



**Australian Government**

**Department of Infrastructure and Regional Development**

Bureau of Infrastructure, Transport and Regional Economics

STATISTICAL REPORT



## Aviation

Domestic airline on time performance  
February 2015

© Commonwealth of Australia 2015

ISSN: 1832-0759

### **Ownership of intellectual property rights in this publication**

Unless otherwise noted, copyright (and any other intellectual property rights, if any) in this publication is owned by the Commonwealth of Australia (referred to below as the Commonwealth).

### **Disclaimer**

The material contained in this publication is made available on the understanding that the Commonwealth is not providing professional advice, and that users exercise their own skill and care with respect to its use, and seek independent advice if necessary.

The Commonwealth makes no representations or warranties as to the contents or accuracy of the information contained in this publication. To the extent permitted by law, the Commonwealth disclaims liability to any person or organisation in respect of anything done, or omitted to be done, in reliance upon information contained in this publication.

### **Creative Commons licence**

With the exception of (a) the Coat of Arms; and (b) the Department of Infrastructure and Regional Development's photos and graphics, copyright in this publication is licensed under a Creative Commons Attribution 3.0 Australia Licence.

Creative Commons Attribution 3.0 Australia Licence is a standard form licence agreement that allows you to copy, communicate and adapt this publication provided that you attribute the work to the Commonwealth and abide by the other licence terms. A summary of the licence terms is available from <http://creativecommons.org/licenses/by/3.0/au/deed.en>. The full licence terms are available from <http://creativecommons.org/licenses/by/3.0/au/legalcode>.

### **Use of the Coat of Arms**

The Department of the Prime Minister and Cabinet sets the terms under which the Coat of Arms is used. Please refer to the Department's Commonwealth Coat of Arms and Government branding web page <http://www.dpmmc.gov.au/guidelines/index.cfm#brand> and, in particular, the Guidelines on the use of the Commonwealth Coat of Arms publication.

An appropriate citation for this report is:

Bureau of Infrastructure, Transport and Regional Economics (BITRE), 2015, Domestic airline on time performance, Statistical Report, BITRE, Canberra ACT.

### **Contact us**

This publication is available in PDF format. All other rights are reserved, including in relation to any Departmental logos or trade marks which may exist. For enquiries regarding the licence and any use of this publication, please contact:

Bureau of Infrastructure, Transport and Regional Economics (BITRE)  
Department of Infrastructure and Regional Development  
GPO Box 501, Canberra ACT 2601, Australia  
Telephone: (international) +61 2 6274 7210  
Fax: (international) +61 2 6274 6855  
Email: [bitre@infrastructure.gov.au](mailto:bitre@infrastructure.gov.au)  
Website: [www.bitre.gov.au](http://www.bitre.gov.au)

### **Inquiries**

Should you require additional information about the statistics contained in this publication:

Telephone (02) 6274 7790 or Facsimile (02) 6274 7727

Electronic mail: [AVSTATS@infrastructure.gov.au](mailto:AVSTATS@infrastructure.gov.au)

Web site: <http://www.bitre.gov.au/statistics/aviation/otphome.aspx>

# Foreword

The Bureau of Infrastructure, Transport and Regional Economics (BITRE) monitors the punctuality and reliability of major domestic airlines operating between Australian airports. The purpose of this is to allow for evaluation of overall industry and individual airline performance, so that consumers of air travel can make informed decisions.

The following domestic airlines currently report this information monthly to the BITRE: Jetstar, Qantas, QantasLink, Regional Express, Tigerair, Virgin Australia and Virgin Australia Regional Airlines. Data has been gathered since November 2003, although some airlines commenced reporting at a later date, including Jetstar which first reported in May 2004, MacAir in July 2005 and Tigerair in April 2008. MacAir ceased operations in February 2009 and data was not received for December 2008 onwards. Virgin Blue was rebranded as Virgin Australia in May 2011 and Tiger Airways was rebranded as Tigerair in July 2013 and time series data in Microsoft Excel spreadsheet format on the BITRE website have been revised to reflect these changes. Virgin Australia Regional Airlines commenced operations in May 2013. It was formed after the acquisition of Skywest by Virgin Australia and represents a combination of operations previously reported under Skywest and Virgin Australia – ATR/F100 Operations. Services operated by Skywest on behalf of Virgin Australia using ATR/F100 aircraft commenced in November 2011 and were shown separately as Virgin Australia – ATR/F100 Operations until April 2013.

Information presented in this report is for Australian domestic routes for which the passenger load averaged 8 000 or more passengers per month over the previous six months and where two or more airlines operated in competition on those routes. There were 62 routes that met this definition in February 2015. Over time, routes which meet these criteria change as airline networks and traffic levels vary.

Participating airlines report their overall monthly network performance where this is possible.

Total industry figures encompass all services operated by reporting airlines only. These airlines collectively carried over 95 per cent of total domestic passengers (regular public transport only) in 2014.

The method of capturing on time performance varies between airlines utilising different recording systems. Jetstar and Qantas jet aircraft use Aircraft Communication Addressing and Reporting System (ACARS) to electronically measure on time performance. Regional Express, Tigerair, Virgin Australia, Virgin Australia Regional Airlines and the Qantas non-jet fleet record on time performance manually using records from pilots, gate agents and/or ground crews.

After initial data is collected, aggregate reports are audited internally by participating airlines prior to publication.

Reports and detailed time series data in Microsoft Excel spreadsheet format are available from the BITRE website at: <http://www.bitre.gov.au/statistics/aviation/otphome.aspx>.



# Contents

	Page
Industry performance .....	1
Individual routes .....	9
Airports .....	21
Definitions .....	27



## Industry performance

For February 2015, on time performance over all routes operated by participating airlines (Jetstar, Qantas, QantasLink, Regional Express, Tigerair, Virgin Australia and Virgin Australia Regional Airlines) averaged 88.9 per cent for on time departures and 87.0 per cent for on time arrivals. Cancellations represented 1.2 per cent of all scheduled flights. The equivalent figures for February 2014 were 89.4 per cent for departures, 87.6 per cent for arrivals and 1.2 per cent for cancellations.

This month's figures were above the long term average performance for all routes (83.8 per cent for departures and 82.3 per cent for arrivals). The rate of cancellations was slightly lower than the long term average of 1.3 per cent.

Of the major domestic airlines, Virgin Australia achieved the highest level of on time departures for February 2015 at 91.6 per cent, followed by Qantas at 90.1 per cent, Jetstar at 84.0 per cent and Tigerair at 83.0 per cent. The regional airlines were led by Virgin Australia Regional Airlines at 90.5 per cent, followed by Regional Express at 89.6 per cent and QantasLink at 88.0 per cent.

Virgin Australia also achieved the highest on time arrivals among the major domestic airlines at 89.2 per cent, followed by Qantas at 88.2 per cent, Jetstar at 84.9 per cent and Tigerair at 81.2 per cent. Virgin Australia Regional Airlines was the best performing regional airline for on time arrivals at 87.6 per cent, followed by QantasLink at 86.3 per cent and Regional Express at 85.8 per cent.

Virgin Australia Regional Airlines had the highest percentage of cancellations (3.1 per cent) during the month, followed by QantasLink and Virgin Australia (both on 1.5 per cent), Tigerair (1.1 per cent), Qantas (1.0 per cent), Jetstar (0.9 per cent) and Regional Express (0.1 per cent).

Of the 62 routes which met the criteria for on time performance reporting in February 2015, the Perth-Darwin route had the highest percentage of on time departures (100.0 per cent) and the Brisbane-Mount Isa and Mount Isa-Brisbane routes had the highest percentage of on time arrivals (98.6 per cent). The Hobart-Brisbane route had the lowest percentage of on time departures (61.5 per cent) and the lowest percentage of on time arrivals (also 61.5 per cent).

Cancellations were highest on the Brisbane-Rockhampton route at 10.8 per cent, followed by the Rockhampton-Brisbane route at 10.6 per cent, the Brisbane-Bundaberg and Bundaberg-Brisbane routes at 7.6 per cent, the Brisbane-Gladstone route at 5.5 per cent and the Gladstone-Brisbane route at 4.8 per cent. Cancellations on these routes could reflect the impact of Tropical Cyclone Marcia.

Mount Isa Airport recorded the highest percentage of on time departures (98.6 per cent) and the highest percentage of on time arrivals (also 98.6 per cent). Hobart Airport recorded the lowest percentage of on time departures (75.5 per cent) and Port Macquarie Airport recorded the lowest percentage of on time arrivals (78.7 per cent). These figures only refer to reported routes and do not cover all flights at these airports.

Table 1 On time performance for February 2015 — Total Industry

	<i>Sectors</i>		<i>Departures On Time</i>		<i>Arrivals On Time</i>		<i>Cancellations</i>	
	<i>Scheduled</i>	<i>Flown</i>	<i>No.</i>	<i>%</i>	<i>No.</i>	<i>%</i>	<i>No.</i>	<i>%</i>
Jetstar	5 834	5 783	4 855	84.0	4 911	84.9	51	0.9
Qantas	8 837	8 749	7 885	90.1	7 720	88.2	88	1.0
QantasLink	9 528	9 383	8 260	88.0	8 095	86.3	145	1.5
Regional Express	4 981	4 978	4 459	89.6	4 269	85.8	3	0.1
Tigerair	1 669	1 651	1 371	83.0	1 340	81.2	18	1.1
Virgin Australia	9 939	9 791	8 970	91.6	8 730	89.2	148	1.5
Virgin Australia Regional Airlines	2 347	2 275	2 060	90.5	1 992	87.6	72	3.1
All Airlines	43 135	42 610	37 860	88.9	37 057	87.0	525	1.2

Total airline network data (including routes not shown in this report).

Table 2 Top ten routes for on time performance for February 2015 (participating airlines only)

<i>Departures</i>		<i>Arrivals</i>	
<i>Route</i>	<i>On Time (%)</i>	<i>Route</i>	<i>On Time (%)</i>
Perth-Darwin	100.0	Brisbane-Mount Isa	98.6
Mount Isa-Brisbane	98.6	Mount Isa-Brisbane	98.6
Newman-Perth	97.6	Perth-Darwin	98.4
Perth-Newman	97.6	Newman-Perth	97.0
Perth-Karratha	97.4	Perth-Newman	97.0
Perth-Port Hedland	96.2	Sydney-Ayers Rock	95.9
Adelaide-Brisbane	96.0	Brisbane-Darwin	95.1
Karratha-Perth	96.0	Adelaide-Port Lincoln	94.9
Sydney-Ayers Rock	95.9	Port Lincoln-Adelaide	94.9
Port Hedland-Perth	95.1	Karratha-Perth	94.9

Table 3 Top ten airports for on time performance for February 2015 (participating airlines and reported routes only)

<i>Departures</i>		<i>Arrivals</i>	
<i>Airport</i>	<i>On Time (%)</i>	<i>Airport</i>	<i>On Time (%)</i>
Mount Isa	98.6	Mount Isa	98.6
Newman	97.6	Newman	97.0
Karratha	96.0	Ayers Rock	95.9
Port Hedland	95.1	Port Lincoln	94.9
Port Lincoln	94.5	Dubbo	94.0
Ayers Rock	94.0	Port Hedland	94.0
Albury	93.4	Albury	93.9
Dubbo	93.1	Broome	93.6
Perth	93.1	Karratha	93.4
Canberra	93.0	Darwin	93.2



## Total industry on time performance

Figure 1 On time performance (by month from February 2012)—Total Industry

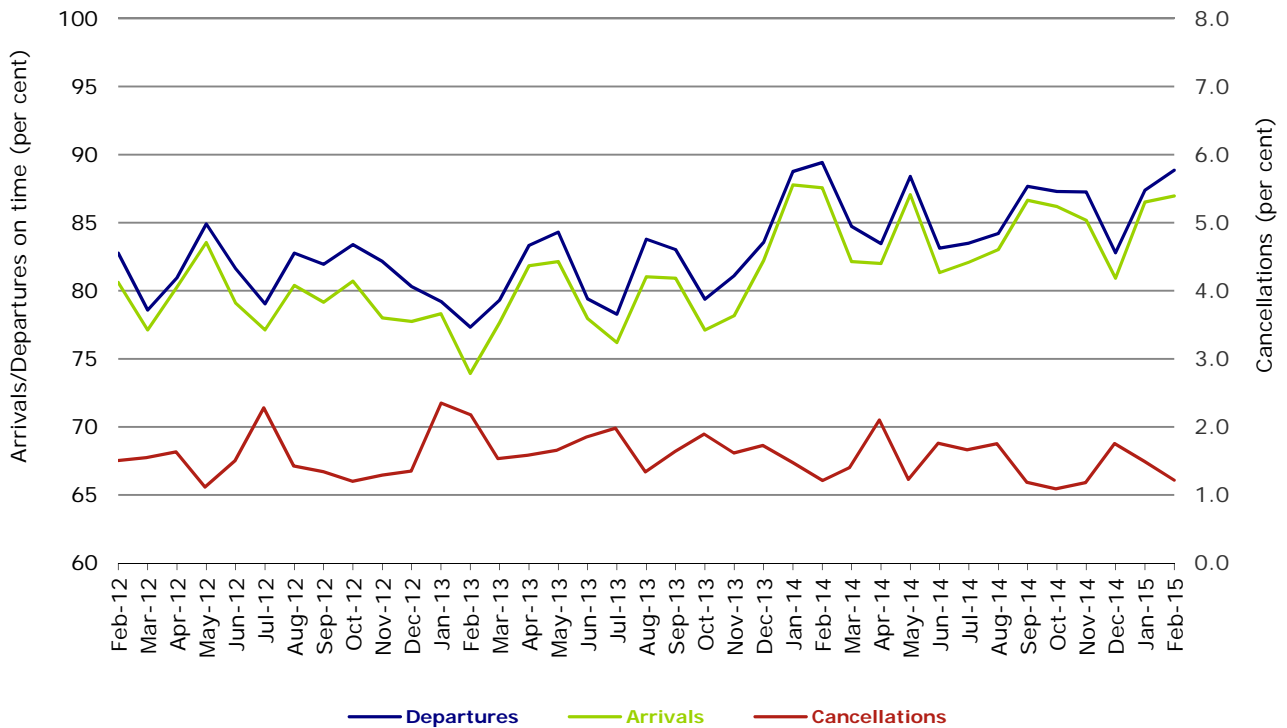


Figure 2 Departures on time (by month from February 2014)

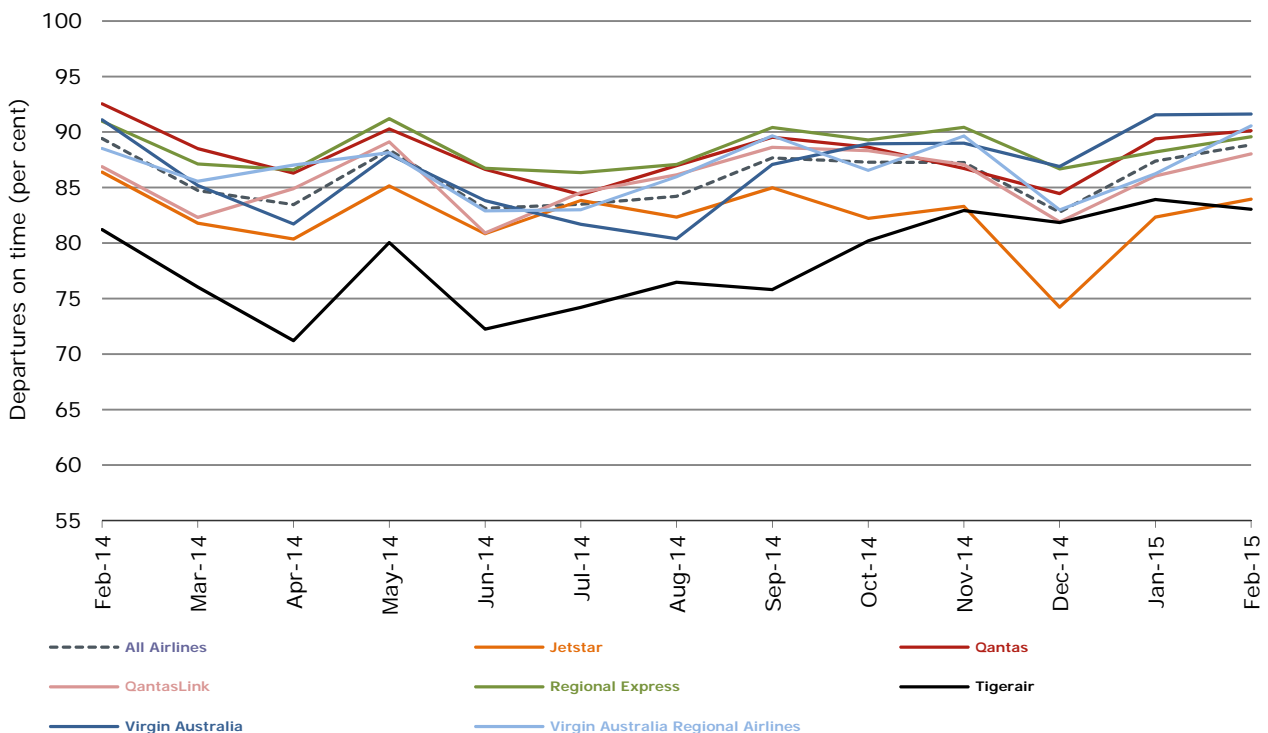


Figure 3 Arrivals on time (by month from February 2014)

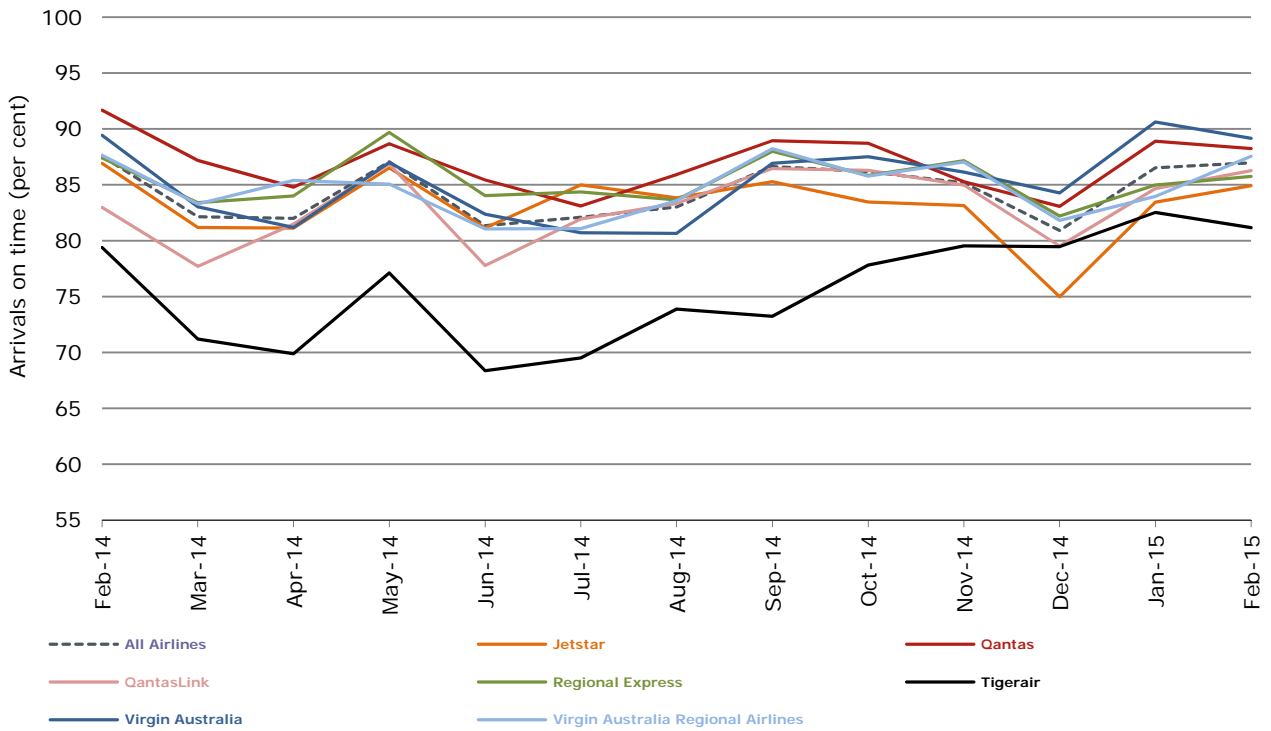
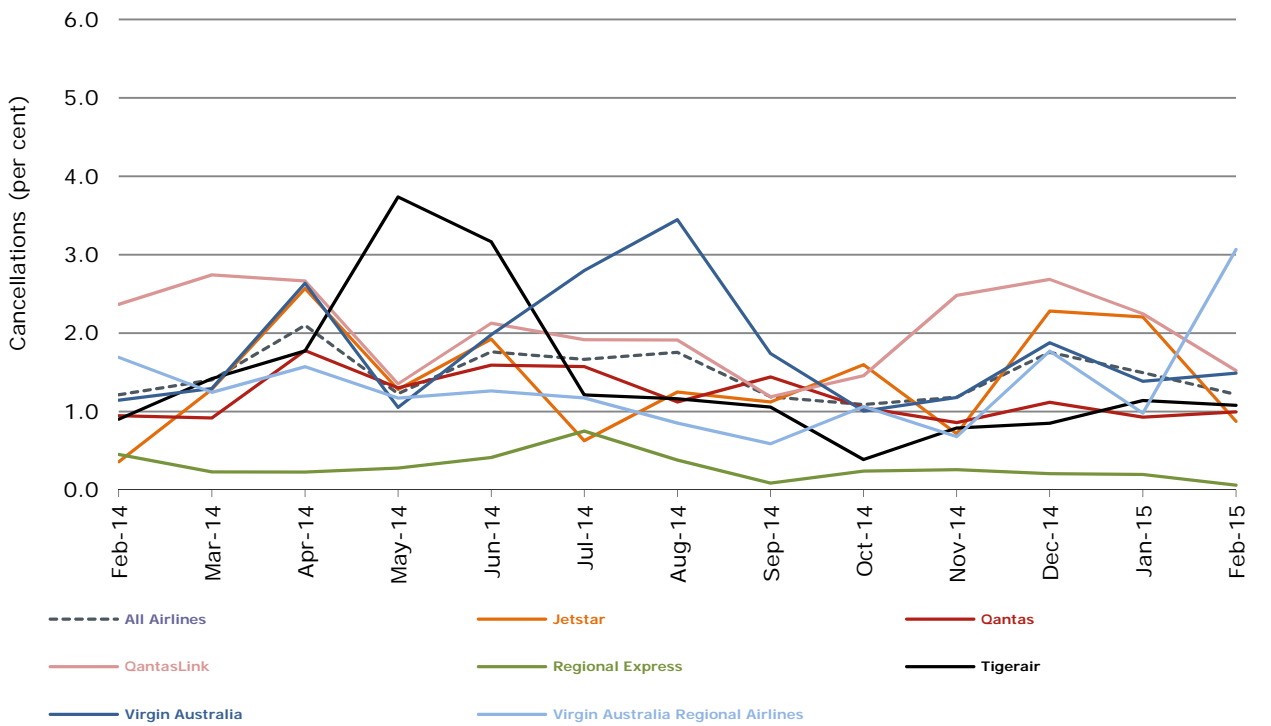


Figure 4 Cancellations (by month from February 2014)



## Major domestic airlines on time performance

Figure 5 On time performance (by month from February 2012)—Jetstar

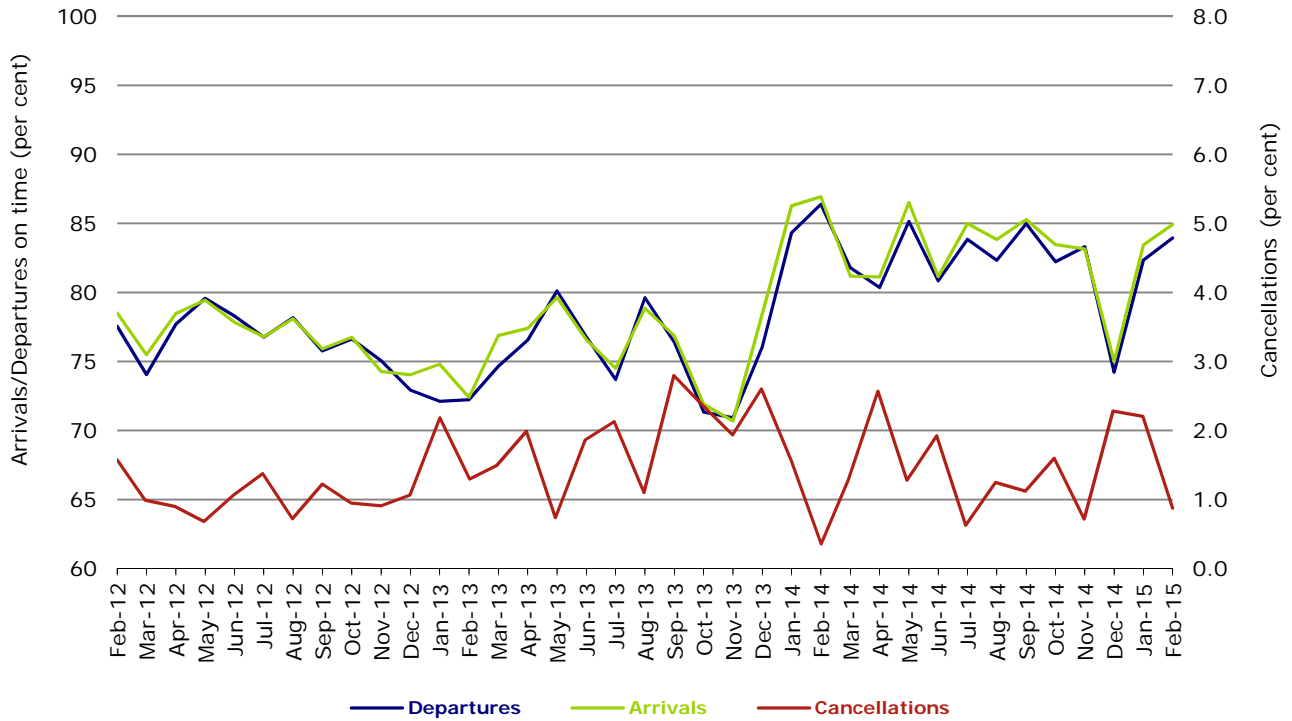


Figure 6 On time performance (by month from February 2012)—Qantas

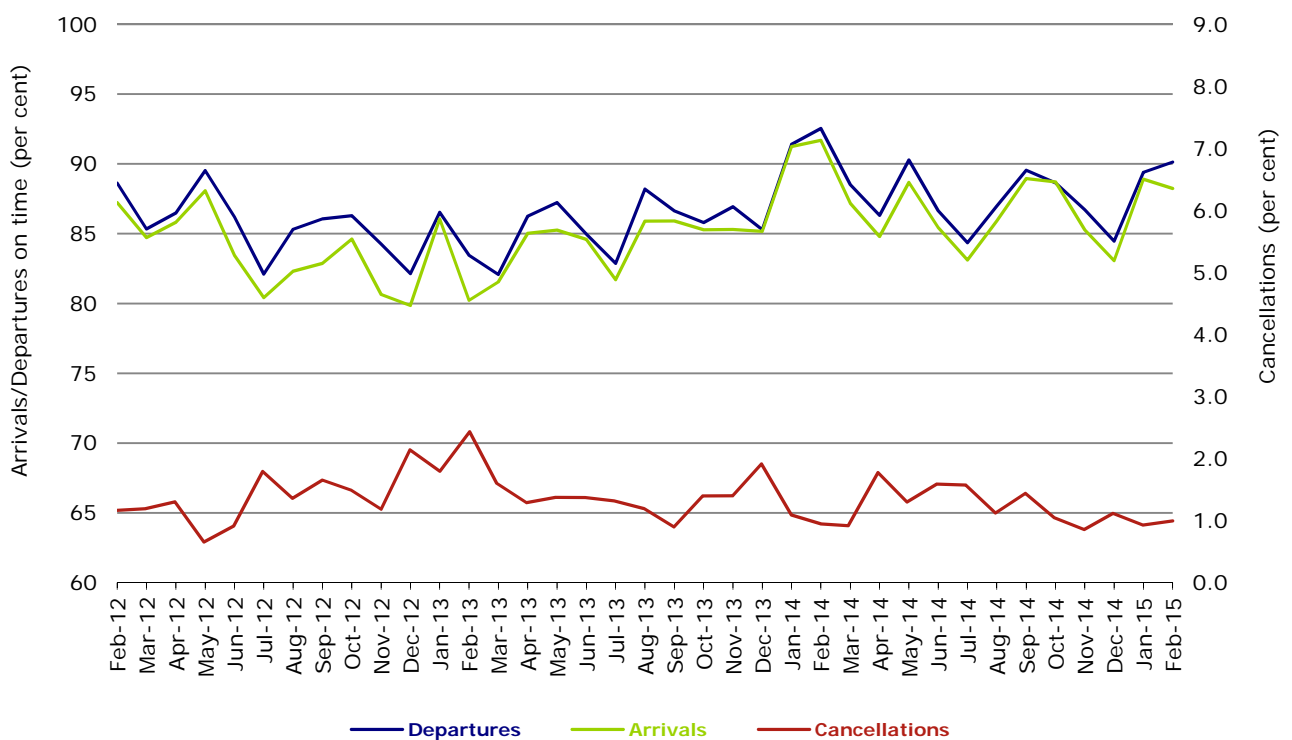


Figure 7 On time performance (by month from February 2012)—Tigerair

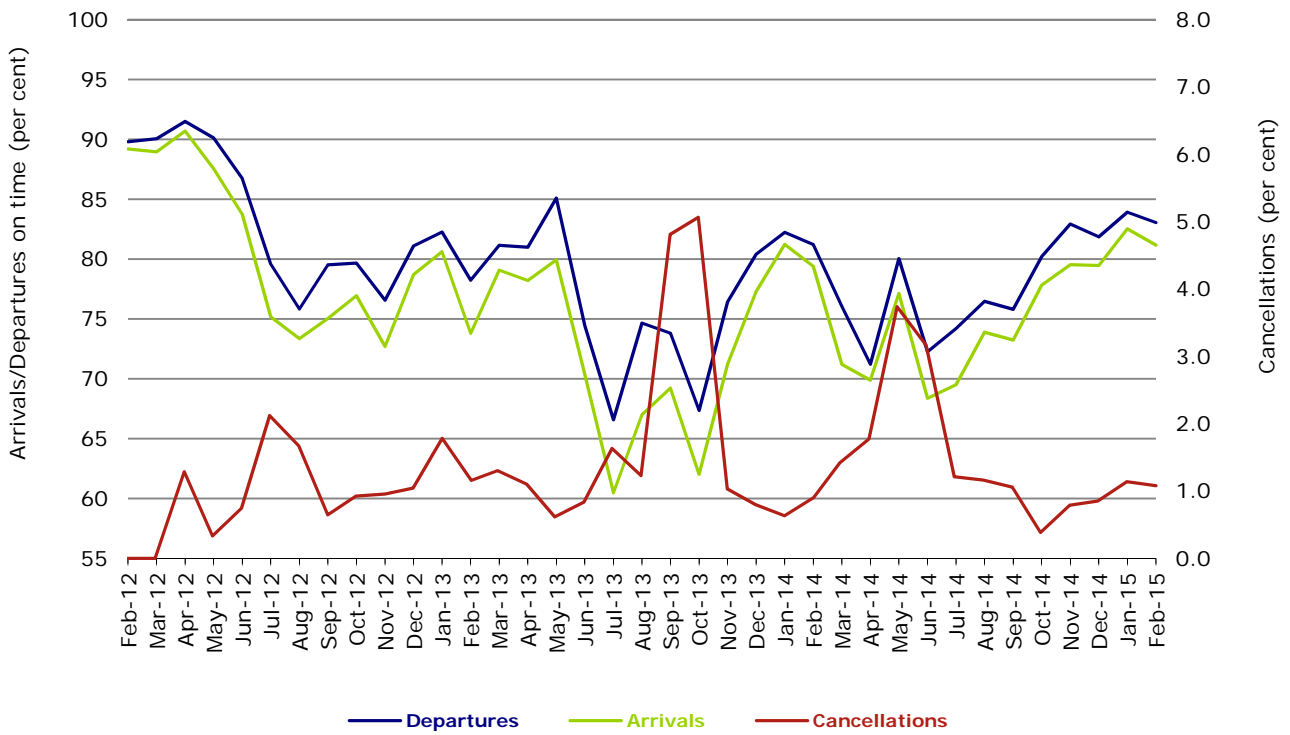
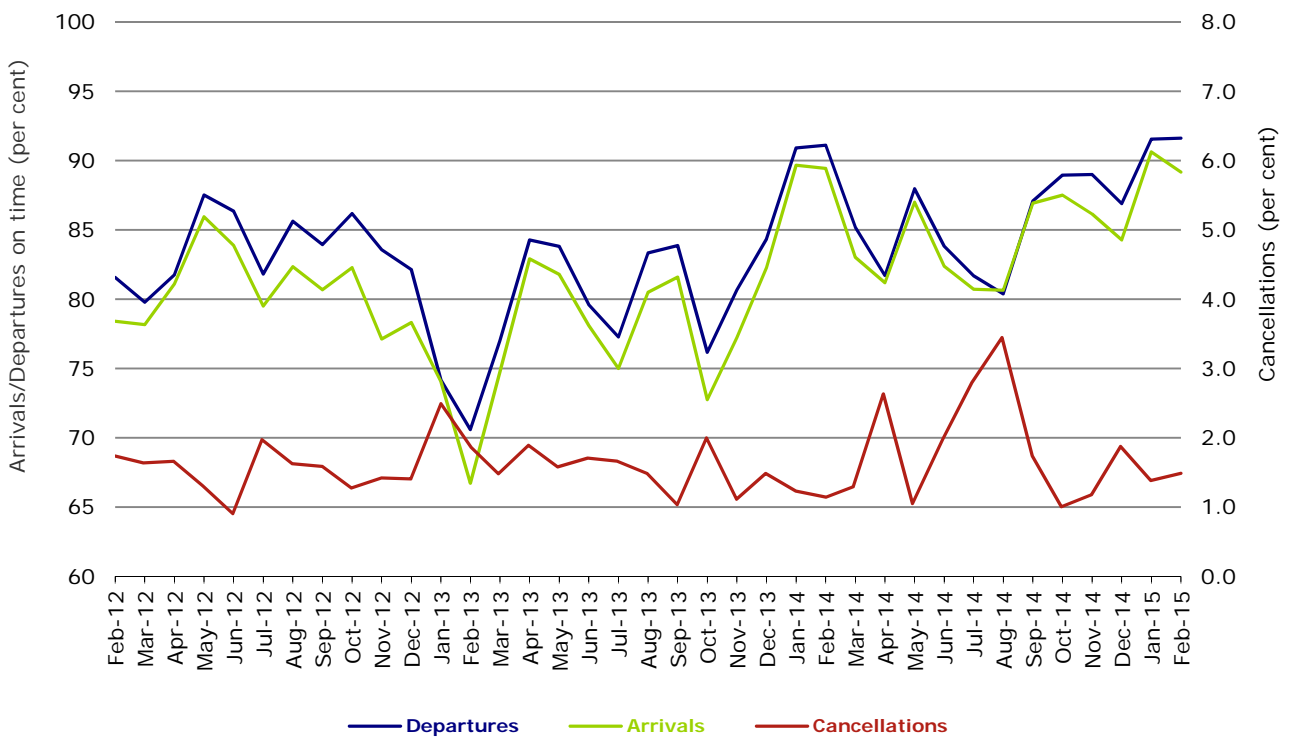


Figure 8 On time performance (by month from February 2012)—Virgin Australia



## Major regional airlines on time performance

Figure 9 On time performance (by month from February 2012)—QantasLink

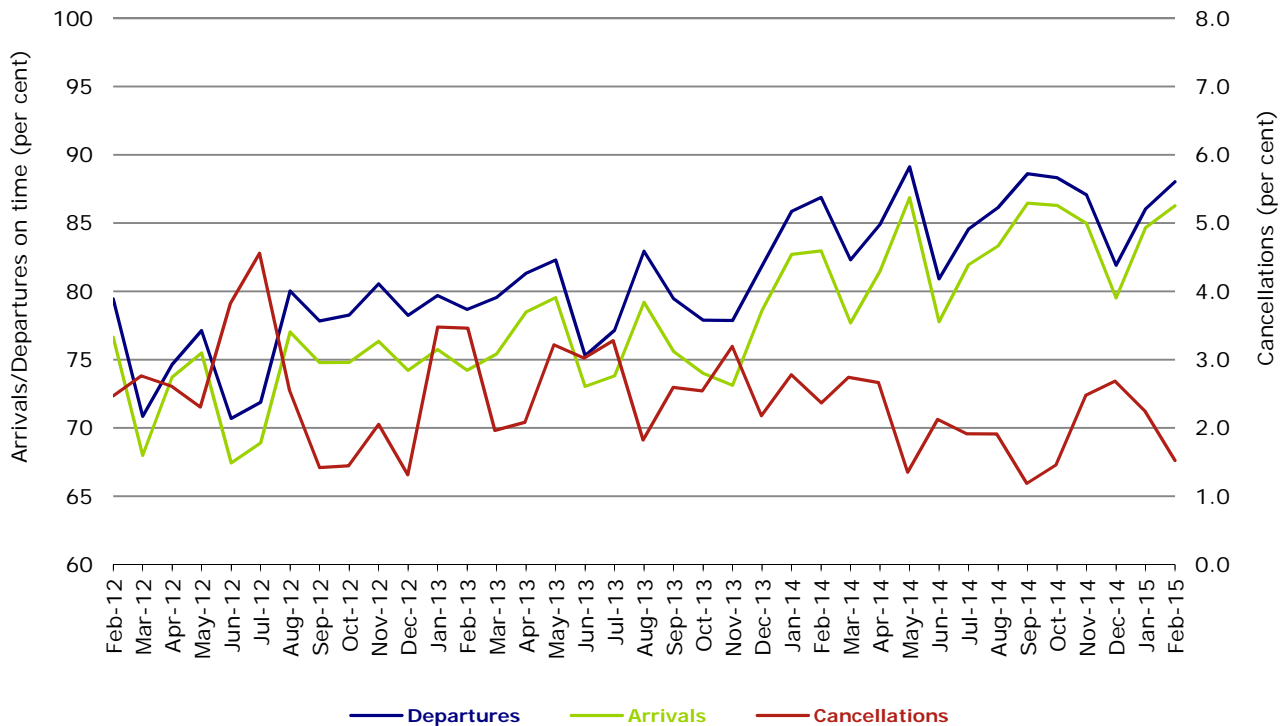


Figure 10 On time performance (by month from February 2012)—Regional Express

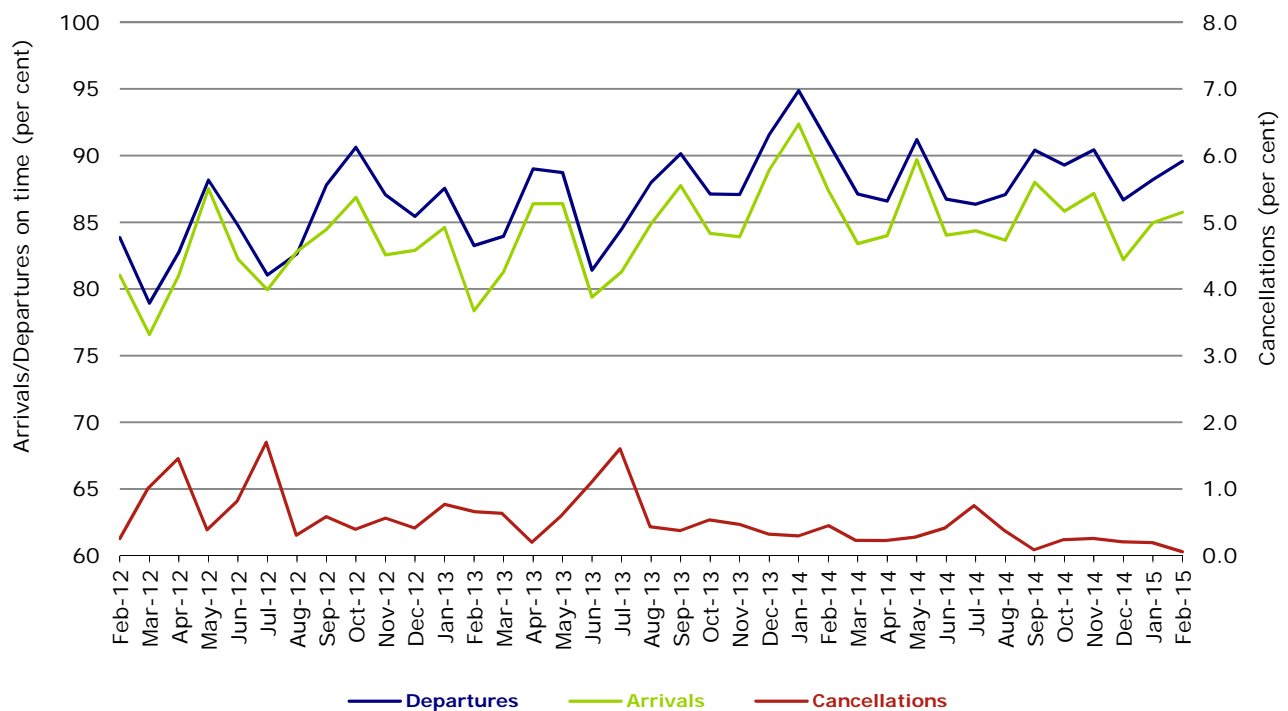
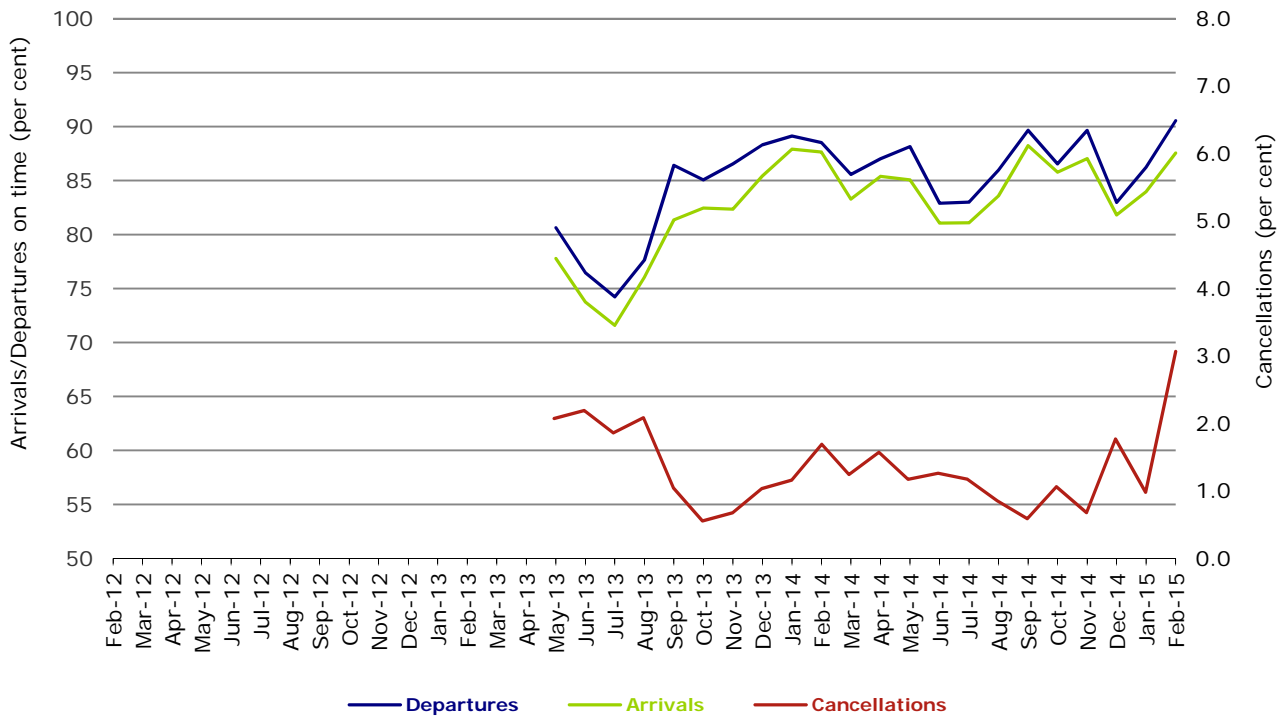


Figure 11 On time performance (by month from February 2012)  
Virgin Australia Regional Airlines



Virgin Australia Regional Airlines commenced operations in May 2013. It was formed after the acquisition of Skywest by Virgin Australia and represents a combination of operations previously reported under Skywest and Virgin Australia – ATR/F100 Operations.

## Individual routes

On time performance is reported for all routes where the passenger load averages over 8000 passengers per month over the previous six months, and where two or more airlines operate in competition on those routes. There are now 62 routes which meet this definition. Over time, however, routes which meet this definition may change as airline networks and traffic levels vary.

	<i>Sectors</i>		<i>Departures On Time</i>		<i>Arrivals On Time</i>		<i>Cancellations</i>	
	<i>Sched.</i>	<i>Flown</i>	<i>No.</i>	<i>%</i>	<i>No.</i>	<i>%</i>	<i>No.</i>	<i>%</i>
<b>Adelaide-Brisbane</b>								
Jetstar	24	24	21	87.5	21	87.5	0	0.0
Qantas	100	99	93	93.9	88	88.9	1	1.0
Tigerair	20	20	19	95.0	19	95.0	0	0.0
Virgin Australia	105	105	105	100.0	96	91.4	0	0.0
All Airlines	249	248	238	96.0	224	90.3	1	0.4
<b>Adelaide-Canberra</b>								
Qantas	44	44	41	93.2	40	90.9	0	0.0
QantasLink	16	16	15	93.8	15	93.8	0	0.0
Virgin Australia	24	24	21	87.5	21	87.5	0	0.0
All Airlines	84	84	77	91.7	76	90.5	0	0.0
<b>Adelaide-Gold Coast</b>								
Jetstar	28	28	25	89.3	24	85.7	0	0.0
Virgin Australia	28	27	27	100.0	27	100.0	1	3.6
All Airlines	56	55	52	94.5	51	92.7	1	1.8
<b>Adelaide-Melbourne</b>								
Jetstar	95	94	73	77.7	76	80.9	1	1.1
Qantas	267	267	242	90.6	249	93.3	0	0.0
Tigerair	60	60	54	90.0	56	93.3	0	0.0
Virgin Australia	251	251	230	91.6	230	91.6	0	0.0
All Airlines	673	672	599	89.1	611	90.9	1	0.1
<b>Adelaide-Perth</b>								
Jetstar	28	28	15	53.6	23	82.1	0	0.0
Qantas	104	104	94	90.4	99	95.2	0	0.0
Virgin Australia	60	59	58	98.3	58	98.3	1	1.7
All Airlines	192	191	167	87.4	180	94.2	1	0.5
<b>Adelaide-Port Lincoln</b>								
QantasLink	92	92	82	89.1	84	91.3	0	0.0
Regional Express	162	162	158	97.5	157	96.9	0	0.0
All Airlines	254	254	240	94.5	241	94.9	0	0.0
<b>Adelaide-Sydney</b>								
Jetstar	103	102	85	83.3	87	85.3	1	1.0
Qantas	216	216	204	94.4	198	91.7	0	0.0
QantasLink	18	18	17	94.4	16	88.9	0	0.0
Tigerair	25	25	22	88.0	23	92.0	0	0.0
Virgin Australia	156	155	145	93.5	142	91.6	1	0.6
All Airlines	518	516	473	91.7	466	90.3	2	0.4
<b>Albury-Sydney</b>								
QantasLink	84	84	79	94.0	78	92.9	0	0.0
Regional Express	88	88	83	94.3	72	81.8	0	0.0
Virgin Australia Regional Airlines	56	56	51	91.1	48	85.7	0	0.0
All Airlines	228	228	213	93.4	198	86.8	0	0.0
<b>Armidale-Sydney</b>								
QantasLink	121	121	105	86.8	106	87.6	0	0.0
Regional Express	68	68	62	91.2	53	77.9	0	0.0
All Airlines	189	189	167	88.4	159	84.1	0	0.0

	<i>Sectors</i>		<i>Departures On Time</i>		<i>Arrivals On Time</i>		<i>Cancellations</i>	
	<i>Sched.</i>	<i>Flown</i>	<i>No.</i>	<i>%</i>	<i>No.</i>	<i>%</i>	<i>No.</i>	<i>%</i>
<b>Ayers Rock-Sydney</b>								
Jetstar	22	22	21	95.5	17	77.3	0	0.0
Virgin Australia	28	28	26	92.9	27	96.4	0	0.0
All Airlines	50	50	47	94.0	44	88.0	0	0.0
<b>Ballina-Sydney</b>								
Jetstar	56	56	42	75.0	49	87.5	0	0.0
Regional Express	19	19	15	78.9	10	52.6	0	0.0
Virgin Australia	28	27	26	96.3	26	96.3	1	3.6
All Airlines	103	102	83	81.4	85	83.3	1	1.0
<b>Brisbane-Adelaide</b>								
Jetstar	24	24	24	100.0	22	91.7	0	0.0
Qantas	100	100	91	91.0	93	93.0	0	0.0
Tigerair	20	20	18	90.0	17	85.0	0	0.0
Virgin Australia	105	105	100	95.2	103	98.1	0	0.0
All Airlines	249	249	233	93.6	235	94.4	0	0.0
<b>Brisbane-Bundaberg</b>								
QantasLink	112	103	96	93.2	97	94.2	9	8.0
Virgin Australia Regional Airlines	32	30	25	83.3	26	86.7	2	6.3
All Airlines	144	133	121	91.0	123	92.5	11	7.6
<b>Brisbane-Cairns</b>								
Jetstar	94	94	84	89.4	86	91.5	0	0.0
Qantas	108	108	100	92.6	92	85.2	0	0.0
QantasLink	4	4	3	75.0	3	75.0	0	0.0
Tigerair	24	24	23	95.8	24	100.0	0	0.0
Virgin Australia	123	123	113	91.9	105	85.4	0	0.0
All Airlines	353	353	323	91.5	310	87.8	0	0.0
<b>Brisbane-Canberra</b>								
Qantas	24	24	22	91.7	23	95.8	0	0.0
QantasLink	127	127	115	90.6	116	91.3	0	0.0
Virgin Australia	85	85	81	95.3	81	95.3	0	0.0
All Airlines	236	236	218	92.4	220	93.2	0	0.0
<b>Brisbane-Darwin</b>								
Jetstar	16	16	11	68.8	14	87.5	0	0.0
Qantas	42	42	40	95.2	42	100.0	0	0.0
Tigerair	16	16	15	93.8	15	93.8	0	0.0
Virgin Australia	28	28	28	100.0	26	92.9	0	0.0
All Airlines	102	102	94	92.2	97	95.1	0	0.0
<b>Brisbane-Emerald</b>								
QantasLink	128	128	116	90.6	111	86.7	0	0.0
Virgin Australia Regional Airlines	76	75	71	94.7	65	86.7	1	1.3
All Airlines	204	203	187	92.1	176	86.7	1	0.5
<b>Brisbane-Gladstone</b>								
QantasLink	187	176	162	92.0	157	89.2	11	5.9
Virgin Australia	12	12	10	83.3	11	91.7	0	0.0
Virgin Australia Regional Airlines	127	120	104	86.7	95	79.2	7	5.5
All Airlines	326	308	276	89.6	263	85.4	18	5.5
<b>Brisbane-Hamilton Island</b>								
QantasLink	16	14	12	85.7	11	78.6	2	12.5
Virgin Australia	28	28	25	89.3	25	89.3	0	0.0
All Airlines	44	42	37	88.1	36	85.7	2	4.5
<b>Brisbane-Hobart</b>								
Jetstar	24	24	20	83.3	20	83.3	0	0.0
Virgin Australia	28	28	27	96.4	25	89.3	0	0.0
All Airlines	52	52	47	90.4	45	86.5	0	0.0



	<i>Sectors</i>		<i>Departures On Time</i>		<i>Arrivals On Time</i>		<i>Cancellations</i>	
	<i>Sched.</i>	<i>Flown</i>	<i>No.</i>	<i>%</i>	<i>No.</i>	<i>%</i>	<i>No.</i>	<i>%</i>
<b>Brisbane-Mackay</b>								
Jetstar	53	52	34	65.4	37	71.2	1	1.9
QantasLink	96	94	84	89.4	86	91.5	2	2.1
Virgin Australia	144	138	132	95.7	133	96.4	6	4.2
All Airlines	293	284	250	88.0	256	90.1	9	3.1
<b>Brisbane-Melbourne</b>								
Jetstar	94	93	72	77.4	77	82.8	1	1.1
Qantas	396	393	357	90.8	354	90.1	3	0.8
Tigerair	87	86	73	84.9	70	81.4	1	1.1
Virgin Australia	363	355	322	90.7	297	83.7	8	2.2
All Airlines	940	927	824	88.9	798	86.1	13	1.4
<b>Brisbane-Moranbah</b>								
QantasLink	109	109	98	89.9	97	89.0	0	0.0
Virgin Australia Regional Airlines	68	67	60	89.6	61	91.0	1	1.5
All Airlines	177	176	158	89.8	158	89.8	1	0.6
<b>Brisbane-Mount Isa</b>								
Qantas	49	49	45	91.8	48	98.0	0	0.0
Virgin Australia	20	20	19	95.0	20	100.0	0	0.0
All Airlines	69	69	64	92.8	68	98.6	0	0.0
<b>Brisbane-Newcastle</b>								
Jetstar	70	69	56	81.2	56	81.2	1	1.4
QantasLink	62	62	53	85.5	47	75.8	0	0.0
Virgin Australia	76	76	73	96.1	74	97.4	0	0.0
All Airlines	208	207	182	87.9	177	85.5	1	0.5
<b>Brisbane-Perth</b>								
Qantas	112	112	97	86.6	104	92.9	0	0.0
Virgin Australia	92	92	81	88.0	81	88.0	0	0.0
All Airlines	204	204	178	87.3	185	90.7	0	0.0
<b>Brisbane-Proserpine</b>								
Jetstar	24	24	21	87.5	21	87.5	0	0.0
Virgin Australia	48	48	46	95.8	46	95.8	0	0.0
All Airlines	72	72	67	93.1	67	93.1	0	0.0
<b>Brisbane-Rockhampton</b>								
QantasLink	187	172	152	88.4	149	86.6	15	8.0
Virgin Australia	87	78	70	89.7	69	88.5	9	10.3
Virgin Australia Regional Airlines	106	89	81	91.0	77	86.5	17	16.0
All Airlines	380	339	303	89.4	295	87.0	41	10.8
<b>Brisbane-Sydney</b>								
Jetstar	144	139	120	86.3	127	91.4	5	3.5
Qantas	543	536	494	92.2	479	89.4	7	1.3
Tigerair	68	68	61	89.7	60	88.2	0	0.0
Virgin Australia	498	493	455	92.3	440	89.2	5	1.0
All Airlines	1 253	1 236	1 130	91.4	1 106	89.5	17	1.4
<b>Brisbane-Townsville</b>								
Jetstar	36	36	36	100.0	35	97.2	0	0.0
Qantas	136	136	119	87.5	123	90.4	0	0.0
Virgin Australia	139	138	128	92.8	125	90.6	1	0.7
All Airlines	311	310	283	91.3	283	91.3	1	0.3
<b>Broome-Perth</b>								
Qantas	30	30	28	93.3	29	96.7	0	0.0
QantasLink	44	43	43	100.0	42	97.7	1	2.3
Virgin Australia	17	17	12	70.6	14	82.4	0	0.0
Virgin Australia Regional Airlines	23	23	20	87.0	17	73.9	0	0.0
All Airlines	114	113	103	91.2	102	90.3	1	0.9

	<i>Sectors</i>		<i>Departures On Time</i>		<i>Arrivals On Time</i>		<i>Cancellations</i>	
	<i>Sched.</i>	<i>Flown</i>	<i>No.</i>	<i>%</i>	<i>No.</i>	<i>%</i>	<i>No.</i>	<i>%</i>
<b>Bundaberg-Brisbane</b>								
QantasLink	112	103	92	89.3	87	84.5	9	8.0
Virgin Australia Regional Airlines	32	30	25	83.3	25	83.3	2	6.3
All Airlines	144	133	117	88.0	112	84.2	11	7.6
<b>Cairns-Brisbane</b>								
Jetstar	94	94	88	93.6	86	91.5	0	0.0
Qantas	108	108	95	88.0	96	88.9	0	0.0
QantasLink	4	4	4	100.0	4	100.0	0	0.0
Tigerair	24	24	22	91.7	21	87.5	0	0.0
Virgin Australia	123	123	103	83.7	106	86.2	0	0.0
All Airlines	353	353	312	88.4	313	88.7	0	0.0
<b>Cairns-Melbourne</b>								
Jetstar	65	65	54	83.1	50	76.9	0	0.0
Qantas	28	28	18	64.3	22	78.6	0	0.0
Tigerair	26	26	16	61.5	17	65.4	0	0.0
Virgin Australia	28	28	23	82.1	23	82.1	0	0.0
All Airlines	147	147	111	75.5	112	76.2	0	0.0
<b>Cairns-Sydney</b>								
Jetstar	78	78	66	84.6	61	78.2	0	0.0
Qantas	64	64	47	73.4	46	71.9	0	0.0
Tigerair	28	28	22	78.6	20	71.4	0	0.0
Virgin Australia	81	80	74	92.5	76	95.0	1	1.2
All Airlines	251	250	209	83.6	203	81.2	1	0.4
<b>Canberra-Adelaide</b>								
Qantas	44	44	41	93.2	40	90.9	0	0.0
QantasLink	16	16	13	81.3	15	93.8	0	0.0
Virgin Australia	24	24	20	83.3	20	83.3	0	0.0
All Airlines	84	84	74	88.1	75	89.3	0	0.0
<b>Canberra-Brisbane</b>								
Qantas	24	24	24	100.0	24	100.0	0	0.0
QantasLink	127	127	110	86.6	110	86.6	0	0.0
Virgin Australia	85	85	80	94.1	79	92.9	0	0.0
All Airlines	236	236	214	90.7	213	90.3	0	0.0
<b>Canberra-Melbourne</b>								
Qantas	167	167	157	94.0	156	93.4	0	0.0
QantasLink	79	78	71	91.0	69	88.5	1	1.3
Virgin Australia	140	139	128	92.1	128	92.1	1	0.7
Virgin Australia Regional Airlines	28	28	28	100.0	25	89.3	0	0.0
All Airlines	414	412	384	93.2	378	91.7	2	0.5
<b>Canberra-Sydney</b>								
QantasLink	463	460	434	94.3	425	92.4	3	0.6
Virgin Australia	21	20	18	90.0	18	90.0	1	4.8
Virgin Australia Regional Airlines	256	249	234	94.0	230	92.4	7	2.7
All Airlines	740	729	686	94.1	673	92.3	11	1.5
<b>Coffs Harbour-Sydney</b>								
QantasLink	137	137	122	89.1	120	87.6	0	0.0
Tigerair	12	12	9	75.0	9	75.0	0	0.0
Virgin Australia	52	51	51	100.0	51	100.0	1	1.9
All Airlines	201	200	182	91.0	180	90.0	1	0.5
<b>Darwin-Brisbane</b>								
Jetstar	16	16	13	81.3	14	87.5	0	0.0
Qantas	42	42	41	97.6	39	92.9	0	0.0
Tigerair	17	17	15	88.2	16	94.1	0	0.0
Virgin Australia	28	28	25	89.3	19	67.9	0	0.0
All Airlines	103	103	94	91.3	88	85.4	0	0.0

	<i>Sectors</i>		<i>Departures On Time</i>		<i>Arrivals On Time</i>		<i>Cancellations</i>	
	<i>Sched.</i>	<i>Flown</i>	<i>No.</i>	<i>%</i>	<i>No.</i>	<i>%</i>	<i>No.</i>	<i>%</i>
<b>Darwin-Melbourne</b>								
Jetstar	20	20	16	80.0	15	75.0	0	0.0
Qantas	20	20	18	90.0	17	85.0	0	0.0
Virgin Australia	28	28	26	92.9	18	64.3	0	0.0
All Airlines	68	68	60	88.2	50	73.5	0	0.0
<b>Darwin-Perth</b>								
Qantas	34	34	32	94.1	32	94.1	0	0.0
Virgin Australia	28	28	25	89.3	25	89.3	0	0.0
All Airlines	62	62	57	91.9	57	91.9	0	0.0
<b>Darwin-Sydney</b>								
Jetstar	16	16	9	56.3	10	62.5	0	0.0
Qantas	32	32	28	87.5	25	78.1	0	0.0
Virgin Australia	28	28	28	100.0	25	89.3	0	0.0
All Airlines	76	76	65	85.5	60	78.9	0	0.0
<b>Dubbo-Sydney</b>								
QantasLink	116	116	108	93.1	105	90.5	0	0.0
Regional Express	132	132	123	93.2	111	84.1	0	0.0
All Airlines	248	248	231	93.1	216	87.1	0	0.0
<b>Emerald-Brisbane</b>								
QantasLink	129	128	112	87.5	106	82.8	1	0.8
Virgin Australia Regional Airlines	76	74	69	93.2	67	90.5	2	2.6
All Airlines	205	202	181	89.6	173	85.6	3	1.5
<b>Geraldton-Perth</b>								
QantasLink	48	48	44	91.7	44	91.7	0	0.0
Virgin Australia Regional Airlines	88	88	81	92.0	79	89.8	0	0.0
All Airlines	136	136	125	91.9	123	90.4	0	0.0
<b>Gladstone-Brisbane</b>								
QantasLink	198	189	162	85.7	163	86.2	9	4.5
Virgin Australia	12	12	9	75.0	9	75.0	0	0.0
Virgin Australia Regional Airlines	126	119	96	80.7	90	75.6	7	5.6
All Airlines	336	320	267	83.4	262	81.9	16	4.8
<b>Gold Coast-Adelaide</b>								
Jetstar	28	28	22	78.6	24	85.7	0	0.0
Virgin Australia	28	27	27	100.0	27	100.0	1	3.6
All Airlines	56	55	49	89.1	51	92.7	1	1.8
<b>Gold Coast-Melbourne</b>								
Jetstar	144	144	122	84.7	128	88.9	0	0.0
Tigerair	69	65	37	56.9	44	67.7	4	5.8
Virgin Australia	164	160	146	91.3	141	88.1	4	2.4
All Airlines	377	369	305	82.7	313	84.8	8	2.1
<b>Gold Coast-Sydney</b>								
Jetstar	254	251	229	91.2	236	94.0	3	1.2
Qantas	84	82	73	89.0	77	93.9	2	2.4
Tigerair	84	81	68	84.0	72	88.9	3	3.6
Virgin Australia	227	216	187	86.6	191	88.4	11	4.8
All Airlines	649	630	557	88.4	576	91.4	19	2.9
<b>Hamilton Island-Brisbane</b>								
QantasLink	16	14	11	78.6	11	78.6	2	12.5
Virgin Australia	28	28	25	89.3	23	82.1	0	0.0
All Airlines	44	42	36	85.7	34	81.0	2	4.5

	<i>Sectors</i>		<i>Departures On Time</i>		<i>Arrivals On Time</i>		<i>Cancellations</i>	
	<i>Sched.</i>	<i>Flown</i>	<i>No.</i>	<i>%</i>	<i>No.</i>	<i>%</i>	<i>No.</i>	<i>%</i>
<b>Hamilton Island-Melbourne</b>								
Jetstar	16	15	14	93.3	14	93.3	1	6.3
Virgin Australia	13	13	9	69.2	11	84.6	0	0.0
All Airlines	29	28	23	82.1	25	89.3	1	3.4
<b>Hamilton Island-Sydney</b>								
Jetstar	16	16	16	100.0	16	100.0	0	0.0
Qantas	8	8	5	62.5	7	87.5	0	0.0
Virgin Australia	28	28	25	89.3	25	89.3	0	0.0
All Airlines	52	52	46	88.5	48	92.3	0	0.0
<b>Hobart-Brisbane</b>								
Jetstar	24	24	14	58.3	14	58.3	0	0.0
Virgin Australia	28	28	18	64.3	18	64.3	0	0.0
All Airlines	52	52	32	61.5	32	61.5	0	0.0
<b>Hobart-Melbourne</b>								
Jetstar	173	173	133	76.9	138	79.8	0	0.0
QantasLink	110	110	66	60.0	68	61.8	0	0.0
Tigerair	28	28	19	67.9	19	67.9	0	0.0
Virgin Australia	132	132	109	82.6	111	84.1	0	0.0
All Airlines	443	443	327	73.8	336	75.8	0	0.0
<b>Hobart-Sydney</b>								
Jetstar	57	57	47	82.5	45	78.9	0	0.0
Qantas	4	4	2	50.0	3	75.0	0	0.0
QantasLink	25	25	23	92.0	22	88.0	0	0.0
Virgin Australia	56	56	50	89.3	53	94.6	0	0.0
All Airlines	142	142	122	85.9	123	86.6	0	0.0
<b>Kalgoorlie-Perth</b>								
Qantas	20	20	18	90.0	17	85.0	0	0.0
QantasLink	52	52	49	94.2	50	96.2	0	0.0
Virgin Australia	36	36	33	91.7	34	94.4	0	0.0
Virgin Australia Regional Airlines	16	16	13	81.3	14	87.5	0	0.0
All Airlines	124	124	113	91.1	115	92.7	0	0.0
<b>Karratha-Perth</b>								
Qantas	100	97	94	96.9	97	100.0	3	3.0
QantasLink	97	97	92	94.8	90	92.8	0	0.0
Virgin Australia	66	64	62	96.9	58	90.6	2	3.0
Virgin Australia Regional Airlines	15	14	13	92.9	13	92.9	1	6.7
All Airlines	278	272	261	96.0	258	94.9	6	2.2
<b>Launceston-Melbourne</b>								
Jetstar	112	111	85	76.6	83	74.8	1	0.9
QantasLink	109	107	90	84.1	78	72.9	2	1.8
Virgin Australia	86	86	76	88.4	69	80.2	0	0.0
Virgin Australia Regional Airlines	4	3	3	100.0	2	66.7	1	25.0
All Airlines	311	307	254	82.7	232	75.6	4	1.3
<b>Launceston-Sydney</b>								
Jetstar	56	56	46	82.1	41	73.2	0	0.0
Virgin Australia	27	27	23	85.2	24	88.9	0	0.0
All Airlines	83	83	69	83.1	65	78.3	0	0.0
<b>Mackay-Brisbane</b>								
Jetstar	53	51	36	70.6	36	70.6	2	3.8
QantasLink	96	93	86	92.5	88	94.6	3	3.1
Virgin Australia	144	138	130	94.2	129	93.5	6	4.2
All Airlines	293	282	252	89.4	253	89.7	11	3.8

	<i>Sectors</i>		<i>Departures On Time</i>		<i>Arrivals On Time</i>		<i>Cancellations</i>	
	<i>Sched.</i>	<i>Flown</i>	<i>No.</i>	<i>%</i>	<i>No.</i>	<i>%</i>	<i>No.</i>	<i>%</i>
<b>Melbourne-Adelaide</b>								
Jetstar	94	93	75	80.6	77	82.8	1	1.1
Qantas	267	267	242	90.6	239	89.5	0	0.0
Tigerair	60	60	55	91.7	55	91.7	0	0.0
Virgin Australia	251	251	223	88.8	220	87.6	0	0.0
All Airlines	672	671	595	88.7	591	88.1	1	0.1
<b>Melbourne-Brisbane</b>								
Jetstar	93	92	70	76.1	69	75.0	1	1.1
Qantas	395	391	358	91.6	312	79.8	4	1.0
Tigerair	87	86	73	84.9	65	75.6	1	1.1
Virgin Australia	360	353	317	89.8	285	80.7	7	1.9
All Airlines	935	922	818	88.7	731	79.3	13	1.4
<b>Melbourne-Cairns</b>								
Jetstar	66	66	49	74.2	52	78.8	0	0.0
Qantas	28	28	25	89.3	24	85.7	0	0.0
Tigerair	26	26	20	76.9	20	76.9	0	0.0
Virgin Australia	28	28	26	92.9	24	85.7	0	0.0
All Airlines	148	148	120	81.1	120	81.1	0	0.0
<b>Melbourne-Canberra</b>								
Qantas	167	167	154	92.2	151	90.4	0	0.0
QantasLink	79	78	63	80.8	63	80.8	1	1.3
Virgin Australia	140	140	125	89.3	124	88.6	0	0.0
Virgin Australia Regional Airlines	28	28	22	78.6	18	64.3	0	0.0
All Airlines	414	413	364	88.1	356	86.2	1	0.2
<b>Melbourne-Darwin</b>								
Jetstar	20	20	14	70.0	16	80.0	0	0.0
Qantas	20	20	16	80.0	18	90.0	0	0.0
Virgin Australia	28	28	27	96.4	26	92.9	0	0.0
All Airlines	68	68	57	83.8	60	88.2	0	0.0
<b>Melbourne-Gold Coast</b>								
Jetstar	145	145	120	82.8	114	78.6	0	0.0
Tigerair	68	65	56	86.2	44	67.7	3	4.4
Virgin Australia	164	159	143	89.9	142	89.3	5	3.0
All Airlines	377	369	319	86.4	300	81.3	8	2.1
<b>Melbourne-Hamilton Island</b>								
Jetstar	16	15	14	93.3	15	100.0	1	6.3
Virgin Australia	13	13	12	92.3	9	69.2	0	0.0
All Airlines	29	28	26	92.9	24	85.7	1	3.4
<b>Melbourne-Hobart</b>								
Jetstar	174	174	152	87.4	151	86.8	0	0.0
QantasLink	111	111	64	57.7	59	53.2	0	0.0
Tigerair	28	28	23	82.1	20	71.4	0	0.0
Virgin Australia	133	132	117	88.6	117	88.6	1	0.8
All Airlines	446	445	356	80.0	347	78.0	1	0.2
<b>Melbourne-Launceston</b>								
Jetstar	112	111	94	84.7	92	82.9	1	0.9
QantasLink	110	109	95	87.2	84	77.1	1	0.9
Virgin Australia	85	85	74	87.1	76	89.4	0	0.0
Virgin Australia Regional Airlines	4	3	3	100.0	3	100.0	1	25.0
All Airlines	311	308	266	86.4	255	82.8	3	1.0
<b>Melbourne-Mildura</b>								
QantasLink	79	79	69	87.3	68	86.1	0	0.0
Regional Express	71	71	64	90.1	63	88.7	0	0.0
Virgin Australia	28	28	26	92.9	25	89.3	0	0.0
All Airlines	178	178	159	89.3	156	87.6	0	0.0

	<i>Sectors</i>		<i>Departures On Time</i>		<i>Arrivals On Time</i>		<i>Cancellations</i>	
	<i>Sched.</i>	<i>Flown</i>	<i>No.</i>	<i>%</i>	<i>No.</i>	<i>%</i>	<i>No.</i>	<i>%</i>
<b>Melbourne-Newcastle</b>								
Jetstar	81	80	64	80.0	60	75.0	1	1.2
Virgin Australia	28	28	27	96.4	25	89.3	0	0.0
All Airlines	109	108	91	84.3	85	78.7	1	0.9
<b>Melbourne-Perth</b>								
Jetstar	60	60	52	86.7	53	88.3	0	0.0
Qantas	198	195	155	79.5	154	79.0	3	1.5
Tigerair	52	52	46	88.5	44	84.6	0	0.0
Virgin Australia	128	128	110	85.9	106	82.8	0	0.0
All Airlines	438	435	363	83.4	357	82.1	3	0.7
<b>Melbourne-Sunshine Coast</b>								
Jetstar	52	52	40	76.9	43	82.7	0	0.0
Virgin Australia	28	27	26	96.3	24	88.9	1	3.6
All Airlines	80	79	66	83.5	67	84.8	1	1.3
<b>Melbourne-Sydney</b>								
Jetstar	308	300	239	79.7	234	78.0	8	2.6
Qantas	969	947	846	89.3	785	82.9	22	2.3
Tigerair	188	188	149	79.3	137	72.9	0	0.0
Virgin Australia	728	715	655	91.6	619	86.6	13	1.8
All Airlines	2 193	2 150	1 889	87.9	1 775	82.6	43	2.0
<b>Mildura-Melbourne</b>								
QantasLink	79	79	70	88.6	68	86.1	0	0.0
Regional Express	70	70	62	88.6	57	81.4	0	0.0
Virgin Australia	28	28	26	92.9	26	92.9	0	0.0
All Airlines	177	177	158	89.3	151	85.3	0	0.0
<b>Moranbah-Brisbane</b>								
QantasLink	105	105	89	84.8	91	86.7	0	0.0
Virgin Australia Regional Airlines	68	67	63	94.0	62	92.5	1	1.5
All Airlines	173	172	152	88.4	153	89.0	1	0.6
<b>Mount Isa-Brisbane</b>								
Qantas	49	49	48	98.0	48	98.0	0	0.0
Virgin Australia	20	20	20	100.0	20	100.0	0	0.0
All Airlines	69	69	68	98.6	68	98.6	0	0.0
<b>Newcastle-Brisbane</b>								
Jetstar	69	69	59	85.5	55	79.7	0	0.0
QantasLink	63	63	46	73.0	45	71.4	0	0.0
Virgin Australia	76	76	69	90.8	66	86.8	0	0.0
All Airlines	208	208	174	83.7	166	79.8	0	0.0
<b>Newcastle-Melbourne</b>								
Jetstar	80	79	69	87.3	67	84.8	1	1.3
Virgin Australia	28	28	21	75.0	22	78.6	0	0.0
All Airlines	108	107	90	84.1	89	83.2	1	0.9
<b>Newman-Perth</b>								
Qantas	80	78	74	94.9	74	94.9	2	2.5
QantasLink	59	59	59	100.0	58	98.3	0	0.0
Virgin Australia	28	28	28	100.0	28	100.0	0	0.0
Virgin Australia Regional Airlines	4	4	4	100.0	4	100.0	0	0.0
All Airlines	171	169	165	97.6	164	97.0	2	1.2
<b>Perth-Adelaide</b>								
Jetstar	28	27	19	70.4	21	77.8	1	3.6
Qantas	108	108	103	95.4	104	96.3	0	0.0
Virgin Australia	60	59	58	98.3	56	94.9	1	1.7
All Airlines	196	194	180	92.8	181	93.3	2	1.0

	<i>Sectors</i>		<i>Departures On Time</i>		<i>Arrivals On Time</i>		<i>Cancellations</i>	
	<i>Sched.</i>	<i>Flown</i>	<i>No.</i>	<i>%</i>	<i>No.</i>	<i>%</i>	<i>No.</i>	<i>%</i>
<b>Perth-Brisbane</b>								
Qantas	112	112	99	88.4	89	79.5	0	0.0
Virgin Australia	92	92	86	93.5	81	88.0	0	0.0
All Airlines	204	204	185	90.7	170	83.3	0	0.0
<b>Perth-Broome</b>								
Qantas	30	30	29	96.7	29	96.7	0	0.0
QantasLink	44	44	41	93.2	41	93.2	0	0.0
Virgin Australia	17	17	15	88.2	15	88.2	0	0.0
Virgin Australia Regional Airlines	18	18	17	94.4	17	94.4	0	0.0
All Airlines	109	109	102	93.6	102	93.6	0	0.0
<b>Perth-Darwin</b>								
Qantas	34	34	34	100.0	34	100.0	0	0.0
Virgin Australia	28	28	28	100.0	27	96.4	0	0.0
All Airlines	62	62	62	100.0	61	98.4	0	0.0
<b>Perth-Geraldton</b>								
QantasLink	48	48	45	93.8	40	83.3	0	0.0
Virgin Australia Regional Airlines	84	84	79	94.0	77	91.7	0	0.0
All Airlines	132	132	124	93.9	117	88.6	0	0.0
<b>Perth-Kalgoorlie</b>								
Qantas	20	20	19	95.0	17	85.0	0	0.0
QantasLink	53	52	49	94.2	49	94.2	1	1.9
Virgin Australia	36	36	35	97.2	35	97.2	0	0.0
Virgin Australia Regional Airlines	16	16	12	75.0	12	75.0	0	0.0
All Airlines	125	124	115	92.7	113	91.1	1	0.8
<b>Perth-Karratha</b>								
Qantas	100	98	97	99.0	92	93.9	2	2.0
QantasLink	97	96	92	95.8	91	94.8	1	1.0
Virgin Australia	66	64	62	96.9	59	92.2	2	3.0
Virgin Australia Regional Airlines	15	15	15	100.0	13	86.7	0	0.0
All Airlines	278	273	266	97.4	255	93.4	5	1.8
<b>Perth-Melbourne</b>								
Jetstar	60	60	49	81.7	48	80.0	0	0.0
Qantas	198	195	175	89.7	164	84.1	3	1.5
Tigerair	52	51	41	80.4	45	88.2	1	1.9
Virgin Australia	128	128	114	89.1	109	85.2	0	0.0
All Airlines	438	434	379	87.3	366	84.3	4	0.9
<b>Perth-Newman</b>								
Qantas	80	77	74	96.1	73	94.8	3	3.8
QantasLink	59	59	58	98.3	58	98.3	0	0.0
Virgin Australia	28	28	28	100.0	28	100.0	0	0.0
Virgin Australia Regional Airlines	4	4	4	100.0	4	100.0	0	0.0
All Airlines	171	168	164	97.6	163	97.0	3	1.8
<b>Perth-Port Hedland</b>								
Qantas	104	103	101	98.1	100	97.1	1	1.0
QantasLink	41	41	38	92.7	35	85.4	0	0.0
Virgin Australia	40	40	38	95.0	38	95.0	0	0.0
All Airlines	185	184	177	96.2	173	94.0	1	0.5
<b>Perth-Sydney</b>								
Jetstar	27	27	23	85.2	25	92.6	0	0.0
Qantas	182	182	167	91.8	150	82.4	0	0.0
Tigerair	19	19	19	100.0	15	78.9	0	0.0
Virgin Australia	108	107	103	96.3	102	95.3	1	0.9
All Airlines	336	335	312	93.1	292	87.2	1	0.3

	<i>Sectors</i>		<i>Departures On Time</i>		<i>Arrivals On Time</i>		<i>Cancellations</i>	
	<i>Sched.</i>	<i>Flown</i>	<i>No.</i>	<i>%</i>	<i>No.</i>	<i>%</i>	<i>No.</i>	<i>%</i>
<b>Port Hedland-Perth</b>								
Qantas	104	102	98	96.1	96	94.1	2	1.9
QantasLink	42	41	37	90.2	36	87.8	1	2.4
Virgin Australia	40	40	39	97.5	38	95.0	0	0.0
All Airlines	186	183	174	95.1	170	92.9	3	1.6
<b>Port Lincoln-Adelaide</b>								
QantasLink	92	92	82	89.1	83	90.2	0	0.0
Regional Express	161	161	157	97.5	157	97.5	0	0.0
All Airlines	253	253	239	94.5	240	94.9	0	0.0
<b>Port Macquarie-Sydney</b>								
QantasLink	121	121	95	78.5	89	73.6	0	0.0
Virgin Australia Regional Airlines	56	56	49	87.5	47	83.9	0	0.0
All Airlines	177	177	144	81.4	136	76.8	0	0.0
<b>Proserpine-Brisbane</b>								
Jetstar	24	24	21	87.5	22	91.7	0	0.0
Virgin Australia	48	48	43	89.6	44	91.7	0	0.0
All Airlines	72	72	64	88.9	66	91.7	0	0.0
<b>Rockhampton-Brisbane</b>								
QantasLink	168	153	123	80.4	116	75.8	15	8.9
Virgin Australia	87	78	68	87.2	69	88.5	9	10.3
Virgin Australia Regional Airlines	103	89	81	91.0	81	91.0	14	13.6
All Airlines	358	320	272	85.0	266	83.1	38	10.6
<b>Sunshine Coast-Melbourne</b>								
Jetstar	52	52	35	67.3	43	82.7	0	0.0
Virgin Australia	28	26	24	92.3	23	88.5	2	7.1
All Airlines	80	78	59	75.6	66	84.6	2	2.5
<b>Sunshine Coast-Sydney</b>								
Jetstar	76	75	60	80.0	64	85.3	1	1.3
Virgin Australia	29	27	27	100.0	27	100.0	2	6.9
All Airlines	105	102	87	85.3	91	89.2	3	2.9
<b>Sydney-Adelaide</b>								
Jetstar	103	102	85	83.3	87	85.3	1	1.0
Qantas	212	212	171	80.7	186	87.7	0	0.0
QantasLink	18	18	16	88.9	17	94.4	0	0.0
Tigerair	25	25	24	96.0	24	96.0	0	0.0
Virgin Australia	156	155	144	92.9	146	94.2	1	0.6
All Airlines	514	512	440	85.9	460	89.8	2	0.4
<b>Sydney-Albury</b>								
QantasLink	84	84	77	91.7	82	97.6	0	0.0
Regional Express	88	88	81	92.0	81	92.0	0	0.0
Virgin Australia Regional Airlines	56	56	50	89.3	51	91.1	0	0.0
All Airlines	228	228	208	91.2	214	93.9	0	0.0
<b>Sydney-Armidale</b>								
QantasLink	123	123	110	89.4	105	85.4	0	0.0
Regional Express	68	68	61	89.7	61	89.7	0	0.0
All Airlines	191	191	171	89.5	166	86.9	0	0.0
<b>Sydney-Ayers Rock</b>								
Jetstar	21	21	20	95.2	21	100.0	0	0.0
Virgin Australia	28	28	27	96.4	26	92.9	0	0.0
All Airlines	49	49	47	95.9	47	95.9	0	0.0



	<i>Sectors</i>		<i>Departures On Time</i>		<i>Arrivals On Time</i>		<i>Cancellations</i>	
	<i>Sched.</i>	<i>Flown</i>	<i>No.</i>	<i>%</i>	<i>No.</i>	<i>%</i>	<i>No.</i>	<i>%</i>
<b>Sydney-Ballina</b>								
Jetstar	56	56	50	89.3	49	87.5	0	0.0
Regional Express	20	20	20	100.0	19	95.0	0	0.0
Virgin Australia	28	27	27	100.0	26	96.3	1	3.6
All Airlines	104	103	97	94.2	94	91.3	1	1.0
<b>Sydney-Brisbane</b>								
Jetstar	144	139	123	88.5	124	89.2	5	3.5
Qantas	543	537	480	89.4	447	83.2	6	1.1
Tigerair	68	68	59	86.8	58	85.3	0	0.0
Virgin Australia	500	493	453	91.9	426	86.4	7	1.4
All Airlines	1 255	1 237	1 115	90.1	1 055	85.3	18	1.4
<b>Sydney-Cairns</b>								
Jetstar	78	78	70	89.7	70	89.7	0	0.0
Qantas	64	64	52	81.3	52	81.3	0	0.0
Tigerair	28	28	27	96.4	25	89.3	0	0.0
Virgin Australia	80	80	76	95.0	75	93.8	0	0.0
All Airlines	250	250	225	90.0	222	88.8	0	0.0
<b>Sydney-Canberra</b>								
QantasLink	467	464	426	91.8	431	92.9	3	0.6
Virgin Australia	21	21	21	100.0	21	100.0	0	0.0
Virgin Australia Regional Airlines	255	250	226	90.4	223	89.2	5	2.0
All Airlines	743	735	673	91.6	675	91.8	8	1.1
<b>Sydney-Coffs Harbour</b>								
QantasLink	138	138	128	92.8	125	90.6	0	0.0
Tigerair	12	12	8	66.7	8	66.7	0	0.0
Virgin Australia	52	51	51	100.0	51	100.0	1	1.9
All Airlines	202	201	187	93.0	184	91.5	1	0.5
<b>Sydney-Darwin</b>								
Jetstar	16	16	12	75.0	15	93.8	0	0.0
Qantas	32	32	23	71.9	28	87.5	0	0.0
Virgin Australia	28	28	27	96.4	26	92.9	0	0.0
All Airlines	76	76	62	81.6	69	90.8	0	0.0
<b>Sydney-Dubbo</b>								
QantasLink	116	116	104	89.7	106	91.4	0	0.0
Regional Express	135	135	127	94.1	130	96.3	0	0.0
All Airlines	251	251	231	92.0	236	94.0	0	0.0
<b>Sydney-Gold Coast</b>								
Jetstar	255	252	230	91.3	228	90.5	3	1.2
Qantas	84	83	77	92.8	76	91.6	1	1.2
Tigerair	84	81	73	90.1	70	86.4	3	3.6
Virgin Australia	227	216	190	88.0	185	85.6	11	4.8
All Airlines	650	632	570	90.2	559	88.4	18	2.8
<b>Sydney-Hamilton Island</b>								
Jetstar	16	16	15	93.8	15	93.8	0	0.0
Qantas	8	8	8	100.0	8	100.0	0	0.0
Virgin Australia	28	28	25	89.3	25	89.3	0	0.0
All Airlines	52	52	48	92.3	48	92.3	0	0.0
<b>Sydney-Hobart</b>								
Jetstar	56	56	52	92.9	51	91.1	0	0.0
Qantas	4	4	4	100.0	3	75.0	0	0.0
QantasLink	25	25	23	92.0	25	100.0	0	0.0
Virgin Australia	56	56	54	96.4	54	96.4	0	0.0
All Airlines	141	141	133	94.3	133	94.3	0	0.0

	<i>Sectors</i>		<i>Departures On Time</i>		<i>Arrivals On Time</i>		<i>Cancellations</i>	
	<i>Sched.</i>	<i>Flown</i>	<i>No.</i>	<i>%</i>	<i>No.</i>	<i>%</i>	<i>No.</i>	<i>%</i>
<b>Sydney-Launceston</b>								
Jetstar	56	56	50	89.3	52	92.9	0	0.0
Virgin Australia	28	28	24	85.7	25	89.3	0	0.0
All Airlines	84	84	74	88.1	77	91.7	0	0.0
<b>Sydney-Melbourne</b>								
Jetstar	308	301	229	76.1	248	82.4	7	2.3
Qantas	969	947	832	87.9	831	87.8	22	2.3
Tigerair	188	188	145	77.1	149	79.3	0	0.0
Virgin Australia	722	711	655	92.1	635	89.3	11	1.5
All Airlines	2 187	2 147	1 861	86.7	1 863	86.8	40	1.8
<b>Sydney-Perth</b>								
Jetstar	28	28	24	85.7	25	89.3	0	0.0
Qantas	186	185	161	87.0	170	91.9	1	0.5
Tigerair	20	20	20	100.0	19	95.0	0	0.0
Virgin Australia	108	107	102	95.3	103	96.3	1	0.9
All Airlines	342	340	307	90.3	317	93.2	2	0.6
<b>Sydney-Port Macquarie</b>								
QantasLink	122	122	102	83.6	90	73.8	0	0.0
Virgin Australia Regional Airlines	56	56	51	91.1	50	89.3	0	0.0
All Airlines	178	178	153	86.0	140	78.7	0	0.0
<b>Sydney-Sunshine Coast</b>								
Jetstar	77	76	68	89.5	67	88.2	1	1.3
Virgin Australia	29	27	27	100.0	27	100.0	2	6.9
All Airlines	106	103	95	92.2	94	91.3	3	2.8
<b>Sydney-Townsville</b>								
Jetstar	14	14	11	78.6	12	85.7	0	0.0
Virgin Australia	26	26	26	100.0	22	84.6	0	0.0
All Airlines	40	40	37	92.5	34	85.0	0	0.0
<b>Sydney-Wagga Wagga</b>								
QantasLink	104	104	91	87.5	86	82.7	0	0.0
Regional Express	100	100	94	94.0	95	95.0	0	0.0
All Airlines	204	204	185	90.7	181	88.7	0	0.0
<b>Townsville-Brisbane</b>								
Jetstar	37	37	33	89.2	33	89.2	0	0.0
Qantas	136	136	129	94.9	131	96.3	0	0.0
Virgin Australia	139	138	130	94.2	126	91.3	1	0.7
All Airlines	312	311	292	93.9	290	93.2	1	0.3
<b>Townsville-Sydney</b>								
Jetstar	14	14	9	64.3	10	71.4	0	0.0
Virgin Australia	26	26	23	88.5	24	92.3	0	0.0
All Airlines	40	40	32	80.0	34	85.0	0	0.0
<b>Wagga Wagga-Sydney</b>								
QantasLink	104	104	92	88.5	93	89.4	0	0.0
Regional Express	101	101	94	93.1	82	81.2	0	0.0
All Airlines	205	205	186	90.7	175	85.4	0	0.0

# Airports

On time performance is reported for all routes where the passenger load averages over 8000 passengers per month, and where two or more airlines operate in competition. The following data reports by airport against flights operated on those routes only.

Airport	Departures			Arrivals		
	Sectors	On Time		Sectors	On Time	
	Flown	No.	%	Flown	No.	%
<b>Adelaide</b>						
Jetstar	276	219	79.3	274	231	84.3
Qantas	730	674	92.3	731	662	90.6
QantasLink	126	114	90.5	126	115	91.3
Regional Express	162	158	97.5	161	157	97.5
Tigerair	105	95	90.5	105	96	91.4
Virgin Australia	621	586	94.4	621	572	92.1
All Airlines	2 020	1 846	91.4	2 018	1 833	90.8
Relates to services to and from Brisbane, Canberra, Gold Coast, Melbourne, Perth, Port Lincoln and Sydney.						
<b>Albury</b>						
QantasLink	84	79	94.0	84	82	97.6
Regional Express	88	83	94.3	88	81	92.0
Virgin Australia Regional Airlines	56	51	91.1	56	51	91.1
All Airlines	228	213	93.4	228	214	93.9
Relates to services to and from Sydney only.						
<b>Armidale</b>						
QantasLink	121	105	86.8	123	105	85.4
Regional Express	68	62	91.2	68	61	89.7
All Airlines	189	167	88.4	191	166	86.9
Relates to services to and from Sydney only.						
<b>Ayers Rock</b>						
Jetstar	22	21	95.5	21	21	100.0
Virgin Australia	28	26	92.9	28	26	92.9
All Airlines	50	47	94.0	49	47	95.9
Relates to services to and from Sydney only.						
<b>Ballina</b>						
Jetstar	56	42	75.0	56	49	87.5
Regional Express	19	15	78.9	20	19	95.0
Virgin Australia	27	26	96.3	27	26	96.3
All Airlines	102	83	81.4	103	94	91.3
Relates to services to and from Sydney only.						
<b>Brisbane</b>						
Jetstar	571	478	83.7	570	474	83.2
Qantas	1 500	1 365	91.0	1 498	1 274	85.0
QantasLink	989	891	90.1	979	821	83.9
Tigerair	214	190	88.8	215	179	83.3
Virgin Australia	1 847	1 710	92.6	1 845	1 596	86.5
Virgin Australia Regional Airlines	381	341	89.5	379	325	85.8
All Airlines	5 502	4 975	90.4	5 486	4 669	85.1
Relates to services to and from Adelaide, Bundaberg, Cairns, Canberra, Darwin, Emerald, Gladstone, Hamilton Island, Hobart, Mackay, Melbourne, Moranbah, Mount Isa, Newcastle, Perth, Proserpine, Rockhampton, Sydney and Townsville.						

Airport	Departures			Arrivals		
	Sectors Flown	On Time		Sectors Flown	On Time	
		No.	%		No.	%
<b>Broome</b>						
Qantas	30	28	93.3	30	29	96.7
QantasLink	43	43	100.0	44	41	93.2
Virgin Australia	17	12	70.6	17	15	88.2
Virgin Australia Regional Airlines	23	20	87.0	18	17	94.4
All Airlines	113	103	91.2	109	102	93.6
Relates to services to and from Perth only.						
<b>Bundaberg</b>						
QantasLink	103	92	89.3	103	97	94.2
Virgin Australia Regional Airlines	30	25	83.3	30	26	86.7
All Airlines	133	117	88.0	133	123	92.5
Relates to services to and from Brisbane only.						
<b>Cairns</b>						
Jetstar	237	208	87.8	238	208	87.4
Qantas	200	160	80.0	200	168	84.0
QantasLink	4	4	100.0	4	3	75.0
Tigerair	78	60	76.9	78	69	88.5
Virgin Australia	231	200	86.6	231	204	88.3
All Airlines	750	632	84.3	751	652	86.8
Relates to services to and from Brisbane, Melbourne and Sydney.						
<b>Canberra</b>						
Qantas	235	222	94.5	235	214	91.1
QantasLink	681	628	92.2	685	625	91.2
Virgin Australia	268	246	91.8	270	247	91.5
Virgin Australia Regional Airlines	277	262	94.6	278	241	86.7
All Airlines	1 461	1 358	93.0	1 468	1 327	90.4
Relates to services to and from Adelaide, Brisbane, Melbourne and Sydney.						
<b>Coffs Harbour</b>						
QantasLink	137	122	89.1	138	125	90.6
Tigerair	12	9	75.0	12	8	66.7
Virgin Australia	51	51	100.0	51	51	100.0
All Airlines	200	182	91.0	201	184	91.5
Relates to services to and from Sydney only.						
<b>Darwin</b>						
Jetstar	52	38	73.1	52	45	86.5
Qantas	128	119	93.0	128	122	95.3
Tigerair	17	15	88.2	16	15	93.8
Virgin Australia	112	104	92.9	112	105	93.8
All Airlines	309	276	89.3	308	287	93.2
Relates to services to and from Brisbane, Melbourne, Perth and Sydney.						
<b>Dubbo</b>						
QantasLink	116	108	93.1	116	106	91.4
Regional Express	132	123	93.2	135	130	96.3
All Airlines	248	231	93.1	251	236	94.0
Relates to services to and from Sydney only.						

Airport	Departures			Arrivals		
	Sectors Flown	On Time		Sectors Flown	On Time	
		No.	%		No.	%
<b>Emerald</b>						
QantasLink	128	112	87.5	128	111	86.7
Virgin Australia Regional Airlines	74	69	93.2	75	65	86.7
All Airlines	202	181	89.6	203	176	86.7
Relates to services to and from Brisbane only.						
<b>Geraldton</b>						
QantasLink	48	44	91.7	48	40	83.3
Virgin Australia Regional Airlines	88	81	92.0	84	77	91.7
All Airlines	136	125	91.9	132	117	88.6
Relates to services to and from Perth only.						
<b>Gladstone</b>						
QantasLink	189	162	85.7	176	157	89.2
Virgin Australia	12	9	75.0	12	11	91.7
Virgin Australia Regional Airlines	119	96	80.7	120	95	79.2
All Airlines	320	267	83.4	308	263	85.4
Relates to services to and from Brisbane only.						
<b>Gold Coast</b>						
Jetstar	423	373	88.2	425	366	86.1
Qantas	82	73	89.0	83	76	91.6
Tigerair	146	105	71.9	146	114	78.1
Virgin Australia	403	360	89.3	402	354	88.1
All Airlines	1 054	911	86.4	1 056	910	86.2
Relates to services to and from Adelaide, Melbourne and Sydney.						
<b>Hamilton Island</b>						
Jetstar	31	30	96.8	31	30	96.8
Qantas	8	5	62.5	8	8	100.0
QantasLink	14	11	78.6	14	11	78.6
Virgin Australia	69	59	85.5	69	59	85.5
All Airlines	122	105	86.1	122	108	88.5
Relates to services to and from Brisbane, Melbourne and Sydney.						
<b>Hobart</b>						
Jetstar	254	194	76.4	254	222	87.4
Qantas	4	2	50.0	4	3	75.0
QantasLink	135	89	65.9	136	84	61.8
Tigerair	28	19	67.9	28	20	71.4
Virgin Australia	216	177	81.9	216	196	90.7
All Airlines	637	481	75.5	638	525	82.3
Relates to services to and from Brisbane, Melbourne and Sydney.						
<b>Kalgoorlie</b>						
Qantas	20	18	90.0	20	17	85.0
QantasLink	52	49	94.2	52	49	94.2
Virgin Australia	36	33	91.7	36	35	97.2
Virgin Australia Regional Airlines	16	13	81.3	16	12	75.0
All Airlines	124	113	91.1	124	113	91.1
Relates to services to and from Perth only.						

Airport	Departures			Arrivals		
	Sectors	On Time		Sectors	On Time	
	Flown	No.	%	Flown	No.	%
<b>Karratha</b>						
Qantas	97	94	96.9	98	92	93.9
QantasLink	97	92	94.8	96	91	94.8
Virgin Australia	64	62	96.9	64	59	92.2
Virgin Australia Regional Airlines	14	13	92.9	15	13	86.7
All Airlines	272	261	96.0	273	255	93.4
Relates to services to and from Perth only.						
<b>Launceston</b>						
Jetstar	167	131	78.4	167	144	86.2
QantasLink	107	90	84.1	109	84	77.1
Virgin Australia	113	99	87.6	113	101	89.4
Virgin Australia Regional Airlines	3	3	100.0	3	3	100.0
All Airlines	390	323	82.8	392	332	84.7
Relates to services to and from Melbourne and Sydney.						
<b>Mackay</b>						
Jetstar	51	36	70.6	52	37	71.2
QantasLink	93	86	92.5	94	86	91.5
Virgin Australia	138	130	94.2	138	133	96.4
All Airlines	282	252	89.4	284	256	90.1
Relates to services to and from Brisbane only.						
<b>Melbourne</b>						
Jetstar	1 208	983	81.4	1 207	987	81.8
Qantas	2 015	1 796	89.1	2 017	1 793	88.9
QantasLink	377	291	77.2	374	283	75.7
Regional Express	71	64	90.1	70	57	81.4
Tigerair	505	422	83.6	504	400	79.4
Virgin Australia	2 115	1 908	90.2	2 113	1 843	87.2
Virgin Australia Regional Airlines	31	25	80.6	31	27	87.1
All Airlines	6 322	5 489	86.8	6 316	5 390	85.3
Relates to services to and from Adelaide, Brisbane, Cairns, Canberra, Darwin, Gold Coast, Hamilton Island, Hobart, Launceston, Mildura, Newcastle, Perth, Sunshine Coast and Sydney.						
<b>Mildura</b>						
QantasLink	79	70	88.6	79	68	86.1
Regional Express	70	62	88.6	71	63	88.7
Virgin Australia	28	26	92.9	28	25	89.3
All Airlines	177	158	89.3	178	156	87.6
Relates to services to and from Melbourne only.						
<b>Moranbah</b>						
QantasLink	105	89	84.8	109	97	89.0
Virgin Australia Regional Airlines	67	63	94.0	67	61	91.0
All Airlines	172	152	88.4	176	158	89.8
Relates to services to and from Brisbane only.						
<b>Mount Isa</b>						
Qantas	49	48	98.0	49	48	98.0
Virgin Australia	20	20	100.0	20	20	100.0
All Airlines	69	68	98.6	69	68	98.6
Relates to services to and from Brisbane only.						

Airport	Departures			Arrivals		
	Sectors Flown	On Time		Sectors Flown	On Time	
		No.	%		No.	%
<b>Newcastle</b>						
Jetstar	148	128	86.5	149	116	77.9
QantasLink	63	46	73.0	62	47	75.8
Virgin Australia	104	90	86.5	104	99	95.2
All Airlines	315	264	83.8	315	262	83.2
Relates to services to and from Brisbane and Melbourne.						
<b>Newman</b>						
Qantas	78	74	94.9	77	73	94.8
QantasLink	59	59	100.0	59	58	98.3
Virgin Australia	28	28	100.0	28	28	100.0
Virgin Australia Regional Airlines	4	4	100.0	4	4	100.0
All Airlines	169	165	97.6	168	163	97.0
Relates to services to and from Perth only.						
<b>Perth</b>						
Jetstar	114	91	79.8	116	101	87.1
Qantas	959	898	93.6	957	872	91.1
QantasLink	340	323	95.0	340	320	94.1
Tigerair	70	60	85.7	72	63	87.5
Virgin Australia	599	567	94.7	599	545	91.0
Virgin Australia Regional Airlines	137	127	92.7	145	127	87.6
All Airlines	2 219	2 066	93.1	2 229	2 028	91.0
Relates to services to and from Adelaide, Brisbane, Broome, Darwin, Geraldton, Kalgoorlie, Karratha, Melbourne, Newman, Port Hedland and Sydney.						
<b>Port Hedland</b>						
Qantas	102	98	96.1	103	100	97.1
QantasLink	41	37	90.2	41	35	85.4
Virgin Australia	40	39	97.5	40	38	95.0
All Airlines	183	174	95.1	184	173	94.0
Relates to services to and from Perth only.						
<b>Port Lincoln</b>						
QantasLink	92	82	89.1	92	84	91.3
Regional Express	161	157	97.5	162	157	96.9
All Airlines	253	239	94.5	254	241	94.9
Relates to services to and from Adelaide only.						
<b>Port Macquarie</b>						
QantasLink	121	95	78.5	122	90	73.8
Virgin Australia Regional Airlines	56	49	87.5	56	50	89.3
All Airlines	177	144	81.4	178	140	78.7
Relates to services to and from Sydney only.						
<b>Proserpine</b>						
Jetstar	24	21	87.5	24	21	87.5
Virgin Australia	48	43	89.6	48	46	95.8
All Airlines	72	64	88.9	72	67	93.1
Relates to services to and from Brisbane only.						

Airport	Departures			Arrivals		
	Sectors	On Time		Sectors	On Time	
	Flown	No.	%	Flown	No.	%
<b>Rockhampton</b>						
QantasLink	153	123	80.4	172	149	86.6
Virgin Australia	78	68	87.2	78	69	88.5
Virgin Australia Regional Airlines	89	81	91.0	89	77	86.5
All Airlines	320	272	85.0	339	295	87.0

Relates to services to and from Brisbane only.

#### Sunshine Coast

Jetstar	127	95	74.8	128	110	85.9
Virgin Australia	53	51	96.2	54	51	94.4
All Airlines	180	146	81.1	182	161	88.5

Relates to services to and from Melbourne and Sydney.

#### Sydney

Jetstar	1 211	1 039	85.8	1 209	1 022	84.5
Qantas	2 072	1 808	87.3	2 071	1 770	85.5
QantasLink	1 194	1 077	90.2	1 186	1 054	88.9
Regional Express	411	383	93.2	408	328	80.4
Tigerair	422	356	84.4	421	336	79.8
Virgin Australia	2 082	1 929	92.7	2 084	1 870	89.7
Virgin Australia Regional Airlines	362	327	90.3	361	325	90.0
All Airlines	7 754	6 919	89.2	7 740	6 705	86.6

Relates to services to and from Adelaide, Albury, Armidale, Ayers Rock, Ballina, Brisbane, Cairns, Canberra, Coffs Harbour, Darwin, Dubbo, Gold Coast, Hamilton Island, Hobart, Launceston, Melbourne, Perth, Port Macquarie, Sunshine Coast, Townsville and Wagga Wagga.

#### Townsville

Jetstar	51	42	82.4	50	47	94.0
Qantas	136	129	94.9	136	123	90.4
Virgin Australia	164	153	93.3	164	147	89.6
All Airlines	351	324	92.3	350	317	90.6

Relates to services to and from Brisbane and Sydney.

#### Wagga Wagga

QantasLink	104	92	88.5	104	86	82.7
Regional Express	101	94	93.1	100	95	95.0
All Airlines	205	186	90.7	204	181	88.7

Relates to services to and from Sydney only.



## Definitions

---

On time departure                      A flight departure is counted as "on time" if it departs the gate before 15 minutes after the scheduled departure time shown in the carriers' schedule.

---

On time arrival                         A flight arrival is counted as "on time" if it arrived at the gate before 15 minutes after the scheduled arrival time shown in the carriers' schedule.  
Neither diverted nor cancelled flights count as on time.

---

Cancellation                            A flight removed from service within 7 days of scheduled departure is regarded as a cancellation.

---

On time departure percentage                      The percentage of on time departures is measured against the number of departures *operated* on any particular sector.

---

On time arrival percentage                         The percentage of on time arrivals is measured against the number of arrivals *operated* on any particular sector.

---

Cancellation percentage                      The percentage of cancellations is measured against the number of services *scheduled* on any particular sector.

---