



**Australian Government**

**Department of Infrastructure and Regional Development**

Bureau of Infrastructure, Transport and Regional Economics

STATISTICAL REPORT



## Aviation

Domestic airline on time performance  
February 2014

© Commonwealth of Australia 2014

ISSN: 1832-0759

### **Ownership of intellectual property rights in this publication**

Unless otherwise noted, copyright (and any other intellectual property rights, if any) in this publication is owned by the Commonwealth of Australia (referred to below as the Commonwealth).

### **Disclaimer**

The material contained in this publication is made available on the understanding that the Commonwealth is not providing professional advice, and that users exercise their own skill and care with respect to its use, and seek independent advice if necessary.

The Commonwealth makes no representations or warranties as to the contents or accuracy of the information contained in this publication. To the extent permitted by law, the Commonwealth disclaims liability to any person or organisation in respect of anything done, or omitted to be done, in reliance upon information contained in this publication.

### **Creative Commons licence**

With the exception of (a) the Coat of Arms; and (b) the Department of Infrastructure and Regional Development's photos and graphics, copyright in this publication is licensed under a Creative Commons Attribution 3.0 Australia Licence.

Creative Commons Attribution 3.0 Australia Licence is a standard form licence agreement that allows you to copy, communicate and adapt this publication provided that you attribute the work to the Commonwealth and abide by the other licence terms. A summary of the licence terms is available from <http://creativecommons.org/licenses/by/3.0/au/deed.en>. The full licence terms are available from <http://creativecommons.org/licenses/by/3.0/au/legalcode>.

### **Use of the Coat of Arms**

The Department of the Prime Minister and Cabinet sets the terms under which the Coat of Arms is used. Please refer to the Department's Commonwealth Coat of Arms and Government branding web page <http://www.dpmmc.gov.au/guidelines/index.cfm#brand> and, in particular, the Guidelines on the use of the Commonwealth Coat of Arms publication.

An appropriate citation for this report is:

Bureau of Infrastructure, Transport and Regional Economics (BITRE), 2014, Domestic airline on time performance, Statistical Report, BITRE, Canberra ACT.

### **Contact us**

This publication is available in PDF format. All other rights are reserved, including in relation to any Departmental logos or trade marks which may exist. For enquiries regarding the licence and any use of this publication, please contact:

Bureau of Infrastructure, Transport and Regional Economics (BITRE)  
Department of Infrastructure and Regional Development  
GPO Box 501, Canberra ACT 2601, Australia  
Telephone: (international) +61 2 6274 7210  
Fax: (international) +61 2 6274 6855  
Email: [bitre@infrastructure.gov.au](mailto:bitre@infrastructure.gov.au)  
Website: [www.bitre.gov.au](http://www.bitre.gov.au)

### **Inquiries**

Should you require additional information about the statistics contained in this publication:

Telephone (02) 6274 7790 or Facsimile (02) 6274 7727

Electronic mail: [AVSTATS@infrastructure.gov.au](mailto:AVSTATS@infrastructure.gov.au)

Web site: <http://www.bitre.gov.au/statistics/aviation/otphome.aspx>

# Foreword

The Bureau of Infrastructure, Transport and Regional Economics (BITRE) monitors the punctuality and reliability of major domestic airlines operating between Australian airports. The purpose of this is to allow for evaluation of overall industry and individual airline performance, so that consumers of air travel can make informed decisions.

The following domestic airlines currently report this information monthly to the BITRE: Jetstar, Qantas, QantasLink, Regional Express, Tigerair, Virgin Australia and Virgin Australia Regional Airlines. Data has been gathered since November 2003, although some airlines commenced reporting at a later date, including Jetstar which first reported in May 2004, MacAir in July 2005 and Tigerair in April 2008. MacAir ceased operations in February 2009 and data was not received for December 2008 onwards. Virgin Blue was rebranded as Virgin Australia in May 2011 and Tiger Airways was rebranded as Tigerair in July 2013 and time series data in Microsoft Excel spreadsheet format on the BITRE website have been revised to reflect these changes. Virgin Australia Regional Airlines commenced operations in May 2013. It was formed after the acquisition of Skywest by Virgin Australia and represents a combination of operations previously reported under Skywest and Virgin Australia – ATR/F100 Operations. Services operated by Skywest on behalf of Virgin Australia using ATR/F100 aircraft commenced in November 2011 and were shown separately as Virgin Australia – ATR/F100 Operations until April 2013.

Information presented in this report is for Australian domestic routes for which the passenger load averaged 8 000 or more passengers per month over the previous six months and where two or more airlines operated in competition on those routes. There were 64 routes that met this definition in February 2014. Over time, routes which meet these criteria change as airline networks and traffic levels vary.

Participating airlines report their overall monthly network performance where this is possible.

Total industry figures encompass all services operated by reporting airlines only. These airlines collectively carried over 95 per cent of total domestic passengers (regular public transport only) in 2013.

The method of capturing on time performance varies between airlines utilising different recording systems. Jetstar and Qantas jet aircraft use Aircraft Communication Addressing and Reporting System (ACARS) to electronically measure on time performance. Regional Express, Tigerair, Virgin Australia, Virgin Australia Regional Airlines and the Qantas non-jet fleet record on time performance manually using records from pilots, gate agents and/or ground crews.

After initial data is collected, aggregate reports are audited internally by participating airlines prior to publication.

Reports and detailed time series data in Microsoft Excel spreadsheet format are available from the BITRE website at: <http://www.bitre.gov.au/statistics/aviation/otphome.aspx>.



# Contents

	Page
Industry performance .....	1
Individual routes .....	9
Airports .....	22
Definitions .....	28



## Industry performance

For February 2014, on time performance over all routes operated by participating airlines (Jetstar, Qantas, QantasLink, Regional Express, Tigerair, Virgin Australia and Virgin Australia Regional Airlines) averaged 89.4 per cent for on time departures and 87.6 per cent for on time arrivals. Cancellations represented 1.2 per cent of all scheduled flights. The equivalent figures for February 2013 were 77.3 per cent for departures, 73.9 per cent for arrivals and 2.2 per cent for cancellations.

This month's figures were significantly better than the long term average performance for all routes (83.6 per cent for departures and 82.1 per cent for arrivals). The rate of cancellations was below the long term average of 1.3 per cent.

Of the major domestic airlines, Qantas achieved the highest level of on time departures for February 2014 at 92.5 per cent, followed by Virgin Australia at 91.1 per cent, Jetstar at 86.4 per cent and Tigerair at 81.2 per cent. The regional airlines were led by Regional Express at 91.0 per cent, followed by Virgin Australia Regional Airlines at 88.5 per cent and QantasLink at 86.9 per cent.

Qantas also achieved the highest on time arrivals among the major domestic airlines at 91.7 per cent, followed by Virgin Australia at 89.4 per cent, Jetstar at 86.9 per cent and Tigerair at 79.4 per cent. Virgin Australia Regional Airlines was the best performing regional airline for on time arrivals at 87.6 per cent, followed by Regional Express at 87.4 per cent and QantasLink at 83.0 per cent.

QantasLink had the highest percentage of cancellations (2.4 per cent) during the month, followed by Virgin Australia Regional Airlines (1.7 per cent), Virgin Australia (1.1 per cent), Qantas (0.9 per cent), Tigerair (also 0.9 per cent), Regional Express (0.5 per cent) and Jetstar (0.4 per cent).

Of the 64 routes which met the criteria for on time performance reporting in February 2014, the Darwin-Perth route had the highest percentage of on time departures (100.0 per cent) while the Hobart-Brisbane route had the lowest percentage of on time departures (64.6 per cent). The Darwin-Perth route also had the highest percentage of on time arrivals (100.0 per cent) while the Port Macquarie-Sydney route had the lowest percentage of on time arrivals (65.9 per cent).

Cancellations were highest on the Karratha-Perth and Perth-Karratha routes at 5.8 per cent, followed by Moranbah-Brisbane at 5.5 per cent, Canberra-Sydney at 4.9 per cent, Gladstone-Brisbane at 4.5 per cent and Hamilton Island-Brisbane at 4.4 per cent.

Mount Isa Airport recorded the highest percentage of on time departures (95.8 per cent) and Karratha Airport recorded the highest percentage of on time arrivals (97.3 per cent). Port Macquarie Airport recorded the lowest percentage of on time departures (70.5 per cent) and the lowest percentage of on time arrivals (74.3 per cent). These figures only refer to reported routes and do not cover all flights at these airports.

Table 1 On time performance for February 2014 — Total Industry

	<i>Sectors</i>		<i>Departures On Time</i>		<i>Arrivals On Time</i>		<i>Cancellations</i>	
	<i>Scheduled</i>	<i>Flown</i>	<i>No.</i>	<i>%</i>	<i>No.</i>	<i>%</i>	<i>No.</i>	<i>%</i>
Jetstar	5 596	5 576	4 817	86.4	4 847	86.9	20	0.4
Qantas	9 510	9 420	8 717	92.5	8 637	91.7	90	0.9
QantasLink	9 422	9 199	7 992	86.9	7 632	83.0	223	2.4
Regional Express	4 655	4 634	4 216	91.0	4 050	87.4	21	0.5
Tigerair	1 332	1 320	1 072	81.2	1 048	79.4	12	0.9
Virgin Australia	9 944	9 832	8 956	91.1	8 793	89.4	112	1.1
Virgin Australia Regional Airlines	2 305	2 266	2 006	88.5	1 986	87.6	39	1.7
All Airlines	42 764	42 247	37 776	89.4	36 993	87.6	517	1.2

Total airline network data (including routes not shown in this report).

Table 2 Top ten routes for on time performance for February 2014 (participating airlines only)

<i>Departures</i>		<i>Arrivals</i>	
<i>Route</i>	<i>On Time (%)</i>	<i>Route</i>	<i>On Time (%)</i>
Darwin-Perth	100.0	Darwin-Perth	100.0
Sydney-Ayers Rock	97.7	Brisbane-Darwin	98.4
Perth-Karratha	97.6	Perth-Karratha	97.3
Melbourne-Sunshine Coast	97.1	Perth-Adelaide	96.9
Perth-Port Hedland	97.0	Perth-Port Hedland	96.6
Brisbane-Darwin	96.8	Brisbane-Mount Isa	95.8
Perth-Newman	96.3	Perth-Newman	95.7
Brisbane-Mount Isa	95.8	Sydney-Sunshine Coast	95.6
Mount Isa-Brisbane	95.8	Port Hedland-Perth	95.5
Perth-Adelaide	95.3	Ayers Rock-Sydney	95.5

Table 3 Top ten airports for on time performance for February 2014 (participating airlines and reported routes only)

<i>Departures</i>		<i>Arrivals</i>	
<i>Airport</i>	<i>On Time (%)</i>	<i>Airport</i>	<i>On Time (%)</i>
Mount Isa	95.8	Karratha	97.3
Karratha	95.2	Port Hedland	96.6
Newman	94.7	Mount Isa	95.8
Port Hedland	94.5	Newman	95.7
Kalgoorlie	94.5	Moranbah	94.8
Perth	93.5	Kalgoorlie	94.5
Ayers Rock	93.2	Sunshine Coast	94.5
Moranbah	92.8	Ayers Rock	93.2
Mildura	92.2	Darwin	92.9
Sunshine Coast	92.1	Perth	92.3



## Total industry on time performance

Figure 1 On time performance (by month from February 2011)—Total Industry

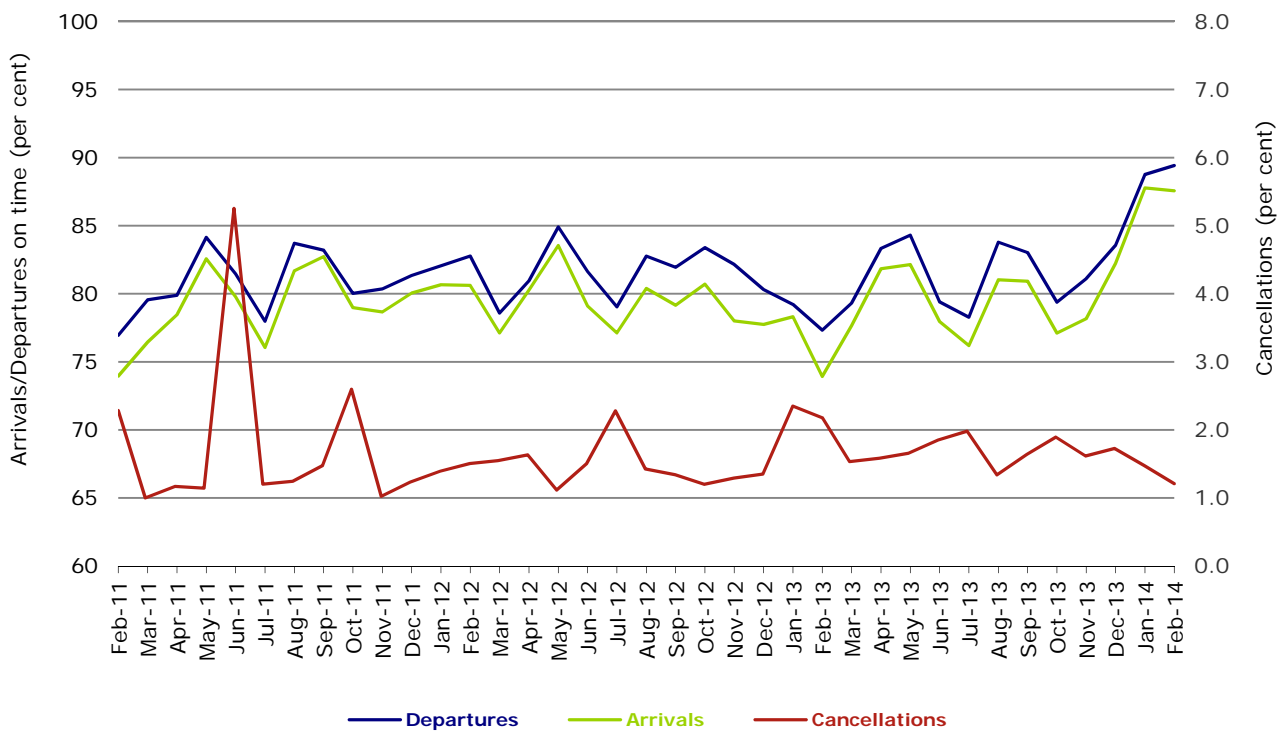
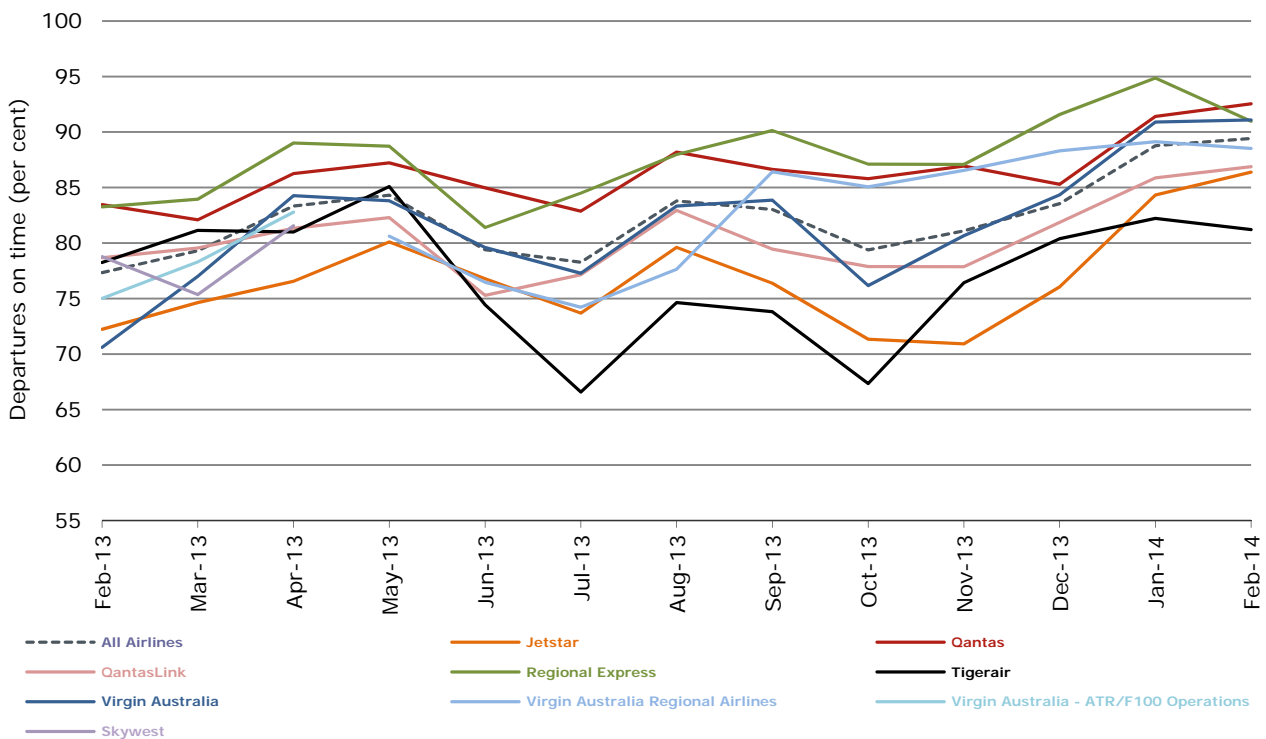
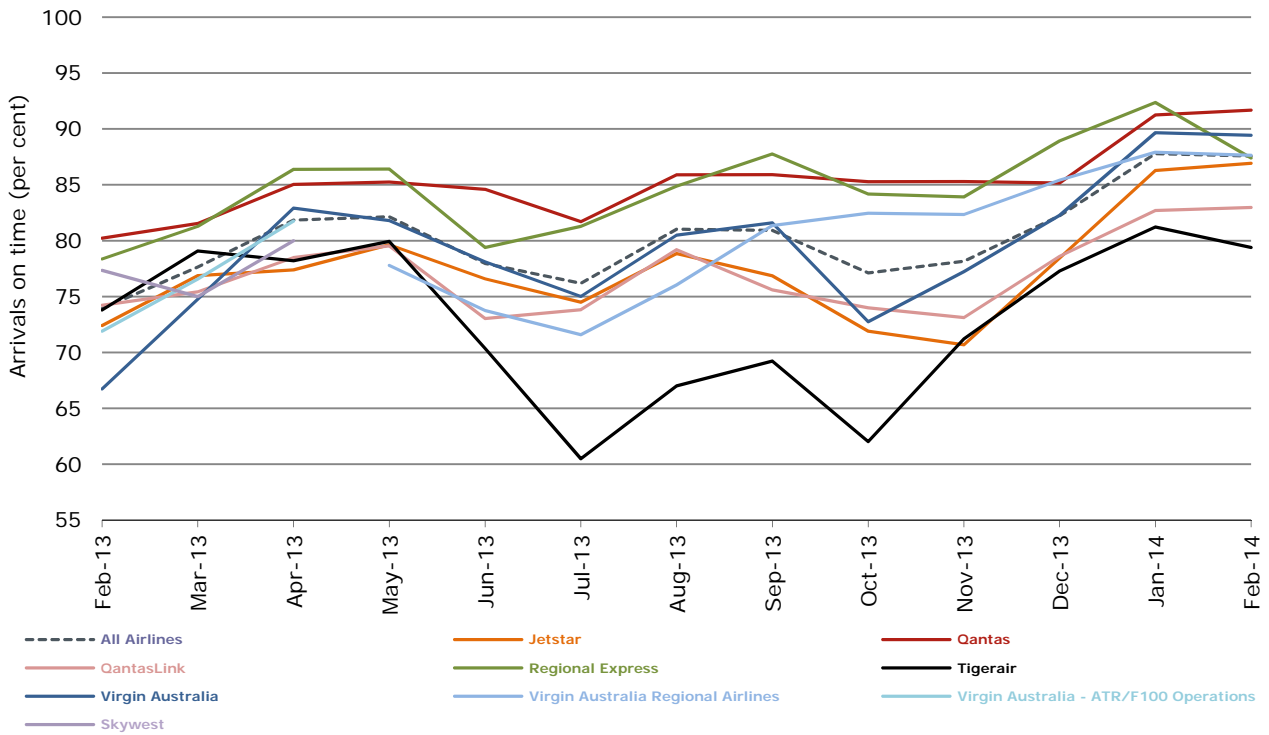


Figure 2 Departures on time (by month from February 2013)



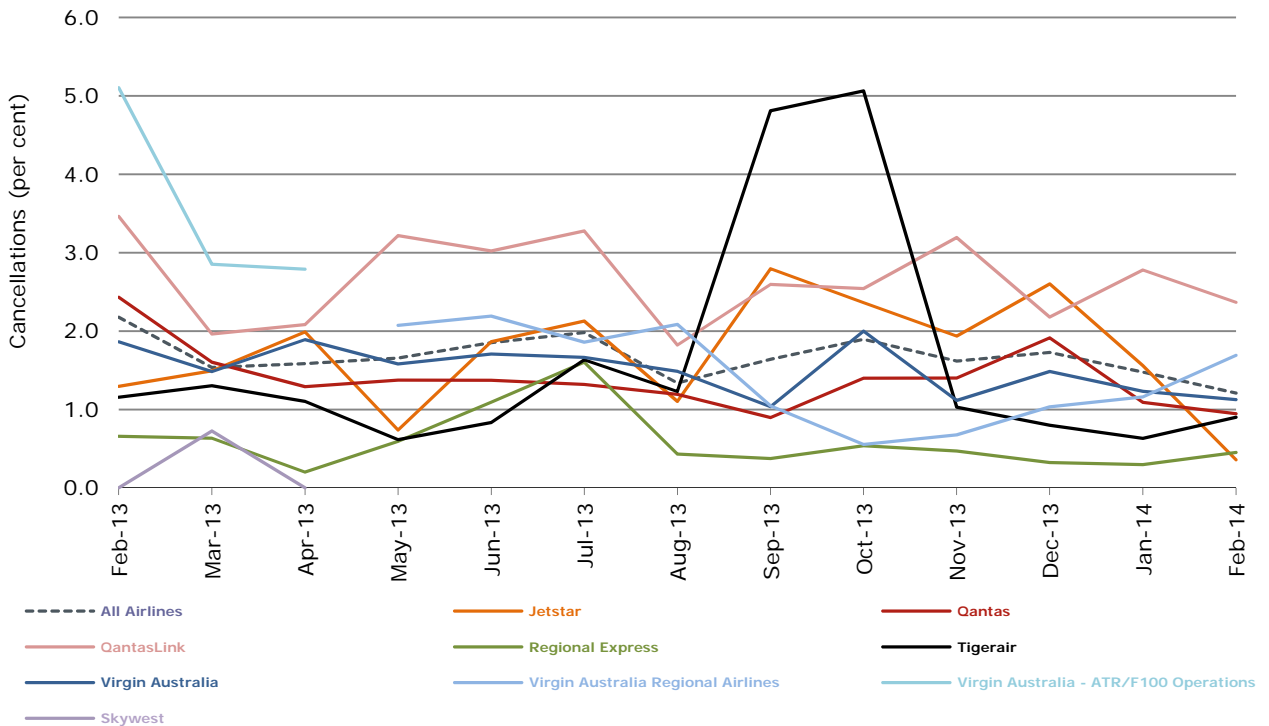
Virgin Australia Regional Airlines commenced operations in May 2013. It was formed after the acquisition of Skywest by Virgin Australia and represents a combination of operations previously reported under Skywest and Virgin Australia – ATR/F100 Operations.

Figure 3 Arrivals on time (by month from February 2013)



Virgin Australia Regional Airlines commenced operations in May 2013. It was formed after the acquisition of Skywest by Virgin Australia and represents a combination of operations previously reported under Skywest and Virgin Australia – ATR/F100 Operations.

Figure 4 Cancellations (by month from February 2013)



Virgin Australia Regional Airlines commenced operations in May 2013. It was formed after the acquisition of Skywest by Virgin Australia and represents a combination of operations previously reported under Skywest and Virgin Australia – ATR/F100 Operations.

## Major domestic airlines on time performance

Figure 5 On time performance (by month from February 2011)—Jetstar

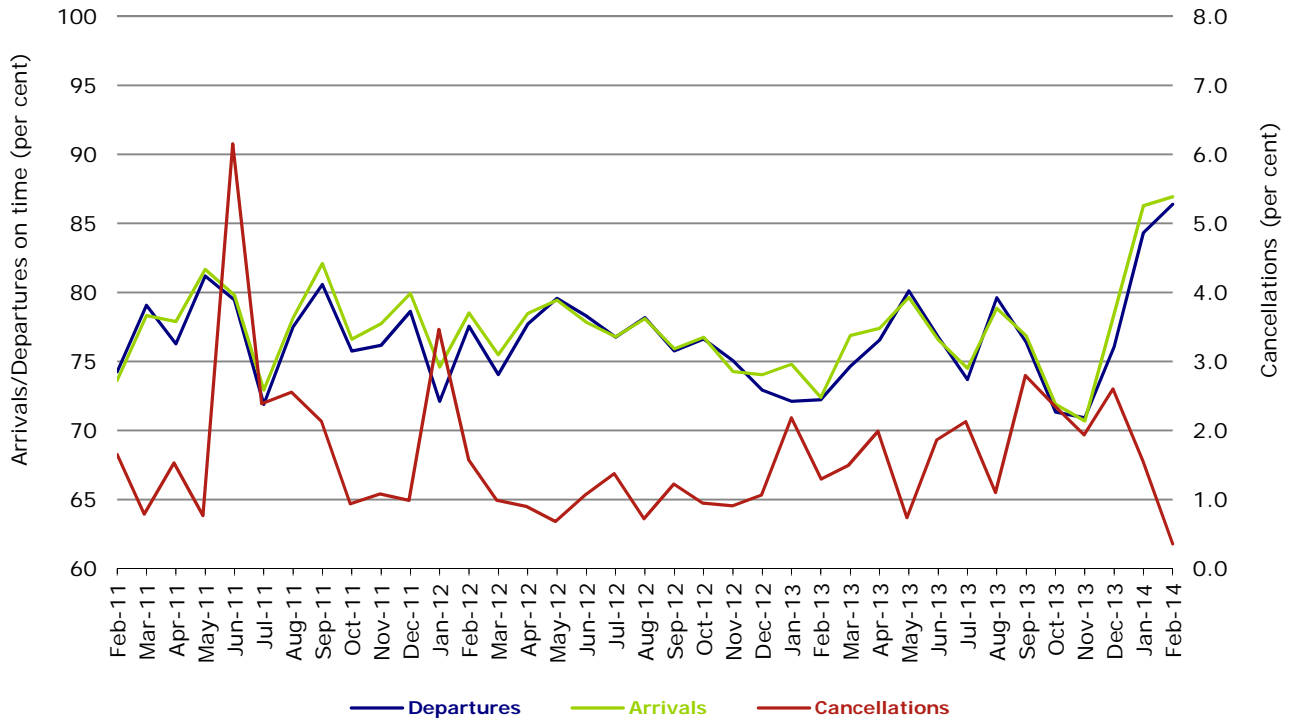


Figure 6 On time performance (by month from February 2011)—Qantas

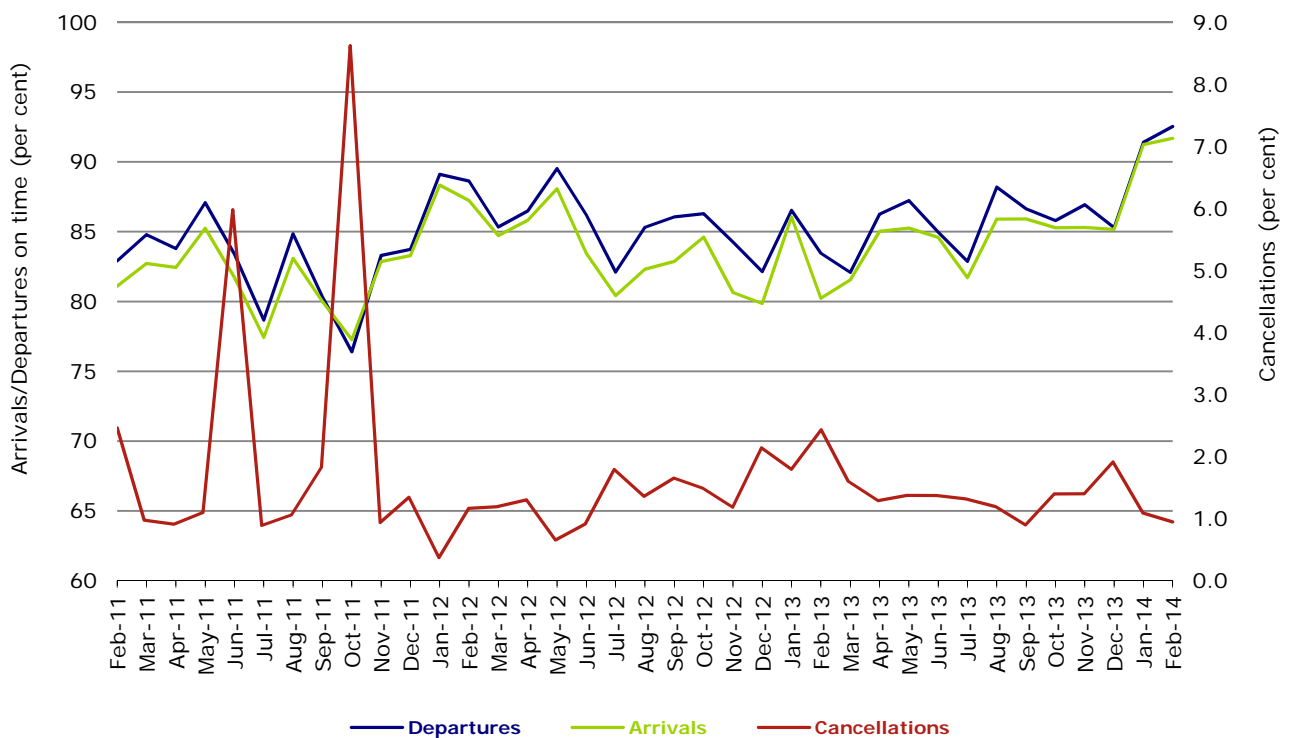
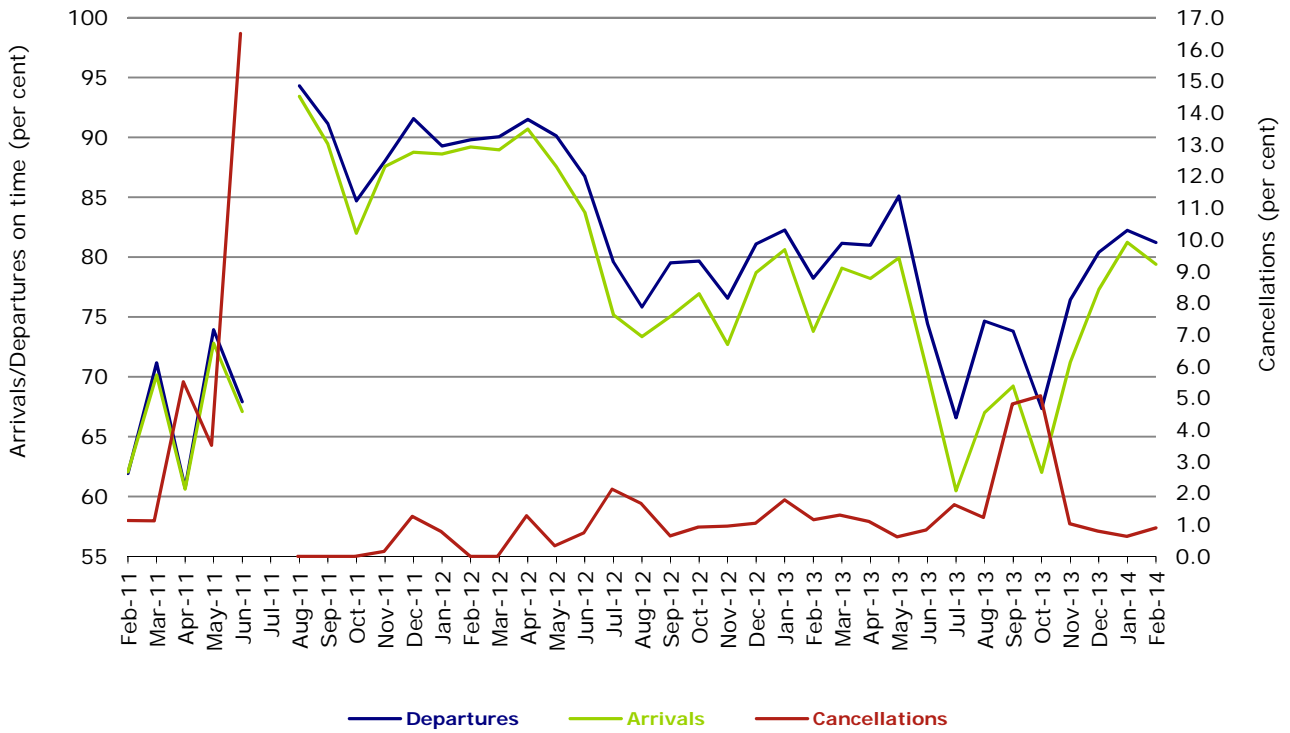
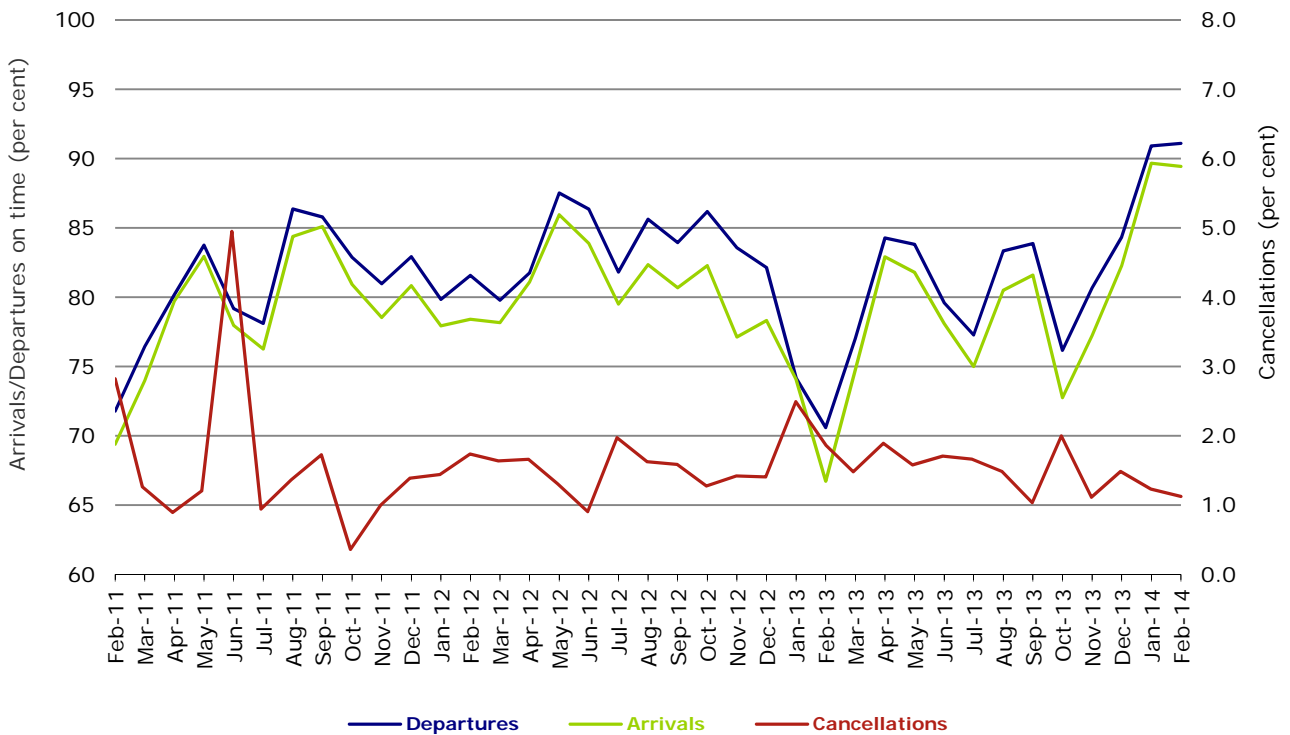


Figure 7 On time performance (by month from February 2011)—Tigerair



No data for Tigerair for July 2011 as it was grounded by CASA from 2/7/2011 to 11/8/2011.

Figure 8 On time performance (by month from February 2011)—Virgin Australia



## Major regional airlines on time performance

Figure 9 On time performance (by month from February 2011)—QantasLink

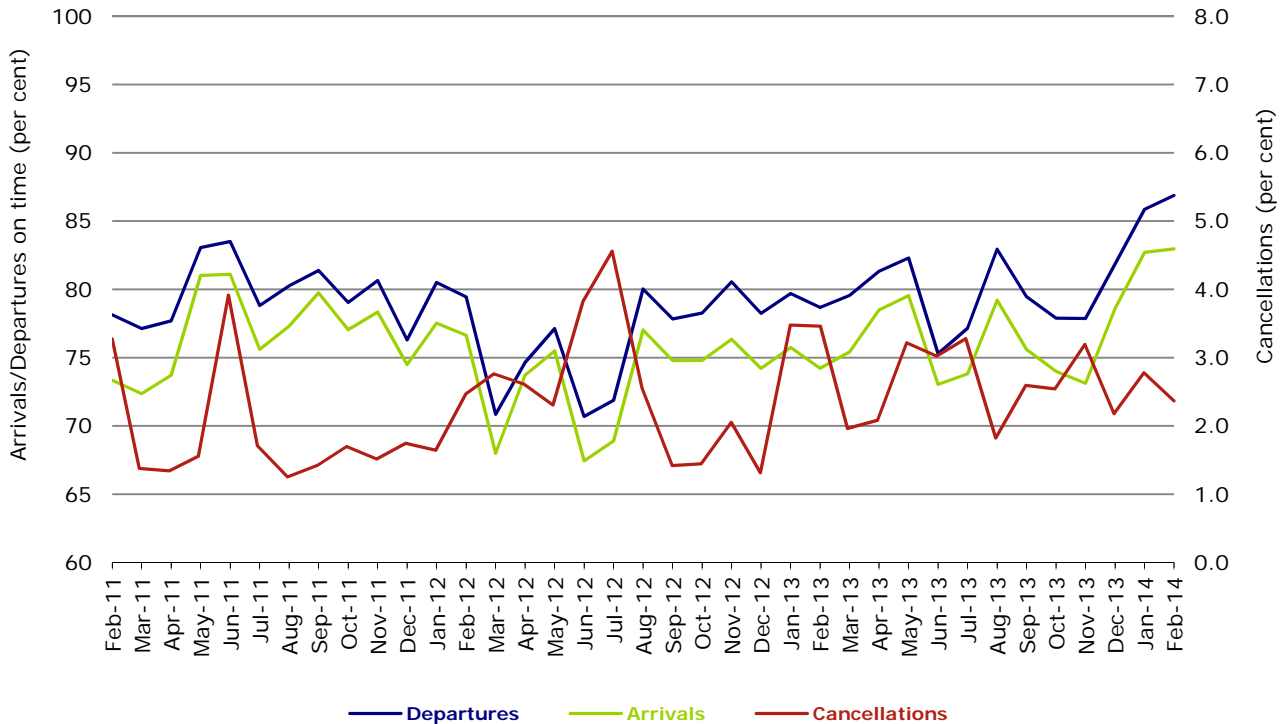


Figure 10 On time performance (by month from February 2011)—Regional Express

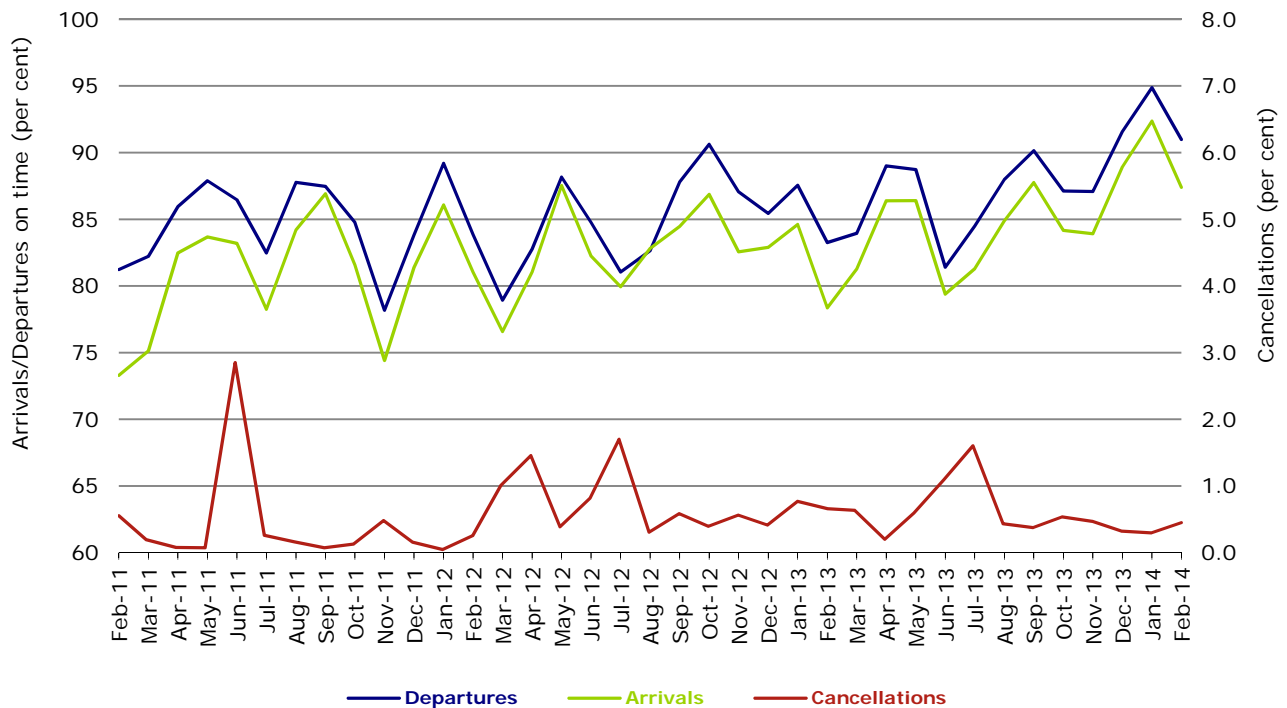
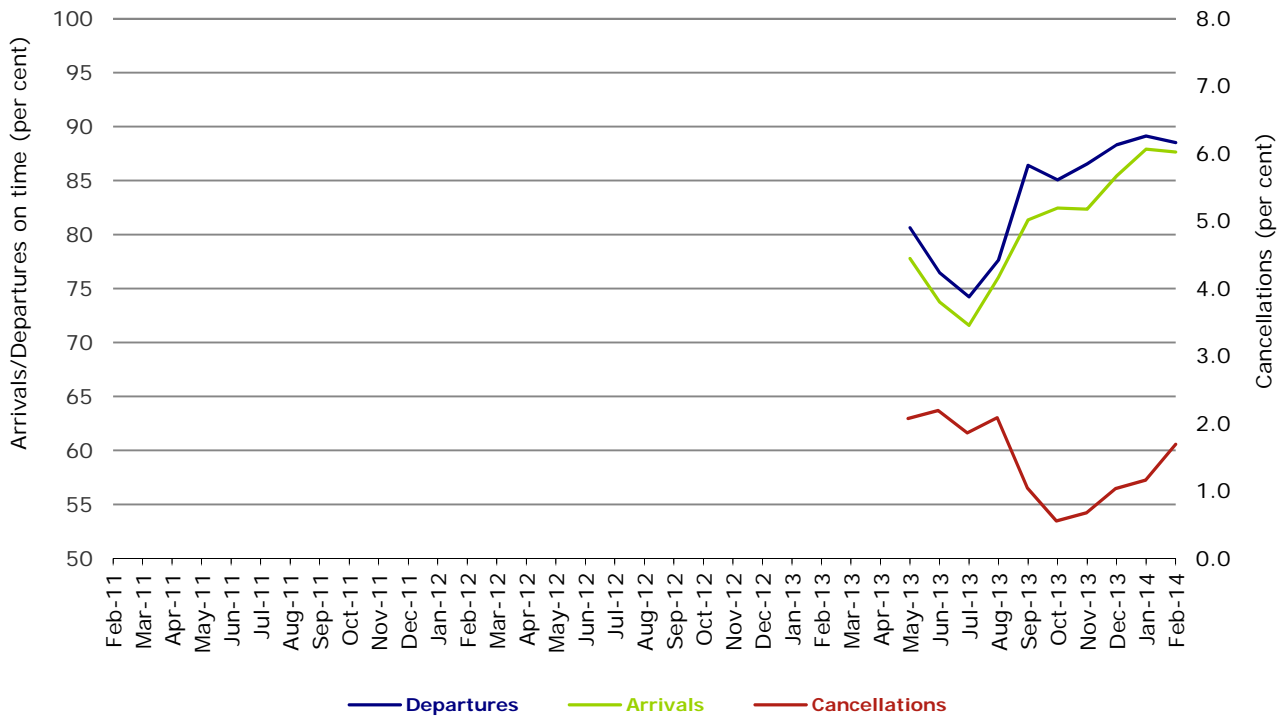


Figure 11 On time performance (by month from February 2011)  
Virgin Australia Regional Airlines



Virgin Australia Regional Airlines commenced operations in May 2013. It was formed after the acquisition of Skywest by Virgin Australia and represents a combination of operations previously reported under Skywest and Virgin Australia – ATR/F100 Operations.

## Individual routes

On time performance is reported for all routes where the passenger load averages over 8000 passengers per month over the previous six months, and where two or more airlines operate in competition on those routes. There are now 64 routes which meet this definition. Over time, however, routes which meet this definition may change as airline networks and traffic levels vary.

	<i>Sectors</i>		<i>Departures On Time</i>		<i>Arrivals On Time</i>		<i>Cancellations</i>	
	<i>Sched.</i>	<i>Flown</i>	<i>No.</i>	<i>%</i>	<i>No.</i>	<i>%</i>	<i>No.</i>	<i>%</i>
<b>Adelaide-Brisbane</b>								
Jetstar	24	24	24	100.0	24	100.0	0	0.0
Qantas	100	100	94	94.0	94	94.0	0	0.0
Virgin Australia	101	101	95	94.1	96	95.0	0	0.0
All Airlines	225	225	213	94.7	214	95.1	0	0.0
<b>Adelaide-Canberra</b>								
Qantas	40	40	38	95.0	39	97.5	0	0.0
QantasLink	20	19	15	78.9	17	89.5	1	5.0
Virgin Australia	24	24	22	91.7	23	95.8	0	0.0
All Airlines	84	83	75	90.4	79	95.2	1	1.2
<b>Adelaide-Gold Coast</b>								
Jetstar	28	28	24	85.7	25	89.3	0	0.0
Virgin Australia	28	28	27	96.4	27	96.4	0	0.0
All Airlines	56	56	51	91.1	52	92.9	0	0.0
<b>Adelaide-Melbourne</b>								
Jetstar	104	103	92	89.3	98	95.1	1	1.0
Qantas	267	265	245	92.5	246	92.8	2	0.7
QantasLink	16	14	12	85.7	11	78.6	2	12.5
Tigerair	72	70	60	85.7	54	77.1	2	2.8
Virgin Australia	238	235	219	93.2	220	93.6	3	1.3
All Airlines	697	687	628	91.4	629	91.6	10	1.4
<b>Adelaide-Perth</b>								
Jetstar	27	27	20	74.1	22	81.5	0	0.0
Qantas	104	104	93	89.4	95	91.3	0	0.0
Virgin Australia	58	58	56	96.6	56	96.6	0	0.0
All Airlines	189	189	169	89.4	173	91.5	0	0.0
<b>Adelaide-Port Lincoln</b>								
QantasLink	86	81	73	90.1	71	87.7	5	5.8
Regional Express	162	158	151	95.6	148	93.7	4	2.5
All Airlines	248	239	224	93.7	219	91.6	9	3.6
<b>Adelaide-Sydney</b>								
Jetstar	112	111	90	81.1	96	86.5	1	0.9
Qantas	248	246	236	95.9	239	97.2	2	0.8
Virgin Australia	148	148	139	93.9	141	95.3	0	0.0
All Airlines	508	505	465	92.1	476	94.3	3	0.6
<b>Albury-Sydney</b>								
QantasLink	104	102	79	77.5	72	70.6	2	1.9
Regional Express	87	87	81	93.1	77	88.5	0	0.0
Virgin Australia Regional Airlines	55	54	49	90.7	43	79.6	1	1.8
All Airlines	246	243	209	86.0	192	79.0	3	1.2
<b>Alice Springs-Melbourne</b>								
Qantas	28	28	20	71.4	25	89.3	0	0.0
Tigerair	14	14	10	71.4	13	92.9	0	0.0
All Airlines	42	42	30	71.4	38	90.5	0	0.0

	<i>Sectors</i>		<i>Departures On Time</i>		<i>Arrivals On Time</i>		<i>Cancellations</i>	
	<i>Sched.</i>	<i>Flown</i>	<i>No.</i>	<i>%</i>	<i>No.</i>	<i>%</i>	<i>No.</i>	<i>%</i>
<b>Alice Springs-Sydney</b>								
Qantas	28	28	19	67.9	23	82.1	0	0.0
Tigerair	13	13	11	84.6	9	69.2	0	0.0
All Airlines	41	41	30	73.2	32	78.0	0	0.0
<b>Ayers Rock-Sydney</b>								
Jetstar	16	16	15	93.8	15	93.8	0	0.0
Virgin Australia	28	28	26	92.9	27	96.4	0	0.0
All Airlines	44	44	41	93.2	42	95.5	0	0.0
<b>Ballina-Sydney</b>								
Jetstar	36	36	25	69.4	26	72.2	0	0.0
Regional Express	19	19	16	84.2	13	68.4	0	0.0
Virgin Australia	28	28	24	85.7	22	78.6	0	0.0
All Airlines	83	83	65	78.3	61	73.5	0	0.0
<b>Brisbane-Adelaide</b>								
Jetstar	24	24	24	100.0	24	100.0	0	0.0
Qantas	100	100	88	88.0	92	92.0	0	0.0
Virgin Australia	101	101	85	84.2	89	88.1	0	0.0
All Airlines	225	225	197	87.6	205	91.1	0	0.0
<b>Brisbane-Bundaberg</b>								
QantasLink	108	107	99	92.5	97	90.7	1	0.9
Virgin Australia Regional Airlines	30	30	28	93.3	27	90.0	0	0.0
All Airlines	138	137	127	92.7	124	90.5	1	0.7
<b>Brisbane-Cairns</b>								
Jetstar	70	70	64	91.4	65	92.9	0	0.0
Qantas	108	108	98	90.7	105	97.2	0	0.0
QantasLink	4	4	4	100.0	4	100.0	0	0.0
Virgin Australia	139	139	128	92.1	129	92.8	0	0.0
All Airlines	321	321	294	91.6	303	94.4	0	0.0
<b>Brisbane-Canberra</b>								
Qantas	41	41	40	97.6	40	97.6	0	0.0
QantasLink	102	101	89	88.1	90	89.1	1	1.0
Virgin Australia	85	85	79	92.9	74	87.1	0	0.0
All Airlines	228	227	208	91.6	204	89.9	1	0.4
<b>Brisbane-Darwin</b>								
Qantas	33	33	31	93.9	32	97.0	0	0.0
Virgin Australia	29	29	29	100.0	29	100.0	0	0.0
All Airlines	62	62	60	96.8	61	98.4	0	0.0
<b>Brisbane-Emerald</b>								
QantasLink	151	149	139	93.3	125	83.9	2	1.3
Virgin Australia Regional Airlines	84	84	75	89.3	69	82.1	0	0.0
All Airlines	235	233	214	91.8	194	83.3	2	0.9
<b>Brisbane-Gladstone</b>								
QantasLink	203	192	181	94.3	174	90.6	11	5.4
Virgin Australia Regional Airlines	133	131	118	90.1	112	85.5	2	1.5
All Airlines	336	323	299	92.6	286	88.5	13	3.9
<b>Brisbane-Hamilton Island</b>								
Jetstar	16	16	14	87.5	14	87.5	0	0.0
Virgin Australia	28	27	26	96.3	25	92.6	1	3.6
All Airlines	44	43	40	93.0	39	90.7	1	2.3
<b>Brisbane-Hobart</b>								
Jetstar	20	20	18	90.0	19	95.0	0	0.0
Virgin Australia	28	28	24	85.7	18	64.3	0	0.0
All Airlines	48	48	42	87.5	37	77.1	0	0.0



	<i>Sectors</i>		<i>Departures On Time</i>		<i>Arrivals On Time</i>		<i>Cancellations</i>	
	<i>Sched.</i>	<i>Flown</i>	<i>No.</i>	<i>%</i>	<i>No.</i>	<i>%</i>	<i>No.</i>	<i>%</i>
<b>Brisbane-Mackay</b>								
Jetstar	72	68	59	86.8	62	91.2	4	5.6
QantasLink	100	100	93	93.0	92	92.0	0	0.0
Virgin Australia	125	124	112	90.3	112	90.3	1	0.8
All Airlines	297	292	264	90.4	266	91.1	5	1.7
<b>Brisbane-Melbourne</b>								
Jetstar	75	75	64	85.3	63	84.0	0	0.0
Qantas	403	400	375	93.8	367	91.8	3	0.7
Tigerair	77	76	51	67.1	56	73.7	1	1.3
Virgin Australia	323	312	286	91.7	275	88.1	11	3.4
All Airlines	878	863	776	89.9	761	88.2	15	1.7
<b>Brisbane-Moranbah</b>								
QantasLink	140	132	126	95.5	127	96.2	8	5.7
Virgin Australia Regional Airlines	81	80	71	88.8	74	92.5	1	1.2
All Airlines	221	212	197	92.9	201	94.8	9	4.1
<b>Brisbane-Mount Isa</b>								
Qantas	52	52	52	100.0	52	100.0	0	0.0
Virgin Australia	20	20	17	85.0	17	85.0	0	0.0
All Airlines	72	72	69	95.8	69	95.8	0	0.0
<b>Brisbane-Newcastle</b>								
Jetstar	98	98	95	96.9	96	98.0	0	0.0
QantasLink	64	63	59	93.7	46	73.0	1	1.6
Virgin Australia	69	68	58	85.3	63	92.6	1	1.4
All Airlines	231	229	212	92.6	205	89.5	2	0.9
<b>Brisbane-Perth</b>								
Jetstar	16	16	13	81.3	15	93.8	0	0.0
Qantas	116	116	105	90.5	111	95.7	0	0.0
Virgin Australia	81	81	73	90.1	72	88.9	0	0.0
All Airlines	213	213	191	89.7	198	93.0	0	0.0
<b>Brisbane-Proserpine</b>								
Jetstar	24	24	19	79.2	20	83.3	0	0.0
Virgin Australia	48	47	44	93.6	45	95.7	1	2.1
All Airlines	72	71	63	88.7	65	91.5	1	1.4
<b>Brisbane-Rockhampton</b>								
QantasLink	201	192	173	90.1	177	92.2	9	4.5
Virgin Australia	86	84	73	86.9	77	91.7	2	2.3
Virgin Australia Regional Airlines	104	101	88	87.1	89	88.1	3	2.9
All Airlines	391	377	334	88.6	343	91.0	14	3.6
<b>Brisbane-Sydney</b>								
Jetstar	83	82	58	70.7	65	79.3	1	1.2
Qantas	584	575	529	92.0	531	92.3	9	1.5
Tigerair	52	51	41	80.4	39	76.5	1	1.9
Virgin Australia	481	475	440	92.6	440	92.6	6	1.2
All Airlines	1 200	1 183	1 068	90.3	1 075	90.9	17	1.4
<b>Brisbane-Townsville</b>								
Jetstar	28	28	24	85.7	25	89.3	0	0.0
Qantas	136	136	120	88.2	126	92.6	0	0.0
Virgin Australia	140	137	127	92.7	129	94.2	3	2.1
All Airlines	304	301	271	90.0	280	93.0	3	1.0

	<i>Sectors</i>		<i>Departures On Time</i>		<i>Arrivals On Time</i>		<i>Cancellations</i>	
	<i>Sched.</i>	<i>Flown</i>	<i>No.</i>	<i>%</i>	<i>No.</i>	<i>%</i>	<i>No.</i>	<i>%</i>
<b>Broome-Perth</b>								
Qantas	27	27	25	92.6	26	96.3	0	0.0
QantasLink	52	49	47	95.9	47	95.9	3	5.8
Virgin Australia	20	19	17	89.5	18	94.7	1	5.0
Virgin Australia Regional Airlines	12	12	6	50.0	6	50.0	0	0.0
All Airlines	111	107	95	88.8	97	90.7	4	3.6
<b>Bundaberg-Brisbane</b>								
QantasLink	108	107	95	88.8	92	86.0	1	0.9
Virgin Australia Regional Airlines	30	30	27	90.0	27	90.0	0	0.0
All Airlines	138	137	122	89.1	119	86.9	1	0.7
<b>Cairns-Brisbane</b>								
Jetstar	72	72	68	94.4	64	88.9	0	0.0
Qantas	108	108	100	92.6	98	90.7	0	0.0
QantasLink	4	4	4	100.0	4	100.0	0	0.0
Virgin Australia	139	139	127	91.4	115	82.7	0	0.0
All Airlines	323	323	299	92.6	281	87.0	0	0.0
<b>Cairns-Melbourne</b>								
Jetstar	48	48	37	77.1	40	83.3	0	0.0
Qantas	28	28	20	71.4	25	89.3	0	0.0
Tigerair	16	16	11	68.8	12	75.0	0	0.0
Virgin Australia	29	28	23	82.1	20	71.4	1	3.4
All Airlines	121	120	91	75.8	97	80.8	1	0.8
<b>Cairns-Sydney</b>								
Jetstar	54	54	49	90.7	46	85.2	0	0.0
Qantas	58	58	49	84.5	55	94.8	0	0.0
Tigerair	16	16	11	68.8	10	62.5	0	0.0
Virgin Australia	81	81	70	86.4	74	91.4	0	0.0
All Airlines	209	209	179	85.6	185	88.5	0	0.0
<b>Cairns-Townsville</b>								
QantasLink	172	171	153	89.5	152	88.9	1	0.6
Virgin Australia Regional Airlines	1	0	0	..	0	..	1	100.0
All Airlines	173	171	153	89.5	152	88.9	2	1.2
<b>Canberra-Adelaide</b>								
Qantas	40	40	37	92.5	38	95.0	0	0.0
QantasLink	20	19	15	78.9	15	78.9	1	5.0
Virgin Australia	24	24	22	91.7	21	87.5	0	0.0
All Airlines	84	83	74	89.2	74	89.2	1	1.2
<b>Canberra-Brisbane</b>								
Qantas	41	41	39	95.1	40	97.6	0	0.0
QantasLink	103	101	86	85.1	86	85.1	2	1.9
Virgin Australia	85	85	78	91.8	77	90.6	0	0.0
All Airlines	229	227	203	89.4	203	89.4	2	0.9
<b>Canberra-Melbourne</b>								
Qantas	201	198	183	92.4	183	92.4	3	1.5
QantasLink	75	75	69	92.0	62	82.7	0	0.0
Virgin Australia	160	160	142	88.8	142	88.8	0	0.0
All Airlines	436	433	394	91.0	387	89.4	3	0.7
<b>Canberra-Sydney</b>								
Qantas	96	96	91	94.8	88	91.7	0	0.0
QantasLink	428	399	341	85.5	345	86.5	29	6.8
Virgin Australia	49	46	43	93.5	44	95.7	3	6.1
Virgin Australia Regional Airlines	222	215	208	96.7	204	94.9	7	3.2
All Airlines	795	756	683	90.3	681	90.1	39	4.9

	<i>Sectors</i>		<i>Departures On Time</i>		<i>Arrivals On Time</i>		<i>Cancellations</i>	
	<i>Sched.</i>	<i>Flown</i>	<i>No.</i>	<i>%</i>	<i>No.</i>	<i>%</i>	<i>No.</i>	<i>%</i>
<b>Coffs Harbour-Sydney</b>								
QantasLink	140	140	101	72.1	114	81.4	0	0.0
Tigerair	12	12	9	75.0	9	75.0	0	0.0
Virgin Australia	53	52	51	98.1	51	98.1	1	1.9
All Airlines	205	204	161	78.9	174	85.3	1	0.5
<b>Darwin-Brisbane</b>								
Qantas	33	33	30	90.9	27	81.8	0	0.0
Virgin Australia	28	28	27	96.4	26	92.9	0	0.0
All Airlines	61	61	57	93.4	53	86.9	0	0.0
<b>Darwin-Melbourne</b>								
Jetstar	28	28	18	64.3	21	75.0	0	0.0
Qantas	17	17	15	88.2	16	94.1	0	0.0
Virgin Australia	28	28	25	89.3	25	89.3	0	0.0
All Airlines	73	73	58	79.5	62	84.9	0	0.0
<b>Darwin-Perth</b>								
Qantas	28	28	28	100.0	28	100.0	0	0.0
Virgin Australia	24	24	24	100.0	24	100.0	0	0.0
All Airlines	52	52	52	100.0	52	100.0	0	0.0
<b>Darwin-Sydney</b>								
Jetstar	19	19	14	73.7	15	78.9	0	0.0
Qantas	36	36	34	94.4	35	97.2	0	0.0
Virgin Australia	28	28	24	85.7	17	60.7	0	0.0
All Airlines	83	83	72	86.7	67	80.7	0	0.0
<b>Dubbo-Sydney</b>								
QantasLink	116	115	96	83.5	91	79.1	1	0.9
Regional Express	134	130	120	92.3	113	86.9	4	3.0
All Airlines	250	245	216	88.2	204	83.3	5	2.0
<b>Emerald-Brisbane</b>								
QantasLink	151	149	124	83.2	116	77.9	2	1.3
Virgin Australia Regional Airlines	84	83	72	86.7	75	90.4	1	1.2
All Airlines	235	232	196	84.5	191	82.3	3	1.3
<b>Geraldton-Perth</b>								
QantasLink	52	52	50	96.2	51	98.1	0	0.0
Virgin Australia Regional Airlines	88	88	76	86.4	73	83.0	0	0.0
All Airlines	140	140	126	90.0	124	88.6	0	0.0
<b>Gladstone-Brisbane</b>								
QantasLink	223	210	181	86.2	169	80.5	13	5.8
Virgin Australia Regional Airlines	133	130	112	86.2	109	83.8	3	2.3
All Airlines	356	340	293	86.2	278	81.8	16	4.5
<b>Gold Coast-Adelaide</b>								
Jetstar	28	28	24	85.7	25	89.3	0	0.0
Virgin Australia	28	28	26	92.9	26	92.9	0	0.0
All Airlines	56	56	50	89.3	51	91.1	0	0.0
<b>Gold Coast-Melbourne</b>								
Jetstar	172	172	157	91.3	154	89.5	0	0.0
Tigerair	39	39	24	61.5	25	64.1	0	0.0
Virgin Australia	156	156	135	86.5	133	85.3	0	0.0
All Airlines	367	367	316	86.1	312	85.0	0	0.0

	<i>Sectors</i>		<i>Departures On Time</i>		<i>Arrivals On Time</i>		<i>Cancellations</i>	
	<i>Sched.</i>	<i>Flown</i>	<i>No.</i>	<i>%</i>	<i>No.</i>	<i>%</i>	<i>No.</i>	<i>%</i>
<b>Gold Coast-Sydney</b>								
Jetstar	287	286	252	88.1	257	89.9	1	0.3
Qantas	84	84	81	96.4	81	96.4	0	0.0
Tigerair	36	36	28	77.8	28	77.8	0	0.0
Virgin Australia	288	284	261	91.9	265	93.3	4	1.4
All Airlines	695	690	622	90.1	631	91.4	5	0.7
<b>Hamilton Island-Brisbane</b>								
Jetstar	16	16	14	87.5	14	87.5	0	0.0
Virgin Australia	29	27	25	92.6	25	92.6	2	6.9
All Airlines	45	43	39	90.7	39	90.7	2	4.4
<b>Hamilton Island-Melbourne</b>								
Jetstar	16	16	15	93.8	14	87.5	0	0.0
Virgin Australia	12	12	10	83.3	11	91.7	0	0.0
All Airlines	28	28	25	89.3	25	89.3	0	0.0
<b>Hamilton Island-Sydney</b>								
Jetstar	16	16	11	68.8	12	75.0	0	0.0
Virgin Australia	29	28	25	89.3	26	92.9	1	3.4
All Airlines	45	44	36	81.8	38	86.4	1	2.2
<b>Hobart-Brisbane</b>								
Jetstar	20	20	17	85.0	16	80.0	0	0.0
Virgin Australia	28	28	14	50.0	18	64.3	0	0.0
All Airlines	48	48	31	64.6	34	70.8	0	0.0
<b>Hobart-Melbourne</b>								
Jetstar	172	172	139	80.8	131	76.2	0	0.0
Qantas	56	56	50	89.3	45	80.4	0	0.0
QantasLink	28	27	24	88.9	23	85.2	1	3.6
Tigerair	24	24	11	45.8	12	50.0	0	0.0
Virgin Australia	122	121	98	81.0	98	81.0	1	0.8
All Airlines	402	400	322	80.5	309	77.3	2	0.5
<b>Hobart-Sydney</b>								
Jetstar	56	56	44	78.6	50	89.3	0	0.0
Qantas	28	28	28	100.0	27	96.4	0	0.0
Virgin Australia	56	56	49	87.5	50	89.3	0	0.0
All Airlines	140	140	121	86.4	127	90.7	0	0.0
<b>Kalgoorlie-Perth</b>								
Qantas	48	48	46	95.8	46	95.8	0	0.0
QantasLink	32	31	28	90.3	26	83.9	1	3.1
Virgin Australia	39	39	37	94.9	34	87.2	0	0.0
Virgin Australia Regional Airlines	9	9	9	100.0	9	100.0	0	0.0
All Airlines	128	127	120	94.5	115	90.6	1	0.8
<b>Karratha-Perth</b>								
Qantas	172	164	156	95.1	156	95.1	8	4.7
QantasLink	60	52	47	90.4	48	92.3	8	13.3
Virgin Australia	80	78	77	98.7	76	97.4	2	2.5
All Airlines	312	294	280	95.2	280	95.2	18	5.8
<b>Launceston-Melbourne</b>								
Jetstar	112	112	91	81.3	88	78.6	0	0.0
QantasLink	112	112	103	92.0	94	83.9	0	0.0
Virgin Australia	109	109	95	87.2	87	79.8	0	0.0
All Airlines	333	333	289	86.8	269	80.8	0	0.0
<b>Launceston-Sydney</b>								
Jetstar	56	56	53	94.6	52	92.9	0	0.0
Virgin Australia	28	28	21	75.0	22	78.6	0	0.0
All Airlines	84	84	74	88.1	74	88.1	0	0.0

	<i>Sectors</i>		<i>Departures On Time</i>		<i>Arrivals On Time</i>		<i>Cancellations</i>	
	<i>Sched.</i>	<i>Flown</i>	<i>No.</i>	<i>%</i>	<i>No.</i>	<i>%</i>	<i>No.</i>	<i>%</i>
<b>Mackay-Brisbane</b>								
Jetstar	72	68	56	82.4	56	82.4	4	5.6
QantasLink	100	99	84	84.8	88	88.9	1	1.0
Virgin Australia	126	124	111	89.5	111	89.5	2	1.6
All Airlines	298	291	251	86.3	255	87.6	7	2.3
<b>Melbourne-Adelaide</b>								
Jetstar	103	102	90	88.2	91	89.2	1	1.0
Qantas	267	265	249	94.0	239	90.2	2	0.7
QantasLink	16	14	13	92.9	13	92.9	2	12.5
Tigerair	72	71	65	91.5	60	84.5	1	1.4
Virgin Australia	239	236	221	93.6	210	89.0	3	1.3
All Airlines	697	688	638	92.7	613	89.1	9	1.3
<b>Melbourne-Alice Springs</b>								
Qantas	28	28	25	89.3	24	85.7	0	0.0
Tigerair	14	14	13	92.9	10	71.4	0	0.0
All Airlines	42	42	38	90.5	34	81.0	0	0.0
<b>Melbourne-Brisbane</b>								
Jetstar	76	76	64	84.2	60	78.9	0	0.0
Qantas	401	396	365	92.2	338	85.4	5	1.2
Tigerair	77	77	63	81.8	51	66.2	0	0.0
Virgin Australia	323	311	287	92.3	259	83.3	12	3.7
All Airlines	877	860	779	90.6	708	82.3	17	1.9
<b>Melbourne-Cairns</b>								
Jetstar	48	48	42	87.5	42	87.5	0	0.0
Qantas	28	28	24	85.7	23	82.1	0	0.0
Tigerair	16	16	16	100.0	15	93.8	0	0.0
Virgin Australia	29	28	22	78.6	23	82.1	1	3.4
All Airlines	121	120	104	86.7	103	85.8	1	0.8
<b>Melbourne-Canberra</b>								
Qantas	201	198	183	92.4	182	91.9	3	1.5
QantasLink	75	73	67	91.8	59	80.8	2	2.7
Virgin Australia	160	160	149	93.1	141	88.1	0	0.0
All Airlines	436	431	399	92.6	382	88.6	5	1.1
<b>Melbourne-Darwin</b>								
Jetstar	27	27	25	92.6	26	96.3	0	0.0
Qantas	17	17	16	94.1	15	88.2	0	0.0
Virgin Australia	28	27	26	96.3	24	88.9	1	3.6
All Airlines	72	71	67	94.4	65	91.5	1	1.4
<b>Melbourne-Gold Coast</b>								
Jetstar	172	172	139	80.8	143	83.1	0	0.0
Tigerair	39	39	37	94.9	30	76.9	0	0.0
Virgin Australia	156	156	138	88.5	131	84.0	0	0.0
All Airlines	367	367	314	85.6	304	82.8	0	0.0
<b>Melbourne-Hamilton Island</b>								
Jetstar	16	16	15	93.8	15	93.8	0	0.0
Virgin Australia	12	12	10	83.3	10	83.3	0	0.0
All Airlines	28	28	25	89.3	25	89.3	0	0.0
<b>Melbourne-Hobart</b>								
Jetstar	171	171	141	82.5	147	86.0	0	0.0
Qantas	56	56	55	98.2	52	92.9	0	0.0
QantasLink	28	28	24	85.7	23	82.1	0	0.0
Tigerair	24	24	16	66.7	16	66.7	0	0.0
Virgin Australia	121	121	111	91.7	105	86.8	0	0.0
All Airlines	400	400	347	86.8	343	85.8	0	0.0

	<i>Sectors</i>		<i>Departures On Time</i>		<i>Arrivals On Time</i>		<i>Cancellations</i>	
	<i>Sched.</i>	<i>Flown</i>	<i>No.</i>	<i>%</i>	<i>No.</i>	<i>%</i>	<i>No.</i>	<i>%</i>
<b>Melbourne-Launceston</b>								
Jetstar	111	111	98	88.3	97	87.4	0	0.0
QantasLink	112	112	104	92.9	96	85.7	0	0.0
Virgin Australia	109	109	94	86.2	91	83.5	0	0.0
All Airlines	332	332	296	89.2	284	85.5	0	0.0
<b>Melbourne-Mildura</b>								
QantasLink	80	80	70	87.5	64	80.0	0	0.0
Regional Express	71	71	71	100.0	69	97.2	0	0.0
Virgin Australia	28	28	26	92.9	23	82.1	0	0.0
All Airlines	179	179	167	93.3	156	87.2	0	0.0
<b>Melbourne-Newcastle</b>								
Jetstar	85	84	63	75.0	62	73.8	1	1.2
Virgin Australia	28	28	28	100.0	25	89.3	0	0.0
All Airlines	113	112	91	81.3	87	77.7	1	0.9
<b>Melbourne-Perth</b>								
Jetstar	64	64	59	92.2	58	90.6	0	0.0
Qantas	203	203	172	84.7	173	85.2	0	0.0
Tigerair	48	47	46	97.9	46	97.9	1	2.1
Virgin Australia	120	120	105	87.5	108	90.0	0	0.0
All Airlines	435	434	382	88.0	385	88.7	1	0.2
<b>Melbourne-Sunshine Coast</b>								
Jetstar	52	52	51	98.1	48	92.3	0	0.0
Tigerair	24	24	24	100.0	23	95.8	0	0.0
Virgin Australia	28	28	26	92.9	26	92.9	0	0.0
All Airlines	104	104	101	97.1	97	93.3	0	0.0
<b>Melbourne-Sydney</b>								
Jetstar	299	298	251	84.2	252	84.6	1	0.3
Qantas	864	849	773	91.0	734	86.5	15	1.7
Tigerair	180	180	136	75.6	149	82.8	0	0.0
Virgin Australia	702	692	632	91.3	600	86.7	10	1.4
All Airlines	2 045	2 019	1 792	88.8	1 735	85.9	26	1.3
<b>Mildura-Melbourne</b>								
QantasLink	80	80	71	88.8	70	87.5	0	0.0
Regional Express	71	71	71	100.0	71	100.0	0	0.0
Virgin Australia	28	28	23	82.1	22	78.6	0	0.0
All Airlines	179	179	165	92.2	163	91.1	0	0.0
<b>Moranbah-Brisbane</b>								
QantasLink	137	128	120	93.8	118	92.2	9	6.6
Virgin Australia Regional Airlines	82	79	72	91.1	69	87.3	3	3.7
All Airlines	219	207	192	92.8	187	90.3	12	5.5
<b>Mount Isa-Brisbane</b>								
Qantas	52	52	52	100.0	51	98.1	0	0.0
Virgin Australia	20	20	17	85.0	15	75.0	0	0.0
All Airlines	72	72	69	95.8	66	91.7	0	0.0
<b>Newcastle-Brisbane</b>								
Jetstar	99	99	87	87.9	86	86.9	0	0.0
QantasLink	64	62	48	77.4	43	69.4	2	3.1
Virgin Australia	69	68	58	85.3	56	82.4	1	1.4
All Airlines	232	229	193	84.3	185	80.8	3	1.3
<b>Newcastle-Melbourne</b>								
Jetstar	84	84	62	73.8	62	73.8	0	0.0
Virgin Australia	28	28	25	89.3	24	85.7	0	0.0
All Airlines	112	112	87	77.7	86	76.8	0	0.0

	<i>Sectors</i>		<i>Departures On Time</i>		<i>Arrivals On Time</i>		<i>Cancellations</i>	
	<i>Sched.</i>	<i>Flown</i>	<i>No.</i>	<i>%</i>	<i>No.</i>	<i>%</i>	<i>No.</i>	<i>%</i>
<b>Newman-Perth</b>								
Qantas	120	118	115	97.5	114	96.6	2	1.7
QantasLink	32	30	29	96.7	29	96.7	2	6.3
Virgin Australia	32	32	29	90.6	29	90.6	0	0.0
Virgin Australia Regional Airlines	8	8	5	62.5	6	75.0	0	0.0
All Airlines	192	188	178	94.7	178	94.7	4	2.1
<b>Perth-Adelaide</b>								
Jetstar	28	28	24	85.7	27	96.4	0	0.0
Qantas	108	108	104	96.3	103	95.4	0	0.0
Virgin Australia	57	56	55	98.2	56	100.0	1	1.8
All Airlines	193	192	183	95.3	186	96.9	1	0.5
<b>Perth-Brisbane</b>								
Jetstar	16	16	8	50.0	7	43.8	0	0.0
Qantas	117	117	112	95.7	111	94.9	0	0.0
Virgin Australia	81	81	76	93.8	74	91.4	0	0.0
All Airlines	214	214	196	91.6	192	89.7	0	0.0
<b>Perth-Broome</b>								
Qantas	27	27	27	100.0	26	96.3	0	0.0
QantasLink	52	50	50	100.0	47	94.0	2	3.8
Virgin Australia	20	19	18	94.7	18	94.7	1	5.0
Virgin Australia Regional Airlines	12	12	6	50.0	3	25.0	0	0.0
All Airlines	111	108	101	93.5	94	87.0	3	2.7
<b>Perth-Darwin</b>								
Qantas	28	28	27	96.4	26	92.9	0	0.0
Virgin Australia	24	24	20	83.3	21	87.5	0	0.0
All Airlines	52	52	47	90.4	47	90.4	0	0.0
<b>Perth-Geraldton</b>								
QantasLink	52	52	47	90.4	47	90.4	0	0.0
Virgin Australia Regional Airlines	84	84	72	85.7	69	82.1	0	0.0
All Airlines	136	136	119	87.5	116	85.3	0	0.0
<b>Perth-Kalgoorlie</b>								
Qantas	48	48	47	97.9	47	97.9	0	0.0
QantasLink	32	32	29	90.6	29	90.6	0	0.0
Virgin Australia	39	39	37	94.9	36	92.3	0	0.0
Virgin Australia Regional Airlines	9	9	9	100.0	9	100.0	0	0.0
All Airlines	128	128	122	95.3	121	94.5	0	0.0
<b>Perth-Karratha</b>								
Qantas	172	165	162	98.2	162	98.2	7	4.1
QantasLink	60	51	48	94.1	47	92.2	9	15.0
Virgin Australia	80	78	77	98.7	77	98.7	2	2.5
All Airlines	312	294	287	97.6	286	97.3	18	5.8
<b>Perth-Melbourne</b>								
Jetstar	64	64	54	84.4	47	73.4	0	0.0
Qantas	204	202	181	89.6	174	86.1	2	1.0
Tigerair	48	48	45	93.8	44	91.7	0	0.0
Virgin Australia	120	120	111	92.5	106	88.3	0	0.0
All Airlines	436	434	391	90.1	371	85.5	2	0.5
<b>Perth-Newman</b>								
Qantas	120	118	115	97.5	116	98.3	2	1.7
QantasLink	32	29	28	96.6	29	100.0	3	9.4
Virgin Australia	32	32	30	93.8	30	93.8	0	0.0
Virgin Australia Regional Airlines	8	8	7	87.5	4	50.0	0	0.0
All Airlines	192	187	180	96.3	179	95.7	5	2.6

	<i>Sectors</i>		<i>Departures On Time</i>		<i>Arrivals On Time</i>		<i>Cancellations</i>	
	<i>Sched.</i>	<i>Flown</i>	<i>No.</i>	<i>%</i>	<i>No.</i>	<i>%</i>	<i>No.</i>	<i>%</i>
<b>Perth-Port Hedland</b>								
Qantas	116	116	112	96.6	111	95.7	0	0.0
QantasLink	40	40	38	95.0	38	95.0	0	0.0
Virgin Australia	48	47	47	100.0	47	100.0	1	2.1
All Airlines	204	203	197	97.0	196	96.6	1	0.5
<b>Perth-Sydney</b>								
Jetstar	36	34	31	91.2	31	91.2	2	5.6
Qantas	188	188	174	92.6	177	94.1	0	0.0
Tigerair	23	21	18	85.7	18	85.7	2	8.7
Virgin Australia	104	104	100	96.2	102	98.1	0	0.0
All Airlines	351	347	323	93.1	328	94.5	4	1.1
<b>Port Hedland-Perth</b>								
Qantas	116	116	111	95.7	113	97.4	0	0.0
QantasLink	40	39	36	92.3	35	89.7	1	2.5
Virgin Australia	48	46	43	93.5	44	95.7	2	4.2
All Airlines	204	201	190	94.5	192	95.5	3	1.5
<b>Port Lincoln-Adelaide</b>								
QantasLink	86	81	71	87.7	69	85.2	5	5.8
Regional Express	163	159	145	91.2	144	90.6	4	2.5
All Airlines	249	240	216	90.0	213	88.8	9	3.6
<b>Port Macquarie-Sydney</b>								
QantasLink	124	122	82	67.2	73	59.8	2	1.6
Virgin Australia Regional Airlines	54	51	40	78.4	41	80.4	3	5.6
All Airlines	178	173	122	70.5	114	65.9	5	2.8
<b>Proserpine-Brisbane</b>								
Jetstar	24	24	20	83.3	21	87.5	0	0.0
Virgin Australia	48	47	45	95.7	39	83.0	1	2.1
All Airlines	72	71	65	91.5	60	84.5	1	1.4
<b>Rockhampton-Brisbane</b>								
QantasLink	182	173	156	90.2	153	88.4	9	4.9
Virgin Australia	86	84	73	86.9	69	82.1	2	2.3
Virgin Australia Regional Airlines	104	100	95	95.0	96	96.0	4	3.8
All Airlines	372	357	324	90.8	318	89.1	15	4.0
<b>Sunshine Coast-Melbourne</b>								
Jetstar	52	52	47	90.4	46	88.5	0	0.0
Tigerair	24	24	23	95.8	21	87.5	0	0.0
Virgin Australia	28	28	25	89.3	23	82.1	0	0.0
All Airlines	104	104	95	91.3	90	86.5	0	0.0
<b>Sunshine Coast-Sydney</b>								
Jetstar	83	83	76	91.6	76	91.6	0	0.0
Virgin Australia	29	29	28	96.6	29	100.0	0	0.0
All Airlines	112	112	104	92.9	105	93.8	0	0.0
<b>Sydney-Adelaide</b>								
Jetstar	110	110	97	88.2	96	87.3	0	0.0
Qantas	244	242	228	94.2	229	94.6	2	0.8
Virgin Australia	148	148	142	95.9	139	93.9	0	0.0
All Airlines	502	500	467	93.4	464	92.8	2	0.4
<b>Sydney-Albury</b>								
QantasLink	104	102	81	79.4	71	69.6	2	1.9
Regional Express	86	86	75	87.2	75	87.2	0	0.0
Virgin Australia Regional Airlines	55	55	48	87.3	51	92.7	0	0.0
All Airlines	245	243	204	84.0	197	81.1	2	0.8



	<i>Sectors</i>		<i>Departures On Time</i>		<i>Arrivals On Time</i>		<i>Cancellations</i>	
	<i>Sched.</i>	<i>Flown</i>	<i>No.</i>	<i>%</i>	<i>No.</i>	<i>%</i>	<i>No.</i>	<i>%</i>
<b>Sydney-Alice Springs</b>								
Qantas	28	28	26	92.9	26	92.9	0	0.0
Tigerair	13	13	13	100.0	12	92.3	0	0.0
All Airlines	41	41	39	95.1	38	92.7	0	0.0
<b>Sydney-Ayers Rock</b>								
Jetstar	16	16	16	100.0	16	100.0	0	0.0
Virgin Australia	28	28	27	96.4	25	89.3	0	0.0
All Airlines	44	44	43	97.7	41	93.2	0	0.0
<b>Sydney-Ballina</b>								
Jetstar	36	36	33	91.7	32	88.9	0	0.0
Regional Express	23	23	17	73.9	16	69.6	0	0.0
Virgin Australia	28	28	24	85.7	24	85.7	0	0.0
All Airlines	87	87	74	85.1	72	82.8	0	0.0
<b>Sydney-Brisbane</b>								
Jetstar	83	83	58	69.9	61	73.5	0	0.0
Qantas	557	549	485	88.3	480	87.4	8	1.4
Tigerair	52	52	47	90.4	40	76.9	0	0.0
Virgin Australia	483	476	431	90.5	421	88.4	7	1.4
All Airlines	1 175	1 160	1 021	88.0	1 002	86.4	15	1.3
<b>Sydney-Cairns</b>								
Jetstar	56	56	47	83.9	49	87.5	0	0.0
Qantas	58	58	51	87.9	54	93.1	0	0.0
Tigerair	16	16	13	81.3	14	87.5	0	0.0
Virgin Australia	81	81	74	91.4	78	96.3	0	0.0
All Airlines	211	211	185	87.7	195	92.4	0	0.0
<b>Sydney-Canberra</b>								
Qantas	95	94	89	94.7	88	93.6	1	1.1
QantasLink	428	406	344	84.7	346	85.2	22	5.1
Virgin Australia	49	46	45	97.8	46	100.0	3	6.1
Virgin Australia Regional Airlines	222	216	196	90.7	198	91.7	6	2.7
All Airlines	794	762	674	88.5	678	89.0	32	4.0
<b>Sydney-Coffs Harbour</b>								
QantasLink	140	140	121	86.4	101	72.1	0	0.0
Tigerair	12	12	9	75.0	9	75.0	0	0.0
Virgin Australia	53	53	51	96.2	52	98.1	0	0.0
All Airlines	205	205	181	88.3	162	79.0	0	0.0
<b>Sydney-Darwin</b>								
Jetstar	20	20	18	90.0	18	90.0	0	0.0
Qantas	36	36	35	97.2	32	88.9	0	0.0
Virgin Australia	27	27	25	92.6	26	96.3	0	0.0
All Airlines	83	83	78	94.0	76	91.6	0	0.0
<b>Sydney-Dubbo</b>								
QantasLink	116	115	94	81.7	77	67.0	1	0.9
Regional Express	129	129	113	87.6	115	89.1	0	0.0
All Airlines	245	244	207	84.8	192	78.7	1	0.4
<b>Sydney-Gold Coast</b>								
Jetstar	288	287	251	87.5	249	86.8	1	0.3
Qantas	84	84	80	95.2	83	98.8	0	0.0
Tigerair	36	36	29	80.6	31	86.1	0	0.0
Virgin Australia	286	282	251	89.0	253	89.7	4	1.4
All Airlines	694	689	611	88.7	616	89.4	5	0.7

	<i>Sectors</i>		<i>Departures On Time</i>		<i>Arrivals On Time</i>		<i>Cancellations</i>	
	<i>Sched.</i>	<i>Flown</i>	<i>No.</i>	<i>%</i>	<i>No.</i>	<i>%</i>	<i>No.</i>	<i>%</i>
<b>Sydney-Hamilton Island</b>								
Jetstar	16	16	11	68.8	11	68.8	0	0.0
Virgin Australia	29	28	26	92.9	27	96.4	1	3.4
All Airlines	45	44	37	84.1	38	86.4	1	2.2
<b>Sydney-Hobart</b>								
Jetstar	55	55	49	89.1	50	90.9	0	0.0
Qantas	28	28	26	92.9	28	100.0	0	0.0
Virgin Australia	56	56	51	91.1	53	94.6	0	0.0
All Airlines	139	139	126	90.6	131	94.2	0	0.0
<b>Sydney-Launceston</b>								
Jetstar	56	56	54	96.4	55	98.2	0	0.0
Virgin Australia	28	28	21	75.0	23	82.1	0	0.0
All Airlines	84	84	75	89.3	78	92.9	0	0.0
<b>Sydney-Melbourne</b>								
Jetstar	298	296	265	89.5	262	88.5	2	0.7
Qantas	864	850	790	92.9	756	88.9	14	1.6
Tigerair	180	180	145	80.6	139	77.2	0	0.0
Virgin Australia	703	694	643	92.7	621	89.5	9	1.3
All Airlines	2 045	2 020	1 843	91.2	1 778	88.0	25	1.2
<b>Sydney-Perth</b>								
Jetstar	35	35	30	85.7	31	88.6	0	0.0
Qantas	192	192	171	89.1	178	92.7	0	0.0
Tigerair	23	21	15	71.4	21	100.0	2	8.7
Virgin Australia	104	104	90	86.5	97	93.3	0	0.0
All Airlines	354	352	306	86.9	327	92.9	2	0.6
<b>Sydney-Port Macquarie</b>								
QantasLink	125	123	102	82.9	86	69.9	2	1.6
Virgin Australia Regional Airlines	54	52	42	80.8	44	84.6	2	3.7
All Airlines	179	175	144	82.3	130	74.3	4	2.2
<b>Sydney-Sunshine Coast</b>								
Jetstar	84	84	75	89.3	79	94.0	0	0.0
Virgin Australia	29	29	29	100.0	29	100.0	0	0.0
All Airlines	113	113	104	92.0	108	95.6	0	0.0
<b>Sydney-Townsville</b>								
Jetstar	16	16	15	93.8	15	93.8	0	0.0
Virgin Australia	28	28	25	89.3	25	89.3	0	0.0
All Airlines	44	44	40	90.9	40	90.9	0	0.0
<b>Sydney-Wagga Wagga</b>								
QantasLink	104	104	87	83.7	80	76.9	0	0.0
Regional Express	101	101	94	93.1	92	91.1	0	0.0
All Airlines	205	205	181	88.3	172	83.9	0	0.0
<b>Townsville-Brisbane</b>								
Jetstar	28	28	25	89.3	25	89.3	0	0.0
Qantas	136	136	133	97.8	134	98.5	0	0.0
Virgin Australia	140	137	127	92.7	120	87.6	3	2.1
All Airlines	304	301	285	94.7	279	92.7	3	1.0
<b>Townsville-Cairns</b>								
QantasLink	172	172	150	87.2	151	87.8	0	0.0
Virgin Australia Regional Airlines	1	0	0	..	0	..	1	100.0
All Airlines	173	172	150	87.2	151	87.8	1	0.6

	<i>Sectors</i>		<i>Departures On Time</i>		<i>Arrivals On Time</i>		<i>Cancellations</i>	
	<i>Sched.</i>	<i>Flown</i>	<i>No.</i>	<i>%</i>	<i>No.</i>	<i>%</i>	<i>No.</i>	<i>%</i>
<b>Townsville-Sydney</b>								
Jetstar	16	16	14	87.5	14	87.5	0	0.0
Virgin Australia	28	28	26	92.9	27	96.4	0	0.0
All Airlines	44	44	40	90.9	41	93.2	0	0.0
<b>Wagga Wagga-Sydney</b>								
QantasLink	104	104	83	79.8	78	75.0	0	0.0
Regional Express	100	100	90	90.0	88	88.0	0	0.0
All Airlines	204	204	173	84.8	166	81.4	0	0.0

## Airports

On time performance is reported for all routes where the passenger load averages over 8000 passengers per month, and where two or more airlines operate in competition. The following data reports by airport against flights operated on those routes only.

Airport	Departures			Arrivals		
	Sectors	On Time		Sectors	On Time	
	Flown	No.	%	Flown	No.	%
<b>Adelaide</b>						
Jetstar	293	250	85.3	292	263	90.1
Qantas	755	706	93.5	755	701	92.8
QantasLink	114	100	87.7	114	97	85.1
Regional Express	158	151	95.6	159	144	90.6
Tigerair	70	60	85.7	71	60	84.5
Virgin Australia	594	558	93.9	593	541	91.2
All Airlines	1 984	1 825	92.0	1 984	1 806	91.0
Relates to services to and from Brisbane, Canberra, Gold Coast, Melbourne, Perth, Port Lincoln and Sydney.						
<b>Albury</b>						
QantasLink	102	79	77.5	102	71	69.6
Regional Express	87	81	93.1	86	75	87.2
Virgin Australia Regional Airlines	54	49	90.7	55	51	92.7
All Airlines	243	209	86.0	243	197	81.1
Relates to services to and from Sydney only.						
<b>Alice Springs</b>						
Qantas	56	39	69.6	56	50	89.3
Tigerair	27	21	77.8	27	22	81.5
All Airlines	83	60	72.3	83	72	86.7
Relates to services to and from Melbourne and Sydney.						
<b>Ayers Rock</b>						
Jetstar	16	15	93.8	16	16	100.0
Virgin Australia	28	26	92.9	28	25	89.3
All Airlines	44	41	93.2	44	41	93.2
Relates to services to and from Sydney only.						
<b>Ballina</b>						
Jetstar	36	25	69.4	36	32	88.9
Regional Express	19	16	84.2	23	16	69.6
Virgin Australia	28	24	85.7	28	24	85.7
All Airlines	83	65	78.3	87	72	82.8
Relates to services to and from Sydney only.						
<b>Brisbane</b>						
Jetstar	521	452	86.8	526	434	82.5
Qantas	1 561	1 438	92.1	1 532	1 373	89.6
QantasLink	1 040	963	92.6	1 033	869	84.1
Tigerair	127	92	72.4	129	91	70.5
Virgin Australia	1 757	1 601	91.1	1 756	1 521	86.6
Virgin Australia Regional Airlines	426	380	89.2	422	376	89.1
All Airlines	5 432	4 926	90.7	5 398	4 664	86.4
Relates to services to and from Adelaide, Bundaberg, Cairns, Canberra, Darwin, Emerald, Gladstone, Hamilton Island, Hobart, Mackay, Melbourne, Moranbah, Mount Isa, Newcastle, Perth, Proserpine, Rockhampton, Sydney and Townsville.						

Airport	Departures			Arrivals		
	Sectors Flown	On Time		Sectors Flown	On Time	
		No.	%		No.	%
<b>Broome</b>						
Qantas	27	25	92.6	27	26	96.3
QantasLink	49	47	95.9	50	47	94.0
Virgin Australia	19	17	89.5	19	18	94.7
Virgin Australia Regional Airlines	12	6	50.0	12	3	25.0
All Airlines	107	95	88.8	108	94	87.0
Relates to services to and from Perth only.						
<b>Bundaberg</b>						
QantasLink	107	95	88.8	107	97	90.7
Virgin Australia Regional Airlines	30	27	90.0	30	27	90.0
All Airlines	137	122	89.1	137	124	90.5
Relates to services to and from Brisbane only.						
<b>Cairns</b>						
Jetstar	174	154	88.5	174	156	89.7
Qantas	194	169	87.1	194	182	93.8
QantasLink	175	157	89.7	176	155	88.1
Tigerair	32	22	68.8	32	29	90.6
Virgin Australia	248	220	88.7	248	230	92.7
Virgin Australia Regional Airlines	0	0	..	0	0	..
All Airlines	823	722	87.7	824	752	91.3
Relates to services to and from Brisbane, Melbourne, Sydney and Townsville.						
<b>Canberra</b>						
Qantas	375	350	93.3	373	349	93.6
QantasLink	594	511	86.0	599	512	85.5
Virgin Australia	315	285	90.5	315	284	90.2
Virgin Australia Regional Airlines	215	208	96.7	216	198	91.7
All Airlines	1 499	1 354	90.3	1 503	1 343	89.4
Relates to services to and from Adelaide, Brisbane, Melbourne and Sydney.						
<b>Coffs Harbour</b>						
QantasLink	140	101	72.1	140	101	72.1
Tigerair	12	9	75.0	12	9	75.0
Virgin Australia	52	51	98.1	53	52	98.1
All Airlines	204	161	78.9	205	162	79.0
Relates to services to and from Sydney only.						
<b>Darwin</b>						
Jetstar	47	32	68.1	47	44	93.6
Qantas	114	107	93.9	114	105	92.1
Virgin Australia	108	100	92.6	107	100	93.5
All Airlines	269	239	88.8	268	249	92.9
Relates to services to and from Brisbane, Melbourne, Perth and Sydney.						
<b>Dubbo</b>						
QantasLink	115	96	83.5	115	77	67.0
Regional Express	130	120	92.3	129	115	89.1
All Airlines	245	216	88.2	244	192	78.7
Relates to services to and from Sydney only.						
<b>Emerald</b>						
QantasLink	149	124	83.2	149	125	83.9
Virgin Australia Regional Airlines	83	72	86.7	84	69	82.1
All Airlines	232	196	84.5	233	194	83.3
Relates to services to and from Brisbane only.						

Airport	Departures			Arrivals		
	Sectors	On Time		Sectors	On Time	
	Flown	No.	%	Flown	No.	%
<b>Geraldton</b>						
QantasLink	52	50	96.2	52	47	90.4
Virgin Australia Regional Airlines	88	76	86.4	84	69	82.1
All Airlines	140	126	90.0	136	116	85.3
Relates to services to and from Perth only.						
<b>Gladstone</b>						
QantasLink	210	181	86.2	192	174	90.6
Virgin Australia Regional Airlines	130	112	86.2	131	112	85.5
All Airlines	340	293	86.2	323	286	88.5
Relates to services to and from Brisbane only.						
<b>Gold Coast</b>						
Jetstar	486	433	89.1	487	417	85.6
Qantas	84	81	96.4	84	83	98.8
Tigerair	75	52	69.3	75	61	81.3
Virgin Australia	468	422	90.2	466	411	88.2
All Airlines	1 113	988	88.8	1 112	972	87.4
Relates to services to and from Adelaide, Melbourne and Sydney.						
<b>Hamilton Island</b>						
Jetstar	48	40	83.3	48	40	83.3
Virgin Australia	67	60	89.6	67	62	92.5
All Airlines	115	100	87.0	115	102	88.7
Relates to services to and from Brisbane, Melbourne and Sydney.						
<b>Hobart</b>						
Jetstar	248	200	80.6	246	216	87.8
Qantas	84	78	92.9	84	80	95.2
QantasLink	27	24	88.9	28	23	82.1
Tigerair	24	11	45.8	24	16	66.7
Virgin Australia	205	161	78.5	205	176	85.9
All Airlines	588	474	80.6	587	511	87.1
Relates to services to and from Brisbane, Melbourne and Sydney.						
<b>Kalgoorlie</b>						
Qantas	48	46	95.8	48	47	97.9
QantasLink	31	28	90.3	32	29	90.6
Virgin Australia	39	37	94.9	39	36	92.3
Virgin Australia Regional Airlines	9	9	100.0	9	9	100.0
All Airlines	127	120	94.5	128	121	94.5
Relates to services to and from Perth only.						
<b>Karratha</b>						
Qantas	164	156	95.1	165	162	98.2
QantasLink	52	47	90.4	51	47	92.2
Virgin Australia	78	77	98.7	78	77	98.7
All Airlines	294	280	95.2	294	286	97.3
Relates to services to and from Perth only.						
<b>Launceston</b>						
Jetstar	168	144	85.7	167	152	91.0
QantasLink	112	103	92.0	112	96	85.7
Virgin Australia	137	116	84.7	137	114	83.2
All Airlines	417	363	87.1	416	362	87.0
Relates to services to and from Melbourne and Sydney.						

Airport	Departures			Arrivals		
	Sectors	On Time		Sectors	On Time	
	Flown	No.	%	Flown	No.	%
<b>Mackay</b>						
Jetstar	68	56	82.4	68	62	91.2
QantasLink	99	84	84.8	100	92	92.0
Virgin Australia	124	111	89.5	124	112	90.3
All Airlines	291	251	86.3	292	266	91.1
Relates to services to and from Brisbane only.						
<b>Melbourne</b>						
Jetstar	1 221	1 038	85.0	1 222	1 026	84.0
Qantas	2 040	1 862	91.3	2 044	1 837	89.9
QantasLink	307	278	90.6	308	260	84.4
Regional Express	71	71	100.0	71	71	100.0
Tigerair	492	416	84.6	491	376	76.6
Virgin Australia	2 056	1 875	91.2	2 059	1 807	87.8
All Airlines	6 187	5 540	89.5	6 195	5 377	86.8
Relates to services to and from Adelaide, Alice Springs, Brisbane, Cairns, Canberra, Darwin, Gold Coast, Hobart, Launceston, Mildura, Newcastle, Perth, Sunshine Coast and Sydney.						
<b>Mildura</b>						
QantasLink	80	71	88.8	80	64	80.0
Regional Express	71	71	100.0	71	69	97.2
Virgin Australia	28	23	82.1	28	23	82.1
All Airlines	179	165	92.2	179	156	87.2
Relates to services to and from Melbourne only.						
<b>Moranbah</b>						
QantasLink	128	120	93.8	132	127	96.2
Virgin Australia Regional Airlines	79	72	91.1	80	74	92.5
All Airlines	207	192	92.8	212	201	94.8
Relates to services to and from Brisbane only.						
<b>Mount Isa</b>						
Qantas	52	52	100.0	52	52	100.0
Virgin Australia	20	17	85.0	20	17	85.0
All Airlines	72	69	95.8	72	69	95.8
Relates to services to and from Brisbane only.						
<b>Newcastle</b>						
Jetstar	183	149	81.4	182	158	86.8
QantasLink	62	48	77.4	63	46	73.0
Virgin Australia	96	83	86.5	96	88	91.7
All Airlines	341	280	82.1	341	292	85.6
Relates to services to and from Brisbane and Melbourne.						
<b>Newman</b>						
Qantas	118	115	97.5	118	116	98.3
QantasLink	30	29	96.7	29	29	100.0
Virgin Australia	32	29	90.6	32	30	93.8
Virgin Australia Regional Airlines	8	5	62.5	8	4	50.0
All Airlines	188	178	94.7	187	179	95.7
Relates to services to and from Perth only.						

Airport	Departures			Arrivals		
	Sectors	On Time		Sectors	On Time	
	Flown	No.	%	Flown	No.	%
<b>Perth</b>						
Jetstar	142	117	82.4	142	126	88.7
Qantas	1 117	1 061	95.0	1 116	1 040	93.2
QantasLink	254	240	94.5	253	236	93.3
Tigerair	69	63	91.3	68	67	98.5
Virgin Australia	600	571	95.2	601	558	92.8
Virgin Australia Regional Airlines	113	94	83.2	117	94	80.3
All Airlines	2 295	2 146	93.5	2 297	2 121	92.3
Relates to services to and from Adelaide, Brisbane, Broome, Darwin, Geraldton, Kalgoorlie, Karratha, Melbourne, Newman, Port Hedland and Sydney.						
<b>Port Hedland</b>						
Qantas	116	111	95.7	116	111	95.7
QantasLink	39	36	92.3	40	38	95.0
Virgin Australia	46	43	93.5	47	47	100.0
All Airlines	201	190	94.5	203	196	96.6
Relates to services to and from Perth only.						
<b>Port Lincoln</b>						
QantasLink	81	71	87.7	81	71	87.7
Regional Express	159	145	91.2	158	148	93.7
All Airlines	240	216	90.0	239	219	91.6
Relates to services to and from Adelaide only.						
<b>Port Macquarie</b>						
QantasLink	122	82	67.2	123	86	69.9
Virgin Australia Regional Airlines	51	40	78.4	52	44	84.6
All Airlines	173	122	70.5	175	130	74.3
Relates to services to and from Sydney only.						
<b>Proserpine</b>						
Jetstar	24	20	83.3	24	20	83.3
Virgin Australia	47	45	95.7	47	45	95.7
All Airlines	71	65	91.5	71	65	91.5
Relates to services to and from Brisbane only.						
<b>Rockhampton</b>						
QantasLink	173	156	90.2	192	177	92.2
Virgin Australia	84	73	86.9	84	77	91.7
Virgin Australia Regional Airlines	100	95	95.0	101	89	88.1
All Airlines	357	324	90.8	377	343	91.0
Relates to services to and from Brisbane only.						
<b>Sunshine Coast</b>						
Jetstar	135	123	91.1	136	127	93.4
Tigerair	24	23	95.8	24	23	95.8
Virgin Australia	57	53	93.0	57	55	96.5
All Airlines	216	199	92.1	217	205	94.5
Relates to services to and from Melbourne and Sydney.						



Airport	Departures			Arrivals		
	Sectors	On Time		Sectors	On Time	
	Flown	No.	%	Flown	No.	%
<b>Sydney</b>						
Jetstar	1 166	1 019	87.4	1 163	1 007	86.6
Qantas	2 161	1 981	91.7	2 188	1 990	91.0
QantasLink	990	829	83.7	982	773	78.7
Regional Express	339	299	88.2	336	291	86.6
Tigerair	330	271	82.1	329	262	79.6
Virgin Australia	2 136	1 955	91.5	2 135	1 937	90.7
Virgin Australia Regional Airlines	323	286	88.5	320	288	90.0
All Airlines	7 445	6 640	89.2	7 453	6 548	87.9

Relates to services to and from Adelaide, Albury, Alice Springs, Ayers Rock, Ballina, Brisbane, Cairns, Canberra, Coffs Harbour, Darwin, Dubbo, Gold Coast, Hamilton Island, Hobart, Launceston, Melbourne, Perth, Port Macquarie, Sunshine Coast, Townsville and Wagga Wagga.

### Townsville

Jetstar	44	39	88.6	44	40	90.9
Qantas	136	133	97.8	136	126	92.6
QantasLink	172	150	87.2	171	152	88.9
Virgin Australia	165	153	92.7	165	154	93.3
Virgin Australia Regional Airlines	0	0	..	0	0	..
All Airlines	517	475	91.9	516	472	91.5

Relates to services to and from Brisbane, Cairns and Sydney.

### Wagga Wagga

QantasLink	104	83	79.8	104	80	76.9
Regional Express	100	90	90.0	101	92	91.1
All Airlines	204	173	84.8	205	172	83.9

Relates to services to and from Sydney only.

## Definitions

---

On time departure                      A flight departure is counted as "on time" if it departs the gate before 15 minutes after the scheduled departure time shown in the carriers' schedule.

---

On time arrival                        A flight arrival is counted as "on time" if it arrived at the gate before 15 minutes after the scheduled arrival time shown in the carriers' schedule.  
Neither diverted nor cancelled flights count as on time.

---

Cancellation                          A flight removed from service within 7 days of scheduled departure is regarded as a cancellation.

---

On time departure percentage                      The percentage of on time departures is measured against the number of departures *operated* on any particular sector.

---

On time arrival percentage                        The percentage of on time arrivals is measured against the number of arrivals *operated* on any particular sector.

---

Cancellation percentage                      The percentage of cancellations is measured against the number of services *scheduled* on any particular sector.

---