



**Australian Government**

**Department of Infrastructure and Transport**

Bureau of Infrastructure, Transport and Regional Economics

STATISTICAL REPORT



## Aviation

Domestic airline on time performance  
February 2013

© Commonwealth of Australia 2013

ISSN: 1832-0759

### **Ownership of intellectual property rights in this publication**

Unless otherwise noted, copyright (and any other intellectual property rights, if any) in this publication is owned by the Commonwealth of Australia (referred to below as the Commonwealth).

### **Disclaimer**

The material contained in this publication is made available on the understanding that the Commonwealth is not providing professional advice, and that users exercise their own skill and care with respect to its use, and seek independent advice if necessary.

The Commonwealth makes no representations or warranties as to the contents or accuracy of the information contained in this publication. To the extent permitted by law, the Commonwealth disclaims liability to any person or organisation in respect of anything done, or omitted to be done, in reliance upon information contained in this publication.

### **Creative Commons licence**

With the exception of (a) the Coat of Arms; and (b) the Department of Infrastructure's photos and graphics, copyright in this publication is licensed under a Creative Commons Attribution 3.0 Australia Licence.

Creative Commons Attribution 3.0 Australia Licence is a standard form licence agreement that allows you to copy, communicate and adapt this publication provided that you attribute the work to the Commonwealth and abide by the other licence terms. A summary of the licence terms is available from <http://creativecommons.org/licenses/by/3.0/au/deed.en>. The full licence terms are available from <http://creativecommons.org/licenses/by/3.0/au/legalcode>.

### **Use of the Coat of Arms**

The Department of the Prime Minister and Cabinet sets the terms under which the Coat of Arms is used. Please refer to the Department's Commonwealth Coat of Arms and Government branding web page <http://www.dpmmc.gov.au/guidelines/index.cfm#brand> and, in particular, the Guidelines on the use of the Commonwealth Coat of Arms publication.

An appropriate citation for this report is:

Bureau of Infrastructure, Transport and Regional Economics (BITRE), 2013, Domestic airline on time performance, Statistical Report, BITRE, Canberra ACT.

### **Contact us**

This publication is available in PDF format. All other rights are reserved, including in relation to any Departmental logos or trade marks which may exist. For enquiries regarding the licence and any use of this publication, please contact:

Bureau of Infrastructure, Transport and Regional Economics (BITRE)  
Department of Infrastructure and Transport  
GPO Box 501, Canberra ACT 2601, Australia  
Telephone: (international) +61 2 6274 7210  
Fax: (international) +61 2 6274 6855  
Email: [bitre@infrastructure.gov.au](mailto:bitre@infrastructure.gov.au)  
Website: [www.bitre.gov.au](http://www.bitre.gov.au)

### **Inquiries**

Should you require additional information about the statistics contained in this publication:

Telephone (02) 6274 7790 or Facsimile (02) 6274 7727

Electronic mail: [AVSTATS@infrastructure.gov.au](mailto:AVSTATS@infrastructure.gov.au)

Web site: <http://www.bitre.gov.au/statistics/aviation/otphome.aspx>

# Foreword

The Bureau of Infrastructure, Transport and Regional Economics (BITRE) monitors the punctuality and reliability of major domestic airlines operating between Australian airports. The purpose of this is to allow for evaluation of overall industry and individual airline performance, so that consumers of air travel can make informed decisions.

The following domestic airlines report this information monthly to the BITRE: Jetstar, Qantas, QantasLink, Regional Express, Skywest Airlines, Tiger Airways, Virgin Australia and Virgin Australia – ATR/F100 Operations. Data has been gathered since November 2003, although some airlines commenced reporting at a later date, including Jetstar which first reported in May 2004, MacAir in July 2005 and Tiger Airways in April 2008. MacAir ceased operations in February 2009 and data was not received for December 2008 onwards. Virgin Blue was rebranded as Virgin Australia in May 2011 and time series data in Microsoft Excel spreadsheet format on the BITRE website has been revised to reflect this. Services operated by Skywest on behalf of Virgin Australia using ATR/F100 aircraft commenced in November 2011 and are shown separately as Virgin Australia – ATR/F100 Operations.

Information presented in this report is for Australian domestic routes for which the passenger load averaged 8 000 or more passengers per month over the previous six months and where two or more airlines operated in competition on those routes. There were 58 routes that met this definition in February 2013. Over time, routes which meet these criteria change as airline networks and traffic levels vary.

Participating airlines report their overall monthly network performance where this is possible.

Total industry figures encompass all services operated by reporting airlines only. These airlines collectively carried over 95 per cent of total domestic passengers (regular public transport only) in 2012.

The method of capturing on time performance varies between airlines utilising different recording systems. Jetstar and Qantas jet aircraft use Aircraft Communication Addressing and Reporting System (ACARS) to electronically measure on time performance. Regional Express, Skywest, Tiger Airways, Virgin Australia, Virgin Australia – ATR/F100 Operations and the Qantas non-jet fleet record on time performance manually using records from pilots, gate agents and/or ground crews.

After initial data is collected, aggregate reports are audited internally by participating airlines prior to publication.

Reports and detailed time series data in Microsoft Excel spreadsheet format are available from the BITRE website at: <http://www.bitre.gov.au/statistics/aviation/otphome.aspx>.



# Contents

	Page
Industry performance .....	1
Individual routes .....	9
Airports .....	21
Definitions .....	27



# Industry performance

For February 2013, on time performance over all routes operated by participating airlines (Jetstar, Qantas, QantasLink, Regional Express, Skywest Airlines, Tiger Airways, Virgin Australia and Virgin Australia – ATR/F100 Operations) averaged 77.3 per cent for on time departures, and 73.9 per cent for on time arrivals. Cancellations represented 2.2 per cent of all scheduled flights. The equivalent figures for February 2012 were 82.8 per cent for departures, 80.6 per cent for arrivals and 1.5 per cent for cancellations.

This month's figures were below the long term average performance for all routes since the collection began (83.7 per cent for departures and 82.3 per cent for arrivals). The rate of cancellations was also worse than the long term average of 1.3 per cent.

Of the major domestic airlines, Qantas achieved the highest level of on time departures for February 2013 at 83.5 per cent, followed by Tiger Airways at 78.2 per cent, Jetstar at 72.2 per cent and Virgin Australia at 70.6 per cent. The regional airlines were led by Regional Express at 83.3 per cent, followed by Skywest at 78.8 per cent, QantasLink at 78.7 per cent and Virgin Australia – ATR/F100 Operations at 75.0 per cent.

Qantas achieved the highest on time arrivals among the major domestic airlines at 80.2 per cent, followed by Tiger Airways at 73.8 per cent, Jetstar at 72.4 per cent and Virgin Australia at 66.7 per cent. Regional Express was the best performing regional airline for on time arrivals at 78.4 per cent, followed by Skywest at 77.3 per cent, QantasLink at 74.2 per cent and Virgin Australia – ATR/F100 Operations at 71.9 per cent.

Virgin Australia – ATR/F100 Operations had the highest percentage of cancellations (5.1 per cent) during the month, followed by QantasLink (3.5 per cent), Qantas (2.4 per cent), Virgin Australia (1.9 per cent) and Jetstar (1.3 per cent). Skywest had no cancellations this month.

Of the 58 routes which met the criteria for on time performance reporting in February 2013, the Adelaide-Gold Coast route had the highest percentage of on time departures (98.2 per cent) and the highest percentage of on time arrivals (also 98.2 per cent). The Brisbane-Hamilton Island route had the lowest percentage of on time departures (52.3 per cent) and the Proserpine-Brisbane route had the lowest percentage of on time arrivals (36.1 per cent).

Cancellations were highest on the Karratha-Perth route at 15.8 per cent, followed by Perth-Karratha at 13.7 per cent, Port Hedland-Perth at 13.1 per cent, Perth-Port Hedland at 12.7 per cent and Port Macquarie-Sydney at 9.4 per cent.

Port Lincoln Airport recorded the highest percentage of on time departures (90.7 per cent) and Karratha Airport recorded the highest percentage of on time arrivals (90.0 per cent). Ballina Airport recorded the lowest percentage of on time departures (54.4 per cent) and the lowest percentage of on time arrivals (57.3 per cent). These figures only refer to reported routes and do not cover all flights at these airports.

Table 1 On time performance for February 2013 — Total Industry

	<i>Sectors</i>		<i>Departures On Time</i>		<i>Arrivals On Time</i>		<i>Cancellations</i>	
	<i>Scheduled</i>	<i>Flown</i>	<i>No.</i>	<i>%</i>	<i>No.</i>	<i>%</i>	<i>No.</i>	<i>%</i>
Jetstar	5 247	5 179	3 741	72.2	3 750	72.4	68	1.3
Qantas	9 664	9 429	7 869	83.5	7 564	80.2	235	2.4
QantasLink	8 752	8 449	6 647	78.7	6 271	74.2	303	3.5
Regional Express	4 708	4 677	3 894	83.3	3 665	78.4	31	0.7
Skywest	768	768	605	78.8	594	77.3	0	0.0
Tiger Airways	1 297	1 282	1 003	78.2	946	73.8	15	1.2
Virgin Australia	10 637	10 440	7 368	70.6	6 961	66.7	197	1.9
Virgin Australia - ATR/F100 Operations	1 489	1 413	1 060	75.0	1 016	71.9	76	5.1
All Airlines	42 562	41 637	32 187	77.3	30 767	73.9	925	2.2

Total airline network data (including routes not shown in this report).

Table 2 Top ten routes for on time performance for February 2013 (participating airlines only)

<i>Departures</i>		<i>Arrivals</i>	
<i>Route</i>	<i>On Time (%)</i>	<i>Route</i>	<i>On Time</i>
Adelaide-Gold Coast	98.2	Adelaide-Gold Coast	98.2
Melbourne-Cairns	92.4	Gold Coast-Adelaide	96.4
Canberra-Adelaide	92.3	Adelaide-Perth	92.4
Cairns-Townsville	91.5	Cairns-Townsville	91.5
Darwin-Melbourne	91.1	Canberra-Adelaide	91.2
Port Lincoln-Adelaide	90.7	Port Lincoln-Adelaide	90.7
Perth-Broome	90.0	Melbourne-Cairns	90.2
Adelaide-Port Lincoln	89.0	Perth-Karratha	90.0
Brisbane-Mount Isa	88.9	Adelaide-Port Lincoln	89.8
Mount Isa-Brisbane	88.9	Perth-Port Hedland	89.1

Table 3 Top ten airports for on time performance for February 2013 (participating airlines and reported routes only)

<i>Departures</i>		<i>Arrivals</i>	
<i>Airport</i>	<i>On Time (%)</i>	<i>Airport</i>	<i>On Time</i>
Port Lincoln	90.7	Karratha	90.0
Mount Isa	88.9	Port Lincoln	89.8
Kalgoorlie	88.1	Port Hedland	89.1
Karratha	87.6	Broome	88.2
Adelaide	85.9	Mount Isa	87.5
Mildura	85.1	Newman	87.3
Perth	84.6	Adelaide	85.8
Port Hedland	82.3	Emerald	81.6
Canberra	81.2	Perth	81.5
Ayers Rock	80.4	Dubbo	80.8



## Total industry on time performance

Figure 1 On time performance (by month from February 2010)—Total Industry

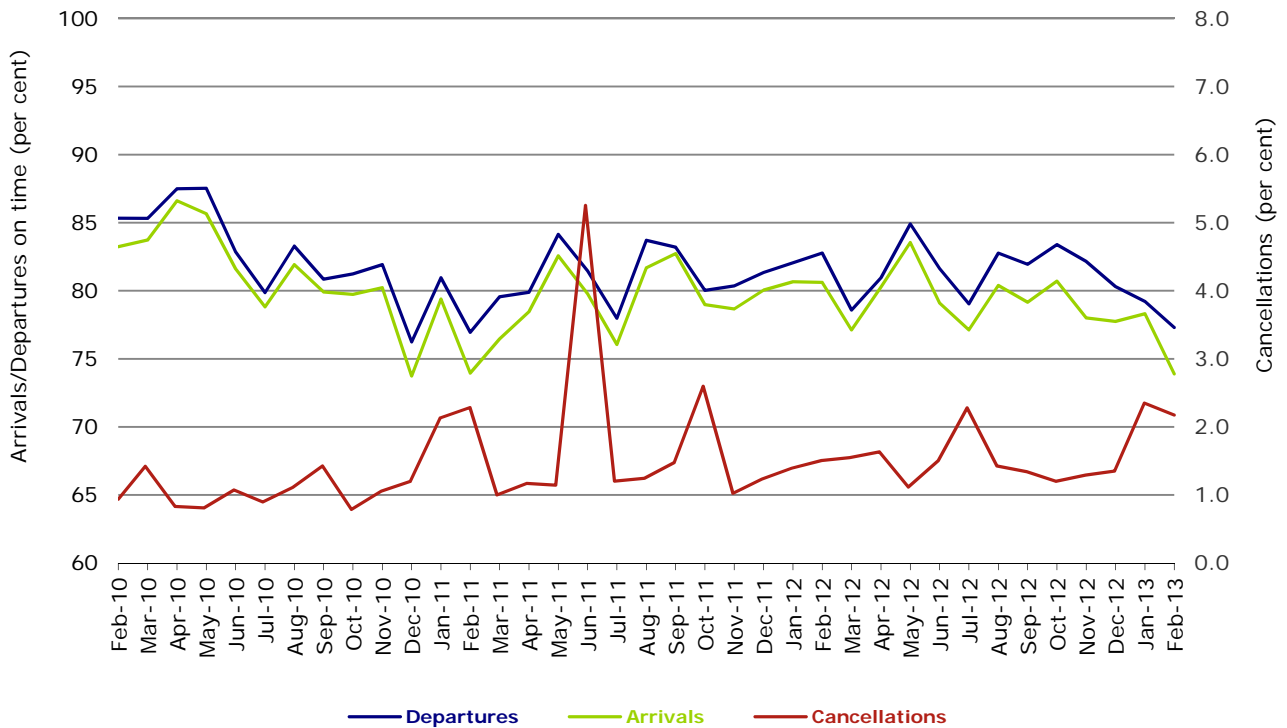


Figure 2 Departures on time (by month from February 2012)

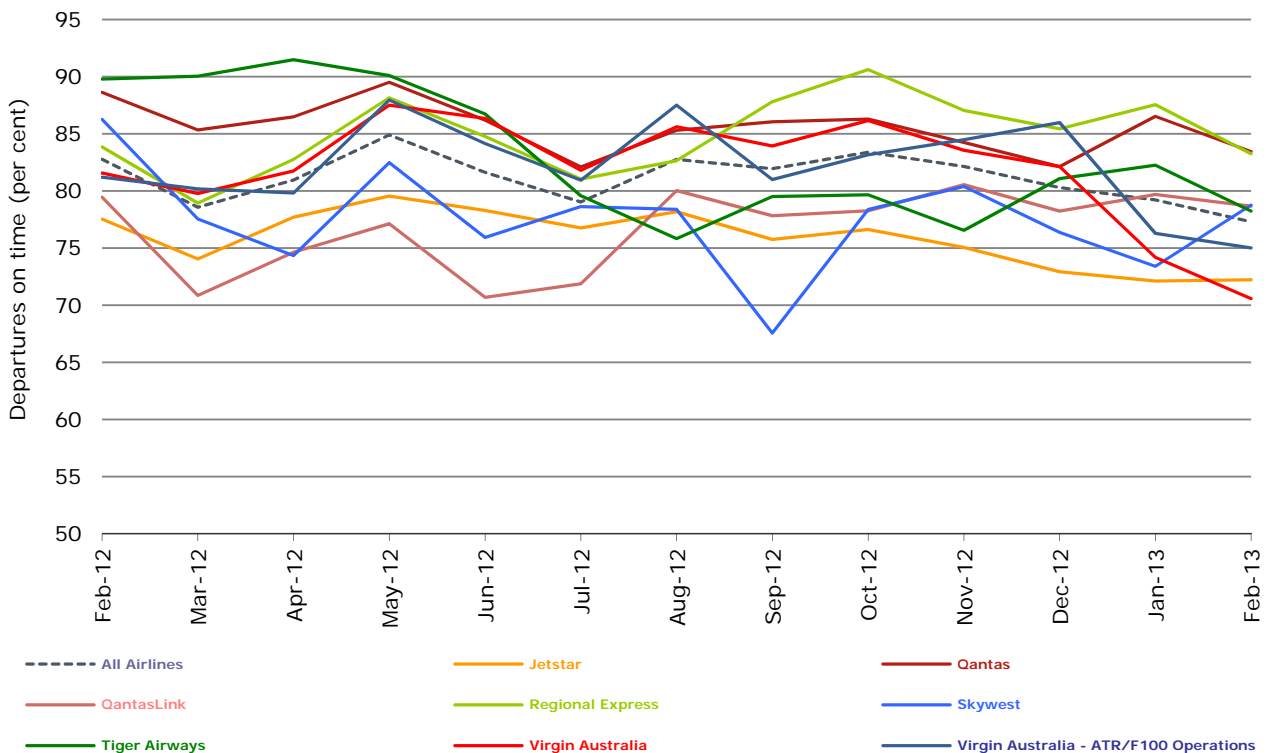


Figure 3 Arrivals on time (by month from February 2012)

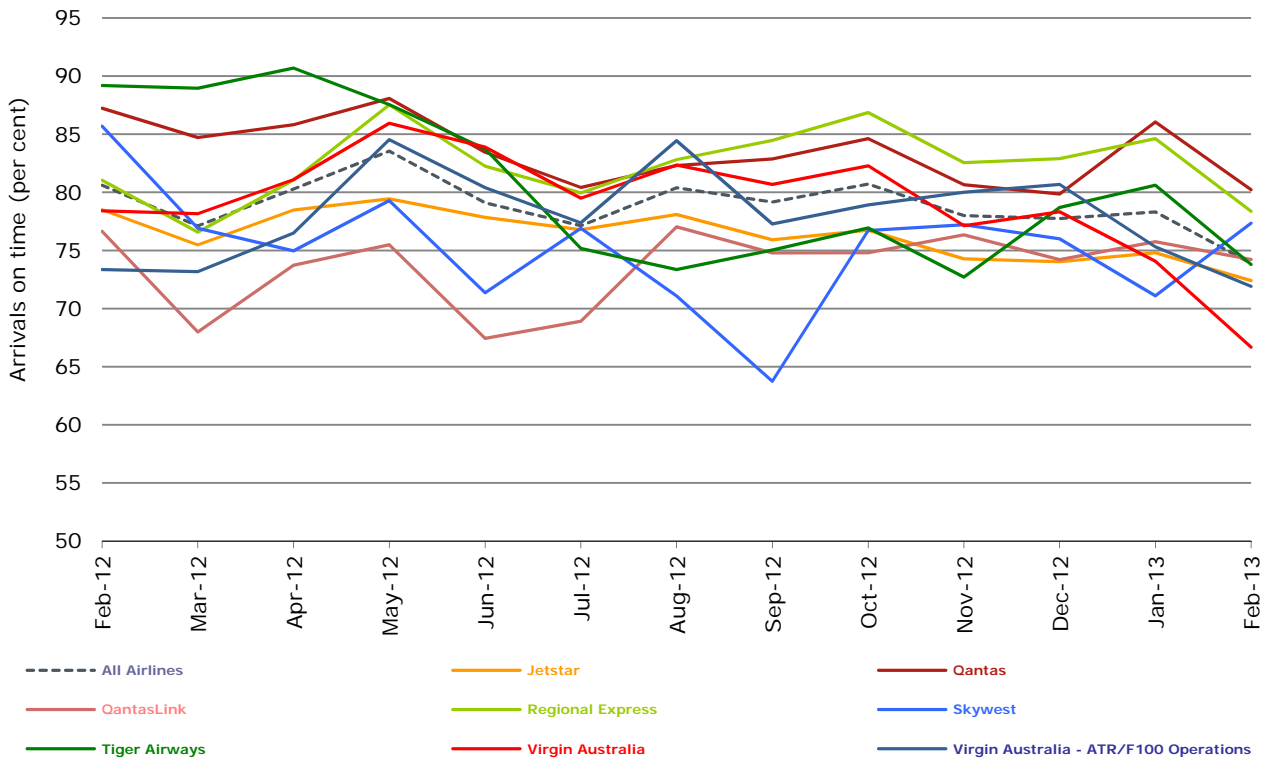
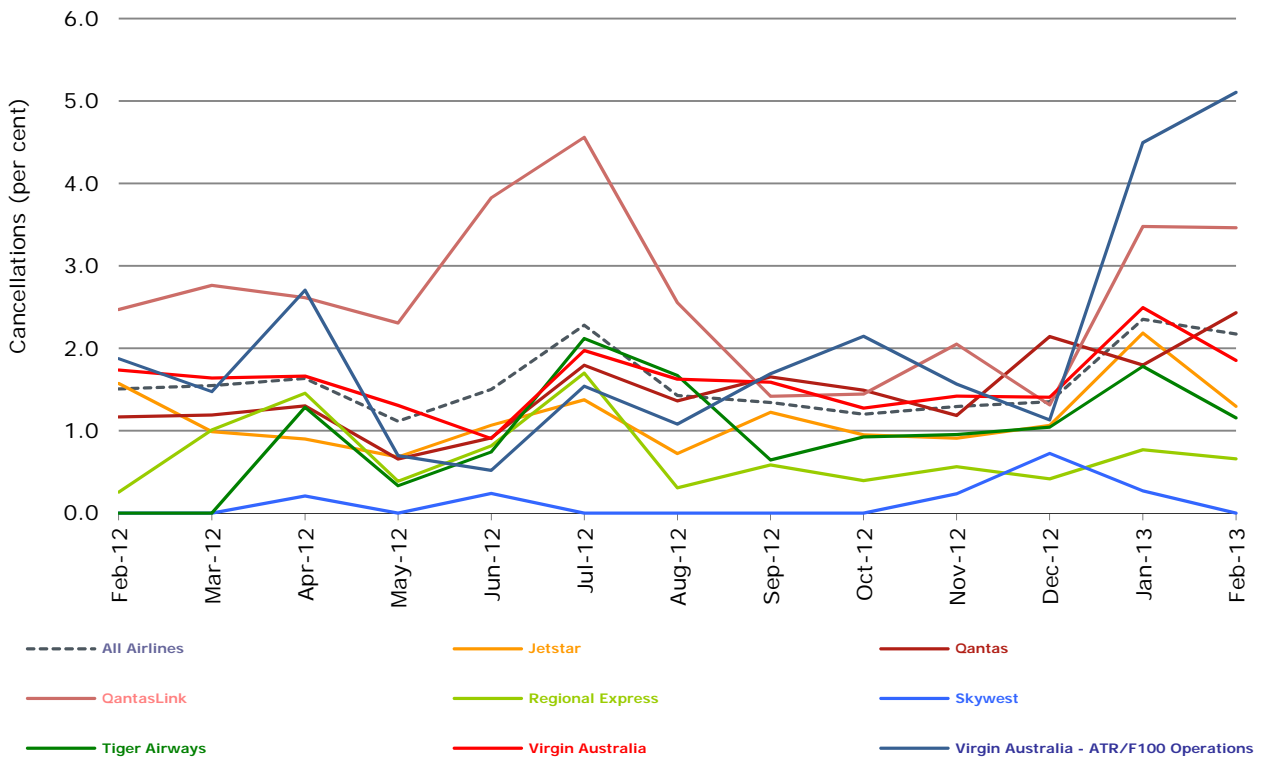


Figure 4 Cancellations (by month from February 2012)



## Major domestic airlines on time performance

Figure 5 On time performance (by month from February 2010)—Jetstar

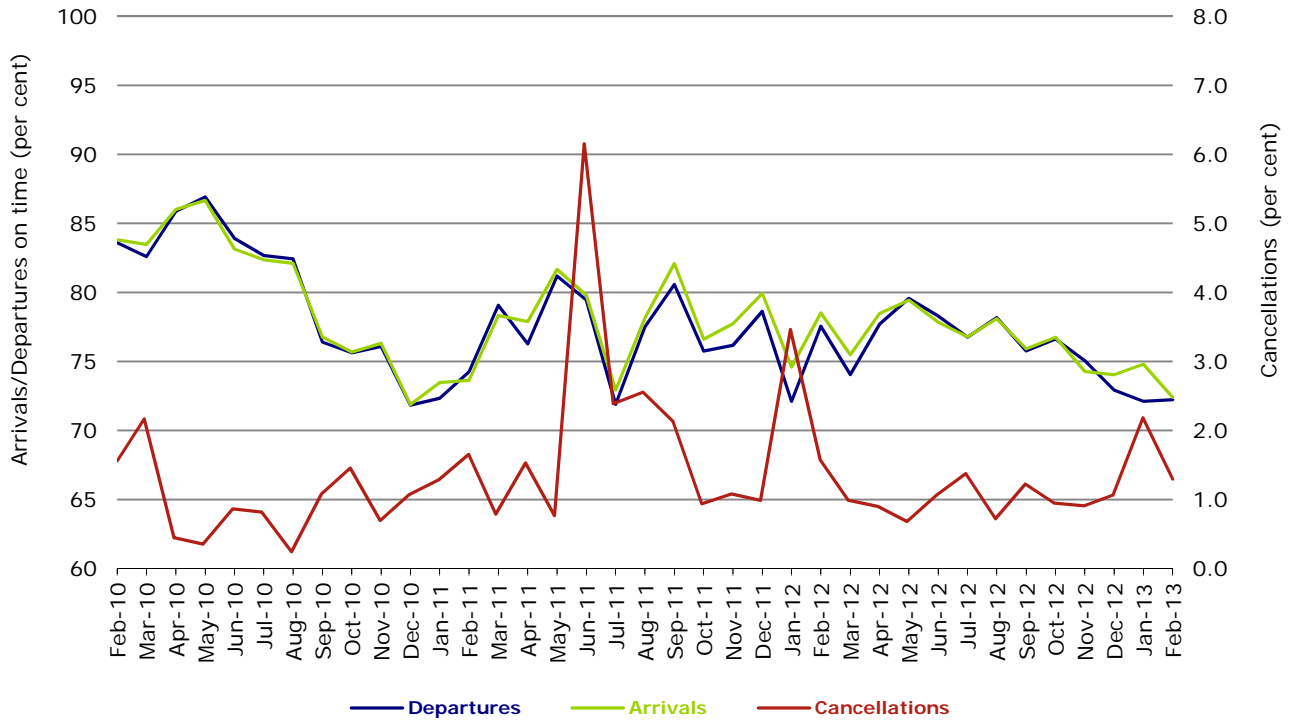


Figure 6 On time performance (by month from February 2010)—Qantas

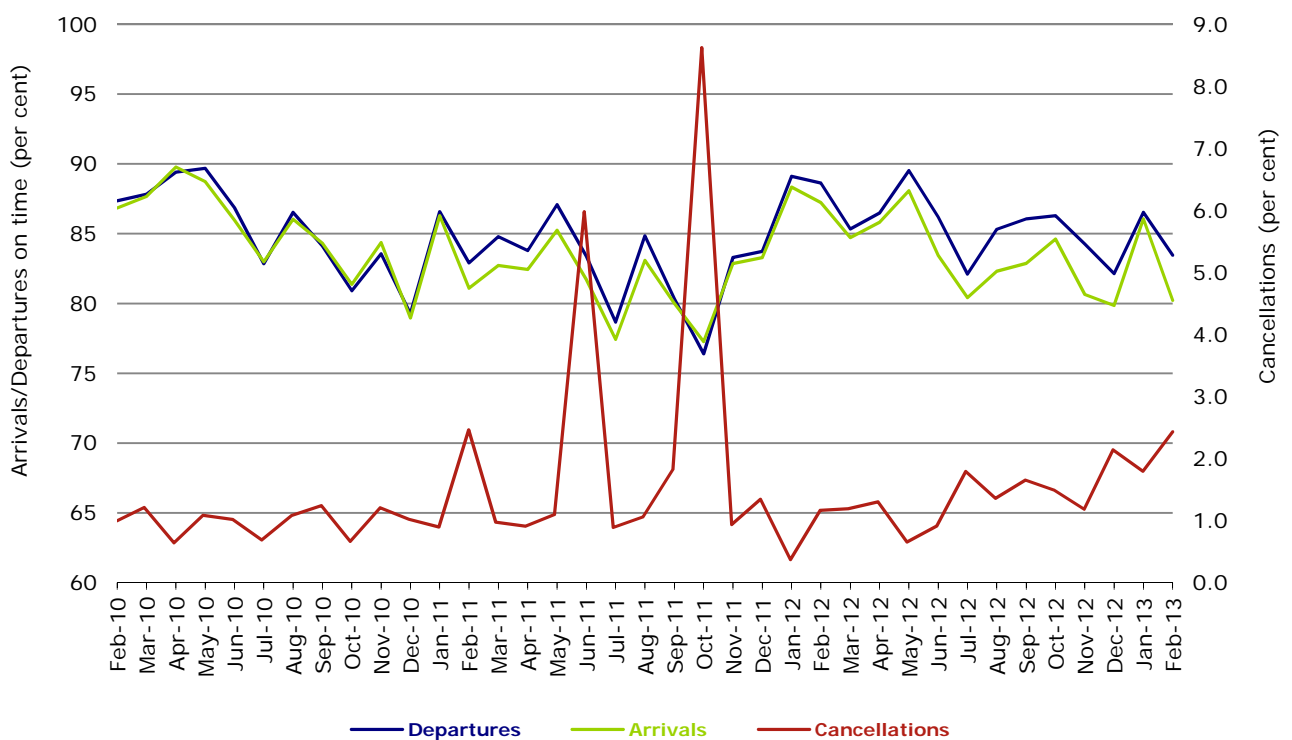
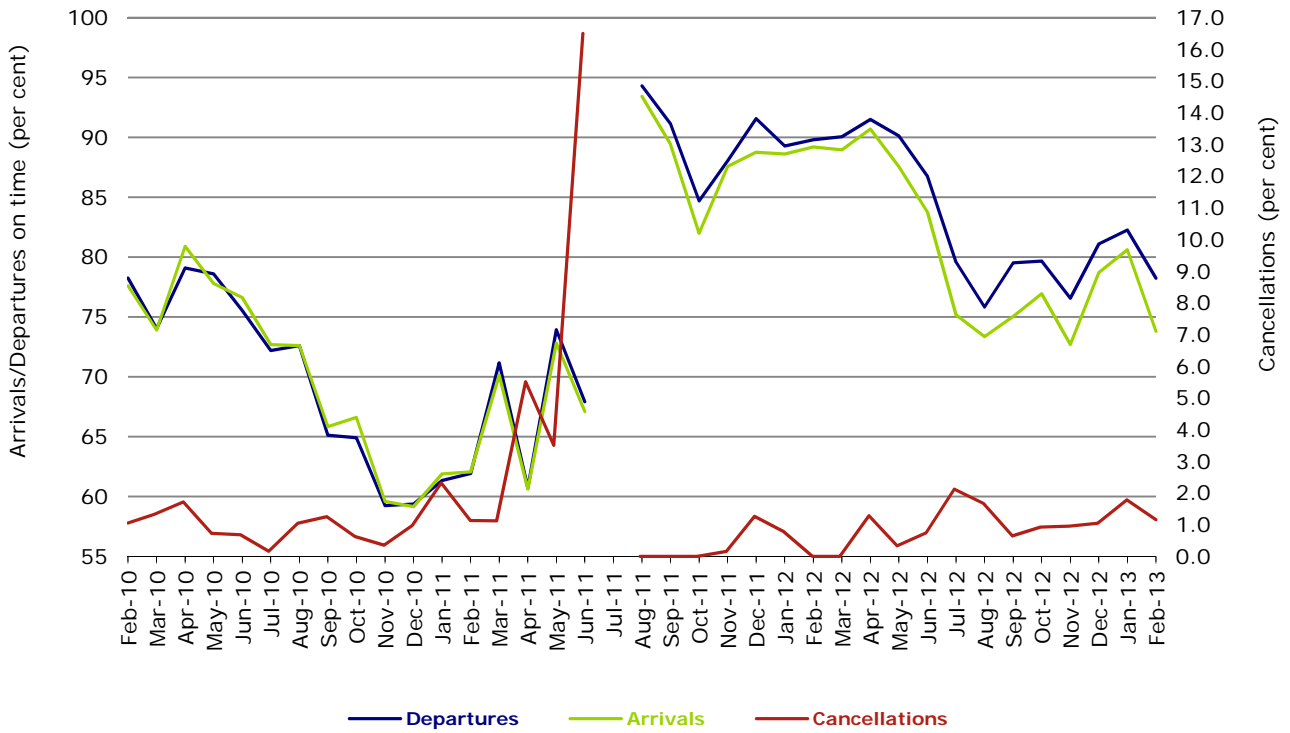
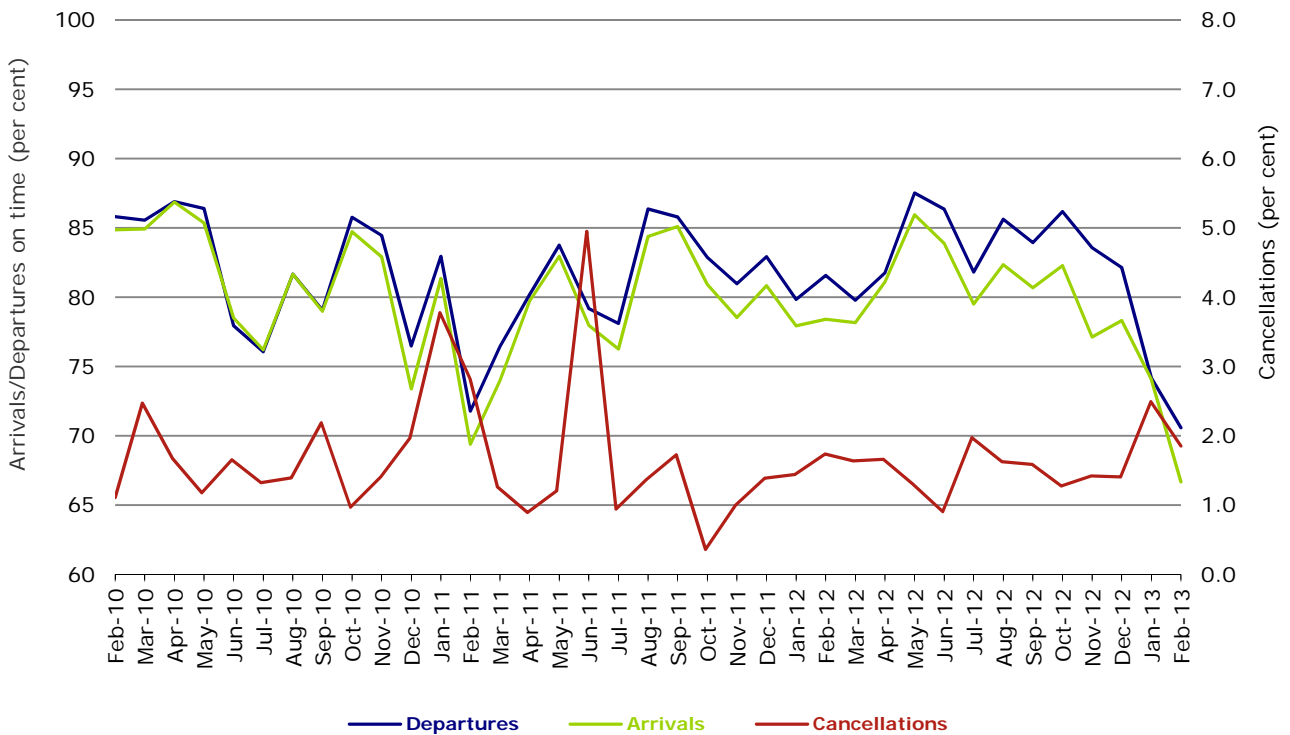


Figure 7 On time performance (by month from February 2010)—Tiger Airways



No data for Tiger Airways for July 2011 as it was grounded by CASA from 2/7/2011 to 11/8/2011.

Figure 8 On time performance (by month from February 2010)—Virgin Australia



## Major regional airlines on time performance

Figure 9 On time performance (by month from February 2010)—QantasLink

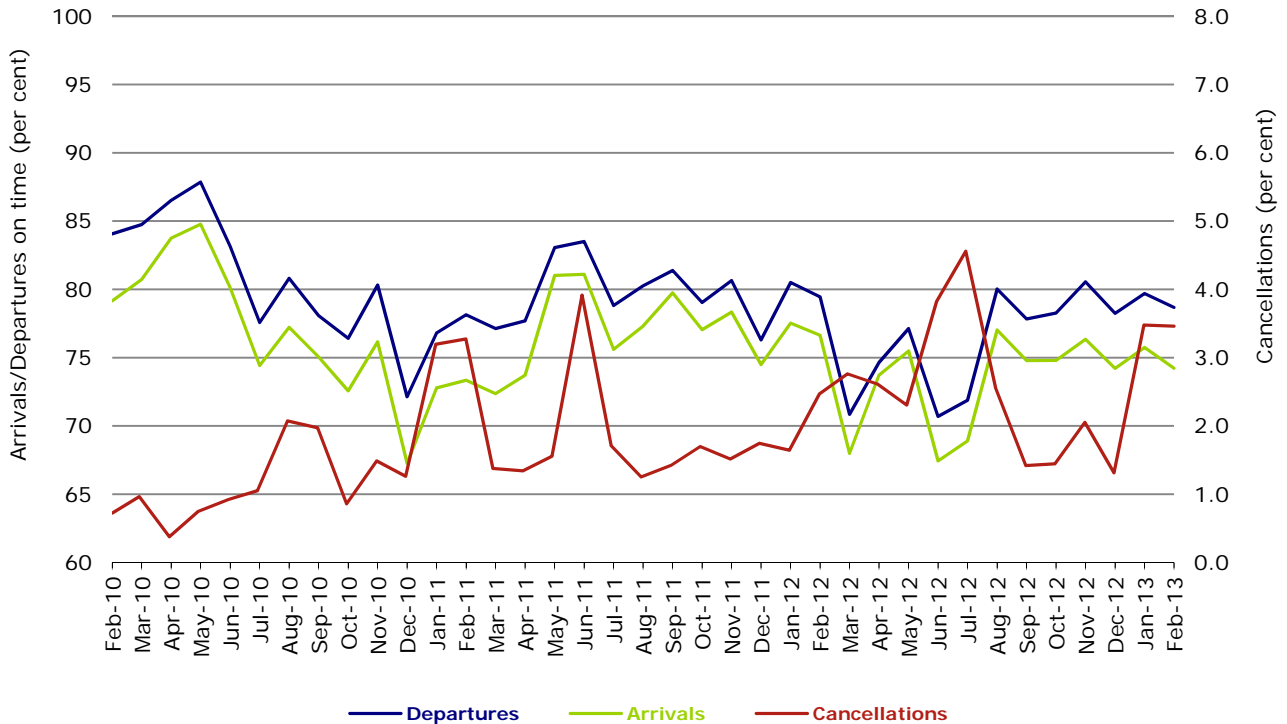


Figure 10 On time performance (by month from February 2010)—Regional Express

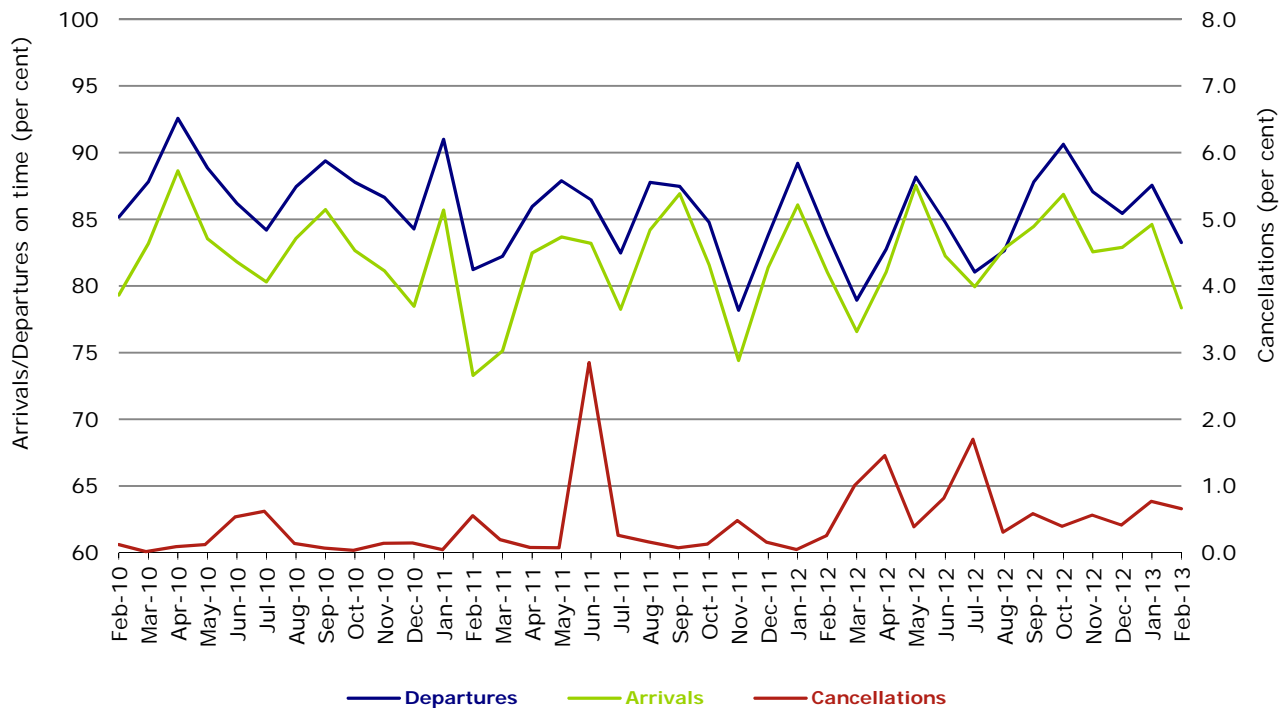


Figure 11 On time performance (by month from February 2010)—Skywest

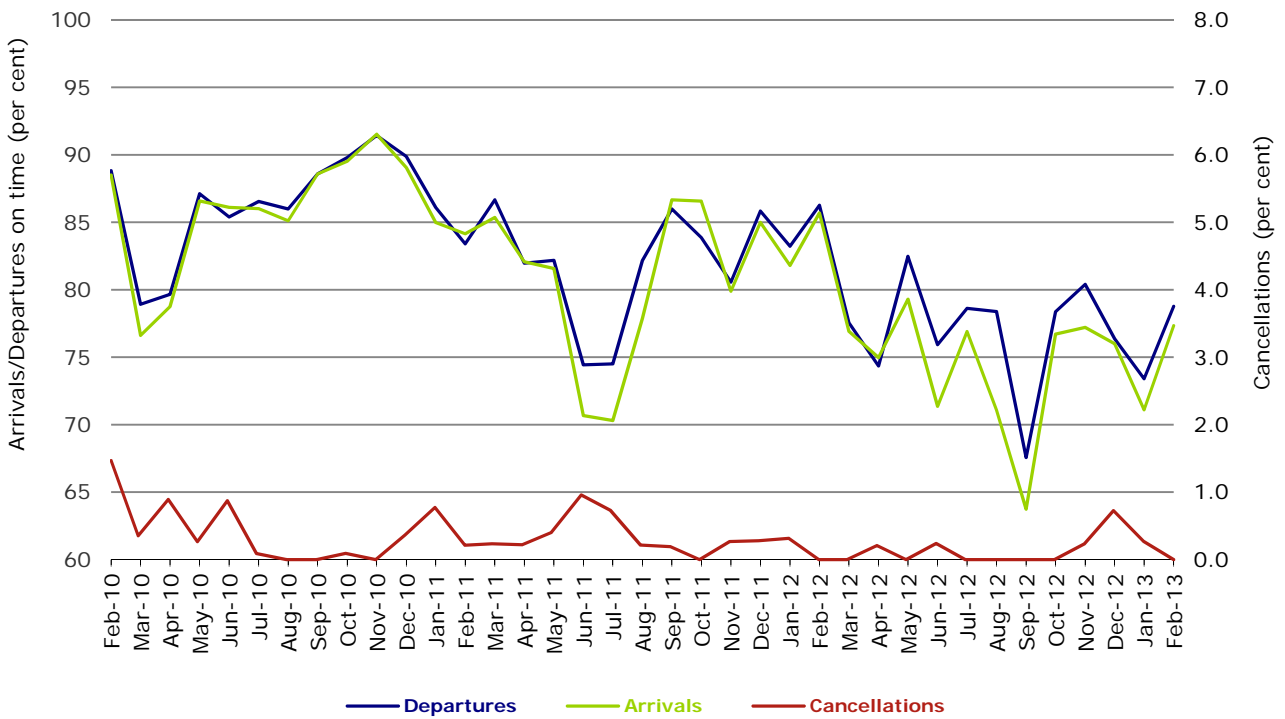
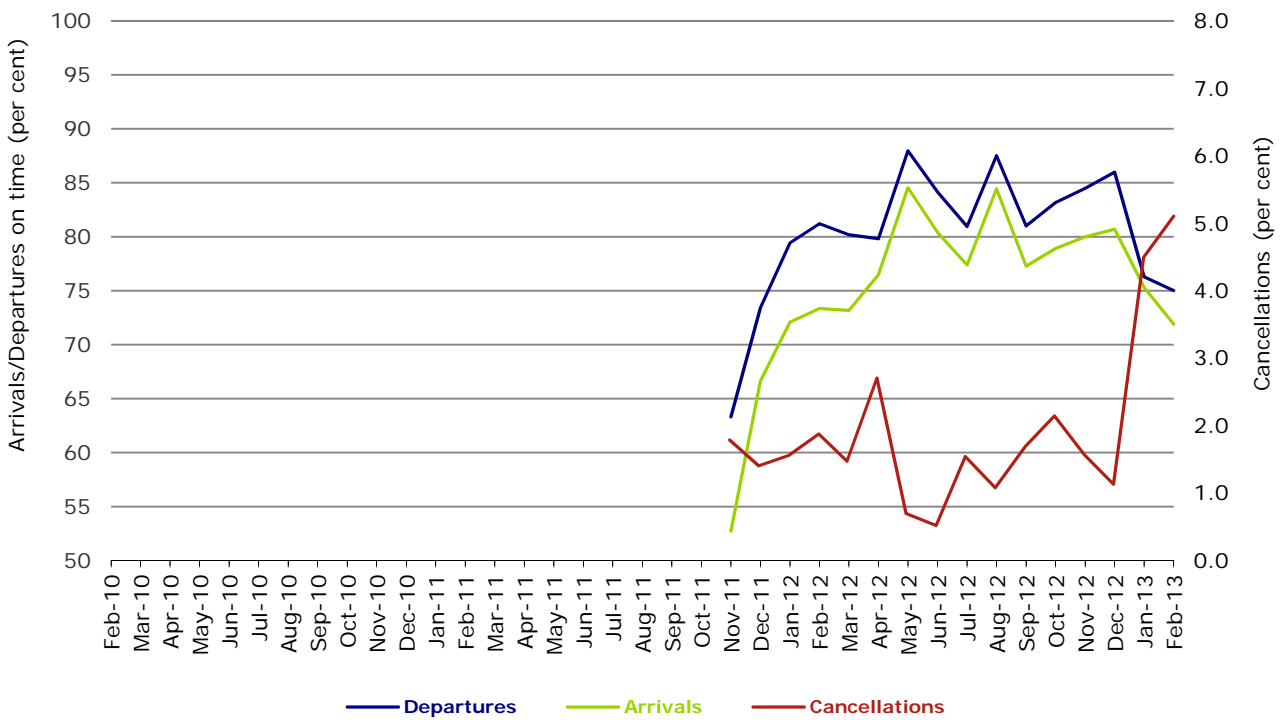


Figure 12 On time performance (by month from February 2010) Virgin Australia - ATR/F100 Operations



Virgin Australia - ATR/F100 Operations commenced in November 2011.

## Individual routes

On time performance is reported for all routes where the passenger load averages over 8000 passengers per month over the previous six months, and where two or more airlines operate in competition on those routes. There are now 58 routes which meet this definition. Over time, however, routes which meet this definition may change as airline networks and traffic levels vary.

	<i>Sectors</i>		<i>Departures On Time</i>		<i>Arrivals On Time</i>		<i>Cancellations</i>	
	<i>Sched.</i>	<i>Flown</i>	<i>No.</i>	<i>%</i>	<i>No.</i>	<i>%</i>	<i>No.</i>	<i>%</i>
<b>Adelaide-Brisbane</b>								
Jetstar	24	24	21	87.5	20	83.3	0	0.0
Qantas	94	94	83	88.3	73	77.7	0	0.0
Virgin Australia	108	105	87	82.9	73	69.5	3	2.8
All Airlines	226	223	191	85.7	166	74.4	3	1.3
<b>Adelaide-Canberra</b>								
Qantas	43	43	37	86.0	39	90.7	0	0.0
QantasLink	20	20	15	75.0	15	75.0	0	0.0
Virgin Australia	24	24	22	91.7	21	87.5	0	0.0
All Airlines	87	87	74	85.1	75	86.2	0	0.0
<b>Adelaide-Gold Coast</b>								
Jetstar	28	28	27	96.4	27	96.4	0	0.0
Virgin Australia	28	27	27	100.0	27	100.0	1	3.6
All Airlines	56	55	54	98.2	54	98.2	1	1.8
<b>Adelaide-Melbourne</b>								
Jetstar	81	81	65	80.2	65	80.2	0	0.0
Qantas	271	265	232	87.5	237	89.4	6	2.2
QantasLink	16	16	15	93.8	15	93.8	0	0.0
Tiger Airways	56	56	43	76.8	44	78.6	0	0.0
Virgin Australia	260	257	229	89.1	219	85.2	3	1.2
All Airlines	684	675	584	86.5	580	85.9	9	1.3
<b>Adelaide-Perth</b>								
Jetstar	28	28	22	78.6	25	89.3	0	0.0
Qantas	101	101	90	89.1	97	96.0	0	0.0
Virgin Australia	56	56	45	80.4	49	87.5	0	0.0
All Airlines	185	185	157	84.9	171	92.4	0	0.0
<b>Adelaide-Port Lincoln</b>								
QantasLink	88	85	68	80.0	69	81.2	3	3.4
Regional Express	161	161	151	93.8	152	94.4	0	0.0
All Airlines	249	246	219	89.0	221	89.8	3	1.2
<b>Adelaide-Sydney</b>								
Jetstar	85	84	57	67.9	53	63.1	1	1.2
Qantas	252	251	225	89.6	203	80.9	1	0.4
Virgin Australia	160	160	128	80.0	113	70.6	0	0.0
All Airlines	497	495	410	82.8	369	74.5	2	0.4
<b>Albury-Sydney</b>								
QantasLink	104	103	79	76.7	71	68.9	1	1.0
Regional Express	88	88	75	85.2	68	77.3	0	0.0
Virgin Australia	2	2	1	50.0	2	100.0	0	0.0
Virgin Australia - ATR/F100 Operations	54	52	39	75.0	28	53.8	2	3.7
All Airlines	248	245	194	79.2	169	69.0	3	1.2
<b>Ayers Rock-Sydney</b>								
Qantas	28	28	25	89.3	25	89.3	0	0.0
Virgin Australia	28	28	20	71.4	22	78.6	0	0.0
All Airlines	56	56	45	80.4	47	83.9	0	0.0

	<i>Sectors</i>		<i>Departures On Time</i>		<i>Arrivals On Time</i>		<i>Cancellations</i>	
	<i>Sched.</i>	<i>Flown</i>	<i>No.</i>	<i>%</i>	<i>No.</i>	<i>%</i>	<i>No.</i>	<i>%</i>
<b>Ballina-Sydney</b>								
Jetstar	36	34	21	61.8	21	61.8	2	5.6
Regional Express	18	18	9	50.0	9	50.0	0	0.0
Virgin Australia	28	27	13	48.1	11	40.7	1	3.6
All Airlines	82	79	43	54.4	41	51.9	3	3.7
<b>Brisbane-Adelaide</b>								
Jetstar	24	24	24	100.0	24	100.0	0	0.0
Qantas	94	94	78	83.0	85	90.4	0	0.0
Virgin Australia	108	105	76	72.4	84	80.0	3	2.8
All Airlines	226	223	178	79.8	193	86.5	3	1.3
<b>Brisbane-Cairns</b>								
Jetstar	82	81	63	77.8	63	77.8	1	1.2
Qantas	103	103	87	84.5	89	86.4	0	0.0
QantasLink	4	4	4	100.0	4	100.0	0	0.0
Virgin Australia	144	144	108	75.0	98	68.1	0	0.0
Virgin Australia - ATR/F100 Operations	8	8	8	100.0	8	100.0	0	0.0
All Airlines	341	340	270	79.4	262	77.1	1	0.3
<b>Brisbane-Canberra</b>								
Qantas	132	132	115	87.1	119	90.2	0	0.0
QantasLink	20	19	17	89.5	18	94.7	1	5.0
Virgin Australia	88	88	60	68.2	58	65.9	0	0.0
All Airlines	240	239	192	80.3	195	81.6	1	0.4
<b>Brisbane-Darwin</b>								
Qantas	28	28	23	82.1	19	67.9	0	0.0
Virgin Australia	28	28	19	67.9	18	64.3	0	0.0
All Airlines	56	56	42	75.0	37	66.1	0	0.0
<b>Brisbane-Emerald</b>								
QantasLink	172	167	141	84.4	137	82.0	5	2.9
Virgin Australia - ATR/F100 Operations	96	94	72	76.6	76	80.9	2	2.1
All Airlines	268	261	213	81.6	213	81.6	7	2.6
<b>Brisbane-Gladstone</b>								
QantasLink	208	199	170	85.4	152	76.4	9	4.3
Virgin Australia - ATR/F100 Operations	112	111	74	66.7	72	64.9	1	0.9
All Airlines	320	310	244	78.7	224	72.3	10	3.1
<b>Brisbane-Hamilton Island</b>								
Jetstar	16	16	5	31.3	12	75.0	0	0.0
Virgin Australia	28	28	18	64.3	19	67.9	0	0.0
All Airlines	44	44	23	52.3	31	70.5	0	0.0
<b>Brisbane-Mackay</b>								
Jetstar	80	80	58	72.5	57	71.3	0	0.0
QantasLink	100	100	84	84.0	82	82.0	0	0.0
Virgin Australia	156	156	111	71.2	96	61.5	0	0.0
All Airlines	336	336	253	75.3	235	69.9	0	0.0
<b>Brisbane-Melbourne</b>								
Jetstar	82	80	36	45.0	47	58.8	2	2.4
Qantas	380	376	311	82.7	315	83.8	4	1.1
Tiger Airways	66	65	33	50.8	42	64.6	1	1.5
Virgin Australia	345	340	221	65.0	219	64.4	5	1.4
All Airlines	873	861	601	69.8	623	72.4	12	1.4
<b>Brisbane-Mount Isa</b>								
Qantas	52	52	47	90.4	47	90.4	0	0.0
Virgin Australia	20	20	17	85.0	16	80.0	0	0.0
All Airlines	72	72	64	88.9	63	87.5	0	0.0



	<i>Sectors</i>		<i>Departures On Time</i>		<i>Arrivals On Time</i>		<i>Cancellations</i>	
	<i>Sched.</i>	<i>Flown</i>	<i>No.</i>	<i>%</i>	<i>No.</i>	<i>%</i>	<i>No.</i>	<i>%</i>
<b>Brisbane-Newcastle</b>								
Jetstar	93	93	77	82.8	78	83.9	0	0.0
QantasLink	64	57	38	66.7	23	40.4	7	10.9
Virgin Australia - ATR/F100 Operations	26	25	22	88.0	21	84.0	1	3.8
All Airlines	183	175	137	78.3	122	69.7	8	4.4
<b>Brisbane-Perth</b>								
Jetstar	16	16	15	93.8	16	100.0	0	0.0
Qantas	108	108	71	65.7	82	75.9	0	0.0
Virgin Australia	80	80	49	61.3	52	65.0	0	0.0
All Airlines	204	204	135	66.2	150	73.5	0	0.0
<b>Brisbane-Proserpine</b>								
Jetstar	24	24	10	41.7	10	41.7	0	0.0
Virgin Australia	42	42	36	85.7	33	78.6	0	0.0
Virgin Australia - ATR/F100 Operations	6	6	6	100.0	5	83.3	0	0.0
All Airlines	72	72	52	72.2	48	66.7	0	0.0
<b>Brisbane-Rockhampton</b>								
QantasLink	179	164	121	73.8	118	72.0	15	8.4
Virgin Australia	88	88	70	79.5	65	73.9	0	0.0
Virgin Australia - ATR/F100 Operations	120	107	78	72.9	81	75.7	13	10.8
All Airlines	387	359	269	74.9	264	73.5	28	7.2
<b>Brisbane-Sydney</b>								
Jetstar	91	88	53	60.2	57	64.8	3	3.3
Qantas	563	551	427	77.5	402	73.0	12	2.1
Tiger Airways	72	71	45	63.4	43	60.6	1	1.4
Virgin Australia	516	500	347	69.4	344	68.8	16	3.1
All Airlines	1 242	1 210	872	72.1	846	69.9	32	2.6
<b>Brisbane-Townsville</b>								
Jetstar	28	28	23	82.1	22	78.6	0	0.0
Qantas	131	131	105	80.2	102	77.9	0	0.0
Virgin Australia	156	154	103	66.9	91	59.1	2	1.3
All Airlines	315	313	231	73.8	215	68.7	2	0.6
<b>Broome-Perth</b>								
Qantas	24	24	20	83.3	20	83.3	0	0.0
QantasLink	52	52	49	94.2	49	94.2	0	0.0
Skywest	13	13	9	69.2	8	61.5	0	0.0
Virgin Australia	28	26	14	53.8	17	65.4	2	7.1
All Airlines	117	115	92	80.0	94	81.7	2	1.7
<b>Cairns-Brisbane</b>								
Jetstar	82	82	50	61.0	50	61.0	0	0.0
Qantas	103	103	87	84.5	84	81.6	0	0.0
QantasLink	5	3	3	100.0	3	100.0	2	40.0
Virgin Australia	144	144	90	62.5	86	59.7	0	0.0
Virgin Australia - ATR/F100 Operations	8	8	8	100.0	8	100.0	0	0.0
All Airlines	342	340	238	70.0	231	67.9	2	0.6
<b>Cairns-Melbourne</b>								
Jetstar	56	56	47	83.9	47	83.9	0	0.0
Qantas	28	28	26	92.9	27	96.4	0	0.0
Tiger Airways	16	16	13	81.3	16	100.0	0	0.0
Virgin Australia	32	32	19	59.4	22	68.8	0	0.0
All Airlines	132	132	105	79.5	112	84.8	0	0.0
<b>Cairns-Sydney</b>								
Jetstar	53	53	40	75.5	36	67.9	0	0.0
Qantas	61	61	43	70.5	47	77.0	0	0.0
Virgin Australia	84	84	63	75.0	67	79.8	0	0.0
All Airlines	198	198	146	73.7	150	75.8	0	0.0

	<i>Sectors</i>		<i>Departures On Time</i>		<i>Arrivals On Time</i>		<i>Cancellations</i>	
	<i>Sched.</i>	<i>Flown</i>	<i>No.</i>	<i>%</i>	<i>No.</i>	<i>%</i>	<i>No.</i>	<i>%</i>
<b>Cairns-Townsville</b>								
QantasLink	164	164	150	91.5	149	90.9	0	0.0
Virgin Australia - ATR/F100 Operations	24	24	22	91.7	23	95.8	0	0.0
All Airlines	188	188	172	91.5	172	91.5	0	0.0
<b>Canberra-Adelaide</b>								
Qantas	47	47	46	97.9	44	93.6	0	0.0
QantasLink	20	20	16	80.0	16	80.0	0	0.0
Virgin Australia	24	24	22	91.7	23	95.8	0	0.0
All Airlines	91	91	84	92.3	83	91.2	0	0.0
<b>Canberra-Brisbane</b>								
Qantas	132	131	121	92.4	102	77.9	1	0.8
QantasLink	20	19	13	68.4	13	68.4	1	5.0
Virgin Australia	88	88	60	68.2	46	52.3	0	0.0
All Airlines	240	238	194	81.5	161	67.6	2	0.8
<b>Canberra-Melbourne</b>								
Qantas	238	236	195	82.6	197	83.5	2	0.8
QantasLink	36	35	25	71.4	22	62.9	1	2.8
Virgin Australia	168	165	124	75.2	129	78.2	3	1.8
All Airlines	442	436	344	78.9	348	79.8	6	1.4
<b>Canberra-Sydney</b>								
Qantas	152	148	131	88.5	130	87.8	4	2.6
QantasLink	372	356	288	80.9	253	71.1	16	4.3
Virgin Australia	68	67	47	70.1	44	65.7	1	1.5
Virgin Australia - ATR/F100 Operations	185	177	141	79.7	126	71.2	8	4.3
All Airlines	777	748	607	81.1	553	73.9	29	3.7
<b>Coffs Harbour-Sydney</b>								
QantasLink	129	125	90	72.0	93	74.4	4	3.1
Tiger Airways	8	7	6	85.7	4	57.1	1	12.5
Virgin Australia	56	53	36	67.9	44	83.0	3	5.4
All Airlines	193	185	132	71.4	141	76.2	8	4.1
<b>Darwin-Brisbane</b>								
Qantas	28	28	19	67.9	21	75.0	0	0.0
Virgin Australia	28	28	21	75.0	21	75.0	0	0.0
All Airlines	56	56	40	71.4	42	75.0	0	0.0
<b>Darwin-Melbourne</b>								
Jetstar	5	5	4	80.0	4	80.0	0	0.0
Qantas	12	12	9	75.0	10	83.3	0	0.0
Virgin Australia	28	28	28	100.0	25	89.3	0	0.0
All Airlines	45	45	41	91.1	39	86.7	0	0.0
<b>Darwin-Perth</b>								
Qantas	28	28	21	75.0	25	89.3	0	0.0
Virgin Australia	24	24	23	95.8	21	87.5	0	0.0
All Airlines	52	52	44	84.6	46	88.5	0	0.0
<b>Darwin-Sydney</b>								
Jetstar	20	20	9	45.0	12	60.0	0	0.0
Qantas	36	36	34	94.4	34	94.4	0	0.0
Virgin Australia	28	28	21	75.0	19	67.9	0	0.0
All Airlines	84	84	64	76.2	65	77.4	0	0.0
<b>Dubbo-Sydney</b>								
QantasLink	100	100	74	74.0	58	58.0	0	0.0
Regional Express	135	134	105	78.4	96	71.6	1	0.7
All Airlines	235	234	179	76.5	154	65.8	1	0.4

	<i>Sectors</i>		<i>Departures On Time</i>		<i>Arrivals On Time</i>		<i>Cancellations</i>	
	<i>Sched.</i>	<i>Flown</i>	<i>No.</i>	<i>%</i>	<i>No.</i>	<i>%</i>	<i>No.</i>	<i>%</i>
<b>Emerald-Brisbane</b>								
QantasLink	172	167	131	78.4	108	64.7	5	2.9
Virgin Australia - ATR/F100 Operations	96	94	74	78.7	64	68.1	2	2.1
All Airlines	268	261	205	78.5	172	65.9	7	2.6
<b>Geraldton-Perth</b>								
QantasLink	48	48	38	79.2	34	70.8	0	0.0
Skywest	78	78	63	80.8	60	76.9	0	0.0
All Airlines	126	126	101	80.2	94	74.6	0	0.0
<b>Gladstone-Brisbane</b>								
QantasLink	216	205	148	72.2	121	59.0	11	5.1
Virgin Australia - ATR/F100 Operations	112	111	71	64.0	67	60.4	1	0.9
All Airlines	328	316	219	69.3	188	59.5	12	3.7
<b>Gold Coast-Adelaide</b>								
Jetstar	28	28	24	85.7	28	100.0	0	0.0
Virgin Australia	28	27	21	77.8	25	92.6	1	3.6
All Airlines	56	55	45	81.8	53	96.4	1	1.8
<b>Gold Coast-Melbourne</b>								
Jetstar	144	142	106	74.6	111	78.2	2	1.4
Tiger Airways	48	48	28	58.3	34	70.8	0	0.0
Virgin Australia	180	175	108	61.7	134	76.6	5	2.8
All Airlines	372	365	242	66.3	279	76.4	7	1.9
<b>Gold Coast-Sydney</b>								
Jetstar	256	245	165	67.3	174	71.0	11	4.3
Qantas	84	84	68	81.0	67	79.8	0	0.0
Tiger Airways	58	57	37	64.9	34	59.6	1	1.7
Virgin Australia	317	307	185	60.3	201	65.5	10	3.2
All Airlines	715	693	455	65.7	476	68.7	22	3.1
<b>Hamilton Island-Brisbane</b>								
Jetstar	16	16	12	75.0	12	75.0	0	0.0
Virgin Australia	28	28	13	46.4	15	53.6	0	0.0
All Airlines	44	44	25	56.8	27	61.4	0	0.0
<b>Hamilton Island-Sydney</b>								
Jetstar	20	20	15	75.0	15	75.0	0	0.0
Virgin Australia	28	28	19	67.9	22	78.6	0	0.0
All Airlines	48	48	34	70.8	37	77.1	0	0.0
<b>Hobart-Melbourne</b>								
Jetstar	161	160	110	68.8	102	63.8	1	0.6
Qantas	56	56	47	83.9	47	83.9	0	0.0
QantasLink	28	26	24	92.3	19	73.1	2	7.1
Tiger Airways	38	37	32	86.5	32	86.5	1	2.6
Virgin Australia	148	148	101	68.2	104	70.3	0	0.0
All Airlines	431	427	314	73.5	304	71.2	4	0.9
<b>Hobart-Sydney</b>								
Jetstar	68	68	41	60.3	45	66.2	0	0.0
Qantas	28	28	22	78.6	22	78.6	0	0.0
Virgin Australia	56	56	34	60.7	34	60.7	0	0.0
All Airlines	152	152	97	63.8	101	66.4	0	0.0
<b>Kalgoorlie-Perth</b>								
Qantas	53	48	40	83.3	39	81.3	5	9.4
QantasLink	32	31	29	93.5	29	93.5	1	3.1
Skywest	55	55	49	89.1	43	78.2	0	0.0
All Airlines	140	134	118	88.1	111	82.8	6	4.3

	<i>Sectors</i>		<i>Departures On Time</i>		<i>Arrivals On Time</i>		<i>Cancellations</i>	
	<i>Sched.</i>	<i>Flown</i>	<i>No.</i>	<i>%</i>	<i>No.</i>	<i>%</i>	<i>No.</i>	<i>%</i>
<b>Karratha-Perth</b>								
Qantas	169	146	132	90.4	124	84.9	23	13.6
QantasLink	61	47	40	85.1	39	83.0	14	23.0
Virgin Australia	48	41	33	80.5	25	61.0	7	14.6
All Airlines	278	234	205	87.6	188	80.3	44	15.8
<b>Launceston-Melbourne</b>								
Jetstar	113	113	79	69.9	83	73.5	0	0.0
QantasLink	112	106	84	79.2	82	77.4	6	5.4
Virgin Australia	124	124	87	70.2	92	74.2	0	0.0
All Airlines	349	343	250	72.9	257	74.9	6	1.7
<b>Launceston-Sydney</b>								
Jetstar	55	55	39	70.9	33	60.0	0	0.0
Virgin Australia	28	28	15	53.6	20	71.4	0	0.0
All Airlines	83	83	54	65.1	53	63.9	0	0.0
<b>Mackay-Brisbane</b>								
Jetstar	82	80	47	58.8	41	51.3	2	2.4
QantasLink	100	99	77	77.8	75	75.8	1	1.0
Virgin Australia	156	155	109	70.3	101	65.2	1	0.6
All Airlines	338	334	233	69.8	217	65.0	4	1.2
<b>Melbourne-Adelaide</b>								
Jetstar	81	81	70	86.4	68	84.0	0	0.0
Qantas	271	268	250	93.3	242	90.3	3	1.1
QantasLink	16	14	10	71.4	10	71.4	2	12.5
Tiger Airways	55	55	47	85.5	44	80.0	0	0.0
Virgin Australia	260	257	214	83.3	203	79.0	3	1.2
All Airlines	683	675	591	87.6	567	84.0	8	1.2
<b>Melbourne-Brisbane</b>								
Jetstar	81	81	27	33.3	25	30.9	0	0.0
Qantas	380	374	332	88.8	257	68.7	6	1.6
Tiger Airways	66	65	53	81.5	36	55.4	1	1.5
Virgin Australia	344	338	245	72.5	162	47.9	6	1.7
All Airlines	871	858	657	76.6	480	55.9	13	1.5
<b>Melbourne-Cairns</b>								
Jetstar	56	56	50	89.3	51	91.1	0	0.0
Qantas	28	28	26	92.9	26	92.9	0	0.0
Tiger Airways	16	16	16	100.0	15	93.8	0	0.0
Virgin Australia	32	32	30	93.8	27	84.4	0	0.0
All Airlines	132	132	122	92.4	119	90.2	0	0.0
<b>Melbourne-Canberra</b>								
Qantas	238	236	208	88.1	199	84.3	2	0.8
QantasLink	36	35	31	88.6	27	77.1	1	2.8
Virgin Australia	168	165	136	82.4	124	75.2	3	1.8
All Airlines	442	436	375	86.0	350	80.3	6	1.4
<b>Melbourne-Darwin</b>								
Jetstar	5	5	4	80.0	4	80.0	0	0.0
Qantas	12	12	11	91.7	10	83.3	0	0.0
Virgin Australia	28	28	24	85.7	19	67.9	0	0.0
All Airlines	45	45	39	86.7	33	73.3	0	0.0
<b>Melbourne-Gold Coast</b>								
Jetstar	144	144	112	77.8	100	69.4	0	0.0
Tiger Airways	48	48	36	75.0	29	60.4	0	0.0
Virgin Australia	180	177	123	69.5	110	62.1	3	1.7
All Airlines	372	369	271	73.4	239	64.8	3	0.8

	<i>Sectors</i>		<i>Departures On Time</i>		<i>Arrivals On Time</i>		<i>Cancellations</i>	
	<i>Sched.</i>	<i>Flown</i>	<i>No.</i>	<i>%</i>	<i>No.</i>	<i>%</i>	<i>No.</i>	<i>%</i>
<b>Melbourne-Hobart</b>								
Jetstar	161	160	106	66.3	107	66.9	1	0.6
Qantas	56	56	50	89.3	50	89.3	0	0.0
QantasLink	28	26	20	76.9	19	73.1	2	7.1
Tiger Airways	38	38	33	86.8	33	86.8	0	0.0
Virgin Australia	148	148	101	68.2	104	70.3	0	0.0
All Airlines	431	428	310	72.4	313	73.1	3	0.7
<b>Melbourne-Launceston</b>								
Jetstar	112	112	85	75.9	85	75.9	0	0.0
QantasLink	112	107	85	79.4	78	72.9	5	4.5
Virgin Australia	124	124	90	72.6	94	75.8	0	0.0
All Airlines	348	343	260	75.8	257	74.9	5	1.4
<b>Melbourne-Mildura</b>								
QantasLink	80	77	50	64.9	44	57.1	3	3.8
Regional Express	72	72	65	90.3	60	83.3	0	0.0
Virgin Australia	28	28	24	85.7	25	89.3	0	0.0
All Airlines	180	177	139	78.5	129	72.9	3	1.7
<b>Melbourne-Newcastle</b>								
Jetstar	85	84	67	79.8	67	79.8	1	1.2
Virgin Australia	28	28	23	82.1	19	67.9	0	0.0
All Airlines	113	112	90	80.4	86	76.8	1	0.9
<b>Melbourne-Perth</b>								
Jetstar	64	64	52	81.3	55	85.9	0	0.0
Qantas	193	192	154	80.2	164	85.4	1	0.5
Tiger Airways	56	56	50	89.3	52	92.9	0	0.0
Virgin Australia	128	127	93	73.2	91	71.7	1	0.8
All Airlines	441	439	349	79.5	362	82.5	2	0.5
<b>Melbourne-Sunshine Coast</b>								
Jetstar	39	39	31	79.5	30	76.9	0	0.0
Virgin Australia	28	27	24	88.9	19	70.4	1	3.6
All Airlines	67	66	55	83.3	49	74.2	1	1.5
<b>Melbourne-Sydney</b>								
Jetstar	252	243	158	65.0	154	63.4	9	3.6
Qantas	794	762	618	81.1	522	68.5	32	4.0
Tiger Airways	196	192	162	84.4	149	77.6	4	2.0
Virgin Australia	734	715	494	69.1	409	57.2	19	2.6
All Airlines	1 976	1 912	1 432	74.9	1 234	64.5	64	3.2
<b>Mildura-Melbourne</b>								
QantasLink	80	76	60	78.9	56	73.7	4	5.0
Regional Express	71	71	64	90.1	62	87.3	0	0.0
Virgin Australia	28	28	25	89.3	25	89.3	0	0.0
All Airlines	179	175	149	85.1	143	81.7	4	2.2
<b>Mount Isa-Brisbane</b>								
Qantas	52	52	49	94.2	45	86.5	0	0.0
Virgin Australia	20	20	15	75.0	13	65.0	0	0.0
All Airlines	72	72	64	88.9	58	80.6	0	0.0
<b>Newcastle-Brisbane</b>								
Jetstar	93	92	73	79.3	69	75.0	1	1.1
QantasLink	64	58	23	39.7	13	22.4	6	9.4
Virgin Australia - ATR/F100 Operations	26	25	21	84.0	15	60.0	1	3.8
All Airlines	183	175	117	66.9	97	55.4	8	4.4

	<i>Sectors</i>		<i>Departures On Time</i>		<i>Arrivals On Time</i>		<i>Cancellations</i>	
	<i>Sched.</i>	<i>Flown</i>	<i>No.</i>	<i>%</i>	<i>No.</i>	<i>%</i>	<i>No.</i>	<i>%</i>
<b>Newcastle-Melbourne</b>								
Jetstar	86	85	64	75.3	61	71.8	1	1.2
Virgin Australia	28	28	16	57.1	19	67.9	0	0.0
All Airlines	114	113	80	70.8	80	70.8	1	0.9
<b>Newman-Perth</b>								
Qantas	125	117	97	82.9	94	80.3	8	6.4
QantasLink	21	18	15	83.3	15	83.3	3	14.3
Skywest	9	9	7	77.8	7	77.8	0	0.0
Virgin Australia	33	29	19	65.5	17	58.6	4	12.1
All Airlines	188	173	138	79.8	133	76.9	15	8.0
<b>Perth-Adelaide</b>								
Jetstar	28	28	25	89.3	24	85.7	0	0.0
Qantas	101	101	87	86.1	87	86.1	0	0.0
Virgin Australia	56	56	52	92.9	52	92.9	0	0.0
All Airlines	185	185	164	88.6	163	88.1	0	0.0
<b>Perth-Brisbane</b>								
Jetstar	17	16	9	56.3	7	43.8	1	5.9
Qantas	108	108	91	84.3	77	71.3	0	0.0
Virgin Australia	80	80	65	81.3	40	50.0	0	0.0
All Airlines	205	204	165	80.9	124	60.8	1	0.5
<b>Perth-Broome</b>								
Qantas	24	24	21	87.5	20	83.3	0	0.0
QantasLink	52	51	48	94.1	47	92.2	1	1.9
Skywest	9	9	6	66.7	6	66.7	0	0.0
Virgin Australia	28	26	24	92.3	24	92.3	2	7.1
All Airlines	113	110	99	90.0	97	88.2	3	2.7
<b>Perth-Darwin</b>								
Qantas	28	28	22	78.6	22	78.6	0	0.0
Virgin Australia	24	24	19	79.2	18	75.0	0	0.0
All Airlines	52	52	41	78.8	40	76.9	0	0.0
<b>Perth-Geraldton</b>								
QantasLink	48	48	39	81.3	38	79.2	0	0.0
Skywest	78	78	60	76.9	57	73.1	0	0.0
All Airlines	126	126	99	78.6	95	75.4	0	0.0
<b>Perth-Kalgoorlie</b>								
Qantas	53	48	41	85.4	41	85.4	5	9.4
QantasLink	32	31	29	93.5	30	96.8	1	3.1
Skywest	54	54	44	81.5	35	64.8	0	0.0
All Airlines	139	133	114	85.7	106	79.7	6	4.3
<b>Perth-Karratha</b>								
Qantas	169	149	135	90.6	137	91.9	20	11.8
QantasLink	61	48	42	87.5	42	87.5	13	21.3
Virgin Australia	48	43	36	83.7	37	86.0	5	10.4
All Airlines	278	240	213	88.8	216	90.0	38	13.7
<b>Perth-Melbourne</b>								
Jetstar	64	63	44	69.8	47	74.6	1	1.6
Qantas	193	193	160	82.9	133	68.9	0	0.0
Tiger Airways	56	56	51	91.1	43	76.8	0	0.0
Virgin Australia	128	127	111	87.4	56	44.1	1	0.8
All Airlines	441	439	366	83.4	279	63.6	2	0.5

	<i>Sectors</i>		<i>Departures On Time</i>		<i>Arrivals On Time</i>		<i>Cancellations</i>	
	<i>Sched.</i>	<i>Flown</i>	<i>No.</i>	<i>%</i>	<i>No.</i>	<i>%</i>	<i>No.</i>	<i>%</i>
<b>Perth-Newman</b>								
Qantas	125	117	104	88.9	106	90.6	8	6.4
QantasLink	21	18	14	77.8	14	77.8	3	14.3
Skywest	9	9	8	88.9	9	100.0	0	0.0
Virgin Australia	33	29	22	75.9	22	75.9	4	12.1
All Airlines	188	173	148	85.5	151	87.3	15	8.0
<b>Perth-Port Hedland</b>								
Qantas	114	97	86	88.7	86	88.7	17	14.9
QantasLink	39	37	35	94.6	36	97.3	2	5.1
Virgin Australia	68	59	45	76.3	50	84.7	9	13.2
All Airlines	221	193	166	86.0	172	89.1	28	12.7
<b>Perth-Sydney</b>								
Jetstar	36	36	30	83.3	27	75.0	0	0.0
Qantas	194	193	153	79.3	144	74.6	1	0.5
Virgin Australia	108	107	95	88.8	72	67.3	1	0.9
All Airlines	338	336	278	82.7	243	72.3	2	0.6
<b>Port Hedland-Perth</b>								
Qantas	114	97	78	80.4	76	78.4	17	14.9
QantasLink	39	35	32	91.4	35	100.0	4	10.3
Virgin Australia	68	60	48	80.0	41	68.3	8	11.8
All Airlines	221	192	158	82.3	152	79.2	29	13.1
<b>Port Lincoln-Adelaide</b>								
QantasLink	88	85	72	84.7	72	84.7	3	3.4
Regional Express	161	161	151	93.8	151	93.8	0	0.0
All Airlines	249	246	223	90.7	223	90.7	3	1.2
<b>Port Macquarie-Sydney</b>								
QantasLink	122	113	82	72.6	77	68.1	9	7.4
Virgin Australia - ATR/F100 Operations	58	50	41	82.0	35	70.0	8	13.8
All Airlines	180	163	123	75.5	112	68.7	17	9.4
<b>Proserpine-Brisbane</b>								
Jetstar	24	24	9	37.5	9	37.5	0	0.0
Virgin Australia	42	42	28	66.7	15	35.7	0	0.0
Virgin Australia - ATR/F100 Operations	6	6	4	66.7	2	33.3	0	0.0
All Airlines	72	72	41	56.9	26	36.1	0	0.0
<b>Rockhampton-Brisbane</b>								
QantasLink	171	156	117	75.0	101	64.7	15	8.8
Virgin Australia	88	86	63	73.3	40	46.5	2	2.3
Virgin Australia - ATR/F100 Operations	120	107	87	81.3	81	75.7	13	10.8
All Airlines	379	349	267	76.5	222	63.6	30	7.9
<b>Sunshine Coast-Melbourne</b>								
Jetstar	39	39	25	64.1	26	66.7	0	0.0
Virgin Australia	28	24	13	54.2	18	75.0	4	14.3
All Airlines	67	63	38	60.3	44	69.8	4	6.0
<b>Sunshine Coast-Sydney</b>								
Jetstar	80	80	54	67.5	53	66.3	0	0.0
Virgin Australia	32	31	16	51.6	19	61.3	1	3.1
All Airlines	112	111	70	63.1	72	64.9	1	0.9
<b>Sydney-Adelaide</b>								
Jetstar	84	84	62	73.8	66	78.6	0	0.0
Qantas	248	248	196	79.0	214	86.3	0	0.0
Virgin Australia	160	159	115	72.3	125	78.6	1	0.6
All Airlines	492	491	373	76.0	405	82.5	1	0.2

	<i>Sectors</i>		<i>Departures On Time</i>		<i>Arrivals On Time</i>		<i>Cancellations</i>	
	<i>Sched.</i>	<i>Flown</i>	<i>No.</i>	<i>%</i>	<i>No.</i>	<i>%</i>	<i>No.</i>	<i>%</i>
<b>Sydney-Albury</b>								
QantasLink	104	103	68	66.0	74	71.8	1	1.0
Regional Express	88	88	71	80.7	72	81.8	0	0.0
Virgin Australia	2	2	0	0.0	1	50.0	0	0.0
Virgin Australia - ATR/F100 Operations	54	52	37	71.2	41	78.8	2	3.7
All Airlines	248	245	176	71.8	188	76.7	3	1.2
<b>Sydney-Ayers Rock</b>								
Qantas	28	28	26	92.9	25	89.3	0	0.0
Virgin Australia	28	28	22	78.6	20	71.4	0	0.0
All Airlines	56	56	48	85.7	45	80.4	0	0.0
<b>Sydney-Ballina</b>								
Jetstar	33	33	25	75.8	20	60.6	0	0.0
Regional Express	21	21	12	57.1	9	42.9	0	0.0
Virgin Australia	28	28	22	78.6	18	64.3	0	0.0
All Airlines	82	82	59	72.0	47	57.3	0	0.0
<b>Sydney-Brisbane</b>								
Jetstar	91	89	59	66.3	55	61.8	2	2.2
Qantas	537	527	418	79.3	345	65.5	10	1.9
Tiger Airways	72	71	60	84.5	38	53.5	1	1.4
Virgin Australia	520	501	300	59.9	242	48.3	19	3.7
All Airlines	1 220	1 188	837	70.5	680	57.2	32	2.6
<b>Sydney-Cairns</b>								
Jetstar	53	53	35	66.0	39	73.6	0	0.0
Qantas	61	61	47	77.0	48	78.7	0	0.0
Virgin Australia	84	84	54	64.3	55	65.5	0	0.0
All Airlines	198	198	136	68.7	142	71.7	0	0.0
<b>Sydney-Canberra</b>								
Qantas	156	151	127	84.1	127	84.1	5	3.2
QantasLink	372	359	284	79.1	284	79.1	13	3.5
Virgin Australia	69	69	52	75.4	51	73.9	0	0.0
Virgin Australia - ATR/F100 Operations	184	175	110	62.9	124	70.9	9	4.9
All Airlines	781	754	573	76.0	586	77.7	27	3.5
<b>Sydney-Coffs Harbour</b>								
QantasLink	129	125	95	76.0	90	72.0	4	3.1
Tiger Airways	8	8	6	75.0	6	75.0	0	0.0
Virgin Australia	56	54	43	79.6	45	83.3	2	3.6
All Airlines	193	187	144	77.0	141	75.4	6	3.1
<b>Sydney-Darwin</b>								
Jetstar	20	20	19	95.0	19	95.0	0	0.0
Qantas	36	36	29	80.6	31	86.1	0	0.0
Virgin Australia	28	28	20	71.4	18	64.3	0	0.0
All Airlines	84	84	68	81.0	68	81.0	0	0.0
<b>Sydney-Dubbo</b>								
QantasLink	100	100	70	70.0	80	80.0	0	0.0
Regional Express	135	134	104	77.6	109	81.3	1	0.7
All Airlines	235	234	174	74.4	189	80.8	1	0.4
<b>Sydney-Gold Coast</b>								
Jetstar	257	247	187	75.7	182	73.7	10	3.9
Qantas	84	84	74	88.1	74	88.1	0	0.0
Tiger Airways	58	57	40	70.2	41	71.9	1	1.7
Virgin Australia	316	311	200	64.3	187	60.1	5	1.6
All Airlines	715	699	501	71.7	484	69.2	16	2.2



	<i>Sectors</i>		<i>Departures On Time</i>		<i>Arrivals On Time</i>		<i>Cancellations</i>	
	<i>Sched.</i>	<i>Flown</i>	<i>No.</i>	<i>%</i>	<i>No.</i>	<i>%</i>	<i>No.</i>	<i>%</i>
<b>Sydney-Hamilton Island</b>								
Jetstar	20	20	17	85.0	16	80.0	0	0.0
Virgin Australia	28	28	21	75.0	18	64.3	0	0.0
All Airlines	48	48	38	79.2	34	70.8	0	0.0
<b>Sydney-Hobart</b>								
Jetstar	68	68	49	72.1	53	77.9	0	0.0
Qantas	28	28	22	78.6	23	82.1	0	0.0
Virgin Australia	56	56	41	73.2	43	76.8	0	0.0
All Airlines	152	152	112	73.7	119	78.3	0	0.0
<b>Sydney-Launceston</b>								
Jetstar	56	56	42	75.0	47	83.9	0	0.0
Virgin Australia	28	28	17	60.7	18	64.3	0	0.0
All Airlines	84	84	59	70.2	65	77.4	0	0.0
<b>Sydney-Melbourne</b>								
Jetstar	256	248	174	70.2	182	73.4	8	3.1
Qantas	794	763	620	81.3	622	81.5	31	3.9
Tiger Airways	196	193	151	78.2	153	79.3	3	1.5
Virgin Australia	730	717	451	62.9	507	70.7	13	1.8
All Airlines	1 976	1 921	1 396	72.7	1 464	76.2	55	2.8
<b>Sydney-Perth</b>								
Jetstar	36	35	30	85.7	32	91.4	1	2.8
Qantas	194	193	130	67.4	162	83.9	1	0.5
Virgin Australia	108	107	75	70.1	90	84.1	1	0.9
All Airlines	338	335	235	70.1	284	84.8	3	0.9
<b>Sydney-Port Macquarie</b>								
QantasLink	123	114	88	77.2	85	74.6	9	7.3
Virgin Australia - ATR/F100 Operations	58	51	40	78.4	35	68.6	7	12.1
All Airlines	181	165	128	77.6	120	72.7	16	8.8
<b>Sydney-Sunshine Coast</b>								
Jetstar	80	80	68	85.0	67	83.8	0	0.0
Virgin Australia	32	31	22	71.0	22	71.0	1	3.1
All Airlines	112	111	90	81.1	89	80.2	1	0.9
<b>Sydney-Townsville</b>								
Jetstar	16	16	12	75.0	11	68.8	0	0.0
Virgin Australia	28	28	18	64.3	19	67.9	0	0.0
All Airlines	44	44	30	68.2	30	68.2	0	0.0
<b>Sydney-Wagga Wagga</b>								
QantasLink	96	96	73	76.0	71	74.0	0	0.0
Regional Express	89	89	68	76.4	68	76.4	0	0.0
All Airlines	185	185	141	76.2	139	75.1	0	0.0
<b>Townsville-Brisbane</b>								
Jetstar	29	28	24	85.7	23	82.1	1	3.4
Qantas	131	131	111	84.7	100	76.3	0	0.0
Virgin Australia	156	154	102	66.2	85	55.2	2	1.3
All Airlines	316	313	237	75.7	208	66.5	3	0.9
<b>Townsville-Cairns</b>								
QantasLink	164	164	134	81.7	132	80.5	0	0.0
Virgin Australia - ATR/F100 Operations	24	24	23	95.8	23	95.8	0	0.0
All Airlines	188	188	157	83.5	155	82.4	0	0.0
<b>Townsville-Sydney</b>								
Jetstar	16	16	13	81.3	12	75.0	0	0.0
Virgin Australia	28	28	12	42.9	15	53.6	0	0.0
All Airlines	44	44	25	56.8	27	61.4	0	0.0

	<i>Sectors</i>		<i>Departures On Time</i>		<i>Arrivals On Time</i>		<i>Cancellations</i>	
	<i>Sched.</i>	<i>Flown</i>	<i>No.</i>	<i>%</i>	<i>No.</i>	<i>%</i>	<i>No.</i>	<i>%</i>
<b>Wagga Wagga-Sydney</b>								
QantasLink	96	96	72	75.0	64	66.7	0	0.0
Regional Express	89	89	68	76.4	62	69.7	0	0.0
All Airlines	185	185	140	75.7	126	68.1	0	0.0

# Airports

On time performance is reported for all routes where the passenger load averages over 8000 passengers per month, and where two or more airlines operate in competition. The following data reports by airport against flights operated on those routes only.

Airport	Departures			Arrivals		
	Sectors	On Time		Sectors	On Time	
	Flown	No.	%	Flown	No.	%
<b>Adelaide</b>						
Jetstar	245	192	78.4	245	210	85.7
Qantas	754	667	88.5	758	672	88.7
QantasLink	121	98	81.0	119	98	82.4
Regional Express	161	151	93.8	161	151	93.8
Tiger Airways	56	43	76.8	55	44	80.0
Virgin Australia	629	538	85.5	628	512	81.5
All Airlines	1 966	1 689	85.9	1 966	1 687	85.8
Relates to services to and from Brisbane, Canberra, Gold Coast, Melbourne, Perth, Port Lincoln and Sydney.						
<b>Albury</b>						
QantasLink	103	79	76.7	103	74	71.8
Regional Express	88	75	85.2	88	72	81.8
Virgin Australia	2	1	50.0	2	1	50.0
Virgin Australia - ATR/F100 Operations	52	39	75.0	52	41	78.8
All Airlines	245	194	79.2	245	188	76.7
Relates to services to and from Sydney only.						
<b>Ayers Rock</b>						
Qantas	28	25	89.3	28	25	89.3
Virgin Australia	28	20	71.4	28	20	71.4
All Airlines	56	45	80.4	56	45	80.4
Relates to services to and from Sydney only.						
<b>Ballina</b>						
Jetstar	34	21	61.8	33	20	60.6
Regional Express	18	9	50.0	21	9	42.9
Virgin Australia	27	13	48.1	28	18	64.3
All Airlines	79	43	54.4	82	47	57.3
Relates to services to and from Sydney only.						
<b>Brisbane</b>						
Jetstar	530	364	68.7	532	311	58.5
Qantas	1 575	1 264	80.3	1 548	1 104	71.3
QantasLink	710	575	81.0	707	434	61.4
Tiger Airways	136	78	57.4	136	74	54.4
Virgin Australia	1 773	1 235	69.7	1 769	939	53.1
Virgin Australia - ATR/F100 Operations	351	260	74.1	351	237	67.5
All Airlines	5 075	3 776	74.4	5 043	3 099	61.5
Relates to services to and from Adelaide, Cairns, Canberra, Darwin, Emerald, Gladstone, Hamilton Island, Mackay, Melbourne, Mount Isa, Newcastle, Perth, Proserpine, Rockhampton, Sydney and Townsville.						

Airport	Departures			Arrivals		
	Sectors Flown	On Time		Sectors Flown	On Time	
		No.	%		No.	%
<b>Broome</b>						
Qantas	24	20	83.3	24	20	83.3
QantasLink	52	49	94.2	51	47	92.2
Skywest	13	9	69.2	9	6	66.7
Virgin Australia	26	14	53.8	26	24	92.3
All Airlines	115	92	80.0	110	97	88.2
Relates to services to and from Perth only.						
<b>Cairns</b>						
Jetstar	191	137	71.7	190	153	80.5
Qantas	192	156	81.3	192	163	84.9
QantasLink	167	153	91.6	168	136	81.0
Tiger Airways	16	13	81.3	16	15	93.8
Virgin Australia	260	172	66.2	260	180	69.2
Virgin Australia - ATR/F100 Operations	32	30	93.8	32	31	96.9
All Airlines	858	661	77.0	858	678	79.0
Relates to services to and from Brisbane, Melbourne, Sydney and Townsville.						
<b>Canberra</b>						
Qantas	562	493	87.7	562	484	86.1
QantasLink	430	342	79.5	433	344	79.4
Virgin Australia	344	253	73.5	346	254	73.4
Virgin Australia - ATR/F100 Operations	177	141	79.7	175	124	70.9
All Airlines	1 513	1 229	81.2	1 516	1 206	79.6
Relates to services to and from Adelaide, Brisbane, Melbourne and Sydney.						
<b>Coffs Harbour</b>						
QantasLink	125	90	72.0	125	90	72.0
Tiger Airways	7	6	85.7	8	6	75.0
Virgin Australia	53	36	67.9	54	45	83.3
All Airlines	185	132	71.4	187	141	75.4
Relates to services to and from Sydney only.						
<b>Darwin</b>						
Jetstar	25	13	52.0	25	23	92.0
Qantas	104	83	79.8	104	82	78.8
Virgin Australia	108	93	86.1	108	73	67.6
All Airlines	237	189	79.7	237	178	75.1
Relates to services to and from Brisbane, Melbourne, Perth and Sydney.						
<b>Dubbo</b>						
QantasLink	100	74	74.0	100	80	80.0
Regional Express	134	105	78.4	134	109	81.3
All Airlines	234	179	76.5	234	189	80.8
Relates to services to and from Sydney only.						
<b>Emerald</b>						
QantasLink	167	131	78.4	167	137	82.0
Virgin Australia - ATR/F100 Operations	94	74	78.7	94	76	80.9
All Airlines	261	205	78.5	261	213	81.6
Relates to services to and from Brisbane only.						

Airport	Departures			Arrivals		
	Sectors	On Time		Sectors	On Time	
	Flown	No.	%	Flown	No.	%
<b>Geraldton</b>						
QantasLink	48	38	79.2	48	38	79.2
Skywest	78	63	80.8	78	57	73.1
All Airlines	126	101	80.2	126	95	75.4
Relates to services to and from Perth only.						
<b>Gladstone</b>						
QantasLink	205	148	72.2	199	152	76.4
Virgin Australia - ATR/F100 Operations	111	71	64.0	111	72	64.9
All Airlines	316	219	69.3	310	224	72.3
Relates to services to and from Brisbane only.						
<b>Gold Coast</b>						
Jetstar	415	295	71.1	419	309	73.7
Qantas	84	68	81.0	84	74	88.1
Tiger Airways	105	65	61.9	105	70	66.7
Virgin Australia	509	314	61.7	515	324	62.9
All Airlines	1 113	742	66.7	1 123	777	69.2
Relates to services to and from Adelaide, Melbourne and Sydney.						
<b>Hamilton Island</b>						
Jetstar	36	27	75.0	36	28	77.8
Virgin Australia	56	32	57.1	56	37	66.1
All Airlines	92	59	64.1	92	65	70.7
Relates to services to and from Brisbane and Sydney.						
<b>Hobart</b>						
Jetstar	228	151	66.2	228	160	70.2
Qantas	84	69	82.1	84	73	86.9
QantasLink	26	24	92.3	26	19	73.1
Tiger Airways	37	32	86.5	38	33	86.8
Virgin Australia	204	135	66.2	204	147	72.1
All Airlines	579	411	71.0	580	432	74.5
Relates to services to and from Melbourne and Sydney.						
<b>Kalgoorlie</b>						
Qantas	48	40	83.3	48	41	85.4
QantasLink	31	29	93.5	31	30	96.8
Skywest	55	49	89.1	54	35	64.8
All Airlines	134	118	88.1	133	106	79.7
Relates to services to and from Perth only.						
<b>Karratha</b>						
Qantas	146	132	90.4	149	137	91.9
QantasLink	47	40	85.1	48	42	87.5
Virgin Australia	41	33	80.5	43	37	86.0
All Airlines	234	205	87.6	240	216	90.0
Relates to services to and from Perth only.						

Airport	Departures			Arrivals		
	Sectors	On Time		Sectors	On Time	
	Flown	No.	%	Flown	No.	%
<b>Launceston</b>						
Jetstar	168	118	70.2	168	132	78.6
QantasLink	106	84	79.2	107	78	72.9
Virgin Australia	152	102	67.1	152	112	73.7
All Airlines	426	304	71.4	427	322	75.4
Relates to services to and from Melbourne and Sydney.						
<b>Mackay</b>						
Jetstar	80	47	58.8	80	57	71.3
QantasLink	99	77	77.8	100	82	82.0
Virgin Australia	155	109	70.3	156	96	61.5
All Airlines	334	233	69.8	336	235	69.9
Relates to services to and from Brisbane only.						
<b>Melbourne</b>						
Jetstar	1 069	762	71.3	1 072	775	72.3
Qantas	1 928	1 649	85.5	1 929	1 588	82.3
QantasLink	259	196	75.7	259	194	74.9
Regional Express	72	65	90.3	71	62	87.3
Tiger Airways	470	397	84.5	471	364	77.3
Virgin Australia	2 194	1 621	73.9	2 193	1 569	71.5
All Airlines	5 992	4 690	78.3	5 995	4 552	75.9
Relates to services to and from Adelaide, Brisbane, Cairns, Canberra, Darwin, Gold Coast, Hobart, Launceston, Mildura, Newcastle, Perth, Sunshine Coast and Sydney.						
<b>Mildura</b>						
QantasLink	76	60	78.9	77	44	57.1
Regional Express	71	64	90.1	72	60	83.3
Virgin Australia	28	25	89.3	28	25	89.3
All Airlines	175	149	85.1	177	129	72.9
Relates to services to and from Melbourne only.						
<b>Mount Isa</b>						
Qantas	52	49	94.2	52	47	90.4
Virgin Australia	20	15	75.0	20	16	80.0
All Airlines	72	64	88.9	72	63	87.5
Relates to services to and from Brisbane only.						
<b>Newcastle</b>						
Jetstar	177	137	77.4	177	145	81.9
QantasLink	58	23	39.7	57	23	40.4
Virgin Australia	28	16	57.1	28	19	67.9
Virgin Australia - ATR/F100 Operations	25	21	84.0	25	21	84.0
All Airlines	288	197	68.4	287	208	72.5
Relates to services to and from Brisbane and Melbourne.						
<b>Newman</b>						
Qantas	117	97	82.9	117	106	90.6
QantasLink	18	15	83.3	18	14	77.8
Skywest	9	7	77.8	9	9	100.0
Virgin Australia	29	19	65.5	29	22	75.9
All Airlines	173	138	79.8	173	151	87.3
Relates to services to and from Perth only.						

Airport	Departures			Arrivals		
	Sectors	On Time		Sectors	On Time	
	Flown	No.	%	Flown	No.	%
<b>Perth</b>						
Jetstar	143	108	75.5	143	128	89.5
Qantas	1 058	900	85.1	1 054	883	83.8
QantasLink	233	207	88.8	231	201	87.0
Skywest	150	118	78.7	155	118	76.1
Tiger Airways	56	51	91.1	56	52	92.9
Virgin Australia	551	469	85.1	550	403	73.3
All Airlines	2 191	1 853	84.6	2 189	1 785	81.5
Relates to services to and from Adelaide, Brisbane, Broome, Darwin, Geraldton, Kalgoorlie, Karratha, Melbourne, Newman, Port Hedland and Sydney.						
<b>Port Hedland</b>						
Qantas	97	78	80.4	97	86	88.7
QantasLink	35	32	91.4	37	36	97.3
Virgin Australia	60	48	80.0	59	50	84.7
All Airlines	192	158	82.3	193	172	89.1
Relates to services to and from Perth only.						
<b>Port Lincoln</b>						
QantasLink	85	72	84.7	85	69	81.2
Regional Express	161	151	93.8	161	152	94.4
All Airlines	246	223	90.7	246	221	89.8
Relates to services to and from Adelaide only.						
<b>Port Macquarie</b>						
QantasLink	113	82	72.6	114	85	74.6
Virgin Australia - ATR/F100 Operations	50	41	82.0	51	35	68.6
All Airlines	163	123	75.5	165	120	72.7
Relates to services to and from Sydney only.						
<b>Proserpine</b>						
Jetstar	24	9	37.5	24	10	41.7
Virgin Australia	42	28	66.7	42	33	78.6
Virgin Australia - ATR/F100 Operations	6	4	66.7	6	5	83.3
All Airlines	72	41	56.9	72	48	66.7
Relates to services to and from Brisbane only.						
<b>Rockhampton</b>						
QantasLink	156	117	75.0	164	118	72.0
Virgin Australia	86	63	73.3	88	65	73.9
Virgin Australia - ATR/F100 Operations	107	87	81.3	107	81	75.7
All Airlines	349	267	76.5	359	264	73.5
Relates to services to and from Brisbane only.						
<b>Sunshine Coast</b>						
Jetstar	119	79	66.4	119	97	81.5
Virgin Australia	55	29	52.7	58	41	70.7
All Airlines	174	108	62.1	177	138	78.0
Relates to services to and from Melbourne and Sydney.						

Airport	Departures			Arrivals		
	Sectors	On Time		Sectors	On Time	
	Flown	No.	%	Flown	No.	%
<b>Sydney</b>						
Jetstar	1 049	779	74.3	1 042	692	66.4
Qantas	2 119	1 689	79.7	2 142	1 596	74.5
QantasLink	897	678	75.6	893	616	69.0
Regional Express	332	255	76.8	329	235	71.4
Tiger Airways	329	257	78.1	327	230	70.3
Virgin Australia	2 259	1 473	65.2	2 249	1 458	64.8
Virgin Australia - ATR/F100 Operations	278	187	67.3	279	189	67.7
All Airlines	7 263	5 318	73.2	7 261	5 016	69.1

Relates to services to and from Adelaide, Albury, Ayers Rock, Ballina, Brisbane, Cairns, Canberra, Coffs Harbour, Darwin, Dubbo, Gold Coast, Hamilton Island, Hobart, Launceston, Melbourne, Perth, Port Macquarie, Sunshine Coast, Townsville and Wagga Wagga.

#### Townsville

Jetstar	44	37	84.1	44	33	75.0
Qantas	131	111	84.7	131	102	77.9
QantasLink	164	134	81.7	164	149	90.9
Virgin Australia	182	114	62.6	182	110	60.4
Virgin Australia - ATR/F100 Operations	24	23	95.8	24	23	95.8
All Airlines	545	419	76.9	545	417	76.5

Relates to services to and from Brisbane, Cairns and Sydney.

#### Wagga Wagga

QantasLink	96	72	75.0	96	71	74.0
Regional Express	89	68	76.4	89	68	76.4
All Airlines	185	140	75.7	185	139	75.1

Relates to services to and from Sydney only.



## Definitions

---

On time departure                      A flight departure is counted as "on time" if it departs the gate within 15 minutes of the scheduled departure time shown in the carriers' schedule.

---

On time arrival                         A flight arrival is counted as "on time" if it arrived at the gate within 15 minutes of the scheduled arrival time shown in the carriers' schedule.  
Neither diverted nor cancelled flights count as on time.

---

Cancellation                            A flight removed from service within 7 days of scheduled departure is regarded as a cancellation.

---

On time departure percentage                      The percentage of on time departures is measured against the number of departures *operated* on any particular sector.

---

On time arrival percentage                         The percentage of on time arrivals is measured against the number of arrivals *operated* on any particular sector.

---

Cancellation percentage                            The percentage of cancellations is measured against the number of services *scheduled* on any particular sector.

---