



Australian Government

Department of Infrastructure and Transport

Bureau of Infrastructure, Transport and Regional Economics

STATISTICAL REPORT



Aviation

Domestic airline on time performance
February 2012

© Commonwealth of Australia 2012

ISSN 1832-0759

This work is copyright and the data contained in this publication should not be reproduced or used in any form without acknowledgement.

Enquiries

Bureau of Infrastructure, Transport and Regional Economics
GPO Box 501
Canberra ACT 2601

Telephone: 02 6274 7790

Facsimile: 02 6274 7727

Website: www.bitre.gov.au

Email: avstats@infrastructure.gov.au

This publication, including a spreadsheet of the time-series data, can be downloaded from the BITRE website: <http://www.bitre.gov.au/info.aspx?ResourceId=214&NodeId=104>.

Disclaimers

BITRE seeks to publish its work to the highest professional standards. However, it cannot accept responsibility for any consequences arising from the use of information herein. Readers should rely on their own skill and judgment in applying any information or analysis to particular issues or circumstances.

Foreword

The Bureau of Infrastructure, Transport and Regional Economics (BITRE) monitors the punctuality and reliability of major domestic airlines operating between Australian airports. The purpose of this is to allow for evaluation of overall industry and individual airline performance, so that consumers of air travel can make informed decisions.

The following domestic airlines report this data monthly to the BITRE: Jetstar, Qantas, QantasLink, Regional Express, Skywest Airlines, Tiger Airways, and Virgin Australia. Data has been gathered since November 2003, although some airlines commenced reporting at a later date, including Jetstar which first reported in May 2004, MacAir in July 2005 and Tiger Airways in April 2008. MacAir ceased operations in February 2009 and data was not received for December 2008 onwards. Virgin Blue was rebranded as Virgin Australia in May 2011 and time series data in Microsoft Excel spreadsheet format on the BITRE website has been revised to reflect this. Services operated by Skywest on behalf of Virgin Australia using ATR/F100 aircraft commenced in November 2011 and are shown separately as Virgin Australia – ATR/F100 Operations.

Information presented in this report is for Australian domestic routes for which the passenger load averaged 8 000 or more passengers per month over the previous six months and where two or more airlines operated in competition on those routes. There were 54 routes that met this definition in February 2012. Over time, routes which meet these criteria change as airline networks and traffic levels vary.

Participating airlines report their overall monthly network performance where this is possible.

Total industry figures encompass all services operated by reporting airlines only. These airlines collectively carried over 95 per cent of total domestic passengers (regular public transport only) in 2010.

The method of capturing on time performance varies between airlines utilising different recording systems. Jetstar and Qantas jet aircraft use Aircraft Communication Addressing and Reporting System (ACARS) to electronically measure on time performance. Regional Express, Skywest, Tiger Airways, Virgin Australia, Virgin Australia – ATR/F100 Operations and the Qantas non-jet fleet record on time performance manually using records from pilots, gate agents and/or ground crews.

After initial data is collected, aggregate reports are audited internally by participating airlines prior to publication.

Reports and detailed time series data in Microsoft Excel spreadsheet format are available from the BITRE website at: <http://www.bitre.gov.au/info.aspx?ResourceId=214&NodeId=104>.

Contents

	Page
Industry performance	1
Individual routes	9
Airports	20
Definitions	26

Industry performance

For February 2012, on time performance over all routes operated by participating airlines (Jetstar, Qantas, QantasLink, Regional Express, Skywest Airlines, Tiger Airways, Virgin Australia and Virgin Australia – ATR/F100 Operations) averaged 82.8 per cent for on time departures, and 80.7 per cent for on time arrivals. Cancellations represented 1.5 per cent of all scheduled flights. The equivalent figures for February 2011 were 76.9 per cent for departures, 74.0 per cent for arrivals and 2.3 per cent for cancellations.

The long term average performance for all routes since reporting commenced in November 2003 is 84.1 per cent for on time departures and 82.8 per cent for on time arrivals. Cancellations average 1.2 per cent of all scheduled flights.

Tiger Airways operated on a reduced schedule with 666 sectors flown in February 2012 compared to 1 397 in February 2011.

Of the major domestic airlines, Tiger Airways achieved the highest level of on time departures for February 2012 at 89.8 per cent, followed by Qantas at 88.6 per cent, Virgin Australia at 81.6 per cent and Jetstar at 77.5 per cent. The regional airlines were led by Skywest at 86.3 per cent, followed by Regional Express at 83.9 per cent, Virgin Australia – ATR/F100 Operations at 81.2 per cent and QantasLink at 79.9 per cent.

Tiger Airways also achieved the highest on time arrivals among the major domestic airlines at 89.2 per cent, followed by Qantas at 87.2 per cent, Jetstar at 78.5 per cent and Virgin Australia at 78.4 per cent. Skywest was the best performing regional airline for on time arrivals at 85.7 per cent, followed by Regional Express at 81.0 per cent, QantasLink at 77.1 per cent and Virgin Australia – ATR/F100 Operations at 73.4 per cent.

QantasLink had the highest percentage of cancellations for February 2012 at 2.4 per cent, while Skywest and Tiger Airways had no cancellations.

Of the 54 routes which met the criteria for on time performance reporting in February 2012, the Darwin-Melbourne route had the highest percentage of on time departures (97.6 per cent) and the highest percentage of on time arrivals (also 97.6 per cent). The Sunshine Coast-Melbourne route had the lowest percentage of on time departures (60.3 per cent) and the Ballina-Sydney route had the lowest percentage of on time arrivals (56.1 per cent).

Cancellations were highest on the Canberra-Sydney route at 4.8 per cent, followed by Sydney-Canberra at 4.0 per cent, Perth-Broome at 3.9 per cent and Broome-Perth at 3.8 per cent.

Port Lincoln Airport recorded the highest percentage of on time departures (95.0 per cent) and Port Hedland Airport recorded the highest percentage of on time arrivals (96.8 per cent). Newcastle Airport recorded the lowest percentage of on time departures (66.5 per cent) and the lowest percentage of on time arrivals (71.2 per cent). These figures only refer to reported routes and do not cover all flights at these airports.

Table 1 On time performance for February 2012 — Total Industry

	<i>Sectors</i>		<i>Departures On Time</i>		<i>Arrivals On Time</i>		<i>Cancellations</i>	
	<i>Scheduled</i>	<i>Flown</i>	<i>No.</i>	<i>%</i>	<i>No.</i>	<i>%</i>	<i>No.</i>	<i>%</i>
Jetstar	5 149	5 068	3 930	77.5	3 979	78.5	81	1.6
Qantas	9 857	9 742	8 634	88.6	8 498	87.2	115	1.2
QantasLink	9 028	8 810	7 036	79.9	6 794	77.1	218	2.4
Regional Express	5 081	5 068	4 250	83.9	4 107	81.0	13	0.3
Skywest	699	699	603	86.3	599	85.7	0	0.0
Tiger Airways	666	666	598	89.8	594	89.2	0	0.0
Virgin Australia	11 168	10 974	8 952	81.6	8 605	78.4	194	1.7
Virgin Australia - ATR/F100 Operations	960	942	765	81.2	691	73.4	18	1.9
All Airlines	42 608	41 969	34 768	82.8	33 867	80.7	639	1.5

Total airline network data (including routes not shown in this report).

Table 2 Top ten routes for on time performance for February 2012 (participating airlines only)

<i>Departures</i>		<i>Arrivals</i>	
<i>Route</i>	<i>On Time (%)</i>	<i>Route</i>	<i>On Time (%)</i>
Darwin-Melbourne	97.6	Darwin-Melbourne	97.6
Melbourne-Darwin	97.5	Perth-Port Hedland	96.8
Port Lincoln-Adelaide	95.0	Adelaide-Gold Coast	94.6
Gold Coast-Adelaide	94.6	Port Lincoln-Adelaide	94.6
Darwin-Perth	94.3	Darwin-Perth	94.3
Adelaide-Port Lincoln	93.9	Adelaide-Port Lincoln	93.6
Canberra-Brisbane	93.3	Gold Coast-Adelaide	92.9
Port Hedland-Perth	93.0	Cairns-Sydney	92.5
Adelaide-Brisbane	93.0	Melbourne-Darwin	92.5
Adelaide-Gold Coast	92.9	Perth-Adelaide	92.1

Table 3 Top ten airports for on time performance for February 2012 (participating airlines and reported routes only)

<i>Departures</i>		<i>Arrivals</i>	
<i>Airport</i>	<i>On Time (%)</i>	<i>Airport</i>	<i>On Time (%)</i>
Port Lincoln	95.0	Port Hedland	96.8
Port Hedland	93.0	Port Lincoln	93.6
Adelaide	90.3	Newman	91.3
Newman	90.0	Proserpine	90.3
Mildura	89.9	Kalgoorlie	90.1
Perth	88.7	Adelaide	88.9
Cairns	87.3	Karratha	88.6
Karratha	87.2	Broome	86.9
Darwin	86.8	Perth	86.1
Kalgoorlie	86.7	Darwin	84.1

Total industry on time performance

Figure 1 On time performance (by month from February 2009)—Total Industry

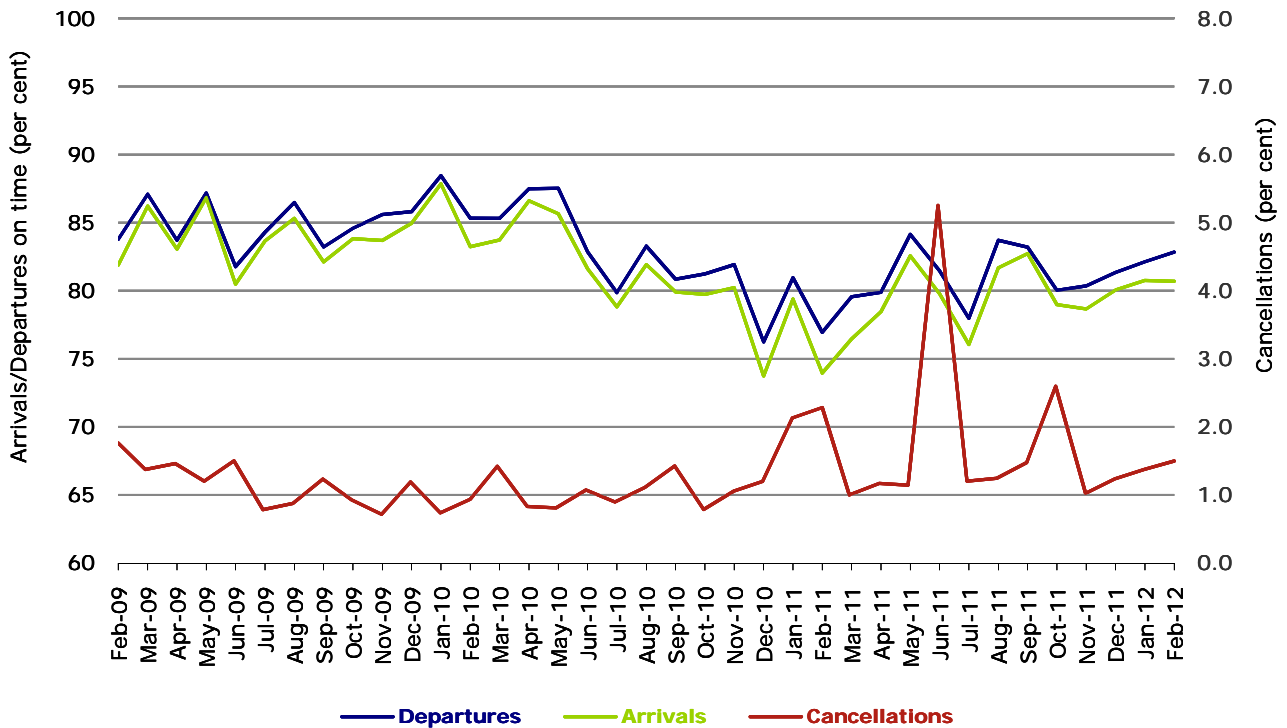
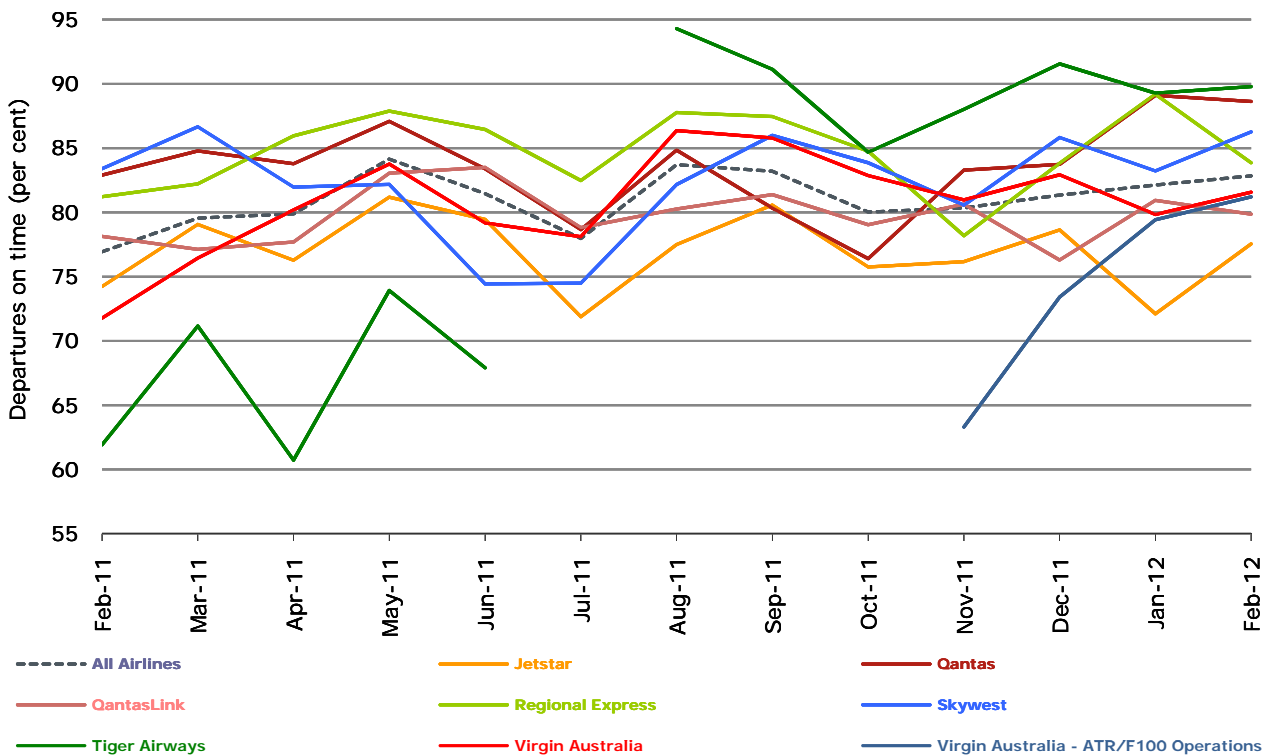


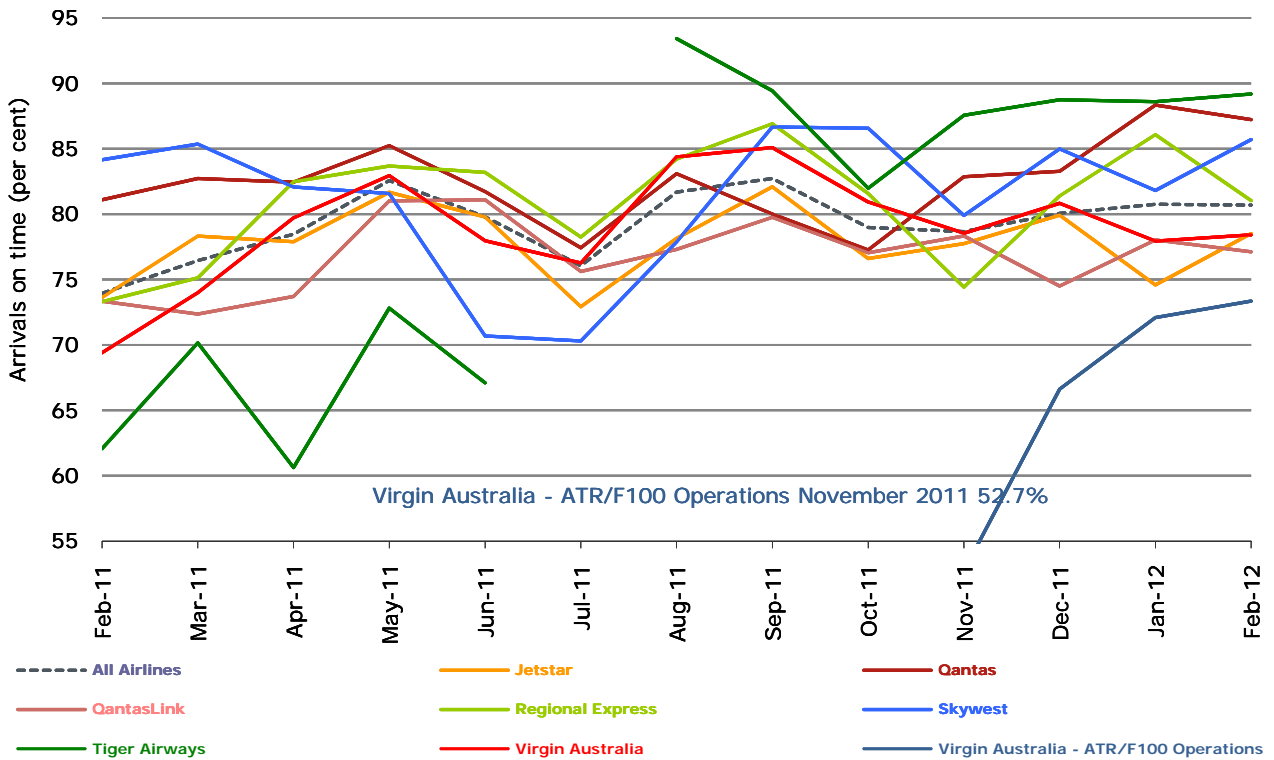
Figure 2 Departures on time (by month from February 2011)



No data for Tiger Airways for July 2011 as it was grounded by CASA from 2/7/2011 to 11/8/2011.

Virgin Australia - ATR/F100 Operations commenced in November 2011.

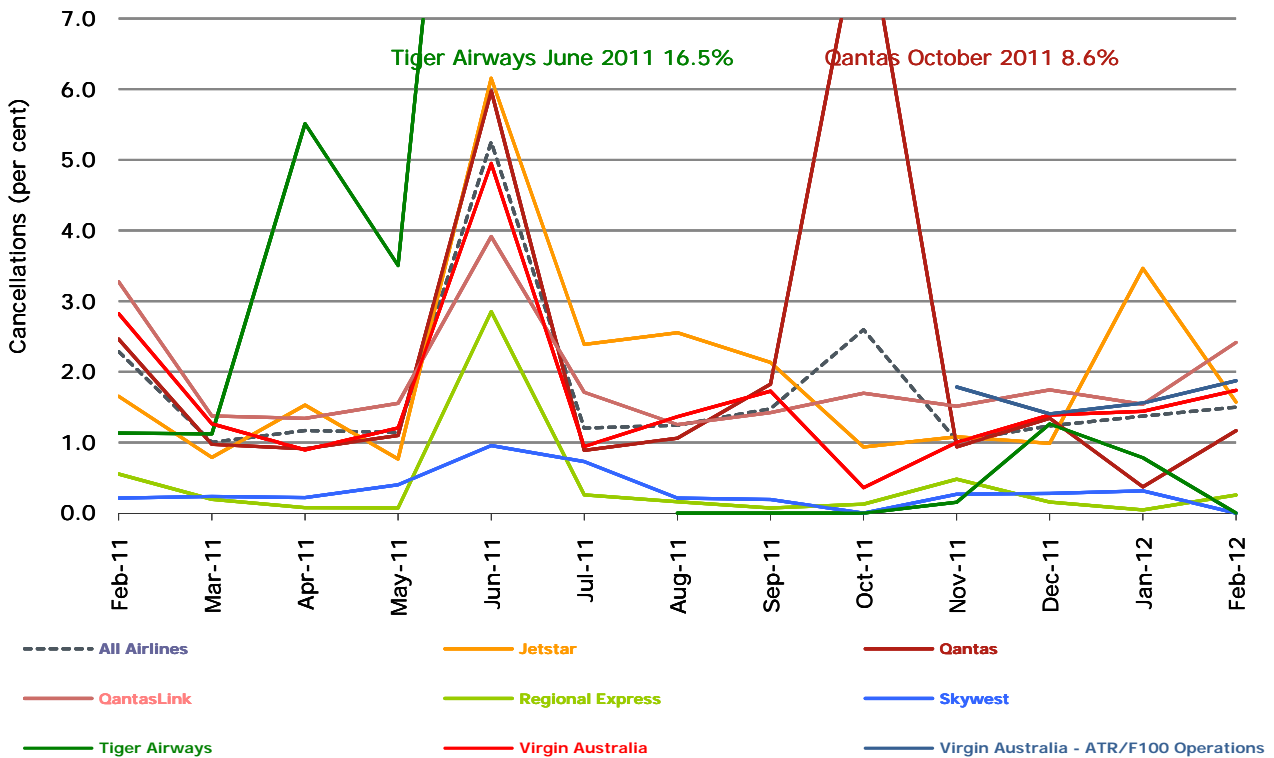
Figure 3 Arrivals on time (by month from February 2011)



No data for Tiger Airways for July 2011 as it was grounded by CASA from 2/7/2011 to 11/8/2011.

Virgin Australia - ATR/F100 Operations commenced in November 2011.

Figure 4 Cancellations (by month from February 2011)



No data for Tiger Airways for July 2011 as it was grounded by CASA from 2/7/2011 to 11/8/2011.

Virgin Australia - ATR/F100 Operations commenced in November 2011.

Major domestic airlines on time performance

Figure 5 On time performance (by month from February 2009)—Jetstar

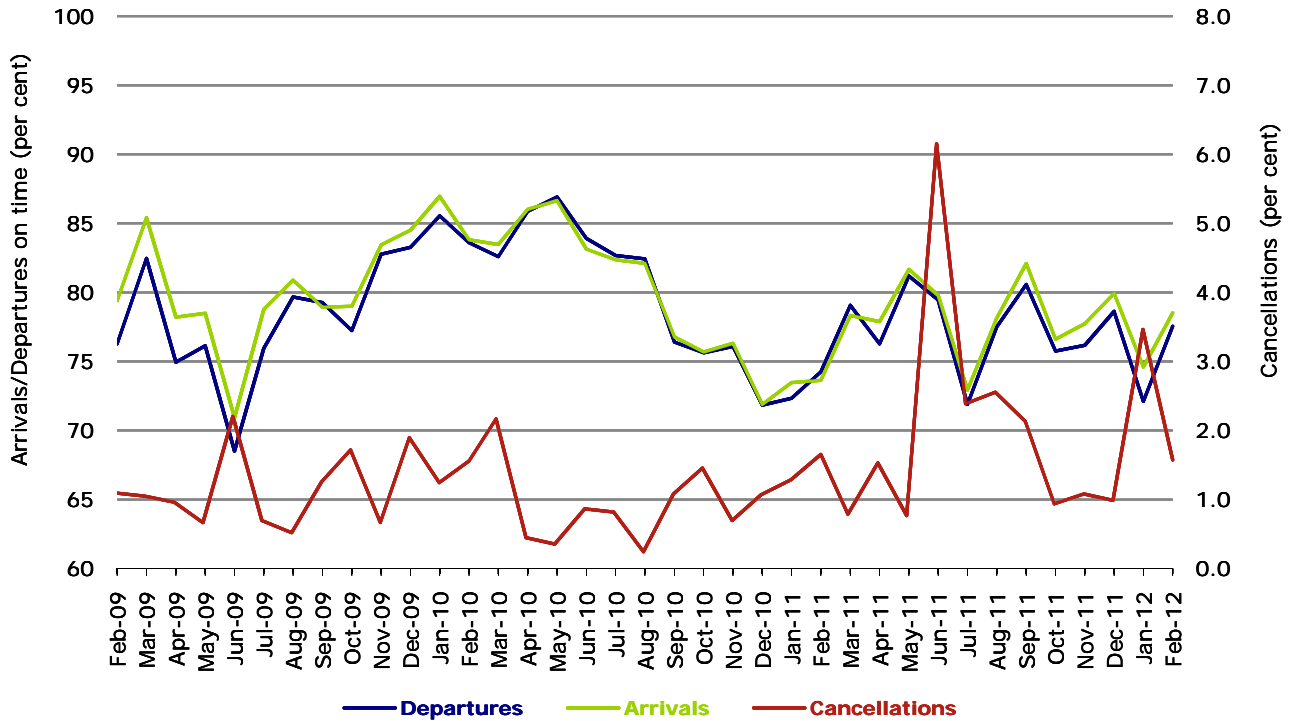


Figure 6 On time performance (by month from February 2009)—Qantas

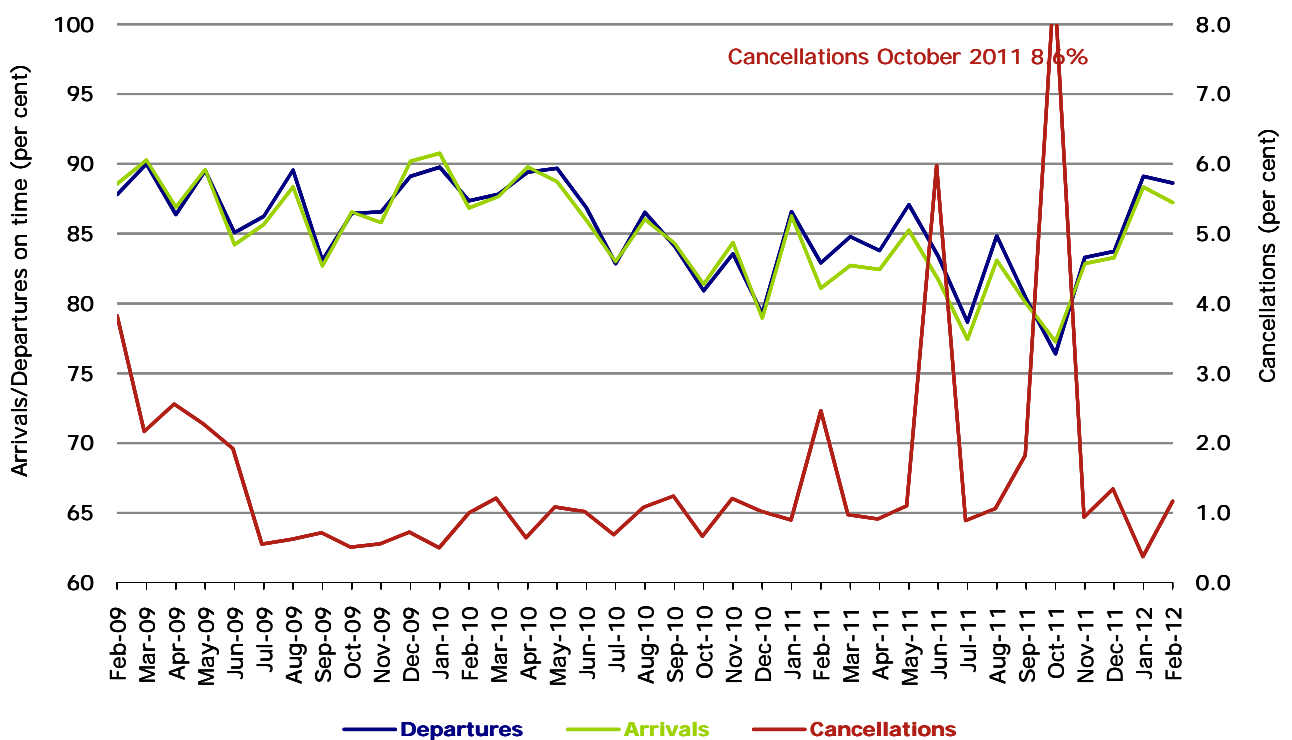
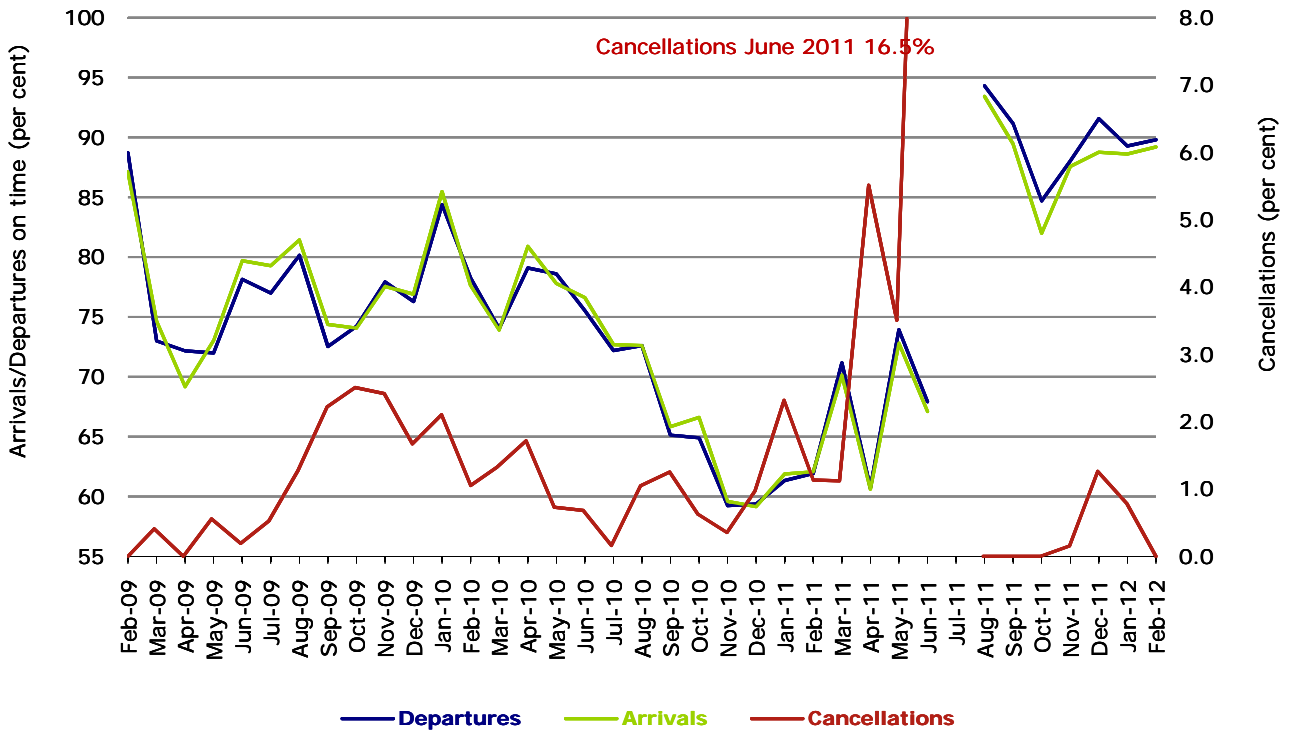
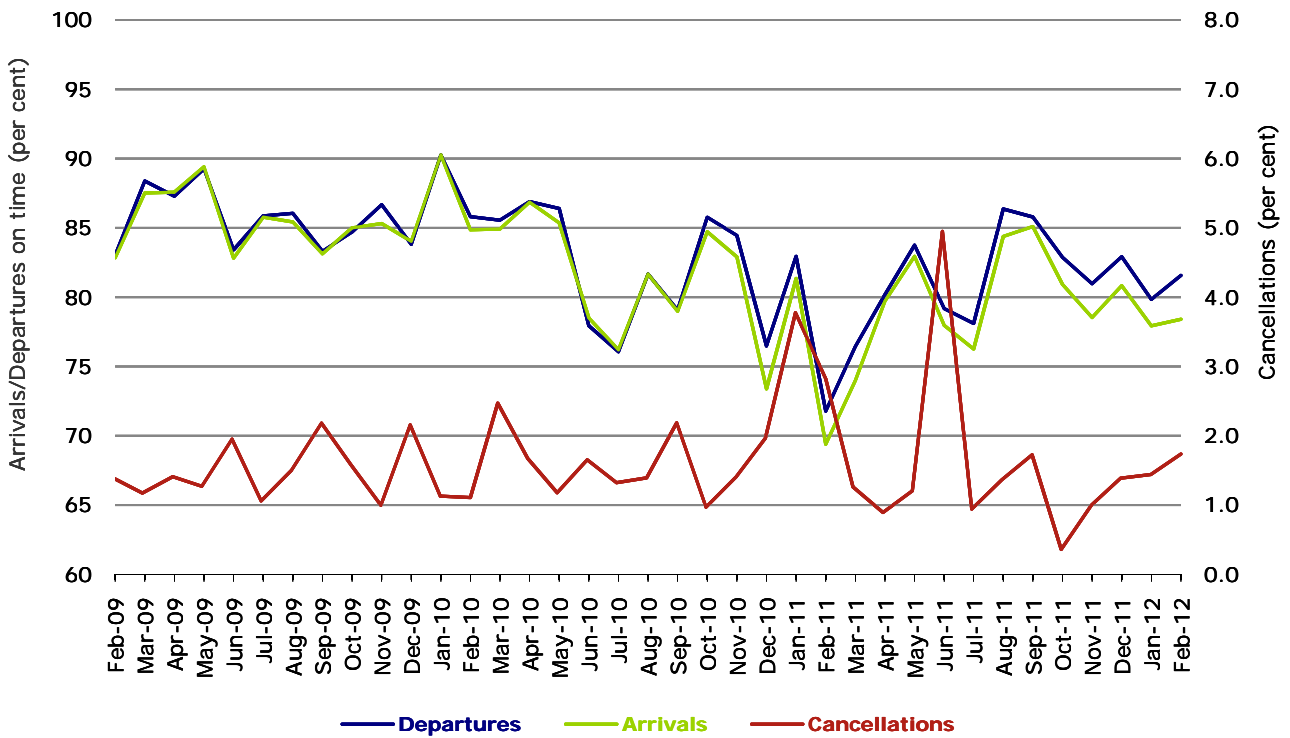


Figure 7 On time performance (by month from February 2009)—Tiger Airways



No data for Tiger Airways for July 2011 as it was grounded by CASA from 2/7/2011 to 11/8/2011.

Figure 8 On time performance (by month from February 2009)—Virgin Australia



Major regional airlines on time performance

Figure 9 On time performance (by month from February 2009)—QantasLink

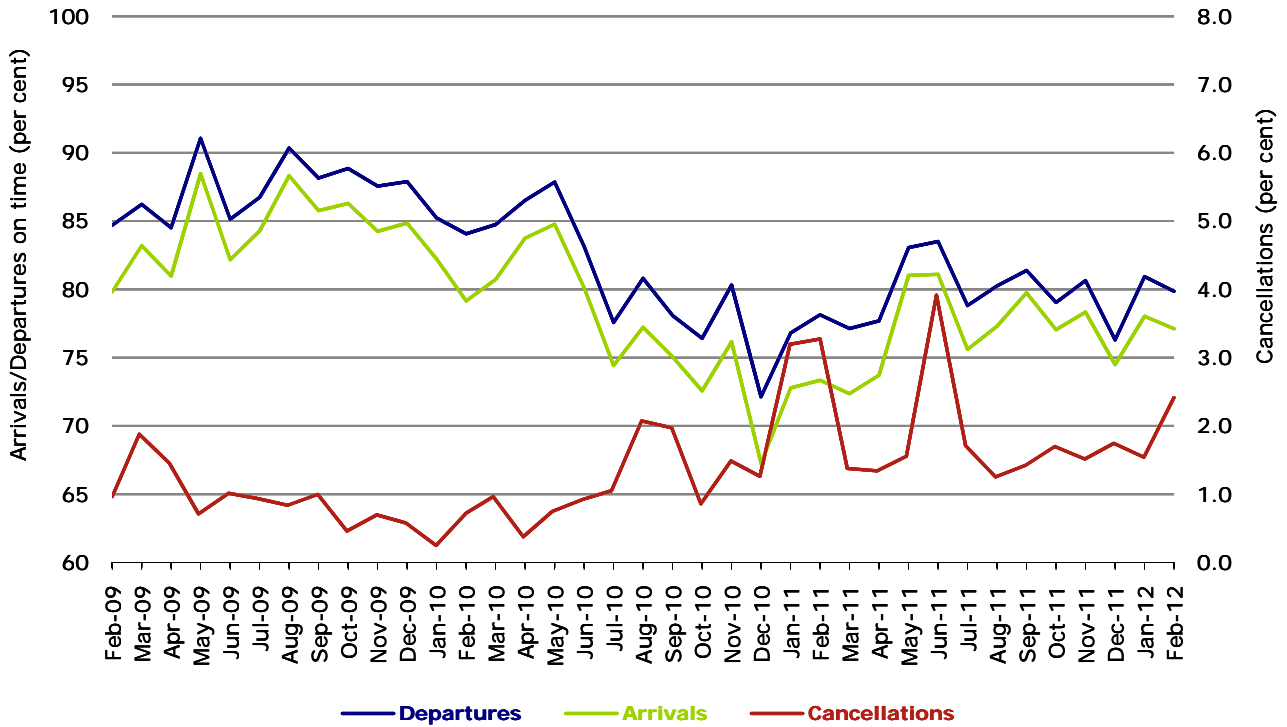


Figure 10 On time performance (by month from February 2009)—Regional Express

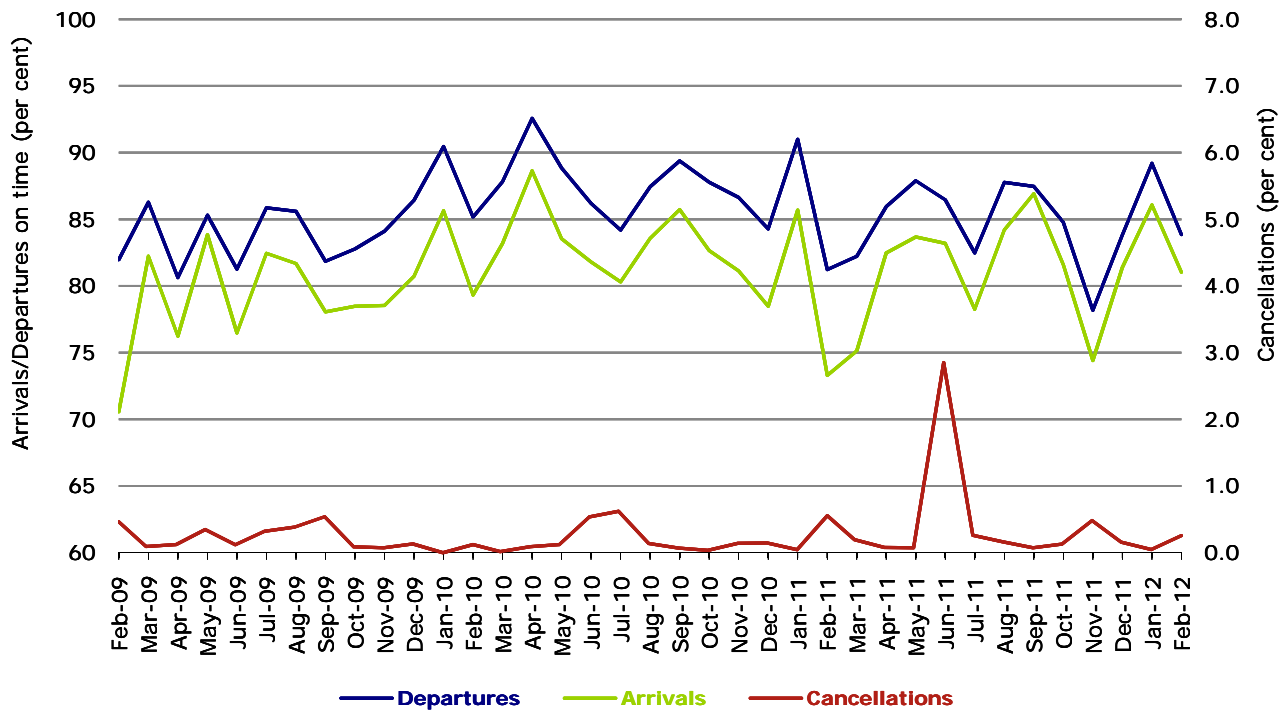


Figure 11 On time performance (by month from February 2009)—Skywest

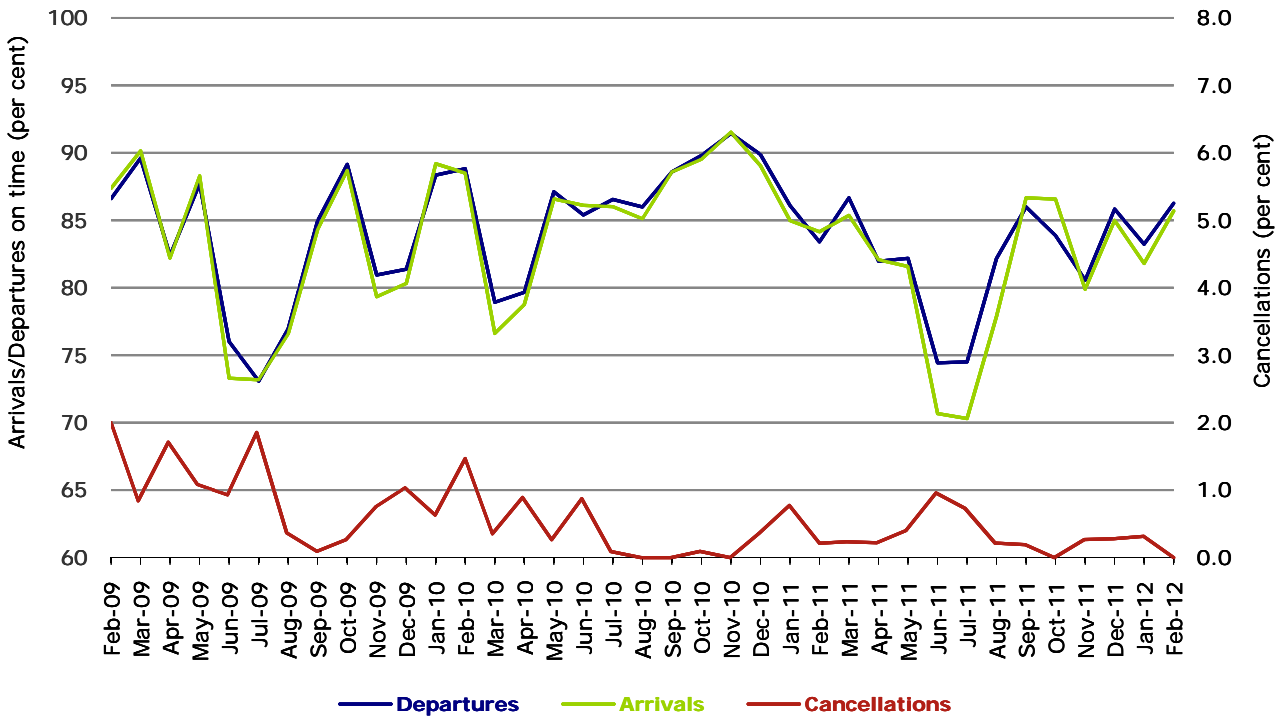
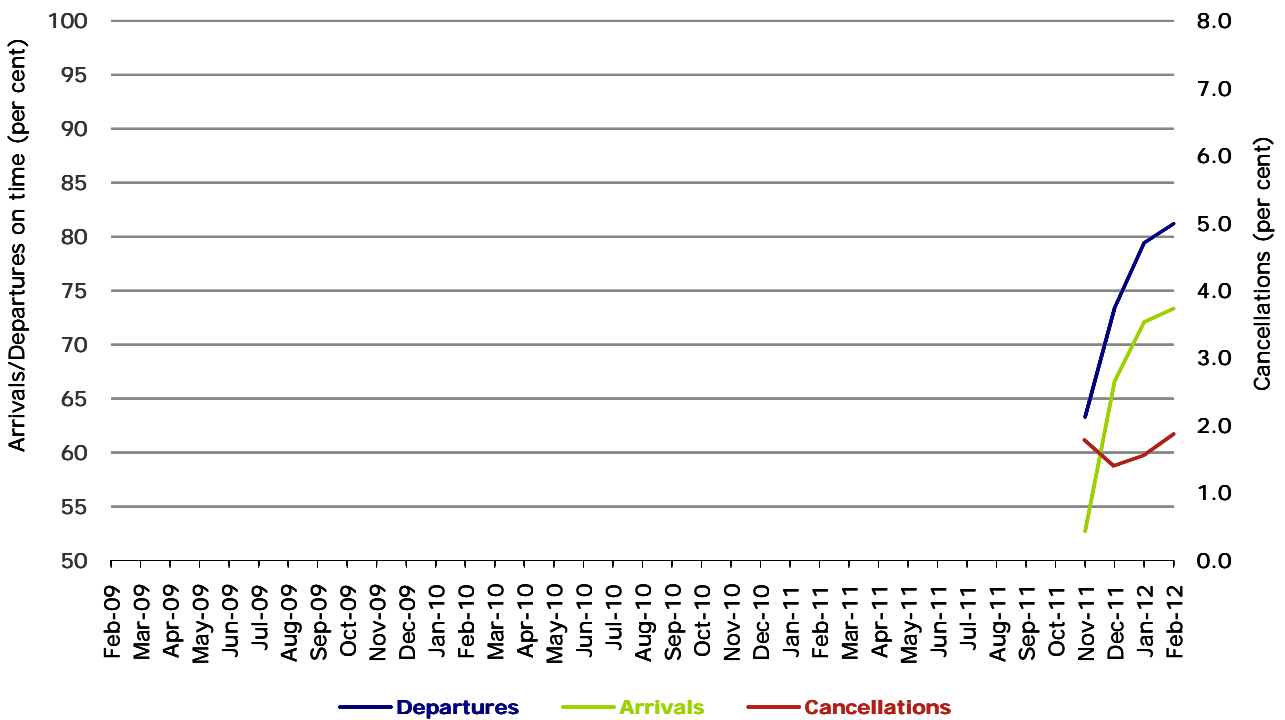


Figure 11 On time performance (by month from February 2009)
Virgin Australia - ATR/F100 Operations



Virgin Australia - ATR/F100 Operations commenced in November 2011.

Individual routes

On time performance is reported for all routes where the passenger load averages over 8000 passengers per month over the previous six months, and where two or more airlines operate in competition on those routes. There are now 54 routes which meet this definition. Over time, however, routes which meet this definition may change as airline networks and traffic levels vary.

	Sectors		Departures On Time		Arrivals On Time		Cancellations	
	Sched.	Flown	No.	%	No.	%	No.	%
Adelaide-Brisbane								
Jetstar	25	25	24	96.0	24	96.0	0	0.0
Qantas	103	103	99	96.1	89	86.4	0	0.0
Virgin Australia	87	86	76	88.4	69	80.2	1	1.1
All Airlines	215	214	199	93.0	182	85.0	1	0.5
Adelaide-Canberra								
Qantas	46	46	41	89.1	40	87.0	0	0.0
Virgin Australia	29	29	25	86.2	25	86.2	0	0.0
All Airlines	75	75	66	88.0	65	86.7	0	0.0
Adelaide-Gold Coast								
Jetstar	29	29	25	86.2	27	93.1	0	0.0
Virgin Australia	29	27	27	100.0	26	96.3	2	6.9
All Airlines	58	56	52	92.9	53	94.6	2	3.4
Adelaide-Melbourne								
Jetstar	79	78	68	87.2	68	87.2	1	1.3
Qantas	285	284	266	93.7	268	94.4	1	0.4
QantasLink	17	16	13	81.3	13	81.3	1	5.9
Virgin Australia	286	275	243	88.4	237	86.2	11	3.8
All Airlines	667	653	590	90.4	586	89.7	14	2.1
Adelaide-Perth								
Jetstar	29	28	20	71.4	23	82.1	1	3.4
Qantas	109	109	98	89.9	101	92.7	0	0.0
Virgin Australia	58	56	44	78.6	49	87.5	2	3.4
All Airlines	196	193	162	83.9	173	89.6	3	1.5
Adelaide-Port Lincoln								
QantasLink	95	94	85	90.4	84	89.4	1	1.1
Regional Express	186	186	178	95.7	178	95.7	0	0.0
All Airlines	281	280	263	93.9	262	93.6	1	0.4
Adelaide-Sydney								
Jetstar	75	73	58	79.5	55	75.3	2	2.7
Qantas	264	260	246	94.6	236	90.8	4	1.5
Virgin Australia	145	142	122	85.9	113	79.6	3	2.1
All Airlines	484	475	426	89.7	404	85.1	9	1.9
Albury-Sydney								
QantasLink	112	112	92	82.1	82	73.2	0	0.0
Regional Express	105	105	74	70.5	69	65.7	0	0.0
Virgin Australia	58	56	54	96.4	51	91.1	2	3.4
All Airlines	275	273	220	80.6	202	74.0	2	0.7
Ayers Rock-Sydney								
Qantas	29	29	23	79.3	23	79.3	0	0.0
Virgin Australia	29	28	22	78.6	23	82.1	1	3.4
All Airlines	58	57	45	78.9	46	80.7	1	1.7

	<i>Sectors</i>		<i>Departures On Time</i>		<i>Arrivals On Time</i>		<i>Cancellations</i>	
	<i>Sched.</i>	<i>Flown</i>	<i>No.</i>	<i>%</i>	<i>No.</i>	<i>%</i>	<i>No.</i>	<i>%</i>
Ballina-Sydney								
Jetstar	29	29	20	69.0	15	51.7	0	0.0
Regional Express	49	49	30	61.2	28	57.1	0	0.0
Virgin Australia	29	29	22	75.9	17	58.6	0	0.0
All Airlines	107	107	72	67.3	60	56.1	0	0.0
Brisbane-Adelaide								
Jetstar	25	25	24	96.0	24	96.0	0	0.0
Qantas	103	103	88	85.4	92	89.3	0	0.0
Virgin Australia	87	85	73	85.9	78	91.8	2	2.3
All Airlines	215	213	185	86.9	194	91.1	2	0.9
Brisbane-Cairns								
Jetstar	87	85	78	91.8	77	90.6	2	2.3
Qantas	101	101	87	86.1	91	90.1	0	0.0
Virgin Australia	141	141	119	84.4	116	82.3	0	0.0
Virgin Australia - ATR/F100 Operations	15	14	14	100.0	13	92.9	1	6.7
All Airlines	344	341	298	87.4	297	87.1	3	0.9
Brisbane-Canberra								
Qantas	137	137	130	94.9	129	94.2	0	0.0
QantasLink	20	18	15	83.3	15	83.3	2	10.0
Virgin Australia	116	115	102	88.7	100	87.0	1	0.9
All Airlines	273	270	247	91.5	244	90.4	3	1.1
Brisbane-Darwin								
Qantas	29	29	24	82.8	21	72.4	0	0.0
Virgin Australia	29	29	22	75.9	21	72.4	0	0.0
All Airlines	58	58	46	79.3	42	72.4	0	0.0
Brisbane-Gladstone								
QantasLink	207	202	147	72.8	148	73.3	5	2.4
Virgin Australia - ATR/F100 Operations	69	69	63	91.3	63	91.3	0	0.0
All Airlines	276	271	210	77.5	211	77.9	5	1.8
Brisbane-Hamilton Island								
Jetstar	16	16	8	50.0	13	81.3	0	0.0
Virgin Australia	29	29	28	96.6	26	89.7	0	0.0
All Airlines	45	45	36	80.0	39	86.7	0	0.0
Brisbane-Mackay								
Jetstar	86	85	61	71.8	63	74.1	1	1.2
QantasLink	100	98	85	86.7	84	85.7	2	2.0
Virgin Australia	159	159	140	88.1	138	86.8	0	0.0
All Airlines	345	342	286	83.6	285	83.3	3	0.9
Brisbane-Melbourne								
Jetstar	68	66	54	81.8	56	84.8	2	2.9
Qantas	391	389	350	90.0	349	89.7	2	0.5
Tiger Airways	70	70	58	82.9	59	84.3	0	0.0
Virgin Australia	366	361	306	84.8	318	88.1	5	1.4
All Airlines	895	886	768	86.7	782	88.3	9	1.0
Brisbane-Newcastle								
Jetstar	99	96	79	82.3	80	83.3	3	3.0
QantasLink	67	64	42	65.6	30	46.9	3	4.5
Virgin Australia	24	24	21	87.5	17	70.8	0	0.0
Virgin Australia - ATR/F100 Operations	34	34	25	73.5	24	70.6	0	0.0
All Airlines	224	218	167	76.6	151	69.3	6	2.7

	<i>Sectors</i>		<i>Departures</i>		<i>Arrivals</i>		<i>Cancellations</i>	
	<i>Sched.</i>	<i>Flown</i>	<i>On Time</i>		<i>On Time</i>		<i>No.</i>	<i>%</i>
			<i>No.</i>	<i>%</i>	<i>No.</i>	<i>%</i>		
Brisbane-Perth								
Jetstar	21	21	19	90.5	18	85.7	0	0.0
Qantas	116	116	94	81.0	92	79.3	0	0.0
Virgin Australia	70	70	61	87.1	60	85.7	0	0.0
All Airlines	207	207	174	84.1	170	82.1	0	0.0
Brisbane-Proserpine								
Jetstar	21	21	18	85.7	17	81.0	0	0.0
Virgin Australia	30	29	27	93.1	27	93.1	1	3.3
Virgin Australia - ATR/F100 Operations	12	12	12	100.0	12	100.0	0	0.0
All Airlines	63	62	57	91.9	56	90.3	1	1.6
Brisbane-Rockhampton								
QantasLink	204	199	158	79.4	163	81.9	5	2.5
Virgin Australia	104	104	89	85.6	88	84.6	0	0.0
Virgin Australia - ATR/F100 Operations	52	50	41	82.0	42	84.0	2	3.8
All Airlines	360	353	288	81.6	293	83.0	7	1.9
Brisbane-Sydney								
Jetstar	89	87	44	50.6	56	64.4	2	2.2
Qantas	560	549	473	86.2	457	83.2	11	2.0
Virgin Australia	563	556	430	77.3	416	74.8	7	1.2
All Airlines	1 212	1 192	947	79.4	929	77.9	20	1.7
Brisbane-Townsville								
Jetstar	29	29	19	65.5	22	75.9	0	0.0
Qantas	127	127	116	91.3	112	88.2	0	0.0
Virgin Australia	158	157	133	84.7	136	86.6	1	0.6
All Airlines	314	313	268	85.6	270	86.3	1	0.3
Broome-Perth								
Qantas	29	29	22	75.9	25	86.2	0	0.0
QantasLink	37	34	27	79.4	27	79.4	3	8.1
Skywest	11	11	9	81.8	8	72.7	0	0.0
Virgin Australia	29	28	23	82.1	23	82.1	1	3.4
All Airlines	106	102	81	79.4	83	81.4	4	3.8
Cairns-Brisbane								
Jetstar	87	86	74	86.0	76	88.4	1	1.1
Qantas	101	101	94	93.1	93	92.1	0	0.0
Virgin Australia	142	141	121	85.8	119	84.4	1	0.7
Virgin Australia - ATR/F100 Operations	15	13	11	84.6	11	84.6	2	13.3
All Airlines	345	341	300	88.0	299	87.7	4	1.2
Cairns-Melbourne								
Jetstar	29	29	28	96.6	27	93.1	0	0.0
Qantas	29	29	24	82.8	26	89.7	0	0.0
Virgin Australia	32	32	28	87.5	24	75.0	0	0.0
All Airlines	90	90	80	88.9	77	85.6	0	0.0
Cairns-Sydney								
Jetstar	29	29	27	93.1	28	96.6	0	0.0
Qantas	86	85	76	89.4	80	94.1	1	1.2
Virgin Australia	87	86	77	89.5	77	89.5	1	1.1
All Airlines	202	200	180	90.0	185	92.5	2	1.0
Cairns-Townsville								
QantasLink	177	175	144	82.3	134	76.6	2	1.1
Virgin Australia	29	28	24	85.7	25	89.3	1	3.4
All Airlines	206	203	168	82.8	159	78.3	3	1.5

	<i>Sectors</i>		<i>Departures</i>		<i>Arrivals</i>		<i>Cancellations</i>	
	<i>Sched.</i>	<i>Flown</i>	<i>On Time</i>		<i>On Time</i>			
			<i>No.</i>	<i>%</i>	<i>No.</i>	<i>%</i>	<i>No.</i>	<i>%</i>
Canberra-Adelaide								
Qantas	50	50	46	92.0	47	94.0	0	0.0
Virgin Australia	29	29	24	82.8	23	79.3	0	0.0
All Airlines	79	79	70	88.6	70	88.6	0	0.0
Canberra-Brisbane								
Qantas	137	137	132	96.4	121	88.3	0	0.0
QantasLink	20	18	11	61.1	11	61.1	2	10.0
Virgin Australia	116	115	109	94.8	103	89.6	1	0.9
All Airlines	273	270	252	93.3	235	87.0	3	1.1
Canberra-Melbourne								
Qantas	250	248	228	91.9	225	90.7	2	0.8
QantasLink	37	35	30	85.7	29	82.9	2	5.4
Virgin Australia	162	161	133	82.6	119	73.9	1	0.6
All Airlines	449	444	391	88.1	373	84.0	5	1.1
Canberra-Sydney								
Qantas	158	156	139	89.1	135	86.5	2	1.3
QantasLink	382	354	286	80.8	256	72.3	28	7.3
Virgin Australia	83	78	67	85.9	52	66.7	5	6.0
Virgin Australia - ATR/F100 Operations	165	162	116	71.6	80	49.4	3	1.8
All Airlines	788	750	608	81.1	523	69.7	38	4.8
Coffs Harbour-Sydney								
QantasLink	138	136	101	74.3	112	82.4	2	1.4
Virgin Australia	58	57	47	82.5	46	80.7	1	1.7
All Airlines	196	193	148	76.7	158	81.9	3	1.5
Darwin-Brisbane								
Qantas	29	29	21	72.4	22	75.9	0	0.0
Virgin Australia	29	29	21	72.4	23	79.3	0	0.0
All Airlines	58	58	42	72.4	45	77.6	0	0.0
Darwin-Melbourne								
Qantas	12	12	12	100.0	12	100.0	0	0.0
Virgin Australia	29	29	28	96.6	28	96.6	0	0.0
All Airlines	41	41	40	97.6	40	97.6	0	0.0
Darwin-Perth								
Qantas	29	29	28	96.6	29	100.0	0	0.0
Virgin Australia	24	24	22	91.7	21	87.5	0	0.0
All Airlines	53	53	50	94.3	50	94.3	0	0.0
Dubbo-Sydney								
QantasLink	104	104	78	75.0	68	65.4	0	0.0
Regional Express	158	157	116	73.9	110	70.1	1	0.6
All Airlines	262	261	194	74.3	178	68.2	1	0.4
Gladstone-Brisbane								
QantasLink	228	221	153	69.2	145	65.6	7	3.1
Virgin Australia - ATR/F100 Operations	69	69	62	89.9	60	87.0	0	0.0
All Airlines	297	290	215	74.1	205	70.7	7	2.4
Gold Coast-Adelaide								
Jetstar	29	29	27	93.1	25	86.2	0	0.0
Virgin Australia	29	27	26	96.3	27	100.0	2	6.9
All Airlines	58	56	53	94.6	52	92.9	2	3.4

	<i>Sectors</i>		<i>Departures</i>		<i>Arrivals</i>		<i>Cancellations</i>	
	<i>Sched.</i>	<i>Flown</i>	<i>On Time</i>		<i>On Time</i>		<i>No.</i>	<i>%</i>
			<i>No.</i>	<i>%</i>	<i>No.</i>	<i>%</i>		
Gold Coast-Melbourne								
Jetstar	215	208	169	81.3	172	82.7	7	3.3
Tiger Airways	61	61	50	82.0	53	86.9	0	0.0
Virgin Australia	203	200	166	83.0	169	84.5	3	1.5
All Airlines	479	469	385	82.1	394	84.0	10	2.1
Gold Coast-Sydney								
Jetstar	264	260	192	73.8	205	78.8	4	1.5
Virgin Australia	344	332	234	70.5	221	66.6	12	3.5
All Airlines	608	592	426	72.0	426	72.0	16	2.6
Hamilton Island-Brisbane								
Jetstar	16	16	12	75.0	14	87.5	0	0.0
Virgin Australia	29	29	25	86.2	25	86.2	0	0.0
All Airlines	45	45	37	82.2	39	86.7	0	0.0
Hamilton Island-Sydney								
Jetstar	29	29	24	82.8	26	89.7	0	0.0
Virgin Australia	29	29	22	75.9	24	82.8	0	0.0
All Airlines	58	58	46	79.3	50	86.2	0	0.0
Hobart-Melbourne								
Jetstar	160	157	108	68.8	103	65.6	3	1.9
Qantas	63	63	58	92.1	54	85.7	0	0.0
Virgin Australia	132	129	100	77.5	101	78.3	3	2.3
All Airlines	355	349	266	76.2	258	73.9	6	1.7
Hobart-Sydney								
Jetstar	58	58	46	79.3	44	75.9	0	0.0
Qantas	29	29	26	89.7	24	82.8	0	0.0
Virgin Australia	58	58	42	72.4	38	65.5	0	0.0
All Airlines	145	145	114	78.6	106	73.1	0	0.0
Kalgoorlie-Perth								
Qantas	63	63	52	82.5	54	85.7	0	0.0
QantasLink	16	15	15	100.0	15	100.0	1	6.3
Skywest	12	12	11	91.7	10	83.3	0	0.0
All Airlines	91	90	78	86.7	79	87.8	1	1.1
Karratha-Perth								
Qantas	188	185	166	89.7	160	86.5	3	1.6
QantasLink	57	54	46	85.2	48	88.9	3	5.3
Virgin Australia	60	57	46	80.7	41	71.9	3	5.0
All Airlines	305	296	258	87.2	249	84.1	9	3.0
Launceston-Melbourne								
Jetstar	103	101	76	75.2	76	75.2	2	1.9
QantasLink	70	69	47	68.1	42	60.9	1	1.4
Virgin Australia	128	124	96	77.4	93	75.0	4	3.1
All Airlines	301	294	219	74.5	211	71.8	7	2.3
Launceston-Sydney								
Jetstar	41	40	27	67.5	28	70.0	1	2.4
Virgin Australia	29	29	17	58.6	14	48.3	0	0.0
All Airlines	70	69	44	63.8	42	60.9	1	1.4

	<i>Sectors</i>		<i>Departures</i>		<i>Arrivals</i>		<i>Cancellations</i>	
	<i>Sched.</i>	<i>Flown</i>	<i>On Time</i>		<i>On Time</i>			
			<i>No.</i>	<i>%</i>	<i>No.</i>	<i>%</i>	<i>No.</i>	<i>%</i>
Mackay-Brisbane								
Jetstar	86	85	55	64.7	57	67.1	1	1.2
QantasLink	100	98	82	83.7	77	78.6	2	2.0
Virgin Australia	159	159	140	88.1	132	83.0	0	0.0
All Airlines	345	342	277	81.0	266	77.8	3	0.9
Melbourne-Adelaide								
Jetstar	78	78	62	79.5	61	78.2	0	0.0
Qantas	285	285	261	91.6	265	93.0	0	0.0
QantasLink	17	16	11	68.8	11	68.8	1	5.9
Virgin Australia	287	278	231	83.1	227	81.7	9	3.1
All Airlines	667	657	565	86.0	564	85.8	10	1.5
Melbourne-Brisbane								
Jetstar	68	66	52	78.8	50	75.8	2	2.9
Qantas	391	387	353	91.2	314	81.1	4	1.0
Tiger Airways	70	70	67	95.7	62	88.6	0	0.0
Virgin Australia	365	360	309	85.8	268	74.4	5	1.4
All Airlines	894	883	781	88.4	694	78.6	11	1.2
Melbourne-Cairns								
Jetstar	29	29	26	89.7	28	96.6	0	0.0
Qantas	29	29	26	89.7	27	93.1	0	0.0
Virgin Australia	33	33	27	81.8	24	72.7	0	0.0
All Airlines	91	91	79	86.8	79	86.8	0	0.0
Melbourne-Canberra								
Qantas	250	249	227	91.2	224	90.0	1	0.4
QantasLink	37	35	30	85.7	26	74.3	2	5.4
Virgin Australia	162	162	132	81.5	126	77.8	0	0.0
All Airlines	449	446	389	87.2	376	84.3	3	0.7
Melbourne-Darwin								
Qantas	12	12	12	100.0	12	100.0	0	0.0
Virgin Australia	29	28	27	96.4	25	89.3	1	3.4
All Airlines	41	40	39	97.5	37	92.5	1	2.4
Melbourne-Gold Coast								
Jetstar	214	209	167	79.9	163	78.0	5	2.3
Tiger Airways	61	61	57	93.4	52	85.2	0	0.0
Virgin Australia	203	200	157	78.5	150	75.0	3	1.5
All Airlines	478	470	381	81.1	365	77.7	8	1.7
Melbourne-Hobart								
Jetstar	162	159	114	71.7	121	76.1	3	1.9
Qantas	63	63	54	85.7	55	87.3	0	0.0
Virgin Australia	132	128	104	81.3	105	82.0	4	3.0
All Airlines	357	350	272	77.7	281	80.3	7	2.0
Melbourne-Launceston								
Jetstar	102	102	77	75.5	84	82.4	0	0.0
QantasLink	70	69	48	69.6	44	63.8	1	1.4
Virgin Australia	128	125	95	76.0	97	77.6	3	2.3
All Airlines	300	296	220	74.3	225	76.0	4	1.3
Melbourne-Mildura								
QantasLink	83	82	63	76.8	56	68.3	1	1.2
Regional Express	80	80	72	90.0	70	87.5	0	0.0
Virgin Australia	29	27	22	81.5	22	81.5	2	6.9
All Airlines	192	189	157	83.1	148	78.3	3	1.6

	<i>Sectors</i>		<i>Departures</i>		<i>Arrivals</i>		<i>Cancellations</i>	
	<i>Sched.</i>	<i>Flown</i>	<i>On Time</i>		<i>On Time</i>		<i>No.</i>	<i>%</i>
			<i>No.</i>	<i>%</i>	<i>No.</i>	<i>%</i>		
Melbourne-Newcastle								
Jetstar	87	84	62	73.8	64	76.2	3	3.4
Virgin Australia	29	28	19	67.9	20	71.4	1	3.4
All Airlines	116	112	81	72.3	84	75.0	4	3.4
Melbourne-Perth								
Jetstar	64	63	45	71.4	48	76.2	1	1.6
Qantas	203	203	172	84.7	177	87.2	0	0.0
Tiger Airways	37	37	37	100.0	37	100.0	0	0.0
Virgin Australia	145	144	125	86.8	123	85.4	1	0.7
All Airlines	449	447	379	84.8	385	86.1	2	0.4
Melbourne-Sunshine Coast								
Jetstar	41	41	29	70.7	29	70.7	0	0.0
Virgin Australia	29	28	22	78.6	19	67.9	1	3.4
All Airlines	70	69	51	73.9	48	69.6	1	1.4
Melbourne-Sydney								
Jetstar	206	196	130	66.3	136	69.4	10	4.9
Qantas	877	845	736	87.1	687	81.3	32	3.6
Tiger Airways	165	165	152	92.1	154	93.3	0	0.0
Virgin Australia	802	784	646	82.4	563	71.8	18	2.2
All Airlines	2 050	1 990	1 664	83.6	1 540	77.4	60	2.9
Mildura-Melbourne								
QantasLink	83	83	74	89.2	64	77.1	0	0.0
Regional Express	79	79	73	92.4	74	93.7	0	0.0
Virgin Australia	29	27	23	85.2	22	81.5	2	6.9
All Airlines	191	189	170	89.9	160	84.7	2	1.0
Newcastle-Brisbane								
Jetstar	99	97	70	72.2	66	68.0	2	2.0
QantasLink	67	64	29	45.3	33	51.6	3	4.5
Virgin Australia	24	24	18	75.0	14	58.3	0	0.0
Virgin Australia - ATR/F100 Operations	34	34	20	58.8	20	58.8	0	0.0
All Airlines	224	219	137	62.6	133	60.7	5	2.2
Newcastle-Melbourne								
Jetstar	87	85	67	78.8	69	81.2	2	2.3
Virgin Australia	29	27	16	59.3	19	70.4	2	6.9
All Airlines	116	112	83	74.1	88	78.6	4	3.4
Newman-Perth								
Qantas	69	69	61	88.4	60	87.0	0	0.0
QantasLink	54	52	50	96.2	48	92.3	2	3.7
Virgin Australia	30	29	24	82.8	25	86.2	1	3.3
All Airlines	153	150	135	90.0	133	88.7	3	2.0
Perth-Adelaide								
Jetstar	29	28	23	82.1	24	85.7	1	3.4
Qantas	108	107	98	91.6	97	90.7	1	0.9
Virgin Australia	57	56	55	98.2	55	98.2	1	1.8
All Airlines	194	191	176	92.1	176	92.1	3	1.5
Perth-Brisbane								
Jetstar	21	21	11	52.4	12	57.1	0	0.0
Qantas	116	116	106	91.4	97	83.6	0	0.0
Virgin Australia	70	70	68	97.1	58	82.9	0	0.0
All Airlines	207	207	185	89.4	167	80.7	0	0.0

	<i>Sectors</i>		<i>Departures</i>		<i>Arrivals</i>		<i>Cancellations</i>	
	<i>Sched.</i>	<i>Flown</i>	<i>No.</i>	<i>%</i>	<i>No.</i>	<i>%</i>	<i>No.</i>	<i>%</i>
Perth-Broome								
Qantas	29	29	22	75.9	26	89.7	0	0.0
QantasLink	37	34	29	85.3	28	82.4	3	8.1
Skywest	8	8	7	87.5	7	87.5	0	0.0
Virgin Australia	29	28	24	85.7	25	89.3	1	3.4
All Airlines	103	99	82	82.8	86	86.9	4	3.9
Perth-Darwin								
Qantas	29	29	27	93.1	28	96.6	0	0.0
Virgin Australia	24	24	22	91.7	20	83.3	0	0.0
All Airlines	53	53	49	92.5	48	90.6	0	0.0
Perth-Kalgoorlie								
Qantas	63	63	59	93.7	59	93.7	0	0.0
QantasLink	16	16	14	87.5	13	81.3	0	0.0
Skywest	12	12	11	91.7	10	83.3	0	0.0
All Airlines	91	91	84	92.3	82	90.1	0	0.0
Perth-Karratha								
Qantas	188	185	170	91.9	167	90.3	3	1.6
QantasLink	58	56	50	89.3	51	91.1	2	3.4
Virgin Australia	59	58	48	82.8	47	81.0	1	1.7
All Airlines	305	299	268	89.6	265	88.6	6	2.0
Perth-Melbourne								
Jetstar	65	63	45	71.4	48	76.2	2	3.1
Qantas	202	201	167	83.1	170	84.6	1	0.5
Tiger Airways	37	37	35	94.6	32	86.5	0	0.0
Virgin Australia	145	143	132	92.3	120	83.9	2	1.4
All Airlines	449	444	379	85.4	370	83.3	5	1.1
Perth-Newman								
Qantas	69	69	64	92.8	67	97.1	0	0.0
QantasLink	54	52	48	92.3	47	90.4	2	3.7
Virgin Australia	30	29	23	79.3	23	79.3	1	3.3
All Airlines	153	150	135	90.0	137	91.3	3	2.0
Perth-Port Hedland								
Qantas	84	84	78	92.9	80	95.2	0	0.0
QantasLink	33	31	30	96.8	31	100.0	2	6.1
Virgin Australia	73	71	64	90.1	69	97.2	2	2.7
All Airlines	190	186	172	92.5	180	96.8	4	2.1
Perth-Sydney								
Jetstar	37	37	34	91.9	30	81.1	0	0.0
Qantas	200	198	169	85.4	168	84.8	2	1.0
Virgin Australia	141	141	126	89.4	93	66.0	0	0.0
All Airlines	378	376	329	87.5	291	77.4	2	0.5
Port Hedland-Perth								
Qantas	84	84	76	90.5	79	94.0	0	0.0
QantasLink	33	31	31	100.0	31	100.0	2	6.1
Virgin Australia	71	71	66	93.0	60	84.5	0	0.0
All Airlines	188	186	173	93.0	170	91.4	2	1.1
Port Lincoln-Adelaide								
QantasLink	95	94	88	93.6	86	91.5	1	1.1
Regional Express	186	186	178	95.7	179	96.2	0	0.0
All Airlines	281	280	266	95.0	265	94.6	1	0.4

	<i>Sectors</i>		<i>Departures</i>		<i>Arrivals</i>		<i>Cancellations</i>	
	<i>Sched.</i>	<i>Flown</i>	<i>On Time</i>		<i>On Time</i>		<i>No.</i>	<i>%</i>
			<i>No.</i>	<i>%</i>	<i>No.</i>	<i>%</i>		
Port Macquarie-Sydney								
QantasLink	129	126	92	73.0	91	72.2	3	2.3
Virgin Australia - ATR/F100 Operations	58	56	49	87.5	39	69.6	2	3.4
All Airlines	187	182	141	77.5	130	71.4	5	2.7
Proserpine-Brisbane								
Jetstar	20	19	14	73.7	14	73.7	1	5.0
Virgin Australia	30	29	27	93.1	26	89.7	1	3.3
Virgin Australia - ATR/F100 Operations	12	12	11	91.7	8	66.7	0	0.0
All Airlines	62	60	52	86.7	48	80.0	2	3.2
Rockhampton-Brisbane								
QantasLink	183	180	137	76.1	130	72.2	3	1.6
Virgin Australia	105	105	87	82.9	84	80.0	0	0.0
Virgin Australia - ATR/F100 Operations	51	49	42	85.7	42	85.7	2	3.9
All Airlines	339	334	266	79.6	256	76.6	5	1.5
Sunshine Coast-Melbourne								
Jetstar	40	40	24	60.0	27	67.5	0	0.0
Virgin Australia	29	28	17	60.7	21	75.0	1	3.4
All Airlines	69	68	41	60.3	48	70.6	1	1.4
Sunshine Coast-Sydney								
Jetstar	87	87	62	71.3	62	71.3	0	0.0
Virgin Australia	33	33	30	90.9	30	90.9	0	0.0
All Airlines	120	120	92	76.7	92	76.7	0	0.0
Sydney-Adelaide								
Jetstar	74	73	62	84.9	64	87.7	1	1.4
Qantas	261	260	243	93.5	247	95.0	1	0.4
Virgin Australia	145	142	105	73.9	103	72.5	3	2.1
All Airlines	480	475	410	86.3	414	87.2	5	1.0
Sydney-Albury								
QantasLink	112	112	92	82.1	91	81.3	0	0.0
Regional Express	105	105	83	79.0	85	81.0	0	0.0
Virgin Australia	58	56	51	91.1	53	94.6	2	3.4
All Airlines	275	273	226	82.8	229	83.9	2	0.7
Sydney-Ayers Rock								
Qantas	29	29	25	86.2	24	82.8	0	0.0
Virgin Australia	29	29	21	72.4	20	69.0	0	0.0
All Airlines	58	58	46	79.3	44	75.9	0	0.0
Sydney-Ballina								
Jetstar	29	29	25	86.2	24	82.8	0	0.0
Regional Express	47	47	42	89.4	39	83.0	0	0.0
Virgin Australia	29	29	25	86.2	24	82.8	0	0.0
All Airlines	105	105	92	87.6	87	82.9	0	0.0
Sydney-Brisbane								
Jetstar	90	88	59	67.0	60	68.2	2	2.2
Qantas	560	553	465	84.1	445	80.5	7	1.3
Virgin Australia	564	556	433	77.9	406	73.0	8	1.4
All Airlines	1 214	1 197	957	79.9	911	76.1	17	1.4

	<i>Sectors</i>		<i>Departures</i>		<i>Arrivals</i>		<i>Cancellations</i>	
	<i>Sched.</i>	<i>Flown</i>	<i>No.</i>	<i>%</i>	<i>No.</i>	<i>%</i>	<i>No.</i>	<i>%</i>
Sydney-Cairns								
Jetstar	29	29	25	86.2	27	93.1	0	0.0
Qantas	86	86	76	88.4	78	90.7	0	0.0
Virgin Australia	86	86	51	59.3	45	52.3	0	0.0
All Airlines	201	201	152	75.6	150	74.6	0	0.0
Sydney-Canberra								
Qantas	162	159	138	86.8	135	84.9	3	1.9
QantasLink	382	359	280	78.0	277	77.2	23	6.0
Virgin Australia	82	79	62	78.5	49	62.0	3	3.7
Virgin Australia - ATR/F100 Operations	166	163	126	77.3	110	67.5	3	1.8
All Airlines	792	760	606	79.7	571	75.1	32	4.0
Sydney-Coffs Harbour								
QantasLink	137	137	117	85.4	112	81.8	0	0.0
Virgin Australia	58	57	43	75.4	46	80.7	1	1.7
All Airlines	195	194	160	82.5	158	81.4	1	0.5
Sydney-Dubbo								
QantasLink	104	104	84	80.8	83	79.8	0	0.0
Regional Express	155	154	128	83.1	130	84.4	1	0.6
All Airlines	259	258	212	82.2	213	82.6	1	0.4
Sydney-Gold Coast								
Jetstar	261	257	205	79.8	198	77.0	4	1.5
Virgin Australia	344	334	237	71.0	227	68.0	10	2.9
All Airlines	605	591	442	74.8	425	71.9	14	2.3
Sydney-Hamilton Island								
Jetstar	29	29	27	93.1	26	89.7	0	0.0
Virgin Australia	29	29	22	75.9	16	55.2	0	0.0
All Airlines	58	58	49	84.5	42	72.4	0	0.0
Sydney-Hobart								
Jetstar	58	58	51	87.9	50	86.2	0	0.0
Qantas	29	29	25	86.2	27	93.1	0	0.0
Virgin Australia	58	58	43	74.1	48	82.8	0	0.0
All Airlines	145	145	119	82.1	125	86.2	0	0.0
Sydney-Launceston								
Jetstar	41	40	31	77.5	32	80.0	1	2.4
Virgin Australia	29	29	16	55.2	18	62.1	0	0.0
All Airlines	70	69	47	68.1	50	72.5	1	1.4
Sydney-Melbourne								
Jetstar	201	197	153	77.7	140	71.1	4	2.0
Qantas	877	843	743	88.1	731	86.7	34	3.9
Tiger Airways	165	165	142	86.1	145	87.9	0	0.0
Virgin Australia	801	783	598	76.4	622	79.4	18	2.2
All Airlines	2 044	1 988	1 636	82.3	1 638	82.4	56	2.7
Sydney-Perth								
Jetstar	37	37	33	89.2	34	91.9	0	0.0
Qantas	199	199	157	78.9	170	85.4	0	0.0
Virgin Australia	141	141	110	78.0	113	80.1	0	0.0
All Airlines	377	377	300	79.6	317	84.1	0	0.0

	<i>Sectors</i>		<i>Departures On Time</i>		<i>Arrivals On Time</i>		<i>Cancellations</i>	
	<i>Sched.</i>	<i>Flown</i>	<i>No.</i>	<i>%</i>	<i>No.</i>	<i>%</i>	<i>No.</i>	<i>%</i>
Sydney-Port Macquarie								
QantasLink	130	127	104	81.9	103	81.1	3	2.3
Virgin Australia - ATR/F100 Operations	58	57	49	86.0	43	75.4	1	1.7
All Airlines	188	184	153	83.2	146	79.3	4	2.1
Sydney-Sunshine Coast								
Jetstar	87	87	65	74.7	66	75.9	0	0.0
Virgin Australia	33	33	31	93.9	30	90.9	0	0.0
All Airlines	120	120	96	80.0	96	80.0	0	0.0
Sydney-Townsville								
Jetstar	21	21	18	85.7	17	81.0	0	0.0
Virgin Australia	29	29	16	55.2	14	48.3	0	0.0
All Airlines	50	50	34	68.0	31	62.0	0	0.0
Sydney-Wagga Wagga								
QantasLink	108	108	93	86.1	84	77.8	0	0.0
Regional Express	100	100	77	77.0	82	82.0	0	0.0
All Airlines	208	208	170	81.7	166	79.8	0	0.0
Townsville-Brisbane								
Jetstar	29	29	19	65.5	21	72.4	0	0.0
Qantas	127	127	119	93.7	119	93.7	0	0.0
Virgin Australia	158	157	142	90.4	132	84.1	1	0.6
All Airlines	314	313	280	89.5	272	86.9	1	0.3
Townsville-Cairns								
QantasLink	177	175	126	72.0	119	68.0	2	1.1
Virgin Australia	29	28	25	89.3	25	89.3	1	3.4
All Airlines	206	203	151	74.4	144	70.9	3	1.5
Townsville-Sydney								
Jetstar	20	20	16	80.0	17	85.0	0	0.0
Virgin Australia	29	29	14	48.3	16	55.2	0	0.0
All Airlines	49	49	30	61.2	33	67.3	0	0.0
Wagga Wagga-Sydney								
QantasLink	108	108	96	88.9	82	75.9	0	0.0
Regional Express	101	101	80	79.2	69	68.3	0	0.0
All Airlines	209	209	176	84.2	151	72.2	0	0.0

Airports

On time performance is reported for all routes where the passenger load averages over 8000 passengers per month, and where two or more airlines operate in competition. The following data reports by airport against flights operated on those routes only.

Airport	Departures			Arrivals		
	Sectors	On Time		Sectors	On Time	
	Flown	No.	%	Flown	No.	%
Adelaide						
Jetstar	233	195	83.7	233	198	85.0
Qantas	802	750	93.5	805	748	92.9
QantasLink	110	98	89.1	110	97	88.2
Regional Express	186	178	95.7	186	179	96.2
Virgin Australia	615	537	87.3	617	513	83.1
All Airlines	1 946	1 758	90.3	1 951	1 735	88.9
Relates to services to and from Brisbane, Canberra, Gold Coast, Melbourne, Perth Port Lincoln and Sydney.						
Albury						
QantasLink	112	92	82.1	112	91	81.3
Regional Express	105	74	70.5	105	85	81.0
Virgin Australia	56	54	96.4	56	53	94.6
All Airlines	273	220	80.6	273	229	83.9
Relates to services to and from Sydney only.						
Ayers Rock						
Qantas	29	23	79.3	29	24	82.8
Virgin Australia	28	22	78.6	29	20	69.0
All Airlines	57	45	78.9	58	44	75.9
Relates to services to and from Sydney only.						
Ballina						
Jetstar	29	20	69.0	29	24	82.8
Regional Express	49	30	61.2	47	39	83.0
Virgin Australia	29	22	75.9	29	24	82.8
All Airlines	107	72	67.3	105	87	82.9
Relates to services to and from Sydney only.						
Brisbane						
Jetstar	531	404	76.1	532	394	74.1
Qantas	1 551	1 362	87.8	1 553	1 300	83.7
QantasLink	581	447	76.9	581	396	68.2
Tiger Airways	70	58	82.9	70	62	88.6
Virgin Australia	1 859	1 551	83.4	1 860	1 459	78.4
Virgin Australia - ATR/F100 Operations	179	155	86.6	177	141	79.7
All Airlines	4 771	3 977	83.4	4 773	3 752	78.6
Relates to services to and from Adelaide, Cairns, Canberra, Darwin, Hamilton Island, Gladstone, Mackay, Melbourne, Newcastle, Perth, Proserpine, Rockhampton, Sydney and Townsville.						

Airport	Departures			Arrivals		
	Sectors	On Time		Sectors	On Time	
	Flown	No.	%	Flown	No.	%
Broome						
Qantas	29	22	75.9	29	26	89.7
QantasLink	34	27	79.4	34	28	82.4
Skywest	11	9	81.8	8	7	87.5
Virgin Australia	28	23	82.1	28	25	89.3
All Airlines	102	81	79.4	99	86	86.9
Relates to services to and from Perth only.						
Cairns						
Jetstar	144	129	89.6	143	132	92.3
Qantas	215	194	90.2	216	196	90.7
QantasLink	175	144	82.3	175	119	68.0
Virgin Australia	287	250	87.1	288	210	72.9
Virgin Australia - ATR/F100 Operations	13	11	84.6	14	13	92.9
All Airlines	834	728	87.3	836	670	80.1
Relates to services to and from Brisbane, Melbourne, Sydney and Townsville.						
Canberra						
Qantas	591	545	92.2	591	528	89.3
QantasLink	407	327	80.3	412	318	77.2
Virgin Australia	383	333	86.9	385	300	77.9
Virgin Australia - ATR/F100 Operations	162	116	71.6	163	110	67.5
All Airlines	1 543	1 321	85.6	1 551	1 256	81.0
Relates to services to and from Adelaide, Brisbane, Melbourne and Sydney.						
Coffs Harbour						
QantasLink	136	101	74.3	137	112	81.8
Virgin Australia	57	47	82.5	57	46	80.7
All Airlines	193	148	76.7	194	158	81.4
Relates to services to and from Sydney only.						
Darwin						
Qantas	70	61	87.1	70	61	87.1
Virgin Australia	82	71	86.6	81	66	81.5
All Airlines	152	132	86.8	151	127	84.1
Relates to services to and from Brisbane, Melbourne and Perth.						
Dubbo						
QantasLink	104	78	75.0	104	83	79.8
Regional Express	157	116	73.9	154	130	84.4
All Airlines	261	194	74.3	258	213	82.6
Relates to services to and from Sydney only.						
Gladstone						
QantasLink	221	153	69.2	202	148	73.3
Virgin Australia - ATR/F100 Operations	69	62	89.9	69	63	91.3
All Airlines	290	215	74.1	271	211	77.9
Relates to services to and from Brisbane only.						

Airport	Departures			Arrivals		
	Sectors Flown	On Time		Sectors Flown	On Time	
		No.	%		No.	%
Gold Coast						
Jetstar	497	388	78.1	495	388	78.4
Tiger Airways	61	50	82.0	61	52	85.2
Virgin Australia	559	426	76.2	561	403	71.8
All Airlines	1 117	864	77.4	1 117	843	75.5
Relates to services to and from Adelaide, Melbourne and Sydney.						
Hamilton Island						
Jetstar	45	36	80.0	45	39	86.7
Virgin Australia	58	47	81.0	58	42	72.4
All Airlines	103	83	80.6	103	81	78.6
Relates to services to and from Brisbane and Sydney.						
Hobart						
Jetstar	215	154	71.6	217	171	78.8
Qantas	92	84	91.3	92	82	89.1
Virgin Australia	187	142	75.9	186	153	82.3
All Airlines	494	380	76.9	495	406	82.0
Relates to services to and from Melbourne and Sydney.						
Kalgoorlie						
Qantas	63	52	82.5	63	59	93.7
QantasLink	15	15	100.0	16	13	81.3
Skywest	12	11	91.7	12	10	83.3
All Airlines	90	78	86.7	91	82	90.1
Relates to services to and from Perth only.						
Karratha						
Qantas	185	166	89.7	185	167	90.3
QantasLink	54	46	85.2	56	51	91.1
Virgin Australia	57	46	80.7	58	47	81.0
All Airlines	296	258	87.2	299	265	88.6
Relates to services to and from Perth only.						
Launceston						
Jetstar	141	103	73.0	142	116	81.7
QantasLink	69	47	68.1	69	44	63.8
Virgin Australia	153	113	73.9	154	115	74.7
All Airlines	363	263	72.5	365	275	75.3
Relates to services to and from Melbourne and Sydney.						
Mackay						
Jetstar	85	55	64.7	85	63	74.1
QantasLink	98	82	83.7	98	84	85.7
Virgin Australia	159	140	88.1	159	138	86.8
All Airlines	342	277	81.0	342	285	83.3
Relates to services to and from Brisbane only.						

Airport	Departures			Arrivals		
	Sectors	On Time		Sectors	On Time	
	Flown	No.	%	Flown	No.	%
Melbourne						
Jetstar	1 027	764	74.4	1 024	786	76.8
Qantas	2 073	1 841	88.8	2 069	1 835	88.7
QantasLink	202	152	75.2	203	148	72.9
Regional Express	80	72	90.0	79	74	93.7
Tiger Airways	333	313	94.0	333	289	86.8
Virgin Australia	2 325	1 916	82.4	2 319	1 893	81.6
All Airlines	6 040	5 058	83.7	6 027	5 025	83.4
Relates to services to and from Adelaide, Brisbane, Cairns, Canberra, Darwin, Gold Coast, Hobart, Launceston, Mildura, Newcastle, Perth, Sunshine Coast and Sydney.						
Mildura						
QantasLink	83	74	89.2	82	56	68.3
Regional Express	79	73	92.4	80	70	87.5
Virgin Australia	27	23	85.2	27	22	81.5
All Airlines	189	170	89.9	189	148	78.3
Relates to services to and from Melbourne only.						
Newcastle						
Jetstar	182	137	75.3	180	144	80.0
QantasLink	64	29	45.3	64	30	46.9
Virgin Australia	51	34	66.7	52	37	71.2
Virgin Australia - ATR/F100 Operations	34	20	58.8	34	24	70.6
All Airlines	331	220	66.5	330	235	71.2
Relates to services to and from Brisbane and Melbourne.						
Newman						
Qantas	69	61	88.4	69	67	97.1
QantasLink	52	50	96.2	52	47	90.4
Virgin Australia	29	24	82.8	29	23	79.3
All Airlines	150	135	90.0	150	137	91.3
Relates to services to and from Perth only.						
Perth						
Jetstar	149	113	75.8	149	123	82.6
Qantas	1 081	960	88.8	1 086	947	87.2
QantasLink	189	171	90.5	186	169	90.9
Skywest	20	18	90.0	23	18	78.3
Tiger Airways	37	35	94.6	37	37	100.0
Virgin Australia	620	562	90.6	620	515	83.1
All Airlines	2 096	1 859	88.7	2 101	1 809	86.1
Relates to services to and from Adelaide, Brisbane, Broome, Darwin, Kalgoorlie, Karratha, Melbourne, Newman, Port Hedland and Sydney.						
Port Hedland						
Qantas	84	76	90.5	84	80	95.2
QantasLink	31	31	100.0	31	31	100.0
Virgin Australia	71	66	93.0	71	69	97.2
All Airlines	186	173	93.0	186	180	96.8
Relates to services to and from Perth only.						

Airport	Departures			Arrivals		
	Sectors Flown	On Time		Sectors Flown	On Time	
		No.	%		No.	%
Port Lincoln						
QantasLink	94	88	93.6	94	84	89.4
Regional Express	186	178	95.7	186	178	95.7
All Airlines	280	266	95.0	280	262	93.6
Relates to services to and from Adelaide only.						
Port Macquarie						
QantasLink	126	92	73.0	127	103	81.1
Virgin Australia - ATR/F100 Operations	56	49	87.5	57	43	75.4
All Airlines	182	141	77.5	184	146	79.3
Relates to services to and from Sydney only.						
Proserpine						
Jetstar	19	14	73.7	21	17	81.0
Virgin Australia	29	27	93.1	29	27	93.1
Virgin Australia - ATR/F100 Operations	12	11	91.7	12	12	100.0
All Airlines	60	52	86.7	62	56	90.3
Relates to services to and from Brisbane only.						
Rockhampton						
QantasLink	180	137	76.1	199	163	81.9
Virgin Australia	105	87	82.9	104	88	84.6
Virgin Australia - ATR/F100 Operations	49	42	85.7	50	42	84.0
All Airlines	334	266	79.6	353	293	83.0
Relates to services to and from Brisbane only.						
Sunshine Coast						
Jetstar	127	86	67.7	128	95	74.2
Virgin Australia	61	47	77.0	61	49	80.3
All Airlines	188	133	70.7	189	144	76.2
Relates to services to and from Melbourne and Sydney.						
Sydney						
Jetstar	945	754	79.8	945	702	74.3
Qantas	2 158	1 872	86.7	2 151	1 810	84.1
QantasLink	947	770	81.3	940	691	73.5
Regional Express	406	330	81.3	412	276	67.0
Tiger Airways	165	142	86.1	165	154	93.3
Virgin Australia	2 470	1 864	75.5	2 467	1 794	72.7
Virgin Australia - ATR/F100 Operations	220	175	79.5	218	119	54.6
All Airlines	7 311	5 907	80.8	7 298	5 546	76.0
Relates to services to and from Adelaide, Albury, Ayers Rock, Ballina, Brisbane, Cairns, Canberra, Coffs Harbour, Dubbo, Gold Coast, Hamilton Island, Hobart, Launceston, Melbourne, Perth, Port Macquarie, Sunshine Coast, Townsville and Wagga Wagga.						
Townsville						
Jetstar	49	35	71.4	50	39	78.0
Qantas	127	119	93.7	127	112	88.2
QantasLink	175	126	72.0	175	134	76.6
Virgin Australia	214	181	84.6	214	175	81.8
All Airlines	565	461	81.6	566	460	81.3
Relates to services to and from Brisbane, Cairns and Sydney.						

<i>Airport</i>	<i>Departures</i>			<i>Arrivals</i>		
	<i>Sectors</i>	<i>On Time</i>		<i>Sectors</i>	<i>On Time</i>	
	<i>Flown</i>	<i>No.</i>	<i>%</i>	<i>Flown</i>	<i>No.</i>	<i>%</i>
Wagga Wagga						
QantasLink	108	96	88.9	108	84	77.8
Regional Express	101	80	79.2	100	82	82.0
All Airlines	209	176	84.2	208	166	79.8

Relates to services to and from Sydney only.

Definitions

On time departure A flight departure is counted as "on time" if it departs the gate within 15 minutes of the scheduled departure time shown in the carriers' schedule.

On time arrival A flight arrival is counted as "on time" if it arrived at the gate within 15 minutes of the scheduled arrival time shown in the carriers' schedule.
Neither diverted nor cancelled flights count as on time.

Cancellation A flight removed from service within 7 days of scheduled departure is regarded as a cancellation.

On time departure percentage The percentage of on time departures is measured against the number of departures *operated* on any particular sector.

On time arrival percentage The percentage of on time arrivals is measured against the number of arrivals *operated* on any particular sector.

Cancellation percentage The percentage of cancellations is measured against the number of services *scheduled* on any particular sector.
