



Australian Government

Department of Infrastructure, Transport,
Regional Development and Local Government
Bureau of Infrastructure, Transport and Regional Economics



bitre

AVIATION STATISTICS

Airline
On Time Performance

February 2009—OTP 71

© Commonwealth of Australia 2009

ISSN 1832–0759

This work is copyright and the data contained in this publication should not be reproduced or used in any form without acknowledgement.

Enquiries

Bureau of Infrastructure, Transport and Regional Economics
GPO Box 501
Canberra ACT 2601

Telephone: 02 6274 7790

Facsimile: 02 6274 7727

Website: www.bitre.gov.au

Email: avstats@infrastructure.gov.au

This publication, including a spreadsheet of the time–series data, can be downloaded from the BITRE website:

<http://www.bitre.gov.au/info.aspx?ResourceId=214&NodeId=104>.

Disclaimers

BITRE seeks to publish its work to the highest professional standards. However, it cannot accept responsibility for any consequences arising from the use of information herein. Readers should rely on their own skill and judgment in applying any information or analysis to particular issues or circumstances.

Foreword

The Bureau of Infrastructure, Transport and Regional Economics (BITRE) monitors the punctuality and reliability of major domestic airlines operating between Australian airports. The purpose of this is to allow for evaluation of overall industry and individual airline performance, so that consumers of air travel can make informed decisions.

The following domestic airlines report this data monthly to the BITRE: Jetstar, Qantas, QantasLink, Regional Express, Skywest Airlines, Tiger Airways, and Virgin Blue. Data has been gathered since November 2003, although some airlines commenced reporting since then, including Jetstar which first reported in May 2004, MacAir in July 2005 and Tiger Airways in April 2008. MacAir ceased operations in February 2009 and data was not received for December 2008 onwards.

Information presented in this report is for Australian domestic routes for which the passenger load averaged 8000 or more passengers per month over the previous six months, *and* where two or more airlines operated in competition on those routes. There were 49 routes that met this definition in February 2009. Over time, routes which meet these criteria change as airline networks and traffic levels vary.

Participating airlines report their overall monthly network performance where this is possible.

Total industry figures encompass all services operated by reporting airlines only. These airlines collectively carried over 95 per cent of total domestic passengers (regular public transport only) in 2008.

The method of capturing on time performance varies between airlines utilising different recording systems. Jetstar and Qantas jet aircraft use Aircraft Communication Addressing and Reporting System (ACARS) to electronically measure on time performance. Regional Express, Skywest, Tiger Airways, Virgin Blue and the Qantas non-jet fleet record on time performance manually using records from pilots, gate agents and/or ground crews.

After initial data is collected, aggregate reports are audited internally by participating airlines prior to publication. The target date for publication is within six weeks of the end of the reporting period.

Information on the total network for February 2009 is presented on Page 1.

On time performance reporting was provided for 49 different routes covering 31 airports for February 2009. Detailed information on the performance of these routes is included in the tables beginning on Page 9, while detailed information on performance by airport is included from Page 21. The definitions can be found on Page 27.

Reports and detailed time series data in Microsoft Excel spreadsheet format are available from the BITRE website at:

<http://www.bitre.gov.au/info.aspx?ResourceId=214&NodeId=104>.

Contents

	Page
Industry performance	1
Individual routes	9
Airports	21
Definitions.....	27

Industry performance

For February 2009, on time performance over all routes operated by participating airlines (Jetstar, Qantas, QantasLink, Regional Express, Skywest Airlines, Tiger Airways and Virgin Blue) averaged 83.8 per cent for on time departures, and 81.9 per cent for on time arrivals. Cancellations represented 1.8 per cent of all scheduled flights. The equivalent figures for February 2008 were 79.1 per cent for departures, 75.8 per cent for arrivals and 2.2 per cent for cancellations.

The long term average performance for all routes since reporting commenced in November 2003 is 84.9 per cent for on time departures and 83.6 per cent for on time arrivals. Cancellations average 1.2 per cent of all scheduled flights.

Of the major domestic airlines, Tiger Airways achieved the highest level of on time departures for February 2009 at 88.7 per cent, followed by Qantas at 87.8 per cent, Virgin Blue at 83.0 per cent and Jetstar at 76.3 per cent. The regional airlines were led by Skywest at 86.6 per cent, QantasLink at 84.7 per cent and Regional Express at 82.0 per cent.

Qantas achieved the highest on time arrivals among the major domestic airlines at 88.6 per cent, followed by Tiger Airways at 87.1 per cent, Virgin Blue at 82.8 per cent and Jetstar at 79.4 per cent. Skywest was the best performing regional airline for on time arrivals at 87.4 per cent, followed by QantasLink at 79.8 per cent and Regional Express at 70.6 per cent.

Qantas had the highest percentage of cancellations for February 2009 at 3.8 per cent, while Tiger Airways had no cancellations.

Of the 49 routes which met the criteria for on time performance reporting in February 2009, the Canberra-Adelaide route had the highest percentage of on time departures (94.7 per cent), while the Ballina-Sydney route had the lowest (54.0 per cent). On time arrivals were highest on the Melbourne-Alice Springs route (100.0 per cent) and lowest on the Ballina-Sydney route (42.1 per cent).

Cancellations were highest on the Proserpine-Brisbane route at 7.0 per cent, followed by Broome-Perth, Perth-Kalgoorlie and Kalgoorlie-Perth all at 6.3 per cent and Perth-Broome at 5.7 per cent.

Alice Springs Airport recorded the highest percentage of on time departures (94.4 per cent), while Ballina Airport recorded the lowest (54.0 per cent). Alice Springs Airport recorded the highest percentage of on time arrivals (100.0 per cent), while Ballina Airport recorded the lowest (55.9 per cent).

Table 1 On time performance for February 2009 — Total Industry

	<i>Sectors</i>		<i>Departures On Time</i>		<i>Arrivals On Time</i>		<i>Cancellations</i>	
	<i>Scheduled</i>	<i>Flown</i>	<i>No.</i>	<i>%</i>	<i>No.</i>	<i>%</i>	<i>No.</i>	<i>%</i>
Jetstar	4 300	4 253	3 244	76.3	3 377	79.4	47	1.1
Qantas	9 490	9 127	8 014	87.8	8 084	88.6	363	3.8
QantasLink	7 043	6 975	5 908	84.7	5 568	79.8	68	1.0
Regional Express	4 748	4 726	3 874	82.0	3 335	70.6	22	0.5
Skywest	800	784	679	86.6	685	87.4	16	2.0
Tiger Airways	566	566	502	88.7	493	87.1	0	0.0
Virgin Blue	10 601	10 455	8 680	83.0	8 661	82.8	146	1.4
All Airlines	37 548	36 886	30 901	83.8	30 203	81.9	662	1.8

1. Total airline network data (including routes not shown in this report).
2. Tiger Airways began reporting in April 2008.

Table 2 Top ten routes for on time performance for February 2009 (participating airlines only)

<i>Departures</i>		<i>Arrivals</i>	
<i>Route</i>	<i>On Time (%)</i>	<i>Route</i>	<i>On Time (%)</i>
Canberra-Adelaide	94.7	Melbourne-Alice Springs	100.0
Alice Springs-Melbourne	94.4	Townsville-Sydney	95.8
Melbourne-Alice Springs	94.4	Canberra-Adelaide	93.3
Townsville-Sydney	93.8	Melbourne-Cairns	93.1
Perth-Karratha	93.5	Brisbane-Cairns	93.0
Melbourne-Cairns	93.1	Perth-Brisbane	92.3
Canberra-Brisbane	93.0	Cairns-Sydney	92.0
Cairns-Brisbane	92.6	Alice Springs-Melbourne	91.7
Melbourne-Maroochydore	92.0	Perth-Sydney	91.2
Sydney-Townsville	91.7	Adelaide-Perth	91.2

Table 3 Top ten airports for on time performance for February 2009 (participating airlines and reported routes only)

<i>Departures</i>		<i>Arrivals</i>	
<i>Airport</i>	<i>On Time (%)</i>	<i>Airport</i>	<i>On Time (%)</i>
Alice Springs	94.4	Alice Springs	100.0
Cairns	91.2	Cairns	91.9
Karratha	91.2	Karratha	90.7
Townsville	90.4	Townsville	90.1
Canberra	88.4	Broome	89.4
Perth	88.3	Darwin	89.3
Darwin	88.1	Newman	88.4
Kalgoorlie	87.5	Adelaide	88.0
Broome	87.2	Perth	86.6
Adelaide	86.4	Kalgoorlie	86.5

Total industry on time performance

Figure 1 On time performance (by month from February 2006)—Total Industry

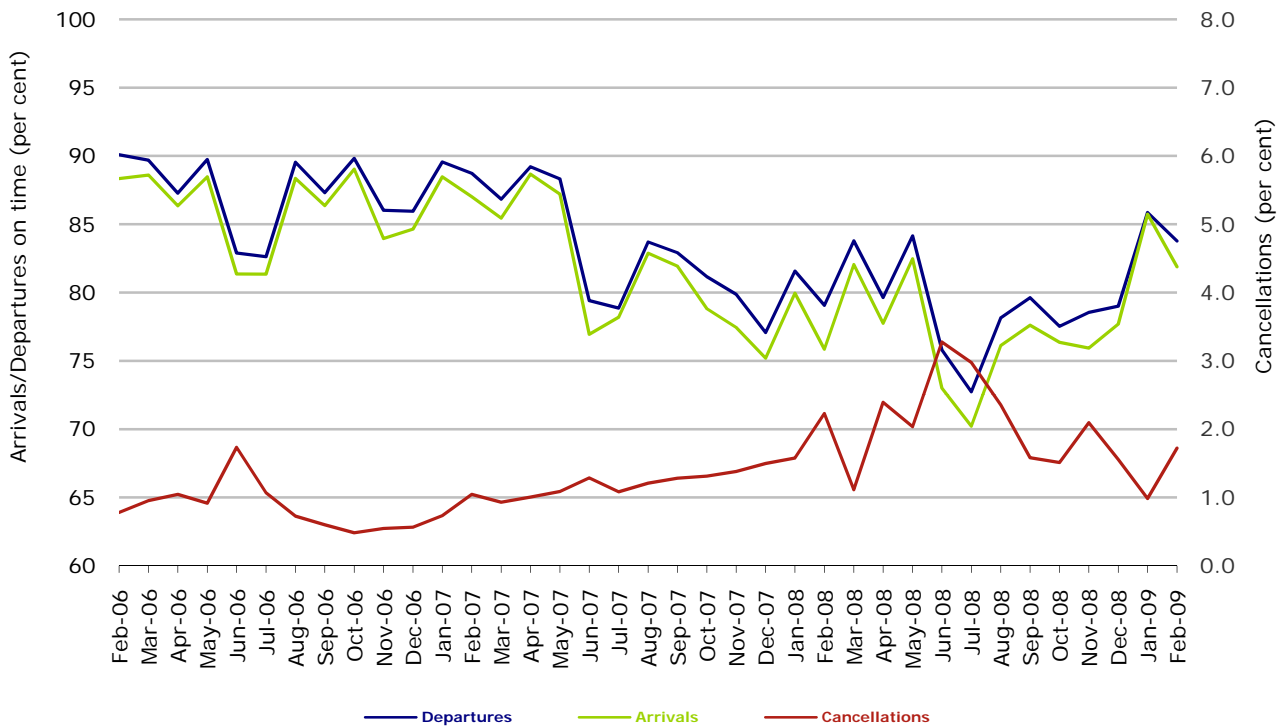
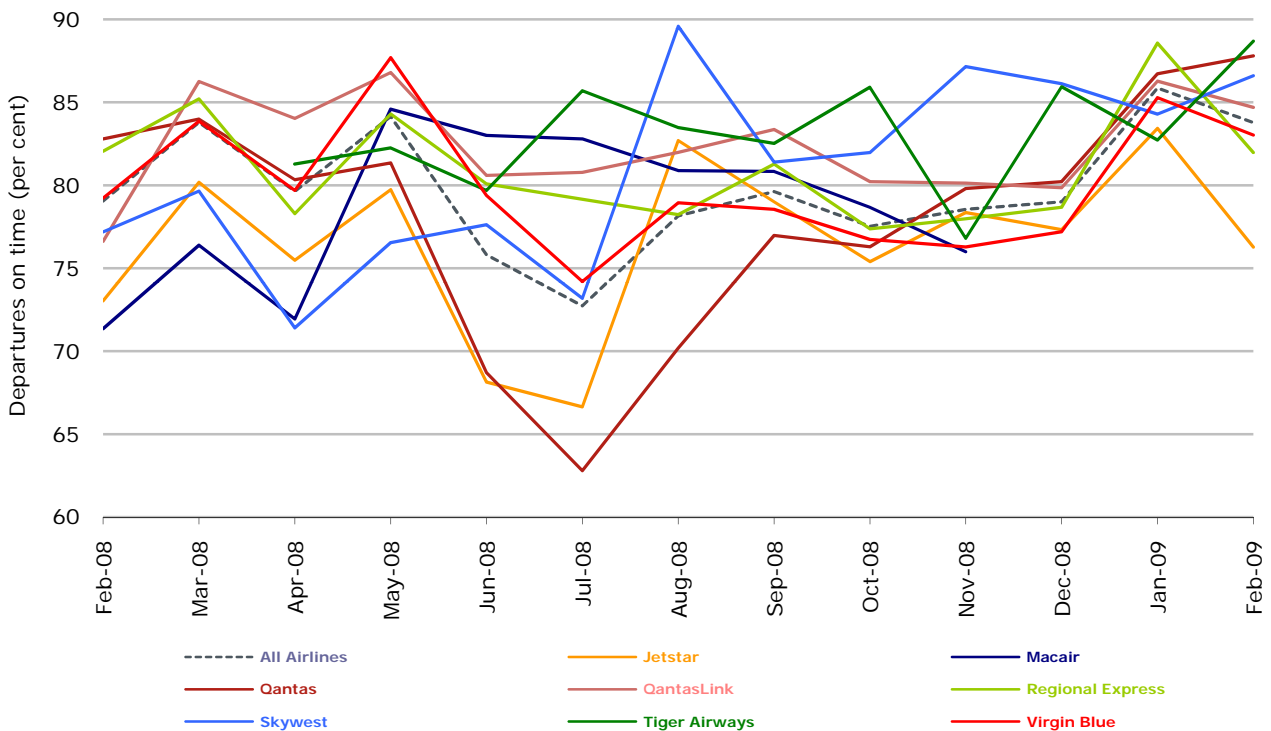
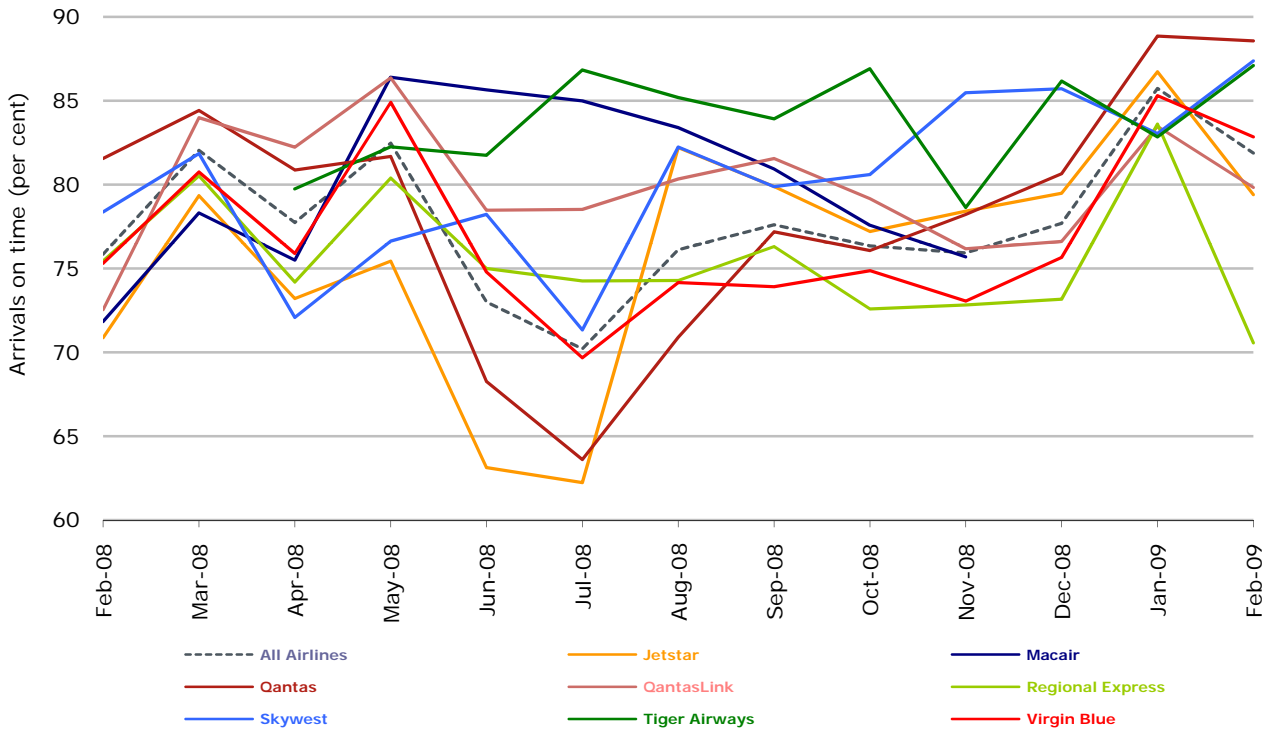


Figure 2 Departures on time (by month from February 2008)



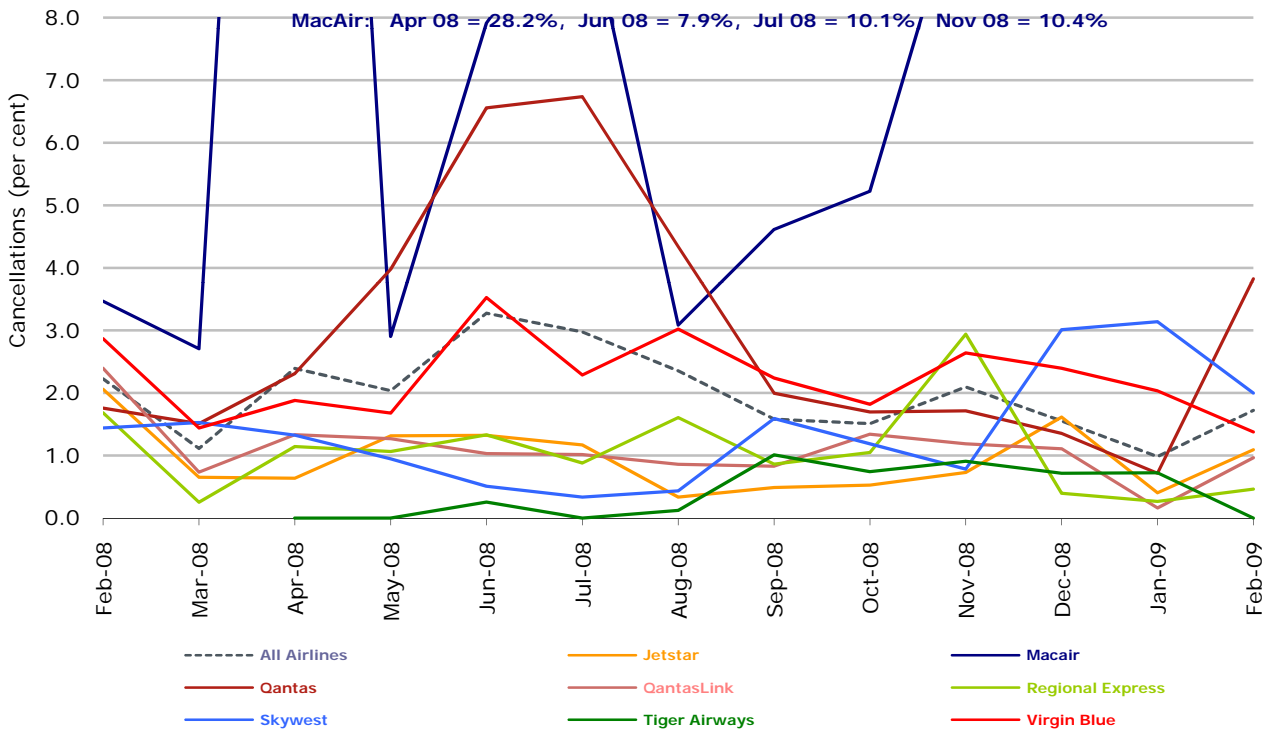
No data received from MacAir for December 2008 and onwards. Operations ceased in February 2009. Tiger Airways began reporting in April 2008.

Figure 3 Arrivals on time (by month from February 2008)



No data received from MacAir for December 2008 and onwards. Operations ceased in February 2009. Tiger Airways began reporting in April 2008.

Figure 4 Cancellations (by month from February 2008)



No data received from MacAir for December 2008 and onwards. Operations ceased in February 2009. Tiger Airways began reporting in April 2008.

Major domestic airlines on time performance

Figure 5 On time performance (by month from February 2006)—Jetstar

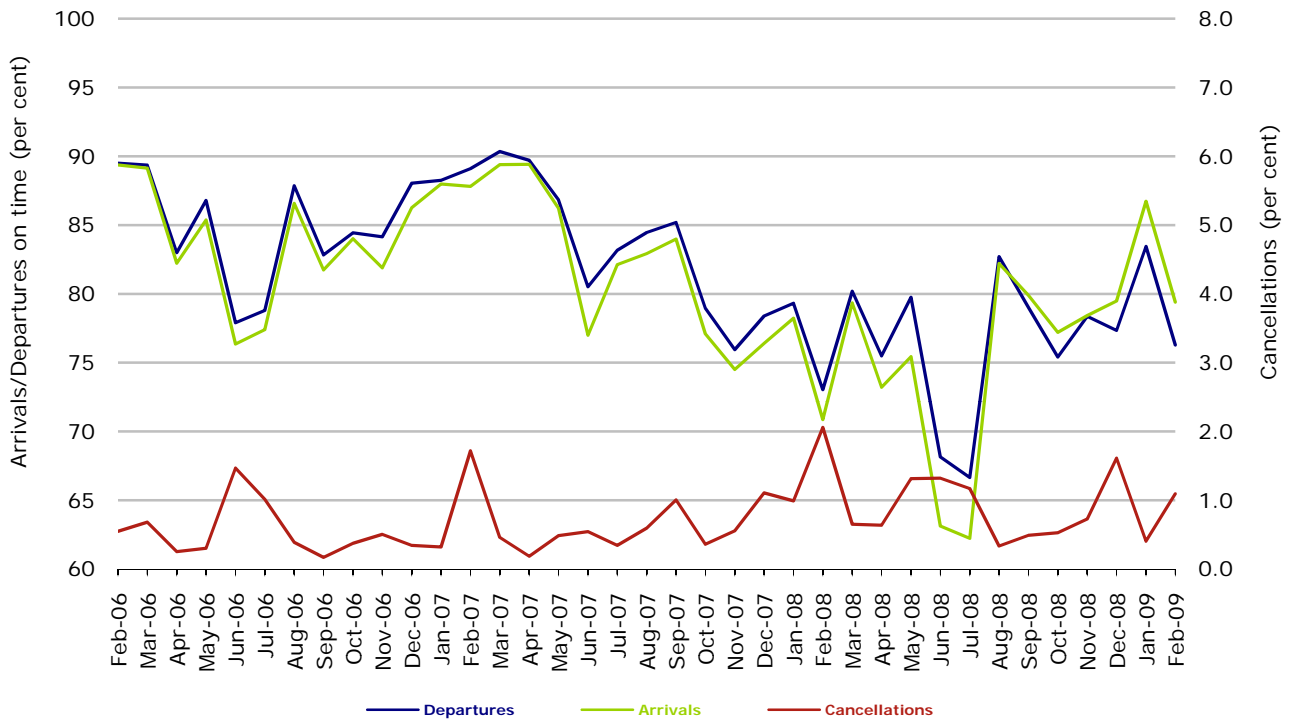


Figure 6 On time performance (by month from February 2006)—Qantas

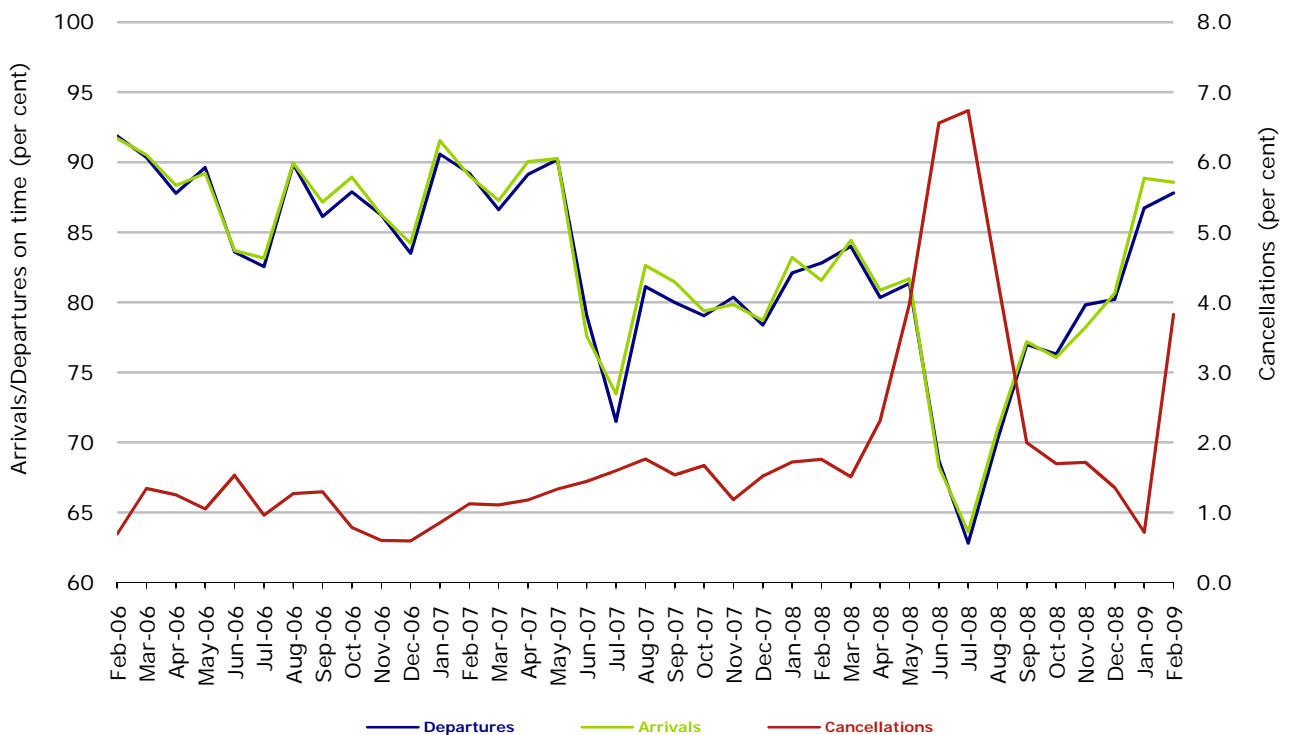
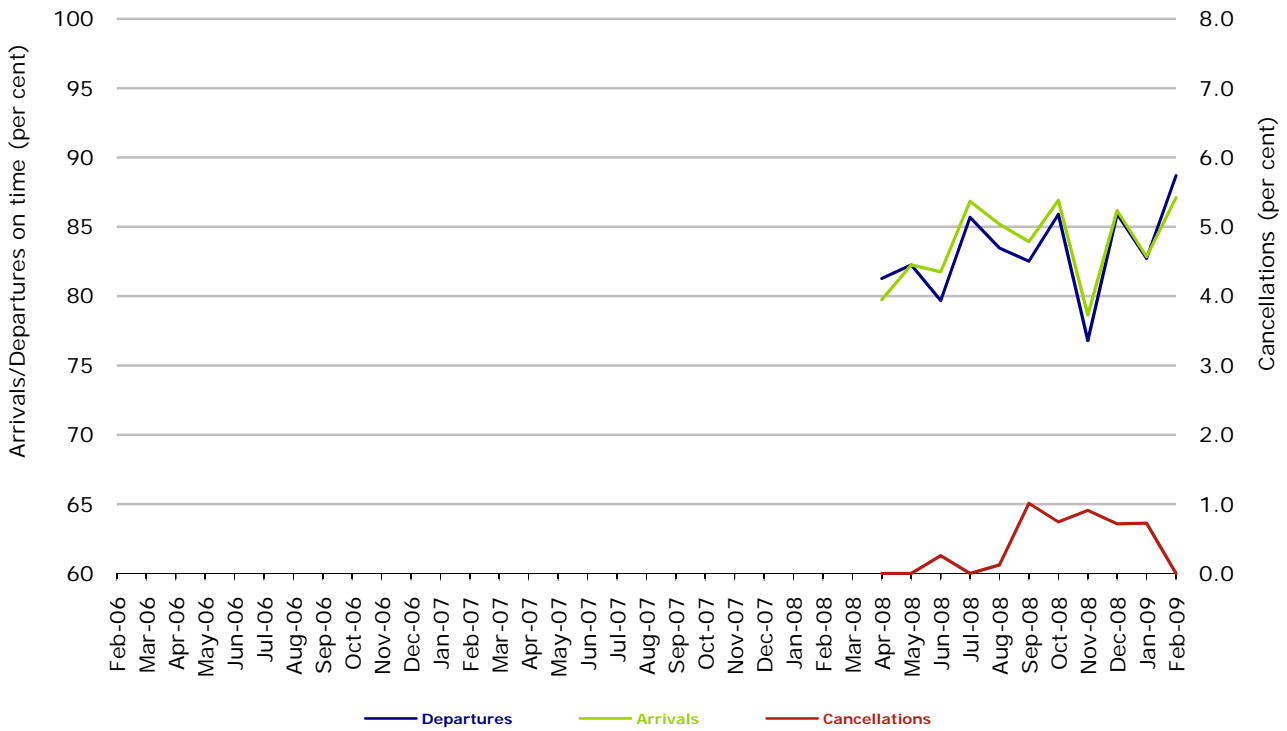
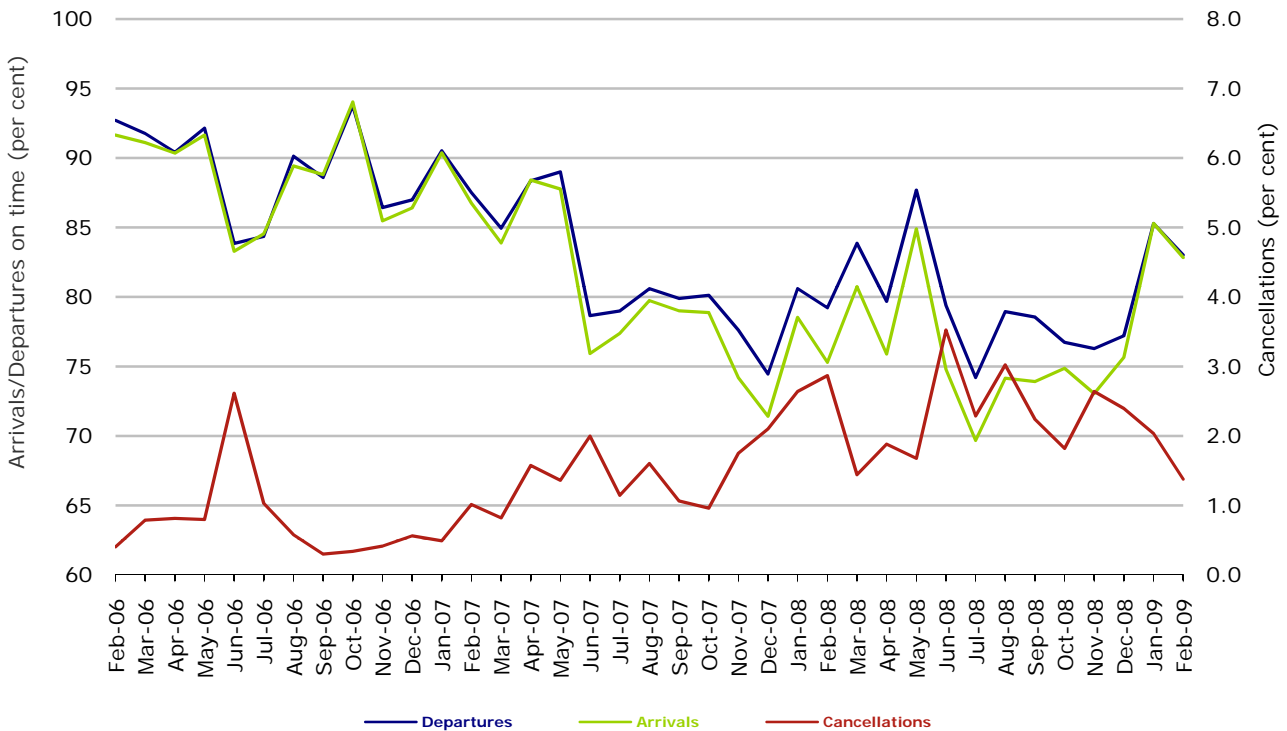


Figure 7 On time performance (by month from February 2006)—Tiger Airways



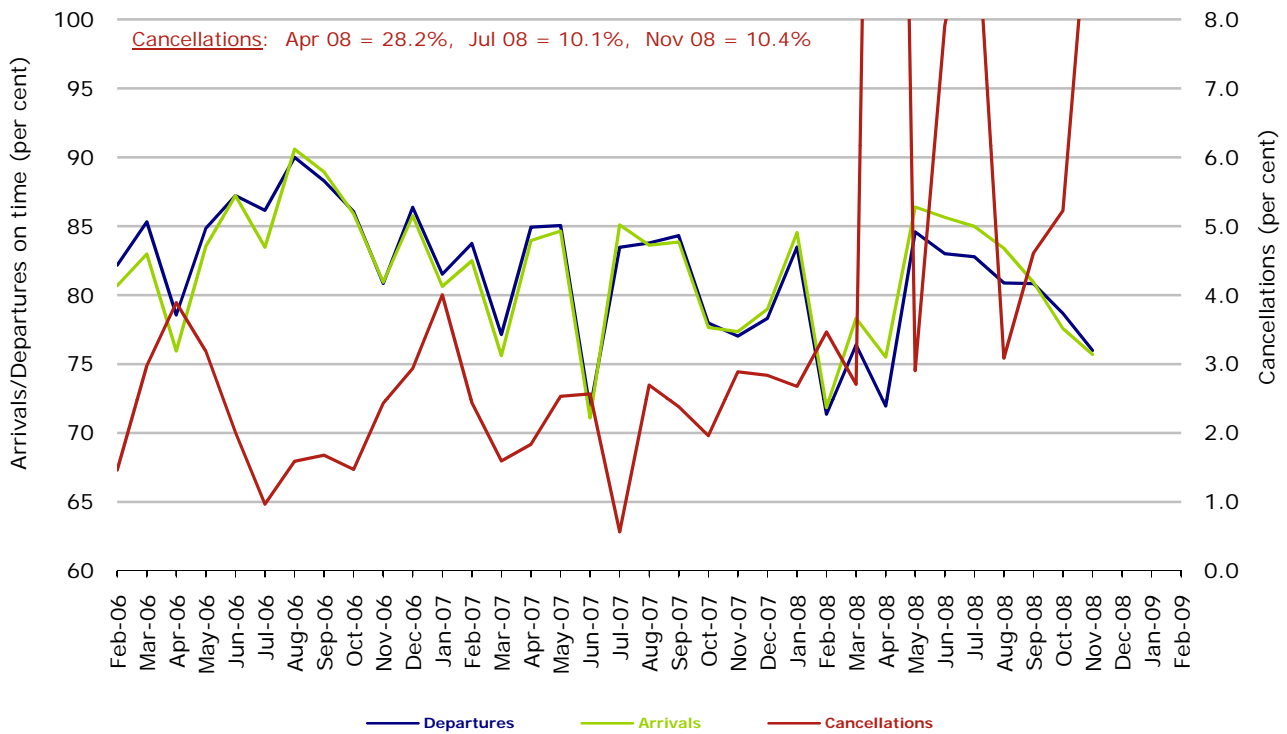
Tiger Airways began reporting in April 2008.

Figure 8 On time performance (by month from February 2006)—Virgin Blue



Major regional airlines on time performance

Figure 9 On time performance (by month from February 2006)—MacAir



No data received from MacAir for December 2008 and onwards. Operations ceased in February 2009.

Figure 10 On time performance (by month from February 2006)—QantasLink

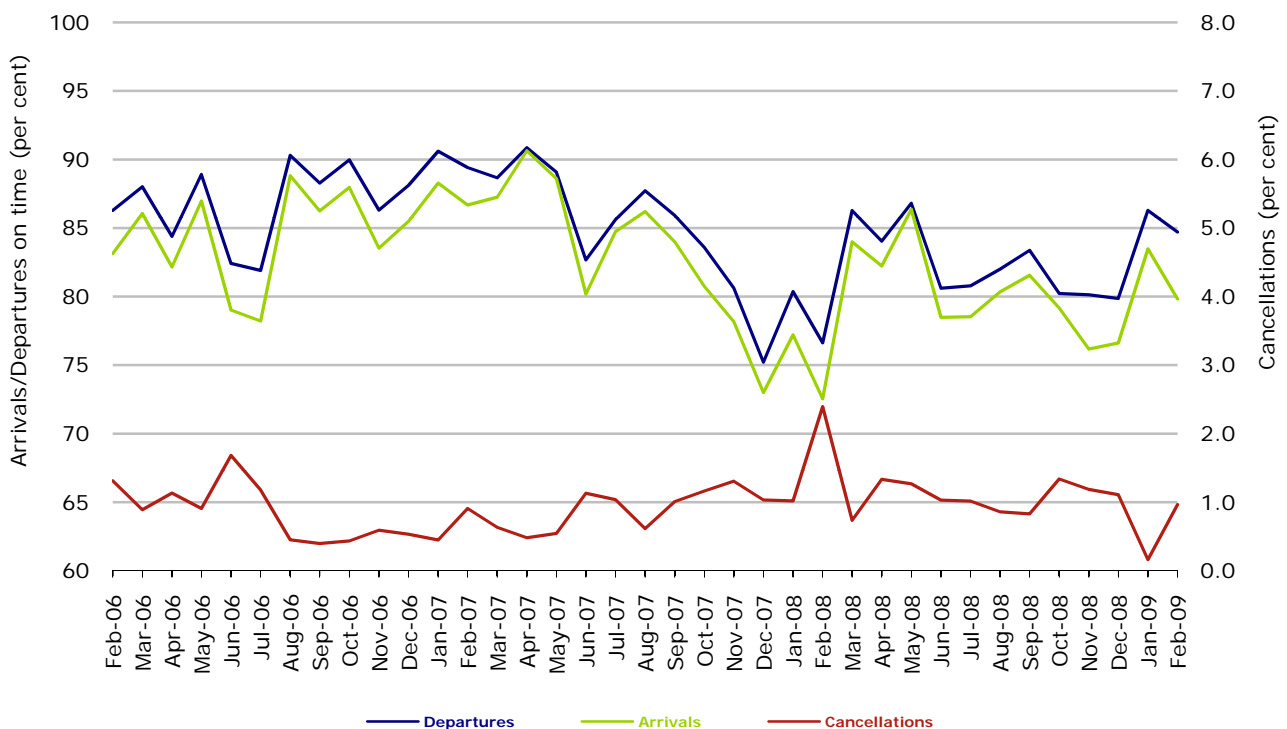


Figure 11 On time performance (by month from February 2006)—Regional Express

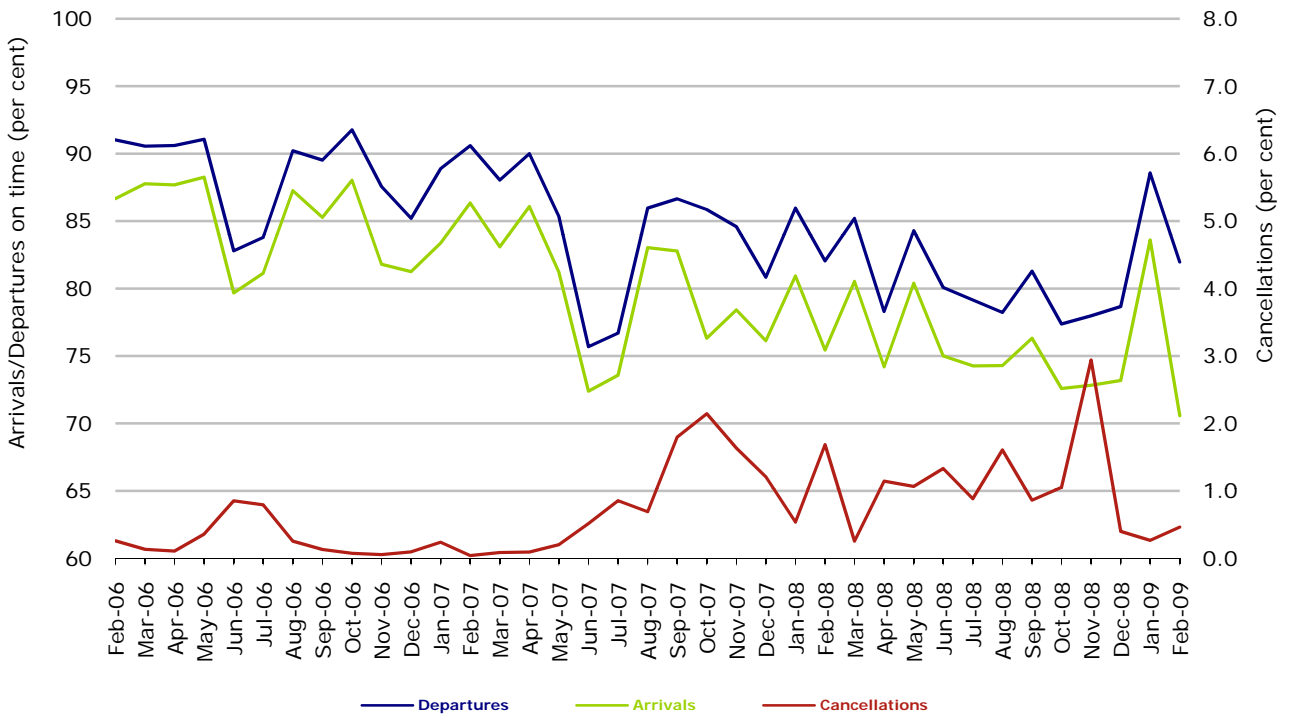
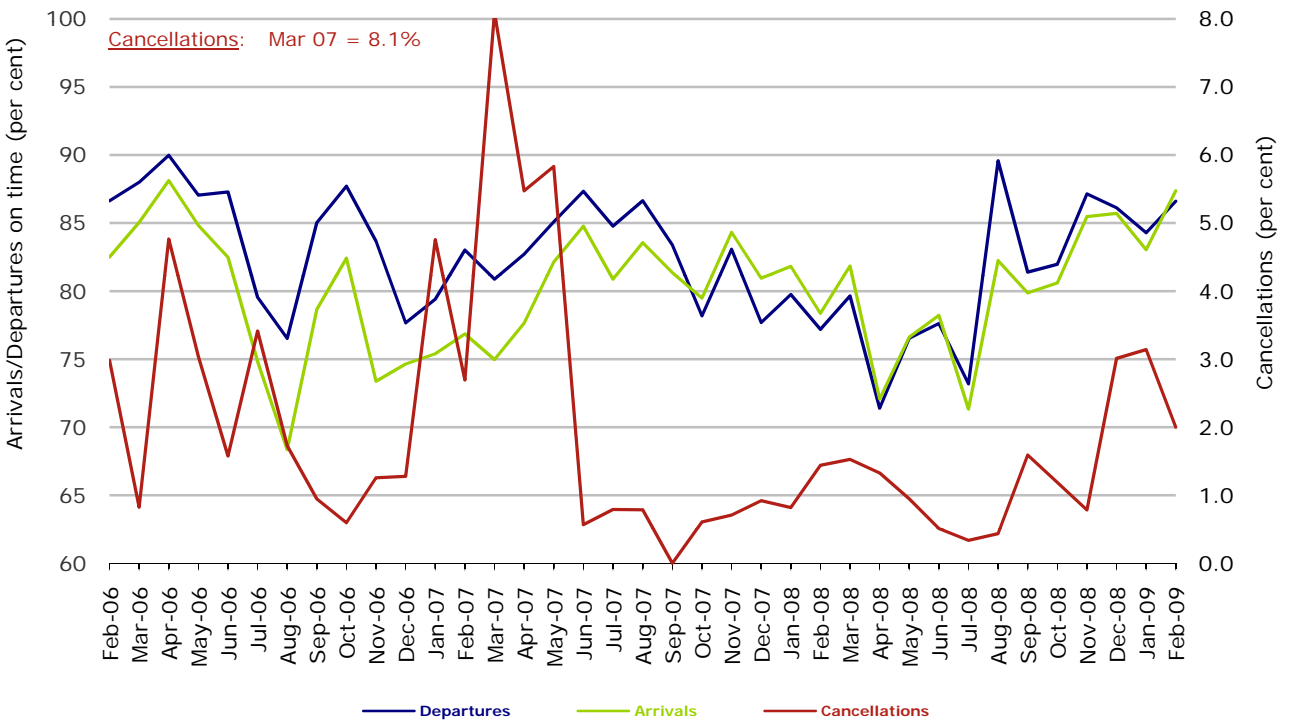


Figure 12 On time performance (by month from February 2006)—Skywest



Individual routes

On time performance is reported for all routes where the passenger load averages over 8000 passengers per month over the previous six months, and where two or more airlines operate in competition on those routes. There are now 49 routes which meet this definition. Over time, however, routes which meet this definition may change as airline networks and traffic levels vary.

	<i>Sectors</i>		<i>Departures On Time</i>		<i>Arrivals On Time</i>		<i>Cancellations</i>	
	<i>Sched.</i>	<i>Flown</i>	<i>No.</i>	<i>%</i>	<i>No.</i>	<i>%</i>	<i>No.</i>	<i>%</i>
Adelaide-Brisbane								
Jetstar	28	28	22	78.6	20	71.4	0	0.0
Qantas	80	80	76	95.0	74	92.5	0	0.0
Virgin Blue	105	104	93	89.4	84	80.8	1	1.0
All Airlines	213	212	191	90.1	178	84.0	1	0.5
Adelaide-Canberra								
Qantas	45	45	43	95.6	43	95.6	0	0.0
Virgin Blue	28	28	21	75.0	20	71.4	0	0.0
All Airlines	73	73	64	87.7	63	86.3	0	0.0
Adelaide-Gold Coast								
Jetstar	28	28	19	67.9	19	67.9	0	0.0
Virgin Blue	28	28	25	89.3	25	89.3	0	0.0
All Airlines	56	56	44	78.6	44	78.6	0	0.0
Adelaide-Melbourne								
Jetstar	44	44	15	34.1	16	36.4	0	0.0
Qantas	313	299	275	92.0	276	92.3	14	4.5
Tiger Airways	54	54	48	88.9	48	88.9	0	0.0
Virgin Blue	269	266	233	87.6	236	88.7	3	1.1
All Airlines	680	663	571	86.1	576	86.9	17	2.5
Adelaide-Perth								
Qantas	128	126	111	88.1	118	93.7	2	1.6
Virgin Blue	67	67	58	86.6	58	86.6	0	0.0
All Airlines	195	193	169	87.6	176	91.2	2	1.0
Adelaide-Sydney								
Jetstar	28	27	24	88.9	26	96.3	1	3.6
Qantas	274	267	239	89.5	244	91.4	7	2.6
Virgin Blue	141	139	106	76.3	109	78.4	2	1.4
All Airlines	443	433	369	85.2	379	87.5	10	2.3
Albury-Sydney								
QantasLink	108	108	87	80.6	79	73.1	0	0.0
Regional Express	105	105	86	81.9	74	70.5	0	0.0
Virgin Blue	52	52	35	67.3	31	59.6	0	0.0
All Airlines	265	265	208	78.5	184	69.4	0	0.0

	<i>Sectors</i>		<i>Departures On Time</i>		<i>Arrivals On Time</i>		<i>Cancellations</i>	
	<i>Sched.</i>	<i>Flown</i>	<i>No.</i>	<i>%</i>	<i>No.</i>	<i>%</i>	<i>No.</i>	<i>%</i>
Alice Springs-Melbourne								
Qantas	28	28	26	92.9	25	89.3	0	0.0
Tiger Airways	8	8	8	100.0	8	100.0	0	0.0
All Airlines	36	36	34	94.4	33	91.7	0	0.0
Ballina-Sydney								
Jetstar	26	26	21	80.8	21	80.8	0	0.0
Regional Express	73	72	29	40.3	13	18.1	1	1.4
Virgin Blue	28	28	18	64.3	19	67.9	0	0.0
All Airlines	127	126	68	54.0	53	42.1	1	0.8
Brisbane-Adelaide								
Jetstar	28	28	21	75.0	23	82.1	0	0.0
Qantas	80	80	74	92.5	74	92.5	0	0.0
Virgin Blue	105	105	89	84.8	87	82.9	0	0.0
All Airlines	213	213	184	86.4	184	86.4	0	0.0
Brisbane-Cairns								
Jetstar	75	75	63	84.0	69	92.0	0	0.0
Qantas	112	112	91	81.3	101	90.2	0	0.0
Virgin Blue	112	112	104	92.9	108	96.4	0	0.0
All Airlines	299	299	258	86.3	278	93.0	0	0.0
Brisbane-Canberra								
Qantas	132	132	121	91.7	127	96.2	0	0.0
QantasLink	8	8	8	100.0	8	100.0	0	0.0
Virgin Blue	132	131	111	84.7	109	83.2	1	0.8
All Airlines	272	271	240	88.6	244	90.0	1	0.4
Brisbane-Darwin								
Jetstar	28	28	23	82.1	23	82.1	0	0.0
Qantas	28	28	25	89.3	26	92.9	0	0.0
Virgin Blue	28	28	24	85.7	26	92.9	0	0.0
All Airlines	84	84	72	85.7	75	89.3	0	0.0
Brisbane-Hamilton Island								
Jetstar	28	28	24	85.7	24	85.7	0	0.0
Virgin Blue	31	30	27	90.0	26	86.7	1	3.2
All Airlines	59	58	51	87.9	50	86.2	1	1.7
Brisbane-Mackay								
Jetstar	72	71	50	70.4	57	80.3	1	1.4
QantasLink	52	52	45	86.5	43	82.7	0	0.0
Virgin Blue	136	136	116	85.3	109	80.1	0	0.0
All Airlines	260	259	211	81.5	209	80.7	1	0.4
Brisbane-Melbourne								
Qantas	387	361	321	88.9	328	90.9	26	6.7
Virgin Blue	339	338	302	89.3	286	84.6	1	0.3
All Airlines	726	699	623	89.1	614	87.8	27	3.7

	<i>Sectors</i>		<i>Departures On Time</i>		<i>Arrivals On Time</i>		<i>Cancellations</i>	
	<i>Sched.</i>	<i>Flown</i>	<i>No.</i>	<i>%</i>	<i>No.</i>	<i>%</i>	<i>No.</i>	<i>%</i>
Brisbane-Newcastle								
Jetstar	96	96	83	86.5	87	90.6	0	0.0
QantasLink	64	63	48	76.2	37	58.7	1	1.6
Virgin Blue	45	44	41	93.2	40	90.9	1	2.2
All Airlines	205	203	172	84.7	164	80.8	2	1.0
Brisbane-Perth								
Qantas	112	112	93	83.0	104	92.9	0	0.0
Virgin Blue	56	56	54	96.4	49	87.5	0	0.0
All Airlines	168	168	147	87.5	153	91.1	0	0.0
Brisbane-Proserpine								
Jetstar	28	27	19	70.4	19	70.4	1	3.6
Virgin Blue	28	28	23	82.1	23	82.1	0	0.0
All Airlines	56	55	42	76.4	42	76.4	1	1.8
Brisbane-Rockhampton								
Jetstar	28	28	26	92.9	26	92.9	0	0.0
QantasLink	125	125	106	84.8	106	84.8	0	0.0
Virgin Blue	140	140	120	85.7	120	85.7	0	0.0
All Airlines	293	293	252	86.0	252	86.0	0	0.0
Brisbane-Sydney								
Jetstar	50	48	34	70.8	38	79.2	2	4.0
Qantas	597	556	460	82.7	442	79.5	41	6.9
Virgin Blue	515	499	395	79.2	389	78.0	16	3.1
All Airlines	1,162	1,103	889	80.6	869	78.8	59	5.1
Brisbane-Townsville								
Jetstar	28	28	25	89.3	28	100.0	0	0.0
Qantas	140	139	127	91.4	128	92.1	1	0.7
Virgin Blue	140	140	122	87.1	121	86.4	0	0.0
All Airlines	308	307	274	89.3	277	90.2	1	0.3
Broome-Perth								
Qantas	8	6	6	100.0	6	100.0	2	25.0
QantasLink	62	62	56	90.3	55	88.7	0	0.0
Skywest	23	19	17	89.5	18	94.7	4	17.4
Virgin Blue	49	46	37	80.4	42	91.3	3	6.1
All Airlines	142	133	116	87.2	121	91.0	9	6.3
Cairns-Brisbane								
Jetstar	75	75	69	92.0	68	90.7	0	0.0
Qantas	112	112	100	89.3	99	88.4	0	0.0
Virgin Blue	112	112	108	96.4	105	93.8	0	0.0
All Airlines	299	299	277	92.6	272	91.0	0	0.0
Cairns-Melbourne								
Jetstar	28	28	24	85.7	24	85.7	0	0.0
Qantas	28	28	27	96.4	27	96.4	0	0.0
Virgin Blue	60	60	50	83.3	54	90.0	0	0.0
All Airlines	116	116	101	87.1	105	90.5	0	0.0

	<i>Sectors</i>		<i>Departures On Time</i>		<i>Arrivals On Time</i>		<i>Cancellations</i>	
	<i>Sched.</i>	<i>Flown</i>	<i>No.</i>	<i>%</i>	<i>No.</i>	<i>%</i>	<i>No.</i>	<i>%</i>
Cairns-Sydney								
Jetstar	28	27	24	88.9	24	88.9	1	3.6
Qantas	93	93	83	89.2	84	90.3	0	0.0
Virgin Blue	80	80	76	95.0	76	95.0	0	0.0
All Airlines	201	200	183	91.5	184	92.0	1	0.5
Canberra-Adelaide								
Qantas	48	48	48	100.0	48	100.0	0	0.0
Virgin Blue	28	27	23	85.2	22	81.5	1	3.6
All Airlines	76	75	71	94.7	70	93.3	1	1.3
Canberra-Brisbane								
Qantas	132	132	126	95.5	120	90.9	0	0.0
QantasLink	8	8	8	100.0	7	87.5	0	0.0
Virgin Blue	131	130	117	90.0	118	90.8	1	0.8
All Airlines	271	270	251	93.0	245	90.7	1	0.4
Canberra-Melbourne								
Qantas	240	238	214	89.9	216	90.8	2	0.8
QantasLink	36	34	28	82.4	29	85.3	2	5.6
Tiger Airways	36	36	32	88.9	33	91.7	0	0.0
Virgin Blue	151	151	135	89.4	130	86.1	0	0.0
All Airlines	463	459	409	89.1	408	88.9	4	0.9
Canberra-Sydney								
Qantas	192	183	165	90.2	163	89.1	9	4.7
QantasLink	388	365	320	87.7	300	82.2	23	5.9
Virgin Blue	210	204	160	78.4	158	77.5	6	2.9
All Airlines	790	752	645	85.8	621	82.6	38	4.8
Coffs Harbour-Sydney								
QantasLink	108	108	66	61.1	68	63.0	0	0.0
Virgin Blue	58	56	46	82.1	44	78.6	2	3.4
All Airlines	166	164	112	68.3	112	68.3	2	1.2
Darwin-Brisbane								
Jetstar	28	28	24	85.7	25	89.3	0	0.0
Qantas	28	28	24	85.7	22	78.6	0	0.0
Virgin Blue	28	28	26	92.9	25	89.3	0	0.0
All Airlines	84	84	74	88.1	72	85.7	0	0.0
Dubbo-Sydney								
QantasLink	80	80	68	85.0	64	80.0	0	0.0
Regional Express	134	133	97	72.9	73	54.9	1	0.7
All Airlines	214	213	165	77.5	137	64.3	1	0.5
Gold Coast-Adelaide								
Jetstar	28	28	16	57.1	20	71.4	0	0.0
Virgin Blue	28	28	22	78.6	24	85.7	0	0.0
All Airlines	56	56	38	67.9	44	78.6	0	0.0

	<i>Sectors</i>		<i>Departures On Time</i>		<i>Arrivals On Time</i>		<i>Cancellations</i>	
	<i>Sched.</i>	<i>Flown</i>	<i>No.</i>	<i>%</i>	<i>No.</i>	<i>%</i>	<i>No.</i>	<i>%</i>
Gold Coast-Melbourne								
Jetstar	153	153	98	64.1	103	67.3	0	0.0
Tiger Airways	68	68	56	82.4	59	86.8	0	0.0
Virgin Blue	140	139	113	81.3	110	79.1	1	0.7
All Airlines	361	360	267	74.2	272	75.6	1	0.3
Gold Coast-Newcastle								
Jetstar	28	28	20	71.4	21	75.0	0	0.0
Virgin Blue	12	11	11	100.0	11	100.0	1	8.3
All Airlines	40	39	31	79.5	32	82.1	1	2.5
Gold Coast-Sydney								
Jetstar	256	254	160	63.0	167	65.7	2	0.8
Virgin Blue	292	281	214	76.2	222	79.0	11	3.8
All Airlines	548	535	374	69.9	389	72.7	13	2.4
Hamilton Island-Brisbane								
Jetstar	28	27	20	74.1	23	85.2	1	3.6
Virgin Blue	30	28	23	82.1	23	82.1	2	6.7
All Airlines	58	55	43	78.2	46	83.6	3	5.2
Hervey Bay-Sydney								
Jetstar	16	16	14	87.5	15	93.8	0	0.0
Virgin Blue	28	27	17	63.0	19	70.4	1	3.6
All Airlines	44	43	31	72.1	34	79.1	1	2.3
Hobart-Melbourne								
Jetstar	112	112	88	78.6	90	80.4	0	0.0
Qantas	56	56	54	96.4	54	96.4	0	0.0
Tiger Airways	28	28	27	96.4	27	96.4	0	0.0
Virgin Blue	140	140	119	85.0	121	86.4	0	0.0
All Airlines	336	336	288	85.7	292	86.9	0	0.0
Hobart-Sydney								
Jetstar	56	56	40	71.4	43	76.8	0	0.0
Qantas	28	28	23	82.1	24	85.7	0	0.0
Virgin Blue	56	56	45	80.4	43	76.8	0	0.0
All Airlines	140	140	108	77.1	110	78.6	0	0.0
Kalgoorlie-Perth								
Qantas	50	46	40	87.0	41	89.1	4	8.0
QantasLink	36	35	31	88.6	30	85.7	1	2.8
Skywest	25	23	20	87.0	18	78.3	2	8.0
All Airlines	111	104	91	87.5	89	85.6	7	6.3
Karratha-Perth								
Qantas	137	132	119	90.2	119	90.2	5	3.6
QantasLink	26	23	20	87.0	19	82.6	3	11.5
Skywest	15	15	15	100.0	15	100.0	0	0.0
Virgin Blue	48	46	43	93.5	42	91.3	2	4.2
All Airlines	226	216	197	91.2	195	90.3	10	4.4

	<i>Sectors</i>		<i>Departures On Time</i>		<i>Arrivals On Time</i>		<i>Cancellations</i>	
	<i>Sched.</i>	<i>Flown</i>	<i>No.</i>	<i>%</i>	<i>No.</i>	<i>%</i>	<i>No.</i>	<i>%</i>
Launceston-Melbourne								
Jetstar	84	84	62	73.8	65	77.4	0	0.0
QantasLink	56	56	50	89.3	34	60.7	0	0.0
Tiger Airways	20	20	19	95.0	19	95.0	0	0.0
Virgin Blue	112	112	99	88.4	100	89.3	0	0.0
All Airlines	272	272	230	84.6	218	80.1	0	0.0
Launceston-Sydney								
Jetstar	28	28	19	67.9	22	78.6	0	0.0
Virgin Blue	28	28	22	78.6	22	78.6	0	0.0
All Airlines	56	56	41	73.2	44	78.6	0	0.0
Mackay-Brisbane								
Jetstar	72	71	48	67.6	49	69.0	1	1.4
QantasLink	52	52	46	88.5	47	90.4	0	0.0
Virgin Blue	136	136	117	86.0	117	86.0	0	0.0
All Airlines	260	259	211	81.5	213	82.2	1	0.4
Maroochydore-Melbourne								
Jetstar	44	43	30	69.8	35	81.4	1	2.3
Tiger Airways	16	16	13	81.3	15	93.8	0	0.0
Virgin Blue	28	28	27	96.4	26	92.9	0	0.0
All Airlines	88	87	70	80.5	76	87.4	1	1.1
Maroochydore-Sydney								
Jetstar	72	71	61	85.9	61	85.9	1	1.4
Virgin Blue	52	50	32	64.0	34	68.0	2	3.8
All Airlines	124	121	93	76.9	95	78.5	3	2.4
Melbourne-Adelaide								
Jetstar	44	44	41	93.2	38	86.4	0	0.0
Qantas	314	305	270	88.5	274	89.8	9	2.9
Tiger Airways	54	54	49	90.7	48	88.9	0	0.0
Virgin Blue	267	265	224	84.5	222	83.8	2	0.7
All Airlines	679	668	584	87.4	582	87.1	11	1.6
Melbourne-Alice Springs								
Qantas	28	28	26	92.9	28	100.0	0	0.0
Tiger Airways	8	8	8	100.0	8	100.0	0	0.0
All Airlines	36	36	34	94.4	36	100.0	0	0.0
Melbourne-Brisbane								
Qantas	383	356	319	89.6	310	87.1	27	7.0
Virgin Blue	337	335	302	90.1	301	89.9	2	0.6
All Airlines	720	691	621	89.9	611	88.4	29	4.0
Melbourne-Cairns								
Jetstar	28	28	26	92.9	26	92.9	0	0.0
Qantas	28	28	27	96.4	27	96.4	0	0.0
Virgin Blue	60	60	55	91.7	55	91.7	0	0.0
All Airlines	116	116	108	93.1	108	93.1	0	0.0

	<i>Sectors</i>		<i>Departures On Time</i>		<i>Arrivals On Time</i>		<i>Cancellations</i>	
	<i>Sched.</i>	<i>Flown</i>	<i>No.</i>	<i>%</i>	<i>No.</i>	<i>%</i>	<i>No.</i>	<i>%</i>
Melbourne-Canberra								
Qantas	239	237	207	87.3	208	87.8	2	0.8
QantasLink	36	34	31	91.2	31	91.2	2	5.6
Tiger Airways	36	36	31	86.1	31	86.1	0	0.0
Virgin Blue	151	150	131	87.3	133	88.7	1	0.7
All Airlines	462	457	400	87.5	403	88.2	5	1.1
Melbourne-Gold Coast								
Jetstar	151	151	116	76.8	115	76.2	0	0.0
Tiger Airways	68	68	60	88.2	58	85.3	0	0.0
Virgin Blue	140	140	113	80.7	113	80.7	0	0.0
All Airlines	359	359	289	80.5	286	79.7	0	0.0
Melbourne-Hobart								
Jetstar	112	112	84	75.0	86	76.8	0	0.0
Qantas	56	56	47	83.9	46	82.1	0	0.0
Tiger Airways	28	28	27	96.4	27	96.4	0	0.0
Virgin Blue	140	140	121	86.4	121	86.4	0	0.0
All Airlines	336	336	279	83.0	280	83.3	0	0.0
Melbourne-Launceston								
Jetstar	84	84	61	72.6	64	76.2	0	0.0
QantasLink	56	56	46	82.1	45	80.4	0	0.0
Tiger Airways	20	20	20	100.0	19	95.0	0	0.0
Virgin Blue	112	112	99	88.4	96	85.7	0	0.0
All Airlines	272	272	226	83.1	224	82.4	0	0.0
Melbourne-Maroochydore								
Jetstar	44	44	38	86.4	37	84.1	0	0.0
Tiger Airways	16	16	16	100.0	13	81.3	0	0.0
Virgin Blue	28	28	27	96.4	27	96.4	0	0.0
All Airlines	88	88	81	92.0	77	87.5	0	0.0
Melbourne-Mildura								
QantasLink	97	97	78	80.4	75	77.3	0	0.0
Regional Express	77	77	75	97.4	70	90.9	0	0.0
Virgin Blue	28	28	24	85.7	22	78.6	0	0.0
All Airlines	202	202	177	87.6	167	82.7	0	0.0
Melbourne-Newcastle								
Jetstar	81	81	56	69.1	59	72.8	0	0.0
Virgin Blue	28	28	27	96.4	26	92.9	0	0.0
All Airlines	109	109	83	76.1	85	78.0	0	0.0
Melbourne-Perth								
Jetstar	56	55	43	78.2	41	74.5	1	1.8
Qantas	195	194	150	77.3	155	79.9	1	0.5
Tiger Airways	37	37	32	86.5	30	81.1	0	0.0
Virgin Blue	112	112	107	95.5	98	87.5	0	0.0
All Airlines	400	398	332	83.4	324	81.4	2	0.5

	<i>Sectors</i>		<i>Departures On Time</i>		<i>Arrivals On Time</i>		<i>Cancellations</i>	
	<i>Sched.</i>	<i>Flown</i>	<i>No.</i>	<i>%</i>	<i>No.</i>	<i>%</i>	<i>No.</i>	<i>%</i>
Melbourne-Sydney								
Jetstar	12	11	3	27.3	4	36.4	1	8.3
Qantas	862	792	668	84.3	656	82.8	70	8.1
Virgin Blue	743	725	584	80.6	579	79.9	18	2.4
All Airlines	1,617	1,528	1,255	82.1	1,239	81.1	89	5.5
Mildura-Melbourne								
QantasLink	97	97	78	80.4	76	78.4	0	0.0
Regional Express	77	77	74	96.1	75	97.4	0	0.0
Virgin Blue	28	28	20	71.4	23	82.1	0	0.0
All Airlines	202	202	172	85.1	174	86.1	0	0.0
Newcastle-Brisbane								
Jetstar	96	96	74	77.1	74	77.1	0	0.0
QantasLink	64	63	48	76.2	40	63.5	1	1.6
Virgin Blue	45	44	41	93.2	41	93.2	1	2.2
All Airlines	205	203	163	80.3	155	76.4	2	1.0
Newcastle-Gold Coast								
Jetstar	28	28	22	78.6	23	82.1	0	0.0
Virgin Blue	12	12	11	91.7	10	83.3	0	0.0
All Airlines	40	40	33	82.5	33	82.5	0	0.0
Newcastle-Melbourne								
Jetstar	80	80	57	71.3	61	76.3	0	0.0
Virgin Blue	28	28	26	92.9	26	92.9	0	0.0
All Airlines	108	108	83	76.9	87	80.6	0	0.0
Newman-Perth								
QantasLink	84	84	73	86.9	71	84.5	0	0.0
Virgin Blue	29	28	19	67.9	23	82.1	1	3.4
All Airlines	113	112	92	82.1	94	83.9	1	0.9
Perth-Adelaide								
Qantas	128	127	119	93.7	118	92.9	1	0.8
Virgin Blue	67	67	56	83.6	57	85.1	0	0.0
All Airlines	195	194	175	90.2	175	90.2	1	0.5
Perth-Brisbane								
Qantas	112	112	98	87.5	103	92.0	0	0.0
Virgin Blue	56	56	55	98.2	52	92.9	0	0.0
All Airlines	168	168	153	91.1	155	92.3	0	0.0
Perth-Broome								
Qantas	8	6	5	83.3	6	100.0	2	25.0
QantasLink	62	62	54	87.1	55	88.7	0	0.0
Skywest	22	18	17	94.4	16	88.9	4	18.2
Virgin Blue	48	46	41	89.1	41	89.1	2	4.2
All Airlines	140	132	117	88.6	118	89.4	8	5.7

	<i>Sectors</i>		<i>Departures On Time</i>		<i>Arrivals On Time</i>		<i>Cancellations</i>	
	<i>Sched.</i>	<i>Flown</i>	<i>No.</i>	<i>%</i>	<i>No.</i>	<i>%</i>	<i>No.</i>	<i>%</i>
Perth-Kalgoorlie								
Qantas	50	46	43	93.5	41	89.1	4	8.0
QantasLink	36	35	33	94.3	33	94.3	1	2.8
Skywest	25	23	17	73.9	16	69.6	2	8.0
All Airlines	111	104	93	89.4	90	86.5	7	6.3
Perth-Karratha								
Qantas	137	132	124	93.9	122	92.4	5	3.6
QantasLink	26	23	20	87.0	20	87.0	3	11.5
Skywest	15	15	14	93.3	12	80.0	0	0.0
Virgin Blue	48	46	44	95.7	42	91.3	2	4.2
All Airlines	226	216	202	93.5	196	90.7	10	4.4
Perth-Melbourne								
Jetstar	56	55	35	63.6	47	85.5	1	1.8
Qantas	195	194	160	82.5	167	86.1	1	0.5
Tiger Airways	37	37	28	75.7	22	59.5	0	0.0
Virgin Blue	112	112	104	92.9	97	86.6	0	0.0
All Airlines	400	398	327	82.2	333	83.7	2	0.5
Perth-Newman								
QantasLink	84	84	74	88.1	72	85.7	0	0.0
Virgin Blue	28	28	27	96.4	27	96.4	0	0.0
All Airlines	112	112	101	90.2	99	88.4	0	0.0
Perth-Sydney								
Qantas	192	191	170	89.0	171	89.5	1	0.5
Virgin Blue	140	139	122	87.8	130	93.5	1	0.7
All Airlines	332	330	292	88.5	301	91.2	2	0.6
Port Macquarie-Sydney								
QantasLink	104	103	84	81.6	84	81.6	1	1.0
Virgin Blue	56	55	34	61.8	33	60.0	1	1.8
All Airlines	160	158	118	74.7	117	74.1	2	1.3
Proserpine-Brisbane								
Jetstar	28	25	18	72.0	20	80.0	3	10.7
Virgin Blue	29	28	23	82.1	23	82.1	1	3.4
All Airlines	57	53	41	77.4	43	81.1	4	7.0
Rockhampton-Brisbane								
Jetstar	28	28	24	85.7	25	89.3	0	0.0
QantasLink	105	105	92	87.6	87	82.9	0	0.0
Virgin Blue	140	139	118	84.9	115	82.7	1	0.7
All Airlines	273	272	234	86.0	227	83.5	1	0.4
Sydney-Adelaide								
Jetstar	28	28	27	96.4	27	96.4	0	0.0
Qantas	270	263	231	87.8	250	95.1	7	2.6
Virgin Blue	141	140	114	81.4	109	77.9	1	0.7
All Airlines	439	431	372	86.3	386	89.6	8	1.8

	<i>Sectors</i>		<i>Departures On Time</i>		<i>Arrivals On Time</i>		<i>Cancellations</i>	
	<i>Sched.</i>	<i>Flown</i>	<i>No.</i>	<i>%</i>	<i>No.</i>	<i>%</i>	<i>No.</i>	<i>%</i>
Sydney-Albury								
QantasLink	108	108	88	81.5	80	74.1	0	0.0
Regional Express	105	105	88	83.8	76	72.4	0	0.0
Virgin Blue	52	52	36	69.2	37	71.2	0	0.0
All Airlines	265	265	212	80.0	193	72.8	0	0.0
Sydney-Ballina								
Jetstar	28	28	25	89.3	23	82.1	0	0.0
Regional Express	71	71	43	60.6	27	38.0	0	0.0
Virgin Blue	28	28	20	71.4	21	75.0	0	0.0
All Airlines	127	127	88	69.3	71	55.9	0	0.0
Sydney-Brisbane								
Jetstar	50	48	34	70.8	39	81.3	2	4.0
Qantas	601	558	475	85.1	469	84.1	43	7.2
Virgin Blue	517	500	383	76.6	397	79.4	17	3.3
All Airlines	1,168	1,106	892	80.7	905	81.8	62	5.3
Sydney-Cairns								
Jetstar	28	27	27	100.0	27	100.0	1	3.6
Qantas	93	93	82	88.2	84	90.3	0	0.0
Virgin Blue	80	80	67	83.8	68	85.0	0	0.0
All Airlines	201	200	176	88.0	179	89.5	1	0.5
Sydney-Canberra								
Qantas	196	188	171	91.0	171	91.0	8	4.1
QantasLink	388	365	301	82.5	289	79.2	23	5.9
Virgin Blue	210	204	153	75.0	161	78.9	6	2.9
All Airlines	794	757	625	82.6	621	82.0	37	4.7
Sydney-Coffs Harbour								
QantasLink	108	108	89	82.4	68	63.0	0	0.0
Virgin Blue	57	57	52	91.2	50	87.7	0	0.0
All Airlines	165	165	141	85.5	118	71.5	0	0.0
Sydney-Dubbo								
QantasLink	80	80	75	93.8	74	92.5	0	0.0
Regional Express	134	134	97	72.4	79	59.0	0	0.0
All Airlines	214	214	172	80.4	153	71.5	0	0.0
Sydney-Gold Coast								
Jetstar	258	256	195	76.2	204	79.7	2	0.8
Virgin Blue	292	284	226	79.6	233	82.0	8	2.7
All Airlines	550	540	421	78.0	437	80.9	10	1.8
Sydney-Hervey Bay								
Jetstar	16	16	16	100.0	16	100.0	0	0.0
Virgin Blue	28	28	17	60.7	16	57.1	0	0.0
All Airlines	44	44	33	75.0	32	72.7	0	0.0

	<i>Sectors</i>		<i>Departures On Time</i>		<i>Arrivals On Time</i>		<i>Cancellations</i>	
	<i>Sched.</i>	<i>Flown</i>	<i>No.</i>	<i>%</i>	<i>No.</i>	<i>%</i>	<i>No.</i>	<i>%</i>
Sydney-Hobart								
Jetstar	56	56	42	75.0	47	83.9	0	0.0
Qantas	28	28	25	89.3	26	92.9	0	0.0
Virgin Blue	56	56	38	67.9	34	60.7	0	0.0
All Airlines	140	140	105	75.0	107	76.4	0	0.0
Sydney-Launceston								
Jetstar	28	28	19	67.9	20	71.4	0	0.0
Virgin Blue	28	28	23	82.1	23	82.1	0	0.0
All Airlines	56	56	42	75.0	43	76.8	0	0.0
Sydney-Maroochydore								
Jetstar	72	72	64	88.9	64	88.9	0	0.0
Virgin Blue	52	51	30	58.8	32	62.7	1	1.9
All Airlines	124	123	94	76.4	96	78.0	1	0.8
Sydney-Melbourne								
Jetstar	12	11	6	54.5	7	63.6	1	8.3
Qantas	857	789	689	87.3	696	88.2	68	7.9
Virgin Blue	742	723	578	79.9	600	83.0	19	2.6
All Airlines	1,611	1,523	1,273	83.6	1,303	85.6	88	5.5
Sydney-Perth								
Qantas	193	193	158	81.9	167	86.5	0	0.0
Virgin Blue	140	139	114	82.0	115	82.7	1	0.7
All Airlines	333	332	272	81.9	282	84.9	1	0.3
Sydney-Port Macquarie								
QantasLink	104	103	89	86.4	80	77.7	1	1.0
Virgin Blue	56	56	32	57.1	32	57.1	0	0.0
All Airlines	160	159	121	76.1	112	70.4	1	0.6
Sydney-Townsville								
Jetstar	20	20	19	95.0	19	95.0	0	0.0
Virgin Blue	28	28	25	89.3	24	85.7	0	0.0
All Airlines	48	48	44	91.7	43	89.6	0	0.0
Sydney-Wagga Wagga								
QantasLink	104	104	83	79.8	75	72.1	0	0.0
Regional Express	99	98	66	67.3	49	50.0	1	1.0
All Airlines	203	202	149	73.8	124	61.4	1	0.5
Townsville-Brisbane								
Jetstar	28	28	28	100.0	28	100.0	0	0.0
Qantas	139	138	120	87.0	122	88.4	1	0.7
Virgin Blue	140	140	127	90.7	126	90.0	0	0.0
All Airlines	307	306	275	89.9	276	90.2	1	0.3
Townsville-Sydney								
Jetstar	20	20	19	95.0	20	100.0	0	0.0
Virgin Blue	28	28	26	92.9	26	92.9	0	0.0
All Airlines	48	48	45	93.8	46	95.8	0	0.0

	<i>Sectors</i>		<i>Departures On Time</i>		<i>Arrivals On Time</i>		<i>Cancellations</i>	
	<i>Sched.</i>	<i>Flown</i>	<i>No.</i>	<i>%</i>	<i>No.</i>	<i>%</i>	<i>No.</i>	<i>%</i>
Wagga Wagga-Sydney								
QantasLink	104	104	85	81.7	74	71.2	0	0.0
Regional Express	99	98	72	73.5	57	58.2	1	1.0
All Airlines	203	202	157	77.7	131	64.9	1	0.5

Airports

On time performance is reported for all routes where the passenger load averages over 8000 passengers per month, and where two or more airlines operate in competition. The following data reports by airport against flights operated on those routes only.

Airport	Departures			Arrivals		
	Sectors	On Time		Sectors	On Time	
	Flown	No.	%	Flown	No.	%
Adelaide						
Jetstar	127	80	63.0	128	108	84.4
Qantas	817	744	91.1	823	764	92.8
Tiger Airways	54	48	88.9	54	48	88.9
Virgin Blue	632	536	84.8	632	521	82.4
All Airlines	1 630	1 408	86.4	1 637	1 441	88.0
Relates to services to and from Brisbane, Canberra, Gold Coast, Melbourne, Perth and Sydney.						
Albury						
QantasLink	108	87	80.6	108	80	74.1
Regional Express	105	86	81.9	105	76	72.4
Virgin Blue	52	35	67.3	52	37	71.2
All Airlines	265	208	78.5	265	193	72.8
Relates to services to and from Sydney only.						
Alice Springs						
Qantas	28	26	92.9	28	28	100.0
Tiger Airways	8	8	100.0	8	8	100.0
All Airlines	36	34	94.4	36	36	100.0
Relates to services to and from Melbourne only						
Ballina						
Jetstar	26	21	80.8	28	23	82.1
Regional Express	72	29	40.3	71	27	38.0
Virgin Blue	28	18	64.3	28	21	75.0
All Airlines	126	68	54.0	127	71	55.9
Relates to services to and from Sydney only.						
Brisbane						
Jetstar	457	368	80.5	454	371	81.7
Qantas	1 520	1 312	86.3	1 516	1 319	87.0
QantasLink	248	207	83.5	228	181	79.4
Virgin Blue	1 787	1 528	85.5	1 780	1 527	85.8
All Airlines	4 012	3 415	85.1	3 978	3 398	85.4
Relates to services to and from Adelaide, Cairns, Canberra, Darwin, Hamilton Island, Mackay, Melbourne, Newcastle, Perth, Proserpine, Rockhampton, Sydney and Townsville.						

Airport	Departures			Arrivals		
	Sectors	On Time		Sectors	On Time	
	Flown	No.	%	Flown	No.	%
Broome						
Qantas	6	6	100.0	6	6	100.0
QantasLink	62	56	90.3	62	55	88.7
Skywest	19	17	89.5	18	16	88.9
Virgin Blue	46	37	80.4	46	41	89.1
All Airlines	133	116	87.2	132	118	89.4
Relates to services to and from Perth only.						
Cairns						
Jetstar	130	117	90.0	130	122	93.8
Qantas	233	210	90.1	233	212	91.0
Virgin Blue	252	234	92.9	252	231	91.7
All Airlines	615	561	91.2	615	565	91.9
Relates to services to and from Brisbane, Melbourne and Sydney.						
Canberra						
Qantas	601	553	92.0	602	549	91.2
QantasLink	407	356	87.5	407	328	80.6
Tiger Airways	36	32	88.9	36	31	86.1
Virgin Blue	512	435	85.0	513	423	82.5
All Airlines	1 556	1 376	88.4	1 558	1 331	85.4
Relates to services to and from Adelaide, Brisbane, Melbourne and Sydney.						
Coffs Harbour						
QantasLink	108	66	61.1	108	68	63.0
Virgin Blue	56	46	82.1	57	50	87.7
All Airlines	164	112	68.3	165	118	71.5
Relates to services to and from Sydney only.						
Darwin						
Jetstar	28	24	85.7	28	23	82.1
Qantas	28	24	85.7	28	26	92.9
Virgin Blue	28	26	92.9	28	26	92.9
All Airlines	84	74	88.1	84	75	89.3
Relates to services to and from Brisbane.						
Dubbo						
QantasLink	80	68	85.0	80	74	92.5
Regional Express	133	97	72.9	134	79	59.0
All Airlines	213	165	77.5	214	153	71.5
Relates to services to and from Sydney only.						
Gold Coast						
Jetstar	463	294	63.5	463	361	78.0
Tiger Airways	68	56	82.4	68	58	85.3
Virgin Blue	459	360	78.4	464	381	82.1
All Airlines	990	710	71.7	995	800	80.4
Relates to services to and from Adelaide, Melbourne, Newcastle and Sydney.						

Airport	Departures			Arrivals		
	Sectors	On Time		Sectors	On Time	
	Flown	No.	%	Flown	No.	%
Hamilton Island						
Jetstar	27	20	74.1	28	24	85.7
Virgin Blue	28	23	82.1	30	26	86.7
All Airlines	55	43	78.2	58	50	86.2
Relates to services to and from Brisbane only.						
Hervey Bay						
Jetstar	16	14	87.5	16	16	100.0
Virgin Blue	27	17	63.0	28	16	57.1
All Airlines	43	31	72.1	44	32	72.7
Relates to services to and from Sydney only.						
Hobart						
Jetstar	168	128	76.2	168	133	79.2
Qantas	84	77	91.7	84	72	85.7
Tiger Airways	28	27	96.4	28	27	96.4
Virgin Blue	196	164	83.7	196	155	79.1
All Airlines	476	396	83.2	476	387	81.3
Relates to services to and from Melbourne and Sydney.						
Kalgoorlie						
Qantas	46	40	87.0	46	41	89.1
QantasLink	35	31	88.6	35	33	94.3
Skywest	23	20	87.0	23	16	69.6
All Airlines	104	91	87.5	104	90	86.5
Relates to services to and from Perth only.						
Karratha						
Qantas	132	119	90.2	132	122	92.4
QantasLink	23	20	87.0	23	20	87.0
Skywest	15	15	100.0	15	12	80.0
Virgin Blue	46	43	93.5	46	42	91.3
All Airlines	216	197	91.2	216	196	90.7
Relates to services to and from Perth only.						
Launceston						
Jetstar	112	81	72.3	112	84	75.0
QantasLink	56	50	89.3	56	45	80.4
Tiger Airways	20	19	95.0	20	19	95.0
Virgin Blue	140	121	86.4	140	119	85.0
All Airlines	328	271	82.6	328	267	81.4
Relates to services to and from Melbourne and Sydney.						

Airport	Departures			Arrivals		
	Sectors Flown	On Time No.	On Time %	Sectors Flown	On Time No.	On Time %
Mackay						
Jetstar	71	48	67.6	71	57	80.3
QantasLink	52	46	88.5	52	43	82.7
Virgin Blue	136	117	86.0	136	109	80.1
All Airlines	259	211	81.5	259	209	80.7
Relates to services to and from Brisbane only.						
Maroochydore						
Jetstar	114	91	79.8	116	101	87.1
Tiger Airways	16	13	81.3	16	13	81.3
Virgin Blue	78	59	75.6	79	59	74.7
All Airlines	208	163	78.4	211	173	82.0
Relates to services to and from Melbourne and Sydney.						
Melbourne						
Jetstar	610	468	76.7	610	448	73.4
Qantas	1 996	1 714	85.9	1 993	1 789	89.8
QantasLink	187	155	82.9	187	139	74.3
Regional Express	77	75	97.4	77	75	97.4
Tiger Airways	267	243	91.0	267	231	86.5
Virgin Blue	2 123	1 814	85.4	2 125	1 809	85.1
All Airlines	5 260	4 469	85.0	5 259	4 491	85.4
Relates to services to and from Adelaide, Alice Springs, Brisbane, Cairns, Canberra, Gold Coast, Hobart, Launceston, Maroochydore, Mildura, Newcastle, Perth and Sydney.						
Mildura						
QantasLink	97	78	80.4	97	75	77.3
Regional Express	77	74	96.1	77	70	90.9
Virgin Blue	28	20	71.4	28	22	78.6
All Airlines	202	172	85.1	202	167	82.7
Relates to services to and from Melbourne only.						
Newcastle						
Jetstar	204	153	75.0	205	167	81.5
QantasLink	63	48	76.2	63	37	58.7
Virgin Blue	84	78	92.9	83	77	92.8
All Airlines	351	279	79.5	351	281	80.1
Relates to services to and from Brisbane, Gold Coast and Melbourne.						
Newman						
QantasLink	84	73	86.9	84	72	85.7
Virgin Blue	28	19	67.9	28	27	96.4
All Airlines	112	92	82.1	112	99	88.4
Relates to services to and from Perth only.						

<i>Airport</i>	<i>Departures</i>			<i>Arrivals</i>		
	<i>Sectors Flown</i>	<i>On Time</i>		<i>Sectors Flown</i>	<i>On Time</i>	
		<i>No.</i>	<i>%</i>		<i>No.</i>	<i>%</i>
Perth						
Jetstar	55	35	63.6	55	41	74.5
Qantas	808	719	89.0	809	710	87.8
QantasLink	204	181	88.7	204	175	85.8
Skywest	56	48	85.7	57	51	89.5
Tiger Airways	37	28	75.7	37	30	81.1
Virgin Blue	494	449	90.9	494	427	86.4
All Airlines	1 654	1 460	88.3	1 656	1 434	86.6
Relates to services to and from Adelaide, Brisbane, Broome, Kalgoorlie, Karratha, Melbourne, Newman, and Sydney.						
Port Macquarie						
QantasLink	103	84	81.6	103	80	77.7
Virgin Blue	55	34	61.8	56	32	57.1
All Airlines	158	118	74.7	159	112	70.4
Relates to services to and from Sydney only.						
Proserpine						
Jetstar	25	18	72.0	27	19	70.4
Virgin Blue	28	23	82.1	28	23	82.1
All Airlines	53	41	77.4	55	42	76.4
Relates to services to and from Brisbane only.						
Rockhampton						
Jetstar	28	24	85.7	28	26	92.9
QantasLink	105	92	87.6	125	106	84.8
Virgin Blue	139	118	84.9	140	120	85.7
All Airlines	272	234	86.0	293	252	86.0
Relates to services to and from Brisbane only.						
Sydney						
Jetstar	590	474	80.3	584	441	75.5
Qantas	2 112	1 831	86.7	2 110	1 784	84.5
QantasLink	868	725	83.5	868	669	77.1
Regional Express	408	294	72.1	408	217	53.2
Virgin Blue	2 454	1 908	77.8	2 447	1 934	79.0
All Airlines	6 432	5 232	81.3	6 417	5 045	78.6
Relates to services to and from Adelaide, Albury, Ballina, Brisbane, Cairns, Canberra, Coffs Harbour, Dubbo, Gold Coast, Hervey Bay, Hobart, Launceston, Maroochydore, Melbourne, Perth, Port Macquarie, Townsville and Wagga Wagga.						
Townsville						
Jetstar	48	47	97.9	48	47	97.9
Qantas	138	120	87.0	139	128	92.1
Virgin Blue	168	153	91.1	168	145	86.3
All Airlines	354	320	90.4	355	320	90.1
Relates to services to and from Brisbane and Sydney.						

<i>Airport</i>	<i>Departures</i>			<i>Arrivals</i>		
	<i>Sectors</i>	<i>On Time</i>		<i>Sectors</i>	<i>On Time</i>	
	<i>Flown</i>	<i>No.</i>	<i>%</i>	<i>Flown</i>	<i>No.</i>	<i>%</i>
Wagga Wagga						
QantasLink	104	85	81.7	104	75	72.1
Regional Express	98	72	73.5	98	49	50.0
All Airlines	202	157	77.7	202	124	61.4

Relates to services to and from Sydney only.

Definitions

On time departure A flight departure is counted as "on time" if it departs the gate within 15 minutes of the scheduled departure time shown in the carriers' schedule.

On time arrival A flight arrival is counted as "on time" if it arrived at the gate within 15 minutes of the scheduled arrival time shown in the carriers' schedule.
Neither diverted nor cancelled flights count as on time.

Cancellation A flight is regarded as a cancellation if it is cancelled or rescheduled less than 7 days prior to its scheduled departure time.

On time departure percentage The percentage of on time departures is measured against the number of departures *operated* on any particular sector.

On time arrival percentage The percentage of on time arrivals is measured against the number of arrivals *operated* on any particular sector.

Cancellation percentage The percentage of cancellations is measured against the number of services *scheduled* on any particular sector.
