



Australian Government

Department of Infrastructure, Regional Development and Cities

Bureau of Infrastructure, Transport and Regional Economics

STATISTICAL REPORT



Aviation

Domestic airline on time performance
December 2017

© Commonwealth of Australia 2018

ISSN: 1832-0759

Ownership of intellectual property rights in this publication

Unless otherwise noted, copyright (and any other intellectual property rights, if any) in this publication is owned by the Commonwealth of Australia (referred to below as the Commonwealth).

Disclaimer

The material contained in this publication is made available on the understanding that the Commonwealth is not providing professional advice, and that users exercise their own skill and care with respect to its use, and seek independent advice if necessary.

The Commonwealth makes no representations or warranties as to the contents or accuracy of the information contained in this publication. To the extent permitted by law, the Commonwealth disclaims liability to any person or organisation in respect of anything done, or omitted to be done, in reliance upon information contained in this publication.

Creative Commons licence

With the exception of (a) the Coat of Arms; and (b) the Department of Infrastructure, Regional Development and Cities' photos and graphics, copyright in this publication is licensed under a Creative Commons Attribution 3.0 Australia Licence.

Creative Commons Attribution 3.0 Australia Licence is a standard form licence agreement that allows you to copy, communicate and adapt this publication provided that you attribute the work to the Commonwealth and abide by the other licence terms. A summary of the licence terms is available from <http://creativecommons.org/licenses/by/3.0/au/deed.en>. The full licence terms are available from <http://creativecommons.org/licenses/by/3.0/au/legalcode>.

Use of the Coat of Arms

The Department of the Prime Minister and Cabinet sets the terms under which the Coat of Arms is used. Please refer to the Department's Commonwealth Coat of Arms and Government branding web page <http://www.dpmmc.gov.au/guidelines/index.cfm#brand> and, in particular, the Guidelines on the use of the Commonwealth Coat of Arms publication.

An appropriate citation for this report is:

Bureau of Infrastructure, Transport and Regional Economics (BITRE), 2018, Domestic airline on time performance, Statistical Report, BITRE, Canberra ACT.

Contact us

This publication is available in PDF format. All other rights are reserved, including in relation to any Departmental logos or trade marks which may exist. For enquiries regarding the licence and any use of this publication, please contact:

Bureau of Infrastructure, Transport and Regional Economics (BITRE)
Department of Infrastructure, Regional Development and Cities
GPO Box 501, Canberra ACT 2601, Australia
Telephone: (international) +61 2 6274 7210
Fax: (international) +61 2 6274 6855
Email: bitre@infrastructure.gov.au
Website: www.bitre.gov.au

Inquiries

Should you require additional information about the statistics contained in this publication:

Telephone (02) 6274 7790 or Facsimile (02) 6274 7727

Electronic mail: AVSTATS@infrastructure.gov.au

Web site: <http://www.bitre.gov.au/statistics/aviation/otphome.aspx>

Foreword

The Bureau of Infrastructure, Transport and Regional Economics (BITRE) monitors the punctuality and reliability of major domestic airlines operating between Australian airports. The purpose of this is to allow for evaluation of overall industry and individual airline performance, so that consumers of air travel can make informed decisions.

The following domestic airlines currently report this information monthly to the BITRE: Jetstar, Qantas, QantasLink, Regional Express, Tigerair Australia, Virgin Australia and Virgin Australia Regional Airlines. Data has been gathered since November 2003, although some airlines commenced reporting at a later date, including Jetstar which first reported in May 2004, MacAir in July 2005, Tigerair Australia in April 2008 and Virgin Australia Regional Airlines in May 2013. MacAir ceased operations in February 2009 and data was not received for December 2008 onwards. Virgin Blue was rebranded as Virgin Australia in May 2011 and Tiger Airways was rebranded as Tigerair Australia in July 2013 and time series data in Microsoft Excel spreadsheet format on the BITRE website have been revised to reflect these changes. Services operated by Skywest on behalf of Virgin Australia using ATR/F100 aircraft commenced in November 2011 and were shown separately as Virgin Australia – ATR/F100 Operations. Virgin Australia Regional Airlines commenced operations in May 2013. It was formed after the acquisition of Skywest by Virgin Australia and represented a combination of operations previously reported under Skywest and Virgin Australia – ATR/F100 Operations. In January 2016, Virgin Australia transferred their ATR fleet from Virgin Australia Regional Airlines to Virgin Australia.

Information presented in this report is for Australian domestic routes for which the passenger load averaged 8 000 or more passengers per month over the previous six months and where two or more airlines operated in competition on those routes. There were 66 routes that met this definition in December 2017. Over time, routes which meet these criteria change as airline networks and traffic levels vary.

Participating airlines report their overall monthly network performance where this is possible.

Total industry figures encompass all services operated by reporting airlines only. These airlines collectively carried over 95 per cent of total domestic passengers (regular public transport only) in 2016.

The method of capturing on time performance varies between airlines utilising different recording systems. Jetstar and Qantas jet aircraft use Aircraft Communication Addressing and Reporting System (ACARS) to electronically measure on time performance. Regional Express, Tigerair Australia, Virgin Australia, Virgin Australia Regional Airlines and the Qantas non-jet fleet record on time performance manually using records from pilots, gate agents and/or ground crews.

After initial data is collected, aggregate reports are audited internally by participating airlines prior to publication.

Reports and detailed time series data in Microsoft Excel spreadsheet format are available from the BITRE website at: <http://www.bitre.gov.au/statistics/aviation/otphome.aspx>.

Contents

	Page
Industry performance	1
Individual routes	10
Airports	24
Definitions	30

Industry performance

For December 2017, on time performance over all routes operated by participating airlines (Jetstar, Qantas, QantasLink, Regional Express, Tigerair Australia, Virgin Australia and Virgin Australia Regional Airlines) averaged 79.7 per cent for on time arrivals and 80.4 per cent for on time departures. Cancellations represented 1.5 per cent of all scheduled flights. The equivalent figures for December 2016 were 80.0 per cent for on time arrivals, 80.8 per cent for on time departures and 1.8 per cent for cancellations.

This month's on time arrivals figure was lower than the long term average performance for all routes (82.7 per cent) and the on time departures figure was also lower than the long term average (84.0 per cent). The rate of cancellations was higher than the long term average of 1.4 per cent.

Virgin Australia achieved the highest on time arrivals among the major domestic airlines at 81.1 per cent followed by Jetstar at 79.3 per cent, Qantas at 79.1 per cent and Tigerair Australia at 67.2 per cent. Of the regional airlines, Regional Express recorded 82.9 per cent for on time arrivals, followed by QantasLink at 80.7 per cent and Virgin Australia Regional Airlines at 76.7 per cent. The Qantas network (Qantas and QantasLink combined operations) recorded 80.0 per cent for on time arrivals while the Virgin Australia network (Virgin Australia and Virgin Australia Regional Airlines combined operations) recorded 80.8 per cent.

Virgin Australia also achieved the highest level of on time departures among the major domestic airlines for December 2017 at 83.2 per cent, followed by Qantas at 79.1 per cent, Jetstar at 76.9 per cent and Tigerair Australia at 68.9 per cent. Of the regional airlines, Regional Express recorded 86.1 per cent, followed by QantasLink at 81.1 per cent and Virgin Australia Regional Airlines at 78.5 per cent. The Qantas network recorded 80.2 per cent for on time departures while the Virgin Australia network recorded 82.9 per cent.

Virgin Australia Regional Airlines recorded the highest percentage of cancellations (3.6 per cent) during the month, followed by QantasLink (2.1 per cent), Tigerair Australia (2.0 per cent), Virgin Australia (1.6 per cent), Qantas and Regional Express (both at 1.0 per cent) and Jetstar (0.9 per cent).

Airlines' on time performance varies across the routes they serve. Individual route data by specific airline for 66 routes are shown on pages 10-23.

Of the 66 routes which met the criteria for on time performance reporting in December 2017, the Perth-Darwin route had the highest percentage of on time arrivals (98.4 per cent) and the Adelaide-Gold Coast and Adelaide-Port Lincoln routes had the highest percentage of on time departures (94.1 per cent). The Mount Isa-Brisbane route had the lowest percentage of on time arrivals (49.2 per cent) and the Port Macquarie-Sydney route had the lowest percentage of on time departures (61.8 per cent).

Cancellations were highest on the Alice Springs-Darwin route at 4.8 per cent, followed by the Canberra-Sydney and Canberra-Melbourne routes at 3.9 per cent, the Alice Springs-Adelaide

route at 3.8 per cent, the Melbourne-Canberra route at 3.7 per cent and the Sydney-Canberra route at 3.6 per cent.

Newman Airport recorded the highest percentage of on time arrivals (93.0 per cent) and the highest percentage of on time departures (91.7 per cent). Port Macquarie Airport recorded the lowest percentage of on time arrivals (65.3 per cent) and the lowest percentage of on time departures (61.8 per cent). These figures only refer to reported routes and do not cover all flights at these airports.

Table 1 On time performance for December 2017 — Total Industry

	<i>Sectors</i>		<i>Arrivals On Time</i>		<i>Departures On Time</i>		<i>Cancellations</i>	
	<i>Scheduled</i>	<i>Flown</i>	<i>No.</i>	<i>%</i>	<i>No.</i>	<i>%</i>	<i>No.</i>	<i>%</i>
Jetstar	8 017	7 944	6 299	79.3	6 110	76.9	73	0.9
Qantas	8 645	8 559	6 773	79.1	6 772	79.1	86	1.0
QantasLink	9 627	9 423	7 609	80.7	7 646	81.1	204	2.1
Regional Express	5 342	5 290	4 385	82.9	4 555	86.1	52	1.0
Tigerair Australia	2 672	2 619	1 760	67.2	1 804	68.9	53	2.0
Virgin Australia	11 582	11 399	9 249	81.1	9 483	83.2	183	1.6
Virgin Australia Regional Airlines	885	853	654	76.7	670	78.5	32	3.6
All Airlines	46 770	46 087	36 729	79.7	37 040	80.4	683	1.5
Qantas - all QF designated services	18 272	17 982	14 382	80.0	14 418	80.2	290	1.6
Virgin Australia - all VA designated services	12 467	12 252	9 903	80.8	10 153	82.9	215	1.7

Total airline network data (including routes not shown in this report).

Airlines' on time performance varies across the routes they serve. Individual route data by specific airline for 66 routes are shown on pages 10-23.

Table 2 Top ten routes for on time performance for December 2017 (participating airlines only)

<i>Arrivals</i>		<i>Departures</i>	
<i>Route</i>	<i>On Time (%)</i>	<i>Route</i>	<i>On Time (%)</i>
Perth-Darwin	98.4	Adelaide-Gold Coast	94.1
Adelaide-Gold Coast	95.6	Adelaide-Port Lincoln	94.1
Brisbane-Proserpine	94.4	Brisbane-Hobart	93.6
Darwin-Alice Springs	93.5	Darwin-Alice Springs	93.5
Perth-Newman	93.0	Perth-Newman	93.0
Sydney-Ayers Rock	92.5	Darwin-Perth	92.2
Adelaide-Port Lincoln	92.4	Newman-Perth	91.7
Brisbane-Hobart	92.3	Kalgoorlie-Perth	91.2
Kalgoorlie-Perth	92.0	Proserpine-Brisbane	91.1
Newman-Perth	91.7	Port Lincoln-Adelaide	90.7

Table 3 Top ten airports for on time performance for December 2017 (participating airlines and reported routes only)

<i>Arrivals</i>		<i>Departures</i>	
<i>Airport</i>	<i>On Time (%)</i>	<i>Airport</i>	<i>On Time (%)</i>
Newman	93.0	Newman	91.7
Ayers Rock	92.5	Kalgoorlie	91.2
Port Lincoln	92.4	Port Lincoln	90.7
Proserpine	91.5	Karratha	90.6
Karratha	91.2	Mackay	88.6
Port Hedland	90.7	Port Hedland	88.0
Darwin	89.6	Newcastle	87.3
Alice Springs	88.5	Alice Springs	85.6
Kalgoorlie	88.3	Darwin	85.5
Broome	86.6	Proserpine	85.4

Total industry on time performance

Figure 1 On time performance (by month from December 2014)—Total Industry

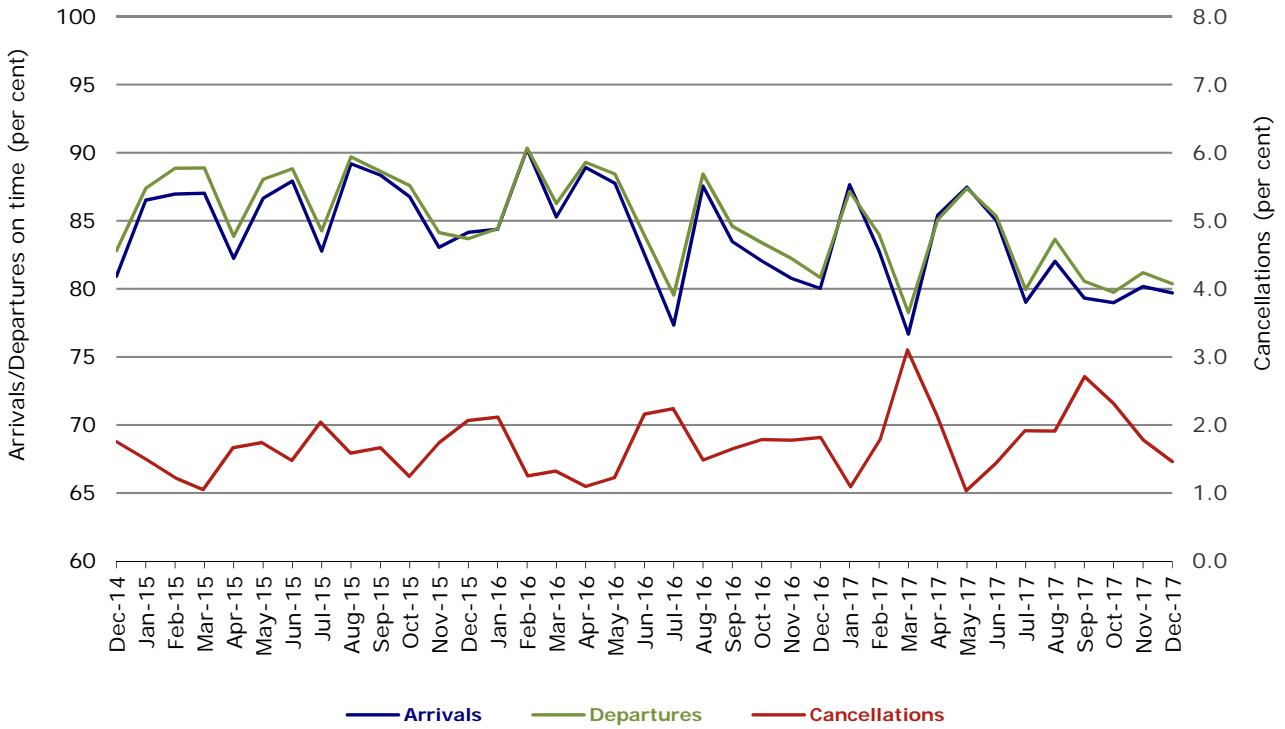


Figure 2 Arrivals on time (by month from December 2016)

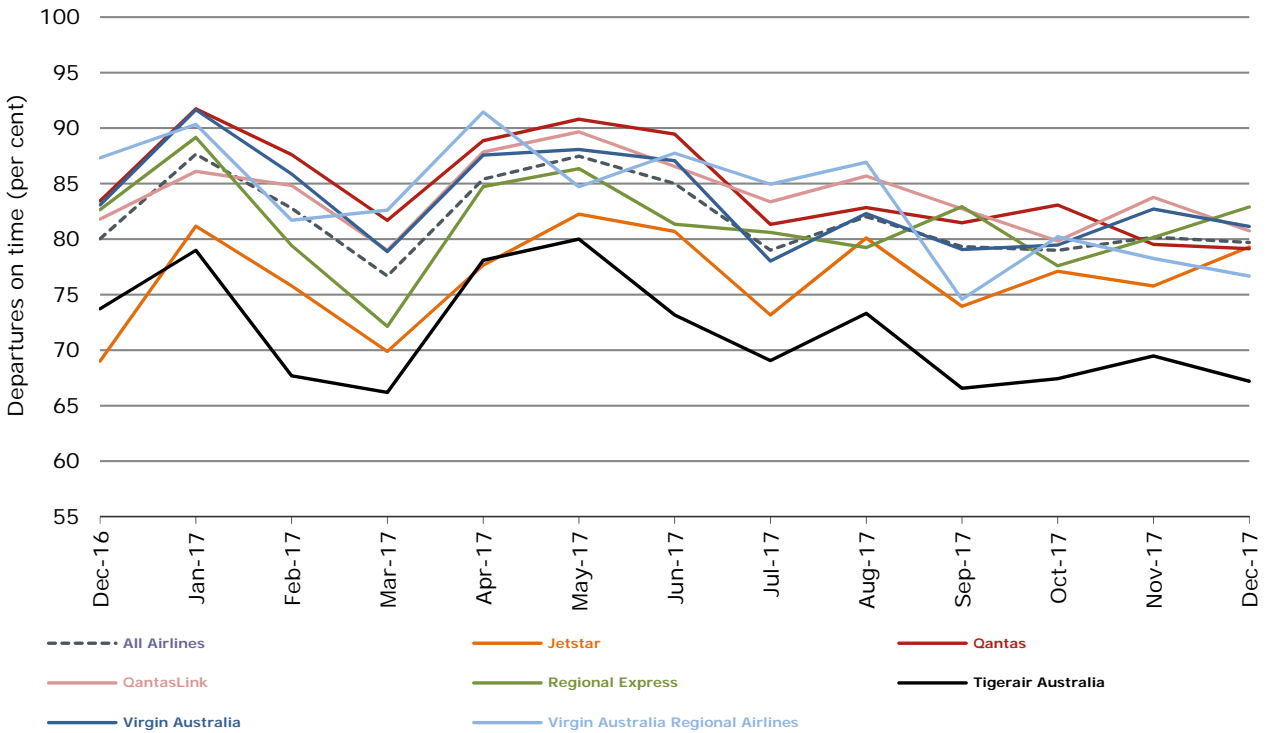


Figure 3 Departures on time (by month from December 2016)

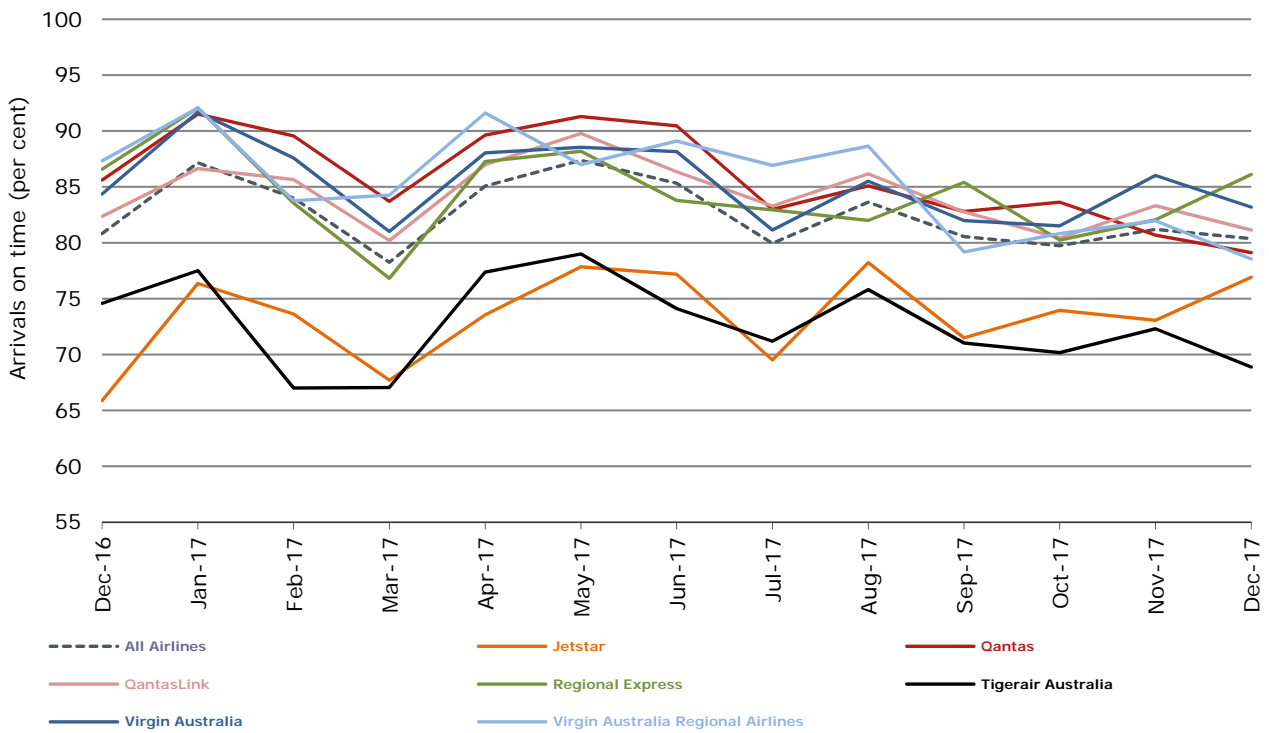
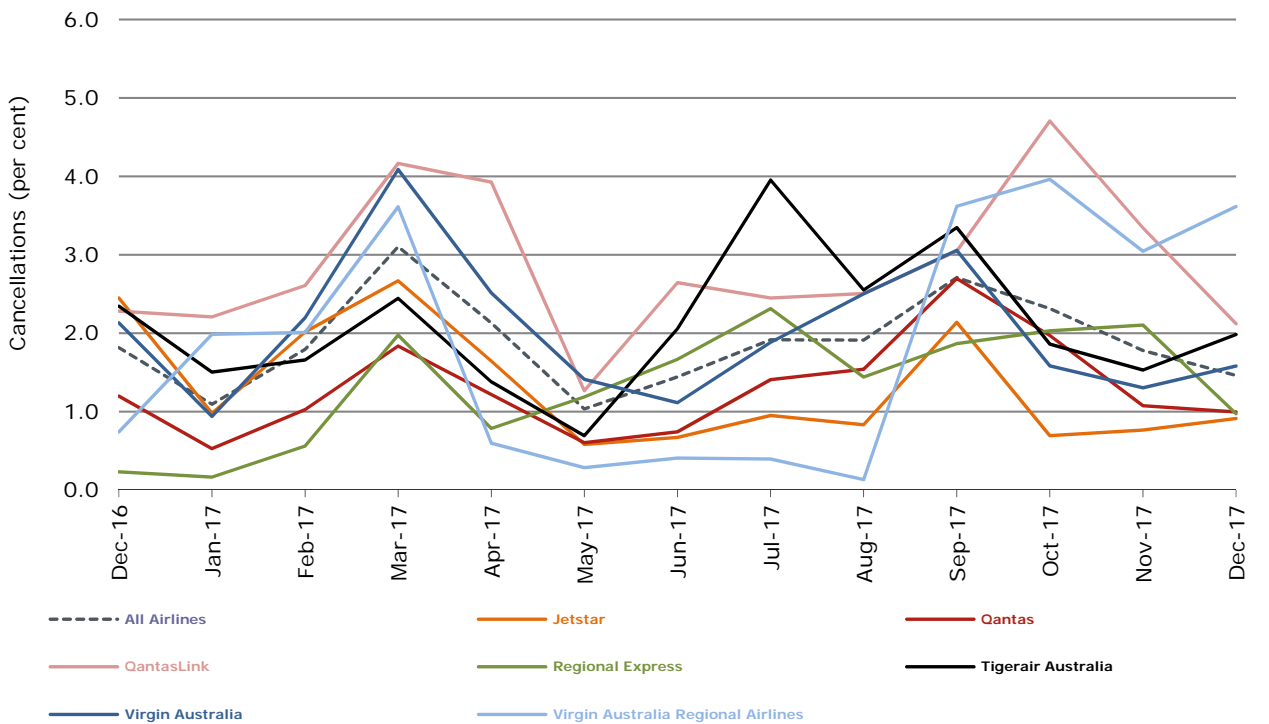


Figure 4 Cancellations (by month from December 2016)



Major domestic airlines on time performance

Figure 5 On time performance (by month from December 2014)—Jetstar

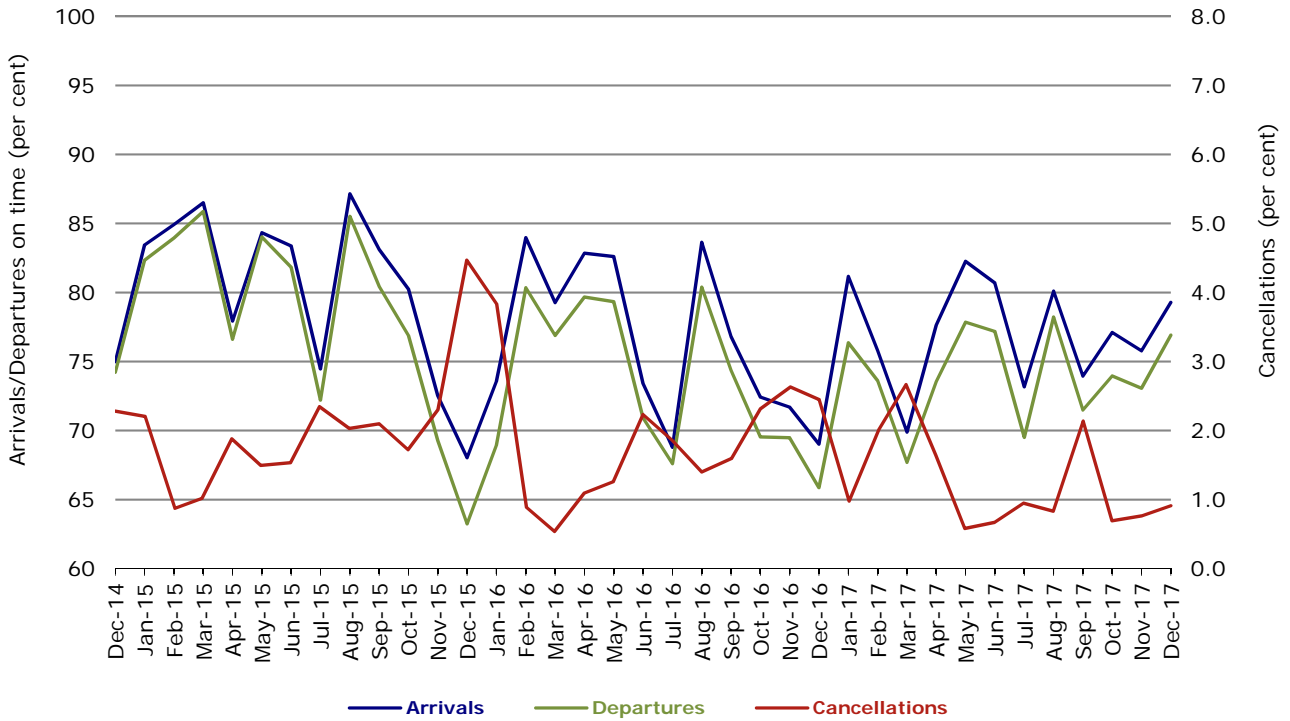


Figure 6 On time performance (by month from December 2014)—Qantas

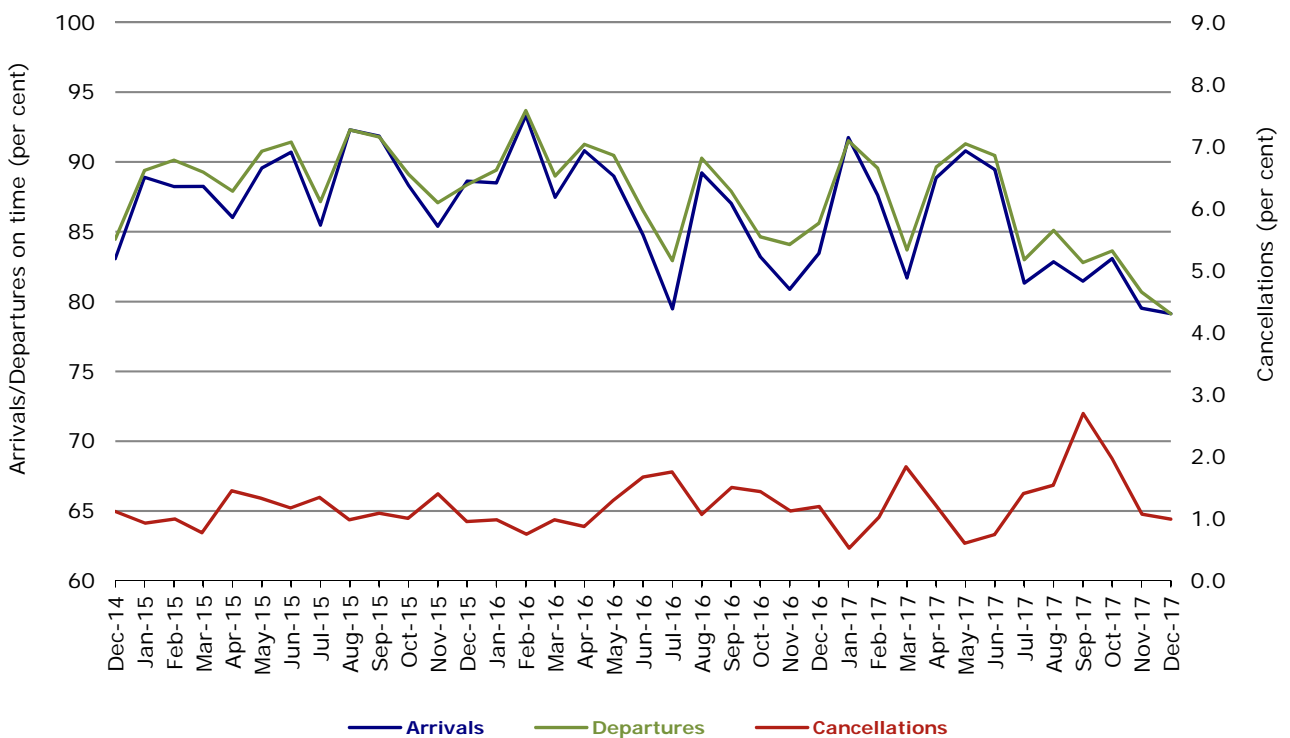


Figure 7 On time performance (by month from December 2014)—Tigerair Australia

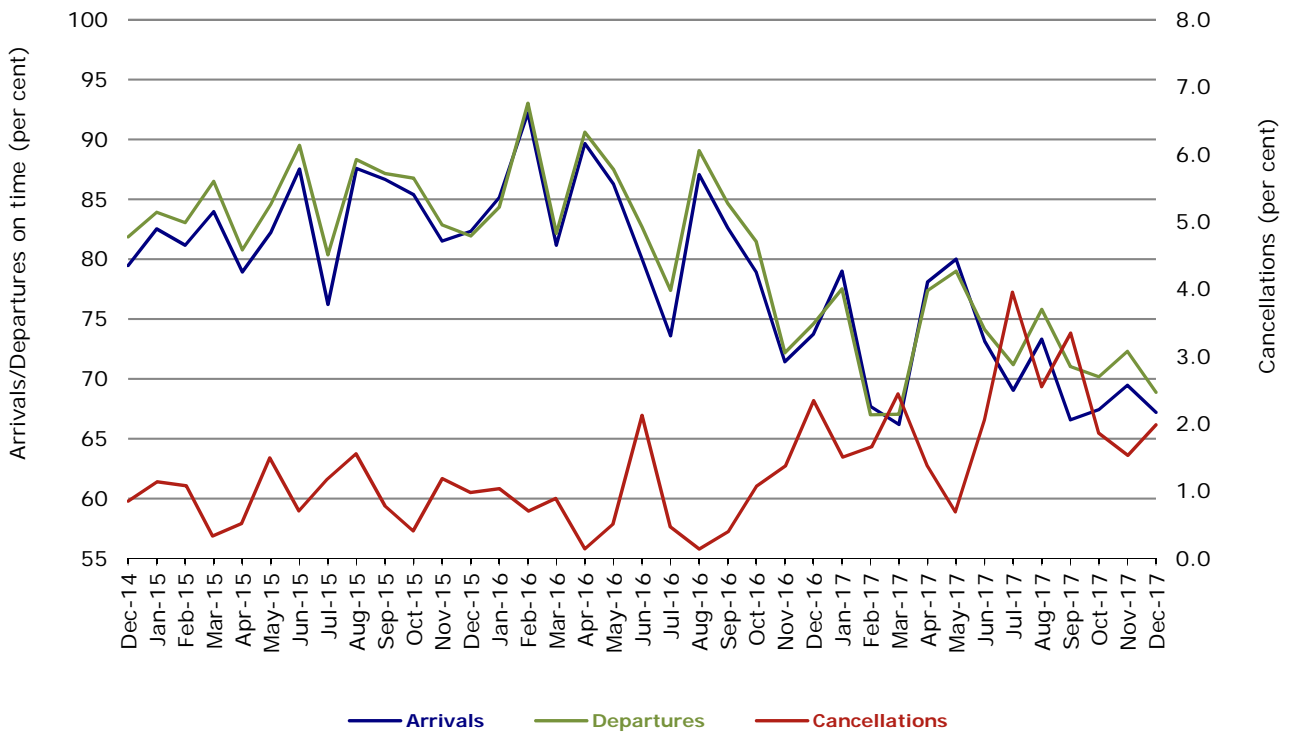
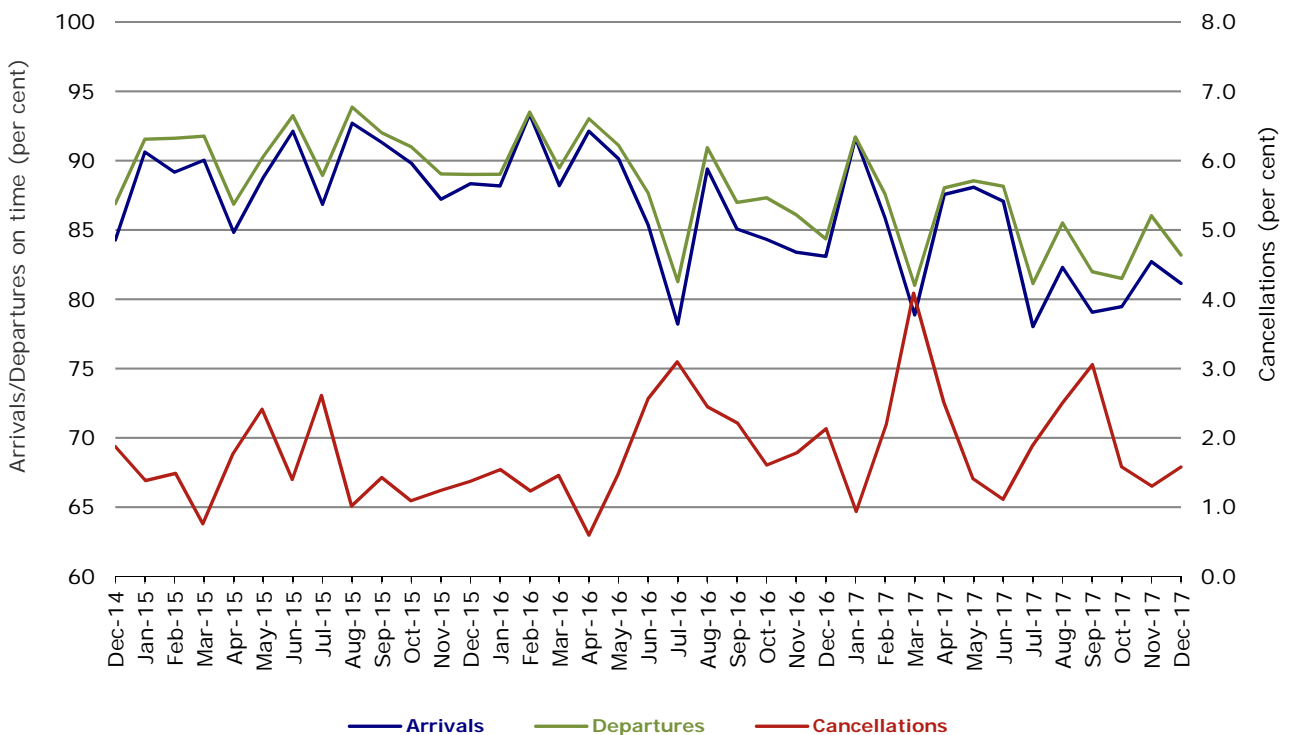


Figure 8 On time performance (by month from December 2014)—Virgin Australia



In January 2016, Virgin Australia transferred their ATR fleet from Virgin Australia Regional Airlines to Virgin Australia.

Major regional airlines on time performance

Figure 9 On time performance (by month from December 2014)—QantasLink

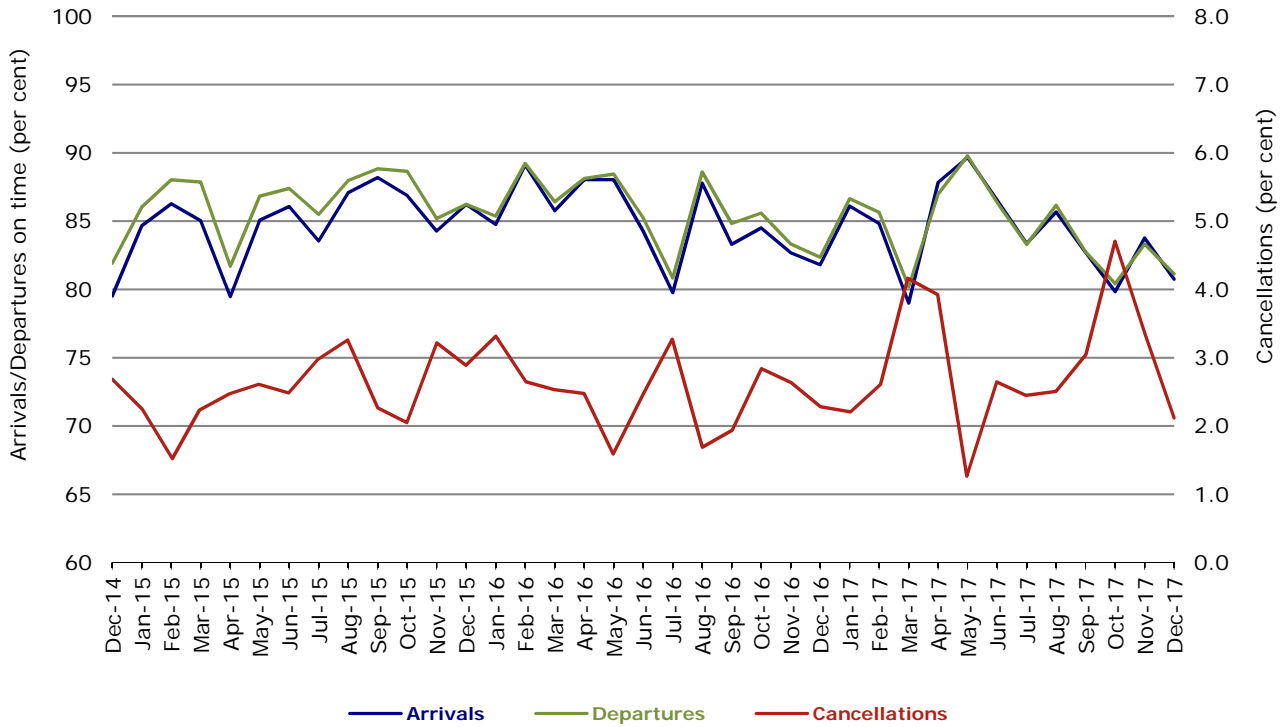


Figure 10 On time performance (by month from December 2014)—Regional Express

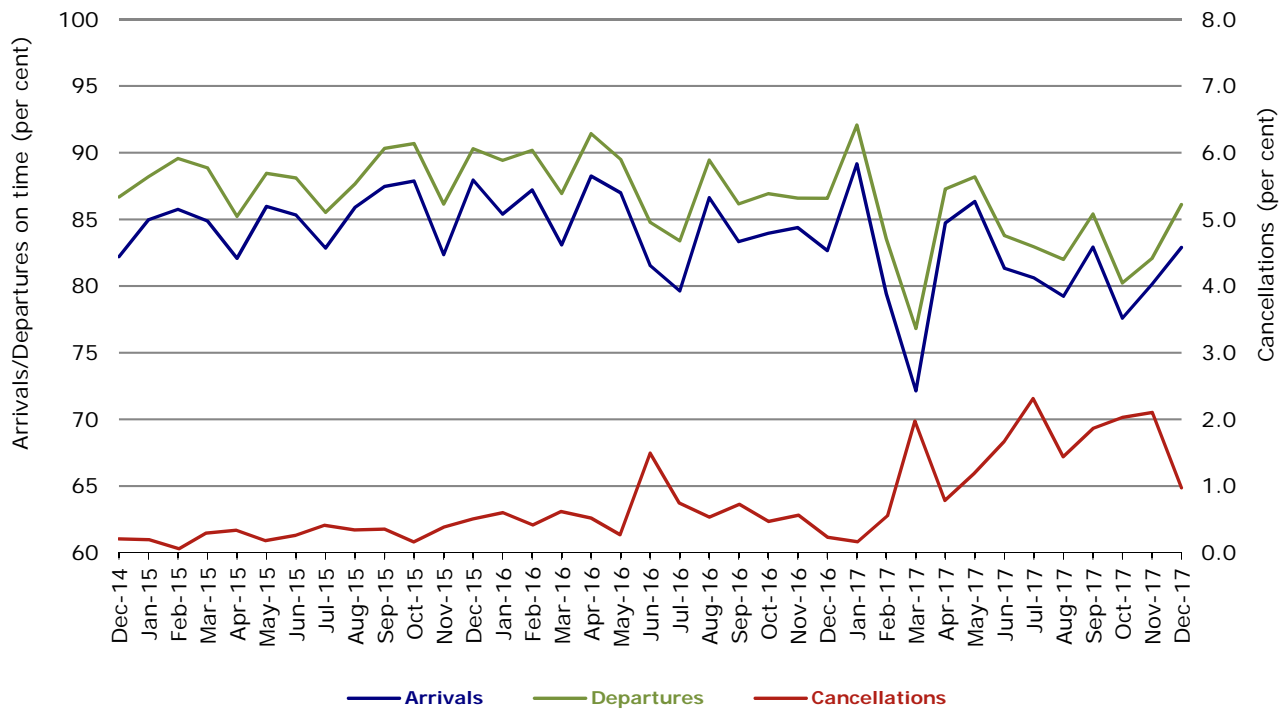
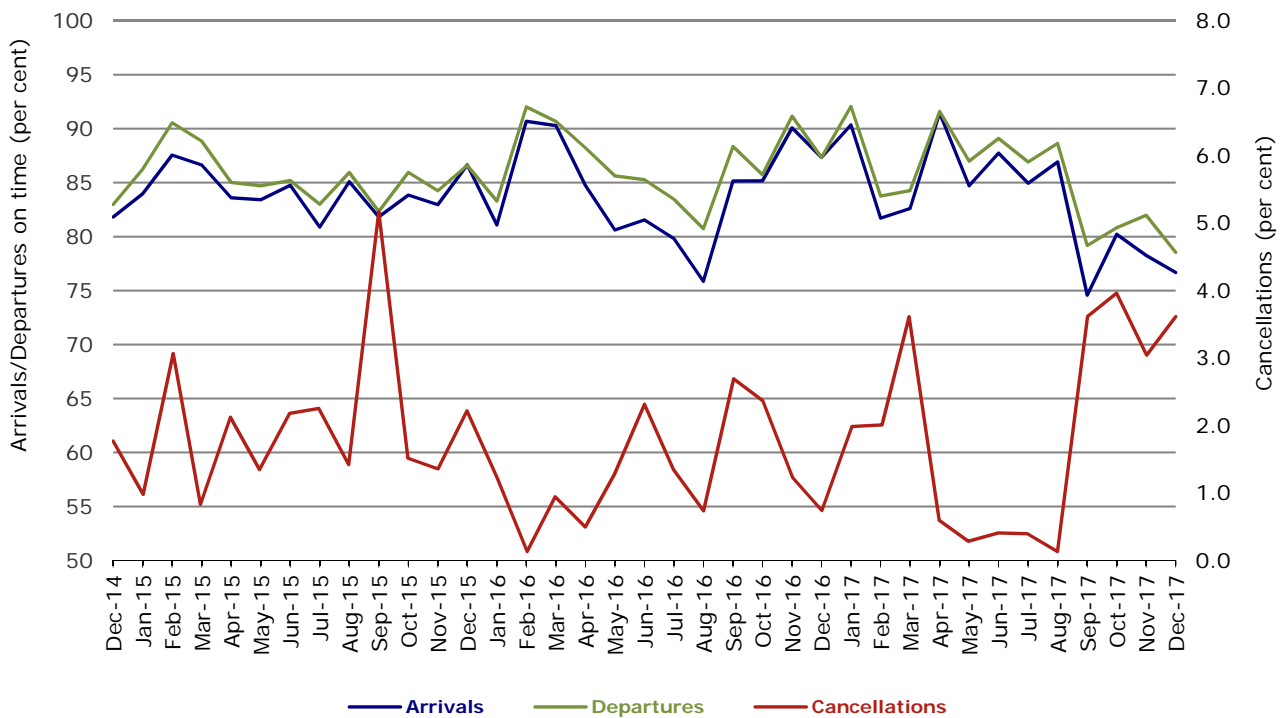


Figure 11 On time performance (by month from December 2014)
Virgin Australia Regional Airlines



In January 2016, Virgin Australia transferred their ATR fleet from Virgin Australia Regional Airlines to Virgin Australia.

Individual routes

On time performance is reported for all routes where the passenger load averages over 8000 passengers per month over the previous six months, and where two or more airlines operate in competition on those routes. There are now 66 routes which meet this definition. Over time, however, routes which meet this definition may change as airline networks and traffic levels vary.

	<i>Sectors</i>		<i>Arrivals On Time</i>		<i>Departures On Time</i>		<i>Cancellations</i>	
	<i>Sched.</i>	<i>Flown</i>	<i>No.</i>	<i>%</i>	<i>No.</i>	<i>%</i>	<i>No.</i>	<i>%</i>
Adelaide-Alice Springs								
Qantas	31	31	27	87.1	28	90.3	0	0.0
Virgin Australia	4	4	4	100.0	4	100.0	0	0.0
Virgin Australia Regional Airlines	17	16	11	68.8	12	75.0	1	5.9
All Airlines	52	51	42	82.4	44	86.3	1	1.9
Adelaide-Brisbane								
Jetstar	29	29	20	69.0	21	72.4	0	0.0
Qantas	96	95	79	83.2	83	87.4	1	1.0
QantasLink	28	28	20	71.4	22	78.6	0	0.0
Tigerair Australia	31	30	16	53.3	20	66.7	1	3.2
Virgin Australia	114	114	105	92.1	105	92.1	0	0.0
All Airlines	298	296	240	81.1	251	84.8	2	0.7
Adelaide-Canberra								
Qantas	39	39	34	87.2	32	82.1	0	0.0
Virgin Australia	26	26	22	84.6	22	84.6	0	0.0
All Airlines	65	65	56	86.2	54	83.1	0	0.0
Adelaide-Gold Coast								
Jetstar	35	35	33	94.3	33	94.3	0	0.0
Virgin Australia	33	33	32	97.0	31	93.9	0	0.0
All Airlines	68	68	65	95.6	64	94.1	0	0.0
Adelaide-Melbourne								
Jetstar	114	113	87	77.0	84	74.3	1	0.9
Qantas	265	262	226	86.3	226	86.3	3	1.1
Tigerair Australia	80	78	52	66.7	45	57.7	2	2.5
Virgin Australia	293	288	234	81.3	239	83.0	5	1.7
All Airlines	752	741	599	80.8	594	80.2	11	1.5
Adelaide-Perth								
Jetstar	29	29	23	79.3	22	75.9	0	0.0
Qantas	94	94	83	88.3	82	87.2	0	0.0
QantasLink	14	14	14	100.0	14	100.0	0	0.0
Virgin Australia	52	52	49	94.2	50	96.2	0	0.0
Virgin Australia Regional Airlines	33	31	11	35.5	15	48.4	2	6.1
All Airlines	222	220	180	81.8	183	83.2	2	0.9
Adelaide-Port Lincoln								
QantasLink	107	107	98	91.6	99	92.5	0	0.0
Regional Express	187	182	169	92.9	173	95.1	5	2.7
All Airlines	294	289	267	92.4	272	94.1	5	1.7
Adelaide-Sydney								
Jetstar	131	127	105	82.7	102	80.3	4	3.1
Qantas	226	224	194	86.6	194	86.6	2	0.9
QantasLink	32	31	23	74.2	23	74.2	1	3.1
Tigerair Australia	49	48	33	68.8	36	75.0	1	2.0
Virgin Australia	162	161	148	91.9	150	93.2	1	0.6
All Airlines	600	591	503	85.1	505	85.4	9	1.5

	<i>Sectors</i>		<i>Arrivals On Time</i>		<i>Departures On Time</i>		<i>Cancellations</i>	
	<i>Sched.</i>	<i>Flown</i>	<i>No.</i>	<i>%</i>	<i>No.</i>	<i>%</i>	<i>No.</i>	<i>%</i>
Albury-Sydney								
QantasLink	89	89	57	64.0	59	66.3	0	0.0
Regional Express	71	71	58	81.7	64	90.1	0	0.0
Virgin Australia	60	60	48	80.0	48	80.0	0	0.0
All Airlines	220	220	163	74.1	171	77.7	0	0.0
Alice Springs-Adelaide								
Qantas	31	30	25	83.3	24	80.0	1	3.2
Virgin Australia	4	4	4	100.0	3	75.0	0	0.0
Virgin Australia Regional Airlines	18	17	14	82.4	14	82.4	1	5.6
All Airlines	53	51	43	84.3	41	80.4	2	3.8
Alice Springs-Darwin								
QantasLink	43	41	40	97.6	39	95.1	2	4.7
Virgin Australia	3	3	3	100.0	3	100.0	0	0.0
Virgin Australia Regional Airlines	17	16	12	75.0	12	75.0	1	5.9
All Airlines	63	60	55	91.7	54	90.0	3	4.8
Armidale-Sydney								
QantasLink	106	105	72	68.6	71	67.6	1	0.9
Regional Express	57	56	36	64.3	40	71.4	1	1.8
All Airlines	163	161	108	67.1	111	68.9	2	1.2
Ayers Rock-Sydney								
Jetstar	23	22	16	72.7	14	63.6	1	4.3
Virgin Australia	31	31	27	87.1	29	93.5	0	0.0
All Airlines	54	53	43	81.1	43	81.1	1	1.9
Ballina-Sydney								
Jetstar	92	92	70	76.1	56	60.9	0	0.0
Regional Express	19	19	14	73.7	14	73.7	0	0.0
Virgin Australia	43	43	42	97.7	40	93.0	0	0.0
All Airlines	154	154	126	81.8	110	71.4	0	0.0
Brisbane-Adelaide								
Jetstar	29	29	25	86.2	23	79.3	0	0.0
Qantas	96	95	82	86.3	82	86.3	1	1.0
QantasLink	28	28	24	85.7	23	82.1	0	0.0
Tigerair Australia	31	30	25	83.3	24	80.0	1	3.2
Virgin Australia	116	116	102	87.9	98	84.5	0	0.0
All Airlines	300	298	258	86.6	250	83.9	2	0.7
Brisbane-Bundaberg								
QantasLink	108	106	85	80.2	85	80.2	2	1.9
Virgin Australia	31	31	23	74.2	23	74.2	0	0.0
All Airlines	139	137	108	78.8	108	78.8	2	1.4
Brisbane-Cairns								
Jetstar	112	110	99	90.0	88	80.0	2	1.8
Qantas	87	87	77	88.5	77	88.5	0	0.0
QantasLink	14	14	10	71.4	10	71.4	0	0.0
Tigerair Australia	46	45	35	77.8	33	73.3	1	2.2
Virgin Australia	130	130	110	84.6	107	82.3	0	0.0
All Airlines	389	386	331	85.8	315	81.6	3	0.8
Brisbane-Canberra								
Qantas	29	29	23	79.3	23	79.3	0	0.0
QantasLink	119	115	90	78.3	94	81.7	4	3.4
Tigerair Australia	13	13	6	46.2	9	69.2	0	0.0
Virgin Australia	93	93	76	81.7	77	82.8	0	0.0
All Airlines	254	250	195	78.0	203	81.2	4	1.6

	<i>Sectors</i>		<i>Arrivals On Time</i>		<i>Departures On Time</i>		<i>Cancellations</i>	
	<i>Sched.</i>	<i>Flown</i>	<i>No.</i>	<i>%</i>	<i>No.</i>	<i>%</i>	<i>No.</i>	<i>%</i>
Brisbane-Darwin								
Jetstar	26	26	24	92.3	21	80.8	0	0.0
Qantas	43	43	40	93.0	40	93.0	0	0.0
Tigerair Australia	16	16	11	68.8	10	62.5	0	0.0
Virgin Australia	33	33	26	78.8	27	81.8	0	0.0
All Airlines	118	118	101	85.6	98	83.1	0	0.0
Brisbane-Emerald								
QantasLink	95	95	81	85.3	82	86.3	0	0.0
Virgin Australia	50	50	44	88.0	44	88.0	0	0.0
All Airlines	145	145	125	86.2	126	86.9	0	0.0
Brisbane-Gladstone								
QantasLink	123	121	100	82.6	99	81.8	2	1.6
Virgin Australia	66	66	55	83.3	62	93.9	0	0.0
All Airlines	189	187	155	82.9	161	86.1	2	1.1
Brisbane-Hamilton Island								
QantasLink	28	28	22	78.6	23	82.1	0	0.0
Virgin Australia	31	31	26	83.9	26	83.9	0	0.0
All Airlines	59	59	48	81.4	49	83.1	0	0.0
Brisbane-Hobart								
Jetstar	36	36	34	94.4	34	94.4	0	0.0
Qantas	3	3	2	66.7	3	100.0	0	0.0
Virgin Australia	39	39	36	92.3	36	92.3	0	0.0
All Airlines	78	78	72	92.3	73	93.6	0	0.0
Brisbane-Mackay								
Jetstar	31	31	26	83.9	30	96.8	0	0.0
QantasLink	103	102	88	86.3	85	83.3	1	1.0
Virgin Australia	134	134	113	84.3	107	79.9	0	0.0
All Airlines	268	267	227	85.0	222	83.1	1	0.4
Brisbane-Melbourne								
Jetstar	139	137	107	78.1	86	62.8	2	1.4
Qantas	409	409	298	72.9	302	73.8	0	0.0
QantasLink	20	20	16	80.0	17	85.0	0	0.0
Tigerair Australia	135	132	89	67.4	88	66.7	3	2.2
Virgin Australia	377	359	270	75.2	291	81.1	18	4.8
All Airlines	1 080	1 057	780	73.8	784	74.2	23	2.1
Brisbane-Mount Isa								
QantasLink	50	50	35	70.0	37	74.0	0	0.0
Virgin Australia	16	16	16	100.0	16	100.0	0	0.0
All Airlines	66	66	51	77.3	53	80.3	0	0.0
Brisbane-Newcastle								
Jetstar	93	90	75	83.3	69	76.7	3	3.2
QantasLink	85	82	71	86.6	68	82.9	3	3.5
Virgin Australia	77	77	71	92.2	74	96.1	0	0.0
All Airlines	255	249	217	87.1	211	84.7	6	2.4
Brisbane-Perth								
Qantas	136	136	98	72.1	99	72.8	0	0.0
Tigerair Australia	18	17	16	94.1	14	82.4	1	5.6
Virgin Australia	109	109	86	78.9	83	76.1	0	0.0
All Airlines	263	262	200	76.3	196	74.8	1	0.4
Brisbane-Proserpine								
Jetstar	39	39	39	100.0	36	92.3	0	0.0
Tigerair Australia	16	16	15	93.8	15	93.8	0	0.0
Virgin Australia	36	35	31	88.6	29	82.9	1	2.8
All Airlines	91	90	85	94.4	80	88.9	1	1.1

	<i>Sectors</i>		<i>Arrivals On Time</i>		<i>Departures On Time</i>		<i>Cancellations</i>	
	<i>Sched.</i>	<i>Flown</i>	<i>No.</i>	<i>%</i>	<i>No.</i>	<i>%</i>	<i>No.</i>	<i>%</i>
Brisbane-Rockhampton								
QantasLink	153	149	122	81.9	124	83.2	4	2.6
Virgin Australia	141	141	108	76.6	115	81.6	0	0.0
All Airlines	294	290	230	79.3	239	82.4	4	1.4
Brisbane-Sydney								
Jetstar	180	175	131	74.9	130	74.3	5	2.8
Qantas	600	591	456	77.2	448	75.8	9	1.5
QantasLink	9	9	4	44.4	5	55.6	0	0.0
Tigerair Australia	122	120	76	63.3	81	67.5	2	1.6
Virgin Australia	505	493	413	83.8	420	85.2	12	2.4
All Airlines	1 416	1 388	1 080	77.8	1 084	78.1	28	2.0
Brisbane-Townsville								
Jetstar	45	45	38	84.4	36	80.0	0	0.0
Qantas	69	69	52	75.4	52	75.4	0	0.0
QantasLink	76	75	50	66.7	58	77.3	1	1.3
Virgin Australia	137	136	111	81.6	109	80.1	1	0.7
All Airlines	327	325	251	77.2	255	78.5	2	0.6
Broome-Perth								
Qantas	2	2	2	100.0	2	100.0	0	0.0
QantasLink	95	92	82	89.1	78	84.8	3	3.2
Virgin Australia	2	2	2	100.0	2	100.0	0	0.0
Virgin Australia Regional Airlines	61	59	42	71.2	43	72.9	2	3.3
All Airlines	160	155	128	82.6	125	80.6	5	3.1
Bundaberg-Brisbane								
QantasLink	108	105	90	85.7	90	85.7	3	2.8
Virgin Australia	31	31	22	71.0	23	74.2	0	0.0
All Airlines	139	136	112	82.4	113	83.1	3	2.2
Cairns-Brisbane								
Jetstar	111	110	91	82.7	89	80.9	1	0.9
Qantas	87	86	75	87.2	78	90.7	1	1.1
QantasLink	14	14	11	78.6	11	78.6	0	0.0
Tigerair Australia	46	45	32	71.1	30	66.7	1	2.2
Virgin Australia	130	130	107	82.3	106	81.5	0	0.0
All Airlines	388	385	316	82.1	314	81.6	3	0.8
Cairns-Melbourne								
Jetstar	101	100	74	74.0	72	72.0	1	1.0
Qantas	43	43	35	81.4	33	76.7	0	0.0
Tigerair Australia	39	39	29	74.4	28	71.8	0	0.0
Virgin Australia	35	35	28	80.0	31	88.6	0	0.0
All Airlines	218	217	166	76.5	164	75.6	1	0.5
Cairns-Sydney								
Jetstar	107	107	78	72.9	82	76.6	0	0.0
Qantas	81	81	74	91.4	74	91.4	0	0.0
Tigerair Australia	44	44	33	75.0	34	77.3	0	0.0
Virgin Australia	93	92	83	90.2	79	85.9	1	1.1
All Airlines	325	324	268	82.7	269	83.0	1	0.3
Cairns-Townsville								
QantasLink	127	124	108	87.1	109	87.9	3	2.4
Regional Express	27	27	26	96.3	26	96.3	0	0.0
All Airlines	154	151	134	88.7	135	89.4	3	1.9
Canberra-Adelaide								
Qantas	39	39	29	74.4	29	74.4	0	0.0
Virgin Australia	26	25	20	80.0	21	84.0	1	3.8
All Airlines	65	64	49	76.6	50	78.1	1	1.5

	<i>Sectors</i>		<i>Arrivals On Time</i>		<i>Departures On Time</i>		<i>Cancellations</i>	
	<i>Sched.</i>	<i>Flown</i>	<i>No.</i>	<i>%</i>	<i>No.</i>	<i>%</i>	<i>No.</i>	<i>%</i>
Canberra-Brisbane								
Qantas	29	29	28	96.6	29	100.0	0	0.0
QantasLink	119	116	97	83.6	98	84.5	3	2.5
Tigerair Australia	13	13	4	30.8	3	23.1	0	0.0
Virgin Australia	92	92	73	79.3	74	80.4	0	0.0
All Airlines	253	250	202	80.8	204	81.6	3	1.2
Canberra-Melbourne								
Qantas	172	171	140	81.9	144	84.2	1	0.6
QantasLink	98	88	76	86.4	75	85.2	10	10.2
Tigerair Australia	37	35	22	62.9	24	68.6	2	5.4
Virgin Australia	156	151	132	87.4	131	86.8	5	3.2
All Airlines	463	445	370	83.1	374	84.0	18	3.9
Canberra-Sydney								
Qantas	29	28	27	96.4	26	92.9	1	3.4
QantasLink	361	348	281	80.7	278	79.9	13	3.6
Virgin Australia	219	209	178	85.2	177	84.7	10	4.6
All Airlines	609	585	486	83.1	481	82.2	24	3.9
Coffs Harbour-Sydney								
QantasLink	148	146	103	70.5	104	71.2	2	1.4
Tigerair Australia	14	14	10	71.4	10	71.4	0	0.0
Virgin Australia	40	39	32	82.1	32	82.1	1	2.5
All Airlines	202	199	145	72.9	146	73.4	3	1.5
Darwin-Alice Springs								
QantasLink	43	42	41	97.6	41	97.6	1	2.3
Virgin Australia	3	3	3	100.0	3	100.0	0	0.0
Virgin Australia Regional Airlines	18	17	14	82.4	14	82.4	1	5.6
All Airlines	64	62	58	93.5	58	93.5	2	3.1
Darwin-Brisbane								
Jetstar	26	26	25	96.2	22	84.6	0	0.0
Qantas	43	43	39	90.7	36	83.7	0	0.0
Tigerair Australia	16	16	13	81.3	14	87.5	0	0.0
Virgin Australia	33	33	21	63.6	25	75.8	0	0.0
All Airlines	118	118	98	83.1	97	82.2	0	0.0
Darwin-Melbourne								
Jetstar	27	27	20	74.1	20	74.1	0	0.0
Qantas	29	29	27	93.1	24	82.8	0	0.0
Virgin Australia	31	31	27	87.1	26	83.9	0	0.0
All Airlines	87	87	74	85.1	70	80.5	0	0.0
Darwin-Perth								
Qantas	31	31	30	96.8	31	100.0	0	0.0
Virgin Australia	25	25	18	72.0	22	88.0	0	0.0
Virgin Australia Regional Airlines	9	8	5	62.5	6	75.0	1	11.1
All Airlines	65	64	53	82.8	59	92.2	1	1.5
Darwin-Sydney								
Jetstar	25	25	21	84.0	23	92.0	0	0.0
Qantas	46	46	40	87.0	39	84.8	0	0.0
Virgin Australia	31	31	23	74.2	24	77.4	0	0.0
All Airlines	102	102	84	82.4	86	84.3	0	0.0
Dubbo-Sydney								
QantasLink	100	98	72	73.5	70	71.4	2	2.0
Regional Express	116	115	94	81.7	96	83.5	1	0.9
All Airlines	216	213	166	77.9	166	77.9	3	1.4

	<i>Sectors</i>		<i>Arrivals On Time</i>		<i>Departures On Time</i>		<i>Cancellations</i>	
	<i>Sched.</i>	<i>Flown</i>	<i>No.</i>	<i>%</i>	<i>No.</i>	<i>%</i>	<i>No.</i>	<i>%</i>
Emerald-Brisbane								
QantasLink	95	95	73	76.8	79	83.2	0	0.0
Virgin Australia	50	50	41	82.0	43	86.0	0	0.0
All Airlines	145	145	114	78.6	122	84.1	0	0.0
Geraldton-Perth								
QantasLink	44	42	39	92.9	39	92.9	2	4.5
Virgin Australia Regional Airlines	47	47	34	72.3	32	68.1	0	0.0
All Airlines	91	89	73	82.0	71	79.8	2	2.2
Gladstone-Brisbane								
QantasLink	123	121	89	73.6	92	76.0	2	1.6
Virgin Australia	67	67	54	80.6	56	83.6	0	0.0
All Airlines	190	188	143	76.1	148	78.7	2	1.1
Gold Coast-Adelaide								
Jetstar	35	35	33	94.3	33	94.3	0	0.0
Virgin Australia	33	33	26	78.8	26	78.8	0	0.0
All Airlines	68	68	59	86.8	59	86.8	0	0.0
Gold Coast-Melbourne								
Jetstar	216	212	178	84.0	163	76.9	4	1.9
Qantas	43	43	40	93.0	36	83.7	0	0.0
Tigerair Australia	91	89	50	56.2	42	47.2	2	2.2
Virgin Australia	200	195	142	72.8	138	70.8	5	2.5
All Airlines	550	539	410	76.1	379	70.3	11	2.0
Gold Coast-Sydney								
Jetstar	322	319	240	75.2	226	70.8	3	0.9
Qantas	112	112	100	89.3	96	85.7	0	0.0
QantasLink	15	14	10	71.4	9	64.3	1	6.7
Tigerair Australia	121	115	66	57.4	64	55.7	6	5.0
Virgin Australia	254	252	197	78.2	187	74.2	2	0.8
All Airlines	824	812	613	75.5	582	71.7	12	1.5
Hamilton Island-Brisbane								
QantasLink	28	28	22	78.6	22	78.6	0	0.0
Virgin Australia	31	31	27	87.1	26	83.9	0	0.0
All Airlines	59	59	49	83.1	48	81.4	0	0.0
Hamilton Island-Sydney								
Jetstar	31	31	26	83.9	24	77.4	0	0.0
Qantas	20	20	19	95.0	19	95.0	0	0.0
QantasLink	11	10	8	80.0	8	80.0	1	9.1
Virgin Australia	26	26	26	100.0	23	88.5	0	0.0
All Airlines	88	87	79	90.8	74	85.1	1	1.1
Hobart-Brisbane								
Jetstar	36	36	30	83.3	28	77.8	0	0.0
Qantas	3	3	2	66.7	1	33.3	0	0.0
Virgin Australia	39	39	29	74.4	28	71.8	0	0.0
All Airlines	78	78	61	78.2	57	73.1	0	0.0
Hobart-Melbourne								
Jetstar	220	218	153	70.2	147	67.4	2	0.9
QantasLink	107	107	84	78.5	92	86.0	0	0.0
Tigerair Australia	46	46	20	43.5	21	45.7	0	0.0
Virgin Australia	151	151	101	66.9	118	78.1	0	0.0
All Airlines	524	522	358	68.6	378	72.4	2	0.4

	<i>Sectors</i>		<i>Arrivals On Time</i>		<i>Departures On Time</i>		<i>Cancellations</i>	
	<i>Sched.</i>	<i>Flown</i>	<i>No.</i>	<i>%</i>	<i>No.</i>	<i>%</i>	<i>No.</i>	<i>%</i>
Hobart-Sydney								
Jetstar	115	113	76	67.3	82	72.6	2	1.7
Qantas	31	31	22	71.0	20	64.5	0	0.0
QantasLink	26	25	21	84.0	23	92.0	1	3.8
Virgin Australia	80	79	58	73.4	61	77.2	1	1.3
All Airlines	252	248	177	71.4	186	75.0	4	1.6
Kalgoorlie-Perth								
Qantas	8	8	8	100.0	8	100.0	0	0.0
QantasLink	63	62	58	93.5	58	93.5	1	1.6
Virgin Australia	15	15	13	86.7	12	80.0	0	0.0
Virgin Australia Regional Airlines	53	52	47	90.4	47	90.4	1	1.9
All Airlines	139	137	126	92.0	125	91.2	2	1.4
Karratha-Perth								
Qantas	14	14	13	92.9	13	92.9	0	0.0
QantasLink	156	153	143	93.5	147	96.1	3	1.9
Virgin Australia	2	2	0	0.0	0	0.0	0	0.0
Virgin Australia Regional Airlines	66	66	52	78.8	53	80.3	0	0.0
All Airlines	238	235	208	88.5	213	90.6	3	1.3
Launceston-Melbourne								
Jetstar	182	181	136	75.1	126	69.6	1	0.5
QantasLink	119	112	86	76.8	89	79.5	7	5.9
Virgin Australia	105	105	84	80.0	91	86.7	0	0.0
All Airlines	406	398	306	76.9	306	76.9	8	2.0
Launceston-Sydney								
Jetstar	77	76	54	71.1	52	68.4	1	1.3
Virgin Australia	32	32	24	75.0	24	75.0	0	0.0
All Airlines	109	108	78	72.2	76	70.4	1	0.9
Mackay-Brisbane								
Jetstar	31	31	25	80.6	23	74.2	0	0.0
QantasLink	108	107	89	83.2	96	89.7	1	0.9
Virgin Australia	134	134	121	90.3	122	91.0	0	0.0
All Airlines	273	272	235	86.4	241	88.6	1	0.4
Melbourne-Adelaide								
Jetstar	114	113	85	75.2	84	74.3	1	0.9
Qantas	270	269	219	81.4	220	81.8	1	0.4
Tigerair Australia	80	78	60	76.9	59	75.6	2	2.5
Virgin Australia	287	282	228	80.9	245	86.9	5	1.7
All Airlines	751	742	592	79.8	608	81.9	9	1.2
Melbourne-Brisbane								
Jetstar	138	136	96	70.6	89	65.4	2	1.4
Qantas	416	416	297	71.4	308	74.0	0	0.0
QantasLink	20	20	16	80.0	19	95.0	0	0.0
Tigerair Australia	135	132	87	65.9	92	69.7	3	2.2
Virgin Australia	368	354	266	75.1	298	84.2	14	3.8
All Airlines	1 077	1 058	762	72.0	806	76.2	19	1.8
Melbourne-Cairns								
Jetstar	99	99	79	79.8	76	76.8	0	0.0
Qantas	43	43	32	74.4	34	79.1	0	0.0
Tigerair Australia	39	39	34	87.2	35	89.7	0	0.0
Virgin Australia	35	35	32	91.4	30	85.7	0	0.0
All Airlines	216	216	177	81.9	175	81.0	0	0.0

	<i>Sectors</i>		<i>Arrivals On Time</i>		<i>Departures On Time</i>		<i>Cancellations</i>	
	<i>Sched.</i>	<i>Flown</i>	<i>No.</i>	<i>%</i>	<i>No.</i>	<i>%</i>	<i>No.</i>	<i>%</i>
Melbourne-Canberra								
Qantas	172	171	130	76.0	135	78.9	1	0.6
QantasLink	98	88	71	80.7	71	80.7	10	10.2
Tigerair Australia	37	36	28	77.8	27	75.0	1	2.7
Virgin Australia	155	150	124	82.7	126	84.0	5	3.2
All Airlines	462	445	353	79.3	359	80.7	17	3.7
Melbourne-Darwin								
Jetstar	27	27	23	85.2	21	77.8	0	0.0
Qantas	29	29	28	96.6	27	93.1	0	0.0
Virgin Australia	31	31	26	83.9	26	83.9	0	0.0
All Airlines	87	87	77	88.5	74	85.1	0	0.0
Melbourne-Gold Coast								
Jetstar	214	212	161	75.9	171	80.7	2	0.9
Qantas	43	43	40	93.0	40	93.0	0	0.0
Tigerair Australia	91	89	56	62.9	59	66.3	2	2.2
Virgin Australia	201	196	156	79.6	167	85.2	5	2.5
All Airlines	549	540	413	76.5	437	80.9	9	1.6
Melbourne-Hobart								
Jetstar	220	220	177	80.5	180	81.8	0	0.0
QantasLink	108	108	81	75.0	85	78.7	0	0.0
Tigerair Australia	46	46	31	67.4	38	82.6	0	0.0
Virgin Australia	152	152	120	78.9	126	82.9	0	0.0
All Airlines	526	526	409	77.8	429	81.6	0	0.0
Melbourne-Launceston								
Jetstar	183	181	155	85.6	151	83.4	2	1.1
QantasLink	120	114	92	80.7	86	75.4	6	5.0
Virgin Australia	104	104	81	77.9	83	79.8	0	0.0
All Airlines	407	399	328	82.2	320	80.2	8	2.0
Melbourne-Mildura								
QantasLink	91	90	68	75.6	69	76.7	1	1.1
Regional Express	68	68	54	79.4	59	86.8	0	0.0
Virgin Australia	31	31	27	87.1	28	90.3	0	0.0
All Airlines	190	189	149	78.8	156	82.5	1	0.5
Melbourne-Newcastle								
Jetstar	112	112	90	80.4	91	81.3	0	0.0
Virgin Australia	33	33	27	81.8	29	87.9	0	0.0
All Airlines	145	145	117	80.7	120	82.8	0	0.0
Melbourne-Perth								
Jetstar	58	58	51	87.9	51	87.9	0	0.0
Qantas	203	203	165	81.3	154	75.9	0	0.0
Tigerair Australia	58	58	42	72.4	45	77.6	0	0.0
Virgin Australia	148	148	103	69.6	108	73.0	0	0.0
All Airlines	467	467	361	77.3	358	76.7	0	0.0
Melbourne-Sunshine Coast								
Jetstar	88	88	74	84.1	74	84.1	0	0.0
QantasLink	12	12	11	91.7	11	91.7	0	0.0
Virgin Australia	73	72	57	79.2	63	87.5	1	1.4
All Airlines	173	172	142	82.6	148	86.0	1	0.6
Melbourne-Sydney								
Jetstar	412	403	276	68.5	290	72.0	9	2.2
Qantas	863	838	581	69.3	616	73.5	25	2.9
QantasLink	4	4	3	75.0	4	100.0	0	0.0
Tigerair Australia	255	250	154	61.6	168	67.2	5	2.0
Virgin Australia	707	680	547	80.4	581	85.4	27	3.8
All Airlines	2 241	2 175	1 561	71.8	1 659	76.3	66	2.9

	<i>Sectors</i>		<i>Arrivals On Time</i>		<i>Departures On Time</i>		<i>Cancellations</i>	
	<i>Sched.</i>	<i>Flown</i>	<i>No.</i>	<i>%</i>	<i>No.</i>	<i>%</i>	<i>No.</i>	<i>%</i>
Melbourne-Townsville								
Jetstar	29	29	21	72.4	16	55.2	0	0.0
Tigerair Australia	18	18	15	83.3	14	77.8	0	0.0
All Airlines	47	47	36	76.6	30	63.8	0	0.0
Mildura-Melbourne								
QantasLink	91	90	71	78.9	69	76.7	1	1.1
Regional Express	69	69	53	76.8	57	82.6	0	0.0
Virgin Australia	31	31	27	87.1	28	90.3	0	0.0
All Airlines	191	190	151	79.5	154	81.1	1	0.5
Mount Isa-Brisbane								
QantasLink	48	48	24	50.0	28	58.3	0	0.0
Virgin Australia	17	17	8	47.1	16	94.1	0	0.0
All Airlines	65	65	32	49.2	44	67.7	0	0.0
Newcastle-Brisbane								
Jetstar	92	90	76	84.4	82	91.1	2	2.2
QantasLink	85	82	74	90.2	71	86.6	3	3.5
Virgin Australia	77	77	71	92.2	71	92.2	0	0.0
All Airlines	254	249	221	88.8	224	90.0	5	2.0
Newcastle-Melbourne								
Jetstar	112	112	92	82.1	93	83.0	0	0.0
Virgin Australia	33	33	25	75.8	27	81.8	0	0.0
All Airlines	145	145	117	80.7	120	82.8	0	0.0
Newman-Perth								
Qantas	48	48	46	95.8	46	95.8	0	0.0
QantasLink	72	71	64	90.1	63	88.7	1	1.4
Virgin Australia	13	13	11	84.6	11	84.6	0	0.0
Virgin Australia Regional Airlines	24	24	22	91.7	23	95.8	0	0.0
All Airlines	157	156	143	91.7	143	91.7	1	0.6
Perth-Adelaide								
Jetstar	30	28	24	85.7	21	75.0	2	6.7
Qantas	98	98	89	90.8	90	91.8	0	0.0
QantasLink	14	14	13	92.9	14	100.0	0	0.0
Virgin Australia	57	57	50	87.7	51	89.5	0	0.0
Virgin Australia Regional Airlines	31	29	18	62.1	23	79.3	2	6.5
All Airlines	230	226	194	85.8	199	88.1	4	1.7
Perth-Brisbane								
Qantas	132	132	111	84.1	112	84.8	0	0.0
Tigerair Australia	18	17	16	94.1	16	94.1	1	5.6
Virgin Australia	109	109	94	86.2	86	78.9	0	0.0
All Airlines	259	258	221	85.7	214	82.9	1	0.4
Perth-Broome								
Qantas	2	2	1	50.0	1	50.0	0	0.0
QantasLink	97	94	90	95.7	86	91.5	3	3.1
Virgin Australia	2	2	2	100.0	2	100.0	0	0.0
Virgin Australia Regional Airlines	61	59	43	72.9	42	71.2	2	3.3
All Airlines	162	157	136	86.6	131	83.4	5	3.1
Perth-Darwin								
Qantas	31	31	31	100.0	31	100.0	0	0.0
Virgin Australia	25	25	24	96.0	22	88.0	0	0.0
Virgin Australia Regional Airlines	9	8	8	100.0	5	62.5	1	11.1
All Airlines	65	64	63	98.4	58	90.6	1	1.5

	<i>Sectors</i>		<i>Arrivals On Time</i>		<i>Departures On Time</i>		<i>Cancellations</i>	
	<i>Sched.</i>	<i>Flown</i>	<i>No.</i>	<i>%</i>	<i>No.</i>	<i>%</i>	<i>No.</i>	<i>%</i>
Perth-Geraldton								
QantasLink	44	42	36	85.7	36	85.7	2	4.5
Virgin Australia Regional Airlines	47	47	31	66.0	30	63.8	0	0.0
All Airlines	91	89	67	75.3	66	74.2	2	2.2
Perth-Kalgoorlie								
Qantas	8	8	7	87.5	7	87.5	0	0.0
QantasLink	63	62	59	95.2	59	95.2	1	1.6
Virgin Australia	15	15	11	73.3	11	73.3	0	0.0
Virgin Australia Regional Airlines	53	52	44	84.6	44	84.6	1	1.9
All Airlines	139	137	121	88.3	121	88.3	2	1.4
Perth-Karratha								
Qantas	14	14	14	100.0	14	100.0	0	0.0
QantasLink	157	156	148	94.9	145	92.9	1	0.6
Virgin Australia	2	2	1	50.0	1	50.0	0	0.0
Virgin Australia Regional Airlines	66	66	54	81.8	54	81.8	0	0.0
All Airlines	239	238	217	91.2	214	89.9	1	0.4
Perth-Melbourne								
Jetstar	58	58	48	82.8	51	87.9	0	0.0
Qantas	203	203	172	84.7	164	80.8	0	0.0
Tigerair Australia	58	58	49	84.5	44	75.9	0	0.0
Virgin Australia	148	148	126	85.1	122	82.4	0	0.0
All Airlines	467	467	395	84.6	381	81.6	0	0.0
Perth-Newman								
Qantas	48	48	46	95.8	44	91.7	0	0.0
QantasLink	72	72	65	90.3	67	93.1	0	0.0
Virgin Australia	13	13	12	92.3	12	92.3	0	0.0
Virgin Australia Regional Airlines	24	24	23	95.8	23	95.8	0	0.0
All Airlines	157	157	146	93.0	146	93.0	0	0.0
Perth-Port Hedland								
Qantas	25	25	21	84.0	22	88.0	0	0.0
QantasLink	97	95	86	90.5	84	88.4	2	2.1
Virgin Australia	12	12	12	100.0	12	100.0	0	0.0
Virgin Australia Regional Airlines	41	40	37	92.5	37	92.5	1	2.4
All Airlines	175	172	156	90.7	155	90.1	3	1.7
Perth-Sydney								
Jetstar	29	29	27	93.1	22	75.9	0	0.0
Qantas	212	212	188	88.7	172	81.1	0	0.0
Tigerair Australia	28	26	24	92.3	24	92.3	2	7.1
Virgin Australia	131	131	105	80.2	99	75.6	0	0.0
All Airlines	400	398	344	86.4	317	79.6	2	0.5
Port Hedland-Perth								
Qantas	25	25	23	92.0	22	88.0	0	0.0
QantasLink	94	90	76	84.4	80	88.9	4	4.3
Virgin Australia	12	12	12	100.0	11	91.7	0	0.0
Virgin Australia Regional Airlines	41	40	34	85.0	34	85.0	1	2.4
All Airlines	172	167	145	86.8	147	88.0	5	2.9
Port Lincoln-Adelaide								
QantasLink	107	107	93	86.9	94	87.9	0	0.0
Regional Express	189	184	166	90.2	170	92.4	5	2.6
All Airlines	296	291	259	89.0	264	90.7	5	1.7
Port Macquarie-Sydney								
QantasLink	117	113	76	67.3	70	61.9	4	3.4
Virgin Australia	60	60	40	66.7	37	61.7	0	0.0
All Airlines	177	173	116	67.1	107	61.8	4	2.3

	<i>Sectors</i>		<i>Arrivals On Time</i>		<i>Departures On Time</i>		<i>Cancellations</i>	
	<i>Sched.</i>	<i>Flown</i>	<i>No.</i>	<i>%</i>	<i>No.</i>	<i>%</i>	<i>No.</i>	<i>%</i>
Proserpine-Brisbane								
Jetstar	39	39	35	89.7	38	97.4	0	0.0
Tigerair Australia	16	16	14	87.5	15	93.8	0	0.0
Virgin Australia	36	35	31	88.6	29	82.9	1	2.8
All Airlines	91	90	80	88.9	82	91.1	1	1.1
Proserpine-Sydney								
Jetstar	13	13	11	84.6	12	92.3	0	0.0
Tigerair Australia	27	27	18	66.7	17	63.0	0	0.0
All Airlines	40	40	29	72.5	29	72.5	0	0.0
Rockhampton-Brisbane								
QantasLink	150	145	121	83.4	117	80.7	5	3.3
Virgin Australia	140	140	111	79.3	113	80.7	0	0.0
All Airlines	290	285	232	81.4	230	80.7	5	1.7
Sunshine Coast-Melbourne								
Jetstar	88	88	69	78.4	65	73.9	0	0.0
QantasLink	12	12	10	83.3	10	83.3	0	0.0
Virgin Australia	73	71	55	77.5	56	78.9	2	2.7
All Airlines	173	171	134	78.4	131	76.6	2	1.2
Sunshine Coast-Sydney								
Jetstar	132	131	103	78.6	103	78.6	1	0.8
QantasLink	36	33	30	90.9	30	90.9	3	8.3
Virgin Australia	60	60	51	85.0	54	90.0	0	0.0
All Airlines	228	224	184	82.1	187	83.5	4	1.8
Sydney-Adelaide								
Jetstar	131	129	112	86.8	107	82.9	2	1.5
Qantas	217	216	172	79.6	167	77.3	1	0.5
QantasLink	32	31	26	83.9	28	90.3	1	3.1
Tigerair Australia	49	48	37	77.1	38	79.2	1	2.0
Virgin Australia	163	163	137	84.0	135	82.8	0	0.0
All Airlines	592	587	484	82.5	475	80.9	5	0.8
Sydney-Albury								
QantasLink	89	89	55	61.8	56	62.9	0	0.0
Regional Express	71	71	59	83.1	60	84.5	0	0.0
Virgin Australia	60	60	49	81.7	49	81.7	0	0.0
All Airlines	220	220	163	74.1	165	75.0	0	0.0
Sydney-Armidale								
QantasLink	106	105	67	63.8	73	69.5	1	0.9
Regional Express	59	58	45	77.6	45	77.6	1	1.7
All Airlines	165	163	112	68.7	118	72.4	2	1.2
Sydney-Ayers Rock								
Jetstar	22	22	19	86.4	17	77.3	0	0.0
Virgin Australia	31	31	30	96.8	30	96.8	0	0.0
All Airlines	53	53	49	92.5	47	88.7	0	0.0
Sydney-Ballina								
Jetstar	92	92	66	71.7	71	77.2	0	0.0
Regional Express	16	16	12	75.0	12	75.0	0	0.0
Virgin Australia	43	43	42	97.7	42	97.7	0	0.0
All Airlines	151	151	120	79.5	125	82.8	0	0.0

	<i>Sectors</i>		<i>Arrivals On Time</i>		<i>Departures On Time</i>		<i>Cancellations</i>	
	<i>Sched.</i>	<i>Flown</i>	<i>No.</i>	<i>%</i>	<i>No.</i>	<i>%</i>	<i>No.</i>	<i>%</i>
Sydney-Brisbane								
Jetstar	179	175	137	78.3	138	78.9	4	2.2
Qantas	597	586	444	75.8	439	74.9	11	1.8
QantasLink	9	8	7	87.5	7	87.5	1	11.1
Tigerair Australia	122	120	87	72.5	90	75.0	2	1.6
Virgin Australia	517	497	379	76.3	405	81.5	20	3.9
All Airlines	1 424	1 386	1 054	76.0	1 079	77.8	38	2.7
Sydney-Cairns								
Jetstar	107	107	93	86.9	76	71.0	0	0.0
Qantas	81	81	72	88.9	75	92.6	0	0.0
Tigerair Australia	44	44	40	90.9	41	93.2	0	0.0
Virgin Australia	93	93	72	77.4	76	81.7	0	0.0
All Airlines	325	325	277	85.2	268	82.5	0	0.0
Sydney-Canberra								
Qantas	29	28	23	82.1	24	85.7	1	3.4
QantasLink	359	348	266	76.4	262	75.3	11	3.1
Virgin Australia	218	208	167	80.3	156	75.0	10	4.6
All Airlines	606	584	456	78.1	442	75.7	22	3.6
Sydney-Coffs Harbour								
QantasLink	147	146	99	67.8	93	63.7	1	0.7
Tigerair Australia	14	14	10	71.4	10	71.4	0	0.0
Virgin Australia	40	39	32	82.1	32	82.1	1	2.5
All Airlines	201	199	141	70.9	135	67.8	2	1.0
Sydney-Darwin								
Jetstar	25	25	23	92.0	23	92.0	0	0.0
Qantas	46	46	37	80.4	32	69.6	0	0.0
Virgin Australia	31	31	30	96.8	30	96.8	0	0.0
All Airlines	102	102	90	88.2	85	83.3	0	0.0
Sydney-Dubbo								
QantasLink	99	97	63	64.9	67	69.1	2	2.0
Regional Express	114	113	100	88.5	97	85.8	1	0.9
All Airlines	213	210	163	77.6	164	78.1	3	1.4
Sydney-Gold Coast								
Jetstar	322	319	235	73.7	238	74.6	3	0.9
Qantas	112	112	90	80.4	86	76.8	0	0.0
QantasLink	15	15	9	60.0	11	73.3	0	0.0
Tigerair Australia	121	115	81	70.4	90	78.3	6	5.0
Virgin Australia	255	255	202	79.2	220	86.3	0	0.0
All Airlines	825	816	617	75.6	645	79.0	9	1.1
Sydney-Hamilton Island								
Jetstar	31	31	27	87.1	24	77.4	0	0.0
Qantas	20	20	17	85.0	17	85.0	0	0.0
QantasLink	11	10	8	80.0	9	90.0	1	9.1
Virgin Australia	27	26	25	96.2	24	92.3	1	3.7
All Airlines	89	87	77	88.5	74	85.1	2	2.2
Sydney-Hobart								
Jetstar	115	113	90	79.6	92	81.4	2	1.7
Qantas	31	31	26	83.9	25	80.6	0	0.0
QantasLink	26	26	19	73.1	19	73.1	0	0.0
Virgin Australia	79	78	65	83.3	64	82.1	1	1.3
All Airlines	251	248	200	80.6	200	80.6	3	1.2
Sydney-Launceston								
Jetstar	77	77	63	81.8	60	77.9	0	0.0
Virgin Australia	32	32	26	81.3	27	84.4	0	0.0
All Airlines	109	109	89	81.7	87	79.8	0	0.0

	<i>Sectors</i>		<i>Arrivals On Time</i>		<i>Departures On Time</i>		<i>Cancellations</i>	
	<i>Sched.</i>	<i>Flown</i>	<i>No.</i>	<i>%</i>	<i>No.</i>	<i>%</i>	<i>No.</i>	<i>%</i>
Sydney-Melbourne								
Jetstar	414	406	293	72.2	285	70.2	8	1.9
Qantas	873	847	586	69.2	597	70.5	26	3.0
QantasLink	4	4	4	100.0	4	100.0	0	0.0
Tigerair Australia	254	249	138	55.4	147	59.0	5	2.0
Virgin Australia	694	673	539	80.1	570	84.7	21	3.0
All Airlines	2 239	2 179	1 560	71.6	1 603	73.6	60	2.7
Sydney-Perth								
Jetstar	29	29	26	89.7	27	93.1	0	0.0
Qantas	213	213	161	75.6	167	78.4	0	0.0
Tigerair Australia	27	27	20	74.1	22	81.5	0	0.0
Virgin Australia	132	132	88	66.7	87	65.9	0	0.0
All Airlines	401	401	295	73.6	303	75.6	0	0.0
Sydney-Port Macquarie								
QantasLink	116	113	66	58.4	67	59.3	3	2.6
Virgin Australia	60	60	47	78.3	45	75.0	0	0.0
All Airlines	176	173	113	65.3	112	64.7	3	1.7
Sydney-Proserpine								
Jetstar	13	13	13	100.0	13	100.0	0	0.0
Tigerair Australia	27	27	21	77.8	21	77.8	0	0.0
All Airlines	40	40	34	85.0	34	85.0	0	0.0
Sydney-Sunshine Coast								
Jetstar	132	132	113	85.6	108	81.8	0	0.0
QantasLink	35	32	26	81.3	28	87.5	3	8.6
Virgin Australia	60	60	55	91.7	55	91.7	0	0.0
All Airlines	227	224	194	86.6	191	85.3	3	1.3
Sydney-Tamworth								
QantasLink	125	123	79	64.2	79	64.2	2	1.6
Virgin Australia	42	41	30	73.2	33	80.5	1	2.4
All Airlines	167	164	109	66.5	112	68.3	3	1.8
Sydney-Townsville								
Jetstar	28	28	23	82.1	18	64.3	0	0.0
Virgin Australia	28	28	25	89.3	24	85.7	0	0.0
All Airlines	56	56	48	85.7	42	75.0	0	0.0
Sydney-Wagga Wagga								
QantasLink	102	102	71	69.6	69	67.6	0	0.0
Regional Express	83	81	66	81.5	67	82.7	2	2.4
All Airlines	185	183	137	74.9	136	74.3	2	1.1
Tamworth-Sydney								
QantasLink	126	124	89	71.8	86	69.4	2	1.6
Virgin Australia	42	42	33	78.6	34	81.0	0	0.0
All Airlines	168	166	122	73.5	120	72.3	2	1.2
Townsville-Brisbane								
Jetstar	45	45	40	88.9	39	86.7	0	0.0
Qantas	71	71	55	77.5	55	77.5	0	0.0
QantasLink	76	75	54	72.0	57	76.0	1	1.3
Virgin Australia	137	136	121	89.0	119	87.5	1	0.7
All Airlines	329	327	270	82.6	270	82.6	2	0.6
Townsville-Cairns								
QantasLink	127	122	109	89.3	108	88.5	5	3.9
Regional Express	27	27	27	100.0	27	100.0	0	0.0
All Airlines	154	149	136	91.3	135	90.6	5	3.2

	<i>Sectors</i>		<i>Arrivals On Time</i>		<i>Departures On Time</i>		<i>Cancellations</i>	
	<i>Sched.</i>	<i>Flown</i>	<i>No.</i>	<i>%</i>	<i>No.</i>	<i>%</i>	<i>No.</i>	<i>%</i>
Townsville-Melbourne								
Jetstar	29	29	19	65.5	20	69.0	0	0.0
Tigerair Australia	18	18	11	61.1	12	66.7	0	0.0
All Airlines	47	47	30	63.8	32	68.1	0	0.0
Townsville-Sydney								
Jetstar	28	28	18	64.3	16	57.1	0	0.0
Virgin Australia	28	28	21	75.0	20	71.4	0	0.0
All Airlines	56	56	39	69.6	36	64.3	0	0.0
Wagga Wagga-Sydney								
QantasLink	103	103	77	74.8	76	73.8	0	0.0
Regional Express	80	78	57	73.1	64	82.1	2	2.5
All Airlines	183	181	134	74.0	140	77.3	2	1.1

Airports

On time performance is reported for all routes where the passenger load averages over 8000 passengers per month, and where two or more airlines operate in competition. The following data reports by airport against flights operated on those routes only. This month, 8 major city airports and 32 regional city airports are covered.

Airport	Arrivals			Departures		
	Sectors	On Time		Sectors	On Time	
	Flown	No.	%	Flown	No.	%
Adelaide						
Jetstar	334	279	83.5	333	262	78.7
Qantas	747	616	82.5	745	645	86.6
QantasLink	180	156	86.7	180	158	87.8
Regional Express	184	166	90.2	182	173	95.1
Tigerair Australia	156	122	78.2	156	101	64.7
Virgin Australia	680	567	83.4	678	601	88.6
Virgin Australia Regional Airlines	46	32	69.6	47	27	57.4
All Airlines	2 327	1 938	83.3	2 321	1 967	84.7
Relates to services to and from Alice Springs, Brisbane, Canberra, Gold Coast, Melbourne, Perth, Port Lincoln and Sydney.						
Albury						
QantasLink	89	55	61.8	89	59	66.3
Regional Express	71	59	83.1	71	64	90.1
Virgin Australia	60	49	81.7	60	48	80.0
All Airlines	220	163	74.1	220	171	77.7
Relates to services to and from Sydney only.						
Alice Springs						
Qantas	31	27	87.1	30	24	80.0
QantasLink	42	41	97.6	41	39	95.1
Virgin Australia	7	7	100.0	7	6	85.7
Virgin Australia Regional Airlines	33	25	75.8	33	26	78.8
All Airlines	113	100	88.5	111	95	85.6
Relates to services to and from Adelaide and Darwin.						
Armidale						
QantasLink	105	67	63.8	105	71	67.6
Regional Express	58	45	77.6	56	40	71.4
All Airlines	163	112	68.7	161	111	68.9
Relates to services to and from Sydney only.						
Ayers Rock						
Jetstar	22	19	86.4	22	14	63.6
Virgin Australia	31	30	96.8	31	29	93.5
All Airlines	53	49	92.5	53	43	81.1
Relates to services to and from Sydney only.						
Ballina						
Jetstar	92	66	71.7	92	56	60.9
Regional Express	16	12	75.0	19	14	73.7
Virgin Australia	43	42	97.7	43	40	93.0
All Airlines	151	120	79.5	154	110	71.4
Relates to services to and from Sydney only.						

Airport	Arrivals			Departures		
	Sectors	On Time		Sectors	On Time	
	Flown	No.	%	Flown	No.	%
Brisbane						
Jetstar	717	575	80.2	718	553	77.0
Qantas	1 461	1 130	77.3	1 462	1 126	77.0
QantasLink	992	787	79.3	994	810	81.5
Tigerair Australia	389	269	69.2	389	274	70.4
Virgin Australia	2 086	1 681	80.6	2 089	1 744	83.5
All Airlines	5 645	4 442	78.7	5 652	4 507	79.7

Relates to services to and from Adelaide, Bundaberg, Cairns, Canberra, Darwin, Emerald, Gladstone, Hamilton Island, Hobart, Mackay, Melbourne, Mount Isa, Newcastle, Perth, Proserpine, Rockhampton, Sydney and Townsville.

Broome

Qantas	2	1	50.0	2	2	100.0
QantasLink	94	90	95.7	92	78	84.8
Virgin Australia	2	2	100.0	2	2	100.0
Virgin Australia Regional Airlines	59	43	72.9	59	43	72.9
All Airlines	157	136	86.6	155	125	80.6

Relates to services to and from Perth only.

Bundaberg

QantasLink	106	85	80.2	105	90	85.7
Virgin Australia	31	23	74.2	31	23	74.2
All Airlines	137	108	78.8	136	113	83.1

Relates to services to and from Brisbane only.

Cairns

Jetstar	316	271	85.8	317	243	76.7
Qantas	211	181	85.8	210	185	88.1
QantasLink	136	119	87.5	138	120	87.0
Regional Express	27	27	100.0	27	26	96.3
Tigerair Australia	128	109	85.2	128	92	71.9
Virgin Australia	258	214	82.9	257	216	84.0
All Airlines	1 076	921	85.6	1 077	882	81.9

Relates to services to and from Brisbane, Melbourne, Sydney and Townsville.

Canberra

Qantas	267	210	78.7	267	228	85.4
QantasLink	551	427	77.5	552	451	81.7
Tigerair Australia	49	34	69.4	48	27	56.3
Virgin Australia	477	389	81.6	477	403	84.5
All Airlines	1 344	1 060	78.9	1 344	1 109	82.5

Relates to services to and from Adelaide, Brisbane, Melbourne and Sydney.

Coffs Harbour

QantasLink	146	99	67.8	146	104	71.2
Tigerair Australia	14	10	71.4	14	10	71.4
Virgin Australia	39	32	82.1	39	32	82.1
All Airlines	199	141	70.9	199	146	73.4

Relates to services to and from Sydney only.

Airport	Arrivals			Departures		
	Sectors Flown	On Time		Sectors Flown	On Time	
		No.	%		No.	%
Darwin						
Jetstar	78	70	89.7	78	65	83.3
Qantas	149	136	91.3	149	130	87.2
QantasLink	41	40	97.6	42	41	97.6
Tigerair Australia	16	11	68.8	16	14	87.5
Virgin Australia	123	109	88.6	123	100	81.3
Virgin Australia Regional Airlines	24	20	83.3	25	20	80.0
All Airlines	431	386	89.6	433	370	85.5
Relates to services to and from Alice Springs, Brisbane, Melbourne, Perth and Sydney.						
Dubbo						
QantasLink	97	63	64.9	98	70	71.4
Regional Express	113	100	88.5	115	96	83.5
All Airlines	210	163	77.6	213	166	77.9
Relates to services to and from Sydney only.						
Emerald						
QantasLink	95	81	85.3	95	79	83.2
Virgin Australia	50	44	88.0	50	43	86.0
All Airlines	145	125	86.2	145	122	84.1
Relates to services to and from Brisbane only.						
Geraldton						
QantasLink	42	36	85.7	42	39	92.9
Virgin Australia Regional Airlines	47	31	66.0	47	32	68.1
All Airlines	89	67	75.3	89	71	79.8
Relates to services to and from Perth only.						
Gladstone						
QantasLink	121	100	82.6	121	92	76.0
Virgin Australia	66	55	83.3	67	56	83.6
All Airlines	187	155	82.9	188	148	78.7
Relates to services to and from Brisbane only.						
Gold Coast						
Jetstar	566	429	75.8	566	422	74.6
Qantas	155	130	83.9	155	132	85.2
QantasLink	15	9	60.0	14	9	64.3
Tigerair Australia	204	137	67.2	204	106	52.0
Virgin Australia	484	390	80.6	480	351	73.1
All Airlines	1 424	1 095	76.9	1 419	1 020	71.9
Relates to services to and from Adelaide, Melbourne and Sydney.						
Hamilton Island						
Jetstar	31	27	87.1	31	24	77.4
Qantas	20	17	85.0	20	19	95.0
QantasLink	38	30	78.9	38	30	78.9
Virgin Australia	57	51	89.5	57	49	86.0
All Airlines	146	125	85.6	146	122	83.6
Relates to services to and from Brisbane and Sydney.						

Airport	Arrivals			Departures		
	Sectors Flown	On Time		Sectors Flown	On Time	
		No.	%		No.	%
Hobart						
Jetstar	369	301	81.6	367	257	70.0
Qantas	34	28	82.4	34	21	61.8
QantasLink	134	100	74.6	132	115	87.1
Tigerair Australia	46	31	67.4	46	21	45.7
Virgin Australia	269	221	82.2	269	207	77.0
All Airlines	852	681	79.9	848	621	73.2
Relates to services to and from Brisbane, Melbourne and Sydney.						
Kalgoorlie						
Qantas	8	7	87.5	8	8	100.0
QantasLink	62	59	95.2	62	58	93.5
Virgin Australia	15	11	73.3	15	12	80.0
Virgin Australia Regional Airlines	52	44	84.6	52	47	90.4
All Airlines	137	121	88.3	137	125	91.2
Relates to services to and from Perth only.						
Karratha						
Qantas	14	14	100.0	14	13	92.9
QantasLink	156	148	94.9	153	147	96.1
Virgin Australia	2	1	50.0	2	0	0.0
Virgin Australia Regional Airlines	66	54	81.8	66	53	80.3
All Airlines	238	217	91.2	235	213	90.6
Relates to services to and from Perth only.						
Launceston						
Jetstar	258	218	84.5	257	178	69.3
QantasLink	114	92	80.7	112	89	79.5
Virgin Australia	136	107	78.7	137	115	83.9
All Airlines	508	417	82.1	506	382	75.5
Relates to services to and from Melbourne and Sydney.						
Mackay						
Jetstar	31	26	83.9	31	23	74.2
QantasLink	102	88	86.3	107	96	89.7
Virgin Australia	134	113	84.3	134	122	91.0
All Airlines	267	227	85.0	272	241	88.6
Relates to services to and from Brisbane only.						
Melbourne						
Jetstar	1 681	1 276	75.9	1 678	1 294	77.1
Qantas	2 007	1 524	75.9	2 012	1 534	76.2
QantasLink	433	347	80.1	436	345	79.1
Regional Express	69	53	76.8	68	59	86.8
Tigerair Australia	744	460	61.8	746	537	72.0
Virgin Australia	2 271	1 790	78.8	2 268	1 910	84.2
All Airlines	7 205	5 450	75.6	7 208	5 679	78.8
Relates to services to and from Adelaide, Brisbane, Cairns, Canberra, Darwin, Gold Coast, Hobart, Launceston, Mildura, Newcastle, Perth, Sunshine Coast, Sydney and Townsville.						
Mildura						
QantasLink	90	68	75.6	90	69	76.7
Regional Express	68	54	79.4	69	57	82.6
Virgin Australia	31	27	87.1	31	28	90.3
All Airlines	189	149	78.8	190	154	81.1
Relates to services to and from Melbourne only.						

Airport	Arrivals			Departures		
	Sectors Flown	On Time		Sectors Flown	On Time	
		No.	%		No.	%
Mount Isa						
QantasLink	50	35	70.0	48	28	58.3
Virgin Australia	16	16	100.0	17	16	94.1
All Airlines	66	51	77.3	65	44	67.7
Relates to services to and from Brisbane only.						
Newcastle						
Jetstar	202	165	81.7	202	175	86.6
QantasLink	82	71	86.6	82	71	86.6
Virgin Australia	110	98	89.1	110	98	89.1
All Airlines	394	334	84.8	394	344	87.3
Relates to services to and from Brisbane and Melbourne.						
Newman						
Qantas	48	46	95.8	48	46	95.8
QantasLink	72	65	90.3	71	63	88.7
Virgin Australia	13	12	92.3	13	11	84.6
Virgin Australia Regional Airlines	24	23	95.8	24	23	95.8
All Airlines	157	146	93.0	156	143	91.7
Relates to services to and from Perth only.						
Perth						
Jetstar	116	100	86.2	115	94	81.7
Qantas	774	629	81.3	773	657	85.0
QantasLink	524	476	90.8	535	491	91.8
Tigerair Australia	102	78	76.5	101	84	83.2
Virgin Australia	510	382	74.9	514	418	81.3
Virgin Australia Regional Airlines	327	247	75.5	325	258	79.4
All Airlines	2 353	1 912	81.3	2 363	2 002	84.7
Relates to services to and from Adelaide, Brisbane, Broome, Darwin, Geraldton, Kalgoorlie, Karratha, Melbourne, Newman, Port Hedland and Sydney.						
Port Hedland						
Qantas	25	21	84.0	25	22	88.0
QantasLink	95	86	90.5	90	80	88.9
Virgin Australia	12	12	100.0	12	11	91.7
Virgin Australia Regional Airlines	40	37	92.5	40	34	85.0
All Airlines	172	156	90.7	167	147	88.0
Relates to services to and from Perth only.						
Port Lincoln						
QantasLink	107	98	91.6	107	94	87.9
Regional Express	182	169	92.9	184	170	92.4
All Airlines	289	267	92.4	291	264	90.7
Relates to services to and from Adelaide only.						
Port Macquarie						
QantasLink	113	66	58.4	113	70	61.9
Virgin Australia	60	47	78.3	60	37	61.7
All Airlines	173	113	65.3	173	107	61.8
Relates to services to and from Sydney only.						

Airport	Arrivals			Departures		
	Sectors Flown	On Time		Sectors Flown	On Time	
		No.	%		No.	%
Proserpine						
Jetstar	52	52	100.0	52	50	96.2
Tigerair Australia	43	36	83.7	43	32	74.4
Virgin Australia	35	31	88.6	35	29	82.9
All Airlines	130	119	91.5	130	111	85.4
Relates to services to and from Brisbane and Sydney.						
Rockhampton						
QantasLink	149	122	81.9	145	117	80.7
Virgin Australia	141	108	76.6	140	113	80.7
All Airlines	290	230	79.3	285	230	80.7
Relates to services to and from Brisbane only.						
Sunshine Coast						
Jetstar	220	187	85.0	219	168	76.7
QantasLink	44	37	84.1	45	40	88.9
Virgin Australia	132	112	84.8	131	110	84.0
All Airlines	396	336	84.8	395	318	80.5
Relates to services to and from Melbourne and Sydney.						
Sydney						
Jetstar	1 691	1 252	74.0	1 698	1 297	76.4
Qantas	2 183	1 701	77.9	2 180	1 629	74.7
QantasLink	1 252	926	74.0	1 249	872	69.8
Regional Express	339	259	76.4	339	281	82.9
Tigerair Australia	644	414	64.3	644	459	71.3
Virgin Australia	2 549	2 096	82.2	2 550	2 104	82.5
All Airlines	8 658	6 648	76.8	8 660	6 642	76.7
Relates to services to and from Adelaide, Albury, Armidale, Ayers Rock, Ballina, Brisbane, Cairns, Canberra, Coffs Harbour, Darwin, Dubbo, Gold Coast, Hamilton Island, Hobart, Launceston, Melbourne, Perth, Port Macquarie, Proserpine, Sunshine Coast, Tamworth, Townsville and Wagga Wagga.						
Tamworth						
QantasLink	123	79	64.2	124	86	69.4
Virgin Australia	41	30	73.2	42	34	81.0
All Airlines	164	109	66.5	166	120	72.3
Relates to services to and from Sydney only.						
Townsville						
Jetstar	102	82	80.4	102	75	73.5
Qantas	69	52	75.4	71	55	77.5
QantasLink	199	158	79.4	197	165	83.8
Regional Express	27	26	96.3	27	27	100.0
Tigerair Australia	18	15	83.3	18	12	66.7
Virgin Australia	164	136	82.9	164	139	84.8
All Airlines	579	469	81.0	579	473	81.7
Relates to services to and from Brisbane, Cairns, Melbourne and Sydney.						
Wagga Wagga						
QantasLink	102	71	69.6	103	76	73.8
Regional Express	81	66	81.5	78	64	82.1
All Airlines	183	137	74.9	181	140	77.3
Relates to services to and from Sydney only.						

Definitions

On time arrival	A flight arrival is counted as "on time" if it arrived at the gate before 15 minutes after the scheduled arrival time shown in the carriers' schedule. Neither diverted nor cancelled flights count as on time.
On time departure	A flight departure is counted as "on time" if it departs the gate before 15 minutes after the scheduled departure time shown in the carriers' schedule.
Cancellation	A flight removed from service within 7 days of scheduled departure is regarded as a cancellation.
On time departure percentage	The percentage of on time departures is measured against the number of departures <i>operated</i> on any particular sector.
On time arrival percentage	The percentage of on time arrivals is measured against the number of arrivals <i>operated</i> on any particular sector.
Cancellation percentage	The percentage of cancellations is measured against the number of services <i>scheduled</i> on any particular sector.
