



Australian Government

Department of Infrastructure and Regional Development

Bureau of Infrastructure, Transport and Regional Economics

STATISTICAL REPORT



Aviation

Domestic airline on time performance
December 2015

© Commonwealth of Australia 2016

ISSN: 1832-0759

Ownership of intellectual property rights in this publication

Unless otherwise noted, copyright (and any other intellectual property rights, if any) in this publication is owned by the Commonwealth of Australia (referred to below as the Commonwealth).

Disclaimer

The material contained in this publication is made available on the understanding that the Commonwealth is not providing professional advice, and that users exercise their own skill and care with respect to its use, and seek independent advice if necessary.

The Commonwealth makes no representations or warranties as to the contents or accuracy of the information contained in this publication. To the extent permitted by law, the Commonwealth disclaims liability to any person or organisation in respect of anything done, or omitted to be done, in reliance upon information contained in this publication.

Creative Commons licence

With the exception of (a) the Coat of Arms; and (b) the Department of Infrastructure and Regional Development's photos and graphics, copyright in this publication is licensed under a Creative Commons Attribution 3.0 Australia Licence.

Creative Commons Attribution 3.0 Australia Licence is a standard form licence agreement that allows you to copy, communicate and adapt this publication provided that you attribute the work to the Commonwealth and abide by the other licence terms. A summary of the licence terms is available from <http://creativecommons.org/licenses/by/3.0/au/deed.en>. The full licence terms are available from <http://creativecommons.org/licenses/by/3.0/au/legalcode>.

Use of the Coat of Arms

The Department of the Prime Minister and Cabinet sets the terms under which the Coat of Arms is used. Please refer to the Department's Commonwealth Coat of Arms and Government branding web page <http://www.dpmmc.gov.au/guidelines/index.cfm#brand> and, in particular, the Guidelines on the use of the Commonwealth Coat of Arms publication.

An appropriate citation for this report is:

Bureau of Infrastructure, Transport and Regional Economics (BITRE), 2016, Domestic airline on time performance, Statistical Report, BITRE, Canberra ACT.

Contact us

This publication is available in PDF format. All other rights are reserved, including in relation to any Departmental logos or trade marks which may exist. For enquiries regarding the licence and any use of this publication, please contact:

Bureau of Infrastructure, Transport and Regional Economics (BITRE)
Department of Infrastructure and Regional Development
GPO Box 501, Canberra ACT 2601, Australia
Telephone: (international) +61 2 6274 7210
Fax: (international) +61 2 6274 6855
Email: bitre@infrastructure.gov.au
Website: www.bitre.gov.au

Inquiries

Should you require additional information about the statistics contained in this publication:

Telephone (02) 6274 7790 or Facsimile (02) 6274 7727

Electronic mail: AVSTATS@infrastructure.gov.au

Web site: <http://www.bitre.gov.au/statistics/aviation/otphome.aspx>

Foreword

The Bureau of Infrastructure, Transport and Regional Economics (BITRE) monitors the punctuality and reliability of major domestic airlines operating between Australian airports. The purpose of this is to allow for evaluation of overall industry and individual airline performance, so that consumers of air travel can make informed decisions.

The following domestic airlines currently report this information monthly to the BITRE: Jetstar, Qantas, QantasLink, Regional Express, Tigerair, Virgin Australia and Virgin Australia Regional Airlines. Data has been gathered since November 2003, although some airlines commenced reporting at a later date, including Jetstar which first reported in May 2004, MacAir in July 2005 and Tigerair in April 2008. MacAir ceased operations in February 2009 and data was not received for December 2008 onwards. Virgin Blue was rebranded as Virgin Australia in May 2011 and Tiger Airways was rebranded as Tigerair in July 2013 and time series data in Microsoft Excel spreadsheet format on the BITRE website have been revised to reflect these changes. Virgin Australia Regional Airlines commenced operations in May 2013. It was formed after the acquisition of Skywest by Virgin Australia and represents a combination of operations previously reported under Skywest and Virgin Australia – ATR/F100 Operations. Services operated by Skywest on behalf of Virgin Australia using ATR/F100 aircraft commenced in November 2011 and were shown separately as Virgin Australia – ATR/F100 Operations until April 2013.

Information presented in this report is for Australian domestic routes for which the passenger load averaged 8 000 or more passengers per month over the previous six months and where two or more airlines operated in competition on those routes. There were 66 routes that met this definition in December 2015. Over time, routes which meet these criteria change as airline networks and traffic levels vary.

Participating airlines report their overall monthly network performance where this is possible.

Total industry figures encompass all services operated by reporting airlines only. These airlines collectively carried over 95 per cent of total domestic passengers (regular public transport only) in 2014.

The method of capturing on time performance varies between airlines utilising different recording systems. Jetstar and Qantas jet aircraft use Aircraft Communication Addressing and Reporting System (ACARS) to electronically measure on time performance. Regional Express, Tigerair, Virgin Australia, Virgin Australia Regional Airlines and the Qantas non-jet fleet record on time performance manually using records from pilots, gate agents and/or ground crews.

After initial data is collected, aggregate reports are audited internally by participating airlines prior to publication.

Reports and detailed time series data in Microsoft Excel spreadsheet format are available from the BITRE website at: <http://www.bitre.gov.au/statistics/aviation/otphome.aspx>.

Contents

	Page
Industry performance	1
Individual routes	10
Airports	23
Definitions	30

Industry performance

For December 2015, on time performance over all routes operated by participating airlines (Jetstar, Qantas, QantasLink, Regional Express, Tigerair, Virgin Australia and Virgin Australia Regional Airlines) averaged 84.2 per cent for on time arrivals and 83.7 per cent for on time departures. Cancellations represented 2.1 per cent of all scheduled flights. The equivalent figures for December 2014 were 80.9 per cent for arrivals, 82.8 per cent for departures and 1.8 per cent for cancellations.

This month's on time arrivals figure was better than the long term average performance for all routes (82.6 per cent) while the on time departures figure was worse than the long term average (84.1 per cent). The rate of cancellations was higher than the long term average of 1.4 per cent.

Qantas achieved the highest on time arrivals among the major domestic airlines at 88.6 per cent, followed by Virgin Australia at 88.3 per cent, Tigerair at 82.3 per cent and Jetstar at 68.0 per cent. Regional Express was the best performing regional airline for on time arrivals at 88.0 per cent, followed by Virgin Australia Regional Airlines at 86.8 per cent and QantasLink at 86.2 per cent. The Qantas network (Qantas and QantasLink combined operations) recorded 87.4 per cent for on time arrivals while the Virgin Australia network (Virgin Australia and Virgin Australia Regional Airlines combined operations) recorded 88.1 per cent.

Virgin Australia achieved the highest level of on time departures for December 2015 at 89.0 per cent, followed by Qantas at 88.4 per cent, Tigerair at 81.9 per cent and Jetstar at 63.2 per cent. Of the regional airlines, Regional Express recorded 90.3 per cent followed by Virgin Australia Regional Airlines at 86.7 per cent and QantasLink at 86.2 per cent. The Qantas network recorded 87.3 per cent for on time departures while the Virgin Australia network recorded 88.6 per cent.

Jetstar had the highest percentage of cancellations (4.5 per cent) during the month, followed by QantasLink (2.9 per cent), Virgin Australia Regional Airlines (2.2 per cent), Virgin Australia (1.4 per cent), Tigerair and Qantas (both on 1.0 per cent) and Regional Express (0.5 per cent).

Airlines' on time performance varies across the routes they serve. Individual route data by specific airline for 66 routes are shown on pages 10-22.

Of the 66 routes which met the criteria for on time performance reporting in December 2015, the Perth-Darwin route had the highest percentage of on time arrivals (98.6 per cent) and the highest percentage of on time departures (also 98.6 per cent). The Port Macquarie-Sydney route had the lowest percentage of on time arrivals (59.9 per cent) and the Sunshine Coast-Sydney route had the lowest percentage of on time departures (62.1 per cent).

Cancellations were highest on the Perth-Melbourne route at 8.6 per cent, followed by the Melbourne-Perth route at 8.4 per cent, the Moranbah-Brisbane route at 5.5 per cent, the Sydney-Canberra route 5.3 per cent and the Canberra-Sydney and Cairns-Townsville routes at 4.9 percent.

Newman Airport recorded the highest percentage of on time arrivals (97.3 per cent) and Kalgoorlie Airport recorded the highest percentage of on time departures (95.6 per cent). Port Macquarie Airport recorded the lowest percentage of on time arrivals (66.2 per cent) and Sunshine Coast Airport recorded the lowest percentage of on time departures (63.2 per cent). These figures only refer to reported routes and do not cover all flights at these airports.

Table 1 On time performance for December 2015 — Total Industry

	<i>Sectors</i>		<i>Arrivals On Time</i>		<i>Departures On Time</i>		<i>Cancellations</i>	
	<i>Scheduled</i>	<i>Flown</i>	<i>No.</i>	<i>%</i>	<i>No.</i>	<i>%</i>	<i>No.</i>	<i>%</i>
Jetstar	8 369	7 995	5 439	68.0	5 056	63.2	374	4.5
Qantas	9 537	9 446	8 372	88.6	8 347	88.4	91	1.0
QantasLink	10 110	9 818	8 466	86.2	8 467	86.2	292	2.9
Regional Express	5 148	5 122	4 505	88.0	4 625	90.3	26	0.5
Tigerair	2 348	2 325	1 914	82.3	1 905	81.9	23	1.0
Virgin Australia	11 010	10 859	9 592	88.3	9 665	89.0	151	1.4
Virgin Australia Regional Airlines	2 365	2 313	2 007	86.8	2 006	86.7	52	2.2
All Airlines	48 887	47 878	40 295	84.2	40 071	83.7	1 009	2.1
Qantas - all QF designated services	19 647	19 264	16 838	87.4	16 814	87.3	383	1.9
Virgin Australia - all VA designated services	13 375	13 172	11 599	88.1	11 671	88.6	203	1.5

Total airline network data (including routes not shown in this report).

Airlines' on time performance varies across the routes they serve. Individual route data by specific airline for 66 routes are shown on pages 10-22.

Table 2 Top ten routes for on time performance for December 2015 (participating airlines only)

<i>Arrivals</i>		<i>Departures</i>	
<i>Route</i>	<i>On Time (%)</i>	<i>Route</i>	<i>On Time (%)</i>
Perth-Darwin	98.6	Perth-Darwin	98.6
Perth-Newman	97.3	Darwin-Alice Springs	98.2
Darwin-Alice Springs	96.4	Darwin-Perth	97.3
Port Hedland-Perth	96.1	Perth-Newman	96.7
Adelaide-Canberra	95.9	Brisbane-Mount Isa	96.7
Darwin-Perth	95.9	Adelaide-Canberra	95.9
Kalgoorlie-Perth	95.6	Kalgoorlie-Perth	95.6
Newman-Perth	95.6	Perth-Port Hedland	95.5
Brisbane-Hobart	95.2	Brisbane-Hobart	95.2
Perth-Port Hedland	95.0	Newman-Perth	95.0

Table 3 Top ten airports for on time performance for December 2015 (participating airlines and reported routes only)

<i>Arrivals</i>		<i>Departures</i>	
<i>Airport</i>	<i>On Time (%)</i>	<i>Airport</i>	<i>On Time (%)</i>
Newman	97.3	Kalgoorlie	95.6
Port Hedland	95.0	Newman	95.0
Mount Isa	93.3	Port Lincoln	93.8
Alice Springs	93.1	Port Hedland	93.8
Bundaberg	93.0	Mount Isa	93.3
Moranbah	92.5	Karratha	93.3
Karratha	92.3	Moranbah	92.3
Port Lincoln	91.9	Bundaberg	91.4
Kalgoorlie	91.3	Mildura	90.0
Gladstone	89.8	Wagga Wagga	89.6

Total industry on time performance

Figure 1 On time performance (by month from December 2012)—Total Industry

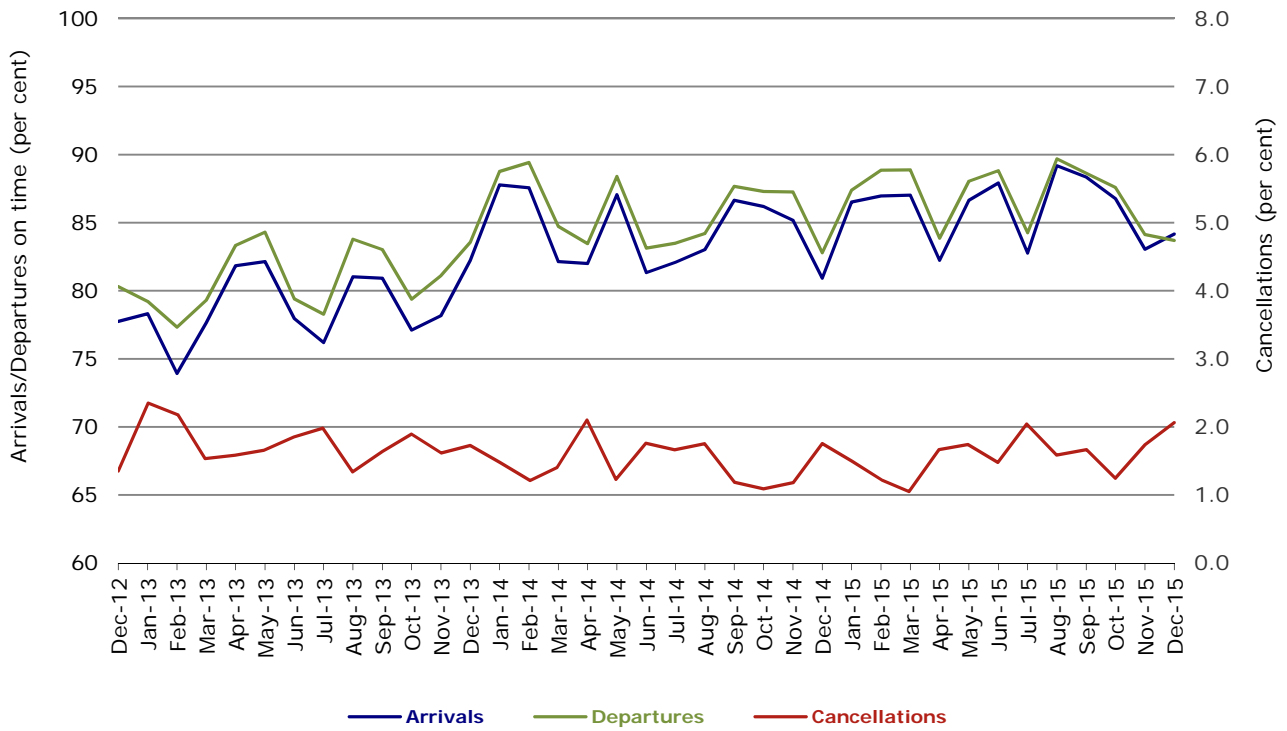


Figure 2 Arrivals on time (by month from December 2014)

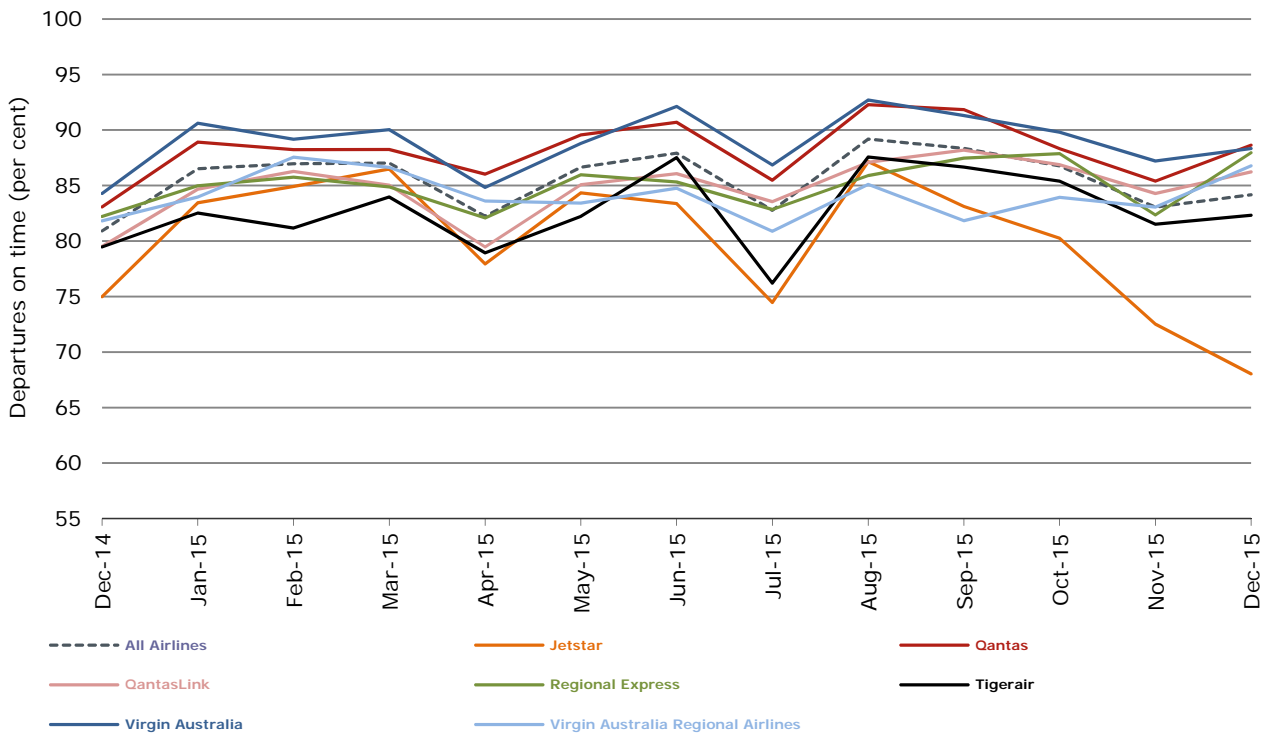


Figure 3 Departures on time (by month from December 2014)

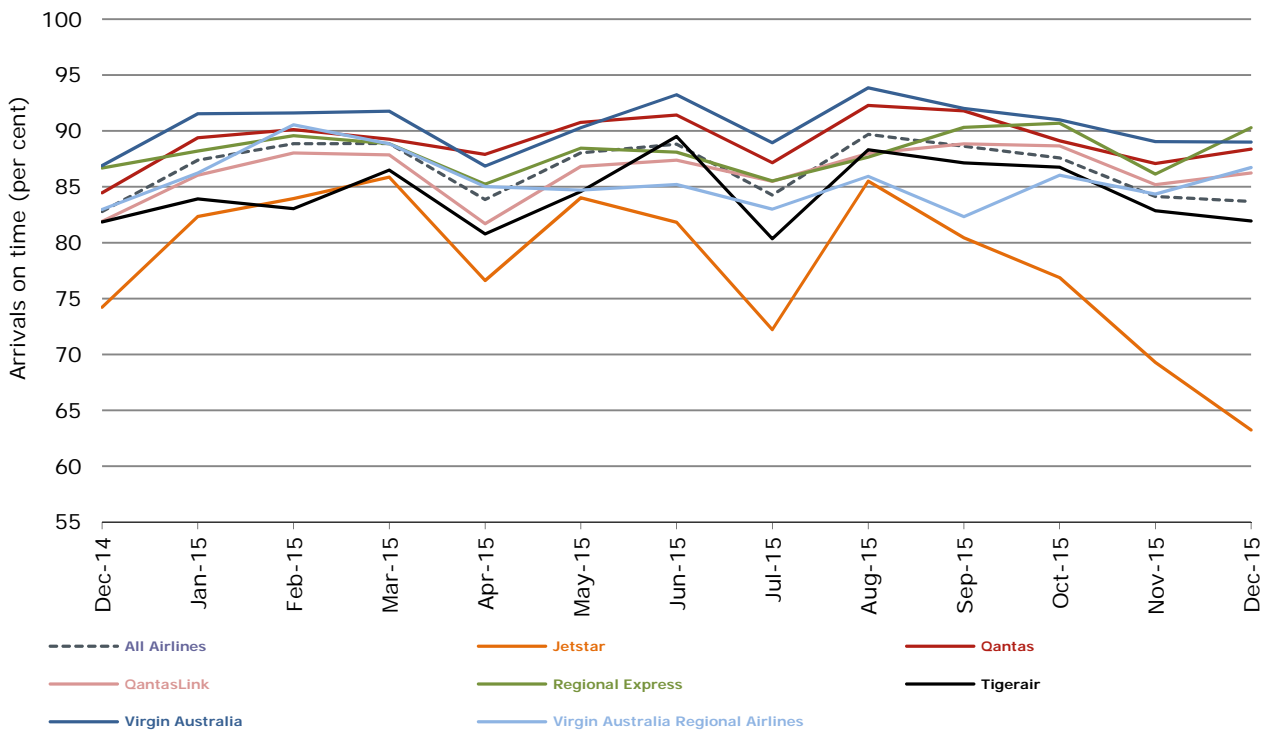
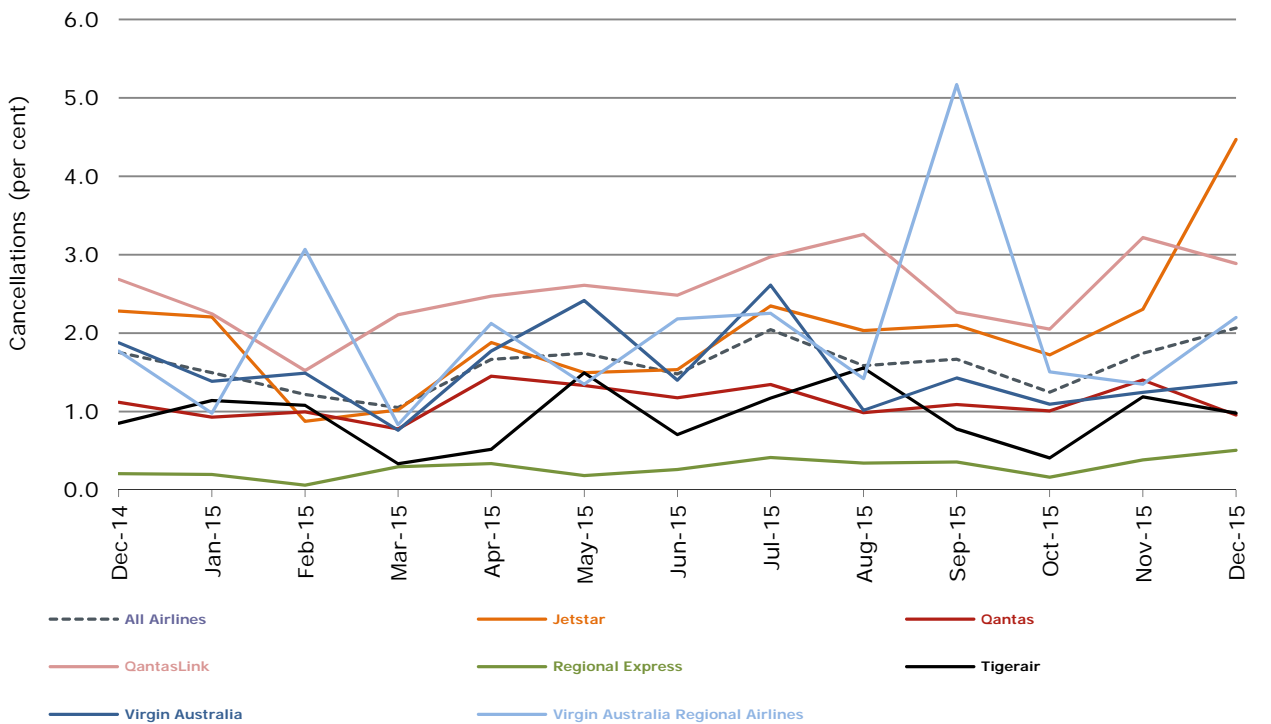


Figure 4 Cancellations (by month from December 2014)



Major domestic airlines on time performance

Figure 5 On time performance (by month from December 2012)—Jetstar

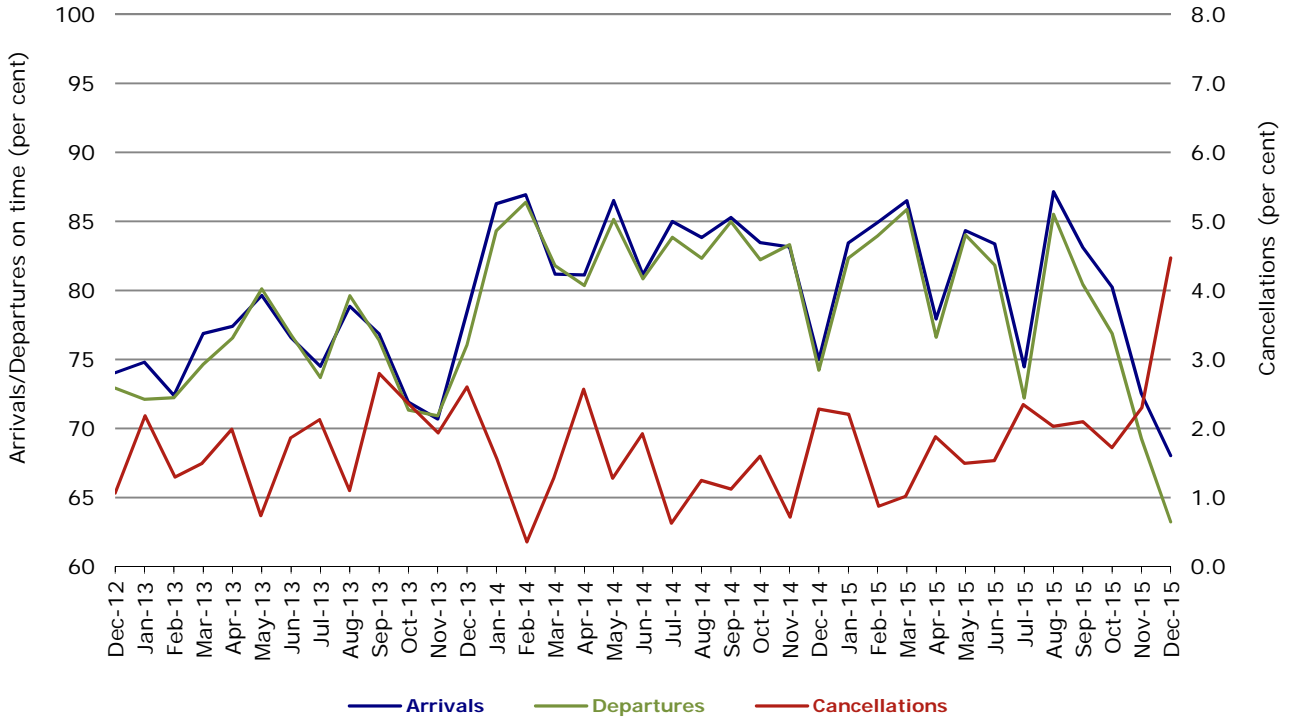


Figure 6 On time performance (by month from December 2012)—Qantas

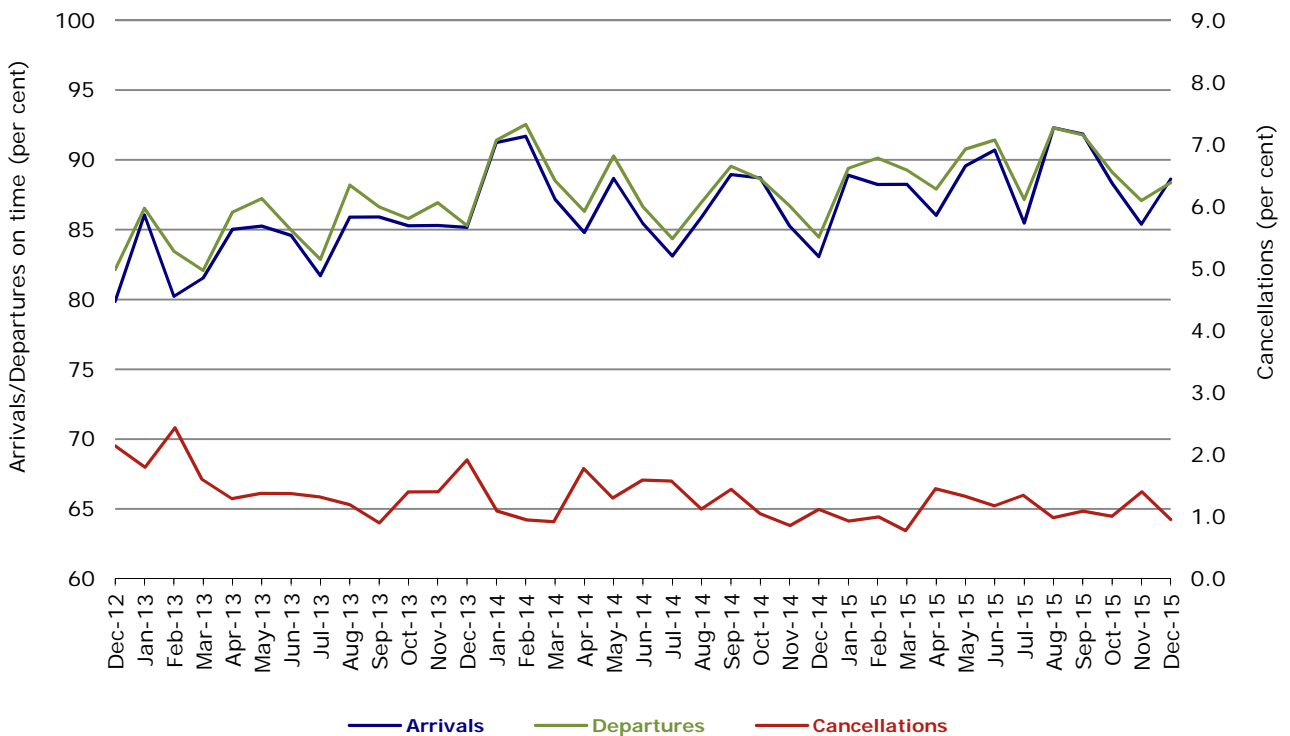


Figure 7 On time performance (by month from December 2012)—Tigerair

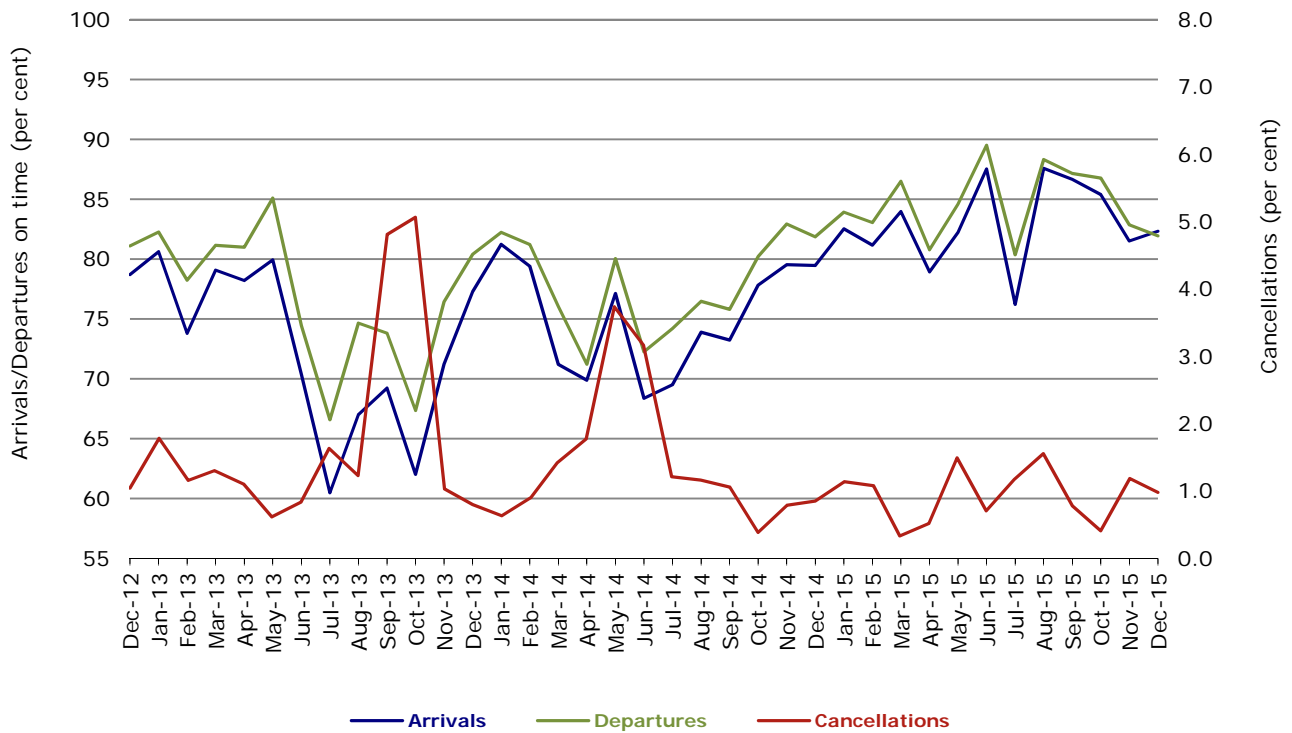
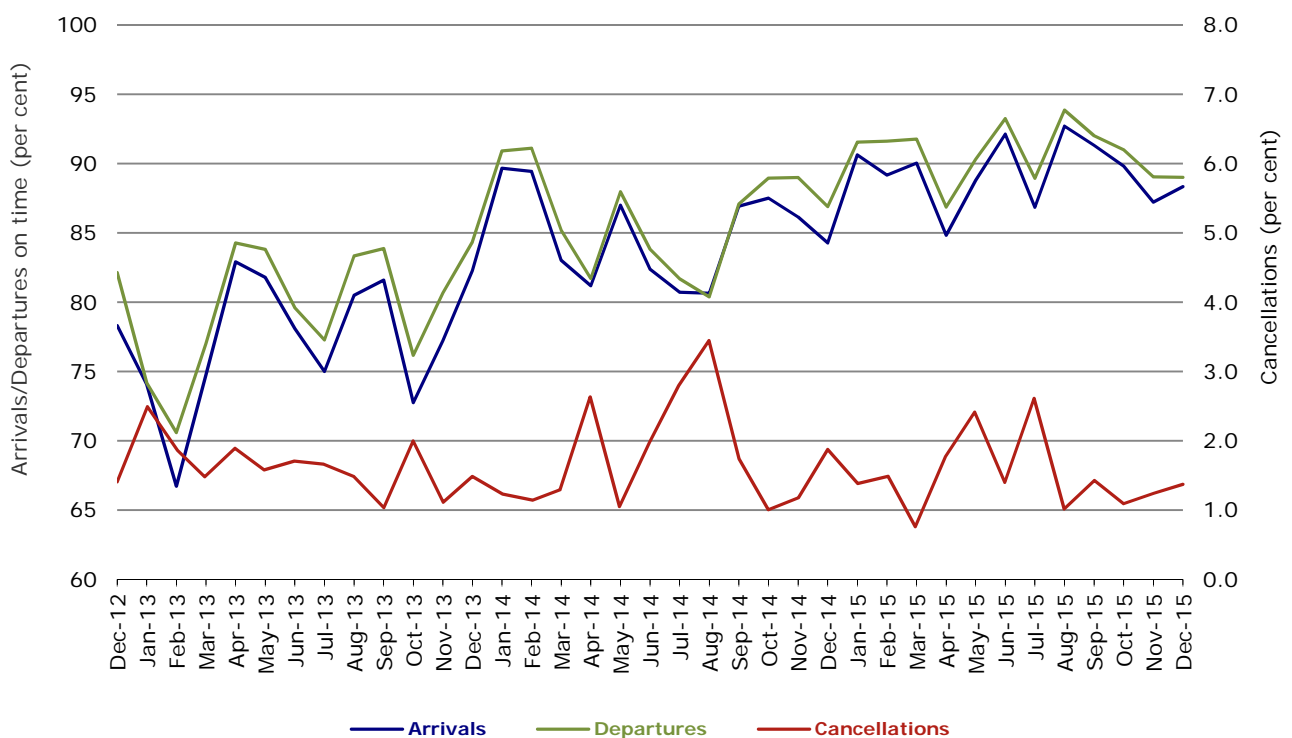


Figure 8 On time performance (by month from December 2012)—Virgin Australia



Major regional airlines on time performance

Figure 9 On time performance (by month from December 2012)—QantasLink

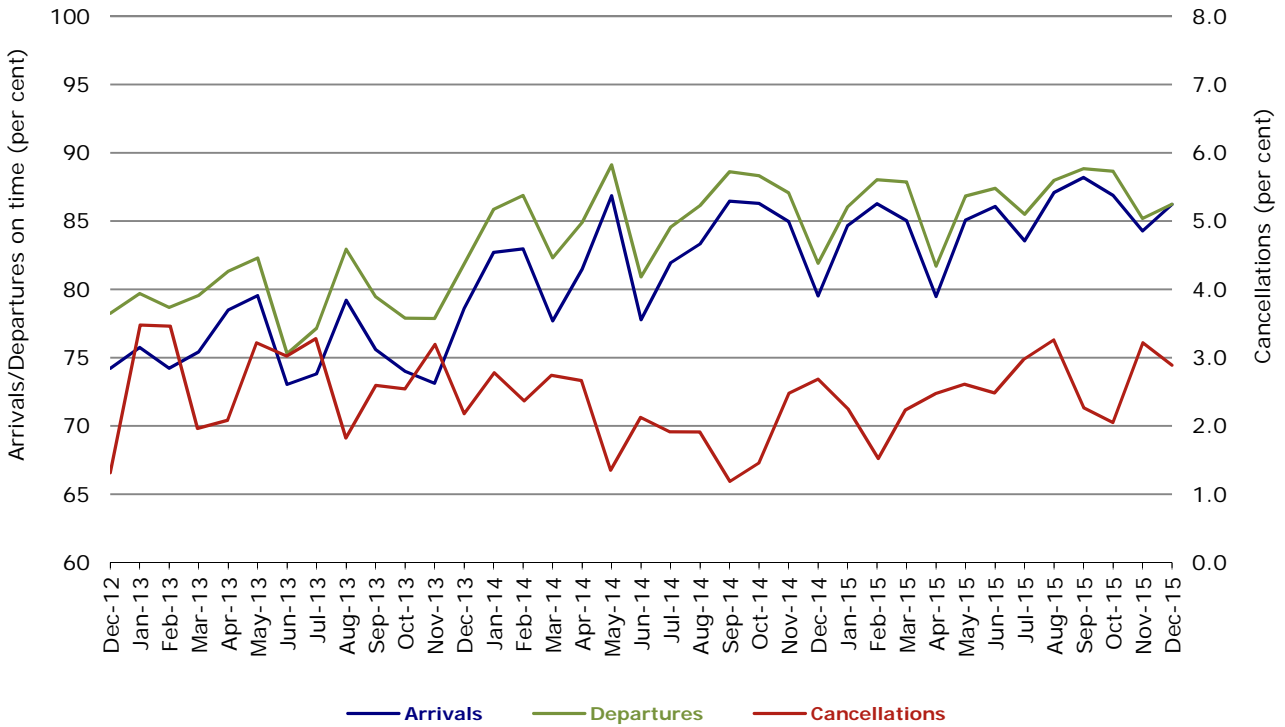


Figure 10 On time performance (by month from December 2012)—Regional Express

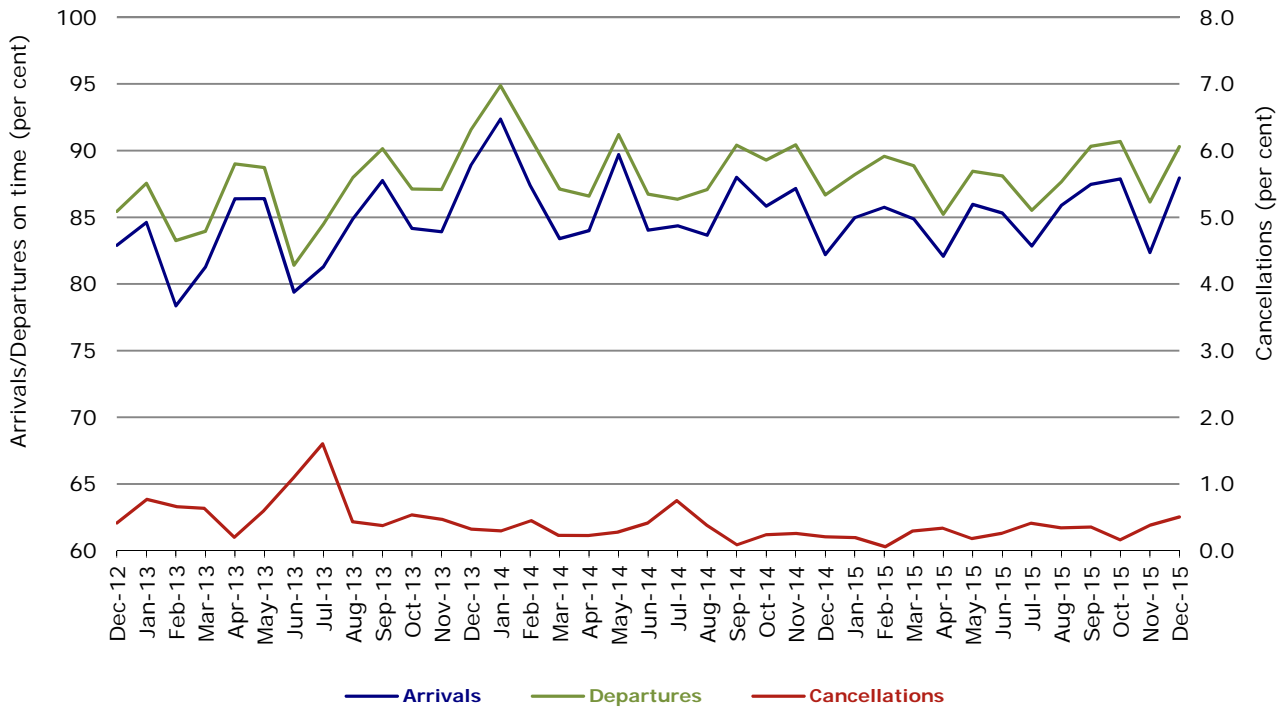
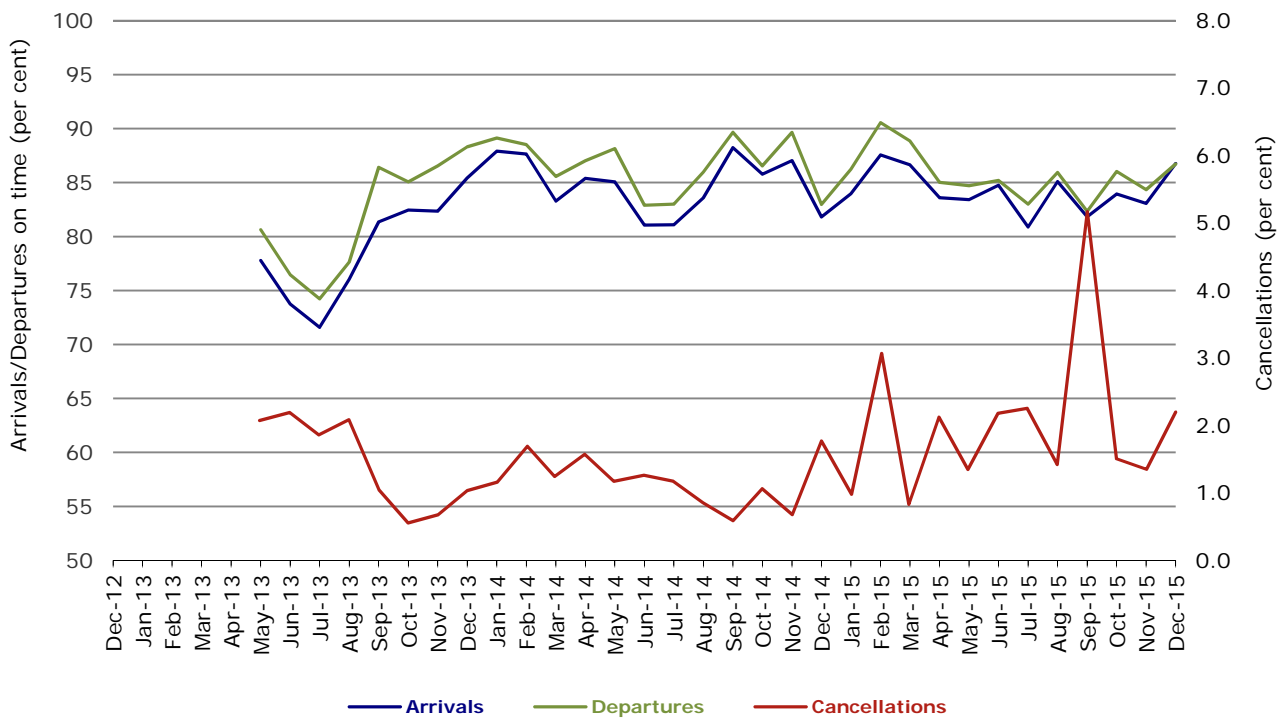


Figure 11 On time performance (by month from December 2012)
Virgin Australia Regional Airlines



Virgin Australia Regional Airlines commenced operations in May 2013. It was formed after the acquisition of Skywest by Virgin Australia and represents a combination of operations previously reported under Skywest and Virgin Australia – ATR/F100 Operations.

Individual routes

On time performance is reported for all routes where the passenger load averages over 8000 passengers per month over the previous six months, and where two or more airlines operate in competition on those routes. There are now 66 routes which meet this definition. Over time, however, routes which meet this definition may change as airline networks and traffic levels vary.

	<i>Sectors</i>		<i>Arrivals On Time</i>		<i>Departures On Time</i>		<i>Cancellations</i>	
	<i>Sched.</i>	<i>Flown</i>	<i>No.</i>	<i>%</i>	<i>No.</i>	<i>%</i>	<i>No.</i>	<i>%</i>
Adelaide-Alice Springs								
Qantas	31	31	29	93.5	29	93.5	0	0.0
Virgin Australia	14	14	11	78.6	11	78.6	0	0.0
All Airlines	45	45	40	88.9	40	88.9	0	0.0
Adelaide-Brisbane								
Jetstar	31	31	22	71.0	23	74.2	0	0.0
Qantas	118	118	113	95.8	114	96.6	0	0.0
Tigerair	30	30	27	90.0	27	90.0	0	0.0
Virgin Australia	120	120	106	88.3	107	89.2	0	0.0
All Airlines	299	299	268	89.6	271	90.6	0	0.0
Adelaide-Canberra								
Qantas	46	46	45	97.8	45	97.8	0	0.0
Virgin Australia	27	27	25	92.6	25	92.6	0	0.0
All Airlines	73	73	70	95.9	70	95.9	0	0.0
Adelaide-Gold Coast								
Jetstar	40	40	29	72.5	27	67.5	0	0.0
Virgin Australia	33	33	33	100.0	33	100.0	0	0.0
All Airlines	73	73	62	84.9	60	82.2	0	0.0
Adelaide-Melbourne								
Jetstar	123	120	81	67.5	82	68.3	3	2.4
Qantas	279	277	255	92.1	247	89.2	2	0.7
Tigerair	84	84	76	90.5	74	88.1	0	0.0
Virgin Australia	283	280	261	93.2	260	92.9	3	1.1
All Airlines	769	761	673	88.4	663	87.1	8	1.0
Adelaide-Perth								
Jetstar	31	28	23	82.1	18	64.3	3	9.7
Qantas	124	123	116	94.3	112	91.1	1	0.8
Virgin Australia	74	73	70	95.9	70	95.9	1	1.4
All Airlines	229	224	209	93.3	200	89.3	5	2.2
Adelaide-Port Lincoln								
QantasLink	120	120	102	85.0	104	86.7	0	0.0
Regional Express	188	187	180	96.3	182	97.3	1	0.5
All Airlines	308	307	282	91.9	286	93.2	1	0.3
Adelaide-Sydney								
Jetstar	146	134	96	71.6	90	67.2	12	8.2
Qantas	246	246	225	91.5	228	92.7	0	0.0
QantasLink	25	23	18	78.3	17	73.9	2	8.0
Tigerair	41	41	31	75.6	29	70.7	0	0.0
Virgin Australia	173	173	163	94.2	166	96.0	0	0.0
All Airlines	631	617	533	86.4	530	85.9	14	2.2
Albury-Sydney								
QantasLink	93	93	81	87.1	83	89.2	0	0.0
Regional Express	81	80	77	96.3	76	95.0	1	1.2
Virgin Australia Regional Airlines	62	62	48	77.4	51	82.3	0	0.0
All Airlines	236	235	206	87.7	210	89.4	1	0.4

	<i>Sectors</i>		<i>Arrivals On Time</i>		<i>Departures On Time</i>		<i>Cancellations</i>	
	<i>Sched.</i>	<i>Flown</i>	<i>No.</i>	<i>%</i>	<i>No.</i>	<i>%</i>	<i>No.</i>	<i>%</i>
Alice Springs-Adelaide								
Qantas	31	31	25	80.6	24	77.4	0	0.0
Virgin Australia	14	14	12	85.7	11	78.6	0	0.0
All Airlines	45	45	37	82.2	35	77.8	0	0.0
Alice Springs-Darwin								
QantasLink	42	42	40	95.2	40	95.2	0	0.0
Virgin Australia	14	14	11	78.6	12	85.7	0	0.0
All Airlines	56	56	51	91.1	52	92.9	0	0.0
Armidale-Sydney								
QantasLink	134	130	98	75.4	91	70.0	4	3.0
Regional Express	62	62	47	75.8	52	83.9	0	0.0
All Airlines	196	192	145	75.5	143	74.5	4	2.0
Ayers Rock-Sydney								
Jetstar	21	21	16	76.2	13	61.9	0	0.0
Virgin Australia	31	31	26	83.9	25	80.6	0	0.0
All Airlines	52	52	42	80.8	38	73.1	0	0.0
Ballina-Sydney								
Jetstar	88	87	59	67.8	53	60.9	1	1.1
Regional Express	16	15	12	80.0	11	73.3	1	6.3
Virgin Australia	32	32	30	93.8	28	87.5	0	0.0
All Airlines	136	134	101	75.4	92	68.7	2	1.5
Brisbane-Adelaide								
Jetstar	31	31	28	90.3	27	87.1	0	0.0
Qantas	118	118	114	96.6	112	94.9	0	0.0
Tigerair	30	30	26	86.7	25	83.3	0	0.0
Virgin Australia	125	125	120	96.0	116	92.8	0	0.0
All Airlines	304	304	288	94.7	280	92.1	0	0.0
Brisbane-Bundaberg								
QantasLink	136	134	122	91.0	123	91.8	2	1.5
Virgin Australia Regional Airlines	37	37	37	100.0	36	97.3	0	0.0
All Airlines	173	171	159	93.0	159	93.0	2	1.2
Brisbane-Cairns								
Jetstar	129	129	96	74.4	77	59.7	0	0.0
Qantas	126	126	116	92.1	112	88.9	0	0.0
QantasLink	4	4	3	75.0	4	100.0	0	0.0
Tigerair	31	31	30	96.8	30	96.8	0	0.0
Virgin Australia	138	138	127	92.0	128	92.8	0	0.0
All Airlines	428	428	372	86.9	351	82.0	0	0.0
Brisbane-Canberra								
Qantas	27	27	26	96.3	25	92.6	0	0.0
QantasLink	123	119	103	86.6	104	87.4	4	3.3
Virgin Australia	90	90	81	90.0	79	87.8	0	0.0
All Airlines	240	236	210	89.0	208	88.1	4	1.7
Brisbane-Darwin								
Jetstar	31	31	18	58.1	21	67.7	0	0.0
Qantas	49	49	44	89.8	46	93.9	0	0.0
Tigerair	26	26	21	80.8	21	80.8	0	0.0
Virgin Australia	32	32	26	81.3	28	87.5	0	0.0
All Airlines	138	138	109	79.0	116	84.1	0	0.0
Brisbane-Emerald								
QantasLink	129	124	110	88.7	110	88.7	5	3.9
Virgin Australia Regional Airlines	82	81	67	82.7	67	82.7	1	1.2
All Airlines	211	205	177	86.3	177	86.3	6	2.8

	<i>Sectors</i>		<i>Arrivals On Time</i>		<i>Departures On Time</i>		<i>Cancellations</i>	
	<i>Sched.</i>	<i>Flown</i>	<i>No.</i>	<i>%</i>	<i>No.</i>	<i>%</i>	<i>No.</i>	<i>%</i>
Brisbane-Gladstone								
QantasLink	202	195	180	92.3	178	91.3	7	3.5
Virgin Australia	29	29	27	93.1	27	93.1	0	0.0
Virgin Australia Regional Airlines	102	100	84	84.0	84	84.0	2	2.0
All Airlines	333	324	291	89.8	289	89.2	9	2.7
Brisbane-Hamilton Island								
QantasLink	26	26	25	96.2	24	92.3	0	0.0
Virgin Australia	31	31	26	83.9	28	90.3	0	0.0
All Airlines	57	57	51	89.5	52	91.2	0	0.0
Brisbane-Hobart								
Jetstar	31	31	30	96.8	30	96.8	0	0.0
Qantas	1	1	1	100.0	1	100.0	0	0.0
Virgin Australia	31	31	29	93.5	29	93.5	0	0.0
All Airlines	63	63	60	95.2	60	95.2	0	0.0
Brisbane-Mackay								
Jetstar	48	48	36	75.0	32	66.7	0	0.0
QantasLink	106	99	93	93.9	92	92.9	7	6.6
Virgin Australia	150	150	134	89.3	133	88.7	0	0.0
All Airlines	304	297	263	88.6	257	86.5	7	2.3
Brisbane-Melbourne								
Jetstar	150	144	113	78.5	105	72.9	6	4.0
Qantas	447	443	403	91.0	397	89.6	4	0.9
Tigerair	134	133	110	82.7	104	78.2	1	0.7
Virgin Australia	385	378	328	86.8	339	89.7	7	1.8
All Airlines	1 116	1 098	954	86.9	945	86.1	18	1.6
Brisbane-Moranbah								
QantasLink	104	96	88	91.7	87	90.6	8	7.7
Virgin Australia Regional Airlines	65	65	61	93.8	61	93.8	0	0.0
All Airlines	169	161	149	92.5	148	91.9	8	4.7
Brisbane-Mount Isa								
Qantas	37	37	36	97.3	36	97.3	0	0.0
Virgin Australia	23	23	20	87.0	22	95.7	0	0.0
All Airlines	60	60	56	93.3	58	96.7	0	0.0
Brisbane-Newcastle								
Jetstar	92	90	64	71.1	67	74.4	2	2.2
QantasLink	92	91	81	89.0	81	89.0	1	1.1
Virgin Australia	85	85	80	94.1	79	92.9	0	0.0
All Airlines	269	266	225	84.6	227	85.3	3	1.1
Brisbane-Perth								
Qantas	137	137	115	83.9	109	79.6	0	0.0
Virgin Australia	114	114	99	86.8	90	78.9	0	0.0
All Airlines	251	251	214	85.3	199	79.3	0	0.0
Brisbane-Proserpine								
Jetstar	31	31	21	67.7	18	58.1	0	0.0
Virgin Australia	54	53	47	88.7	49	92.5	1	1.9
All Airlines	85	84	68	81.0	67	79.8	1	1.2
Brisbane-Rockhampton								
QantasLink	184	182	163	89.6	162	89.0	2	1.1
Virgin Australia	102	97	87	89.7	87	89.7	5	4.9
Virgin Australia Regional Airlines	80	74	66	89.2	66	89.2	6	7.5
All Airlines	366	353	316	89.5	315	89.2	13	3.6

	<i>Sectors</i>		<i>Arrivals On Time</i>		<i>Departures On Time</i>		<i>Cancellations</i>	
	<i>Sched.</i>	<i>Flown</i>	<i>No.</i>	<i>%</i>	<i>No.</i>	<i>%</i>	<i>No.</i>	<i>%</i>
Brisbane-Sydney								
Jetstar	202	180	120	66.7	117	65.0	22	10.9
Qantas	655	640	559	87.3	574	89.7	15	2.3
Tigerair	106	101	85	84.2	84	83.2	5	4.7
Virgin Australia	547	531	460	86.6	480	90.4	16	2.9
All Airlines	1 510	1 452	1 224	84.3	1 255	86.4	58	3.8
Brisbane-Townsville								
Jetstar	46	46	35	76.1	29	63.0	0	0.0
Qantas	147	147	128	87.1	124	84.4	0	0.0
Virgin Australia	147	146	127	87.0	128	87.7	1	0.7
All Airlines	340	339	290	85.5	281	82.9	1	0.3
Broome-Perth								
Qantas	22	22	21	95.5	19	86.4	0	0.0
QantasLink	62	62	56	90.3	57	91.9	0	0.0
Virgin Australia	4	4	3	75.0	3	75.0	0	0.0
Virgin Australia Regional Airlines	38	38	27	71.1	33	86.8	0	0.0
All Airlines	126	126	107	84.9	112	88.9	0	0.0
Bundaberg-Brisbane								
QantasLink	136	136	124	91.2	123	90.4	0	0.0
Virgin Australia Regional Airlines	38	38	36	94.7	36	94.7	0	0.0
All Airlines	174	174	160	92.0	159	91.4	0	0.0
Cairns-Brisbane								
Jetstar	129	129	107	82.9	105	81.4	0	0.0
Qantas	126	126	116	92.1	115	91.3	0	0.0
QantasLink	4	4	4	100.0	4	100.0	0	0.0
Tigerair	31	30	23	76.7	26	86.7	1	3.2
Virgin Australia	138	138	129	93.5	131	94.9	0	0.0
All Airlines	428	427	379	88.8	381	89.2	1	0.2
Cairns-Melbourne								
Jetstar	105	101	64	63.4	68	67.3	4	3.8
Qantas	39	39	38	97.4	39	100.0	0	0.0
Tigerair	42	42	32	76.2	29	69.0	0	0.0
Virgin Australia	31	31	30	96.8	30	96.8	0	0.0
All Airlines	217	213	164	77.0	166	77.9	4	1.8
Cairns-Sydney								
Jetstar	111	109	83	76.1	86	78.9	2	1.8
Qantas	86	86	79	91.9	79	91.9	0	0.0
Tigerair	46	46	32	69.6	37	80.4	0	0.0
Virgin Australia	90	90	83	92.2	82	91.1	0	0.0
All Airlines	333	331	277	83.7	284	85.8	2	0.6
Cairns-Townsville								
QantasLink	138	130	115	88.5	117	90.0	8	5.8
Regional Express	47	46	43	93.5	42	91.3	1	2.1
All Airlines	185	176	158	89.8	159	90.3	9	4.9
Canberra-Adelaide								
Qantas	46	46	44	95.7	43	93.5	0	0.0
Virgin Australia	27	27	24	88.9	25	92.6	0	0.0
All Airlines	73	73	68	93.2	68	93.2	0	0.0
Canberra-Brisbane								
Qantas	27	27	25	92.6	25	92.6	0	0.0
QantasLink	123	119	97	81.5	96	80.7	4	3.3
Virgin Australia	90	90	86	95.6	83	92.2	0	0.0
All Airlines	240	236	208	88.1	204	86.4	4	1.7

	<i>Sectors</i>		<i>Arrivals On Time</i>		<i>Departures On Time</i>		<i>Cancellations</i>	
	<i>Sched.</i>	<i>Flown</i>	<i>No.</i>	<i>%</i>	<i>No.</i>	<i>%</i>	<i>No.</i>	<i>%</i>
Canberra-Melbourne								
Qantas	155	155	143	92.3	140	90.3	0	0.0
QantasLink	92	88	76	86.4	76	86.4	4	4.3
Virgin Australia	145	145	130	89.7	132	91.0	0	0.0
Virgin Australia Regional Airlines	28	27	25	92.6	25	92.6	1	3.6
All Airlines	420	415	374	90.1	373	89.9	5	1.2
Canberra-Sydney								
QantasLink	422	401	361	90.0	353	88.0	21	5.0
Virgin Australia	32	31	27	87.1	26	83.9	1	3.1
Virgin Australia Regional Airlines	201	191	170	89.0	173	90.6	10	5.0
All Airlines	655	623	558	89.6	552	88.6	32	4.9
Coffs Harbour-Sydney								
QantasLink	155	151	123	81.5	121	80.1	4	2.6
Tigerair	12	12	11	91.7	12	100.0	0	0.0
Virgin Australia	62	61	56	91.8	56	91.8	1	1.6
All Airlines	229	224	190	84.8	189	84.4	5	2.2
Darwin-Alice Springs								
QantasLink	42	42	41	97.6	41	97.6	0	0.0
Virgin Australia	14	14	13	92.9	14	100.0	0	0.0
All Airlines	56	56	54	96.4	55	98.2	0	0.0
Darwin-Brisbane								
Jetstar	31	31	22	71.0	17	54.8	0	0.0
Qantas	49	49	48	98.0	41	83.7	0	0.0
Tigerair	26	25	20	80.0	18	72.0	1	3.8
Virgin Australia	32	32	25	78.1	29	90.6	0	0.0
All Airlines	138	137	115	83.9	105	76.6	1	0.7
Darwin-Melbourne								
Jetstar	27	27	11	40.7	8	29.6	0	0.0
Qantas	30	30	28	93.3	27	90.0	0	0.0
Virgin Australia	31	31	28	90.3	26	83.9	0	0.0
All Airlines	88	88	67	76.1	61	69.3	0	0.0
Darwin-Perth								
Qantas	42	42	40	95.2	40	95.2	0	0.0
Virgin Australia	31	31	30	96.8	31	100.0	0	0.0
All Airlines	73	73	70	95.9	71	97.3	0	0.0
Darwin-Sydney								
Jetstar	28	27	18	66.7	17	63.0	1	3.6
Qantas	49	49	46	93.9	46	93.9	0	0.0
Virgin Australia	31	31	27	87.1	25	80.6	0	0.0
All Airlines	108	107	91	85.0	88	82.2	1	0.9
Dubbo-Sydney								
QantasLink	119	117	87	74.4	87	74.4	2	1.7
Regional Express	123	123	102	82.9	109	88.6	0	0.0
All Airlines	242	240	189	78.8	196	81.7	2	0.8
Emerald-Brisbane								
QantasLink	129	124	109	87.9	110	88.7	5	3.9
Virgin Australia Regional Airlines	82	80	73	91.3	71	88.8	2	2.4
All Airlines	211	204	182	89.2	181	88.7	7	3.3
Geraldton-Perth								
QantasLink	45	45	42	93.3	41	91.1	0	0.0
Virgin Australia Regional Airlines	68	68	61	89.7	57	83.8	0	0.0
All Airlines	113	113	103	91.2	98	86.7	0	0.0

	<i>Sectors</i>		<i>Arrivals On Time</i>		<i>Departures On Time</i>		<i>Cancellations</i>	
	<i>Sched.</i>	<i>Flown</i>	<i>No.</i>	<i>%</i>	<i>No.</i>	<i>%</i>	<i>No.</i>	<i>%</i>
Gladstone-Brisbane								
QantasLink	200	190	171	90.0	170	89.5	10	5.0
Virgin Australia	28	28	25	89.3	25	89.3	0	0.0
Virgin Australia Regional Airlines	103	99	88	88.9	86	86.9	4	3.9
All Airlines	331	317	284	89.6	281	88.6	14	4.2
Gold Coast-Adelaide								
Jetstar	40	40	29	72.5	29	72.5	0	0.0
Virgin Australia	33	33	32	97.0	31	93.9	0	0.0
All Airlines	73	73	61	83.6	60	82.2	0	0.0
Gold Coast-Melbourne								
Jetstar	257	239	181	75.7	161	67.4	18	7.0
Qantas	31	31	28	90.3	28	90.3	0	0.0
Tigerair	90	90	77	85.6	73	81.1	0	0.0
Virgin Australia	193	192	175	91.1	172	89.6	1	0.5
All Airlines	571	552	461	83.5	434	78.6	19	3.3
Gold Coast-Sydney								
Jetstar	364	345	245	71.0	229	66.4	19	5.2
Qantas	107	107	99	92.5	98	91.6	0	0.0
Tigerair	120	117	86	73.5	88	75.2	3	2.5
Virgin Australia	270	267	226	84.6	228	85.4	3	1.1
All Airlines	861	836	656	78.5	643	76.9	25	2.9
Hamilton Island-Brisbane								
QantasLink	26	26	26	100.0	23	88.5	0	0.0
Virgin Australia	31	31	27	87.1	26	83.9	0	0.0
All Airlines	57	57	53	93.0	49	86.0	0	0.0
Hamilton Island-Melbourne								
Qantas	12	12	12	100.0	12	100.0	0	0.0
Virgin Australia	21	21	18	85.7	19	90.5	0	0.0
All Airlines	33	33	30	90.9	31	93.9	0	0.0
Hamilton Island-Sydney								
Jetstar	31	31	16	51.6	15	48.4	0	0.0
Qantas	15	14	9	64.3	9	64.3	1	6.7
Virgin Australia	35	35	31	88.6	28	80.0	0	0.0
All Airlines	81	80	56	70.0	52	65.0	1	1.2
Hobart-Brisbane								
Jetstar	31	31	26	83.9	24	77.4	0	0.0
Qantas	1	1	1	100.0	1	100.0	0	0.0
Virgin Australia	31	31	28	90.3	26	83.9	0	0.0
All Airlines	63	63	55	87.3	51	81.0	0	0.0
Hobart-Melbourne								
Jetstar	230	229	136	59.4	111	48.5	1	0.4
Qantas	21	21	16	76.2	15	71.4	0	0.0
QantasLink	106	106	85	80.2	85	80.2	0	0.0
Tigerair	42	42	31	73.8	28	66.7	0	0.0
Virgin Australia	144	142	126	88.7	130	91.5	2	1.4
All Airlines	543	540	394	73.0	369	68.3	3	0.6
Hobart-Sydney								
Jetstar	128	126	81	64.3	75	59.5	2	1.6
Qantas	6	6	6	100.0	3	50.0	0	0.0
QantasLink	38	36	29	80.6	31	86.1	2	5.3
Virgin Australia	67	67	58	86.6	59	88.1	0	0.0
All Airlines	239	235	174	74.0	168	71.5	4	1.7

	<i>Sectors</i>		<i>Arrivals On Time</i>		<i>Departures On Time</i>		<i>Cancellations</i>	
	<i>Sched.</i>	<i>Flown</i>	<i>No.</i>	<i>%</i>	<i>No.</i>	<i>%</i>	<i>No.</i>	<i>%</i>
Kalgoorlie-Perth								
Qantas	11	11	10	90.9	10	90.9	0	0.0
QantasLink	69	68	65	95.6	64	94.1	1	1.4
Virgin Australia	33	33	32	97.0	33	100.0	0	0.0
Virgin Australia Regional Airlines	24	24	23	95.8	23	95.8	0	0.0
All Airlines	137	136	130	95.6	130	95.6	1	0.7
Karratha-Perth								
Qantas	47	45	45	100.0	43	95.6	2	4.3
QantasLink	158	155	146	94.2	145	93.5	3	1.9
Virgin Australia	34	33	33	100.0	33	100.0	1	2.9
Virgin Australia Regional Airlines	53	51	45	88.2	44	86.3	2	3.8
All Airlines	292	284	269	94.7	265	93.3	8	2.7
Launceston-Melbourne								
Jetstar	196	193	143	74.1	131	67.9	3	1.5
QantasLink	122	120	103	85.8	98	81.7	2	1.6
Virgin Australia	95	94	78	83.0	78	83.0	1	1.1
Virgin Australia Regional Airlines	6	6	4	66.7	3	50.0	0	0.0
All Airlines	419	413	328	79.4	310	75.1	6	1.4
Launceston-Sydney								
Jetstar	86	85	54	63.5	54	63.5	1	1.2
Virgin Australia	33	33	31	93.9	31	93.9	0	0.0
All Airlines	119	118	85	72.0	85	72.0	1	0.8
Mackay-Brisbane								
Jetstar	48	47	25	53.2	23	48.9	1	2.1
QantasLink	107	100	88	88.0	82	82.0	7	6.5
Virgin Australia	150	149	135	90.6	137	91.9	1	0.7
All Airlines	305	296	248	83.8	242	81.8	9	3.0
Melbourne-Adelaide								
Jetstar	123	118	68	57.6	70	59.3	5	4.1
Qantas	279	277	249	89.9	246	88.8	2	0.7
Tigerair	84	84	75	89.3	78	92.9	0	0.0
Virgin Australia	274	272	242	89.0	248	91.2	2	0.7
All Airlines	760	751	634	84.4	642	85.5	9	1.2
Melbourne-Brisbane								
Jetstar	149	143	96	67.1	84	58.7	6	4.0
Qantas	445	441	388	88.0	385	87.3	4	0.9
Tigerair	134	133	104	78.2	109	82.0	1	0.7
Virgin Australia	382	373	334	89.5	342	91.7	9	2.4
All Airlines	1 110	1 090	922	84.6	920	84.4	20	1.8
Melbourne-Cairns								
Jetstar	105	101	62	61.4	51	50.5	4	3.8
Qantas	39	39	39	100.0	39	100.0	0	0.0
Tigerair	42	42	35	83.3	34	81.0	0	0.0
Virgin Australia	31	31	31	100.0	30	96.8	0	0.0
All Airlines	217	213	167	78.4	154	72.3	4	1.8
Melbourne-Canberra								
Qantas	155	155	145	93.5	140	90.3	0	0.0
QantasLink	92	85	70	82.4	72	84.7	7	7.6
Virgin Australia	145	145	132	91.0	133	91.7	0	0.0
Virgin Australia Regional Airlines	28	27	24	88.9	24	88.9	1	3.6
All Airlines	420	412	371	90.0	369	89.6	8	1.9

	<i>Sectors</i>		<i>Arrivals On Time</i>		<i>Departures On Time</i>		<i>Cancellations</i>	
	<i>Sched.</i>	<i>Flown</i>	<i>No.</i>	<i>%</i>	<i>No.</i>	<i>%</i>	<i>No.</i>	<i>%</i>
Melbourne-Darwin								
Jetstar	27	27	20	74.1	17	63.0	0	0.0
Qantas	30	30	29	96.7	28	93.3	0	0.0
Virgin Australia	31	31	26	83.9	26	83.9	0	0.0
All Airlines	88	88	75	85.2	71	80.7	0	0.0
Melbourne-Gold Coast								
Jetstar	255	239	159	66.5	141	59.0	16	6.3
Qantas	31	31	27	87.1	28	90.3	0	0.0
Tigerair	90	90	82	91.1	82	91.1	0	0.0
Virgin Australia	193	193	162	83.9	171	88.6	0	0.0
All Airlines	569	553	430	77.8	422	76.3	16	2.8
Melbourne-Hamilton Island								
Qantas	12	12	12	100.0	12	100.0	0	0.0
Virgin Australia	21	21	18	85.7	19	90.5	0	0.0
All Airlines	33	33	30	90.9	31	93.9	0	0.0
Melbourne-Hobart								
Jetstar	232	231	150	64.9	133	57.6	1	0.4
Qantas	21	21	16	76.2	16	76.2	0	0.0
QantasLink	106	106	78	73.6	79	74.5	0	0.0
Tigerair	42	42	33	78.6	33	78.6	0	0.0
Virgin Australia	144	142	128	90.1	128	90.1	2	1.4
All Airlines	545	542	405	74.7	389	71.8	3	0.6
Melbourne-Launceston								
Jetstar	197	193	142	73.6	143	74.1	4	2.0
QantasLink	122	121	88	72.7	94	77.7	1	0.8
Virgin Australia	95	95	80	84.2	78	82.1	0	0.0
Virgin Australia Regional Airlines	6	6	4	66.7	3	50.0	0	0.0
All Airlines	420	415	314	75.7	318	76.6	5	1.2
Melbourne-Mildura								
QantasLink	95	92	78	84.8	76	82.6	3	3.2
Regional Express	67	67	64	95.5	64	95.5	0	0.0
Virgin Australia	31	31	25	80.6	26	83.9	0	0.0
All Airlines	193	190	167	87.9	166	87.4	3	1.6
Melbourne-Newcastle								
Jetstar	102	100	62	62.0	61	61.0	2	2.0
Virgin Australia	34	33	28	84.8	29	87.9	1	2.9
All Airlines	136	133	90	67.7	90	67.7	3	2.2
Melbourne-Perth								
Jetstar	90	47	23	48.9	13	27.7	43	47.8
Qantas	211	211	173	82.0	165	78.2	0	0.0
Tigerair	62	62	54	87.1	51	82.3	0	0.0
Virgin Australia	151	151	129	85.4	125	82.8	0	0.0
All Airlines	514	471	379	80.5	354	75.2	43	8.4
Melbourne-Sunshine Coast								
Jetstar	93	91	59	64.8	51	56.0	2	2.2
Virgin Australia	35	35	31	88.6	31	88.6	0	0.0
All Airlines	128	126	90	71.4	82	65.1	2	1.6
Melbourne-Sydney								
Jetstar	394	367	208	56.7	189	51.5	27	6.9
Qantas	925	907	744	82.0	763	84.1	18	1.9
Tigerair	248	246	197	80.1	195	79.3	2	0.8
Virgin Australia	757	730	637	87.3	658	90.1	27	3.6
All Airlines	2 324	2 250	1 786	79.4	1 805	80.2	74	3.2

	<i>Sectors</i>		<i>Arrivals On Time</i>		<i>Departures On Time</i>		<i>Cancellations</i>	
	<i>Sched.</i>	<i>Flown</i>	<i>No.</i>	<i>%</i>	<i>No.</i>	<i>%</i>	<i>No.</i>	<i>%</i>
Mildura-Melbourne								
QantasLink	95	91	81	89.0	83	91.2	4	4.2
Regional Express	68	68	63	92.6	64	94.1	0	0.0
Virgin Australia	31	31	24	77.4	24	77.4	0	0.0
All Airlines	194	190	168	88.4	171	90.0	4	2.1
Moranbah-Brisbane								
QantasLink	99	90	80	88.9	80	88.9	9	9.1
Virgin Australia Regional Airlines	65	65	62	95.4	63	96.9	0	0.0
All Airlines	164	155	142	91.6	143	92.3	9	5.5
Mount Isa-Brisbane								
Qantas	37	37	35	94.6	35	94.6	0	0.0
Virgin Australia	23	23	20	87.0	21	91.3	0	0.0
All Airlines	60	60	55	91.7	56	93.3	0	0.0
Newcastle-Brisbane								
Jetstar	92	90	62	68.9	70	77.8	2	2.2
QantasLink	93	92	83	90.2	83	90.2	1	1.1
Virgin Australia	85	85	78	91.8	78	91.8	0	0.0
All Airlines	270	267	223	83.5	231	86.5	3	1.1
Newcastle-Melbourne								
Jetstar	100	100	68	68.0	63	63.0	0	0.0
Virgin Australia	34	33	25	75.8	24	72.7	1	2.9
All Airlines	134	133	93	69.9	87	65.4	1	0.7
Newman-Perth								
Qantas	78	77	76	98.7	76	98.7	1	1.3
QantasLink	72	70	66	94.3	66	94.3	2	2.8
Virgin Australia	22	21	20	95.2	19	90.5	1	4.5
Virgin Australia Regional Airlines	13	13	11	84.6	11	84.6	0	0.0
All Airlines	185	181	173	95.6	172	95.0	4	2.2
Perth-Adelaide								
Jetstar	31	27	17	63.0	19	70.4	4	12.9
Qantas	129	128	122	95.3	124	96.9	1	0.8
Virgin Australia	80	79	67	84.8	71	89.9	1	1.3
All Airlines	240	234	206	88.0	214	91.5	6	2.5
Perth-Brisbane								
Qantas	138	138	118	85.5	126	91.3	0	0.0
Virgin Australia	114	114	99	86.8	99	86.8	0	0.0
All Airlines	252	252	217	86.1	225	89.3	0	0.0
Perth-Broome								
Qantas	22	22	21	95.5	20	90.9	0	0.0
QantasLink	62	62	58	93.5	58	93.5	0	0.0
Virgin Australia	4	4	3	75.0	4	100.0	0	0.0
Virgin Australia Regional Airlines	38	38	30	78.9	32	84.2	0	0.0
All Airlines	126	126	112	88.9	114	90.5	0	0.0
Perth-Darwin								
Qantas	42	42	41	97.6	41	97.6	0	0.0
Virgin Australia	31	31	31	100.0	31	100.0	0	0.0
All Airlines	73	73	72	98.6	72	98.6	0	0.0
Perth-Geraldton								
QantasLink	45	45	42	93.3	42	93.3	0	0.0
Virgin Australia Regional Airlines	65	65	54	83.1	56	86.2	0	0.0
All Airlines	110	110	96	87.3	98	89.1	0	0.0

	<i>Sectors</i>		<i>Arrivals On Time</i>		<i>Departures On Time</i>		<i>Cancellations</i>	
	<i>Sched.</i>	<i>Flown</i>	<i>No.</i>	<i>%</i>	<i>No.</i>	<i>%</i>	<i>No.</i>	<i>%</i>
Perth-Kalgoorlie								
Qantas	11	11	11	100.0	11	100.0	0	0.0
QantasLink	69	68	62	91.2	60	88.2	1	1.4
Virgin Australia	35	35	33	94.3	33	94.3	0	0.0
Virgin Australia Regional Airlines	24	24	20	83.3	21	87.5	0	0.0
All Airlines	139	138	126	91.3	125	90.6	1	0.7
Perth-Karratha								
Qantas	47	46	46	100.0	46	100.0	1	2.1
QantasLink	157	155	141	91.0	145	93.5	2	1.3
Virgin Australia	34	33	32	97.0	32	97.0	1	2.9
Virgin Australia Regional Airlines	53	52	45	86.5	47	90.4	1	1.9
All Airlines	291	286	264	92.3	270	94.4	5	1.7
Perth-Melbourne								
Jetstar	91	47	14	29.8	9	19.1	44	48.4
Qantas	210	210	180	85.7	178	84.8	0	0.0
Tigerair	61	61	54	88.5	54	88.5	0	0.0
Virgin Australia	147	147	117	79.6	112	76.2	0	0.0
All Airlines	509	465	365	78.5	353	75.9	44	8.6
Perth-Newman								
Qantas	78	78	78	100.0	77	98.7	0	0.0
QantasLink	72	70	68	97.1	68	97.1	2	2.8
Virgin Australia	22	21	19	90.5	19	90.5	1	4.5
Virgin Australia Regional Airlines	13	13	12	92.3	12	92.3	0	0.0
All Airlines	185	182	177	97.3	176	96.7	3	1.6
Perth-Port Hedland								
Qantas	70	68	66	97.1	65	95.6	2	2.9
QantasLink	69	68	62	91.2	65	95.6	1	1.4
Virgin Australia	43	43	42	97.7	41	95.3	0	0.0
All Airlines	182	179	170	95.0	171	95.5	3	1.6
Perth-Sydney								
Jetstar	31	31	21	67.7	19	61.3	0	0.0
Qantas	213	213	185	86.9	191	89.7	0	0.0
Tigerair	31	31	30	96.8	30	96.8	0	0.0
Virgin Australia	127	127	103	81.1	98	77.2	0	0.0
All Airlines	402	402	339	84.3	338	84.1	0	0.0
Port Hedland-Perth								
Qantas	70	67	63	94.0	63	94.0	3	4.3
QantasLink	69	68	65	95.6	64	94.1	1	1.4
Virgin Australia	43	43	43	100.0	40	93.0	0	0.0
All Airlines	182	178	171	96.1	167	93.8	4	2.2
Port Lincoln-Adelaide								
QantasLink	120	120	106	88.3	107	89.2	0	0.0
Regional Express	189	188	179	95.2	182	96.8	1	0.5
All Airlines	309	308	285	92.5	289	93.8	1	0.3
Port Macquarie-Sydney								
QantasLink	138	135	73	54.1	81	60.0	3	2.2
Virgin Australia Regional Airlines	62	62	45	72.6	49	79.0	0	0.0
All Airlines	200	197	118	59.9	130	66.0	3	1.5
Proserpine-Brisbane								
Jetstar	31	31	19	61.3	16	51.6	0	0.0
Virgin Australia	54	53	47	88.7	47	88.7	1	1.9
All Airlines	85	84	66	78.6	63	75.0	1	1.2

	<i>Sectors</i>		<i>Arrivals On Time</i>		<i>Departures On Time</i>		<i>Cancellations</i>	
	<i>Sched.</i>	<i>Flown</i>	<i>No.</i>	<i>%</i>	<i>No.</i>	<i>%</i>	<i>No.</i>	<i>%</i>
Rockhampton-Brisbane								
QantasLink	185	183	157	85.8	153	83.6	2	1.1
Virgin Australia	102	96	86	89.6	84	87.5	6	5.9
Virgin Australia Regional Airlines	80	74	64	86.5	66	89.2	6	7.5
All Airlines	367	353	307	87.0	303	85.8	14	3.8
Sunshine Coast-Melbourne								
Jetstar	94	92	56	60.9	53	57.6	2	2.1
Virgin Australia	35	35	30	85.7	29	82.9	0	0.0
All Airlines	129	127	86	67.7	82	64.6	2	1.6
Sunshine Coast-Sydney								
Jetstar	128	124	71	57.3	67	54.0	4	3.1
QantasLink	10	10	7	70.0	7	70.0	0	0.0
Virgin Australia	35	35	31	88.6	31	88.6	0	0.0
All Airlines	173	169	109	64.5	105	62.1	4	2.3
Sydney-Adelaide								
Jetstar	145	137	79	57.7	73	53.3	8	5.5
Qantas	241	241	214	88.8	206	85.5	0	0.0
QantasLink	25	23	18	78.3	20	87.0	2	8.0
Tigerair	41	41	30	73.2	30	73.2	0	0.0
Virgin Australia	172	171	157	91.8	157	91.8	1	0.6
All Airlines	624	613	498	81.2	486	79.3	11	1.8
Sydney-Albury								
QantasLink	93	93	79	84.9	77	82.8	0	0.0
Regional Express	81	80	73	91.3	75	93.8	1	1.2
Virgin Australia Regional Airlines	62	62	53	85.5	52	83.9	0	0.0
All Airlines	236	235	205	87.2	204	86.8	1	0.4
Sydney-Armidale								
QantasLink	134	132	97	73.5	102	77.3	2	1.5
Regional Express	61	61	50	82.0	52	85.2	0	0.0
All Airlines	195	193	147	76.2	154	79.8	2	1.0
Sydney-Ayers Rock								
Jetstar	22	22	15	68.2	14	63.6	0	0.0
Virgin Australia	31	31	25	80.6	27	87.1	0	0.0
All Airlines	53	53	40	75.5	41	77.4	0	0.0
Sydney-Ballina								
Jetstar	89	89	61	68.5	62	69.7	0	0.0
Regional Express	15	15	14	93.3	14	93.3	0	0.0
Virgin Australia	32	32	28	87.5	29	90.6	0	0.0
All Airlines	136	136	103	75.7	105	77.2	0	0.0
Sydney-Brisbane								
Jetstar	200	180	109	60.6	109	60.6	20	10.0
Qantas	647	631	540	85.6	545	86.4	16	2.5
Tigerair	106	101	85	84.2	90	89.1	5	4.7
Virgin Australia	553	537	449	83.6	470	87.5	16	2.9
All Airlines	1 506	1 449	1 183	81.6	1 214	83.8	57	3.8
Sydney-Cairns								
Jetstar	110	108	82	75.9	60	55.6	2	1.8
Qantas	86	86	81	94.2	82	95.3	0	0.0
Tigerair	46	46	40	87.0	41	89.1	0	0.0
Virgin Australia	90	90	81	90.0	79	87.8	0	0.0
All Airlines	332	330	284	86.1	262	79.4	2	0.6

	<i>Sectors</i>		<i>Arrivals On Time</i>		<i>Departures On Time</i>		<i>Cancellations</i>	
	<i>Sched.</i>	<i>Flown</i>	<i>No.</i>	<i>%</i>	<i>No.</i>	<i>%</i>	<i>No.</i>	<i>%</i>
Sydney-Canberra								
QantasLink	421	398	351	88.2	344	86.4	23	5.5
Virgin Australia	30	29	28	96.6	23	79.3	1	3.3
Virgin Australia Regional Airlines	204	193	164	85.0	160	82.9	11	5.4
All Airlines	655	620	543	87.6	527	85.0	35	5.3
Sydney-Coffs Harbour								
QantasLink	154	150	118	78.7	115	76.7	4	2.6
Tigerair	12	12	12	100.0	12	100.0	0	0.0
Virgin Australia	62	61	56	91.8	55	90.2	1	1.6
All Airlines	228	223	186	83.4	182	81.6	5	2.2
Sydney-Darwin								
Jetstar	28	27	19	70.4	16	59.3	1	3.6
Qantas	49	49	45	91.8	44	89.8	0	0.0
Virgin Australia	31	31	28	90.3	29	93.5	0	0.0
All Airlines	108	107	92	86.0	89	83.2	1	0.9
Sydney-Dubbo								
QantasLink	118	115	85	73.9	79	68.7	3	2.5
Regional Express	120	120	112	93.3	111	92.5	0	0.0
All Airlines	238	235	197	83.8	190	80.9	3	1.3
Sydney-Gold Coast								
Jetstar	362	343	240	70.0	238	69.4	19	5.2
Qantas	107	107	99	92.5	97	90.7	0	0.0
Tigerair	120	118	95	80.5	98	83.1	2	1.7
Virgin Australia	270	267	234	87.6	240	89.9	3	1.1
All Airlines	859	835	668	80.0	673	80.6	24	2.8
Sydney-Hamilton Island								
Jetstar	31	31	19	61.3	20	64.5	0	0.0
Qantas	15	14	12	85.7	13	92.9	1	6.7
Virgin Australia	35	35	29	82.9	31	88.6	0	0.0
All Airlines	81	80	60	75.0	64	80.0	1	1.2
Sydney-Hobart								
Jetstar	129	128	94	73.4	85	66.4	1	0.8
Qantas	6	6	6	100.0	6	100.0	0	0.0
QantasLink	38	37	33	89.2	35	94.6	1	2.6
Virgin Australia	67	67	62	92.5	63	94.0	0	0.0
All Airlines	240	238	195	81.9	189	79.4	2	0.8
Sydney-Launceston								
Jetstar	85	85	65	76.5	59	69.4	0	0.0
Virgin Australia	33	33	27	81.8	26	78.8	0	0.0
All Airlines	118	118	92	78.0	85	72.0	0	0.0
Sydney-Melbourne								
Jetstar	393	364	210	57.7	193	53.0	29	7.4
Qantas	926	909	754	82.9	773	85.0	17	1.8
Tigerair	247	245	189	77.1	180	73.5	2	0.8
Virgin Australia	747	719	613	85.3	622	86.5	28	3.7
All Airlines	2 313	2 237	1 766	78.9	1 768	79.0	76	3.3
Sydney-Perth								
Jetstar	31	31	22	71.0	14	45.2	0	0.0
Qantas	219	219	180	82.2	172	78.5	0	0.0
Tigerair	31	31	29	93.5	30	96.8	0	0.0
Virgin Australia	127	127	111	87.4	104	81.9	0	0.0
All Airlines	408	408	342	83.8	320	78.4	0	0.0

	<i>Sectors</i>		<i>Arrivals On Time</i>		<i>Departures On Time</i>		<i>Cancellations</i>	
	<i>Sched.</i>	<i>Flown</i>	<i>No.</i>	<i>%</i>	<i>No.</i>	<i>%</i>	<i>No.</i>	<i>%</i>
Sydney-Port Macquarie								
QantasLink	136	134	78	58.2	85	63.4	2	1.5
Virgin Australia Regional Airlines	62	61	51	83.6	51	83.6	1	1.6
All Airlines	198	195	129	66.2	136	69.7	3	1.5
Sydney-Sunshine Coast								
Jetstar	129	125	85	68.0	75	60.0	4	3.1
QantasLink	10	10	8	80.0	8	80.0	0	0.0
Virgin Australia	35	35	32	91.4	32	91.4	0	0.0
All Airlines	174	170	125	73.5	115	67.6	4	2.3
Sydney-Tamworth								
QantasLink	148	142	114	80.3	113	79.6	6	4.1
Virgin Australia Regional Airlines	27	27	23	85.2	23	85.2	0	0.0
All Airlines	175	169	137	81.1	136	80.5	6	3.4
Sydney-Townsville								
Jetstar	29	28	20	71.4	13	46.4	1	3.4
Virgin Australia	31	31	29	93.5	29	93.5	0	0.0
All Airlines	60	59	49	83.1	42	71.2	1	1.7
Sydney-Wagga Wagga								
QantasLink	112	111	93	83.8	90	81.1	1	0.9
Regional Express	103	103	96	93.2	97	94.2	0	0.0
All Airlines	215	214	189	88.3	187	87.4	1	0.5
Tamworth-Sydney								
QantasLink	148	140	113	80.7	117	83.6	8	5.4
Virgin Australia Regional Airlines	27	27	22	81.5	22	81.5	0	0.0
All Airlines	175	167	135	80.8	139	83.2	8	4.6
Townsville-Brisbane								
Jetstar	46	46	35	76.1	33	71.7	0	0.0
Qantas	147	147	138	93.9	136	92.5	0	0.0
Virgin Australia	147	146	136	93.2	129	88.4	1	0.7
All Airlines	340	339	309	91.2	298	87.9	1	0.3
Townsville-Cairns								
QantasLink	138	130	119	91.5	115	88.5	8	5.8
Regional Express	47	47	41	87.2	41	87.2	0	0.0
All Airlines	185	177	160	90.4	156	88.1	8	4.3
Townsville-Sydney								
Jetstar	29	28	17	60.7	16	57.1	1	3.4
Virgin Australia	31	31	25	80.6	24	77.4	0	0.0
All Airlines	60	59	42	71.2	40	67.8	1	1.7
Wagga Wagga-Sydney								
QantasLink	112	111	97	87.4	97	87.4	1	0.9
Regional Express	100	100	87	87.0	92	92.0	0	0.0
All Airlines	212	211	184	87.2	189	89.6	1	0.5

Airports

On time performance is reported for all routes where the passenger load averages over 8000 passengers per month, and where two or more airlines operate in competition. The following data reports by airport against flights operated on those routes only. This month, 8 major city airports and 33 regional city airports are covered.

Airport	Arrivals			Departures		
	Sectors	On Time		Sectors	On Time	
	Flown	No.	%	Flown	No.	%
Adelaide						
Jetstar	353	221	62.6	353	240	68.0
Qantas	841	768	91.3	841	775	92.2
QantasLink	143	124	86.7	143	121	84.6
Regional Express	188	179	95.2	187	182	97.3
Tigerair	155	131	84.5	155	130	83.9
Virgin Australia	721	654	90.7	720	672	93.3
All Airlines	2 401	2 077	86.5	2 399	2 120	88.4
Relates to services to and from Alice Springs, Brisbane, Canberra, Gold Coast, Melbourne, Perth, Port Lincoln and Sydney.						
Albury						
QantasLink	93	79	84.9	93	83	89.2
Regional Express	80	73	91.3	80	76	95.0
Virgin Australia Regional Airlines	62	53	85.5	62	51	82.3
All Airlines	235	205	87.2	235	210	89.4
Relates to services to and from Sydney only.						
Alice Springs						
Qantas	31	29	93.5	31	24	77.4
QantasLink	42	41	97.6	42	40	95.2
Virgin Australia	28	24	85.7	28	23	82.1
All Airlines	101	94	93.1	101	87	86.1
Relates to services to and from Adelaide and Darwin.						
Armidale						
QantasLink	132	97	73.5	130	91	70.0
Regional Express	61	50	82.0	62	52	83.9
All Airlines	193	147	76.2	192	143	74.5
Relates to services to and from Sydney only.						
Ayers Rock						
Jetstar	22	15	68.2	21	13	61.9
Virgin Australia	31	25	80.6	31	25	80.6
All Airlines	53	40	75.5	52	38	73.1
Relates to services to and from Sydney only.						
Ballina						
Jetstar	89	61	68.5	87	53	60.9
Regional Express	15	14	93.3	15	11	73.3
Virgin Australia	32	28	87.5	32	28	87.5
All Airlines	136	103	75.7	134	92	68.7
Relates to services to and from Sydney only.						

Airport	Arrivals			Departures		
	Sectors Flown	On Time		Sectors Flown	On Time	
		No.	%		No.	%
Brisbane						
Jetstar	759	523	68.9	761	523	68.7
Qantas	1 715	1 522	88.7	1 725	1 536	89.0
QantasLink	1 064	939	88.3	1 070	965	90.2
Tigerair	319	259	81.2	321	264	82.2
Virgin Australia	2 046	1 810	88.5	2 053	1 842	89.7
Virgin Australia Regional Airlines	356	323	90.7	357	314	88.0
All Airlines	6 259	5 376	85.9	6 287	5 444	86.6

Relates to services to and from Adelaide, Bundaberg, Cairns, Canberra, Darwin, Emerald, Gladstone, Hamilton Island, Hobart, Mackay, Melbourne, Moranbah, Mount Isa, Newcastle, Perth, Proserpine, Rockhampton, Sydney and Townsville.

Broome

Qantas	22	21	95.5	22	19	86.4
QantasLink	62	58	93.5	62	57	91.9
Virgin Australia	4	3	75.0	4	3	75.0
Virgin Australia Regional Airlines	38	30	78.9	38	33	86.8
All Airlines	126	112	88.9	126	112	88.9

Relates to services to and from Perth only.

Bundaberg

QantasLink	134	122	91.0	136	123	90.4
Virgin Australia Regional Airlines	37	37	100.0	38	36	94.7
All Airlines	171	159	93.0	174	159	91.4

Relates to services to and from Brisbane only.

Cairns

Jetstar	338	240	71.0	339	259	76.4
Qantas	251	236	94.0	251	233	92.8
QantasLink	134	122	91.0	134	121	90.3
Regional Express	47	41	87.2	46	42	91.3
Tigerair	119	105	88.2	118	92	78.0
Virgin Australia	259	239	92.3	259	243	93.8
All Airlines	1 148	983	85.6	1 147	990	86.3

Relates to services to and from Brisbane, Melbourne, Sydney and Townsville.

Canberra

Qantas	228	216	94.7	228	208	91.2
QantasLink	602	524	87.0	608	525	86.3
Virgin Australia	291	266	91.4	293	266	90.8
Virgin Australia Regional Airlines	220	188	85.5	218	198	90.8
All Airlines	1 341	1 194	89.0	1 347	1 197	88.9

Relates to services to and from Adelaide, Brisbane, Melbourne and Sydney.

Coffs Harbour

QantasLink	150	118	78.7	151	121	80.1
Tigerair	12	12	100.0	12	12	100.0
Virgin Australia	61	56	91.8	61	56	91.8
All Airlines	223	186	83.4	224	189	84.4

Relates to services to and from Sydney only.

Airport	Arrivals			Departures		
	Sectors Flown	On Time		Sectors Flown	On Time	
		No.	%		No.	%
Darwin						
Jetstar	85	57	67.1	85	42	49.4
Qantas	170	159	93.5	170	154	90.6
QantasLink	42	40	95.2	42	41	97.6
Tigerair	26	21	80.8	25	18	72.0
Virgin Australia	139	122	87.8	139	125	89.9
All Airlines	462	399	86.4	461	380	82.4
Relates to services to and from Alice Springs, Brisbane, Melbourne, Perth and Sydney.						
Dubbo						
QantasLink	115	85	73.9	117	87	74.4
Regional Express	120	112	93.3	123	109	88.6
All Airlines	235	197	83.8	240	196	81.7
Relates to services to and from Sydney only.						
Emerald						
QantasLink	124	110	88.7	124	110	88.7
Virgin Australia Regional Airlines	81	67	82.7	80	71	88.8
All Airlines	205	177	86.3	204	181	88.7
Relates to services to and from Brisbane only.						
Geraldton						
QantasLink	45	42	93.3	45	41	91.1
Virgin Australia Regional Airlines	65	54	83.1	68	57	83.8
All Airlines	110	96	87.3	113	98	86.7
Relates to services to and from Perth only.						
Gladstone						
QantasLink	195	180	92.3	190	170	89.5
Virgin Australia	29	27	93.1	28	25	89.3
Virgin Australia Regional Airlines	100	84	84.0	99	86	86.9
All Airlines	324	291	89.8	317	281	88.6
Relates to services to and from Brisbane only.						
Gold Coast						
Jetstar	622	428	68.8	624	419	67.1
Qantas	138	126	91.3	138	126	91.3
Tigerair	208	177	85.1	207	161	77.8
Virgin Australia	493	429	87.0	492	431	87.6
All Airlines	1 461	1 160	79.4	1 461	1 137	77.8
Relates to services to and from Adelaide, Melbourne and Sydney.						
Hamilton Island						
Jetstar	31	19	61.3	31	15	48.4
Qantas	26	24	92.3	26	21	80.8
QantasLink	26	25	96.2	26	23	88.5
Virgin Australia	87	73	83.9	87	73	83.9
All Airlines	170	141	82.9	170	132	77.6
Relates to services to and from Brisbane, Melbourne and Sydney.						

Airport	Arrivals			Departures		
	Sectors	On Time		Sectors	On Time	
	Flown	No.	%	Flown	No.	%
Hobart						
Jetstar	390	274	70.3	386	210	54.4
Qantas	28	23	82.1	28	19	67.9
QantasLink	143	111	77.6	142	116	81.7
Tigerair	42	33	78.6	42	28	66.7
Virgin Australia	240	219	91.3	240	215	89.6
All Airlines	843	660	78.3	838	588	70.2
Relates to services to and from Brisbane, Melbourne and Sydney.						
Kalgoorlie						
Qantas	11	11	100.0	11	10	90.9
QantasLink	68	62	91.2	68	64	94.1
Virgin Australia	35	33	94.3	33	33	100.0
Virgin Australia Regional Airlines	24	20	83.3	24	23	95.8
All Airlines	138	126	91.3	136	130	95.6
Relates to services to and from Perth only.						
Karratha						
Qantas	46	46	100.0	45	43	95.6
QantasLink	155	141	91.0	155	145	93.5
Virgin Australia	33	32	97.0	33	33	100.0
Virgin Australia Regional Airlines	52	45	86.5	51	44	86.3
All Airlines	286	264	92.3	284	265	93.3
Relates to services to and from Perth only.						
Launceston						
Jetstar	278	207	74.5	278	185	66.5
QantasLink	121	88	72.7	120	98	81.7
Virgin Australia	128	107	83.6	127	109	85.8
Virgin Australia Regional Airlines	6	4	66.7	6	3	50.0
All Airlines	533	406	76.2	531	395	74.4
Relates to services to and from Melbourne and Sydney.						
Mackay						
Jetstar	48	36	75.0	47	23	48.9
QantasLink	99	93	93.9	100	82	82.0
Virgin Australia	150	134	89.3	149	137	91.9
All Airlines	297	263	88.6	296	242	81.8
Relates to services to and from Brisbane only.						
Melbourne						
Jetstar	1 656	1 077	65.0	1 657	953	57.5
Qantas	2 127	1 857	87.3	2 124	1 822	85.8
QantasLink	405	345	85.2	404	321	79.5
Regional Express	68	63	92.6	67	64	95.5
Tigerair	697	569	81.6	699	582	83.3
Virgin Australia	2 279	1 983	87.0	2 283	2 044	89.5
Virgin Australia Regional Airlines	33	29	87.9	33	27	81.8
All Airlines	7 265	5 923	81.5	7 267	5 813	80.0

Relates to services to and from Adelaide, Brisbane, Cairns, Canberra, Darwin, Gold Coast, Hamilton Island, Hobart, Launceston, Mildura, Newcastle, Perth, Sunshine Coast and Sydney.

Airport	Arrivals			Departures		
	Sectors Flown	On Time		Sectors Flown	On Time	
		No.	%		No.	%
Mildura						
QantasLink	92	78	84.8	91	83	91.2
Regional Express	67	64	95.5	68	64	94.1
Virgin Australia	31	25	80.6	31	24	77.4
All Airlines	190	167	87.9	190	171	90.0
Relates to services to and from Melbourne only.						
Moranbah						
QantasLink	96	88	91.7	90	80	88.9
Virgin Australia Regional Airlines	65	61	93.8	65	63	96.9
All Airlines	161	149	92.5	155	143	92.3
Relates to services to and from Brisbane only.						
Mount Isa						
Qantas	37	36	97.3	37	35	94.6
Virgin Australia	23	20	87.0	23	21	91.3
All Airlines	60	56	93.3	60	56	93.3
Relates to services to and from Brisbane only.						
Newcastle						
Jetstar	190	126	66.3	190	133	70.0
QantasLink	91	81	89.0	92	83	90.2
Virgin Australia	118	108	91.5	118	102	86.4
All Airlines	399	315	78.9	400	318	79.5
Relates to services to and from Brisbane and Melbourne.						
Newman						
Qantas	78	78	100.0	77	76	98.7
QantasLink	70	68	97.1	70	66	94.3
Virgin Australia	21	19	90.5	21	19	90.5
Virgin Australia Regional Airlines	13	12	92.3	13	11	84.6
All Airlines	182	177	97.3	181	172	95.0
Relates to services to and from Perth only.						
Perth						
Jetstar	106	68	64.2	105	47	44.8
Qantas	954	839	87.9	956	879	91.9
QantasLink	468	440	94.0	468	438	93.6
Tigerair	93	83	89.2	92	84	91.3
Virgin Australia	630	570	90.5	634	540	85.2
Virgin Australia Regional Airlines	194	167	86.1	192	168	87.5
All Airlines	2 445	2 167	88.6	2 447	2 156	88.1
Relates to services to and from Adelaide, Brisbane, Broome, Darwin, Geraldton, Kalgoorlie, Karratha, Melbourne, Newman, Port Hedland and Sydney.						
Port Hedland						
Qantas	68	66	97.1	67	63	94.0
QantasLink	68	62	91.2	68	64	94.1
Virgin Australia	43	42	97.7	43	40	93.0
All Airlines	179	170	95.0	178	167	93.8
Relates to services to and from Perth only.						

Airport	Arrivals			Departures		
	Sectors	On Time		Sectors	On Time	
	Flown	No.	%	Flown	No.	%
Port Lincoln						
QantasLink	120	102	85.0	120	107	89.2
Regional Express	187	180	96.3	188	182	96.8
All Airlines	307	282	91.9	308	289	93.8
Relates to services to and from Adelaide only.						
Port Macquarie						
QantasLink	134	78	58.2	135	81	60.0
Virgin Australia Regional Airlines	61	51	83.6	62	49	79.0
All Airlines	195	129	66.2	197	130	66.0
Relates to services to and from Sydney only.						
Proserpine						
Jetstar	31	21	67.7	31	16	51.6
Virgin Australia	53	47	88.7	53	47	88.7
All Airlines	84	68	81.0	84	63	75.0
Relates to services to and from Brisbane only.						
Rockhampton						
QantasLink	182	163	89.6	183	153	83.6
Virgin Australia	97	87	89.7	96	84	87.5
Virgin Australia Regional Airlines	74	66	89.2	74	66	89.2
All Airlines	353	316	89.5	353	303	85.8
Relates to services to and from Brisbane only.						
Sunshine Coast						
Jetstar	216	144	66.7	216	120	55.6
QantasLink	10	8	80.0	10	7	70.0
Virgin Australia	70	63	90.0	70	60	85.7
All Airlines	296	215	72.6	296	187	63.2
Relates to services to and from Melbourne and Sydney.						
Sydney						
Jetstar	1 695	1 105	65.2	1 698	1 031	60.7
Qantas	2 268	1 952	86.1	2 262	1 938	85.7
QantasLink	1 347	1 087	80.7	1 345	1 068	79.4
Regional Express	380	325	85.5	379	349	92.1
Tigerair	594	472	79.5	594	481	81.0
Virgin Australia	2 305	2 014	87.4	2 296	2 016	87.8
Virgin Australia Regional Airlines	342	285	83.3	343	286	83.4
All Airlines	8 931	7 240	81.1	8 917	7 169	80.4
Relates to services to and from Adelaide, Albury, Armidale, Ayers Rock, Ballina, Brisbane, Cairns, Canberra, Coffs Harbour, Darwin, Dubbo, Gold Coast, Hamilton Island, Hobart, Launceston, Melbourne, Perth, Port Macquarie, Sunshine Coast, Tamworth, Townsville and Wagga Wagga.						
Tamworth						
QantasLink	142	114	80.3	140	117	83.6
Virgin Australia Regional Airlines	27	23	85.2	27	22	81.5
All Airlines	169	137	81.1	167	139	83.2
Relates to services to and from Sydney only.						

<i>Airport</i>	<i>Arrivals</i>			<i>Departures</i>		
	<i>Sectors</i>	<i>On Time</i>		<i>Sectors</i>	<i>On Time</i>	
	<i>Flown</i>	<i>No.</i>	<i>%</i>	<i>Flown</i>	<i>No.</i>	<i>%</i>
Townsville						
Jetstar	74	55	74.3	74	49	66.2
Qantas	147	128	87.1	147	136	92.5
QantasLink	130	115	88.5	130	115	88.5
Regional Express	46	43	93.5	47	41	87.2
Virgin Australia	177	156	88.1	177	153	86.4
All Airlines	574	497	86.6	575	494	85.9
Relates to services to and from Brisbane, Cairns and Sydney.						
Wagga Wagga						
QantasLink	111	93	83.8	111	97	87.4
Regional Express	103	96	93.2	100	92	92.0
All Airlines	214	189	88.3	211	189	89.6
Relates to services to and from Sydney only.						

Definitions

On time arrival	A flight arrival is counted as "on time" if it arrived at the gate before 15 minutes after the scheduled arrival time shown in the carriers' schedule. Neither diverted nor cancelled flights count as on time.
On time departure	A flight departure is counted as "on time" if it departs the gate before 15 minutes after the scheduled departure time shown in the carriers' schedule.
Cancellation	A flight removed from service within 7 days of scheduled departure is regarded as a cancellation.
On time departure percentage	The percentage of on time departures is measured against the number of departures <i>operated</i> on any particular sector.
On time arrival percentage	The percentage of on time arrivals is measured against the number of arrivals <i>operated</i> on any particular sector.
Cancellation percentage	The percentage of cancellations is measured against the number of services <i>scheduled</i> on any particular sector.
