



**Australian Government**

**Department of Infrastructure and Regional Development**

Bureau of Infrastructure, Transport and Regional Economics

STATISTICAL REPORT



## Aviation

Domestic airline on time performance  
December 2014

© Commonwealth of Australia 2015

ISSN: 1832-0759

### **Ownership of intellectual property rights in this publication**

Unless otherwise noted, copyright (and any other intellectual property rights, if any) in this publication is owned by the Commonwealth of Australia (referred to below as the Commonwealth).

### **Disclaimer**

The material contained in this publication is made available on the understanding that the Commonwealth is not providing professional advice, and that users exercise their own skill and care with respect to its use, and seek independent advice if necessary.

The Commonwealth makes no representations or warranties as to the contents or accuracy of the information contained in this publication. To the extent permitted by law, the Commonwealth disclaims liability to any person or organisation in respect of anything done, or omitted to be done, in reliance upon information contained in this publication.

### **Creative Commons licence**

With the exception of (a) the Coat of Arms; and (b) the Department of Infrastructure and Regional Development's photos and graphics, copyright in this publication is licensed under a Creative Commons Attribution 3.0 Australia Licence.

Creative Commons Attribution 3.0 Australia Licence is a standard form licence agreement that allows you to copy, communicate and adapt this publication provided that you attribute the work to the Commonwealth and abide by the other licence terms. A summary of the licence terms is available from <http://creativecommons.org/licenses/by/3.0/au/deed.en>. The full licence terms are available from <http://creativecommons.org/licenses/by/3.0/au/legalcode>.

### **Use of the Coat of Arms**

The Department of the Prime Minister and Cabinet sets the terms under which the Coat of Arms is used. Please refer to the Department's Commonwealth Coat of Arms and Government branding web page <http://www.dpmmc.gov.au/guidelines/index.cfm#brand> and, in particular, the Guidelines on the use of the Commonwealth Coat of Arms publication.

An appropriate citation for this report is:

Bureau of Infrastructure, Transport and Regional Economics (BITRE), 2015, Domestic airline on time performance, Statistical Report, BITRE, Canberra ACT.

### **Contact us**

This publication is available in PDF format. All other rights are reserved, including in relation to any Departmental logos or trade marks which may exist. For enquiries regarding the licence and any use of this publication, please contact:

Bureau of Infrastructure, Transport and Regional Economics (BITRE)  
Department of Infrastructure and Regional Development  
GPO Box 501, Canberra ACT 2601, Australia  
Telephone: (international) +61 2 6274 7210  
Fax: (international) +61 2 6274 6855  
Email: [bitre@infrastructure.gov.au](mailto:bitre@infrastructure.gov.au)  
Website: [www.bitre.gov.au](http://www.bitre.gov.au)

### **Inquiries**

Should you require additional information about the statistics contained in this publication:

Telephone (02) 6274 7790 or Facsimile (02) 6274 7727

Electronic mail: [AVSTATS@infrastructure.gov.au](mailto:AVSTATS@infrastructure.gov.au)

Web site: <http://www.bitre.gov.au/statistics/aviation/otphome.aspx>

# Foreword

The Bureau of Infrastructure, Transport and Regional Economics (BITRE) monitors the punctuality and reliability of major domestic airlines operating between Australian airports. The purpose of this is to allow for evaluation of overall industry and individual airline performance, so that consumers of air travel can make informed decisions.

The following domestic airlines currently report this information monthly to the BITRE: Jetstar, Qantas, QantasLink, Regional Express, Tigerair, Virgin Australia and Virgin Australia Regional Airlines. Data has been gathered since November 2003, although some airlines commenced reporting at a later date, including Jetstar which first reported in May 2004, MacAir in July 2005 and Tigerair in April 2008. MacAir ceased operations in February 2009 and data was not received for December 2008 onwards. Virgin Blue was rebranded as Virgin Australia in May 2011 and Tiger Airways was rebranded as Tigerair in July 2013 and time series data in Microsoft Excel spreadsheet format on the BITRE website have been revised to reflect these changes. Virgin Australia Regional Airlines commenced operations in May 2013. It was formed after the acquisition of Skywest by Virgin Australia and represents a combination of operations previously reported under Skywest and Virgin Australia – ATR/F100 Operations. Services operated by Skywest on behalf of Virgin Australia using ATR/F100 aircraft commenced in November 2011 and were shown separately as Virgin Australia – ATR/F100 Operations until April 2013.

Information presented in this report is for Australian domestic routes for which the passenger load averaged 8 000 or more passengers per month over the previous six months and where two or more airlines operated in competition on those routes. There were 62 routes that met this definition in December 2014. Over time, routes which meet these criteria change as airline networks and traffic levels vary.

Participating airlines report their overall monthly network performance where this is possible.

Total industry figures encompass all services operated by reporting airlines only. These airlines collectively carried over 95 per cent of total domestic passengers (regular public transport only) in 2013.

The method of capturing on time performance varies between airlines utilising different recording systems. Jetstar and Qantas jet aircraft use Aircraft Communication Addressing and Reporting System (ACARS) to electronically measure on time performance. Regional Express, Tigerair, Virgin Australia, Virgin Australia Regional Airlines and the Qantas non-jet fleet record on time performance manually using records from pilots, gate agents and/or ground crews.

After initial data is collected, aggregate reports are audited internally by participating airlines prior to publication.

Reports and detailed time series data in Microsoft Excel spreadsheet format are available from the BITRE website at: <http://www.bitre.gov.au/statistics/aviation/otphome.aspx>.



# Contents

	Page
Industry performance .....	1
Individual routes .....	9
Airports .....	21
Definitions .....	27



# Industry performance

For December 2014, on time performance over all routes operated by participating airlines (Jetstar, Qantas, QantasLink, Regional Express, Tigerair, Virgin Australia and Virgin Australia Regional Airlines) averaged 82.8 per cent for on time departures and 80.9 per cent for on time arrivals. Cancellations represented 1.8 per cent of all scheduled flights. The equivalent figures for December 2013 were 83.6 per cent for departures, 82.2 per cent for arrivals and 1.7 per cent for cancellations.

This month's figures were below the long term average performance for all routes (83.8 per cent for departures and 82.3 per cent for arrivals). The rate of cancellations was higher than the long term average of 1.3 per cent.

Of the major domestic airlines, Virgin Australia achieved the highest level of on time departures for December 2014 at 86.9 per cent, followed by Qantas at 84.5 per cent, Tigerair at 81.8 per cent and Jetstar at 74.2 per cent. The regional airlines were led by Regional Express at 86.7 per cent, followed by Virgin Australia Regional Airlines at 83.0 per cent and QantasLink at 81.9 per cent.

Virgin Australia also achieved the highest on time arrivals among the major domestic airlines at 84.3 per cent, followed by Qantas at 83.1 per cent, Tigerair at 79.5 per cent and Jetstar at 75.0 per cent. Regional Express was the best performing regional airline for on time arrivals at 82.2 per cent, followed by Virgin Australia Regional Airlines at 81.8 per cent and QantasLink at 79.5 per cent.

QantasLink had the highest percentage of cancellations (2.7 per cent) during the month, followed by Jetstar (2.3 per cent), Virgin Australia (1.9 per cent), Virgin Australia Regional Airlines (1.8 per cent), Qantas (1.1 per cent), Tigerair (0.9 per cent) and Regional Express (0.2 per cent).

Of the 62 routes which met the criteria for on time performance reporting in December 2014, the Perth-Darwin route had the highest percentage of on time departures (96.9 per cent) and the highest percentage of on time arrivals (also 96.9 per cent). The Hobart-Brisbane route had the lowest percentage of on time departures (48.4 per cent) and the lowest percentage of on time arrivals (51.6 per cent).

Cancellations were highest on the Canberra-Sydney route at 6.9 per cent, followed by the Sydney-Canberra route at 6.5 per cent, the Moranbah-Brisbane route at 5.9 per cent, the Brisbane-Moranbah route at 5.3 per cent and the Ballina-Sydney route at 4.5 per cent.

Proserpine airport recorded the highest percentage of on time departures (96.5 per cent) and Port Hedland airport recorded the highest percentage of on time arrivals (96.3 per cent). Port Macquarie Airport recorded the lowest percentage of on time departures (61.3 per cent) and the lowest percentage of on time arrivals (53.9 per cent). These figures only refer to reported routes and do not cover all flights at these airports.

Table 1 On time performance for December 2014 — Total Industry

	<i>Sectors</i>		<i>Departures On Time</i>		<i>Arrivals On Time</i>		<i>Cancellations</i>	
	<i>Scheduled</i>	<i>Flown</i>	<i>No.</i>	<i>%</i>	<i>No.</i>	<i>%</i>	<i>No.</i>	<i>%</i>
Jetstar	8 068	7 884	5 852	74.2	5 912	75.0	184	2.3
Qantas	9 222	9 119	7 702	84.5	7 575	83.1	103	1.1
QantasLink	10 389	10 110	8 281	81.9	8 039	79.5	279	2.7
Regional Express	4 836	4 826	4 183	86.7	3 967	82.2	10	0.2
Tigerair	2 117	2 099	1 718	81.8	1 668	79.5	18	0.9
Virgin Australia	10 871	10 667	9 269	86.9	8 990	84.3	204	1.9
Virgin Australia Regional Airlines	2 542	2 497	2 072	83.0	2 043	81.8	45	1.8
All Airlines	48 045	47 202	39 077	82.8	38 194	80.9	843	1.8

Total airline network data (including routes not shown in this report).

Table 2 Top ten routes for on time performance for December 2014 (participating airlines only)

<i>Departures</i>		<i>Arrivals</i>	
<i>Route</i>	<i>On Time (%)</i>	<i>Route</i>	<i>On Time (%)</i>
Perth-Darwin	96.9	Perth-Darwin	96.9
Proserpine-Brisbane	96.5	Perth-Port Hedland	96.3
Perth-Port Hedland	96.3	Newman-Perth	95.9
Perth-Newman	96.0	Darwin-Perth	95.4
Adelaide-Gold Coast	95.9	Perth-Newman	95.4
Darwin-Perth	95.4	Geraldton-Perth	95.1
Karratha-Perth	94.7	Karratha-Perth	95.1
Brisbane-Mount Isa	94.7	Brisbane-Mount Isa	93.3
Perth-Karratha	94.4	Perth-Adelaide	93.2
Brisbane-Moranbah	93.9	Perth-Karratha	93.0

Table 3 Top ten airports for on time performance for December 2014 (participating airlines and reported routes only)

<i>Departures</i>		<i>Arrivals</i>	
<i>Airport</i>	<i>On Time (%)</i>	<i>Airport</i>	<i>On Time (%)</i>
Proserpine	96.5	Port Hedland	96.3
Karratha	94.7	Newman	95.4
Geraldton	93.8	Mount Isa	93.3
Newman	93.6	Karratha	93.0
Broome	90.5	Kalgoorlie	91.9
Mount Isa	89.3	Broome	91.7
Kalgoorlie	88.1	Geraldton	90.3
Perth	88.1	Moranbah	89.4
Ayers Rock	87.7	Hamilton Island	89.4
Port Hedland	87.3	Proserpine	89.4



## Total industry on time performance

Figure 1 On time performance (by month from December 2011)—Total Industry

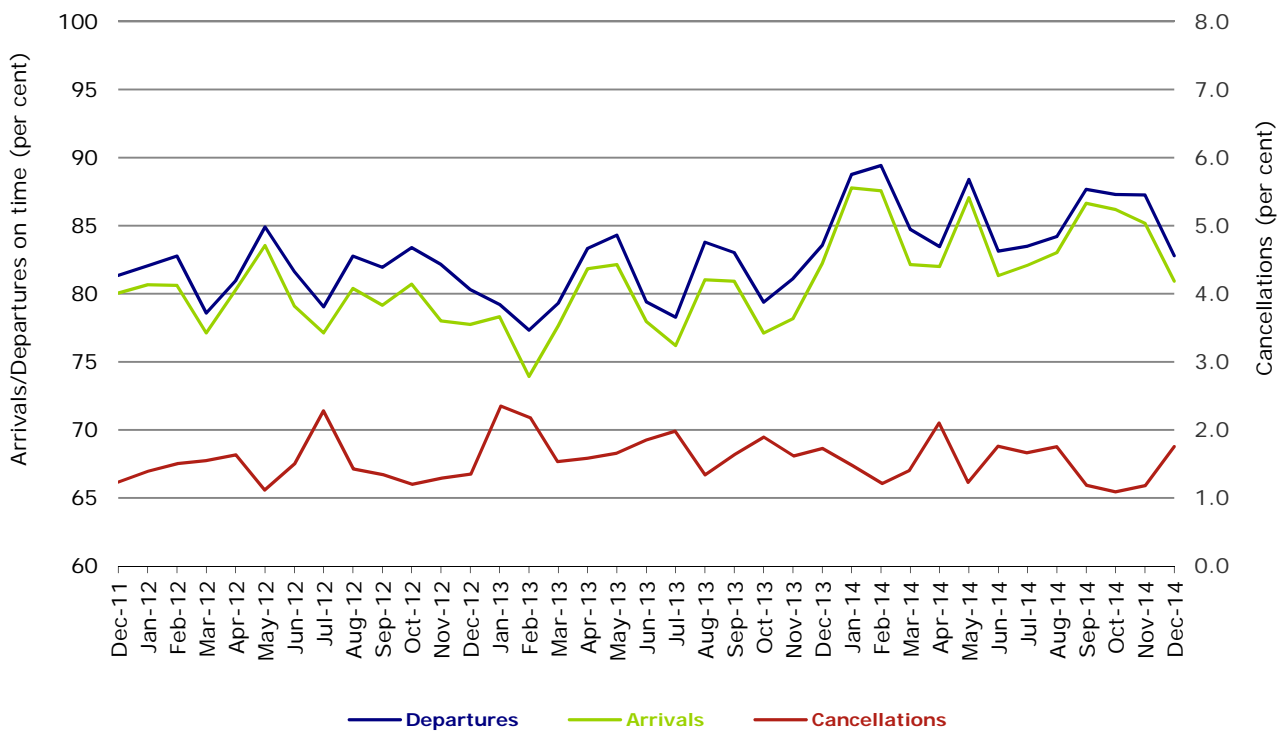


Figure 2 Departures on time (by month from December 2013)

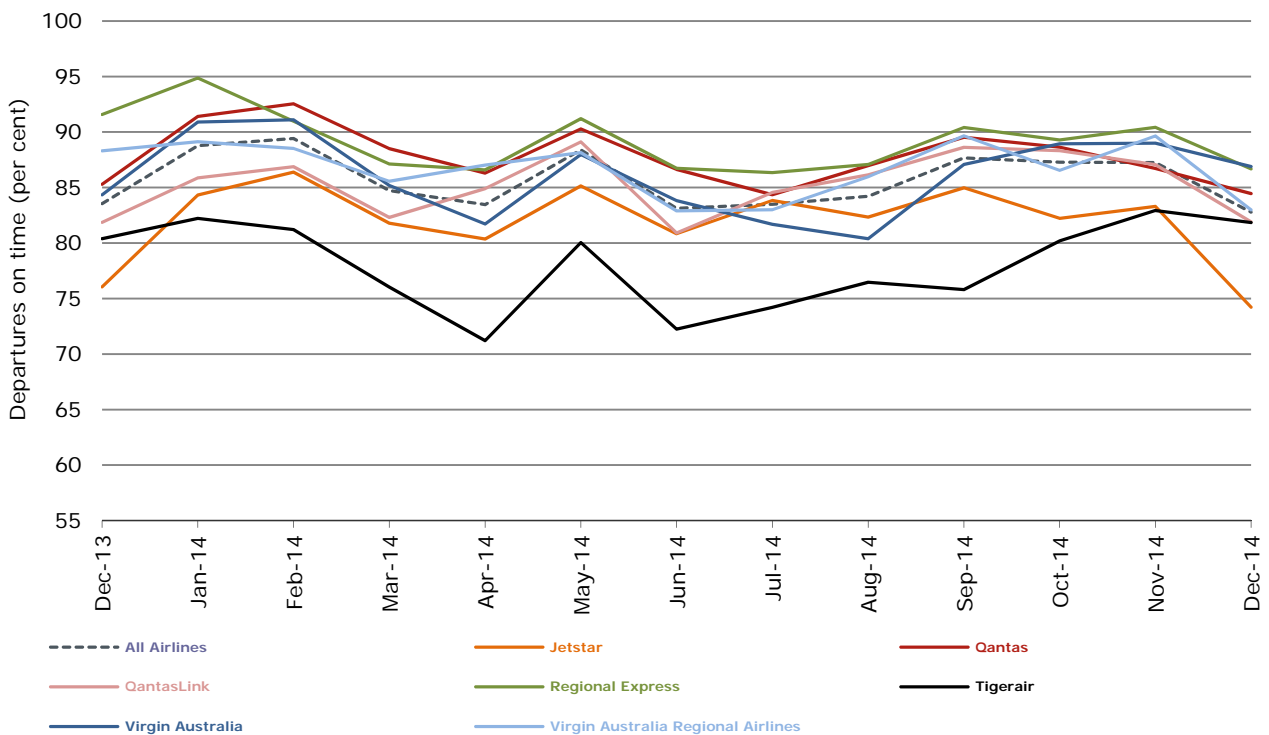


Figure 3 Arrivals on time (by month from December 2013)

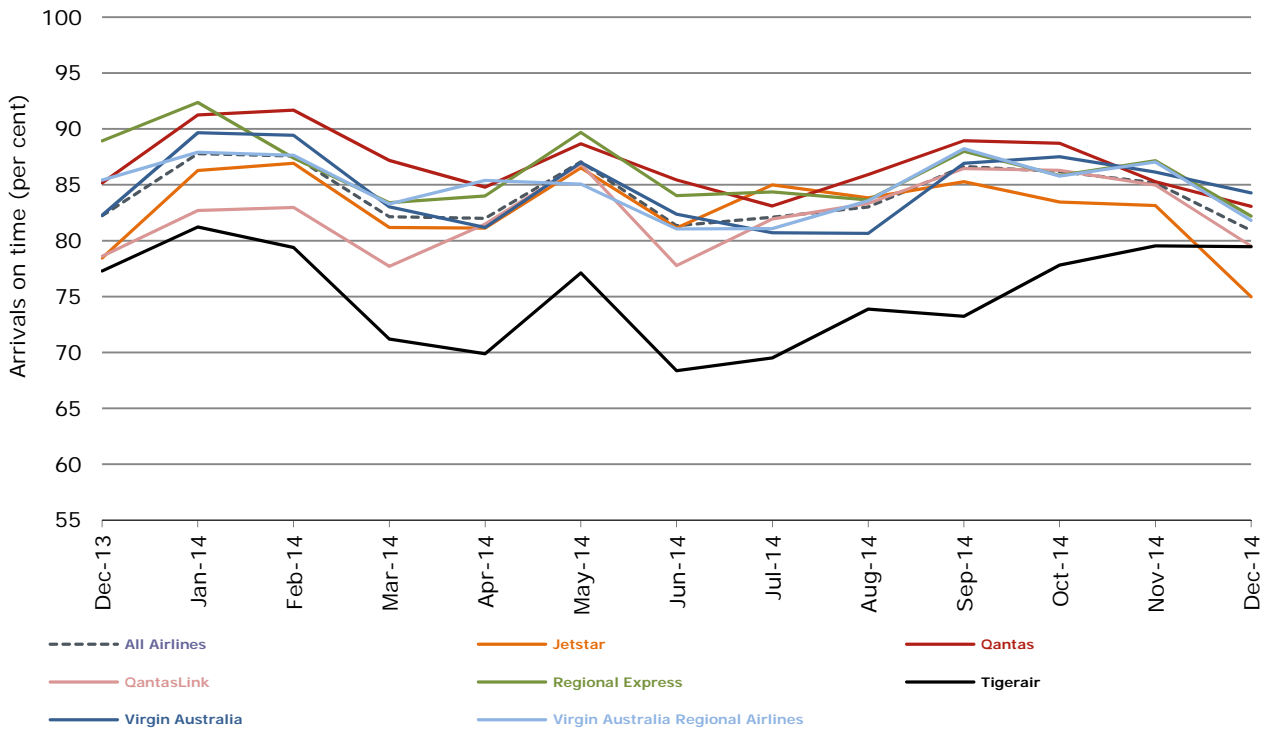
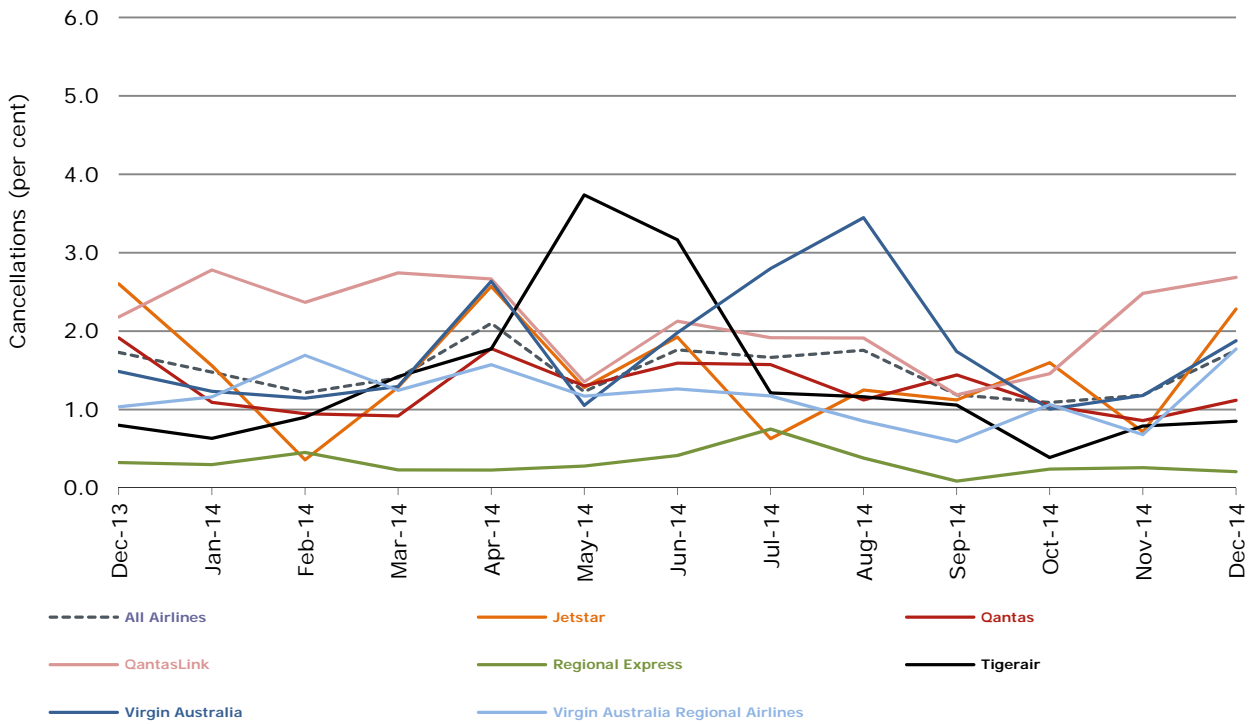


Figure 4 Cancellations (by month from December 2013)



## Major domestic airlines on time performance

Figure 5 On time performance (by month from December 2011)—Jetstar

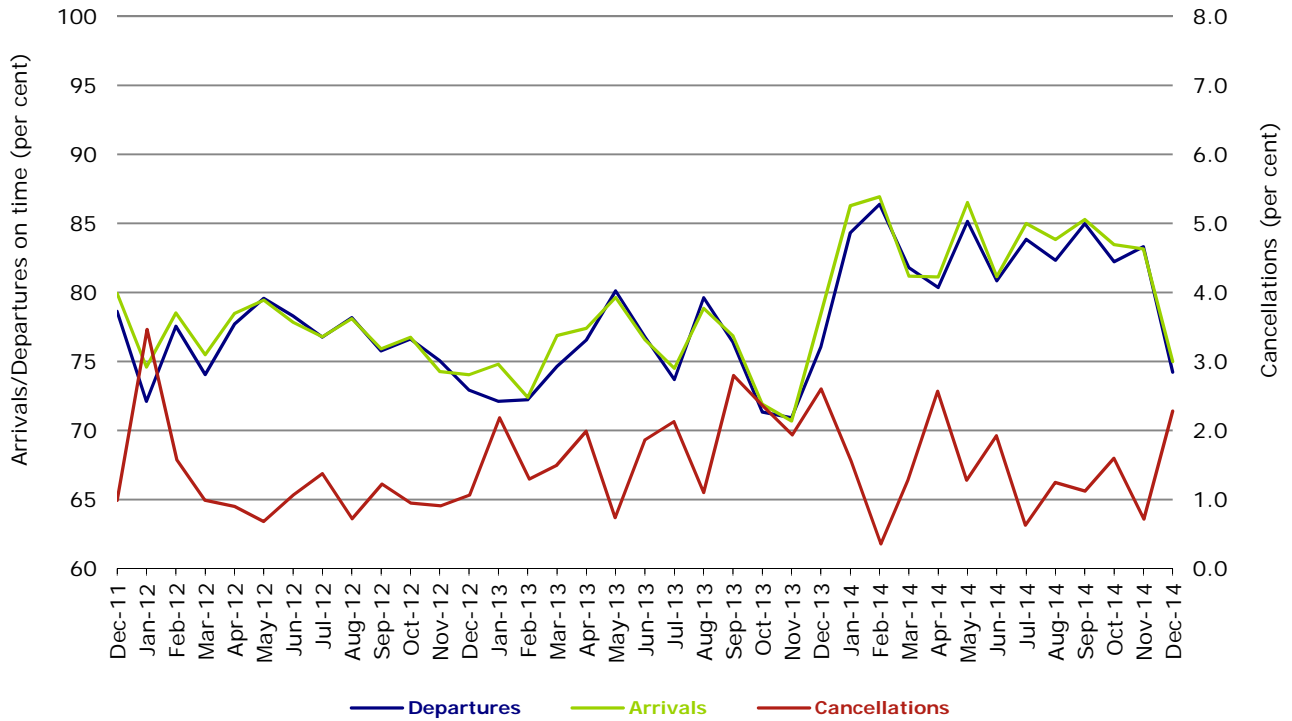


Figure 6 On time performance (by month from December 2011)—Qantas

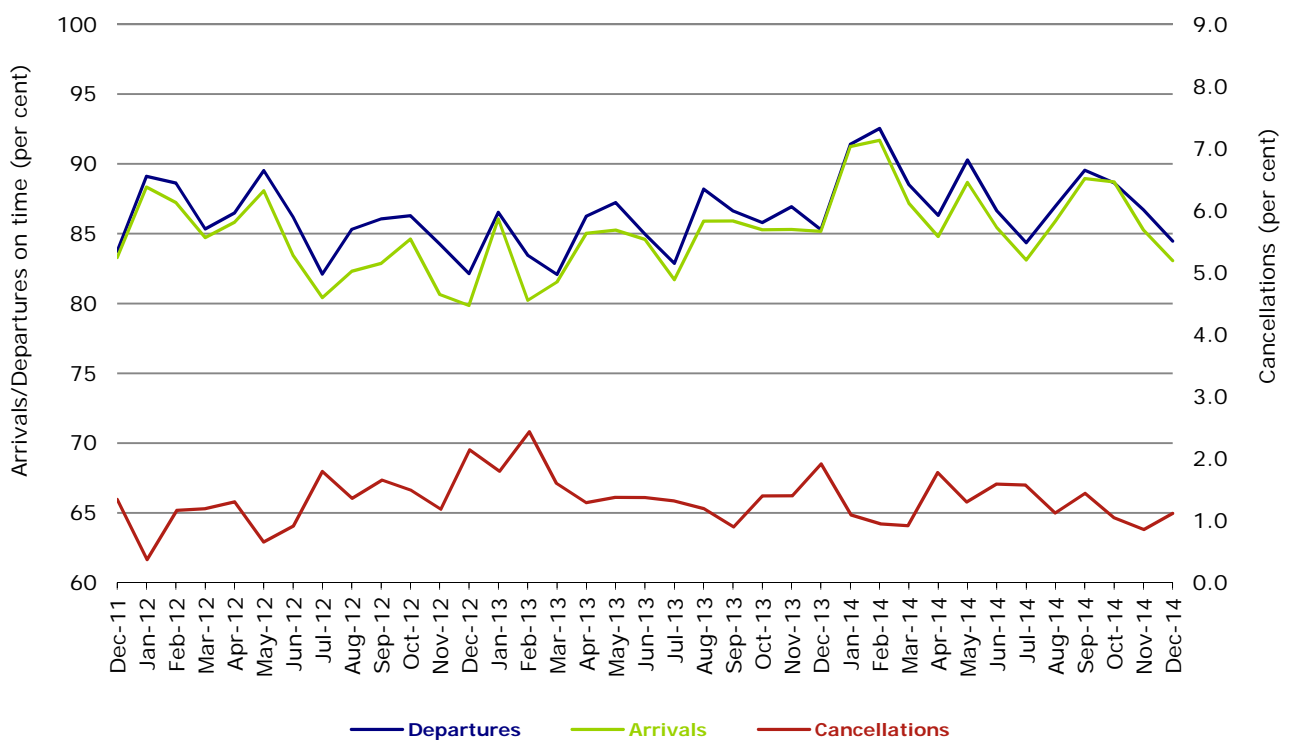


Figure 7 On time performance (by month from December 2011)—Tigerair

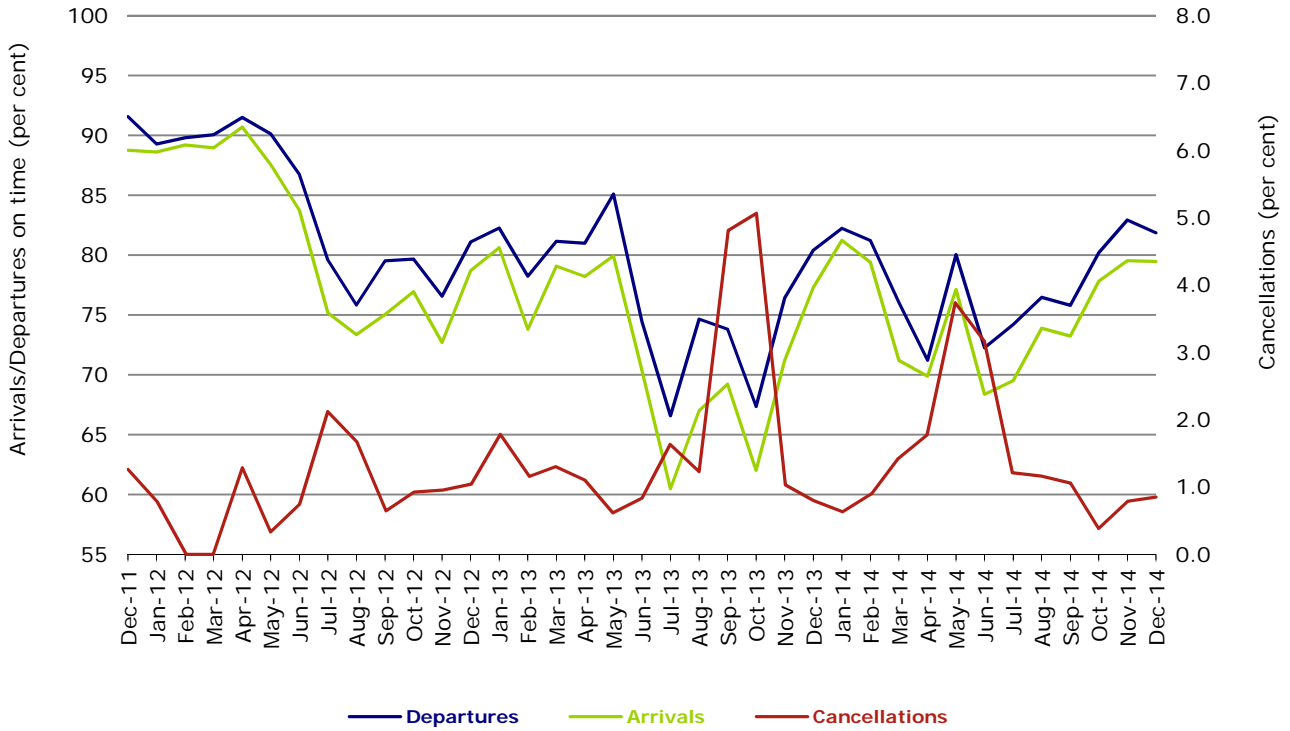
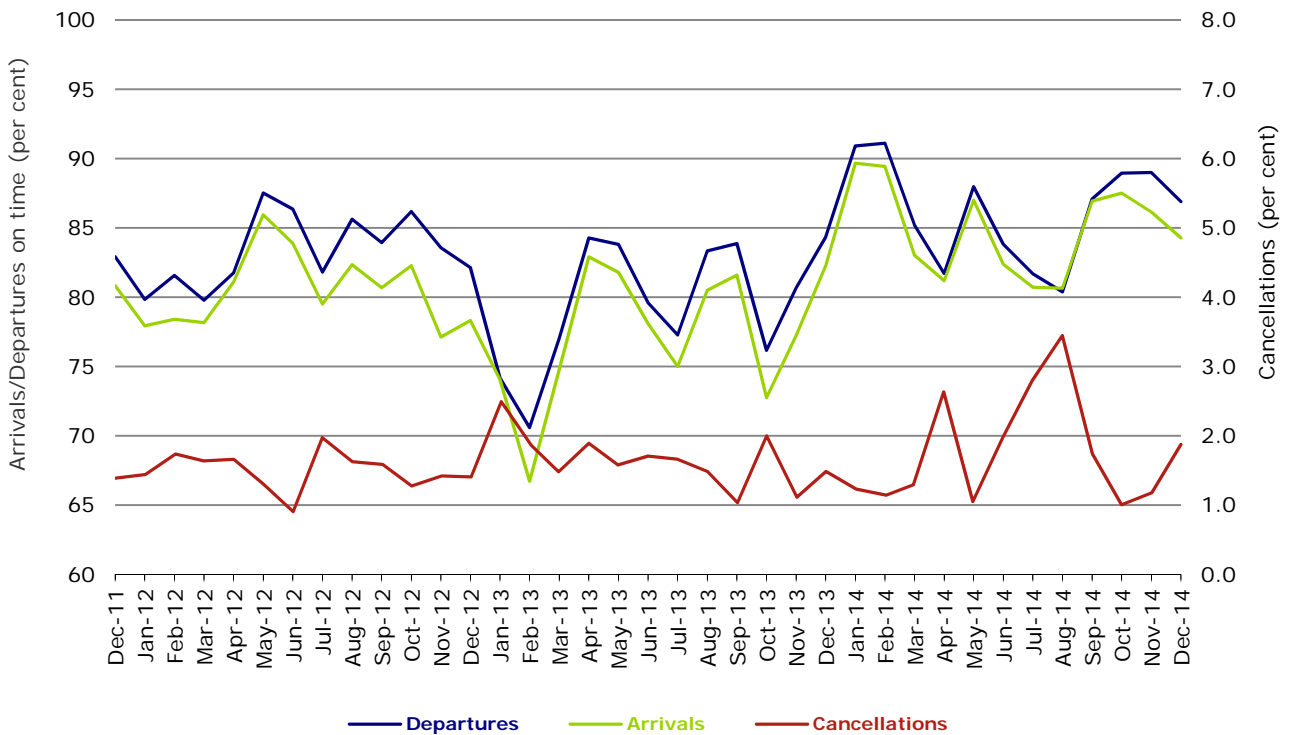


Figure 8 On time performance (by month from December 2011)—Virgin Australia



## Major regional airlines on time performance

Figure 9 On time performance (by month from December 2011)—QantasLink

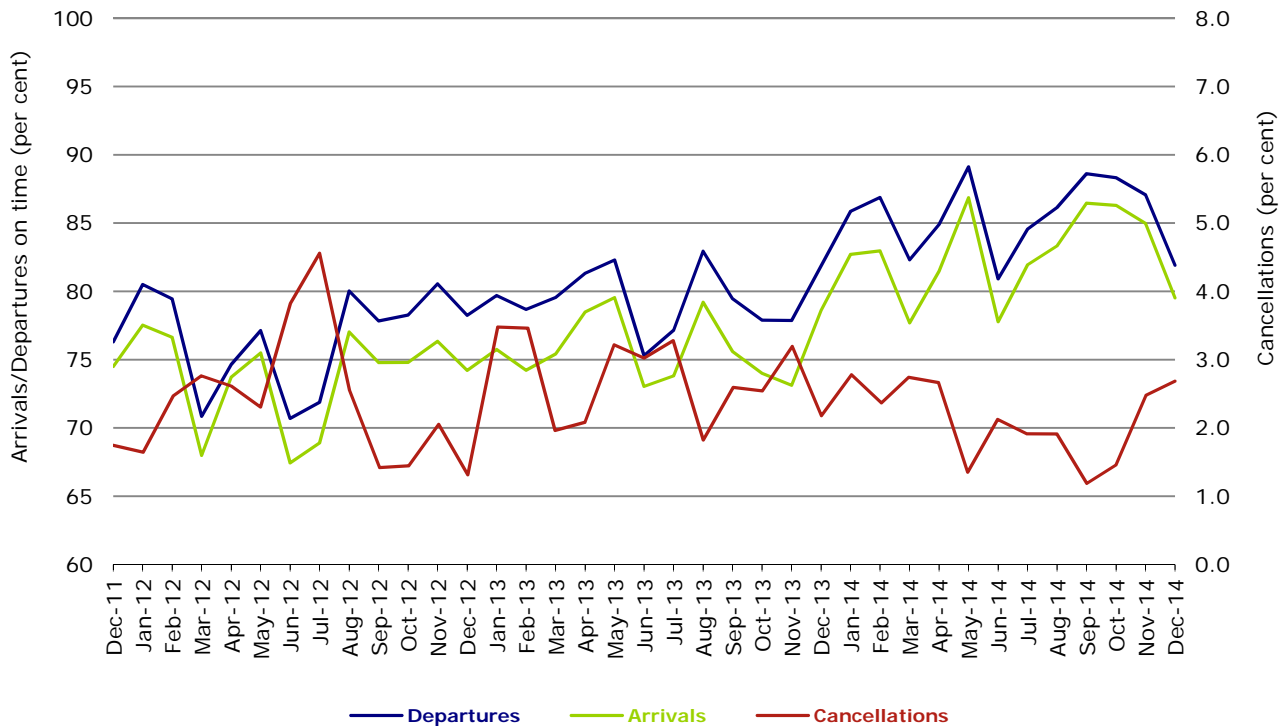


Figure 10 On time performance (by month from December 2011)—Regional Express

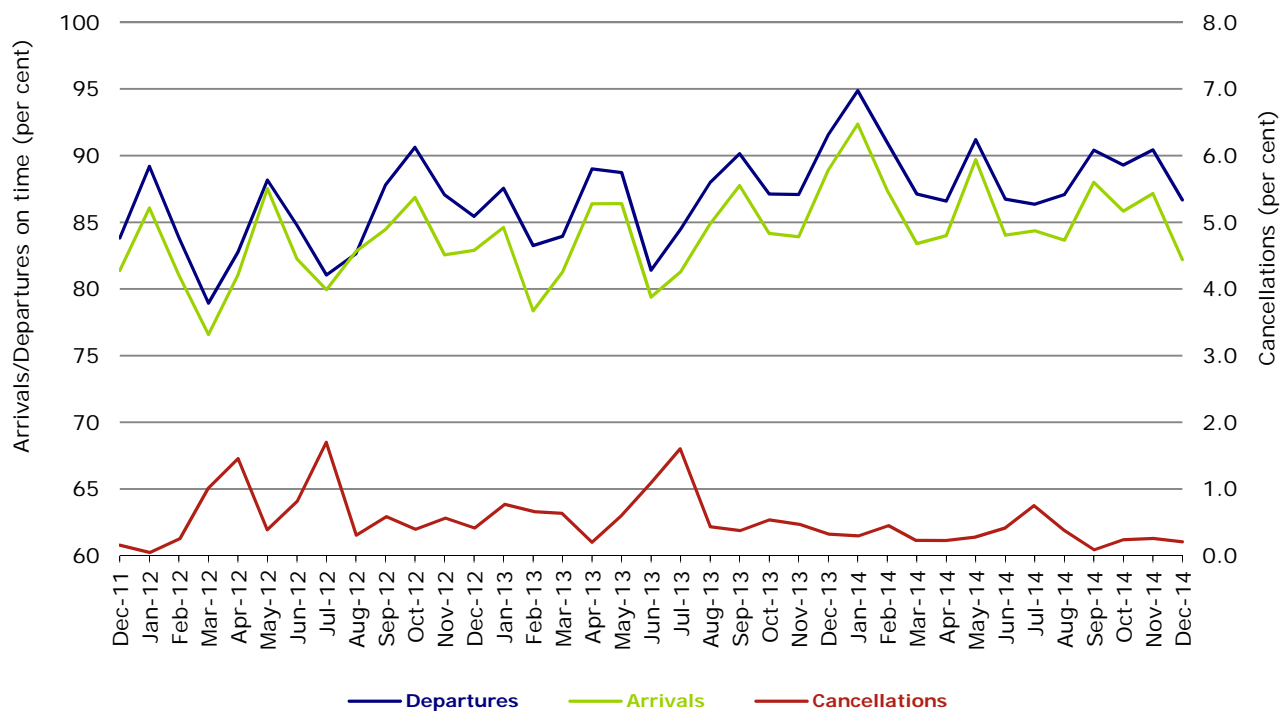
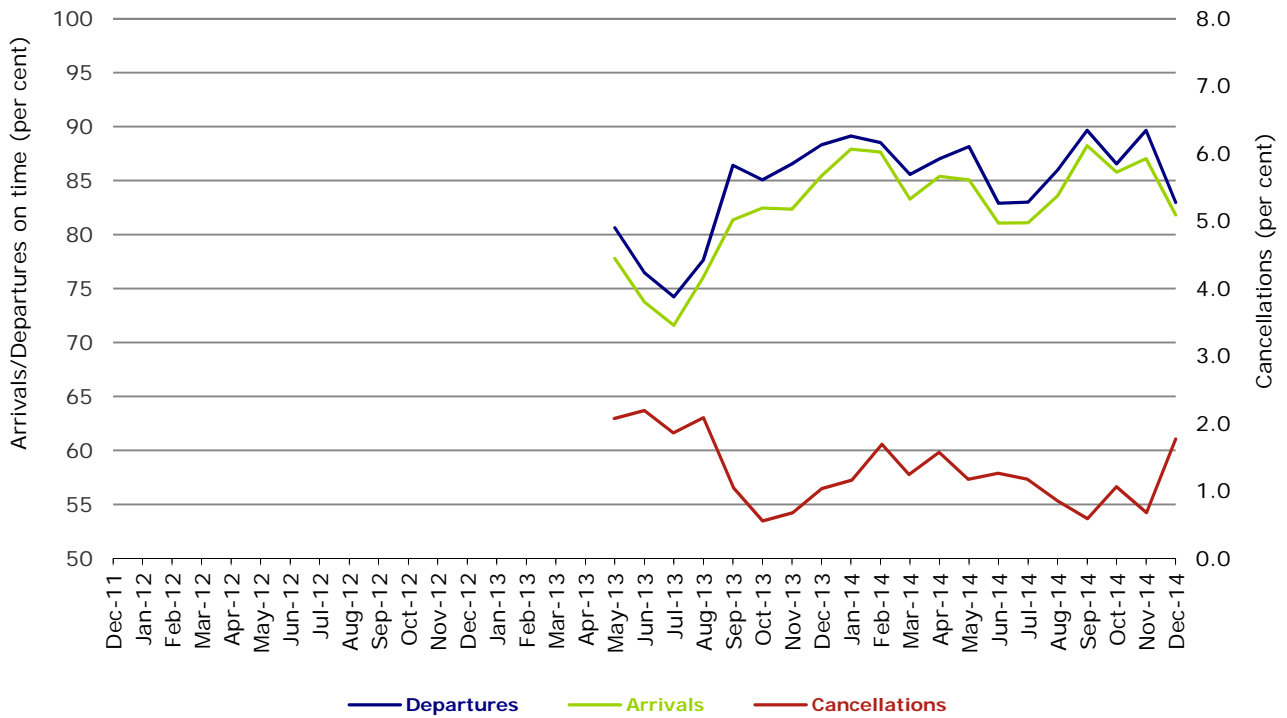


Figure 11 On time performance (by month from December 2011)  
Virgin Australia Regional Airlines



Virgin Australia Regional Airlines commenced operations in May 2013. It was formed after the acquisition of Skywest by Virgin Australia and represents a combination of operations previously reported under Skywest and Virgin Australia – ATR/F100 Operations.

## Individual routes

On time performance is reported for all routes where the passenger load averages over 8000 passengers per month over the previous six months, and where two or more airlines operate in competition on those routes. There are now 62 routes which meet this definition. Over time, however, routes which meet this definition may change as airline networks and traffic levels vary.

	<i>Sectors</i>		<i>Departures On Time</i>		<i>Arrivals On Time</i>		<i>Cancellations</i>	
	<i>Sched.</i>	<i>Flown</i>	<i>No.</i>	<i>%</i>	<i>No.</i>	<i>%</i>	<i>No.</i>	<i>%</i>
<b>Adelaide-Brisbane</b>								
Jetstar	31	31	27	87.1	26	83.9	0	0.0
Qantas	107	106	98	92.5	100	94.3	1	0.9
Tigerair	27	27	24	88.9	24	88.9	0	0.0
Virgin Australia	116	114	105	92.1	100	87.7	2	1.7
All Airlines	281	278	254	91.4	250	89.9	3	1.1
<b>Adelaide-Canberra</b>								
Qantas	39	39	38	97.4	36	92.3	0	0.0
QantasLink	18	18	13	72.2	12	66.7	0	0.0
Virgin Australia	27	27	26	96.3	27	100.0	0	0.0
All Airlines	84	84	77	91.7	75	89.3	0	0.0
<b>Adelaide-Gold Coast</b>								
Jetstar	42	42	39	92.9	37	88.1	0	0.0
Virgin Australia	31	31	31	100.0	30	96.8	0	0.0
All Airlines	73	73	70	95.9	67	91.8	0	0.0
<b>Adelaide-Melbourne</b>								
Jetstar	117	114	89	78.1	94	82.5	3	2.6
Qantas	280	280	243	86.8	253	90.4	0	0.0
Tigerair	79	79	65	82.3	68	86.1	0	0.0
Virgin Australia	270	268	241	89.9	243	90.7	2	0.7
All Airlines	746	741	638	86.1	658	88.8	5	0.7
<b>Adelaide-Perth</b>								
Jetstar	39	39	26	66.7	28	71.8	0	0.0
Qantas	113	113	98	86.7	102	90.3	0	0.0
Virgin Australia	67	66	63	95.5	56	84.8	1	1.5
All Airlines	219	218	187	85.8	186	85.3	1	0.5
<b>Adelaide-Port Lincoln</b>								
QantasLink	97	97	71	73.2	74	76.3	0	0.0
Regional Express	184	184	174	94.6	170	92.4	0	0.0
All Airlines	281	281	245	87.2	244	86.8	0	0.0
<b>Adelaide-Sydney</b>								
Jetstar	141	140	105	75.0	114	81.4	1	0.7
Qantas	240	240	206	85.8	210	87.5	0	0.0
QantasLink	24	24	11	45.8	11	45.8	0	0.0
Tigerair	28	28	21	75.0	25	89.3	0	0.0
Virgin Australia	174	174	156	89.7	157	90.2	0	0.0
All Airlines	607	606	499	82.3	517	85.3	1	0.2
<b>Albury-Sydney</b>								
QantasLink	93	91	83	91.2	78	85.7	2	2.2
Regional Express	87	87	74	85.1	72	82.8	0	0.0
Virgin Australia Regional Airlines	62	62	52	83.9	43	69.4	0	0.0
All Airlines	242	240	209	87.1	193	80.4	2	0.8
<b>Armidale-Sydney</b>								
QantasLink	126	120	82	68.3	84	70.0	6	4.8
Regional Express	67	67	53	79.1	42	62.7	0	0.0
All Airlines	193	187	135	72.2	126	67.4	6	3.1

	<i>Sectors</i>		<i>Departures On Time</i>		<i>Arrivals On Time</i>		<i>Cancellations</i>	
	<i>Sched.</i>	<i>Flown</i>	<i>No.</i>	<i>%</i>	<i>No.</i>	<i>%</i>	<i>No.</i>	<i>%</i>
<b>Ayers Rock-Sydney</b>								
Jetstar	26	26	24	92.3	21	80.8	0	0.0
Virgin Australia	31	31	26	83.9	26	83.9	0	0.0
All Airlines	57	57	50	87.7	47	82.5	0	0.0
<b>Ballina-Sydney</b>								
Jetstar	83	79	52	65.8	47	59.5	4	4.8
Regional Express	19	19	13	68.4	12	63.2	0	0.0
Virgin Australia	31	29	23	79.3	25	86.2	2	6.5
All Airlines	133	127	88	69.3	84	66.1	6	4.5
<b>Brisbane-Adelaide</b>								
Jetstar	31	31	28	90.3	28	90.3	0	0.0
Qantas	107	106	93	87.7	89	84.0	1	0.9
Tigerair	27	27	24	88.9	21	77.8	0	0.0
Virgin Australia	116	115	104	90.4	98	85.2	1	0.9
All Airlines	281	279	249	89.2	236	84.6	2	0.7
<b>Brisbane-Bundaberg</b>								
QantasLink	121	119	98	82.4	96	80.7	2	1.7
Virgin Australia Regional Airlines	40	40	34	85.0	33	82.5	0	0.0
All Airlines	161	159	132	83.0	129	81.1	2	1.2
<b>Brisbane-Cairns</b>								
Jetstar	120	119	86	72.3	98	82.4	1	0.8
Qantas	120	120	101	84.2	108	90.0	0	0.0
QantasLink	4	4	3	75.0	2	50.0	0	0.0
Tigerair	27	27	19	70.4	21	77.8	0	0.0
Virgin Australia	137	136	109	80.1	113	83.1	1	0.7
All Airlines	408	406	318	78.3	342	84.2	2	0.5
<b>Brisbane-Canberra</b>								
Qantas	27	27	24	88.9	25	92.6	0	0.0
QantasLink	135	133	114	85.7	111	83.5	2	1.5
Virgin Australia	93	93	81	87.1	82	88.2	0	0.0
All Airlines	255	253	219	86.6	218	86.2	2	0.8
<b>Brisbane-Darwin</b>								
Jetstar	31	31	19	61.3	25	80.6	0	0.0
Qantas	41	41	38	92.7	36	87.8	0	0.0
Tigerair	25	24	23	95.8	22	91.7	1	4.0
Virgin Australia	31	31	30	96.8	30	96.8	0	0.0
All Airlines	128	127	110	86.6	113	89.0	1	0.8
<b>Brisbane-Emerald</b>								
QantasLink	138	137	119	86.9	107	78.1	1	0.7
Virgin Australia Regional Airlines	83	80	61	76.3	57	71.3	3	3.6
All Airlines	221	217	180	82.9	164	75.6	4	1.8
<b>Brisbane-Gladstone</b>								
QantasLink	203	192	174	90.6	170	88.5	11	5.4
Virgin Australia	10	9	6	66.7	6	66.7	1	10.0
Virgin Australia Regional Airlines	141	141	110	78.0	110	78.0	0	0.0
All Airlines	354	342	290	84.8	286	83.6	12	3.4
<b>Brisbane-Hamilton Island</b>								
QantasLink	17	17	14	82.4	15	88.2	0	0.0
Virgin Australia	31	31	27	87.1	29	93.5	0	0.0
All Airlines	48	48	41	85.4	44	91.7	0	0.0
<b>Brisbane-Hobart</b>								
Jetstar	31	31	27	87.1	23	74.2	0	0.0
Virgin Australia	31	31	28	90.3	23	74.2	0	0.0
All Airlines	62	62	55	88.7	46	74.2	0	0.0



	<i>Sectors</i>		<i>Departures On Time</i>		<i>Arrivals On Time</i>		<i>Cancellations</i>	
	<i>Sched.</i>	<i>Flown</i>	<i>No.</i>	<i>%</i>	<i>No.</i>	<i>%</i>	<i>No.</i>	<i>%</i>
<b>Brisbane-Mackay</b>								
Jetstar	58	57	28	49.1	33	57.9	1	1.7
QantasLink	106	105	93	88.6	95	90.5	1	0.9
Virgin Australia	156	155	130	83.9	134	86.5	1	0.6
All Airlines	320	317	251	79.2	262	82.6	3	0.9
<b>Brisbane-Melbourne</b>								
Jetstar	147	145	95	65.5	101	69.7	2	1.4
Qantas	428	424	364	85.8	343	80.9	4	0.9
Tigerair	125	125	89	71.2	88	70.4	0	0.0
Virgin Australia	401	387	338	87.3	302	78.0	14	3.5
All Airlines	1 101	1 081	886	82.0	834	77.2	20	1.8
<b>Brisbane-Moranbah</b>								
QantasLink	116	107	98	91.6	91	85.0	9	7.8
Virgin Australia Regional Airlines	74	73	71	97.3	70	95.9	1	1.4
All Airlines	190	180	169	93.9	161	89.4	10	5.3
<b>Brisbane-Mount Isa</b>								
Qantas	52	52	48	92.3	47	90.4	0	0.0
Virgin Australia	23	23	23	100.0	23	100.0	0	0.0
All Airlines	75	75	71	94.7	70	93.3	0	0.0
<b>Brisbane-Newcastle</b>								
Jetstar	89	87	72	82.8	74	85.1	2	2.2
QantasLink	72	70	55	78.6	41	58.6	2	2.8
Virgin Australia	85	85	74	87.1	72	84.7	0	0.0
All Airlines	246	242	201	83.1	187	77.3	4	1.6
<b>Brisbane-Perth</b>								
Qantas	133	133	102	76.7	87	65.4	0	0.0
Virgin Australia	98	96	67	69.8	48	50.0	2	2.0
All Airlines	231	229	169	73.8	135	59.0	2	0.9
<b>Brisbane-Proserpine</b>								
Jetstar	31	31	18	58.1	23	74.2	0	0.0
Virgin Australia	54	54	50	92.6	53	98.1	0	0.0
All Airlines	85	85	68	80.0	76	89.4	0	0.0
<b>Brisbane-Rockhampton</b>								
QantasLink	220	215	169	78.6	169	78.6	5	2.3
Virgin Australia	107	105	88	83.8	89	84.8	2	1.9
Virgin Australia Regional Airlines	98	94	71	75.5	67	71.3	4	4.1
All Airlines	425	414	328	79.2	325	78.5	11	2.6
<b>Brisbane-Sydney</b>								
Jetstar	178	163	103	63.2	108	66.3	15	8.4
Qantas	589	572	490	85.7	461	80.6	17	2.9
Tigerair	94	94	77	81.9	76	80.9	0	0.0
Virgin Australia	538	521	459	88.1	422	81.0	17	3.2
All Airlines	1 399	1 350	1 129	83.6	1 067	79.0	49	3.5
<b>Brisbane-Townsville</b>								
Jetstar	63	60	44	73.3	43	71.7	3	4.8
Qantas	146	146	124	84.9	121	82.9	0	0.0
Virgin Australia	152	152	122	80.3	127	83.6	0	0.0
All Airlines	361	358	290	81.0	291	81.3	3	0.8
<b>Broome-Perth</b>								
Qantas	31	31	27	87.1	27	87.1	0	0.0
QantasLink	51	51	50	98.0	50	98.0	0	0.0
Virgin Australia	28	27	23	85.2	24	88.9	1	3.6
Virgin Australia Regional Airlines	17	17	14	82.4	13	76.5	0	0.0
All Airlines	127	126	114	90.5	114	90.5	1	0.8

	<i>Sectors</i>		<i>Departures On Time</i>		<i>Arrivals On Time</i>		<i>Cancellations</i>	
	<i>Sched.</i>	<i>Flown</i>	<i>No.</i>	<i>%</i>	<i>No.</i>	<i>%</i>	<i>No.</i>	<i>%</i>
<b>Bundaberg-Brisbane</b>								
QantasLink	119	118	99	83.9	99	83.9	1	0.8
Virgin Australia Regional Airlines	41	41	33	80.5	30	73.2	0	0.0
All Airlines	160	159	132	83.0	129	81.1	1	0.6
<b>Cairns-Brisbane</b>								
Jetstar	120	120	103	85.8	96	80.0	0	0.0
Qantas	120	120	112	93.3	106	88.3	0	0.0
QantasLink	4	4	2	50.0	2	50.0	0	0.0
Tigerair	27	27	19	70.4	17	63.0	0	0.0
Virgin Australia	137	137	118	86.1	115	83.9	0	0.0
All Airlines	408	408	354	86.8	336	82.4	0	0.0
<b>Cairns-Melbourne</b>								
Jetstar	86	84	70	83.3	69	82.1	2	2.3
Qantas	31	31	25	80.6	25	80.6	0	0.0
Tigerair	31	31	27	87.1	26	83.9	0	0.0
Virgin Australia	33	33	29	87.9	30	90.9	0	0.0
All Airlines	181	179	151	84.4	150	83.8	2	1.1
<b>Cairns-Sydney</b>								
Jetstar	87	87	78	89.7	74	85.1	0	0.0
Qantas	75	75	60	80.0	57	76.0	0	0.0
Tigerair	30	30	28	93.3	24	80.0	0	0.0
Virgin Australia	91	89	85	95.5	83	93.3	2	2.2
All Airlines	283	281	251	89.3	238	84.7	2	0.7
<b>Canberra-Adelaide</b>								
Qantas	39	39	35	89.7	36	92.3	0	0.0
QantasLink	18	18	15	83.3	14	77.8	0	0.0
Virgin Australia	27	27	24	88.9	24	88.9	0	0.0
All Airlines	84	84	74	88.1	74	88.1	0	0.0
<b>Canberra-Brisbane</b>								
Qantas	27	27	26	96.3	26	96.3	0	0.0
QantasLink	135	132	113	85.6	111	84.1	3	2.2
Virgin Australia	94	94	81	86.2	78	83.0	0	0.0
All Airlines	256	253	220	87.0	215	85.0	3	1.2
<b>Canberra-Melbourne</b>								
Qantas	163	162	140	86.4	140	86.4	1	0.6
QantasLink	88	86	66	76.7	67	77.9	2	2.3
Virgin Australia	154	149	126	84.6	132	88.6	5	3.2
Virgin Australia Regional Airlines	30	29	24	82.8	23	79.3	1	3.3
All Airlines	435	426	356	83.6	362	85.0	9	2.1
<b>Canberra-Sydney</b>								
QantasLink	487	448	370	82.6	381	85.0	39	8.0
Virgin Australia	22	18	14	77.8	14	77.8	4	18.2
Virgin Australia Regional Airlines	271	260	219	84.2	223	85.8	11	4.1
All Airlines	780	726	603	83.1	618	85.1	54	6.9
<b>Coffs Harbour-Sydney</b>								
Qantas	3	2	1	50.0	1	50.0	1	33.3
QantasLink	152	149	114	76.5	108	72.5	3	2.0
Tigerair	13	12	9	75.0	10	83.3	1	7.7
Virgin Australia	62	59	52	88.1	49	83.1	3	4.8
All Airlines	230	222	176	79.3	168	75.7	8	3.5

	<i>Sectors</i>		<i>Departures On Time</i>		<i>Arrivals On Time</i>		<i>Cancellations</i>	
	<i>Sched.</i>	<i>Flown</i>	<i>No.</i>	<i>%</i>	<i>No.</i>	<i>%</i>	<i>No.</i>	<i>%</i>
<b>Darwin-Brisbane</b>								
Jetstar	31	31	24	77.4	26	83.9	0	0.0
Qantas	41	41	35	85.4	31	75.6	0	0.0
Tigerair	25	24	21	87.5	21	87.5	1	4.0
Virgin Australia	31	31	27	87.1	13	41.9	0	0.0
All Airlines	128	127	107	84.3	91	71.7	1	0.8
<b>Darwin-Melbourne</b>								
Jetstar	31	31	20	64.5	20	64.5	0	0.0
Qantas	31	31	27	87.1	24	77.4	0	0.0
Virgin Australia	31	31	27	87.1	26	83.9	0	0.0
All Airlines	93	93	74	79.6	70	75.3	0	0.0
<b>Darwin-Perth</b>								
Qantas	38	38	37	97.4	37	97.4	0	0.0
Virgin Australia	27	27	25	92.6	25	92.6	0	0.0
All Airlines	65	65	62	95.4	62	95.4	0	0.0
<b>Darwin-Sydney</b>								
Jetstar	26	25	16	64.0	20	80.0	1	3.8
Qantas	51	51	44	86.3	43	84.3	0	0.0
Virgin Australia	31	31	25	80.6	22	71.0	0	0.0
All Airlines	108	107	85	79.4	85	79.4	1	0.9
<b>Dubbo-Sydney</b>								
QantasLink	120	118	87	73.7	88	74.6	2	1.7
Regional Express	110	109	92	84.4	81	74.3	1	0.9
All Airlines	230	227	179	78.9	169	74.4	3	1.3
<b>Emerald-Brisbane</b>								
QantasLink	138	137	102	74.5	100	73.0	1	0.7
Virgin Australia Regional Airlines	81	80	63	78.8	64	80.0	1	1.2
All Airlines	219	217	165	76.0	164	75.6	2	0.9
<b>Geraldton-Perth</b>								
QantasLink	52	51	49	96.1	49	96.1	1	1.9
Virgin Australia Regional Airlines	95	93	86	92.5	88	94.6	2	2.1
All Airlines	147	144	135	93.8	137	95.1	3	2.0
<b>Gladstone-Brisbane</b>								
QantasLink	224	210	168	80.0	156	74.3	14	6.3
Virgin Australia	10	9	6	66.7	5	55.6	1	10.0
Virgin Australia Regional Airlines	140	140	106	75.7	98	70.0	0	0.0
All Airlines	374	359	280	78.0	259	72.1	15	4.0
<b>Gold Coast-Adelaide</b>								
Jetstar	42	42	37	88.1	33	78.6	0	0.0
Virgin Australia	31	31	28	90.3	29	93.5	0	0.0
All Airlines	73	73	65	89.0	62	84.9	0	0.0
<b>Gold Coast-Melbourne</b>								
Jetstar	271	267	216	80.9	222	83.1	4	1.5
Tigerair	80	80	53	66.3	61	76.3	0	0.0
Virgin Australia	187	185	162	87.6	159	85.9	2	1.1
All Airlines	538	532	431	81.0	442	83.1	6	1.1
<b>Gold Coast-Sydney</b>								
Jetstar	372	353	263	74.5	264	74.8	19	5.1
Qantas	95	95	68	71.6	72	75.8	0	0.0
Tigerair	106	104	87	83.7	83	79.8	2	1.9
Virgin Australia	257	247	200	81.0	198	80.2	10	3.9
All Airlines	830	799	618	77.3	617	77.2	31	3.7

	<i>Sectors</i>		<i>Departures On Time</i>		<i>Arrivals On Time</i>		<i>Cancellations</i>	
	<i>Sched.</i>	<i>Flown</i>	<i>No.</i>	<i>%</i>	<i>No.</i>	<i>%</i>	<i>No.</i>	<i>%</i>
<b>Hamilton Island-Brisbane</b>								
QantasLink	17	17	13	76.5	15	88.2	0	0.0
Virgin Australia	31	31	27	87.1	22	71.0	0	0.0
All Airlines	48	48	40	83.3	37	77.1	0	0.0
<b>Hamilton Island-Melbourne</b>								
Jetstar	19	19	17	89.5	18	94.7	0	0.0
Virgin Australia	20	20	19	95.0	18	90.0	0	0.0
All Airlines	39	39	36	92.3	36	92.3	0	0.0
<b>Hamilton Island-Sydney</b>								
Jetstar	31	31	27	87.1	26	83.9	0	0.0
Qantas	13	13	6	46.2	9	69.2	0	0.0
Virgin Australia	31	30	26	86.7	25	83.3	1	3.2
All Airlines	75	74	59	79.7	60	81.1	1	1.3
<b>Hobart-Brisbane</b>								
Jetstar	31	31	14	45.2	13	41.9	0	0.0
Virgin Australia	31	31	16	51.6	19	61.3	0	0.0
All Airlines	62	62	30	48.4	32	51.6	0	0.0
<b>Hobart-Melbourne</b>								
Jetstar	240	234	162	69.2	167	71.4	6	2.5
QantasLink	117	117	72	61.5	69	59.0	0	0.0
Tigerair	31	30	23	76.7	20	66.7	1	3.2
Virgin Australia	145	145	124	85.5	120	82.8	0	0.0
All Airlines	533	526	381	72.4	376	71.5	7	1.3
<b>Hobart-Sydney</b>								
Jetstar	117	117	84	71.8	76	65.0	0	0.0
QantasLink	38	37	25	67.6	25	67.6	1	2.6
Virgin Australia	62	62	56	90.3	50	80.6	0	0.0
All Airlines	217	216	165	76.4	151	69.9	1	0.5
<b>Kalgoorlie-Perth</b>								
Qantas	23	22	18	81.8	18	81.8	1	4.3
QantasLink	59	56	51	91.1	51	91.1	3	5.1
Virgin Australia	37	37	34	91.9	34	91.9	0	0.0
Virgin Australia Regional Airlines	20	20	16	80.0	16	80.0	0	0.0
All Airlines	139	135	119	88.1	119	88.1	4	2.9
<b>Karratha-Perth</b>								
Qantas	103	99	94	94.9	96	97.0	4	3.9
QantasLink	96	96	92	95.8	91	94.8	0	0.0
Virgin Australia	68	67	63	94.0	63	94.0	1	1.5
Virgin Australia Regional Airlines	21	21	19	90.5	19	90.5	0	0.0
All Airlines	288	283	268	94.7	269	95.1	5	1.7
<b>Launceston-Melbourne</b>								
Jetstar	163	161	116	72.0	109	67.7	2	1.2
QantasLink	123	118	88	74.6	85	72.0	5	4.1
Virgin Australia	93	93	84	90.3	78	83.9	0	0.0
Virgin Australia Regional Airlines	5	5	3	60.0	3	60.0	0	0.0
All Airlines	384	377	291	77.2	275	72.9	7	1.8
<b>Launceston-Sydney</b>								
Jetstar	82	82	54	65.9	50	61.0	0	0.0
Virgin Australia	32	32	28	87.5	27	84.4	0	0.0
All Airlines	114	114	82	71.9	77	67.5	0	0.0

	<i>Sectors</i>		<i>Departures On Time</i>		<i>Arrivals On Time</i>		<i>Cancellations</i>	
	<i>Sched.</i>	<i>Flown</i>	<i>No.</i>	<i>%</i>	<i>No.</i>	<i>%</i>	<i>No.</i>	<i>%</i>
<b>Mackay-Brisbane</b>								
Jetstar	58	57	30	52.6	29	50.9	1	1.7
QantasLink	107	106	98	92.5	93	87.7	1	0.9
Virgin Australia	156	155	139	89.7	135	87.1	1	0.6
All Airlines	321	318	267	84.0	257	80.8	3	0.9
<b>Melbourne-Adelaide</b>								
Jetstar	117	115	96	83.5	91	79.1	2	1.7
Qantas	278	278	242	87.1	245	88.1	0	0.0
Tigerair	79	79	71	89.9	71	89.9	0	0.0
Virgin Australia	271	270	236	87.4	231	85.6	1	0.4
All Airlines	745	742	645	86.9	638	86.0	3	0.4
<b>Melbourne-Brisbane</b>								
Jetstar	147	146	84	57.5	97	66.4	1	0.7
Qantas	429	426	375	88.0	350	82.2	3	0.7
Tigerair	125	125	86	68.8	85	68.0	0	0.0
Virgin Australia	396	385	341	88.6	308	80.0	11	2.8
All Airlines	1 097	1 082	886	81.9	840	77.6	15	1.4
<b>Melbourne-Cairns</b>								
Jetstar	86	85	68	80.0	73	85.9	1	1.2
Qantas	31	31	28	90.3	28	90.3	0	0.0
Tigerair	31	31	28	90.3	29	93.5	0	0.0
Virgin Australia	33	33	30	90.9	30	90.9	0	0.0
All Airlines	181	180	154	85.6	160	88.9	1	0.6
<b>Melbourne-Canberra</b>								
Qantas	163	162	148	91.4	146	90.1	1	0.6
QantasLink	88	87	71	81.6	67	77.0	1	1.1
Virgin Australia	154	150	140	93.3	137	91.3	4	2.6
Virgin Australia Regional Airlines	30	29	19	65.5	17	58.6	1	3.3
All Airlines	435	428	378	88.3	367	85.7	7	1.6
<b>Melbourne-Darwin</b>								
Jetstar	31	31	25	80.6	19	61.3	0	0.0
Qantas	31	31	28	90.3	29	93.5	0	0.0
Virgin Australia	31	31	30	96.8	30	96.8	0	0.0
All Airlines	93	93	83	89.2	78	83.9	0	0.0
<b>Melbourne-Gold Coast</b>								
Jetstar	271	268	207	77.2	218	81.3	3	1.1
Tigerair	80	80	71	88.8	58	72.5	0	0.0
Virgin Australia	187	186	169	90.9	163	87.6	1	0.5
All Airlines	538	534	447	83.7	439	82.2	4	0.7
<b>Melbourne-Hamilton Island</b>								
Jetstar	19	19	15	78.9	17	89.5	0	0.0
Virgin Australia	20	20	19	95.0	19	95.0	0	0.0
All Airlines	39	39	34	87.2	36	92.3	0	0.0
<b>Melbourne-Hobart</b>								
Jetstar	240	235	175	74.5	178	75.7	5	2.1
QantasLink	117	116	62	53.4	52	44.8	1	0.9
Tigerair	31	31	25	80.6	25	80.6	0	0.0
Virgin Australia	145	145	129	89.0	127	87.6	0	0.0
All Airlines	533	527	391	74.2	382	72.5	6	1.1
<b>Melbourne-Launceston</b>								
Jetstar	163	161	126	78.3	129	80.1	2	1.2
QantasLink	124	118	85	72.0	80	67.8	6	4.8
Virgin Australia	93	93	82	88.2	79	84.9	0	0.0
Virgin Australia Regional Airlines	5	5	4	80.0	4	80.0	0	0.0
All Airlines	385	377	297	78.8	292	77.5	8	2.1

	<i>Sectors</i>		<i>Departures On Time</i>		<i>Arrivals On Time</i>		<i>Cancellations</i>	
	<i>Sched.</i>	<i>Flown</i>	<i>No.</i>	<i>%</i>	<i>No.</i>	<i>%</i>	<i>No.</i>	<i>%</i>
<b>Melbourne-Mildura</b>								
QantasLink	88	88	72	81.8	65	73.9	0	0.0
Regional Express	70	70	63	90.0	60	85.7	0	0.0
Virgin Australia	31	31	30	96.8	28	90.3	0	0.0
All Airlines	189	189	165	87.3	153	81.0	0	0.0
<b>Melbourne-Newcastle</b>								
Jetstar	94	94	65	69.1	66	70.2	0	0.0
Virgin Australia	31	31	25	80.6	22	71.0	0	0.0
All Airlines	125	125	90	72.0	88	70.4	0	0.0
<b>Melbourne-Perth</b>								
Jetstar	93	88	69	78.4	75	85.2	5	5.4
Qantas	226	226	179	79.2	160	70.8	0	0.0
Tigerair	62	62	55	88.7	53	85.5	0	0.0
Virgin Australia	143	143	123	86.0	122	85.3	0	0.0
All Airlines	524	519	426	82.1	410	79.0	5	1.0
<b>Melbourne-Sunshine Coast</b>								
Jetstar	87	86	67	77.9	71	82.6	1	1.1
Virgin Australia	33	33	30	90.9	28	84.8	0	0.0
All Airlines	120	119	97	81.5	99	83.2	1	0.8
<b>Melbourne-Sydney</b>								
Jetstar	351	336	220	65.5	224	66.7	15	4.3
Qantas	858	834	703	84.3	663	79.5	24	2.8
Tigerair	242	237	192	81.0	187	78.9	5	2.1
Virgin Australia	737	706	622	88.1	592	83.9	31	4.2
All Airlines	2 188	2 113	1 737	82.2	1 666	78.8	75	3.4
<b>Mildura-Melbourne</b>								
QantasLink	89	89	68	76.4	68	76.4	0	0.0
Regional Express	71	70	58	82.9	56	80.0	1	1.4
Virgin Australia	31	31	29	93.5	28	90.3	0	0.0
All Airlines	191	190	155	81.6	152	80.0	1	0.5
<b>Moranbah-Brisbane</b>								
QantasLink	111	101	81	80.2	84	83.2	10	9.0
Virgin Australia Regional Airlines	74	73	67	91.8	63	86.3	1	1.4
All Airlines	185	174	148	85.1	147	84.5	11	5.9
<b>Mount Isa-Brisbane</b>								
Qantas	52	52	46	88.5	45	86.5	0	0.0
Virgin Australia	23	23	21	91.3	23	100.0	0	0.0
All Airlines	75	75	67	89.3	68	90.7	0	0.0
<b>Newcastle-Brisbane</b>								
Jetstar	89	87	63	72.4	53	60.9	2	2.2
QantasLink	72	71	46	64.8	36	50.7	1	1.4
Virgin Australia	85	84	69	82.1	67	79.8	1	1.2
All Airlines	246	242	178	73.6	156	64.5	4	1.6
<b>Newcastle-Melbourne</b>								
Jetstar	94	92	73	79.3	73	79.3	2	2.1
Virgin Australia	31	31	15	48.4	15	48.4	0	0.0
All Airlines	125	123	88	71.5	88	71.5	2	1.6
<b>Newman-Perth</b>								
Qantas	77	75	69	92.0	72	96.0	2	2.6
QantasLink	63	62	60	96.8	60	96.8	1	1.6
Virgin Australia	31	31	29	93.5	30	96.8	0	0.0
Virgin Australia Regional Airlines	4	4	3	75.0	3	75.0	0	0.0
All Airlines	175	172	161	93.6	165	95.9	3	1.7

	<i>Sectors</i>		<i>Departures On Time</i>		<i>Arrivals On Time</i>		<i>Cancellations</i>	
	<i>Sched.</i>	<i>Flown</i>	<i>No.</i>	<i>%</i>	<i>No.</i>	<i>%</i>	<i>No.</i>	<i>%</i>
<b>Perth-Adelaide</b>								
Jetstar	39	39	29	74.4	29	74.4	0	0.0
Qantas	117	117	111	94.9	115	98.3	0	0.0
Virgin Australia	66	65	58	89.2	62	95.4	1	1.5
All Airlines	222	221	198	89.6	206	93.2	1	0.5
<b>Perth-Brisbane</b>								
Qantas	133	133	111	83.5	121	91.0	0	0.0
Virgin Australia	97	96	77	80.2	86	89.6	1	1.0
All Airlines	230	229	188	82.1	207	90.4	1	0.4
<b>Perth-Broome</b>								
Qantas	31	31	28	90.3	28	90.3	0	0.0
QantasLink	51	51	49	96.1	49	96.1	0	0.0
Virgin Australia	27	26	24	92.3	24	92.3	1	3.7
Virgin Australia Regional Airlines	13	13	11	84.6	10	76.9	0	0.0
All Airlines	122	121	112	92.6	111	91.7	1	0.8
<b>Perth-Darwin</b>								
Qantas	38	38	37	97.4	37	97.4	0	0.0
Virgin Australia	27	27	26	96.3	26	96.3	0	0.0
All Airlines	65	65	63	96.9	63	96.9	0	0.0
<b>Perth-Geraldton</b>								
QantasLink	52	52	50	96.2	49	94.2	0	0.0
Virgin Australia Regional Airlines	92	92	84	91.3	81	88.0	0	0.0
All Airlines	144	144	134	93.1	130	90.3	0	0.0
<b>Perth-Kalgoorlie</b>								
Qantas	23	22	19	86.4	19	86.4	1	4.3
QantasLink	59	57	54	94.7	54	94.7	2	3.4
Virgin Australia	37	37	36	97.3	36	97.3	0	0.0
Virgin Australia Regional Airlines	20	20	16	80.0	16	80.0	0	0.0
All Airlines	139	136	125	91.9	125	91.9	3	2.2
<b>Perth-Karratha</b>								
Qantas	103	102	96	94.1	95	93.1	1	1.0
QantasLink	94	94	91	96.8	88	93.6	0	0.0
Virgin Australia	68	67	64	95.5	64	95.5	1	1.5
Virgin Australia Regional Airlines	21	21	17	81.0	17	81.0	0	0.0
All Airlines	286	284	268	94.4	264	93.0	2	0.7
<b>Perth-Melbourne</b>								
Jetstar	91	85	62	72.9	63	74.1	6	6.6
Qantas	225	225	176	78.2	196	87.1	0	0.0
Tigerair	61	61	54	88.5	57	93.4	0	0.0
Virgin Australia	143	142	130	91.5	129	90.8	1	0.7
All Airlines	520	513	422	82.3	445	86.7	7	1.3
<b>Perth-Newman</b>								
Qantas	77	76	73	96.1	72	94.7	1	1.3
QantasLink	63	62	60	96.8	60	96.8	1	1.6
Virgin Australia	31	31	29	93.5	29	93.5	0	0.0
Virgin Australia Regional Airlines	4	4	4	100.0	4	100.0	0	0.0
All Airlines	175	173	166	96.0	165	95.4	2	1.1
<b>Perth-Port Hedland</b>								
Qantas	100	100	95	95.0	96	96.0	0	0.0
QantasLink	46	45	45	100.0	45	100.0	1	2.2
Virgin Australia	46	46	44	95.7	43	93.5	0	0.0
All Airlines	192	191	184	96.3	184	96.3	1	0.5

	<i>Sectors</i>		<i>Departures On Time</i>		<i>Arrivals On Time</i>		<i>Cancellations</i>	
	<i>Sched.</i>	<i>Flown</i>	<i>No.</i>	<i>%</i>	<i>No.</i>	<i>%</i>	<i>No.</i>	<i>%</i>
<b>Perth-Sydney</b>								
Jetstar	31	30	20	66.7	24	80.0	1	3.2
Qantas	206	206	153	74.3	176	85.4	0	0.0
Tigerair	28	28	26	92.9	25	89.3	0	0.0
Virgin Australia	120	119	109	91.6	112	94.1	1	0.8
All Airlines	385	383	308	80.4	337	88.0	2	0.5
<b>Port Hedland-Perth</b>								
Qantas	100	100	85	85.0	90	90.0	0	0.0
QantasLink	47	44	41	93.2	44	100.0	3	6.4
Virgin Australia	45	45	39	86.7	41	91.1	0	0.0
All Airlines	192	189	165	87.3	175	92.6	3	1.6
<b>Port Lincoln-Adelaide</b>								
QantasLink	97	97	76	78.4	72	74.2	0	0.0
Regional Express	185	185	170	91.9	167	90.3	0	0.0
All Airlines	282	282	246	87.2	239	84.8	0	0.0
<b>Port Macquarie-Sydney</b>								
QantasLink	132	132	77	58.3	62	47.0	0	0.0
Virgin Australia Regional Airlines	62	62	42	67.7	39	62.9	0	0.0
All Airlines	194	194	119	61.3	101	52.1	0	0.0
<b>Proserpine-Brisbane</b>								
Jetstar	31	31	30	96.8	28	90.3	0	0.0
Virgin Australia	54	54	52	96.3	48	88.9	0	0.0
All Airlines	85	85	82	96.5	76	89.4	0	0.0
<b>Rockhampton-Brisbane</b>								
QantasLink	197	194	142	73.2	130	67.0	3	1.5
Virgin Australia	107	105	87	82.9	84	80.0	2	1.9
Virgin Australia Regional Airlines	97	93	75	80.6	76	81.7	4	4.1
All Airlines	401	392	304	77.6	290	74.0	9	2.2
<b>Sunshine Coast-Melbourne</b>								
Jetstar	87	86	62	72.1	57	66.3	1	1.1
Virgin Australia	33	33	24	72.7	24	72.7	0	0.0
All Airlines	120	119	86	72.3	81	68.1	1	0.8
<b>Sunshine Coast-Sydney</b>								
Jetstar	116	112	74	66.1	75	67.0	4	3.4
Virgin Australia	31	31	26	83.9	24	77.4	0	0.0
All Airlines	147	143	100	69.9	99	69.2	4	2.7
<b>Sydney-Adelaide</b>								
Jetstar	141	140	96	68.6	99	70.7	1	0.7
Qantas	239	238	192	80.7	195	81.9	1	0.4
QantasLink	24	24	14	58.3	12	50.0	0	0.0
Tigerair	28	28	25	89.3	24	85.7	0	0.0
Virgin Australia	174	174	150	86.2	151	86.8	0	0.0
All Airlines	606	604	477	79.0	481	79.6	2	0.3
<b>Sydney-Albury</b>								
QantasLink	93	91	73	80.2	73	80.2	2	2.2
Regional Express	86	86	69	80.2	66	76.7	0	0.0
Virgin Australia Regional Airlines	62	62	54	87.1	54	87.1	0	0.0
All Airlines	241	239	196	82.0	193	80.8	2	0.8
<b>Sydney-Armidale</b>								
QantasLink	125	121	86	71.1	78	64.5	4	3.2
Regional Express	66	66	52	78.8	50	75.8	0	0.0
All Airlines	191	187	138	73.8	128	68.4	4	2.1



	<i>Sectors</i>		<i>Departures On Time</i>		<i>Arrivals On Time</i>		<i>Cancellations</i>	
	<i>Sched.</i>	<i>Flown</i>	<i>No.</i>	<i>%</i>	<i>No.</i>	<i>%</i>	<i>No.</i>	<i>%</i>
<b>Sydney-Ayers Rock</b>								
Jetstar	26	26	21	80.8	19	73.1	0	0.0
Virgin Australia	31	31	29	93.5	27	87.1	0	0.0
All Airlines	57	57	50	87.7	46	80.7	0	0.0
<b>Sydney-Ballina</b>								
Jetstar	84	82	66	80.5	59	72.0	2	2.4
Regional Express	19	19	15	78.9	15	78.9	0	0.0
Virgin Australia	31	30	26	86.7	24	80.0	1	3.2
All Airlines	134	131	107	81.7	98	74.8	3	2.2
<b>Sydney-Brisbane</b>								
Jetstar	178	164	98	59.8	104	63.4	14	7.9
Qantas	590	577	485	84.1	440	76.3	13	2.2
Tigerair	94	94	80	85.1	75	79.8	0	0.0
Virgin Australia	541	521	435	83.5	424	81.4	20	3.7
All Airlines	1 403	1 356	1 098	81.0	1 043	76.9	47	3.3
<b>Sydney-Cairns</b>								
Jetstar	85	85	75	88.2	79	92.9	0	0.0
Qantas	75	75	61	81.3	62	82.7	0	0.0
Tigerair	30	30	30	100.0	28	93.3	0	0.0
Virgin Australia	91	89	80	89.9	80	89.9	2	2.2
All Airlines	281	279	246	88.2	249	89.2	2	0.7
<b>Sydney-Canberra</b>								
QantasLink	486	450	369	82.0	360	80.0	36	7.4
Virgin Australia	21	18	14	77.8	14	77.8	3	14.3
Virgin Australia Regional Airlines	272	260	213	81.9	219	84.2	12	4.4
All Airlines	779	728	596	81.9	593	81.5	51	6.5
<b>Sydney-Coffs Harbour</b>								
Qantas	2	2	2	100.0	2	100.0	0	0.0
QantasLink	152	149	109	73.2	112	75.2	3	2.0
Tigerair	13	12	10	83.3	9	75.0	1	7.7
Virgin Australia	62	59	53	89.8	54	91.5	3	4.8
All Airlines	229	222	174	78.4	177	79.7	7	3.1
<b>Sydney-Darwin</b>								
Jetstar	28	27	20	74.1	23	85.2	1	3.6
Qantas	50	50	37	74.0	38	76.0	0	0.0
Virgin Australia	31	31	29	93.5	28	90.3	0	0.0
All Airlines	109	108	86	79.6	89	82.4	1	0.9
<b>Sydney-Dubbo</b>								
QantasLink	120	118	75	63.6	76	64.4	2	1.7
Regional Express	112	110	98	89.1	97	88.2	2	1.8
All Airlines	232	228	173	75.9	173	75.9	4	1.7
<b>Sydney-Gold Coast</b>								
Jetstar	371	353	266	75.4	263	74.5	18	4.9
Qantas	95	95	85	89.5	84	88.4	0	0.0
Tigerair	105	104	93	89.4	87	83.7	1	1.0
Virgin Australia	256	250	209	83.6	200	80.0	6	2.3
All Airlines	827	802	653	81.4	634	79.1	25	3.0
<b>Sydney-Hamilton Island</b>								
Jetstar	31	31	27	87.1	26	83.9	0	0.0
Qantas	13	13	12	92.3	12	92.3	0	0.0
Virgin Australia	31	30	26	86.7	26	86.7	1	3.2
All Airlines	75	74	65	87.8	64	86.5	1	1.3

	<i>Sectors</i>		<i>Departures On Time</i>		<i>Arrivals On Time</i>		<i>Cancellations</i>	
	<i>Sched.</i>	<i>Flown</i>	<i>No.</i>	<i>%</i>	<i>No.</i>	<i>%</i>	<i>No.</i>	<i>%</i>
<b>Sydney-Hobart</b>								
Jetstar	117	117	87	74.4	93	79.5	0	0.0
QantasLink	37	37	27	73.0	28	75.7	0	0.0
Virgin Australia	62	62	60	96.8	58	93.5	0	0.0
All Airlines	216	216	174	80.6	179	82.9	0	0.0
<b>Sydney-Launceston</b>								
Jetstar	83	83	58	69.9	58	69.9	0	0.0
Virgin Australia	32	32	28	87.5	28	87.5	0	0.0
All Airlines	115	115	86	74.8	86	74.8	0	0.0
<b>Sydney-Melbourne</b>								
Jetstar	351	337	221	65.6	230	68.2	14	4.0
Qantas	858	833	656	78.8	633	76.0	25	2.9
Tigerair	242	237	185	78.1	175	73.8	5	2.1
Virgin Australia	729	698	574	82.2	565	80.9	31	4.3
All Airlines	2 180	2 105	1 636	77.7	1 603	76.2	75	3.4
<b>Sydney-Perth</b>								
Jetstar	31	31	22	71.0	22	71.0	0	0.0
Qantas	209	209	139	66.5	139	66.5	0	0.0
Tigerair	29	29	27	93.1	27	93.1	0	0.0
Virgin Australia	120	119	106	89.1	96	80.7	1	0.8
All Airlines	389	388	294	75.8	284	73.2	1	0.3
<b>Sydney-Port Macquarie</b>								
QantasLink	131	130	75	57.7	59	45.4	1	0.8
Virgin Australia Regional Airlines	61	61	44	72.1	44	72.1	0	0.0
All Airlines	192	191	119	62.3	103	53.9	1	0.5
<b>Sydney-Sunshine Coast</b>								
Jetstar	117	113	81	71.7	81	71.7	4	3.4
Virgin Australia	31	31	27	87.1	26	83.9	0	0.0
All Airlines	148	144	108	75.0	107	74.3	4	2.7
<b>Sydney-Townsville</b>								
Jetstar	29	29	22	75.9	22	75.9	0	0.0
Virgin Australia	31	31	28	90.3	24	77.4	0	0.0
All Airlines	60	60	50	83.3	46	76.7	0	0.0
<b>Sydney-Wagga Wagga</b>								
QantasLink	114	114	90	78.9	87	76.3	0	0.0
Regional Express	106	106	96	90.6	92	86.8	0	0.0
All Airlines	220	220	186	84.5	179	81.4	0	0.0
<b>Townsville-Brisbane</b>								
Jetstar	63	60	45	75.0	44	73.3	3	4.8
Qantas	146	146	127	87.0	124	84.9	0	0.0
Virgin Australia	152	152	127	83.6	128	84.2	0	0.0
All Airlines	361	358	299	83.5	296	82.7	3	0.8
<b>Townsville-Sydney</b>								
Jetstar	29	28	21	75.0	19	67.9	1	3.4
Virgin Australia	31	31	23	74.2	22	71.0	0	0.0
All Airlines	60	59	44	74.6	41	69.5	1	1.7
<b>Wagga Wagga-Sydney</b>								
QantasLink	114	114	89	78.1	88	77.2	0	0.0
Regional Express	101	101	87	86.1	79	78.2	0	0.0
All Airlines	215	215	176	81.9	167	77.7	0	0.0

# Airports

On time performance is reported for all routes where the passenger load averages over 8000 passengers per month, and where two or more airlines operate in competition. The following data reports by airport against flights operated on those routes only.

Airport	Departures			Arrivals		
	Sectors	On Time		Sectors	On Time	
	Flown	No.	%	Flown	No.	%
<b>Adelaide</b>						
Jetstar	366	286	78.1	367	280	76.3
Qantas	778	683	87.8	778	680	87.4
QantasLink	139	95	68.3	139	98	70.5
Regional Express	184	174	94.6	185	167	90.3
Tigerair	134	110	82.1	134	116	86.6
Virgin Australia	680	622	91.5	682	595	87.2
All Airlines	2 281	1 970	86.4	2 285	1 936	84.7
Relates to services to and from Brisbane, Canberra, Gold Coast, Melbourne, Perth, Port Lincoln and Sydney.						
<b>Albury</b>						
QantasLink	91	83	91.2	91	73	80.2
Regional Express	87	74	85.1	86	66	76.7
Virgin Australia Regional Airlines	62	52	83.9	62	54	87.1
All Airlines	240	209	87.1	239	193	80.8
Relates to services to and from Sydney only.						
<b>Armidale</b>						
QantasLink	120	82	68.3	121	78	64.5
Regional Express	67	53	79.1	66	50	75.8
All Airlines	187	135	72.2	187	128	68.4
Relates to services to and from Sydney only.						
<b>Ayers Rock</b>						
Jetstar	26	24	92.3	26	19	73.1
Virgin Australia	31	26	83.9	31	27	87.1
All Airlines	57	50	87.7	57	46	80.7
Relates to services to and from Sydney only.						
<b>Ballina</b>						
Jetstar	79	52	65.8	82	59	72.0
Regional Express	19	13	68.4	19	15	78.9
Virgin Australia	29	23	79.3	30	24	80.0
All Airlines	127	88	69.3	131	98	74.8
Relates to services to and from Sydney only.						
<b>Brisbane</b>						
Jetstar	755	520	68.9	758	516	68.1
Qantas	1 621	1 384	85.4	1 628	1 343	82.5
QantasLink	1 099	937	85.3	1 090	826	75.8
Tigerair	297	232	78.1	297	222	74.7
Virgin Australia	2 024	1 736	85.8	2 022	1 655	81.8
Virgin Australia Regional Airlines	428	347	81.1	427	331	77.5
All Airlines	6 224	5 156	82.8	6 222	4 893	78.6
Relates to services to and from Adelaide, Bundaberg, Cairns, Canberra, Darwin, Emerald, Gladstone, Hamilton Island, Hobart, Mackay, Melbourne, Moranbah, Mount Isa, Newcastle, Perth, Proserpine, Rockhampton, Sydney and Townsville.						

Airport	Departures			Arrivals		
	Sectors Flown	On Time		Sectors Flown	On Time	
		No.	%		No.	%
<b>Broome</b>						
Qantas	31	27	87.1	31	28	90.3
QantasLink	51	50	98.0	51	49	96.1
Virgin Australia	27	23	85.2	26	24	92.3
Virgin Australia Regional Airlines	17	14	82.4	13	10	76.9
All Airlines	126	114	90.5	121	111	91.7
Relates to services to and from Perth only.						
<b>Bundaberg</b>						
QantasLink	118	99	83.9	119	96	80.7
Virgin Australia Regional Airlines	41	33	80.5	40	33	82.5
All Airlines	159	132	83.0	159	129	81.1
Relates to services to and from Brisbane only.						
<b>Cairns</b>						
Jetstar	291	251	86.3	289	250	86.5
Qantas	226	197	87.2	226	198	87.6
QantasLink	4	2	50.0	4	2	50.0
Tigerair	88	74	84.1	88	78	88.6
Virgin Australia	259	232	89.6	258	223	86.4
All Airlines	868	756	87.1	865	751	86.8
Relates to services to and from Brisbane, Melbourne and Sydney.						
<b>Canberra</b>						
Qantas	228	201	88.2	228	207	90.8
QantasLink	684	564	82.5	688	550	79.9
Virgin Australia	288	245	85.1	288	260	90.3
Virgin Australia Regional Airlines	289	243	84.1	289	236	81.7
All Airlines	1 489	1 253	84.2	1 493	1 253	83.9
Relates to services to and from Adelaide, Brisbane, Melbourne and Sydney.						
<b>Coffs Harbour</b>						
Qantas	2	1	50.0	2	2	100.0
QantasLink	149	114	76.5	149	112	75.2
Tigerair	12	9	75.0	12	9	75.0
Virgin Australia	59	52	88.1	59	54	91.5
All Airlines	222	176	79.3	222	177	79.7
Relates to services to and from Sydney only.						
<b>Darwin</b>						
Jetstar	87	60	69.0	89	67	75.3
Qantas	161	143	88.8	160	140	87.5
Tigerair	24	21	87.5	24	22	91.7
Virgin Australia	120	104	86.7	120	114	95.0
All Airlines	392	328	83.7	393	343	87.3
Relates to services to and from Brisbane, Melbourne, Perth and Sydney.						
<b>Dubbo</b>						
QantasLink	118	87	73.7	118	76	64.4
Regional Express	109	92	84.4	110	97	88.2
All Airlines	227	179	78.9	228	173	75.9
Relates to services to and from Sydney only.						

Airport	Departures			Arrivals		
	Sectors Flown	On Time		Sectors Flown	On Time	
		No.	%		No.	%
<b>Emerald</b>						
QantasLink	137	102	74.5	137	107	78.1
Virgin Australia Regional Airlines	80	63	78.8	80	57	71.3
All Airlines	217	165	76.0	217	164	75.6
Relates to services to and from Brisbane only.						
<b>Geraldton</b>						
QantasLink	51	49	96.1	52	49	94.2
Virgin Australia Regional Airlines	93	86	92.5	92	81	88.0
All Airlines	144	135	93.8	144	130	90.3
Relates to services to and from Perth only.						
<b>Gladstone</b>						
QantasLink	210	168	80.0	192	170	88.5
Virgin Australia	9	6	66.7	9	6	66.7
Virgin Australia Regional Airlines	140	106	75.7	141	110	78.0
All Airlines	359	280	78.0	342	286	83.6
Relates to services to and from Brisbane only.						
<b>Gold Coast</b>						
Jetstar	662	516	77.9	663	518	78.1
Qantas	95	68	71.6	95	84	88.4
Tigerair	184	140	76.1	184	145	78.8
Virgin Australia	463	390	84.2	467	393	84.2
All Airlines	1 404	1 114	79.3	1 409	1 140	80.9
Relates to services to and from Adelaide, Melbourne and Sydney.						
<b>Hamilton Island</b>						
Jetstar	50	44	88.0	50	43	86.0
Qantas	13	6	46.2	13	12	92.3
QantasLink	17	13	76.5	17	15	88.2
Virgin Australia	81	72	88.9	81	74	91.4
All Airlines	161	135	83.9	161	144	89.4
Relates to services to and from Brisbane, Melbourne and Sydney.						
<b>Hobart</b>						
Jetstar	382	260	68.1	383	294	76.8
QantasLink	154	97	63.0	153	80	52.3
Tigerair	30	23	76.7	31	25	80.6
Virgin Australia	238	196	82.4	238	208	87.4
All Airlines	804	576	71.6	805	607	75.4
Relates to services to and from Brisbane, Melbourne and Sydney.						
<b>Kalgoorlie</b>						
Qantas	22	18	81.8	22	19	86.4
QantasLink	56	51	91.1	57	54	94.7
Virgin Australia	37	34	91.9	37	36	97.3
Virgin Australia Regional Airlines	20	16	80.0	20	16	80.0
All Airlines	135	119	88.1	136	125	91.9
Relates to services to and from Perth only.						

Airport	Departures			Arrivals		
	Sectors Flown	On Time		Sectors Flown	On Time	
		No.	%		No.	%
<b>Karratha</b>						
Qantas	99	94	94.9	102	95	93.1
QantasLink	96	92	95.8	94	88	93.6
Virgin Australia	67	63	94.0	67	64	95.5
Virgin Australia Regional Airlines	21	19	90.5	21	17	81.0
All Airlines	283	268	94.7	284	264	93.0
Relates to services to and from Perth only.						
<b>Launceston</b>						
Jetstar	243	170	70.0	244	187	76.6
QantasLink	118	88	74.6	118	80	67.8
Virgin Australia	125	112	89.6	125	107	85.6
Virgin Australia Regional Airlines	5	3	60.0	5	4	80.0
All Airlines	491	373	76.0	492	378	76.8
Relates to services to and from Melbourne and Sydney.						
<b>Mackay</b>						
Jetstar	57	30	52.6	57	33	57.9
QantasLink	106	98	92.5	105	95	90.5
Virgin Australia	155	139	89.7	155	134	86.5
All Airlines	318	267	84.0	317	262	82.6
Relates to services to and from Brisbane only.						
<b>Melbourne</b>						
Jetstar	1 664	1 217	73.1	1 655	1 223	73.9
Qantas	1 988	1 703	85.7	1 986	1 614	81.3
QantasLink	409	290	70.9	410	289	70.5
Regional Express	70	63	90.0	70	56	80.0
Tigerair	645	528	81.9	643	495	77.0
Virgin Australia	2 257	2 006	88.9	2 246	1 869	83.2
Virgin Australia Regional Airlines	34	23	67.6	34	26	76.5
All Airlines	7 067	5 830	82.5	7 044	5 572	79.1
Relates to services to and from Adelaide, Brisbane, Cairns, Canberra, Darwin, Gold Coast, Hamilton Island, Hobart, Launceston, Mildura, Newcastle, Perth, Sunshine Coast and Sydney.						
<b>Mildura</b>						
QantasLink	89	68	76.4	88	65	73.9
Regional Express	70	58	82.9	70	60	85.7
Virgin Australia	31	29	93.5	31	28	90.3
All Airlines	190	155	81.6	189	153	81.0
Relates to services to and from Melbourne only.						
<b>Moranbah</b>						
QantasLink	101	81	80.2	107	91	85.0
Virgin Australia Regional Airlines	73	67	91.8	73	70	95.9
All Airlines	174	148	85.1	180	161	89.4
Relates to services to and from Brisbane only.						
<b>Mount Isa</b>						
Qantas	52	46	88.5	52	47	90.4
Virgin Australia	23	21	91.3	23	23	100.0
All Airlines	75	67	89.3	75	70	93.3
Relates to services to and from Brisbane only.						

Airport	Departures			Arrivals		
	Sectors	On Time		Sectors	On Time	
	Flown	No.	%	Flown	No.	%
<b>Newcastle</b>						
Jetstar	179	136	76.0	181	140	77.3
QantasLink	71	46	64.8	70	41	58.6
Virgin Australia	115	84	73.0	116	94	81.0
All Airlines	365	266	72.9	367	275	74.9
Relates to services to and from Brisbane and Melbourne.						
<b>Newman</b>						
Qantas	75	69	92.0	76	72	94.7
QantasLink	62	60	96.8	62	60	96.8
Virgin Australia	31	29	93.5	31	29	93.5
Virgin Australia Regional Airlines	4	3	75.0	4	4	100.0
All Airlines	172	161	93.6	173	165	95.4
Relates to services to and from Perth only.						
<b>Perth</b>						
Jetstar	154	111	72.1	158	125	79.1
Qantas	1 050	899	85.6	1 046	828	79.2
QantasLink	361	349	96.7	360	345	95.8
Tigerair	89	80	89.9	91	80	87.9
Virgin Australia	656	597	91.0	658	539	81.9
Virgin Australia Regional Airlines	150	132	88.0	155	139	89.7
All Airlines	2 460	2 168	88.1	2 468	2 056	83.3
Relates to services to and from Adelaide, Brisbane, Broome, Darwin, Geraldton, Kalgoorlie, Karratha, Melbourne, Newman, Port Hedland and Sydney.						
<b>Port Hedland</b>						
Qantas	100	85	85.0	100	96	96.0
QantasLink	44	41	93.2	45	45	100.0
Virgin Australia	45	39	86.7	46	43	93.5
All Airlines	189	165	87.3	191	184	96.3
Relates to services to and from Perth only.						
<b>Port Lincoln</b>						
QantasLink	97	76	78.4	97	74	76.3
Regional Express	185	170	91.9	184	170	92.4
All Airlines	282	246	87.2	281	244	86.8
Relates to services to and from Adelaide only.						
<b>Port Macquarie</b>						
QantasLink	132	77	58.3	130	59	45.4
Virgin Australia Regional Airlines	62	42	67.7	61	44	72.1
All Airlines	194	119	61.3	191	103	53.9
Relates to services to and from Sydney only.						
<b>Proserpine</b>						
Jetstar	31	30	96.8	31	23	74.2
Virgin Australia	54	52	96.3	54	53	98.1
All Airlines	85	82	96.5	85	76	89.4
Relates to services to and from Brisbane only.						

<i>Airport</i>	<i>Departures</i>			<i>Arrivals</i>		
	<i>Sectors</i>	<i>On Time</i>		<i>Sectors</i>	<i>On Time</i>	
	<i>Flown</i>	<i>No.</i>	<i>%</i>	<i>Flown</i>	<i>No.</i>	<i>%</i>
<b>Rockhampton</b>						
QantasLink	194	142	73.2	215	169	78.6
Virgin Australia	105	87	82.9	105	89	84.8
Virgin Australia Regional Airlines	93	75	80.6	94	67	71.3
All Airlines	392	304	77.6	414	325	78.5
Relates to services to and from Brisbane only.						
<b>Sunshine Coast</b>						
Jetstar	198	136	68.7	199	152	76.4
Virgin Australia	64	50	78.1	64	54	84.4
All Airlines	262	186	71.0	263	206	78.3
Relates to services to and from Melbourne and Sydney.						
<b>Sydney</b>						
Jetstar	1 618	1 160	71.7	1 609	1 142	71.0
Qantas	2 092	1 669	79.8	2 088	1 692	81.0
QantasLink	1 234	918	74.4	1 233	925	75.0
Regional Express	387	330	85.3	383	286	74.7
Tigerair	534	450	84.3	533	430	80.7
Virgin Australia	2 206	1 874	85.0	2 210	1 848	83.6
Virgin Australia Regional Airlines	383	311	81.2	384	305	79.4
All Airlines	8 454	6 712	79.4	8 440	6 628	78.5
Relates to services to and from Adelaide, Albury, Armidale, Ayers Rock, Ballina, Brisbane, Cairns, Canberra, Coffs Harbour, Darwin, Dubbo, Gold Coast, Hamilton Island, Hobart, Launceston, Melbourne, Perth, Port Macquarie, Sunshine Coast, Townsville and Wagga Wagga.						
<b>Townsville</b>						
Jetstar	88	66	75.0	89	65	73.0
Qantas	146	127	87.0	146	121	82.9
Virgin Australia	183	150	82.0	183	151	82.5
All Airlines	417	343	82.3	418	337	80.6
Relates to services to and from Brisbane and Sydney.						
<b>Wagga Wagga</b>						
QantasLink	114	89	78.1	114	87	76.3
Regional Express	101	87	86.1	106	92	86.8
All Airlines	215	176	81.9	220	179	81.4
Relates to services to and from Sydney only.						



## Definitions

---

On time departure                      A flight departure is counted as "on time" if it departs the gate before 15 minutes after the scheduled departure time shown in the carriers' schedule.

---

On time arrival                         A flight arrival is counted as "on time" if it arrived at the gate before 15 minutes after the scheduled arrival time shown in the carriers' schedule.  
Neither diverted nor cancelled flights count as on time.

---

Cancellation                            A flight removed from service within 7 days of scheduled departure is regarded as a cancellation.

---

On time departure percentage                      The percentage of on time departures is measured against the number of departures *operated* on any particular sector.

---

On time arrival percentage                         The percentage of on time arrivals is measured against the number of arrivals *operated* on any particular sector.

---

Cancellation percentage                      The percentage of cancellations is measured against the number of services *scheduled* on any particular sector.

---