



Australian Government

Department of Infrastructure and Regional Development

Bureau of Infrastructure, Transport and Regional Economics

STATISTICAL REPORT



Aviation

Domestic airline on time performance
December 2013

© Commonwealth of Australia 2014

ISSN: 1832-0759

Ownership of intellectual property rights in this publication

Unless otherwise noted, copyright (and any other intellectual property rights, if any) in this publication is owned by the Commonwealth of Australia (referred to below as the Commonwealth).

Disclaimer

The material contained in this publication is made available on the understanding that the Commonwealth is not providing professional advice, and that users exercise their own skill and care with respect to its use, and seek independent advice if necessary.

The Commonwealth makes no representations or warranties as to the contents or accuracy of the information contained in this publication. To the extent permitted by law, the Commonwealth disclaims liability to any person or organisation in respect of anything done, or omitted to be done, in reliance upon information contained in this publication.

Creative Commons licence

With the exception of (a) the Coat of Arms; and (b) the Department of Infrastructure and Regional Development's photos and graphics, copyright in this publication is licensed under a Creative Commons Attribution 3.0 Australia Licence.

Creative Commons Attribution 3.0 Australia Licence is a standard form licence agreement that allows you to copy, communicate and adapt this publication provided that you attribute the work to the Commonwealth and abide by the other licence terms. A summary of the licence terms is available from <http://creativecommons.org/licenses/by/3.0/au/deed.en>. The full licence terms are available from <http://creativecommons.org/licenses/by/3.0/au/legalcode>.

Use of the Coat of Arms

The Department of the Prime Minister and Cabinet sets the terms under which the Coat of Arms is used. Please refer to the Department's Commonwealth Coat of Arms and Government branding web page <http://www.dpmmc.gov.au/guidelines/index.cfm#brand> and, in particular, the Guidelines on the use of the Commonwealth Coat of Arms publication.

An appropriate citation for this report is:

Bureau of Infrastructure, Transport and Regional Economics (BITRE), 2014, Domestic airline on time performance, Statistical Report, BITRE, Canberra ACT.

Contact us

This publication is available in PDF format. All other rights are reserved, including in relation to any Departmental logos or trade marks which may exist. For enquiries regarding the licence and any use of this publication, please contact:

Bureau of Infrastructure, Transport and Regional Economics (BITRE)
Department of Infrastructure and Regional Development
GPO Box 501, Canberra ACT 2601, Australia
Telephone: (international) +61 2 6274 7210
Fax: (international) +61 2 6274 6855
Email: bitre@infrastructure.gov.au
Website: www.bitre.gov.au

Inquiries

Should you require additional information about the statistics contained in this publication:

Telephone (02) 6274 7790 or Facsimile (02) 6274 7727

Electronic mail: AVSTATS@infrastructure.gov.au

Web site: <http://www.bitre.gov.au/statistics/aviation/otphome.aspx>

Foreword

The Bureau of Infrastructure, Transport and Regional Economics (BITRE) monitors the punctuality and reliability of major domestic airlines operating between Australian airports. The purpose of this is to allow for evaluation of overall industry and individual airline performance, so that consumers of air travel can make informed decisions.

The following domestic airlines currently report this information monthly to the BITRE: Jetstar, Qantas, QantasLink, Regional Express, Tigerair, Virgin Australia and Virgin Australia Regional Airlines. Data has been gathered since November 2003, although some airlines commenced reporting at a later date, including Jetstar which first reported in May 2004, MacAir in July 2005 and Tigerair in April 2008. MacAir ceased operations in February 2009 and data was not received for December 2008 onwards. Virgin Blue was rebranded as Virgin Australia in May 2011 and Tiger Airways was rebranded as Tigerair in July 2013 and time series data in Microsoft Excel spreadsheet format on the BITRE website have been revised to reflect these changes. Virgin Australia Regional Airlines commenced operations in May 2013. It was formed after the acquisition of Skywest by Virgin Australia and represents a combination of operations previously reported under Skywest and Virgin Australia – ATR/F100 Operations. Services operated by Skywest on behalf of Virgin Australia using ATR/F100 aircraft commenced in November 2011 and were shown separately as Virgin Australia – ATR/F100 Operations until April 2013.

Information presented in this report is for Australian domestic routes for which the passenger load averaged 8 000 or more passengers per month over the previous six months and where two or more airlines operated in competition on those routes. There were 62 routes that met this definition in December 2013. Over time, routes which meet these criteria change as airline networks and traffic levels vary.

Participating airlines report their overall monthly network performance where this is possible.

Total industry figures encompass all services operated by reporting airlines only. These airlines collectively carried over 95 per cent of total domestic passengers (regular public transport only) in 2012.

The method of capturing on time performance varies between airlines utilising different recording systems. Jetstar and Qantas jet aircraft use Aircraft Communication Addressing and Reporting System (ACARS) to electronically measure on time performance. Regional Express, Tigerair, Virgin Australia, Virgin Australia Regional Airlines and the Qantas non-jet fleet record on time performance manually using records from pilots, gate agents and/or ground crews.

After initial data is collected, aggregate reports are audited internally by participating airlines prior to publication.

Reports and detailed time series data in Microsoft Excel spreadsheet format are available from the BITRE website at: <http://www.bitre.gov.au/statistics/aviation/otphome.aspx>.

Contents

	Page
Industry performance	1
Individual routes	9
Airports	21
Definitions	27

Industry performance

For December 2013, on time performance over all routes operated by participating airlines (Jetstar, Qantas, QantasLink, Regional Express, Tigerair, Virgin Australia and Virgin Australia Regional Airlines) averaged 83.6 per cent for on time departures and 82.2 per cent for on time arrivals. Cancellations represented 1.7 per cent of all scheduled flights. The equivalent figures for December 2012 were 80.3 per cent for departures, 77.7 per cent for arrivals and 1.4 per cent for cancellations.

This month's figures were slightly better than the long term average performance for all routes (83.5 per cent for departures and 82.0 per cent for arrivals). The rate of cancellations was above the long term average of 1.3 per cent.

Of the major domestic airlines, Qantas achieved the highest level of on time departures for December 2013 at 85.3 per cent, followed by Virgin Australia at 84.3 per cent, Tigerair at 80.4 per cent and Jetstar at 76.1 per cent. The regional airlines were led by Regional Express at 91.6 per cent, followed by Virgin Australia Regional Airlines at 88.3 per cent and QantasLink at 81.9 per cent.

Qantas also achieved the highest on time arrivals among the major domestic airlines at 85.2 per cent, followed by Virgin Australia at 82.3 per cent, Jetstar at 78.4 per cent and Tigerair at 77.3 per cent. Regional Express was the best performing regional airline for on time arrivals at 88.9 per cent, followed by Virgin Australia Regional Airlines at 85.4 per cent and QantasLink at 78.6 per cent.

Jetstar had the highest percentage of cancellations (2.6 per cent) during the month, followed by QantasLink (2.2 per cent), Qantas (1.9 per cent), Virgin Australia (1.5 per cent), Virgin Australia Regional Airlines (1.0 per cent), Tigerair (0.8 per cent) and Regional Express (0.3 per cent).

Of the 62 routes which met the criteria for on time performance reporting in December 2013, the Perth-Broome route had the highest percentage of on time departures (96.2 per cent) while the Alice Springs-Sydney route had the lowest percentage of on time departures (60.4 per cent). The Brisbane-Hamilton Island route had the highest percentage of on time arrivals (98.0 per cent) while the Port Macquarie-Sydney route had the lowest percentage of on time arrivals (63.1 per cent).

Cancellations were highest on the Karratha-Perth route at 11.8 per cent, followed by Perth-Karratha at 11.5 per cent, Brisbane-Moranbah at 8.6 per cent, Moranbah-Brisbane at 8.0 per cent and Perth-Port Hedland and Port Hedland-Perth at 6.7 per cent.

Newman Airport recorded the highest percentage of on time departures (94.4 per cent) and Broome Airport recorded the highest percentage of on time arrivals (95.4 per cent). Alice Springs Airport recorded the lowest percentage of on time departures (66.7 per cent) and Emerald Airport recorded the lowest percentage of on time arrivals (75.5 per cent). These figures only refer to reported routes and do not cover all flights at these airports.

Table 1 On time performance for December 2013 — Total Industry

	<i>Sectors</i>		<i>Departures On Time</i>		<i>Arrivals On Time</i>		<i>Cancellations</i>	
	<i>Scheduled</i>	<i>Flown</i>	<i>No.</i>	<i>%</i>	<i>No.</i>	<i>%</i>	<i>No.</i>	<i>%</i>
Jetstar	7 687	7 487	5 694	76.1	5 873	78.4	200	2.6
Qantas	10 292	10 095	8 610	85.3	8 597	85.2	197	1.9
QantasLink	9 731	9 519	7 793	81.9	7 483	78.6	212	2.2
Regional Express	4 964	4 948	4 531	91.6	4 400	88.9	16	0.3
Tigerair	1 753	1 739	1 398	80.4	1 344	77.3	14	0.8
Virgin Australia	11 044	10 880	9 177	84.3	8 951	82.3	164	1.5
Virgin Australia Regional Airlines	2 515	2 489	2 198	88.3	2 126	85.4	26	1.0
All Airlines	47 986	47 157	39 401	83.6	38 774	82.2	829	1.7

Total airline network data (including routes not shown in this report).

Table 2 Top ten routes for on time performance for December 2013 (participating airlines only)

<i>Departures</i>		<i>Arrivals</i>	
<i>Route</i>	<i>On Time (%)</i>	<i>Route</i>	<i>On Time (%)</i>
Perth-Broome	96.2	Brisbane-Hamilton Island	98.0
Cairns-Townsville	95.8	Geraldton-Perth	96.7
Perth-Newman	94.9	Perth-Broome	95.4
Perth-Port Hedland	94.9	Perth-Port Hedland	94.9
Newman-Perth	94.4	Port Hedland-Perth	94.9
Port Hedland-Perth	94.4	Darwin-Perth	94.7
Geraldton-Perth	94.1	Perth-Newman	94.4
Perth-Geraldton	94.0	Perth-Karratha	94.3
Brisbane-Hamilton Island	93.9	Cairns-Townsville	94.3
Hamilton Island-Brisbane	93.9	Karratha-Perth	94.0

Table 3 Top ten airports for on time performance for December 2013 (participating airlines and reported routes only)

<i>Departures</i>		<i>Arrivals</i>	
<i>Airport</i>	<i>On Time (%)</i>	<i>Airport</i>	<i>On Time (%)</i>
Newman	94.4	Broome	95.4
Port Hedland	94.4	Port Hedland	94.9
Geraldton	94.1	Newman	94.4
Karratha	92.6	Karratha	94.3
Kalgoorlie	92.5	Hamilton Island	93.6
Port Lincoln	91.1	Kalgoorlie	91.8
Cairns	89.6	Port Lincoln	91.0
Perth	88.0	Geraldton	90.7
Proserpine	88.0	Proserpine	90.2
Mildura	87.1	Darwin	89.1

Total industry on time performance

Figure 1 On time performance (by month from December 2010)—Total Industry

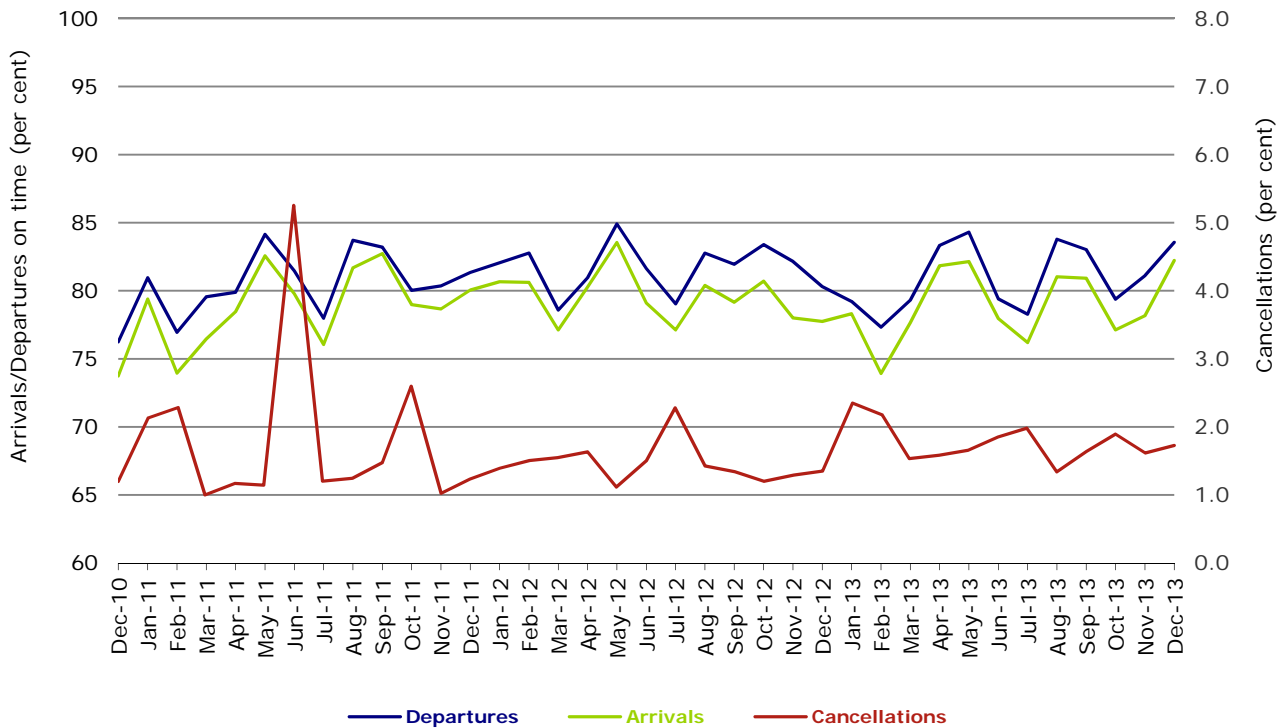
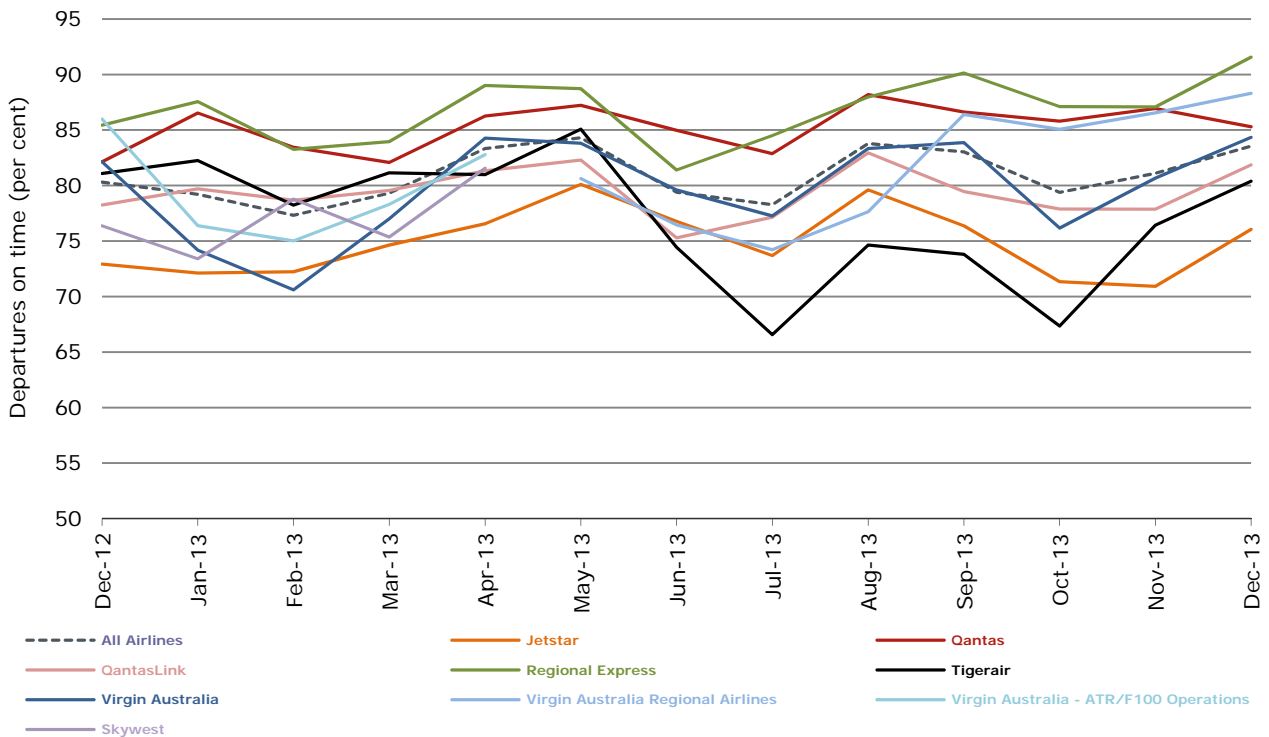
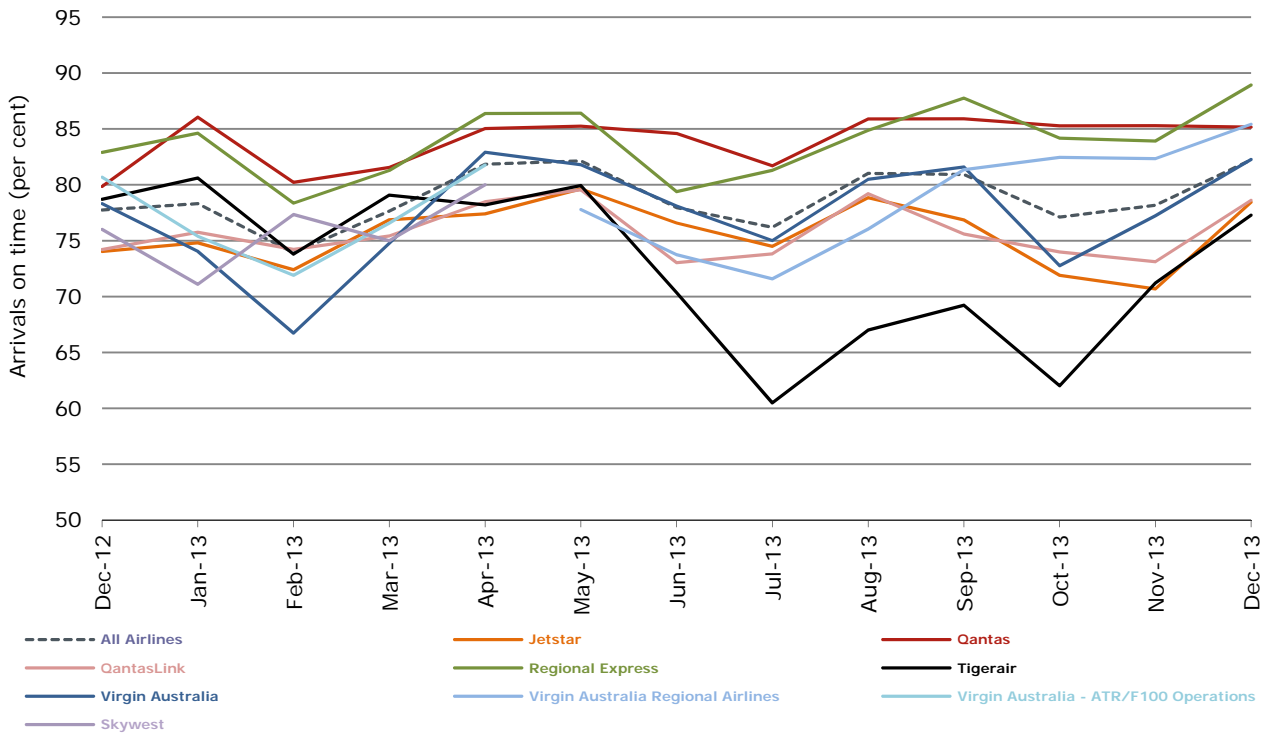


Figure 2 Departures on time (by month from December 2012)



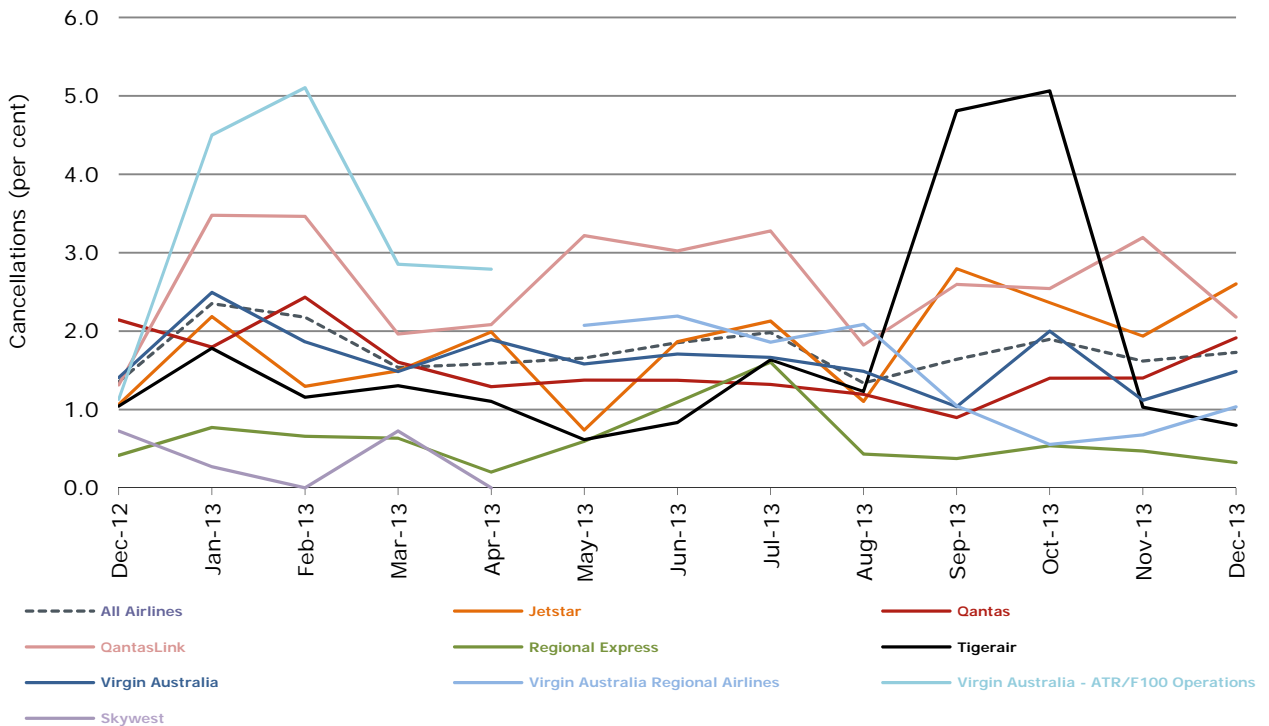
Virgin Australia Regional Airlines commenced operations in May 2013. It was formed after the acquisition of Skywest by Virgin Australia and represents a combination of operations previously reported under Skywest and Virgin Australia – ATR/F100 Operations.

Figure 3 Arrivals on time (by month from December 2012)



Virgin Australia Regional Airlines commenced operations in May 2013. It was formed after the acquisition of Skywest by Virgin Australia and represents a combination of operations previously reported under Skywest and Virgin Australia – ATR/F100 Operations.

Figure 4 Cancellations (by month from December 2012)



Virgin Australia Regional Airlines commenced operations in May 2013. It was formed after the acquisition of Skywest by Virgin Australia and represents a combination of operations previously reported under Skywest and Virgin Australia – ATR/F100 Operations.

Major domestic airlines on time performance

Figure 5 On time performance (by month from December 2010)—Jetstar

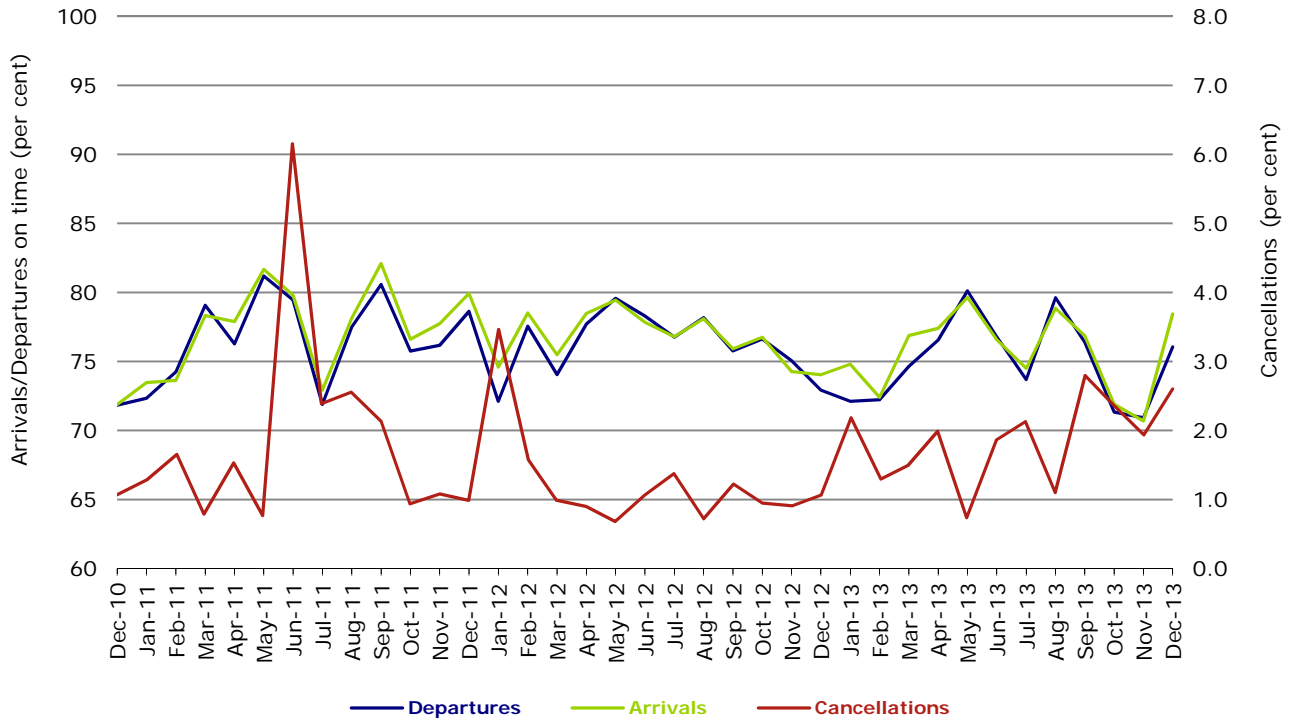


Figure 6 On time performance (by month from December 2010)—Qantas

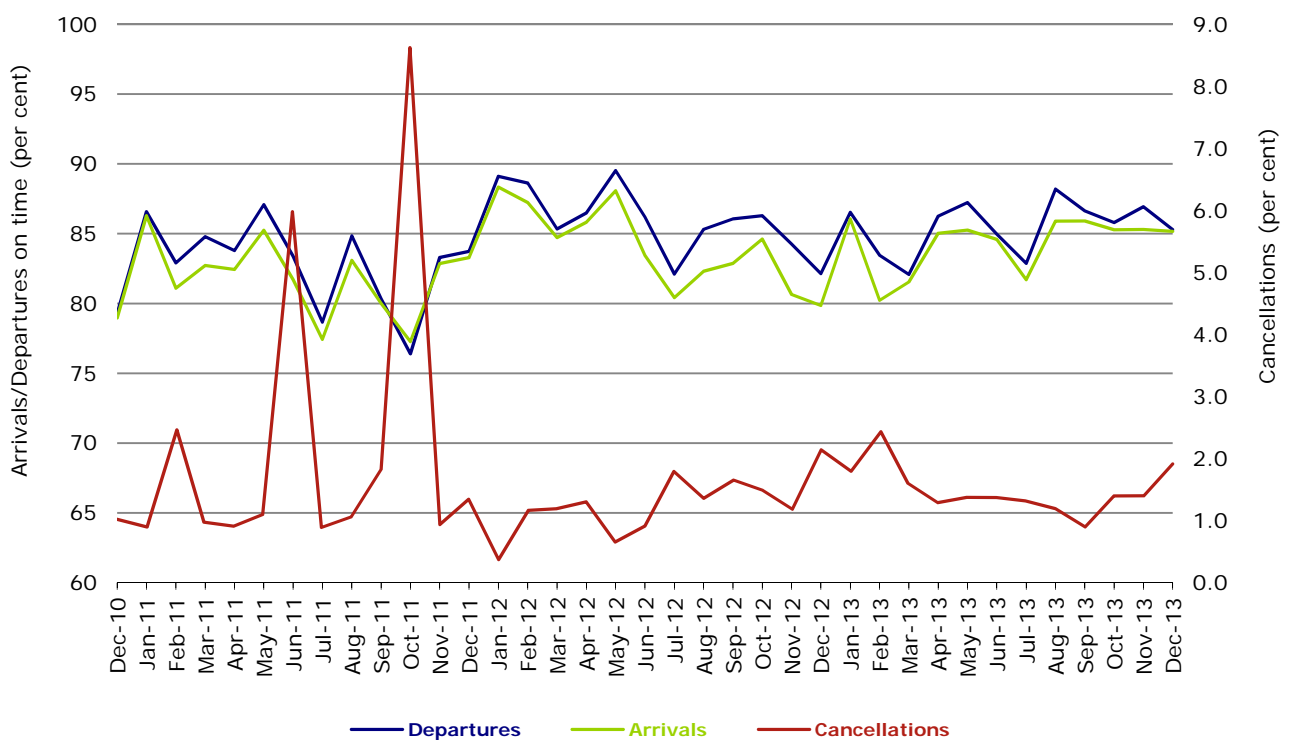
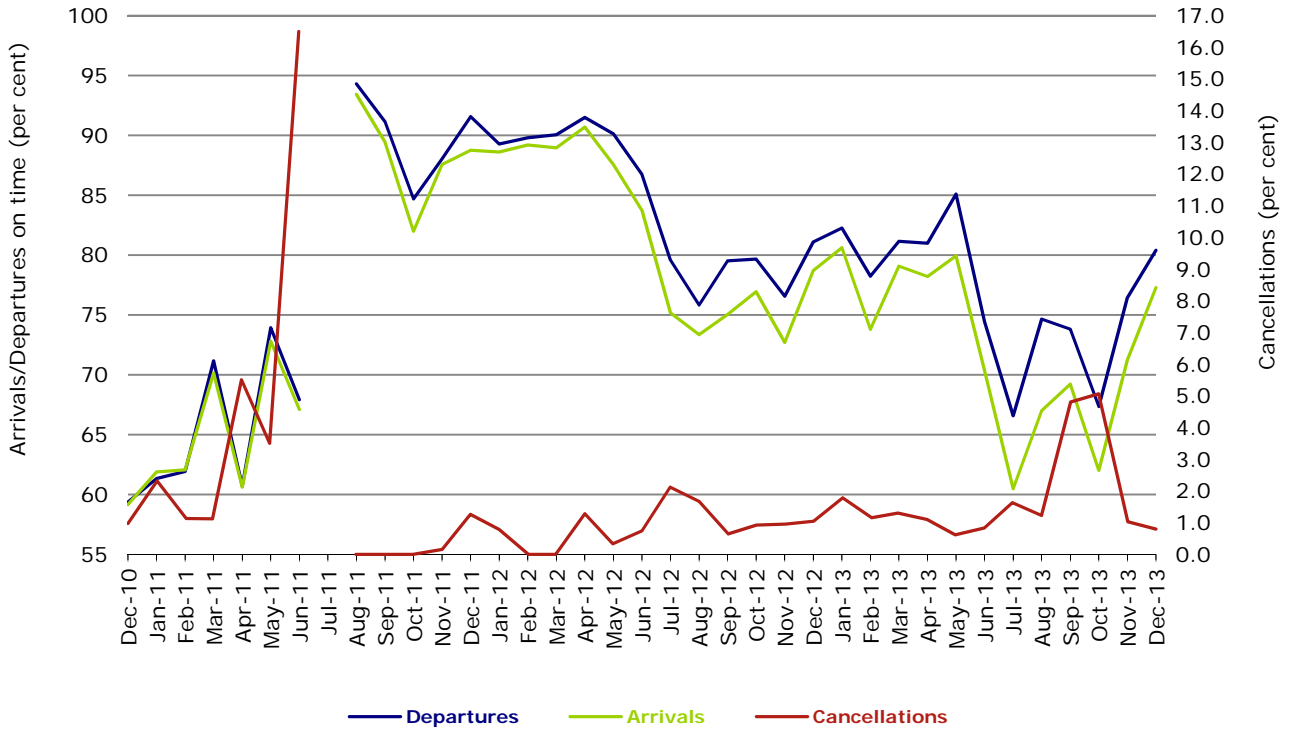
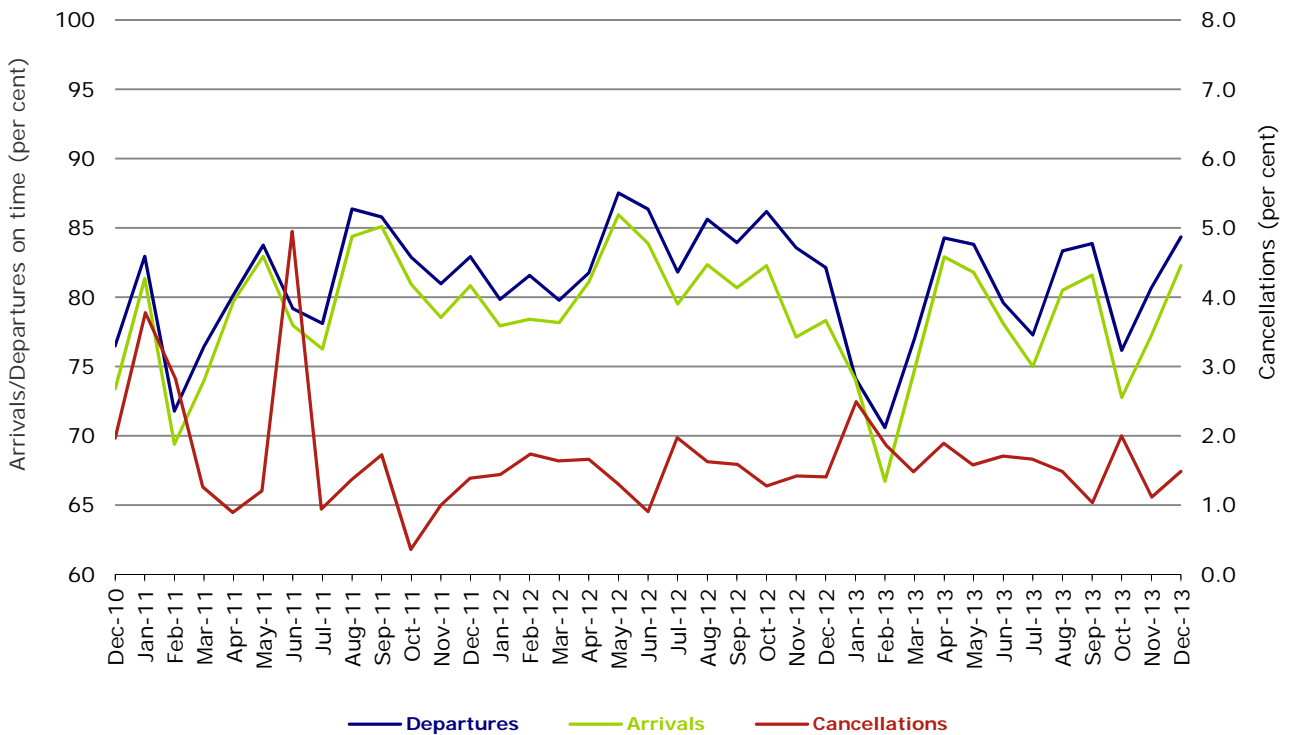


Figure 7 On time performance (by month from December 2010)—Tigerair



No data for Tigerair for July 2011 as it was grounded by CASA from 2/7/2011 to 11/8/2011.

Figure 8 On time performance (by month from December 2010)—Virgin Australia



Major regional airlines on time performance

Figure 9 On time performance (by month from December 2010)—QantasLink

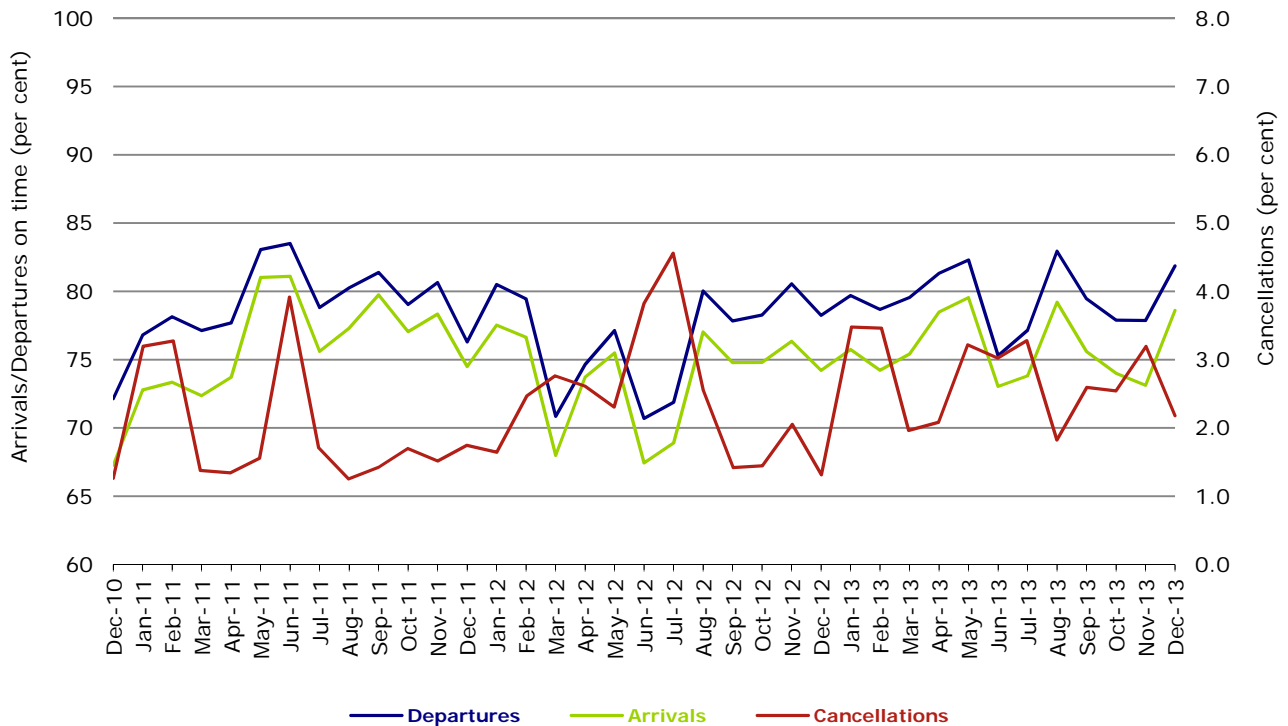


Figure 10 On time performance (by month from December 2010)—Regional Express

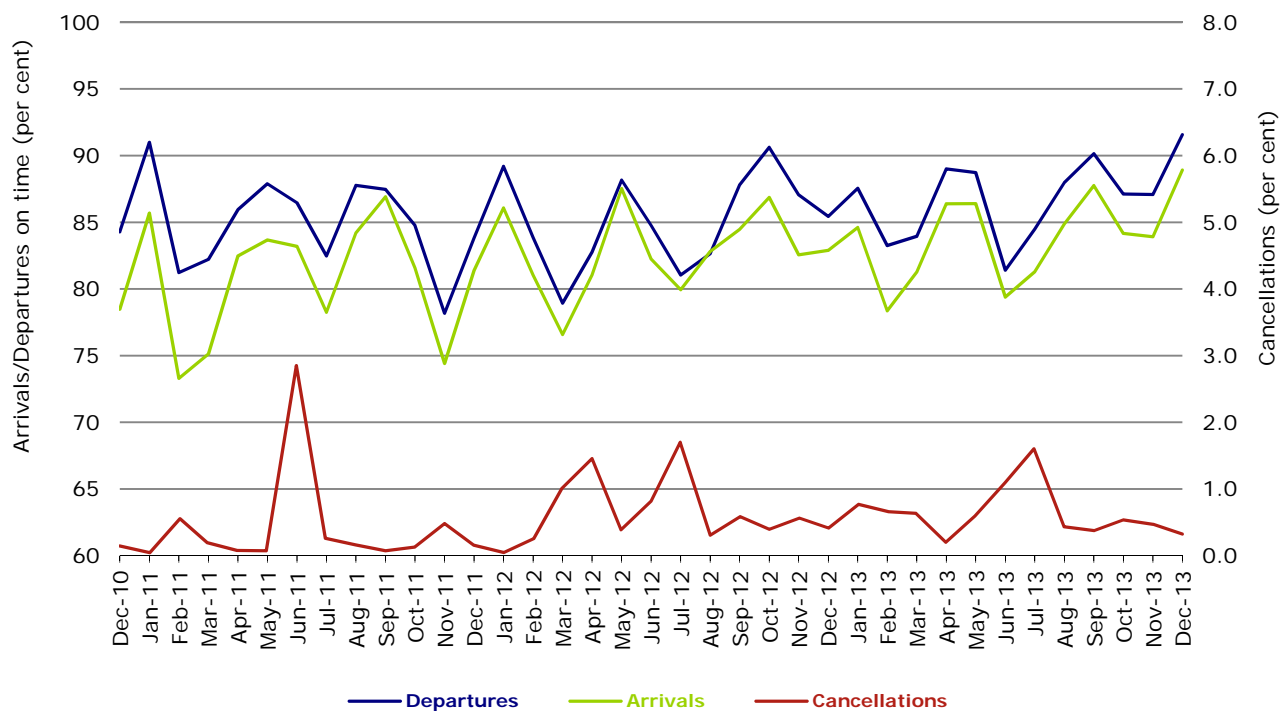
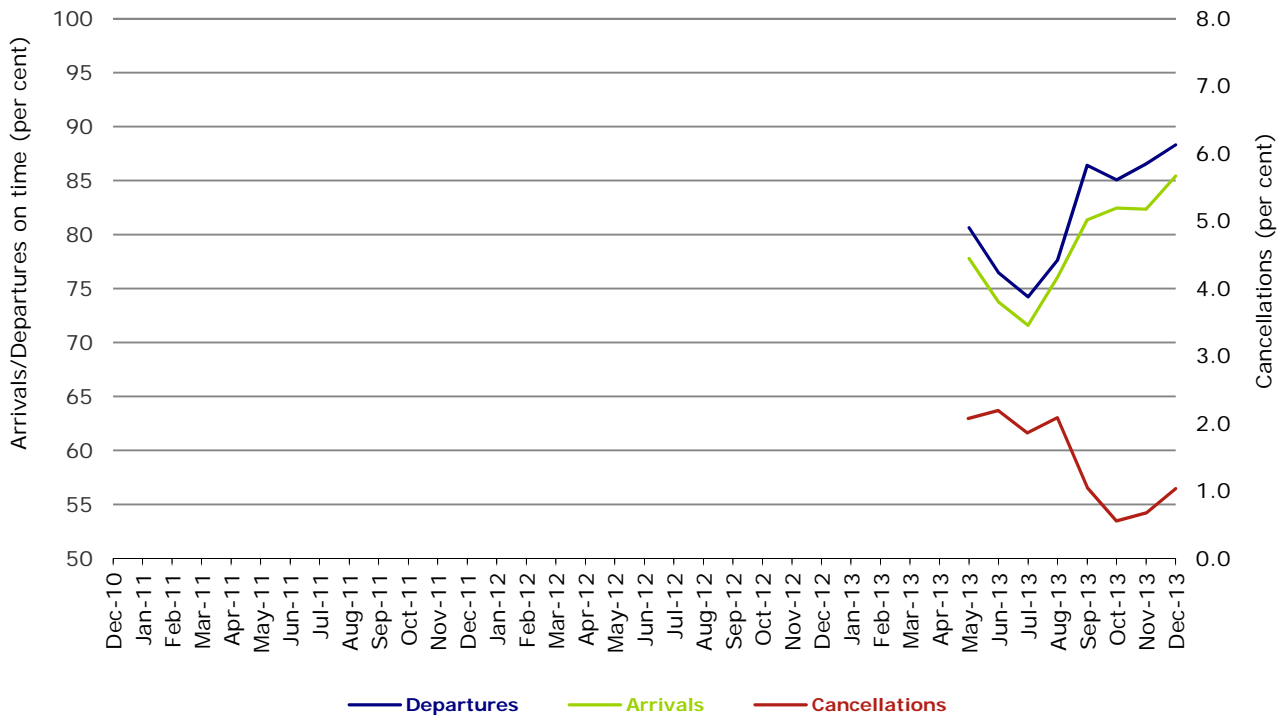


Figure 11 On time performance (by month from December 2010)
Virgin Australia Regional Airlines



Virgin Australia Regional Airlines commenced operations in May 2013. It was formed after the acquisition of Skywest by Virgin Australia and represents a combination of operations previously reported under Skywest and Virgin Australia – ATR/F100 Operations.

Individual routes

On time performance is reported for all routes where the passenger load averages over 8000 passengers per month over the previous six months, and where two or more airlines operate in competition on those routes. There are now 62 routes which meet this definition. Over time, however, routes which meet this definition may change as airline networks and traffic levels vary.

	<i>Sectors</i>		<i>Departures On Time</i>		<i>Arrivals On Time</i>		<i>Cancellations</i>	
	<i>Sched.</i>	<i>Flown</i>	<i>No.</i>	<i>%</i>	<i>No.</i>	<i>%</i>	<i>No.</i>	<i>%</i>
Adelaide-Brisbane								
Jetstar	30	30	27	90.0	27	90.0	0	0.0
Qantas	109	108	95	88.0	97	89.8	1	0.9
Virgin Australia	112	112	95	84.8	98	87.5	0	0.0
All Airlines	251	250	217	86.8	222	88.8	1	0.4
Adelaide-Canberra								
Qantas	40	40	39	97.5	40	100.0	0	0.0
QantasLink	22	22	15	68.2	17	77.3	0	0.0
Virgin Australia	27	27	22	81.5	24	88.9	0	0.0
All Airlines	89	89	76	85.4	81	91.0	0	0.0
Adelaide-Gold Coast								
Jetstar	41	40	31	77.5	35	87.5	1	2.4
Virgin Australia	31	31	29	93.5	30	96.8	0	0.0
All Airlines	72	71	60	84.5	65	91.5	1	1.4
Adelaide-Melbourne								
Jetstar	92	91	76	83.5	75	82.4	1	1.1
Qantas	291	290	245	84.5	252	86.9	1	0.3
QantasLink	18	18	18	100.0	18	100.0	0	0.0
Tigerair	58	57	47	82.5	48	84.2	1	1.7
Virgin Australia	264	260	204	78.5	216	83.1	4	1.5
All Airlines	723	716	590	82.4	609	85.1	7	1.0
Adelaide-Perth								
Jetstar	38	38	26	68.4	24	63.2	0	0.0
Qantas	114	114	97	85.1	97	85.1	0	0.0
Virgin Australia	65	65	59	90.8	52	80.0	0	0.0
All Airlines	217	217	182	83.9	173	79.7	0	0.0
Adelaide-Port Lincoln								
QantasLink	97	92	74	80.4	73	79.3	5	5.2
Regional Express	186	186	181	97.3	180	96.8	0	0.0
All Airlines	283	278	255	91.7	253	91.0	5	1.8
Adelaide-Sydney								
Jetstar	117	108	70	64.8	82	75.9	9	7.7
Qantas	274	274	225	82.1	243	88.7	0	0.0
Virgin Australia	166	164	145	88.4	148	90.2	2	1.2
All Airlines	557	546	440	80.6	473	86.6	11	2.0
Albury-Sydney								
QantasLink	113	113	76	67.3	77	68.1	0	0.0
Regional Express	94	94	84	89.4	84	89.4	0	0.0
Virgin Australia Regional Airlines	62	62	57	91.9	47	75.8	0	0.0
All Airlines	269	269	217	80.7	208	77.3	0	0.0
Alice Springs-Melbourne								
Qantas	31	31	23	74.2	26	83.9	0	0.0
Tigerair	17	17	12	70.6	12	70.6	0	0.0
All Airlines	48	48	35	72.9	38	79.2	0	0.0

	<i>Sectors</i>		<i>Departures On Time</i>		<i>Arrivals On Time</i>		<i>Cancellations</i>	
	<i>Sched.</i>	<i>Flown</i>	<i>No.</i>	<i>%</i>	<i>No.</i>	<i>%</i>	<i>No.</i>	<i>%</i>
Alice Springs-Sydney								
Qantas	31	31	17	54.8	25	80.6	0	0.0
Tigerair	17	17	12	70.6	12	70.6	0	0.0
All Airlines	48	48	29	60.4	37	77.1	0	0.0
Ayers Rock-Sydney								
Jetstar	18	17	14	82.4	13	76.5	1	5.6
Virgin Australia	31	31	26	83.9	28	90.3	0	0.0
All Airlines	49	48	40	83.3	41	85.4	1	2.0
Ballina-Sydney								
Jetstar	82	81	63	77.8	60	74.1	1	1.2
Regional Express	21	21	18	85.7	16	76.2	0	0.0
Virgin Australia	31	31	24	77.4	24	77.4	0	0.0
All Airlines	134	133	105	78.9	100	75.2	1	0.7
Brisbane-Adelaide								
Jetstar	30	30	28	93.3	29	96.7	0	0.0
Qantas	109	109	89	81.7	88	80.7	0	0.0
Virgin Australia	112	111	82	73.9	69	62.2	1	0.9
All Airlines	251	250	199	79.6	186	74.4	1	0.4
Brisbane-Bundaberg								
QantasLink	117	116	90	77.6	91	78.4	1	0.9
Virgin Australia Regional Airlines	31	31	26	83.9	28	90.3	0	0.0
All Airlines	148	147	116	78.9	119	81.0	1	0.7
Brisbane-Cairns								
Jetstar	126	125	99	79.2	107	85.6	1	0.8
Qantas	120	120	100	83.3	103	85.8	0	0.0
QantasLink	4	4	4	100.0	4	100.0	0	0.0
Virgin Australia	151	150	127	84.7	124	82.7	1	0.7
All Airlines	401	399	330	82.7	338	84.7	2	0.5
Brisbane-Canberra								
Qantas	67	67	61	91.0	63	94.0	0	0.0
QantasLink	96	95	75	78.9	69	72.6	1	1.0
Virgin Australia	95	95	75	78.9	71	74.7	0	0.0
All Airlines	258	257	211	82.1	203	79.0	1	0.4
Brisbane-Darwin								
Qantas	35	35	32	91.4	32	91.4	0	0.0
Virgin Australia	32	32	25	78.1	28	87.5	0	0.0
All Airlines	67	67	57	85.1	60	89.6	0	0.0
Brisbane-Emerald								
QantasLink	161	154	133	86.4	113	73.4	7	4.3
Virgin Australia Regional Airlines	96	95	87	91.6	75	78.9	1	1.0
All Airlines	257	249	220	88.4	188	75.5	8	3.1
Brisbane-Gladstone								
QantasLink	208	207	177	85.5	176	85.0	1	0.5
Virgin Australia	2	2	2	100.0	1	50.0	0	0.0
Virgin Australia Regional Airlines	133	131	103	78.6	101	77.1	2	1.5
All Airlines	343	340	282	82.9	278	81.8	3	0.9
Brisbane-Hamilton Island								
Jetstar	18	18	16	88.9	17	94.4	0	0.0
Virgin Australia	31	31	30	96.8	31	100.0	0	0.0
All Airlines	49	49	46	93.9	48	98.0	0	0.0

	<i>Sectors</i>		<i>Departures On Time</i>		<i>Arrivals On Time</i>		<i>Cancellations</i>	
	<i>Sched.</i>	<i>Flown</i>	<i>No.</i>	<i>%</i>	<i>No.</i>	<i>%</i>	<i>No.</i>	<i>%</i>
Brisbane-Mackay								
Jetstar	97	96	71	74.0	82	85.4	1	1.0
QantasLink	109	109	87	79.8	92	84.4	0	0.0
Virgin Australia	147	147	120	81.6	119	81.0	0	0.0
All Airlines	353	352	278	79.0	293	83.2	1	0.3
Brisbane-Melbourne								
Jetstar	126	121	80	66.1	85	70.2	5	4.0
Qantas	436	433	344	79.4	308	71.1	3	0.7
Tigerair	91	91	59	64.8	59	64.8	0	0.0
Virgin Australia	388	381	333	87.4	291	76.4	7	1.8
All Airlines	1 041	1 026	816	79.5	743	72.4	15	1.4
Brisbane-Moranbah								
QantasLink	140	123	109	88.6	115	93.5	17	12.1
Virgin Australia Regional Airlines	70	69	55	79.7	48	69.6	1	1.4
All Airlines	210	192	164	85.4	163	84.9	18	8.6
Brisbane-Mount Isa								
Qantas	57	57	49	86.0	47	82.5	0	0.0
Virgin Australia	20	20	19	95.0	20	100.0	0	0.0
All Airlines	77	77	68	88.3	67	87.0	0	0.0
Brisbane-Newcastle								
Jetstar	122	121	107	88.4	109	90.1	1	0.8
QantasLink	68	65	49	75.4	31	47.7	3	4.4
Virgin Australia	79	79	64	81.0	62	78.5	0	0.0
All Airlines	269	265	220	83.0	202	76.2	4	1.5
Brisbane-Perth								
Jetstar	31	31	25	80.6	19	61.3	0	0.0
Qantas	136	136	106	77.9	103	75.7	0	0.0
Virgin Australia	91	89	61	68.5	52	58.4	2	2.2
All Airlines	258	256	192	75.0	174	68.0	2	0.8
Brisbane-Proserpine								
Jetstar	30	30	22	73.3	25	83.3	0	0.0
Virgin Australia	52	52	48	92.3	49	94.2	0	0.0
All Airlines	82	82	70	85.4	74	90.2	0	0.0
Brisbane-Rockhampton								
QantasLink	215	213	171	80.3	174	81.7	2	0.9
Virgin Australia	91	91	71	78.0	74	81.3	0	0.0
Virgin Australia Regional Airlines	107	105	88	83.8	94	89.5	2	1.9
All Airlines	413	409	330	80.7	342	83.6	4	1.0
Brisbane-Sydney								
Jetstar	158	149	103	69.1	109	73.2	9	5.7
Qantas	616	605	496	82.0	483	79.8	11	1.8
Tigerair	70	68	53	77.9	50	73.5	2	2.9
Virgin Australia	525	516	446	86.4	434	84.1	9	1.7
All Airlines	1 369	1 338	1 098	82.1	1 076	80.4	31	2.3
Brisbane-Townsville								
Jetstar	31	31	26	83.9	24	77.4	0	0.0
Qantas	149	149	120	80.5	120	80.5	0	0.0
Virgin Australia	160	158	127	80.4	128	81.0	2	1.3
All Airlines	340	338	273	80.8	272	80.5	2	0.6

	<i>Sectors</i>		<i>Departures On Time</i>		<i>Arrivals On Time</i>		<i>Cancellations</i>	
	<i>Sched.</i>	<i>Flown</i>	<i>No.</i>	<i>%</i>	<i>No.</i>	<i>%</i>	<i>No.</i>	<i>%</i>
Broome-Perth								
Qantas	32	32	23	71.9	26	81.3	0	0.0
QantasLink	57	54	50	92.6	49	90.7	3	5.3
Virgin Australia	31	30	21	70.0	22	73.3	1	3.2
Virgin Australia Regional Airlines	14	14	10	71.4	10	71.4	0	0.0
All Airlines	134	130	104	80.0	107	82.3	4	3.0
Bundaberg-Brisbane								
QantasLink	117	117	94	80.3	83	70.9	0	0.0
Virgin Australia Regional Airlines	31	31	27	87.1	26	83.9	0	0.0
All Airlines	148	148	121	81.8	109	73.6	0	0.0
Cairns-Brisbane								
Jetstar	124	123	112	91.1	102	82.9	1	0.8
Qantas	119	119	107	89.9	107	89.9	0	0.0
QantasLink	5	5	5	100.0	5	100.0	0	0.0
Virgin Australia	151	149	134	89.9	127	85.2	2	1.3
All Airlines	399	396	358	90.4	341	86.1	3	0.8
Cairns-Melbourne								
Jetstar	88	88	66	75.0	64	72.7	0	0.0
Qantas	31	31	26	83.9	27	87.1	0	0.0
Tigerair	37	37	34	91.9	30	81.1	0	0.0
Virgin Australia	34	34	29	85.3	26	76.5	0	0.0
All Airlines	190	190	155	81.6	147	77.4	0	0.0
Cairns-Sydney								
Jetstar	79	78	70	89.7	62	79.5	1	1.3
Qantas	63	63	53	84.1	58	92.1	0	0.0
Tigerair	31	31	30	96.8	29	93.5	0	0.0
Virgin Australia	90	89	81	91.0	84	94.4	1	1.1
All Airlines	263	261	234	89.7	233	89.3	2	0.8
Cairns-Townsville								
QantasLink	169	165	157	95.2	154	93.3	4	2.4
Virgin Australia Regional Airlines	27	27	27	100.0	27	100.0	0	0.0
All Airlines	196	192	184	95.8	181	94.3	4	2.0
Canberra-Adelaide								
Qantas	40	40	32	80.0	33	82.5	0	0.0
QantasLink	22	22	19	86.4	18	81.8	0	0.0
Virgin Australia	27	27	22	81.5	21	77.8	0	0.0
All Airlines	89	89	73	82.0	72	80.9	0	0.0
Canberra-Brisbane								
Qantas	67	67	60	89.6	62	92.5	0	0.0
QantasLink	96	95	62	65.3	74	77.9	1	1.0
Virgin Australia	96	96	81	84.4	83	86.5	0	0.0
All Airlines	259	258	203	78.7	219	84.9	1	0.4
Canberra-Melbourne								
Qantas	201	199	172	86.4	170	85.4	2	1.0
QantasLink	68	67	51	76.1	46	68.7	1	1.5
Virgin Australia	168	166	137	82.5	133	80.1	2	1.2
All Airlines	437	432	360	83.3	349	80.8	5	1.1
Canberra-Sydney								
Qantas	110	101	84	83.2	91	90.1	9	8.2
QantasLink	399	384	335	87.2	340	88.5	15	3.8
Virgin Australia	44	42	40	95.2	39	92.9	2	4.5
Virgin Australia Regional Airlines	227	226	216	95.6	210	92.9	1	0.4
All Airlines	780	753	675	89.6	680	90.3	27	3.5

	<i>Sectors</i>		<i>Departures On Time</i>		<i>Arrivals On Time</i>		<i>Cancellations</i>	
	<i>Sched.</i>	<i>Flown</i>	<i>No.</i>	<i>%</i>	<i>No.</i>	<i>%</i>	<i>No.</i>	<i>%</i>
Coffs Harbour-Sydney								
QantasLink	152	150	120	80.0	126	84.0	2	1.3
Tigerair	31	30	26	86.7	25	83.3	1	3.2
Virgin Australia	62	62	53	85.5	55	88.7	0	0.0
All Airlines	245	242	199	82.2	206	85.1	3	1.2
Darwin-Brisbane								
Qantas	35	35	26	74.3	27	77.1	0	0.0
Virgin Australia	32	32	25	78.1	27	84.4	0	0.0
All Airlines	67	67	51	76.1	54	80.6	0	0.0
Darwin-Melbourne								
Jetstar	30	30	21	70.0	28	93.3	0	0.0
Qantas	25	25	21	84.0	23	92.0	0	0.0
Virgin Australia	31	31	28	90.3	29	93.5	0	0.0
All Airlines	86	86	70	81.4	80	93.0	0	0.0
Darwin-Perth								
Qantas	30	30	27	90.0	28	93.3	0	0.0
Virgin Australia	27	27	26	96.3	26	96.3	0	0.0
All Airlines	57	57	53	93.0	54	94.7	0	0.0
Darwin-Sydney								
Jetstar	25	25	12	48.0	16	64.0	0	0.0
Qantas	53	53	48	90.6	49	92.5	0	0.0
Virgin Australia	31	31	26	83.9	19	61.3	0	0.0
All Airlines	109	109	86	78.9	84	77.1	0	0.0
Dubbo-Sydney								
QantasLink	114	113	86	76.1	76	67.3	1	0.9
Regional Express	121	120	114	95.0	109	90.8	1	0.8
All Airlines	235	233	200	85.8	185	79.4	2	0.9
Emerald-Brisbane								
QantasLink	161	153	107	69.9	105	68.6	8	5.0
Virgin Australia Regional Airlines	96	95	81	85.3	83	87.4	1	1.0
All Airlines	257	248	188	75.8	188	75.8	9	3.5
Geraldton-Perth								
QantasLink	61	60	58	96.7	59	98.3	1	1.6
Virgin Australia Regional Airlines	94	92	85	92.4	88	95.7	2	2.1
All Airlines	155	152	143	94.1	147	96.7	3	1.9
Gladstone-Brisbane								
QantasLink	230	228	184	80.7	177	77.6	2	0.9
Virgin Australia	2	2	2	100.0	2	100.0	0	0.0
Virgin Australia Regional Airlines	132	130	103	79.2	96	73.8	2	1.5
All Airlines	364	360	289	80.3	275	76.4	4	1.1
Gold Coast-Adelaide								
Jetstar	42	41	36	87.8	34	82.9	1	2.4
Virgin Australia	31	31	30	96.8	28	90.3	0	0.0
All Airlines	73	72	66	91.7	62	86.1	1	1.4
Gold Coast-Melbourne								
Jetstar	246	240	191	79.6	176	73.3	6	2.4
Tigerair	80	80	45	56.3	42	52.5	0	0.0
Virgin Australia	175	175	145	82.9	141	80.6	0	0.0
All Airlines	501	495	381	77.0	359	72.5	6	1.2

	<i>Sectors</i>		<i>Departures On Time</i>		<i>Arrivals On Time</i>		<i>Cancellations</i>	
	<i>Sched.</i>	<i>Flown</i>	<i>No.</i>	<i>%</i>	<i>No.</i>	<i>%</i>	<i>No.</i>	<i>%</i>
Gold Coast-Sydney								
Jetstar	394	368	293	79.6	302	82.1	26	6.6
Qantas	93	93	81	87.1	83	89.2	0	0.0
Tigerair	62	61	43	70.5	39	63.9	1	1.6
Virgin Australia	315	305	257	84.3	262	85.9	10	3.2
All Airlines	864	827	674	81.5	686	83.0	37	4.3
Hamilton Island-Brisbane								
Jetstar	18	18	17	94.4	17	94.4	0	0.0
Virgin Australia	31	31	29	93.5	28	90.3	0	0.0
All Airlines	49	49	46	93.9	45	91.8	0	0.0
Hamilton Island-Sydney								
Jetstar	31	31	23	74.2	23	74.2	0	0.0
Virgin Australia	31	31	27	87.1	27	87.1	0	0.0
All Airlines	62	62	50	80.6	50	80.6	0	0.0
Hobart-Melbourne								
Jetstar	202	201	132	65.7	132	65.7	1	0.5
Qantas	62	62	53	85.5	54	87.1	0	0.0
QantasLink	31	31	27	87.1	23	74.2	0	0.0
Tigerair	38	38	30	78.9	25	65.8	0	0.0
Virgin Australia	151	149	118	79.2	123	82.6	2	1.3
All Airlines	484	481	360	74.8	357	74.2	3	0.6
Hobart-Sydney								
Jetstar	117	116	69	59.5	86	74.1	1	0.9
Qantas	31	31	28	90.3	30	96.8	0	0.0
Virgin Australia	60	59	50	84.7	54	91.5	1	1.7
All Airlines	208	206	147	71.4	170	82.5	2	1.0
Kalgoorlie-Perth								
Qantas	61	61	58	95.1	59	96.7	0	0.0
QantasLink	29	29	27	93.1	27	93.1	0	0.0
Virgin Australia	44	44	41	93.2	38	86.4	0	0.0
Virgin Australia Regional Airlines	14	13	10	76.9	11	84.6	1	7.1
All Airlines	148	147	136	92.5	135	91.8	1	0.7
Karratha-Perth								
Qantas	189	160	154	96.3	157	98.1	29	15.3
QantasLink	57	53	51	96.2	51	96.2	4	7.0
Virgin Australia	93	86	72	83.7	73	84.9	7	7.5
All Airlines	339	299	277	92.6	281	94.0	40	11.8
Launceston-Melbourne								
Jetstar	162	160	113	70.6	110	68.8	2	1.2
QantasLink	124	122	92	75.4	90	73.8	2	1.6
Virgin Australia	122	121	103	85.1	96	79.3	1	0.8
All Airlines	408	403	308	76.4	296	73.4	5	1.2
Launceston-Sydney								
Jetstar	87	87	57	65.5	64	73.6	0	0.0
Virgin Australia	31	31	28	90.3	28	90.3	0	0.0
All Airlines	118	118	85	72.0	92	78.0	0	0.0
Mackay-Brisbane								
Jetstar	97	96	69	71.9	69	71.9	1	1.0
QantasLink	108	108	88	81.5	84	77.8	0	0.0
Virgin Australia	147	147	128	87.1	128	87.1	0	0.0
All Airlines	352	351	285	81.2	281	80.1	1	0.3

	<i>Sectors</i>		<i>Departures On Time</i>		<i>Arrivals On Time</i>		<i>Cancellations</i>	
	<i>Sched.</i>	<i>Flown</i>	<i>No.</i>	<i>%</i>	<i>No.</i>	<i>%</i>	<i>No.</i>	<i>%</i>
Melbourne-Adelaide								
Jetstar	91	91	77	84.6	76	83.5	0	0.0
Qantas	291	291	244	83.8	242	83.2	0	0.0
QantasLink	18	18	14	77.8	13	72.2	0	0.0
Tigerair	58	57	49	86.0	48	84.2	1	1.7
Virgin Australia	265	261	223	85.4	202	77.4	4	1.5
All Airlines	723	718	607	84.5	581	80.9	5	0.7
Melbourne-Alice Springs								
Qantas	31	31	26	83.9	25	80.6	0	0.0
Tigerair	17	17	14	82.4	14	82.4	0	0.0
All Airlines	48	48	40	83.3	39	81.3	0	0.0
Melbourne-Brisbane								
Jetstar	125	120	68	56.7	83	69.2	5	4.0
Qantas	436	431	343	79.6	338	78.4	5	1.1
Tigerair	91	91	65	71.4	63	69.2	0	0.0
Virgin Australia	389	383	308	80.4	285	74.4	6	1.5
All Airlines	1 041	1 025	784	76.5	769	75.0	16	1.5
Melbourne-Cairns								
Jetstar	89	89	65	73.0	71	79.8	0	0.0
Qantas	31	31	28	90.3	25	80.6	0	0.0
Tigerair	38	38	35	92.1	37	97.4	0	0.0
Virgin Australia	34	34	31	91.2	31	91.2	0	0.0
All Airlines	192	192	159	82.8	164	85.4	0	0.0
Melbourne-Canberra								
Qantas	201	197	170	86.3	169	85.8	4	2.0
QantasLink	68	65	56	86.2	52	80.0	3	4.4
Virgin Australia	168	165	128	77.6	132	80.0	3	1.8
All Airlines	437	427	354	82.9	353	82.7	10	2.3
Melbourne-Darwin								
Jetstar	31	31	26	83.9	26	83.9	0	0.0
Qantas	25	25	24	96.0	23	92.0	0	0.0
Virgin Australia	31	31	27	87.1	26	83.9	0	0.0
All Airlines	87	87	77	88.5	75	86.2	0	0.0
Melbourne-Gold Coast								
Jetstar	245	240	164	68.3	182	75.8	5	2.0
Tigerair	80	80	59	73.8	52	65.0	0	0.0
Virgin Australia	175	174	145	83.3	142	81.6	1	0.6
All Airlines	500	494	368	74.5	376	76.1	6	1.2
Melbourne-Hobart								
Jetstar	202	201	138	68.7	150	74.6	1	0.5
Qantas	62	62	56	90.3	54	87.1	0	0.0
QantasLink	31	31	19	61.3	21	67.7	0	0.0
Tigerair	38	38	29	76.3	31	81.6	0	0.0
Virgin Australia	151	149	121	81.2	125	83.9	2	1.3
All Airlines	484	481	363	75.5	381	79.2	3	0.6
Melbourne-Launceston								
Jetstar	160	158	107	67.7	116	73.4	2	1.3
QantasLink	124	122	83	68.0	81	66.4	2	1.6
Virgin Australia	122	121	101	83.5	104	86.0	1	0.8
All Airlines	406	401	291	72.6	301	75.1	5	1.2
Melbourne-Mildura								
QantasLink	89	89	67	75.3	64	71.9	0	0.0
Regional Express	73	73	68	93.2	66	90.4	0	0.0
Virgin Australia	31	31	29	93.5	27	87.1	0	0.0
All Airlines	193	193	164	85.0	157	81.3	0	0.0

	<i>Sectors</i>		<i>Departures On Time</i>		<i>Arrivals On Time</i>		<i>Cancellations</i>	
	<i>Sched.</i>	<i>Flown</i>	<i>No.</i>	<i>%</i>	<i>No.</i>	<i>%</i>	<i>No.</i>	<i>%</i>
Melbourne-Newcastle								
Jetstar	108	106	82	77.4	83	78.3	2	1.9
Virgin Australia	31	31	24	77.4	26	83.9	0	0.0
All Airlines	139	137	106	77.4	109	79.6	2	1.4
Melbourne-Perth								
Jetstar	78	69	54	78.3	53	76.8	9	11.5
Qantas	229	228	172	75.4	156	68.4	1	0.4
Tigerair	62	62	52	83.9	51	82.3	0	0.0
Virgin Australia	138	138	117	84.8	107	77.5	0	0.0
All Airlines	507	497	395	79.5	367	73.8	10	2.0
Melbourne-Sunshine Coast								
Jetstar	75	73	62	84.9	63	86.3	2	2.7
Tigerair	33	33	28	84.8	26	78.8	0	0.0
Virgin Australia	31	31	29	93.5	28	90.3	0	0.0
All Airlines	139	137	119	86.9	117	85.4	2	1.4
Melbourne-Sydney								
Jetstar	348	332	244	73.5	262	78.9	16	4.6
Qantas	855	835	721	86.3	732	87.7	20	2.3
Tigerair	205	202	167	82.7	177	87.6	3	1.5
Virgin Australia	726	705	596	84.5	596	84.5	21	2.9
All Airlines	2 134	2 074	1 728	83.3	1 767	85.2	60	2.8
Mildura-Melbourne								
QantasLink	89	89	74	83.1	71	79.8	0	0.0
Regional Express	74	74	69	93.2	67	90.5	0	0.0
Virgin Australia	31	31	26	83.9	25	80.6	0	0.0
All Airlines	194	194	169	87.1	163	84.0	0	0.0
Moranbah-Brisbane								
QantasLink	131	116	97	83.6	96	82.8	15	11.5
Virgin Australia Regional Airlines	70	69	55	79.7	42	60.9	1	1.4
All Airlines	201	185	152	82.2	138	74.6	16	8.0
Mount Isa-Brisbane								
Qantas	57	57	48	84.2	51	89.5	0	0.0
Virgin Australia	20	20	17	85.0	16	80.0	0	0.0
All Airlines	77	77	65	84.4	67	87.0	0	0.0
Newcastle-Brisbane								
Jetstar	120	120	95	79.2	95	79.2	0	0.0
QantasLink	67	64	29	45.3	26	40.6	3	4.5
Virgin Australia	79	78	59	75.6	55	70.5	1	1.3
All Airlines	266	262	183	69.8	176	67.2	4	1.5
Newcastle-Melbourne								
Jetstar	107	106	77	72.6	75	70.8	1	0.9
Virgin Australia	31	31	15	48.4	16	51.6	0	0.0
All Airlines	138	137	92	67.2	91	66.4	1	0.7
Newman-Perth								
Qantas	132	124	118	95.2	116	93.5	8	6.1
QantasLink	28	26	24	92.3	24	92.3	2	7.1
Virgin Australia	40	39	36	92.3	34	87.2	1	2.5
Virgin Australia Regional Airlines	10	8	8	100.0	8	100.0	2	20.0
All Airlines	210	197	186	94.4	182	92.4	13	6.2
Perth-Adelaide								
Jetstar	39	39	33	84.6	33	84.6	0	0.0
Qantas	116	116	106	91.4	109	94.0	0	0.0
Virgin Australia	64	64	62	96.9	62	96.9	0	0.0
All Airlines	219	219	201	91.8	204	93.2	0	0.0

	<i>Sectors</i>		<i>Departures On Time</i>		<i>Arrivals On Time</i>		<i>Cancellations</i>	
	<i>Sched.</i>	<i>Flown</i>	<i>No.</i>	<i>%</i>	<i>No.</i>	<i>%</i>	<i>No.</i>	<i>%</i>
Perth-Brisbane								
Jetstar	30	30	16	53.3	17	56.7	0	0.0
Qantas	136	136	115	84.6	120	88.2	0	0.0
Virgin Australia	91	91	79	86.8	77	84.6	0	0.0
All Airlines	257	257	210	81.7	214	83.3	0	0.0
Perth-Broome								
Qantas	32	32	31	96.9	30	93.8	0	0.0
QantasLink	57	54	52	96.3	52	96.3	3	5.3
Virgin Australia	31	31	30	96.8	30	96.8	0	0.0
Virgin Australia Regional Airlines	13	13	12	92.3	12	92.3	0	0.0
All Airlines	133	130	125	96.2	124	95.4	3	2.3
Perth-Darwin								
Qantas	30	30	28	93.3	28	93.3	0	0.0
Virgin Australia	27	27	25	92.6	25	92.6	0	0.0
All Airlines	57	57	53	93.0	53	93.0	0	0.0
Perth-Geraldton								
QantasLink	61	61	58	95.1	56	91.8	0	0.0
Virgin Australia Regional Airlines	91	89	83	93.3	80	89.9	2	2.2
All Airlines	152	150	141	94.0	136	90.7	2	1.3
Perth-Kalgoorlie								
Qantas	61	61	57	93.4	56	91.8	0	0.0
QantasLink	28	28	27	96.4	27	96.4	0	0.0
Virgin Australia	44	44	39	88.6	39	88.6	0	0.0
Virgin Australia Regional Airlines	13	13	12	92.3	12	92.3	0	0.0
All Airlines	146	146	135	92.5	134	91.8	0	0.0
Perth-Karratha								
Qantas	189	161	153	95.0	156	96.9	28	14.8
QantasLink	57	53	51	96.2	51	96.2	4	7.0
Virgin Australia	93	86	77	89.5	76	88.4	7	7.5
All Airlines	339	300	281	93.7	283	94.3	39	11.5
Perth-Melbourne								
Jetstar	79	70	45	64.3	49	70.0	9	11.4
Qantas	228	227	174	76.7	185	81.5	1	0.4
Tigerair	61	61	48	78.7	46	75.4	0	0.0
Virgin Australia	139	139	120	86.3	122	87.8	0	0.0
All Airlines	507	497	387	77.9	402	80.9	10	2.0
Perth-Newman								
Qantas	132	125	120	96.0	119	95.2	7	5.3
QantasLink	28	26	23	88.5	24	92.3	2	7.1
Virgin Australia	40	39	37	94.9	36	92.3	1	2.5
Virgin Australia Regional Airlines	10	8	8	100.0	8	100.0	2	20.0
All Airlines	210	198	188	94.9	187	94.4	12	5.7
Perth-Port Hedland								
Qantas	122	113	110	97.3	111	98.2	9	7.4
QantasLink	37	35	32	91.4	32	91.4	2	5.4
Virgin Australia	51	48	44	91.7	43	89.6	3	5.9
All Airlines	210	196	186	94.9	186	94.9	14	6.7
Perth-Sydney								
Jetstar	49	47	38	80.9	43	91.5	2	4.1
Qantas	204	204	173	84.8	186	91.2	0	0.0
Tigerair	10	10	8	80.0	10	100.0	0	0.0
Virgin Australia	114	114	96	84.2	106	93.0	0	0.0
All Airlines	377	375	315	84.0	345	92.0	2	0.5

	<i>Sectors</i>		<i>Departures On Time</i>		<i>Arrivals On Time</i>		<i>Cancellations</i>	
	<i>Sched.</i>	<i>Flown</i>	<i>No.</i>	<i>%</i>	<i>No.</i>	<i>%</i>	<i>No.</i>	<i>%</i>
Port Hedland-Perth								
Qantas	122	113	108	95.6	109	96.5	9	7.4
QantasLink	37	35	33	94.3	33	94.3	2	5.4
Virgin Australia	51	48	44	91.7	44	91.7	3	5.9
All Airlines	210	196	185	94.4	186	94.9	14	6.7
Port Lincoln-Adelaide								
QantasLink	95	93	75	80.6	76	81.7	2	2.1
Regional Express	187	187	180	96.3	179	95.7	0	0.0
All Airlines	282	280	255	91.1	255	91.1	2	0.7
Port Macquarie-Sydney								
QantasLink	136	136	95	69.9	76	55.9	0	0.0
Virgin Australia Regional Airlines	63	62	50	80.6	49	79.0	1	1.6
All Airlines	199	198	145	73.2	125	63.1	1	0.5
Proserpine-Brisbane								
Jetstar	31	31	26	83.9	25	80.6	0	0.0
Virgin Australia	52	52	47	90.4	39	75.0	0	0.0
All Airlines	83	83	73	88.0	64	77.1	0	0.0
Rockhampton-Brisbane								
QantasLink	193	191	145	75.9	136	71.2	2	1.0
Virgin Australia	91	91	73	80.2	66	72.5	0	0.0
Virgin Australia Regional Airlines	107	104	94	90.4	89	85.6	3	2.8
All Airlines	391	386	312	80.8	291	75.4	5	1.3
Sunshine Coast-Melbourne								
Jetstar	76	74	61	82.4	57	77.0	2	2.6
Tigerair	33	33	27	81.8	24	72.7	0	0.0
Virgin Australia	31	31	20	64.5	14	45.2	0	0.0
All Airlines	140	138	108	78.3	95	68.8	2	1.4
Sunshine Coast-Sydney								
Jetstar	122	119	91	76.5	94	79.0	3	2.5
Virgin Australia	36	35	26	74.3	25	71.4	1	2.8
All Airlines	158	154	117	76.0	119	77.3	4	2.5
Sydney-Adelaide								
Jetstar	116	109	84	77.1	83	76.1	7	6.0
Qantas	271	271	232	85.6	219	80.8	0	0.0
Virgin Australia	166	165	139	84.2	143	86.7	1	0.6
All Airlines	553	545	455	83.5	445	81.7	8	1.4
Sydney-Albury								
QantasLink	113	113	81	71.7	66	58.4	0	0.0
Regional Express	94	94	78	83.0	79	84.0	0	0.0
Virgin Australia Regional Airlines	62	62	60	96.8	59	95.2	0	0.0
All Airlines	269	269	219	81.4	204	75.8	0	0.0
Sydney-Alice Springs								
Qantas	31	31	27	87.1	29	93.5	0	0.0
Tigerair	17	17	15	88.2	12	70.6	0	0.0
All Airlines	48	48	42	87.5	41	85.4	0	0.0
Sydney-Ayers Rock								
Jetstar	16	16	15	93.8	15	93.8	0	0.0
Virgin Australia	31	31	27	87.1	21	67.7	0	0.0
All Airlines	47	47	42	89.4	36	76.6	0	0.0

	<i>Sectors</i>		<i>Departures On Time</i>		<i>Arrivals On Time</i>		<i>Cancellations</i>	
	<i>Sched.</i>	<i>Flown</i>	<i>No.</i>	<i>%</i>	<i>No.</i>	<i>%</i>	<i>No.</i>	<i>%</i>
Sydney-Ballina								
Jetstar	81	80	67	83.8	69	86.3	1	1.2
Regional Express	26	26	23	88.5	23	88.5	0	0.0
Virgin Australia	31	31	27	87.1	27	87.1	0	0.0
All Airlines	138	137	117	85.4	119	86.9	1	0.7
Sydney-Brisbane								
Jetstar	158	151	106	70.2	110	72.8	7	4.4
Qantas	587	581	484	83.3	468	80.6	6	1.0
Tigerair	70	70	61	87.1	55	78.6	0	0.0
Virgin Australia	525	513	443	86.4	424	82.7	12	2.3
All Airlines	1 340	1 315	1 094	83.2	1 057	80.4	25	1.9
Sydney-Cairns								
Jetstar	80	79	49	62.0	60	75.9	1	1.3
Qantas	63	63	50	79.4	58	92.1	0	0.0
Tigerair	31	31	30	96.8	30	96.8	0	0.0
Virgin Australia	91	91	77	84.6	80	87.9	0	0.0
All Airlines	265	264	206	78.0	228	86.4	1	0.4
Sydney-Canberra								
Qantas	112	103	91	88.3	88	85.4	9	8.0
QantasLink	398	387	331	85.5	332	85.8	11	2.8
Virgin Australia	43	41	40	97.6	40	97.6	2	4.7
Virgin Australia Regional Airlines	229	228	212	93.0	212	93.0	1	0.4
All Airlines	782	759	674	88.8	672	88.5	23	2.9
Sydney-Coffs Harbour								
QantasLink	152	151	127	84.1	119	78.8	1	0.7
Tigerair	31	30	25	83.3	25	83.3	1	3.2
Virgin Australia	62	62	54	87.1	56	90.3	0	0.0
All Airlines	245	243	206	84.8	200	82.3	2	0.8
Sydney-Darwin								
Jetstar	27	27	22	81.5	25	92.6	0	0.0
Qantas	53	53	47	88.7	46	86.8	0	0.0
Virgin Australia	31	31	27	87.1	28	90.3	0	0.0
All Airlines	111	111	96	86.5	99	89.2	0	0.0
Sydney-Dubbo								
QantasLink	115	114	93	81.6	82	71.9	1	0.9
Regional Express	118	118	110	93.2	109	92.4	0	0.0
All Airlines	233	232	203	87.5	191	82.3	1	0.4
Sydney-Gold Coast								
Jetstar	392	366	291	79.5	296	80.9	26	6.6
Qantas	93	93	90	96.8	87	93.5	0	0.0
Tigerair	62	62	42	67.7	44	71.0	0	0.0
Virgin Australia	315	307	264	86.0	263	85.7	8	2.5
All Airlines	862	828	687	83.0	690	83.3	34	3.9
Sydney-Hamilton Island								
Jetstar	30	30	21	70.0	27	90.0	0	0.0
Virgin Australia	31	31	29	93.5	28	90.3	0	0.0
All Airlines	61	61	50	82.0	55	90.2	0	0.0
Sydney-Hobart								
Jetstar	116	115	80	69.6	83	72.2	1	0.9
Qantas	31	31	30	96.8	29	93.5	0	0.0
Virgin Australia	60	59	56	94.9	55	93.2	1	1.7
All Airlines	207	205	166	81.0	167	81.5	2	1.0

	<i>Sectors</i>		<i>Departures On Time</i>		<i>Arrivals On Time</i>		<i>Cancellations</i>	
	<i>Sched.</i>	<i>Flown</i>	<i>No.</i>	<i>%</i>	<i>No.</i>	<i>%</i>	<i>No.</i>	<i>%</i>
Sydney-Launceston								
Jetstar	87	87	64	73.6	66	75.9	0	0.0
Virgin Australia	31	31	29	93.5	29	93.5	0	0.0
All Airlines	118	118	93	78.8	95	80.5	0	0.0
Sydney-Melbourne								
Jetstar	350	334	270	80.8	267	79.9	16	4.6
Qantas	854	828	732	88.4	710	85.7	26	3.0
Tigerair	204	200	179	89.5	156	78.0	4	2.0
Virgin Australia	725	701	600	85.6	576	82.2	24	3.3
All Airlines	2 133	2 063	1 781	86.3	1 709	82.8	70	3.3
Sydney-Perth								
Jetstar	48	47	38	80.9	37	78.7	1	2.1
Qantas	209	209	169	80.9	164	78.5	0	0.0
Tigerair	10	10	7	70.0	7	70.0	0	0.0
Virgin Australia	114	114	93	81.6	81	71.1	0	0.0
All Airlines	381	380	307	80.8	289	76.1	1	0.3
Sydney-Port Macquarie								
QantasLink	135	135	115	85.2	93	68.9	0	0.0
Virgin Australia Regional Airlines	63	62	56	90.3	57	91.9	1	1.6
All Airlines	198	197	171	86.8	150	76.1	1	0.5
Sydney-Sunshine Coast								
Jetstar	123	121	96	79.3	100	82.6	2	1.6
Virgin Australia	36	35	29	82.9	29	82.9	1	2.8
All Airlines	159	156	125	80.1	129	82.7	3	1.9
Sydney-Townsville								
Jetstar	30	30	24	80.0	25	83.3	0	0.0
Virgin Australia	31	31	30	96.8	26	83.9	0	0.0
All Airlines	61	61	54	88.5	51	83.6	0	0.0
Sydney-Wagga Wagga								
QantasLink	114	114	92	80.7	75	65.8	0	0.0
Regional Express	107	107	101	94.4	101	94.4	0	0.0
All Airlines	221	221	193	87.3	176	79.6	0	0.0
Townsville-Brisbane								
Jetstar	31	30	23	76.7	22	73.3	1	3.2
Qantas	149	149	125	83.9	126	84.6	0	0.0
Virgin Australia	160	158	122	77.2	112	70.9	2	1.3
All Airlines	340	337	270	80.1	260	77.2	3	0.9
Townsville-Cairns								
QantasLink	168	164	142	86.6	145	88.4	4	2.4
Virgin Australia Regional Airlines	27	27	26	96.3	27	100.0	0	0.0
All Airlines	195	191	168	88.0	172	90.1	4	2.1
Townsville-Sydney								
Jetstar	31	31	27	87.1	25	80.6	0	0.0
Virgin Australia	31	31	18	58.1	20	64.5	0	0.0
All Airlines	62	62	45	72.6	45	72.6	0	0.0
Wagga Wagga-Sydney								
QantasLink	113	113	75	66.4	72	63.7	0	0.0
Regional Express	107	107	99	92.5	97	90.7	0	0.0
All Airlines	220	220	174	79.1	169	76.8	0	0.0

Airports

On time performance is reported for all routes where the passenger load averages over 8000 passengers per month, and where two or more airlines operate in competition. The following data reports by airport against flights operated on those routes only.

Airport	Departures			Arrivals		
	Sectors	On Time		Sectors	On Time	
	Flown	No.	%	Flown	No.	%
Adelaide						
Jetstar	307	230	74.9	310	255	82.3
Qantas	826	701	84.9	827	691	83.6
QantasLink	132	107	81.1	133	107	80.5
Regional Express	186	181	97.3	187	179	95.7
Tigerair	57	47	82.5	57	48	84.2
Virgin Australia	659	554	84.1	659	525	79.7
All Airlines	2 167	1 820	84.0	2 173	1 805	83.1
Relates to services to and from Brisbane, Canberra, Gold Coast, Melbourne, Perth, Port Lincoln and Sydney.						
Albury						
QantasLink	113	76	67.3	113	66	58.4
Regional Express	94	84	89.4	94	79	84.0
Virgin Australia Regional Airlines	62	57	91.9	62	59	95.2
All Airlines	269	217	80.7	269	204	75.8
Relates to services to and from Sydney only.						
Alice Springs						
Qantas	62	40	64.5	62	54	87.1
Tigerair	34	24	70.6	34	26	76.5
All Airlines	96	64	66.7	96	80	83.3
Relates to services to and from Melbourne and Sydney.						
Ayers Rock						
Jetstar	17	14	82.4	16	15	93.8
Virgin Australia	31	26	83.9	31	21	67.7
All Airlines	48	40	83.3	47	36	76.6
Relates to services to and from Sydney only.						
Ballina						
Jetstar	81	63	77.8	80	69	86.3
Regional Express	21	18	85.7	26	23	88.5
Virgin Australia	31	24	77.4	31	27	87.1
All Airlines	133	105	78.9	137	119	86.9
Relates to services to and from Sydney only.						
Brisbane						
Jetstar	752	577	76.7	749	567	75.7
Qantas	1 711	1 397	81.6	1 683	1 396	82.9
QantasLink	1 086	895	82.4	1 077	786	73.0
Tigerair	159	112	70.4	161	118	73.3
Virgin Australia	1 954	1 630	83.4	1 955	1 567	80.2
Virgin Australia Regional Airlines	431	359	83.3	429	336	78.3
All Airlines	6 093	4 970	81.6	6 054	4 770	78.8
Relates to services to and from Adelaide, Bundaberg, Cairns, Canberra, Darwin, Emerald, Gladstone, Hamilton Island, Mackay, Melbourne, Moranbah, Mount Isa, Newcastle, Perth, Proserpine, Rockhampton, Sydney and Townsville.						

Airport	Departures			Arrivals		
	Sectors Flown	On Time		Sectors Flown	On Time	
		No.	%		No.	%
Broome						
Qantas	32	23	71.9	32	30	93.8
QantasLink	54	50	92.6	54	52	96.3
Virgin Australia	30	21	70.0	31	30	96.8
Virgin Australia Regional Airlines	14	10	71.4	13	12	92.3
All Airlines	130	104	80.0	130	124	95.4
Relates to services to and from Perth only.						
Bundaberg						
QantasLink	117	94	80.3	116	91	78.4
Virgin Australia Regional Airlines	31	27	87.1	31	28	90.3
All Airlines	148	121	81.8	147	119	81.0
Relates to services to and from Brisbane only.						
Cairns						
Jetstar	289	248	85.8	293	238	81.2
Qantas	213	186	87.3	214	186	86.9
QantasLink	170	162	95.3	168	149	88.7
Tigerair	68	64	94.1	69	67	97.1
Virgin Australia	272	244	89.7	275	235	85.5
Virgin Australia Regional Airlines	27	27	100.0	27	27	100.0
All Airlines	1 039	931	89.6	1 046	902	86.2
Relates to services to and from Brisbane, Melbourne, Sydney and Townsville.						
Canberra						
Qantas	407	348	85.5	407	360	88.5
QantasLink	568	467	82.2	569	470	82.6
Virgin Australia	331	280	84.6	328	267	81.4
Virgin Australia Regional Airlines	226	216	95.6	228	212	93.0
All Airlines	1 532	1 311	85.6	1 532	1 309	85.4
Relates to services to and from Adelaide, Brisbane, Melbourne and Sydney.						
Coffs Harbour						
QantasLink	150	120	80.0	151	119	78.8
Tigerair	30	26	86.7	30	25	83.3
Virgin Australia	62	53	85.5	62	56	90.3
All Airlines	242	199	82.2	243	200	82.3
Relates to services to and from Sydney only.						
Darwin						
Jetstar	55	33	60.0	58	51	87.9
Qantas	143	122	85.3	143	129	90.2
Virgin Australia	121	105	86.8	121	107	88.4
All Airlines	319	260	81.5	322	287	89.1
Relates to services to and from Brisbane, Melbourne, Perth and Sydney.						
Dubbo						
QantasLink	113	86	76.1	114	82	71.9
Regional Express	120	114	95.0	118	109	92.4
All Airlines	233	200	85.8	232	191	82.3
Relates to services to and from Sydney only.						

Airport	Departures			Arrivals		
	Sectors	On Time		Sectors	On Time	
	Flown	No.	%	Flown	No.	%
Emerald						
QantasLink	153	107	69.9	154	113	73.4
Virgin Australia Regional Airlines	95	81	85.3	95	75	78.9
All Airlines	248	188	75.8	249	188	75.5
Relates to services to and from Brisbane only.						
Geraldton						
QantasLink	60	58	96.7	61	56	91.8
Virgin Australia Regional Airlines	92	85	92.4	89	80	89.9
All Airlines	152	143	94.1	150	136	90.7
Relates to services to and from Perth only.						
Gladstone						
QantasLink	228	184	80.7	207	176	85.0
Virgin Australia	2	2	100.0	2	1	50.0
Virgin Australia Regional Airlines	130	103	79.2	131	101	77.1
All Airlines	360	289	80.3	340	278	81.8
Relates to services to and from Brisbane only.						
Gold Coast						
Jetstar	649	520	80.1	646	513	79.4
Qantas	93	81	87.1	93	87	93.5
Tigerair	141	88	62.4	142	96	67.6
Virgin Australia	511	432	84.5	512	435	85.0
All Airlines	1 394	1 121	80.4	1 393	1 131	81.2
Relates to services to and from Adelaide, Melbourne and Sydney.						
Hamilton Island						
Jetstar	49	40	81.6	48	44	91.7
Virgin Australia	62	56	90.3	62	59	95.2
All Airlines	111	96	86.5	110	103	93.6
Relates to services to and from Brisbane and Sydney.						
Hobart						
Jetstar	317	201	63.4	316	233	73.7
Qantas	93	81	87.1	93	83	89.2
QantasLink	31	27	87.1	31	21	67.7
Tigerair	38	30	78.9	38	31	81.6
Virgin Australia	208	168	80.8	208	180	86.5
All Airlines	687	507	73.8	686	548	79.9
Relates to services to and from Melbourne and Sydney.						
Kalgoorlie						
Qantas	61	58	95.1	61	56	91.8
QantasLink	29	27	93.1	28	27	96.4
Virgin Australia	44	41	93.2	44	39	88.6
Virgin Australia Regional Airlines	13	10	76.9	13	12	92.3
All Airlines	147	136	92.5	146	134	91.8
Relates to services to and from Perth only.						

Airport	Departures			Arrivals		
	Sectors	On Time		Sectors	On Time	
	Flown	No.	%	Flown	No.	%
Karratha						
Qantas	160	154	96.3	161	156	96.9
QantasLink	53	51	96.2	53	51	96.2
Virgin Australia	86	72	83.7	86	76	88.4
All Airlines	299	277	92.6	300	283	94.3
Relates to services to and from Perth only.						
Launceston						
Jetstar	247	170	68.8	245	182	74.3
QantasLink	122	92	75.4	122	81	66.4
Virgin Australia	152	131	86.2	152	133	87.5
All Airlines	521	393	75.4	519	396	76.3
Relates to services to and from Melbourne and Sydney.						
Mackay						
Jetstar	96	69	71.9	96	82	85.4
QantasLink	108	88	81.5	109	92	84.4
Virgin Australia	147	128	87.1	147	119	81.0
All Airlines	351	285	81.2	352	293	83.2
Relates to services to and from Brisbane only.						
Melbourne						
Jetstar	1 510	1 087	72.0	1 515	1 118	73.8
Qantas	2 131	1 784	83.7	2 126	1 755	82.5
QantasLink	325	239	73.5	327	248	75.8
Regional Express	73	68	93.2	74	67	90.5
Tigerair	618	498	80.6	614	442	72.0
Virgin Australia	2 254	1 879	83.4	2 250	1 808	80.4
All Airlines	6 911	5 555	80.4	6 906	5 438	78.7
Relates to services to and from Adelaide, Alice Springs, Brisbane, Cairns, Canberra, Darwin, Gold Coast, Hobart, Launceston, Mildura, Newcastle, Perth, Sunshine Coast and Sydney.						
Mildura						
QantasLink	89	74	83.1	89	64	71.9
Regional Express	74	69	93.2	73	66	90.4
Virgin Australia	31	26	83.9	31	27	87.1
All Airlines	194	169	87.1	193	157	81.3
Relates to services to and from Melbourne only.						
Moranbah						
QantasLink	116	97	83.6	123	115	93.5
Virgin Australia Regional Airlines	69	55	79.7	69	48	69.6
All Airlines	185	152	82.2	192	163	84.9
Relates to services to and from Brisbane only.						
Mount Isa						
Qantas	57	48	84.2	57	47	82.5
Virgin Australia	20	17	85.0	20	20	100.0
All Airlines	77	65	84.4	77	67	87.0
Relates to services to and from Brisbane only.						

Airport	Departures			Arrivals		
	Sectors	On Time		Sectors	On Time	
	Flown	No.	%	Flown	No.	%
Newcastle						
Jetstar	226	172	76.1	227	192	84.6
QantasLink	64	29	45.3	65	31	47.7
Virgin Australia	109	74	67.9	110	88	80.0
All Airlines	399	275	68.9	402	311	77.4
Relates to services to and from Brisbane and Melbourne.						
Newman						
Qantas	124	118	95.2	125	119	95.2
QantasLink	26	24	92.3	26	24	92.3
Virgin Australia	39	36	92.3	39	36	92.3
Virgin Australia Regional Airlines	8	8	100.0	8	8	100.0
All Airlines	197	186	94.4	198	187	94.4
Relates to services to and from Perth only.						
Perth						
Jetstar	186	132	71.0	185	133	71.9
Qantas	1 205	1 067	88.5	1 207	1 015	84.1
QantasLink	257	243	94.6	257	243	94.6
Tigerair	71	56	78.9	72	58	80.6
Virgin Australia	683	609	89.2	680	529	77.8
Virgin Australia Regional Airlines	123	115	93.5	127	117	92.1
All Airlines	2 525	2 222	88.0	2 528	2 095	82.9
Relates to services to and from Adelaide, Brisbane, Broome, Darwin, Geraldton, Kalgoorlie, Karratha, Melbourne, Newman, Port Hedland and Sydney.						
Port Hedland						
Qantas	113	108	95.6	113	111	98.2
QantasLink	35	33	94.3	35	32	91.4
Virgin Australia	48	44	91.7	48	43	89.6
All Airlines	196	185	94.4	196	186	94.9
Relates to services to and from Perth only.						
Port Lincoln						
QantasLink	93	75	80.6	92	73	79.3
Regional Express	187	180	96.3	186	180	96.8
All Airlines	280	255	91.1	278	253	91.0
Relates to services to and from Adelaide only.						
Port Macquarie						
QantasLink	136	95	69.9	135	93	68.9
Virgin Australia Regional Airlines	62	50	80.6	62	57	91.9
All Airlines	198	145	73.2	197	150	76.1
Relates to services to and from Sydney only.						
Proserpine						
Jetstar	31	26	83.9	30	25	83.3
Virgin Australia	52	47	90.4	52	49	94.2
All Airlines	83	73	88.0	82	74	90.2
Relates to services to and from Brisbane only.						

Airport	Departures			Arrivals		
	Sectors Flown	On Time		Sectors Flown	On Time	
		No.	%		No.	%
Rockhampton						
QantasLink	191	145	75.9	213	174	81.7
Virgin Australia	91	73	80.2	91	74	81.3
Virgin Australia Regional Airlines	104	94	90.4	105	94	89.5
All Airlines	386	312	80.8	409	342	83.6
Relates to services to and from Brisbane only.						
Sunshine Coast						
Jetstar	193	152	78.8	194	163	84.0
Tigerair	33	27	81.8	33	26	78.8
Virgin Australia	66	46	69.7	66	57	86.4
All Airlines	292	225	77.1	293	246	84.0
Relates to services to and from Melbourne and Sydney.						
Sydney						
Jetstar	1 592	1 227	77.1	1 589	1 241	78.1
Qantas	2 263	1 952	86.3	2 290	1 980	86.5
QantasLink	1 014	839	82.7	1 009	767	76.0
Regional Express	345	312	90.4	342	306	89.5
Tigerair	420	359	85.5	419	342	81.6
Virgin Australia	2 274	1 964	86.4	2 277	1 949	85.6
Virgin Australia Regional Airlines	352	328	93.2	350	306	87.4
All Airlines	8 260	6 981	84.5	8 276	6 891	83.3
Relates to services to and from Adelaide, Albury, Alice Springs, Ayers Rock, Ballina, Brisbane, Cairns, Canberra, Coffs Harbour, Darwin, Dubbo, Gold Coast, Hamilton Island, Hobart, Launceston, Melbourne, Perth, Port Macquarie, Sunshine Coast, Townsville and Wagga Wagga.						
Townsville						
Jetstar	61	50	82.0	61	49	80.3
Qantas	149	125	83.9	149	120	80.5
QantasLink	164	142	86.6	165	154	93.3
Virgin Australia	189	140	74.1	189	154	81.5
Virgin Australia Regional Airlines	27	26	96.3	27	27	100.0
All Airlines	590	483	81.9	591	504	85.3
Relates to services to and from Brisbane, Cairns and Sydney.						
Wagga Wagga						
QantasLink	113	75	66.4	114	75	65.8
Regional Express	107	99	92.5	107	101	94.4
All Airlines	220	174	79.1	221	176	79.6
Relates to services to and from Sydney only.						

Definitions

On time departure A flight departure is counted as "on time" if it departs the gate before 15 minutes after the scheduled departure time shown in the carriers' schedule.

On time arrival A flight arrival is counted as "on time" if it arrived at the gate before 15 minutes after the scheduled arrival time shown in the carriers' schedule.
Neither diverted nor cancelled flights count as on time.

Cancellation A flight removed from service within 7 days of scheduled departure is regarded as a cancellation.

On time departure percentage The percentage of on time departures is measured against the number of departures *operated* on any particular sector.

On time arrival percentage The percentage of on time arrivals is measured against the number of arrivals *operated* on any particular sector.

Cancellation percentage The percentage of cancellations is measured against the number of services *scheduled* on any particular sector.
