



**Australian Government**

**Department of Infrastructure and Transport**

Bureau of Infrastructure, Transport and Regional Economics

STATISTICAL REPORT



## Aviation

Domestic airline on time performance  
December 2012

© Commonwealth of Australia 2013

ISSN: 1832-0759

### **Ownership of intellectual property rights in this publication**

Unless otherwise noted, copyright (and any other intellectual property rights, if any) in this publication is owned by the Commonwealth of Australia (referred to below as the Commonwealth).

### **Disclaimer**

The material contained in this publication is made available on the understanding that the Commonwealth is not providing professional advice, and that users exercise their own skill and care with respect to its use, and seek independent advice if necessary.

The Commonwealth makes no representations or warranties as to the contents or accuracy of the information contained in this publication. To the extent permitted by law, the Commonwealth disclaims liability to any person or organisation in respect of anything done, or omitted to be done, in reliance upon information contained in this publication.

### **Creative Commons licence**

With the exception of (a) the Coat of Arms; and (b) the Department of Infrastructure's photos and graphics, copyright in this publication is licensed under a Creative Commons Attribution 3.0 Australia Licence.

Creative Commons Attribution 3.0 Australia Licence is a standard form licence agreement that allows you to copy, communicate and adapt this publication provided that you attribute the work to the Commonwealth and abide by the other licence terms. A summary of the licence terms is available from <http://creativecommons.org/licenses/by/3.0/au/deed.en>. The full licence terms are available from <http://creativecommons.org/licenses/by/3.0/au/legalcode>.

### **Use of the Coat of Arms**

The Department of the Prime Minister and Cabinet sets the terms under which the Coat of Arms is used. Please refer to the Department's Commonwealth Coat of Arms and Government branding web page <http://www.dpmmc.gov.au/guidelines/index.cfm#brand> and, in particular, the Guidelines on the use of the Commonwealth Coat of Arms publication.

An appropriate citation for this report is:

Bureau of Infrastructure, Transport and Regional Economics (BITRE), 2013, Domestic airline on time performance, Statistical Report, BITRE, Canberra ACT.

### **Contact us**

This publication is available in PDF format. All other rights are reserved, including in relation to any Departmental logos or trade marks which may exist. For enquiries regarding the licence and any use of this publication, please contact:

Bureau of Infrastructure, Transport and Regional Economics (BITRE)  
Department of Infrastructure and Transport  
GPO Box 501, Canberra ACT 2601, Australia  
Telephone: (international) +61 2 6274 7210  
Fax: (international) +61 2 6274 6855  
Email: [bitre@infrastructure.gov.au](mailto:bitre@infrastructure.gov.au)  
Website: [www.bitre.gov.au](http://www.bitre.gov.au)

### **Inquiries**

Should you require additional information about the statistics contained in this publication:

Telephone (02) 6274 7790 or Facsimile (02) 6274 7727

Electronic mail: [AVSTATS@infrastructure.gov.au](mailto:AVSTATS@infrastructure.gov.au)

Web site: <http://www.bitre.gov.au/statistics/aviation/otphome.aspx>

# Foreword

The Bureau of Infrastructure, Transport and Regional Economics (BITRE) monitors the punctuality and reliability of major domestic airlines operating between Australian airports. The purpose of this is to allow for evaluation of overall industry and individual airline performance, so that consumers of air travel can make informed decisions.

The following domestic airlines report this information monthly to the BITRE: Jetstar, Qantas, QantasLink, Regional Express, Skywest Airlines, Tiger Airways, Virgin Australia and Virgin Australia – ATR/F100 Operations. Data has been gathered since November 2003, although some airlines commenced reporting at a later date, including Jetstar which first reported in May 2004, MacAir in July 2005 and Tiger Airways in April 2008. MacAir ceased operations in February 2009 and data was not received for December 2008 onwards. Virgin Blue was rebranded as Virgin Australia in May 2011 and time series data in Microsoft Excel spreadsheet format on the BITRE website has been revised to reflect this. Services operated by Skywest on behalf of Virgin Australia using ATR/F100 aircraft commenced in November 2011 and are shown separately as Virgin Australia – ATR/F100 Operations.

Information presented in this report is for Australian domestic routes for which the passenger load averaged 8 000 or more passengers per month over the previous six months and where two or more airlines operated in competition on those routes. There were 58 routes that met this definition in December 2012. Over time, routes which meet these criteria change as airline networks and traffic levels vary.

Participating airlines report their overall monthly network performance where this is possible.

Total industry figures encompass all services operated by reporting airlines only. These airlines collectively carried over 95 per cent of total domestic passengers (regular public transport only) in 2011.

The method of capturing on time performance varies between airlines utilising different recording systems. Jetstar and Qantas jet aircraft use Aircraft Communication Addressing and Reporting System (ACARS) to electronically measure on time performance. Regional Express, Skywest, Tiger Airways, Virgin Australia, Virgin Australia – ATR/F100 Operations and the Qantas non-jet fleet record on time performance manually using records from pilots, gate agents and/or ground crews.

After initial data is collected, aggregate reports are audited internally by participating airlines prior to publication.

Reports and detailed time series data in Microsoft Excel spreadsheet format are available from the BITRE website at: <http://www.bitre.gov.au/statistics/aviation/otphome.aspx>.



# Contents

	Page
Industry performance .....	1
Individual routes .....	9
Airports .....	20
Definitions .....	26



# Industry performance

For December 2012, on time performance over all routes operated by participating airlines (Jetstar, Qantas, QantasLink, Regional Express, Skywest Airlines, Tiger Airways, Virgin Australia and Virgin Australia – ATR/F100 Operations) averaged 80.4 per cent for on time departures, and 77.9 per cent for on time arrivals. Cancellations represented 1.3 per cent of all scheduled flights. The equivalent figures for December 2011 were 81.3 per cent for departures, 80.1 per cent for arrivals and 1.2 per cent for cancellations.

The long term average performance for all routes since reporting commenced in November 2003 is 83.9 per cent for on time departures and 82.4 per cent for on time arrivals. Cancellations average 1.3 per cent of all scheduled flights.

Of the major domestic airlines, Virgin Australia and Qantas achieved the highest level of on time departures for December 2012 at 82.1 per cent, followed by Tiger Airways at 81.1 per cent and Jetstar at 72.9 per cent. The regional airlines were led by Virgin Australia – ATR/F100 Operations at 86.0 per cent, followed by Regional Express at 85.4 per cent, QantasLink at 78.8 per cent and Skywest at 76.4 per cent.

Qantas achieved the highest on time arrivals among the major domestic airlines at 79.9 per cent, followed by Tiger Airways at 78.7 per cent, Virgin Australia at 78.3 per cent and Jetstar at 74.0 per cent. Regional Express was the best performing regional airline for on time arrivals at 82.9 per cent, followed by Virgin Australia – ATR/F100 Operations at 80.7 per cent, Skywest at 76.0 per cent and QantasLink at 74.8 per cent.

Qantas had the highest percentage of cancellations for December 2012 at 2.1 per cent, while Regional Express had the lowest percentage of cancellations at 0.4 per cent.

Of the 58 routes which met the criteria for on time performance reporting in December 2012, the Mildura-Melbourne route had the highest percentage of on time departures (95.9 per cent) and the Ballina-Sydney route had the lowest percentage of on time departures (57.8 per cent). The Cairns-Townsville route had the highest percentage of on time arrivals (92.7 per cent) and the Townsville-Sydney route had the lowest percentage of on time arrivals (53.3 per cent).

Cancellations were highest on the Karratha-Perth route at 5.3 per cent, followed by Sydney-Melbourne at 5.2 per cent, Melbourne-Sydney at 4.8 per cent, Canberra-Sydney at 4.4 per cent and Perth-Karratha at 4.3 per cent.

Mildura Airport recorded the highest percentage of on time departures (95.9 per cent) and Ballina Airport recorded the lowest percentage of on time departures (57.8 per cent). Mount Isa Airport recorded the highest percentage of on time arrivals (92.2 per cent) and Brisbane Airport recorded the lowest percentage of on time arrivals (69.2 per cent). These figures only refer to reported routes and do not cover all flights at these airports.

Table 1 On time performance for December 2012 — Total Industry

	<i>Sectors</i>		<i>Departures On Time</i>		<i>Arrivals On Time</i>		<i>Cancellations</i>	
	<i>Scheduled</i>	<i>Flown</i>	<i>No.</i>	<i>%</i>	<i>No.</i>	<i>%</i>	<i>No.</i>	<i>%</i>
Jetstar	7 229	7 152	5 216	72.9	5 295	74.0	77	1.1
Qantas	10 130	9 913	8 142	82.1	7 916	79.9	217	2.1
QantasLink	8 900	8 790	6 925	78.8	6 578	74.8	110	1.2
Regional Express	5 056	5 035	4 302	85.4	4 174	82.9	21	0.4
Skywest	827	821	627	76.4	624	76.0	6	0.7
Tiger Airways	1 822	1 803	1 462	81.1	1 419	78.7	19	1.0
Virgin Australia	10 807	10 655	8 752	82.1	8 345	78.3	152	1.4
Virgin Australia - ATR/F100 Operations	1 681	1 662	1 429	86.0	1 341	80.7	19	1.1
All Airlines	46 452	45 831	36 855	80.4	35 692	77.9	621	1.3

Total airline network data (including routes not shown in this report).

Table 2 Top ten routes for on time performance for December 2012 (participating airlines only)

<i>Departures</i>		<i>Arrivals</i>	
<i>Route</i>	<i>On Time (%)</i>	<i>Route</i>	<i>On Time</i>
Mildura-Melbourne	95.9	Cairns-Townsville	92.7
Melbourne-Mildura	93.8	Brisbane-Mount Isa	92.2
Adelaide-Port Lincoln	92.6	Mildura-Melbourne	91.8
Darwin-Melbourne	92.5	Adelaide-Port Lincoln	90.8
Cairns-Townsville	92.2	Adelaide-Melbourne	90.0
Canberra-Melbourne	91.0	Port Lincoln-Adelaide	89.7
Mount Isa-Brisbane	90.9	Melbourne-Mildura	89.2
Melbourne-Darwin	90.6	Melbourne-Canberra	89.2
Brisbane-Mount Isa	89.6	Townsville-Cairns	89.2
Adelaide-Brisbane	89.5	Melbourne-Cairns	87.5

Table 3 Top ten airports for on time performance for December 2012 (participating airlines and reported routes only)

<i>Departures</i>		<i>Arrivals</i>	
<i>Airport</i>	<i>On Time (%)</i>	<i>Airport</i>	<i>On Time</i>
Mildura	95.9	Mount Isa	92.2
Mount Isa	90.9	Port Lincoln	90.8
Cairns	88.0	Mildura	89.2
Port Lincoln	87.6	Emerald	86.7
Adelaide	87.4	Sunshine Coast	86.5
Rockhampton	85.9	Cairns	86.3
Canberra	85.8	Rockhampton	84.9
Darwin	83.4	Adelaide	84.8
Emerald	81.7	Darwin	84.8
Melbourne	81.2	Proserpine	83.1



## Total industry on time performance

Figure 1 On time performance (by month from December 2009)—Total Industry

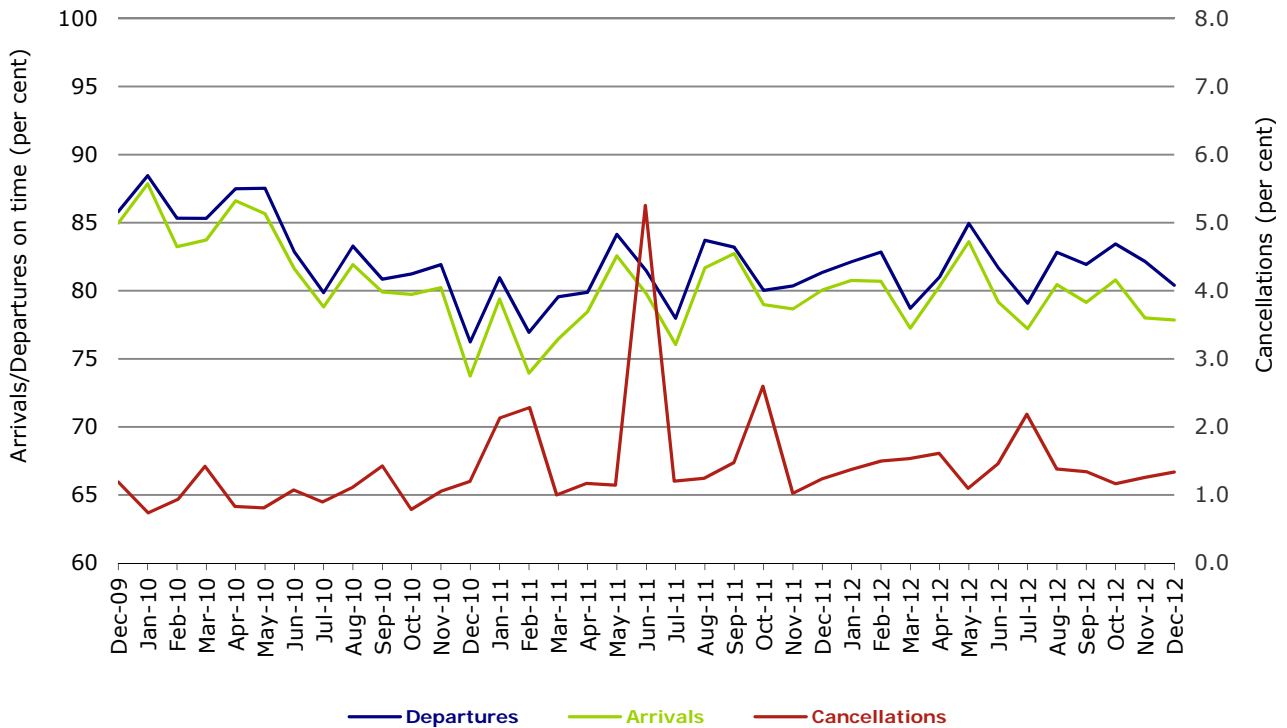


Figure 2 Departures on time (by month from December 2011)

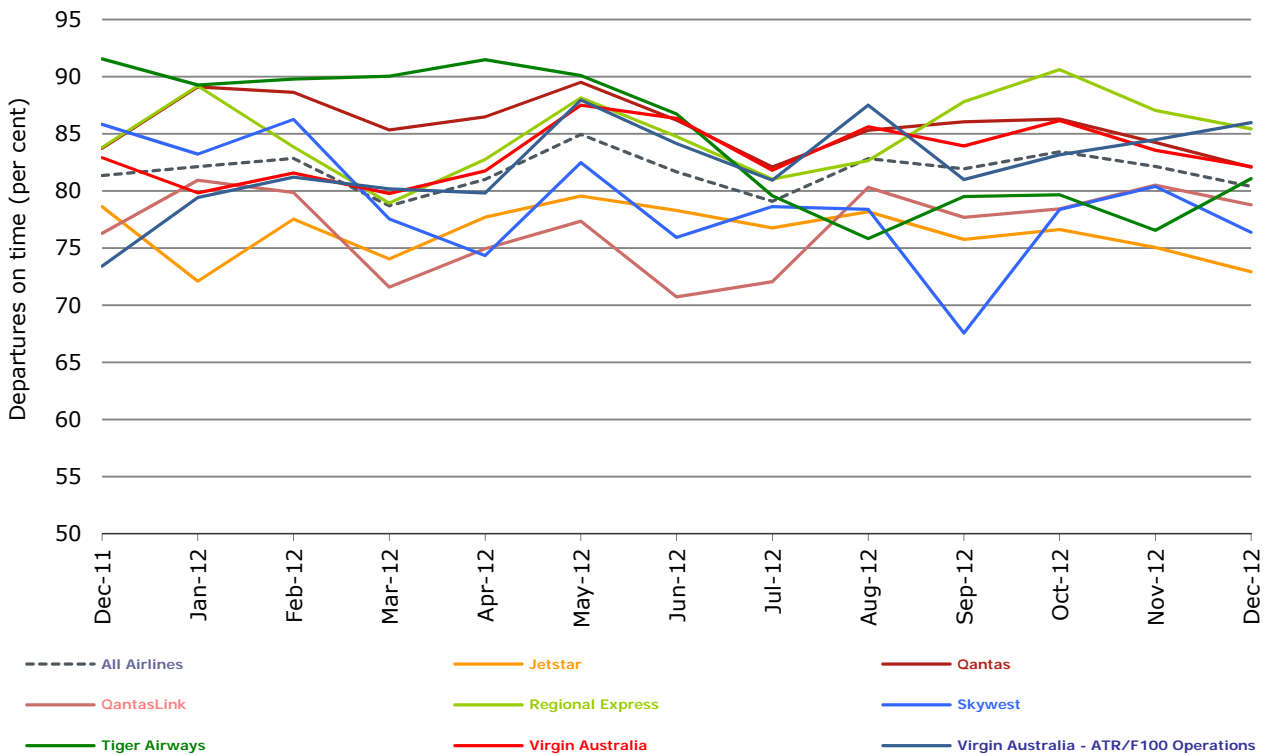


Figure 3 Arrivals on time (by month from December 2011)

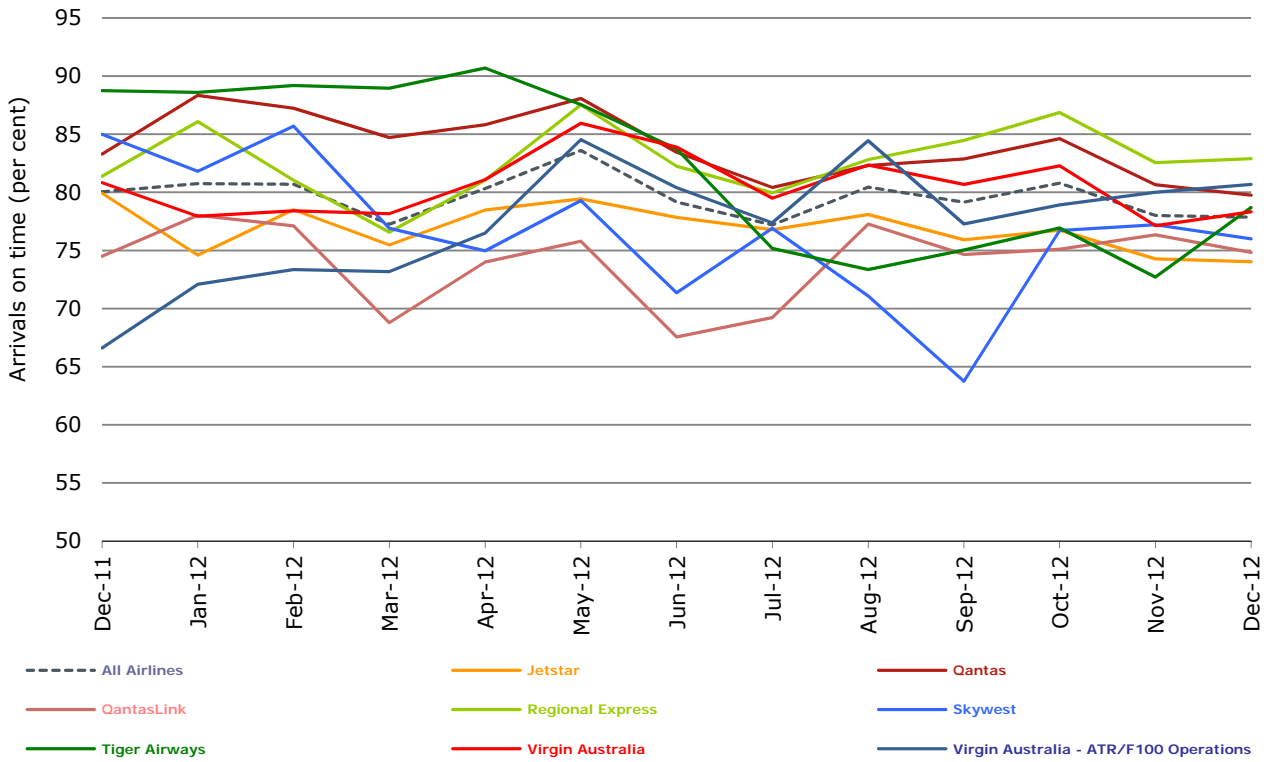
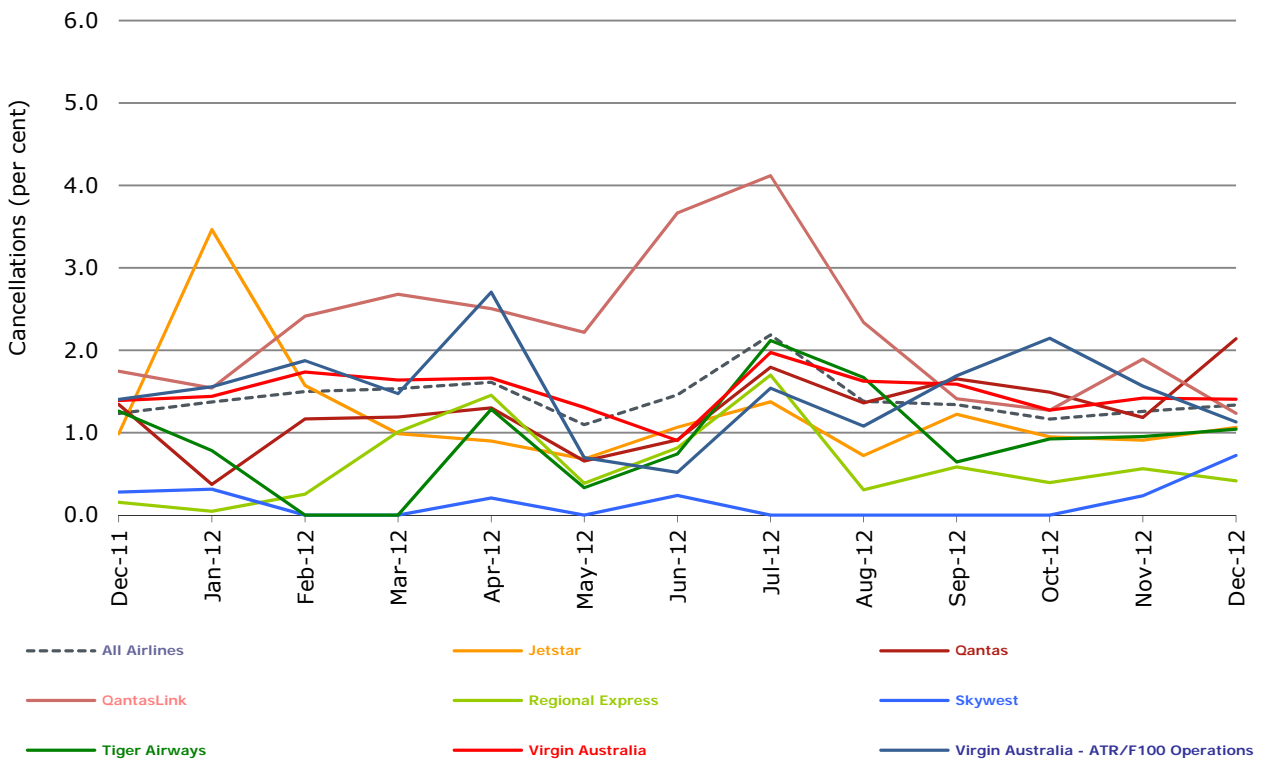


Figure 4 Cancellations (by month from December 2011)



## Major domestic airlines on time performance

Figure 5 On time performance (by month from December 2009)—Jetstar

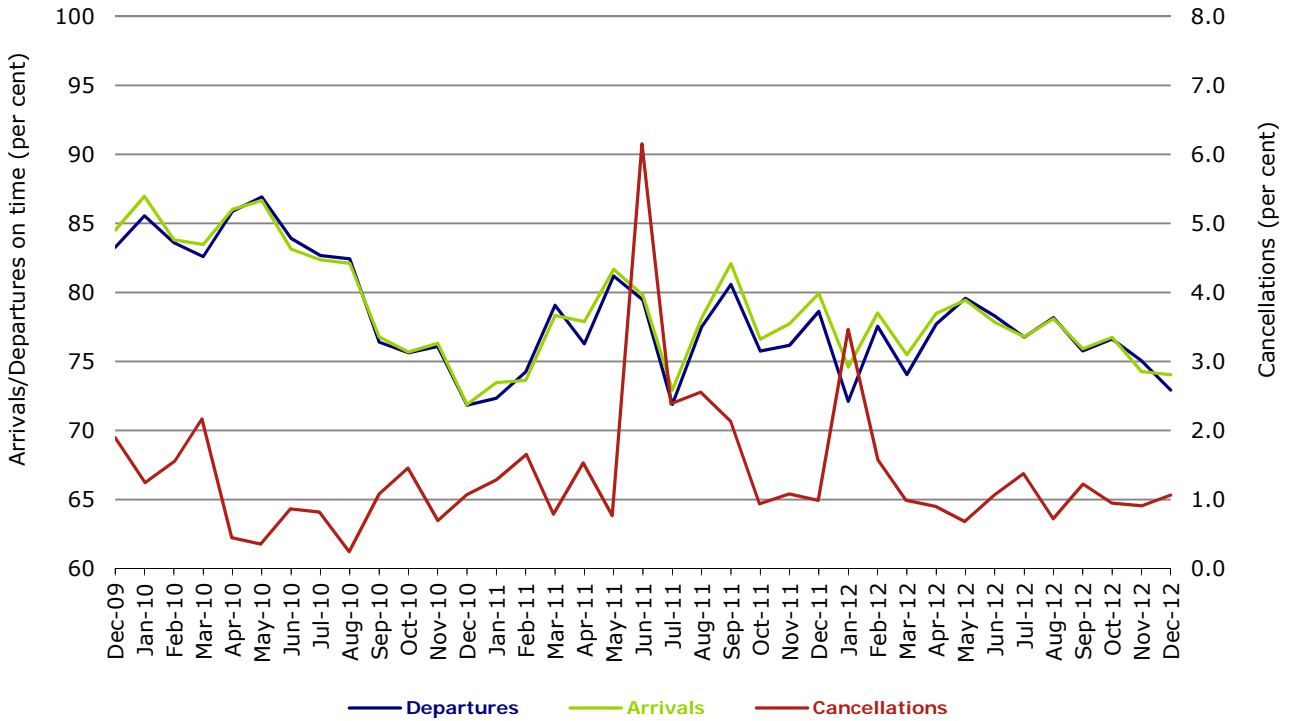


Figure 6 On time performance (by month from December 2009)—Qantas

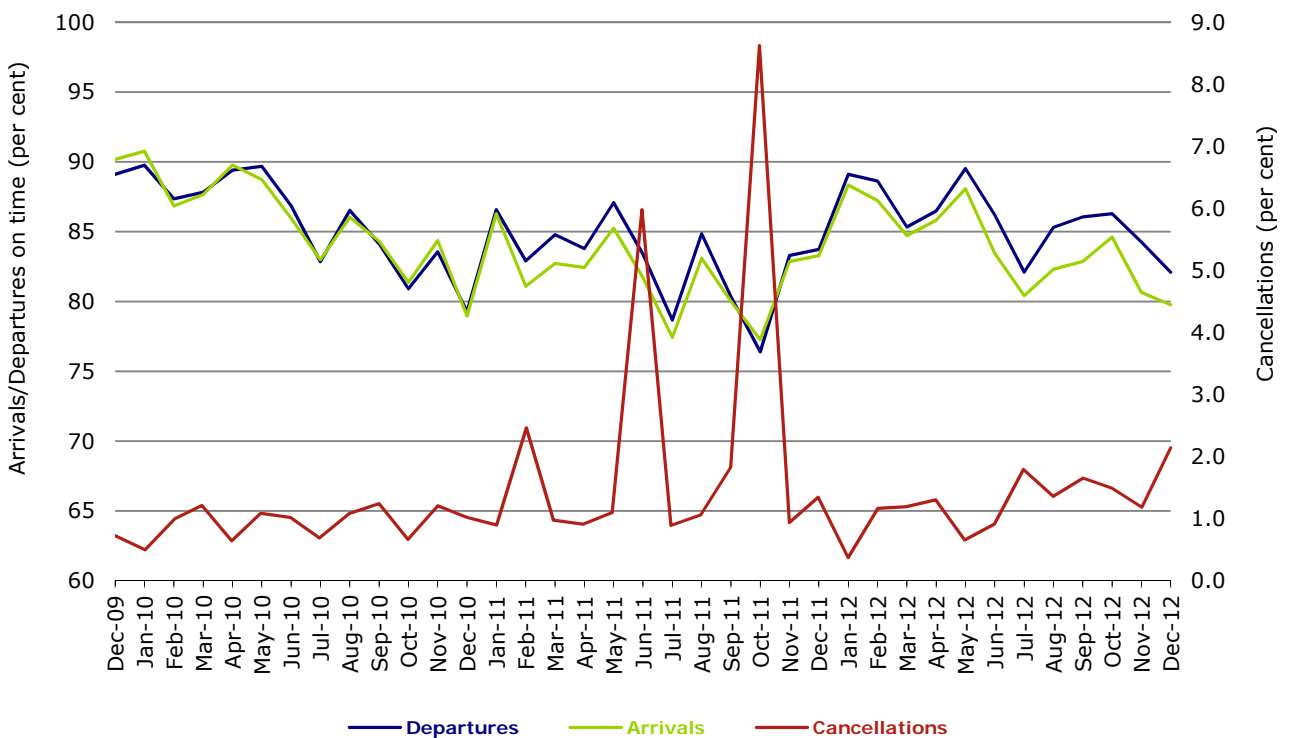
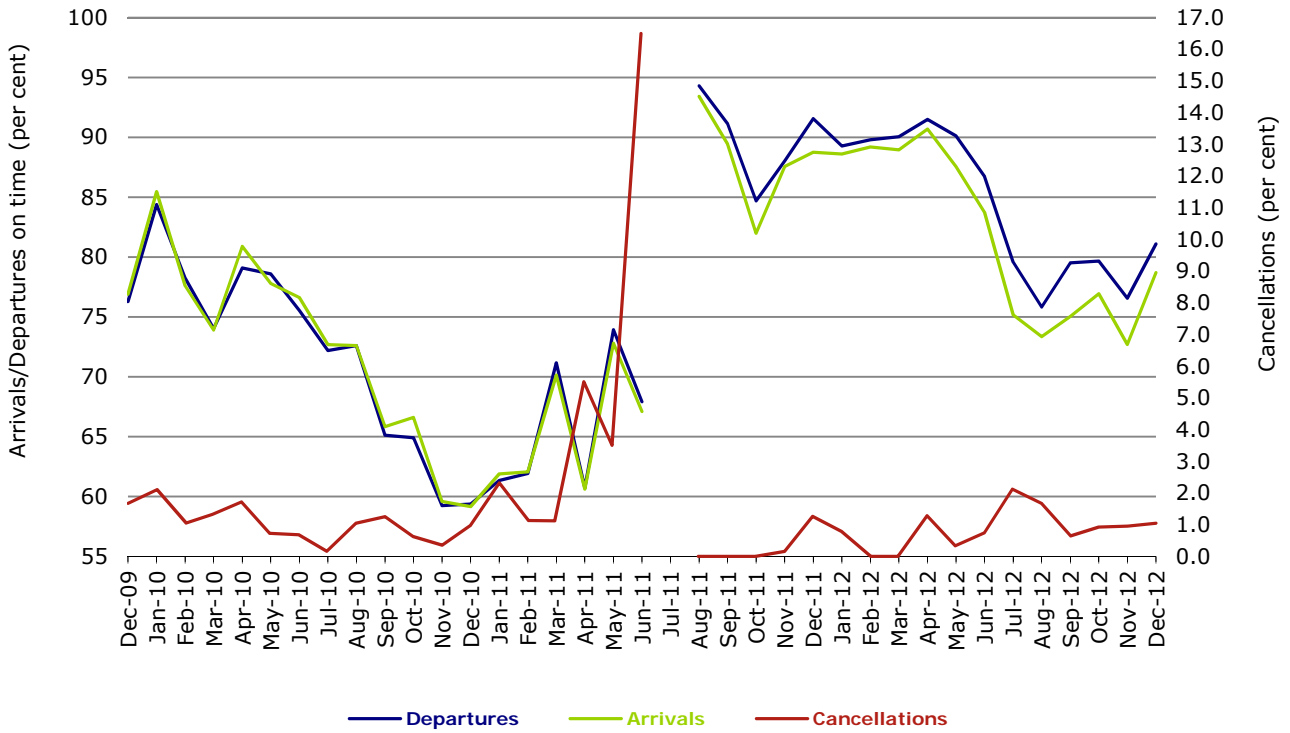
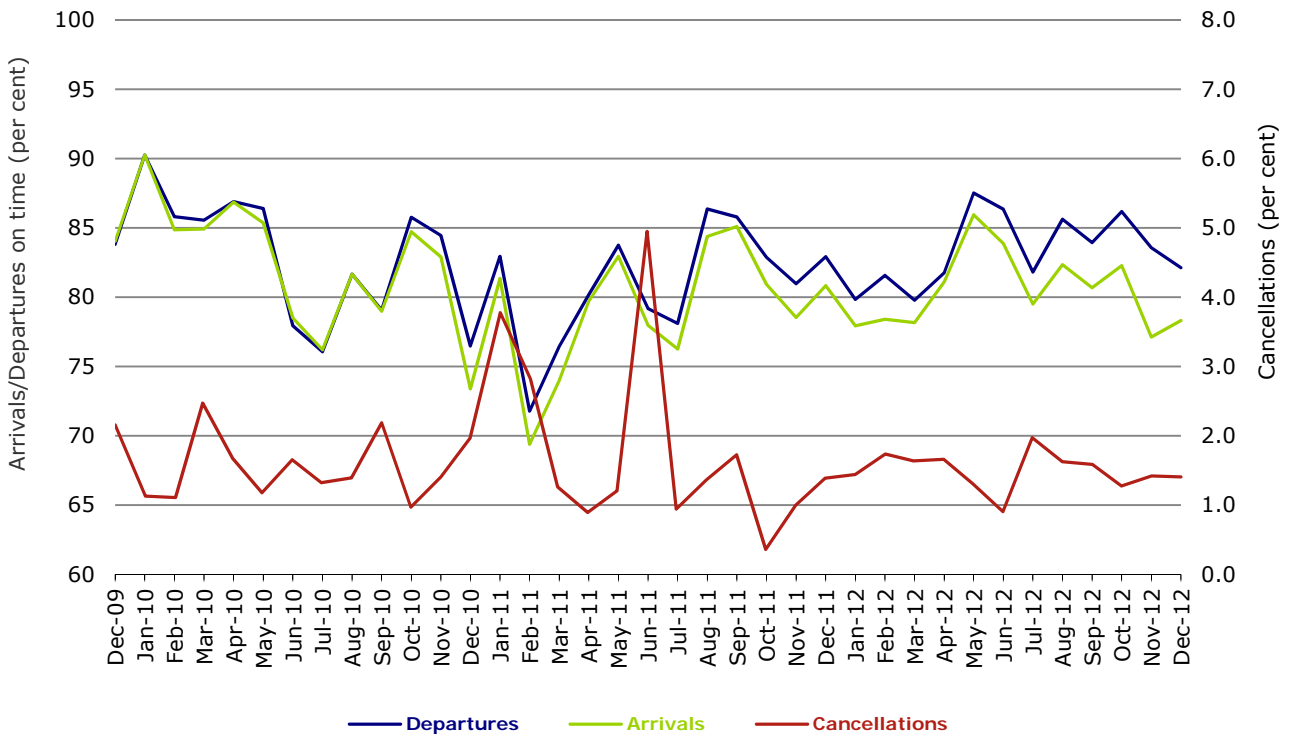


Figure 7 On time performance (by month from December 2009)—Tiger Airways



No data for Tiger Airways for July 2011 as it was grounded by CASA from 2/7/2011 to 11/8/2011.

Figure 8 On time performance (by month from December 2009)—Virgin Australia



## Major regional airlines on time performance

Figure 9 On time performance (by month from December 2009)—QantasLink

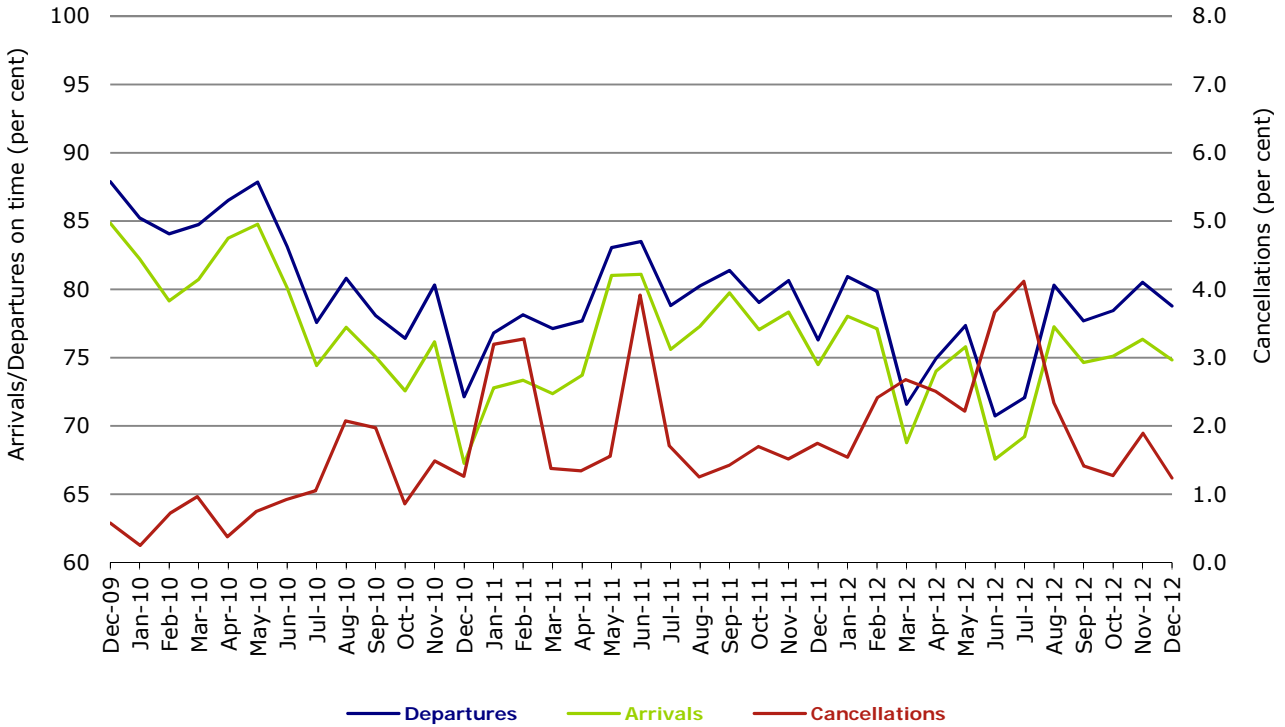


Figure 10 On time performance (by month from December 2009)—Regional Express

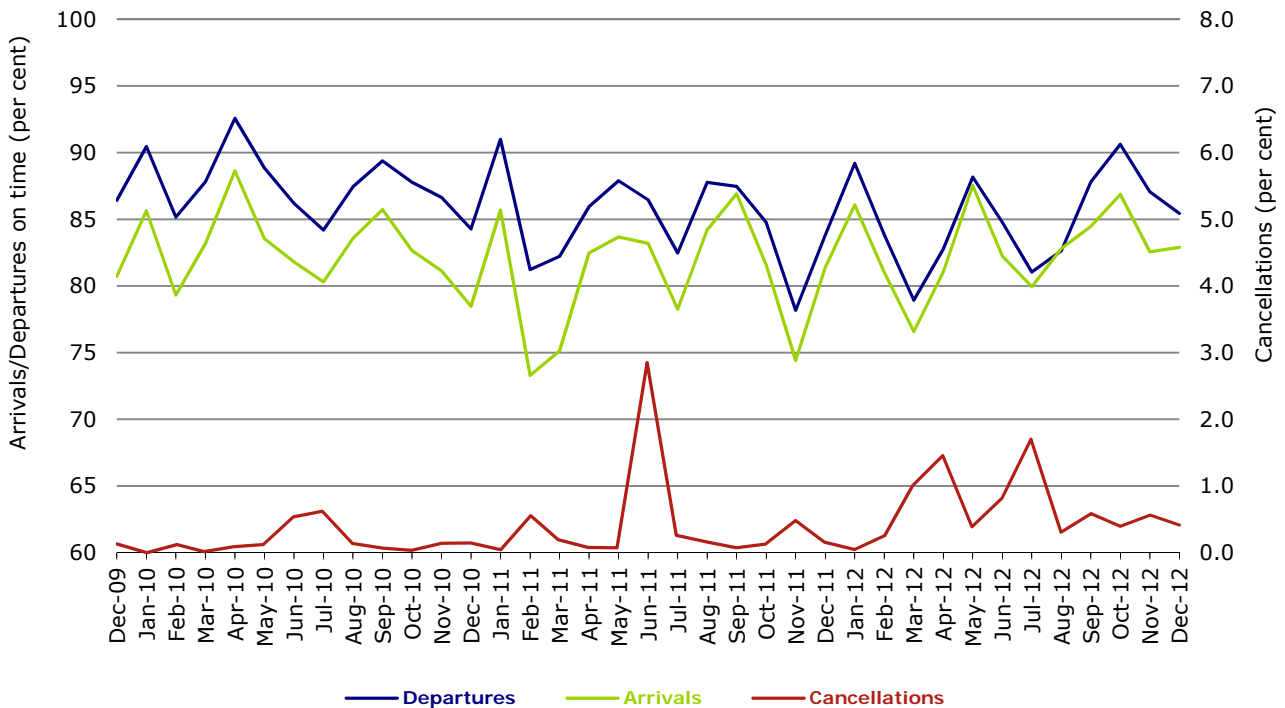


Figure 11 On time performance (by month from December 2009)—Skywest

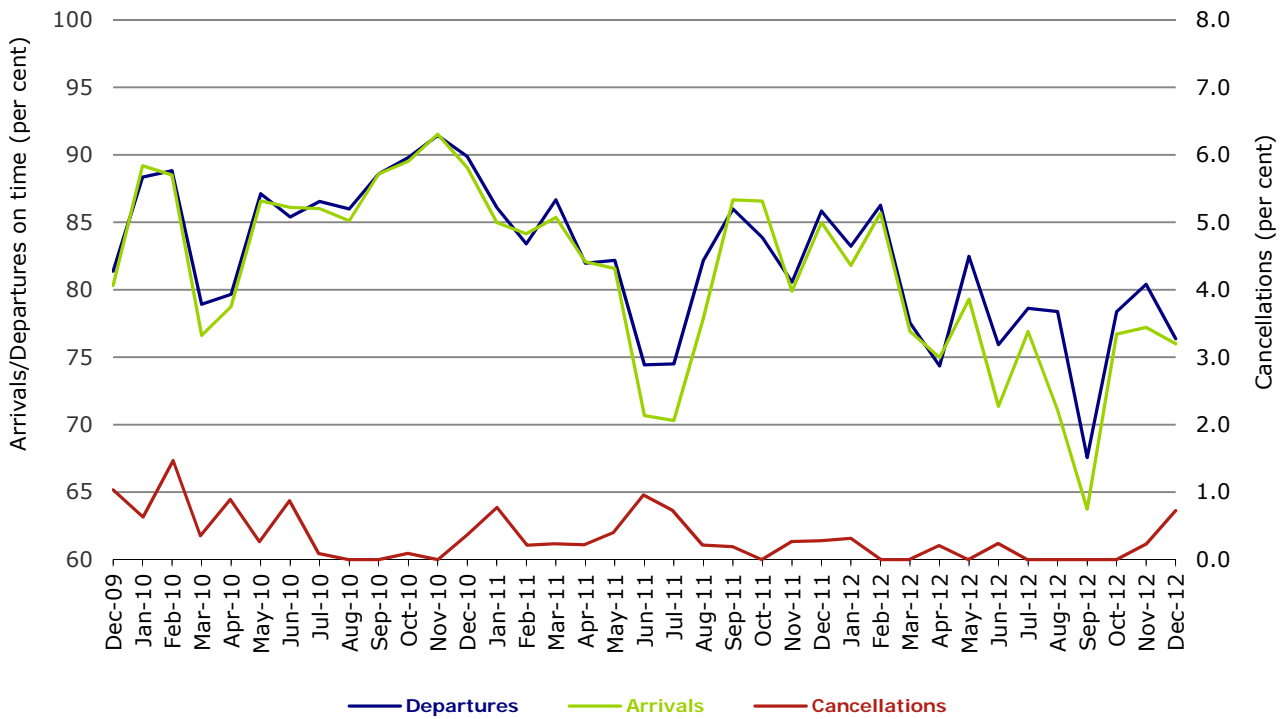
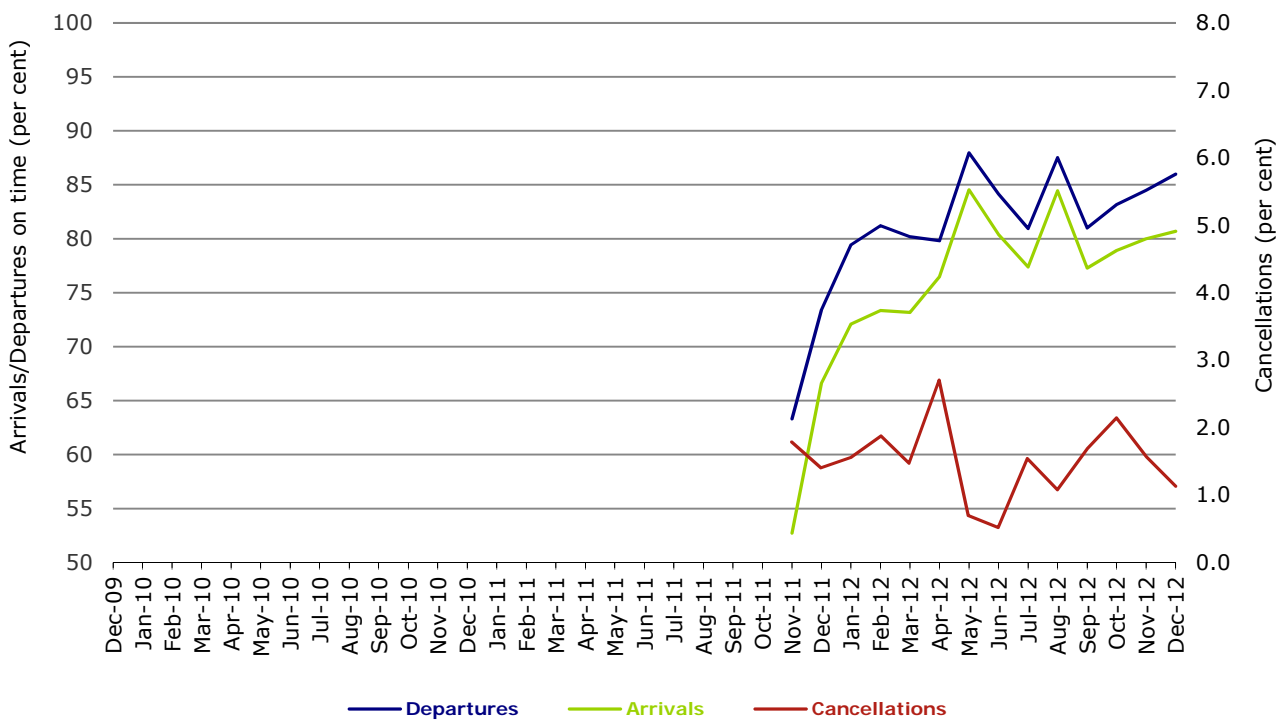


Figure 12 On time performance (by month from December 2009)  
Virgin Australia - ATR/F100 Operations



Virgin Australia - ATR/F100 Operations commenced in November 2011.

## Individual routes

On time performance is reported for all routes where the passenger load averages over 8000 passengers per month over the previous six months, and where two or more airlines operate in competition on those routes. There are now 58 routes which meet this definition. Over time, however, routes which meet this definition may change as airline networks and traffic levels vary.

	<i>Sectors</i>		<i>Departures On Time</i>		<i>Arrivals On Time</i>		<i>Cancellations</i>	
	<i>Sched.</i>	<i>Flown</i>	<i>No.</i>	<i>%</i>	<i>No.</i>	<i>%</i>	<i>No.</i>	<i>%</i>
<b>Adelaide-Brisbane</b>								
Jetstar	32	32	30	93.8	30	93.8	0	0.0
Qantas	106	106	91	85.8	91	85.8	0	0.0
Virgin Australia	119	119	109	91.6	103	86.6	0	0.0
All Airlines	257	257	230	89.5	224	87.2	0	0.0
<b>Adelaide-Canberra</b>								
Qantas	41	41	35	85.4	36	87.8	0	0.0
QantasLink	18	18	8	44.4	10	55.6	0	0.0
Virgin Australia	27	27	23	85.2	24	88.9	0	0.0
All Airlines	86	86	66	76.7	70	81.4	0	0.0
<b>Adelaide-Gold Coast</b>								
Jetstar	37	37	28	75.7	28	75.7	0	0.0
Virgin Australia	31	31	31	100.0	31	100.0	0	0.0
All Airlines	68	68	59	86.8	59	86.8	0	0.0
<b>Adelaide-Melbourne</b>								
Jetstar	101	100	75	75.0	79	79.0	1	1.0
Qantas	290	285	257	90.2	261	91.6	5	1.7
QantasLink	18	16	16	100.0	16	100.0	2	11.1
Tiger Airways	63	63	55	87.3	55	87.3	0	0.0
Virgin Australia	272	268	252	94.0	248	92.5	4	1.5
All Airlines	744	732	655	89.5	659	90.0	12	1.6
<b>Adelaide-Perth</b>								
Jetstar	38	38	29	76.3	28	73.7	0	0.0
Qantas	111	111	93	83.8	94	84.7	0	0.0
Virgin Australia	62	61	58	95.1	59	96.7	1	1.6
All Airlines	211	210	180	85.7	181	86.2	1	0.5
<b>Adelaide-Port Lincoln</b>								
QantasLink	98	97	89	91.8	85	87.6	1	1.0
Regional Express	186	185	172	93.0	171	92.4	1	0.5
All Airlines	284	282	261	92.6	256	90.8	2	0.7
<b>Adelaide-Sydney</b>								
Jetstar	120	117	77	65.8	79	67.5	3	2.5
Qantas	271	266	239	89.8	238	89.5	5	1.8
Virgin Australia	166	165	141	85.5	138	83.6	1	0.6
All Airlines	557	548	457	83.4	455	83.0	9	1.6
<b>Albury-Sydney</b>								
QantasLink	114	113	73	64.6	72	63.7	1	0.9
Regional Express	97	97	79	81.4	73	75.3	0	0.0
Virgin Australia - ATR/F100 Operations	60	60	50	83.3	42	70.0	0	0.0
All Airlines	271	270	202	74.8	187	69.3	1	0.4
<b>Ayers Rock-Sydney</b>								
Qantas	31	31	29	93.5	28	90.3	0	0.0
Virgin Australia	31	31	20	64.5	24	77.4	0	0.0
All Airlines	62	62	49	79.0	52	83.9	0	0.0

	<i>Sectors</i>		<i>Departures On Time</i>		<i>Arrivals On Time</i>		<i>Cancellations</i>	
	<i>Sched.</i>	<i>Flown</i>	<i>No.</i>	<i>%</i>	<i>No.</i>	<i>%</i>	<i>No.</i>	<i>%</i>
<b>Ballina-Sydney</b>								
Jetstar	63	63	36	57.1	36	57.1	0	0.0
Regional Express	22	22	13	59.1	11	50.0	0	0.0
Virgin Australia	31	31	18	58.1	16	51.6	0	0.0
All Airlines	116	116	67	57.8	63	54.3	0	0.0
<b>Brisbane-Adelaide</b>								
Jetstar	31	31	31	100.0	31	100.0	0	0.0
Qantas	106	106	81	76.4	85	80.2	0	0.0
Virgin Australia	119	119	98	82.4	102	85.7	0	0.0
All Airlines	256	256	210	82.0	218	85.2	0	0.0
<b>Brisbane-Cairns</b>								
Jetstar	127	122	93	76.2	100	82.0	5	3.9
Qantas	117	117	94	80.3	103	88.0	0	0.0
Virgin Australia	135	135	117	86.7	120	88.9	0	0.0
Virgin Australia - ATR/F100 Operations	25	25	22	88.0	24	96.0	0	0.0
All Airlines	404	399	326	81.7	347	87.0	5	1.2
<b>Brisbane-Canberra</b>								
Qantas	134	134	116	86.6	118	88.1	0	0.0
QantasLink	23	23	18	78.3	17	73.9	0	0.0
Virgin Australia	98	98	75	76.5	72	73.5	0	0.0
All Airlines	255	255	209	82.0	207	81.2	0	0.0
<b>Brisbane-Darwin</b>								
Qantas	31	31	28	90.3	28	90.3	0	0.0
Virgin Australia	33	32	26	81.3	25	78.1	1	3.0
All Airlines	64	63	54	85.7	53	84.1	1	1.6
<b>Brisbane-Emerald</b>								
QantasLink	167	162	134	82.7	137	84.6	5	3.0
Virgin Australia - ATR/F100 Operations	93	93	80	86.0	84	90.3	0	0.0
All Airlines	260	255	214	83.9	221	86.7	5	1.9
<b>Brisbane-Gladstone</b>								
QantasLink	152	152	112	73.7	110	72.4	0	0.0
Virgin Australia - ATR/F100 Operations	109	108	92	85.2	91	84.3	1	0.9
All Airlines	261	260	204	78.5	201	77.3	1	0.4
<b>Brisbane-Hamilton Island</b>								
Jetstar	19	19	1	5.3	13	68.4	0	0.0
Virgin Australia	31	31	30	96.8	29	93.5	0	0.0
All Airlines	50	50	31	62.0	42	84.0	0	0.0
<b>Brisbane-Mackay</b>								
Jetstar	108	107	77	72.0	85	79.4	1	0.9
QantasLink	49	49	30	61.2	34	69.4	0	0.0
Virgin Australia	155	155	131	84.5	135	87.1	0	0.0
All Airlines	312	311	238	76.5	254	81.7	1	0.3
<b>Brisbane-Melbourne</b>								
Jetstar	100	98	65	66.3	72	73.5	2	2.0
Qantas	406	405	317	78.3	312	77.0	1	0.2
Tiger Airways	93	93	63	67.7	62	66.7	0	0.0
Virgin Australia	373	372	318	85.5	298	80.1	1	0.3
All Airlines	972	968	763	78.8	744	76.9	4	0.4
<b>Brisbane-Mount Isa</b>								
Qantas	56	56	49	87.5	51	91.1	0	0.0
Virgin Australia	21	21	20	95.2	20	95.2	0	0.0
All Airlines	77	77	69	89.6	71	92.2	0	0.0



	<i>Sectors</i>		<i>Departures On Time</i>		<i>Arrivals On Time</i>		<i>Cancellations</i>	
	<i>Sched.</i>	<i>Flown</i>	<i>No.</i>	<i>%</i>	<i>No.</i>	<i>%</i>	<i>No.</i>	<i>%</i>
<b>Brisbane-Newcastle</b>								
Jetstar	124	124	100	80.6	100	80.6	0	0.0
QantasLink	65	62	41	66.1	26	41.9	3	4.6
Virgin Australia - ATR/F100 Operations	80	80	74	92.5	68	85.0	0	0.0
All Airlines	269	266	215	80.8	194	72.9	3	1.1
<b>Brisbane-Perth</b>								
Jetstar	31	31	27	87.1	24	77.4	0	0.0
Qantas	124	123	84	68.3	81	65.9	1	0.8
Virgin Australia	86	86	76	88.4	59	68.6	0	0.0
All Airlines	241	240	187	77.9	164	68.3	1	0.4
<b>Brisbane-Proserpine</b>								
Jetstar	31	31	19	61.3	21	67.7	0	0.0
Virgin Australia	31	31	29	93.5	28	90.3	0	0.0
Virgin Australia - ATR/F100 Operations	21	21	20	95.2	20	95.2	0	0.0
All Airlines	83	83	68	81.9	69	83.1	0	0.0
<b>Brisbane-Rockhampton</b>								
QantasLink	152	152	114	75.0	121	79.6	0	0.0
Virgin Australia	69	69	61	88.4	62	89.9	0	0.0
Virgin Australia - ATR/F100 Operations	133	131	110	84.0	116	88.5	2	1.5
All Airlines	354	352	285	81.0	299	84.9	2	0.6
<b>Brisbane-Sydney</b>								
Jetstar	117	114	69	60.5	73	64.0	3	2.6
Qantas	560	549	426	77.6	407	74.1	11	2.0
Tiger Airways	121	119	83	69.7	86	72.3	2	1.7
Virgin Australia	525	512	407	79.5	385	75.2	13	2.5
All Airlines	1 323	1 294	985	76.1	951	73.5	29	2.2
<b>Brisbane-Townsville</b>								
Jetstar	31	31	13	41.9	15	48.4	0	0.0
Qantas	149	149	123	82.6	121	81.2	0	0.0
Virgin Australia	155	155	119	76.8	120	77.4	0	0.0
All Airlines	335	335	255	76.1	256	76.4	0	0.0
<b>Broome-Perth</b>								
Qantas	27	27	16	59.3	18	66.7	0	0.0
QantasLink	54	54	45	83.3	47	87.0	0	0.0
Skywest	14	14	11	78.6	11	78.6	0	0.0
Virgin Australia	31	30	22	73.3	22	73.3	1	3.2
All Airlines	126	125	94	75.2	98	78.4	1	0.8
<b>Cairns-Brisbane</b>								
Jetstar	128	123	103	83.7	89	72.4	5	3.9
Qantas	117	117	108	92.3	97	82.9	0	0.0
Virgin Australia	135	135	123	91.1	100	74.1	0	0.0
Virgin Australia - ATR/F100 Operations	25	25	22	88.0	22	88.0	0	0.0
All Airlines	405	400	356	89.0	308	77.0	5	1.2
<b>Cairns-Melbourne</b>								
Jetstar	85	85	76	89.4	73	85.9	0	0.0
Qantas	31	31	26	83.9	25	80.6	0	0.0
Tiger Airways	17	17	14	82.4	14	82.4	0	0.0
Virgin Australia	34	34	28	82.4	22	64.7	0	0.0
All Airlines	167	167	144	86.2	134	80.2	0	0.0
<b>Cairns-Sydney</b>								
Jetstar	80	80	65	81.3	59	73.8	0	0.0
Qantas	64	64	51	79.7	51	79.7	0	0.0
Virgin Australia	93	93	83	89.2	81	87.1	0	0.0
All Airlines	237	237	199	84.0	191	80.6	0	0.0

	<i>Sectors</i>		<i>Departures On Time</i>		<i>Arrivals On Time</i>		<i>Cancellations</i>	
	<i>Sched.</i>	<i>Flown</i>	<i>No.</i>	<i>%</i>	<i>No.</i>	<i>%</i>	<i>No.</i>	<i>%</i>
<b>Cairns-Townsville</b>								
QantasLink	167	167	153	91.6	154	92.2	0	0.0
Virgin Australia - ATR/F100 Operations	26	26	25	96.2	25	96.2	0	0.0
All Airlines	193	193	178	92.2	179	92.7	0	0.0
<b>Canberra-Adelaide</b>								
Qantas	46	46	41	89.1	40	87.0	0	0.0
QantasLink	18	18	12	66.7	9	50.0	0	0.0
Virgin Australia	27	27	24	88.9	24	88.9	0	0.0
All Airlines	91	91	77	84.6	73	80.2	0	0.0
<b>Canberra-Brisbane</b>								
Qantas	134	134	120	89.6	102	76.1	0	0.0
QantasLink	23	23	15	65.2	14	60.9	0	0.0
Virgin Australia	98	98	84	85.7	77	78.6	0	0.0
All Airlines	255	255	219	85.9	193	75.7	0	0.0
<b>Canberra-Melbourne</b>								
Qantas	220	216	204	94.4	197	91.2	4	1.8
QantasLink	39	37	21	56.8	15	40.5	2	5.1
Virgin Australia	158	157	148	94.3	144	91.7	1	0.6
All Airlines	417	410	373	91.0	356	86.8	7	1.7
<b>Canberra-Sydney</b>								
Qantas	106	99	91	91.9	92	92.9	7	6.6
QantasLink	366	351	264	75.2	228	65.0	15	4.1
Virgin Australia	67	63	58	92.1	47	74.6	4	6.0
Virgin Australia - ATR/F100 Operations	170	165	148	89.7	136	82.4	5	2.9
All Airlines	709	678	561	82.7	503	74.2	31	4.4
<b>Coffs Harbour-Sydney</b>								
QantasLink	143	143	93	65.0	100	69.9	0	0.0
Virgin Australia	61	60	47	78.3	47	78.3	1	1.6
All Airlines	204	203	140	69.0	147	72.4	1	0.5
<b>Darwin-Brisbane</b>								
Qantas	31	31	28	90.3	22	71.0	0	0.0
Virgin Australia	33	33	23	69.7	24	72.7	0	0.0
All Airlines	64	64	51	79.7	46	71.9	0	0.0
<b>Darwin-Melbourne</b>								
Jetstar	9	9	5	55.6	6	66.7	0	0.0
Qantas	13	13	13	100.0	10	76.9	0	0.0
Virgin Australia	31	31	31	100.0	29	93.5	0	0.0
All Airlines	53	53	49	92.5	45	84.9	0	0.0
<b>Darwin-Perth</b>								
Qantas	31	31	23	74.2	23	74.2	0	0.0
Virgin Australia	26	26	25	96.2	24	92.3	0	0.0
All Airlines	57	57	48	84.2	47	82.5	0	0.0
<b>Darwin-Sydney</b>								
Jetstar	25	25	19	76.0	17	68.0	0	0.0
Qantas	61	60	50	83.3	47	78.3	1	1.6
Virgin Australia	31	31	25	80.6	23	74.2	0	0.0
All Airlines	117	116	94	81.0	87	75.0	1	0.9
<b>Dubbo-Sydney</b>								
QantasLink	104	104	74	71.2	63	60.6	0	0.0
Regional Express	138	137	112	81.8	100	73.0	1	0.7
All Airlines	242	241	186	77.2	163	67.6	1	0.4

	<i>Sectors</i>		<i>Departures On Time</i>		<i>Arrivals On Time</i>		<i>Cancellations</i>	
	<i>Sched.</i>	<i>Flown</i>	<i>No.</i>	<i>%</i>	<i>No.</i>	<i>%</i>	<i>No.</i>	<i>%</i>
<b>Emerald-Brisbane</b>								
QantasLink	168	164	128	78.0	105	64.0	4	2.4
Virgin Australia - ATR/F100 Operations	93	93	82	88.2	69	74.2	0	0.0
All Airlines	261	257	210	81.7	174	67.7	4	1.5
<b>Geraldton-Perth</b>								
QantasLink	52	52	34	65.4	33	63.5	0	0.0
Skywest	81	81	59	72.8	61	75.3	0	0.0
All Airlines	133	133	93	69.9	94	70.7	0	0.0
<b>Gladstone-Brisbane</b>								
QantasLink	167	166	120	72.3	85	51.2	1	0.6
Virgin Australia - ATR/F100 Operations	109	108	96	88.9	76	70.4	1	0.9
All Airlines	276	274	216	78.8	161	58.8	2	0.7
<b>Gold Coast-Adelaide</b>								
Jetstar	39	39	31	79.5	31	79.5	0	0.0
Virgin Australia	31	31	30	96.8	30	96.8	0	0.0
All Airlines	70	70	61	87.1	61	87.1	0	0.0
<b>Gold Coast-Melbourne</b>								
Jetstar	230	230	186	80.9	179	77.8	0	0.0
Tiger Airways	84	84	63	75.0	61	72.6	0	0.0
Virgin Australia	195	193	169	87.6	174	90.2	2	1.0
All Airlines	509	507	418	82.4	414	81.7	2	0.4
<b>Gold Coast-Sydney</b>								
Jetstar	326	319	228	71.5	236	74.0	7	2.1
Qantas	93	93	80	86.0	77	82.8	0	0.0
Tiger Airways	111	104	85	81.7	78	75.0	7	6.3
Virgin Australia	339	327	250	76.5	252	77.1	12	3.5
All Airlines	869	843	643	76.3	643	76.3	26	3.0
<b>Hamilton Island-Brisbane</b>								
Jetstar	19	19	13	68.4	12	63.2	0	0.0
Virgin Australia	31	31	23	74.2	24	77.4	0	0.0
All Airlines	50	50	36	72.0	36	72.0	0	0.0
<b>Hamilton Island-Sydney</b>								
Jetstar	31	31	20	64.5	19	61.3	0	0.0
Virgin Australia	31	31	20	64.5	17	54.8	0	0.0
All Airlines	62	62	40	64.5	36	58.1	0	0.0
<b>Hobart-Melbourne</b>								
Jetstar	209	206	137	66.5	124	60.2	3	1.4
Qantas	62	62	49	79.0	47	75.8	0	0.0
QantasLink	31	30	28	93.3	25	83.3	1	3.2
Tiger Airways	63	63	52	82.5	46	73.0	0	0.0
Virgin Australia	158	158	132	83.5	133	84.2	0	0.0
All Airlines	523	519	398	76.7	375	72.3	4	0.8
<b>Hobart-Sydney</b>								
Jetstar	117	117	77	65.8	90	76.9	0	0.0
Qantas	31	31	23	74.2	27	87.1	0	0.0
Virgin Australia	61	61	41	67.2	42	68.9	0	0.0
All Airlines	209	209	141	67.5	159	76.1	0	0.0
<b>Kalgoorlie-Perth</b>								
Qantas	67	67	57	85.1	53	79.1	0	0.0
QantasLink	19	19	18	94.7	16	84.2	0	0.0
Skywest	56	56	36	64.3	36	64.3	0	0.0
All Airlines	142	142	111	78.2	105	73.9	0	0.0

	<i>Sectors</i>		<i>Departures On Time</i>		<i>Arrivals On Time</i>		<i>Cancellations</i>	
	<i>Sched.</i>	<i>Flown</i>	<i>No.</i>	<i>%</i>	<i>No.</i>	<i>%</i>	<i>No.</i>	<i>%</i>
<b>Karratha-Perth</b>								
Qantas	193	181	142	78.5	143	79.0	12	6.2
QantasLink	58	54	42	77.8	45	83.3	4	6.9
Virgin Australia	50	50	32	64.0	30	60.0	0	0.0
All Airlines	301	285	216	75.8	218	76.5	16	5.3
<b>Launceston-Melbourne</b>								
Jetstar	154	151	105	69.5	110	72.8	3	1.9
QantasLink	113	109	80	73.4	78	71.6	4	3.5
Virgin Australia	127	127	110	86.6	113	89.0	0	0.0
All Airlines	394	387	295	76.2	301	77.8	7	1.8
<b>Launceston-Sydney</b>								
Jetstar	80	79	50	63.3	51	64.6	1	1.3
Virgin Australia	31	31	23	74.2	24	77.4	0	0.0
All Airlines	111	110	73	66.4	75	68.2	1	0.9
<b>Mackay-Brisbane</b>								
Jetstar	108	107	70	65.4	65	60.7	1	0.9
QantasLink	50	50	34	68.0	27	54.0	0	0.0
Virgin Australia	155	154	135	87.7	117	76.0	1	0.6
All Airlines	313	311	239	76.8	209	67.2	2	0.6
<b>Melbourne-Adelaide</b>								
Jetstar	100	100	89	89.0	84	84.0	0	0.0
Qantas	290	283	246	86.9	244	86.2	7	2.4
QantasLink	18	17	16	94.1	15	88.2	1	5.6
Tiger Airways	63	63	58	92.1	56	88.9	0	0.0
Virgin Australia	272	269	237	88.1	238	88.5	3	1.1
All Airlines	743	732	646	88.3	637	87.0	11	1.5
<b>Melbourne-Brisbane</b>								
Jetstar	99	97	55	56.7	46	47.4	2	2.0
Qantas	406	405	332	82.0	286	70.6	1	0.2
Tiger Airways	93	93	79	84.9	67	72.0	0	0.0
Virgin Australia	368	366	312	85.2	271	74.0	2	0.5
All Airlines	966	961	778	81.0	670	69.7	5	0.5
<b>Melbourne-Cairns</b>								
Jetstar	86	86	69	80.2	73	84.9	0	0.0
Qantas	31	31	24	77.4	28	90.3	0	0.0
Tiger Airways	17	17	15	88.2	15	88.2	0	0.0
Virgin Australia	34	34	30	88.2	31	91.2	0	0.0
All Airlines	168	168	138	82.1	147	87.5	0	0.0
<b>Melbourne-Canberra</b>								
Qantas	220	215	193	89.8	200	93.0	5	2.3
QantasLink	39	36	28	77.8	22	61.1	3	7.7
Virgin Australia	158	157	143	91.1	142	90.4	1	0.6
All Airlines	417	408	364	89.2	364	89.2	9	2.2
<b>Melbourne-Darwin</b>								
Jetstar	9	9	8	88.9	8	88.9	0	0.0
Qantas	13	13	11	84.6	12	92.3	0	0.0
Virgin Australia	31	31	29	93.5	26	83.9	0	0.0
All Airlines	53	53	48	90.6	46	86.8	0	0.0
<b>Melbourne-Gold Coast</b>								
Jetstar	230	230	159	69.1	172	74.8	0	0.0
Tiger Airways	84	84	69	82.1	66	78.6	0	0.0
Virgin Australia	195	193	168	87.0	171	88.6	2	1.0
All Airlines	509	507	396	78.1	409	80.7	2	0.4

	<i>Sectors</i>		<i>Departures On Time</i>		<i>Arrivals On Time</i>		<i>Cancellations</i>	
	<i>Sched.</i>	<i>Flown</i>	<i>No.</i>	<i>%</i>	<i>No.</i>	<i>%</i>	<i>No.</i>	<i>%</i>
<b>Melbourne-Hobart</b>								
Jetstar	209	206	135	65.5	144	69.9	3	1.4
Qantas	62	62	55	88.7	54	87.1	0	0.0
QantasLink	31	31	17	54.8	17	54.8	0	0.0
Tiger Airways	63	63	53	84.1	53	84.1	0	0.0
Virgin Australia	158	158	136	86.1	133	84.2	0	0.0
All Airlines	523	520	396	76.2	401	77.1	3	0.6
<b>Melbourne-Launceston</b>								
Jetstar	152	150	115	76.7	117	78.0	2	1.3
QantasLink	112	109	74	67.9	79	72.5	3	2.7
Virgin Australia	127	127	105	82.7	112	88.2	0	0.0
All Airlines	391	386	294	76.2	308	79.8	5	1.3
<b>Melbourne-Mildura</b>								
QantasLink	88	88	80	90.9	73	83.0	0	0.0
Regional Express	76	76	73	96.1	71	93.4	0	0.0
Virgin Australia	31	31	30	96.8	30	96.8	0	0.0
All Airlines	195	195	183	93.8	174	89.2	0	0.0
<b>Melbourne-Newcastle</b>								
Jetstar	111	110	82	74.5	83	75.5	1	0.9
Virgin Australia	31	31	29	93.5	29	93.5	0	0.0
All Airlines	142	141	111	78.7	112	79.4	1	0.7
<b>Melbourne-Perth</b>								
Jetstar	87	87	70	80.5	56	64.4	0	0.0
Qantas	220	219	164	74.9	149	68.0	1	0.5
Tiger Airways	76	76	59	77.6	68	89.5	0	0.0
Virgin Australia	146	146	110	75.3	67	45.9	0	0.0
All Airlines	529	528	403	76.3	340	64.4	1	0.2
<b>Melbourne-Sunshine Coast</b>								
Jetstar	66	66	55	83.3	58	87.9	0	0.0
Virgin Australia	33	33	28	84.8	28	84.8	0	0.0
All Airlines	99	99	83	83.8	86	86.9	0	0.0
<b>Melbourne-Sydney</b>								
Jetstar	311	303	191	63.0	222	73.3	8	2.6
Qantas	793	732	597	81.6	571	78.0	61	7.7
Tiger Airways	264	263	219	83.3	227	86.3	1	0.4
Virgin Australia	729	699	588	84.1	543	77.7	30	4.1
All Airlines	2 097	1 997	1 595	79.9	1 563	78.3	100	4.8
<b>Mildura-Melbourne</b>								
QantasLink	88	88	84	95.5	77	87.5	0	0.0
Regional Express	76	76	73	96.1	72	94.7	0	0.0
Virgin Australia	31	31	30	96.8	30	96.8	0	0.0
All Airlines	195	195	187	95.9	179	91.8	0	0.0
<b>Mount Isa-Brisbane</b>								
Qantas	56	56	51	91.1	46	82.1	0	0.0
Virgin Australia	21	21	19	90.5	16	76.2	0	0.0
All Airlines	77	77	70	90.9	62	80.5	0	0.0
<b>Newcastle-Brisbane</b>								
Jetstar	124	124	101	81.5	94	75.8	0	0.0
QantasLink	65	62	30	48.4	24	38.7	3	4.6
Virgin Australia - ATR/F100 Operations	80	80	68	85.0	56	70.0	0	0.0
All Airlines	269	266	199	74.8	174	65.4	3	1.1

	<i>Sectors</i>		<i>Departures On Time</i>		<i>Arrivals On Time</i>		<i>Cancellations</i>	
	<i>Sched.</i>	<i>Flown</i>	<i>No.</i>	<i>%</i>	<i>No.</i>	<i>%</i>	<i>No.</i>	<i>%</i>
<b>Newcastle-Melbourne</b>								
Jetstar	112	110	84	76.4	79	71.8	2	1.8
Virgin Australia	31	31	25	80.6	25	80.6	0	0.0
All Airlines	143	141	109	77.3	104	73.8	2	1.4
<b>Newman-Perth</b>								
Qantas	121	120	86	71.7	86	71.7	1	0.8
QantasLink	26	26	25	96.2	25	96.2	0	0.0
Virgin Australia	34	34	20	58.8	21	61.8	0	0.0
All Airlines	181	180	131	72.8	132	73.3	1	0.6
<b>Perth-Adelaide</b>								
Jetstar	38	38	24	63.2	23	60.5	0	0.0
Qantas	111	111	79	71.2	91	82.0	0	0.0
Virgin Australia	62	61	55	90.2	55	90.2	1	1.6
All Airlines	211	210	158	75.2	169	80.5	1	0.5
<b>Perth-Brisbane</b>								
Jetstar	31	31	21	67.7	22	71.0	0	0.0
Qantas	124	124	85	68.5	87	70.2	0	0.0
Virgin Australia	86	86	64	74.4	47	54.7	0	0.0
All Airlines	241	241	170	70.5	156	64.7	0	0.0
<b>Perth-Broome</b>								
Qantas	27	27	21	77.8	21	77.8	0	0.0
QantasLink	54	54	45	83.3	40	74.1	0	0.0
Skywest	9	9	7	77.8	8	88.9	0	0.0
Virgin Australia	31	31	27	87.1	25	80.6	0	0.0
All Airlines	121	121	100	82.6	94	77.7	0	0.0
<b>Perth-Darwin</b>								
Qantas	31	31	25	80.6	26	83.9	0	0.0
Virgin Australia	26	26	19	73.1	20	76.9	0	0.0
All Airlines	57	57	44	77.2	46	80.7	0	0.0
<b>Perth-Geraldton</b>								
QantasLink	52	52	35	67.3	37	71.2	0	0.0
Skywest	77	77	61	79.2	57	74.0	0	0.0
All Airlines	129	129	96	74.4	94	72.9	0	0.0
<b>Perth-Kalgoorlie</b>								
Qantas	67	67	59	88.1	58	86.6	0	0.0
QantasLink	19	19	18	94.7	18	94.7	0	0.0
Skywest	56	56	40	71.4	34	60.7	0	0.0
All Airlines	142	142	117	82.4	110	77.5	0	0.0
<b>Perth-Karratha</b>								
Qantas	193	184	154	83.7	146	79.3	9	4.7
QantasLink	58	54	47	87.0	46	85.2	4	6.9
Virgin Australia	50	50	39	78.0	38	76.0	0	0.0
All Airlines	301	288	240	83.3	230	79.9	13	4.3
<b>Perth-Melbourne</b>								
Jetstar	88	87	52	59.8	57	65.5	1	1.1
Qantas	219	217	152	70.0	163	75.1	2	0.9
Tiger Airways	76	76	56	73.7	57	75.0	0	0.0
Virgin Australia	146	146	103	70.5	81	55.5	0	0.0
All Airlines	529	526	363	69.0	358	68.1	3	0.6
<b>Perth-Newman</b>								
Qantas	120	119	101	84.9	93	78.2	1	0.8
QantasLink	25	25	24	96.0	23	92.0	0	0.0
Virgin Australia	34	34	26	76.5	22	64.7	0	0.0
All Airlines	179	178	151	84.8	138	77.5	1	0.6

	<i>Sectors</i>		<i>Departures On Time</i>		<i>Arrivals On Time</i>		<i>Cancellations</i>	
	<i>Sched.</i>	<i>Flown</i>	<i>No.</i>	<i>%</i>	<i>No.</i>	<i>%</i>	<i>No.</i>	<i>%</i>
<b>Perth-Port Hedland</b>								
Qantas	111	110	100	90.9	91	82.7	1	0.9
QantasLink	36	36	33	91.7	33	91.7	0	0.0
Virgin Australia	68	68	54	79.4	46	67.6	0	0.0
All Airlines	215	214	187	87.4	170	79.4	1	0.5
<b>Perth-Sydney</b>								
Jetstar	49	49	32	65.3	36	73.5	0	0.0
Qantas	203	203	133	65.5	169	83.3	0	0.0
Virgin Australia	122	121	92	76.0	93	76.9	1	0.8
All Airlines	374	373	257	68.9	298	79.9	1	0.3
<b>Port Hedland-Perth</b>								
Qantas	112	111	77	69.4	69	62.2	1	0.9
QantasLink	36	35	33	94.3	33	94.3	1	2.8
Virgin Australia	68	68	46	67.6	44	64.7	0	0.0
All Airlines	216	214	156	72.9	146	68.2	2	0.9
<b>Port Lincoln-Adelaide</b>								
QantasLink	98	96	83	86.5	88	91.7	2	2.0
Regional Express	187	186	164	88.2	165	88.7	1	0.5
All Airlines	285	282	247	87.6	253	89.7	3	1.1
<b>Port Macquarie-Sydney</b>								
QantasLink	135	134	93	69.4	88	65.7	1	0.7
Virgin Australia - ATR/F100 Operations	62	61	47	77.0	43	70.5	1	1.6
All Airlines	197	195	140	71.8	131	67.2	2	1.0
<b>Proserpine-Brisbane</b>								
Jetstar	31	31	19	61.3	19	61.3	0	0.0
Virgin Australia	31	31	28	90.3	22	71.0	0	0.0
Virgin Australia - ATR/F100 Operations	21	21	20	95.2	12	57.1	0	0.0
All Airlines	83	83	67	80.7	53	63.9	0	0.0
<b>Rockhampton-Brisbane</b>								
QantasLink	141	141	108	76.6	81	57.4	0	0.0
Virgin Australia	69	68	63	92.6	46	67.6	1	1.4
Virgin Australia - ATR/F100 Operations	134	132	122	92.4	105	79.5	2	1.5
All Airlines	344	341	293	85.9	232	68.0	3	0.9
<b>Sunshine Coast-Melbourne</b>								
Jetstar	67	67	53	79.1	51	76.1	0	0.0
Virgin Australia	33	33	28	84.8	28	84.8	0	0.0
All Airlines	100	100	81	81.0	79	79.0	0	0.0
<b>Sunshine Coast-Sydney</b>								
Jetstar	116	116	90	77.6	90	77.6	0	0.0
Virgin Australia	36	36	29	80.6	29	80.6	0	0.0
All Airlines	152	152	119	78.3	119	78.3	0	0.0
<b>Sydney-Adelaide</b>								
Jetstar	120	117	86	73.5	88	75.2	3	2.5
Qantas	266	265	232	87.5	220	83.0	1	0.4
Virgin Australia	166	165	128	77.6	137	83.0	1	0.6
All Airlines	552	547	446	81.5	445	81.4	5	0.9
<b>Sydney-Albury</b>								
QantasLink	114	114	77	67.5	68	59.6	0	0.0
Regional Express	98	98	74	75.5	75	76.5	0	0.0
Virgin Australia - ATR/F100 Operations	60	60	49	81.7	48	80.0	0	0.0
All Airlines	272	272	200	73.5	191	70.2	0	0.0

	<i>Sectors</i>		<i>Departures On Time</i>		<i>Arrivals On Time</i>		<i>Cancellations</i>	
	<i>Sched.</i>	<i>Flown</i>	<i>No.</i>	<i>%</i>	<i>No.</i>	<i>%</i>	<i>No.</i>	<i>%</i>
<b>Sydney-Ayers Rock</b>								
Qantas	31	31	30	96.8	29	93.5	0	0.0
Virgin Australia	31	31	19	61.3	18	58.1	0	0.0
All Airlines	62	62	49	79.0	47	75.8	0	0.0
<b>Sydney-Ballina</b>								
Jetstar	63	63	47	74.6	48	76.2	0	0.0
Regional Express	26	26	19	73.1	19	73.1	0	0.0
Virgin Australia	31	31	25	80.6	25	80.6	0	0.0
All Airlines	120	120	91	75.8	92	76.7	0	0.0
<b>Sydney-Brisbane</b>								
Jetstar	116	113	79	69.9	70	61.9	3	2.6
Qantas	559	552	457	82.8	376	68.1	7	1.3
Tiger Airways	121	120	98	81.7	75	62.5	1	0.8
Virgin Australia	530	514	395	76.8	338	65.8	16	3.0
All Airlines	1 326	1 299	1 029	79.2	859	66.1	27	2.0
<b>Sydney-Cairns</b>								
Jetstar	79	79	52	65.8	59	74.7	0	0.0
Qantas	64	64	53	82.8	57	89.1	0	0.0
Virgin Australia	93	93	67	72.0	77	82.8	0	0.0
All Airlines	236	236	172	72.9	193	81.8	0	0.0
<b>Sydney-Canberra</b>								
Qantas	109	104	87	83.7	87	83.7	5	4.6
QantasLink	367	355	254	71.5	243	68.5	12	3.3
Virgin Australia	68	65	54	83.1	59	90.8	3	4.4
Virgin Australia - ATR/F100 Operations	170	165	128	77.6	133	80.6	5	2.9
All Airlines	714	689	523	75.9	522	75.8	25	3.5
<b>Sydney-Coffs Harbour</b>								
QantasLink	142	142	92	64.8	96	67.6	0	0.0
Virgin Australia	61	60	48	80.0	49	81.7	1	1.6
All Airlines	203	202	140	69.3	145	71.8	1	0.5
<b>Sydney-Darwin</b>								
Jetstar	25	25	23	92.0	23	92.0	0	0.0
Qantas	61	60	46	76.7	49	81.7	1	1.6
Virgin Australia	31	31	24	77.4	28	90.3	0	0.0
All Airlines	117	116	93	80.2	100	86.2	1	0.9
<b>Sydney-Dubbo</b>								
QantasLink	104	104	76	73.1	77	74.0	0	0.0
Regional Express	136	135	112	83.0	117	86.7	1	0.7
All Airlines	240	239	188	78.7	194	81.2	1	0.4
<b>Sydney-Gold Coast</b>								
Jetstar	324	317	237	74.8	237	74.8	7	2.2
Qantas	93	93	83	89.2	85	91.4	0	0.0
Tiger Airways	111	104	86	82.7	91	87.5	7	6.3
Virgin Australia	338	327	242	74.0	246	75.2	11	3.3
All Airlines	866	841	648	77.1	659	78.4	25	2.9
<b>Sydney-Hamilton Island</b>								
Jetstar	31	31	18	58.1	22	71.0	0	0.0
Virgin Australia	31	31	25	80.6	23	74.2	0	0.0
All Airlines	62	62	43	69.4	45	72.6	0	0.0
<b>Sydney-Hobart</b>								
Jetstar	118	118	84	71.2	91	77.1	0	0.0
Qantas	31	31	26	83.9	24	77.4	0	0.0
Virgin Australia	61	61	52	85.2	52	85.2	0	0.0
All Airlines	210	210	162	77.1	167	79.5	0	0.0



	<i>Sectors</i>		<i>Departures On Time</i>		<i>Arrivals On Time</i>		<i>Cancellations</i>	
	<i>Sched.</i>	<i>Flown</i>	<i>No.</i>	<i>%</i>	<i>No.</i>	<i>%</i>	<i>No.</i>	<i>%</i>
<b>Sydney-Launceston</b>								
Jetstar	80	80	58	72.5	65	81.3	0	0.0
Virgin Australia	31	31	22	71.0	23	74.2	0	0.0
All Airlines	111	111	80	72.1	88	79.3	0	0.0
<b>Sydney-Melbourne</b>								
Jetstar	312	302	221	73.2	227	75.2	10	3.2
Qantas	792	726	628	86.5	608	83.7	66	8.3
Tiger Airways	264	263	221	84.0	210	79.8	1	0.4
Virgin Australia	724	692	552	79.8	546	78.9	32	4.4
All Airlines	2 092	1 983	1 622	81.8	1 591	80.2	109	5.2
<b>Sydney-Perth</b>								
Jetstar	49	49	37	75.5	36	73.5	0	0.0
Qantas	203	203	145	71.4	141	69.5	0	0.0
Virgin Australia	121	120	98	81.7	80	66.7	1	0.8
All Airlines	373	372	280	75.3	257	69.1	1	0.3
<b>Sydney-Port Macquarie</b>								
QantasLink	133	132	97	73.5	92	69.7	1	0.8
Virgin Australia - ATR/F100 Operations	62	61	46	75.4	44	72.1	1	1.6
All Airlines	195	193	143	74.1	136	70.5	2	1.0
<b>Sydney-Sunshine Coast</b>								
Jetstar	116	116	93	80.2	99	85.3	0	0.0
Virgin Australia	36	36	31	86.1	32	88.9	0	0.0
All Airlines	152	152	124	81.6	131	86.2	0	0.0
<b>Sydney-Townsville</b>								
Jetstar	30	30	25	83.3	26	86.7	0	0.0
Virgin Australia	31	31	24	77.4	25	80.6	0	0.0
All Airlines	61	61	49	80.3	51	83.6	0	0.0
<b>Sydney-Wagga Wagga</b>								
QantasLink	104	104	73	70.2	68	65.4	0	0.0
Regional Express	106	106	92	86.8	85	80.2	0	0.0
All Airlines	210	210	165	78.6	153	72.9	0	0.0
<b>Townsville-Brisbane</b>								
Jetstar	31	31	16	51.6	20	64.5	0	0.0
Qantas	149	149	125	83.9	114	76.5	0	0.0
Virgin Australia	155	155	123	79.4	93	60.0	0	0.0
All Airlines	335	335	264	78.8	227	67.8	0	0.0
<b>Townsville-Cairns</b>								
QantasLink	168	168	142	84.5	148	88.1	0	0.0
Virgin Australia - ATR/F100 Operations	26	26	26	100.0	25	96.2	0	0.0
All Airlines	194	194	168	86.6	173	89.2	0	0.0
<b>Townsville-Sydney</b>								
Jetstar	29	29	22	75.9	20	69.0	0	0.0
Virgin Australia	31	31	19	61.3	12	38.7	0	0.0
All Airlines	60	60	41	68.3	32	53.3	0	0.0
<b>Wagga Wagga-Sydney</b>								
QantasLink	105	105	72	68.6	63	60.0	0	0.0
Regional Express	105	104	88	84.6	78	75.0	1	1.0
All Airlines	210	209	160	76.6	141	67.5	1	0.5

## Airports

On time performance is reported for all routes where the passenger load averages over 8000 passengers per month, and where two or more airlines operate in competition. The following data reports by airport against flights operated on those routes only.

Airport	Departures			Arrivals		
	Sectors	On Time		Sectors	On Time	
	Flown	No.	%	Flown	No.	%
<b>Adelaide</b>						
Jetstar	324	239	73.8	325	257	79.1
Qantas	809	715	88.4	811	680	83.8
QantasLink	131	113	86.3	131	112	85.5
Regional Express	185	172	93.0	186	165	88.7
Tiger Airways	63	55	87.3	63	56	88.9
Virgin Australia	671	614	91.5	672	586	87.2
All Airlines	2 183	1 908	87.4	2 188	1 856	84.8
Relates to services to and from Brisbane, Canberra, Gold Coast, Melbourne, Perth, Port Lincoln and Sydney.						
<b>Albury</b>						
QantasLink	113	73	64.6	114	68	59.6
Regional Express	97	79	81.4	98	75	76.5
Virgin Australia - ATR/F100 Operations	60	50	83.3	60	48	80.0
All Airlines	270	202	74.8	272	191	70.2
Relates to services to and from Sydney only.						
<b>Ayers Rock</b>						
Qantas	31	29	93.5	31	29	93.5
Virgin Australia	31	20	64.5	31	18	58.1
All Airlines	62	49	79.0	62	47	75.8
Relates to services to and from Sydney only.						
<b>Ballina</b>						
Jetstar	63	36	57.1	63	48	76.2
Regional Express	22	13	59.1	26	19	73.1
Virgin Australia	31	18	58.1	31	25	80.6
All Airlines	116	67	57.8	120	92	76.7
Relates to services to and from Sydney only.						
<b>Brisbane</b>						
Jetstar	708	495	69.9	708	467	66.0
Qantas	1 670	1 318	78.9	1 674	1 221	72.9
QantasLink	600	449	74.8	606	336	55.4
Tiger Airways	212	146	68.9	213	142	66.7
Virgin Australia	1 816	1 507	83.0	1 811	1 278	70.6
Virgin Australia - ATR/F100 Operations	458	398	86.9	459	340	74.1
All Airlines	5 464	4 313	78.9	5 471	3 784	69.2
Relates to services to and from Adelaide, Cairns, Canberra, Darwin, Emerald, Gladstone, Hamilton Island, Mackay, Melbourne, Mount Isa, Newcastle, Perth, Proserpine, Rockhampton, Sydney and Townsville.						

Airport	Departures			Arrivals		
	Sectors Flown	On Time		Sectors Flown	On Time	
		No.	%		No.	%
<b>Broome</b>						
Qantas	27	16	59.3	27	21	77.8
QantasLink	54	45	83.3	54	40	74.1
Skywest	14	11	78.6	9	8	88.9
Virgin Australia	30	22	73.3	31	25	80.6
All Airlines	125	94	75.2	121	94	77.7
Relates to services to and from Perth only.						
<b>Cairns</b>						
Jetstar	288	244	84.7	287	232	80.8
Qantas	212	185	87.3	212	188	88.7
QantasLink	167	153	91.6	168	148	88.1
Tiger Airways	17	14	82.4	17	15	88.2
Virgin Australia	262	234	89.3	262	228	87.0
Virgin Australia - ATR/F100 Operations	51	47	92.2	51	49	96.1
All Airlines	997	877	88.0	997	860	86.3
Relates to services to and from Brisbane, Melbourne, Sydney and Townsville.						
<b>Canberra</b>						
Qantas	495	456	92.1	494	441	89.3
QantasLink	429	312	72.7	432	292	67.6
Virgin Australia	345	314	91.0	347	297	85.6
Virgin Australia - ATR/F100 Operations	165	148	89.7	165	133	80.6
All Airlines	1 434	1 230	85.8	1 438	1 163	80.9
Relates to services to and from Adelaide, Brisbane, Melbourne and Sydney.						
<b>Coffs Harbour</b>						
QantasLink	143	93	65.0	142	96	67.6
Virgin Australia	60	47	78.3	60	49	81.7
All Airlines	203	140	69.0	202	145	71.8
Relates to services to and from Sydney only.						
<b>Darwin</b>						
Jetstar	34	24	70.6	34	31	91.2
Qantas	135	114	84.4	135	115	85.2
Virgin Australia	121	104	86.0	120	99	82.5
All Airlines	290	242	83.4	289	245	84.8
Relates to services to and from Brisbane, Melbourne, Perth and Sydney.						
<b>Dubbo</b>						
QantasLink	104	74	71.2	104	77	74.0
Regional Express	137	112	81.8	135	117	86.7
All Airlines	241	186	77.2	239	194	81.2
Relates to services to and from Sydney only.						
<b>Emerald</b>						
QantasLink	164	128	78.0	162	137	84.6
Virgin Australia - ATR/F100 Operations	93	82	88.2	93	84	90.3
All Airlines	257	210	81.7	255	221	86.7
Relates to services to and from Brisbane only.						

Airport	Departures			Arrivals		
	Sectors Flown	On Time		Sectors Flown	On Time	
		No.	%		No.	%
<b>Geraldton</b>						
QantasLink	52	34	65.4	52	37	71.2
Skywest	81	59	72.8	77	57	74.0
All Airlines	133	93	69.9	129	94	72.9
Relates to services to and from Perth only.						
<b>Gladstone</b>						
QantasLink	166	120	72.3	152	110	72.4
Virgin Australia - ATR/F100 Operations	108	96	88.9	108	91	84.3
All Airlines	274	216	78.8	260	201	77.3
Relates to services to and from Brisbane only.						
<b>Gold Coast</b>						
Jetstar	588	445	75.7	584	437	74.8
Qantas	93	80	86.0	93	85	91.4
Tiger Airways	188	148	78.7	188	157	83.5
Virgin Australia	551	449	81.5	551	448	81.3
All Airlines	1 420	1 122	79.0	1 416	1 127	79.6
Relates to services to and from Adelaide, Melbourne and Sydney.						
<b>Hamilton Island</b>						
Jetstar	50	33	66.0	50	35	70.0
Virgin Australia	62	43	69.4	62	52	83.9
All Airlines	112	76	67.9	112	87	77.7
Relates to services to and from Brisbane and Sydney.						
<b>Hobart</b>						
Jetstar	323	214	66.3	324	235	72.5
Qantas	93	72	77.4	93	78	83.9
QantasLink	30	28	93.3	31	17	54.8
Tiger Airways	63	52	82.5	63	53	84.1
Virgin Australia	219	173	79.0	219	185	84.5
All Airlines	728	539	74.0	730	568	77.8
Relates to services to and from Melbourne and Sydney.						
<b>Kalgoorlie</b>						
Qantas	67	57	85.1	67	58	86.6
QantasLink	19	18	94.7	19	18	94.7
Skywest	56	36	64.3	56	34	60.7
All Airlines	142	111	78.2	142	110	77.5
Relates to services to and from Perth only.						
<b>Karratha</b>						
Qantas	181	142	78.5	184	146	79.3
QantasLink	54	42	77.8	54	46	85.2
Virgin Australia	50	32	64.0	50	38	76.0
All Airlines	285	216	75.8	288	230	79.9
Relates to services to and from Perth only.						

Airport	Departures			Arrivals		
	Sectors Flown	On Time		Sectors Flown	On Time	
		No.	%		No.	%
<b>Launceston</b>						
Jetstar	230	155	67.4	230	182	79.1
QantasLink	109	80	73.4	109	79	72.5
Virgin Australia	158	133	84.2	158	135	85.4
All Airlines	497	368	74.0	497	396	79.7
Relates to services to and from Melbourne and Sydney.						
<b>Mackay</b>						
Jetstar	107	70	65.4	107	85	79.4
QantasLink	50	34	68.0	49	34	69.4
Virgin Australia	154	135	87.7	155	135	87.1
All Airlines	311	239	76.8	311	254	81.7
Relates to services to and from Brisbane only.						
<b>Melbourne</b>						
Jetstar	1 444	1 028	71.2	1 445	1 057	73.1
Qantas	1 960	1 622	82.8	1 955	1 623	83.0
QantasLink	281	215	76.5	280	211	75.4
Regional Express	76	73	96.1	76	72	94.7
Tiger Airways	659	552	83.8	659	505	76.6
Virgin Australia	2 275	1 945	85.5	2 273	1 871	82.3
All Airlines	6 695	5 435	81.2	6 688	5 339	79.8
Relates to services to and from Adelaide, Brisbane, Cairns, Canberra, Darwin, Gold Coast, Hobart, Launceston, Mildura, Newcastle, Perth, Sunshine Coast and Sydney.						
<b>Mildura</b>						
QantasLink	88	84	95.5	88	73	83.0
Regional Express	76	73	96.1	76	71	93.4
Virgin Australia	31	30	96.8	31	30	96.8
All Airlines	195	187	95.9	195	174	89.2
Relates to services to and from Melbourne only.						
<b>Mount Isa</b>						
Qantas	56	51	91.1	56	51	91.1
Virgin Australia	21	19	90.5	21	20	95.2
All Airlines	77	70	90.9	77	71	92.2
Relates to services to and from Brisbane only.						
<b>Newcastle</b>						
Jetstar	234	185	79.1	234	183	78.2
QantasLink	62	30	48.4	62	26	41.9
Virgin Australia	31	25	80.6	31	29	93.5
Virgin Australia - ATR/F100 Operations	80	68	85.0	80	68	85.0
All Airlines	407	308	75.7	407	306	75.2
Relates to services to and from Brisbane and Melbourne.						
<b>Newman</b>						
Qantas	120	86	71.7	119	93	78.2
QantasLink	26	25	96.2	25	23	92.0
Virgin Australia	34	20	58.8	34	22	64.7
All Airlines	180	131	72.8	178	138	77.5
Relates to services to and from Perth only.						

Airport	Departures			Arrivals		
	Sectors Flown	On Time		Sectors Flown	On Time	
		No.	%		No.	%
<b>Perth</b>						
Jetstar	205	129	62.9	205	144	70.2
Qantas	1 193	909	76.2	1 193	857	71.8
QantasLink	240	202	84.2	240	199	82.9
Skywest	142	108	76.1	151	108	71.5
Tiger Airways	76	56	73.7	76	68	89.5
Virgin Australia	623	479	76.9	621	406	65.4
All Airlines	2 479	1 883	76.0	2 486	1 782	71.7
Relates to services to and from Adelaide, Brisbane, Broome, Darwin, Geraldton, Kalgoorlie, Karratha, Melbourne, Newman, Port Hedland and Sydney.						
<b>Port Hedland</b>						
Qantas	111	77	69.4	110	91	82.7
QantasLink	35	33	94.3	36	33	91.7
Virgin Australia	68	46	67.6	68	46	67.6
All Airlines	214	156	72.9	214	170	79.4
Relates to services to and from Perth only.						
<b>Port Lincoln</b>						
QantasLink	96	83	86.5	97	85	87.6
Regional Express	186	164	88.2	185	171	92.4
All Airlines	282	247	87.6	282	256	90.8
Relates to services to and from Adelaide only.						
<b>Port Macquarie</b>						
QantasLink	134	93	69.4	132	92	69.7
Virgin Australia - ATR/F100 Operations	61	47	77.0	61	44	72.1
All Airlines	195	140	71.8	193	136	70.5
Relates to services to and from Sydney only.						
<b>Proserpine</b>						
Jetstar	31	19	61.3	31	21	67.7
Virgin Australia	31	28	90.3	31	28	90.3
Virgin Australia - ATR/F100 Operations	21	20	95.2	21	20	95.2
All Airlines	83	67	80.7	83	69	83.1
Relates to services to and from Brisbane only.						
<b>Rockhampton</b>						
QantasLink	141	108	76.6	152	121	79.6
Virgin Australia	68	63	92.6	69	62	89.9
Virgin Australia - ATR/F100 Operations	132	122	92.4	131	116	88.5
All Airlines	341	293	85.9	352	299	84.9
Relates to services to and from Brisbane only.						
<b>Sunshine Coast</b>						
Jetstar	183	143	78.1	182	157	86.3
Virgin Australia	69	57	82.6	69	60	87.0
All Airlines	252	200	79.4	251	217	86.5
Relates to services to and from Melbourne and Sydney.						

Airport	Departures			Arrivals		
	Sectors	On Time		Sectors	On Time	
	Flown	No.	%	Flown	No.	%
<b>Sydney</b>						
Jetstar	1 440	1 060	73.6	1 442	1 028	71.3
Qantas	2 129	1 787	83.9	2 128	1 707	80.2
QantasLink	951	669	70.3	950	614	64.6
Regional Express	365	297	81.4	360	262	72.8
Tiger Airways	487	405	83.2	486	391	80.5
Virgin Australia	2 319	1 806	77.9	2 323	1 773	76.3
Virgin Australia - ATR/F100 Operations	286	223	78.0	286	221	77.3
All Airlines	7 977	6 247	78.3	7 975	5 996	75.2
Relates to services to and from Adelaide, Albury, Ayers Rock, Ballina, Brisbane, Cairns, Canberra, Coffs Harbour, Darwin, Dubbo, Gold Coast, Hamilton Island, Hobart, Launceston, Melbourne, Perth, Port Macquarie, Sunshine Coast, Townsville and Wagga Wagga.						
<b>Townsville</b>						
Jetstar	60	38	63.3	61	41	67.2
Qantas	149	125	83.9	149	121	81.2
QantasLink	168	142	84.5	167	154	92.2
Virgin Australia	186	142	76.3	186	145	78.0
Virgin Australia - ATR/F100 Operations	26	26	100.0	26	25	96.2
All Airlines	589	473	80.3	589	486	82.5
Relates to services to and from Brisbane, Cairns and Sydney.						
<b>Wagga Wagga</b>						
QantasLink	105	72	68.6	104	68	65.4
Regional Express	104	88	84.6	106	85	80.2
All Airlines	209	160	76.6	210	153	72.9
Relates to services to and from Sydney only.						

## Definitions

---

On time departure                      A flight departure is counted as "on time" if it departs the gate within 15 minutes of the scheduled departure time shown in the carriers' schedule.

---

On time arrival                         A flight arrival is counted as "on time" if it arrived at the gate within 15 minutes of the scheduled arrival time shown in the carriers' schedule.  
Neither diverted nor cancelled flights count as on time.

---

Cancellation                            A flight removed from service within 7 days of scheduled departure is regarded as a cancellation.

---

On time departure percentage                      The percentage of on time departures is measured against the number of departures *operated* on any particular sector.

---

On time arrival percentage                         The percentage of on time arrivals is measured against the number of arrivals *operated* on any particular sector.

---

Cancellation percentage                            The percentage of cancellations is measured against the number of services *scheduled* on any particular sector.

---