



Australian Government

Department of Infrastructure, Transport,  
Regional Development and Local Government  
Bureau of Infrastructure, Transport and Regional Economics



bitre

AVIATION STATISTICS

Airline  
On Time Performance

December 2008—OTP 68

© Commonwealth of Australia 2009

ISSN 1832–0759

This work is copyright and the data contained in this publication should not be reproduced or used in any form without acknowledgement.

#### Enquiries

Bureau of Infrastructure, Transport and Regional Economics  
GPO Box 501  
Canberra ACT 2601

Telephone: 02 6274 7790

Facsimile: 02 6274 7727

Website: [www.bitre.gov.au](http://www.bitre.gov.au)

Email: [avstats@infrastructure.gov.au](mailto:avstats@infrastructure.gov.au)

This publication, including a spreadsheet of the time–series data, can be downloaded from the BITRE website:

<http://www.bitre.gov.au/info.aspx?ResourceId=214&NodeId=104>.

#### Disclaimers

BITRE seeks to publish its work to the highest professional standards. However, it cannot accept responsibility for any consequences arising from the use of information herein. Readers should rely on their own skill and judgment in applying any information or analysis to particular issues or circumstances.

## Foreword

The Bureau of Infrastructure, Transport and Regional Economics (BITRE) reports on domestic aviation on time performance of the following participating Australian domestic airlines: Jetstar, MacAir, Qantas, QantasLink, Regional Express, Skywest Airlines, Tiger Airways and Virgin Blue.

Reporting commenced in November 2003, except for Jetstar which commenced reporting in May 2004, MacAir which commenced reporting in July 2005, and Tiger Airways which commenced reporting in April 2008. MacAir ceased operations in February 2009 and data was not received for December 2008 or January 2009.

The purpose of collecting this information is to monitor overall industry and individual airline performance on punctuality, and to allow consumers of air travel to make informed decisions when planning air travel.

On time performance is reported for all routes where the passenger load averaged 8000 or more passengers per month over the previous six months, and where two or more airlines operated in competition on those routes. There were 49 routes that met this definition in November 2008. Over time, however, routes which meet these criteria may change as airline networks and traffic levels vary.

The participating airlines also report overall monthly network performance, except for MacAir which only supplies total network data because it does not operate on competitive routes.

Total industry figures refer to all services operated by reporting airlines only. These airlines collectively carried over 95 per cent of total domestic passengers (regular public transport only) in 2007.

The method of capturing on time performance varies between airlines utilising different recording systems. Jetstar and Qantas jet aircraft use Aircraft Communication Addressing and Reporting System (ACARS) to electronically measure on time performance. MacAir, Regional Express, Skywest, Tiger Airways, Virgin Blue and the Qantas non-jet fleet record on time performance manually using records from pilots, gate agents and/or ground crews.

Reports are published monthly on the BITRE web site. After collection of initial data, aggregate reports are subject to internal audit by participating airlines prior to publication. The target date for publication is within six weeks of the end of the reporting period. The report for December 2008 includes comparable data for the total industry for previous months.

Information on the total network for the month ending 31 December 2008 is presented on Page 1.

On time performance reporting was provided for 49 different routes covering 31 airports for December 2008. Detailed information on the performance of these routes is included in the tables beginning on Page 9, while detailed information on performance by airport is included from Page 21. The definitions can be found on Page 27.

Detailed time series data is available in Microsoft Excel spreadsheet format from the BITRE website at <http://www.bitre.gov.au/info.aspx?ResourceId=214&NodeId=104>.



# Contents

	Page
Industry performance .....	1
Individual routes .....	9
Airports .....	21
Definitions.....	27



# Industry performance

For the month ending 31 December 2008, airline on time performance over all routes operated by participating airlines (Jetstar, Qantas, QantasLink, Regional Express, Skywest Airlines, Tiger Airways, and Virgin Blue) averaged 79.0 per cent for on time departures, and 77.7 per cent for on time arrivals. Cancellations for December 2008 represented 1.6 per cent of all scheduled flights. The equivalent figures for December 2007 were 77.1 per cent for departures, 75.2 per cent for arrivals and 1.5 per cent for cancellations.

The long term average performance for all routes since reporting commenced in November 2003 is 84.9 per cent for on time departures and 83.6 per cent for on time arrivals. Cancellations average 1.2 per cent of all scheduled flights.

Of the major domestic airlines, Tiger Airways achieved the highest level of on time departures for December 2008 at 85.9 per cent, followed by Qantas at 80.2 per cent, Jetstar at 77.3 per cent, and Virgin Blue at 77.2 per cent. Skywest was the best performing regional airline with 86.1 per cent departures on time, followed by QantasLink (79.9 per cent) and Regional Express (78.7 per cent).

Tiger Airways achieved the highest on time arrivals among the major domestic airlines at 86.2 per cent, followed by Qantas at 80.7 per cent, Jetstar at 79.5 per cent, and Virgin Blue at 75.7 per cent. Skywest was also the best performing regional airline for on time arrivals at 85.7 per cent, followed by QantasLink (76.6 per cent) and Regional Express (73.2 per cent).

Skywest had the highest percentage of cancellations for December 2008 at 3.0 per cent, while Regional Express had the lowest at 0.4 per cent.

Of the 49 routes which met the criteria for on time performance reporting in December 2008, the Melbourne-Alice Springs route had the highest percentage of on time departures (93.5 per cent), while the Launceston-Sydney route had the lowest (45.9 per cent). On time arrivals were also highest on the Melbourne-Alice Springs route (97.8 per cent) and lowest on the Ballina-Sydney route (42.8 per cent).

Cancellations were highest on the Melbourne–Sydney route at 5.0 per cent, followed by Sydney–Melbourne at 4.7 per cent, Canberra–Sydney at 4.4 per cent, Sydney–Canberra at 4.1 per cent and Broome-Perth also at 4.1 per cent.

Alice Springs Airport recorded the highest percentage of on time departures (93.5 per cent), while Ballina Airport recorded the lowest (58.6 per cent). Alice Springs Airport also recorded the highest percentage of on time arrivals (97.8 per cent), while Wagga Wagga Airport recorded the lowest (56.4 per cent).

Table 1 On time performance for December 2008—Total Industry

	<i>Sectors</i>		<i>Departures On Time</i>		<i>Arrivals On Time</i>		<i>Cancellations</i>	
	<i>Scheduled</i>	<i>Flown</i>	<i>No.</i>	<i>%</i>	<i>No.</i>	<i>%</i>	<i>No.</i>	<i>%</i>
Jetstar	5 206	5 122	3 961	77.3	4 071	79.5	84	1.6
MacAir	..	..	..	..	..	..	..	..
Qantas	10 270	10 131	8 127	80.2	8 171	80.7	139	1.4
QantasLink	7 299	7 218	5 764	79.9	5 530	76.6	81	1.1
Regional Express	5 023	5 003	3 936	78.7	3 661	73.2	20	0.4
Skywest	996	966	832	86.1	828	85.7	30	3.0
Tiger Airways	838	832	715	85.9	717	86.2	6	0.7
Virgin Blue	11 940	11 654	8 997	77.2	8 817	75.7	286	2.4
All Airlines	41 572	40 926	32 332	79.0	31 795	77.7	646	1.6

**Note:** 1. Total airline network data (including routes not shown in this report).  
2. Tiger Airways began reporting in April 2008.  
3. No data received from MacAir for December 2008. Operations ceased in February 2009.

Table 2 Top ten routes for on time performance for December 2008 (participating airlines only)

<i>Departures</i>		<i>Arrivals</i>	
<i>Route</i>	<i>On Time (%)</i>	<i>Route</i>	<i>On Time (%)</i>
Melbourne-Alice Springs	93.5	Melbourne-Alice Springs	97.8
Alice Springs-Melbourne	93.5	Alice Springs-Melbourne	93.5
Townsville-Sydney	90.6	Townsville-Sydney	92.5
Townsville-Brisbane	89.5	Brisbane-Hamilton Island	91.9
Canberra-Melbourne	88.8	Melbourne-Brisbane	89.6
Kalgoorlie-Perth	87.9	Brisbane-Townsville	89.3
Cairns-Sydney	87.2	Sydney-Townsville	88.7
Melbourne-Newcastle	87.1	Townsville-Brisbane	88.5
Perth-Kalgoorlie	87.1	Melbourne-Maroochydore	88.0
Perth-Karratha	86.9	Perth-Kalgoorlie	87.9

Table 3 Top ten airports for on time performance for December 2008 (participating airlines and reported routes only)

<i>Departures</i>		<i>Arrivals</i>	
<i>Airport</i>	<i>On Time (%)</i>	<i>Airport</i>	<i>On Time (%)</i>
Alice Springs	93.5	Alice Springs	97.8
Townsville	89.7	Hamilton Island	91.9
Kalgoorlie	87.9	Townsville	89.3
Cairns	85.7	Kalgoorlie	87.9
Hamilton Island	85.5	Hervey Bay	87.8
Darwin	83.9	Rockhampton	87.1
Rockhampton	83.9	Cairns	86.6
Mildura	83.5	Maroochydore	84.4
Canberra	83.2	Karratha	83.8
Mackay	82.4	Brisbane	83.1

# Total industry on time performance

Figure 1 On time performance (by month from December 2005)—Total Industry

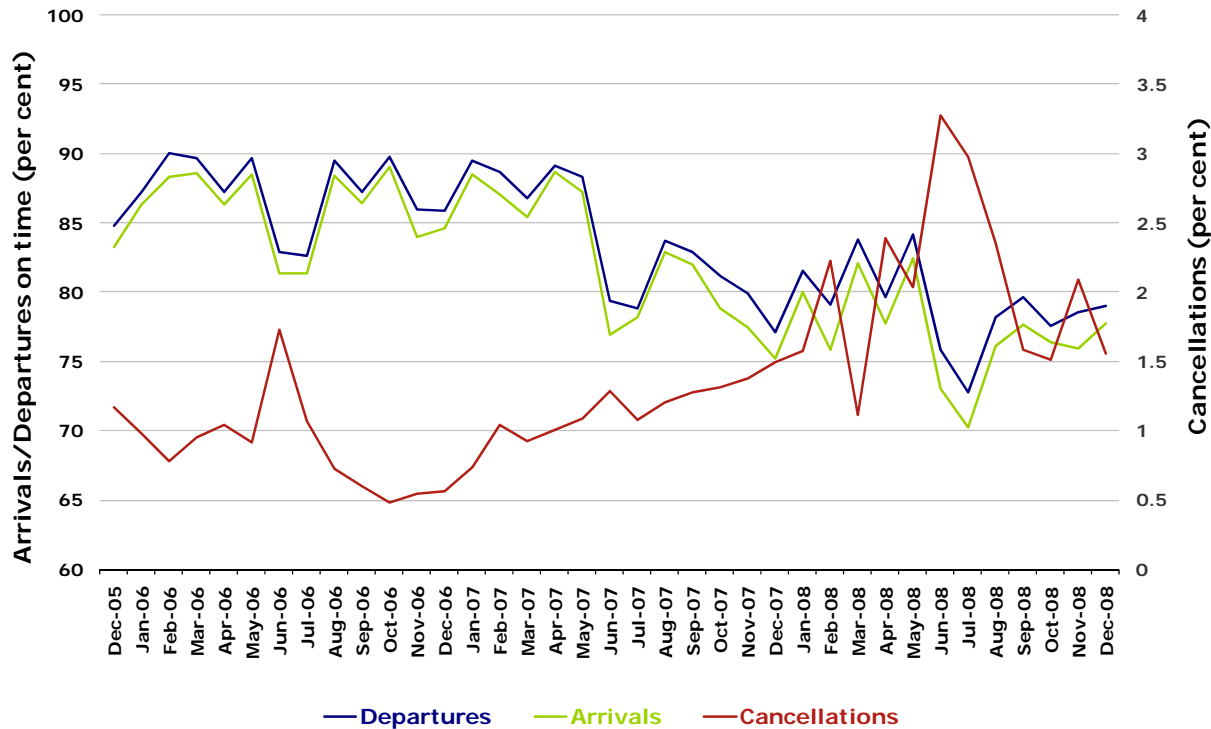
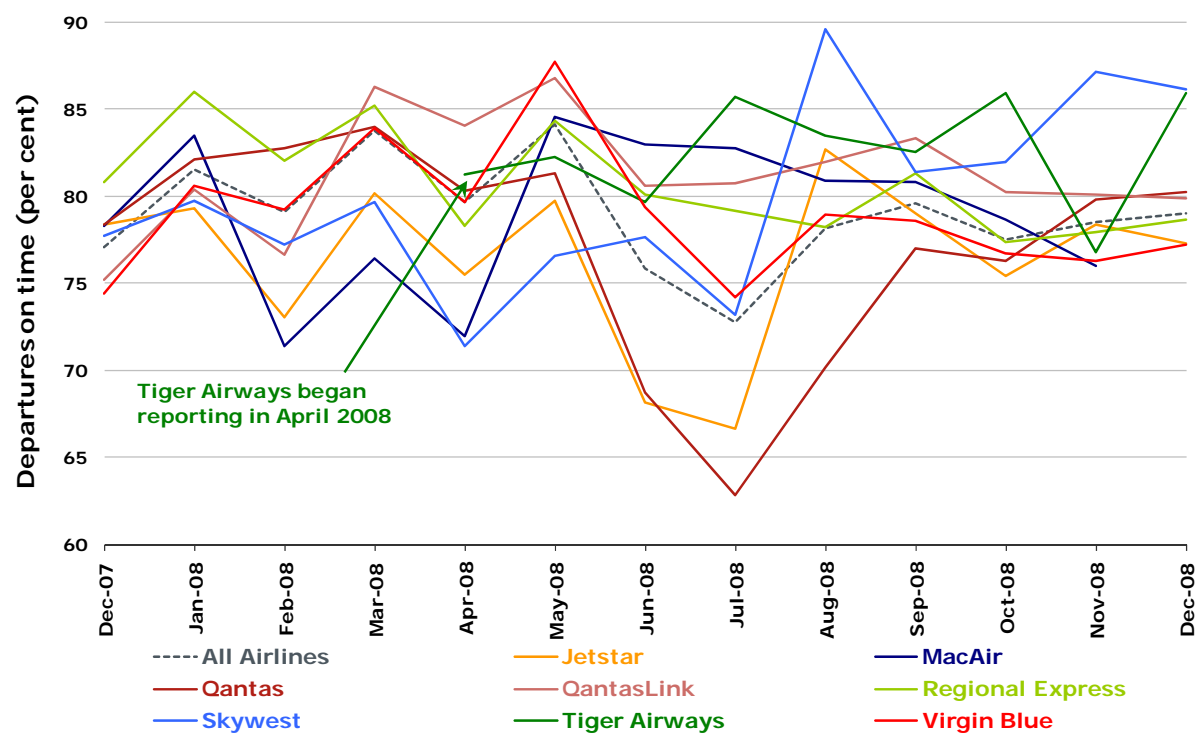
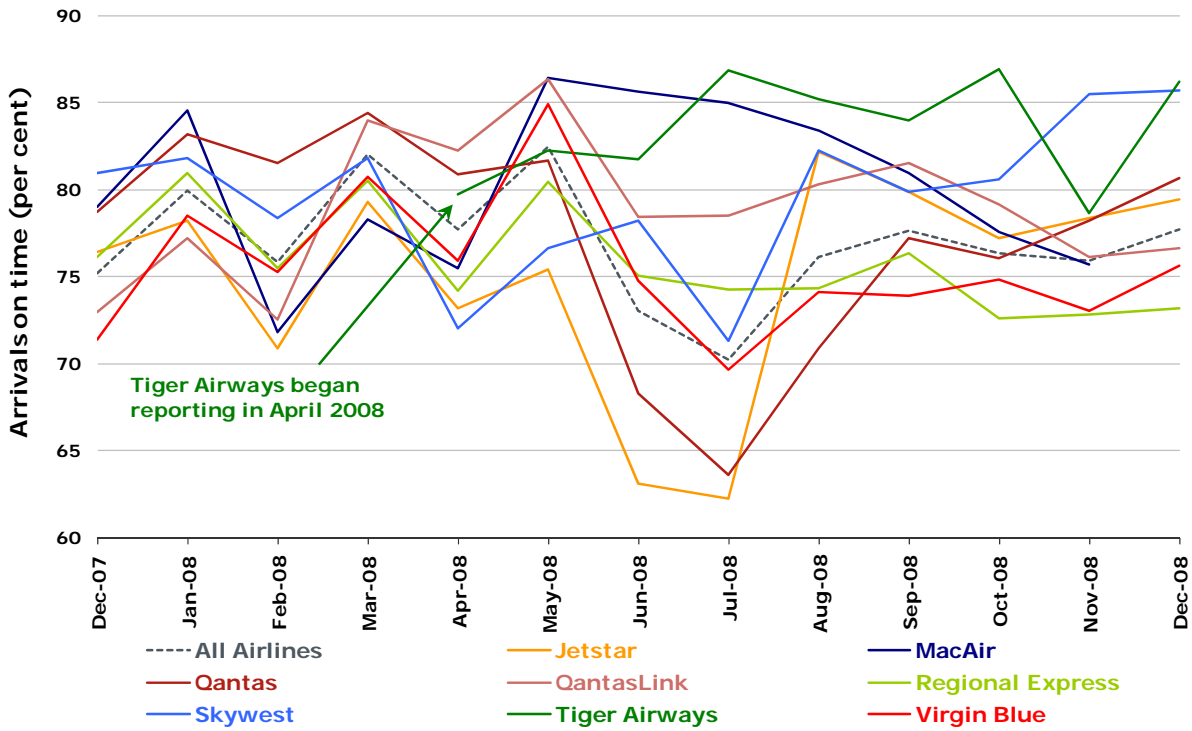


Figure 2 Departures on time (by month from December 2007)



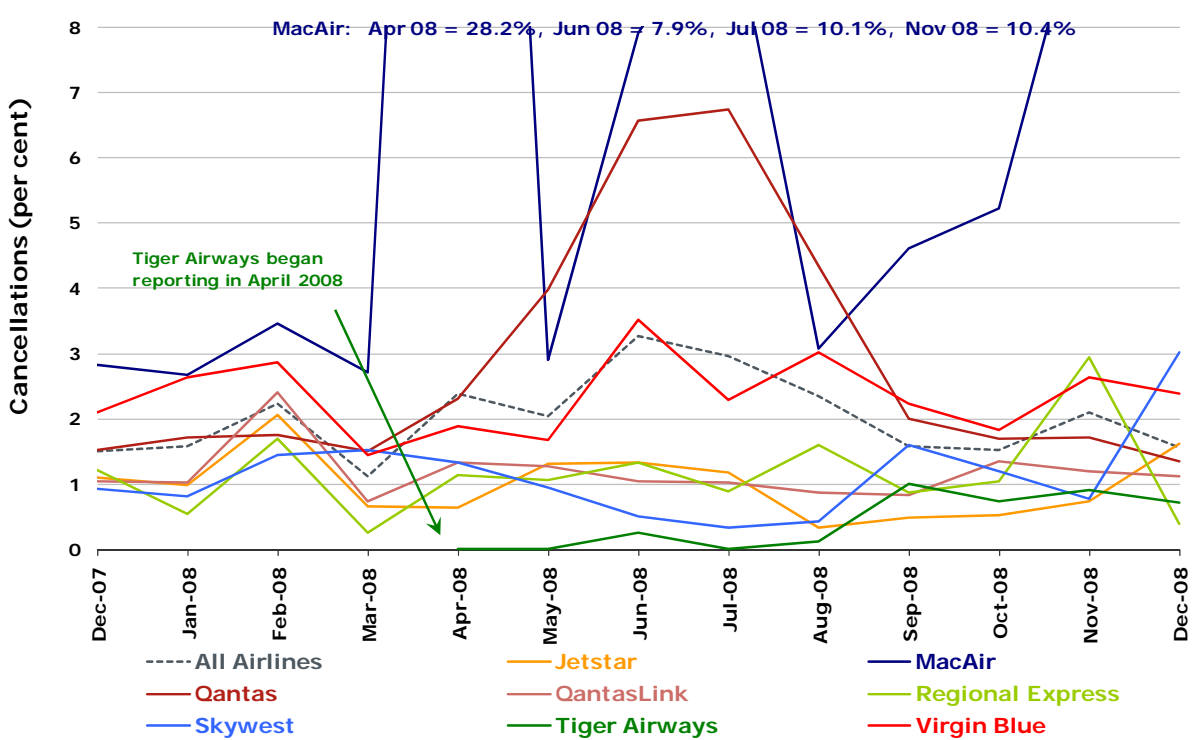
No data received from MacAir for December 2008. Operations ceased in February 2009.

Figure 3 Arrivals on time (by month from December 2007)



No data received from MacAir for December 2008. Operations ceased in February 2009.

Figure 4 Cancellations (by month from December 2007)



No data received from MacAir for December 2008. Operations ceased in February 2009.

# Major domestic airlines on time performance

Figure 5 On time performance (by month from December 2005)—Jetstar

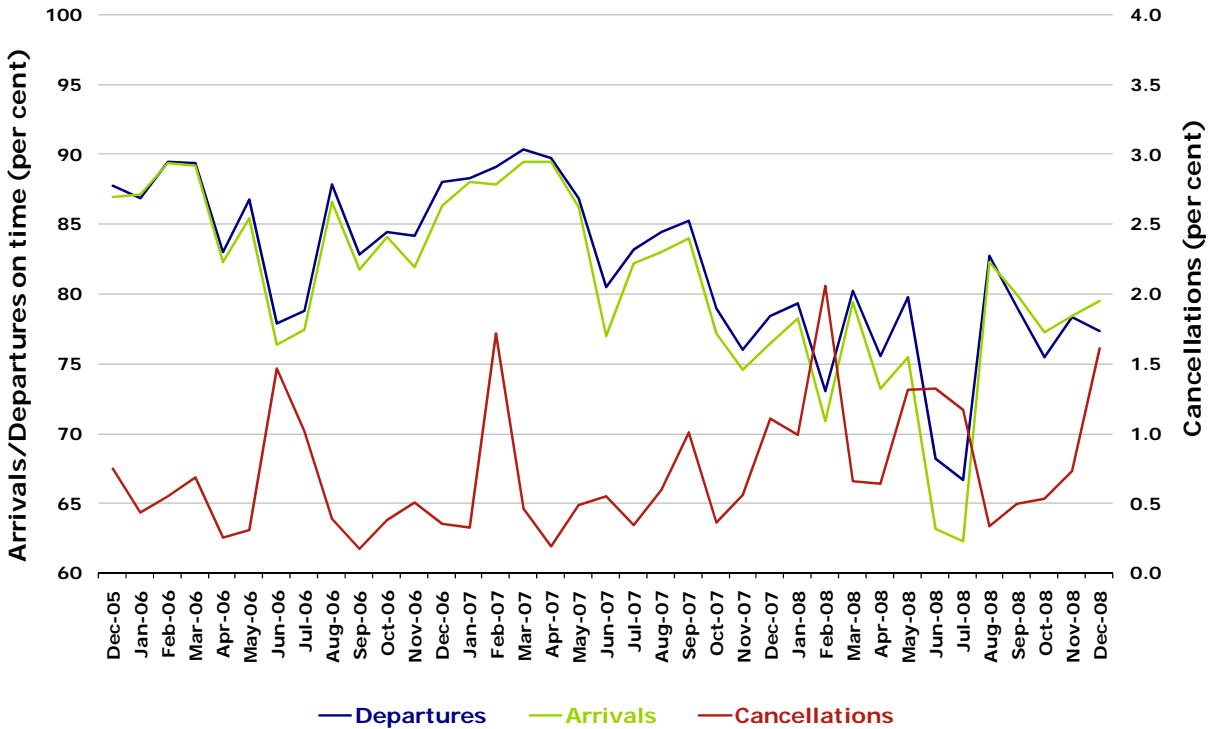


Figure 6 On time performance (by month from December 2005)—Qantas

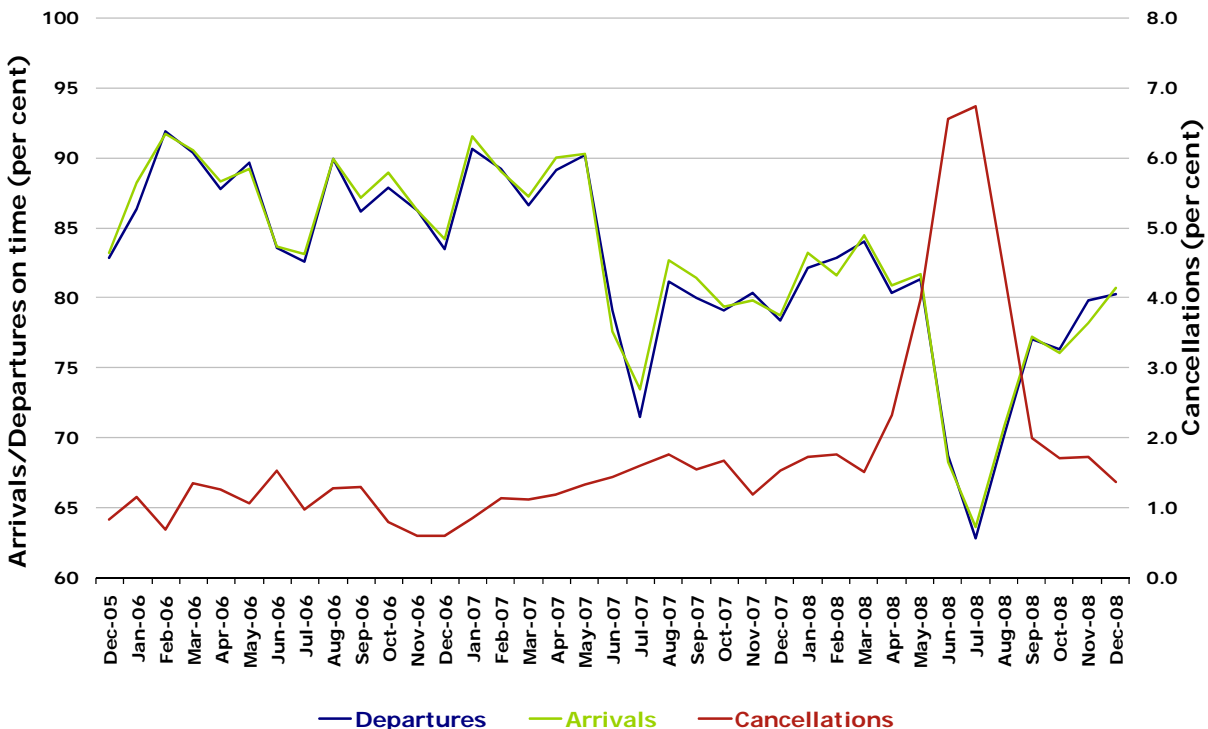


Figure 7 On time performance (by month from December 2005)—Tiger Airways

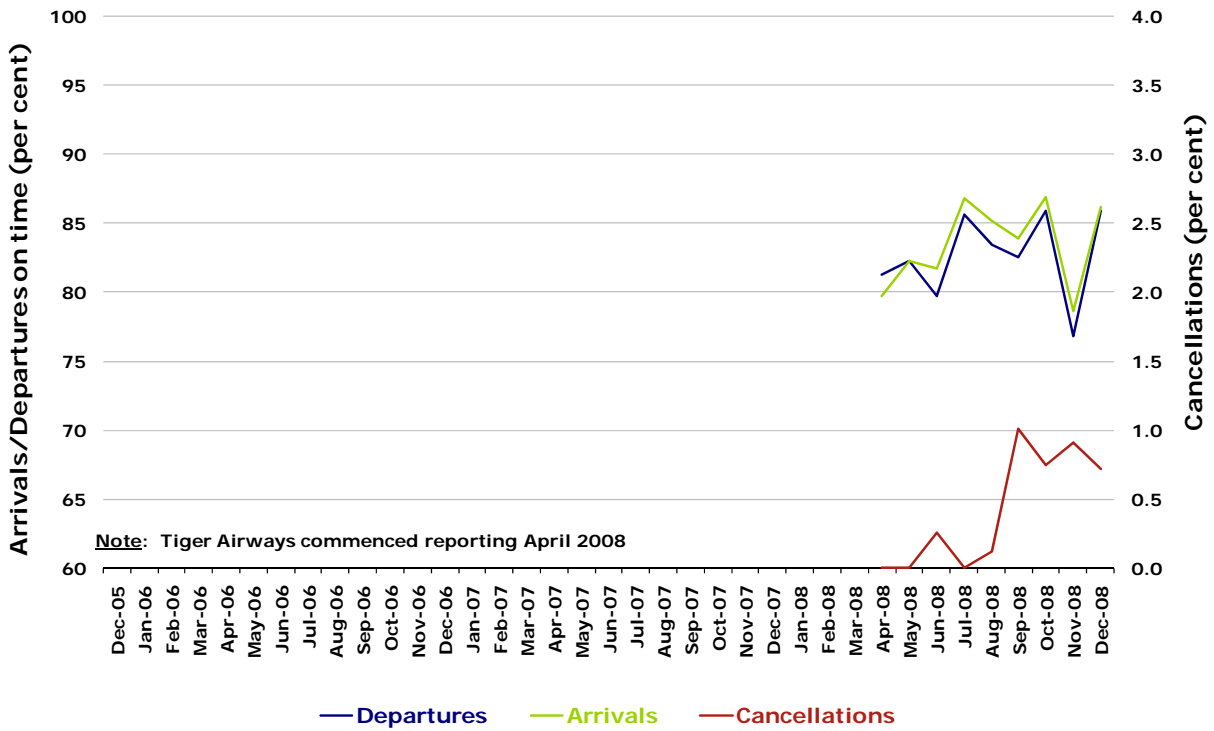
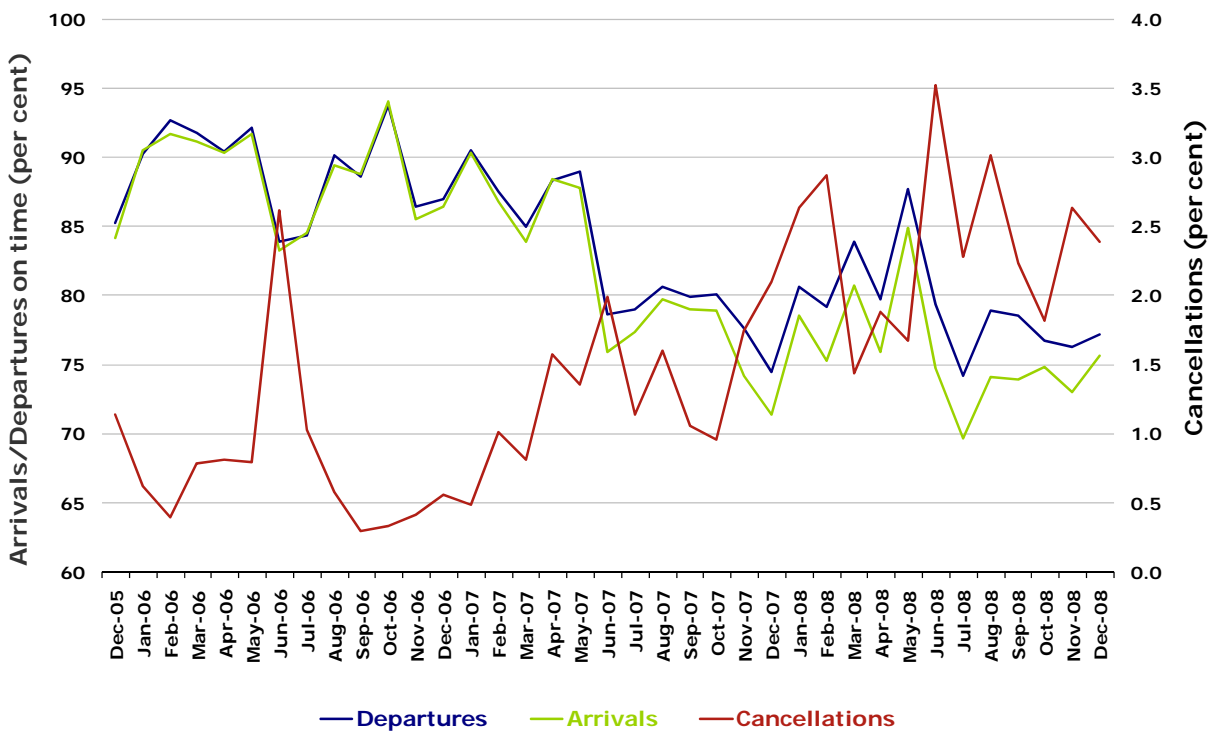


Figure 8 On time performance (by month from December 2005)—Virgin Blue



# Major regional airlines on time performance

Figure 9 On time performance (by month from December 2005)—MacAir

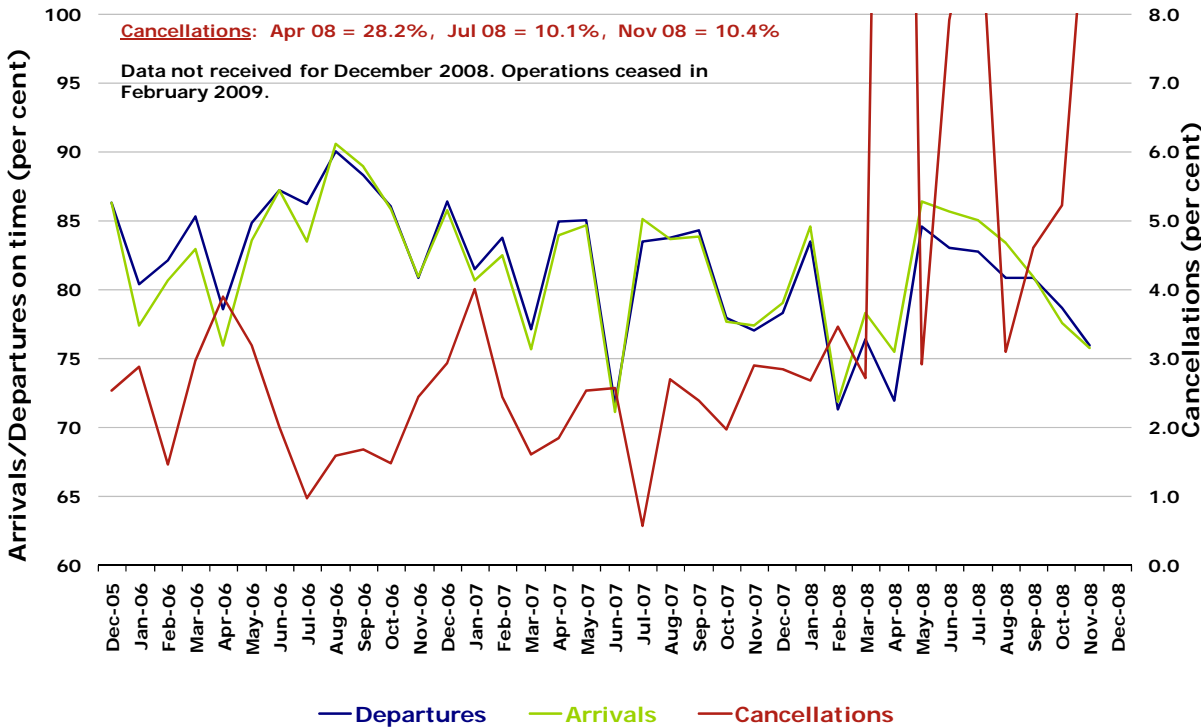


Figure 10 On time performance (by month from December 2005)—QantasLink

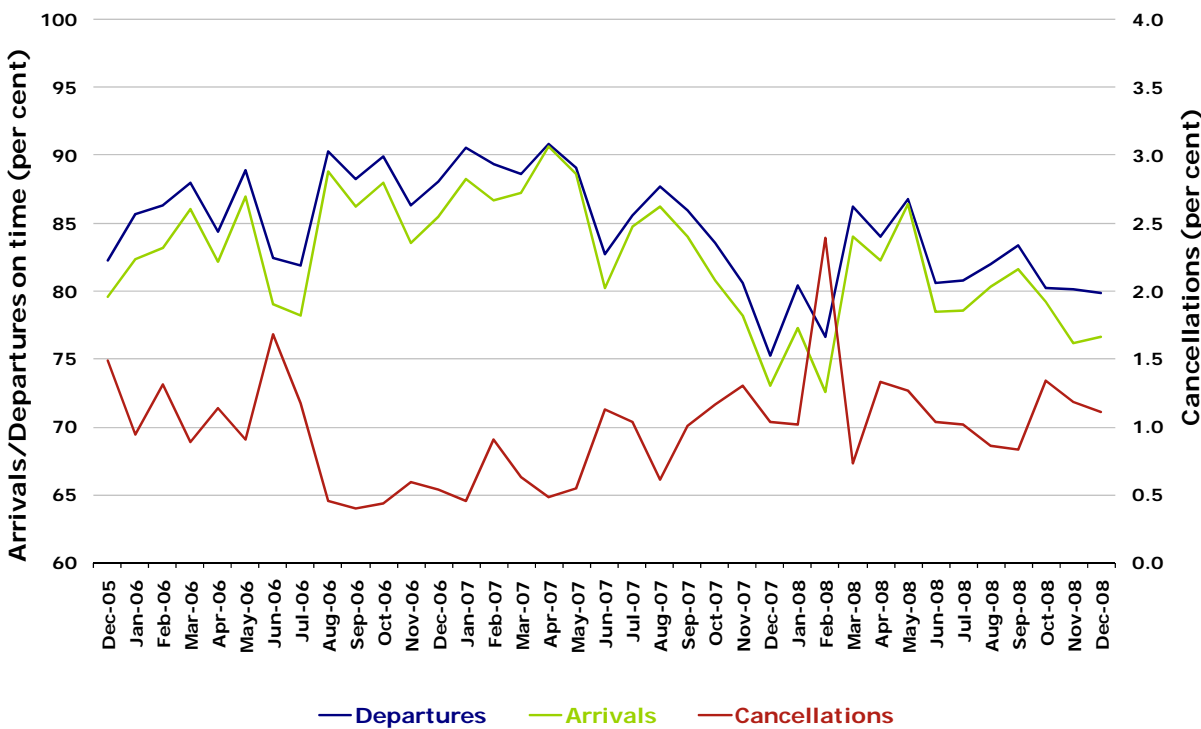


Figure 11 On time performance (by month from December 2005)—Regional Express

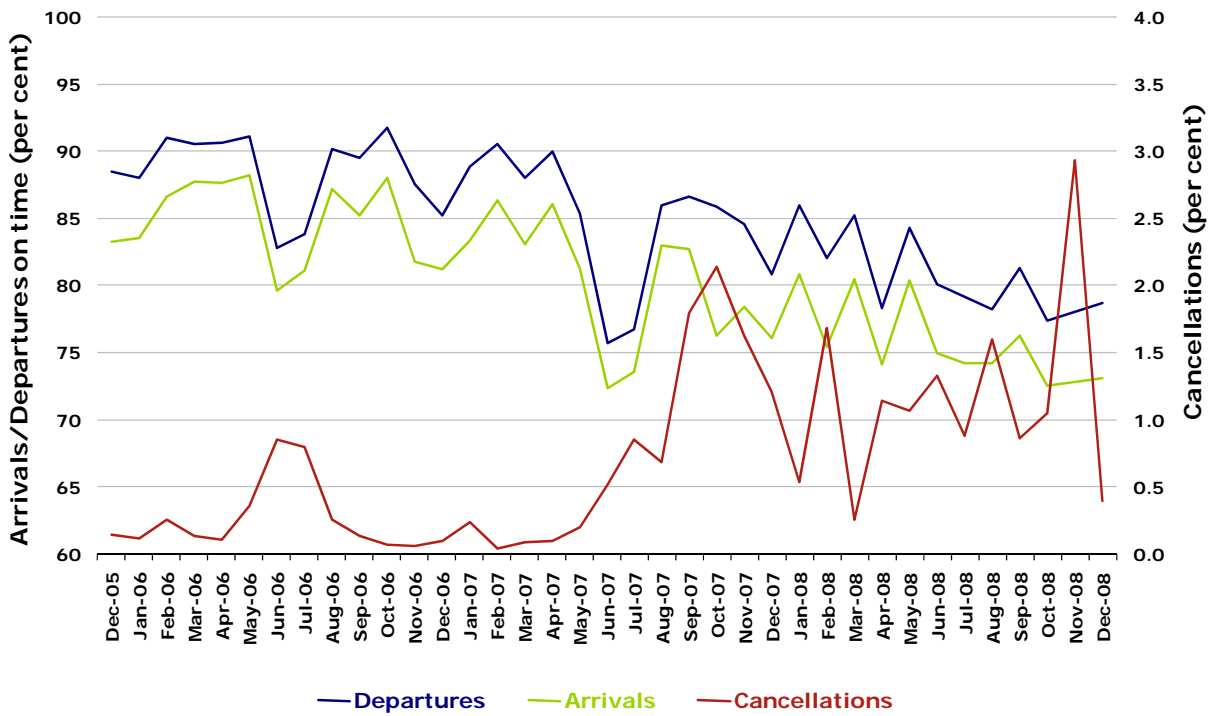
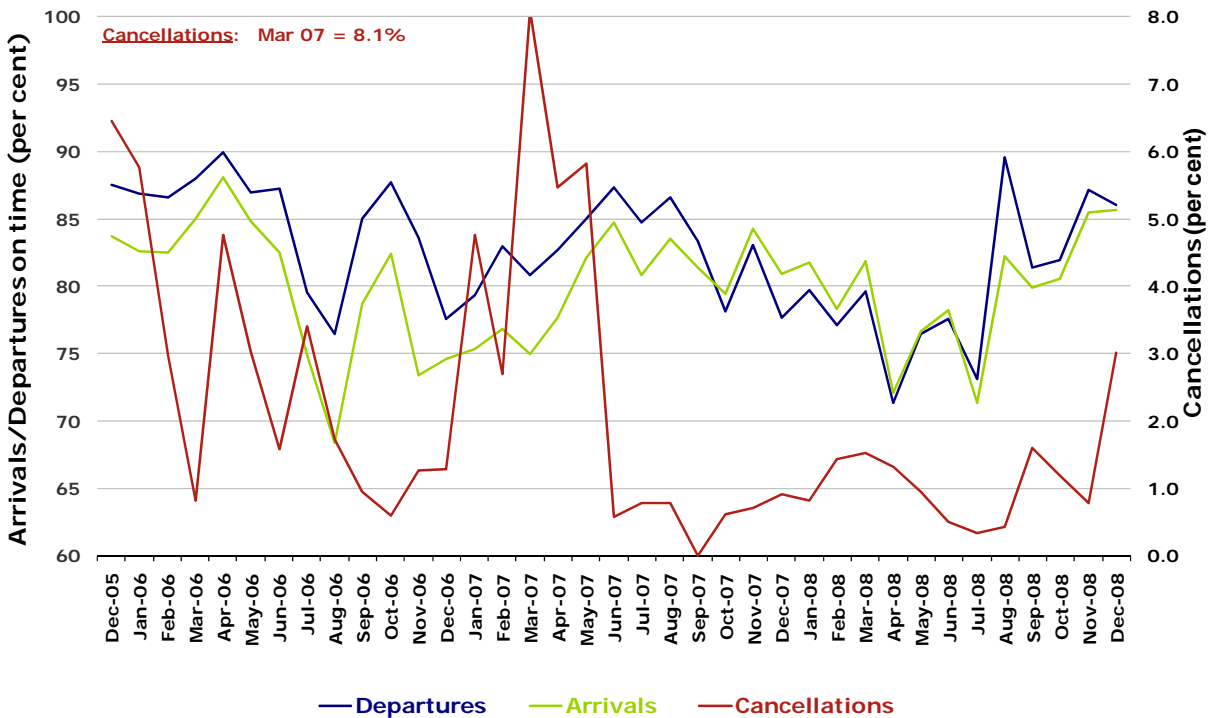


Figure 12 On time performance (by month from December 2005)—Skywest



## Individual routes

On time performance is reported for all routes where the passenger load averages over 8000 passengers per month over the previous six months, and where two or more airlines operate in competition on those routes. There are now 49 routes which meet this definition. Over time, however, routes which meet this definition may change as airline networks and traffic levels vary.

	<i>Sectors</i>		<i>Departures On Time</i>		<i>Arrivals On Time</i>		<i>Cancellations</i>	
	<i>Sched.</i>	<i>Flown</i>	<i>No.</i>	<i>%</i>	<i>No.</i>	<i>%</i>	<i>No.</i>	<i>%</i>
<b>Adelaide-Brisbane</b>								
Jetstar	31	31	22	71.0	27	87.1	0	0.0
Qantas	90	90	82	91.1	86	95.6	0	0.0
Virgin Blue	125	122	82	67.2	95	77.9	3	2.4
All Airlines	246	243	186	76.5	208	85.6	3	1.2
<b>Adelaide-Canberra</b>								
Qantas	42	42	27	64.3	30	71.4	0	0.0
Virgin Blue	31	31	19	61.3	20	64.5	0	0.0
All Airlines	73	73	46	63.0	50	68.5	0	0.0
<b>Adelaide-Gold Coast</b>								
Jetstar	31	31	20	64.5	23	74.2	0	0.0
Virgin Blue	31	31	26	83.9	27	87.1	0	0.0
All Airlines	62	62	46	74.2	50	80.6	0	0.0
<b>Adelaide-Melbourne</b>								
Qantas	350	346	298	86.1	311	89.9	4	1.1
Tiger Airways	68	67	51	76.1	53	79.1	1	1.5
Virgin Blue	296	290	220	75.9	233	80.3	6	2.0
All Airlines	714	703	569	80.9	597	84.9	11	1.5
<b>Adelaide-Perth</b>								
Qantas	146	145	123	84.8	119	82.1	1	0.7
Virgin Blue	92	90	71	78.9	45	50.0	2	2.2
All Airlines	238	235	194	82.6	164	69.8	3	1.3
<b>Adelaide-Sydney</b>								
Jetstar	45	44	31	70.5	37	84.1	1	2.2
Qantas	309	308	249	80.8	272	88.3	1	0.3
Virgin Blue	155	152	86	56.6	115	75.7	3	1.9
All Airlines	509	504	366	72.6	424	84.1	5	1.0
<b>Albury-Sydney</b>								
QantasLink	106	103	63	61.2	60	58.3	3	2.8
Regional Express	108	107	72	67.3	76	71.0	1	0.9
Virgin Blue	57	57	35	61.4	32	56.1	0	0.0
All Airlines	271	267	170	63.7	168	62.9	4	1.5

	<i>Sectors</i>		<i>Departures On Time</i>		<i>Arrivals On Time</i>		<i>Cancellations</i>	
	<i>Sched.</i>	<i>Flown</i>	<i>No.</i>	<i>%</i>	<i>No.</i>	<i>%</i>	<i>No.</i>	<i>%</i>
<b>Alice Springs-Melbourne</b>								
Qantas	31	31	29	93.5	29	93.5	0	0.0
Tiger Airways	15	15	14	93.3	14	93.3	0	0.0
All Airlines	46	46	43	93.5	43	93.5	0	0.0
<b>Ballina-Sydney</b>								
Jetstar	31	31	19	61.3	13	41.9	0	0.0
Regional Express	92	91	46	50.5	31	34.1	1	1.1
Virgin Blue	31	30	24	80.0	21	70.0	1	3.2
All Airlines	154	152	89	58.6	65	42.8	2	1.3
<b>Brisbane-Adelaide</b>								
Jetstar	31	31	27	87.1	26	83.9	0	0.0
Qantas	90	90	74	82.2	71	78.9	0	0.0
Virgin Blue	125	122	99	81.1	69	56.6	3	2.4
All Airlines	246	243	200	82.3	166	68.3	3	1.2
<b>Brisbane-Cairns</b>								
Jetstar	98	98	70	71.4	84	85.7	0	0.0
Qantas	124	124	100	80.6	107	86.3	0	0.0
Virgin Blue	123	123	102	82.9	109	88.6	0	0.0
All Airlines	345	345	272	78.8	300	87.0	0	0.0
<b>Brisbane-Canberra</b>								
Qantas	139	138	110	79.7	110	79.7	1	0.7
QantasLink	8	8	6	75.0	6	75.0	0	0.0
Virgin Blue	155	145	119	82.1	99	68.3	10	6.5
All Airlines	302	291	235	80.8	215	73.9	11	3.6
<b>Brisbane-Darwin</b>								
Jetstar	56	56	44	78.6	43	76.8	0	0.0
Qantas	32	32	27	84.4	26	81.3	0	0.0
Virgin Blue	31	31	22	71.0	23	74.2	0	0.0
All Airlines	119	119	93	78.2	92	77.3	0	0.0
<b>Brisbane-Hamilton Island</b>								
Jetstar	31	31	24	77.4	28	90.3	0	0.0
Virgin Blue	31	31	29	93.5	29	93.5	0	0.0
All Airlines	62	62	53	85.5	57	91.9	0	0.0
<b>Brisbane-Mackay</b>								
Jetstar	93	90	70	77.8	76	84.4	3	3.2
QantasLink	57	57	46	80.7	44	77.2	0	0.0
Virgin Blue	148	147	116	78.9	120	81.6	1	0.7
All Airlines	298	294	232	78.9	240	81.6	4	1.3

	<i>Sectors</i>		<i>Departures On Time</i>		<i>Arrivals On Time</i>		<i>Cancellations</i>	
	<i>Sched.</i>	<i>Flown</i>	<i>No.</i>	<i>%</i>	<i>No.</i>	<i>%</i>	<i>No.</i>	<i>%</i>
<b>Brisbane-Melbourne</b>								
Qantas	443	443	372	84.0	344	77.7	0	0.0
Virgin Blue	388	382	341	89.3	320	83.8	6	1.5
All Airlines	831	825	713	86.4	664	80.5	6	0.7
<b>Brisbane-Newcastle</b>								
Jetstar	122	122	94	77.0	103	84.4	0	0.0
QantasLink	57	55	41	74.5	31	56.4	2	3.5
Virgin Blue	48	48	41	85.4	39	81.3	0	0.0
All Airlines	227	225	176	78.2	173	76.9	2	0.9
<b>Brisbane-Perth</b>								
Qantas	124	124	95	76.6	69	55.6	0	0.0
Virgin Blue	62	62	52	83.9	16	25.8	0	0.0
All Airlines	186	186	147	79.0	85	45.7	0	0.0
<b>Brisbane-Proserpine</b>								
Jetstar	31	31	22	71.0	25	80.6	0	0.0
Virgin Blue	32	31	26	83.9	25	80.6	1	3.1
All Airlines	63	62	48	77.4	50	80.6	1	1.6
<b>Brisbane-Rockhampton</b>								
Jetstar	31	31	23	74.2	26	83.9	0	0.0
QantasLink	169	167	156	93.4	155	92.8	2	1.2
Virgin Blue	151	150	114	76.0	122	81.3	1	0.7
All Airlines	351	348	293	84.2	303	87.1	3	0.9
<b>Brisbane-Sydney</b>								
Qantas	671	659	512	77.7	449	68.1	12	1.8
Virgin Blue	602	574	441	76.8	375	65.3	28	4.7
All Airlines	1,273	1,233	953	77.3	824	66.8	40	3.1
<b>Brisbane-Townsville</b>								
Jetstar	60	59	49	83.1	53	89.8	1	1.7
Qantas	162	162	139	85.8	145	89.5	0	0.0
Virgin Blue	154	154	133	86.4	137	89.0	0	0.0
All Airlines	376	375	321	85.6	335	89.3	1	0.3
<b>Broome-Perth</b>								
Qantas	30	30	18	60.0	20	66.7	0	0.0
QantasLink	45	44	37	84.1	39	88.6	1	2.2
Skywest	17	17	13	76.5	14	82.4	0	0.0
Virgin Blue	55	50	25	50.0	35	70.0	5	9.1
All Airlines	147	141	93	66.0	108	76.6	6	4.1
<b>Cairns-Brisbane</b>								
Jetstar	99	99	85	85.9	80	80.8	0	0.0
Qantas	124	124	106	85.5	107	86.3	0	0.0
Virgin Blue	124	124	109	87.9	102	82.3	0	0.0
All Airlines	347	347	300	86.5	289	83.3	0	0.0

	<i>Sectors</i>		<i>Departures On Time</i>		<i>Arrivals On Time</i>		<i>Cancellations</i>	
	<i>Sched.</i>	<i>Flown</i>	<i>No.</i>	<i>%</i>	<i>No.</i>	<i>%</i>	<i>No.</i>	<i>%</i>
<b>Cairns-Melbourne</b>								
Jetstar	31	31	24	77.4	20	64.5	0	0.0
Qantas	31	31	28	90.3	27	87.1	0	0.0
Virgin Blue	65	64	50	78.1	45	70.3	1	1.5
All Airlines	127	126	102	81.0	92	73.0	1	0.8
<b>Cairns-Sydney</b>								
Jetstar	31	27	18	66.7	18	66.7	4	12.9
Qantas	110	109	92	84.4	88	80.7	1	0.9
Virgin Blue	100	98	94	95.9	86	87.8	2	2.0
All Airlines	241	234	204	87.2	192	82.1	7	2.9
<b>Canberra-Adelaide</b>								
Qantas	45	45	43	95.6	39	86.7	0	0.0
Virgin Blue	31	31	22	71.0	20	64.5	0	0.0
All Airlines	76	76	65	85.5	59	77.6	0	0.0
<b>Canberra-Brisbane</b>								
Qantas	139	139	117	84.2	117	84.2	0	0.0
QantasLink	8	8	5	62.5	4	50.0	0	0.0
Virgin Blue	155	144	110	76.4	113	78.5	11	7.1
All Airlines	302	291	232	79.7	234	80.4	11	3.6
<b>Canberra-Melbourne</b>								
Qantas	219	217	195	89.9	196	90.3	2	0.9
QantasLink	30	30	24	80.0	22	73.3	0	0.0
Tiger Airways	51	51	46	90.2	46	90.2	0	0.0
Virgin Blue	168	165	146	88.5	137	83.0	3	1.8
All Airlines	468	463	411	88.8	401	86.6	5	1.1
<b>Canberra-Sydney</b>								
Qantas	142	139	121	87.1	118	84.9	3	2.1
QantasLink	379	359	283	78.8	276	76.9	20	5.3
Virgin Blue	207	198	158	79.8	165	83.3	9	4.3
All Airlines	728	696	562	80.7	559	80.3	32	4.4
<b>Coffs Harbour-Sydney</b>								
QantasLink	123	123	88	71.5	77	62.6	0	0.0
Virgin Blue	62	62	55	88.7	46	74.2	0	0.0
All Airlines	185	185	143	77.3	123	66.5	0	0.0
<b>Darwin-Brisbane</b>								
Jetstar	55	55	45	81.8	47	85.5	0	0.0
Qantas	32	32	26	81.3	26	81.3	0	0.0
Virgin Blue	31	31	28	90.3	27	87.1	0	0.0
All Airlines	118	118	99	83.9	100	84.7	0	0.0
<b>Dubbo-Sydney</b>								
QantasLink	81	81	60	74.1	54	66.7	0	0.0
Regional Express	137	136	95	69.9	89	65.4	1	0.7
All Airlines	218	217	155	71.4	143	65.9	1	0.5

	<i>Sectors</i>		<i>Departures On Time</i>		<i>Arrivals On Time</i>		<i>Cancellations</i>	
	<i>Sched.</i>	<i>Flown</i>	<i>No.</i>	<i>%</i>	<i>No.</i>	<i>%</i>	<i>No.</i>	<i>%</i>
<b>Gold Coast-Adelaide</b>								
Jetstar	31	31	24	77.4	23	74.2	0	0.0
Virgin Blue	31	30	23	76.7	13	43.3	1	3.2
All Airlines	62	61	47	77.0	36	59.0	1	1.6
<b>Gold Coast-Melbourne</b>								
Jetstar	184	184	143	77.7	135	73.4	0	0.0
Tiger Airways	95	95	84	88.4	86	90.5	0	0.0
Virgin Blue	155	153	120	78.4	87	56.9	2	1.3
All Airlines	434	432	347	80.3	308	71.3	2	0.5
<b>Gold Coast-Newcastle</b>								
Jetstar	29	29	25	86.2	25	86.2	0	0.0
Virgin Blue	13	13	11	84.6	11	84.6	0	0.0
All Airlines	42	42	36	85.7	36	85.7	0	0.0
<b>Gold Coast-Sydney</b>								
Jetstar	310	310	228	73.5	211	68.1	0	0.0
Virgin Blue	346	328	261	79.6	242	73.8	18	5.2
All Airlines	656	638	489	76.6	453	71.0	18	2.7
<b>Hamilton Island-Brisbane</b>								
Jetstar	31	31	25	80.6	25	80.6	0	0.0
Virgin Blue	31	31	28	90.3	28	90.3	0	0.0
All Airlines	62	62	53	85.5	53	85.5	0	0.0
<b>Hervey Bay-Sydney</b>								
Jetstar	18	18	13	72.2	15	83.3	0	0.0
Virgin Blue	31	31	26	83.9	25	80.6	0	0.0
All Airlines	49	49	39	79.6	40	81.6	0	0.0
<b>Hobart-Melbourne</b>								
Jetstar	138	137	121	88.3	122	89.1	1	0.7
Qantas	62	62	48	77.4	48	77.4	0	0.0
Tiger Airways	39	39	36	92.3	36	92.3	0	0.0
Virgin Blue	158	158	126	79.7	128	81.0	0	0.0
All Airlines	397	396	331	83.6	334	84.3	1	0.3
<b>Hobart-Sydney</b>								
Jetstar	62	62	47	75.8	45	72.6	0	0.0
Qantas	33	33	23	69.7	29	87.9	0	0.0
Virgin Blue	62	62	52	83.9	51	82.3	0	0.0
All Airlines	157	157	122	77.7	125	79.6	0	0.0
<b>Kalgoorlie-Perth</b>								
Qantas	64	64	56	87.5	55	85.9	0	0.0
QantasLink	23	21	19	90.5	19	90.5	2	8.7
Skywest	33	31	27	87.1	26	83.9	2	6.1
All Airlines	120	116	102	87.9	100	86.2	4	3.3

	<i>Sectors</i>		<i>Departures On Time</i>		<i>Arrivals On Time</i>		<i>Cancellations</i>	
	<i>Sched.</i>	<i>Flown</i>	<i>No.</i>	<i>%</i>	<i>No.</i>	<i>%</i>	<i>No.</i>	<i>%</i>
<b>Karratha-Perth</b>								
Qantas	119	117	103	88.0	103	88.0	2	1.7
QantasLink	32	31	30	96.8	30	96.8	1	3.1
Skywest	17	17	14	82.4	14	82.4	0	0.0
Virgin Blue	55	54	33	61.1	37	68.5	1	1.8
All Airlines	223	219	180	82.2	184	84.0	4	1.8
<b>Launceston-Melbourne</b>								
Jetstar	93	93	72	77.4	77	82.8	0	0.0
QantasLink	71	69	58	84.1	50	72.5	2	2.8
Tiger Airways	34	34	32	94.1	32	94.1	0	0.0
Virgin Blue	126	126	104	82.5	100	79.4	0	0.0
All Airlines	324	322	266	82.6	259	80.4	2	0.6
<b>Launceston-Sydney</b>								
Jetstar	31	30	10	33.3	16	53.3	1	3.2
Virgin Blue	31	31	18	58.1	21	67.7	0	0.0
All Airlines	62	61	28	45.9	37	60.7	1	1.6
<b>Mackay-Brisbane</b>								
Jetstar	93	90	68	75.6	69	76.7	3	3.2
QantasLink	57	57	44	77.2	50	87.7	0	0.0
Virgin Blue	149	148	131	88.5	123	83.1	1	0.7
All Airlines	299	295	243	82.4	242	82.0	4	1.3
<b>Maroochydore-Melbourne</b>								
Jetstar	62	61	44	72.1	45	73.8	1	1.6
Tiger Airways	25	25	23	92.0	24	96.0	0	0.0
Virgin Blue	47	47	44	93.6	37	78.7	0	0.0
All Airlines	134	133	111	83.5	106	79.7	1	0.7
<b>Maroochydore-Sydney</b>								
Jetstar	93	91	73	80.2	71	78.0	2	2.2
Virgin Blue	64	63	45	71.4	40	63.5	1	1.6
All Airlines	157	154	118	76.6	111	72.1	3	1.9
<b>Melbourne-Adelaide</b>								
Qantas	351	347	299	86.2	296	85.3	4	1.1
Tiger Airways	68	67	59	88.1	62	92.5	1	1.5
Virgin Blue	296	290	221	76.2	208	71.7	6	2.0
All Airlines	715	704	579	82.2	566	80.4	11	1.5
<b>Melbourne-Alice Springs</b>								
Qantas	31	31	29	93.5	30	96.8	0	0.0
Tiger Airways	15	15	14	93.3	15	100.0	0	0.0
All Airlines	46	46	43	93.5	45	97.8	0	0.0

	<i>Sectors</i>		<i>Departures On Time</i>		<i>Arrivals On Time</i>		<i>Cancellations</i>	
	<i>Sched.</i>	<i>Flown</i>	<i>No.</i>	<i>%</i>	<i>No.</i>	<i>%</i>	<i>No.</i>	<i>%</i>
<b>Melbourne-Brisbane</b>								
Qantas	439	439	366	83.4	393	89.5	0	0.0
Virgin Blue	385	380	321	84.5	341	89.7	5	1.3
All Airlines	824	819	687	83.9	734	89.6	5	0.6
<b>Melbourne-Cairns</b>								
Jetstar	31	31	29	93.5	27	87.1	0	0.0
Qantas	31	31	25	80.6	29	93.5	0	0.0
Virgin Blue	65	65	46	70.8	52	80.0	0	0.0
All Airlines	127	127	100	78.7	108	85.0	0	0.0
<b>Melbourne-Canberra</b>								
Qantas	219	217	185	85.3	192	88.5	2	0.9
QantasLink	30	30	23	76.7	24	80.0	0	0.0
Tiger Airways	51	51	44	86.3	44	86.3	0	0.0
Virgin Blue	169	166	139	83.7	146	88.0	3	1.8
All Airlines	469	464	391	84.3	406	87.5	5	1.1
<b>Melbourne-Gold Coast</b>								
Jetstar	186	186	154	82.8	156	83.9	0	0.0
Tiger Airways	95	95	85	89.5	85	89.5	0	0.0
Virgin Blue	156	155	112	72.3	123	79.4	1	0.6
All Airlines	437	436	351	80.5	364	83.5	1	0.2
<b>Melbourne-Hobart</b>								
Jetstar	138	137	114	83.2	118	86.1	1	0.7
Qantas	62	62	40	64.5	47	75.8	0	0.0
Tiger Airways	39	39	37	94.9	36	92.3	0	0.0
Virgin Blue	158	158	112	70.9	122	77.2	0	0.0
All Airlines	397	396	303	76.5	323	81.6	1	0.3
<b>Melbourne-Launceston</b>								
Jetstar	93	93	74	79.6	77	82.8	0	0.0
QantasLink	71	69	58	84.1	58	84.1	2	2.8
Tiger Airways	34	34	31	91.2	31	91.2	0	0.0
Virgin Blue	126	126	91	72.2	93	73.8	0	0.0
All Airlines	324	322	254	78.9	259	80.4	2	0.6
<b>Melbourne-Maroochydore</b>								
Jetstar	62	61	46	75.4	50	82.0	1	1.6
Tiger Airways	25	25	24	96.0	22	88.0	0	0.0
Virgin Blue	47	47	40	85.1	45	95.7	0	0.0
All Airlines	134	133	110	82.7	117	88.0	1	0.7
<b>Melbourne-Mildura</b>								
QantasLink	106	105	75	71.4	67	63.8	1	0.9
Regional Express	93	92	85	92.4	82	89.1	1	1.1
Virgin Blue	31	31	29	93.5	28	90.3	0	0.0
All Airlines	230	228	189	82.9	177	77.6	2	0.9

	<i>Sectors</i>		<i>Departures On Time</i>		<i>Arrivals On Time</i>		<i>Cancellations</i>	
	<i>Sched.</i>	<i>Flown</i>	<i>No.</i>	<i>%</i>	<i>No.</i>	<i>%</i>	<i>No.</i>	<i>%</i>
<b>Melbourne-Newcastle</b>								
Jetstar	93	93	78	83.9	78	83.9	0	0.0
Virgin Blue	31	31	30	96.8	30	96.8	0	0.0
All Airlines	124	124	108	87.1	108	87.1	0	0.0
<b>Melbourne-Perth</b>								
Qantas	220	220	147	66.8	132	60.0	0	0.0
Tiger Airways	61	59	51	86.4	48	81.4	2	3.3
Virgin Blue	124	123	100	81.3	76	61.8	1	0.8
All Airlines	405	402	298	74.1	256	63.7	3	0.7
<b>Melbourne-Sydney</b>								
Qantas	912	866	659	76.1	700	80.8	46	5.0
Virgin Blue	840	798	595	74.6	635	79.6	42	5.0
All Airlines	1,752	1,664	1,254	75.4	1,335	80.2	88	5.0
<b>Mildura-Melbourne</b>								
QantasLink	107	106	84	79.2	87	82.1	1	0.9
Regional Express	94	93	85	91.4	86	92.5	1	1.1
Virgin Blue	31	31	23	74.2	28	90.3	0	0.0
All Airlines	232	230	192	83.5	201	87.4	2	0.9
<b>Newcastle-Brisbane</b>								
Jetstar	122	122	97	79.5	100	82.0	0	0.0
QantasLink	59	56	34	60.7	38	67.9	3	5.1
Virgin Blue	48	48	43	89.6	42	87.5	0	0.0
All Airlines	229	226	174	77.0	180	79.6	3	1.3
<b>Newcastle-Gold Coast</b>								
Jetstar	30	30	26	86.7	26	86.7	0	0.0
Virgin Blue	13	13	11	84.6	12	92.3	0	0.0
All Airlines	43	43	37	86.0	38	88.4	0	0.0
<b>Newcastle-Melbourne</b>								
Jetstar	92	92	75	81.5	75	81.5	0	0.0
Virgin Blue	31	31	26	83.9	25	80.6	0	0.0
All Airlines	123	123	101	82.1	100	81.3	0	0.0
<b>Newman-Perth</b>								
QantasLink	81	78	60	76.9	59	75.6	3	3.7
Virgin Blue	31	31	21	67.7	21	67.7	0	0.0
All Airlines	112	109	81	74.3	80	73.4	3	2.7
<b>Perth-Adelaide</b>								
Qantas	146	145	101	69.7	115	79.3	1	0.7
Virgin Blue	92	91	64	70.3	73	80.2	1	1.1
All Airlines	238	236	165	69.9	188	79.7	2	0.8

	<i>Sectors</i>		<i>Departures On Time</i>		<i>Arrivals On Time</i>		<i>Cancellations</i>	
	<i>Sched.</i>	<i>Flown</i>	<i>No.</i>	<i>%</i>	<i>No.</i>	<i>%</i>	<i>No.</i>	<i>%</i>
<b>Perth-Brisbane</b>								
Qantas	124	124	71	57.3	96	77.4	0	0.0
Virgin Blue	62	62	43	69.4	54	87.1	0	0.0
All Airlines	186	186	114	61.3	150	80.6	0	0.0
<b>Perth-Broome</b>								
Qantas	30	30	17	56.7	24	80.0	0	0.0
QantasLink	45	44	36	81.8	37	84.1	1	2.2
Skywest	18	18	14	77.8	9	50.0	0	0.0
Virgin Blue	54	51	32	62.7	31	60.8	3	5.6
All Airlines	147	143	99	69.2	101	70.6	4	2.7
<b>Perth-Kalgoorlie</b>								
Qantas	64	64	57	89.1	57	89.1	0	0.0
QantasLink	23	21	17	81.0	18	85.7	2	8.7
Skywest	33	31	27	87.1	27	87.1	2	6.1
All Airlines	120	116	101	87.1	102	87.9	4	3.3
<b>Perth-Karratha</b>								
Qantas	119	117	105	89.7	104	88.9	2	1.7
QantasLink	33	33	32	97.0	32	97.0	0	0.0
Skywest	18	18	14	77.8	9	50.0	0	0.0
Virgin Blue	54	54	42	77.8	41	75.9	0	0.0
All Airlines	224	222	193	86.9	186	83.8	2	0.9
<b>Perth-Melbourne</b>								
Qantas	220	220	124	56.4	174	79.1	0	0.0
Tiger Airways	61	59	29	49.2	26	44.1	2	3.3
Virgin Blue	124	123	78	63.4	102	82.9	1	0.8
All Airlines	405	402	231	57.5	302	75.1	3	0.7
<b>Perth-Newman</b>								
QantasLink	81	77	68	88.3	65	84.4	4	4.9
Virgin Blue	31	31	29	93.5	29	93.5	0	0.0
All Airlines	112	108	97	89.8	94	87.0	4	3.6
<b>Perth-Sydney</b>								
Qantas	201	201	132	65.7	172	85.6	0	0.0
Virgin Blue	155	155	101	65.2	132	85.2	0	0.0
All Airlines	356	356	233	65.4	304	85.4	0	0.0
<b>Port Macquarie-Sydney</b>								
QantasLink	112	111	88	79.3	76	68.5	1	0.9
Virgin Blue	61	60	38	63.3	33	55.0	1	1.6
All Airlines	173	171	126	73.7	109	63.7	2	1.2

	<i>Sectors</i>		<i>Departures On Time</i>		<i>Arrivals On Time</i>		<i>Cancellations</i>	
	<i>Sched.</i>	<i>Flown</i>	<i>No.</i>	<i>%</i>	<i>No.</i>	<i>%</i>	<i>No.</i>	<i>%</i>
<b>Proserpine-Brisbane</b>								
Jetstar	31	31	24	77.4	22	71.0	0	0.0
Virgin Blue	32	31	22	71.0	19	61.3	1	3.1
All Airlines	63	62	46	74.2	41	66.1	1	1.6
<b>Rockhampton-Brisbane</b>								
Jetstar	31	31	23	74.2	24	77.4	0	0.0
QantasLink	143	141	129	91.5	126	89.4	2	1.4
Virgin Blue	152	150	118	78.7	111	74.0	2	1.3
All Airlines	326	322	270	83.9	261	81.1	4	1.2
<b>Sydney-Adelaide</b>								
Jetstar	45	44	38	86.4	36	81.8	1	2.2
Qantas	306	306	251	82.0	248	81.0	0	0.0
Virgin Blue	155	153	120	78.4	89	58.2	2	1.3
All Airlines	506	503	409	81.3	373	74.2	3	0.6
<b>Sydney-Albury</b>								
QantasLink	105	102	70	68.6	64	62.7	3	2.9
Regional Express	108	108	70	64.8	61	56.5	0	0.0
Virgin Blue	57	57	43	75.4	38	66.7	0	0.0
All Airlines	270	267	183	68.5	163	61.0	3	1.1
<b>Sydney-Ballina</b>								
Jetstar	31	31	19	61.3	26	83.9	0	0.0
Regional Express	92	92	53	57.6	47	51.1	0	0.0
Virgin Blue	32	31	27	87.1	26	83.9	1	3.1
All Airlines	155	154	99	64.3	99	64.3	1	0.6
<b>Sydney-Brisbane</b>								
Qantas	675	662	540	81.6	555	83.8	13	1.9
Virgin Blue	602	574	380	66.2	430	74.9	28	4.7
All Airlines	1,277	1,236	920	74.4	985	79.7	41	3.2
<b>Sydney-Cairns</b>								
Jetstar	31	27	26	96.3	25	92.6	4	12.9
Qantas	110	109	87	79.8	91	83.5	1	0.9
Virgin Blue	100	99	78	78.8	88	88.9	1	1.0
All Airlines	241	235	191	81.3	204	86.8	6	2.5
<b>Sydney-Canberra</b>								
Qantas	143	141	118	83.7	108	76.6	2	1.4
QantasLink	378	359	289	80.5	270	75.2	19	5.0
Virgin Blue	207	198	157	79.3	155	78.3	9	4.3
All Airlines	728	698	564	80.8	533	76.4	30	4.1

	<i>Sectors</i>		<i>Departures On Time</i>		<i>Arrivals On Time</i>		<i>Cancellations</i>	
	<i>Sched.</i>	<i>Flown</i>	<i>No.</i>	<i>%</i>	<i>No.</i>	<i>%</i>	<i>No.</i>	<i>%</i>
<b>Sydney-Coffs Harbour</b>								
QantasLink	122	122	90	73.8	90	73.8	0	0.0
Virgin Blue	62	62	55	88.7	55	88.7	0	0.0
All Airlines	184	184	145	78.8	145	78.8	0	0.0
<b>Sydney-Dubbo</b>								
QantasLink	80	80	60	75.0	62	77.5	0	0.0
Regional Express	136	135	99	73.3	88	65.2	1	0.7
All Airlines	216	215	159	74.0	150	69.8	1	0.5
<b>Sydney-Gold Coast</b>								
Jetstar	315	315	237	75.2	253	80.3	0	0.0
Virgin Blue	345	331	257	77.6	278	84.0	14	4.1
All Airlines	660	646	494	76.5	531	82.2	14	2.1
<b>Sydney-Hervey Bay</b>								
Jetstar	18	18	16	88.9	17	94.4	0	0.0
Virgin Blue	31	31	24	77.4	26	83.9	0	0.0
All Airlines	49	49	40	81.6	43	87.8	0	0.0
<b>Sydney-Hobart</b>								
Jetstar	62	62	48	77.4	51	82.3	0	0.0
Qantas	33	33	25	75.8	24	72.7	0	0.0
Virgin Blue	62	62	40	64.5	34	54.8	0	0.0
All Airlines	157	157	113	72.0	109	69.4	0	0.0
<b>Sydney-Launceston</b>								
Jetstar	31	31	9	29.0	15	48.4	0	0.0
Virgin Blue	31	31	25	80.6	25	80.6	0	0.0
All Airlines	62	62	34	54.8	40	64.5	0	0.0
<b>Sydney-Maroochydore</b>								
Jetstar	93	91	70	76.9	75	82.4	2	2.2
Virgin Blue	64	64	42	65.6	51	79.7	0	0.0
All Airlines	157	155	112	72.3	126	81.3	2	1.3
<b>Sydney-Melbourne</b>								
Qantas	910	869	711	81.8	633	72.8	41	4.5
Virgin Blue	837	796	600	75.4	545	68.5	41	4.9
All Airlines	1,747	1,665	1,311	78.7	1,178	70.8	82	4.7
<b>Sydney-Perth</b>								
Qantas	201	201	141	70.1	108	53.7	0	0.0
Virgin Blue	154	154	125	81.2	56	36.4	0	0.0
All Airlines	355	355	266	74.9	164	46.2	0	0.0

	<i>Sectors</i>		<i>Departures On Time</i>		<i>Arrivals On Time</i>		<i>Cancellations</i>	
	<i>Sched.</i>	<i>Flown</i>	<i>No.</i>	<i>%</i>	<i>No.</i>	<i>%</i>	<i>No.</i>	<i>%</i>
<b>Sydney-Port Macquarie</b>								
QantasLink	110	110	83	75.5	75	68.2	0	0.0
Virgin Blue	61	60	41	68.3	42	70.0	1	1.6
All Airlines	171	170	124	72.9	117	68.8	1	0.6
<b>Sydney-Townsville</b>								
Jetstar	22	22	20	90.9	20	90.9	0	0.0
Virgin Blue	31	31	23	74.2	27	87.1	0	0.0
All Airlines	53	53	43	81.1	47	88.7	0	0.0
<b>Sydney-Wagga Wagga</b>								
QantasLink	103	103	67	65.0	57	55.3	0	0.0
Regional Express	108	108	75	69.4	62	57.4	0	0.0
All Airlines	211	211	142	67.3	119	56.4	0	0.0
<b>Townsville-Brisbane</b>								
Jetstar	60	57	51	89.5	51	89.5	3	5.0
Qantas	162	162	140	86.4	139	85.8	0	0.0
Virgin Blue	154	154	143	92.9	140	90.9	0	0.0
All Airlines	376	373	334	89.5	330	88.5	3	0.8
<b>Townsville-Sydney</b>								
Jetstar	22	22	20	90.9	21	95.5	0	0.0
Virgin Blue	31	31	28	90.3	28	90.3	0	0.0
All Airlines	53	53	48	90.6	49	92.5	0	0.0
<b>Wagga Wagga-Sydney</b>								
QantasLink	104	104	63	60.6	63	60.6	0	0.0
Regional Express	106	106	78	73.6	75	70.8	0	0.0
All Airlines	210	210	141	67.1	138	65.7	0	0.0

# Airports

On time performance is reported for all routes where the passenger load averages over 8 000 passengers per month, and where two or more airlines operate in competition. The following data reports by airport against flights operated on those routes only.

Airport	Departures			Arrivals		
	Sectors	On Time		Sectors	On Time	
	Flown	No.	%	Flown	No.	%
<b>Adelaide</b>						
Jetstar	106	73	68.9	106	85	80.2
Qantas	931	779	83.7	933	769	82.4
Tiger Airways	67	51	76.1	67	62	92.5
Virgin Blue	716	504	70.4	717	472	65.8
All Airlines	1 820	1 407	77.3	1 823	1 388	76.1
Relates to services to and from Brisbane, Canberra, Gold Coast, Melbourne, Perth and Sydney.						
<b>Albury</b>						
QantasLink	103	63	61.2	102	64	62.7
Regional Express	107	72	67.3	108	61	56.5
Virgin Blue	57	35	61.4	57	38	66.7
All Airlines	267	170	63.7	267	163	61.0
Relates to services to and from Sydney only.						
<b>Alice Springs</b>						
Qantas	31	29	93.5	31	30	96.8
Tiger Airways	15	14	93.3	15	15	100.0
All Airlines	46	43	93.5	46	45	97.8
Relates to services to and from Melbourne only						
<b>Ballina</b>						
Jetstar	31	19	61.3	31	26	83.9
Regional Express	91	46	50.5	92	47	51.1
Virgin Blue	30	24	80.0	31	26	83.9
All Airlines	152	89	58.6	154	99	64.3
Relates to services to and from Sydney only.						
<b>Brisbane</b>						
Jetstar	549	423	77.0	547	445	81.4
Qantas	1 772	1 429	80.6	1 772	1 519	85.7
QantasLink	287	249	86.8	262	218	83.2
Virgin Blue	2 000	1 635	81.8	1 999	1 625	81.3
All Airlines	4 608	3 736	81.1	4 580	3 807	83.1
Relates to services to and from Adelaide, Cairns, Canberra, Darwin, Hamilton Island, Mackay, Melbourne, Newcastle, Perth, Proserpine, Rockhampton, Sydney and Townsville.						

Airport	Departures			Arrivals		
	Sectors	On Time		Sectors	On Time	
	Flown	No.	%	Flown	No.	%
<b>Broome</b>						
Qantas	30	18	60.0	30	24	80.0
QantasLink	44	37	84.1	44	37	84.1
Skywest	17	13	76.5	18	9	50.0
Virgin Blue	50	25	50.0	51	31	60.8
All Airlines	141	93	66.0	143	101	70.6
Relates to services to and from Perth only.						
<b>Cairns</b>						
Jetstar	157	127	80.9	156	136	87.2
Qantas	264	226	85.6	264	227	86.0
Virgin Blue	286	253	88.5	287	249	86.8
All Airlines	707	606	85.7	707	612	86.6
Relates to services to and from Brisbane, Melbourne and Sydney.						
<b>Canberra</b>						
Qantas	540	476	88.1	538	440	81.8
QantasLink	397	312	78.6	397	300	75.6
Tiger Airways	51	46	90.2	51	44	86.3
Virgin Blue	538	436	81.0	540	420	77.8
All Airlines	1 526	1 270	83.2	1 526	1 204	78.9
Relates to services to and from Adelaide, Brisbane, Melbourne and Sydney.						
<b>Coffs Harbour</b>						
QantasLink	123	88	71.5	122	90	73.8
Virgin Blue	62	55	88.7	62	55	88.7
All Airlines	185	143	77.3	184	145	78.8
Relates to services to and from Sydney only.						
<b>Darwin</b>						
Jetstar	55	45	81.8	56	43	76.8
Qantas	32	26	81.3	32	26	81.3
Virgin Blue	31	28	90.3	31	23	74.2
All Airlines	118	99	83.9	119	92	77.3
Relates to services to and from Brisbane.						
<b>Dubbo</b>						
QantasLink	81	60	74.1	80	62	77.5
Regional Express	136	95	69.9	135	88	65.2
All Airlines	217	155	71.4	215	150	69.8
Relates to services to and from Sydney only.						
<b>Gold Coast</b>						
Jetstar	554	420	75.8	562	458	81.5
Tiger Airways	95	84	88.4	95	85	89.5
Virgin Blue	524	415	79.2	530	440	83.0
All Airlines	1 173	919	78.3	1 187	983	82.8
Relates to services to and from Adelaide, Melbourne, Newcastle and Sydney.						

Airport	Departures			Arrivals		
	Sectors	On Time		Sectors	On Time	
	Flown	No.	%	Flown	No.	%
<b>Hamilton Island</b>						
Jetstar	31	25	80.6	31	28	90.3
Virgin Blue	31	28	90.3	31	29	93.5
All Airlines	62	53	85.5	62	57	91.9
Relates to services to and from Brisbane only.						
<b>Hervey Bay</b>						
Jetstar	18	13	72.2	18	17	94.4
Virgin Blue	31	26	83.9	31	26	83.9
All Airlines	49	39	79.6	49	43	87.8
Relates to services to and from Sydney only.						
<b>Hobart</b>						
Jetstar	199	168	84.4	199	169	84.9
Qantas	95	71	74.7	95	71	74.7
Tiger Airways	39	36	92.3	39	36	92.3
Virgin Blue	220	178	80.9	220	156	70.9
All Airlines	553	453	81.9	553	432	78.1
Relates to services to and from Melbourne and Sydney.						
<b>Kalgoorlie</b>						
Qantas	64	56	87.5	64	57	89.1
QantasLink	21	19	90.5	21	18	85.7
Skywest	31	27	87.1	31	27	87.1
All Airlines	116	102	87.9	116	102	87.9
Relates to services to and from Perth only.						
<b>Karratha</b>						
Qantas	117	103	88.0	117	104	88.9
QantasLink	31	30	96.8	33	32	97.0
Skywest	17	14	82.4	18	9	50.0
Virgin Blue	54	33	61.1	54	41	75.9
All Airlines	219	180	82.2	222	186	83.8
Relates to services to and from Perth only.						
<b>Launceston</b>						
Jetstar	123	82	66.7	124	92	74.2
QantasLink	69	58	84.1	69	58	84.1
Tiger Airways	34	32	94.1	34	31	91.2
Virgin Blue	157	122	77.7	157	118	75.2
All Airlines	383	294	76.8	384	299	77.9
Relates to services to and from Melbourne and Sydney.						

Airport	Departures			Arrivals		
	Sectors Flown	On Time No.	On Time %	Sectors Flown	On Time No.	On Time %
<b>Mackay</b>						
Jetstar	90	68	75.6	90	76	84.4
QantasLink	57	44	77.2	57	44	77.2
Virgin Blue	148	131	88.5	147	120	81.6
All Airlines	295	243	82.4	294	240	81.6
Relates to services to and from Brisbane only.						
<b>Maroochydore</b>						
Jetstar	152	117	77.0	152	125	82.2
Tiger Airways	25	23	92.0	25	22	88.0
Virgin Blue	110	89	80.9	111	96	86.5
All Airlines	287	229	79.8	288	243	84.4
Relates to services to and from Melbourne and Sydney.						
<b>Melbourne</b>						
Jetstar	601	495	82.4	598	474	79.3
Qantas	2 213	1 750	79.1	2 219	1 762	79.4
QantasLink	204	156	76.5	205	159	77.6
Regional Express	92	85	92.4	93	86	92.5
Tiger Airways	385	345	89.6	385	317	82.3
Virgin Blue	2 370	1 836	77.5	2 366	1 787	75.5
All Airlines	5 865	4 667	79.6	5 866	4 585	78.2
Relates to services to and from Adelaide, Alice Springs, Brisbane, Cairns, Canberra, Gold Coast, Hobart, Launceston, Maroochydore, Mildura, Newcastle, Perth and Sydney.						
<b>Mildura</b>						
QantasLink	106	84	79.2	105	67	63.8
Regional Express	93	85	91.4	92	82	89.1
Virgin Blue	31	23	74.2	31	28	90.3
All Airlines	230	192	83.5	228	177	77.6
Relates to services to and from Melbourne only.						
<b>Newcastle</b>						
Jetstar	244	198	81.1	244	206	84.4
QantasLink	56	34	60.7	55	31	56.4
Virgin Blue	92	80	87.0	92	80	87.0
All Airlines	392	312	79.6	391	317	81.1
Relates to services to and from Brisbane, Gold Coast and Melbourne.						
<b>Newman</b>						
QantasLink	78	60	76.9	77	65	84.4
Virgin Blue	31	21	67.7	31	29	93.5
All Airlines	109	81	74.3	108	94	87.0
Relates to services to and from Perth only.						

Airport	Departures			Arrivals		
	Sectors Flown	On Time No.	On Time %	Sectors Flown	On Time No.	On Time %
<b>Perth</b>						
Qantas	901	607	67.4	901	606	67.3
QantasLink	175	153	87.4	174	147	84.5
Skywest	67	55	82.1	65	54	83.1
Tiger Airways	59	29	49.2	59	48	81.4
Virgin Blue	567	389	68.6	564	286	50.7
All Airlines	1 769	1 233	69.7	1 763	1 141	64.7
Relates to services to and from Adelaide, Brisbane, Broome, Kalgoorlie, Karratha, Melbourne, Newman, and Sydney.						
<b>Port Macquarie</b>						
QantasLink	111	88	79.3	110	75	68.2
Virgin Blue	60	38	63.3	60	42	70.0
All Airlines	171	126	73.7	170	117	68.8
Relates to services to and from Sydney only.						
<b>Proserpine</b>						
Jetstar	31	24	77.4	31	25	80.6
Virgin Blue	31	22	71.0	31	25	80.6
All Airlines	62	46	74.2	62	50	80.6
Relates to services to and from Brisbane only.						
<b>Rockhampton</b>						
Jetstar	31	23	74.2	31	26	83.9
QantasLink	141	129	91.5	167	155	92.8
Virgin Blue	150	118	78.7	150	122	81.3
All Airlines	322	270	83.9	348	303	87.1
Relates to services to and from Brisbane only.						
<b>Sydney</b>						
Jetstar	641	483	75.4	635	447	70.4
Qantas	2 321	1 873	80.7	2 315	1 828	79.0
QantasLink	876	659	75.2	881	606	68.8
Regional Express	443	297	67.0	440	271	61.6
Virgin Blue	2 734	2 037	74.5	2 730	2 047	75.0
All Airlines	7 015	5 349	76.3	7 001	5 199	74.3
Relates to services to and from Adelaide, Albury, Ballina, Brisbane, Cairns, Canberra, Coffs Harbour, Dubbo, Gold Coast, Hervey Bay, Hobart, Launceston, Maroochydore, Melbourne, Perth, Port Macquarie, Townsville and Wagga Wagga.						
<b>Townsville</b>						
Jetstar	79	71	89.9	81	73	90.1
Qantas	162	140	86.4	162	145	89.5
Virgin Blue	185	171	92.4	185	164	88.6
All Airlines	426	382	89.7	428	382	89.3
Relates to services to and from Brisbane and Sydney.						

<i>Airport</i>	<i>Departures</i>			<i>Arrivals</i>		
	<i>Sectors</i>	<i>On Time</i>		<i>Sectors</i>	<i>On Time</i>	
	<i>Flown</i>	<i>No.</i>	<i>%</i>	<i>Flown</i>	<i>No.</i>	<i>%</i>
<b>Wagga Wagga</b>						
QantasLink	104	63	60.6	103	57	55.3
Regional Express	106	78	73.6	108	62	57.4
All Airlines	210	141	67.1	211	119	56.4

Relates to services to and from Sydney only.

## Definitions

---

On time departure                      A flight departure is counted as "on time" if it departs the gate within 15 minutes of the scheduled departure time shown in the carriers' schedule.

---

On time arrival                         A flight arrival is counted as "on time" if it arrived at the gate within 15 minutes of the scheduled arrival time shown in the carriers' schedule.  
Neither diverted nor cancelled flights count as on time.

---

Cancellation                            A flight is regarded as a cancellation if it is cancelled or rescheduled less than 7 days prior to its scheduled departure time.

---

On time departure percentage                      The percentage of on time departures is measured against the number of departures *operated* on any particular sector.

---

On time arrival percentage                         The percentage of on time arrivals is measured against the number of arrivals *operated* on any particular sector.

---

Cancellation percentage                      The percentage of cancellations is measured against the number of services *scheduled* on any particular sector.

---