



Australian Government

Department of Infrastructure and Regional Development

Bureau of Infrastructure, Transport and Regional Economics

STATISTICAL REPORT



Aviation

Domestic airline on time performance
August 2017

© Commonwealth of Australia 2017

ISSN: 1832-0759

Ownership of intellectual property rights in this publication

Unless otherwise noted, copyright (and any other intellectual property rights, if any) in this publication is owned by the Commonwealth of Australia (referred to below as the Commonwealth).

Disclaimer

The material contained in this publication is made available on the understanding that the Commonwealth is not providing professional advice, and that users exercise their own skill and care with respect to its use, and seek independent advice if necessary.

The Commonwealth makes no representations or warranties as to the contents or accuracy of the information contained in this publication. To the extent permitted by law, the Commonwealth disclaims liability to any person or organisation in respect of anything done, or omitted to be done, in reliance upon information contained in this publication.

Creative Commons licence

With the exception of (a) the Coat of Arms; and (b) the Department of Infrastructure and Regional Development's photos and graphics, copyright in this publication is licensed under a Creative Commons Attribution 3.0 Australia Licence.

Creative Commons Attribution 3.0 Australia Licence is a standard form licence agreement that allows you to copy, communicate and adapt this publication provided that you attribute the work to the Commonwealth and abide by the other licence terms. A summary of the licence terms is available from <http://creativecommons.org/licenses/by/3.0/au/deed.en>. The full licence terms are available from <http://creativecommons.org/licenses/by/3.0/au/legalcode>.

Use of the Coat of Arms

The Department of the Prime Minister and Cabinet sets the terms under which the Coat of Arms is used. Please refer to the Department's Commonwealth Coat of Arms and Government branding web page <http://www.dpmmc.gov.au/guidelines/index.cfm#brand> and, in particular, the Guidelines on the use of the Commonwealth Coat of Arms publication.

An appropriate citation for this report is:

Bureau of Infrastructure, Transport and Regional Economics (BITRE), 2017, Domestic airline on time performance, Statistical Report, BITRE, Canberra ACT.

Contact us

This publication is available in PDF format. All other rights are reserved, including in relation to any Departmental logos or trade marks which may exist. For enquiries regarding the licence and any use of this publication, please contact:

Bureau of Infrastructure, Transport and Regional Economics (BITRE)
Department of Infrastructure and Regional Development
GPO Box 501, Canberra ACT 2601, Australia
Telephone: (international) +61 2 6274 7210
Fax: (international) +61 2 6274 6855
Email: bitre@infrastructure.gov.au
Website: www.bitre.gov.au

Inquiries

Should you require additional information about the statistics contained in this publication:

Telephone (02) 6274 7790 or Facsimile (02) 6274 7727

Electronic mail: AVSTATS@infrastructure.gov.au

Web site: <http://www.bitre.gov.au/statistics/aviation/otphome.aspx>

Foreword

The Bureau of Infrastructure, Transport and Regional Economics (BITRE) monitors the punctuality and reliability of major domestic airlines operating between Australian airports. The purpose of this is to allow for evaluation of overall industry and individual airline performance, so that consumers of air travel can make informed decisions.

The following domestic airlines currently report this information monthly to the BITRE: Jetstar, Qantas, QantasLink, Regional Express, Tigerair Australia, Virgin Australia and Virgin Australia Regional Airlines. Data has been gathered since November 2003, although some airlines commenced reporting at a later date, including Jetstar which first reported in May 2004, MacAir in July 2005, Tigerair Australia in April 2008 and Virgin Australia Regional Airlines in May 2013. MacAir ceased operations in February 2009 and data was not received for December 2008 onwards. Virgin Blue was rebranded as Virgin Australia in May 2011 and Tiger Airways was rebranded as Tigerair Australia in July 2013 and time series data in Microsoft Excel spreadsheet format on the BITRE website have been revised to reflect these changes. Services operated by Skywest on behalf of Virgin Australia using ATR/F100 aircraft commenced in November 2011 and were shown separately as Virgin Australia – ATR/F100 Operations. Virgin Australia Regional Airlines commenced operations in May 2013. It was formed after the acquisition of Skywest by Virgin Australia and represented a combination of operations previously reported under Skywest and Virgin Australia – ATR/F100 Operations. In January 2016, Virgin Australia transferred their ATR fleet from Virgin Australia Regional Airlines to Virgin Australia.

Information presented in this report is for Australian domestic routes for which the passenger load averaged 8 000 or more passengers per month over the previous six months and where two or more airlines operated in competition on those routes. There were 65 routes that met this definition in August 2017. Over time, routes which meet these criteria change as airline networks and traffic levels vary.

Participating airlines report their overall monthly network performance where this is possible.

Total industry figures encompass all services operated by reporting airlines only. These airlines collectively carried over 95 per cent of total domestic passengers (regular public transport only) in 2016.

The method of capturing on time performance varies between airlines utilising different recording systems. Jetstar and Qantas jet aircraft use Aircraft Communication Addressing and Reporting System (ACARS) to electronically measure on time performance. Regional Express, Tigerair Australia, Virgin Australia, Virgin Australia Regional Airlines and the Qantas non-jet fleet record on time performance manually using records from pilots, gate agents and/or ground crews.

After initial data is collected, aggregate reports are audited internally by participating airlines prior to publication.

Reports and detailed time series data in Microsoft Excel spreadsheet format are available from the BITRE website at: <http://www.bitre.gov.au/statistics/aviation/otphome.aspx>.

Contents

	Page
Industry performance	1
Individual routes	10
Airports	23
Definitions	30

Industry performance

For August 2017, on time performance over all routes operated by participating airlines (Jetstar, Qantas, QantasLink, Regional Express, Tigerair Australia, Virgin Australia and Virgin Australia Regional Airlines) averaged 82.0 per cent for on time arrivals and 83.6 per cent for on time departures. Cancellations represented 1.9 per cent of all scheduled flights. The equivalent figures for August 2016 were 87.5 per cent for on time arrivals, 88.4 per cent for on time departures and 1.5 per cent for cancellations.

This month's on time arrivals figure was lower than the long term average performance for all routes (82.8 per cent) and the on time departures figure was also lower than the long term average (84.1 per cent). The rate of cancellations was higher than the long term average of 1.4 per cent.

Qantas achieved the highest on time arrivals among the major domestic airlines at 82.8 per cent followed by Virgin Australia at 82.3 per cent, Jetstar at 80.1 per cent and Tigerair Australia at 73.3 per cent. Of the regional airlines, Virgin Australia Regional Airlines recorded 86.9 per cent for on time arrivals, followed by QantasLink at 85.7 per cent and Regional Express at 79.2 per cent. The Qantas network (Qantas and QantasLink combined operations) recorded 84.4 per cent for on time arrivals while the Virgin Australia network (Virgin Australia and Virgin Australia Regional Airlines combined operations) recorded 82.6 per cent.

Virgin Australia achieved the highest level of on time departures among the major domestic airlines for August 2017 at 85.5 per cent, followed by Qantas at 85.1 per cent, Jetstar at 78.2 per cent and Tigerair Australia at 75.8 per cent. Of the regional airlines, Virgin Australia Regional Airlines recorded 88.6 per cent, followed by QantasLink at 86.2 per cent and Regional Express at 82.0 per cent. Both the Qantas network and the Virgin Australia network recorded 85.7 per cent for on time departures.

Tigerair Australia recorded the highest percentage of cancellations (2.6 per cent) during the month, followed by QantasLink and Virgin Australia (both at 2.5 per cent), Qantas (1.5 per cent), Regional Express (1.4 per cent), Jetstar (0.8 per cent), and Virgin Australia Regional Airlines (0.1 per cent).

Airlines' on time performance varies across the routes they serve. Individual route data by specific airline for 65 routes are shown on pages 10-22.

Of the 65 routes which met the criteria for on time performance reporting in August 2017, the Alice Springs-Darwin and Darwin-Alice Springs routes had the highest percentage of on time arrivals (both 97.4 per cent) and the Alice Springs-Darwin and Darwin-Alice Springs routes also recorded the highest percentage of on time departures (both 96.1 per cent). The Cairns-Melbourne route had the lowest percentage of on time arrivals (61.0 per cent) and the Ayers Rock-Sydney route had the lowest percentage of on time departures (56.5 per cent).

Cancellations were highest on the Sydney-Canberra route at 6.1 per cent, followed by the Canberra-Sydney route at 5.9 per cent, the Sydney-Melbourne route at 5.1 per cent, the

Melbourne-Sydney route at 4.9 per cent and the Port Macquarie-Sydney and Sydney-Port Macquarie routes at 4.6 per cent.

Moranbah Airport recorded the highest percentage of on time arrivals (95.0 per cent) and the highest percentage of on time departures (95.6 per cent). Ayers Rock Airport recorded the lowest percentage of on time arrivals (64.5 per cent) and the lowest percentage of on time departures (56.5 per cent). These figures only refer to reported routes and do not cover all flights at these airports.

Table 1 On time performance for August 2017 — Total Industry

	<i>Sectors</i>		<i>Arrivals On Time</i>		<i>Departures On Time</i>		<i>Cancellations</i>	
	<i>Scheduled</i>	<i>Flown</i>	<i>No.</i>	<i>%</i>	<i>No.</i>	<i>%</i>	<i>No.</i>	<i>%</i>
Jetstar	6 617	6 562	5 256	80.1	5 133	78.2	55	0.8
Qantas	9 283	9 140	7 572	82.8	7 778	85.1	143	1.5
QantasLink	10 812	10 541	9 031	85.7	9 083	86.2	271	2.5
Regional Express	6 808	6 710	5 317	79.2	5 502	82.0	98	1.4
Tigerair Australia	2 549	2 484	1 821	73.3	1 883	75.8	65	2.6
Virgin Australia	12 032	11 731	9 655	82.3	10 031	85.5	301	2.5
Virgin Australia Regional Airlines	758	757	658	86.9	671	88.6	1	0.1
All Airlines	48 859	47 925	39 310	82.0	40 081	83.6	934	1.9
Qantas - all QF designated services	20 095	19 681	16 603	84.4	16 861	85.7	414	2.1
Virgin Australia - all VA designated services	12 790	12 488	10 313	82.6	10 702	85.7	302	2.4

Total airline network data (including routes not shown in this report).

Airlines' on time performance varies across the routes they serve. Individual route data by specific airline for 65 routes are shown on pages 10-22.

Table 2 Top ten routes for on time performance for August 2017 (participating airlines only)

<i>Arrivals</i>		<i>Departures</i>	
<i>Route</i>	<i>On Time (%)</i>	<i>Route</i>	<i>On Time (%)</i>
Alice Springs-Darwin	97.4	Alice Springs-Darwin	96.1
Darwin-Alice Springs	97.4	Darwin-Alice Springs	96.1
Brisbane-Darwin	97.1	Moranbah-Brisbane	95.6
Townsville-Cairns	95.1	Brisbane-Moranbah	95.0
Brisbane-Moranbah	95.0	Townsville-Cairns	94.6
Proserpine-Brisbane	94.9	Adelaide-Port Lincoln	94.6
Moranbah-Brisbane	94.8	Cairns-Townsville	94.2
Cairns-Townsville	94.7	Brisbane-Proserpine	93.7
Sydney-Launceston	94.6	Perth-Newman	92.8
Brisbane-Hamilton Island	93.8	Newman-Perth	92.7

Table 3 Top ten airports for on time performance for August 2017 (participating airlines and reported routes only)

<i>Arrivals</i>		<i>Departures</i>	
<i>Airport</i>	<i>On Time (%)</i>	<i>Airport</i>	<i>On Time (%)</i>
Moranbah	95.0	Moranbah	95.6
Kalgoorlie	92.4	Alice Springs	93.4
Proserpine	92.4	Newman	92.7
Newman	92.2	Port Lincoln	92.4
Alice Springs	91.7	Kalgoorlie	91.1
Port Lincoln	91.5	Proserpine	91.1
Townsville	91.4	Newcastle	89.8
Ballina	90.8	Townsville	89.3
Coffs Harbour	90.1	Karratha	89.1
Emerald	89.7	Brisbane	88.2

Total industry on time performance

Figure 1 On time performance (by month from August 2014)—Total Industry

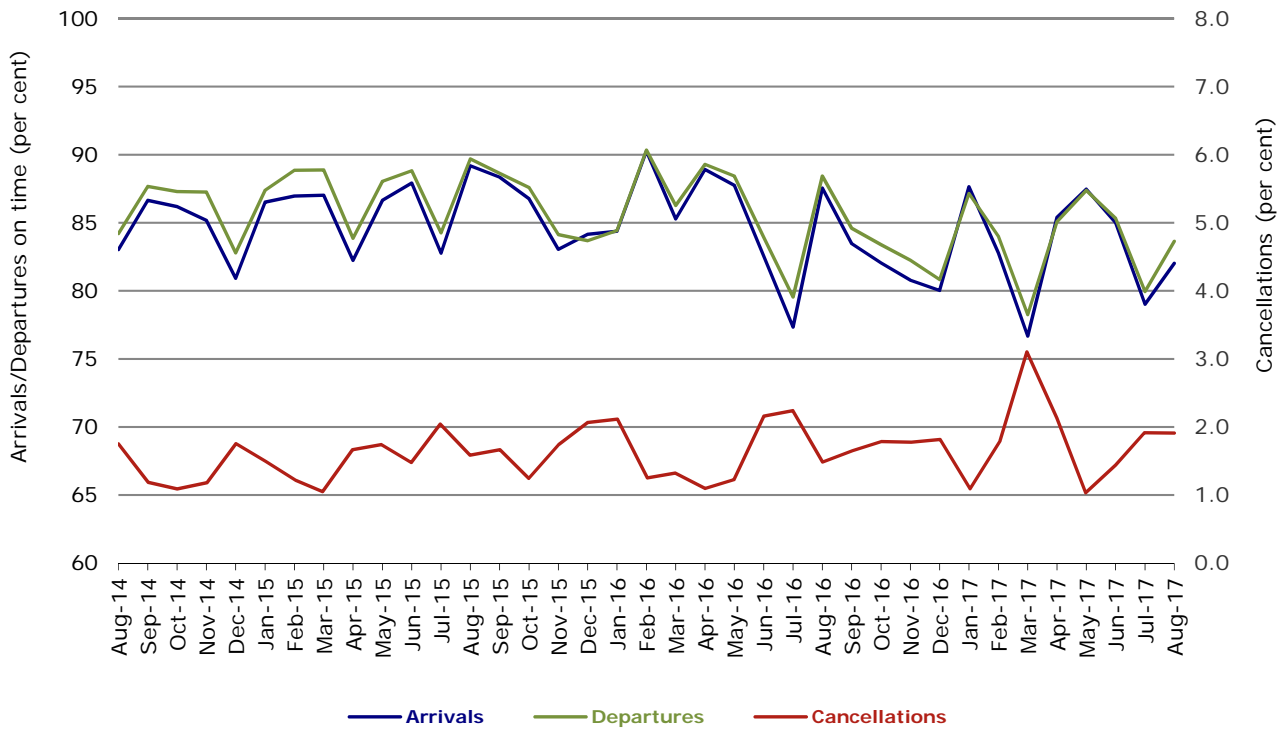


Figure 2 Arrivals on time (by month from August 2016)

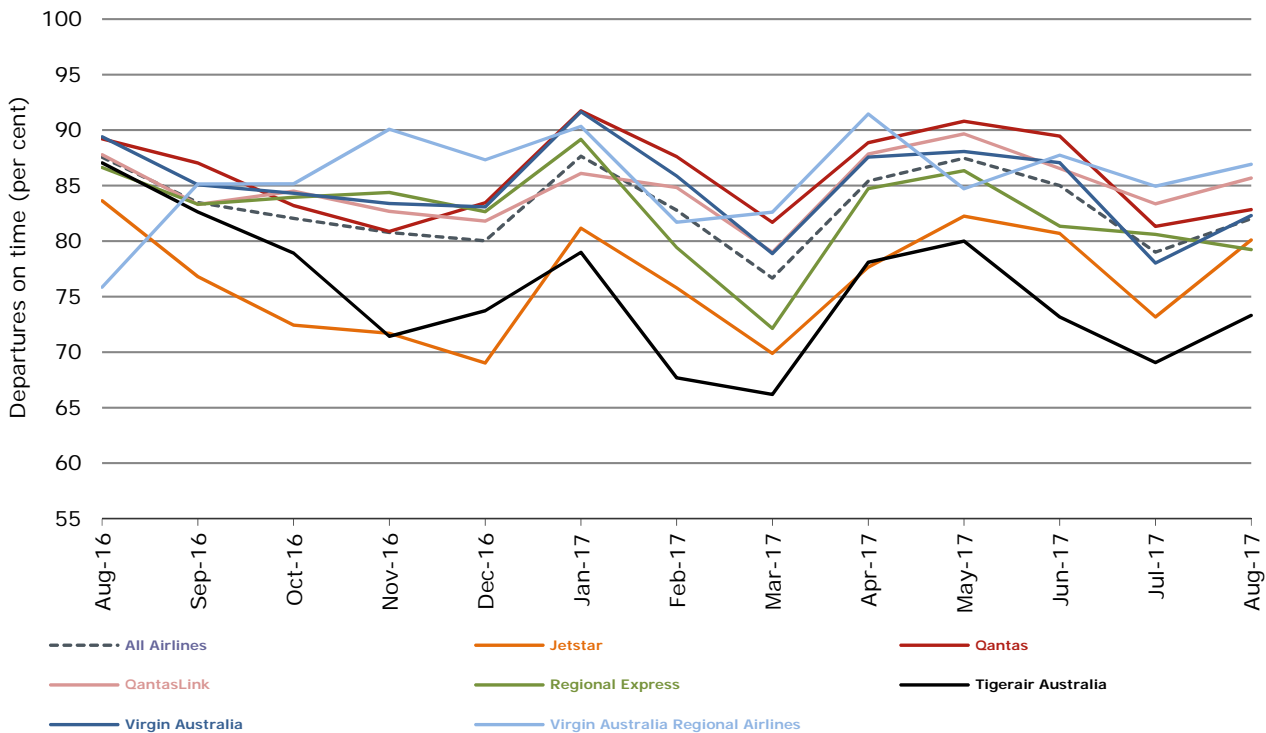


Figure 3 Departures on time (by month from August 2016)

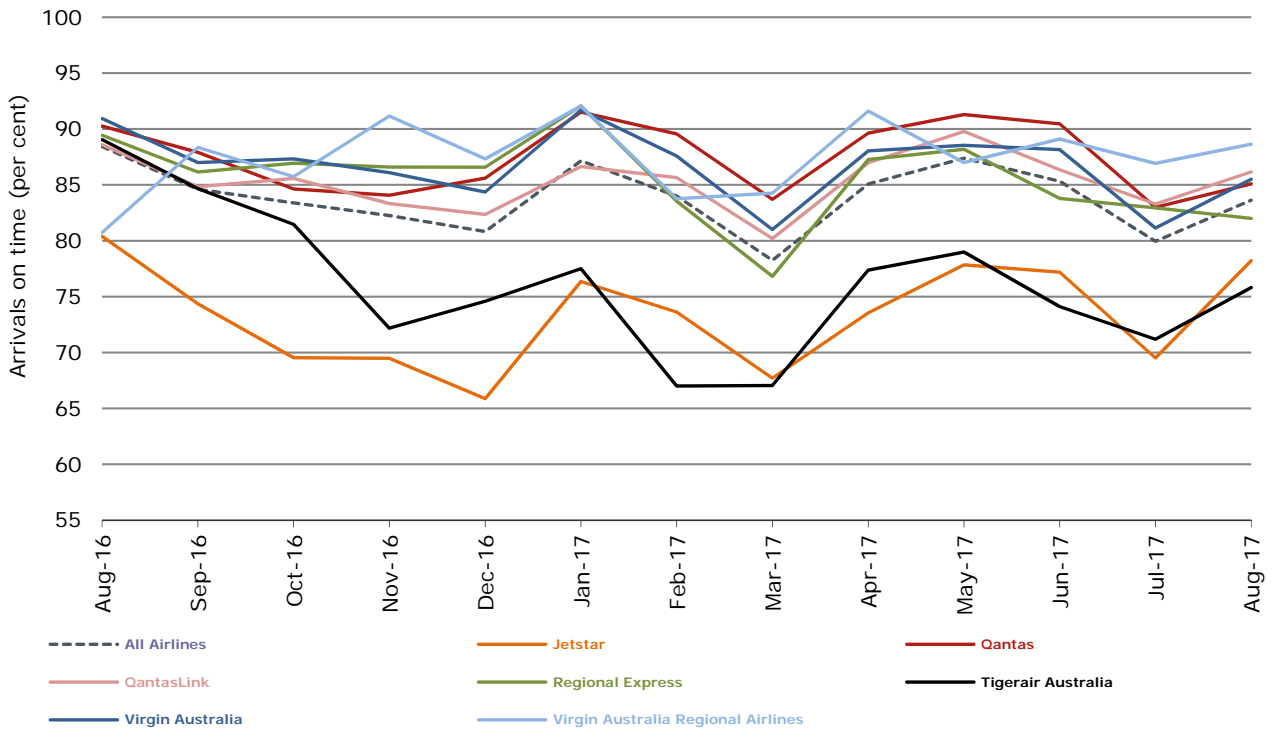
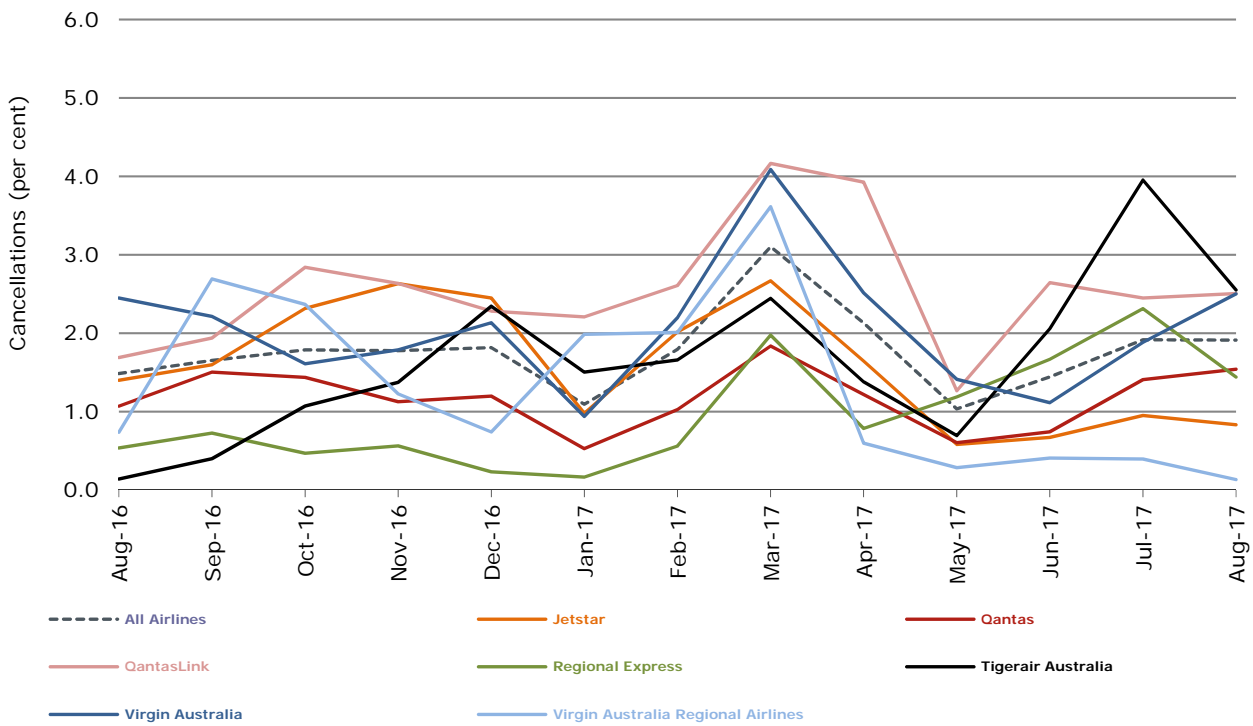


Figure 4 Cancellations (by month from August 2016)



Major domestic airlines on time performance

Figure 5 On time performance (by month from August 2014)—Jetstar

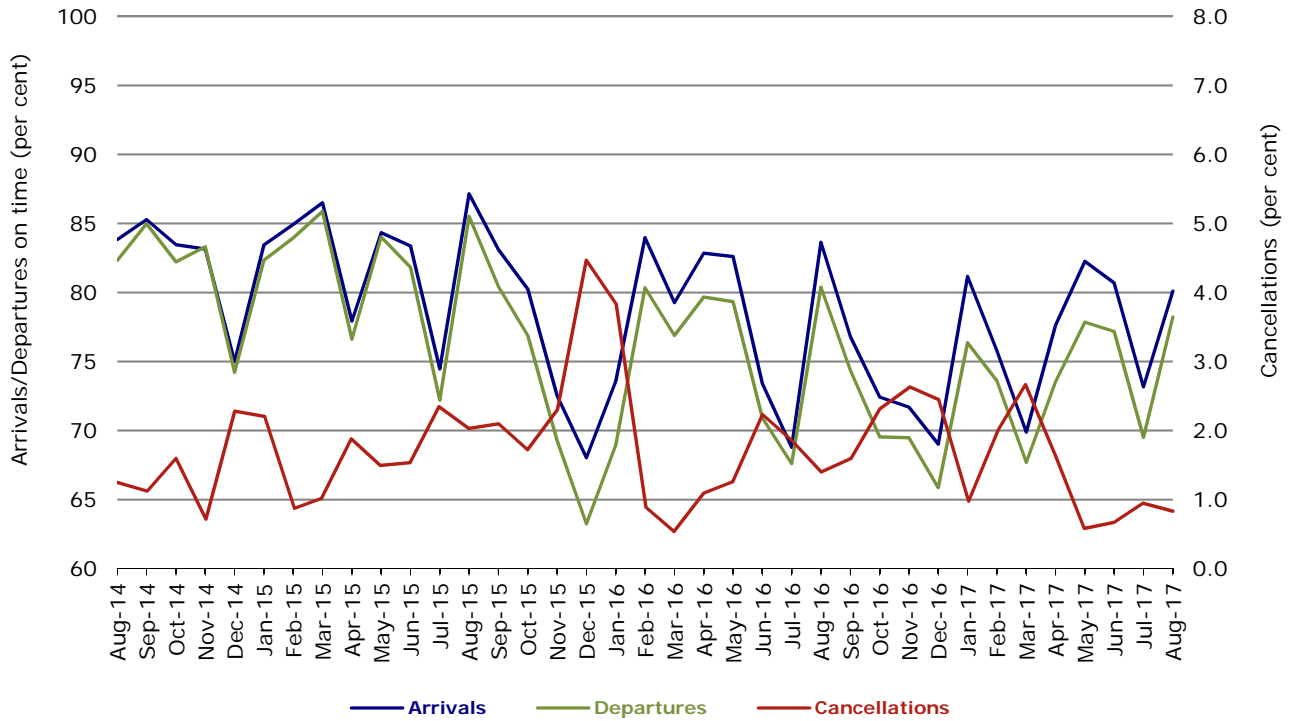


Figure 6 On time performance (by month from August 2014)—Qantas

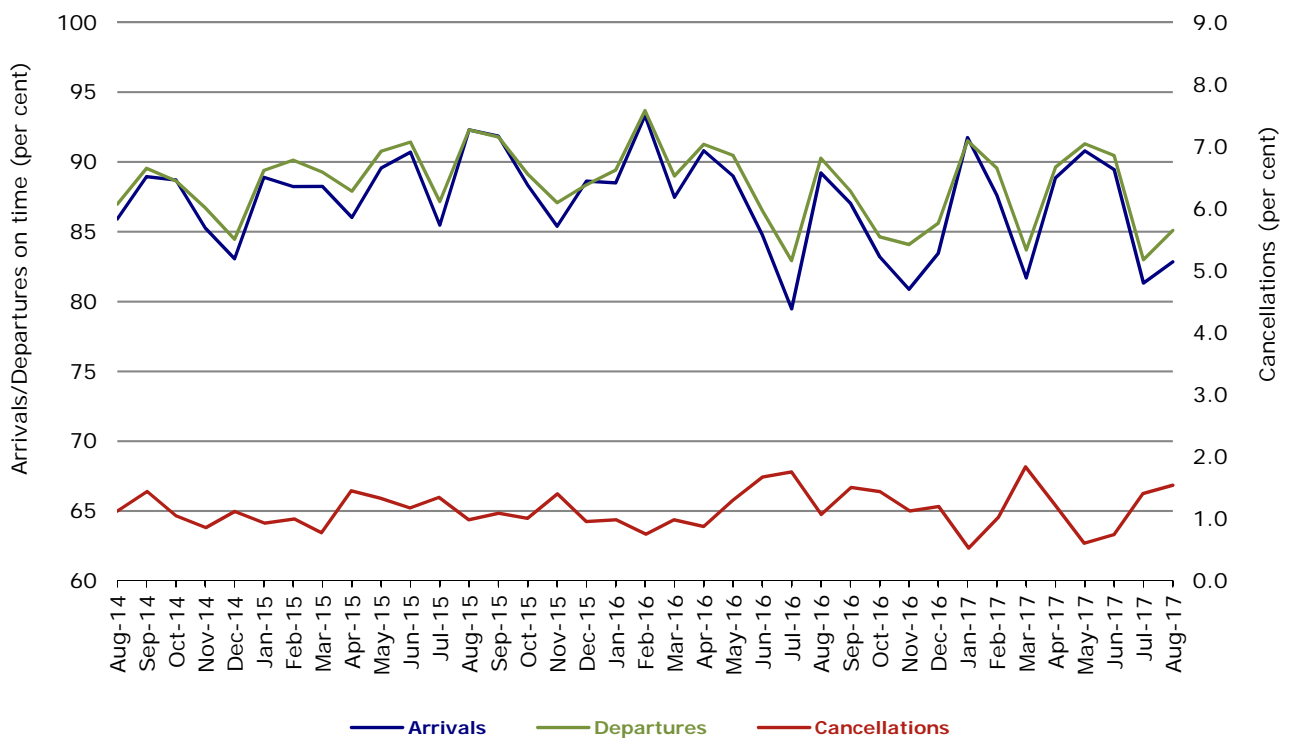


Figure 7 On time performance (by month from August 2014)—Tigerair Australia

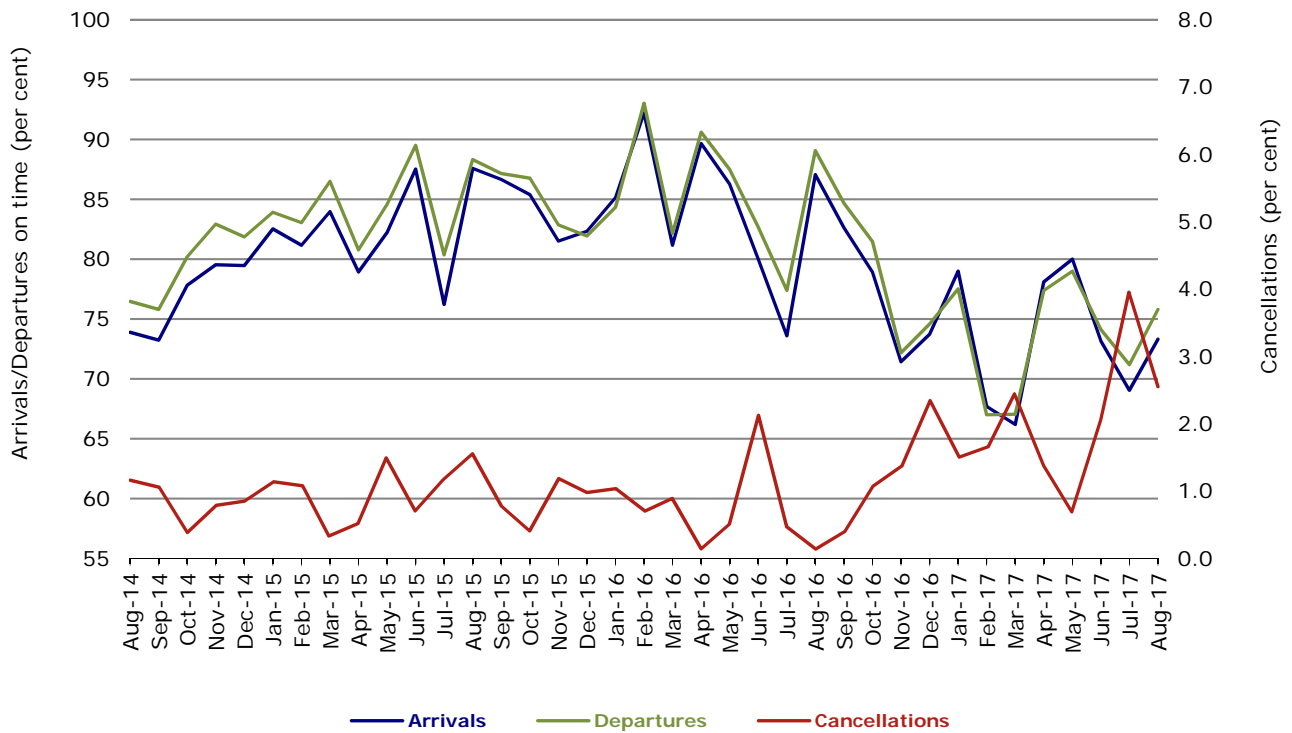
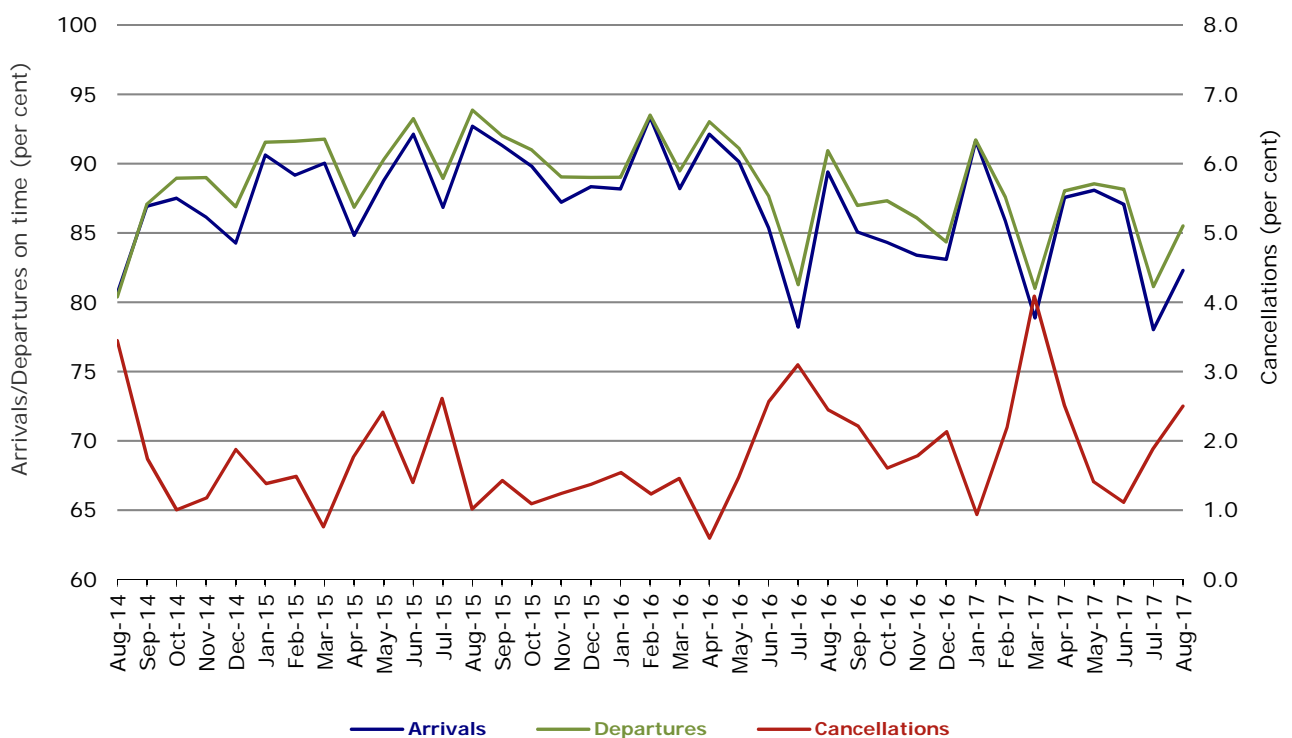


Figure 8 On time performance (by month from August 2014)—Virgin Australia



In January 2016, Virgin Australia transferred their ATR fleet from Virgin Australia Regional Airlines to Virgin Australia.

Major regional airlines on time performance

Figure 9 On time performance (by month from August 2014)—QantasLink

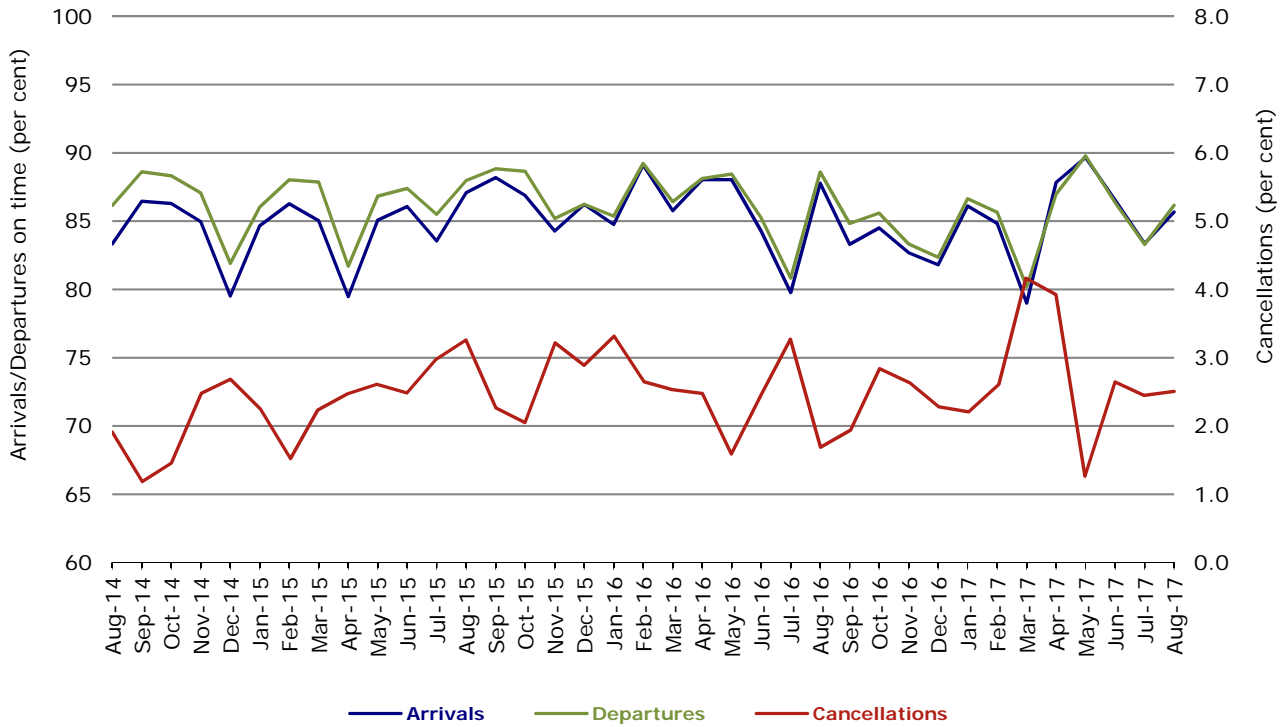


Figure 10 On time performance (by month from August 2014)—Regional Express

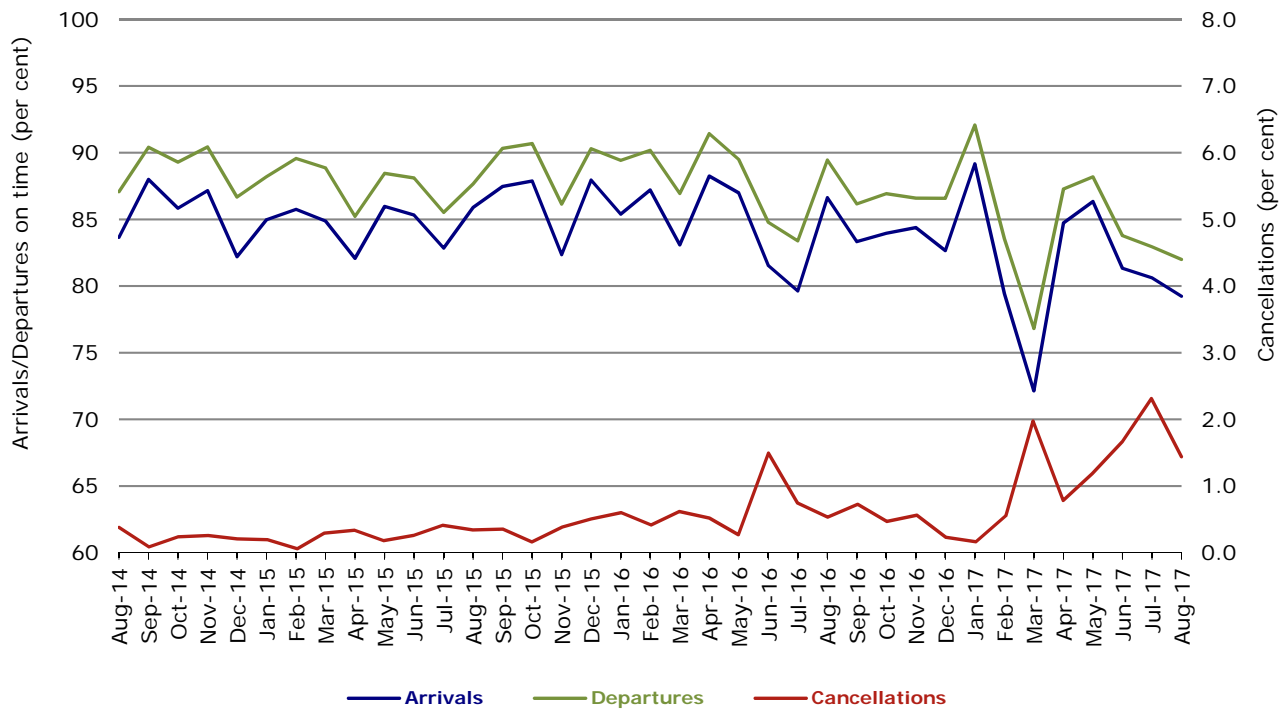
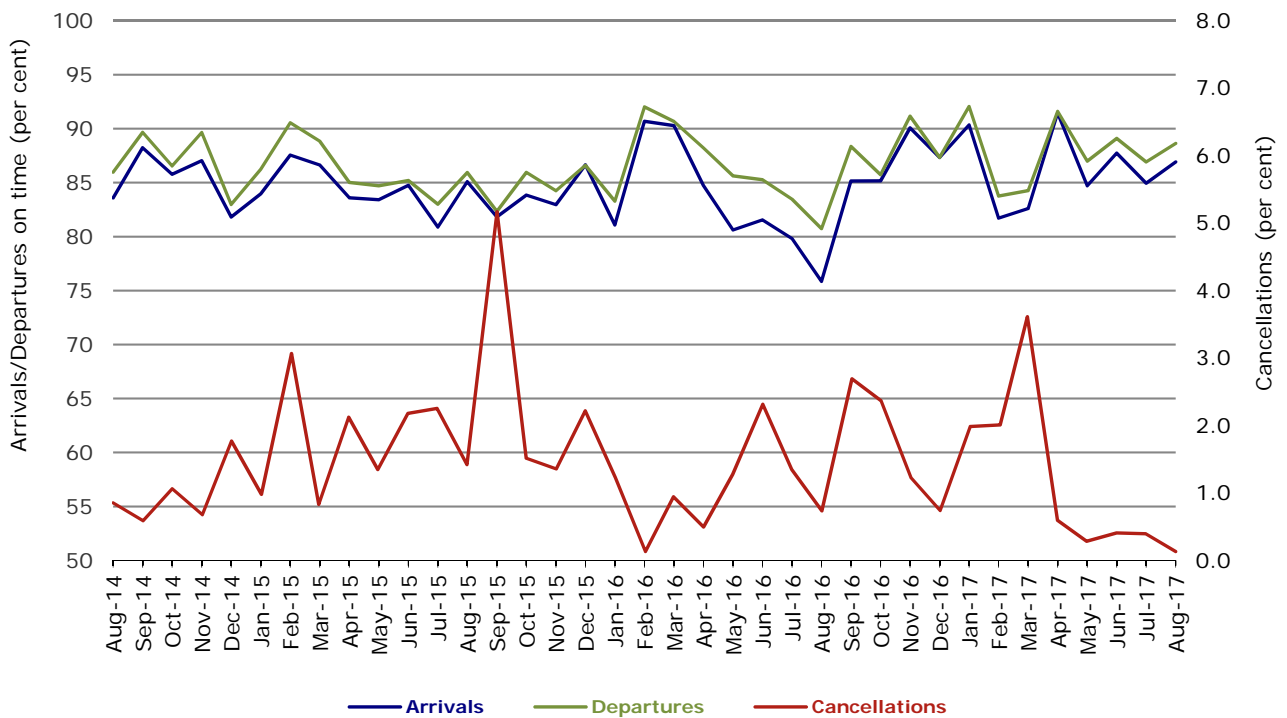


Figure 11 On time performance (by month from August 2014)
Virgin Australia Regional Airlines



In January 2016, Virgin Australia transferred their ATR fleet from Virgin Australia Regional Airlines to Virgin Australia.

Individual routes

On time performance is reported for all routes where the passenger load averages over 8000 passengers per month over the previous six months, and where two or more airlines operate in competition on those routes. There are now 65 routes which meet this definition. Over time, however, routes which meet this definition may change as airline networks and traffic levels vary.

	<i>Sectors</i>		<i>Arrivals On Time</i>		<i>Departures On Time</i>		<i>Cancellations</i>	
	<i>Sched.</i>	<i>Flown</i>	<i>No.</i>	<i>%</i>	<i>No.</i>	<i>%</i>	<i>No.</i>	<i>%</i>
Adelaide-Alice Springs								
Qantas	31	31	24	77.4	23	74.2	0	0.0
Virgin Australia	14	14	13	92.9	13	92.9	0	0.0
All Airlines	45	45	37	82.2	36	80.0	0	0.0
Adelaide-Brisbane								
Jetstar	26	26	21	80.8	16	61.5	0	0.0
Qantas	93	93	84	90.3	81	87.1	0	0.0
QantasLink	28	27	25	92.6	26	96.3	1	3.6
Tigerair Australia	31	30	17	56.7	14	46.7	1	3.2
Virgin Australia	105	105	95	90.5	87	82.9	0	0.0
All Airlines	283	281	242	86.1	224	79.7	2	0.7
Adelaide-Canberra								
Qantas	50	50	42	84.0	41	82.0	0	0.0
Virgin Australia	27	27	24	88.9	24	88.9	0	0.0
All Airlines	77	77	66	85.7	65	84.4	0	0.0
Adelaide-Gold Coast								
Jetstar	31	31	27	87.1	24	77.4	0	0.0
Virgin Australia	31	31	31	100.0	29	93.5	0	0.0
All Airlines	62	62	58	93.5	53	85.5	0	0.0
Adelaide-Melbourne								
Jetstar	96	95	78	82.1	72	75.8	1	1.0
Qantas	277	277	241	87.0	237	85.6	0	0.0
Tigerair Australia	79	77	49	63.6	51	66.2	2	2.5
Virgin Australia	279	273	226	82.8	225	82.4	6	2.2
All Airlines	731	722	594	82.3	585	81.0	9	1.2
Adelaide-Perth								
Jetstar	22	22	15	68.2	17	77.3	0	0.0
Qantas	88	88	64	72.7	72	81.8	0	0.0
QantasLink	28	27	14	51.9	23	85.2	1	3.6
Virgin Australia	59	59	43	72.9	57	96.6	0	0.0
Virgin Australia Regional Airlines	8	8	5	62.5	7	87.5	0	0.0
All Airlines	205	204	141	69.1	176	86.3	1	0.5
Adelaide-Port Lincoln								
QantasLink	109	109	102	93.6	107	98.2	0	0.0
Regional Express	225	222	201	90.5	206	92.8	3	1.3
All Airlines	334	331	303	91.5	313	94.6	3	0.9
Adelaide-Sydney								
Jetstar	71	70	64	91.4	58	82.9	1	1.4
Qantas	235	234	203	86.8	205	87.6	1	0.4
QantasLink	28	25	18	72.0	14	56.0	3	10.7
Tigerair Australia	48	48	30	62.5	27	56.3	0	0.0
Virgin Australia	161	159	130	81.8	124	78.0	2	1.2
All Airlines	543	536	445	83.0	428	79.9	7	1.3

	<i>Sectors</i>		<i>Arrivals On Time</i>		<i>Departures On Time</i>		<i>Cancellations</i>	
	<i>Sched.</i>	<i>Flown</i>	<i>No.</i>	<i>%</i>	<i>No.</i>	<i>%</i>	<i>No.</i>	<i>%</i>
Albury-Sydney								
QantasLink	112	110	90	81.8	88	80.0	2	1.8
Regional Express	113	110	88	80.0	85	77.3	3	2.7
Virgin Australia	62	61	41	67.2	42	68.9	1	1.6
All Airlines	287	281	219	77.9	215	76.5	6	2.1
Alice Springs-Adelaide								
Qantas	31	31	26	83.9	26	83.9	0	0.0
Virgin Australia	14	14	14	100.0	14	100.0	0	0.0
All Airlines	45	45	40	88.9	40	88.9	0	0.0
Alice Springs-Darwin								
QantasLink	62	62	60	96.8	59	95.2	0	0.0
Virgin Australia	14	14	14	100.0	14	100.0	0	0.0
All Airlines	76	76	74	97.4	73	96.1	0	0.0
Armidale-Sydney								
QantasLink	115	109	67	61.5	70	64.2	6	5.2
Regional Express	81	81	50	61.7	54	66.7	0	0.0
All Airlines	196	190	117	61.6	124	65.3	6	3.1
Ayers Rock-Sydney								
Jetstar	31	31	22	71.0	15	48.4	0	0.0
Virgin Australia	31	31	24	77.4	20	64.5	0	0.0
All Airlines	62	62	46	74.2	35	56.5	0	0.0
Ballina-Sydney								
Jetstar	75	74	60	81.1	61	82.4	1	1.3
Regional Express	26	25	15	60.0	15	60.0	1	3.8
Virgin Australia	31	30	24	80.0	27	90.0	1	3.2
All Airlines	132	129	99	76.7	103	79.8	3	2.3
Brisbane-Adelaide								
Jetstar	26	26	21	80.8	23	88.5	0	0.0
Qantas	93	93	75	80.6	87	93.5	0	0.0
QantasLink	28	27	24	88.9	27	100.0	1	3.6
Tigerair Australia	31	30	20	66.7	28	93.3	1	3.2
Virgin Australia	101	101	72	71.3	89	88.1	0	0.0
All Airlines	279	277	212	76.5	254	91.7	2	0.7
Brisbane-Bundaberg								
QantasLink	137	133	119	89.5	121	91.0	4	2.9
Virgin Australia	31	31	27	87.1	28	90.3	0	0.0
All Airlines	168	164	146	89.0	149	90.9	4	2.4
Brisbane-Cairns								
Jetstar	98	98	86	87.8	76	77.6	0	0.0
Qantas	132	132	123	93.2	119	90.2	0	0.0
QantasLink	4	4	3	75.0	2	50.0	0	0.0
Tigerair Australia	48	47	39	83.0	39	83.0	1	2.1
Virgin Australia	124	124	112	90.3	112	90.3	0	0.0
All Airlines	406	405	363	89.6	348	85.9	1	0.2
Brisbane-Canberra								
Qantas	32	32	27	84.4	28	87.5	0	0.0
QantasLink	125	125	91	72.8	103	82.4	0	0.0
Virgin Australia	102	102	86	84.3	93	91.2	0	0.0
All Airlines	259	259	204	78.8	224	86.5	0	0.0

	<i>Sectors</i>		<i>Arrivals On Time</i>		<i>Departures On Time</i>		<i>Cancellations</i>	
	<i>Sched.</i>	<i>Flown</i>	<i>No.</i>	<i>%</i>	<i>No.</i>	<i>%</i>	<i>No.</i>	<i>%</i>
Brisbane-Darwin								
Jetstar	31	31	30	96.8	31	100.0	0	0.0
Qantas	50	50	50	100.0	49	98.0	0	0.0
Tigerair Australia	26	25	25	100.0	23	92.0	1	3.8
Virgin Australia	31	31	28	90.3	24	77.4	0	0.0
All Airlines	138	137	133	97.1	127	92.7	1	0.7
Brisbane-Emerald								
QantasLink	121	120	108	90.0	107	89.2	1	0.8
Virgin Australia	54	54	48	88.9	50	92.6	0	0.0
All Airlines	175	174	156	89.7	157	90.2	1	0.6
Brisbane-Gladstone								
QantasLink	148	146	137	93.8	134	91.8	2	1.4
Virgin Australia	76	76	62	81.6	67	88.2	0	0.0
All Airlines	224	222	199	89.6	201	90.5	2	0.9
Brisbane-Hamilton Island								
QantasLink	35	34	31	91.2	30	88.2	1	2.9
Virgin Australia	31	31	30	96.8	29	93.5	0	0.0
All Airlines	66	65	61	93.8	59	90.8	1	1.5
Brisbane-Hobart								
Jetstar	22	22	19	86.4	18	81.8	0	0.0
Virgin Australia	31	31	26	83.9	27	87.1	0	0.0
All Airlines	53	53	45	84.9	45	84.9	0	0.0
Brisbane-Mackay								
Jetstar	44	44	35	79.5	31	70.5	0	0.0
QantasLink	111	109	99	90.8	102	93.6	2	1.8
Virgin Australia	146	144	131	91.0	130	90.3	2	1.4
All Airlines	301	297	265	89.2	263	88.6	4	1.3
Brisbane-Melbourne								
Jetstar	96	96	74	77.1	77	80.2	0	0.0
Qantas	419	417	317	76.0	373	89.4	2	0.5
QantasLink	16	16	10	62.5	14	87.5	0	0.0
Tigerair Australia	131	128	89	69.5	107	83.6	3	2.3
Virgin Australia	390	384	266	69.3	352	91.7	6	1.5
All Airlines	1 052	1 041	756	72.6	923	88.7	11	1.0
Brisbane-Moranbah								
QantasLink	82	81	77	95.1	77	95.1	1	1.2
Virgin Australia	59	59	56	94.9	56	94.9	0	0.0
All Airlines	141	140	133	95.0	133	95.0	1	0.7
Brisbane-Mount Isa								
QantasLink	58	58	50	86.2	52	89.7	0	0.0
Virgin Australia	19	19	14	73.7	17	89.5	0	0.0
All Airlines	77	77	64	83.1	69	89.6	0	0.0
Brisbane-Newcastle								
Jetstar	88	88	71	80.7	73	83.0	0	0.0
QantasLink	95	94	87	92.6	89	94.7	1	1.1
Virgin Australia	90	90	83	92.2	81	90.0	0	0.0
All Airlines	273	272	241	88.6	243	89.3	1	0.4
Brisbane-Perth								
Qantas	134	134	103	76.9	117	87.3	0	0.0
Tigerair Australia	18	18	14	77.8	15	83.3	0	0.0
Virgin Australia	112	112	65	58.0	94	83.9	0	0.0
All Airlines	264	264	182	68.9	226	85.6	0	0.0

	<i>Sectors</i>		<i>Arrivals On Time</i>		<i>Departures On Time</i>		<i>Cancellations</i>	
	<i>Sched.</i>	<i>Flown</i>	<i>No.</i>	<i>%</i>	<i>No.</i>	<i>%</i>	<i>No.</i>	<i>%</i>
Brisbane-Proserpine								
Jetstar	31	31	27	87.1	27	87.1	0	0.0
Tigerair Australia	17	17	16	94.1	16	94.1	0	0.0
Virgin Australia	31	31	30	96.8	31	100.0	0	0.0
All Airlines	79	79	73	92.4	74	93.7	0	0.0
Brisbane-Rockhampton								
QantasLink	187	187	165	88.2	161	86.1	0	0.0
Virgin Australia	142	142	95	66.9	116	81.7	0	0.0
All Airlines	329	329	260	79.0	277	84.2	0	0.0
Brisbane-Sydney								
Jetstar	173	167	126	75.4	128	76.6	6	3.5
Qantas	637	626	531	84.8	551	88.0	11	1.7
QantasLink	6	6	3	50.0	3	50.0	0	0.0
Tigerair Australia	114	111	78	70.3	86	77.5	3	2.6
Virgin Australia	557	529	448	84.7	470	88.8	28	5.0
All Airlines	1 487	1 439	1 186	82.4	1 238	86.0	48	3.2
Brisbane-Townsville								
Jetstar	49	49	43	87.8	43	87.8	0	0.0
Qantas	73	73	68	93.2	68	93.2	0	0.0
QantasLink	78	78	70	89.7	72	92.3	0	0.0
Virgin Australia	142	141	129	91.5	128	90.8	1	0.7
All Airlines	342	341	310	90.9	311	91.2	1	0.3
Broome-Perth								
Qantas	26	26	22	84.6	22	84.6	0	0.0
QantasLink	82	82	67	81.7	65	79.3	0	0.0
Virgin Australia	3	3	2	66.7	1	33.3	0	0.0
Virgin Australia Regional Airlines	73	72	59	81.9	61	84.7	1	1.4
All Airlines	184	183	150	82.0	149	81.4	1	0.5
Bundaberg-Brisbane								
QantasLink	137	133	115	86.5	117	88.0	4	2.9
Virgin Australia	31	31	23	74.2	24	77.4	0	0.0
All Airlines	168	164	138	84.1	141	86.0	4	2.4
Cairns-Brisbane								
Jetstar	98	98	88	89.8	85	86.7	0	0.0
Qantas	132	132	122	92.4	118	89.4	0	0.0
QantasLink	4	4	3	75.0	3	75.0	0	0.0
Tigerair Australia	48	47	40	85.1	38	80.9	1	2.1
Virgin Australia	124	124	112	90.3	107	86.3	0	0.0
All Airlines	406	405	365	90.1	351	86.7	1	0.2
Cairns-Melbourne								
Jetstar	116	114	80	70.2	87	76.3	2	1.7
Qantas	49	48	23	47.9	30	62.5	1	2.0
Tigerair Australia	35	35	19	54.3	24	68.6	0	0.0
Virgin Australia	34	34	19	55.9	21	61.8	0	0.0
All Airlines	234	231	141	61.0	162	70.1	3	1.3
Cairns-Sydney								
Jetstar	102	101	78	77.2	88	87.1	1	1.0
Qantas	86	86	71	82.6	73	84.9	0	0.0
Tigerair Australia	50	49	38	77.6	39	79.6	1	2.0
Virgin Australia	85	84	69	82.1	71	84.5	1	1.2
All Airlines	323	320	256	80.0	271	84.7	3	0.9
Cairns-Townsville								
QantasLink	147	146	142	97.3	141	96.6	1	0.7
Regional Express	45	44	38	86.4	38	86.4	1	2.2
All Airlines	192	190	180	94.7	179	94.2	2	1.0

	<i>Sectors</i>		<i>Arrivals On Time</i>		<i>Departures On Time</i>		<i>Cancellations</i>	
	<i>Sched.</i>	<i>Flown</i>	<i>No.</i>	<i>%</i>	<i>No.</i>	<i>%</i>	<i>No.</i>	<i>%</i>
Canberra-Adelaide								
Qantas	50	50	42	84.0	43	86.0	0	0.0
Virgin Australia	27	27	21	77.8	23	85.2	0	0.0
All Airlines	77	77	63	81.8	66	85.7	0	0.0
Canberra-Brisbane								
Qantas	32	32	31	96.9	31	96.9	0	0.0
QantasLink	125	124	104	83.9	101	81.5	1	0.8
Virgin Australia	102	102	93	91.2	95	93.1	0	0.0
All Airlines	259	258	228	88.4	227	88.0	1	0.4
Canberra-Melbourne								
Qantas	205	205	183	89.3	186	90.7	0	0.0
QantasLink	103	95	84	88.4	84	88.4	8	7.8
Tigerair Australia	31	31	20	64.5	22	71.0	0	0.0
Virgin Australia	185	177	145	81.9	155	87.6	8	4.3
All Airlines	524	508	432	85.0	447	88.0	16	3.1
Canberra-Sydney								
QantasLink	506	479	406	84.8	399	83.3	27	5.3
Virgin Australia	277	258	205	79.5	203	78.7	19	6.9
All Airlines	783	737	611	82.9	602	81.7	46	5.9
Coffs Harbour-Sydney								
QantasLink	156	149	129	86.6	130	87.2	7	4.5
Tigerair Australia	12	12	7	58.3	7	58.3	0	0.0
Virgin Australia	54	51	47	92.2	48	94.1	3	5.6
All Airlines	222	212	183	86.3	185	87.3	10	4.5
Darwin-Alice Springs								
QantasLink	62	62	60	96.8	59	95.2	0	0.0
Virgin Australia	14	14	14	100.0	14	100.0	0	0.0
All Airlines	76	76	74	97.4	73	96.1	0	0.0
Darwin-Brisbane								
Jetstar	31	31	30	96.8	27	87.1	0	0.0
Qantas	50	50	46	92.0	43	86.0	0	0.0
Tigerair Australia	27	26	25	96.2	25	96.2	1	3.7
Virgin Australia	31	31	27	87.1	27	87.1	0	0.0
All Airlines	139	138	128	92.8	122	88.4	1	0.7
Darwin-Melbourne								
Jetstar	31	31	28	90.3	21	67.7	0	0.0
Qantas	41	41	35	85.4	34	82.9	0	0.0
Virgin Australia	31	31	30	96.8	28	90.3	0	0.0
All Airlines	103	103	93	90.3	83	80.6	0	0.0
Darwin-Perth								
Qantas	31	31	30	96.8	26	83.9	0	0.0
Virgin Australia	27	27	24	88.9	23	85.2	0	0.0
Virgin Australia Regional Airlines	4	4	3	75.0	2	50.0	0	0.0
All Airlines	62	62	57	91.9	51	82.3	0	0.0
Darwin-Sydney								
Jetstar	31	31	24	77.4	25	80.6	0	0.0
Qantas	52	52	42	80.8	41	78.8	0	0.0
Virgin Australia	31	31	17	54.8	22	71.0	0	0.0
All Airlines	114	114	83	72.8	88	77.2	0	0.0
Dubbo-Sydney								
QantasLink	128	124	91	73.4	89	71.8	4	3.1
Regional Express	149	147	110	74.8	118	80.3	2	1.3
All Airlines	277	271	201	74.2	207	76.4	6	2.2

	<i>Sectors</i>		<i>Arrivals On Time</i>		<i>Departures On Time</i>		<i>Cancellations</i>	
	<i>Sched.</i>	<i>Flown</i>	<i>No.</i>	<i>%</i>	<i>No.</i>	<i>%</i>	<i>No.</i>	<i>%</i>
Emerald-Brisbane								
QantasLink	120	118	106	89.8	105	89.0	2	1.7
Virgin Australia	54	54	47	87.0	46	85.2	0	0.0
All Airlines	174	172	153	89.0	151	87.8	2	1.1
Geraldton-Perth								
QantasLink	49	47	44	93.6	42	89.4	2	4.1
Virgin Australia Regional Airlines	54	54	47	87.0	47	87.0	0	0.0
All Airlines	103	101	91	90.1	89	88.1	2	1.9
Gladstone-Brisbane								
QantasLink	149	147	134	91.2	132	89.8	2	1.3
Virgin Australia	76	76	64	84.2	63	82.9	0	0.0
All Airlines	225	223	198	88.8	195	87.4	2	0.9
Gold Coast-Adelaide								
Jetstar	31	31	24	77.4	27	87.1	0	0.0
Virgin Australia	31	31	19	61.3	29	93.5	0	0.0
All Airlines	62	62	43	69.4	56	90.3	0	0.0
Gold Coast-Melbourne								
Jetstar	181	181	154	85.1	143	79.0	0	0.0
Qantas	29	29	23	79.3	23	79.3	0	0.0
Tigerair Australia	79	79	52	65.8	58	73.4	0	0.0
Virgin Australia	170	170	116	68.2	140	82.4	0	0.0
All Airlines	459	459	345	75.2	364	79.3	0	0.0
Gold Coast-Sydney								
Jetstar	233	231	181	78.4	191	82.7	2	0.9
Qantas	98	98	79	80.6	84	85.7	0	0.0
QantasLink	21	19	14	73.7	13	68.4	2	9.5
Tigerair Australia	122	116	82	70.7	86	74.1	6	4.9
Virgin Australia	248	239	195	81.6	200	83.7	9	3.6
All Airlines	722	703	551	78.4	574	81.7	19	2.6
Hamilton Island-Brisbane								
QantasLink	35	34	30	88.2	30	88.2	1	2.9
Virgin Australia	31	31	30	96.8	30	96.8	0	0.0
All Airlines	66	65	60	92.3	60	92.3	1	1.5
Hamilton Island-Sydney								
Jetstar	31	31	26	83.9	26	83.9	0	0.0
Qantas	13	13	10	76.9	9	69.2	0	0.0
QantasLink	19	19	15	78.9	15	78.9	0	0.0
Virgin Australia	30	30	28	93.3	27	90.0	0	0.0
All Airlines	93	93	79	84.9	77	82.8	0	0.0
Hobart-Brisbane								
Jetstar	21	21	16	76.2	16	76.2	0	0.0
Virgin Australia	31	31	24	77.4	17	54.8	0	0.0
All Airlines	52	52	40	76.9	33	63.5	0	0.0
Hobart-Melbourne								
Jetstar	145	145	92	63.4	82	56.6	0	0.0
QantasLink	132	131	106	80.9	110	84.0	1	0.8
Tigerair Australia	31	31	26	83.9	25	80.6	0	0.0
Virgin Australia	137	135	114	84.4	115	85.2	2	1.5
All Airlines	445	442	338	76.5	332	75.1	3	0.7
Hobart-Sydney								
Jetstar	54	54	40	74.1	35	64.8	0	0.0
QantasLink	58	57	48	84.2	50	87.7	1	1.7
Virgin Australia	70	67	53	79.1	53	79.1	3	4.3
All Airlines	182	178	141	79.2	138	77.5	4	2.2

	<i>Sectors</i>		<i>Arrivals On Time</i>		<i>Departures On Time</i>		<i>Cancellations</i>	
	<i>Sched.</i>	<i>Flown</i>	<i>No.</i>	<i>%</i>	<i>No.</i>	<i>%</i>	<i>No.</i>	<i>%</i>
Kalgoorlie-Perth								
Qantas	21	20	19	95.0	19	95.0	1	4.8
QantasLink	68	67	62	92.5	63	94.0	1	1.5
Virgin Australia	37	34	29	85.3	28	82.4	3	8.1
Virgin Australia Regional Airlines	37	37	36	97.3	34	91.9	0	0.0
All Airlines	163	158	146	92.4	144	91.1	5	3.1
Karratha-Perth								
Qantas	15	15	15	100.0	14	93.3	0	0.0
QantasLink	177	170	156	91.8	155	91.2	7	4.0
Virgin Australia Regional Airlines	72	72	62	86.1	60	83.3	0	0.0
All Airlines	264	257	233	90.7	229	89.1	7	2.7
Launceston-Melbourne								
Jetstar	94	93	67	72.0	63	67.7	1	1.1
QantasLink	114	111	94	84.7	94	84.7	3	2.6
Virgin Australia	95	95	82	86.3	85	89.5	0	0.0
All Airlines	303	299	243	81.3	242	80.9	4	1.3
Launceston-Sydney								
Jetstar	26	26	21	80.8	20	76.9	0	0.0
Virgin Australia	30	30	22	73.3	21	70.0	0	0.0
All Airlines	56	56	43	76.8	41	73.2	0	0.0
Mackay-Brisbane								
Jetstar	44	44	40	90.9	29	65.9	0	0.0
QantasLink	111	109	99	90.8	97	89.0	2	1.8
Virgin Australia	145	144	134	93.1	131	91.0	1	0.7
All Airlines	300	297	273	91.9	257	86.5	3	1.0
Melbourne-Adelaide								
Jetstar	96	95	61	64.2	72	75.8	1	1.0
Qantas	277	277	228	82.3	237	85.6	0	0.0
Tigerair Australia	79	77	60	77.9	61	79.2	2	2.5
Virgin Australia	273	267	216	80.9	226	84.6	6	2.2
All Airlines	725	716	565	78.9	596	83.2	9	1.2
Melbourne-Brisbane								
Jetstar	96	96	79	82.3	74	77.1	0	0.0
Qantas	422	422	370	87.7	356	84.4	0	0.0
QantasLink	16	16	11	68.8	11	68.8	0	0.0
Tigerair Australia	131	128	105	82.0	96	75.0	3	2.3
Virgin Australia	395	385	340	88.3	339	88.1	10	2.5
All Airlines	1 060	1 047	905	86.4	876	83.7	13	1.2
Melbourne-Cairns								
Jetstar	114	113	92	81.4	85	75.2	1	0.9
Qantas	48	48	40	83.3	34	70.8	0	0.0
Tigerair Australia	35	35	28	80.0	30	85.7	0	0.0
Virgin Australia	34	34	26	76.5	31	91.2	0	0.0
All Airlines	231	230	186	80.9	180	78.3	1	0.4
Melbourne-Canberra								
Qantas	205	205	180	87.8	179	87.3	0	0.0
QantasLink	103	95	78	82.1	77	81.1	8	7.8
Tigerair Australia	31	31	27	87.1	28	90.3	0	0.0
Virgin Australia	185	175	151	86.3	157	89.7	10	5.4
All Airlines	524	506	436	86.2	441	87.2	18	3.4
Melbourne-Darwin								
Jetstar	31	31	25	80.6	26	83.9	0	0.0
Qantas	41	41	32	78.0	32	78.0	0	0.0
Virgin Australia	31	31	23	74.2	27	87.1	0	0.0
All Airlines	103	103	80	77.7	85	82.5	0	0.0

	<i>Sectors</i>		<i>Arrivals On Time</i>		<i>Departures On Time</i>		<i>Cancellations</i>	
	<i>Sched.</i>	<i>Flown</i>	<i>No.</i>	<i>%</i>	<i>No.</i>	<i>%</i>	<i>No.</i>	<i>%</i>
Melbourne-Gold Coast								
Jetstar	181	181	150	82.9	151	83.4	0	0.0
Qantas	29	29	26	89.7	26	89.7	0	0.0
Tigerair Australia	79	79	66	83.5	65	82.3	0	0.0
Virgin Australia	170	170	152	89.4	145	85.3	0	0.0
All Airlines	459	459	394	85.8	387	84.3	0	0.0
Melbourne-Hobart								
Jetstar	145	145	110	75.9	114	78.6	0	0.0
QantasLink	132	131	98	74.8	112	85.5	1	0.8
Tigerair Australia	31	31	28	90.3	27	87.1	0	0.0
Virgin Australia	137	135	123	91.1	122	90.4	2	1.5
All Airlines	445	442	359	81.2	375	84.8	3	0.7
Melbourne-Launceston								
Jetstar	94	94	69	73.4	70	74.5	0	0.0
QantasLink	114	111	86	77.5	88	79.3	3	2.6
Virgin Australia	95	95	70	73.7	79	83.2	0	0.0
All Airlines	303	300	225	75.0	237	79.0	3	1.0
Melbourne-Mildura								
QantasLink	98	94	79	84.0	81	86.2	4	4.1
Regional Express	89	88	71	80.7	76	86.4	1	1.1
Virgin Australia	31	31	25	80.6	27	87.1	0	0.0
All Airlines	218	213	175	82.2	184	86.4	5	2.3
Melbourne-Newcastle								
Jetstar	108	108	93	86.1	82	75.9	0	0.0
Virgin Australia	31	31	27	87.1	27	87.1	0	0.0
All Airlines	139	139	120	86.3	109	78.4	0	0.0
Melbourne-Perth								
Jetstar	39	39	29	74.4	34	87.2	0	0.0
Qantas	191	191	118	61.8	154	80.6	0	0.0
Tigerair Australia	53	51	34	66.7	42	82.4	2	3.8
Virgin Australia	131	129	82	63.6	97	75.2	2	1.5
All Airlines	414	410	263	64.1	327	79.8	4	1.0
Melbourne-Sunshine Coast								
Jetstar	82	82	68	82.9	68	82.9	0	0.0
Virgin Australia	44	44	37	84.1	36	81.8	0	0.0
All Airlines	126	126	105	83.3	104	82.5	0	0.0
Melbourne-Sydney								
Jetstar	355	349	270	77.4	275	78.8	6	1.7
Qantas	1 067	1 009	843	83.5	830	82.3	58	5.4
QantasLink	2	2	2	100.0	2	100.0	0	0.0
Tigerair Australia	261	249	166	66.7	166	66.7	12	4.6
Virgin Australia	796	751	631	84.0	648	86.3	45	5.7
All Airlines	2 481	2 360	1 912	81.0	1 921	81.4	121	4.9
Mildura-Melbourne								
QantasLink	98	94	83	88.3	83	88.3	4	4.1
Regional Express	89	88	61	69.3	70	79.5	1	1.1
Virgin Australia	31	31	25	80.6	27	87.1	0	0.0
All Airlines	218	213	169	79.3	180	84.5	5	2.3
Moranbah-Brisbane								
QantasLink	77	76	72	94.7	72	94.7	1	1.3
Virgin Australia	59	59	56	94.9	57	96.6	0	0.0
All Airlines	136	135	128	94.8	129	95.6	1	0.7

	<i>Sectors</i>		<i>Arrivals On Time</i>		<i>Departures On Time</i>		<i>Cancellations</i>	
	<i>Sched.</i>	<i>Flown</i>	<i>No.</i>	<i>%</i>	<i>No.</i>	<i>%</i>	<i>No.</i>	<i>%</i>
Mount Isa-Brisbane								
QantasLink	57	57	48	84.2	50	87.7	0	0.0
Virgin Australia	19	19	12	63.2	15	78.9	0	0.0
All Airlines	76	76	60	78.9	65	85.5	0	0.0
Newcastle-Brisbane								
Jetstar	88	88	81	92.0	79	89.8	0	0.0
QantasLink	95	94	90	95.7	87	92.6	1	1.1
Virgin Australia	89	89	81	91.0	81	91.0	0	0.0
All Airlines	272	271	252	93.0	247	91.1	1	0.4
Newcastle-Melbourne								
Jetstar	108	108	86	79.6	95	88.0	0	0.0
Virgin Australia	31	31	22	71.0	26	83.9	0	0.0
All Airlines	139	139	108	77.7	121	87.1	0	0.0
Newman-Perth								
Qantas	60	59	56	94.9	55	93.2	1	1.7
QantasLink	79	76	68	89.5	71	93.4	3	3.8
Virgin Australia	21	21	21	100.0	20	95.2	0	0.0
Virgin Australia Regional Airlines	23	23	21	91.3	20	87.0	0	0.0
All Airlines	183	179	166	92.7	166	92.7	4	2.2
Perth-Adelaide								
Jetstar	22	21	13	61.9	11	52.4	1	4.5
Qantas	94	94	91	96.8	90	95.7	0	0.0
QantasLink	28	28	23	82.1	25	89.3	0	0.0
Virgin Australia	59	59	56	94.9	53	89.8	0	0.0
Virgin Australia Regional Airlines	8	8	7	87.5	7	87.5	0	0.0
All Airlines	211	210	190	90.5	186	88.6	1	0.5
Perth-Brisbane								
Qantas	130	130	119	91.5	117	90.0	0	0.0
Tigerair Australia	18	18	15	83.3	12	66.7	0	0.0
Virgin Australia	112	112	109	97.3	104	92.9	0	0.0
All Airlines	260	260	243	93.5	233	89.6	0	0.0
Perth-Broome								
Qantas	26	26	23	88.5	24	92.3	0	0.0
QantasLink	82	82	71	86.6	68	82.9	0	0.0
Virgin Australia	3	3	2	66.7	1	33.3	0	0.0
Virgin Australia Regional Airlines	72	72	65	90.3	64	88.9	0	0.0
All Airlines	183	183	161	88.0	157	85.8	0	0.0
Perth-Darwin								
Qantas	31	31	30	96.8	29	93.5	0	0.0
Virgin Australia	27	27	24	88.9	24	88.9	0	0.0
Virgin Australia Regional Airlines	4	4	3	75.0	3	75.0	0	0.0
All Airlines	62	62	57	91.9	56	90.3	0	0.0
Perth-Geraldton								
QantasLink	48	46	40	87.0	43	93.5	2	4.2
Virgin Australia Regional Airlines	54	54	48	88.9	48	88.9	0	0.0
All Airlines	102	100	88	88.0	91	91.0	2	2.0
Perth-Kalgoorlie								
Qantas	20	20	19	95.0	19	95.0	0	0.0
QantasLink	68	67	62	92.5	58	86.6	1	1.5
Virgin Australia	37	34	32	94.1	31	91.2	3	8.1
Virgin Australia Regional Airlines	37	37	33	89.2	33	89.2	0	0.0
All Airlines	162	158	146	92.4	141	89.2	4	2.5

	Sectors		Arrivals On Time		Departures On Time		Cancellations	
	Sched.	Flown	No.	%	No.	%	No.	%
Perth-Karratha								
Qantas	15	15	12	80.0	14	93.3	0	0.0
QantasLink	178	175	159	90.9	153	87.4	3	1.7
Virgin Australia Regional Airlines	72	72	61	84.7	71	98.6	0	0.0
All Airlines	265	262	232	88.5	238	90.8	3	1.1
Perth-Melbourne								
Jetstar	39	37	30	81.1	20	54.1	2	5.1
Qantas	191	191	162	84.8	153	80.1	0	0.0
Tigerair Australia	53	51	41	80.4	34	66.7	2	3.8
Virgin Australia	131	131	114	87.0	110	84.0	0	0.0
All Airlines	414	410	347	84.6	317	77.3	4	1.0
Perth-Newman								
Qantas	60	59	57	96.6	57	96.6	1	1.7
QantasLink	78	77	67	87.0	69	89.6	1	1.3
Virgin Australia	21	21	21	100.0	20	95.2	0	0.0
Virgin Australia Regional Airlines	23	23	21	91.3	21	91.3	0	0.0
All Airlines	182	180	166	92.2	167	92.8	2	1.1
Perth-Port Hedland								
Qantas	34	34	32	94.1	32	94.1	0	0.0
QantasLink	102	101	83	82.2	86	85.1	1	1.0
Virgin Australia	16	16	14	87.5	15	93.8	0	0.0
Virgin Australia Regional Airlines	38	38	30	78.9	34	89.5	0	0.0
All Airlines	190	189	159	84.1	167	88.4	1	0.5
Perth-Sydney								
Jetstar	26	25	16	64.0	7	28.0	1	3.8
Qantas	214	214	189	88.3	169	79.0	0	0.0
Tigerair Australia	27	26	24	92.3	17	65.4	1	3.7
Virgin Australia	120	119	108	90.8	90	75.6	1	0.8
All Airlines	387	384	337	87.8	283	73.7	3	0.8
Port Hedland-Perth								
Qantas	34	34	32	94.1	29	85.3	0	0.0
QantasLink	104	101	87	86.1	87	86.1	3	2.9
Virgin Australia	16	16	16	100.0	16	100.0	0	0.0
Virgin Australia Regional Airlines	37	37	34	91.9	33	89.2	0	0.0
All Airlines	191	188	169	89.9	165	87.8	3	1.6
Port Lincoln-Adelaide								
QantasLink	109	109	101	92.7	104	95.4	0	0.0
Regional Express	225	220	196	89.1	200	90.9	5	2.2
All Airlines	334	329	297	90.3	304	92.4	5	1.5
Port Macquarie-Sydney								
QantasLink	135	127	92	72.4	89	70.1	8	5.9
Virgin Australia	62	61	41	67.2	46	75.4	1	1.6
All Airlines	197	188	133	70.7	135	71.8	9	4.6
Proserpine-Brisbane								
Jetstar	31	31	29	93.5	29	93.5	0	0.0
Tigerair Australia	17	17	16	94.1	15	88.2	0	0.0
Virgin Australia	31	31	30	96.8	28	90.3	0	0.0
All Airlines	79	79	75	94.9	72	91.1	0	0.0
Rockhampton-Brisbane								
QantasLink	187	187	151	80.7	158	84.5	0	0.0
Virgin Australia	142	142	118	83.1	111	78.2	0	0.0
All Airlines	329	329	269	81.8	269	81.8	0	0.0

	<i>Sectors</i>		<i>Arrivals On Time</i>		<i>Departures On Time</i>		<i>Cancellations</i>	
	<i>Sched.</i>	<i>Flown</i>	<i>No.</i>	<i>%</i>	<i>No.</i>	<i>%</i>	<i>No.</i>	<i>%</i>
Sunshine Coast-Melbourne								
Jetstar	82	82	54	65.9	56	68.3	0	0.0
Virgin Australia	44	44	25	56.8	29	65.9	0	0.0
All Airlines	126	126	79	62.7	85	67.5	0	0.0
Sunshine Coast-Sydney								
Jetstar	93	91	70	76.9	66	72.5	2	2.2
QantasLink	35	35	20	57.1	27	77.1	0	0.0
Virgin Australia	39	39	26	66.7	29	74.4	0	0.0
All Airlines	167	165	116	70.3	122	73.9	2	1.2
Sydney-Adelaide								
Jetstar	71	71	53	74.6	60	84.5	0	0.0
Qantas	229	228	169	74.1	188	82.5	1	0.4
QantasLink	27	24	18	75.0	21	87.5	3	11.1
Tigerair Australia	48	48	32	66.7	38	79.2	0	0.0
Virgin Australia	172	170	122	71.8	146	85.9	2	1.2
All Airlines	547	541	394	72.8	453	83.7	6	1.1
Sydney-Albury								
QantasLink	112	110	85	77.3	90	81.8	2	1.8
Regional Express	112	109	83	76.1	80	73.4	3	2.7
Virgin Australia	62	61	44	72.1	50	82.0	1	1.6
All Airlines	286	280	212	75.7	220	78.6	6	2.1
Sydney-Armidale								
QantasLink	115	109	71	65.1	67	61.5	6	5.2
Regional Express	81	81	62	76.5	60	74.1	0	0.0
All Airlines	196	190	133	70.0	127	66.8	6	3.1
Sydney-Ayers Rock								
Jetstar	31	31	17	54.8	25	80.6	0	0.0
Virgin Australia	31	31	23	74.2	25	80.6	0	0.0
All Airlines	62	62	40	64.5	50	80.6	0	0.0
Sydney-Ballina								
Jetstar	75	74	68	91.9	67	90.5	1	1.3
Regional Express	27	26	23	88.5	22	84.6	1	3.7
Virgin Australia	31	30	27	90.0	26	86.7	1	3.2
All Airlines	133	130	118	90.8	115	88.5	3	2.3
Sydney-Brisbane								
Jetstar	172	166	135	81.3	126	75.9	6	3.5
Qantas	638	629	536	85.2	549	87.3	9	1.4
QantasLink	6	6	3	50.0	3	50.0	0	0.0
Tigerair Australia	114	111	88	79.3	91	82.0	3	2.6
Virgin Australia	548	523	457	87.4	448	85.7	25	4.6
All Airlines	1 478	1 435	1 219	84.9	1 217	84.8	43	2.9
Sydney-Cairns								
Jetstar	102	101	88	87.1	82	81.2	1	1.0
Qantas	87	87	74	85.1	75	86.2	0	0.0
Tigerair Australia	50	49	45	91.8	45	91.8	1	2.0
Virgin Australia	85	84	69	82.1	73	86.9	1	1.2
All Airlines	324	321	276	86.0	275	85.7	3	0.9
Sydney-Canberra								
QantasLink	508	480	398	82.9	402	83.8	28	5.5
Virgin Australia	279	259	200	77.2	197	76.1	20	7.2
All Airlines	787	739	598	80.9	599	81.1	48	6.1

	<i>Sectors</i>		<i>Arrivals On Time</i>		<i>Departures On Time</i>		<i>Cancellations</i>	
	<i>Sched.</i>	<i>Flown</i>	<i>No.</i>	<i>%</i>	<i>No.</i>	<i>%</i>	<i>No.</i>	<i>%</i>
Sydney-Coffs Harbour								
QantasLink	156	149	137	91.9	125	83.9	7	4.5
Tigerair Australia	12	12	7	58.3	7	58.3	0	0.0
Virgin Australia	54	51	47	92.2	46	90.2	3	5.6
All Airlines	222	212	191	90.1	178	84.0	10	4.5
Sydney-Darwin								
Jetstar	31	31	28	90.3	30	96.8	0	0.0
Qantas	52	52	41	78.8	39	75.0	0	0.0
Virgin Australia	31	31	26	83.9	25	80.6	0	0.0
All Airlines	114	114	95	83.3	94	82.5	0	0.0
Sydney-Dubbo								
QantasLink	128	124	86	69.4	79	63.7	4	3.1
Regional Express	148	147	120	81.6	114	77.6	1	0.7
All Airlines	276	271	206	76.0	193	71.2	5	1.8
Sydney-Gold Coast								
Jetstar	233	231	198	85.7	188	81.4	2	0.9
Qantas	98	98	85	86.7	82	83.7	0	0.0
QantasLink	21	19	13	68.4	14	73.7	2	9.5
Tigerair Australia	122	116	96	82.8	99	85.3	6	4.9
Virgin Australia	248	239	204	85.4	197	82.4	9	3.6
All Airlines	722	703	596	84.8	580	82.5	19	2.6
Sydney-Hamilton Island								
Jetstar	31	31	28	90.3	29	93.5	0	0.0
Qantas	13	13	9	69.2	9	69.2	0	0.0
QantasLink	19	19	14	73.7	12	63.2	0	0.0
Virgin Australia	30	30	28	93.3	28	93.3	0	0.0
All Airlines	93	93	79	84.9	78	83.9	0	0.0
Sydney-Hobart								
Jetstar	54	54	51	94.4	51	94.4	0	0.0
QantasLink	58	57	46	80.7	48	84.2	1	1.7
Virgin Australia	70	67	57	85.1	58	86.6	3	4.3
All Airlines	182	178	154	86.5	157	88.2	4	2.2
Sydney-Launceston								
Jetstar	26	26	23	88.5	22	84.6	0	0.0
Virgin Australia	30	30	30	100.0	28	93.3	0	0.0
All Airlines	56	56	53	94.6	50	89.3	0	0.0
Sydney-Melbourne								
Jetstar	356	349	272	77.9	275	78.8	7	2.0
Qantas	1 071	1 014	771	76.0	835	82.3	57	5.3
QantasLink	2	2	2	100.0	2	100.0	0	0.0
Tigerair Australia	261	250	153	61.2	167	66.8	11	4.2
Virgin Australia	793	742	586	79.0	649	87.5	51	6.4
All Airlines	2 483	2 357	1 784	75.7	1 928	81.8	126	5.1
Sydney-Perth								
Jetstar	26	26	14	53.8	19	73.1	0	0.0
Qantas	213	213	137	64.3	170	79.8	0	0.0
Tigerair Australia	27	26	15	57.7	23	88.5	1	3.7
Virgin Australia	120	120	70	58.3	97	80.8	0	0.0
All Airlines	386	385	236	61.3	309	80.3	1	0.3
Sydney-Port Macquarie								
QantasLink	135	127	90	70.9	85	66.9	8	5.9
Virgin Australia	62	61	42	68.9	40	65.6	1	1.6
All Airlines	197	188	132	70.2	125	66.5	9	4.6

	<i>Sectors</i>		<i>Arrivals On Time</i>		<i>Departures On Time</i>		<i>Cancellations</i>	
	<i>Sched.</i>	<i>Flown</i>	<i>No.</i>	<i>%</i>	<i>No.</i>	<i>%</i>	<i>No.</i>	<i>%</i>
Sydney-Sunshine Coast								
Jetstar	93	91	78	85.7	68	74.7	2	2.2
QantasLink	35	35	29	82.9	29	82.9	0	0.0
Virgin Australia	39	39	33	84.6	32	82.1	0	0.0
All Airlines	167	165	140	84.8	129	78.2	2	1.2
Sydney-Tamworth								
QantasLink	154	147	120	81.6	115	78.2	7	4.5
Virgin Australia	54	53	36	67.9	37	69.8	1	1.9
All Airlines	208	200	156	78.0	152	76.0	8	3.8
Sydney-Townsville								
Jetstar	31	31	24	77.4	21	67.7	0	0.0
Virgin Australia	22	21	19	90.5	19	90.5	1	4.5
All Airlines	53	52	43	82.7	40	76.9	1	1.9
Sydney-Wagga Wagga								
QantasLink	116	112	92	82.1	90	80.4	4	3.4
Regional Express	141	140	119	85.0	122	87.1	1	0.7
All Airlines	257	252	211	83.7	212	84.1	5	1.9
Tamworth-Sydney								
QantasLink	155	148	115	77.7	119	80.4	7	4.5
Virgin Australia	54	52	42	80.8	42	80.8	2	3.7
All Airlines	209	200	157	78.5	161	80.5	9	4.3
Townsville-Brisbane								
Jetstar	49	49	39	79.6	39	79.6	0	0.0
Qantas	73	73	68	93.2	68	93.2	0	0.0
QantasLink	78	78	66	84.6	70	89.7	0	0.0
Virgin Australia	141	140	129	92.1	130	92.9	1	0.7
All Airlines	341	340	302	88.8	307	90.3	1	0.3
Townsville-Cairns								
QantasLink	142	141	135	95.7	133	94.3	1	0.7
Regional Express	45	44	41	93.2	42	95.5	1	2.2
All Airlines	187	185	176	95.1	175	94.6	2	1.1
Townsville-Sydney								
Jetstar	31	31	22	71.0	17	54.8	0	0.0
Virgin Australia	22	21	16	76.2	16	76.2	1	4.5
All Airlines	53	52	38	73.1	33	63.5	1	1.9
Wagga Wagga-Sydney								
QantasLink	116	112	91	81.3	91	81.3	4	3.4
Regional Express	137	136	110	80.9	117	86.0	1	0.7
All Airlines	253	248	201	81.0	208	83.9	5	2.0

Airports

On time performance is reported for all routes where the passenger load averages over 8000 passengers per month, and where two or more airlines operate in competition. The following data reports by airport against flights operated on those routes only. This month, 8 major city airports and 33 regional city airports are covered.

Airport	Arrivals			Departures		
	Sectors	On Time		Sectors	On Time	
	Flown	No.	%	Flown	No.	%
Adelaide						
Jetstar	244	172	70.5	244	187	76.6
Qantas	773	631	81.6	773	659	85.3
QantasLink	188	166	88.3	188	170	90.4
Regional Express	220	196	89.1	222	206	92.8
Tigerair Australia	155	112	72.3	155	92	59.4
Virgin Australia	669	520	77.7	668	559	83.7
Virgin Australia Regional Airlines	8	7	87.5	8	7	87.5
All Airlines	2 257	1 804	79.9	2 258	1 880	83.3
Relates to services to and from Alice Springs, Brisbane, Canberra, Gold Coast, Melbourne, Perth, Port Lincoln and Sydney.						
Albury						
QantasLink	110	85	77.3	110	88	80.0
Regional Express	109	83	76.1	110	85	77.3
Virgin Australia	61	44	72.1	61	42	68.9
All Airlines	280	212	75.7	281	215	76.5
Relates to services to and from Sydney only.						
Alice Springs						
Qantas	31	24	77.4	31	26	83.9
QantasLink	62	60	96.8	62	59	95.2
Virgin Australia	28	27	96.4	28	28	100.0
All Airlines	121	111	91.7	121	113	93.4
Relates to services to and from Adelaide and Darwin.						
Armidale						
QantasLink	109	71	65.1	109	70	64.2
Regional Express	81	62	76.5	81	54	66.7
All Airlines	190	133	70.0	190	124	65.3
Relates to services to and from Sydney only.						
Ayers Rock						
Jetstar	31	17	54.8	31	15	48.4
Virgin Australia	31	23	74.2	31	20	64.5
All Airlines	62	40	64.5	62	35	56.5
Relates to services to and from Sydney only.						
Ballina						
Jetstar	74	68	91.9	74	61	82.4
Regional Express	26	23	88.5	25	15	60.0
Virgin Australia	30	27	90.0	30	27	90.0
All Airlines	130	118	90.8	129	103	79.8
Relates to services to and from Sydney only.						

Airport	Arrivals			Departures		
	Sectors	On Time		Sectors	On Time	
	Flown	No.	%	Flown	No.	%
Brisbane						
Jetstar	650	558	85.8	652	527	80.8
Qantas	1 561	1 376	88.1	1 557	1 392	89.4
QantasLink	1 210	1 057	87.4	1 218	1 094	89.8
Tigerair Australia	377	306	81.2	376	314	83.5
Virgin Australia	2 229	1 981	88.9	2 232	1 994	89.3
All Airlines	6 027	5 278	87.6	6 035	5 321	88.2

Relates to services to and from Adelaide, Bundaberg, Cairns, Canberra, Darwin, Emerald, Gladstone, Hamilton Island, Hobart, Mackay, Melbourne, Moranbah, Mount Isa, Newcastle, Perth, Proserpine, Rockhampton, Sydney and Townsville.

Broome

Qantas	26	23	88.5	26	22	84.6
QantasLink	82	71	86.6	82	65	79.3
Virgin Australia	3	2	66.7	3	1	33.3
Virgin Australia Regional Airlines	72	65	90.3	72	61	84.7
All Airlines	183	161	88.0	183	149	81.4

Relates to services to and from Perth only.

Bundaberg

QantasLink	133	119	89.5	133	117	88.0
Virgin Australia	31	27	87.1	31	24	77.4
All Airlines	164	146	89.0	164	141	86.0

Relates to services to and from Brisbane only.

Cairns

Jetstar	312	266	85.3	313	260	83.1
Qantas	267	237	88.8	266	221	83.1
QantasLink	145	138	95.2	150	144	96.0
Regional Express	44	41	93.2	44	38	86.4
Tigerair Australia	131	112	85.5	131	101	77.1
Virgin Australia	242	207	85.5	242	199	82.2
All Airlines	1 141	1 001	87.7	1 146	963	84.0

Relates to services to and from Brisbane, Melbourne, Sydney and Townsville.

Canberra

Qantas	287	249	86.8	287	260	90.6
QantasLink	700	567	81.0	698	584	83.7
Tigerair Australia	31	27	87.1	31	22	71.0
Virgin Australia	563	461	81.9	564	476	84.4
All Airlines	1 581	1 304	82.5	1 580	1 342	84.9

Relates to services to and from Adelaide, Brisbane, Melbourne and Sydney.

Coffs Harbour

QantasLink	149	137	91.9	149	130	87.2
Tigerair Australia	12	7	58.3	12	7	58.3
Virgin Australia	51	47	92.2	51	48	94.1
All Airlines	212	191	90.1	212	185	87.3

Relates to services to and from Sydney only.

Airport	Arrivals			Departures		
	Sectors Flown	On Time		Sectors Flown	On Time	
		No.	%		No.	%
Darwin						
Jetstar	93	83	89.2	93	73	78.5
Qantas	174	153	87.9	174	144	82.8
QantasLink	62	60	96.8	62	59	95.2
Tigerair Australia	25	25	100.0	26	25	96.2
Virgin Australia	134	115	85.8	134	114	85.1
Virgin Australia Regional Airlines	4	3	75.0	4	2	50.0
All Airlines	492	439	89.2	493	417	84.6
Relates to services to and from Alice Springs, Brisbane, Melbourne, Perth and Sydney.						
Dubbo						
QantasLink	124	86	69.4	124	89	71.8
Regional Express	147	120	81.6	147	118	80.3
All Airlines	271	206	76.0	271	207	76.4
Relates to services to and from Sydney only.						
Emerald						
QantasLink	120	108	90.0	118	105	89.0
Virgin Australia	54	48	88.9	54	46	85.2
All Airlines	174	156	89.7	172	151	87.8
Relates to services to and from Brisbane only.						
Geraldton						
QantasLink	46	40	87.0	47	42	89.4
Virgin Australia Regional Airlines	54	48	88.9	54	47	87.0
All Airlines	100	88	88.0	101	89	88.1
Relates to services to and from Perth only.						
Gladstone						
QantasLink	146	137	93.8	147	132	89.8
Virgin Australia	76	62	81.6	76	63	82.9
All Airlines	222	199	89.6	223	195	87.4
Relates to services to and from Brisbane only.						
Gold Coast						
Jetstar	443	375	84.7	443	361	81.5
Qantas	127	111	87.4	127	107	84.3
QantasLink	19	13	68.4	19	13	68.4
Tigerair Australia	195	162	83.1	195	144	73.8
Virgin Australia	440	387	88.0	440	369	83.9
All Airlines	1 224	1 048	85.6	1 224	994	81.2
Relates to services to and from Adelaide, Melbourne and Sydney.						
Hamilton Island						
Jetstar	31	28	90.3	31	26	83.9
Qantas	13	9	69.2	13	9	69.2
QantasLink	53	45	84.9	53	45	84.9
Virgin Australia	61	58	95.1	61	57	93.4
All Airlines	158	140	88.6	158	137	86.7
Relates to services to and from Brisbane and Sydney.						

Airport	Arrivals			Departures		
	Sectors Flown	On Time		Sectors Flown	On Time	
		No.	%		No.	%
Hobart						
Jetstar	221	180	81.4	220	133	60.5
QantasLink	188	144	76.6	188	160	85.1
Tigerair Australia	31	28	90.3	31	25	80.6
Virgin Australia	233	206	88.4	233	185	79.4
All Airlines	673	558	82.9	672	503	74.9
Relates to services to and from Brisbane, Melbourne and Sydney.						
Kalgoorlie						
Qantas	20	19	95.0	20	19	95.0
QantasLink	67	62	92.5	67	63	94.0
Virgin Australia	34	32	94.1	34	28	82.4
Virgin Australia Regional Airlines	37	33	89.2	37	34	91.9
All Airlines	158	146	92.4	158	144	91.1
Relates to services to and from Perth only.						
Karratha						
Qantas	15	12	80.0	15	14	93.3
QantasLink	175	159	90.9	170	155	91.2
Virgin Australia Regional Airlines	72	61	84.7	72	60	83.3
All Airlines	262	232	88.5	257	229	89.1
Relates to services to and from Perth only.						
Launceston						
Jetstar	120	92	76.7	119	83	69.7
QantasLink	111	86	77.5	111	94	84.7
Virgin Australia	125	100	80.0	125	106	84.8
All Airlines	356	278	78.1	355	283	79.7
Relates to services to and from Melbourne and Sydney.						
Mackay						
Jetstar	44	35	79.5	44	29	65.9
QantasLink	109	99	90.8	109	97	89.0
Virgin Australia	144	131	91.0	144	131	91.0
All Airlines	297	265	89.2	297	257	86.5
Relates to services to and from Brisbane only.						
Melbourne						
Jetstar	1 331	1 015	76.3	1 333	1 051	78.8
Qantas	2 222	1 755	79.0	2 222	1 848	83.2
QantasLink	449	379	84.4	449	371	82.6
Regional Express	88	61	69.3	88	76	86.4
Tigerair Australia	682	449	65.8	681	515	75.6
Virgin Australia	2 278	1 770	77.7	2 278	1 961	86.1
All Airlines	7 050	5 429	77.0	7 051	5 822	82.6
Relates to services to and from Adelaide, Brisbane, Cairns, Canberra, Darwin, Gold Coast, Hobart, Launceston, Mildura, Newcastle, Perth, Sunshine Coast and Sydney.						
Mildura						
QantasLink	94	79	84.0	94	83	88.3
Regional Express	88	71	80.7	88	70	79.5
Virgin Australia	31	25	80.6	31	27	87.1
All Airlines	213	175	82.2	213	180	84.5
Relates to services to and from Melbourne only.						

Airport	Arrivals			Departures		
	Sectors Flown	On Time		Sectors Flown	On Time	
		No.	%		No.	%
Moranbah						
QantasLink	81	77	95.1	76	72	94.7
Virgin Australia	59	56	94.9	59	57	96.6
All Airlines	140	133	95.0	135	129	95.6
Relates to services to and from Brisbane only.						
Mount Isa						
QantasLink	58	50	86.2	57	50	87.7
Virgin Australia	19	14	73.7	19	15	78.9
All Airlines	77	64	83.1	76	65	85.5
Relates to services to and from Brisbane only.						
Newcastle						
Jetstar	196	164	83.7	196	174	88.8
QantasLink	94	87	92.6	94	87	92.6
Virgin Australia	121	110	90.9	120	107	89.2
All Airlines	411	361	87.8	410	368	89.8
Relates to services to and from Brisbane and Melbourne.						
Newman						
Qantas	59	57	96.6	59	55	93.2
QantasLink	77	67	87.0	76	71	93.4
Virgin Australia	21	21	100.0	21	20	95.2
Virgin Australia Regional Airlines	23	21	91.3	23	20	87.0
All Airlines	180	166	92.2	179	166	92.7
Relates to services to and from Perth only.						
Perth						
Jetstar	87	58	66.7	83	38	45.8
Qantas	811	596	73.5	814	704	86.5
QantasLink	570	498	87.4	576	502	87.2
Tigerair Australia	95	63	66.3	95	63	66.3
Virgin Australia	521	352	67.6	522	448	85.8
Virgin Australia Regional Airlines	307	267	87.0	308	281	91.2
All Airlines	2 391	1 834	76.7	2 398	2 036	84.9
Relates to services to and from Adelaide, Brisbane, Broome, Darwin, Geraldton, Kalgoorlie, Karratha, Melbourne, Newman, Port Hedland and Sydney.						
Port Hedland						
Qantas	34	32	94.1	34	29	85.3
QantasLink	101	83	82.2	101	87	86.1
Virgin Australia	16	14	87.5	16	16	100.0
Virgin Australia Regional Airlines	38	30	78.9	37	33	89.2
All Airlines	189	159	84.1	188	165	87.8
Relates to services to and from Perth only.						
Port Lincoln						
QantasLink	109	102	93.6	109	104	95.4
Regional Express	222	201	90.5	220	200	90.9
All Airlines	331	303	91.5	329	304	92.4
Relates to services to and from Adelaide only.						

Airport	Arrivals			Departures		
	Sectors Flown	On Time		Sectors Flown	On Time	
		No.	%		No.	%
Port Macquarie						
QantasLink	127	90	70.9	127	89	70.1
Virgin Australia	61	42	68.9	61	46	75.4
All Airlines	188	132	70.2	188	135	71.8
Relates to services to and from Sydney only.						
Proserpine						
Jetstar	31	27	87.1	31	29	93.5
Tigerair Australia	17	16	94.1	17	15	88.2
Virgin Australia	31	30	96.8	31	28	90.3
All Airlines	79	73	92.4	79	72	91.1
Relates to services to and from Brisbane only.						
Rockhampton						
QantasLink	187	165	88.2	187	158	84.5
Virgin Australia	142	95	66.9	142	111	78.2
All Airlines	329	260	79.0	329	269	81.8
Relates to services to and from Brisbane only.						
Sunshine Coast						
Jetstar	173	146	84.4	173	122	70.5
QantasLink	35	29	82.9	35	27	77.1
Virgin Australia	83	70	84.3	83	58	69.9
All Airlines	291	245	84.2	291	207	71.1
Relates to services to and from Melbourne and Sydney.						
Sydney						
Jetstar	1 312	1 020	77.7	1 313	1 063	81.0
Qantas	2 332	1 968	84.4	2 334	1 947	83.4
QantasLink	1 521	1 201	79.0	1 520	1 182	77.8
Regional Express	499	373	74.7	503	398	79.1
Tigerair Australia	611	425	69.6	612	470	76.8
Virgin Australia	2 643	2 167	82.0	2 642	2 221	84.1
All Airlines	8 918	7 154	80.2	8 924	7 281	81.6
Relates to services to and from Adelaide, Albury, Armidale, Ayers Rock, Ballina, Brisbane, Cairns, Canberra, Coffs Harbour, Darwin, Dubbo, Gold Coast, Hamilton Island, Hobart, Launceston, Melbourne, Perth, Port Macquarie, Sunshine Coast, Tamworth, Townsville and Wagga Wagga.						
Tamworth						
QantasLink	147	120	81.6	148	119	80.4
Virgin Australia	53	36	67.9	52	42	80.8
All Airlines	200	156	78.0	200	161	80.5
Relates to services to and from Sydney only.						
Townsville						
Jetstar	80	67	83.8	80	56	70.0
Qantas	73	68	93.2	73	68	93.2
QantasLink	224	212	94.6	219	203	92.7
Regional Express	44	38	86.4	44	42	95.5
Virgin Australia	162	148	91.4	161	146	90.7
All Airlines	583	533	91.4	577	515	89.3
Relates to services to and from Brisbane, Cairns and Sydney.						

<i>Airport</i>	<i>Arrivals</i>			<i>Departures</i>		
	<i>Sectors</i>	<i>On Time</i>		<i>Sectors</i>	<i>On Time</i>	
	<i>Flown</i>	<i>No.</i>	<i>%</i>	<i>Flown</i>	<i>No.</i>	<i>%</i>
Wagga Wagga						
QantasLink	112	92	82.1	112	91	81.3
Regional Express	140	119	85.0	136	117	86.0
All Airlines	252	211	83.7	248	208	83.9

Relates to services to and from Sydney only.

Definitions

On time arrival	A flight arrival is counted as "on time" if it arrived at the gate before 15 minutes after the scheduled arrival time shown in the carriers' schedule. Neither diverted nor cancelled flights count as on time.
On time departure	A flight departure is counted as "on time" if it departs the gate before 15 minutes after the scheduled departure time shown in the carriers' schedule.
Cancellation	A flight removed from service within 7 days of scheduled departure is regarded as a cancellation.
On time departure percentage	The percentage of on time departures is measured against the number of departures <i>operated</i> on any particular sector.
On time arrival percentage	The percentage of on time arrivals is measured against the number of arrivals <i>operated</i> on any particular sector.
Cancellation percentage	The percentage of cancellations is measured against the number of services <i>scheduled</i> on any particular sector.
