



Australian Government

Department of Infrastructure and Regional Development

Bureau of Infrastructure, Transport and Regional Economics

STATISTICAL REPORT



Aviation

Domestic airline on time performance
August 2016

© Commonwealth of Australia 2016

ISSN: 1832-0759

Ownership of intellectual property rights in this publication

Unless otherwise noted, copyright (and any other intellectual property rights, if any) in this publication is owned by the Commonwealth of Australia (referred to below as the Commonwealth).

Disclaimer

The material contained in this publication is made available on the understanding that the Commonwealth is not providing professional advice, and that users exercise their own skill and care with respect to its use, and seek independent advice if necessary.

The Commonwealth makes no representations or warranties as to the contents or accuracy of the information contained in this publication. To the extent permitted by law, the Commonwealth disclaims liability to any person or organisation in respect of anything done, or omitted to be done, in reliance upon information contained in this publication.

Creative Commons licence

With the exception of (a) the Coat of Arms; and (b) the Department of Infrastructure and Regional Development's photos and graphics, copyright in this publication is licensed under a Creative Commons Attribution 3.0 Australia Licence.

Creative Commons Attribution 3.0 Australia Licence is a standard form licence agreement that allows you to copy, communicate and adapt this publication provided that you attribute the work to the Commonwealth and abide by the other licence terms. A summary of the licence terms is available from <http://creativecommons.org/licenses/by/3.0/au/deed.en>. The full licence terms are available from <http://creativecommons.org/licenses/by/3.0/au/legalcode>.

Use of the Coat of Arms

The Department of the Prime Minister and Cabinet sets the terms under which the Coat of Arms is used. Please refer to the Department's Commonwealth Coat of Arms and Government branding web page <http://www.dpmmc.gov.au/guidelines/index.cfm#brand> and, in particular, the Guidelines on the use of the Commonwealth Coat of Arms publication.

An appropriate citation for this report is:

Bureau of Infrastructure, Transport and Regional Economics (BITRE), 2016, Domestic airline on time performance, Statistical Report, BITRE, Canberra ACT.

Contact us

This publication is available in PDF format. All other rights are reserved, including in relation to any Departmental logos or trade marks which may exist. For enquiries regarding the licence and any use of this publication, please contact:

Bureau of Infrastructure, Transport and Regional Economics (BITRE)
Department of Infrastructure and Regional Development
GPO Box 501, Canberra ACT 2601, Australia
Telephone: (international) +61 2 6274 7210
Fax: (international) +61 2 6274 6855
Email: bitre@infrastructure.gov.au
Website: www.bitre.gov.au

Inquiries

Should you require additional information about the statistics contained in this publication:

Telephone (02) 6274 7790 or Facsimile (02) 6274 7727

Electronic mail: AVSTATS@infrastructure.gov.au

Web site: <http://www.bitre.gov.au/statistics/aviation/otphome.aspx>

Foreword

The Bureau of Infrastructure, Transport and Regional Economics (BITRE) monitors the punctuality and reliability of major domestic airlines operating between Australian airports. The purpose of this is to allow for evaluation of overall industry and individual airline performance, so that consumers of air travel can make informed decisions.

The following domestic airlines currently report this information monthly to the BITRE: Jetstar, Qantas, QantasLink, Regional Express, Tigerair Australia, Virgin Australia and Virgin Australia Regional Airlines. Data has been gathered since November 2003, although some airlines commenced reporting at a later date, including Jetstar which first reported in May 2004, MacAir in July 2005, Tigerair Australia in April 2008 and Virgin Australia Regional Airlines in May 2013. MacAir ceased operations in February 2009 and data was not received for December 2008 onwards. Virgin Blue was rebranded as Virgin Australia in May 2011 and Tiger Airways was rebranded as Tigerair Australia in July 2013 and time series data in Microsoft Excel spreadsheet format on the BITRE website have been revised to reflect these changes. Services operated by Skywest on behalf of Virgin Australia using ATR/F100 aircraft commenced in November 2011 and were shown separately as Virgin Australia – ATR/F100 Operations. Virgin Australia Regional Airlines commenced operations in May 2013. It was formed after the acquisition of Skywest by Virgin Australia and represented a combination of operations previously reported under Skywest and Virgin Australia – ATR/F100 Operations. In January 2016, Virgin Australia transferred their ATR fleet from Virgin Australia Regional Airlines to Virgin Australia.

Information presented in this report is for Australian domestic routes for which the passenger load averaged 8 000 or more passengers per month over the previous six months and where two or more airlines operated in competition on those routes. There were 66 routes that met this definition in August 2016. Over time, routes which meet these criteria change as airline networks and traffic levels vary.

Participating airlines report their overall monthly network performance where this is possible.

Total industry figures encompass all services operated by reporting airlines only. These airlines collectively carried over 95 per cent of total domestic passengers (regular public transport only) in 2015.

The method of capturing on time performance varies between airlines utilising different recording systems. Jetstar and Qantas jet aircraft use Aircraft Communication Addressing and Reporting System (ACARS) to electronically measure on time performance. Regional Express, Tigerair Australia, Virgin Australia, Virgin Australia Regional Airlines and the Qantas non-jet fleet record on time performance manually using records from pilots, gate agents and/or ground crews.

After initial data is collected, aggregate reports are audited internally by participating airlines prior to publication.

Reports and detailed time series data in Microsoft Excel spreadsheet format are available from the BITRE website at: <http://www.bitre.gov.au/statistics/aviation/otphome.aspx>.

Contents

	Page
Industry performance	1
Individual routes	10
Airports	23
Definitions	29

Industry performance

For August 2016, on time performance over all routes operated by participating airlines (Jetstar, Qantas, QantasLink, Regional Express, Tigerair Australia, Virgin Australia and Virgin Australia Regional Airlines) averaged 87.5 per cent for on time arrivals and 88.4 per cent for on time departures. Cancellations represented 1.5 per cent of all scheduled flights. The equivalent figures for August 2015 were 89.2 per cent for arrivals, 89.7 per cent for departures and 1.6 per cent for cancellations.

This month's on time arrivals figure was higher than the long term average performance for all routes (82.8 per cent) and the on time departures figure was also higher than the long term average (84.2 per cent). The rate of cancellations was higher than the long term average of 1.4 per cent.

Virgin Australia achieved the highest on time arrivals among the major domestic airlines at 89.4 per cent followed by Qantas at 89.2 per cent, Tigerair Australia at 87.1 per cent and Jetstar at 83.6 per cent. Of the regional airlines, QantasLink recorded 87.8 per cent for on time arrivals, followed by Regional Express at 86.6 per cent and Virgin Australia Regional Airlines at 75.9 per cent. The Qantas network (Qantas and QantasLink combined operations) recorded 88.5 per cent for on time arrivals while the Virgin Australia network (Virgin Australia and Virgin Australia Regional Airlines combined operations) recorded 88.7 per cent.

Virgin Australia also achieved the highest level of on time departures for August 2016 at 90.9 per cent, followed by Qantas at 90.3 per cent, Tigerair Australia at 89.1 per cent and Jetstar at 80.4 per cent. Of the regional airlines, Regional Express recorded 89.4 per cent, followed by QantasLink at 88.6 per cent and Virgin Australia Regional Airlines at 80.7 per cent. The Qantas network recorded 89.4 per cent for on time departures while the Virgin Australia network recorded 90.4 per cent.

Virgin Australia had the highest percentage of cancellations (2.4 per cent) during the month, followed by QantasLink (1.7 per cent), Jetstar (1.4 per cent), Qantas (1.1 per cent), Virgin Australia Regional Airlines (0.7 per cent), Regional Express (0.5 per cent) and Tigerair Australia (0.1 per cent).

Airlines' on time performance varies across the routes they serve. Individual route data by specific airline for 66 routes are shown on pages 10-22.

Of the 66 routes which met the criteria for on time performance reporting in August 2016, the Brisbane-Hobart route had the highest percentage of on time arrivals (98.3 per cent) and the Darwin-Alice Springs route had the highest percentage of on time departures (97.3 per cent). The Cairns-Melbourne route had the lowest percentage of on time arrivals (72.4 per cent) and the Hamilton Island-Sydney route had the lowest percentage of on time departures (67.0 per cent).

Cancellations were highest on the Sydney-Melbourne, Canberra-Sydney and Melbourne-Sydney routes at 4.4 per cent, followed by the Sydney-Canberra route at 4.1 per cent, the

Brisbane-Moranbah route at 3.8 per cent, the Karratha-Perth and Gladstone-Brisbane routes at 3.7 per cent and the Brisbane-Gladstone route at 3.4 per cent.

Newman Airport recorded the highest percentage of on time arrivals (92.9 per cent) and Moranbah Airport recorded the highest percentage of on time departures (93.7 per cent). Armidale Airport recorded the lowest percentage of on time arrivals (77.3 per cent) and Sunshine Coast Airport recorded the lowest percentage of on time departures (76.2 per cent). These figures only refer to reported routes and do not cover all flights at these airports.

Table 1 On time performance for August 2016 — Total Industry

	<i>Sectors</i>		<i>Arrivals On Time</i>		<i>Departures On Time</i>		<i>Cancellations</i>	
	<i>Scheduled</i>	<i>Flown</i>	<i>No.</i>	<i>%</i>	<i>No.</i>	<i>%</i>	<i>No.</i>	<i>%</i>
Jetstar	6 786	6 691	5 596	83.6	5 379	80.4	95	1.4
Qantas	9 640	9 537	8 508	89.2	8 609	90.3	103	1.1
QantasLink	10 830	10 647	9 346	87.8	9 433	88.6	183	1.7
Regional Express	6 917	6 880	5 960	86.6	6 154	89.4	37	0.5
Tigerair Australia	2 150	2 147	1 869	87.1	1 912	89.1	3	0.1
Virgin Australia	12 870	12 555	11 224	89.4	11 417	90.9	315	2.4
Virgin Australia Regional Airlines	680	675	512	75.9	545	80.7	5	0.7
All Airlines	49 873	49 132	43 015	87.5	43 449	88.4	741	1.5
Qantas - all QF designated services	20 470	20 184	17 854	88.5	18 042	89.4	286	1.4
Virgin Australia - all VA designated services	13 550	13 230	11 736	88.7	11 962	90.4	320	2.4

Total airline network data (including routes not shown in this report).

Airlines' on time performance varies across the routes they serve. Individual route data by specific airline for 66 routes are shown on pages 10-22.

Table 2 Top ten routes for on time performance for August 2016 (participating airlines only)

<i>Arrivals</i>		<i>Departures</i>	
<i>Route</i>	<i>On Time (%)</i>	<i>Route</i>	<i>On Time (%)</i>
Brisbane-Hobart	98.3	Darwin-Alice Springs	97.3
Adelaide-Canberra	97.4	Adelaide-Port Lincoln	96.6
Sydney-Launceston	96.8	Brisbane-Hobart	96.6
Alice Springs-Darwin	96.0	Cairns-Townsville	95.9
Townsville-Cairns	95.9	Adelaide-Alice Springs	95.6
Cairns-Townsville	95.9	Adelaide-Perth	95.5
Sydney-Townsville	95.2	Sydney-Launceston	95.2
Perth-Brisbane	95.1	Sydney-Ayers Rock	95.2
Adelaide-Brisbane	95.1	Perth-Newman	95.1
Perth-Adelaide	94.7	Melbourne-Mildura	94.9

Table 3 Top ten airports for on time performance for August 2016 (participating airlines and reported routes only)

<i>Arrivals</i>		<i>Departures</i>	
<i>Airport</i>	<i>On Time (%)</i>	<i>Airport</i>	<i>On Time (%)</i>
Newman	92.9	Moranbah	93.7
Townsville	92.8	Newcastle	93.3
Port Lincoln	92.5	Adelaide	92.6
Launceston	90.9	Port Lincoln	92.2
Gladstone	90.9	Mount Isa	92.1
Karratha	90.7	Mildura	91.6
Bundaberg	90.6	Karratha	91.5
Mildura	90.3	Newman	91.2
Emerald	89.9	Emerald	91.2
Hobart	89.9	Bundaberg	91.2

Total industry on time performance

Figure 1 On time performance (by month from August 2013)—Total Industry

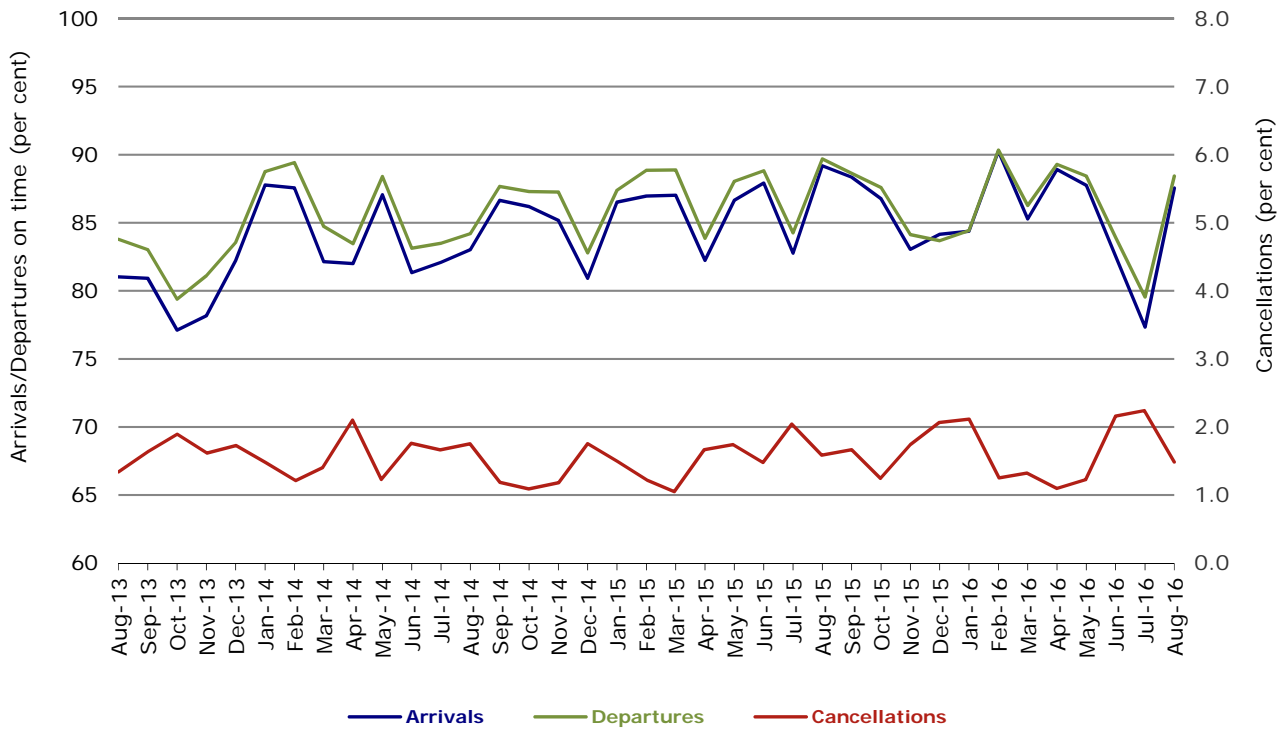


Figure 2 Arrivals on time (by month from August 2015)

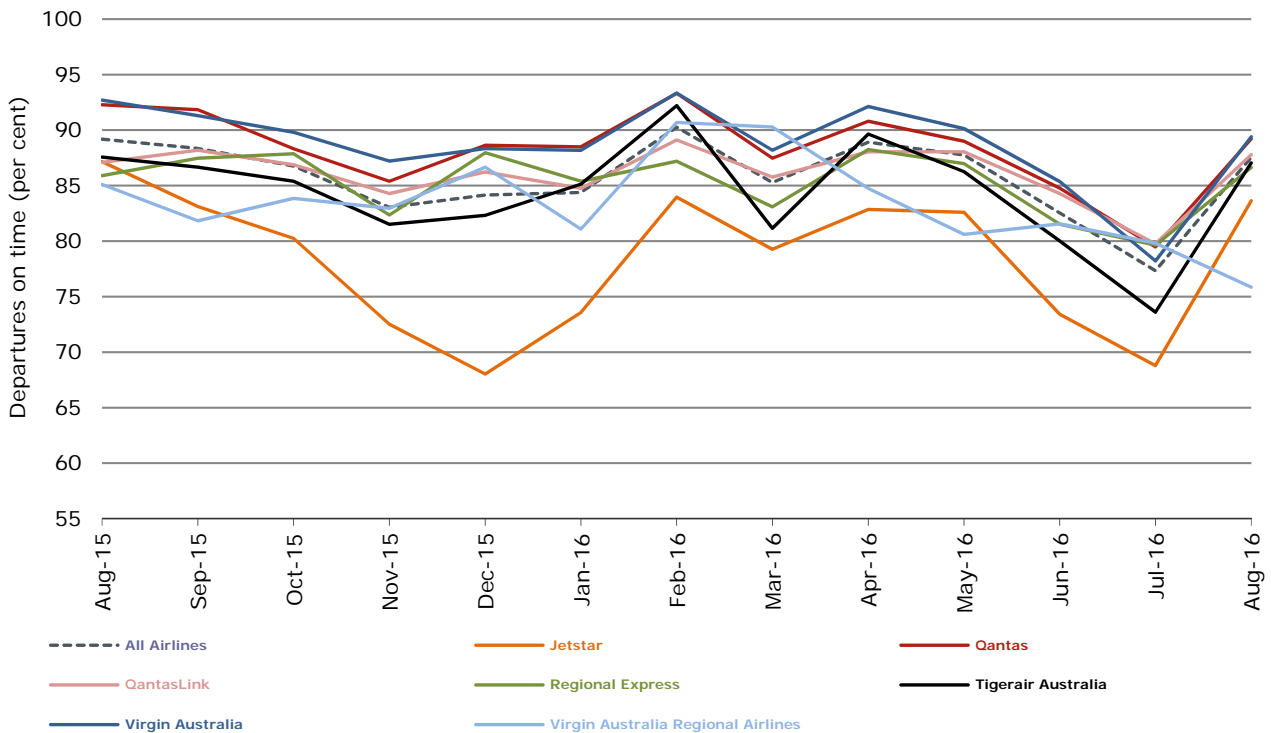


Figure 3 Departures on time (by month from August 2015)

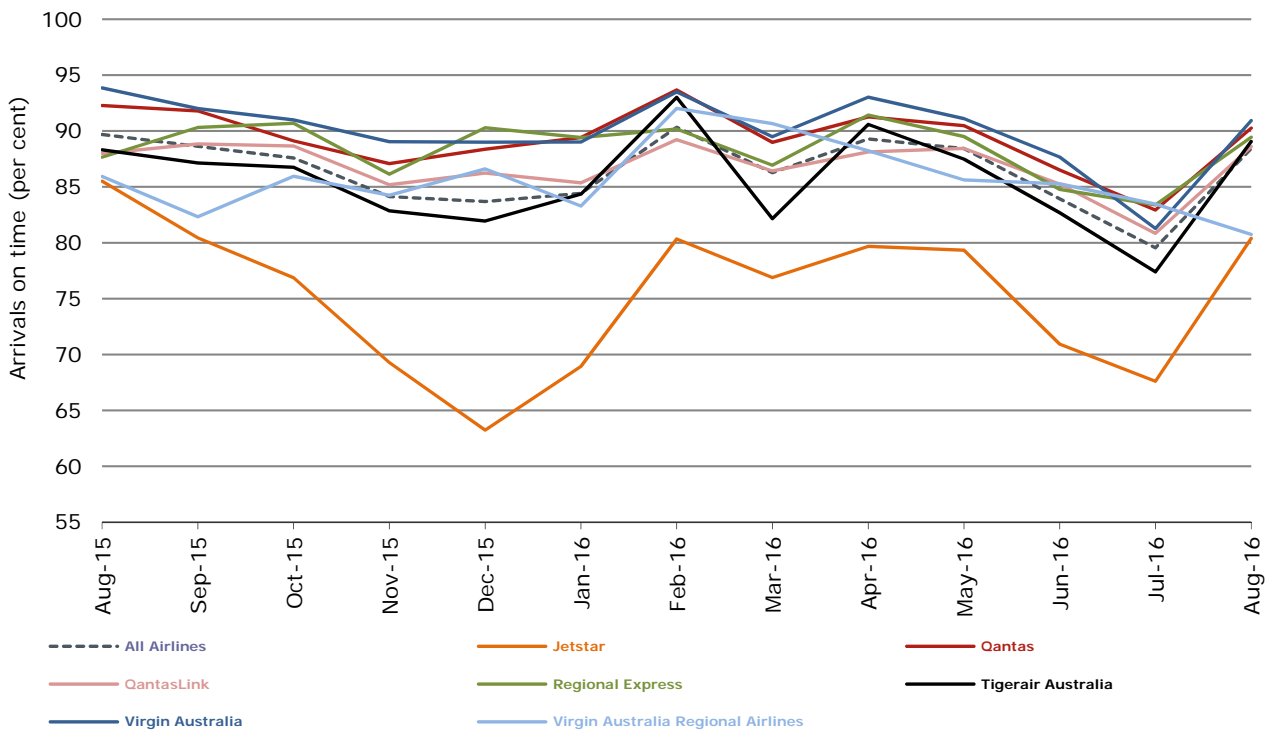
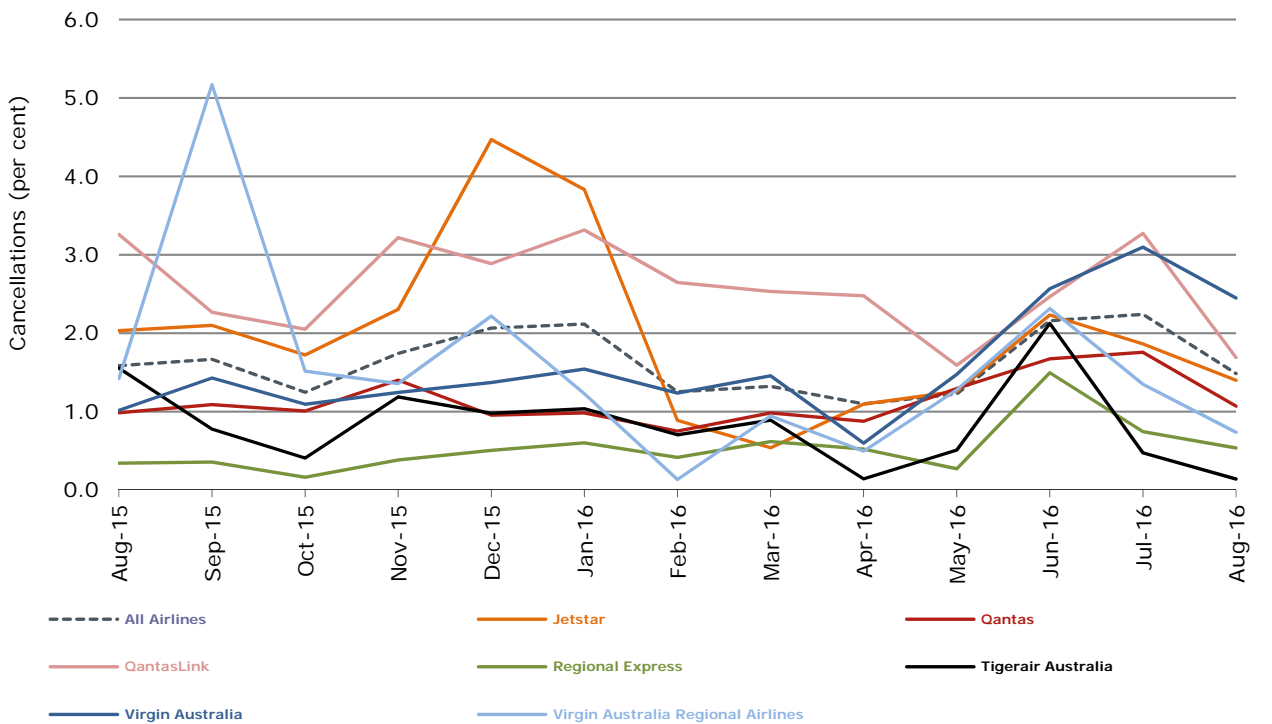


Figure 4 Cancellations (by month from August 2015)



Major domestic airlines on time performance

Figure 5 On time performance (by month from August 2013)—Jetstar

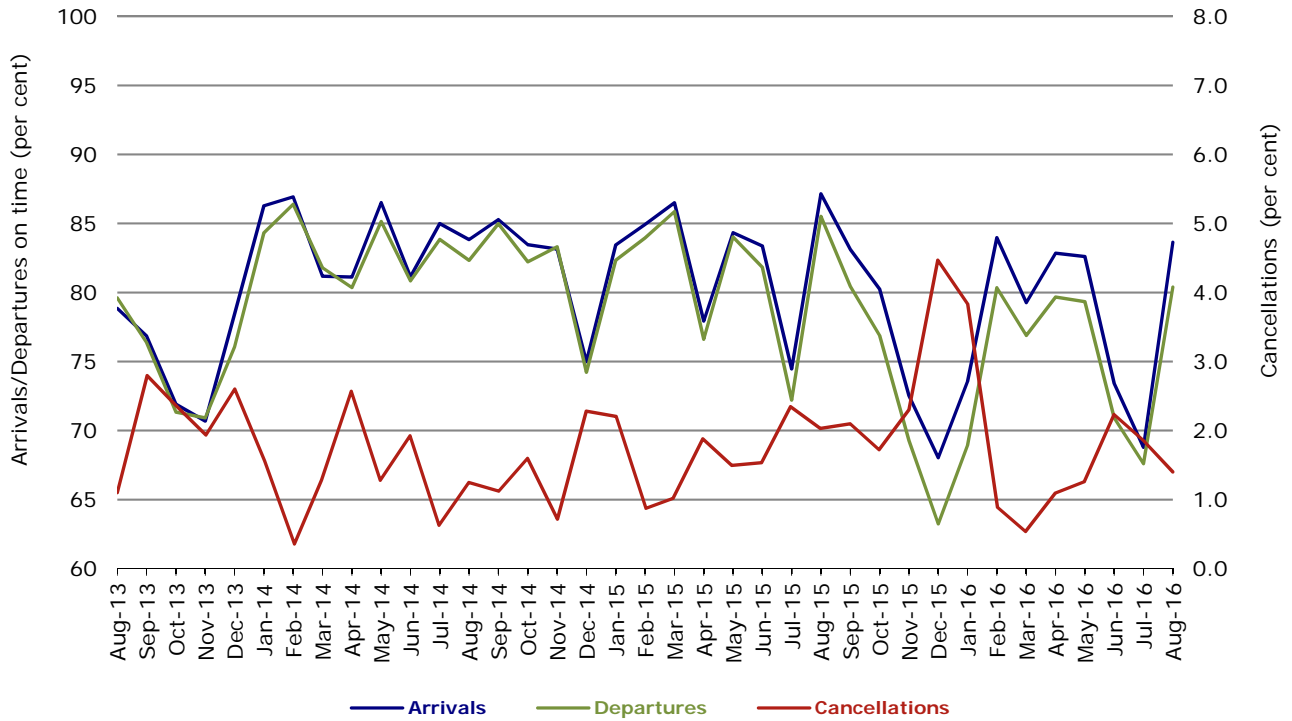


Figure 6 On time performance (by month from August 2013)—Qantas

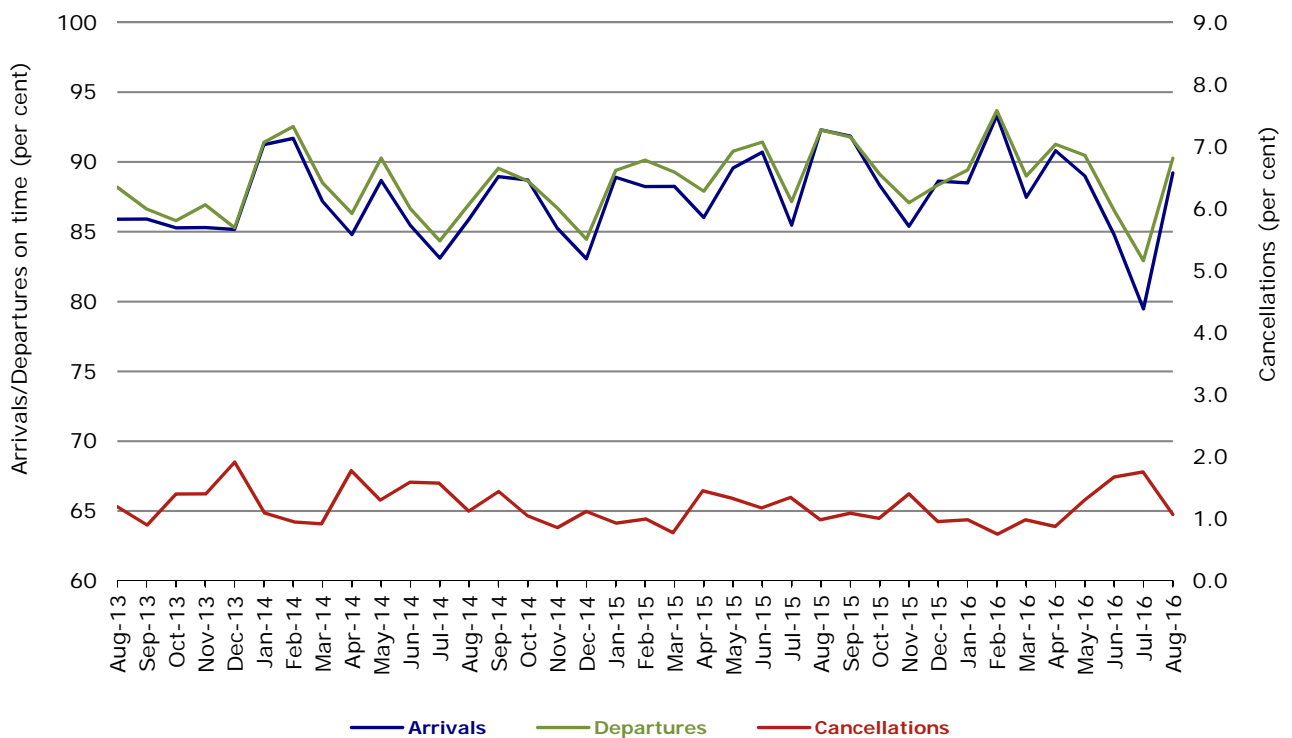


Figure 7 On time performance (by month from August 2013)—Tigerair Australia

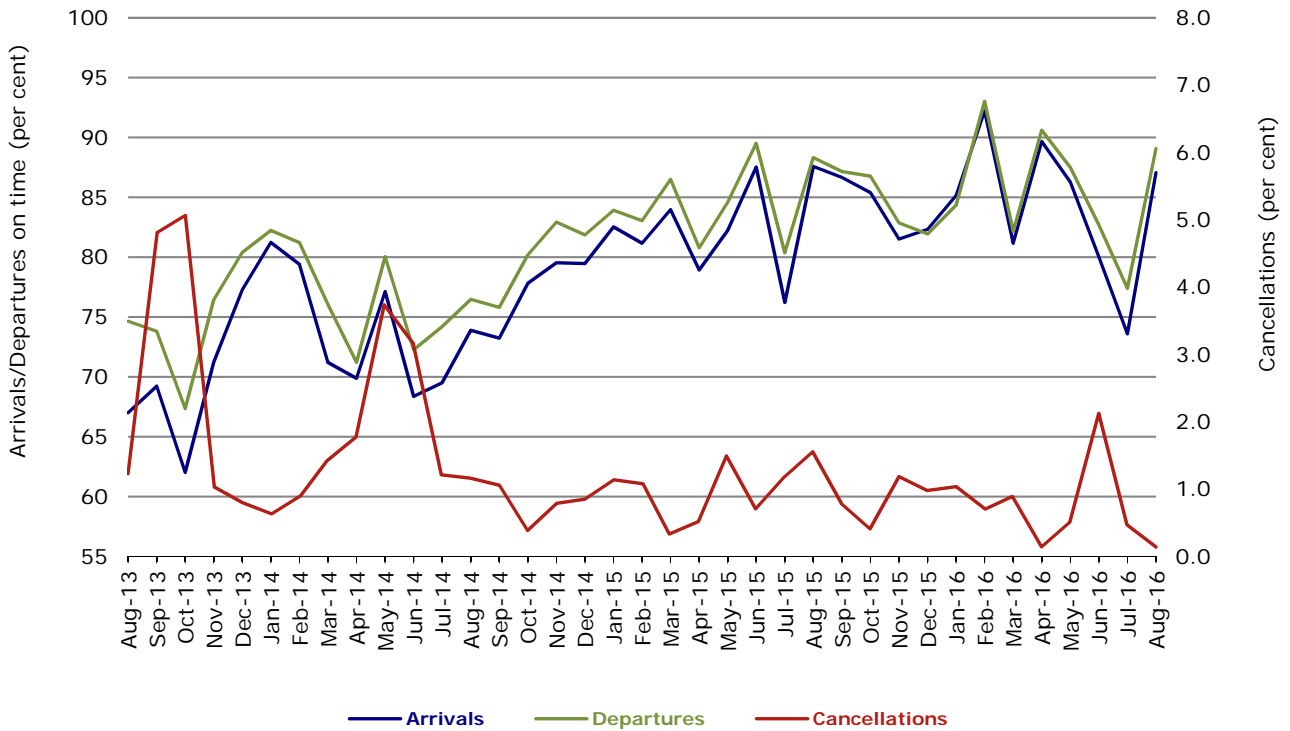
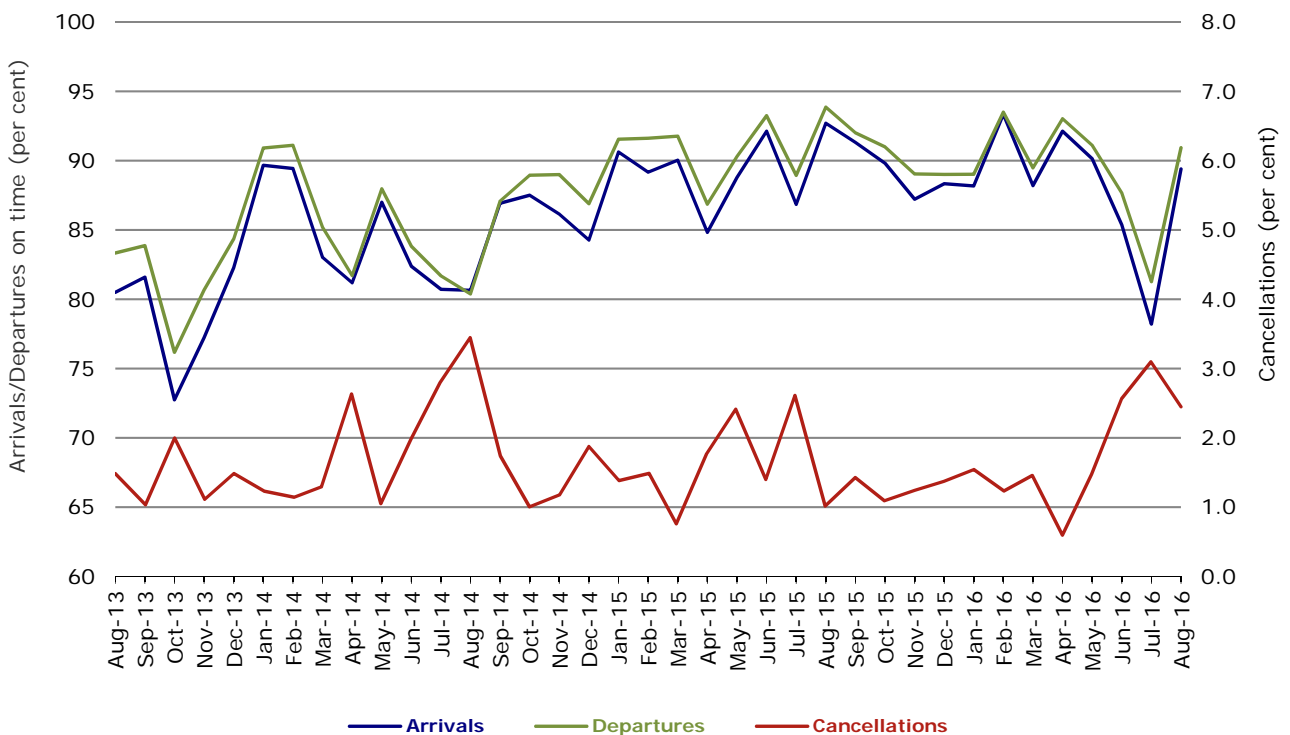


Figure 8 On time performance (by month from August 2013)—Virgin Australia



In January 2016, Virgin Australia transferred their ATR fleet from Virgin Australia Regional Airlines to Virgin Australia.

Major regional airlines on time performance

Figure 9 On time performance (by month from August 2013)—QantasLink

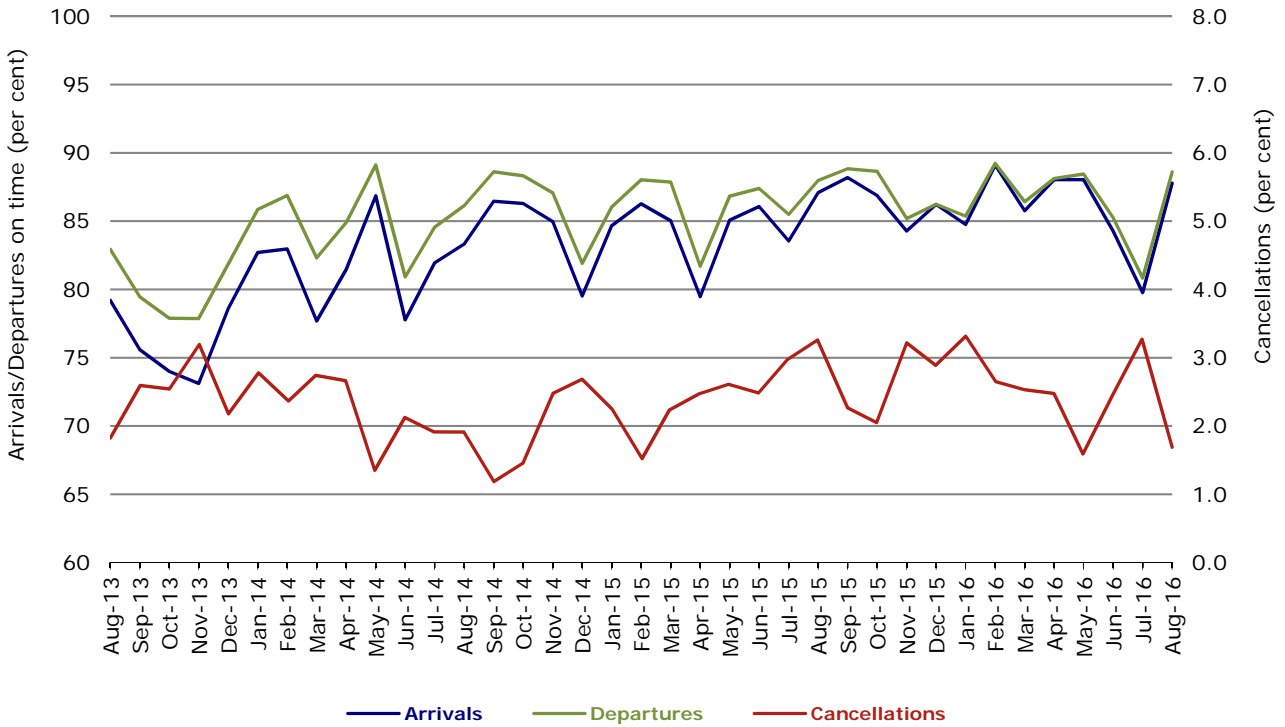


Figure 10 On time performance (by month from August 2013)—Regional Express

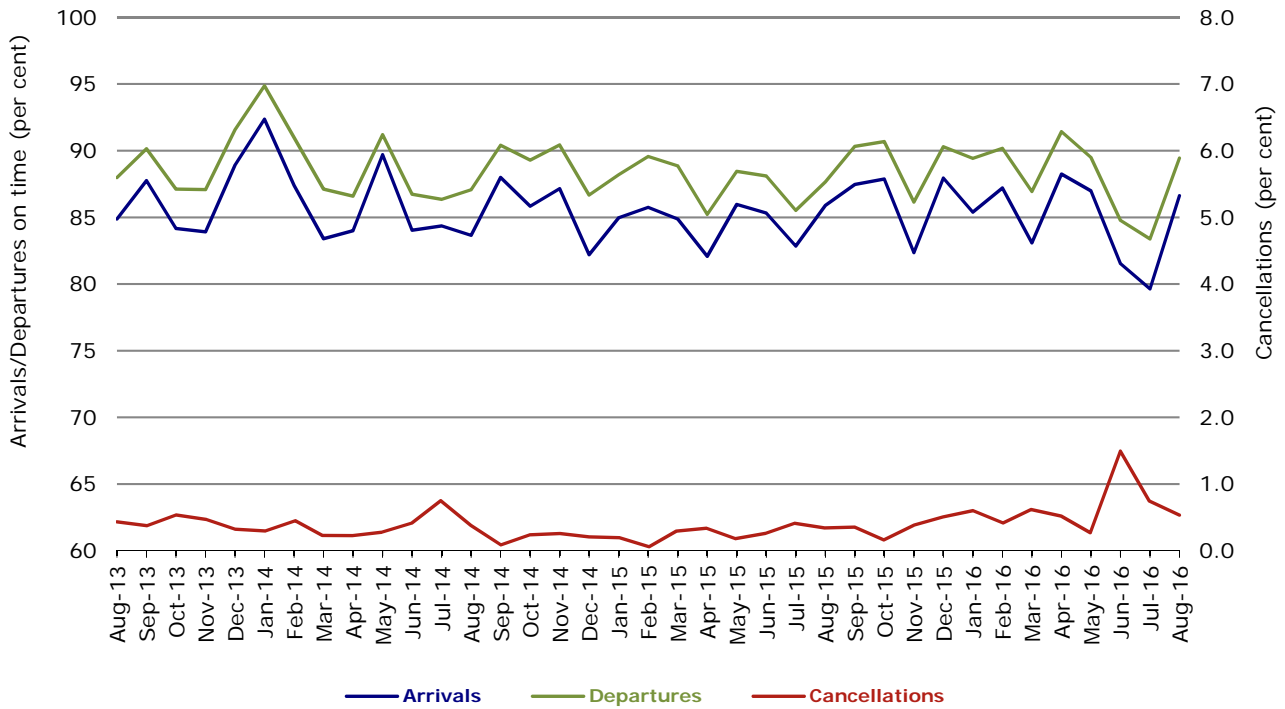
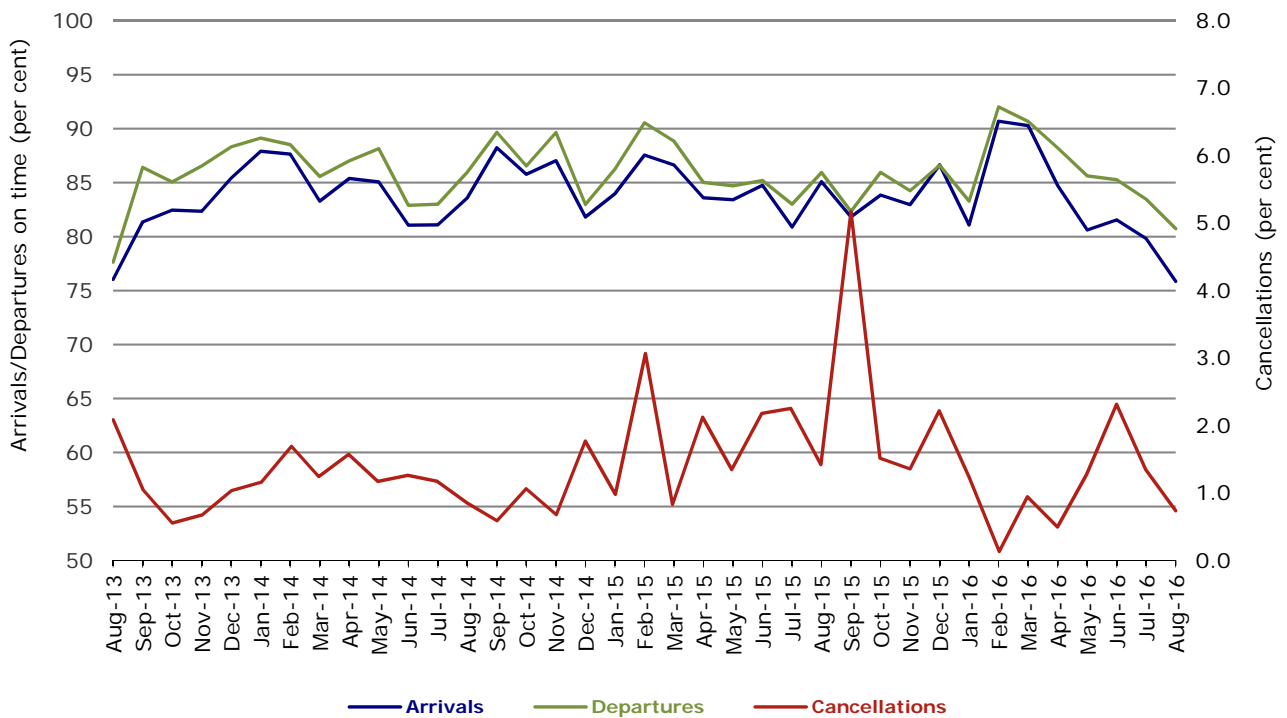


Figure 11 On time performance (by month from August 2013)
Virgin Australia Regional Airlines



Virgin Australia Regional Airlines commenced operations in May 2013. It was formed after the acquisition of Skywest by Virgin Australia and represented a combination of operations previously reported under Skywest and Virgin Australia – ATR/F100 Operations. In January 2016, Virgin Australia transferred their ATR fleet from Virgin Australia Regional Airlines to Virgin Australia.

Individual routes

On time performance is reported for all routes where the passenger load averages over 8000 passengers per month over the previous six months, and where two or more airlines operate in competition on those routes. There are now 66 routes which meet this definition. Over time, however, routes which meet this definition may change as airline networks and traffic levels vary.

	<i>Sectors</i>		<i>Arrivals On Time</i>		<i>Departures On Time</i>		<i>Cancellations</i>	
	<i>Sched.</i>	<i>Flown</i>	<i>No.</i>	<i>%</i>	<i>No.</i>	<i>%</i>	<i>No.</i>	<i>%</i>
Adelaide-Alice Springs								
Qantas	31	31	28	90.3	29	93.5	0	0.0
Virgin Australia	14	14	14	100.0	14	100.0	0	0.0
All Airlines	45	45	42	93.3	43	95.6	0	0.0
Adelaide-Brisbane								
Jetstar	24	24	21	87.5	24	100.0	0	0.0
Qantas	124	124	120	96.8	121	97.6	0	0.0
Tigerair Australia	22	22	21	95.5	22	100.0	0	0.0
Virgin Australia	118	116	110	94.8	102	87.9	2	1.7
All Airlines	288	286	272	95.1	269	94.1	2	0.7
Adelaide-Canberra								
Qantas	50	50	49	98.0	47	94.0	0	0.0
Virgin Australia	27	27	26	96.3	24	88.9	0	0.0
All Airlines	77	77	75	97.4	71	92.2	0	0.0
Adelaide-Gold Coast								
Jetstar	35	35	30	85.7	28	80.0	0	0.0
Virgin Australia	31	31	30	96.8	30	96.8	0	0.0
All Airlines	66	66	60	90.9	58	87.9	0	0.0
Adelaide-Melbourne								
Jetstar	105	103	84	81.6	73	70.9	2	1.9
Qantas	293	293	274	93.5	277	94.5	0	0.0
Tigerair Australia	74	74	67	90.5	64	86.5	0	0.0
Virgin Australia	286	279	254	91.0	260	93.2	7	2.4
All Airlines	758	749	679	90.7	674	90.0	9	1.2
Adelaide-Perth								
Jetstar	27	26	20	76.9	25	96.2	1	3.7
Qantas	124	124	112	90.3	121	97.6	0	0.0
Virgin Australia	75	74	61	82.4	68	91.9	1	1.3
All Airlines	226	224	193	86.2	214	95.5	2	0.9
Adelaide-Port Lincoln								
QantasLink	110	109	106	97.2	107	98.2	1	0.9
Regional Express	215	212	191	90.1	203	95.8	3	1.4
All Airlines	325	321	297	92.5	310	96.6	4	1.2
Adelaide-Sydney								
Jetstar	77	75	67	89.3	63	84.0	2	2.6
Qantas	237	237	221	93.2	226	95.4	0	0.0
QantasLink	30	29	25	86.2	24	82.8	1	3.3
Tigerair Australia	48	48	44	91.7	44	91.7	0	0.0
Virgin Australia	174	173	158	91.3	161	93.1	1	0.6
All Airlines	566	562	515	91.6	518	92.2	4	0.7
Albury-Sydney								
QantasLink	111	111	85	76.6	90	81.1	0	0.0
Regional Express	112	112	100	89.3	104	92.9	0	0.0
Virgin Australia	62	62	54	87.1	57	91.9	0	0.0
All Airlines	285	285	239	83.9	251	88.1	0	0.0

	<i>Sectors</i>		<i>Arrivals On Time</i>		<i>Departures On Time</i>		<i>Cancellations</i>	
	<i>Sched.</i>	<i>Flown</i>	<i>No.</i>	<i>%</i>	<i>No.</i>	<i>%</i>	<i>No.</i>	<i>%</i>
Alice Springs-Adelaide								
Qantas	31	31	28	90.3	25	80.6	0	0.0
Virgin Australia	14	14	12	85.7	10	71.4	0	0.0
All Airlines	45	45	40	88.9	35	77.8	0	0.0
Alice Springs-Darwin								
QantasLink	62	61	58	95.1	56	91.8	1	1.6
Virgin Australia	14	14	14	100.0	14	100.0	0	0.0
All Airlines	76	75	72	96.0	70	93.3	1	1.3
Armidale-Sydney								
QantasLink	118	114	89	78.1	89	78.1	4	3.4
Regional Express	80	80	65	81.3	72	90.0	0	0.0
All Airlines	198	194	154	79.4	161	83.0	4	2.0
Ayers Rock-Sydney								
Jetstar	31	30	27	90.0	25	83.3	1	3.2
Virgin Australia	31	31	28	90.3	22	71.0	0	0.0
All Airlines	62	61	55	90.2	47	77.0	1	1.6
Ballina-Sydney								
Jetstar	73	73	58	79.5	57	78.1	0	0.0
Regional Express	27	27	22	81.5	25	92.6	0	0.0
Virgin Australia	31	31	30	96.8	30	96.8	0	0.0
All Airlines	131	131	110	84.0	112	85.5	0	0.0
Brisbane-Adelaide								
Jetstar	24	24	24	100.0	23	95.8	0	0.0
Qantas	124	124	120	96.8	119	96.0	0	0.0
Tigerair Australia	22	22	20	90.9	21	95.5	0	0.0
Virgin Australia	118	116	104	89.7	102	87.9	2	1.7
All Airlines	288	286	268	93.7	265	92.7	2	0.7
Brisbane-Bundaberg								
QantasLink	139	139	129	92.8	132	95.0	0	0.0
Virgin Australia	31	31	25	80.6	24	77.4	0	0.0
All Airlines	170	170	154	90.6	156	91.8	0	0.0
Brisbane-Cairns								
Jetstar	104	104	84	80.8	75	72.1	0	0.0
Qantas	129	129	113	87.6	115	89.1	0	0.0
QantasLink	8	8	5	62.5	6	75.0	0	0.0
Tigerair Australia	31	31	26	83.9	26	83.9	0	0.0
Virgin Australia	137	137	124	90.5	125	91.2	0	0.0
All Airlines	409	409	352	86.1	347	84.8	0	0.0
Brisbane-Canberra								
Qantas	27	27	26	96.3	26	96.3	0	0.0
QantasLink	129	129	118	91.5	119	92.2	0	0.0
Virgin Australia	102	102	90	88.2	88	86.3	0	0.0
All Airlines	258	258	234	90.7	233	90.3	0	0.0
Brisbane-Darwin								
Jetstar	31	31	27	87.1	27	87.1	0	0.0
Qantas	50	50	47	94.0	48	96.0	0	0.0
Tigerair Australia	18	18	17	94.4	17	94.4	0	0.0
Virgin Australia	32	32	26	81.3	29	90.6	0	0.0
All Airlines	131	131	117	89.3	121	92.4	0	0.0
Brisbane-Emerald								
QantasLink	143	142	123	86.6	131	92.3	1	0.7
Virgin Australia	76	76	73	96.1	73	96.1	0	0.0
All Airlines	219	218	196	89.9	204	93.6	1	0.5

	<i>Sectors</i>		<i>Arrivals On Time</i>		<i>Departures On Time</i>		<i>Cancellations</i>	
	<i>Sched.</i>	<i>Flown</i>	<i>No.</i>	<i>%</i>	<i>No.</i>	<i>%</i>	<i>No.</i>	<i>%</i>
Brisbane-Gladstone								
QantasLink	200	198	177	89.4	189	95.5	2	1.0
Virgin Australia	128	119	111	93.3	109	91.6	9	7.0
All Airlines	328	317	288	90.9	298	94.0	11	3.4
Brisbane-Hamilton Island								
QantasLink	29	29	23	79.3	26	89.7	0	0.0
Virgin Australia	31	31	29	93.5	29	93.5	0	0.0
All Airlines	60	60	52	86.7	55	91.7	0	0.0
Brisbane-Hobart								
Jetstar	26	26	26	100.0	26	100.0	0	0.0
Virgin Australia	32	32	31	96.9	30	93.8	0	0.0
All Airlines	58	58	57	98.3	56	96.6	0	0.0
Brisbane-Mackay								
Jetstar	49	49	41	83.7	41	83.7	0	0.0
QantasLink	112	111	99	89.2	101	91.0	1	0.9
Virgin Australia	151	149	135	90.6	139	93.3	2	1.3
All Airlines	312	309	275	89.0	281	90.9	3	1.0
Brisbane-Melbourne								
Jetstar	111	103	92	89.3	83	80.6	8	7.2
Qantas	435	432	389	90.0	393	91.0	3	0.7
Tigerair Australia	115	115	102	88.7	107	93.0	0	0.0
Virgin Australia	403	386	338	87.6	353	91.5	17	4.2
All Airlines	1 064	1 036	921	88.9	936	90.3	28	2.6
Brisbane-Moranbah								
QantasLink	117	111	100	90.1	104	93.7	6	5.1
Virgin Australia	67	66	58	87.9	61	92.4	1	1.5
All Airlines	184	177	158	89.3	165	93.2	7	3.8
Brisbane-Mount Isa								
Qantas	27	27	24	88.9	27	100.0	0	0.0
QantasLink	31	31	27	87.1	27	87.1	0	0.0
Virgin Australia	19	19	18	94.7	19	100.0	0	0.0
All Airlines	77	77	69	89.6	73	94.8	0	0.0
Brisbane-Newcastle								
Jetstar	90	90	82	91.1	81	90.0	0	0.0
QantasLink	99	96	83	86.5	83	86.5	3	3.0
Virgin Australia	91	91	85	93.4	85	93.4	0	0.0
All Airlines	280	277	250	90.3	249	89.9	3	1.1
Brisbane-Perth								
Qantas	136	135	112	83.0	121	89.6	1	0.7
Virgin Australia	111	110	73	66.4	98	89.1	1	0.9
All Airlines	247	245	185	75.5	219	89.4	2	0.8
Brisbane-Proserpine								
Jetstar	31	31	22	71.0	20	64.5	0	0.0
Virgin Australia	32	32	30	93.8	31	96.9	0	0.0
All Airlines	63	63	52	82.5	51	81.0	0	0.0
Brisbane-Rockhampton								
QantasLink	196	196	169	86.2	175	89.3	0	0.0
Virgin Australia	185	176	161	91.5	160	90.9	9	4.9
All Airlines	381	372	330	88.7	335	90.1	9	2.4

	<i>Sectors</i>		<i>Arrivals On Time</i>		<i>Departures On Time</i>		<i>Cancellations</i>	
	<i>Sched.</i>	<i>Flown</i>	<i>No.</i>	<i>%</i>	<i>No.</i>	<i>%</i>	<i>No.</i>	<i>%</i>
Brisbane-Sydney								
Jetstar	170	168	138	82.1	135	80.4	2	1.2
Qantas	628	624	566	90.7	571	91.5	4	0.6
Tigerair Australia	95	94	82	87.2	85	90.4	1	1.1
Virgin Australia	573	555	506	91.2	521	93.9	18	3.1
All Airlines	1 466	1 441	1 292	89.7	1 312	91.0	25	1.7
Brisbane-Townsville								
Jetstar	48	47	41	87.2	42	89.4	1	2.1
Qantas	93	93	84	90.3	83	89.2	0	0.0
QantasLink	55	54	49	90.7	52	96.3	1	1.8
Virgin Australia	147	145	132	91.0	135	93.1	2	1.4
All Airlines	343	339	306	90.3	312	92.0	4	1.2
Broome-Perth								
Qantas	27	27	22	81.5	23	85.2	0	0.0
QantasLink	57	56	50	89.3	50	89.3	1	1.8
Virgin Australia	8	8	8	100.0	7	87.5	0	0.0
Virgin Australia Regional Airlines	63	62	33	53.2	43	69.4	1	1.6
All Airlines	155	153	113	73.9	123	80.4	2	1.3
Bundaberg-Brisbane								
QantasLink	139	139	132	95.0	133	95.7	0	0.0
Virgin Australia	31	31	23	74.2	22	71.0	0	0.0
All Airlines	170	170	155	91.2	155	91.2	0	0.0
Cairns-Brisbane								
Jetstar	104	104	90	86.5	85	81.7	0	0.0
Qantas	129	129	114	88.4	119	92.2	0	0.0
QantasLink	8	8	5	62.5	5	62.5	0	0.0
Tigerair Australia	31	31	28	90.3	28	90.3	0	0.0
Virgin Australia	137	137	127	92.7	125	91.2	0	0.0
All Airlines	409	409	364	89.0	362	88.5	0	0.0
Cairns-Melbourne								
Jetstar	113	113	75	66.4	79	69.9	0	0.0
Qantas	49	49	32	65.3	36	73.5	0	0.0
Tigerair Australia	31	31	28	90.3	30	96.8	0	0.0
Virgin Australia	35	35	30	85.7	32	91.4	0	0.0
All Airlines	228	228	165	72.4	177	77.6	0	0.0
Cairns-Sydney								
Jetstar	104	104	95	91.3	94	90.4	0	0.0
Qantas	83	83	64	77.1	67	80.7	0	0.0
Tigerair Australia	48	48	44	91.7	45	93.8	0	0.0
Virgin Australia	93	92	87	94.6	87	94.6	1	1.1
All Airlines	328	327	290	88.7	293	89.6	1	0.3
Cairns-Townsville								
QantasLink	146	145	138	95.2	138	95.2	1	0.7
Regional Express	77	75	73	97.3	73	97.3	2	2.6
All Airlines	223	220	211	95.9	211	95.9	3	1.3
Canberra-Adelaide								
Qantas	50	50	48	96.0	48	96.0	0	0.0
Virgin Australia	27	27	23	85.2	22	81.5	0	0.0
All Airlines	77	77	71	92.2	70	90.9	0	0.0
Canberra-Brisbane								
Qantas	27	27	26	96.3	26	96.3	0	0.0
QantasLink	129	128	112	87.5	113	88.3	1	0.8
Virgin Australia	102	102	83	81.4	92	90.2	0	0.0
All Airlines	258	257	221	86.0	231	89.9	1	0.4

	<i>Sectors</i>		<i>Arrivals On Time</i>		<i>Departures On Time</i>		<i>Cancellations</i>	
	<i>Sched.</i>	<i>Flown</i>	<i>No.</i>	<i>%</i>	<i>No.</i>	<i>%</i>	<i>No.</i>	<i>%</i>
Canberra-Melbourne								
Qantas	211	209	203	97.1	202	96.7	2	0.9
QantasLink	81	78	67	85.9	69	88.5	3	3.7
Virgin Australia	195	187	163	87.2	172	92.0	8	4.1
All Airlines	487	474	433	91.4	443	93.5	13	2.7
Canberra-Sydney								
QantasLink	504	481	428	89.0	430	89.4	23	4.6
Virgin Australia	309	296	263	88.9	262	88.5	13	4.2
All Airlines	813	777	691	88.9	692	89.1	36	4.4
Coffs Harbour-Sydney								
QantasLink	155	154	126	81.8	123	79.9	1	0.6
Tigerair Australia	13	13	13	100.0	13	100.0	0	0.0
Virgin Australia	62	62	56	90.3	54	87.1	0	0.0
All Airlines	230	229	195	85.2	190	83.0	1	0.4
Darwin-Alice Springs								
QantasLink	62	61	54	88.5	60	98.4	1	1.6
Virgin Australia	14	14	11	78.6	13	92.9	0	0.0
All Airlines	76	75	65	86.7	73	97.3	1	1.3
Darwin-Brisbane								
Jetstar	31	31	31	100.0	27	87.1	0	0.0
Qantas	50	50	44	88.0	43	86.0	0	0.0
Tigerair Australia	18	18	18	100.0	18	100.0	0	0.0
Virgin Australia	32	32	20	62.5	24	75.0	0	0.0
All Airlines	131	131	113	86.3	112	85.5	0	0.0
Darwin-Melbourne								
Jetstar	31	31	26	83.9	22	71.0	0	0.0
Qantas	40	40	31	77.5	32	80.0	0	0.0
Virgin Australia	31	31	22	71.0	25	80.6	0	0.0
All Airlines	102	102	79	77.5	79	77.5	0	0.0
Darwin-Perth								
Qantas	40	40	37	92.5	38	95.0	0	0.0
Virgin Australia	31	31	21	67.7	25	80.6	0	0.0
All Airlines	71	71	58	81.7	63	88.7	0	0.0
Darwin-Sydney								
Jetstar	31	29	28	96.6	23	79.3	2	6.5
Qantas	53	53	42	79.2	38	71.7	0	0.0
Virgin Australia	31	31	16	51.6	21	67.7	0	0.0
All Airlines	115	113	86	76.1	82	72.6	2	1.7
Dubbo-Sydney								
QantasLink	131	130	103	79.2	110	84.6	1	0.8
Regional Express	160	158	133	84.2	141	89.2	2	1.3
All Airlines	291	288	236	81.9	251	87.2	3	1.0
Emerald-Brisbane								
QantasLink	142	140	129	92.1	122	87.1	2	1.4
Virgin Australia	76	76	75	98.7	75	98.7	0	0.0
All Airlines	218	216	204	94.4	197	91.2	2	0.9
Geraldton-Perth								
QantasLink	45	44	37	84.1	37	84.1	1	2.2
Virgin Australia Regional Airlines	59	58	46	79.3	46	79.3	1	1.7
All Airlines	104	102	83	81.4	83	81.4	2	1.9

	<i>Sectors</i>		<i>Arrivals On Time</i>		<i>Departures On Time</i>		<i>Cancellations</i>	
	<i>Sched.</i>	<i>Flown</i>	<i>No.</i>	<i>%</i>	<i>No.</i>	<i>%</i>	<i>No.</i>	<i>%</i>
Gladstone-Brisbane								
QantasLink	200	198	185	93.4	176	88.9	2	1.0
Virgin Australia	128	118	106	89.8	110	93.2	10	7.8
All Airlines	328	316	291	92.1	286	90.5	12	3.7
Gold Coast-Adelaide								
Jetstar	34	34	28	82.4	27	79.4	0	0.0
Virgin Australia	31	31	26	83.9	28	90.3	0	0.0
All Airlines	65	65	54	83.1	55	84.6	0	0.0
Gold Coast-Melbourne								
Jetstar	198	196	176	89.8	157	80.1	2	1.0
Qantas	31	31	27	87.1	27	87.1	0	0.0
Tigerair Australia	79	79	70	88.6	67	84.8	0	0.0
Virgin Australia	184	183	158	86.3	152	83.1	1	0.5
All Airlines	492	489	431	88.1	403	82.4	3	0.6
Gold Coast-Sydney								
Jetstar	249	248	229	92.3	224	90.3	1	0.4
Qantas	92	92	87	94.6	84	91.3	0	0.0
QantasLink	23	23	21	91.3	20	87.0	0	0.0
Tigerair Australia	107	107	97	90.7	100	93.5	0	0.0
Virgin Australia	261	258	230	89.1	229	88.8	3	1.1
All Airlines	732	728	664	91.2	657	90.2	4	0.5
Hamilton Island-Brisbane								
QantasLink	29	29	23	79.3	23	79.3	0	0.0
Virgin Australia	31	31	29	93.5	28	90.3	0	0.0
All Airlines	60	60	52	86.7	51	85.0	0	0.0
Hamilton Island-Melbourne								
Qantas	12	12	11	91.7	10	83.3	0	0.0
Virgin Australia	22	22	19	86.4	19	86.4	0	0.0
All Airlines	34	34	30	88.2	29	85.3	0	0.0
Hamilton Island-Sydney								
Jetstar	31	31	22	71.0	18	58.1	0	0.0
Qantas	10	10	8	80.0	7	70.0	0	0.0
QantasLink	19	19	13	68.4	13	68.4	0	0.0
Virgin Australia	31	31	24	77.4	23	74.2	0	0.0
All Airlines	91	91	67	73.6	61	67.0	0	0.0
Hobart-Brisbane								
Jetstar	25	25	24	96.0	23	92.0	0	0.0
Virgin Australia	32	32	28	87.5	27	84.4	0	0.0
All Airlines	57	57	52	91.2	50	87.7	0	0.0
Hobart-Melbourne								
Jetstar	160	158	113	71.5	113	71.5	2	1.3
QantasLink	138	137	121	88.3	126	92.0	1	0.7
Tigerair Australia	31	31	28	90.3	29	93.5	0	0.0
Virgin Australia	145	141	124	87.9	127	90.1	4	2.8
All Airlines	474	467	386	82.7	395	84.6	7	1.5
Hobart-Sydney								
Jetstar	56	56	46	82.1	39	69.6	0	0.0
QantasLink	58	58	58	100.0	58	100.0	0	0.0
Virgin Australia	62	61	53	86.9	53	86.9	1	1.6
All Airlines	176	175	157	89.7	150	85.7	1	0.6

	<i>Sectors</i>		<i>Arrivals On Time</i>		<i>Departures On Time</i>		<i>Cancellations</i>	
	<i>Sched.</i>	<i>Flown</i>	<i>No.</i>	<i>%</i>	<i>No.</i>	<i>%</i>	<i>No.</i>	<i>%</i>
Kalgoorlie-Perth								
Qantas	8	8	7	87.5	6	75.0	0	0.0
QantasLink	79	78	65	83.3	66	84.6	1	1.3
Virgin Australia	38	37	34	91.9	34	91.9	1	2.6
Virgin Australia Regional Airlines	26	26	20	76.9	21	80.8	0	0.0
All Airlines	151	149	126	84.6	127	85.2	2	1.3
Karratha-Perth								
Qantas	40	39	37	94.9	37	94.9	1	2.5
QantasLink	171	163	153	93.9	155	95.1	8	4.7
Virgin Australia	9	8	6	75.0	6	75.0	1	11.1
Virgin Australia Regional Airlines	74	73	51	69.9	61	83.6	1	1.4
All Airlines	294	283	247	87.3	259	91.5	11	3.7
Launceston-Melbourne								
Jetstar	92	92	71	77.2	67	72.8	0	0.0
QantasLink	120	115	107	93.0	106	92.2	5	4.2
Virgin Australia	93	92	86	93.5	89	96.7	1	1.1
All Airlines	305	299	264	88.3	262	87.6	6	2.0
Launceston-Sydney								
Jetstar	31	31	27	87.1	26	83.9	0	0.0
Virgin Australia	31	31	28	90.3	27	87.1	0	0.0
All Airlines	62	62	55	88.7	53	85.5	0	0.0
Mackay-Brisbane								
Jetstar	49	49	41	83.7	40	81.6	0	0.0
QantasLink	112	112	95	84.8	92	82.1	0	0.0
Virgin Australia	151	149	137	91.9	136	91.3	2	1.3
All Airlines	312	310	273	88.1	268	86.5	2	0.6
Melbourne-Adelaide								
Jetstar	105	103	67	65.0	75	72.8	2	1.9
Qantas	293	293	262	89.4	267	91.1	0	0.0
Tigerair Australia	74	74	64	86.5	66	89.2	0	0.0
Virgin Australia	287	280	252	90.0	259	92.5	7	2.4
All Airlines	759	750	645	86.0	667	88.9	9	1.2
Melbourne-Brisbane								
Jetstar	111	104	79	76.0	75	72.1	7	6.3
Qantas	435	431	399	92.6	394	91.4	4	0.9
Tigerair Australia	115	115	99	86.1	103	89.6	0	0.0
Virgin Australia	403	387	352	91.0	353	91.2	16	4.0
All Airlines	1 064	1 037	929	89.6	925	89.2	27	2.5
Melbourne-Cairns								
Jetstar	112	112	73	65.2	68	60.7	0	0.0
Qantas	49	49	41	83.7	38	77.6	0	0.0
Tigerair Australia	31	31	28	90.3	29	93.5	0	0.0
Virgin Australia	35	35	32	91.4	34	97.1	0	0.0
All Airlines	227	227	174	76.7	169	74.4	0	0.0
Melbourne-Canberra								
Qantas	211	209	199	95.2	198	94.7	2	0.9
QantasLink	81	78	63	80.8	66	84.6	3	3.7
Virgin Australia	195	187	170	90.9	171	91.4	8	4.1
All Airlines	487	474	432	91.1	435	91.8	13	2.7
Melbourne-Darwin								
Jetstar	31	31	26	83.9	26	83.9	0	0.0
Qantas	40	40	35	87.5	38	95.0	0	0.0
Virgin Australia	31	31	22	71.0	28	90.3	0	0.0
All Airlines	102	102	83	81.4	92	90.2	0	0.0

	<i>Sectors</i>		<i>Arrivals On Time</i>		<i>Departures On Time</i>		<i>Cancellations</i>	
	<i>Sched.</i>	<i>Flown</i>	<i>No.</i>	<i>%</i>	<i>No.</i>	<i>%</i>	<i>No.</i>	<i>%</i>
Melbourne-Gold Coast								
Jetstar	198	196	165	84.2	166	84.7	2	1.0
Qantas	31	31	28	90.3	28	90.3	0	0.0
Tigerair Australia	79	79	71	89.9	71	89.9	0	0.0
Virgin Australia	184	183	170	92.9	164	89.6	1	0.5
All Airlines	492	489	434	88.8	429	87.7	3	0.6
Melbourne-Hamilton Island								
Qantas	12	12	12	100.0	11	91.7	0	0.0
Virgin Australia	22	22	20	90.9	19	86.4	0	0.0
All Airlines	34	34	32	94.1	30	88.2	0	0.0
Melbourne-Hobart								
Jetstar	160	159	130	81.8	128	80.5	1	0.6
QantasLink	138	137	129	94.2	129	94.2	1	0.7
Tigerair Australia	31	31	27	87.1	28	90.3	0	0.0
Virgin Australia	145	141	132	93.6	131	92.9	4	2.8
All Airlines	474	468	418	89.3	416	88.9	6	1.3
Melbourne-Launceston								
Jetstar	92	92	75	81.5	73	79.3	0	0.0
QantasLink	120	117	108	92.3	111	94.9	3	2.5
Virgin Australia	93	92	87	94.6	85	92.4	1	1.1
All Airlines	305	301	270	89.7	269	89.4	4	1.3
Melbourne-Mildura								
QantasLink	97	96	92	95.8	93	96.9	1	1.0
Regional Express	89	89	76	85.4	83	93.3	0	0.0
Virgin Australia	31	31	27	87.1	29	93.5	0	0.0
All Airlines	217	216	195	90.3	205	94.9	1	0.5
Melbourne-Newcastle								
Jetstar	108	107	93	86.9	87	81.3	1	0.9
Virgin Australia	31	31	29	93.5	30	96.8	0	0.0
All Airlines	139	138	122	88.4	117	84.8	1	0.7
Melbourne-Perth								
Jetstar	43	43	33	76.7	33	76.7	0	0.0
Qantas	201	201	159	79.1	167	83.1	0	0.0
Tigerair Australia	55	55	45	81.8	48	87.3	0	0.0
Virgin Australia	143	143	114	79.7	124	86.7	0	0.0
All Airlines	442	442	351	79.4	372	84.2	0	0.0
Melbourne-Sunshine Coast								
Jetstar	80	80	73	91.3	68	85.0	0	0.0
Virgin Australia	40	40	34	85.0	31	77.5	0	0.0
All Airlines	120	120	107	89.2	99	82.5	0	0.0
Melbourne-Sydney								
Jetstar	351	331	264	79.8	253	76.4	20	5.7
Qantas	1 030	992	870	87.7	884	89.1	38	3.7
Tigerair Australia	246	246	200	81.3	212	86.2	0	0.0
Virgin Australia	831	782	708	90.5	733	93.7	49	5.9
All Airlines	2 458	2 351	2 042	86.9	2 082	88.6	107	4.4
Mildura-Melbourne								
QantasLink	97	96	94	97.9	93	96.9	1	1.0
Regional Express	89	89	73	82.0	80	89.9	0	0.0
Virgin Australia	31	30	24	80.0	24	80.0	1	3.2
All Airlines	217	215	191	88.8	197	91.6	2	0.9

	<i>Sectors</i>		<i>Arrivals On Time</i>		<i>Departures On Time</i>		<i>Cancellations</i>	
	<i>Sched.</i>	<i>Flown</i>	<i>No.</i>	<i>%</i>	<i>No.</i>	<i>%</i>	<i>No.</i>	<i>%</i>
Moranbah-Brisbane								
QantasLink	112	108	101	93.5	99	91.7	4	3.6
Virgin Australia	67	66	62	93.9	64	97.0	1	1.5
All Airlines	179	174	163	93.7	163	93.7	5	2.8
Mount Isa-Brisbane								
Qantas	27	27	27	100.0	25	92.6	0	0.0
QantasLink	31	31	27	87.1	28	90.3	0	0.0
Virgin Australia	18	18	17	94.4	17	94.4	0	0.0
All Airlines	76	76	71	93.4	70	92.1	0	0.0
Newcastle-Brisbane								
Jetstar	90	90	81	90.0	83	92.2	0	0.0
QantasLink	99	96	92	95.8	90	93.8	3	3.0
Virgin Australia	92	92	89	96.7	89	96.7	0	0.0
All Airlines	281	278	262	94.2	262	94.2	3	1.1
Newcastle-Melbourne								
Jetstar	108	107	91	85.0	98	91.6	1	0.9
Virgin Australia	31	31	26	83.9	28	90.3	0	0.0
All Airlines	139	138	117	84.8	126	91.3	1	0.7
Newman-Perth								
Qantas	81	80	74	92.5	76	95.0	1	1.2
QantasLink	65	61	57	93.4	55	90.2	4	6.2
Virgin Australia	16	16	14	87.5	16	100.0	0	0.0
Virgin Australia Regional Airlines	25	25	20	80.0	19	76.0	0	0.0
All Airlines	187	182	165	90.7	166	91.2	5	2.7
Perth-Adelaide								
Jetstar	27	26	23	88.5	16	61.5	1	3.7
Qantas	128	128	121	94.5	116	90.6	0	0.0
Virgin Australia	74	73	71	97.3	68	93.2	1	1.4
All Airlines	229	227	215	94.7	200	88.1	2	0.9
Perth-Brisbane								
Qantas	135	135	127	94.1	125	92.6	0	0.0
Virgin Australia	112	111	107	96.4	102	91.9	1	0.9
All Airlines	247	246	234	95.1	227	92.3	1	0.4
Perth-Broome								
Qantas	27	27	25	92.6	24	88.9	0	0.0
QantasLink	57	57	53	93.0	53	93.0	0	0.0
Virgin Australia	8	8	8	100.0	8	100.0	0	0.0
Virgin Australia Regional Airlines	63	63	47	74.6	50	79.4	0	0.0
All Airlines	155	155	133	85.8	135	87.1	0	0.0
Perth-Darwin								
Qantas	40	40	39	97.5	38	95.0	0	0.0
Virgin Australia	31	31	27	87.1	27	87.1	0	0.0
All Airlines	71	71	66	93.0	65	91.5	0	0.0
Perth-Geraldton								
QantasLink	45	45	39	86.7	37	82.2	0	0.0
Virgin Australia Regional Airlines	59	58	48	82.8	49	84.5	1	1.7
All Airlines	104	103	87	84.5	86	83.5	1	1.0
Perth-Kalgoorlie								
Qantas	8	8	7	87.5	7	87.5	0	0.0
QantasLink	79	78	69	88.5	68	87.2	1	1.3
Virgin Australia	38	37	36	97.3	35	94.6	1	2.6
Virgin Australia Regional Airlines	26	26	20	76.9	20	76.9	0	0.0
All Airlines	151	149	132	88.6	130	87.2	2	1.3

	<i>Sectors</i>		<i>Arrivals On Time</i>		<i>Departures On Time</i>		<i>Cancellations</i>	
	<i>Sched.</i>	<i>Flown</i>	<i>No.</i>	<i>%</i>	<i>No.</i>	<i>%</i>	<i>No.</i>	<i>%</i>
Perth-Karratha								
Qantas	40	40	37	92.5	39	97.5	0	0.0
QantasLink	175	168	157	93.5	156	92.9	7	4.0
Virgin Australia	9	8	8	100.0	8	100.0	1	11.1
Virgin Australia Regional Airlines	74	73	60	82.2	67	91.8	1	1.4
All Airlines	298	289	262	90.7	270	93.4	9	3.0
Perth-Melbourne								
Jetstar	44	44	34	77.3	22	50.0	0	0.0
Qantas	201	200	189	94.5	184	92.0	1	0.5
Tigerair Australia	56	56	51	91.1	49	87.5	0	0.0
Virgin Australia	143	143	135	94.4	131	91.6	0	0.0
All Airlines	444	443	409	92.3	386	87.1	1	0.2
Perth-Newman								
Qantas	81	80	76	95.0	76	95.0	1	1.2
QantasLink	65	62	56	90.3	58	93.5	3	4.6
Virgin Australia	16	16	16	100.0	16	100.0	0	0.0
Virgin Australia Regional Airlines	25	25	22	88.0	24	96.0	0	0.0
All Airlines	187	183	170	92.9	174	95.1	4	2.1
Perth-Port Hedland								
Qantas	62	62	58	93.5	59	95.2	0	0.0
QantasLink	75	71	53	74.6	58	81.7	4	5.3
Virgin Australia	32	32	29	90.6	29	90.6	0	0.0
Virgin Australia Regional Airlines	22	22	20	90.9	21	95.5	0	0.0
All Airlines	191	187	160	85.6	167	89.3	4	2.1
Perth-Sydney								
Jetstar	31	30	27	90.0	14	46.7	1	3.2
Qantas	208	207	187	90.3	170	82.1	1	0.5
Tigerair Australia	27	26	23	88.5	24	92.3	1	3.7
Virgin Australia	121	121	115	95.0	107	88.4	0	0.0
All Airlines	387	384	352	91.7	315	82.0	3	0.8
Port Hedland-Perth								
Qantas	62	62	62	100.0	60	96.8	0	0.0
QantasLink	76	72	59	81.9	60	83.3	4	5.3
Virgin Australia	32	32	28	87.5	29	90.6	0	0.0
Virgin Australia Regional Airlines	22	22	14	63.6	17	77.3	0	0.0
All Airlines	192	188	163	86.7	166	88.3	4	2.1
Port Lincoln-Adelaide								
QantasLink	110	109	102	93.6	101	92.7	1	0.9
Regional Express	215	212	193	91.0	195	92.0	3	1.4
All Airlines	325	321	295	91.9	296	92.2	4	1.2
Port Macquarie-Sydney								
QantasLink	139	137	104	75.9	111	81.0	2	1.4
Virgin Australia	62	60	53	88.3	54	90.0	2	3.2
All Airlines	201	197	157	79.7	165	83.8	4	2.0
Proserpine-Brisbane								
Jetstar	31	31	24	77.4	22	71.0	0	0.0
Virgin Australia	32	32	31	96.9	30	93.8	0	0.0
All Airlines	63	63	55	87.3	52	82.5	0	0.0
Rockhampton-Brisbane								
QantasLink	196	195	166	85.1	168	86.2	1	0.5
Virgin Australia	185	176	161	91.5	163	92.6	9	4.9
All Airlines	381	371	327	88.1	331	89.2	10	2.6

	<i>Sectors</i>		<i>Arrivals On Time</i>		<i>Departures On Time</i>		<i>Cancellations</i>	
	<i>Sched.</i>	<i>Flown</i>	<i>No.</i>	<i>%</i>	<i>No.</i>	<i>%</i>	<i>No.</i>	<i>%</i>
Sunshine Coast-Melbourne								
Jetstar	80	80	61	76.3	58	72.5	0	0.0
Virgin Australia	40	40	32	80.0	30	75.0	0	0.0
All Airlines	120	120	93	77.5	88	73.3	0	0.0
Sunshine Coast-Sydney								
Jetstar	90	90	71	78.9	60	66.7	0	0.0
QantasLink	27	27	23	85.2	27	100.0	0	0.0
Virgin Australia	32	32	30	93.8	30	93.8	0	0.0
All Airlines	149	149	124	83.2	117	78.5	0	0.0
Sydney-Adelaide								
Jetstar	77	75	62	82.7	57	76.0	2	2.6
Qantas	234	234	213	91.0	216	92.3	0	0.0
QantasLink	31	29	24	82.8	23	79.3	2	6.5
Tigerair Australia	48	48	43	89.6	44	91.7	0	0.0
Virgin Australia	174	173	153	88.4	158	91.3	1	0.6
All Airlines	564	559	495	88.6	498	89.1	5	0.9
Sydney-Albury								
QantasLink	111	111	86	77.5	88	79.3	0	0.0
Regional Express	112	112	95	84.8	95	84.8	0	0.0
Virgin Australia	62	62	57	91.9	54	87.1	0	0.0
All Airlines	285	285	238	83.5	237	83.2	0	0.0
Sydney-Armidale								
QantasLink	117	117	83	70.9	91	77.8	0	0.0
Regional Express	81	81	70	86.4	70	86.4	0	0.0
All Airlines	198	198	153	77.3	161	81.3	0	0.0
Sydney-Ayers Rock								
Jetstar	31	31	28	90.3	30	96.8	0	0.0
Virgin Australia	31	31	22	71.0	29	93.5	0	0.0
All Airlines	62	62	50	80.6	59	95.2	0	0.0
Sydney-Ballina								
Jetstar	73	73	63	86.3	64	87.7	0	0.0
Regional Express	26	26	23	88.5	23	88.5	0	0.0
Virgin Australia	31	31	30	96.8	30	96.8	0	0.0
All Airlines	130	130	116	89.2	117	90.0	0	0.0
Sydney-Brisbane								
Jetstar	168	166	144	86.7	136	81.9	2	1.2
Qantas	630	628	533	84.9	560	89.2	2	0.3
Tigerair Australia	95	94	82	87.2	85	90.4	1	1.1
Virgin Australia	573	552	491	88.9	503	91.1	21	3.7
All Airlines	1 466	1 440	1 250	86.8	1 284	89.2	26	1.8
Sydney-Cairns								
Jetstar	104	104	89	85.6	84	80.8	0	0.0
Qantas	83	83	72	86.7	68	81.9	0	0.0
Tigerair Australia	48	48	44	91.7	41	85.4	0	0.0
Virgin Australia	93	93	86	92.5	84	90.3	0	0.0
All Airlines	328	328	291	88.7	277	84.5	0	0.0
Sydney-Canberra								
QantasLink	502	482	416	86.3	395	82.0	20	4.0
Virgin Australia	308	295	264	89.5	256	86.8	13	4.2
All Airlines	810	777	680	87.5	651	83.8	33	4.1

	<i>Sectors</i>		<i>Arrivals On Time</i>		<i>Departures On Time</i>		<i>Cancellations</i>	
	<i>Sched.</i>	<i>Flown</i>	<i>No.</i>	<i>%</i>	<i>No.</i>	<i>%</i>	<i>No.</i>	<i>%</i>
Sydney-Coffs Harbour								
QantasLink	155	153	121	79.1	124	81.0	2	1.3
Tigerair Australia	13	13	13	100.0	13	100.0	0	0.0
Virgin Australia	62	62	58	93.5	59	95.2	0	0.0
All Airlines	230	228	192	84.2	196	86.0	2	0.9
Sydney-Darwin								
Jetstar	31	30	24	80.0	26	86.7	1	3.2
Qantas	53	53	44	83.0	44	83.0	0	0.0
Virgin Australia	31	31	26	83.9	30	96.8	0	0.0
All Airlines	115	114	94	82.5	100	87.7	1	0.9
Sydney-Dubbo								
QantasLink	131	130	96	73.8	97	74.6	1	0.8
Regional Express	158	157	140	89.2	136	86.6	1	0.6
All Airlines	289	287	236	82.2	233	81.2	2	0.7
Sydney-Gold Coast								
Jetstar	249	249	224	90.0	220	88.4	0	0.0
Qantas	92	92	88	95.7	88	95.7	0	0.0
QantasLink	23	23	21	91.3	22	95.7	0	0.0
Tigerair Australia	107	107	97	90.7	94	87.9	0	0.0
Virgin Australia	261	258	228	88.4	238	92.2	3	1.1
All Airlines	732	729	658	90.3	662	90.8	3	0.4
Sydney-Hamilton Island								
Jetstar	31	31	22	71.0	27	87.1	0	0.0
Qantas	10	10	8	80.0	6	60.0	0	0.0
QantasLink	19	19	15	78.9	16	84.2	0	0.0
Virgin Australia	31	31	24	77.4	27	87.1	0	0.0
All Airlines	91	91	69	75.8	76	83.5	0	0.0
Sydney-Hobart								
Jetstar	56	56	44	78.6	40	71.4	0	0.0
QantasLink	58	58	56	96.6	55	94.8	0	0.0
Virgin Australia	62	61	55	90.2	56	91.8	1	1.6
All Airlines	176	175	155	88.6	151	86.3	1	0.6
Sydney-Launceston								
Jetstar	31	31	29	93.5	29	93.5	0	0.0
Virgin Australia	31	31	31	100.0	30	96.8	0	0.0
All Airlines	62	62	60	96.8	59	95.2	0	0.0
Sydney-Melbourne								
Jetstar	351	331	263	79.5	261	78.9	20	5.7
Qantas	1 030	988	856	86.6	900	91.1	42	4.1
Tigerair Australia	247	247	202	81.8	210	85.0	0	0.0
Virgin Australia	831	784	691	88.1	719	91.7	47	5.7
All Airlines	2 459	2 350	2 012	85.6	2 090	88.9	109	4.4
Sydney-Perth								
Jetstar	31	30	24	80.0	29	96.7	1	3.2
Qantas	213	213	164	77.0	170	79.8	0	0.0
Tigerair Australia	27	27	24	88.9	27	100.0	0	0.0
Virgin Australia	121	121	92	76.0	112	92.6	0	0.0
All Airlines	392	391	304	77.7	338	86.4	1	0.3
Sydney-Port Macquarie								
QantasLink	139	137	113	82.5	113	82.5	2	1.4
Virgin Australia	62	60	48	80.0	46	76.7	2	3.2
All Airlines	201	197	161	81.7	159	80.7	4	2.0

	<i>Sectors</i>		<i>Arrivals On Time</i>		<i>Departures On Time</i>		<i>Cancellations</i>	
	<i>Sched.</i>	<i>Flown</i>	<i>No.</i>	<i>%</i>	<i>No.</i>	<i>%</i>	<i>No.</i>	<i>%</i>
Sydney-Sunshine Coast								
Jetstar	90	90	78	86.7	71	78.9	0	0.0
QantasLink	27	27	21	77.8	23	85.2	0	0.0
Virgin Australia	32	32	30	93.8	30	93.8	0	0.0
All Airlines	149	149	129	86.6	124	83.2	0	0.0
Sydney-Tamworth								
QantasLink	160	159	123	77.4	134	84.3	1	0.6
Virgin Australia	54	53	46	86.8	46	86.8	1	1.9
All Airlines	214	212	169	79.7	180	84.9	2	0.9
Sydney-Townsville								
Jetstar	31	31	29	93.5	27	87.1	0	0.0
Virgin Australia	31	31	30	96.8	31	100.0	0	0.0
All Airlines	62	62	59	95.2	58	93.5	0	0.0
Sydney-Wagga Wagga								
QantasLink	116	114	89	78.1	100	87.7	2	1.7
Regional Express	143	142	128	90.1	127	89.4	1	0.7
All Airlines	259	256	217	84.8	227	88.7	3	1.2
Tamworth-Sydney								
QantasLink	162	160	127	79.4	124	77.5	2	1.2
Virgin Australia	54	53	48	90.6	48	90.6	1	1.9
All Airlines	216	213	175	82.2	172	80.8	3	1.4
Townsville-Brisbane								
Jetstar	48	46	39	84.8	37	80.4	2	4.2
Qantas	93	93	82	88.2	83	89.2	0	0.0
QantasLink	55	54	50	92.6	48	88.9	1	1.8
Virgin Australia	147	145	136	93.8	131	90.3	2	1.4
All Airlines	343	338	307	90.8	299	88.5	5	1.5
Townsville-Cairns								
QantasLink	146	146	137	93.8	134	91.8	0	0.0
Regional Express	77	75	75	100.0	75	100.0	2	2.6
All Airlines	223	221	212	95.9	209	94.6	2	0.9
Townsville-Sydney								
Jetstar	31	31	30	96.8	28	90.3	0	0.0
Virgin Australia	31	31	28	90.3	29	93.5	0	0.0
All Airlines	62	62	58	93.5	57	91.9	0	0.0
Wagga Wagga-Sydney								
QantasLink	116	114	98	86.0	95	83.3	2	1.7
Regional Express	144	143	120	83.9	126	88.1	1	0.7
All Airlines	260	257	218	84.8	221	86.0	3	1.2

Airports

On time performance is reported for all routes where the passenger load averages over 8000 passengers per month, and where two or more airlines operate in competition. The following data reports by airport against flights operated on those routes only. This month, 8 major city airports and 33 regional city airports are covered.

Airport	Arrivals			Departures		
	Sectors	On Time		Sectors	On Time	
	Flown	No.	%	Flown	No.	%
Adelaide						
Jetstar	262	204	77.9	263	213	81.0
Qantas	860	792	92.1	859	821	95.6
QantasLink	138	126	91.3	138	131	94.9
Regional Express	212	193	91.0	212	203	95.8
Tigerair Australia	144	127	88.2	144	130	90.3
Virgin Australia	714	641	89.8	714	659	92.3
All Airlines	2 330	2 083	89.4	2 330	2 157	92.6
Relates to services to and from Alice Springs, Brisbane, Canberra, Gold Coast, Melbourne, Perth, Port Lincoln and Sydney.						
Albury						
QantasLink	111	86	77.5	111	90	81.1
Regional Express	112	95	84.8	112	104	92.9
Virgin Australia	62	57	91.9	62	57	91.9
All Airlines	285	238	83.5	285	251	88.1
Relates to services to and from Sydney only.						
Alice Springs						
Qantas	31	28	90.3	31	25	80.6
QantasLink	61	54	88.5	61	56	91.8
Virgin Australia	28	25	89.3	28	24	85.7
All Airlines	120	107	89.2	120	105	87.5
Relates to services to and from Adelaide and Darwin.						
Armidale						
QantasLink	117	83	70.9	114	89	78.1
Regional Express	81	70	86.4	80	72	90.0
All Airlines	198	153	77.3	194	161	83.0
Relates to services to and from Sydney only.						
Ayers Rock						
Jetstar	31	28	90.3	30	25	83.3
Virgin Australia	31	22	71.0	31	22	71.0
All Airlines	62	50	80.6	61	47	77.0
Relates to services to and from Sydney only.						
Ballina						
Jetstar	73	63	86.3	73	57	78.1
Regional Express	26	23	88.5	27	25	92.6
Virgin Australia	31	30	96.8	31	30	96.8
All Airlines	130	116	89.2	131	112	85.5
Relates to services to and from Sydney only.						

Airport	Arrivals			Departures		
	Sectors Flown	On Time		Sectors Flown	On Time	
		No.	%		No.	%
Brisbane						
Jetstar	670	574	85.7	673	553	82.2
Qantas	1 644	1 472	89.5	1 641	1 503	91.6
QantasLink	1 238	1 117	90.2	1 244	1 145	92.0
Tigerair Australia	280	248	88.6	280	256	91.4
Virgin Australia	2 403	2 184	90.9	2 405	2 211	91.9
All Airlines	6 235	5 595	89.7	6 243	5 668	90.8

Relates to services to and from Adelaide, Bundaberg, Cairns, Canberra, Darwin, Emerald, Gladstone, Hamilton Island, Hobart, Mackay, Melbourne, Moranbah, Mount Isa, Newcastle, Perth, Proserpine, Rockhampton, Sydney and Townsville.

Broome

Qantas	27	25	92.6	27	23	85.2
QantasLink	57	53	93.0	56	50	89.3
Virgin Australia	8	8	100.0	8	7	87.5
Virgin Australia Regional Airlines	63	47	74.6	62	43	69.4
All Airlines	155	133	85.8	153	123	80.4

Relates to services to and from Perth only.

Bundaberg

QantasLink	139	129	92.8	139	133	95.7
Virgin Australia	31	25	80.6	31	22	71.0
All Airlines	170	154	90.6	170	155	91.2

Relates to services to and from Brisbane only.

Cairns

Jetstar	320	246	76.9	321	258	80.4
Qantas	261	226	86.6	261	222	85.1
QantasLink	154	142	92.2	153	143	93.5
Regional Express	75	75	100.0	75	73	97.3
Tigerair Australia	110	98	89.1	110	103	93.6
Virgin Australia	265	242	91.3	264	244	92.4
All Airlines	1 185	1 029	86.8	1 184	1 043	88.1

Relates to services to and from Brisbane, Melbourne, Sydney and Townsville.

Canberra

Qantas	286	274	95.8	286	276	96.5
QantasLink	689	597	86.6	687	612	89.1
Virgin Australia	611	550	90.0	612	548	89.5
All Airlines	1 586	1 421	89.6	1 585	1 436	90.6

Relates to services to and from Adelaide, Brisbane, Melbourne and Sydney.

Coffs Harbour

QantasLink	153	121	79.1	154	123	79.9
Tigerair Australia	13	13	100.0	13	13	100.0
Virgin Australia	62	58	93.5	62	54	87.1
All Airlines	228	192	84.2	229	190	83.0

Relates to services to and from Sydney only.

Darwin

Jetstar	92	77	83.7	91	72	79.1
Qantas	183	165	90.2	183	151	82.5
QantasLink	61	58	95.1	61	60	98.4
Tigerair Australia	18	17	94.4	18	18	100.0
Virgin Australia	139	115	82.7	139	108	77.7
All Airlines	493	432	87.6	492	409	83.1

Relates to services to and from Alice Springs, Brisbane, Melbourne, Perth and Sydney.

Airport	Arrivals			Departures		
	Sectors Flown	On Time		Sectors Flown	On Time	
		No.	%		No.	%
Dubbo						
QantasLink	130	96	73.8	130	110	84.6
Regional Express	157	140	89.2	158	141	89.2
All Airlines	287	236	82.2	288	251	87.2
Relates to services to and from Sydney only.						
Emerald						
QantasLink	142	123	86.6	140	122	87.1
Virgin Australia	76	73	96.1	76	75	98.7
All Airlines	218	196	89.9	216	197	91.2
Relates to services to and from Brisbane only.						
Geraldton						
QantasLink	45	39	86.7	44	37	84.1
Virgin Australia Regional Airlines	58	48	82.8	58	46	79.3
All Airlines	103	87	84.5	102	83	81.4
Relates to services to and from Perth only.						
Gladstone						
QantasLink	198	177	89.4	198	176	88.9
Virgin Australia	119	111	93.3	118	110	93.2
All Airlines	317	288	90.9	316	286	90.5
Relates to services to and from Brisbane only.						
Gold Coast						
Jetstar	480	419	87.3	478	408	85.4
Qantas	123	116	94.3	123	111	90.2
QantasLink	23	21	91.3	23	20	87.0
Tigerair Australia	186	168	90.3	186	167	89.8
Virgin Australia	472	428	90.7	472	409	86.7
All Airlines	1 284	1 152	89.7	1 282	1 115	87.0
Relates to services to and from Adelaide, Melbourne and Sydney.						
Hamilton Island						
Jetstar	31	22	71.0	31	18	58.1
Qantas	22	20	90.9	22	17	77.3
QantasLink	48	38	79.2	48	36	75.0
Virgin Australia	84	73	86.9	84	70	83.3
All Airlines	185	153	82.7	185	141	76.2
Relates to services to and from Brisbane, Melbourne and Sydney.						
Hobart						
Jetstar	241	200	83.0	239	175	73.2
QantasLink	195	185	94.9	195	184	94.4
Tigerair Australia	31	27	87.1	31	29	93.5
Virgin Australia	234	218	93.2	234	207	88.5
All Airlines	701	630	89.9	699	595	85.1
Relates to services to and from Brisbane, Melbourne and Sydney.						
Kalgoorlie						
Qantas	8	7	87.5	8	6	75.0
QantasLink	78	69	88.5	78	66	84.6
Virgin Australia	37	36	97.3	37	34	91.9
Virgin Australia Regional Airlines	26	20	76.9	26	21	80.8
All Airlines	149	132	88.6	149	127	85.2
Relates to services to and from Perth only.						

Airport	Arrivals			Departures		
	Sectors Flown	On Time		Sectors Flown	On Time	
		No.	%		No.	%
Karratha						
Qantas	40	37	92.5	39	37	94.9
QantasLink	168	157	93.5	163	155	95.1
Virgin Australia	8	8	100.0	8	6	75.0
Virgin Australia Regional Airlines	73	60	82.2	73	61	83.6
All Airlines	289	262	90.7	283	259	91.5
Relates to services to and from Perth only.						
Launceston						
Jetstar	123	104	84.6	123	93	75.6
QantasLink	117	108	92.3	115	106	92.2
Virgin Australia	123	118	95.9	123	116	94.3
All Airlines	363	330	90.9	361	315	87.3
Relates to services to and from Melbourne and Sydney.						
Mackay						
Jetstar	49	41	83.7	49	40	81.6
QantasLink	111	99	89.2	112	92	82.1
Virgin Australia	149	135	90.6	149	136	91.3
All Airlines	309	275	89.0	310	268	86.5
Relates to services to and from Brisbane only.						
Melbourne						
Jetstar	1 358	1 086	80.0	1 358	1 052	77.5
Qantas	2 254	2 012	89.3	2 258	2 025	89.7
QantasLink	426	389	91.3	428	399	93.2
Regional Express	89	73	82.0	89	83	93.3
Tigerair Australia	633	548	86.6	631	557	88.3
Virgin Australia	2 384	2 102	88.2	2 385	2 191	91.9
All Airlines	7 144	6 210	86.9	7 149	6 307	88.2
Relates to services to and from Adelaide, Brisbane, Cairns, Canberra, Darwin, Gold Coast, Hamilton Island, Hobart, Launceston, Mildura, Newcastle, Perth, Sunshine Coast and Sydney.						
Mildura						
QantasLink	96	92	95.8	96	93	96.9
Regional Express	89	76	85.4	89	80	89.9
Virgin Australia	31	27	87.1	30	24	80.0
All Airlines	216	195	90.3	215	197	91.6
Relates to services to and from Melbourne only.						
Moranbah						
QantasLink	111	100	90.1	108	99	91.7
Virgin Australia	66	58	87.9	66	64	97.0
All Airlines	177	158	89.3	174	163	93.7
Relates to services to and from Brisbane only.						
Mount Isa						
Qantas	27	24	88.9	27	25	92.6
QantasLink	31	27	87.1	31	28	90.3
Virgin Australia	19	18	94.7	18	17	94.4
All Airlines	77	69	89.6	76	70	92.1
Relates to services to and from Brisbane only.						

Airport	Arrivals			Departures		
	Sectors	On Time		Sectors	On Time	
	Flown	No.	%	Flown	No.	%
Newcastle						
Jetstar	197	175	88.8	197	181	91.9
QantasLink	96	83	86.5	96	90	93.8
Virgin Australia	122	114	93.4	123	117	95.1
All Airlines	415	372	89.6	416	388	93.3
Relates to services to and from Brisbane and Melbourne.						
Newman						
Qantas	80	76	95.0	80	76	95.0
QantasLink	62	56	90.3	61	55	90.2
Virgin Australia	16	16	100.0	16	16	100.0
Virgin Australia Regional Airlines	25	22	88.0	25	19	76.0
All Airlines	183	170	92.9	182	166	91.2
Relates to services to and from Perth only.						
Perth						
Jetstar	99	77	77.8	100	52	52.0
Qantas	929	786	84.6	927	838	90.4
QantasLink	474	421	88.8	481	430	89.4
Tigerair Australia	82	69	84.1	82	73	89.0
Virgin Australia	580	451	77.8	580	531	91.6
Virgin Australia Regional Airlines	266	184	69.2	267	231	86.5
All Airlines	2 430	1 988	81.8	2 437	2 155	88.4
Relates to services to and from Adelaide, Brisbane, Broome, Darwin, Geraldton, Kalgoorlie, Karratha, Melbourne, Newman, Port Hedland and Sydney.						
Port Hedland						
Qantas	62	58	93.5	62	60	96.8
QantasLink	71	53	74.6	72	60	83.3
Virgin Australia	32	29	90.6	32	29	90.6
Virgin Australia Regional Airlines	22	20	90.9	22	17	77.3
All Airlines	187	160	85.6	188	166	88.3
Relates to services to and from Perth only.						
Port Lincoln						
QantasLink	109	106	97.2	109	101	92.7
Regional Express	212	191	90.1	212	195	92.0
All Airlines	321	297	92.5	321	296	92.2
Relates to services to and from Adelaide only.						
Port Macquarie						
QantasLink	137	113	82.5	137	111	81.0
Virgin Australia	60	48	80.0	60	54	90.0
All Airlines	197	161	81.7	197	165	83.8
Relates to services to and from Sydney only.						
Proserpine						
Jetstar	31	22	71.0	31	22	71.0
Virgin Australia	32	30	93.8	32	30	93.8
All Airlines	63	52	82.5	63	52	82.5
Relates to services to and from Brisbane only.						

Airport	Arrivals			Departures		
	Sectors Flown	On Time		Sectors Flown	On Time	
		No.	%		No.	%
Rockhampton						
QantasLink	196	169	86.2	195	168	86.2
Virgin Australia	176	161	91.5	176	163	92.6
All Airlines	372	330	88.7	371	331	89.2
Relates to services to and from Brisbane only.						
Sunshine Coast						
Jetstar	170	151	88.8	170	118	69.4
QantasLink	27	21	77.8	27	27	100.0
Virgin Australia	72	64	88.9	72	60	83.3
All Airlines	269	236	87.7	269	205	76.2
Relates to services to and from Melbourne and Sydney.						
Sydney						
Jetstar	1 327	1 129	85.1	1 328	1 101	82.9
Qantas	2 298	2 045	89.0	2 301	2 052	89.2
QantasLink	1 557	1 300	83.5	1 559	1 281	82.2
Regional Express	520	440	84.6	518	451	87.1
Tigerair Australia	582	503	86.4	584	514	88.0
Virgin Australia	2 793	2 515	90.0	2 792	2 538	90.9
All Airlines	9 077	7 932	87.4	9 082	7 937	87.4
Relates to services to and from Adelaide, Albury, Armidale, Ayers Rock, Ballina, Brisbane, Cairns, Canberra, Coffs Harbour, Darwin, Dubbo, Gold Coast, Hamilton Island, Hobart, Launceston, Melbourne, Perth, Port Macquarie, Sunshine Coast, Tamworth, Townsville and Wagga Wagga.						
Tamworth						
QantasLink	159	123	77.4	160	124	77.5
Virgin Australia	53	46	86.8	53	48	90.6
All Airlines	212	169	79.7	213	172	80.8
Relates to services to and from Sydney only.						
Townsville						
Jetstar	78	70	89.7	77	65	84.4
Qantas	93	84	90.3	93	83	89.2
QantasLink	199	187	94.0	200	182	91.0
Regional Express	75	73	97.3	75	75	100.0
Virgin Australia	176	162	92.0	176	160	90.9
All Airlines	621	576	92.8	621	565	91.0
Relates to services to and from Brisbane, Cairns and Sydney.						
Wagga Wagga						
QantasLink	114	89	78.1	114	95	83.3
Regional Express	142	128	90.1	143	126	88.1
All Airlines	256	217	84.8	257	221	86.0
Relates to services to and from Sydney only.						

Definitions

On time arrival	A flight arrival is counted as "on time" if it arrived at the gate before 15 minutes after the scheduled arrival time shown in the carriers' schedule. Neither diverted nor cancelled flights count as on time.
On time departure	A flight departure is counted as "on time" if it departs the gate before 15 minutes after the scheduled departure time shown in the carriers' schedule.
Cancellation	A flight removed from service within 7 days of scheduled departure is regarded as a cancellation.
On time departure percentage	The percentage of on time departures is measured against the number of departures <i>operated</i> on any particular sector.
On time arrival percentage	The percentage of on time arrivals is measured against the number of arrivals <i>operated</i> on any particular sector.
Cancellation percentage	The percentage of cancellations is measured against the number of services <i>scheduled</i> on any particular sector.
