



Australian Government

Department of Infrastructure and Regional Development

Bureau of Infrastructure, Transport and Regional Economics

STATISTICAL REPORT



Aviation

Domestic airline on time performance
August 2015

© Commonwealth of Australia 2015

ISSN: 1832-0759

Ownership of intellectual property rights in this publication

Unless otherwise noted, copyright (and any other intellectual property rights, if any) in this publication is owned by the Commonwealth of Australia (referred to below as the Commonwealth).

Disclaimer

The material contained in this publication is made available on the understanding that the Commonwealth is not providing professional advice, and that users exercise their own skill and care with respect to its use, and seek independent advice if necessary.

The Commonwealth makes no representations or warranties as to the contents or accuracy of the information contained in this publication. To the extent permitted by law, the Commonwealth disclaims liability to any person or organisation in respect of anything done, or omitted to be done, in reliance upon information contained in this publication.

Creative Commons licence

With the exception of (a) the Coat of Arms; and (b) the Department of Infrastructure and Regional Development's photos and graphics, copyright in this publication is licensed under a Creative Commons Attribution 3.0 Australia Licence.

Creative Commons Attribution 3.0 Australia Licence is a standard form licence agreement that allows you to copy, communicate and adapt this publication provided that you attribute the work to the Commonwealth and abide by the other licence terms. A summary of the licence terms is available from <http://creativecommons.org/licenses/by/3.0/au/deed.en>. The full licence terms are available from <http://creativecommons.org/licenses/by/3.0/au/legalcode>.

Use of the Coat of Arms

The Department of the Prime Minister and Cabinet sets the terms under which the Coat of Arms is used. Please refer to the Department's Commonwealth Coat of Arms and Government branding web page <http://www.dpmmc.gov.au/guidelines/index.cfm#brand> and, in particular, the Guidelines on the use of the Commonwealth Coat of Arms publication.

An appropriate citation for this report is:

Bureau of Infrastructure, Transport and Regional Economics (BITRE), 2015, Domestic airline on time performance, Statistical Report, BITRE, Canberra ACT.

Contact us

This publication is available in PDF format. All other rights are reserved, including in relation to any Departmental logos or trade marks which may exist. For enquiries regarding the licence and any use of this publication, please contact:

Bureau of Infrastructure, Transport and Regional Economics (BITRE)
Department of Infrastructure and Regional Development
GPO Box 501, Canberra ACT 2601, Australia
Telephone: (international) +61 2 6274 7210
Fax: (international) +61 2 6274 6855
Email: bitre@infrastructure.gov.au
Website: www.bitre.gov.au

Inquiries

Should you require additional information about the statistics contained in this publication:

Telephone (02) 6274 7790 or Facsimile (02) 6274 7727

Electronic mail: AVSTATS@infrastructure.gov.au

Web site: <http://www.bitre.gov.au/statistics/aviation/otphome.aspx>

Foreword

The Bureau of Infrastructure, Transport and Regional Economics (BITRE) monitors the punctuality and reliability of major domestic airlines operating between Australian airports. The purpose of this is to allow for evaluation of overall industry and individual airline performance, so that consumers of air travel can make informed decisions.

The following domestic airlines currently report this information monthly to the BITRE: Jetstar, Qantas, QantasLink, Regional Express, Tigerair, Virgin Australia and Virgin Australia Regional Airlines. Data has been gathered since November 2003, although some airlines commenced reporting at a later date, including Jetstar which first reported in May 2004, MacAir in July 2005 and Tigerair in April 2008. MacAir ceased operations in February 2009 and data was not received for December 2008 onwards. Virgin Blue was rebranded as Virgin Australia in May 2011 and Tiger Airways was rebranded as Tigerair in July 2013 and time series data in Microsoft Excel spreadsheet format on the BITRE website have been revised to reflect these changes. Virgin Australia Regional Airlines commenced operations in May 2013. It was formed after the acquisition of Skywest by Virgin Australia and represents a combination of operations previously reported under Skywest and Virgin Australia – ATR/F100 Operations. Services operated by Skywest on behalf of Virgin Australia using ATR/F100 aircraft commenced in November 2011 and were shown separately as Virgin Australia – ATR/F100 Operations until April 2013.

Information presented in this report is for Australian domestic routes for which the passenger load averaged 8 000 or more passengers per month over the previous six months and where two or more airlines operated in competition on those routes. There were 63 routes that met this definition in August 2015. Over time, routes which meet these criteria change as airline networks and traffic levels vary.

Participating airlines report their overall monthly network performance where this is possible.

Total industry figures encompass all services operated by reporting airlines only. These airlines collectively carried over 95 per cent of total domestic passengers (regular public transport only) in 2014.

The method of capturing on time performance varies between airlines utilising different recording systems. Jetstar and Qantas jet aircraft use Aircraft Communication Addressing and Reporting System (ACARS) to electronically measure on time performance. Regional Express, Tigerair, Virgin Australia, Virgin Australia Regional Airlines and the Qantas non-jet fleet record on time performance manually using records from pilots, gate agents and/or ground crews.

After initial data is collected, aggregate reports are audited internally by participating airlines prior to publication.

Reports and detailed time series data in Microsoft Excel spreadsheet format are available from the BITRE website at: <http://www.bitre.gov.au/statistics/aviation/otphome.aspx>.

Contents

	Page
Industry performance	1
Individual routes	10
Airports	23
Definitions	29

Industry performance

For August 2015, on time performance over all routes operated by participating airlines (Jetstar, Qantas, QantasLink, Regional Express, Tigerair, Virgin Australia and Virgin Australia Regional Airlines) averaged 89.2 per cent for on time arrivals and 89.7 per cent for on time departures. Cancellations represented 1.6 per cent of all scheduled flights. The equivalent figures for August 2014 were 83.0 per cent for arrivals, 84.2 per cent for departures and 1.8 per cent for cancellations.

This month's figures were significantly better than the long term average performance for all routes (82.5 per cent for arrivals and 84.0 per cent for departures). The rate of cancellations was higher than the long term average of 1.4 per cent.

Virgin Australia achieved the highest on time arrivals among the major domestic airlines at 92.7 per cent, followed by Qantas at 92.3 per cent, Tigerair at 87.6 per cent and Jetstar at 87.1 per cent. QantasLink was the best performing regional airline for on time arrivals at 87.1 per cent, followed by Regional Express at 85.9 per cent and Virgin Australia Regional Airlines at 85.1 per cent. The Qantas network (Qantas and QantasLink combined operations) recorded 89.7 per cent for on time arrivals while the Virgin Australia network (Virgin Australia and Virgin Australia Regional Airlines combined operations) recorded 91.2 per cent.

Virgin Australia also achieved the highest level of on time departures for August 2015 at 93.9 per cent, followed by Qantas at 92.3 per cent, Tigerair at 88.3 per cent and Jetstar at 85.5 per cent. Of the regional airlines, QantasLink recorded 88.0 per cent followed by Regional Express at 87.7 per cent and Virgin Australia Regional Airlines at 85.9 per cent. The Qantas network recorded 90.1 per cent for on time departures while the Virgin Australia network recorded 92.3 per cent.

QantasLink had the highest percentage of cancellations (3.3 per cent) during the month, followed by Jetstar (2.0 per cent), Tigerair (1.6 per cent), Virgin Australia Regional Airlines (1.4 per cent), Virgin Australia (1.0 per cent), Qantas (also 1.0 per cent) and Regional Express (0.3 per cent).

Airlines' on time performance varies across the routes they serve. Individual route data by specific airline for 63 routes are shown on pages 10-22.

Of the 63 routes which met the criteria for on time performance reporting in August 2015, the Adelaide-Gold Coast route had the highest percentage of on time arrivals (100.0 per cent) and the highest percentage of on time departures (98.4 per cent). The Port Macquarie-Sydney route had the lowest percentage of on time arrivals (65.3 per cent) and the Darwin-Sydney route had the lowest percentage of on time departures (68.7 per cent).

Cancellations were highest on the Moranbah-Brisbane route at 9.6 per cent, followed by the Brisbane-Moranbah route at 8.9 per cent, the Karratha-Perth route at 6.0 per cent, the Sydney-Canberra route at 5.8 per cent and the Canberra-Sydney route at 5.7 per cent.

Newman Airport recorded the highest percentage of on time arrivals (97.7 per cent) and the highest percentage of on time departures (96.6 per cent). Port Macquarie Airport recorded the lowest percentage of on time arrivals (75.3 per cent) and Broome Airport recorded the lowest

percentage of on time departures (73.5 per cent). These figures only refer to reported routes and do not cover all flights at these airports.

Table 1 On time performance for August 2015 — Total Industry

	<i>Sectors</i>		<i>Arrivals On Time</i>		<i>Departures On Time</i>		<i>Cancellations</i>	
	<i>Scheduled</i>	<i>Flown</i>	<i>No.</i>	<i>%</i>	<i>No.</i>	<i>%</i>	<i>No.</i>	<i>%</i>
Jetstar	7 187	7 041	6 136	87.1	6 021	85.5	146	2.0
Qantas	9 757	9 661	8 916	92.3	8 916	92.3	96	1.0
QantasLink	10 278	9 943	8 660	87.1	8 748	88.0	335	3.3
Regional Express	6 149	6 128	5 264	85.9	5 372	87.7	21	0.3
Tigerair	2 060	2 028	1 776	87.6	1 791	88.3	32	1.6
Virgin Australia	11 218	11 104	10 294	92.7	10 422	93.9	114	1.0
Virgin Australia Regional Airlines	2 676	2 638	2 245	85.1	2 267	85.9	38	1.4
All Airlines	49 325	48 543	43 291	89.2	43 537	89.7	782	1.6
Qantas - all QF designated services	20 035	19 604	17 576	89.7	17 664	90.1	431	2.2
Virgin Australia - all VA designated services	13 894	13 742	12 539	91.2	12 689	92.3	152	1.1

Total airline network data (including routes not shown in this report).

Airlines' on time performance varies across the routes they serve. Individual route data by specific airline for 63 routes are shown on pages 10-22.

Table 2 Top ten routes for on time performance for August 2015 (participating airlines only)

<i>Arrivals</i>		<i>Departures</i>	
<i>Route</i>	<i>On Time (%)</i>	<i>Route</i>	<i>On Time (%)</i>
Adelaide-Gold Coast	100.0	Adelaide-Gold Coast	98.4
Townsville-Brisbane	98.6	Gold Coast-Adelaide	96.8
Alice Springs-Adelaide	97.7	Brisbane-Mount Isa	96.7
Perth-Newman	97.7	Newman-Perth	96.6
Perth-Adelaide	96.8	Perth-Newman	96.6
Brisbane-Townsville	96.7	Townsville-Brisbane	96.4
Gold Coast-Adelaide	95.2	Alice Springs-Darwin	96.0
Alice Springs-Darwin	94.7	Adelaide-Alice Springs	95.5
Sydney-Townsville	94.4	Brisbane-Townsville	95.4
Sydney-Launceston	94.4	Brisbane-Darwin	95.3

Table 3 Top ten airports for on time performance for August 2015 (participating airlines and reported routes only)

<i>Arrivals</i>		<i>Departures</i>	
<i>Airport</i>	<i>On Time (%)</i>	<i>Airport</i>	<i>On Time (%)</i>
Newman	97.7	Newman	96.6
Townsville	96.4	Townsville	95.2
Mackay	94.0	Alice Springs	95.0
Proserpine	94.0	Karratha	94.7
Karratha	92.7	Moranbah	92.9
Alice Springs	92.4	Brisbane	92.8
Gold Coast	92.2	Adelaide	92.8
Port Hedland	91.7	Bundaberg	92.6
Gladstone	91.7	Mackay	92.5
Adelaide	91.4	Gladstone	92.3

Total industry on time performance

Figure 1 On time performance (by month from August 2012)—Total Industry

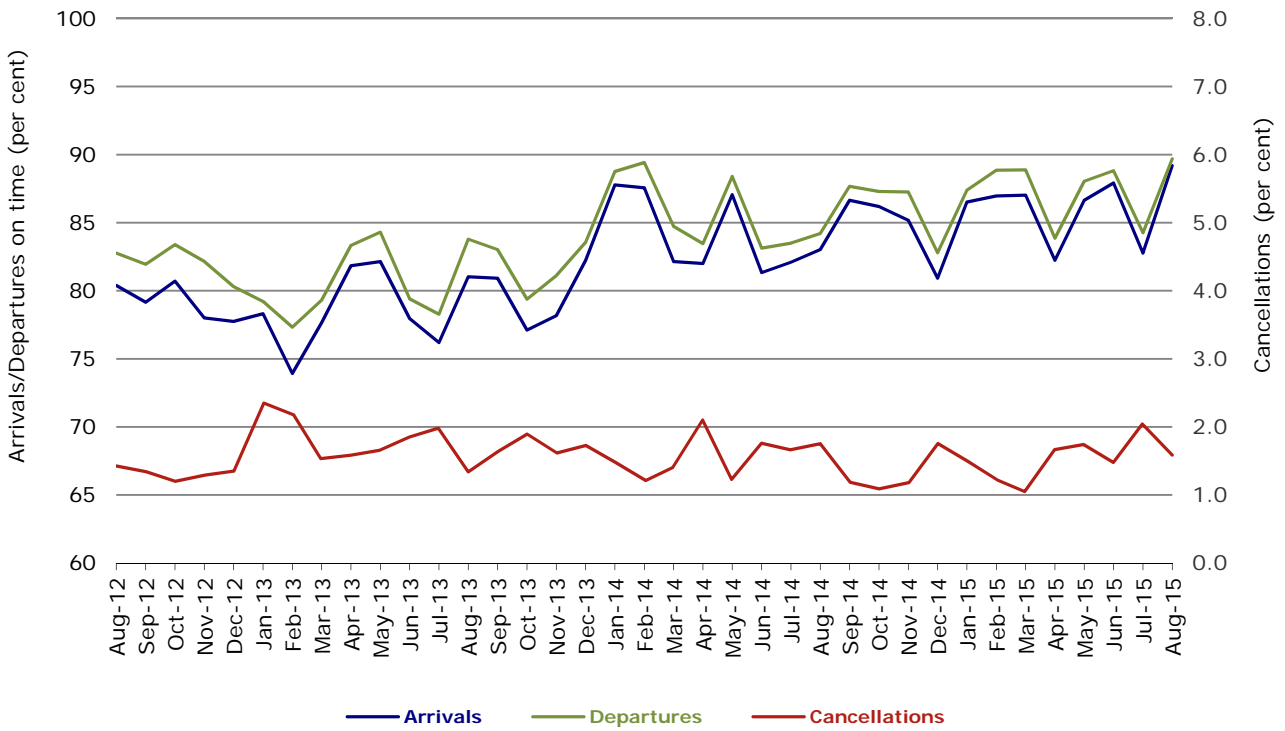


Figure 2 Arrivals on time (by month from August 2014)

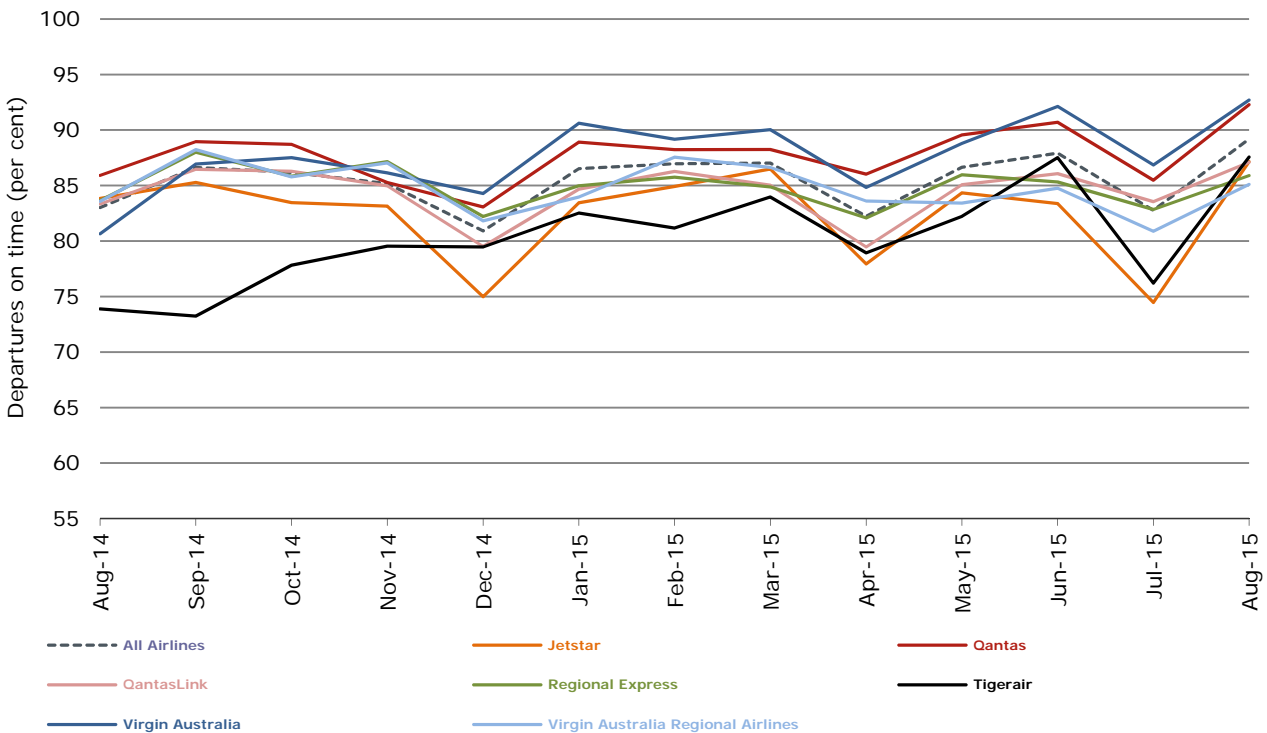


Figure 3 Departures on time (by month from August 2014)

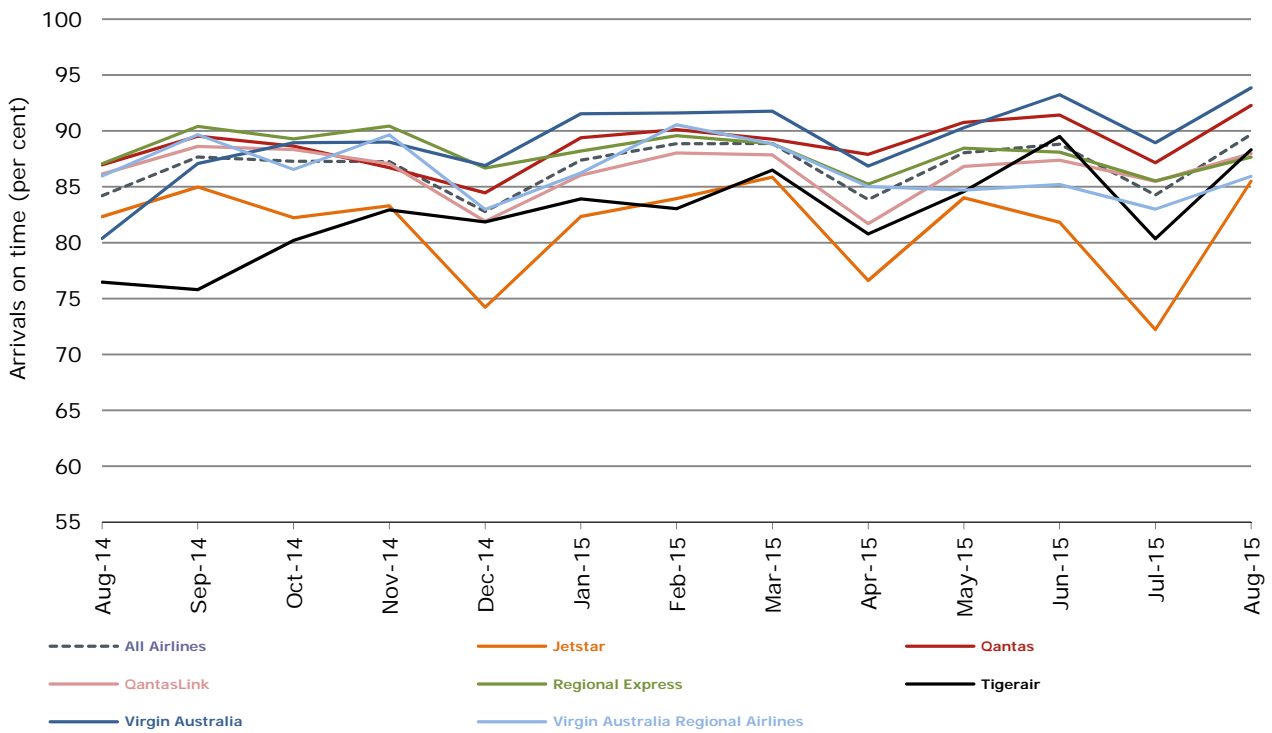
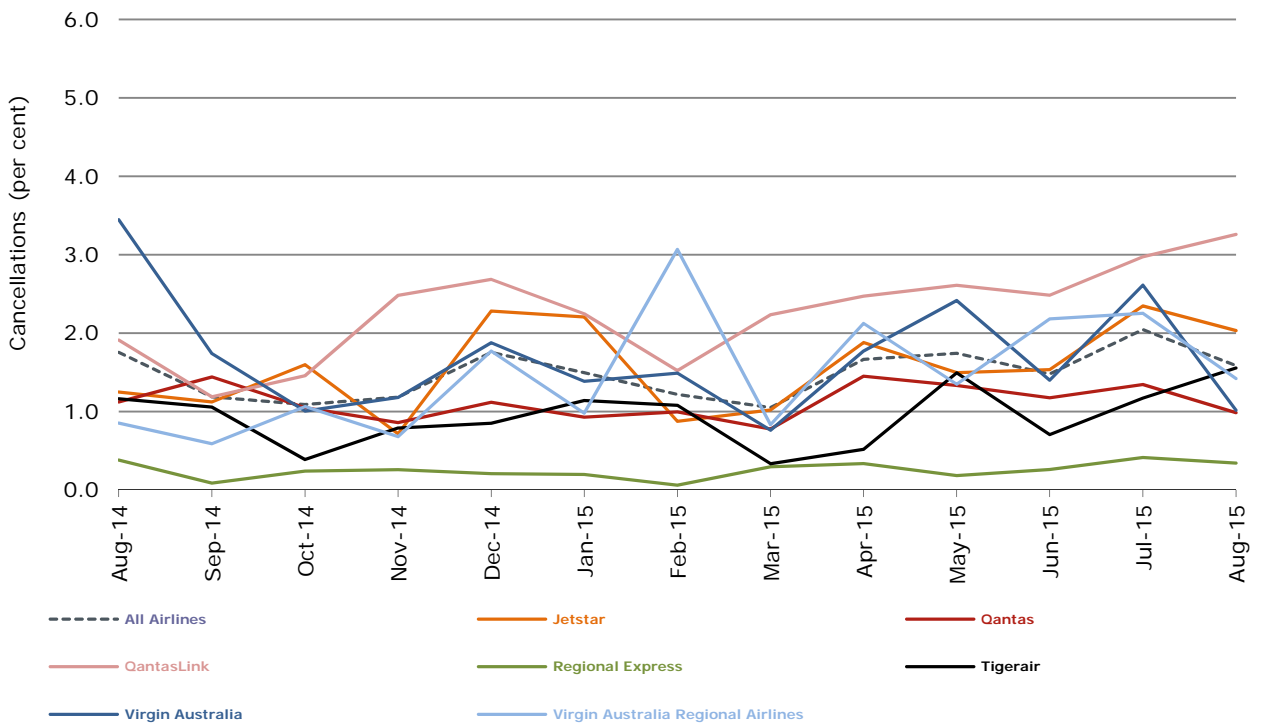


Figure 4 Cancellations (by month from August 2014)



Major domestic airlines on time performance

Figure 5 On time performance (by month from August 2012)—Jetstar

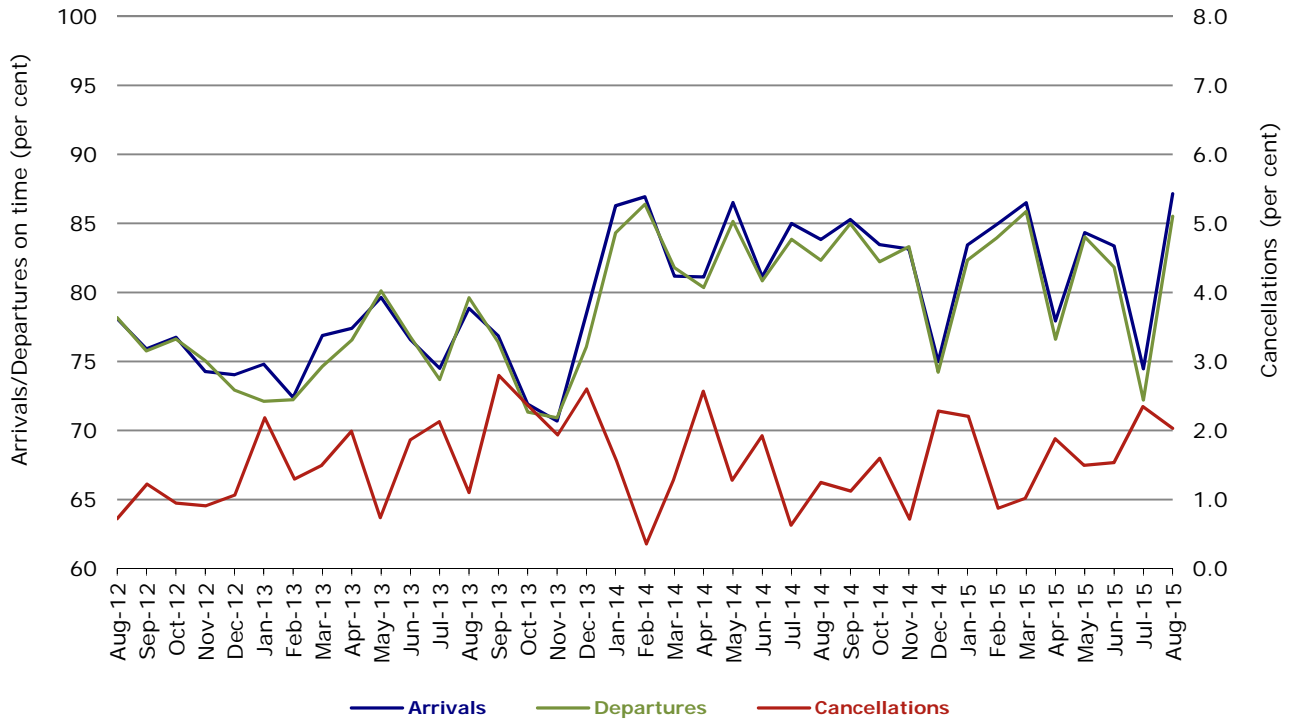


Figure 6 On time performance (by month from August 2012)—Qantas

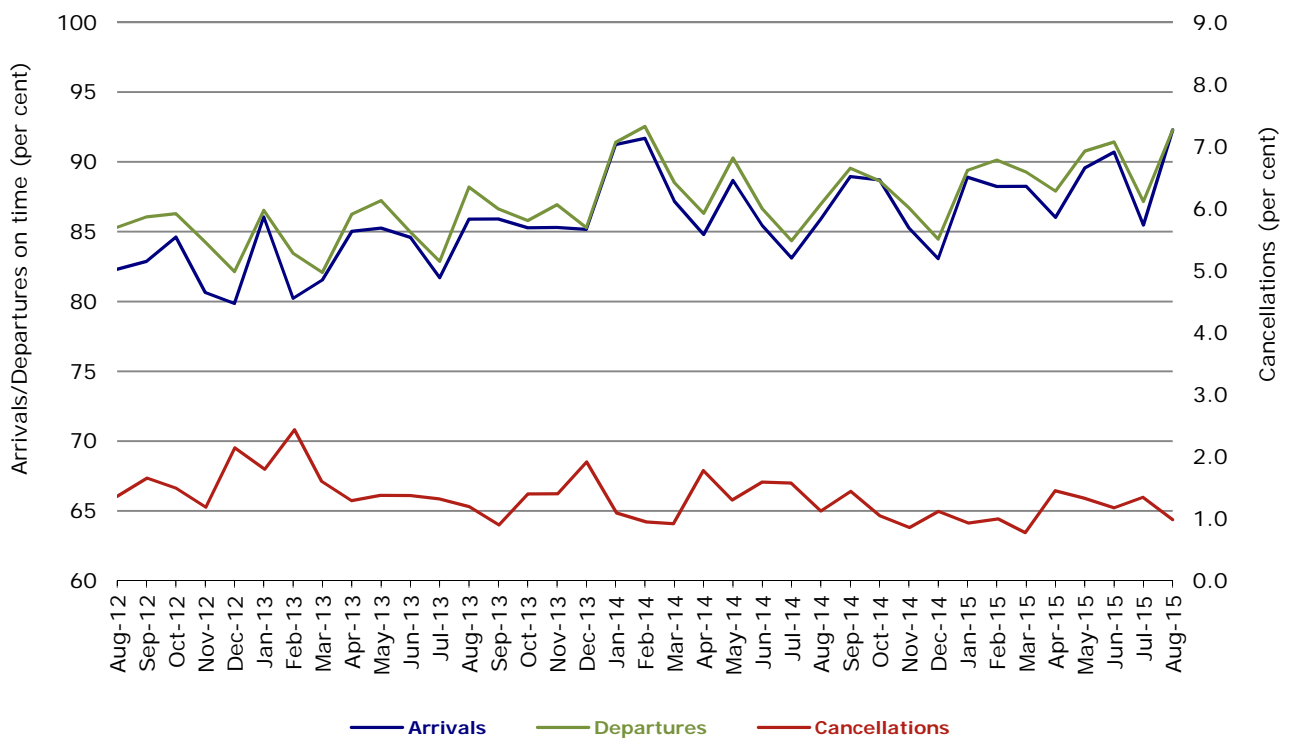


Figure 7 On time performance (by month from August 2012)—Tigerair

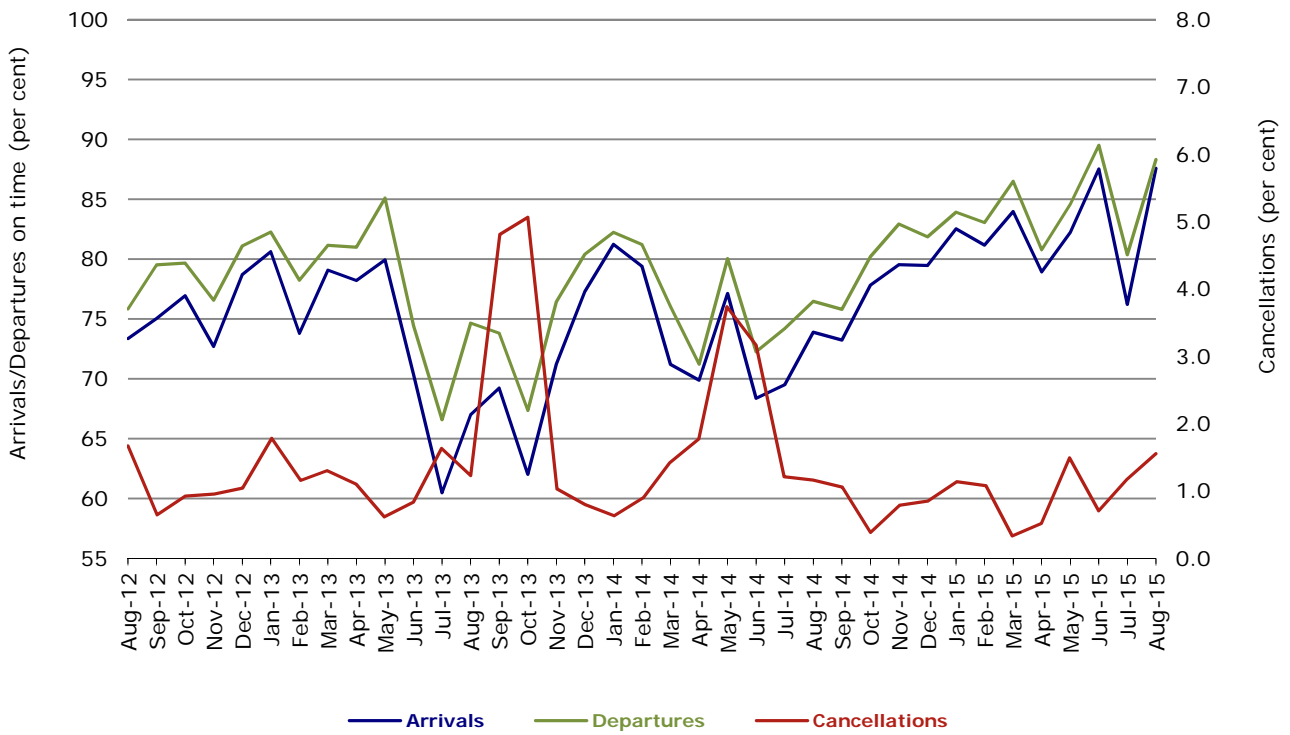
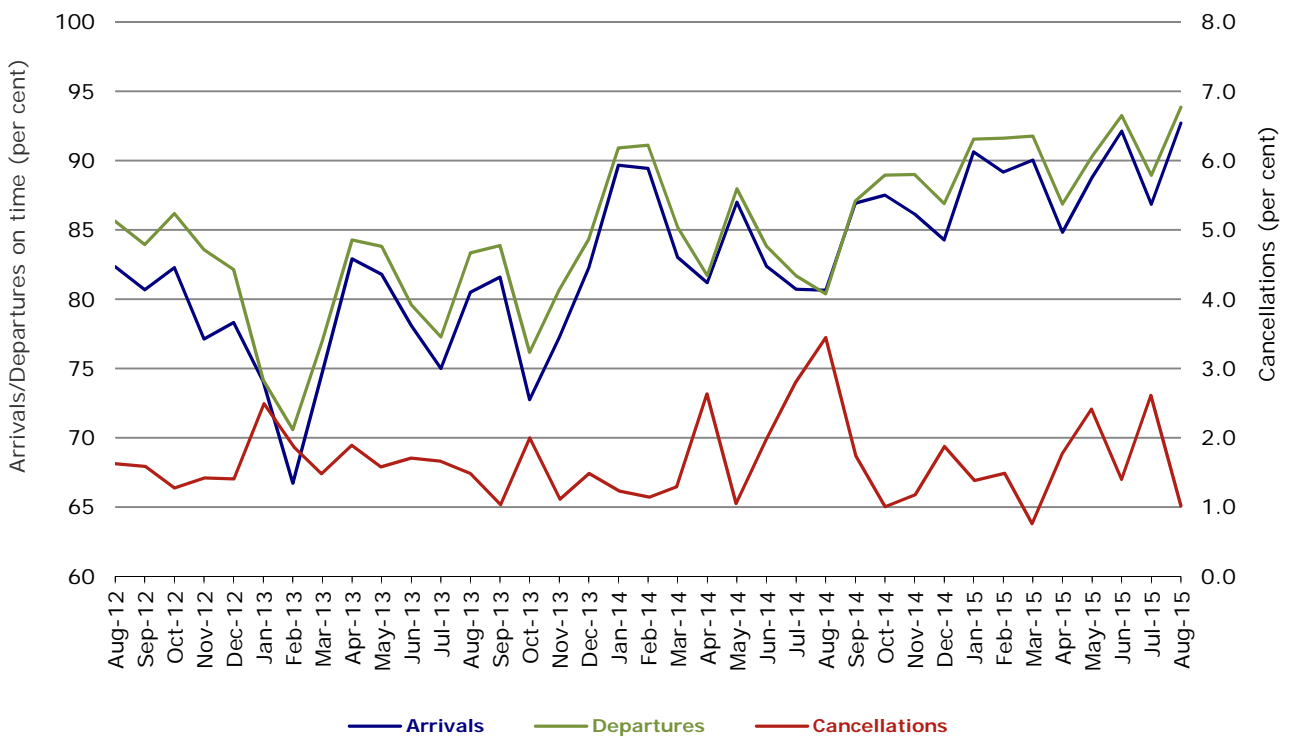


Figure 8 On time performance (by month from August 2012)—Virgin Australia



Major regional airlines on time performance

Figure 9 On time performance (by month from August 2012)—QantasLink

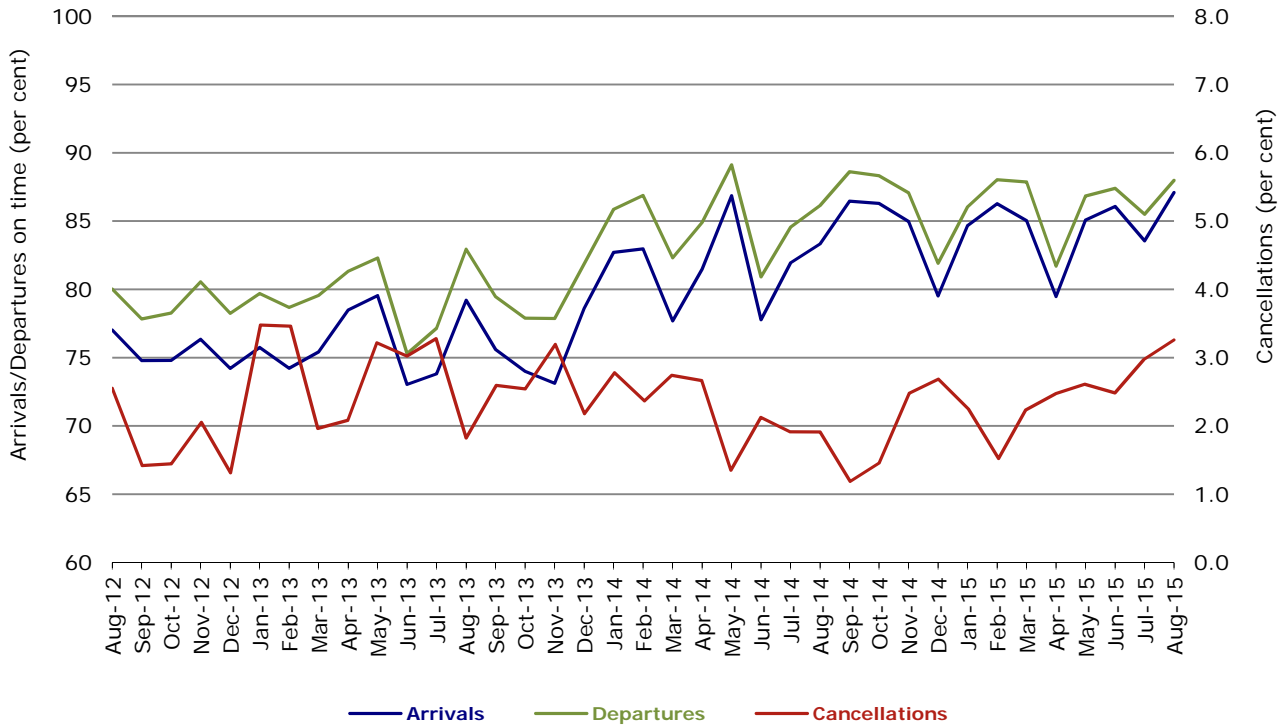


Figure 10 On time performance (by month from August 2012)—Regional Express

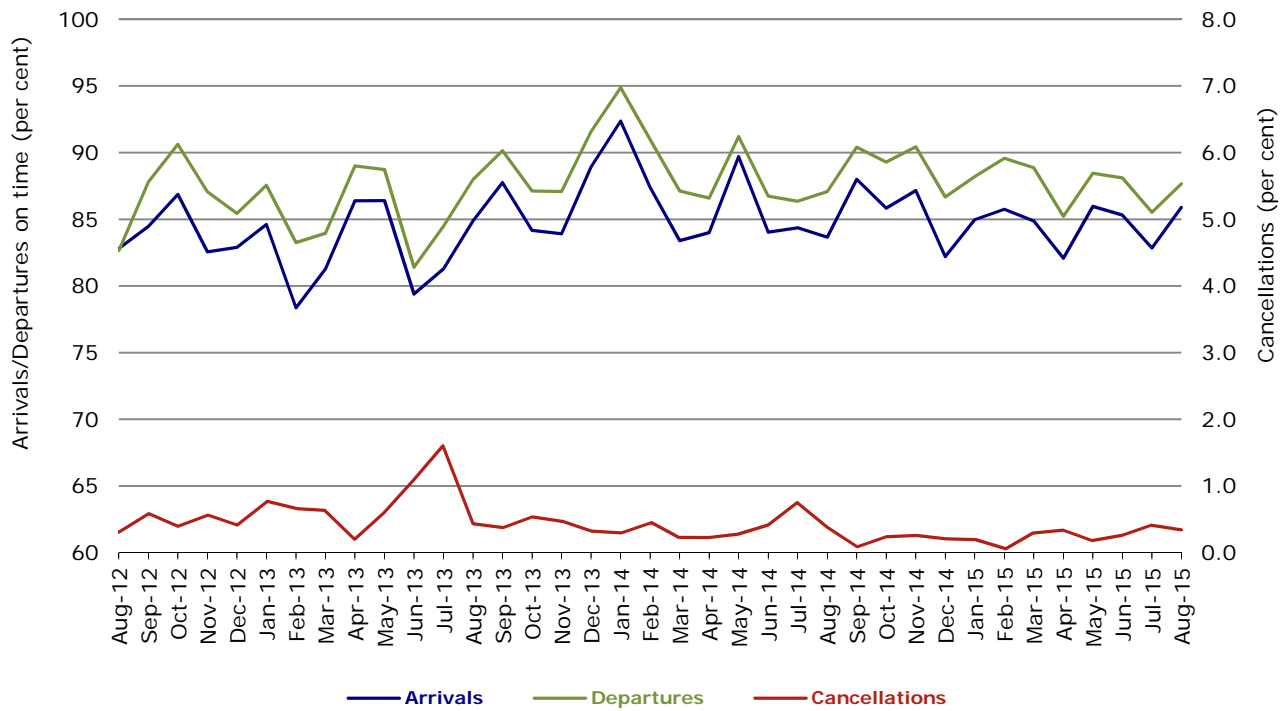
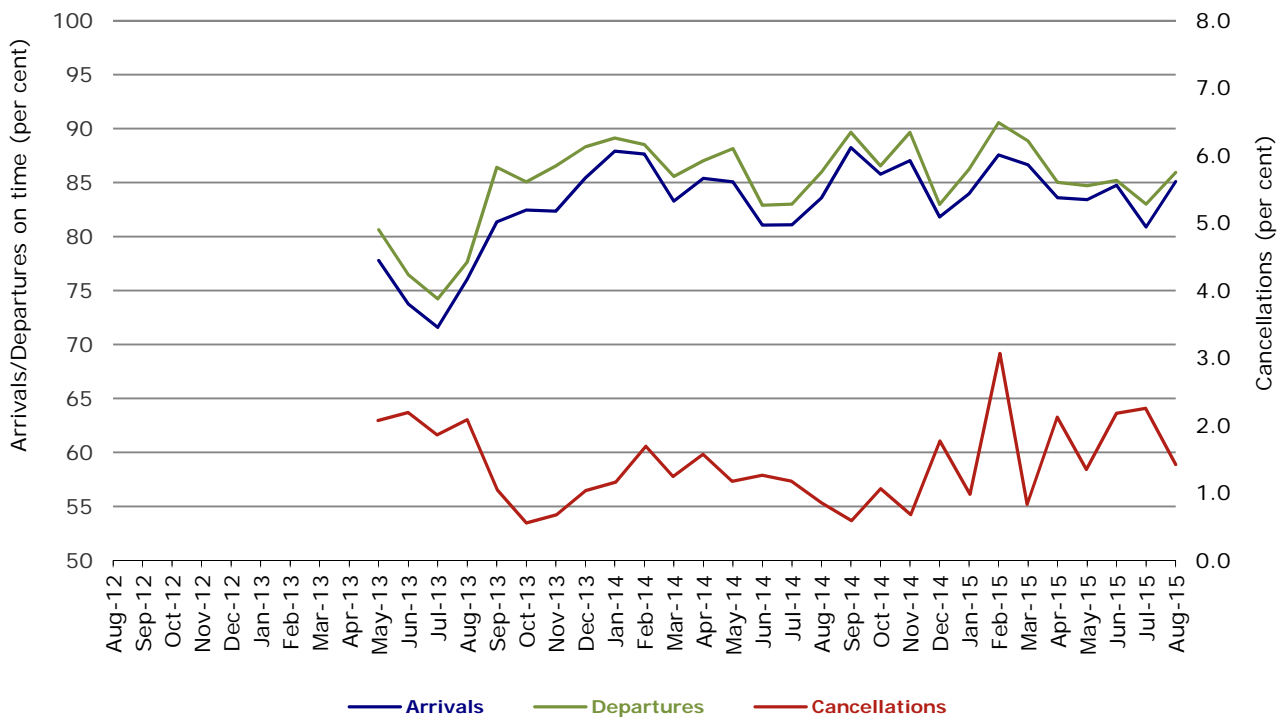


Figure 11 On time performance (by month from August 2012)
Virgin Australia Regional Airlines



Virgin Australia Regional Airlines commenced operations in May 2013. It was formed after the acquisition of Skywest by Virgin Australia and represents a combination of operations previously reported under Skywest and Virgin Australia – ATR/F100 Operations.

Individual routes

On time performance is reported for all routes where the passenger load averages over 8000 passengers per month over the previous six months, and where two or more airlines operate in competition on those routes. There are now 63 routes which meet this definition. Over time, however, routes which meet this definition may change as airline networks and traffic levels vary.

	<i>Sectors</i>		<i>Arrivals On Time</i>		<i>Departures On Time</i>		<i>Cancellations</i>	
	<i>Sched.</i>	<i>Flown</i>	<i>No.</i>	<i>%</i>	<i>No.</i>	<i>%</i>	<i>No.</i>	<i>%</i>
Adelaide-Alice Springs								
Qantas	31	31	28	90.3	29	93.5	0	0.0
Virgin Australia	13	13	13	100.0	13	100.0	0	0.0
All Airlines	44	44	41	93.2	42	95.5	0	0.0
Adelaide-Brisbane								
Jetstar	29	29	28	96.6	26	89.7	0	0.0
Qantas	109	109	103	94.5	105	96.3	0	0.0
Tigerair	26	26	25	96.2	24	92.3	0	0.0
Virgin Australia	113	112	101	90.2	101	90.2	1	0.9
All Airlines	277	276	257	93.1	256	92.8	1	0.4
Adelaide-Canberra								
Qantas	47	47	42	89.4	42	89.4	0	0.0
Virgin Australia	26	26	25	96.2	25	96.2	0	0.0
All Airlines	73	73	67	91.8	67	91.8	0	0.0
Adelaide-Gold Coast								
Jetstar	31	31	31	100.0	31	100.0	0	0.0
Virgin Australia	31	31	31	100.0	30	96.8	0	0.0
All Airlines	62	62	62	100.0	61	98.4	0	0.0
Adelaide-Melbourne								
Jetstar	111	104	93	89.4	87	83.7	7	6.3
Qantas	291	289	277	95.8	270	93.4	2	0.7
Tigerair	64	63	57	90.5	56	88.9	1	1.6
Virgin Australia	294	291	270	92.8	267	91.8	3	1.0
All Airlines	760	747	697	93.3	680	91.0	13	1.7
Adelaide-Perth								
Jetstar	31	31	26	83.9	26	83.9	0	0.0
Qantas	113	113	108	95.6	110	97.3	0	0.0
Virgin Australia	77	77	72	93.5	72	93.5	0	0.0
All Airlines	221	221	206	93.2	208	94.1	0	0.0
Adelaide-Port Lincoln								
QantasLink	110	109	98	89.9	100	91.7	1	0.9
Regional Express	215	211	190	90.0	196	92.9	4	1.9
All Airlines	325	320	288	90.0	296	92.5	5	1.5
Adelaide-Sydney								
Jetstar	111	107	96	89.7	98	91.6	4	3.6
Qantas	246	246	233	94.7	234	95.1	0	0.0
QantasLink	20	18	15	83.3	15	83.3	2	10.0
Tigerair	31	30	29	96.7	29	96.7	1	3.2
Virgin Australia	175	174	167	96.0	165	94.8	1	0.6
All Airlines	583	575	540	93.9	541	94.1	8	1.4
Albury-Sydney								
QantasLink	97	97	80	82.5	83	85.6	0	0.0
Regional Express	109	108	96	88.9	96	88.9	1	0.9
Virgin Australia Regional Airlines	62	62	50	80.6	48	77.4	0	0.0
All Airlines	268	267	226	84.6	227	85.0	1	0.4

	<i>Sectors</i>		<i>Arrivals On Time</i>		<i>Departures On Time</i>		<i>Cancellations</i>	
	<i>Sched.</i>	<i>Flown</i>	<i>No.</i>	<i>%</i>	<i>No.</i>	<i>%</i>	<i>No.</i>	<i>%</i>
Alice Springs-Adelaide								
Qantas	31	31	30	96.8	29	93.5	0	0.0
Virgin Australia	13	13	13	100.0	12	92.3	0	0.0
All Airlines	44	44	43	97.7	41	93.2	0	0.0
Alice Springs-Darwin								
QantasLink	62	62	59	95.2	60	96.8	0	0.0
Virgin Australia	13	13	12	92.3	12	92.3	0	0.0
All Airlines	75	75	71	94.7	72	96.0	0	0.0
Armidale-Sydney								
QantasLink	134	134	111	82.8	108	80.6	0	0.0
Regional Express	79	79	64	81.0	71	89.9	0	0.0
All Airlines	213	213	175	82.2	179	84.0	0	0.0
Ayers Rock-Sydney								
Jetstar	31	30	28	93.3	23	76.7	1	3.2
Virgin Australia	31	31	27	87.1	23	74.2	0	0.0
All Airlines	62	61	55	90.2	46	75.4	1	1.6
Ballina-Sydney								
Jetstar	71	70	56	80.0	54	77.1	1	1.4
Regional Express	24	24	20	83.3	20	83.3	0	0.0
Virgin Australia	31	31	28	90.3	30	96.8	0	0.0
All Airlines	126	125	104	83.2	104	83.2	1	0.8
Brisbane-Adelaide								
Jetstar	29	29	27	93.1	28	96.6	0	0.0
Qantas	109	109	106	97.2	104	95.4	0	0.0
Tigerair	26	26	21	80.8	22	84.6	0	0.0
Virgin Australia	113	113	93	82.3	104	92.0	0	0.0
All Airlines	277	277	247	89.2	258	93.1	0	0.0
Brisbane-Bundaberg								
QantasLink	135	135	124	91.9	124	91.9	0	0.0
Virgin Australia Regional Airlines	41	41	35	85.4	35	85.4	0	0.0
All Airlines	176	176	159	90.3	159	90.3	0	0.0
Brisbane-Cairns								
Jetstar	116	116	104	89.7	106	91.4	0	0.0
Qantas	119	119	110	92.4	112	94.1	0	0.0
QantasLink	5	5	4	80.0	4	80.0	0	0.0
Tigerair	31	31	30	96.8	31	100.0	0	0.0
Virgin Australia	136	136	128	94.1	129	94.9	0	0.0
All Airlines	407	407	376	92.4	382	93.9	0	0.0
Brisbane-Canberra								
Qantas	26	26	25	96.2	26	100.0	0	0.0
QantasLink	127	124	108	87.1	112	90.3	3	2.4
Virgin Australia	98	98	91	92.9	94	95.9	0	0.0
All Airlines	251	248	224	90.3	232	93.5	3	1.2
Brisbane-Darwin								
Jetstar	31	29	28	96.6	27	93.1	2	6.5
Qantas	48	48	40	83.3	47	97.9	0	0.0
Tigerair	21	20	20	100.0	20	100.0	1	4.8
Virgin Australia	31	31	26	83.9	28	90.3	0	0.0
All Airlines	131	128	114	89.1	122	95.3	3	2.3
Brisbane-Emerald								
QantasLink	143	141	123	87.2	132	93.6	2	1.4
Virgin Australia Regional Airlines	79	77	59	76.6	67	87.0	2	2.5
All Airlines	222	218	182	83.5	199	91.3	4	1.8

	<i>Sectors</i>		<i>Arrivals On Time</i>		<i>Departures On Time</i>		<i>Cancellations</i>	
	<i>Sched.</i>	<i>Flown</i>	<i>No.</i>	<i>%</i>	<i>No.</i>	<i>%</i>	<i>No.</i>	<i>%</i>
Brisbane-Gladstone								
QantasLink	209	194	184	94.8	184	94.8	15	7.2
Virgin Australia	7	7	7	100.0	7	100.0	0	0.0
Virgin Australia Regional Airlines	139	136	118	86.8	117	86.0	3	2.2
All Airlines	355	337	309	91.7	308	91.4	18	5.1
Brisbane-Hamilton Island								
QantasLink	19	19	16	84.2	18	94.7	0	0.0
Virgin Australia	31	31	28	90.3	29	93.5	0	0.0
All Airlines	50	50	44	88.0	47	94.0	0	0.0
Brisbane-Hobart								
Jetstar	30	30	26	86.7	27	90.0	0	0.0
Virgin Australia	31	31	29	93.5	31	100.0	0	0.0
All Airlines	61	61	55	90.2	58	95.1	0	0.0
Brisbane-Mackay								
Jetstar	58	58	51	87.9	50	86.2	0	0.0
QantasLink	110	104	96	92.3	94	90.4	6	5.5
Virgin Australia	158	156	152	97.4	148	94.9	2	1.3
All Airlines	326	318	299	94.0	292	91.8	8	2.5
Brisbane-Melbourne								
Jetstar	116	106	88	83.0	86	81.1	10	8.6
Qantas	444	442	410	92.8	419	94.8	2	0.5
Tigerair	118	117	101	86.3	102	87.2	1	0.8
Virgin Australia	403	395	342	86.6	374	94.7	8	2.0
All Airlines	1 081	1 060	941	88.8	981	92.5	21	1.9
Brisbane-Moranbah								
QantasLink	120	103	95	92.2	95	92.2	17	14.2
Virgin Australia Regional Airlines	71	71	64	90.1	65	91.5	0	0.0
All Airlines	191	174	159	91.4	160	92.0	17	8.9
Brisbane-Mount Isa								
Qantas	39	39	34	87.2	38	97.4	0	0.0
Virgin Australia	21	21	20	95.2	20	95.2	0	0.0
All Airlines	60	60	54	90.0	58	96.7	0	0.0
Brisbane-Newcastle								
Jetstar	87	86	77	89.5	79	91.9	1	1.1
QantasLink	78	77	60	77.9	65	84.4	1	1.3
Virgin Australia	83	83	76	91.6	77	92.8	0	0.0
All Airlines	248	246	213	86.6	221	89.8	2	0.8
Brisbane-Perth								
Qantas	134	134	111	82.8	115	85.8	0	0.0
Virgin Australia	109	109	86	78.9	98	89.9	0	0.0
All Airlines	243	243	197	81.1	213	87.7	0	0.0
Brisbane-Proserpine								
Jetstar	31	31	28	90.3	28	90.3	0	0.0
Virgin Australia	52	52	50	96.2	51	98.1	0	0.0
All Airlines	83	83	78	94.0	79	95.2	0	0.0
Brisbane-Rockhampton								
QantasLink	193	184	165	89.7	169	91.8	9	4.7
Virgin Australia	105	103	100	97.1	100	97.1	2	1.9
Virgin Australia Regional Airlines	107	103	82	79.6	85	82.5	4	3.7
All Airlines	405	390	347	89.0	354	90.8	15	3.7

	<i>Sectors</i>		<i>Arrivals On Time</i>		<i>Departures On Time</i>		<i>Cancellations</i>	
	<i>Sched.</i>	<i>Flown</i>	<i>No.</i>	<i>%</i>	<i>No.</i>	<i>%</i>	<i>No.</i>	<i>%</i>
Brisbane-Sydney								
Jetstar	186	181	167	92.3	163	90.1	5	2.7
Qantas	621	612	585	95.6	582	95.1	9	1.4
Tigerair	99	98	88	89.8	86	87.8	1	1.0
Virgin Australia	571	565	525	92.9	543	96.1	6	1.1
All Airlines	1 477	1 456	1 365	93.8	1 374	94.4	21	1.4
Brisbane-Townsville								
Jetstar	62	61	58	95.1	58	95.1	1	1.6
Qantas	149	149	144	96.6	144	96.6	0	0.0
Virgin Australia	156	156	152	97.4	147	94.2	0	0.0
All Airlines	367	366	354	96.7	349	95.4	1	0.3
Broome-Perth								
Qantas	34	34	23	67.6	18	52.9	0	0.0
QantasLink	49	48	44	91.7	44	91.7	1	2.0
Virgin Australia	24	23	19	82.6	19	82.6	1	4.2
Virgin Australia Regional Airlines	46	46	27	58.7	30	65.2	0	0.0
All Airlines	153	151	113	74.8	111	73.5	2	1.3
Bundaberg-Brisbane								
QantasLink	135	135	124	91.9	126	93.3	0	0.0
Virgin Australia Regional Airlines	40	40	35	87.5	36	90.0	0	0.0
All Airlines	175	175	159	90.9	162	92.6	0	0.0
Cairns-Brisbane								
Jetstar	116	116	106	91.4	96	82.8	0	0.0
Qantas	119	119	110	92.4	111	93.3	0	0.0
QantasLink	5	5	5	100.0	5	100.0	0	0.0
Tigerair	31	31	25	80.6	28	90.3	0	0.0
Virgin Australia	136	136	127	93.4	127	93.4	0	0.0
All Airlines	407	407	373	91.6	367	90.2	0	0.0
Cairns-Melbourne								
Jetstar	121	120	102	85.0	96	80.0	1	0.8
Qantas	41	41	38	92.7	39	95.1	0	0.0
Tigerair	31	31	20	64.5	20	64.5	0	0.0
Virgin Australia	36	36	33	91.7	33	91.7	0	0.0
All Airlines	229	228	193	84.6	188	82.5	1	0.4
Cairns-Sydney								
Jetstar	121	121	108	89.3	103	85.1	0	0.0
Qantas	76	76	72	94.7	74	97.4	0	0.0
Tigerair	31	31	29	93.5	23	74.2	0	0.0
Virgin Australia	93	92	88	95.7	84	91.3	1	1.1
All Airlines	321	320	297	92.8	284	88.8	1	0.3
Canberra-Adelaide								
Qantas	47	47	44	93.6	42	89.4	0	0.0
Virgin Australia	26	26	24	92.3	24	92.3	0	0.0
All Airlines	73	73	68	93.2	66	90.4	0	0.0
Canberra-Brisbane								
Qantas	26	26	24	92.3	24	92.3	0	0.0
QantasLink	127	124	101	81.5	102	82.3	3	2.4
Virgin Australia	98	98	88	89.8	91	92.9	0	0.0
All Airlines	251	248	213	85.9	217	87.5	3	1.2
Canberra-Melbourne								
Qantas	187	185	179	96.8	174	94.1	2	1.1
QantasLink	82	71	61	85.9	60	84.5	11	13.4
Virgin Australia	159	157	146	93.0	145	92.4	2	1.3
Virgin Australia Regional Airlines	26	26	22	84.6	23	88.5	0	0.0
All Airlines	454	439	408	92.9	402	91.6	15	3.3

	<i>Sectors</i>		<i>Arrivals On Time</i>		<i>Departures On Time</i>		<i>Cancellations</i>	
	<i>Sched.</i>	<i>Flown</i>	<i>No.</i>	<i>%</i>	<i>No.</i>	<i>%</i>	<i>No.</i>	<i>%</i>
Canberra-Sydney								
QantasLink	515	476	409	85.9	403	84.7	39	7.6
Virgin Australia	24	24	24	100.0	24	100.0	0	0.0
Virgin Australia Regional Airlines	279	271	252	93.0	252	93.0	8	2.9
All Airlines	818	771	685	88.8	679	88.1	47	5.7
Coffs Harbour-Sydney								
QantasLink	153	151	129	85.4	126	83.4	2	1.3
Tigerair	13	13	12	92.3	12	92.3	0	0.0
Virgin Australia	61	60	54	90.0	54	90.0	1	1.6
All Airlines	227	224	195	87.1	192	85.7	3	1.3
Darwin-Alice Springs								
QantasLink	62	62	57	91.9	57	91.9	0	0.0
Virgin Australia	13	13	12	92.3	12	92.3	0	0.0
All Airlines	75	75	69	92.0	69	92.0	0	0.0
Darwin-Brisbane								
Jetstar	31	29	27	93.1	25	86.2	2	6.5
Qantas	48	48	41	85.4	40	83.3	0	0.0
Tigerair	20	19	19	100.0	19	100.0	1	5.0
Virgin Australia	31	31	25	80.6	25	80.6	0	0.0
All Airlines	130	127	112	88.2	109	85.8	3	2.3
Darwin-Melbourne								
Jetstar	31	31	26	83.9	23	74.2	0	0.0
Qantas	31	31	30	96.8	30	96.8	0	0.0
Virgin Australia	34	34	30	88.2	29	85.3	0	0.0
All Airlines	96	96	86	89.6	82	85.4	0	0.0
Darwin-Perth								
Qantas	39	39	35	89.7	35	89.7	0	0.0
Virgin Australia	31	31	21	67.7	23	74.2	0	0.0
All Airlines	70	70	56	80.0	58	82.9	0	0.0
Darwin-Sydney								
Jetstar	31	31	17	54.8	13	41.9	0	0.0
Qantas	53	53	49	92.5	46	86.8	0	0.0
Virgin Australia	31	31	22	71.0	20	64.5	0	0.0
All Airlines	115	115	88	76.5	79	68.7	0	0.0
Dubbo-Sydney								
QantasLink	126	125	102	81.6	98	78.4	1	0.8
Regional Express	155	155	140	90.3	144	92.9	0	0.0
All Airlines	281	280	242	86.4	242	86.4	1	0.4
Emerald-Brisbane								
QantasLink	144	140	127	90.7	120	85.7	4	2.8
Virgin Australia Regional Airlines	79	77	67	87.0	65	84.4	2	2.5
All Airlines	223	217	194	89.4	185	85.3	6	2.7
Geraldton-Perth								
QantasLink	50	50	47	94.0	47	94.0	0	0.0
Virgin Australia Regional Airlines	89	88	77	87.5	80	90.9	1	1.1
All Airlines	139	138	124	89.9	127	92.0	1	0.7
Gladstone-Brisbane								
QantasLink	205	193	181	93.8	183	94.8	12	5.9
Virgin Australia	7	7	6	85.7	7	100.0	0	0.0
Virgin Australia Regional Airlines	139	136	118	86.8	120	88.2	3	2.2
All Airlines	351	336	305	90.8	310	92.3	15	4.3

	<i>Sectors</i>		<i>Arrivals On Time</i>		<i>Departures On Time</i>		<i>Cancellations</i>	
	<i>Sched.</i>	<i>Flown</i>	<i>No.</i>	<i>%</i>	<i>No.</i>	<i>%</i>	<i>No.</i>	<i>%</i>
Gold Coast-Adelaide								
Jetstar	31	31	29	93.5	29	93.5	0	0.0
Virgin Australia	31	31	30	96.8	31	100.0	0	0.0
All Airlines	62	62	59	95.2	60	96.8	0	0.0
Gold Coast-Melbourne								
Jetstar	222	219	203	92.7	201	91.8	3	1.4
Tigerair	78	78	69	88.5	69	88.5	0	0.0
Virgin Australia	189	188	168	89.4	172	91.5	1	0.5
All Airlines	489	485	440	90.7	442	91.1	4	0.8
Gold Coast-Sydney								
Jetstar	281	275	245	89.1	241	87.6	6	2.1
Qantas	88	88	81	92.0	82	93.2	0	0.0
QantasLink	5	5	4	80.0	4	80.0	0	0.0
Tigerair	106	104	96	92.3	96	92.3	2	1.9
Virgin Australia	258	258	240	93.0	241	93.4	0	0.0
All Airlines	738	730	666	91.2	664	91.0	8	1.1
Hamilton Island-Brisbane								
QantasLink	19	19	16	84.2	12	63.2	0	0.0
Virgin Australia	31	31	28	90.3	27	87.1	0	0.0
All Airlines	50	50	44	88.0	39	78.0	0	0.0
Hamilton Island-Sydney								
Jetstar	30	30	22	73.3	24	80.0	0	0.0
Qantas	9	9	8	88.9	7	77.8	0	0.0
Virgin Australia	31	31	28	90.3	24	77.4	0	0.0
All Airlines	70	70	58	82.9	55	78.6	0	0.0
Hobart-Brisbane								
Jetstar	30	30	26	86.7	25	83.3	0	0.0
Virgin Australia	31	31	27	87.1	28	90.3	0	0.0
All Airlines	61	61	53	86.9	53	86.9	0	0.0
Hobart-Melbourne								
Jetstar	173	170	142	83.5	137	80.6	3	1.7
QantasLink	124	122	106	86.9	105	86.1	2	1.6
Tigerair	27	27	22	81.5	24	88.9	0	0.0
Virgin Australia	148	148	136	91.9	138	93.2	0	0.0
All Airlines	472	467	406	86.9	404	86.5	5	1.1
Hobart-Sydney								
Jetstar	54	54	40	74.1	41	75.9	0	0.0
QantasLink	31	30	23	76.7	24	80.0	1	3.2
Virgin Australia	62	62	60	96.8	58	93.5	0	0.0
All Airlines	147	146	123	84.2	123	84.2	1	0.7
Kalgoorlie-Perth								
Qantas	21	20	17	85.0	16	80.0	1	4.8
QantasLink	64	63	57	90.5	57	90.5	1	1.6
Virgin Australia	36	35	35	100.0	34	97.1	1	2.8
Virgin Australia Regional Airlines	21	21	18	85.7	18	85.7	0	0.0
All Airlines	142	139	127	91.4	125	89.9	3	2.1
Karratha-Perth								
Qantas	105	102	94	92.2	100	98.0	3	2.9
QantasLink	111	102	95	93.1	97	95.1	9	8.1
Virgin Australia	61	55	51	92.7	53	96.4	6	9.8
Virgin Australia Regional Airlines	24	24	18	75.0	18	75.0	0	0.0
All Airlines	301	283	258	91.2	268	94.7	18	6.0

	<i>Sectors</i>		<i>Arrivals On Time</i>		<i>Departures On Time</i>		<i>Cancellations</i>	
	<i>Sched.</i>	<i>Flown</i>	<i>No.</i>	<i>%</i>	<i>No.</i>	<i>%</i>	<i>No.</i>	<i>%</i>
Launceston-Melbourne								
Jetstar	106	106	86	81.1	87	82.1	0	0.0
QantasLink	119	111	90	81.1	96	86.5	8	6.7
Virgin Australia	95	95	90	94.7	93	97.9	0	0.0
Virgin Australia Regional Airlines	5	5	2	40.0	2	40.0	0	0.0
All Airlines	325	317	268	84.5	278	87.7	8	2.5
Launceston-Sydney								
Jetstar	40	39	37	94.9	37	94.9	1	2.5
Virgin Australia	31	31	29	93.5	29	93.5	0	0.0
All Airlines	71	70	66	94.3	66	94.3	1	1.4
Mackay-Brisbane								
Jetstar	58	58	49	84.5	46	79.3	0	0.0
QantasLink	111	105	100	95.2	100	95.2	6	5.4
Virgin Australia	158	156	150	96.2	149	95.5	2	1.3
All Airlines	327	319	299	93.7	295	92.5	8	2.4
Melbourne-Adelaide								
Jetstar	111	107	87	81.3	90	84.1	4	3.6
Qantas	291	291	273	93.8	262	90.0	0	0.0
Tigerair	64	63	56	88.9	56	88.9	1	1.6
Virgin Australia	296	291	273	93.8	271	93.1	5	1.7
All Airlines	762	752	689	91.6	679	90.3	10	1.3
Melbourne-Brisbane								
Jetstar	116	105	94	89.5	86	81.9	11	9.5
Qantas	438	435	399	91.7	394	90.6	3	0.7
Tigerair	119	118	98	83.1	97	82.2	1	0.8
Virgin Australia	404	397	370	93.2	372	93.7	7	1.7
All Airlines	1 077	1 055	961	91.1	949	90.0	22	2.0
Melbourne-Cairns								
Jetstar	121	120	101	84.2	102	85.0	1	0.8
Qantas	41	41	38	92.7	35	85.4	0	0.0
Tigerair	30	30	25	83.3	28	93.3	0	0.0
Virgin Australia	36	36	33	91.7	33	91.7	0	0.0
All Airlines	228	227	197	86.8	198	87.2	1	0.4
Melbourne-Canberra								
Qantas	187	185	168	90.8	167	90.3	2	1.1
QantasLink	82	70	55	78.6	53	75.7	12	14.6
Virgin Australia	159	157	141	89.8	141	89.8	2	1.3
Virgin Australia Regional Airlines	28	28	21	75.0	24	85.7	0	0.0
All Airlines	456	440	385	87.5	385	87.5	16	3.5
Melbourne-Darwin								
Jetstar	31	31	27	87.1	25	80.6	0	0.0
Qantas	31	31	31	100.0	31	100.0	0	0.0
Virgin Australia	34	34	29	85.3	33	97.1	0	0.0
All Airlines	96	96	87	90.6	89	92.7	0	0.0
Melbourne-Gold Coast								
Jetstar	222	220	192	87.3	191	86.8	2	0.9
Tigerair	78	78	71	91.0	72	92.3	0	0.0
Virgin Australia	189	188	181	96.3	173	92.0	1	0.5
All Airlines	489	486	444	91.4	436	89.7	3	0.6
Melbourne-Hobart								
Jetstar	174	173	152	87.9	153	88.4	1	0.6
QantasLink	124	122	101	82.8	99	81.1	2	1.6
Tigerair	27	27	24	88.9	23	85.2	0	0.0
Virgin Australia	147	147	143	97.3	145	98.6	0	0.0
All Airlines	472	469	420	89.6	420	89.6	3	0.6

	<i>Sectors</i>		<i>Arrivals On Time</i>		<i>Departures On Time</i>		<i>Cancellations</i>	
	<i>Sched.</i>	<i>Flown</i>	<i>No.</i>	<i>%</i>	<i>No.</i>	<i>%</i>	<i>No.</i>	<i>%</i>
Melbourne-Launceston								
Jetstar	106	106	87	82.1	88	83.0	0	0.0
QantasLink	119	111	90	81.1	93	83.8	8	6.7
Virgin Australia	95	95	86	90.5	92	96.8	0	0.0
Virgin Australia Regional Airlines	5	5	3	60.0	3	60.0	0	0.0
All Airlines	325	317	266	83.9	276	87.1	8	2.5
Melbourne-Mildura								
QantasLink	88	88	81	92.0	81	92.0	0	0.0
Regional Express	88	88	79	89.8	81	92.0	0	0.0
Virgin Australia	31	31	28	90.3	28	90.3	0	0.0
All Airlines	207	207	188	90.8	190	91.8	0	0.0
Melbourne-Newcastle								
Jetstar	107	107	100	93.5	99	92.5	0	0.0
Virgin Australia	31	31	29	93.5	29	93.5	0	0.0
All Airlines	138	138	129	93.5	128	92.8	0	0.0
Melbourne-Perth								
Jetstar	62	48	46	95.8	41	85.4	14	22.6
Qantas	223	223	200	89.7	186	83.4	0	0.0
Tigerair	54	54	45	83.3	45	83.3	0	0.0
Virgin Australia	140	139	128	92.1	119	85.6	1	0.7
All Airlines	479	464	419	90.3	391	84.3	15	3.1
Melbourne-Sunshine Coast								
Jetstar	85	85	76	89.4	71	83.5	0	0.0
Virgin Australia	35	35	31	88.6	31	88.6	0	0.0
All Airlines	120	120	107	89.2	102	85.0	0	0.0
Melbourne-Sydney								
Jetstar	374	356	315	88.5	301	84.6	18	4.8
Qantas	1 015	989	934	94.4	919	92.9	26	2.6
Tigerair	244	237	199	84.0	201	84.8	7	2.9
Virgin Australia	805	786	758	96.4	763	97.1	19	2.4
All Airlines	2 438	2 368	2 206	93.2	2 184	92.2	70	2.9
Mildura-Melbourne								
QantasLink	88	86	77	89.5	81	94.2	2	2.3
Regional Express	87	87	72	82.8	77	88.5	0	0.0
Virgin Australia	31	31	29	93.5	28	90.3	0	0.0
All Airlines	206	204	178	87.3	186	91.2	2	1.0
Moranbah-Brisbane								
QantasLink	116	98	91	92.9	91	92.9	18	15.5
Virgin Australia Regional Airlines	71	71	65	91.5	66	93.0	0	0.0
All Airlines	187	169	156	92.3	157	92.9	18	9.6
Mount Isa-Brisbane								
Qantas	39	39	35	89.7	33	84.6	0	0.0
Virgin Australia	21	21	20	95.2	20	95.2	0	0.0
All Airlines	60	60	55	91.7	53	88.3	0	0.0
Newcastle-Brisbane								
Jetstar	87	86	77	89.5	78	90.7	1	1.1
QantasLink	78	77	67	87.0	64	83.1	1	1.3
Virgin Australia	83	83	79	95.2	78	94.0	0	0.0
All Airlines	248	246	223	90.7	220	89.4	2	0.8
Newcastle-Melbourne								
Jetstar	107	107	98	91.6	100	93.5	0	0.0
Virgin Australia	31	31	28	90.3	29	93.5	0	0.0
All Airlines	138	138	126	91.3	129	93.5	0	0.0

	<i>Sectors</i>		<i>Arrivals On Time</i>		<i>Departures On Time</i>		<i>Cancellations</i>	
	<i>Sched.</i>	<i>Flown</i>	<i>No.</i>	<i>%</i>	<i>No.</i>	<i>%</i>	<i>No.</i>	<i>%</i>
Newman-Perth								
Qantas	77	77	71	92.2	74	96.1	0	0.0
QantasLink	71	71	68	95.8	69	97.2	0	0.0
Virgin Australia	22	22	20	90.9	21	95.5	0	0.0
Virgin Australia Regional Airlines	5	5	5	100.0	5	100.0	0	0.0
All Airlines	175	175	164	93.7	169	96.6	0	0.0
Perth-Adelaide								
Jetstar	31	31	28	90.3	25	80.6	0	0.0
Qantas	116	116	113	97.4	111	95.7	0	0.0
Virgin Australia	75	75	74	98.7	71	94.7	0	0.0
All Airlines	222	222	215	96.8	207	93.2	0	0.0
Perth-Brisbane								
Qantas	132	132	115	87.1	111	84.1	0	0.0
Virgin Australia	108	108	105	97.2	105	97.2	0	0.0
All Airlines	240	240	220	91.7	216	90.0	0	0.0
Perth-Broome								
Qantas	34	34	29	85.3	28	82.4	0	0.0
QantasLink	49	48	46	95.8	46	95.8	1	2.0
Virgin Australia	24	24	21	87.5	20	83.3	0	0.0
Virgin Australia Regional Airlines	46	46	34	73.9	38	82.6	0	0.0
All Airlines	153	152	130	85.5	132	86.8	1	0.7
Perth-Darwin								
Qantas	39	39	38	97.4	38	97.4	0	0.0
Virgin Australia	31	31	27	87.1	26	83.9	0	0.0
All Airlines	70	70	65	92.9	64	91.4	0	0.0
Perth-Geraldton								
QantasLink	50	50	47	94.0	48	96.0	0	0.0
Virgin Australia Regional Airlines	85	85	76	89.4	78	91.8	0	0.0
All Airlines	135	135	123	91.1	126	93.3	0	0.0
Perth-Kalgoorlie								
Qantas	19	18	14	77.8	14	77.8	1	5.3
QantasLink	64	63	55	87.3	56	88.9	1	1.6
Virgin Australia	35	34	32	94.1	33	97.1	1	2.9
Virgin Australia Regional Airlines	21	21	18	85.7	18	85.7	0	0.0
All Airlines	139	136	119	87.5	121	89.0	3	2.2
Perth-Karratha								
Qantas	105	103	101	98.1	100	97.1	2	1.9
QantasLink	111	104	97	93.3	97	93.3	7	6.3
Virgin Australia	61	55	51	92.7	53	96.4	6	9.8
Virgin Australia Regional Airlines	24	24	16	66.7	18	75.0	0	0.0
All Airlines	301	286	265	92.7	268	93.7	15	5.0
Perth-Melbourne								
Jetstar	61	46	43	93.5	40	87.0	15	24.6
Qantas	223	223	188	84.3	190	85.2	0	0.0
Tigerair	54	52	49	94.2	50	96.2	2	3.7
Virgin Australia	140	139	125	89.9	127	91.4	1	0.7
All Airlines	478	460	405	88.0	407	88.5	18	3.8
Perth-Newman								
Qantas	77	77	76	98.7	75	97.4	0	0.0
QantasLink	71	71	70	98.6	69	97.2	0	0.0
Virgin Australia	22	22	20	90.9	20	90.9	0	0.0
Virgin Australia Regional Airlines	5	5	5	100.0	5	100.0	0	0.0
All Airlines	175	175	171	97.7	169	96.6	0	0.0

	<i>Sectors</i>		<i>Arrivals On Time</i>		<i>Departures On Time</i>		<i>Cancellations</i>	
	<i>Sched.</i>	<i>Flown</i>	<i>No.</i>	<i>%</i>	<i>No.</i>	<i>%</i>	<i>No.</i>	<i>%</i>
Perth-Port Hedland								
Qantas	97	94	88	93.6	90	95.7	3	3.1
QantasLink	46	46	40	87.0	43	93.5	0	0.0
Virgin Australia	41	41	38	92.7	39	95.1	0	0.0
All Airlines	184	181	166	91.7	172	95.0	3	1.6
Perth-Sydney								
Jetstar	29	29	27	93.1	22	75.9	0	0.0
Qantas	206	206	182	88.3	177	85.9	0	0.0
Tigerair	24	24	24	100.0	24	100.0	0	0.0
Virgin Australia	119	117	109	93.2	106	90.6	2	1.7
All Airlines	378	376	342	91.0	329	87.5	2	0.5
Port Hedland-Perth								
Qantas	97	93	83	89.2	84	90.3	4	4.1
QantasLink	46	46	41	89.1	41	89.1	0	0.0
Virgin Australia	41	41	37	90.2	38	92.7	0	0.0
All Airlines	184	180	161	89.4	163	90.6	4	2.2
Port Lincoln-Adelaide								
QantasLink	110	107	96	89.7	96	89.7	3	2.7
Regional Express	215	212	187	88.2	194	91.5	3	1.4
All Airlines	325	319	283	88.7	290	90.9	6	1.8
Port Macquarie-Sydney								
QantasLink	133	131	76	58.0	95	72.5	2	1.5
Virgin Australia Regional Airlines	62	62	50	80.6	50	80.6	0	0.0
All Airlines	195	193	126	65.3	145	75.1	2	1.0
Proserpine-Brisbane								
Jetstar	31	31	28	90.3	26	83.9	0	0.0
Virgin Australia	52	52	50	96.2	49	94.2	0	0.0
All Airlines	83	83	78	94.0	75	90.4	0	0.0
Rockhampton-Brisbane								
QantasLink	194	186	158	84.9	156	83.9	8	4.1
Virgin Australia	105	103	100	97.1	99	96.1	2	1.9
Virgin Australia Regional Airlines	108	104	85	81.7	84	80.8	4	3.7
All Airlines	407	393	343	87.3	339	86.3	14	3.4
Sunshine Coast-Melbourne								
Jetstar	85	85	69	81.2	64	75.3	0	0.0
Virgin Australia	35	35	29	82.9	30	85.7	0	0.0
All Airlines	120	120	98	81.7	94	78.3	0	0.0
Sunshine Coast-Sydney								
Jetstar	94	94	80	85.1	78	83.0	0	0.0
Virgin Australia	31	31	30	96.8	30	96.8	0	0.0
All Airlines	125	125	110	88.0	108	86.4	0	0.0
Sydney-Adelaide								
Jetstar	111	108	92	85.2	94	87.0	3	2.7
Qantas	242	242	224	92.6	224	92.6	0	0.0
QantasLink	20	18	16	88.9	15	83.3	2	10.0
Tigerair	31	30	29	96.7	29	96.7	1	3.2
Virgin Australia	176	175	157	89.7	163	93.1	1	0.6
All Airlines	580	573	518	90.4	525	91.6	7	1.2
Sydney-Albury								
QantasLink	97	97	83	85.6	84	86.6	0	0.0
Regional Express	108	107	82	76.6	83	77.6	1	0.9
Virgin Australia Regional Airlines	62	62	48	77.4	49	79.0	0	0.0
All Airlines	267	266	213	80.1	216	81.2	1	0.4

	<i>Sectors</i>		<i>Arrivals On Time</i>		<i>Departures On Time</i>		<i>Cancellations</i>	
	<i>Sched.</i>	<i>Flown</i>	<i>No.</i>	<i>%</i>	<i>No.</i>	<i>%</i>	<i>No.</i>	<i>%</i>
Sydney-Armidale								
QantasLink	134	134	111	82.8	117	87.3	0	0.0
Regional Express	75	75	69	92.0	69	92.0	0	0.0
All Airlines	209	209	180	86.1	186	89.0	0	0.0
Sydney-Ayers Rock								
Jetstar	31	31	24	77.4	29	93.5	0	0.0
Virgin Australia	31	31	23	74.2	28	90.3	0	0.0
All Airlines	62	62	47	75.8	57	91.9	0	0.0
Sydney-Ballina								
Jetstar	71	70	61	87.1	60	85.7	1	1.4
Regional Express	26	26	22	84.6	22	84.6	0	0.0
Virgin Australia	31	31	31	100.0	31	100.0	0	0.0
All Airlines	128	127	114	89.8	113	89.0	1	0.8
Sydney-Brisbane								
Jetstar	186	181	159	87.8	164	90.6	5	2.7
Qantas	632	622	570	91.6	596	95.8	10	1.6
Tigerair	99	98	85	86.7	89	90.8	1	1.0
Virgin Australia	572	566	524	92.6	543	95.9	6	1.0
All Airlines	1 489	1 467	1 338	91.2	1 392	94.9	22	1.5
Sydney-Cairns								
Jetstar	120	120	101	84.2	102	85.0	0	0.0
Qantas	76	76	72	94.7	74	97.4	0	0.0
Tigerair	31	31	27	87.1	31	100.0	0	0.0
Virgin Australia	93	92	88	95.7	87	94.6	1	1.1
All Airlines	320	319	288	90.3	294	92.2	1	0.3
Sydney-Canberra								
QantasLink	515	476	389	81.7	387	81.3	39	7.6
Virgin Australia	24	24	24	100.0	24	100.0	0	0.0
Virgin Australia Regional Airlines	278	270	249	92.2	245	90.7	8	2.9
All Airlines	817	770	662	86.0	656	85.2	47	5.8
Sydney-Coffs Harbour								
QantasLink	153	151	131	86.8	126	83.4	2	1.3
Tigerair	13	13	12	92.3	12	92.3	0	0.0
Virgin Australia	61	60	54	90.0	55	91.7	1	1.6
All Airlines	227	224	197	87.9	193	86.2	3	1.3
Sydney-Darwin								
Jetstar	31	31	21	67.7	23	74.2	0	0.0
Qantas	53	53	46	86.8	46	86.8	0	0.0
Virgin Australia	31	31	29	93.5	31	100.0	0	0.0
All Airlines	115	115	96	83.5	100	87.0	0	0.0
Sydney-Dubbo								
QantasLink	126	125	94	75.2	86	68.8	1	0.8
Regional Express	154	154	138	89.6	136	88.3	0	0.0
All Airlines	280	279	232	83.2	222	79.6	1	0.4
Sydney-Gold Coast								
Jetstar	281	277	249	89.9	247	89.2	4	1.4
Qantas	88	88	85	96.6	84	95.5	0	0.0
QantasLink	5	5	5	100.0	5	100.0	0	0.0
Tigerair	106	104	96	92.3	99	95.2	2	1.9
Virgin Australia	259	259	240	92.7	244	94.2	0	0.0
All Airlines	739	733	675	92.1	679	92.6	6	0.8

	<i>Sectors</i>		<i>Arrivals On Time</i>		<i>Departures On Time</i>		<i>Cancellations</i>	
	<i>Sched.</i>	<i>Flown</i>	<i>No.</i>	<i>%</i>	<i>No.</i>	<i>%</i>	<i>No.</i>	<i>%</i>
Sydney-Hamilton Island								
Jetstar	31	31	26	83.9	28	90.3	0	0.0
Qantas	9	9	8	88.9	8	88.9	0	0.0
Virgin Australia	31	31	29	93.5	30	96.8	0	0.0
All Airlines	71	71	63	88.7	66	93.0	0	0.0
Sydney-Hobart								
Jetstar	54	54	43	79.6	44	81.5	0	0.0
QantasLink	31	30	23	76.7	24	80.0	1	3.2
Virgin Australia	62	62	61	98.4	61	98.4	0	0.0
All Airlines	147	146	127	87.0	129	88.4	1	0.7
Sydney-Launceston								
Jetstar	40	40	38	95.0	38	95.0	0	0.0
Virgin Australia	31	31	29	93.5	29	93.5	0	0.0
All Airlines	71	71	67	94.4	67	94.4	0	0.0
Sydney-Melbourne								
Jetstar	374	357	312	87.4	309	86.6	17	4.5
Qantas	1 003	979	884	90.3	910	93.0	24	2.4
Tigerair	244	237	200	84.4	202	85.2	7	2.9
Virgin Australia	806	787	727	92.4	754	95.8	19	2.4
All Airlines	2 427	2 360	2 123	90.0	2 175	92.2	67	2.8
Sydney-Perth								
Jetstar	29	29	25	86.2	22	75.9	0	0.0
Qantas	211	210	186	88.6	186	88.6	1	0.5
Tigerair	23	23	20	87.0	21	91.3	0	0.0
Virgin Australia	119	118	106	89.8	107	90.7	1	0.8
All Airlines	382	380	337	88.7	336	88.4	2	0.5
Sydney-Port Macquarie								
QantasLink	134	132	93	70.5	111	84.1	2	1.5
Virgin Australia Regional Airlines	62	62	53	85.5	53	85.5	0	0.0
All Airlines	196	194	146	75.3	164	84.5	2	1.0
Sydney-Sunshine Coast								
Jetstar	94	94	80	85.1	81	86.2	0	0.0
Virgin Australia	31	31	30	96.8	30	96.8	0	0.0
All Airlines	125	125	110	88.0	111	88.8	0	0.0
Sydney-Townsville								
Jetstar	27	27	26	96.3	23	85.2	0	0.0
Virgin Australia	27	27	25	92.6	26	96.3	0	0.0
All Airlines	54	54	51	94.4	49	90.7	0	0.0
Sydney-Wagga Wagga								
QantasLink	114	113	96	85.0	92	81.4	1	0.9
Regional Express	140	140	125	89.3	120	85.7	0	0.0
All Airlines	254	253	221	87.4	212	83.8	1	0.4
Townsville-Brisbane								
Jetstar	62	61	59	96.7	58	95.1	1	1.6
Qantas	149	149	149	100.0	147	98.7	0	0.0
Virgin Australia	156	156	153	98.1	148	94.9	0	0.0
All Airlines	367	366	361	98.6	353	96.4	1	0.3
Townsville-Sydney								
Jetstar	27	27	27	100.0	25	92.6	0	0.0
Virgin Australia	27	27	23	85.2	22	81.5	0	0.0
All Airlines	54	54	50	92.6	47	87.0	0	0.0

	<i>Sectors</i>		<i>Arrivals On Time</i>		<i>Departures On Time</i>		<i>Cancellations</i>	
	<i>Sched.</i>	<i>Flown</i>	<i>No.</i>	<i>%</i>	<i>No.</i>	<i>%</i>	<i>No.</i>	<i>%</i>
Wagga Wagga-Sydney								
QantasLink	114	113	94	83.2	91	80.5	1	0.9
Regional Express	139	139	125	89.9	129	92.8	0	0.0
All Airlines	253	252	219	86.9	220	87.3	1	0.4

Airports

On time performance is reported for all routes where the passenger load averages over 8000 passengers per month, and where two or more airlines operate in competition. The following data reports by airport against flights operated on those routes only. This month, 8 major city airports and 32 regional city airports are covered.

Airport	Arrivals			Departures		
	Sectors	On Time		Sectors	On Time	
	Flown	No.	%	Flown	No.	%
Adelaide						
Jetstar	306	263	85.9	302	268	88.7
Qantas	836	790	94.5	835	790	94.6
QantasLink	125	112	89.6	127	115	90.6
Regional Express	212	187	88.2	211	196	92.9
Tigerair	119	106	89.1	119	109	91.6
Virgin Australia	724	664	91.7	724	673	93.0
All Airlines	2 322	2 122	91.4	2 318	2 151	92.8
Relates to services to and from Alice Springs, Brisbane, Canberra, Gold Coast, Melbourne, Perth, Port Lincoln and Sydney.						
Albury						
QantasLink	97	83	85.6	97	83	85.6
Regional Express	107	82	76.6	108	96	88.9
Virgin Australia Regional Airlines	62	48	77.4	62	48	77.4
All Airlines	266	213	80.1	267	227	85.0
Relates to services to and from Sydney only.						
Alice Springs						
Qantas	31	28	90.3	31	29	93.5
QantasLink	62	57	91.9	62	60	96.8
Virgin Australia	26	25	96.2	26	24	92.3
All Airlines	119	110	92.4	119	113	95.0
Relates to services to and from Adelaide and Darwin.						
Armidale						
QantasLink	134	111	82.8	134	108	80.6
Regional Express	75	69	92.0	79	71	89.9
All Airlines	209	180	86.1	213	179	84.0
Relates to services to and from Sydney only.						
Ayers Rock						
Jetstar	31	24	77.4	30	23	76.7
Virgin Australia	31	23	74.2	31	23	74.2
All Airlines	62	47	75.8	61	46	75.4
Relates to services to and from Sydney only.						
Ballina						
Jetstar	70	61	87.1	70	54	77.1
Regional Express	26	22	84.6	24	20	83.3
Virgin Australia	31	31	100.0	31	30	96.8
All Airlines	127	114	89.8	125	104	83.2
Relates to services to and from Sydney only.						

Airport	Arrivals			Departures		
	Sectors Flown	On Time		Sectors Flown	On Time	
		No.	%		No.	%
Brisbane						
Jetstar	726	653	89.9	727	652	89.7
Qantas	1 679	1 546	92.1	1 678	1 587	94.6
QantasLink	1 082	970	89.6	1 086	997	91.8
Tigerair	292	252	86.3	292	261	89.4
Virgin Australia	2 088	1 953	93.5	2 087	1 980	94.9
Virgin Australia Regional Airlines	428	370	86.4	428	369	86.2
All Airlines	6 295	5 744	91.2	6 298	5 846	92.8

Relates to services to and from Adelaide, Bundaberg, Cairns, Canberra, Darwin, Emerald, Gladstone, Hamilton Island, Hobart, Mackay, Melbourne, Moranbah, Mount Isa, Newcastle, Perth, Proserpine, Rockhampton, Sydney and Townsville.

Broome

Qantas	34	29	85.3	34	18	52.9
QantasLink	48	46	95.8	48	44	91.7
Virgin Australia	24	21	87.5	23	19	82.6
Virgin Australia Regional Airlines	46	34	73.9	46	30	65.2
All Airlines	152	130	85.5	151	111	73.5

Relates to services to and from Perth only.

Bundaberg

QantasLink	135	124	91.9	135	126	93.3
Virgin Australia Regional Airlines	41	35	85.4	40	36	90.0
All Airlines	176	159	90.3	175	162	92.6

Relates to services to and from Brisbane only.

Cairns

Jetstar	356	306	86.0	357	295	82.6
Qantas	236	220	93.2	236	224	94.9
QantasLink	5	4	80.0	5	5	100.0
Tigerair	92	82	89.1	93	71	76.3
Virgin Australia	264	249	94.3	264	244	92.4
All Airlines	953	861	90.3	955	839	87.9

Relates to services to and from Brisbane, Melbourne and Sydney.

Canberra

Qantas	258	235	91.1	258	240	93.0
QantasLink	670	552	82.4	671	565	84.2
Virgin Australia	305	281	92.1	305	284	93.1
Virgin Australia Regional Airlines	298	270	90.6	297	275	92.6
All Airlines	1 531	1 338	87.4	1 531	1 364	89.1

Relates to services to and from Adelaide, Brisbane, Melbourne and Sydney.

Coffs Harbour

QantasLink	151	131	86.8	151	126	83.4
Tigerair	13	12	92.3	13	12	92.3
Virgin Australia	60	54	90.0	60	54	90.0
All Airlines	224	197	87.9	224	192	85.7

Relates to services to and from Sydney only.

Airport	Arrivals			Departures		
	Sectors Flown	On Time		Sectors Flown	On Time	
		No.	%		No.	%
Darwin						
Jetstar	91	76	83.5	91	61	67.0
Qantas	171	155	90.6	171	151	88.3
QantasLink	62	59	95.2	62	57	91.9
Tigerair	20	20	100.0	19	19	100.0
Virgin Australia	140	123	87.9	140	109	77.9
All Airlines	484	433	89.5	483	397	82.2
Relates to services to and from Alice Springs, Brisbane, Melbourne, Perth and Sydney.						
Dubbo						
QantasLink	125	94	75.2	125	98	78.4
Regional Express	154	138	89.6	155	144	92.9
All Airlines	279	232	83.2	280	242	86.4
Relates to services to and from Sydney only.						
Emerald						
QantasLink	141	123	87.2	140	120	85.7
Virgin Australia Regional Airlines	77	59	76.6	77	65	84.4
All Airlines	218	182	83.5	217	185	85.3
Relates to services to and from Brisbane only.						
Geraldton						
QantasLink	50	47	94.0	50	47	94.0
Virgin Australia Regional Airlines	85	76	89.4	88	80	90.9
All Airlines	135	123	91.1	138	127	92.0
Relates to services to and from Perth only.						
Gladstone						
QantasLink	194	184	94.8	193	183	94.8
Virgin Australia	7	7	100.0	7	7	100.0
Virgin Australia Regional Airlines	136	118	86.8	136	120	88.2
All Airlines	337	309	91.7	336	310	92.3
Relates to services to and from Brisbane only.						
Gold Coast						
Jetstar	528	472	89.4	525	471	89.7
Qantas	88	85	96.6	88	82	93.2
QantasLink	5	5	100.0	5	4	80.0
Tigerair	182	167	91.8	182	165	90.7
Virgin Australia	478	452	94.6	477	444	93.1
All Airlines	1 281	1 181	92.2	1 277	1 166	91.3
Relates to services to and from Adelaide, Melbourne and Sydney.						
Hamilton Island						
Jetstar	31	26	83.9	30	24	80.0
Qantas	9	8	88.9	9	7	77.8
QantasLink	19	16	84.2	19	12	63.2
Virgin Australia	62	57	91.9	62	51	82.3
All Airlines	121	107	88.4	120	94	78.3
Relates to services to and from Brisbane and Sydney.						

Airport	Arrivals			Departures		
	Sectors Flown	On Time		Sectors Flown	On Time	
		No.	%		No.	%
Hobart						
Jetstar	257	221	86.0	254	203	79.9
QantasLink	152	124	81.6	152	129	84.9
Tigerair	27	24	88.9	27	24	88.9
Virgin Australia	240	233	97.1	241	224	92.9
All Airlines	676	602	89.1	674	580	86.1
Relates to services to and from Brisbane, Melbourne and Sydney.						
Kalgoorlie						
Qantas	18	14	77.8	20	16	80.0
QantasLink	63	55	87.3	63	57	90.5
Virgin Australia	34	32	94.1	35	34	97.1
Virgin Australia Regional Airlines	21	18	85.7	21	18	85.7
All Airlines	136	119	87.5	139	125	89.9
Relates to services to and from Perth only.						
Karratha						
Qantas	103	101	98.1	102	100	98.0
QantasLink	104	97	93.3	102	97	95.1
Virgin Australia	55	51	92.7	55	53	96.4
Virgin Australia Regional Airlines	24	16	66.7	24	18	75.0
All Airlines	286	265	92.7	283	268	94.7
Relates to services to and from Perth only.						
Launceston						
Jetstar	146	125	85.6	145	124	85.5
QantasLink	111	90	81.1	111	96	86.5
Virgin Australia	126	115	91.3	126	122	96.8
Virgin Australia Regional Airlines	5	3	60.0	5	2	40.0
All Airlines	388	333	85.8	387	344	88.9
Relates to services to and from Melbourne and Sydney.						
Mackay						
Jetstar	58	51	87.9	58	46	79.3
QantasLink	104	96	92.3	105	100	95.2
Virgin Australia	156	152	97.4	156	149	95.5
All Airlines	318	299	94.0	319	295	92.5
Relates to services to and from Brisbane only.						
Melbourne						
Jetstar	1 451	1 262	87.0	1 458	1 247	85.5
Qantas	2 190	2 006	91.6	2 195	1 994	90.8
QantasLink	390	334	85.6	391	326	83.4
Regional Express	87	72	82.8	88	81	92.0
Tigerair	605	518	85.6	607	522	86.0
Virgin Australia	2 367	2 153	91.0	2 367	2 230	94.2
Virgin Australia Regional Airlines	31	24	77.4	33	27	81.8
All Airlines	7 121	6 369	89.4	7 139	6 427	90.0
Relates to services to and from Adelaide, Brisbane, Cairns, Canberra, Darwin, Gold Coast, Hobart, Launceston, Mildura, Newcastle, Perth, Sunshine Coast and Sydney.						

Airport	Arrivals			Departures		
	Sectors Flown	On Time		Sectors Flown	On Time	
		No.	%		No.	%
Mildura						
QantasLink	88	81	92.0	86	81	94.2
Regional Express	88	79	89.8	87	77	88.5
Virgin Australia	31	28	90.3	31	28	90.3
All Airlines	207	188	90.8	204	186	91.2
Relates to services to and from Melbourne only.						
Moranbah						
QantasLink	103	95	92.2	98	91	92.9
Virgin Australia Regional Airlines	71	64	90.1	71	66	93.0
All Airlines	174	159	91.4	169	157	92.9
Relates to services to and from Brisbane only.						
Mount Isa						
Qantas	39	34	87.2	39	33	84.6
Virgin Australia	21	20	95.2	21	20	95.2
All Airlines	60	54	90.0	60	53	88.3
Relates to services to and from Brisbane only.						
Newcastle						
Jetstar	193	177	91.7	193	178	92.2
QantasLink	77	60	77.9	77	64	83.1
Virgin Australia	114	105	92.1	114	107	93.9
All Airlines	384	342	89.1	384	349	90.9
Relates to services to and from Brisbane and Melbourne.						
Newman						
Qantas	77	76	98.7	77	74	96.1
QantasLink	71	70	98.6	71	69	97.2
Virgin Australia	22	20	90.9	22	21	95.5
Virgin Australia Regional Airlines	5	5	100.0	5	5	100.0
All Airlines	175	171	97.7	175	169	96.6
Relates to services to and from Perth only.						
Perth						
Jetstar	108	97	89.8	106	87	82.1
Qantas	1 045	928	88.8	1 042	934	89.6
QantasLink	380	352	92.6	382	359	94.0
Tigerair	77	65	84.4	76	74	97.4
Virgin Australia	650	575	88.5	646	600	92.9
Virgin Australia Regional Airlines	184	145	78.8	181	157	86.7
All Airlines	2 444	2 162	88.5	2 433	2 211	90.9
Relates to services to and from Adelaide, Brisbane, Broome, Darwin, Geraldton, Kalgoorlie, Karratha, Melbourne, Newman, Port Hedland and Sydney.						
Port Hedland						
Qantas	94	88	93.6	93	84	90.3
QantasLink	46	40	87.0	46	41	89.1
Virgin Australia	41	38	92.7	41	38	92.7
All Airlines	181	166	91.7	180	163	90.6
Relates to services to and from Perth only.						

Airport	Arrivals			Departures		
	Sectors Flown	On Time		Sectors Flown	On Time	
		No.	%		No.	%
Port Lincoln						
QantasLink	109	98	89.9	107	96	89.7
Regional Express	211	190	90.0	212	194	91.5
All Airlines	320	288	90.0	319	290	90.9
Relates to services to and from Adelaide only.						
Port Macquarie						
QantasLink	132	93	70.5	131	95	72.5
Virgin Australia Regional Airlines	62	53	85.5	62	50	80.6
All Airlines	194	146	75.3	193	145	75.1
Relates to services to and from Sydney only.						
Proserpine						
Jetstar	31	28	90.3	31	26	83.9
Virgin Australia	52	50	96.2	52	49	94.2
All Airlines	83	78	94.0	83	75	90.4
Relates to services to and from Brisbane only.						
Rockhampton						
QantasLink	184	165	89.7	186	156	83.9
Virgin Australia	103	100	97.1	103	99	96.1
Virgin Australia Regional Airlines	103	82	79.6	104	84	80.8
All Airlines	390	347	89.0	393	339	86.3
Relates to services to and from Brisbane only.						
Sunshine Coast						
Jetstar	179	156	87.2	179	142	79.3
Virgin Australia	66	61	92.4	66	60	90.9
All Airlines	245	217	88.6	245	202	82.4
Relates to services to and from Melbourne and Sydney.						
Sydney						
Jetstar	1 444	1 265	87.6	1 450	1 264	87.2
Qantas	2 279	2 144	94.1	2 279	2 128	93.4
QantasLink	1 280	1 043	81.5	1 281	1 047	81.7
Regional Express	505	445	88.1	502	430	85.7
Tigerair	537	477	88.8	536	483	90.1
Virgin Australia	2 351	2 212	94.1	2 356	2 243	95.2
Virgin Australia Regional Airlines	395	352	89.1	394	347	88.1
All Airlines	8 791	7 938	90.3	8 798	7 942	90.3
Relates to services to and from Adelaide, Albury, Armidale, Ayers Rock, Ballina, Brisbane, Cairns, Canberra, Coffs Harbour, Darwin, Dubbo, Gold Coast, Hamilton Island, Hobart, Launceston, Melbourne, Perth, Port Macquarie, Sunshine Coast, Townsville and Wagga Wagga.						
Townsville						
Jetstar	88	84	95.5	88	83	94.3
Qantas	149	144	96.6	149	147	98.7
Virgin Australia	183	177	96.7	183	170	92.9
All Airlines	420	405	96.4	420	400	95.2
Relates to services to and from Brisbane and Sydney.						
Wagga Wagga						
QantasLink	113	96	85.0	113	91	80.5
Regional Express	140	125	89.3	139	129	92.8
All Airlines	253	221	87.4	252	220	87.3
Relates to services to and from Sydney only.						

Definitions

On time arrival	A flight arrival is counted as "on time" if it arrived at the gate before 15 minutes after the scheduled arrival time shown in the carriers' schedule. Neither diverted nor cancelled flights count as on time.
On time departure	A flight departure is counted as "on time" if it departs the gate before 15 minutes after the scheduled departure time shown in the carriers' schedule.
Cancellation	A flight removed from service within 7 days of scheduled departure is regarded as a cancellation.
On time departure percentage	The percentage of on time departures is measured against the number of departures <i>operated</i> on any particular sector.
On time arrival percentage	The percentage of on time arrivals is measured against the number of arrivals <i>operated</i> on any particular sector.
Cancellation percentage	The percentage of cancellations is measured against the number of services <i>scheduled</i> on any particular sector.
