



Australian Government

Department of Infrastructure and Regional Development

Bureau of Infrastructure, Transport and Regional Economics

STATISTICAL REPORT



Aviation

Domestic airline on time performance
August 2014

© Commonwealth of Australia 2014

ISSN: 1832-0759

Ownership of intellectual property rights in this publication

Unless otherwise noted, copyright (and any other intellectual property rights, if any) in this publication is owned by the Commonwealth of Australia (referred to below as the Commonwealth).

Disclaimer

The material contained in this publication is made available on the understanding that the Commonwealth is not providing professional advice, and that users exercise their own skill and care with respect to its use, and seek independent advice if necessary.

The Commonwealth makes no representations or warranties as to the contents or accuracy of the information contained in this publication. To the extent permitted by law, the Commonwealth disclaims liability to any person or organisation in respect of anything done, or omitted to be done, in reliance upon information contained in this publication.

Creative Commons licence

With the exception of (a) the Coat of Arms; and (b) the Department of Infrastructure and Regional Development's photos and graphics, copyright in this publication is licensed under a Creative Commons Attribution 3.0 Australia Licence.

Creative Commons Attribution 3.0 Australia Licence is a standard form licence agreement that allows you to copy, communicate and adapt this publication provided that you attribute the work to the Commonwealth and abide by the other licence terms. A summary of the licence terms is available from <http://creativecommons.org/licenses/by/3.0/au/deed.en>. The full licence terms are available from <http://creativecommons.org/licenses/by/3.0/au/legalcode>.

Use of the Coat of Arms

The Department of the Prime Minister and Cabinet sets the terms under which the Coat of Arms is used. Please refer to the Department's Commonwealth Coat of Arms and Government branding web page <http://www.dpmmc.gov.au/guidelines/index.cfm#brand> and, in particular, the Guidelines on the use of the Commonwealth Coat of Arms publication.

An appropriate citation for this report is:

Bureau of Infrastructure, Transport and Regional Economics (BITRE), 2014, Domestic airline on time performance, Statistical Report, BITRE, Canberra ACT.

Contact us

This publication is available in PDF format. All other rights are reserved, including in relation to any Departmental logos or trade marks which may exist. For enquiries regarding the licence and any use of this publication, please contact:

Bureau of Infrastructure, Transport and Regional Economics (BITRE)
Department of Infrastructure and Regional Development
GPO Box 501, Canberra ACT 2601, Australia
Telephone: (international) +61 2 6274 7210
Fax: (international) +61 2 6274 6855
Email: bitre@infrastructure.gov.au
Website: www.bitre.gov.au

Inquiries

Should you require additional information about the statistics contained in this publication:

Telephone (02) 6274 7790 or Facsimile (02) 6274 7727

Electronic mail: AVSTATS@infrastructure.gov.au

Web site: <http://www.bitre.gov.au/statistics/aviation/otphome.aspx>

Foreword

The Bureau of Infrastructure, Transport and Regional Economics (BITRE) monitors the punctuality and reliability of major domestic airlines operating between Australian airports. The purpose of this is to allow for evaluation of overall industry and individual airline performance, so that consumers of air travel can make informed decisions.

The following domestic airlines currently report this information monthly to the BITRE: Jetstar, Qantas, QantasLink, Regional Express, Tigerair, Virgin Australia and Virgin Australia Regional Airlines. Data has been gathered since November 2003, although some airlines commenced reporting at a later date, including Jetstar which first reported in May 2004, MacAir in July 2005 and Tigerair in April 2008. MacAir ceased operations in February 2009 and data was not received for December 2008 onwards. Virgin Blue was rebranded as Virgin Australia in May 2011 and Tiger Airways was rebranded as Tigerair in July 2013 and time series data in Microsoft Excel spreadsheet format on the BITRE website have been revised to reflect these changes. Virgin Australia Regional Airlines commenced operations in May 2013. It was formed after the acquisition of Skywest by Virgin Australia and represents a combination of operations previously reported under Skywest and Virgin Australia – ATR/F100 Operations. Services operated by Skywest on behalf of Virgin Australia using ATR/F100 aircraft commenced in November 2011 and were shown separately as Virgin Australia – ATR/F100 Operations until April 2013.

Information presented in this report is for Australian domestic routes for which the passenger load averaged 8 000 or more passengers per month over the previous six months and where two or more airlines operated in competition on those routes. There were 62 routes that met this definition in August 2014. Over time, routes which meet these criteria change as airline networks and traffic levels vary.

Participating airlines report their overall monthly network performance where this is possible.

Total industry figures encompass all services operated by reporting airlines only. These airlines collectively carried over 95 per cent of total domestic passengers (regular public transport only) in 2013.

The method of capturing on time performance varies between airlines utilising different recording systems. Jetstar and Qantas jet aircraft use Aircraft Communication Addressing and Reporting System (ACARS) to electronically measure on time performance. Regional Express, Tigerair, Virgin Australia, Virgin Australia Regional Airlines and the Qantas non-jet fleet record on time performance manually using records from pilots, gate agents and/or ground crews.

After initial data is collected, aggregate reports are audited internally by participating airlines prior to publication.

Reports and detailed time series data in Microsoft Excel spreadsheet format are available from the BITRE website at: <http://www.bitre.gov.au/statistics/aviation/otphome.aspx>.

Contents

	Page
Industry performance	1
Individual routes	9
Airports	21
Definitions	27

Industry performance

For August 2014, on time performance over all routes operated by participating airlines (Jetstar, Qantas, QantasLink, Regional Express, Tigerair, Virgin Australia and Virgin Australia Regional Airlines) averaged 84.2 per cent for on time departures and 83.0 per cent for on time arrivals. Cancellations represented 1.8 per cent of all scheduled flights. The equivalent figures for August 2013 were 83.8 per cent for departures, 81.0 per cent for arrivals and 1.3 per cent for cancellations.

This month's figures were better than the long term average performance for all routes (83.7 per cent for departures and 82.2 per cent for arrivals). The rate of cancellations was above the long term average of 1.3 per cent.

Of the major domestic airlines, Qantas achieved the highest level of on time departures for August 2014 at 87.0 per cent, followed by Jetstar at 82.3 per cent, Virgin Australia at 80.4 per cent and Tigerair at 76.5 per cent. The regional airlines were led by Regional Express at 87.1 per cent, followed by QantasLink at 86.1 per cent and Virgin Australia Regional Airlines at 86.0 per cent.

Qantas also achieved the highest on time arrivals among the major domestic airlines at 85.9 per cent, followed by Jetstar at 83.8 per cent, Virgin Australia at 80.7 per cent and Tigerair at 73.9 per cent. Regional Express was the best performing regional airline for on time arrivals at 83.7 per cent, followed by Virgin Australia Regional Airlines at 83.6 per cent and QantasLink at 83.3 per cent.

Virgin Australia had the highest percentage of cancellations (3.4 per cent) during the month, followed by QantasLink (1.9 per cent), Jetstar (1.2 per cent), Tigerair (also 1.2 per cent), Qantas (1.1 per cent), Virgin Australia Regional Airlines (0.9 per cent) and Regional Express (0.4 per cent).

Of the 62 routes which met the criteria for on time performance reporting in August 2014, the Brisbane-Mount Isa and Port Lincoln-Adelaide routes had the highest percentage of on time departures (both at 97.4 per cent). The Adelaide-Port Lincoln route had the highest percentage of on time arrivals (96.8 per cent). The Darwin-Sydney route had the lowest percentage of on time departures (53.3 per cent) and the Darwin-Brisbane route had the lowest percentage of on time arrivals (63.7 per cent).

Cancellations were highest on the Melbourne-Sydney route at 4.9 per cent, followed by Sydney-Melbourne at 4.7 per cent, Canberra-Sydney at 4.2 per cent, Brisbane-Moranbah at 3.8 per cent and Sydney-Canberra at 3.7 per cent.

Port Lincoln airport recorded the highest percentage of on time departures (97.4 per cent) and the highest percentage of on time arrivals (96.8 per cent). Darwin Airport recorded the lowest percentage of on time departures (63.5 per cent) and Port Macquarie Airport recorded the lowest percentage of on time arrivals (71.8 per cent). These figures only refer to reported routes and do not cover all flights at these airports.

Table 1 On time performance for August 2014 — Total Industry

	<i>Sectors</i>		<i>Departures On Time</i>		<i>Arrivals On Time</i>		<i>Cancellations</i>	
	<i>Scheduled</i>	<i>Flown</i>	<i>No.</i>	<i>%</i>	<i>No.</i>	<i>%</i>	<i>No.</i>	<i>%</i>
Jetstar	6 889	6 803	5 601	82.3	5 703	83.8	86	1.2
Qantas	9 720	9 611	8 359	87.0	8 257	85.9	109	1.1
QantasLink	10 625	10 422	8 978	86.1	8 685	83.3	203	1.9
Regional Express	5 778	5 756	5 012	87.1	4 815	83.7	22	0.4
Tigerair	1 720	1 700	1 300	76.5	1 256	73.9	20	1.2
Virgin Australia	11 374	10 982	8 828	80.4	8 857	80.7	392	3.4
Virgin Australia Regional Airlines	2 580	2 558	2 199	86.0	2 138	83.6	22	0.9
All Airlines	48 686	47 832	40 277	84.2	39 711	83.0	854	1.8

Total airline network data (including routes not shown in this report).

Table 2 Top ten routes for on time performance for August 2014 (participating airlines only)

<i>Departures</i>		<i>Arrivals</i>	
<i>Route</i>	<i>On Time (%)</i>	<i>Route</i>	<i>On Time (%)</i>
Brisbane-Mount Isa	97.4	Adelaide-Port Lincoln	96.8
Port Lincoln-Adelaide	97.4	Gold Coast-Adelaide	96.7
Adelaide-Port Lincoln	97.1	Adelaide-Canberra	96.7
Perth-Geraldton	96.5	Perth-Newman	96.5
Newman-Perth	95.9	Newman-Perth	95.9
Adelaide-Canberra	95.6	Perth-Port Hedland	95.9
Adelaide-Gold Coast	95.1	Port Lincoln-Adelaide	95.8
Perth-Port Hedland	94.8	Canberra-Adelaide	95.6
Canberra-Adelaide	94.4	Adelaide-Perth	95.2
Perth-Newman	94.2	Adelaide-Gold Coast	95.1

Table 3 Top ten airports for on time performance for August 2014 (participating airlines and reported routes only)

<i>Departures</i>		<i>Arrivals</i>	
<i>Airport</i>	<i>On Time (%)</i>	<i>Airport</i>	<i>On Time (%)</i>
Port Lincoln	97.4	Port Lincoln	96.8
Newman	95.9	Newman	96.5
Geraldton	92.5	Port Hedland	95.9
Port Hedland	91.8	Ayers Rock	93.4
Adelaide	90.3	Broome	93.4
Perth	89.4	Mount Isa	92.3
Wagga Wagga	89.4	Karratha	91.7
Ayers Rock	88.3	Geraldton	91.6
Kalgoorlie	88.1	Kalgoorlie	91.5
Dubbo	88.0	Adelaide	91.1

Total industry on time performance

Figure 1 On time performance (by month from August 2011)—Total Industry

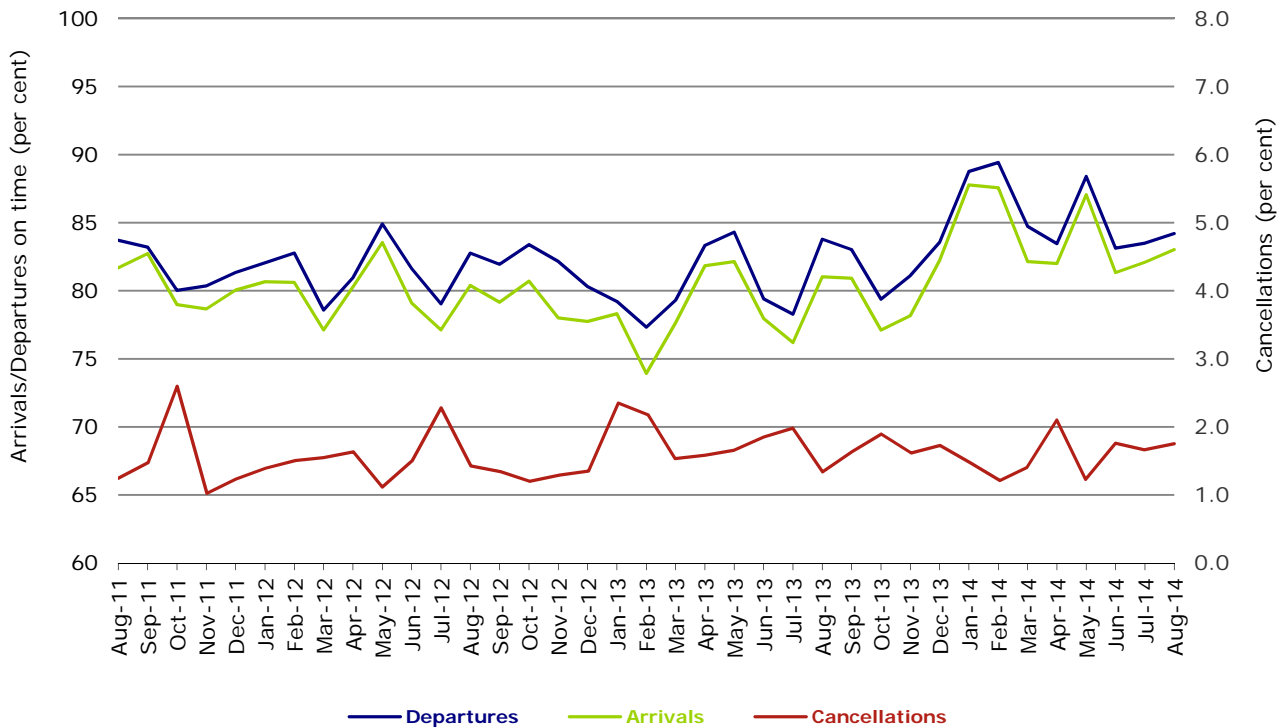


Figure 2 Departures on time (by month from August 2013)

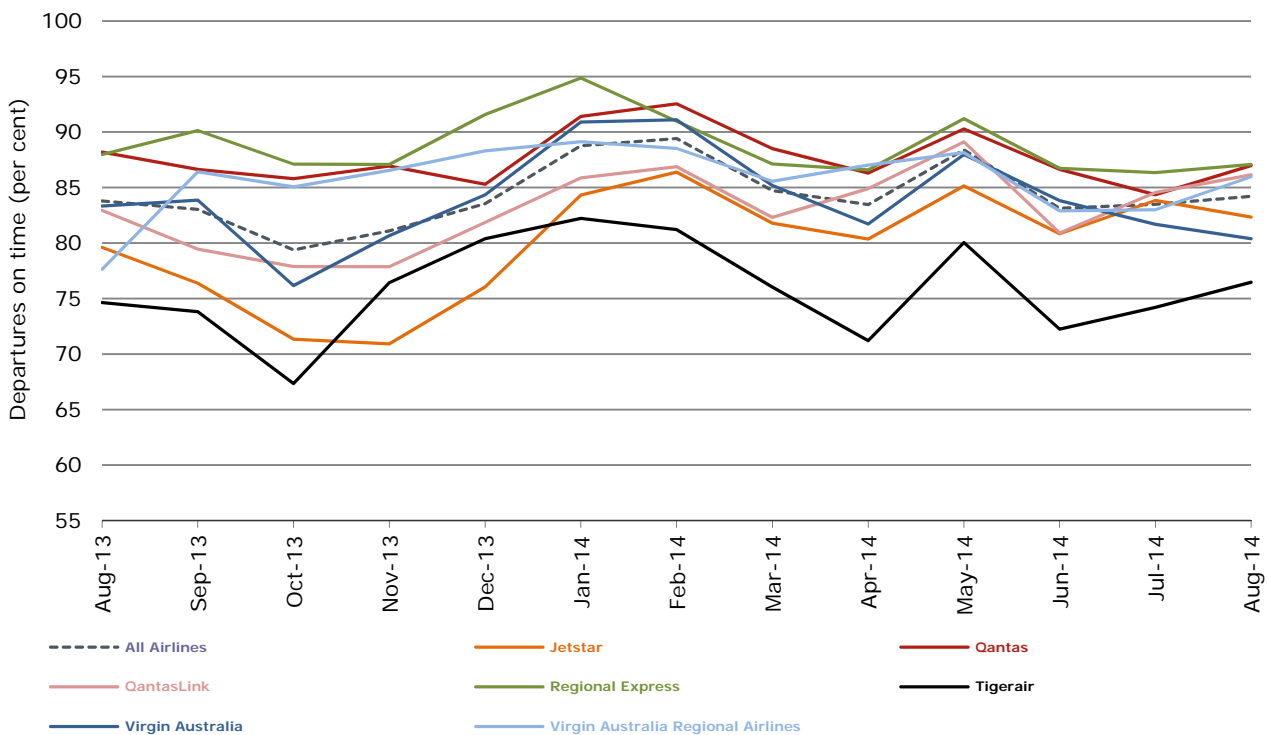


Figure 3 Arrivals on time (by month from August 2013)

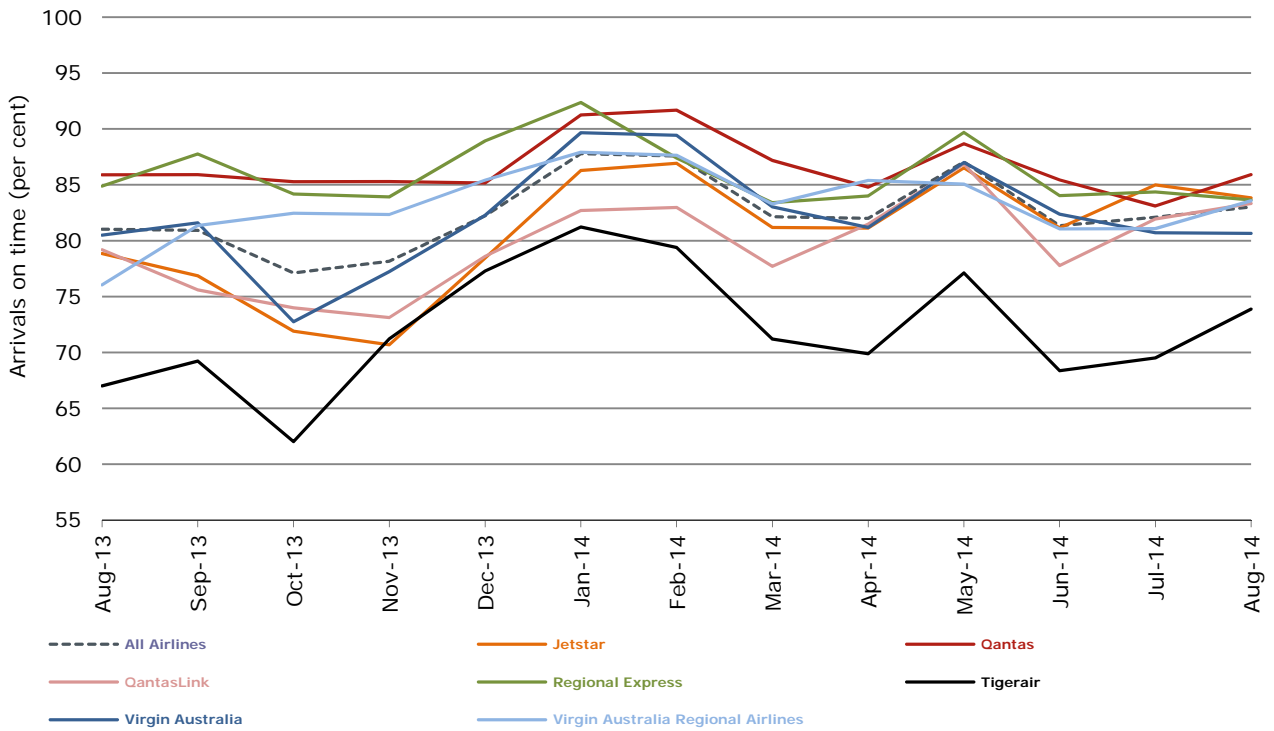
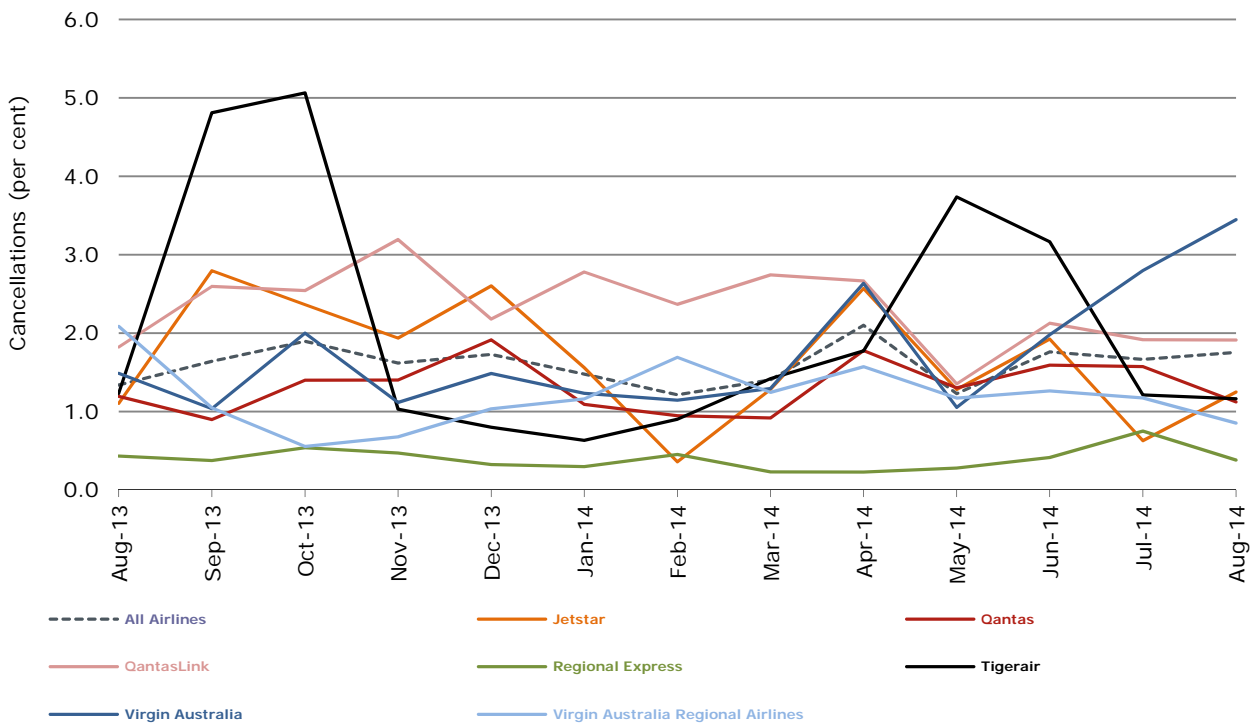


Figure 4 Cancellations (by month from August 2013)



Major domestic airlines on time performance

Figure 5 On time performance (by month from August 2011)—Jetstar

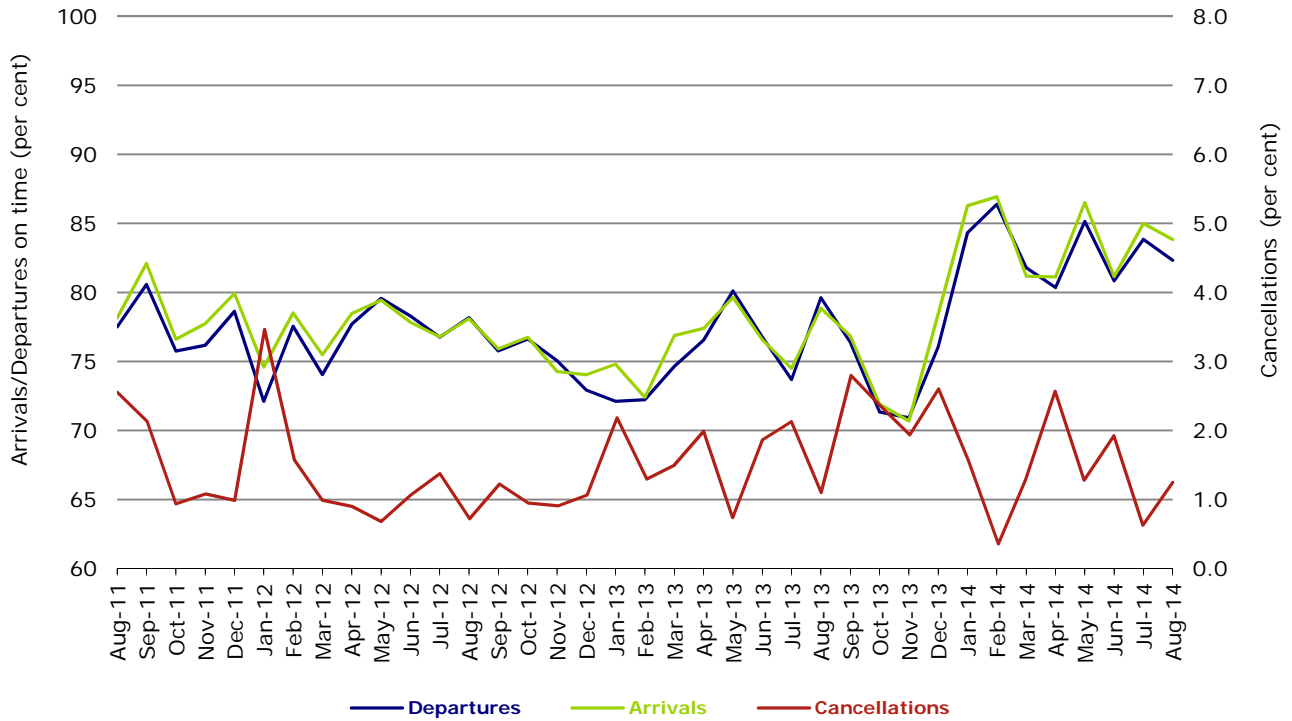


Figure 6 On time performance (by month from August 2011)—Qantas

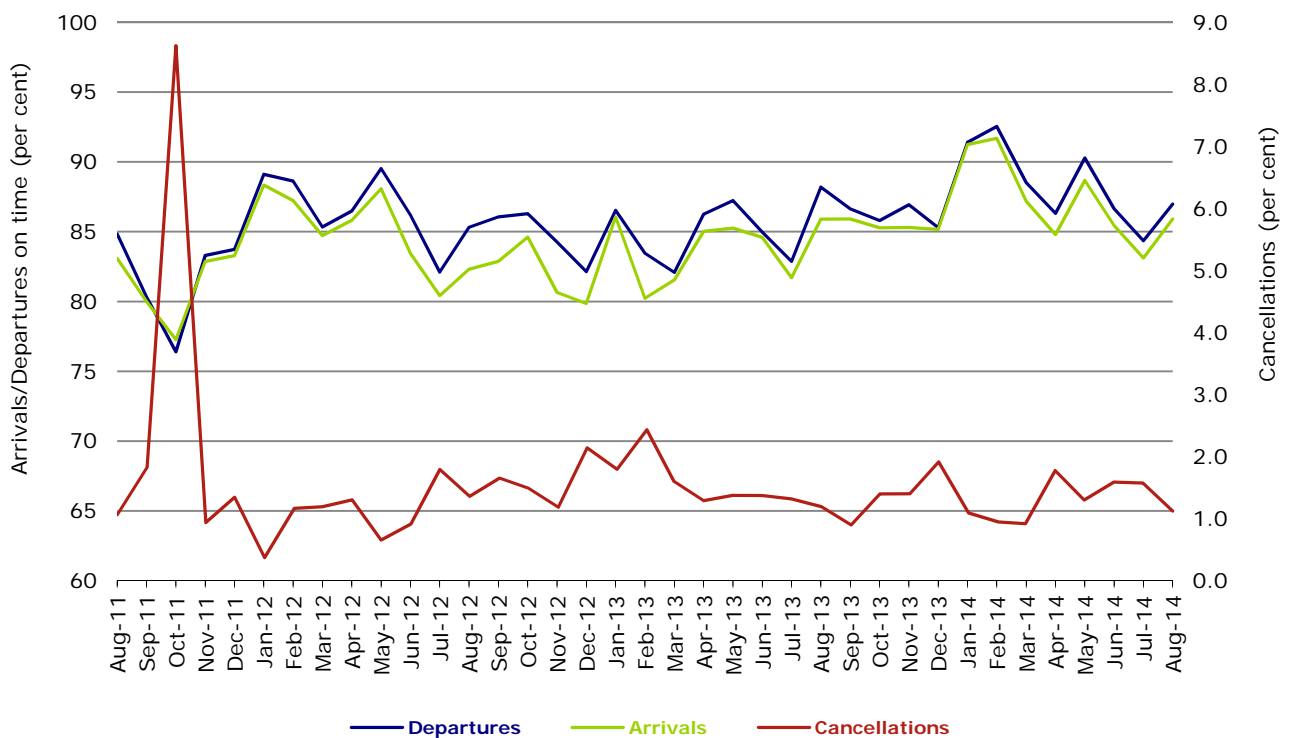


Figure 7 On time performance (by month from August 2011)—Tigerair

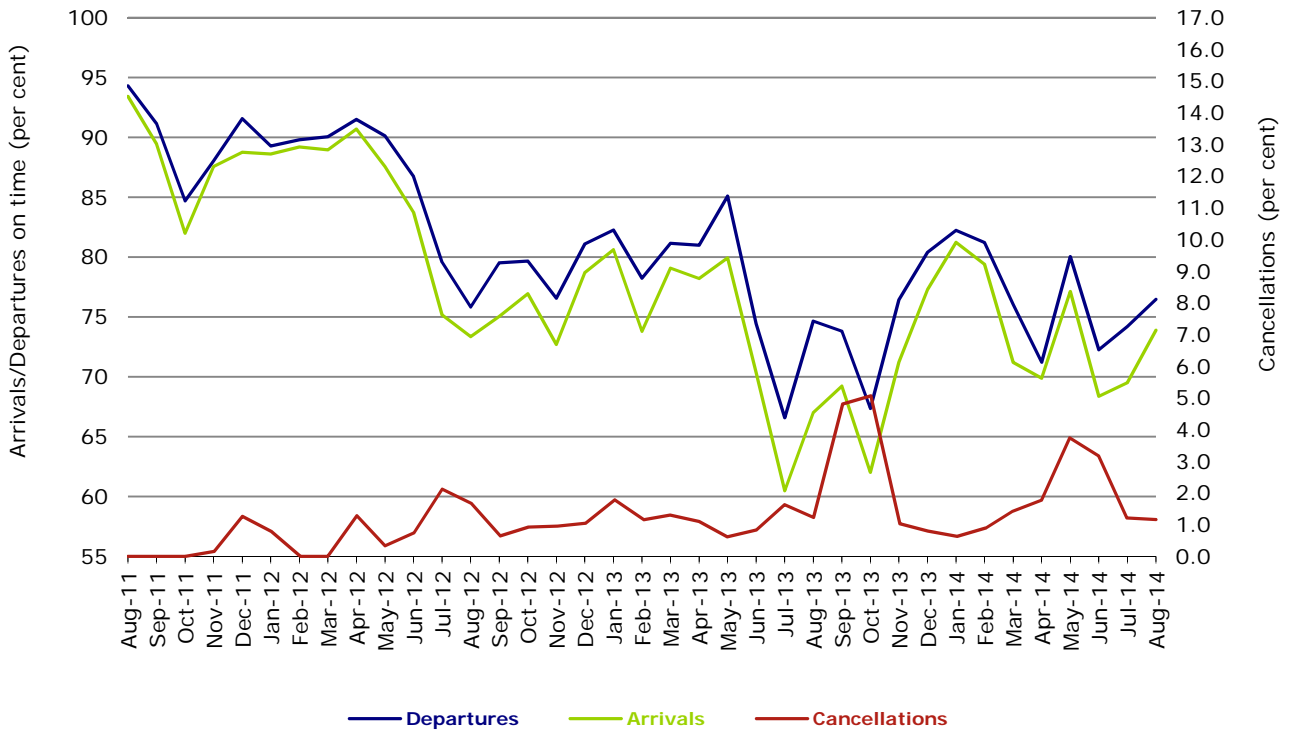
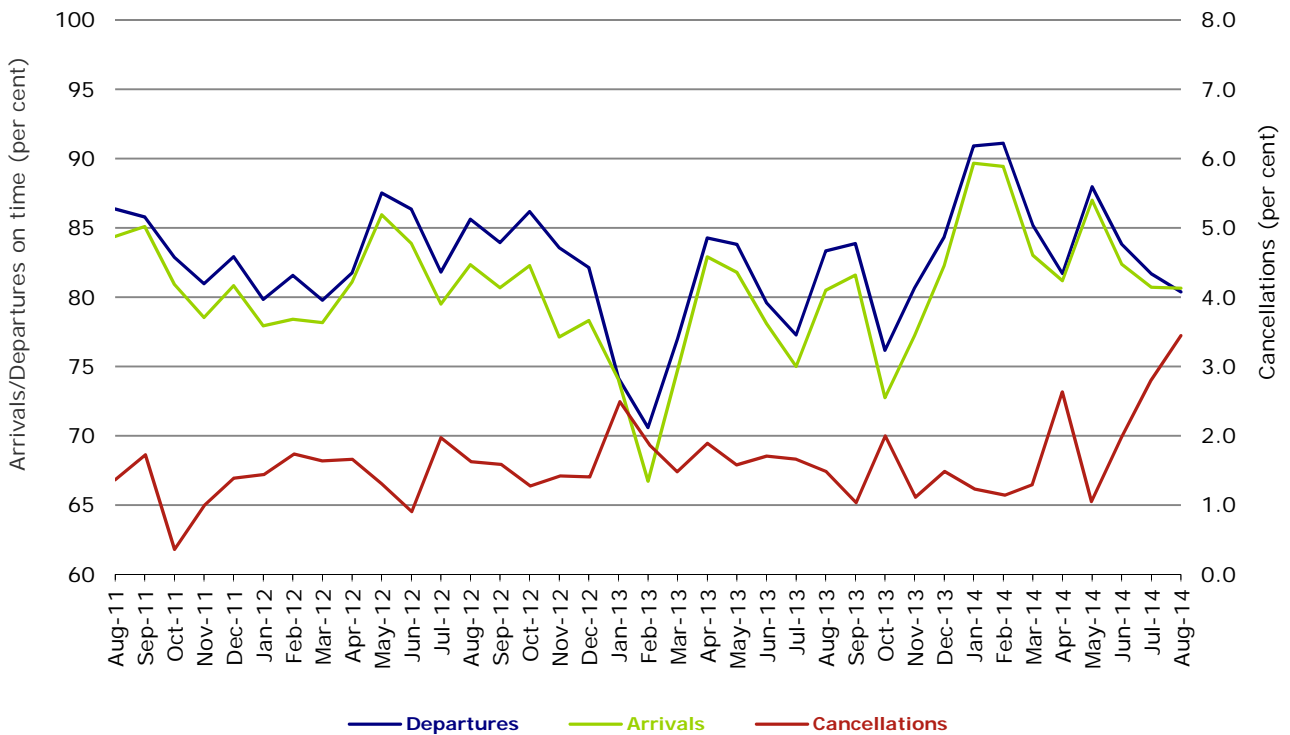


Figure 8 On time performance (by month from August 2011)—Virgin Australia



Major regional airlines on time performance

Figure 9 On time performance (by month from August 2011)—QantasLink

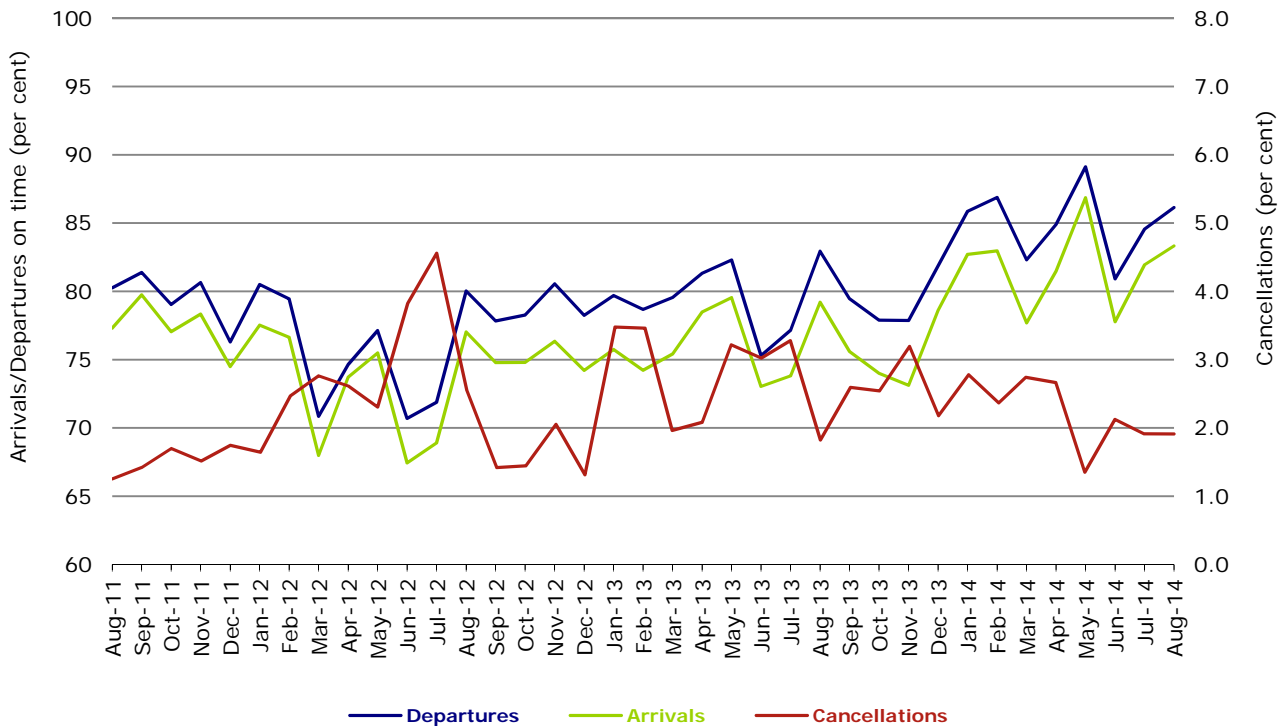


Figure 10 On time performance (by month from August 2011)—Regional Express

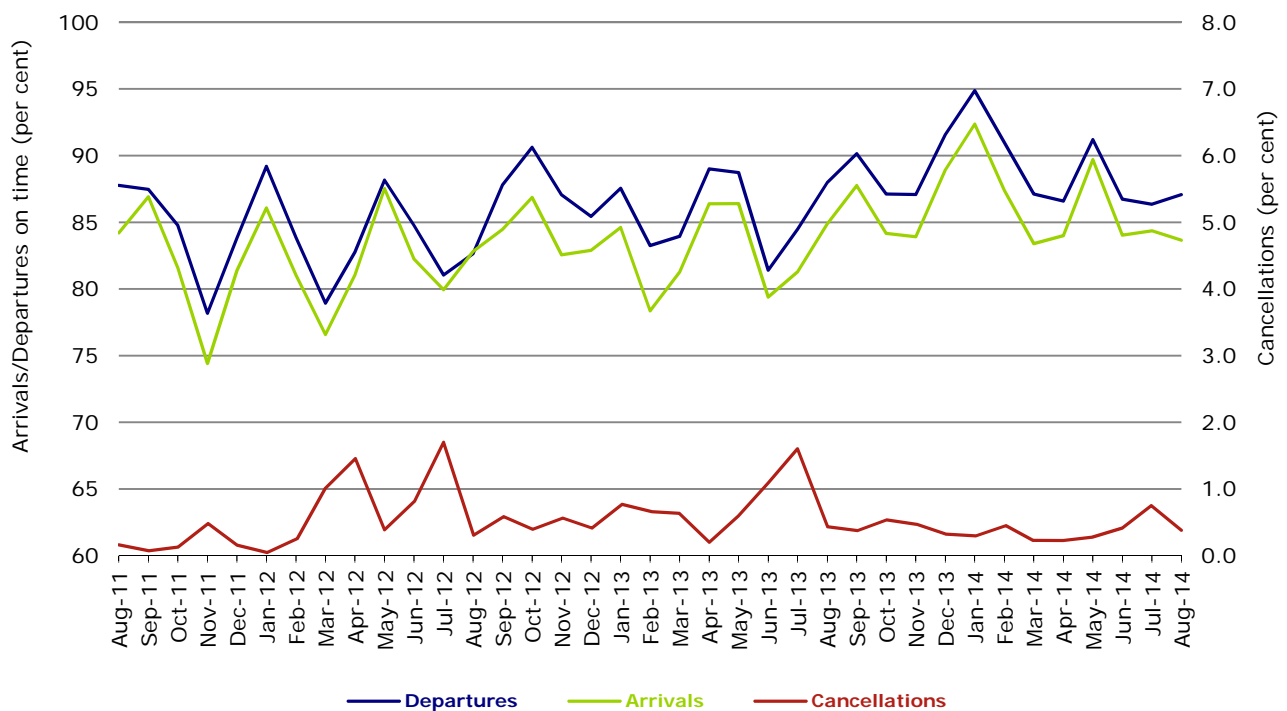
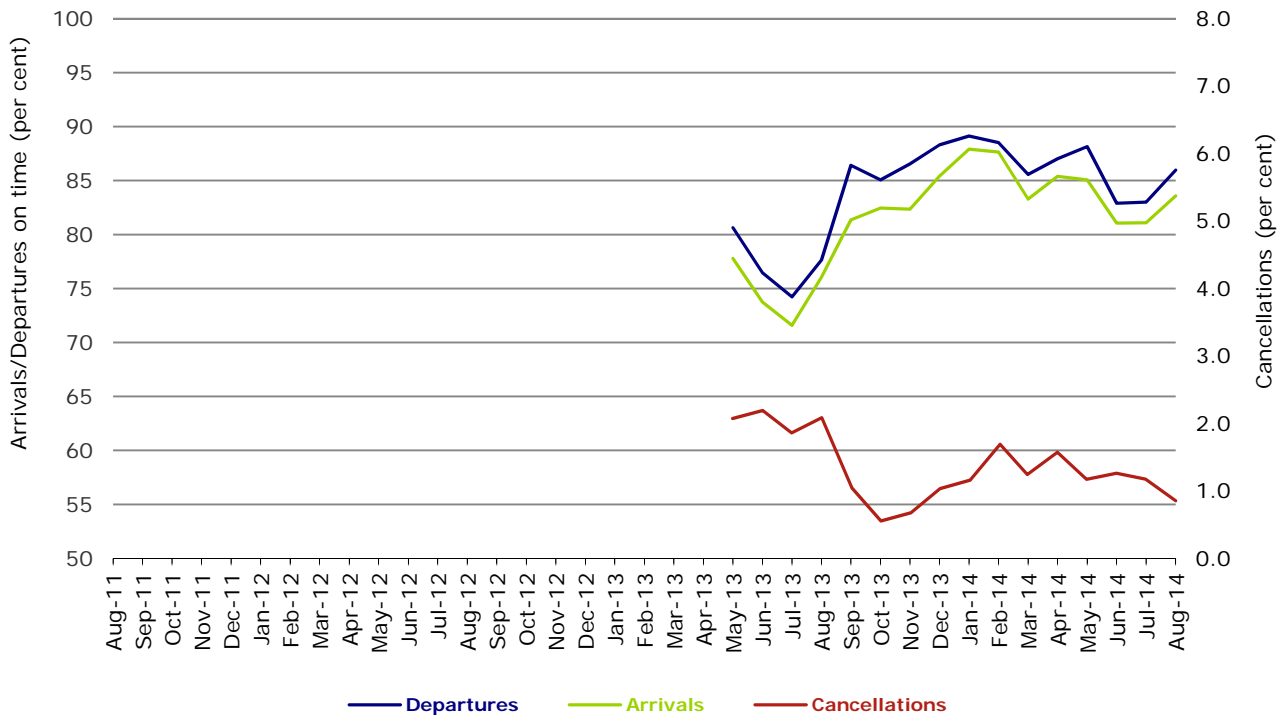


Figure 11 On time performance (by month from August 2011)
Virgin Australia Regional Airlines



Virgin Australia Regional Airlines commenced operations in May 2013. It was formed after the acquisition of Skywest by Virgin Australia and represents a combination of operations previously reported under Skywest and Virgin Australia – ATR/F100 Operations.

Individual routes

On time performance is reported for all routes where the passenger load averages over 8000 passengers per month over the previous six months, and where two or more airlines operate in competition on those routes. There are now 62 routes which meet this definition. Over time, however, routes which meet this definition may change as airline networks and traffic levels vary.

	<i>Sectors</i>		<i>Departures On Time</i>		<i>Arrivals On Time</i>		<i>Cancellations</i>	
	<i>Sched.</i>	<i>Flown</i>	<i>No.</i>	<i>%</i>	<i>No.</i>	<i>%</i>	<i>No.</i>	<i>%</i>
Adelaide-Brisbane								
Jetstar	27	27	25	92.6	25	92.6	0	0.0
Qantas	109	109	102	93.6	92	84.4	0	0.0
Tigerair	22	22	21	95.5	22	100.0	0	0.0
Virgin Australia	114	112	100	89.3	103	92.0	2	1.8
All Airlines	272	270	248	91.9	242	89.6	2	0.7
Adelaide-Canberra								
Qantas	47	47	47	100.0	47	100.0	0	0.0
QantasLink	19	18	14	77.8	15	83.3	1	5.3
Virgin Australia	26	25	25	100.0	25	100.0	1	3.8
All Airlines	92	90	86	95.6	87	96.7	2	2.2
Adelaide-Gold Coast								
Jetstar	30	30	29	96.7	29	96.7	0	0.0
Virgin Australia	31	31	29	93.5	29	93.5	0	0.0
All Airlines	61	61	58	95.1	58	95.1	0	0.0
Adelaide-Melbourne								
Jetstar	103	103	83	80.6	82	79.6	0	0.0
Qantas	292	292	266	91.1	270	92.5	0	0.0
QantasLink	10	10	10	100.0	10	100.0	0	0.0
Tigerair	66	64	57	89.1	54	84.4	2	3.0
Virgin Australia	282	278	230	82.7	222	79.9	4	1.4
All Airlines	753	747	646	86.5	638	85.4	6	0.8
Adelaide-Perth								
Jetstar	31	31	26	83.9	29	93.5	0	0.0
Qantas	113	113	106	93.8	110	97.3	0	0.0
Virgin Australia	67	66	57	86.4	61	92.4	1	1.5
All Airlines	211	210	189	90.0	200	95.2	1	0.5
Adelaide-Port Lincoln								
QantasLink	96	96	95	99.0	94	97.9	0	0.0
Regional Express	216	215	207	96.3	207	96.3	1	0.5
All Airlines	312	311	302	97.1	301	96.8	1	0.3
Adelaide-Sydney								
Jetstar	111	110	96	87.3	85	77.3	1	0.9
Qantas	247	247	227	91.9	210	85.0	0	0.0
QantasLink	20	18	10	55.6	8	44.4	2	10.0
Tigerair	24	23	22	95.7	22	95.7	1	4.2
Virgin Australia	171	170	155	91.2	150	88.2	1	0.6
All Airlines	573	568	510	89.8	475	83.6	5	0.9
Albury-Sydney								
QantasLink	111	111	89	80.2	81	73.0	0	0.0
Regional Express	114	114	100	87.7	95	83.3	0	0.0
Virgin Australia Regional Airlines	62	62	47	75.8	43	69.4	0	0.0
All Airlines	287	287	236	82.2	219	76.3	0	0.0
Armidale-Sydney								
QantasLink	135	129	101	78.3	105	81.4	6	4.4
Regional Express	78	78	66	84.6	50	64.1	0	0.0
All Airlines	213	207	167	80.7	155	74.9	6	2.8

	<i>Sectors</i>		<i>Departures On Time</i>		<i>Arrivals On Time</i>		<i>Cancellations</i>	
	<i>Sched.</i>	<i>Flown</i>	<i>No.</i>	<i>%</i>	<i>No.</i>	<i>%</i>	<i>No.</i>	<i>%</i>
Ayers Rock-Sydney								
Jetstar	31	30	26	86.7	23	76.7	1	3.2
Virgin Australia	31	30	27	90.0	27	90.0	1	3.2
All Airlines	62	60	53	88.3	50	83.3	2	3.2
Ballina-Sydney								
Jetstar	63	62	44	71.0	50	80.6	1	1.6
Regional Express	26	26	21	80.8	17	65.4	0	0.0
Virgin Australia	31	30	28	93.3	28	93.3	1	3.2
All Airlines	120	118	93	78.8	95	80.5	2	1.7
Brisbane-Adelaide								
Jetstar	26	26	25	96.2	25	96.2	0	0.0
Qantas	109	109	96	88.1	107	98.2	0	0.0
Tigerair	22	22	19	86.4	20	90.9	0	0.0
Virgin Australia	114	114	88	77.2	97	85.1	0	0.0
All Airlines	271	271	228	84.1	249	91.9	0	0.0
Brisbane-Bundaberg								
QantasLink	121	120	112	93.3	107	89.2	1	0.8
Virgin Australia Regional Airlines	40	40	36	90.0	34	85.0	0	0.0
All Airlines	161	160	148	92.5	141	88.1	1	0.6
Brisbane-Cairns								
Jetstar	117	117	105	89.7	95	81.2	0	0.0
Qantas	119	119	100	84.0	98	82.4	0	0.0
QantasLink	5	5	3	60.0	3	60.0	0	0.0
Tigerair	24	24	17	70.8	17	70.8	0	0.0
Virgin Australia	137	136	110	80.9	111	81.6	1	0.7
All Airlines	402	401	335	83.5	324	80.8	1	0.2
Brisbane-Canberra								
Qantas	53	53	47	88.7	52	98.1	0	0.0
QantasLink	113	113	91	80.5	96	85.0	0	0.0
Virgin Australia	97	96	77	80.2	79	82.3	1	1.0
All Airlines	263	262	215	82.1	227	86.6	1	0.4
Brisbane-Darwin								
Jetstar	31	31	29	93.5	29	93.5	0	0.0
Qantas	47	47	45	95.7	35	74.5	0	0.0
Tigerair	17	17	16	94.1	10	58.8	0	0.0
Virgin Australia	31	31	26	83.9	20	64.5	0	0.0
All Airlines	126	126	116	92.1	94	74.6	0	0.0
Brisbane-Emerald								
QantasLink	148	148	139	93.9	126	85.1	0	0.0
Virgin Australia Regional Airlines	82	82	76	92.7	71	86.6	0	0.0
All Airlines	230	230	215	93.5	197	85.7	0	0.0
Brisbane-Gladstone								
QantasLink	217	210	194	92.4	178	84.8	7	3.2
Virgin Australia	2	2	2	100.0	2	100.0	0	0.0
Virgin Australia Regional Airlines	149	149	133	89.3	125	83.9	0	0.0
All Airlines	368	361	329	91.1	305	84.5	7	1.9
Brisbane-Hamilton Island								
Jetstar	18	18	18	100.0	18	100.0	0	0.0
Virgin Australia	30	30	27	90.0	26	86.7	0	0.0
All Airlines	48	48	45	93.8	44	91.7	0	0.0
Brisbane-Hobart								
Jetstar	31	31	30	96.8	30	96.8	0	0.0
Virgin Australia	31	31	28	90.3	28	90.3	0	0.0
All Airlines	62	62	58	93.5	58	93.5	0	0.0

	<i>Sectors</i>		<i>Departures On Time</i>		<i>Arrivals On Time</i>		<i>Cancellations</i>	
	<i>Sched.</i>	<i>Flown</i>	<i>No.</i>	<i>%</i>	<i>No.</i>	<i>%</i>	<i>No.</i>	<i>%</i>
Brisbane-Mackay								
Jetstar	62	61	50	82.0	49	80.3	1	1.6
QantasLink	109	109	97	89.0	99	90.8	0	0.0
Virgin Australia	156	152	125	82.2	120	78.9	4	2.6
All Airlines	327	322	272	84.5	268	83.2	5	1.5
Brisbane-Melbourne								
Jetstar	99	99	71	71.7	85	85.9	0	0.0
Qantas	434	432	363	84.0	369	85.4	2	0.5
Tigerair	109	108	73	67.6	75	69.4	1	0.9
Virgin Australia	402	376	274	72.9	282	75.0	26	6.5
All Airlines	1 044	1 015	781	76.9	811	79.9	29	2.8
Brisbane-Moranbah								
QantasLink	127	119	110	92.4	107	89.9	8	6.3
Virgin Australia Regional Airlines	82	82	75	91.5	71	86.6	0	0.0
All Airlines	209	201	185	92.0	178	88.6	8	3.8
Brisbane-Mount Isa								
Qantas	57	57	55	96.5	52	91.2	0	0.0
Virgin Australia	21	21	21	100.0	20	95.2	0	0.0
All Airlines	78	78	76	97.4	72	92.3	0	0.0
Brisbane-Newcastle								
Jetstar	106	106	83	78.3	88	83.0	0	0.0
QantasLink	68	68	57	83.8	51	75.0	0	0.0
Virgin Australia	82	82	65	79.3	66	80.5	0	0.0
All Airlines	256	256	205	80.1	205	80.1	0	0.0
Brisbane-Perth								
Qantas	124	124	99	79.8	116	93.5	0	0.0
Virgin Australia	92	90	61	67.8	73	81.1	2	2.2
All Airlines	216	214	160	74.8	189	88.3	2	0.9
Brisbane-Proserpine								
Jetstar	31	31	28	90.3	30	96.8	0	0.0
Virgin Australia	53	52	43	82.7	41	78.8	1	1.9
All Airlines	84	83	71	85.5	71	85.5	1	1.2
Brisbane-Rockhampton								
QantasLink	224	223	196	87.9	183	82.1	1	0.4
Virgin Australia	101	100	83	83.0	85	85.0	1	1.0
Virgin Australia Regional Airlines	110	108	93	86.1	91	84.3	2	1.8
All Airlines	435	431	372	86.3	359	83.3	4	0.9
Brisbane-Sydney								
Jetstar	185	177	136	76.8	150	84.7	8	4.3
Qantas	622	607	522	86.0	519	85.5	15	2.4
Tigerair	83	83	59	71.1	60	72.3	0	0.0
Virgin Australia	563	538	455	84.6	452	84.0	25	4.4
All Airlines	1 453	1 405	1 172	83.4	1 181	84.1	48	3.3
Brisbane-Townsville								
Jetstar	54	53	48	90.6	40	75.5	1	1.9
Qantas	150	150	125	83.3	126	84.0	0	0.0
Virgin Australia	152	150	122	81.3	121	80.7	2	1.3
All Airlines	356	353	295	83.6	287	81.3	3	0.8
Broome-Perth								
Qantas	37	37	33	89.2	34	91.9	0	0.0
QantasLink	46	46	43	93.5	42	91.3	0	0.0
Virgin Australia	49	45	35	77.8	30	66.7	4	8.2
Virgin Australia Regional Airlines	29	28	16	57.1	13	46.4	1	3.4
All Airlines	161	156	127	81.4	119	76.3	5	3.1

	<i>Sectors</i>		<i>Departures On Time</i>		<i>Arrivals On Time</i>		<i>Cancellations</i>	
	<i>Sched.</i>	<i>Flown</i>	<i>No.</i>	<i>%</i>	<i>No.</i>	<i>%</i>	<i>No.</i>	<i>%</i>
Bundaberg-Brisbane								
QantasLink	121	120	103	85.8	95	79.2	1	0.8
Virgin Australia Regional Airlines	39	39	31	79.5	32	82.1	0	0.0
All Airlines	160	159	134	84.3	127	79.9	1	0.6
Cairns-Brisbane								
Jetstar	116	116	106	91.4	109	94.0	0	0.0
Qantas	119	119	93	78.2	97	81.5	0	0.0
QantasLink	5	5	5	100.0	5	100.0	0	0.0
Tigerair	25	24	16	66.7	15	62.5	1	4.0
Virgin Australia	137	136	101	74.3	108	79.4	1	0.7
All Airlines	402	400	321	80.3	334	83.5	2	0.5
Cairns-Melbourne								
Jetstar	105	105	86	81.9	89	84.8	0	0.0
Qantas	31	31	22	71.0	25	80.6	0	0.0
Tigerair	34	34	28	82.4	27	79.4	0	0.0
Virgin Australia	36	36	23	63.9	30	83.3	0	0.0
All Airlines	206	206	159	77.2	171	83.0	0	0.0
Cairns-Sydney								
Jetstar	103	103	87	84.5	93	90.3	0	0.0
Qantas	76	76	49	64.5	68	89.5	0	0.0
Tigerair	36	36	23	63.9	28	77.8	0	0.0
Virgin Australia	93	92	77	83.7	83	90.2	1	1.1
All Airlines	308	307	236	76.9	272	88.6	1	0.3
Canberra-Adelaide								
Qantas	47	47	46	97.9	46	97.9	0	0.0
QantasLink	19	18	15	83.3	16	88.9	1	5.3
Virgin Australia	26	25	24	96.0	24	96.0	1	3.8
All Airlines	92	90	85	94.4	86	95.6	2	2.2
Canberra-Brisbane								
Qantas	52	52	51	98.1	50	96.2	0	0.0
QantasLink	114	114	93	81.6	88	77.2	0	0.0
Virgin Australia	98	97	77	79.4	69	71.1	1	1.0
All Airlines	264	263	221	84.0	207	78.7	1	0.4
Canberra-Melbourne								
Qantas	184	182	167	91.8	170	93.4	2	1.1
QantasLink	110	107	82	76.6	81	75.7	3	2.7
Virgin Australia	184	179	140	78.2	142	79.3	5	2.7
All Airlines	478	468	389	83.1	393	84.0	10	2.1
Canberra-Sydney								
Qantas	30	29	26	89.7	26	89.7	1	3.3
QantasLink	535	506	439	86.8	401	79.2	29	5.4
Virgin Australia	46	45	40	88.9	38	84.4	1	2.2
Virgin Australia Regional Airlines	243	238	210	88.2	199	83.6	5	2.1
All Airlines	854	818	715	87.4	664	81.2	36	4.2
Coffs Harbour-Sydney								
QantasLink	154	154	136	88.3	136	88.3	0	0.0
Tigerair	14	14	10	71.4	10	71.4	0	0.0
Virgin Australia	62	58	46	79.3	48	82.8	4	6.5
All Airlines	230	226	192	85.0	194	85.8	4	1.7
Darwin-Brisbane								
Jetstar	31	31	24	77.4	29	93.5	0	0.0
Qantas	47	47	24	51.1	27	57.4	0	0.0
Tigerair	15	15	14	93.3	14	93.3	0	0.0
Virgin Australia	32	31	15	48.4	9	29.0	1	3.1
All Airlines	125	124	77	62.1	79	63.7	1	0.8

	<i>Sectors</i>		<i>Departures On Time</i>		<i>Arrivals On Time</i>		<i>Cancellations</i>	
	<i>Sched.</i>	<i>Flown</i>	<i>No.</i>	<i>%</i>	<i>No.</i>	<i>%</i>	<i>No.</i>	<i>%</i>
Darwin-Melbourne								
Jetstar	31	31	17	54.8	23	74.2	0	0.0
Qantas	31	31	21	67.7	18	58.1	0	0.0
Virgin Australia	31	31	24	77.4	21	67.7	0	0.0
All Airlines	93	93	62	66.7	62	66.7	0	0.0
Darwin-Perth								
Qantas	36	36	28	77.8	27	75.0	0	0.0
Virgin Australia	25	25	22	88.0	14	56.0	0	0.0
All Airlines	61	61	50	82.0	41	67.2	0	0.0
Darwin-Sydney								
Jetstar	31	30	12	40.0	18	60.0	1	3.2
Qantas	61	61	42	68.9	48	78.7	0	0.0
Virgin Australia	31	31	11	35.5	15	48.4	0	0.0
All Airlines	123	122	65	53.3	81	66.4	1	0.8
Dubbo-Sydney								
QantasLink	123	123	107	87.0	103	83.7	0	0.0
Regional Express	161	160	142	88.8	129	80.6	1	0.6
All Airlines	284	283	249	88.0	232	82.0	1	0.4
Emerald-Brisbane								
QantasLink	147	146	110	75.3	119	81.5	1	0.7
Virgin Australia Regional Airlines	83	82	71	86.6	71	86.6	1	1.2
All Airlines	230	228	181	79.4	190	83.3	2	0.9
Geraldton-Perth								
QantasLink	52	51	49	96.1	45	88.2	1	1.9
Virgin Australia Regional Airlines	96	96	87	90.6	83	86.5	0	0.0
All Airlines	148	147	136	92.5	128	87.1	1	0.7
Gladstone-Brisbane								
QantasLink	234	226	188	83.2	178	78.8	8	3.4
Virgin Australia	2	2	2	100.0	2	100.0	0	0.0
Virgin Australia Regional Airlines	149	149	123	82.6	123	82.6	0	0.0
All Airlines	385	377	313	83.0	303	80.4	8	2.1
Gold Coast-Adelaide								
Jetstar	30	30	27	90.0	29	96.7	0	0.0
Virgin Australia	31	31	29	93.5	30	96.8	0	0.0
All Airlines	61	61	56	91.8	59	96.7	0	0.0
Gold Coast-Melbourne								
Jetstar	220	218	189	86.7	197	90.4	2	0.9
Tigerair	62	61	38	62.3	44	72.1	1	1.6
Virgin Australia	184	177	135	76.3	150	84.7	7	3.8
All Airlines	466	456	362	79.4	391	85.7	10	2.1
Gold Coast-Sydney								
Jetstar	281	277	237	85.6	240	86.6	4	1.4
Qantas	93	92	81	88.0	81	88.0	1	1.1
Tigerair	45	44	31	70.5	31	70.5	1	2.2
Virgin Australia	326	313	252	80.5	266	85.0	13	4.0
All Airlines	745	726	601	82.8	618	85.1	19	2.6
Hamilton Island-Brisbane								
Jetstar	19	19	17	89.5	17	89.5	0	0.0
Virgin Australia	30	29	20	69.0	21	72.4	1	3.3
All Airlines	49	48	37	77.1	38	79.2	1	2.0

	<i>Sectors</i>		<i>Departures On Time</i>		<i>Arrivals On Time</i>		<i>Cancellations</i>	
	<i>Sched.</i>	<i>Flown</i>	<i>No.</i>	<i>%</i>	<i>No.</i>	<i>%</i>	<i>No.</i>	<i>%</i>
Hamilton Island-Melbourne								
Jetstar	22	22	22	100.0	22	100.0	0	0.0
Virgin Australia	22	21	18	85.7	18	85.7	1	4.5
All Airlines	44	43	40	93.0	40	93.0	1	2.3
Hamilton Island-Sydney								
Jetstar	31	31	23	74.2	24	77.4	0	0.0
Virgin Australia	31	30	20	66.7	25	83.3	1	3.2
All Airlines	62	61	43	70.5	49	80.3	1	1.6
Hobart-Brisbane								
Jetstar	31	31	29	93.5	23	74.2	0	0.0
Virgin Australia	31	30	25	83.3	25	83.3	1	3.2
All Airlines	62	61	54	88.5	48	78.7	1	1.6
Hobart-Melbourne								
Jetstar	174	174	146	83.9	150	86.2	0	0.0
QantasLink	115	114	80	70.2	83	72.8	1	0.9
Tigerair	27	27	20	74.1	18	66.7	0	0.0
Virgin Australia	148	143	111	77.6	112	78.3	5	3.4
All Airlines	464	458	357	77.9	363	79.3	6	1.3
Hobart-Sydney								
Jetstar	54	54	41	75.9	40	74.1	0	0.0
QantasLink	31	30	22	73.3	19	63.3	1	3.2
Virgin Australia	62	62	56	90.3	55	88.7	0	0.0
All Airlines	147	146	119	81.5	114	78.1	1	0.7
Kalgoorlie-Perth								
Qantas	30	29	27	93.1	27	93.1	1	3.3
QantasLink	57	57	50	87.7	50	87.7	0	0.0
Virgin Australia	43	43	37	86.0	37	86.0	0	0.0
Virgin Australia Regional Airlines	14	14	12	85.7	11	78.6	0	0.0
All Airlines	144	143	126	88.1	125	87.4	1	0.7
Karratha-Perth								
Qantas	112	110	102	92.7	100	90.9	2	1.8
QantasLink	100	99	93	93.9	88	88.9	1	1.0
Virgin Australia	62	61	49	80.3	49	80.3	1	1.6
Virgin Australia Regional Airlines	19	18	7	38.9	8	44.4	1	5.3
All Airlines	293	288	251	87.2	245	85.1	5	1.7
Launceston-Melbourne								
Jetstar	102	102	80	78.4	86	84.3	0	0.0
QantasLink	119	119	102	85.7	103	86.6	0	0.0
Virgin Australia	120	119	101	84.9	97	81.5	1	0.8
All Airlines	341	340	283	83.2	286	84.1	1	0.3
Launceston-Sydney								
Jetstar	36	36	28	77.8	28	77.8	0	0.0
Virgin Australia	31	31	28	90.3	27	87.1	0	0.0
All Airlines	67	67	56	83.6	55	82.1	0	0.0
Mackay-Brisbane								
Jetstar	61	59	44	74.6	44	74.6	2	3.3
QantasLink	109	109	90	82.6	95	87.2	0	0.0
Virgin Australia	156	152	116	76.3	118	77.6	4	2.6
All Airlines	326	320	250	78.1	257	80.3	6	1.8

	<i>Sectors</i>		<i>Departures On Time</i>		<i>Arrivals On Time</i>		<i>Cancellations</i>	
	<i>Sched.</i>	<i>Flown</i>	<i>No.</i>	<i>%</i>	<i>No.</i>	<i>%</i>	<i>No.</i>	<i>%</i>
Melbourne-Adelaide								
Jetstar	102	102	78	76.5	87	85.3	0	0.0
Qantas	292	292	274	93.8	281	96.2	0	0.0
QantasLink	10	10	9	90.0	9	90.0	0	0.0
Tigerair	66	64	55	85.9	57	89.1	2	3.0
Virgin Australia	280	274	226	82.5	234	85.4	6	2.1
All Airlines	750	742	642	86.5	668	90.0	8	1.1
Melbourne-Brisbane								
Jetstar	97	97	66	68.0	68	70.1	0	0.0
Qantas	434	432	374	86.6	345	79.9	2	0.5
Tigerair	109	108	82	75.9	64	59.3	1	0.9
Virgin Australia	402	372	278	74.7	253	68.0	30	7.5
All Airlines	1 042	1 009	800	79.3	730	72.3	33	3.2
Melbourne-Cairns								
Jetstar	106	106	88	83.0	93	87.7	0	0.0
Qantas	31	31	23	74.2	24	77.4	0	0.0
Tigerair	34	34	32	94.1	32	94.1	0	0.0
Virgin Australia	36	36	30	83.3	30	83.3	0	0.0
All Airlines	207	207	173	83.6	179	86.5	0	0.0
Melbourne-Canberra								
Qantas	184	183	170	92.9	173	94.5	1	0.5
QantasLink	107	105	89	84.8	80	76.2	2	1.9
Virgin Australia	184	177	145	81.9	145	81.9	7	3.8
All Airlines	475	465	404	86.9	398	85.6	10	2.1
Melbourne-Darwin								
Jetstar	31	31	28	90.3	29	93.5	0	0.0
Qantas	31	31	23	74.2	22	71.0	0	0.0
Virgin Australia	31	31	26	83.9	27	87.1	0	0.0
All Airlines	93	93	77	82.8	78	83.9	0	0.0
Melbourne-Gold Coast								
Jetstar	220	218	190	87.2	187	85.8	2	0.9
Tigerair	62	61	45	73.8	40	65.6	1	1.6
Virgin Australia	184	174	137	78.7	141	81.0	10	5.4
All Airlines	466	453	372	82.1	368	81.2	13	2.8
Melbourne-Hamilton Island								
Jetstar	23	23	23	100.0	23	100.0	0	0.0
Virgin Australia	22	22	19	86.4	18	81.8	0	0.0
All Airlines	45	45	42	93.3	41	91.1	0	0.0
Melbourne-Hobart								
Jetstar	174	174	148	85.1	153	87.9	0	0.0
QantasLink	116	114	79	69.3	71	62.3	2	1.7
Tigerair	27	27	22	81.5	19	70.4	0	0.0
Virgin Australia	148	144	116	80.6	113	78.5	4	2.7
All Airlines	465	459	365	79.5	356	77.6	6	1.3
Melbourne-Launceston								
Jetstar	100	100	84	84.0	87	87.0	0	0.0
QantasLink	120	120	108	90.0	108	90.0	0	0.0
Virgin Australia	120	119	95	79.8	92	77.3	1	0.8
All Airlines	340	339	287	84.7	287	84.7	1	0.3
Melbourne-Mildura								
QantasLink	88	88	76	86.4	73	83.0	0	0.0
Regional Express	88	88	79	89.8	79	89.8	0	0.0
Virgin Australia	31	31	25	80.6	25	80.6	0	0.0
All Airlines	207	207	180	87.0	177	85.5	0	0.0

	<i>Sectors</i>		<i>Departures On Time</i>		<i>Arrivals On Time</i>		<i>Cancellations</i>	
	<i>Sched.</i>	<i>Flown</i>	<i>No.</i>	<i>%</i>	<i>No.</i>	<i>%</i>	<i>No.</i>	<i>%</i>
Melbourne-Newcastle								
Jetstar	103	103	80	77.7	90	87.4	0	0.0
Virgin Australia	31	31	27	87.1	27	87.1	0	0.0
All Airlines	134	134	107	79.9	117	87.3	0	0.0
Melbourne-Perth								
Jetstar	69	67	58	86.6	60	89.6	2	2.9
Qantas	211	211	174	82.5	187	88.6	0	0.0
Tigerair	41	41	32	78.0	34	82.9	0	0.0
Virgin Australia	143	141	102	72.3	115	81.6	2	1.4
All Airlines	464	460	366	79.6	396	86.1	4	0.9
Melbourne-Sunshine Coast								
Jetstar	66	65	49	75.4	48	73.8	1	1.5
Virgin Australia	31	31	21	67.7	19	61.3	0	0.0
All Airlines	97	96	70	72.9	67	69.8	1	1.0
Melbourne-Sydney								
Jetstar	327	310	233	75.2	228	73.5	17	5.2
Qantas	908	880	775	88.1	702	79.8	28	3.1
Tigerair	205	202	159	78.7	147	72.8	3	1.5
Virgin Australia	802	741	610	82.3	561	75.7	61	7.6
All Airlines	2 242	2 133	1 777	83.3	1 638	76.8	109	4.9
Mildura-Melbourne								
QantasLink	88	88	75	85.2	70	79.5	0	0.0
Regional Express	88	88	73	83.0	69	78.4	0	0.0
Virgin Australia	31	31	26	83.9	27	87.1	0	0.0
All Airlines	207	207	174	84.1	166	80.2	0	0.0
Moranbah-Brisbane								
QantasLink	114	114	93	81.6	95	83.3	0	0.0
Virgin Australia Regional Airlines	82	82	72	87.8	76	92.7	0	0.0
All Airlines	196	196	165	84.2	171	87.2	0	0.0
Mount Isa-Brisbane								
Qantas	57	57	48	84.2	51	89.5	0	0.0
Virgin Australia	21	21	17	81.0	19	90.5	0	0.0
All Airlines	78	78	65	83.3	70	89.7	0	0.0
Newcastle-Brisbane								
Jetstar	106	106	85	80.2	79	74.5	0	0.0
QantasLink	68	68	53	77.9	46	67.6	0	0.0
Virgin Australia	83	82	62	75.6	61	74.4	1	1.2
All Airlines	257	256	200	78.1	186	72.7	1	0.4
Newcastle-Melbourne								
Jetstar	105	104	81	77.9	80	76.9	1	1.0
Virgin Australia	31	31	23	74.2	26	83.9	0	0.0
All Airlines	136	135	104	77.0	106	78.5	1	0.7
Newman-Perth								
Qantas	111	110	105	95.5	105	95.5	1	0.9
QantasLink	32	30	30	100.0	30	100.0	2	6.3
Virgin Australia	27	26	25	96.2	25	96.2	1	3.7
Virgin Australia Regional Airlines	5	5	4	80.0	4	80.0	0	0.0
All Airlines	175	171	164	95.9	164	95.9	4	2.3
Perth-Adelaide								
Jetstar	31	31	25	80.6	26	83.9	0	0.0
Qantas	116	115	105	91.3	108	93.9	1	0.9
Virgin Australia	67	65	55	84.6	58	89.2	2	3.0
All Airlines	214	211	185	87.7	192	91.0	3	1.4

	<i>Sectors</i>		<i>Departures</i>		<i>Arrivals</i>		<i>Cancellations</i>	
	<i>Sched.</i>	<i>Flown</i>	<i>On Time</i>		<i>On Time</i>		<i>No.</i>	<i>%</i>
			<i>No.</i>	<i>%</i>	<i>No.</i>	<i>%</i>		
Perth-Brisbane								
Qantas	124	124	116	93.5	105	84.7	0	0.0
Virgin Australia	93	93	79	84.9	71	76.3	0	0.0
All Airlines	217	217	195	89.9	176	81.1	0	0.0
Perth-Broome								
Qantas	37	37	35	94.6	36	97.3	0	0.0
QantasLink	46	46	44	95.7	44	95.7	0	0.0
Virgin Australia	48	45	44	97.8	43	95.6	3	6.3
Virgin Australia Regional Airlines	24	23	18	78.3	18	78.3	1	4.2
All Airlines	155	151	141	93.4	141	93.4	4	2.6
Perth-Darwin								
Qantas	35	35	30	85.7	28	80.0	0	0.0
Virgin Australia	25	25	21	84.0	20	80.0	0	0.0
All Airlines	60	60	51	85.0	48	80.0	0	0.0
Perth-Geraldton								
QantasLink	52	52	51	98.1	48	92.3	0	0.0
Virgin Australia Regional Airlines	91	91	87	95.6	83	91.2	0	0.0
All Airlines	143	143	138	96.5	131	91.6	0	0.0
Perth-Kalgoorlie								
Qantas	29	27	26	96.3	26	96.3	2	6.9
QantasLink	57	57	52	91.2	51	89.5	0	0.0
Virgin Australia	43	43	35	81.4	39	90.7	0	0.0
Virgin Australia Regional Airlines	14	14	13	92.9	13	92.9	0	0.0
All Airlines	143	141	126	89.4	129	91.5	2	1.4
Perth-Karratha								
Qantas	112	110	102	92.7	104	94.5	2	1.8
QantasLink	100	99	92	92.9	92	92.9	1	1.0
Virgin Australia	62	62	53	85.5	55	88.7	0	0.0
Virgin Australia Regional Airlines	19	19	10	52.6	15	78.9	0	0.0
All Airlines	293	290	257	88.6	266	91.7	3	1.0
Perth-Melbourne								
Jetstar	69	66	55	83.3	48	72.7	3	4.3
Qantas	211	210	188	89.5	182	86.7	1	0.5
Tigerair	42	41	32	78.0	29	70.7	1	2.4
Virgin Australia	142	140	117	83.6	110	78.6	2	1.4
All Airlines	464	457	392	85.8	369	80.7	7	1.5
Perth-Newman								
Qantas	111	110	104	94.5	106	96.4	1	0.9
QantasLink	32	31	31	100.0	31	100.0	1	3.1
Virgin Australia	27	27	23	85.2	25	92.6	0	0.0
Virgin Australia Regional Airlines	5	5	5	100.0	5	100.0	0	0.0
All Airlines	175	173	163	94.2	167	96.5	2	1.1
Perth-Port Hedland								
Qantas	112	108	105	97.2	106	98.1	4	3.6
QantasLink	46	45	44	97.8	43	95.6	1	2.2
Virgin Australia	42	41	35	85.4	37	90.2	1	2.4
All Airlines	200	194	184	94.8	186	95.9	6	3.0
Perth-Sydney								
Jetstar	26	25	21	84.0	11	44.0	1	3.8
Qantas	195	195	176	90.3	160	82.1	0	0.0
Tigerair	19	19	17	89.5	16	84.2	0	0.0
Virgin Australia	119	115	91	79.1	101	87.8	4	3.4
All Airlines	359	354	305	86.2	288	81.4	5	1.4

	<i>Sectors</i>		<i>Departures On Time</i>		<i>Arrivals On Time</i>		<i>Cancellations</i>	
	<i>Sched.</i>	<i>Flown</i>	<i>No.</i>	<i>%</i>	<i>No.</i>	<i>%</i>	<i>No.</i>	<i>%</i>
Port Hedland-Perth								
Qantas	112	107	102	95.3	98	91.6	5	4.5
QantasLink	46	46	44	95.7	42	91.3	0	0.0
Virgin Australia	42	42	33	78.6	28	66.7	0	0.0
All Airlines	200	195	179	91.8	168	86.2	5	2.5
Port Lincoln-Adelaide								
QantasLink	96	96	94	97.9	93	96.9	0	0.0
Regional Express	216	215	209	97.2	205	95.3	1	0.5
All Airlines	312	311	303	97.4	298	95.8	1	0.3
Port Macquarie-Sydney								
QantasLink	134	134	91	67.9	85	63.4	0	0.0
Virgin Australia Regional Airlines	62	61	54	88.5	48	78.7	1	1.6
All Airlines	196	195	145	74.4	133	68.2	1	0.5
Proserpine-Brisbane								
Jetstar	31	31	30	96.8	29	93.5	0	0.0
Virgin Australia	53	52	38	73.1	41	78.8	1	1.9
All Airlines	84	83	68	81.9	70	84.3	1	1.2
Rockhampton-Brisbane								
QantasLink	202	202	153	75.7	150	74.3	0	0.0
Virgin Australia	101	100	83	83.0	82	82.0	1	1.0
Virgin Australia Regional Airlines	110	109	101	92.7	101	92.7	1	0.9
All Airlines	413	411	337	82.0	333	81.0	2	0.5
Sunshine Coast-Melbourne								
Jetstar	67	66	43	65.2	49	74.2	1	1.5
Virgin Australia	31	31	13	41.9	19	61.3	0	0.0
All Airlines	98	97	56	57.7	68	70.1	1	1.0
Sunshine Coast-Sydney								
Jetstar	92	91	76	83.5	78	85.7	1	1.1
Virgin Australia	31	30	22	73.3	25	83.3	1	3.2
All Airlines	123	121	98	81.0	103	85.1	2	1.6
Sydney-Adelaide								
Jetstar	112	111	87	78.4	93	83.8	1	0.9
Qantas	244	244	210	86.1	220	90.2	0	0.0
QantasLink	20	19	6	31.6	10	52.6	1	5.0
Tigerair	24	23	21	91.3	22	95.7	1	4.2
Virgin Australia	172	169	138	81.7	154	91.1	3	1.7
All Airlines	572	566	462	81.6	499	88.2	6	1.0
Sydney-Albury								
QantasLink	111	111	95	85.6	91	82.0	0	0.0
Regional Express	114	113	89	78.8	89	78.8	1	0.9
Virgin Australia Regional Airlines	62	62	53	85.5	49	79.0	0	0.0
All Airlines	287	286	237	82.9	229	80.1	1	0.3
Sydney-Armidale								
QantasLink	135	131	109	83.2	104	79.4	4	3.0
Regional Express	78	78	68	87.2	67	85.9	0	0.0
All Airlines	213	209	177	84.7	171	81.8	4	1.9
Sydney-Ayers Rock								
Jetstar	31	31	28	90.3	29	93.5	0	0.0
Virgin Australia	31	30	27	90.0	28	93.3	1	3.2
All Airlines	62	61	55	90.2	57	93.4	1	1.6

	<i>Sectors</i>		<i>Departures On Time</i>		<i>Arrivals On Time</i>		<i>Cancellations</i>	
	<i>Sched.</i>	<i>Flown</i>	<i>No.</i>	<i>%</i>	<i>No.</i>	<i>%</i>	<i>No.</i>	<i>%</i>
Sydney-Ballina								
Jetstar	63	62	50	80.6	48	77.4	1	1.6
Regional Express	32	32	28	87.5	28	87.5	0	0.0
Virgin Australia	31	30	28	93.3	28	93.3	1	3.2
All Airlines	126	124	106	85.5	104	83.9	2	1.6
Sydney-Brisbane								
Jetstar	183	177	140	79.1	140	79.1	6	3.3
Qantas	589	575	467	81.2	406	70.6	14	2.4
Tigerair	83	83	63	75.9	57	68.7	0	0.0
Virgin Australia	563	536	445	83.0	417	77.8	27	4.8
All Airlines	1 418	1 371	1 115	81.3	1 020	74.4	47	3.3
Sydney-Cairns								
Jetstar	103	103	90	87.4	88	85.4	0	0.0
Qantas	76	76	65	85.5	63	82.9	0	0.0
Tigerair	36	36	30	83.3	26	72.2	0	0.0
Virgin Australia	93	92	77	83.7	75	81.5	1	1.1
All Airlines	308	307	262	85.3	252	82.1	1	0.3
Sydney-Canberra								
Qantas	29	29	29	100.0	28	96.6	0	0.0
QantasLink	537	509	435	85.5	442	86.8	28	5.2
Virgin Australia	46	46	41	89.1	41	89.1	0	0.0
Virgin Australia Regional Airlines	243	239	210	87.9	214	89.5	4	1.6
All Airlines	855	823	715	86.9	725	88.1	32	3.7
Sydney-Coffs Harbour								
QantasLink	154	153	133	86.9	132	86.3	1	0.6
Tigerair	14	14	10	71.4	9	64.3	0	0.0
Virgin Australia	62	58	50	86.2	48	82.8	4	6.5
All Airlines	230	225	193	85.8	189	84.0	5	2.2
Sydney-Darwin								
Jetstar	31	31	27	87.1	26	83.9	0	0.0
Qantas	61	61	47	77.0	42	68.9	0	0.0
Virgin Australia	31	31	20	64.5	19	61.3	0	0.0
All Airlines	123	123	94	76.4	87	70.7	0	0.0
Sydney-Dubbo								
QantasLink	123	123	105	85.4	106	86.2	0	0.0
Regional Express	155	155	132	85.2	137	88.4	0	0.0
All Airlines	278	278	237	85.3	243	87.4	0	0.0
Sydney-Gold Coast								
Jetstar	279	276	245	88.8	240	87.0	3	1.1
Qantas	93	93	90	96.8	84	90.3	0	0.0
Tigerair	45	44	36	81.8	35	79.5	1	2.2
Virgin Australia	326	315	257	81.6	248	78.7	11	3.4
All Airlines	743	728	628	86.3	607	83.4	15	2.0
Sydney-Hamilton Island								
Jetstar	31	31	26	83.9	26	83.9	0	0.0
Virgin Australia	31	31	25	80.6	25	80.6	0	0.0
All Airlines	62	62	51	82.3	51	82.3	0	0.0
Sydney-Hobart								
Jetstar	54	54	44	81.5	46	85.2	0	0.0
QantasLink	31	30	25	83.3	24	80.0	1	3.2
Virgin Australia	62	62	53	85.5	58	93.5	0	0.0
All Airlines	147	146	122	83.6	128	87.7	1	0.7

	<i>Sectors</i>		<i>Departures On Time</i>		<i>Arrivals On Time</i>		<i>Cancellations</i>	
	<i>Sched.</i>	<i>Flown</i>	<i>No.</i>	<i>%</i>	<i>No.</i>	<i>%</i>	<i>No.</i>	<i>%</i>
Sydney-Launceston								
Jetstar	35	35	28	80.0	29	82.9	0	0.0
Virgin Australia	31	31	28	90.3	28	90.3	0	0.0
All Airlines	66	66	56	84.8	57	86.4	0	0.0
Sydney-Melbourne								
Jetstar	329	312	235	75.3	243	77.9	17	5.2
Qantas	907	884	738	83.5	743	84.0	23	2.5
Tigerair	205	202	134	66.3	145	71.8	3	1.5
Virgin Australia	802	739	541	73.2	569	77.0	63	7.9
All Airlines	2 243	2 137	1 648	77.1	1 700	79.6	106	4.7
Sydney-Perth								
Jetstar	28	28	17	60.7	26	92.9	0	0.0
Qantas	199	199	147	73.9	180	90.5	0	0.0
Tigerair	21	21	17	81.0	17	81.0	0	0.0
Virgin Australia	119	115	84	73.0	103	89.6	4	3.4
All Airlines	367	363	265	73.0	326	89.8	4	1.1
Sydney-Port Macquarie								
QantasLink	134	134	111	82.8	92	68.7	0	0.0
Virgin Australia Regional Airlines	62	61	48	78.7	48	78.7	1	1.6
All Airlines	196	195	159	81.5	140	71.8	1	0.5
Sydney-Sunshine Coast								
Jetstar	92	92	80	87.0	81	88.0	0	0.0
Virgin Australia	31	30	22	73.3	21	70.0	1	3.2
All Airlines	123	122	102	83.6	102	83.6	1	0.8
Sydney-Townsville								
Jetstar	23	23	19	82.6	19	82.6	0	0.0
Virgin Australia	31	31	26	83.9	21	67.7	0	0.0
All Airlines	54	54	45	83.3	40	74.1	0	0.0
Sydney-Wagga Wagga								
QantasLink	114	114	97	85.1	98	86.0	0	0.0
Regional Express	142	141	128	90.8	123	87.2	1	0.7
All Airlines	256	255	225	88.2	221	86.7	1	0.4
Townsville-Brisbane								
Jetstar	55	53	33	62.3	37	69.8	2	3.6
Qantas	150	150	138	92.0	131	87.3	0	0.0
Virgin Australia	152	150	126	84.0	129	86.0	2	1.3
All Airlines	357	353	297	84.1	297	84.1	4	1.1
Townsville-Sydney								
Jetstar	23	23	18	78.3	19	82.6	0	0.0
Virgin Australia	31	31	12	38.7	20	64.5	0	0.0
All Airlines	54	54	30	55.6	39	72.2	0	0.0
Wagga Wagga-Sydney								
QantasLink	114	114	95	83.3	90	78.9	0	0.0
Regional Express	140	140	132	94.3	117	83.6	0	0.0
All Airlines	254	254	227	89.4	207	81.5	0	0.0

Airports

On time performance is reported for all routes where the passenger load averages over 8000 passengers per month, and where two or more airlines operate in competition. The following data reports by airport against flights operated on those routes only.

Airport	Departures			Arrivals		
	Sectors	On Time		Sectors	On Time	
	Flown	No.	%	Flown	No.	%
Adelaide						
Jetstar	301	259	86.0	300	260	86.7
Qantas	808	748	92.6	807	762	94.4
QantasLink	142	129	90.8	143	128	89.5
Regional Express	215	207	96.3	215	205	95.3
Tigerair	109	100	91.7	109	99	90.8
Virgin Australia	682	596	87.4	678	597	88.1
All Airlines	2 257	2 039	90.3	2 252	2 051	91.1
Relates to services to and from Brisbane, Canberra, Gold Coast, Melbourne, Perth, Port Lincoln and Sydney.						
Albury						
QantasLink	111	89	80.2	111	91	82.0
Regional Express	114	100	87.7	113	89	78.8
Virgin Australia Regional Airlines	62	47	75.8	62	49	79.0
All Airlines	287	236	82.2	286	229	80.1
Relates to services to and from Sydney only.						
Armidale						
QantasLink	129	101	78.3	131	104	79.4
Regional Express	78	66	84.6	78	67	85.9
All Airlines	207	167	80.7	209	171	81.8
Relates to services to and from Sydney only.						
Ayers Rock						
Jetstar	30	26	86.7	31	29	93.5
Virgin Australia	30	27	90.0	30	28	93.3
All Airlines	60	53	88.3	61	57	93.4
Relates to services to and from Sydney only.						
Ballina						
Jetstar	62	44	71.0	62	48	77.4
Regional Express	26	21	80.8	32	28	87.5
Virgin Australia	30	28	93.3	30	28	93.3
All Airlines	118	93	78.8	124	104	83.9
Relates to services to and from Sydney only.						
Brisbane						
Jetstar	750	623	83.1	747	600	80.3
Qantas	1 698	1 452	85.5	1 665	1 304	78.3
QantasLink	1 115	999	89.6	1 104	871	78.9
Tigerair	254	184	72.4	252	172	68.3
Virgin Australia	2 001	1 607	80.3	1 995	1 528	76.6
Virgin Australia Regional Airlines	461	413	89.6	461	403	87.4
All Airlines	6 279	5 278	84.1	6 224	4 878	78.4
Relates to services to and from Adelaide, Bundaberg, Cairns, Canberra, Darwin, Emerald, Gladstone, Hamilton Island, Hobart, Mackay, Melbourne, Moranbah, Mount Isa, Newcastle, Perth, Proserpine, Rockhampton, Sydney and Townsville.						

Airport	Departures			Arrivals		
	Sectors Flown	On Time		Sectors Flown	On Time	
		No.	%		No.	%
Broome						
Qantas	37	33	89.2	37	36	97.3
QantasLink	46	43	93.5	46	44	95.7
Virgin Australia	45	35	77.8	45	43	95.6
Virgin Australia Regional Airlines	28	16	57.1	23	18	78.3
All Airlines	156	127	81.4	151	141	93.4
Relates to services to and from Perth only.						
Bundaberg						
QantasLink	120	103	85.8	120	107	89.2
Virgin Australia Regional Airlines	39	31	79.5	40	34	85.0
All Airlines	159	134	84.3	160	141	88.1
Relates to services to and from Brisbane only.						
Cairns						
Jetstar	324	279	86.1	326	276	84.7
Qantas	226	164	72.6	226	185	81.9
QantasLink	5	5	100.0	5	3	60.0
Tigerair	94	67	71.3	94	75	79.8
Virgin Australia	264	201	76.1	264	216	81.8
All Airlines	913	716	78.4	915	755	82.5
Relates to services to and from Brisbane, Melbourne and Sydney.						
Canberra						
Qantas	310	290	93.5	312	300	96.2
QantasLink	745	629	84.4	745	633	85.0
Virgin Australia	346	281	81.2	344	290	84.3
Virgin Australia Regional Airlines	238	210	88.2	239	214	89.5
All Airlines	1 639	1 410	86.0	1 640	1 437	87.6
Relates to services to and from Adelaide, Brisbane, Melbourne and Sydney.						
Coffs Harbour						
QantasLink	154	136	88.3	153	132	86.3
Tigerair	14	10	71.4	14	9	64.3
Virgin Australia	58	46	79.3	58	48	82.8
All Airlines	226	192	85.0	225	189	84.0
Relates to services to and from Sydney only.						
Darwin						
Jetstar	92	53	57.6	93	84	90.3
Qantas	175	115	65.7	174	127	73.0
Tigerair	15	14	93.3	17	10	58.8
Virgin Australia	118	72	61.0	118	86	72.9
All Airlines	400	254	63.5	402	307	76.4
Relates to services to and from Brisbane, Melbourne, Perth and Sydney.						
Dubbo						
QantasLink	123	107	87.0	123	106	86.2
Regional Express	160	142	88.8	155	137	88.4
All Airlines	283	249	88.0	278	243	87.4
Relates to services to and from Sydney only.						

Airport	Departures			Arrivals		
	Sectors Flown	On Time		Sectors Flown	On Time	
		No.	%		No.	%
Emerald						
QantasLink	146	110	75.3	148	126	85.1
Virgin Australia Regional Airlines	82	71	86.6	82	71	86.6
All Airlines	228	181	79.4	230	197	85.7
Relates to services to and from Brisbane only.						
Geraldton						
QantasLink	51	49	96.1	52	48	92.3
Virgin Australia Regional Airlines	96	87	90.6	91	83	91.2
All Airlines	147	136	92.5	143	131	91.6
Relates to services to and from Perth only.						
Gladstone						
QantasLink	226	188	83.2	210	178	84.8
Virgin Australia	2	2	100.0	2	2	100.0
Virgin Australia Regional Airlines	149	123	82.6	149	125	83.9
All Airlines	377	313	83.0	361	305	84.5
Relates to services to and from Brisbane only.						
Gold Coast						
Jetstar	525	453	86.3	524	456	87.0
Qantas	92	81	88.0	93	84	90.3
Tigerair	105	69	65.7	105	75	71.4
Virgin Australia	521	416	79.8	520	418	80.4
All Airlines	1 243	1 019	82.0	1 242	1 033	83.2
Relates to services to and from Adelaide, Melbourne and Sydney.						
Hamilton Island						
Jetstar	72	62	86.1	72	67	93.1
Virgin Australia	80	58	72.5	83	69	83.1
All Airlines	152	120	78.9	155	136	87.7
Relates to services to and from Brisbane, Melbourne and Sydney.						
Hobart						
Jetstar	259	216	83.4	259	229	88.4
QantasLink	144	102	70.8	144	95	66.0
Tigerair	27	20	74.1	27	19	70.4
Virgin Australia	235	192	81.7	237	199	84.0
All Airlines	665	530	79.7	667	542	81.3
Relates to services to and from Brisbane, Melbourne and Sydney.						
Kalgoorlie						
Qantas	29	27	93.1	27	26	96.3
QantasLink	57	50	87.7	57	51	89.5
Virgin Australia	43	37	86.0	43	39	90.7
Virgin Australia Regional Airlines	14	12	85.7	14	13	92.9
All Airlines	143	126	88.1	141	129	91.5
Relates to services to and from Perth only.						
Karratha						
Qantas	110	102	92.7	110	104	94.5
QantasLink	99	93	93.9	99	92	92.9
Virgin Australia	61	49	80.3	62	55	88.7
Virgin Australia Regional Airlines	18	7	38.9	19	15	78.9
All Airlines	288	251	87.2	290	266	91.7
Relates to services to and from Perth only.						

Airport	Departures			Arrivals		
	Sectors Flown	On Time		Sectors Flown	On Time	
		No.	%		No.	%
Launceston						
Jetstar	138	108	78.3	135	116	85.9
QantasLink	119	102	85.7	120	108	90.0
Virgin Australia	150	129	86.0	150	120	80.0
All Airlines	407	339	83.3	405	344	84.9
Relates to services to and from Melbourne and Sydney.						
Mackay						
Jetstar	59	44	74.6	61	49	80.3
QantasLink	109	90	82.6	109	99	90.8
Virgin Australia	152	116	76.3	152	120	78.9
All Airlines	320	250	78.1	322	268	83.2
Relates to services to and from Brisbane only.						
Melbourne						
Jetstar	1 396	1 125	80.6	1 402	1 154	82.3
Qantas	2 060	1 813	88.0	2 062	1 777	86.2
QantasLink	437	361	82.6	438	347	79.2
Regional Express	88	79	89.8	88	69	78.4
Tigerair	537	427	79.5	537	392	73.0
Virgin Australia	2 324	1 857	79.9	2 332	1 825	78.3
All Airlines	6 842	5 662	82.8	6 859	5 564	81.1
Relates to services to and from Adelaide, Brisbane, Cairns, Canberra, Darwin, Gold Coast, Hamilton Island, Hobart, Launceston, Mildura, Newcastle, Perth, Sunshine Coast and Sydney.						
Mildura						
QantasLink	88	75	85.2	88	73	83.0
Regional Express	88	73	83.0	88	79	89.8
Virgin Australia	31	26	83.9	31	25	80.6
All Airlines	207	174	84.1	207	177	85.5
Relates to services to and from Melbourne only.						
Moranbah						
QantasLink	114	93	81.6	119	107	89.9
Virgin Australia Regional Airlines	82	72	87.8	82	71	86.6
All Airlines	196	165	84.2	201	178	88.6
Relates to services to and from Brisbane only.						
Mount Isa						
Qantas	57	48	84.2	57	52	91.2
Virgin Australia	21	17	81.0	21	20	95.2
All Airlines	78	65	83.3	78	72	92.3
Relates to services to and from Brisbane only.						
Newcastle						
Jetstar	210	166	79.0	209	178	85.2
QantasLink	68	53	77.9	68	51	75.0
Virgin Australia	113	85	75.2	113	93	82.3
All Airlines	391	304	77.7	390	322	82.6
Relates to services to and from Brisbane and Melbourne.						

Airport	Departures			Arrivals		
	Sectors	On Time		Sectors	On Time	
	Flown	No.	%	Flown	No.	%
Newman						
Qantas	110	105	95.5	110	106	96.4
QantasLink	30	30	100.0	31	31	100.0
Virgin Australia	26	25	96.2	27	25	92.6
Virgin Australia Regional Airlines	5	4	80.0	5	5	100.0
All Airlines	171	164	95.9	173	167	96.5
Relates to services to and from Perth only.						
Perth						
Jetstar	122	101	82.8	126	115	91.3
Qantas	1 071	987	92.2	1 076	984	91.4
QantasLink	330	314	95.2	329	297	90.3
Tigerair	60	49	81.7	62	51	82.3
Virgin Australia	656	553	84.3	654	535	81.8
Virgin Australia Regional Airlines	152	133	87.5	161	119	73.9
All Airlines	2 391	2 137	89.4	2 408	2 101	87.3
Relates to services to and from Adelaide, Brisbane, Broome, Darwin, Geraldton, Kalgoorlie, Karratha, Melbourne, Newman, Port Hedland and Sydney.						
Port Hedland						
Qantas	107	102	95.3	108	106	98.1
QantasLink	46	44	95.7	45	43	95.6
Virgin Australia	42	33	78.6	41	37	90.2
All Airlines	195	179	91.8	194	186	95.9
Relates to services to and from Perth only.						
Port Lincoln						
QantasLink	96	94	97.9	96	94	97.9
Regional Express	215	209	97.2	215	207	96.3
All Airlines	311	303	97.4	311	301	96.8
Relates to services to and from Adelaide only.						
Port Macquarie						
QantasLink	134	91	67.9	134	92	68.7
Virgin Australia Regional Airlines	61	54	88.5	61	48	78.7
All Airlines	195	145	74.4	195	140	71.8
Relates to services to and from Sydney only.						
Proserpine						
Jetstar	31	30	96.8	31	30	96.8
Virgin Australia	52	38	73.1	52	41	78.8
All Airlines	83	68	81.9	83	71	85.5
Relates to services to and from Brisbane only.						
Rockhampton						
QantasLink	202	153	75.7	223	183	82.1
Virgin Australia	100	83	83.0	100	85	85.0
Virgin Australia Regional Airlines	109	101	92.7	108	91	84.3
All Airlines	411	337	82.0	431	359	83.3
Relates to services to and from Brisbane only.						

<i>Airport</i>	<i>Departures</i>			<i>Arrivals</i>		
	<i>Sectors</i>	<i>On Time</i>		<i>Sectors</i>	<i>On Time</i>	
	<i>Flown</i>	<i>No.</i>	<i>%</i>	<i>Flown</i>	<i>No.</i>	<i>%</i>
Sunshine Coast						
Jetstar	157	119	75.8	157	129	82.2
Virgin Australia	61	35	57.4	61	40	65.6
All Airlines	218	154	70.6	218	169	77.5
Relates to services to and from Melbourne and Sydney.						
Sydney						
Jetstar	1 366	1 116	81.7	1 359	1 087	80.0
Qantas	2 161	1 793	83.0	2 187	1 814	82.9
QantasLink	1 324	1 116	84.3	1 319	1 028	77.9
Regional Express	519	445	85.7	518	408	78.8
Tigerair	423	311	73.5	421	314	74.6
Virgin Australia	2 346	1 862	79.4	2 347	1 921	81.8
Virgin Australia Regional Airlines	362	311	85.9	361	290	80.3
All Airlines	8 501	6 954	81.8	8 512	6 862	80.6
Relates to services to and from Adelaide, Albury, Armidale, Ayers Rock, Ballina, Brisbane, Cairns, Canberra, Coffs Harbour, Darwin, Dubbo, Gold Coast, Hamilton Island, Hobart, Launceston, Melbourne, Perth, Port Macquarie, Sunshine Coast, Townsville and Wagga Wagga.						
Townsville						
Jetstar	76	51	67.1	76	59	77.6
Qantas	150	138	92.0	150	126	84.0
Virgin Australia	181	138	76.2	181	142	78.5
All Airlines	407	327	80.3	407	327	80.3
Relates to services to and from Brisbane and Sydney.						
Wagga Wagga						
QantasLink	114	95	83.3	114	98	86.0
Regional Express	140	132	94.3	141	123	87.2
All Airlines	254	227	89.4	255	221	86.7
Relates to services to and from Sydney only.						

Definitions

On time departure A flight departure is counted as "on time" if it departs the gate before 15 minutes after the scheduled departure time shown in the carriers' schedule.

On time arrival A flight arrival is counted as "on time" if it arrived at the gate before 15 minutes after the scheduled arrival time shown in the carriers' schedule.
Neither diverted nor cancelled flights count as on time.

Cancellation A flight removed from service within 7 days of scheduled departure is regarded as a cancellation.

On time departure percentage The percentage of on time departures is measured against the number of departures *operated* on any particular sector.

On time arrival percentage The percentage of on time arrivals is measured against the number of arrivals *operated* on any particular sector.

Cancellation percentage The percentage of cancellations is measured against the number of services *scheduled* on any particular sector.
