

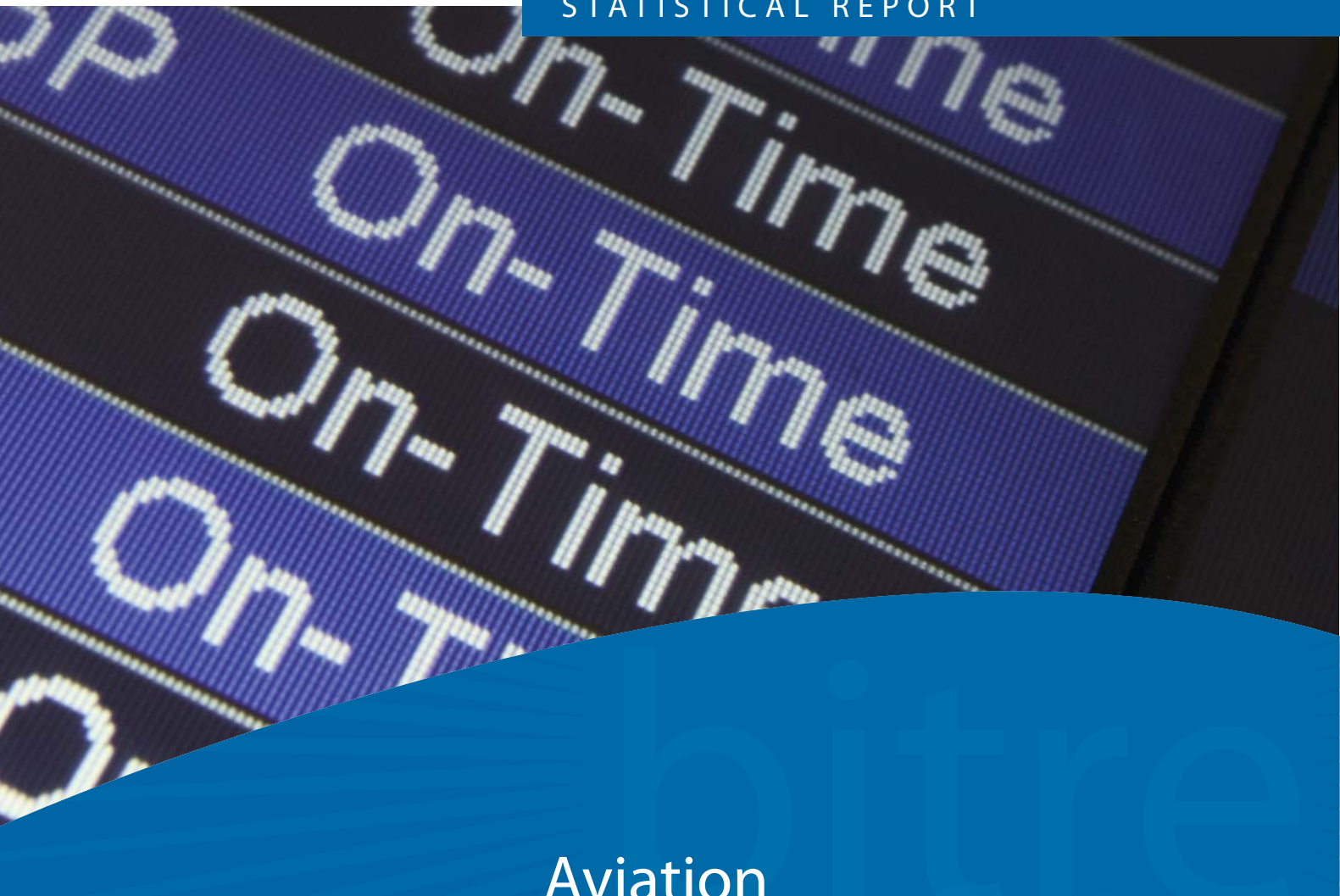


**Australian Government**

**Department of Infrastructure and Regional Development**

Bureau of Infrastructure, Transport and Regional Economics

STATISTICAL REPORT



# Aviation

Domestic airline on time performance  
August 2013

© Commonwealth of Australia 2013

ISSN: 1832-0759

### **Ownership of intellectual property rights in this publication**

Unless otherwise noted, copyright (and any other intellectual property rights, if any) in this publication is owned by the Commonwealth of Australia (referred to below as the Commonwealth).

### **Disclaimer**

The material contained in this publication is made available on the understanding that the Commonwealth is not providing professional advice, and that users exercise their own skill and care with respect to its use, and seek independent advice if necessary.

The Commonwealth makes no representations or warranties as to the contents or accuracy of the information contained in this publication. To the extent permitted by law, the Commonwealth disclaims liability to any person or organisation in respect of anything done, or omitted to be done, in reliance upon information contained in this publication.

### **Creative Commons licence**

With the exception of (a) the Coat of Arms; and (b) the Department of Infrastructure's photos and graphics, copyright in this publication is licensed under a Creative Commons Attribution 3.0 Australia Licence.

Creative Commons Attribution 3.0 Australia Licence is a standard form licence agreement that allows you to copy, communicate and adapt this publication provided that you attribute the work to the Commonwealth and abide by the other licence terms. A summary of the licence terms is available from <http://creativecommons.org/licenses/by/3.0/au/deed.en>. The full licence terms are available from <http://creativecommons.org/licenses/by/3.0/au/legalcode>.

### **Use of the Coat of Arms**

The Department of the Prime Minister and Cabinet sets the terms under which the Coat of Arms is used. Please refer to the Department's Commonwealth Coat of Arms and Government branding web page <http://www.dpmc.gov.au/guidelines/index.cfm#brand> and, in particular, the Guidelines on the use of the Commonwealth Coat of Arms publication.

An appropriate citation for this report is:

Bureau of Infrastructure, Transport and Regional Economics (BITRE), 2013, Domestic airline on time performance, Statistical Report, BITRE, Canberra ACT.

### **Contact us**

This publication is available in PDF format. All other rights are reserved, including in relation to any Departmental logos or trade marks which may exist. For enquiries regarding the licence and any use of this publication, please contact:

Bureau of Infrastructure, Transport and Regional Economics (BITRE)  
Department of Infrastructure and Regional Development  
GPO Box 501, Canberra ACT 2601, Australia  
Telephone: (international) +61 2 6274 7210  
Fax: (international) +61 2 6274 6855  
Email: [bitre@infrastructure.gov.au](mailto:bitre@infrastructure.gov.au)  
Website: [www.bitre.gov.au](http://www.bitre.gov.au)

### **Inquiries**

Should you require additional information about the statistics contained in this publication:

Telephone (02) 6274 7790 or Facsimile (02) 6274 7727

Electronic mail: [AVSTATS@infrastructure.gov.au](mailto:AVSTATS@infrastructure.gov.au)

Web site: <http://www.bitre.gov.au/statistics/aviation/otphome.aspx>

# Foreword

The Bureau of Infrastructure, Transport and Regional Economics (BITRE) monitors the punctuality and reliability of major domestic airlines operating between Australian airports. The purpose of this is to allow for evaluation of overall industry and individual airline performance, so that consumers of air travel can make informed decisions.

The following domestic airlines currently report this information monthly to the BITRE: Jetstar, Qantas, QantasLink, Regional Express, Tigerair, Virgin Australia and Virgin Australia Regional Airlines. Data has been gathered since November 2003, although some airlines commenced reporting at a later date, including Jetstar which first reported in May 2004, MacAir in July 2005 and Tigerair in April 2008. MacAir ceased operations in February 2009 and data was not received for December 2008 onwards. Virgin Blue was rebranded as Virgin Australia in May 2011 and Tiger Airways was rebranded as Tigerair in July 2013 and time series data in Microsoft Excel spreadsheet format on the BITRE website have been revised to reflect these changes. Virgin Australia Regional Airlines commenced operations in May 2013. It was formed after the acquisition of Skywest by Virgin Australia and represents a combination of operations previously reported under Skywest and Virgin Australia – ATR/F100 Operations. Services operated by Skywest on behalf of Virgin Australia using ATR/F100 aircraft commenced in November 2011 and were shown separately as Virgin Australia – ATR/F100 Operations until April 2013.

Information presented in this report is for Australian domestic routes for which the passenger load averaged 8 000 or more passengers per month over the previous six months and where two or more airlines operated in competition on those routes. There were 62 routes that met this definition in August 2013. Over time, routes which meet these criteria change as airline networks and traffic levels vary.

Participating airlines report their overall monthly network performance where this is possible.

Total industry figures encompass all services operated by reporting airlines only. These airlines collectively carried over 95 per cent of total domestic passengers (regular public transport only) in 2012.

The method of capturing on time performance varies between airlines utilising different recording systems. Jetstar and Qantas jet aircraft use Aircraft Communication Addressing and Reporting System (ACARS) to electronically measure on time performance. Regional Express, Tigerair, Virgin Australia, Virgin Australia Regional Airlines and the Qantas non-jet fleet record on time performance manually using records from pilots, gate agents and/or ground crews.

After initial data is collected, aggregate reports are audited internally by participating airlines prior to publication.

Reports and detailed time series data in Microsoft Excel spreadsheet format are available from the BITRE website at: <http://www.bitre.gov.au/statistics/aviation/otphome.aspx>.



# Contents

	Page
Industry performance .....	1
Individual routes .....	9
Airports .....	21
Definitions .....	27



## Industry performance

For August 2013, on time performance over all routes operated by participating airlines (Jetstar, Qantas, QantasLink, Regional Express, Tigerair, Virgin Australia and Virgin Australia Regional Airlines) averaged 83.8 per cent for on time departures and 81.0 per cent for on time arrivals. Cancellations represented 1.3 per cent of all scheduled flights. The equivalent figures for August 2012 were 78.3 per cent for departures, 76.2 per cent for arrivals and 2.0 per cent for cancellations.

This month's figures were similar to the long term average performance for all routes since the collection began (83.6 per cent for departures and 82.1 per cent for arrivals). The rate of cancellations was also similar to the long term average of 1.3 per cent.

Of the major domestic airlines, Qantas achieved the highest level of on time departures for August 2013 at 88.2 per cent, followed by Virgin Australia at 83.3 per cent, Jetstar at 79.6 per cent and Tigerair at 74.6 per cent. The regional airlines were led by Regional Express at 88.0 per cent, followed by QantasLink at 82.9 per cent and Virgin Australia Regional Airlines at 77.6 per cent.

Qantas also achieved the highest on time arrivals among the major domestic airlines at 85.9 per cent, followed by Virgin Australia at 80.5 per cent, Jetstar at 78.9 per cent and Tigerair at 67.0 per cent. Regional Express was the best performing regional airline for on time arrivals at 84.9 per cent, followed by QantasLink at 79.2 per cent and Virgin Australia Regional Airlines at 76.0 per cent.

Virgin Australia Regional Airlines had the highest percentage of cancellations (2.1 per cent) during the month, followed by QantasLink (1.8 per cent), Virgin Australia (1.5 per cent) Tigerair (1.2 per cent), Qantas (also 1.2 per cent), Jetstar (1.1 per cent) and Regional Express (0.4 per cent).

Of the 62 routes which met the criteria for on time performance reporting in August 2013, the Cairns-Townsville route had the highest percentage of on time departures (95.7 per cent) while the Alice Springs-Sydney route had the lowest percentage of on time departures (49.0 per cent). The Adelaide-Gold Coast route had the highest percentage of on time arrivals (98.6 per cent) while the Sunshine Coast-Melbourne route had the lowest percentage of on time arrivals (55.7 per cent).

Cancellations were highest on the Brisbane-Emerald route at 5.4 per cent, followed by Karratha-Perth at 5.2 per cent, Emerald-Brisbane at 5.1 per cent, Gold Coast-Adelaide at 4.2 per cent and Perth-Karratha at 3.6 per cent.

Port Hedland Airport recorded the highest percentage of on time departures (93.3 per cent), while Karratha Airport recorded the highest percentage of on time arrivals (95.3 per cent). Alice Springs Airport recorded the lowest percentage of on time departures (54.6 per cent) and Albury Airport recorded the lowest percentage of on time arrivals (61.6 per cent). These figures only refer to reported routes and do not cover all flights at these airports.

Table 1 On time performance for August 2013 — Total Industry

	<i>Sectors</i>		<i>Departures On Time</i>		<i>Arrivals On Time</i>		<i>Cancellations</i>	
	<i>Scheduled</i>	<i>Flown</i>	<i>No.</i>	<i>%</i>	<i>No.</i>	<i>%</i>	<i>No.</i>	<i>%</i>
Jetstar	6 350	6 280	5 000	79.6	4 952	78.9	70	1.1
Qantas	10 805	10 676	9 415	88.2	9 170	85.9	129	1.2
QantasLink	9 935	9 754	8 090	82.9	7 725	79.2	181	1.8
Regional Express	5 782	5 757	5 065	88.0	4 886	84.9	25	0.4
Tigerair	1 709	1 688	1 260	74.6	1 131	67.0	21	1.2
Virgin Australia	11 507	11 336	9 447	83.3	9 125	80.5	171	1.5
Virgin Australia Regional Airlines	2 699	2 643	2 052	77.6	2 009	76.0	56	2.1
All Airlines	48 787	48 134	40 329	83.8	38 998	81.0	653	1.3

Total airline network data (including routes not shown in this report).

Virgin Australia Regional Airlines commenced operations in May 2013. It was formed after the acquisition of Skywest by Virgin Australia and represents a combination of operations previously reported under Skywest and Virgin Australia – ATR/F100 Operations.

Table 2 Top ten routes for on time performance for August 2013 (participating airlines only)

<i>Departures</i>		<i>Arrivals</i>	
<i>Route</i>	<i>On Time (%)</i>	<i>Route</i>	<i>On Time</i>
Cairns-Townsville	95.7	Adelaide-Gold Coast	98.6
Perth-Karratha	94.3	Darwin-Perth	98.2
Perth-Port Hedland	94.2	Perth-Karratha	95.3
Gold Coast-Adelaide	94.1	Cairns-Townsville	94.8
Sydney-Alice Springs	93.9	Perth-Adelaide	94.3
Port Hedland-Perth	93.3	Perth-Port Hedland	94.2
Darwin-Perth	93.0	Sydney-Sunshine Coast	94.2
Sydney-Sunshine Coast	92.5	Sydney-Hamilton Island	93.3
Adelaide-Port Lincoln	91.8	Sydney-Cairns	92.8
Brisbane-Proserpine	91.7	Adelaide-Canberra	92.6

Table 3 Top ten airports for on time performance for August 2013 (participating airlines and reported routes only)

<i>Departures</i>		<i>Arrivals</i>	
<i>Airport</i>	<i>On Time (%)</i>	<i>Airport</i>	<i>On Time</i>
Port Hedland	93.3	Karratha	95.3
Karratha	91.7	Port Hedland	94.2
Newman	89.8	Hamilton Island	92.7
Townsville	89.2	Townsville	91.7
Mildura	88.4	Mount Isa	91.1
Gold Coast	87.7	Newman	90.7
Port Lincoln	87.5	Kalgoorlie	89.6
Cairns	86.8	Ballina	89.5
Mackay	86.3	Mackay	89.5
Canberra	86.1	Proserpine	89.3



## Total industry on time performance

Figure 1 On time performance (by month from August 2010)—Total Industry

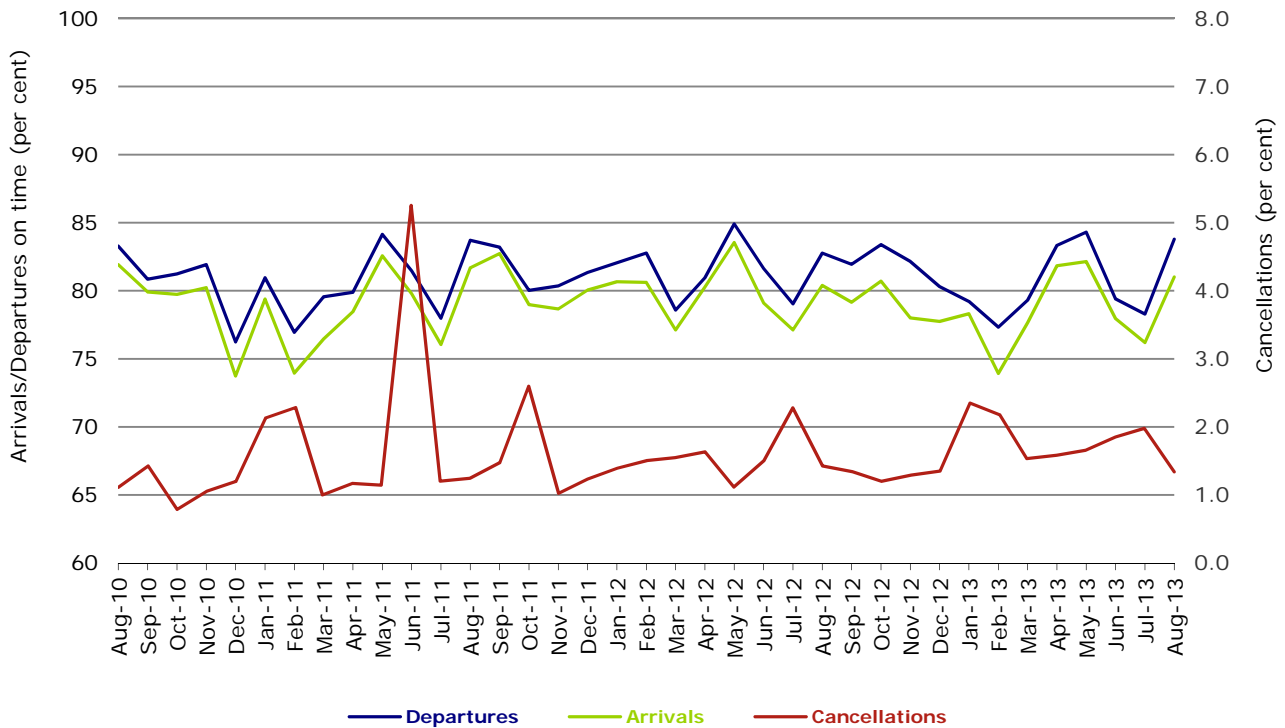
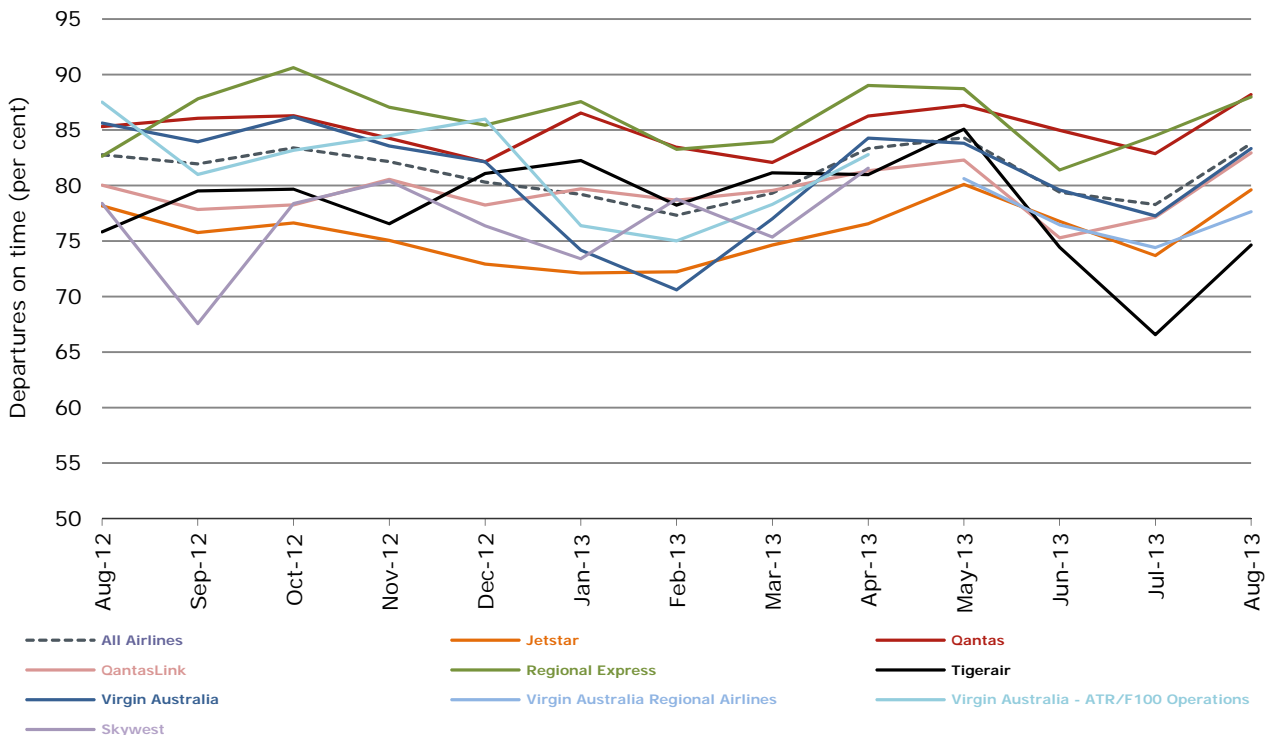
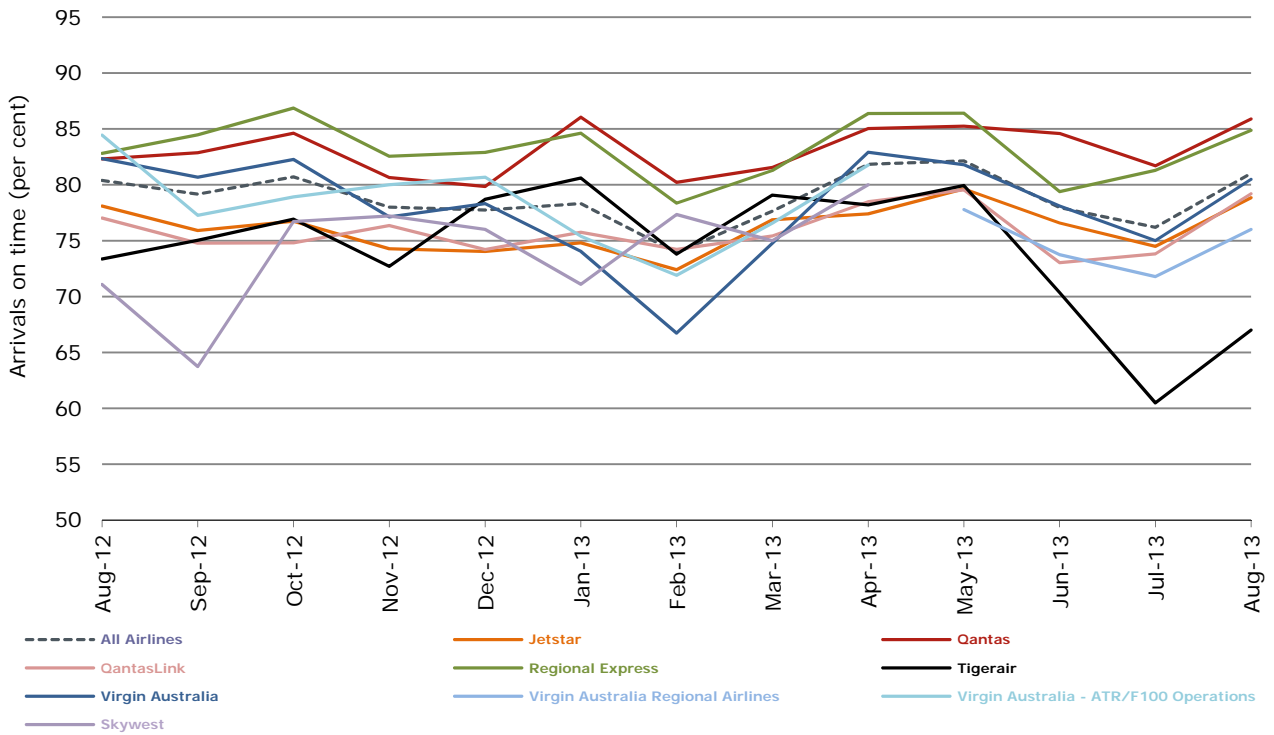


Figure 2 Departures on time (by month from August 2012)



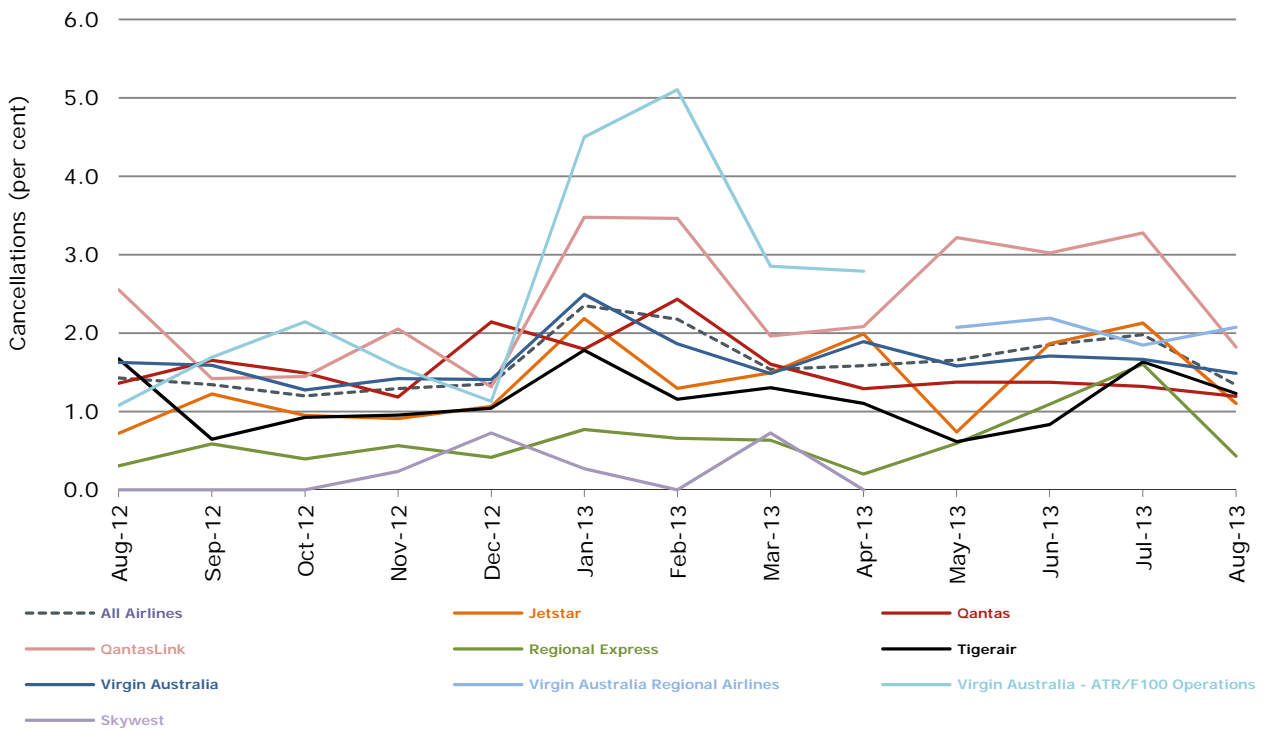
Virgin Australia Regional Airlines commenced operations in May 2013. It was formed after the acquisition of Skywest by Virgin Australia and represents a combination of operations previously reported under Skywest and Virgin Australia – ATR/F100 Operations.

Figure 3 Arrivals on time (by month from August 2012)



Virgin Australia Regional Airlines commenced operations in May 2013. It was formed after the acquisition of Skywest by Virgin Australia and represents a combination of operations previously reported under Skywest and Virgin Australia – ATR/F100 Operations.

Figure 4 Cancellations (by month from August 2012)



Virgin Australia Regional Airlines commenced operations in May 2013. It was formed after the acquisition of Skywest by Virgin Australia and represents a combination of operations previously reported under Skywest and Virgin Australia – ATR/F100 Operations.

## Major domestic airlines on time performance

Figure 5 On time performance (by month from August 2010)—Jetstar

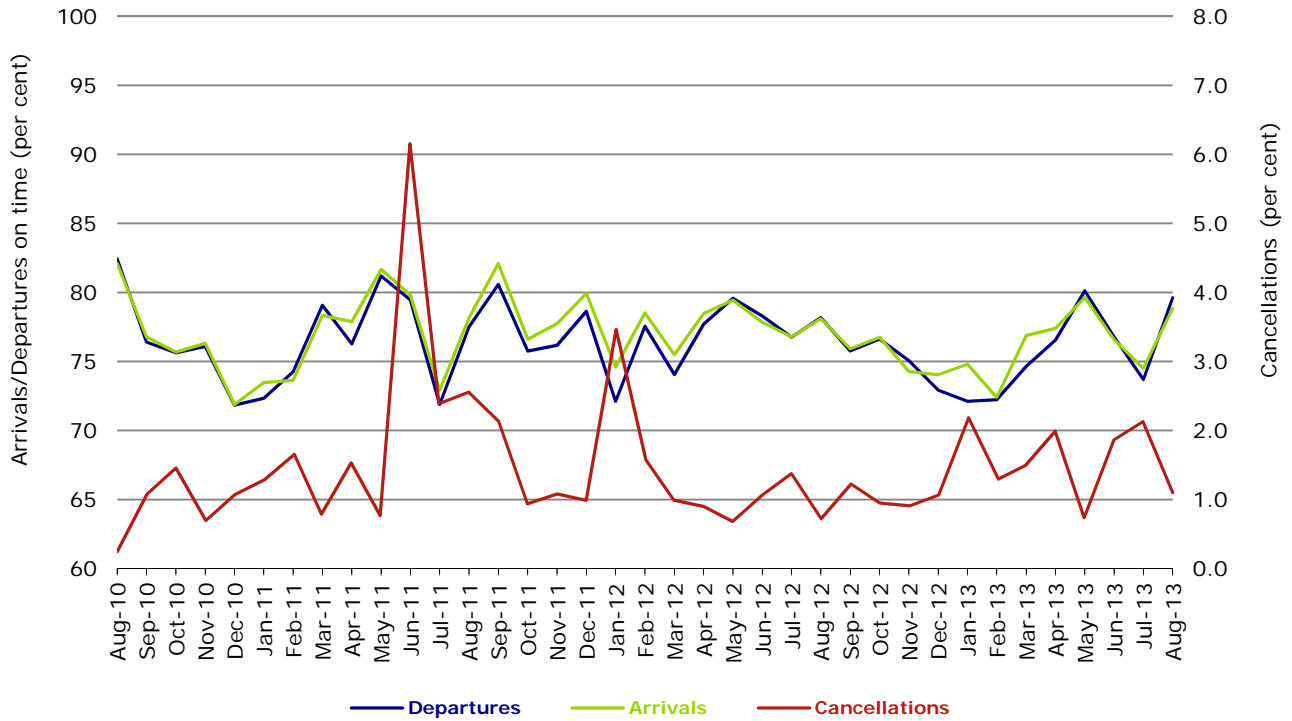


Figure 6 On time performance (by month from August 2010)—Qantas

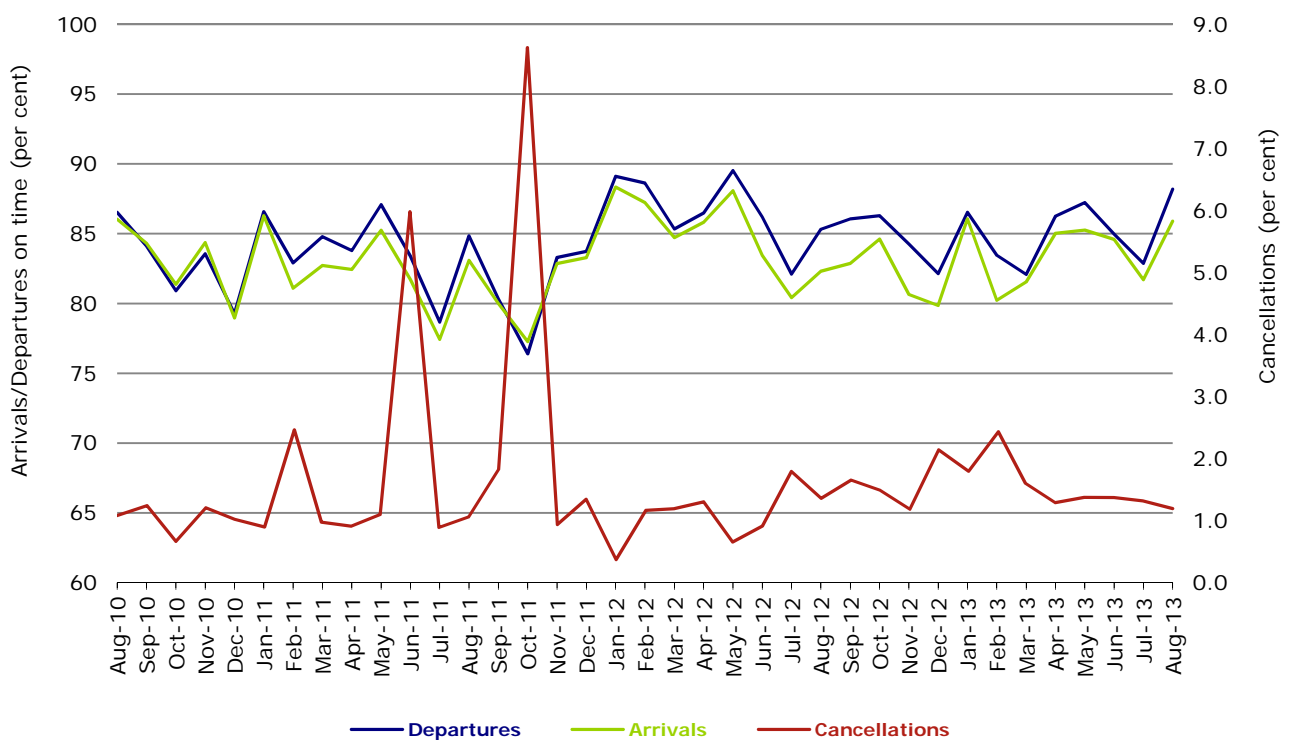
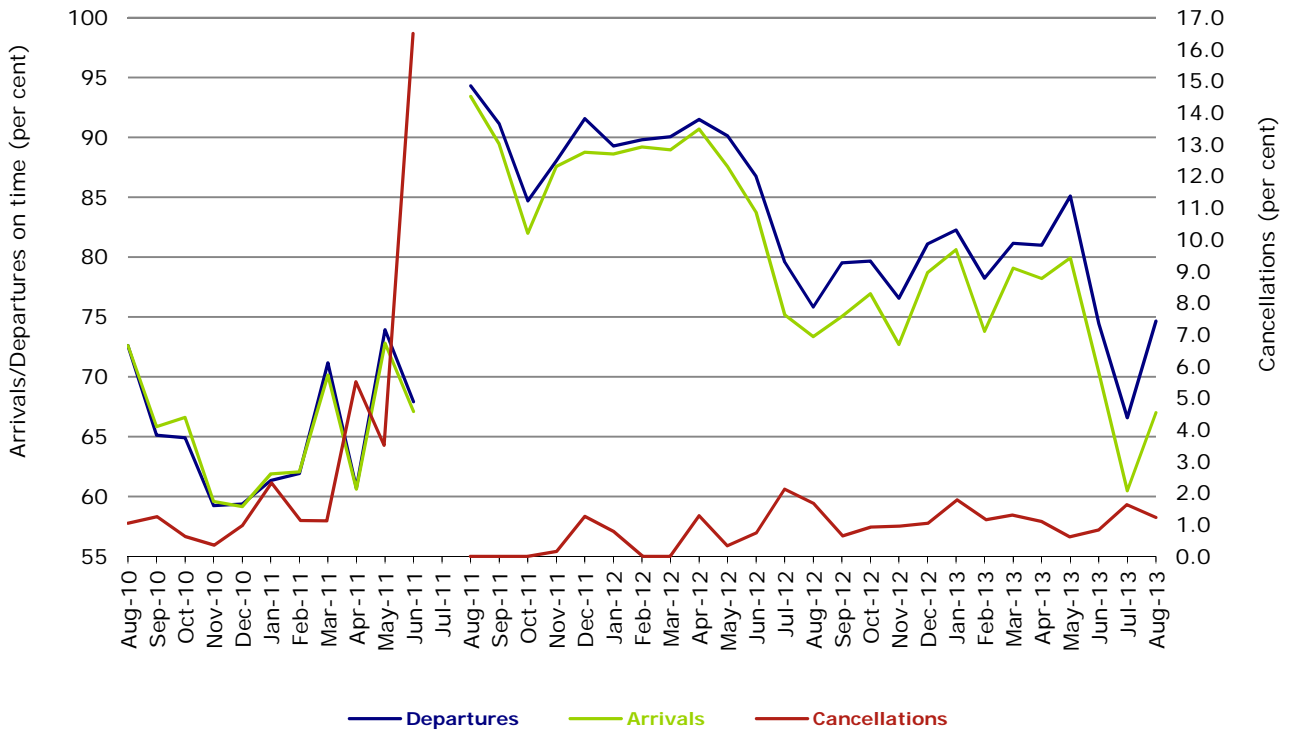
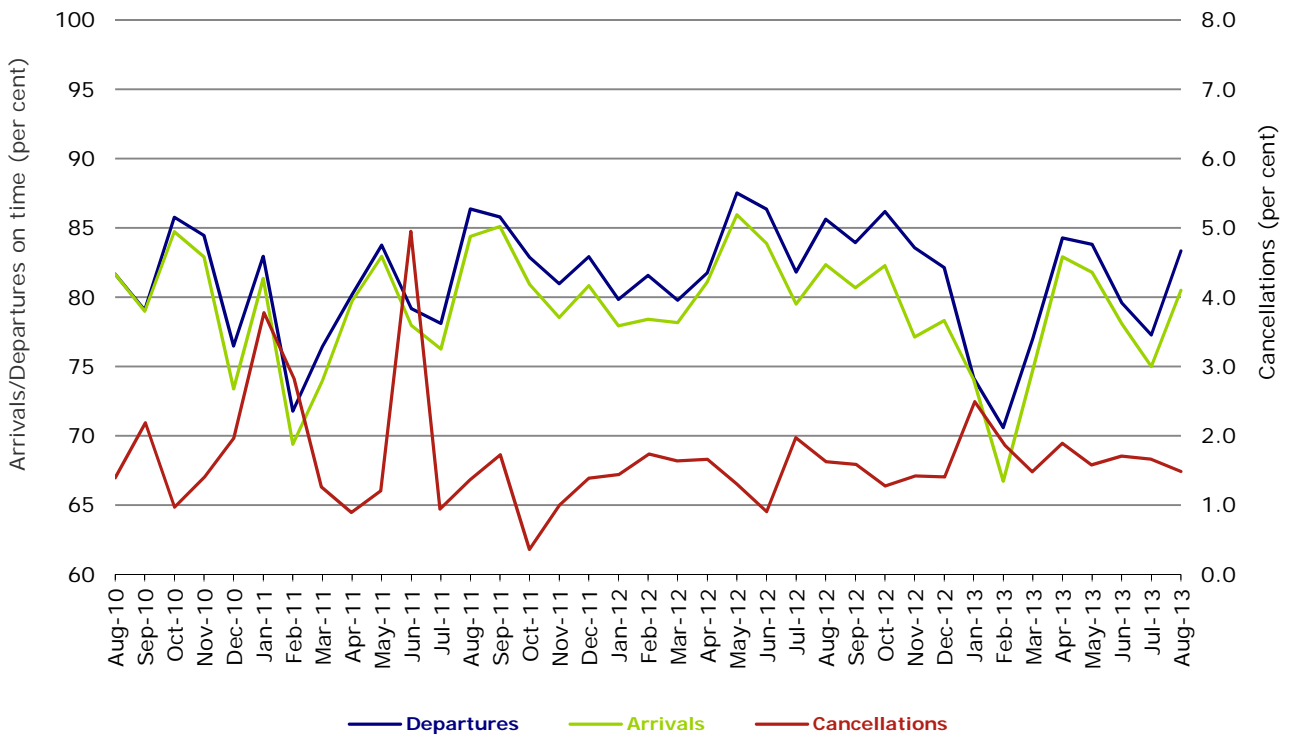


Figure 7 On time performance (by month from August 2010)—Tigerair



No data for Tigerair for July 2011 as it was grounded by CASA from 2/7/2011 to 11/8/2011.

Figure 8 On time performance (by month from August 2010)—Virgin Australia



## Major regional airlines on time performance

Figure 9 On time performance (by month from August 2010)—QantasLink

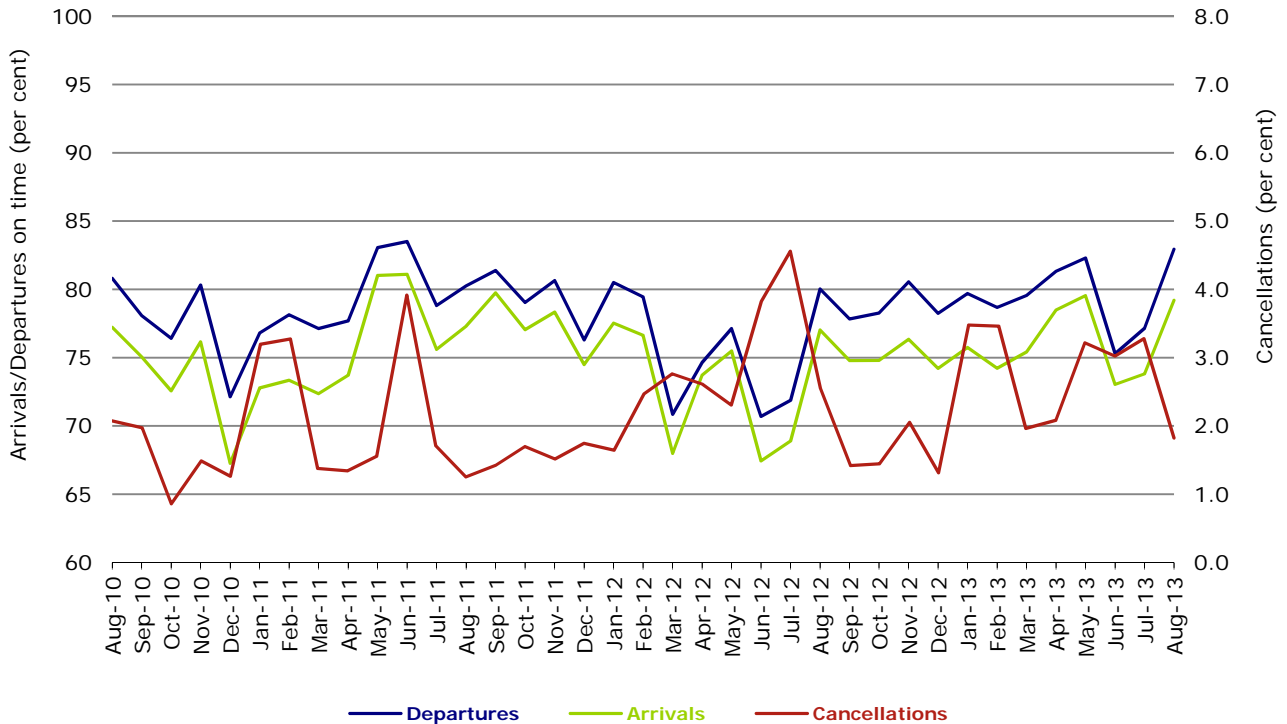


Figure 10 On time performance (by month from August 2010)—Regional Express

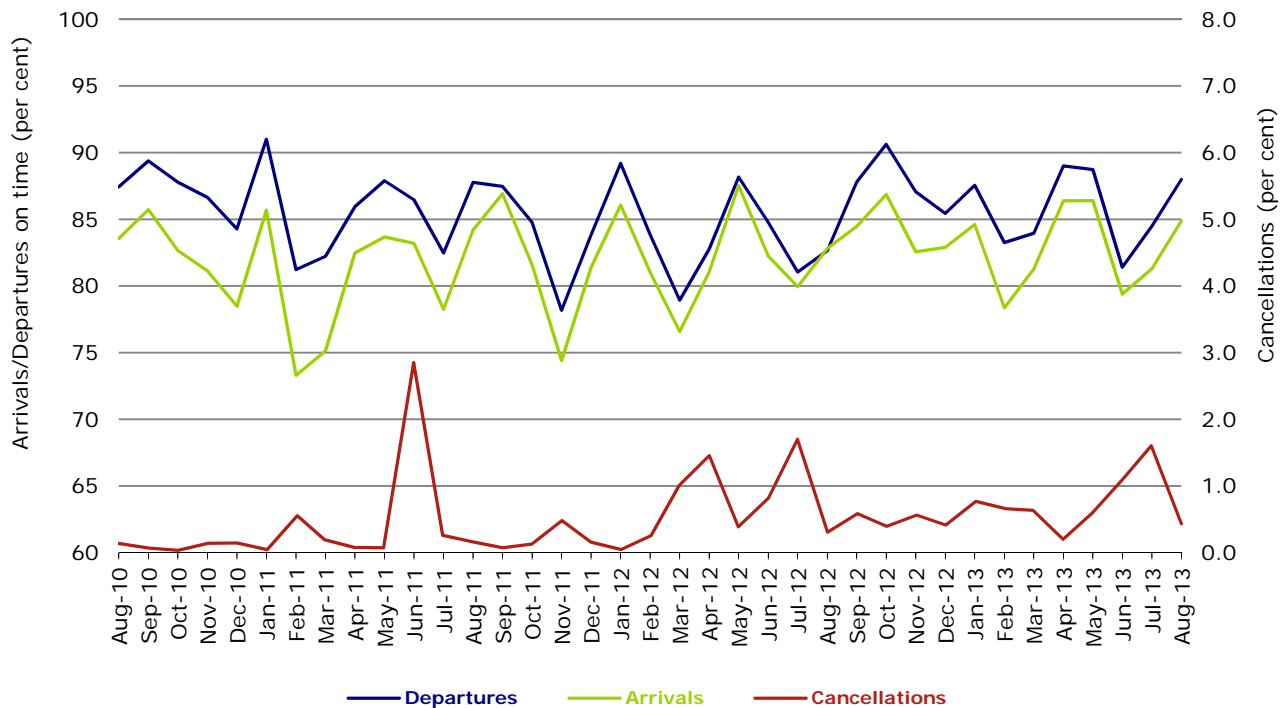
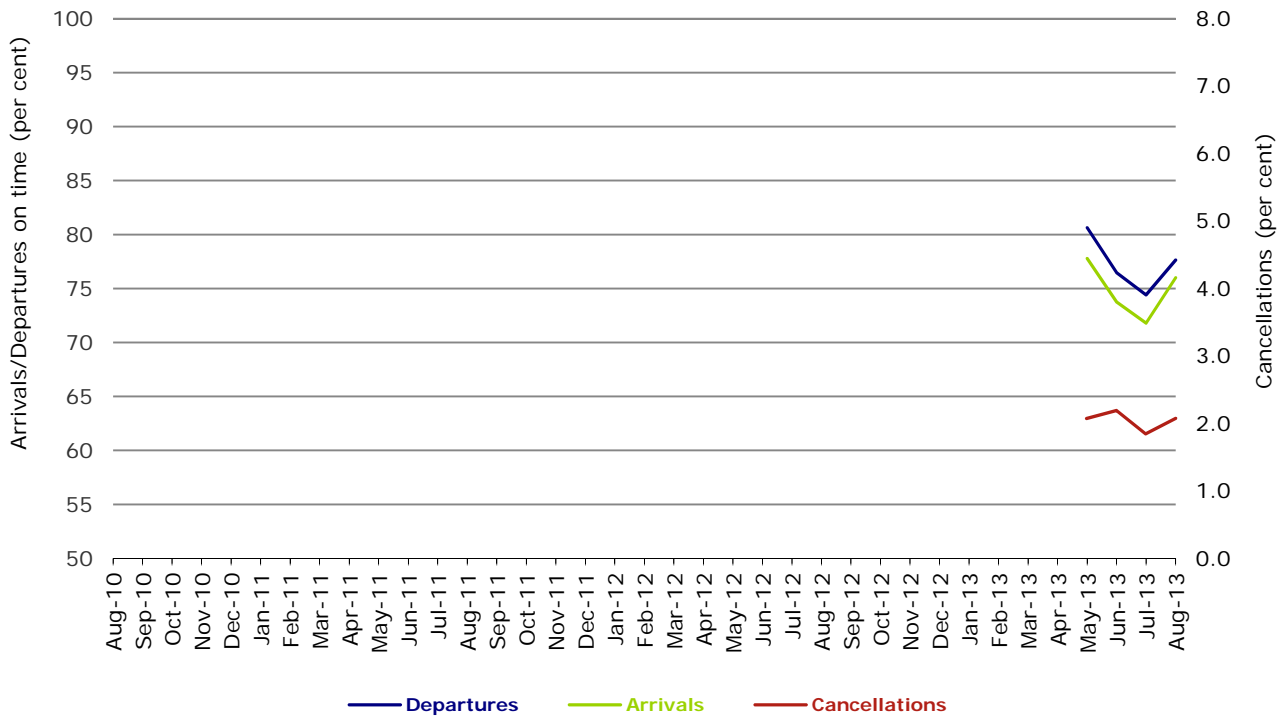


Figure 11 On time performance (by month from August 2010)  
Virgin Australia Regional Airlines



Virgin Australia Regional Airlines commenced operations in May 2013. It was formed after the acquisition of Skywest by Virgin Australia and represents a combination of operations previously reported under Skywest and Virgin Australia – ATR/F100 Operations.

## Individual routes

On time performance is reported for all routes where the passenger load averages over 8000 passengers per month over the previous six months, and where two or more airlines operate in competition on those routes. There are now 62 routes which meet this definition. Over time, however, routes which meet this definition may change as airline networks and traffic levels vary.

	<i>Sectors</i>		<i>Departures On Time</i>		<i>Arrivals On Time</i>		<i>Cancellations</i>	
	<i>Sched.</i>	<i>Flown</i>	<i>No.</i>	<i>%</i>	<i>No.</i>	<i>%</i>	<i>No.</i>	<i>%</i>
<b>Adelaide-Brisbane</b>								
Jetstar	31	31	22	71.0	21	67.7	0	0.0
Qantas	105	105	89	84.8	96	91.4	0	0.0
Virgin Australia	109	106	78	73.6	82	77.4	3	2.8
All Airlines	245	242	189	78.1	199	82.2	3	1.2
<b>Adelaide-Canberra</b>								
Qantas	47	47	47	100.0	47	100.0	0	0.0
QantasLink	22	22	14	63.6	16	72.7	0	0.0
Virgin Australia	26	25	24	96.0	24	96.0	1	3.8
All Airlines	95	94	85	90.4	87	92.6	1	1.1
<b>Adelaide-Gold Coast</b>								
Jetstar	40	39	32	82.1	38	97.4	1	2.5
Virgin Australia	32	31	29	93.5	31	100.0	1	3.1
All Airlines	72	70	61	87.1	69	98.6	2	2.8
<b>Adelaide-Melbourne</b>								
Jetstar	76	74	60	81.1	63	85.1	2	2.6
Qantas	298	295	255	86.4	256	86.8	3	1.0
QantasLink	17	17	16	94.1	16	94.1	0	0.0
Tigerair	62	61	41	67.2	37	60.7	1	1.6
Virgin Australia	282	278	236	84.9	234	84.2	4	1.4
All Airlines	735	725	608	83.9	606	83.6	10	1.4
<b>Adelaide-Perth</b>								
Jetstar	31	31	19	61.3	13	41.9	0	0.0
Qantas	112	112	98	87.5	99	88.4	0	0.0
Virgin Australia	63	63	57	90.5	47	74.6	0	0.0
All Airlines	206	206	174	84.5	159	77.2	0	0.0
<b>Adelaide-Port Lincoln</b>								
QantasLink	102	101	96	95.0	93	92.1	1	1.0
Regional Express	217	216	195	90.3	183	84.7	1	0.5
All Airlines	319	317	291	91.8	276	87.1	2	0.6
<b>Adelaide-Sydney</b>								
Jetstar	90	88	58	65.9	67	76.1	2	2.2
Qantas	270	267	239	89.5	259	97.0	3	1.1
Virgin Australia	170	169	144	85.2	158	93.5	1	0.6
All Airlines	530	524	441	84.2	484	92.4	6	1.1
<b>Albury-Sydney</b>								
QantasLink	115	115	63	54.8	70	60.9	0	0.0
Regional Express	115	115	102	88.7	105	91.3	0	0.0
Virgin Australia Regional Airlines	63	62	43	69.4	39	62.9	1	1.6
All Airlines	293	292	208	71.2	214	73.3	1	0.3
<b>Alice Springs-Melbourne</b>								
Qantas	31	31	22	71.0	23	74.2	0	0.0
Tigerair	18	17	7	41.2	8	47.1	1	5.6
All Airlines	49	48	29	60.4	31	64.6	1	2.0

	<i>Sectors</i>		<i>Departures On Time</i>		<i>Arrivals On Time</i>		<i>Cancellations</i>	
	<i>Sched.</i>	<i>Flown</i>	<i>No.</i>	<i>%</i>	<i>No.</i>	<i>%</i>	<i>No.</i>	<i>%</i>
<b>Alice Springs-Sydney</b>								
Qantas	31	31	14	45.2	26	83.9	0	0.0
Tigerair	18	18	10	55.6	11	61.1	0	0.0
All Airlines	49	49	24	49.0	37	75.5	0	0.0
<b>Ayers Rock-Sydney</b>								
Jetstar	18	18	13	72.2	14	77.8	0	0.0
Virgin Australia	31	31	20	64.5	26	83.9	0	0.0
All Airlines	49	49	33	67.3	40	81.6	0	0.0
<b>Ballina-Sydney</b>								
Jetstar	48	48	38	79.2	35	72.9	0	0.0
Regional Express	26	26	22	84.6	20	76.9	0	0.0
Virgin Australia	31	31	26	83.9	26	83.9	0	0.0
All Airlines	105	105	86	81.9	81	77.1	0	0.0
<b>Brisbane-Adelaide</b>								
Jetstar	30	30	25	83.3	22	73.3	0	0.0
Qantas	105	105	87	82.9	78	74.3	0	0.0
Virgin Australia	109	108	89	82.4	79	73.1	1	0.9
All Airlines	244	243	201	82.7	179	73.7	1	0.4
<b>Brisbane-Bundaberg</b>								
QantasLink	124	124	111	89.5	108	87.1	0	0.0
Virgin Australia Regional Airlines	31	31	22	71.0	24	77.4	0	0.0
All Airlines	155	155	133	85.8	132	85.2	0	0.0
<b>Brisbane-Cairns</b>								
Jetstar	129	127	98	77.2	102	80.3	2	1.6
Qantas	119	119	112	94.1	111	93.3	0	0.0
QantasLink	5	5	5	100.0	4	80.0	0	0.0
Virgin Australia	167	166	144	86.7	148	89.2	1	0.6
All Airlines	420	417	359	86.1	365	87.5	3	0.7
<b>Brisbane-Canberra</b>								
Qantas	144	143	131	91.6	131	91.6	1	0.7
QantasLink	22	21	21	100.0	19	90.5	1	4.5
Virgin Australia	92	91	81	89.0	79	86.8	1	1.1
All Airlines	258	255	233	91.4	229	89.8	3	1.2
<b>Brisbane-Darwin</b>								
Jetstar	9	9	4	44.4	4	44.4	0	0.0
Qantas	31	31	25	80.6	26	83.9	0	0.0
Virgin Australia	31	31	17	54.8	22	71.0	0	0.0
All Airlines	71	71	46	64.8	52	73.2	0	0.0
<b>Brisbane-Emerald</b>								
QantasLink	191	180	169	93.9	164	91.1	11	5.8
Virgin Australia Regional Airlines	105	100	84	84.0	83	83.0	5	4.8
All Airlines	296	280	253	90.4	247	88.2	16	5.4
<b>Brisbane-Gladstone</b>								
QantasLink	229	227	204	89.9	200	88.1	2	0.9
Virgin Australia	30	30	28	93.3	28	93.3	0	0.0
Virgin Australia Regional Airlines	121	113	82	72.6	80	70.8	8	6.6
All Airlines	380	370	314	84.9	308	83.2	10	2.6
<b>Brisbane-Hamilton Island</b>								
Jetstar	18	18	17	94.4	17	94.4	0	0.0
Virgin Australia	31	31	27	87.1	28	90.3	0	0.0
All Airlines	49	49	44	89.8	45	91.8	0	0.0



	<i>Sectors</i>		<i>Departures On Time</i>		<i>Arrivals On Time</i>		<i>Cancellations</i>	
	<i>Sched.</i>	<i>Flown</i>	<i>No.</i>	<i>%</i>	<i>No.</i>	<i>%</i>	<i>No.</i>	<i>%</i>
<b>Brisbane-Mackay</b>								
Jetstar	111	110	98	89.1	99	90.0	1	0.9
QantasLink	110	108	100	92.6	98	90.7	2	1.8
Virgin Australia	169	163	144	88.3	144	88.3	6	3.6
All Airlines	390	381	342	89.8	341	89.5	9	2.3
<b>Brisbane-Melbourne</b>								
Jetstar	89	89	69	77.5	73	82.0	0	0.0
Qantas	423	422	378	89.6	323	76.5	1	0.2
Tigerair	85	84	57	67.9	44	52.4	1	1.2
Virgin Australia	393	386	319	82.6	220	57.0	7	1.8
All Airlines	990	981	823	83.9	660	67.3	9	0.9
<b>Brisbane-Moranbah</b>								
QantasLink	169	161	148	91.9	149	92.5	8	4.7
Virgin Australia Regional Airlines	74	74	63	85.1	47	63.5	0	0.0
All Airlines	243	235	211	89.8	196	83.4	8	3.3
<b>Brisbane-Mount Isa</b>								
Qantas	57	57	52	91.2	54	94.7	0	0.0
Virgin Australia	22	22	19	86.4	18	81.8	0	0.0
All Airlines	79	79	71	89.9	72	91.1	0	0.0
<b>Brisbane-Newcastle</b>								
Jetstar	114	114	94	82.5	94	82.5	0	0.0
QantasLink	70	69	55	79.7	32	46.4	1	1.4
Virgin Australia	84	84	77	91.7	75	89.3	0	0.0
All Airlines	268	267	226	84.6	201	75.3	1	0.4
<b>Brisbane-Perth</b>								
Jetstar	22	22	17	77.3	14	63.6	0	0.0
Qantas	124	124	97	78.2	97	78.2	0	0.0
Virgin Australia	88	88	72	81.8	59	67.0	0	0.0
All Airlines	234	234	186	79.5	170	72.6	0	0.0
<b>Brisbane-Proserpine</b>								
Jetstar	31	31	29	93.5	25	80.6	0	0.0
Virgin Australia	53	53	48	90.6	50	94.3	0	0.0
All Airlines	84	84	77	91.7	75	89.3	0	0.0
<b>Brisbane-Rockhampton</b>								
QantasLink	213	209	179	85.6	179	85.6	4	1.9
Virgin Australia	101	99	82	82.8	84	84.8	2	2.0
Virgin Australia Regional Airlines	116	111	84	75.7	92	82.9	5	4.3
All Airlines	430	419	345	82.3	355	84.7	11	2.6
<b>Brisbane-Sydney</b>								
Jetstar	102	99	71	71.7	71	71.7	3	2.9
Qantas	624	605	521	86.1	501	82.8	19	3.0
Tigerair	79	78	48	61.5	39	50.0	1	1.3
Virgin Australia	568	551	457	82.9	443	80.4	17	3.0
All Airlines	1 373	1 333	1 097	82.3	1 054	79.1	40	2.9
<b>Brisbane-Townsville</b>								
Jetstar	31	31	26	83.9	27	87.1	0	0.0
Qantas	150	150	132	88.0	136	90.7	0	0.0
Virgin Australia	167	166	151	91.0	152	91.6	1	0.6
All Airlines	348	347	309	89.0	315	90.8	1	0.3

	<i>Sectors</i>		<i>Departures On Time</i>		<i>Arrivals On Time</i>		<i>Cancellations</i>	
	<i>Sched.</i>	<i>Flown</i>	<i>No.</i>	<i>%</i>	<i>No.</i>	<i>%</i>	<i>No.</i>	<i>%</i>
<b>Broome-Perth</b>								
Qantas	36	36	20	55.6	27	75.0	0	0.0
QantasLink	52	50	44	88.0	46	92.0	2	3.8
Virgin Australia	62	61	44	72.1	42	68.9	1	1.6
Virgin Australia Regional Airlines	27	27	15	55.6	14	51.9	0	0.0
All Airlines	177	174	123	70.7	129	74.1	3	1.7
<b>Bundaberg-Brisbane</b>								
QantasLink	124	124	104	83.9	96	77.4	0	0.0
Virgin Australia Regional Airlines	31	31	22	71.0	22	71.0	0	0.0
All Airlines	155	155	126	81.3	118	76.1	0	0.0
<b>Cairns-Brisbane</b>								
Jetstar	129	128	105	82.0	94	73.4	1	0.8
Qantas	120	120	107	89.2	99	82.5	0	0.0
QantasLink	4	4	4	100.0	4	100.0	0	0.0
Virgin Australia	167	166	139	83.7	123	74.1	1	0.6
All Airlines	420	418	355	84.9	320	76.6	2	0.5
<b>Cairns-Melbourne</b>								
Jetstar	105	103	96	93.2	90	87.4	2	1.9
Qantas	31	31	20	64.5	21	67.7	0	0.0
Tigerair	53	53	35	66.0	28	52.8	0	0.0
Virgin Australia	36	35	25	71.4	20	57.1	1	2.8
All Airlines	225	222	176	79.3	159	71.6	3	1.3
<b>Cairns-Sydney</b>								
Jetstar	100	100	93	93.0	86	86.0	0	0.0
Qantas	80	80	73	91.3	73	91.3	0	0.0
Tigerair	39	39	30	76.9	28	71.8	0	0.0
Virgin Australia	89	88	76	86.4	76	86.4	1	1.1
All Airlines	308	307	272	88.6	263	85.7	1	0.3
<b>Cairns-Townsville</b>								
QantasLink	184	184	175	95.1	175	95.1	0	0.0
Virgin Australia Regional Airlines	26	26	26	100.0	24	92.3	0	0.0
All Airlines	210	210	201	95.7	199	94.8	0	0.0
<b>Canberra-Adelaide</b>								
Qantas	52	51	51	100.0	50	98.0	1	1.9
QantasLink	22	22	15	68.2	11	50.0	0	0.0
Virgin Australia	26	25	23	92.0	23	92.0	1	3.8
All Airlines	100	98	89	90.8	84	85.7	2	2.0
<b>Canberra-Brisbane</b>								
Qantas	144	144	129	89.6	130	90.3	0	0.0
QantasLink	22	20	15	75.0	18	90.0	2	9.1
Virgin Australia	92	91	81	89.0	85	93.4	1	1.1
All Airlines	258	255	225	88.2	233	91.4	3	1.2
<b>Canberra-Melbourne</b>								
Qantas	261	258	236	91.5	221	85.7	3	1.1
QantasLink	40	39	32	82.1	24	61.5	1	2.5
Virgin Australia	180	177	138	78.0	130	73.4	3	1.7
All Airlines	481	474	406	85.7	375	79.1	7	1.5
<b>Canberra-Sydney</b>								
Qantas	156	156	144	92.3	146	93.6	0	0.0
QantasLink	382	369	296	80.2	308	83.5	13	3.4
Virgin Australia	52	51	46	90.2	47	92.2	1	1.9
Virgin Australia Regional Airlines	253	245	213	86.9	217	88.6	8	3.2
All Airlines	843	821	699	85.1	718	87.5	22	2.6

	<i>Sectors</i>		<i>Departures On Time</i>		<i>Arrivals On Time</i>		<i>Cancellations</i>	
	<i>Sched.</i>	<i>Flown</i>	<i>No.</i>	<i>%</i>	<i>No.</i>	<i>%</i>	<i>No.</i>	<i>%</i>
<b>Coffs Harbour-Sydney</b>								
QantasLink	155	155	110	71.0	108	69.7	0	0.0
Tigerair	22	22	15	68.2	14	63.6	0	0.0
Virgin Australia	62	62	58	93.5	59	95.2	0	0.0
All Airlines	239	239	183	76.6	181	75.7	0	0.0
<b>Darwin-Brisbane</b>								
Jetstar	9	9	5	55.6	5	55.6	0	0.0
Qantas	31	31	24	77.4	22	71.0	0	0.0
Virgin Australia	31	31	23	74.2	26	83.9	0	0.0
All Airlines	71	71	52	73.2	53	74.6	0	0.0
<b>Darwin-Melbourne</b>								
Jetstar	13	13	3	23.1	6	46.2	0	0.0
Qantas	17	17	16	94.1	12	70.6	0	0.0
Virgin Australia	31	31	30	96.8	28	90.3	0	0.0
All Airlines	61	61	49	80.3	46	75.4	0	0.0
<b>Darwin-Perth</b>								
Qantas	31	31	29	93.5	31	100.0	0	0.0
Virgin Australia	26	26	24	92.3	25	96.2	0	0.0
All Airlines	57	57	53	93.0	56	98.2	0	0.0
<b>Darwin-Sydney</b>								
Jetstar	30	30	24	80.0	25	83.3	0	0.0
Qantas	58	58	52	89.7	50	86.2	0	0.0
Virgin Australia	31	31	20	64.5	20	64.5	0	0.0
All Airlines	119	119	96	80.7	95	79.8	0	0.0
<b>Dubbo-Sydney</b>								
QantasLink	127	125	77	61.6	71	56.8	2	1.6
Regional Express	163	163	143	87.7	141	86.5	0	0.0
All Airlines	290	288	220	76.4	212	73.6	2	0.7
<b>Emerald-Brisbane</b>								
QantasLink	190	180	160	88.9	152	84.4	10	5.3
Virgin Australia Regional Airlines	105	100	80	80.0	85	85.0	5	4.8
All Airlines	295	280	240	85.7	237	84.6	15	5.1
<b>Geraldton-Perth</b>								
QantasLink	62	62	58	93.5	54	87.1	0	0.0
Virgin Australia Regional Airlines	96	94	73	77.7	70	74.5	2	2.1
All Airlines	158	156	131	84.0	124	79.5	2	1.3
<b>Gladstone-Brisbane</b>								
QantasLink	251	248	208	83.9	192	77.4	3	1.2
Virgin Australia	30	30	26	86.7	19	63.3	0	0.0
Virgin Australia Regional Airlines	121	114	84	73.7	86	75.4	7	5.8
All Airlines	402	392	318	81.1	297	75.8	10	2.5
<b>Gold Coast-Adelaide</b>								
Jetstar	40	39	36	92.3	33	84.6	1	2.5
Virgin Australia	31	29	28	96.6	25	86.2	2	6.5
All Airlines	71	68	64	94.1	58	85.3	3	4.2
<b>Gold Coast-Melbourne</b>								
Jetstar	181	180	158	87.8	139	77.2	1	0.6
Tigerair	63	63	51	81.0	28	44.4	0	0.0
Virgin Australia	173	173	144	83.2	132	76.3	0	0.0
All Airlines	417	416	353	84.9	299	71.9	1	0.2

	<i>Sectors</i>		<i>Departures On Time</i>		<i>Arrivals On Time</i>		<i>Cancellations</i>	
	<i>Sched.</i>	<i>Flown</i>	<i>No.</i>	<i>%</i>	<i>No.</i>	<i>%</i>	<i>No.</i>	<i>%</i>
<b>Gold Coast-Sydney</b>								
Jetstar	280	269	230	85.5	231	85.9	11	3.9
Qantas	93	93	90	96.8	89	95.7	0	0.0
Tigerair	61	60	48	80.0	40	66.7	1	1.6
Virgin Australia	313	309	280	90.6	273	88.3	4	1.3
All Airlines	747	731	648	88.6	633	86.6	16	2.1
<b>Hamilton Island-Brisbane</b>								
Jetstar	18	18	16	88.9	15	83.3	0	0.0
Virgin Australia	31	31	27	87.1	26	83.9	0	0.0
All Airlines	49	49	43	87.8	41	83.7	0	0.0
<b>Hamilton Island-Sydney</b>								
Jetstar	30	30	24	80.0	26	86.7	0	0.0
Virgin Australia	31	30	26	86.7	25	83.3	1	3.2
All Airlines	61	60	50	83.3	51	85.0	1	1.6
<b>Hobart-Melbourne</b>								
Jetstar	160	158	114	72.2	111	70.3	2	1.3
Qantas	62	62	54	87.1	52	83.9	0	0.0
QantasLink	31	31	30	96.8	21	67.7	0	0.0
Tigerair	31	31	14	45.2	13	41.9	0	0.0
Virgin Australia	146	145	117	80.7	114	78.6	1	0.7
All Airlines	430	427	329	77.0	311	72.8	3	0.7
<b>Hobart-Sydney</b>								
Jetstar	49	49	36	73.5	37	75.5	0	0.0
Qantas	31	31	29	93.5	31	100.0	0	0.0
Virgin Australia	62	62	53	85.5	56	90.3	0	0.0
All Airlines	142	142	118	83.1	124	87.3	0	0.0
<b>Kalgoorlie-Perth</b>								
Qantas	68	67	59	88.1	57	85.1	1	1.5
QantasLink	24	24	20	83.3	20	83.3	0	0.0
Virgin Australia	47	46	35	76.1	31	67.4	1	2.1
Virgin Australia Regional Airlines	13	13	7	53.8	7	53.8	0	0.0
All Airlines	152	150	121	80.7	115	76.7	2	1.3
<b>Karratha-Perth</b>								
Qantas	189	180	170	94.4	163	90.6	9	4.8
QantasLink	65	57	56	98.2	53	93.0	8	12.3
Virgin Australia	75	75	60	80.0	57	76.0	0	0.0
All Airlines	329	312	286	91.7	273	87.5	17	5.2
<b>Launceston-Melbourne</b>								
Jetstar	108	107	72	67.3	63	58.9	1	0.9
QantasLink	112	111	98	88.3	92	82.9	1	0.9
Virgin Australia	121	121	103	85.1	94	77.7	0	0.0
All Airlines	341	339	273	80.5	249	73.5	2	0.6
<b>Launceston-Sydney</b>								
Jetstar	47	47	27	57.4	28	59.6	0	0.0
Virgin Australia	31	31	29	93.5	28	90.3	0	0.0
All Airlines	78	78	56	71.8	56	71.8	0	0.0
<b>Mackay-Brisbane</b>								
Jetstar	111	110	82	74.5	66	60.0	1	0.9
QantasLink	111	109	101	92.7	100	91.7	2	1.8
Virgin Australia	168	161	145	90.1	124	77.0	7	4.2
All Airlines	390	380	328	86.3	290	76.3	10	2.6

	<i>Sectors</i>		<i>Departures On Time</i>		<i>Arrivals On Time</i>		<i>Cancellations</i>	
	<i>Sched.</i>	<i>Flown</i>	<i>No.</i>	<i>%</i>	<i>No.</i>	<i>%</i>	<i>No.</i>	<i>%</i>
<b>Melbourne-Adelaide</b>								
Jetstar	75	75	64	85.3	59	78.7	0	0.0
Qantas	298	293	269	91.8	264	90.1	5	1.7
QantasLink	17	17	17	100.0	16	94.1	0	0.0
Tigerair	62	62	52	83.9	43	69.4	0	0.0
Virgin Australia	283	280	224	80.0	225	80.4	3	1.1
All Airlines	735	727	626	86.1	607	83.5	8	1.1
<b>Melbourne-Alice Springs</b>								
Qantas	31	31	25	80.6	24	77.4	0	0.0
Tigerair	18	17	17	100.0	11	64.7	1	5.6
All Airlines	49	48	42	87.5	35	72.9	1	2.0
<b>Melbourne-Brisbane</b>								
Jetstar	88	88	51	58.0	56	63.6	0	0.0
Qantas	423	422	355	84.1	341	80.8	1	0.2
Tigerair	84	84	52	61.9	57	67.9	0	0.0
Virgin Australia	392	386	264	68.4	276	71.5	6	1.5
All Airlines	987	980	722	73.7	730	74.5	7	0.7
<b>Melbourne-Cairns</b>								
Jetstar	106	104	90	86.5	95	91.3	2	1.9
Qantas	31	31	22	71.0	24	77.4	0	0.0
Tigerair	53	53	46	86.8	45	84.9	0	0.0
Virgin Australia	36	36	26	72.2	30	83.3	0	0.0
All Airlines	226	224	184	82.1	194	86.6	2	0.9
<b>Melbourne-Canberra</b>								
Qantas	261	260	230	88.5	234	90.0	1	0.4
QantasLink	40	38	35	92.1	30	78.9	2	5.0
Virgin Australia	180	178	133	74.7	138	77.5	2	1.1
All Airlines	481	476	398	83.6	402	84.5	5	1.0
<b>Melbourne-Darwin</b>								
Jetstar	13	13	8	61.5	7	53.8	0	0.0
Qantas	17	17	15	88.2	16	94.1	0	0.0
Virgin Australia	31	31	26	83.9	28	90.3	0	0.0
All Airlines	61	61	49	80.3	51	83.6	0	0.0
<b>Melbourne-Gold Coast</b>								
Jetstar	181	180	129	71.7	137	76.1	1	0.6
Tigerair	63	63	52	82.5	49	77.8	0	0.0
Virgin Australia	172	171	124	72.5	140	81.9	1	0.6
All Airlines	416	414	305	73.7	326	78.7	2	0.5
<b>Melbourne-Hobart</b>								
Jetstar	160	159	122	76.7	121	76.1	1	0.6
Qantas	62	62	56	90.3	55	88.7	0	0.0
QantasLink	31	31	19	61.3	14	45.2	0	0.0
Tigerair	31	31	16	51.6	15	48.4	0	0.0
Virgin Australia	146	145	114	78.6	107	73.8	1	0.7
All Airlines	430	428	327	76.4	312	72.9	2	0.5
<b>Melbourne-Launceston</b>								
Jetstar	109	108	86	79.6	83	76.9	1	0.9
QantasLink	112	111	97	87.4	86	77.5	1	0.9
Virgin Australia	121	121	100	82.6	105	86.8	0	0.0
All Airlines	342	340	283	83.2	274	80.6	2	0.6
<b>Melbourne-Mildura</b>								
QantasLink	88	88	82	93.2	74	84.1	0	0.0
Regional Express	88	88	80	90.9	78	88.6	0	0.0
Virgin Australia	31	31	23	74.2	21	67.7	0	0.0
All Airlines	207	207	185	89.4	173	83.6	0	0.0

	<i>Sectors</i>		<i>Departures On Time</i>		<i>Arrivals On Time</i>		<i>Cancellations</i>	
	<i>Sched.</i>	<i>Flown</i>	<i>No.</i>	<i>%</i>	<i>No.</i>	<i>%</i>	<i>No.</i>	<i>%</i>
<b>Melbourne-Newcastle</b>								
Jetstar	106	106	66	62.3	72	67.9	0	0.0
Virgin Australia	31	31	30	96.8	31	100.0	0	0.0
All Airlines	137	137	96	70.1	103	75.2	0	0.0
<b>Melbourne-Perth</b>								
Jetstar	81	80	68	85.0	56	70.0	1	1.2
Qantas	226	223	185	83.0	173	77.6	3	1.3
Tigerair	57	54	40	74.1	21	38.9	3	5.3
Virgin Australia	141	141	111	78.7	63	44.7	0	0.0
All Airlines	505	498	404	81.1	313	62.9	7	1.4
<b>Melbourne-Sunshine Coast</b>								
Jetstar	62	62	46	74.2	48	77.4	0	0.0
Tigerair	31	31	28	90.3	30	96.8	0	0.0
Virgin Australia	31	31	24	77.4	25	80.6	0	0.0
All Airlines	124	124	98	79.0	103	83.1	0	0.0
<b>Melbourne-Sydney</b>								
Jetstar	290	282	196	69.5	216	76.6	8	2.8
Qantas	895	870	747	85.9	758	87.1	25	2.8
Tigerair	200	196	151	77.0	168	85.7	4	2.0
Virgin Australia	796	770	625	81.2	631	81.9	26	3.3
All Airlines	2 181	2 118	1 719	81.2	1 773	83.7	63	2.9
<b>Mildura-Melbourne</b>								
QantasLink	88	88	83	94.3	79	89.8	0	0.0
Regional Express	88	88	79	89.8	75	85.2	0	0.0
Virgin Australia	31	31	21	67.7	21	67.7	0	0.0
All Airlines	207	207	183	88.4	175	84.5	0	0.0
<b>Moranbah-Brisbane</b>								
QantasLink	170	162	143	88.3	143	88.3	8	4.7
Virgin Australia Regional Airlines	74	74	50	67.6	33	44.6	0	0.0
All Airlines	244	236	193	81.8	176	74.6	8	3.3
<b>Mount Isa-Brisbane</b>								
Qantas	57	57	48	84.2	47	82.5	0	0.0
Virgin Australia	22	21	16	76.2	12	57.1	1	4.5
All Airlines	79	78	64	82.1	59	75.6	1	1.3
<b>Newcastle-Brisbane</b>								
Jetstar	113	112	96	85.7	95	84.8	1	0.9
QantasLink	71	70	33	47.1	44	62.9	1	1.4
Virgin Australia	84	84	71	84.5	65	77.4	0	0.0
All Airlines	268	266	200	75.2	204	76.7	2	0.7
<b>Newcastle-Melbourne</b>								
Jetstar	106	106	78	73.6	69	65.1	0	0.0
Virgin Australia	31	31	26	83.9	23	74.2	0	0.0
All Airlines	137	137	104	75.9	92	67.2	0	0.0
<b>Newman-Perth</b>								
Qantas	129	128	115	89.8	106	82.8	1	0.8
QantasLink	36	33	30	90.9	28	84.8	3	8.3
Virgin Australia	39	39	36	92.3	34	87.2	0	0.0
Virgin Australia Regional Airlines	15	15	12	80.0	10	66.7	0	0.0
All Airlines	219	215	193	89.8	178	82.8	4	1.8
<b>Perth-Adelaide</b>								
Jetstar	31	31	21	67.7	28	90.3	0	0.0
Qantas	117	117	108	92.3	112	95.7	0	0.0
Virgin Australia	64	64	57	89.1	60	93.8	0	0.0
All Airlines	212	212	186	87.7	200	94.3	0	0.0

	<i>Sectors</i>		<i>Departures On Time</i>		<i>Arrivals On Time</i>		<i>Cancellations</i>	
	<i>Sched.</i>	<i>Flown</i>	<i>No.</i>	<i>%</i>	<i>No.</i>	<i>%</i>	<i>No.</i>	<i>%</i>
<b>Perth-Brisbane</b>								
Jetstar	21	21	9	42.9	15	71.4	0	0.0
Qantas	124	124	108	87.1	111	89.5	0	0.0
Virgin Australia	88	88	66	75.0	72	81.8	0	0.0
All Airlines	233	233	183	78.5	198	85.0	0	0.0
<b>Perth-Broome</b>								
Qantas	36	36	32	88.9	30	83.3	0	0.0
QantasLink	52	51	45	88.2	46	90.2	1	1.9
Virgin Australia	62	61	48	78.7	53	86.9	1	1.6
Virgin Australia Regional Airlines	28	28	18	64.3	20	71.4	0	0.0
All Airlines	178	176	143	81.3	149	84.7	2	1.1
<b>Perth-Darwin</b>								
Qantas	31	31	29	93.5	29	93.5	0	0.0
Virgin Australia	26	26	22	84.6	20	76.9	0	0.0
All Airlines	57	57	51	89.5	49	86.0	0	0.0
<b>Perth-Geraldton</b>								
QantasLink	61	61	57	93.4	53	86.9	0	0.0
Virgin Australia Regional Airlines	96	94	74	78.7	70	74.5	2	2.1
All Airlines	157	155	131	84.5	123	79.4	2	1.3
<b>Perth-Kalgoorlie</b>								
Qantas	70	69	61	88.4	62	89.9	1	1.4
QantasLink	25	25	24	96.0	25	100.0	0	0.0
Virgin Australia	47	46	38	82.6	40	87.0	1	2.1
Virgin Australia Regional Airlines	14	14	10	71.4	11	78.6	0	0.0
All Airlines	156	154	133	86.4	138	89.6	2	1.3
<b>Perth-Karratha</b>								
Qantas	189	183	175	95.6	175	95.6	6	3.2
QantasLink	65	59	58	98.3	59	100.0	6	9.2
Virgin Australia	75	75	66	88.0	68	90.7	0	0.0
All Airlines	329	317	299	94.3	302	95.3	12	3.6
<b>Perth-Melbourne</b>								
Jetstar	80	79	41	51.9	58	73.4	1	1.3
Qantas	226	224	185	82.6	199	88.8	2	0.9
Tigerair	58	54	21	38.9	32	59.3	4	6.9
Virgin Australia	141	141	107	75.9	119	84.4	0	0.0
All Airlines	505	498	354	71.1	408	81.9	7	1.4
<b>Perth-Newman</b>								
Qantas	129	129	117	90.7	118	91.5	0	0.0
QantasLink	36	33	28	84.8	29	87.9	3	8.3
Virgin Australia	39	39	37	94.9	37	94.9	0	0.0
Virgin Australia Regional Airlines	15	15	11	73.3	12	80.0	0	0.0
All Airlines	219	216	193	89.4	196	90.7	3	1.4
<b>Perth-Port Hedland</b>								
Qantas	129	128	121	94.5	120	93.8	1	0.8
QantasLink	44	43	42	97.7	41	95.3	1	2.3
Virgin Australia	53	53	48	90.6	50	94.3	0	0.0
All Airlines	226	224	211	94.2	211	94.2	2	0.9

	<i>Sectors</i>		<i>Departures On Time</i>		<i>Arrivals On Time</i>		<i>Cancellations</i>	
	<i>Sched.</i>	<i>Flown</i>	<i>No.</i>	<i>%</i>	<i>No.</i>	<i>%</i>	<i>No.</i>	<i>%</i>
<b>Perth-Sydney</b>								
Jetstar	30	30	13	43.3	25	83.3	0	0.0
Qantas	207	207	168	81.2	191	92.3	0	0.0
Virgin Australia	119	118	90	76.3	109	92.4	1	0.8
All Airlines	356	355	271	76.3	325	91.5	1	0.3
<b>Port Hedland-Perth</b>								
Qantas	129	128	121	94.5	117	91.4	1	0.8
QantasLink	44	43	41	95.3	38	88.4	1	2.3
Virgin Australia	53	52	46	88.5	45	86.5	1	1.9
All Airlines	226	223	208	93.3	200	89.7	3	1.3
<b>Port Lincoln-Adelaide</b>								
QantasLink	103	102	95	93.1	92	90.2	1	1.0
Regional Express	217	217	184	84.8	180	82.9	0	0.0
All Airlines	320	319	279	87.5	272	85.3	1	0.3
<b>Port Macquarie-Sydney</b>								
QantasLink	136	135	80	59.3	73	54.1	1	0.7
Virgin Australia Regional Airlines	62	62	50	80.6	46	74.2	0	0.0
All Airlines	198	197	130	66.0	119	60.4	1	0.5
<b>Proserpine-Brisbane</b>								
Jetstar	31	31	26	83.9	25	80.6	0	0.0
Virgin Australia	53	53	43	81.1	39	73.6	0	0.0
All Airlines	84	84	69	82.1	64	76.2	0	0.0
<b>Rockhampton-Brisbane</b>								
QantasLink	195	188	154	81.9	139	73.9	7	3.6
Virgin Australia	101	99	84	84.8	73	73.7	2	2.0
Virgin Australia Regional Airlines	116	112	91	81.3	91	81.3	4	3.4
All Airlines	412	399	329	82.5	303	75.9	13	3.2
<b>Sunshine Coast-Melbourne</b>								
Jetstar	61	60	37	61.7	33	55.0	1	1.6
Tigerair	31	31	27	87.1	17	54.8	0	0.0
Virgin Australia	31	31	22	71.0	18	58.1	0	0.0
All Airlines	123	122	86	70.5	68	55.7	1	0.8
<b>Sunshine Coast-Sydney</b>								
Jetstar	86	86	74	86.0	73	84.9	0	0.0
Virgin Australia	36	36	33	91.7	31	86.1	0	0.0
All Airlines	122	122	107	87.7	104	85.2	0	0.0
<b>Sydney-Adelaide</b>								
Jetstar	90	90	76	84.4	67	74.4	0	0.0
Qantas	260	260	231	88.8	212	81.5	0	0.0
Virgin Australia	170	167	139	83.2	134	80.2	3	1.8
All Airlines	520	517	446	86.3	413	79.9	3	0.6
<b>Sydney-Albury</b>								
QantasLink	115	115	71	61.7	45	39.1	0	0.0
Regional Express	115	115	97	84.3	97	84.3	0	0.0
Virgin Australia Regional Airlines	63	62	43	69.4	38	61.3	1	1.6
All Airlines	293	292	211	72.3	180	61.6	1	0.3
<b>Sydney-Alice Springs</b>								
Qantas	31	31	30	96.8	27	87.1	0	0.0
Tigerair	18	18	16	88.9	14	77.8	0	0.0
All Airlines	49	49	46	93.9	41	83.7	0	0.0



	<i>Sectors</i>		<i>Departures On Time</i>		<i>Arrivals On Time</i>		<i>Cancellations</i>	
	<i>Sched.</i>	<i>Flown</i>	<i>No.</i>	<i>%</i>	<i>No.</i>	<i>%</i>	<i>No.</i>	<i>%</i>
<b>Sydney-Ayers Rock</b>								
Jetstar	16	16	16	100.0	15	93.8	0	0.0
Virgin Australia	31	31	27	87.1	25	80.6	0	0.0
All Airlines	47	47	43	91.5	40	85.1	0	0.0
<b>Sydney-Ballina</b>								
Jetstar	48	48	40	83.3	41	85.4	0	0.0
Regional Express	26	26	25	96.2	25	96.2	0	0.0
Virgin Australia	31	31	29	93.5	28	90.3	0	0.0
All Airlines	105	105	94	89.5	94	89.5	0	0.0
<b>Sydney-Brisbane</b>								
Jetstar	101	100	87	87.0	74	74.0	1	1.0
Qantas	593	578	505	87.4	469	81.1	15	2.5
Tigerair	79	78	58	74.4	40	51.3	1	1.3
Virgin Australia	567	551	490	88.9	450	81.7	16	2.8
All Airlines	1 340	1 307	1 140	87.2	1 033	79.0	33	2.5
<b>Sydney-Cairns</b>								
Jetstar	100	100	94	94.0	95	95.0	0	0.0
Qantas	80	80	72	90.0	77	96.3	0	0.0
Tigerair	39	39	37	94.9	36	92.3	0	0.0
Virgin Australia	88	87	66	75.9	76	87.4	1	1.1
All Airlines	307	306	269	87.9	284	92.8	1	0.3
<b>Sydney-Canberra</b>								
Qantas	160	160	153	95.6	145	90.6	0	0.0
QantasLink	382	369	277	75.1	284	77.0	13	3.4
Virgin Australia	53	52	50	96.2	50	96.2	1	1.9
Virgin Australia Regional Airlines	252	244	206	84.4	205	84.0	8	3.2
All Airlines	847	825	686	83.2	684	82.9	22	2.6
<b>Sydney-Coffs Harbour</b>								
QantasLink	155	155	110	71.0	106	68.4	0	0.0
Tigerair	22	22	14	63.6	14	63.6	0	0.0
Virgin Australia	62	62	58	93.5	59	95.2	0	0.0
All Airlines	239	239	182	76.2	179	74.9	0	0.0
<b>Sydney-Darwin</b>								
Jetstar	30	30	27	90.0	27	90.0	0	0.0
Qantas	57	57	46	80.7	54	94.7	0	0.0
Virgin Australia	31	31	25	80.6	27	87.1	0	0.0
All Airlines	118	118	98	83.1	108	91.5	0	0.0
<b>Sydney-Dubbo</b>								
QantasLink	126	124	89	71.8	67	54.0	2	1.6
Regional Express	157	157	131	83.4	136	86.6	0	0.0
All Airlines	283	281	220	78.3	203	72.2	2	0.7
<b>Sydney-Gold Coast</b>								
Jetstar	280	269	237	88.1	244	90.7	11	3.9
Qantas	93	93	89	95.7	92	98.9	0	0.0
Tigerair	61	61	47	77.0	50	82.0	0	0.0
Virgin Australia	314	311	269	86.5	272	87.5	3	1.0
All Airlines	748	734	642	87.5	658	89.6	14	1.9
<b>Sydney-Hamilton Island</b>								
Jetstar	30	30	26	86.7	29	96.7	0	0.0
Virgin Australia	30	30	26	86.7	27	90.0	0	0.0
All Airlines	60	60	52	86.7	56	93.3	0	0.0

	<i>Sectors</i>		<i>Departures On Time</i>		<i>Arrivals On Time</i>		<i>Cancellations</i>	
	<i>Sched.</i>	<i>Flown</i>	<i>No.</i>	<i>%</i>	<i>No.</i>	<i>%</i>	<i>No.</i>	<i>%</i>
<b>Sydney-Hobart</b>								
Jetstar	48	48	41	85.4	39	81.3	0	0.0
Qantas	31	31	29	93.5	28	90.3	0	0.0
Virgin Australia	62	62	57	91.9	59	95.2	0	0.0
All Airlines	141	141	127	90.1	126	89.4	0	0.0
<b>Sydney-Launceston</b>								
Jetstar	46	46	36	78.3	33	71.7	0	0.0
Virgin Australia	31	31	28	90.3	27	87.1	0	0.0
All Airlines	77	77	64	83.1	60	77.9	0	0.0
<b>Sydney-Melbourne</b>								
Jetstar	288	282	242	85.8	222	78.7	6	2.1
Qantas	896	870	793	91.1	703	80.8	26	2.9
Tigerair	199	196	167	85.2	143	73.0	3	1.5
Virgin Australia	797	773	657	85.0	596	77.1	24	3.0
All Airlines	2 180	2 121	1 859	87.6	1 664	78.5	59	2.7
<b>Sydney-Perth</b>								
Jetstar	31	31	26	83.9	17	54.8	0	0.0
Qantas	209	209	173	82.8	127	60.8	0	0.0
Virgin Australia	118	117	97	82.9	64	54.7	1	0.8
All Airlines	358	357	296	82.9	208	58.3	1	0.3
<b>Sydney-Port Macquarie</b>								
QantasLink	136	135	93	68.9	85	63.0	1	0.7
Virgin Australia Regional Airlines	62	62	51	82.3	50	80.6	0	0.0
All Airlines	198	197	144	73.1	135	68.5	1	0.5
<b>Sydney-Sunshine Coast</b>								
Jetstar	84	84	76	90.5	77	91.7	0	0.0
Virgin Australia	36	36	35	97.2	36	100.0	0	0.0
All Airlines	120	120	111	92.5	113	94.2	0	0.0
<b>Sydney-Townsville</b>								
Jetstar	23	23	17	73.9	21	91.3	0	0.0
Virgin Australia	31	31	27	87.1	25	80.6	0	0.0
All Airlines	54	54	44	81.5	46	85.2	0	0.0
<b>Sydney-Wagga Wagga</b>								
QantasLink	114	114	73	64.0	58	50.9	0	0.0
Regional Express	141	141	127	90.1	126	89.4	0	0.0
All Airlines	255	255	200	78.4	184	72.2	0	0.0
<b>Townsville-Brisbane</b>								
Jetstar	31	31	23	74.2	17	54.8	0	0.0
Qantas	150	150	144	96.0	139	92.7	0	0.0
Virgin Australia	167	166	151	91.0	139	83.7	1	0.6
All Airlines	348	347	318	91.6	295	85.0	1	0.3
<b>Townsville-Cairns</b>								
QantasLink	186	185	162	87.6	164	88.6	1	0.5
Virgin Australia Regional Airlines	26	26	25	96.2	24	92.3	0	0.0
All Airlines	212	211	187	88.6	188	89.1	1	0.5
<b>Townsville-Sydney</b>								
Jetstar	23	23	17	73.9	18	78.3	0	0.0
Virgin Australia	31	31	24	77.4	24	77.4	0	0.0
All Airlines	54	54	41	75.9	42	77.8	0	0.0
<b>Wagga Wagga-Sydney</b>								
QantasLink	115	114	76	66.7	73	64.0	1	0.9
Regional Express	141	141	125	88.7	128	90.8	0	0.0
All Airlines	256	255	201	78.8	201	78.8	1	0.4

# Airports

On time performance is reported for all routes where the passenger load averages over 8000 passengers per month, and where two or more airlines operate in competition. The following data reports by airport against flights operated on those routes only.

Airport	Departures			Arrivals		
	Sectors	On Time		Sectors	On Time	
	Flown	No.	%	Flown	No.	%
<b>Adelaide</b>						
Jetstar	263	191	72.6	265	209	78.9
Qantas	826	728	88.1	826	716	86.7
QantasLink	140	126	90.0	141	119	84.4
Regional Express	216	195	90.3	217	180	82.9
Tigerair	61	41	67.2	62	43	69.4
Virgin Australia	672	568	84.5	673	546	81.1
All Airlines	2 178	1 849	84.9	2 184	1 813	83.0
Relates to services to and from Brisbane, Canberra, Gold Coast, Melbourne, Perth, Port Lincoln and Sydney.						
<b>Albury</b>						
QantasLink	115	63	54.8	115	45	39.1
Regional Express	115	102	88.7	115	97	84.3
Virgin Australia Regional Airlines	62	43	69.4	62	38	61.3
All Airlines	292	208	71.2	292	180	61.6
Relates to services to and from Sydney only.						
<b>Alice Springs</b>						
Qantas	62	36	58.1	62	51	82.3
Tigerair	35	17	48.6	35	25	71.4
All Airlines	97	53	54.6	97	76	78.4
Relates to services to and from Melbourne and Sydney.						
<b>Ayers Rock</b>						
Jetstar	18	13	72.2	16	15	93.8
Virgin Australia	31	20	64.5	31	25	80.6
All Airlines	49	33	67.3	47	40	85.1
Relates to services to and from Sydney only.						
<b>Ballina</b>						
Jetstar	48	38	79.2	48	41	85.4
Regional Express	26	22	84.6	26	25	96.2
Virgin Australia	31	26	83.9	31	28	90.3
All Airlines	105	86	81.9	105	94	89.5
Relates to services to and from Sydney only.						
<b>Brisbane</b>						
Jetstar	680	548	80.6	679	483	71.1
Qantas	1 756	1 535	87.4	1 731	1 454	84.0
QantasLink	1 104	992	89.9	1 105	888	80.4
Tigerair	162	105	64.8	162	97	59.9
Virgin Australia	2 069	1 755	84.8	2 064	1 611	78.1
Virgin Australia Regional Airlines	429	335	78.1	431	317	73.5
All Airlines	6 200	5 270	85.0	6 172	4 850	78.6
Relates to services to and from Adelaide, Bundaberg, Cairns, Canberra, Darwin, Emerald, Gladstone, Hamilton Island, Mackay, Melbourne, Moranbah, Mount Isa, Newcastle, Perth, Proserpine, Rockhampton, Sydney and Townsville.						

Airport	Departures			Arrivals		
	Sectors Flown	On Time		Sectors Flown	On Time	
		No.	%		No.	%
<b>Broome</b>						
Qantas	36	20	55.6	36	30	83.3
QantasLink	50	44	88.0	51	46	90.2
Virgin Australia	61	44	72.1	61	53	86.9
Virgin Australia Regional Airlines	27	15	55.6	28	20	71.4
All Airlines	174	123	70.7	176	149	84.7
Relates to services to and from Perth only.						
<b>Bundaberg</b>						
QantasLink	124	104	83.9	124	108	87.1
Virgin Australia Regional Airlines	31	22	71.0	31	24	77.4
All Airlines	155	126	81.3	155	132	85.2
Relates to services to and from Brisbane only.						
<b>Cairns</b>						
Jetstar	331	294	88.8	331	292	88.2
Qantas	231	200	86.6	230	212	92.2
QantasLink	188	179	95.2	190	168	88.4
Tigerair	92	65	70.7	92	81	88.0
Virgin Australia	289	240	83.0	289	254	87.9
Virgin Australia Regional Airlines	26	26	100.0	26	24	92.3
All Airlines	1 157	1 004	86.8	1 158	1 031	89.0
Relates to services to and from Brisbane, Melbourne, Sydney and Townsville.						
<b>Canberra</b>						
Qantas	609	560	92.0	610	557	91.3
QantasLink	450	358	79.6	450	349	77.6
Virgin Australia	344	288	83.7	346	291	84.1
Virgin Australia Regional Airlines	245	213	86.9	244	205	84.0
All Airlines	1 648	1 419	86.1	1 650	1 402	85.0
Relates to services to and from Adelaide, Brisbane, Melbourne and Sydney.						
<b>Coffs Harbour</b>						
QantasLink	155	110	71.0	155	106	68.4
Tigerair	22	15	68.2	22	14	63.6
Virgin Australia	62	58	93.5	62	59	95.2
All Airlines	239	183	76.6	239	179	74.9
Relates to services to and from Sydney only.						
<b>Darwin</b>						
Jetstar	52	32	61.5	52	38	73.1
Qantas	137	121	88.3	136	125	91.9
Virgin Australia	119	97	81.5	119	97	81.5
All Airlines	308	250	81.2	307	260	84.7
Relates to services to and from Brisbane, Melbourne, Perth and Sydney.						
<b>Dubbo</b>						
QantasLink	125	77	61.6	124	67	54.0
Regional Express	163	143	87.7	157	136	86.6
All Airlines	288	220	76.4	281	203	72.2
Relates to services to and from Sydney only.						

Airport	Departures			Arrivals		
	Sectors Flown	On Time		Sectors Flown	On Time	
		No.	%		No.	%
<b>Emerald</b>						
QantasLink	180	160	88.9	180	164	91.1
Virgin Australia Regional Airlines	100	80	80.0	100	83	83.0
All Airlines	280	240	85.7	280	247	88.2
Relates to services to and from Brisbane only.						
<b>Geraldton</b>						
QantasLink	62	58	93.5	61	53	86.9
Virgin Australia Regional Airlines	94	73	77.7	94	70	74.5
All Airlines	156	131	84.0	155	123	79.4
Relates to services to and from Perth only.						
<b>Gladstone</b>						
QantasLink	248	208	83.9	227	200	88.1
Virgin Australia	30	26	86.7	30	28	93.3
Virgin Australia Regional Airlines	114	84	73.7	113	80	70.8
All Airlines	392	318	81.1	370	308	83.2
Relates to services to and from Brisbane only.						
<b>Gold Coast</b>						
Jetstar	488	424	86.9	488	419	85.9
Qantas	93	90	96.8	93	92	98.9
Tigerair	123	99	80.5	124	99	79.8
Virgin Australia	511	452	88.5	513	443	86.4
All Airlines	1 215	1 065	87.7	1 218	1 053	86.5
Relates to services to and from Adelaide, Melbourne and Sydney.						
<b>Hamilton Island</b>						
Jetstar	48	40	83.3	48	46	95.8
Virgin Australia	61	53	86.9	61	55	90.2
All Airlines	109	93	85.3	109	101	92.7
Relates to services to and from Brisbane and Sydney.						
<b>Hobart</b>						
Jetstar	207	150	72.5	207	160	77.3
Qantas	93	83	89.2	93	83	89.2
QantasLink	31	30	96.8	31	14	45.2
Tigerair	31	14	45.2	31	15	48.4
Virgin Australia	207	170	82.1	207	166	80.2
All Airlines	569	447	78.6	569	438	77.0
Relates to services to and from Melbourne and Sydney.						
<b>Kalgoorlie</b>						
Qantas	67	59	88.1	69	62	89.9
QantasLink	24	20	83.3	25	25	100.0
Virgin Australia	46	35	76.1	46	40	87.0
Virgin Australia Regional Airlines	13	7	53.8	14	11	78.6
All Airlines	150	121	80.7	154	138	89.6
Relates to services to and from Perth only.						

Airport	Departures			Arrivals		
	Sectors Flown	On Time		Sectors Flown	On Time	
		No.	%		No.	%
<b>Karratha</b>						
Qantas	180	170	94.4	183	175	95.6
QantasLink	57	56	98.2	59	59	100.0
Virgin Australia	75	60	80.0	75	68	90.7
All Airlines	312	286	91.7	317	302	95.3
Relates to services to and from Perth only.						
<b>Launceston</b>						
Jetstar	154	99	64.3	154	116	75.3
QantasLink	111	98	88.3	111	86	77.5
Virgin Australia	152	132	86.8	152	132	86.8
All Airlines	417	329	78.9	417	334	80.1
Relates to services to and from Melbourne and Sydney.						
<b>Mackay</b>						
Jetstar	110	82	74.5	110	99	90.0
QantasLink	109	101	92.7	108	98	90.7
Virgin Australia	161	145	90.1	163	144	88.3
All Airlines	380	328	86.3	381	341	89.5
Relates to services to and from Brisbane only.						
<b>Melbourne</b>						
Jetstar	1 257	926	73.7	1 251	927	74.1
Qantas	2 209	1 904	86.2	2 210	1 810	81.9
QantasLink	285	250	87.7	286	232	81.1
Regional Express	88	80	90.9	88	75	85.2
Tigerair	591	454	76.8	590	350	59.3
Virgin Australia	2 352	1 824	77.6	2 353	1 749	74.3
All Airlines	6 782	5 438	80.2	6 778	5 143	75.9
Relates to services to and from Adelaide, Alice Springs, Brisbane, Cairns, Canberra, Darwin, Gold Coast, Hobart, Launceston, Mildura, Newcastle, Perth, Sunshine Coast and Sydney.						
<b>Mildura</b>						
QantasLink	88	83	94.3	88	74	84.1
Regional Express	88	79	89.8	88	78	88.6
Virgin Australia	31	21	67.7	31	21	67.7
All Airlines	207	183	88.4	207	173	83.6
Relates to services to and from Melbourne only.						
<b>Moranbah</b>						
QantasLink	162	143	88.3	161	149	92.5
Virgin Australia Regional Airlines	74	50	67.6	74	47	63.5
All Airlines	236	193	81.8	235	196	83.4
Relates to services to and from Brisbane only.						
<b>Mount Isa</b>						
Qantas	57	48	84.2	57	54	94.7
Virgin Australia	21	16	76.2	22	18	81.8
All Airlines	78	64	82.1	79	72	91.1
Relates to services to and from Brisbane only.						

Airport	Departures			Arrivals		
	Sectors Flown	On Time		Sectors Flown	On Time	
		No.	%		No.	%
<b>Newcastle</b>						
Jetstar	218	174	79.8	220	166	75.5
QantasLink	70	33	47.1	69	32	46.4
Virgin Australia	115	97	84.3	115	106	92.2
All Airlines	403	304	75.4	404	304	75.2
Relates to services to and from Brisbane and Melbourne.						
<b>Newman</b>						
Qantas	128	115	89.8	129	118	91.5
QantasLink	33	30	90.9	33	29	87.9
Virgin Australia	39	36	92.3	39	37	94.9
Virgin Australia Regional Airlines	15	12	80.0	15	12	80.0
All Airlines	215	193	89.8	216	196	90.7
Relates to services to and from Perth only.						
<b>Perth</b>						
Jetstar	161	84	52.2	164	100	61.0
Qantas	1 248	1 104	88.5	1 238	997	80.5
QantasLink	272	254	93.4	269	239	88.8
Tigerair	54	21	38.9	54	21	38.9
Virgin Australia	711	579	81.4	708	467	66.0
Virgin Australia Regional Airlines	151	113	74.8	149	101	67.8
All Airlines	2 597	2 155	83.0	2 582	1 925	74.6
Relates to services to and from Adelaide, Brisbane, Broome, Darwin, Geraldton, Kalgoorlie, Karratha, Melbourne, Newman, Port Hedland and Sydney.						
<b>Port Hedland</b>						
Qantas	128	121	94.5	128	120	93.8
QantasLink	43	41	95.3	43	41	95.3
Virgin Australia	52	46	88.5	53	50	94.3
All Airlines	223	208	93.3	224	211	94.2
Relates to services to and from Perth only.						
<b>Port Lincoln</b>						
QantasLink	102	95	93.1	101	93	92.1
Regional Express	217	184	84.8	216	183	84.7
All Airlines	319	279	87.5	317	276	87.1
Relates to services to and from Adelaide only.						
<b>Port Macquarie</b>						
QantasLink	135	80	59.3	135	85	63.0
Virgin Australia Regional Airlines	62	50	80.6	62	50	80.6
All Airlines	197	130	66.0	197	135	68.5
Relates to services to and from Sydney only.						
<b>Proserpine</b>						
Jetstar	31	26	83.9	31	25	80.6
Virgin Australia	53	43	81.1	53	50	94.3
All Airlines	84	69	82.1	84	75	89.3
Relates to services to and from Brisbane only.						

Airport	Departures			Arrivals		
	Sectors	On Time		Sectors	On Time	
	Flown	No.	%	Flown	No.	%
<b>Rockhampton</b>						
QantasLink	188	154	81.9	209	179	85.6
Virgin Australia	99	84	84.8	99	84	84.8
Virgin Australia Regional Airlines	112	91	81.3	111	92	82.9
All Airlines	399	329	82.5	419	355	84.7
Relates to services to and from Brisbane only.						
<b>Sunshine Coast</b>						
Jetstar	146	111	76.0	146	125	85.6
Tigerair	31	27	87.1	31	30	96.8
Virgin Australia	67	55	82.1	67	61	91.0
All Airlines	244	193	79.1	244	216	88.5
Relates to services to and from Melbourne and Sydney.						
<b>Sydney</b>						
Jetstar	1 197	1 041	87.0	1 199	952	79.4
Qantas	2 369	2 121	89.5	2 398	2 124	88.6
QantasLink	1 012	713	70.5	1 013	703	69.4
Regional Express	439	380	86.6	445	394	88.5
Tigerair	414	339	81.9	413	300	72.6
Virgin Australia	2 403	2 080	86.6	2 401	2 032	84.6
Virgin Australia Regional Airlines	368	300	81.5	369	302	81.8
All Airlines	8 202	6 974	85.0	8 238	6 807	82.6
Relates to services to and from Adelaide, Albury, Alice Springs, Ayers Rock, Ballina, Brisbane, Cairns, Canberra, Coffs Harbour, Darwin, Dubbo, Gold Coast, Hamilton Island, Hobart, Launceston, Melbourne, Perth, Port Macquarie, Sunshine Coast, Townsville and Wagga Wagga.						
<b>Townsville</b>						
Jetstar	54	40	74.1	54	48	88.9
Qantas	150	144	96.0	150	136	90.7
QantasLink	185	162	87.6	184	175	95.1
Virgin Australia	197	175	88.8	197	177	89.8
Virgin Australia Regional Airlines	26	25	96.2	26	24	92.3
All Airlines	612	546	89.2	611	560	91.7
Relates to services to and from Brisbane, Cairns and Sydney.						
<b>Wagga Wagga</b>						
QantasLink	114	76	66.7	114	58	50.9
Regional Express	141	125	88.7	141	126	89.4
All Airlines	255	201	78.8	255	184	72.2
Relates to services to and from Sydney only.						



## Definitions

---

On time departure                      A flight departure is counted as "on time" if it departs the gate before 15 minutes after the scheduled departure time shown in the carriers' schedule.

---

On time arrival                         A flight arrival is counted as "on time" if it arrived at the gate before 15 minutes after the scheduled arrival time shown in the carriers' schedule.  
Neither diverted nor cancelled flights count as on time.

---

Cancellation                             A flight removed from service within 7 days of scheduled departure is regarded as a cancellation.

---

On time departure percentage                      The percentage of on time departures is measured against the number of departures *operated* on any particular sector.

---

On time arrival percentage                         The percentage of on time arrivals is measured against the number of arrivals *operated* on any particular sector.

---

Cancellation percentage                             The percentage of cancellations is measured against the number of services *scheduled* on any particular sector.

---