



Australian Government

Department of Infrastructure and Transport

Bureau of Infrastructure, Transport and Regional Economics

STATISTICAL REPORT



Aviation

Domestic airline on time performance
August 2012

© Commonwealth of Australia 2012

ISSN: 1832-0759

Ownership of intellectual property rights in this publication

Unless otherwise noted, copyright (and any other intellectual property rights, if any) in this publication is owned by the Commonwealth of Australia (referred to below as the Commonwealth).

Disclaimer

The material contained in this publication is made available on the understanding that the Commonwealth is not providing professional advice, and that users exercise their own skill and care with respect to its use, and seek independent advice if necessary.

The Commonwealth makes no representations or warranties as to the contents or accuracy of the information contained in this publication. To the extent permitted by law, the Commonwealth disclaims liability to any person or organisation in respect of anything done, or omitted to be done, in reliance upon information contained in this publication.

Creative Commons licence

With the exception of (a) the Coat of Arms; and (b) the Department of Infrastructure's photos and graphics, copyright in this publication is licensed under a Creative Commons Attribution 3.0 Australia Licence.

Creative Commons Attribution 3.0 Australia Licence is a standard form licence agreement that allows you to copy, communicate and adapt this publication provided that you attribute the work to the Commonwealth and abide by the other licence terms. A summary of the licence terms is available from <http://creativecommons.org/licenses/by/3.0/au/deed.en>. The full licence terms are available from <http://creativecommons.org/licenses/by/3.0/au/legalcode>.

Use of the Coat of Arms

The Department of the Prime Minister and Cabinet sets the terms under which the Coat of Arms is used. Please refer to the Department's Commonwealth Coat of Arms and Government branding web page <http://www.dpmmc.gov.au/guidelines/index.cfm#brand> and, in particular, the Guidelines on the use of the Commonwealth Coat of Arms publication.

An appropriate citation for this report is:

Bureau of Infrastructure, Transport and Regional Economics (BITRE), 2012, Domestic airline on time performance, Statistical Report, BITRE, Canberra ACT.

Contact us

This publication is available in PDF format. All other rights are reserved, including in relation to any Departmental logos or trade marks which may exist. For enquiries regarding the licence and any use of this publication, please contact:

Bureau of Infrastructure, Transport and Regional Economics (BITRE)
Department of Infrastructure and Transport
GPO Box 501, Canberra ACT 2601, Australia
Telephone: (international) +61 2 6274 7210
Fax: (international) +61 2 6274 6855
Email: bitre@infrastructure.gov.au
Website: www.bitre.gov.au

Inquiries

Should you require additional information about the statistics contained in this publication:

Telephone (02) 6274 7790 or Facsimile (02) 6274 7727

Electronic mail: AVSTATS@infrastructure.gov.au

Web site: <http://www.bitre.gov.au/statistics/aviation/otphome.aspx>

Foreword

The Bureau of Infrastructure, Transport and Regional Economics (BITRE) monitors the punctuality and reliability of major domestic airlines operating between Australian airports. The purpose of this is to allow for evaluation of overall industry and individual airline performance, so that consumers of air travel can make informed decisions.

The following domestic airlines report this information monthly to the BITRE: Jetstar, Qantas, QantasLink, Regional Express, Skywest Airlines, Tiger Airways, Virgin Australia and Virgin Australia – ATR/F100 Operations. Data has been gathered since November 2003, although some airlines commenced reporting at a later date, including Jetstar which first reported in May 2004, MacAir in July 2005 and Tiger Airways in April 2008. MacAir ceased operations in February 2009 and data was not received for December 2008 onwards. Virgin Blue was rebranded as Virgin Australia in May 2011 and time series data in Microsoft Excel spreadsheet format on the BITRE website has been revised to reflect this. Services operated by Skywest on behalf of Virgin Australia using ATR/F100 aircraft commenced in November 2011 and are shown separately as Virgin Australia – ATR/F100 Operations.

Information presented in this report is for Australian domestic routes for which the passenger load averaged 8 000 or more passengers per month over the previous six months and where two or more airlines operated in competition on those routes. There were 57 routes that met this definition in August 2012. Over time, routes which meet these criteria change as airline networks and traffic levels vary.

Participating airlines report their overall monthly network performance where this is possible.

Total industry figures encompass all services operated by reporting airlines only. These airlines collectively carried over 95 per cent of total domestic passengers (regular public transport only) in 2011.

The method of capturing on time performance varies between airlines utilising different recording systems. Jetstar and Qantas jet aircraft use Aircraft Communication Addressing and Reporting System (ACARS) to electronically measure on time performance. Regional Express, Skywest, Tiger Airways, Virgin Australia, Virgin Australia – ATR/F100 Operations and the Qantas non-jet fleet record on time performance manually using records from pilots, gate agents and/or ground crews.

After initial data is collected, aggregate reports are audited internally by participating airlines prior to publication.

Reports and detailed time series data in Microsoft Excel spreadsheet format are available from the BITRE website at: <http://www.bitre.gov.au/statistics/aviation/otphome.aspx>.

Contents

	Page
Industry performance	1
Individual routes	9
Airports	20
Definitions	26

Industry performance

For August 2012, on time performance over all routes operated by participating airlines (Jetstar, Qantas, QantasLink, Regional Express, Skywest Airlines, Tiger Airways, Virgin Australia and Virgin Australia – ATR/F100 Operations) averaged 82.8 per cent for on time departures, and 80.4 per cent for on time arrivals. Cancellations represented 1.4 per cent of all scheduled flights. The equivalent figures for August 2011 were 83.7 per cent for departures, 81.7 per cent for arrivals and 1.2 per cent for cancellations.

The long term average performance for all routes since reporting commenced in November 2003 is 83.9 per cent for on time departures and 82.6 per cent for on time arrivals. Cancellations average 1.3 per cent of all scheduled flights.

Of the major domestic airlines, Virgin Australia achieved the highest level of on time departures for August 2012 at 85.6 per cent, followed by Qantas at 85.3 per cent, Jetstar at 78.2 per cent and Tiger Airways at 75.8 per cent. The regional airlines were led by Virgin Australia – ATR/F100 Operations at 87.5 per cent, followed by Regional Express at 82.6 per cent, QantasLink at 80.3 per cent and Skywest at 78.4 per cent.

Among the major domestic airlines, Virgin Australia and Qantas both achieved an on time arrival rate of 82.3 per cent, followed by Jetstar at 78.1 per cent and Tiger Airways at 73.4 per cent. Virgin Australia – ATR/F100 Operations was the best performing regional airline for on time arrivals at 84.4 per cent, followed by Regional Express at 82.8 per cent, QantasLink at 77.3 per cent and Skywest at 71.1 per cent.

QantasLink had the highest percentage of cancellations for August 2012 at 2.3 per cent, while Skywest had no cancellations.

Of the 57 routes which met the criteria for on time performance reporting in August 2012, the Melbourne-Darwin route had the highest percentage of on time departures (94.6 per cent) and the highest percentage of on time arrivals (92.9). The Sunshine Coast-Melbourne route had the lowest percentage of on time departures (44.0 per cent) and the lowest percentage of on time arrivals (49.3 per cent).

Cancellations were highest on the Adelaide-Gold Coast and Gold Coast-Adelaide routes at 4.8 per cent. This was followed by the Karratha-Perth, Perth-Karratha, Melbourne-Sydney and Sydney-Melbourne routes with 4.0 per cent each.

Mildura Airport recorded the highest percentage of on time departures (92.9 per cent) and Sunshine Coast Airport recorded the lowest percentage of on time departures (64.8 per cent). Newman Airport recorded the highest percentage of on time arrivals (88.1 per cent) and Albury Airport recorded the lowest percentage of on time arrivals (67.9 per cent). These figures only refer to reported routes and do not cover all flights at these airports.

Table 1 On time performance for August 2012 — Total Industry

	<i>Sectors</i>		<i>Departures On Time</i>		<i>Arrivals On Time</i>		<i>Cancellations</i>	
	<i>Scheduled</i>	<i>Flown</i>	<i>No.</i>	<i>%</i>	<i>No.</i>	<i>%</i>	<i>No.</i>	<i>%</i>
Jetstar	6 232	6 187	4 837	78.2	4 832	78.1	45	0.7
Qantas	11 240	11 087	9 459	85.3	9 126	82.3	153	1.4
QantasLink	9 538	9 315	7 481	80.3	7 197	77.3	223	2.3
Regional Express	5 855	5 837	4 824	82.6	4 834	82.8	18	0.3
Skywest	944	944	740	78.4	671	71.1	0	0.0
Tiger Airways	1 317	1 295	982	75.8	950	73.4	22	1.7
Virgin Australia	11 681	11 491	9 839	85.6	9 462	82.3	190	1.6
Virgin Australia - ATR/F100 Operations	1 482	1 466	1 283	87.5	1 238	84.4	16	1.1
All Airlines	48 289	47 622	39 445	82.8	38 310	80.4	667	1.4

Total airline network data (including routes not shown in this report).

Table 2 Top ten routes for on time performance for August 2012 (participating airlines only)

<i>Departures</i>		<i>Arrivals</i>	
<i>Route</i>	<i>On Time (%)</i>	<i>Route</i>	<i>On Time</i>
Melbourne-Darwin	94.6	Melbourne-Darwin	92.9
Brisbane-Darwin	93.0	Newcastle-Melbourne	92.3
Mildura-Melbourne	92.9	Adelaide-Gold Coast	91.5
Canberra-Brisbane	92.1	Gold Coast-Adelaide	91.5
Brisbane-Proserpine	91.8	Adelaide-Canberra	90.7
Newcastle-Melbourne	91.5	Ayers Rock-Sydney	90.3
Adelaide-Gold Coast	91.5	Brisbane-Darwin	90.1
Gold Coast-Adelaide	91.5	Darwin-Perth	89.7
Perth-Darwin	91.4	Perth-Darwin	89.7
Brisbane-Canberra	90.9	Brisbane-Canberra	89.4

Table 3 Top ten airports for on time performance for August 2012 (participating airlines and reported routes only)

<i>Departures</i>		<i>Arrivals</i>	
<i>Airport</i>	<i>On Time (%)</i>	<i>Airport</i>	<i>On Time</i>
Mildura	92.9	Newman	88.1
Adelaide	87.3	Darwin	88.1
Ayers Rock	87.1	Port Lincoln	87.3
Cairns	86.3	Adelaide	85.4
Brisbane	85.8	Port Hedland	85.2
Port Lincoln	85.7	Rockhampton	84.3
Canberra	85.6	Gold Coast	84.2
Darwin	85.4	Townsville	84.0
Newman	85.1	Cairns	83.9
Melbourne	84.9	Canberra	83.4

Total industry on time performance

Figure 1 On time performance (by month from August 2009)—Total Industry

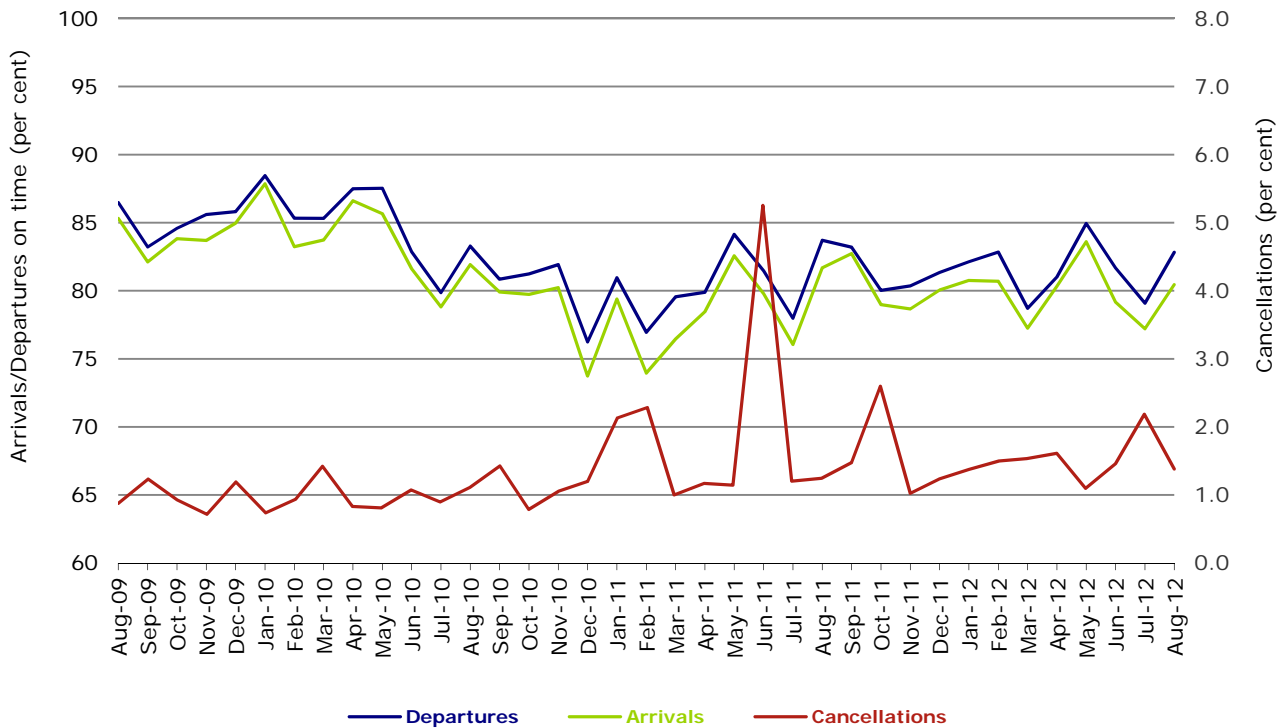
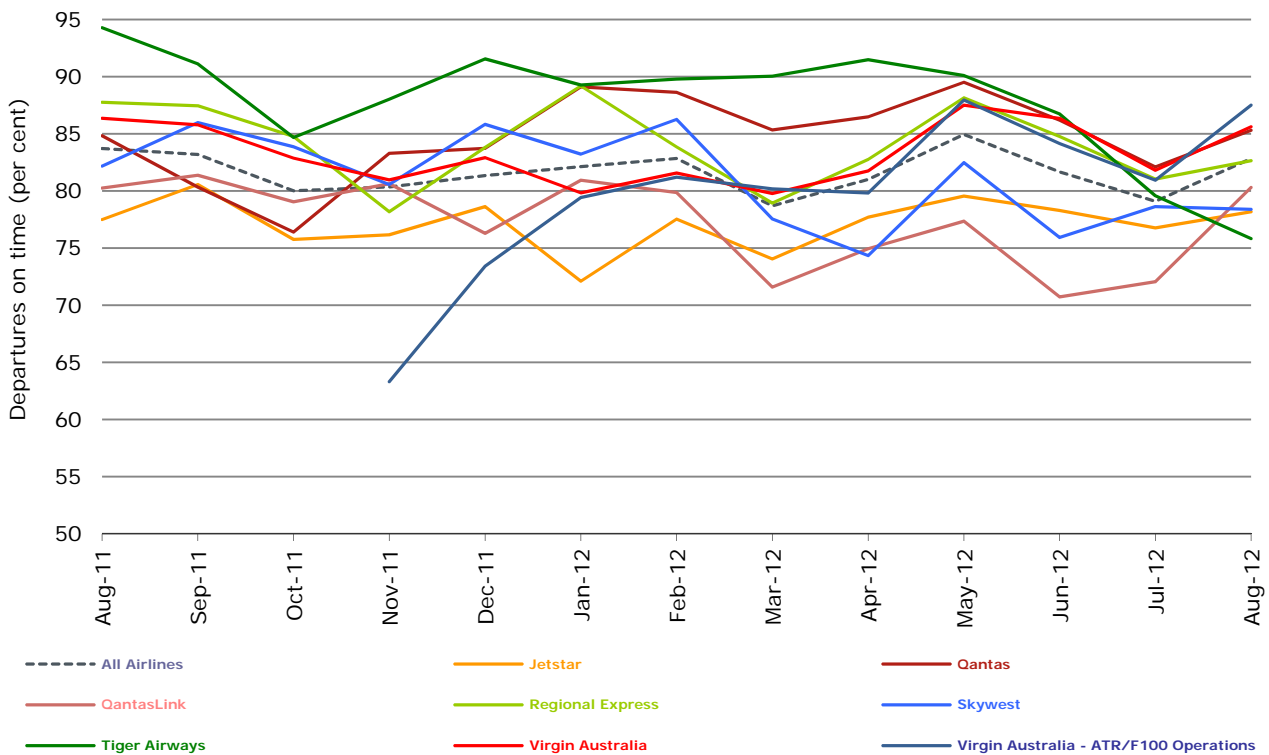
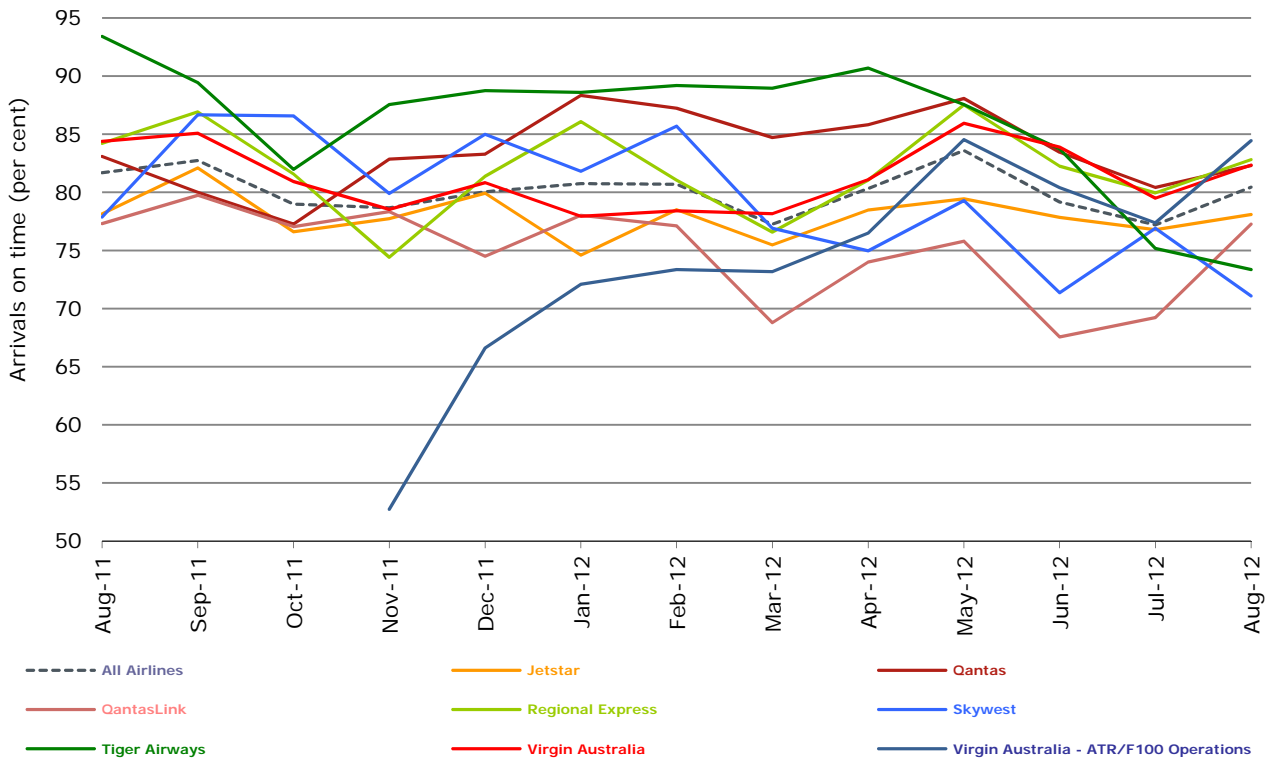


Figure 2 Departures on time (by month from August 2011)



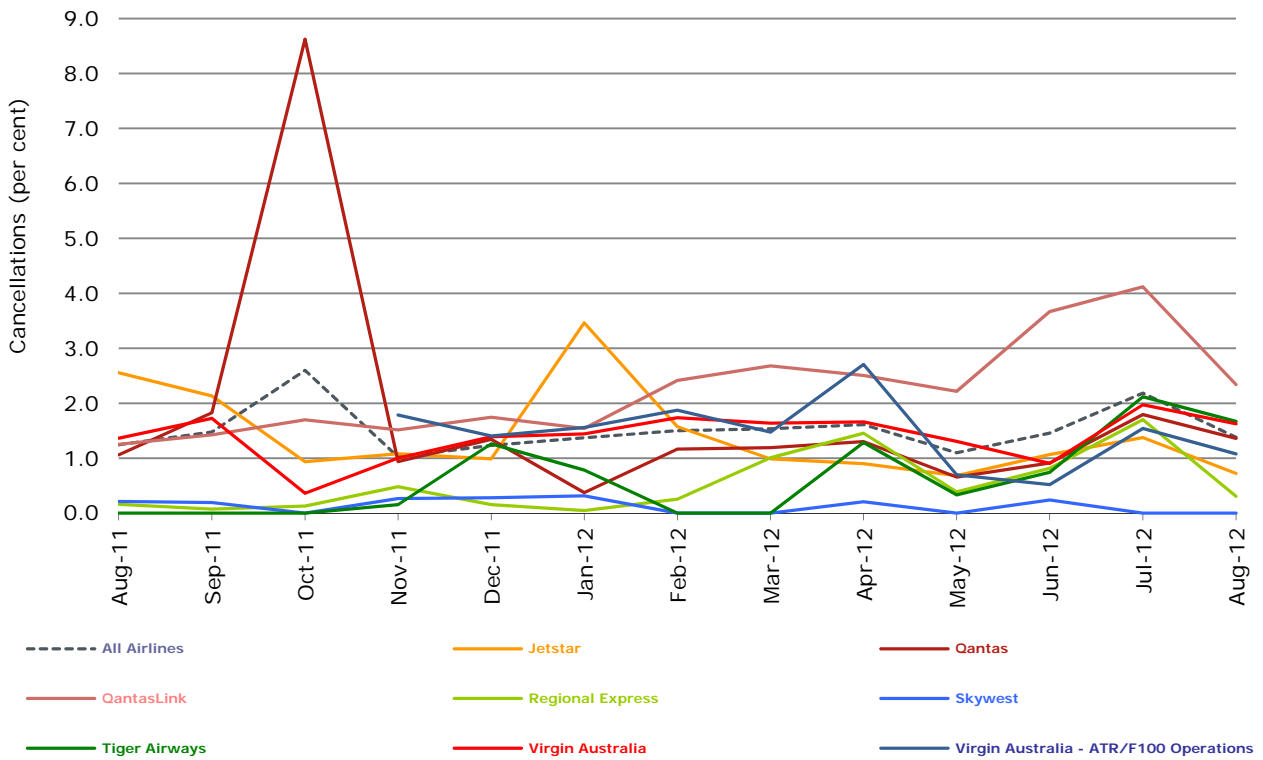
Virgin Australia - ATR/F100 Operations commenced in November 2011.

Figure 3 Arrivals on time (by month from August 2011)



Virgin Australia - ATR/F100 Operations commenced in November 2011.

Figure 4 Cancellations (by month from August 2011)



Virgin Australia - ATR/F100 Operations commenced in November 2011.

Major domestic airlines on time performance

Figure 5 On time performance (by month from August 2009)—Jetstar

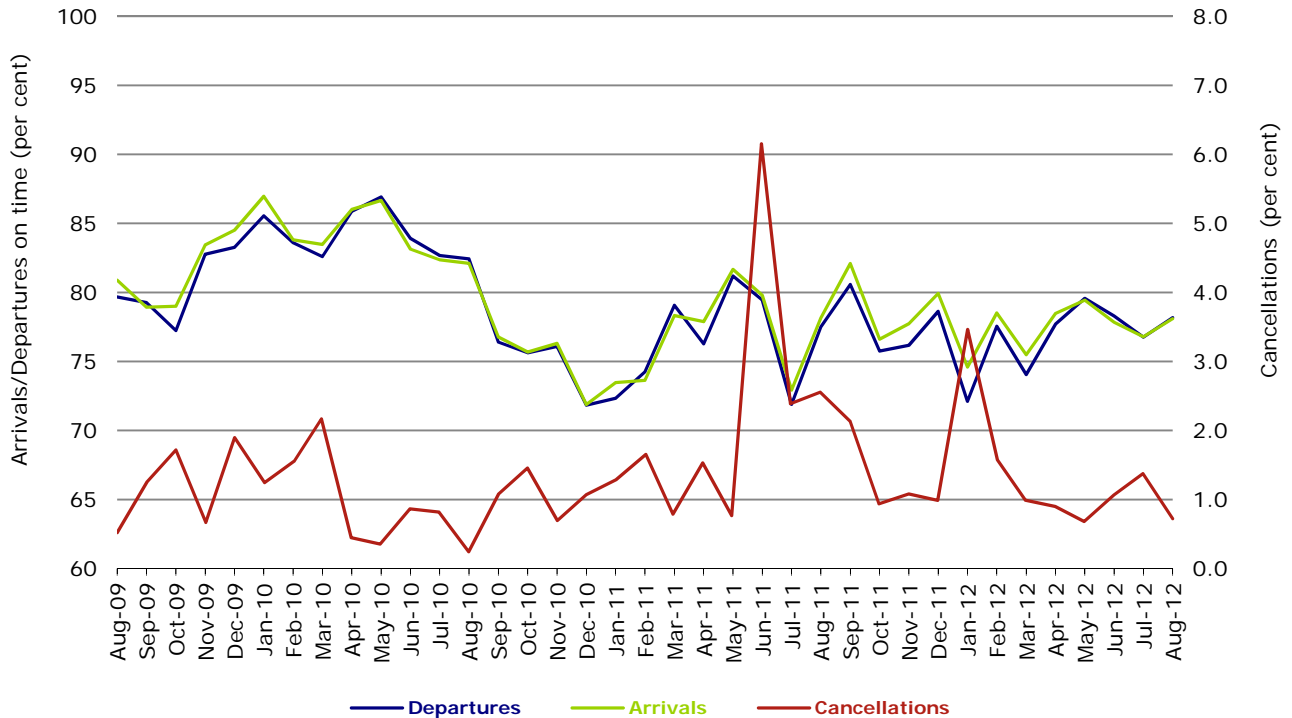


Figure 6 On time performance (by month from August 2009)—Qantas

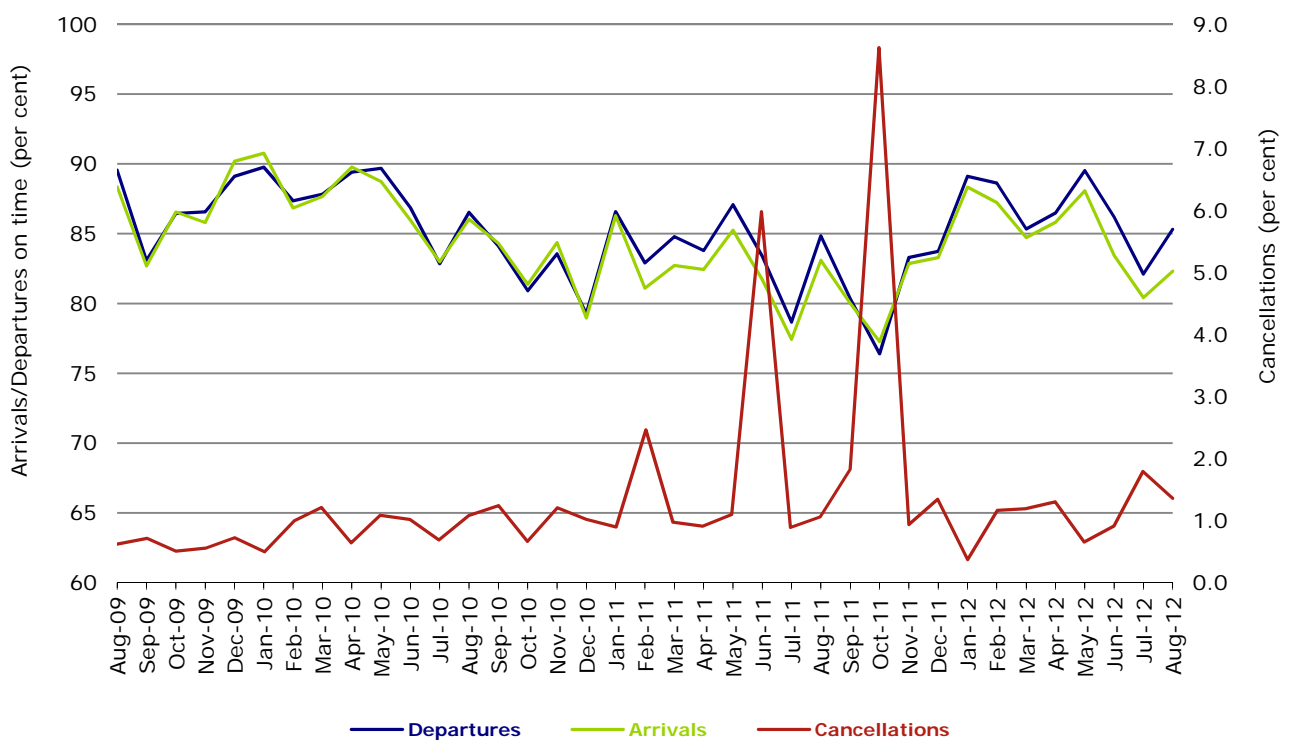
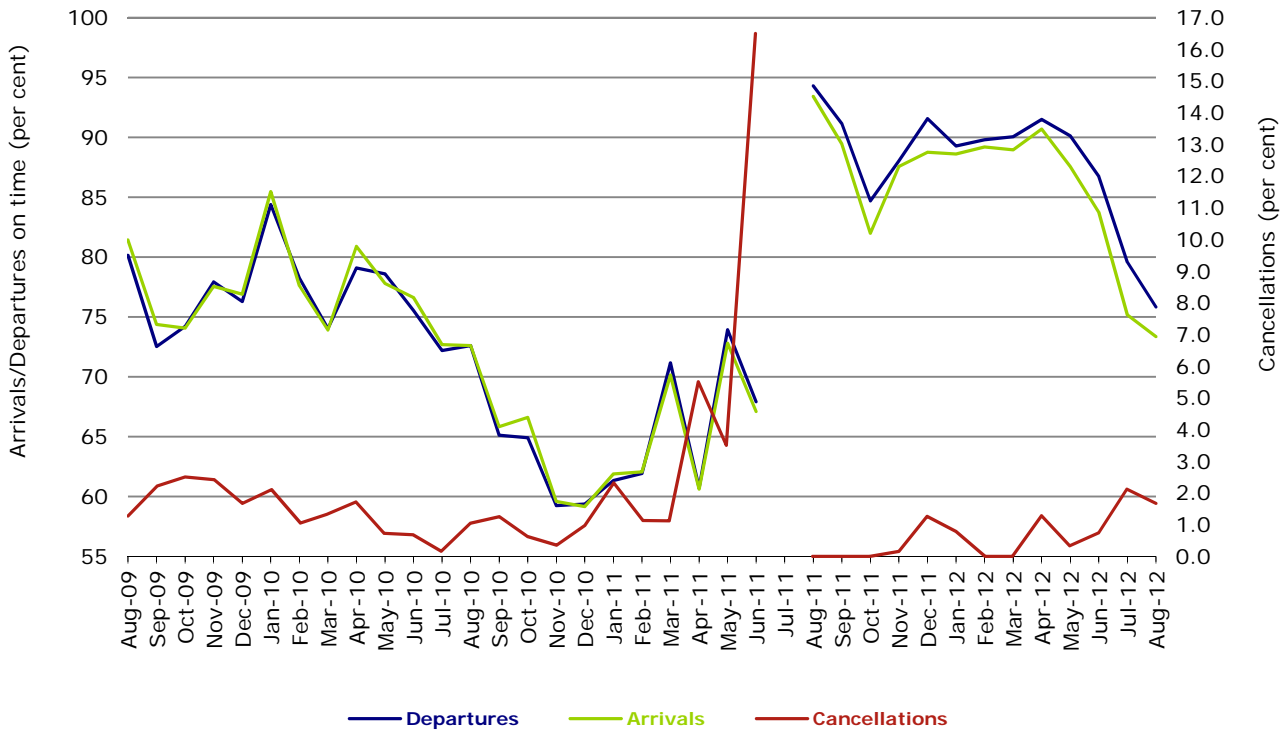
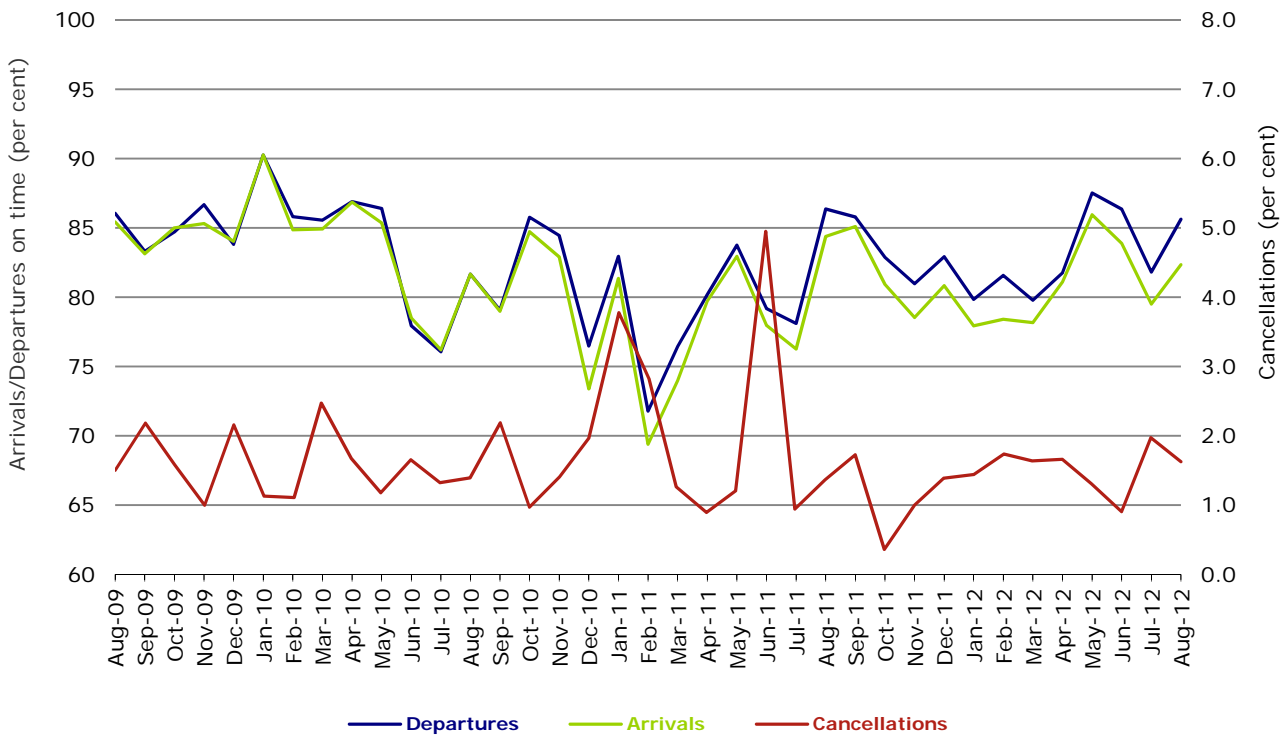


Figure 7 On time performance (by month from August 2009)—Tiger Airways



No data for Tiger Airways for July 2011 as it was grounded by CASA from 2/7/2011 to 11/8/2011.

Figure 8 On time performance (by month from August 2009)—Virgin Australia



Major regional airlines on time performance

Figure 9 On time performance (by month from August 2009)—QantasLink

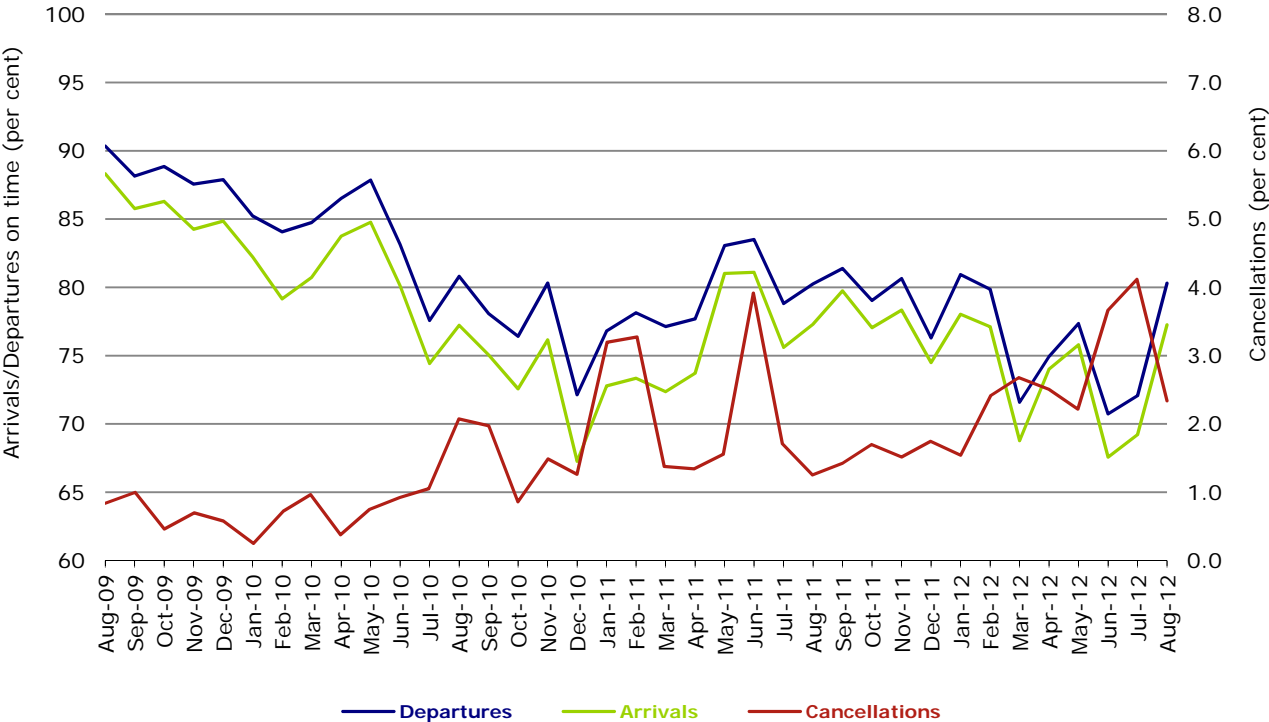


Figure 10 On time performance (by month from August 2009)—Regional Express

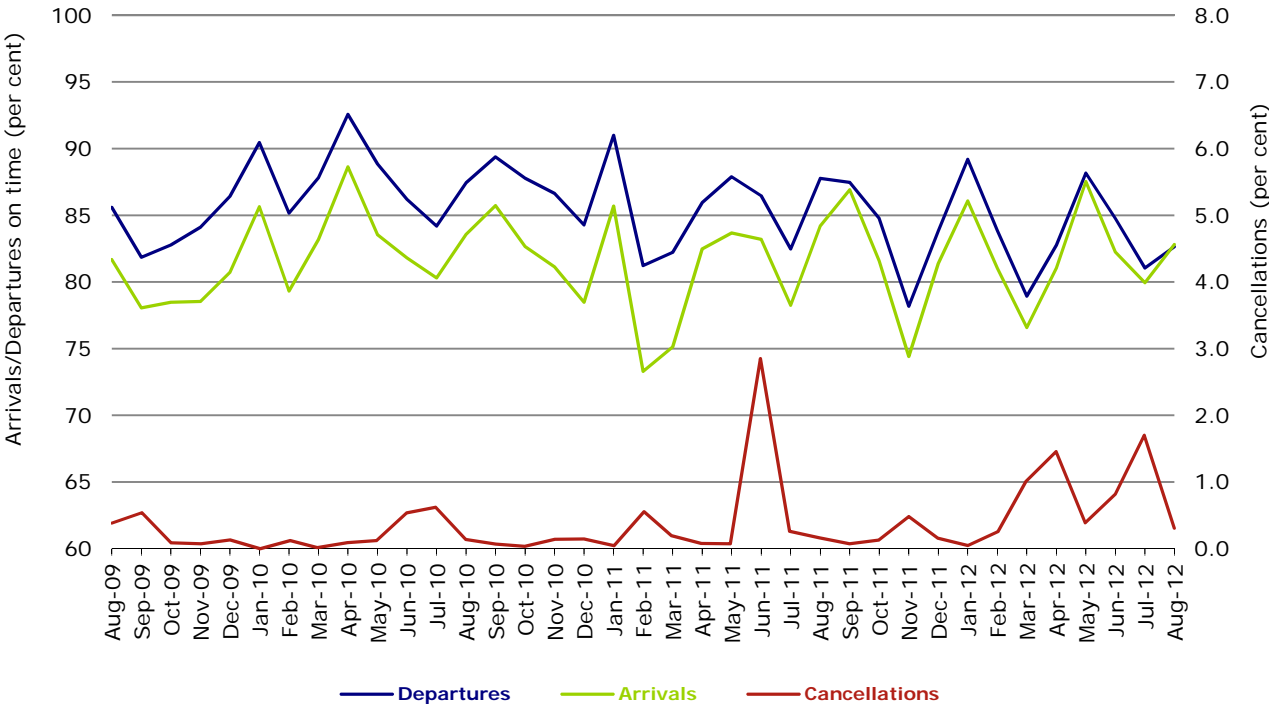


Figure 11 On time performance (by month from August 2009)—Skywest

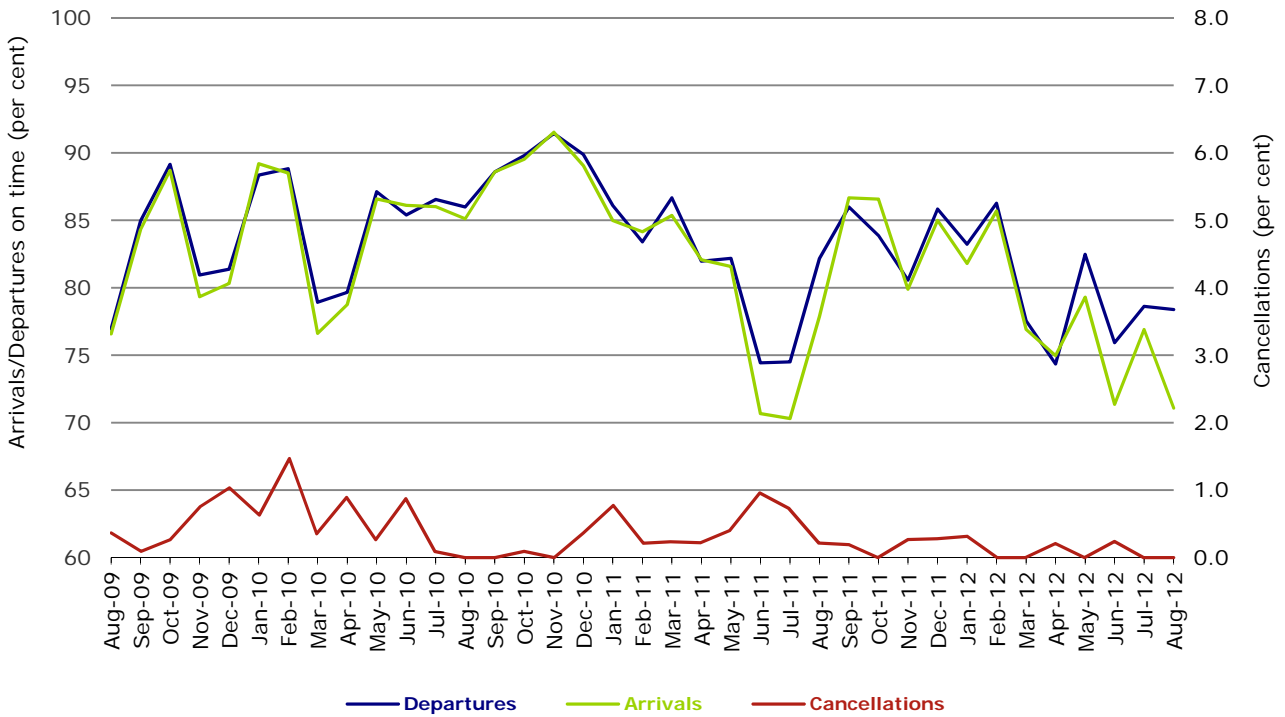
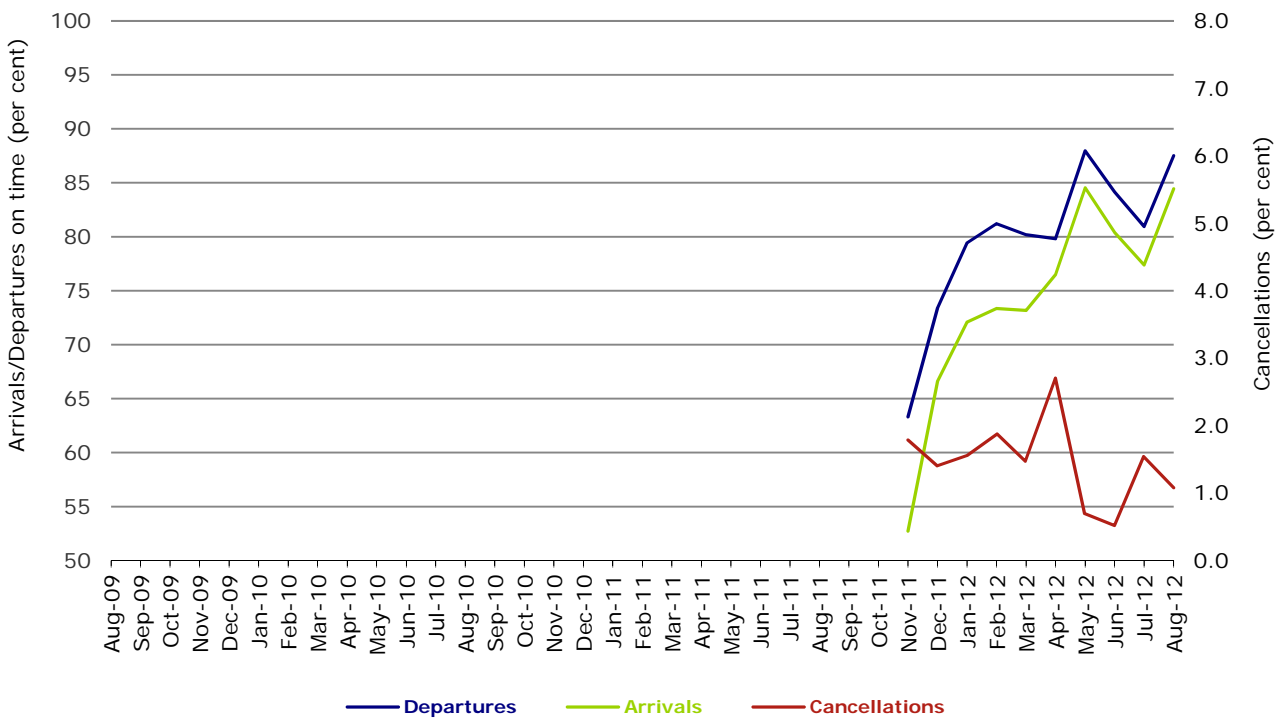


Figure 12 On time performance (by month from August 2009) Virgin Australia - ATR/F100 Operations



Virgin Australia - ATR/F100 Operations commenced in November 2011.

Individual routes

On time performance is reported for all routes where the passenger load averages over 8000 passengers per month over the previous six months, and where two or more airlines operate in competition on those routes. There are now 57 routes which meet this definition. Over time, however, routes which meet this definition may change as airline networks and traffic levels vary.

	<i>Sectors</i>		<i>Departures On Time</i>		<i>Arrivals On Time</i>		<i>Cancellations</i>	
	<i>Sched.</i>	<i>Flown</i>	<i>No.</i>	<i>%</i>	<i>No.</i>	<i>%</i>	<i>No.</i>	<i>%</i>
Adelaide-Brisbane								
Jetstar	31	31	22	71.0	23	74.2	0	0.0
Qantas	112	112	99	88.4	101	90.2	0	0.0
Virgin Australia	124	121	105	86.8	112	92.6	3	2.4
All Airlines	267	264	226	85.6	236	89.4	3	1.1
Adelaide-Canberra								
Qantas	50	50	44	88.0	48	96.0	0	0.0
Virgin Australia	27	25	20	80.0	20	80.0	2	7.4
All Airlines	77	75	64	85.3	68	90.7	2	2.6
Adelaide-Gold Coast								
Jetstar	31	31	30	96.8	30	96.8	0	0.0
Virgin Australia	31	28	24	85.7	24	85.7	3	9.7
All Airlines	62	59	54	91.5	54	91.5	3	4.8
Adelaide-Melbourne								
Jetstar	81	80	62	77.5	63	78.8	1	1.2
Qantas	313	312	245	78.5	253	81.1	1	0.3
QantasLink	17	17	15	88.2	15	88.2	0	0.0
Virgin Australia	289	286	263	92.0	257	89.9	3	1.0
All Airlines	700	695	585	84.2	588	84.6	5	0.7
Adelaide-Perth								
Jetstar	31	31	21	67.7	16	51.6	0	0.0
Qantas	114	114	106	93.0	95	83.3	0	0.0
Virgin Australia	62	62	60	96.8	53	85.5	0	0.0
All Airlines	207	207	187	90.3	164	79.2	0	0.0
Adelaide-Port Lincoln								
QantasLink	103	100	91	91.0	86	86.0	3	2.9
Regional Express	216	215	195	90.7	189	87.9	1	0.5
All Airlines	319	315	286	90.8	275	87.3	4	1.3
Adelaide-Sydney								
Jetstar	91	91	73	80.2	73	80.2	0	0.0
Qantas	283	282	255	90.4	255	90.4	1	0.4
Virgin Australia	178	177	160	90.4	157	88.7	1	0.6
All Airlines	552	550	488	88.7	485	88.2	2	0.4
Albury-Sydney								
QantasLink	125	123	76	61.8	76	61.8	2	1.6
Regional Express	114	114	97	85.1	98	86.0	0	0.0
Virgin Australia	62	61	47	77.0	49	80.3	1	1.6
All Airlines	301	298	220	73.8	223	74.8	3	1.0
Ayers Rock-Sydney								
Qantas	31	31	26	83.9	27	87.1	0	0.0
Virgin Australia	31	31	28	90.3	29	93.5	0	0.0
All Airlines	62	62	54	87.1	56	90.3	0	0.0

	<i>Sectors</i>		<i>Departures On Time</i>		<i>Arrivals On Time</i>		<i>Cancellations</i>	
	<i>Sched.</i>	<i>Flown</i>	<i>No.</i>	<i>%</i>	<i>No.</i>	<i>%</i>	<i>No.</i>	<i>%</i>
Ballina-Sydney								
Jetstar	57	57	46	80.7	47	82.5	0	0.0
Regional Express	24	24	17	70.8	17	70.8	0	0.0
Virgin Australia	31	31	24	77.4	20	64.5	0	0.0
All Airlines	112	112	87	77.7	84	75.0	0	0.0
Brisbane-Adelaide								
Jetstar	31	31	25	80.6	24	77.4	0	0.0
Qantas	112	112	97	86.6	100	89.3	0	0.0
Virgin Australia	124	123	109	88.6	109	88.6	1	0.8
All Airlines	267	266	231	86.8	233	87.6	1	0.4
Brisbane-Cairns								
Jetstar	105	105	90	85.7	86	81.9	0	0.0
Qantas	116	116	95	81.9	102	87.9	0	0.0
Virgin Australia	151	151	128	84.8	133	88.1	0	0.0
Virgin Australia - ATR/F100 Operations	27	27	24	88.9	18	66.7	0	0.0
All Airlines	399	399	337	84.5	339	85.0	0	0.0
Brisbane-Canberra								
Qantas	147	147	139	94.6	137	93.2	0	0.0
QantasLink	21	21	17	81.0	18	85.7	0	0.0
Virgin Australia	98	97	85	87.6	82	84.5	1	1.0
All Airlines	266	265	241	90.9	237	89.4	1	0.4
Brisbane-Darwin								
Jetstar	9	9	7	77.8	7	77.8	0	0.0
Qantas	31	31	30	96.8	29	93.5	0	0.0
Virgin Australia	31	31	29	93.5	28	90.3	0	0.0
All Airlines	71	71	66	93.0	64	90.1	0	0.0
Brisbane-Emerald								
QantasLink	203	199	178	89.4	158	79.4	4	2.0
Virgin Australia - ATR/F100 Operations	77	76	72	94.7	70	92.1	1	1.3
All Airlines	280	275	250	90.9	228	82.9	5	1.8
Brisbane-Gladstone								
QantasLink	161	158	126	79.7	123	77.8	3	1.9
Virgin Australia - ATR/F100 Operations	127	125	109	87.2	108	86.4	2	1.6
All Airlines	288	283	235	83.0	231	81.6	5	1.7
Brisbane-Hamilton Island								
Jetstar	17	17	15	88.2	14	82.4	0	0.0
Virgin Australia	31	31	26	83.9	26	83.9	0	0.0
All Airlines	48	48	41	85.4	40	83.3	0	0.0
Brisbane-Mackay								
Jetstar	111	110	85	77.3	87	79.1	1	0.9
QantasLink	55	54	42	77.8	35	64.8	1	1.8
Virgin Australia	175	172	148	86.0	137	79.7	3	1.7
All Airlines	341	336	275	81.8	259	77.1	5	1.5
Brisbane-Melbourne								
Jetstar	96	90	66	73.3	68	75.6	6	6.3
Qantas	431	430	365	84.9	340	79.1	1	0.2
Tiger Airways	84	84	57	67.9	56	66.7	0	0.0
Virgin Australia	378	372	345	92.7	330	88.7	6	1.6
All Airlines	989	976	833	85.3	794	81.4	13	1.3

	<i>Sectors</i>		<i>Departures On Time</i>		<i>Arrivals On Time</i>		<i>Cancellations</i>	
	<i>Sched.</i>	<i>Flown</i>	<i>No.</i>	<i>%</i>	<i>No.</i>	<i>%</i>	<i>No.</i>	<i>%</i>
Brisbane-Newcastle								
Jetstar	119	119	102	85.7	102	85.7	0	0.0
QantasLink	73	73	61	83.6	48	65.8	0	0.0
Virgin Australia - ATR/F100 Operations	61	61	50	82.0	42	68.9	0	0.0
All Airlines	253	253	213	84.2	192	75.9	0	0.0
Brisbane-Perth								
Jetstar	30	30	27	90.0	20	66.7	0	0.0
Qantas	124	124	88	71.0	92	74.2	0	0.0
Virgin Australia	71	71	66	93.0	45	63.4	0	0.0
All Airlines	225	225	181	80.4	157	69.8	0	0.0
Brisbane-Proserpine								
Jetstar	31	31	30	96.8	25	80.6	0	0.0
Virgin Australia	31	31	28	90.3	27	87.1	0	0.0
Virgin Australia - ATR/F100 Operations	23	23	20	87.0	15	65.2	0	0.0
All Airlines	85	85	78	91.8	67	78.8	0	0.0
Brisbane-Rockhampton								
QantasLink	159	156	128	82.1	127	81.4	3	1.9
Virgin Australia	85	85	75	88.2	72	84.7	0	0.0
Virgin Australia - ATR/F100 Operations	124	122	113	92.6	107	87.7	2	1.6
All Airlines	368	363	316	87.1	306	84.3	5	1.4
Brisbane-Sydney								
Jetstar	100	99	72	72.7	53	53.5	1	1.0
Qantas	623	619	537	86.8	494	79.8	4	0.6
Tiger Airways	62	62	40	64.5	41	66.1	0	0.0
Virgin Australia	594	578	519	89.8	486	84.1	16	2.7
All Airlines	1 379	1 358	1 168	86.0	1 074	79.1	21	1.5
Brisbane-Townsville								
Jetstar	31	31	22	71.0	24	77.4	0	0.0
Qantas	150	150	125	83.3	122	81.3	0	0.0
Virgin Australia	174	174	154	88.5	147	84.5	0	0.0
All Airlines	355	355	301	84.8	293	82.5	0	0.0
Broome-Perth								
Qantas	51	51	26	51.0	30	58.8	0	0.0
QantasLink	35	33	31	93.9	32	97.0	2	5.7
Skywest	22	22	16	72.7	13	59.1	0	0.0
Virgin Australia	59	59	49	83.1	52	88.1	0	0.0
All Airlines	167	165	122	73.9	127	77.0	2	1.2
Cairns-Brisbane								
Jetstar	105	105	99	94.3	93	88.6	0	0.0
Qantas	117	117	104	88.9	98	83.8	0	0.0
Virgin Australia	151	151	131	86.8	128	84.8	0	0.0
Virgin Australia - ATR/F100 Operations	27	27	17	63.0	19	70.4	0	0.0
All Airlines	400	400	351	87.8	338	84.5	0	0.0
Cairns-Melbourne								
Jetstar	90	90	77	85.6	76	84.4	0	0.0
Qantas	31	31	24	77.4	27	87.1	0	0.0
Tiger Airways	31	31	20	64.5	19	61.3	0	0.0
Virgin Australia	35	35	25	71.4	28	80.0	0	0.0
All Airlines	187	187	146	78.1	150	80.2	0	0.0
Cairns-Sydney								
Jetstar	83	83	72	86.7	70	84.3	0	0.0
Qantas	101	100	89	89.0	90	90.0	1	1.0
Virgin Australia	93	93	80	86.0	78	83.9	0	0.0
All Airlines	277	276	241	87.3	238	86.2	1	0.4

	<i>Sectors</i>		<i>Departures On Time</i>		<i>Arrivals On Time</i>		<i>Cancellations</i>	
	<i>Sched.</i>	<i>Flown</i>	<i>No.</i>	<i>%</i>	<i>No.</i>	<i>%</i>	<i>No.</i>	<i>%</i>
Cairns-Townsville								
QantasLink	193	189	170	89.9	164	86.8	4	2.1
Virgin Australia - ATR/F100 Operations	27	27	23	85.2	23	85.2	0	0.0
All Airlines	220	216	193	89.4	187	86.6	4	1.8
Canberra-Adelaide								
Qantas	54	54	50	92.6	49	90.7	0	0.0
Virgin Australia	27	25	20	80.0	20	80.0	2	7.4
All Airlines	81	79	70	88.6	69	87.3	2	2.5
Canberra-Brisbane								
Qantas	147	147	142	96.6	137	93.2	0	0.0
QantasLink	21	21	13	61.9	14	66.7	0	0.0
Virgin Australia	97	97	89	91.8	81	83.5	0	0.0
All Airlines	265	265	244	92.1	232	87.5	0	0.0
Canberra-Melbourne								
Qantas	272	271	241	88.9	234	86.3	1	0.4
QantasLink	39	28	24	85.7	23	82.1	11	28.2
Virgin Australia	173	169	151	89.3	150	88.8	4	2.3
All Airlines	484	468	416	88.9	407	87.0	16	3.3
Canberra-Sydney								
Qantas	172	170	147	86.5	140	82.4	2	1.2
QantasLink	413	390	293	75.1	286	73.3	23	5.6
Virgin Australia	108	107	87	81.3	81	75.7	1	0.9
Virgin Australia - ATR/F100 Operations	151	150	138	92.0	134	89.3	1	0.7
All Airlines	844	817	665	81.4	641	78.5	27	3.2
Coffs Harbour-Sydney								
QantasLink	148	148	120	81.1	115	77.7	0	0.0
Virgin Australia	62	62	54	87.1	49	79.0	0	0.0
All Airlines	210	210	174	82.9	164	78.1	0	0.0
Darwin-Brisbane								
Jetstar	9	9	6	66.7	7	77.8	0	0.0
Qantas	31	31	24	77.4	26	83.9	0	0.0
Virgin Australia	31	31	26	83.9	27	87.1	0	0.0
All Airlines	71	71	56	78.9	60	84.5	0	0.0
Darwin-Melbourne								
Jetstar	10	10	8	80.0	6	60.0	0	0.0
Qantas	15	14	11	78.6	7	50.0	1	6.7
Virgin Australia	31	31	30	96.8	27	87.1	0	0.0
All Airlines	56	55	49	89.1	40	72.7	1	1.8
Darwin-Perth								
Qantas	31	31	24	77.4	26	83.9	0	0.0
Virgin Australia	27	27	27	100.0	26	96.3	0	0.0
All Airlines	58	58	51	87.9	52	89.7	0	0.0
Darwin-Sydney								
Jetstar	36	36	29	80.6	33	91.7	0	0.0
Qantas	58	58	53	91.4	48	82.8	0	0.0
Virgin Australia	31	31	26	83.9	21	67.7	0	0.0
All Airlines	125	125	108	86.4	102	81.6	0	0.0
Dubbo-Sydney								
QantasLink	112	112	72	64.3	63	56.3	0	0.0
Regional Express	176	173	145	83.8	141	81.5	3	1.7
All Airlines	288	285	217	76.1	204	71.6	3	1.0

	<i>Sectors</i>		<i>Departures On Time</i>		<i>Arrivals On Time</i>		<i>Cancellations</i>	
	<i>Sched.</i>	<i>Flown</i>	<i>No.</i>	<i>%</i>	<i>No.</i>	<i>%</i>	<i>No.</i>	<i>%</i>
Emerald-Brisbane								
QantasLink	203	199	158	79.4	163	81.9	4	2.0
Virgin Australia - ATR/F100 Operations	77	76	70	92.1	71	93.4	1	1.3
All Airlines	280	275	228	82.9	234	85.1	5	1.8
Geraldton-Perth								
QantasLink	54	54	42	77.8	27	50.0	0	0.0
Skywest	84	84	55	65.5	51	60.7	0	0.0
All Airlines	138	138	97	70.3	78	56.5	0	0.0
Gladstone-Brisbane								
QantasLink	185	181	129	71.3	122	67.4	4	2.2
Virgin Australia - ATR/F100 Operations	127	125	111	88.8	112	89.6	2	1.6
All Airlines	312	306	240	78.4	234	76.5	6	1.9
Gold Coast-Adelaide								
Jetstar	31	31	29	93.5	30	96.8	0	0.0
Virgin Australia	31	28	25	89.3	24	85.7	3	9.7
All Airlines	62	59	54	91.5	54	91.5	3	4.8
Gold Coast-Melbourne								
Jetstar	228	227	183	80.6	165	72.7	1	0.4
Tiger Airways	62	62	43	69.4	30	48.4	0	0.0
Virgin Australia	204	199	169	84.9	167	83.9	5	2.5
All Airlines	494	488	395	80.9	362	74.2	6	1.2
Gold Coast-Sydney								
Jetstar	305	303	250	82.5	245	80.9	2	0.7
Tiger Airways	80	76	56	73.7	44	57.9	4	5.0
Virgin Australia	338	331	288	87.0	282	85.2	7	2.1
All Airlines	723	710	594	83.7	571	80.4	13	1.8
Hamilton Island-Brisbane								
Jetstar	17	17	14	82.4	14	82.4	0	0.0
Virgin Australia	31	31	23	74.2	25	80.6	0	0.0
All Airlines	48	48	37	77.1	39	81.3	0	0.0
Hamilton Island-Sydney								
Jetstar	33	31	24	77.4	23	74.2	2	6.1
Virgin Australia	31	31	17	54.8	17	54.8	0	0.0
All Airlines	64	62	41	66.1	40	64.5	2	3.1
Hobart-Melbourne								
Jetstar	143	143	114	79.7	108	75.5	0	0.0
Qantas	62	62	58	93.5	55	88.7	0	0.0
Virgin Australia	135	135	108	80.0	108	80.0	0	0.0
All Airlines	340	340	280	82.4	271	79.7	0	0.0
Hobart-Sydney								
Jetstar	69	67	51	76.1	51	76.1	2	2.9
Qantas	31	31	23	74.2	22	71.0	0	0.0
Virgin Australia	62	59	38	64.4	41	69.5	3	4.8
All Airlines	162	157	112	71.3	114	72.6	5	3.1
Kalgoorlie-Perth								
Qantas	78	78	66	84.6	58	74.4	0	0.0
QantasLink	17	17	14	82.4	11	64.7	0	0.0
Skywest	58	58	44	75.9	24	41.4	0	0.0
All Airlines	153	153	124	81.0	93	60.8	0	0.0

	<i>Sectors</i>		<i>Departures On Time</i>		<i>Arrivals On Time</i>		<i>Cancellations</i>	
	<i>Sched.</i>	<i>Flown</i>	<i>No.</i>	<i>%</i>	<i>No.</i>	<i>%</i>	<i>No.</i>	<i>%</i>
Karratha-Perth								
Qantas	214	206	177	85.9	169	82.0	8	3.7
QantasLink	56	51	43	84.3	39	76.5	5	8.9
Virgin Australia	54	54	35	64.8	23	42.6	0	0.0
All Airlines	324	311	255	82.0	231	74.3	13	4.0
Launceston-Melbourne								
Jetstar	109	109	90	82.6	82	75.2	0	0.0
QantasLink	76	71	55	77.5	56	78.9	5	6.6
Virgin Australia	135	135	112	83.0	109	80.7	0	0.0
All Airlines	320	315	257	81.6	247	78.4	5	1.6
Launceston-Sydney								
Jetstar	32	32	27	84.4	27	84.4	0	0.0
Virgin Australia	31	31	24	77.4	23	74.2	0	0.0
All Airlines	63	63	51	81.0	50	79.4	0	0.0
Mackay-Brisbane								
Jetstar	113	110	85	77.3	86	78.2	3	2.7
QantasLink	54	54	39	72.2	43	79.6	0	0.0
Virgin Australia	175	170	134	78.8	126	74.1	5	2.9
All Airlines	342	334	258	77.2	255	76.3	8	2.3
Melbourne-Adelaide								
Jetstar	81	81	63	77.8	60	74.1	0	0.0
Qantas	313	313	282	90.1	250	79.9	0	0.0
QantasLink	17	16	14	87.5	12	75.0	1	5.9
Virgin Australia	289	286	258	90.2	255	89.2	3	1.0
All Airlines	700	696	617	88.6	577	82.9	4	0.6
Melbourne-Brisbane								
Jetstar	94	92	61	66.3	67	72.8	2	2.1
Qantas	431	430	369	85.8	358	83.3	1	0.2
Tiger Airways	84	84	71	84.5	66	78.6	0	0.0
Virgin Australia	378	372	329	88.4	318	85.5	6	1.6
All Airlines	987	978	830	84.9	809	82.7	9	0.9
Melbourne-Cairns								
Jetstar	89	89	79	88.8	81	91.0	0	0.0
Qantas	31	31	30	96.8	28	90.3	0	0.0
Tiger Airways	31	31	29	93.5	26	83.9	0	0.0
Virgin Australia	35	35	31	88.6	30	85.7	0	0.0
All Airlines	186	186	169	90.9	165	88.7	0	0.0
Melbourne-Canberra								
Qantas	272	272	247	90.8	249	91.5	0	0.0
QantasLink	39	28	26	92.9	21	75.0	11	28.2
Virgin Australia	173	171	150	87.7	149	87.1	2	1.2
All Airlines	484	471	423	89.8	419	89.0	13	2.7
Melbourne-Darwin								
Jetstar	10	10	10	100.0	10	100.0	0	0.0
Qantas	15	15	14	93.3	14	93.3	0	0.0
Virgin Australia	31	31	29	93.5	28	90.3	0	0.0
All Airlines	56	56	53	94.6	52	92.9	0	0.0
Melbourne-Gold Coast								
Jetstar	228	227	166	73.1	178	78.4	1	0.4
Tiger Airways	62	62	57	91.9	57	91.9	0	0.0
Virgin Australia	204	199	170	85.4	177	88.9	5	2.5
All Airlines	494	488	393	80.5	412	84.4	6	1.2

	<i>Sectors</i>		<i>Departures On Time</i>		<i>Arrivals On Time</i>		<i>Cancellations</i>	
	<i>Sched.</i>	<i>Flown</i>	<i>No.</i>	<i>%</i>	<i>No.</i>	<i>%</i>	<i>No.</i>	<i>%</i>
Melbourne-Hobart								
Jetstar	143	143	118	82.5	117	81.8	0	0.0
Qantas	63	63	46	73.0	36	57.1	0	0.0
Virgin Australia	135	135	114	84.4	107	79.3	0	0.0
All Airlines	341	341	278	81.5	260	76.2	0	0.0
Melbourne-Launceston								
Jetstar	109	109	90	82.6	91	83.5	0	0.0
QantasLink	77	70	61	87.1	52	74.3	7	9.1
Virgin Australia	135	135	110	81.5	112	83.0	0	0.0
All Airlines	321	314	261	83.1	255	81.2	7	2.2
Melbourne-Mildura								
QantasLink	90	89	79	88.8	71	79.8	1	1.1
Regional Express	89	89	80	89.9	73	82.0	0	0.0
Virgin Australia	31	31	31	100.0	29	93.5	0	0.0
All Airlines	210	209	190	90.9	173	82.8	1	0.5
Melbourne-Newcastle								
Jetstar	99	99	85	85.9	82	82.8	0	0.0
Virgin Australia	31	31	30	96.8	29	93.5	0	0.0
All Airlines	130	130	115	88.5	111	85.4	0	0.0
Melbourne-Perth								
Jetstar	80	79	68	86.1	53	67.1	1	1.3
Qantas	218	217	183	84.3	182	83.9	1	0.5
Tiger Airways	80	80	66	82.5	61	76.3	0	0.0
Virgin Australia	150	148	138	93.2	102	68.9	2	1.3
All Airlines	528	524	455	86.8	398	76.0	4	0.8
Melbourne-Sunshine Coast								
Jetstar	44	44	23	52.3	23	52.3	0	0.0
Virgin Australia	31	31	27	87.1	25	80.6	0	0.0
All Airlines	75	75	50	66.7	48	64.0	0	0.0
Melbourne-Sydney								
Jetstar	265	262	167	63.7	172	65.6	3	1.1
Qantas	995	939	804	85.6	757	80.6	56	5.6
Tiger Airways	260	253	205	81.0	207	81.8	7	2.7
Virgin Australia	824	796	691	86.8	654	82.2	28	3.4
All Airlines	2 344	2 250	1 867	83.0	1 790	79.6	94	4.0
Mildura-Melbourne								
QantasLink	89	89	84	94.4	77	86.5	0	0.0
Regional Express	90	90	82	91.1	79	87.8	0	0.0
Virgin Australia	31	31	29	93.5	29	93.5	0	0.0
All Airlines	210	210	195	92.9	185	88.1	0	0.0
Newcastle-Brisbane								
Jetstar	119	119	90	75.6	88	73.9	0	0.0
QantasLink	73	73	50	68.5	54	74.0	0	0.0
Virgin Australia - ATR/F100 Operations	61	61	41	67.2	39	63.9	0	0.0
All Airlines	253	253	181	71.5	181	71.5	0	0.0
Newcastle-Melbourne								
Jetstar	100	100	90	90.0	91	91.0	0	0.0
Virgin Australia	31	30	29	96.7	29	96.7	1	3.2
All Airlines	131	130	119	91.5	120	92.3	1	0.8

	<i>Sectors</i>		<i>Departures On Time</i>		<i>Arrivals On Time</i>		<i>Cancellations</i>	
	<i>Sched.</i>	<i>Flown</i>	<i>No.</i>	<i>%</i>	<i>No.</i>	<i>%</i>	<i>No.</i>	<i>%</i>
Newman-Perth								
Qantas	116	116	98	84.5	88	75.9	0	0.0
QantasLink	19	19	19	100.0	18	94.7	0	0.0
Virgin Australia	33	33	26	78.8	24	72.7	0	0.0
All Airlines	168	168	143	85.1	130	77.4	0	0.0
Perth-Adelaide								
Jetstar	31	31	16	51.6	21	67.7	0	0.0
Qantas	113	113	92	81.4	103	91.2	0	0.0
Virgin Australia	62	62	59	95.2	60	96.8	0	0.0
All Airlines	206	206	167	81.1	184	89.3	0	0.0
Perth-Brisbane								
Jetstar	31	30	8	26.7	21	70.0	1	3.2
Qantas	124	124	89	71.8	98	79.0	0	0.0
Virgin Australia	72	72	69	95.8	66	91.7	0	0.0
All Airlines	227	226	166	73.5	185	81.9	1	0.4
Perth-Broome								
Qantas	51	51	28	54.9	27	52.9	0	0.0
QantasLink	35	34	32	94.1	31	91.2	1	2.9
Skywest	22	22	18	81.8	18	81.8	0	0.0
Virgin Australia	59	59	50	84.7	53	89.8	0	0.0
All Airlines	167	166	128	77.1	129	77.7	1	0.6
Perth-Darwin								
Qantas	31	31	27	87.1	27	87.1	0	0.0
Virgin Australia	27	27	26	96.3	25	92.6	0	0.0
All Airlines	58	58	53	91.4	52	89.7	0	0.0
Perth-Geraldton								
QantasLink	54	54	45	83.3	46	85.2	0	0.0
Skywest	85	85	66	77.6	56	65.9	0	0.0
All Airlines	139	139	111	79.9	102	73.4	0	0.0
Perth-Kalgoorlie								
Qantas	79	79	71	89.9	68	86.1	0	0.0
QantasLink	17	17	16	94.1	16	94.1	0	0.0
Skywest	68	68	54	79.4	45	66.2	0	0.0
All Airlines	164	164	141	86.0	129	78.7	0	0.0
Perth-Karratha								
Qantas	214	207	176	85.0	172	83.1	7	3.3
QantasLink	55	50	44	88.0	35	70.0	5	9.1
Virgin Australia	55	54	39	72.2	37	68.5	1	1.8
All Airlines	324	311	259	83.3	244	78.5	13	4.0
Perth-Melbourne								
Jetstar	80	79	41	51.9	54	68.4	1	1.3
Qantas	218	218	189	86.7	197	90.4	0	0.0
Tiger Airways	80	80	47	58.8	53	66.3	0	0.0
Virgin Australia	149	147	126	85.7	111	75.5	2	1.3
All Airlines	527	524	403	76.9	415	79.2	3	0.6
Perth-Newman								
Qantas	116	116	96	82.8	100	86.2	0	0.0
QantasLink	19	19	18	94.7	19	100.0	0	0.0
Virgin Australia	33	33	29	87.9	29	87.9	0	0.0
All Airlines	168	168	143	85.1	148	88.1	0	0.0

	<i>Sectors</i>		<i>Departures On Time</i>		<i>Arrivals On Time</i>		<i>Cancellations</i>	
	<i>Sched.</i>	<i>Flown</i>	<i>No.</i>	<i>%</i>	<i>No.</i>	<i>%</i>	<i>No.</i>	<i>%</i>
Perth-Port Hedland								
Qantas	138	137	116	84.7	113	82.5	1	0.7
QantasLink	29	29	27	93.1	28	96.6	0	0.0
Virgin Australia	64	64	58	90.6	55	85.9	0	0.0
All Airlines	231	230	201	87.4	196	85.2	1	0.4
Perth-Sydney								
Jetstar	45	45	17	37.8	33	73.3	0	0.0
Qantas	214	212	169	79.7	168	79.2	2	0.9
Virgin Australia	143	140	104	74.3	111	79.3	3	2.1
All Airlines	402	397	290	73.0	312	78.6	5	1.2
Port Hedland-Perth								
Qantas	138	136	102	75.0	100	73.5	2	1.4
QantasLink	29	28	27	96.4	27	96.4	1	3.4
Virgin Australia	64	63	50	79.4	50	79.4	1	1.6
All Airlines	231	227	179	78.9	177	78.0	4	1.7
Port Lincoln-Adelaide								
QantasLink	103	100	87	87.0	89	89.0	3	2.9
Regional Express	216	215	183	85.1	186	86.5	1	0.5
All Airlines	319	315	270	85.7	275	87.3	4	1.3
Port Macquarie-Sydney								
QantasLink	140	135	99	73.3	95	70.4	5	3.6
Virgin Australia - ATR/F100 Operations	62	62	52	83.9	48	77.4	0	0.0
All Airlines	202	197	151	76.6	143	72.6	5	2.5
Proserpine-Brisbane								
Jetstar	31	31	26	83.9	28	90.3	0	0.0
Virgin Australia	31	31	27	87.1	29	93.5	0	0.0
Virgin Australia - ATR/F100 Operations	23	23	16	69.6	12	52.2	0	0.0
All Airlines	85	85	69	81.2	69	81.2	0	0.0
Rockhampton-Brisbane								
QantasLink	136	132	103	78.0	108	81.8	4	2.9
Virgin Australia	87	85	70	82.4	75	88.2	2	2.3
Virgin Australia - ATR/F100 Operations	124	118	102	86.4	104	88.1	6	4.8
All Airlines	347	335	275	82.1	287	85.7	12	3.5
Sunshine Coast-Melbourne								
Jetstar	44	44	16	36.4	17	38.6	0	0.0
Virgin Australia	31	31	17	54.8	20	64.5	0	0.0
All Airlines	75	75	33	44.0	37	49.3	0	0.0
Sunshine Coast-Sydney								
Jetstar	86	86	67	77.9	63	73.3	0	0.0
Virgin Australia	35	35	27	77.1	18	51.4	0	0.0
All Airlines	121	121	94	77.7	81	66.9	0	0.0
Sydney-Adelaide								
Jetstar	90	90	69	76.7	75	83.3	0	0.0
Qantas	279	279	244	87.5	236	84.6	0	0.0
Virgin Australia	179	177	146	82.5	148	83.6	2	1.1
All Airlines	548	546	459	84.1	459	84.1	2	0.4
Sydney-Albury								
QantasLink	123	122	72	59.0	66	54.1	1	0.8
Regional Express	112	112	87	77.7	86	76.8	0	0.0
Virgin Australia	62	62	54	87.1	49	79.0	0	0.0
All Airlines	297	296	213	72.0	201	67.9	1	0.3

	<i>Sectors</i>		<i>Departures On Time</i>		<i>Arrivals On Time</i>		<i>Cancellations</i>	
	<i>Sched.</i>	<i>Flown</i>	<i>No.</i>	<i>%</i>	<i>No.</i>	<i>%</i>	<i>No.</i>	<i>%</i>
Sydney-Ayers Rock								
Qantas	31	31	27	87.1	25	80.6	0	0.0
Virgin Australia	31	31	22	71.0	24	77.4	0	0.0
All Airlines	62	62	49	79.0	49	79.0	0	0.0
Sydney-Ballina								
Jetstar	57	57	51	89.5	50	87.7	0	0.0
Regional Express	28	28	18	64.3	19	67.9	0	0.0
Virgin Australia	31	31	27	87.1	26	83.9	0	0.0
All Airlines	116	116	96	82.8	95	81.9	0	0.0
Sydney-Brisbane								
Jetstar	100	99	85	85.9	85	85.9	1	1.0
Qantas	622	619	538	86.9	494	79.8	3	0.5
Tiger Airways	62	62	50	80.6	43	69.4	0	0.0
Virgin Australia	593	575	485	84.3	459	79.8	18	3.0
All Airlines	1 377	1 355	1 158	85.5	1 081	79.8	22	1.6
Sydney-Cairns								
Jetstar	83	83	73	88.0	68	81.9	0	0.0
Qantas	101	101	89	88.1	90	89.1	0	0.0
Virgin Australia	93	93	76	81.7	76	81.7	0	0.0
All Airlines	277	277	238	85.9	234	84.5	0	0.0
Sydney-Canberra								
Qantas	175	173	160	92.5	149	86.1	2	1.1
QantasLink	412	389	299	76.9	274	70.4	23	5.6
Virgin Australia	108	107	81	75.7	85	79.4	1	0.9
Virgin Australia - ATR/F100 Operations	151	150	133	88.7	127	84.7	1	0.7
All Airlines	846	819	673	82.2	635	77.5	27	3.2
Sydney-Coffs Harbour								
QantasLink	147	147	112	76.2	112	76.2	0	0.0
Virgin Australia	62	62	54	87.1	55	88.7	0	0.0
All Airlines	209	209	166	79.4	167	79.9	0	0.0
Sydney-Darwin								
Jetstar	36	36	31	86.1	32	88.9	0	0.0
Qantas	58	58	46	79.3	50	86.2	0	0.0
Virgin Australia	31	31	26	83.9	23	74.2	0	0.0
All Airlines	125	125	103	82.4	105	84.0	0	0.0
Sydney-Dubbo								
QantasLink	112	112	69	61.6	64	57.1	0	0.0
Regional Express	178	175	141	80.6	152	86.9	3	1.7
All Airlines	290	287	210	73.2	216	75.3	3	1.0
Sydney-Gold Coast								
Jetstar	305	302	256	84.8	252	83.4	3	1.0
Tiger Airways	80	76	53	69.7	59	77.6	4	5.0
Virgin Australia	338	331	279	84.3	280	84.6	7	2.1
All Airlines	723	709	588	82.9	591	83.4	14	1.9
Sydney-Hamilton Island								
Jetstar	31	31	26	83.9	27	87.1	0	0.0
Virgin Australia	31	31	28	90.3	24	77.4	0	0.0
All Airlines	62	62	54	87.1	51	82.3	0	0.0
Sydney-Hobart								
Jetstar	69	67	57	85.1	56	83.6	2	2.9
Qantas	31	31	29	93.5	28	90.3	0	0.0
Virgin Australia	62	59	37	62.7	40	67.8	3	4.8
All Airlines	162	157	123	78.3	124	79.0	5	3.1

	<i>Sectors</i>		<i>Departures On Time</i>		<i>Arrivals On Time</i>		<i>Cancellations</i>	
	<i>Sched.</i>	<i>Flown</i>	<i>No.</i>	<i>%</i>	<i>No.</i>	<i>%</i>	<i>No.</i>	<i>%</i>
Sydney-Launceston								
Jetstar	32	32	30	93.8	29	90.6	0	0.0
Virgin Australia	30	30	25	83.3	24	80.0	0	0.0
All Airlines	62	62	55	88.7	53	85.5	0	0.0
Sydney-Melbourne								
Jetstar	268	265	156	58.9	188	70.9	3	1.1
Qantas	998	942	849	90.1	764	81.1	56	5.6
Tiger Airways	259	252	188	74.6	188	74.6	7	2.7
Virgin Australia	825	797	671	84.2	637	79.9	28	3.4
All Airlines	2 350	2 256	1 864	82.6	1 777	78.8	94	4.0
Sydney-Perth								
Jetstar	45	45	38	84.4	27	60.0	0	0.0
Qantas	213	211	168	79.6	159	75.4	2	0.9
Virgin Australia	142	140	115	82.1	70	50.0	2	1.4
All Airlines	400	396	321	81.1	256	64.6	4	1.0
Sydney-Port Macquarie								
QantasLink	139	134	92	68.7	100	74.6	5	3.6
Virgin Australia - ATR/F100 Operations	62	62	52	83.9	48	77.4	0	0.0
All Airlines	201	196	144	73.5	148	75.5	5	2.5
Sydney-Sunshine Coast								
Jetstar	86	86	70	81.4	74	86.0	0	0.0
Virgin Australia	35	35	32	91.4	31	88.6	0	0.0
All Airlines	121	121	102	84.3	105	86.8	0	0.0
Sydney-Townsville								
Jetstar	22	22	16	72.7	18	81.8	0	0.0
Virgin Australia	31	31	26	83.9	26	83.9	0	0.0
All Airlines	53	53	42	79.2	44	83.0	0	0.0
Sydney-Wagga Wagga								
QantasLink	116	116	94	81.0	75	64.7	0	0.0
Regional Express	120	120	92	76.7	92	76.7	0	0.0
All Airlines	236	236	186	78.8	167	70.8	0	0.0
Townsville-Brisbane								
Jetstar	31	31	22	71.0	23	74.2	0	0.0
Qantas	150	150	120	80.0	123	82.0	0	0.0
Virgin Australia	174	174	150	86.2	145	83.3	0	0.0
All Airlines	355	355	292	82.3	291	82.0	0	0.0
Townsville-Cairns								
QantasLink	194	190	152	80.0	143	75.3	4	2.1
Virgin Australia - ATR/F100 Operations	27	27	24	88.9	24	88.9	0	0.0
All Airlines	221	217	176	81.1	167	77.0	4	1.8
Townsville-Sydney								
Jetstar	22	22	11	50.0	12	54.5	0	0.0
Virgin Australia	31	31	22	71.0	23	74.2	0	0.0
All Airlines	53	53	33	62.3	35	66.0	0	0.0
Wagga Wagga-Sydney								
QantasLink	116	116	83	71.6	86	74.1	0	0.0
Regional Express	119	119	95	79.8	97	81.5	0	0.0
All Airlines	235	235	178	75.7	183	77.9	0	0.0

Airports

On time performance is reported for all routes where the passenger load averages over 8000 passengers per month, and where two or more airlines operate in competition. The following data reports by airport against flights operated on those routes only.

Airport	Departures			Arrivals		
	Sectors	On Time		Sectors	On Time	
	Flown	No.	%	Flown	No.	%
Adelaide						
Jetstar	264	208	78.8	264	210	79.5
Qantas	870	749	86.1	871	738	84.7
QantasLink	117	106	90.6	116	101	87.1
Regional Express	215	195	90.7	215	186	86.5
Virgin Australia	699	632	90.4	701	616	87.9
All Airlines	2 165	1 890	87.3	2 167	1 851	85.4
Relates to services to and from Brisbane, Canberra, Gold Coast, Melbourne, Perth, Port Lincoln and Sydney.						
Albury						
QantasLink	123	76	61.8	122	66	54.1
Regional Express	114	97	85.1	112	86	76.8
Virgin Australia	61	47	77.0	62	49	79.0
All Airlines	298	220	73.8	296	201	67.9
Relates to services to and from Sydney only.						
Ayers Rock						
Qantas	31	26	83.9	31	25	80.6
Virgin Australia	31	28	90.3	31	24	77.4
All Airlines	62	54	87.1	62	49	79.0
Relates to services to and from Sydney only.						
Ballina						
Jetstar	57	46	80.7	57	50	87.7
Regional Express	24	17	70.8	28	19	67.9
Virgin Australia	31	24	77.4	31	26	83.9
All Airlines	112	87	77.7	116	95	81.9
Relates to services to and from Sydney only.						
Brisbane						
Jetstar	672	541	80.5	674	535	79.4
Qantas	1 729	1 476	85.4	1 730	1 435	82.9
QantasLink	661	552	83.5	660	504	76.4
Tiger Airways	146	97	66.4	146	109	74.7
Virgin Australia	1 916	1 712	89.4	1 910	1 591	83.3
Virgin Australia - ATR/F100 Operations	434	388	89.4	430	357	83.0
All Airlines	5 558	4 766	85.8	5 550	4 531	81.6
Relates to services to and from Adelaide, Cairns, Canberra, Darwin, Emerald, Gladstone, Hamilton Island, Mackay, Melbourne, Newcastle, Perth, Proserpine, Rockhampton, Sydney and Townsville.						

Airport	Departures			Arrivals		
	Sectors	On Time		Sectors	On Time	
	Flown	No.	%	Flown	No.	%
Broome						
Qantas	51	26	51.0	51	27	52.9
QantasLink	33	31	93.9	34	31	91.2
Skywest	22	16	72.7	22	18	81.8
Virgin Australia	59	49	83.1	59	53	89.8
All Airlines	165	122	73.9	166	129	77.7
Relates to services to and from Perth only.						
Cairns						
Jetstar	278	248	89.2	277	235	84.8
Qantas	248	217	87.5	248	220	88.7
QantasLink	189	170	89.9	190	143	75.3
Tiger Airways	31	20	64.5	31	26	83.9
Virgin Australia	279	236	84.6	279	239	85.7
Virgin Australia - ATR/F100 Operations	54	40	74.1	54	42	77.8
All Airlines	1 079	931	86.3	1 079	905	83.9
Relates to services to and from Brisbane, Melbourne, Sydney and Townsville.						
Canberra						
Qantas	642	580	90.3	642	583	90.8
QantasLink	439	330	75.2	438	313	71.5
Virgin Australia	398	347	87.2	400	336	84.0
Virgin Australia - ATR/F100 Operations	150	138	92.0	150	127	84.7
All Airlines	1 629	1 395	85.6	1 630	1 359	83.4
Relates to services to and from Adelaide, Brisbane, Melbourne and Sydney.						
Coffs Harbour						
QantasLink	148	120	81.1	147	112	76.2
Virgin Australia	62	54	87.1	62	55	88.7
All Airlines	210	174	82.9	209	167	79.9
Relates to services to and from Sydney only.						
Darwin						
Jetstar	55	43	78.2	55	49	89.1
Qantas	134	112	83.6	135	120	88.9
Virgin Australia	120	109	90.8	120	104	86.7
All Airlines	309	264	85.4	310	273	88.1
Relates to services to and from Brisbane, Melbourne, Perth and Sydney.						
Dubbo						
QantasLink	112	72	64.3	112	64	57.1
Regional Express	173	145	83.8	175	152	86.9
All Airlines	285	217	76.1	287	216	75.3
Relates to services to and from Sydney only.						
Emerald						
QantasLink	199	158	79.4	199	158	79.4
Virgin Australia - ATR/F100 Operations	76	70	92.1	76	70	92.1
All Airlines	275	228	82.9	275	228	82.9
Relates to services to and from Brisbane only.						

Airport	Departures			Arrivals		
	Sectors Flown	On Time		Sectors Flown	On Time	
		No.	%		No.	%
Geraldton						
QantasLink	54	42	77.8	54	46	85.2
Skywest	84	55	65.5	85	56	65.9
All Airlines	138	97	70.3	139	102	73.4
Relates to services to and from Perth only.						
Gladstone						
QantasLink	181	129	71.3	158	123	77.8
Virgin Australia - ATR/F100 Operations	125	111	88.8	125	108	86.4
All Airlines	306	240	78.4	283	231	81.6
Relates to services to and from Brisbane only.						
Gold Coast						
Jetstar	561	462	82.4	560	460	82.1
Tiger Airways	138	99	71.7	138	116	84.1
Virgin Australia	558	482	86.4	558	481	86.2
All Airlines	1 257	1 043	83.0	1 256	1 057	84.2
Relates to services to and from Adelaide, Melbourne and Sydney.						
Hamilton Island						
Jetstar	48	38	79.2	48	41	85.4
Virgin Australia	62	40	64.5	62	50	80.6
All Airlines	110	78	70.9	110	91	82.7
Relates to services to and from Brisbane and Sydney.						
Hobart						
Jetstar	210	165	78.6	210	173	82.4
Qantas	93	81	87.1	94	64	68.1
Virgin Australia	194	146	75.3	194	147	75.8
All Airlines	497	392	78.9	498	384	77.1
Relates to services to and from Melbourne and Sydney.						
Kalgoorlie						
Qantas	78	66	84.6	79	68	86.1
QantasLink	17	14	82.4	17	16	94.1
Skywest	58	44	75.9	68	45	66.2
All Airlines	153	124	81.0	164	129	78.7
Relates to services to and from Perth only.						
Karratha						
Qantas	206	177	85.9	207	172	83.1
QantasLink	51	43	84.3	50	35	70.0
Virgin Australia	54	35	64.8	54	37	68.5
All Airlines	311	255	82.0	311	244	78.5
Relates to services to and from Perth only.						
Launceston						
Jetstar	141	117	83.0	141	120	85.1
QantasLink	71	55	77.5	70	52	74.3
Virgin Australia	166	136	81.9	165	136	82.4
All Airlines	378	308	81.5	376	308	81.9
Relates to services to and from Melbourne and Sydney.						

Airport	Departures			Arrivals		
	Sectors	On Time		Sectors	On Time	
	Flown	No.	%	Flown	No.	%
Mackay						
Jetstar	110	85	77.3	110	87	79.1
QantasLink	54	39	72.2	54	35	64.8
Virgin Australia	170	134	78.8	172	137	79.7
All Airlines	334	258	77.2	336	259	77.1
Relates to services to and from Brisbane only.						
Melbourne						
Jetstar	1 235	930	75.3	1 237	918	74.2
Qantas	2 280	1 975	86.6	2 280	1 877	82.3
QantasLink	203	180	88.7	205	171	83.4
Regional Express	89	80	89.9	90	79	87.8
Tiger Airways	510	428	83.9	509	346	68.0
Virgin Australia	2 401	2 108	87.8	2 398	2 002	83.5
All Airlines	6 718	5 701	84.9	6 719	5 393	80.3
Relates to services to and from Adelaide, Brisbane, Cairns, Canberra, Darwin, Gold Coast, Hobart, Launceston, Mildura, Newcastle, Perth, Sunshine Coast and Sydney.						
Mildura						
QantasLink	89	84	94.4	89	71	79.8
Regional Express	90	82	91.1	89	73	82.0
Virgin Australia	31	29	93.5	31	29	93.5
All Airlines	210	195	92.9	209	173	82.8
Relates to services to and from Melbourne only.						
Newcastle						
Jetstar	219	180	82.2	218	184	84.4
QantasLink	73	50	68.5	73	48	65.8
Virgin Australia	30	29	96.7	31	29	93.5
Virgin Australia - ATR/F100 Operations	61	41	67.2	61	42	68.9
All Airlines	383	300	78.3	383	303	79.1
Relates to services to and from Brisbane and Melbourne.						
Newman						
Qantas	116	98	84.5	116	100	86.2
QantasLink	19	19	100.0	19	19	100.0
Virgin Australia	33	26	78.8	33	29	87.9
All Airlines	168	143	85.1	168	148	88.1
Relates to services to and from Perth only.						
Perth						
Jetstar	185	82	44.3	185	116	62.7
Qantas	1 288	1 053	81.8	1 284	999	77.8
QantasLink	203	182	89.7	202	154	76.2
Skywest	175	138	78.9	164	88	53.7
Tiger Airways	80	47	58.8	80	61	76.3
Virgin Australia	658	560	85.1	657	445	67.7
All Airlines	2 589	2 062	79.6	2 572	1 863	72.4
Relates to services to and from Adelaide, Brisbane, Broome, Darwin, Geraldton, Kalgoorlie, Karratha, Melbourne, Newman, Port Hedland and Sydney.						

Airport	Departures			Arrivals		
	Sectors Flown	On Time		Sectors Flown	On Time	
		No.	%		No.	%
Port Hedland						
Qantas	136	102	75.0	137	113	82.5
QantasLink	28	27	96.4	29	28	96.6
Virgin Australia	63	50	79.4	64	55	85.9
All Airlines	227	179	78.9	230	196	85.2
Relates to services to and from Perth only.						
Port Lincoln						
QantasLink	100	87	87.0	100	86	86.0
Regional Express	215	183	85.1	215	189	87.9
All Airlines	315	270	85.7	315	275	87.3
Relates to services to and from Adelaide only.						
Port Macquarie						
QantasLink	135	99	73.3	134	100	74.6
Virgin Australia - ATR/F100 Operations	62	52	83.9	62	48	77.4
All Airlines	197	151	76.6	196	148	75.5
Relates to services to and from Sydney only.						
Proserpine						
Jetstar	31	26	83.9	31	25	80.6
Virgin Australia	31	27	87.1	31	27	87.1
Virgin Australia - ATR/F100 Operations	23	16	69.6	23	15	65.2
All Airlines	85	69	81.2	85	67	78.8
Relates to services to and from Brisbane only.						
Rockhampton						
QantasLink	132	103	78.0	156	127	81.4
Virgin Australia	85	70	82.4	85	72	84.7
Virgin Australia - ATR/F100 Operations	118	102	86.4	122	107	87.7
All Airlines	335	275	82.1	363	306	84.3
Relates to services to and from Brisbane only.						
Sunshine Coast						
Jetstar	130	83	63.8	130	97	74.6
Virgin Australia	66	44	66.7	66	56	84.8
All Airlines	196	127	64.8	196	153	78.1
Relates to services to and from Melbourne and Sydney.						
Sydney						
Jetstar	1 215	958	78.8	1 214	902	74.3
Qantas	2 445	2 150	87.9	2 442	2 001	81.9
QantasLink	1 020	738	72.4	1 024	721	70.4
Regional Express	435	338	77.7	430	353	82.1
Tiger Airways	390	291	74.6	391	292	74.7
Virgin Australia	2 623	2 184	83.3	2 625	2 139	81.5
Virgin Australia - ATR/F100 Operations	212	185	87.3	212	182	85.8
All Airlines	8 340	6 844	82.1	8 338	6 590	79.0
Relates to services to and from Adelaide, Albury, Ayers Rock, Ballina, Brisbane, Cairns, Canberra, Coffs Harbour, Darwin, Dubbo, Gold Coast, Hamilton Island, Hobart, Launceston, Melbourne, Perth, Port Macquarie, Sunshine Coast, Townsville and Wagga Wagga.						

<i>Airport</i>	<i>Departures</i>			<i>Arrivals</i>		
	<i>Sectors</i>	<i>On Time</i>		<i>Sectors</i>	<i>On Time</i>	
	<i>Flown</i>	<i>No.</i>	<i>%</i>	<i>Flown</i>	<i>No.</i>	<i>%</i>
Townsville						
Jetstar	53	33	62.3	53	42	79.2
Qantas	150	120	80.0	150	122	81.3
QantasLink	190	152	80.0	189	164	86.8
Virgin Australia	205	172	83.9	205	173	84.4
Virgin Australia - ATR/F100 Operations	27	24	88.9	27	23	85.2
All Airlines	625	501	80.2	624	524	84.0
Relates to services to and from Brisbane, Cairns and Sydney.						
Wagga Wagga						
QantasLink	116	83	71.6	116	75	64.7
Regional Express	119	95	79.8	120	92	76.7
All Airlines	235	178	75.7	236	167	70.8
Relates to services to and from Sydney only.						

Definitions

On time departure A flight departure is counted as "on time" if it departs the gate within 15 minutes of the scheduled departure time shown in the carriers' schedule.

On time arrival A flight arrival is counted as "on time" if it arrived at the gate within 15 minutes of the scheduled arrival time shown in the carriers' schedule.
Neither diverted nor cancelled flights count as on time.

Cancellation A flight removed from service within 7 days of scheduled departure is regarded as a cancellation.

On time departure percentage The percentage of on time departures is measured against the number of departures *operated* on any particular sector.

On time arrival percentage The percentage of on time arrivals is measured against the number of arrivals *operated* on any particular sector.

Cancellation percentage The percentage of cancellations is measured against the number of services *scheduled* on any particular sector.
