



Australian Government

Department of Infrastructure, Transport,
Regional Development and Local Government
Bureau of Infrastructure, Transport and Regional Economics



bitre

AVIATION STATISTICS

Airline On Time Performance

August 2009—OTP 78

© Commonwealth of Australia 2009

ISSN 1832-0759

This work is copyright and the data contained in this publication should not be reproduced or used in any form without acknowledgement.

Enquiries

Bureau of Infrastructure, Transport and Regional Economics
GPO Box 501
Canberra ACT 2601

Telephone: 02 6274 7790

Facsimile: 02 6274 7727

Website: www.bitre.gov.au

Email: avstats@infrastructure.gov.au

This publication, including a spreadsheet of the time-series data, can be downloaded from the BITRE website: <http://www.bitre.gov.au/info.aspx?ResourceId=214&NodeId=104>.

Disclaimers

BITRE seeks to publish its work to the highest professional standards. However, it cannot accept responsibility for any consequences arising from the use of information herein. Readers should rely on their own skill and judgment in applying any information or analysis to particular issues or circumstances.

Foreword

The Bureau of Infrastructure, Transport and Regional Economics (BITRE) monitors the punctuality and reliability of major domestic airlines operating between Australian airports. The purpose of this is to allow for evaluation of overall industry and individual airline performance, so that consumers of air travel can make informed decisions.

The following domestic airlines report this data monthly to the BITRE: Jetstar, Qantas, QantasLink, Regional Express, Skywest Airlines, Tiger Airways, and Virgin Blue. Data has been gathered since November 2003, although some airlines commenced reporting since then, including Jetstar which first reported in May 2004, MacAir in July 2005 and Tiger Airways in April 2008. MacAir ceased operations in February 2009 and data was not received for December 2008 onwards.

Information presented in this report is for Australian domestic routes for which the passenger load averaged 8000 or more passengers per month over the previous six months, *and* where two or more airlines operated in competition on those routes. There were 52 routes that met this definition in August 2009. Over time, routes which meet these criteria change as airline networks and traffic levels vary.

Participating airlines report their overall monthly network performance where this is possible.

Total industry figures encompass all services operated by reporting airlines only. These airlines collectively carried over 95 per cent of total domestic passengers (regular public transport only) in 2008.

The method of capturing on time performance varies between airlines utilising different recording systems. Jetstar and Qantas jet aircraft use Aircraft Communication Addressing and Reporting System (ACARS) to electronically measure on time performance. Regional Express, Skywest, Tiger Airways, Virgin Blue and the Qantas non-jet fleet record on time performance manually using records from pilots, gate agents and/or ground crews.

After initial data is collected, aggregate reports are audited internally by participating airlines prior to publication.

Reports and detailed time series data in Microsoft Excel spreadsheet format are available from the BITRE website at: <http://www.bitre.gov.au/info.aspx?ResourceId=214&NodeId=104>.

Contents

	Page
Industry performance	1
Individual routes	9
Airports	21
Definitions	27

Industry performance

For August 2009, on time performance over all routes operated by participating airlines (Jetstar, Qantas, QantasLink, Regional Express, Skywest Airlines, Tiger Airways and Virgin Blue) averaged 86.5 per cent for on time departures, and 85.3 per cent for on time arrivals. Cancellations represented 0.9 per cent of all scheduled flights. The equivalent figures for August 2008 were 78.2 per cent for departures, 76.1 per cent for arrivals and 2.4 per cent for cancellations.

The long term average performance for all routes since reporting commenced in November 2003 is 84.9 per cent for on time departures and 83.7 per cent for on time arrivals. Cancellations average 1.2 per cent of all scheduled flights.

Of the major domestic airlines, Qantas achieved the highest level of on time departures for August 2009 at 89.6 per cent, followed by Virgin Blue at 86.1 per cent, Tiger Airways at 80.1 per cent and Jetstar at 79.7 per cent. The regional airlines were led by QantasLink at 90.4 per cent, followed by Regional Express at 85.6 per cent and Skywest at 77.0 per cent.

Qantas also achieved the highest on time arrivals among the major domestic airlines at 88.3 per cent, followed by Virgin Blue at 85.4 per cent, Tiger Airways at 81.4 per cent and Jetstar at 80.9 per cent. QantasLink was the best performing regional airline for on time arrivals at 88.3 per cent, followed by Regional Express at 81.7 per cent and Skywest at 76.6 per cent.

Virgin Blue had the highest percentage of cancellations for August 2009 at 1.5 per cent, while Regional Express and Skywest had the lowest at 0.4 per cent.

Of the 52 routes which met the criteria for on time performance reporting in August 2009, the Newman-Perth route had the highest percentage of on time departures (97.5 per cent), while the Melbourne-Darwin route had the lowest (62.6 per cent). On time arrivals were highest on the Adelaide-Gold Coast route (96.8 per cent) and lowest on the Sydney-Perth route (45.2 per cent).

Cancellations were highest on Canberra-Sydney, Sydney-Melbourne and Newman-Perth routes at 2.5 per cent, followed by Melbourne-Sydney and Sydney-Canberra routes at 2.3 per cent.

Newman Airport recorded the highest percentage of on time departures (97.5 per cent), while Broome Airport recorded the lowest (69.0 per cent). Newman Airport also recorded the highest percentage of on time arrivals (95.9 per cent), while Perth Airport recorded the lowest (67.1 per cent).

Table 1 On time performance for August 2009 — Total Industry

	<i>Sectors</i>		<i>Departures On Time</i>		<i>Arrivals On Time</i>		<i>Cancellations</i>	
	<i>Scheduled</i>	<i>Flown</i>	<i>No.</i>	<i>%</i>	<i>No.</i>	<i>%</i>	<i>No.</i>	<i>%</i>
Jetstar	4 807	4 782	3 810	79.7	3 868	80.9	25	0.5
Qantas	9 964	9 902	8 868	89.6	8 748	88.3	62	0.6
QantasLink	7 640	7 576	6 845	90.4	6 691	88.3	64	0.8
Regional Express	5 219	5 199	4 450	85.6	4 247	81.7	20	0.4
Skywest	1 093	1 089	838	77.0	834	76.6	4	0.4
Tiger Airways	1 178	1 163	932	80.1	947	81.4	15	1.3
Virgin Blue	11 449	11 277	9 704	86.1	9 633	85.4	172	1.5
All Airlines	41 350	40 988	35 447	86.5	34 968	85.3	362	0.9

1. Total airline network data (including routes not shown in this report).

Table 2 Top ten routes for on time performance for August 2009 (participating airlines only)

<i>Departures</i>		<i>Arrivals</i>	
<i>Route</i>	<i>On Time (%)</i>	<i>Route</i>	<i>On Time (%)</i>
Newman-Perth	97.5	Adelaide-Gold Coast	96.8
Gold Coast-Adelaide	96.8	Perth-Newman	95.9
Perth-Newman	96.7	Newman-Perth	95.8
Townsville-Cairns	96.6	Perth-Brisbane	95.7
Darwin-Perth	95.8	Gold Coast-Newcastle	95.7
Gold Coast-Newcastle	95.7	Newcastle-Gold Coast	95.7
Townsville-Brisbane	95.6	Townsville-Cairns	95.5
Perth-Darwin	94.4	Townsville-Brisbane	95.0
Cairns-Townsville	93.8	Brisbane-Townsville	95.0
Newcastle-Gold Coast	93.5	Canberra-Brisbane	94.6

Table 3 Top ten airports for on time performance for August 2009 (participating airlines and reported routes only)

<i>Departures</i>		<i>Arrivals</i>	
<i>Airport</i>	<i>On Time (%)</i>	<i>Airport</i>	<i>On Time (%)</i>
Newman	97.5	Newman	95.9
Townsville	94.6	Townsville	94.2
Canberra	91.9	Proserpine	93.8
Mackay	91.9	Cairns	93.0
Rockhampton	91.7	Rockhampton	92.4
Cairns	91.2	Hamilton Island	92.3
Karratha	90.8	Karratha	91.6
Brisbane	90.0	Brisbane	91.3
Mildura	89.6	Canberra	88.8
Newcastle	89.3	Gold Coast	88.8

Total industry on time performance

Figure 1 On time performance (by month from August 2006)—Total Industry

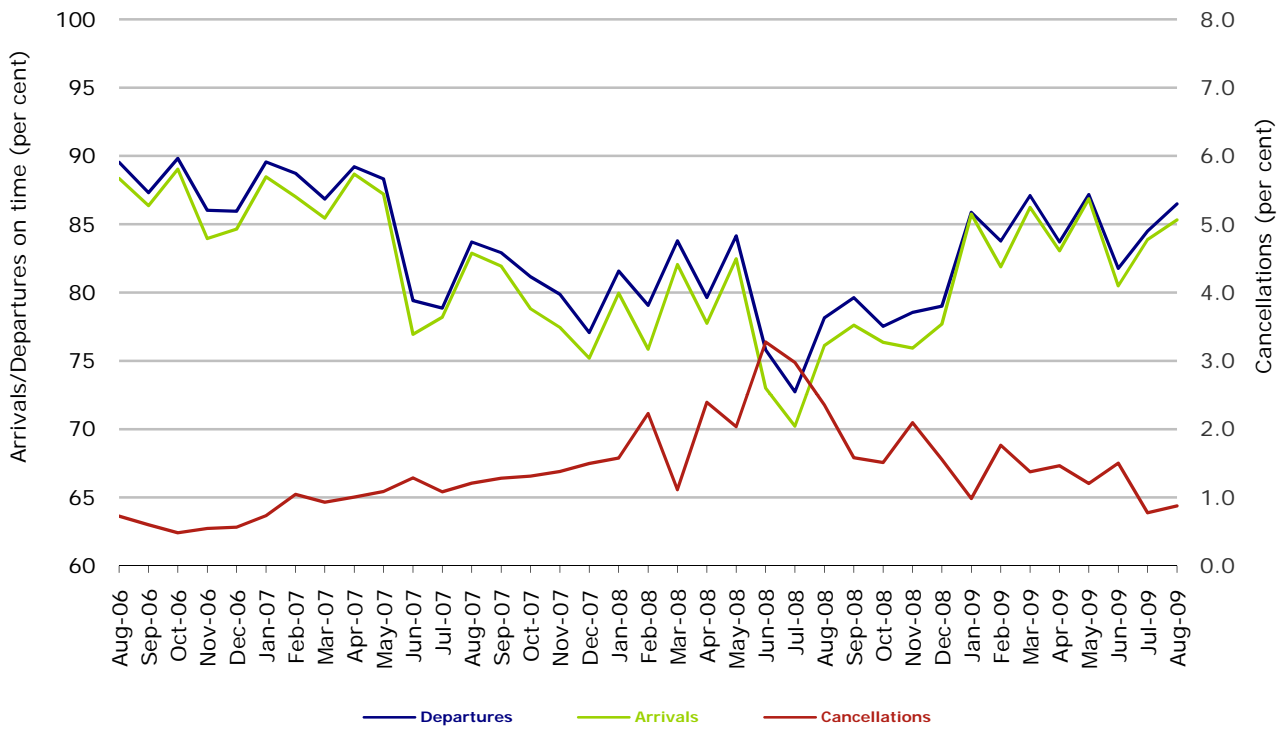
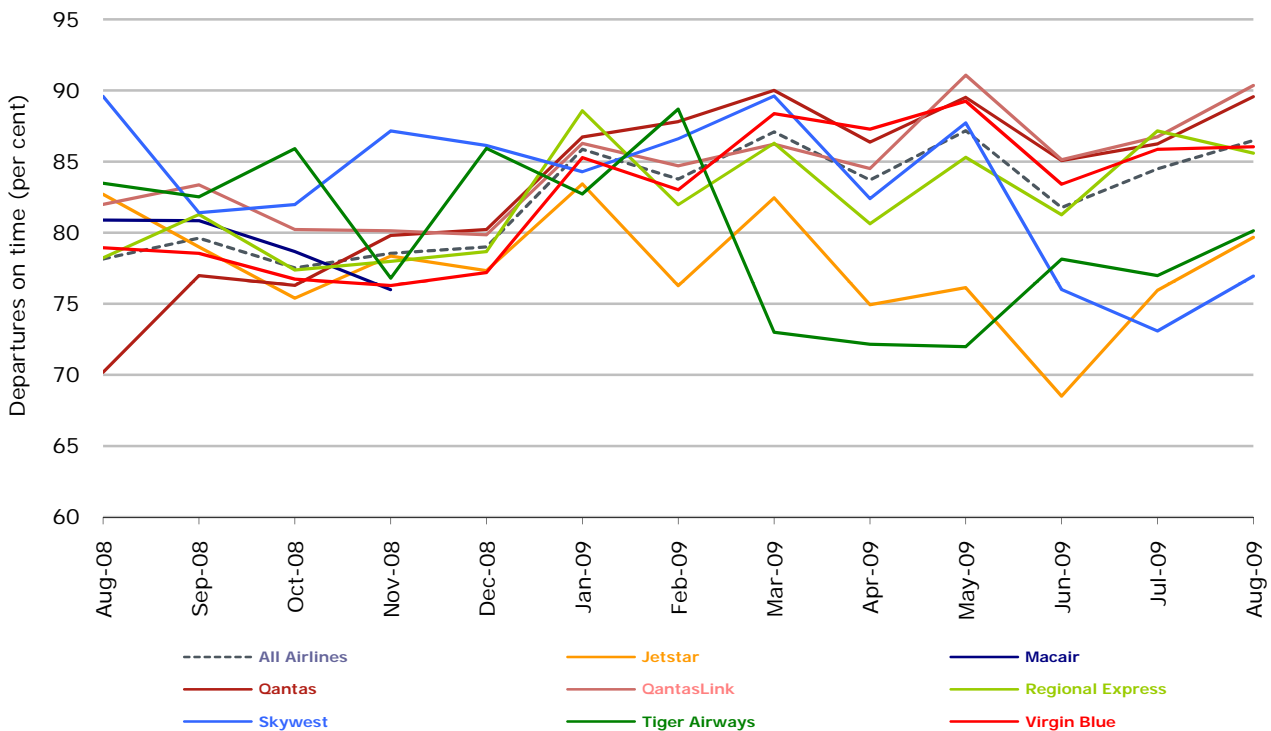
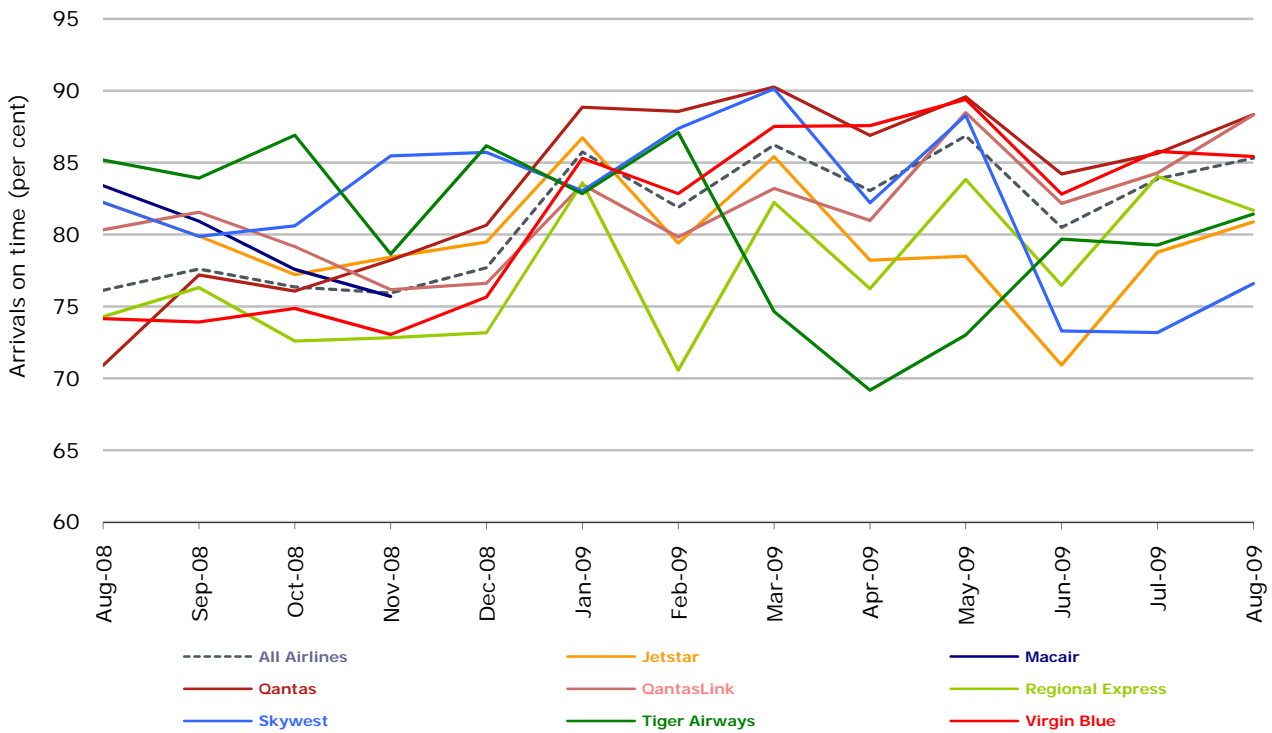


Figure 2 Departures on time (by month from August 2008)



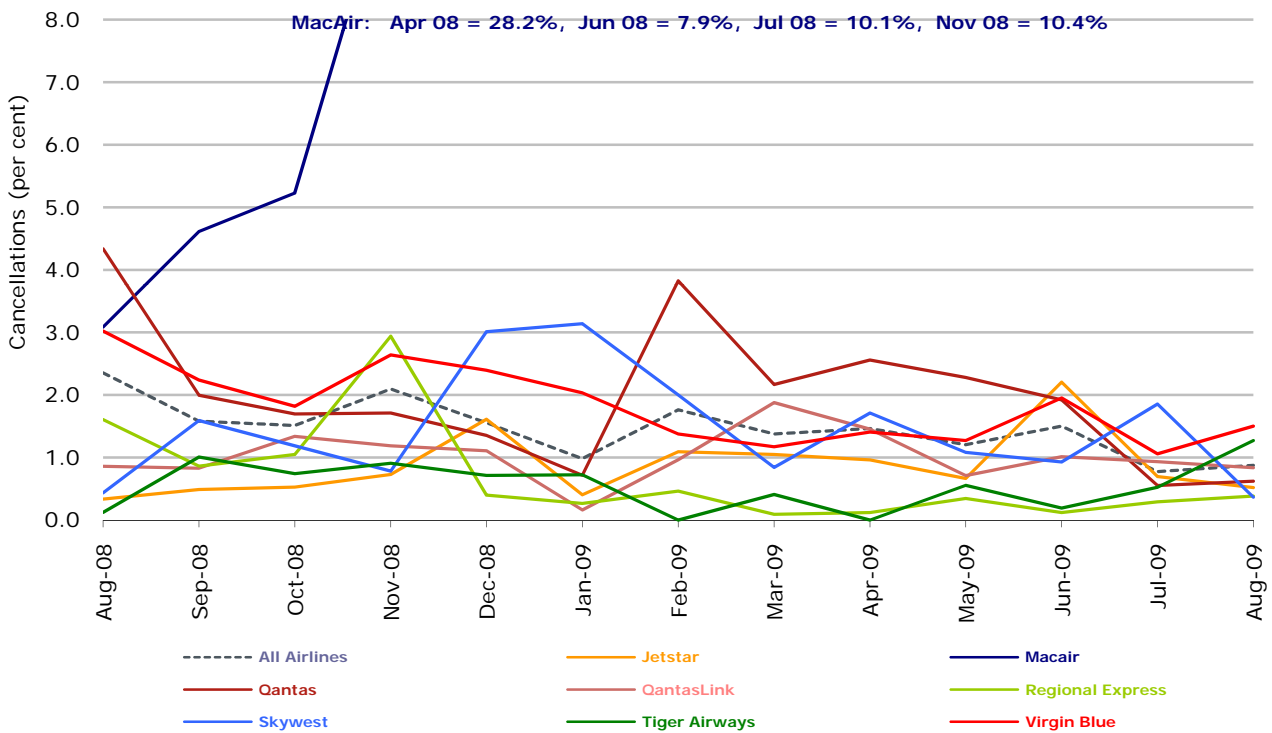
No data received from MacAir for December 2008 and onwards. Operations ceased in February 2009.

Figure 3 Arrivals on time (by month from August 2008)



No data received from MacAir for December 2008 and onwards. Operations ceased in February 2009.

Figure 4 Cancellations (by month from August 2008)



No data received from MacAir for December 2008 and onwards. Operations ceased in February 2009.

Major domestic airlines on time performance

Figure 5 On time performance (by month from August 2006)—Jetstar

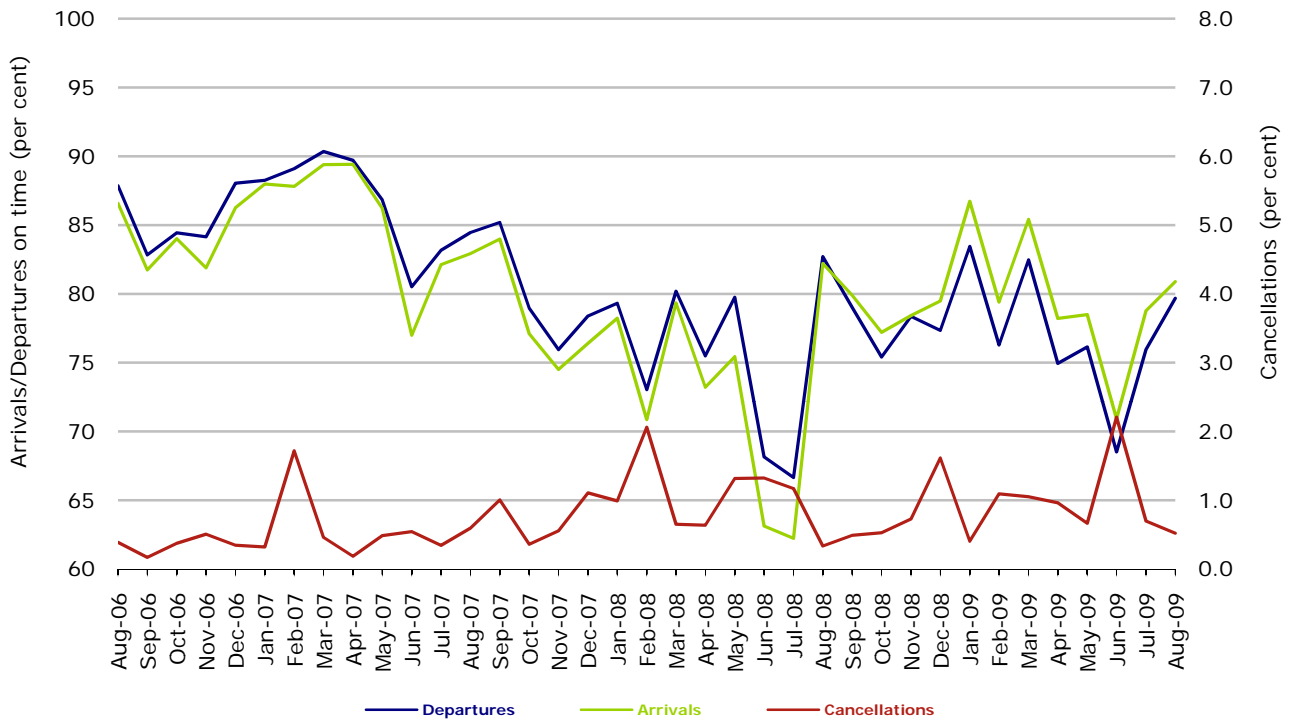


Figure 6 On time performance (by month from August 2006)—Qantas

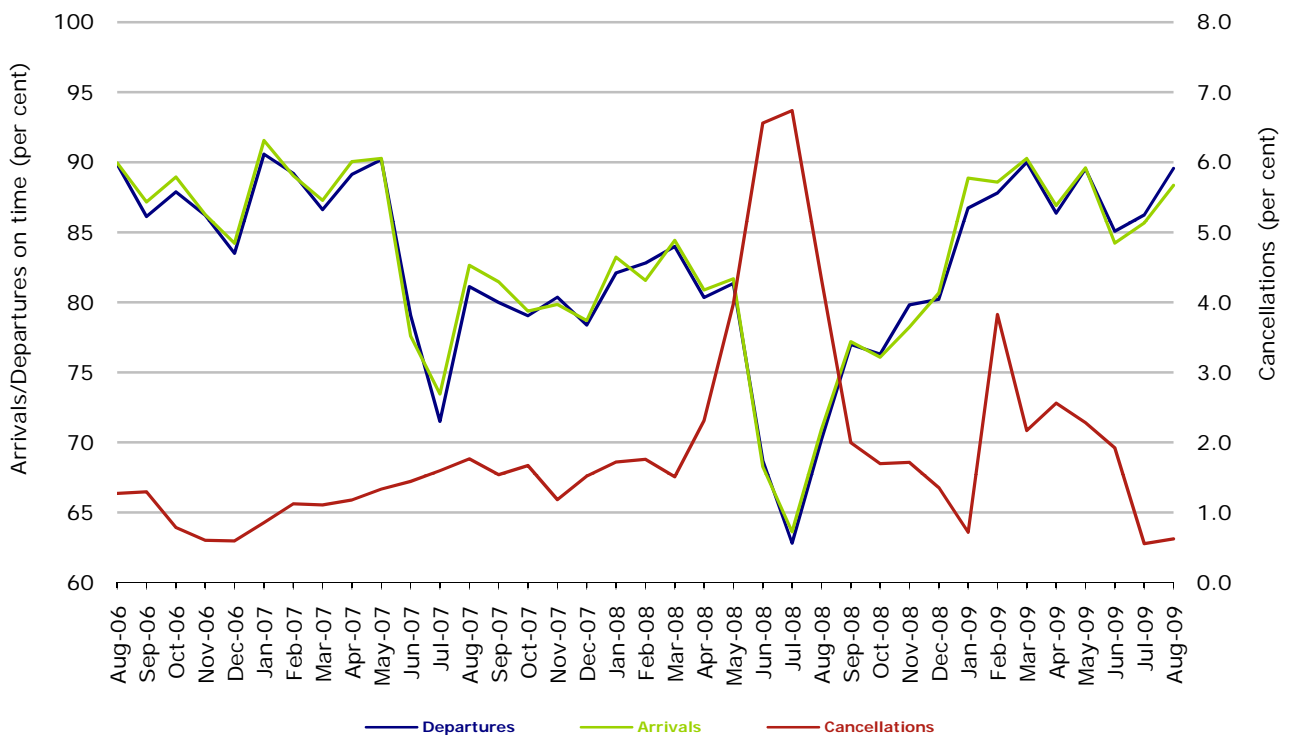
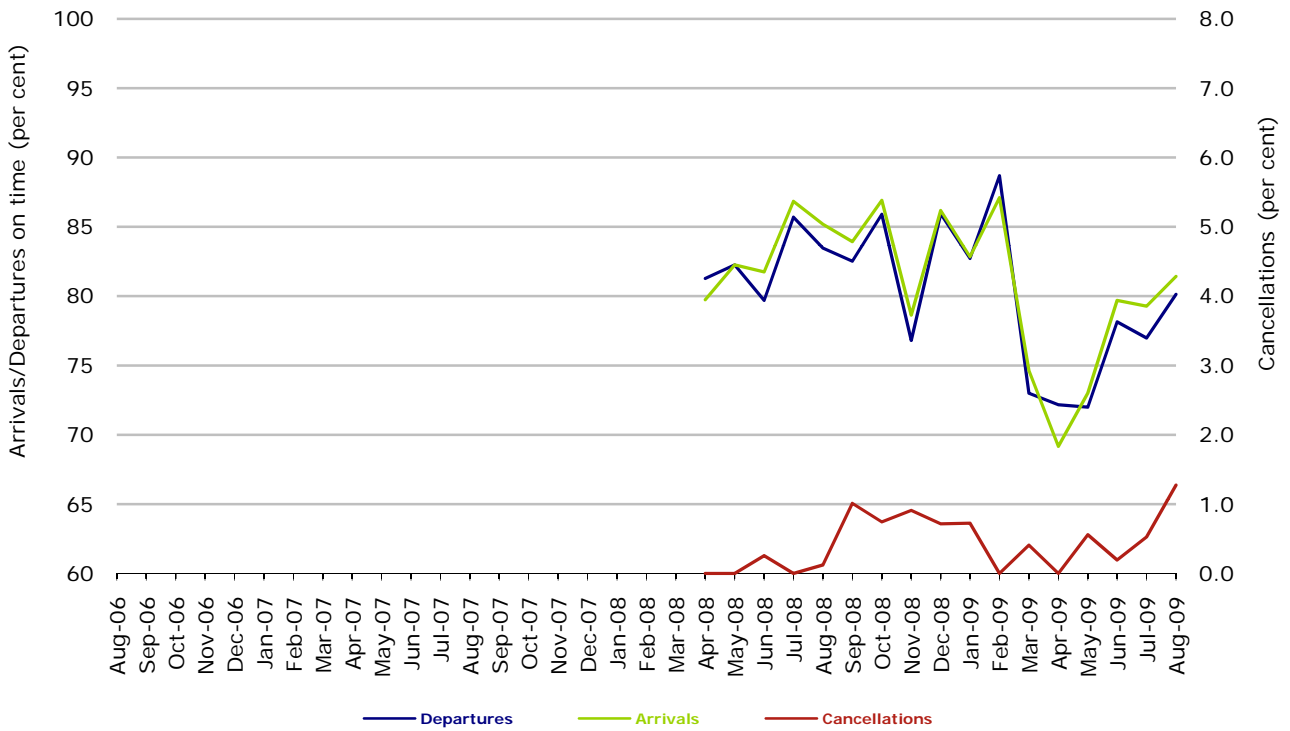
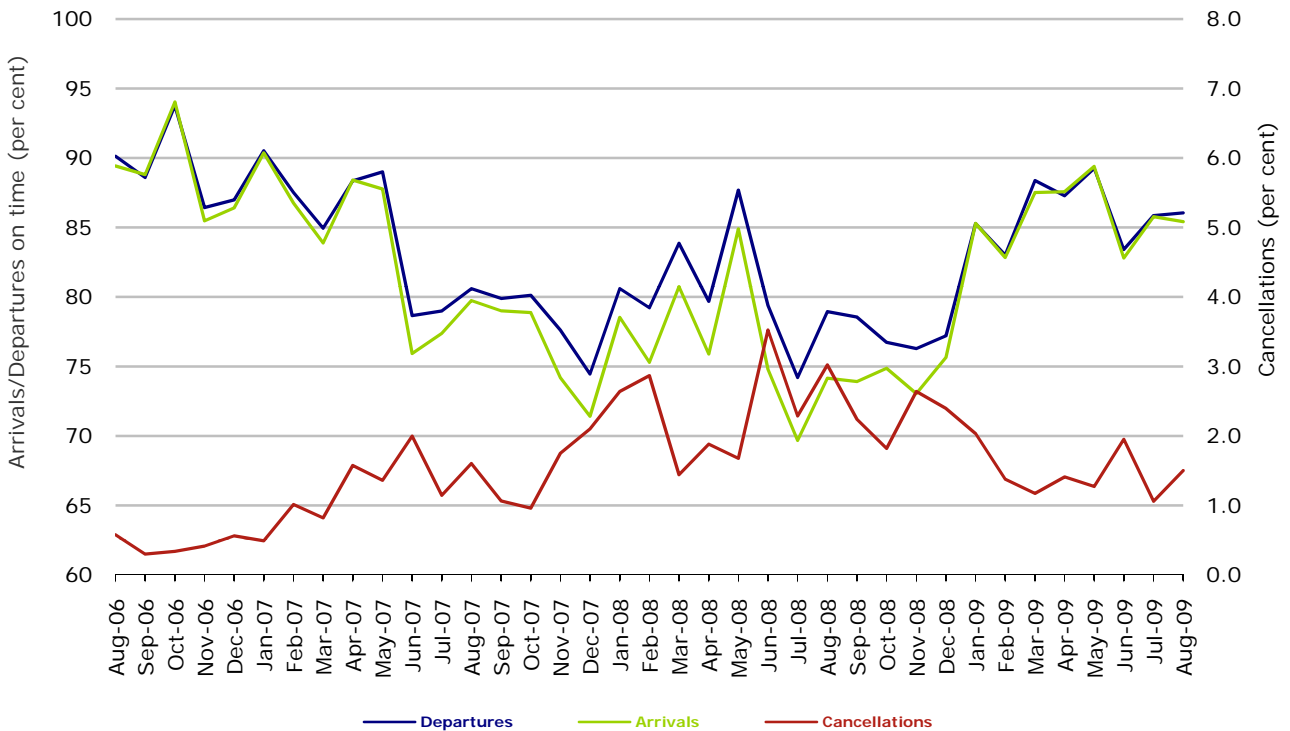


Figure 7 On time performance (by month from August 2006)—Tiger Airways



Tiger Airways began reporting in April 2008.

Figure 8 On time performance (by month from August 2006)—Virgin Blue



Major regional airlines on time performance

Figure 9 On time performance (by month from August 2006)—QantasLink

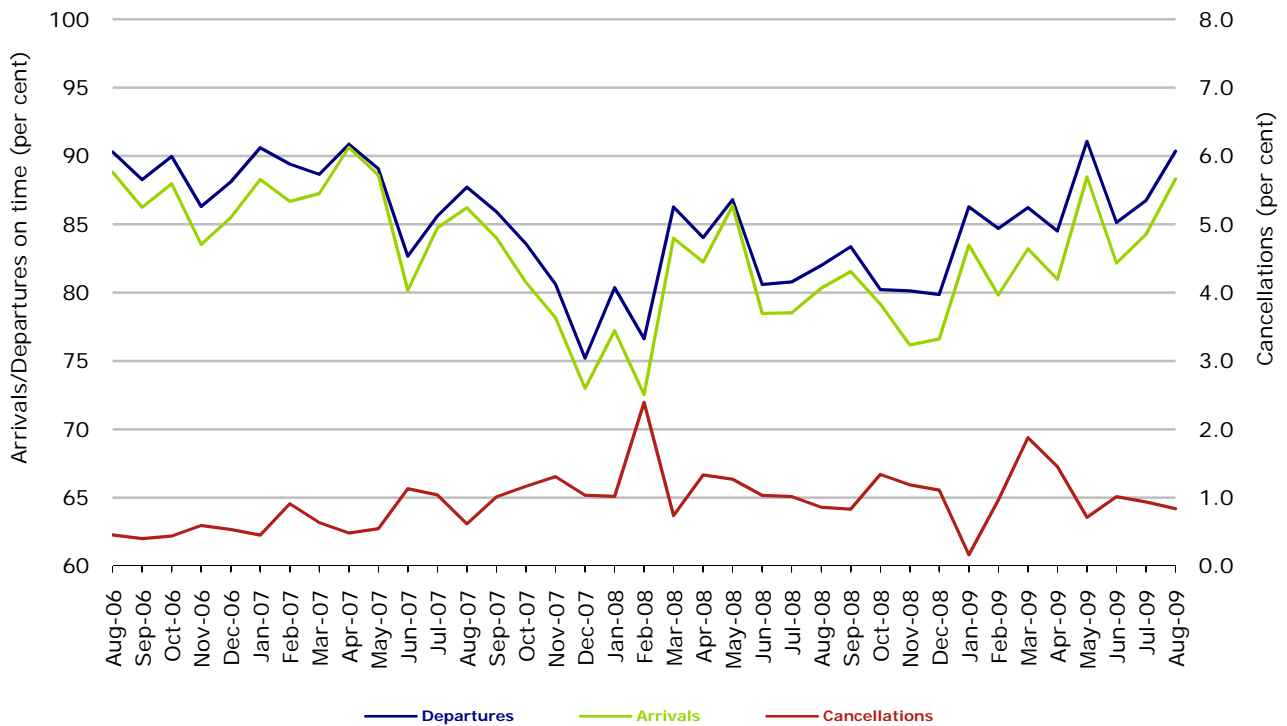


Figure 10 On time performance (by month from August 2006)—Regional Express

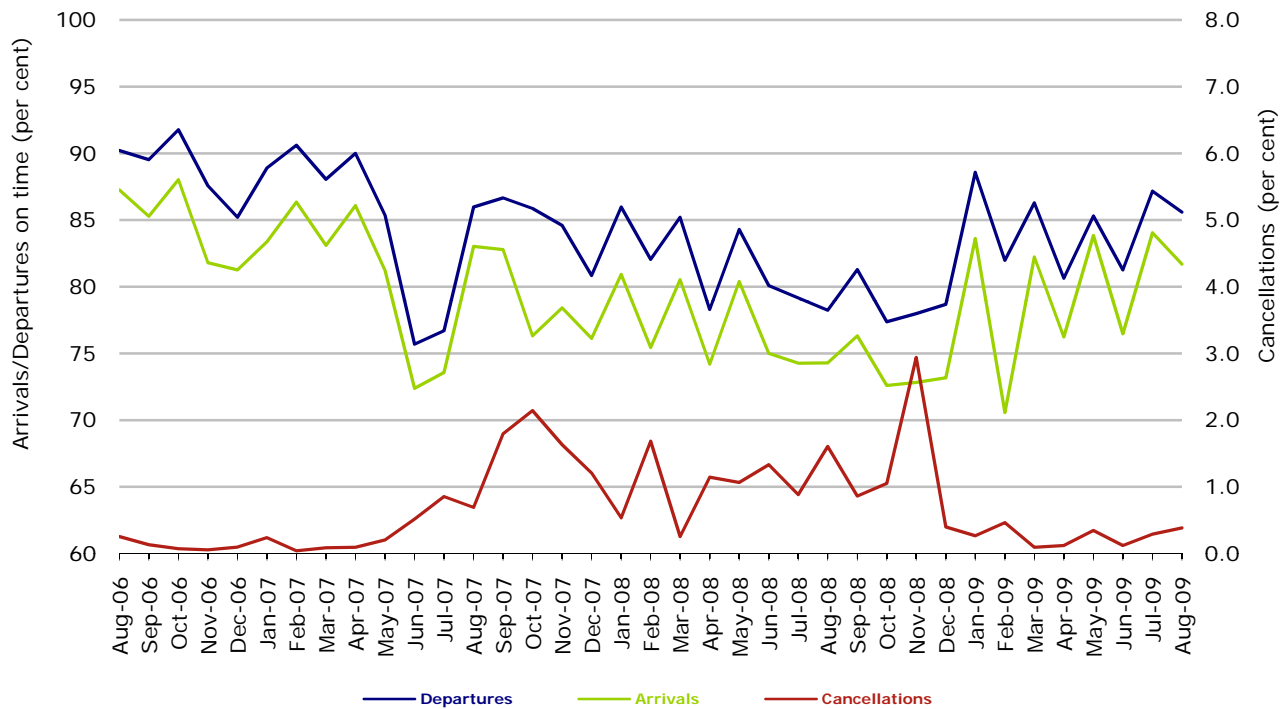
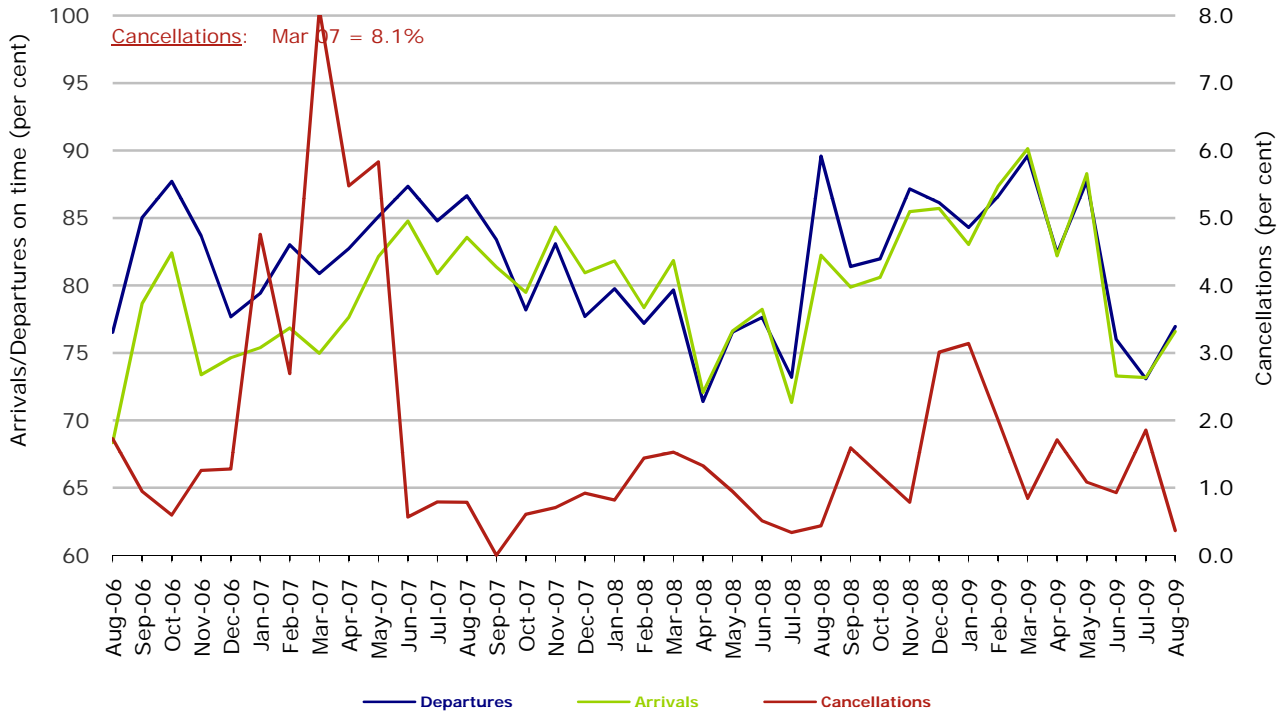


Figure 11 On time performance (by month from August 2006)—Skywest



Individual routes

On time performance is reported for all routes where the passenger load averages over 8000 passengers per month over the previous six months, and where two or more airlines operate in competition on those routes. There are now 52 routes which meet this definition. Over time, however, routes which meet this definition may change as airline networks and traffic levels vary.

	<i>Sectors</i>		<i>Departures On Time</i>		<i>Arrivals On Time</i>		<i>Cancellations</i>	
	<i>Sched.</i>	<i>Flown</i>	<i>No.</i>	<i>%</i>	<i>No.</i>	<i>%</i>	<i>No.</i>	<i>%</i>
Adelaide-Alice Springs								
Qantas	31	31	26	83.9	27	87.1	0	0.0
Tiger Airways	13	13	8	61.5	8	61.5	0	0.0
All Airlines	44	44	34	77.3	35	79.5	0	0.0
Adelaide-Brisbane								
Jetstar	33	33	17	51.5	26	78.8	0	0.0
Qantas	89	89	81	91.0	84	94.4	0	0.0
Virgin Blue	94	94	76	80.9	85	90.4	0	0.0
All Airlines	216	216	174	80.6	195	90.3	0	0.0
Adelaide-Canberra								
Qantas	47	47	45	95.7	45	95.7	0	0.0
Tiger Airways	18	17	9	52.9	13	76.5	1	5.6
Virgin Blue	31	31	27	87.1	28	90.3	0	0.0
All Airlines	96	95	81	85.3	86	90.5	1	1.0
Adelaide-Gold Coast								
Jetstar	33	33	23	69.7	31	93.9	0	0.0
Tiger Airways	31	31	27	87.1	30	96.8	0	0.0
Virgin Blue	31	31	29	93.5	31	100.0	0	0.0
All Airlines	95	95	79	83.2	92	96.8	0	0.0
Adelaide-Melbourne								
Jetstar	51	51	32	62.7	34	66.7	0	0.0
Qantas	281	281	239	85.1	247	87.9	0	0.0
Tiger Airways	54	54	41	75.9	40	74.1	0	0.0
Virgin Blue	238	234	215	91.9	222	94.9	4	1.7
All Airlines	624	620	527	85.0	543	87.6	4	0.6
Adelaide-Perth								
Jetstar	31	31	30	96.8	19	61.3	0	0.0
Qantas	114	114	103	90.4	88	77.2	0	0.0
Tiger Airways	22	22	20	90.9	12	54.5	0	0.0
Virgin Blue	66	62	58	93.5	38	61.3	4	6.1
All Airlines	233	229	211	92.1	157	68.6	4	1.7
Adelaide-Sydney								
Jetstar	31	31	23	74.2	27	87.1	0	0.0
Qantas	283	278	243	87.4	259	93.2	5	1.8
Virgin Blue	145	144	116	80.6	128	88.9	1	0.7
All Airlines	459	453	382	84.3	414	91.4	6	1.3

	<i>Sectors</i>		<i>Departures On Time</i>		<i>Arrivals On Time</i>		<i>Cancellations</i>	
	<i>Sched.</i>	<i>Flown</i>	<i>No.</i>	<i>%</i>	<i>No.</i>	<i>%</i>	<i>No.</i>	<i>%</i>
Albury-Sydney								
QantasLink	113	113	86	76.1	89	78.8	0	0.0
Regional Express	119	119	102	85.7	103	86.6	0	0.0
Virgin Blue	63	62	46	74.2	49	79.0	1	1.6
All Airlines	295	294	234	79.6	241	82.0	1	0.3
Alice Springs-Adelaide								
Qantas	31	31	27	87.1	29	93.5	0	0.0
Tiger Airways	13	13	8	61.5	8	61.5	0	0.0
All Airlines	44	44	35	79.5	37	84.1	0	0.0
Alice Springs-Melbourne								
Qantas	31	31	21	67.7	25	80.6	0	0.0
Tiger Airways	13	13	12	92.3	13	100.0	0	0.0
All Airlines	44	44	33	75.0	38	86.4	0	0.0
Ballina-Sydney								
Jetstar	32	31	27	87.1	26	83.9	1	3.1
Regional Express	78	78	62	79.5	59	75.6	0	0.0
Virgin Blue	36	36	32	88.9	32	88.9	0	0.0
All Airlines	146	145	121	83.4	117	80.7	1	0.7
Brisbane-Adelaide								
Jetstar	33	33	27	81.8	23	69.7	0	0.0
Qantas	89	89	83	93.3	81	91.0	0	0.0
Virgin Blue	94	94	91	96.8	79	84.0	0	0.0
All Airlines	216	216	201	93.1	183	84.7	0	0.0
Brisbane-Cairns								
Jetstar	109	108	91	84.3	96	88.9	1	0.9
Qantas	124	124	114	91.9	118	95.2	0	0.0
Virgin Blue	124	124	112	90.3	119	96.0	0	0.0
All Airlines	357	356	317	89.0	333	93.5	1	0.3
Brisbane-Canberra								
Qantas	145	145	139	95.9	139	95.9	0	0.0
QantasLink	10	10	10	100.0	9	90.0	0	0.0
Virgin Blue	126	125	110	88.0	105	84.0	1	0.8
All Airlines	281	280	259	92.5	253	90.4	1	0.4
Brisbane-Darwin								
Jetstar	52	51	44	86.3	43	84.3	1	1.9
Qantas	31	31	29	93.5	30	96.8	0	0.0
Virgin Blue	31	31	28	90.3	30	96.8	0	0.0
All Airlines	114	113	101	89.4	103	91.2	1	0.9
Brisbane-Hamilton Island								
Jetstar	33	33	23	69.7	29	87.9	0	0.0
Virgin Blue	32	32	30	93.8	31	96.9	0	0.0
All Airlines	65	65	53	81.5	60	92.3	0	0.0

	<i>Sectors</i>		<i>Departures On Time</i>		<i>Arrivals On Time</i>		<i>Cancellations</i>	
	<i>Sched.</i>	<i>Flown</i>	<i>No.</i>	<i>%</i>	<i>No.</i>	<i>%</i>	<i>No.</i>	<i>%</i>
Brisbane-Mackay								
Jetstar	84	84	69	82.1	50	59.5	0	0.0
QantasLink	68	68	61	89.7	60	88.2	0	0.0
Virgin Blue	142	142	132	93.0	134	94.4	0	0.0
All Airlines	294	294	262	89.1	244	83.0	0	0.0
Brisbane-Melbourne								
Qantas	418	416	378	90.9	368	88.5	2	0.5
Virgin Blue	335	333	313	94.0	307	92.2	2	0.6
All Airlines	753	749	691	92.3	675	90.1	4	0.5
Brisbane-Newcastle								
Jetstar	119	118	99	83.9	104	88.1	1	0.8
QantasLink	68	67	58	86.6	55	82.1	1	1.5
Virgin Blue	48	48	44	91.7	41	85.4	0	0.0
All Airlines	235	233	201	86.3	200	85.8	2	0.9
Brisbane-Perth								
Qantas	123	123	112	91.1	90	73.2	0	0.0
Virgin Blue	62	62	57	91.9	52	83.9	0	0.0
All Airlines	185	185	169	91.4	142	76.8	0	0.0
Brisbane-Proserpine								
Jetstar	33	33	25	75.8	30	90.9	0	0.0
Virgin Blue	31	31	29	93.5	30	96.8	0	0.0
All Airlines	64	64	54	84.4	60	93.8	0	0.0
Brisbane-Rockhampton								
Jetstar	31	31	26	83.9	29	93.5	0	0.0
QantasLink	178	177	166	93.8	164	92.7	1	0.6
Virgin Blue	150	149	138	92.6	137	91.9	1	0.7
All Airlines	359	357	330	92.4	330	92.4	2	0.6
Brisbane-Sydney								
Jetstar	93	92	73	79.3	61	66.3	1	1.1
Qantas	559	555	507	91.4	506	91.2	4	0.7
Virgin Blue	543	526	450	85.6	419	79.7	17	3.1
All Airlines	1,195	1,173	1,030	87.8	986	84.1	22	1.8
Brisbane-Townsville								
Jetstar	32	32	27	84.4	29	90.6	0	0.0
Qantas	142	142	133	93.7	136	95.8	0	0.0
Virgin Blue	145	145	134	92.4	138	95.2	0	0.0
All Airlines	319	319	294	92.2	303	95.0	0	0.0
Broome-Perth								
Qantas	14	14	9	64.3	10	71.4	0	0.0
QantasLink	70	70	51	72.9	57	81.4	0	0.0
Skywest	26	26	14	53.8	10	38.5	0	0.0
Virgin Blue	62	61	44	72.1	48	78.7	1	1.6
All Airlines	172	171	118	69.0	125	73.1	1	0.6

	<i>Sectors</i>		<i>Departures On Time</i>		<i>Arrivals On Time</i>		<i>Cancellations</i>	
	<i>Sched.</i>	<i>Flown</i>	<i>No.</i>	<i>%</i>	<i>No.</i>	<i>%</i>	<i>No.</i>	<i>%</i>
Cairns-Brisbane								
Jetstar	107	106	88	83.0	91	85.8	1	0.9
Qantas	124	124	117	94.4	120	96.8	0	0.0
Virgin Blue	124	124	122	98.4	116	93.5	0	0.0
All Airlines	355	354	327	92.4	327	92.4	1	0.3
Cairns-Melbourne								
Jetstar	44	44	38	86.4	31	70.5	0	0.0
Qantas	31	31	28	90.3	27	87.1	0	0.0
Virgin Blue	31	31	28	90.3	24	77.4	0	0.0
All Airlines	106	106	94	88.7	82	77.4	0	0.0
Cairns-Sydney								
Jetstar	66	66	54	81.8	59	89.4	0	0.0
Qantas	112	112	104	92.9	103	92.0	0	0.0
Virgin Blue	67	67	59	88.1	64	95.5	0	0.0
All Airlines	245	245	217	88.6	226	92.2	0	0.0
Cairns-Townsville								
QantasLink	147	147	136	92.5	135	91.8	0	0.0
Virgin Blue	31	31	31	100.0	31	100.0	0	0.0
All Airlines	178	178	167	93.8	166	93.3	0	0.0
Canberra-Adelaide								
Qantas	52	52	51	98.1	48	92.3	0	0.0
Tiger Airways	18	17	14	82.4	14	82.4	1	5.6
Virgin Blue	31	31	28	90.3	26	83.9	0	0.0
All Airlines	101	100	93	93.0	88	88.0	1	1.0
Canberra-Brisbane								
Qantas	145	145	137	94.5	139	95.9	0	0.0
QantasLink	10	10	8	80.0	9	90.0	0	0.0
Virgin Blue	126	124	112	90.3	116	93.5	2	1.6
All Airlines	281	279	257	92.1	264	94.6	2	0.7
Canberra-Melbourne								
Qantas	259	258	244	94.6	228	88.4	1	0.4
QantasLink	41	38	33	86.8	30	78.9	3	7.3
Tiger Airways	36	34	28	82.4	28	82.4	2	5.6
Virgin Blue	181	178	161	90.4	158	88.8	3	1.7
All Airlines	517	508	466	91.7	444	87.4	9	1.7
Canberra-Sydney								
Qantas	207	206	194	94.2	191	92.7	1	0.5
QantasLink	375	366	331	90.4	338	92.3	9	2.4
Virgin Blue	228	218	201	92.2	205	94.0	10	4.4
All Airlines	810	790	726	91.9	734	92.9	20	2.5
Coffs Harbour-Sydney								
QantasLink	124	124	111	89.5	102	82.3	0	0.0
Virgin Blue	62	61	54	88.5	54	88.5	1	1.6
All Airlines	186	185	165	89.2	156	84.3	1	0.5

	<i>Sectors</i>		<i>Departures On Time</i>		<i>Arrivals On Time</i>		<i>Cancellations</i>	
	<i>Sched.</i>	<i>Flown</i>	<i>No.</i>	<i>%</i>	<i>No.</i>	<i>%</i>	<i>No.</i>	<i>%</i>
Darwin-Brisbane								
Jetstar	49	49	38	77.6	39	79.6	0	0.0
Qantas	31	31	29	93.5	27	87.1	0	0.0
Virgin Blue	31	31	26	83.9	26	83.9	0	0.0
All Airlines	111	111	93	83.8	92	82.9	0	0.0
Darwin-Melbourne								
Jetstar	62	62	52	83.9	47	75.8	0	0.0
Virgin Blue	26	26	25	96.2	23	88.5	0	0.0
All Airlines	88	88	77	87.5	70	79.5	0	0.0
Darwin-Perth								
Qantas	40	40	38	95.0	39	97.5	0	0.0
Virgin Blue	31	31	30	96.8	22	71.0	0	0.0
All Airlines	71	71	68	95.8	61	85.9	0	0.0
Dubbo-Sydney								
QantasLink	103	103	93	90.3	92	89.3	0	0.0
Regional Express	157	156	130	83.3	132	84.6	1	0.6
All Airlines	260	259	223	86.1	224	86.5	1	0.4
Gold Coast-Adelaide								
Jetstar	33	33	32	97.0	26	78.8	0	0.0
Tiger Airways	31	30	29	96.7	29	96.7	1	3.2
Virgin Blue	31	31	30	96.8	30	96.8	0	0.0
All Airlines	95	94	91	96.8	85	90.4	1	1.1
Gold Coast-Melbourne								
Jetstar	190	189	153	81.0	137	72.5	1	0.5
Tiger Airways	93	91	82	90.1	84	92.3	2	2.2
Virgin Blue	155	154	129	83.8	130	84.4	1	0.6
All Airlines	438	434	364	83.9	351	80.9	4	0.9
Gold Coast-Newcastle								
Jetstar	32	32	31	96.9	31	96.9	0	0.0
Virgin Blue	14	14	13	92.9	13	92.9	0	0.0
All Airlines	46	46	44	95.7	44	95.7	0	0.0
Gold Coast-Sydney								
Jetstar	260	260	211	81.2	192	73.8	0	0.0
Virgin Blue	359	352	310	88.1	310	88.1	7	1.9
All Airlines	619	612	521	85.1	502	82.0	7	1.1
Hamilton Island-Brisbane								
Jetstar	33	33	25	75.8	27	81.8	0	0.0
Virgin Blue	32	32	30	93.8	30	93.8	0	0.0
All Airlines	65	65	55	84.6	57	87.7	0	0.0

	<i>Sectors</i>		<i>Departures On Time</i>		<i>Arrivals On Time</i>		<i>Cancellations</i>	
	<i>Sched.</i>	<i>Flown</i>	<i>No.</i>	<i>%</i>	<i>No.</i>	<i>%</i>	<i>No.</i>	<i>%</i>
Hobart-Melbourne								
Jetstar	125	125	79	63.2	77	61.6	0	0.0
Qantas	62	62	60	96.8	58	93.5	0	0.0
Tiger Airways	31	31	25	80.6	25	80.6	0	0.0
Virgin Blue	124	124	103	83.1	100	80.6	0	0.0
All Airlines	342	342	267	78.1	260	76.0	0	0.0
Hobart-Sydney								
Jetstar	52	52	39	75.0	45	86.5	0	0.0
Qantas	31	31	27	87.1	29	93.5	0	0.0
Virgin Blue	62	62	53	85.5	54	87.1	0	0.0
All Airlines	145	145	119	82.1	128	88.3	0	0.0
Kalgoorlie-Perth								
Qantas	31	31	26	83.9	28	90.3	0	0.0
QantasLink	63	62	52	83.9	51	82.3	1	1.6
Skywest	26	26	21	80.8	19	73.1	0	0.0
All Airlines	120	119	99	83.2	98	82.4	1	0.8
Karratha-Perth								
Qantas	153	153	144	94.1	136	88.9	0	0.0
QantasLink	25	25	23	92.0	23	92.0	0	0.0
Skywest	21	21	15	71.4	13	61.9	0	0.0
Virgin Blue	52	52	46	88.5	44	84.6	0	0.0
All Airlines	251	251	228	90.8	216	86.1	0	0.0
Launceston-Melbourne								
Jetstar	97	97	77	79.4	76	78.4	0	0.0
QantasLink	62	62	51	82.3	44	71.0	0	0.0
Tiger Airways	31	30	25	83.3	25	83.3	1	3.2
Virgin Blue	124	124	112	90.3	102	82.3	0	0.0
All Airlines	314	313	265	84.7	247	78.9	1	0.3
Launceston-Sydney								
Jetstar	32	32	24	75.0	30	93.8	0	0.0
Virgin Blue	32	31	24	77.4	26	83.9	1	3.1
All Airlines	64	63	48	76.2	56	88.9	1	1.6
Mackay-Brisbane								
Jetstar	86	86	77	89.5	70	81.4	0	0.0
QantasLink	68	68	63	92.6	63	92.6	0	0.0
Virgin Blue	142	142	132	93.0	130	91.5	0	0.0
All Airlines	296	296	272	91.9	263	88.9	0	0.0
Maroochydore-Melbourne								
Jetstar	66	66	40	60.6	32	48.5	0	0.0
Tiger Airways	18	18	16	88.9	16	88.9	0	0.0
Virgin Blue	36	36	27	75.0	24	66.7	0	0.0
All Airlines	120	120	83	69.2	72	60.0	0	0.0

	<i>Sectors</i>		<i>Departures On Time</i>		<i>Arrivals On Time</i>		<i>Cancellations</i>	
	<i>Sched.</i>	<i>Flown</i>	<i>No.</i>	<i>%</i>	<i>No.</i>	<i>%</i>	<i>No.</i>	<i>%</i>
Maroochydore-Sydney								
Jetstar	87	87	79	90.8	80	92.0	0	0.0
Virgin Blue	41	40	28	70.0	29	72.5	1	2.4
All Airlines	128	127	107	84.3	109	85.8	1	0.8
Melbourne-Adelaide								
Jetstar	50	50	49	98.0	47	94.0	0	0.0
Qantas	281	281	249	88.6	224	79.7	0	0.0
Tiger Airways	54	54	39	72.2	41	75.9	0	0.0
Virgin Blue	238	234	206	88.0	184	78.6	4	1.7
All Airlines	623	619	543	87.7	496	80.1	4	0.6
Melbourne-Alice Springs								
Qantas	31	31	28	90.3	28	90.3	0	0.0
Tiger Airways	13	13	12	92.3	12	92.3	0	0.0
All Airlines	44	44	40	90.9	40	90.9	0	0.0
Melbourne-Brisbane								
Qantas	414	412	362	87.9	383	93.0	2	0.5
Virgin Blue	335	333	281	84.4	307	92.2	2	0.6
All Airlines	749	745	643	86.3	690	92.6	4	0.5
Melbourne-Cairns								
Jetstar	42	42	39	92.9	40	95.2	0	0.0
Qantas	31	31	28	90.3	29	93.5	0	0.0
Virgin Blue	31	31	24	77.4	28	90.3	0	0.0
All Airlines	104	104	91	87.5	97	93.3	0	0.0
Melbourne-Canberra								
Qantas	259	258	238	92.2	239	92.6	1	0.4
QantasLink	41	38	34	89.5	35	92.1	3	7.3
Tiger Airways	36	34	23	67.6	28	82.4	2	5.6
Virgin Blue	175	173	146	84.4	154	89.0	2	1.1
All Airlines	511	503	441	87.7	456	90.7	8	1.6
Melbourne-Darwin								
Jetstar	66	66	32	48.5	32	48.5	0	0.0
Virgin Blue	25	25	25	100.0	23	92.0	0	0.0
All Airlines	91	91	57	62.6	55	60.4	0	0.0
Melbourne-Gold Coast								
Jetstar	188	187	144	77.0	160	85.6	1	0.5
Tiger Airways	93	92	78	84.8	84	91.3	1	1.1
Virgin Blue	155	154	127	82.5	136	88.3	1	0.6
All Airlines	436	433	349	80.6	380	87.8	3	0.7
Melbourne-Hobart								
Jetstar	124	124	77	62.1	81	65.3	0	0.0
Qantas	62	62	55	88.7	53	85.5	0	0.0
Tiger Airways	31	31	26	83.9	25	80.6	0	0.0
Virgin Blue	124	124	100	80.6	94	75.8	0	0.0
All Airlines	341	341	258	75.7	253	74.2	0	0.0

	<i>Sectors</i>		<i>Departures On Time</i>		<i>Arrivals On Time</i>		<i>Cancellations</i>	
	<i>Sched.</i>	<i>Flown</i>	<i>No.</i>	<i>%</i>	<i>No.</i>	<i>%</i>	<i>No.</i>	<i>%</i>
Melbourne-Launceston								
Jetstar	97	97	78	80.4	78	80.4	0	0.0
QantasLink	61	60	50	83.3	46	76.7	1	1.6
Tiger Airways	31	30	23	76.7	24	80.0	1	3.2
Virgin Blue	124	124	109	87.9	110	88.7	0	0.0
All Airlines	313	311	260	83.6	258	83.0	2	0.6
Melbourne-Maroochydore								
Jetstar	65	64	36	56.3	48	75.0	1	1.5
Tiger Airways	18	18	17	94.4	17	94.4	0	0.0
Virgin Blue	36	36	30	83.3	33	91.7	0	0.0
All Airlines	119	118	83	70.3	98	83.1	1	0.8
Melbourne-Mildura								
QantasLink	100	100	89	89.0	76	76.0	0	0.0
Regional Express	93	92	87	94.6	83	90.2	1	1.1
Virgin Blue	31	31	29	93.5	22	71.0	0	0.0
All Airlines	224	223	205	91.9	181	81.2	1	0.4
Melbourne-Newcastle								
Jetstar	83	83	70	84.3	73	88.0	0	0.0
Virgin Blue	31	31	29	93.5	30	96.8	0	0.0
All Airlines	114	114	99	86.8	103	90.4	0	0.0
Melbourne-Perth								
Jetstar	48	47	37	78.7	25	53.2	1	2.1
Qantas	193	192	161	83.9	106	55.2	1	0.5
Tiger Airways	42	42	28	66.7	13	31.0	0	0.0
Virgin Blue	124	124	116	93.5	57	46.0	0	0.0
All Airlines	407	405	342	84.4	201	49.6	2	0.5
Melbourne-Sydney								
Jetstar	15	15	8	53.3	11	73.3	0	0.0
Qantas	899	881	777	88.2	813	92.3	18	2.0
Tiger Airways	107	107	93	86.9	93	86.9	0	0.0
Virgin Blue	725	702	496	70.7	565	80.5	23	3.2
All Airlines	1,746	1,705	1,374	80.6	1,482	86.9	41	2.3
Mildura-Melbourne								
QantasLink	100	100	87	87.0	80	80.0	0	0.0
Regional Express	92	91	87	95.6	87	95.6	1	1.1
Virgin Blue	31	31	25	80.6	27	87.1	0	0.0
All Airlines	223	222	199	89.6	194	87.4	1	0.4
Newcastle-Brisbane								
Jetstar	118	118	98	83.1	105	89.0	0	0.0
QantasLink	68	67	62	92.5	62	92.5	1	1.5
Virgin Blue	48	48	45	93.8	45	93.8	0	0.0
All Airlines	234	233	205	88.0	212	91.0	1	0.4

	<i>Sectors</i>		<i>Departures On Time</i>		<i>Arrivals On Time</i>		<i>Cancellations</i>	
	<i>Sched.</i>	<i>Flown</i>	<i>No.</i>	<i>%</i>	<i>No.</i>	<i>%</i>	<i>No.</i>	<i>%</i>
Newcastle-Gold Coast								
Jetstar	32	32	29	90.6	30	93.8	0	0.0
Virgin Blue	14	14	14	100.0	14	100.0	0	0.0
All Airlines	46	46	43	93.5	44	95.7	0	0.0
Newcastle-Melbourne								
Jetstar	81	81	72	88.9	71	87.7	0	0.0
Virgin Blue	31	31	29	93.5	29	93.5	0	0.0
All Airlines	112	112	101	90.2	100	89.3	0	0.0
Newman-Perth								
QantasLink	90	89	86	96.6	84	94.4	1	1.1
Virgin Blue	32	30	30	100.0	30	100.0	2	6.3
All Airlines	122	119	116	97.5	114	95.8	3	2.5
Perth-Adelaide								
Jetstar	32	32	15	46.9	16	50.0	0	0.0
Qantas	114	114	100	87.7	107	93.9	0	0.0
Tiger Airways	22	22	19	86.4	22	100.0	0	0.0
Virgin Blue	68	64	56	87.5	61	95.3	4	5.9
All Airlines	236	232	190	81.9	206	88.8	4	1.7
Perth-Brisbane								
Qantas	123	123	105	85.4	117	95.1	0	0.0
Virgin Blue	62	62	55	88.7	60	96.8	0	0.0
All Airlines	185	185	160	86.5	177	95.7	0	0.0
Perth-Broome								
Qantas	14	14	11	78.6	13	92.9	0	0.0
QantasLink	70	70	51	72.9	53	75.7	0	0.0
Skywest	26	26	15	57.7	15	57.7	0	0.0
Virgin Blue	62	62	48	77.4	53	85.5	0	0.0
All Airlines	172	172	125	72.7	134	77.9	0	0.0
Perth-Darwin								
Qantas	40	40	37	92.5	36	90.0	0	0.0
Virgin Blue	31	31	30	96.8	29	93.5	0	0.0
All Airlines	71	71	67	94.4	65	91.5	0	0.0
Perth-Kalgoorlie								
Qantas	30	30	29	96.7	27	90.0	0	0.0
QantasLink	62	62	49	79.0	51	82.3	0	0.0
Skywest	25	25	19	76.0	19	76.0	0	0.0
All Airlines	117	117	97	82.9	97	82.9	0	0.0
Perth-Karratha								
Qantas	153	153	145	94.8	143	93.5	0	0.0
QantasLink	25	25	24	96.0	24	96.0	0	0.0
Skywest	21	21	16	76.2	16	76.2	0	0.0
Virgin Blue	53	51	46	90.2	46	90.2	2	3.8
All Airlines	252	250	231	92.4	229	91.6	2	0.8

	<i>Sectors</i>		<i>Departures On Time</i>		<i>Arrivals On Time</i>		<i>Cancellations</i>	
	<i>Sched.</i>	<i>Flown</i>	<i>No.</i>	<i>%</i>	<i>No.</i>	<i>%</i>	<i>No.</i>	<i>%</i>
Perth-Melbourne								
Jetstar	50	49	27	55.1	31	63.3	1	2.0
Qantas	188	188	130	69.1	171	91.0	0	0.0
Tiger Airways	42	41	9	22.0	14	34.1	1	2.4
Virgin Blue	124	124	100	80.6	122	98.4	0	0.0
All Airlines	404	402	266	66.2	338	84.1	2	0.5
Perth-Newman								
QantasLink	91	90	86	95.6	85	94.4	1	1.1
Virgin Blue	31	31	31	100.0	31	100.0	0	0.0
All Airlines	122	121	117	96.7	116	95.9	1	0.8
Perth-Sydney								
Qantas	191	190	127	66.8	162	85.3	1	0.5
Virgin Blue	150	149	129	86.6	145	97.3	1	0.7
All Airlines	341	339	256	75.5	307	90.6	2	0.6
Port Macquarie-Sydney								
QantasLink	103	103	93	90.3	85	82.5	0	0.0
Virgin Blue	62	62	54	87.1	54	87.1	0	0.0
All Airlines	165	165	147	89.1	139	84.2	0	0.0
Proserpine-Brisbane								
Jetstar	33	33	26	78.8	26	78.8	0	0.0
Virgin Blue	31	31	29	93.5	28	90.3	0	0.0
All Airlines	64	64	55	85.9	54	84.4	0	0.0
Rockhampton-Brisbane								
Jetstar	33	33	29	87.9	28	84.8	0	0.0
QantasLink	168	167	151	90.4	153	91.6	1	0.6
Virgin Blue	150	149	140	94.0	139	93.3	1	0.7
All Airlines	351	349	320	91.7	320	91.7	2	0.6
Sydney-Adelaide								
Jetstar	31	31	29	93.5	26	83.9	0	0.0
Qantas	278	277	252	91.0	221	79.8	1	0.4
Virgin Blue	145	144	125	86.8	111	77.1	1	0.7
All Airlines	454	452	406	89.8	358	79.2	2	0.4
Sydney-Albury								
QantasLink	113	113	95	84.1	88	77.9	0	0.0
Regional Express	118	118	102	86.4	87	73.7	0	0.0
Virgin Blue	63	63	45	71.4	44	69.8	0	0.0
All Airlines	294	294	242	82.3	219	74.5	0	0.0
Sydney-Ballina								
Jetstar	32	31	26	83.9	29	93.5	1	3.1
Regional Express	79	79	66	83.5	66	83.5	0	0.0
Virgin Blue	36	36	32	88.9	32	88.9	0	0.0
All Airlines	147	146	124	84.9	127	87.0	1	0.7

	<i>Sectors</i>		<i>Departures On Time</i>		<i>Arrivals On Time</i>		<i>Cancellations</i>	
	<i>Sched.</i>	<i>Flown</i>	<i>No.</i>	<i>%</i>	<i>No.</i>	<i>%</i>	<i>No.</i>	<i>%</i>
Sydney-Brisbane								
Jetstar	93	92	70	76.1	81	88.0	1	1.1
Qantas	563	558	509	91.2	522	93.5	5	0.9
Virgin Blue	543	526	422	80.2	452	85.9	17	3.1
All Airlines	1,199	1,176	1,001	85.1	1,055	89.7	23	1.9
Sydney-Cairns								
Jetstar	64	64	56	87.5	50	78.1	0	0.0
Qantas	112	112	104	92.9	107	95.5	0	0.0
Virgin Blue	67	67	58	86.6	62	92.5	0	0.0
All Airlines	243	243	218	89.7	219	90.1	0	0.0
Sydney-Canberra								
Qantas	213	212	199	93.9	190	89.6	1	0.5
QantasLink	376	368	334	90.8	312	84.8	8	2.1
Virgin Blue	233	223	198	88.8	196	87.9	10	4.3
All Airlines	822	803	731	91.0	698	86.9	19	2.3
Sydney-Coffs Harbour								
QantasLink	124	124	110	88.7	106	85.5	0	0.0
Virgin Blue	62	62	55	88.7	56	90.3	0	0.0
All Airlines	186	186	165	88.7	162	87.1	0	0.0
Sydney-Dubbo								
QantasLink	103	103	96	93.2	92	89.3	0	0.0
Regional Express	155	154	133	86.4	123	79.9	1	0.6
All Airlines	258	257	229	89.1	215	83.7	1	0.4
Sydney-Gold Coast								
Jetstar	261	259	215	83.0	228	88.0	2	0.8
Virgin Blue	359	352	293	83.2	308	87.5	7	1.9
All Airlines	620	611	508	83.1	536	87.7	9	1.5
Sydney-Hobart								
Jetstar	51	50	45	90.0	42	84.0	1	2.0
Qantas	31	31	31	100.0	30	96.8	0	0.0
Virgin Blue	63	62	54	87.1	51	82.3	1	1.6
All Airlines	145	143	130	90.9	123	86.0	2	1.4
Sydney-Launceston								
Jetstar	32	32	27	84.4	27	84.4	0	0.0
Virgin Blue	31	31	26	83.9	25	80.6	0	0.0
All Airlines	63	63	53	84.1	52	82.5	0	0.0
Sydney-Maroochydore								
Jetstar	85	85	78	91.8	80	94.1	0	0.0
Virgin Blue	41	40	30	75.0	30	75.0	1	2.4
All Airlines	126	125	108	86.4	110	88.0	1	0.8

	<i>Sectors</i>		<i>Departures On Time</i>		<i>Arrivals On Time</i>		<i>Cancellations</i>	
	<i>Sched.</i>	<i>Flown</i>	<i>No.</i>	<i>%</i>	<i>No.</i>	<i>%</i>	<i>No.</i>	<i>%</i>
Sydney-Melbourne								
Jetstar	16	16	12	75.0	9	56.3	0	0.0
Qantas	898	879	809	92.0	741	84.3	19	2.1
Tiger Airways	107	107	93	86.9	95	88.8	0	0.0
Virgin Blue	721	697	580	83.2	508	72.9	24	3.3
All Airlines	1,742	1,699	1,494	87.9	1,353	79.6	43	2.5
Sydney-Perth								
Qantas	185	185	156	84.3	83	44.9	0	0.0
Virgin Blue	150	149	124	83.2	68	45.6	1	0.7
All Airlines	335	334	280	83.8	151	45.2	1	0.3
Sydney-Port Macquarie								
QantasLink	104	104	91	87.5	90	86.5	0	0.0
Virgin Blue	62	62	54	87.1	54	87.1	0	0.0
All Airlines	166	166	145	87.3	144	86.7	0	0.0
Sydney-Townsville								
Jetstar	21	20	19	95.0	18	90.0	1	4.8
Virgin Blue	31	31	28	90.3	29	93.5	0	0.0
All Airlines	52	51	47	92.2	47	92.2	1	1.9
Sydney-Wagga Wagga								
QantasLink	133	132	115	87.1	99	75.0	1	0.8
Regional Express	131	130	104	80.0	91	70.0	1	0.8
All Airlines	264	262	219	83.6	190	72.5	2	0.8
Townsville-Brisbane								
Jetstar	34	34	30	88.2	30	88.2	0	0.0
Qantas	142	142	137	96.5	136	95.8	0	0.0
Virgin Blue	145	145	140	96.6	139	95.9	0	0.0
All Airlines	321	321	307	95.6	305	95.0	0	0.0
Townsville-Cairns								
QantasLink	146	146	140	95.9	138	94.5	0	0.0
Virgin Blue	31	31	31	100.0	31	100.0	0	0.0
All Airlines	177	177	171	96.6	169	95.5	0	0.0
Townsville-Sydney								
Jetstar	24	24	20	83.3	23	95.8	0	0.0
Virgin Blue	31	31	25	80.6	25	80.6	0	0.0
All Airlines	55	55	45	81.8	48	87.3	0	0.0
Wagga Wagga-Sydney								
QantasLink	129	126	101	80.2	105	83.3	3	2.3
Regional Express	132	131	103	78.6	101	77.1	1	0.8
All Airlines	261	257	204	79.4	206	80.2	4	1.5

Airports

On time performance is reported for all routes where the passenger load averages over 8000 passengers per month, and where two or more airlines operate in competition. The following data reports by airport against flights operated on those routes only.

Airport	Departures			Arrivals		
	Sectors	On Time		Sectors	On Time	
	Flown	No.	%	Flown	No.	%
Adelaide						
Jetstar	179	125	69.8	179	138	77.1
Qantas	840	737	87.7	844	710	84.1
Tiger Airways	137	105	76.6	136	114	83.8
Virgin Blue	596	521	87.4	598	491	82.1
All Airlines	1 752	1 488	84.9	1 757	1 453	82.7
Relates to services to and from Alice Springs, Brisbane, Canberra, Gold Coast, Melbourne, Perth and Sydney.						
Albury						
QantasLink	113	86	76.1	113	88	77.9
Regional Express	119	102	85.7	118	87	73.7
Virgin Blue	62	46	74.2	63	44	69.8
All Airlines	294	234	79.6	294	219	74.5
Relates to services to and from Sydney only.						
Alice Springs						
Qantas	62	48	77.4	62	55	88.7
Tiger Airways	26	20	76.9	26	20	76.9
All Airlines	88	68	77.3	88	75	85.2
Relates to services to and from Adelaide and Melbourne.						
Ballina						
Jetstar	31	27	87.1	31	29	93.5
Regional Express	78	62	79.5	79	66	83.5
Virgin Blue	36	32	88.9	36	32	88.9
All Airlines	145	121	83.4	146	127	87.0
Relates to services to and from Sydney only.						
Brisbane						
Jetstar	615	504	82.0	617	523	84.8
Qantas	1 625	1 495	92.0	1 624	1 528	94.1
QantasLink	322	295	91.6	312	287	92.0
Virgin Blue	1 842	1 668	90.6	1 841	1 673	90.9
All Airlines	4 404	3 962	90.0	4 394	4 011	91.3
Relates to services to and from Adelaide, Cairns, Canberra, Darwin, Hamilton Island, Mackay, Melbourne, Newcastle, Perth, Proserpine, Rockhampton, Sydney and Townsville.						

Airport	Departures			Arrivals		
	Sectors Flown	On Time No.	On Time %	Sectors Flown	On Time No.	On Time %
Broome						
Qantas	14	9	64.3	14	13	92.9
QantasLink	70	51	72.9	70	53	75.7
Skywest	26	14	53.8	26	15	57.7
Virgin Blue	61	44	72.1	62	53	85.5
All Airlines	171	118	69.0	172	134	77.9
Relates to services to and from Perth only.						
Cairns						
Jetstar	216	180	83.3	214	186	86.9
Qantas	267	249	93.3	267	254	95.1
QantasLink	147	136	92.5	146	138	94.5
Virgin Blue	253	240	94.9	253	240	94.9
All Airlines	883	805	91.2	880	818	93.0
Relates to services to and from Brisbane, Melbourne, Sydney and Townsville.						
Canberra						
Qantas	661	626	94.7	662	613	92.6
QantasLink	414	372	89.9	416	356	85.6
Tiger Airways	51	42	82.4	51	41	80.4
Virgin Blue	551	502	91.1	552	483	87.5
All Airlines	1 677	1 542	91.9	1 681	1 493	88.8
Relates to services to and from Adelaide, Brisbane, Melbourne and Sydney.						
Coffs Harbour						
QantasLink	124	111	89.5	124	106	85.5
Virgin Blue	61	54	88.5	62	56	90.3
All Airlines	185	165	89.2	186	162	87.1
Relates to services to and from Sydney only.						
Darwin						
Jetstar	111	90	81.1	117	75	64.1
Qantas	71	67	94.4	71	66	93.0
Virgin Blue	88	81	92.0	87	82	94.3
All Airlines	270	238	88.1	275	223	81.1
Relates to services to and from Brisbane, Melbourne and Perth.						
Dubbo						
QantasLink	103	93	90.3	103	92	89.3
Regional Express	156	130	83.3	154	123	79.9
All Airlines	259	223	86.1	257	215	83.7
Relates to services to and from Sydney only.						

<i>Airport</i>	<i>Departures</i>			<i>Arrivals</i>		
	<i>Sectors Flown</i>	<i>On Time</i>		<i>Sectors Flown</i>	<i>On Time</i>	
		<i>No.</i>	<i>%</i>		<i>No.</i>	<i>%</i>
Gold Coast						
Jetstar	514	427	83.1	511	449	87.9
Tiger Airways	121	111	91.7	123	114	92.7
Virgin Blue	551	482	87.5	551	489	88.7
All Airlines	1 186	1 020	86.0	1 185	1 052	88.8
Relates to services to and from Adelaide, Melbourne, Newcastle and Sydney.						
Hamilton Island						
Jetstar	33	25	75.8	33	29	87.9
Virgin Blue	32	30	93.8	32	31	96.9
All Airlines	65	55	84.6	65	60	92.3
Relates to services to and from Brisbane only.						
Hobart						
Jetstar	177	118	66.7	174	123	70.7
Qantas	93	87	93.5	93	83	89.2
Tiger Airways	31	25	80.6	31	25	80.6
Virgin Blue	186	156	83.9	186	145	78.0
All Airlines	487	386	79.3	484	376	77.7
Relates to services to and from Melbourne and Sydney.						
Kalgoorlie						
Qantas	31	26	83.9	30	27	90.0
QantasLink	62	52	83.9	62	51	82.3
Skywest	26	21	80.8	25	19	76.0
All Airlines	119	99	83.2	117	97	82.9
Relates to services to and from Perth only.						
Karratha						
Qantas	153	144	94.1	153	143	93.5
QantasLink	25	23	92.0	25	24	96.0
Skywest	21	15	71.4	21	16	76.2
Virgin Blue	52	46	88.5	51	46	90.2
All Airlines	251	228	90.8	250	229	91.6
Relates to services to and from Perth only.						

Airport	Departures			Arrivals		
	Sectors	On Time		Sectors	On Time	
	Flown	No.	%	Flown	No.	%
Launceston						
Jetstar	129	101	78.3	129	105	81.4
QantasLink	62	51	82.3	60	46	76.7
Tiger Airways	30	25	83.3	30	24	80.0
Virgin Blue	155	136	87.7	155	135	87.1
All Airlines	376	313	83.2	374	310	82.9
Relates to services to and from Melbourne and Sydney.						
Mackay						
Jetstar	86	77	89.5	84	50	59.5
QantasLink	68	63	92.6	68	60	88.2
Virgin Blue	142	132	93.0	142	134	94.4
All Airlines	296	272	91.9	294	244	83.0
Relates to services to and from Brisbane only.						
Maroochydore						
Jetstar	153	119	77.8	149	128	85.9
Tiger Airways	18	16	88.9	18	17	94.4
Virgin Blue	76	55	72.4	76	63	82.9
All Airlines	247	190	76.9	243	208	85.6
Relates to services to and from Melbourne and Sydney.						
Melbourne						
Jetstar	775	570	73.5	780	545	69.9
Qantas	2 148	1 898	88.4	2 146	1 865	86.9
QantasLink	198	173	87.4	200	154	77.0
Regional Express	92	87	94.6	91	87	95.6
Tiger Airways	421	339	80.5	419	340	81.1
Virgin Blue	2 122	1 718	81.0	2 123	1 776	83.7
All Airlines	5 756	4 785	83.1	5 759	4 767	82.8
Relates to services to and from Adelaide, Alice Springs, Brisbane, Cairns, Canberra, Darwin, Gold Coast, Hobart, Launceston, Maroochydore, Mildura, Newcastle, Perth and Sydney.						
Mildura						
QantasLink	100	87	87.0	100	76	76.0
Regional Express	91	87	95.6	92	83	90.2
Virgin Blue	31	25	80.6	31	22	71.0
All Airlines	222	199	89.6	223	181	81.2
Relates to services to and from Melbourne only.						
Newcastle						
Jetstar	231	199	86.1	233	208	89.3
QantasLink	67	62	92.5	67	55	82.1
Virgin Blue	93	88	94.6	93	84	90.3
All Airlines	391	349	89.3	393	347	88.3
Relates to services to and from Brisbane, Gold Coast and Melbourne.						

Airport	Departures			Arrivals		
	Sectors	On Time		Sectors	On Time	
	Flown	No.	%	Flown	No.	%
Newman						
QantasLink	89	86	96.6	90	85	94.4
Virgin Blue	30	30	100.0	31	31	100.0
All Airlines	119	116	97.5	121	116	95.9
Relates to services to and from Perth only.						
Perth						
Jetstar	81	42	51.9	78	44	56.4
Qantas	852	684	80.3	852	580	68.1
QantasLink	247	210	85.0	246	215	87.4
Skywest	72	50	69.4	73	42	57.5
Tiger Airways	63	28	44.4	64	25	39.1
Virgin Blue	574	495	86.2	571	359	62.9
All Airlines	1 889	1 509	79.9	1 884	1 265	67.1
Relates to services to and from Adelaide, Brisbane, Broome, Darwin, Kalgoorlie, Karratha, Melbourne, Newman, and Sydney.						
Port Macquarie						
QantasLink	103	93	90.3	104	90	86.5
Virgin Blue	62	54	87.1	62	54	87.1
All Airlines	165	147	89.1	166	144	86.7
Relates to services to and from Sydney only.						
Proserpine						
Jetstar	33	26	78.8	33	30	90.9
Virgin Blue	31	29	93.5	31	30	96.8
All Airlines	64	55	85.9	64	60	93.8
Relates to services to and from Brisbane only.						
Rockhampton						
Jetstar	33	29	87.9	31	29	93.5
QantasLink	167	151	90.4	177	164	92.7
Virgin Blue	149	140	94.0	149	137	91.9
All Airlines	349	320	91.7	357	330	92.4
Relates to services to and from Brisbane only.						
Sydney						
Jetstar	680	577	84.9	690	554	80.3
Qantas	2 254	2 060	91.4	2 253	2 063	91.6
QantasLink	944	841	89.1	935	811	86.7
Regional Express	481	405	84.2	484	395	81.6
Tiger Airways	107	93	86.9	107	93	86.9
Virgin Blue	2 545	2 124	83.5	2 543	2 159	84.9
All Airlines	7 011	6 100	87.0	7 012	6 075	86.6
Relates to services to and from Adelaide, Albury, Ballina, Brisbane, Cairns, Canberra, Coffs Harbour, Dubbo, Gold Coast, Hobart, Launceston, Maroochydore, Melbourne, Perth, Port Macquarie, Townsville and Wagga Wagga.						

<i>Airport</i>	<i>Departures</i>			<i>Arrivals</i>		
	<i>Sectors</i>	<i>On Time</i>		<i>Sectors</i>	<i>On Time</i>	
	<i>Flown</i>	<i>No.</i>	<i>%</i>	<i>Flown</i>	<i>No.</i>	<i>%</i>

Townsville

Jetstar	58	50	86.2	52	47	90.4
Qantas	142	137	96.5	142	136	95.8
QantasLink	146	140	95.9	147	135	91.8
Virgin Blue	207	196	94.7	207	198	95.7
All Airlines	553	523	94.6	548	516	94.2

Relates to services to and from Brisbane, Cairns and Sydney.

Wagga Wagga

QantasLink	126	101	80.2	132	99	75.0
Regional Express	131	103	78.6	130	91	70.0
All Airlines	257	204	79.4	262	190	72.5

Relates to services to and from Sydney only.

Definitions

On time departure A flight departure is counted as "on time" if it departs the gate within 15 minutes of the scheduled departure time shown in the carriers' schedule.

On time arrival A flight arrival is counted as "on time" if it arrived at the gate within 15 minutes of the scheduled arrival time shown in the carriers' schedule.
Neither diverted nor cancelled flights count as on time.

Cancellation A flight is regarded as a cancellation if it is cancelled or rescheduled less than 7 days prior to its scheduled departure time.

On time departure percentage The percentage of on time departures is measured against the number of departures *operated* on any particular sector.

On time arrival percentage The percentage of on time arrivals is measured against the number of arrivals *operated* on any particular sector.

Cancellation percentage The percentage of cancellations is measured against the number of services *scheduled* on any particular sector.
