



Australian Government

Department of Infrastructure and Regional Development

Bureau of Infrastructure, Transport and Regional Economics

STATISTICAL REPORT



Aviation

Domestic airline on time performance
April 2017

© Commonwealth of Australia 2017

ISSN: 1832-0759

Ownership of intellectual property rights in this publication

Unless otherwise noted, copyright (and any other intellectual property rights, if any) in this publication is owned by the Commonwealth of Australia (referred to below as the Commonwealth).

Disclaimer

The material contained in this publication is made available on the understanding that the Commonwealth is not providing professional advice, and that users exercise their own skill and care with respect to its use, and seek independent advice if necessary.

The Commonwealth makes no representations or warranties as to the contents or accuracy of the information contained in this publication. To the extent permitted by law, the Commonwealth disclaims liability to any person or organisation in respect of anything done, or omitted to be done, in reliance upon information contained in this publication.

Creative Commons licence

With the exception of (a) the Coat of Arms; and (b) the Department of Infrastructure and Regional Development's photos and graphics, copyright in this publication is licensed under a Creative Commons Attribution 3.0 Australia Licence.

Creative Commons Attribution 3.0 Australia Licence is a standard form licence agreement that allows you to copy, communicate and adapt this publication provided that you attribute the work to the Commonwealth and abide by the other licence terms. A summary of the licence terms is available from <http://creativecommons.org/licenses/by/3.0/au/deed.en>. The full licence terms are available from <http://creativecommons.org/licenses/by/3.0/au/legalcode>.

Use of the Coat of Arms

The Department of the Prime Minister and Cabinet sets the terms under which the Coat of Arms is used. Please refer to the Department's Commonwealth Coat of Arms and Government branding web page <http://www.dpmmc.gov.au/guidelines/index.cfm#brand> and, in particular, the Guidelines on the use of the Commonwealth Coat of Arms publication.

An appropriate citation for this report is:

Bureau of Infrastructure, Transport and Regional Economics (BITRE), 2017, Domestic airline on time performance, Statistical Report, BITRE, Canberra ACT.

Contact us

This publication is available in PDF format. All other rights are reserved, including in relation to any Departmental logos or trade marks which may exist. For enquiries regarding the licence and any use of this publication, please contact:

Bureau of Infrastructure, Transport and Regional Economics (BITRE)
Department of Infrastructure and Regional Development
GPO Box 501, Canberra ACT 2601, Australia
Telephone: (international) +61 2 6274 7210
Fax: (international) +61 2 6274 6855
Email: bitre@infrastructure.gov.au
Website: www.bitre.gov.au

Inquiries

Should you require additional information about the statistics contained in this publication:

Telephone (02) 6274 7790 or Facsimile (02) 6274 7727

Electronic mail: AVSTATS@infrastructure.gov.au

Web site: <http://www.bitre.gov.au/statistics/aviation/otphome.aspx>

Foreword

The Bureau of Infrastructure, Transport and Regional Economics (BITRE) monitors the punctuality and reliability of major domestic airlines operating between Australian airports. The purpose of this is to allow for evaluation of overall industry and individual airline performance, so that consumers of air travel can make informed decisions.

The following domestic airlines currently report this information monthly to the BITRE: Jetstar, Qantas, QantasLink, Regional Express, Tigerair Australia, Virgin Australia and Virgin Australia Regional Airlines. Data has been gathered since November 2003, although some airlines commenced reporting at a later date, including Jetstar which first reported in May 2004, MacAir in July 2005, Tigerair Australia in April 2008 and Virgin Australia Regional Airlines in May 2013. MacAir ceased operations in February 2009 and data was not received for December 2008 onwards. Virgin Blue was rebranded as Virgin Australia in May 2011 and Tiger Airways was rebranded as Tigerair Australia in July 2013 and time series data in Microsoft Excel spreadsheet format on the BITRE website have been revised to reflect these changes. Services operated by Skywest on behalf of Virgin Australia using ATR/F100 aircraft commenced in November 2011 and were shown separately as Virgin Australia – ATR/F100 Operations. Virgin Australia Regional Airlines commenced operations in May 2013. It was formed after the acquisition of Skywest by Virgin Australia and represented a combination of operations previously reported under Skywest and Virgin Australia – ATR/F100 Operations. In January 2016, Virgin Australia transferred their ATR fleet from Virgin Australia Regional Airlines to Virgin Australia.

Information presented in this report is for Australian domestic routes for which the passenger load averaged 8 000 or more passengers per month over the previous six months and where two or more airlines operated in competition on those routes. There were 65 routes that met this definition in April 2017. Over time, routes which meet these criteria change as airline networks and traffic levels vary.

Participating airlines report their overall monthly network performance where this is possible.

Total industry figures encompass all services operated by reporting airlines only. These airlines collectively carried over 95 per cent of total domestic passengers (regular public transport only) in 2016.

The method of capturing on time performance varies between airlines utilising different recording systems. Jetstar and Qantas jet aircraft use Aircraft Communication Addressing and Reporting System (ACARS) to electronically measure on time performance. Regional Express, Tigerair Australia, Virgin Australia, Virgin Australia Regional Airlines and the Qantas non-jet fleet record on time performance manually using records from pilots, gate agents and/or ground crews.

After initial data is collected, aggregate reports are audited internally by participating airlines prior to publication.

Reports and detailed time series data in Microsoft Excel spreadsheet format are available from the BITRE website at: <http://www.bitre.gov.au/statistics/aviation/otphome.aspx>.

Contents

	Page
Industry performance	1
Individual routes	10
Airports	23
Definitions	30

Industry performance

For April 2017, on time performance over all routes operated by participating airlines (Jetstar, Qantas, QantasLink, Regional Express, Tigerair Australia, Virgin Australia and Virgin Australia Regional Airlines) averaged 85.4 per cent for on time arrivals and 85.1 per cent for on time departures. Cancellations represented 2.1 per cent of all scheduled flights. The equivalent figures for April 2016 were 88.9 per cent for on time arrivals, 89.3 per cent for on time departures and 1.1 per cent for cancellations.

This month's on time arrivals figure was higher than the long term average performance for all routes (82.8 per cent) and the on time departures figure was also higher than the long term average (84.1 per cent). The rate of cancellations was higher than the long term average of 1.4 per cent.

Qantas achieved the highest on time arrivals among the major domestic airlines at 88.9 per cent followed by Virgin Australia at 87.6 per cent, Tigerair Australia at 78.1 per cent and Jetstar at 77.6 per cent. Of the regional airlines, Virgin Australia Regional Airlines recorded 91.5 per cent for on time arrivals, followed by QantasLink at 87.8 per cent and Regional Express at 84.7 per cent. The Qantas network (Qantas and QantasLink combined operations) recorded 88.3 per cent for on time arrivals while the Virgin Australia network (Virgin Australia and Virgin Australia Regional Airlines combined operations) recorded 87.8 per cent.

Qantas also achieved the highest level of on time departures among the major domestic airlines for April 2017 at 89.6 per cent, followed by Virgin Australia at 88.0 per cent, Tigerair Australia at 77.4 per cent and Jetstar at 73.5 per cent. Of the regional airlines, Virgin Australia Regional Airlines recorded 91.6 per cent, followed by Regional Express at 87.3 per cent and QantasLink at 87.0 per cent. Both the Qantas network and the Virgin Australia network recorded 88.2 per cent for on time departures.

QantasLink recorded the highest percentage of cancellations (3.9 per cent) during the month, followed by Virgin Australia (2.5 per cent), Jetstar (1.6 per cent), Tigerair Australia (1.4 per cent), Qantas (1.2 per cent), Regional Express (0.8 per cent) and Virgin Australia Regional Airlines (0.6 per cent).

Airlines' on time performance varies across the routes they serve. Individual route data by specific airline for 65 routes are shown on pages 10-22.

Of the 65 routes which met the criteria for on time performance reporting in April 2017, the Darwin-Alice Springs route had the highest percentage of on time arrivals (98.5 per cent) and the highest percentage of on time departures (also 98.5 per cent). The Launceston-Sydney route had the lowest percentage of on time arrivals (60.0 per cent) and the lowest percentage of on time departures (55.3 per cent).

Cancellations were highest on the Rockhampton-Brisbane route at 34.3 per cent, followed by the Hamilton Island-Sydney route at 31.2 per cent, the Brisbane-Rockhampton and Sydney-Hamilton Island routes at 30.8 per cent, the Brisbane-Proserpine and Proserpine-Brisbane routes at 12.9 per cent and the Brisbane-Hamilton Island route at 12.5 per cent. These high

cancellation rates are most likely due to Cyclone Debbie which hit this region of Queensland in late March 2017.

Proserpine Airport recorded the highest percentage of on time arrivals (96.3 per cent) and Moranbah Airport recorded the highest percentage of on time departures (96.6 per cent). Armidale Airport recorded the lowest percentage of on time arrivals (76.8 per cent) and Sunshine Coast Airport recorded the lowest percentage of on time departures (64.5 per cent). These figures only refer to reported routes and do not cover all flights at these airports.

Table 1 On time performance for April 2017 — Total Industry

	<i>Sectors</i>		<i>Arrivals On Time</i>		<i>Departures On Time</i>		<i>Cancellations</i>	
	<i>Scheduled</i>	<i>Flown</i>	<i>No.</i>	<i>%</i>	<i>No.</i>	<i>%</i>	<i>No.</i>	<i>%</i>
Jetstar	7 787	7 659	5 947	77.6	5 633	73.5	128	1.6
Qantas	8 544	8 440	7 500	88.9	7 565	89.6	104	1.2
QantasLink	10 036	9 642	8 470	87.8	8 387	87.0	394	3.9
Regional Express	5 867	5 821	4 932	84.7	5 080	87.3	46	0.8
Tigerair Australia	2 393	2 360	1 843	78.1	1 826	77.4	33	1.4
Virgin Australia	11 261	10 978	9 613	87.6	9 665	88.0	283	2.5
Virgin Australia Regional Airlines	671	667	610	91.5	611	91.6	4	0.6
All Airlines	46 559	45 567	38 915	85.4	38 767	85.1	992	2.1
Qantas - all QF designated services	18 580	18 082	15 970	88.3	15 952	88.2	498	2.7
Virgin Australia - all VA designated services	11 932	11 645	10 223	87.8	10 276	88.2	287	2.4

Total airline network data (including routes not shown in this report).

Airlines' on time performance varies across the routes they serve. Individual route data by specific airline for 65 routes are shown on pages 10-22.

Table 2 Top ten routes for on time performance for April 2017 (participating airlines only)

<i>Arrivals</i>		<i>Departures</i>	
<i>Route</i>	<i>On Time (%)</i>	<i>Route</i>	<i>On Time (%)</i>
Darwin-Alice Springs	98.5	Darwin-Alice Springs	98.5
Brisbane-Darwin	98.3	Moranbah-Brisbane	96.6
Canberra-Adelaide	96.8	Sydney-Hamilton Island	96.3
Moranbah-Brisbane	96.6	Alice Springs-Darwin	95.6
Hamilton Island-Brisbane	96.6	Townsville-Cairns	95.3
Brisbane-Hamilton Island	96.4	Perth-Adelaide	95.2
Brisbane-Proserpine	96.3	Brisbane-Hobart	95.1
Brisbane-Adelaide	96.0	Brisbane-Adelaide	95.0
Townsville-Cairns	95.9	Hamilton Island-Brisbane	94.8
Newman-Perth	95.4	Perth-Brisbane	94.8

Table 3 Top ten airports for on time performance for April 2017 (participating airlines and reported routes only)

<i>Arrivals</i>		<i>Departures</i>	
<i>Airport</i>	<i>On Time (%)</i>	<i>Airport</i>	<i>On Time (%)</i>
Proserpine	96.3	Moranbah	96.6
Hamilton Island	95.5	Newman	94.7
Alice Springs	95.5	Port Lincoln	93.9
Kalgoorlie	94.8	Hamilton Island	93.7
Emerald	94.7	Emerald	92.9
Newman	94.1	Karratha	92.5
Moranbah	93.7	Alice Springs	91.8
Karratha	93.4	Perth	91.3
Townsville	93.2	Wagga Wagga	91.2
Port Lincoln	92.9	Kalgoorlie	91.1

Total industry on time performance

Figure 1 On time performance (by month from April 2014)—Total Industry

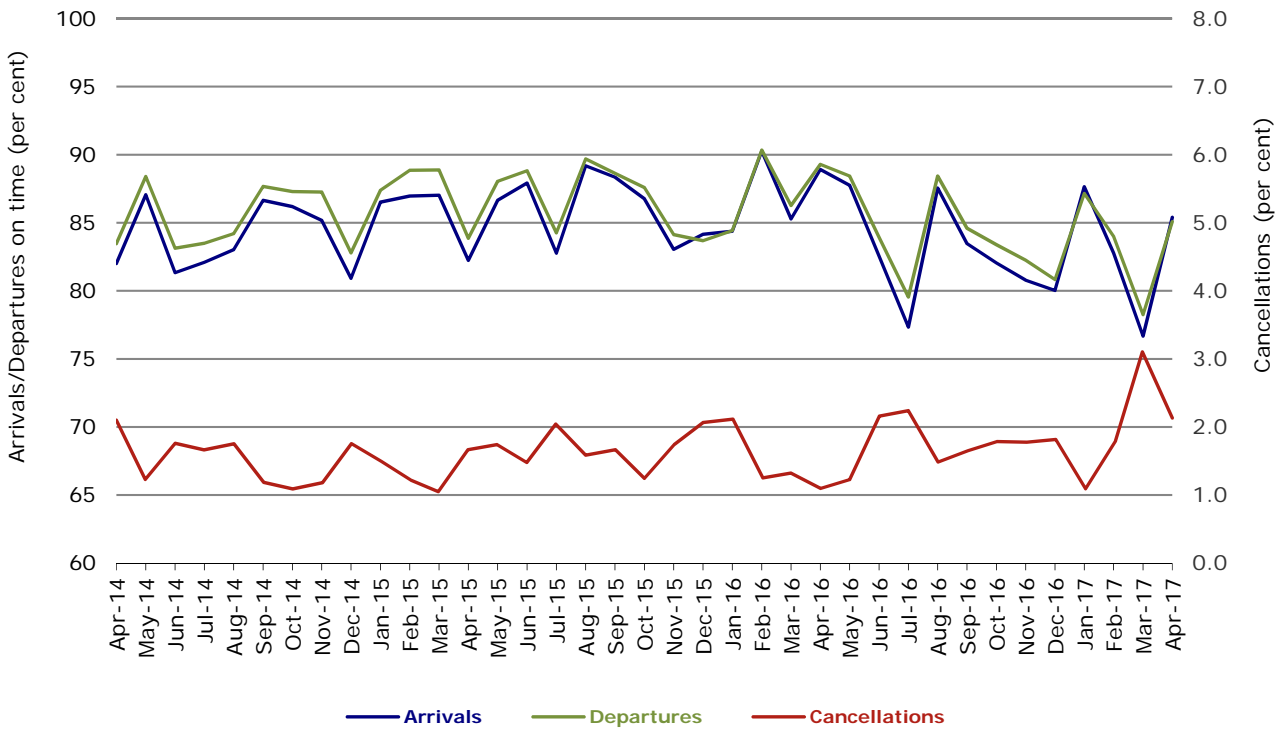


Figure 2 Arrivals on time (by month from April 2016)

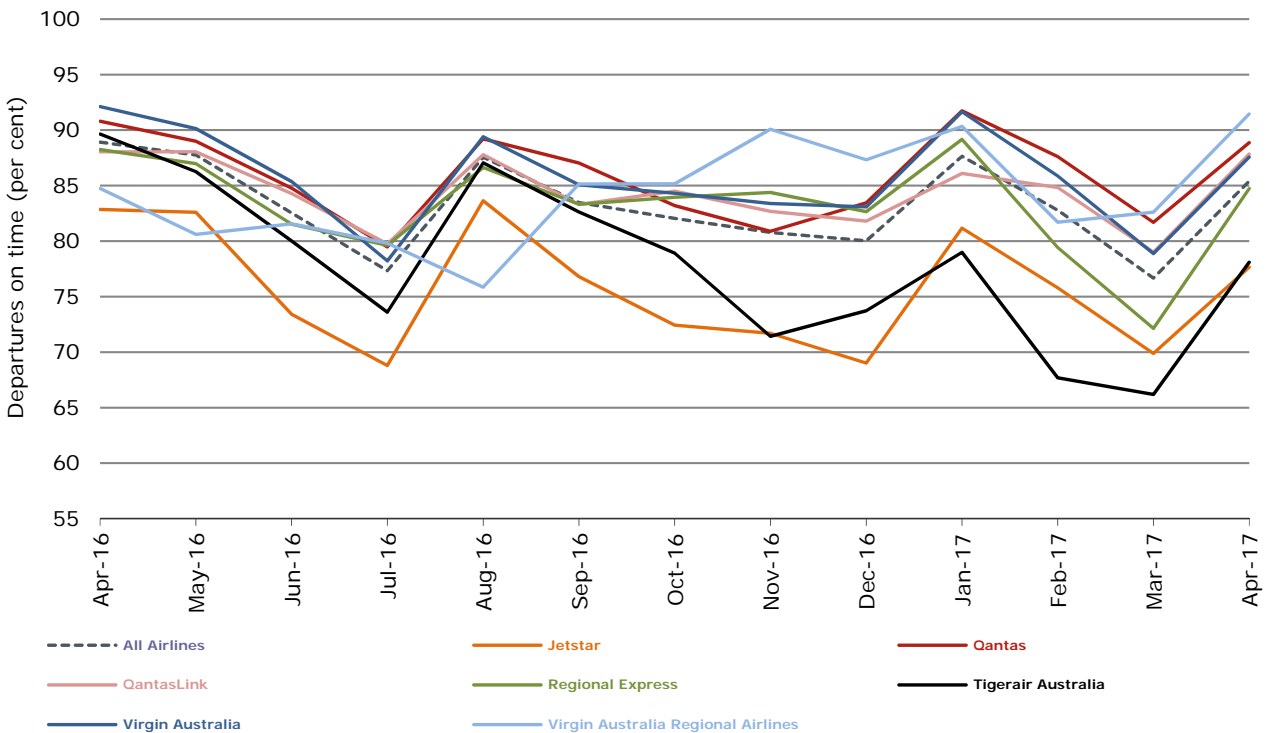


Figure 3 Departures on time (by month from April 2016)

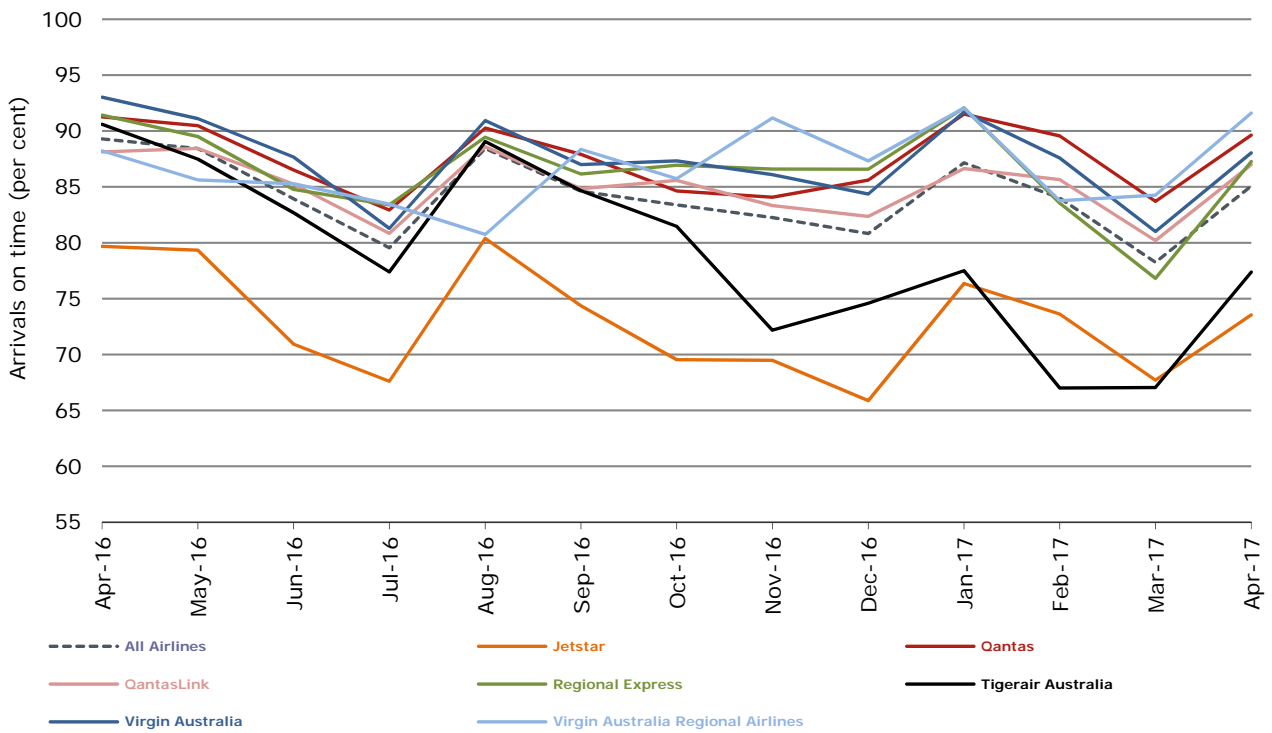
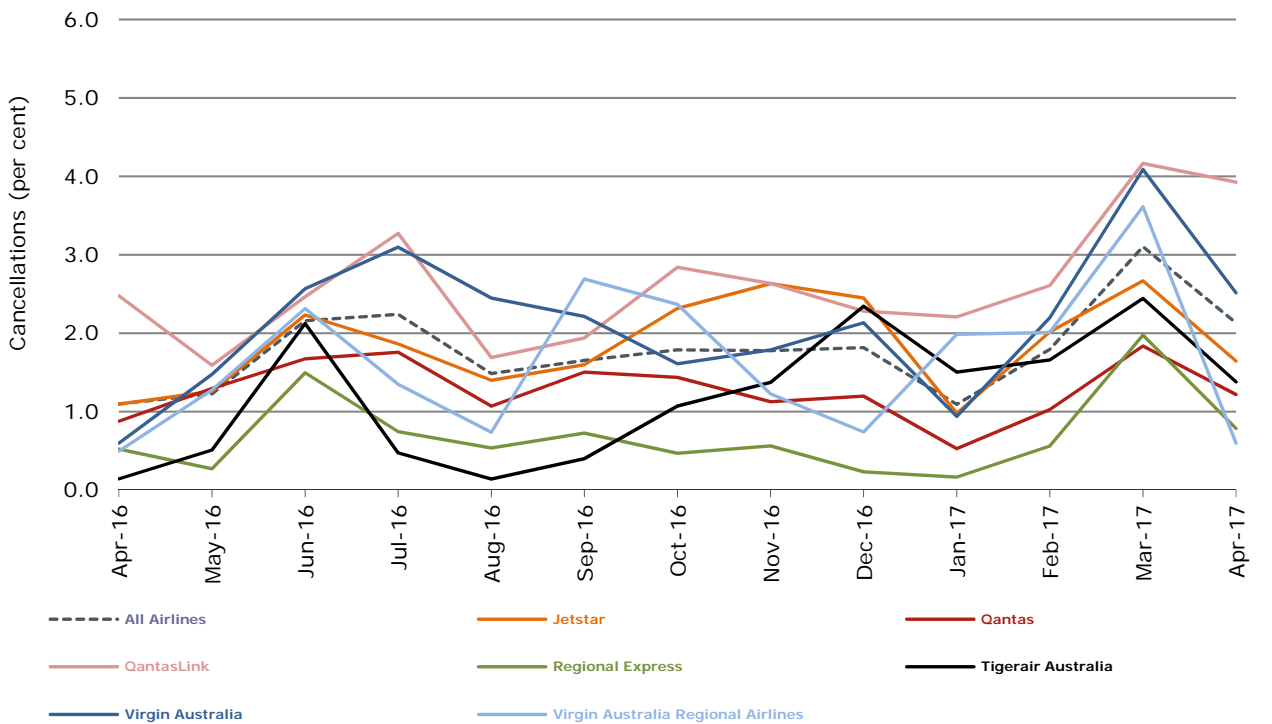


Figure 4 Cancellations (by month from April 2016)



Major domestic airlines on time performance

Figure 5 On time performance (by month from April 2014)—Jetstar

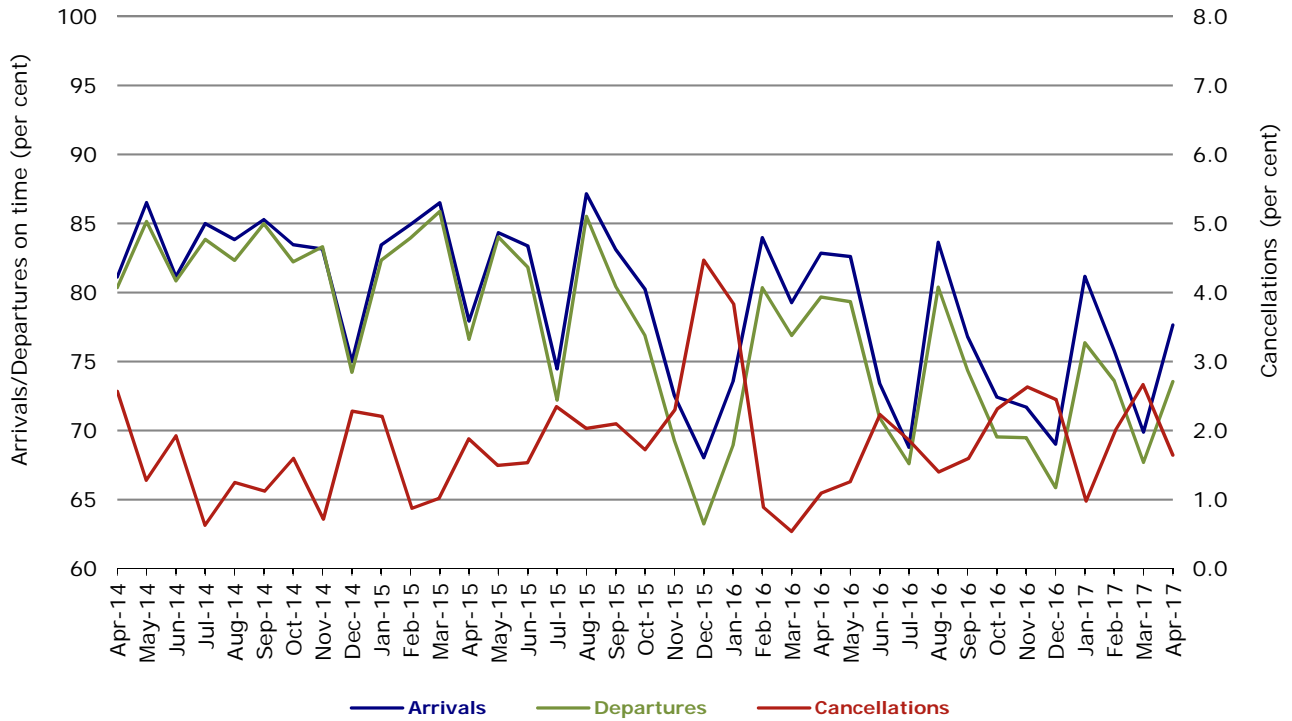


Figure 6 On time performance (by month from April 2014)—Qantas

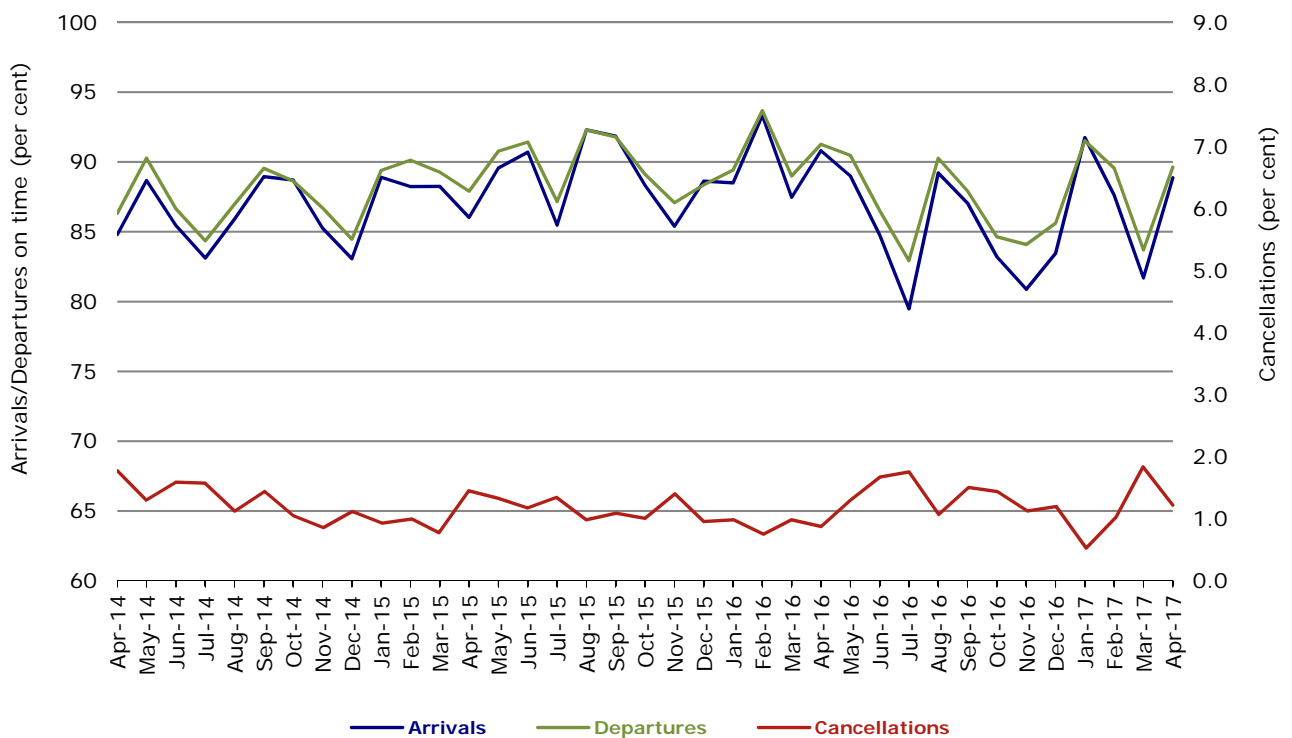


Figure 7 On time performance (by month from April 2014)—Tigerair Australia

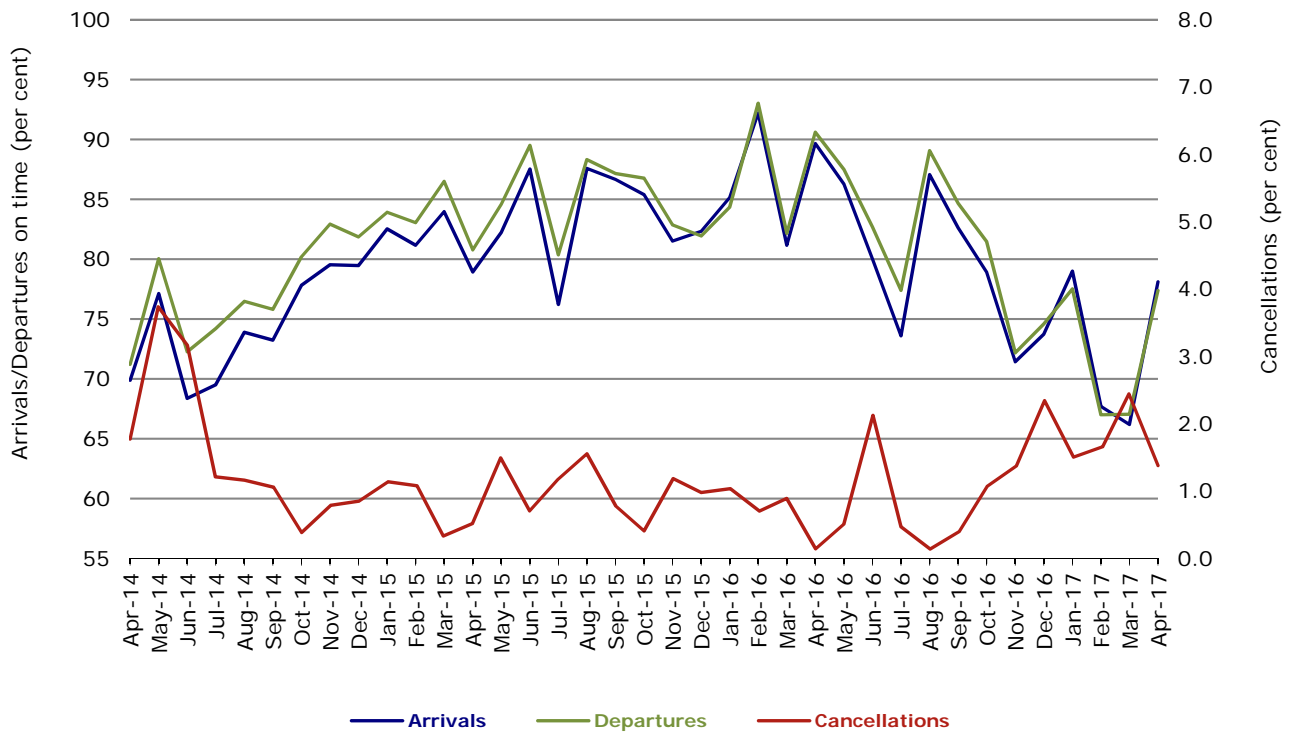
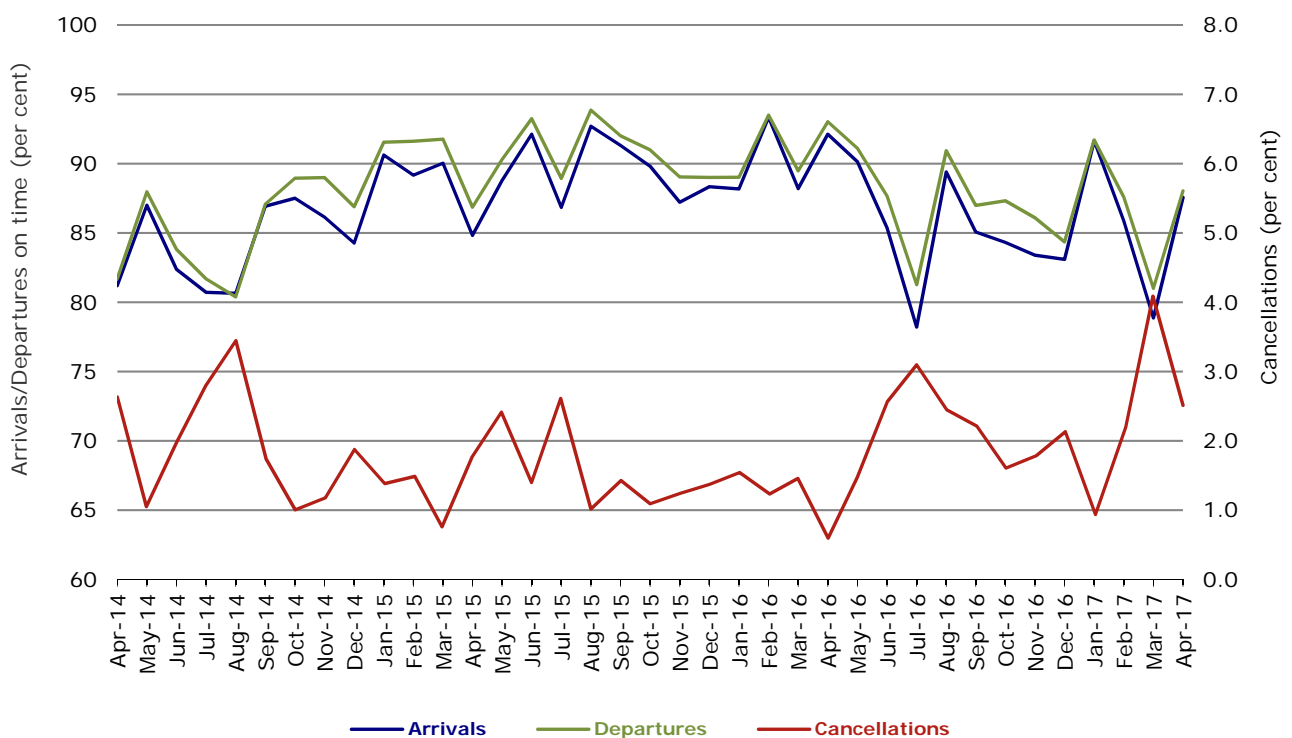


Figure 8 On time performance (by month from April 2014)—Virgin Australia



In January 2016, Virgin Australia transferred their ATR fleet from Virgin Australia Regional Airlines to Virgin Australia.

Major regional airlines on time performance

Figure 9 On time performance (by month from April 2014)—QantasLink

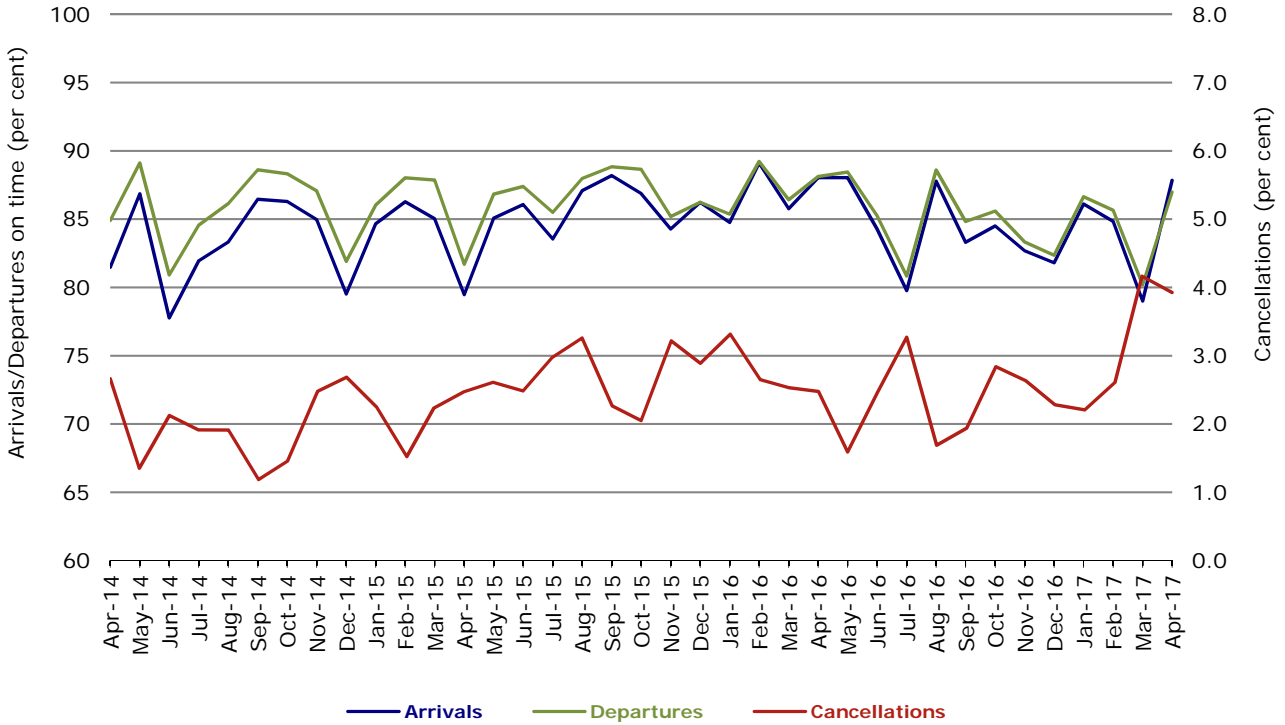


Figure 10 On time performance (by month from April 2014)—Regional Express

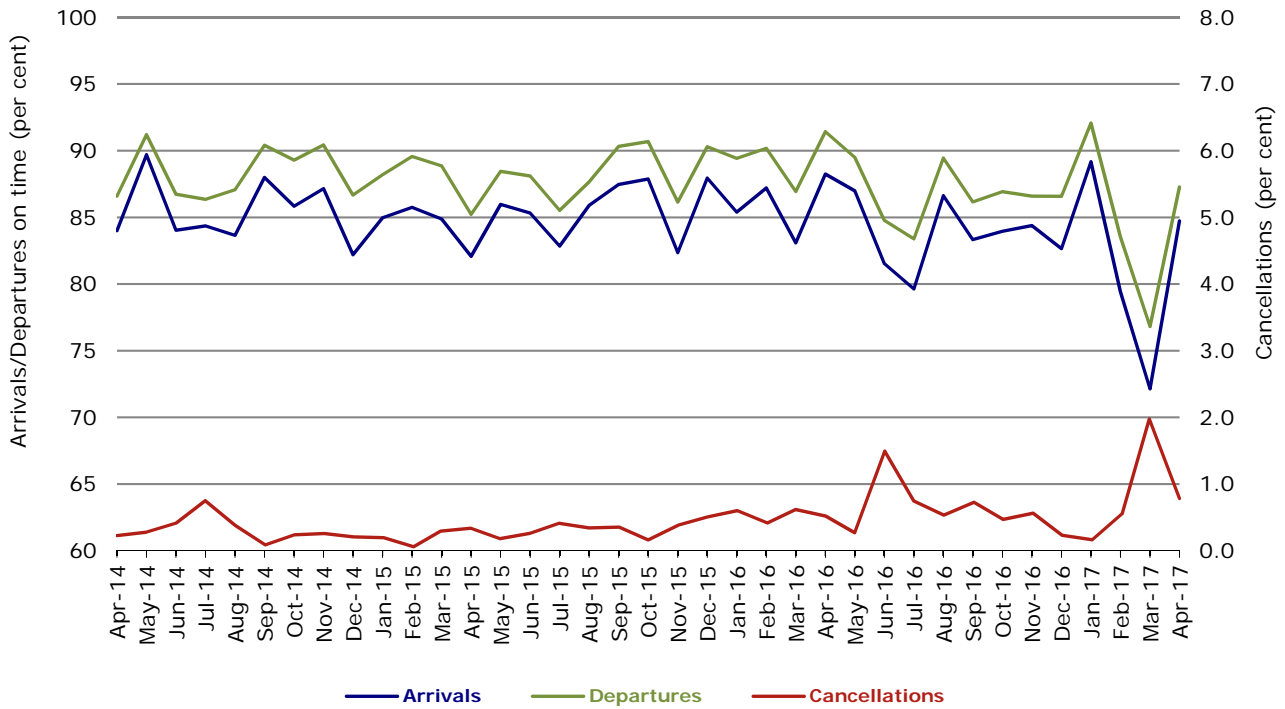
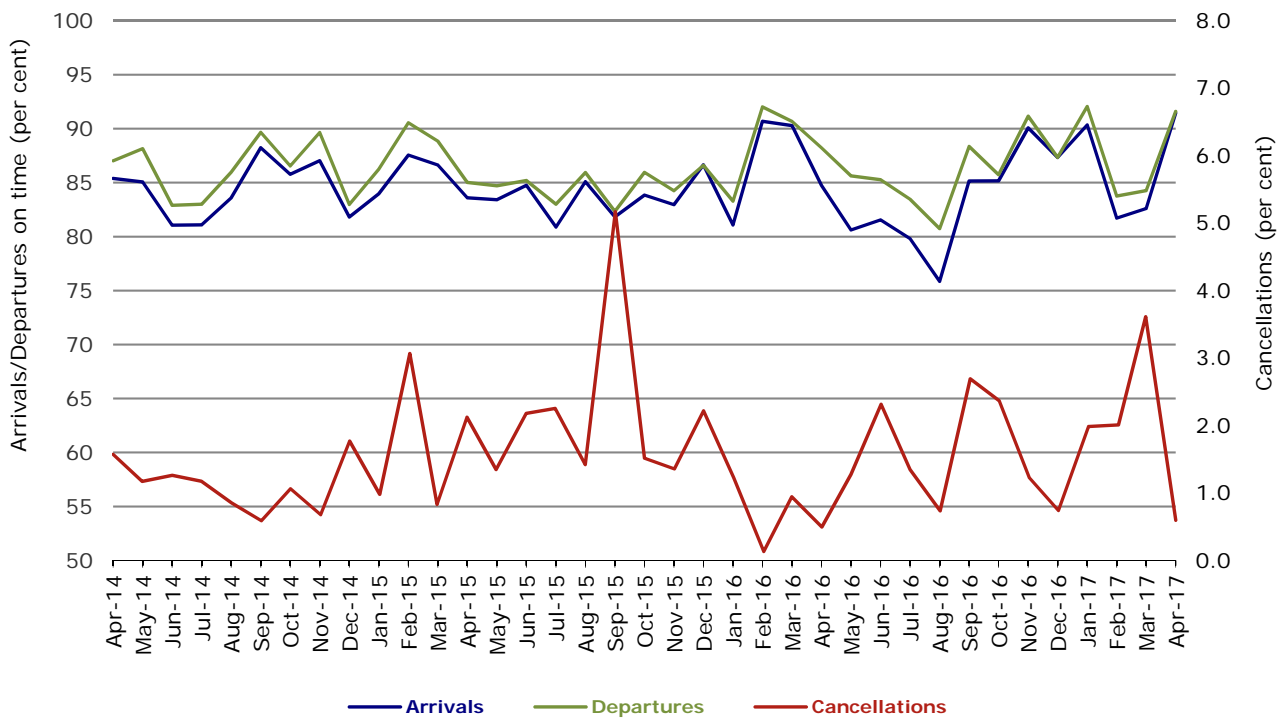


Figure 11 On time performance (by month from April 2014)
Virgin Australia Regional Airlines



In January 2016, Virgin Australia transferred their ATR fleet from Virgin Australia Regional Airlines to Virgin Australia.

Individual routes

On time performance is reported for all routes where the passenger load averages over 8000 passengers per month over the previous six months, and where two or more airlines operate in competition on those routes. There are now 65 routes which meet this definition. Over time, however, routes which meet this definition may change as airline networks and traffic levels vary.

	<i>Sectors</i>		<i>Arrivals On Time</i>		<i>Departures On Time</i>		<i>Cancellations</i>	
	<i>Sched.</i>	<i>Flown</i>	<i>No.</i>	<i>%</i>	<i>No.</i>	<i>%</i>	<i>No.</i>	<i>%</i>
Adelaide-Alice Springs								
Qantas	30	30	26	86.7	22	73.3	0	0.0
Virgin Australia	12	12	12	100.0	12	100.0	0	0.0
All Airlines	42	42	38	90.5	34	81.0	0	0.0
Adelaide-Brisbane								
Jetstar	29	29	26	89.7	24	82.8	0	0.0
Qantas	98	98	95	96.9	93	94.9	0	0.0
QantasLink	23	20	18	90.0	18	90.0	3	13.0
Tigerair Australia	30	30	29	96.7	29	96.7	0	0.0
Virgin Australia	104	104	99	95.2	97	93.3	0	0.0
All Airlines	284	281	267	95.0	261	92.9	3	1.1
Adelaide-Canberra								
Qantas	37	37	34	91.9	32	86.5	0	0.0
Virgin Australia	25	25	25	100.0	23	92.0	0	0.0
All Airlines	62	62	59	95.2	55	88.7	0	0.0
Adelaide-Gold Coast								
Jetstar	33	33	32	97.0	31	93.9	0	0.0
Virgin Australia	30	30	28	93.3	28	93.3	0	0.0
All Airlines	63	63	60	95.2	59	93.7	0	0.0
Adelaide-Melbourne								
Jetstar	117	116	90	77.6	84	72.4	1	0.9
Qantas	273	272	236	86.8	245	90.1	1	0.4
Tigerair Australia	71	71	54	76.1	54	76.1	0	0.0
Virgin Australia	258	256	223	87.1	217	84.8	2	0.8
All Airlines	719	715	603	84.3	600	83.9	4	0.6
Adelaide-Perth								
Jetstar	30	30	28	93.3	28	93.3	0	0.0
Qantas	84	84	78	92.9	76	90.5	0	0.0
QantasLink	30	29	26	89.7	27	93.1	1	3.3
Virgin Australia	67	65	63	96.9	61	93.8	2	3.0
All Airlines	211	208	195	93.8	192	92.3	3	1.4
Adelaide-Port Lincoln								
QantasLink	105	103	91	88.3	91	88.3	2	1.9
Regional Express	192	191	182	95.3	185	96.9	1	0.5
All Airlines	297	294	273	92.9	276	93.9	3	1.0
Adelaide-Sydney								
Jetstar	131	126	108	85.7	108	85.7	5	3.8
Qantas	225	224	207	92.4	214	95.5	1	0.4
QantasLink	23	22	20	90.9	20	90.9	1	4.3
Tigerair Australia	47	47	29	61.7	29	61.7	0	0.0
Virgin Australia	148	148	127	85.8	131	88.5	0	0.0
All Airlines	574	567	491	86.6	502	88.5	7	1.2
Albury-Sydney								
QantasLink	101	100	83	83.0	86	86.0	1	1.0
Regional Express	95	94	82	87.2	86	91.5	1	1.1
Virgin Australia	56	56	46	82.1	51	91.1	0	0.0
All Airlines	252	250	211	84.4	223	89.2	2	0.8

	<i>Sectors</i>		<i>Arrivals On Time</i>		<i>Departures On Time</i>		<i>Cancellations</i>	
	<i>Sched.</i>	<i>Flown</i>	<i>No.</i>	<i>%</i>	<i>No.</i>	<i>%</i>	<i>No.</i>	<i>%</i>
Alice Springs-Adelaide								
Qantas	30	30	26	86.7	25	83.3	0	0.0
Virgin Australia	12	12	10	83.3	11	91.7	0	0.0
All Airlines	42	42	36	85.7	36	85.7	0	0.0
Alice Springs-Darwin								
QantasLink	60	57	54	94.7	54	94.7	3	5.0
Virgin Australia	11	11	10	90.9	11	100.0	0	0.0
All Airlines	71	68	64	94.1	65	95.6	3	4.2
Armidale-Sydney								
QantasLink	113	112	83	74.1	84	75.0	1	0.9
Regional Express	68	68	48	70.6	52	76.5	0	0.0
All Airlines	181	180	131	72.8	136	75.6	1	0.6
Ayers Rock-Sydney								
Jetstar	30	30	22	73.3	17	56.7	0	0.0
Virgin Australia	30	30	24	80.0	22	73.3	0	0.0
All Airlines	60	60	46	76.7	39	65.0	0	0.0
Ballina-Sydney								
Jetstar	86	86	65	75.6	56	65.1	0	0.0
Regional Express	26	24	16	66.7	14	58.3	2	7.7
Virgin Australia	39	39	29	74.4	27	69.2	0	0.0
All Airlines	151	149	110	73.8	97	65.1	2	1.3
Brisbane-Adelaide								
Jetstar	29	29	28	96.6	27	93.1	0	0.0
Qantas	98	98	94	95.9	92	93.9	0	0.0
QantasLink	23	19	16	84.2	17	89.5	4	17.4
Tigerair Australia	30	30	29	96.7	28	93.3	0	0.0
Virgin Australia	102	102	100	98.0	100	98.0	0	0.0
All Airlines	282	278	267	96.0	264	95.0	4	1.4
Brisbane-Bundaberg								
QantasLink	129	127	112	88.2	115	90.6	2	1.6
Virgin Australia	30	30	25	83.3	26	86.7	0	0.0
All Airlines	159	157	137	87.3	141	89.8	2	1.3
Brisbane-Cairns								
Jetstar	124	122	106	86.9	98	80.3	2	1.6
Qantas	115	115	112	97.4	111	96.5	0	0.0
QantasLink	5	5	4	80.0	4	80.0	0	0.0
Tigerair Australia	47	47	45	95.7	43	91.5	0	0.0
Virgin Australia	124	124	117	94.4	112	90.3	0	0.0
All Airlines	415	413	384	93.0	368	89.1	2	0.5
Brisbane-Canberra								
Qantas	25	25	23	92.0	21	84.0	0	0.0
QantasLink	121	117	101	86.3	99	84.6	4	3.3
Virgin Australia	94	94	91	96.8	89	94.7	0	0.0
All Airlines	240	236	215	91.1	209	88.6	4	1.7
Brisbane-Darwin								
Jetstar	28	28	27	96.4	26	92.9	0	0.0
Qantas	46	46	46	100.0	43	93.5	0	0.0
Tigerair Australia	17	17	17	100.0	16	94.1	0	0.0
Virgin Australia	30	30	29	96.7	27	90.0	0	0.0
All Airlines	121	121	119	98.3	112	92.6	0	0.0
Brisbane-Emerald								
QantasLink	111	111	103	92.8	98	88.3	0	0.0
Virgin Australia	59	59	58	98.3	58	98.3	0	0.0
All Airlines	170	170	161	94.7	156	91.8	0	0.0

	<i>Sectors</i>		<i>Arrivals On Time</i>		<i>Departures On Time</i>		<i>Cancellations</i>	
	<i>Sched.</i>	<i>Flown</i>	<i>No.</i>	<i>%</i>	<i>No.</i>	<i>%</i>	<i>No.</i>	<i>%</i>
Brisbane-Gladstone								
QantasLink	154	151	128	84.8	129	85.4	3	1.9
Virgin Australia	76	76	69	90.8	69	90.8	0	0.0
All Airlines	230	227	197	86.8	198	87.2	3	1.3
Brisbane-Hamilton Island								
Qantas	5	4	3	75.0	3	75.0	1	20.0
QantasLink	29	24	23	95.8	22	91.7	5	17.2
Virgin Australia	30	28	28	100.0	28	100.0	2	6.7
All Airlines	64	56	54	96.4	53	94.6	8	12.5
Brisbane-Hobart								
Jetstar	29	29	28	96.6	28	96.6	0	0.0
Virgin Australia	32	32	30	93.8	30	93.8	0	0.0
All Airlines	61	61	58	95.1	58	95.1	0	0.0
Brisbane-Mackay								
Jetstar	47	47	40	85.1	35	74.5	0	0.0
QantasLink	107	105	96	91.4	93	88.6	2	1.9
Virgin Australia	129	129	117	90.7	118	91.5	0	0.0
All Airlines	283	281	253	90.0	246	87.5	2	0.7
Brisbane-Melbourne								
Jetstar	129	129	97	75.2	95	73.6	0	0.0
Qantas	402	398	343	86.2	355	89.2	4	1.0
Tigerair Australia	130	127	95	74.8	95	74.8	3	2.3
Virgin Australia	371	364	305	83.8	326	89.6	7	1.9
All Airlines	1 032	1 018	840	82.5	871	85.6	14	1.4
Brisbane-Moranbah								
QantasLink	71	71	66	93.0	65	91.5	0	0.0
Virgin Australia	56	55	52	94.5	52	94.5	1	1.8
All Airlines	127	126	118	93.7	117	92.9	1	0.8
Brisbane-Mount Isa								
Qantas	3	3	3	100.0	3	100.0	0	0.0
QantasLink	49	48	43	89.6	39	81.3	1	2.0
Virgin Australia	16	16	14	87.5	14	87.5	0	0.0
All Airlines	68	67	60	89.6	56	83.6	1	1.5
Brisbane-Newcastle								
Jetstar	88	88	82	93.2	80	90.9	0	0.0
QantasLink	87	85	72	84.7	72	84.7	2	2.3
Virgin Australia	81	81	79	97.5	77	95.1	0	0.0
All Airlines	256	254	233	91.7	229	90.2	2	0.8
Brisbane-Perth								
Qantas	128	128	116	90.6	117	91.4	0	0.0
Virgin Australia	109	109	104	95.4	97	89.0	0	0.0
All Airlines	237	237	220	92.8	214	90.3	0	0.0
Brisbane-Proserpine								
Jetstar	39	33	32	97.0	32	97.0	6	15.4
Tigerair Australia	17	16	15	93.8	15	93.8	1	5.9
Virgin Australia	37	32	31	96.9	28	87.5	5	13.5
All Airlines	93	81	78	96.3	75	92.6	12	12.9
Brisbane-Rockhampton								
QantasLink	157	112	86	76.8	88	78.6	45	28.7
Virgin Australia	132	88	78	88.6	75	85.2	44	33.3
All Airlines	289	200	164	82.0	163	81.5	89	30.8

	<i>Sectors</i>		<i>Arrivals On Time</i>		<i>Departures On Time</i>		<i>Cancellations</i>	
	<i>Sched.</i>	<i>Flown</i>	<i>No.</i>	<i>%</i>	<i>No.</i>	<i>%</i>	<i>No.</i>	<i>%</i>
Brisbane-Sydney								
Jetstar	172	169	133	78.7	123	72.8	3	1.7
Qantas	599	595	545	91.6	551	92.6	4	0.7
Tigerair Australia	111	109	93	85.3	88	80.7	2	1.8
Virgin Australia	509	504	458	90.9	463	91.9	5	1.0
All Airlines	1 391	1 377	1 229	89.3	1 225	89.0	14	1.0
Brisbane-Townsville								
Jetstar	47	47	46	97.9	45	95.7	0	0.0
Qantas	70	70	68	97.1	62	88.6	0	0.0
QantasLink	72	68	58	85.3	57	83.8	4	5.6
Virgin Australia	133	133	130	97.7	127	95.5	0	0.0
All Airlines	322	318	302	95.0	291	91.5	4	1.2
Broome-Perth								
Qantas	11	11	11	100.0	11	100.0	0	0.0
QantasLink	69	69	65	94.2	60	87.0	0	0.0
Virgin Australia	4	4	4	100.0	4	100.0	0	0.0
Virgin Australia Regional Airlines	50	50	43	86.0	42	84.0	0	0.0
All Airlines	134	134	123	91.8	117	87.3	0	0.0
Bundaberg-Brisbane								
QantasLink	129	128	112	87.5	115	89.8	1	0.8
Virgin Australia	30	29	22	75.9	22	75.9	1	3.3
All Airlines	159	157	134	85.4	137	87.3	2	1.3
Cairns-Brisbane								
Jetstar	124	122	105	86.1	102	83.6	2	1.6
Qantas	115	115	111	96.5	111	96.5	0	0.0
QantasLink	5	5	4	80.0	4	80.0	0	0.0
Tigerair Australia	47	46	44	95.7	44	95.7	1	2.1
Virgin Australia	124	124	117	94.4	111	89.5	0	0.0
All Airlines	415	412	381	92.5	372	90.3	3	0.7
Cairns-Melbourne								
Jetstar	114	114	84	73.7	84	73.7	0	0.0
Qantas	37	37	28	75.7	31	83.8	0	0.0
Tigerair Australia	34	34	29	85.3	28	82.4	0	0.0
Virgin Australia	32	32	23	71.9	26	81.3	0	0.0
All Airlines	217	217	164	75.6	169	77.9	0	0.0
Cairns-Sydney								
Jetstar	113	110	90	81.8	91	82.7	3	2.7
Qantas	76	76	71	93.4	71	93.4	0	0.0
Tigerair Australia	44	44	41	93.2	41	93.2	0	0.0
Virgin Australia	87	86	79	91.9	79	91.9	1	1.1
All Airlines	320	316	281	88.9	282	89.2	4	1.3
Cairns-Townsville								
QantasLink	140	140	134	95.7	134	95.7	0	0.0
Regional Express	33	32	29	90.6	29	90.6	1	3.0
All Airlines	173	172	163	94.8	163	94.8	1	0.6
Canberra-Adelaide								
Qantas	37	37	36	97.3	34	91.9	0	0.0
Virgin Australia	25	25	24	96.0	24	96.0	0	0.0
All Airlines	62	62	60	96.8	58	93.5	0	0.0
Canberra-Brisbane								
Qantas	25	25	25	100.0	25	100.0	0	0.0
QantasLink	120	118	101	85.6	95	80.5	2	1.7
Virgin Australia	94	94	83	88.3	86	91.5	0	0.0
All Airlines	239	237	209	88.2	206	86.9	2	0.8

	<i>Sectors</i>		<i>Arrivals On Time</i>		<i>Departures On Time</i>		<i>Cancellations</i>	
	<i>Sched.</i>	<i>Flown</i>	<i>No.</i>	<i>%</i>	<i>No.</i>	<i>%</i>	<i>No.</i>	<i>%</i>
Canberra-Melbourne								
Qantas	189	186	173	93.0	173	93.0	3	1.6
QantasLink	92	87	71	81.6	71	81.6	5	5.4
Tigerair Australia	31	31	22	71.0	21	67.7	0	0.0
Virgin Australia	150	145	122	84.1	128	88.3	5	3.3
All Airlines	462	449	388	86.4	393	87.5	13	2.8
Canberra-Sydney								
Qantas	24	24	22	91.7	23	95.8	0	0.0
QantasLink	416	390	348	89.2	333	85.4	26	6.3
Virgin Australia	207	197	181	91.9	186	94.4	10	4.8
All Airlines	647	611	551	90.2	542	88.7	36	5.6
Coffs Harbour-Sydney								
QantasLink	144	141	119	84.4	113	80.1	3	2.1
Tigerair Australia	13	13	11	84.6	10	76.9	0	0.0
Virgin Australia	56	55	52	94.5	52	94.5	1	1.8
All Airlines	213	209	182	87.1	175	83.7	4	1.9
Darwin-Alice Springs								
QantasLink	60	57	56	98.2	56	98.2	3	5.0
Virgin Australia	11	11	11	100.0	11	100.0	0	0.0
All Airlines	71	68	67	98.5	67	98.5	3	4.2
Darwin-Brisbane								
Jetstar	28	28	25	89.3	24	85.7	0	0.0
Qantas	46	46	45	97.8	44	95.7	0	0.0
Tigerair Australia	17	17	16	94.1	16	94.1	0	0.0
Virgin Australia	30	30	24	80.0	22	73.3	0	0.0
All Airlines	121	121	110	90.9	106	87.6	0	0.0
Darwin-Melbourne								
Jetstar	30	30	25	83.3	21	70.0	0	0.0
Qantas	30	30	27	90.0	28	93.3	0	0.0
Virgin Australia	30	30	24	80.0	24	80.0	0	0.0
All Airlines	90	90	76	84.4	73	81.1	0	0.0
Darwin-Perth								
Qantas	30	30	29	96.7	25	83.3	0	0.0
Virgin Australia	30	30	25	83.3	22	73.3	0	0.0
All Airlines	60	60	54	90.0	47	78.3	0	0.0
Darwin-Sydney								
Jetstar	28	27	18	66.7	20	74.1	1	3.6
Qantas	47	46	37	80.4	39	84.8	1	2.1
Virgin Australia	28	28	18	64.3	23	82.1	0	0.0
All Airlines	103	101	73	72.3	82	81.2	2	1.9
Dubbo-Sydney								
QantasLink	122	120	102	85.0	105	87.5	2	1.6
Regional Express	139	139	115	82.7	125	89.9	0	0.0
All Airlines	261	259	217	83.8	230	88.8	2	0.8
Emerald-Brisbane								
QantasLink	111	111	99	89.2	100	90.1	0	0.0
Virgin Australia	59	59	57	96.6	58	98.3	0	0.0
All Airlines	170	170	156	91.8	158	92.9	0	0.0
Geraldton-Perth								
QantasLink	45	44	41	93.2	38	86.4	1	2.2
Virgin Australia Regional Airlines	50	50	47	94.0	46	92.0	0	0.0
All Airlines	95	94	88	93.6	84	89.4	1	1.1

	<i>Sectors</i>		<i>Arrivals On Time</i>		<i>Departures On Time</i>		<i>Cancellations</i>	
	<i>Sched.</i>	<i>Flown</i>	<i>No.</i>	<i>%</i>	<i>No.</i>	<i>%</i>	<i>No.</i>	<i>%</i>
Gladstone-Brisbane								
QantasLink	152	148	124	83.8	119	80.4	4	2.6
Virgin Australia	77	76	69	90.8	69	90.8	1	1.3
All Airlines	229	224	193	86.2	188	83.9	5	2.2
Gold Coast-Adelaide								
Jetstar	33	33	33	100.0	31	93.9	0	0.0
Virgin Australia	30	30	25	83.3	26	86.7	0	0.0
All Airlines	63	63	58	92.1	57	90.5	0	0.0
Gold Coast-Melbourne								
Jetstar	230	227	179	78.9	161	70.9	3	1.3
Qantas	32	32	26	81.3	25	78.1	0	0.0
QantasLink	1	1	1	100.0	1	100.0	0	0.0
Tigerair Australia	78	78	45	57.7	50	64.1	0	0.0
Virgin Australia	181	178	142	79.8	135	75.8	3	1.7
All Airlines	522	516	393	76.2	372	72.1	6	1.1
Gold Coast-Sydney								
Jetstar	325	319	251	78.7	236	74.0	6	1.8
Qantas	92	92	79	85.9	85	92.4	0	0.0
QantasLink	19	18	15	83.3	15	83.3	1	5.3
Tigerair Australia	121	120	88	73.3	86	71.7	1	0.8
Virgin Australia	239	238	187	78.6	190	79.8	1	0.4
All Airlines	796	787	620	78.8	612	77.8	9	1.1
Hamilton Island-Brisbane								
Qantas	5	4	3	75.0	3	75.0	1	20.0
QantasLink	30	25	25	100.0	24	96.0	5	16.7
Virgin Australia	30	29	28	96.6	28	96.6	1	3.3
All Airlines	65	58	56	96.6	55	94.8	7	10.8
Hamilton Island-Sydney								
Jetstar	28	19	17	89.5	17	89.5	9	32.1
Qantas	18	14	13	92.9	12	85.7	4	22.2
QantasLink	6	5	5	100.0	5	100.0	1	16.7
Virgin Australia	25	15	14	93.3	15	100.0	10	40.0
All Airlines	77	53	49	92.5	49	92.5	24	31.2
Hobart-Brisbane								
Jetstar	29	29	26	89.7	26	89.7	0	0.0
Virgin Australia	32	32	26	81.3	25	78.1	0	0.0
All Airlines	61	61	52	85.2	51	83.6	0	0.0
Hobart-Melbourne								
Jetstar	175	175	99	56.6	95	54.3	0	0.0
Qantas	4	4	4	100.0	4	100.0	0	0.0
QantasLink	136	131	107	81.7	109	83.2	5	3.7
Tigerair Australia	30	30	24	80.0	22	73.3	0	0.0
Virgin Australia	139	139	112	80.6	110	79.1	0	0.0
All Airlines	484	479	346	72.2	340	71.0	5	1.0
Hobart-Sydney								
Jetstar	84	84	62	73.8	56	66.7	0	0.0
Qantas	2	2	2	100.0	1	50.0	0	0.0
QantasLink	53	53	41	77.4	44	83.0	0	0.0
Virgin Australia	66	66	60	90.9	59	89.4	0	0.0
All Airlines	205	205	165	80.5	160	78.0	0	0.0

	<i>Sectors</i>		<i>Arrivals On Time</i>		<i>Departures On Time</i>		<i>Cancellations</i>	
	<i>Sched.</i>	<i>Flown</i>	<i>No.</i>	<i>%</i>	<i>No.</i>	<i>%</i>	<i>No.</i>	<i>%</i>
Kalgoorlie-Perth								
Qantas	8	8	8	100.0	8	100.0	0	0.0
QantasLink	68	68	60	88.2	61	89.7	0	0.0
Virgin Australia	23	23	22	95.7	20	87.0	0	0.0
Virgin Australia Regional Airlines	36	36	34	94.4	34	94.4	0	0.0
All Airlines	135	135	124	91.9	123	91.1	0	0.0
Karratha-Perth								
Qantas	16	16	16	100.0	16	100.0	0	0.0
QantasLink	162	156	146	93.6	145	92.9	6	3.7
Virgin Australia Regional Airlines	69	67	61	91.0	60	89.6	2	2.9
All Airlines	247	239	223	93.3	221	92.5	8	3.2
Launceston-Melbourne								
Jetstar	133	133	75	56.4	66	49.6	0	0.0
QantasLink	115	107	88	82.2	85	79.4	8	7.0
Virgin Australia	98	98	71	72.4	83	84.7	0	0.0
All Airlines	346	338	234	69.2	234	69.2	8	2.3
Launceston-Sydney								
Jetstar	56	55	29	52.7	26	47.3	1	1.8
Virgin Australia	30	30	22	73.3	21	70.0	0	0.0
All Airlines	86	85	51	60.0	47	55.3	1	1.2
Mackay-Brisbane								
Jetstar	47	47	41	87.2	35	74.5	0	0.0
QantasLink	107	106	91	85.8	88	83.0	1	0.9
Virgin Australia	129	129	116	89.9	112	86.8	0	0.0
All Airlines	283	282	248	87.9	235	83.3	1	0.4
Melbourne-Adelaide								
Jetstar	117	116	86	74.1	86	74.1	1	0.9
Qantas	273	273	237	86.8	244	89.4	0	0.0
Tigerair Australia	71	71	58	81.7	55	77.5	0	0.0
Virgin Australia	257	255	229	89.8	231	90.6	2	0.8
All Airlines	718	715	610	85.3	616	86.2	3	0.4
Melbourne-Brisbane								
Jetstar	130	130	78	60.0	67	51.5	0	0.0
Qantas	409	407	372	91.4	367	90.2	2	0.5
Tigerair Australia	130	127	102	80.3	98	77.2	3	2.3
Virgin Australia	373	366	333	91.0	333	91.0	7	1.9
All Airlines	1 042	1 030	885	85.9	865	84.0	12	1.2
Melbourne-Cairns								
Jetstar	115	115	90	78.3	79	68.7	0	0.0
Qantas	38	38	35	92.1	35	92.1	0	0.0
Tigerair Australia	34	34	29	85.3	29	85.3	0	0.0
Virgin Australia	32	32	27	84.4	26	81.3	0	0.0
All Airlines	219	219	181	82.6	169	77.2	0	0.0
Melbourne-Canberra								
Qantas	189	186	172	92.5	173	93.0	3	1.6
QantasLink	92	85	64	75.3	66	77.6	7	7.6
Tigerair Australia	31	31	25	80.6	27	87.1	0	0.0
Virgin Australia	151	146	133	91.1	135	92.5	5	3.3
All Airlines	463	448	394	87.9	401	89.5	15	3.2
Melbourne-Darwin								
Jetstar	30	30	25	83.3	24	80.0	0	0.0
Qantas	30	30	26	86.7	27	90.0	0	0.0
Virgin Australia	30	30	21	70.0	22	73.3	0	0.0
All Airlines	90	90	72	80.0	73	81.1	0	0.0

	<i>Sectors</i>		<i>Arrivals On Time</i>		<i>Departures On Time</i>		<i>Cancellations</i>	
	<i>Sched.</i>	<i>Flown</i>	<i>No.</i>	<i>%</i>	<i>No.</i>	<i>%</i>	<i>No.</i>	<i>%</i>
Melbourne-Gold Coast								
Jetstar	229	226	165	73.0	170	75.2	3	1.3
Qantas	32	32	31	96.9	31	96.9	0	0.0
QantasLink	1	1	1	100.0	1	100.0	0	0.0
Tigerair Australia	78	78	59	75.6	60	76.9	0	0.0
Virgin Australia	181	177	155	87.6	146	82.5	4	2.2
All Airlines	521	514	411	80.0	408	79.4	7	1.3
Melbourne-Hobart								
Jetstar	175	175	121	69.1	118	67.4	0	0.0
Qantas	4	4	4	100.0	4	100.0	0	0.0
QantasLink	136	131	104	79.4	104	79.4	5	3.7
Tigerair Australia	30	30	22	73.3	23	76.7	0	0.0
Virgin Australia	139	139	116	83.5	118	84.9	0	0.0
All Airlines	484	479	367	76.6	367	76.6	5	1.0
Melbourne-Launceston								
Jetstar	132	132	84	63.6	92	69.7	0	0.0
QantasLink	114	107	92	86.0	93	86.9	7	6.1
Virgin Australia	97	97	81	83.5	86	88.7	0	0.0
All Airlines	343	336	257	76.5	271	80.7	7	2.0
Melbourne-Mildura								
QantasLink	89	89	83	93.3	81	91.0	0	0.0
Regional Express	76	76	63	82.9	63	82.9	0	0.0
Virgin Australia	30	30	20	66.7	23	76.7	0	0.0
All Airlines	195	195	166	85.1	167	85.6	0	0.0
Melbourne-Newcastle								
Jetstar	119	119	88	73.9	88	73.9	0	0.0
Virgin Australia	32	32	29	90.6	30	93.8	0	0.0
All Airlines	151	151	117	77.5	118	78.1	0	0.0
Melbourne-Perth								
Jetstar	59	59	55	93.2	47	79.7	0	0.0
Qantas	188	188	164	87.2	149	79.3	0	0.0
Tigerair Australia	57	57	51	89.5	47	82.5	0	0.0
Virgin Australia	130	130	108	83.1	96	73.8	0	0.0
All Airlines	434	434	378	87.1	339	78.1	0	0.0
Melbourne-Sunshine Coast								
Jetstar	105	102	82	80.4	81	79.4	3	2.9
Virgin Australia	50	50	45	90.0	44	88.0	0	0.0
All Airlines	155	152	127	83.6	125	82.2	3	1.9
Melbourne-Sydney								
Jetstar	375	362	246	68.0	244	67.4	13	3.5
Qantas	904	876	737	84.1	763	87.1	28	3.1
Tigerair Australia	246	239	162	67.8	162	67.8	7	2.8
Virgin Australia	695	668	568	85.0	592	88.6	27	3.9
All Airlines	2 220	2 145	1 713	79.9	1 761	82.1	75	3.4
Mildura-Melbourne								
QantasLink	89	89	80	89.9	82	92.1	0	0.0
Regional Express	75	75	52	69.3	59	78.7	0	0.0
Virgin Australia	30	30	21	70.0	20	66.7	0	0.0
All Airlines	194	194	153	78.9	161	83.0	0	0.0
Moranbah-Brisbane								
QantasLink	67	64	62	96.9	61	95.3	3	4.5
Virgin Australia	56	55	53	96.4	54	98.2	1	1.8
All Airlines	123	119	115	96.6	115	96.6	4	3.3

	<i>Sectors</i>		<i>Arrivals On Time</i>		<i>Departures On Time</i>		<i>Cancellations</i>	
	<i>Sched.</i>	<i>Flown</i>	<i>No.</i>	<i>%</i>	<i>No.</i>	<i>%</i>	<i>No.</i>	<i>%</i>
Mount Isa-Brisbane								
Qantas	3	3	3	100.0	3	100.0	0	0.0
QantasLink	49	46	40	87.0	41	89.1	3	6.1
Virgin Australia	16	16	11	68.8	14	87.5	0	0.0
All Airlines	68	65	54	83.1	58	89.2	3	4.4
Newcastle-Brisbane								
Jetstar	88	88	87	98.9	87	98.9	0	0.0
QantasLink	87	84	69	82.1	69	82.1	3	3.4
Virgin Australia	81	81	76	93.8	77	95.1	0	0.0
All Airlines	256	253	232	91.7	233	92.1	3	1.2
Newcastle-Melbourne								
Jetstar	119	119	82	68.9	84	70.6	0	0.0
Virgin Australia	32	32	25	78.1	27	84.4	0	0.0
All Airlines	151	151	107	70.9	111	73.5	0	0.0
Newman-Perth								
Qantas	56	55	55	100.0	54	98.2	1	1.8
QantasLink	66	61	57	93.4	57	93.4	5	7.6
Virgin Australia	17	17	16	94.1	16	94.1	0	0.0
Virgin Australia Regional Airlines	19	19	17	89.5	17	89.5	0	0.0
All Airlines	158	152	145	95.4	144	94.7	6	3.8
Perth-Adelaide								
Jetstar	32	27	27	100.0	26	96.3	5	15.6
Qantas	87	87	80	92.0	82	94.3	0	0.0
QantasLink	30	29	27	93.1	28	96.6	1	3.3
Virgin Australia	67	65	62	95.4	62	95.4	2	3.0
All Airlines	216	208	196	94.2	198	95.2	8	3.7
Perth-Brisbane								
Qantas	124	124	116	93.5	118	95.2	0	0.0
Virgin Australia	107	107	101	94.4	101	94.4	0	0.0
All Airlines	231	231	217	93.9	219	94.8	0	0.0
Perth-Broome								
Qantas	11	11	10	90.9	11	100.0	0	0.0
QantasLink	69	69	64	92.8	59	85.5	0	0.0
Virgin Australia	4	4	4	100.0	4	100.0	0	0.0
Virgin Australia Regional Airlines	50	50	43	86.0	45	90.0	0	0.0
All Airlines	134	134	121	90.3	119	88.8	0	0.0
Perth-Darwin								
Qantas	30	30	28	93.3	29	96.7	0	0.0
Virgin Australia	30	30	26	86.7	27	90.0	0	0.0
All Airlines	60	60	54	90.0	56	93.3	0	0.0
Perth-Geraldton								
QantasLink	45	44	39	88.6	39	88.6	1	2.2
Virgin Australia Regional Airlines	50	50	47	94.0	47	94.0	0	0.0
All Airlines	95	94	86	91.5	86	91.5	1	1.1
Perth-Kalgoorlie								
Qantas	8	8	8	100.0	8	100.0	0	0.0
QantasLink	68	68	63	92.6	62	91.2	0	0.0
Virgin Australia	22	22	21	95.5	21	95.5	0	0.0
Virgin Australia Regional Airlines	36	36	35	97.2	35	97.2	0	0.0
All Airlines	134	134	127	94.8	126	94.0	0	0.0

	<i>Sectors</i>		<i>Arrivals On Time</i>		<i>Departures On Time</i>		<i>Cancellations</i>	
	<i>Sched.</i>	<i>Flown</i>	<i>No.</i>	<i>%</i>	<i>No.</i>	<i>%</i>	<i>No.</i>	<i>%</i>
Perth-Karratha								
Qantas	16	16	16	100.0	16	100.0	0	0.0
QantasLink	161	159	149	93.7	145	91.2	2	1.2
Virgin Australia Regional Airlines	69	67	61	91.0	64	95.5	2	2.9
All Airlines	246	242	226	93.4	225	93.0	4	1.6
Perth-Melbourne								
Jetstar	59	59	45	76.3	47	79.7	0	0.0
Qantas	188	188	166	88.3	172	91.5	0	0.0
Tigerair Australia	56	56	51	91.1	51	91.1	0	0.0
Virgin Australia	130	129	100	77.5	111	86.0	1	0.8
All Airlines	433	432	362	83.8	381	88.2	1	0.2
Perth-Newman								
Qantas	56	55	53	96.4	53	96.4	1	1.8
QantasLink	66	62	58	93.5	56	90.3	4	6.1
Virgin Australia	17	17	16	94.1	16	94.1	0	0.0
Virgin Australia Regional Airlines	19	19	17	89.5	17	89.5	0	0.0
All Airlines	158	153	144	94.1	142	92.8	5	3.2
Perth-Port Hedland								
Qantas	28	28	26	92.9	26	92.9	0	0.0
QantasLink	99	98	87	88.8	84	85.7	1	1.0
Virgin Australia	7	7	7	100.0	7	100.0	0	0.0
Virgin Australia Regional Airlines	43	43	40	93.0	41	95.3	0	0.0
All Airlines	177	176	160	90.9	158	89.8	1	0.6
Perth-Sydney								
Jetstar	30	30	24	80.0	21	70.0	0	0.0
Qantas	200	200	179	89.5	183	91.5	0	0.0
Tigerair Australia	31	30	29	96.7	29	96.7	1	3.2
Virgin Australia	116	115	103	89.6	101	87.8	1	0.9
All Airlines	377	375	335	89.3	334	89.1	2	0.5
Port Hedland-Perth								
Qantas	28	28	26	92.9	24	85.7	0	0.0
QantasLink	99	97	87	89.7	82	84.5	2	2.0
Virgin Australia	7	7	7	100.0	6	85.7	0	0.0
Virgin Australia Regional Airlines	43	43	41	95.3	40	93.0	0	0.0
All Airlines	177	175	161	92.0	152	86.9	2	1.1
Port Lincoln-Adelaide								
QantasLink	105	102	93	91.2	93	91.2	3	2.9
Regional Express	193	192	178	92.7	183	95.3	1	0.5
All Airlines	298	294	271	92.2	276	93.9	4	1.3
Port Macquarie-Sydney								
QantasLink	128	127	110	86.6	110	86.6	1	0.8
Virgin Australia	56	55	45	81.8	44	80.0	1	1.8
All Airlines	184	182	155	85.2	154	84.6	2	1.1
Proserpine-Brisbane								
Jetstar	39	33	31	93.9	28	84.8	6	15.4
Tigerair Australia	17	16	15	93.8	15	93.8	1	5.9
Virgin Australia	37	32	29	90.6	28	87.5	5	13.5
All Airlines	93	81	75	92.6	71	87.7	12	12.9
Rockhampton-Brisbane								
QantasLink	172	112	94	83.9	95	84.8	60	34.9
Virgin Australia	131	87	78	89.7	75	86.2	44	33.6
All Airlines	303	199	172	86.4	170	85.4	104	34.3

	<i>Sectors</i>		<i>Arrivals On Time</i>		<i>Departures On Time</i>		<i>Cancellations</i>	
	<i>Sched.</i>	<i>Flown</i>	<i>No.</i>	<i>%</i>	<i>No.</i>	<i>%</i>	<i>No.</i>	<i>%</i>
Sunshine Coast-Melbourne								
Jetstar	106	103	68	66.0	58	56.3	3	2.8
Virgin Australia	50	50	44	88.0	41	82.0	0	0.0
All Airlines	156	153	112	73.2	99	64.7	3	1.9
Sunshine Coast-Sydney								
Jetstar	125	122	81	66.4	64	52.5	3	2.4
QantasLink	35	35	28	80.0	31	88.6	0	0.0
Virgin Australia	42	42	31	73.8	33	78.6	0	0.0
All Airlines	202	199	140	70.4	128	64.3	3	1.5
Sydney-Adelaide								
Jetstar	132	127	109	85.8	108	85.0	5	3.8
Qantas	220	220	192	87.3	197	89.5	0	0.0
QantasLink	24	22	20	90.9	15	68.2	2	8.3
Tigerair Australia	47	47	32	68.1	32	68.1	0	0.0
Virgin Australia	152	152	135	88.8	137	90.1	0	0.0
All Airlines	575	568	488	85.9	489	86.1	7	1.2
Sydney-Albury								
QantasLink	101	101	89	88.1	85	84.2	0	0.0
Regional Express	96	95	77	81.1	75	78.9	1	1.0
Virgin Australia	56	56	51	91.1	51	91.1	0	0.0
All Airlines	253	252	217	86.1	211	83.7	1	0.4
Sydney-Armidale								
QantasLink	113	112	80	71.4	80	71.4	1	0.9
Regional Express	69	69	59	85.5	60	87.0	0	0.0
All Airlines	182	181	139	76.8	140	77.3	1	0.5
Sydney-Ayers Rock								
Jetstar	29	29	22	75.9	24	82.8	0	0.0
Virgin Australia	30	30	26	86.7	30	100.0	0	0.0
All Airlines	59	59	48	81.4	54	91.5	0	0.0
Sydney-Ballina								
Jetstar	85	85	74	87.1	75	88.2	0	0.0
Regional Express	27	27	24	88.9	23	85.2	0	0.0
Virgin Australia	39	39	34	87.2	34	87.2	0	0.0
All Airlines	151	151	132	87.4	132	87.4	0	0.0
Sydney-Brisbane								
Jetstar	169	167	137	82.0	124	74.3	2	1.2
Qantas	596	591	537	90.9	529	89.5	5	0.8
Tigerair Australia	111	109	91	83.5	95	87.2	2	1.8
Virgin Australia	507	502	443	88.2	445	88.6	5	1.0
All Airlines	1 383	1 369	1 208	88.2	1 193	87.1	14	1.0
Sydney-Cairns								
Jetstar	115	113	92	81.4	77	68.1	2	1.7
Qantas	76	76	69	90.8	68	89.5	0	0.0
Tigerair Australia	44	44	42	95.5	42	95.5	0	0.0
Virgin Australia	87	87	82	94.3	78	89.7	0	0.0
All Airlines	322	320	285	89.1	265	82.8	2	0.6
Sydney-Canberra								
Qantas	23	23	21	91.3	22	95.7	0	0.0
QantasLink	414	392	342	87.2	335	85.5	22	5.3
Virgin Australia	208	198	173	87.4	169	85.4	10	4.8
All Airlines	645	613	536	87.4	526	85.8	32	5.0

	<i>Sectors</i>		<i>Arrivals On Time</i>		<i>Departures On Time</i>		<i>Cancellations</i>	
	<i>Sched.</i>	<i>Flown</i>	<i>No.</i>	<i>%</i>	<i>No.</i>	<i>%</i>	<i>No.</i>	<i>%</i>
Sydney-Coffs Harbour								
QantasLink	144	141	115	81.6	115	81.6	3	2.1
Tigerair Australia	13	13	11	84.6	11	84.6	0	0.0
Virgin Australia	56	55	52	94.5	53	96.4	1	1.8
All Airlines	213	209	178	85.2	179	85.6	4	1.9
Sydney-Darwin								
Jetstar	28	28	26	92.9	22	78.6	0	0.0
Qantas	47	47	45	95.7	36	76.6	0	0.0
Virgin Australia	28	28	25	89.3	23	82.1	0	0.0
All Airlines	103	103	96	93.2	81	78.6	0	0.0
Sydney-Dubbo								
QantasLink	122	120	103	85.8	105	87.5	2	1.6
Regional Express	136	136	124	91.2	122	89.7	0	0.0
All Airlines	258	256	227	88.7	227	88.7	2	0.8
Sydney-Gold Coast								
Jetstar	325	319	251	78.7	236	74.0	6	1.8
Qantas	92	92	86	93.5	83	90.2	0	0.0
QantasLink	19	18	16	88.9	15	83.3	1	5.3
Tigerair Australia	121	120	94	78.3	95	79.2	1	0.8
Virgin Australia	240	240	193	80.4	195	81.3	0	0.0
All Airlines	797	789	640	81.1	624	79.1	8	1.0
Sydney-Hamilton Island								
Jetstar	28	20	19	95.0	19	95.0	8	28.6
Qantas	18	13	11	84.6	13	100.0	5	27.8
QantasLink	7	6	6	100.0	5	83.3	1	14.3
Virgin Australia	25	15	15	100.0	15	100.0	10	40.0
All Airlines	78	54	51	94.4	52	96.3	24	30.8
Sydney-Hobart								
Jetstar	84	84	74	88.1	69	82.1	0	0.0
Qantas	2	2	2	100.0	2	100.0	0	0.0
QantasLink	53	53	45	84.9	44	83.0	0	0.0
Virgin Australia	66	66	61	92.4	60	90.9	0	0.0
All Airlines	205	205	182	88.8	175	85.4	0	0.0
Sydney-Launceston								
Jetstar	55	55	45	81.8	41	74.5	0	0.0
Virgin Australia	30	30	29	96.7	27	90.0	0	0.0
All Airlines	85	85	74	87.1	68	80.0	0	0.0
Sydney-Melbourne								
Jetstar	376	364	243	66.8	231	63.5	12	3.2
Qantas	908	883	696	78.8	738	83.6	25	2.8
Tigerair Australia	245	240	152	63.3	152	63.3	5	2.0
Virgin Australia	695	665	533	80.2	561	84.4	30	4.3
All Airlines	2 224	2 152	1 624	75.5	1 682	78.2	72	3.2
Sydney-Perth								
Jetstar	30	30	25	83.3	26	86.7	0	0.0
Qantas	202	202	174	86.1	175	86.6	0	0.0
Tigerair Australia	30	30	30	100.0	27	90.0	0	0.0
Virgin Australia	116	115	102	88.7	96	83.5	1	0.9
All Airlines	378	377	331	87.8	324	85.9	1	0.3
Sydney-Port Macquarie								
QantasLink	129	128	108	84.4	109	85.2	1	0.8
Virgin Australia	56	56	50	89.3	49	87.5	0	0.0
All Airlines	185	184	158	85.9	158	85.9	1	0.5

	<i>Sectors</i>		<i>Arrivals On Time</i>		<i>Departures On Time</i>		<i>Cancellations</i>	
	<i>Sched.</i>	<i>Flown</i>	<i>No.</i>	<i>%</i>	<i>No.</i>	<i>%</i>	<i>No.</i>	<i>%</i>
Sydney-Sunshine Coast								
Jetstar	125	123	90	73.2	81	65.9	2	1.6
QantasLink	35	34	32	94.1	31	91.2	1	2.9
Virgin Australia	42	42	37	88.1	37	88.1	0	0.0
All Airlines	202	199	159	79.9	149	74.9	3	1.5
Sydney-Tamworth								
QantasLink	146	143	125	87.4	126	88.1	3	2.1
Virgin Australia	48	48	43	89.6	43	89.6	0	0.0
All Airlines	194	191	168	88.0	169	88.5	3	1.5
Sydney-Townsville								
Jetstar	28	28	18	64.3	19	67.9	0	0.0
Virgin Australia	30	30	28	93.3	27	90.0	0	0.0
All Airlines	58	58	46	79.3	46	79.3	0	0.0
Sydney-Wagga Wagga								
QantasLink	110	109	92	84.4	89	81.7	1	0.9
Regional Express	118	117	107	91.5	109	93.2	1	0.8
All Airlines	228	226	199	88.1	198	87.6	2	0.9
Tamworth-Sydney								
QantasLink	146	143	125	87.4	127	88.8	3	2.1
Virgin Australia	48	48	41	85.4	42	87.5	0	0.0
All Airlines	194	191	166	86.9	169	88.5	3	1.5
Townsville-Brisbane								
Jetstar	47	47	42	89.4	42	89.4	0	0.0
Qantas	70	70	62	88.6	61	87.1	0	0.0
QantasLink	71	67	56	83.6	58	86.6	4	5.6
Virgin Australia	133	133	131	98.5	130	97.7	0	0.0
All Airlines	321	317	291	91.8	291	91.8	4	1.2
Townsville-Cairns								
QantasLink	139	139	133	95.7	132	95.0	0	0.0
Regional Express	33	32	31	96.9	31	96.9	1	3.0
All Airlines	172	171	164	95.9	163	95.3	1	0.6
Townsville-Sydney								
Jetstar	29	29	19	65.5	15	51.7	0	0.0
Virgin Australia	30	30	26	86.7	28	93.3	0	0.0
All Airlines	59	59	45	76.3	43	72.9	0	0.0
Wagga Wagga-Sydney								
QantasLink	110	109	97	89.0	96	88.1	1	0.9
Regional Express	120	119	104	87.4	112	94.1	1	0.8
All Airlines	230	228	201	88.2	208	91.2	2	0.9

Airports

On time performance is reported for all routes where the passenger load averages over 8000 passengers per month, and where two or more airlines operate in competition. The following data reports by airport against flights operated on those routes only. This month, 8 major city airports and 33 regional city airports are covered.

Airport	Arrivals			Departures		
	Sectors	On Time		Sectors	On Time	
	Flown	No.	%	Flown	No.	%
Adelaide						
Jetstar	332	283	85.2	334	275	82.3
Qantas	745	665	89.3	745	682	91.5
QantasLink	172	156	90.7	174	156	89.7
Regional Express	192	178	92.7	191	185	96.9
Tigerair Australia	148	119	80.4	148	112	75.7
Virgin Australia	641	585	91.3	640	569	88.9
All Airlines	2 230	1 986	89.1	2 232	1 979	88.7
Relates to services to and from Alice Springs, Brisbane, Canberra, Gold Coast, Melbourne, Perth, Port Lincoln and Sydney.						
Albury						
QantasLink	101	89	88.1	100	86	86.0
Regional Express	95	77	81.1	94	86	91.5
Virgin Australia	56	51	91.1	56	51	91.1
All Airlines	252	217	86.1	250	223	89.2
Relates to services to and from Sydney only.						
Alice Springs						
Qantas	30	26	86.7	30	25	83.3
QantasLink	57	56	98.2	57	54	94.7
Virgin Australia	23	23	100.0	23	22	95.7
All Airlines	110	105	95.5	110	101	91.8
Relates to services to and from Adelaide and Darwin.						
Armidale						
QantasLink	112	80	71.4	112	84	75.0
Regional Express	69	59	85.5	68	52	76.5
All Airlines	181	139	76.8	180	136	75.6
Relates to services to and from Sydney only.						
Ayers Rock						
Jetstar	29	22	75.9	30	17	56.7
Virgin Australia	30	26	86.7	30	22	73.3
All Airlines	59	48	81.4	60	39	65.0
Relates to services to and from Sydney only.						
Ballina						
Jetstar	85	74	87.1	86	56	65.1
Regional Express	27	24	88.9	24	14	58.3
Virgin Australia	39	34	87.2	39	27	69.2
All Airlines	151	132	87.4	149	97	65.1
Relates to services to and from Sydney only.						

Airport	Arrivals			Departures		
	Sectors	On Time		Sectors	On Time	
	Flown	No.	%	Flown	No.	%
Brisbane						
Jetstar	720	598	83.1	721	589	81.7
Qantas	1 483	1 369	92.3	1 482	1 358	91.6
QantasLink	1 034	895	86.6	1 043	898	86.1
Tigerair Australia	345	297	86.1	346	285	82.4
Virgin Australia	2 085	1 896	90.9	2 086	1 916	91.9
All Airlines	5 667	5 055	89.2	5 678	5 046	88.9

Relates to services to and from Adelaide, Bundaberg, Cairns, Canberra, Darwin, Emerald, Gladstone, Hamilton Island, Hobart, Mackay, Melbourne, Moranbah, Mount Isa, Newcastle, Perth, Proserpine, Rockhampton, Sydney and Townsville.

Broome

Qantas	11	10	90.9	11	11	100.0
QantasLink	69	64	92.8	69	60	87.0
Virgin Australia	4	4	100.0	4	4	100.0
Virgin Australia Regional Airlines	50	43	86.0	50	42	84.0
All Airlines	134	121	90.3	134	117	87.3

Relates to services to and from Perth only.

Bundaberg

QantasLink	127	112	88.2	128	115	89.8
Virgin Australia	30	25	83.3	29	22	75.9
All Airlines	157	137	87.3	157	137	87.3

Relates to services to and from Brisbane only.

Cairns

Jetstar	350	288	82.3	346	277	80.1
Qantas	229	216	94.3	228	213	93.4
QantasLink	144	137	95.1	145	138	95.2
Regional Express	32	31	96.9	32	29	90.6
Tigerair Australia	125	116	92.8	124	113	91.1
Virgin Australia	243	226	93.0	242	216	89.3
All Airlines	1 123	1 014	90.3	1 117	986	88.3

Relates to services to and from Brisbane, Melbourne, Sydney and Townsville.

Canberra

Qantas	271	250	92.3	272	255	93.8
QantasLink	594	507	85.4	595	499	83.9
Tigerair Australia	31	25	80.6	31	21	67.7
Virgin Australia	463	422	91.1	461	424	92.0
All Airlines	1 359	1 204	88.6	1 359	1 199	88.2

Relates to services to and from Adelaide, Brisbane, Melbourne and Sydney.

Coffs Harbour

QantasLink	141	115	81.6	141	113	80.1
Tigerair Australia	13	11	84.6	13	10	76.9
Virgin Australia	55	52	94.5	55	52	94.5
All Airlines	209	178	85.2	209	175	83.7

Relates to services to and from Sydney only.

Airport	Arrivals			Departures		
	Sectors	On Time		Sectors	On Time	
	Flown	No.	%	Flown	No.	%
Darwin						
Jetstar	86	78	90.7	85	65	76.5
Qantas	153	145	94.8	152	136	89.5
QantasLink	57	54	94.7	57	56	98.2
Tigerair Australia	17	17	100.0	17	16	94.1
Virgin Australia	129	111	86.0	129	102	79.1
All Airlines	442	405	91.6	440	375	85.2
Relates to services to and from Alice Springs, Brisbane, Melbourne, Perth and Sydney.						
Dubbo						
QantasLink	120	103	85.8	120	105	87.5
Regional Express	136	124	91.2	139	125	89.9
All Airlines	256	227	88.7	259	230	88.8
Relates to services to and from Sydney only.						
Emerald						
QantasLink	111	103	92.8	111	100	90.1
Virgin Australia	59	58	98.3	59	58	98.3
All Airlines	170	161	94.7	170	158	92.9
Relates to services to and from Brisbane only.						
Geraldton						
QantasLink	44	39	88.6	44	38	86.4
Virgin Australia Regional Airlines	50	47	94.0	50	46	92.0
All Airlines	94	86	91.5	94	84	89.4
Relates to services to and from Perth only.						
Gladstone						
QantasLink	151	128	84.8	148	119	80.4
Virgin Australia	76	69	90.8	76	69	90.8
All Airlines	227	197	86.8	224	188	83.9
Relates to services to and from Brisbane only.						
Gold Coast						
Jetstar	578	448	77.5	579	428	73.9
Qantas	124	117	94.4	124	110	88.7
QantasLink	19	17	89.5	19	16	84.2
Tigerair Australia	198	153	77.3	198	136	68.7
Virgin Australia	447	376	84.1	446	351	78.7
All Airlines	1 366	1 111	81.3	1 366	1 041	76.2
Relates to services to and from Adelaide, Melbourne and Sydney.						
Hamilton Island						
Jetstar	20	19	95.0	19	17	89.5
Qantas	17	14	82.4	18	15	83.3
QantasLink	30	29	96.7	30	29	96.7
Virgin Australia	43	43	100.0	44	43	97.7
All Airlines	110	105	95.5	111	104	93.7
Relates to services to and from Brisbane and Sydney.						

Airport	Arrivals			Departures		
	Sectors Flown	On Time		Sectors Flown	On Time	
		No.	%		No.	%
Hobart						
Jetstar	288	223	77.4	288	177	61.5
Qantas	6	6	100.0	6	5	83.3
QantasLink	184	149	81.0	184	153	83.2
Tigerair Australia	30	22	73.3	30	22	73.3
Virgin Australia	237	207	87.3	237	194	81.9
All Airlines	745	607	81.5	745	551	74.0
Relates to services to and from Brisbane, Melbourne and Sydney.						
Kalgoorlie						
Qantas	8	8	100.0	8	8	100.0
QantasLink	68	63	92.6	68	61	89.7
Virgin Australia	22	21	95.5	23	20	87.0
Virgin Australia Regional Airlines	36	35	97.2	36	34	94.4
All Airlines	134	127	94.8	135	123	91.1
Relates to services to and from Perth only.						
Karratha						
Qantas	16	16	100.0	16	16	100.0
QantasLink	159	149	93.7	156	145	92.9
Virgin Australia Regional Airlines	67	61	91.0	67	60	89.6
All Airlines	242	226	93.4	239	221	92.5
Relates to services to and from Perth only.						
Launceston						
Jetstar	187	129	69.0	188	92	48.9
QantasLink	107	92	86.0	107	85	79.4
Virgin Australia	127	110	86.6	128	104	81.3
All Airlines	421	331	78.6	423	281	66.4
Relates to services to and from Melbourne and Sydney.						
Mackay						
Jetstar	47	40	85.1	47	35	74.5
QantasLink	105	96	91.4	106	88	83.0
Virgin Australia	129	117	90.7	129	112	86.8
All Airlines	281	253	90.0	282	235	83.3
Relates to services to and from Brisbane only.						
Melbourne						
Jetstar	1 569	1 087	69.3	1 566	1 096	70.0
Qantas	2 030	1 699	83.7	2 034	1 793	88.2
QantasLink	415	347	83.6	413	345	83.5
Regional Express	75	52	69.3	76	63	82.9
Tigerair Australia	667	472	70.8	667	501	75.1
Virgin Australia	2 148	1 745	81.2	2 152	1 882	87.5
All Airlines	6 904	5 402	78.2	6 908	5 680	82.2
Relates to services to and from Adelaide, Brisbane, Cairns, Canberra, Darwin, Gold Coast, Hobart, Launceston, Mildura, Newcastle, Perth, Sunshine Coast and Sydney.						
Mildura						
QantasLink	89	83	93.3	89	82	92.1
Regional Express	76	63	82.9	75	59	78.7
Virgin Australia	30	20	66.7	30	20	66.7
All Airlines	195	166	85.1	194	161	83.0
Relates to services to and from Melbourne only.						

Airport	Arrivals			Departures		
	Sectors	On Time		Sectors	On Time	
	Flown	No.	%	Flown	No.	%
Moranbah						
QantasLink	71	66	93.0	64	61	95.3
Virgin Australia	55	52	94.5	55	54	98.2
All Airlines	126	118	93.7	119	115	96.6
Relates to services to and from Brisbane only.						
Mount Isa						
Qantas	3	3	100.0	3	3	100.0
QantasLink	48	43	89.6	46	41	89.1
Virgin Australia	16	14	87.5	16	14	87.5
All Airlines	67	60	89.6	65	58	89.2
Relates to services to and from Brisbane only.						
Newcastle						
Jetstar	207	170	82.1	207	171	82.6
QantasLink	85	72	84.7	84	69	82.1
Virgin Australia	113	108	95.6	113	104	92.0
All Airlines	405	350	86.4	404	344	85.1
Relates to services to and from Brisbane and Melbourne.						
Newman						
Qantas	55	53	96.4	55	54	98.2
QantasLink	62	58	93.5	61	57	93.4
Virgin Australia	17	16	94.1	17	16	94.1
Virgin Australia Regional Airlines	19	17	89.5	19	17	89.5
All Airlines	153	144	94.1	152	144	94.7
Relates to services to and from Perth only.						
Perth						
Jetstar	119	108	90.8	116	94	81.0
Qantas	750	677	90.3	747	698	93.4
QantasLink	524	482	92.0	529	473	89.4
Tigerair Australia	87	81	93.1	86	80	93.0
Virgin Australia	500	451	90.2	496	450	90.7
Virgin Australia Regional Airlines	265	243	91.7	265	249	94.0
All Airlines	2 245	2 042	91.0	2 239	2 044	91.3
Relates to services to and from Adelaide, Brisbane, Broome, Darwin, Geraldton, Kalgoorlie, Karratha, Melbourne, Newman, Port Hedland and Sydney.						
Port Hedland						
Qantas	28	26	92.9	28	24	85.7
QantasLink	98	87	88.8	97	82	84.5
Virgin Australia	7	7	100.0	7	6	85.7
Virgin Australia Regional Airlines	43	40	93.0	43	40	93.0
All Airlines	176	160	90.9	175	152	86.9
Relates to services to and from Perth only.						
Port Lincoln						
QantasLink	103	91	88.3	102	93	91.2
Regional Express	191	182	95.3	192	183	95.3
All Airlines	294	273	92.9	294	276	93.9
Relates to services to and from Adelaide only.						

Airport	Arrivals			Departures		
	Sectors Flown	On Time		Sectors Flown	On Time	
		No.	%		No.	%
Port Macquarie						
QantasLink	128	108	84.4	127	110	86.6
Virgin Australia	56	50	89.3	55	44	80.0
All Airlines	184	158	85.9	182	154	84.6
Relates to services to and from Sydney only.						
Proserpine						
Jetstar	33	32	97.0	33	28	84.8
Tigerair Australia	16	15	93.8	16	15	93.8
Virgin Australia	32	31	96.9	32	28	87.5
All Airlines	81	78	96.3	81	71	87.7
Relates to services to and from Brisbane only.						
Rockhampton						
QantasLink	112	86	76.8	112	95	84.8
Virgin Australia	88	78	88.6	87	75	86.2
All Airlines	200	164	82.0	199	170	85.4
Relates to services to and from Brisbane only.						
Sunshine Coast						
Jetstar	225	172	76.4	225	122	54.2
QantasLink	34	32	94.1	35	31	88.6
Virgin Australia	92	82	89.1	92	74	80.4
All Airlines	351	286	81.5	352	227	64.5
Relates to services to and from Melbourne and Sydney.						
Sydney						
Jetstar	1 568	1 165	74.3	1 572	1 152	73.3
Qantas	2 149	1 892	88.0	2 149	1 863	86.7
QantasLink	1 375	1 176	85.5	1 379	1 154	83.7
Regional Express	444	365	82.2	444	389	87.6
Tigerair Australia	602	453	75.2	603	454	75.3
Virgin Australia	2 450	2 111	86.2	2 454	2 130	86.8
All Airlines	8 588	7 162	83.4	8 601	7 142	83.0
Relates to services to and from Adelaide, Albury, Armidale, Ayers Rock, Ballina, Brisbane, Cairns, Canberra, Coffs Harbour, Darwin, Dubbo, Gold Coast, Hamilton Island, Hobart, Launceston, Melbourne, Perth, Port Macquarie, Sunshine Coast, Tamworth, Townsville and Wagga Wagga.						
Tamworth						
QantasLink	143	125	87.4	143	127	88.8
Virgin Australia	48	43	89.6	48	42	87.5
All Airlines	191	168	88.0	191	169	88.5
Relates to services to and from Sydney only.						
Townsville						
Jetstar	75	64	85.3	76	57	75.0
Qantas	70	68	97.1	70	61	87.1
QantasLink	208	192	92.3	206	190	92.2
Regional Express	32	29	90.6	32	31	96.9
Virgin Australia	163	158	96.9	163	158	96.9
All Airlines	548	511	93.2	547	497	90.9
Relates to services to and from Brisbane, Cairns and Sydney.						

<i>Airport</i>	<i>Arrivals</i>			<i>Departures</i>		
	<i>Sectors</i>	<i>On Time</i>		<i>Sectors</i>	<i>On Time</i>	
	<i>Flown</i>	<i>No.</i>	<i>%</i>	<i>Flown</i>	<i>No.</i>	<i>%</i>
Wagga Wagga						
QantasLink	109	92	84.4	109	96	88.1
Regional Express	117	107	91.5	119	112	94.1
All Airlines	226	199	88.1	228	208	91.2

Relates to services to and from Sydney only.

Definitions

On time arrival	A flight arrival is counted as "on time" if it arrived at the gate before 15 minutes after the scheduled arrival time shown in the carriers' schedule. Neither diverted nor cancelled flights count as on time.
On time departure	A flight departure is counted as "on time" if it departs the gate before 15 minutes after the scheduled departure time shown in the carriers' schedule.
Cancellation	A flight removed from service within 7 days of scheduled departure is regarded as a cancellation.
On time departure percentage	The percentage of on time departures is measured against the number of departures <i>operated</i> on any particular sector.
On time arrival percentage	The percentage of on time arrivals is measured against the number of arrivals <i>operated</i> on any particular sector.
Cancellation percentage	The percentage of cancellations is measured against the number of services <i>scheduled</i> on any particular sector.
