



Australian Government

Department of Infrastructure and Regional Development

Bureau of Infrastructure, Transport and Regional Economics

STATISTICAL REPORT



Aviation

Domestic airline on time performance
April 2016

© Commonwealth of Australia 2016

ISSN: 1832-0759

Ownership of intellectual property rights in this publication

Unless otherwise noted, copyright (and any other intellectual property rights, if any) in this publication is owned by the Commonwealth of Australia (referred to below as the Commonwealth).

Disclaimer

The material contained in this publication is made available on the understanding that the Commonwealth is not providing professional advice, and that users exercise their own skill and care with respect to its use, and seek independent advice if necessary.

The Commonwealth makes no representations or warranties as to the contents or accuracy of the information contained in this publication. To the extent permitted by law, the Commonwealth disclaims liability to any person or organisation in respect of anything done, or omitted to be done, in reliance upon information contained in this publication.

Creative Commons licence

With the exception of (a) the Coat of Arms; and (b) the Department of Infrastructure and Regional Development's photos and graphics, copyright in this publication is licensed under a Creative Commons Attribution 3.0 Australia Licence.

Creative Commons Attribution 3.0 Australia Licence is a standard form licence agreement that allows you to copy, communicate and adapt this publication provided that you attribute the work to the Commonwealth and abide by the other licence terms. A summary of the licence terms is available from <http://creativecommons.org/licenses/by/3.0/au/deed.en>. The full licence terms are available from <http://creativecommons.org/licenses/by/3.0/au/legalcode>.

Use of the Coat of Arms

The Department of the Prime Minister and Cabinet sets the terms under which the Coat of Arms is used. Please refer to the Department's Commonwealth Coat of Arms and Government branding web page <http://www.dpmmc.gov.au/guidelines/index.cfm#brand> and, in particular, the Guidelines on the use of the Commonwealth Coat of Arms publication.

An appropriate citation for this report is:

Bureau of Infrastructure, Transport and Regional Economics (BITRE), 2016, Domestic airline on time performance, Statistical Report, BITRE, Canberra ACT.

Contact us

This publication is available in PDF format. All other rights are reserved, including in relation to any Departmental logos or trade marks which may exist. For enquiries regarding the licence and any use of this publication, please contact:

Bureau of Infrastructure, Transport and Regional Economics (BITRE)
Department of Infrastructure and Regional Development
GPO Box 501, Canberra ACT 2601, Australia
Telephone: (international) +61 2 6274 7210
Fax: (international) +61 2 6274 6855
Email: bitre@infrastructure.gov.au
Website: www.bitre.gov.au

Inquiries

Should you require additional information about the statistics contained in this publication:

Telephone (02) 6274 7790 or Facsimile (02) 6274 7727

Electronic mail: AVSTATS@infrastructure.gov.au

Web site: <http://www.bitre.gov.au/statistics/aviation/otphome.aspx>

Foreword

The Bureau of Infrastructure, Transport and Regional Economics (BITRE) monitors the punctuality and reliability of major domestic airlines operating between Australian airports. The purpose of this is to allow for evaluation of overall industry and individual airline performance, so that consumers of air travel can make informed decisions.

The following domestic airlines currently report this information monthly to the BITRE: Jetstar, Qantas, QantasLink, Regional Express, Tigerair Australia, Virgin Australia and Virgin Australia Regional Airlines. Data has been gathered since November 2003, although some airlines commenced reporting at a later date, including Jetstar which first reported in May 2004, MacAir in July 2005, Tigerair Australia in April 2008 and Virgin Australia Regional Airlines in May 2013. MacAir ceased operations in February 2009 and data was not received for December 2008 onwards. Virgin Blue was rebranded as Virgin Australia in May 2011 and Tiger Airways was rebranded as Tigerair Australia in July 2013 and time series data in Microsoft Excel spreadsheet format on the BITRE website have been revised to reflect these changes. Services operated by Skywest on behalf of Virgin Australia using ATR/F100 aircraft commenced in November 2011 and were shown separately as Virgin Australia – ATR/F100 Operations. Virgin Australia Regional Airlines commenced operations in May 2013. It was formed after the acquisition of Skywest by Virgin Australia and represented a combination of operations previously reported under Skywest and Virgin Australia – ATR/F100 Operations. In January 2016, Virgin Australia transferred their ATR fleet from Virgin Australia Regional Airlines to Virgin Australia.

Information presented in this report is for Australian domestic routes for which the passenger load averaged 8 000 or more passengers per month over the previous six months and where two or more airlines operated in competition on those routes. There were 66 routes that met this definition in April 2016. Over time, routes which meet these criteria change as airline networks and traffic levels vary.

Participating airlines report their overall monthly network performance where this is possible.

Total industry figures encompass all services operated by reporting airlines only. These airlines collectively carried over 95 per cent of total domestic passengers (regular public transport only) in 2015.

The method of capturing on time performance varies between airlines utilising different recording systems. Jetstar and Qantas jet aircraft use Aircraft Communication Addressing and Reporting System (ACARS) to electronically measure on time performance. Regional Express, Tigerair Australia, Virgin Australia, Virgin Australia Regional Airlines and the Qantas non-jet fleet record on time performance manually using records from pilots, gate agents and/or ground crews.

After initial data is collected, aggregate reports are audited internally by participating airlines prior to publication.

Reports and detailed time series data in Microsoft Excel spreadsheet format are available from the BITRE website at: <http://www.bitre.gov.au/statistics/aviation/otphome.aspx>.

Contents

	Page
Industry performance	1
Individual routes	10
Airports	23
Definitions	29

Industry performance

For April 2016, on time performance over all routes operated by participating airlines (Jetstar, Qantas, QantasLink, Regional Express, Tigerair Australia, Virgin Australia and Virgin Australia Regional Airlines) averaged 88.9 per cent for on time arrivals and 89.3 per cent for on time departures. Cancellations represented 1.1 per cent of all scheduled flights. The equivalent figures for April 2015 were 82.2 per cent for arrivals, 83.9 per cent for departures and 1.7 per cent for cancellations.

This month's on time arrivals figure was better than the long term average performance for all routes (82.8 per cent) and the on time departures figure was also better than the long term average (84.2 per cent). The rate of cancellations was lower than the long term average of 1.4 per cent.

Virgin Australia achieved the highest on time arrivals among the major domestic airlines at 92.1 per cent followed by Qantas at 90.8 per cent, Tigerair Australia at 89.6 per cent and Jetstar at 82.9 per cent. Regional Express was the best performing regional airline for on time arrivals at 88.3 per cent, followed by QantasLink at 88.0 per cent and Virgin Australia Regional Airlines at 84.7 per cent. The Qantas network (Qantas and QantasLink combined operations) recorded 89.4 per cent for on time arrivals while the Virgin Australia network (Virgin Australia and Virgin Australia Regional Airlines combined operations) recorded 91.8 per cent.

Virgin Australia also achieved the highest level of on time departures for April 2016 at 93.0 per cent, followed by Qantas at 91.3 per cent, Tigerair Australia at 90.6 per cent and Jetstar at 79.7 per cent. Of the regional airlines, Regional Express recorded 91.4 per cent followed by Virgin Australia Regional Airlines at 88.2 per cent and QantasLink at 88.1 per cent. The Qantas network recorded 89.6 per cent for on time departures while the Virgin Australia network recorded 92.8 per cent.

QantasLink had the highest percentage of cancellations (2.5 per cent) during the month, followed by Jetstar (1.1 per cent), Qantas (0.9 per cent), Virgin Australia (0.6 per cent), Regional Express and Virgin Australia Regional Airlines (both 0.5 per cent) and Tigerair Australia (0.1 per cent).

Airlines' on time performance varies across the routes they serve. Individual route data by specific airline for 66 routes are shown on pages 10-22.

Of the 66 routes which met the criteria for on time performance reporting in April 2016, the Brisbane-Proserpine route had the highest percentage of on time arrivals (100.0 per cent) and the Darwin-Alice Springs route had the highest percentage of on time departures (97.2 per cent). The Launceston-Sydney route had the lowest percentage of on time arrivals (73.3 per cent) and the Hamilton Island-Sydney route had the lowest percentage of on time departures (68.1 per cent).

Cancellations were highest on the Brisbane-Moranbah route at 8.8 per cent, followed by the Moranbah-Brisbane route at 7.2 per cent, the Sydney-Canberra route at 3.9 per cent, the Canberra-Sydney route at 3.8 per cent and the Newcastle-Brisbane route at 3.5 per cent.

Proserpine Airport recorded the highest percentage of on time arrivals (100.0 per cent) and Mount Isa Airport recorded the highest percentage of on time departures (95.8 per cent). Port Macquarie Airport recorded the lowest percentage of on time arrivals (74.2 per cent) and the lowest percentage of on time departures (72.3 per cent). These figures only refer to reported routes and do not cover all flights at these airports.

Table 1 On time performance for April 2016 — Total Industry

	<i>Sectors</i>		<i>Arrivals On Time</i>		<i>Departures On Time</i>		<i>Cancellations</i>	
	<i>Scheduled</i>	<i>Flown</i>	<i>No.</i>	<i>%</i>	<i>No.</i>	<i>%</i>	<i>No.</i>	<i>%</i>
Jetstar	7 034	6 957	5 764	82.9	5 543	79.7	77	1.1
Qantas	9 136	9 056	8 223	90.8	8 265	91.3	80	0.9
QantasLink	10 292	10 037	8 837	88.0	8 845	88.1	255	2.5
Regional Express	6 333	6 300	5 560	88.3	5 760	91.4	33	0.5
Tigerair Australia	2 109	2 106	1 888	89.6	1 908	90.6	3	0.1
Virgin Australia	12 219	12 146	11 189	92.1	11 299	93.0	73	0.6
Virgin Australia Regional Airlines	606	603	511	84.7	532	88.2	3	0.5
All Airlines	47 729	47 205	41 972	88.9	42 152	89.3	524	1.1
Qantas - all QF designated services	19 428	19 093	17 060	89.4	17 110	89.6	335	1.7
Virgin Australia - all VA designated services	12 825	12 749	11 700	91.8	11 831	92.8	76	0.6

Total airline network data (including routes not shown in this report).

In January 2016, Virgin Australia transferred their ATR fleet from Virgin Australia Regional Airlines to Virgin Australia.

Airlines' on time performance varies across the routes they serve. Individual route data by specific airline for 66 routes are shown on pages 10-22.

Table 2 Top ten routes for on time performance for April 2016 (participating airlines only)

<i>Arrivals</i>		<i>Departures</i>	
<i>Route</i>	<i>On Time (%)</i>	<i>Route</i>	<i>On Time (%)</i>
Brisbane-Proserpine	100.0	Darwin-Alice Springs	97.2
Brisbane-Darwin	97.5	Brisbane-Proserpine	96.6
Darwin-Alice Springs	97.2	Brisbane-Townsville	96.3
Cairns-Brisbane	96.6	Cairns-Brisbane	95.8
Proserpine-Brisbane	96.6	Canberra-Adelaide	95.8
Townsville-Brisbane	96.6	Adelaide-Port Lincoln	95.8
Brisbane-Mackay	96.3	Mount Isa-Brisbane	95.8
Brisbane-Townsville	96.3	Adelaide-Gold Coast	95.7
Brisbane-Adelaide	96.0	Newman-Perth	95.5
Sydney-Launceston	96.0	Port Lincoln-Adelaide	95.5

Table 3 Top ten airports for on time performance for April 2016 (participating airlines and reported routes only)

<i>Arrivals</i>		<i>Departures</i>	
<i>Airport</i>	<i>On Time (%)</i>	<i>Airport</i>	<i>On Time (%)</i>
Proserpine	100.0	Mount Isa	95.8
Alice Springs	96.5	Newman	95.5
Mackay	96.3	Port Lincoln	95.5
Mount Isa	95.8	Moranbah	94.2
Darwin	95.4	Geraldton	94.2
Ayers Rock	94.9	Bundaberg	93.7
Townsville	94.9	Rockhampton	93.6
Port Lincoln	94.8	Ayers Rock	93.3
Moranbah	94.2	Townsville	93.3
Rockhampton	94.1	Gladstone	93.3

Total industry on time performance

Figure 1 On time performance (by month from April 2013)—Total Industry

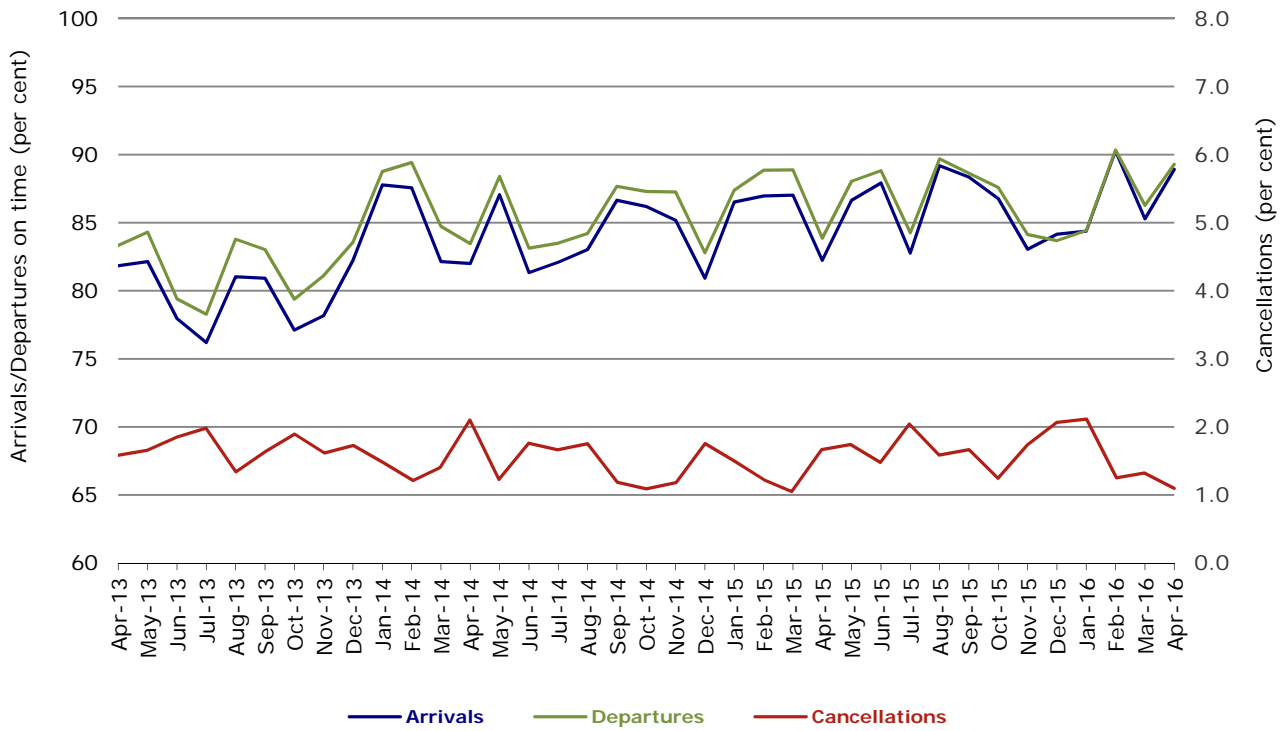


Figure 2 Arrivals on time (by month from April 2015)

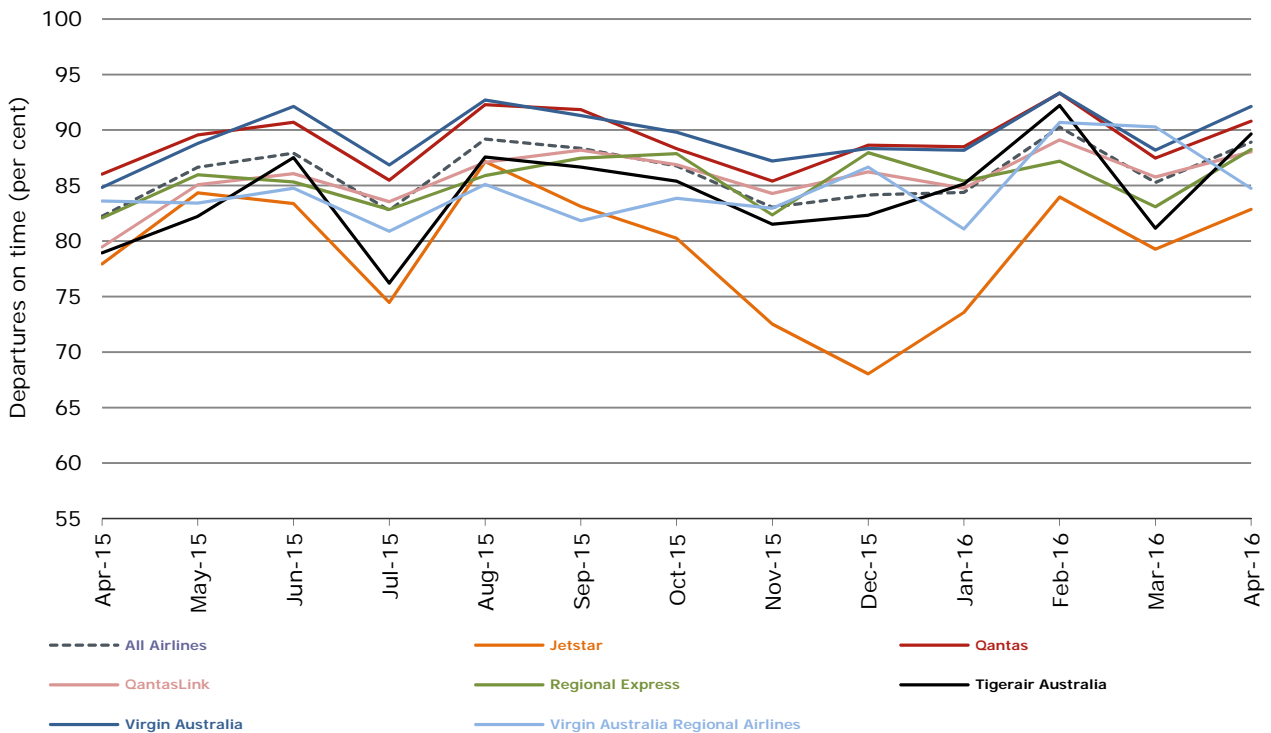


Figure 3 Departures on time (by month from April 2015)

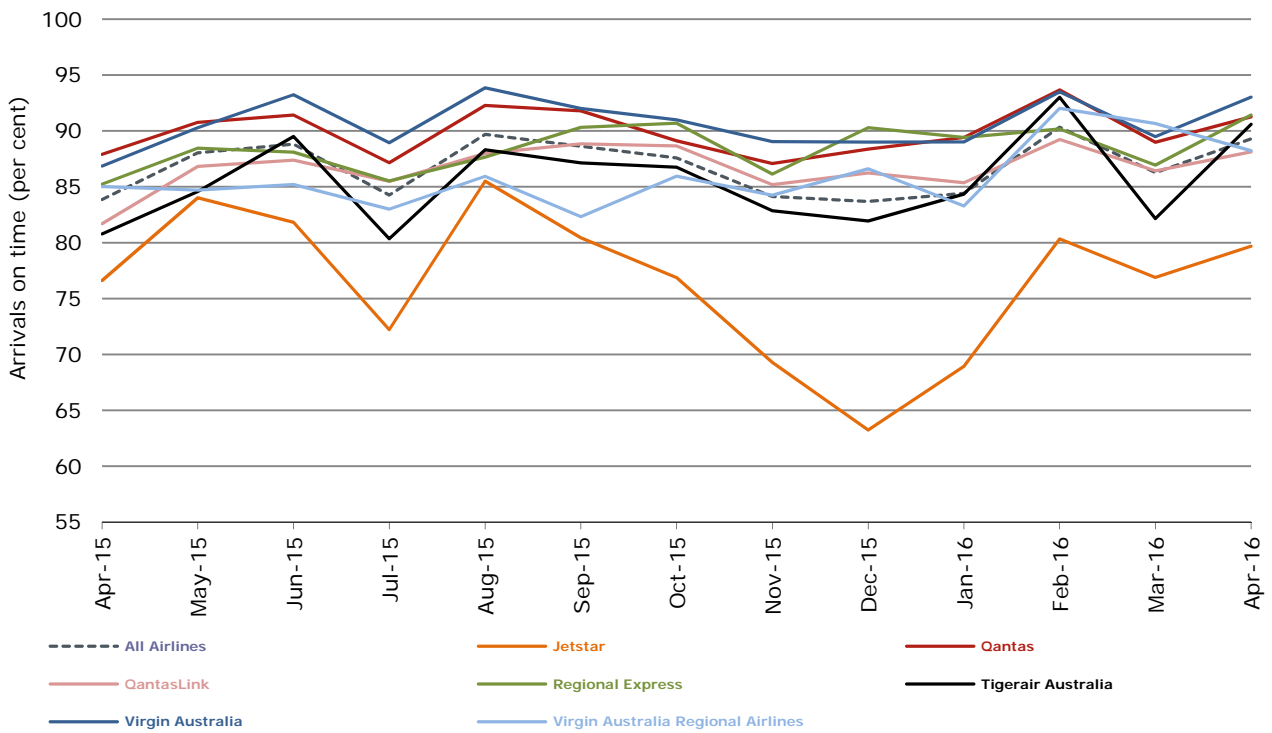
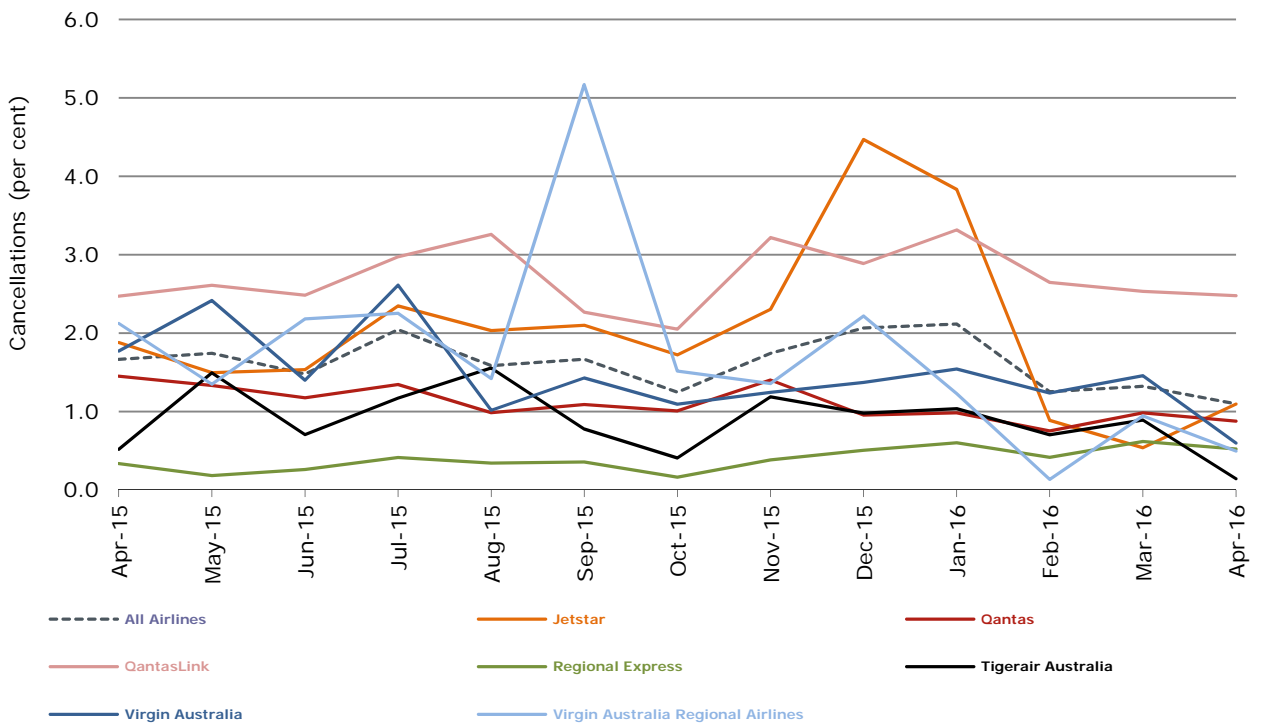


Figure 4 Cancellations (by month from April 2015)



Major domestic airlines on time performance

Figure 5 On time performance (by month from April 2013)—Jetstar

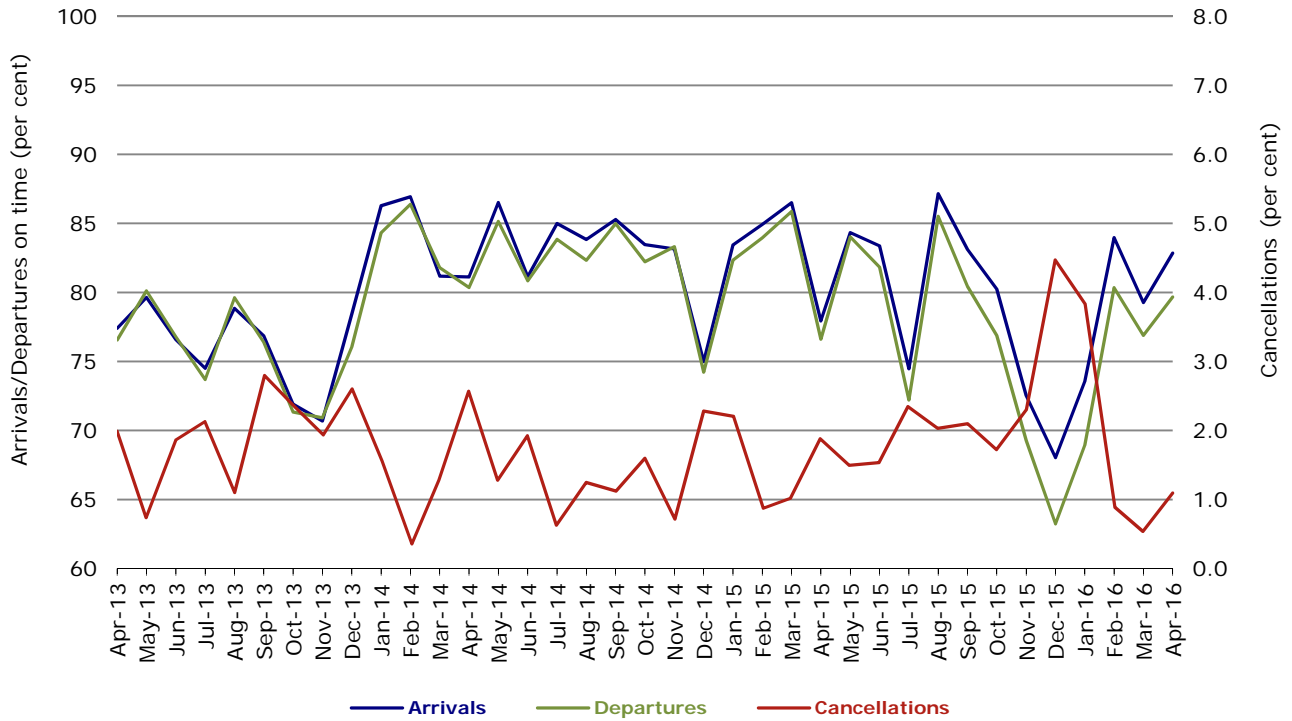


Figure 6 On time performance (by month from April 2013)—Qantas

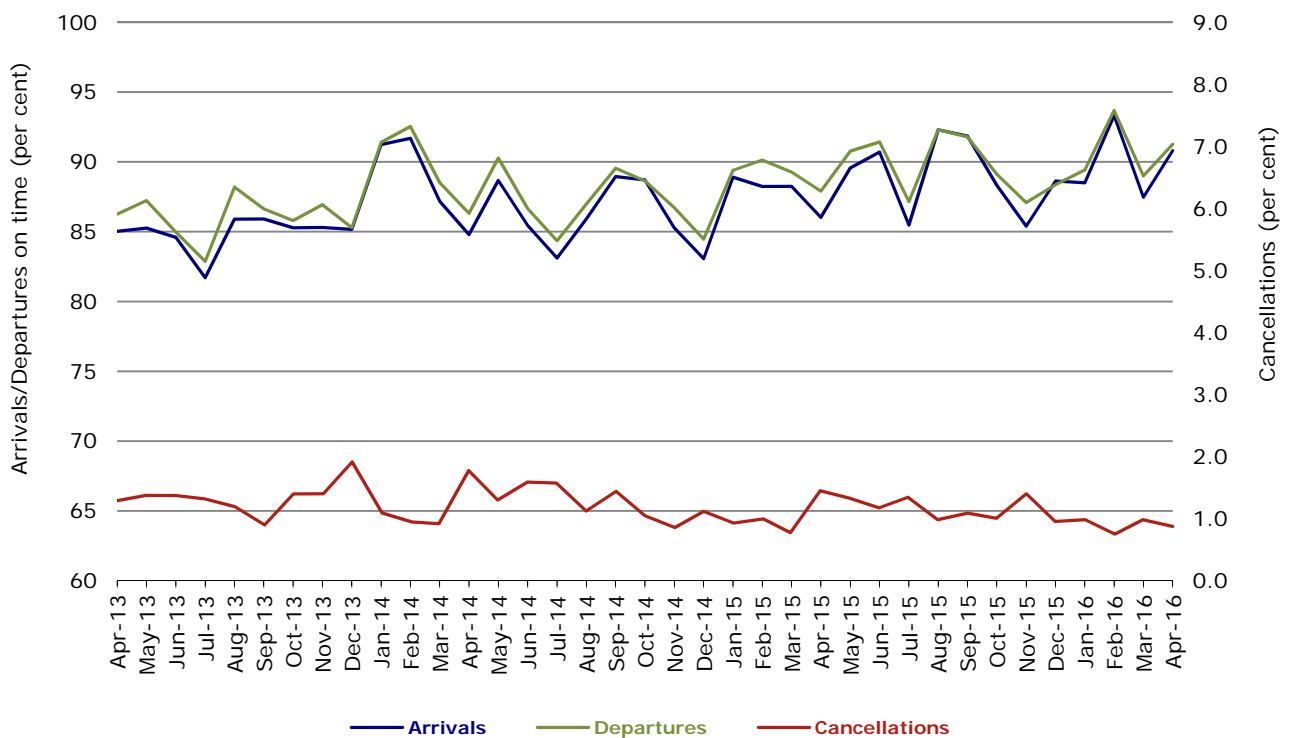


Figure 7 On time performance (by month from April 2013)—Tigerair Australia

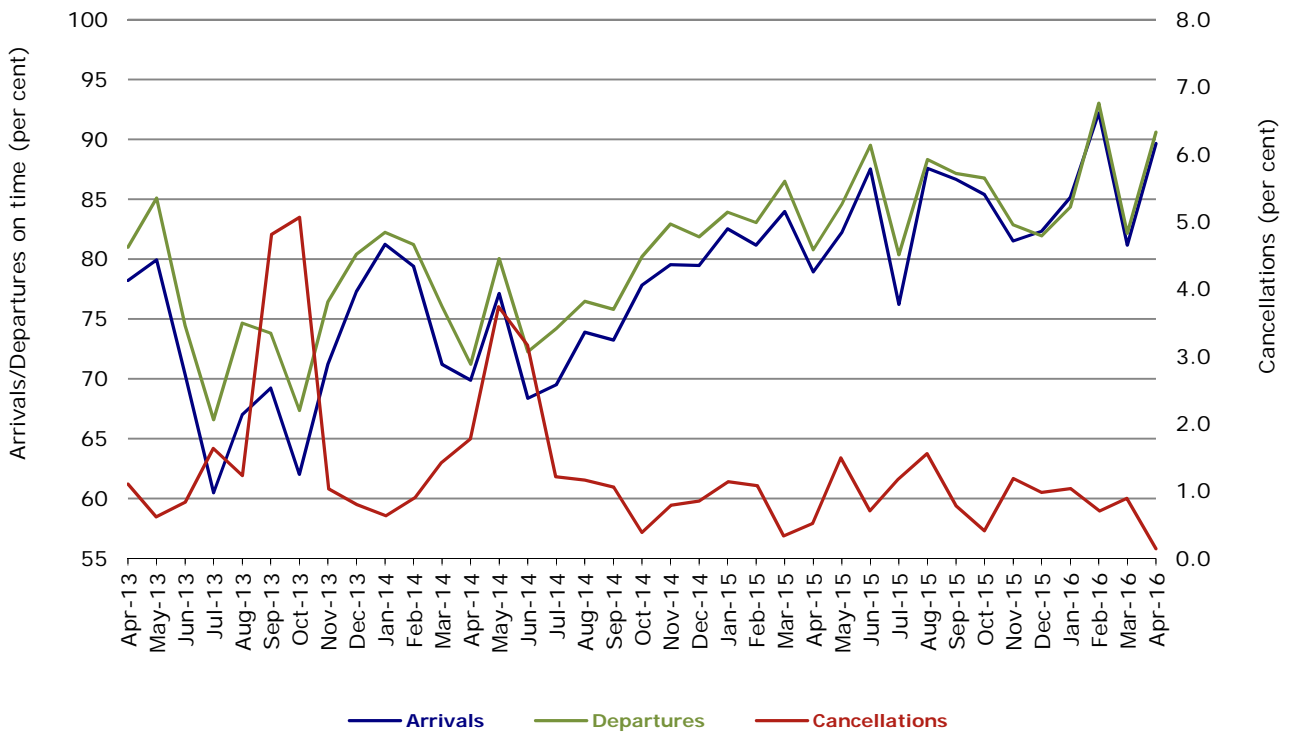
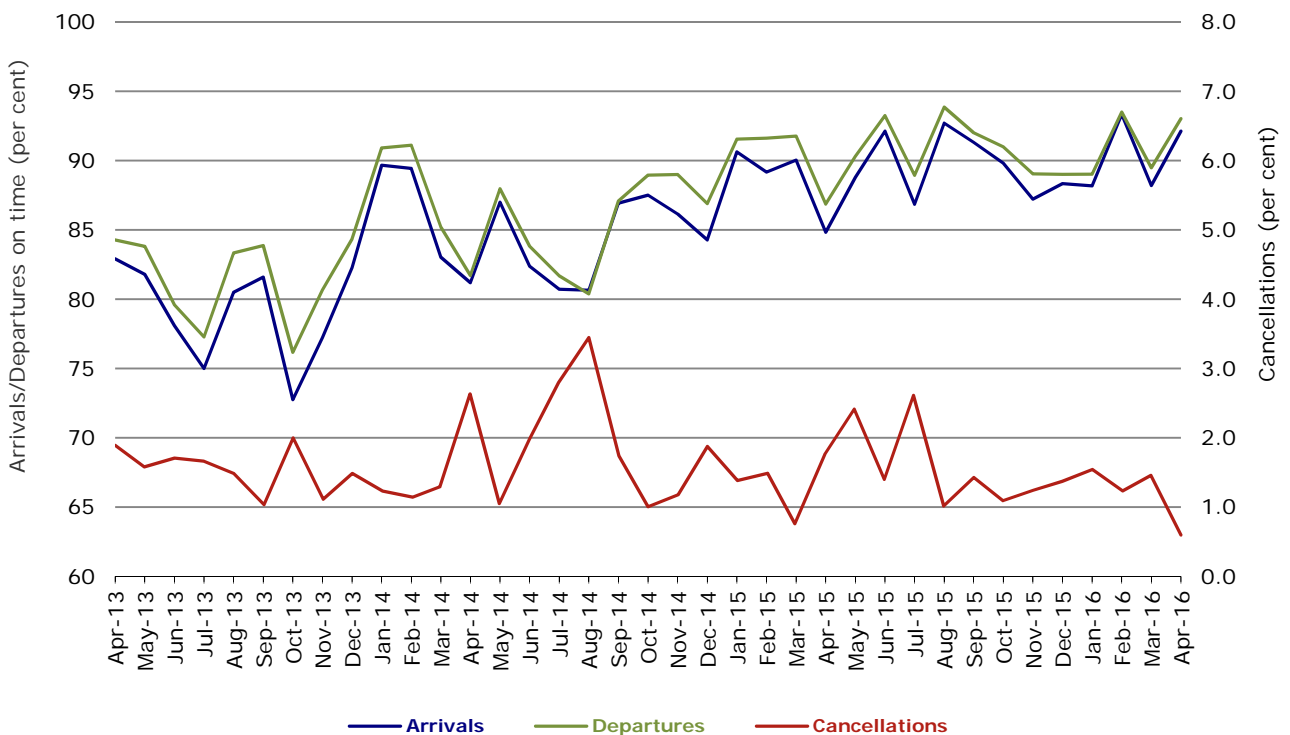


Figure 8 On time performance (by month from April 2013)—Virgin Australia



In January 2016, Virgin Australia transferred their ATR fleet from Virgin Australia Regional Airlines to Virgin Australia.

Major regional airlines on time performance

Figure 9 On time performance (by month from April 2013)—QantasLink

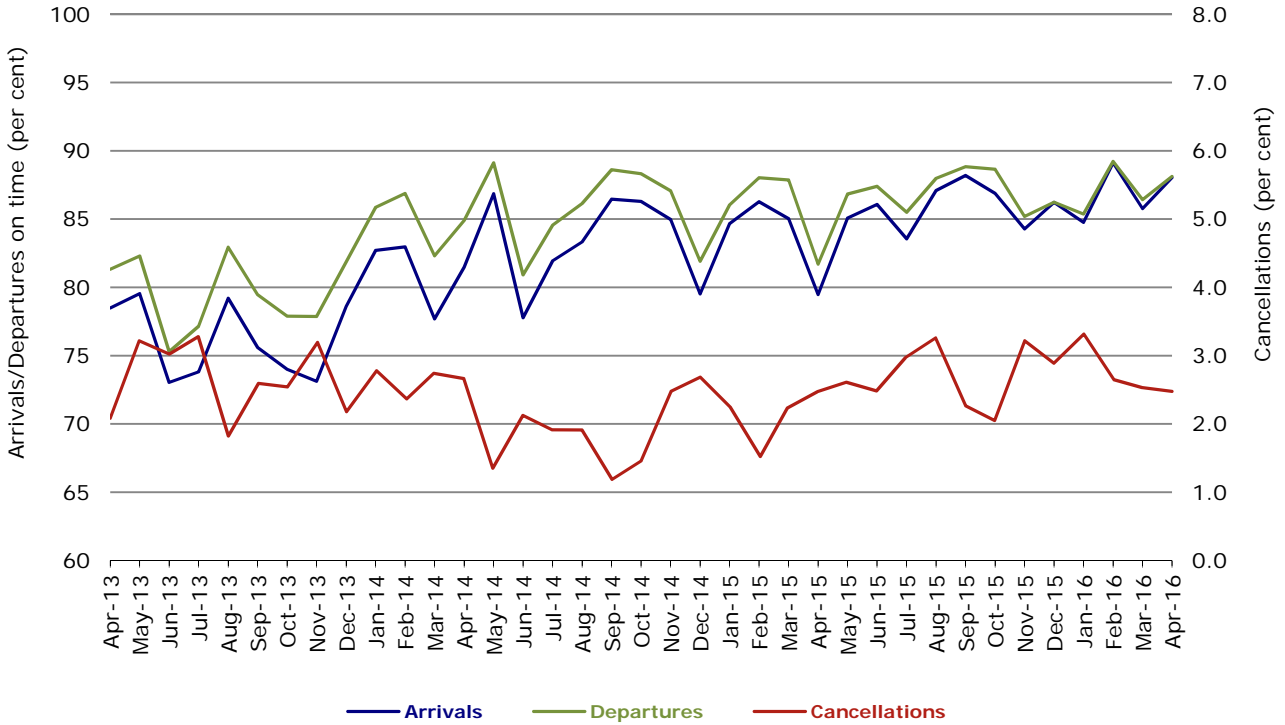


Figure 10 On time performance (by month from April 2013)—Regional Express

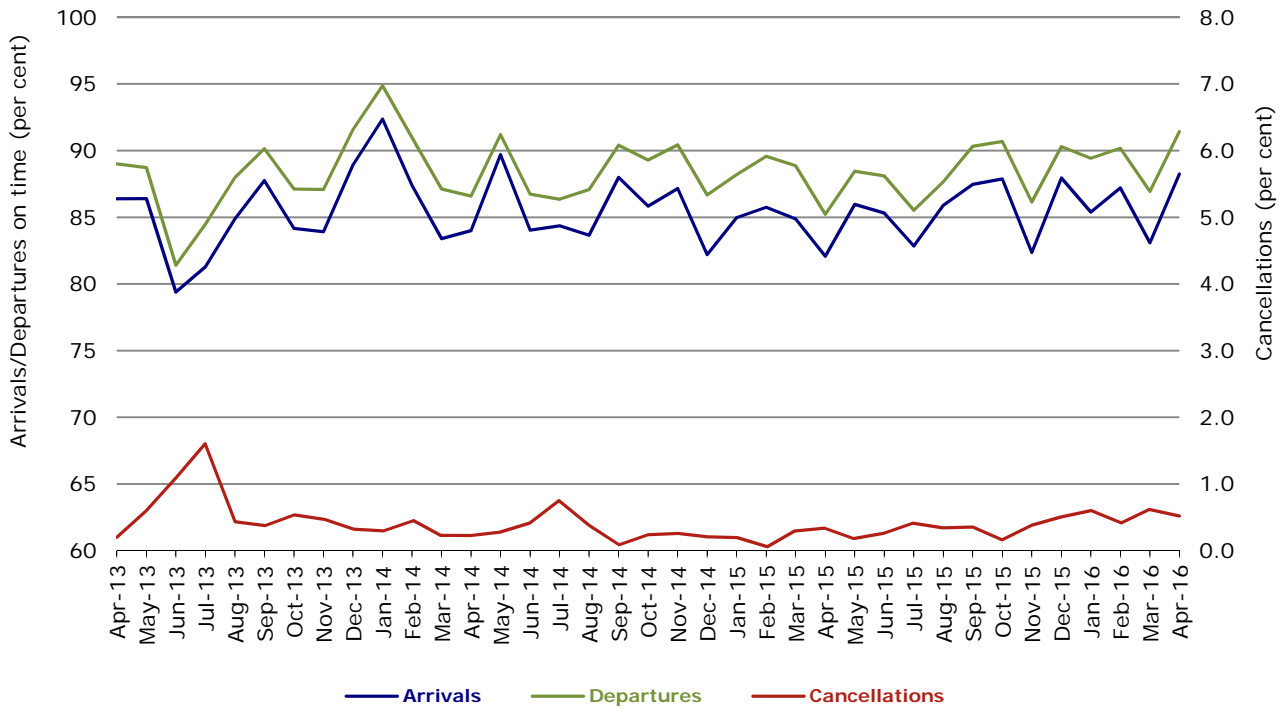
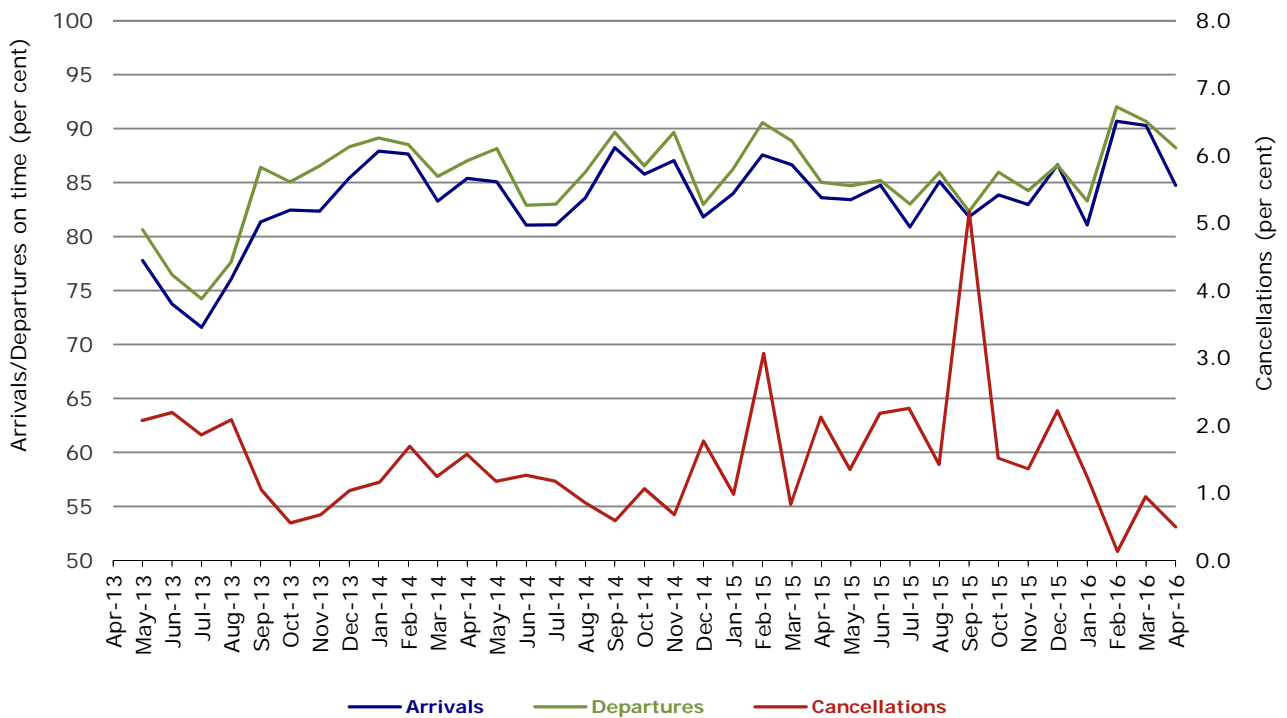


Figure 11 On time performance (by month from April 2013)
Virgin Australia Regional Airlines



Virgin Australia Regional Airlines commenced operations in May 2013. It was formed after the acquisition of Skywest by Virgin Australia and represented a combination of operations previously reported under Skywest and Virgin Australia – ATR/F100 Operations. In January 2016, Virgin Australia transferred their ATR fleet from Virgin Australia Regional Airlines to Virgin Australia.

Individual routes

On time performance is reported for all routes where the passenger load averages over 8000 passengers per month over the previous six months, and where two or more airlines operate in competition on those routes. There are now 66 routes which meet this definition. Over time, however, routes which meet this definition may change as airline networks and traffic levels vary.

	<i>Sectors</i>		<i>Arrivals On Time</i>		<i>Departures On Time</i>		<i>Cancellations</i>	
	<i>Sched.</i>	<i>Flown</i>	<i>No.</i>	<i>%</i>	<i>No.</i>	<i>%</i>	<i>No.</i>	<i>%</i>
Adelaide-Alice Springs								
Qantas	30	30	28	93.3	28	93.3	0	0.0
Virgin Australia	12	12	12	100.0	12	100.0	0	0.0
All Airlines	42	42	40	95.2	40	95.2	0	0.0
Adelaide-Brisbane								
Jetstar	27	27	27	100.0	27	100.0	0	0.0
Qantas	119	119	109	91.6	112	94.1	0	0.0
Tigerair Australia	21	21	17	81.0	19	90.5	0	0.0
Virgin Australia	111	110	105	95.5	105	95.5	1	0.9
All Airlines	278	277	258	93.1	263	94.9	1	0.4
Adelaide-Canberra								
Qantas	46	46	46	100.0	43	93.5	0	0.0
Virgin Australia	26	26	23	88.5	23	88.5	0	0.0
All Airlines	72	72	69	95.8	66	91.7	0	0.0
Adelaide-Gold Coast								
Jetstar	39	39	35	89.7	36	92.3	0	0.0
Virgin Australia	30	30	30	100.0	30	100.0	0	0.0
All Airlines	69	69	65	94.2	66	95.7	0	0.0
Adelaide-Melbourne								
Jetstar	98	97	77	79.4	64	66.0	1	1.0
Qantas	280	278	264	95.0	259	93.2	2	0.7
Tigerair Australia	71	71	62	87.3	62	87.3	0	0.0
Virgin Australia	282	282	258	91.5	265	94.0	0	0.0
All Airlines	731	728	661	90.8	650	89.3	3	0.4
Adelaide-Perth								
Jetstar	30	30	25	83.3	24	80.0	0	0.0
Qantas	116	116	109	94.0	107	92.2	0	0.0
Virgin Australia	74	74	73	98.6	72	97.3	0	0.0
All Airlines	220	220	207	94.1	203	92.3	0	0.0
Adelaide-Port Lincoln								
QantasLink	107	106	98	92.5	99	93.4	1	0.9
Regional Express	204	203	195	96.1	197	97.0	1	0.5
All Airlines	311	309	293	94.8	296	95.8	2	0.6
Adelaide-Sydney								
Jetstar	103	101	78	77.2	81	80.2	2	1.9
Qantas	228	227	198	87.2	218	96.0	1	0.4
QantasLink	29	29	24	82.8	22	75.9	0	0.0
Tigerair Australia	43	43	32	74.4	36	83.7	0	0.0
Virgin Australia	165	165	151	91.5	159	96.4	0	0.0
All Airlines	568	565	483	85.5	516	91.3	3	0.5
Albury-Sydney								
QantasLink	98	98	86	87.8	86	87.8	0	0.0
Regional Express	103	103	98	95.1	101	98.1	0	0.0
Virgin Australia	60	60	54	90.0	56	93.3	0	0.0
All Airlines	261	261	238	91.2	243	93.1	0	0.0

	<i>Sectors</i>		<i>Arrivals On Time</i>		<i>Departures On Time</i>		<i>Cancellations</i>	
	<i>Sched.</i>	<i>Flown</i>	<i>No.</i>	<i>%</i>	<i>No.</i>	<i>%</i>	<i>No.</i>	<i>%</i>
Alice Springs-Adelaide								
Qantas	30	30	24	80.0	24	80.0	0	0.0
Virgin Australia	12	12	12	100.0	12	100.0	0	0.0
All Airlines	42	42	36	85.7	36	85.7	0	0.0
Alice Springs-Darwin								
QantasLink	60	60	56	93.3	55	91.7	0	0.0
Virgin Australia	12	12	12	100.0	12	100.0	0	0.0
All Airlines	72	72	68	94.4	67	93.1	0	0.0
Armidale-Sydney								
QantasLink	129	126	92	73.0	90	71.4	3	2.3
Regional Express	75	75	56	74.7	62	82.7	0	0.0
All Airlines	204	201	148	73.6	152	75.6	3	1.5
Ayers Rock-Sydney								
Jetstar	30	30	27	90.0	28	93.3	0	0.0
Virgin Australia	30	30	29	96.7	28	93.3	0	0.0
All Airlines	60	60	56	93.3	56	93.3	0	0.0
Ballina-Sydney								
Jetstar	71	71	56	78.9	48	67.6	0	0.0
Regional Express	23	23	16	69.6	20	87.0	0	0.0
Virgin Australia	30	30	29	96.7	29	96.7	0	0.0
All Airlines	124	124	101	81.5	97	78.2	0	0.0
Brisbane-Adelaide								
Jetstar	27	27	25	92.6	25	92.6	0	0.0
Qantas	119	119	117	98.3	113	95.0	0	0.0
Tigerair Australia	21	21	19	90.5	17	81.0	0	0.0
Virgin Australia	111	110	105	95.5	104	94.5	1	0.9
All Airlines	278	277	266	96.0	259	93.5	1	0.4
Brisbane-Bundaberg								
QantasLink	131	131	123	93.9	121	92.4	0	0.0
Virgin Australia	30	30	27	90.0	28	93.3	0	0.0
All Airlines	161	161	150	93.2	149	92.5	0	0.0
Brisbane-Cairns								
Jetstar	110	108	100	92.6	90	83.3	2	1.8
Qantas	111	111	104	93.7	102	91.9	0	0.0
QantasLink	5	5	4	80.0	5	100.0	0	0.0
Tigerair Australia	28	28	27	96.4	28	100.0	0	0.0
Virgin Australia	133	133	129	97.0	129	97.0	0	0.0
All Airlines	387	385	364	94.5	354	91.9	2	0.5
Brisbane-Canberra								
Qantas	29	29	28	96.6	28	96.6	0	0.0
QantasLink	118	113	103	91.2	100	88.5	5	4.2
Virgin Australia	94	94	89	94.7	88	93.6	0	0.0
All Airlines	241	236	220	93.2	216	91.5	5	2.1
Brisbane-Darwin								
Jetstar	28	28	26	92.9	22	78.6	0	0.0
Qantas	45	45	44	97.8	43	95.6	0	0.0
Tigerair Australia	19	19	19	100.0	19	100.0	0	0.0
Virgin Australia	30	30	30	100.0	30	100.0	0	0.0
All Airlines	122	122	119	97.5	114	93.4	0	0.0
Brisbane-Emerald								
QantasLink	133	130	120	92.3	121	93.1	3	2.3
Virgin Australia	69	69	64	92.8	60	87.0	0	0.0
All Airlines	202	199	184	92.5	181	91.0	3	1.5

	<i>Sectors</i>		<i>Arrivals On Time</i>		<i>Departures On Time</i>		<i>Cancellations</i>	
	<i>Sched.</i>	<i>Flown</i>	<i>No.</i>	<i>%</i>	<i>No.</i>	<i>%</i>	<i>No.</i>	<i>%</i>
Brisbane-Gladstone								
QantasLink	188	182	163	89.6	169	92.9	6	3.2
Virgin Australia	131	131	127	96.9	123	93.9	0	0.0
All Airlines	319	313	290	92.7	292	93.3	6	1.9
Brisbane-Hamilton Island								
QantasLink	30	28	22	78.6	26	92.9	2	6.7
Virgin Australia	30	30	28	93.3	29	96.7	0	0.0
All Airlines	60	58	50	86.2	55	94.8	2	3.3
Brisbane-Hobart								
Jetstar	29	29	28	96.6	27	93.1	0	0.0
Virgin Australia	30	30	28	93.3	28	93.3	0	0.0
All Airlines	59	59	56	94.9	55	93.2	0	0.0
Brisbane-Mackay								
Jetstar	42	42	39	92.9	35	83.3	0	0.0
QantasLink	103	102	100	98.0	97	95.1	1	1.0
Virgin Australia	152	152	146	96.1	144	94.7	0	0.0
All Airlines	297	296	285	96.3	276	93.2	1	0.3
Brisbane-Melbourne								
Jetstar	123	120	105	87.5	105	87.5	3	2.4
Qantas	423	422	406	96.2	395	93.6	1	0.2
Tigerair Australia	119	119	112	94.1	109	91.6	0	0.0
Virgin Australia	378	373	345	92.5	352	94.4	5	1.3
All Airlines	1 043	1 034	968	93.6	961	92.9	9	0.9
Brisbane-Moranbah								
QantasLink	106	91	87	95.6	84	92.3	15	14.2
Virgin Australia	65	65	60	92.3	62	95.4	0	0.0
All Airlines	171	156	147	94.2	146	93.6	15	8.8
Brisbane-Mount Isa								
Qantas	22	21	21	100.0	19	90.5	1	4.5
QantasLink	31	30	28	93.3	28	93.3	1	3.2
Virgin Australia	20	20	19	95.0	19	95.0	0	0.0
All Airlines	73	71	68	95.8	66	93.0	2	2.7
Brisbane-Newcastle								
Jetstar	73	71	60	84.5	57	80.3	2	2.7
QantasLink	91	89	79	88.8	85	95.5	2	2.2
Virgin Australia	90	87	82	94.3	81	93.1	3	3.3
All Airlines	254	247	221	89.5	223	90.3	7	2.8
Brisbane-Perth								
Qantas	132	132	119	90.2	108	81.8	0	0.0
Virgin Australia	107	107	99	92.5	97	90.7	0	0.0
All Airlines	239	239	218	91.2	205	85.8	0	0.0
Brisbane-Proserpine								
Jetstar	29	29	29	100.0	28	96.6	0	0.0
Virgin Australia	30	30	30	100.0	29	96.7	0	0.0
All Airlines	59	59	59	100.0	57	96.6	0	0.0
Brisbane-Rockhampton								
QantasLink	169	165	155	93.9	152	92.1	4	2.4
Virgin Australia	192	191	180	94.2	176	92.1	1	0.5
All Airlines	361	356	335	94.1	328	92.1	5	1.4

	<i>Sectors</i>		<i>Arrivals On Time</i>		<i>Departures On Time</i>		<i>Cancellations</i>	
	<i>Sched.</i>	<i>Flown</i>	<i>No.</i>	<i>%</i>	<i>No.</i>	<i>%</i>	<i>No.</i>	<i>%</i>
Brisbane-Sydney								
Jetstar	165	159	139	87.4	137	86.2	6	3.6
Qantas	597	595	568	95.5	566	95.1	2	0.3
Tigerair Australia	101	100	91	91.0	85	85.0	1	1.0
Virgin Australia	534	530	500	94.3	496	93.6	4	0.7
All Airlines	1 397	1 384	1 298	93.8	1 284	92.8	13	0.9
Brisbane-Townsville								
Jetstar	40	39	35	89.7	36	92.3	1	2.5
Qantas	143	143	140	97.9	138	96.5	0	0.0
Virgin Australia	139	139	134	96.4	135	97.1	0	0.0
All Airlines	322	321	309	96.3	309	96.3	1	0.3
Broome-Perth								
Qantas	25	25	23	92.0	23	92.0	0	0.0
QantasLink	56	56	52	92.9	50	89.3	0	0.0
Virgin Australia	5	5	5	100.0	5	100.0	0	0.0
Virgin Australia Regional Airlines	61	61	49	80.3	49	80.3	0	0.0
All Airlines	147	147	129	87.8	127	86.4	0	0.0
Bundaberg-Brisbane								
QantasLink	131	130	123	94.6	124	95.4	1	0.8
Virgin Australia	30	29	26	89.7	25	86.2	1	3.3
All Airlines	161	159	149	93.7	149	93.7	2	1.2
Cairns-Brisbane								
Jetstar	110	108	103	95.4	102	94.4	2	1.8
Qantas	112	112	108	96.4	107	95.5	0	0.0
QantasLink	4	4	4	100.0	4	100.0	0	0.0
Tigerair Australia	28	28	28	100.0	27	96.4	0	0.0
Virgin Australia	133	133	129	97.0	129	97.0	0	0.0
All Airlines	387	385	372	96.6	369	95.8	2	0.5
Cairns-Melbourne								
Jetstar	102	102	84	82.4	80	78.4	0	0.0
Qantas	38	38	33	86.8	35	92.1	0	0.0
Tigerair Australia	32	32	29	90.6	28	87.5	0	0.0
Virgin Australia	32	32	30	93.8	27	84.4	0	0.0
All Airlines	204	204	176	86.3	170	83.3	0	0.0
Cairns-Sydney								
Jetstar	108	105	94	89.5	90	85.7	3	2.8
Qantas	73	73	69	94.5	66	90.4	0	0.0
Tigerair Australia	36	36	35	97.2	34	94.4	0	0.0
Virgin Australia	90	90	86	95.6	85	94.4	0	0.0
All Airlines	307	304	284	93.4	275	90.5	3	1.0
Cairns-Townsville								
QantasLink	140	137	127	92.7	125	91.2	3	2.1
Regional Express	55	55	55	100.0	54	98.2	0	0.0
All Airlines	195	192	182	94.8	179	93.2	3	1.5
Canberra-Adelaide								
Qantas	46	46	46	100.0	46	100.0	0	0.0
Virgin Australia	26	26	23	88.5	23	88.5	0	0.0
All Airlines	72	72	69	95.8	69	95.8	0	0.0
Canberra-Brisbane								
Qantas	29	29	28	96.6	28	96.6	0	0.0
QantasLink	118	114	95	83.3	95	83.3	4	3.4
Virgin Australia	93	93	87	93.5	86	92.5	0	0.0
All Airlines	240	236	210	89.0	209	88.6	4	1.7

	<i>Sectors</i>		<i>Arrivals On Time</i>		<i>Departures On Time</i>		<i>Cancellations</i>	
	<i>Sched.</i>	<i>Flown</i>	<i>No.</i>	<i>%</i>	<i>No.</i>	<i>%</i>	<i>No.</i>	<i>%</i>
Canberra-Melbourne								
Qantas	202	200	190	95.0	190	95.0	2	1.0
QantasLink	82	80	65	81.3	64	80.0	2	2.4
Virgin Australia	185	183	162	88.5	166	90.7	2	1.1
All Airlines	469	463	417	90.1	420	90.7	6	1.3
Canberra-Sydney								
QantasLink	489	462	409	88.5	411	89.0	27	5.5
Virgin Australia	270	268	244	91.0	249	92.9	2	0.7
All Airlines	759	730	653	89.5	660	90.4	29	3.8
Coffs Harbour-Sydney								
QantasLink	149	146	126	86.3	122	83.6	3	2.0
Tigerair Australia	13	13	12	92.3	12	92.3	0	0.0
Virgin Australia	59	59	55	93.2	52	88.1	0	0.0
All Airlines	221	218	193	88.5	186	85.3	3	1.4
Darwin-Alice Springs								
QantasLink	60	60	58	96.7	58	96.7	0	0.0
Virgin Australia	12	12	12	100.0	12	100.0	0	0.0
All Airlines	72	72	70	97.2	70	97.2	0	0.0
Darwin-Brisbane								
Jetstar	28	28	25	89.3	26	92.9	0	0.0
Qantas	45	45	43	95.6	42	93.3	0	0.0
Tigerair Australia	19	18	18	100.0	18	100.0	1	5.3
Virgin Australia	30	30	28	93.3	27	90.0	0	0.0
All Airlines	122	121	114	94.2	113	93.4	1	0.8
Darwin-Melbourne								
Jetstar	30	30	26	86.7	25	83.3	0	0.0
Qantas	30	30	29	96.7	29	96.7	0	0.0
Virgin Australia	30	30	26	86.7	27	90.0	0	0.0
All Airlines	90	90	81	90.0	81	90.0	0	0.0
Darwin-Perth								
Qantas	34	34	34	100.0	33	97.1	0	0.0
Virgin Australia	30	30	26	86.7	25	83.3	0	0.0
All Airlines	64	64	60	93.8	58	90.6	0	0.0
Darwin-Sydney								
Jetstar	28	28	24	85.7	22	78.6	0	0.0
Qantas	47	47	41	87.2	44	93.6	0	0.0
Virgin Australia	30	30	22	73.3	26	86.7	0	0.0
All Airlines	105	105	87	82.9	92	87.6	0	0.0
Dubbo-Sydney								
QantasLink	123	122	100	82.0	104	85.2	1	0.8
Regional Express	149	144	127	88.2	134	93.1	5	3.4
All Airlines	272	266	227	85.3	238	89.5	6	2.2
Emerald-Brisbane								
QantasLink	133	130	122	93.8	121	93.1	3	2.3
Virgin Australia	69	68	62	91.2	62	91.2	1	1.4
All Airlines	202	198	184	92.9	183	92.4	4	2.0
Geraldton-Perth								
QantasLink	47	47	46	97.9	45	95.7	0	0.0
Virgin Australia Regional Airlines	57	56	52	92.9	52	92.9	1	1.8
All Airlines	104	103	98	95.1	97	94.2	1	1.0

	<i>Sectors</i>		<i>Arrivals On Time</i>		<i>Departures On Time</i>		<i>Cancellations</i>	
	<i>Sched.</i>	<i>Flown</i>	<i>No.</i>	<i>%</i>	<i>No.</i>	<i>%</i>	<i>No.</i>	<i>%</i>
Gladstone-Brisbane								
QantasLink	188	181	170	93.9	164	90.6	7	3.7
Virgin Australia	132	131	123	93.9	127	96.9	1	0.8
All Airlines	320	312	293	93.9	291	93.3	8	2.5
Gold Coast-Adelaide								
Jetstar	38	38	36	94.7	34	89.5	0	0.0
Virgin Australia	30	30	28	93.3	28	93.3	0	0.0
All Airlines	68	68	64	94.1	62	91.2	0	0.0
Gold Coast-Melbourne								
Jetstar	200	198	166	83.8	145	73.2	2	1.0
Qantas	30	30	27	90.0	23	76.7	0	0.0
Tigerair Australia	82	82	77	93.9	76	92.7	0	0.0
Virgin Australia	179	178	162	91.0	155	87.1	1	0.6
All Airlines	491	488	432	88.5	399	81.8	3	0.6
Gold Coast-Sydney								
Jetstar	300	299	253	84.6	232	77.6	1	0.3
Qantas	94	94	87	92.6	85	90.4	0	0.0
QantasLink	17	17	11	64.7	11	64.7	0	0.0
Tigerair Australia	114	114	103	90.4	97	85.1	0	0.0
Virgin Australia	252	252	237	94.0	234	92.9	0	0.0
All Airlines	777	776	691	89.0	659	84.9	1	0.1
Hamilton Island-Brisbane								
QantasLink	30	28	24	85.7	21	75.0	2	6.7
Virgin Australia	30	30	27	90.0	27	90.0	0	0.0
All Airlines	60	58	51	87.9	48	82.8	2	3.3
Hamilton Island-Melbourne								
Qantas	14	14	13	92.9	11	78.6	0	0.0
Virgin Australia	21	21	16	76.2	16	76.2	0	0.0
All Airlines	35	35	29	82.9	27	77.1	0	0.0
Hamilton Island-Sydney								
Jetstar	28	28	19	67.9	16	57.1	0	0.0
Qantas	14	14	9	64.3	9	64.3	0	0.0
Virgin Australia	30	30	26	86.7	24	80.0	0	0.0
All Airlines	72	72	54	75.0	49	68.1	0	0.0
Hobart-Brisbane								
Jetstar	28	28	25	89.3	24	85.7	0	0.0
Virgin Australia	30	30	27	90.0	28	93.3	0	0.0
All Airlines	58	58	52	89.7	52	89.7	0	0.0
Hobart-Melbourne								
Jetstar	158	158	95	60.1	102	64.6	0	0.0
Qantas	2	2	1	50.0	1	50.0	0	0.0
QantasLink	140	136	103	75.7	112	82.4	4	2.9
Tigerair Australia	32	32	29	90.6	30	93.8	0	0.0
Virgin Australia	143	143	121	84.6	127	88.8	0	0.0
All Airlines	475	471	349	74.1	372	79.0	4	0.8
Hobart-Sydney								
Jetstar	74	72	58	80.6	53	73.6	2	2.7
QantasLink	56	56	51	91.1	53	94.6	0	0.0
Virgin Australia	60	60	57	95.0	58	96.7	0	0.0
All Airlines	190	188	166	88.3	164	87.2	2	1.1

	<i>Sectors</i>		<i>Arrivals On Time</i>		<i>Departures On Time</i>		<i>Cancellations</i>	
	<i>Sched.</i>	<i>Flown</i>	<i>No.</i>	<i>%</i>	<i>No.</i>	<i>%</i>	<i>No.</i>	<i>%</i>
Kalgoorlie-Perth								
Qantas	4	4	4	100.0	4	100.0	0	0.0
QantasLink	73	73	67	91.8	66	90.4	0	0.0
Virgin Australia	26	26	26	100.0	24	92.3	0	0.0
Virgin Australia Regional Airlines	33	33	28	84.8	28	84.8	0	0.0
All Airlines	136	136	125	91.9	122	89.7	0	0.0
Karratha-Perth								
Qantas	41	40	35	87.5	37	92.5	1	2.4
QantasLink	162	159	146	91.8	146	91.8	3	1.9
Virgin Australia	10	10	10	100.0	10	100.0	0	0.0
Virgin Australia Regional Airlines	57	56	42	75.0	47	83.9	1	1.8
All Airlines	270	265	233	87.9	240	90.6	5	1.9
Launceston-Melbourne								
Jetstar	127	127	96	75.6	99	78.0	0	0.0
QantasLink	115	112	95	84.8	95	84.8	3	2.6
Virgin Australia	97	97	82	84.5	88	90.7	0	0.0
All Airlines	339	336	273	81.3	282	83.9	3	0.9
Launceston-Sydney								
Jetstar	45	45	27	60.0	28	62.2	0	0.0
Virgin Australia	30	30	28	93.3	28	93.3	0	0.0
All Airlines	75	75	55	73.3	56	74.7	0	0.0
Mackay-Brisbane								
Jetstar	42	42	39	92.9	34	81.0	0	0.0
QantasLink	104	103	97	94.2	95	92.2	1	1.0
Virgin Australia	153	153	145	94.8	144	94.1	0	0.0
All Airlines	299	298	281	94.3	273	91.6	1	0.3
Melbourne-Adelaide								
Jetstar	98	97	64	66.0	68	70.1	1	1.0
Qantas	280	279	248	88.9	253	90.7	1	0.4
Tigerair Australia	71	71	65	91.5	68	95.8	0	0.0
Virgin Australia	281	281	263	93.6	264	94.0	0	0.0
All Airlines	730	728	640	87.9	653	89.7	2	0.3
Melbourne-Brisbane								
Jetstar	124	122	97	79.5	92	75.4	2	1.6
Qantas	422	420	378	90.0	380	90.5	2	0.5
Tigerair Australia	119	119	109	91.6	109	91.6	0	0.0
Virgin Australia	379	374	350	93.6	350	93.6	5	1.3
All Airlines	1 044	1 035	934	90.2	931	90.0	9	0.9
Melbourne-Cairns								
Jetstar	102	102	78	76.5	77	75.5	0	0.0
Qantas	38	38	34	89.5	34	89.5	0	0.0
Tigerair Australia	32	32	32	100.0	32	100.0	0	0.0
Virgin Australia	32	32	27	84.4	29	90.6	0	0.0
All Airlines	204	204	171	83.8	172	84.3	0	0.0
Melbourne-Canberra								
Qantas	202	201	188	93.5	188	93.5	1	0.5
QantasLink	82	78	62	79.5	60	76.9	4	4.9
Virgin Australia	183	181	157	86.7	164	90.6	2	1.1
All Airlines	467	460	407	88.5	412	89.6	7	1.5
Melbourne-Darwin								
Jetstar	30	30	27	90.0	26	86.7	0	0.0
Qantas	30	30	30	100.0	30	100.0	0	0.0
Virgin Australia	30	30	28	93.3	27	90.0	0	0.0
All Airlines	90	90	85	94.4	83	92.2	0	0.0

	<i>Sectors</i>		<i>Arrivals On Time</i>		<i>Departures On Time</i>		<i>Cancellations</i>	
	<i>Sched.</i>	<i>Flown</i>	<i>No.</i>	<i>%</i>	<i>No.</i>	<i>%</i>	<i>No.</i>	<i>%</i>
Melbourne-Gold Coast								
Jetstar	199	198	149	75.3	150	75.8	1	0.5
Qantas	30	30	22	73.3	23	76.7	0	0.0
Tigerair Australia	82	82	77	93.9	79	96.3	0	0.0
Virgin Australia	180	180	162	90.0	165	91.7	0	0.0
All Airlines	491	490	410	83.7	417	85.1	1	0.2
Melbourne-Hamilton Island								
Qantas	14	14	14	100.0	13	92.9	0	0.0
Virgin Australia	21	21	19	90.5	19	90.5	0	0.0
All Airlines	35	35	33	94.3	32	91.4	0	0.0
Melbourne-Hobart								
Jetstar	158	158	123	77.8	123	77.8	0	0.0
Qantas	2	2	2	100.0	2	100.0	0	0.0
QantasLink	140	136	115	84.6	118	86.8	4	2.9
Tigerair Australia	32	32	30	93.8	30	93.8	0	0.0
Virgin Australia	143	143	129	90.2	134	93.7	0	0.0
All Airlines	475	471	399	84.7	407	86.4	4	0.8
Melbourne-Launceston								
Jetstar	126	126	102	81.0	97	77.0	0	0.0
QantasLink	115	112	98	87.5	100	89.3	3	2.6
Virgin Australia	97	97	85	87.6	88	90.7	0	0.0
All Airlines	338	335	285	85.1	285	85.1	3	0.9
Melbourne-Mildura								
QantasLink	93	90	78	86.7	78	86.7	3	3.2
Regional Express	82	82	70	85.4	76	92.7	0	0.0
Virgin Australia	30	30	29	96.7	30	100.0	0	0.0
All Airlines	205	202	177	87.6	184	91.1	3	1.5
Melbourne-Newcastle								
Jetstar	86	84	67	79.8	64	76.2	2	2.3
Virgin Australia	29	29	27	93.1	27	93.1	0	0.0
All Airlines	115	113	94	83.2	91	80.5	2	1.7
Melbourne-Perth								
Jetstar	78	78	67	85.9	63	80.8	0	0.0
Qantas	190	190	159	83.7	156	82.1	0	0.0
Tigerair Australia	54	54	48	88.9	50	92.6	0	0.0
Virgin Australia	136	136	120	88.2	114	83.8	0	0.0
All Airlines	458	458	394	86.0	383	83.6	0	0.0
Melbourne-Sunshine Coast								
Jetstar	91	91	79	86.8	77	84.6	0	0.0
Virgin Australia	39	39	34	87.2	36	92.3	0	0.0
All Airlines	130	130	113	86.9	113	86.9	0	0.0
Melbourne-Sydney								
Jetstar	338	330	259	78.5	248	75.2	8	2.4
Qantas	945	914	802	87.7	825	90.3	31	3.3
Tigerair Australia	232	232	199	85.8	206	88.8	0	0.0
Virgin Australia	764	750	681	90.8	704	93.9	14	1.8
All Airlines	2 279	2 226	1 941	87.2	1 983	89.1	53	2.3
Mildura-Melbourne								
QantasLink	93	90	89	98.9	85	94.4	3	3.2
Regional Express	82	82	71	86.6	71	86.6	0	0.0
Virgin Australia	30	30	30	100.0	28	93.3	0	0.0
All Airlines	205	202	190	94.1	184	91.1	3	1.5

	<i>Sectors</i>		<i>Arrivals On Time</i>		<i>Departures On Time</i>		<i>Cancellations</i>	
	<i>Sched.</i>	<i>Flown</i>	<i>No.</i>	<i>%</i>	<i>No.</i>	<i>%</i>	<i>No.</i>	<i>%</i>
Moranbah-Brisbane								
QantasLink	102	90	83	92.2	83	92.2	12	11.8
Virgin Australia	65	65	63	96.9	63	96.9	0	0.0
All Airlines	167	155	146	94.2	146	94.2	12	7.2
Mount Isa-Brisbane								
Qantas	22	21	20	95.2	20	95.2	1	4.5
QantasLink	31	30	28	93.3	28	93.3	1	3.2
Virgin Australia	20	20	20	100.0	20	100.0	0	0.0
All Airlines	73	71	68	95.8	68	95.8	2	2.7
Newcastle-Brisbane								
Jetstar	73	70	55	78.6	58	82.9	3	4.1
QantasLink	92	89	81	91.0	77	86.5	3	3.3
Virgin Australia	90	87	81	93.1	81	93.1	3	3.3
All Airlines	255	246	217	88.2	216	87.8	9	3.5
Newcastle-Melbourne								
Jetstar	86	83	70	84.3	66	79.5	3	3.5
Virgin Australia	30	29	25	86.2	26	89.7	1	3.3
All Airlines	116	112	95	84.8	92	82.1	4	3.4
Newman-Perth								
Qantas	69	67	65	97.0	65	97.0	2	2.9
QantasLink	73	73	69	94.5	69	94.5	0	0.0
Virgin Australia	21	21	20	95.2	21	100.0	0	0.0
Virgin Australia Regional Airlines	16	16	13	81.3	14	87.5	0	0.0
All Airlines	179	177	167	94.4	169	95.5	2	1.1
Perth-Adelaide								
Jetstar	30	30	21	70.0	22	73.3	0	0.0
Qantas	121	121	110	90.9	109	90.1	0	0.0
Virgin Australia	75	75	74	98.7	75	100.0	0	0.0
All Airlines	226	226	205	90.7	206	91.2	0	0.0
Perth-Brisbane								
Qantas	133	133	107	80.5	125	94.0	0	0.0
Virgin Australia	107	107	83	77.6	98	91.6	0	0.0
All Airlines	240	240	190	79.2	223	92.9	0	0.0
Perth-Broome								
Qantas	25	25	21	84.0	22	88.0	0	0.0
QantasLink	56	56	54	96.4	53	94.6	0	0.0
Virgin Australia	5	5	5	100.0	5	100.0	0	0.0
Virgin Australia Regional Airlines	61	61	52	85.2	57	93.4	0	0.0
All Airlines	147	147	132	89.8	137	93.2	0	0.0
Perth-Darwin								
Qantas	33	33	32	97.0	31	93.9	0	0.0
Virgin Australia	30	30	27	90.0	27	90.0	0	0.0
All Airlines	63	63	59	93.7	58	92.1	0	0.0
Perth-Geraldton								
QantasLink	47	47	45	95.7	46	97.9	0	0.0
Virgin Australia Regional Airlines	57	57	52	91.2	52	91.2	0	0.0
All Airlines	104	104	97	93.3	98	94.2	0	0.0
Perth-Kalgoorlie								
Qantas	4	4	4	100.0	4	100.0	0	0.0
QantasLink	73	73	65	89.0	66	90.4	0	0.0
Virgin Australia	27	27	26	96.3	26	96.3	0	0.0
Virgin Australia Regional Airlines	33	33	29	87.9	30	90.9	0	0.0
All Airlines	137	137	124	90.5	126	92.0	0	0.0

	<i>Sectors</i>		<i>Arrivals On Time</i>		<i>Departures On Time</i>		<i>Cancellations</i>	
	<i>Sched.</i>	<i>Flown</i>	<i>No.</i>	<i>%</i>	<i>No.</i>	<i>%</i>	<i>No.</i>	<i>%</i>
Perth-Karratha								
Qantas	41	40	38	95.0	39	97.5	1	2.4
QantasLink	160	160	146	91.3	148	92.5	0	0.0
Virgin Australia	10	10	10	100.0	9	90.0	0	0.0
Virgin Australia Regional Airlines	57	56	47	83.9	53	94.6	1	1.8
All Airlines	268	266	241	90.6	249	93.6	2	0.7
Perth-Melbourne								
Jetstar	79	78	59	75.6	54	69.2	1	1.3
Qantas	191	191	174	91.1	173	90.6	0	0.0
Tigerair Australia	54	54	48	88.9	47	87.0	0	0.0
Virgin Australia	137	137	116	84.7	125	91.2	0	0.0
All Airlines	461	460	397	86.3	399	86.7	1	0.2
Perth-Newman								
Qantas	69	69	64	92.8	64	92.8	0	0.0
QantasLink	74	74	69	93.2	69	93.2	0	0.0
Virgin Australia	21	21	21	100.0	21	100.0	0	0.0
Virgin Australia Regional Airlines	16	16	15	93.8	15	93.8	0	0.0
All Airlines	180	180	169	93.9	169	93.9	0	0.0
Perth-Port Hedland								
Qantas	64	64	61	95.3	60	93.8	0	0.0
QantasLink	74	74	59	79.7	65	87.8	0	0.0
Virgin Australia	37	37	37	100.0	37	100.0	0	0.0
Virgin Australia Regional Airlines	14	14	13	92.9	13	92.9	0	0.0
All Airlines	189	189	170	89.9	175	92.6	0	0.0
Perth-Sydney								
Jetstar	29	28	18	64.3	20	71.4	1	3.4
Qantas	199	199	167	83.9	185	93.0	0	0.0
Tigerair Australia	25	25	21	84.0	24	96.0	0	0.0
Virgin Australia	115	115	105	91.3	110	95.7	0	0.0
All Airlines	368	367	311	84.7	339	92.4	1	0.3
Port Hedland-Perth								
Qantas	64	64	60	93.8	60	93.8	0	0.0
QantasLink	73	73	66	90.4	66	90.4	0	0.0
Virgin Australia	37	37	35	94.6	37	100.0	0	0.0
Virgin Australia Regional Airlines	14	14	12	85.7	12	85.7	0	0.0
All Airlines	188	188	173	92.0	175	93.1	0	0.0
Port Lincoln-Adelaide								
QantasLink	108	107	98	91.6	100	93.5	1	0.9
Regional Express	202	202	191	94.6	195	96.5	0	0.0
All Airlines	310	309	289	93.5	295	95.5	1	0.3
Port Macquarie-Sydney								
QantasLink	133	131	91	69.5	86	65.6	2	1.5
Virgin Australia	60	60	55	91.7	52	86.7	0	0.0
All Airlines	193	191	146	76.4	138	72.3	2	1.0
Proserpine-Brisbane								
Jetstar	29	29	27	93.1	26	89.7	0	0.0
Virgin Australia	30	30	30	100.0	29	96.7	0	0.0
All Airlines	59	59	57	96.6	55	93.2	0	0.0
Rockhampton-Brisbane								
QantasLink	169	166	151	91.0	151	91.0	3	1.8
Virgin Australia	193	192	185	96.4	184	95.8	1	0.5
All Airlines	362	358	336	93.9	335	93.6	4	1.1

	<i>Sectors</i>		<i>Arrivals On Time</i>		<i>Departures On Time</i>		<i>Cancellations</i>	
	<i>Sched.</i>	<i>Flown</i>	<i>No.</i>	<i>%</i>	<i>No.</i>	<i>%</i>	<i>No.</i>	<i>%</i>
Sunshine Coast-Melbourne								
Jetstar	91	91	76	83.5	68	74.7	0	0.0
Virgin Australia	39	39	35	89.7	32	82.1	0	0.0
All Airlines	130	130	111	85.4	100	76.9	0	0.0
Sunshine Coast-Sydney								
Jetstar	102	100	71	71.0	63	63.0	2	2.0
QantasLink	28	28	26	92.9	26	92.9	0	0.0
Virgin Australia	30	30	26	86.7	27	90.0	0	0.0
All Airlines	160	158	123	77.8	116	73.4	2	1.3
Sydney-Adelaide								
Jetstar	104	102	80	78.4	72	70.6	2	1.9
Qantas	223	222	206	92.8	201	90.5	1	0.4
QantasLink	29	28	22	78.6	23	82.1	1	3.4
Tigerair Australia	43	43	36	83.7	35	81.4	0	0.0
Virgin Australia	165	165	157	95.2	157	95.2	0	0.0
All Airlines	564	560	501	89.5	488	87.1	4	0.7
Sydney-Albury								
QantasLink	98	98	84	85.7	81	82.7	0	0.0
Regional Express	103	103	97	94.2	96	93.2	0	0.0
Virgin Australia	60	60	56	93.3	57	95.0	0	0.0
All Airlines	261	261	237	90.8	234	89.7	0	0.0
Sydney-Armidale								
QantasLink	128	126	86	68.3	90	71.4	2	1.6
Regional Express	73	73	63	86.3	62	84.9	0	0.0
All Airlines	201	199	149	74.9	152	76.4	2	1.0
Sydney-Ayers Rock								
Jetstar	29	29	28	96.6	27	93.1	0	0.0
Virgin Australia	30	30	28	93.3	29	96.7	0	0.0
All Airlines	59	59	56	94.9	56	94.9	0	0.0
Sydney-Ballina								
Jetstar	70	70	58	82.9	59	84.3	0	0.0
Regional Express	24	24	21	87.5	20	83.3	0	0.0
Virgin Australia	30	30	29	96.7	27	90.0	0	0.0
All Airlines	124	124	108	87.1	106	85.5	0	0.0
Sydney-Brisbane								
Jetstar	157	152	129	84.9	126	82.9	5	3.2
Qantas	583	581	532	91.6	535	92.1	2	0.3
Tigerair Australia	101	100	91	91.0	95	95.0	1	1.0
Virgin Australia	531	526	492	93.5	494	93.9	5	0.9
All Airlines	1 372	1 359	1 244	91.5	1 250	92.0	13	0.9
Sydney-Cairns								
Jetstar	109	106	96	90.6	86	81.1	3	2.8
Qantas	73	73	63	86.3	59	80.8	0	0.0
Tigerair Australia	36	36	35	97.2	33	91.7	0	0.0
Virgin Australia	89	89	85	95.5	84	94.4	0	0.0
All Airlines	307	304	279	91.8	262	86.2	3	1.0
Sydney-Canberra								
QantasLink	491	463	390	84.2	394	85.1	28	5.7
Virgin Australia	269	267	247	92.5	243	91.0	2	0.7
All Airlines	760	730	637	87.3	637	87.3	30	3.9

	<i>Sectors</i>		<i>Arrivals On Time</i>		<i>Departures On Time</i>		<i>Cancellations</i>	
	<i>Sched.</i>	<i>Flown</i>	<i>No.</i>	<i>%</i>	<i>No.</i>	<i>%</i>	<i>No.</i>	<i>%</i>
Sydney-Coffs Harbour								
QantasLink	149	146	116	79.5	120	82.2	3	2.0
Tigerair Australia	13	13	13	100.0	13	100.0	0	0.0
Virgin Australia	59	59	53	89.8	54	91.5	0	0.0
All Airlines	221	218	182	83.5	187	85.8	3	1.4
Sydney-Darwin								
Jetstar	28	28	28	100.0	28	100.0	0	0.0
Qantas	47	47	46	97.9	40	85.1	0	0.0
Virgin Australia	30	30	26	86.7	27	90.0	0	0.0
All Airlines	105	105	100	95.2	95	90.5	0	0.0
Sydney-Dubbo								
QantasLink	122	121	92	76.0	89	73.6	1	0.8
Regional Express	148	143	132	92.3	131	91.6	5	3.4
All Airlines	270	264	224	84.8	220	83.3	6	2.2
Sydney-Gold Coast								
Jetstar	299	298	246	82.6	245	82.2	1	0.3
Qantas	94	94	87	92.6	83	88.3	0	0.0
QantasLink	17	17	12	70.6	13	76.5	0	0.0
Tigerair Australia	114	114	101	88.6	107	93.9	0	0.0
Virgin Australia	253	253	231	91.3	238	94.1	0	0.0
All Airlines	777	776	677	87.2	686	88.4	1	0.1
Sydney-Hamilton Island								
Jetstar	27	27	22	81.5	22	81.5	0	0.0
Qantas	14	14	13	92.9	13	92.9	0	0.0
Virgin Australia	30	30	27	90.0	30	100.0	0	0.0
All Airlines	71	71	62	87.3	65	91.5	0	0.0
Sydney-Hobart								
Jetstar	74	74	63	85.1	59	79.7	0	0.0
QantasLink	55	55	49	89.1	43	78.2	0	0.0
Virgin Australia	60	60	59	98.3	59	98.3	0	0.0
All Airlines	189	189	171	90.5	161	85.2	0	0.0
Sydney-Launceston								
Jetstar	45	45	42	93.3	42	93.3	0	0.0
Virgin Australia	30	30	30	100.0	28	93.3	0	0.0
All Airlines	75	75	72	96.0	70	93.3	0	0.0
Sydney-Melbourne								
Jetstar	339	332	259	78.0	247	74.4	7	2.1
Qantas	944	916	775	84.6	812	88.6	28	3.0
Tigerair Australia	232	232	202	87.1	208	89.7	0	0.0
Virgin Australia	766	751	654	87.1	691	92.0	15	2.0
All Airlines	2 281	2 231	1 890	84.7	1 958	87.8	50	2.2
Sydney-Perth								
Jetstar	30	30	27	90.0	20	66.7	0	0.0
Qantas	202	202	170	84.2	171	84.7	0	0.0
Tigerair Australia	24	24	23	95.8	24	100.0	0	0.0
Virgin Australia	114	114	103	90.4	102	89.5	0	0.0
All Airlines	370	370	323	87.3	317	85.7	0	0.0
Sydney-Port Macquarie								
QantasLink	131	130	91	70.0	99	76.2	1	0.8
Virgin Australia	60	60	50	83.3	49	81.7	0	0.0
All Airlines	191	190	141	74.2	148	77.9	1	0.5

	<i>Sectors</i>		<i>Arrivals On Time</i>		<i>Departures On Time</i>		<i>Cancellations</i>	
	<i>Sched.</i>	<i>Flown</i>	<i>No.</i>	<i>%</i>	<i>No.</i>	<i>%</i>	<i>No.</i>	<i>%</i>
Sydney-Sunshine Coast								
Jetstar	102	102	77	75.5	74	72.5	0	0.0
QantasLink	27	27	22	81.5	23	85.2	0	0.0
Virgin Australia	30	30	28	93.3	28	93.3	0	0.0
All Airlines	159	159	127	79.9	125	78.6	0	0.0
Sydney-Tamworth								
QantasLink	153	147	126	85.7	124	84.4	6	3.9
Virgin Australia	25	25	25	100.0	25	100.0	0	0.0
All Airlines	178	172	151	87.8	149	86.6	6	3.4
Sydney-Townsville								
Jetstar	29	29	24	82.8	21	72.4	0	0.0
Virgin Australia	26	25	23	92.0	22	88.0	1	3.8
All Airlines	55	54	47	87.0	43	79.6	1	1.8
Sydney-Wagga Wagga								
QantasLink	111	109	84	77.1	89	81.7	2	1.8
Regional Express	132	132	119	90.2	118	89.4	0	0.0
All Airlines	243	241	203	84.2	207	85.9	2	0.8
Tamworth-Sydney								
QantasLink	153	148	123	83.1	125	84.5	5	3.3
Virgin Australia	25	25	24	96.0	24	96.0	0	0.0
All Airlines	178	173	147	85.0	149	86.1	5	2.8
Townsville-Brisbane								
Jetstar	40	39	35	89.7	33	84.6	1	2.5
Qantas	143	143	140	97.9	140	97.9	0	0.0
Virgin Australia	140	140	136	97.1	133	95.0	0	0.0
All Airlines	323	322	311	96.6	306	95.0	1	0.3
Townsville-Cairns								
QantasLink	141	137	128	93.4	128	93.4	4	2.8
Regional Express	55	55	53	96.4	53	96.4	0	0.0
All Airlines	196	192	181	94.3	181	94.3	4	2.0
Townsville-Sydney								
Jetstar	29	29	23	79.3	21	72.4	0	0.0
Virgin Australia	26	25	22	88.0	22	88.0	1	3.8
All Airlines	55	54	45	83.3	43	79.6	1	1.8
Wagga Wagga-Sydney								
QantasLink	111	110	95	86.4	96	87.3	1	0.9
Regional Express	132	132	112	84.8	122	92.4	0	0.0
All Airlines	243	242	207	85.5	218	90.1	1	0.4

Airports

On time performance is reported for all routes where the passenger load averages over 8000 passengers per month, and where two or more airlines operate in competition. The following data reports by airport against flights operated on those routes only. This month, 8 major city airports and 33 regional city airports are covered.

Airport	Arrivals			Departures		
	Sectors	On Time		Sectors	On Time	
	Flown	No.	%	Flown	No.	%
Adelaide						
Jetstar	294	226	76.9	294	232	78.9
Qantas	817	751	91.9	816	767	94.0
QantasLink	135	120	88.9	135	121	89.6
Regional Express	202	191	94.6	203	197	97.0
Tigerair Australia	135	120	88.9	135	117	86.7
Virgin Australia	699	662	94.7	699	666	95.3
All Airlines	2 282	2 070	90.7	2 282	2 100	92.0
Relates to services to and from Alice Springs, Brisbane, Canberra, Gold Coast, Melbourne, Perth, Port Lincoln and Sydney.						
Albury						
QantasLink	98	84	85.7	98	86	87.8
Regional Express	103	97	94.2	103	101	98.1
Virgin Australia	60	56	93.3	60	56	93.3
All Airlines	261	237	90.8	261	243	93.1
Relates to services to and from Sydney only.						
Alice Springs						
Qantas	30	28	93.3	30	24	80.0
QantasLink	60	58	96.7	60	55	91.7
Virgin Australia	24	24	100.0	24	24	100.0
All Airlines	114	110	96.5	114	103	90.4
Relates to services to and from Adelaide and Darwin.						
Armidale						
QantasLink	126	86	68.3	126	90	71.4
Regional Express	73	63	86.3	75	62	82.7
All Airlines	199	149	74.9	201	152	75.6
Relates to services to and from Sydney only.						
Ayers Rock						
Jetstar	29	28	96.6	30	28	93.3
Virgin Australia	30	28	93.3	30	28	93.3
All Airlines	59	56	94.9	60	56	93.3
Relates to services to and from Sydney only.						
Ballina						
Jetstar	70	58	82.9	71	48	67.6
Regional Express	24	21	87.5	23	20	87.0
Virgin Australia	30	29	96.7	30	29	96.7
All Airlines	124	108	87.1	124	97	78.2
Relates to services to and from Sydney only.						

Airport	Arrivals			Departures		
	Sectors Flown	On Time		Sectors Flown	On Time	
		No.	%		No.	%
Brisbane						
Jetstar	645	562	87.1	652	562	86.2
Qantas	1 603	1 465	91.4	1 617	1 512	93.5
QantasLink	1 065	978	91.8	1 066	988	92.7
Tigerair Australia	286	263	92.0	287	258	89.9
Virgin Australia	2 348	2 199	93.7	2 351	2 210	94.0
All Airlines	5 947	5 467	91.9	5 973	5 530	92.6

Relates to services to and from Adelaide, Bundaberg, Cairns, Canberra, Darwin, Emerald, Gladstone, Hamilton Island, Hobart, Mackay, Melbourne, Moranbah, Mount Isa, Newcastle, Perth, Proserpine, Rockhampton, Sydney and Townsville.

Broome

Qantas	25	21	84.0	25	23	92.0
QantasLink	56	54	96.4	56	50	89.3
Virgin Australia	5	5	100.0	5	5	100.0
Virgin Australia Regional Airlines	61	52	85.2	61	49	80.3
All Airlines	147	132	89.8	147	127	86.4

Relates to services to and from Perth only.

Bundaberg

QantasLink	131	123	93.9	130	124	95.4
Virgin Australia	30	27	90.0	29	25	86.2
All Airlines	161	150	93.2	159	149	93.7

Relates to services to and from Brisbane only.

Cairns

Jetstar	316	274	86.7	315	272	86.3
Qantas	222	201	90.5	223	208	93.3
QantasLink	142	132	93.0	141	129	91.5
Regional Express	55	53	96.4	55	54	98.2
Tigerair Australia	96	94	97.9	96	89	92.7
Virgin Australia	254	241	94.9	255	241	94.5
All Airlines	1 085	995	91.7	1 085	993	91.5

Relates to services to and from Brisbane, Melbourne, Sydney and Townsville.

Canberra

Qantas	276	262	94.9	275	264	96.0
QantasLink	654	555	84.9	656	570	86.9
Virgin Australia	568	516	90.8	570	524	91.9
All Airlines	1 498	1 333	89.0	1 501	1 358	90.5

Relates to services to and from Adelaide, Brisbane, Melbourne and Sydney.

Coffs Harbour

QantasLink	146	116	79.5	146	122	83.6
Tigerair Australia	13	13	100.0	13	12	92.3
Virgin Australia	59	53	89.8	59	52	88.1
All Airlines	218	182	83.5	218	186	85.3

Relates to services to and from Sydney only.

Darwin

Jetstar	86	81	94.2	86	73	84.9
Qantas	155	152	98.1	156	148	94.9
QantasLink	60	56	93.3	60	58	96.7
Tigerair Australia	19	19	100.0	18	18	100.0
Virgin Australia	132	123	93.2	132	117	88.6
All Airlines	452	431	95.4	452	414	91.6

Relates to services to and from Alice Springs, Brisbane, Melbourne, Perth and Sydney.

Airport	Arrivals			Departures		
	Sectors Flown	On Time		Sectors Flown	On Time	
		No.	%		No.	%
Dubbo						
QantasLink	121	92	76.0	122	104	85.2
Regional Express	143	132	92.3	144	134	93.1
All Airlines	264	224	84.8	266	238	89.5
Relates to services to and from Sydney only.						
Emerald						
QantasLink	130	120	92.3	130	121	93.1
Virgin Australia	69	64	92.8	68	62	91.2
All Airlines	199	184	92.5	198	183	92.4
Relates to services to and from Brisbane only.						
Geraldton						
QantasLink	47	45	95.7	47	45	95.7
Virgin Australia Regional Airlines	57	52	91.2	56	52	92.9
All Airlines	104	97	93.3	103	97	94.2
Relates to services to and from Perth only.						
Gladstone						
QantasLink	182	163	89.6	181	164	90.6
Virgin Australia	131	127	96.9	131	127	96.9
All Airlines	313	290	92.7	312	291	93.3
Relates to services to and from Brisbane only.						
Gold Coast						
Jetstar	535	430	80.4	535	411	76.8
Qantas	124	109	87.9	124	108	87.1
QantasLink	17	12	70.6	17	11	64.7
Tigerair Australia	196	178	90.8	196	173	88.3
Virgin Australia	463	423	91.4	460	417	90.7
All Airlines	1 335	1 152	86.3	1 332	1 120	84.1
Relates to services to and from Adelaide, Melbourne and Sydney.						
Hamilton Island						
Jetstar	27	22	81.5	28	16	57.1
Qantas	28	27	96.4	28	20	71.4
QantasLink	28	22	78.6	28	21	75.0
Virgin Australia	81	74	91.4	81	67	82.7
All Airlines	164	145	88.4	165	124	75.2
Relates to services to and from Brisbane, Melbourne and Sydney.						
Hobart						
Jetstar	261	214	82.0	258	179	69.4
Qantas	2	2	100.0	2	1	50.0
QantasLink	191	164	85.9	192	165	85.9
Tigerair Australia	32	30	93.8	32	30	93.8
Virgin Australia	233	216	92.7	233	213	91.4
All Airlines	719	626	87.1	717	588	82.0
Relates to services to and from Brisbane, Melbourne and Sydney.						
Kalgoorlie						
Qantas	4	4	100.0	4	4	100.0
QantasLink	73	65	89.0	73	66	90.4
Virgin Australia	27	26	96.3	26	24	92.3
Virgin Australia Regional Airlines	33	29	87.9	33	28	84.8
All Airlines	137	124	90.5	136	122	89.7
Relates to services to and from Perth only.						

Airport	Arrivals			Departures		
	Sectors Flown	On Time		Sectors Flown	On Time	
		No.	%		No.	%
Karratha						
Qantas	40	38	95.0	40	37	92.5
QantasLink	160	146	91.3	159	146	91.8
Virgin Australia	10	10	100.0	10	10	100.0
Virgin Australia Regional Airlines	56	47	83.9	56	47	83.9
All Airlines	266	241	90.6	265	240	90.6
Relates to services to and from Perth only.						
Launceston						
Jetstar	171	144	84.2	172	127	73.8
QantasLink	112	98	87.5	112	95	84.8
Virgin Australia	127	115	90.6	127	116	91.3
All Airlines	410	357	87.1	411	338	82.2
Relates to services to and from Melbourne and Sydney.						
Mackay						
Jetstar	42	39	92.9	42	34	81.0
QantasLink	102	100	98.0	103	95	92.2
Virgin Australia	152	146	96.1	153	144	94.1
All Airlines	296	285	96.3	298	273	91.6
Relates to services to and from Brisbane only.						
Melbourne						
Jetstar	1 416	1 113	78.6	1 416	1 085	76.6
Qantas	2 121	1 912	90.1	2 118	1 904	89.9
QantasLink	418	352	84.2	416	356	85.6
Regional Express	82	71	86.6	82	76	92.7
Tigerair Australia	622	559	89.9	622	574	92.3
Virgin Australia	2 325	2 062	88.7	2 323	2 151	92.6
All Airlines	6 984	6 069	86.9	6 977	6 146	88.1
Relates to services to and from Adelaide, Brisbane, Cairns, Canberra, Darwin, Gold Coast, Hamilton Island, Hobart, Launceston, Mildura, Newcastle, Perth, Sunshine Coast and Sydney.						
Mildura						
QantasLink	90	78	86.7	90	85	94.4
Regional Express	82	70	85.4	82	71	86.6
Virgin Australia	30	29	96.7	30	28	93.3
All Airlines	202	177	87.6	202	184	91.1
Relates to services to and from Melbourne only.						
Moranbah						
QantasLink	91	87	95.6	90	83	92.2
Virgin Australia	65	60	92.3	65	63	96.9
All Airlines	156	147	94.2	155	146	94.2
Relates to services to and from Brisbane only.						
Mount Isa						
Qantas	21	21	100.0	21	20	95.2
QantasLink	30	28	93.3	30	28	93.3
Virgin Australia	20	19	95.0	20	20	100.0
All Airlines	71	68	95.8	71	68	95.8
Relates to services to and from Brisbane only.						

Airport	Arrivals			Departures		
	Sectors Flown	On Time		Sectors Flown	On Time	
		No.	%		No.	%
Newcastle						
Jetstar	155	127	81.9	153	124	81.0
QantasLink	89	79	88.8	89	77	86.5
Virgin Australia	116	109	94.0	116	107	92.2
All Airlines	360	315	87.5	358	308	86.0
Relates to services to and from Brisbane and Melbourne.						
Newman						
Qantas	69	64	92.8	67	65	97.0
QantasLink	74	69	93.2	73	69	94.5
Virgin Australia	21	21	100.0	21	21	100.0
Virgin Australia Regional Airlines	16	15	93.8	16	14	87.5
All Airlines	180	169	93.9	177	169	95.5
Relates to services to and from Perth only.						
Perth						
Jetstar	138	119	86.2	136	96	70.6
Qantas	874	778	89.0	879	812	92.4
QantasLink	481	446	92.7	484	447	92.4
Tigerair Australia	78	71	91.0	79	71	89.9
Virgin Australia	560	517	92.3	564	533	94.5
Virgin Australia Regional Airlines	236	196	83.1	237	220	92.8
All Airlines	2 367	2 127	89.9	2 379	2 179	91.6
Relates to services to and from Adelaide, Brisbane, Broome, Darwin, Geraldton, Kalgoorlie, Karratha, Melbourne, Newman, Port Hedland and Sydney.						
Port Hedland						
Qantas	64	61	95.3	64	60	93.8
QantasLink	74	59	79.7	73	66	90.4
Virgin Australia	37	37	100.0	37	37	100.0
Virgin Australia Regional Airlines	14	13	92.9	14	12	85.7
All Airlines	189	170	89.9	188	175	93.1
Relates to services to and from Perth only.						
Port Lincoln						
QantasLink	106	98	92.5	107	100	93.5
Regional Express	203	195	96.1	202	195	96.5
All Airlines	309	293	94.8	309	295	95.5
Relates to services to and from Adelaide only.						
Port Macquarie						
QantasLink	130	91	70.0	131	86	65.6
Virgin Australia	60	50	83.3	60	52	86.7
All Airlines	190	141	74.2	191	138	72.3
Relates to services to and from Sydney only.						
Proserpine						
Jetstar	29	29	100.0	29	26	89.7
Virgin Australia	30	30	100.0	30	29	96.7
All Airlines	59	59	100.0	59	55	93.2
Relates to services to and from Brisbane only.						

Airport	Arrivals			Departures		
	Sectors Flown	On Time		Sectors Flown	On Time	
		No.	%		No.	%
Rockhampton						
QantasLink	165	155	93.9	166	151	91.0
Virgin Australia	191	180	94.2	192	184	95.8
All Airlines	356	335	94.1	358	335	93.6
Relates to services to and from Brisbane only.						
Sunshine Coast						
Jetstar	193	156	80.8	191	131	68.6
QantasLink	27	22	81.5	28	26	92.9
Virgin Australia	69	62	89.9	69	59	85.5
All Airlines	289	240	83.0	288	216	75.0
Relates to services to and from Melbourne and Sydney.						
Sydney						
Jetstar	1 425	1 146	80.4	1 424	1 128	79.2
Qantas	2 163	1 941	89.7	2 149	1 914	89.1
QantasLink	1 473	1 234	83.8	1 467	1 188	81.0
Regional Express	477	409	85.7	475	427	89.9
Tigerair Australia	563	493	87.6	562	515	91.6
Virgin Australia	2 639	2 431	92.1	2 634	2 444	92.8
All Airlines	8 740	7 654	87.6	8 711	7 616	87.4
Relates to services to and from Adelaide, Albury, Armidale, Ayers Rock, Ballina, Brisbane, Cairns, Canberra, Coffs Harbour, Darwin, Dubbo, Gold Coast, Hamilton Island, Hobart, Launceston, Melbourne, Perth, Port Macquarie, Sunshine Coast, Tamworth, Townsville and Wagga Wagga.						
Tamworth						
QantasLink	147	126	85.7	148	125	84.5
Virgin Australia	25	25	100.0	25	24	96.0
All Airlines	172	151	87.8	173	149	86.1
Relates to services to and from Sydney only.						
Townsville						
Jetstar	68	59	86.8	68	54	79.4
Qantas	143	140	97.9	143	140	97.9
QantasLink	137	127	92.7	137	128	93.4
Regional Express	55	55	100.0	55	53	96.4
Virgin Australia	164	157	95.7	165	155	93.9
All Airlines	567	538	94.9	568	530	93.3
Relates to services to and from Brisbane, Cairns and Sydney.						
Wagga Wagga						
QantasLink	109	84	77.1	110	96	87.3
Regional Express	132	119	90.2	132	122	92.4
All Airlines	241	203	84.2	242	218	90.1
Relates to services to and from Sydney only.						

Definitions

On time arrival	A flight arrival is counted as "on time" if it arrived at the gate before 15 minutes after the scheduled arrival time shown in the carriers' schedule. Neither diverted nor cancelled flights count as on time.
On time departure	A flight departure is counted as "on time" if it departs the gate before 15 minutes after the scheduled departure time shown in the carriers' schedule.
Cancellation	A flight removed from service within 7 days of scheduled departure is regarded as a cancellation.
On time departure percentage	The percentage of on time departures is measured against the number of departures <i>operated</i> on any particular sector.
On time arrival percentage	The percentage of on time arrivals is measured against the number of arrivals <i>operated</i> on any particular sector.
Cancellation percentage	The percentage of cancellations is measured against the number of services <i>scheduled</i> on any particular sector.
