



**Australian Government**

**Department of Infrastructure and Regional Development**

Bureau of Infrastructure, Transport and Regional Economics

STATISTICAL REPORT



## Aviation

Domestic airline on time performance  
April 2015

© Commonwealth of Australia 2015

ISSN: 1832-0759

### **Ownership of intellectual property rights in this publication**

Unless otherwise noted, copyright (and any other intellectual property rights, if any) in this publication is owned by the Commonwealth of Australia (referred to below as the Commonwealth).

### **Disclaimer**

The material contained in this publication is made available on the understanding that the Commonwealth is not providing professional advice, and that users exercise their own skill and care with respect to its use, and seek independent advice if necessary.

The Commonwealth makes no representations or warranties as to the contents or accuracy of the information contained in this publication. To the extent permitted by law, the Commonwealth disclaims liability to any person or organisation in respect of anything done, or omitted to be done, in reliance upon information contained in this publication.

### **Creative Commons licence**

With the exception of (a) the Coat of Arms; and (b) the Department of Infrastructure and Regional Development's photos and graphics, copyright in this publication is licensed under a Creative Commons Attribution 3.0 Australia Licence.

Creative Commons Attribution 3.0 Australia Licence is a standard form licence agreement that allows you to copy, communicate and adapt this publication provided that you attribute the work to the Commonwealth and abide by the other licence terms. A summary of the licence terms is available from <http://creativecommons.org/licenses/by/3.0/au/deed.en>. The full licence terms are available from <http://creativecommons.org/licenses/by/3.0/au/legalcode>.

### **Use of the Coat of Arms**

The Department of the Prime Minister and Cabinet sets the terms under which the Coat of Arms is used. Please refer to the Department's Commonwealth Coat of Arms and Government branding web page <http://www.dpmmc.gov.au/guidelines/index.cfm#brand> and, in particular, the Guidelines on the use of the Commonwealth Coat of Arms publication.

An appropriate citation for this report is:

Bureau of Infrastructure, Transport and Regional Economics (BITRE), 2015, Domestic airline on time performance, Statistical Report, BITRE, Canberra ACT.

### **Contact us**

This publication is available in PDF format. All other rights are reserved, including in relation to any Departmental logos or trade marks which may exist. For enquiries regarding the licence and any use of this publication, please contact:

Bureau of Infrastructure, Transport and Regional Economics (BITRE)  
Department of Infrastructure and Regional Development  
GPO Box 501, Canberra ACT 2601, Australia  
Telephone: (international) +61 2 6274 7210  
Fax: (international) +61 2 6274 6855  
Email: [bitre@infrastructure.gov.au](mailto:bitre@infrastructure.gov.au)  
Website: [www.bitre.gov.au](http://www.bitre.gov.au)

### **Inquiries**

Should you require additional information about the statistics contained in this publication:

Telephone (02) 6274 7790 or Facsimile (02) 6274 7727

Electronic mail: [AVSTATS@infrastructure.gov.au](mailto:AVSTATS@infrastructure.gov.au)

Web site: <http://www.bitre.gov.au/statistics/aviation/otphome.aspx>

# Foreword

The Bureau of Infrastructure, Transport and Regional Economics (BITRE) monitors the punctuality and reliability of major domestic airlines operating between Australian airports. The purpose of this is to allow for evaluation of overall industry and individual airline performance, so that consumers of air travel can make informed decisions.

The following domestic airlines currently report this information monthly to the BITRE: Jetstar, Qantas, QantasLink, Regional Express, Tigerair, Virgin Australia and Virgin Australia Regional Airlines. Data has been gathered since November 2003, although some airlines commenced reporting at a later date, including Jetstar which first reported in May 2004, MacAir in July 2005 and Tigerair in April 2008. MacAir ceased operations in February 2009 and data was not received for December 2008 onwards. Virgin Blue was rebranded as Virgin Australia in May 2011 and Tiger Airways was rebranded as Tigerair in July 2013 and time series data in Microsoft Excel spreadsheet format on the BITRE website have been revised to reflect these changes. Virgin Australia Regional Airlines commenced operations in May 2013. It was formed after the acquisition of Skywest by Virgin Australia and represents a combination of operations previously reported under Skywest and Virgin Australia – ATR/F100 Operations. Services operated by Skywest on behalf of Virgin Australia using ATR/F100 aircraft commenced in November 2011 and were shown separately as Virgin Australia – ATR/F100 Operations until April 2013.

Information presented in this report is for Australian domestic routes for which the passenger load averaged 8 000 or more passengers per month over the previous six months and where two or more airlines operated in competition on those routes. There were 62 routes that met this definition in April 2015. Over time, routes which meet these criteria change as airline networks and traffic levels vary.

Participating airlines report their overall monthly network performance where this is possible.

Total industry figures encompass all services operated by reporting airlines only. These airlines collectively carried over 95 per cent of total domestic passengers (regular public transport only) in 2014.

The method of capturing on time performance varies between airlines utilising different recording systems. Jetstar and Qantas jet aircraft use Aircraft Communication Addressing and Reporting System (ACARS) to electronically measure on time performance. Regional Express, Tigerair, Virgin Australia, Virgin Australia Regional Airlines and the Qantas non-jet fleet record on time performance manually using records from pilots, gate agents and/or ground crews.

After initial data is collected, aggregate reports are audited internally by participating airlines prior to publication.

Reports and detailed time series data in Microsoft Excel spreadsheet format are available from the BITRE website at: <http://www.bitre.gov.au/statistics/aviation/otphome.aspx>.



# Contents

	Page
Industry performance .....	1
Individual routes .....	10
Airports .....	22
Definitions .....	28



## Industry performance

For April 2015, on time performance over all routes operated by participating airlines (Jetstar, Qantas, QantasLink, Regional Express, Tigerair, Virgin Australia and Virgin Australia Regional Airlines) averaged 82.2 per cent for on time arrivals and 83.9 per cent for on time departures. Cancellations represented 1.7 per cent of all scheduled flights. The equivalent figures for April 2014 were 82.0 per cent for arrivals, 83.5 per cent for departures and 2.1 per cent for cancellations.

This month's on time arrivals figure was slightly below the long term average performance for all routes of 82.4 per cent while this month's on time departures figure was the same as the long term average of 83.9 per cent. The rate of cancellations was higher than the long term average of 1.3 per cent.

Of the major domestic airlines, Qantas achieved the highest on time arrivals among the major domestic airlines at 86.0 per cent, followed by Virgin Australia at 84.8 per cent, Tigerair at 78.9 per cent and Jetstar at 77.9 per cent. Virgin Australia Regional Airlines was the best performing regional airline for on time arrivals at 83.6 per cent, followed by Regional Express at 82.1 per cent and QantasLink at 79.5 per cent. The Qantas network (Qantas and QantasLink combined operations) recorded 82.6 per cent for on time arrivals while the Virgin Australia network (Virgin Australia and Virgin Australia Regional Airlines combined operations) recorded 84.6 per cent.

Qantas also achieved the highest level of on time departures for April 2015 at 87.9 per cent, followed by Virgin Australia at 86.9 per cent, Tigerair at 80.8 per cent and Jetstar at 76.6 per cent. The regional airlines were led by Regional Express at 85.2 per cent, followed by Virgin Australia Regional Airlines at 85.0 per cent and QantasLink at 81.7 per cent. The Qantas network recorded 84.7 per cent for on time departures while the Virgin Australia network recorded 86.5 per cent.

QantasLink had the highest percentage of cancellations (2.5 per cent) during the month, followed by Virgin Australia Regional Airlines (2.1 per cent), Jetstar (1.9 per cent), Virgin Australia (1.8 per cent), Qantas (1.4 per cent), Tigerair (0.5 per cent) and Regional Express (0.3 per cent).

Airlines' on time performance varies across the routes they serve. Individual route data by specific airline for 62 routes are shown on pages 10-21.

Of the 62 routes which met the criteria for on time performance reporting in April 2015, the Melbourne-Hamilton Island route had the highest percentage of on time arrivals (97.0 per cent) and the Port Hedland-Perth route had the highest percentage of on time departures (96.0 per cent). The Port Macquarie-Sydney route had the lowest percentage of on time arrivals (56.1 per cent) and the Townsville-Sydney route had the lowest percentage of on time departures (57.9 per cent).

Cancellations were highest on the Canberra-Sydney route at 6.1 per cent, followed by the Sydney-Canberra route at 6.0 per cent, the Moranbah-Brisbane route at 5.2 per cent, the Brisbane-Moranbah route at 5.1 per cent and the Melbourne-Sydney route at 4.9 per cent.

Port Hedland Airport recorded the highest percentage of on time arrivals (95.0 per cent) and the highest percentage of on time departures (96.0 per cent). Port Macquarie Airport recorded the lowest percentage of on time arrivals (61.1 per cent) and the lowest percentage of on time departures (62.0 per cent). These figures only refer to reported routes and do not cover all flights at these airports.



Table 1 On time performance for April 2015 — Total Industry

	<i>Sectors</i>		<i>Arrivals On Time</i>		<i>Departures On Time</i>		<i>Cancellations</i>	
	<i>Scheduled</i>	<i>Flown</i>	<i>No.</i>	<i>%</i>	<i>No.</i>	<i>%</i>	<i>No.</i>	<i>%</i>
Jetstar	7 344	7 206	5 616	77.9	5 521	76.6	138	1.9
Qantas	9 380	9 244	7 952	86.0	8 126	87.9	136	1.4
QantasLink	10 074	9 825	7 808	79.5	8 027	81.7	249	2.5
Regional Express	5 645	5 626	4 618	82.1	4 795	85.2	19	0.3
Tigerair	2 128	2 117	1 671	78.9	1 710	80.8	11	0.5
Virgin Australia	10 904	10 711	9 086	84.8	9 303	86.9	193	1.8
Virgin Australia Regional Airlines	2 449	2 397	2 004	83.6	2 038	85.0	52	2.1
All Airlines	47 924	47 126	38 755	82.2	39 520	83.9	798	1.7
Qantas - all QF designated services	19 454	19 069	15 760	82.6	16 153	84.7	385	2.0
Virgin Australia - all VA designated services	13 353	13 108	11 090	84.6	11 341	86.5	245	1.8

Total airline network data (including routes not shown in this report).

Airlines' on time performance varies across the routes they serve. Individual route data by specific airline for 62 routes are shown on pages 10-21.

Table 2 Top ten routes for on time performance for April 2015 (participating airlines only)

<i>Arrivals</i>		<i>Departures</i>	
<i>Route</i>	<i>On Time (%)</i>	<i>Route</i>	<i>On Time (%)</i>
Melbourne-Hamilton Island	97.0	Port Hedland-Perth	96.0
Hamilton Island-Melbourne	96.9	Perth-Port Hedland	95.0
Adelaide-Perth	95.0	Perth-Newman	94.7
Perth-Port Hedland	95.0	Perth-Karratha	94.2
Perth-Adelaide	94.7	Perth-Darwin	94.0
Brisbane-Hobart	94.6	Karratha-Perth	93.9
Port Hedland-Perth	94.4	Brisbane-Mount Isa	93.8
Perth-Newman	94.1	Hamilton Island-Melbourne	93.8
Brisbane-Adelaide	94.1	Brisbane-Hamilton Island	93.5
Newman-Perth	93.6	Perth-Adelaide	93.4

Table 3 Top ten airports for on time performance for April 2015 (participating airlines and reported routes only)

<i>Arrivals</i>		<i>Departures</i>	
<i>Airport</i>	<i>On Time (%)</i>	<i>Airport</i>	<i>On Time (%)</i>
Port Hedland	95.0	Port Hedland	96.0
Newman	94.1	Karratha	93.9
Karratha	93.6	Newman	93.0
Proserpine	92.5	Proserpine	92.5
Mount Isa	90.8	Kalgoorlie	91.3
Geraldton	90.1	Geraldton	91.0
Mackay	89.3	Perth	90.6
Gladstone	88.6	Mount Isa	89.1
Broome	88.5	Moranbah	88.5
Perth	88.2	Adelaide	88.4

## Total industry on time performance

Figure 1 On time performance (by month from April 2012)—Total Industry

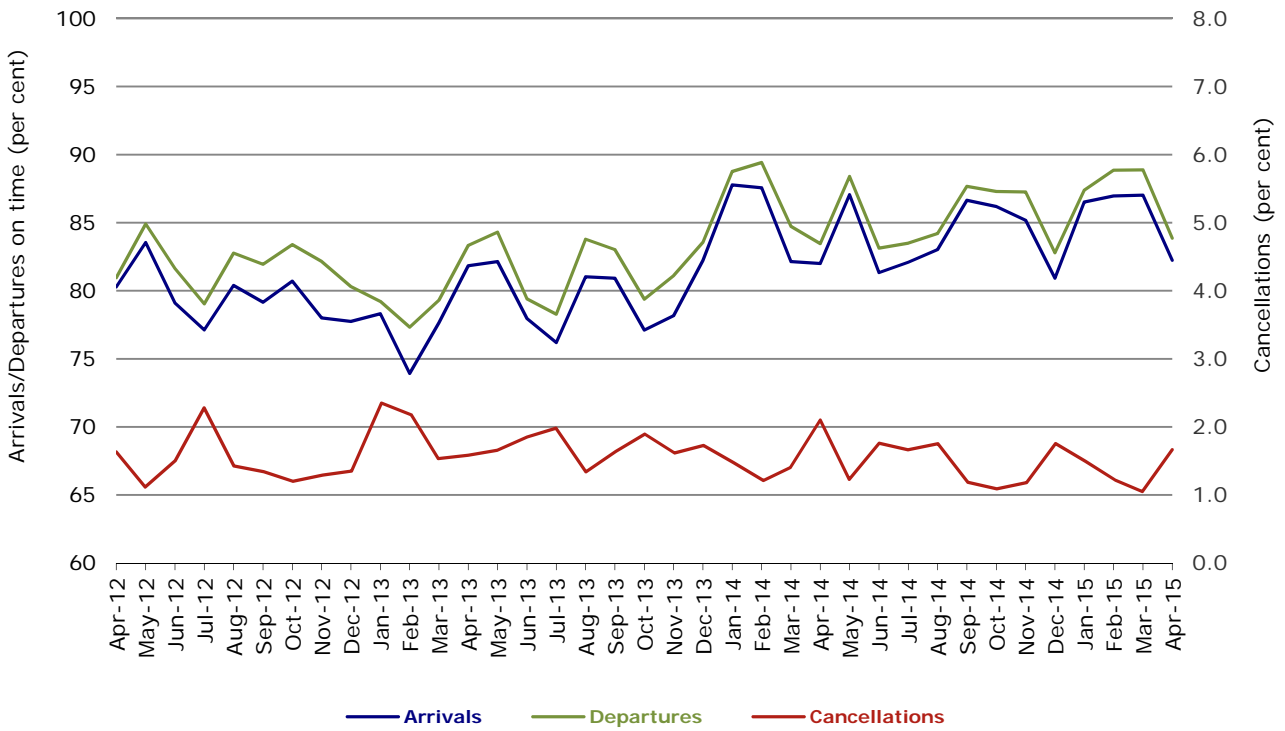


Figure 2 Arrivals on time (by month from April 2014)

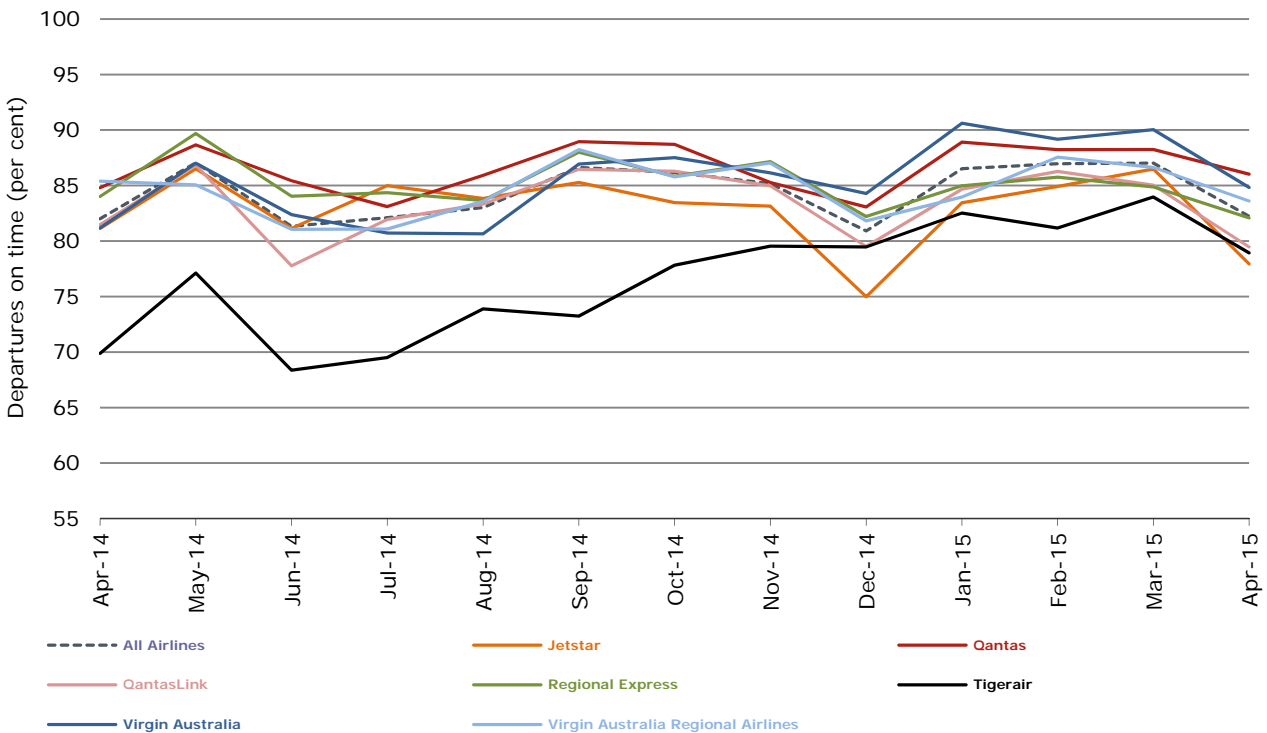


Figure 3 Departures on time (by month from April 2014)

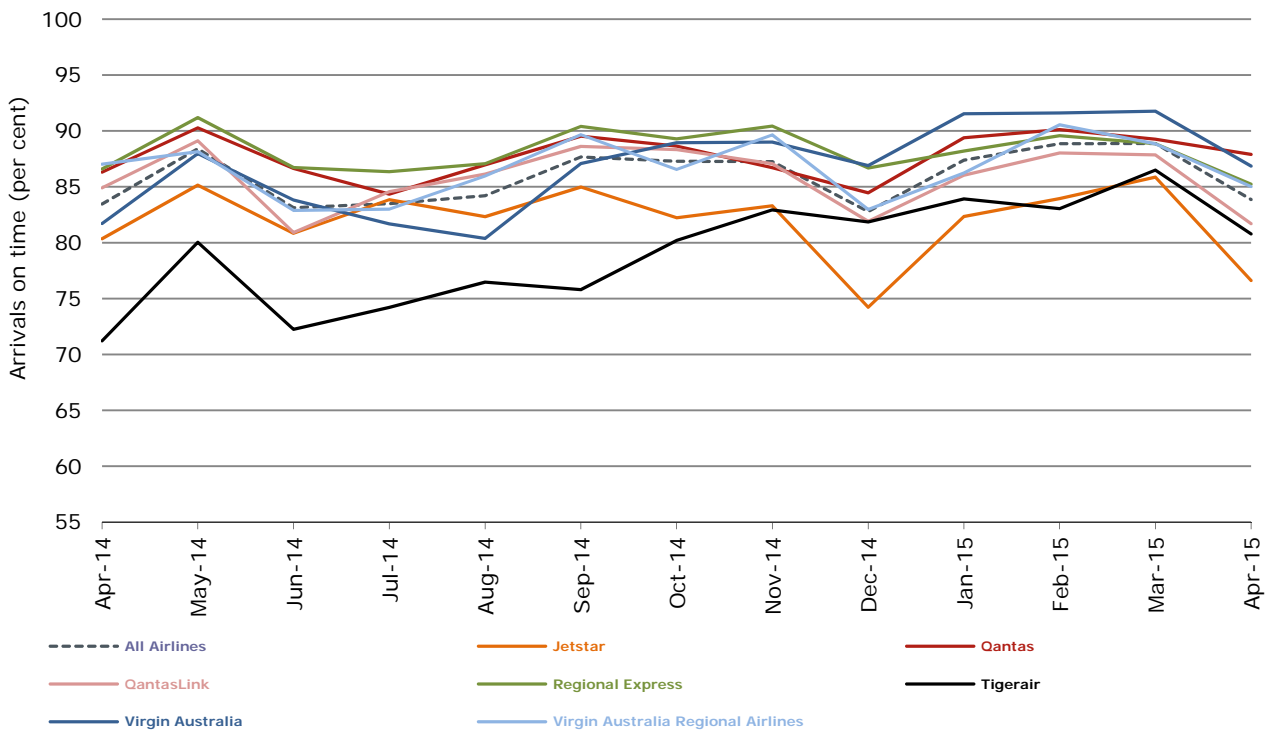
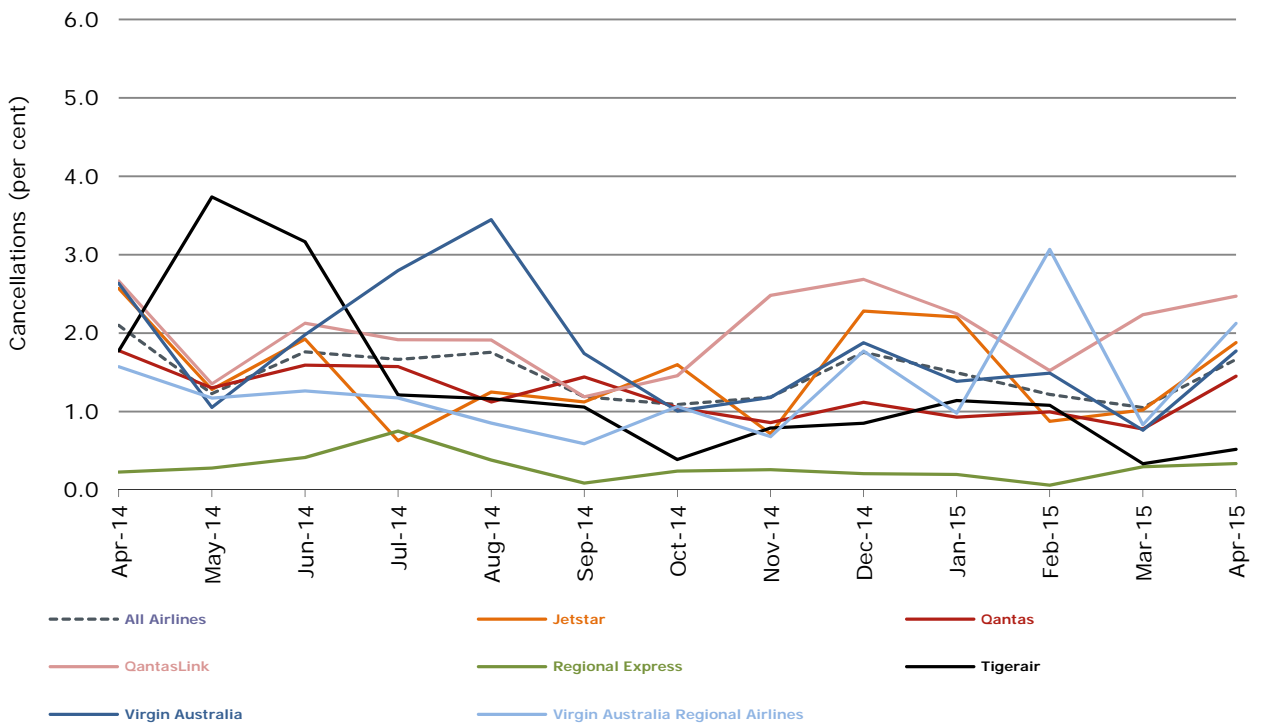


Figure 4 Cancellations (by month from April 2014)



## Major domestic airlines on time performance

Figure 5 On time performance (by month from April 2012)—Jetstar

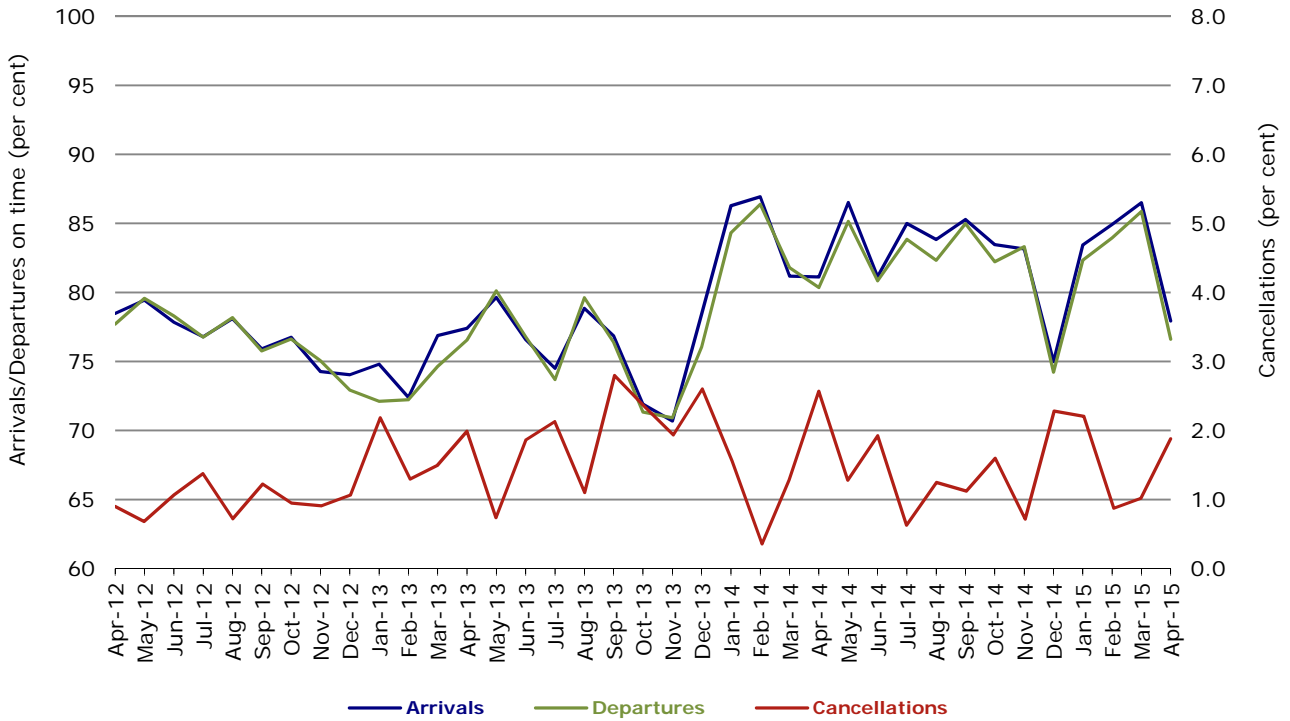


Figure 6 On time performance (by month from April 2012)—Qantas

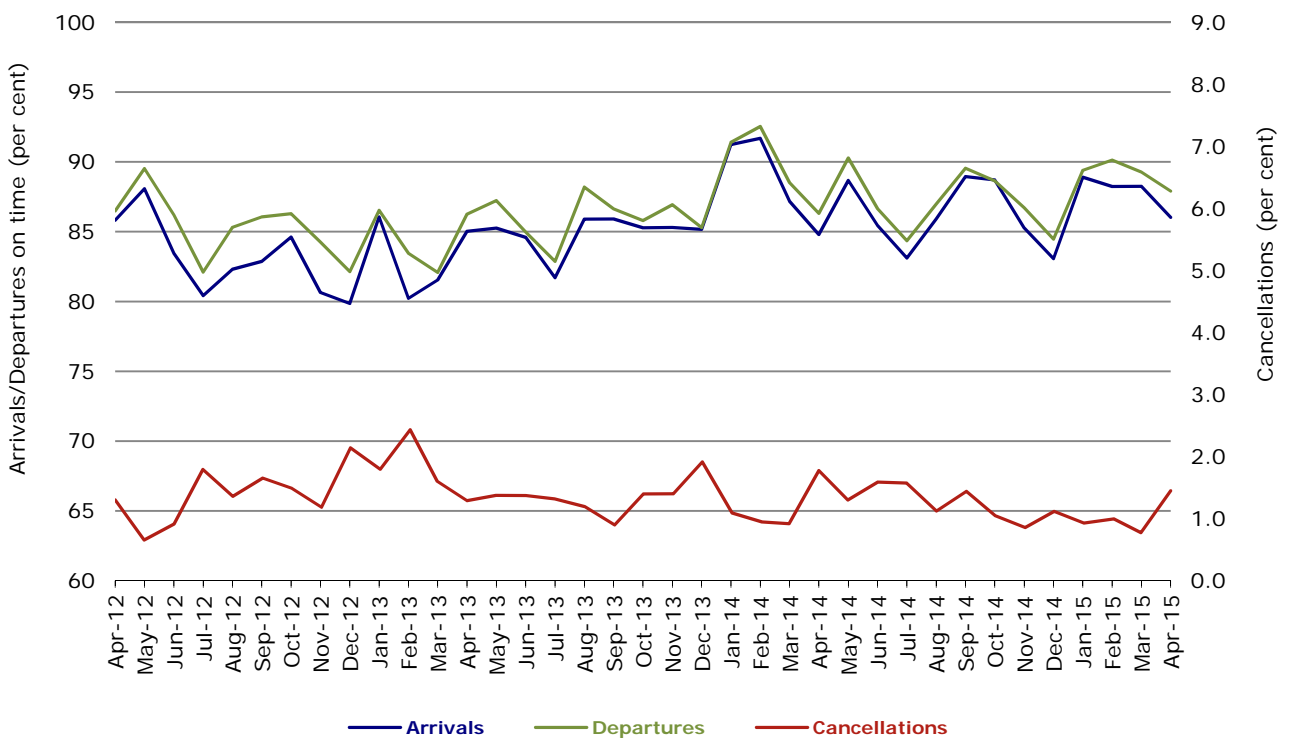


Figure 7 On time performance (by month from April 2012)—Tigerair

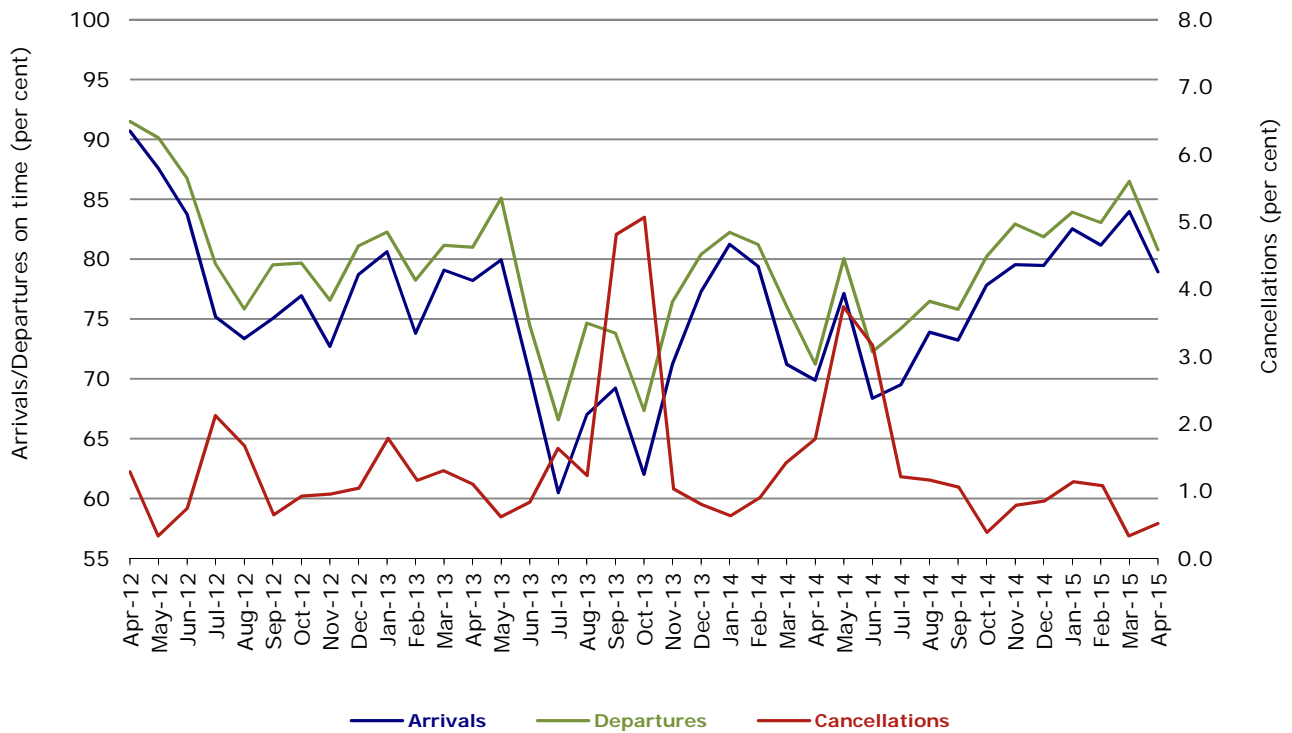
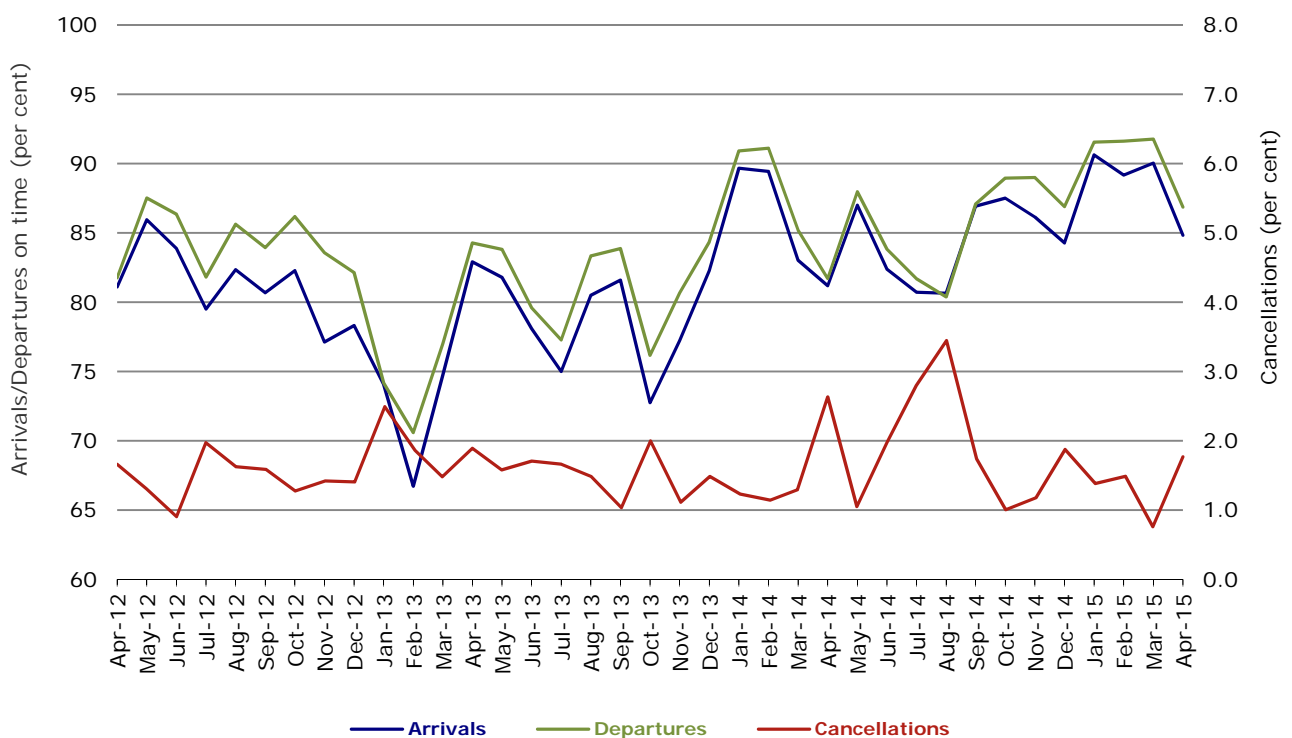


Figure 8 On time performance (by month from April 2012)—Virgin Australia



## Major regional airlines on time performance

Figure 9 On time performance (by month from April 2012)—QantasLink

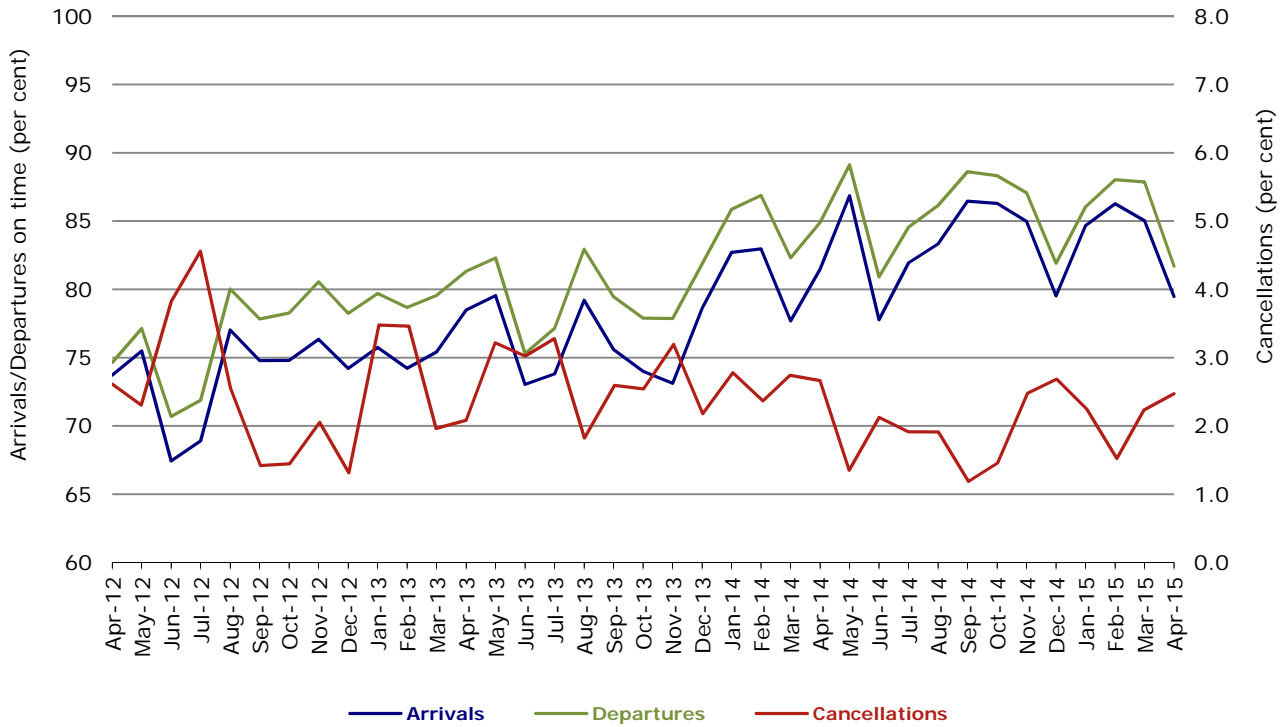


Figure 10 On time performance (by month from April 2012)—Regional Express

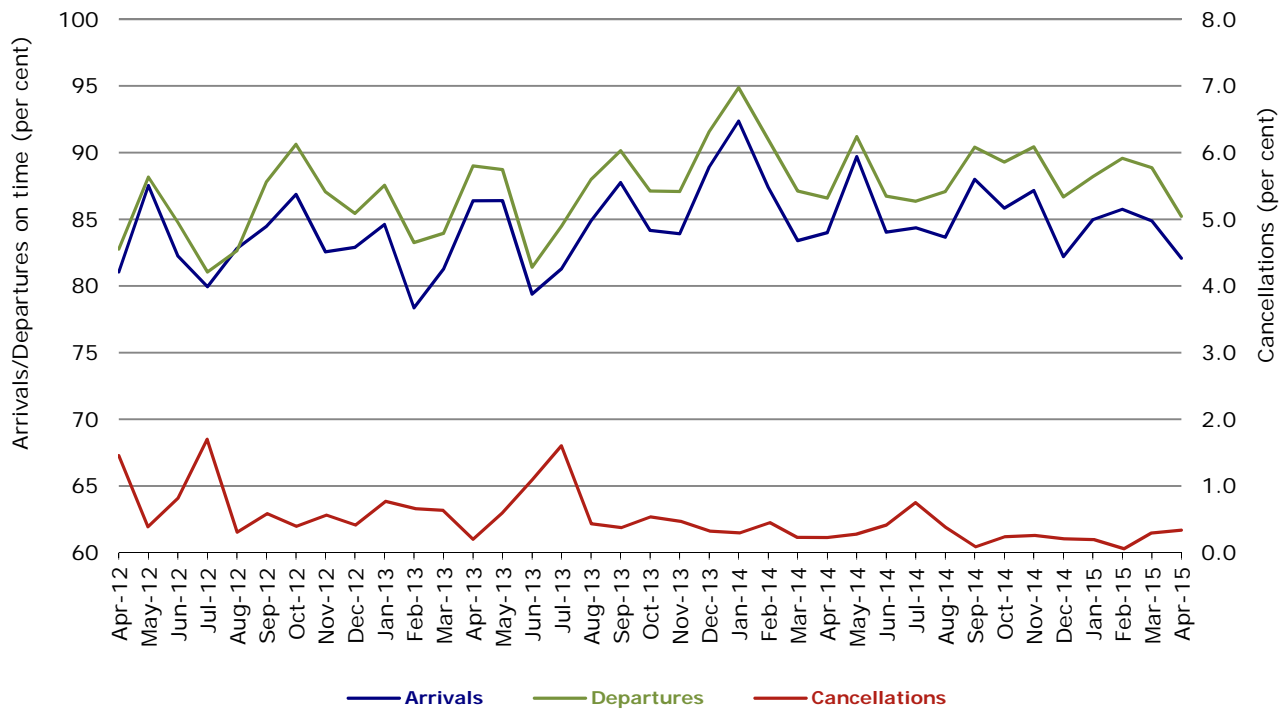
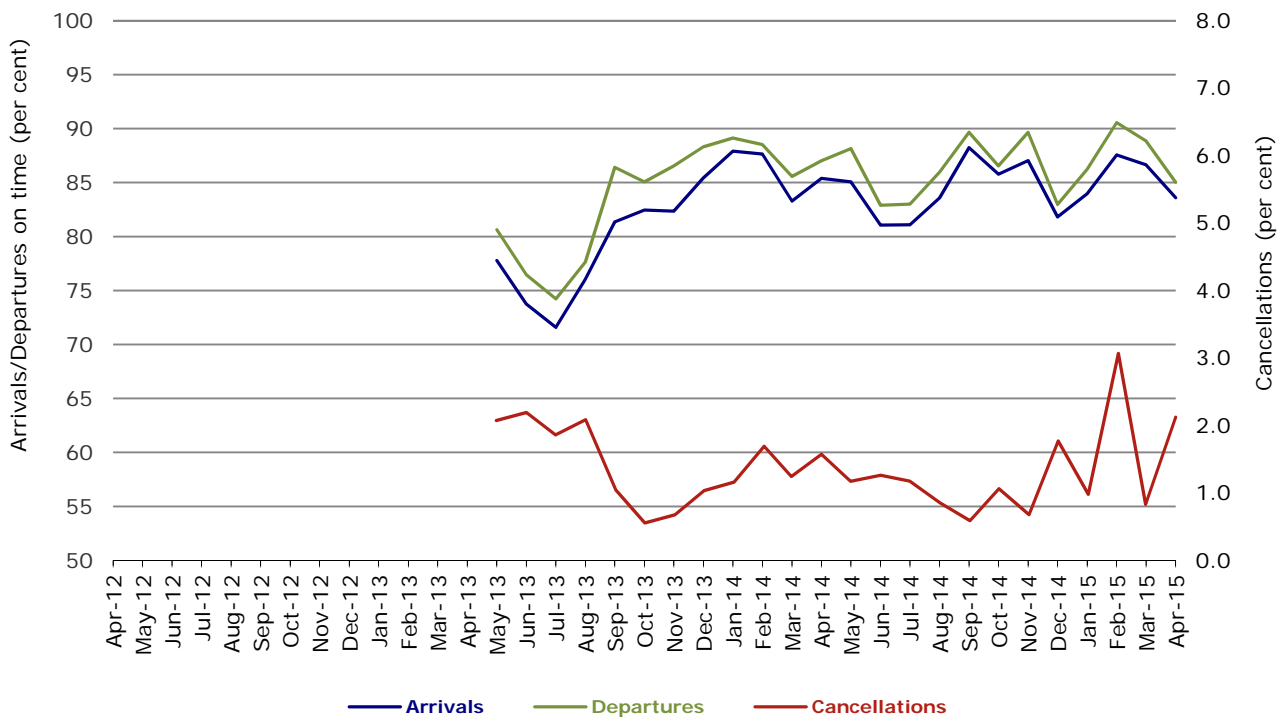


Figure 11 On time performance (by month from April 2012)  
Virgin Australia Regional Airlines



Virgin Australia Regional Airlines commenced operations in May 2013. It was formed after the acquisition of Skywest by Virgin Australia and represents a combination of operations previously reported under Skywest and Virgin Australia – ATR/F100 Operations.

## Individual routes

On time performance is reported for all routes where the passenger load averages over 8000 passengers per month over the previous six months, and where two or more airlines operate in competition on those routes. There are now 62 routes which meet this definition. Over time, however, routes which meet this definition may change as airline networks and traffic levels vary.

	<i>Sectors</i>		<i>Arrivals On Time</i>		<i>Departures On Time</i>		<i>Cancellations</i>	
	<i>Sched.</i>	<i>Flown</i>	<i>No.</i>	<i>%</i>	<i>No.</i>	<i>%</i>	<i>No.</i>	<i>%</i>
<b>Adelaide-Brisbane</b>								
Jetstar	26	26	25	96.2	26	100.0	0	0.0
Qantas	107	107	89	83.2	98	91.6	0	0.0
Tigerair	26	26	24	92.3	24	92.3	0	0.0
Virgin Australia	110	110	97	88.2	101	91.8	0	0.0
All Airlines	269	269	235	87.4	249	92.6	0	0.0
<b>Adelaide-Canberra</b>								
Qantas	43	43	37	86.0	37	86.0	0	0.0
Virgin Australia	27	26	26	100.0	26	100.0	1	3.7
All Airlines	70	69	63	91.3	63	91.3	1	1.4
<b>Adelaide-Gold Coast</b>								
Jetstar	41	41	34	82.9	34	82.9	0	0.0
Virgin Australia	30	30	26	86.7	28	93.3	0	0.0
All Airlines	71	71	60	84.5	62	87.3	0	0.0
<b>Adelaide-Melbourne</b>								
Jetstar	124	121	96	79.3	87	71.9	3	2.4
Qantas	290	290	270	93.1	268	92.4	0	0.0
Tigerair	76	76	64	84.2	64	84.2	0	0.0
Virgin Australia	276	275	242	88.0	251	91.3	1	0.4
All Airlines	766	762	672	88.2	670	87.9	4	0.5
<b>Adelaide-Perth</b>								
Jetstar	38	38	35	92.1	33	86.8	0	0.0
Qantas	112	112	108	96.4	107	95.5	0	0.0
Virgin Australia	71	71	67	94.4	65	91.5	0	0.0
All Airlines	221	221	210	95.0	205	92.8	0	0.0
<b>Adelaide-Port Lincoln</b>								
QantasLink	111	110	79	71.8	82	74.5	1	0.9
Regional Express	199	198	185	93.4	188	94.9	1	0.5
All Airlines	310	308	264	85.7	270	87.7	2	0.6
<b>Adelaide-Sydney</b>								
Jetstar	139	137	98	71.5	113	82.5	2	1.4
Qantas	231	231	184	79.7	213	92.2	0	0.0
QantasLink	22	20	14	70.0	13	65.0	2	9.1
Tigerair	30	30	24	80.0	23	76.7	0	0.0
Virgin Australia	170	168	125	74.4	139	82.7	2	1.2
All Airlines	592	586	445	75.9	501	85.5	6	1.0
<b>Albury-Sydney</b>								
QantasLink	90	88	58	65.9	62	70.5	2	2.2
Regional Express	88	87	70	80.5	77	88.5	1	1.1
Virgin Australia Regional Airlines	60	59	44	74.6	46	78.0	1	1.7
All Airlines	238	234	172	73.5	185	79.1	4	1.7
<b>Armidale-Sydney</b>								
QantasLink	134	128	87	68.0	83	64.8	6	4.5
Regional Express	72	72	45	62.5	57	79.2	0	0.0
All Airlines	206	200	132	66.0	140	70.0	6	2.9



	<i>Sectors</i>		<i>Arrivals On Time</i>		<i>Departures On Time</i>		<i>Cancellations</i>	
	<i>Sched.</i>	<i>Flown</i>	<i>No.</i>	<i>%</i>	<i>No.</i>	<i>%</i>	<i>No.</i>	<i>%</i>
<b>Ayers Rock-Sydney</b>								
Jetstar	30	30	23	76.7	23	76.7	0	0.0
Virgin Australia	30	30	26	86.7	24	80.0	0	0.0
All Airlines	60	60	49	81.7	47	78.3	0	0.0
<b>Ballina-Sydney</b>								
Jetstar	79	79	51	64.6	47	59.5	0	0.0
Regional Express	23	23	15	65.2	16	69.6	0	0.0
Virgin Australia	30	29	26	89.7	25	86.2	1	3.3
All Airlines	132	131	92	70.2	88	67.2	1	0.8
<b>Brisbane-Adelaide</b>								
Jetstar	26	26	25	96.2	26	100.0	0	0.0
Qantas	107	107	106	99.1	97	90.7	0	0.0
Tigerair	26	26	23	88.5	21	80.8	0	0.0
Virgin Australia	110	110	99	90.0	94	85.5	0	0.0
All Airlines	269	269	253	94.1	238	88.5	0	0.0
<b>Brisbane-Bundaberg</b>								
QantasLink	125	125	103	82.4	108	86.4	0	0.0
Virgin Australia Regional Airlines	38	38	29	76.3	30	78.9	0	0.0
All Airlines	163	163	132	81.0	138	84.7	0	0.0
<b>Brisbane-Cairns</b>								
Jetstar	105	105	92	87.6	85	81.0	0	0.0
Qantas	116	116	105	90.5	100	86.2	0	0.0
QantasLink	4	4	4	100.0	4	100.0	0	0.0
Tigerair	28	28	21	75.0	20	71.4	0	0.0
Virgin Australia	132	132	116	87.9	111	84.1	0	0.0
All Airlines	385	385	338	87.8	320	83.1	0	0.0
<b>Brisbane-Canberra</b>								
Qantas	26	26	25	96.2	26	100.0	0	0.0
QantasLink	125	125	110	88.0	107	85.6	0	0.0
Virgin Australia	93	93	84	90.3	82	88.2	0	0.0
All Airlines	244	244	219	89.8	215	88.1	0	0.0
<b>Brisbane-Darwin</b>								
Jetstar	26	26	23	88.5	22	84.6	0	0.0
Qantas	48	48	40	83.3	44	91.7	0	0.0
Tigerair	24	24	22	91.7	22	91.7	0	0.0
Virgin Australia	30	30	26	86.7	26	86.7	0	0.0
All Airlines	128	128	111	86.7	114	89.1	0	0.0
<b>Brisbane-Emerald</b>								
QantasLink	141	138	114	82.6	121	87.7	3	2.1
Virgin Australia Regional Airlines	80	80	57	71.3	71	88.8	0	0.0
All Airlines	221	218	171	78.4	192	88.1	3	1.4
<b>Brisbane-Gladstone</b>								
QantasLink	206	201	183	91.0	187	93.0	5	2.4
Virgin Australia	12	12	11	91.7	11	91.7	0	0.0
Virgin Australia Regional Airlines	139	137	116	84.7	119	86.9	2	1.4
All Airlines	357	350	310	88.6	317	90.6	7	2.0
<b>Brisbane-Hamilton Island</b>								
QantasLink	16	16	13	81.3	14	87.5	0	0.0
Virgin Australia	30	30	28	93.3	29	96.7	0	0.0
All Airlines	46	46	41	89.1	43	93.5	0	0.0
<b>Brisbane-Hobart</b>								
Jetstar	26	26	26	100.0	25	96.2	0	0.0
Virgin Australia	30	30	27	90.0	27	90.0	0	0.0
All Airlines	56	56	53	94.6	52	92.9	0	0.0

	<i>Sectors</i>		<i>Arrivals On Time</i>		<i>Departures On Time</i>		<i>Cancellations</i>	
	<i>Sched.</i>	<i>Flown</i>	<i>No.</i>	<i>%</i>	<i>No.</i>	<i>%</i>	<i>No.</i>	<i>%</i>
<b>Brisbane-Mackay</b>								
Jetstar	60	60	51	85.0	51	85.0	0	0.0
QantasLink	108	107	96	89.7	96	89.7	1	0.9
Virgin Australia	153	152	138	90.8	141	92.8	1	0.7
All Airlines	321	319	285	89.3	288	90.3	2	0.6
<b>Brisbane-Melbourne</b>								
Jetstar	132	130	106	81.5	89	68.5	2	1.5
Qantas	408	407	375	92.1	368	90.4	1	0.2
Tigerair	126	126	102	81.0	96	76.2	0	0.0
Virgin Australia	401	390	355	91.0	350	89.7	11	2.7
All Airlines	1 067	1 053	938	89.1	903	85.8	14	1.3
<b>Brisbane-Moranbah</b>								
QantasLink	122	113	95	84.1	100	88.5	9	7.4
Virgin Australia Regional Airlines	74	73	60	82.2	65	89.0	1	1.4
All Airlines	196	186	155	83.3	165	88.7	10	5.1
<b>Brisbane-Mount Isa</b>								
Qantas	43	43	38	88.4	41	95.3	0	0.0
Virgin Australia	22	22	21	95.5	20	90.9	0	0.0
All Airlines	65	65	59	90.8	61	93.8	0	0.0
<b>Brisbane-Newcastle</b>								
Jetstar	83	80	77	96.3	75	93.8	3	3.6
QantasLink	78	75	57	76.0	58	77.3	3	3.8
Virgin Australia	80	79	68	86.1	71	89.9	1	1.3
All Airlines	241	234	202	86.3	204	87.2	7	2.9
<b>Brisbane-Perth</b>								
Qantas	122	121	88	72.7	96	79.3	1	0.8
Virgin Australia	108	108	96	88.9	82	75.9	0	0.0
All Airlines	230	229	184	80.3	178	77.7	1	0.4
<b>Brisbane-Proserpine</b>								
Jetstar	28	28	26	92.9	27	96.4	0	0.0
Virgin Australia	52	52	48	92.3	47	90.4	0	0.0
All Airlines	80	80	74	92.5	74	92.5	0	0.0
<b>Brisbane-Rockhampton</b>								
QantasLink	187	185	149	80.5	157	84.9	2	1.1
Virgin Australia	107	105	95	90.5	95	90.5	2	1.9
Virgin Australia Regional Airlines	93	89	78	87.6	81	91.0	4	4.3
All Airlines	387	379	322	85.0	333	87.9	8	2.1
<b>Brisbane-Sydney</b>								
Jetstar	174	169	118	69.8	112	66.3	5	2.9
Qantas	582	569	494	86.8	503	88.4	13	2.2
Tigerair	103	101	80	79.2	79	78.2	2	1.9
Virgin Australia	552	536	464	86.6	481	89.7	16	2.9
All Airlines	1 411	1 375	1 156	84.1	1 175	85.5	36	2.6
<b>Brisbane-Townsville</b>								
Jetstar	60	60	50	83.3	51	85.0	0	0.0
Qantas	144	144	128	88.9	128	88.9	0	0.0
Virgin Australia	157	156	140	89.7	141	90.4	1	0.6
All Airlines	361	360	318	88.3	320	88.9	1	0.3
<b>Broome-Perth</b>								
Qantas	35	35	35	100.0	32	91.4	0	0.0
QantasLink	46	46	42	91.3	40	87.0	0	0.0
Virgin Australia	17	17	13	76.5	14	82.4	0	0.0
Virgin Australia Regional Airlines	28	28	14	50.0	15	53.6	0	0.0
All Airlines	126	126	104	82.5	101	80.2	0	0.0

	<i>Sectors</i>		<i>Arrivals On Time</i>		<i>Departures On Time</i>		<i>Cancellations</i>	
	<i>Sched.</i>	<i>Flown</i>	<i>No.</i>	<i>%</i>	<i>No.</i>	<i>%</i>	<i>No.</i>	<i>%</i>
<b>Bundaberg-Brisbane</b>								
QantasLink	127	125	100	80.0	102	81.6	2	1.6
Virgin Australia Regional Airlines	38	38	30	78.9	28	73.7	0	0.0
All Airlines	165	163	130	79.8	130	79.8	2	1.2
<b>Cairns-Brisbane</b>								
Jetstar	105	105	94	89.5	91	86.7	0	0.0
Qantas	116	116	104	89.7	103	88.8	0	0.0
QantasLink	4	4	4	100.0	4	100.0	0	0.0
Tigerair	28	28	19	67.9	21	75.0	0	0.0
Virgin Australia	132	132	116	87.9	117	88.6	0	0.0
All Airlines	385	385	337	87.5	336	87.3	0	0.0
<b>Cairns-Melbourne</b>								
Jetstar	100	98	92	93.9	85	86.7	2	2.0
Qantas	30	30	27	90.0	23	76.7	0	0.0
Tigerair	33	33	26	78.8	26	78.8	0	0.0
Virgin Australia	34	34	30	88.2	26	76.5	0	0.0
All Airlines	197	195	175	89.7	160	82.1	2	1.0
<b>Cairns-Sydney</b>								
Jetstar	105	103	82	79.6	83	80.6	2	1.9
Qantas	71	71	58	81.7	57	80.3	0	0.0
Tigerair	30	30	25	83.3	21	70.0	0	0.0
Virgin Australia	89	88	73	83.0	75	85.2	1	1.1
All Airlines	295	292	238	81.5	236	80.8	3	1.0
<b>Canberra-Adelaide</b>								
Qantas	43	43	39	90.7	37	86.0	0	0.0
Virgin Australia	27	26	24	92.3	22	84.6	1	3.7
All Airlines	70	69	63	91.3	59	85.5	1	1.4
<b>Canberra-Brisbane</b>								
Qantas	26	26	23	88.5	24	92.3	0	0.0
QantasLink	125	125	95	76.0	106	84.8	0	0.0
Virgin Australia	93	93	79	84.9	85	91.4	0	0.0
All Airlines	244	244	197	80.7	215	88.1	0	0.0
<b>Canberra-Melbourne</b>								
Qantas	181	181	168	92.8	170	93.9	0	0.0
QantasLink	82	81	69	85.2	72	88.9	1	1.2
Virgin Australia	147	146	133	91.1	136	93.2	1	0.7
Virgin Australia Regional Airlines	30	30	26	86.7	27	90.0	0	0.0
All Airlines	440	438	396	90.4	405	92.5	2	0.5
<b>Canberra-Sydney</b>								
QantasLink	474	442	346	78.3	356	80.5	32	6.8
Virgin Australia	15	14	11	78.6	11	78.6	1	6.7
Virgin Australia Regional Airlines	263	250	213	85.2	222	88.8	13	4.9
All Airlines	752	706	570	80.7	589	83.4	46	6.1
<b>Coffs Harbour-Sydney</b>								
QantasLink	150	147	101	68.7	101	68.7	3	2.0
Tigerair	12	12	10	83.3	9	75.0	0	0.0
Virgin Australia	60	59	51	86.4	51	86.4	1	1.7
All Airlines	222	218	162	74.3	161	73.9	4	1.8
<b>Darwin-Brisbane</b>								
Jetstar	26	26	21	80.8	23	88.5	0	0.0
Qantas	48	48	38	79.2	38	79.2	0	0.0
Tigerair	23	23	21	91.3	22	95.7	0	0.0
Virgin Australia	30	30	18	60.0	22	73.3	0	0.0
All Airlines	127	127	98	77.2	105	82.7	0	0.0

	<i>Sectors</i>		<i>Arrivals On Time</i>		<i>Departures On Time</i>		<i>Cancellations</i>	
	<i>Sched.</i>	<i>Flown</i>	<i>No.</i>	<i>%</i>	<i>No.</i>	<i>%</i>	<i>No.</i>	<i>%</i>
<b>Darwin-Melbourne</b>								
Jetstar	27	25	18	72.0	19	76.0	2	7.4
Qantas	30	30	26	86.7	27	90.0	0	0.0
Virgin Australia	30	30	21	70.0	25	83.3	0	0.0
All Airlines	87	85	65	76.5	71	83.5	2	2.3
<b>Darwin-Perth</b>								
Qantas	36	36	33	91.7	34	94.4	0	0.0
Virgin Australia	30	30	24	80.0	24	80.0	0	0.0
All Airlines	66	66	57	86.4	58	87.9	0	0.0
<b>Darwin-Sydney</b>								
Jetstar	25	25	10	40.0	15	60.0	0	0.0
Qantas	47	47	37	78.7	42	89.4	0	0.0
Virgin Australia	30	30	19	63.3	26	86.7	0	0.0
All Airlines	102	102	66	64.7	83	81.4	0	0.0
<b>Dubbo-Sydney</b>								
QantasLink	125	123	81	65.9	81	65.9	2	1.6
Regional Express	139	137	103	75.2	114	83.2	2	1.4
All Airlines	264	260	184	70.8	195	75.0	4	1.5
<b>Emerald-Brisbane</b>								
QantasLink	141	136	111	81.6	106	77.9	5	3.5
Virgin Australia Regional Airlines	80	79	69	87.3	68	86.1	1	1.3
All Airlines	221	215	180	83.7	174	80.9	6	2.7
<b>Geraldton-Perth</b>								
QantasLink	52	52	50	96.2	49	94.2	0	0.0
Virgin Australia Regional Airlines	93	93	83	89.2	83	89.2	0	0.0
All Airlines	145	145	133	91.7	132	91.0	0	0.0
<b>Gladstone-Brisbane</b>								
QantasLink	201	196	173	88.3	166	84.7	5	2.5
Virgin Australia	12	12	10	83.3	10	83.3	0	0.0
Virgin Australia Regional Airlines	138	134	112	83.6	115	85.8	4	2.9
All Airlines	351	342	295	86.3	291	85.1	9	2.6
<b>Gold Coast-Adelaide</b>								
Jetstar	41	41	34	82.9	34	82.9	0	0.0
Virgin Australia	30	30	26	86.7	26	86.7	0	0.0
All Airlines	71	71	60	84.5	60	84.5	0	0.0
<b>Gold Coast-Melbourne</b>								
Jetstar	227	218	188	86.2	172	78.9	9	4.0
Tigerair	76	76	61	80.3	45	59.2	0	0.0
Virgin Australia	178	178	166	93.3	143	80.3	0	0.0
All Airlines	481	472	415	87.9	360	76.3	9	1.9
<b>Gold Coast-Sydney</b>								
Jetstar	319	309	233	75.4	219	70.9	10	3.1
Qantas	91	91	81	89.0	79	86.8	0	0.0
QantasLink	1	1	0	0.0	0	0.0	0	0.0
Tigerair	111	110	93	84.5	90	81.8	1	0.9
Virgin Australia	245	240	197	82.1	194	80.8	5	2.0
All Airlines	767	751	604	80.4	582	77.5	16	2.1
<b>Hamilton Island-Brisbane</b>								
QantasLink	16	16	15	93.8	11	68.8	0	0.0
Virgin Australia	30	30	28	93.3	25	83.3	0	0.0
All Airlines	46	46	43	93.5	36	78.3	0	0.0

	<i>Sectors</i>		<i>Arrivals On Time</i>		<i>Departures On Time</i>		<i>Cancellations</i>	
	<i>Sched.</i>	<i>Flown</i>	<i>No.</i>	<i>%</i>	<i>No.</i>	<i>%</i>	<i>No.</i>	<i>%</i>
<b>Hamilton Island-Melbourne</b>								
Jetstar	15	15	14	93.3	13	86.7	0	0.0
Virgin Australia	17	17	17	100.0	17	100.0	0	0.0
All Airlines	32	32	31	96.9	30	93.8	0	0.0
<b>Hamilton Island-Sydney</b>								
Jetstar	25	25	18	72.0	15	60.0	0	0.0
Qantas	9	9	5	55.6	4	44.4	0	0.0
Virgin Australia	30	30	27	90.0	24	80.0	0	0.0
All Airlines	64	64	50	78.1	43	67.2	0	0.0
<b>Hobart-Brisbane</b>								
Jetstar	26	26	18	69.2	22	84.6	0	0.0
Virgin Australia	30	30	21	70.0	21	70.0	0	0.0
All Airlines	56	56	39	69.6	43	76.8	0	0.0
<b>Hobart-Melbourne</b>								
Jetstar	169	168	121	72.0	127	75.6	1	0.6
QantasLink	120	119	85	71.4	84	70.6	1	0.8
Tigerair	30	30	20	66.7	24	80.0	0	0.0
Virgin Australia	137	137	112	81.8	119	86.9	0	0.0
All Airlines	456	454	338	74.4	354	78.0	2	0.4
<b>Hobart-Sydney</b>								
Jetstar	76	76	54	71.1	56	73.7	0	0.0
Qantas	1	1	1	100.0	1	100.0	0	0.0
QantasLink	31	31	20	64.5	22	71.0	0	0.0
Virgin Australia	60	60	39	65.0	43	71.7	0	0.0
All Airlines	168	168	114	67.9	122	72.6	0	0.0
<b>Kalgoorlie-Perth</b>								
Qantas	21	21	20	95.2	20	95.2	0	0.0
QantasLink	61	61	56	91.8	55	90.2	0	0.0
Virgin Australia	36	36	33	91.7	35	97.2	0	0.0
Virgin Australia Regional Airlines	20	20	17	85.0	16	80.0	0	0.0
All Airlines	138	138	126	91.3	126	91.3	0	0.0
<b>Karratha-Perth</b>								
Qantas	110	107	99	92.5	103	96.3	3	2.7
QantasLink	102	101	92	91.1	95	94.1	1	1.0
Virgin Australia	71	71	65	91.5	66	93.0	0	0.0
Virgin Australia Regional Airlines	16	16	12	75.0	13	81.3	0	0.0
All Airlines	299	295	268	90.8	277	93.9	4	1.3
<b>Launceston-Melbourne</b>								
Jetstar	133	131	95	72.5	97	74.0	2	1.5
QantasLink	117	113	83	73.5	89	78.8	4	3.4
Virgin Australia	93	93	69	74.2	74	79.6	0	0.0
Virgin Australia Regional Airlines	3	3	3	100.0	3	100.0	0	0.0
All Airlines	346	340	250	73.5	263	77.4	6	1.7
<b>Launceston-Sydney</b>								
Jetstar	44	44	31	70.5	33	75.0	0	0.0
Virgin Australia	30	30	20	66.7	22	73.3	0	0.0
All Airlines	74	74	51	68.9	55	74.3	0	0.0
<b>Mackay-Brisbane</b>								
Jetstar	59	59	51	86.4	45	76.3	0	0.0
QantasLink	108	108	98	90.7	97	89.8	0	0.0
Virgin Australia	153	152	139	91.4	138	90.8	1	0.7
All Airlines	320	319	288	90.3	280	87.8	1	0.3

	<i>Sectors</i>		<i>Arrivals On Time</i>		<i>Departures On Time</i>		<i>Cancellations</i>	
	<i>Sched.</i>	<i>Flown</i>	<i>No.</i>	<i>%</i>	<i>No.</i>	<i>%</i>	<i>No.</i>	<i>%</i>
<b>Melbourne-Adelaide</b>								
Jetstar	123	121	89	73.6	90	74.4	2	1.6
Qantas	290	289	270	93.4	270	93.4	1	0.3
Tigerair	76	76	66	86.8	70	92.1	0	0.0
Virgin Australia	276	274	246	89.8	252	92.0	2	0.7
All Airlines	765	760	671	88.3	682	89.7	5	0.7
<b>Melbourne-Brisbane</b>								
Jetstar	134	131	83	63.4	87	66.4	3	2.2
Qantas	408	406	326	80.3	365	89.9	2	0.5
Tigerair	126	126	92	73.0	99	78.6	0	0.0
Virgin Australia	402	391	310	79.3	360	92.1	11	2.7
All Airlines	1 070	1 054	811	76.9	911	86.4	16	1.5
<b>Melbourne-Cairns</b>								
Jetstar	101	101	86	85.1	89	88.1	0	0.0
Qantas	30	30	27	90.0	24	80.0	0	0.0
Tigerair	33	33	27	81.8	31	93.9	0	0.0
Virgin Australia	34	34	27	79.4	30	88.2	0	0.0
All Airlines	198	198	167	84.3	174	87.9	0	0.0
<b>Melbourne-Canberra</b>								
Qantas	181	181	160	88.4	167	92.3	0	0.0
QantasLink	83	80	61	76.3	64	80.0	3	3.6
Virgin Australia	147	147	139	94.6	142	96.6	0	0.0
Virgin Australia Regional Airlines	30	30	21	70.0	23	76.7	0	0.0
All Airlines	441	438	381	87.0	396	90.4	3	0.7
<b>Melbourne-Darwin</b>								
Jetstar	26	26	23	88.5	21	80.8	0	0.0
Qantas	30	30	29	96.7	28	93.3	0	0.0
Virgin Australia	30	30	27	90.0	26	86.7	0	0.0
All Airlines	86	86	79	91.9	75	87.2	0	0.0
<b>Melbourne-Gold Coast</b>								
Jetstar	227	218	166	76.1	172	78.9	9	4.0
Tigerair	76	76	56	73.7	70	92.1	0	0.0
Virgin Australia	178	178	153	86.0	163	91.6	0	0.0
All Airlines	481	472	375	79.4	405	85.8	9	1.9
<b>Melbourne-Hamilton Island</b>								
Jetstar	16	16	15	93.8	14	87.5	0	0.0
Virgin Australia	17	17	17	100.0	15	88.2	0	0.0
All Airlines	33	33	32	97.0	29	87.9	0	0.0
<b>Melbourne-Hobart</b>								
Jetstar	169	168	137	81.5	128	76.2	1	0.6
QantasLink	120	120	77	64.2	81	67.5	0	0.0
Tigerair	30	30	25	83.3	27	90.0	0	0.0
Virgin Australia	137	137	117	85.4	119	86.9	0	0.0
All Airlines	456	455	356	78.2	355	78.0	1	0.2
<b>Melbourne-Launceston</b>								
Jetstar	134	132	102	77.3	105	79.5	2	1.5
QantasLink	117	114	85	74.6	93	81.6	3	2.6
Virgin Australia	93	93	74	79.6	77	82.8	0	0.0
Virgin Australia Regional Airlines	3	3	3	100.0	3	100.0	0	0.0
All Airlines	347	342	264	77.2	278	81.3	5	1.4
<b>Melbourne-Mildura</b>								
QantasLink	86	86	74	86.0	76	88.4	0	0.0
Regional Express	78	78	71	91.0	71	91.0	0	0.0
Virgin Australia	30	30	25	83.3	26	86.7	0	0.0
All Airlines	194	194	170	87.6	173	89.2	0	0.0

	<i>Sectors</i>		<i>Arrivals On Time</i>		<i>Departures On Time</i>		<i>Cancellations</i>	
	<i>Sched.</i>	<i>Flown</i>	<i>No.</i>	<i>%</i>	<i>No.</i>	<i>%</i>	<i>No.</i>	<i>%</i>
<b>Melbourne-Newcastle</b>								
Jetstar	107	103	87	84.5	89	86.4	4	3.7
Virgin Australia	30	29	23	79.3	25	86.2	1	3.3
All Airlines	137	132	110	83.3	114	86.4	5	3.6
<b>Melbourne-Perth</b>								
Jetstar	77	75	70	93.3	61	81.3	2	2.6
Qantas	213	213	179	84.0	179	84.0	0	0.0
Tigerair	57	57	45	78.9	49	86.0	0	0.0
Virgin Australia	137	136	120	88.2	111	81.6	1	0.7
All Airlines	484	481	414	86.1	400	83.2	3	0.6
<b>Melbourne-Sunshine Coast</b>								
Jetstar	77	77	58	75.3	63	81.8	0	0.0
Virgin Australia	35	35	32	91.4	33	94.3	0	0.0
All Airlines	112	112	90	80.4	96	85.7	0	0.0
<b>Melbourne-Sydney</b>								
Jetstar	348	329	211	64.1	219	66.6	19	5.5
Qantas	970	921	699	75.9	796	86.4	49	5.1
Tigerair	244	242	172	71.1	195	80.6	2	0.8
Virgin Australia	786	742	593	79.9	665	89.6	44	5.6
All Airlines	2 348	2 234	1 675	75.0	1 875	83.9	114	4.9
<b>Mildura-Melbourne</b>								
QantasLink	86	86	72	83.7	74	86.0	0	0.0
Regional Express	78	78	60	76.9	63	80.8	0	0.0
Virgin Australia	30	30	26	86.7	25	83.3	0	0.0
All Airlines	194	194	158	81.4	162	83.5	0	0.0
<b>Moranbah-Brisbane</b>								
QantasLink	118	109	97	89.0	95	87.2	9	7.6
Virgin Australia Regional Airlines	74	73	70	95.9	66	90.4	1	1.4
All Airlines	192	182	167	91.8	161	88.5	10	5.2
<b>Mount Isa-Brisbane</b>								
Qantas	43	42	37	88.1	35	83.3	1	2.3
Virgin Australia	22	22	22	100.0	22	100.0	0	0.0
All Airlines	65	64	59	92.2	57	89.1	1	1.5
<b>Newcastle-Brisbane</b>								
Jetstar	83	80	62	77.5	59	73.8	3	3.6
QantasLink	78	75	52	69.3	58	77.3	3	3.8
Virgin Australia	82	79	64	81.0	65	82.3	3	3.7
All Airlines	243	234	178	76.1	182	77.8	9	3.7
<b>Newcastle-Melbourne</b>								
Jetstar	108	104	88	84.6	87	83.7	4	3.7
Virgin Australia	30	29	22	75.9	18	62.1	1	3.3
All Airlines	138	133	110	82.7	105	78.9	5	3.6
<b>Newman-Perth</b>								
Qantas	89	89	87	97.8	87	97.8	0	0.0
QantasLink	64	62	54	87.1	54	87.1	2	3.1
Virgin Australia	32	32	32	100.0	30	93.8	0	0.0
Virgin Australia Regional Airlines	4	4	2	50.0	3	75.0	0	0.0
All Airlines	189	187	175	93.6	174	93.0	2	1.1
<b>Perth-Adelaide</b>								
Jetstar	38	38	33	86.8	33	86.8	0	0.0
Qantas	117	117	116	99.1	112	95.7	0	0.0
Virgin Australia	71	71	65	91.5	66	93.0	0	0.0
All Airlines	226	226	214	94.7	211	93.4	0	0.0

	<i>Sectors</i>		<i>Arrivals On Time</i>		<i>Departures On Time</i>		<i>Cancellations</i>	
	<i>Sched.</i>	<i>Flown</i>	<i>No.</i>	<i>%</i>	<i>No.</i>	<i>%</i>	<i>No.</i>	<i>%</i>
<b>Perth-Brisbane</b>								
Qantas	122	122	102	83.6	109	89.3	0	0.0
Virgin Australia	108	108	94	87.0	101	93.5	0	0.0
All Airlines	230	230	196	85.2	210	91.3	0	0.0
<b>Perth-Broome</b>								
Qantas	35	35	34	97.1	35	100.0	0	0.0
QantasLink	46	46	42	91.3	41	89.1	0	0.0
Virgin Australia	17	17	17	100.0	17	100.0	0	0.0
Virgin Australia Regional Airlines	24	24	15	62.5	17	70.8	0	0.0
All Airlines	122	122	108	88.5	110	90.2	0	0.0
<b>Perth-Darwin</b>								
Qantas	37	37	36	97.3	36	97.3	0	0.0
Virgin Australia	30	30	24	80.0	27	90.0	0	0.0
All Airlines	67	67	60	89.6	63	94.0	0	0.0
<b>Perth-Geraldton</b>								
QantasLink	52	52	49	94.2	48	92.3	0	0.0
Virgin Australia Regional Airlines	89	89	78	87.6	76	85.4	0	0.0
All Airlines	141	141	127	90.1	124	87.9	0	0.0
<b>Perth-Kalgoorlie</b>								
Qantas	21	21	20	95.2	20	95.2	0	0.0
QantasLink	61	61	54	88.5	57	93.4	0	0.0
Virgin Australia	36	36	31	86.1	31	86.1	0	0.0
Virgin Australia Regional Airlines	20	20	16	80.0	17	85.0	0	0.0
All Airlines	138	138	121	87.7	125	90.6	0	0.0
<b>Perth-Karratha</b>								
Qantas	110	107	105	98.1	105	98.1	3	2.7
QantasLink	102	101	94	93.1	95	94.1	1	1.0
Virgin Australia	71	71	66	93.0	66	93.0	0	0.0
Virgin Australia Regional Airlines	16	16	11	68.8	12	75.0	0	0.0
All Airlines	299	295	276	93.6	278	94.2	4	1.3
<b>Perth-Melbourne</b>								
Jetstar	79	76	68	89.5	70	92.1	3	3.8
Qantas	212	212	178	84.0	182	85.8	0	0.0
Tigerair	56	56	42	75.0	48	85.7	0	0.0
Virgin Australia	137	137	109	79.6	120	87.6	0	0.0
All Airlines	484	481	397	82.5	420	87.3	3	0.6
<b>Perth-Newman</b>								
Qantas	89	89	88	98.9	88	98.9	0	0.0
QantasLink	64	62	54	87.1	56	90.3	2	3.1
Virgin Australia	32	32	31	96.9	30	93.8	0	0.0
Virgin Australia Regional Airlines	4	4	3	75.0	3	75.0	0	0.0
All Airlines	189	187	176	94.1	177	94.7	2	1.1
<b>Perth-Port Hedland</b>								
Qantas	115	114	110	96.5	109	95.6	1	0.9
QantasLink	44	43	42	97.7	42	97.7	1	2.3
Virgin Australia	43	42	37	88.1	38	90.5	1	2.3
All Airlines	202	199	189	95.0	189	95.0	3	1.5
<b>Perth-Sydney</b>								
Jetstar	33	33	21	63.6	26	78.8	0	0.0
Qantas	196	196	166	84.7	167	85.2	0	0.0
Tigerair	26	25	20	80.0	24	96.0	1	3.8
Virgin Australia	114	114	89	78.1	100	87.7	0	0.0
All Airlines	369	368	296	80.4	317	86.1	1	0.3



	<i>Sectors</i>		<i>Arrivals On Time</i>		<i>Departures On Time</i>		<i>Cancellations</i>	
	<i>Sched.</i>	<i>Flown</i>	<i>No.</i>	<i>%</i>	<i>No.</i>	<i>%</i>	<i>No.</i>	<i>%</i>
<b>Port Hedland-Perth</b>								
Qantas	115	113	108	95.6	110	97.3	2	1.7
QantasLink	44	43	43	100.0	43	100.0	1	2.3
Virgin Australia	43	42	36	85.7	37	88.1	1	2.3
All Airlines	202	198	187	94.4	190	96.0	4	2.0
<b>Port Lincoln-Adelaide</b>								
QantasLink	111	110	75	68.2	78	70.9	1	0.9
Regional Express	199	199	184	92.5	189	95.0	0	0.0
All Airlines	310	309	259	83.8	267	86.4	1	0.3
<b>Port Macquarie-Sydney</b>								
QantasLink	134	130	57	43.8	70	53.8	4	3.0
Virgin Australia Regional Airlines	59	57	48	84.2	46	80.7	2	3.4
All Airlines	193	187	105	56.1	116	62.0	6	3.1
<b>Proserpine-Brisbane</b>								
Jetstar	28	28	24	85.7	26	92.9	0	0.0
Virgin Australia	52	52	48	92.3	48	92.3	0	0.0
All Airlines	80	80	72	90.0	74	92.5	0	0.0
<b>Rockhampton-Brisbane</b>								
QantasLink	187	186	143	76.9	149	80.1	1	0.5
Virgin Australia	109	105	98	93.3	96	91.4	4	3.7
Virgin Australia Regional Airlines	93	90	83	92.2	82	91.1	3	3.2
All Airlines	389	381	324	85.0	327	85.8	8	2.1
<b>Sunshine Coast-Melbourne</b>								
Jetstar	78	78	61	78.2	52	66.7	0	0.0
Virgin Australia	35	35	32	91.4	29	82.9	0	0.0
All Airlines	113	113	93	82.3	81	71.7	0	0.0
<b>Sunshine Coast-Sydney</b>								
Jetstar	112	112	77	68.8	68	60.7	0	0.0
Virgin Australia	30	30	22	73.3	22	73.3	0	0.0
All Airlines	142	142	99	69.7	90	63.4	0	0.0
<b>Sydney-Adelaide</b>								
Jetstar	138	136	103	75.7	99	72.8	2	1.4
Qantas	226	226	197	87.2	185	81.9	0	0.0
QantasLink	22	21	14	66.7	15	71.4	1	4.5
Tigerair	30	30	24	80.0	27	90.0	0	0.0
Virgin Australia	169	168	140	83.3	141	83.9	1	0.6
All Airlines	585	581	478	82.3	467	80.4	4	0.7
<b>Sydney-Albury</b>								
QantasLink	90	89	70	78.7	66	74.2	1	1.1
Regional Express	92	92	72	78.3	74	80.4	0	0.0
Virgin Australia Regional Airlines	60	59	47	79.7	48	81.4	1	1.7
All Airlines	242	240	189	78.8	188	78.3	2	0.8
<b>Sydney-Armidale</b>								
QantasLink	134	131	85	64.9	93	71.0	3	2.2
Regional Express	71	71	57	80.3	57	80.3	0	0.0
All Airlines	205	202	142	70.3	150	74.3	3	1.5
<b>Sydney-Ayers Rock</b>								
Jetstar	29	29	23	79.3	22	75.9	0	0.0
Virgin Australia	30	30	27	90.0	25	83.3	0	0.0
All Airlines	59	59	50	84.7	47	79.7	0	0.0

	<i>Sectors</i>		<i>Arrivals On Time</i>		<i>Departures On Time</i>		<i>Cancellations</i>	
	<i>Sched.</i>	<i>Flown</i>	<i>No.</i>	<i>%</i>	<i>No.</i>	<i>%</i>	<i>No.</i>	<i>%</i>
<b>Sydney-Ballina</b>								
Jetstar	78	78	53	67.9	56	71.8	0	0.0
Regional Express	26	26	21	80.8	21	80.8	0	0.0
Virgin Australia	30	29	25	86.2	27	93.1	1	3.3
All Airlines	134	133	99	74.4	104	78.2	1	0.7
<b>Sydney-Brisbane</b>								
Jetstar	173	168	106	63.1	113	67.3	5	2.9
Qantas	582	572	448	78.3	490	85.7	10	1.7
Tigerair	103	101	83	82.2	86	85.1	2	1.9
Virgin Australia	552	535	407	76.1	449	83.9	17	3.1
All Airlines	1 410	1 376	1 044	75.9	1 138	82.7	34	2.4
<b>Sydney-Cairns</b>								
Jetstar	106	106	82	77.4	81	76.4	0	0.0
Qantas	71	71	57	80.3	62	87.3	0	0.0
Tigerair	30	30	25	83.3	28	93.3	0	0.0
Virgin Australia	89	88	75	85.2	72	81.8	1	1.1
All Airlines	296	295	239	81.0	243	82.4	1	0.3
<b>Sydney-Canberra</b>								
QantasLink	476	444	344	77.5	343	77.3	32	6.7
Virgin Australia	15	14	11	78.6	11	78.6	1	6.7
Virgin Australia Regional Airlines	263	251	215	85.7	210	83.7	12	4.6
All Airlines	754	709	570	80.4	564	79.5	45	6.0
<b>Sydney-Coffs Harbour</b>								
QantasLink	150	148	108	73.0	108	73.0	2	1.3
Tigerair	12	12	12	100.0	12	100.0	0	0.0
Virgin Australia	60	59	51	86.4	52	88.1	1	1.7
All Airlines	222	219	171	78.1	172	78.5	3	1.4
<b>Sydney-Darwin</b>								
Jetstar	25	25	19	76.0	19	76.0	0	0.0
Qantas	48	48	42	87.5	33	68.8	0	0.0
Virgin Australia	30	30	25	83.3	25	83.3	0	0.0
All Airlines	103	103	86	83.5	77	74.8	0	0.0
<b>Sydney-Dubbo</b>								
QantasLink	125	123	73	59.3	70	56.9	2	1.6
Regional Express	138	137	120	87.6	117	85.4	1	0.7
All Airlines	263	260	193	74.2	187	71.9	3	1.1
<b>Sydney-Gold Coast</b>								
Jetstar	320	311	229	73.6	233	74.9	9	2.8
Qantas	91	91	83	91.2	82	90.1	0	0.0
QantasLink	1	1	0	0.0	0	0.0	0	0.0
Tigerair	111	110	95	86.4	98	89.1	1	0.9
Virgin Australia	246	241	197	81.7	205	85.1	5	2.0
All Airlines	769	754	604	80.1	618	82.0	15	2.0
<b>Sydney-Hamilton Island</b>								
Jetstar	25	25	16	64.0	19	76.0	0	0.0
Qantas	9	9	7	77.8	7	77.8	0	0.0
Virgin Australia	30	30	25	83.3	27	90.0	0	0.0
All Airlines	64	64	48	75.0	53	82.8	0	0.0
<b>Sydney-Hobart</b>								
Jetstar	75	75	62	82.7	62	82.7	0	0.0
Qantas	1	1	1	100.0	1	100.0	0	0.0
QantasLink	31	31	20	64.5	23	74.2	0	0.0
Virgin Australia	60	60	54	90.0	53	88.3	0	0.0
All Airlines	167	167	137	82.0	139	83.2	0	0.0

	<i>Sectors</i>		<i>Arrivals On Time</i>		<i>Departures On Time</i>		<i>Cancellations</i>	
	<i>Sched.</i>	<i>Flown</i>	<i>No.</i>	<i>%</i>	<i>No.</i>	<i>%</i>	<i>No.</i>	<i>%</i>
<b>Sydney-Launceston</b>								
Jetstar	44	44	37	84.1	33	75.0	0	0.0
Virgin Australia	30	30	27	90.0	23	76.7	0	0.0
All Airlines	74	74	64	86.5	56	75.7	0	0.0
<b>Sydney-Melbourne</b>								
Jetstar	348	330	237	71.8	219	66.4	18	5.2
Qantas	970	922	777	84.3	760	82.4	48	4.9
Tigerair	244	242	182	75.2	169	69.8	2	0.8
Virgin Australia	785	741	610	82.3	597	80.6	44	5.6
All Airlines	2 347	2 235	1 806	80.8	1 745	78.1	112	4.8
<b>Sydney-Perth</b>								
Jetstar	32	32	30	93.8	24	75.0	0	0.0
Qantas	201	201	163	81.1	152	75.6	0	0.0
Tigerair	26	26	26	100.0	25	96.2	0	0.0
Virgin Australia	114	114	92	80.7	83	72.8	0	0.0
All Airlines	373	373	311	83.4	284	76.1	0	0.0
<b>Sydney-Port Macquarie</b>								
QantasLink	134	132	68	51.5	97	73.5	2	1.5
Virgin Australia Regional Airlines	59	58	48	82.8	47	81.0	1	1.7
All Airlines	193	190	116	61.1	144	75.8	3	1.6
<b>Sydney-Sunshine Coast</b>								
Jetstar	111	111	80	72.1	81	73.0	0	0.0
Virgin Australia	30	30	23	76.7	26	86.7	0	0.0
All Airlines	141	141	103	73.0	107	75.9	0	0.0
<b>Sydney-Townsville</b>								
Jetstar	27	27	20	74.1	17	63.0	0	0.0
Virgin Australia	30	30	23	76.7	25	83.3	0	0.0
All Airlines	57	57	43	75.4	42	73.7	0	0.0
<b>Sydney-Wagga Wagga</b>								
QantasLink	112	110	78	70.9	81	73.6	2	1.8
Regional Express	116	116	103	88.8	103	88.8	0	0.0
All Airlines	228	226	181	80.1	184	81.4	2	0.9
<b>Townsville-Brisbane</b>								
Jetstar	59	59	47	79.7	45	76.3	0	0.0
Qantas	144	144	133	92.4	130	90.3	0	0.0
Virgin Australia	157	156	138	88.5	135	86.5	1	0.6
All Airlines	360	359	318	88.6	310	86.4	1	0.3
<b>Townsville-Sydney</b>								
Jetstar	27	27	15	55.6	12	44.4	0	0.0
Virgin Australia	30	30	20	66.7	21	70.0	0	0.0
All Airlines	57	57	35	61.4	33	57.9	0	0.0
<b>Wagga Wagga-Sydney</b>								
QantasLink	112	109	76	69.7	77	70.6	3	2.7
Regional Express	122	122	92	75.4	97	79.5	0	0.0
All Airlines	234	231	168	72.7	174	75.3	3	1.3

## Airports

On time performance is reported for all routes where the passenger load averages over 8000 passengers per month, and where two or more airlines operate in competition. The following data reports by airport against flights operated on those routes only. This month, 8 major city airports and 31 regional city airports are covered.

Airport	Arrivals			Departures		
	Sectors	On Time		Sectors	On Time	
	Flown	No.	%	Flown	No.	%
<b>Adelaide</b>						
Jetstar	362	284	78.5	363	293	80.7
Qantas	782	728	93.1	783	723	92.3
QantasLink	131	89	67.9	130	95	73.1
Regional Express	199	184	92.5	198	188	94.9
Tigerair	132	113	85.6	132	111	84.1
Virgin Australia	679	600	88.4	680	610	89.7
All Airlines	2 285	1 998	87.4	2 286	2 020	88.4
Relates to services to and from Brisbane, Canberra, Gold Coast, Melbourne, Perth, Port Lincoln and Sydney.						
<b>Albury</b>						
QantasLink	89	70	78.7	88	62	70.5
Regional Express	92	72	78.3	87	77	88.5
Virgin Australia Regional Airlines	59	47	79.7	59	46	78.0
All Airlines	240	189	78.8	234	185	79.1
Relates to services to and from Sydney only.						
<b>Armidale</b>						
QantasLink	131	85	64.9	128	83	64.8
Regional Express	71	57	80.3	72	57	79.2
All Airlines	202	142	70.3	200	140	70.0
Relates to services to and from Sydney only.						
<b>Ayers Rock</b>						
Jetstar	29	23	79.3	30	23	76.7
Virgin Australia	30	27	90.0	30	24	80.0
All Airlines	59	50	84.7	60	47	78.3
Relates to services to and from Sydney only.						
<b>Ballina</b>						
Jetstar	78	53	67.9	79	47	59.5
Regional Express	26	21	80.8	23	16	69.6
Virgin Australia	29	25	86.2	29	25	86.2
All Airlines	133	99	74.4	131	88	67.2
Relates to services to and from Sydney only.						
<b>Brisbane</b>						
Jetstar	708	531	75.0	710	563	79.3
Qantas	1 583	1 300	82.1	1 581	1 403	88.7
QantasLink	1 080	888	82.2	1 089	952	87.4
Tigerair	304	239	78.6	305	238	78.0
Virgin Australia	2 037	1 689	82.9	2 037	1 808	88.8
Virgin Australia Regional Airlines	414	364	87.9	417	366	87.8
All Airlines	6 126	5 011	81.8	6 139	5 330	86.8
Relates to services to and from Adelaide, Bundaberg, Cairns, Canberra, Darwin, Emerald, Gladstone, Hamilton Island, Hobart, Mackay, Melbourne, Moranbah, Mount Isa, Newcastle, Perth, Proserpine, Rockhampton, Sydney and Townsville.						

Airport	Arrivals			Departures		
	Sectors Flown	On Time		Sectors Flown	On Time	
		No.	%		No.	%
<b>Broome</b>						
Qantas	35	34	97.1	35	32	91.4
QantasLink	46	42	91.3	46	40	87.0
Virgin Australia	17	17	100.0	17	14	82.4
Virgin Australia Regional Airlines	24	15	62.5	28	15	53.6
All Airlines	122	108	88.5	126	101	80.2
Relates to services to and from Perth only.						
<b>Bundaberg</b>						
QantasLink	125	103	82.4	125	102	81.6
Virgin Australia Regional Airlines	38	29	76.3	38	28	73.7
All Airlines	163	132	81.0	163	130	79.8
Relates to services to and from Brisbane only.						
<b>Cairns</b>						
Jetstar	312	260	83.3	306	259	84.6
Qantas	217	189	87.1	217	183	84.3
QantasLink	4	4	100.0	4	4	100.0
Tigerair	91	73	80.2	91	68	74.7
Virgin Australia	254	218	85.8	254	218	85.8
All Airlines	878	744	84.7	872	732	83.9
Relates to services to and from Brisbane, Melbourne and Sydney.						
<b>Canberra</b>						
Qantas	250	222	88.8	250	231	92.4
QantasLink	649	515	79.4	648	534	82.4
Virgin Australia	280	260	92.9	279	254	91.0
Virgin Australia Regional Airlines	281	236	84.0	280	249	88.9
All Airlines	1 460	1 233	84.5	1 457	1 268	87.0
Relates to services to and from Adelaide, Brisbane, Melbourne and Sydney.						
<b>Coffs Harbour</b>						
QantasLink	148	108	73.0	147	101	68.7
Tigerair	12	12	100.0	12	9	75.0
Virgin Australia	59	51	86.4	59	51	86.4
All Airlines	219	171	78.1	218	161	73.9
Relates to services to and from Sydney only.						
<b>Darwin</b>						
Jetstar	77	65	84.4	76	57	75.0
Qantas	163	147	90.2	161	141	87.6
Tigerair	24	22	91.7	23	22	95.7
Virgin Australia	120	102	85.0	120	97	80.8
All Airlines	384	336	87.5	380	317	83.4
Relates to services to and from Brisbane, Melbourne, Perth and Sydney.						
<b>Dubbo</b>						
QantasLink	123	73	59.3	123	81	65.9
Regional Express	137	120	87.6	137	114	83.2
All Airlines	260	193	74.2	260	195	75.0
Relates to services to and from Sydney only.						

Airport	Arrivals			Departures		
	Sectors	On Time		Sectors	On Time	
	Flown	No.	%	Flown	No.	%
<b>Emerald</b>						
QantasLink	138	114	82.6	136	106	77.9
Virgin Australia Regional Airlines	80	57	71.3	79	68	86.1
All Airlines	218	171	78.4	215	174	80.9
Relates to services to and from Brisbane only.						
<b>Geraldton</b>						
QantasLink	52	49	94.2	52	49	94.2
Virgin Australia Regional Airlines	89	78	87.6	93	83	89.2
All Airlines	141	127	90.1	145	132	91.0
Relates to services to and from Perth only.						
<b>Gladstone</b>						
QantasLink	201	183	91.0	196	166	84.7
Virgin Australia	12	11	91.7	12	10	83.3
Virgin Australia Regional Airlines	137	116	84.7	134	115	85.8
All Airlines	350	310	88.6	342	291	85.1
Relates to services to and from Brisbane only.						
<b>Gold Coast</b>						
Jetstar	570	429	75.3	568	425	74.8
Qantas	91	83	91.2	91	79	86.8
QantasLink	1	0	0.0	1	0	0.0
Tigerair	186	151	81.2	186	135	72.6
Virgin Australia	449	376	83.7	448	363	81.0
All Airlines	1 297	1 039	80.1	1 294	1 002	77.4
Relates to services to and from Adelaide, Melbourne and Sydney.						
<b>Hamilton Island</b>						
Jetstar	41	31	75.6	40	28	70.0
Qantas	9	7	77.8	9	4	44.4
QantasLink	16	13	81.3	16	11	68.8
Virgin Australia	77	70	90.9	77	66	85.7
All Airlines	143	121	84.6	142	109	76.8
Relates to services to and from Brisbane, Melbourne and Sydney.						
<b>Hobart</b>						
Jetstar	269	225	83.6	270	205	75.9
Qantas	1	1	100.0	1	1	100.0
QantasLink	151	97	64.2	150	106	70.7
Tigerair	30	25	83.3	30	24	80.0
Virgin Australia	227	198	87.2	227	183	80.6
All Airlines	678	546	80.5	678	519	76.5
Relates to services to and from Brisbane, Melbourne and Sydney.						
<b>Kalgoorlie</b>						
Qantas	21	20	95.2	21	20	95.2
QantasLink	61	54	88.5	61	55	90.2
Virgin Australia	36	31	86.1	36	35	97.2
Virgin Australia Regional Airlines	20	16	80.0	20	16	80.0
All Airlines	138	121	87.7	138	126	91.3
Relates to services to and from Perth only.						

Airport	Arrivals			Departures		
	Sectors Flown	On Time		Sectors Flown	On Time	
		No.	%		No.	%
<b>Karratha</b>						
Qantas	107	105	98.1	107	103	96.3
QantasLink	101	94	93.1	101	95	94.1
Virgin Australia	71	66	93.0	71	66	93.0
Virgin Australia Regional Airlines	16	11	68.8	16	13	81.3
All Airlines	295	276	93.6	295	277	93.9
Relates to services to and from Perth only.						
<b>Launceston</b>						
Jetstar	176	139	79.0	175	130	74.3
QantasLink	114	85	74.6	113	89	78.8
Virgin Australia	123	101	82.1	123	96	78.0
Virgin Australia Regional Airlines	3	3	100.0	3	3	100.0
All Airlines	416	328	78.8	414	318	76.8
Relates to services to and from Melbourne and Sydney.						
<b>Mackay</b>						
Jetstar	60	51	85.0	59	45	76.3
QantasLink	107	96	89.7	108	97	89.8
Virgin Australia	152	138	90.8	152	138	90.8
All Airlines	319	285	89.3	319	280	87.8
Relates to services to and from Brisbane only.						
<b>Melbourne</b>						
Jetstar	1 494	1 184	79.3	1 497	1 138	76.0
Qantas	2 072	1 821	87.9	2 070	1 829	88.4
QantasLink	399	309	77.4	400	314	78.5
Regional Express	78	60	76.9	78	71	91.0
Tigerair	639	497	77.8	640	541	84.5
Virgin Australia	2 272	1 944	85.6	2 273	2 044	89.9
Virgin Australia Regional Airlines	33	29	87.9	33	26	78.8
All Airlines	6 987	5 844	83.6	6 991	5 963	85.3
Relates to services to and from Adelaide, Brisbane, Cairns, Canberra, Darwin, Gold Coast, Hamilton Island, Hobart, Launceston, Mildura, Newcastle, Perth, Sunshine Coast and Sydney.						
<b>Mildura</b>						
QantasLink	86	74	86.0	86	74	86.0
Regional Express	78	71	91.0	78	63	80.8
Virgin Australia	30	25	83.3	30	25	83.3
All Airlines	194	170	87.6	194	162	83.5
Relates to services to and from Melbourne only.						
<b>Moranbah</b>						
QantasLink	113	95	84.1	109	95	87.2
Virgin Australia Regional Airlines	73	60	82.2	73	66	90.4
All Airlines	186	155	83.3	182	161	88.5
Relates to services to and from Brisbane only.						
<b>Mount Isa</b>						
Qantas	43	38	88.4	42	35	83.3
Virgin Australia	22	21	95.5	22	22	100.0
All Airlines	65	59	90.8	64	57	89.1
Relates to services to and from Brisbane only.						

Airport	Arrivals			Departures		
	Sectors	On Time		Sectors	On Time	
	Flown	No.	%	Flown	No.	%
<b>Newcastle</b>						
Jetstar	183	164	89.6	184	146	79.3
QantasLink	75	57	76.0	75	58	77.3
Virgin Australia	108	91	84.3	108	83	76.9
All Airlines	366	312	85.2	367	287	78.2
Relates to services to and from Brisbane and Melbourne.						
<b>Newman</b>						
Qantas	89	88	98.9	89	87	97.8
QantasLink	62	54	87.1	62	54	87.1
Virgin Australia	32	31	96.9	32	30	93.8
Virgin Australia Regional Airlines	4	3	75.0	4	3	75.0
All Airlines	187	176	94.1	187	174	93.0
Relates to services to and from Perth only.						
<b>Perth</b>						
Jetstar	145	135	93.1	147	129	87.8
Qantas	1 048	920	87.8	1 050	963	91.7
QantasLink	365	337	92.3	365	339	92.9
Tigerair	83	71	85.5	81	72	88.9
Virgin Australia	657	578	88.0	658	596	90.6
Virgin Australia Regional Airlines	161	128	79.5	153	125	81.7
All Airlines	2 459	2 169	88.2	2 454	2 224	90.6
Relates to services to and from Adelaide, Brisbane, Broome, Darwin, Geraldton, Kalgoorlie, Karratha, Melbourne, Newman, Port Hedland and Sydney.						
<b>Port Hedland</b>						
Qantas	114	110	96.5	113	110	97.3
QantasLink	43	42	97.7	43	43	100.0
Virgin Australia	42	37	88.1	42	37	88.1
All Airlines	199	189	95.0	198	190	96.0
Relates to services to and from Perth only.						
<b>Port Lincoln</b>						
QantasLink	110	79	71.8	110	78	70.9
Regional Express	198	185	93.4	199	189	95.0
All Airlines	308	264	85.7	309	267	86.4
Relates to services to and from Adelaide only.						
<b>Port Macquarie</b>						
QantasLink	132	68	51.5	130	70	53.8
Virgin Australia Regional Airlines	58	48	82.8	57	46	80.7
All Airlines	190	116	61.1	187	116	62.0
Relates to services to and from Sydney only.						
<b>Proserpine</b>						
Jetstar	28	26	92.9	28	26	92.9
Virgin Australia	52	48	92.3	52	48	92.3
All Airlines	80	74	92.5	80	74	92.5
Relates to services to and from Brisbane only.						



<i>Airport</i>	<i>Arrivals</i>			<i>Departures</i>		
	<i>Sectors</i>	<i>On Time</i>		<i>Sectors</i>	<i>On Time</i>	
	<i>Flown</i>	<i>No.</i>	<i>%</i>	<i>Flown</i>	<i>No.</i>	<i>%</i>
<b>Rockhampton</b>						
QantasLink	185	149	80.5	186	149	80.1
Virgin Australia	105	95	90.5	105	96	91.4
Virgin Australia Regional Airlines	89	78	87.6	90	82	91.1
All Airlines	379	322	85.0	381	327	85.8
Relates to services to and from Brisbane only.						
<b>Sunshine Coast</b>						
Jetstar	188	138	73.4	190	120	63.2
Virgin Australia	65	55	84.6	65	51	78.5
All Airlines	253	193	76.3	255	171	67.1
Relates to services to and from Melbourne and Sydney.						
<b>Sydney</b>						
Jetstar	1 498	1 042	69.6	1 497	1 078	72.0
Qantas	2 136	1 725	80.8	2 141	1 772	82.8
QantasLink	1 219	840	68.9	1 230	896	72.8
Regional Express	441	325	73.7	442	372	84.2
Tigerair	550	424	77.1	551	445	80.8
Virgin Australia	2 230	1 802	80.8	2 229	1 841	82.6
Virgin Australia Regional Airlines	366	305	83.3	368	305	82.9
All Airlines	8 440	6 463	76.6	8 458	6 709	79.3
Relates to services to and from Adelaide, Albury, Armidale, Ayers Rock, Ballina, Brisbane, Cairns, Canberra, Coffs Harbour, Darwin, Dubbo, Gold Coast, Hamilton Island, Hobart, Launceston, Melbourne, Perth, Port Macquarie, Sunshine Coast, Townsville and Wagga Wagga.						
<b>Townsville</b>						
Jetstar	87	70	80.5	86	57	66.3
Qantas	144	128	88.9	144	130	90.3
Virgin Australia	186	163	87.6	186	156	83.9
All Airlines	417	361	86.6	416	343	82.5
Relates to services to and from Brisbane and Sydney.						
<b>Wagga Wagga</b>						
QantasLink	110	78	70.9	109	77	70.6
Regional Express	116	103	88.8	122	97	79.5
All Airlines	226	181	80.1	231	174	75.3
Relates to services to and from Sydney only.						

## Definitions

---

On time arrival	A flight arrival is counted as "on time" if it arrived at the gate before 15 minutes after the scheduled arrival time shown in the carriers' schedule. Neither diverted nor cancelled flights count as on time.
On time departure	A flight departure is counted as "on time" if it departs the gate before 15 minutes after the scheduled departure time shown in the carriers' schedule.
Cancellation	A flight removed from service within 7 days of scheduled departure is regarded as a cancellation.
On time departure percentage	The percentage of on time departures is measured against the number of departures <i>operated</i> on any particular sector.
On time arrival percentage	The percentage of on time arrivals is measured against the number of arrivals <i>operated</i> on any particular sector.
Cancellation percentage	The percentage of cancellations is measured against the number of services <i>scheduled</i> on any particular sector.

---