



Australian Government

Department of Infrastructure and Regional Development

Bureau of Infrastructure, Transport and Regional Economics

STATISTICAL REPORT



Aviation

Domestic airline on time performance
April 2014

© Commonwealth of Australia 2014

ISSN: 1832-0759

Ownership of intellectual property rights in this publication

Unless otherwise noted, copyright (and any other intellectual property rights, if any) in this publication is owned by the Commonwealth of Australia (referred to below as the Commonwealth).

Disclaimer

The material contained in this publication is made available on the understanding that the Commonwealth is not providing professional advice, and that users exercise their own skill and care with respect to its use, and seek independent advice if necessary.

The Commonwealth makes no representations or warranties as to the contents or accuracy of the information contained in this publication. To the extent permitted by law, the Commonwealth disclaims liability to any person or organisation in respect of anything done, or omitted to be done, in reliance upon information contained in this publication.

Creative Commons licence

With the exception of (a) the Coat of Arms; and (b) the Department of Infrastructure and Regional Development's photos and graphics, copyright in this publication is licensed under a Creative Commons Attribution 3.0 Australia Licence.

Creative Commons Attribution 3.0 Australia Licence is a standard form licence agreement that allows you to copy, communicate and adapt this publication provided that you attribute the work to the Commonwealth and abide by the other licence terms. A summary of the licence terms is available from <http://creativecommons.org/licenses/by/3.0/au/deed.en>. The full licence terms are available from <http://creativecommons.org/licenses/by/3.0/au/legalcode>.

Use of the Coat of Arms

The Department of the Prime Minister and Cabinet sets the terms under which the Coat of Arms is used. Please refer to the Department's Commonwealth Coat of Arms and Government branding web page <http://www.dpmmc.gov.au/guidelines/index.cfm#brand> and, in particular, the Guidelines on the use of the Commonwealth Coat of Arms publication.

An appropriate citation for this report is:

Bureau of Infrastructure, Transport and Regional Economics (BITRE), 2014, Domestic airline on time performance, Statistical Report, BITRE, Canberra ACT.

Contact us

This publication is available in PDF format. All other rights are reserved, including in relation to any Departmental logos or trade marks which may exist. For enquiries regarding the licence and any use of this publication, please contact:

Bureau of Infrastructure, Transport and Regional Economics (BITRE)
Department of Infrastructure and Regional Development
GPO Box 501, Canberra ACT 2601, Australia
Telephone: (international) +61 2 6274 7210
Fax: (international) +61 2 6274 6855
Email: bitre@infrastructure.gov.au
Website: www.bitre.gov.au

Inquiries

Should you require additional information about the statistics contained in this publication:

Telephone (02) 6274 7790 or Facsimile (02) 6274 7727

Electronic mail: AVSTATS@infrastructure.gov.au

Web site: <http://www.bitre.gov.au/statistics/aviation/otphome.aspx>

Foreword

The Bureau of Infrastructure, Transport and Regional Economics (BITRE) monitors the punctuality and reliability of major domestic airlines operating between Australian airports. The purpose of this is to allow for evaluation of overall industry and individual airline performance, so that consumers of air travel can make informed decisions.

The following domestic airlines currently report this information monthly to the BITRE: Jetstar, Qantas, QantasLink, Regional Express, Tigerair, Virgin Australia and Virgin Australia Regional Airlines. Data has been gathered since November 2003, although some airlines commenced reporting at a later date, including Jetstar which first reported in May 2004, MacAir in July 2005 and Tigerair in April 2008. MacAir ceased operations in February 2009 and data was not received for December 2008 onwards. Virgin Blue was rebranded as Virgin Australia in May 2011 and Tiger Airways was rebranded as Tigerair in July 2013 and time series data in Microsoft Excel spreadsheet format on the BITRE website have been revised to reflect these changes. Virgin Australia Regional Airlines commenced operations in May 2013. It was formed after the acquisition of Skywest by Virgin Australia and represents a combination of operations previously reported under Skywest and Virgin Australia – ATR/F100 Operations. Services operated by Skywest on behalf of Virgin Australia using ATR/F100 aircraft commenced in November 2011 and were shown separately as Virgin Australia – ATR/F100 Operations until April 2013.

Information presented in this report is for Australian domestic routes for which the passenger load averaged 8 000 or more passengers per month over the previous six months and where two or more airlines operated in competition on those routes. There were 63 routes that met this definition in April 2014. Over time, routes which meet these criteria change as airline networks and traffic levels vary.

Participating airlines report their overall monthly network performance where this is possible.

Total industry figures encompass all services operated by reporting airlines only. These airlines collectively carried over 95 per cent of total domestic passengers (regular public transport only) in 2013.

The method of capturing on time performance varies between airlines utilising different recording systems. Jetstar and Qantas jet aircraft use Aircraft Communication Addressing and Reporting System (ACARS) to electronically measure on time performance. Regional Express, Tigerair, Virgin Australia, Virgin Australia Regional Airlines and the Qantas non-jet fleet record on time performance manually using records from pilots, gate agents and/or ground crews.

After initial data is collected, aggregate reports are audited internally by participating airlines prior to publication.

Reports and detailed time series data in Microsoft Excel spreadsheet format are available from the BITRE website at: <http://www.bitre.gov.au/statistics/aviation/otphome.aspx>.

Contents

	Page
Industry performance	1
Individual routes	9
Airports	21
Definitions	27

Industry performance

For April 2014, on time performance over all routes operated by participating airlines (Jetstar, Qantas, QantasLink, Regional Express, Tigerair, Virgin Australia and Virgin Australia Regional Airlines) averaged 83.5 per cent for on time departures and 82.0 per cent for on time arrivals. Cancellations represented 2.1 per cent of all scheduled flights. The equivalent figures for April 2013 were 83.3 per cent for departures, 81.8 per cent for arrivals and 1.6 per cent for cancellations.

This month's figures were just below the long term average performance for all routes (83.6 per cent for departures and 82.1 per cent for arrivals). The rate of cancellations was above the long term average of 1.3 per cent.

Of the major domestic airlines, Qantas achieved the highest level of on time departures for April 2014 at 86.3 per cent, followed by Virgin Australia at 81.7 per cent, Jetstar at 80.4 per cent and Tigerair at 71.2 per cent. The regional airlines were led by Virgin Australia Regional Airlines at 87.0 per cent, followed by Regional Express at 86.6 per cent and QantasLink at 84.9 per cent.

Qantas also achieved the highest on time arrivals among the major domestic airlines at 84.8 per cent, followed by Virgin Australia at 81.2 per cent, Jetstar at 81.1 per cent and Tigerair at 69.9 per cent. Virgin Australia Regional Airlines was the best performing regional airline for on time arrivals at 85.4 per cent, followed by Regional Express at 84.0 per cent and QantasLink at 81.5 per cent.

QantasLink had the highest percentage of cancellations (2.7 per cent) during the month, followed by Virgin Australia (2.6 per cent), Jetstar (also 2.6 per cent), Qantas (1.8 per cent), Tigerair (also 1.8 per cent), Virgin Australia Regional Airlines (1.6 per cent) and Regional Express (0.2 per cent).

Of the 63 routes which met the criteria for on time performance reporting in April 2014, the Hamilton Island-Brisbane route had the highest percentage of on time departures (95.6 per cent) and the Gold Coast-Adelaide route had the highest percentage of on time arrivals (97.3 per cent). The Alice Springs-Melbourne route had the lowest percentage of on time departures (56.3 per cent) and the lowest percentage of on time arrivals (60.4 per cent).

Cancellations were highest on the Melbourne-Sydney route at 5.9 per cent, followed by Sydney-Melbourne at 5.5 per cent, Brisbane-Moranbah at 5.1 per cent, Cairns-Melbourne at 5.0 per cent and Melbourne-Cairns at 4.6 per cent.

Port Lincoln Airport recorded the highest percentage of on time departures (94.8 per cent) and Port Hedland Airport recorded the highest percentage of on time arrivals (96.2 per cent). Alice Springs Airport recorded the lowest percentage of on time departures (63.2 per cent) and Port Macquarie Airport recorded the lowest percentage of on time arrivals (75.5 per cent). These figures only refer to reported routes and do not cover all flights at these airports.

Table 1 On time performance for April 2014 — Total Industry

	<i>Sectors</i>		<i>Departures On Time</i>		<i>Arrivals On Time</i>		<i>Cancellations</i>	
	<i>Scheduled</i>	<i>Flown</i>	<i>No.</i>	<i>%</i>	<i>No.</i>	<i>%</i>	<i>No.</i>	<i>%</i>
Jetstar	7 629	7 433	5 973	80.4	6 030	81.1	196	2.6
Qantas	9 851	9 676	8 351	86.3	8 205	84.8	175	1.8
QantasLink	10 173	9 902	8 407	84.9	8 068	81.5	271	2.7
Regional Express	5 263	5 251	4 547	86.6	4 411	84.0	12	0.2
Tigerair	2 143	2 105	1 499	71.2	1 471	69.9	38	1.8
Virgin Australia	10 744	10 461	8 548	81.7	8 493	81.2	283	2.6
Virgin Australia Regional Airlines	2 482	2 443	2 126	87.0	2 086	85.4	39	1.6
All Airlines	48 285	47 271	39 451	83.5	38 764	82.0	1 014	2.1

Total airline network data (including routes not shown in this report).

Table 2 Top ten routes for on time performance for April 2014 (participating airlines only)

<i>Departures</i>		<i>Arrivals</i>	
<i>Route</i>	<i>On Time (%)</i>	<i>Route</i>	<i>On Time (%)</i>
Hamilton Island-Brisbane	95.6	Gold Coast-Adelaide	97.3
Perth-Port Hedland	95.3	Perth-Port Hedland	96.2
Port Lincoln-Adelaide	94.8	Brisbane-Hamilton Island	95.5
Perth-Kalgoorlie	94.3	Darwin-Perth	95.4
Perth-Broome	94.1	Karratha-Perth	95.1
Brisbane-Emerald	93.9	Perth-Karratha	94.8
Proserpine-Brisbane	93.8	Perth-Broome	94.7
Karratha-Perth	93.5	Perth-Kalgoorlie	94.3
Adelaide-Port Lincoln	93.5	Perth-Newman	93.9
Gold Coast-Adelaide	93.2	Newman-Perth	93.4

Table 3 Top ten airports for on time performance for April 2014 (participating airlines and reported routes only)

<i>Departures</i>		<i>Arrivals</i>	
<i>Airport</i>	<i>On Time (%)</i>	<i>Airport</i>	<i>On Time (%)</i>
Port Lincoln	94.8	Port Hedland	96.2
Proserpine	93.8	Karratha	94.8
Karratha	93.5	Broome	94.7
Newman	92.5	Kalgoorlie	94.3
Kalgoorlie	92.1	Newman	93.9
Geraldton	90.5	Ayers Rock	93.3
Perth	88.9	Port Lincoln	93.1
Emerald	88.6	Proserpine	92.6
Moranbah	88.6	Moranbah	92.4
Port Hedland	88.6	Hamilton Island	90.4

Total industry on time performance

Figure 1 On time performance (by month from April 2011)—Total Industry

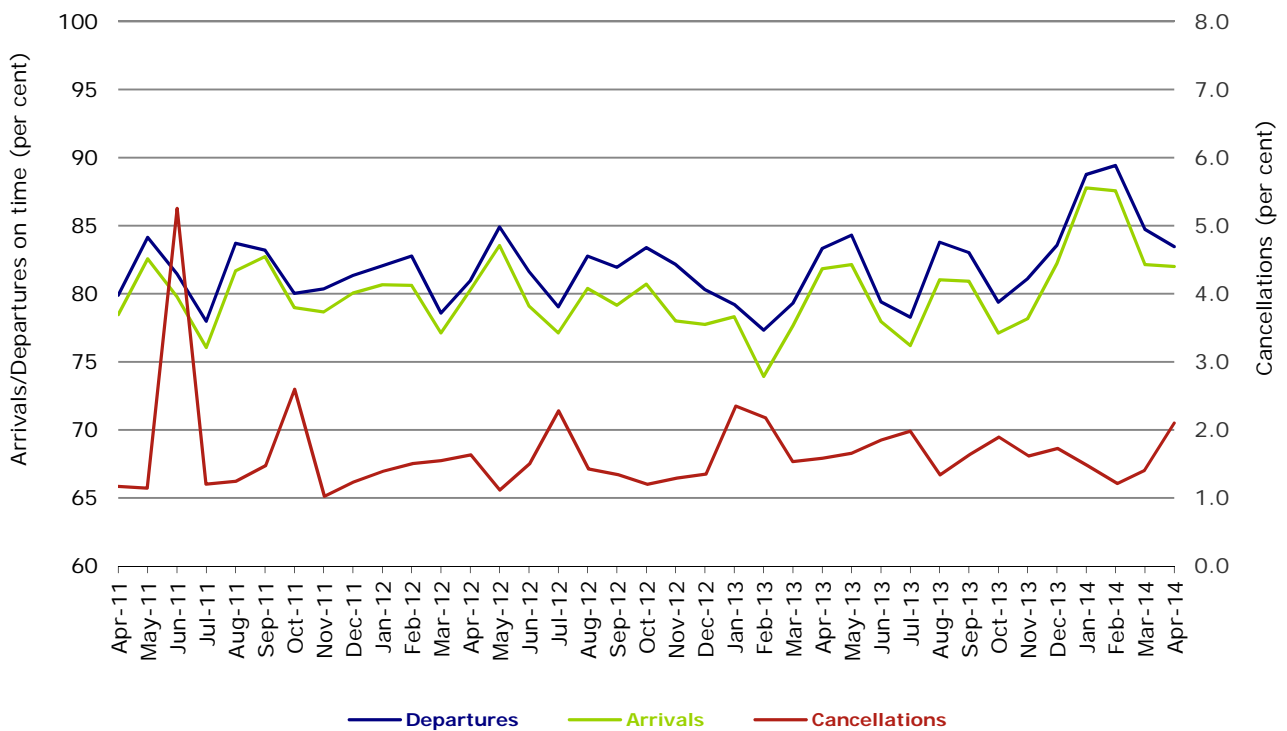
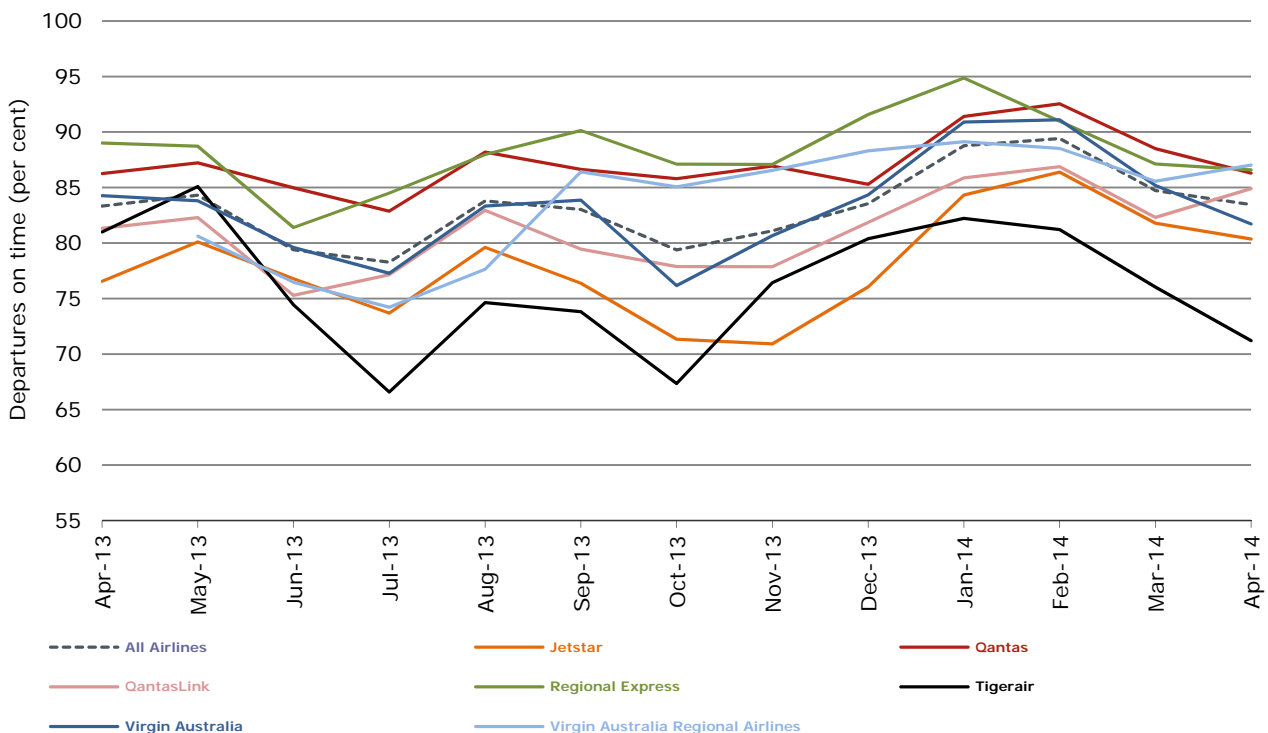
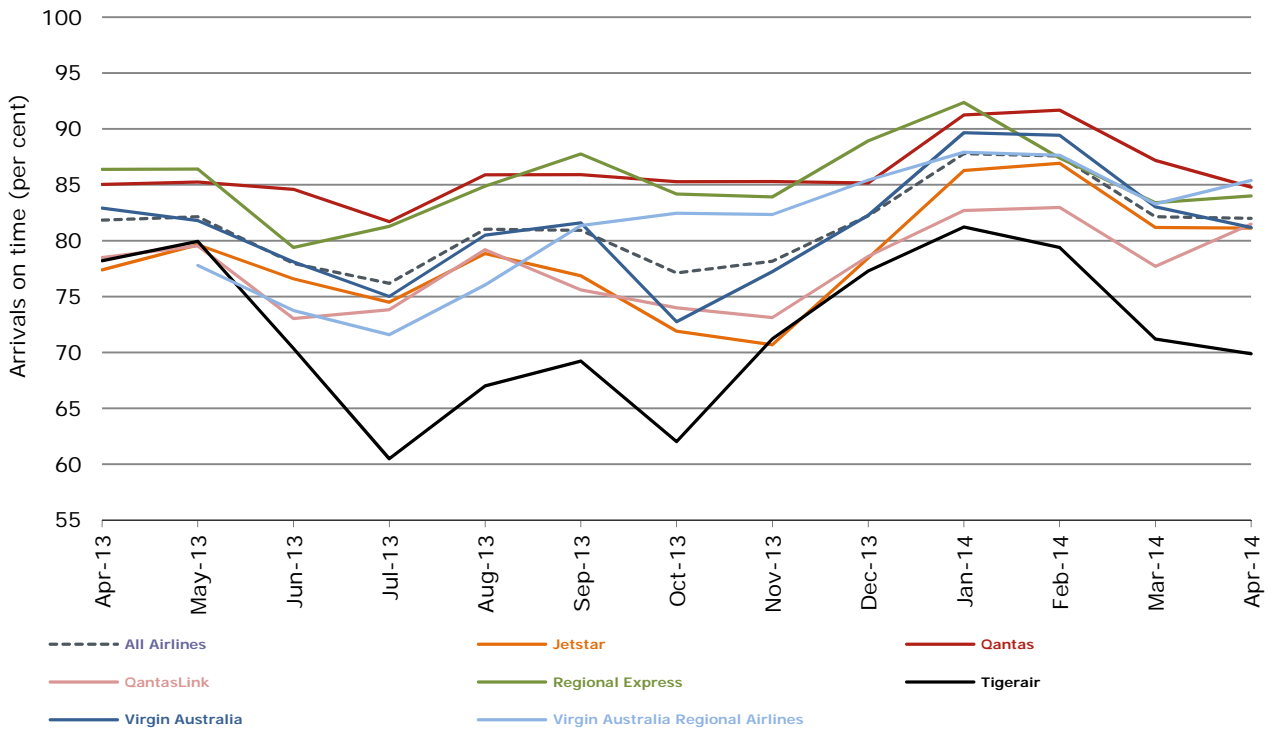


Figure 2 Departures on time (by month from April 2013)



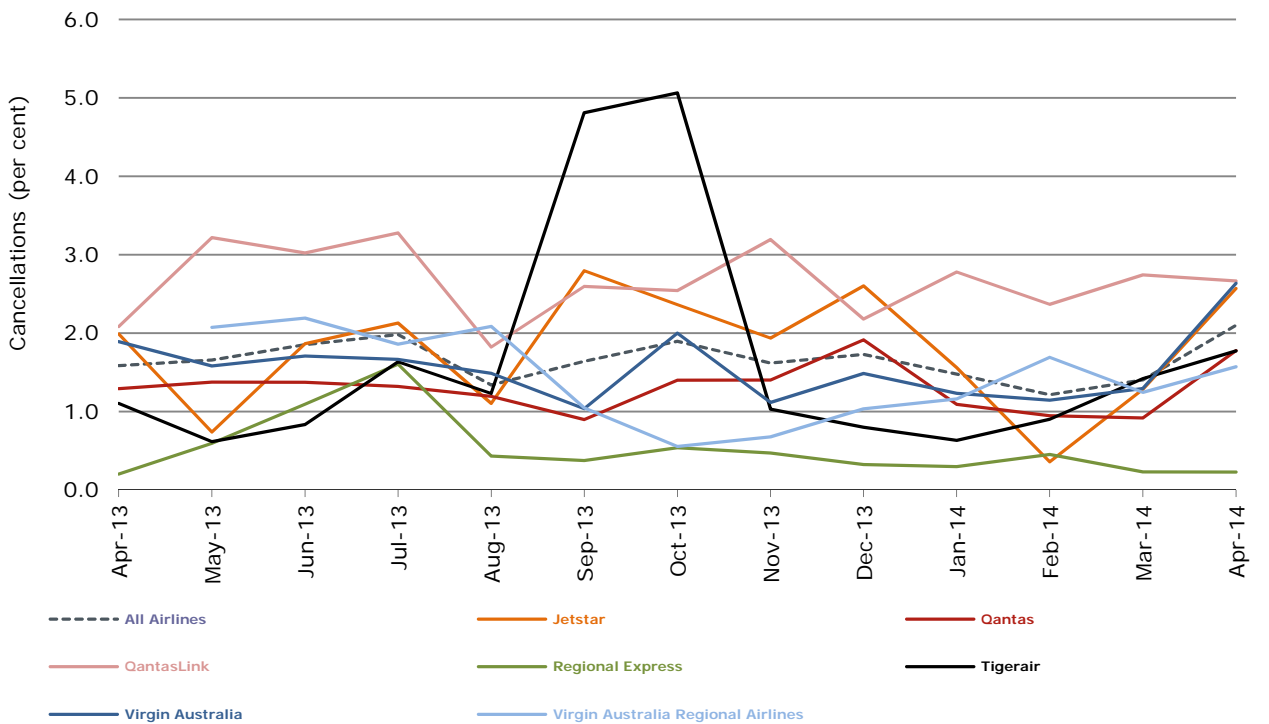
Virgin Australia Regional Airlines commenced operations in May 2013. It was formed after the acquisition of Skywest by Virgin Australia and represents a combination of operations previously reported under Skywest and Virgin Australia – ATR/F100 Operations.

Figure 3 Arrivals on time (by month from April 2013)



Virgin Australia Regional Airlines commenced operations in May 2013. It was formed after the acquisition of Skywest by Virgin Australia and represents a combination of operations previously reported under Skywest and Virgin Australia – ATR/F100 Operations.

Figure 4 Cancellations (by month from April 2013)



Virgin Australia Regional Airlines commenced operations in May 2013. It was formed after the acquisition of Skywest by Virgin Australia and represents a combination of operations previously reported under Skywest and Virgin Australia – ATR/F100 Operations.

Major domestic airlines on time performance

Figure 5 On time performance (by month from April 2011)—Jetstar

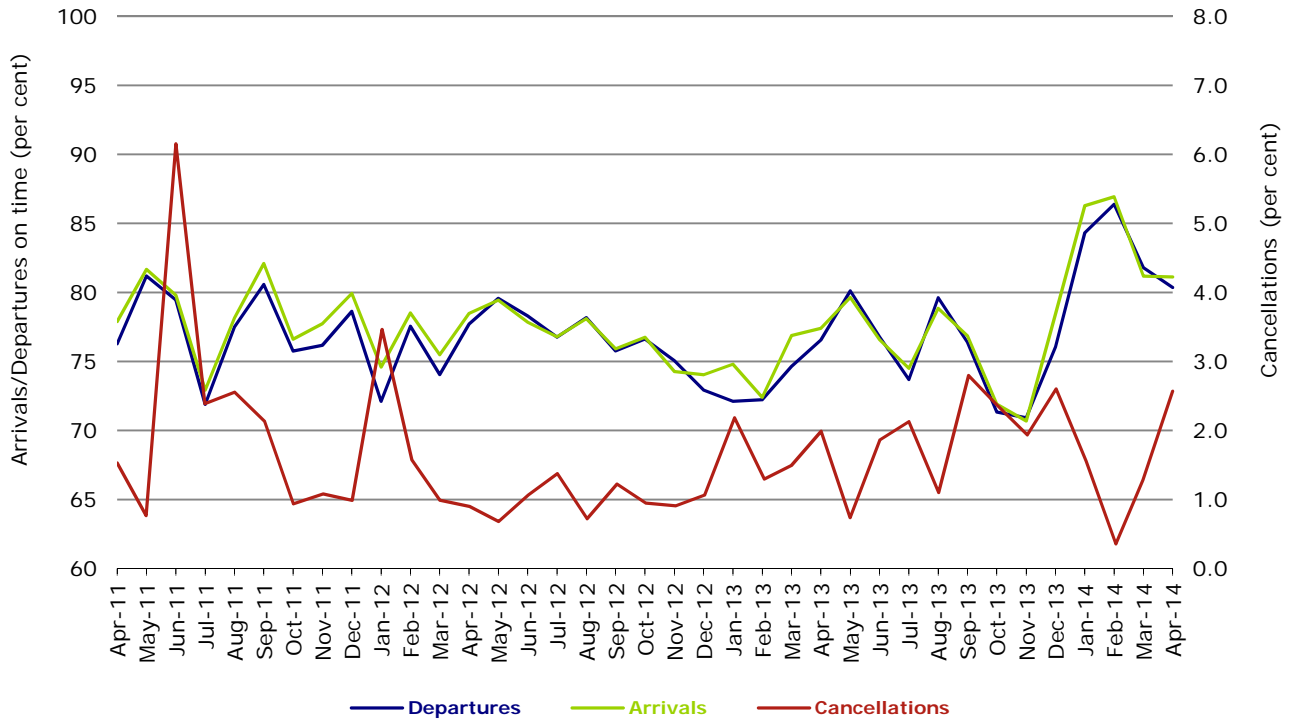


Figure 6 On time performance (by month from April 2011)—Qantas

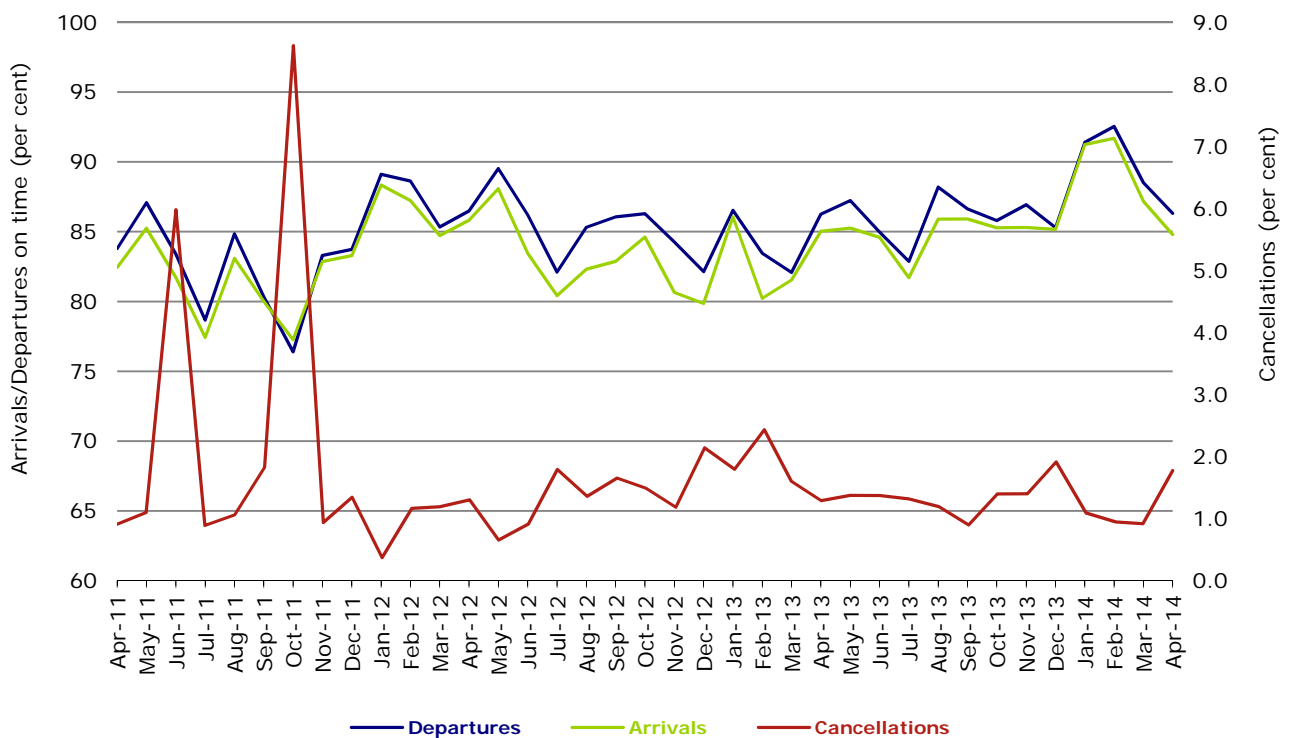
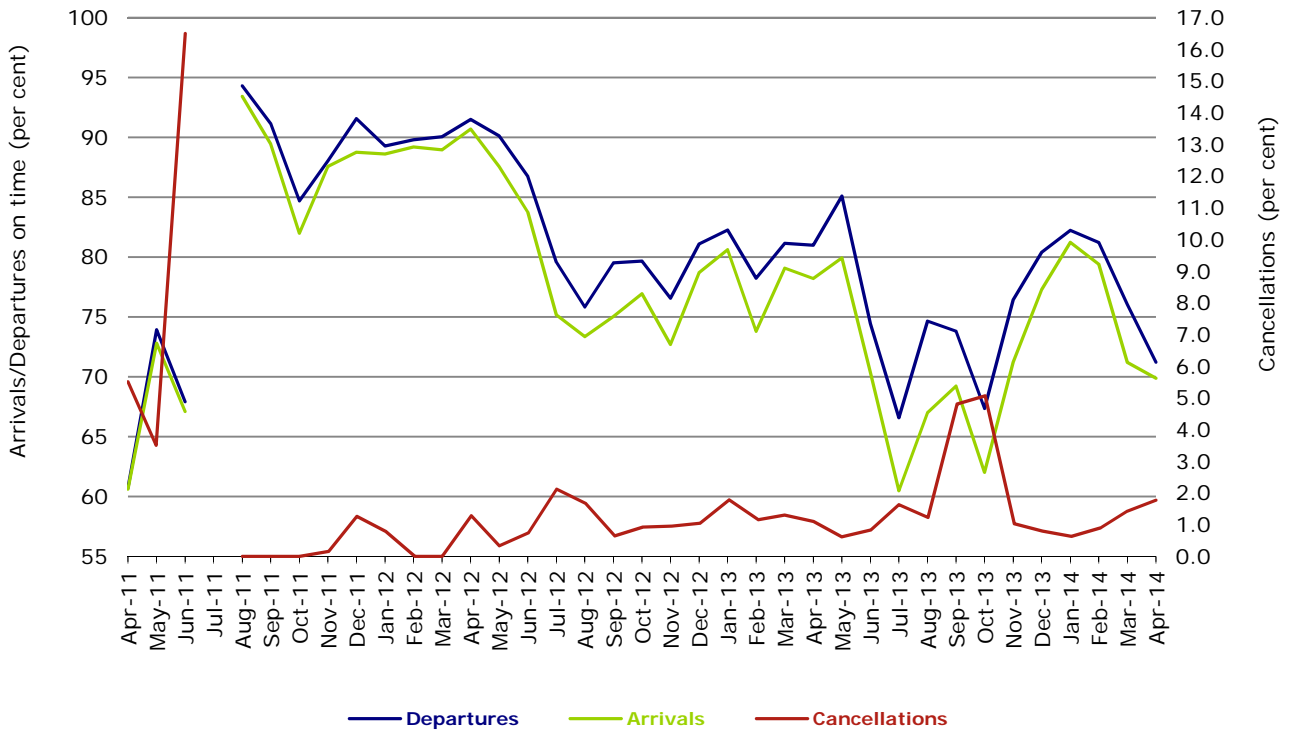
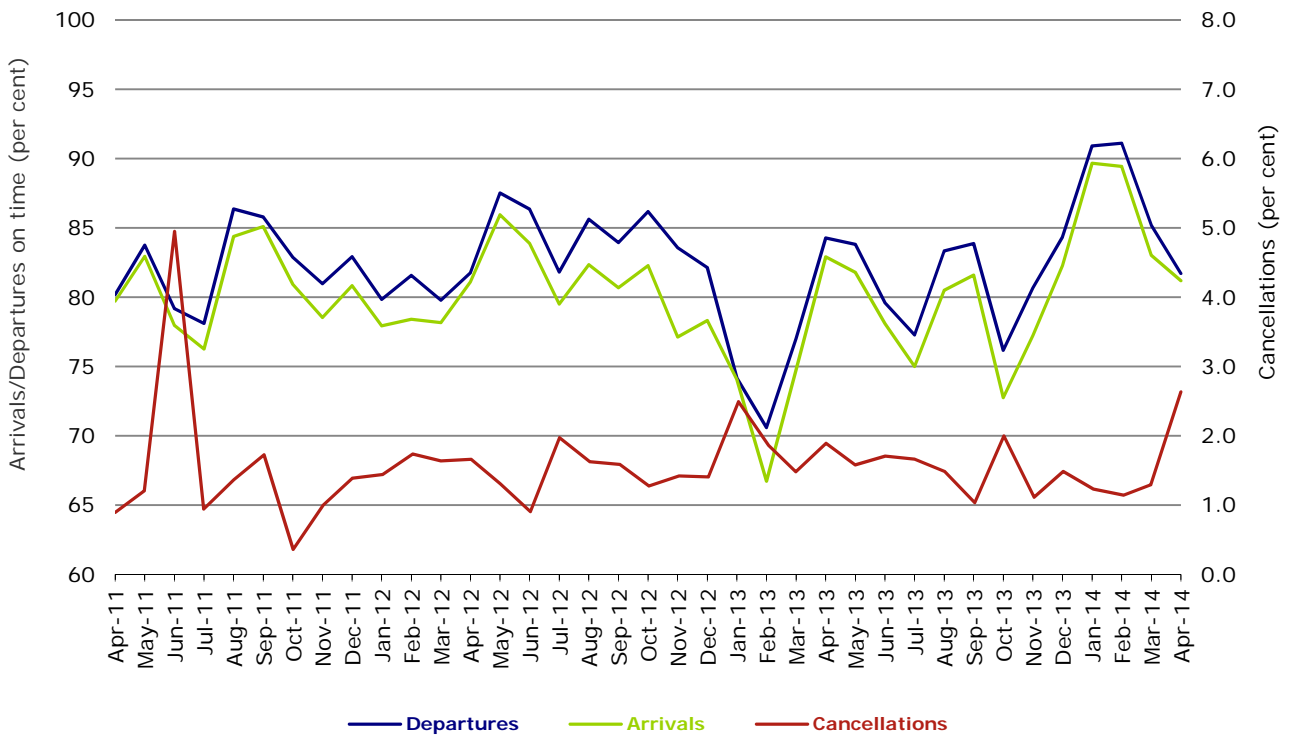


Figure 7 On time performance (by month from April 2011)—Tigerair



No data for Tigerair for July 2011 as it was grounded by CASA from 2/7/2011 to 11/8/2011.

Figure 8 On time performance (by month from April 2011)—Virgin Australia



Major regional airlines on time performance

Figure 9 On time performance (by month from April 2011)—QantasLink

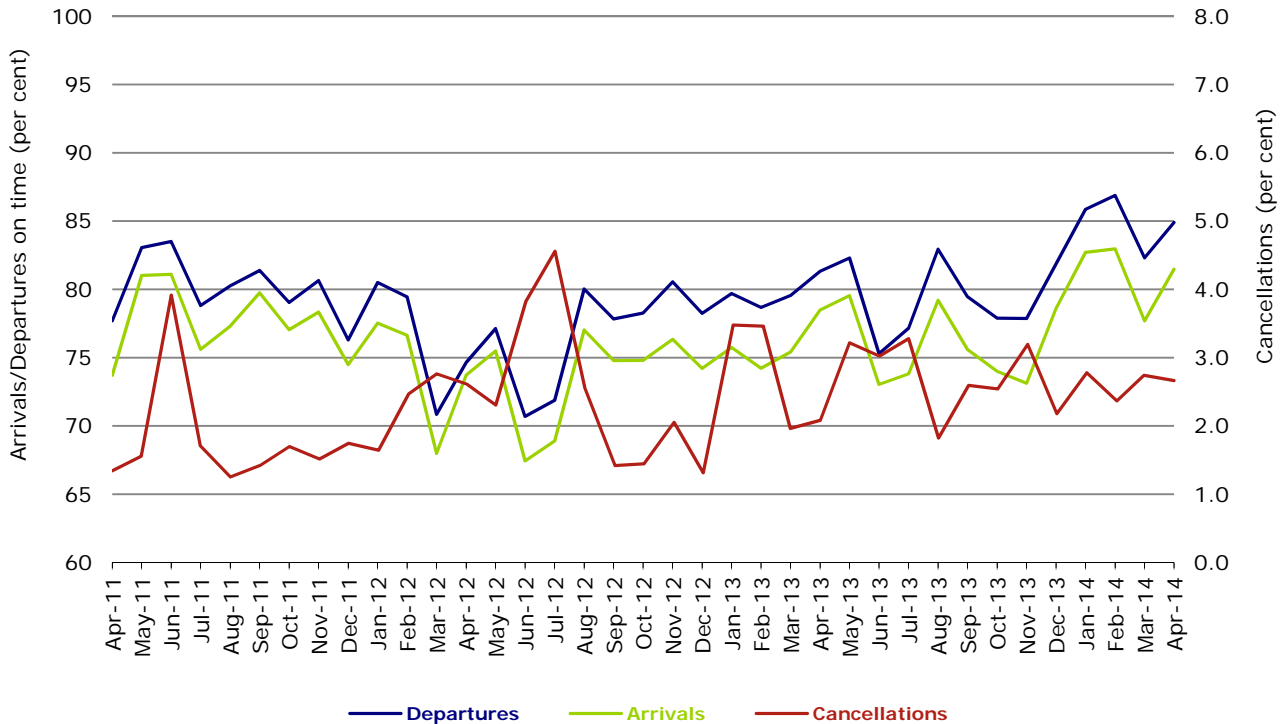


Figure 10 On time performance (by month from April 2011)—Regional Express

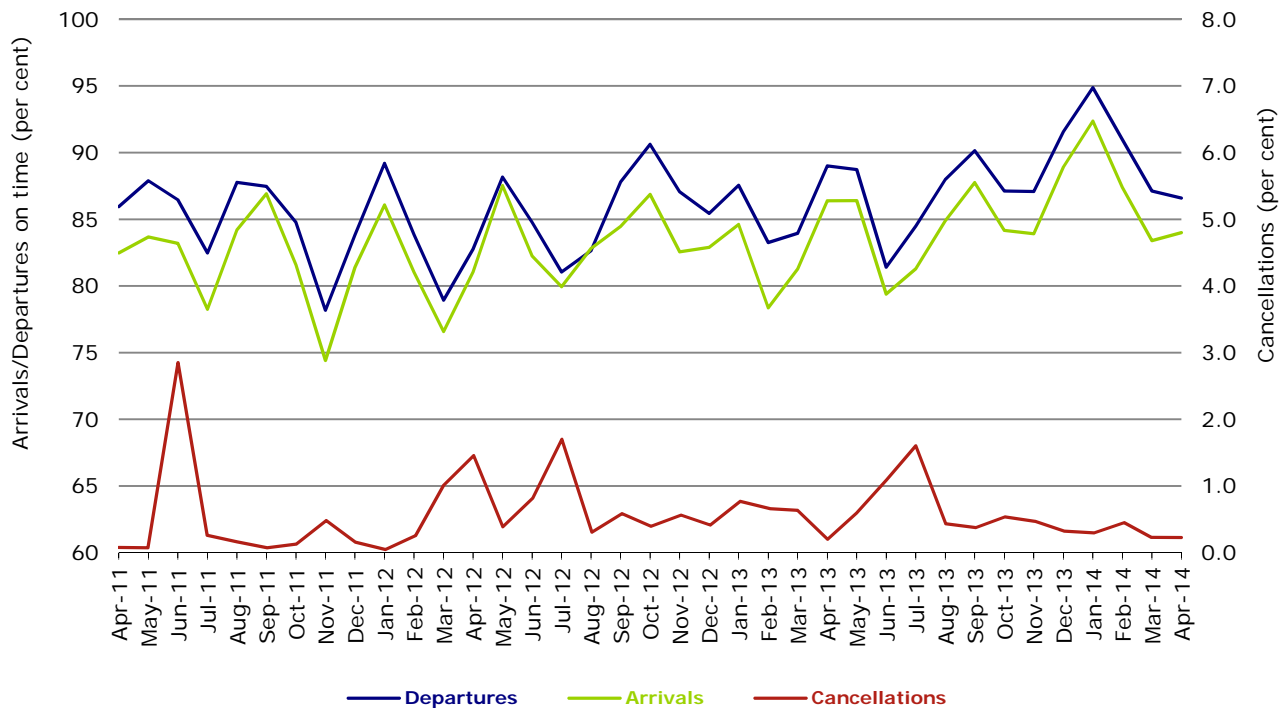
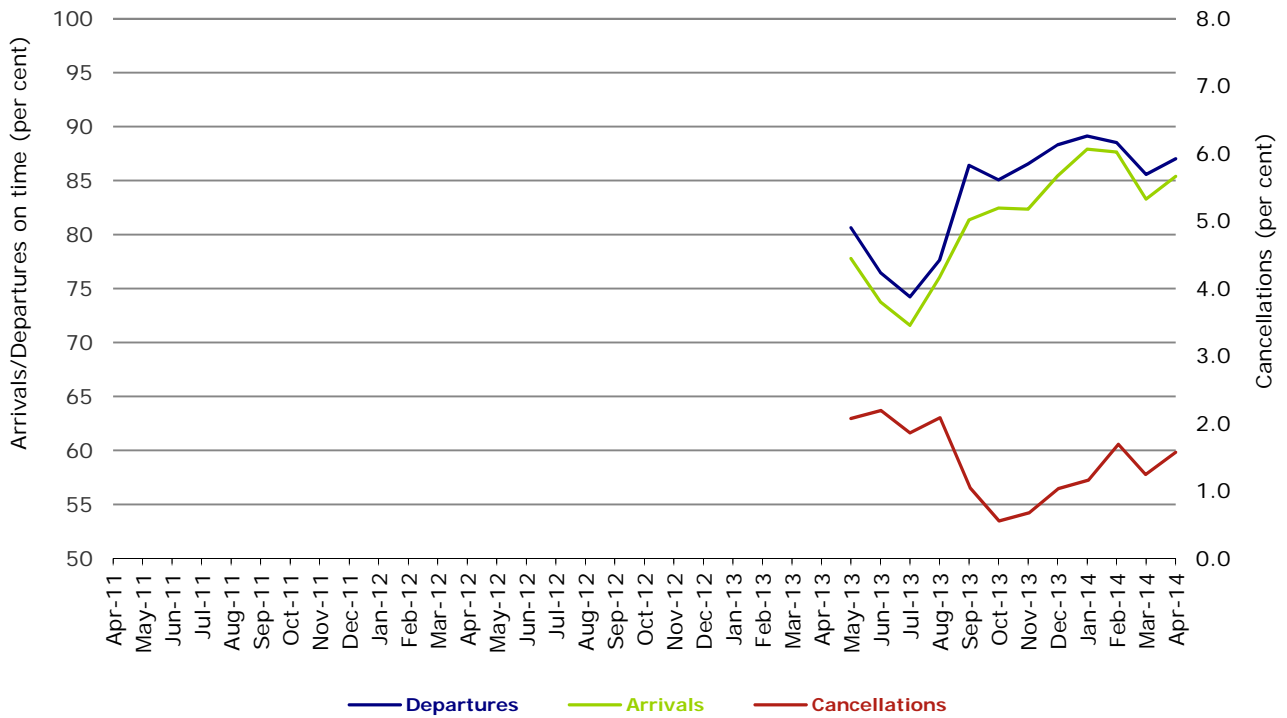


Figure 11 On time performance (by month from April 2011)
Virgin Australia Regional Airlines



Virgin Australia Regional Airlines commenced operations in May 2013. It was formed after the acquisition of Skywest by Virgin Australia and represents a combination of operations previously reported under Skywest and Virgin Australia – ATR/F100 Operations.

Individual routes

On time performance is reported for all routes where the passenger load averages over 8000 passengers per month over the previous six months, and where two or more airlines operate in competition on those routes. There are now 63 routes which meet this definition. Over time, however, routes which meet this definition may change as airline networks and traffic levels vary.

	<i>Sectors</i>		<i>Departures On Time</i>		<i>Arrivals On Time</i>		<i>Cancellations</i>	
	<i>Sched.</i>	<i>Flown</i>	<i>No.</i>	<i>%</i>	<i>No.</i>	<i>%</i>	<i>No.</i>	<i>%</i>
Adelaide-Brisbane								
Jetstar	29	29	29	100.0	29	100.0	0	0.0
Qantas	106	106	91	85.8	89	84.0	0	0.0
Tigerair	26	26	24	92.3	24	92.3	0	0.0
Virgin Australia	112	112	100	89.3	103	92.0	0	0.0
All Airlines	273	273	244	89.4	245	89.7	0	0.0
Adelaide-Canberra								
Qantas	43	43	40	93.0	41	95.3	0	0.0
QantasLink	22	22	17	77.3	19	86.4	0	0.0
Virgin Australia	26	24	22	91.7	22	91.7	2	7.7
All Airlines	91	89	79	88.8	82	92.1	2	2.2
Adelaide-Gold Coast								
Jetstar	44	44	41	93.2	39	88.6	0	0.0
Virgin Australia	30	30	26	86.7	27	90.0	0	0.0
All Airlines	74	74	67	90.5	66	89.2	0	0.0
Adelaide-Melbourne								
Jetstar	123	122	90	73.8	90	73.8	1	0.8
Qantas	270	269	211	78.4	219	81.4	1	0.4
QantasLink	18	18	18	100.0	18	100.0	0	0.0
Tigerair	76	75	59	78.7	55	73.3	1	1.3
Virgin Australia	264	257	203	79.0	208	80.9	7	2.7
All Airlines	751	741	581	78.4	590	79.6	10	1.3
Adelaide-Perth								
Jetstar	42	42	36	85.7	36	85.7	0	0.0
Qantas	110	110	94	85.5	97	88.2	0	0.0
Virgin Australia	60	59	47	79.7	52	88.1	1	1.7
All Airlines	212	211	177	83.9	185	87.7	1	0.5
Adelaide-Port Lincoln								
QantasLink	97	97	92	94.8	93	95.9	0	0.0
Regional Express	194	194	180	92.8	178	91.8	0	0.0
All Airlines	291	291	272	93.5	271	93.1	0	0.0
Adelaide-Sydney								
Jetstar	145	142	92	64.8	91	64.1	3	2.1
Qantas	244	242	214	88.4	223	92.1	2	0.8
QantasLink	10	10	3	30.0	6	60.0	0	0.0
Tigerair	30	30	25	83.3	28	93.3	0	0.0
Virgin Australia	163	163	148	90.8	153	93.9	0	0.0
All Airlines	592	587	482	82.1	501	85.3	5	0.8
Albury-Sydney								
QantasLink	112	112	81	72.3	87	77.7	0	0.0
Regional Express	98	98	90	91.8	89	90.8	0	0.0
Virgin Australia Regional Airlines	60	59	52	88.1	51	86.4	1	1.7
All Airlines	270	269	223	82.9	227	84.4	1	0.4
Alice Springs-Melbourne								
Qantas	30	30	18	60.0	20	66.7	0	0.0
Tigerair	18	18	9	50.0	9	50.0	0	0.0
All Airlines	48	48	27	56.3	29	60.4	0	0.0

	<i>Sectors</i>		<i>Departures On Time</i>		<i>Arrivals On Time</i>		<i>Cancellations</i>	
	<i>Sched.</i>	<i>Flown</i>	<i>No.</i>	<i>%</i>	<i>No.</i>	<i>%</i>	<i>No.</i>	<i>%</i>
Alice Springs-Sydney								
Qantas	30	30	19	63.3	25	83.3	0	0.0
Tigerair	17	17	14	82.4	14	82.4	0	0.0
All Airlines	47	47	33	70.2	39	83.0	0	0.0
Ayers Rock-Sydney								
Jetstar	18	17	14	82.4	10	58.8	1	5.6
Virgin Australia	30	30	25	83.3	26	86.7	0	0.0
All Airlines	48	47	39	83.0	36	76.6	1	2.1
Ballina-Sydney								
Jetstar	84	84	70	83.3	73	86.9	0	0.0
Regional Express	29	29	24	82.8	25	86.2	0	0.0
Virgin Australia	30	30	25	83.3	27	90.0	0	0.0
All Airlines	143	143	119	83.2	125	87.4	0	0.0
Brisbane-Adelaide								
Jetstar	29	29	28	96.6	29	100.0	0	0.0
Qantas	106	106	90	84.9	97	91.5	0	0.0
Tigerair	26	26	20	76.9	21	80.8	0	0.0
Virgin Australia	112	112	95	84.8	100	89.3	0	0.0
All Airlines	273	273	233	85.3	247	90.5	0	0.0
Brisbane-Bundaberg								
QantasLink	114	114	94	82.5	88	77.2	0	0.0
Virgin Australia Regional Airlines	37	37	31	83.8	28	75.7	0	0.0
All Airlines	151	151	125	82.8	116	76.8	0	0.0
Brisbane-Cairns								
Jetstar	122	116	98	84.5	102	87.9	6	4.9
Qantas	116	113	94	83.2	101	89.4	3	2.6
QantasLink	4	3	3	100.0	3	100.0	1	25.0
Tigerair	16	16	6	37.5	6	37.5	0	0.0
Virgin Australia	130	128	111	86.7	114	89.1	2	1.5
All Airlines	388	376	312	83.0	326	86.7	12	3.1
Brisbane-Canberra								
Qantas	44	44	39	88.6	40	90.9	0	0.0
QantasLink	110	108	89	82.4	97	89.8	2	1.8
Virgin Australia	94	94	77	81.9	77	81.9	0	0.0
All Airlines	248	246	205	83.3	214	87.0	2	0.8
Brisbane-Darwin								
Jetstar	29	29	24	82.8	25	86.2	0	0.0
Qantas	48	48	43	89.6	45	93.8	0	0.0
Tigerair	16	15	14	93.3	14	93.3	1	6.3
Virgin Australia	30	30	22	73.3	25	83.3	0	0.0
All Airlines	123	122	103	84.4	109	89.3	1	0.8
Brisbane-Emerald								
QantasLink	151	147	137	93.2	120	81.6	4	2.6
Virgin Australia Regional Airlines	83	82	78	95.1	69	84.1	1	1.2
All Airlines	234	229	215	93.9	189	82.5	5	2.1
Brisbane-Gladstone								
QantasLink	213	209	194	92.8	188	90.0	4	1.9
Virgin Australia Regional Airlines	144	143	128	89.5	124	86.7	1	0.7
All Airlines	357	352	322	91.5	312	88.6	5	1.4
Brisbane-Hamilton Island								
Jetstar	16	15	14	93.3	14	93.3	1	6.3
Virgin Australia	30	29	27	93.1	28	96.6	1	3.3
All Airlines	46	44	41	93.2	42	95.5	2	4.3

	<i>Sectors</i>		<i>Departures On Time</i>		<i>Arrivals On Time</i>		<i>Cancellations</i>	
	<i>Sched.</i>	<i>Flown</i>	<i>No.</i>	<i>%</i>	<i>No.</i>	<i>%</i>	<i>No.</i>	<i>%</i>
Brisbane-Hobart								
Jetstar	28	28	25	89.3	26	92.9	0	0.0
Virgin Australia	30	30	25	83.3	26	86.7	0	0.0
All Airlines	58	58	50	86.2	52	89.7	0	0.0
Brisbane-Mackay								
Jetstar	69	68	58	85.3	59	86.8	1	1.4
QantasLink	108	107	103	96.3	104	97.2	1	0.9
Virgin Australia	137	133	108	81.2	110	82.7	4	2.9
All Airlines	314	308	269	87.3	273	88.6	6	1.9
Brisbane-Melbourne								
Jetstar	124	121	91	75.2	98	81.0	3	2.4
Qantas	419	414	323	78.0	328	79.2	5	1.2
Tigerair	117	117	71	60.7	69	59.0	0	0.0
Virgin Australia	352	341	271	79.5	255	74.8	11	3.1
All Airlines	1 012	993	756	76.1	750	75.5	19	1.9
Brisbane-Moranbah								
QantasLink	144	132	118	89.4	122	92.4	12	8.3
Virgin Australia Regional Airlines	91	91	81	89.0	84	92.3	0	0.0
All Airlines	235	223	199	89.2	206	92.4	12	5.1
Brisbane-Mount Isa								
Qantas	56	56	50	89.3	51	91.1	0	0.0
Virgin Australia	22	22	19	86.4	19	86.4	0	0.0
All Airlines	78	78	69	88.5	70	89.7	0	0.0
Brisbane-Newcastle								
Jetstar	116	115	105	91.3	100	87.0	1	0.9
QantasLink	72	71	64	90.1	51	71.8	1	1.4
Virgin Australia	75	75	62	82.7	61	81.3	0	0.0
All Airlines	263	261	231	88.5	212	81.2	2	0.8
Brisbane-Perth								
Jetstar	27	27	22	81.5	26	96.3	0	0.0
Qantas	128	128	102	79.7	91	71.1	0	0.0
Virgin Australia	86	86	62	72.1	76	88.4	0	0.0
All Airlines	241	241	186	77.2	193	80.1	0	0.0
Brisbane-Proserpine								
Jetstar	30	29	25	86.2	27	93.1	1	3.3
Virgin Australia	53	52	46	88.5	48	92.3	1	1.9
All Airlines	83	81	71	87.7	75	92.6	2	2.4
Brisbane-Rockhampton								
QantasLink	218	212	191	90.1	187	88.2	6	2.8
Virgin Australia	104	102	89	87.3	92	90.2	2	1.9
Virgin Australia Regional Airlines	100	98	82	83.7	82	83.7	2	2.0
All Airlines	422	412	362	87.9	361	87.6	10	2.4
Brisbane-Sydney								
Jetstar	180	171	141	82.5	147	86.0	9	5.0
Qantas	596	587	511	87.1	511	87.1	9	1.5
Tigerair	100	100	66	66.0	66	66.0	0	0.0
Virgin Australia	528	512	435	85.0	431	84.2	16	3.0
All Airlines	1 404	1 370	1 153	84.2	1 155	84.3	34	2.4
Brisbane-Townsville								
Jetstar	42	41	38	92.7	38	92.7	1	2.4
Qantas	146	142	119	83.8	131	92.3	4	2.7
Virgin Australia	149	146	122	83.6	128	87.7	3	2.0
All Airlines	337	329	279	84.8	297	90.3	8	2.4

	<i>Sectors</i>		<i>Departures On Time</i>		<i>Arrivals On Time</i>		<i>Cancellations</i>	
	<i>Sched.</i>	<i>Flown</i>	<i>No.</i>	<i>%</i>	<i>No.</i>	<i>%</i>	<i>No.</i>	<i>%</i>
Broome-Perth								
Qantas	31	31	29	93.5	30	96.8	0	0.0
QantasLink	55	53	46	86.8	47	88.7	2	3.6
Virgin Australia	56	55	47	85.5	51	92.7	1	1.8
Virgin Australia Regional Airlines	15	15	11	73.3	9	60.0	0	0.0
All Airlines	157	154	133	86.4	137	89.0	3	1.9
Bundaberg-Brisbane								
QantasLink	114	114	98	86.0	94	82.5	0	0.0
Virgin Australia Regional Airlines	38	38	31	81.6	30	78.9	0	0.0
All Airlines	152	152	129	84.9	124	81.6	0	0.0
Cairns-Brisbane								
Jetstar	120	113	96	85.0	94	83.2	7	5.8
Qantas	116	111	96	86.5	91	82.0	5	4.3
QantasLink	4	3	2	66.7	2	66.7	1	25.0
Tigerair	16	16	7	43.8	9	56.3	0	0.0
Virgin Australia	130	127	108	85.0	102	80.3	3	2.3
All Airlines	386	370	309	83.5	298	80.5	16	4.1
Cairns-Melbourne								
Jetstar	111	103	81	78.6	78	75.7	8	7.2
Qantas	30	29	21	72.4	24	82.8	1	3.3
Tigerair	46	45	33	73.3	37	82.2	1	2.2
Virgin Australia	32	31	19	61.3	22	71.0	1	3.1
All Airlines	219	208	154	74.0	161	77.4	11	5.0
Cairns-Sydney								
Jetstar	118	112	88	78.6	88	78.6	6	5.1
Qantas	65	63	56	88.9	61	96.8	2	3.1
Tigerair	30	29	20	69.0	23	79.3	1	3.3
Virgin Australia	82	80	71	88.8	73	91.3	2	2.4
All Airlines	295	284	235	82.7	245	86.3	11	3.7
Canberra-Adelaide								
Qantas	43	43	38	88.4	39	90.7	0	0.0
QantasLink	22	22	17	77.3	15	68.2	0	0.0
Virgin Australia	26	24	23	95.8	22	91.7	2	7.7
All Airlines	91	89	78	87.6	76	85.4	2	2.2
Canberra-Brisbane								
Qantas	45	44	43	97.7	43	97.7	1	2.2
QantasLink	110	108	86	79.6	83	76.9	2	1.8
Virgin Australia	94	94	80	85.1	73	77.7	0	0.0
All Airlines	249	246	209	85.0	199	80.9	3	1.2
Canberra-Melbourne								
Qantas	192	191	163	85.3	161	84.3	1	0.5
QantasLink	103	103	77	74.8	72	69.9	0	0.0
Virgin Australia	174	168	121	72.0	117	69.6	6	3.4
All Airlines	469	462	361	78.1	350	75.8	7	1.5
Canberra-Sydney								
Qantas	46	45	41	91.1	39	86.7	1	2.2
QantasLink	454	440	391	88.9	386	87.7	14	3.1
Virgin Australia	53	52	43	82.7	43	82.7	1	1.9
Virgin Australia Regional Airlines	241	234	211	90.2	213	91.0	7	2.9
All Airlines	794	771	686	89.0	681	88.3	23	2.9
Coffs Harbour-Sydney								
QantasLink	144	144	113	78.5	119	82.6	0	0.0
Tigerair	12	12	8	66.7	9	75.0	0	0.0
Virgin Australia	55	54	51	94.4	52	96.3	1	1.8
All Airlines	211	210	172	81.9	180	85.7	1	0.5

	<i>Sectors</i>		<i>Departures On Time</i>		<i>Arrivals On Time</i>		<i>Cancellations</i>	
	<i>Sched.</i>	<i>Flown</i>	<i>No.</i>	<i>%</i>	<i>No.</i>	<i>%</i>	<i>No.</i>	<i>%</i>
Darwin-Brisbane								
Jetstar	30	30	22	73.3	23	76.7	0	0.0
Qantas	48	47	38	80.9	33	70.2	1	2.1
Tigerair	15	14	13	92.9	13	92.9	1	6.7
Virgin Australia	31	31	24	77.4	20	64.5	0	0.0
All Airlines	124	122	97	79.5	89	73.0	2	1.6
Darwin-Melbourne								
Jetstar	30	30	25	83.3	27	90.0	0	0.0
Qantas	30	30	22	73.3	21	70.0	0	0.0
Virgin Australia	31	30	25	83.3	25	83.3	1	3.2
All Airlines	91	90	72	80.0	73	81.1	1	1.1
Darwin-Perth								
Qantas	39	39	34	87.2	37	94.9	0	0.0
Virgin Australia	26	26	23	88.5	25	96.2	0	0.0
All Airlines	65	65	57	87.7	62	95.4	0	0.0
Darwin-Sydney								
Jetstar	28	28	22	78.6	23	82.1	0	0.0
Qantas	52	52	46	88.5	45	86.5	0	0.0
Virgin Australia	30	30	26	86.7	26	86.7	0	0.0
All Airlines	110	110	94	85.5	94	85.5	0	0.0
Dubbo-Sydney								
QantasLink	123	123	97	78.9	92	74.8	0	0.0
Regional Express	142	142	127	89.4	128	90.1	0	0.0
All Airlines	265	265	224	84.5	220	83.0	0	0.0
Emerald-Brisbane								
QantasLink	151	147	127	86.4	123	83.7	4	2.6
Virgin Australia Regional Airlines	83	82	76	92.7	73	89.0	1	1.2
All Airlines	234	229	203	88.6	196	85.6	5	2.1
Geraldton-Perth								
QantasLink	54	54	54	100.0	53	98.1	0	0.0
Virgin Australia Regional Airlines	93	93	79	84.9	80	86.0	0	0.0
All Airlines	147	147	133	90.5	133	90.5	0	0.0
Gladstone-Brisbane								
QantasLink	231	227	192	84.6	177	78.0	4	1.7
Virgin Australia Regional Airlines	144	143	124	86.7	116	81.1	1	0.7
All Airlines	375	370	316	85.4	293	79.2	5	1.3
Gold Coast-Adelaide								
Jetstar	44	44	44	100.0	44	100.0	0	0.0
Virgin Australia	30	30	25	83.3	28	93.3	0	0.0
All Airlines	74	74	69	93.2	72	97.3	0	0.0
Gold Coast-Melbourne								
Jetstar	237	231	176	76.2	180	77.9	6	2.5
Tigerair	77	75	34	45.3	36	48.0	2	2.6
Virgin Australia	169	164	126	76.8	133	81.1	5	3.0
All Airlines	483	470	336	71.5	349	74.3	13	2.7
Gold Coast-Sydney								
Jetstar	364	345	283	82.0	284	82.3	19	5.2
Qantas	90	90	81	90.0	85	94.4	0	0.0
Tigerair	68	66	42	63.6	49	74.2	2	2.9
Virgin Australia	293	287	256	89.2	258	89.9	6	2.0
All Airlines	815	788	662	84.0	676	85.8	27	3.3

	<i>Sectors</i>		<i>Departures On Time</i>		<i>Arrivals On Time</i>		<i>Cancellations</i>	
	<i>Sched.</i>	<i>Flown</i>	<i>No.</i>	<i>%</i>	<i>No.</i>	<i>%</i>	<i>No.</i>	<i>%</i>
Hamilton Island-Brisbane								
Jetstar	16	15	14	93.3	14	93.3	1	6.3
Virgin Australia	31	30	29	96.7	27	90.0	1	3.2
All Airlines	47	45	43	95.6	41	91.1	2	4.3
Hamilton Island-Melbourne								
Jetstar	20	20	17	85.0	17	85.0	0	0.0
Virgin Australia	14	14	11	78.6	11	78.6	0	0.0
All Airlines	34	34	28	82.4	28	82.4	0	0.0
Hamilton Island-Sydney								
Jetstar	30	29	27	93.1	27	93.1	1	3.3
Virgin Australia	30	29	22	75.9	23	79.3	1	3.3
All Airlines	60	58	49	84.5	50	86.2	2	3.3
Hobart-Brisbane								
Jetstar	28	28	23	82.1	22	78.6	0	0.0
Virgin Australia	30	30	21	70.0	19	63.3	0	0.0
All Airlines	58	58	44	75.9	41	70.7	0	0.0
Hobart-Melbourne								
Jetstar	175	171	130	76.0	129	75.4	4	2.3
Qantas	60	60	51	85.0	46	76.7	0	0.0
QantasLink	31	30	24	80.0	18	60.0	1	3.2
Tigerair	30	30	23	76.7	17	56.7	0	0.0
Virgin Australia	130	129	90	69.8	87	67.4	1	0.8
All Airlines	426	420	318	75.7	297	70.7	6	1.4
Hobart-Sydney								
Jetstar	84	84	69	82.1	66	78.6	0	0.0
Qantas	14	14	13	92.9	13	92.9	0	0.0
QantasLink	18	18	12	66.7	12	66.7	0	0.0
Virgin Australia	57	57	50	87.7	50	87.7	0	0.0
All Airlines	173	173	144	83.2	141	81.5	0	0.0
Kalgoorlie-Perth								
Qantas	52	52	51	98.1	51	98.1	0	0.0
QantasLink	34	34	31	91.2	30	88.2	0	0.0
Virgin Australia	42	42	37	88.1	38	90.5	0	0.0
Virgin Australia Regional Airlines	12	12	10	83.3	10	83.3	0	0.0
All Airlines	140	140	129	92.1	129	92.1	0	0.0
Karratha-Perth								
Qantas	174	167	160	95.8	162	97.0	7	4.0
QantasLink	64	60	57	95.0	56	93.3	4	6.3
Virgin Australia	82	81	71	87.7	75	92.6	1	1.2
All Airlines	320	308	288	93.5	293	95.1	12	3.8
Launceston-Melbourne								
Jetstar	132	129	92	71.3	84	65.1	3	2.3
QantasLink	120	116	88	75.9	76	65.5	4	3.3
Virgin Australia	117	116	96	82.8	86	74.1	1	0.9
All Airlines	369	361	276	76.5	246	68.1	8	2.2
Launceston-Sydney								
Jetstar	58	57	47	82.5	49	86.0	1	1.7
Virgin Australia	30	30	26	86.7	25	83.3	0	0.0
All Airlines	88	87	73	83.9	74	85.1	1	1.1
Mackay-Brisbane								
Jetstar	68	67	55	82.1	51	76.1	1	1.5
QantasLink	108	106	95	89.6	94	88.7	2	1.9
Virgin Australia	137	133	112	84.2	112	84.2	4	2.9
All Airlines	313	306	262	85.6	257	84.0	7	2.2

	<i>Sectors</i>		<i>Departures On Time</i>		<i>Arrivals On Time</i>		<i>Cancellations</i>	
	<i>Sched.</i>	<i>Flown</i>	<i>No.</i>	<i>%</i>	<i>No.</i>	<i>%</i>	<i>No.</i>	<i>%</i>
Melbourne-Adelaide								
Jetstar	123	122	84	68.9	89	73.0	1	0.8
Qantas	270	270	234	86.7	214	79.3	0	0.0
QantasLink	18	18	16	88.9	16	88.9	0	0.0
Tigerair	76	75	69	92.0	64	85.3	1	1.3
Virgin Australia	263	258	199	77.1	193	74.8	5	1.9
All Airlines	750	743	602	81.0	576	77.5	7	0.9
Melbourne-Alice Springs								
Qantas	30	30	24	80.0	21	70.0	0	0.0
Tigerair	18	18	13	72.2	13	72.2	0	0.0
All Airlines	48	48	37	77.1	34	70.8	0	0.0
Melbourne-Brisbane								
Jetstar	125	123	81	65.9	88	71.5	2	1.6
Qantas	417	413	326	78.9	297	71.9	4	1.0
Tigerair	118	118	78	66.1	65	55.1	0	0.0
Virgin Australia	353	344	253	73.5	232	67.4	9	2.5
All Airlines	1 013	998	738	73.9	682	68.3	15	1.5
Melbourne-Cairns								
Jetstar	111	104	83	79.8	78	75.0	7	6.3
Qantas	30	29	24	82.8	20	69.0	1	3.3
Tigerair	46	45	36	80.0	36	80.0	1	2.2
Virgin Australia	32	31	22	71.0	21	67.7	1	3.1
All Airlines	219	209	165	78.9	155	74.2	10	4.6
Melbourne-Canberra								
Qantas	192	191	172	90.1	166	86.9	1	0.5
QantasLink	103	103	87	84.5	74	71.8	0	0.0
Virgin Australia	175	171	127	74.3	120	70.2	4	2.3
All Airlines	470	465	386	83.0	360	77.4	5	1.1
Melbourne-Darwin								
Jetstar	30	30	24	80.0	25	83.3	0	0.0
Qantas	30	30	27	90.0	21	70.0	0	0.0
Virgin Australia	29	29	24	82.8	27	93.1	0	0.0
All Airlines	89	89	75	84.3	73	82.0	0	0.0
Melbourne-Gold Coast								
Jetstar	235	230	175	76.1	169	73.5	5	2.1
Tigerair	76	76	50	65.8	43	56.6	0	0.0
Virgin Australia	169	164	126	76.8	119	72.6	5	3.0
All Airlines	480	470	351	74.7	331	70.4	10	2.1
Melbourne-Hamilton Island								
Jetstar	19	19	17	89.5	18	94.7	0	0.0
Virgin Australia	14	14	12	85.7	11	78.6	0	0.0
All Airlines	33	33	29	87.9	29	87.9	0	0.0
Melbourne-Hobart								
Jetstar	175	171	137	80.1	144	84.2	4	2.3
Qantas	60	60	55	91.7	54	90.0	0	0.0
QantasLink	31	30	24	80.0	24	80.0	1	3.2
Tigerair	30	30	27	90.0	26	86.7	0	0.0
Virgin Australia	130	129	107	82.9	100	77.5	1	0.8
All Airlines	426	420	350	83.3	348	82.9	6	1.4
Melbourne-Launceston								
Jetstar	130	127	95	74.8	99	78.0	3	2.3
QantasLink	120	115	92	80.0	82	71.3	5	4.2
Virgin Australia	117	115	92	80.0	90	78.3	2	1.7
All Airlines	367	357	279	78.2	271	75.9	10	2.7

	<i>Sectors</i>		<i>Departures On Time</i>		<i>Arrivals On Time</i>		<i>Cancellations</i>	
	<i>Sched.</i>	<i>Flown</i>	<i>No.</i>	<i>%</i>	<i>No.</i>	<i>%</i>	<i>No.</i>	<i>%</i>
Melbourne-Mildura								
QantasLink	86	86	65	75.6	65	75.6	0	0.0
Regional Express	79	79	71	89.9	66	83.5	0	0.0
Virgin Australia	30	30	19	63.3	20	66.7	0	0.0
All Airlines	195	195	155	79.5	151	77.4	0	0.0
Melbourne-Newcastle								
Jetstar	105	104	78	75.0	80	76.9	1	1.0
Virgin Australia	29	28	23	82.1	23	82.1	1	3.4
All Airlines	134	132	101	76.5	103	78.0	2	1.5
Melbourne-Perth								
Jetstar	87	87	73	83.9	73	83.9	0	0.0
Qantas	215	214	162	75.7	139	65.0	1	0.5
Tigerair	60	60	41	68.3	47	78.3	0	0.0
Virgin Australia	130	128	82	64.1	102	79.7	2	1.5
All Airlines	492	489	358	73.2	361	73.8	3	0.6
Melbourne-Sunshine Coast								
Jetstar	69	67	51	76.1	51	76.1	2	2.9
Tigerair	29	28	25	89.3	18	64.3	1	3.4
Virgin Australia	30	30	23	76.7	18	60.0	0	0.0
All Airlines	128	125	99	79.2	87	69.6	3	2.3
Melbourne-Sydney								
Jetstar	322	310	215	69.4	210	67.7	12	3.7
Qantas	874	827	717	86.7	672	81.3	47	5.4
Tigerair	241	230	164	71.3	169	73.5	11	4.6
Virgin Australia	755	696	563	80.9	541	77.7	59	7.8
All Airlines	2 192	2 063	1 659	80.4	1 592	77.2	129	5.9
Mildura-Melbourne								
QantasLink	86	86	68	79.1	63	73.3	0	0.0
Regional Express	79	79	62	78.5	58	73.4	0	0.0
Virgin Australia	30	30	19	63.3	20	66.7	0	0.0
All Airlines	195	195	149	76.4	141	72.3	0	0.0
Moranbah-Brisbane								
QantasLink	139	129	114	88.4	114	88.4	10	7.2
Virgin Australia Regional Airlines	91	91	81	89.0	77	84.6	0	0.0
All Airlines	230	220	195	88.6	191	86.8	10	4.3
Mount Isa-Brisbane								
Qantas	56	56	46	82.1	47	83.9	0	0.0
Virgin Australia	22	22	19	86.4	21	95.5	0	0.0
All Airlines	78	78	65	83.3	68	87.2	0	0.0
Newcastle-Brisbane								
Jetstar	118	117	99	84.6	98	83.8	1	0.8
QantasLink	72	71	51	71.8	52	73.2	1	1.4
Virgin Australia	75	75	51	68.0	50	66.7	0	0.0
All Airlines	265	263	201	76.4	200	76.0	2	0.8
Newcastle-Melbourne								
Jetstar	107	104	87	83.7	82	78.8	3	2.8
Virgin Australia	29	28	21	75.0	22	78.6	1	3.4
All Airlines	136	132	108	81.8	104	78.8	4	2.9
Newman-Perth								
Qantas	135	131	126	96.2	127	96.9	4	3.0
QantasLink	28	26	25	96.2	25	96.2	2	7.1
Virgin Australia	36	36	31	86.1	31	86.1	0	0.0
Virgin Australia Regional Airlines	20	20	15	75.0	16	80.0	0	0.0
All Airlines	219	213	197	92.5	199	93.4	6	2.7

	<i>Sectors</i>		<i>Departures On Time</i>		<i>Arrivals On Time</i>		<i>Cancellations</i>	
	<i>Sched.</i>	<i>Flown</i>	<i>No.</i>	<i>%</i>	<i>No.</i>	<i>%</i>	<i>No.</i>	<i>%</i>
Perth-Adelaide								
Jetstar	42	42	34	81.0	33	78.6	0	0.0
Qantas	114	114	109	95.6	110	96.5	0	0.0
Virgin Australia	60	59	56	94.9	55	93.2	1	1.7
All Airlines	216	215	199	92.6	198	92.1	1	0.5
Perth-Brisbane								
Jetstar	28	28	25	89.3	22	78.6	0	0.0
Qantas	129	129	118	91.5	112	86.8	0	0.0
Virgin Australia	86	86	71	82.6	62	72.1	0	0.0
All Airlines	243	243	214	88.1	196	80.7	0	0.0
Perth-Broome								
Qantas	31	31	30	96.8	30	96.8	0	0.0
QantasLink	55	54	49	90.7	48	88.9	1	1.8
Virgin Australia	56	55	53	96.4	54	98.2	1	1.8
Virgin Australia Regional Airlines	12	12	11	91.7	12	100.0	0	0.0
All Airlines	154	152	143	94.1	144	94.7	2	1.3
Perth-Darwin								
Qantas	39	39	36	92.3	35	89.7	0	0.0
Virgin Australia	26	26	23	88.5	20	76.9	0	0.0
All Airlines	65	65	59	90.8	55	84.6	0	0.0
Perth-Geraldton								
QantasLink	54	54	51	94.4	50	92.6	0	0.0
Virgin Australia Regional Airlines	91	91	82	90.1	80	87.9	0	0.0
All Airlines	145	145	133	91.7	130	89.7	0	0.0
Perth-Kalgoorlie								
Qantas	52	52	51	98.1	51	98.1	0	0.0
QantasLink	34	34	33	97.1	33	97.1	0	0.0
Virgin Australia	42	42	37	88.1	37	88.1	0	0.0
Virgin Australia Regional Airlines	12	12	11	91.7	11	91.7	0	0.0
All Airlines	140	140	132	94.3	132	94.3	0	0.0
Perth-Karratha								
Qantas	174	169	161	95.3	162	95.9	5	2.9
QantasLink	64	60	58	96.7	58	96.7	4	6.3
Virgin Australia	82	81	68	84.0	74	91.4	1	1.2
All Airlines	320	310	287	92.6	294	94.8	10	3.1
Perth-Melbourne								
Jetstar	89	89	71	79.8	66	74.2	0	0.0
Qantas	214	214	175	81.8	186	86.9	0	0.0
Tigerair	59	58	37	63.8	35	60.3	1	1.7
Virgin Australia	130	128	107	83.6	105	82.0	2	1.5
All Airlines	492	489	390	79.8	392	80.2	3	0.6
Perth-Newman								
Qantas	135	132	128	97.0	128	97.0	3	2.2
QantasLink	28	26	24	92.3	25	96.2	2	7.1
Virgin Australia	34	34	28	82.4	28	82.4	0	0.0
Virgin Australia Regional Airlines	20	20	15	75.0	18	90.0	0	0.0
All Airlines	217	212	195	92.0	199	93.9	5	2.3
Perth-Port Hedland								
Qantas	124	122	118	96.7	118	96.7	2	1.6
QantasLink	41	40	39	97.5	39	97.5	1	2.4
Virgin Australia	50	50	45	90.0	47	94.0	0	0.0
All Airlines	215	212	202	95.3	204	96.2	3	1.4

	<i>Sectors</i>		<i>Departures On Time</i>		<i>Arrivals On Time</i>		<i>Cancellations</i>	
	<i>Sched.</i>	<i>Flown</i>	<i>No.</i>	<i>%</i>	<i>No.</i>	<i>%</i>	<i>No.</i>	<i>%</i>
Perth-Sydney								
Jetstar	45	44	35	79.5	33	75.0	1	2.2
Qantas	196	196	170	86.7	179	91.3	0	0.0
Tigerair	25	25	23	92.0	21	84.0	0	0.0
Virgin Australia	110	110	91	82.7	99	90.0	0	0.0
All Airlines	376	375	319	85.1	332	88.5	1	0.3
Port Hedland-Perth								
Qantas	124	121	106	87.6	107	88.4	3	2.4
QantasLink	41	41	37	90.2	37	90.2	0	0.0
Virgin Australia	50	49	44	89.8	44	89.8	1	2.0
All Airlines	215	211	187	88.6	188	89.1	4	1.9
Port Lincoln-Adelaide								
QantasLink	97	97	95	97.9	93	95.9	0	0.0
Regional Express	194	193	180	93.3	177	91.7	1	0.5
All Airlines	291	290	275	94.8	270	93.1	1	0.3
Port Macquarie-Sydney								
QantasLink	134	133	104	78.2	92	69.2	1	0.7
Virgin Australia Regional Airlines	59	59	39	66.1	40	67.8	0	0.0
All Airlines	193	192	143	74.5	132	68.8	1	0.5
Proserpine-Brisbane								
Jetstar	30	29	29	100.0	29	100.0	1	3.3
Virgin Australia	53	52	47	90.4	42	80.8	1	1.9
All Airlines	83	81	76	93.8	71	87.7	2	2.4
Rockhampton-Brisbane								
QantasLink	196	189	158	83.6	155	82.0	7	3.6
Virgin Australia	104	100	88	88.0	83	83.0	4	3.8
Virgin Australia Regional Airlines	100	98	92	93.9	83	84.7	2	2.0
All Airlines	400	387	338	87.3	321	82.9	13	3.3
Sunshine Coast-Melbourne								
Jetstar	71	68	46	67.6	49	72.1	3	4.2
Tigerair	29	28	18	64.3	19	67.9	1	3.4
Virgin Australia	30	30	15	50.0	14	46.7	0	0.0
All Airlines	130	126	79	62.7	82	65.1	4	3.1
Sunshine Coast-Sydney								
Jetstar	117	116	105	90.5	106	91.4	1	0.9
Virgin Australia	30	30	20	66.7	22	73.3	0	0.0
All Airlines	147	146	125	85.6	128	87.7	1	0.7
Sydney-Adelaide								
Jetstar	143	141	103	73.0	107	75.9	2	1.4
Qantas	240	239	217	90.8	222	92.9	1	0.4
QantasLink	10	10	6	60.0	8	80.0	0	0.0
Tigerair	30	30	28	93.3	27	90.0	0	0.0
Virgin Australia	166	163	134	82.2	144	88.3	3	1.8
All Airlines	589	583	488	83.7	508	87.1	6	1.0
Sydney-Albury								
QantasLink	112	112	85	75.9	76	67.9	0	0.0
Regional Express	98	98	75	76.5	80	81.6	0	0.0
Virgin Australia Regional Airlines	60	59	51	86.4	51	86.4	1	1.7
All Airlines	270	269	211	78.4	207	77.0	1	0.4
Sydney-Alice Springs								
Qantas	30	30	27	90.0	25	83.3	0	0.0
Tigerair	17	17	14	82.4	16	94.1	0	0.0
All Airlines	47	47	41	87.2	41	87.2	0	0.0

	<i>Sectors</i>		<i>Departures On Time</i>		<i>Arrivals On Time</i>		<i>Cancellations</i>	
	<i>Sched.</i>	<i>Flown</i>	<i>No.</i>	<i>%</i>	<i>No.</i>	<i>%</i>	<i>No.</i>	<i>%</i>
Sydney-Ayers Rock								
Jetstar	15	15	12	80.0	13	86.7	0	0.0
Virgin Australia	30	30	26	86.7	29	96.7	0	0.0
All Airlines	45	45	38	84.4	42	93.3	0	0.0
Sydney-Ballina								
Jetstar	83	83	71	85.5	70	84.3	0	0.0
Regional Express	32	31	27	87.1	27	87.1	1	3.1
Virgin Australia	30	30	27	90.0	26	86.7	0	0.0
All Airlines	145	144	125	86.8	123	85.4	1	0.7
Sydney-Brisbane								
Jetstar	179	171	135	78.9	140	81.9	8	4.5
Qantas	568	561	461	82.2	445	79.3	7	1.2
Tigerair	100	99	72	72.7	65	65.7	1	1.0
Virgin Australia	526	507	423	83.4	394	77.7	19	3.6
All Airlines	1 373	1 338	1 091	81.5	1 044	78.0	35	2.5
Sydney-Cairns								
Jetstar	116	113	96	85.0	99	87.6	3	2.6
Qantas	65	63	57	90.5	60	95.2	2	3.1
Tigerair	30	29	25	86.2	24	82.8	1	3.3
Virgin Australia	82	80	71	88.8	70	87.5	2	2.4
All Airlines	293	285	249	87.4	253	88.8	8	2.7
Sydney-Canberra								
Qantas	45	45	38	84.4	39	86.7	0	0.0
QantasLink	455	441	385	87.3	393	89.1	14	3.1
Virgin Australia	53	52	46	88.5	44	84.6	1	1.9
Virgin Australia Regional Airlines	242	232	191	82.3	192	82.8	10	4.1
All Airlines	795	770	660	85.7	668	86.8	25	3.1
Sydney-Coffs Harbour								
QantasLink	144	144	120	83.3	111	77.1	0	0.0
Tigerair	12	12	8	66.7	8	66.7	0	0.0
Virgin Australia	55	54	52	96.3	52	96.3	1	1.8
All Airlines	211	210	180	85.7	171	81.4	1	0.5
Sydney-Darwin								
Jetstar	29	29	26	89.7	27	93.1	0	0.0
Qantas	53	53	44	83.0	48	90.6	0	0.0
Virgin Australia	30	30	25	83.3	26	86.7	0	0.0
All Airlines	112	112	95	84.8	101	90.2	0	0.0
Sydney-Dubbo								
QantasLink	123	123	97	78.9	85	69.1	0	0.0
Regional Express	137	137	119	86.9	125	91.2	0	0.0
All Airlines	260	260	216	83.1	210	80.8	0	0.0
Sydney-Gold Coast								
Jetstar	366	347	293	84.4	296	85.3	19	5.2
Qantas	90	90	84	93.3	86	95.6	0	0.0
Tigerair	68	67	48	71.6	48	71.6	1	1.5
Virgin Australia	295	291	252	86.6	249	85.6	4	1.4
All Airlines	819	795	677	85.2	679	85.4	24	2.9
Sydney-Hamilton Island								
Jetstar	30	29	23	79.3	27	93.1	1	3.3
Virgin Australia	31	30	25	83.3	25	83.3	1	3.2
All Airlines	61	59	48	81.4	52	88.1	2	3.3

	<i>Sectors</i>		<i>Departures On Time</i>		<i>Arrivals On Time</i>		<i>Cancellations</i>	
	<i>Sched.</i>	<i>Flown</i>	<i>No.</i>	<i>%</i>	<i>No.</i>	<i>%</i>	<i>No.</i>	<i>%</i>
Sydney-Hobart								
Jetstar	83	83	70	84.3	76	91.6	0	0.0
Qantas	14	14	13	92.9	13	92.9	0	0.0
QantasLink	18	18	13	72.2	11	61.1	0	0.0
Virgin Australia	57	57	54	94.7	54	94.7	0	0.0
All Airlines	172	172	150	87.2	154	89.5	0	0.0
Sydney-Launceston								
Jetstar	57	57	48	84.2	48	84.2	0	0.0
Virgin Australia	30	30	27	90.0	28	93.3	0	0.0
All Airlines	87	87	75	86.2	76	87.4	0	0.0
Sydney-Melbourne								
Jetstar	320	311	223	71.7	224	72.0	9	2.8
Qantas	873	827	722	87.3	674	81.5	46	5.3
Tigerair	241	231	158	68.4	161	69.7	10	4.1
Virgin Australia	756	700	553	79.0	528	75.4	56	7.4
All Airlines	2 190	2 069	1 656	80.0	1 587	76.7	121	5.5
Sydney-Perth								
Jetstar	45	44	36	81.8	41	93.2	1	2.2
Qantas	201	201	168	83.6	148	73.6	0	0.0
Tigerair	26	26	21	80.8	21	80.8	0	0.0
Virgin Australia	110	110	82	74.5	90	81.8	0	0.0
All Airlines	382	381	307	80.6	300	78.7	1	0.3
Sydney-Port Macquarie								
QantasLink	134	133	115	86.5	98	73.7	1	0.7
Virgin Australia Regional Airlines	59	59	50	84.7	47	79.7	0	0.0
All Airlines	193	192	165	85.9	145	75.5	1	0.5
Sydney-Sunshine Coast								
Jetstar	116	115	105	91.3	107	93.0	1	0.9
Virgin Australia	30	30	23	76.7	25	83.3	0	0.0
All Airlines	146	145	128	88.3	132	91.0	1	0.7
Sydney-Townsville								
Jetstar	28	27	24	88.9	23	85.2	1	3.6
Virgin Australia	27	26	23	88.5	21	80.8	1	3.7
All Airlines	55	53	47	88.7	44	83.0	2	3.6
Sydney-Wagga Wagga								
QantasLink	111	111	89	80.2	84	75.7	0	0.0
Regional Express	120	120	115	95.8	111	92.5	0	0.0
All Airlines	231	231	204	88.3	195	84.4	0	0.0
Townsville-Brisbane								
Jetstar	42	41	35	85.4	37	90.2	1	2.4
Qantas	146	142	134	94.4	129	90.8	4	2.7
Virgin Australia	149	144	113	78.5	117	81.3	5	3.4
All Airlines	337	327	282	86.2	283	86.5	10	3.0
Townsville-Sydney								
Jetstar	28	27	22	81.5	21	77.8	1	3.6
Virgin Australia	27	26	16	61.5	20	76.9	1	3.7
All Airlines	55	53	38	71.7	41	77.4	2	3.6
Wagga Wagga-Sydney								
QantasLink	111	111	87	78.4	85	76.6	0	0.0
Regional Express	120	120	116	96.7	115	95.8	0	0.0
All Airlines	231	231	203	87.9	200	86.6	0	0.0

Airports

On time performance is reported for all routes where the passenger load averages over 8000 passengers per month, and where two or more airlines operate in competition. The following data reports by airport against flights operated on those routes only.

Airport	Departures			Arrivals		
	Sectors	On Time		Sectors	On Time	
	Flown	No.	%	Flown	No.	%
Adelaide						
Jetstar	379	288	76.0	378	302	79.9
Qantas	770	650	84.4	772	682	88.3
QantasLink	147	130	88.4	147	132	89.8
Regional Express	194	180	92.8	193	177	91.7
Tigerair	131	108	82.4	131	112	85.5
Virgin Australia	645	546	84.7	646	542	83.9
All Airlines	2 266	1 902	83.9	2 267	1 947	85.9
Relates to services to and from Brisbane, Canberra, Gold Coast, Melbourne, Perth, Port Lincoln and Sydney.						
Albury						
QantasLink	112	81	72.3	112	76	67.9
Regional Express	98	90	91.8	98	80	81.6
Virgin Australia Regional Airlines	59	52	88.1	59	51	86.4
All Airlines	269	223	82.9	269	207	77.0
Relates to services to and from Sydney only.						
Alice Springs						
Qantas	60	37	61.7	60	46	76.7
Tigerair	35	23	65.7	35	29	82.9
All Airlines	95	60	63.2	95	75	78.9
Relates to services to and from Melbourne and Sydney.						
Ayers Rock						
Jetstar	17	14	82.4	15	13	86.7
Virgin Australia	30	25	83.3	30	29	96.7
All Airlines	47	39	83.0	45	42	93.3
Relates to services to and from Sydney only.						
Ballina						
Jetstar	84	70	83.3	83	70	84.3
Regional Express	29	24	82.8	31	27	87.1
Virgin Australia	30	25	83.3	30	26	86.7
All Airlines	143	119	83.2	144	123	85.4
Relates to services to and from Sydney only.						
Brisbane						
Jetstar	789	669	84.8	791	647	81.8
Qantas	1 638	1 371	83.7	1 609	1 286	79.9
QantasLink	1 103	993	90.0	1 094	894	81.7
Tigerair	274	177	64.6	273	176	64.5
Virgin Australia	1 892	1 571	83.0	1 887	1 457	77.2
Virgin Australia Regional Airlines	451	400	88.7	452	379	83.8
All Airlines	6 147	5 181	84.3	6 106	4 839	79.2
Relates to services to and from Adelaide, Bundaberg, Cairns, Canberra, Darwin, Emerald, Gladstone, Hamilton Island, Hobart, Mackay, Melbourne, Moranbah, Mount Isa, Newcastle, Perth, Proserpine, Rockhampton, Sydney and Townsville.						

Airport	Departures			Arrivals		
	Sectors Flown	On Time		Sectors Flown	On Time	
		No.	%		No.	%
Broome						
Qantas	31	29	93.5	31	30	96.8
QantasLink	53	46	86.8	54	48	88.9
Virgin Australia	55	47	85.5	55	54	98.2
Virgin Australia Regional Airlines	15	11	73.3	12	12	100.0
All Airlines	154	133	86.4	152	144	94.7
Relates to services to and from Perth only.						
Bundaberg						
QantasLink	114	98	86.0	114	88	77.2
Virgin Australia Regional Airlines	38	31	81.6	37	28	75.7
All Airlines	152	129	84.9	151	116	76.8
Relates to services to and from Brisbane only.						
Cairns						
Jetstar	328	265	80.8	333	279	83.8
Qantas	203	173	85.2	205	181	88.3
QantasLink	3	2	66.7	3	3	100.0
Tigerair	90	60	66.7	90	66	73.3
Virgin Australia	238	198	83.2	239	205	85.8
All Airlines	862	698	81.0	870	734	84.4
Relates to services to and from Brisbane, Melbourne and Sydney.						
Canberra						
Qantas	323	285	88.2	323	286	88.5
QantasLink	673	571	84.8	674	583	86.5
Virgin Australia	338	267	79.0	341	263	77.1
Virgin Australia Regional Airlines	234	211	90.2	232	192	82.8
All Airlines	1 568	1 334	85.1	1 570	1 324	84.3
Relates to services to and from Adelaide, Brisbane, Melbourne and Sydney.						
Coffs Harbour						
QantasLink	144	113	78.5	144	111	77.1
Tigerair	12	8	66.7	12	8	66.7
Virgin Australia	54	51	94.4	54	52	96.3
All Airlines	210	172	81.9	210	171	81.4
Relates to services to and from Sydney only.						
Darwin						
Jetstar	88	69	78.4	88	77	87.5
Qantas	168	140	83.3	170	149	87.6
Tigerair	14	13	92.9	15	14	93.3
Virgin Australia	117	98	83.8	115	98	85.2
All Airlines	387	320	82.7	388	338	87.1
Relates to services to and from Brisbane, Melbourne, Perth and Sydney.						
Dubbo						
QantasLink	123	97	78.9	123	85	69.1
Regional Express	142	127	89.4	137	125	91.2
All Airlines	265	224	84.5	260	210	80.8
Relates to services to and from Sydney only.						
Emerald						
QantasLink	147	127	86.4	147	120	81.6
Virgin Australia Regional Airlines	82	76	92.7	82	69	84.1
All Airlines	229	203	88.6	229	189	82.5
Relates to services to and from Brisbane only.						

Airport	Departures			Arrivals		
	Sectors Flown	On Time		Sectors Flown	On Time	
		No.	%		No.	%
Geraldton						
QantasLink	54	54	100.0	54	50	92.6
Virgin Australia Regional Airlines	93	79	84.9	91	80	87.9
All Airlines	147	133	90.5	145	130	89.7
Relates to services to and from Perth only.						
Gladstone						
QantasLink	227	192	84.6	209	188	90.0
Virgin Australia Regional Airlines	143	124	86.7	143	124	86.7
All Airlines	370	316	85.4	352	312	88.6
Relates to services to and from Brisbane only.						
Gold Coast						
Jetstar	620	503	81.1	621	504	81.2
Qantas	90	81	90.0	90	86	95.6
Tigerair	141	76	53.9	143	91	63.6
Virgin Australia	481	407	84.6	485	395	81.4
All Airlines	1 332	1 067	80.1	1 339	1 076	80.4
Relates to services to and from Adelaide, Melbourne and Sydney.						
Hamilton Island						
Jetstar	64	58	90.6	63	59	93.7
Virgin Australia	73	62	84.9	73	64	87.7
All Airlines	137	120	87.6	136	123	90.4
Relates to services to and from Brisbane, Melbourne and Sydney.						
Hobart						
Jetstar	283	222	78.4	282	246	87.2
Qantas	74	64	86.5	74	67	90.5
QantasLink	48	36	75.0	48	35	72.9
Tigerair	30	23	76.7	30	26	86.7
Virgin Australia	216	161	74.5	216	180	83.3
All Airlines	651	506	77.7	650	554	85.2
Relates to services to and from Brisbane, Melbourne and Sydney.						
Kalgoorlie						
Qantas	52	51	98.1	52	51	98.1
QantasLink	34	31	91.2	34	33	97.1
Virgin Australia	42	37	88.1	42	37	88.1
Virgin Australia Regional Airlines	12	10	83.3	12	11	91.7
All Airlines	140	129	92.1	140	132	94.3
Relates to services to and from Perth only.						
Karratha						
Qantas	167	160	95.8	169	162	95.9
QantasLink	60	57	95.0	60	58	96.7
Virgin Australia	81	71	87.7	81	74	91.4
All Airlines	308	288	93.5	310	294	94.8
Relates to services to and from Perth only.						
Launceston						
Jetstar	186	139	74.7	184	147	79.9
QantasLink	116	88	75.9	115	82	71.3
Virgin Australia	146	122	83.6	145	118	81.4
All Airlines	448	349	77.9	444	347	78.2
Relates to services to and from Melbourne and Sydney.						

Airport	Departures			Arrivals		
	Sectors	On Time		Sectors	On Time	
	Flown	No.	%	Flown	No.	%
Mackay						
Jetstar	67	55	82.1	68	59	86.8
QantasLink	106	95	89.6	107	104	97.2
Virgin Australia	133	112	84.2	133	110	82.7
All Airlines	306	262	85.6	308	273	88.6
Relates to services to and from Brisbane only.						
Melbourne						
Jetstar	1 494	1 113	74.5	1 499	1 124	75.0
Qantas	2 064	1 741	84.4	2 064	1 679	81.3
QantasLink	352	284	80.7	353	247	70.0
Regional Express	79	71	89.9	79	58	73.4
Tigerair	680	503	74.0	677	438	64.7
Virgin Australia	2 167	1 672	77.2	2 166	1 633	75.4
All Airlines	6 836	5 384	78.8	6 838	5 179	75.7
Relates to services to and from Adelaide, Alice Springs, Brisbane, Cairns, Canberra, Darwin, Gold Coast, Hobart, Launceston, Mildura, Newcastle, Perth, Sunshine Coast and Sydney.						
Mildura						
QantasLink	86	68	79.1	86	65	75.6
Regional Express	79	62	78.5	79	66	83.5
Virgin Australia	30	19	63.3	30	20	66.7
All Airlines	195	149	76.4	195	151	77.4
Relates to services to and from Melbourne only.						
Moranbah						
QantasLink	129	114	88.4	132	122	92.4
Virgin Australia Regional Airlines	91	81	89.0	91	84	92.3
All Airlines	220	195	88.6	223	206	92.4
Relates to services to and from Brisbane only.						
Mount Isa						
Qantas	56	46	82.1	56	51	91.1
Virgin Australia	22	19	86.4	22	19	86.4
All Airlines	78	65	83.3	78	70	89.7
Relates to services to and from Brisbane only.						
Newcastle						
Jetstar	221	186	84.2	219	180	82.2
QantasLink	71	51	71.8	71	51	71.8
Virgin Australia	103	72	69.9	103	84	81.6
All Airlines	395	309	78.2	393	315	80.2
Relates to services to and from Brisbane and Melbourne.						
Newman						
Qantas	131	126	96.2	132	128	97.0
QantasLink	26	25	96.2	26	25	96.2
Virgin Australia	36	31	86.1	34	28	82.4
Virgin Australia Regional Airlines	20	15	75.0	20	18	90.0
All Airlines	213	197	92.5	212	199	93.9
Relates to services to and from Perth only.						

Airport	Departures			Arrivals		
	Sectors	On Time		Sectors	On Time	
	Flown	No.	%	Flown	No.	%
Perth						
Jetstar	203	165	81.3	200	176	88.0
Qantas	1 198	1 096	91.5	1 194	989	82.8
QantasLink	268	254	94.8	268	248	92.5
Tigerair	83	60	72.3	86	68	79.1
Virgin Australia	671	579	86.3	672	584	86.9
Virgin Australia Regional Airlines	135	119	88.1	140	115	82.1
All Airlines	2 558	2 273	88.9	2 560	2 180	85.2
Relates to services to and from Adelaide, Brisbane, Broome, Darwin, Geraldton, Kalgoorlie, Karratha, Melbourne, Newman, Port Hedland and Sydney.						
Port Hedland						
Qantas	121	106	87.6	122	118	96.7
QantasLink	41	37	90.2	40	39	97.5
Virgin Australia	49	44	89.8	50	47	94.0
All Airlines	211	187	88.6	212	204	96.2
Relates to services to and from Perth only.						
Port Lincoln						
QantasLink	97	95	97.9	97	93	95.9
Regional Express	193	180	93.3	194	178	91.8
All Airlines	290	275	94.8	291	271	93.1
Relates to services to and from Adelaide only.						
Port Macquarie						
QantasLink	133	104	78.2	133	98	73.7
Virgin Australia Regional Airlines	59	39	66.1	59	47	79.7
All Airlines	192	143	74.5	192	145	75.5
Relates to services to and from Sydney only.						
Proserpine						
Jetstar	29	29	100.0	29	27	93.1
Virgin Australia	52	47	90.4	52	48	92.3
All Airlines	81	76	93.8	81	75	92.6
Relates to services to and from Brisbane only.						
Rockhampton						
QantasLink	189	158	83.6	212	187	88.2
Virgin Australia	100	88	88.0	102	92	90.2
Virgin Australia Regional Airlines	98	92	93.9	98	82	83.7
All Airlines	387	338	87.3	412	361	87.6
Relates to services to and from Brisbane only.						
Sunshine Coast						
Jetstar	184	151	82.1	182	158	86.8
Tigerair	28	18	64.3	28	18	64.3
Virgin Australia	60	35	58.3	60	43	71.7
All Airlines	272	204	75.0	270	219	81.1
Relates to services to and from Melbourne and Sydney.						

<i>Airport</i>	<i>Departures</i>			<i>Arrivals</i>		
	<i>Sectors</i>	<i>On Time</i>		<i>Sectors</i>	<i>On Time</i>	
	<i>Flown</i>	<i>No.</i>	<i>%</i>	<i>Flown</i>	<i>No.</i>	<i>%</i>
Sydney						
Jetstar	1 565	1 265	80.8	1 566	1 228	78.4
Qantas	2 123	1 831	86.2	2 146	1 853	86.3
QantasLink	1 092	910	83.3	1 091	879	80.6
Regional Express	386	336	87.0	389	357	91.8
Tigerair	511	374	73.2	509	379	74.5
Virgin Australia	2 220	1 843	83.0	2 216	1 869	84.3
Virgin Australia Regional Airlines	350	292	83.4	352	304	86.4
All Airlines	8 247	6 851	83.1	8 269	6 869	83.1

Relates to services to and from Adelaide, Albury, Alice Springs, Ayers Rock, Ballina, Brisbane, Cairns, Canberra, Coffs Harbour, Darwin, Dubbo, Gold Coast, Hamilton Island, Hobart, Launceston, Melbourne, Perth, Port Macquarie, Sunshine Coast, Townsville and Wagga Wagga.

Townsville

Jetstar	68	57	83.8	68	61	89.7
Qantas	142	134	94.4	142	131	92.3
Virgin Australia	170	129	75.9	172	149	86.6
All Airlines	380	320	84.2	382	341	89.3

Relates to services to and from Brisbane and Sydney.

Wagga Wagga

QantasLink	111	87	78.4	111	84	75.7
Regional Express	120	116	96.7	120	111	92.5
All Airlines	231	203	87.9	231	195	84.4

Relates to services to and from Sydney only.

Definitions

On time departure A flight departure is counted as "on time" if it departs the gate before 15 minutes after the scheduled departure time shown in the carriers' schedule.

On time arrival A flight arrival is counted as "on time" if it arrived at the gate before 15 minutes after the scheduled arrival time shown in the carriers' schedule.
Neither diverted nor cancelled flights count as on time.

Cancellation A flight removed from service within 7 days of scheduled departure is regarded as a cancellation.

On time departure percentage The percentage of on time departures is measured against the number of departures *operated* on any particular sector.

On time arrival percentage The percentage of on time arrivals is measured against the number of arrivals *operated* on any particular sector.

Cancellation percentage The percentage of cancellations is measured against the number of services *scheduled* on any particular sector.
