



**Australian Government**

**Department of Infrastructure and Transport**

Bureau of Infrastructure, Transport and Regional Economics

STATISTICAL REPORT



# Aviation

Domestic airline on time performance  
April 2013

© Commonwealth of Australia 2013

ISSN: 1832-0759

### **Ownership of intellectual property rights in this publication**

Unless otherwise noted, copyright (and any other intellectual property rights, if any) in this publication is owned by the Commonwealth of Australia (referred to below as the Commonwealth).

### **Disclaimer**

The material contained in this publication is made available on the understanding that the Commonwealth is not providing professional advice, and that users exercise their own skill and care with respect to its use, and seek independent advice if necessary.

The Commonwealth makes no representations or warranties as to the contents or accuracy of the information contained in this publication. To the extent permitted by law, the Commonwealth disclaims liability to any person or organisation in respect of anything done, or omitted to be done, in reliance upon information contained in this publication.

### **Creative Commons licence**

With the exception of (a) the Coat of Arms; and (b) the Department of Infrastructure's photos and graphics, copyright in this publication is licensed under a Creative Commons Attribution 3.0 Australia Licence.

Creative Commons Attribution 3.0 Australia Licence is a standard form licence agreement that allows you to copy, communicate and adapt this publication provided that you attribute the work to the Commonwealth and abide by the other licence terms. A summary of the licence terms is available from <http://creativecommons.org/licenses/by/3.0/au/deed.en>. The full licence terms are available from <http://creativecommons.org/licenses/by/3.0/au/legalcode>.

### **Use of the Coat of Arms**

The Department of the Prime Minister and Cabinet sets the terms under which the Coat of Arms is used. Please refer to the Department's Commonwealth Coat of Arms and Government branding web page <http://www.dpmmc.gov.au/guidelines/index.cfm#brand> and, in particular, the Guidelines on the use of the Commonwealth Coat of Arms publication.

An appropriate citation for this report is:

Bureau of Infrastructure, Transport and Regional Economics (BITRE), 2013, Domestic airline on time performance, Statistical Report, BITRE, Canberra ACT.

### **Contact us**

This publication is available in PDF format. All other rights are reserved, including in relation to any Departmental logos or trade marks which may exist. For enquiries regarding the licence and any use of this publication, please contact:

Bureau of Infrastructure, Transport and Regional Economics (BITRE)  
Department of Infrastructure and Transport  
GPO Box 501, Canberra ACT 2601, Australia  
Telephone: (international) +61 2 6274 7210  
Fax: (international) +61 2 6274 6855  
Email: [bitre@infrastructure.gov.au](mailto:bitre@infrastructure.gov.au)  
Website: [www.bitre.gov.au](http://www.bitre.gov.au)

### **Inquiries**

Should you require additional information about the statistics contained in this publication:

Telephone (02) 6274 7790 or Facsimile (02) 6274 7727

Electronic mail: [AVSTATS@infrastructure.gov.au](mailto:AVSTATS@infrastructure.gov.au)

Web site: <http://www.bitre.gov.au/statistics/aviation/otphome.aspx>

# Foreword

The Bureau of Infrastructure, Transport and Regional Economics (BITRE) monitors the punctuality and reliability of major domestic airlines operating between Australian airports. The purpose of this is to allow for evaluation of overall industry and individual airline performance, so that consumers of air travel can make informed decisions.

The following domestic airlines report this information monthly to the BITRE: Jetstar, Qantas, QantasLink, Regional Express, Skywest Airlines, Tiger Airways, Virgin Australia and Virgin Australia – ATR/F100 Operations. Data has been gathered since November 2003, although some airlines commenced reporting at a later date, including Jetstar which first reported in May 2004, MacAir in July 2005 and Tiger Airways in April 2008. MacAir ceased operations in February 2009 and data was not received for December 2008 onwards. Virgin Blue was rebranded as Virgin Australia in May 2011 and time series data in Microsoft Excel spreadsheet format on the BITRE website has been revised to reflect this. Services operated by Skywest on behalf of Virgin Australia using ATR/F100 aircraft commenced in November 2011 and are shown separately as Virgin Australia – ATR/F100 Operations.

Information presented in this report is for Australian domestic routes for which the passenger load averaged 8 000 or more passengers per month over the previous six months and where two or more airlines operated in competition on those routes. There were 58 routes that met this definition in April 2013. Over time, routes which meet these criteria change as airline networks and traffic levels vary.

Participating airlines report their overall monthly network performance where this is possible.

Total industry figures encompass all services operated by reporting airlines only. These airlines collectively carried over 95 per cent of total domestic passengers (regular public transport only) in 2012.

The method of capturing on time performance varies between airlines utilising different recording systems. Jetstar and Qantas jet aircraft use Aircraft Communication Addressing and Reporting System (ACARS) to electronically measure on time performance. Regional Express, Skywest, Tiger Airways, Virgin Australia, Virgin Australia – ATR/F100 Operations and the Qantas non-jet fleet record on time performance manually using records from pilots, gate agents and/or ground crews.

After initial data is collected, aggregate reports are audited internally by participating airlines prior to publication.

Reports and detailed time series data in Microsoft Excel spreadsheet format are available from the BITRE website at: <http://www.bitre.gov.au/statistics/aviation/otphome.aspx>.



# Contents

	Page
Industry performance .....	1
Individual routes .....	9
Airports .....	21
Definitions .....	27



## Industry performance

For April 2013, on time performance over all routes operated by participating airlines (Jetstar, Qantas, QantasLink, Regional Express, Skywest Airlines, Tiger Airways, Virgin Australia and Virgin Australia – ATR/F100 Operations) averaged 83.3 per cent for on time departures, and 81.8 per cent for on time arrivals. Cancellations represented 1.6 per cent of all scheduled flights. The equivalent figures for April 2012 were 81.0 per cent for departures, 80.3 per cent for arrivals and 1.6 per cent for cancellations.

This month's figures were below the long term average performance for all routes since the collection began (83.7 per cent for departures and 82.3 per cent for arrivals). The rate of cancellations was also worse than the long term average of 1.3 per cent.

Of the major domestic airlines, Qantas achieved the highest level of on time departures for April 2013 at 86.3 per cent, followed by Virgin Australia at 84.3 per cent, Tiger Airways at 81.0 per cent and Jetstar at 76.6 per cent. The regional airlines were led by Regional Express at 89.0 per cent, followed by Virgin Australia – ATR/F100 Operations at 82.8 per cent, Skywest at 81.6 per cent and QantasLink at 81.3 per cent.

Qantas also achieved the highest on time arrivals among the major domestic airlines at 85.0 per cent, followed by Virgin Australia at 82.9 per cent, Tiger Airways at 78.2 per cent and Jetstar at 77.4 per cent. Regional Express was the best performing regional airline for on time arrivals at 86.4 per cent, followed by Virgin Australia – ATR/F100 Operations at 81.8 per cent, Skywest at 80.0 per cent and QantasLink at 78.5 per cent.

Virgin Australia – ATR/F100 Operations had the highest percentage of cancellations (2.8 per cent) during the month, followed by QantasLink (2.1 per cent), Jetstar (2.0 per cent), Virgin Australia (1.9 per cent), Qantas (1.3 per cent), Tiger Airways (1.1 per cent) and Regional Express (0.2 per cent). Skywest had no cancellations this month.

Of the 58 routes which met the criteria for on time performance reporting in April 2013, the Mildura-Melbourne route had the highest percentage of on time departures (93.0 per cent) and the Gold Coast-Adelaide route had the highest percentage of on time arrivals (98.6 per cent). The Sunshine Coast-Melbourne route had the lowest percentage of on time departures (52.2 per cent) and the Launceston-Sydney route had the lowest percentage of on time arrivals (58.1 per cent).

Cancellations were highest on the Port Hedland-Perth route at 4.3 per cent, followed by Rockhampton-Brisbane at 4.0 per cent, Perth-Port Hedland at 3.8 per cent, Cairns-Melbourne at 3.6 per cent and Newcastle-Brisbane, Townsville-Cairns and Sunshine Coast-Sydney all at 3.4 per cent.

Mildura Airport recorded the highest percentage of on time departures (93.0 per cent) and Karratha Airport recorded the highest percentage of on time arrivals (94.9 per cent). Sunshine Coast Airport recorded the lowest percentage of on time departures (65.2 per cent) and Port Macquarie Airport recorded the lowest percentage of on time arrivals (70.5 per cent). These figures only refer to reported routes and do not cover all flights at these airports.

Table 1 On time performance for April 2013 — Total Industry

	<i>Sectors</i>		<i>Departures On Time</i>		<i>Arrivals On Time</i>		<i>Cancellations</i>	
	<i>Scheduled</i>	<i>Flown</i>	<i>No.</i>	<i>%</i>	<i>No.</i>	<i>%</i>	<i>No.</i>	<i>%</i>
Jetstar	6 937	6 799	5 205	76.6	5 262	77.4	138	2.0
Qantas	10 388	10 254	8 845	86.3	8 719	85.0	134	1.3
QantasLink	9 697	9 495	7 722	81.3	7 453	78.5	202	2.1
Regional Express	5 497	5 486	4 883	89.0	4 739	86.4	11	0.2
Skywest	900	900	734	81.6	720	80.0	0	0.0
Tiger Airways	1 633	1 615	1 308	81.0	1 263	78.2	18	1.1
Virgin Australia	11 157	10 946	9 224	84.3	9 076	82.9	211	1.9
Virgin Australia - ATR/F100 Operations	1 506	1 464	1 212	82.8	1 197	81.8	42	2.8
All Airlines	47 715	46 959	39 133	83.3	38 429	81.8	756	1.6

Total airline network data (including routes not shown in this report).

Table 2 Top ten routes for on time performance for April 2013 (participating airlines only)

<i>Departures</i>		<i>Arrivals</i>	
<i>Route</i>	<i>On Time (%)</i>	<i>Route</i>	<i>On Time</i>
Mildura-Melbourne	93.0	Gold Coast-Adelaide	98.6
Brisbane-Emerald	92.9	Darwin-Perth	98.2
Karratha-Perth	91.8	Perth-Karratha	94.9
Adelaide-Port Lincoln	91.8	Darwin-Sydney	91.6
Melbourne-Mildura	91.5	Perth-Adelaide	91.5
Perth-Karratha	91.5	Adelaide-Perth	91.5
Port Lincoln-Adelaide	91.4	Adelaide-Canberra	91.1
Darwin-Perth	91.1	Perth-Darwin	91.1
Perth-Newman	90.8	Karratha-Perth	90.8
Canberra-Melbourne	90.3	Melbourne-Canberra	90.8

Table 3 Top ten airports for on time performance for April 2013 (participating airlines and reported routes only)

<i>Departures</i>		<i>Arrivals</i>	
<i>Airport</i>	<i>On Time (%)</i>	<i>Airport</i>	<i>On Time</i>
Mildura	93.0	Karratha	94.9
Karratha	91.8	Port Hedland	90.3
Port Lincoln	91.4	Mount Isa	89.7
Port Hedland	89.8	Adelaide	89.4
Mount Isa	88.2	Port Lincoln	89.3
Adelaide	88.1	Kalgoorlie	88.9
Newman	88.0	Newman	88.5
Perth	87.0	Mildura	87.5
Geraldton	86.7	Gladstone	87.0
Canberra	86.3	Broome	87.0



## Total industry on time performance

Figure 1 On time performance (by month from April 2010)—Total Industry

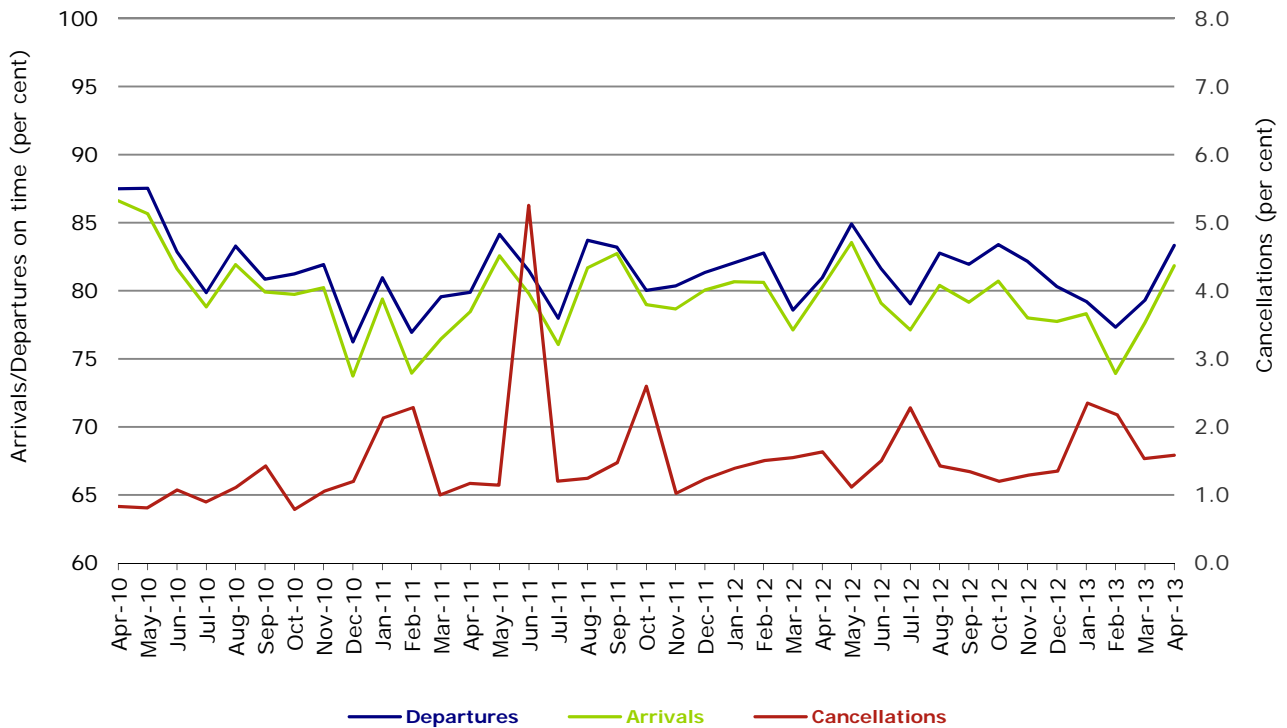


Figure 2 Departures on time (by month from April 2012)

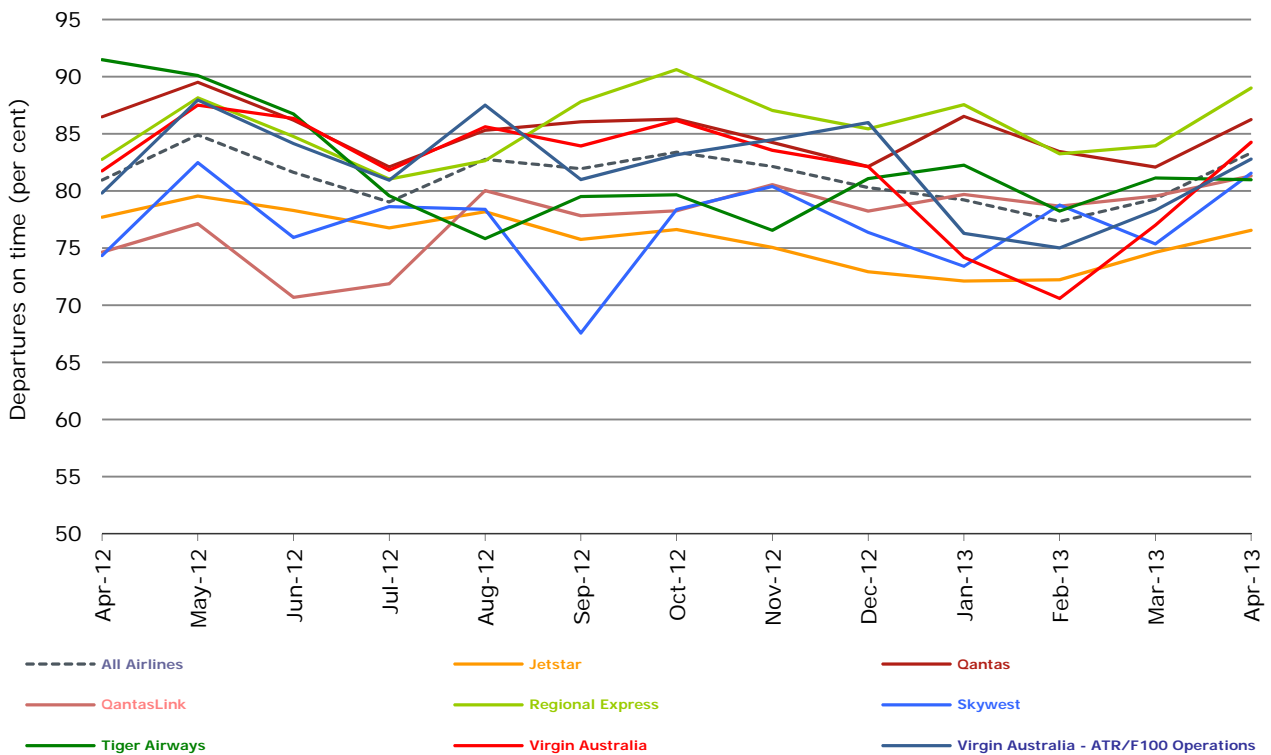


Figure 3 Arrivals on time (by month from April 2012)

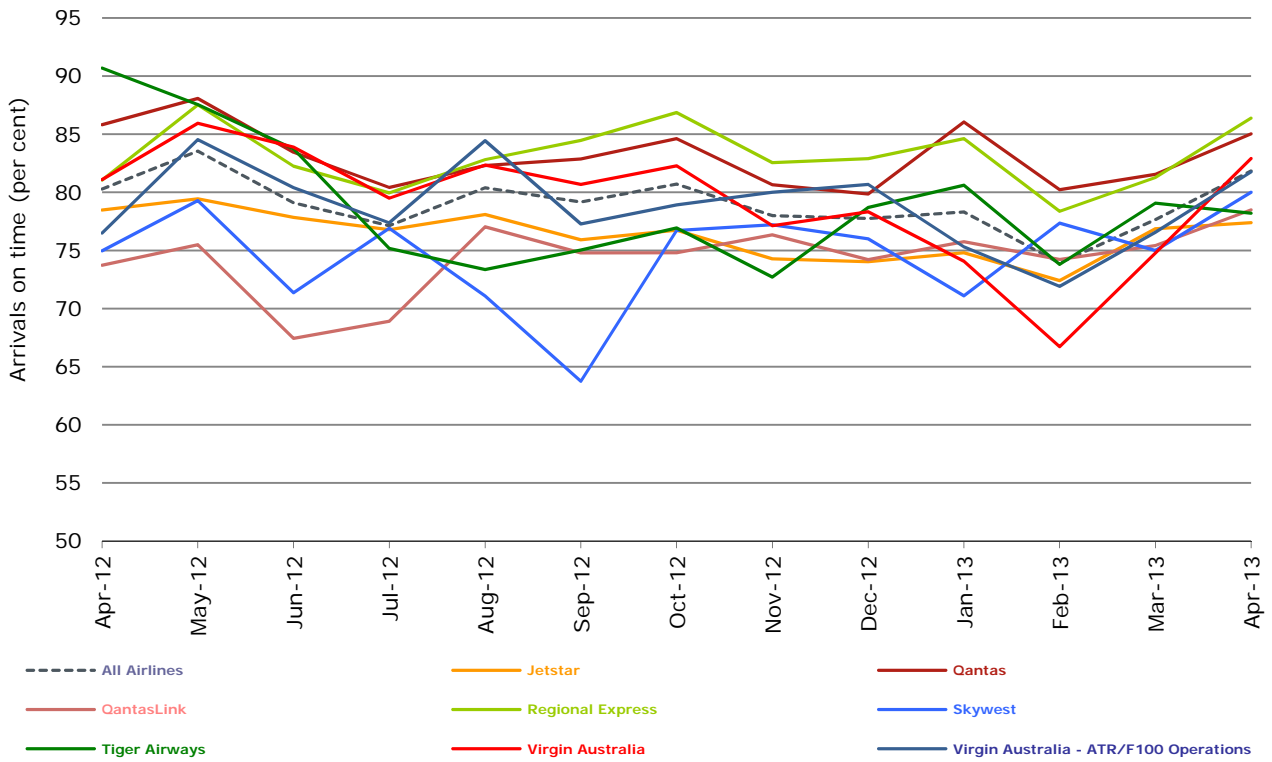
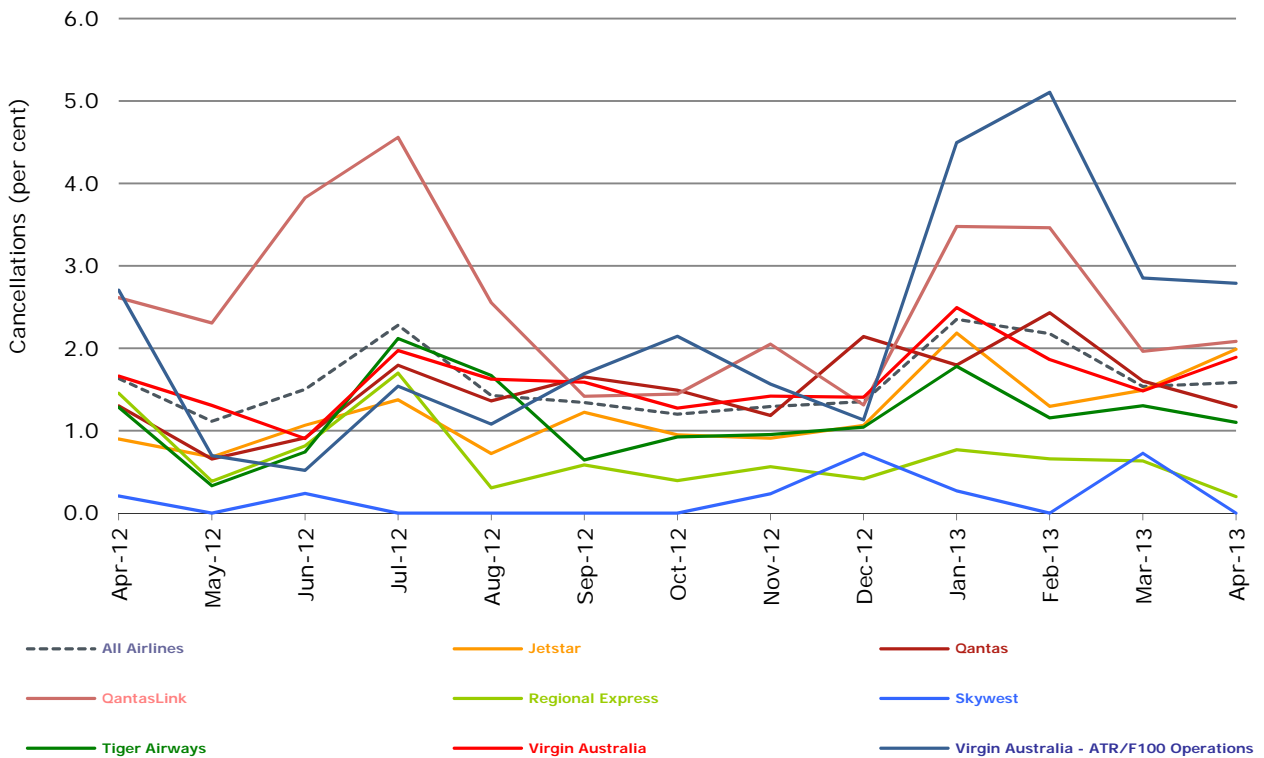


Figure 4 Cancellations (by month from April 2012)



## Major domestic airlines on time performance

Figure 5 On time performance (by month from April 2010)—Jetstar

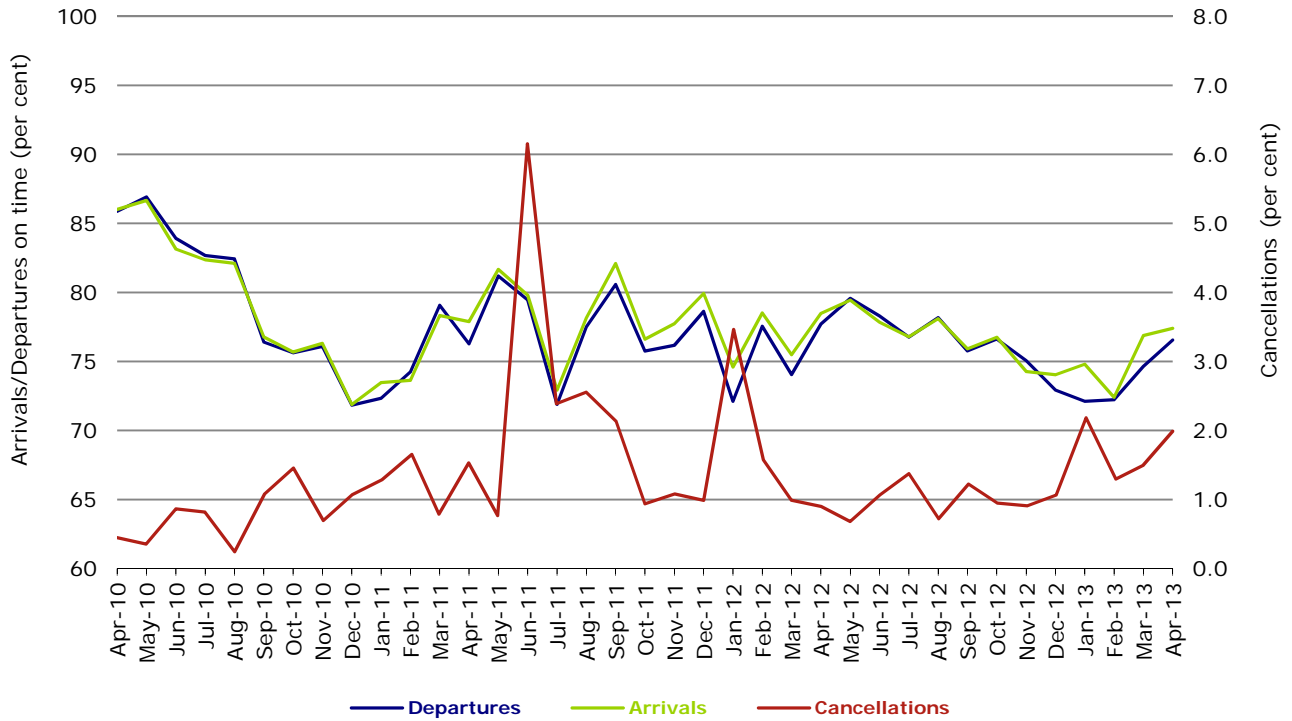


Figure 6 On time performance (by month from April 2010)—Qantas

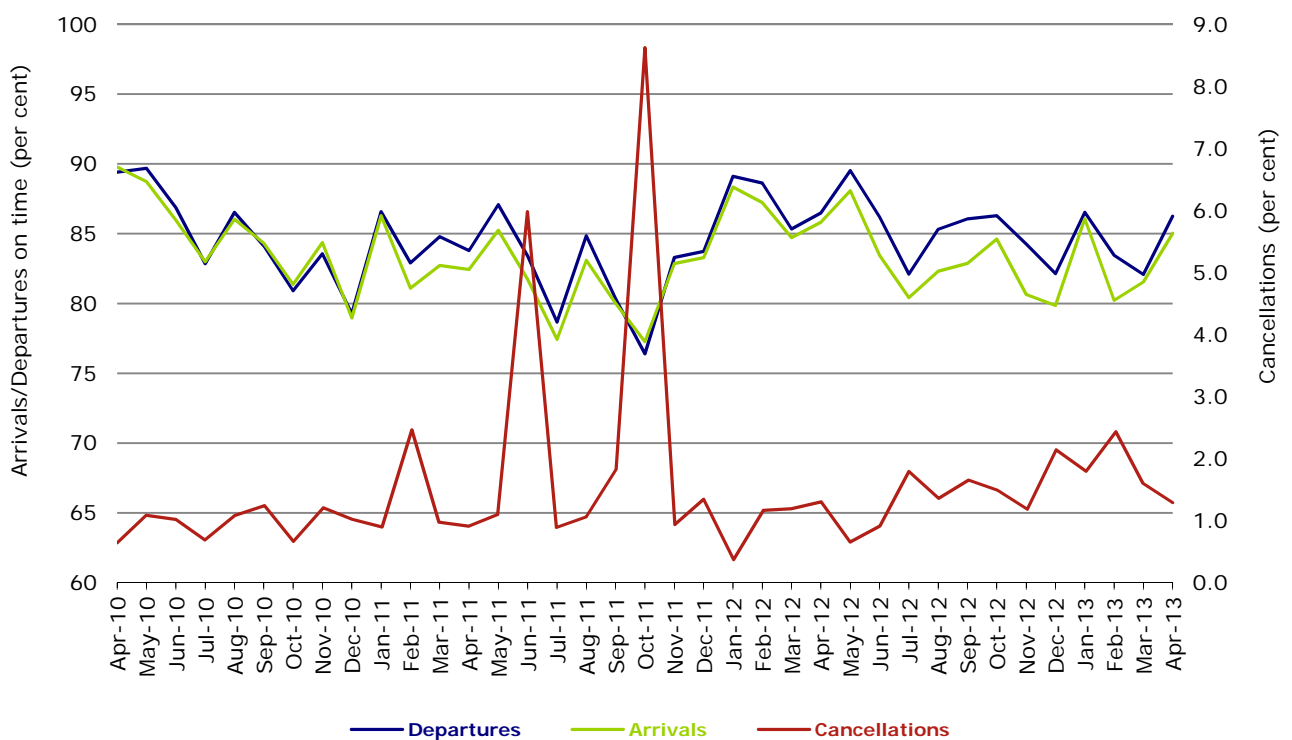
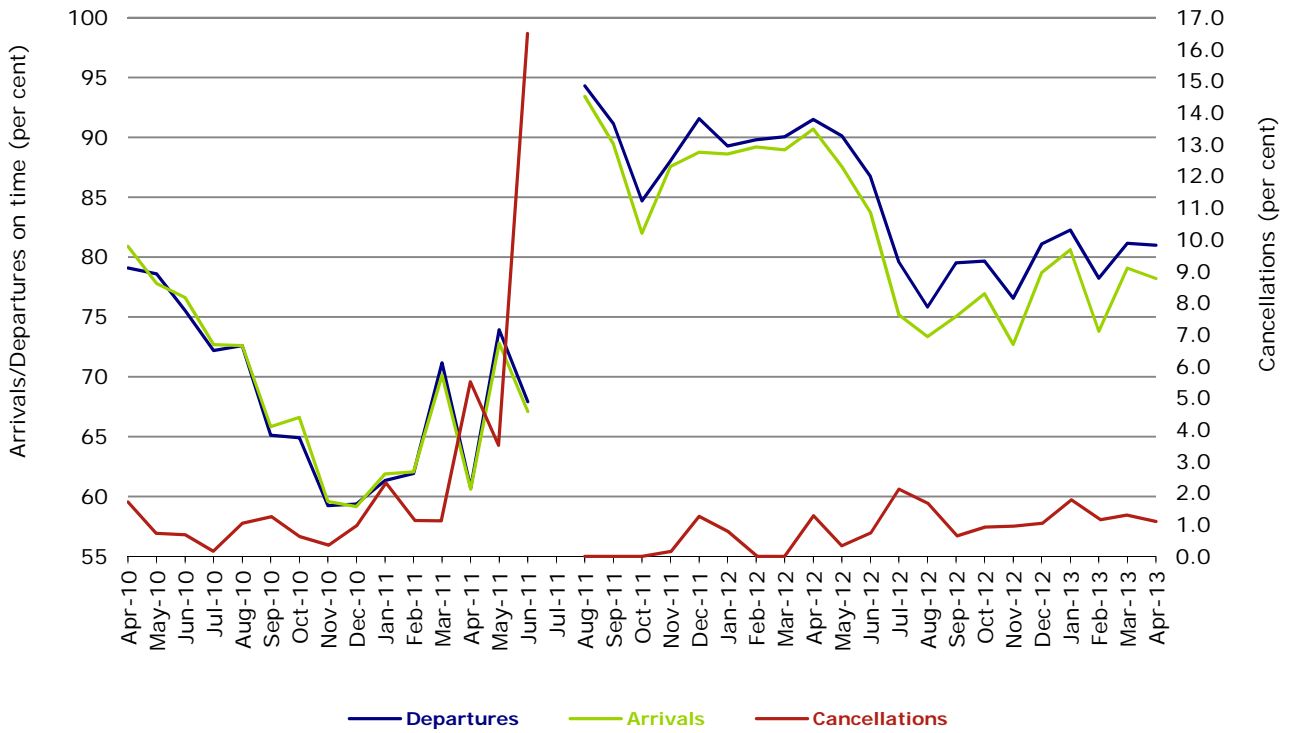
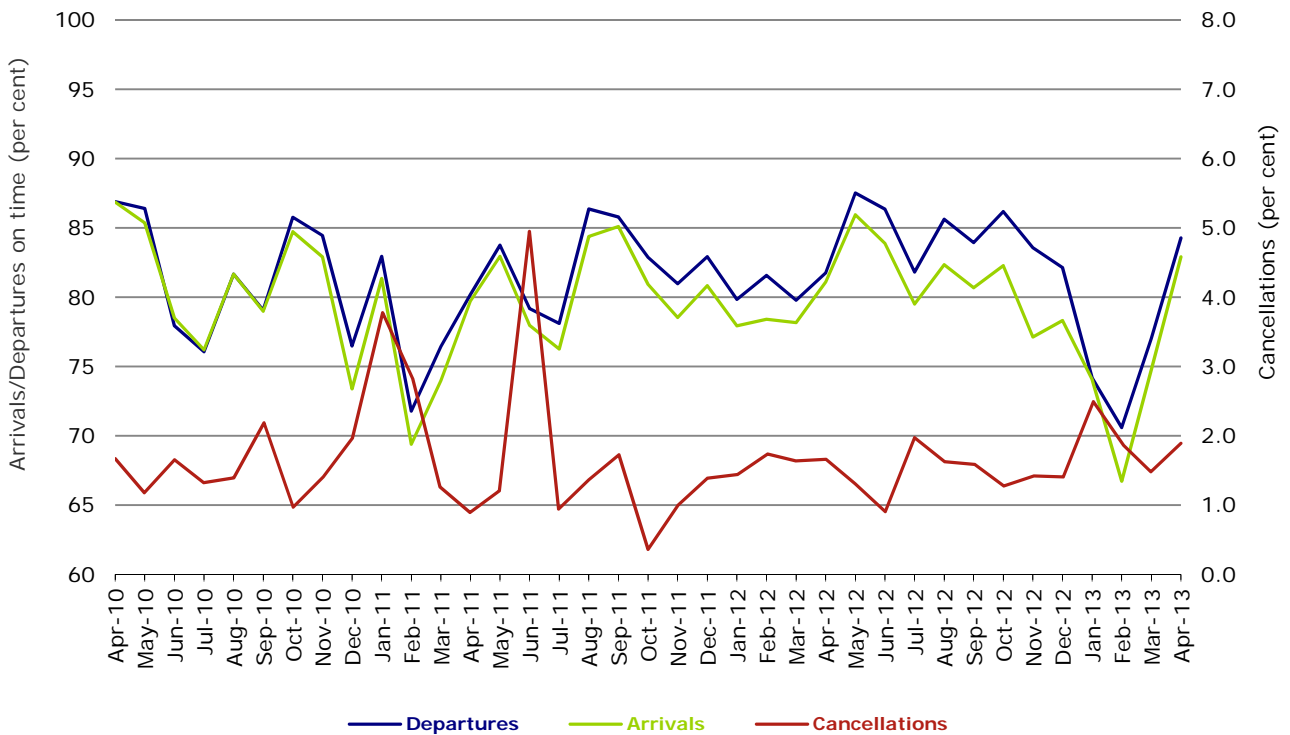


Figure 7 On time performance (by month from April 2010)—Tiger Airways



No data for Tiger Airways for July 2011 as it was grounded by CASA from 2/7/2011 to 11/8/2011.

Figure 8 On time performance (by month from April 2010)—Virgin Australia



## Major regional airlines on time performance

Figure 9 On time performance (by month from April 2010)—QantasLink

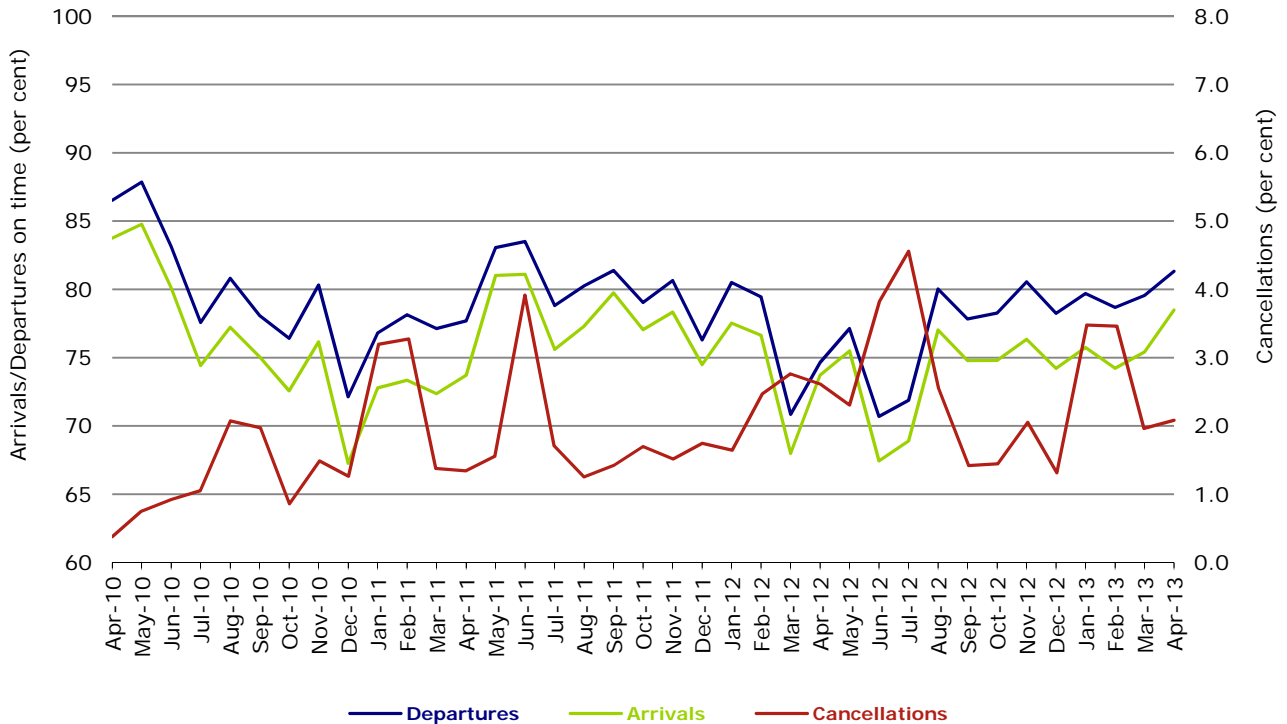


Figure 10 On time performance (by month from April 2010)—Regional Express

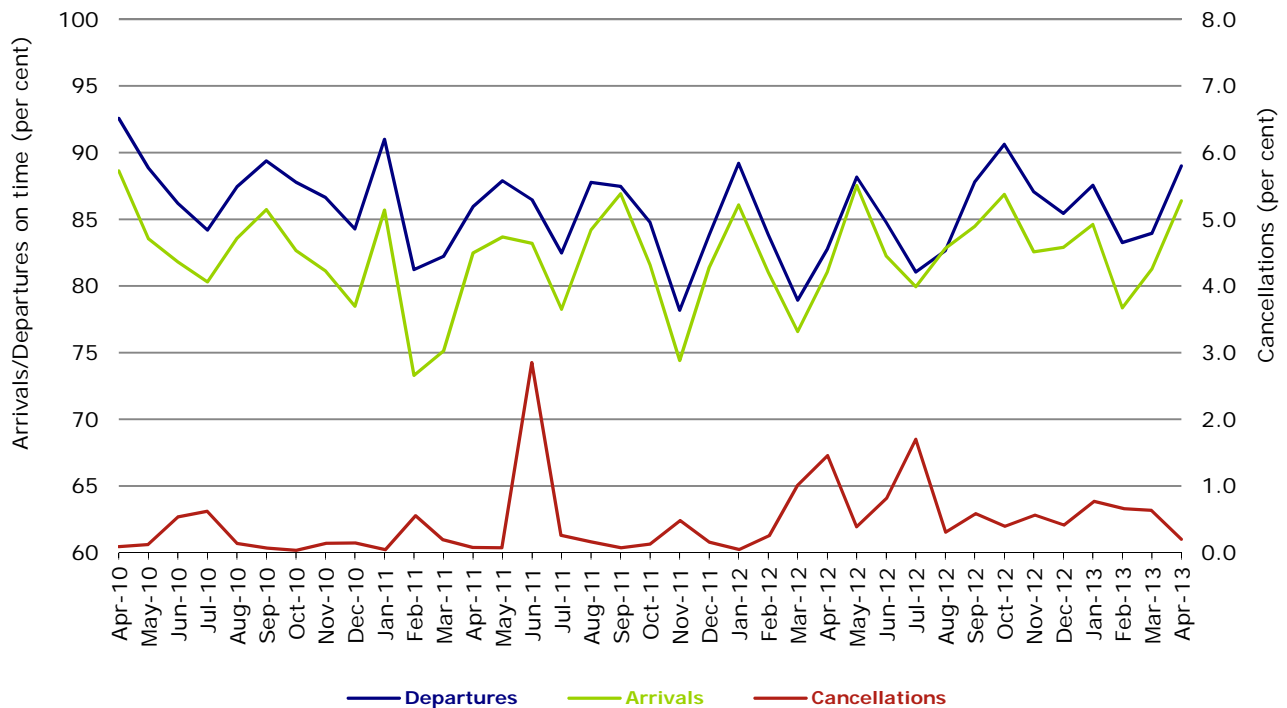


Figure 11 On time performance (by month from April 2010)—Skywest

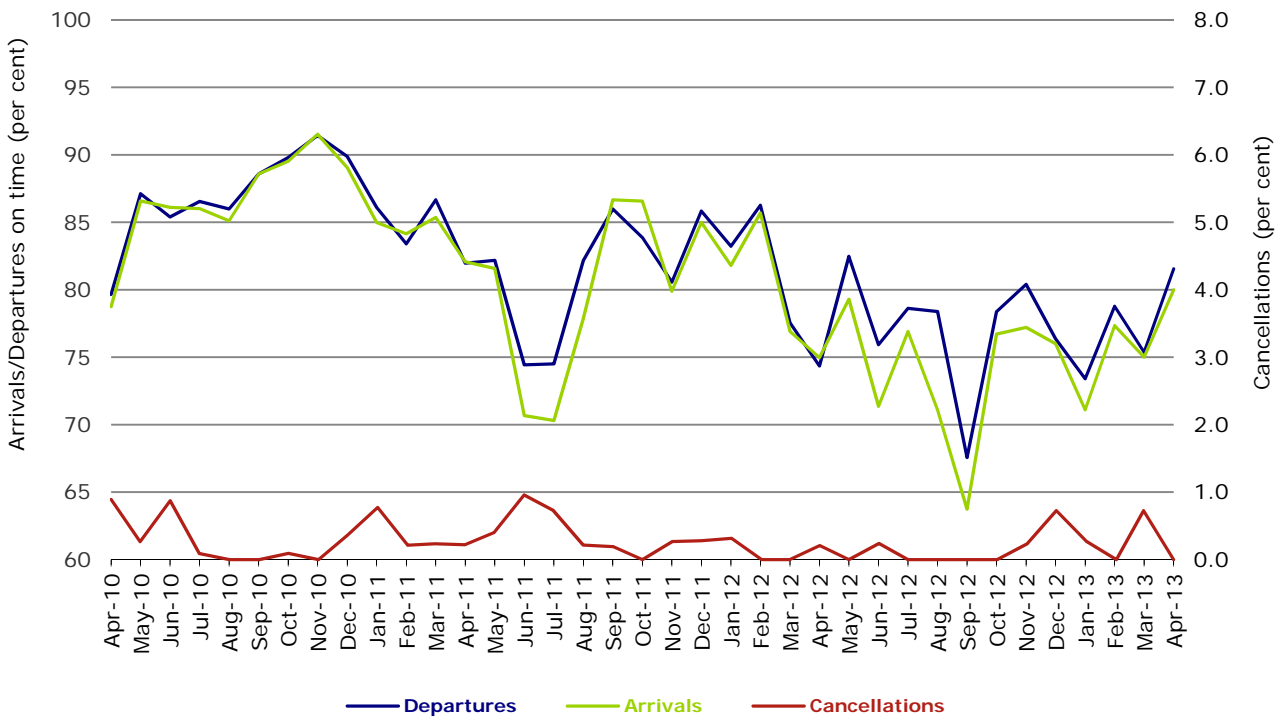
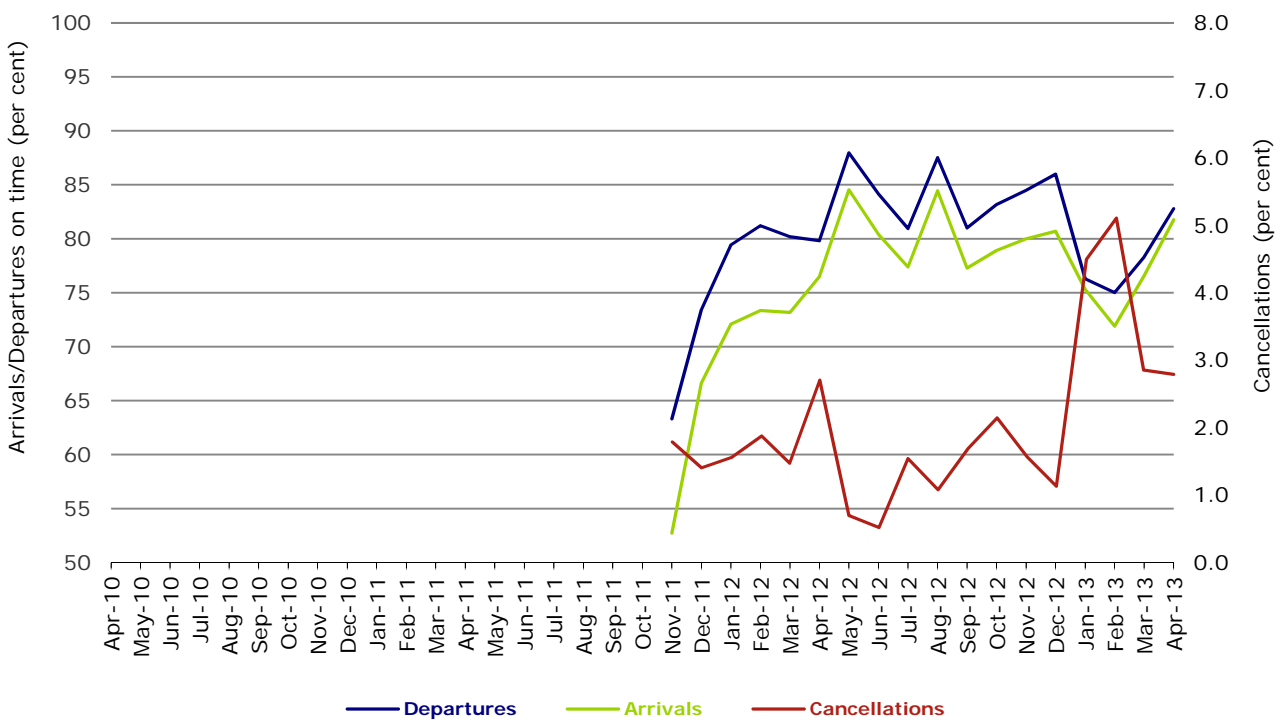


Figure 12 On time performance (by month from April 2010) Virgin Australia - ATR/F100 Operations



Virgin Australia - ATR/F100 Operations commenced in November 2011.

## Individual routes

On time performance is reported for all routes where the passenger load averages over 8000 passengers per month over the previous six months, and where two or more airlines operate in competition on those routes. There are now 58 routes which meet this definition. Over time, however, routes which meet this definition may change as airline networks and traffic levels vary.

	<i>Sectors</i>		<i>Departures On Time</i>		<i>Arrivals On Time</i>		<i>Cancellations</i>	
	<i>Sched.</i>	<i>Flown</i>	<i>No.</i>	<i>%</i>	<i>No.</i>	<i>%</i>	<i>No.</i>	<i>%</i>
<b>Adelaide-Brisbane</b>								
Jetstar	29	29	27	93.1	25	86.2	0	0.0
Qantas	105	105	89	84.8	81	77.1	0	0.0
Virgin Australia	115	115	102	88.7	95	82.6	0	0.0
All Airlines	249	249	218	87.6	201	80.7	0	0.0
<b>Adelaide-Canberra</b>								
Qantas	43	43	37	86.0	40	93.0	0	0.0
QantasLink	22	21	14	66.7	17	81.0	1	4.5
Virgin Australia	26	26	25	96.2	25	96.2	0	0.0
All Airlines	91	90	76	84.4	82	91.1	1	1.1
<b>Adelaide-Gold Coast</b>								
Jetstar	40	40	33	82.5	34	85.0	0	0.0
Virgin Australia	30	30	27	90.0	27	90.0	0	0.0
All Airlines	70	70	60	85.7	61	87.1	0	0.0
<b>Adelaide-Melbourne</b>								
Jetstar	81	79	66	83.5	64	81.0	2	2.5
Qantas	290	289	253	87.5	259	89.6	1	0.3
QantasLink	17	17	16	94.1	15	88.2	0	0.0
Tiger Airways	72	72	61	84.7	58	80.6	0	0.0
Virgin Australia	275	270	253	93.7	248	91.9	5	1.8
All Airlines	735	727	649	89.3	644	88.6	8	1.1
<b>Adelaide-Perth</b>								
Jetstar	43	43	33	76.7	37	86.0	0	0.0
Qantas	108	108	96	88.9	102	94.4	0	0.0
Virgin Australia	61	60	52	86.7	54	90.0	1	1.6
All Airlines	212	211	181	85.8	193	91.5	1	0.5
<b>Adelaide-Port Lincoln</b>								
QantasLink	90	87	78	89.7	77	88.5	3	3.3
Regional Express	204	204	189	92.6	183	89.7	0	0.0
All Airlines	294	291	267	91.8	260	89.3	3	1.0
<b>Adelaide-Sydney</b>								
Jetstar	115	113	87	77.0	83	73.5	2	1.7
Qantas	274	274	243	88.7	243	88.7	0	0.0
Virgin Australia	165	163	147	90.2	143	87.7	2	1.2
All Airlines	554	550	477	86.7	469	85.3	4	0.7
<b>Albury-Sydney</b>								
QantasLink	112	112	76	67.9	69	61.6	0	0.0
Regional Express	107	107	98	91.6	96	89.7	0	0.0
Virgin Australia - ATR/F100 Operations	59	59	47	79.7	41	69.5	0	0.0
All Airlines	278	278	221	79.5	206	74.1	0	0.0
<b>Ayers Rock-Sydney</b>								
Qantas	30	30	28	93.3	28	93.3	0	0.0
Virgin Australia	30	30	23	76.7	24	80.0	0	0.0
All Airlines	60	60	51	85.0	52	86.7	0	0.0

	<i>Sectors</i>		<i>Departures On Time</i>		<i>Arrivals On Time</i>		<i>Cancellations</i>	
	<i>Sched.</i>	<i>Flown</i>	<i>No.</i>	<i>%</i>	<i>No.</i>	<i>%</i>	<i>No.</i>	<i>%</i>
<b>Ballina-Sydney</b>								
Jetstar	84	82	69	84.1	71	86.6	2	2.4
Regional Express	27	27	13	48.1	15	55.6	0	0.0
Virgin Australia	30	30	27	90.0	27	90.0	0	0.0
All Airlines	141	139	109	78.4	113	81.3	2	1.4
<b>Brisbane-Adelaide</b>								
Jetstar	29	29	29	100.0	29	100.0	0	0.0
Qantas	105	105	80	76.2	90	85.7	0	0.0
Virgin Australia	114	114	100	87.7	105	92.1	0	0.0
All Airlines	248	248	209	84.3	224	90.3	0	0.0
<b>Brisbane-Cairns</b>								
Jetstar	112	110	82	74.5	78	70.9	2	1.8
Qantas	111	111	96	86.5	96	86.5	0	0.0
QantasLink	4	4	3	75.0	3	75.0	0	0.0
Virgin Australia	159	156	128	82.1	120	76.9	3	1.9
All Airlines	386	381	309	81.1	297	78.0	5	1.3
<b>Brisbane-Canberra</b>								
Qantas	137	137	118	86.1	122	89.1	0	0.0
QantasLink	22	22	19	86.4	19	86.4	0	0.0
Virgin Australia	106	106	89	84.0	89	84.0	0	0.0
All Airlines	265	265	226	85.3	230	86.8	0	0.0
<b>Brisbane-Darwin</b>								
Qantas	30	30	20	66.7	22	73.3	0	0.0
Virgin Australia	30	30	24	80.0	21	70.0	0	0.0
All Airlines	60	60	44	73.3	43	71.7	0	0.0
<b>Brisbane-Emerald</b>								
QantasLink	187	183	171	93.4	156	85.2	4	2.1
Virgin Australia - ATR/F100 Operations	102	99	91	91.9	89	89.9	3	2.9
All Airlines	289	282	262	92.9	245	86.9	7	2.4
<b>Brisbane-Gladstone</b>								
QantasLink	223	217	196	90.3	189	87.1	6	2.7
Virgin Australia - ATR/F100 Operations	140	137	118	86.1	119	86.9	3	2.1
All Airlines	363	354	314	88.7	308	87.0	9	2.5
<b>Brisbane-Hamilton Island</b>								
Jetstar	17	17	15	88.2	16	94.1	0	0.0
Virgin Australia	30	30	26	86.7	26	86.7	0	0.0
All Airlines	47	47	41	87.2	42	89.4	0	0.0
<b>Brisbane-Mackay</b>								
Jetstar	106	103	71	68.9	78	75.7	3	2.8
QantasLink	108	108	99	91.7	97	89.8	0	0.0
Virgin Australia	165	161	127	78.9	121	75.2	4	2.4
All Airlines	379	372	297	79.8	296	79.6	7	1.8
<b>Brisbane-Melbourne</b>								
Jetstar	96	94	67	71.3	78	83.0	2	2.1
Qantas	402	396	328	82.8	338	85.4	6	1.5
Tiger Airways	82	80	43	53.8	50	62.5	2	2.4
Virgin Australia	363	349	292	83.7	289	82.8	14	3.9
All Airlines	943	919	730	79.4	755	82.2	24	2.5
<b>Brisbane-Mount Isa</b>								
Qantas	56	56	47	83.9	52	92.9	0	0.0
Virgin Australia	22	22	21	95.5	18	81.8	0	0.0
All Airlines	78	78	68	87.2	70	89.7	0	0.0



	<i>Sectors</i>		<i>Departures On Time</i>		<i>Arrivals On Time</i>		<i>Cancellations</i>	
	<i>Sched.</i>	<i>Flown</i>	<i>No.</i>	<i>%</i>	<i>No.</i>	<i>%</i>	<i>No.</i>	<i>%</i>
<b>Brisbane-Newcastle</b>								
Jetstar	113	113	90	79.6	88	77.9	0	0.0
QantasLink	70	67	54	80.6	36	53.7	3	4.3
Virgin Australia	79	74	66	89.2	66	89.2	5	6.3
All Airlines	262	254	210	82.7	190	74.8	8	3.1
<b>Brisbane-Perth</b>								
Jetstar	28	28	17	60.7	21	75.0	0	0.0
Qantas	118	118	94	79.7	107	90.7	0	0.0
Virgin Australia	89	89	78	87.6	82	92.1	0	0.0
All Airlines	235	235	189	80.4	210	89.4	0	0.0
<b>Brisbane-Proserpine</b>								
Jetstar	29	29	24	82.8	19	65.5	0	0.0
Virgin Australia	51	51	46	90.2	46	90.2	0	0.0
All Airlines	80	80	70	87.5	65	81.3	0	0.0
<b>Brisbane-Rockhampton</b>								
QantasLink	213	207	170	82.1	167	80.7	6	2.8
Virgin Australia	107	105	89	84.8	88	83.8	2	1.9
Virgin Australia - ATR/F100 Operations	109	104	77	74.0	80	76.9	5	4.6
All Airlines	429	416	336	80.8	335	80.5	13	3.0
<b>Brisbane-Sydney</b>								
Jetstar	115	107	71	66.4	80	74.8	8	7.0
Qantas	600	590	468	79.3	472	80.0	10	1.7
Tiger Airways	74	71	32	45.1	38	53.5	3	4.1
Virgin Australia	535	518	414	79.9	412	79.5	17	3.2
All Airlines	1 324	1 286	985	76.6	1 002	77.9	38	2.9
<b>Brisbane-Townsville</b>								
Jetstar	30	30	20	66.7	23	76.7	0	0.0
Qantas	149	149	123	82.6	121	81.2	0	0.0
Virgin Australia	164	164	132	80.5	127	77.4	0	0.0
All Airlines	343	343	275	80.2	271	79.0	0	0.0
<b>Broome-Perth</b>								
Qantas	28	28	22	78.6	25	89.3	0	0.0
QantasLink	55	53	47	88.7	50	94.3	2	3.6
Skywest	23	23	11	47.8	11	47.8	0	0.0
Virgin Australia	53	52	38	73.1	41	78.8	1	1.9
All Airlines	159	156	118	75.6	127	81.4	3	1.9
<b>Cairns-Brisbane</b>								
Jetstar	112	110	80	72.7	75	68.2	2	1.8
Qantas	111	111	95	85.6	90	81.1	0	0.0
QantasLink	4	4	2	50.0	2	50.0	0	0.0
Virgin Australia	159	156	111	71.2	116	74.4	3	1.9
All Airlines	386	381	288	75.6	283	74.3	5	1.3
<b>Cairns-Melbourne</b>								
Jetstar	102	97	83	85.6	82	84.5	5	4.9
Qantas	30	30	26	86.7	26	86.7	0	0.0
Tiger Airways	31	31	29	93.5	29	93.5	0	0.0
Virgin Australia	34	32	25	78.1	27	84.4	2	5.9
All Airlines	197	190	163	85.8	164	86.3	7	3.6
<b>Cairns-Sydney</b>								
Jetstar	115	113	98	86.7	96	85.0	2	1.7
Qantas	76	76	64	84.2	68	89.5	0	0.0
Tiger Airways	15	15	9	60.0	10	66.7	0	0.0
Virgin Australia	88	87	78	89.7	82	94.3	1	1.1
All Airlines	294	291	249	85.6	256	88.0	3	1.0

	<i>Sectors</i>		<i>Departures On Time</i>		<i>Arrivals On Time</i>		<i>Cancellations</i>	
	<i>Sched.</i>	<i>Flown</i>	<i>No.</i>	<i>%</i>	<i>No.</i>	<i>%</i>	<i>No.</i>	<i>%</i>
<b>Cairns-Townsville</b>								
QantasLink	181	176	156	88.6	155	88.1	5	2.8
Virgin Australia - ATR/F100 Operations	26	25	20	80.0	20	80.0	1	3.8
All Airlines	207	201	176	87.6	175	87.1	6	2.9
<b>Canberra-Adelaide</b>								
Qantas	47	47	40	85.1	42	89.4	0	0.0
QantasLink	22	22	16	72.7	17	77.3	0	0.0
Virgin Australia	26	26	25	96.2	26	100.0	0	0.0
All Airlines	95	95	81	85.3	85	89.5	0	0.0
<b>Canberra-Brisbane</b>								
Qantas	137	137	121	88.3	115	83.9	0	0.0
QantasLink	22	22	17	77.3	18	81.8	0	0.0
Virgin Australia	107	107	94	87.9	88	82.2	0	0.0
All Airlines	266	266	232	87.2	221	83.1	0	0.0
<b>Canberra-Melbourne</b>								
Qantas	247	241	227	94.2	226	93.8	6	2.4
QantasLink	38	37	32	86.5	29	78.4	1	2.6
Virgin Australia	172	166	142	85.5	142	85.5	6	3.5
All Airlines	457	444	401	90.3	397	89.4	13	2.8
<b>Canberra-Sydney</b>								
Qantas	149	147	130	88.4	123	83.7	2	1.3
QantasLink	395	384	309	80.5	299	77.9	11	2.8
Virgin Australia	74	74	65	87.8	66	89.2	0	0.0
Virgin Australia - ATR/F100 Operations	199	192	165	85.9	163	84.9	7	3.5
All Airlines	817	797	669	83.9	651	81.7	20	2.4
<b>Coffs Harbour-Sydney</b>								
QantasLink	148	148	107	72.3	116	78.4	0	0.0
Tiger Airways	21	21	14	66.7	16	76.2	0	0.0
Virgin Australia	60	59	46	78.0	49	83.1	1	1.7
All Airlines	229	228	167	73.2	181	79.4	1	0.4
<b>Darwin-Brisbane</b>								
Qantas	30	30	15	50.0	18	60.0	0	0.0
Virgin Australia	30	30	24	80.0	28	93.3	0	0.0
All Airlines	60	60	39	65.0	46	76.7	0	0.0
<b>Darwin-Melbourne</b>								
Jetstar	12	12	3	25.0	5	41.7	0	0.0
Qantas	13	13	9	69.2	8	61.5	0	0.0
Virgin Australia	30	30	30	100.0	27	90.0	0	0.0
All Airlines	55	55	42	76.4	40	72.7	0	0.0
<b>Darwin-Perth</b>								
Qantas	30	30	25	83.3	29	96.7	0	0.0
Virgin Australia	26	26	26	100.0	26	100.0	0	0.0
All Airlines	56	56	51	91.1	55	98.2	0	0.0
<b>Darwin-Sydney</b>								
Jetstar	30	30	24	80.0	26	86.7	0	0.0
Qantas	47	47	39	83.0	44	93.6	0	0.0
Virgin Australia	30	30	26	86.7	28	93.3	0	0.0
All Airlines	107	107	89	83.2	98	91.6	0	0.0
<b>Dubbo-Sydney</b>								
QantasLink	125	125	77	61.6	63	50.4	0	0.0
Regional Express	154	154	140	90.9	136	88.3	0	0.0
All Airlines	279	279	217	77.8	199	71.3	0	0.0

	<i>Sectors</i>		<i>Departures On Time</i>		<i>Arrivals On Time</i>		<i>Cancellations</i>	
	<i>Sched.</i>	<i>Flown</i>	<i>No.</i>	<i>%</i>	<i>No.</i>	<i>%</i>	<i>No.</i>	<i>%</i>
<b>Emerald-Brisbane</b>								
QantasLink	187	183	148	80.9	143	78.1	4	2.1
Virgin Australia - ATR/F100 Operations	102	99	87	87.9	87	87.9	3	2.9
All Airlines	289	282	235	83.3	230	81.6	7	2.4
<b>Geraldton-Perth</b>								
QantasLink	53	53	47	88.7	45	84.9	0	0.0
Skywest	82	82	70	85.4	64	78.0	0	0.0
All Airlines	135	135	117	86.7	109	80.7	0	0.0
<b>Gladstone-Brisbane</b>								
QantasLink	245	240	200	83.3	195	81.3	5	2.0
Virgin Australia - ATR/F100 Operations	140	136	107	78.7	107	78.7	4	2.9
All Airlines	385	376	307	81.6	302	80.3	9	2.3
<b>Gold Coast-Adelaide</b>								
Jetstar	39	39	34	87.2	38	97.4	0	0.0
Virgin Australia	30	30	27	90.0	30	100.0	0	0.0
All Airlines	69	69	61	88.4	68	98.6	0	0.0
<b>Gold Coast-Melbourne</b>								
Jetstar	201	199	154	77.4	156	78.4	2	1.0
Tiger Airways	82	82	71	86.6	70	85.4	0	0.0
Virgin Australia	193	190	168	88.4	175	92.1	3	1.6
All Airlines	476	471	393	83.4	401	85.1	5	1.1
<b>Gold Coast-Sydney</b>								
Jetstar	340	326	278	85.3	283	86.8	14	4.1
Qantas	90	90	84	93.3	84	93.3	0	0.0
Tiger Airways	54	53	49	92.5	47	88.7	1	1.9
Virgin Australia	325	316	266	84.2	285	90.2	9	2.8
All Airlines	809	785	677	86.2	699	89.0	24	3.0
<b>Hamilton Island-Brisbane</b>								
Jetstar	17	17	14	82.4	14	82.4	0	0.0
Virgin Australia	30	30	24	80.0	21	70.0	0	0.0
All Airlines	47	47	38	80.9	35	74.5	0	0.0
<b>Hamilton Island-Sydney</b>								
Jetstar	29	29	19	65.5	22	75.9	0	0.0
Virgin Australia	30	30	16	53.3	20	66.7	0	0.0
All Airlines	59	59	35	59.3	42	71.2	0	0.0
<b>Hobart-Melbourne</b>								
Jetstar	164	164	122	74.4	122	74.4	0	0.0
Qantas	60	59	53	89.8	53	89.8	1	1.7
QantasLink	30	30	30	100.0	24	80.0	0	0.0
Tiger Airways	30	30	24	80.0	24	80.0	0	0.0
Virgin Australia	138	138	106	76.8	110	79.7	0	0.0
All Airlines	422	421	335	79.6	333	79.1	1	0.2
<b>Hobart-Sydney</b>								
Jetstar	85	85	54	63.5	54	63.5	0	0.0
Qantas	30	30	23	76.7	23	76.7	0	0.0
Virgin Australia	60	60	51	85.0	54	90.0	0	0.0
All Airlines	175	175	128	73.1	131	74.9	0	0.0
<b>Kalgoorlie-Perth</b>								
Qantas	63	61	54	88.5	55	90.2	2	3.2
QantasLink	26	25	22	88.0	22	88.0	1	3.8
Skywest	59	59	47	79.7	44	74.6	0	0.0
All Airlines	148	145	123	84.8	121	83.4	3	2.0

	<i>Sectors</i>		<i>Departures On Time</i>		<i>Arrivals On Time</i>		<i>Cancellations</i>	
	<i>Sched.</i>	<i>Flown</i>	<i>No.</i>	<i>%</i>	<i>No.</i>	<i>%</i>	<i>No.</i>	<i>%</i>
<b>Karratha-Perth</b>								
Qantas	180	174	162	93.1	161	92.5	6	3.3
QantasLink	71	68	64	94.1	64	94.1	3	4.2
Virgin Australia	53	52	44	84.6	42	80.8	1	1.9
All Airlines	304	294	270	91.8	267	90.8	10	3.3
<b>Launceston-Melbourne</b>								
Jetstar	130	129	89	69.0	85	65.9	1	0.8
QantasLink	118	115	84	73.0	89	77.4	3	2.5
Virgin Australia	125	124	114	91.9	111	89.5	1	0.8
All Airlines	373	368	287	78.0	285	77.4	5	1.3
<b>Launceston-Sydney</b>								
Jetstar	57	57	34	59.6	32	56.1	0	0.0
Virgin Australia	29	29	17	58.6	18	62.1	0	0.0
All Airlines	86	86	51	59.3	50	58.1	0	0.0
<b>Mackay-Brisbane</b>								
Jetstar	105	102	62	60.8	61	59.8	3	2.9
QantasLink	108	108	98	90.7	94	87.0	0	0.0
Virgin Australia	165	161	121	75.2	117	72.7	4	2.4
All Airlines	378	371	281	75.7	272	73.3	7	1.9
<b>Melbourne-Adelaide</b>								
Jetstar	81	81	72	88.9	70	86.4	0	0.0
Qantas	290	289	259	89.6	256	88.6	1	0.3
QantasLink	17	17	15	88.2	14	82.4	0	0.0
Tiger Airways	72	72	65	90.3	62	86.1	0	0.0
Virgin Australia	275	271	238	87.8	242	89.3	4	1.5
All Airlines	735	730	649	88.9	644	88.2	5	0.7
<b>Melbourne-Brisbane</b>								
Jetstar	98	93	61	65.6	44	47.3	5	5.1
Qantas	402	396	336	84.8	300	75.8	6	1.5
Tiger Airways	82	80	55	68.8	44	55.0	2	2.4
Virgin Australia	364	348	290	83.3	246	70.7	16	4.4
All Airlines	946	917	742	80.9	634	69.1	29	3.1
<b>Melbourne-Cairns</b>								
Jetstar	103	98	79	80.6	83	84.7	5	4.9
Qantas	30	30	25	83.3	25	83.3	0	0.0
Tiger Airways	31	31	28	90.3	27	87.1	0	0.0
Virgin Australia	34	33	30	90.9	28	84.8	1	2.9
All Airlines	198	192	162	84.4	163	84.9	6	3.0
<b>Melbourne-Canberra</b>								
Qantas	247	242	221	91.3	224	92.6	5	2.0
QantasLink	38	37	34	91.9	29	78.4	1	2.6
Virgin Australia	172	166	144	86.7	151	91.0	6	3.5
All Airlines	457	445	399	89.7	404	90.8	12	2.6
<b>Melbourne-Darwin</b>								
Jetstar	12	12	5	41.7	7	58.3	0	0.0
Qantas	13	13	11	84.6	11	84.6	0	0.0
Virgin Australia	30	30	29	96.7	28	93.3	0	0.0
All Airlines	55	55	45	81.8	46	83.6	0	0.0
<b>Melbourne-Gold Coast</b>								
Jetstar	200	198	136	68.7	142	71.7	2	1.0
Tiger Airways	82	82	73	89.0	70	85.4	0	0.0
Virgin Australia	193	191	164	85.9	161	84.3	2	1.0
All Airlines	475	471	373	79.2	373	79.2	4	0.8

	<i>Sectors</i>		<i>Departures On Time</i>		<i>Arrivals On Time</i>		<i>Cancellations</i>	
	<i>Sched.</i>	<i>Flown</i>	<i>No.</i>	<i>%</i>	<i>No.</i>	<i>%</i>	<i>No.</i>	<i>%</i>
<b>Melbourne-Hobart</b>								
Jetstar	164	164	138	84.1	135	82.3	0	0.0
Qantas	60	60	58	96.7	56	93.3	0	0.0
QantasLink	30	30	24	80.0	22	73.3	0	0.0
Tiger Airways	30	30	26	86.7	26	86.7	0	0.0
Virgin Australia	138	138	114	82.6	111	80.4	0	0.0
All Airlines	422	422	360	85.3	350	82.9	0	0.0
<b>Melbourne-Launceston</b>								
Jetstar	130	129	103	79.8	105	81.4	1	0.8
QantasLink	118	115	90	78.3	86	74.8	3	2.5
Virgin Australia	124	123	110	89.4	113	91.9	1	0.8
All Airlines	372	367	303	82.6	304	82.8	5	1.3
<b>Melbourne-Mildura</b>								
QantasLink	86	86	76	88.4	70	81.4	0	0.0
Regional Express	84	84	82	97.6	80	95.2	0	0.0
Virgin Australia	30	30	25	83.3	25	83.3	0	0.0
All Airlines	200	200	183	91.5	175	87.5	0	0.0
<b>Melbourne-Newcastle</b>								
Jetstar	107	107	83	77.6	88	82.2	0	0.0
Virgin Australia	30	30	26	86.7	25	83.3	0	0.0
All Airlines	137	137	109	79.6	113	82.5	0	0.0
<b>Melbourne-Perth</b>								
Jetstar	89	89	71	79.8	75	84.3	0	0.0
Qantas	220	220	174	79.1	162	73.6	0	0.0
Tiger Airways	61	61	56	91.8	58	95.1	0	0.0
Virgin Australia	145	144	113	78.5	112	77.8	1	0.7
All Airlines	515	514	414	80.5	407	79.2	1	0.2
<b>Melbourne-Sunshine Coast</b>								
Jetstar	67	65	34	52.3	36	55.4	2	3.0
Tiger Airways	17	17	16	94.1	14	82.4	0	0.0
Virgin Australia	30	30	24	80.0	22	73.3	0	0.0
All Airlines	114	112	74	66.1	72	64.3	2	1.8
<b>Melbourne-Sydney</b>								
Jetstar	293	280	199	71.1	190	67.9	13	4.4
Qantas	837	811	727	89.6	685	84.5	26	3.1
Tiger Airways	214	211	175	82.9	177	83.9	3	1.4
Virgin Australia	758	735	635	86.4	597	81.2	23	3.0
All Airlines	2 102	2 037	1 736	85.2	1 649	81.0	65	3.1
<b>Mildura-Melbourne</b>								
QantasLink	86	86	78	90.7	73	84.9	0	0.0
Regional Express	83	83	81	97.6	78	94.0	0	0.0
Virgin Australia	30	30	26	86.7	26	86.7	0	0.0
All Airlines	199	199	185	93.0	177	88.9	0	0.0
<b>Mount Isa-Brisbane</b>								
Qantas	56	55	49	89.1	45	81.8	1	1.8
Virgin Australia	22	21	18	85.7	17	81.0	1	4.5
All Airlines	78	76	67	88.2	62	81.6	2	2.6
<b>Newcastle-Brisbane</b>								
Jetstar	114	113	87	77.0	88	77.9	1	0.9
QantasLink	70	67	35	52.2	35	52.2	3	4.3
Virgin Australia	79	74	60	81.1	55	74.3	5	6.3
All Airlines	263	254	182	71.7	178	70.1	9	3.4

	<i>Sectors</i>		<i>Departures On Time</i>		<i>Arrivals On Time</i>		<i>Cancellations</i>	
	<i>Sched.</i>	<i>Flown</i>	<i>No.</i>	<i>%</i>	<i>No.</i>	<i>%</i>	<i>No.</i>	<i>%</i>
<b>Newcastle-Melbourne</b>								
Jetstar	107	105	83	79.0	84	80.0	2	1.9
Virgin Australia	30	30	21	70.0	22	73.3	0	0.0
All Airlines	137	135	104	77.0	106	78.5	2	1.5
<b>Newman-Perth</b>								
Qantas	137	135	121	89.6	117	86.7	2	1.5
QantasLink	32	31	27	87.1	28	90.3	1	3.1
Skywest	13	13	13	100.0	13	100.0	0	0.0
Virgin Australia	39	38	30	78.9	31	81.6	1	2.6
All Airlines	221	217	191	88.0	189	87.1	4	1.8
<b>Perth-Adelaide</b>								
Jetstar	42	42	39	92.9	38	90.5	0	0.0
Qantas	112	112	93	83.0	101	90.2	0	0.0
Virgin Australia	60	58	54	93.1	55	94.8	2	3.3
All Airlines	214	212	186	87.7	194	91.5	2	0.9
<b>Perth-Brisbane</b>								
Jetstar	29	29	13	44.8	13	44.8	0	0.0
Qantas	118	118	107	90.7	98	83.1	0	0.0
Virgin Australia	88	88	78	88.6	57	64.8	0	0.0
All Airlines	235	235	198	84.3	168	71.5	0	0.0
<b>Perth-Broome</b>								
Qantas	28	28	23	82.1	24	85.7	0	0.0
QantasLink	55	53	48	90.6	50	94.3	2	3.6
Skywest	28	28	21	75.0	22	78.6	0	0.0
Virgin Australia	53	52	43	82.7	44	84.6	1	1.9
All Airlines	164	161	135	83.9	140	87.0	3	1.8
<b>Perth-Darwin</b>								
Qantas	30	30	27	90.0	28	93.3	0	0.0
Virgin Australia	26	26	23	88.5	23	88.5	0	0.0
All Airlines	56	56	50	89.3	51	91.1	0	0.0
<b>Perth-Geraldton</b>								
QantasLink	53	53	45	84.9	42	79.2	0	0.0
Skywest	80	80	67	83.8	66	82.5	0	0.0
All Airlines	133	133	112	84.2	108	81.2	0	0.0
<b>Perth-Kalgoorlie</b>								
Qantas	63	61	57	93.4	56	91.8	2	3.2
QantasLink	25	25	22	88.0	22	88.0	0	0.0
Skywest	58	58	51	87.9	50	86.2	0	0.0
All Airlines	146	144	130	90.3	128	88.9	2	1.4
<b>Perth-Karratha</b>								
Qantas	180	174	159	91.4	163	93.7	6	3.3
QantasLink	71	67	63	94.0	65	97.0	4	5.6
Virgin Australia	52	52	46	88.5	50	96.2	0	0.0
All Airlines	303	293	268	91.5	278	94.9	10	3.3
<b>Perth-Melbourne</b>								
Jetstar	89	88	66	75.0	62	70.5	1	1.1
Qantas	219	219	187	85.4	188	85.8	0	0.0
Tiger Airways	60	60	53	88.3	46	76.7	0	0.0
Virgin Australia	146	146	140	95.9	133	91.1	0	0.0
All Airlines	514	513	446	86.9	429	83.6	1	0.2

	<i>Sectors</i>		<i>Departures On Time</i>		<i>Arrivals On Time</i>		<i>Cancellations</i>	
	<i>Sched.</i>	<i>Flown</i>	<i>No.</i>	<i>%</i>	<i>No.</i>	<i>%</i>	<i>No.</i>	<i>%</i>
<b>Perth-Newman</b>								
Qantas	137	135	122	90.4	120	88.9	2	1.5
QantasLink	32	32	27	84.4	28	87.5	0	0.0
Skywest	13	13	12	92.3	10	76.9	0	0.0
Virgin Australia	39	38	37	97.4	35	92.1	1	2.6
All Airlines	221	218	198	90.8	193	88.5	3	1.4
<b>Perth-Port Hedland</b>								
Qantas	124	119	105	88.2	105	88.2	5	4.0
QantasLink	44	41	37	90.2	38	92.7	3	6.8
Virgin Australia	67	66	60	90.9	61	92.4	1	1.5
All Airlines	235	226	202	89.4	204	90.3	9	3.8
<b>Perth-Sydney</b>								
Jetstar	46	45	21	46.7	32	71.1	1	2.2
Qantas	200	199	174	87.4	182	91.5	1	0.5
Virgin Australia	113	112	96	85.7	91	81.3	1	0.9
All Airlines	359	356	291	81.7	305	85.7	3	0.8
<b>Port Hedland-Perth</b>								
Qantas	124	118	108	91.5	103	87.3	6	4.8
QantasLink	44	41	37	90.2	37	90.2	3	6.8
Virgin Australia	67	66	57	86.4	54	81.8	1	1.5
All Airlines	235	225	202	89.8	194	86.2	10	4.3
<b>Port Lincoln-Adelaide</b>								
QantasLink	90	88	82	93.2	80	90.9	2	2.2
Regional Express	204	204	185	90.7	181	88.7	0	0.0
All Airlines	294	292	267	91.4	261	89.4	2	0.7
<b>Port Macquarie-Sydney</b>								
QantasLink	134	133	87	65.4	85	63.9	1	0.7
Virgin Australia - ATR/F100 Operations	60	59	48	81.4	46	78.0	1	1.7
All Airlines	194	192	135	70.3	131	68.2	2	1.0
<b>Proserpine-Brisbane</b>								
Jetstar	29	29	22	75.9	23	79.3	0	0.0
Virgin Australia	51	51	39	76.5	35	68.6	0	0.0
All Airlines	80	80	61	76.3	58	72.5	0	0.0
<b>Rockhampton-Brisbane</b>								
QantasLink	189	181	139	76.8	132	72.9	8	4.2
Virgin Australia	107	105	84	80.0	79	75.2	2	1.9
Virgin Australia - ATR/F100 Operations	109	103	80	77.7	82	79.6	6	5.5
All Airlines	405	389	303	77.9	293	75.3	16	4.0
<b>Sunshine Coast-Melbourne</b>								
Jetstar	68	66	28	42.4	34	51.5	2	2.9
Tiger Airways	17	17	14	82.4	13	76.5	0	0.0
Virgin Australia	30	30	17	56.7	21	70.0	0	0.0
All Airlines	115	113	59	52.2	68	60.2	2	1.7
<b>Sunshine Coast-Sydney</b>								
Jetstar	114	111	84	75.7	87	78.4	3	2.6
Virgin Australia	34	32	24	75.0	24	75.0	2	5.9
All Airlines	148	143	108	75.5	111	77.6	5	3.4
<b>Sydney-Adelaide</b>								
Jetstar	113	111	90	81.1	94	84.7	2	1.8
Qantas	266	266	231	86.8	234	88.0	0	0.0
Virgin Australia	167	165	145	87.9	152	92.1	2	1.2
All Airlines	546	542	466	86.0	480	88.6	4	0.7

	<i>Sectors</i>		<i>Departures On Time</i>		<i>Arrivals On Time</i>		<i>Cancellations</i>	
	<i>Sched.</i>	<i>Flown</i>	<i>No.</i>	<i>%</i>	<i>No.</i>	<i>%</i>	<i>No.</i>	<i>%</i>
<b>Sydney-Albury</b>								
QantasLink	112	112	67	59.8	67	59.8	0	0.0
Regional Express	105	105	90	85.7	91	86.7	0	0.0
Virgin Australia - ATR/F100 Operations	59	59	51	86.4	49	83.1	0	0.0
All Airlines	276	276	208	75.4	207	75.0	0	0.0
<b>Sydney-Ayers Rock</b>								
Qantas	30	30	28	93.3	28	93.3	0	0.0
Virgin Australia	30	30	22	73.3	23	76.7	0	0.0
All Airlines	60	60	50	83.3	51	85.0	0	0.0
<b>Sydney-Ballina</b>								
Jetstar	82	81	57	70.4	69	85.2	1	1.2
Regional Express	29	29	25	86.2	24	82.8	0	0.0
Virgin Australia	30	30	27	90.0	26	86.7	0	0.0
All Airlines	141	140	109	77.9	119	85.0	1	0.7
<b>Sydney-Brisbane</b>								
Jetstar	114	107	90	84.1	76	71.0	7	6.1
Qantas	570	561	470	83.8	407	72.5	9	1.6
Tiger Airways	73	71	44	62.0	34	47.9	2	2.7
Virgin Australia	536	518	429	82.8	382	73.7	18	3.4
All Airlines	1 293	1 257	1 033	82.2	899	71.5	36	2.8
<b>Sydney-Cairns</b>								
Jetstar	117	114	92	80.7	93	81.6	3	2.6
Qantas	76	76	64	84.2	64	84.2	0	0.0
Tiger Airways	15	15	12	80.0	10	66.7	0	0.0
Virgin Australia	88	87	70	80.5	75	86.2	1	1.1
All Airlines	296	292	238	81.5	242	82.9	4	1.4
<b>Sydney-Canberra</b>								
Qantas	154	152	134	88.2	131	86.2	2	1.3
QantasLink	395	386	310	80.3	295	76.4	9	2.3
Virgin Australia	74	74	59	79.7	68	91.9	0	0.0
Virgin Australia - ATR/F100 Operations	201	193	160	82.9	163	84.5	8	4.0
All Airlines	824	805	663	82.4	657	81.6	19	2.3
<b>Sydney-Coffs Harbour</b>								
QantasLink	148	148	106	71.6	106	71.6	0	0.0
Tiger Airways	21	21	15	71.4	15	71.4	0	0.0
Virgin Australia	60	59	45	76.3	48	81.4	1	1.7
All Airlines	229	228	166	72.8	169	74.1	1	0.4
<b>Sydney-Darwin</b>								
Jetstar	30	30	24	80.0	27	90.0	0	0.0
Qantas	47	47	33	70.2	36	76.6	0	0.0
Virgin Australia	30	30	24	80.0	24	80.0	0	0.0
All Airlines	107	107	81	75.7	87	81.3	0	0.0
<b>Sydney-Dubbo</b>								
QantasLink	125	125	84	67.2	79	63.2	0	0.0
Regional Express	149	149	129	86.6	134	89.9	0	0.0
All Airlines	274	274	213	77.7	213	77.7	0	0.0
<b>Sydney-Gold Coast</b>								
Jetstar	342	327	275	84.1	271	82.9	15	4.4
Qantas	90	90	84	93.3	88	97.8	0	0.0
Tiger Airways	54	53	46	86.8	46	86.8	1	1.9
Virgin Australia	326	319	269	84.3	266	83.4	7	2.1
All Airlines	812	789	674	85.4	671	85.0	23	2.8



	<i>Sectors</i>		<i>Departures On Time</i>		<i>Arrivals On Time</i>		<i>Cancellations</i>	
	<i>Sched.</i>	<i>Flown</i>	<i>No.</i>	<i>%</i>	<i>No.</i>	<i>%</i>	<i>No.</i>	<i>%</i>
<b>Sydney-Hamilton Island</b>								
Jetstar	29	29	21	72.4	21	72.4	0	0.0
Virgin Australia	30	30	26	86.7	18	60.0	0	0.0
All Airlines	59	59	47	79.7	39	66.1	0	0.0
<b>Sydney-Hobart</b>								
Jetstar	84	84	71	84.5	69	82.1	0	0.0
Qantas	30	30	24	80.0	22	73.3	0	0.0
Virgin Australia	60	60	54	90.0	51	85.0	0	0.0
All Airlines	174	174	149	85.6	142	81.6	0	0.0
<b>Sydney-Launceston</b>								
Jetstar	57	57	45	78.9	43	75.4	0	0.0
Virgin Australia	30	30	19	63.3	20	66.7	0	0.0
All Airlines	87	87	64	73.6	63	72.4	0	0.0
<b>Sydney-Melbourne</b>								
Jetstar	294	282	206	73.0	217	77.0	12	4.1
Qantas	837	811	717	88.4	685	84.5	26	3.1
Tiger Airways	215	211	184	87.2	173	82.0	4	1.9
Virgin Australia	756	734	625	85.1	614	83.7	22	2.9
All Airlines	2 102	2 038	1 732	85.0	1 689	82.9	64	3.0
<b>Sydney-Perth</b>								
Jetstar	46	45	34	75.6	37	82.2	1	2.2
Qantas	204	204	168	82.4	158	77.5	0	0.0
Virgin Australia	112	112	95	84.8	106	94.6	0	0.0
All Airlines	362	361	297	82.3	301	83.4	1	0.3
<b>Sydney-Port Macquarie</b>								
QantasLink	134	133	94	70.7	95	71.4	1	0.7
Virgin Australia - ATR/F100 Operations	60	60	48	80.0	41	68.3	0	0.0
All Airlines	194	193	142	73.6	136	70.5	1	0.5
<b>Sydney-Sunshine Coast</b>								
Jetstar	114	111	93	83.8	95	85.6	3	2.6
Virgin Australia	34	33	28	84.8	26	78.8	1	2.9
All Airlines	148	144	121	84.0	121	84.0	4	2.7
<b>Sydney-Townsville</b>								
Jetstar	29	29	22	75.9	24	82.8	0	0.0
Virgin Australia	30	30	26	86.7	26	86.7	0	0.0
All Airlines	59	59	48	81.4	50	84.7	0	0.0
<b>Sydney-Wagga Wagga</b>								
QantasLink	110	110	79	71.8	68	61.8	0	0.0
Regional Express	132	132	117	88.6	114	86.4	0	0.0
All Airlines	242	242	196	81.0	182	75.2	0	0.0
<b>Townsville-Brisbane</b>								
Jetstar	30	30	19	63.3	22	73.3	0	0.0
Qantas	149	149	127	85.2	125	83.9	0	0.0
Virgin Australia	164	164	128	78.0	126	76.8	0	0.0
All Airlines	343	343	274	79.9	273	79.6	0	0.0
<b>Townsville-Cairns</b>								
QantasLink	181	175	141	80.6	137	78.3	6	3.3
Virgin Australia - ATR/F100 Operations	26	25	22	88.0	20	80.0	1	3.8
All Airlines	207	200	163	81.5	157	78.5	7	3.4
<b>Townsville-Sydney</b>								
Jetstar	29	29	23	79.3	23	79.3	0	0.0
Virgin Australia	30	30	15	50.0	18	60.0	0	0.0
All Airlines	59	59	38	64.4	41	69.5	0	0.0

	<i>Sectors</i>		<i>Departures On Time</i>		<i>Arrivals On Time</i>		<i>Cancellations</i>	
	<i>Sched.</i>	<i>Flown</i>	<i>No.</i>	<i>%</i>	<i>No.</i>	<i>%</i>	<i>No.</i>	<i>%</i>
<b>Wagga Wagga-Sydney</b>								
QantasLink	110	109	81	74.3	77	70.6	1	0.9
Regional Express	131	130	117	90.0	112	86.2	1	0.8
All Airlines	241	239	198	82.8	189	79.1	2	0.8

# Airports

On time performance is reported for all routes where the passenger load averages over 8000 passengers per month, and where two or more airlines operate in competition. The following data reports by airport against flights operated on those routes only.

Airport	Departures			Arrivals		
	Sectors	On Time		Sectors	On Time	
	Flown	No.	%	Flown	No.	%
<b>Adelaide</b>						
Jetstar	304	246	80.9	302	269	89.1
Qantas	819	718	87.7	819	723	88.3
QantasLink	125	108	86.4	127	111	87.4
Regional Express	204	189	92.6	204	181	88.7
Tiger Airways	72	61	84.7	72	62	86.1
Virgin Australia	664	606	91.3	664	610	91.9
All Airlines	2 188	1 928	88.1	2 188	1 956	89.4
Relates to services to and from Brisbane, Canberra, Gold Coast, Melbourne, Perth, Port Lincoln and Sydney.						
<b>Albury</b>						
QantasLink	112	76	67.9	112	67	59.8
Regional Express	107	98	91.6	105	91	86.7
Virgin Australia - ATR/F100 Operations	59	47	79.7	59	49	83.1
All Airlines	278	221	79.5	276	207	75.0
Relates to services to and from Sydney only.						
<b>Ayers Rock</b>						
Qantas	30	28	93.3	30	28	93.3
Virgin Australia	30	23	76.7	30	23	76.7
All Airlines	60	51	85.0	60	51	85.0
Relates to services to and from Sydney only.						
<b>Ballina</b>						
Jetstar	82	69	84.1	81	69	85.2
Regional Express	27	13	48.1	29	24	82.8
Virgin Australia	30	27	90.0	30	26	86.7
All Airlines	139	109	78.4	140	119	85.0
Relates to services to and from Sydney only.						
<b>Brisbane</b>						
Jetstar	660	486	73.6	659	441	66.9
Qantas	1 692	1 374	81.2	1 662	1 279	77.0
QantasLink	808	712	88.1	805	619	76.9
Tiger Airways	151	75	49.7	151	78	51.7
Virgin Australia	1 969	1 632	82.9	1 968	1 462	74.3
Virgin Australia - ATR/F100 Operations	340	286	84.1	338	276	81.7
All Airlines	5 620	4 565	81.2	5 583	4 155	74.4
Relates to services to and from Adelaide, Cairns, Canberra, Darwin, Emerald, Gladstone, Hamilton Island, Mackay, Melbourne, Mount Isa, Newcastle, Perth, Proserpine, Rockhampton, Sydney and Townsville.						

Airport	Departures			Arrivals		
	Sectors	On Time		Sectors	On Time	
	Flown	No.	%	Flown	No.	%
<b>Broome</b>						
Qantas	28	22	78.6	28	24	85.7
QantasLink	53	47	88.7	53	50	94.3
Skywest	23	11	47.8	28	22	78.6
Virgin Australia	52	38	73.1	52	44	84.6
All Airlines	156	118	75.6	161	140	87.0
Relates to services to and from Perth only.						
<b>Cairns</b>						
Jetstar	320	261	81.6	322	254	78.9
Qantas	217	185	85.3	217	185	85.3
QantasLink	180	158	87.8	179	140	78.2
Tiger Airways	46	38	82.6	46	37	80.4
Virgin Australia	275	214	77.8	276	223	80.8
Virgin Australia - ATR/F100 Operations	25	20	80.0	25	20	80.0
All Airlines	1 063	876	82.4	1 065	859	80.7
Relates to services to and from Brisbane, Melbourne, Sydney and Townsville.						
<b>Canberra</b>						
Qantas	572	518	90.6	574	517	90.1
QantasLink	465	374	80.4	466	360	77.3
Virgin Australia	373	326	87.4	372	333	89.5
Virgin Australia - ATR/F100 Operations	192	165	85.9	193	163	84.5
All Airlines	1 602	1 383	86.3	1 605	1 373	85.5
Relates to services to and from Adelaide, Brisbane, Melbourne and Sydney.						
<b>Coffs Harbour</b>						
QantasLink	148	107	72.3	148	106	71.6
Tiger Airways	21	14	66.7	21	15	71.4
Virgin Australia	59	46	78.0	59	48	81.4
All Airlines	228	167	73.2	228	169	74.1
Relates to services to and from Sydney only.						
<b>Darwin</b>						
Jetstar	42	27	64.3	42	34	81.0
Qantas	120	88	73.3	120	97	80.8
Virgin Australia	116	106	91.4	116	96	82.8
All Airlines	278	221	79.5	278	227	81.7
Relates to services to and from Brisbane, Melbourne, Perth and Sydney.						
<b>Dubbo</b>						
QantasLink	125	77	61.6	125	79	63.2
Regional Express	154	140	90.9	149	134	89.9
All Airlines	279	217	77.8	274	213	77.7
Relates to services to and from Sydney only.						
<b>Emerald</b>						
QantasLink	183	148	80.9	183	156	85.2
Virgin Australia - ATR/F100 Operations	99	87	87.9	99	89	89.9
All Airlines	282	235	83.3	282	245	86.9
Relates to services to and from Brisbane only.						

Airport	Departures			Arrivals		
	Sectors	On Time		Sectors	On Time	
	Flown	No.	%	Flown	No.	%
<b>Geraldton</b>						
QantasLink	53	47	88.7	53	42	79.2
Skywest	82	70	85.4	80	66	82.5
All Airlines	135	117	86.7	133	108	81.2
Relates to services to and from Perth only.						
<b>Gladstone</b>						
QantasLink	240	200	83.3	217	189	87.1
Virgin Australia - ATR/F100 Operations	136	107	78.7	137	119	86.9
All Airlines	376	307	81.6	354	308	87.0
Relates to services to and from Brisbane only.						
<b>Gold Coast</b>						
Jetstar	564	466	82.6	565	447	79.1
Qantas	90	84	93.3	90	88	97.8
Tiger Airways	135	120	88.9	135	116	85.9
Virgin Australia	536	461	86.0	540	454	84.1
All Airlines	1 325	1 131	85.4	1 330	1 105	83.1
Relates to services to and from Adelaide, Melbourne and Sydney.						
<b>Hamilton Island</b>						
Jetstar	46	33	71.7	46	37	80.4
Virgin Australia	60	40	66.7	60	44	73.3
All Airlines	106	73	68.9	106	81	76.4
Relates to services to and from Brisbane and Sydney.						
<b>Hobart</b>						
Jetstar	249	176	70.7	248	204	82.3
Qantas	89	76	85.4	90	78	86.7
QantasLink	30	30	100.0	30	22	73.3
Tiger Airways	30	24	80.0	30	26	86.7
Virgin Australia	198	157	79.3	198	162	81.8
All Airlines	596	463	77.7	596	492	82.6
Relates to services to and from Melbourne and Sydney.						
<b>Kalgoorlie</b>						
Qantas	61	54	88.5	61	56	91.8
QantasLink	25	22	88.0	25	22	88.0
Skywest	59	47	79.7	58	50	86.2
All Airlines	145	123	84.8	144	128	88.9
Relates to services to and from Perth only.						
<b>Karratha</b>						
Qantas	174	162	93.1	174	163	93.7
QantasLink	68	64	94.1	67	65	97.0
Virgin Australia	52	44	84.6	52	50	96.2
All Airlines	294	270	91.8	293	278	94.9
Relates to services to and from Perth only.						

Airport	Departures			Arrivals		
	Sectors	On Time		Sectors	On Time	
	Flown	No.	%	Flown	No.	%
<b>Launceston</b>						
Jetstar	186	123	66.1	186	148	79.6
QantasLink	115	84	73.0	115	86	74.8
Virgin Australia	153	131	85.6	153	133	86.9
All Airlines	454	338	74.4	454	367	80.8
Relates to services to and from Melbourne and Sydney.						
<b>Mackay</b>						
Jetstar	102	62	60.8	103	78	75.7
QantasLink	108	98	90.7	108	97	89.8
Virgin Australia	161	121	75.2	161	121	75.2
All Airlines	371	281	75.7	372	296	79.6
Relates to services to and from Brisbane only.						
<b>Melbourne</b>						
Jetstar	1 316	981	74.5	1 315	989	75.2
Qantas	2 061	1 811	87.9	2 058	1 783	86.6
QantasLink	285	239	83.9	285	230	80.7
Regional Express	84	82	97.6	83	78	94.0
Tiger Airways	584	494	84.6	583	463	79.4
Virgin Australia	2 269	1 942	85.6	2 269	1 945	85.7
All Airlines	6 599	5 549	84.1	6 593	5 488	83.2
Relates to services to and from Adelaide, Brisbane, Cairns, Canberra, Darwin, Gold Coast, Hobart, Launceston, Mildura, Newcastle, Perth, Sunshine Coast and Sydney.						
<b>Mildura</b>						
QantasLink	86	78	90.7	86	70	81.4
Regional Express	83	81	97.6	84	80	95.2
Virgin Australia	30	26	86.7	30	25	83.3
All Airlines	199	185	93.0	200	175	87.5
Relates to services to and from Melbourne only.						
<b>Mount Isa</b>						
Qantas	55	49	89.1	56	52	92.9
Virgin Australia	21	18	85.7	22	18	81.8
All Airlines	76	67	88.2	78	70	89.7
Relates to services to and from Brisbane only.						
<b>Newcastle</b>						
Jetstar	218	170	78.0	220	176	80.0
QantasLink	67	35	52.2	67	36	53.7
Virgin Australia	104	81	77.9	104	91	87.5
All Airlines	389	286	73.5	391	303	77.5
Relates to services to and from Brisbane and Melbourne.						
<b>Newman</b>						
Qantas	135	121	89.6	135	120	88.9
QantasLink	31	27	87.1	32	28	87.5
Skywest	13	13	100.0	13	10	76.9
Virgin Australia	38	30	78.9	38	35	92.1
All Airlines	217	191	88.0	218	193	88.5
Relates to services to and from Perth only.						

Airport	Departures			Arrivals		
	Sectors	On Time		Sectors	On Time	
	Flown	No.	%	Flown	No.	%
<b>Perth</b>						
Jetstar	204	139	68.1	205	170	82.9
Qantas	1 195	1 054	88.2	1 196	1 019	85.2
QantasLink	271	242	89.3	271	246	90.8
Skywest	179	151	84.4	177	132	74.6
Tiger Airways	60	53	88.3	61	58	95.1
Virgin Australia	638	577	90.4	639	548	85.8
All Airlines	2 547	2 216	87.0	2 549	2 173	85.2
Relates to services to and from Adelaide, Brisbane, Broome, Darwin, Geraldton, Kalgoorlie, Karratha, Melbourne, Newman, Port Hedland and Sydney.						
<b>Port Hedland</b>						
Qantas	118	108	91.5	119	105	88.2
QantasLink	41	37	90.2	41	38	92.7
Virgin Australia	66	57	86.4	66	61	92.4
All Airlines	225	202	89.8	226	204	90.3
Relates to services to and from Perth only.						
<b>Port Lincoln</b>						
QantasLink	88	82	93.2	87	77	88.5
Regional Express	204	185	90.7	204	183	89.7
All Airlines	292	267	91.4	291	260	89.3
Relates to services to and from Adelaide only.						
<b>Port Macquarie</b>						
QantasLink	133	87	65.4	133	95	71.4
Virgin Australia - ATR/F100 Operations	59	48	81.4	60	41	68.3
All Airlines	192	135	70.3	193	136	70.5
Relates to services to and from Sydney only.						
<b>Proserpine</b>						
Jetstar	29	22	75.9	29	19	65.5
Virgin Australia	51	39	76.5	51	46	90.2
All Airlines	80	61	76.3	80	65	81.3
Relates to services to and from Brisbane only.						
<b>Rockhampton</b>						
QantasLink	181	139	76.8	207	167	80.7
Virgin Australia	105	84	80.0	105	88	83.8
Virgin Australia - ATR/F100 Operations	103	80	77.7	104	80	76.9
All Airlines	389	303	77.9	416	335	80.5
Relates to services to and from Brisbane only.						
<b>Sunshine Coast</b>						
Jetstar	177	112	63.3	176	131	74.4
Tiger Airways	17	14	82.4	17	14	82.4
Virgin Australia	62	41	66.1	63	48	76.2
All Airlines	256	167	65.2	256	193	75.4
Relates to services to and from Melbourne and Sydney.						

Airport	Departures			Arrivals		
	Sectors	On Time		Sectors	On Time	
	Flown	No.	%	Flown	No.	%
<b>Sydney</b>						
Jetstar	1 407	1 120	79.6	1 407	1 079	76.7
Qantas	2 267	1 953	86.1	2 294	1 952	85.1
QantasLink	1 014	740	73.0	1 011	709	70.1
Regional Express	415	361	87.0	418	359	85.9
Tiger Airways	371	301	81.1	371	288	77.6
Virgin Australia	2 341	1 963	83.9	2 335	1 938	83.0
Virgin Australia - ATR/F100 Operations	312	259	83.0	310	250	80.6
All Airlines	8 127	6 697	82.4	8 146	6 575	80.7

Relates to services to and from Adelaide, Albury, Ayers Rock, Ballina, Brisbane, Cairns, Canberra, Coffs Harbour, Darwin, Dubbo, Gold Coast, Hamilton Island, Hobart, Launceston, Melbourne, Perth, Port Macquarie, Sunshine Coast, Townsville and Wagga Wagga.

#### Townsville

Jetstar	59	42	71.2	59	47	79.7
Qantas	149	127	85.2	149	121	81.2
QantasLink	175	141	80.6	176	155	88.1
Virgin Australia	194	143	73.7	194	153	78.9
Virgin Australia - ATR/F100 Operations	25	22	88.0	25	20	80.0
All Airlines	602	475	78.9	603	496	82.3

Relates to services to and from Brisbane, Cairns and Sydney.

#### Wagga Wagga

QantasLink	109	81	74.3	110	68	61.8
Regional Express	130	117	90.0	132	114	86.4
All Airlines	239	198	82.8	242	182	75.2

Relates to services to and from Sydney only.



## Definitions

---

On time departure                      A flight departure is counted as "on time" if it departs the gate within 15 minutes of the scheduled departure time shown in the carriers' schedule.

---

On time arrival                         A flight arrival is counted as "on time" if it arrived at the gate within 15 minutes of the scheduled arrival time shown in the carriers' schedule.  
Neither diverted nor cancelled flights count as on time.

---

Cancellation                            A flight removed from service within 7 days of scheduled departure is regarded as a cancellation.

---

On time departure percentage                      The percentage of on time departures is measured against the number of departures *operated* on any particular sector.

---

On time arrival percentage                         The percentage of on time arrivals is measured against the number of arrivals *operated* on any particular sector.

---

Cancellation percentage                      The percentage of cancellations is measured against the number of services *scheduled* on any particular sector.

---