



Australian Government

Department of Infrastructure and Transport

Bureau of Infrastructure, Transport and Regional Economics

STATISTICAL REPORT



Aviation

Domestic airline on time performance
April 2012

© Commonwealth of Australia 2012

ISSN: 1832-0759

Ownership of intellectual property rights in this publication

Unless otherwise noted, copyright (and any other intellectual property rights, if any) in this publication is owned by the Commonwealth of Australia (referred to below as the Commonwealth).

Disclaimer

The material contained in this publication is made available on the understanding that the Commonwealth is not providing professional advice, and that users exercise their own skill and care with respect to its use, and seek independent advice if necessary.

The Commonwealth makes no representations or warranties as to the contents or accuracy of the information contained in this publication. To the extent permitted by law, the Commonwealth disclaims liability to any person or organisation in respect of anything done, or omitted to be done, in reliance upon information contained in this publication.

Creative Commons licence

With the exception of (a) the Coat of Arms; and (b) the Department of Infrastructure's photos and graphics, copyright in this publication is licensed under a Creative Commons Attribution 3.0 Australia Licence.

Creative Commons Attribution 3.0 Australia Licence is a standard form licence agreement that allows you to copy, communicate and adapt this publication provided that you attribute the work to the Commonwealth and abide by the other licence terms. A summary of the licence terms is available from <http://creativecommons.org/licenses/by/3.0/au/deed.en>. The full licence terms are available from <http://creativecommons.org/licenses/by/3.0/au/legalcode>.

Use of the Coat of Arms

The Department of the Prime Minister and Cabinet sets the terms under which the Coat of Arms is used. Please refer to the Department's Commonwealth Coat of Arms and Government branding web page <http://www.dpmmc.gov.au/guidelines/index.cfm#brand> and, in particular, the Guidelines on the use of the Commonwealth Coat of Arms publication.

An appropriate citation for this report is:

Bureau of Infrastructure, Transport and Regional Economics (BITRE), 2012, Domestic airline on time performance, Statistical Report, BITRE, Canberra ACT.

Contact us

This publication is available in PDF format. All other rights are reserved, including in relation to any Departmental logos or trade marks which may exist. For enquiries regarding the licence and any use of this publication, please contact:

Bureau of Infrastructure, Transport and Regional Economics (BITRE)
Department of Infrastructure and Transport
GPO Box 501, Canberra ACT 2601, Australia
Telephone: (international) +61 2 6274 7210
Fax: (international) +61 2 6274 6855
Email: bitre@infrastructure.gov.au
Website: www.bitre.gov.au

Inquiries

Should you require additional information about the statistics contained in this publication:

Telephone (02) 6274 7790 or Facsimile (02) 6274 7727

Electronic mail: AVSTATS@infrastructure.gov.au

Web site: <http://www.bitre.gov.au/statistics/aviation/otphome.aspx>

Foreword

The Bureau of Infrastructure, Transport and Regional Economics (BITRE) monitors the punctuality and reliability of major domestic airlines operating between Australian airports. The purpose of this is to allow for evaluation of overall industry and individual airline performance, so that consumers of air travel can make informed decisions.

The following domestic airlines report this data monthly to the BITRE: Jetstar, Qantas, QantasLink, Regional Express, Skywest Airlines, Tiger Airways, and Virgin Australia. Data has been gathered since November 2003, although some airlines commenced reporting at a later date, including Jetstar which first reported in May 2004, MacAir in July 2005 and Tiger Airways in April 2008. MacAir ceased operations in February 2009 and data was not received for December 2008 onwards. Virgin Blue was rebranded as Virgin Australia in May 2011 and time series data in Microsoft Excel spreadsheet format on the BITRE website has been revised to reflect this. Services operated by Skywest on behalf of Virgin Australia using ATR/F100 aircraft commenced in November 2011 and are shown separately as Virgin Australia – ATR/F100 Operations.

Information presented in this report is for Australian domestic routes for which the passenger load averaged 8 000 or more passengers per month over the previous six months and where two or more airlines operated in competition on those routes. There were 56 routes that met this definition in April 2012. Over time, routes which meet these criteria change as airline networks and traffic levels vary.

Participating airlines report their overall monthly network performance where this is possible.

Total industry figures encompass all services operated by reporting airlines only. These airlines collectively carried over 95 per cent of total domestic passengers (regular public transport only) in 2011.

The method of capturing on time performance varies between airlines utilising different recording systems. Jetstar and Qantas jet aircraft use Aircraft Communication Addressing and Reporting System (ACARS) to electronically measure on time performance. Regional Express, Skywest, Tiger Airways, Virgin Australia, Virgin Australia – ATR/F100 Operations and the Qantas non-jet fleet record on time performance manually using records from pilots, gate agents and/or ground crews.

After initial data is collected, aggregate reports are audited internally by participating airlines prior to publication.

Reports and detailed time series data in Microsoft Excel spreadsheet format are available from the BITRE website at: <http://www.bitre.gov.au/statistics/aviation/otphome.aspx>.

Contents

	Page
Industry performance	1
Individual routes	9
Airports	20
Definitions	26

Industry performance

For April 2012, on time performance over all routes operated by participating airlines (Jetstar, Qantas, QantasLink, Regional Express, Skywest Airlines, Tiger Airways, Virgin Australia and Virgin Australia – ATR/F100 Operations) averaged 81.0 per cent for on time departures, and 80.3 per cent for on time arrivals. Cancellations represented 1.6 per cent of all scheduled flights. The equivalent figures for April 2011 were 79.9 per cent for departures, 78.5 per cent for arrivals and 1.2 per cent for cancellations.

The long term average performance for all routes since reporting commenced in November 2003 is 84.0 per cent for on time departures and 82.7 per cent for on time arrivals. Cancellations average 1.2 per cent of all scheduled flights.

Tiger Airways operated on a reduced schedule with 999 sectors flown in April 2012 compared to 1 869 in April 2011.

Of the major domestic airlines, Tiger Airways achieved the highest level of on time departures for April 2012 at 91.5 per cent, followed by Qantas at 86.5 per cent, Virgin Australia at 81.8 per cent and Jetstar at 77.7 per cent. The regional airlines were led by Regional Express at 82.8 per cent, followed by Virgin Australia – ATR/F100 Operations at 79.8 per cent, QantasLink at 74.9 per cent and Skywest at 74.3 per cent.

Tiger Airways also achieved the highest on time arrivals among the major domestic airlines at 90.7 per cent, followed by Qantas at 85.8 per cent, Virgin Australia at 81.1 per cent and Jetstar at 78.5 per cent. Regional Express was the best performing regional airline for on time arrivals at 81.0 per cent, followed by Virgin Australia – ATR/F100 Operations at 76.5 per cent, Skywest at 75.0 per cent and QantasLink at 74.0 per cent.

Virgin Australia – ATR/F100 Operations had the highest percentage of cancellations for April 2012 at 2.7 per cent, while Skywest had the lowest percentage of cancellations at 0.2 per cent.

Of the 56 routes which met the criteria for on time performance reporting in April 2012, the Perth-Darwin route had the highest percentage of on time departures (93.3 per cent) and both the Perth-Geraldton route and Coffs Harbour-Sydney route had the lowest percentage of on time departures (57.0 per cent). The Adelaide-Perth route had the highest percentage of on time arrivals (95.2 per cent) and both the Geraldton-Perth route and Perth-Brisbane route had the lowest percentage of on time arrivals (58.1 per cent).

Cancellations were highest on the Canberra-Sydney route at 7.4 per cent, followed by Sydney-Canberra at 6.7 per cent, Port Hedland-Perth at 6.5 per cent, Perth-Port Hedland at 5.1 per cent and Karratha-Perth at 4.6 per cent.

Ayers Rock Airport recorded the highest percentage of on time departures (93.2 per cent) and Port Lincoln Airport recorded the highest percentage of on time arrivals (90.8 per cent). Coffs Harbour Airport recorded the lowest percentage of on time departures (57.0 per cent) and Geraldton Airport recorded the lowest percentage of on time arrivals (61.6 per cent). These figures only refer to reported routes and do not cover all flights at these airports.

Table 1 On time performance for April 2012 — Total Industry

	<i>Sectors</i>		<i>Departures On Time</i>		<i>Arrivals On Time</i>		<i>Cancellations</i>	
	<i>Scheduled</i>	<i>Flown</i>	<i>No.</i>	<i>%</i>	<i>No.</i>	<i>%</i>	<i>No.</i>	<i>%</i>
Jetstar	6 222	6 166	4 791	77.7	4 839	78.5	56	0.9
Qantas	10 138	10 006	8 654	86.5	8 587	85.8	132	1.3
QantasLink	9 218	8 987	6 735	74.9	6 651	74.0	231	2.5
Regional Express	5 221	5 145	4 258	82.8	4 170	81.0	76	1.5
Skywest	957	955	710	74.3	716	75.0	2	0.2
Tiger Airways	1 012	999	914	91.5	906	90.7	13	1.3
Virgin Australia	11 374	11 185	9 144	81.8	9 071	81.1	189	1.7
Virgin Australia - ATR/F100 Operations	1 146	1 115	890	79.8	853	76.5	31	2.7
All Airlines	45 288	44 558	36 096	81.0	35 793	80.3	730	1.6

Total airline network data (including routes not shown in this report).

Table 2 Top ten routes for on time performance for April 2012 (participating airlines only)

<i>Departures</i>		<i>Arrivals</i>	
<i>Route</i>	<i>On Time (%)</i>	<i>Route</i>	<i>On Time (%)</i>
Perth-Darwin	93.3	Adelaide-Perth	95.2
Ayers Rock-Sydney	93.2	Canberra-Adelaide	94.9
Darwin-Melbourne	92.2	Gold Coast-Adelaide	94.9
Perth-Adelaide	91.9	Ayers Rock-Sydney	94.9
Adelaide-Port Lincoln	91.8	Darwin-Perth	93.3
Canberra-Brisbane	91.4	Brisbane-Adelaide	92.4
Canberra-Adelaide	91.1	Adelaide-Canberra	92.1
Port Lincoln-Adelaide	91.1	Melbourne-Adelaide	91.7
Brisbane-Proserpine	91.0	Hamilton Island-Brisbane	91.7
Perth-Port Hedland	91.0	Melbourne-Perth	91.6

Table 3 Top ten airports for on time performance for April 2012 (participating airlines and reported routes only)

<i>Departures</i>		<i>Arrivals</i>	
<i>Airport</i>	<i>On Time (%)</i>	<i>Airport</i>	<i>On Time (%)</i>
Ayers Rock	93.2	Port Lincoln	90.8
Port Lincoln	91.1	Port Hedland	90.4
Mildura	88.8	Adelaide	90.1
Adelaide	87.4	Newman	87.8
Melbourne	86.8	Ayers Rock	86.7
Port Hedland	86.7	Emerald	86.0
Cairns	86.1	Karratha	85.7
Proserpine	86.1	Perth	85.2
Emerald	85.5	Melbourne	85.0
Perth	85.3	Mildura	84.3

Total industry on time performance

Figure 1 On time performance (by month from April 2009)—Total Industry

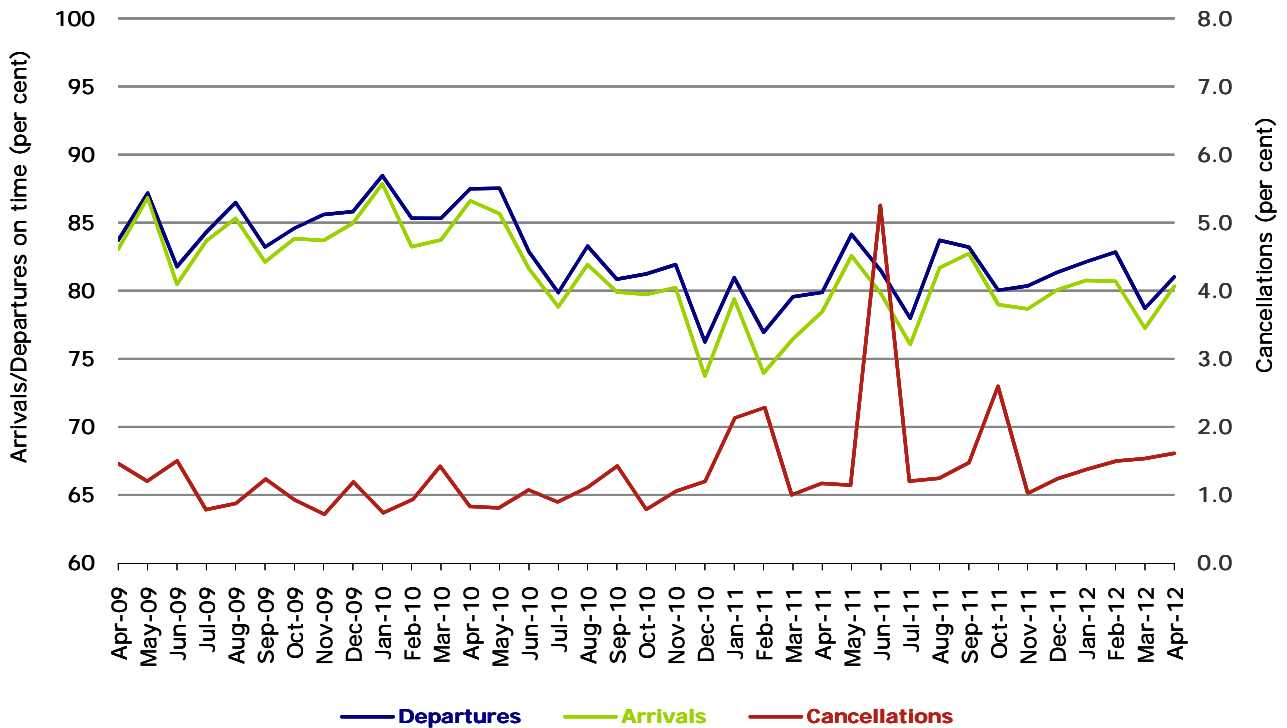
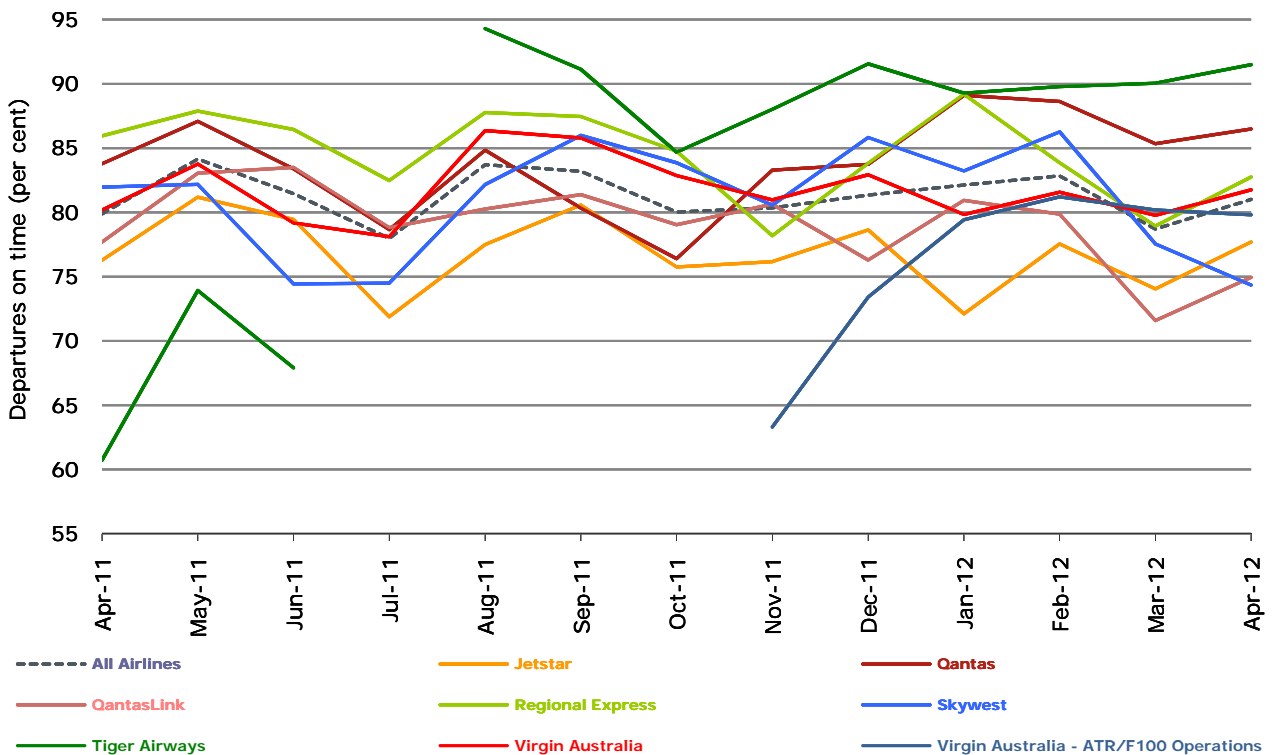


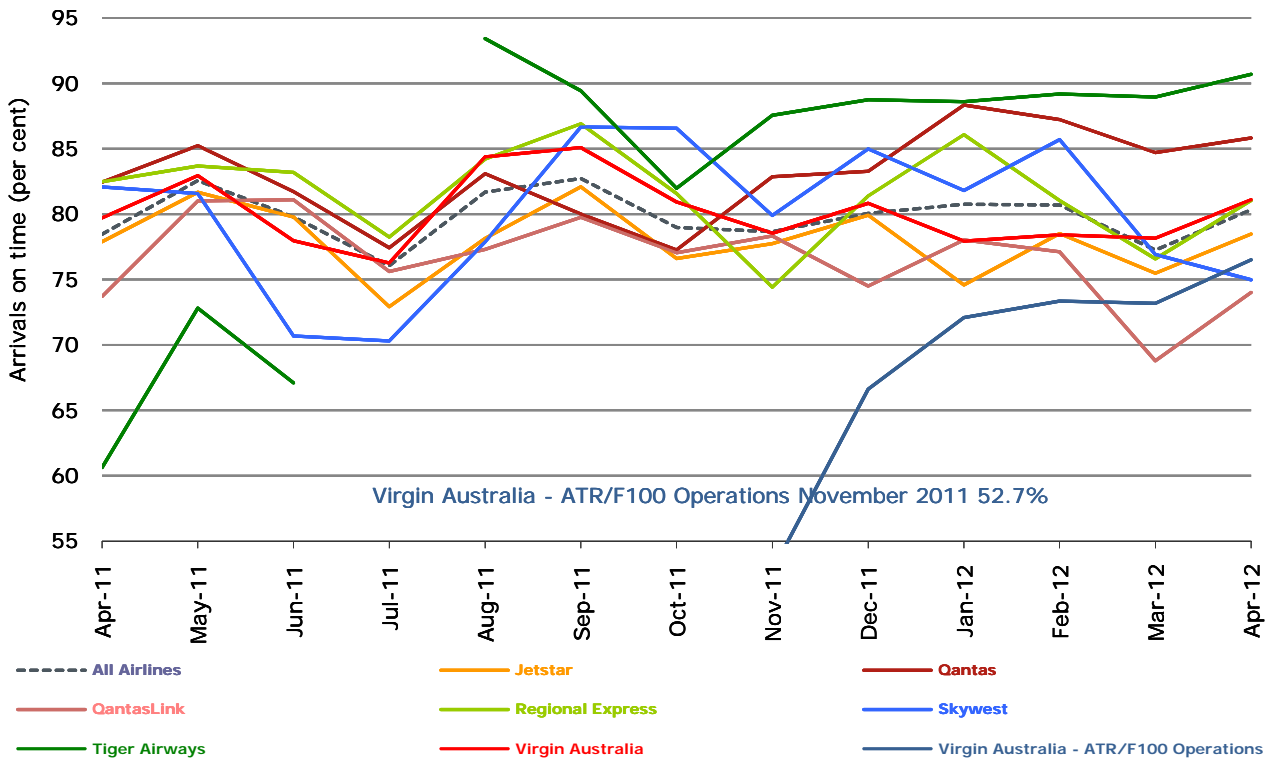
Figure 2 Departures on time (by month from April 2011)



No data for Tiger Airways for July 2011 as it was grounded by CASA from 2/7/2011 to 11/8/2011.

Virgin Australia - ATR/F100 Operations commenced in November 2011.

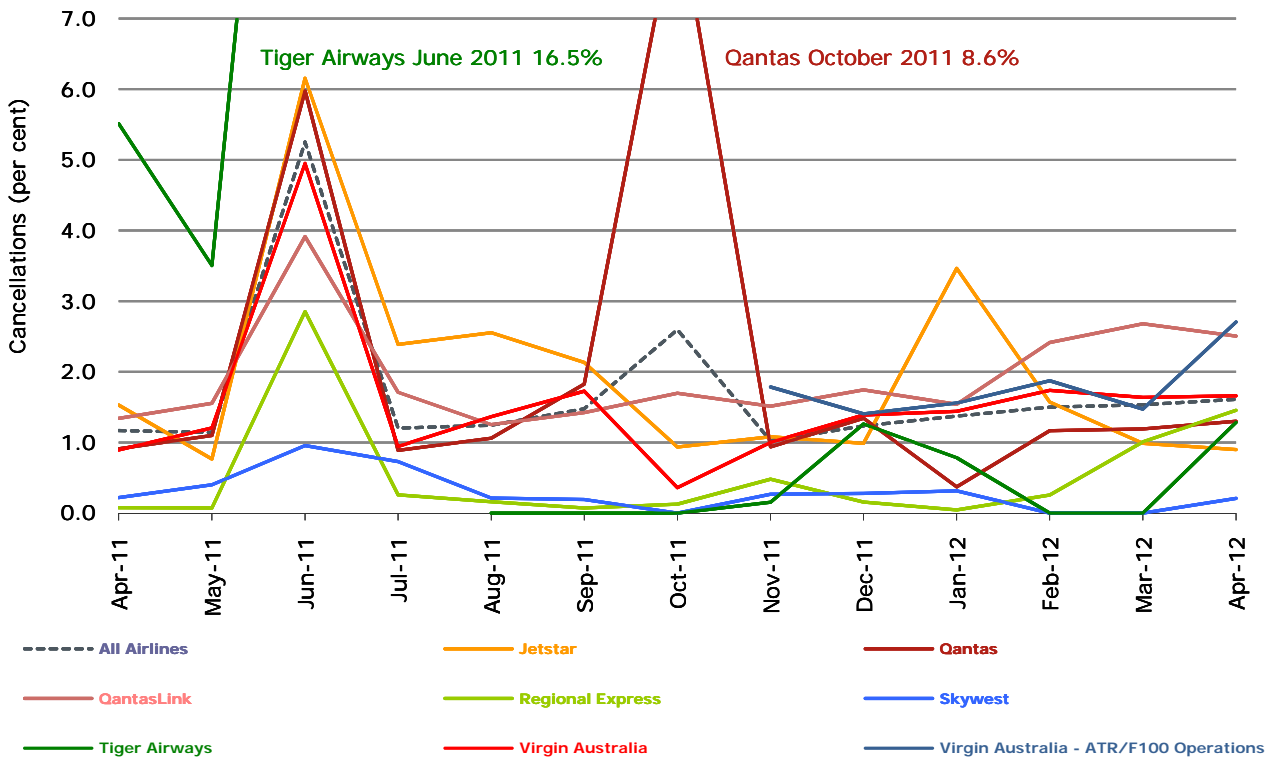
Figure 3 Arrivals on time (by month from April 2011)



No data for Tiger Airways for July 2011 as it was grounded by CASA from 2/7/2011 to 11/8/2011.

Virgin Australia - ATR/F100 Operations commenced in November 2011.

Figure 4 Cancellations (by month from April 2011)



No data for Tiger Airways for July 2011 as it was grounded by CASA from 2/7/2011 to 11/8/2011.

Virgin Australia - ATR/F100 Operations commenced in November 2011.

Major domestic airlines on time performance

Figure 5 On time performance (by month from April 2009)—Jetstar

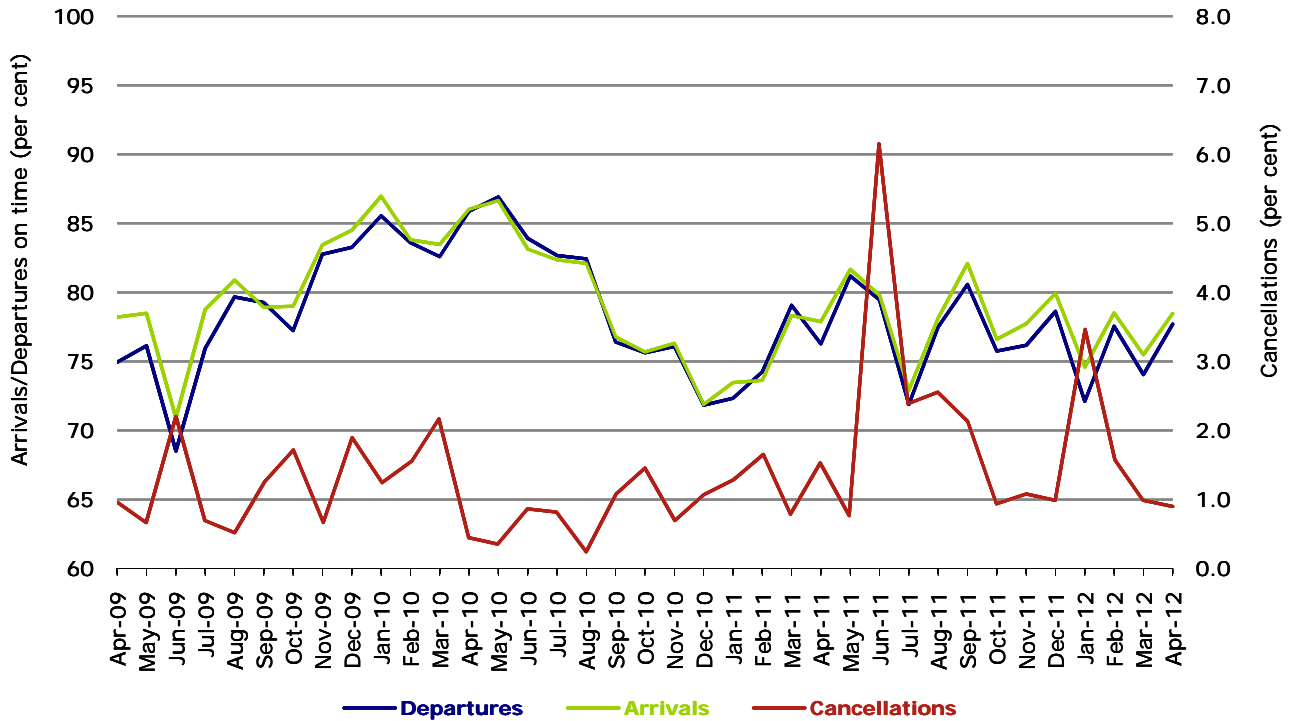


Figure 6 On time performance (by month from April 2009)—Qantas

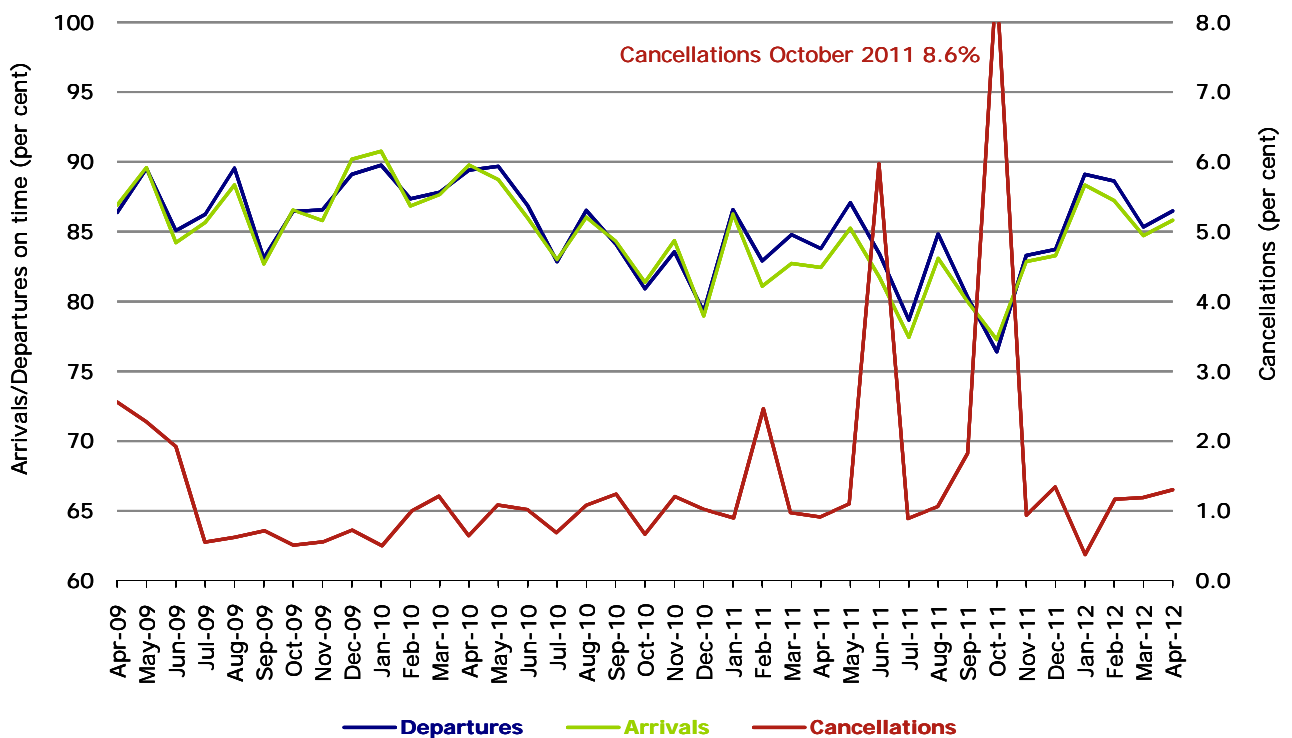
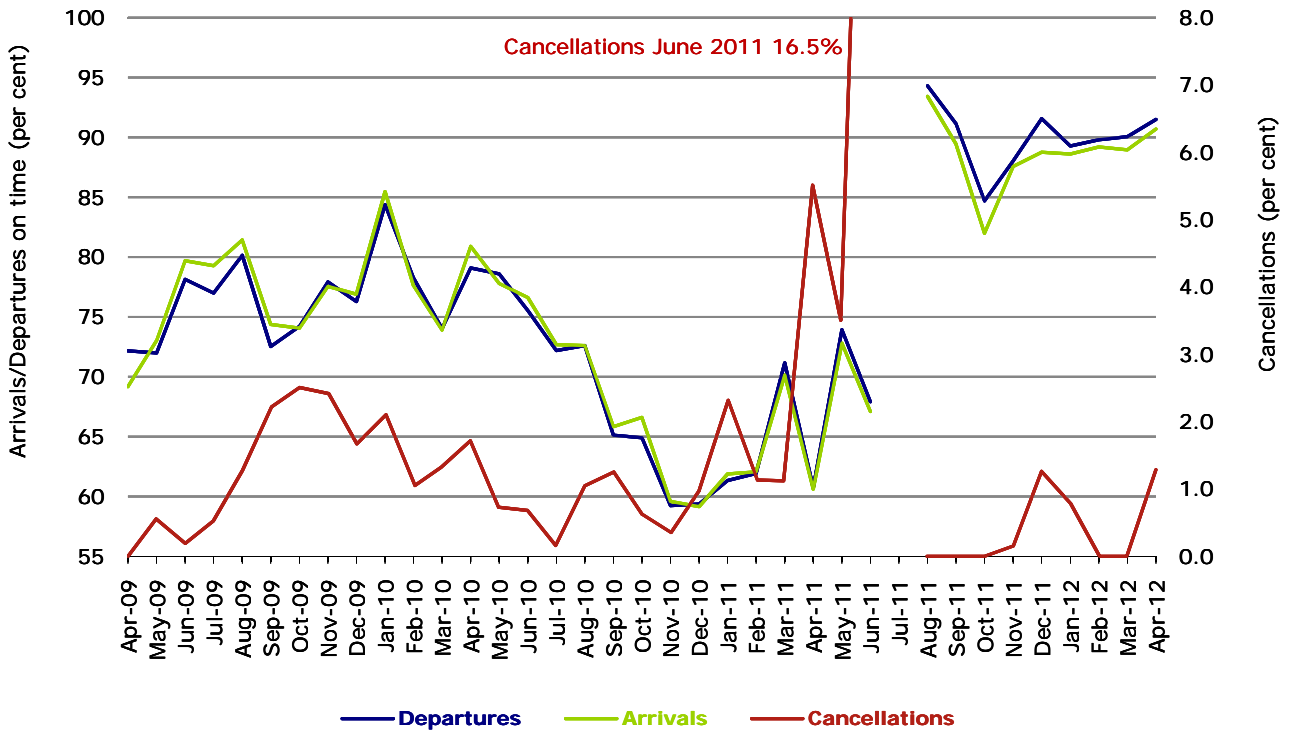
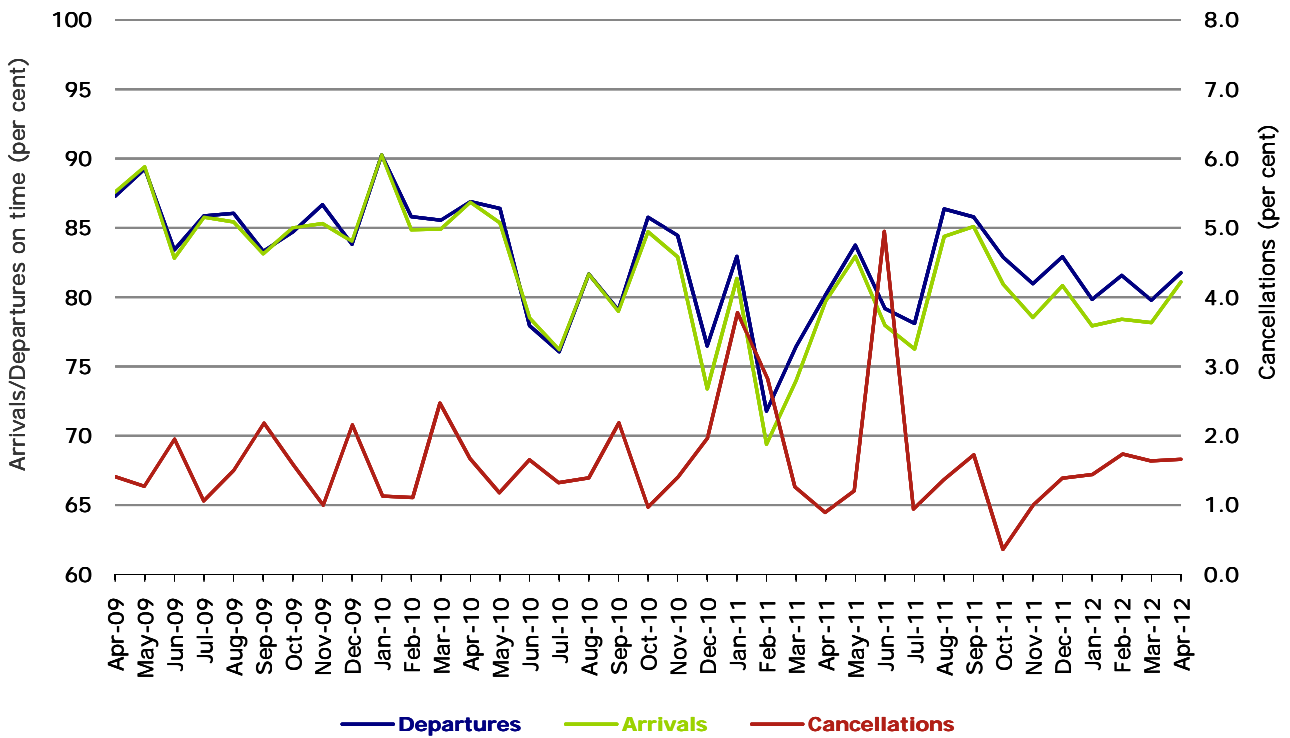


Figure 7 On time performance (by month from April 2009)—Tiger Airways



No data for Tiger Airways for July 2011 as it was grounded by CASA from 2/7/2011 to 11/8/2011.

Figure 8 On time performance (by month from April 2009)—Virgin Australia



Major regional airlines on time performance

Figure 9 On time performance (by month from April 2009)—QantasLink

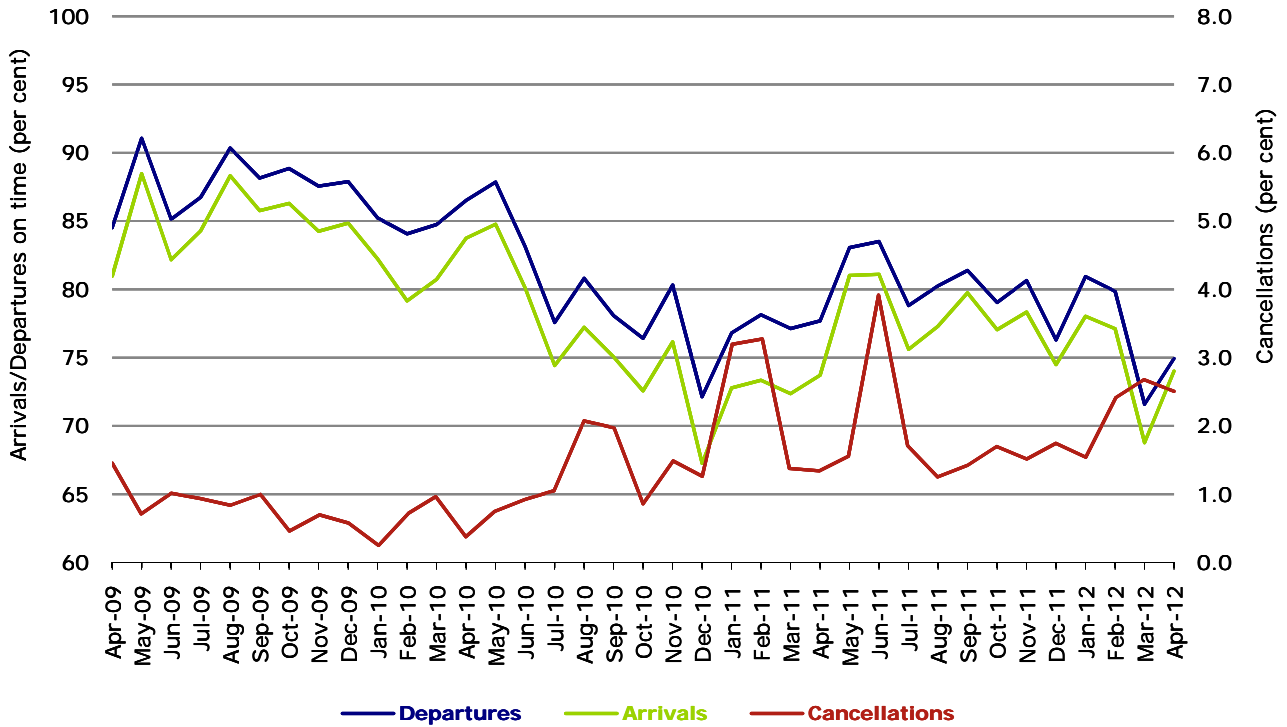


Figure 10 On time performance (by month from April 2009)—Regional Express

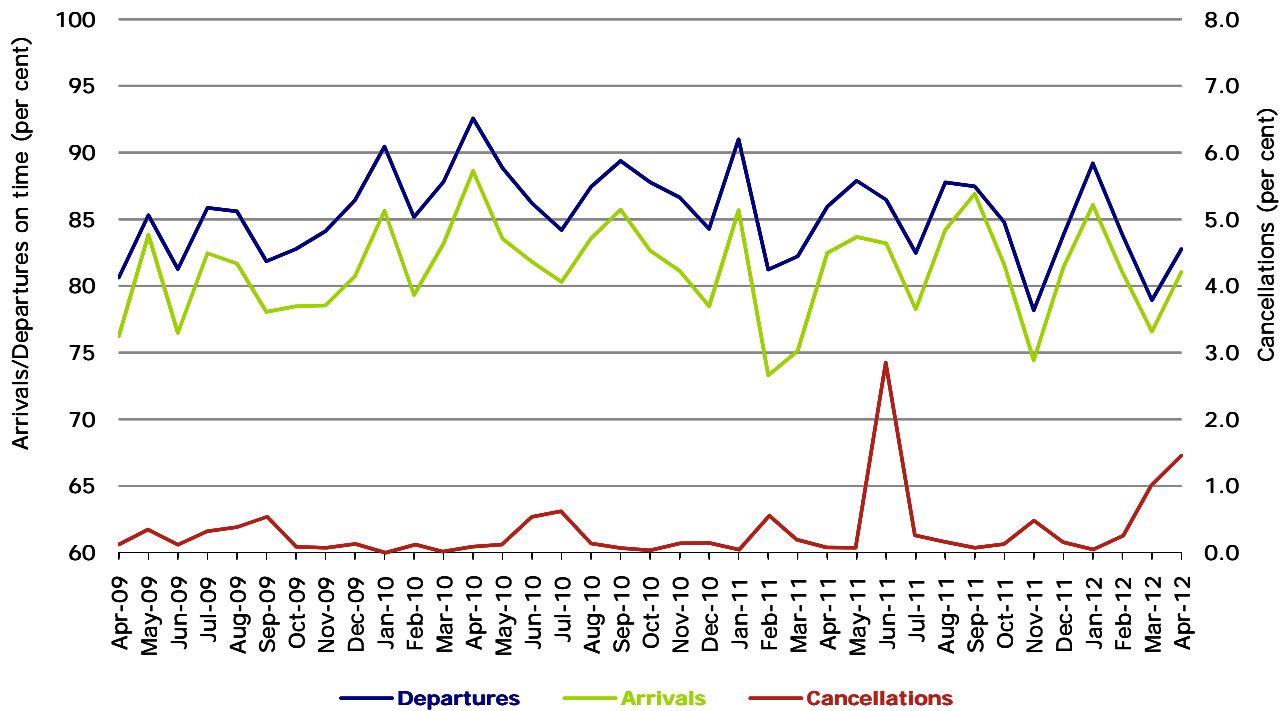


Figure 11 On time performance (by month from April 2009)—Skywest

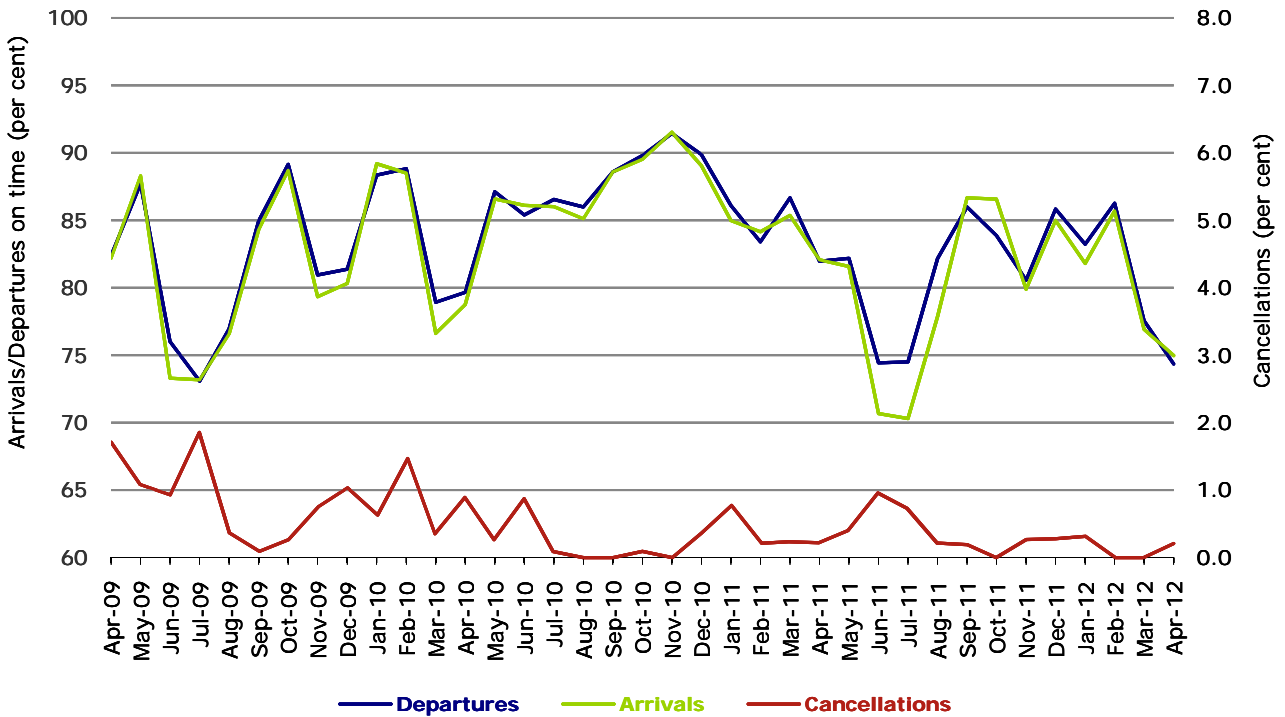
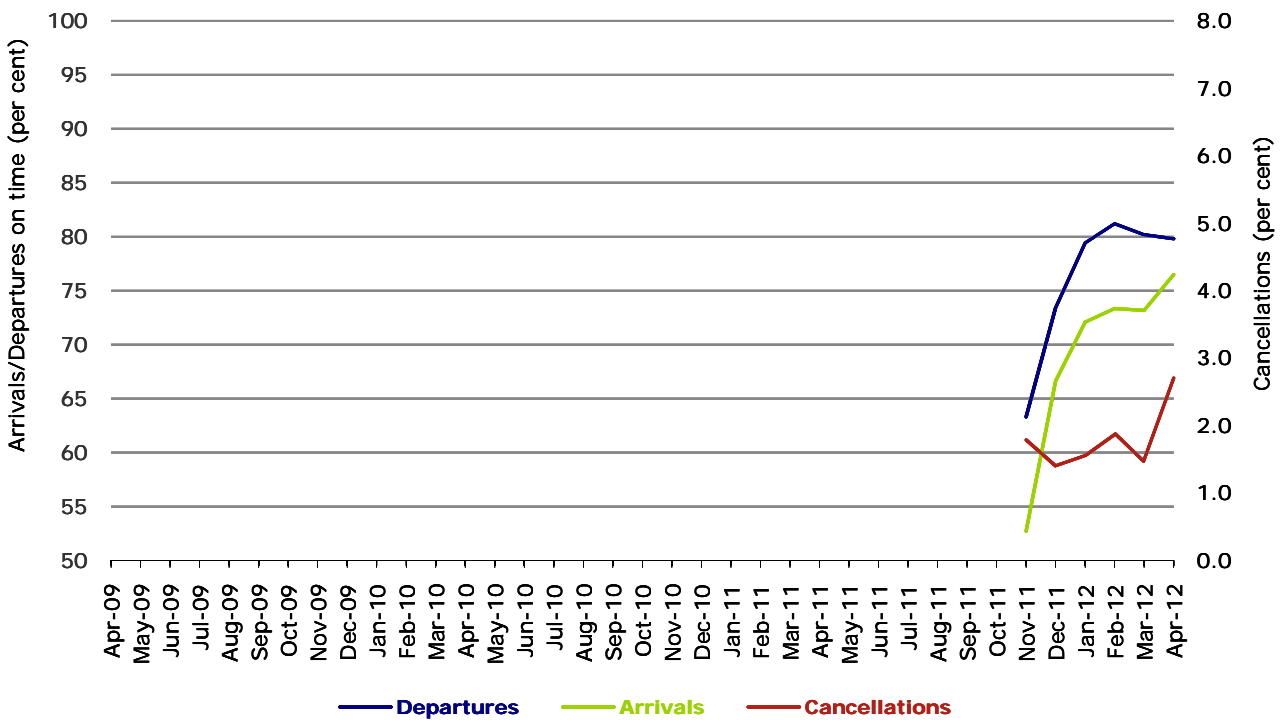


Figure 11 On time performance (by month from April 2009)
Virgin Australia - ATR/F100 Operations



Virgin Australia - ATR/F100 Operations commenced in November 2011.

Individual routes

On time performance is reported for all routes where the passenger load averages over 8000 passengers per month over the previous six months, and where two or more airlines operate in competition on those routes. There are now 56 routes which meet this definition. Over time, however, routes which meet this definition may change as airline networks and traffic levels vary.

	<i>Sectors</i>		<i>Departures On Time</i>		<i>Arrivals On Time</i>		<i>Cancellations</i>	
	<i>Sched.</i>	<i>Flown</i>	<i>No.</i>	<i>%</i>	<i>No.</i>	<i>%</i>	<i>No.</i>	<i>%</i>
Adelaide-Brisbane								
Jetstar	29	29	26	89.7	25	86.2	0	0.0
Qantas	106	106	94	88.7	81	76.4	0	0.0
Virgin Australia	90	88	71	80.7	73	83.0	2	2.2
All Airlines	225	223	191	85.7	179	80.3	2	0.9
Adelaide-Canberra								
Qantas	46	46	38	82.6	41	89.1	0	0.0
Virgin Australia	30	30	28	93.3	29	96.7	0	0.0
All Airlines	76	76	66	86.8	70	92.1	0	0.0
Adelaide-Gold Coast								
Jetstar	30	30	26	86.7	27	90.0	0	0.0
Virgin Australia	30	29	27	93.1	25	86.2	1	3.3
All Airlines	60	59	53	89.8	52	88.1	1	1.7
Adelaide-Melbourne								
Jetstar	86	86	65	75.6	60	69.8	0	0.0
Qantas	296	294	257	87.4	263	89.5	2	0.7
QantasLink	17	16	14	87.5	14	87.5	1	5.9
Virgin Australia	281	277	257	92.8	251	90.6	4	1.4
All Airlines	680	673	593	88.1	588	87.4	7	1.0
Adelaide-Perth								
Jetstar	39	39	27	69.2	33	84.6	0	0.0
Qantas	112	112	98	87.5	108	96.4	0	0.0
Virgin Australia	60	58	53	91.4	58	100.0	2	3.3
All Airlines	211	209	178	85.2	199	95.2	2	0.9
Adelaide-Port Lincoln								
QantasLink	99	99	82	82.8	81	81.8	0	0.0
Regional Express	195	193	186	96.4	184	95.3	2	1.0
All Airlines	294	292	268	91.8	265	90.8	2	0.7
Adelaide-Sydney								
Jetstar	88	87	74	85.1	71	81.6	1	1.1
Qantas	270	267	234	87.6	232	86.9	3	1.1
Virgin Australia	175	174	144	82.8	133	76.4	1	0.6
All Airlines	533	528	452	85.6	436	82.6	5	0.9
Albury-Sydney								
QantasLink	113	112	65	58.0	69	61.6	1	0.9
Regional Express	100	100	76	76.0	79	79.0	0	0.0
Virgin Australia	60	60	49	81.7	51	85.0	0	0.0
All Airlines	273	272	190	69.9	199	73.2	1	0.4
Ayers Rock-Sydney								
Qantas	30	30	28	93.3	27	90.0	0	0.0
Virgin Australia	30	29	27	93.1	29	100.0	1	3.3
All Airlines	60	59	55	93.2	56	94.9	1	1.7

	<i>Sectors</i>		<i>Departures On Time</i>		<i>Arrivals On Time</i>		<i>Cancellations</i>	
	<i>Sched.</i>	<i>Flown</i>	<i>No.</i>	<i>%</i>	<i>No.</i>	<i>%</i>	<i>No.</i>	<i>%</i>
Ballina-Sydney								
Jetstar	52	52	38	73.1	38	73.1	0	0.0
Regional Express	23	23	12	52.2	11	47.8	0	0.0
Virgin Australia	30	30	19	63.3	15	50.0	0	0.0
All Airlines	105	105	69	65.7	64	61.0	0	0.0
Brisbane-Adelaide								
Jetstar	29	29	27	93.1	27	93.1	0	0.0
Qantas	106	106	89	84.0	94	88.7	0	0.0
Virgin Australia	90	89	75	84.3	86	96.6	1	1.1
All Airlines	225	224	191	85.3	207	92.4	1	0.4
Brisbane-Cairns								
Jetstar	97	96	87	90.6	86	89.6	1	1.0
Qantas	117	117	92	78.6	101	86.3	0	0.0
Virgin Australia	143	142	118	83.1	127	89.4	1	0.7
Virgin Australia - ATR/F100 Operations	26	26	25	96.2	20	76.9	0	0.0
All Airlines	383	381	322	84.5	334	87.7	2	0.5
Brisbane-Canberra								
Qantas	140	140	121	86.4	128	91.4	0	0.0
QantasLink	22	22	15	68.2	18	81.8	0	0.0
Virgin Australia	119	117	88	75.2	95	81.2	2	1.7
All Airlines	281	279	224	80.3	241	86.4	2	0.7
Brisbane-Darwin								
Jetstar	6	6	5	83.3	6	100.0	0	0.0
Qantas	30	30	23	76.7	25	83.3	0	0.0
Virgin Australia	30	30	20	66.7	17	56.7	0	0.0
All Airlines	66	66	48	72.7	48	72.7	0	0.0
Brisbane-Emerald								
QantasLink	168	167	145	86.8	139	83.2	1	0.6
Virgin Australia - ATR/F100 Operations	68	68	60	88.2	63	92.6	0	0.0
All Airlines	236	235	205	87.2	202	86.0	1	0.4
Brisbane-Gladstone								
QantasLink	174	173	129	74.6	136	78.6	1	0.6
Virgin Australia - ATR/F100 Operations	72	70	60	85.7	60	85.7	2	2.8
All Airlines	246	243	189	77.8	196	80.7	3	1.2
Brisbane-Hamilton Island								
Jetstar	18	18	15	83.3	16	88.9	0	0.0
Virgin Australia	30	30	24	80.0	26	86.7	0	0.0
All Airlines	48	48	39	81.3	42	87.5	0	0.0
Brisbane-Mackay								
Jetstar	108	108	83	76.9	92	85.2	0	0.0
QantasLink	81	81	67	82.7	66	81.5	0	0.0
Virgin Australia	161	159	132	83.0	130	81.8	2	1.2
All Airlines	350	348	282	81.0	288	82.8	2	0.6
Brisbane-Melbourne								
Jetstar	97	95	73	76.8	82	86.3	2	2.1
Qantas	404	403	333	82.6	357	88.6	1	0.2
Tiger Airways	92	92	73	79.3	80	87.0	0	0.0
Virgin Australia	368	359	308	85.8	329	91.6	9	2.4
All Airlines	961	949	787	82.9	848	89.4	12	1.2
Brisbane-Newcastle								
Jetstar	116	116	97	83.6	96	82.8	0	0.0
QantasLink	67	65	49	75.4	42	64.6	2	3.0
Virgin Australia - ATR/F100 Operations	60	60	51	85.0	48	80.0	0	0.0
All Airlines	243	241	197	81.7	186	77.2	2	0.8

	<i>Sectors</i>		<i>Departures On Time</i>		<i>Arrivals On Time</i>		<i>Cancellations</i>	
	<i>Sched.</i>	<i>Flown</i>	<i>No.</i>	<i>%</i>	<i>No.</i>	<i>%</i>	<i>No.</i>	<i>%</i>
Brisbane-Perth								
Jetstar	29	29	23	79.3	24	82.8	0	0.0
Qantas	116	116	72	62.1	98	84.5	0	0.0
Virgin Australia	74	74	60	81.1	71	95.9	0	0.0
All Airlines	219	219	155	70.8	193	88.1	0	0.0
Brisbane-Proserpine								
Jetstar	27	27	26	96.3	24	88.9	0	0.0
Virgin Australia	30	30	26	86.7	25	83.3	0	0.0
Virgin Australia - ATR/F100 Operations	21	21	19	90.5	15	71.4	0	0.0
All Airlines	78	78	71	91.0	64	82.1	0	0.0
Brisbane-Rockhampton								
QantasLink	198	198	142	71.7	147	74.2	0	0.0
Virgin Australia	76	76	64	84.2	65	85.5	0	0.0
Virgin Australia - ATR/F100 Operations	71	66	61	92.4	58	87.9	5	7.0
All Airlines	345	340	267	78.5	270	79.4	5	1.4
Brisbane-Sydney								
Jetstar	113	112	73	65.2	71	63.4	1	0.9
Qantas	563	555	467	84.1	488	87.9	8	1.4
Virgin Australia	558	549	450	82.0	437	79.6	9	1.6
All Airlines	1 234	1 216	990	81.4	996	81.9	18	1.5
Brisbane-Townsville								
Jetstar	30	29	21	72.4	24	82.8	1	3.3
Qantas	137	137	112	81.8	119	86.9	0	0.0
Virgin Australia	162	160	132	82.5	137	85.6	2	1.2
All Airlines	329	326	265	81.3	280	85.9	3	0.9
Broome-Perth								
Qantas	35	35	23	65.7	25	71.4	0	0.0
QantasLink	46	46	39	84.8	42	91.3	0	0.0
Skywest	23	23	17	73.9	17	73.9	0	0.0
Virgin Australia	59	57	52	91.2	50	87.7	2	3.4
All Airlines	163	161	131	81.4	134	83.2	2	1.2
Cairns-Brisbane								
Jetstar	96	96	90	93.8	85	88.5	0	0.0
Qantas	117	117	105	89.7	97	82.9	0	0.0
Virgin Australia	143	142	132	93.0	128	90.1	1	0.7
Virgin Australia - ATR/F100 Operations	26	26	19	73.1	21	80.8	0	0.0
All Airlines	382	381	346	90.8	331	86.9	1	0.3
Cairns-Melbourne								
Jetstar	95	95	78	82.1	79	83.2	0	0.0
Qantas	30	30	24	80.0	25	83.3	0	0.0
Tiger Airways	6	6	5	83.3	5	83.3	0	0.0
Virgin Australia	34	33	28	84.8	30	90.9	1	2.9
All Airlines	165	164	135	82.3	139	84.8	1	0.6
Cairns-Sydney								
Jetstar	81	78	64	82.1	60	76.9	3	3.7
Qantas	96	96	85	88.5	87	90.6	0	0.0
Virgin Australia	90	90	77	85.6	78	86.7	0	0.0
All Airlines	267	264	226	85.6	225	85.2	3	1.1
Cairns-Townsville								
QantasLink	181	176	142	80.7	138	78.4	5	2.8
Virgin Australia	30	30	25	83.3	26	86.7	0	0.0
All Airlines	211	206	167	81.1	164	79.6	5	2.4

	<i>Sectors</i>		<i>Departures On Time</i>		<i>Arrivals On Time</i>		<i>Cancellations</i>	
	<i>Sched.</i>	<i>Flown</i>	<i>No.</i>	<i>%</i>	<i>No.</i>	<i>%</i>	<i>No.</i>	<i>%</i>
Canberra-Adelaide								
Qantas	50	49	44	89.8	45	91.8	1	2.0
Virgin Australia	30	30	28	93.3	30	100.0	0	0.0
All Airlines	80	79	72	91.1	75	94.9	1	1.3
Canberra-Brisbane								
Qantas	140	140	133	95.0	118	84.3	0	0.0
QantasLink	22	22	18	81.8	15	68.2	0	0.0
Virgin Australia	119	118	105	89.0	91	77.1	1	0.8
All Airlines	281	280	256	91.4	224	80.0	1	0.4
Canberra-Melbourne								
Qantas	242	242	218	90.1	220	90.9	0	0.0
QantasLink	39	34	30	88.2	30	88.2	5	12.8
Virgin Australia	164	161	133	82.6	133	82.6	3	1.8
All Airlines	445	437	381	87.2	383	87.6	8	1.8
Canberra-Sydney								
Qantas	155	150	127	84.7	121	80.7	5	3.2
QantasLink	393	347	271	78.1	256	73.8	46	11.7
Virgin Australia	97	93	67	72.0	59	63.4	4	4.1
Virgin Australia - ATR/F100 Operations	164	159	119	74.8	111	69.8	5	3.0
All Airlines	809	749	584	78.0	547	73.0	60	7.4
Coffs Harbour-Sydney								
QantasLink	141	141	75	53.2	99	70.2	0	0.0
Virgin Australia	60	59	39	66.1	43	72.9	1	1.7
All Airlines	201	200	114	57.0	142	71.0	1	0.5
Darwin-Brisbane								
Jetstar	6	6	6	100.0	6	100.0	0	0.0
Qantas	30	30	22	73.3	22	73.3	0	0.0
Virgin Australia	30	30	22	73.3	22	73.3	0	0.0
All Airlines	66	66	50	75.8	50	75.8	0	0.0
Darwin-Melbourne								
Jetstar	8	8	5	62.5	6	75.0	0	0.0
Qantas	13	13	12	92.3	11	84.6	0	0.0
Virgin Australia	30	30	30	100.0	29	96.7	0	0.0
All Airlines	51	51	47	92.2	46	90.2	0	0.0
Darwin-Perth								
Qantas	30	30	25	83.3	27	90.0	0	0.0
Virgin Australia	30	30	27	90.0	29	96.7	0	0.0
All Airlines	60	60	52	86.7	56	93.3	0	0.0
Dubbo-Sydney								
QantasLink	106	106	73	68.9	58	54.7	0	0.0
Regional Express	151	145	121	83.4	116	80.0	6	4.0
All Airlines	257	251	194	77.3	174	69.3	6	2.3
Emerald-Brisbane								
QantasLink	168	167	139	83.2	137	82.0	1	0.6
Virgin Australia - ATR/F100 Operations	68	68	62	91.2	62	91.2	0	0.0
All Airlines	236	235	201	85.5	199	84.7	1	0.4
Geraldton-Perth								
QantasLink	51	51	28	54.9	23	45.1	0	0.0
Skywest	104	104	71	68.3	67	64.4	0	0.0
All Airlines	155	155	99	63.9	90	58.1	0	0.0

	<i>Sectors</i>		<i>Departures On Time</i>		<i>Arrivals On Time</i>		<i>Cancellations</i>	
	<i>Sched.</i>	<i>Flown</i>	<i>No.</i>	<i>%</i>	<i>No.</i>	<i>%</i>	<i>No.</i>	<i>%</i>
Gladstone-Brisbane								
QantasLink	195	194	145	74.7	141	72.7	1	0.5
Virgin Australia - ATR/F100 Operations	73	70	61	87.1	60	85.7	3	4.1
All Airlines	268	264	206	78.0	201	76.1	4	1.5
Gold Coast-Adelaide								
Jetstar	30	30	26	86.7	27	90.0	0	0.0
Virgin Australia	30	29	27	93.1	29	100.0	1	3.3
All Airlines	60	59	53	89.8	56	94.9	1	1.7
Gold Coast-Melbourne								
Jetstar	209	206	145	70.4	155	75.2	3	1.4
Tiger Airways	86	85	78	91.8	79	92.9	1	1.2
Virgin Australia	205	202	173	85.6	186	92.1	3	1.5
All Airlines	500	493	396	80.3	420	85.2	7	1.4
Gold Coast-Sydney								
Jetstar	335	325	239	73.5	254	78.2	10	3.0
Virgin Australia	341	333	239	71.8	256	76.9	8	2.3
All Airlines	676	658	478	72.6	510	77.5	18	2.7
Hamilton Island-Brisbane								
Jetstar	18	18	17	94.4	17	94.4	0	0.0
Virgin Australia	30	30	24	80.0	27	90.0	0	0.0
All Airlines	48	48	41	85.4	44	91.7	0	0.0
Hamilton Island-Sydney								
Jetstar	30	30	23	76.7	22	73.3	0	0.0
Virgin Australia	31	30	17	56.7	18	60.0	1	3.2
All Airlines	61	60	40	66.7	40	66.7	1	1.6
Hobart-Melbourne								
Jetstar	144	144	110	76.4	106	73.6	0	0.0
Qantas	60	60	58	96.7	59	98.3	0	0.0
Virgin Australia	132	132	107	81.1	109	82.6	0	0.0
All Airlines	336	336	275	81.8	274	81.5	0	0.0
Hobart-Sydney								
Jetstar	58	57	40	70.2	37	64.9	1	1.7
Qantas	30	30	25	83.3	20	66.7	0	0.0
Virgin Australia	60	60	35	58.3	37	61.7	0	0.0
All Airlines	148	147	100	68.0	94	63.9	1	0.7
Kalgoorlie-Perth								
Qantas	68	68	56	82.4	57	83.8	0	0.0
QantasLink	19	19	13	68.4	14	73.7	0	0.0
Skywest	15	15	11	73.3	7	46.7	0	0.0
All Airlines	102	102	80	78.4	78	76.5	0	0.0
Karratha-Perth								
Qantas	192	184	153	83.2	149	81.0	8	4.2
QantasLink	61	58	49	84.5	52	89.7	3	4.9
Virgin Australia	52	49	34	69.4	28	57.1	3	5.8
All Airlines	305	291	236	81.1	229	78.7	14	4.6
Launceston-Melbourne								
Jetstar	99	99	71	71.7	67	67.7	0	0.0
QantasLink	75	75	42	56.0	47	62.7	0	0.0
Virgin Australia	132	132	113	85.6	113	85.6	0	0.0
All Airlines	306	306	226	73.9	227	74.2	0	0.0

	<i>Sectors</i>		<i>Departures On Time</i>		<i>Arrivals On Time</i>		<i>Cancellations</i>	
	<i>Sched.</i>	<i>Flown</i>	<i>No.</i>	<i>%</i>	<i>No.</i>	<i>%</i>	<i>No.</i>	<i>%</i>
Launceston-Sydney								
Jetstar	30	30	19	63.3	21	70.0	0	0.0
Virgin Australia	30	30	16	53.3	16	53.3	0	0.0
All Airlines	60	60	35	58.3	37	61.7	0	0.0
Mackay-Brisbane								
Jetstar	108	108	92	85.2	80	74.1	0	0.0
QantasLink	80	80	59	73.8	53	66.3	0	0.0
Virgin Australia	161	159	140	88.1	131	82.4	2	1.2
All Airlines	349	347	291	83.9	264	76.1	2	0.6
Melbourne-Adelaide								
Jetstar	86	86	69	80.2	73	84.9	0	0.0
Qantas	296	296	268	90.5	274	92.6	0	0.0
QantasLink	17	16	12	75.0	13	81.3	1	5.9
Virgin Australia	282	278	248	89.2	260	93.5	4	1.4
All Airlines	681	676	597	88.3	620	91.7	5	0.7
Melbourne-Brisbane								
Jetstar	98	97	70	72.2	62	63.9	1	1.0
Qantas	402	401	365	91.0	330	82.3	1	0.2
Tiger Airways	91	91	84	92.3	79	86.8	0	0.0
Virgin Australia	369	360	328	91.1	301	83.6	9	2.4
All Airlines	960	949	847	89.3	772	81.3	11	1.1
Melbourne-Cairns								
Jetstar	95	95	84	88.4	84	88.4	0	0.0
Qantas	30	30	25	83.3	26	86.7	0	0.0
Tiger Airways	6	6	6	100.0	5	83.3	0	0.0
Virgin Australia	34	34	29	85.3	29	85.3	0	0.0
All Airlines	165	165	144	87.3	144	87.3	0	0.0
Melbourne-Canberra								
Qantas	242	241	213	88.4	213	88.4	1	0.4
QantasLink	39	34	33	97.1	31	91.2	5	12.8
Virgin Australia	164	161	135	83.9	136	84.5	3	1.8
All Airlines	445	436	381	87.4	380	87.2	9	2.0
Melbourne-Darwin								
Jetstar	8	8	7	87.5	7	87.5	0	0.0
Qantas	13	13	12	92.3	12	92.3	0	0.0
Virgin Australia	30	30	27	90.0	27	90.0	0	0.0
All Airlines	51	51	46	90.2	46	90.2	0	0.0
Melbourne-Gold Coast								
Jetstar	207	203	151	74.4	143	70.4	4	1.9
Tiger Airways	86	86	83	96.5	79	91.9	0	0.0
Virgin Australia	205	203	175	86.2	170	83.7	2	1.0
All Airlines	498	492	409	83.1	392	79.7	6	1.2
Melbourne-Hobart								
Jetstar	145	145	118	81.4	116	80.0	0	0.0
Qantas	60	60	51	85.0	52	86.7	0	0.0
Virgin Australia	132	131	117	89.3	116	88.5	1	0.8
All Airlines	337	336	286	85.1	284	84.5	1	0.3
Melbourne-Launceston								
Jetstar	98	98	79	80.6	77	78.6	0	0.0
QantasLink	75	75	56	74.7	44	58.7	0	0.0
Virgin Australia	133	133	112	84.2	115	86.5	0	0.0
All Airlines	306	306	247	80.7	236	77.1	0	0.0

	<i>Sectors</i>		<i>Departures</i>		<i>Arrivals</i>		<i>Cancellations</i>	
	<i>Sched.</i>	<i>Flown</i>	<i>On Time</i>		<i>On Time</i>		<i>No.</i>	<i>%</i>
			<i>No.</i>	<i>%</i>	<i>No.</i>	<i>%</i>		
Melbourne-Mildura								
QantasLink	86	85	70	82.4	65	76.5	1	1.2
Regional Express	82	82	75	91.5	75	91.5	0	0.0
Virgin Australia	30	30	26	86.7	26	86.7	0	0.0
All Airlines	198	197	171	86.8	166	84.3	1	0.5
Melbourne-Newcastle								
Jetstar	101	101	88	87.1	86	85.1	0	0.0
Virgin Australia	30	30	27	90.0	27	90.0	0	0.0
All Airlines	131	131	115	87.8	113	86.3	0	0.0
Melbourne-Perth								
Jetstar	86	85	68	80.0	73	85.9	1	1.2
Qantas	214	214	187	87.4	199	93.0	0	0.0
Tiger Airways	66	65	65	100.0	61	93.8	1	1.5
Virgin Australia	149	149	132	88.6	137	91.9	0	0.0
All Airlines	515	513	452	88.1	470	91.6	2	0.4
Melbourne-Sunshine Coast								
Jetstar	66	65	40	61.5	39	60.0	1	1.5
Virgin Australia	30	30	26	86.7	25	83.3	0	0.0
All Airlines	96	95	66	69.5	64	67.4	1	1.0
Melbourne-Sydney								
Jetstar	238	232	161	69.4	156	67.2	6	2.5
Qantas	846	814	733	90.0	694	85.3	32	3.8
Tiger Airways	257	252	236	93.7	242	96.0	5	1.9
Virgin Australia	808	778	684	87.9	612	78.7	30	3.7
All Airlines	2 149	2 076	1 814	87.4	1 704	82.1	73	3.4
Mildura-Melbourne								
QantasLink	86	85	74	87.1	68	80.0	1	1.2
Regional Express	82	82	75	91.5	75	91.5	0	0.0
Virgin Australia	30	30	26	86.7	26	86.7	0	0.0
All Airlines	198	197	175	88.8	169	85.8	1	0.5
Newcastle-Brisbane								
Jetstar	114	114	95	83.3	93	81.6	0	0.0
QantasLink	66	65	40	61.5	36	55.4	1	1.5
Virgin Australia - ATR/F100 Operations	60	60	48	80.0	41	68.3	0	0.0
All Airlines	240	239	183	76.6	170	71.1	1	0.4
Newcastle-Melbourne								
Jetstar	102	102	89	87.3	83	81.4	0	0.0
Virgin Australia	30	30	22	73.3	24	80.0	0	0.0
All Airlines	132	132	111	84.1	107	81.1	0	0.0
Newman-Perth								
Qantas	70	68	49	72.1	50	73.5	2	2.9
QantasLink	54	51	42	82.4	44	86.3	3	5.6
Virgin Australia	31	30	24	80.0	24	80.0	1	3.2
All Airlines	155	149	115	77.2	118	79.2	6	3.9
Perth-Adelaide								
Jetstar	39	39	32	82.1	30	76.9	0	0.0
Qantas	112	112	103	92.0	95	84.8	0	0.0
Virgin Australia	60	58	57	98.3	55	94.8	2	3.3
All Airlines	211	209	192	91.9	180	86.1	2	0.9
Perth-Brisbane								
Jetstar	29	28	14	50.0	14	50.0	1	3.4
Qantas	116	116	99	85.3	72	62.1	0	0.0
Virgin Australia	73	73	71	97.3	40	54.8	0	0.0
All Airlines	218	217	184	84.8	126	58.1	1	0.5

	<i>Sectors</i>		<i>Departures On Time</i>		<i>Arrivals On Time</i>		<i>Cancellations</i>	
	<i>Sched.</i>	<i>Flown</i>	<i>No.</i>	<i>%</i>	<i>No.</i>	<i>%</i>	<i>No.</i>	<i>%</i>
Perth-Broome								
Qantas	35	35	28	80.0	28	80.0	0	0.0
QantasLink	46	46	37	80.4	40	87.0	0	0.0
Skywest	23	23	15	65.2	14	60.9	0	0.0
Virgin Australia	59	58	53	91.4	53	91.4	1	1.7
All Airlines	163	162	133	82.1	135	83.3	1	0.6
Perth-Darwin								
Qantas	30	30	27	90.0	26	86.7	0	0.0
Virgin Australia	30	30	29	96.7	28	93.3	0	0.0
All Airlines	60	60	56	93.3	54	90.0	0	0.0
Perth-Geraldton								
QantasLink	51	51	18	35.3	28	54.9	0	0.0
Skywest	100	100	68	68.0	65	65.0	0	0.0
All Airlines	151	151	86	57.0	93	61.6	0	0.0
Perth-Kalgoorlie								
Qantas	68	68	58	85.3	57	83.8	0	0.0
QantasLink	18	18	16	88.9	16	88.9	0	0.0
Skywest	15	15	12	80.0	9	60.0	0	0.0
All Airlines	101	101	86	85.1	82	81.2	0	0.0
Perth-Karratha								
Qantas	192	187	164	87.7	164	87.7	5	2.6
QantasLink	61	58	49	84.5	49	84.5	3	4.9
Virgin Australia	51	48	38	79.2	38	79.2	3	5.9
All Airlines	304	293	251	85.7	251	85.7	11	3.6
Perth-Melbourne								
Jetstar	87	86	66	76.7	64	74.4	1	1.1
Qantas	214	213	194	91.1	185	86.9	1	0.5
Tiger Airways	65	64	57	89.1	45	70.3	1	1.5
Virgin Australia	150	150	139	92.7	121	80.7	0	0.0
All Airlines	516	513	456	88.9	415	80.9	3	0.6
Perth-Newman								
Qantas	70	68	55	80.9	57	83.8	2	2.9
QantasLink	54	51	45	88.2	47	92.2	3	5.6
Virgin Australia	30	29	27	93.1	26	89.7	1	3.3
All Airlines	154	148	127	85.8	130	87.8	6	3.9
Perth-Port Hedland								
Qantas	107	100	90	90.0	90	90.0	7	6.5
QantasLink	32	29	27	93.1	27	93.1	3	9.4
Virgin Australia	59	59	54	91.5	53	89.8	0	0.0
All Airlines	198	188	171	91.0	170	90.4	10	5.1
Perth-Sydney								
Jetstar	45	43	34	79.1	32	74.4	2	4.4
Qantas	200	198	161	81.3	143	72.2	2	1.0
Virgin Australia	145	144	133	92.4	75	52.1	1	0.7
All Airlines	390	385	328	85.2	250	64.9	5	1.3
Port Hedland-Perth								
Qantas	107	99	84	84.8	86	86.9	8	7.5
QantasLink	32	30	28	93.3	27	90.0	2	6.3
Virgin Australia	62	59	51	86.4	54	91.5	3	4.8
All Airlines	201	188	163	86.7	167	88.8	13	6.5
Port Lincoln-Adelaide								
QantasLink	98	98	82	83.7	81	82.7	0	0.0
Regional Express	195	193	183	94.8	183	94.8	2	1.0
All Airlines	293	291	265	91.1	264	90.7	2	0.7

	<i>Sectors</i>		<i>Departures</i>		<i>Arrivals</i>		<i>Cancellations</i>	
	<i>Sched.</i>	<i>Flown</i>	<i>On Time</i>		<i>On Time</i>		<i>No.</i>	<i>%</i>
			<i>No.</i>	<i>%</i>	<i>No.</i>	<i>%</i>		
Port Macquarie-Sydney								
QantasLink	132	127	93	73.2	88	69.3	5	3.8
Virgin Australia - ATR/F100 Operations	60	60	41	68.3	35	58.3	0	0.0
All Airlines	192	187	134	71.7	123	65.8	5	2.6
Proserpine-Brisbane								
Jetstar	28	28	26	92.9	27	96.4	0	0.0
Virgin Australia	30	30	27	90.0	28	93.3	0	0.0
Virgin Australia - ATR/F100 Operations	21	21	15	71.4	12	57.1	0	0.0
All Airlines	79	79	68	86.1	67	84.8	0	0.0
Rockhampton-Brisbane								
QantasLink	177	177	125	70.6	120	67.8	0	0.0
Virgin Australia	76	76	62	81.6	61	80.3	0	0.0
Virgin Australia - ATR/F100 Operations	71	65	56	86.2	58	89.2	6	8.5
All Airlines	324	318	243	76.4	239	75.2	6	1.9
Sunshine Coast-Melbourne								
Jetstar	66	65	38	58.5	40	61.5	1	1.5
Virgin Australia	30	30	21	70.0	26	86.7	0	0.0
All Airlines	96	95	59	62.1	66	69.5	1	1.0
Sunshine Coast-Sydney								
Jetstar	107	107	85	79.4	89	83.2	0	0.0
Virgin Australia	34	32	29	90.6	29	90.6	2	5.9
All Airlines	141	139	114	82.0	118	84.9	2	1.4
Sydney-Adelaide								
Jetstar	86	86	73	84.9	77	89.5	0	0.0
Qantas	266	266	241	90.6	245	92.1	0	0.0
Virgin Australia	176	175	105	60.0	136	77.7	1	0.6
All Airlines	528	527	419	79.5	458	86.9	1	0.2
Sydney-Albury								
QantasLink	114	113	64	56.6	67	59.3	1	0.9
Regional Express	100	100	72	72.0	70	70.0	0	0.0
Virgin Australia	60	60	49	81.7	50	83.3	0	0.0
All Airlines	274	273	185	67.8	187	68.5	1	0.4
Sydney-Ayers Rock								
Qantas	30	30	26	86.7	25	83.3	0	0.0
Virgin Australia	30	30	18	60.0	27	90.0	0	0.0
All Airlines	60	60	44	73.3	52	86.7	0	0.0
Sydney-Ballina								
Jetstar	51	51	40	78.4	39	76.5	0	0.0
Regional Express	24	24	15	62.5	15	62.5	0	0.0
Virgin Australia	30	30	24	80.0	20	66.7	0	0.0
All Airlines	105	105	79	75.2	74	70.5	0	0.0
Sydney-Brisbane								
Jetstar	114	112	87	77.7	81	72.3	2	1.8
Qantas	564	558	468	83.9	428	76.7	6	1.1
Virgin Australia	557	546	413	75.6	386	70.7	11	2.0
All Airlines	1 235	1 216	968	79.6	895	73.6	19	1.5
Sydney-Cairns								
Jetstar	79	79	65	82.3	67	84.8	0	0.0
Qantas	96	96	86	89.6	87	90.6	0	0.0
Virgin Australia	90	89	61	68.5	65	73.0	1	1.1
All Airlines	265	264	212	80.3	219	83.0	1	0.4

	<i>Sectors</i>		<i>Departures On Time</i>		<i>Arrivals On Time</i>		<i>Cancellations</i>	
	<i>Sched.</i>	<i>Flown</i>	<i>No.</i>	<i>%</i>	<i>No.</i>	<i>%</i>	<i>No.</i>	<i>%</i>
Sydney-Canberra								
Qantas	161	157	140	89.2	135	86.0	4	2.5
QantasLink	394	349	265	75.9	256	73.4	45	11.4
Virgin Australia	98	96	60	62.5	58	60.4	2	2.0
Virgin Australia - ATR/F100 Operations	164	160	115	71.9	114	71.3	4	2.4
All Airlines	817	762	580	76.1	563	73.9	55	6.7
Sydney-Coffs Harbour								
QantasLink	142	141	100	70.9	93	66.0	1	0.7
Virgin Australia	60	59	43	72.9	39	66.1	1	1.7
All Airlines	202	200	143	71.5	132	66.0	2	1.0
Sydney-Dubbo								
QantasLink	106	106	69	65.1	71	67.0	0	0.0
Regional Express	153	149	124	83.2	124	83.2	4	2.6
All Airlines	259	255	193	75.7	195	76.5	4	1.5
Sydney-Gold Coast								
Jetstar	328	325	262	80.6	261	80.3	3	0.9
Virgin Australia	342	337	245	72.7	236	70.0	5	1.5
All Airlines	670	662	507	76.6	497	75.1	8	1.2
Sydney-Hamilton Island								
Jetstar	30	30	22	73.3	23	76.7	0	0.0
Virgin Australia	30	30	20	66.7	19	63.3	0	0.0
All Airlines	60	60	42	70.0	42	70.0	0	0.0
Sydney-Hobart								
Jetstar	58	58	45	77.6	50	86.2	0	0.0
Qantas	30	30	28	93.3	30	100.0	0	0.0
Virgin Australia	60	59	33	55.9	38	64.4	1	1.7
All Airlines	148	147	106	72.1	118	80.3	1	0.7
Sydney-Launceston								
Jetstar	30	30	21	70.0	22	73.3	0	0.0
Virgin Australia	30	30	19	63.3	20	66.7	0	0.0
All Airlines	60	60	40	66.7	42	70.0	0	0.0
Sydney-Melbourne								
Jetstar	237	232	138	59.5	168	72.4	5	2.1
Qantas	845	813	734	90.3	725	89.2	32	3.8
Tiger Airways	257	252	227	90.1	231	91.7	5	1.9
Virgin Australia	808	779	612	78.6	651	83.6	29	3.6
All Airlines	2 147	2 076	1 711	82.4	1 775	85.5	71	3.3
Sydney-Perth								
Jetstar	46	44	31	70.5	36	81.8	2	4.3
Qantas	203	202	166	82.2	181	89.6	1	0.5
Virgin Australia	147	146	100	68.5	128	87.7	1	0.7
All Airlines	396	392	297	75.8	345	88.0	4	1.0
Sydney-Port Macquarie								
QantasLink	132	128	88	68.8	87	68.0	4	3.0
Virgin Australia - ATR/F100 Operations	60	58	34	58.6	29	50.0	2	3.3
All Airlines	192	186	122	65.6	116	62.4	6	3.1
Sydney-Sunshine Coast								
Jetstar	107	107	90	84.1	93	86.9	0	0.0
Virgin Australia	34	32	28	87.5	30	93.8	2	5.9
All Airlines	141	139	118	84.9	123	88.5	2	1.4

	<i>Sectors</i>		<i>Departures On Time</i>		<i>Arrivals On Time</i>		<i>Cancellations</i>	
	<i>Sched.</i>	<i>Flown</i>	<i>No.</i>	<i>%</i>	<i>No.</i>	<i>%</i>	<i>No.</i>	<i>%</i>
Sydney-Townsville								
Jetstar	28	28	24	85.7	24	85.7	0	0.0
Virgin Australia	30	30	20	66.7	23	76.7	0	0.0
All Airlines	58	58	44	75.9	47	81.0	0	0.0
Sydney-Wagga Wagga								
QantasLink	111	110	84	76.4	77	70.0	1	0.9
Regional Express	111	111	88	79.3	84	75.7	0	0.0
All Airlines	222	221	172	77.8	161	72.9	1	0.5
Townsville-Brisbane								
Jetstar	30	29	22	75.9	20	69.0	1	3.3
Qantas	137	137	119	86.9	115	83.9	0	0.0
Virgin Australia	162	159	137	86.2	129	81.1	3	1.9
All Airlines	329	325	278	85.5	264	81.2	4	1.2
Townsville-Cairns								
QantasLink	179	171	121	70.8	102	59.6	8	4.5
Virgin Australia	30	30	24	80.0	25	83.3	0	0.0
All Airlines	209	201	145	72.1	127	63.2	8	3.8
Townsville-Sydney								
Jetstar	28	28	22	78.6	24	85.7	0	0.0
Virgin Australia	30	30	18	60.0	17	56.7	0	0.0
All Airlines	58	58	40	69.0	41	70.7	0	0.0
Wagga Wagga-Sydney								
QantasLink	110	109	75	68.8	66	60.6	1	0.9
Regional Express	110	110	88	80.0	84	76.4	0	0.0
All Airlines	220	219	163	74.4	150	68.5	1	0.5

Airports

On time performance is reported for all routes where the passenger load averages over 8000 passengers per month, and where two or more airlines operate in competition. The following data reports by airport against flights operated on those routes only.

Airport	Departures			Arrivals		
	Sectors	On Time		Sectors	On Time	
	Flown	No.	%	Flown	No.	%
Adelaide						
Jetstar	271	218	80.4	270	234	86.7
Qantas	825	721	87.4	829	753	90.8
QantasLink	115	96	83.5	114	94	82.5
Regional Express	193	186	96.4	193	183	94.8
Virgin Australia	656	580	88.4	659	596	90.4
All Airlines	2 060	1 801	87.4	2 065	1 860	90.1
Relates to services to and from Brisbane, Canberra, Gold Coast, Melbourne, Perth Port Lincoln and Sydney.						
Albury						
QantasLink	112	65	58.0	113	67	59.3
Regional Express	100	76	76.0	100	70	70.0
Virgin Australia	60	49	81.7	60	50	83.3
All Airlines	272	190	69.9	273	187	68.5
Relates to services to and from Sydney only.						
Ayers Rock						
Qantas	30	28	93.3	30	25	83.3
Virgin Australia	29	27	93.1	30	27	90.0
All Airlines	59	55	93.2	60	52	86.7
Relates to services to and from Sydney only.						
Ballina						
Jetstar	52	38	73.1	51	39	76.5
Regional Express	23	12	52.2	24	15	62.5
Virgin Australia	30	19	63.3	30	20	66.7
All Airlines	105	69	65.7	105	74	70.5
Relates to services to and from Sydney only.						
Brisbane						
Jetstar	665	530	79.7	665	510	76.7
Qantas	1 604	1 309	81.6	1 605	1 263	78.7
QantasLink	706	547	77.5	705	502	71.2
Tiger Airways	92	73	79.3	91	79	86.8
Virgin Australia	1 815	1 497	82.5	1 811	1 417	78.2
Virgin Australia - ATR/F100 Operations	311	276	88.7	310	254	81.9
All Airlines	5 193	4 232	81.5	5 187	4 025	77.6
Relates to services to and from Adelaide, Cairns, Canberra, Darwin, Emerald, Hamilton Island, Gladstone, Mackay, Melbourne, Newcastle, Perth, Proserpine, Rockhampton, Sydney and Townsville.						

Airport	Departures			Arrivals		
	Sectors Flown	On Time		Sectors Flown	On Time	
		No.	%		No.	%
Broome						
Qantas	35	23	65.7	35	28	80.0
QantasLink	46	39	84.8	46	40	87.0
Skywest	23	17	73.9	23	14	60.9
Virgin Australia	57	52	91.2	58	53	91.4
All Airlines	161	131	81.4	162	135	83.3
Relates to services to and from Perth only.						
Cairns						
Jetstar	269	232	86.2	270	237	87.8
Qantas	243	214	88.1	243	214	88.1
QantasLink	176	142	80.7	171	102	59.6
Tiger Airways	6	5	83.3	6	5	83.3
Virgin Australia	295	262	88.8	295	246	83.4
Virgin Australia - ATR/F100 Operations	26	19	73.1	26	20	76.9
All Airlines	1 015	874	86.1	1 011	824	81.5
Relates to services to and from Brisbane, Melbourne, Sydney and Townsville.						
Canberra						
Qantas	581	522	89.8	584	517	88.5
QantasLink	403	319	79.2	405	305	75.3
Virgin Australia	402	333	82.8	404	318	78.7
Virgin Australia - ATR/F100 Operations	159	119	74.8	160	114	71.3
All Airlines	1 545	1 293	83.7	1 553	1 254	80.7
Relates to services to and from Adelaide, Brisbane, Melbourne and Sydney.						
Coffs Harbour						
QantasLink	141	75	53.2	141	93	66.0
Virgin Australia	59	39	66.1	59	39	66.1
All Airlines	200	114	57.0	200	132	66.0
Relates to services to and from Sydney only.						
Darwin						
Jetstar	14	11	78.6	14	13	92.9
Qantas	73	59	80.8	73	63	86.3
Virgin Australia	90	79	87.8	90	72	80.0
All Airlines	177	149	84.2	177	148	83.6
Relates to services to and from Brisbane, Melbourne and Perth.						
Dubbo						
QantasLink	106	73	68.9	106	71	67.0
Regional Express	145	121	83.4	149	124	83.2
All Airlines	251	194	77.3	255	195	76.5
Relates to services to and from Sydney only.						
Emerald						
QantasLink	167	139	83.2	167	139	83.2
Virgin Australia - ATR/F100 Operations	68	62	91.2	68	63	92.6
All Airlines	235	201	85.5	235	202	86.0
Relates to services to and from Brisbane only.						

Airport	Departures			Arrivals		
	Sectors Flown	On Time		Sectors Flown	On Time	
		No.	%		No.	%
Geraldton						
QantasLink	51	28	54.9	51	28	54.9
Skywest	104	71	68.3	100	65	65.0
All Airlines	155	99	63.9	151	93	61.6
Relates to services to and from Perth only.						
Gladstone						
QantasLink	194	145	74.7	173	136	78.6
Virgin Australia - ATR/F100 Operations	70	61	87.1	70	60	85.7
All Airlines	264	206	78.0	243	196	80.7
Relates to services to and from Brisbane only.						
Gold Coast						
Jetstar	561	410	73.1	558	431	77.2
Tiger Airways	85	78	91.8	86	79	91.9
Virgin Australia	564	439	77.8	569	431	75.7
All Airlines	1 210	927	76.6	1 213	941	77.6
Relates to services to and from Adelaide, Melbourne and Sydney.						
Hamilton Island						
Jetstar	48	40	83.3	48	39	81.3
Virgin Australia	60	41	68.3	60	45	75.0
All Airlines	108	81	75.0	108	84	77.8
Relates to services to and from Brisbane and Sydney.						
Hobart						
Jetstar	201	150	74.6	203	166	81.8
Qantas	90	83	92.2	90	82	91.1
Virgin Australia	192	142	74.0	190	154	81.1
All Airlines	483	375	77.6	483	402	83.2
Relates to services to and from Melbourne and Sydney.						
Kalgoorlie						
Qantas	68	56	82.4	68	57	83.8
QantasLink	19	13	68.4	18	16	88.9
Skywest	15	11	73.3	15	9	60.0
All Airlines	102	80	78.4	101	82	81.2
Relates to services to and from Perth only.						
Karratha						
Qantas	184	153	83.2	187	164	87.7
QantasLink	58	49	84.5	58	49	84.5
Virgin Australia	49	34	69.4	48	38	79.2
All Airlines	291	236	81.1	293	251	85.7
Relates to services to and from Perth only.						
Launceston						
Jetstar	129	90	69.8	128	99	77.3
QantasLink	75	42	56.0	75	44	58.7
Virgin Australia	162	129	79.6	163	135	82.8
All Airlines	366	261	71.3	366	278	76.0
Relates to services to and from Melbourne and Sydney.						

Airport	Departures			Arrivals		
	Sectors	On Time		Sectors	On Time	
	Flown	No.	%	Flown	No.	%
Mackay						
Jetstar	108	92	85.2	108	92	85.2
QantasLink	80	59	73.8	81	66	81.5
Virgin Australia	159	140	88.1	159	130	81.8
All Airlines	347	291	83.9	348	288	82.8
Relates to services to and from Brisbane only.						
Melbourne						
Jetstar	1 215	935	77.0	1 218	910	74.7
Qantas	2 069	1 854	89.6	2 068	1 845	89.2
QantasLink	210	171	81.4	210	159	75.7
Regional Express	82	75	91.5	82	75	91.5
Tiger Airways	500	474	94.8	499	440	88.2
Virgin Australia	2 347	2 066	88.0	2 345	2 028	86.5
All Airlines	6 423	5 575	86.8	6 422	5 457	85.0
Relates to services to and from Adelaide, Brisbane, Cairns, Canberra, Darwin, Gold Coast, Hobart, Launceston, Mildura, Newcastle, Perth, Sunshine Coast and Sydney.						
Mildura						
QantasLink	85	74	87.1	85	65	76.5
Regional Express	82	75	91.5	82	75	91.5
Virgin Australia	30	26	86.7	30	26	86.7
All Airlines	197	175	88.8	197	166	84.3
Relates to services to and from Melbourne only.						
Newcastle						
Jetstar	216	184	85.2	217	182	83.9
QantasLink	65	40	61.5	65	42	64.6
Virgin Australia	30	22	73.3	30	27	90.0
Virgin Australia - ATR/F100 Operations	60	48	80.0	60	48	80.0
All Airlines	371	294	79.2	372	299	80.4
Relates to services to and from Brisbane and Melbourne.						
Newman						
Qantas	68	49	72.1	68	57	83.8
QantasLink	51	42	82.4	51	47	92.2
Virgin Australia	30	24	80.0	29	26	89.7
All Airlines	149	115	77.2	148	130	87.8
Relates to services to and from Perth only.						
Perth						
Jetstar	196	146	74.5	197	166	84.3
Qantas	1 127	979	86.9	1 128	980	86.9
QantasLink	253	192	75.9	255	202	79.2
Skywest	138	95	68.8	142	91	64.1
Tiger Airways	64	57	89.1	65	61	93.8
Virgin Australia	649	601	92.6	652	579	88.8
All Airlines	2 427	2 070	85.3	2 439	2 079	85.2
Relates to services to and from Adelaide, Brisbane, Broome, Darwin, Geraldton, Kalgoorlie, Karratha, Melbourne, Newman, Port Hedland and Sydney.						

Airport	Departures			Arrivals		
	Sectors Flown	On Time		Sectors Flown	On Time	
		No.	%		No.	%
Port Hedland						
Qantas	99	84	84.8	100	90	90.0
QantasLink	30	28	93.3	29	27	93.1
Virgin Australia	59	51	86.4	59	53	89.8
All Airlines	188	163	86.7	188	170	90.4
Relates to services to and from Perth only.						
Port Lincoln						
QantasLink	98	82	83.7	99	81	81.8
Regional Express	193	183	94.8	193	184	95.3
All Airlines	291	265	91.1	292	265	90.8
Relates to services to and from Adelaide only.						
Port Macquarie						
QantasLink	127	93	73.2	128	87	68.0
Virgin Australia - ATR/F100 Operations	60	41	68.3	58	29	50.0
All Airlines	187	134	71.7	186	116	62.4
Relates to services to and from Sydney only.						
Proserpine						
Jetstar	28	26	92.9	27	24	88.9
Virgin Australia	30	27	90.0	30	25	83.3
Virgin Australia - ATR/F100 Operations	21	15	71.4	21	15	71.4
All Airlines	79	68	86.1	78	64	82.1
Relates to services to and from Brisbane only.						
Rockhampton						
QantasLink	177	125	70.6	198	147	74.2
Virgin Australia	76	62	81.6	76	65	85.5
Virgin Australia - ATR/F100 Operations	65	56	86.2	66	58	87.9
All Airlines	318	243	76.4	340	270	79.4
Relates to services to and from Brisbane only.						
Sunshine Coast						
Jetstar	172	123	71.5	172	132	76.7
Virgin Australia	62	50	80.6	62	55	88.7
All Airlines	234	173	73.9	234	187	79.9
Relates to services to and from Melbourne and Sydney.						
Sydney						
Jetstar	1 182	898	76.0	1 181	875	74.1
Qantas	2 152	1 889	87.8	2 140	1 812	84.7
QantasLink	947	670	70.7	942	636	67.5
Regional Express	384	299	77.9	378	290	76.7
Tiger Airways	252	227	90.1	252	242	96.0
Virgin Australia	2 528	1 850	73.2	2 521	1 905	75.6
Virgin Australia - ATR/F100 Operations	218	149	68.3	219	146	66.7
All Airlines	7 663	5 982	78.1	7 633	5 906	77.4
Relates to services to and from Adelaide, Albury, Ayers Rock, Ballina, Brisbane, Cairns, Canberra, Coffs Harbour, Dubbo, Gold Coast, Hamilton Island, Hobart, Launceston, Melbourne, Perth, Port Macquarie, Sunshine Coast, Townsville and Wagga Wagga.						

<i>Airport</i>	<i>Departures</i>			<i>Arrivals</i>		
	<i>Sectors</i>	<i>On Time</i>		<i>Sectors</i>	<i>On Time</i>	
	<i>Flown</i>	<i>No.</i>	<i>%</i>	<i>Flown</i>	<i>No.</i>	<i>%</i>
Townsville						
Jetstar	57	44	77.2	57	48	84.2
Qantas	137	119	86.9	137	119	86.9
QantasLink	171	121	70.8	176	138	78.4
Virgin Australia	219	179	81.7	220	186	84.5
All Airlines	584	463	79.3	590	491	83.2
Relates to services to and from Brisbane, Cairns and Sydney.						
Wagga Wagga						
QantasLink	109	75	68.8	110	77	70.0
Regional Express	110	88	80.0	111	84	75.7
All Airlines	219	163	74.4	221	161	72.9
Relates to services to and from Sydney only.						

Definitions

On time departure A flight departure is counted as "on time" if it departs the gate within 15 minutes of the scheduled departure time shown in the carriers' schedule.

On time arrival A flight arrival is counted as "on time" if it arrived at the gate within 15 minutes of the scheduled arrival time shown in the carriers' schedule.
Neither diverted nor cancelled flights count as on time.

Cancellation A flight removed from service within 7 days of scheduled departure is regarded as a cancellation.

On time departure percentage The percentage of on time departures is measured against the number of departures *operated* on any particular sector.

On time arrival percentage The percentage of on time arrivals is measured against the number of arrivals *operated* on any particular sector.

Cancellation percentage The percentage of cancellations is measured against the number of services *scheduled* on any particular sector.
