



Australian Government

Department of Infrastructure, Transport,
Regional Development and Local Government
Bureau of Infrastructure, Transport and Regional Economics



AVIATION STATISTICS

Airline On Time Performance

April 2009—OTP 73

© Commonwealth of Australia 2009

ISSN 1832-0759

This work is copyright and the data contained in this publication should not be reproduced or used in any form without acknowledgement.

Enquiries

Bureau of Infrastructure, Transport and Regional Economics
GPO Box 501
Canberra ACT 2601

Telephone: 02 6274 7790

Facsimile: 02 6274 7727

Website: www.bitre.gov.au

Email: avstats@infrastructure.gov.au

This publication, including a spreadsheet of the time-series data, can be downloaded from the BITRE website: <http://www.bitre.gov.au/info.aspx?ResourceId=214&NodeId=104>.

Disclaimers

BITRE seeks to publish its work to the highest professional standards. However, it cannot accept responsibility for any consequences arising from the use of information herein. Readers should rely on their own skill and judgment in applying any information or analysis to particular issues or circumstances.

Foreword

The Bureau of Infrastructure, Transport and Regional Economics (BITRE) monitors the punctuality and reliability of major domestic airlines operating between Australian airports. The purpose of this is to allow for evaluation of overall industry and individual airline performance, so that consumers of air travel can make informed decisions.

The following domestic airlines report this data monthly to the BITRE: Jetstar, Qantas, QantasLink, Regional Express, Skywest Airlines, Tiger Airways, and Virgin Blue. Data has been gathered since November 2003, although some airlines commenced reporting since then, including Jetstar which first reported in May 2004, MacAir in July 2005 and Tiger Airways in April 2008. MacAir ceased operations in February 2009 and data was not received for December 2008 onwards.

Information presented in this report is for Australian domestic routes for which the passenger load averaged 8000 or more passengers per month over the previous six months, *and* where two or more airlines operated in competition on those routes. There were 49 routes that met this definition in April 2009. Over time, routes which meet these criteria change as airline networks and traffic levels vary.

Participating airlines report their overall monthly network performance where this is possible.

Total industry figures encompass all services operated by reporting airlines only. These airlines collectively carried over 95 per cent of total domestic passengers (regular public transport only) in 2008.

The method of capturing on time performance varies between airlines utilising different recording systems. Jetstar and Qantas jet aircraft use Aircraft Communication Addressing and Reporting System (ACARS) to electronically measure on time performance. Regional Express, Skywest, Tiger Airways, Virgin Blue and the Qantas non-jet fleet record on time performance manually using records from pilots, gate agents and/or ground crews.

After initial data is collected, aggregate reports are audited internally by participating airlines prior to publication.

Reports and detailed time series data in Microsoft Excel spreadsheet format are available from the BITRE website at: <http://www.bitre.gov.au/info.aspx?ResourceId=214&NodeId=104>.

Contents

	Page
Industry performance	1
Individual routes	9
Airports	21
Definitions	27

Industry performance

For April 2009, on time performance over all routes operated by participating airlines (Jetstar, Qantas, QantasLink, Regional Express, Skywest Airlines, Tiger Airways and Virgin Blue) averaged 83.6 per cent for on time departures, and 82.8 per cent for on time arrivals. Cancellations represented 1.4 per cent of all scheduled flights. The equivalent figures for April 2008 were 79.6 per cent for departures, 77.7 per cent for arrivals and 2.4 per cent for cancellations.

The long term average performance for all routes since reporting commenced in November 2003 is 84.9 per cent for on time departures and 83.7 per cent for on time arrivals. Cancellations average 1.2 per cent of all scheduled flights.

Of the major domestic airlines, Virgin Blue achieved the highest level of on time departures for April 2009 at 87.3 per cent, followed by Qantas at 86.4 per cent, Jetstar at 75.5 per cent and Tiger Airways at 72.2 per cent. The regional airlines were led by QantasLink at 84.5 per cent, Skywest at 82.4 per cent and Regional Express at 80.6 per cent.

Virgin Blue also achieved the highest on time arrivals among the major domestic airlines at 87.6 per cent, followed by Qantas at 86.9 per cent, Jetstar at 77.2 per cent and Tiger Airways at 69.2 per cent. Skywest was the best performing regional airline for on time arrivals at 82.2 per cent, followed by QantasLink at 81.0 per cent and Regional Express at 76.2 per cent.

Qantas had the highest percentage of cancellations for April 2009 at 2.6 per cent, while Tiger Airways had no cancellations.

Of the 49 routes which met the criteria for on time performance reporting in April 2009, the Sydney-Townsville route had the highest percentage of on time departures (94.1 per cent), while the Ballina-Sydney route had the lowest (65.0 per cent). On time arrivals were highest on the Sydney-Townsville route (96.1 per cent) and lowest on the Ballina-Sydney route (66.4 per cent).

Cancellations were highest on the Melbourne-Sydney route at 6.2 per cent, followed by Sydney-Melbourne at 6.1 per cent, Maroochydore-Sydney at 5.4 per cent, Canberra-Sydney at 5.1 per cent and Sydney-Canberra at 4.9 per cent.

Newman Airport recorded the highest percentage of on time departures (91.6 per cent), while Ballina Airport recorded the lowest (65.0 per cent). Harvey Bay Airport recorded the highest percentage of on time arrivals (95.7 per cent), while Wagga Wagga Airport recorded the lowest (73.3 per cent).

Table 1 On time performance for April 2009 — Total Industry

	<i>Sectors</i>		<i>Departures On Time</i>		<i>Arrivals On Time</i>		<i>Cancellations</i>	
	<i>Scheduled</i>	<i>Flown</i>	<i>No.</i>	<i>%</i>	<i>No.</i>	<i>%</i>	<i>No.</i>	<i>%</i>
Jetstar	5 980	5 931	4 477	75.5	4 579	77.2	49	0.8
Qantas	10 161	9 901	8 551	86.4	8 604	86.9	260	2.6
QantasLink	7 494	7 385	6 241	84.5	5 980	81.0	109	1.5
Regional Express	4 983	4 977	4 013	80.6	3 794	76.2	6	0.1
Skywest	1 052	1 034	852	82.4	850	82.2	18	1.7
Tiger Airways	1 038	1 038	749	72.2	718	69.2	0	0.0
Virgin Blue	11 428	11 267	9 835	87.3	9 867	87.6	161	1.4
All Airlines	42 136	41 533	34 718	83.6	34 392	82.8	603	1.4

1. Total airline network data (including routes not shown in this report).

Table 2 Top ten routes for on time performance for April 2009 (participating airlines only)

<i>Departures</i>		<i>Arrivals</i>	
<i>Route</i>	<i>On Time (%)</i>	<i>Route</i>	<i>On Time (%)</i>
Sydney-Townsville	94.1	Sydney-Townsville	96.1
Perth-Newman	94.1	Sydney-Hervey Bay	95.7
Sydney-Hervey Bay	93.6	Townsville-Sydney	94.1
Perth-Adelaide	92.1	Perth-Newman	93.2
Canberra-Brisbane	91.6	Cairns-Sydney	92.7
Adelaide-Sydney	91.6	Sydney-Adelaide	92.0
Newman-Perth	91.6	Canberra-Adelaide	91.9
Cairns-Brisbane	90.9	Brisbane-Canberra	91.7
Canberra-Sydney	90.4	Brisbane-Melbourne	91.0
Townsville-Sydney	90.2	Cairns-Melbourne	90.8

Table 3 Top ten airports for on time performance for April 2009 (participating airlines and reported routes only)

<i>Departures</i>		<i>Arrivals</i>	
<i>Airport</i>	<i>On Time (%)</i>	<i>Airport</i>	<i>On Time (%)</i>
Newman	91.6	Hervey Bay	95.7
Canberra	90.2	Newman	93.2
Kalgoorlie	90.0	Townsville	88.5
Cairns	89.2	Adelaide	88.3
Townsville	88.5	Canberra	88.3
Adelaide	87.4	Cairns	88.1
Hervey Bay	87.2	Karratha	87.1
Perth	85.8	Kalgoorlie	86.7
Karratha	85.5	Proserpine	86.7
Sydney	84.1	Broome	85.7

Total industry on time performance

Figure 1 On time performance (by month from April 2006)—Total Industry

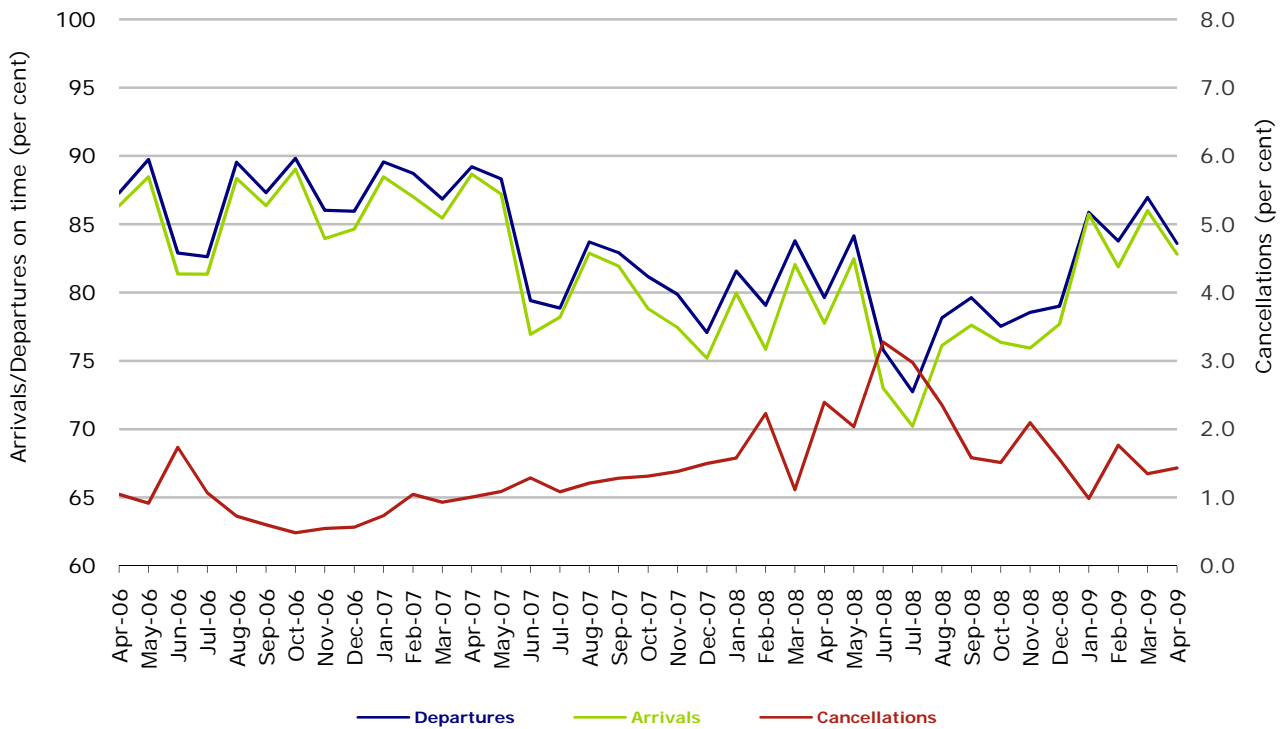
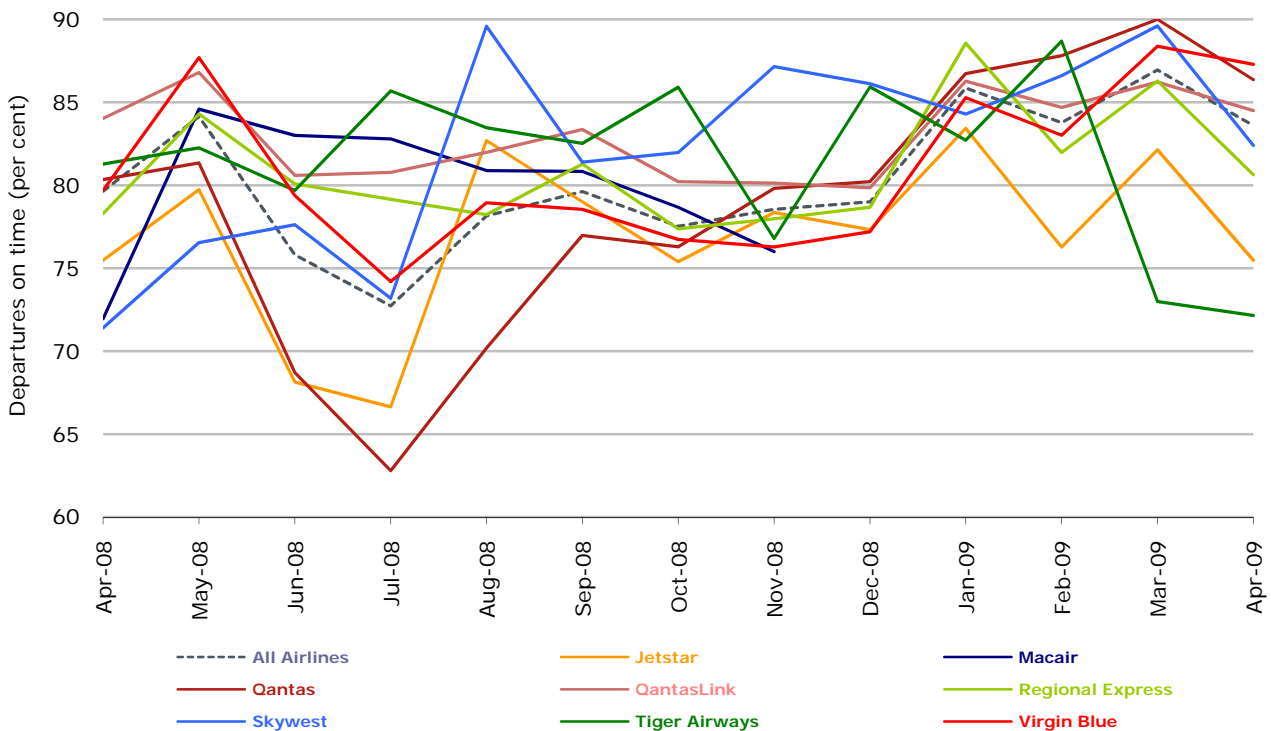
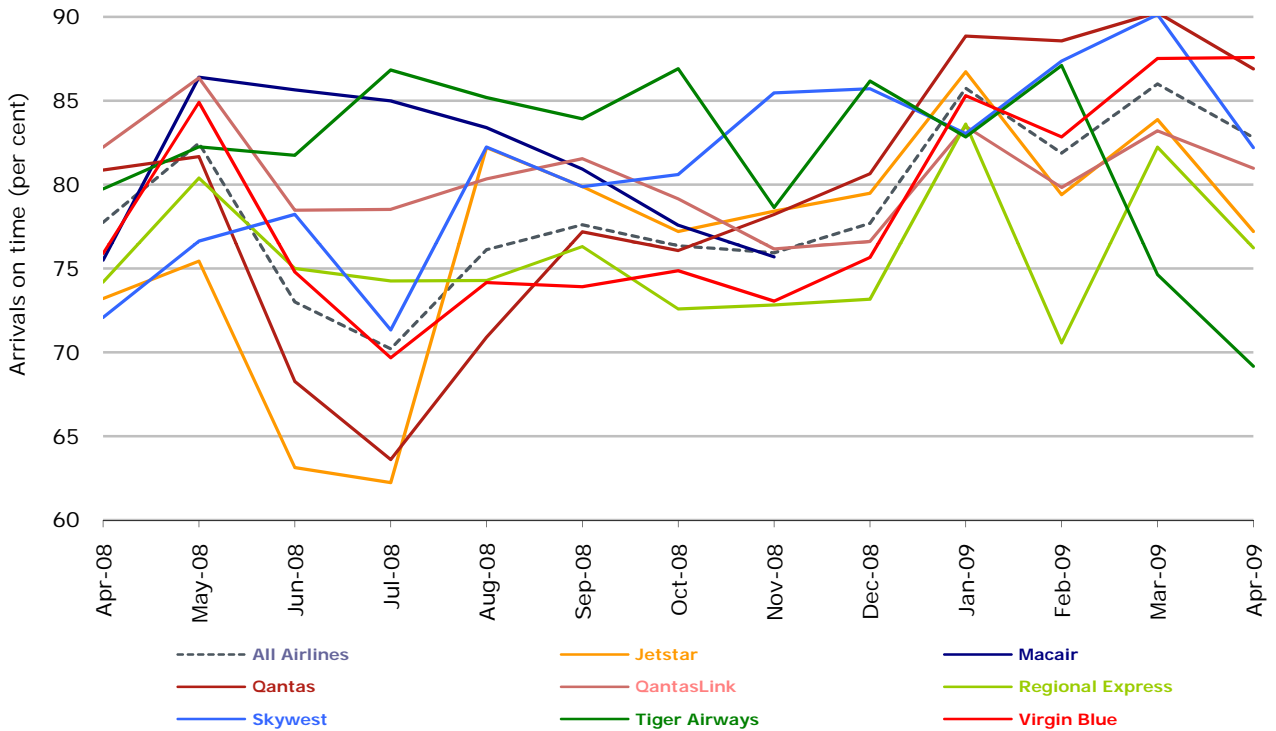


Figure 2 Departures on time (by month from April 2008)



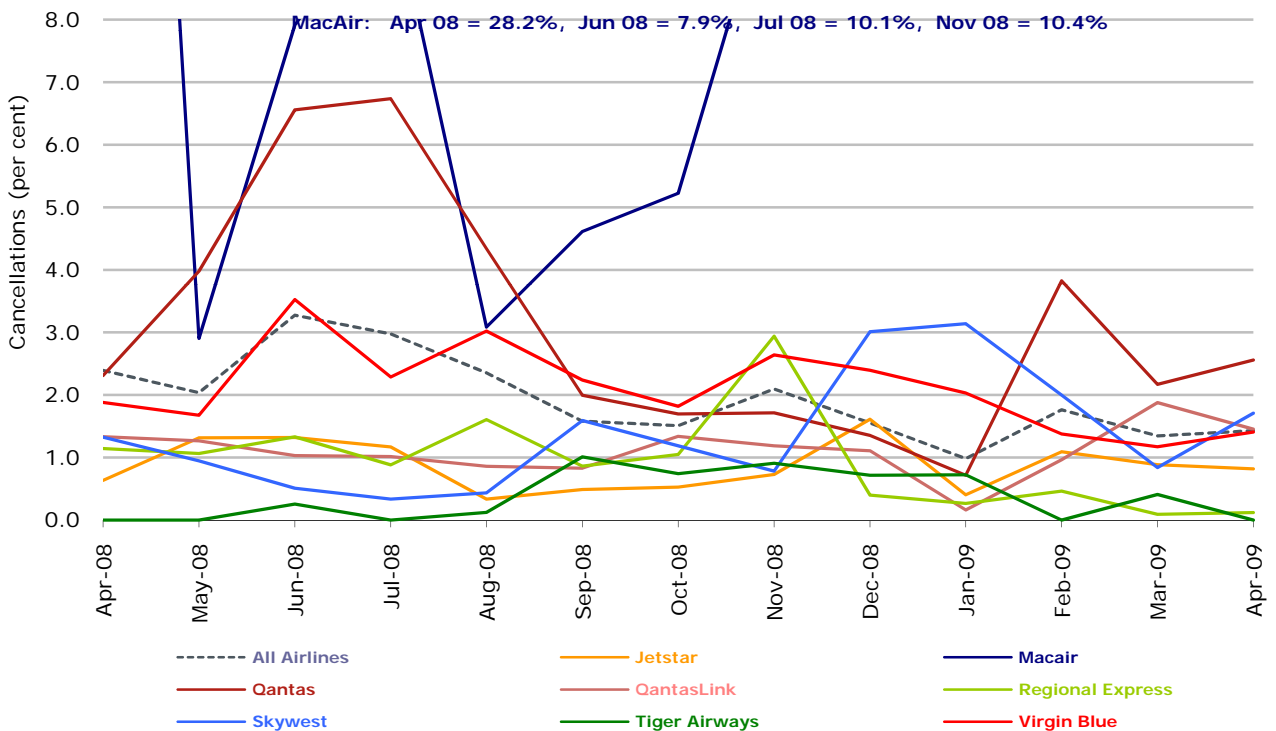
No data received from MacAir for December 2008 and onwards. Operations ceased in February 2009.

Figure 3 Arrivals on time (by month from April 2008)



No data received from MacAir for December 2008 and onwards. Operations ceased in February 2009.

Figure 4 Cancellations (by month from April 2008)



No data received from MacAir for December 2008 and onwards. Operations ceased in February 2009.

Major domestic airlines on time performance

Figure 5 On time performance (by month from April 2006)—Jetstar

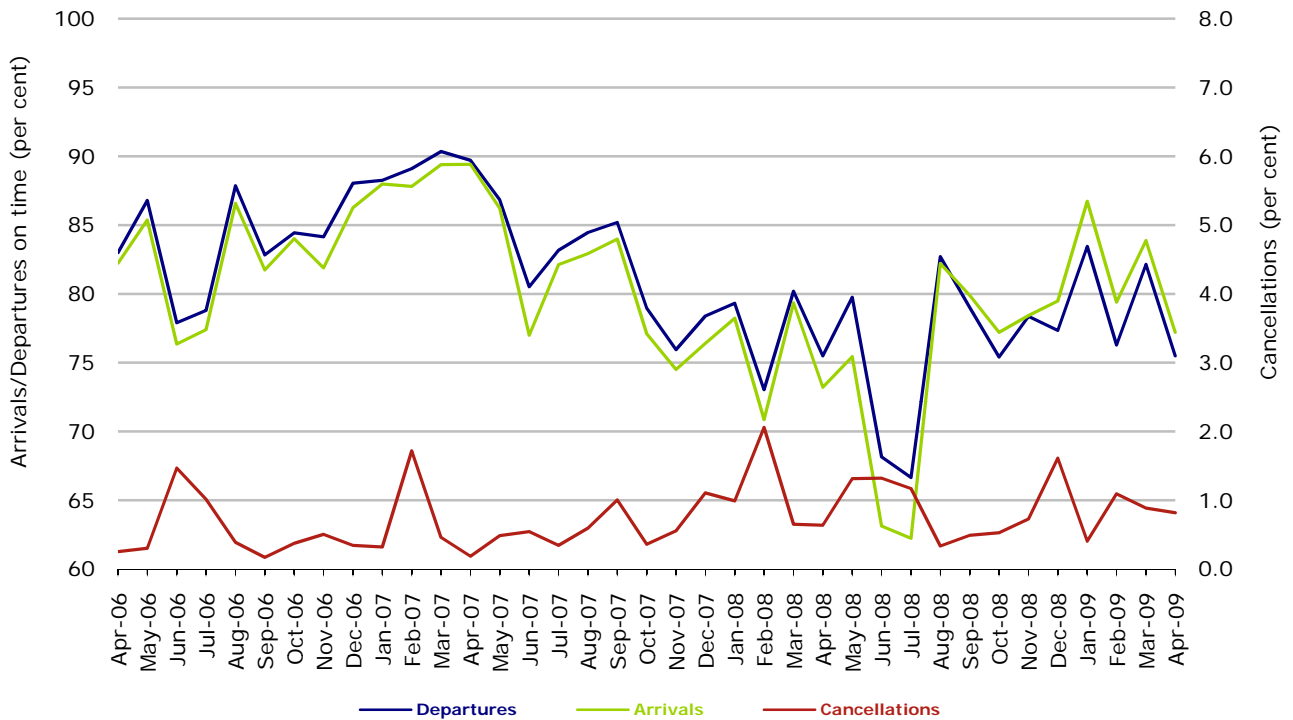


Figure 6 On time performance (by month from April 2006)—Qantas

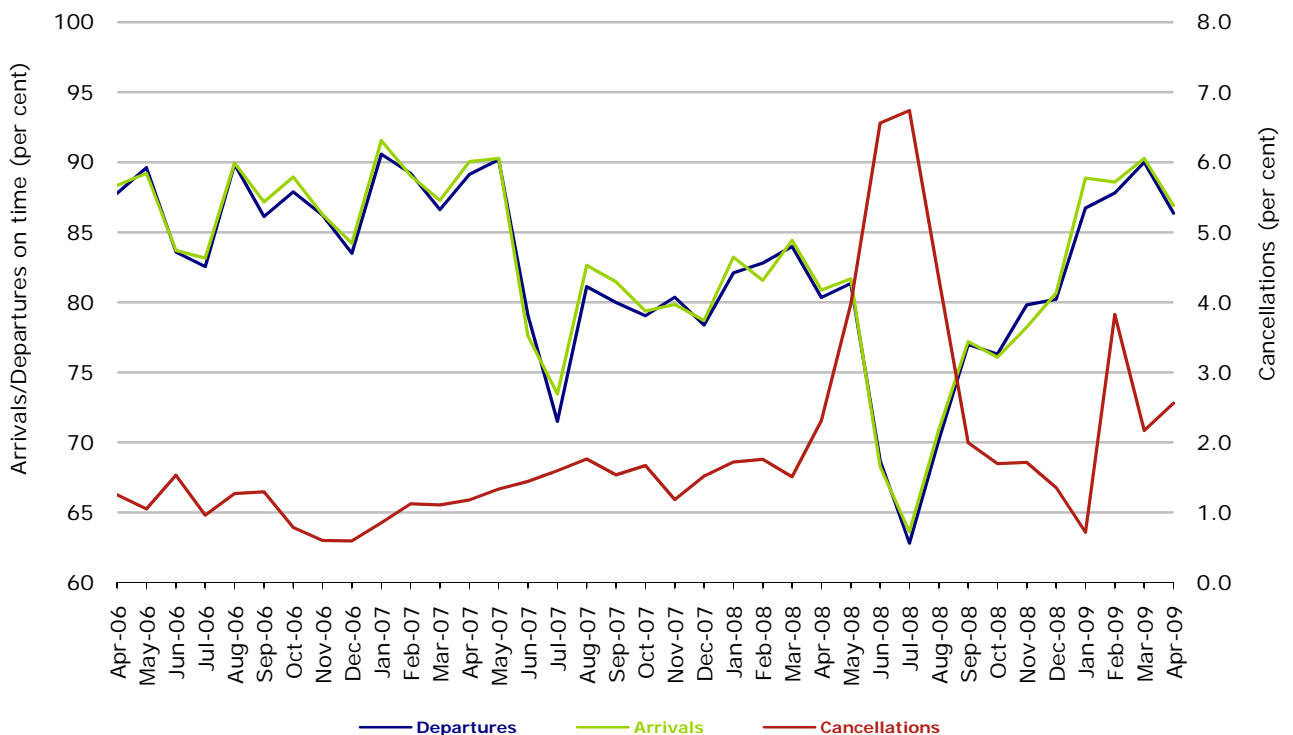
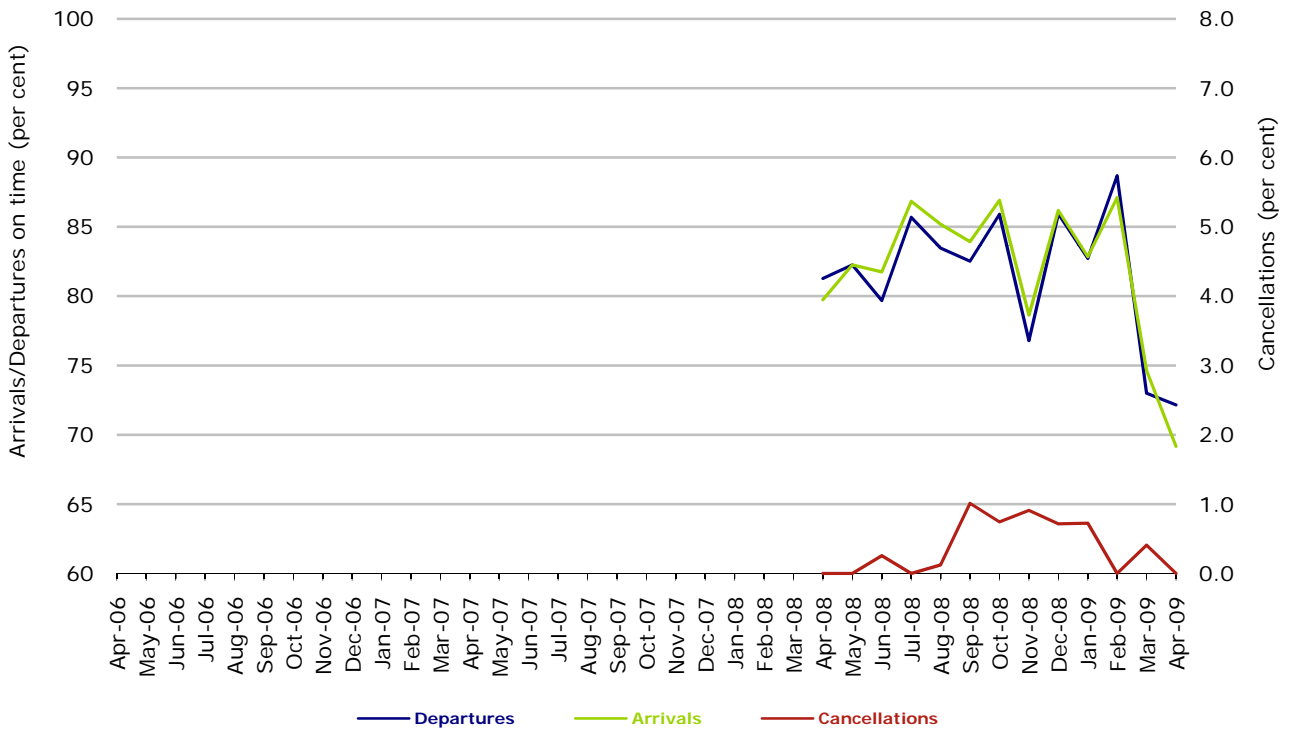
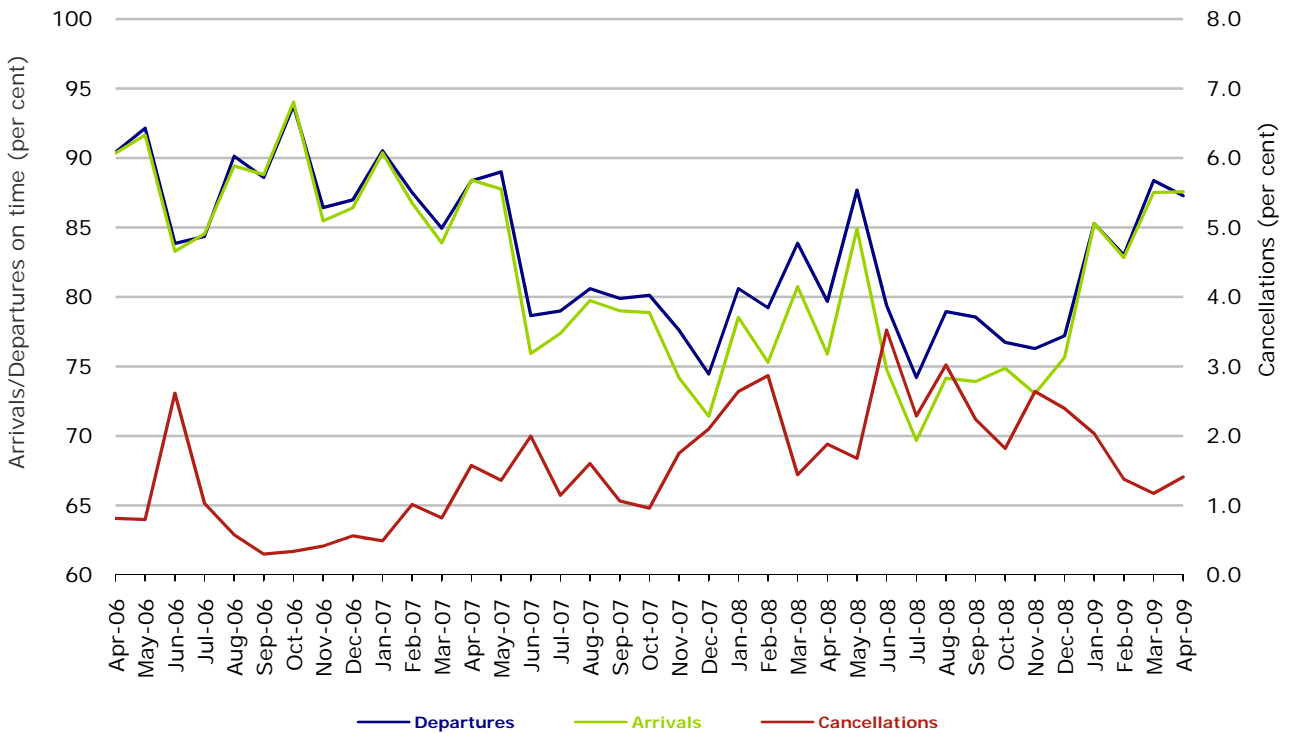


Figure 7 On time performance (by month from April 2006)—Tiger Airways



Tiger Airways began reporting in April 2008.

Figure 8 On time performance (by month from April 2006)—Virgin Blue



Major regional airlines on time performance

Figure 9 On time performance (by month from April 2006)—QantasLink

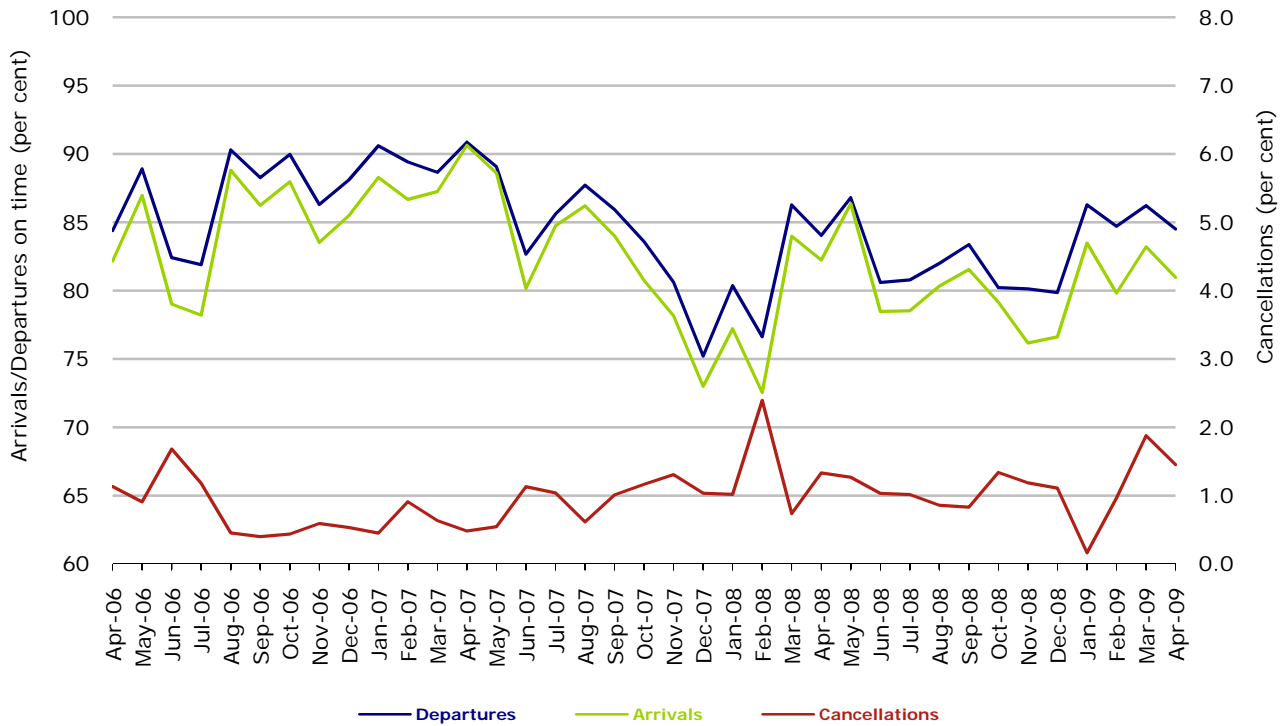


Figure 10 On time performance (by month from April 2006)—Regional Express

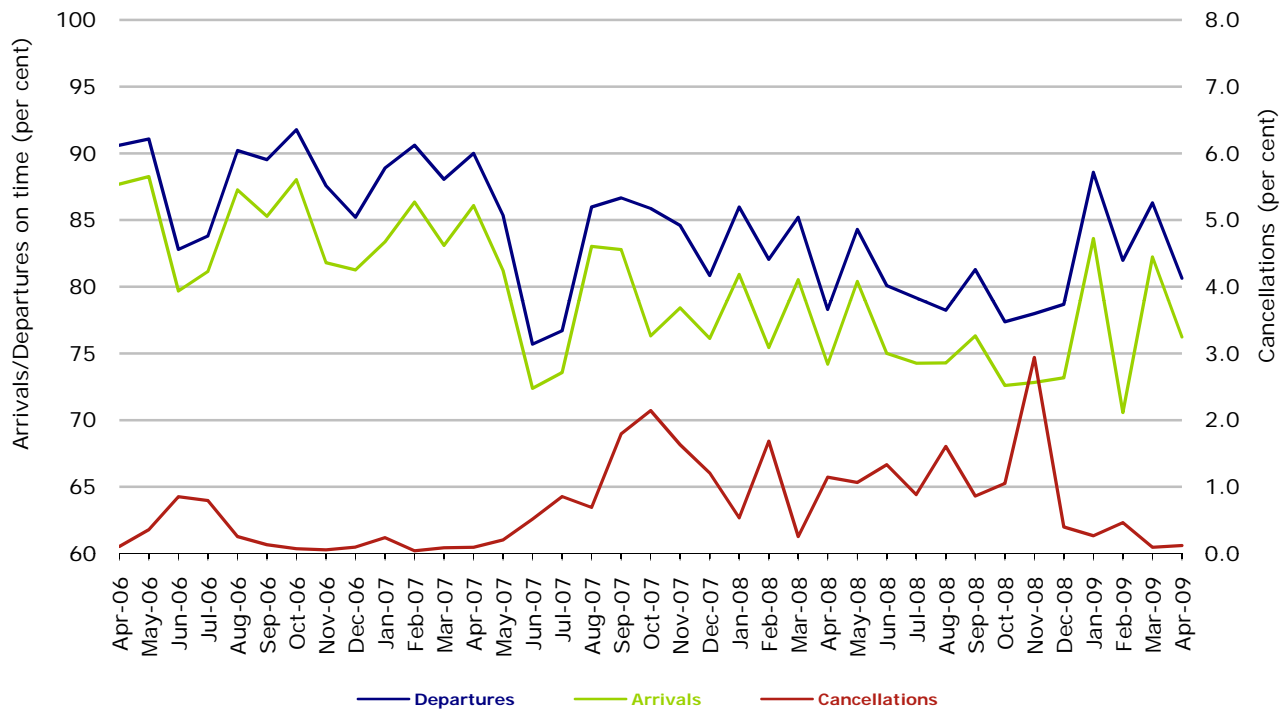
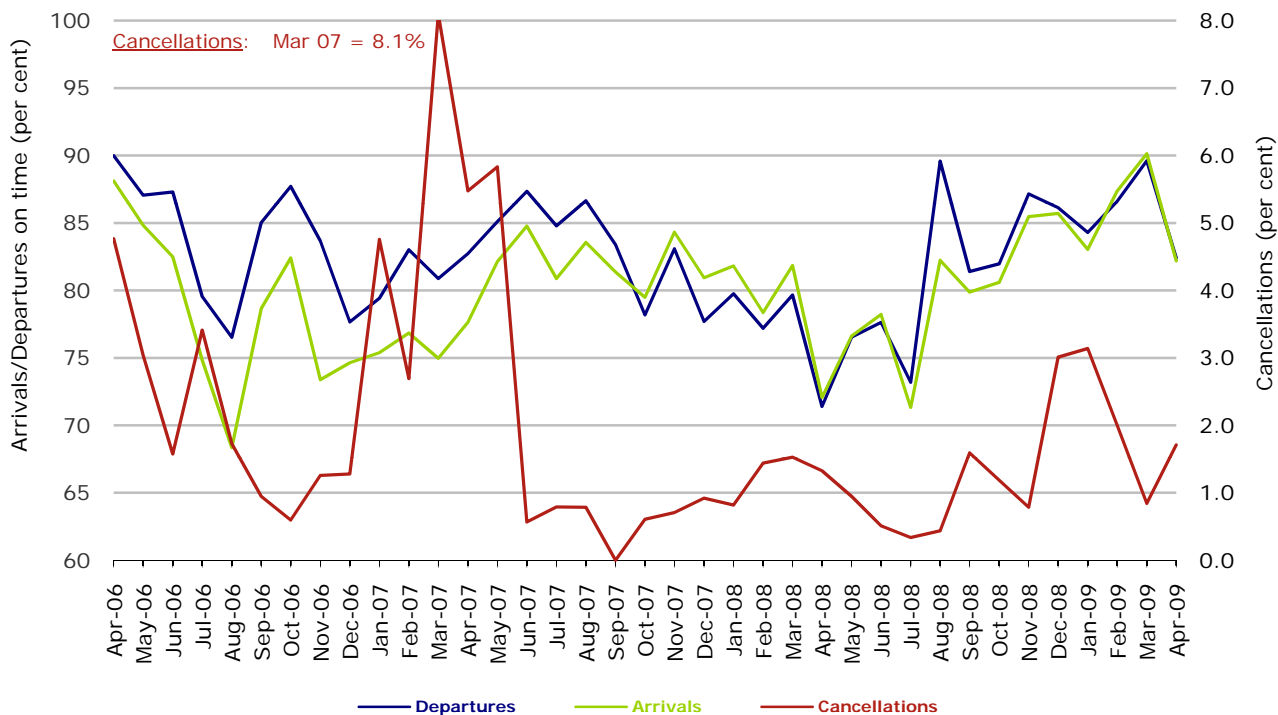


Figure 11 On time performance (by month from April 2006)—Skywest



Individual routes

On time performance is reported for all routes where the passenger load averages over 8000 passengers per month over the previous six months, and where two or more airlines operate in competition on those routes. There are now 49 routes which meet this definition. Over time, however, routes which meet this definition may change as airline networks and traffic levels vary.

	<i>Sectors</i>		<i>Departures On Time</i>		<i>Arrivals On Time</i>		<i>Cancellations</i>	
	<i>Sched.</i>	<i>Flown</i>	<i>No.</i>	<i>%</i>	<i>No.</i>	<i>%</i>	<i>No.</i>	<i>%</i>
Adelaide-Brisbane								
Jetstar	30	30	23	76.7	22	73.3	0	0.0
Qantas	86	86	82	95.3	82	95.3	0	0.0
Virgin Blue	109	106	91	85.8	92	86.8	3	2.8
All Airlines	225	222	196	88.3	196	88.3	3	1.3
Adelaide-Canberra								
Qantas	48	48	39	81.3	40	83.3	0	0.0
Tiger Airways	17	17	15	88.2	15	88.2	0	0.0
Virgin Blue	30	30	23	76.7	23	76.7	0	0.0
All Airlines	95	95	77	81.1	78	82.1	0	0.0
Adelaide-Gold Coast								
Jetstar	30	30	26	86.7	26	86.7	0	0.0
Tiger Airways	30	30	23	76.7	25	83.3	0	0.0
Virgin Blue	30	30	29	96.7	27	90.0	0	0.0
All Airlines	90	90	78	86.7	78	86.7	0	0.0
Adelaide-Melbourne								
Jetstar	47	47	18	38.3	22	46.8	0	0.0
Qantas	340	336	299	89.0	288	85.7	4	1.2
Tiger Airways	82	82	54	65.9	48	58.5	0	0.0
Virgin Blue	313	310	285	91.9	283	91.3	3	1.0
All Airlines	782	775	656	84.6	641	82.7	7	0.9
Adelaide-Perth								
Jetstar	30	30	28	93.3	29	96.7	0	0.0
Qantas	133	133	116	87.2	121	91.0	0	0.0
Tiger Airways	30	30	28	93.3	12	40.0	0	0.0
Virgin Blue	60	59	55	93.2	55	93.2	1	1.7
All Airlines	253	252	227	90.1	217	86.1	1	0.4
Adelaide-Sydney								
Jetstar	30	30	27	90.0	27	90.0	0	0.0
Qantas	299	298	279	93.6	263	88.3	1	0.3
Virgin Blue	148	148	130	87.8	130	87.8	0	0.0
All Airlines	477	476	436	91.6	420	88.2	1	0.2
Albury-Sydney								
QantasLink	105	105	86	81.9	83	79.0	0	0.0
Regional Express	109	109	85	78.0	84	77.1	0	0.0
Virgin Blue	60	60	51	85.0	49	81.7	0	0.0
All Airlines	274	274	222	81.0	216	78.8	0	0.0

	<i>Sectors</i>		<i>Departures On Time</i>		<i>Arrivals On Time</i>		<i>Cancellations</i>	
	<i>Sched.</i>	<i>Flown</i>	<i>No.</i>	<i>%</i>	<i>No.</i>	<i>%</i>	<i>No.</i>	<i>%</i>
Alice Springs-Melbourne								
Qantas	30	30	23	76.7	26	86.7	0	0.0
Tiger Airways	13	13	9	69.2	9	69.2	0	0.0
All Airlines	43	43	32	74.4	35	81.4	0	0.0
Ballina-Sydney								
Jetstar	30	30	21	70.0	25	83.3	0	0.0
Regional Express	83	83	43	51.8	43	51.8	0	0.0
Virgin Blue	30	30	29	96.7	27	90.0	0	0.0
All Airlines	143	143	93	65.0	95	66.4	0	0.0
Brisbane-Adelaide								
Jetstar	30	30	23	76.7	23	76.7	0	0.0
Qantas	86	86	78	90.7	83	96.5	0	0.0
Virgin Blue	109	107	86	80.4	94	87.9	2	1.8
All Airlines	225	223	187	83.9	200	89.7	2	0.9
Brisbane-Cairns								
Jetstar	100	100	71	71.0	79	79.0	0	0.0
Qantas	120	120	109	90.8	113	94.2	0	0.0
Virgin Blue	120	120	106	88.3	111	92.5	0	0.0
All Airlines	340	340	286	84.1	303	89.1	0	0.0
Brisbane-Canberra								
Qantas	142	142	133	93.7	137	96.5	0	0.0
QantasLink	8	8	7	87.5	7	87.5	0	0.0
Virgin Blue	138	138	116	84.1	120	87.0	0	0.0
All Airlines	288	288	256	88.9	264	91.7	0	0.0
Brisbane-Darwin								
Jetstar	50	49	30	61.2	27	55.1	1	2.0
Qantas	30	30	23	76.7	27	90.0	0	0.0
Virgin Blue	30	30	25	83.3	26	86.7	0	0.0
All Airlines	110	109	78	71.6	80	73.4	1	0.9
Brisbane-Hamilton Island								
Jetstar	30	30	22	73.3	26	86.7	0	0.0
Virgin Blue	30	30	22	73.3	22	73.3	0	0.0
All Airlines	60	60	44	73.3	48	80.0	0	0.0
Brisbane-Mackay								
Jetstar	85	84	55	65.5	61	72.6	1	1.2
QantasLink	54	54	46	85.2	45	83.3	0	0.0
Virgin Blue	139	139	110	79.1	110	79.1	0	0.0
All Airlines	278	277	211	76.2	216	78.0	1	0.4
Brisbane-Melbourne								
Qantas	430	426	363	85.2	387	90.8	4	0.9
Virgin Blue	345	342	310	90.6	312	91.2	3	0.9
All Airlines	775	768	673	87.6	699	91.0	7	0.9

	<i>Sectors</i>		<i>Departures On Time</i>		<i>Arrivals On Time</i>		<i>Cancellations</i>	
	<i>Sched.</i>	<i>Flown</i>	<i>No.</i>	<i>%</i>	<i>No.</i>	<i>%</i>	<i>No.</i>	<i>%</i>
Brisbane-Newcastle								
Jetstar	116	116	93	80.2	100	86.2	0	0.0
QantasLink	66	64	61	95.3	51	79.7	2	3.0
Virgin Blue	47	47	43	91.5	44	93.6	0	0.0
All Airlines	229	227	197	86.8	195	85.9	2	0.9
Brisbane-Perth								
Qantas	120	120	94	78.3	102	85.0	0	0.0
Virgin Blue	60	60	55	91.7	54	90.0	0	0.0
All Airlines	180	180	149	82.8	156	86.7	0	0.0
Brisbane-Proserpine								
Jetstar	30	30	22	73.3	24	80.0	0	0.0
Virgin Blue	30	30	28	93.3	28	93.3	0	0.0
All Airlines	60	60	50	83.3	52	86.7	0	0.0
Brisbane-Rockhampton								
Jetstar	30	30	22	73.3	22	73.3	0	0.0
QantasLink	176	175	151	86.3	149	85.1	1	0.6
Virgin Blue	141	139	115	82.7	114	82.0	2	1.4
All Airlines	347	344	288	83.7	285	82.8	3	0.9
Brisbane-Sydney								
Jetstar	60	58	48	82.8	48	82.8	2	3.3
Qantas	596	573	467	81.5	482	84.1	23	3.9
Virgin Blue	533	525	424	80.8	413	78.7	8	1.5
All Airlines	1,189	1,156	939	81.2	943	81.6	33	2.8
Brisbane-Townsville								
Jetstar	54	49	40	81.6	41	83.7	5	9.3
Qantas	151	151	129	85.4	132	87.4	0	0.0
Virgin Blue	150	149	130	87.2	132	88.6	1	0.7
All Airlines	355	349	299	85.7	305	87.4	6	1.7
Broome-Perth								
Qantas	21	21	14	66.7	16	76.2	0	0.0
QantasLink	59	59	53	89.8	55	93.2	0	0.0
Skywest	26	26	15	57.7	10	38.5	0	0.0
Virgin Blue	47	47	40	85.1	43	91.5	0	0.0
All Airlines	153	153	122	79.7	124	81.0	0	0.0
Cairns-Brisbane								
Jetstar	99	99	83	83.8	85	85.9	0	0.0
Qantas	120	120	113	94.2	113	94.2	0	0.0
Virgin Blue	120	120	112	93.3	107	89.2	0	0.0
All Airlines	339	339	308	90.9	305	90.0	0	0.0
Cairns-Melbourne								
Jetstar	30	30	24	80.0	24	80.0	0	0.0
Qantas	30	30	26	86.7	28	93.3	0	0.0
Virgin Blue	61	60	52	86.7	57	95.0	1	1.6
All Airlines	121	120	102	85.0	109	90.8	1	0.8

	<i>Sectors</i>		<i>Departures On Time</i>		<i>Arrivals On Time</i>		<i>Cancellations</i>	
	<i>Sched.</i>	<i>Flown</i>	<i>No.</i>	<i>%</i>	<i>No.</i>	<i>%</i>	<i>No.</i>	<i>%</i>
Cairns-Sydney								
Jetstar	35	35	29	82.9	29	82.9	0	0.0
Qantas	98	98	85	86.7	89	90.8	0	0.0
Virgin Blue	86	86	81	94.2	85	98.8	0	0.0
All Airlines	219	219	195	89.0	203	92.7	0	0.0
Canberra-Adelaide								
Qantas	52	52	49	94.2	51	98.1	0	0.0
Tiger Airways	17	17	14	82.4	14	82.4	0	0.0
Virgin Blue	30	30	26	86.7	26	86.7	0	0.0
All Airlines	99	99	89	89.9	91	91.9	0	0.0
Canberra-Brisbane								
Qantas	142	141	132	93.6	131	92.9	1	0.7
QantasLink	8	8	7	87.5	7	87.5	0	0.0
Virgin Blue	139	137	123	89.8	116	84.7	2	1.4
All Airlines	289	286	262	91.6	254	88.8	3	1.0
Canberra-Melbourne								
Qantas	254	251	237	94.4	229	91.2	3	1.2
QantasLink	34	31	29	93.5	27	87.1	3	8.8
Tiger Airways	60	60	34	56.7	33	55.0	0	0.0
Virgin Blue	168	165	152	92.1	153	92.7	3	1.8
All Airlines	516	507	452	89.2	442	87.2	9	1.7
Canberra-Sydney								
Qantas	194	180	165	91.7	160	88.9	14	7.2
QantasLink	388	367	319	86.9	307	83.7	21	5.4
Virgin Blue	216	210	200	95.2	198	94.3	6	2.8
All Airlines	798	757	684	90.4	665	87.8	41	5.1
Coffs Harbour-Sydney								
QantasLink	122	120	90	75.0	93	77.5	2	1.6
Virgin Blue	60	60	53	88.3	54	90.0	0	0.0
All Airlines	182	180	143	79.4	147	81.7	2	1.1
Darwin-Brisbane								
Jetstar	50	48	35	72.9	41	85.4	2	4.0
Qantas	30	30	25	83.3	21	70.0	0	0.0
Virgin Blue	30	30	26	86.7	28	93.3	0	0.0
All Airlines	110	108	86	79.6	90	83.3	2	1.8
Dubbo-Sydney								
QantasLink	98	98	86	87.8	79	80.6	0	0.0
Regional Express	145	145	113	77.9	111	76.6	0	0.0
All Airlines	243	243	199	81.9	190	78.2	0	0.0
Gold Coast-Adelaide								
Jetstar	30	30	27	90.0	26	86.7	0	0.0
Tiger Airways	30	30	25	83.3	18	60.0	0	0.0
Virgin Blue	30	30	25	83.3	27	90.0	0	0.0
All Airlines	90	90	77	85.6	71	78.9	0	0.0

	<i>Sectors</i>		<i>Departures On Time</i>		<i>Arrivals On Time</i>		<i>Cancellations</i>	
	<i>Sched.</i>	<i>Flown</i>	<i>No.</i>	<i>%</i>	<i>No.</i>	<i>%</i>	<i>No.</i>	<i>%</i>
Gold Coast-Melbourne								
Jetstar	181	181	129	71.3	142	78.5	0	0.0
Tiger Airways	90	90	63	70.0	65	72.2	0	0.0
Virgin Blue	159	157	125	79.6	137	87.3	2	1.3
All Airlines	430	428	317	74.1	344	80.4	2	0.5
Gold Coast-Newcastle								
Jetstar	30	30	20	66.7	25	83.3	0	0.0
Virgin Blue	13	13	13	100.0	13	100.0	0	0.0
All Airlines	43	43	33	76.7	38	88.4	0	0.0
Gold Coast-Sydney								
Jetstar	295	295	234	79.3	236	80.0	0	0.0
Virgin Blue	333	330	297	90.0	305	92.4	3	0.9
All Airlines	628	625	531	85.0	541	86.6	3	0.5
Hamilton Island-Brisbane								
Jetstar	30	30	22	73.3	24	80.0	0	0.0
Virgin Blue	30	30	23	76.7	23	76.7	0	0.0
All Airlines	60	60	45	75.0	47	78.3	0	0.0
Hervey Bay-Sydney								
Jetstar	17	17	15	88.2	15	88.2	0	0.0
Virgin Blue	30	30	26	86.7	26	86.7	0	0.0
All Airlines	47	47	41	87.2	41	87.2	0	0.0
Hobart-Melbourne								
Jetstar	146	145	99	68.3	104	71.7	1	0.7
Qantas	60	60	52	86.7	52	86.7	0	0.0
Tiger Airways	30	30	20	66.7	20	66.7	0	0.0
Virgin Blue	120	120	112	93.3	113	94.2	0	0.0
All Airlines	356	355	283	79.7	289	81.4	1	0.3
Hobart-Sydney								
Jetstar	60	60	40	66.7	41	68.3	0	0.0
Qantas	30	30	24	80.0	25	83.3	0	0.0
Virgin Blue	60	60	57	95.0	56	93.3	0	0.0
All Airlines	150	150	121	80.7	122	81.3	0	0.0
Kalgoorlie-Perth								
Qantas	28	27	22	81.5	22	81.5	1	3.6
QantasLink	75	74	68	91.9	68	91.9	1	1.3
Skywest	23	19	18	94.7	15	78.9	4	17.4
All Airlines	126	120	108	90.0	105	87.5	6	4.8
Karratha-Perth								
Qantas	140	134	117	87.3	114	85.1	6	4.3
QantasLink	29	28	24	85.7	24	85.7	1	3.4
Skywest	22	21	15	71.4	15	71.4	1	4.5
Virgin Blue	53	52	45	86.5	41	78.8	1	1.9
All Airlines	244	235	201	85.5	194	82.6	9	3.7

	<i>Sectors</i>		<i>Departures On Time</i>		<i>Arrivals On Time</i>		<i>Cancellations</i>	
	<i>Sched.</i>	<i>Flown</i>	<i>No.</i>	<i>%</i>	<i>No.</i>	<i>%</i>	<i>No.</i>	<i>%</i>
Launceston-Melbourne								
Jetstar	90	89	63	70.8	66	74.2	1	1.1
QantasLink	63	63	46	73.0	42	66.7	0	0.0
Tiger Airways	30	30	21	70.0	21	70.0	0	0.0
Virgin Blue	120	120	101	84.2	102	85.0	0	0.0
All Airlines	303	302	231	76.5	231	76.5	1	0.3
Launceston-Sydney								
Jetstar	30	30	20	66.7	22	73.3	0	0.0
Virgin Blue	30	30	24	80.0	23	76.7	0	0.0
All Airlines	60	60	44	73.3	45	75.0	0	0.0
Mackay-Brisbane								
Jetstar	85	84	48	57.1	53	63.1	1	1.2
QantasLink	54	54	48	88.9	51	94.4	0	0.0
Virgin Blue	139	139	121	87.1	118	84.9	0	0.0
All Airlines	278	277	217	78.3	222	80.1	1	0.4
Maroochydore-Melbourne								
Jetstar	58	56	41	73.2	40	71.4	2	3.4
Tiger Airways	17	17	13	76.5	14	82.4	0	0.0
Virgin Blue	50	46	35	76.1	39	84.8	4	8.0
All Airlines	125	119	89	74.8	93	78.2	6	4.8
Maroochydore-Sydney								
Jetstar	88	82	63	76.8	70	85.4	6	6.8
Virgin Blue	61	59	46	78.0	49	83.1	2	3.3
All Airlines	149	141	109	77.3	119	84.4	8	5.4
Melbourne-Adelaide								
Jetstar	47	47	44	93.6	45	95.7	0	0.0
Qantas	339	335	293	87.5	297	88.7	4	1.2
Tiger Airways	82	82	58	70.7	56	68.3	0	0.0
Virgin Blue	311	310	278	89.7	284	91.6	1	0.3
All Airlines	779	774	673	87.0	682	88.1	5	0.6
Melbourne-Alice Springs								
Qantas	30	30	24	80.0	27	90.0	0	0.0
Tiger Airways	13	13	9	69.2	9	69.2	0	0.0
All Airlines	43	43	33	76.7	36	83.7	0	0.0
Melbourne-Brisbane								
Qantas	426	421	368	87.4	364	86.5	5	1.2
Virgin Blue	343	337	313	92.9	303	89.9	6	1.7
All Airlines	769	758	681	89.8	667	88.0	11	1.4
Melbourne-Cairns								
Jetstar	30	30	22	73.3	23	76.7	0	0.0
Qantas	30	30	28	93.3	27	90.0	0	0.0
Virgin Blue	60	60	48	80.0	48	80.0	0	0.0
All Airlines	120	120	98	81.7	98	81.7	0	0.0

	<i>Sectors</i>		<i>Departures On Time</i>		<i>Arrivals On Time</i>		<i>Cancellations</i>	
	<i>Sched.</i>	<i>Flown</i>	<i>No.</i>	<i>%</i>	<i>No.</i>	<i>%</i>	<i>No.</i>	<i>%</i>
Melbourne-Canberra								
Qantas	254	250	232	92.8	231	92.4	4	1.6
QantasLink	34	31	29	93.5	26	83.9	3	8.8
Tiger Airways	60	60	36	60.0	38	63.3	0	0.0
Virgin Blue	166	163	146	89.6	147	90.2	3	1.8
All Airlines	514	504	443	87.9	442	87.7	10	1.9
Melbourne-Gold Coast								
Jetstar	180	180	123	68.3	129	71.7	0	0.0
Tiger Airways	90	90	62	68.9	62	68.9	0	0.0
Virgin Blue	159	159	141	88.7	132	83.0	0	0.0
All Airlines	429	429	326	76.0	323	75.3	0	0.0
Melbourne-Hobart								
Jetstar	146	145	94	64.8	107	73.8	1	0.7
Qantas	60	60	46	76.7	49	81.7	0	0.0
Tiger Airways	30	30	20	66.7	22	73.3	0	0.0
Virgin Blue	120	120	112	93.3	111	92.5	0	0.0
All Airlines	356	355	272	76.6	289	81.4	1	0.3
Melbourne-Launceston								
Jetstar	90	89	58	65.2	61	68.5	1	1.1
QantasLink	63	63	44	69.8	39	61.9	0	0.0
Tiger Airways	30	30	22	73.3	22	73.3	0	0.0
Virgin Blue	120	120	95	79.2	98	81.7	0	0.0
All Airlines	303	302	219	72.5	220	72.8	1	0.3
Melbourne-Maroochydore								
Jetstar	58	57	45	78.9	42	73.7	1	1.7
Tiger Airways	17	17	14	82.4	14	82.4	0	0.0
Virgin Blue	51	49	42	85.7	40	81.6	2	3.9
All Airlines	126	123	101	82.1	96	78.0	3	2.4
Melbourne-Mildura								
QantasLink	100	100	74	74.0	73	73.0	0	0.0
Regional Express	87	87	73	83.9	74	85.1	0	0.0
Virgin Blue	30	30	29	96.7	28	93.3	0	0.0
All Airlines	217	217	176	81.1	175	80.6	0	0.0
Melbourne-Newcastle								
Jetstar	90	90	51	56.7	59	65.6	0	0.0
Virgin Blue	30	30	28	93.3	30	100.0	0	0.0
All Airlines	120	120	79	65.8	89	74.2	0	0.0
Melbourne-Perth								
Jetstar	57	57	35	61.4	37	64.9	0	0.0
Qantas	205	205	155	75.6	169	82.4	0	0.0
Tiger Airways	60	60	42	70.0	40	66.7	0	0.0
Virgin Blue	120	120	107	89.2	106	88.3	0	0.0
All Airlines	442	442	339	76.7	352	79.6	0	0.0

	<i>Sectors</i>		<i>Departures On Time</i>		<i>Arrivals On Time</i>		<i>Cancellations</i>	
	<i>Sched.</i>	<i>Flown</i>	<i>No.</i>	<i>%</i>	<i>No.</i>	<i>%</i>	<i>No.</i>	<i>%</i>
Melbourne-Sydney								
Jetstar	14	14	8	57.1	8	57.1	0	0.0
Qantas	916	841	718	85.4	699	83.1	75	8.2
Virgin Blue	770	739	622	84.2	609	82.4	31	4.0
All Airlines	1,700	1,594	1,348	84.6	1,316	82.6	106	6.2
Mildura-Melbourne								
QantasLink	100	100	78	78.0	77	77.0	0	0.0
Regional Express	87	87	72	82.8	73	83.9	0	0.0
Virgin Blue	30	30	28	93.3	27	90.0	0	0.0
All Airlines	217	217	178	82.0	177	81.6	0	0.0
Newcastle-Brisbane								
Jetstar	116	116	88	75.9	90	77.6	0	0.0
QantasLink	66	64	48	75.0	50	78.1	2	3.0
Virgin Blue	47	47	45	95.7	44	93.6	0	0.0
All Airlines	229	227	181	79.7	184	81.1	2	0.9
Newcastle-Gold Coast								
Jetstar	30	30	25	83.3	24	80.0	0	0.0
Virgin Blue	13	13	13	100.0	13	100.0	0	0.0
All Airlines	43	43	38	88.4	37	86.0	0	0.0
Newcastle-Melbourne								
Jetstar	90	90	50	55.6	62	68.9	0	0.0
Virgin Blue	30	30	29	96.7	28	93.3	0	0.0
All Airlines	120	120	79	65.8	90	75.0	0	0.0
Newman-Perth								
QantasLink	91	89	82	92.1	81	91.0	2	2.2
Virgin Blue	32	30	27	90.0	27	90.0	2	6.3
All Airlines	123	119	109	91.6	108	90.8	4	3.3
Perth-Adelaide								
Jetstar	30	30	25	83.3	13	43.3	0	0.0
Qantas	133	133	122	91.7	111	83.5	0	0.0
Tiger Airways	30	30	28	93.3	28	93.3	0	0.0
Virgin Blue	60	59	57	96.6	57	96.6	1	1.7
All Airlines	253	252	232	92.1	209	82.9	1	0.4
Perth-Brisbane								
Qantas	120	120	89	74.2	90	75.0	0	0.0
Virgin Blue	60	60	56	93.3	45	75.0	0	0.0
All Airlines	180	180	145	80.6	135	75.0	0	0.0
Perth-Broome								
Qantas	21	21	18	85.7	17	81.0	0	0.0
QantasLink	60	60	53	88.3	51	85.0	0	0.0
Skywest	26	26	20	76.9	20	76.9	0	0.0
Virgin Blue	47	47	43	91.5	44	93.6	0	0.0
All Airlines	154	154	134	87.0	132	85.7	0	0.0

	<i>Sectors</i>		<i>Departures On Time</i>		<i>Arrivals On Time</i>		<i>Cancellations</i>	
	<i>Sched.</i>	<i>Flown</i>	<i>No.</i>	<i>%</i>	<i>No.</i>	<i>%</i>	<i>No.</i>	<i>%</i>
Perth-Kalgoorlie								
Qantas	28	27	22	81.5	21	77.8	1	3.6
QantasLink	74	73	65	89.0	65	89.0	1	1.4
Skywest	24	20	18	90.0	18	90.0	4	16.7
All Airlines	126	120	105	87.5	104	86.7	6	4.8
Perth-Karratha								
Qantas	140	134	119	88.8	119	88.8	6	4.3
QantasLink	26	26	24	92.3	23	88.5	0	0.0
Skywest	22	21	16	76.2	13	61.9	1	4.5
Virgin Blue	52	52	50	96.2	48	92.3	0	0.0
All Airlines	240	233	209	89.7	203	87.1	7	2.9
Perth-Melbourne								
Jetstar	60	57	32	56.1	34	59.6	3	5.0
Qantas	203	203	161	79.3	159	78.3	0	0.0
Tiger Airways	60	60	37	61.7	35	58.3	0	0.0
Virgin Blue	120	120	110	91.7	102	85.0	0	0.0
All Airlines	443	440	340	77.3	330	75.0	3	0.7
Perth-Newman								
QantasLink	88	88	82	93.2	82	93.2	0	0.0
Virgin Blue	30	30	29	96.7	28	93.3	0	0.0
All Airlines	118	118	111	94.1	110	93.2	0	0.0
Perth-Sydney								
Qantas	205	204	169	82.8	158	77.5	1	0.5
Virgin Blue	155	146	140	95.9	140	95.9	9	5.8
All Airlines	360	350	309	88.3	298	85.1	10	2.8
Port Macquarie-Sydney								
QantasLink	105	105	76	72.4	73	69.5	0	0.0
Virgin Blue	60	59	49	83.1	52	88.1	1	1.7
All Airlines	165	164	125	76.2	125	76.2	1	0.6
Proserpine-Brisbane								
Jetstar	30	30	24	80.0	23	76.7	0	0.0
Virgin Blue	30	30	26	86.7	26	86.7	0	0.0
All Airlines	60	60	50	83.3	49	81.7	0	0.0
Rockhampton-Brisbane								
Jetstar	30	30	19	63.3	21	70.0	0	0.0
QantasLink	154	151	131	86.8	132	87.4	3	1.9
Virgin Blue	140	139	116	83.5	116	83.5	1	0.7
All Airlines	324	320	266	83.1	269	84.1	4	1.2
Sydney-Adelaide								
Jetstar	30	30	28	93.3	28	93.3	0	0.0
Qantas	296	296	263	88.9	274	92.6	0	0.0
Virgin Blue	148	148	130	87.8	134	90.5	0	0.0
All Airlines	474	474	421	88.8	436	92.0	0	0.0

	<i>Sectors</i>		<i>Departures On Time</i>		<i>Arrivals On Time</i>		<i>Cancellations</i>	
	<i>Sched.</i>	<i>Flown</i>	<i>No.</i>	<i>%</i>	<i>No.</i>	<i>%</i>	<i>No.</i>	<i>%</i>
Sydney-Albury								
QantasLink	105	105	86	81.9	79	75.2	0	0.0
Regional Express	109	109	85	78.0	77	70.6	0	0.0
Virgin Blue	60	60	53	88.3	52	86.7	0	0.0
All Airlines	274	274	224	81.8	208	75.9	0	0.0
Sydney-Ballina								
Jetstar	30	30	25	83.3	28	93.3	0	0.0
Regional Express	83	83	59	71.1	51	61.4	0	0.0
Virgin Blue	30	30	27	90.0	26	86.7	0	0.0
All Airlines	143	143	111	77.6	105	73.4	0	0.0
Sydney-Brisbane								
Jetstar	60	58	48	82.8	56	96.6	2	3.3
Qantas	601	581	470	80.9	481	82.8	20	3.3
Virgin Blue	531	521	403	77.4	427	82.0	10	1.9
All Airlines	1,192	1,160	921	79.4	964	83.1	32	2.7
Sydney-Cairns								
Jetstar	35	35	32	91.4	32	91.4	0	0.0
Qantas	98	98	84	85.7	86	87.8	0	0.0
Virgin Blue	86	86	75	87.2	79	91.9	0	0.0
All Airlines	219	219	191	87.2	197	90.0	0	0.0
Sydney-Canberra								
Qantas	198	185	167	90.3	167	90.3	13	6.6
QantasLink	388	368	323	87.8	311	84.5	20	5.2
Virgin Blue	218	212	191	90.1	196	92.5	6	2.8
All Airlines	804	765	681	89.0	674	88.1	39	4.9
Sydney-Coffs Harbour								
QantasLink	122	121	101	83.5	82	67.8	1	0.8
Virgin Blue	60	60	53	88.3	55	91.7	0	0.0
All Airlines	182	181	154	85.1	137	75.7	1	0.5
Sydney-Dubbo								
QantasLink	98	98	86	87.8	86	87.8	0	0.0
Regional Express	145	145	116	80.0	109	75.2	0	0.0
All Airlines	243	243	202	83.1	195	80.2	0	0.0
Sydney-Gold Coast								
Jetstar	295	295	241	81.7	248	84.1	0	0.0
Virgin Blue	333	330	299	90.6	305	92.4	3	0.9
All Airlines	628	625	540	86.4	553	88.5	3	0.5
Sydney-Hervey Bay								
Jetstar	17	17	16	94.1	16	94.1	0	0.0
Virgin Blue	30	30	28	93.3	29	96.7	0	0.0
All Airlines	47	47	44	93.6	45	95.7	0	0.0

	<i>Sectors</i>		<i>Departures On Time</i>		<i>Arrivals On Time</i>		<i>Cancellations</i>	
	<i>Sched.</i>	<i>Flown</i>	<i>No.</i>	<i>%</i>	<i>No.</i>	<i>%</i>	<i>No.</i>	<i>%</i>
Sydney-Hobart								
Jetstar	60	60	37	61.7	46	76.7	0	0.0
Qantas	30	30	29	96.7	29	96.7	0	0.0
Virgin Blue	60	60	46	76.7	46	76.7	0	0.0
All Airlines	150	150	112	74.7	121	80.7	0	0.0
Sydney-Launceston								
Jetstar	30	30	23	76.7	23	76.7	0	0.0
Virgin Blue	30	30	21	70.0	25	83.3	0	0.0
All Airlines	60	60	44	73.3	48	80.0	0	0.0
Sydney-Maroochydore								
Jetstar	87	86	74	86.0	71	82.6	1	1.1
Virgin Blue	61	60	49	81.7	49	81.7	1	1.6
All Airlines	148	146	123	84.2	120	82.2	2	1.4
Sydney-Melbourne								
Jetstar	12	12	11	91.7	10	83.3	0	0.0
Qantas	914	840	725	86.3	706	84.0	74	8.1
Virgin Blue	767	738	619	83.9	613	83.1	29	3.8
All Airlines	1,693	1,590	1,355	85.2	1,329	83.6	103	6.1
Sydney-Perth								
Qantas	204	204	159	77.9	174	85.3	0	0.0
Virgin Blue	148	147	122	83.0	131	89.1	1	0.7
All Airlines	352	351	281	80.1	305	86.9	1	0.3
Sydney-Port Macquarie								
QantasLink	105	105	81	77.1	69	65.7	0	0.0
Virgin Blue	61	60	54	90.0	54	90.0	1	1.6
All Airlines	166	165	135	81.8	123	74.5	1	0.6
Sydney-Townsville								
Jetstar	21	21	19	90.5	19	90.5	0	0.0
Virgin Blue	30	30	29	96.7	30	100.0	0	0.0
All Airlines	51	51	48	94.1	49	96.1	0	0.0
Sydney-Wagga Wagga								
QantasLink	124	124	112	90.3	99	79.8	0	0.0
Regional Express	119	119	90	75.6	79	66.4	0	0.0
All Airlines	243	243	202	83.1	178	73.3	0	0.0
Townsville-Brisbane								
Jetstar	55	50	38	76.0	41	82.0	5	9.1
Qantas	151	151	133	88.1	138	91.4	0	0.0
Virgin Blue	148	147	136	92.5	136	92.5	1	0.7
All Airlines	354	348	307	88.2	315	90.5	6	1.7
Townsville-Sydney								
Jetstar	21	21	17	81.0	19	90.5	0	0.0
Virgin Blue	30	30	29	96.7	29	96.7	0	0.0
All Airlines	51	51	46	90.2	48	94.1	0	0.0

	<i>Sectors</i>		<i>Departures On Time</i>		<i>Arrivals On Time</i>		<i>Cancellations</i>	
	<i>Sched.</i>	<i>Flown</i>	<i>No.</i>	<i>%</i>	<i>No.</i>	<i>%</i>	<i>No.</i>	<i>%</i>
Wagga Wagga-Sydney								
QantasLink	124	124	107	86.3	101	81.5	0	0.0
Regional Express	119	119	89	74.8	77	64.7	0	0.0
All Airlines	243	243	196	80.7	178	73.3	0	0.0

Airports

On time performance is reported for all routes where the passenger load averages over 8000 passengers per month, and where two or more airlines operate in competition. The following data reports by airport against flights operated on those routes only.

Airport	Departures			Arrivals		
	Sectors	On Time		Sectors	On Time	
	Flown	No.	%	Flown	No.	%
Adelaide						
Jetstar	167	122	73.1	167	135	80.8
Qantas	901	815	90.5	902	816	90.5
Tiger Airways	159	120	75.5	159	116	73.0
Virgin Blue	683	613	89.8	684	622	90.9
All Airlines	1 910	1 670	87.4	1 912	1 689	88.3
Relates to services to and from Brisbane, Canberra, Gold Coast, Melbourne, Perth and Sydney.						
Albury						
QantasLink	105	86	81.9	105	79	75.2
Regional Express	109	85	78.0	109	77	70.6
Virgin Blue	60	51	85.0	60	52	86.7
All Airlines	274	222	81.0	274	208	75.9
Relates to services to and from Sydney only.						
Alice Springs						
Qantas	30	23	76.7	30	27	90.0
Tiger Airways	13	9	69.2	13	9	69.2
All Airlines	43	32	74.4	43	36	83.7
Relates to services to and from Melbourne only						
Ballina						
Jetstar	30	21	70.0	30	28	93.3
Regional Express	83	43	51.8	83	51	61.4
Virgin Blue	30	29	96.7	30	26	86.7
All Airlines	143	93	65.0	143	105	73.4
Relates to services to and from Sydney only.						
Brisbane						
Jetstar	576	426	74.0	575	456	79.3
Qantas	1 648	1 396	84.7	1 650	1 420	86.1
QantasLink	301	265	88.0	277	240	86.6
Virgin Blue	1 856	1 570	84.6	1 843	1 581	85.8
All Airlines	4 381	3 657	83.5	4 345	3 697	85.1
Relates to services to and from Adelaide, Cairns, Canberra, Darwin, Hamilton Island, Mackay, Melbourne, Newcastle, Perth, Proserpine, Rockhampton, Sydney and Townsville.						

Airport	Departures			Arrivals		
	Sectors	On Time		Sectors	On Time	
	Flown	No.	%	Flown	No.	%
Broome						
Qantas	21	14	66.7	21	17	81.0
QantasLink	59	53	89.8	60	51	85.0
Skywest	26	15	57.7	26	20	76.9
Virgin Blue	47	40	85.1	47	44	93.6
All Airlines	153	122	79.7	154	132	85.7
Relates to services to and from Perth only.						
Cairns						
Jetstar	164	136	82.9	165	134	81.2
Qantas	248	224	90.3	248	226	91.1
Virgin Blue	266	245	92.1	266	238	89.5
All Airlines	678	605	89.2	679	598	88.1
Relates to services to and from Brisbane, Melbourne and Sydney.						
Canberra						
Qantas	624	583	93.4	625	575	92.0
QantasLink	406	355	87.4	407	344	84.5
Tiger Airways	77	48	62.3	77	53	68.8
Virgin Blue	542	501	92.4	543	486	89.5
All Airlines	1 649	1 487	90.2	1 652	1 458	88.3
Relates to services to and from Adelaide, Brisbane, Melbourne and Sydney.						
Coffs Harbour						
QantasLink	120	90	75.0	121	82	67.8
Virgin Blue	60	53	88.3	60	55	91.7
All Airlines	180	143	79.4	181	137	75.7
Relates to services to and from Sydney only.						
Darwin						
Jetstar	48	35	72.9	49	27	55.1
Qantas	30	25	83.3	30	27	90.0
Virgin Blue	30	26	86.7	30	26	86.7
All Airlines	108	86	79.6	109	80	73.4
Relates to services to and from Brisbane.						
Dubbo						
QantasLink	98	86	87.8	98	86	87.8
Regional Express	145	113	77.9	145	109	75.2
All Airlines	243	199	81.9	243	195	80.2
Relates to services to and from Sydney only.						
Gold Coast						
Jetstar	536	410	76.5	535	427	79.8
Tiger Airways	120	88	73.3	120	87	72.5
Virgin Blue	530	460	86.8	532	477	89.7
All Airlines	1 186	958	80.8	1 187	991	83.5
Relates to services to and from Adelaide, Melbourne, Newcastle and Sydney.						

Airport	Departures			Arrivals		
	Sectors	On Time		Sectors	On Time	
	Flown	No.	%	Flown	No.	%
Hamilton Island						
Jetstar	30	22	73.3	30	26	86.7
Virgin Blue	30	23	76.7	30	22	73.3
All Airlines	60	45	75.0	60	48	80.0
Relates to services to and from Brisbane only.						
Hervey Bay						
Jetstar	17	15	88.2	17	16	94.1
Virgin Blue	30	26	86.7	30	29	96.7
All Airlines	47	41	87.2	47	45	95.7
Relates to services to and from Sydney only.						
Hobart						
Jetstar	205	139	67.8	205	153	74.6
Qantas	90	76	84.4	90	78	86.7
Tiger Airways	30	20	66.7	30	22	73.3
Virgin Blue	180	169	93.9	180	157	87.2
All Airlines	505	404	80.0	505	410	81.2
Relates to services to and from Melbourne and Sydney.						
Kalgoorlie						
Qantas	27	22	81.5	27	21	77.8
QantasLink	74	68	91.9	73	65	89.0
Skywest	19	18	94.7	20	18	90.0
All Airlines	120	108	90.0	120	104	86.7
Relates to services to and from Perth only.						
Karratha						
Qantas	134	117	87.3	134	119	88.8
QantasLink	28	24	85.7	26	23	88.5
Skywest	21	15	71.4	21	13	61.9
Virgin Blue	52	45	86.5	52	48	92.3
All Airlines	235	201	85.5	233	203	87.1
Relates to services to and from Perth only.						
Launceston						
Jetstar	119	83	69.7	119	84	70.6
QantasLink	63	46	73.0	63	39	61.9
Tiger Airways	30	21	70.0	30	22	73.3
Virgin Blue	150	125	83.3	150	123	82.0
All Airlines	362	275	76.0	362	268	74.0
Relates to services to and from Melbourne and Sydney.						

Airport	Departures			Arrivals		
	Sectors	On Time		Sectors	On Time	
	Flown	No.	%	Flown	No.	%
Mackay						
Jetstar	84	48	57.1	84	61	72.6
QantasLink	54	48	88.9	54	45	83.3
Virgin Blue	139	121	87.1	139	110	79.1
All Airlines	277	217	78.3	277	216	78.0
Relates to services to and from Brisbane only.						
Maroochydore						
Jetstar	138	104	75.4	143	113	79.0
Tiger Airways	17	13	76.5	17	14	82.4
Virgin Blue	105	81	77.1	109	89	81.7
All Airlines	260	198	76.2	269	216	80.3
Relates to services to and from Melbourne and Sydney.						
Melbourne						
Jetstar	709	480	67.7	707	504	71.3
Qantas	2 172	1 864	85.8	2 176	1 875	86.2
QantasLink	194	147	75.8	194	146	75.3
Regional Express	87	73	83.9	87	73	83.9
Tiger Airways	382	263	68.8	382	245	64.1
Virgin Blue	2 237	1 961	87.7	2 238	1 966	87.8
All Airlines	5 781	4 788	82.8	5 784	4 809	83.1
Relates to services to and from Adelaide, Alice Springs, Brisbane, Cairns, Canberra, Gold Coast, Hobart, Launceston, Maroochydore, Mildura, Newcastle, Perth and Sydney.						
Mildura						
QantasLink	100	78	78.0	100	73	73.0
Regional Express	87	72	82.8	87	74	85.1
Virgin Blue	30	28	93.3	30	28	93.3
All Airlines	217	178	82.0	217	175	80.6
Relates to services to and from Melbourne only.						
Newcastle						
Jetstar	236	163	69.1	236	184	78.0
QantasLink	64	48	75.0	64	51	79.7
Virgin Blue	90	87	96.7	90	87	96.7
All Airlines	390	298	76.4	390	322	82.6
Relates to services to and from Brisbane, Gold Coast and Melbourne.						
Newman						
QantasLink	89	82	92.1	88	82	93.2
Virgin Blue	30	27	90.0	30	28	93.3
All Airlines	119	109	91.6	118	110	93.2
Relates to services to and from Perth only.						

Airport	Departures			Arrivals		
	Sectors Flown	On Time No.	%	Sectors Flown	On Time No.	%
Perth						
Jetstar	87	57	65.5	87	66	75.9
Qantas	842	700	83.1	844	718	85.1
QantasLink	247	224	90.7	250	228	91.2
Skywest	67	54	80.6	66	40	60.6
Tiger Airways	90	65	72.2	90	52	57.8
Virgin Blue	514	485	94.4	515	457	88.7
All Airlines	1 847	1 585	85.8	1 852	1 561	84.3
Relates to services to and from Adelaide, Brisbane, Broome, Kalgoorlie, Karratha, Melbourne, Newman, and Sydney.						
Port Macquarie						
QantasLink	105	76	72.4	105	69	65.7
Virgin Blue	59	49	83.1	60	54	90.0
All Airlines	164	125	76.2	165	123	74.5
Relates to services to and from Sydney only.						
Proserpine						
Jetstar	30	24	80.0	30	24	80.0
Virgin Blue	30	26	86.7	30	28	93.3
All Airlines	60	50	83.3	60	52	86.7
Relates to services to and from Brisbane only.						
Rockhampton						
Jetstar	30	19	63.3	30	22	73.3
QantasLink	151	131	86.8	175	149	85.1
Virgin Blue	139	116	83.5	139	114	82.0
All Airlines	320	266	83.1	344	285	82.8
Relates to services to and from Brisbane only.						
Sydney						
Jetstar	674	554	82.2	672	540	80.4
Qantas	2 234	1 897	84.9	2 224	1 876	84.4
QantasLink	921	789	85.7	919	736	80.1
Regional Express	456	350	76.8	456	315	69.1
Virgin Blue	2 602	2 199	84.5	2 602	2 245	86.3
All Airlines	6 887	5 789	84.1	6 873	5 712	83.1
Relates to services to and from Adelaide, Albury, Ballina, Brisbane, Cairns, Canberra, Coffs Harbour, Dubbo, Gold Coast, Hervey Bay, Hobart, Launceston, Maroochydore, Melbourne, Perth, Port Macquarie, Townsville and Wagga Wagga.						
Townsville						
Jetstar	71	55	77.5	70	60	85.7
Qantas	151	133	88.1	151	132	87.4
Virgin Blue	177	165	93.2	179	162	90.5
All Airlines	399	353	88.5	400	354	88.5
Relates to services to and from Brisbane and Sydney.						

<i>Airport</i>	<i>Departures</i>			<i>Arrivals</i>		
	<i>Sectors</i>	<i>On Time</i>		<i>Sectors</i>	<i>On Time</i>	
	<i>Flown</i>	<i>No.</i>	<i>%</i>	<i>Flown</i>	<i>No.</i>	<i>%</i>
Wagga Wagga						
QantasLink	124	107	86.3	124	99	79.8
Regional Express	119	89	74.8	119	79	66.4
All Airlines	243	196	80.7	243	178	73.3

Relates to services to and from Sydney only.

Definitions

On time departure A flight departure is counted as "on time" if it departs the gate within 15 minutes of the scheduled departure time shown in the carriers' schedule.

On time arrival A flight arrival is counted as "on time" if it arrived at the gate within 15 minutes of the scheduled arrival time shown in the carriers' schedule.
Neither diverted nor cancelled flights count as on time.

Cancellation A flight is regarded as a cancellation if it is cancelled or rescheduled less than 7 days prior to its scheduled departure time.

On time departure percentage The percentage of on time departures is measured against the number of departures *operated* on any particular sector.

On time arrival percentage The percentage of on time arrivals is measured against the number of arrivals *operated* on any particular sector.

Cancellation percentage The percentage of cancellations is measured against the number of services *scheduled* on any particular sector.
