



**Australian Government**

**Department of Infrastructure and Regional Development**

Bureau of Infrastructure, Transport and Regional Economics

STATISTICAL REPORT



## Aviation

Domestic airline on time performance 2015-16

© Commonwealth of Australia 2016

ISSN: 1832-0759

### **Ownership of intellectual property rights in this publication**

Unless otherwise noted, copyright (and any other intellectual property rights, if any) in this publication is owned by the Commonwealth of Australia (referred to below as the Commonwealth).

### **Disclaimer**

The material contained in this publication is made available on the understanding that the Commonwealth is not providing professional advice, and that users exercise their own skill and care with respect to its use, and seek independent advice if necessary.

The Commonwealth makes no representations or warranties as to the contents or accuracy of the information contained in this publication. To the extent permitted by law, the Commonwealth disclaims liability to any person or organisation in respect of anything done, or omitted to be done, in reliance upon information contained in this publication.

### **Creative Commons licence**

With the exception of (a) the Coat of Arms; and (b) the Department of Infrastructure and Regional Development's photos and graphics, copyright in this publication is licensed under a Creative Commons Attribution 3.0 Australia Licence.

Creative Commons Attribution 3.0 Australia Licence is a standard form licence agreement that allows you to copy, communicate and adapt this publication provided that you attribute the work to the Commonwealth and abide by the other licence terms. A summary of the licence terms is available from <http://creativecommons.org/licenses/by/3.0/au/deed.en>. The full licence terms are available from <http://creativecommons.org/licenses/by/3.0/au/legalcode>.

### **Use of the Coat of Arms**

The Department of the Prime Minister and Cabinet sets the terms under which the Coat of Arms is used. Please refer to the Department's Commonwealth Coat of Arms and Government branding web page <http://www.dpmmc.gov.au/guidelines/index.cfm#brand> and, in particular, the Guidelines on the use of the Commonwealth Coat of Arms publication.

An appropriate citation for this report is:

Bureau of Infrastructure, Transport and Regional Economics (BITRE), 2016, Domestic airline on time performance, Statistical Report, BITRE, Canberra ACT.

### **Contact us**

This publication is available in PDF format. All other rights are reserved, including in relation to any Departmental logos or trade marks which may exist. For enquiries regarding the licence and any use of this publication, please contact:

Bureau of Infrastructure, Transport and Regional Economics (BITRE)  
Department of Infrastructure and Regional Development  
GPO Box 501, Canberra ACT 2601, Australia  
Telephone: (international) +61 2 6274 7210  
Fax: (international) +61 2 6274 6855  
Email: [bitre@infrastructure.gov.au](mailto:bitre@infrastructure.gov.au)  
Website: [www.bitre.gov.au](http://www.bitre.gov.au)

### **Inquiries**

Should you require additional information about the statistics contained in this publication:

Telephone (02) 6274 7790 or Facsimile (02) 6274 7727

Electronic mail: [AVSTATS@infrastructure.gov.au](mailto:AVSTATS@infrastructure.gov.au)

Web site: <http://www.bitre.gov.au/statistics/aviation/otphome.aspx>

# Foreword

The Bureau of Infrastructure, Transport and Regional Economics (BITRE) monitors the punctuality and reliability of major domestic airlines operating between Australian airports. The purpose of this is to allow for evaluation of overall industry and individual airline performance, so that consumers of air travel can make informed decisions.

The following domestic airlines currently report this information monthly to the BITRE: Jetstar, Qantas, QantasLink, Regional Express, Tigerair Australia, Virgin Australia and Virgin Australia Regional Airlines. Data has been gathered since November 2003, although some airlines commenced reporting at a later date, including Jetstar which first reported in May 2004, MacAir in July 2005, Tigerair Australia in April 2008 and Virgin Australia Regional Airlines in May 2013. MacAir ceased operations in February 2009 and data was not received for December 2008 onwards. Virgin Blue was rebranded as Virgin Australia in May 2011 and Tiger Airways was rebranded as Tigerair Australia in July 2013 and time series data in Microsoft Excel spreadsheet format on the BITRE website have been revised to reflect these changes. Services operated by Skywest on behalf of Virgin Australia using ATR/F100 aircraft commenced in November 2011 and were shown separately as Virgin Australia – ATR/F100 Operations. Virgin Australia Regional Airlines commenced operations in May 2013. It was formed after the acquisition of Skywest by Virgin Australia and represented a combination of operations previously reported under Skywest and Virgin Australia – ATR/F100 Operations. In January 2016, Virgin Australia transferred their ATR fleet from Virgin Australia Regional Airlines to Virgin Australia.

Information presented in this report is for Australian domestic routes for which the passenger load averaged 8 000 or more passengers per month over the previous six months and where two or more airlines operated in competition on those routes. There were 63 routes that met these criteria for all twelve months in 2015-16 and another 3 routes did so for a shorter period of the year. Over time, routes which meet these criteria change as airline networks and traffic levels vary.

Participating airlines report their overall monthly network performance where this is possible.

Total industry figures encompass all services operated by reporting airlines only. These airlines collectively carried over 95 per cent of total domestic passengers (regular public transport only) in 2015.

The method of capturing on time performance varies between airlines utilising different recording systems. Jetstar and Qantas jet aircraft use Aircraft Communication Addressing and Reporting System (ACARS) to electronically measure on time performance. Regional Express, Tigerair Australia, Virgin Australia, Virgin Australia Regional Airlines and the Qantas non-jet fleet record on time performance manually using records from pilots, gate agents and/or ground crews.

After initial data is collected, aggregate reports are audited internally by participating airlines prior to publication.

Reports and detailed time series data in Microsoft Excel spreadsheet format are available from the BITRE website at: <http://www.bitre.gov.au/statistics/aviation/otphome.aspx>.



# Contents

	Page
Industry performance .....	1
Individual routes .....	9
Airports .....	23
Definitions .....	30



## Industry performance

For the year ended June 2016, on time performance over all routes operated by participating airlines (Jetstar, Qantas, QantasLink, Regional Express, Tigerair Australia, Virgin Australia and Virgin Australia Regional Airlines) averaged 86.1 per cent for on time arrivals and 86.7 per cent for on time departures. Cancellations represented 1.6 per cent of all scheduled flights. The equivalent figures for 2014-15 were 85.1 per cent for arrivals, 86.5 per cent for departures and 1.4 per cent for cancellations.

The figures for 2015-16 were above the long term average performance for all routes (82.8 per cent for arrivals and 84.2 per cent for departures). The rate of cancellations was higher than the long term average of 1.4 per cent.

Virgin Australia achieved the highest on time arrivals among the major domestic airlines at 89.5 per cent, followed by Qantas at 88.8 per cent, Tigerair Australia at 84.4 per cent and Jetstar at 78.2 per cent. QantasLink was the best performing regional airline for on time arrivals at 86.4 per cent, followed by Regional Express at 85.5 per cent and Virgin Australia Regional Airlines at 83.8 per cent. The Qantas network (Qantas and QantasLink combined operations) recorded 87.5 per cent for on time arrivals while the Virgin Australia network (Virgin Australia and Virgin Australia Regional Airlines combined operations) recorded 88.8 per cent.

Virgin Australia also achieved the highest level of on time departures for 2015-16 at 90.6 per cent, followed by Qantas at 89.7 per cent, Tigerair Australia at 85.5 per cent and Jetstar at 75.1 per cent. The regional airlines were led by Regional Express at 88.5 per cent, followed by QantasLink at 87.1 per cent and Virgin Australia Regional Airlines at 85.2 per cent. The Qantas network recorded 88.3 per cent for on time departures while the Virgin Australia network recorded 90.0 per cent.

QantasLink had the highest percentage of cancellations (2.6 per cent) during 2015-16, followed by Jetstar (2.2 per cent), Virgin Australia Regional Airlines (2.1 per cent), Virgin Australia (1.5 per cent), Qantas (1.1 per cent), Tigerair Australia (1.0 per cent) and Regional Express (0.5 per cent).

Airlines' on time performance varies across the routes they serve. Individual route data by specific airline for 66 routes are shown on pages 9-22.

Of the 63 routes which met the criteria for on time performance reporting for all 12 months in 2015-16, the Brisbane-Mount Isa route had the highest percentage of on time arrivals (95.8 per cent) and the highest percentage of on time departures (96.3 per cent). The Port Macquarie-Sydney route had the lowest percentage of on time arrivals (68.0 per cent) and the Sunshine Coast-Melbourne route had the lowest percentage of on time departures (69.6 per cent).

Cancellations were highest on the Moranbah-Brisbane route at 7.2 per cent, followed by the Brisbane-Moranbah route at 6.9 per cent, the Canberra-Sydney route at 5.5 per cent, the Sydney-Canberra route at 5.3 per cent and the Gladstone-Brisbane route at 3.6 per cent.

Mount Isa Airport recorded the highest percentage of on time arrivals (95.8 per cent) and Newman Airport recorded the highest percentage of on time departures (94.9 per cent). Port Macquarie Airport recorded the lowest percentage of on time arrivals (72.9 per cent) and Sunshine Coast Airport recorded the lowest percentage of on time departures (72.0 per cent). These figures only refer to reported routes and do not cover all flights at these airports.



Table 1 On time performance for the year ended June 2016 — Total Industry

	<i>Sectors</i>		<i>Arrivals On Time</i>		<i>Departures On Time</i>		<i>Cancellations</i>	
	<i>Scheduled</i>	<i>Flown</i>	<i>No.</i>	<i>%</i>	<i>No.</i>	<i>%</i>	<i>No.</i>	<i>%</i>
Jetstar	86 730	84 863	66 374	78.2	63 693	75.1	1 867	2.2
Qantas	112 797	111 544	99 065	88.8	100 021	89.7	1 253	1.1
QantasLink	123 070	119 827	103 474	86.4	104 382	87.1	3 243	2.6
Regional Express	71 517	71 156	60 866	85.5	62 986	88.5	361	0.5
Tigerair Australia	25 751	25 505	21 530	84.4	21 811	85.5	246	1.0
Virgin Australia	140 999	138 925	124 306	89.5	125 930	90.6	2 074	1.5
Virgin Australia Regional Airlines	19 020	18 629	15 607	83.8	15 881	85.2	391	2.1
All Airlines	579 884	570 449	491 222	86.1	494 704	86.7	9 435	1.6
Qantas - all QF designated services	235 867	231 371	202 539	87.5	204 403	88.3	4 496	1.9
Virgin Australia - all VA designated services	160 019	157 554	139 913	88.8	141 811	90.0	2 465	1.5

Total airline network data (including routes not shown in this report).

Airlines' on time performance varies across the routes they serve. Individual route data by specific airline for 66 routes are shown on pages 9-22.

Table 2 Top ten routes for on time performance for the year ended June 2016 (participating airlines only)

<i>Arrivals</i>		<i>Departures</i>	
<i>Route</i>	<i>On Time (%)</i>	<i>Route</i>	<i>On Time</i>
Brisbane-Mount Isa	95.8	Brisbane-Mount Isa	96.3
Mount Isa-Brisbane	95.2	Darwin-Alice Springs	95.2
Perth-Newman	94.8	Perth-Newman	95.1
Darwin-Alice Springs	94.6	Newman-Perth	94.9
Newman-Perth	94.4	Mount Isa-Brisbane	94.1
Perth-Darwin	94.0	Perth-Port Hedland	94.0
Canberra-Adelaide	93.8	Adelaide-Canberra	93.4
Adelaide-Canberra	93.6	Perth-Karratha	93.2
Alice Springs-Darwin	93.4	Perth-Darwin	93.1
Townsville-Brisbane	93.1	Adelaide-Port Lincoln	93.0

Table 3 Top ten airports for on time performance for the year ended June 2016 (participating airlines and reported routes only)

<i>Arrivals</i>		<i>Departures</i>	
<i>Airport</i>	<i>On Time (%)</i>	<i>Airport</i>	<i>On Time</i>
Mount Isa	95.8	Newman	94.9
Newman	94.8	Mount Isa	94.1
Alice Springs	93.9	Port Hedland	92.3
Proserpine	91.9	Karratha	92.0
Moranbah	91.2	Port Lincoln	91.9
Port Lincoln	91.1	Kalgoorlie	91.4
Bundaberg	90.9	Moranbah	91.1
Port Hedland	90.9	Bundaberg	90.7
Kalgoorlie	90.7	Townsville	90.7
Townsville	90.6	Alice Springs	90.2

## Total industry on time performance

Figure 1 On time performance (by month from June 2011)—Total Industry

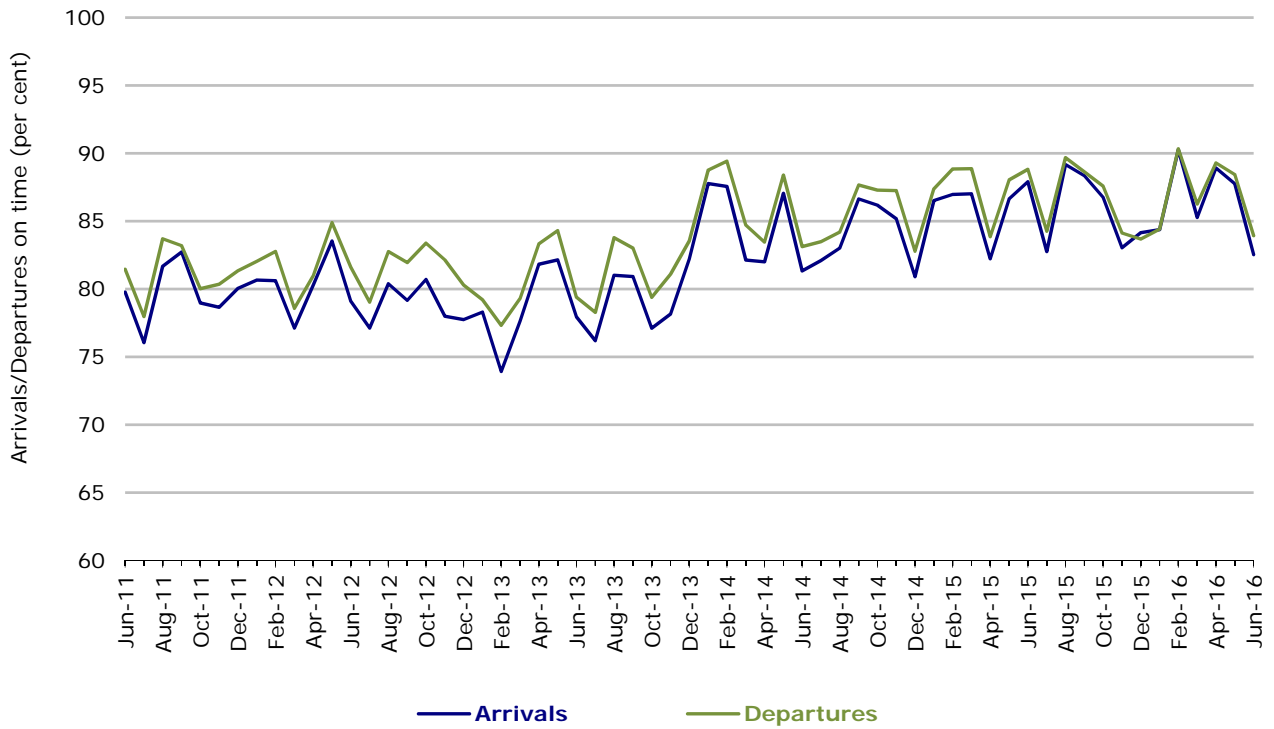
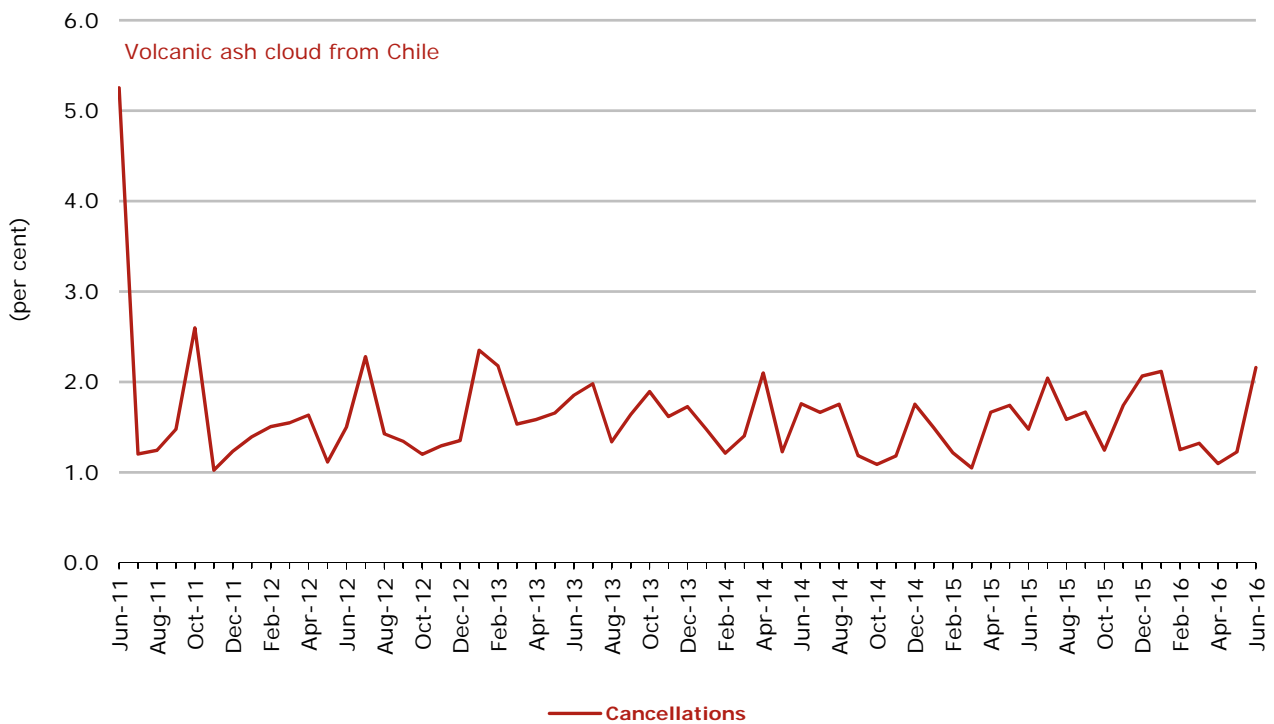


Figure 2 Cancellations (by month from June 2011)—Total Industry



## Major domestic airlines on time performance

Figure 3 On time performance (by month from June 2011)—Jetstar

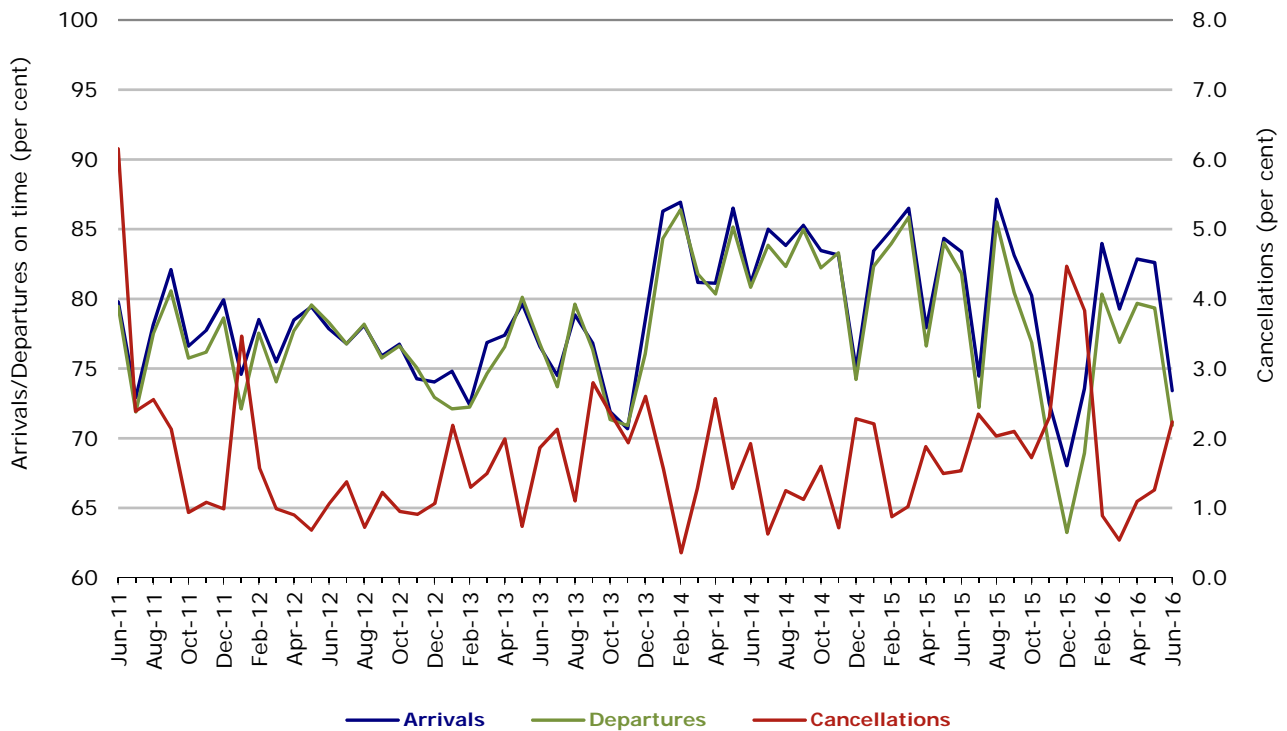
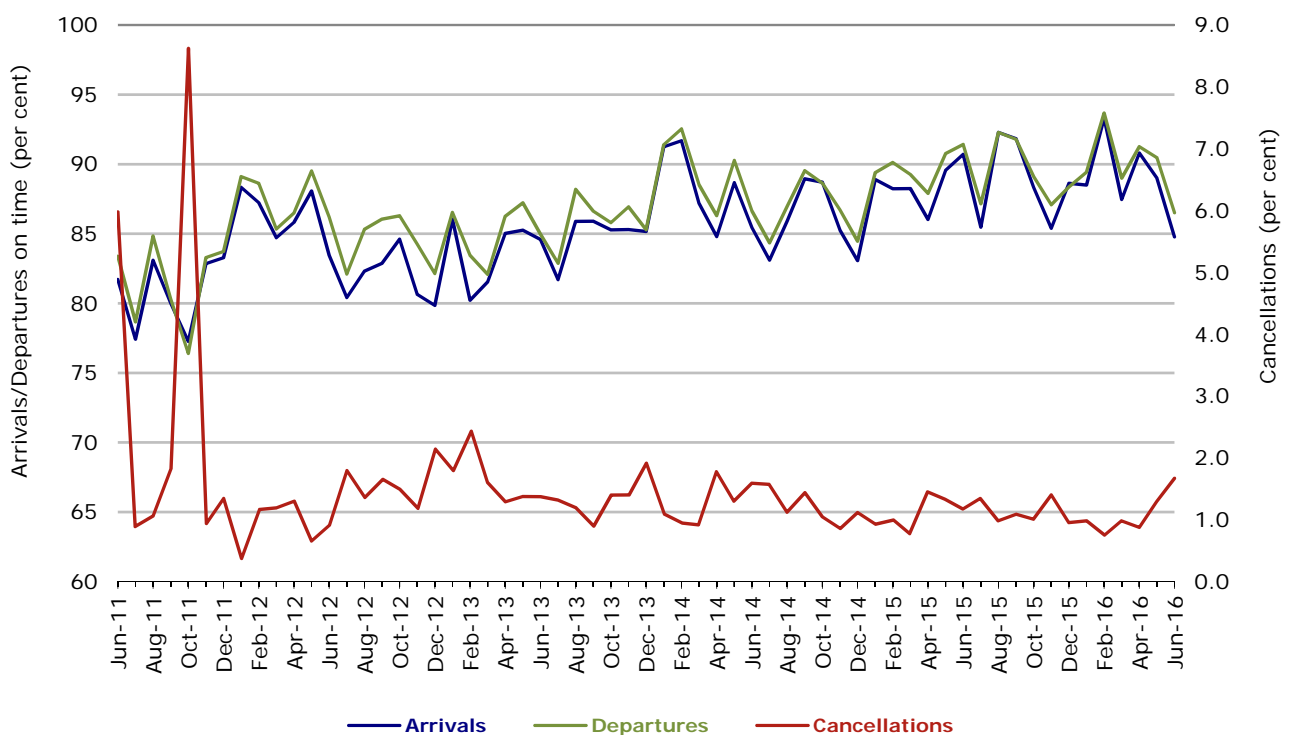
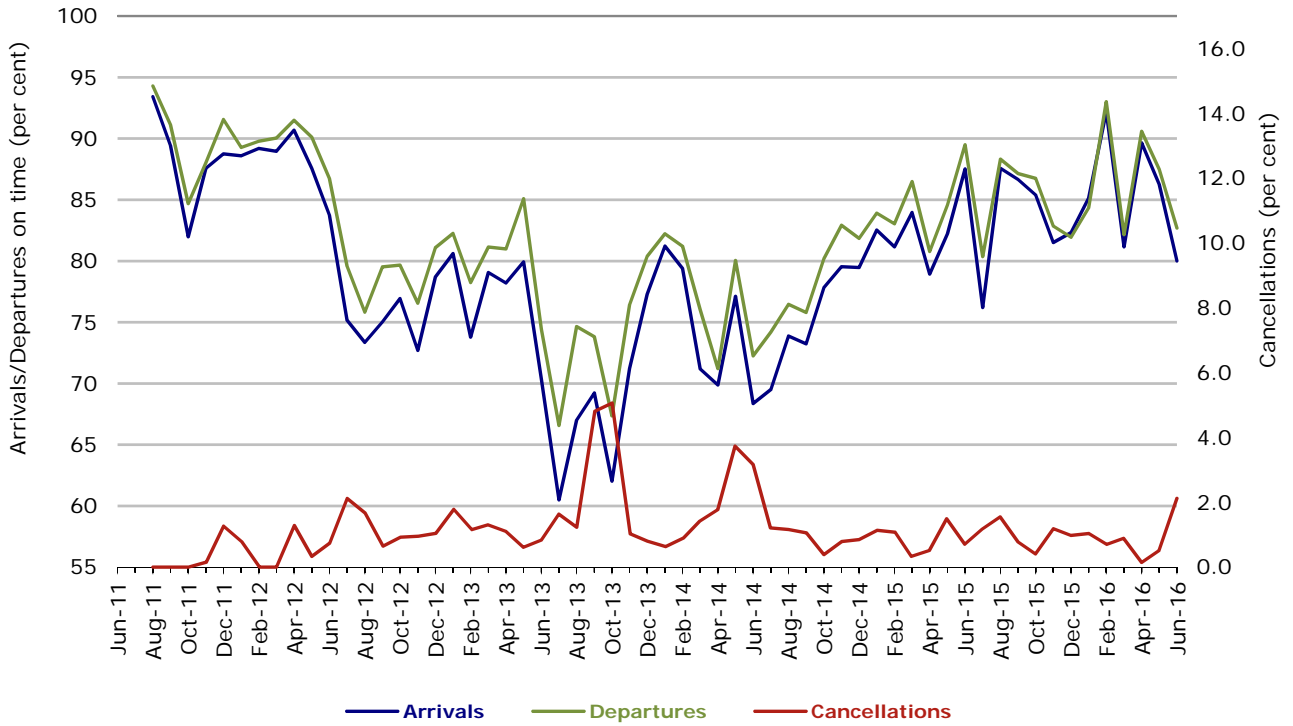


Figure 4 On time performance (by month from June 2011)—Qantas



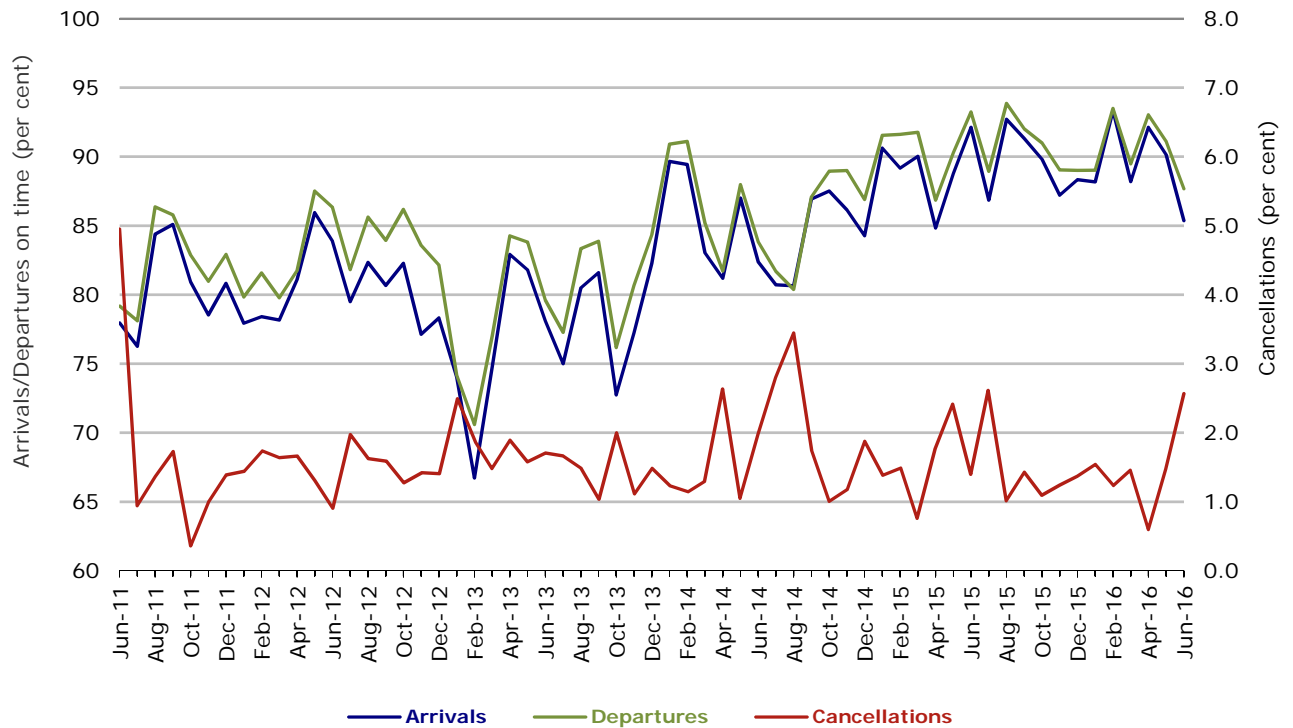
During October 2011 there were disruptions to Qantas services on several days due to industrial disputes and the entire fleet was grounded for nearly 48 hours at the end of the month.

Figure 5 On time performance (by month from June 2011)—Tigerair Australia



No data for Tigerair Australia for July 2011 as it was grounded by CASA from 2/7/2011 to 11/8/2011.

Figure 6 On time performance (by month from June 2011)—Virgin Australia



In January 2016, Virgin Australia transferred their ATR fleet from Virgin Australia Regional Airlines to Virgin Australia.

## Major regional airlines on time performance

Figure 7 On time performance (by month from June 2011)—QantasLink

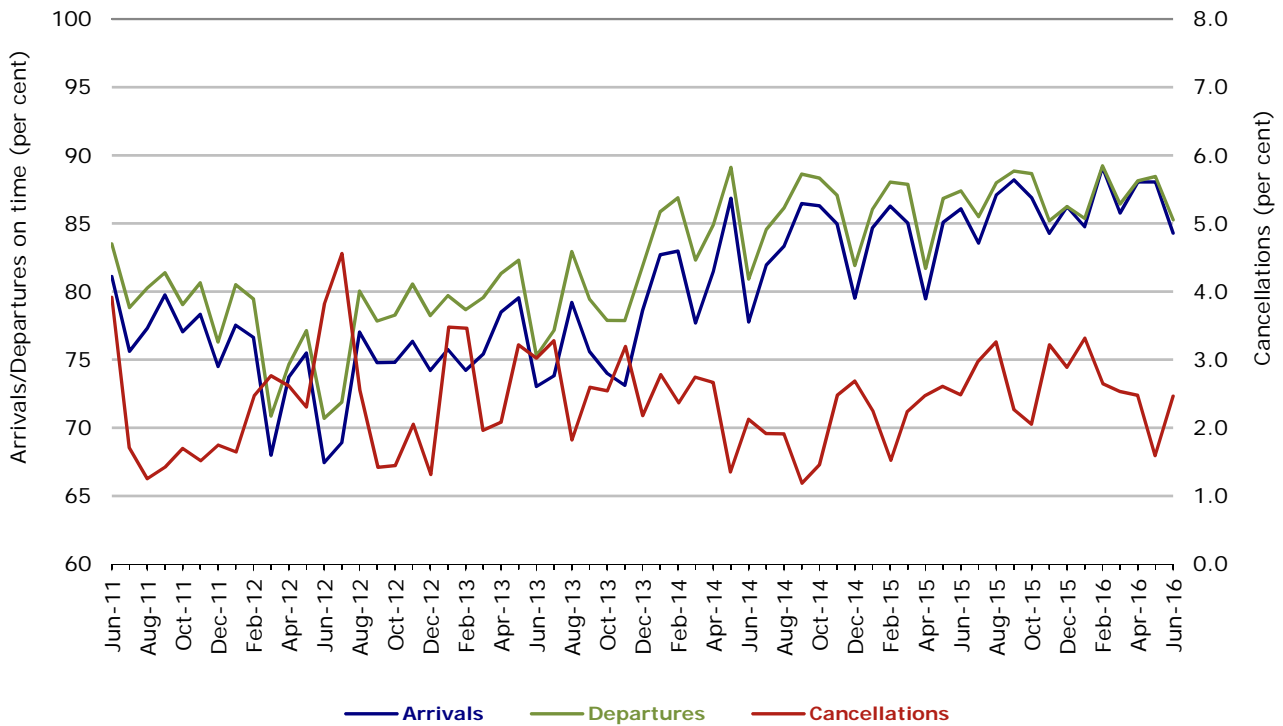


Figure 8 On time performance (by month from June 2011)—Regional Express

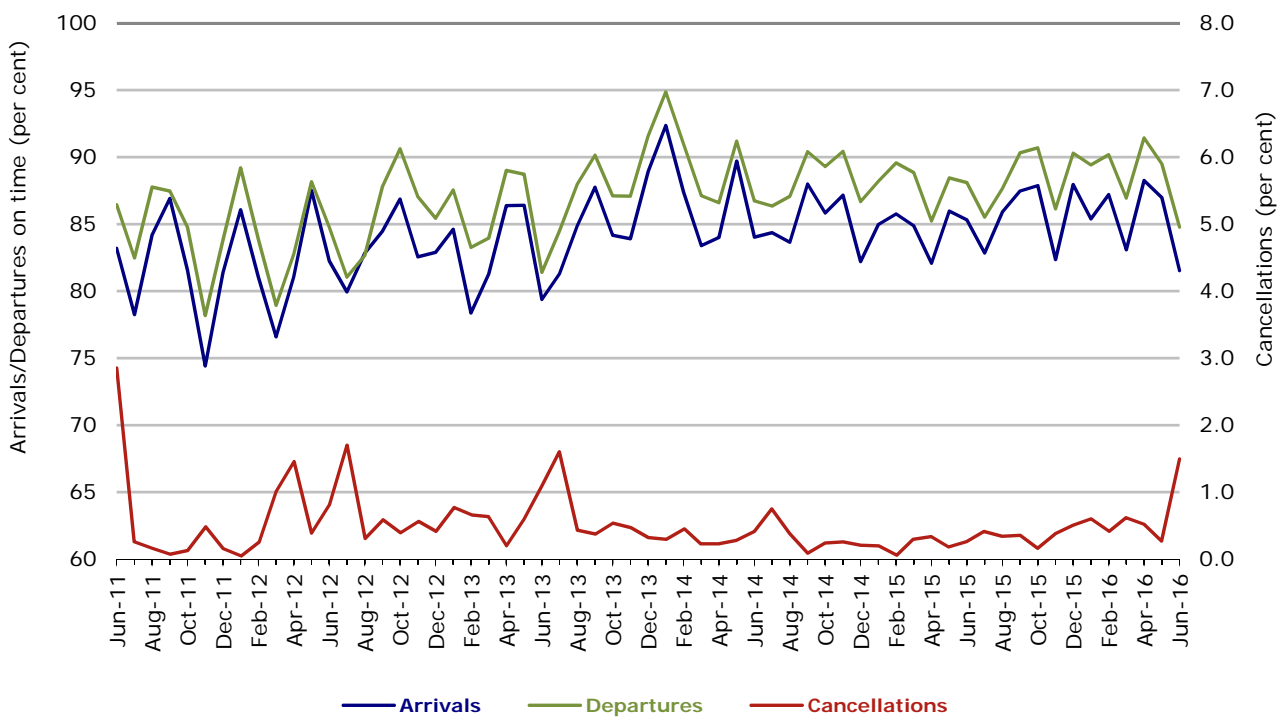
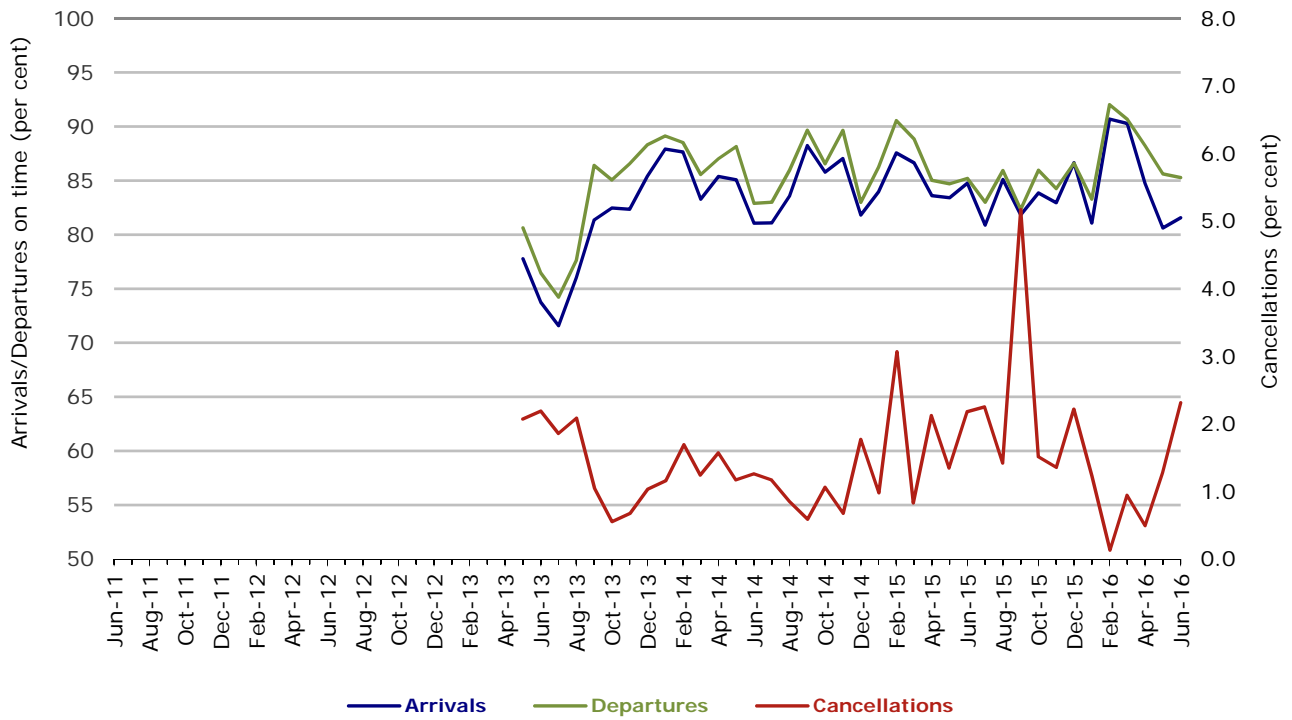


Figure 9 On time performance (by month from June 2011)  
Virgin Australia Regional Airlines



Virgin Australia Regional Airlines commenced operations in May 2013. It was formed after the acquisition of Skywest by Virgin Australia and represented a combination of operations previously reported under Skywest and Virgin Australia – ATR/F100 Operations. In January 2016, Virgin Australia transferred their ATR fleet from Virgin Australia Regional Airlines to Virgin Australia.

## Individual routes

On time performance is reported for all routes where the passenger load averages over 8000 passengers per month over the previous six months, and where two or more airlines operate in competition on those routes. There are now 66 routes which meet this definition. Over time, however, routes which meet this definition may change as airline networks and traffic levels vary.

	<i>Sectors</i>		<i>Arrivals On Time</i>		<i>Departures On Time</i>		<i>Cancellations</i>	
	<i>Sched.</i>	<i>Flown</i>	<i>No.</i>	<i>%</i>	<i>No.</i>	<i>%</i>	<i>No.</i>	<i>%</i>
<b>Adelaide-Alice Springs</b>								
Qantas	366	365	345	94.5	344	94.2	1	0.3
Virgin Australia	160	160	143	89.4	143	89.4	0	0.0
All Airlines	526	525	488	93.0	487	92.8	1	0.2
<b>Adelaide-Brisbane</b>								
Jetstar	334	334	284	85.0	281	84.1	0	0.0
Qantas	1 361	1 361	1 277	93.8	1 293	95.0	0	0.0
Tigerair Australia	294	294	266	90.5	266	90.5	0	0.0
Virgin Australia	1 375	1 369	1 267	92.5	1 262	92.2	6	0.4
All Airlines	3 364	3 358	3 094	92.1	3 102	92.4	6	0.2
<b>Adelaide-Canberra</b>								
Qantas	544	544	508	93.4	507	93.2	0	0.0
Virgin Australia	315	314	295	93.9	294	93.6	1	0.3
All Airlines	859	858	803	93.6	801	93.4	1	0.1
<b>Adelaide-Gold Coast</b>								
Jetstar	424	422	367	87.0	358	84.8	2	0.5
Virgin Australia	374	374	360	96.3	361	96.5	0	0.0
All Airlines	798	796	727	91.3	719	90.3	2	0.3
<b>Adelaide-Melbourne</b>								
Jetstar	1 325	1 285	1 022	79.5	930	72.4	40	3.0
Qantas	3 376	3 362	3 047	90.6	3 060	91.0	14	0.4
Tigerair Australia	902	896	776	86.6	773	86.3	6	0.7
Virgin Australia	3 444	3 403	3 093	90.9	3 101	91.1	41	1.2
All Airlines	9 047	8 946	7 938	88.7	7 864	87.9	101	1.1
<b>Adelaide-Perth</b>								
Jetstar	373	369	317	85.9	299	81.0	4	1.1
Qantas	1 382	1 377	1 272	92.4	1 278	92.8	5	0.4
Virgin Australia	887	881	801	90.9	815	92.5	6	0.7
All Airlines	2 642	2 627	2 390	91.0	2 392	91.1	15	0.6
<b>Adelaide-Port Lincoln</b>								
QantasLink	1 331	1 315	1 163	88.4	1 181	89.8	16	1.2
Regional Express	2 442	2 426	2 245	92.5	2 299	94.8	16	0.7
All Airlines	3 773	3 741	3 408	91.1	3 480	93.0	32	0.8
<b>Adelaide-Sydney</b>								
Jetstar	1 423	1 379	1 137	82.5	1 105	80.1	44	3.1
Qantas	2 841	2 824	2 574	91.1	2 625	93.0	17	0.6
QantasLink	287	269	209	77.7	201	74.7	18	6.3
Tigerair Australia	461	458	383	83.6	381	83.2	3	0.7
Virgin Australia	2 028	2 015	1 866	92.6	1 882	93.4	13	0.6
All Airlines	7 040	6 945	6 169	88.8	6 194	89.2	95	1.3
<b>Albury-Sydney</b>								
QantasLink	1 156	1 149	966	84.1	978	85.1	7	0.6
Regional Express	1 183	1 178	1 067	90.6	1 087	92.3	5	0.4
Virgin Australia	363	360	288	80.0	305	84.7	3	0.8
Virgin Australia Regional Airlines	368	366	297	81.1	305	83.3	2	0.5
All Airlines	3 070	3 053	2 618	85.8	2 675	87.6	17	0.6

	<i>Sectors</i>		<i>Arrivals On Time</i>		<i>Departures On Time</i>		<i>Cancellations</i>	
	<i>Sched.</i>	<i>Flown</i>	<i>No.</i>	<i>%</i>	<i>No.</i>	<i>%</i>	<i>No.</i>	<i>%</i>
<b>Alice Springs-Adelaide</b>								
Qantas	366	365	318	87.1	315	86.3	1	0.3
Virgin Australia	160	158	143	90.5	141	89.2	2	1.3
All Airlines	526	523	461	88.1	456	87.2	3	0.6
<b>Alice Springs-Darwin</b>								
QantasLink	642	639	602	94.2	597	93.4	3	0.5
Virgin Australia	158	158	142	89.9	138	87.3	0	0.0
All Airlines	800	797	744	93.4	735	92.2	3	0.4
<b>Armidale-Sydney</b>								
QantasLink	1 571	1 525	1 193	78.2	1 145	75.1	46	2.9
Regional Express	859	853	638	74.8	726	85.1	6	0.7
All Airlines	2 430	2 378	1 831	77.0	1 871	78.7	52	2.1
<b>Ayers Rock-Sydney</b>								
Jetstar	328	326	273	83.7	254	77.9	2	0.6
Virgin Australia	366	362	333	92.0	305	84.3	4	1.1
All Airlines	694	688	606	88.1	559	81.3	6	0.9
<b>Ballina-Sydney</b>								
Jetstar	905	899	693	77.1	624	69.4	6	0.7
Regional Express	273	268	200	74.6	218	81.3	5	1.8
Virgin Australia	372	370	343	92.7	345	93.2	2	0.5
All Airlines	1 550	1 537	1 236	80.4	1 187	77.2	13	0.8
<b>Brisbane-Adelaide</b>								
Jetstar	333	333	306	91.9	303	91.0	0	0.0
Qantas	1 361	1 361	1 298	95.4	1 270	93.3	0	0.0
Tigerair Australia	294	294	263	89.5	253	86.1	0	0.0
Virgin Australia	1 396	1 394	1 279	91.8	1 291	92.6	2	0.1
All Airlines	3 384	3 382	3 146	93.0	3 117	92.2	2	0.1
<b>Brisbane-Bundaberg</b>								
QantasLink	1 600	1 592	1 454	91.3	1 455	91.4	8	0.5
Virgin Australia	183	183	168	91.8	166	90.7	0	0.0
Virgin Australia Regional Airlines	232	229	200	87.3	197	86.0	3	1.3
All Airlines	2 015	2 004	1 822	90.9	1 818	90.7	11	0.5
<b>Brisbane-Cairns</b>								
Jetstar	1 298	1 285	1 080	84.0	1 012	78.8	13	1.0
Qantas	1 417	1 417	1 301	91.8	1 270	89.6	0	0.0
QantasLink	56	56	45	80.4	46	82.1	0	0.0
Tigerair Australia	358	358	332	92.7	334	93.3	0	0.0
Virgin Australia	1 622	1 621	1 512	93.3	1 496	92.3	1	0.1
All Airlines	4 751	4 737	4 270	90.1	4 158	87.8	14	0.3
<b>Brisbane-Canberra</b>								
Qantas	319	319	307	96.2	304	95.3	0	0.0
QantasLink	1 470	1 443	1 277	88.5	1 270	88.0	27	1.8
Virgin Australia	1 122	1 120	1 038	92.7	1 036	92.5	2	0.2
All Airlines	2 911	2 882	2 622	91.0	2 610	90.6	29	1.0
<b>Brisbane-Darwin</b>								
Jetstar	305	303	246	81.2	240	79.2	2	0.7
Qantas	559	559	518	92.7	535	95.7	0	0.0
Tigerair Australia	252	251	222	88.4	237	94.4	1	0.4
Virgin Australia	368	368	329	89.4	335	91.0	0	0.0
All Airlines	1 484	1 481	1 315	88.8	1 347	91.0	3	0.2



	<i>Sectors</i>		<i>Arrivals On Time</i>		<i>Departures On Time</i>		<i>Cancellations</i>	
	<i>Sched.</i>	<i>Flown</i>	<i>No.</i>	<i>%</i>	<i>No.</i>	<i>%</i>	<i>No.</i>	<i>%</i>
<b>Brisbane-Emerald</b>								
QantasLink	1 671	1 625	1 463	90.0	1 499	92.2	46	2.8
Virgin Australia	413	412	361	87.6	373	90.5	1	0.2
Virgin Australia Regional Airlines	461	451	338	74.9	374	82.9	10	2.2
All Airlines	2 545	2 488	2 162	86.9	2 246	90.3	57	2.2
<b>Brisbane-Gladstone</b>								
QantasLink	2 346	2 255	2 066	91.6	2 102	93.2	91	3.9
Virgin Australia	989	973	879	90.3	879	90.3	16	1.6
Virgin Australia Regional Airlines	668	647	547	84.5	552	85.3	21	3.1
All Airlines	4 003	3 875	3 492	90.1	3 533	91.2	128	3.2
<b>Brisbane-Hamilton Island</b>								
QantasLink	311	305	273	89.5	282	92.5	6	1.9
Virgin Australia	366	362	329	90.9	335	92.5	4	1.1
All Airlines	677	667	602	90.3	617	92.5	10	1.5
<b>Brisbane-Hobart</b>								
Jetstar	348	348	314	90.2	306	87.9	0	0.0
Qantas	5	5	5	100.0	5	100.0	0	0.0
Virgin Australia	366	366	348	95.1	348	95.1	0	0.0
All Airlines	719	719	667	92.8	659	91.7	0	0.0
<b>Brisbane-Mackay</b>								
Jetstar	583	581	458	78.8	431	74.2	2	0.3
QantasLink	1 281	1 239	1 137	91.8	1 134	91.5	42	3.3
Virgin Australia	1 836	1 823	1 686	92.5	1 678	92.0	13	0.7
All Airlines	3 700	3 643	3 281	90.1	3 243	89.0	57	1.5
<b>Brisbane-Melbourne</b>								
Jetstar	1 498	1 447	1 184	81.8	1 104	76.3	51	3.4
Qantas	5 150	5 121	4 604	89.9	4 700	91.8	29	0.6
Tigerair Australia	1 473	1 452	1 217	83.8	1 219	84.0	21	1.4
Virgin Australia	4 690	4 577	3 928	85.8	4 191	91.6	113	2.4
All Airlines	12 811	12 597	10 933	86.8	11 214	89.0	214	1.7
<b>Brisbane-Moranbah</b>								
QantasLink	1 363	1 225	1 137	92.8	1 129	92.2	138	10.1
Virgin Australia	394	390	350	89.7	360	92.3	4	1.0
Virgin Australia Regional Airlines	428	420	368	87.6	370	88.1	8	1.9
All Airlines	2 185	2 035	1 855	91.2	1 859	91.4	150	6.9
<b>Brisbane-Mount Isa</b>								
Qantas	419	418	400	95.7	407	97.4	1	0.2
QantasLink	148	147	142	96.6	140	95.2	1	0.7
Virgin Australia	253	253	242	95.7	241	95.3	0	0.0
All Airlines	820	818	784	95.8	788	96.3	2	0.2
<b>Brisbane-Newcastle</b>								
Jetstar	999	985	832	84.5	817	82.9	14	1.4
QantasLink	1 056	1 044	927	88.8	944	90.4	12	1.1
Virgin Australia	1 025	1 016	947	93.2	946	93.1	9	0.9
All Airlines	3 080	3 045	2 706	88.9	2 707	88.9	35	1.1
<b>Brisbane-Perth</b>								
Qantas	1 588	1 588	1 365	86.0	1 357	85.5	0	0.0
Virgin Australia	1 315	1 313	1 105	84.2	1 114	84.8	2	0.2
All Airlines	2 903	2 901	2 470	85.1	2 471	85.2	2	0.1
<b>Brisbane-Proserpine</b>								
Jetstar	340	340	296	87.1	278	81.8	0	0.0
Virgin Australia	560	557	528	94.8	531	95.3	3	0.5
All Airlines	900	897	824	91.9	809	90.2	3	0.3

	<i>Sectors</i>		<i>Arrivals On Time</i>		<i>Departures On Time</i>		<i>Cancellations</i>	
	<i>Sched.</i>	<i>Flown</i>	<i>No.</i>	<i>%</i>	<i>No.</i>	<i>%</i>	<i>No.</i>	<i>%</i>
<b>Brisbane-Rockhampton</b>								
QantasLink	2 222	2 186	1 982	90.7	1 986	90.9	36	1.6
Virgin Australia	1 811	1 776	1 619	91.2	1 618	91.1	35	1.9
Virgin Australia Regional Airlines	508	474	387	81.6	392	82.7	34	6.7
All Airlines	4 541	4 436	3 988	89.9	3 996	90.1	105	2.3
<b>Brisbane-Sydney</b>								
Jetstar	2 145	2 037	1 596	78.4	1 546	75.9	108	5.0
Qantas	7 396	7 297	6 608	90.6	6 695	91.8	99	1.3
Tigerair Australia	1 201	1 184	1 025	86.6	1 023	86.4	17	1.4
Virgin Australia	6 567	6 407	5 829	91.0	5 916	92.3	160	2.4
All Airlines	17 309	16 925	15 058	89.0	15 180	89.7	384	2.2
<b>Brisbane-Townsville</b>								
Jetstar	551	549	445	81.1	442	80.5	2	0.4
Qantas	1 722	1 722	1 576	91.5	1 559	90.5	0	0.0
QantasLink	26	26	22	84.6	21	80.8	0	0.0
Virgin Australia	1 795	1 780	1 638	92.0	1 629	91.5	15	0.8
All Airlines	4 094	4 077	3 681	90.3	3 651	89.6	17	0.4
<b>Broome-Perth</b>								
Qantas	289	286	231	80.8	211	73.8	3	1.0
QantasLink	703	696	631	90.7	618	88.8	7	1.0
Virgin Australia	136	134	114	85.1	112	83.6	2	1.5
Virgin Australia Regional Airlines	534	532	353	66.4	387	72.7	2	0.4
All Airlines	1 662	1 648	1 329	80.6	1 328	80.6	14	0.8
<b>Bundaberg-Brisbane</b>								
QantasLink	1 600	1 593	1 441	90.5	1 465	92.0	7	0.4
Virgin Australia	183	182	163	89.6	162	89.0	1	0.5
Virgin Australia Regional Airlines	231	228	196	86.0	190	83.3	3	1.3
All Airlines	2 014	2 003	1 800	89.9	1 817	90.7	11	0.5
<b>Cairns-Brisbane</b>								
Jetstar	1 294	1 278	1 115	87.2	1 067	83.5	16	1.2
Qantas	1 417	1 417	1 296	91.5	1 309	92.4	0	0.0
QantasLink	56	55	46	83.6	46	83.6	1	1.8
Tigerair Australia	358	357	299	83.8	313	87.7	1	0.3
Virgin Australia	1 622	1 622	1 518	93.6	1 518	93.6	0	0.0
All Airlines	4 747	4 729	4 274	90.4	4 253	89.9	18	0.4
<b>Cairns-Melbourne</b>								
Jetstar	1 210	1 199	901	75.1	881	73.5	11	0.9
Qantas	461	461	407	88.3	410	88.9	0	0.0
Tigerair Australia	443	440	346	78.6	344	78.2	3	0.7
Virgin Australia	389	389	349	89.7	354	91.0	0	0.0
All Airlines	2 503	2 489	2 003	80.5	1 989	79.9	14	0.6
<b>Cairns-Sydney</b>								
Jetstar	1 234	1 216	1 028	84.5	1 011	83.1	18	1.5
Qantas	918	917	843	91.9	820	89.4	1	0.1
Tigerair Australia	438	438	376	85.8	367	83.8	0	0.0
Virgin Australia	1 076	1 073	988	92.1	981	91.4	3	0.3
All Airlines	3 666	3 644	3 235	88.8	3 179	87.2	22	0.6
<b>Cairns-Townsville</b>								
(From September 2015 only)								
QantasLink	1 422	1 392	1 266	90.9	1 275	91.6	30	2.1
Regional Express	571	568	550	96.8	547	96.3	3	0.5
All Airlines	1 993	1 960	1 816	92.7	1 822	93.0	33	1.7
<b>Canberra-Adelaide</b>								
Qantas	544	542	512	94.5	502	92.6	2	0.4
Virgin Australia	315	313	290	92.7	292	93.3	2	0.6
All Airlines	859	855	802	93.8	794	92.9	4	0.5

	<i>Sectors</i>		<i>Arrivals On Time</i>		<i>Departures On Time</i>		<i>Cancellations</i>	
	<i>Sched.</i>	<i>Flown</i>	<i>No.</i>	<i>%</i>	<i>No.</i>	<i>%</i>	<i>No.</i>	<i>%</i>
<b>Canberra-Brisbane</b>								
Qantas	319	319	302	94.7	300	94.0	0	0.0
QantasLink	1 468	1 439	1 186	82.4	1 191	82.8	29	2.0
Virgin Australia	1 122	1 119	1 028	91.9	1 030	92.0	3	0.3
All Airlines	2 909	2 877	2 516	87.5	2 521	87.6	32	1.1
<b>Canberra-Melbourne</b>								
Qantas	2 283	2 269	2 072	91.3	2 090	92.1	14	0.6
QantasLink	972	929	767	82.6	769	82.8	43	4.4
Virgin Australia	2 004	1 980	1 747	88.2	1 785	90.2	24	1.2
Virgin Australia Regional Airlines	171	164	133	81.1	146	89.0	7	4.1
All Airlines	5 430	5 342	4 719	88.3	4 790	89.7	88	1.6
<b>Canberra-Sydney</b>								
Qantas	60	59	54	91.5	53	89.8	1	1.7
QantasLink	5 699	5 334	4 598	86.2	4 576	85.8	365	6.4
Virgin Australia	1 780	1 709	1 526	89.3	1 532	89.6	71	4.0
Virgin Australia Regional Airlines	1 579	1 517	1 346	88.7	1 355	89.3	62	3.9
All Airlines	9 118	8 619	7 524	87.3	7 516	87.2	499	5.5
<b>Coffs Harbour-Sydney</b>								
QantasLink	1 819	1 791	1 462	81.6	1 448	80.8	28	1.5
Tigerair Australia	155	153	136	88.9	141	92.2	2	1.3
Virgin Australia	724	709	648	91.4	645	91.0	15	2.1
All Airlines	2 698	2 653	2 246	84.7	2 234	84.2	45	1.7
<b>Darwin-Alice Springs</b>								
QantasLink	642	639	606	94.8	607	95.0	3	0.5
Virgin Australia	158	158	148	93.7	152	96.2	0	0.0
All Airlines	800	797	754	94.6	759	95.2	3	0.4
<b>Darwin-Brisbane</b>								
Jetstar	305	302	254	84.1	229	75.8	3	1.0
Qantas	559	558	520	93.2	492	88.2	1	0.2
Tigerair Australia	251	245	227	92.7	217	88.6	6	2.4
Virgin Australia	369	368	305	82.9	321	87.2	1	0.3
All Airlines	1 484	1 473	1 306	88.7	1 259	85.5	11	0.7
<b>Darwin-Melbourne</b>								
Jetstar	328	325	222	68.3	196	60.3	3	0.9
Qantas	369	369	340	92.1	341	92.4	0	0.0
Virgin Australia	376	376	321	85.4	313	83.2	0	0.0
All Airlines	1 073	1 070	883	82.5	850	79.4	3	0.3
<b>Darwin-Perth</b>								
Qantas	456	455	434	95.4	430	94.5	1	0.2
Virgin Australia	370	370	320	86.5	330	89.2	0	0.0
All Airlines	826	825	754	91.4	760	92.1	1	0.1
<b>Darwin-Sydney</b>								
Jetstar	304	302	220	72.8	201	66.6	2	0.7
Qantas	578	576	504	87.5	502	87.2	2	0.3
Virgin Australia	368	368	286	77.7	279	75.8	0	0.0
All Airlines	1 250	1 246	1 010	81.1	982	78.8	4	0.3
<b>Dubbo-Sydney</b>								
QantasLink	1 488	1 471	1 167	79.3	1 171	79.6	17	1.1
Regional Express	1 735	1 720	1 478	85.9	1 550	90.1	15	0.9
All Airlines	3 223	3 191	2 645	82.9	2 721	85.3	32	1.0

	<i>Sectors</i>		<i>Arrivals On Time</i>		<i>Departures On Time</i>		<i>Cancellations</i>	
	<i>Sched.</i>	<i>Flown</i>	<i>No.</i>	<i>%</i>	<i>No.</i>	<i>%</i>	<i>No.</i>	<i>%</i>
<b>Emerald-Brisbane</b>								
QantasLink	1 670	1 620	1 447	89.3	1 431	88.3	50	3.0
Virgin Australia	416	414	382	92.3	379	91.5	2	0.5
Virgin Australia Regional Airlines	461	450	378	84.0	376	83.6	11	2.4
All Airlines	2 547	2 484	2 207	88.8	2 186	88.0	63	2.5
<b>Geraldton-Perth</b>								
QantasLink	577	576	536	93.1	524	91.0	1	0.2
Virgin Australia Regional Airlines	855	848	754	88.9	752	88.7	7	0.8
All Airlines	1 432	1 424	1 290	90.6	1 276	89.6	8	0.6
<b>Gladstone-Brisbane</b>								
QantasLink	2 337	2 240	2 040	91.1	2 026	90.4	97	4.2
Virgin Australia	988	969	888	91.6	884	91.2	19	1.9
Virgin Australia Regional Airlines	670	644	550	85.4	550	85.4	26	3.9
All Airlines	3 995	3 853	3 478	90.3	3 460	89.8	142	3.6
<b>Gold Coast-Adelaide</b>								
Jetstar	425	423	376	88.9	380	89.8	2	0.5
Virgin Australia	374	374	339	90.6	337	90.1	0	0.0
All Airlines	799	797	715	89.7	717	90.0	2	0.3
<b>Gold Coast-Melbourne</b>								
Jetstar	2 490	2 442	2 000	81.9	1 852	75.8	48	1.9
Qantas	252	252	216	85.7	213	84.5	0	0.0
Tigerair Australia	1 001	990	830	83.8	815	82.3	11	1.1
Virgin Australia	2 232	2 215	1 961	88.5	1 931	87.2	17	0.8
All Airlines	5 975	5 899	5 007	84.9	4 811	81.6	76	1.3
<b>Gold Coast-Sydney</b>								
Jetstar	3 742	3 657	2 900	79.3	2 761	75.5	85	2.3
Qantas	1 116	1 116	1 027	92.0	1 030	92.3	0	0.0
QantasLink	69	67	50	74.6	49	73.1	2	2.9
Tigerair Australia	1 307	1 294	1 072	82.8	1 058	81.8	13	1.0
Virgin Australia	3 088	3 051	2 706	88.7	2 707	88.7	37	1.2
All Airlines	9 322	9 185	7 755	84.4	7 605	82.8	137	1.5
<b>Hamilton Island-Brisbane</b>								
QantasLink	310	305	281	92.1	250	82.0	5	1.6
Virgin Australia	367	361	326	90.3	320	88.6	6	1.6
All Airlines	677	666	607	91.1	570	85.6	11	1.6
<b>Hamilton Island-Melbourne</b>								
			(From September 2015 only)					
Qantas	121	121	106	87.6	98	81.0	0	0.0
Virgin Australia	212	211	189	89.6	183	86.7	1	0.5
All Airlines	333	332	295	88.9	281	84.6	1	0.3
<b>Hamilton Island-Sydney</b>								
Jetstar	317	314	221	70.4	189	60.2	3	0.9
Qantas	173	169	131	77.5	116	68.6	4	2.3
QantasLink	24	24	16	66.7	16	66.7	0	0.0
Virgin Australia	371	365	318	87.1	301	82.5	6	1.6
All Airlines	885	872	686	78.7	622	71.3	13	1.5
<b>Hobart-Brisbane</b>								
Jetstar	345	345	298	86.4	283	82.0	0	0.0
Qantas	5	5	5	100.0	5	100.0	0	0.0
Virgin Australia	366	366	322	88.0	325	88.8	0	0.0
All Airlines	716	716	625	87.3	613	85.6	0	0.0

	<i>Sectors</i>		<i>Arrivals On Time</i>		<i>Departures On Time</i>		<i>Cancellations</i>	
	<i>Sched.</i>	<i>Flown</i>	<i>No.</i>	<i>%</i>	<i>No.</i>	<i>%</i>	<i>No.</i>	<i>%</i>
<b>Hobart-Melbourne</b>								
Jetstar	2 208	2 193	1 463	66.7	1 383	63.1	15	0.7
Qantas	43	43	34	79.1	32	74.4	0	0.0
QantasLink	1 505	1 485	1 156	77.8	1 215	81.8	20	1.3
Tigerair Australia	384	384	301	78.4	308	80.2	0	0.0
Virgin Australia	1 722	1 714	1 480	86.3	1 524	88.9	8	0.5
All Airlines	5 862	5 819	4 434	76.2	4 462	76.7	43	0.7
<b>Hobart-Sydney</b>								
Jetstar	954	946	683	72.2	667	70.5	8	0.8
Qantas	13	13	12	92.3	9	69.2	0	0.0
QantasLink	479	471	375	79.6	399	84.7	8	1.7
Virgin Australia	739	739	651	88.1	654	88.5	0	0.0
All Airlines	2 185	2 169	1 721	79.3	1 729	79.7	16	0.7
<b>Kalgoorlie-Perth</b>								
Qantas	117	114	104	91.2	100	87.7	3	2.6
QantasLink	864	856	784	91.6	778	90.9	8	0.9
Virgin Australia	395	392	371	94.6	371	94.6	3	0.8
Virgin Australia Regional Airlines	310	309	273	88.3	278	90.0	1	0.3
All Airlines	1 686	1 671	1 532	91.7	1 527	91.4	15	0.9
<b>Karratha-Perth</b>								
Qantas	753	715	675	94.4	680	95.1	38	5.0
QantasLink	1 767	1 719	1 578	91.8	1 589	92.4	48	2.7
Virgin Australia	463	445	425	95.5	419	94.2	18	3.9
Virgin Australia Regional Airlines	519	503	391	77.7	422	83.9	16	3.1
All Airlines	3 502	3 382	3 069	90.7	3 110	92.0	120	3.4
<b>Launceston-Melbourne</b>								
Jetstar	1 650	1 633	1 203	73.7	1 184	72.5	17	1.0
QantasLink	1 418	1 358	1 132	83.4	1 142	84.1	60	4.2
Virgin Australia	1 122	1 118	973	87.0	1 009	90.3	4	0.4
Virgin Australia Regional Airlines	27	27	16	59.3	14	51.9	0	0.0
All Airlines	4 217	4 136	3 324	80.4	3 349	81.0	81	1.9
<b>Launceston-Sydney</b>								
Jetstar	640	632	465	73.6	455	72.0	8	1.3
Virgin Australia	369	369	331	89.7	335	90.8	0	0.0
All Airlines	1 009	1 001	796	79.5	790	78.9	8	0.8
<b>Mackay-Brisbane</b>								
Jetstar	582	576	434	75.3	395	68.6	6	1.0
QantasLink	1 281	1 237	1 110	89.7	1 089	88.0	44	3.4
Virgin Australia	1 836	1 820	1 688	92.7	1 687	92.7	16	0.9
All Airlines	3 699	3 633	3 232	89.0	3 171	87.3	66	1.8
<b>Melbourne-Adelaide</b>								
Jetstar	1 326	1 290	886	68.7	900	69.8	36	2.7
Qantas	3 376	3 366	3 039	90.3	3 006	89.3	10	0.3
Tigerair Australia	905	897	808	90.1	823	91.8	8	0.9
Virgin Australia	3 398	3 358	3 040	90.5	3 067	91.3	40	1.2
All Airlines	9 005	8 911	7 773	87.2	7 796	87.5	94	1.0
<b>Melbourne-Brisbane</b>								
Jetstar	1 496	1 449	1 087	75.0	994	68.6	47	3.1
Qantas	5 124	5 085	4 448	87.5	4 497	88.4	39	0.8
Tigerair Australia	1 475	1 457	1 215	83.4	1 212	83.2	18	1.2
Virgin Australia	4 675	4 554	4 032	88.5	4 162	91.4	121	2.6
All Airlines	12 770	12 545	10 782	85.9	10 865	86.6	225	1.8

	<i>Sectors</i>		<i>Arrivals On Time</i>		<i>Departures On Time</i>		<i>Cancellations</i>	
	<i>Sched.</i>	<i>Flown</i>	<i>No.</i>	<i>%</i>	<i>No.</i>	<i>%</i>	<i>No.</i>	<i>%</i>
<b>Melbourne-Cairns</b>								
Jetstar	1 209	1 200	877	73.1	802	66.8	9	0.7
Qantas	461	461	421	91.3	404	87.6	0	0.0
Tigerair Australia	444	444	391	88.1	402	90.5	0	0.0
Virgin Australia	389	389	352	90.5	359	92.3	0	0.0
All Airlines	2 503	2 494	2 041	81.8	1 967	78.9	9	0.4
<b>Melbourne-Canberra</b>								
Qantas	2 283	2 269	2 042	90.0	2 046	90.2	14	0.6
QantasLink	973	917	751	81.9	764	83.3	56	5.8
Virgin Australia	2 003	1 980	1 767	89.2	1 798	90.8	23	1.1
Virgin Australia Regional Airlines	173	165	128	77.6	134	81.2	8	4.6
All Airlines	5 432	5 331	4 688	87.9	4 742	89.0	101	1.9
<b>Melbourne-Darwin</b>								
Jetstar	329	329	262	79.6	248	75.4	0	0.0
Qantas	369	369	350	94.9	347	94.0	0	0.0
Virgin Australia	378	378	307	81.2	328	86.8	0	0.0
All Airlines	1 076	1 076	919	85.4	923	85.8	0	0.0
<b>Melbourne-Gold Coast</b>								
Jetstar	2 488	2 444	1 796	73.5	1 768	72.3	44	1.8
Qantas	252	252	215	85.3	222	88.1	0	0.0
Tigerair Australia	1 000	993	889	89.5	925	93.2	7	0.7
Virgin Australia	2 234	2 223	1 954	87.9	1 972	88.7	11	0.5
All Airlines	5 974	5 912	4 854	82.1	4 887	82.7	62	1.0
<b>Melbourne-Hamilton Island</b>								
			(From September 2015 only)					
Qantas	121	121	118	97.5	112	92.6	0	0.0
Virgin Australia	212	211	195	92.4	192	91.0	1	0.5
All Airlines	333	332	313	94.3	304	91.6	1	0.3
<b>Melbourne-Hobart</b>								
Jetstar	2 210	2 200	1 628	74.0	1 600	72.7	10	0.5
Qantas	43	43	36	83.7	37	86.0	0	0.0
QantasLink	1 505	1 484	1 163	78.4	1 180	79.5	21	1.4
Tigerair Australia	384	384	331	86.2	330	85.9	0	0.0
Virgin Australia	1 721	1 716	1 551	90.4	1 567	91.3	5	0.3
All Airlines	5 863	5 827	4 709	80.8	4 714	80.9	36	0.6
<b>Melbourne-Launceston</b>								
Jetstar	1 651	1 634	1 267	77.5	1 253	76.7	17	1.0
QantasLink	1 418	1 362	1 084	79.6	1 147	84.2	56	3.9
Virgin Australia	1 122	1 121	985	87.9	1 017	90.7	1	0.1
Virgin Australia Regional Airlines	27	27	22	81.5	22	81.5	0	0.0
All Airlines	4 218	4 144	3 358	81.0	3 439	83.0	74	1.8
<b>Melbourne-Mildura</b>								
QantasLink	1 098	1 088	900	82.7	914	84.0	10	0.9
Regional Express	961	960	846	88.1	876	91.3	1	0.1
Virgin Australia	366	366	327	89.3	336	91.8	0	0.0
All Airlines	2 425	2 414	2 073	85.9	2 126	88.1	11	0.5
<b>Melbourne-Newcastle</b>								
Jetstar	1 193	1 182	898	76.0	866	73.3	11	0.9
Virgin Australia	378	375	337	89.9	348	92.8	3	0.8
All Airlines	1 571	1 557	1 235	79.3	1 214	78.0	14	0.9
<b>Melbourne-Perth</b>								
Jetstar	897	762	632	82.9	580	76.1	135	15.1
Qantas	2 451	2 442	2 003	82.0	1 993	81.6	9	0.4
Tigerair Australia	679	677	580	85.7	589	87.0	2	0.3
Virgin Australia	1 703	1 696	1 478	87.1	1 442	85.0	7	0.4
All Airlines	5 730	5 577	4 693	84.1	4 604	82.6	153	2.7

	<i>Sectors</i>		<i>Arrivals On Time</i>		<i>Departures On Time</i>		<i>Cancellations</i>	
	<i>Sched.</i>	<i>Flown</i>	<i>No.</i>	<i>%</i>	<i>No.</i>	<i>%</i>	<i>No.</i>	<i>%</i>
<b>Melbourne-Sunshine Coast</b>								
Jetstar	993	985	757	76.9	707	71.8	8	0.8
Virgin Australia	435	434	374	86.2	383	88.2	1	0.2
All Airlines	1 428	1 419	1 131	79.7	1 090	76.8	9	0.6
<b>Melbourne-Sydney</b>								
Jetstar	4 324	4 114	2 983	72.5	2 875	69.9	210	4.9
Qantas	11 605	11 248	9 624	85.6	9 779	86.9	357	3.1
Tigerair Australia	2 873	2 834	2 275	80.3	2 306	81.4	39	1.4
Virgin Australia	9 348	9 022	8 062	89.4	8 255	91.5	326	3.5
All Airlines	28 150	27 218	22 944	84.3	23 215	85.3	932	3.3
<b>Mildura-Melbourne</b>								
QantasLink	1 098	1 084	937	86.4	966	89.1	14	1.3
Regional Express	960	957	779	81.4	821	85.8	3	0.3
Virgin Australia	366	366	334	91.3	328	89.6	0	0.0
All Airlines	2 424	2 407	2 050	85.2	2 115	87.9	17	0.7
<b>Moranbah-Brisbane</b>								
QantasLink	1 312	1 173	1 075	91.6	1 070	91.2	139	10.6
Virgin Australia	394	388	364	93.8	364	93.8	6	1.5
Virgin Australia Regional Airlines	428	419	358	85.4	369	88.1	9	2.1
All Airlines	2 134	1 980	1 797	90.8	1 803	91.1	154	7.2
<b>Mount Isa-Brisbane</b>								
Qantas	419	417	398	95.4	389	93.3	2	0.5
QantasLink	148	147	140	95.2	141	95.9	1	0.7
Virgin Australia	252	252	239	94.8	238	94.4	0	0.0
All Airlines	819	816	777	95.2	768	94.1	3	0.4
<b>Newcastle-Brisbane</b>								
Jetstar	999	985	788	80.0	822	83.5	14	1.4
QantasLink	1 056	1 040	943	90.7	928	89.2	16	1.5
Virgin Australia	1 026	1 013	930	91.8	934	92.2	13	1.3
All Airlines	3 081	3 038	2 661	87.6	2 684	88.3	43	1.4
<b>Newcastle-Melbourne</b>								
Jetstar	1 192	1 179	906	76.8	911	77.3	13	1.1
Virgin Australia	379	375	313	83.5	319	85.1	4	1.1
All Airlines	1 571	1 554	1 219	78.4	1 230	79.2	17	1.1
<b>Newman-Perth</b>								
Qantas	913	903	864	95.7	868	96.1	10	1.1
QantasLink	875	867	827	95.4	825	95.2	8	0.9
Virgin Australia	257	253	229	90.5	234	92.5	4	1.6
Virgin Australia Regional Airlines	154	154	134	87.0	139	90.3	0	0.0
All Airlines	2 199	2 177	2 054	94.4	2 066	94.9	22	1.0
<b>Perth-Adelaide</b>								
Jetstar	372	361	285	78.9	277	76.7	11	3.0
Qantas	1 435	1 430	1 357	94.9	1 348	94.3	5	0.3
Virgin Australia	908	901	833	92.5	836	92.8	7	0.8
All Airlines	2 715	2 692	2 475	91.9	2 461	91.4	23	0.8
<b>Perth-Brisbane</b>								
Qantas	1 590	1 589	1 382	87.0	1 428	89.9	1	0.1
Virgin Australia	1 315	1 315	1 171	89.0	1 201	91.3	0	0.0
All Airlines	2 905	2 904	2 553	87.9	2 629	90.5	1	0.0

	<i>Sectors</i>		<i>Arrivals On Time</i>		<i>Departures On Time</i>		<i>Cancellations</i>	
	<i>Sched.</i>	<i>Flown</i>	<i>No.</i>	<i>%</i>	<i>No.</i>	<i>%</i>	<i>No.</i>	<i>%</i>
<b>Perth-Broome</b>								
Qantas	289	286	258	90.2	252	88.1	3	1.0
QantasLink	704	699	639	91.4	646	92.4	5	0.7
Virgin Australia	136	136	122	89.7	122	89.7	0	0.0
Virgin Australia Regional Airlines	534	534	416	77.9	459	86.0	0	0.0
All Airlines	1 663	1 655	1 435	86.7	1 479	89.4	8	0.5
<b>Perth-Darwin</b>								
Qantas	456	455	434	95.4	431	94.7	1	0.2
Virgin Australia	368	368	340	92.4	335	91.0	0	0.0
All Airlines	824	823	774	94.0	766	93.1	1	0.1
<b>Perth-Geraldton</b>								
QantasLink	577	576	531	92.2	534	92.7	1	0.2
Virgin Australia Regional Airlines	819	818	715	87.4	727	88.9	1	0.1
All Airlines	1 396	1 394	1 246	89.4	1 261	90.5	2	0.1
<b>Perth-Kalgoorlie</b>								
Qantas	115	112	98	87.5	101	90.2	3	2.6
QantasLink	865	859	784	91.3	776	90.3	6	0.7
Virgin Australia	397	395	376	95.2	377	95.4	2	0.5
Virgin Australia Regional Airlines	310	309	262	84.8	275	89.0	1	0.3
All Airlines	1 687	1 675	1 520	90.7	1 529	91.3	12	0.7
<b>Perth-Karratha</b>								
Qantas	753	724	694	95.9	697	96.3	29	3.9
QantasLink	1 775	1 730	1 567	90.6	1 608	92.9	45	2.5
Virgin Australia	463	447	422	94.4	427	95.5	16	3.5
Virgin Australia Regional Airlines	519	509	403	79.2	445	87.4	10	1.9
All Airlines	3 510	3 410	3 086	90.5	3 177	93.2	100	2.8
<b>Perth-Melbourne</b>								
Jetstar	897	753	577	76.6	535	71.0	144	16.1
Qantas	2 451	2 442	2 131	87.3	2 129	87.2	9	0.4
Tigerair Australia	677	670	573	85.5	579	86.4	7	1.0
Virgin Australia	1 683	1 678	1 456	86.8	1 479	88.1	5	0.3
All Airlines	5 708	5 543	4 737	85.5	4 722	85.2	165	2.9
<b>Perth-Newman</b>								
Qantas	913	908	873	96.1	878	96.7	5	0.5
QantasLink	880	871	829	95.2	829	95.2	9	1.0
Virgin Australia	257	254	234	92.1	235	92.5	3	1.2
Virgin Australia Regional Airlines	152	151	135	89.4	136	90.1	1	0.7
All Airlines	2 202	2 184	2 071	94.8	2 078	95.1	18	0.8
<b>Perth-Port Hedland</b>								
Qantas	929	909	869	95.6	866	95.3	20	2.2
QantasLink	763	743	614	82.6	685	92.2	20	2.6
Virgin Australia	493	491	463	94.3	462	94.1	2	0.4
Virgin Australia Regional Airlines	66	66	61	92.4	64	97.0	0	0.0
All Airlines	2 251	2 209	2 007	90.9	2 077	94.0	42	1.9
<b>Perth-Sydney</b>								
Jetstar	359	354	292	82.5	248	70.1	5	1.4
Qantas	2 429	2 422	2 107	87.0	2 138	88.3	7	0.3
Tigerair Australia	307	304	280	92.1	284	93.4	3	1.0
Virgin Australia	1 418	1 411	1 270	90.0	1 257	89.1	7	0.5
All Airlines	4 513	4 491	3 949	87.9	3 927	87.4	22	0.5



	<i>Sectors</i>		<i>Arrivals On Time</i>		<i>Departures On Time</i>		<i>Cancellations</i>	
	<i>Sched.</i>	<i>Flown</i>	<i>No.</i>	<i>%</i>	<i>No.</i>	<i>%</i>	<i>No.</i>	<i>%</i>
<b>Port Hedland-Perth</b>								
Qantas	929	907	853	94.0	849	93.6	22	2.4
QantasLink	756	733	666	90.9	658	89.8	23	3.0
Virgin Australia	493	487	456	93.6	458	94.0	6	1.2
Virgin Australia Regional Airlines	67	67	56	83.6	59	88.1	0	0.0
All Airlines	2 245	2 194	2 031	92.6	2 024	92.3	51	2.3
<b>Port Lincoln-Adelaide</b>								
QantasLink	1 330	1 311	1 168	89.1	1 171	89.3	19	1.4
Regional Express	2 443	2 420	2 210	91.3	2 257	93.3	23	0.9
All Airlines	3 773	3 731	3 378	90.5	3 428	91.9	42	1.1
<b>Port Macquarie-Sydney</b>								
QantasLink	1 618	1 590	983	61.8	1 103	69.4	28	1.7
Virgin Australia	362	355	299	84.2	299	84.2	7	1.9
Virgin Australia Regional Airlines	366	361	286	79.2	289	80.1	5	1.4
All Airlines	2 346	2 306	1 568	68.0	1 691	73.3	40	1.7
<b>Proserpine-Brisbane</b>								
Jetstar	340	339	276	81.4	258	76.1	1	0.3
Virgin Australia	560	557	518	93.0	511	91.7	3	0.5
All Airlines	900	896	794	88.6	769	85.8	4	0.4
<b>Rockhampton-Brisbane</b>								
QantasLink	2 227	2 185	1 912	87.5	1 920	87.9	42	1.9
Virgin Australia	1 810	1 771	1 661	93.8	1 643	92.8	39	2.2
Virgin Australia Regional Airlines	502	471	408	86.6	408	86.6	31	6.2
All Airlines	4 539	4 427	3 981	89.9	3 971	89.7	112	2.5
<b>Sunshine Coast-Melbourne</b>								
Jetstar	993	981	692	70.5	635	64.7	12	1.2
Virgin Australia	435	432	360	83.3	348	80.6	3	0.7
All Airlines	1 428	1 413	1 052	74.5	983	69.6	15	1.1
<b>Sunshine Coast-Sydney</b>								
Jetstar	1 273	1 246	902	72.4	843	67.7	27	2.1
QantasLink	165	165	131	79.4	136	82.4	0	0.0
Virgin Australia	378	376	345	91.8	343	91.2	2	0.5
All Airlines	1 816	1 787	1 378	77.1	1 322	74.0	29	1.6
<b>Sydney-Adelaide</b>								
Jetstar	1 425	1 390	1 033	74.3	986	70.9	35	2.5
Qantas	2 789	2 776	2 487	89.6	2 480	89.3	13	0.5
QantasLink	287	269	209	77.7	216	80.3	18	6.3
Tigerair Australia	461	459	390	85.0	392	85.4	2	0.4
Virgin Australia	2 028	2 016	1 815	90.0	1 845	91.5	12	0.6
All Airlines	6 990	6 910	5 934	85.9	5 919	85.7	80	1.1
<b>Sydney-Albury</b>								
QantasLink	1 156	1 150	949	82.5	933	81.1	6	0.5
Regional Express	1 179	1 174	1 001	85.3	1 020	86.9	5	0.4
Virgin Australia	364	362	310	85.6	312	86.2	2	0.5
Virgin Australia Regional Airlines	368	366	306	83.6	305	83.3	2	0.5
All Airlines	3 067	3 052	2 566	84.1	2 570	84.2	15	0.5
<b>Sydney-Armidale</b>								
QantasLink	1 571	1 534	1 125	73.3	1 183	77.1	37	2.4
Regional Express	852	848	713	84.1	713	84.1	4	0.5
All Airlines	2 423	2 382	1 838	77.2	1 896	79.6	41	1.7
<b>Sydney-Ayers Rock</b>								
Jetstar	329	329	277	84.2	280	85.1	0	0.0
Virgin Australia	366	365	314	86.0	335	91.8	1	0.3
All Airlines	695	694	591	85.2	615	88.6	1	0.1

	<i>Sectors</i>		<i>Arrivals On Time</i>		<i>Departures On Time</i>		<i>Cancellations</i>	
	<i>Sched.</i>	<i>Flown</i>	<i>No.</i>	<i>%</i>	<i>No.</i>	<i>%</i>	<i>No.</i>	<i>%</i>
<b>Sydney-Ballina</b>								
Jetstar	908	905	707	78.1	706	78.0	3	0.3
Regional Express	283	282	250	88.7	248	87.9	1	0.4
Virgin Australia	372	370	348	94.1	355	95.9	2	0.5
All Airlines	1 563	1 557	1 305	83.8	1 309	84.1	6	0.4
<b>Sydney-Brisbane</b>								
Jetstar	2 123	2 022	1 520	75.2	1 518	75.1	101	4.8
Qantas	7 292	7 207	6 217	86.3	6 449	89.5	85	1.2
Tigerair Australia	1 203	1 186	1 019	85.9	1 071	90.3	17	1.4
Virgin Australia	6 608	6 445	5 634	87.4	5 838	90.6	163	2.5
All Airlines	17 226	16 860	14 390	85.3	14 876	88.2	366	2.1
<b>Sydney-Cairns</b>								
Jetstar	1 233	1 216	1 009	83.0	924	76.0	17	1.4
Qantas	919	919	819	89.1	823	89.6	0	0.0
Tigerair Australia	436	436	391	89.7	415	95.2	0	0.0
Virgin Australia	1 076	1 074	972	90.5	970	90.3	2	0.2
All Airlines	3 664	3 645	3 191	87.5	3 132	85.9	19	0.5
<b>Sydney-Canberra</b>								
Qantas	60	59	52	88.1	54	91.5	1	1.7
QantasLink	5 695	5 343	4 441	83.1	4 428	82.9	352	6.2
Virgin Australia	1 778	1 710	1 490	87.1	1 474	86.2	68	3.8
Virgin Australia Regional Airlines	1 582	1 519	1 294	85.2	1 282	84.4	63	4.0
All Airlines	9 115	8 631	7 277	84.3	7 238	83.9	484	5.3
<b>Sydney-Coffs Harbour</b>								
QantasLink	1 818	1 794	1 452	80.9	1 434	79.9	24	1.3
Tigerair Australia	155	154	146	94.8	147	95.5	1	0.6
Virgin Australia	723	711	656	92.3	656	92.3	12	1.7
All Airlines	2 696	2 659	2 254	84.8	2 237	84.1	37	1.4
<b>Sydney-Darwin</b>								
Jetstar	304	303	234	77.2	231	76.2	1	0.3
Qantas	576	576	504	87.5	495	85.9	0	0.0
Virgin Australia	368	368	329	89.4	341	92.7	0	0.0
All Airlines	1 248	1 247	1 067	85.6	1 067	85.6	1	0.1
<b>Sydney-Dubbo</b>								
QantasLink	1 486	1 470	1 093	74.4	1 049	71.4	16	1.1
Regional Express	1 729	1 715	1 554	90.6	1 537	89.6	14	0.8
All Airlines	3 215	3 185	2 647	83.1	2 586	81.2	30	0.9
<b>Sydney-Gold Coast</b>								
Jetstar	3 744	3 664	2 869	78.3	2 841	77.5	80	2.1
Qantas	1 117	1 117	1 044	93.5	1 019	91.2	0	0.0
QantasLink	69	67	53	79.1	56	83.6	2	2.9
Tigerair Australia	1 307	1 294	1 116	86.2	1 164	90.0	13	1.0
Virgin Australia	3 087	3 052	2 697	88.4	2 770	90.8	35	1.1
All Airlines	9 324	9 194	7 779	84.6	7 850	85.4	130	1.4
<b>Sydney-Hamilton Island</b>								
Jetstar	321	321	249	77.6	249	77.6	0	0.0
Qantas	173	170	160	94.1	162	95.3	3	1.7
QantasLink	25	24	15	62.5	17	70.8	1	4.0
Virgin Australia	370	366	322	88.0	335	91.5	4	1.1
All Airlines	889	881	746	84.7	763	86.6	8	0.9

	<i>Sectors</i>		<i>Arrivals On Time</i>		<i>Departures On Time</i>		<i>Cancellations</i>	
	<i>Sched.</i>	<i>Flown</i>	<i>No.</i>	<i>%</i>	<i>No.</i>	<i>%</i>	<i>No.</i>	<i>%</i>
<b>Sydney-Hobart</b>								
Jetstar	955	950	768	80.8	734	77.3	5	0.5
Qantas	13	13	12	92.3	12	92.3	0	0.0
QantasLink	480	475	393	82.7	393	82.7	5	1.0
Virgin Australia	739	738	683	92.5	687	93.1	1	0.1
All Airlines	2 187	2 176	1 856	85.3	1 826	83.9	11	0.5
<b>Sydney-Launceston</b>								
Jetstar	641	641	541	84.4	508	79.3	0	0.0
Virgin Australia	369	369	330	89.4	325	88.1	0	0.0
All Airlines	1 010	1 010	871	86.2	833	82.5	0	0.0
<b>Sydney-Melbourne</b>								
Jetstar	4 315	4 109	2 986	72.7	2 855	69.5	206	4.8
Qantas	11 581	11 225	9 352	83.3	9 836	87.6	356	3.1
Tigerair Australia	2 875	2 834	2 236	78.9	2 274	80.2	41	1.4
Virgin Australia	9 308	8 981	7 715	85.9	8 048	89.6	327	3.5
All Airlines	28 079	27 149	22 289	82.1	23 013	84.8	930	3.3
<b>Sydney-Perth</b>								
Jetstar	359	359	305	85.0	272	75.8	0	0.0
Qantas	2 480	2 475	2 033	82.1	2 040	82.4	5	0.2
Tigerair Australia	306	304	277	91.1	292	96.1	2	0.7
Virgin Australia	1 418	1 412	1 208	85.6	1 230	87.1	6	0.4
All Airlines	4 563	4 550	3 823	84.0	3 834	84.3	13	0.3
<b>Sydney-Port Macquarie</b>								
QantasLink	1 613	1 591	1 092	68.6	1 235	77.6	22	1.4
Virgin Australia	361	356	292	82.0	295	82.9	5	1.4
Virgin Australia Regional Airlines	366	360	297	82.5	297	82.5	6	1.6
All Airlines	2 340	2 307	1 681	72.9	1 827	79.2	33	1.4
<b>Sydney-Sunshine Coast</b>								
Jetstar	1 277	1 258	989	78.6	926	73.6	19	1.5
QantasLink	167	166	122	73.5	130	78.3	1	0.6
Virgin Australia	378	376	352	93.6	355	94.4	2	0.5
All Airlines	1 822	1 800	1 463	81.3	1 411	78.4	22	1.2
<b>Sydney-Tamworth</b>								
(From September 2015 only)								
QantasLink	1 533	1 483	1 193	80.4	1 207	81.4	50	3.3
Virgin Australia	159	158	138	87.3	138	87.3	1	0.6
Virgin Australia Regional Airlines	105	105	88	83.8	88	83.8	0	0.0
All Airlines	1 797	1 746	1 419	81.3	1 433	82.1	51	2.8
<b>Sydney-Townsville</b>								
Jetstar	295	293	235	80.2	211	72.0	2	0.7
Qantas	2	2	1	50.0	1	50.0	0	0.0
Virgin Australia	323	321	293	91.3	299	93.1	2	0.6
All Airlines	620	616	529	85.9	511	83.0	4	0.6
<b>Sydney-Wagga Wagga</b>								
QantasLink	1 343	1 335	1 059	79.3	1 065	79.8	8	0.6
Regional Express	1 507	1 504	1 336	88.8	1 350	89.8	3	0.2
All Airlines	2 850	2 839	2 395	84.4	2 415	85.1	11	0.4
<b>Tamworth-Sydney</b>								
(From September 2015 only)								
QantasLink	1 531	1 479	1 193	80.7	1 211	81.9	52	3.4
Virgin Australia	159	158	128	81.0	136	86.1	1	0.6
Virgin Australia Regional Airlines	105	105	83	79.0	85	81.0	0	0.0
All Airlines	1 795	1 742	1 404	80.6	1 432	82.2	53	3.0

	<i>Sectors</i>		<i>Arrivals On Time</i>		<i>Departures On Time</i>		<i>Cancellations</i>	
	<i>Sched.</i>	<i>Flown</i>	<i>No.</i>	<i>%</i>	<i>No.</i>	<i>%</i>	<i>No.</i>	<i>%</i>
<b>Townsville-Brisbane</b>								
Jetstar	551	548	446	81.4	413	75.4	3	0.5
Qantas	1 722	1 721	1 645	95.6	1 643	95.5	1	0.1
QantasLink	26	26	21	80.8	21	80.8	0	0.0
Virgin Australia	1 794	1 775	1 676	94.4	1 629	91.8	19	1.1
All Airlines	4 093	4 070	3 788	93.1	3 706	91.1	23	0.6
<b>Townsville-Cairns</b>								
			(From September 2015 only)					
QantasLink	1 419	1 385	1 298	93.7	1 286	92.9	34	2.4
Regional Express	571	569	545	95.8	551	96.8	2	0.4
All Airlines	1 990	1 954	1 843	94.3	1 837	94.0	36	1.8
<b>Townsville-Sydney</b>								
Jetstar	295	293	220	75.1	202	68.9	2	0.7
Qantas	2	2	1	50.0	1	50.0	0	0.0
Virgin Australia	323	321	277	86.3	276	86.0	2	0.6
All Airlines	620	616	498	80.8	479	77.8	4	0.6
<b>Wagga Wagga-Sydney</b>								
QantasLink	1 345	1 334	1 114	83.5	1 111	83.3	11	0.8
Regional Express	1 501	1 497	1 273	85.0	1 341	89.6	4	0.3
All Airlines	2 846	2 831	2 387	84.3	2 452	86.6	15	0.5

## Airports

On time performance is reported for all routes where the passenger load averages over 8000 passengers per month, and where two or more airlines operate in competition. The following data reports by airport against flights operated on those routes only. This year, 8 major city airports and 33 regional city airports are covered.

Airport	Arrivals			Departures		
	Sectors	On Time		Sectors	On Time	
	Flown	No.	%	Flown	No.	%
<b>Adelaide</b>						
Jetstar	3 797	2 886	76.0	3 789	2 973	78.5
Qantas	9 840	9 011	91.6	9 833	9 107	92.6
QantasLink	1 580	1 377	87.2	1 584	1 382	87.2
Regional Express	2 420	2 210	91.3	2 426	2 299	94.8
Tigerair Australia	1 650	1 461	88.5	1 648	1 420	86.2
Virgin Australia	8 514	7 739	90.9	8 516	7 858	92.3
All Airlines	27 801	24 684	88.8	27 796	25 039	90.1

Relates to services to and from Alice Springs, Brisbane, Canberra, Gold Coast, Melbourne, Perth, Port Lincoln and Sydney.

### Albury

QantasLink	1 150	949	82.5	1 149	978	85.1
Regional Express	1 174	1 001	85.3	1 178	1 087	92.3
Virgin Australia	362	310	85.6	360	305	84.7
Virgin Australia Regional Airlines	366	306	83.6	366	305	83.3
All Airlines	3 052	2 566	84.1	3 053	2 675	87.6

Relates to services to and from Sydney only.

### Alice Springs

Qantas	365	345	94.5	365	315	86.3
QantasLink	639	606	94.8	639	597	93.4
Virgin Australia	318	291	91.5	316	279	88.3
All Airlines	1 322	1 242	93.9	1 320	1 191	90.2

Relates to services to and from Adelaide and Darwin.

### Armidale

QantasLink	1 534	1 125	73.3	1 525	1 145	75.1
Regional Express	848	713	84.1	853	726	85.1
All Airlines	2 382	1 838	77.2	2 378	1 871	78.7

Relates to services to and from Sydney only.

### Ayers Rock

Jetstar	329	277	84.2	326	254	77.9
Virgin Australia	365	314	86.0	362	305	84.3
All Airlines	694	591	85.2	688	559	81.3

Relates to services to and from Sydney only.

### Ballina

Jetstar	905	707	78.1	899	624	69.4
Regional Express	282	250	88.7	268	218	81.3
Virgin Australia	370	348	94.1	370	345	93.2
All Airlines	1 557	1 305	83.8	1 537	1 187	77.2

Relates to services to and from Sydney only.

Airport	Arrivals			Departures		
	Sectors Flown	On Time		Sectors Flown	On Time	
		No.	%		No.	%
<b>Brisbane</b>						
Jetstar	8 178	6 502	79.5	8 208	6 479	78.9
Qantas	19 679	17 490	88.9	19 807	18 102	91.4
QantasLink	13 060	11 642	89.1	13 143	12 008	91.4
Tigerair Australia	3 539	3 026	85.5	3 539	3 066	86.6
Virgin Australia	26 660	24 112	90.4	26 691	24 483	91.7
Virgin Australia Regional Airlines	2 212	1 890	85.4	2 221	1 885	84.9
All Airlines	73 328	64 662	88.2	73 609	66 023	89.7

Relates to services to and from Adelaide, Bundaberg, Cairns, Canberra, Darwin, Emerald, Gladstone, Hamilton Island, Hobart, Mackay, Melbourne, Moranbah, Mount Isa, Newcastle, Perth, Proserpine, Rockhampton, Sydney and Townsville.

#### Broome

Qantas	286	258	90.2	286	211	73.8
QantasLink	699	639	91.4	696	618	88.8
Virgin Australia	136	122	89.7	134	112	83.6
Virgin Australia Regional Airlines	534	416	77.9	532	387	72.7
All Airlines	1 655	1 435	86.7	1 648	1 328	80.6

Relates to services to and from Perth only.

#### Bundaberg

QantasLink	1 592	1 454	91.3	1 593	1 465	92.0
Virgin Australia	183	168	91.8	182	162	89.0
Virgin Australia Regional Airlines	229	200	87.3	228	190	83.3
All Airlines	2 004	1 822	90.9	2 003	1 817	90.7

Relates to services to and from Brisbane only.

#### Cairns

Jetstar	3 701	2 966	80.1	3 693	2 959	80.1
Qantas	2 797	2 541	90.8	2 795	2 539	90.8
QantasLink	1 441	1 343	93.2	1 447	1 321	91.3
Regional Express	569	545	95.8	568	547	96.3
Tigerair Australia	1 238	1 114	90.0	1 235	1 024	82.9
Virgin Australia	3 084	2 836	92.0	3 084	2 853	92.5
All Airlines	12 830	11 345	88.4	12 822	11 243	87.7

Relates to services to and from Brisbane, Melbourne, Sydney and Townsville (from September 2015 only).

#### Canberra

Qantas	3 191	2 909	91.2	3 189	2 945	92.3
QantasLink	7 703	6 469	84.0	7 702	6 536	84.9
Virgin Australia	5 124	4 590	89.6	5 121	4 639	90.6
Virgin Australia Regional Airlines	1 684	1 422	84.4	1 681	1 501	89.3
All Airlines	17 702	15 390	86.9	17 693	15 621	88.3

Relates to services to and from Adelaide, Brisbane, Melbourne and Sydney.

#### Coffs Harbour

QantasLink	1 794	1 452	80.9	1 791	1 448	80.8
Tigerair Australia	154	146	94.8	153	141	92.2
Virgin Australia	711	656	92.3	709	645	91.0
All Airlines	2 659	2 254	84.8	2 653	2 234	84.2

Relates to services to and from Sydney only.

Airport	Arrivals			Departures		
	Sectors Flown	On Time		Sectors Flown	On Time	
		No.	%		No.	%
<b>Darwin</b>						
Jetstar	935	742	79.4	929	626	67.4
Qantas	1 959	1 806	92.2	1 958	1 765	90.1
QantasLink	639	602	94.2	639	607	95.0
Tigerair Australia	251	222	88.4	245	217	88.6
Virgin Australia	1 640	1 447	88.2	1 640	1 395	85.1
All Airlines	5 424	4 819	88.8	5 411	4 610	85.2
Relates to services to and from Alice Springs, Brisbane, Melbourne, Perth and Sydney.						
<b>Dubbo</b>						
QantasLink	1 470	1 093	74.4	1 471	1 171	79.6
Regional Express	1 715	1 554	90.6	1 720	1 550	90.1
All Airlines	3 185	2 647	83.1	3 191	2 721	85.3
Relates to services to and from Sydney only.						
<b>Emerald</b>						
QantasLink	1 625	1 463	90.0	1 620	1 431	88.3
Virgin Australia	412	361	87.6	414	379	91.5
Virgin Australia Regional Airlines	451	338	74.9	450	376	83.6
All Airlines	2 488	2 162	86.9	2 484	2 186	88.0
Relates to services to and from Brisbane only.						
<b>Geraldton</b>						
QantasLink	576	531	92.2	576	524	91.0
Virgin Australia Regional Airlines	818	715	87.4	848	752	88.7
All Airlines	1 394	1 246	89.4	1 424	1 276	89.6
Relates to services to and from Perth only.						
<b>Gladstone</b>						
QantasLink	2 255	2 066	91.6	2 240	2 026	90.4
Virgin Australia	973	879	90.3	969	884	91.2
Virgin Australia Regional Airlines	647	547	84.5	644	550	85.4
All Airlines	3 875	3 492	90.1	3 853	3 460	89.8
Relates to services to and from Brisbane only.						
<b>Gold Coast</b>						
Jetstar	6 530	5 032	77.1	6 522	4 993	76.6
Qantas	1 369	1 259	92.0	1 368	1 243	90.9
QantasLink	67	53	79.1	67	49	73.1
Tigerair Australia	2 287	2 005	87.7	2 284	1 873	82.0
Virgin Australia	5 649	5 011	88.7	5 640	4 975	88.2
All Airlines	15 902	13 360	84.0	15 881	13 133	82.7
Relates to services to and from Adelaide, Melbourne and Sydney.						
<b>Hamilton Island</b>						
Jetstar	321	249	77.6	314	189	60.2
Qantas	291	278	95.5	290	214	73.8
QantasLink	329	288	87.5	329	266	80.9
Virgin Australia	939	846	90.1	937	804	85.8
All Airlines	1 880	1 661	88.4	1 870	1 473	78.8
Relates to services to and from Brisbane, Melbourne (not published for July and August 2015) and Sydney.						

Airport	Arrivals			Departures		
	Sectors Flown	On Time		Sectors Flown	On Time	
		No.	%		No.	%
<b>Hobart</b>						
Jetstar	3 498	2 710	77.5	3 484	2 333	67.0
Qantas	61	53	86.9	61	46	75.4
QantasLink	1 959	1 556	79.4	1 956	1 614	82.5
Tigerair Australia	384	331	86.2	384	308	80.2
Virgin Australia	2 820	2 582	91.6	2 819	2 503	88.8
All Airlines	8 722	7 232	82.9	8 704	6 804	78.2
Relates to services to and from Brisbane, Melbourne and Sydney.						
<b>Kalgoorlie</b>						
Qantas	112	98	87.5	114	100	87.7
QantasLink	859	784	91.3	856	778	90.9
Virgin Australia	395	376	95.2	392	371	94.6
Virgin Australia Regional Airlines	309	262	84.8	309	278	90.0
All Airlines	1 675	1 520	90.7	1 671	1 527	91.4
Relates to services to and from Perth only.						
<b>Karratha</b>						
Qantas	724	694	95.9	715	680	95.1
QantasLink	1 730	1 567	90.6	1 719	1 589	92.4
Virgin Australia	447	422	94.4	445	419	94.2
Virgin Australia Regional Airlines	509	403	79.2	503	422	83.9
All Airlines	3 410	3 086	90.5	3 382	3 110	92.0
Relates to services to and from Perth only.						
<b>Launceston</b>						
Jetstar	2 275	1 808	79.5	2 265	1 639	72.4
QantasLink	1 362	1 084	79.6	1 358	1 142	84.1
Virgin Australia	1 490	1 315	88.3	1 487	1 344	90.4
Virgin Australia Regional Airlines	27	22	81.5	27	14	51.9
All Airlines	5 154	4 229	82.1	5 137	4 139	80.6
Relates to services to and from Melbourne and Sydney.						
<b>Mackay</b>						
Jetstar	581	458	78.8	576	395	68.6
QantasLink	1 239	1 137	91.8	1 237	1 089	88.0
Virgin Australia	1 823	1 686	92.5	1 820	1 687	92.7
All Airlines	3 643	3 281	90.1	3 633	3 171	87.3
Relates to services to and from Brisbane only.						
<b>Melbourne</b>						
Jetstar	17 546	13 156	75.0	17 589	12 593	71.6
Qantas	25 665	22 309	86.9	25 656	22 443	87.5
QantasLink	4 856	3 992	82.2	4 851	4 005	82.6
Regional Express	957	779	81.4	960	876	91.3
Tigerair Australia	7 666	6 279	81.9	7 686	6 587	85.7
Virgin Australia	27 815	24 219	87.1	27 823	25 226	90.7
Virgin Australia Regional Airlines	191	149	78.0	192	156	81.3
All Airlines	84 696	70 883	83.7	84 757	71 886	84.8
Relates to services to and from Adelaide, Brisbane, Cairns, Canberra, Darwin, Gold Coast, Hamilton Island (not published for July and August 2015), Hobart, Launceston, Mildura, Newcastle, Perth, Sunshine Coast and Sydney.						



Airport	Arrivals			Departures		
	Sectors Flown	On Time		Sectors Flown	On Time	
		No.	%		No.	%
<b>Mildura</b>						
QantasLink	1 088	900	82.7	1 084	966	89.1
Regional Express	960	846	88.1	957	821	85.8
Virgin Australia	366	327	89.3	366	328	89.6
All Airlines	2 414	2 073	85.9	2 407	2 115	87.9
Relates to services to and from Melbourne only.						
<b>Moranbah</b>						
QantasLink	1 225	1 137	92.8	1 173	1 070	91.2
Virgin Australia	390	350	89.7	388	364	93.8
Virgin Australia Regional Airlines	420	368	87.6	419	369	88.1
All Airlines	2 035	1 855	91.2	1 980	1 803	91.1
Relates to services to and from Brisbane only.						
<b>Mount Isa</b>						
Qantas	418	400	95.7	417	389	93.3
QantasLink	147	142	96.6	147	141	95.9
Virgin Australia	253	242	95.7	252	238	94.4
All Airlines	818	784	95.8	816	768	94.1
Relates to services to and from Brisbane only.						
<b>Newcastle</b>						
Jetstar	2 167	1 730	79.8	2 164	1 733	80.1
QantasLink	1 044	927	88.8	1 040	928	89.2
Virgin Australia	1 391	1 284	92.3	1 388	1 253	90.3
All Airlines	4 602	3 941	85.6	4 592	3 914	85.2
Relates to services to and from Brisbane and Melbourne.						
<b>Newman</b>						
Qantas	908	873	96.1	903	868	96.1
QantasLink	871	829	95.2	867	825	95.2
Virgin Australia	254	234	92.1	253	234	92.5
Virgin Australia Regional Airlines	151	135	89.4	154	139	90.3
All Airlines	2 184	2 071	94.8	2 177	2 066	94.9
Relates to services to and from Perth only.						
<b>Perth</b>						
Jetstar	1 490	1 254	84.2	1 468	1 060	72.2
Qantas	11 262	9 834	87.3	11 277	10 268	91.1
QantasLink	5 447	5 022	92.2	5 478	5 078	92.7
Tigerair Australia	981	857	87.4	974	863	88.6
Virgin Australia	7 383	6 507	88.1	7 396	6 731	91.0
Virgin Australia Regional Airlines	2 413	1 961	81.3	2 387	2 106	88.2
All Airlines	28 976	25 435	87.8	28 980	26 106	90.1
Relates to services to and from Adelaide, Brisbane, Broome, Darwin, Geraldton, Kalgoorlie, Karratha, Melbourne, Newman, Port Hedland and Sydney.						
<b>Port Hedland</b>						
Qantas	909	869	95.6	907	849	93.6
QantasLink	743	614	82.6	733	658	89.8
Virgin Australia	491	463	94.3	487	458	94.0
Virgin Australia Regional Airlines	66	61	92.4	67	59	88.1
All Airlines	2 209	2 007	90.9	2 194	2 024	92.3
Relates to services to and from Perth only.						

Airport	Arrivals			Departures		
	Sectors Flown	On Time		Sectors Flown	On Time	
		No.	%		No.	%
<b>Port Lincoln</b>						
QantasLink	1 315	1 163	88.4	1 311	1 171	89.3
Regional Express	2 426	2 245	92.5	2 420	2 257	93.3
All Airlines	3 741	3 408	91.1	3 731	3 428	91.9
Relates to services to and from Adelaide only.						
<b>Port Macquarie</b>						
QantasLink	1 591	1 092	68.6	1 590	1 103	69.4
Virgin Australia	356	292	82.0	355	299	84.2
Virgin Australia Regional Airlines	360	297	82.5	361	289	80.1
All Airlines	2 307	1 681	72.9	2 306	1 691	73.3
Relates to services to and from Sydney only.						
<b>Proserpine</b>						
Jetstar	340	296	87.1	339	258	76.1
Virgin Australia	557	528	94.8	557	511	91.7
All Airlines	897	824	91.9	896	769	85.8
Relates to services to and from Brisbane only.						
<b>Rockhampton</b>						
QantasLink	2 186	1 982	90.7	2 185	1 920	87.9
Virgin Australia	1 776	1 619	91.2	1 771	1 643	92.8
Virgin Australia Regional Airlines	474	387	81.6	471	408	86.6
All Airlines	4 436	3 988	89.9	4 427	3 971	89.7
Relates to services to and from Brisbane only.						
<b>Sunshine Coast</b>						
Jetstar	2 243	1 746	77.8	2 227	1 478	66.4
QantasLink	166	122	73.5	165	136	82.4
Virgin Australia	810	726	89.6	808	691	85.5
All Airlines	3 219	2 594	80.6	3 200	2 305	72.0
Relates to services to and from Melbourne and Sydney.						
<b>Sydney</b>						
Jetstar	17 715	13 613	76.8	17 760	13 241	74.6
Qantas	26 643	23 485	88.1	26 539	23 371	88.1
QantasLink	16 669	13 457	80.7	16 701	13 346	79.9
Regional Express	5 516	4 656	84.4	5 523	4 868	88.1
Tigerair Australia	6 665	5 547	83.2	6 667	5 755	86.3
Virgin Australia	29 540	26 494	89.7	29 550	26 608	90.0
Virgin Australia Regional Airlines	2 349	2 012	85.7	2 350	1 972	83.9
All Airlines	105 097	89 264	84.9	105 090	89 161	84.8
Relates to services to and from Adelaide, Albury, Armidale, Ayers Rock, Ballina, Brisbane, Cairns, Canberra, Coffs Harbour, Darwin, Dubbo, Gold Coast, Hamilton Island, Hobart, Launceston, Melbourne, Perth, Port Macquarie, Sunshine Coast, Tamworth (from September 2015 only), Townsville and Wagga Wagga.						
<b>Tamworth</b>						
(From September 2015 only)						
QantasLink	1 483	1 193	80.4	1 479	1 211	81.9
Virgin Australia	158	138	87.3	158	136	86.1
Virgin Australia Regional Airlines	105	88	83.8	105	85	81.0
All Airlines	1 746	1 419	81.3	1 742	1 432	82.2
Relates to services to and from Sydney (from September 2015) only.						

<i>Airport</i>	<i>Arrivals</i>			<i>Departures</i>		
	<i>Sectors</i>	<i>On Time</i>		<i>Sectors</i>	<i>On Time</i>	
	<i>Flown</i>	<i>No.</i>	<i>%</i>	<i>Flown</i>	<i>No.</i>	<i>%</i>
<b>Townsville</b>						
Jetstar	842	680	80.8	841	615	73.1
Qantas	1 724	1 577	91.5	1 723	1 644	95.4
QantasLink	1 418	1 288	90.8	1 411	1 307	92.6
Regional Express	568	550	96.8	569	551	96.8
Virgin Australia	2 101	1 931	91.9	2 096	1 905	90.9
All Airlines	6 653	6 026	90.6	6 640	6 022	90.7
Relates to services to and from Brisbane, Cairns (from September 2015) and Sydney.						
<b>Wagga Wagga</b>						
QantasLink	1 335	1 059	79.3	1 334	1 111	83.3
Regional Express	1 504	1 336	88.8	1 497	1 341	89.6
All Airlines	2 839	2 395	84.4	2 831	2 452	86.6
Relates to services to and from Sydney only.						

## Definitions

---

On time arrival	A flight arrival is counted as "on time" if it arrived at the gate before 15 minutes after the scheduled arrival time shown in the carriers' schedule. Neither diverted nor cancelled flights count as on time.
On time departure	A flight departure is counted as "on time" if it departs the gate before 15 minutes after the scheduled departure time shown in the carriers' schedule.
Cancellation	A flight removed from service within 7 days of scheduled departure is regarded as a cancellation.
On time departure percentage	The percentage of on time departures is measured against the number of departures <i>operated</i> on any particular sector.
On time arrival percentage	The percentage of on time arrivals is measured against the number of arrivals <i>operated</i> on any particular sector.
Cancellation percentage	The percentage of cancellations is measured against the number of services <i>scheduled</i> on any particular sector.

---