



**Australian Government**

**Department of Infrastructure and Regional Development**

Bureau of Infrastructure, Transport and Regional Economics

STATISTICAL REPORT



## Aviation

Domestic airline on time performance 2013-14

© Commonwealth of Australia 2014

ISSN: 1832-0759

### **Ownership of intellectual property rights in this publication**

Unless otherwise noted, copyright (and any other intellectual property rights, if any) in this publication is owned by the Commonwealth of Australia (referred to below as the Commonwealth).

### **Disclaimer**

The material contained in this publication is made available on the understanding that the Commonwealth is not providing professional advice, and that users exercise their own skill and care with respect to its use, and seek independent advice if necessary.

The Commonwealth makes no representations or warranties as to the contents or accuracy of the information contained in this publication. To the extent permitted by law, the Commonwealth disclaims liability to any person or organisation in respect of anything done, or omitted to be done, in reliance upon information contained in this publication.

### **Creative Commons licence**

With the exception of (a) the Coat of Arms; and (b) the Department of Infrastructure and Regional Development's photos and graphics, copyright in this publication is licensed under a Creative Commons Attribution 3.0 Australia Licence.

Creative Commons Attribution 3.0 Australia Licence is a standard form licence agreement that allows you to copy, communicate and adapt this publication provided that you attribute the work to the Commonwealth and abide by the other licence terms. A summary of the licence terms is available from <http://creativecommons.org/licenses/by/3.0/au/deed.en>. The full licence terms are available from <http://creativecommons.org/licenses/by/3.0/au/legalcode>.

### **Use of the Coat of Arms**

The Department of the Prime Minister and Cabinet sets the terms under which the Coat of Arms is used. Please refer to the Department's Commonwealth Coat of Arms and Government branding web page <http://www.dpmmc.gov.au/guidelines/index.cfm#brand> and, in particular, the Guidelines on the use of the Commonwealth Coat of Arms publication.

An appropriate citation for this report is:

Bureau of Infrastructure, Transport and Regional Economics (BITRE), 2014, Domestic airline on time performance, Statistical Report, BITRE, Canberra ACT.

### **Contact us**

This publication is available in PDF format. All other rights are reserved, including in relation to any Departmental logos or trade marks which may exist. For enquiries regarding the licence and any use of this publication, please contact:

Bureau of Infrastructure, Transport and Regional Economics (BITRE)  
Department of Infrastructure and Regional Development  
GPO Box 501, Canberra ACT 2601, Australia  
Telephone: (international) +61 2 6274 7210  
Fax: (international) +61 2 6274 6855  
Email: [bitre@infrastructure.gov.au](mailto:bitre@infrastructure.gov.au)  
Website: [www.bitre.gov.au](http://www.bitre.gov.au)

### **Inquiries**

Should you require additional information about the statistics contained in this publication:

Telephone (02) 6274 7790 or Facsimile (02) 6274 7727

Electronic mail: [AVSTATS@infrastructure.gov.au](mailto:AVSTATS@infrastructure.gov.au)

Web site: <http://www.bitre.gov.au/statistics/aviation/otphome.aspx>

# Foreword

The Bureau of Infrastructure, Transport and Regional Economics (BITRE) monitors the punctuality and reliability of major domestic airlines operating between Australian airports. The purpose of this is to allow for evaluation of overall industry and individual airline performance, so that consumers of air travel can make informed decisions.

The following domestic airlines currently report this information monthly to the BITRE: Jetstar, Qantas, QantasLink, Regional Express, Tigerair, Virgin Australia and Virgin Australia Regional Airlines. Data has been gathered since November 2003, although some airlines commenced reporting at a later date, including Jetstar which first reported in May 2004, MacAir in July 2005 and Tigerair in April 2008. MacAir ceased operations in February 2009 and data was not received for December 2008 onwards. Virgin Blue was rebranded as Virgin Australia in May 2011 and Tiger Airways was rebranded as Tigerair in July 2013 and time series data in Microsoft Excel spreadsheet format on the BITRE website have been revised to reflect these changes. Virgin Australia Regional Airlines commenced operations in May 2013. It was formed after the acquisition of Skywest by Virgin Australia and represents a combination of operations previously reported under Skywest and Virgin Australia – ATR/F100 Operations. Services operated by Skywest on behalf of Virgin Australia using ATR/F100 aircraft commenced in November 2011 and were shown separately as Virgin Australia – ATR/F100 Operations until April 2013.

Information presented in this report is for Australian domestic routes for which the passenger load averaged 8 000 or more passengers per month over the previous six months and where two or more airlines operated in competition on those routes. There were 60 routes that met these criteria for all twelve months in 2013-14 and another 4 routes did so for a shorter period of the year. Over time, routes which meet these criteria change as airline networks and traffic levels vary.

Participating airlines report their overall monthly network performance where this is possible.

Total industry figures encompass all services operated by reporting airlines only. These airlines collectively carried over 95 per cent of total domestic passengers (regular public transport only) in 2013.

The method of capturing on time performance varies between airlines utilising different recording systems. Jetstar and Qantas jet aircraft use Aircraft Communication Addressing and Reporting System (ACARS) to electronically measure on time performance. Regional Express, Tigerair, Virgin Australia, Virgin Australia Regional Airlines and the Qantas non-jet fleet record on time performance manually using records from pilots, gate agents and/or ground crews.

After initial data is collected, aggregate reports are audited internally by participating airlines prior to publication.

Reports and detailed time series data in Microsoft Excel spreadsheet format are available from the BITRE website at: <http://www.bitre.gov.au/statistics/aviation/otphome.aspx>.



# Contents

	Page
Industry performance .....	1
Individual routes .....	8
Airports .....	21
Definitions .....	27



## Industry performance

For the year ended June 2014, on time performance over all routes operated by participating airlines (Jetstar, Qantas, QantasLink, Regional Express, Tigerair, Virgin Australia and Virgin Australia Regional Airlines) averaged 83.8 per cent for on time departures and 81.9 per cent for on time arrivals. Cancellations represented 1.6 per cent of all scheduled flights. The equivalent figures for 2012-13 were 81.1 per cent for departures, 78.8 per cent for arrivals and 1.7 per cent for cancellations.

The figures for 2013-14 were close to the long term average performance for all routes (83.7 per cent for departures and 82.2 per cent for arrivals). The rate of cancellations was above the long term average of 1.3 per cent.

Of the major domestic airlines, Qantas achieved the highest level of on time departures for 2013-14 at 87.5 per cent, followed by Virgin Australia at 83.8 per cent, Jetstar at 78.8 per cent and Tigerair at 75.1 per cent. The regional airlines were led by Regional Express at 88.6 per cent, followed by Virgin Australia Regional Airlines at 84.8 per cent and QantasLink at 82.3 per cent.

Qantas also achieved the highest on time arrivals among the major domestic airlines at 86.4 per cent, followed by Virgin Australia at 81.7 per cent, Jetstar at 79.5 per cent and Tigerair at 71.1 per cent. Regional Express was the best performing regional airline for on time arrivals at 85.8 per cent, followed by Virgin Australia Regional Airlines at 82.3 per cent and QantasLink at 78.7 per cent.

QantasLink had the highest percentage of cancellations (2.5 per cent) during 2013-14, followed by Tigerair (2.2 per cent), Jetstar (1.9 per cent), Virgin Australia (1.5 per cent), Qantas (1.3 per cent), Virgin Australia Regional Airlines (also 1.3 per cent) and Regional Express (0.5 per cent).

Of the 60 routes which met the criteria for on time performance reporting for all 12 months in 2013-14, the Perth-Port Hedland route had the highest percentage of on time departures (94.7 per cent) and the highest percentage of on time arrivals (95.1 per cent). The Alice Springs-Melbourne route had the lowest percentage of on time departures (66.3 per cent) and the Port Macquarie-Sydney route had the lowest percentage of on time arrivals (63.8 per cent).

Cancellations were highest on the Moranbah-Brisbane route at 5.6 per cent, followed by Brisbane-Moranbah at 5.5 per cent, Karratha-Perth at 4.5 per cent, Canberra-Sydney at 4.2 per cent and Perth-Karratha at 4.1 per cent.

Newman Airport recorded the highest percentage of on time departures (92.3 per cent) and Port Hedland Airport recorded the highest percentage of on time arrivals (95.1 per cent). Alice Springs Airport recorded the lowest percentage of on time departures (67.8 per cent) and Port Macquarie Airport recorded the lowest percentage of on time arrivals (72.0 per cent). These figures only refer to reported routes and do not cover all flights at these airports.

Table 1 On time performance for the year ended June 2014 — Total Industry

	<i>Sectors</i>		<i>Departures On Time</i>		<i>Arrivals On Time</i>		<i>Cancellations</i>	
	<i>Scheduled</i>	<i>Flown</i>	<i>No.</i>	<i>%</i>	<i>No.</i>	<i>%</i>	<i>No.</i>	<i>%</i>
Jetstar	82 195	80 656	63 548	78.8	64 092	79.5	1 539	1.9
Qantas	122 884	121 272	106 158	87.5	104 828	86.4	1 612	1.3
QantasLink	120 565	117 595	96 778	82.3	92 543	78.7	2 970	2.5
Regional Express	64 141	63 833	56 574	88.6	54 762	85.8	308	0.5
Tigerair	21 740	21 253	15 951	75.1	15 115	71.1	487	2.2
Virgin Australia	132 237	130 237	109 080	83.8	106 415	81.7	2 000	1.5
Virgin Australia Regional Airlines	30 623	30 231	25 638	84.8	24 874	82.3	392	1.3
All Airlines	574 385	565 077	473 727	83.8	462 629	81.9	9 308	1.6

Total airline network data (including routes not shown in this report).

Table 2 Top ten routes for on time performance for the year ended June 2014 (participating airlines only)

<i>Departures</i>		<i>Arrivals</i>	
<i>Route</i>	<i>On Time (%)</i>	<i>Route</i>	<i>On Time</i>
Perth-Port Hedland	94.7	Perth-Port Hedland	95.1
Perth-Karratha	94.3	Perth-Karratha	94.3
Adelaide-Port Lincoln	93.6	Perth-Newman	93.4
Perth-Newman	93.1	Perth-Adelaide	92.8
Newman-Perth	92.3	Darwin-Perth	92.3
Karratha-Perth	92.2	Perth-Kalgoorlie	92.0
Port Lincoln-Adelaide	91.8	Adelaide-Gold Coast	91.2
Perth-Kalgoorlie	91.8	Brisbane-Mount Isa	91.1
Port Hedland-Perth	91.8	Karratha-Perth	91.0
Perth-Darwin	91.3	Adelaide-Port Lincoln	90.9

Table 3 Top ten airports for on time performance for the year ended June 2014 (participating airlines and reported routes only)

<i>Departures</i>		<i>Arrivals</i>	
<i>Airport</i>	<i>On Time (%)</i>	<i>Airport</i>	<i>On Time</i>
Newman	92.3	Port Hedland	95.1
Karratha	92.2	Karratha	94.3
Port Lincoln	91.8	Newman	93.4
Port Hedland	91.8	Kalgoorlie	92.0
Kalgoorlie	89.7	Mount Isa	91.1
Geraldton	88.5	Port Lincoln	90.9
Perth	88.2	Broome	89.6
Mount Isa	86.8	Hamilton Island	87.4
Adelaide	86.1	Townsville	86.8
Canberra	85.6	Moranbah	86.4



## Total industry on time performance

Figure 1 On time performance (by month from June 2009)—Total Industry

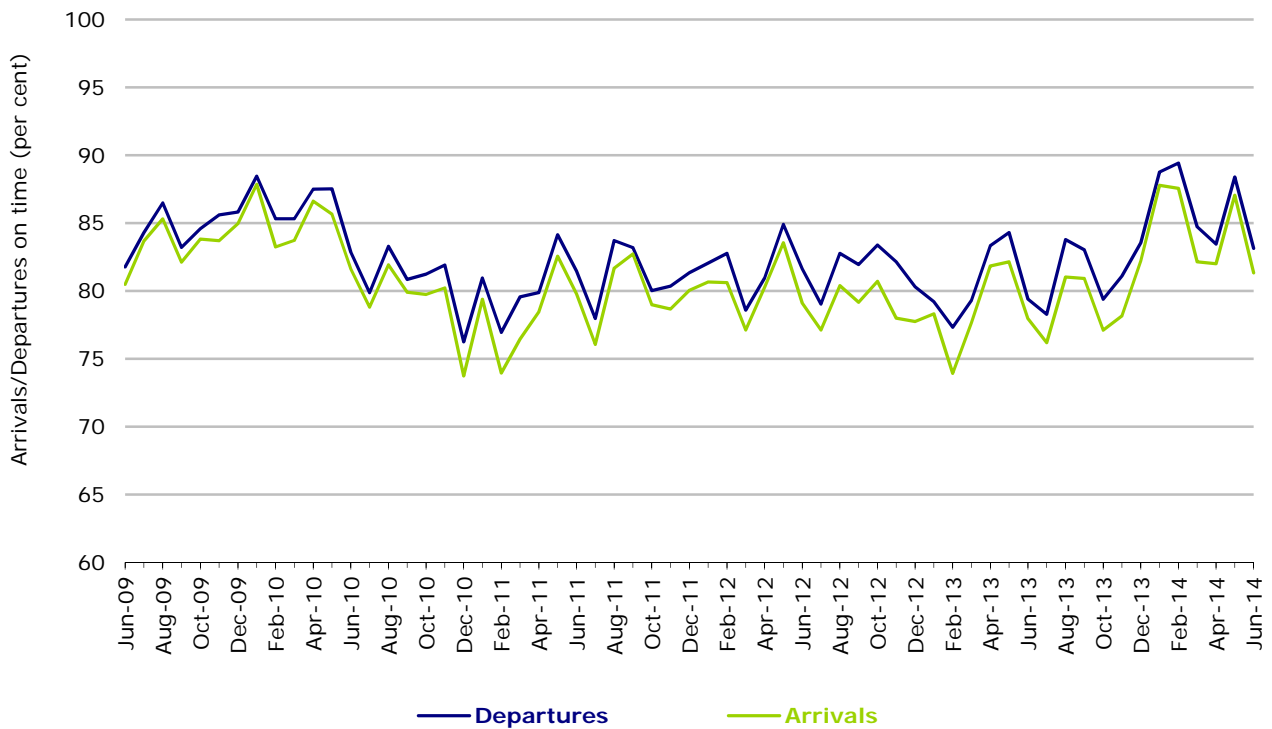
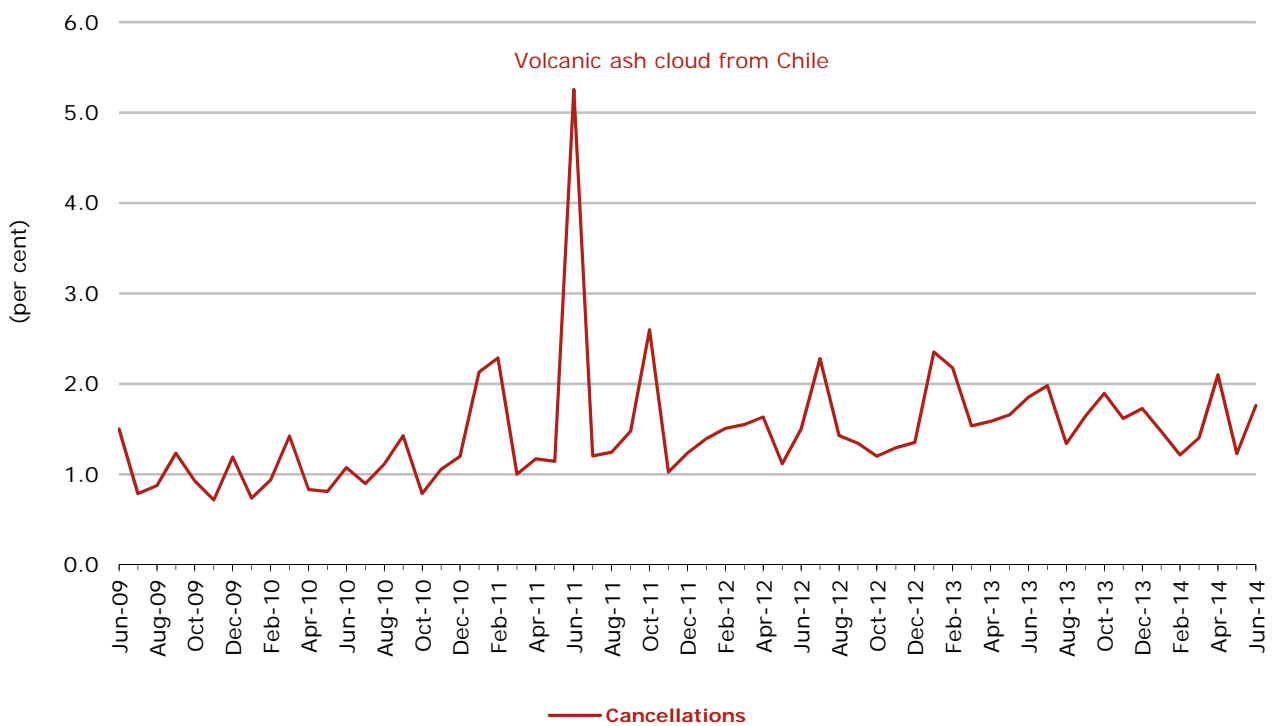


Figure 2 Cancellations (by month from June 2009)—Total Industry



## Major domestic airlines on time performance

Figure 3 On time performance (by month from June 2009)—Jetstar

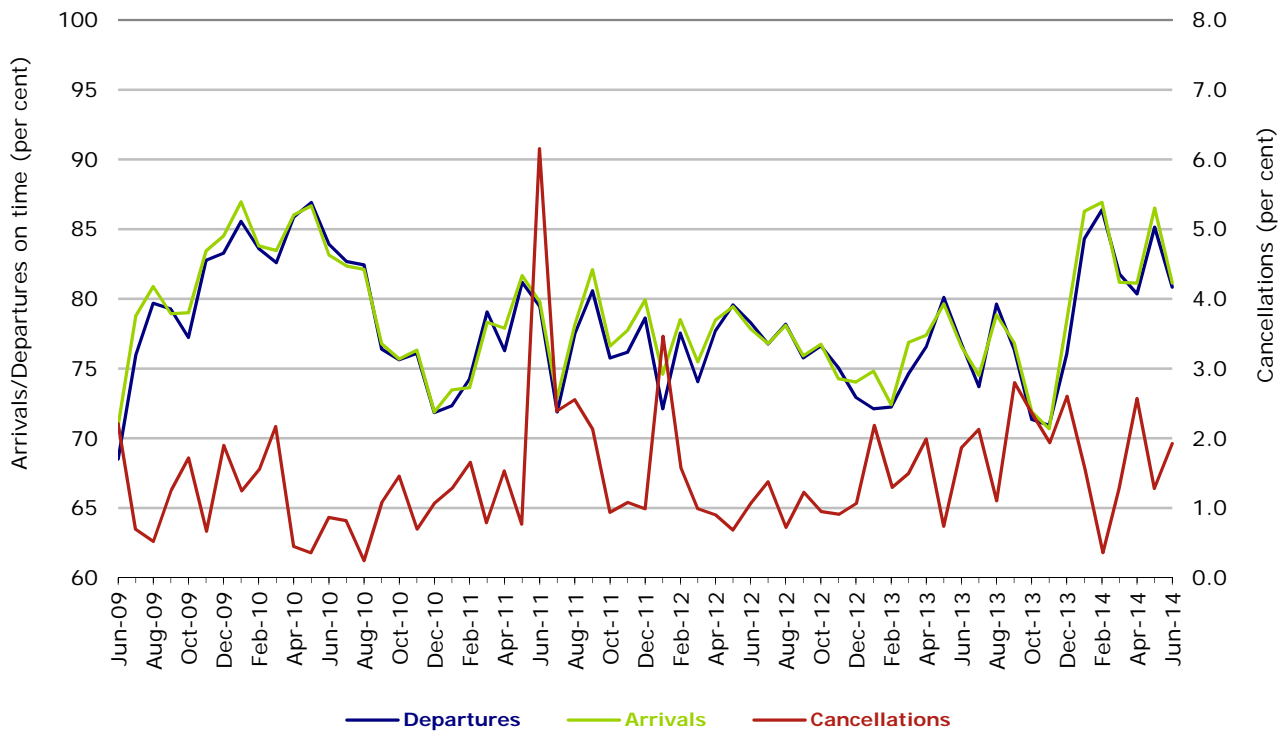
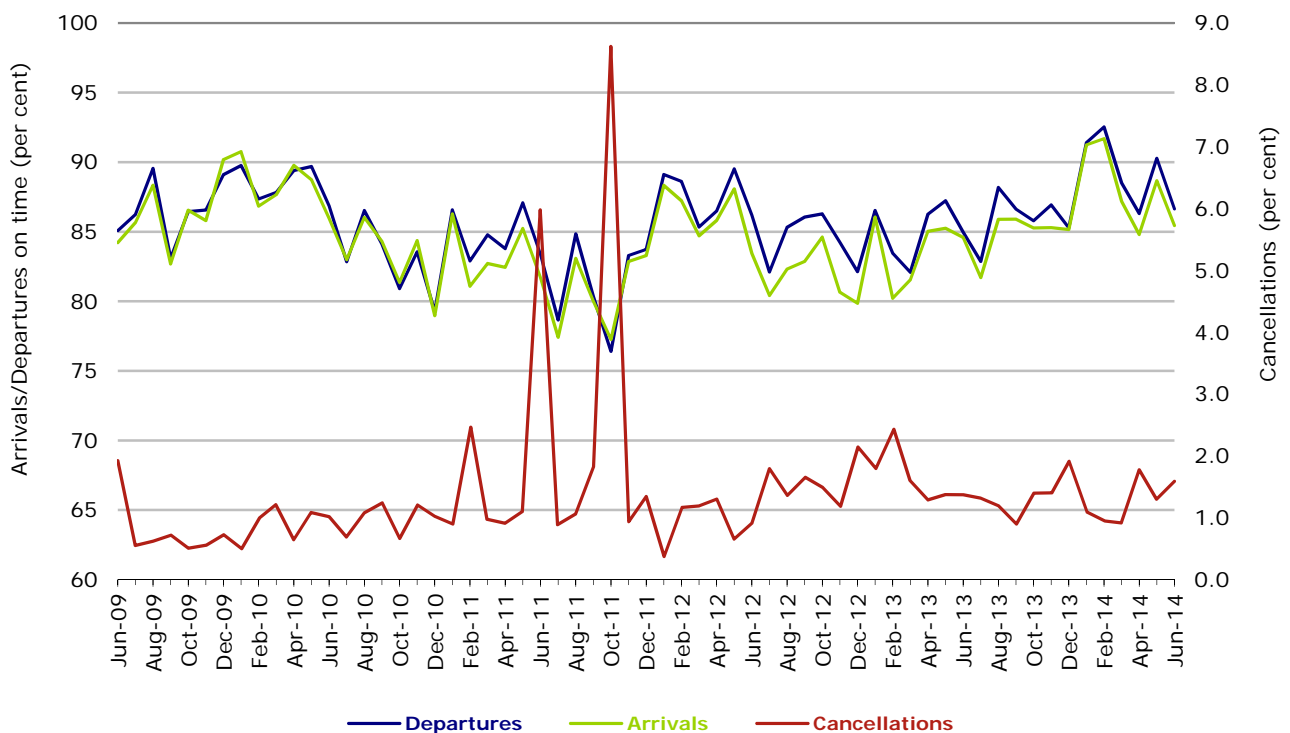
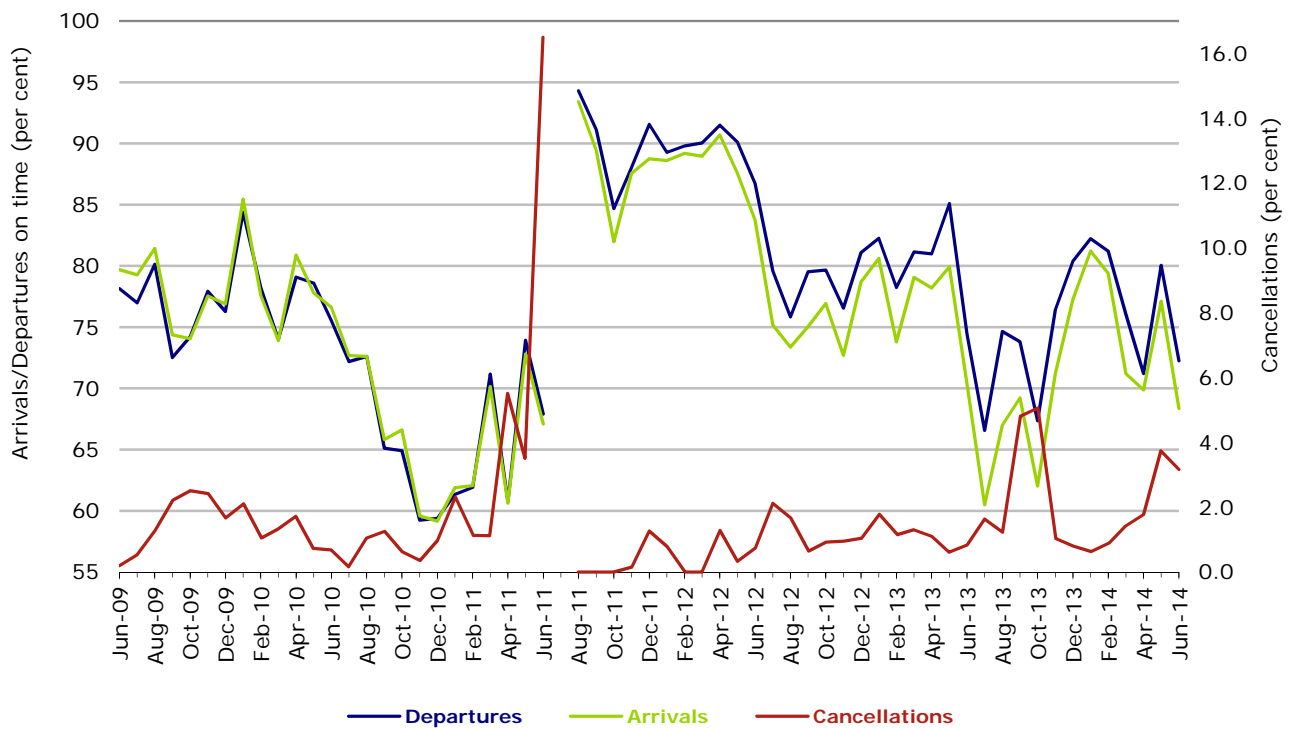


Figure 4 On time performance (by month from June 2009)—Qantas



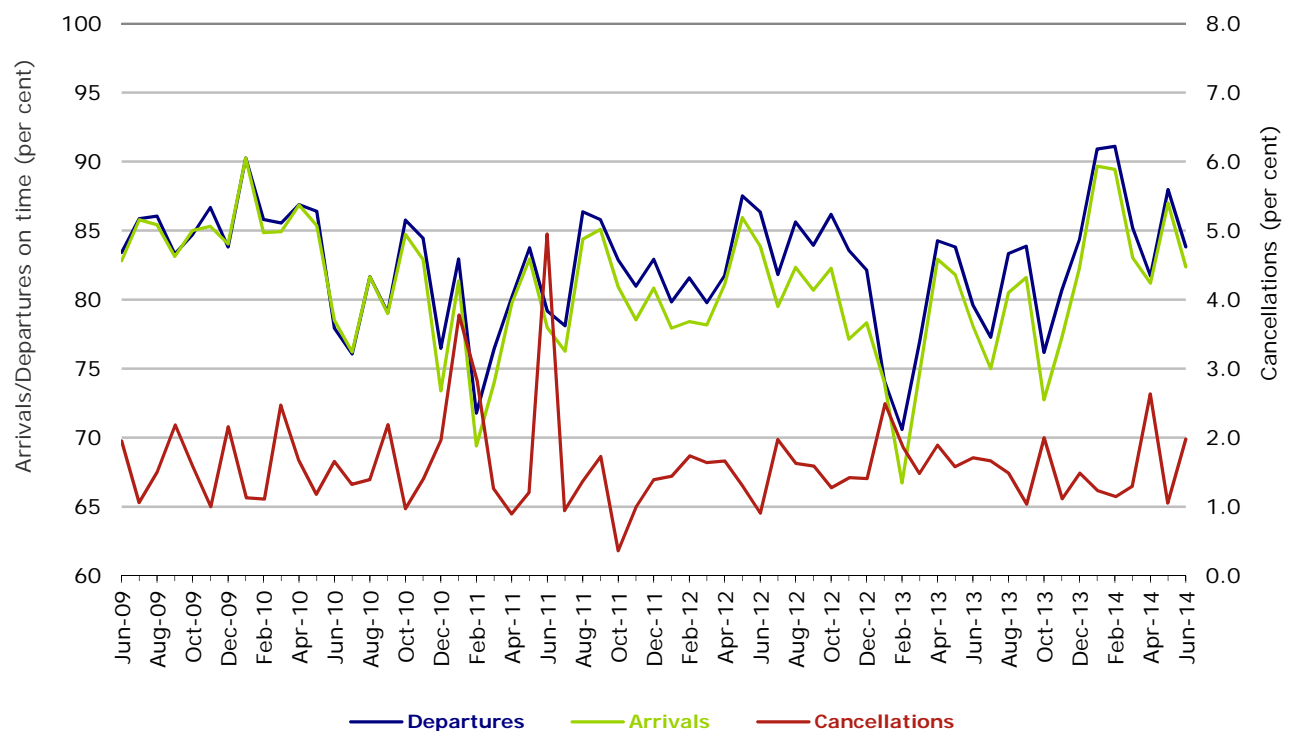
During October 2011 there were disruptions to Qantas services on several days due to industrial disputes and the entire fleet was grounded for nearly 48 hours at the end of the month.

Figure 5 On time performance (by month from June 2009)—Tigerair



No data for Tiger Airways for July 2011 as it was grounded by CASA from 2/7/2011 to 11/8/2011.

Figure 6 On time performance (by month from June 2009)—Virgin Australia



## Major regional airlines on time performance

Figure 7 On time performance (by month from June 2009)—QantasLink

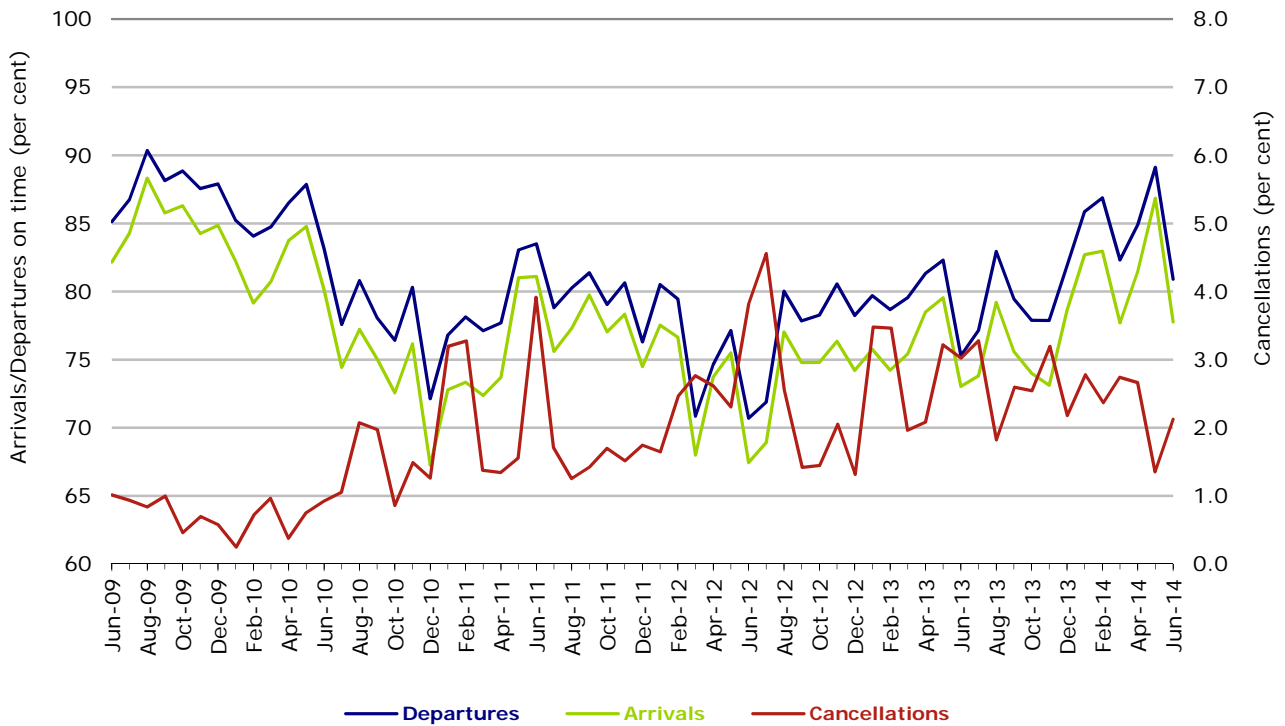


Figure 8 On time performance (by month from June 2009)—Regional Express

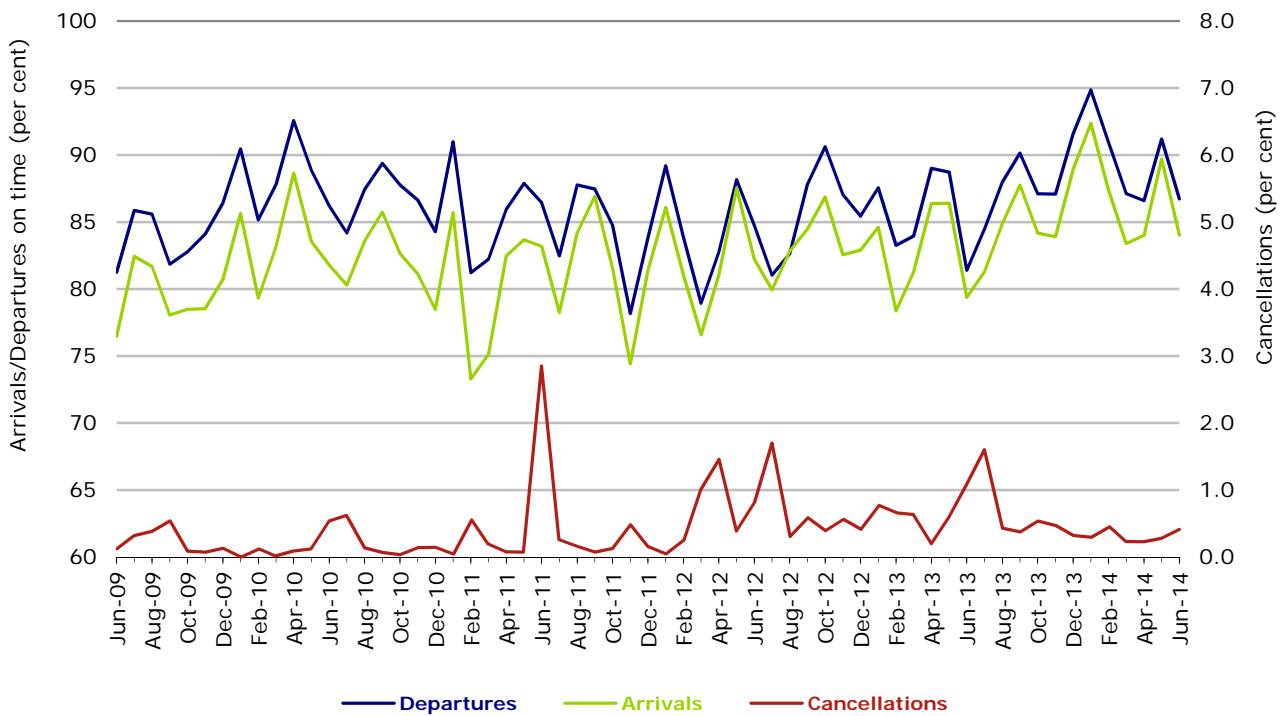
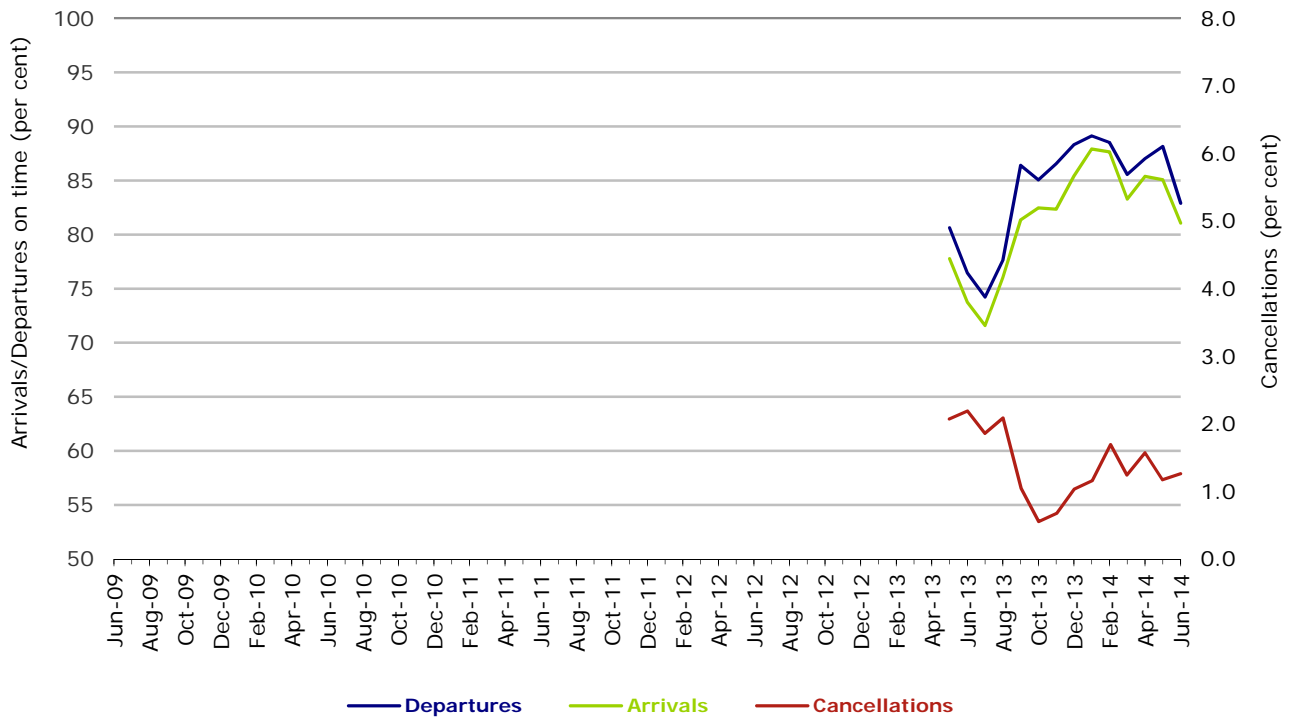


Figure 9 On time performance (by month from June 2009)  
Virgin Australia Regional Airlines



Virgin Australia Regional Airlines commenced operations in May 2013. It was formed after the acquisition of Skywest by Virgin Australia and represents a combination of operations previously reported under Skywest and Virgin Australia – ATR/F100 Operations.

## Individual routes

On time performance is reported for all routes where the passenger load averages over 8000 passengers per month over the previous six months, and where two or more airlines operate in competition on those routes. There are now 63 routes which meet this definition. Over time, however, routes which meet this definition may change as airline networks and traffic levels vary.

	<i>Sectors</i>		<i>Departures On Time</i>		<i>Arrivals On Time</i>		<i>Cancellations</i>	
	<i>Sched.</i>	<i>Flown</i>	<i>No.</i>	<i>%</i>	<i>No.</i>	<i>%</i>	<i>No.</i>	<i>%</i>
<b>Adelaide-Brisbane</b>								
Jetstar	343	343	297	86.6	294	85.7	0	0.0
Qantas	1 273	1 272	1 120	88.1	1 102	86.6	1	0.1
Tigerair	93	93	88	94.6	88	94.6	0	0.0
Virgin Australia	1 325	1 314	1 114	84.8	1 113	84.7	11	0.8
All Airlines	3 034	3 022	2 619	86.7	2 597	85.9	12	0.4
<b>Adelaide-Canberra</b>								
Qantas	513	513	481	93.8	485	94.5	0	0.0
QantasLink	260	251	167	66.5	193	76.9	9	3.5
Virgin Australia	314	311	287	92.3	288	92.6	3	1.0
All Airlines	1 087	1 075	935	87.0	966	89.9	12	1.1
<b>Adelaide-Gold Coast</b>								
Jetstar	436	431	358	83.1	376	87.2	5	1.1
Virgin Australia	365	362	336	92.8	347	95.9	3	0.8
All Airlines	801	793	694	87.5	723	91.2	8	1.0
<b>Adelaide-Melbourne</b>								
Jetstar	1 137	1 120	900	80.4	894	79.8	17	1.5
Qantas	3 439	3 420	2 943	86.1	3 026	88.5	19	0.6
QantasLink	207	201	183	91.0	181	90.0	6	2.9
Tigerair	832	807	627	77.7	585	72.5	25	3.0
Virgin Australia	3 257	3 209	2 701	84.2	2 724	84.9	48	1.5
All Airlines	8 872	8 757	7 354	84.0	7 410	84.6	115	1.3
<b>Adelaide-Perth</b>								
Jetstar	411	407	314	77.1	297	73.0	4	1.0
Qantas	1 335	1 334	1 178	88.3	1 175	88.1	1	0.1
Virgin Australia	754	751	668	88.9	648	86.3	3	0.4
All Airlines	2 500	2 492	2 160	86.7	2 120	85.1	8	0.3
<b>Adelaide-Port Lincoln</b>								
QantasLink	1 163	1 137	1 041	91.6	1 019	89.6	26	2.2
Regional Express	2 383	2 373	2 244	94.6	2 172	91.5	10	0.4
All Airlines	3 546	3 510	3 285	93.6	3 191	90.9	36	1.0
<b>Adelaide-Sydney</b>								
Jetstar	1 354	1 311	912	69.6	963	73.5	43	3.2
Qantas	3 131	3 117	2 749	88.2	2 858	91.7	14	0.4
QantasLink	52	50	29	58.0	35	70.0	2	3.8
Tigerair	109	108	95	88.0	98	90.7	1	0.9
Virgin Australia	1 983	1 969	1 739	88.3	1 791	91.0	14	0.7
All Airlines	6 629	6 555	5 524	84.3	5 745	87.6	74	1.1
<b>Albury-Sydney</b>								
QantasLink	1 345	1 338	890	66.5	880	65.8	7	0.5
Regional Express	1 238	1 232	1 101	89.4	1 082	87.8	6	0.5
Virgin Australia Regional Airlines	726	721	585	81.1	530	73.5	5	0.7
All Airlines	3 309	3 291	2 576	78.3	2 492	75.7	18	0.5

	<i>Sectors</i>		<i>Departures On Time</i>		<i>Arrivals On Time</i>		<i>Cancellations</i>	
	<i>Sched.</i>	<i>Flown</i>	<i>No.</i>	<i>%</i>	<i>No.</i>	<i>%</i>	<i>No.</i>	<i>%</i>
<b>Alice Springs-Melbourne</b>								
Qantas	365	365	249	68.2	291	79.7	0	0.0
Tigerair	202	201	126	62.7	131	65.2	1	0.5
All Airlines	567	566	375	66.3	422	74.6	1	0.2
<b>Alice Springs-Sydney</b>								
			(From August 2013 only)					
Qantas	334	334	214	64.1	274	82.0	0	0.0
Tigerair	188	188	149	79.3	139	73.9	0	0.0
All Airlines	522	522	363	69.5	413	79.1	0	0.0
<b>Ayers Rock-Sydney</b>								
Jetstar	212	209	160	76.6	141	67.5	3	1.4
Virgin Australia	367	366	300	82.0	330	90.2	1	0.3
All Airlines	579	575	460	80.0	471	81.9	4	0.7
<b>Ballina-Sydney</b>								
Jetstar	770	761	563	74.0	569	74.8	9	1.2
Regional Express	285	283	210	74.2	194	68.6	2	0.7
Virgin Australia	366	363	295	81.3	286	78.8	3	0.8
All Airlines	1 421	1 407	1 068	75.9	1 049	74.6	14	1.0
<b>Brisbane-Adelaide</b>								
Jetstar	339	339	315	92.9	310	91.4	0	0.0
Qantas	1 273	1 273	1 076	84.5	1 107	87.0	0	0.0
Tigerair	93	93	80	86.0	81	87.1	0	0.0
Virgin Australia	1 328	1 323	1 081	81.7	1 051	79.4	5	0.4
All Airlines	3 033	3 028	2 552	84.3	2 549	84.2	5	0.2
<b>Brisbane-Bundaberg</b>								
QantasLink	1 424	1 414	1 193	84.4	1 180	83.5	10	0.7
Virgin Australia Regional Airlines	402	402	335	83.3	338	84.1	0	0.0
All Airlines	1 826	1 816	1 528	84.1	1 518	83.6	10	0.5
<b>Brisbane-Cairns</b>								
Jetstar	1 297	1 278	1 009	79.0	1 043	81.6	19	1.5
Qantas	1 407	1 404	1 206	85.9	1 245	88.7	3	0.2
QantasLink	52	50	48	96.0	46	92.0	2	3.8
Tigerair	77	76	42	55.3	38	50.0	1	1.3
Virgin Australia	1 803	1 796	1 520	84.6	1 526	85.0	7	0.4
All Airlines	4 636	4 604	3 825	83.1	3 898	84.7	32	0.7
<b>Brisbane-Canberra</b>								
Qantas	1 031	1 015	913	90.0	926	91.2	16	1.6
QantasLink	899	882	740	83.9	737	83.6	17	1.9
Virgin Australia	1 119	1 116	929	83.2	911	81.6	3	0.3
All Airlines	3 049	3 013	2 582	85.7	2 574	85.4	36	1.2
<b>Brisbane-Darwin</b>								
Jetstar	127	125	97	77.6	92	73.6	2	1.6
Qantas	446	445	389	87.4	389	87.4	1	0.2
Tigerair	72	68	66	97.1	56	82.4	4	5.6
Virgin Australia	368	366	282	77.0	289	79.0	2	0.5
All Airlines	1 013	1 004	834	83.1	826	82.3	9	0.9
<b>Brisbane-Emerald</b>								
QantasLink	2 031	1 954	1 774	90.8	1 569	80.3	77	3.8
Virgin Australia Regional Airlines	1 139	1 128	1 011	89.6	928	82.3	11	1.0
All Airlines	3 170	3 082	2 785	90.4	2 497	81.0	88	2.8
<b>Brisbane-Gladstone</b>								
QantasLink	2 621	2 564	2 287	89.2	2 218	86.5	57	2.2
Virgin Australia	122	120	102	85.0	94	78.3	2	1.6
Virgin Australia Regional Airlines	1 606	1 577	1 295	82.1	1 263	80.1	29	1.8
All Airlines	4 349	4 261	3 684	86.5	3 575	83.9	88	2.0

	<i>Sectors</i>		<i>Departures On Time</i>		<i>Arrivals On Time</i>		<i>Cancellations</i>	
	<i>Sched.</i>	<i>Flown</i>	<i>No.</i>	<i>%</i>	<i>No.</i>	<i>%</i>	<i>No.</i>	<i>%</i>
<b>Brisbane-Hamilton Island</b>								
Jetstar	208	204	182	89.2	186	91.2	4	1.9
Virgin Australia	365	359	321	89.4	319	88.9	6	1.6
All Airlines	573	563	503	89.3	505	89.7	10	1.7
<b>Brisbane-Hobart</b>								
			(From January 2014 only)					
Jetstar	161	161	149	92.5	147	91.3	0	0.0
Virgin Australia	181	181	154	85.1	141	77.9	0	0.0
All Airlines	342	342	303	88.6	288	84.2	0	0.0
<b>Brisbane-Mackay</b>								
Jetstar	1 072	1 041	823	79.1	866	83.2	31	2.9
QantasLink	1 305	1 285	1 146	89.2	1 145	89.1	20	1.5
Virgin Australia	1 787	1 759	1 487	84.5	1 456	82.8	28	1.6
All Airlines	4 164	4 085	3 456	84.6	3 467	84.9	79	1.9
<b>Brisbane-Melbourne</b>								
Jetstar	1 311	1 283	922	71.9	975	76.0	28	2.1
Qantas	5 053	5 024	4 241	84.4	4 082	81.3	29	0.6
Tigerair	1 145	1 114	700	62.8	681	61.1	31	2.7
Virgin Australia	4 481	4 401	3 639	82.7	3 201	72.7	80	1.8
All Airlines	11 990	11 822	9 502	80.4	8 939	75.6	168	1.4
<b>Brisbane-Moranbah</b>								
QantasLink	1 831	1 690	1 517	89.8	1 540	91.1	141	7.7
Virgin Australia Regional Airlines	960	947	815	86.1	739	78.0	13	1.4
All Airlines	2 791	2 637	2 332	88.4	2 279	86.4	154	5.5
<b>Brisbane-Mount Isa</b>								
Qantas	676	676	623	92.2	630	93.2	0	0.0
Virgin Australia	258	258	222	86.0	221	85.7	0	0.0
All Airlines	934	934	845	90.5	851	91.1	0	0.0
<b>Brisbane-Newcastle</b>								
Jetstar	1 340	1 328	1 134	85.4	1 130	85.1	12	0.9
QantasLink	834	808	656	81.2	467	57.8	26	3.1
Virgin Australia	945	943	809	85.8	810	85.9	2	0.2
All Airlines	3 119	3 079	2 599	84.4	2 407	78.2	40	1.3
<b>Brisbane-Perth</b>								
Jetstar	293	293	237	80.9	227	77.5	0	0.0
Qantas	1 534	1 532	1 250	81.6	1 260	82.2	2	0.1
Virgin Australia	1 056	1 052	793	75.4	739	70.2	4	0.4
All Airlines	2 883	2 877	2 280	79.2	2 226	77.4	6	0.2
<b>Brisbane-Proserpine</b>								
Jetstar	352	350	280	80.0	277	79.1	2	0.6
Virgin Australia	616	609	540	88.7	549	90.1	7	1.1
All Airlines	968	959	820	85.5	826	86.1	9	0.9
<b>Brisbane-Rockhampton</b>								
QantasLink	2 572	2 513	2 115	84.2	2 106	83.8	59	2.3
Virgin Australia	1 181	1 167	955	81.8	989	84.7	14	1.2
Virgin Australia Regional Airlines	1 356	1 319	1 070	81.1	1 084	82.2	37	2.7
All Airlines	5 109	4 999	4 140	82.8	4 179	83.6	110	2.2
<b>Brisbane-Sydney</b>								
Jetstar	1 640	1 558	1 165	74.8	1 222	78.4	82	5.0
Qantas	7 332	7 177	6 130	85.4	6 039	84.1	155	2.1
Tigerair	958	940	605	64.4	578	61.5	18	1.9
Virgin Australia	6 423	6 260	5 335	85.2	5 205	83.1	163	2.5
All Airlines	16 353	15 935	13 235	83.1	13 044	81.9	418	2.6



	<i>Sectors</i>		<i>Departures On Time</i>		<i>Arrivals On Time</i>		<i>Cancellations</i>	
	<i>Sched.</i>	<i>Flown</i>	<i>No.</i>	<i>%</i>	<i>No.</i>	<i>%</i>	<i>No.</i>	<i>%</i>
<b>Brisbane-Townsville</b>								
Jetstar	419	416	335	80.5	347	83.4	3	0.7
Qantas	1 773	1 767	1 498	84.8	1 549	87.7	6	0.3
Virgin Australia	1 895	1 875	1 610	85.9	1 597	85.2	20	1.1
All Airlines	4 087	4 058	3 443	84.8	3 493	86.1	29	0.7
<b>Broome-Perth</b>								
Qantas	388	388	288	74.2	328	84.5	0	0.0
QantasLink	651	636	578	90.9	580	91.2	15	2.3
Virgin Australia	521	511	401	78.5	412	80.6	10	1.9
Virgin Australia Regional Airlines	210	209	136	65.1	117	56.0	1	0.5
All Airlines	1 770	1 744	1 403	80.4	1 437	82.4	26	1.5
<b>Bundaberg-Brisbane</b>								
QantasLink	1 425	1 417	1 174	82.9	1 081	76.3	8	0.6
Virgin Australia Regional Airlines	401	401	318	79.3	317	79.1	0	0.0
All Airlines	1 826	1 818	1 492	82.1	1 398	76.9	8	0.4
<b>Cairns-Brisbane</b>								
Jetstar	1 296	1 279	1 064	83.2	990	77.4	17	1.3
Qantas	1 407	1 400	1 225	87.5	1 177	84.1	7	0.5
QantasLink	52	51	47	92.2	46	90.2	1	1.9
Tigerair	77	76	39	51.3	42	55.3	1	1.3
Virgin Australia	1 803	1 792	1 496	83.5	1 402	78.2	11	0.6
All Airlines	4 635	4 598	3 871	84.2	3 657	79.5	37	0.8
<b>Cairns-Melbourne</b>								
Jetstar	1 094	1 080	873	80.8	872	80.7	14	1.3
Qantas	365	364	275	75.5	299	82.1	1	0.3
Tigerair	478	464	335	72.2	310	66.8	14	2.9
Virgin Australia	401	398	281	70.6	272	68.3	3	0.7
All Airlines	2 338	2 306	1 764	76.5	1 753	76.0	32	1.4
<b>Cairns-Sydney</b>								
Jetstar	1 077	1 061	903	85.1	884	83.3	16	1.5
Qantas	822	820	701	85.5	740	90.2	2	0.2
Tigerair	362	360	272	75.6	282	78.3	2	0.6
Virgin Australia	1 035	1 029	894	86.9	925	89.9	6	0.6
All Airlines	3 296	3 270	2 770	84.7	2 831	86.6	26	0.8
<b>Cairns-Townsville</b>								
			(To February 2014 only)					
QantasLink	1 438	1 408	1 266	89.9	1 262	89.6	30	2.1
Virgin Australia Regional Airlines	174	171	166	97.1	162	94.7	3	1.7
All Airlines	1 612	1 579	1 432	90.7	1 424	90.2	33	2.0
<b>Canberra-Adelaide</b>								
Qantas	532	531	484	91.1	487	91.7	1	0.2
QantasLink	260	255	186	72.9	170	66.7	5	1.9
Virgin Australia	314	311	281	90.4	279	89.7	3	1.0
All Airlines	1 106	1 097	951	86.7	936	85.3	9	0.8
<b>Canberra-Brisbane</b>								
Qantas	1 033	1 017	918	90.3	928	91.2	16	1.5
QantasLink	898	878	673	76.7	678	77.2	20	2.2
Virgin Australia	1 120	1 112	955	85.9	939	84.4	8	0.7
All Airlines	3 051	3 007	2 546	84.7	2 545	84.6	44	1.4
<b>Canberra-Melbourne</b>								
Qantas	2 621	2 586	2 339	90.4	2 303	89.1	35	1.3
QantasLink	843	818	639	78.1	589	72.0	25	3.0
Virgin Australia	2 070	2 032	1 631	80.3	1 596	78.5	38	1.8
All Airlines	5 534	5 436	4 609	84.8	4 488	82.6	98	1.8

	<i>Sectors</i>		<i>Departures On Time</i>		<i>Arrivals On Time</i>		<i>Cancellations</i>	
	<i>Sched.</i>	<i>Flown</i>	<i>No.</i>	<i>%</i>	<i>No.</i>	<i>%</i>	<i>No.</i>	<i>%</i>
<b>Canberra-Sydney</b>								
Qantas	1 198	1 174	1 054	89.8	1 054	89.8	24	2.0
QantasLink	5 235	4 920	4 065	82.6	4 145	84.2	315	6.0
Virgin Australia	605	584	515	88.2	511	87.5	21	3.5
Virgin Australia Regional Airlines	2 860	2 804	2 536	90.4	2 514	89.7	56	2.0
All Airlines	9 898	9 482	8 170	86.2	8 224	86.7	416	4.2
<b>Coffs Harbour-Sydney</b>								
QantasLink	1 811	1 802	1 313	72.9	1 364	75.7	9	0.5
Tigerair	240	235	181	77.0	179	76.2	5	2.1
Virgin Australia	712	702	620	88.3	628	89.5	10	1.4
All Airlines	2 763	2 739	2 114	77.2	2 171	79.3	24	0.9
<b>Darwin-Brisbane</b>								
Jetstar	126	124	89	71.8	96	77.4	2	1.6
Qantas	447	445	331	74.4	318	71.5	2	0.4
Tigerair	69	66	62	93.9	62	93.9	3	4.3
Virgin Australia	369	365	272	74.5	270	74.0	4	1.1
All Airlines	1 011	1 000	754	75.4	746	74.6	11	1.1
<b>Darwin-Melbourne</b>								
Jetstar	328	327	213	65.1	251	76.8	1	0.3
Qantas	280	279	219	78.5	225	80.6	1	0.4
Virgin Australia	366	362	327	90.3	318	87.8	4	1.1
All Airlines	974	968	759	78.4	794	82.0	6	0.6
<b>Darwin-Perth</b>								
Qantas	388	387	325	84.0	353	91.2	1	0.3
Virgin Australia	313	313	289	92.3	293	93.6	0	0.0
All Airlines	701	700	614	87.7	646	92.3	1	0.1
<b>Darwin-Sydney</b>								
Jetstar	330	326	221	67.8	259	79.4	4	1.2
Qantas	611	610	530	86.9	535	87.7	1	0.2
Virgin Australia	365	362	281	77.6	261	72.1	3	0.8
All Airlines	1 306	1 298	1 032	79.5	1 055	81.3	8	0.6
<b>Dubbo-Sydney</b>								
QantasLink	1 472	1 462	1 069	73.1	993	67.9	10	0.7
Regional Express	1 756	1 743	1 552	89.0	1 508	86.5	13	0.7
All Airlines	3 228	3 205	2 621	81.8	2 501	78.0	23	0.7
<b>Emerald-Brisbane</b>								
QantasLink	2 029	1 950	1 545	79.2	1 497	76.8	79	3.9
Virgin Australia Regional Airlines	1 139	1 123	952	84.8	968	86.2	16	1.4
All Airlines	3 168	3 073	2 497	81.3	2 465	80.2	95	3.0
<b>Geraldton-Perth</b>								
QantasLink	696	694	642	92.5	631	90.9	2	0.3
Virgin Australia Regional Airlines	1 144	1 128	971	86.1	933	82.7	16	1.4
All Airlines	1 840	1 822	1 613	88.5	1 564	85.8	18	1.0
<b>Gladstone-Brisbane</b>								
QantasLink	2 869	2 800	2 287	81.7	2 127	76.0	69	2.4
Virgin Australia	117	114	75	65.8	53	46.5	3	2.6
Virgin Australia Regional Airlines	1 606	1 577	1 296	82.2	1 224	77.6	29	1.8
All Airlines	4 592	4 491	3 658	81.5	3 404	75.8	101	2.2
<b>Gold Coast-Adelaide</b>								
Jetstar	435	433	385	88.9	383	88.5	2	0.5
Virgin Australia	363	359	329	91.6	330	91.9	4	1.1
All Airlines	798	792	714	90.2	713	90.0	6	0.8

	<i>Sectors</i>		<i>Departures On Time</i>		<i>Arrivals On Time</i>		<i>Cancellations</i>	
	<i>Sched.</i>	<i>Flown</i>	<i>No.</i>	<i>%</i>	<i>No.</i>	<i>%</i>	<i>No.</i>	<i>%</i>
<b>Gold Coast-Melbourne</b>								
Jetstar	2 488	2 465	2 020	81.9	1 959	79.5	23	0.9
Tigerair	841	830	484	58.3	429	51.7	11	1.3
Virgin Australia	2 070	2 058	1 671	81.2	1 667	81.0	12	0.6
All Airlines	5 399	5 353	4 175	78.0	4 055	75.8	46	0.9
<b>Gold Coast-Sydney</b>								
Jetstar	3 987	3 820	3 089	80.9	3 162	82.8	167	4.2
Qantas	1 084	1 083	977	90.2	984	90.9	1	0.1
Tigerair	699	680	497	73.1	472	69.4	19	2.7
Virgin Australia	3 694	3 627	3 129	86.3	3 164	87.2	67	1.8
All Airlines	9 464	9 210	7 692	83.5	7 782	84.5	254	2.7
<b>Hamilton Island-Brisbane</b>								
Jetstar	210	206	177	85.9	175	85.0	4	1.9
Virgin Australia	368	359	314	87.5	304	84.7	9	2.4
All Airlines	578	565	491	86.9	479	84.8	13	2.2
<b>Hamilton Island-Melbourne</b>								
			(From February 2014 only)					
Jetstar	94	91	82	90.1	83	91.2	3	3.2
Virgin Australia	68	65	51	78.5	56	86.2	3	4.4
All Airlines	162	156	133	85.3	139	89.1	6	3.7
<b>Hamilton Island-Sydney</b>								
Jetstar	331	325	236	72.6	240	73.8	6	1.8
Virgin Australia	366	358	296	82.7	298	83.2	8	2.2
All Airlines	697	683	532	77.9	538	78.8	14	2.0
<b>Hobart-Brisbane</b>								
			(From January 2014 only)					
Jetstar	162	162	124	76.5	124	76.5	0	0.0
Virgin Australia	181	181	112	61.9	123	68.0	0	0.0
All Airlines	343	343	236	68.8	247	72.0	0	0.0
<b>Hobart-Melbourne</b>								
Jetstar	2 101	2 083	1 565	75.1	1 543	74.1	18	0.9
Qantas	670	669	596	89.1	577	86.2	1	0.1
QantasLink	452	445	359	80.7	300	67.4	7	1.5
Tigerair	366	363	215	59.2	189	52.1	3	0.8
Virgin Australia	1 665	1 655	1 319	79.7	1 312	79.3	10	0.6
All Airlines	5 254	5 215	4 054	77.7	3 921	75.2	39	0.7
<b>Hobart-Sydney</b>								
Jetstar	921	911	648	71.1	694	76.2	10	1.1
Qantas	289	289	262	90.7	263	91.0	0	0.0
QantasLink	85	85	66	77.6	61	71.8	0	0.0
Virgin Australia	711	708	591	83.5	612	86.4	3	0.4
All Airlines	2 006	1 993	1 567	78.6	1 630	81.8	13	0.6
<b>Kalgoorlie-Perth</b>								
Qantas	676	669	623	93.1	622	93.0	7	1.0
QantasLink	371	364	328	90.1	320	87.9	7	1.9
Virgin Australia	483	479	422	88.1	402	83.9	4	0.8
Virgin Australia Regional Airlines	188	185	150	81.1	142	76.8	3	1.6
All Airlines	1 718	1 697	1 523	89.7	1 486	87.6	21	1.2
<b>Karratha-Perth</b>								
Qantas	2 147	2 042	1 934	94.7	1 920	94.0	105	4.9
QantasLink	781	730	689	94.4	666	91.2	51	6.5
Virgin Australia	1 007	985	844	85.7	835	84.8	22	2.2
Virgin Australia Regional Airlines	13	13	10	76.9	9	69.2	0	0.0
All Airlines	3 948	3 770	3 477	92.2	3 430	91.0	178	4.5

	<i>Sectors</i>		<i>Departures On Time</i>		<i>Arrivals On Time</i>		<i>Cancellations</i>	
	<i>Sched.</i>	<i>Flown</i>	<i>No.</i>	<i>%</i>	<i>No.</i>	<i>%</i>	<i>No.</i>	<i>%</i>
<b>Launceston-Melbourne</b>								
Jetstar	1 566	1 547	1 136	73.4	1 092	70.6	19	1.2
QantasLink	1 433	1 398	1 143	81.8	1 085	77.6	35	2.4
Virgin Australia	1 425	1 416	1 182	83.5	1 093	77.2	9	0.6
All Airlines	4 424	4 361	3 461	79.4	3 270	75.0	63	1.4
<b>Launceston-Sydney</b>								
Jetstar	706	702	482	68.7	508	72.4	4	0.6
Virgin Australia	364	362	306	84.5	304	84.0	2	0.5
All Airlines	1 070	1 064	788	74.1	812	76.3	6	0.6
<b>Mackay-Brisbane</b>								
Jetstar	1 073	1 039	725	69.8	687	66.1	34	3.2
QantasLink	1 306	1 282	1 099	85.7	1 093	85.3	24	1.8
Virgin Australia	1 787	1 757	1 494	85.0	1 420	80.8	30	1.7
All Airlines	4 166	4 078	3 318	81.4	3 200	78.5	88	2.1
<b>Melbourne-Adelaide</b>								
Jetstar	1 132	1 124	907	80.7	896	79.7	8	0.7
Qantas	3 439	3 425	3 068	89.6	3 005	87.7	14	0.4
QantasLink	207	204	181	88.7	174	85.3	3	1.4
Tigerair	831	808	705	87.3	633	78.3	23	2.8
Virgin Australia	3 261	3 225	2 715	84.2	2 638	81.8	36	1.1
All Airlines	8 870	8 786	7 576	86.2	7 346	83.6	84	0.9
<b>Melbourne-Alice Springs</b>								
Qantas	365	365	312	85.5	299	81.9	0	0.0
Tigerair	202	201	172	85.6	142	70.6	1	0.5
All Airlines	567	566	484	85.5	441	77.9	1	0.2
<b>Melbourne-Brisbane</b>								
Jetstar	1 306	1 280	803	62.7	841	65.7	26	2.0
Qantas	5 053	5 020	4 225	84.2	3 929	78.3	33	0.7
Tigerair	1 148	1 118	764	68.3	676	60.5	30	2.6
Virgin Australia	4 483	4 404	3 421	77.7	3 181	72.2	79	1.8
All Airlines	11 990	11 822	9 213	77.9	8 627	73.0	168	1.4
<b>Melbourne-Cairns</b>								
Jetstar	1 093	1 080	861	79.7	878	81.3	13	1.2
Qantas	365	364	304	83.5	289	79.4	1	0.3
Tigerair	477	467	401	85.9	387	82.9	10	2.1
Virgin Australia	401	399	308	77.2	299	74.9	2	0.5
All Airlines	2 336	2 310	1 874	81.1	1 853	80.2	26	1.1
<b>Melbourne-Canberra</b>								
Qantas	2 622	2 591	2 341	90.4	2 327	89.8	31	1.2
QantasLink	843	810	687	84.8	601	74.2	33	3.9
Virgin Australia	2 072	2 040	1 599	78.4	1 595	78.2	32	1.5
All Airlines	5 537	5 441	4 627	85.0	4 523	83.1	96	1.7
<b>Melbourne-Darwin</b>								
Jetstar	327	326	254	77.9	254	77.9	1	0.3
Qantas	280	279	252	90.3	233	83.5	1	0.4
Virgin Australia	364	361	329	91.1	309	85.6	3	0.8
All Airlines	971	966	835	86.4	796	82.4	5	0.5
<b>Melbourne-Gold Coast</b>								
Jetstar	2 488	2 467	1 830	74.2	1 854	75.2	21	0.8
Tigerair	840	832	622	74.8	547	65.7	8	1.0
Virgin Australia	2 069	2 056	1 597	77.7	1 621	78.8	13	0.6
All Airlines	5 397	5 355	4 049	75.6	4 022	75.1	42	0.8

	<i>Sectors</i>		<i>Departures On Time</i>		<i>Arrivals On Time</i>		<i>Cancellations</i>	
	<i>Sched.</i>	<i>Flown</i>	<i>No.</i>	<i>%</i>	<i>No.</i>	<i>%</i>	<i>No.</i>	<i>%</i>
<b>Melbourne-Hamilton Island</b>								
			(From February 2014 only)					
Jetstar	93	91	85	93.4	84	92.3	2	2.2
Virgin Australia	67	66	59	89.4	55	83.3	1	1.5
All Airlines	160	157	144	91.7	139	88.5	3	1.9
<b>Melbourne-Hobart</b>								
Jetstar	2 097	2 082	1 639	78.7	1 689	81.1	15	0.7
Qantas	670	670	623	93.0	617	92.1	0	0.0
QantasLink	452	444	281	63.3	272	61.3	8	1.8
Tigerair	366	363	247	68.0	232	63.9	3	0.8
Virgin Australia	1 664	1 655	1 356	81.9	1 312	79.3	9	0.5
All Airlines	5 249	5 214	4 146	79.5	4 122	79.1	35	0.7
<b>Melbourne-Launceston</b>								
Jetstar	1 558	1 540	1 211	78.6	1 228	79.7	18	1.2
QantasLink	1 433	1 398	1 147	82.0	1 063	76.0	35	2.4
Virgin Australia	1 424	1 415	1 152	81.4	1 155	81.6	9	0.6
All Airlines	4 415	4 353	3 510	80.6	3 446	79.2	62	1.4
<b>Melbourne-Mildura</b>								
QantasLink	1 043	1 040	871	83.8	800	76.9	3	0.3
Regional Express	972	972	917	94.3	868	89.3	0	0.0
Virgin Australia	365	365	301	82.5	285	78.1	0	0.0
All Airlines	2 380	2 377	2 089	87.9	1 953	82.2	3	0.1
<b>Melbourne-Newcastle</b>								
Jetstar	1 240	1 228	935	76.1	949	77.3	12	1.0
Virgin Australia	364	362	316	87.3	320	88.4	2	0.5
All Airlines	1 604	1 590	1 251	78.7	1 269	79.8	14	0.9
<b>Melbourne-Perth</b>								
Jetstar	956	929	783	84.3	746	80.3	27	2.8
Qantas	2 645	2 635	2 117	80.3	2 054	78.0	10	0.4
Tigerair	715	701	567	80.9	520	74.2	14	2.0
Virgin Australia	1 622	1 616	1 302	80.6	1 226	75.9	6	0.4
All Airlines	5 938	5 881	4 769	81.1	4 546	77.3	57	1.0
<b>Melbourne-Sunshine Coast</b>								
Jetstar	763	755	595	78.8	602	79.7	8	1.0
Tigerair	345	332	293	88.3	271	81.6	13	3.8
Virgin Australia	365	364	303	83.2	285	78.3	1	0.3
All Airlines	1 473	1 451	1 191	82.1	1 158	79.8	22	1.5
<b>Melbourne-Sydney</b>								
Jetstar	3 779	3 633	2 680	73.8	2 787	76.7	146	3.9
Qantas	10 655	10 339	9 067	87.7	8 862	85.7	316	3.0
Tigerair	2 561	2 491	1 859	74.6	1 974	79.2	70	2.7
Virgin Australia	9 120	8 825	7 376	83.6	7 191	81.5	295	3.2
All Airlines	26 115	25 288	20 982	83.0	20 814	82.3	827	3.2
<b>Mildura-Melbourne</b>								
QantasLink	1 043	1 040	879	84.5	849	81.6	3	0.3
Regional Express	973	973	878	90.2	843	86.6	0	0.0
Virgin Australia	365	365	274	75.1	283	77.5	0	0.0
All Airlines	2 381	2 378	2 031	85.4	1 975	83.1	3	0.1
<b>Moranbah-Brisbane</b>								
QantasLink	1 772	1 636	1 392	85.1	1 348	82.4	136	7.7
Virgin Australia Regional Airlines	961	944	748	79.2	617	65.4	17	1.8
All Airlines	2 733	2 580	2 140	82.9	1 965	76.2	153	5.6

	<i>Sectors</i>		<i>Departures On Time</i>		<i>Arrivals On Time</i>		<i>Cancellations</i>	
	<i>Sched.</i>	<i>Flown</i>	<i>No.</i>	<i>%</i>	<i>No.</i>	<i>%</i>	<i>No.</i>	<i>%</i>
<b>Mount Isa-Brisbane</b>								
Qantas	676	675	590	87.4	582	86.2	1	0.1
Virgin Australia	258	256	218	85.2	202	78.9	2	0.8
All Airlines	934	931	808	86.8	784	84.2	3	0.3
<b>Newcastle-Brisbane</b>								
Jetstar	1 342	1 331	1 067	80.2	1 060	79.6	11	0.8
QantasLink	834	805	478	59.4	469	58.3	29	3.5
Virgin Australia	947	940	718	76.4	670	71.3	7	0.7
All Airlines	3 123	3 076	2 263	73.6	2 199	71.5	47	1.5
<b>Newcastle-Melbourne</b>								
Jetstar	1 247	1 237	968	78.3	938	75.8	10	0.8
Virgin Australia	364	360	259	71.9	253	70.3	4	1.1
All Airlines	1 611	1 597	1 227	76.8	1 191	74.6	14	0.9
<b>Newman-Perth</b>								
Qantas	1 553	1 515	1 420	93.7	1 391	91.8	38	2.4
QantasLink	384	369	347	94.0	339	91.9	15	3.9
Virgin Australia	442	436	387	88.8	380	87.2	6	1.4
Virgin Australia Regional Airlines	126	122	101	82.8	95	77.9	4	3.2
All Airlines	2 505	2 442	2 255	92.3	2 205	90.3	63	2.5
<b>Perth-Adelaide</b>								
Jetstar	413	408	313	76.7	345	84.6	5	1.2
Qantas	1 385	1 385	1 248	90.1	1 296	93.6	0	0.0
Virgin Australia	752	743	694	93.4	713	96.0	9	1.2
All Airlines	2 550	2 536	2 255	88.9	2 354	92.8	14	0.5
<b>Perth-Brisbane</b>								
Jetstar	293	292	176	60.3	205	70.2	1	0.3
Qantas	1 534	1 531	1 366	89.2	1 340	87.5	3	0.2
Virgin Australia	1 056	1 055	917	86.9	881	83.5	1	0.1
All Airlines	2 883	2 878	2 459	85.4	2 426	84.3	5	0.2
<b>Perth-Broome</b>								
Qantas	389	389	362	93.1	355	91.3	0	0.0
QantasLink	651	641	599	93.4	592	92.4	10	1.5
Virgin Australia	523	515	454	88.2	462	89.7	8	1.5
Virgin Australia Regional Airlines	195	194	147	75.8	150	77.3	1	0.5
All Airlines	1 758	1 739	1 562	89.8	1 559	89.6	19	1.1
<b>Perth-Darwin</b>								
Qantas	388	387	362	93.5	353	91.2	1	0.3
Virgin Australia	313	313	277	88.5	273	87.2	0	0.0
All Airlines	701	700	639	91.3	626	89.4	1	0.1
<b>Perth-Geraldton</b>								
QantasLink	695	694	637	91.8	612	88.2	1	0.1
Virgin Australia Regional Airlines	1 107	1 093	966	88.4	932	85.3	14	1.3
All Airlines	1 802	1 787	1 603	89.7	1 544	86.4	15	0.8
<b>Perth-Kalgoorlie</b>								
Qantas	678	673	626	93.0	631	93.8	5	0.7
QantasLink	370	366	350	95.6	347	94.8	4	1.1
Virgin Australia	483	481	423	87.9	427	88.8	2	0.4
Virgin Australia Regional Airlines	187	187	168	89.8	166	88.8	0	0.0
All Airlines	1 718	1 707	1 567	91.8	1 571	92.0	11	0.6

	<i>Sectors</i>		<i>Departures On Time</i>		<i>Arrivals On Time</i>		<i>Cancellations</i>	
	<i>Sched.</i>	<i>Flown</i>	<i>No.</i>	<i>%</i>	<i>No.</i>	<i>%</i>	<i>No.</i>	<i>%</i>
<b>Perth-Karratha</b>								
Qantas	2 147	2 058	1 967	95.6	1 967	95.6	89	4.1
QantasLink	780	730	695	95.2	692	94.8	50	6.4
Virgin Australia	1 008	986	900	91.3	903	91.6	22	2.2
Virgin Australia Regional Airlines	13	13	10	76.9	10	76.9	0	0.0
All Airlines	3 948	3 787	3 572	94.3	3 572	94.3	161	4.1
<b>Perth-Melbourne</b>								
Jetstar	960	927	660	71.2	690	74.4	33	3.4
Qantas	2 649	2 633	2 197	83.4	2 283	86.7	16	0.6
Tigerair	714	698	492	70.5	481	68.9	16	2.2
Virgin Australia	1 623	1 618	1 379	85.2	1 396	86.3	5	0.3
All Airlines	5 946	5 876	4 728	80.5	4 850	82.5	70	1.2
<b>Perth-Newman</b>								
Qantas	1 553	1 521	1 437	94.5	1 437	94.5	32	2.1
QantasLink	383	367	341	92.9	345	94.0	16	4.2
Virgin Australia	440	436	397	91.1	396	90.8	4	0.9
Virgin Australia Regional Airlines	126	123	102	82.9	108	87.8	3	2.4
All Airlines	2 502	2 447	2 277	93.1	2 286	93.4	55	2.2
<b>Perth-Port Hedland</b>								
Qantas	1 479	1 459	1 391	95.3	1 391	95.3	20	1.4
QantasLink	508	499	470	94.2	474	95.0	9	1.8
Virgin Australia	615	610	572	93.8	576	94.4	5	0.8
All Airlines	2 602	2 568	2 433	94.7	2 441	95.1	34	1.3
<b>Perth-Sydney</b>								
Jetstar	469	452	304	67.3	348	77.0	17	3.6
Qantas	2 410	2 409	2 093	86.9	2 202	91.4	1	0.0
Tigerair	163	155	137	88.4	138	89.0	8	4.9
Virgin Australia	1 367	1 364	1 178	86.4	1 257	92.2	3	0.2
All Airlines	4 409	4 380	3 712	84.7	3 945	90.1	29	0.7
<b>Port Hedland-Perth</b>								
Qantas	1 480	1 455	1 338	92.0	1 325	91.1	25	1.7
QantasLink	509	502	454	90.4	452	90.0	7	1.4
Virgin Australia	615	606	560	92.4	540	89.1	9	1.5
All Airlines	2 604	2 563	2 352	91.8	2 317	90.4	41	1.6
<b>Port Lincoln-Adelaide</b>								
QantasLink	1 162	1 139	1 045	91.7	1 029	90.3	23	2.0
Regional Express	2 385	2 374	2 180	91.8	2 145	90.4	11	0.5
All Airlines	3 547	3 513	3 225	91.8	3 174	90.4	34	1.0
<b>Port Macquarie-Sydney</b>								
QantasLink	1 615	1 594	1 089	68.3	942	59.1	21	1.3
Virgin Australia Regional Airlines	724	717	558	77.8	532	74.2	7	1.0
All Airlines	2 339	2 311	1 647	71.3	1 474	63.8	28	1.2
<b>Proserpine-Brisbane</b>								
Jetstar	353	351	295	84.0	288	82.1	2	0.6
Virgin Australia	620	607	496	81.7	425	70.0	13	2.1
All Airlines	973	958	791	82.6	713	74.4	15	1.5
<b>Rockhampton-Brisbane</b>								
QantasLink	2 324	2 260	1 793	79.3	1 690	74.8	64	2.8
Virgin Australia	1 180	1 161	951	81.9	873	75.2	19	1.6
Virgin Australia Regional Airlines	1 348	1 315	1 155	87.8	1 114	84.7	33	2.4
All Airlines	4 852	4 736	3 899	82.3	3 677	77.6	116	2.4

	<i>Sectors</i>		<i>Departures On Time</i>		<i>Arrivals On Time</i>		<i>Cancellations</i>	
	<i>Sched.</i>	<i>Flown</i>	<i>No.</i>	<i>%</i>	<i>No.</i>	<i>%</i>	<i>No.</i>	<i>%</i>
<b>Sunshine Coast-Melbourne</b>								
Jetstar	770	757	544	71.9	545	72.0	13	1.7
Tigerair	345	333	264	79.3	239	71.8	12	3.5
Virgin Australia	365	363	236	65.0	225	62.0	2	0.5
All Airlines	1 480	1 453	1 044	71.9	1 009	69.4	27	1.8
<b>Sunshine Coast-Sydney</b>								
Jetstar	1 219	1 204	999	83.0	1 002	83.2	15	1.2
Virgin Australia	401	397	328	82.6	328	82.6	4	1.0
All Airlines	1 620	1 601	1 327	82.9	1 330	83.1	19	1.2
<b>Sydney-Adelaide</b>								
Jetstar	1 346	1 318	1 028	78.0	1 019	77.3	28	2.1
Qantas	3 063	3 060	2 717	88.8	2 666	87.1	3	0.1
QantasLink	52	50	33	66.0	34	68.0	2	3.8
Tigerair	109	108	101	93.5	97	89.8	1	0.9
Virgin Australia	1 985	1 968	1 645	83.6	1 673	85.0	17	0.9
All Airlines	6 555	6 504	5 524	84.9	5 489	84.4	51	0.8
<b>Sydney-Albury</b>								
QantasLink	1 345	1 339	936	69.9	792	59.1	6	0.4
Regional Express	1 237	1 232	1 035	84.0	1 043	84.7	5	0.4
Virgin Australia Regional Airlines	726	721	600	83.2	580	80.4	5	0.7
All Airlines	3 308	3 292	2 571	78.1	2 415	73.4	16	0.5
<b>Sydney-Alice Springs</b>								
			(From August 2013 only)					
Qantas	334	334	298	89.2	297	88.9	0	0.0
Tigerair	188	188	168	89.4	164	87.2	0	0.0
All Airlines	522	522	466	89.3	461	88.3	0	0.0
<b>Sydney-Ayers Rock</b>								
Jetstar	206	205	174	84.9	178	86.8	1	0.5
Virgin Australia	366	365	327	89.6	308	84.4	1	0.3
All Airlines	572	570	501	87.9	486	85.3	2	0.3
<b>Sydney-Ballina</b>								
Jetstar	763	760	625	82.2	623	82.0	3	0.4
Regional Express	330	329	276	83.9	269	81.8	1	0.3
Virgin Australia	365	362	320	88.4	308	85.1	3	0.8
All Airlines	1 458	1 451	1 221	84.1	1 200	82.7	7	0.5
<b>Sydney-Brisbane</b>								
Jetstar	1 633	1 564	1 185	75.8	1 164	74.4	69	4.2
Qantas	6 980	6 847	5 800	84.7	5 394	78.8	133	1.9
Tigerair	962	947	698	73.7	579	61.1	15	1.6
Virgin Australia	6 425	6 247	5 294	84.7	4 914	78.7	178	2.8
All Airlines	16 000	15 605	12 977	83.2	12 051	77.2	395	2.5
<b>Sydney-Cairns</b>								
Jetstar	1 074	1 064	885	83.2	917	86.2	10	0.9
Qantas	822	820	721	87.9	759	92.6	2	0.2
Tigerair	362	360	327	90.8	305	84.7	2	0.6
Virgin Australia	1 035	1 030	883	85.7	888	86.2	5	0.5
All Airlines	3 293	3 274	2 816	86.0	2 869	87.6	19	0.6
<b>Sydney-Canberra</b>								
Qantas	1 218	1 193	1 075	90.1	1 025	85.9	25	2.1
QantasLink	5 236	4 954	3 990	80.5	4 041	81.6	282	5.4
Virgin Australia	605	585	535	91.5	535	91.5	20	3.3
Virgin Australia Regional Airlines	2 867	2 808	2 435	86.7	2 426	86.4	59	2.1
All Airlines	9 926	9 540	8 035	84.2	8 027	84.1	386	3.9



	<i>Sectors</i>		<i>Departures On Time</i>		<i>Arrivals On Time</i>		<i>Cancellations</i>	
	<i>Sched.</i>	<i>Flown</i>	<i>No.</i>	<i>%</i>	<i>No.</i>	<i>%</i>	<i>No.</i>	<i>%</i>
<b>Sydney-Coffs Harbour</b>								
QantasLink	1 811	1 803	1 439	79.8	1 316	73.0	8	0.4
Tigerair	240	235	175	74.5	175	74.5	5	2.1
Virgin Australia	711	704	631	89.6	639	90.8	7	1.0
All Airlines	2 762	2 742	2 245	81.9	2 130	77.7	20	0.7
<b>Sydney-Darwin</b>								
Jetstar	333	330	291	88.2	286	86.7	3	0.9
Qantas	611	610	515	84.4	521	85.4	1	0.2
Virgin Australia	364	363	320	88.2	309	85.1	1	0.3
All Airlines	1 308	1 303	1 126	86.4	1 116	85.6	5	0.4
<b>Sydney-Dubbo</b>								
QantasLink	1 472	1 464	1 132	77.3	958	65.4	8	0.5
Regional Express	1 700	1 697	1 484	87.4	1 506	88.7	3	0.2
All Airlines	3 172	3 161	2 616	82.8	2 464	78.0	11	0.3
<b>Sydney-Gold Coast</b>								
Jetstar	3 991	3 838	3 163	82.4	3 159	82.3	153	3.8
Qantas	1 084	1 083	1 013	93.5	1 036	95.7	1	0.1
Tigerair	697	685	533	77.8	538	78.5	12	1.7
Virgin Australia	3 695	3 634	3 116	85.7	3 068	84.4	61	1.7
All Airlines	9 467	9 240	7 825	84.7	7 801	84.4	227	2.4
<b>Sydney-Hamilton Island</b>								
Jetstar	325	320	244	76.3	268	83.8	5	1.5
Virgin Australia	366	361	315	87.3	312	86.4	5	1.4
All Airlines	691	681	559	82.1	580	85.2	10	1.4
<b>Sydney-Hobart</b>								
Jetstar	913	908	723	79.6	740	81.5	5	0.5
Qantas	288	288	261	90.6	265	92.0	0	0.0
QantasLink	85	85	71	83.5	65	76.5	0	0.0
Virgin Australia	711	709	637	89.8	641	90.4	2	0.3
All Airlines	1 997	1 990	1 692	85.0	1 711	86.0	7	0.4
<b>Sydney-Launceston</b>								
Jetstar	699	698	541	77.5	536	76.8	1	0.1
Virgin Australia	364	363	321	88.4	320	88.2	1	0.3
All Airlines	1 063	1 061	862	81.2	856	80.7	2	0.2
<b>Sydney-Melbourne</b>								
Jetstar	3 780	3 636	2 952	81.2	2 884	79.3	144	3.8
Qantas	10 654	10 329	9 197	89.0	8 749	84.7	325	3.1
Tigerair	2 559	2 486	1 952	78.5	1 820	73.2	73	2.9
Virgin Australia	9 126	8 833	7 387	83.6	6 990	79.1	293	3.2
All Airlines	26 119	25 284	21 488	85.0	20 443	80.9	835	3.2
<b>Sydney-Perth</b>								
Jetstar	465	456	365	80.0	350	76.8	9	1.9
Qantas	2 460	2 460	2 061	83.8	1 957	79.6	0	0.0
Tigerair	164	157	131	83.4	135	86.0	7	4.3
Virgin Australia	1 367	1 363	1 120	82.2	1 051	77.1	4	0.3
All Airlines	4 456	4 436	3 677	82.9	3 493	78.7	20	0.4
<b>Sydney-Port Macquarie</b>								
QantasLink	1 615	1 595	1 239	77.7	1 061	66.5	20	1.2
Virgin Australia Regional Airlines	724	718	606	84.4	604	84.1	6	0.8
All Airlines	2 339	2 313	1 845	79.8	1 665	72.0	26	1.1
<b>Sydney-Sunshine Coast</b>								
Jetstar	1 219	1 212	1 060	87.5	1 076	88.8	7	0.6
Virgin Australia	401	399	353	88.5	357	89.5	2	0.5
All Airlines	1 620	1 611	1 413	87.7	1 433	89.0	9	0.6

	<i>Sectors</i>		<i>Departures On Time</i>		<i>Arrivals On Time</i>		<i>Cancellations</i>	
	<i>Sched.</i>	<i>Flown</i>	<i>No.</i>	<i>%</i>	<i>No.</i>	<i>%</i>	<i>No.</i>	<i>%</i>
<b>Sydney-Townsville</b>								
Jetstar	290	288	244	84.7	248	86.1	2	0.7
Virgin Australia	347	344	308	89.5	276	80.2	3	0.9
All Airlines	637	632	552	87.3	524	82.9	5	0.8
<b>Sydney-Wagga Wagga</b>								
QantasLink	1 339	1 334	1 022	76.6	880	66.0	5	0.4
Regional Express	1 495	1 491	1 371	92.0	1 355	90.9	4	0.3
All Airlines	2 834	2 825	2 393	84.7	2 235	79.1	9	0.3
<b>Townsville-Brisbane</b>								
Jetstar	421	417	299	71.7	294	70.5	4	1.0
Qantas	1 773	1 764	1 615	91.6	1 565	88.7	9	0.5
Virgin Australia	1 896	1 875	1 544	82.3	1 476	78.7	21	1.1
All Airlines	4 090	4 056	3 458	85.3	3 335	82.2	34	0.8
<b>Townsville-Cairns</b>								
			(To February 2014 only)					
QantasLink	1 439	1 400	1 159	82.8	1 175	83.9	39	2.7
Virgin Australia Regional Airlines	174	171	166	97.1	164	95.9	3	1.7
All Airlines	1 613	1 571	1 325	84.3	1 339	85.2	42	2.6
<b>Townsville-Sydney</b>								
Jetstar	293	291	227	78.0	231	79.4	2	0.7
Virgin Australia	347	341	238	69.8	260	76.2	6	1.7
All Airlines	640	632	465	73.6	491	77.7	8	1.3
<b>Wagga Wagga-Sydney</b>								
QantasLink	1 339	1 333	939	70.4	914	68.6	6	0.4
Regional Express	1 491	1 488	1 351	90.8	1 326	89.1	3	0.2
All Airlines	2 830	2 821	2 290	81.2	2 240	79.4	9	0.3

# Airports

On time performance is reported for all routes where the passenger load averages over 8000 passengers per month, and where two or more airlines operate in competition. The following data reports by airport against flights operated on those routes only.

Airport	Departures			Arrivals		
	Sectors	On Time		Sectors	On Time	
	Flown	No.	%	Flown	No.	%
<b>Adelaide</b>						
Jetstar	3 612	2 781	77.0	3 622	2 953	81.5
Qantas	9 656	8 471	87.7	9 674	8 561	88.5
QantasLink	1 639	1 420	86.6	1 648	1 407	85.4
Regional Express	2 373	2 244	94.6	2 374	2 145	90.4
Tigerair	1 008	810	80.4	1 009	811	80.4
Virgin Australia	7 916	6 845	86.5	7 929	6 684	84.3
All Airlines	26 204	22 571	86.1	26 256	22 561	85.9
Relates to services to and from Brisbane, Canberra, Gold Coast, Melbourne, Perth, Port Lincoln and Sydney.						
<b>Albury</b>						
QantasLink	1 338	890	66.5	1 339	792	59.1
Regional Express	1 232	1 101	89.4	1 232	1 043	84.7
Virgin Australia Regional Airlines	721	585	81.1	721	580	80.4
All Airlines	3 291	2 576	78.3	3 292	2 415	73.4
Relates to services to and from Sydney only.						
<b>Alice Springs</b>						
Qantas	699	463	66.2	699	596	85.3
Tigerair	389	275	70.7	389	306	78.7
All Airlines	1 088	738	67.8	1 088	902	82.9
Relates to services to and from Melbourne and Sydney.						
<b>Ayers Rock</b>						
Jetstar	209	160	76.6	205	178	86.8
Virgin Australia	366	300	82.0	365	308	84.4
All Airlines	575	460	80.0	570	486	85.3
Relates to services to and from Sydney only.						
<b>Ballina</b>						
Jetstar	761	563	74.0	760	623	82.0
Regional Express	283	210	74.2	329	269	81.8
Virgin Australia	363	295	81.3	362	308	85.1
All Airlines	1 407	1 068	75.9	1 451	1 200	82.7
Relates to services to and from Sydney only.						
<b>Brisbane</b>						
Jetstar	8 376	6 648	79.4	8 388	6 218	74.1
Qantas	20 313	17 326	85.3	19 971	16 335	81.8
QantasLink	13 160	11 476	87.2	13 079	10 029	76.7
Tigerair	2 291	1 493	65.2	2 300	1 447	62.9
Virgin Australia	23 585	19 779	83.9	23 539	18 246	77.5
Virgin Australia Regional Airlines	5 373	4 526	84.2	5 360	4 240	79.1
All Airlines	73 098	61 248	83.8	72 637	56 515	77.8
Relates to services to and from Adelaide, Bundaberg, Cairns, Canberra, Darwin, Emerald, Gladstone, Hamilton Island, Hobart, Mackay, Melbourne, Moranbah, Mount Isa, Newcastle, Perth, Proserpine, Rockhampton, Sydney and Townsville.						

Airport	Departures			Arrivals		
	Sectors Flown	On Time		Sectors Flown	On Time	
		No.	%		No.	%
<b>Broome</b>						
Qantas	388	288	74.2	389	355	91.3
QantasLink	636	578	90.9	641	592	92.4
Virgin Australia	511	401	78.5	515	462	89.7
Virgin Australia Regional Airlines	209	136	65.1	194	150	77.3
All Airlines	1 744	1 403	80.4	1 739	1 559	89.6
Relates to services to and from Perth only.						
<b>Bundaberg</b>						
QantasLink	1 417	1 174	82.9	1 414	1 180	83.5
Virgin Australia Regional Airlines	401	318	79.3	402	338	84.1
All Airlines	1 818	1 492	82.1	1 816	1 518	83.6
Relates to services to and from Brisbane only.						
<b>Cairns</b>						
Jetstar	3 420	2 840	83.0	3 422	2 838	82.9
Qantas	2 584	2 201	85.2	2 588	2 293	88.6
QantasLink	1 459	1 313	90.0	1 450	1 221	84.2
Tigerair	900	646	71.8	903	730	80.8
Virgin Australia	3 219	2 671	83.0	3 225	2 713	84.1
Virgin Australia Regional Airlines	171	166	97.1	171	164	95.9
All Airlines	11 753	9 837	83.7	11 759	9 959	84.7
Relates to services to and from Brisbane, Melbourne, Sydney and Townsville.						
<b>Canberra</b>						
Qantas	5 308	4 795	90.3	5 312	4 763	89.7
QantasLink	6 871	5 563	81.0	6 897	5 572	80.8
Virgin Australia	4 039	3 382	83.7	4 052	3 329	82.2
Virgin Australia Regional Airlines	2 804	2 536	90.4	2 808	2 426	86.4
All Airlines	19 022	16 276	85.6	19 069	16 090	84.4
Relates to services to and from Adelaide, Brisbane, Melbourne and Sydney.						
<b>Coffs Harbour</b>						
QantasLink	1 802	1 313	72.9	1 803	1 316	73.0
Tigerair	235	181	77.0	235	175	74.5
Virgin Australia	702	620	88.3	704	639	90.8
All Airlines	2 739	2 114	77.2	2 742	2 130	77.7
Relates to services to and from Sydney only.						
<b>Darwin</b>						
Jetstar	777	523	67.3	781	632	80.9
Qantas	1 721	1 405	81.6	1 721	1 496	86.9
Tigerair	66	62	93.9	68	56	82.4
Virgin Australia	1 402	1 169	83.4	1 403	1 180	84.1
All Airlines	3 966	3 159	79.7	3 973	3 364	84.7
Relates to services to and from Brisbane, Melbourne, Perth and Sydney.						
<b>Dubbo</b>						
QantasLink	1 462	1 069	73.1	1 464	958	65.4
Regional Express	1 743	1 552	89.0	1 697	1 506	88.7
All Airlines	3 205	2 621	81.8	3 161	2 464	78.0
Relates to services to and from Sydney only.						

Airport	Departures			Arrivals		
	Sectors Flown	On Time		Sectors Flown	On Time	
		No.	%		No.	%
<b>Emerald</b>						
QantasLink	1 950	1 545	79.2	1 954	1 569	80.3
Virgin Australia Regional Airlines	1 123	952	84.8	1 128	928	82.3
All Airlines	3 073	2 497	81.3	3 082	2 497	81.0
Relates to services to and from Brisbane only.						
<b>Geraldton</b>						
QantasLink	694	642	92.5	694	612	88.2
Virgin Australia Regional Airlines	1 128	971	86.1	1 093	932	85.3
All Airlines	1 822	1 613	88.5	1 787	1 544	86.4
Relates to services to and from Perth only.						
<b>Gladstone</b>						
QantasLink	2 800	2 287	81.7	2 564	2 218	86.5
Virgin Australia	114	75	65.8	120	94	78.3
Virgin Australia Regional Airlines	1 577	1 296	82.2	1 577	1 263	80.1
All Airlines	4 491	3 658	81.5	4 261	3 575	83.9
Relates to services to and from Brisbane only.						
<b>Gold Coast</b>						
Jetstar	6 718	5 494	81.8	6 736	5 389	80.0
Qantas	1 083	977	90.2	1 083	1 036	95.7
Tigerair	1 510	981	65.0	1 517	1 085	71.5
Virgin Australia	6 044	5 129	84.9	6 052	5 036	83.2
All Airlines	15 355	12 581	81.9	15 388	12 546	81.5
Relates to services to and from Adelaide, Melbourne and Sydney.						
<b>Hamilton Island</b>						
Jetstar	622	495	79.6	615	538	87.5
Virgin Australia	782	661	84.5	786	686	87.3
All Airlines	1 404	1 156	82.3	1 401	1 224	87.4
Relates to services to and from Brisbane, Melbourne and Sydney.						
<b>Hobart</b>						
Jetstar	3 156	2 337	74.0	3 151	2 576	81.8
Qantas	958	858	89.6	958	882	92.1
QantasLink	530	425	80.2	529	337	63.7
Tigerair	363	215	59.2	363	232	63.9
Virgin Australia	2 544	2 022	79.5	2 545	2 094	82.3
All Airlines	7 551	5 857	77.6	7 546	6 121	81.1
Relates to services to and from Brisbane, Melbourne and Sydney.						
<b>Kalgoorlie</b>						
Qantas	669	623	93.1	673	631	93.8
QantasLink	364	328	90.1	366	347	94.8
Virgin Australia	479	422	88.1	481	427	88.8
Virgin Australia Regional Airlines	185	150	81.1	187	166	88.8
All Airlines	1 697	1 523	89.7	1 707	1 571	92.0
Relates to services to and from Perth only.						

Airport	Departures			Arrivals		
	Sectors Flown	On Time		Sectors Flown	On Time	
		No.	%		No.	%
<b>Karratha</b>						
Qantas	2 042	1 934	94.7	2 058	1 967	95.6
QantasLink	730	689	94.4	730	692	94.8
Virgin Australia	985	844	85.7	986	903	91.6
Virgin Australia Regional Airlines	13	10	76.9	13	10	76.9
All Airlines	3 770	3 477	92.2	3 787	3 572	94.3
Relates to services to and from Perth only.						
<b>Launceston</b>						
Jetstar	2 249	1 618	71.9	2 238	1 764	78.8
QantasLink	1 398	1 143	81.8	1 398	1 063	76.0
Virgin Australia	1 778	1 488	83.7	1 778	1 475	83.0
All Airlines	5 425	4 249	78.3	5 414	4 302	79.5
Relates to services to and from Melbourne and Sydney.						
<b>Mackay</b>						
Jetstar	1 039	725	69.8	1 041	866	83.2
QantasLink	1 282	1 099	85.7	1 285	1 145	89.1
Virgin Australia	1 757	1 494	85.0	1 759	1 456	82.8
All Airlines	4 078	3 318	81.4	4 085	3 467	84.9
Relates to services to and from Brisbane only.						
<b>Melbourne</b>						
Jetstar	16 535	12 583	76.1	16 553	12 726	76.9
Qantas	25 688	22 309	86.8	25 669	21 835	85.1
QantasLink	3 896	3 167	81.3	3 902	3 004	77.0
Regional Express	972	917	94.3	973	843	86.6
Tigerair	7 313	5 630	77.0	7 296	4 865	66.7
Virgin Australia	27 153	22 134	81.5	27 135	21 386	78.8
All Airlines	81 557	66 740	81.8	81 528	64 659	79.3
Relates to services to and from Adelaide, Alice Springs, Brisbane, Cairns, Canberra, Darwin, Gold Coast, Hamilton Island, Hobart, Launceston, Mildura, Newcastle, Perth, Sunshine Coast and Sydney.						
<b>Mildura</b>						
QantasLink	1 040	879	84.5	1 040	800	76.9
Regional Express	973	878	90.2	972	868	89.3
Virgin Australia	365	274	75.1	365	285	78.1
All Airlines	2 378	2 031	85.4	2 377	1 953	82.2
Relates to services to and from Melbourne only.						
<b>Moranbah</b>						
QantasLink	1 636	1 392	85.1	1 690	1 540	91.1
Virgin Australia Regional Airlines	944	748	79.2	947	739	78.0
All Airlines	2 580	2 140	82.9	2 637	2 279	86.4
Relates to services to and from Brisbane only.						
<b>Mount Isa</b>						
Qantas	675	590	87.4	676	630	93.2
Virgin Australia	256	218	85.2	258	221	85.7
All Airlines	931	808	86.8	934	851	91.1
Relates to services to and from Brisbane only.						

Airport	Departures			Arrivals		
	Sectors	On Time		Sectors	On Time	
	Flown	No.	%	Flown	No.	%
<b>Newcastle</b>						
Jetstar	2 568	2 035	79.2	2 556	2 079	81.3
QantasLink	805	478	59.4	808	467	57.8
Virgin Australia	1 300	977	75.2	1 305	1 130	86.6
All Airlines	4 673	3 490	74.7	4 669	3 676	78.7
Relates to services to and from Brisbane and Melbourne.						
<b>Newman</b>						
Qantas	1 515	1 420	93.7	1 521	1 437	94.5
QantasLink	369	347	94.0	367	345	94.0
Virgin Australia	436	387	88.8	436	396	90.8
Virgin Australia Regional Airlines	122	101	82.8	123	108	87.8
All Airlines	2 442	2 255	92.3	2 447	2 286	93.4
Relates to services to and from Perth only.						
<b>Perth</b>						
Jetstar	2 079	1 453	69.9	2 085	1 620	77.7
Qantas	14 445	13 049	90.3	14 417	12 385	85.9
QantasLink	3 297	3 092	93.8	3 295	2 988	90.7
Tigerair	853	629	73.7	858	655	76.3
Virgin Australia	8 121	7 191	88.5	8 112	6 526	80.4
Virgin Australia Regional Airlines	1 610	1 393	86.5	1 657	1 296	78.2
All Airlines	30 405	26 807	88.2	30 424	25 470	83.7
Relates to services to and from Adelaide, Brisbane, Broome, Darwin, Geraldton, Kalgoorlie, Karratha, Melbourne, Newman, Port Hedland and Sydney.						
<b>Port Hedland</b>						
Qantas	1 455	1 338	92.0	1 459	1 391	95.3
QantasLink	502	454	90.4	499	474	95.0
Virgin Australia	606	560	92.4	610	576	94.4
All Airlines	2 563	2 352	91.8	2 568	2 441	95.1
Relates to services to and from Perth only.						
<b>Port Lincoln</b>						
QantasLink	1 139	1 045	91.7	1 137	1 019	89.6
Regional Express	2 374	2 180	91.8	2 373	2 172	91.5
All Airlines	3 513	3 225	91.8	3 510	3 191	90.9
Relates to services to and from Adelaide only.						
<b>Port Macquarie</b>						
QantasLink	1 594	1 089	68.3	1 595	1 061	66.5
Virgin Australia Regional Airlines	717	558	77.8	718	604	84.1
All Airlines	2 311	1 647	71.3	2 313	1 665	72.0
Relates to services to and from Sydney only.						
<b>Proserpine</b>						
Jetstar	351	295	84.0	350	277	79.1
Virgin Australia	607	496	81.7	609	549	90.1
All Airlines	958	791	82.6	959	826	86.1
Relates to services to and from Brisbane only.						

Airport	Departures			Arrivals		
	Sectors	On Time		Sectors	On Time	
	Flown	No.	%	Flown	No.	%
<b>Rockhampton</b>						
QantasLink	2 260	1 793	79.3	2 513	2 106	83.8
Virgin Australia	1 161	951	81.9	1 167	989	84.7
Virgin Australia Regional Airlines	1 315	1 155	87.8	1 319	1 084	82.2
All Airlines	4 736	3 899	82.3	4 999	4 179	83.6
Relates to services to and from Brisbane only.						
<b>Sunshine Coast</b>						
Jetstar	1 961	1 543	78.7	1 967	1 678	85.3
Tigerair	333	264	79.3	332	271	81.6
Virgin Australia	760	564	74.2	763	642	84.1
All Airlines	3 054	2 371	77.6	3 062	2 591	84.6
Relates to services to and from Melbourne and Sydney.						
<b>Sydney</b>						
Jetstar	16 597	13 480	81.2	16 564	13 010	78.5
Qantas	27 024	23 658	87.5	27 352	23 811	87.1
QantasLink	12 624	9 862	78.1	12 584	9 334	74.2
Regional Express	4 749	4 166	87.7	4 746	4 110	86.6
Tigerair	5 166	4 085	79.1	5 157	3 860	74.8
Virgin Australia	27 630	23 512	85.1	27 617	23 351	84.6
Virgin Australia Regional Airlines	4 247	3 641	85.7	4 242	3 576	84.3
All Airlines	98 037	82 404	84.1	98 262	81 052	82.5
Relates to services to and from Adelaide, Albury, Alice Springs, Ayers Rock, Ballina, Brisbane, Cairns, Canberra, Coffs Harbour, Darwin, Dubbo, Gold Coast, Hamilton Island, Hobart, Launceston, Melbourne, Perth, Port Macquarie, Sunshine Coast, Townsville and Wagga Wagga.						
<b>Townsville</b>						
Jetstar	708	526	74.3	704	595	84.5
Qantas	1 764	1 615	91.6	1 767	1 549	87.7
QantasLink	1 400	1 159	82.8	1 408	1 262	89.6
Virgin Australia	2 216	1 782	80.4	2 219	1 873	84.4
Virgin Australia Regional Airlines	171	166	97.1	171	162	94.7
All Airlines	6 259	5 248	83.8	6 269	5 441	86.8
Relates to services to and from Brisbane, Cairns and Sydney.						
<b>Wagga Wagga</b>						
QantasLink	1 333	939	70.4	1 334	880	66.0
Regional Express	1 488	1 351	90.8	1 491	1 355	90.9
All Airlines	2 821	2 290	81.2	2 825	2 235	79.1
Relates to services to and from Sydney only.						



## Definitions

---

On time departure                      A flight departure is counted as "on time" if it departs the gate before 15 minutes after the scheduled departure time shown in the carriers' schedule.

---

On time arrival                         A flight arrival is counted as "on time" if it arrived at the gate before 15 minutes after the scheduled arrival time shown in the carriers' schedule.  
Neither diverted nor cancelled flights count as on time.

---

Cancellation                            A flight removed from service within 7 days of scheduled departure is regarded as a cancellation.

---

On time departure percentage                      The percentage of on time departures is measured against the number of departures *operated* on any particular sector.

---

On time arrival percentage                         The percentage of on time arrivals is measured against the number of arrivals *operated* on any particular sector.

---

Cancellation percentage                         The percentage of cancellations is measured against the number of services *scheduled* on any particular sector.

---