



**Australian Government**

**Department of Infrastructure and Transport**

Bureau of Infrastructure, Transport and Regional Economics

STATISTICAL REPORT



# Aviation

Domestic airline on time performance 2012-13

© Commonwealth of Australia 2013

ISSN: 1832-0759

### **Ownership of intellectual property rights in this publication**

Unless otherwise noted, copyright (and any other intellectual property rights, if any) in this publication is owned by the Commonwealth of Australia (referred to below as the Commonwealth).

### **Disclaimer**

The material contained in this publication is made available on the understanding that the Commonwealth is not providing professional advice, and that users exercise their own skill and care with respect to its use, and seek independent advice if necessary.

The Commonwealth makes no representations or warranties as to the contents or accuracy of the information contained in this publication. To the extent permitted by law, the Commonwealth disclaims liability to any person or organisation in respect of anything done, or omitted to be done, in reliance upon information contained in this publication.

### **Creative Commons licence**

With the exception of (a) the Coat of Arms; and (b) the Department of Infrastructure's photos and graphics, copyright in this publication is licensed under a Creative Commons Attribution 3.0 Australia Licence.

Creative Commons Attribution 3.0 Australia Licence is a standard form licence agreement that allows you to copy, communicate and adapt this publication provided that you attribute the work to the Commonwealth and abide by the other licence terms. A summary of the licence terms is available from <http://creativecommons.org/licenses/by/3.0/au/deed.en>. The full licence terms are available from <http://creativecommons.org/licenses/by/3.0/au/legalcode>.

### **Use of the Coat of Arms**

The Department of the Prime Minister and Cabinet sets the terms under which the Coat of Arms is used. Please refer to the Department's Commonwealth Coat of Arms and Government branding web page <http://www.dpmmc.gov.au/guidelines/index.cfm#brand> and, in particular, the Guidelines on the use of the Commonwealth Coat of Arms publication.

An appropriate citation for this report is:

Bureau of Infrastructure, Transport and Regional Economics (BITRE), 2013, Domestic airline on time performance, Statistical Report, BITRE, Canberra ACT.

### **Contact us**

This publication is available in PDF format. All other rights are reserved, including in relation to any Departmental logos or trade marks which may exist. For enquiries regarding the licence and any use of this publication, please contact:

Bureau of Infrastructure, Transport and Regional Economics (BITRE)  
Department of Infrastructure and Transport  
GPO Box 501, Canberra ACT 2601, Australia  
Telephone: (international) +61 2 6274 7210  
Fax: (international) +61 2 6274 6855  
Email: [bitre@infrastructure.gov.au](mailto:bitre@infrastructure.gov.au)  
Website: [www.bitre.gov.au](http://www.bitre.gov.au)

### **Inquiries**

Should you require additional information about the statistics contained in this publication:

Telephone (02) 6274 7790 or Facsimile (02) 6274 7727

Electronic mail: [AVSTATS@infrastructure.gov.au](mailto:AVSTATS@infrastructure.gov.au)

Web site: <http://www.bitre.gov.au/statistics/aviation/otphome.aspx>

# Foreword

The Bureau of Infrastructure, Transport and Regional Economics (BITRE) monitors the punctuality and reliability of major domestic airlines operating between Australian airports. The purpose of this is to allow for evaluation of overall industry and individual airline performance, so that consumers of air travel can make informed decisions.

The following domestic airlines currently report this information monthly to the BITRE: Jetstar, Qantas, QantasLink, Regional Express, Tiger Airways, Virgin Australia and Virgin Australia Regional Airlines. Data has been gathered since November 2003, although some airlines commenced reporting at a later date, including Jetstar which first reported in May 2004, MacAir in July 2005 and Tiger Airways in April 2008. MacAir ceased operations in February 2009 and data was not received for December 2008 onwards. Virgin Blue was rebranded as Virgin Australia in May 2011 and time series data in Microsoft Excel spreadsheet format on the BITRE website has been revised to reflect this. Virgin Australia Regional Airlines commenced operations in May 2013. It was formed after the acquisition of Skywest by Virgin Australia and represents a combination of operations previously reported under Skywest and Virgin Australia – ATR/F100 Operations. Services operated by Skywest on behalf of Virgin Australia using ATR/F100 aircraft commenced in November 2011 and were shown separately as Virgin Australia – ATR/F100 Operations until April 2013.

Information presented in this report is for Australian domestic routes for which the passenger load averaged 8 000 or more passengers per month over the previous six months and where two or more airlines operated in competition on those routes. There were 57 routes that met these criteria for all twelve months in 2012-13 and another route did so for a shorter period of the year. Over time, routes which meet these criteria change as airline networks and traffic levels vary.

Participating airlines report their overall monthly network performance where this is possible.

Total industry figures encompass all services operated by reporting airlines only. These airlines collectively carried over 95 per cent of total domestic passengers (regular public transport only) in 2012.

The method of capturing on time performance varies between airlines utilising different recording systems. Jetstar and Qantas jet aircraft use Aircraft Communication Addressing and Reporting System (ACARS) to electronically measure on time performance. Regional Express, Tiger Airways, Virgin Australia, Virgin Australia Regional Airlines and the Qantas non-jet fleet record on time performance manually using records from pilots, gate agents and/or ground crews.

After initial data is collected, aggregate reports are audited internally by participating airlines prior to publication.

Reports and detailed time series data in Microsoft Excel spreadsheet format are available from the BITRE website at: <http://www.bitre.gov.au/statistics/aviation/otphome.aspx>.



# Contents

	Page
Industry performance .....	1
Individual routes .....	9
Airports .....	21
Definitions .....	27



## Industry performance

For the year ended June 2013, on time performance over all routes operated by participating airlines (Jetstar, Qantas, QantasLink, Regional Express, Skywest, Tiger Airways, Virgin Australia, Virgin Australia ATR/F100 Operations and Virgin Australia Regional Airlines) averaged 81.1 per cent for on time departures and 78.8 per cent for on time arrivals. Cancellations represented 1.7 per cent of all scheduled flights. The equivalent figures for 2011-12 were 81.4 per cent for departures, 80.0 per cent for arrivals and 1.5 per cent for cancellations.

The figures for 2012-13 were worse than the long term average performance for all routes since the collection began (83.7 per cent for departures and 82.2 per cent for arrivals). The rate of cancellations was also worse than the long term average of 1.3 per cent.

Of the major domestic airlines, Qantas achieved the highest level of on time departures for 2012-13 at 84.7 per cent, followed by Virgin Australia at 81.2 per cent, Tiger Airways at 79.6 per cent and Jetstar at 75.6 per cent. The regional airlines were led by Regional Express at 85.8 per cent, followed by Virgin Australia ATR/F100 Operations at 81.6 per cent, QantasLink at 78.7 per cent, Virgin Australia Regional Airlines at 78.6 per cent and Skywest at 77.0 per cent.

Qantas also achieved the highest on time arrivals among the major domestic airlines at 82.8 per cent, followed by Virgin Australia at 78.3 per cent, Tiger Airways at 76.3 per cent and Jetstar at 76.1 per cent. Regional Express was the best performing regional airline for on time arrivals at 83.1 per cent, followed by Virgin Australia ATR/F100 Operations at 78.5 per cent, Virgin Australia Regional Airlines at 75.8 per cent, QantasLink at 75.3 per cent and Skywest at 74.5 per cent.

QantasLink and Virgin Australia ATR/F100 Operations had the highest percentage of cancellations (2.5 per cent) during 2012-13, followed by Virgin Australia Regional Airlines (2.1 per cent), Virgin Australia (1.7 per cent), Qantas (1.6 per cent), Jetstar (1.3 per cent), Tiger Airways (1.2 per cent), Regional Express (0.7 per cent) and Skywest (0.2 per cent).

Of the 57 routes which met the criteria for on time performance reporting for all 12 months in 2012-13, the Adelaide-Port Lincoln route had the highest percentage of on time departures (91.2 per cent) while the Hamilton Island-Sydney route had the lowest percentage of on time departures (62.8 per cent). The Adelaide-Gold Coast route had the highest percentage of on time arrivals (91.4 per cent) while the Proserpine-Brisbane route had the lowest percentage of on time arrivals (63.3 per cent).

Cancellations were highest on the Karratha-Perth route at 4.6 per cent, followed by Perth-Karratha at 4.2 per cent, Gladstone-Brisbane at 4.1 per cent, Canberra-Sydney at 3.8 per cent, Sydney-Melbourne also at 3.8 per cent and Melbourne-Sydney at 3.7 per cent.

Of the airports with on time performance reporting for all 12 months in 2012-13, Mildura Airport recorded the highest percentage of on time departures (90.2 per cent) and Hamilton Island Airport recorded the lowest percentage of on time departures (67.8 per cent). Port Lincoln Airport recorded the highest percentage of on time arrivals (88.5 per cent) and Port Macquarie Airport recorded the lowest percentage of on time arrivals (70.2 per cent). These figures only refer to reported routes and do not cover all flights at these airports.

Table 1 On time performance for the year ended June 2013 — Total Industry

	<i>Sectors</i>		<i>Departures On Time</i>		<i>Arrivals On Time</i>		<i>Cancellations</i>	
	<i>Scheduled</i>	<i>Flown</i>	<i>No.</i>	<i>%</i>	<i>No.</i>	<i>%</i>	<i>No.</i>	<i>%</i>
Jetstar	77 330	76 298	57 672	75.6	58 075	76.1	1 032	1.3
Qantas	126 035	123 999	105 062	84.7	102 645	82.8	2 036	1.6
QantasLink	113 605	110 713	87 108	78.7	83 326	75.3	2 892	2.5
Regional Express	64 650	64 226	55 075	85.8	53 358	83.1	424	0.7
Skywest	8 634	8 618	6 632	77.0	6 422	74.5	16	0.2
Tiger Airways	18 454	18 238	14 524	79.6	13 920	76.3	216	1.2
Virgin Australia	133 807	131 546	106 756	81.2	103 011	78.3	2 261	1.7
Virgin Australia - ATR/F100 Operations	15 720	15 334	12 515	81.6	12 033	78.5	386	2.5
Virgin Australia Regional Airlines	5 401	5 286	4 156	78.6	4 009	75.8	115	2.1
All Airlines	563 636	554 258	449 500	81.1	436 799	78.8	9 378	1.7

Total airline network data (including routes not shown in this report).

Virgin Australia Regional Airlines commenced operations in May 2013. It was formed after the acquisition of Skywest by Virgin Australia and represents a combination of operations previously reported under Skywest and Virgin Australia – ATR/F100 Operations.

Table 2 Top ten routes for on time performance for the year ended June 2013 (participating airlines only)

<i>Departures</i>		<i>Arrivals</i>	
<i>Route</i>	<i>On Time (%)</i>	<i>Route</i>	<i>On Time (%)</i>
Adelaide-Port Lincoln	91.2	Adelaide-Gold Coast	91.4
Adelaide-Gold Coast	90.2	Gold Coast-Adelaide	89.5
Mildura-Melbourne	90.2	Darwin-Perth	89.4
Port Lincoln-Adelaide	89.2	Port Lincoln-Adelaide	88.7
Perth-Port Hedland	88.9	Adelaide-Port Lincoln	88.5
Canberra-Adelaide	88.5	Adelaide-Canberra	88.5
Melbourne-Mildura	88.5	Canberra-Adelaide	87.7
Gold Coast-Adelaide	88.5	Brisbane-Adelaide	87.6
Melbourne-Canberra	88.4	Adelaide-Melbourne	87.4
Melbourne-Adelaide	87.8	Mildura-Melbourne	86.9

Table 3 Top ten airports for on time performance for the year ended June 2013 (participating airlines and reported routes only)

<i>Departures</i>		<i>Arrivals</i>	
<i>Airport</i>	<i>On Time (%)</i>	<i>Airport</i>	<i>On Time (%)</i>
Mildura	90.2	Port Lincoln	88.5
Port Lincoln	89.2	Port Hedland	86.4
Adelaide	86.6	Adelaide	86.2
Karratha	84.6	Newman	85.7
Canberra	84.1	Karratha	85.7
Melbourne	83.0	Mildura	84.1
Cairns	82.9	Emerald	82.9
Port Hedland	82.4	Cairns	81.9
Perth	82.1	Canberra	81.4
Newman	82.0	Sunshine Coast	81.4



## Total industry on time performance

Figure 1 On time performance (by month from June 2008)—Total Industry

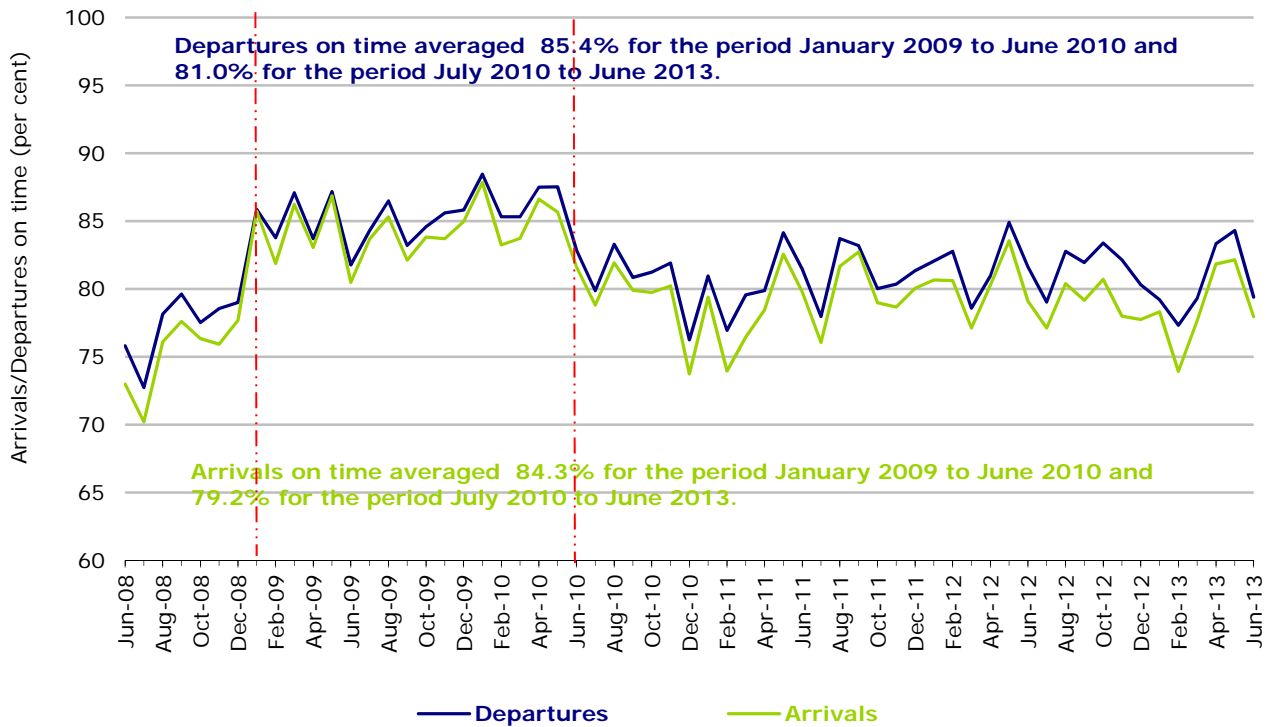
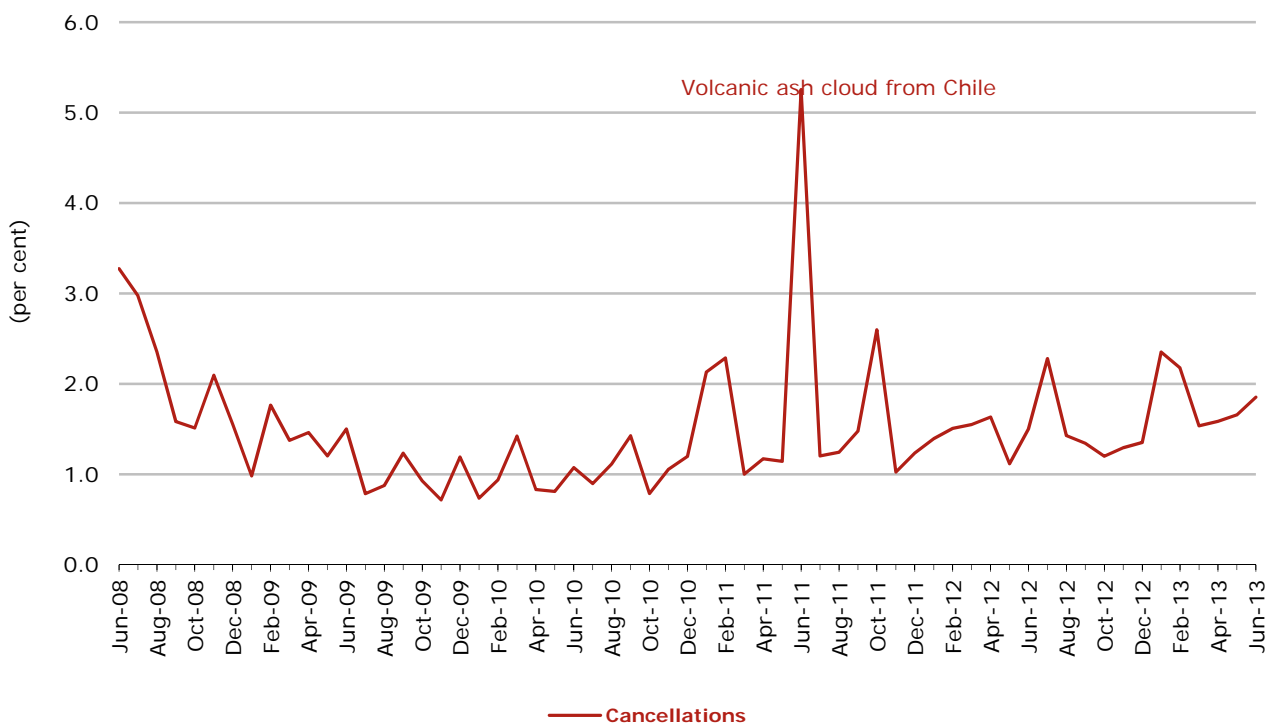


Figure 2 Cancellations (by month from June 2008)—Total Industry



## Major domestic airlines on time performance

Figure 3 On time performance (by month from June 2008)—Jetstar

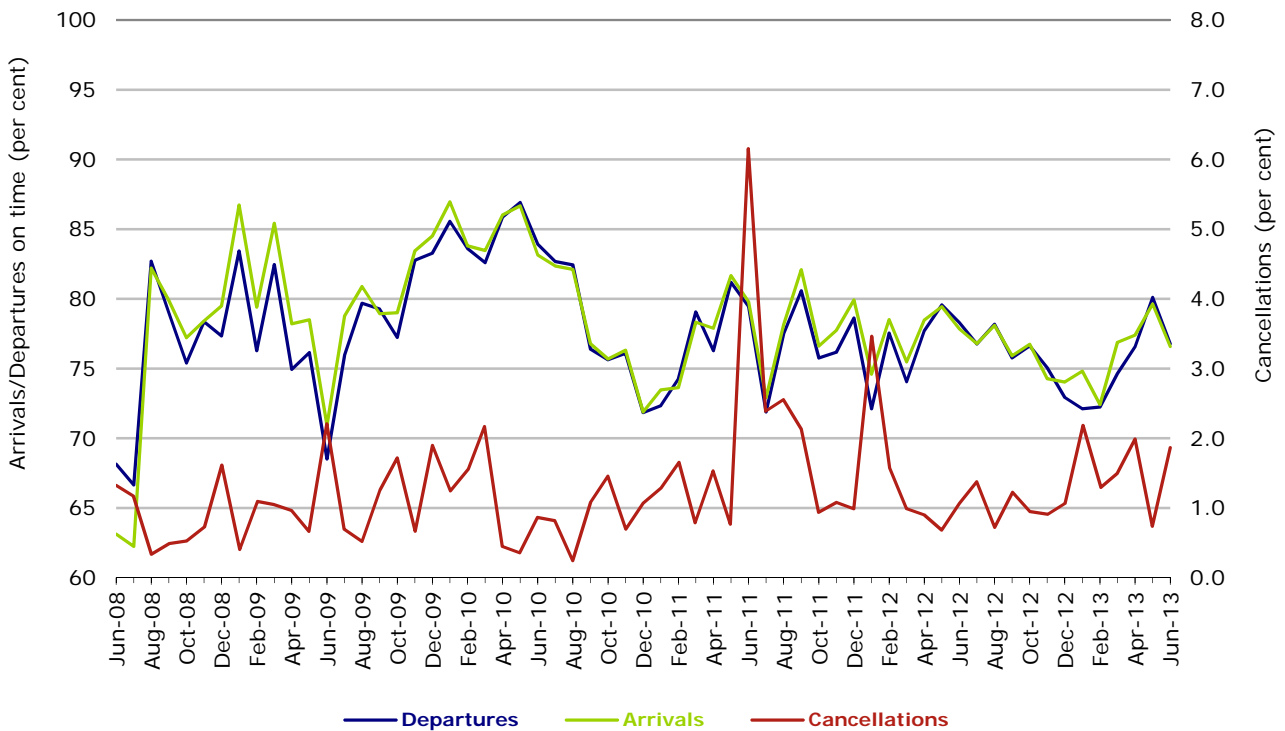
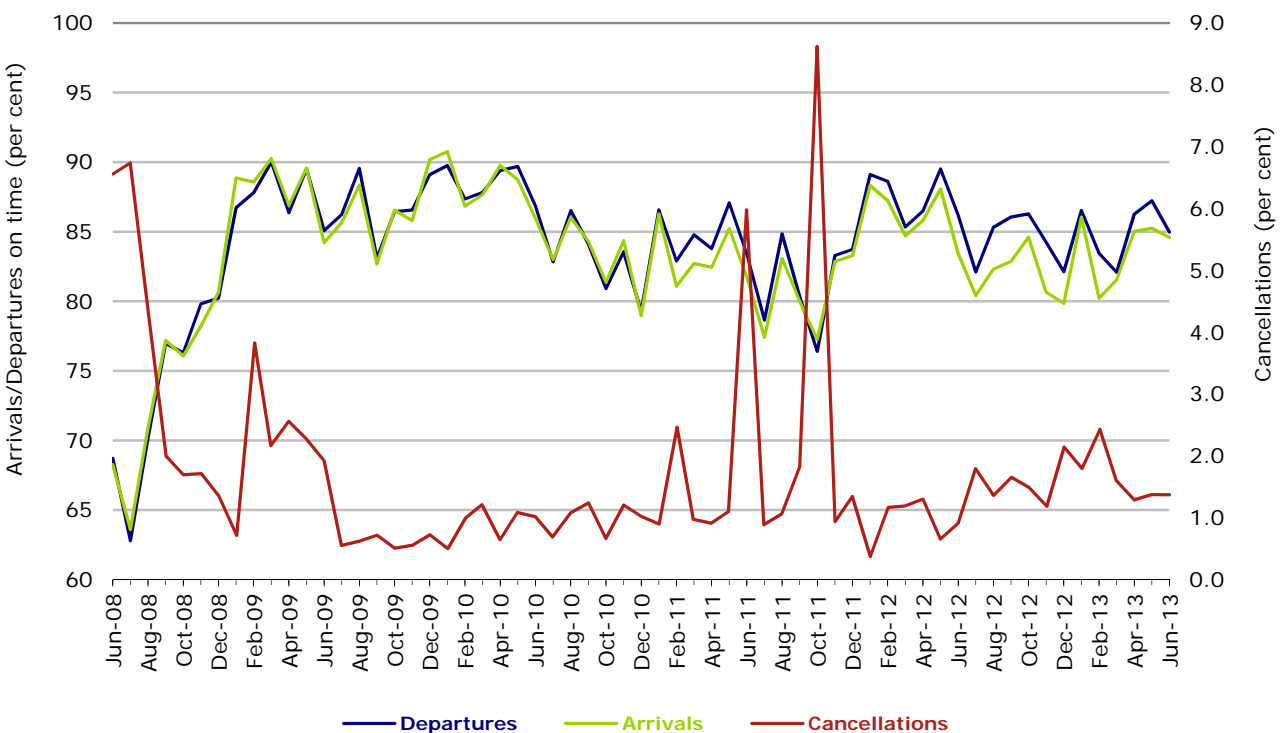
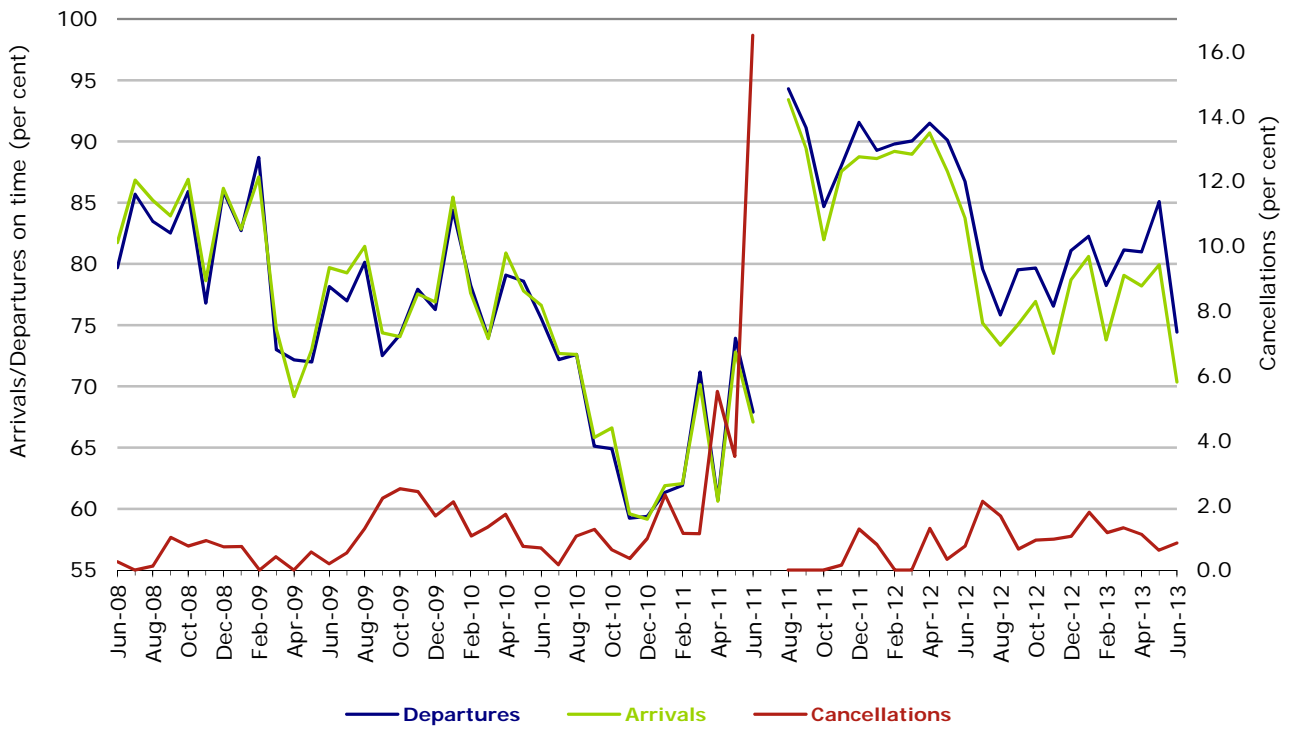


Figure 4 On time performance (by month from June 2008)—Qantas



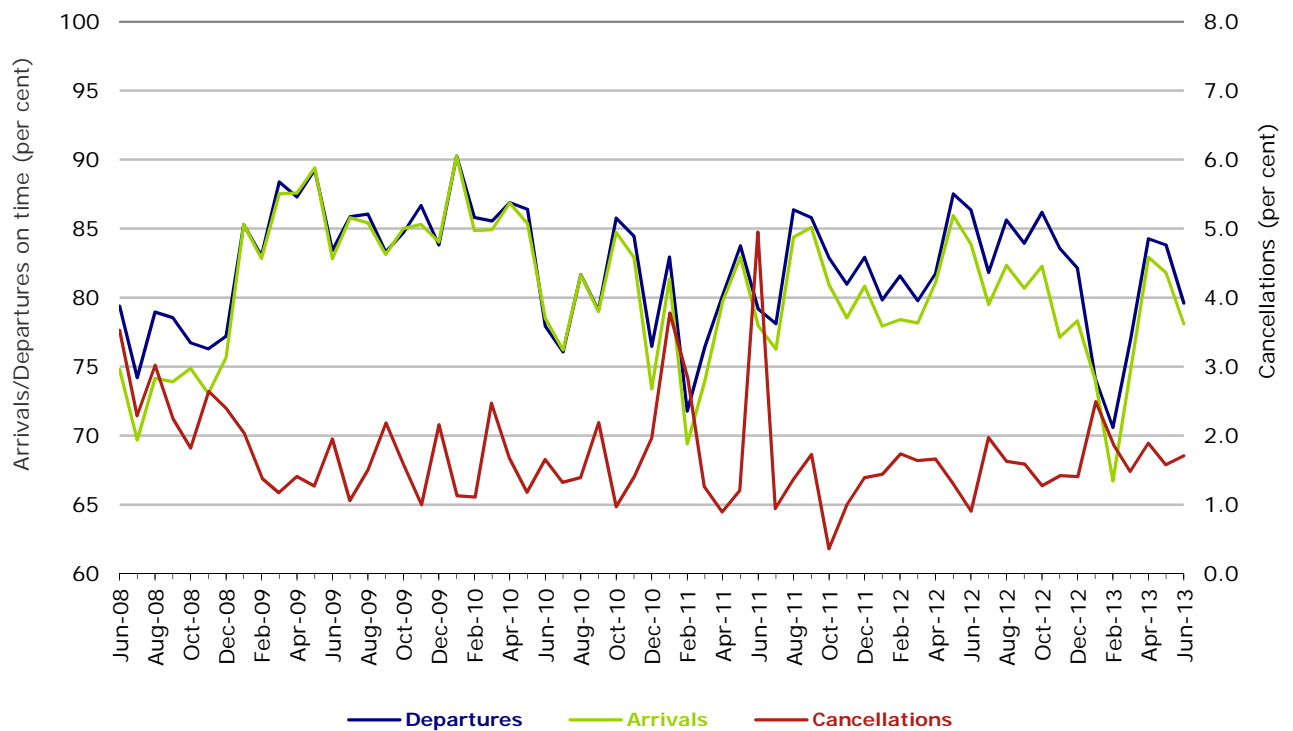
During October 2011 there were disruptions to Qantas services on several days due to industrial disputes and the entire fleet was grounded for nearly 48 hours at the end of the month.

Figure 5 On time performance (by month from June 2008)—Tiger Airways



No data for Tiger Airways for July 2011 as it was grounded by CASA from 2/7/2011 to 11/8/2011.

Figure 6 On time performance (by month from June 2008)—Virgin Australia



## Major regional airlines on time performance

Figure 7 On time performance (by month from June 2008)—QantasLink

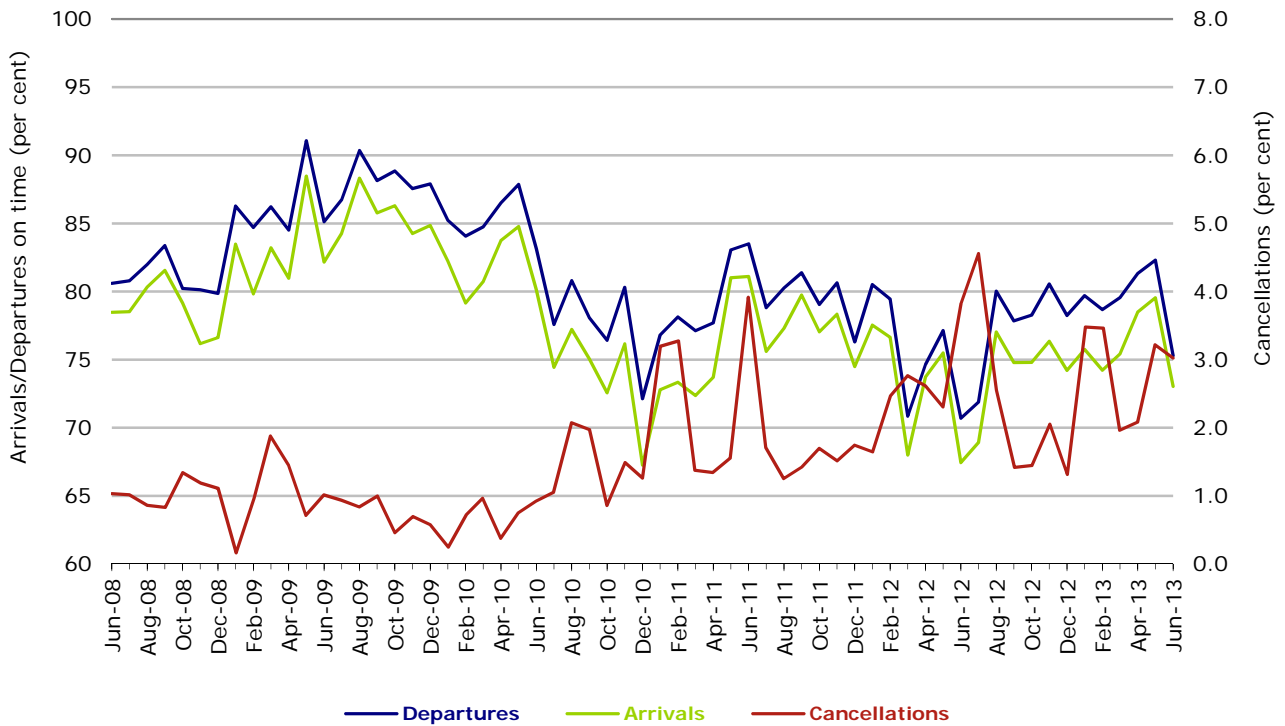


Figure 8 On time performance (by month from June 2008)—Regional Express

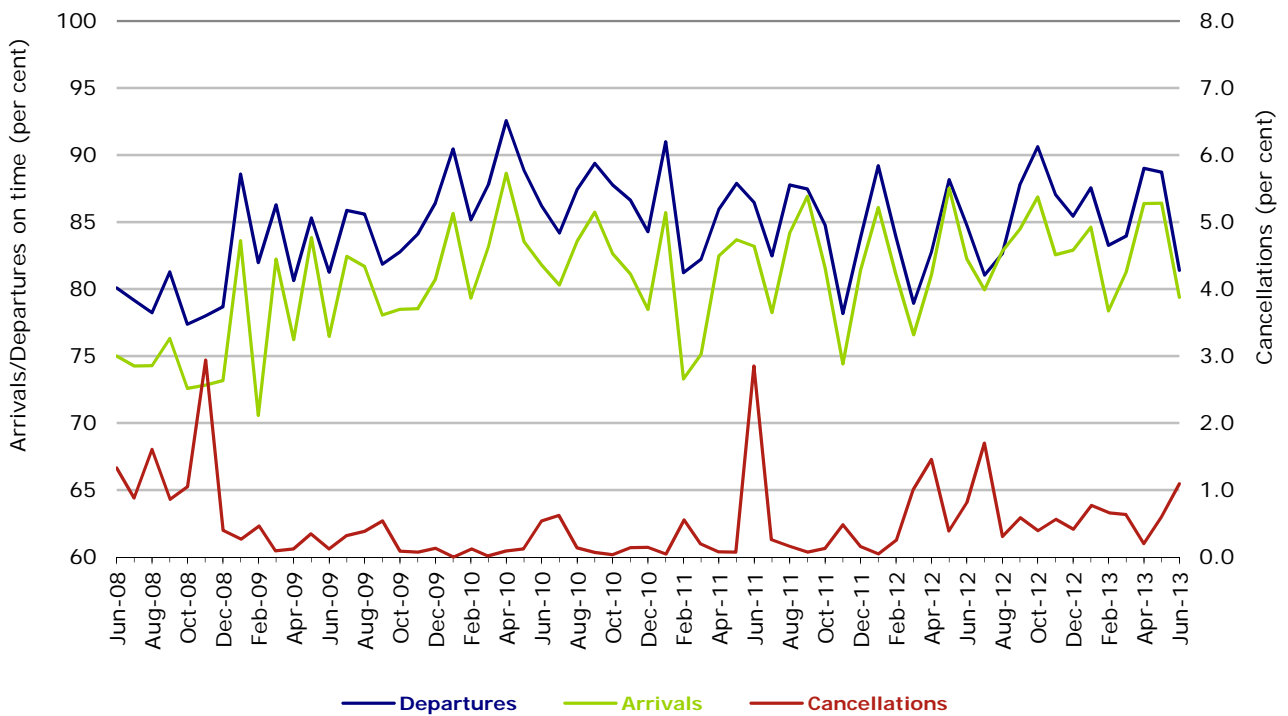
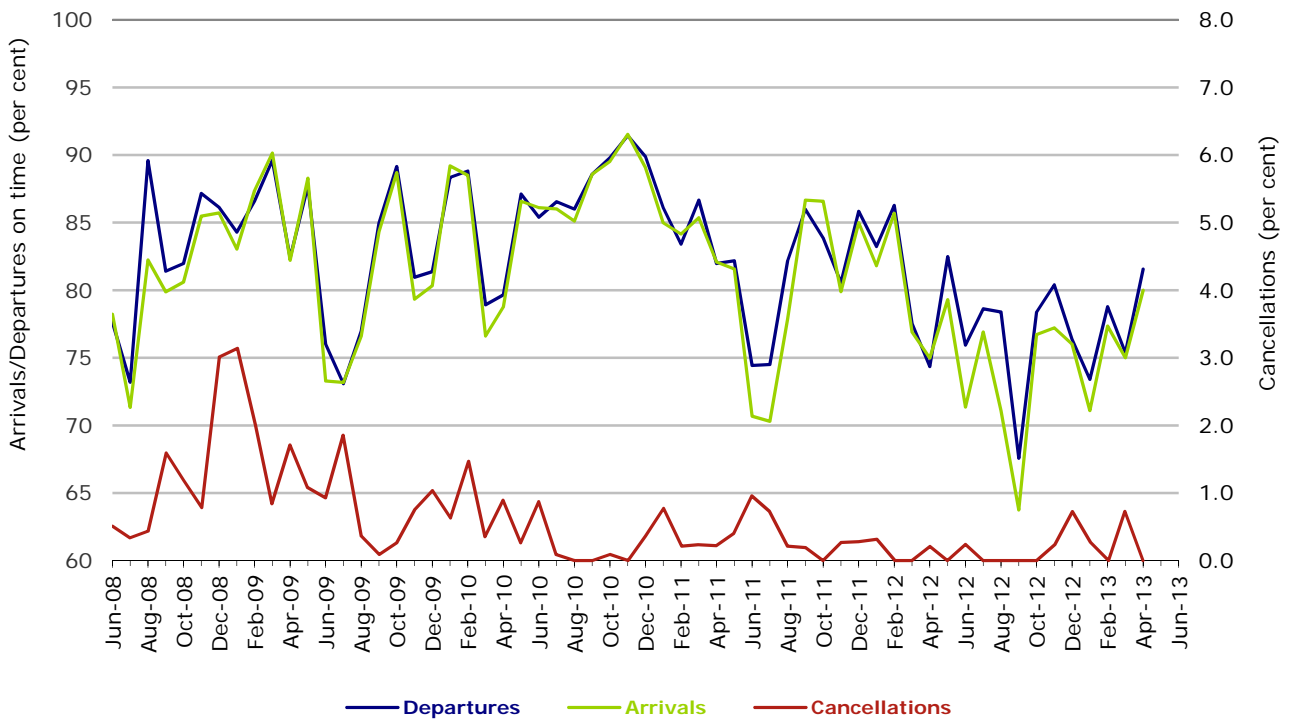
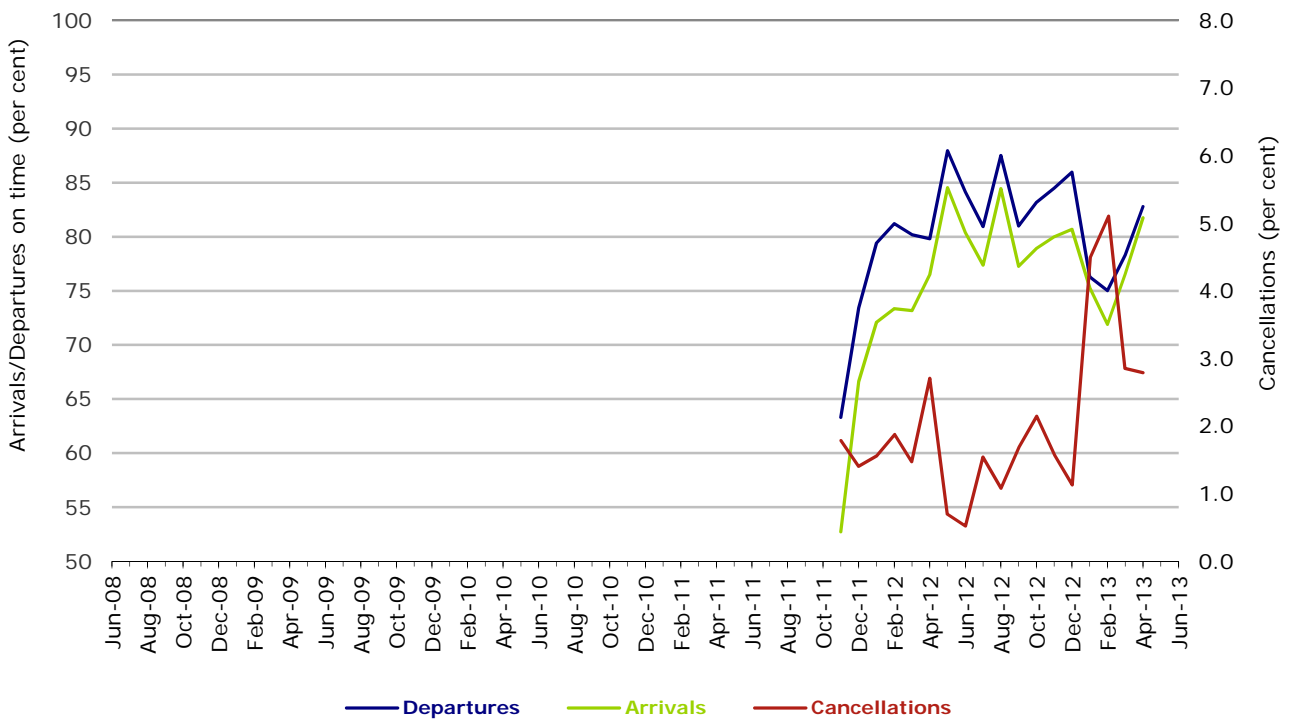


Figure 9 On time performance (by month from June 2008)—Skywest



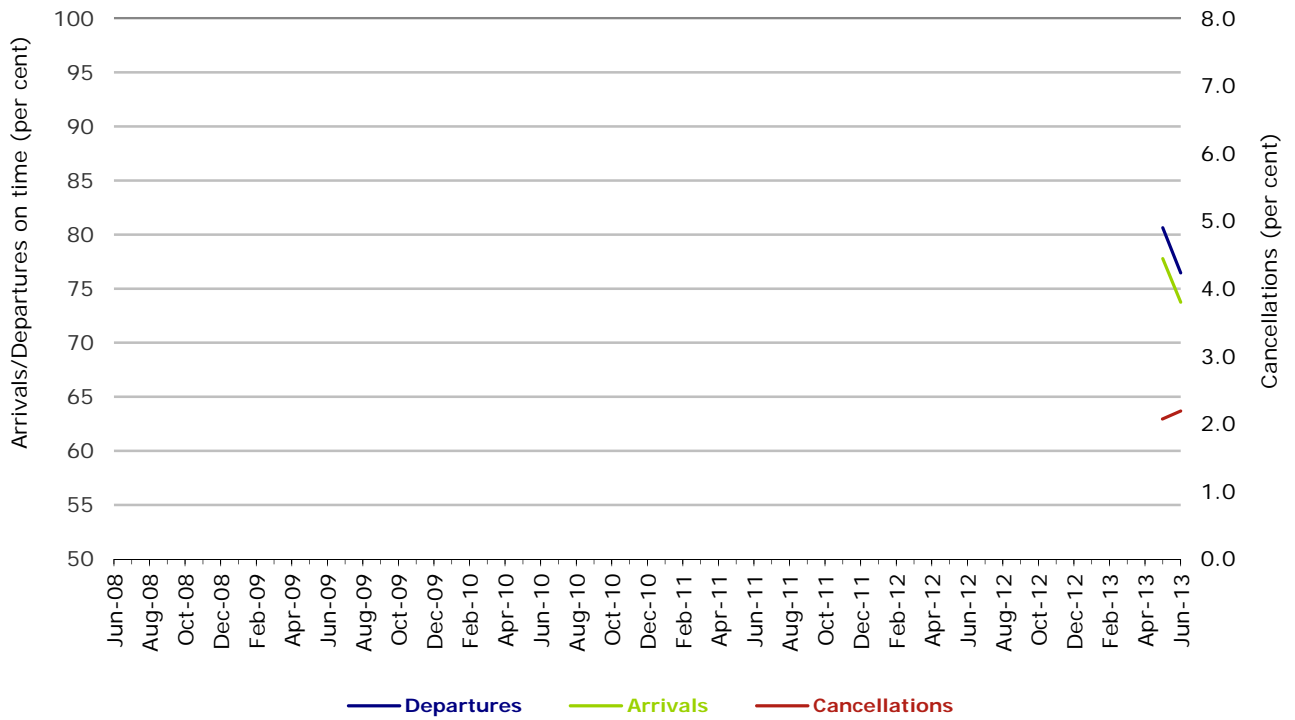
Following the acquisition of Skywest by Virgin Australia in May 2013, operations previously reported as Skywest and as Virgin Australia ATR/F100 Operations are reported as Virgin Australia Regional Airlines.

Figure 10 On time performance (by month from June 2008) Virgin Australia - ATR/F100 Operations



Following the acquisition of Skywest by Virgin Australia in May 2013, operations previously reported as Skywest and as Virgin Australia ATR/F100 Operations are reported as Virgin Australia Regional Airlines.

Figure 11 On time performance (by month from June 2008)  
Virgin Australia Regional Airlines



Virgin Australia Regional Airlines commenced operations in May 2013. It was formed after the acquisition of Skywest by Virgin Australia and represents a combination of operations previously reported under Skywest and Virgin Australia – ATR/F100 Operations.

## Individual routes

On time performance is reported for all routes where the passenger load averages over 8000 passengers per month over the previous six months, and where two or more airlines operate in competition on those routes. There are now 58 routes which meet this definition. Over time, however, routes which meet this definition may change as airline networks and traffic levels vary.

	<i>Sectors</i>		<i>Departures On Time</i>		<i>Arrivals On Time</i>		<i>Cancellations</i>	
	<i>Sched.</i>	<i>Flown</i>	<i>No.</i>	<i>%</i>	<i>No.</i>	<i>%</i>	<i>No.</i>	<i>%</i>
<b>Adelaide-Brisbane</b>								
Jetstar	352	352	307	87.2	297	84.4	0	0.0
Qantas	1 269	1 268	1 082	85.3	1 030	81.2	1	0.1
Virgin Australia	1 405	1 390	1 210	87.1	1 161	83.5	15	1.1
All Airlines	3 026	3 010	2 599	86.3	2 488	82.7	16	0.5
<b>Adelaide-Canberra</b>								
Qantas	536	535	475	88.8	494	92.3	1	0.2
QantasLink	171	169	104	61.5	122	72.2	2	1.2
Virgin Australia	314	308	280	90.9	280	90.9	6	1.9
All Airlines	1 021	1 012	859	84.9	896	88.5	9	0.9
<b>Adelaide-Gold Coast</b>								
Jetstar	406	404	347	85.9	355	87.9	2	0.5
Virgin Australia	365	354	337	95.2	338	95.5	11	3.0
All Airlines	771	758	684	90.2	693	91.4	13	1.7
<b>Adelaide-Melbourne</b>								
Jetstar	1 048	1 034	803	77.7	808	78.1	14	1.3
Qantas	3 530	3 484	2 996	86.0	3 098	88.9	46	1.3
QantasLink	209	200	181	90.5	175	87.5	9	4.3
Tiger Airways	471	468	392	83.8	382	81.6	3	0.6
Virgin Australia	3 336	3 294	2 993	90.9	2 949	89.5	42	1.3
All Airlines	8 594	8 480	7 365	86.9	7 412	87.4	114	1.3
<b>Adelaide-Perth</b>								
Jetstar	433	432	312	72.2	304	70.4	1	0.2
Qantas	1 315	1 315	1 155	87.8	1 155	87.8	0	0.0
Virgin Australia	728	725	625	86.2	624	86.1	3	0.4
All Airlines	2 476	2 472	2 092	84.6	2 083	84.3	4	0.2
<b>Adelaide-Port Lincoln</b>								
QantasLink	1 150	1 123	993	88.4	956	85.1	27	2.3
Regional Express	2 371	2 361	2 183	92.5	2 129	90.2	10	0.4
All Airlines	3 521	3 484	3 176	91.2	3 085	88.5	37	1.1
<b>Adelaide-Sydney</b>								
Jetstar	1 183	1 158	853	73.7	845	73.0	25	2.1
Qantas	3 267	3 245	2 870	88.4	2 858	88.1	22	0.7
Virgin Australia	2 041	2 025	1 721	85.0	1 673	82.6	16	0.8
All Airlines	6 491	6 428	5 444	84.7	5 376	83.6	63	1.0
<b>Albury-Sydney</b>								
QantasLink	1 355	1 344	861	64.1	847	63.0	11	0.8
Regional Express	1 252	1 248	1 052	84.3	1 007	80.7	4	0.3
Virgin Australia	228	220	180	81.8	178	80.9	8	3.5
Virgin Australia - ATR/F100 Operations	374	371	296	79.8	238	64.2	3	0.8
Virgin Australia Regional Airlines	120	118	86	72.9	83	70.3	2	1.7
All Airlines	3 329	3 301	2 475	75.0	2 353	71.3	28	0.8
<b>Ayers Rock-Sydney</b>								
Qantas	338	337	291	86.4	302	89.6	1	0.3
Virgin Australia	366	363	270	74.4	302	83.2	3	0.8
All Airlines	704	700	561	80.1	604	86.3	4	0.6

	<i>Sectors</i>		<i>Departures On Time</i>		<i>Arrivals On Time</i>		<i>Cancellations</i>	
	<i>Sched.</i>	<i>Flown</i>	<i>No.</i>	<i>%</i>	<i>No.</i>	<i>%</i>	<i>No.</i>	<i>%</i>
<b>Ballina-Sydney</b>								
Jetstar	691	683	494	72.3	480	70.3	8	1.2
Regional Express	293	291	194	66.7	175	60.1	2	0.7
Virgin Australia	365	361	279	77.3	256	70.9	4	1.1
All Airlines	1 349	1 335	967	72.4	911	68.2	14	1.0
<b>Brisbane-Adelaide</b>								
Jetstar	350	350	332	94.9	332	94.9	0	0.0
Qantas	1 268	1 267	1 029	81.2	1 096	86.5	1	0.1
Virgin Australia	1 406	1 393	1 158	83.1	1 210	86.9	13	0.9
All Airlines	3 024	3 010	2 519	83.7	2 638	87.6	14	0.5
<b>Brisbane-Cairns</b>								
Jetstar	1 234	1 215	940	77.4	955	78.6	19	1.5
Qantas	1 365	1 365	1 083	79.3	1 157	84.8	0	0.0
QantasLink	52	52	44	84.6	32	61.5	0	0.0
Virgin Australia	1 804	1 792	1 482	82.7	1 484	82.8	12	0.7
Virgin Australia - ATR/F100 Operations	189	189	163	86.2	146	77.2	0	0.0
All Airlines	4 644	4 613	3 712	80.5	3 774	81.8	31	0.7
<b>Brisbane-Canberra</b>								
Qantas	1 669	1 665	1 462	87.8	1 480	88.9	4	0.2
QantasLink	261	254	207	81.5	206	81.1	7	2.7
Virgin Australia	1 167	1 162	931	80.1	903	77.7	5	0.4
All Airlines	3 097	3 081	2 600	84.4	2 589	84.0	16	0.5
<b>Brisbane-Darwin</b>								
Jetstar	19	19	15	78.9	17	89.5	0	0.0
Qantas	365	365	306	83.8	305	83.6	0	0.0
Virgin Australia	368	366	286	78.1	273	74.6	2	0.5
All Airlines	752	750	607	80.9	595	79.3	2	0.3
<b>Brisbane-Emerald</b>								
QantasLink	2 228	2 160	1 871	86.6	1 765	81.7	68	3.1
Virgin Australia - ATR/F100 Operations	911	891	770	86.4	778	87.3	20	2.2
Virgin Australia Regional Airlines	198	192	165	85.9	147	76.6	6	3.0
All Airlines	3 337	3 243	2 806	86.5	2 690	82.9	94	2.8
<b>Brisbane-Gladstone</b>								
QantasLink	2 696	2 590	2 141	82.7	2 068	79.8	106	3.9
Virgin Australia	7	6	4	66.7	3	50.0	1	14.3
Virgin Australia - ATR/F100 Operations	1 229	1 192	970	81.4	959	80.5	37	3.0
Virgin Australia Regional Airlines	284	275	188	68.4	190	69.1	9	3.2
All Airlines	4 216	4 063	3 303	81.3	3 220	79.3	153	3.6
<b>Brisbane-Hamilton Island</b>								
Jetstar	210	209	122	58.4	169	80.9	1	0.5
Virgin Australia	368	366	312	85.2	307	83.9	2	0.5
All Airlines	578	575	434	75.5	476	82.8	3	0.5
<b>Brisbane-Mackay</b>								
Jetstar	1 207	1 195	872	73.0	926	77.5	12	1.0
QantasLink	1 294	1 276	1 063	83.3	1 037	81.3	18	1.4
Virgin Australia	1 996	1 977	1 596	80.7	1 540	77.9	19	1.0
All Airlines	4 497	4 448	3 531	79.4	3 503	78.8	49	1.1
<b>Brisbane-Melbourne</b>								
Jetstar	1 141	1 116	777	69.6	851	76.3	25	2.2
Qantas	4 939	4 907	4 046	82.5	4 038	82.3	32	0.6
Tiger Airways	1 039	1 035	680	65.7	694	67.1	4	0.4
Virgin Australia	4 429	4 358	3 559	81.7	3 416	78.4	71	1.6
All Airlines	11 548	11 416	9 062	79.4	8 999	78.8	132	1.1



	<i>Sectors</i>		<i>Departures On Time</i>		<i>Arrivals On Time</i>		<i>Cancellations</i>	
	<i>Sched.</i>	<i>Flown</i>	<i>No.</i>	<i>%</i>	<i>No.</i>	<i>%</i>	<i>No.</i>	<i>%</i>
<b>Brisbane-Mount Isa</b>			(From November 2012 only)					
Qantas	447	447	401	89.7	408	91.3	0	0.0
Virgin Australia	172	172	155	90.1	147	85.5	0	0.0
All Airlines	619	619	556	89.8	555	89.7	0	0.0
<b>Brisbane-Newcastle</b>								
Jetstar	1 358	1 355	1 104	81.5	1 103	81.4	3	0.2
QantasLink	829	798	586	73.4	407	51.0	31	3.7
Virgin Australia	363	354	293	82.8	289	81.6	9	2.5
Virgin Australia - ATR/F100 Operations	513	507	440	86.8	389	76.7	6	1.2
All Airlines	3 063	3 014	2 423	80.4	2 188	72.6	49	1.6
<b>Brisbane-Perth</b>								
Jetstar	316	316	263	83.2	248	78.5	0	0.0
Qantas	1 437	1 436	1 007	70.1	1 108	77.2	1	0.1
Virgin Australia	986	986	776	78.7	690	70.0	0	0.0
All Airlines	2 739	2 738	2 046	74.7	2 046	74.7	1	0.0
<b>Brisbane-Proserpine</b>								
Jetstar	352	352	259	73.6	241	68.5	0	0.0
Virgin Australia	450	450	401	89.1	387	86.0	0	0.0
Virgin Australia - ATR/F100 Operations	161	161	143	88.8	123	76.4	0	0.0
All Airlines	963	963	803	83.4	751	78.0	0	0.0
<b>Brisbane-Rockhampton</b>								
QantasLink	2 508	2 429	1 879	77.4	1 876	77.2	79	3.1
Virgin Australia	1 051	1 037	854	82.4	835	80.5	14	1.3
Virgin Australia - ATR/F100 Operations	1 220	1 184	946	79.9	964	81.4	36	3.0
Virgin Australia Regional Airlines	229	225	178	79.1	179	79.6	4	1.7
All Airlines	5 008	4 875	3 857	79.1	3 854	79.1	133	2.7
<b>Brisbane-Sydney</b>								
Jetstar	1 293	1 249	798	63.9	800	64.1	44	3.4
Qantas	7 147	7 008	5 680	81.1	5 480	78.2	139	1.9
Tiger Airways	968	948	652	68.8	648	68.4	20	2.1
Virgin Australia	6 597	6 392	5 183	81.1	4 973	77.8	205	3.1
All Airlines	16 005	15 597	12 313	78.9	11 901	76.3	408	2.5
<b>Brisbane-Townsville</b>								
Jetstar	362	360	235	65.3	254	70.6	2	0.6
Qantas	1 753	1 752	1 441	82.2	1 440	82.2	1	0.1
Virgin Australia	1 985	1 977	1 535	77.6	1 515	76.6	8	0.4
All Airlines	4 100	4 089	3 211	78.5	3 209	78.5	11	0.3
<b>Broome-Perth</b>								
Qantas	382	381	236	61.9	269	70.6	1	0.3
QantasLink	608	598	518	86.6	533	89.1	10	1.6
Skywest	179	179	116	64.8	103	57.5	0	0.0
Virgin Australia	539	528	406	76.9	412	78.0	11	2.0
Virgin Australia Regional Airlines	44	44	19	43.2	14	31.8	0	0.0
All Airlines	1 752	1 730	1 295	74.9	1 331	76.9	22	1.3
<b>Cairns-Brisbane</b>								
Jetstar	1 240	1 223	993	81.2	899	73.5	17	1.4
Qantas	1 364	1 362	1 188	87.2	1 057	77.6	2	0.1
QantasLink	53	51	44	86.3	43	84.3	2	3.8
Virgin Australia	1 801	1 792	1 460	81.5	1 334	74.4	9	0.5
Virgin Australia - ATR/F100 Operations	190	190	136	71.6	140	73.7	0	0.0
All Airlines	4 648	4 618	3 821	82.7	3 473	75.2	30	0.6

	<i>Sectors</i>		<i>Departures On Time</i>		<i>Arrivals On Time</i>		<i>Cancellations</i>	
	<i>Sched.</i>	<i>Flown</i>	<i>No.</i>	<i>%</i>	<i>No.</i>	<i>%</i>	<i>No.</i>	<i>%</i>
<b>Cairns-Melbourne</b>								
Jetstar	1 024	1 017	832	81.8	834	82.0	7	0.7
Qantas	365	365	283	77.5	303	83.0	0	0.0
Tiger Airways	335	335	261	77.9	262	78.2	0	0.0
Virgin Australia	406	403	271	67.2	283	70.2	3	0.7
All Airlines	2 130	2 120	1 647	77.7	1 682	79.3	10	0.5
<b>Cairns-Sydney</b>								
Jetstar	1 039	1 030	846	82.1	795	77.2	9	0.9
Qantas	924	921	775	84.1	797	86.5	3	0.3
Tiger Airways	76	76	47	61.8	51	67.1	0	0.0
Virgin Australia	1 079	1 076	926	86.1	928	86.2	3	0.3
All Airlines	3 118	3 103	2 594	83.6	2 571	82.9	15	0.5
<b>Cairns-Townsville</b>								
QantasLink	2 180	2 136	1 857	86.9	1 812	84.8	44	2.0
Virgin Australia	1	1	1	100.0	1	100.0	0	0.0
Virgin Australia - ATR/F100 Operations	259	255	217	85.1	217	85.1	4	1.5
Virgin Australia Regional Airlines	53	51	48	94.1	46	90.2	2	3.8
All Airlines	2 493	2 443	2 123	86.9	2 076	85.0	50	2.0
<b>Canberra-Adelaide</b>								
Qantas	588	588	545	92.7	544	92.5	0	0.0
QantasLink	171	171	122	71.3	115	67.3	0	0.0
Virgin Australia	314	309	278	90.0	278	90.0	5	1.6
All Airlines	1 073	1 068	945	88.5	937	87.7	5	0.5
<b>Canberra-Brisbane</b>								
Qantas	1 669	1 664	1 510	90.7	1 385	83.2	5	0.3
QantasLink	261	254	185	72.8	184	72.4	7	2.7
Virgin Australia	1 168	1 158	953	82.3	863	74.5	10	0.9
All Airlines	3 098	3 076	2 648	86.1	2 432	79.1	22	0.7
<b>Canberra-Melbourne</b>								
Qantas	2 970	2 932	2 645	90.2	2 625	89.5	38	1.3
QantasLink	467	438	340	77.6	303	69.2	29	6.2
Virgin Australia	2 078	2 048	1 722	84.1	1 733	84.6	30	1.4
All Airlines	5 515	5 418	4 707	86.9	4 661	86.0	97	1.8
<b>Canberra-Sydney</b>								
Qantas	1 766	1 731	1 528	88.3	1 496	86.4	35	2.0
QantasLink	4 738	4 504	3 464	76.9	3 298	73.2	234	4.9
Virgin Australia	914	882	730	82.8	681	77.2	32	3.5
Virgin Australia - ATR/F100 Operations	1 793	1 746	1 466	84.0	1 422	81.4	47	2.6
Virgin Australia Regional Airlines	495	472	399	84.5	374	79.2	23	4.6
All Airlines	9 706	9 335	7 587	81.3	7 271	77.9	371	3.8
<b>Coffs Harbour-Sydney</b>								
QantasLink	1 736	1 725	1 198	69.4	1 256	72.8	11	0.6
Tiger Airways	91	89	73	82.0	72	80.9	2	2.2
Virgin Australia	720	704	568	80.7	570	81.0	16	2.2
All Airlines	2 547	2 518	1 839	73.0	1 898	75.4	29	1.1
<b>Darwin-Brisbane</b>								
Jetstar	19	19	15	78.9	17	89.5	0	0.0
Qantas	365	364	252	69.2	257	70.6	1	0.3
Virgin Australia	368	367	267	72.8	292	79.6	1	0.3
All Airlines	752	750	534	71.2	566	75.5	2	0.3
<b>Darwin-Melbourne</b>								
Jetstar	101	100	51	51.0	58	58.0	1	1.0
Qantas	163	162	120	74.1	123	75.9	1	0.6
Virgin Australia	364	363	346	95.3	335	92.3	1	0.3
All Airlines	628	625	517	82.7	516	82.6	3	0.5

	<i>Sectors</i>		<i>Departures On Time</i>		<i>Arrivals On Time</i>		<i>Cancellations</i>	
	<i>Sched.</i>	<i>Flown</i>	<i>No.</i>	<i>%</i>	<i>No.</i>	<i>%</i>	<i>No.</i>	<i>%</i>
<b>Darwin-Perth</b>								
Qantas	365	365	277	75.9	310	84.9	0	0.0
Virgin Australia	313	312	299	95.8	295	94.6	1	0.3
All Airlines	678	677	576	85.1	605	89.4	1	0.1
<b>Darwin-Sydney</b>								
Jetstar	303	301	231	76.7	244	81.1	2	0.7
Qantas	610	608	514	84.5	529	87.0	2	0.3
Virgin Australia	360	358	280	78.2	268	74.9	2	0.6
All Airlines	1 273	1 267	1 025	80.9	1 041	82.2	6	0.5
<b>Dubbo-Sydney</b>								
QantasLink	1 344	1 339	892	66.6	761	56.8	5	0.4
Regional Express	1 872	1 846	1 569	85.0	1 483	80.3	26	1.4
All Airlines	3 216	3 185	2 461	77.3	2 244	70.5	31	1.0
<b>Emerald-Brisbane</b>								
QantasLink	2 228	2 154	1 704	79.1	1 560	72.4	74	3.3
Virgin Australia - ATR/F100 Operations	911	886	775	87.5	725	81.8	25	2.7
Virgin Australia Regional Airlines	199	190	149	78.4	158	83.2	9	4.5
All Airlines	3 338	3 230	2 628	81.4	2 443	75.6	108	3.2
<b>Geraldton-Perth</b>								
QantasLink	627	625	472	75.5	416	66.6	2	0.3
Skywest	808	808	584	72.3	553	68.4	0	0.0
Virgin Australia Regional Airlines	184	182	154	84.6	147	80.8	2	1.1
All Airlines	1 619	1 615	1 210	74.9	1 116	69.1	4	0.2
<b>Gladstone-Brisbane</b>								
QantasLink	2 918	2 802	2 175	77.6	1 959	69.9	116	4.0
Virgin Australia	7	6	3	50.0	4	66.7	1	14.3
Virgin Australia - ATR/F100 Operations	1 229	1 176	946	80.4	878	74.7	53	4.3
Virgin Australia Regional Airlines	286	275	183	66.5	175	63.6	11	3.8
All Airlines	4 440	4 259	3 307	77.6	3 016	70.8	181	4.1
<b>Gold Coast-Adelaide</b>								
Jetstar	410	408	351	86.0	361	88.5	2	0.5
Virgin Australia	365	354	323	91.2	321	90.7	11	3.0
All Airlines	775	762	674	88.5	682	89.5	13	1.7
<b>Gold Coast-Melbourne</b>								
Jetstar	2 429	2 411	1 886	78.2	1 846	76.6	18	0.7
Tiger Airways	872	866	602	69.5	570	65.8	6	0.7
Virgin Australia	2 293	2 263	1 848	81.7	1 932	85.4	30	1.3
All Airlines	5 594	5 540	4 336	78.3	4 348	78.5	54	1.0
<b>Gold Coast-Sydney</b>								
Jetstar	3 714	3 607	2 753	76.3	2 766	76.7	107	2.9
Qantas	738	732	620	84.7	605	82.7	6	0.8
Tiger Airways	877	851	635	74.6	571	67.1	26	3.0
Virgin Australia	3 955	3 829	2 995	78.2	3 032	79.2	126	3.2
All Airlines	9 284	9 019	7 003	77.6	6 974	77.3	265	2.9
<b>Hamilton Island-Brisbane</b>								
Jetstar	210	209	161	77.0	159	76.1	1	0.5
Virgin Australia	370	363	261	71.9	263	72.5	7	1.9
All Airlines	580	572	422	73.8	422	73.8	8	1.4
<b>Hamilton Island-Sydney</b>								
Jetstar	338	331	212	64.0	224	67.7	7	2.1
Virgin Australia	366	360	222	61.7	227	63.1	6	1.6
All Airlines	704	691	434	62.8	451	65.3	13	1.8

	<i>Sectors</i>		<i>Departures On Time</i>		<i>Arrivals On Time</i>		<i>Cancellations</i>	
	<i>Sched.</i>	<i>Flown</i>	<i>No.</i>	<i>%</i>	<i>No.</i>	<i>%</i>	<i>No.</i>	<i>%</i>
<b>Hobart-Melbourne</b>								
Jetstar	1 981	1 962	1 434	73.1	1 379	70.3	19	1.0
Qantas	731	729	661	90.7	640	87.8	2	0.3
QantasLink	244	241	221	91.7	177	73.4	3	1.2
Tiger Airways	350	348	283	81.3	271	77.9	2	0.6
Virgin Australia	1 767	1 764	1 385	78.5	1 411	80.0	3	0.2
All Airlines	5 073	5 044	3 984	79.0	3 878	76.9	29	0.6
<b>Hobart-Sydney</b>								
Jetstar	959	953	668	70.1	700	73.5	6	0.6
Qantas	365	365	290	79.5	300	82.2	0	0.0
Virgin Australia	717	711	477	67.1	506	71.2	6	0.8
All Airlines	2 041	2 029	1 435	70.7	1 506	74.2	12	0.6
<b>Kalgoorlie-Perth</b>								
Qantas	781	762	649	85.2	627	82.3	19	2.4
QantasLink	284	280	248	88.6	233	83.2	4	1.4
Skywest	573	573	403	70.3	346	60.4	0	0.0
Virgin Australia Regional Airlines	117	117	100	85.5	92	78.6	0	0.0
All Airlines	1 755	1 732	1 400	80.8	1 298	74.9	23	1.3
<b>Karratha-Perth</b>								
Qantas	2 314	2 220	1 923	86.6	1 886	85.0	94	4.1
QantasLink	724	662	566	85.5	556	84.0	62	8.6
Virgin Australia	621	607	462	76.1	391	64.4	14	2.3
All Airlines	3 659	3 489	2 951	84.6	2 833	81.2	170	4.6
<b>Launceston-Melbourne</b>								
Jetstar	1 493	1 470	1 090	74.1	1 061	72.2	23	1.5
QantasLink	1 221	1 178	952	80.8	933	79.2	43	3.5
Virgin Australia	1 541	1 537	1 276	83.0	1 269	82.6	4	0.3
All Airlines	4 255	4 185	3 318	79.3	3 263	78.0	70	1.6
<b>Launceston-Sydney</b>								
Jetstar	601	598	396	66.2	398	66.6	3	0.5
Virgin Australia	365	365	235	64.4	258	70.7	0	0.0
All Airlines	966	963	631	65.5	656	68.1	3	0.3
<b>Mackay-Brisbane</b>								
Jetstar	1 215	1 195	807	67.5	757	63.3	20	1.6
QantasLink	1 292	1 272	1 016	79.9	989	77.8	20	1.5
Virgin Australia	1 996	1 968	1 566	79.6	1 435	72.9	28	1.4
All Airlines	4 503	4 435	3 389	76.4	3 181	71.7	68	1.5
<b>Melbourne-Adelaide</b>								
Jetstar	1 035	1 033	876	84.8	848	82.1	2	0.2
Qantas	3 530	3 492	3 143	90.0	3 039	87.0	38	1.1
QantasLink	209	201	169	84.1	157	78.1	8	3.8
Tiger Airways	469	468	419	89.5	401	85.7	1	0.2
Virgin Australia	3 339	3 308	2 861	86.5	2 821	85.3	31	0.9
All Airlines	8 582	8 502	7 468	87.8	7 266	85.5	80	0.9
<b>Melbourne-Brisbane</b>								
Jetstar	1 135	1 112	693	62.3	599	53.9	23	2.0
Qantas	4 940	4 907	4 252	86.7	3 725	75.9	33	0.7
Tiger Airways	1 041	1 037	851	82.1	721	69.5	4	0.4
Virgin Australia	4 405	4 328	3 544	81.9	3 049	70.4	77	1.7
All Airlines	11 521	11 384	9 340	82.0	8 094	71.1	137	1.2

	<i>Sectors</i>		<i>Departures On Time</i>		<i>Arrivals On Time</i>		<i>Cancellations</i>	
	<i>Sched.</i>	<i>Flown</i>	<i>No.</i>	<i>%</i>	<i>No.</i>	<i>%</i>	<i>No.</i>	<i>%</i>
<b>Melbourne-Cairns</b>								
Jetstar	1 024	1 019	843	82.7	877	86.1	5	0.5
Qantas	365	365	311	85.2	308	84.4	0	0.0
Tiger Airways	334	334	305	91.3	288	86.2	0	0.0
Virgin Australia	406	405	349	86.2	346	85.4	1	0.2
All Airlines	2 129	2 123	1 808	85.2	1 819	85.7	6	0.3
<b>Melbourne-Canberra</b>								
Qantas	2 970	2 935	2 659	90.6	2 652	90.4	35	1.2
QantasLink	467	435	385	88.5	325	74.7	32	6.9
Virgin Australia	2 078	2 053	1 751	85.3	1 731	84.3	25	1.2
All Airlines	5 515	5 423	4 795	88.4	4 708	86.8	92	1.7
<b>Melbourne-Darwin</b>								
Jetstar	100	99	70	70.7	72	72.7	1	1.0
Qantas	163	163	135	82.8	135	82.8	0	0.0
Virgin Australia	365	364	326	89.6	296	81.3	1	0.3
All Airlines	628	626	531	84.8	503	80.4	2	0.3
<b>Melbourne-Gold Coast</b>								
Jetstar	2 429	2 415	1 751	72.5	1 811	75.0	14	0.6
Tiger Airways	872	868	729	84.0	677	78.0	4	0.5
Virgin Australia	2 292	2 267	1 871	82.5	1 876	82.8	25	1.1
All Airlines	5 593	5 550	4 351	78.4	4 364	78.6	43	0.8
<b>Melbourne-Hobart</b>								
Jetstar	1 978	1 961	1 472	75.1	1 497	76.3	17	0.9
Qantas	731	730	645	88.4	608	83.3	1	0.1
QantasLink	245	242	176	72.7	167	69.0	3	1.2
Tiger Airways	350	349	298	85.4	294	84.2	1	0.3
Virgin Australia	1 764	1 762	1 434	81.4	1 407	79.9	2	0.1
All Airlines	5 068	5 044	4 025	79.8	3 973	78.8	24	0.5
<b>Melbourne-Launceston</b>								
Jetstar	1 483	1 463	1 185	81.0	1 182	80.8	20	1.3
QantasLink	1 221	1 177	969	82.3	905	76.9	44	3.6
Virgin Australia	1 539	1 536	1 258	81.9	1 295	84.3	3	0.2
All Airlines	4 243	4 176	3 412	81.7	3 382	81.0	67	1.6
<b>Melbourne-Mildura</b>								
QantasLink	1 044	1 038	879	84.7	814	78.4	6	0.6
Regional Express	980	980	913	93.2	880	89.8	0	0.0
Virgin Australia	365	365	316	86.6	311	85.2	0	0.0
All Airlines	2 389	2 383	2 108	88.5	2 005	84.1	6	0.3
<b>Melbourne-Newcastle</b>								
Jetstar	1 242	1 239	997	80.5	1 001	80.8	3	0.2
Virgin Australia	364	361	313	86.7	307	85.0	3	0.8
All Airlines	1 606	1 600	1 310	81.9	1 308	81.8	6	0.4
<b>Melbourne-Perth</b>								
Jetstar	968	956	761	79.6	697	72.9	12	1.2
Qantas	2 582	2 573	2 117	82.3	2 017	78.4	9	0.3
Tiger Airways	858	855	738	86.3	742	86.8	3	0.3
Virgin Australia	1 734	1 726	1 416	82.0	1 123	65.1	8	0.5
All Airlines	6 142	6 110	5 032	82.4	4 579	74.9	32	0.5
<b>Melbourne-Sunshine Coast</b>								
Jetstar	703	697	484	69.4	512	73.5	6	0.9
Tiger Airways	68	68	63	92.6	57	83.8	0	0.0
Virgin Australia	367	360	305	84.7	287	79.7	7	1.9
All Airlines	1 138	1 125	852	75.7	856	76.1	13	1.1

	<i>Sectors</i>		<i>Departures On Time</i>		<i>Arrivals On Time</i>		<i>Cancellations</i>	
	<i>Sched.</i>	<i>Flown</i>	<i>No.</i>	<i>%</i>	<i>No.</i>	<i>%</i>	<i>No.</i>	<i>%</i>
<b>Melbourne-Sydney</b>								
Jetstar	3 504	3 397	2 295	67.6	2 418	71.2	107	3.1
Qantas	10 478	9 986	8 589	86.0	8 149	81.6	492	4.7
Tiger Airways	2 875	2 828	2 355	83.3	2 381	84.2	47	1.6
Virgin Australia	9 289	8 976	7 453	83.0	6 952	77.5	313	3.4
All Airlines	26 146	25 187	20 692	82.2	19 900	79.0	959	3.7
<b>Mildura-Melbourne</b>								
QantasLink	1 043	1 038	922	88.8	868	83.6	5	0.5
Regional Express	982	981	920	93.8	895	91.2	1	0.1
Virgin Australia	365	365	309	84.7	309	84.7	0	0.0
All Airlines	2 390	2 384	2 151	90.2	2 072	86.9	6	0.3
<b>Mount Isa-Brisbane</b>								
			(From November 2012 only)					
Qantas	447	445	397	89.2	377	84.7	2	0.4
Virgin Australia	172	171	141	82.5	123	71.9	1	0.6
All Airlines	619	616	538	87.3	500	81.2	3	0.5
<b>Newcastle-Brisbane</b>								
Jetstar	1 358	1 352	1 070	79.1	1 016	75.1	6	0.4
QantasLink	828	800	399	49.9	368	46.0	28	3.4
Virgin Australia	363	353	261	73.9	218	61.8	10	2.8
Virgin Australia - ATR/F100 Operations	512	506	379	74.9	332	65.6	6	1.2
All Airlines	3 061	3 011	2 109	70.0	1 934	64.2	50	1.6
<b>Newcastle-Melbourne</b>								
Jetstar	1 245	1 238	992	80.1	966	78.0	7	0.6
Virgin Australia	364	360	264	73.3	279	77.5	4	1.1
All Airlines	1 609	1 598	1 256	78.6	1 245	77.9	11	0.7
<b>Newman-Perth</b>								
Qantas	1 555	1 518	1 249	82.3	1 206	79.4	37	2.4
QantasLink	314	304	276	90.8	277	91.1	10	3.2
Skywest	48	48	43	89.6	42	87.5	0	0.0
Virgin Australia	412	406	301	74.1	291	71.7	6	1.5
Virgin Australia Regional Airlines	27	22	15	68.2	16	72.7	5	18.5
All Airlines	2 356	2 298	1 884	82.0	1 832	79.7	58	2.5
<b>Perth-Adelaide</b>								
Jetstar	433	427	289	67.7	316	74.0	6	1.4
Qantas	1 326	1 325	1 050	79.2	1 148	86.6	1	0.1
Virgin Australia	728	722	662	91.7	680	94.2	6	0.8
All Airlines	2 487	2 474	2 001	80.9	2 144	86.7	13	0.5
<b>Perth-Brisbane</b>								
Jetstar	320	318	158	49.7	219	68.9	2	0.6
Qantas	1 437	1 435	1 138	79.3	1 079	75.2	2	0.1
Virgin Australia	987	987	842	85.3	711	72.0	0	0.0
All Airlines	2 744	2 740	2 138	78.0	2 009	73.3	4	0.1
<b>Perth-Broome</b>								
Qantas	384	384	286	74.5	287	74.7	0	0.0
QantasLink	608	595	519	87.2	497	83.5	13	2.1
Skywest	157	157	103	65.6	114	72.6	0	0.0
Virgin Australia	537	531	455	85.7	463	87.2	6	1.1
Virgin Australia Regional Airlines	45	45	36	80.0	32	71.1	0	0.0
All Airlines	1 731	1 712	1 399	81.7	1 393	81.4	19	1.1
<b>Perth-Darwin</b>								
Qantas	365	365	295	80.8	295	80.8	0	0.0
Virgin Australia	313	313	269	85.9	268	85.6	0	0.0
All Airlines	678	678	564	83.2	563	83.0	0	0.0

	<i>Sectors</i>		<i>Departures On Time</i>		<i>Arrivals On Time</i>		<i>Cancellations</i>	
	<i>Sched.</i>	<i>Flown</i>	<i>No.</i>	<i>%</i>	<i>No.</i>	<i>%</i>	<i>No.</i>	<i>%</i>
<b>Perth-Geraldton</b>								
QantasLink	628	627	494	78.8	487	77.7	1	0.2
Skywest	773	773	585	75.7	543	70.2	0	0.0
Virgin Australia Regional Airlines	188	185	164	88.6	162	87.6	3	1.6
All Airlines	1 589	1 585	1 243	78.4	1 192	75.2	4	0.3
<b>Perth-Kalgoorlie</b>								
Qantas	781	763	681	89.3	668	87.5	18	2.3
QantasLink	282	280	253	90.4	253	90.4	2	0.7
Skywest	600	600	461	76.8	407	67.8	0	0.0
Virgin Australia Regional Airlines	114	114	101	88.6	96	84.2	0	0.0
All Airlines	1 777	1 757	1 496	85.1	1 424	81.0	20	1.1
<b>Perth-Karratha</b>								
Qantas	2 314	2 230	1 953	87.6	1 925	86.3	84	3.6
QantasLink	724	663	600	90.5	578	87.2	61	8.4
Virgin Australia	620	613	505	82.4	500	81.6	7	1.1
All Airlines	3 658	3 506	3 058	87.2	3 003	85.7	152	4.2
<b>Perth-Melbourne</b>								
Jetstar	973	955	631	66.1	687	71.9	18	1.8
Qantas	2 581	2 570	2 089	81.3	2 183	84.9	11	0.4
Tiger Airways	860	855	667	78.0	621	72.6	5	0.6
Virgin Australia	1 731	1 725	1 472	85.3	1 288	74.7	6	0.3
All Airlines	6 145	6 105	4 859	79.6	4 779	78.3	40	0.7
<b>Perth-Newman</b>								
Qantas	1 553	1 517	1 313	86.6	1 301	85.8	36	2.3
QantasLink	313	304	280	92.1	279	91.8	9	2.9
Skywest	48	48	43	89.6	42	87.5	0	0.0
Virgin Australia	411	405	353	87.2	334	82.5	6	1.5
Virgin Australia Regional Airlines	31	26	13	50.0	15	57.7	5	16.1
All Airlines	2 356	2 300	2 002	87.0	1 971	85.7	56	2.4
<b>Perth-Port Hedland</b>								
Qantas	1 490	1 449	1 275	88.0	1 237	85.4	41	2.8
QantasLink	484	467	442	94.6	438	93.8	17	3.5
Virgin Australia	789	769	671	87.3	645	83.9	20	2.5
All Airlines	2 763	2 685	2 388	88.9	2 320	86.4	78	2.8
<b>Perth-Sydney</b>								
Jetstar	526	518	292	56.4	367	70.8	8	1.5
Qantas	2 443	2 432	1 952	80.3	2 047	84.2	11	0.5
Virgin Australia	1 469	1 460	1 184	81.1	1 160	79.5	9	0.6
All Airlines	4 438	4 410	3 428	77.7	3 574	81.0	28	0.6
<b>Port Hedland-Perth</b>								
Qantas	1 492	1 441	1 156	80.2	1 134	78.7	51	3.4
QantasLink	484	463	432	93.3	437	94.4	21	4.3
Virgin Australia	789	771	617	80.0	570	73.9	18	2.3
All Airlines	2 765	2 675	2 205	82.4	2 141	80.0	90	3.3
<b>Port Lincoln-Adelaide</b>								
QantasLink	1 149	1 123	986	87.8	992	88.3	26	2.3
Regional Express	2 369	2 357	2 118	89.9	2 095	88.9	12	0.5
All Airlines	3 518	3 480	3 104	89.2	3 087	88.7	38	1.1
<b>Port Macquarie-Sydney</b>								
QantasLink	1 606	1 571	1 090	69.4	1 058	67.3	35	2.2
Virgin Australia - ATR/F100 Operations	610	594	463	77.9	418	70.4	16	2.6
Virgin Australia Regional Airlines	122	119	92	77.3	90	75.6	3	2.5
All Airlines	2 338	2 284	1 645	72.0	1 566	68.6	54	2.3

	<i>Sectors</i>		<i>Departures On Time</i>		<i>Arrivals On Time</i>		<i>Cancellations</i>	
	<i>Sched.</i>	<i>Flown</i>	<i>No.</i>	<i>%</i>	<i>No.</i>	<i>%</i>	<i>No.</i>	<i>%</i>
<b>Proserpine-Brisbane</b>								
Jetstar	352	352	252	71.6	251	71.3	0	0.0
Virgin Australia	452	450	360	80.0	284	63.1	2	0.4
Virgin Australia - ATR/F100 Operations	160	160	119	74.4	74	46.3	0	0.0
All Airlines	964	962	731	76.0	609	63.3	2	0.2
<b>Rockhampton-Brisbane</b>								
QantasLink	2 284	2 195	1 657	75.5	1 477	67.3	89	3.9
Virgin Australia	1 060	1 033	799	77.3	699	67.7	27	2.5
Virgin Australia - ATR/F100 Operations	1 217	1 169	1 002	85.7	957	81.9	48	3.9
Virgin Australia Regional Airlines	229	225	187	83.1	178	79.1	4	1.7
All Airlines	4 790	4 622	3 645	78.9	3 311	71.6	168	3.5
<b>Sunshine Coast-Melbourne</b>								
Jetstar	706	699	428	61.2	433	61.9	7	1.0
Tiger Airways	68	68	55	80.9	51	75.0	0	0.0
Virgin Australia	367	356	232	65.2	259	72.8	11	3.0
All Airlines	1 141	1 123	715	63.7	743	66.2	18	1.6
<b>Sunshine Coast-Sydney</b>								
Jetstar	1 213	1 198	931	77.7	915	76.4	15	1.2
Virgin Australia	410	400	290	72.5	271	67.8	10	2.4
All Airlines	1 623	1 598	1 221	76.4	1 186	74.2	25	1.5
<b>Sydney-Adelaide</b>								
Jetstar	1 179	1 157	892	77.1	924	79.9	22	1.9
Qantas	3 201	3 197	2 755	86.2	2 770	86.6	4	0.1
Virgin Australia	2 041	2 030	1 617	79.7	1 676	82.6	11	0.5
All Airlines	6 421	6 384	5 264	82.5	5 370	84.1	37	0.6
<b>Sydney-Albury</b>								
QantasLink	1 356	1 351	843	62.4	807	59.7	5	0.4
Regional Express	1 245	1 240	991	79.9	985	79.4	5	0.4
Virgin Australia	227	223	182	81.6	175	78.5	4	1.8
Virgin Australia - ATR/F100 Operations	374	371	292	78.7	287	77.4	3	0.8
Virgin Australia Regional Airlines	119	119	93	78.2	86	72.3	0	0.0
All Airlines	3 321	3 304	2 401	72.7	2 340	70.8	17	0.5
<b>Sydney-Ayers Rock</b>								
Qantas	338	338	299	88.5	295	87.3	0	0.0
Virgin Australia	365	364	258	70.9	253	69.5	1	0.3
All Airlines	703	702	557	79.3	548	78.1	1	0.1
<b>Sydney-Ballina</b>								
Jetstar	685	682	522	76.5	550	80.6	3	0.4
Regional Express	347	345	272	78.8	256	74.2	2	0.6
Virgin Australia	365	363	318	87.6	309	85.1	2	0.5
All Airlines	1 397	1 390	1 112	80.0	1 115	80.2	7	0.5
<b>Sydney-Brisbane</b>								
Jetstar	1 278	1 243	962	77.4	867	69.8	35	2.7
Qantas	6 976	6 878	5 824	84.7	4 952	72.0	98	1.4
Tiger Airways	970	958	777	81.1	601	62.7	12	1.2
Virgin Australia	6 621	6 389	5 027	78.7	4 439	69.5	232	3.5
All Airlines	15 845	15 468	12 590	81.4	10 859	70.2	377	2.4
<b>Sydney-Cairns</b>								
Jetstar	1 042	1 036	795	76.7	831	80.2	6	0.6
Qantas	925	925	788	85.2	809	87.5	0	0.0
Tiger Airways	76	76	63	82.9	57	75.0	0	0.0
Virgin Australia	1 080	1 076	797	74.1	852	79.2	4	0.4
All Airlines	3 123	3 113	2 443	78.5	2 549	81.9	10	0.3



	<i>Sectors</i>		<i>Departures On Time</i>		<i>Arrivals On Time</i>		<i>Cancellations</i>	
	<i>Sched.</i>	<i>Flown</i>	<i>No.</i>	<i>%</i>	<i>No.</i>	<i>%</i>	<i>No.</i>	<i>%</i>
<b>Sydney-Canberra</b>								
Qantas	1 817	1 786	1 573	88.1	1 534	85.9	31	1.7
QantasLink	4 739	4 530	3 357	74.1	3 228	71.3	209	4.4
Virgin Australia	916	898	709	79.0	740	82.4	18	2.0
Virgin Australia - ATR/F100 Operations	1 795	1 747	1 305	74.7	1 341	76.8	48	2.7
Virgin Australia Regional Airlines	496	474	396	83.5	393	82.9	22	4.4
All Airlines	9 763	9 435	7 340	77.8	7 236	76.7	328	3.4
<b>Sydney-Coffs Harbour</b>								
QantasLink	1 737	1 727	1 221	70.7	1 190	68.9	10	0.6
Tiger Airways	91	90	72	80.0	71	78.9	1	1.1
Virgin Australia	720	707	574	81.2	590	83.5	13	1.8
All Airlines	2 548	2 524	1 867	74.0	1 851	73.3	24	0.9
<b>Sydney-Darwin</b>								
Jetstar	307	307	272	88.6	274	89.3	0	0.0
Qantas	611	610	482	79.0	504	82.6	1	0.2
Virgin Australia	360	360	283	78.6	260	72.2	0	0.0
All Airlines	1 278	1 277	1 037	81.2	1 038	81.3	1	0.1
<b>Sydney-Dubbo</b>								
QantasLink	1 345	1 339	915	68.3	909	67.9	6	0.4
Regional Express	1 854	1 836	1 515	82.5	1 560	85.0	18	1.0
All Airlines	3 199	3 175	2 430	76.5	2 469	77.8	24	0.8
<b>Sydney-Gold Coast</b>								
Jetstar	3 704	3 604	2 838	78.7	2 825	78.4	100	2.7
Qantas	738	734	664	90.5	671	91.4	4	0.5
Tiger Airways	873	850	638	75.1	674	79.3	23	2.6
Virgin Australia	3 956	3 855	2 967	77.0	2 941	76.3	101	2.6
All Airlines	9 271	9 043	7 107	78.6	7 111	78.6	228	2.5
<b>Sydney-Hamilton Island</b>								
Jetstar	335	332	233	70.2	244	73.5	3	0.9
Virgin Australia	366	365	278	76.2	265	72.6	1	0.3
All Airlines	701	697	511	73.3	509	73.0	4	0.6
<b>Sydney-Hobart</b>								
Jetstar	958	954	751	78.7	782	82.0	4	0.4
Qantas	365	365	318	87.1	312	85.5	0	0.0
Virgin Australia	719	713	525	73.6	551	77.3	6	0.8
All Airlines	2 042	2 032	1 594	78.4	1 645	81.0	10	0.5
<b>Sydney-Launceston</b>								
Jetstar	601	600	462	77.0	474	79.0	1	0.2
Virgin Australia	365	365	264	72.3	261	71.5	0	0.0
All Airlines	966	965	726	75.2	735	76.2	1	0.1
<b>Sydney-Melbourne</b>								
Jetstar	3 510	3 402	2 436	71.6	2 611	76.7	108	3.1
Qantas	10 475	9 969	8 745	87.7	8 436	84.6	506	4.8
Tiger Airways	2 877	2 827	2 305	81.5	2 231	78.9	50	1.7
Virgin Australia	9 262	8 944	7 156	80.0	7 157	80.0	318	3.4
All Airlines	26 124	25 142	20 642	82.1	20 435	81.3	982	3.8
<b>Sydney-Perth</b>								
Jetstar	518	512	407	79.5	383	74.8	6	1.2
Qantas	2 457	2 446	1 869	76.4	1 879	76.8	11	0.4
Virgin Australia	1 468	1 463	1 134	77.5	1 030	70.4	5	0.3
All Airlines	4 443	4 421	3 410	77.1	3 292	74.5	22	0.5

	<i>Sectors</i>		<i>Departures On Time</i>		<i>Arrivals On Time</i>		<i>Cancellations</i>	
	<i>Sched.</i>	<i>Flown</i>	<i>No.</i>	<i>%</i>	<i>No.</i>	<i>%</i>	<i>No.</i>	<i>%</i>
<b>Sydney-Port Macquarie</b>								
QantasLink	1 606	1 573	1 120	71.2	1 106	70.3	33	2.1
Virgin Australia - ATR/F100 Operations	609	598	471	78.8	426	71.2	11	1.8
Virgin Australia Regional Airlines	122	121	86	71.1	77	63.6	1	0.8
All Airlines	2 337	2 292	1 677	73.2	1 609	70.2	45	1.9
<b>Sydney-Sunshine Coast</b>								
Jetstar	1 208	1 197	1 003	83.8	1 034	86.4	11	0.9
Virgin Australia	410	402	326	81.1	327	81.3	8	2.0
All Airlines	1 618	1 599	1 329	83.1	1 361	85.1	19	1.2
<b>Sydney-Townsville</b>								
Jetstar	295	295	243	82.4	253	85.8	0	0.0
Virgin Australia	360	360	277	76.9	277	76.9	0	0.0
All Airlines	655	655	520	79.4	530	80.9	0	0.0
<b>Sydney-Wagga Wagga</b>								
QantasLink	1 307	1 302	950	73.0	834	64.1	5	0.4
Regional Express	1 391	1 388	1 179	84.9	1 145	82.5	3	0.2
All Airlines	2 698	2 690	2 129	79.1	1 979	73.6	8	0.3
<b>Townsville-Brisbane</b>								
Jetstar	364	361	240	66.5	237	65.7	3	0.8
Qantas	1 753	1 750	1 506	86.1	1 420	81.1	3	0.2
Virgin Australia	1 987	1 976	1 581	80.0	1 381	69.9	11	0.6
All Airlines	4 104	4 087	3 327	81.4	3 038	74.3	17	0.4
<b>Townsville-Cairns</b>								
QantasLink	2 178	2 131	1 688	79.2	1 640	77.0	47	2.2
Virgin Australia	1	1	1	100.0	1	100.0	0	0.0
Virgin Australia - ATR/F100 Operations	259	255	230	90.2	226	88.6	4	1.5
Virgin Australia Regional Airlines	52	51	49	96.1	49	96.1	1	1.9
All Airlines	2 490	2 438	1 968	80.7	1 916	78.6	52	2.1
<b>Townsville-Sydney</b>								
Jetstar	296	296	235	79.4	227	76.7	0	0.0
Virgin Australia	360	360	218	60.6	209	58.1	0	0.0
All Airlines	656	656	453	69.1	436	66.5	0	0.0
<b>Wagga Wagga-Sydney</b>								
QantasLink	1 307	1 300	929	71.5	878	67.5	7	0.5
Regional Express	1 386	1 381	1 187	86.0	1 126	81.5	5	0.4
All Airlines	2 693	2 681	2 116	78.9	2 004	74.7	12	0.4

# Airports

On time performance is reported for all routes where the passenger load averages over 8000 passengers per month, and where two or more airlines operate in competition. The following data reports by airport against flights operated on those routes only.

Airport	Departures			Arrivals		
	Sectors	On Time		Sectors	On Time	
	Flown	No.	%	Flown	No.	%
<b>Adelaide</b>						
Jetstar	3 380	2 622	77.6	3 375	2 781	82.4
Qantas	9 847	8 578	87.1	9 869	8 597	87.1
QantasLink	1 492	1 278	85.7	1 495	1 264	84.5
Regional Express	2 361	2 183	92.5	2 357	2 095	88.9
Tiger Airways	468	392	83.8	468	401	85.7
Virgin Australia	8 096	7 166	88.5	8 116	6 986	86.1
All Airlines	25 644	22 219	86.6	25 680	22 124	86.2
Relates to services to and from Brisbane, Canberra, Gold Coast, Melbourne, Perth, Port Lincoln and Sydney.						
<b>Albury</b>						
QantasLink	1 344	861	64.1	1 351	807	59.7
Regional Express	1 248	1 052	84.3	1 240	985	79.4
Virgin Australia	220	180	81.8	223	175	78.5
Virgin Australia - ATR/F100 Operations	371	296	79.8	371	287	77.4
Virgin Australia Regional Airlines	118	86	72.9	119	86	72.3
All Airlines	3 301	2 475	75.0	3 304	2 340	70.8
Relates to services to and from Sydney only.						
<b>Ayers Rock</b>						
Qantas	337	291	86.4	338	295	87.3
Virgin Australia	363	270	74.4	364	253	69.5
All Airlines	700	561	80.1	702	548	78.1
Relates to services to and from Sydney only.						
<b>Ballina</b>						
Jetstar	683	494	72.3	682	550	80.6
Regional Express	291	194	66.7	345	256	74.2
Virgin Australia	361	279	77.3	363	309	85.1
All Airlines	1 335	967	72.4	1 390	1 115	80.2
Relates to services to and from Sydney only.						
<b>Brisbane</b>						
Jetstar	7 736	5 717	73.9	7 736	5 318	68.7
Qantas	20 212	16 455	81.4	20 073	15 282	76.1
QantasLink	9 559	7 791	81.5	9 528	6 580	69.1
Tiger Airways	1 983	1 332	67.2	1 995	1 322	66.3
Virgin Australia	22 788	18 525	81.3	22 731	16 256	71.5
Virgin Australia - ATR/F100 Operations	4 124	3 432	83.2	4 087	3 106	76.0
Virgin Australia Regional Airlines	692	531	76.7	690	511	74.1
All Airlines	67 094	53 783	80.2	66 840	48 375	72.4
Relates to services to and from Adelaide, Cairns, Canberra, Darwin, Emerald, Gladstone, Hamilton Island, Mackay, Melbourne, Mount Isa, Newcastle, Perth, Proserpine, Rockhampton, Sydney and Townsville.						

Airport	Departures			Arrivals		
	Sectors Flown	On Time		Sectors Flown	On Time	
		No.	%		No.	%
<b>Broome</b>						
Qantas	381	236	61.9	384	287	74.7
QantasLink	598	518	86.6	595	497	83.5
Skywest	179	116	64.8	157	114	72.6
Virgin Australia	528	406	76.9	531	463	87.2
Virgin Australia Regional Airlines	44	19	43.2	45	32	71.1
All Airlines	1 730	1 295	74.9	1 712	1 393	81.4
Relates to services to and from Perth only.						
<b>Cairns</b>						
Jetstar	3 270	2 671	81.7	3 270	2 663	81.4
Qantas	2 648	2 246	84.8	2 655	2 274	85.6
QantasLink	2 187	1 901	86.9	2 183	1 672	76.6
Tiger Airways	411	308	74.9	410	345	84.1
Virgin Australia	3 272	2 658	81.2	3 274	2 683	81.9
Virgin Australia - ATR/F100 Operations	445	353	79.3	444	372	83.8
Virgin Australia Regional Airlines	51	48	94.1	51	49	96.1
All Airlines	12 284	10 185	82.9	12 287	10 058	81.9
Relates to services to and from Brisbane, Melbourne, Sydney and Townsville.						
<b>Canberra</b>						
Qantas	6 915	6 228	90.1	6 921	6 160	89.0
QantasLink	5 367	4 111	76.6	5 388	3 881	72.0
Virgin Australia	4 397	3 683	83.8	4 421	3 654	82.7
Virgin Australia - ATR/F100 Operations	1 746	1 466	84.0	1 747	1 341	76.8
Virgin Australia Regional Airlines	472	399	84.5	474	393	82.9
All Airlines	18 897	15 887	84.1	18 951	15 429	81.4
Relates to services to and from Adelaide, Brisbane, Melbourne and Sydney.						
<b>Coffs Harbour</b>						
QantasLink	1 725	1 198	69.4	1 727	1 190	68.9
Tiger Airways	89	73	82.0	90	71	78.9
Virgin Australia	704	568	80.7	707	590	83.5
All Airlines	2 518	1 839	73.0	2 524	1 851	73.3
Relates to services to and from Sydney only.						
<b>Darwin</b>						
Jetstar	420	297	70.7	425	363	85.4
Qantas	1 499	1 163	77.6	1 503	1 239	82.4
Virgin Australia	1 400	1 192	85.1	1 403	1 097	78.2
All Airlines	3 319	2 652	79.9	3 331	2 699	81.0
Relates to services to and from Brisbane, Melbourne, Perth and Sydney.						
<b>Dubbo</b>						
QantasLink	1 339	892	66.6	1 339	909	67.9
Regional Express	1 846	1 569	85.0	1 836	1 560	85.0
All Airlines	3 185	2 461	77.3	3 175	2 469	77.8
Relates to services to and from Sydney only.						

Airport	Departures			Arrivals		
	Sectors Flown	On Time		Sectors Flown	On Time	
		No.	%		No.	%
<b>Emerald</b>						
QantasLink	2 154	1 704	79.1	2 160	1 765	81.7
Virgin Australia - ATR/F100 Operations	886	775	87.5	891	778	87.3
Virgin Australia Regional Airlines	190	149	78.4	192	147	76.6
All Airlines	3 230	2 628	81.4	3 243	2 690	82.9
Relates to services to and from Brisbane only.						
<b>Geraldton</b>						
QantasLink	625	472	75.5	627	487	77.7
Skywest	808	584	72.3	773	543	70.2
Virgin Australia Regional Airlines	182	154	84.6	185	162	87.6
All Airlines	1 615	1 210	74.9	1 585	1 192	75.2
Relates to services to and from Perth only.						
<b>Gladstone</b>						
QantasLink	2 802	2 175	77.6	2 590	2 068	79.8
Virgin Australia	6	3	50.0	6	3	50.0
Virgin Australia - ATR/F100 Operations	1 176	946	80.4	1 192	959	80.5
Virgin Australia Regional Airlines	275	183	66.5	275	190	69.1
All Airlines	4 259	3 307	77.6	4 063	3 220	79.3
Relates to services to and from Brisbane only.						
<b>Gold Coast</b>						
Jetstar	6 426	4 990	77.7	6 423	4 991	77.7
Qantas	732	620	84.7	734	671	91.4
Tiger Airways	1 717	1 237	72.0	1 718	1 351	78.6
Virgin Australia	6 446	5 166	80.1	6 476	5 155	79.6
All Airlines	15 321	12 013	78.4	15 351	12 168	79.3
Relates to services to and from Adelaide, Melbourne and Sydney.						
<b>Hamilton Island</b>						
Jetstar	540	373	69.1	541	413	76.3
Virgin Australia	723	483	66.8	731	572	78.2
All Airlines	1 263	856	67.8	1 272	985	77.4
Relates to services to and from Brisbane and Sydney.						
<b>Hobart</b>						
Jetstar	2 915	2 102	72.1	2 915	2 279	78.2
Qantas	1 094	951	86.9	1 095	920	84.0
QantasLink	241	221	91.7	242	167	69.0
Tiger Airways	348	283	81.3	349	294	84.2
Virgin Australia	2 475	1 862	75.2	2 475	1 958	79.1
All Airlines	7 073	5 419	76.6	7 076	5 618	79.4
Relates to services to and from Melbourne and Sydney.						
<b>Kalgoorlie</b>						
Qantas	762	649	85.2	763	668	87.5
QantasLink	280	248	88.6	280	253	90.4
Skywest	573	403	70.3	600	407	67.8
Virgin Australia Regional Airlines	117	100	85.5	114	96	84.2
All Airlines	1 732	1 400	80.8	1 757	1 424	81.0
Relates to services to and from Perth only.						

Airport	Departures			Arrivals		
	Sectors	On Time		Sectors	On Time	
	Flown	No.	%	Flown	No.	%
<b>Karratha</b>						
Qantas	2 220	1 923	86.6	2 230	1 925	86.3
QantasLink	662	566	85.5	663	578	87.2
Virgin Australia	607	462	76.1	613	500	81.6
All Airlines	3 489	2 951	84.6	3 506	3 003	85.7
Relates to services to and from Perth only.						
<b>Launceston</b>						
Jetstar	2 068	1 486	71.9	2 063	1 656	80.3
QantasLink	1 178	952	80.8	1 177	905	76.9
Virgin Australia	1 902	1 511	79.4	1 901	1 556	81.9
All Airlines	5 148	3 949	76.7	5 141	4 117	80.1
Relates to services to and from Melbourne and Sydney.						
<b>Mackay</b>						
Jetstar	1 195	807	67.5	1 195	926	77.5
QantasLink	1 272	1 016	79.9	1 276	1 037	81.3
Virgin Australia	1 968	1 566	79.6	1 977	1 540	77.9
All Airlines	4 435	3 389	76.4	4 448	3 503	78.8
Relates to services to and from Brisbane only.						
<b>Melbourne</b>						
Jetstar	15 391	11 427	74.2	15 404	11 534	74.9
Qantas	25 151	21 851	86.9	25 118	21 446	85.4
QantasLink	3 093	2 578	83.3	3 095	2 456	79.4
Regional Express	980	913	93.2	981	895	91.2
Tiger Airways	6 807	5 758	84.6	6 802	5 082	74.7
Virgin Australia	27 811	23 197	83.4	27 780	22 620	81.4
All Airlines	79 233	65 724	83.0	79 180	64 033	80.9
Relates to services to and from Adelaide, Brisbane, Cairns, Canberra, Darwin, Gold Coast, Hobart, Launceston, Mildura, Newcastle, Perth, Sunshine Coast and Sydney.						
<b>Mildura</b>						
QantasLink	1 038	922	88.8	1 038	814	78.4
Regional Express	981	920	93.8	980	880	89.8
Virgin Australia	365	309	84.7	365	311	85.2
All Airlines	2 384	2 151	90.2	2 383	2 005	84.1
Relates to services to and from Melbourne only.						
<b>Mount Isa</b>						
	(From November 2012 only)					
Qantas	445	397	89.2	447	408	91.3
Virgin Australia	171	141	82.5	172	147	85.5
All Airlines	616	538	87.3	619	555	89.7
Relates to services to and from Brisbane only.						
<b>Newcastle</b>						
Jetstar	2 590	2 062	79.6	2 594	2 104	81.1
QantasLink	800	399	49.9	798	407	51.0
Virgin Australia	713	525	73.6	715	596	83.4
Virgin Australia - ATR/F100 Operations	506	379	74.9	507	389	76.7
All Airlines	4 609	3 365	73.0	4 614	3 496	75.8
Relates to services to and from Brisbane and Melbourne.						

Airport	Departures			Arrivals		
	Sectors	On Time		Sectors	On Time	
	Flown	No.	%	Flown	No.	%
<b>Newman</b>						
Qantas	1 518	1 249	82.3	1 517	1 301	85.8
QantasLink	304	276	90.8	304	279	91.8
Skywest	48	43	89.6	48	42	87.5
Virgin Australia	406	301	74.1	405	334	82.5
Virgin Australia Regional Airlines	22	15	68.2	26	15	57.7
All Airlines	2 298	1 884	82.0	2 300	1 971	85.7
Relates to services to and from Perth only.						
<b>Perth</b>						
Jetstar	2 218	1 370	61.8	2 216	1 632	73.6
Qantas	14 470	12 032	83.2	14 457	11 591	80.2
QantasLink	2 936	2 588	88.1	2 932	2 452	83.6
Skywest	1 578	1 192	75.5	1 608	1 044	64.9
Tiger Airways	855	667	78.0	855	742	86.8
Virgin Australia	7 525	6 413	85.2	7 524	5 426	72.1
Virgin Australia Regional Airlines	370	314	84.9	365	269	73.7
All Airlines	29 952	24 576	82.1	29 957	23 156	77.3
Relates to services to and from Adelaide, Brisbane, Broome, Darwin, Geraldton, Kalgoorlie, Karratha, Melbourne, Newman, Port Hedland and Sydney.						
<b>Port Hedland</b>						
Qantas	1 441	1 156	80.2	1 449	1 237	85.4
QantasLink	463	432	93.3	467	438	93.8
Virgin Australia	771	617	80.0	769	645	83.9
All Airlines	2 675	2 205	82.4	2 685	2 320	86.4
Relates to services to and from Perth only.						
<b>Port Lincoln</b>						
QantasLink	1 123	986	87.8	1 123	956	85.1
Regional Express	2 357	2 118	89.9	2 361	2 129	90.2
All Airlines	3 480	3 104	89.2	3 484	3 085	88.5
Relates to services to and from Adelaide only.						
<b>Port Macquarie</b>						
QantasLink	1 571	1 090	69.4	1 573	1 106	70.3
Virgin Australia - ATR/F100 Operations	594	463	77.9	598	426	71.2
Virgin Australia Regional Airlines	119	92	77.3	121	77	63.6
All Airlines	2 284	1 645	72.0	2 292	1 609	70.2
Relates to services to and from Sydney only.						
<b>Proserpine</b>						
Jetstar	352	252	71.6	352	241	68.5
Virgin Australia	450	360	80.0	450	387	86.0
Virgin Australia - ATR/F100 Operations	160	119	74.4	161	123	76.4
All Airlines	962	731	76.0	963	751	78.0
Relates to services to and from Brisbane only.						

Airport	Departures			Arrivals		
	Sectors Flown	On Time		Sectors Flown	On Time	
		No.	%		No.	%
<b>Rockhampton</b>						
QantasLink	2 195	1 657	75.5	2 429	1 876	77.2
Virgin Australia	1 033	799	77.3	1 037	835	80.5
Virgin Australia - ATR/F100 Operations	1 169	1 002	85.7	1 184	964	81.4
Virgin Australia Regional Airlines	225	187	83.1	225	179	79.6
All Airlines	4 622	3 645	78.9	4 875	3 854	79.1
Relates to services to and from Brisbane only.						
<b>Sunshine Coast</b>						
Jetstar	1 897	1 359	71.6	1 894	1 546	81.6
Tiger Airways	68	55	80.9	68	57	83.8
Virgin Australia	756	522	69.0	762	614	80.6
All Airlines	2 721	1 936	71.2	2 724	2 217	81.4
Relates to services to and from Melbourne and Sydney.						
<b>Sydney</b>						
Jetstar	15 321	11 816	77.1	15 319	11 179	73.0
Qantas	27 248	23 317	85.6	27 365	22 563	82.5
QantasLink	11 822	8 406	71.1	11 783	8 098	68.7
Regional Express	4 809	3 957	82.3	4 766	3 791	79.5
Tiger Airways	4 801	3 855	80.3	4 792	3 723	77.7
Virgin Australia	28 877	22 692	78.6	28 842	22 444	77.8
Virgin Australia - ATR/F100 Operations	2 716	2 068	76.1	2 711	2 078	76.7
Virgin Australia Regional Airlines	714	575	80.5	709	547	77.2
All Airlines	96 308	76 686	79.6	96 287	74 423	77.3
Relates to services to and from Adelaide, Albury, Ayers Rock, Ballina, Brisbane, Cairns, Canberra, Coffs Harbour, Darwin, Dubbo, Gold Coast, Hamilton Island, Hobart, Launceston, Melbourne, Perth, Port Macquarie, Sunshine Coast, Townsville and Wagga Wagga.						
<b>Townsville</b>						
Jetstar	657	475	72.3	655	507	77.4
Qantas	1 750	1 506	86.1	1 752	1 440	82.2
QantasLink	2 131	1 688	79.2	2 136	1 812	84.8
Virgin Australia	2 337	1 800	77.0	2 338	1 793	76.7
Virgin Australia - ATR/F100 Operations	255	230	90.2	255	217	85.1
Virgin Australia Regional Airlines	51	49	96.1	51	46	90.2
All Airlines	7 181	5 748	80.0	7 187	5 815	80.9
Relates to services to and from Brisbane, Cairns and Sydney.						
<b>Wagga Wagga</b>						
QantasLink	1 300	929	71.5	1 302	834	64.1
Regional Express	1 381	1 187	86.0	1 388	1 145	82.5
All Airlines	2 681	2 116	78.9	2 690	1 979	73.6
Relates to services to and from Sydney only.						



## Definitions

---

On time departure                      A flight departure is counted as "on time" if it departs the gate before 15 minutes of the scheduled departure time shown in the carriers' schedule.

---

On time arrival                         A flight arrival is counted as "on time" if it arrived at the gate before 15 minutes of the scheduled arrival time shown in the carriers' schedule.  
Neither diverted nor cancelled flights count as on time.

---

Cancellation                            A flight removed from service within 7 days of scheduled departure is regarded as a cancellation.

---

On time departure percentage                      The percentage of on time departures is measured against the number of departures *operated* on any particular sector.

---

On time arrival percentage                         The percentage of on time arrivals is measured against the number of arrivals *operated* on any particular sector.

---

Cancellation percentage                      The percentage of cancellations is measured against the number of services *scheduled* on any particular sector.

---