



**Australian Government**

**Department of Infrastructure and Transport**

Bureau of Infrastructure, Transport and Regional Economics

STATISTICAL REPORT



# Aviation

Domestic airline on time performance 2012

© Commonwealth of Australia 2013

ISSN: 1832-0759

### **Ownership of intellectual property rights in this publication**

Unless otherwise noted, copyright (and any other intellectual property rights, if any) in this publication is owned by the Commonwealth of Australia (referred to below as the Commonwealth).

### **Disclaimer**

The material contained in this publication is made available on the understanding that the Commonwealth is not providing professional advice, and that users exercise their own skill and care with respect to its use, and seek independent advice if necessary.

The Commonwealth makes no representations or warranties as to the contents or accuracy of the information contained in this publication. To the extent permitted by law, the Commonwealth disclaims liability to any person or organisation in respect of anything done, or omitted to be done, in reliance upon information contained in this publication.

### **Creative Commons licence**

With the exception of (a) the Coat of Arms; and (b) the Department of Infrastructure's photos and graphics, copyright in this publication is licensed under a Creative Commons Attribution 3.0 Australia Licence.

Creative Commons Attribution 3.0 Australia Licence is a standard form licence agreement that allows you to copy, communicate and adapt this publication provided that you attribute the work to the Commonwealth and abide by the other licence terms. A summary of the licence terms is available from <http://creativecommons.org/licenses/by/3.0/au/deed.en>. The full licence terms are available from <http://creativecommons.org/licenses/by/3.0/au/legalcode>.

### **Use of the Coat of Arms**

The Department of the Prime Minister and Cabinet sets the terms under which the Coat of Arms is used. Please refer to the Department's Commonwealth Coat of Arms and Government branding web page <http://www.dpmmc.gov.au/guidelines/index.cfm#brand> and, in particular, the Guidelines on the use of the Commonwealth Coat of Arms publication.

An appropriate citation for this report is:

Bureau of Infrastructure, Transport and Regional Economics (BITRE), 2013, Domestic airline on time performance, Statistical Report, BITRE, Canberra ACT.

### **Contact us**

This publication is available in PDF format. All other rights are reserved, including in relation to any Departmental logos or trade marks which may exist. For enquiries regarding the licence and any use of this publication, please contact:

Bureau of Infrastructure, Transport and Regional Economics (BITRE)  
Department of Infrastructure and Transport  
GPO Box 501, Canberra ACT 2601, Australia  
Telephone: (international) +61 2 6274 7210  
Fax: (international) +61 2 6274 6855  
Email: [bitre@infrastructure.gov.au](mailto:bitre@infrastructure.gov.au)  
Website: [www.bitre.gov.au](http://www.bitre.gov.au)

### **Inquiries**

Should you require additional information about the statistics contained in this publication:

Telephone (02) 6274 7790 or Facsimile (02) 6274 7727

Electronic mail: [AVSTATS@infrastructure.gov.au](mailto:AVSTATS@infrastructure.gov.au)

Web site: <http://www.bitre.gov.au/statistics/aviation/otphome.aspx>

# Foreword

The Bureau of Infrastructure, Transport and Regional Economics (BITRE) monitors the punctuality and reliability of major domestic airlines operating between Australian airports. The purpose of this is to allow for evaluation of overall industry and individual airline performance, so that consumers of air travel can make informed decisions.

The following domestic airlines report this information monthly to the BITRE: Jetstar, Qantas, QantasLink, Regional Express, Skywest Airlines, Tiger Airways, Virgin Australia and Virgin Australia – ATR/F100 Operations. Data has been gathered since November 2003, although some airlines commenced reporting at a later date, including Jetstar which first reported in May 2004, MacAir in July 2005 and Tiger Airways in April 2008. MacAir ceased operations in February 2009 and data was not received for December 2008 onwards. Virgin Blue was rebranded as Virgin Australia in May 2011 and time series data in Microsoft Excel spreadsheet format on the BITRE website has been revised to reflect this. Services operated by Skywest on behalf of Virgin Australia using ATR/F100 aircraft commenced in November 2011 and are shown separately as Virgin Australia – ATR/F100 Operations.

Information presented in this report is for Australian domestic routes for which the passenger load averaged 8000 or more passengers per month over the previous six months, and where two or more airlines operated in competition on those routes. 54 routes met these criteria for all twelve months in 2012 and another 4 routes did so for a shorter period of the year. Over time, routes which meet these criteria change as airline networks and traffic levels vary.

Participating airlines report their overall monthly network performance where this is possible.

Total industry figures encompass all services operated by reporting airlines only. These airlines collectively carried over 95 per cent of total domestic passengers (regular public transport only) in 2011.

The method of capturing on time performance varies between airlines utilising different recording systems. Jetstar and Qantas jet aircraft use Aircraft Communication Addressing and Reporting System (ACARS) to electronically measure on time performance. Regional Express, Skywest, Tiger Airways, Virgin Australia, Virgin Australia – ATR/F100 Operations and the Qantas non-jet fleet record on time performance manually using records from pilots, gate agents and/or ground crews.

After initial data is collected, aggregate reports are audited internally by participating airlines prior to publication.

Reports and detailed time series data in Microsoft Excel spreadsheet format are available from the BITRE website at: <http://www.bitre.gov.au/statistics/aviation/otphome.aspx>



# Contents

	Page
Industry performance .....	1
Individual routes .....	9
Airports .....	21
Definitions .....	27



## Industry performance

For the year ended December 2012, on time performance over all routes operated by participating airlines (Jetstar, Qantas, QantasLink, Regional Express, Skywest Airlines, Tiger Airways, Virgin Australia and Virgin Australia – ATR/F100 Operations) averaged 81.7 per cent for on time departures and 79.5 per cent for on time arrivals. Cancellations for 2012 represented 1.5 per cent of all scheduled flights. The equivalent figures for 2011 were 80.8 per cent for departures, 79.1 per cent for arrivals and 1.8 per cent for cancellations.

The long term average performance for all routes since reporting commenced in November 2003 is 83.8 per cent for on time departures and 82.4 per cent for on time arrivals. Cancellations averaged 1.3 per cent of all scheduled flights.

On time performance tracked around 87 per cent for the period before June 2007. There was then a noticeable decrease to 79 per cent for the period from June 2007 to December 2008. For the period January 2009 to June 2010, on time performance rose back up to 85 per cent but has dropped back down to 80 per cent for the period July 2010 to December 2012.

Of the major domestic airlines, Qantas achieved the highest level of on time departures for 2012 at 85.9 per cent, followed by Virgin Australia at 83.3 per cent, Tiger Airways at 82.8 per cent and Jetstar at 76.1 per cent. The regional airlines were led by Regional Express at 85.1 per cent, Virgin Australia – ATR/F100 Operations at 83.3 per cent, Skywest at 78.0 per cent and QantasLink at 76.7 per cent.

Qantas also achieved the highest on time arrivals among the major domestic airlines at 84.0 per cent, followed by Virgin Australia at 80.5 per cent, Tiger Airways at 80.1 per cent and Jetstar at 76.6 per cent. Regional Express was the best performing regional airline for on time arrivals at 82.8 per cent, followed by Virgin Australia – ATR/F100 Operations at 78.8 per cent, Skywest at 75.6 per cent and QantasLink at 73.7 per cent.

QantasLink had the highest percentage of cancellations for 2012 at 2.4 per cent, while Skywest had the lowest percentage at 0.1 per cent.

Of the 54 routes which met the criteria for on time performance reporting for all twelve months in 2012, the Adelaide-Gold Coast route had the highest percentage of on time departures (91.5 per cent) and the highest percentage of on time arrivals (91.7 per cent). The Sunshine Coast-Melbourne route had the lowest percentage of on time departures (62.3 per cent) and the Ballina-Sydney route had the lowest percentage of on time arrivals (63.5 per cent).

Cancellations were highest on the Canberra-Sydney route at 4.7 per cent, followed by Sydney-Canberra at 4.0 per cent, Karratha-Perth at 3.4 per cent, Sydney-Melbourne and Melbourne-Sydney at 3.3 per cent and Gladstone-Brisbane at 3.0 per cent.

Of the airports with on time performance reporting for all twelve months in 2012, Mildura Airport recorded the highest percentage of on time departures (89.8 per cent) and Ballina Airport recorded the lowest percentage of on time departures (70.0 per cent). Port Lincoln Airport recorded the highest percentage of on time arrivals (88.4 per cent) and Port Macquarie Airport recorded the lowest percentage of on time arrivals (70.2 per cent). These figures only refer to reported routes and do not cover all flights at these airports.

Table 1 On time performance for the year ended December 2012 — Total Industry

	<i>Sectors</i>		<i>Departures On Time</i>		<i>Arrivals On Time</i>		<i>Cancellations</i>	
	<i>Scheduled</i>	<i>Flown</i>	<i>No.</i>	<i>%</i>	<i>No.</i>	<i>%</i>	<i>No.</i>	<i>%</i>
Jetstar	74 743	73 805	56 174	76.1	56 522	76.6	938	1.3
Qantas	124 478	122 880	105 543	85.9	103 159	84.0	1 598	1.3
QantasLink	111 281	108 590	83 271	76.7	80 081	73.7	2 691	2.4
Regional Express	64 811	64 375	54 808	85.1	53 309	82.8	436	0.7
Skywest	10 187	10 173	7 937	78.0	7 694	75.6	14	0.1
Tiger Airways	14 334	14 196	11 750	82.8	11 370	80.1	138	1.0
Virgin Australia	136 363	134 315	111 920	83.3	108 098	80.5	2 048	1.5
Virgin Australia - ATR/F100 Operations	15 581	15 348	12 789	83.3	12 090	78.8	233	1.5
All Airlines	551 778	543 682	444 192	81.7	432 323	79.5	8 096	1.5

## Notes:

Total airline network data (including routes not shown in this report).

Table 2 Top ten routes for on time performance for the year ended December 2012 (covers participating airlines only and routes reported for all twelve months)

<i>Departures</i>		<i>Arrivals</i>	
<i>Route</i>	<i>On Time (%)</i>	<i>Route</i>	<i>On Time (%)</i>
Adelaide-Gold Coast	91.5	Adelaide-Gold Coast	91.7
Adelaide-Port Lincoln	91.3	Ayers Rock-Sydney	90.5
Canberra-Adelaide	90.0	Gold Coast-Adelaide	90.4
Gold Coast-Adelaide	90.0	Canberra-Adelaide	89.9
Canberra-Brisbane	89.9	Adelaide-Canberra	89.2
Mildura-Melbourne	89.8	Brisbane-Adelaide	88.8
Perth-Port Hedland	89.5	Port Lincoln-Adelaide	88.7
Melbourne-Darwin	89.5	Darwin-Perth	88.7
Port Lincoln-Adelaide	89.3	Adelaide-Port Lincoln	88.4
Melbourne-Canberra	88.6	Adelaide-Melbourne	87.9

Table 3 Top ten airports for on time performance for the year ended December 2012 (covers participating airlines only and routes reported for all twelve months)

<i>Departures</i>		<i>Arrivals</i>	
<i>Airport</i>	<i>On Time (%)</i>	<i>Airport</i>	<i>On Time (%)</i>
Mildura	89.8	Port Lincoln	88.4
Port Lincoln	89.3	Port Hedland	87.0
Adelaide	87.8	Adelaide	86.9
Ayers Rock	84.9	Newman	85.5
Cairns	84.7	Karratha	83.5
Melbourne	84.7	Proserpine	83.1
Canberra	84.6	Darwin	82.9
Karratha	82.6	Mildura	82.4
Darwin	82.4	Melbourne	82.3
Brisbane	82.0	Sunshine Coast	80.9



## Total industry on time performance

Figure 1 On time performance (by month from December 2007)—Total Industry

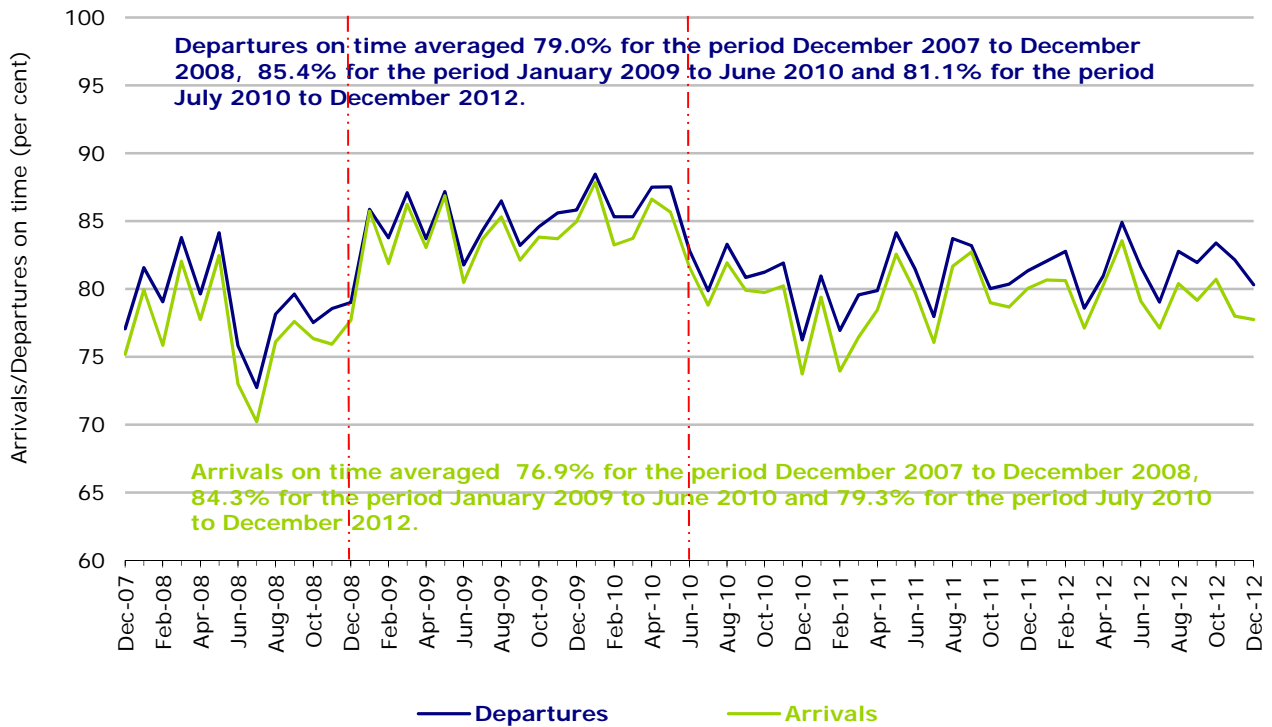
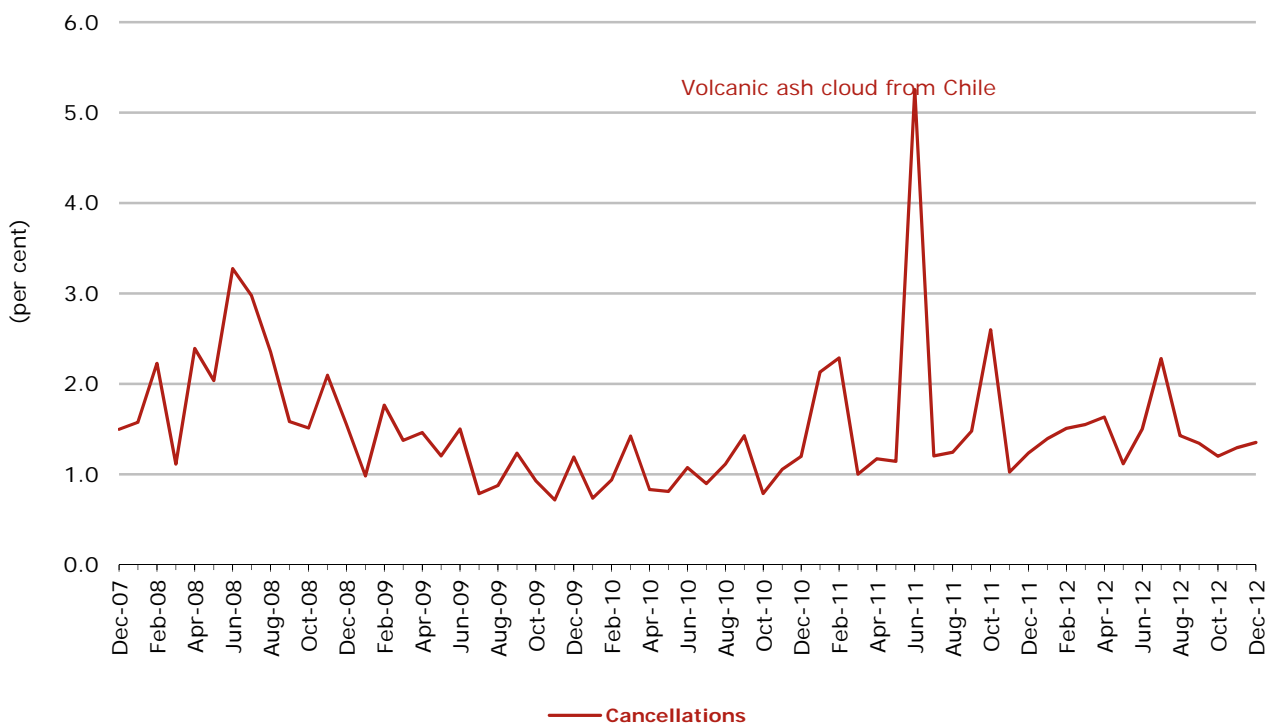


Figure 2 Cancellations (by month from December 2007)—Total Industry



## Major domestic airlines on time performance

Figure 3 On time performance (by month from December 2007)—Jetstar

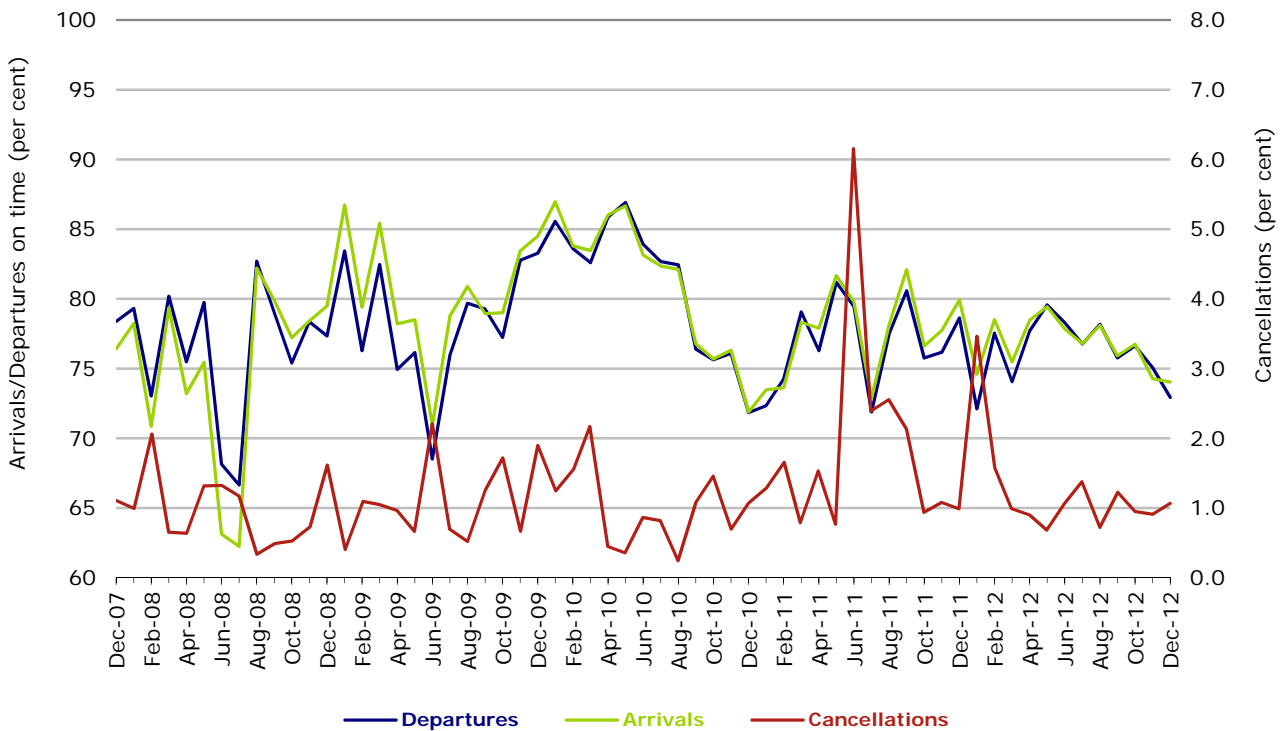
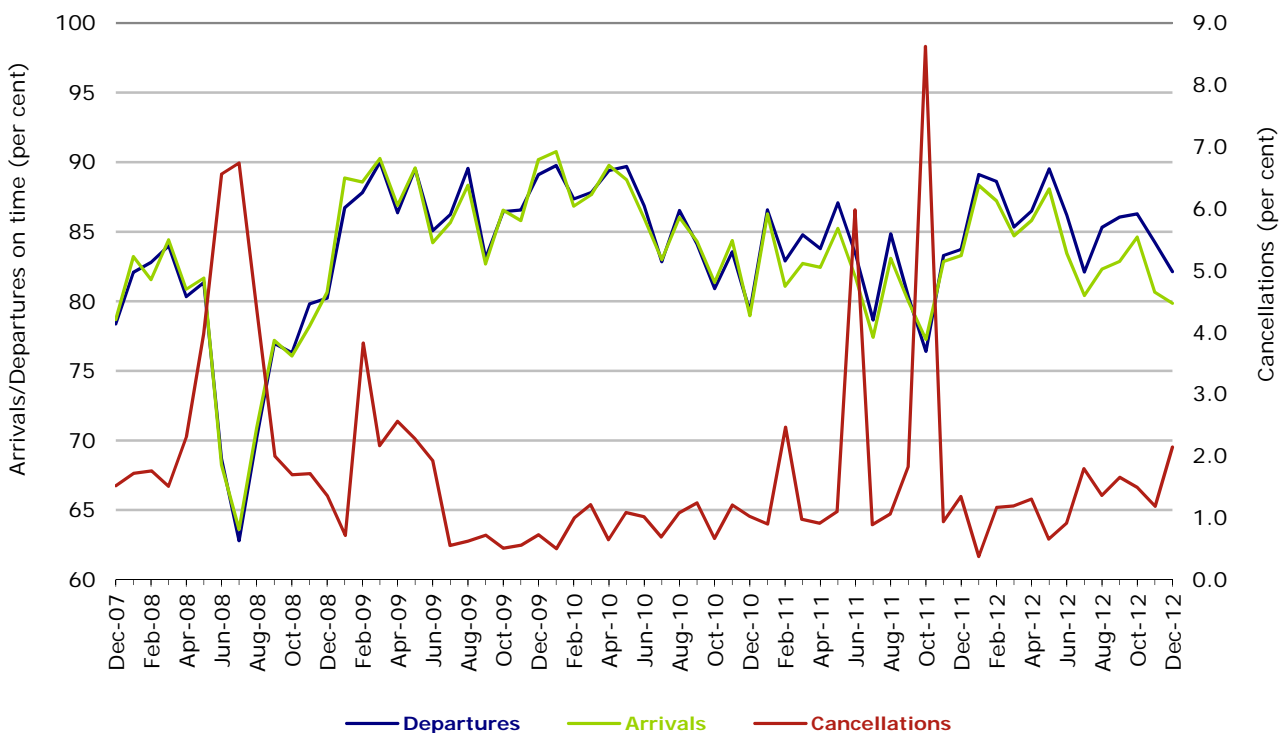
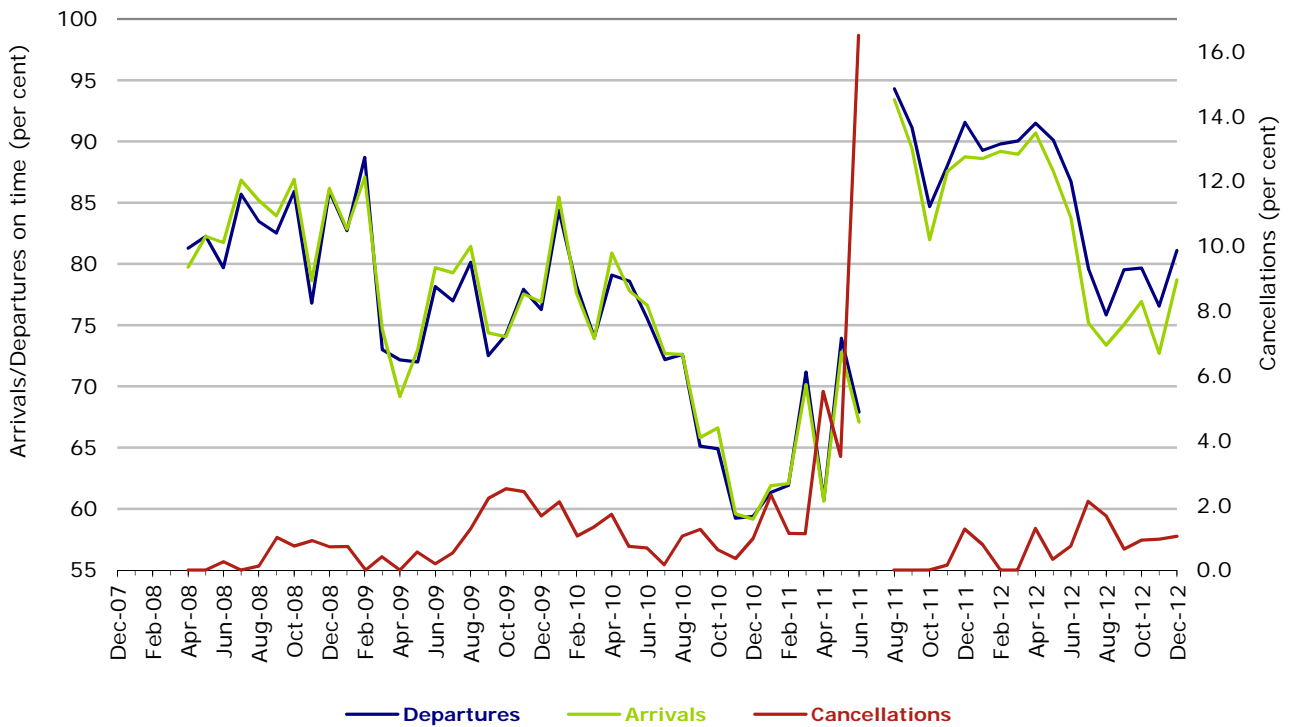


Figure 4 On time performance (by month from December 2007)—Qantas



During October 2011 there were disruptions to Qantas services on several days due to industrial disputes and the entire fleet was grounded for nearly 48 hours at the end of the month.

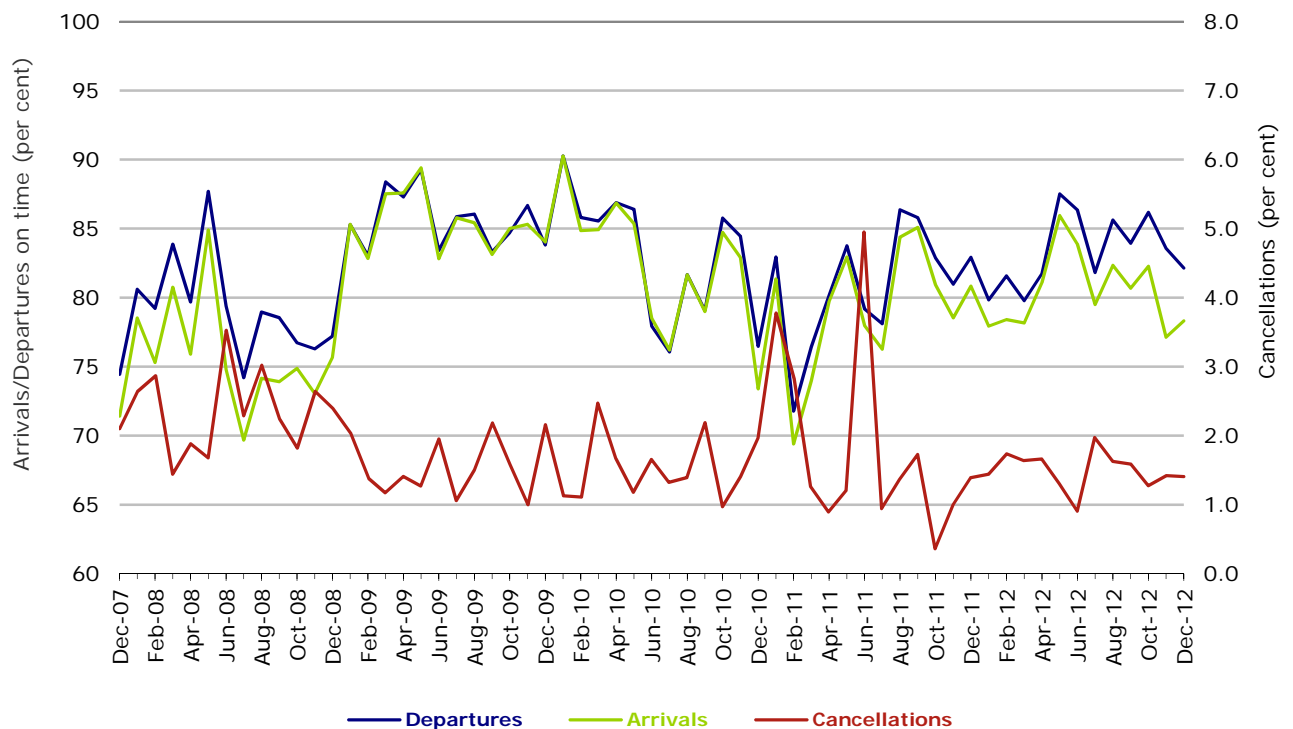
Figure 5 On time performance (by month from December 2007)—Tiger Airways



Tiger Airways commenced reporting in April 2008.

No data for Tiger Airways for July 2011 as it was grounded by CASA from 2/7/2011 to 11/8/2011.

Figure 6 On time performance (by month from December 2007)—Virgin Australia



## Major regional airlines on time performance

Figure 7 On time performance (by month from December 2007)—QantasLink

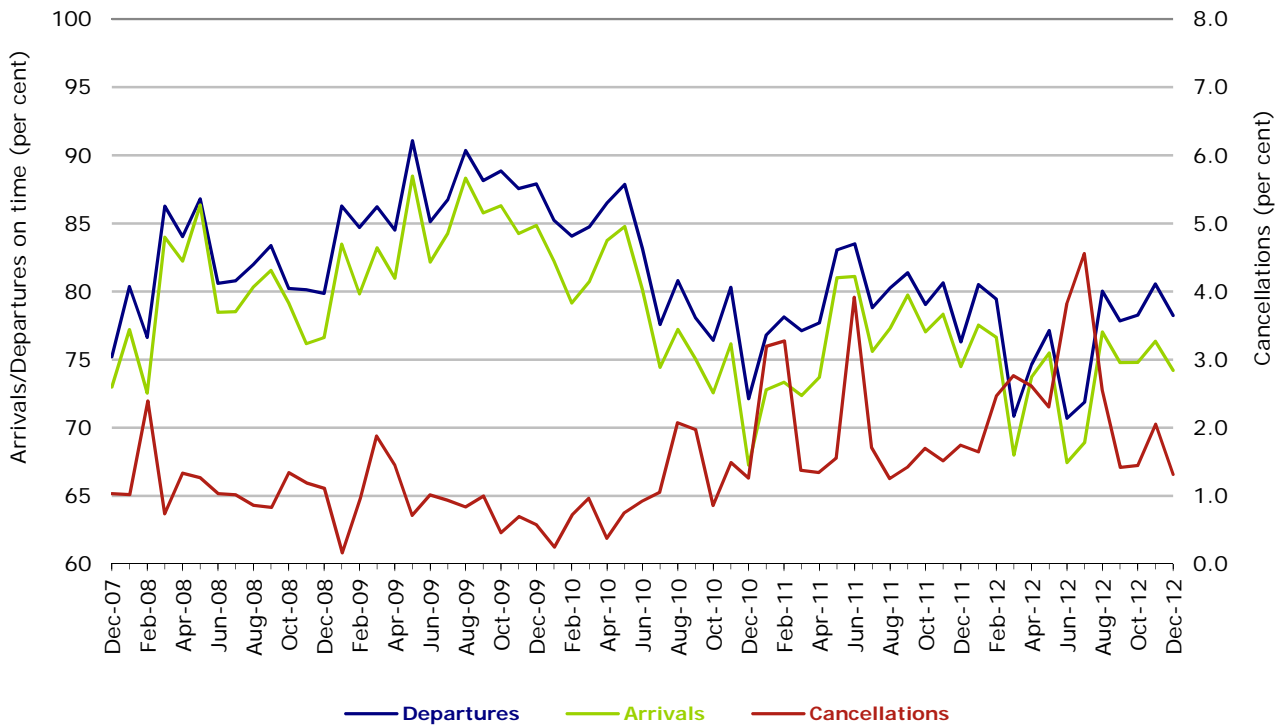


Figure 8 On time performance (by month from December 2007)—Regional Express

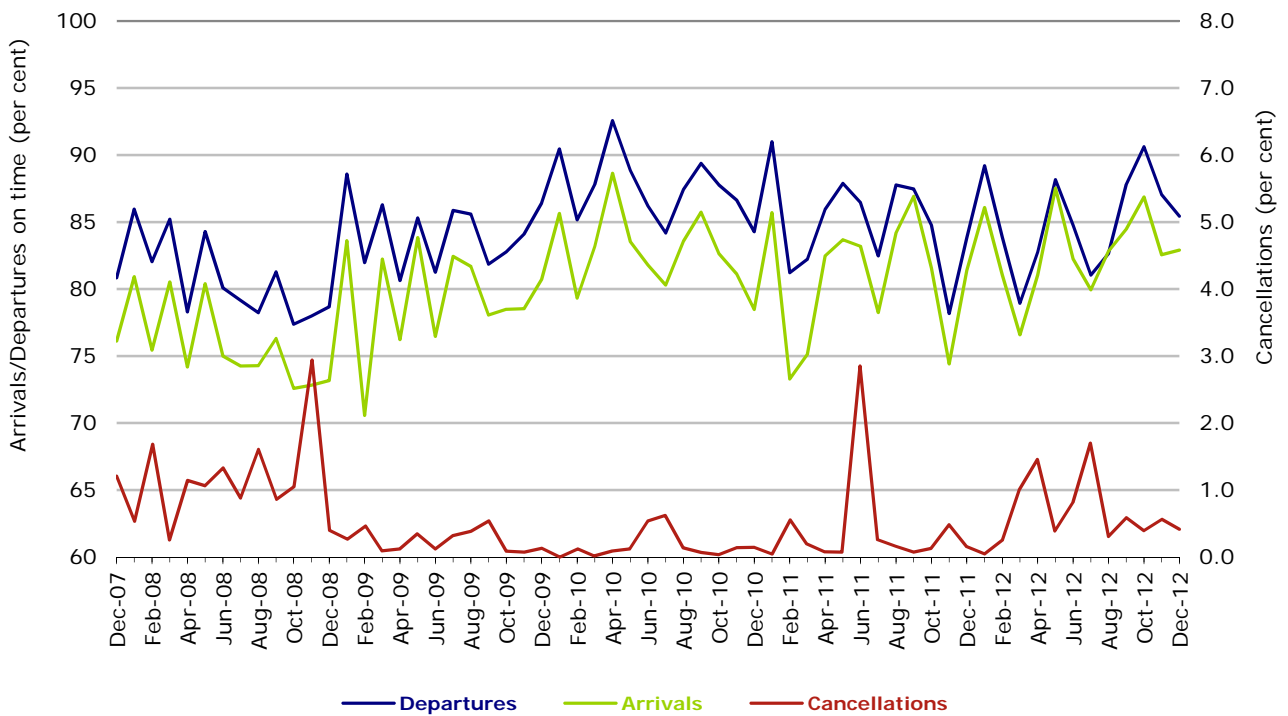


Figure 9 On time performance (by month from December 2007)—Skywest

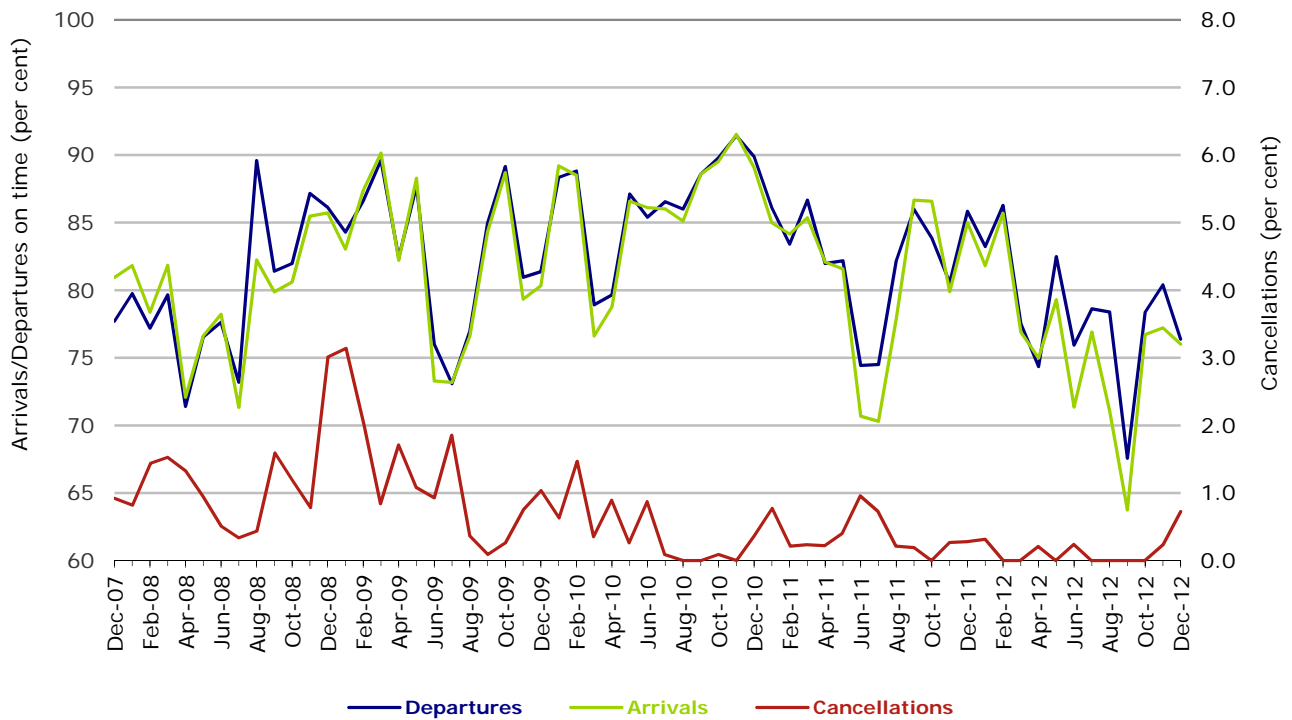
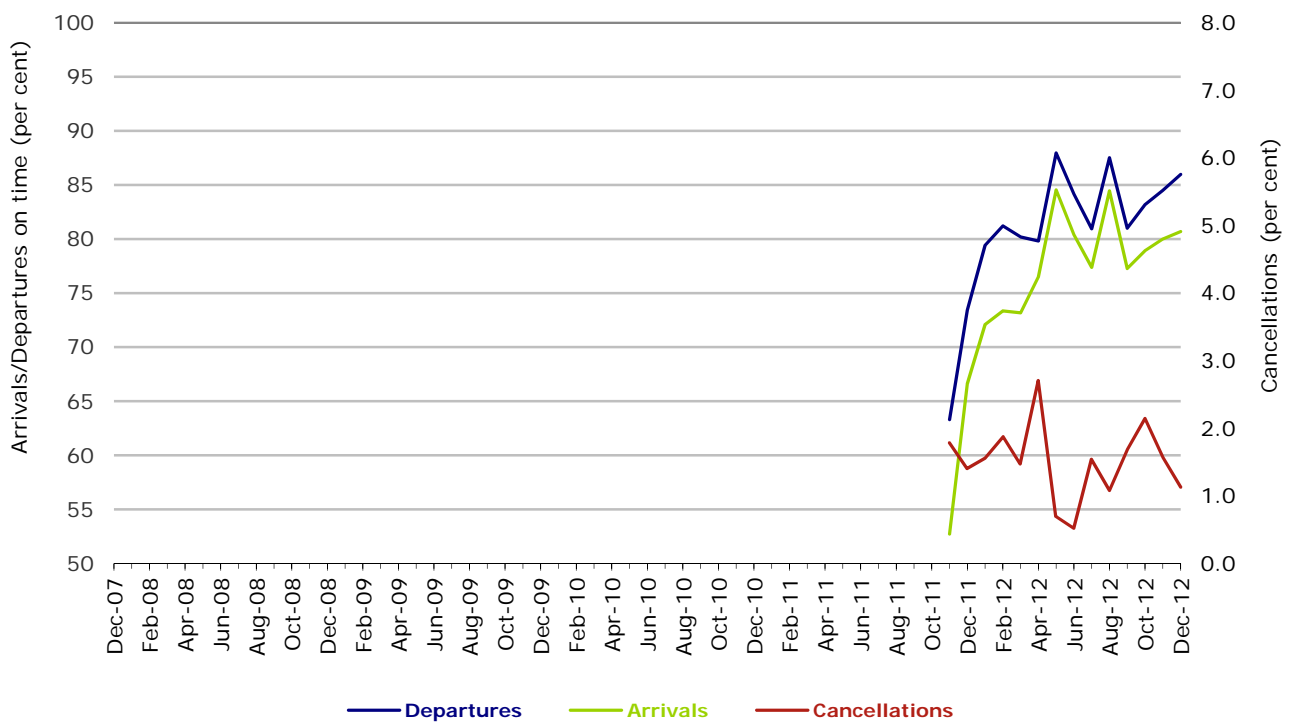


Figure 10 On time performance (by month from December 2007) Virgin Australia - ATR/F100 Operations



Virgin Australia - ATR/F100 Operations commenced in November 2011.



## Individual routes

On time performance is reported for all routes where the passenger load averages over 8000 passengers per month over the previous six months, and where two or more airlines operate in competition on those routes. There are now 58 routes which meet this definition. Over time, however, routes which meet this definition may change as airline networks and traffic levels vary.

	<i>Sectors</i>		<i>Departures On Time</i>		<i>Arrivals On Time</i>		<i>Cancellations</i>	
	<i>Sched.</i>	<i>Flown</i>	<i>No.</i>	<i>%</i>	<i>No.</i>	<i>%</i>	<i>No.</i>	<i>%</i>
<b>Adelaide-Brisbane</b>								
Jetstar	355	355	319	89.9	314	88.5	0	0.0
Qantas	1 274	1 274	1 127	88.5	1 068	83.8	0	0.0
Virgin Australia	1 279	1 267	1 103	87.1	1 097	86.6	12	0.9
All Airlines	2 908	2 896	2 549	88.0	2 479	85.6	12	0.4
<b>Adelaide-Canberra</b>								
Qantas	550	550	489	88.9	498	90.5	0	0.0
QantasLink	43	42	22	52.4	28	66.7	1	2.3
Virgin Australia	330	326	291	89.3	293	89.9	4	1.2
All Airlines	923	918	802	87.4	819	89.2	5	0.5
<b>Adelaide-Gold Coast</b>								
Jetstar	372	369	320	86.7	329	89.2	3	0.8
Virgin Australia	366	357	344	96.4	337	94.4	9	2.5
All Airlines	738	726	664	91.5	666	91.7	12	1.6
<b>Adelaide-Melbourne</b>								
Jetstar	1 009	993	752	75.7	762	76.7	16	1.6
Qantas	3 525	3 497	3 050	87.2	3 123	89.3	28	0.8
QantasLink	209	199	175	87.9	170	85.4	10	4.8
Tiger Airways	109	109	91	83.5	91	83.5	0	0.0
Virgin Australia	3 414	3 369	3 080	91.4	3 032	90.0	45	1.3
All Airlines	8 266	8 167	7 148	87.5	7 178	87.9	99	1.2
<b>Adelaide-Perth</b>								
Jetstar	411	410	292	71.2	301	73.4	1	0.2
Qantas	1 328	1 328	1 186	89.3	1 181	88.9	0	0.0
Virgin Australia	733	725	631	87.0	629	86.8	8	1.1
All Airlines	2 472	2 463	2 109	85.6	2 111	85.7	9	0.4
<b>Adelaide-Port Lincoln</b>								
QantasLink	1 189	1 160	1 034	89.1	993	85.6	29	2.4
Regional Express	2 375	2 360	2 179	92.3	2 117	89.7	15	0.6
All Airlines	3 564	3 520	3 213	91.3	3 110	88.4	44	1.2
<b>Adelaide-Sydney</b>								
Jetstar	1 075	1 063	823	77.4	804	75.6	12	1.1
Qantas	3 262	3 237	2 905	89.7	2 899	89.6	25	0.8
Virgin Australia	2 003	1 991	1 713	86.0	1 679	84.3	12	0.6
All Airlines	6 340	6 291	5 441	86.5	5 382	85.6	49	0.8
<b>Albury-Sydney</b>								
QantasLink	1 366	1 358	868	63.9	867	63.8	8	0.6
Regional Express	1 266	1 262	1 014	80.3	984	78.0	4	0.3
Virgin Australia	579	561	471	84.0	467	83.2	18	3.1
Virgin Australia - ATR/F100 Operations	138	138	111	80.4	88	63.8	0	0.0
All Airlines	3 349	3 319	2 464	74.2	2 406	72.5	30	0.9
<b>Ayers Rock-Sydney</b>								
Qantas	366	365	320	87.7	334	91.5	1	0.3
Virgin Australia	368	362	297	82.0	324	89.5	6	1.6
All Airlines	734	727	617	84.9	658	90.5	7	1.0

	<i>Sectors</i>		<i>Departures On Time</i>		<i>Arrivals On Time</i>		<i>Cancellations</i>	
	<i>Sched.</i>	<i>Flown</i>	<i>No.</i>	<i>%</i>	<i>No.</i>	<i>%</i>	<i>No.</i>	<i>%</i>
<b>Ballina-Sydney</b>								
Jetstar	582	580	411	70.9	384	66.2	2	0.3
Regional Express	360	357	226	63.3	200	56.0	3	0.8
Virgin Australia	366	362	272	75.1	241	66.6	4	1.1
All Airlines	1 308	1 299	909	70.0	825	63.5	9	0.7
<b>Brisbane-Adelaide</b>								
Jetstar	352	352	329	93.5	331	94.0	0	0.0
Qantas	1 273	1 273	1 061	83.3	1 115	87.6	0	0.0
Virgin Australia	1 280	1 269	1 076	84.8	1 124	88.6	11	0.9
All Airlines	2 905	2 894	2 466	85.2	2 570	88.8	11	0.4
<b>Brisbane-Cairns</b>								
Jetstar	1 218	1 204	987	82.0	968	80.4	14	1.1
Qantas	1 376	1 376	1 095	79.6	1 167	84.8	0	0.0
QantasLink	26	26	20	76.9	9	34.6	0	0.0
Virgin Australia	1 729	1 724	1 468	85.2	1 474	85.5	5	0.3
Virgin Australia - ATR/F100 Operations	273	272	242	89.0	201	73.9	1	0.4
All Airlines	4 622	4 602	3 812	82.8	3 819	83.0	20	0.4
<b>Brisbane-Canberra</b>								
Qantas	1 663	1 660	1 489	89.7	1 500	90.4	3	0.2
QantasLink	261	252	189	75.0	196	77.8	9	3.4
Virgin Australia	1 257	1 248	1 062	85.1	1 039	83.3	9	0.7
All Airlines	3 181	3 160	2 740	86.7	2 735	86.6	21	0.7
<b>Brisbane-Darwin</b>								
Jetstar	25	25	20	80.0	23	92.0	0	0.0
Qantas	366	366	320	87.4	317	86.6	0	0.0
Virgin Australia	368	367	281	76.6	262	71.4	1	0.3
All Airlines	759	758	621	81.9	602	79.4	1	0.1
<b>Brisbane-Emerald</b>								
			(From April 2012 only)					
QantasLink	1 687	1 643	1 397	85.0	1 327	80.8	44	2.6
Virgin Australia - ATR/F100 Operations	706	700	629	89.9	632	90.3	6	0.8
All Airlines	2 393	2 343	2 026	86.5	1 959	83.6	50	2.1
<b>Brisbane-Gladstone</b>								
QantasLink	2 657	2 585	1 994	77.1	1 974	76.4	72	2.7
Virgin Australia - ATR/F100 Operations	1 193	1 166	1 010	86.6	996	85.4	27	2.3
All Airlines	3 850	3 751	3 004	80.1	2 970	79.2	99	2.6
<b>Brisbane-Hamilton Island</b>								
Jetstar	219	218	137	62.8	175	80.3	1	0.5
Virgin Australia	367	365	318	87.1	315	86.3	2	0.5
All Airlines	586	583	455	78.0	490	84.0	3	0.5
<b>Brisbane-Mackay</b>								
Jetstar	1 255	1 245	924	74.2	990	79.5	10	0.8
QantasLink	1 280	1 253	1 020	81.4	984	78.5	27	2.1
Virgin Australia	1 985	1 969	1 641	83.3	1 580	80.2	16	0.8
All Airlines	4 520	4 467	3 585	80.3	3 554	79.6	53	1.2
<b>Brisbane-Melbourne</b>								
Jetstar	1 131	1 108	791	71.4	855	77.2	23	2.0
Qantas	4 790	4 772	3 984	83.5	4 005	83.9	18	0.4
Tiger Airways	1 069	1 069	790	73.9	813	76.1	0	0.0
Virgin Australia	4 434	4 375	3 781	86.4	3 764	86.0	59	1.3
All Airlines	11 424	11 324	9 346	82.5	9 437	83.3	100	0.9



	<i>Sectors</i>		<i>Departures On Time</i>		<i>Arrivals On Time</i>		<i>Cancellations</i>	
	<i>Sched.</i>	<i>Flown</i>	<i>No.</i>	<i>%</i>	<i>No.</i>	<i>%</i>	<i>No.</i>	<i>%</i>
<b>Brisbane-Mount Isa</b>			(From November 2012 only)					
Qantas	112	112	102	91.1	102	91.1	0	0.0
Virgin Australia	43	43	40	93.0	38	88.4	0	0.0
All Airlines	155	155	142	91.6	140	90.3	0	0.0
<b>Brisbane-Newcastle</b>								
Jetstar	1 379	1 375	1 122	81.6	1 125	81.8	4	0.3
QantasLink	824	798	577	72.3	429	53.8	26	3.2
Virgin Australia	84	84	74	88.1	67	79.8	0	0.0
Virgin Australia - ATR/F100 Operations	670	669	580	86.7	517	77.3	1	0.1
All Airlines	2 957	2 926	2 353	80.4	2 138	73.1	31	1.0
<b>Brisbane-Perth</b>								
Jetstar	335	334	272	81.4	257	76.9	1	0.3
Qantas	1 418	1 415	1 015	71.7	1 078	76.2	3	0.2
Virgin Australia	901	901	757	84.0	680	75.5	0	0.0
All Airlines	2 654	2 650	2 044	77.1	2 015	76.0	4	0.2
<b>Brisbane-Proserpine</b>								
Jetstar	337	336	281	83.6	270	80.4	1	0.3
Virgin Australia	367	365	327	89.6	322	88.2	2	0.5
Virgin Australia - ATR/F100 Operations	229	228	214	93.9	180	78.9	1	0.4
All Airlines	933	929	822	88.5	772	83.1	4	0.4
<b>Brisbane-Rockhampton</b>								
QantasLink	2 556	2 519	1 908	75.7	1 938	76.9	37	1.4
Virgin Australia	1 101	1 095	950	86.8	931	85.0	6	0.5
Virgin Australia - ATR/F100 Operations	1 088	1 073	906	84.4	902	84.1	15	1.4
All Airlines	4 745	4 687	3 764	80.3	3 771	80.5	58	1.2
<b>Brisbane-Sydney</b>								
Jetstar	1 269	1 244	800	64.3	772	62.1	25	2.0
Qantas	6 844	6 745	5 661	83.9	5 513	81.7	99	1.4
Tiger Airways	513	507	363	71.6	357	70.4	6	1.2
Virgin Australia	6 781	6 641	5 486	82.6	5 260	79.2	140	2.1
All Airlines	15 407	15 137	12 310	81.3	11 902	78.6	270	1.8
<b>Brisbane-Townsville</b>								
Jetstar	364	357	235	65.8	260	72.8	7	1.9
Qantas	1 693	1 693	1 419	83.8	1 422	84.0	0	0.0
Virgin Australia	1 996	1 990	1 660	83.4	1 653	83.1	6	0.3
All Airlines	4 053	4 040	3 314	82.0	3 335	82.5	13	0.3
<b>Broome-Perth</b>								
Qantas	449	448	283	63.2	303	67.6	1	0.2
QantasLink	520	505	416	82.4	428	84.8	15	2.9
Skywest	217	217	142	65.4	125	57.6	0	0.0
Virgin Australia	553	539	433	80.3	420	77.9	14	2.5
All Airlines	1 739	1 709	1 274	74.5	1 276	74.7	30	1.7
<b>Cairns-Brisbane</b>								
Jetstar	1 219	1 207	1 073	88.9	1 008	83.5	12	1.0
Qantas	1 376	1 374	1 225	89.2	1 107	80.6	2	0.1
QantasLink	26	26	22	84.6	21	80.8	0	0.0
Virgin Australia	1 730	1 723	1 529	88.7	1 408	81.7	7	0.4
Virgin Australia - ATR/F100 Operations	273	271	184	67.9	202	74.5	2	0.7
All Airlines	4 624	4 601	4 033	87.7	3 746	81.4	23	0.5
<b>Cairns-Melbourne</b>								
Jetstar	916	912	726	79.6	734	80.5	4	0.4
Qantas	366	366	288	78.7	309	84.4	0	0.0
Tiger Airways	237	237	174	73.4	178	75.1	0	0.0
Virgin Australia	415	413	314	76.0	307	74.3	2	0.5
All Airlines	1 934	1 928	1 502	77.9	1 528	79.3	6	0.3

	<i>Sectors</i>		<i>Departures On Time</i>		<i>Arrivals On Time</i>		<i>Cancellations</i>	
	<i>Sched.</i>	<i>Flown</i>	<i>No.</i>	<i>%</i>	<i>No.</i>	<i>%</i>	<i>No.</i>	<i>%</i>
<b>Cairns-Sydney</b>								
Jetstar	874	862	708	82.1	671	77.8	12	1.4
Qantas	1 058	1 055	924	87.6	953	90.3	3	0.3
Virgin Australia	1 090	1 085	946	87.2	944	87.0	5	0.5
All Airlines	3 022	3 002	2 578	85.9	2 568	85.5	20	0.7
<b>Cairns-Townsville</b>								
QantasLink	2 184	2 146	1 776	82.8	1 673	78.0	38	1.7
Virgin Australia	157	151	129	85.4	131	86.8	6	3.8
Virgin Australia - ATR/F100 Operations	156	156	134	85.9	134	85.9	0	0.0
All Airlines	2 497	2 453	2 039	83.1	1 938	79.0	44	1.8
<b>Canberra-Adelaide</b>								
Qantas	601	600	561	93.5	560	93.3	1	0.2
QantasLink	43	43	28	65.1	24	55.8	0	0.0
Virgin Australia	331	328	285	86.9	289	88.1	3	0.9
All Airlines	975	971	874	90.0	873	89.9	4	0.4
<b>Canberra-Brisbane</b>								
Qantas	1 663	1 660	1 531	92.2	1 403	84.5	3	0.2
QantasLink	261	251	170	67.7	166	66.1	10	3.8
Virgin Australia	1 258	1 245	1 136	91.2	1 012	81.3	13	1.0
All Airlines	3 182	3 156	2 837	89.9	2 581	81.8	26	0.8
<b>Canberra-Melbourne</b>								
Qantas	2 950	2 926	2 656	90.8	2 616	89.4	24	0.8
QantasLink	467	423	335	79.2	311	73.5	44	9.4
Virgin Australia	2 024	1 999	1 718	85.9	1 692	84.6	25	1.2
All Airlines	5 441	5 348	4 709	88.1	4 619	86.4	93	1.7
<b>Canberra-Sydney</b>								
Qantas	1 759	1 726	1 520	88.1	1 503	87.1	33	1.9
QantasLink	4 726	4 403	3 305	75.1	3 095	70.3	323	6.8
Virgin Australia	1 076	1 025	855	83.4	772	75.3	51	4.7
Virgin Australia - ATR/F100 Operations	1 945	1 904	1 570	82.5	1 449	76.1	41	2.1
All Airlines	9 506	9 058	7 250	80.0	6 819	75.3	448	4.7
<b>Coffs Harbour-Sydney</b>								
QantasLink	1 724	1 713	1 138	66.4	1 225	71.5	11	0.6
Virgin Australia	722	705	577	81.8	574	81.4	17	2.4
All Airlines	2 446	2 418	1 715	70.9	1 799	74.4	28	1.1
<b>Darwin-Brisbane</b>								
Jetstar	26	26	22	84.6	24	92.3	0	0.0
Qantas	366	365	267	73.2	276	75.6	1	0.3
Virgin Australia	368	368	266	72.3	290	78.8	0	0.0
All Airlines	760	759	555	73.1	590	77.7	1	0.1
<b>Darwin-Melbourne</b>								
Jetstar	66	66	43	65.2	43	65.2	0	0.0
Qantas	167	166	130	78.3	130	78.3	1	0.6
Virgin Australia	366	364	350	96.2	343	94.2	2	0.5
All Airlines	599	596	523	87.8	516	86.6	3	0.5
<b>Darwin-Perth</b>								
Qantas	366	366	290	79.2	310	84.7	0	0.0
Virgin Australia	325	325	306	94.2	303	93.2	0	0.0
All Airlines	691	691	596	86.3	613	88.7	0	0.0
<b>Darwin-Sydney</b>								
			(From July 2012 only)					
Jetstar	141	141	117	83.0	120	85.1	0	0.0
Qantas	341	340	299	87.9	294	86.5	1	0.3
Virgin Australia	184	183	144	78.7	130	71.0	1	0.5
All Airlines	666	664	560	84.3	544	81.9	2	0.3

	<i>Sectors</i>		<i>Departures On Time</i>		<i>Arrivals On Time</i>		<i>Cancellations</i>	
	<i>Sched.</i>	<i>Flown</i>	<i>No.</i>	<i>%</i>	<i>No.</i>	<i>%</i>	<i>No.</i>	<i>%</i>
<b>Dubbo-Sydney</b>								
QantasLink	1 282	1 280	890	69.5	760	59.4	2	0.2
Regional Express	1 952	1 919	1 591	82.9	1 525	79.5	33	1.7
All Airlines	3 234	3 199	2 481	77.6	2 285	71.4	35	1.1
<b>Emerald-Brisbane</b>								
			(From April 2012 only)					
QantasLink	1 687	1 641	1 286	78.4	1 225	74.6	46	2.7
Virgin Australia - ATR/F100 Operations	706	699	634	90.7	610	87.3	7	1.0
All Airlines	2 393	2 340	1 920	82.1	1 835	78.4	53	2.2
<b>Geraldton-Perth</b>								
			(From March 2012 only)					
QantasLink	524	521	352	67.6	271	52.0	3	0.6
Skywest	858	858	595	69.3	561	65.4	0	0.0
All Airlines	1 382	1 379	947	68.7	832	60.3	3	0.2
<b>Gladstone-Brisbane</b>								
QantasLink	2 910	2 827	2 078	73.5	1 906	67.4	83	2.9
Virgin Australia - ATR/F100 Operations	1 194	1 155	1 001	86.7	938	81.2	39	3.3
All Airlines	4 104	3 982	3 079	77.3	2 844	71.4	122	3.0
<b>Gold Coast-Adelaide</b>								
Jetstar	374	373	327	87.7	330	88.5	1	0.3
Virgin Australia	365	355	328	92.4	328	92.4	10	2.7
All Airlines	739	728	655	90.0	658	90.4	11	1.5
<b>Gold Coast-Melbourne</b>								
Jetstar	2 623	2 587	1 999	77.3	1 965	76.0	36	1.4
Tiger Airways	903	897	670	74.7	631	70.3	6	0.7
Virgin Australia	2 430	2 399	2 031	84.7	2 100	87.5	31	1.3
All Airlines	5 956	5 883	4 700	79.9	4 696	79.8	73	1.2
<b>Gold Coast-Sydney</b>								
Jetstar	3 811	3 737	2 833	75.8	2 883	77.1	74	1.9
Qantas	195	195	169	86.7	146	74.9	0	0.0
Tiger Airways	520	504	376	74.6	323	64.1	16	3.1
Virgin Australia	4 093	3 978	3 135	78.8	3 102	78.0	115	2.8
All Airlines	8 619	8 414	6 513	77.4	6 454	76.7	205	2.4
<b>Hamilton Island-Brisbane</b>								
Jetstar	218	217	171	78.8	174	80.2	1	0.5
Virgin Australia	369	362	284	78.5	289	79.8	7	1.9
All Airlines	587	579	455	78.6	463	80.0	8	1.4
<b>Hamilton Island-Sydney</b>								
Jetstar	368	361	241	66.8	240	66.5	7	1.9
Virgin Australia	369	362	227	62.7	229	63.3	7	1.9
All Airlines	737	723	468	64.7	469	64.9	14	1.9
<b>Hobart-Melbourne</b>								
Jetstar	1 912	1 896	1 374	72.5	1 335	70.4	16	0.8
Qantas	749	747	689	92.2	671	89.8	2	0.3
QantasLink	63	62	55	88.7	48	77.4	1	1.6
Tiger Airways	123	123	102	82.9	93	75.6	0	0.0
Virgin Australia	1 709	1 700	1 366	80.4	1 383	81.4	9	0.5
All Airlines	4 556	4 528	3 586	79.2	3 530	78.0	28	0.6
<b>Hobart-Sydney</b>								
Jetstar	861	851	635	74.6	635	74.6	10	1.2
Qantas	367	367	299	81.5	295	80.4	0	0.0
Virgin Australia	729	724	459	63.4	479	66.2	5	0.7
All Airlines	1 957	1 942	1 393	71.7	1 409	72.6	15	0.8

	<i>Sectors</i>		<i>Departures On Time</i>		<i>Arrivals On Time</i>		<i>Cancellations</i>	
	<i>Sched.</i>	<i>Flown</i>	<i>No.</i>	<i>%</i>	<i>No.</i>	<i>%</i>	<i>No.</i>	<i>%</i>
<b>Kalgoorlie-Perth</b>								
Qantas	816	814	654	80.3	641	78.7	2	0.2
QantasLink	213	208	171	82.2	163	78.4	5	2.3
Skywest	431	431	288	66.8	232	53.8	0	0.0
All Airlines	1 460	1 453	1 113	76.6	1 036	71.3	7	0.5
<b>Karratha-Perth</b>								
Qantas	2 473	2 397	2 039	85.1	1 966	82.0	76	3.1
QantasLink	614	577	477	82.7	481	83.4	37	6.0
Virgin Australia	649	634	465	73.3	377	59.5	15	2.3
All Airlines	3 736	3 608	2 981	82.6	2 824	78.3	128	3.4
<b>Launceston-Melbourne</b>								
Jetstar	1 371	1 349	978	72.5	964	71.5	22	1.6
QantasLink	1 004	977	725	74.2	701	71.8	27	2.7
Virgin Australia	1 594	1 585	1 346	84.9	1 326	83.7	9	0.6
All Airlines	3 969	3 911	3 049	78.0	2 991	76.5	58	1.5
<b>Launceston-Sydney</b>								
Jetstar	488	478	333	69.7	338	70.7	10	2.0
Virgin Australia	366	366	243	66.4	254	69.4	0	0.0
All Airlines	854	844	576	68.2	592	70.1	10	1.2
<b>Mackay-Brisbane</b>								
Jetstar	1 265	1 247	913	73.2	863	69.2	18	1.4
QantasLink	1 279	1 249	958	76.7	927	74.2	30	2.3
Virgin Australia	1 986	1 963	1 647	83.9	1 513	77.1	23	1.2
All Airlines	4 530	4 459	3 518	78.9	3 303	74.1	71	1.6
<b>Melbourne-Adelaide</b>								
Jetstar	997	992	828	83.5	802	80.8	5	0.5
Qantas	3 526	3 507	3 198	91.2	3 097	88.3	19	0.5
QantasLink	209	200	151	75.5	144	72.0	9	4.3
Tiger Airways	109	109	96	88.1	93	85.3	0	0.0
Virgin Australia	3 417	3 381	2 984	88.3	2 966	87.7	36	1.1
All Airlines	8 258	8 189	7 257	88.6	7 102	86.7	69	0.8
<b>Melbourne-Brisbane</b>								
Jetstar	1 130	1 114	779	69.9	695	62.4	16	1.4
Qantas	4 793	4 779	4 227	88.4	3 726	78.0	14	0.3
Tiger Airways	1 072	1 072	965	90.0	852	79.5	0	0.0
Virgin Australia	4 422	4 366	3 810	87.3	3 413	78.2	56	1.3
All Airlines	11 417	11 331	9 781	86.3	8 686	76.7	86	0.8
<b>Melbourne-Cairns</b>								
Jetstar	913	911	759	83.3	784	86.1	2	0.2
Qantas	366	366	320	87.4	316	86.3	0	0.0
Tiger Airways	237	237	215	90.7	195	82.3	0	0.0
Virgin Australia	416	415	354	85.3	340	81.9	1	0.2
All Airlines	1 932	1 929	1 648	85.4	1 635	84.8	3	0.2
<b>Melbourne-Canberra</b>								
Qantas	2 949	2 928	2 661	90.9	2 650	90.5	21	0.7
QantasLink	468	423	370	87.5	320	75.7	45	9.6
Virgin Australia	2 025	2 009	1 720	85.6	1 697	84.5	16	0.8
All Airlines	5 442	5 360	4 751	88.6	4 667	87.1	82	1.5
<b>Melbourne-Darwin</b>								
Jetstar	69	69	54	78.3	54	78.3	0	0.0
Qantas	167	167	145	86.8	144	86.2	0	0.0
Virgin Australia	366	364	338	92.9	317	87.1	2	0.5
All Airlines	602	600	537	89.5	515	85.8	2	0.3

	<i>Sectors</i>		<i>Departures On Time</i>		<i>Arrivals On Time</i>		<i>Cancellations</i>	
	<i>Sched.</i>	<i>Flown</i>	<i>No.</i>	<i>%</i>	<i>No.</i>	<i>%</i>	<i>No.</i>	<i>%</i>
<b>Melbourne-Gold Coast</b>								
Jetstar	2 617	2 583	1 921	74.4	1 944	75.3	34	1.3
Tiger Airways	903	899	799	88.9	747	83.1	4	0.4
Virgin Australia	2 428	2 402	2 021	84.1	2 038	84.8	26	1.1
All Airlines	5 948	5 884	4 741	80.6	4 729	80.4	64	1.1
<b>Melbourne-Hobart</b>								
Jetstar	1 912	1 897	1 416	74.6	1 442	76.0	15	0.8
Qantas	748	747	629	84.2	590	79.0	1	0.1
QantasLink	64	64	38	59.4	35	54.7	0	0.0
Tiger Airways	123	123	104	84.6	102	82.9	0	0.0
Virgin Australia	1 707	1 698	1 433	84.4	1 402	82.6	9	0.5
All Airlines	4 554	4 529	3 620	79.9	3 571	78.8	25	0.5
<b>Melbourne-Launceston</b>								
Jetstar	1 365	1 346	1 048	77.9	1 057	78.5	19	1.4
QantasLink	1 005	980	769	78.5	686	70.0	25	2.5
Virgin Australia	1 594	1 590	1 324	83.3	1 355	85.2	4	0.3
All Airlines	3 964	3 916	3 141	80.2	3 098	79.1	48	1.2
<b>Melbourne-Mildura</b>								
QantasLink	1 045	1 036	848	81.9	773	74.6	9	0.9
Regional Express	1 006	1 006	934	92.8	899	89.4	0	0.0
Virgin Australia	366	364	318	87.4	311	85.4	2	0.5
All Airlines	2 417	2 406	2 100	87.3	1 983	82.4	11	0.5
<b>Melbourne-Newcastle</b>								
Jetstar	1 234	1 224	980	80.1	988	80.7	10	0.8
Virgin Australia	364	361	315	87.3	313	86.7	3	0.8
All Airlines	1 598	1 585	1 295	81.7	1 301	82.1	13	0.8
<b>Melbourne-Perth</b>								
Jetstar	962	940	720	76.6	664	70.6	22	2.3
Qantas	2 562	2 557	2 153	84.2	2 105	82.3	5	0.2
Tiger Airways	864	861	770	89.4	756	87.8	3	0.3
Virgin Australia	1 790	1 783	1 542	86.5	1 294	72.6	7	0.4
All Airlines	6 178	6 141	5 185	84.4	4 819	78.5	37	0.6
<b>Melbourne-Sunshine Coast</b>								
Jetstar	712	706	472	66.9	500	70.8	6	0.8
Virgin Australia	373	368	318	86.4	300	81.5	5	1.3
All Airlines	1 085	1 074	790	73.6	800	74.5	11	1.0
<b>Melbourne-Sydney</b>								
Jetstar	3 055	2 967	1 981	66.8	2 091	70.5	88	2.9
Qantas	10 586	10 159	8 879	87.4	8 447	83.1	427	4.0
Tiger Airways	2 806	2 768	2 405	86.9	2 462	88.9	38	1.4
Virgin Australia	9 546	9 252	7 993	86.4	7 397	80.0	294	3.1
All Airlines	25 993	25 146	21 258	84.5	20 397	81.1	847	3.3
<b>Mildura-Melbourne</b>								
QantasLink	1 044	1 038	906	87.3	840	80.9	6	0.6
Regional Express	1 007	1 007	941	93.4	923	91.7	0	0.0
Virgin Australia	366	364	317	87.1	319	87.6	2	0.5
All Airlines	2 417	2 409	2 164	89.8	2 082	86.4	8	0.3
<b>Mount Isa-Brisbane</b>								
								(From November 2012 only)
Qantas	112	112	101	90.2	96	85.7	0	0.0
Virgin Australia	43	43	37	86.0	34	79.1	0	0.0
All Airlines	155	155	138	89.0	130	83.9	0	0.0

	<i>Sectors</i>		<i>Departures On Time</i>		<i>Arrivals On Time</i>		<i>Cancellations</i>	
	<i>Sched.</i>	<i>Flown</i>	<i>No.</i>	<i>%</i>	<i>No.</i>	<i>%</i>	<i>No.</i>	<i>%</i>
<b>Newcastle-Brisbane</b>								
Jetstar	1 374	1 370	1 087	79.3	1 038	75.8	4	0.3
QantasLink	823	796	441	55.4	425	53.4	27	3.3
Virgin Australia	84	84	69	82.1	61	72.6	0	0.0
Virgin Australia - ATR/F100 Operations	669	668	494	74.0	436	65.3	1	0.1
All Airlines	2 950	2 918	2 091	71.7	1 960	67.2	32	1.1
<b>Newcastle-Melbourne</b>								
Jetstar	1 238	1 226	1 027	83.8	994	81.1	12	1.0
Virgin Australia	364	359	279	77.7	289	80.5	5	1.4
All Airlines	1 602	1 585	1 306	82.4	1 283	80.9	17	1.1
<b>Newman-Perth</b>								
Qantas	1 264	1 244	996	80.1	945	76.0	20	1.6
QantasLink	409	393	348	88.5	347	88.3	16	3.9
Virgin Australia	376	371	282	76.0	268	72.2	5	1.3
All Airlines	2 049	2 008	1 626	81.0	1 560	77.7	41	2.0
<b>Perth-Adelaide</b>								
Jetstar	415	408	257	63.0	284	69.6	7	1.7
Qantas	1 325	1 323	1 070	80.9	1 137	85.9	2	0.2
Virgin Australia	732	724	663	91.6	674	93.1	8	1.1
All Airlines	2 472	2 455	1 990	81.1	2 095	85.3	17	0.7
<b>Perth-Brisbane</b>								
Jetstar	334	332	135	40.7	209	63.0	2	0.6
Qantas	1 418	1 417	1 104	77.9	1 038	73.3	1	0.1
Virgin Australia	902	902	805	89.2	698	77.4	0	0.0
All Airlines	2 654	2 651	2 044	77.1	1 945	73.4	3	0.1
<b>Perth-Broome</b>								
Qantas	451	451	327	72.5	340	75.4	0	0.0
QantasLink	520	510	428	83.9	407	79.8	10	1.9
Skywest	197	197	123	62.4	134	68.0	0	0.0
Virgin Australia	553	542	463	85.4	464	85.6	11	2.0
All Airlines	1 721	1 700	1 341	78.9	1 345	79.1	21	1.2
<b>Perth-Darwin</b>								
Qantas	366	366	299	81.7	302	82.5	0	0.0
Virgin Australia	325	325	287	88.3	280	86.2	0	0.0
All Airlines	691	691	586	84.8	582	84.2	0	0.0
<b>Perth-Geraldton</b>								
			(From March 2012 only)					
QantasLink	524	523	350	66.9	375	71.7	1	0.2
Skywest	820	820	603	73.5	564	68.8	0	0.0
All Airlines	1 344	1 343	953	71.0	939	69.9	1	0.1
<b>Perth-Kalgoorlie</b>								
Qantas	816	814	706	86.7	685	84.2	2	0.2
QantasLink	212	211	184	87.2	181	85.8	1	0.5
Skywest	460	460	351	76.3	304	66.1	0	0.0
All Airlines	1 488	1 485	1 241	83.6	1 170	78.8	3	0.2
<b>Perth-Karratha</b>								
Qantas	2 473	2 408	2 095	87.0	2 070	86.0	65	2.6
QantasLink	614	582	511	87.8	478	82.1	32	5.2
Virgin Australia	645	636	486	76.4	480	75.5	9	1.4
All Airlines	3 732	3 626	3 092	85.3	3 028	83.5	106	2.8

	<i>Sectors</i>		<i>Departures On Time</i>		<i>Arrivals On Time</i>		<i>Cancellations</i>	
	<i>Sched.</i>	<i>Flown</i>	<i>No.</i>	<i>%</i>	<i>No.</i>	<i>%</i>	<i>No.</i>	<i>%</i>
<b>Perth-Melbourne</b>								
Jetstar	964	941	620	65.9	664	70.6	23	2.4
Qantas	2 560	2 546	2 068	81.2	2 180	85.6	14	0.5
Tiger Airways	870	865	676	78.2	612	70.8	5	0.6
Virgin Australia	1 787	1 779	1 554	87.4	1 326	74.5	8	0.4
All Airlines	6 181	6 131	4 918	80.2	4 782	78.0	50	0.8
<b>Perth-Newman</b>								
Qantas	1 262	1 243	1 064	85.6	1 062	85.4	19	1.5
QantasLink	408	397	354	89.2	355	89.4	11	2.7
Virgin Australia	374	369	314	85.1	300	81.3	5	1.3
All Airlines	2 044	2 009	1 732	86.2	1 717	85.5	35	1.7
<b>Perth-Port Hedland</b>								
Qantas	1 416	1 381	1 223	88.6	1 190	86.2	35	2.5
QantasLink	414	400	372	93.0	367	91.8	14	3.4
Virgin Australia	800	787	704	89.5	676	85.9	13	1.6
All Airlines	2 630	2 568	2 299	89.5	2 233	87.0	62	2.4
<b>Perth-Sydney</b>								
Jetstar	534	516	328	63.6	381	73.8	18	3.4
Qantas	2 459	2 446	1 939	79.3	1 972	80.6	13	0.5
Virgin Australia	1 645	1 637	1 382	84.4	1 188	72.6	8	0.5
All Airlines	4 638	4 599	3 649	79.3	3 541	77.0	39	0.8
<b>Port Hedland-Perth</b>								
Qantas	1 417	1 374	1 082	78.7	1 069	77.8	43	3.0
QantasLink	414	397	363	91.4	367	92.4	17	4.1
Virgin Australia	800	788	636	80.7	585	74.2	12	1.5
All Airlines	2 631	2 559	2 081	81.3	2 021	79.0	72	2.7
<b>Port Lincoln-Adelaide</b>								
QantasLink	1 188	1 154	1 016	88.0	1 018	88.2	34	2.9
Regional Express	2 375	2 357	2 119	89.9	2 097	89.0	18	0.8
All Airlines	3 563	3 511	3 135	89.3	3 115	88.7	52	1.5
<b>Port Macquarie-Sydney</b>								
QantasLink	1 593	1 565	1 102	70.4	1 070	68.4	28	1.8
Virgin Australia - ATR/F100 Operations	724	717	563	78.5	494	68.9	7	1.0
All Airlines	2 317	2 282	1 665	73.0	1 564	68.5	35	1.5
<b>Proserpine-Brisbane</b>								
Jetstar	341	339	267	78.8	267	78.8	2	0.6
Virgin Australia	367	365	311	85.2	280	76.7	2	0.5
Virgin Australia - ATR/F100 Operations	229	228	181	79.4	127	55.7	1	0.4
All Airlines	937	932	759	81.4	674	72.3	5	0.5
<b>Rockhampton-Brisbane</b>								
QantasLink	2 303	2 261	1 676	74.1	1 528	67.6	42	1.8
Virgin Australia	1 109	1 094	918	83.9	864	79.0	15	1.4
Virgin Australia - ATR/F100 Operations	1 085	1 057	943	89.2	900	85.1	28	2.6
All Airlines	4 497	4 412	3 537	80.2	3 292	74.6	85	1.9
<b>Sunshine Coast-Melbourne</b>								
Jetstar	717	708	414	58.5	420	59.3	9	1.3
Virgin Australia	373	365	254	69.6	280	76.7	8	2.1
All Airlines	1 090	1 073	668	62.3	700	65.2	17	1.6
<b>Sunshine Coast-Sydney</b>								
Jetstar	1 226	1 208	942	78.0	931	77.1	18	1.5
Virgin Australia	418	405	328	81.0	301	74.3	13	3.1
All Airlines	1 644	1 613	1 270	78.7	1 232	76.4	31	1.9

	<i>Sectors</i>		<i>Departures On Time</i>		<i>Arrivals On Time</i>		<i>Cancellations</i>	
	<i>Sched.</i>	<i>Flown</i>	<i>No.</i>	<i>%</i>	<i>No.</i>	<i>%</i>	<i>No.</i>	<i>%</i>
<b>Sydney-Adelaide</b>								
Jetstar	1 068	1 061	854	80.5	885	83.4	7	0.7
Qantas	3 210	3 205	2 882	89.9	2 854	89.0	5	0.2
Virgin Australia	2 005	1 998	1 542	77.2	1 592	79.7	7	0.3
All Airlines	6 283	6 264	5 278	84.3	5 331	85.1	19	0.3
<b>Sydney-Albury</b>								
QantasLink	1 367	1 362	848	62.3	822	60.4	5	0.4
Regional Express	1 264	1 259	966	76.7	952	75.6	5	0.4
Virgin Australia	579	567	473	83.4	469	82.7	12	2.1
Virgin Australia - ATR/F100 Operations	138	138	103	74.6	99	71.7	0	0.0
All Airlines	3 348	3 326	2 390	71.9	2 342	70.4	22	0.7
<b>Sydney-Ayers Rock</b>								
Qantas	366	366	324	88.5	323	88.3	0	0.0
Virgin Australia	366	364	258	70.9	262	72.0	2	0.5
All Airlines	732	730	582	79.7	585	80.1	2	0.3
<b>Sydney-Ballina</b>								
Jetstar	580	579	475	82.0	472	81.5	1	0.2
Regional Express	398	397	308	77.6	286	72.0	1	0.3
Virgin Australia	366	364	322	88.5	306	84.1	2	0.5
All Airlines	1 344	1 340	1 105	82.5	1 064	79.4	4	0.3
<b>Sydney-Brisbane</b>								
Jetstar	1 272	1 247	987	79.1	916	73.5	25	2.0
Qantas	6 837	6 770	5 858	86.5	5 131	75.8	67	1.0
Tiger Airways	513	510	429	84.1	345	67.6	3	0.6
Virgin Australia	6 793	6 632	5 328	80.3	4 862	73.3	161	2.4
All Airlines	15 415	15 159	12 602	83.1	11 254	74.2	256	1.7
<b>Sydney-Cairns</b>								
Jetstar	869	864	686	79.4	705	81.6	5	0.6
Qantas	1 059	1 059	927	87.5	951	89.8	0	0.0
Virgin Australia	1 090	1 087	780	71.8	801	73.7	3	0.3
All Airlines	3 018	3 010	2 393	79.5	2 457	81.6	8	0.3
<b>Sydney-Canberra</b>								
Qantas	1 808	1 787	1 597	89.4	1 549	86.7	21	1.2
QantasLink	4 726	4 436	3 136	70.7	3 009	67.8	290	6.1
Virgin Australia	1 077	1 046	803	76.8	813	77.7	31	2.9
Virgin Australia - ATR/F100 Operations	1 949	1 911	1 488	77.9	1 436	75.1	38	1.9
All Airlines	9 560	9 180	7 024	76.5	6 807	74.2	380	4.0
<b>Sydney-Coffs Harbour</b>								
QantasLink	1 724	1 711	1 197	70.0	1 172	68.5	13	0.8
Virgin Australia	723	707	576	81.5	579	81.9	16	2.2
All Airlines	2 447	2 418	1 773	73.3	1 751	72.4	29	1.2
<b>Sydney-Darwin</b>								
			(From July 2012 only)					
Jetstar	141	141	132	93.6	130	92.2	0	0.0
Qantas	342	341	272	79.8	288	84.5	1	0.3
Virgin Australia	184	184	147	79.9	134	72.8	0	0.0
All Airlines	667	666	551	82.7	552	82.9	1	0.1
<b>Sydney-Dubbo</b>								
QantasLink	1 282	1 279	889	69.5	903	70.6	3	0.2
Regional Express	1 950	1 923	1 582	82.3	1 635	85.0	27	1.4
All Airlines	3 232	3 202	2 471	77.2	2 538	79.3	30	0.9



	<i>Sectors</i>		<i>Departures On Time</i>		<i>Arrivals On Time</i>		<i>Cancellations</i>	
	<i>Sched.</i>	<i>Flown</i>	<i>No.</i>	<i>%</i>	<i>No.</i>	<i>%</i>	<i>No.</i>	<i>%</i>
<b>Sydney-Gold Coast</b>								
Jetstar	3 790	3 733	2 917	78.1	2 912	78.0	57	1.5
Qantas	195	195	179	91.8	182	93.3	0	0.0
Tiger Airways	519	504	366	72.6	399	79.2	15	2.9
Virgin Australia	4 092	4 002	3 147	78.6	3 117	77.9	90	2.2
All Airlines	8 596	8 434	6 609	78.4	6 610	78.4	162	1.9
<b>Sydney-Hamilton Island</b>								
Jetstar	363	361	257	71.2	270	74.8	2	0.6
Virgin Australia	366	366	280	76.5	256	69.9	0	0.0
All Airlines	729	727	537	73.9	526	72.4	2	0.3
<b>Sydney-Hobart</b>								
Jetstar	861	855	689	80.6	718	84.0	6	0.7
Qantas	368	368	341	92.7	344	93.5	0	0.0
Virgin Australia	730	725	482	66.5	526	72.6	5	0.7
All Airlines	1 959	1 948	1 512	77.6	1 588	81.5	11	0.6
<b>Sydney-Launceston</b>								
Jetstar	485	480	373	77.7	377	78.5	5	1.0
Virgin Australia	364	364	273	75.0	273	75.0	0	0.0
All Airlines	849	844	646	76.5	650	77.0	5	0.6
<b>Sydney-Melbourne</b>								
Jetstar	3 042	2 958	2 084	70.5	2 227	75.3	84	2.8
Qantas	10 582	10 137	9 065	89.4	8 735	86.2	445	4.2
Tiger Airways	2 806	2 764	2 325	84.1	2 289	82.8	42	1.5
Virgin Australia	9 530	9 241	7 589	82.1	7 609	82.3	289	3.0
All Airlines	25 960	25 100	21 063	83.9	20 860	83.1	860	3.3
<b>Sydney-Perth</b>								
Jetstar	528	515	420	81.6	388	75.3	13	2.5
Qantas	2 460	2 451	1 949	79.5	1 939	79.1	9	0.4
Virgin Australia	1 646	1 639	1 290	78.7	1 161	70.8	7	0.4
All Airlines	4 634	4 605	3 659	79.5	3 488	75.7	29	0.6
<b>Sydney-Port Macquarie</b>								
QantasLink	1 593	1 568	1 098	70.0	1 106	70.5	25	1.6
Virgin Australia - ATR/F100 Operations	723	718	552	76.9	499	69.5	5	0.7
All Airlines	2 316	2 286	1 650	72.2	1 605	70.2	30	1.3
<b>Sydney-Sunshine Coast</b>								
Jetstar	1 214	1 202	989	82.3	1 015	84.4	12	1.0
Virgin Australia	418	408	357	87.5	356	87.3	10	2.4
All Airlines	1 632	1 610	1 346	83.6	1 371	85.2	22	1.3
<b>Sydney-Townsville</b>								
Jetstar	306	306	250	81.7	256	83.7	0	0.0
Virgin Australia	366	365	266	72.9	260	71.2	1	0.3
All Airlines	672	671	516	76.9	516	76.9	1	0.1
<b>Sydney-Wagga Wagga</b>								
QantasLink	1 320	1 316	968	73.6	852	64.7	4	0.3
Regional Express	1 364	1 359	1 149	84.5	1 119	82.3	5	0.4
All Airlines	2 684	2 675	2 117	79.1	1 971	73.7	9	0.3
<b>Townsville-Brisbane</b>								
Jetstar	364	356	239	67.1	243	68.3	8	2.2
Qantas	1 693	1 691	1 465	86.6	1 412	83.5	2	0.1
Virgin Australia	1 998	1 987	1 704	85.8	1 537	77.4	11	0.6
All Airlines	4 055	4 034	3 408	84.5	3 192	79.1	21	0.5

	<i>Sectors</i>		<i>Departures On Time</i>		<i>Arrivals On Time</i>		<i>Cancellations</i>	
	<i>Sched.</i>	<i>Flown</i>	<i>No.</i>	<i>%</i>	<i>No.</i>	<i>%</i>	<i>No.</i>	<i>%</i>
<b>Townsville-Cairns</b>								
QantasLink	2 183	2 132	1 576	73.9	1 445	67.8	51	2.3
Virgin Australia	157	152	126	82.9	125	82.2	5	3.2
Virgin Australia - ATR/F100 Operations	156	156	141	90.4	140	89.7	0	0.0
All Airlines	2 496	2 440	1 843	75.5	1 710	70.1	56	2.2
<b>Townsville-Sydney</b>								
Jetstar	307	307	231	75.2	228	74.3	0	0.0
Virgin Australia	366	365	216	59.2	213	58.4	1	0.3
All Airlines	673	672	447	66.5	441	65.6	1	0.1
<b>Wagga Wagga-Sydney</b>								
QantasLink	1 321	1 316	950	72.2	875	66.5	5	0.4
Regional Express	1 362	1 355	1 162	85.8	1 096	80.9	7	0.5
All Airlines	2 683	2 671	2 112	79.1	1 971	73.8	12	0.4

# Airports

On time performance is reported for all routes where the passenger load averages over 8000 passengers per month, and where two or more airlines operate in competition. The following data reports by airport against flights operated on those routes only.

Airport	Departures			Arrivals		
	Sectors	On Time		Sectors	On Time	
	Flown	No.	%	Flown	No.	%
<b>Adelaide</b>						
Jetstar	3 190	2 506	78.6	3 186	2 632	82.6
Qantas	9 886	8 757	88.6	9 908	8 763	88.4
QantasLink	1 401	1 231	87.9	1 397	1 186	84.9
Regional Express	2 360	2 179	92.3	2 357	2 097	89.0
Tiger Airways	109	91	83.5	109	93	85.3
Virgin Australia	8 035	7 162	89.1	8 055	6 973	86.6
All Airlines	24 981	21 926	87.8	25 012	21 744	86.9
Relates to services to and from Brisbane, Canberra, Gold Coast, Melbourne, Perth, Port Lincoln and Sydney.						
<b>Albury</b>						
QantasLink	1 358	868	63.9	1 362	822	60.4
Regional Express	1 262	1 014	80.3	1 259	952	75.6
Virgin Australia	561	471	84.0	567	469	82.7
Virgin Australia - ATR/F100 Operations	138	111	80.4	138	99	71.7
All Airlines	3 319	2 464	74.2	3 326	2 342	70.4
Relates to services to and from Sydney only.						
<b>Ayers Rock</b>						
Qantas	365	320	87.7	366	323	88.3
Virgin Australia	362	297	82.0	364	262	72.0
All Airlines	727	617	84.9	730	585	80.1
Relates to services to and from Sydney only.						
<b>Ballina</b>						
Jetstar	580	411	70.9	579	472	81.5
Regional Express	357	226	63.3	397	286	72.0
Virgin Australia	362	272	75.1	364	306	84.1
All Airlines	1 299	909	70.0	1 340	1 064	79.4
Relates to services to and from Sydney only.						
<b>Brisbane</b>						
Jetstar	7 798	5 898	75.6	7 810	5 751	73.6
Qantas	19 412	16 146	83.2	19 442	15 257	78.5
QantasLink	9 076	7 105	78.3	9 051	6 198	68.5
Tiger Airways	1 576	1 153	73.2	1 582	1 197	75.7
Virgin Australia	22 436	18 921	84.3	22 401	17 358	77.5
Virgin Australia - ATR/F100 Operations	4 108	3 581	87.2	4 078	3 213	78.8
All Airlines	64 406	52 804	82.0	64 364	48 974	76.1
Relates to services to and from Adelaide, Cairns, Canberra, Darwin, Emerald, Gladstone, Hamilton Island, Mackay, Melbourne, Mount Isa, Newcastle, Perth, Proserpine, Rockhampton, Sydney and Townsville.						

Airport	Departures			Arrivals		
	Sectors	On Time		Sectors	On Time	
	Flown	No.	%	Flown	No.	%
<b>Broome</b>						
Qantas	448	283	63.2	451	340	75.4
QantasLink	505	416	82.4	510	407	79.8
Skywest	217	142	65.4	197	134	68.0
Virgin Australia	539	433	80.3	542	464	85.6
All Airlines	1 709	1 274	74.5	1 700	1 345	79.1
Relates to services to and from Perth only.						
<b>Cairns</b>						
Jetstar	2 981	2 507	84.1	2 979	2 457	82.5
Qantas	2 795	2 437	87.2	2 801	2 434	86.9
QantasLink	2 172	1 798	82.8	2 158	1 454	67.4
Tiger Airways	237	174	73.4	237	195	82.3
Virgin Australia	3 372	2 918	86.5	3 378	2 740	81.1
Virgin Australia - ATR/F100 Operations	427	318	74.5	428	341	79.7
All Airlines	11 984	10 152	84.7	11 981	9 621	80.3
Relates to services to and from Brisbane, Melbourne, Sydney and Townsville.						
<b>Canberra</b>						
Qantas	6 912	6 268	90.7	6 925	6 197	89.5
QantasLink	5 120	3 838	75.0	5 153	3 553	69.0
Virgin Australia	4 597	3 994	86.9	4 629	3 842	83.0
Virgin Australia - ATR/F100 Operations	1 904	1 570	82.5	1 911	1 436	75.1
All Airlines	18 533	15 670	84.6	18 618	15 028	80.7
Relates to services to and from Adelaide, Brisbane, Melbourne and Sydney.						
<b>Coffs Harbour</b>						
QantasLink	1 713	1 138	66.4	1 711	1 172	68.5
Virgin Australia	705	577	81.8	707	579	81.9
All Airlines	2 418	1 715	70.9	2 418	1 751	72.4
Relates to services to and from Sydney only.						
<b>Darwin</b>						
Jetstar	233	182	78.1	235	207	88.1
Qantas	1 237	986	79.7	1 240	1 051	84.8
Virgin Australia	1 240	1 066	86.0	1 240	993	80.1
All Airlines	2 710	2 234	82.4	2 715	2 251	82.9
Relates to services to and from Brisbane, Melbourne, Perth and Sydney.						
<b>Dubbo</b>						
QantasLink	1 280	890	69.5	1 279	903	70.6
Regional Express	1 919	1 591	82.9	1 923	1 635	85.0
All Airlines	3 199	2 481	77.6	3 202	2 538	79.3
Relates to services to and from Sydney only.						
<b>Emerald</b>						
	(From April 2012 only)					
QantasLink	1 641	1 286	78.4	1 643	1 327	80.8
Virgin Australia - ATR/F100 Operations	699	634	90.7	700	632	90.3
All Airlines	2 340	1 920	82.1	2 343	1 959	83.6
Relates to services to and from Brisbane only.						

Airport	Departures			Arrivals		
	Sectors	On Time		Sectors	On Time	
	Flown	No.	%	Flown	No.	%
<b>Geraldton</b>	(From March 2012 only)					
QantasLink	521	352	67.6	523	375	71.7
Skywest	858	595	69.3	820	564	68.8
All Airlines	1 379	947	68.7	1 343	939	69.9
Relates to services to and from Perth only.						
<b>Gladstone</b>						
QantasLink	2 827	2 078	73.5	2 585	1 974	76.4
Virgin Australia - ATR/F100 Operations	1 155	1 001	86.7	1 166	996	85.4
All Airlines	3 982	3 079	77.3	3 751	2 970	79.2
Relates to services to and from Brisbane only.						
<b>Gold Coast</b>						
Jetstar	6 697	5 159	77.0	6 685	5 185	77.6
Qantas	195	169	86.7	195	182	93.3
Tiger Airways	1 401	1 046	74.7	1 403	1 146	81.7
Virgin Australia	6 732	5 494	81.6	6 761	5 492	81.2
All Airlines	15 025	11 868	79.0	15 044	12 005	79.8
Relates to services to and from Adelaide, Melbourne and Sydney.						
<b>Hamilton Island</b>						
Jetstar	578	412	71.3	579	445	76.9
Virgin Australia	724	511	70.6	731	571	78.1
All Airlines	1 302	923	70.9	1 310	1 016	77.6
Relates to services to and from Brisbane and Sydney.						
<b>Hobart</b>						
Jetstar	2 747	2 009	73.1	2 752	2 160	78.5
Qantas	1 114	988	88.7	1 115	934	83.8
QantasLink	62	55	88.7	64	35	54.7
Tiger Airways	123	102	82.9	123	102	82.9
Virgin Australia	2 424	1 825	75.3	2 423	1 928	79.6
All Airlines	6 470	4 979	77.0	6 477	5 159	79.7
Relates to services to and from Melbourne and Sydney.						
<b>Kalgoorlie</b>						
Qantas	814	654	80.3	814	685	84.2
QantasLink	208	171	82.2	211	181	85.8
Skywest	431	288	66.8	460	304	66.1
All Airlines	1 453	1 113	76.6	1 485	1 170	78.8
Relates to services to and from Perth only.						
<b>Karratha</b>						
Qantas	2 397	2 039	85.1	2 408	2 070	86.0
QantasLink	577	477	82.7	582	478	82.1
Virgin Australia	634	465	73.3	636	480	75.5
All Airlines	3 608	2 981	82.6	3 626	3 028	83.5
Relates to services to and from Perth only.						

Airport	Departures			Arrivals		
	Sectors Flown	On Time		Sectors Flown	On Time	
		No.	%		No.	%
<b>Launceston</b>						
Jetstar	1 827	1 311	71.8	1 826	1 434	78.5
QantasLink	977	725	74.2	980	686	70.0
Virgin Australia	1 951	1 589	81.4	1 954	1 628	83.3
All Airlines	4 755	3 625	76.2	4 760	3 748	78.7
Relates to services to and from Melbourne and Sydney.						
<b>Mackay</b>						
Jetstar	1 247	913	73.2	1 245	990	79.5
QantasLink	1 249	958	76.7	1 253	984	78.5
Virgin Australia	1 963	1 647	83.9	1 969	1 580	80.2
All Airlines	4 459	3 518	78.9	4 467	3 554	79.6
Relates to services to and from Brisbane only.						
<b>Melbourne</b>						
Jetstar	14 749	10 958	74.3	14 744	10 963	74.4
Qantas	25 210	22 212	88.1	25 157	21 769	86.5
QantasLink	2 703	2 176	80.5	2 699	2 070	76.7
Regional Express	1 006	934	92.8	1 007	923	91.7
Tiger Airways	6 069	5 354	88.2	6 064	4 707	77.6
Virgin Australia	28 353	24 470	86.3	28 312	23 770	84.0
All Airlines	78 090	66 104	84.7	77 983	64 202	82.3
Relates to services to and from Adelaide, Brisbane, Cairns, Canberra, Darwin, Gold Coast, Hobart, Launceston, Mildura, Newcastle, Perth, Sunshine Coast and Sydney.						
<b>Mildura</b>						
QantasLink	1 038	906	87.3	1 036	773	74.6
Regional Express	1 007	941	93.4	1 006	899	89.4
Virgin Australia	364	317	87.1	364	311	85.4
All Airlines	2 409	2 164	89.8	2 406	1 983	82.4
Relates to services to and from Melbourne only.						
<b>Mount Isa</b>						
	(From November 2012 only)					
Qantas	112	101	90.2	112	102	91.1
Virgin Australia	43	37	86.0	43	38	88.4
All Airlines	155	138	89.0	155	140	90.3
Relates to services to and from Brisbane only.						
<b>Newcastle</b>						
Jetstar	2 596	2 114	81.4	2 599	2 113	81.3
QantasLink	796	441	55.4	798	429	53.8
Virgin Australia	443	348	78.6	445	380	85.4
Virgin Australia - ATR/F100 Operations	668	494	74.0	669	517	77.3
All Airlines	4 503	3 397	75.4	4 511	3 439	76.2
Relates to services to and from Brisbane and Melbourne.						
<b>Newman</b>						
Qantas	1 244	996	80.1	1 243	1 062	85.4
QantasLink	393	348	88.5	397	355	89.4
Virgin Australia	371	282	76.0	369	300	81.3
All Airlines	2 008	1 626	81.0	2 009	1 717	85.5
Relates to services to and from Perth only.						

Airport	Departures			Arrivals		
	Sectors Flown	On Time		Sectors Flown	On Time	
		No.	%		No.	%
<b>Perth</b>						
Jetstar	2 197	1 340	61.0	2 199	1 610	73.2
Qantas	14 395	11 895	82.6	14 394	11 537	80.2
QantasLink	2 623	2 199	83.8	2 601	2 057	79.1
Skywest	1 477	1 077	72.9	1 506	918	61.0
Tiger Airways	865	676	78.2	861	756	87.8
Virgin Australia	7 701	6 658	86.5	7 705	5 717	74.2
All Airlines	29 258	23 845	81.5	29 266	22 595	77.2
Relates to services to and from Adelaide, Brisbane, Broome, Darwin, Geraldton, Kalgoorlie, Karratha, Melbourne, Newman, Port Hedland and Sydney.						
<b>Port Hedland</b>						
Qantas	1 374	1 082	78.7	1 381	1 190	86.2
QantasLink	397	363	91.4	400	367	91.8
Virgin Australia	788	636	80.7	787	676	85.9
All Airlines	2 559	2 081	81.3	2 568	2 233	87.0
Relates to services to and from Perth only.						
<b>Port Lincoln</b>						
QantasLink	1 154	1 016	88.0	1 160	993	85.6
Regional Express	2 357	2 119	89.9	2 360	2 117	89.7
All Airlines	3 511	3 135	89.3	3 520	3 110	88.4
Relates to services to and from Adelaide only.						
<b>Port Macquarie</b>						
QantasLink	1 565	1 102	70.4	1 568	1 106	70.5
Virgin Australia - ATR/F100 Operations	717	563	78.5	718	499	69.5
All Airlines	2 282	1 665	73.0	2 286	1 605	70.2
Relates to services to and from Sydney only.						
<b>Proserpine</b>						
Jetstar	339	267	78.8	336	270	80.4
Virgin Australia	365	311	85.2	365	322	88.2
Virgin Australia - ATR/F100 Operations	228	181	79.4	228	180	78.9
All Airlines	932	759	81.4	929	772	83.1
Relates to services to and from Brisbane only.						
<b>Rockhampton</b>						
QantasLink	2 261	1 676	74.1	2 519	1 938	76.9
Virgin Australia	1 094	918	83.9	1 095	931	85.0
Virgin Australia - ATR/F100 Operations	1 057	943	89.2	1 073	902	84.1
All Airlines	4 412	3 537	80.2	4 687	3 771	80.5
Relates to services to and from Brisbane only.						
<b>Sunshine Coast</b>						
Jetstar	1 916	1 356	70.8	1 908	1 515	79.4
Virgin Australia	770	582	75.6	776	656	84.5
All Airlines	2 686	1 938	72.2	2 684	2 171	80.9
Relates to services to and from Melbourne and Sydney.						

Airport	Departures			Arrivals		
	Sectors	On Time		Sectors	On Time	
	Flown	No.	%	Flown	No.	%
<b>Sydney</b>						
Jetstar	14 302	11 113	77.7	14 315	10 478	73.2
Qantas	26 679	23 394	87.7	26 635	22 356	83.9
QantasLink	11 672	8 136	69.7	11 635	7 892	67.8
Regional Express	4 938	4 005	81.1	4 893	3 805	77.8
Tiger Airways	3 778	3 120	82.6	3 779	3 142	83.1
Virgin Australia	30 059	23 913	79.6	30 004	23 554	78.5
Virgin Australia - ATR/F100 Operations	2 767	2 143	77.4	2 759	2 031	73.6
All Airlines	94 195	75 824	80.5	94 020	73 258	77.9

Relates to services to and from Adelaide, Albury, Ayers Rock, Ballina, Brisbane, Cairns, Canberra, Coffs Harbour, Darwin, Dubbo, Gold Coast, Hamilton Island, Hobart, Launceston, Melbourne, Perth, Port Macquarie, Sunshine Coast, Townsville and Wagga Wagga.

**Townsville**

Jetstar	663	470	70.9	663	516	77.8
Qantas	1 691	1 465	86.6	1 693	1 422	84.0
QantasLink	2 132	1 576	73.9	2 146	1 673	78.0
Virgin Australia	2 504	2 046	81.7	2 506	2 044	81.6
Virgin Australia - ATR/F100 Operations	156	141	90.4	156	134	85.9
All Airlines	7 146	5 698	79.7	7 164	5 789	80.8

Relates to services to and from Brisbane, Cairns and Sydney.

**Wagga Wagga**

QantasLink	1 316	950	72.2	1 316	852	64.7
Regional Express	1 355	1 162	85.8	1 359	1 119	82.3
All Airlines	2 671	2 112	79.1	2 675	1 971	73.7

Relates to services to and from Sydney only.



## Definitions

---

On time departure                      A flight departure is counted as "on time" if it departs the gate within 15 minutes of the scheduled departure time shown in the carriers' schedule.

---

On time arrival                         A flight arrival is counted as "on time" if it arrived at the gate within 15 minutes of the scheduled arrival time shown in the carriers' schedule.  
Neither diverted nor cancelled flights count as on time.

---

Cancellation                            A flight removed from service within 7 days of scheduled departure is regarded as a cancellation.

---

On time departure percentage                      The percentage of on time departures is measured against the number of departures *operated* on any particular sector.

---

On time arrival percentage                         The percentage of on time arrivals is measured against the number of arrivals *operated* on any particular sector.

---

Cancellation percentage                      The percentage of cancellations is measured against the number of services *scheduled* on any particular sector.

---