



Australian Government

Department of Infrastructure and Transport

Bureau of Infrastructure, Transport and Regional Economics

STATISTICAL REPORT



Aviation

Domestic airline on time performance 2011

© Commonwealth of Australia 2012

ISSN 1832-0759

This work is copyright and the data contained in this publication should not be reproduced or used in any form without acknowledgement.

Enquiries

Bureau of Infrastructure, Transport and Regional Economics
GPO Box 501
Canberra ACT 2601

Telephone: 02 6274 7790

Facsimile: 02 6274 7727

Website: www.bitre.gov.au

Email: avstats@infrastructure.gov.au

This publication, including a spreadsheet of the time-series data, can be downloaded from the BITRE website: <http://www.bitre.gov.au/info.aspx?ResourceId=214&NodeId=104>.

Disclaimers

BITRE seeks to publish its work to the highest professional standards. However, it cannot accept responsibility for any consequences arising from the use of information herein. Readers should rely on their own skill and judgment in applying any information or analysis to particular issues or circumstances.

Foreword

The Bureau of Infrastructure, Transport and Regional Economics (BITRE) monitors the punctuality and reliability of major domestic airlines operating between Australian airports. The purpose of this is to allow for evaluation of overall industry and individual airline performance, so that consumers of air travel can make informed decisions.

The following domestic airlines reported this data monthly to the BITRE during 2011: Jetstar, Qantas, QantasLink, Regional Express, Skywest Airlines, Tiger Airways, Virgin Australia and Virgin Australia – ATR Operations. Data has been gathered since November 2003, although some airlines commenced reporting at a later date, including Jetstar which first reported in May 2004, MacAir in July 2005 and Tiger Airways in April 2008. MacAir ceased operations in February 2009 and data was not received for December 2008 onwards. Virgin Blue was rebranded as Virgin Australia in May 2011 and time series data in Microsoft Excel spreadsheet format on the BITRE website has been revised to reflect this. Services operated by Skywest on behalf of Virgin Australia using ATR aircraft commenced in November 2011 and are shown separately as Virgin Australia – ATR Operations.

Information presented in this report is for Australian domestic routes for which the passenger load averaged 8000 or more passengers per month over the previous six months, and where two or more airlines operated in competition on those routes. 53 routes met these criteria for all twelve months in 2011 and another route did so for a shorter period of the year. Over time, routes which meet these criteria change as airline networks and traffic levels vary.

Participating airlines report their overall monthly network performance where this is possible.

Total industry figures encompass all services operated by reporting airlines only. These airlines collectively carried over 95 per cent of total domestic passengers (regular public transport only) in 2010.

The method of capturing on time performance varies between airlines utilising different recording systems. Jetstar and Qantas jet aircraft use Aircraft Communication Addressing and Reporting System (ACARS) to electronically measure on time performance. Regional Express, Skywest, Tiger Airways, Virgin Australia and the Qantas non-jet fleet record on time performance manually using records from pilots, gate agents and/or ground crews.

After initial data is collected, aggregate reports are audited internally by participating airlines prior to publication.

Reports and detailed time series data in Microsoft Excel spreadsheet format are available from the BITRE website at: <http://www.bitre.gov.au/info.aspx?ResourceId=214&NodeId=104>.

Contents

	Page
Industry performance	1
Individual routes	9
Airports	21
Definitions	26

Industry performance

For the year ended December 2011, on time performance over all routes operated by participating airlines (Jetstar, Qantas, QantasLink, Regional Express, Skywest Airlines, Tiger Airways, Virgin Australia and Virgin Australia – ATR Operations) averaged 80.8 per cent for on time departures and 79.1 per cent for on time arrivals. Cancellations for 2011 represented 1.8 per cent of all scheduled flights. The equivalent figures for 2010 were 83.3 per cent for departures, 81.8 per cent for arrivals and 1.0 per cent for cancellations.

The long term average performance for all routes since reporting commenced in November 2003 is 84.1 per cent for on time departures and 82.8 per cent for on time arrivals. Cancellations averaged 1.2 per cent of all scheduled flights.

On time performance tracked around 87 per cent for the period before June 2007. There was then a noticeable decrease to 79 per cent for the period from June 2007 to December 2008. For the period January 2009 to June 2010, on time performance rose back up to 85 per cent but has dropped back down to 80 per cent for the period July 2010 to December 2011 (see Figure 1). On time performance in 2011 was affected by adverse weather conditions on the East Coast during January 2011 followed by the extreme weather conditions experienced in February 2011 with cyclones Yasi and Carlos and finally in June 2011 by the volcanic ash cloud from Chile.

Of the major domestic airlines, Qantas achieved the highest level of on time departures for 2011 at 83.0 per cent, followed by Virgin Australia at 81.0 per cent, Jetstar at 76.8 per cent and Tiger Airways at 71.3 per cent. The regional airlines were led by Regional Express at 84.9 per cent, Skywest at 82.2 per cent, QantasLink at 79.5 per cent and Virgin Australia – ATR Operations at 68.5 per cent.

Qantas also achieved the highest on time arrivals among the major domestic airlines at 81.9 per cent, followed by Virgin Australia at 79.4 per cent, Jetstar at 77.6 per cent and Tiger Airways at 70.6 per cent. Skywest was the best performing regional airline for on time arrivals at 81.2 per cent, followed by Regional Express at 80.8 per cent, QantasLink at 76.5 per cent and Virgin Australia – ATR Operations at 59.8 per cent.

Tiger Airways had the highest percentage of cancellations for 2011 at 4.1 per cent, while Skywest and Regional Express had the lowest percentage at 0.4 per cent.

Of the 53 routes which met the criteria for on time performance reporting for all twelve months in 2011, the Adelaide-Port Lincoln route had the highest percentage of on time departures (93.0 per cent) and the Adelaide-Gold Coast route had the highest percentage of on time arrivals (92.9 per cent). The Sunshine Coast-Melbourne route had the lowest percentage of on time departures (58.9 per cent) and the lowest percentage of on time arrivals (63.8 per cent).

Cancellations were highest on the Rockhampton-Brisbane route at 4.2 per cent, followed by Brisbane-Rockhampton at 4.0 per cent, Karratha-Perth at 3.8 per cent, Canberra-Sydney and Melbourne-Sydney each at 3.7 per cent and Sydney-Melbourne at 3.6 per cent.

Of the airports with on time performance reporting for all twelve months in 2011, Port Lincoln Airport recorded the highest percentage of on time departures (92.6 per cent) and the highest percentage of on time arrivals (91.2 per cent). Broome Airport recorded the lowest percentage of on time departures (69.2 per cent) and the lowest percentage of on time arrivals (72.6 per cent). These figures only refer to reported routes and do not cover all flights at these airports.

Table 1 On time performance for the year ended December 2011 — Total Industry

	<i>Sectors</i>		<i>Departures On Time</i>		<i>Arrivals On Time</i>		<i>Cancellations</i>	
	<i>Scheduled</i>	<i>Flown</i>	<i>No.</i>	<i>%</i>	<i>No.</i>	<i>%</i>	<i>No.</i>	<i>%</i>
Jetstar	68 645	67 392	51 744	76.8	52 277	77.6	1 253	1.8
Qantas	121 127	118 396	98 251	83.0	97 023	81.9	2 731	2.3
QantasLink	105 416	103 345	82 113	79.5	79 071	76.5	2 071	2.0
Regional Express	63 277	63 011	53 477	84.9	50 933	80.8	266	0.4
Skywest	10 925	10 884	8 952	82.2	8 841	81.2	41	0.4
Tiger Airways	13 523	12 963	9 242	71.3	9 148	70.6	560	4.1
Virgin Australia	139 478	136 982	111 018	81.0	108 736	79.4	2 496	1.8
Virgin Australia - ATR Operations	1 257	1 237	847	68.5	740	59.8	20	1.6
All Airlines	523 648	514 210	415 644	80.8	406 769	79.1	9 438	1.8

Notes:

Total airline network data (including routes not shown in this report).

Virgin Australia - ATR Operations commenced in November 2011.

Table 2 Top ten routes for on time performance for the year ended December 2011 (covers participating airlines only and routes reported for all twelve months)

<i>Departures</i>		<i>Arrivals</i>	
<i>Route</i>	<i>On Time (%)</i>	<i>Route</i>	<i>On Time (%)</i>
Adelaide-Port Lincoln	93.0	Adelaide-Gold Coast	92.9
Port Lincoln-Adelaide	92.6	Gold Coast-Adelaide	92.6
Adelaide-Gold Coast	92.5	Port Lincoln-Adelaide	91.9
Gold Coast-Adelaide	90.7	Adelaide-Port Lincoln	91.2
Canberra-Brisbane	90.5	Brisbane-Adelaide	90.3
Adelaide-Brisbane	89.7	Brisbane-Canberra	89.0
Cairns-Brisbane	89.2	Canberra-Adelaide	88.8
Perth-Darwin	88.0	Darwin-Perth	88.7
Mildura-Melbourne	87.8	Adelaide-Canberra	88.4
Brisbane-Canberra	87.4	Adelaide-Brisbane	87.4

Table 3 Top ten airports for on time performance for the year ended December 2011 (covers participating airlines only and routes reported for all twelve months)

<i>Departures</i>		<i>Arrivals</i>	
<i>Airport</i>	<i>On Time (%)</i>	<i>Airport</i>	<i>On Time (%)</i>
Port Lincoln	92.6	Port Lincoln	91.2
Mildura	87.8	Adelaide	86.1
Adelaide	87.2	Proserpine	86.0
Canberra	84.7	Townsville	83.4
Cairns	84.6	Port Hedland	82.5
Townsville	82.8	Karratha	82.4
Wagga Wagga	82.4	Canberra	82.2
Port Hedland	81.5	Kalgoorlie	82.0
Karratha	81.3	Newman	82.0
Brisbane	80.9	Cairns	81.5

Total industry on time performance

Figure 1 On time performance (by month from December 2006)—Total Industry

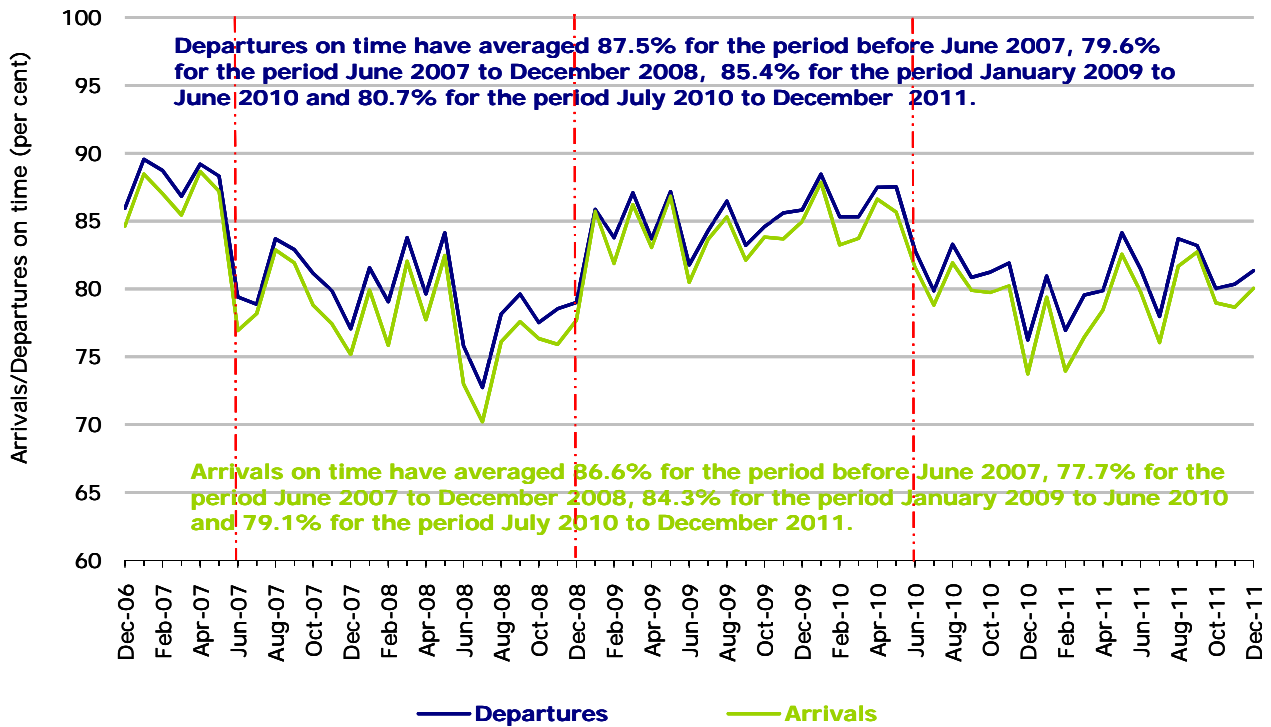
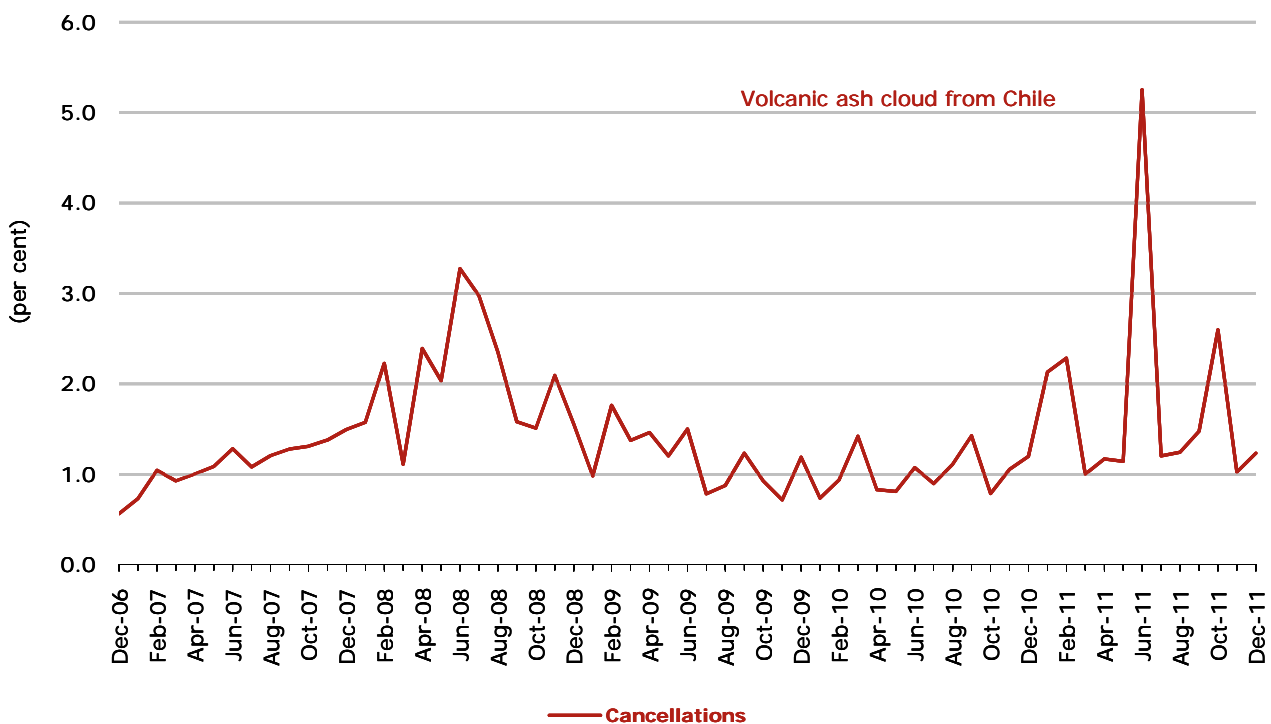


Figure 2 Cancellations (by month from December 2006)—Total Industry



Major domestic airlines on time performance

Figure 3 On time performance (by month from December 2006)—Jetstar

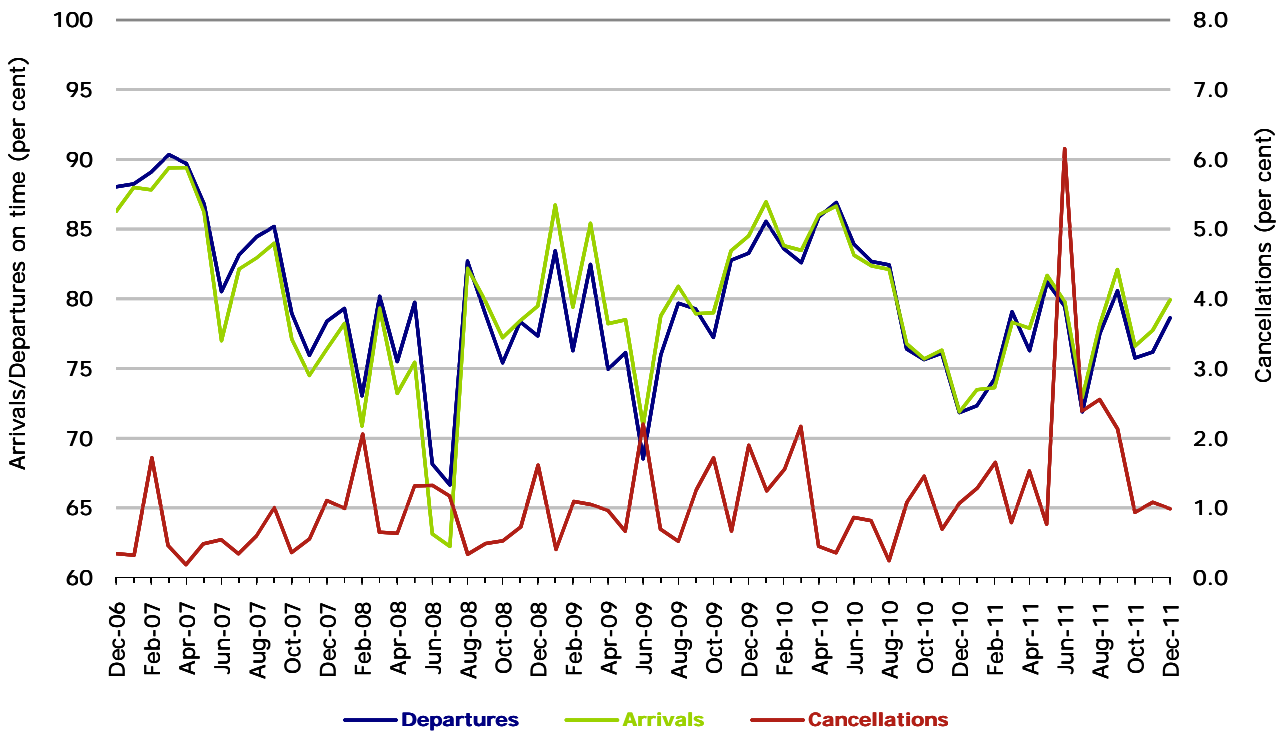
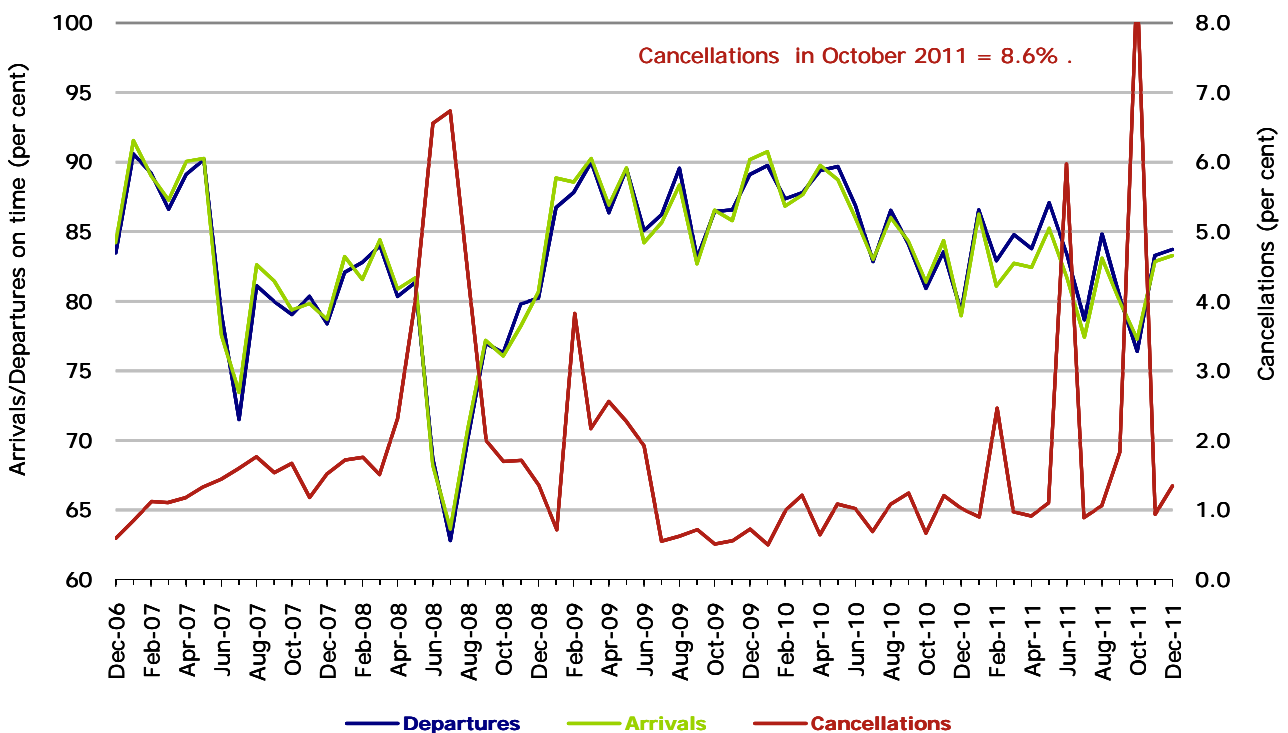
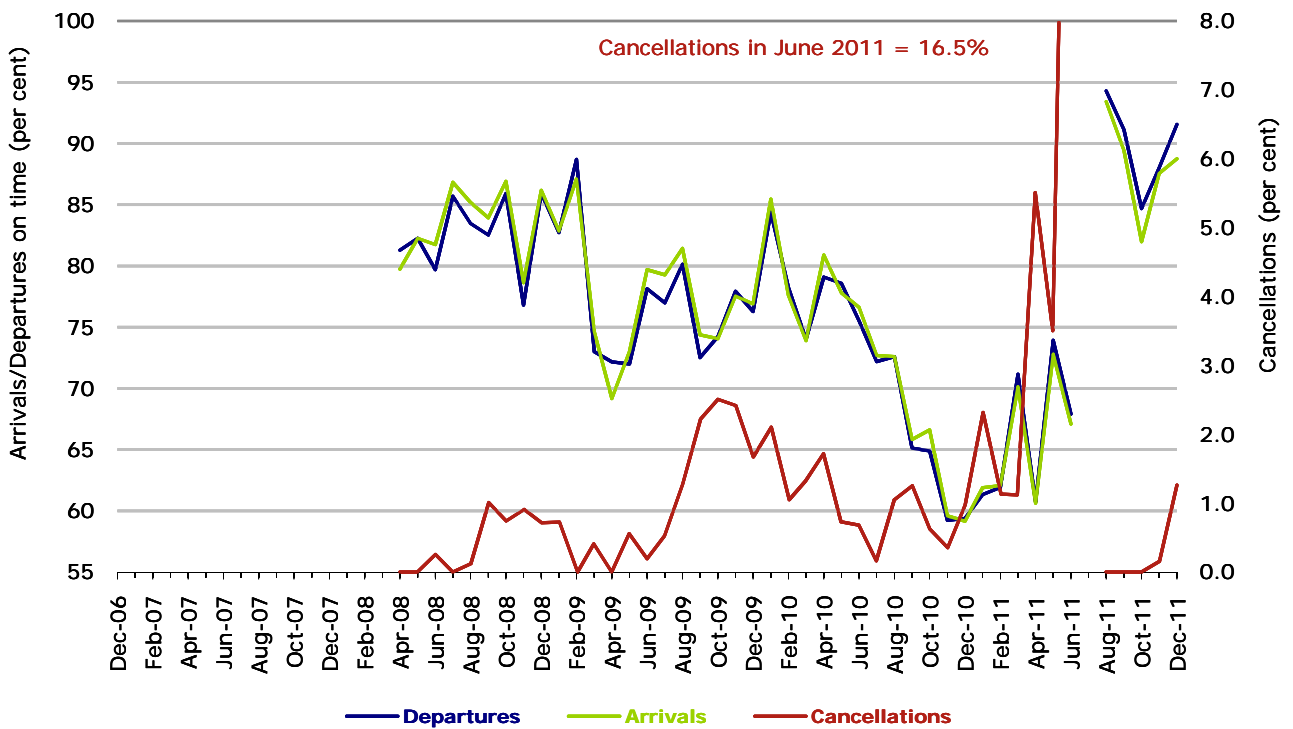


Figure 4 On time performance (by month from December 2006)—Qantas



During October 2011 there were disruptions to Qantas services on several days due to industrial disputes and the entire fleet was grounded for nearly 48 hours at the end of the month.

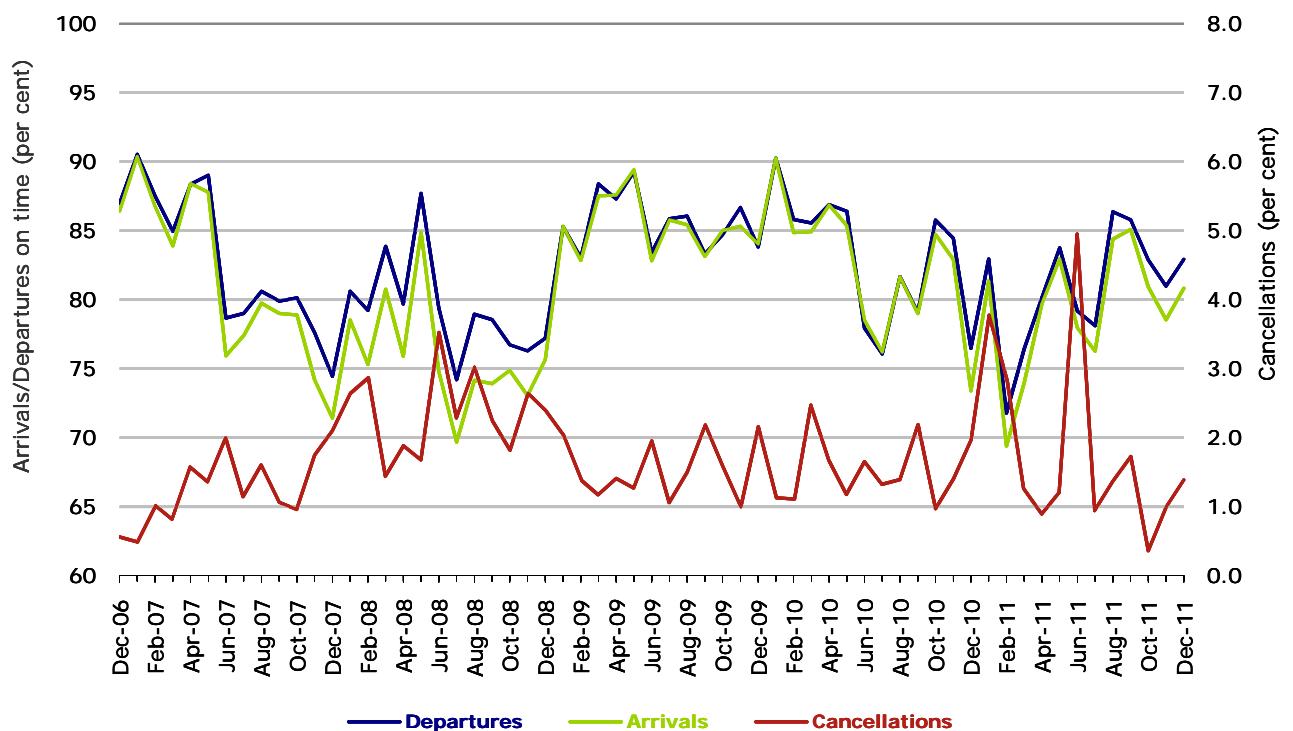
Figure 5 On time performance (by month from December 2006)—Tiger Airways



Tiger Airways commenced reporting in April 2008.

No data for Tiger Airways for July 2011 as it was grounded by CASA from 2/7/2011 to 11/8/2011.

Figure 6 On time performance (by month from December 2006)—Virgin Australia



Major regional airlines on time performance

Figure 7 On time performance (by month from December 2006)—QantasLink

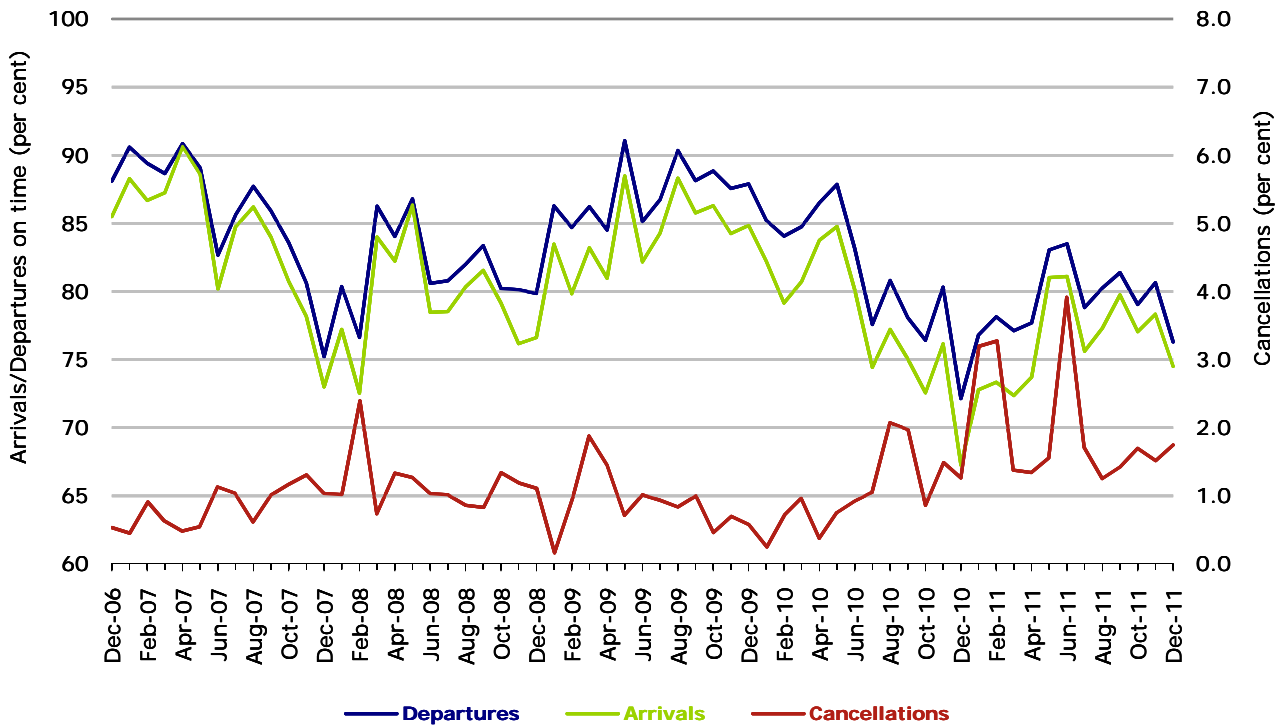


Figure 8 On time performance (by month from December 2006)—Regional Express

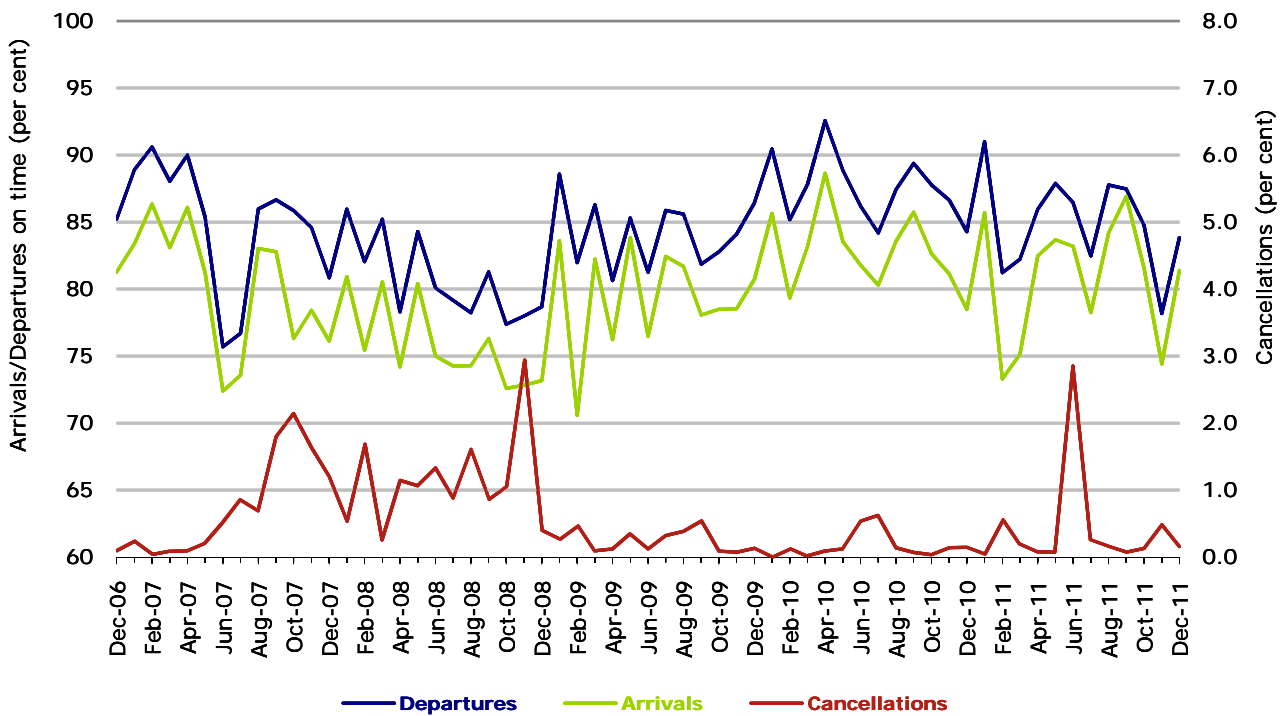


Figure 9 On time performance (by month from December 2006)—Skywest

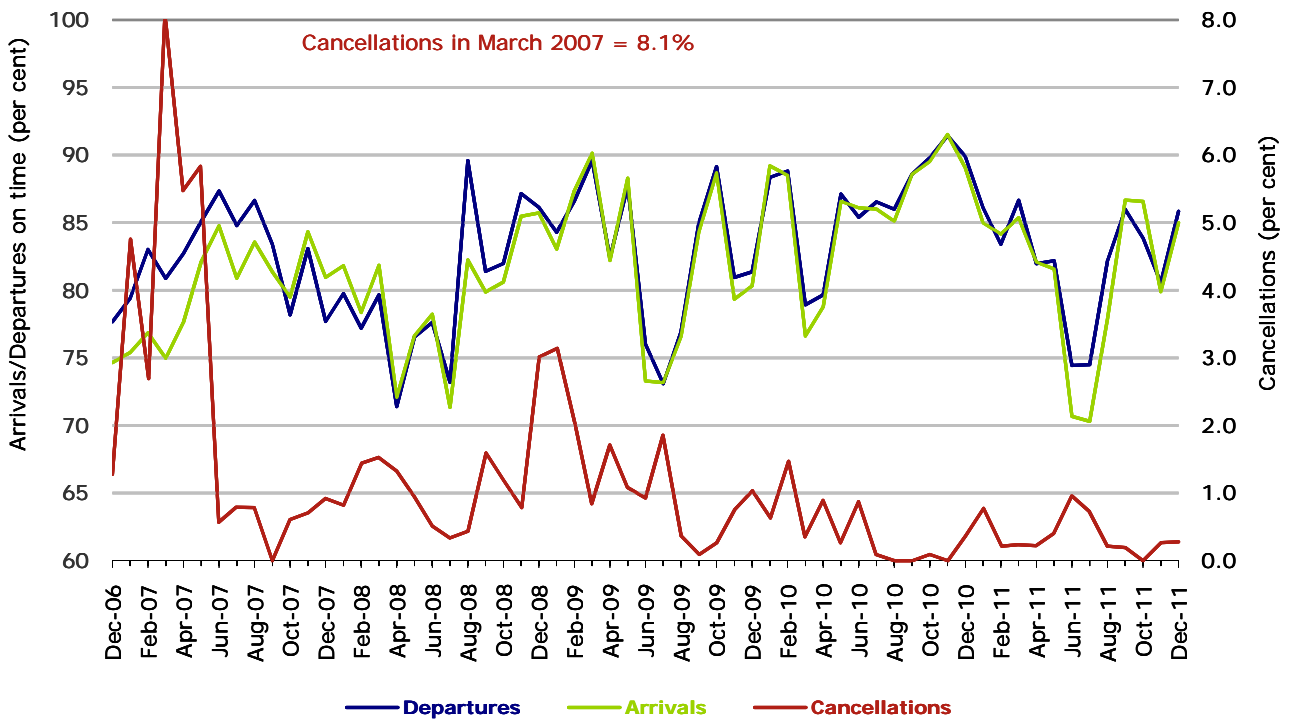
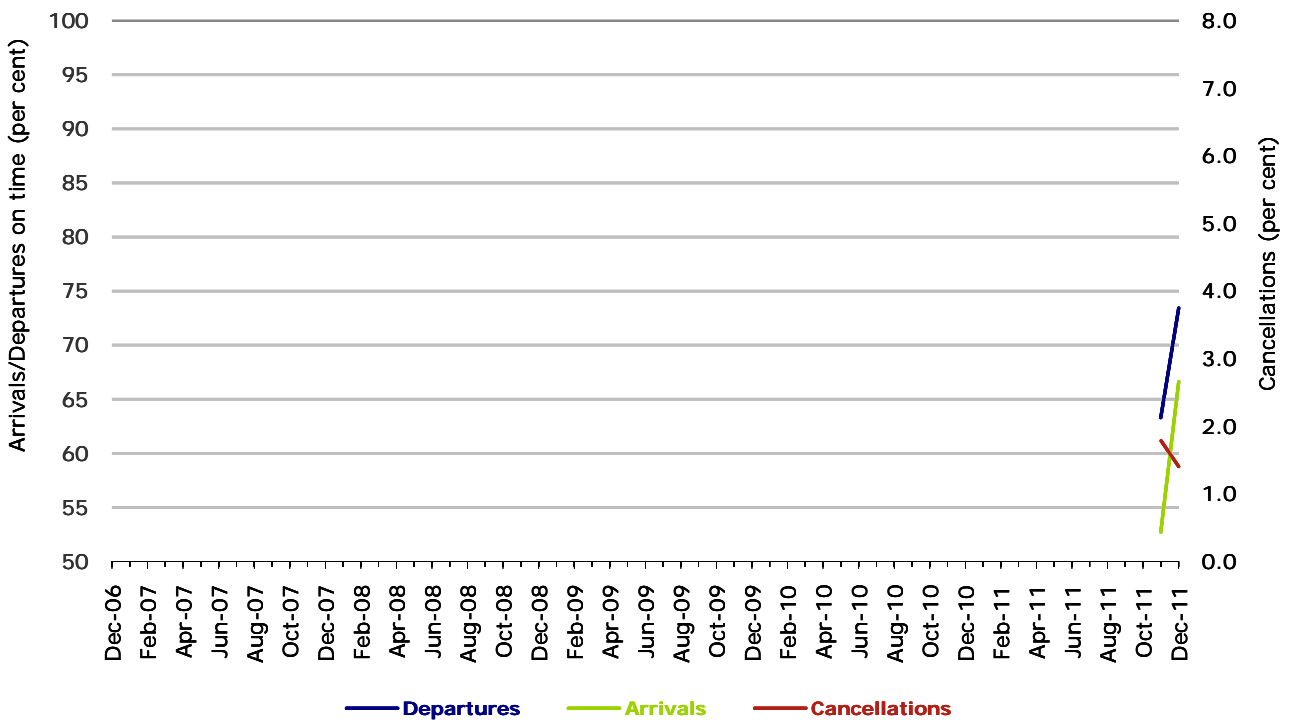


Figure 10 On time performance (by month from December 2006) Virgin Australia - ATR Operations



Virgin Australia - ATR Operations commenced in November 2011.

Individual routes

On time performance is reported for all routes where the passenger load averages over 8000 passengers per month over the previous six months, and where two or more airlines operate in competition on those routes. There are now 53 routes which meet this definition. Over time, however, routes which meet this definition may change as airline networks and traffic levels vary.

	<i>Sectors</i>		<i>Departures On Time</i>		<i>Arrivals On Time</i>		<i>Cancellations</i>	
	<i>Sched.</i>	<i>Flown</i>	<i>No.</i>	<i>%</i>	<i>No.</i>	<i>%</i>	<i>No.</i>	<i>%</i>
Adelaide-Brisbane								
Jetstar	356	355	313	88.2	314	88.5	1	0.3
Qantas	1 255	1 241	1 126	90.7	1 086	87.5	14	1.1
Virgin Australia	1 085	1 066	948	88.9	926	86.9	19	1.8
All Airlines	2 696	2 662	2 387	89.7	2 326	87.4	34	1.3
Adelaide-Canberra								
Qantas	551	544	475	87.3	482	88.6	7	1.3
Virgin Australia	355	351	303	86.3	309	88.0	4	1.1
All Airlines	906	895	778	86.9	791	88.4	11	1.2
Adelaide-Gold Coast								
Jetstar	363	360	327	90.8	329	91.4	3	0.8
Virgin Australia	366	360	339	94.2	340	94.4	6	1.6
All Airlines	729	720	666	92.5	669	92.9	9	1.2
Adelaide-Melbourne								
Jetstar	938	920	715	77.7	692	75.2	18	1.9
Qantas	3 494	3 435	2 881	83.9	2 818	82.0	59	1.7
QantasLink	209	202	186	92.1	175	86.6	7	3.3
Tiger Airways	503	491	418	85.1	402	81.9	12	2.4
Virgin Australia	3 163	3 121	2 699	86.5	2 587	82.9	42	1.3
All Airlines	8 307	8 169	6 899	84.4	6 674	81.7	138	1.7
Adelaide-Perth								
Jetstar	363	360	289	80.3	295	81.9	3	0.8
Qantas	1 336	1 314	1 157	88.1	1 138	86.6	22	1.6
Virgin Australia	739	729	634	87.0	625	85.7	10	1.4
All Airlines	2 438	2 403	2 080	86.6	2 058	85.6	35	1.4
Adelaide-Port Lincoln								
QantasLink	1 187	1 165	1 033	88.7	1 011	86.8	22	1.9
Regional Express	2 454	2 446	2 327	95.1	2 283	93.3	8	0.3
All Airlines	3 641	3 611	3 360	93.0	3 294	91.2	30	0.8
Adelaide-Sydney								
Jetstar	969	956	759	79.4	710	74.3	13	1.3
Qantas	3 287	3 231	2 884	89.3	2 840	87.9	56	1.7
Tiger Airways	188	180	151	83.7	148	82.4	8	4.3
Virgin Australia	1 810	1 790	1 506	84.1	1 489	83.2	20	1.1
All Airlines	6 254	6 157	5 300	86.1	5 187	84.3	97	1.6
Albury-Sydney								
QantasLink	1 350	1 341	957	71.4	927	69.1	9	0.7
Regional Express	1 285	1 278	1 047	81.9	1 013	79.3	7	0.5
Virgin Australia	716	699	576	82.4	556	79.5	17	2.4
All Airlines	3 351	3 318	2 580	77.8	2 496	75.2	33	1.0

	<i>Sectors</i>		<i>Departures On Time</i>		<i>Arrivals On Time</i>		<i>Cancellations</i>	
	<i>Sched.</i>	<i>Flown</i>	<i>No.</i>	<i>%</i>	<i>No.</i>	<i>%</i>	<i>No.</i>	<i>%</i>
Ayers Rock-Sydney								
Qantas	365	361	313	86.7	320	88.6	4	1.1
Virgin Australia	366	364	264	72.5	301	82.7	2	0.5
All Airlines	731	725	577	79.6	621	85.7	6	0.8
Ballina-Sydney								
Jetstar	430	425	309	72.7	293	68.9	5	1.2
Regional Express	856	850	608	71.5	536	63.1	6	0.7
Virgin Australia	377	374	267	71.4	252	67.4	3	0.8
All Airlines	1 663	1 649	1 184	71.8	1 081	65.6	14	0.8
Brisbane-Adelaide								
Jetstar	355	354	323	91.2	325	91.8	1	0.3
Qantas	1 256	1 240	1 072	86.5	1 130	91.1	16	1.3
Virgin Australia	1 083	1 071	898	83.8	951	88.8	12	1.1
All Airlines	2 694	2 665	2 293	86.0	2 406	90.3	29	1.1
Brisbane-Cairns								
Jetstar	1 075	1 060	879	82.9	898	84.7	15	1.4
Qantas	1 392	1 377	1 133	82.3	1 205	87.5	15	1.1
Virgin Australia	1 763	1 749	1 533	87.7	1 547	88.5	14	0.8
All Airlines	4 230	4 186	3 545	84.7	3 650	87.2	44	1.0
Brisbane-Canberra								
Qantas	1 670	1 651	1 481	89.7	1 511	91.5	19	1.1
QantasLink	219	211	162	76.8	174	82.5	8	3.7
Virgin Australia	1 403	1 388	1 197	86.2	1 207	87.0	15	1.1
All Airlines	3 292	3 250	2 840	87.4	2 892	89.0	42	1.3
Brisbane-Darwin								
Qantas	365	361	242	67.0	250	69.3	4	1.1
Virgin Australia	367	365	296	81.1	286	78.4	2	0.5
All Airlines	732	726	538	74.1	536	73.8	6	0.8
Brisbane-Hamilton Island								
Jetstar	316	313	223	71.2	258	82.4	3	0.9
Virgin Australia	369	367	328	89.4	319	86.9	2	0.5
All Airlines	685	680	551	81.0	577	84.9	5	0.7
Brisbane-Mackay								
Jetstar	1 226	1 221	931	76.2	1 028	84.2	5	0.4
QantasLink	1 254	1 250	961	76.9	907	72.6	4	0.3
Virgin Australia	1 761	1 750	1 455	83.1	1 438	82.2	11	0.6
All Airlines	4 241	4 221	3 347	79.3	3 373	79.9	20	0.5
Brisbane-Melbourne								
Jetstar	1 027	995	711	71.5	776	78.0	32	3.1
Qantas	4 803	4 726	3 869	81.9	3 945	83.5	77	1.6
Tiger Airways	827	801	578	72.1	581	72.5	26	3.1
Virgin Australia	4 109	4 034	3 413	84.6	3 430	85.0	75	1.8
All Airlines	10 766	10 556	8 571	81.2	8 732	82.7	210	2.0
Brisbane-Newcastle								
Jetstar	1 353	1 345	1 131	84.1	1 144	85.1	8	0.6
QantasLink	792	775	563	72.6	442	57.0	17	2.1
Virgin Australia	720	717	591	82.4	590	82.3	3	0.4
All Airlines	2 865	2 837	2 285	80.5	2 176	76.7	28	1.0

	<i>Sectors</i>		<i>Departures</i>		<i>Arrivals</i>		<i>Cancellations</i>		
	<i>Sched.</i>	<i>Flown</i>	<i>On Time</i>		<i>On Time</i>		<i>No.</i>	<i>%</i>	
			<i>No.</i>	<i>%</i>	<i>No.</i>	<i>%</i>			
Brisbane-Perth									
Jetstar	309	306	244	79.7	256	83.7	3	1.0	
Qantas	1 402	1 390	980	70.5	1 042	75.0	12	0.9	
Virgin Australia	810	805	692	86.0	649	80.6	5	0.6	
All Airlines	2 521	2 501	1 916	76.6	1 947	77.8	20	0.8	
Brisbane-Proserpine									
Jetstar	351	345	299	86.7	302	87.5	6	1.7	
Virgin Australia	366	362	299	82.6	306	84.5	4	1.1	
All Airlines	717	707	598	84.6	608	86.0	10	1.4	
Brisbane-Rockhampton									
QantasLink	2 405	2 352	1 724	73.3	1 751	74.4	53	2.2	
Tiger Airways	7	0	0		0		7	100.0	
Virgin Australia	1 749	1 644	1 393	84.7	1 405	85.5	105	6.0	
All Airlines	4 161	3 996	3 117	78.0	3 156	79.0	165	4.0	
Brisbane-Sydney									
Jetstar	1 141	1 121	794	70.8	714	63.7	20	1.8	
Qantas	6 907	6 701	5 251	78.4	5 249	78.3	206	3.0	
Tiger Airways	374	344	184	53.4	194	56.4	30	8.0	
Virgin Australia	6 586	6 476	5 252	81.1	5 052	78.0	110	1.7	
All Airlines	15 008	14 642	11 481	78.4	11 209	76.6	366	2.4	
Brisbane-Townsville									
Jetstar	355	352	246	69.9	284	80.7	3	0.8	
Qantas	1 751	1 729	1 454	84.1	1 457	84.3	22	1.3	
Virgin Australia	1 888	1 873	1 637	87.4	1 655	88.4	15	0.8	
All Airlines	3 994	3 954	3 337	84.4	3 396	85.9	40	1.0	
Broome-Perth									
Qantas	386	375	238	63.5	259	69.1	11	2.8	
QantasLink	579	559	422	75.5	417	74.6	20	3.5	
Skywest	249	248	158	63.7	147	59.3	1	0.4	
Virgin Australia	578	556	385	69.2	414	74.5	22	3.8	
All Airlines	1 792	1 738	1 203	69.2	1 237	71.2	54	3.0	
Cairns-Brisbane									
Jetstar	1 069	1 056	942	89.2	914	86.6	13	1.2	
Qantas	1 391	1 375	1 226	89.2	1 163	84.6	16	1.2	
Virgin Australia	1 762	1 747	1 558	89.2	1 481	84.8	15	0.9	
All Airlines	4 222	4 178	3 726	89.2	3 558	85.2	44	1.0	
Cairns-Melbourne									
Jetstar	760	749	576	76.9	585	78.1	11	1.4	
Qantas	365	360	260	72.2	266	73.9	5	1.4	
Tiger Airways	145	137	87	63.3	90	65.3	8	5.5	
Virgin Australia	420	417	287	68.8	287	68.8	3	0.7	
All Airlines	1 690	1 663	1 210	72.7	1 228	73.8	27	1.6	
Cairns-Sydney									
Jetstar	696	676	559	82.7	524	77.5	20	2.9	
Qantas	1 191	1 173	980	83.5	1 007	85.8	18	1.5	
Virgin Australia	1 079	1 068	917	85.9	871	81.6	11	1.0	
All Airlines	2 966	2 917	2 456	84.2	2 402	82.3	49	1.7	

	<i>Sectors</i>		<i>Departures On Time</i>		<i>Arrivals On Time</i>		<i>Cancellations</i>	
	<i>Sched.</i>	<i>Flown</i>	<i>No.</i>	<i>%</i>	<i>No.</i>	<i>%</i>	<i>No.</i>	<i>%</i>
Cairns-Townsville								
QantasLink	2 093	2 057	1 743	84.7	1 609	78.2	36	1.7
Virgin Australia	352	346	309	89.3	310	89.6	6	1.7
All Airlines	2 445	2 403	2 052	85.4	1 919	79.9	42	1.7
Canberra-Adelaide								
Qantas	604	596	531	89.1	542	90.9	8	1.3
Virgin Australia	353	349	288	82.5	297	85.1	4	1.1
All Airlines	957	945	819	86.7	839	88.8	12	1.3
Canberra-Brisbane								
Qantas	1 683	1 650	1 527	92.5	1 425	86.4	33	2.0
QantasLink	219	211	148	70.1	130	61.6	8	3.7
Virgin Australia	1 403	1 384	1 262	91.2	1 189	85.9	19	1.4
All Airlines	3 305	3 245	2 937	90.5	2 744	84.6	60	1.8
Canberra-Melbourne								
Qantas	2 996	2 947	2 565	87.0	2 414	81.9	49	1.6
QantasLink	454	425	360	84.7	344	80.9	29	6.4
Tiger Airways	173	169	107	63.3	108	64.0	4	2.3
Virgin Australia	1 997	1 970	1 665	84.5	1 652	83.9	27	1.4
All Airlines	5 620	5 511	4 697	85.2	4 518	82.0	109	1.9
Canberra-Sydney								
Qantas	1 897	1 861	1 602	86.1	1 534	82.4	36	1.9
QantasLink	4 566	4 331	3 507	81.0	3 173	73.3	235	5.1
Virgin Australia	2 347	2 282	1 931	84.6	1 826	80.0	65	2.8
Virgin Australia - ATR Operations	349	343	200	58.3	145	42.3	6	1.7
All Airlines	9 159	8 817	7 240	82.1	6 678	75.7	342	3.7
Coffs Harbour-Sydney								
QantasLink	1 731	1 714	1 231	71.8	1 298	75.7	17	1.0
Virgin Australia	727	710	576	81.1	569	80.1	17	2.3
All Airlines	2 458	2 424	1 807	74.5	1 867	77.0	34	1.4
Darwin-Brisbane								
Qantas	365	360	198	55.0	205	56.9	5	1.4
Virgin Australia	367	364	303	83.2	294	80.8	3	0.8
All Airlines	732	724	501	69.2	499	68.9	8	1.1
Darwin-Melbourne								
Jetstar	111	109	78	71.6	76	69.7	2	1.8
Qantas	117	114	97	85.1	93	81.6	3	2.6
Tiger Airways	26	23	23	100.0	13	56.5	3	11.5
Virgin Australia	356	352	323	91.8	295	83.8	4	1.1
All Airlines	610	598	521	87.1	477	79.8	12	2.0
Darwin-Perth								
Qantas	365	358	306	85.5	317	88.5	7	1.9
Virgin Australia	326	323	280	86.7	287	88.9	3	0.9
All Airlines	691	681	586	86.0	604	88.7	10	1.4
Dubbo-Sydney								
QantasLink	1 249	1 241	969	78.1	844	68.0	8	0.6
Regional Express	1 972	1 957	1 564	79.9	1 477	75.5	15	0.8
All Airlines	3 221	3 198	2 533	79.2	2 321	72.6	23	0.7

	<i>Sectors</i>		<i>Departures</i>		<i>Arrivals</i>		<i>Cancellations</i>		
	<i>Sched.</i>	<i>Flown</i>	<i>On Time</i>		<i>On Time</i>		<i>No.</i>	<i>%</i>	
			<i>No.</i>	<i>%</i>	<i>No.</i>	<i>%</i>			
Gold Coast-Adelaide									
Jetstar	362	360	315	87.5	332	92.2	2	0.6	
Virgin Australia	364	357	335	93.8	332	93.0	7	1.9	
All Airlines	726	717	650	90.7	664	92.6	9	1.2	
Gold Coast-Melbourne									
Jetstar	2 400	2 359	1 693	71.8	1 753	74.3	41	1.7	
Tiger Airways	588	574	400	69.8	406	70.8	14	2.4	
Virgin Australia	2 441	2 402	1 875	78.1	1 952	81.3	39	1.6	
All Airlines	5 429	5 335	3 968	74.4	4 111	77.1	94	1.7	
Gold Coast-Newcastle									
(To March 2011 only)									
Jetstar	122	122	99	81.1	103	84.4	0	0.0	
Virgin Australia	37	37	23	62.2	21	56.8	0	0.0	
All Airlines	159	159	122	76.7	124	78.0	0	0.0	
Gold Coast-Sydney									
Jetstar	3 454	3 390	2 544	75.0	2 638	77.8	64	1.9	
Tiger Airways	188	182	154	84.8	152	83.2	6	3.2	
Virgin Australia	4 223	4 135	3 020	73.0	3 027	73.2	88	2.1	
All Airlines	7 865	7 707	5 718	74.2	5 817	75.5	158	2.0	
Hamilton Island-Brisbane									
Jetstar	321	314	232	73.9	247	78.7	7	2.2	
Virgin Australia	370	366	303	82.8	297	81.1	4	1.1	
All Airlines	691	680	535	78.7	544	80.0	11	1.6	
Hamilton Island-Sydney									
Jetstar	354	348	260	74.7	264	75.9	6	1.7	
Virgin Australia	366	360	279	77.5	276	76.7	6	1.6	
All Airlines	720	708	539	76.1	540	76.3	12	1.7	
Hobart-Melbourne									
Jetstar	1 573	1 546	977	63.2	992	64.2	27	1.7	
Qantas	735	719	657	91.4	627	87.2	16	2.2	
Tiger Airways	247	239	120	50.4	123	51.3	8	3.2	
Virgin Australia	1 488	1 471	1 069	72.7	1 053	71.6	17	1.1	
All Airlines	4 043	3 975	2 823	71.0	2 795	70.3	68	1.7	
Hobart-Sydney									
Jetstar	769	755	566	75.0	566	75.0	14	1.8	
Qantas	365	356	250	70.2	261	73.3	9	2.5	
Virgin Australia	799	785	503	64.1	537	68.4	14	1.8	
All Airlines	1 933	1 896	1 319	69.6	1 364	71.9	37	1.9	
Kalgoorlie-Perth									
Qantas	847	836	665	79.5	656	78.5	11	1.3	
QantasLink	241	234	189	80.8	183	78.2	7	2.9	
Skywest	222	220	176	80.0	156	70.9	2	0.9	
All Airlines	1 310	1 290	1 030	79.8	995	77.1	20	1.5	
Karratha-Perth									
Qantas	2 043	1 986	1 682	84.7	1 657	83.4	57	2.8	
QantasLink	659	613	534	87.1	514	83.8	46	7.0	
Skywest	195	190	121	63.7	103	54.2	5	2.6	
Virgin Australia	648	620	433	69.8	406	65.5	28	4.3	
All Airlines	3 545	3 409	2 770	81.3	2 680	78.6	136	3.8	

	<i>Sectors</i>		<i>Departures On Time</i>		<i>Arrivals On Time</i>		<i>Cancellations</i>	
	<i>Sched.</i>	<i>Flown</i>	<i>No.</i>	<i>%</i>	<i>No.</i>	<i>%</i>	<i>No.</i>	<i>%</i>
Launceston-Melbourne								
Jetstar	1 188	1 172	797	68.0	796	67.9	16	1.3
QantasLink	963	934	606	64.9	549	58.8	29	3.0
Virgin Australia	1 482	1 461	1 190	81.5	1 162	79.5	21	1.4
All Airlines	3 633	3 567	2 593	72.7	2 507	70.3	66	1.8
Launceston-Sydney								
Jetstar	460	454	351	77.3	355	78.2	6	1.3
Virgin Australia	366	365	211	57.8	213	58.4	1	0.3
All Airlines	826	819	562	68.6	568	69.4	7	0.8
Mackay-Brisbane								
Jetstar	1 137	1 130	866	76.6	841	74.4	7	0.6
QantasLink	1 248	1 244	929	74.7	898	72.2	4	0.3
Virgin Australia	1 762	1 745	1 518	87.0	1 434	82.2	17	1.0
All Airlines	4 147	4 119	3 313	80.4	3 173	77.0	28	0.7
Melbourne-Adelaide								
Jetstar	937	925	797	86.2	796	86.1	12	1.3
Qantas	3 491	3 437	3 004	87.4	2 938	85.5	54	1.5
QantasLink	209	203	145	71.4	137	67.5	6	2.9
Tiger Airways	503	488	339	69.5	333	68.3	15	3.0
Virgin Australia	3 166	3 132	2 653	84.7	2 649	84.6	34	1.1
All Airlines	8 306	8 185	6 938	84.8	6 853	83.7	121	1.5
Melbourne-Brisbane								
Jetstar	1 027	1 005	682	67.9	673	67.0	22	2.1
Qantas	4 802	4 727	3 992	84.5	3 789	80.2	75	1.6
Tiger Airways	825	801	629	78.5	596	74.4	24	2.9
Virgin Australia	4 103	4 031	3 300	81.9	3 227	80.1	72	1.8
All Airlines	10 757	10 564	8 603	81.4	8 285	78.4	193	1.8
Melbourne-Cairns								
Jetstar	756	746	603	80.8	643	86.2	10	1.3
Qantas	365	359	282	78.6	292	81.3	6	1.6
Tiger Airways	146	138	84	60.5	96	69.8	8	5.5
Virgin Australia	419	416	306	73.6	316	76.0	3	0.7
All Airlines	1 686	1 659	1 275	76.8	1 347	81.2	27	1.6
Melbourne-Canberra								
Qantas	2 994	2 951	2 548	86.3	2 546	86.3	43	1.4
QantasLink	453	422	372	88.2	311	73.7	31	6.8
Tiger Airways	173	170	112	66.1	111	65.3	3	1.7
Virgin Australia	1 986	1 961	1 600	81.6	1 624	82.8	25	1.3
All Airlines	5 606	5 504	4 632	84.2	4 592	83.4	102	1.8
Melbourne-Darwin								
Jetstar	115	113	89	78.8	95	84.1	2	1.7
Qantas	117	115	99	86.1	104	90.4	2	1.7
Tiger Airways	27	26	16	61.5	15	57.7	1	3.7
Virgin Australia	355	351	303	86.3	300	85.5	4	1.1
All Airlines	614	605	507	83.8	514	85.0	9	1.5
Melbourne-Gold Coast								
Jetstar	2 382	2 351	1 680	71.5	1 649	70.1	31	1.3
Tiger Airways	588	576	461	80.1	431	74.8	12	2.0
Virgin Australia	2 440	2 412	1 920	79.6	1 883	78.1	28	1.1
All Airlines	5 410	5 339	4 061	76.1	3 963	74.2	71	1.3

	<i>Sectors</i>		<i>Departures On Time</i>		<i>Arrivals On Time</i>		<i>Cancellations</i>	
	<i>Sched.</i>	<i>Flown</i>	<i>No.</i>	<i>%</i>	<i>No.</i>	<i>%</i>	<i>No.</i>	<i>%</i>
Melbourne-Hobart								
Jetstar	1 576	1 551	1 075	69.3	1 095	70.6	25	1.6
Qantas	735	718	538	74.9	515	71.7	17	2.3
Tiger Airways	247	239	149	62.4	152	63.4	8	3.2
Virgin Australia	1 485	1 472	1 153	78.3	1 128	76.6	13	0.9
All Airlines	4 043	3 980	2 915	73.2	2 890	72.6	63	1.6
Melbourne-Launceston								
Jetstar	1 185	1 170	860	73.5	870	74.4	15	1.3
QantasLink	960	932	686	73.6	588	63.1	28	2.9
Virgin Australia	1 480	1 463	1 133	77.4	1 141	78.0	17	1.1
All Airlines	3 625	3 565	2 679	75.1	2 599	72.9	60	1.7
Melbourne-Mildura								
QantasLink	1 036	1 028	743	72.3	673	65.5	8	0.8
Regional Express	1 034	1 031	959	93.0	940	91.2	3	0.3
Virgin Australia	365	363	316	87.1	312	86.0	2	0.5
All Airlines	2 435	2 422	2 018	83.3	1 925	79.5	13	0.5
Melbourne-Newcastle								
Jetstar	1 293	1 266	1 002	79.1	999	78.9	27	2.1
Virgin Australia	365	364	277	76.1	282	77.5	1	0.3
All Airlines	1 658	1 630	1 279	78.5	1 281	78.6	28	1.7
Melbourne-Perth								
Jetstar	848	830	623	75.1	617	74.3	18	2.1
Qantas	2 469	2 428	1 860	76.6	1 817	74.8	41	1.7
Tiger Airways	429	417	338	80.9	342	81.9	12	2.8
Virgin Australia	1 489	1 477	1 236	83.7	1 144	77.5	12	0.8
All Airlines	5 235	5 152	4 057	78.7	3 920	76.1	83	1.6
Melbourne-Sunshine Coast								
Jetstar	804	801	506	63.2	542	67.7	3	0.4
Tiger Airways	163	151	100	66.1	99	65.5	12	7.4
Virgin Australia	377	373	281	75.3	260	69.7	4	1.1
All Airlines	1 344	1 325	887	66.9	901	68.0	19	1.4
Melbourne-Sydney								
Jetstar	2 142	2 054	1 410	68.6	1 400	68.2	88	4.1
Qantas	10 676	10 185	8 457	83.0	7 967	78.2	491	4.6
Tiger Airways	1 805	1 746	1 332	76.3	1 329	76.1	59	3.3
Virgin Australia	9 045	8 814	7 020	79.6	6 608	75.0	231	2.6
All Airlines	23 668	22 799	18 219	79.9	17 304	75.9	869	3.7
Mildura-Melbourne								
QantasLink	1 037	1 029	861	83.7	757	73.6	8	0.8
Regional Express	1 035	1 031	950	92.1	930	90.2	4	0.4
Virgin Australia	365	362	316	87.3	320	88.4	3	0.8
All Airlines	2 437	2 422	2 127	87.8	2 007	82.9	15	0.6
Newcastle-Brisbane								
Jetstar	1 346	1 338	1 085	81.1	1 079	80.6	8	0.6
QantasLink	792	774	522	67.4	523	67.6	18	2.3
Virgin Australia	721	715	590	82.5	578	80.8	6	0.8
All Airlines	2 859	2 827	2 197	77.7	2 180	77.1	32	1.1

	<i>Sectors</i>		<i>Departures</i>		<i>Arrivals</i>		<i>Cancellations</i>	
	<i>Sched.</i>	<i>Flown</i>	<i>On Time</i>		<i>On Time</i>			
			<i>No.</i>	<i>%</i>	<i>No.</i>	<i>%</i>	<i>No.</i>	<i>%</i>
Newcastle-Gold Coast			(To March 2011 only)					
Jetstar	121	121	88	72.7	88	72.7	0	0.0
Virgin Australia	37	37	20	54.1	21	56.8	0	0.0
All Airlines	158	158	108	68.4	109	69.0	0	0.0
Newcastle-Melbourne								
Jetstar	1 293	1 265	1 036	81.9	1 020	80.6	28	2.2
Virgin Australia	365	362	245	67.7	266	73.5	3	0.8
All Airlines	1 658	1 627	1 281	78.7	1 286	79.0	31	1.9
Newman-Perth								
Qantas	387	378	254	67.2	224	59.3	9	2.3
QantasLink	805	789	702	89.0	665	84.3	16	2.0
Virgin Australia	377	371	277	74.7	265	71.4	6	1.6
All Airlines	1 569	1 538	1 233	80.2	1 154	75.0	31	2.0
Perth-Adelaide								
Jetstar	368	359	222	61.8	242	67.4	9	2.4
Qantas	1 333	1 306	1 067	81.7	1 099	84.2	27	2.0
Virgin Australia	739	726	629	86.6	626	86.2	13	1.8
All Airlines	2 440	2 391	1 918	80.2	1 967	82.3	49	2.0
Perth-Brisbane								
Jetstar	307	305	171	56.1	201	65.9	2	0.7
Qantas	1 405	1 393	1 074	77.1	1 058	76.0	12	0.9
Virgin Australia	808	803	699	87.0	659	82.1	5	0.6
All Airlines	2 520	2 501	1 944	77.7	1 918	76.7	19	0.8
Perth-Broome								
Qantas	387	375	287	76.5	281	74.9	12	3.1
QantasLink	580	562	437	77.8	382	68.0	18	3.1
Skywest	235	235	181	77.0	174	74.0	0	0.0
Virgin Australia	578	561	430	76.6	422	75.2	17	2.9
All Airlines	1 780	1 733	1 335	77.0	1 259	72.6	47	2.6
Perth-Darwin								
Qantas	365	361	317	87.8	317	87.8	4	1.1
Virgin Australia	326	323	285	88.2	271	83.9	3	0.9
All Airlines	691	684	602	88.0	588	86.0	7	1.0
Perth-Kalgoorlie								
Qantas	846	836	699	83.6	697	83.4	10	1.2
QantasLink	240	234	198	84.6	195	83.3	6	2.5
Skywest	213	211	177	83.9	159	75.4	2	0.9
All Airlines	1 299	1 281	1 074	83.8	1 051	82.0	18	1.4
Perth-Karratha								
Qantas	2 043	1 990	1 733	87.1	1 714	86.1	53	2.6
QantasLink	661	618	541	87.5	524	84.8	43	6.5
Skywest	199	196	168	85.7	138	70.4	3	1.5
Virgin Australia	642	628	480	76.4	453	72.1	14	2.2
All Airlines	3 545	3 432	2 922	85.1	2 829	82.4	113	3.2

	<i>Sectors</i>		<i>Departures On Time</i>		<i>Arrivals On Time</i>		<i>Cancellations</i>	
	<i>Sched.</i>	<i>Flown</i>	<i>No.</i>	<i>%</i>	<i>No.</i>	<i>%</i>	<i>No.</i>	<i>%</i>
Perth-Melbourne								
Jetstar	845	822	547	66.5	556	67.6	23	2.7
Qantas	2 466	2 421	1 796	74.2	1 866	77.1	45	1.8
Tiger Airways	430	417	288	68.9	262	62.8	13	3.0
Virgin Australia	1 490	1 477	1 238	83.8	1 179	79.8	13	0.9
All Airlines	5 231	5 137	3 869	75.3	3 863	75.2	94	1.8
Perth-Newman								
Qantas	387	378	307	81.2	294	77.8	9	2.3
QantasLink	801	785	693	88.3	666	84.8	16	2.0
Virgin Australia	380	366	300	82.0	294	80.3	14	3.7
All Airlines	1 568	1 529	1 300	85.0	1 254	82.0	39	2.5
Perth-Port Hedland								
Qantas	828	810	683	84.3	655	80.9	18	2.2
QantasLink	539	516	465	90.1	453	87.8	23	4.3
Virgin Australia	739	717	606	84.5	578	80.6	22	3.0
All Airlines	2 106	2 043	1 754	85.9	1 686	82.5	63	3.0
Perth-Sydney								
Jetstar	493	451	332	73.6	364	80.7	42	8.5
Qantas	2 536	2 485	1 944	78.2	1 894	76.2	51	2.0
Virgin Australia	1 793	1 770	1 445	81.6	1 327	75.0	23	1.3
All Airlines	4 822	4 706	3 721	79.1	3 585	76.2	116	2.4
Port Hedland-Perth								
Qantas	826	807	620	76.8	595	73.7	19	2.3
QantasLink	537	511	463	90.6	452	88.5	26	4.8
Virgin Australia	742	714	573	80.3	573	80.3	28	3.8
All Airlines	2 105	2 032	1 656	81.5	1 620	79.7	73	3.5
Port Lincoln-Adelaide								
QantasLink	1 188	1 166	1 029	88.3	1 025	87.9	22	1.9
Regional Express	2 462	2 449	2 318	94.7	2 298	93.8	13	0.5
All Airlines	3 650	3 615	3 347	92.6	3 323	91.9	35	1.0
Port Macquarie-Sydney								
QantasLink	1 583	1 562	1 213	77.7	1 169	74.8	21	1.3
Virgin Australia	595	584	456	78.1	447	76.5	11	1.8
Virgin Australia - ATR Operations	122	119	92	77.3	73	61.3	3	2.5
All Airlines	2 300	2 265	1 761	77.7	1 689	74.6	35	1.5
Proserpine-Brisbane								
Jetstar	358	351	287	81.8	285	81.2	7	2.0
Virgin Australia	366	362	288	79.6	284	78.5	4	1.1
All Airlines	724	713	575	80.6	569	79.8	11	1.5
Rockhampton-Brisbane								
QantasLink	2 157	2 108	1 483	70.4	1 411	66.9	49	2.3
Tiger Airways	7	0	0		0		7	100.0
Virgin Australia	1 751	1 641	1 398	85.2	1 340	81.7	110	6.3
All Airlines	3 915	3 749	2 881	76.8	2 751	73.4	166	4.2
Sunshine Coast-Melbourne								
Jetstar	812	802	456	56.9	495	61.7	10	1.2
Tiger Airways	163	151	87	57.8	88	58.6	12	7.4
Virgin Australia	377	368	235	63.9	259	70.4	9	2.4
All Airlines	1 352	1 321	778	58.9	842	63.8	31	2.3

	<i>Sectors</i>		<i>Departures On Time</i>		<i>Arrivals On Time</i>		<i>Cancellations</i>	
	<i>Sched.</i>	<i>Flown</i>	<i>No.</i>	<i>%</i>	<i>No.</i>	<i>%</i>	<i>No.</i>	<i>%</i>
Sunshine Coast-Sydney								
Jetstar	1 213	1 185	949	80.1	968	81.7	28	2.3
Tiger Airways	92	79	53	66.6	49	62.5	13	14.1
Virgin Australia	549	535	382	71.4	385	72.0	14	2.6
All Airlines	1 854	1 799	1 384	76.9	1 402	78.0	55	3.0
Sydney-Adelaide								
Jetstar	969	957	792	82.8	819	85.6	12	1.2
Qantas	3 236	3 187	2 759	86.6	2 772	87.0	49	1.5
Tiger Airways	188	180	132	73.4	143	79.4	8	4.3
Virgin Australia	1 808	1 792	1 421	79.3	1 427	79.6	16	0.9
All Airlines	6 201	6 116	5 104	83.5	5 161	84.4	85	1.4
Sydney-Albury								
QantasLink	1 350	1 343	947	70.5	920	68.5	7	0.5
Regional Express	1 280	1 275	1 021	80.1	987	77.4	5	0.4
Virgin Australia	716	706	596	84.4	584	82.7	10	1.4
All Airlines	3 346	3 324	2 564	77.1	2 491	74.9	22	0.7
Sydney-Ayers Rock								
Qantas	366	363	319	87.9	320	88.2	3	0.8
Virgin Australia	365	364	291	79.9	258	70.9	1	0.3
All Airlines	731	727	610	83.9	578	79.5	4	0.5
Sydney-Ballina								
Jetstar	425	424	363	85.6	365	86.1	1	0.2
Regional Express	863	855	726	84.9	681	79.6	8	0.9
Virgin Australia	377	375	302	80.5	299	79.7	2	0.5
All Airlines	1 665	1 654	1 391	84.1	1 345	81.3	11	0.7
Sydney-Brisbane								
Jetstar	1 135	1 113	903	81.1	859	77.2	22	1.9
Qantas	6 867	6 694	5 457	81.5	5 314	79.4	173	2.5
Tiger Airways	376	345	213	61.6	178	51.7	31	8.2
Virgin Australia	6 588	6 477	5 111	78.9	4 995	77.1	111	1.7
All Airlines	14 966	14 629	11 684	79.9	11 346	77.6	337	2.3
Sydney-Cairns								
Jetstar	733	715	583	81.5	632	88.4	18	2.5
Qantas	1 191	1 179	935	79.3	1 008	85.5	12	1.0
Virgin Australia	1 079	1 070	767	71.7	795	74.3	9	0.8
All Airlines	3 003	2 964	2 285	77.1	2 435	82.2	39	1.3
Sydney-Canberra								
Qantas	1 949	1 913	1 707	89.2	1 665	87.0	36	1.8
QantasLink	4 568	4 351	3 394	78.0	3 266	75.1	217	4.8
Virgin Australia	2 355	2 296	1 868	81.4	1 864	81.2	59	2.5
Virgin Australia - ATR Operations	351	342	199	58.2	187	54.7	9	2.6
All Airlines	9 223	8 902	7 168	80.5	6 982	78.4	321	3.5
Sydney-Coffs Harbour								
QantasLink	1 730	1 714	1 295	75.6	1 254	73.2	16	0.9
Virgin Australia	728	713	576	80.8	592	83.0	15	2.1
All Airlines	2 458	2 427	1 871	77.1	1 846	76.1	31	1.3

	Sectors		Departures		Arrivals		Cancellations		
	Sched.	Flown	On Time		On Time		No.	%	
			No.	%	No.	%			
Sydney-Dubbo									
QantasLink	1 248	1 242	987	79.5	988	79.5	6	0.5	
Regional Express	1 978	1 966	1 603	81.5	1 582	80.5	12	0.6	
All Airlines	3 226	3 208	2 590	80.7	2 570	80.1	18	0.6	
Sydney-Gold Coast									
Jetstar	3 437	3 382	2 724	80.5	2 719	80.4	55	1.6	
Tiger Airways	188	182	136	74.7	151	83.1	6	3.2	
Virgin Australia	4 225	4 142	3 175	76.7	3 161	76.3	83	2.0	
All Airlines	7 850	7 706	6 035	78.3	6 031	78.3	144	1.8	
Sydney-Hamilton Island									
Jetstar	352	349	267	76.5	292	83.7	3	0.9	
Virgin Australia	366	363	283	78.0	261	71.9	3	0.8	
All Airlines	718	712	550	77.2	553	77.7	6	0.8	
Sydney-Hobart									
Jetstar	765	752	636	84.6	645	85.8	13	1.7	
Qantas	365	357	332	93.0	337	94.4	8	2.2	
Virgin Australia	798	788	530	67.3	578	73.4	10	1.3	
All Airlines	1 928	1 897	1 498	79.0	1 560	82.2	31	1.6	
Sydney-Launceston									
Jetstar	476	471	413	87.7	414	87.9	5	1.1	
Virgin Australia	366	365	281	77.0	250	68.5	1	0.3	
All Airlines	842	836	694	83.0	664	79.4	6	0.7	
Sydney-Melbourne									
Jetstar	2 134	2 056	1 575	76.6	1 495	72.7	78	3.7	
Qantas	10 671	10 185	8 547	83.9	8 365	82.1	486	4.6	
Tiger Airways	1 811	1 744	1 206	69.2	1 199	68.8	67	3.7	
Virgin Australia	9 029	8 811	6 857	77.8	6 439	73.1	218	2.4	
All Airlines	23 645	22 796	18 185	79.8	17 498	76.8	849	3.6	
Sydney-Perth									
Jetstar	482	446	355	79.6	386	86.5	36	7.5	
Qantas	2 535	2 498	1 904	76.2	1 879	75.2	37	1.5	
Virgin Australia	1 788	1 769	1 458	82.4	1 424	80.5	19	1.1	
All Airlines	4 805	4 713	3 717	78.9	3 689	78.3	92	1.9	
Sydney-Port Macquarie									
QantasLink	1 582	1 562	1 205	77.1	1 213	77.7	20	1.3	
Virgin Australia	595	589	441	74.9	442	75.0	6	1.0	
Virgin Australia - ATR Operations	122	122	90	73.8	76	62.3	0	0.0	
All Airlines	2 299	2 273	1 736	76.4	1 731	76.2	26	1.1	
Sydney-Sunshine Coast									
Jetstar	1 194	1 180	978	82.9	1 008	85.4	14	1.2	
Tiger Airways	92	79	52	65.7	49	62.5	13	14.1	
Virgin Australia	547	543	379	69.8	378	69.6	4	0.7	
All Airlines	1 833	1 802	1 409	78.2	1 435	79.7	31	1.7	
Sydney-Townsville									
Jetstar	285	284	238	83.8	252	88.7	1	0.4	
Virgin Australia	365	362	263	72.7	273	75.4	3	0.8	
All Airlines	650	646	501	77.6	525	81.3	4	0.6	

	<i>Sectors</i>		<i>Departures On Time</i>		<i>Arrivals On Time</i>		<i>Cancellations</i>	
	<i>Sched.</i>	<i>Flown</i>	<i>No.</i>	<i>%</i>	<i>No.</i>	<i>%</i>	<i>No.</i>	<i>%</i>
Sydney-Wagga Wagga								
QantasLink	1 309	1 300	1 001	77.0	879	67.6	9	0.7
Regional Express	1 536	1 530	1 305	85.3	1 230	80.4	6	0.4
All Airlines	2 845	2 830	2 306	81.5	2 109	74.5	15	0.5
Townsville-Brisbane								
Jetstar	353	350	264	75.4	238	68.0	3	0.8
Qantas	1 751	1 730	1 497	86.5	1 479	85.5	21	1.2
Virgin Australia	1 889	1 871	1 686	90.1	1 623	86.7	18	1.0
All Airlines	3 993	3 951	3 447	87.2	3 340	84.5	42	1.1
Townsville-Cairns								
QantasLink	2 094	2 052	1 559	76.0	1 404	68.4	42	2.0
Virgin Australia	351	342	297	86.8	299	87.4	9	2.6
All Airlines	2 445	2 394	1 856	77.5	1 703	71.1	51	2.1
Townsville-Sydney								
Jetstar	288	285	230	80.7	223	78.2	3	1.0
Virgin Australia	365	361	255	70.6	241	66.8	4	1.1
All Airlines	653	646	485	75.1	464	71.8	7	1.1
Wagga Wagga-Sydney								
QantasLink	1 309	1 299	1 007	77.5	923	71.1	10	0.8
Regional Express	1 533	1 528	1 323	86.6	1 238	81.0	5	0.3
All Airlines	2 842	2 827	2 330	82.4	2 161	76.4	15	0.5

Airports

On time performance is reported for all routes where the passenger load averages over 8000 passengers per month, and where two or more airlines operate in competition. The following data reports by airport against flights operated on those routes only.

Airport	Departures			Arrivals		
	Sectors	On Time		Sectors	On Time	
	Flown	No.	%	Flown	No.	%
Adelaide						
Jetstar	2 951	2 403	81.4	2 955	2 514	85.1
Qantas	9 765	8 523	87.3	9 766	8 481	86.8
QantasLink	1 367	1 219	89.2	1 369	1 162	84.9
Regional Express	2 446	2 327	95.1	2 449	2 298	93.8
Tiger Airways	671	568	84.7	668	476	71.3
Virgin Australia	7 417	6 429	86.7	7 427	6 282	84.6
All Airlines	24 617	21 469	87.2	24 634	21 213	86.1
Relates to services to and from Brisbane, Canberra, Gold Coast, Melbourne, Perth, Port Lincoln and Sydney.						
Albury						
QantasLink	1 341	957	71.4	1 343	920	68.5
Regional Express	1 278	1 047	81.9	1 275	987	77.4
Virgin Australia	699	576	82.4	706	584	82.7
All Airlines	3 318	2 580	77.8	3 324	2 491	74.9
Relates to services to and from Sydney only.						
Ayers Rock						
Qantas	361	313	86.7	363	320	88.2
Virgin Australia	364	264	72.5	364	258	70.9
All Airlines	725	577	79.6	727	578	79.5
Relates to services to and from Sydney only.						
Ballina						
Jetstar	425	309	72.7	424	365	86.1
Regional Express	850	608	71.5	855	681	79.6
Virgin Australia	374	267	71.4	375	299	79.7
All Airlines	1 649	1 184	71.8	1 654	1 345	81.3
Relates to services to and from Sydney only.						
Brisbane						
Jetstar	7 412	5 781	78.0	7 317	5 651	77.2
Qantas	19 175	15 482	80.7	19 170	15 519	81.0
QantasLink	4 588	3 410	74.3	4 337	2 962	68.3
Tiger Airways	1 145	761	66.5	1 146	775	67.6
Virgin Australia	22 601	18 984	84.0	22 572	18 327	81.2
All Airlines	54 921	44 418	80.9	54 542	43 234	79.3
Relates to services to and from Adelaide, Cairns, Canberra, Darwin, Hamilton Island, Mackay, Melbourne, Newcastle, Perth, Proserpine, Rockhampton, Sydney and Townsville.						

Airport	Departures			Arrivals		
	Sectors	On Time		Sectors	On Time	
	Flown	No.	%	Flown	No.	%
Broome						
Qantas	375	238	63.5	375	281	74.9
QantasLink	559	422	75.5	562	382	68.0
Skywest	248	158	63.7	235	174	74.0
Virgin Australia	556	385	69.2	561	422	75.2
All Airlines	1 738	1 203	69.2	1 733	1 259	72.6
Relates to services to and from Perth only.						
Cairns						
Jetstar	2 481	2 077	83.7	2 521	2 173	86.2
Qantas	2 908	2 466	84.8	2 915	2 505	85.9
QantasLink	2 057	1 743	84.7	2 052	1 404	68.4
Tiger Airways	137	87	63.3	138	96	69.8
Virgin Australia	3 578	3 071	85.8	3 577	2 957	82.7
All Airlines	11 161	9 444	84.6	11 203	9 135	81.5
Relates to services to and from Brisbane, Melbourne, Sydney and Townsville.						
Canberra						
Qantas	7 054	6 225	88.2	7 059	6 204	87.9
QantasLink	4 967	4 015	80.8	4 984	3 751	75.3
Tiger Airways	169	107	63.3	170	111	65.3
Virgin Australia	5 985	5 146	86.0	5 996	5 004	83.5
Virgin Australia - ATR Operations	343	200	58.3	342	187	54.7
All Airlines	18 518	15 693	84.7	18 551	15 257	82.2
Relates to services to and from Adelaide, Brisbane, Melbourne and Sydney.						
Coffs Harbour						
QantasLink	1 714	1 231	71.8	1 714	1 254	73.2
Virgin Australia	710	576	81.1	713	592	83.0
All Airlines	2 424	1 807	74.5	2 427	1 846	76.1
Relates to services to and from Sydney only.						
Darwin						
Jetstar	109	78	71.6	113	95	84.1
Qantas	832	601	72.2	837	671	80.2
Tiger Airways	23	23	100.0	26	15	57.7
Virgin Australia	1 039	906	87.2	1 039	857	82.5
All Airlines	2 003	1 608	80.3	2 015	1 638	81.3
Relates to services to and from Brisbane, Melbourne and Perth.						
Dubbo						
QantasLink	1 241	969	78.1	1 242	988	79.5
Regional Express	1 957	1 564	79.9	1 966	1 582	80.5
All Airlines	3 198	2 533	79.2	3 208	2 570	80.1
Relates to services to and from Sydney only.						
Gold Coast						
Jetstar	6 231	4 651	74.6	6 214	4 785	77.0
Tiger Airways	756	555	73.4	758	582	76.8
Virgin Australia	6 931	5 253	75.8	6 951	5 405	77.8
All Airlines	13 918	10 459	75.1	13 923	10 772	77.4
Relates to services to and from Adelaide, Melbourne, Newcastle and Sydney.						

Airport	Departures			Arrivals		
	Sectors Flown	On Time		Sectors Flown	On Time	
		No.	%		No.	%
Hamilton Island						
Jetstar	662	492	74.3	662	550	83.1
Virgin Australia	726	582	80.2	730	580	79.5
All Airlines	1 388	1 074	77.4	1 392	1 130	81.2
Relates to services to and from Brisbane and Sydney.						
Hobart						
Jetstar	2 301	1 543	67.1	2 303	1 740	75.6
Qantas	1 075	907	84.4	1 075	852	79.3
Tiger Airways	239	120	50.4	239	152	63.4
Virgin Australia	2 256	1 572	69.7	2 260	1 706	75.5
All Airlines	5 871	4 142	70.6	5 877	4 450	75.7
Relates to services to and from Melbourne and Sydney.						
Kalgoorlie						
Qantas	836	665	79.5	836	697	83.4
QantasLink	234	189	80.8	234	195	83.3
Skywest	220	176	80.0	211	159	75.4
All Airlines	1 290	1 030	79.8	1 281	1 051	82.0
Relates to services to and from Perth only.						
Karratha						
Qantas	1 986	1 682	84.7	1 990	1 714	86.1
QantasLink	613	534	87.1	618	524	84.8
Skywest	190	121	63.7	196	138	70.4
Virgin Australia	620	433	69.8	628	453	72.1
All Airlines	3 409	2 770	81.3	3 432	2 829	82.4
Relates to services to and from Perth only.						
Launceston						
Jetstar	1 626	1 148	70.6	1 641	1 284	78.2
QantasLink	934	606	64.9	932	588	63.1
Virgin Australia	1 826	1 401	76.7	1 828	1 391	76.1
All Airlines	4 386	3 155	71.9	4 401	3 263	74.1
Relates to services to and from Melbourne and Sydney.						
Mackay						
Jetstar	1 130	866	76.6	1 221	1 028	84.2
QantasLink	1 244	929	74.7	1 250	907	72.6
Virgin Australia	1 745	1 518	87.0	1 750	1 438	82.2
All Airlines	4 119	3 313	80.4	4 221	3 373	79.9
Relates to services to and from Brisbane only.						
Melbourne						
Jetstar	12 812	9 327	72.8	12 795	9 236	72.2
Qantas	24 920	20 780	83.4	24 907	20 394	81.9
QantasLink	2 585	1 946	75.3	2 590	1 825	70.5
Regional Express	1 031	959	93.0	1 031	930	90.2
Tiger Airways	4 752	3 560	74.9	4 746	3 272	68.9
Virgin Australia	26 629	21 498	80.7	26 608	20 881	78.5
All Airlines	72 729	58 070	79.8	72 677	56 538	77.8
Relates to services to and from Adelaide, Brisbane, Cairns, Canberra, Darwin, Gold Coast, Hobart, Launceston, Mildura, Newcastle, Perth, Sunshine Coast and Sydney.						

Airport	Departures			Arrivals		
	Sectors Flown	On Time		Sectors Flown	On Time	
		No.	%		No.	%
Mildura						
QantasLink	1 029	861	83.7	1 028	673	65.5
Regional Express	1 031	950	92.1	1 031	940	91.2
Virgin Australia	362	316	87.3	363	312	86.0
All Airlines	2 422	2 127	87.8	2 422	1 925	79.5
Relates to services to and from Melbourne only.						
Newcastle						
Jetstar	2 724	2 209	81.1	2 733	2 246	82.2
QantasLink	774	522	67.4	775	442	57.0
Virgin Australia	1 114	855	76.8	1 118	893	79.9
All Airlines	4 612	3 586	77.8	4 626	3 581	77.4
Relates to services to and from Brisbane, Gold Coast and Melbourne.						
Newman						
Qantas	378	254	67.2	378	294	77.8
QantasLink	789	702	89.0	785	666	84.8
Virgin Australia	371	277	74.7	366	294	80.3
All Airlines	1 538	1 233	80.2	1 529	1 254	82.0
Relates to services to and from Perth only.						
Perth						
Jetstar	1 937	1 272	65.7	1 942	1 554	80.0
Qantas	12 355	9 907	80.2	12 370	9 584	77.5
QantasLink	2 715	2 334	86.0	2 706	2 231	82.4
Skywest	642	526	81.9	658	406	61.7
Tiger Airways	417	288	68.9	417	342	81.9
Virgin Australia	7 371	6 112	82.9	7 364	5 787	78.6
All Airlines	25 437	20 439	80.3	25 457	19 904	78.2
Relates to services to and from Adelaide, Brisbane, Broome, Darwin, Kalgoorlie, Karratha, Melbourne, Newman, Port Hedland and Sydney.						
Port Hedland						
Qantas	807	620	76.8	810	655	80.9
QantasLink	511	463	90.6	516	453	87.8
Virgin Australia	714	573	80.3	717	578	80.6
All Airlines	2 032	1 656	81.5	2 043	1 686	82.5
Relates to services to and from Perth only.						
Port Lincoln						
QantasLink	1 166	1 029	88.3	1 165	1 011	86.8
Regional Express	2 449	2 318	94.7	2 446	2 283	93.3
All Airlines	3 615	3 347	92.6	3 611	3 294	91.2
Relates to services to and from Adelaide only.						
Port Macquarie						
QantasLink	1 562	1 213	77.7	1 562	1 213	77.7
Virgin Australia	584	456	78.1	589	442	75.0
Virgin Australia - ATR Operations	119	92	77.3	122	76	62.3
All Airlines	2 265	1 761	77.7	2 273	1 731	76.2
Relates to services to and from Sydney only.						

Airport	Departures			Arrivals		
	Sectors Flown	On Time		Sectors Flown	On Time	
		No.	%		No.	%
Proserpine						
Jetstar	351	287	81.8	345	302	87.5
Virgin Australia	362	288	79.6	362	306	84.5
All Airlines	713	575	80.6	707	608	86.0
Relates to services to and from Brisbane only.						
Rockhampton						
QantasLink	2 108	1 483	70.4	2 352	1 751	74.4
Tiger Airways	0	0		0	0	
Virgin Australia	1 641	1 398	85.2	1 644	1 405	85.5
All Airlines	3 749	2 881	76.8	3 996	3 156	79.0
Relates to services to and from Brisbane only.						
Sunshine Coast						
Jetstar	1 987	1 405	70.7	1 981	1 550	78.2
Tiger Airways	230	140	60.8	230	148	64.5
Virgin Australia	903	617	68.3	916	638	69.7
All Airlines	3 120	2 162	69.3	3 127	2 336	74.7
Relates to services to and from Melbourne and Sydney.						
Sydney						
Jetstar	12 129	9 827	81.0	12 100	9 019	74.5
Qantas	26 376	21 960	83.3	26 353	21 072	80.0
QantasLink	11 512	8 829	76.7	11 488	8 334	72.5
Regional Express	5 626	4 655	82.7	5 613	4 264	76.0
Tiger Airways	2 530	1 739	68.7	2 531	1 872	74.0
Virgin Australia	31 525	24 599	78.0	31 472	23 977	76.2
Virgin Australia - ATR Operations	464	289	62.3	462	218	47.2
All Airlines	90 162	71 898	79.7	90 019	68 756	76.4
Relates to services to and from Adelaide, Albury, Ayers Rock, Ballina, Brisbane, Cairns, Canberra, Coffs Harbour, Dubbo, Gold Coast, Hamilton Island, Hobart, Launceston, Melbourne, Perth, Port Macquarie, Sunshine Coast, Townsville and Wagga Wagga.						
Townsville						
Jetstar	635	494	77.8	636	536	84.3
Qantas	1 730	1 497	86.5	1 729	1 457	84.3
QantasLink	2 052	1 559	76.0	2 057	1 609	78.2
Virgin Australia	2 574	2 238	86.9	2 581	2 238	86.7
All Airlines	6 991	5 788	82.8	7 003	5 840	83.4
Relates to services to and from Brisbane, Cairns and Sydney.						
Wagga Wagga						
QantasLink	1 299	1 007	77.5	1 300	879	67.6
Regional Express	1 528	1 323	86.6	1 530	1 230	80.4
All Airlines	2 827	2 330	82.4	2 830	2 109	74.5
Relates to services to and from Sydney only.						

Definitions

On time departure A flight departure is counted as "on time" if it departs the gate within 15 minutes of the scheduled departure time shown in the carriers' schedule.

On time arrival A flight arrival is counted as "on time" if it arrived at the gate within 15 minutes of the scheduled arrival time shown in the carriers' schedule.
Neither diverted nor cancelled flights count as on time.

Cancellation A flight removed from service within 7 days of scheduled departure is regarded as a cancellation.

On time departure percentage The percentage of on time departures is measured against the number of departures *operated* on any particular sector.

On time arrival percentage The percentage of on time arrivals is measured against the number of arrivals *operated* on any particular sector.

Cancellation percentage The percentage of cancellations is measured against the number of services *scheduled* on any particular sector.
