



**Australian Government**

**Department of Infrastructure and Transport**

Bureau of Infrastructure, Transport and Regional Economics

STATISTICAL REPORT



# Aviation

Domestic airline on time performance 2010

© Commonwealth of Australia 2011

ISSN 1832-0759

This work is copyright and the data contained in this publication should not be reproduced or used in any form without acknowledgement.

#### Enquiries

Bureau of Infrastructure, Transport and Regional Economics  
GPO Box 501  
Canberra ACT 2601

Telephone: 02 6274 7790

Facsimile: 02 6274 7727

Website: [www.bitre.gov.au](http://www.bitre.gov.au)

Email: [avstats@infrastructure.gov.au](mailto:avstats@infrastructure.gov.au)

This publication, including a spreadsheet of the time-series data, can be downloaded from the BITRE website: <http://www.bitre.gov.au/info.aspx?ResourceId=214&NodeId=104>.

#### Disclaimers

BITRE seeks to publish its work to the highest professional standards. However, it cannot accept responsibility for any consequences arising from the use of information herein. Readers should rely on their own skill and judgment in applying any information or analysis to particular issues or circumstances.

# Foreword

The Bureau of Infrastructure, Transport and Regional Economics (BITRE) monitors the punctuality and reliability of major domestic airlines operating between Australian airports. The purpose of this is to allow for evaluation of overall industry and individual airline performance, so that consumers of air travel can make informed decisions.

The following domestic airlines reported this data monthly to the BITRE during 2010: Jetstar, Qantas, QantasLink, Regional Express, Skywest Airlines, Tiger Airways and Virgin Blue. Data has been gathered since November 2003, although some airlines commenced reporting since then, including Jetstar which first reported in May 2004, MacAir in July 2005 and Tiger Airways in April 2008. MacAir ceased operations in February 2009 and data was not received for December 2008 or January 2009.

Information presented in this report is for Australian domestic routes for which the passenger load averaged 8000 or more passengers per month over the previous six months, and where two or more airlines operated in competition on those routes. 52 routes met these criteria for all twelve months in 2010 and another 4 routes did so for a shorter period of the year. Over time, routes which meet these criteria change as airline networks and traffic levels vary.

Participating airlines report their overall monthly network performance where this is possible.

Total industry figures encompass all services operated by reporting airlines only. These airlines collectively carried over 95 per cent of total domestic passengers (regular public transport only) in 2009.

The method of capturing on time performance varies between airlines utilising different recording systems. Jetstar and Qantas jet aircraft use Aircraft Communication Addressing and Reporting System (ACARS) to electronically measure on time performance. MacAir, Regional Express, Skywest, Tiger Airways, Virgin Blue and the Qantas non-jet fleet record on time performance manually using records from pilots, gate agents and/or ground crews.

After initial data is collected, aggregate reports are audited internally by participating airlines prior to publication.

Reports and detailed time series data in Microsoft Excel spreadsheet format are available from the BITRE website at: <http://www.bitre.gov.au/info.aspx?ResourceId=214&NodeId=104>.



# Contents

	Page
Industry performance .....	1
Individual routes .....	8
Airports .....	22
Definitions .....	28



## Industry performance

For the year ended December 2010, on time performance over all routes operated by participating airlines (Jetstar, Qantas, QantasLink, Regional Express, Skywest Airlines, Tiger Airways and Virgin Blue) averaged 83.3 per cent for on time departures, and 81.8 per cent for on time arrivals. Cancellations for 2010 represented 1.0 per cent of all scheduled flights. The equivalent figures for 2009 were 85.0 per cent for departures, 84.0 per cent for arrivals and 1.2 per cent for cancellations.

The long term average performance for all routes since reporting commenced in November 2003 is 84.7 per cent for on time departures and 83.4 per cent for on time arrivals. Cancellations averaged 1.1 per cent of all scheduled flights.

On time performance tracked around 87 per cent for the period before June 2007. There was then a noticeable decrease to 79 per cent for the period from June 2007 to December 2008. For the period January 2009 to June 2010, on time performance rose back up to 85 per cent but has dropped back down to 80 per cent for the second half of 2010 (see Figure 1).

The percentage of cancelled flights rose from 0.9 per cent for the period before June 2007 to 1.8 per cent for the period from June 2007 to December 2008 before dropping back down to 1.1 per cent for the period January 2009 to December 2010 (see Figure 2).

Of the major domestic airlines, Qantas achieved the highest level of on time departures for 2010 at 85.6 per cent, followed by Virgin Blue at 83.0 per cent, Jetstar at 80.7 per cent and Tiger Airways at 71.7 per cent. The regional airlines were led by Regional Express at 87.5 per cent, Skywest at 86.6 per cent and QantasLink at 81.3 per cent.

Qantas also achieved the highest on time arrivals among the major domestic airlines at 85.6 per cent, followed by Virgin Blue at 82.3 per cent, Jetstar at 80.8 per cent and Tiger Airways at 72.2 per cent. Skywest was the best performing regional airline for on time arrivals at 86.2 per cent, followed by Regional Express at 82.8 per cent, and QantasLink at 77.7 per cent.

Virgin Blue had the highest percentage of cancellations for 2010 at 1.5 per cent, while Regional Express had the lowest at 0.2 per cent.

Of the 52 routes which met the criteria for on time performance reporting for all twelve months in 2010, the Perth-Port Hedland route had the highest percentage of on time departures (92.2 per cent) and the highest percentage of on time arrivals (92.7 per cent). The Sunshine Coast-Melbourne route had the lowest percentage of on time departures (68.2 per cent) and the Townsville-Cairns route had the lowest percentage of on time arrivals (71.1 per cent).

Cancellations were highest on the Sydney-Melbourne route at 2.9 per cent, followed by Melbourne-Sydney at 2.8 per cent, Canberra-Sydney at 2.4 per cent, Gold Coast-Sydney at 2.3 per cent and Sydney-Brisbane at 2.2 per cent.

Of the airports with on time performance reporting for all twelve months in 2010, Newman Airport recorded the highest percentage of on time departures (90.6 per cent) and Port Hedland Airport recorded the highest percentage of on time arrivals (92.7 per cent). Proserpine Airport recorded the lowest percentage of on time departures (72.2 per cent) and the lowest percentage of on time arrivals (75.1 per cent). These figures only refer to reported routes and do not cover all flights at these airports.

Table 1 On time performance for the year ended December 2010 — Total Industry

	<i>Sectors</i>		<i>Departures On Time</i>		<i>Arrivals On Time</i>		<i>Cancellations</i>	
	<i>Scheduled</i>	<i>Flown</i>	<i>No.</i>	<i>%</i>	<i>No.</i>	<i>%</i>	<i>No.</i>	<i>%</i>
Jetstar	60 707	60 102	48 488	80.7	48 570	80.8	605	1.0
Qantas	121 748	120 592	103 254	85.6	103 213	85.6	1 156	0.9
QantasLink	97 935	96 883	78 782	81.3	75 278	77.7	1 052	1.1
Regional Express	66 570	66 455	58 170	87.5	55 039	82.8	115	0.2
Skywest	13 027	12 974	11 237	86.6	11 181	86.2	53	0.4
Tiger Airways	20 032	19 837	14 230	71.7	14 321	72.2	195	1.0
Virgin Blue	141 024	138 851	115 223	83.0	114 328	82.3	2 173	1.5
All Airlines	521 043	515 694	429 384	83.3	421 930	81.8	5 349	1.0

1. Total airline network data (including routes not shown in this report).

Table 2 Top ten routes for on time performance for the year ended December 2010 (covers participating airlines only and routes reported for all twelve months)

<i>Departures</i>		<i>Arrivals</i>	
<i>Route</i>	<i>On Time (%)</i>	<i>Route</i>	<i>On Time (%)</i>
Perth-Port Hedland	92.2	Perth-Port Hedland	92.7
Perth-Newman	91.0	Adelaide-Perth	90.4
Canberra-Brisbane	90.7	Perth-Darwin	90.4
Newman-Perth	90.6	Brisbane-Canberra	89.9
Perth-Darwin	90.4	Perth-Newman	89.6
Perth-Karratha	89.9	Newman-Perth	89.5
Cairns-Brisbane	89.6	Perth-Karratha	89.3
Port Hedland-Perth	89.1	Adelaide-Canberra	88.9
Perth-Kalgoorlie	89.1	Cairns-Brisbane	88.8
Darwin-Perth	88.6	Canberra-Brisbane	88.5

Table 3 Top ten airports for on time performance for the year ended December 2010 (covers participating airlines only and routes reported for all twelve months)

<i>Departures</i>		<i>Arrivals</i>	
<i>Airport</i>	<i>On Time (%)</i>	<i>Airport</i>	<i>On Time (%)</i>
Newman	90.6	Port Hedland	92.7
Port Hedland	89.1	Newman	89.6
Mildura	88.5	Karratha	89.3
Karratha	87.5	Kalgoorlie	87.7
Canberra	87.2	Adelaide	86.3
Adelaide	87.1	Broome	85.2
Perth	86.5	Perth	85.0
Cairns	85.3	Canberra	84.5
Kalgoorlie	84.9	Townsville	83.3
Townsville	84.4	Brisbane	82.7



## Total industry on time performance

Figure 1 On time performance (by month from December 2005)—Total Industry

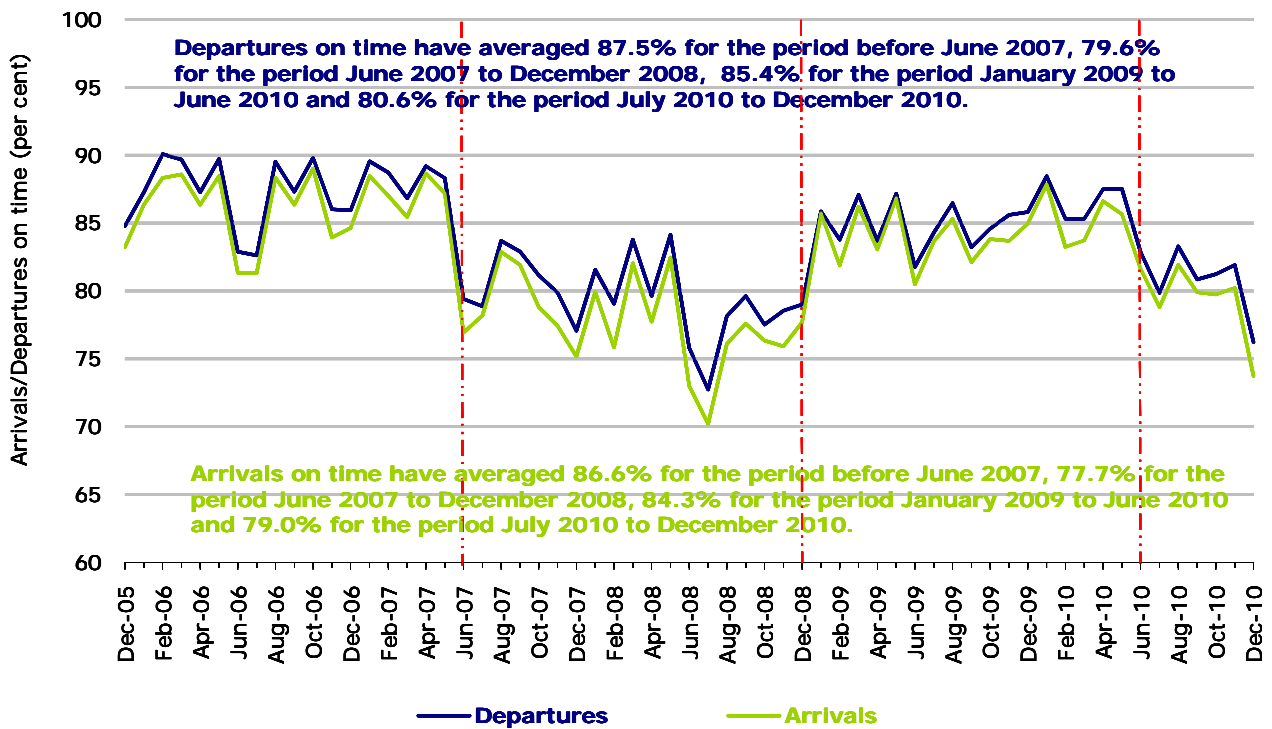
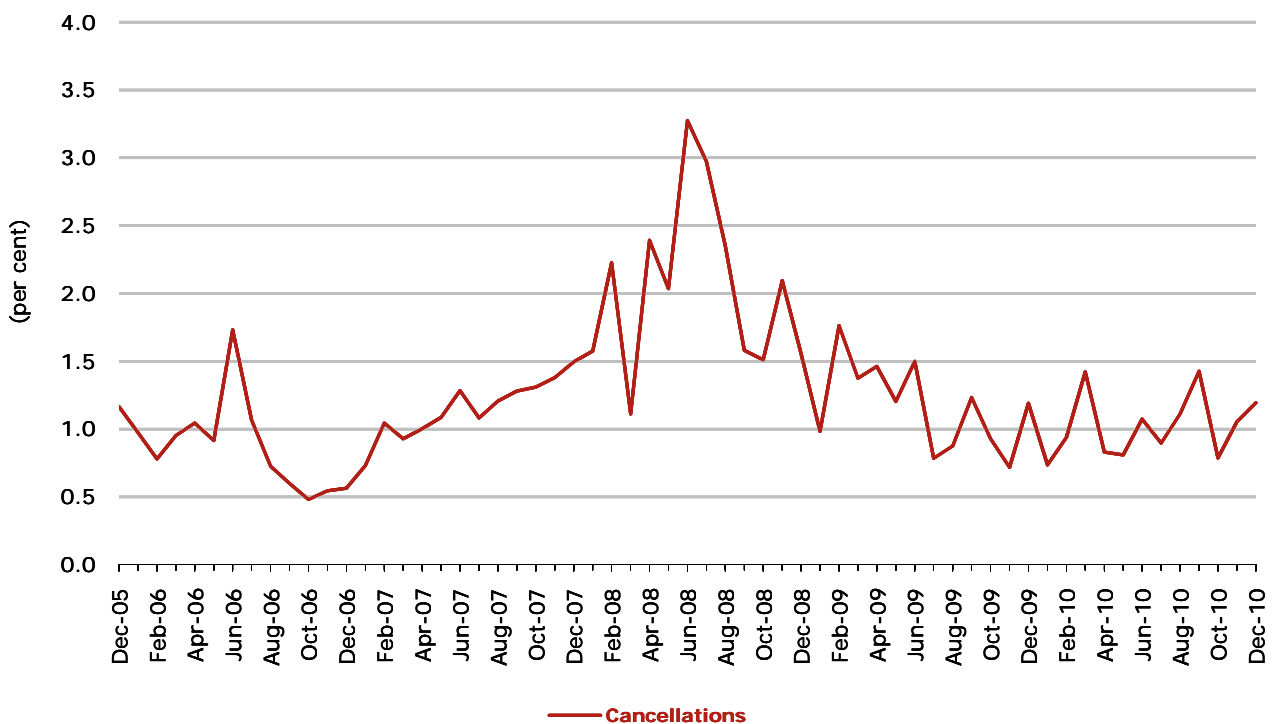


Figure 2 Cancellations (by month from December 2005)—Total Industry



## Major domestic airlines on time performance

Figure 3 On time performance (by month from December 2005)—Jetstar

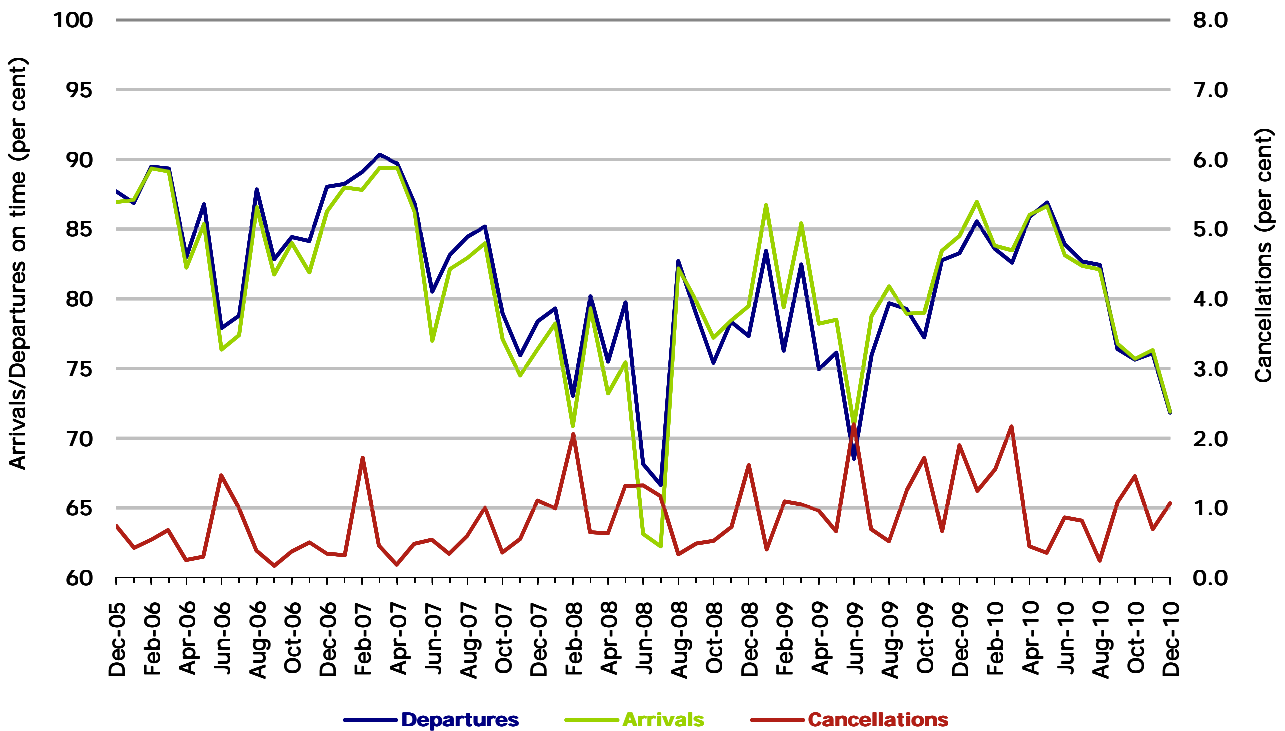


Figure 4 On time performance (by month from December 2005)—Qantas

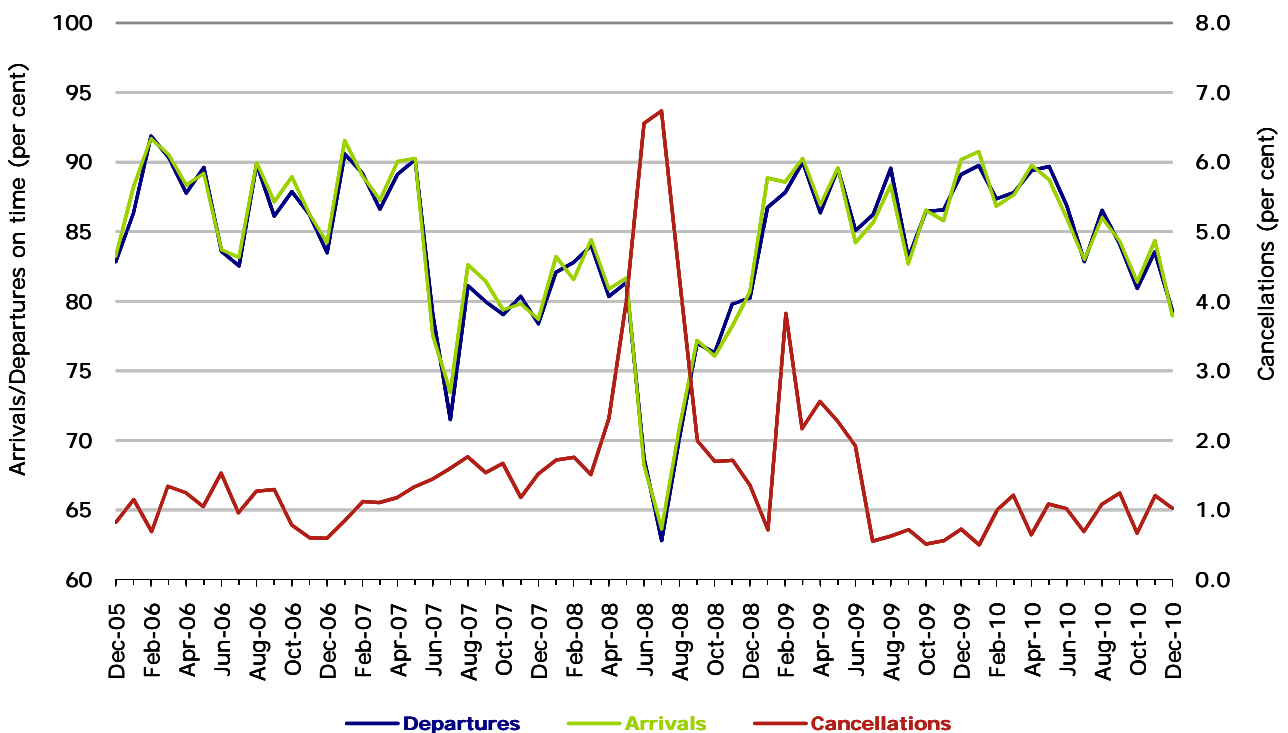
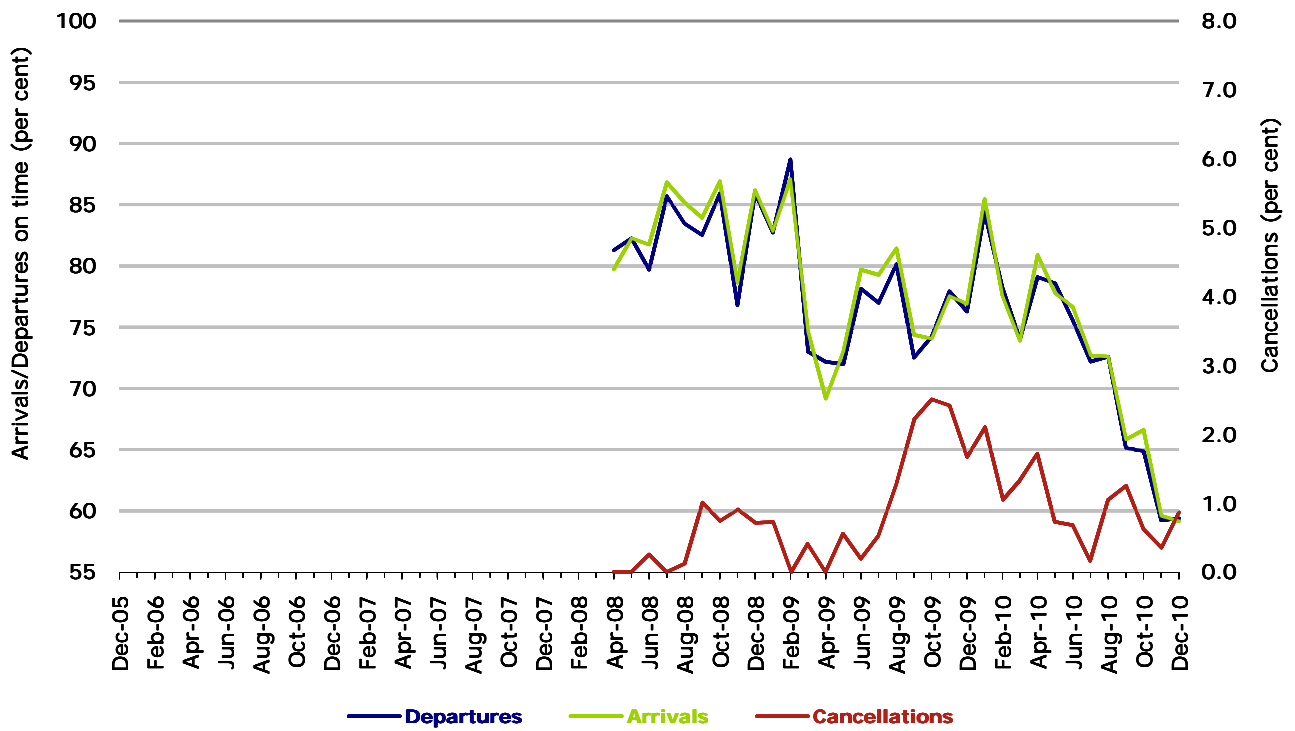
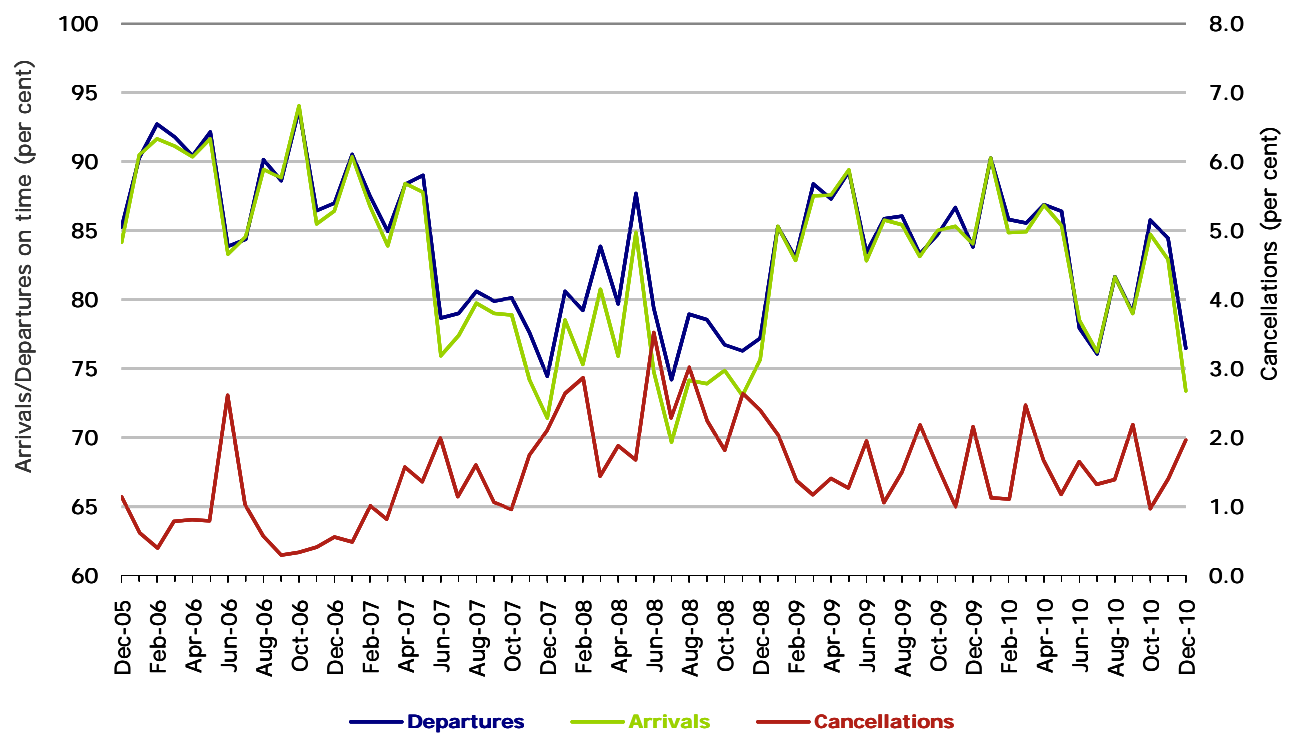


Figure 5 On time performance (by month from December 2005)—Tiger Airways



Tiger Airways commenced reporting in April 2008.

Figure 6 On time performance (by month from December 2005)—Virgin Blue



## Major regional airlines on time performance

Figure 7 On time performance (by month from December 2005)—QantasLink

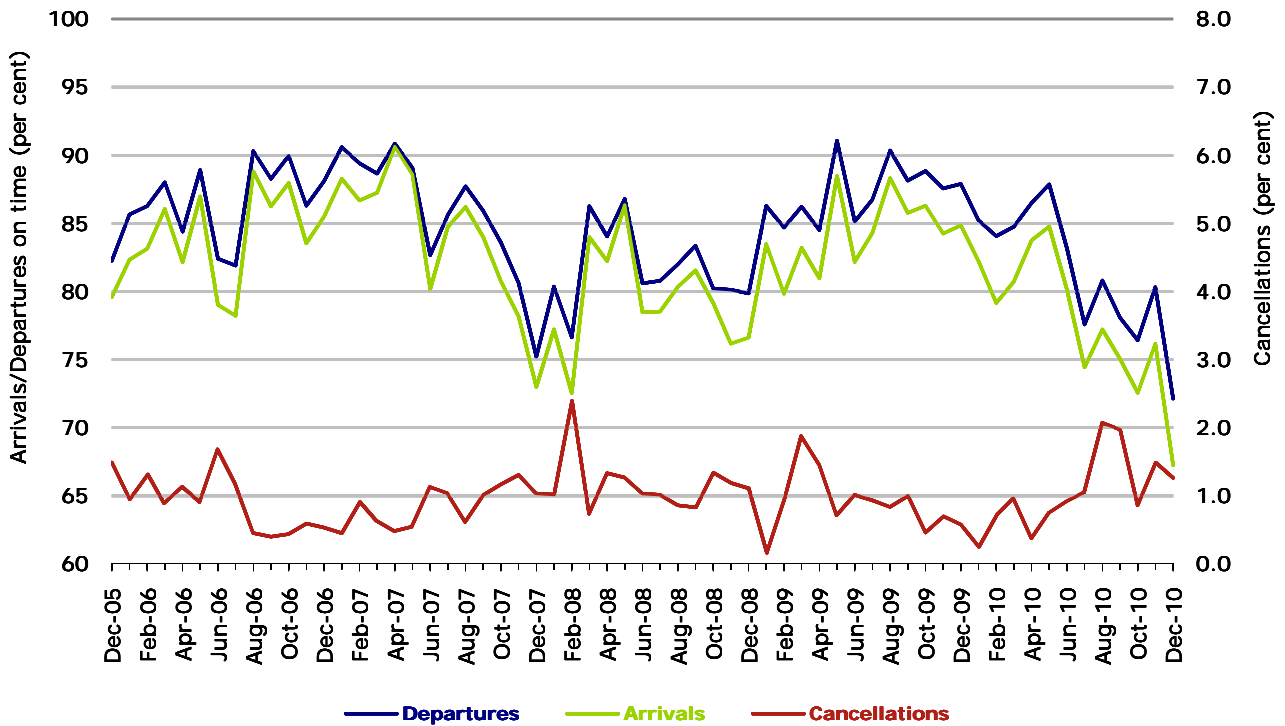


Figure 8 On time performance (by month from December 2005)—Regional Express

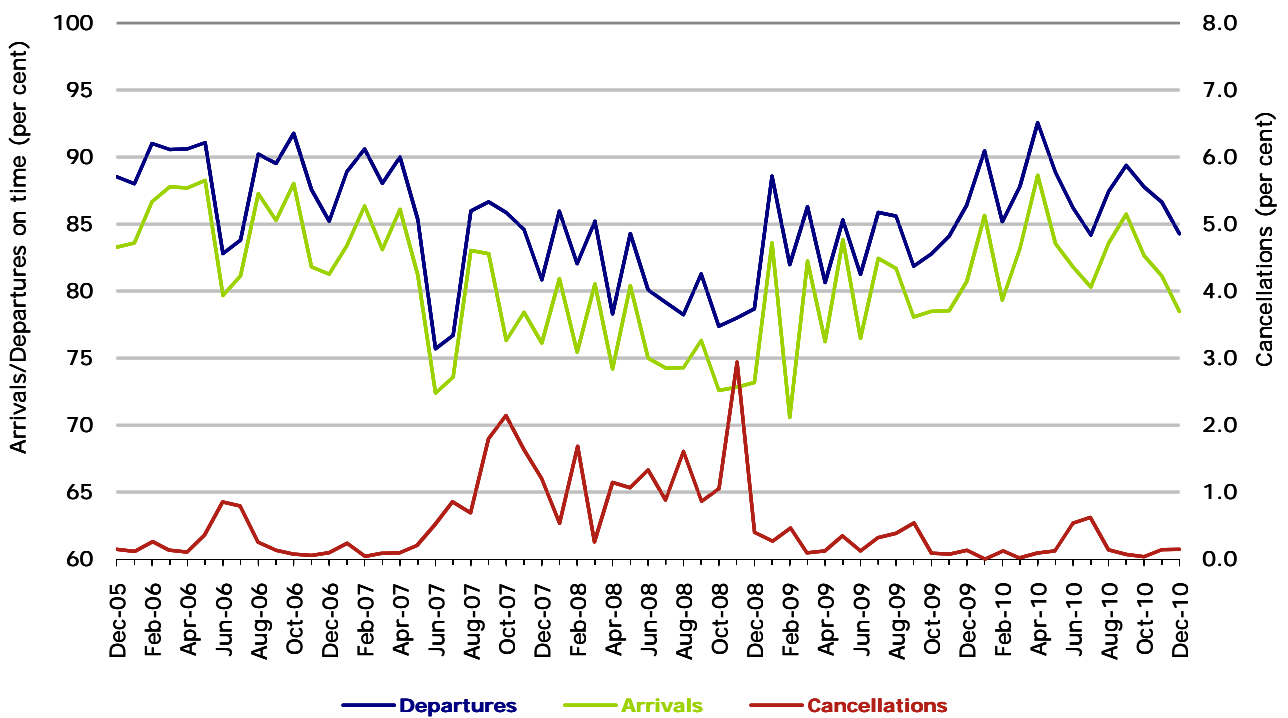
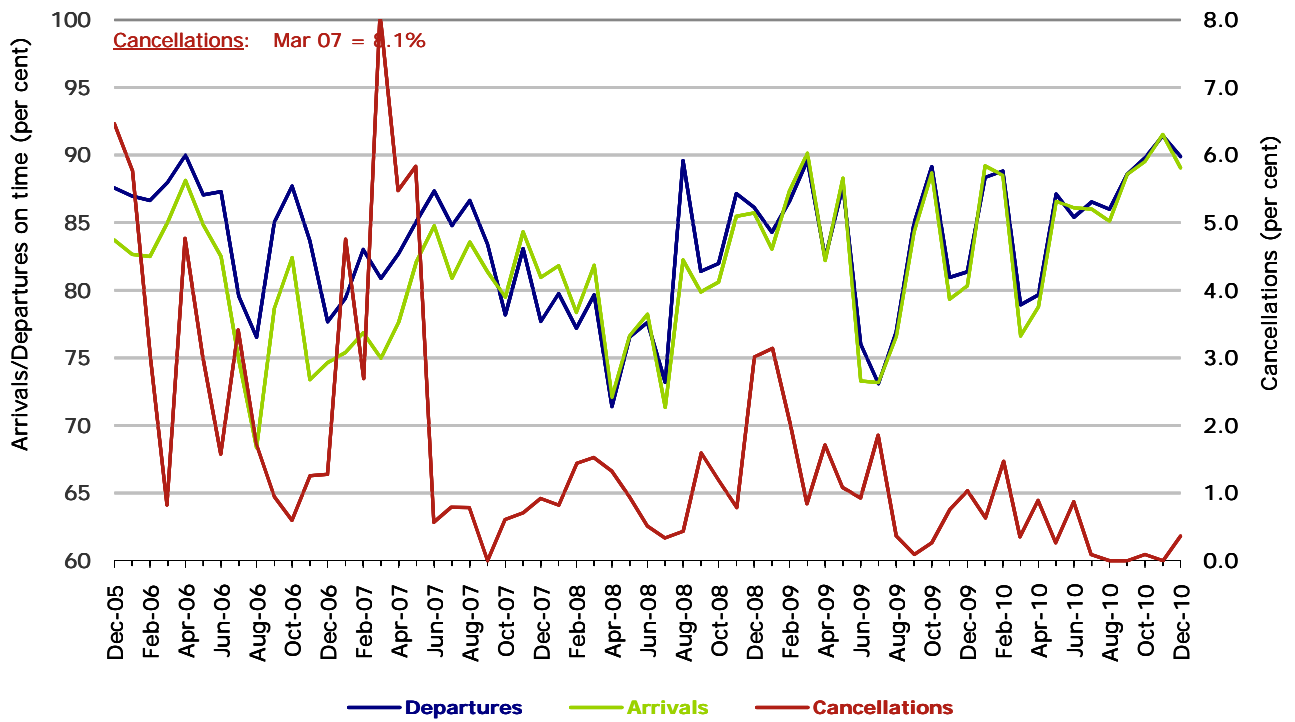


Figure 9 On time performance (by month from December 2005)—Skywest



## Individual routes

On time performance is reported for all routes where the passenger load averages over 8000 passengers per month over the previous six months, and where two or more airlines operate in competition on those routes. There are now 54 routes which meet this definition. Over time, however, routes which meet this definition may change as airline networks and traffic levels vary.

	<i>Sectors</i>		<i>Departures On Time</i>		<i>Arrivals On Time</i>		<i>Cancellations</i>	
	<i>Sched.</i>	<i>Flown</i>	<i>No.</i>	<i>%</i>	<i>No.</i>	<i>%</i>	<i>No.</i>	<i>%</i>
<b>Adelaide-Alice Springs</b>			(To April 2010 only)					
Qantas	120	120	114	95.0	115	95.8	0	0.0
Tiger Airways	51	51	37	72.5	42	82.4	0	0.0
All Airlines	171	171	151	88.3	157	91.8	0	0.0
<b>Adelaide-Brisbane</b>								
Jetstar	354	349	254	72.8	262	75.1	5	1.4
Qantas	1,223	1,223	1,123	91.8	1,066	87.2	0	0.0
Tiger Airways	207	207	195	94.2	191	92.3	0	0.0
Virgin Blue	1,094	1,082	934	86.3	929	85.9	12	1.1
All Airlines	2,878	2,861	2,506	87.6	2,448	85.6	17	0.6
<b>Adelaide-Canberra</b>								
Qantas	558	558	510	91.4	516	92.5	0	0.0
Tiger Airways	2	2	2	100.0	2	100.0	0	0.0
Virgin Blue	365	363	287	79.1	303	83.5	2	0.5
All Airlines	925	923	799	86.6	821	88.9	2	0.2
<b>Adelaide-Gold Coast</b>								
Jetstar	359	358	318	88.8	320	89.4	1	0.3
Tiger Airways	301	300	234	78.0	239	79.7	1	0.3
Virgin Blue	362	359	331	92.2	333	92.8	3	0.8
All Airlines	1,022	1,017	883	86.8	892	87.7	5	0.5
<b>Adelaide-Melbourne</b>								
Jetstar	603	600	467	77.8	455	75.8	3	0.5
Qantas	3,488	3,480	3,008	86.4	3,013	86.6	8	0.2
QantasLink	149	147	132	89.8	122	83.0	2	1.3
Tiger Airways	1,200	1,190	958	80.5	946	79.5	10	0.8
Virgin Blue	3,140	3,118	2,746	88.1	2,680	86.0	22	0.7
All Airlines	8,580	8,535	7,311	85.7	7,216	84.5	45	0.5
<b>Adelaide-Perth</b>								
Jetstar	359	359	326	90.8	332	92.5	0	0.0
Qantas	1,361	1,357	1,169	86.1	1,252	92.3	4	0.3
Virgin Blue	751	744	628	84.4	641	86.2	7	0.9
All Airlines	2,471	2,460	2,123	86.3	2,225	90.4	11	0.4
<b>Adelaide-Port Lincoln</b>			(From May 2010 only)					
QantasLink	788	775	679	87.6	635	81.9	13	1.6
Regional Express	1,814	1,810	1,722	95.1	1,680	92.8	4	0.2
All Airlines	2,602	2,585	2,401	92.9	2,315	89.6	17	0.7

	<i>Sectors</i>		<i>Departures On Time</i>		<i>Arrivals On Time</i>		<i>Cancellations</i>	
	<i>Sched.</i>	<i>Flown</i>	<i>No.</i>	<i>%</i>	<i>No.</i>	<i>%</i>	<i>No.</i>	<i>%</i>
<b>Adelaide-Sydney</b>								
Jetstar	684	680	589	86.6	517	76.0	4	0.6
Qantas	3,328	3,310	2,986	90.2	2,915	88.1	18	0.5
Tiger Airways	635	623	530	85.1	520	83.5	12	1.9
Virgin Blue	1,790	1,784	1,451	81.3	1,486	83.3	6	0.3
All Airlines	6,437	6,397	5,556	86.9	5,438	85.0	40	0.6
<b>Albury-Sydney</b>								
QantasLink	1,286	1,280	930	72.7	888	69.4	6	0.5
Regional Express	1,327	1,321	1,102	83.4	1,039	78.7	6	0.5
Virgin Blue	729	713	599	84.0	564	79.1	16	2.2
All Airlines	3,342	3,314	2,631	79.4	2,491	75.2	28	0.8
<b>Alice Springs-Adelaide</b> (To April 2010 only)								
Qantas	120	120	112	93.3	114	95.0	0	0.0
Tiger Airways	51	51	40	78.4	41	80.4	0	0.0
All Airlines	171	171	152	88.9	155	90.6	0	0.0
<b>Alice Springs-Melbourne</b> (To October 2010 only)								
Qantas	304	304	269	88.5	286	94.1	0	0.0
Tiger Airways	140	140	92	65.7	99	70.7	0	0.0
All Airlines	444	444	361	81.3	385	86.7	0	0.0
<b>Ayers Rock-Sydney</b> (From October 2010 only)								
Qantas	94	94	83	88.3	83	88.3	0	0.0
Virgin Blue	92	92	82	89.1	83	90.2	0	0.0
All Airlines	186	186	165	88.7	166	89.2	0	0.0
<b>Ballina-Sydney</b>								
Jetstar	440	435	345	79.3	337	77.5	5	1.1
Regional Express	987	986	760	77.1	697	70.7	1	0.1
Virgin Blue	418	413	332	80.4	336	81.4	5	1.2
All Airlines	1,845	1,834	1,437	78.4	1,370	74.7	11	0.6
<b>Brisbane-Adelaide</b>								
Jetstar	350	349	257	73.6	265	75.9	1	0.3
Qantas	1,222	1,222	1,072	87.7	1,126	92.1	0	0.0
Tiger Airways	207	205	162	79.0	161	78.5	2	1.0
Virgin Blue	1,092	1,085	945	87.1	930	85.7	7	0.6
All Airlines	2,871	2,861	2,436	85.1	2,482	86.8	10	0.3
<b>Brisbane-Cairns</b>								
Jetstar	1,085	1,082	885	81.8	898	83.0	3	0.3
Qantas	1,460	1,460	1,275	87.3	1,331	91.2	0	0.0
Virgin Blue	1,701	1,697	1,496	88.2	1,470	86.6	4	0.2
All Airlines	4,246	4,239	3,656	86.2	3,699	87.3	7	0.2
<b>Brisbane-Canberra</b>								
Qantas	1,703	1,697	1,558	91.8	1,593	93.9	6	0.4
QantasLink	135	134	114	85.1	114	85.1	1	0.7
Virgin Blue	1,458	1,448	1,218	84.1	1,240	85.6	10	0.7
All Airlines	3,296	3,279	2,890	88.1	2,947	89.9	17	0.5

	<i>Sectors</i>		<i>Departures On Time</i>		<i>Arrivals On Time</i>		<i>Cancellations</i>	
	<i>Sched.</i>	<i>Flown</i>	<i>No.</i>	<i>%</i>	<i>No.</i>	<i>%</i>	<i>No.</i>	<i>%</i>
<b>Brisbane-Darwin</b>								
Qantas	365	365	301	82.5	284	77.8	0	0.0
Virgin Blue	365	364	286	78.6	282	77.5	1	0.3
All Airlines	730	729	587	80.5	566	77.6	1	0.1
<b>Brisbane-Hamilton Island</b>								
Jetstar	347	342	273	79.8	265	77.5	5	1.4
Virgin Blue	364	361	313	86.7	304	84.2	3	0.8
All Airlines	711	703	586	83.4	569	80.9	8	1.1
<b>Brisbane-Mackay</b>								
Jetstar	1,174	1,156	965	83.5	973	84.2	18	1.5
QantasLink	1,113	1,110	885	79.7	833	75.0	3	0.3
Virgin Blue	1,754	1,741	1,461	83.9	1,435	82.4	13	0.7
All Airlines	4,041	4,007	3,311	82.6	3,241	80.9	34	0.8
<b>Brisbane-Melbourne</b>								
Jetstar	213	211	124	58.8	158	74.9	2	0.9
Qantas	5,056	5,041	4,336	86.0	4,409	87.5	15	0.3
Tiger Airways	760	757	517	68.3	525	69.4	3	0.4
Virgin Blue	4,091	4,034	3,376	83.7	3,514	87.1	57	1.4
All Airlines	10,120	10,043	8,353	83.2	8,606	85.7	77	0.8
<b>Brisbane-Newcastle</b>								
Jetstar	1,348	1,345	1,150	85.5	1,160	86.2	3	0.2
QantasLink	778	769	625	81.3	517	67.2	9	1.2
Virgin Blue	694	687	574	83.6	560	81.5	7	1.0
All Airlines	2,820	2,801	2,349	83.9	2,237	79.9	19	0.7
<b>Brisbane-Perth</b>								
Qantas	1,458	1,458	1,112	76.3	1,214	83.3	0	0.0
Virgin Blue	730	729	621	85.2	602	82.6	1	0.1
All Airlines	2,188	2,187	1,733	79.2	1,816	83.0	1	0.0
<b>Brisbane-Proserpine</b>								
Jetstar	356	353	264	74.8	270	76.5	3	0.8
Virgin Blue	365	362	297	82.0	267	73.8	3	0.8
All Airlines	721	715	561	78.5	537	75.1	6	0.8
<b>Brisbane-Rockhampton</b>								
Jetstar	124	123	108	87.8	108	87.8	1	0.8
QantasLink	2,308	2,292	1,817	79.3	1,751	76.4	16	0.7
Tiger Airways	271	269	210	78.1	210	78.1	2	0.7
Virgin Blue	1,765	1,744	1,514	86.8	1,498	85.9	21	1.2
All Airlines	4,468	4,428	3,649	82.4	3,567	80.6	40	0.9
<b>Brisbane-Sydney</b>								
Jetstar	994	972	724	74.5	643	66.2	22	2.2
Qantas	7,378	7,262	5,832	80.3	5,934	81.7	116	1.6
Virgin Blue	6,491	6,316	4,948	78.3	4,548	72.0	175	2.7
All Airlines	14,863	14,550	11,504	79.1	11,125	76.5	313	2.1



	<i>Sectors</i>		<i>Departures On Time</i>		<i>Arrivals On Time</i>		<i>Cancellations</i>	
	<i>Sched.</i>	<i>Flown</i>	<i>No.</i>	<i>%</i>	<i>No.</i>	<i>%</i>	<i>No.</i>	<i>%</i>
<b>Brisbane-Townsville</b>								
Jetstar	356	354	295	83.3	303	85.6	2	0.6
Qantas	1,864	1,862	1,612	86.6	1,624	87.2	2	0.1
Virgin Blue	1,716	1,709	1,485	86.9	1,491	87.2	7	0.4
All Airlines	3,936	3,925	3,392	86.4	3,418	87.1	11	0.3
<b>Broome-Perth</b>								
Qantas	377	371	274	73.9	297	80.1	6	1.6
QantasLink	608	602	530	88.0	535	88.9	6	1.0
Skywest	295	293	219	74.7	198	67.6	2	0.7
Virgin Blue	571	565	458	81.1	477	84.4	6	1.1
All Airlines	1,851	1,831	1,481	80.9	1,507	82.3	20	1.1
<b>Cairns-Brisbane</b>								
Jetstar	1,079	1,077	977	90.7	973	90.3	2	0.2
Qantas	1,460	1,460	1,316	90.1	1,322	90.5	0	0.0
Virgin Blue	1,702	1,691	1,494	88.4	1,461	86.4	11	0.6
All Airlines	4,241	4,228	3,787	89.6	3,756	88.8	13	0.3
<b>Cairns-Melbourne</b>								
Jetstar	548	547	439	80.3	474	86.7	1	0.2
Qantas	362	360	290	80.6	308	85.6	2	0.6
Tiger Airways	105	105	41	39.0	54	51.4	0	0.0
Virgin Blue	404	399	281	70.4	321	80.5	5	1.2
All Airlines	1,419	1,411	1,051	74.5	1,157	82.0	8	0.6
<b>Cairns-Sydney</b>								
Jetstar	578	576	480	83.3	466	80.9	2	0.3
Qantas	1,311	1,307	1,137	87.0	1,180	90.3	4	0.3
Virgin Blue	1,012	1,006	826	82.1	819	81.4	6	0.6
All Airlines	2,901	2,889	2,443	84.6	2,465	85.3	12	0.4
<b>Cairns-Townsville</b>								
QantasLink	1,972	1,942	1,620	83.4	1,481	76.3	30	1.5
Virgin Blue	325	321	299	93.1	299	93.1	4	1.2
All Airlines	2,297	2,263	1,919	84.8	1,780	78.7	34	1.5
<b>Canberra-Adelaide</b>								
Qantas	610	610	561	92.0	560	91.8	0	0.0
Tiger Airways	2	2	2	100.0	2	100.0	0	0.0
Virgin Blue	365	362	291	80.4	299	82.6	3	0.8
All Airlines	977	974	854	87.7	861	88.4	3	0.3
<b>Canberra-Brisbane</b>								
Qantas	1,704	1,698	1,569	92.4	1,538	90.6	6	0.4
QantasLink	135	134	100	74.6	89	66.4	1	0.7
Virgin Blue	1,458	1,443	1,302	90.2	1,270	88.0	15	1.0
All Airlines	3,297	3,275	2,971	90.7	2,897	88.5	22	0.7

	<i>Sectors</i>		<i>Departures On Time</i>		<i>Arrivals On Time</i>		<i>Cancellations</i>	
	<i>Sched.</i>	<i>Flown</i>	<i>No.</i>	<i>%</i>	<i>No.</i>	<i>%</i>	<i>No.</i>	<i>%</i>
<b>Canberra-Melbourne</b>								
Qantas	3,015	2,992	2,701	90.3	2,657	88.8	23	0.8
QantasLink	433	404	346	85.6	318	78.7	29	6.7
Tiger Airways	362	359	229	63.8	237	66.0	3	0.8
Virgin Blue	1,880	1,861	1,644	88.3	1,609	86.5	19	1.0
All Airlines	5,690	5,616	4,920	87.6	4,821	85.8	74	1.3
<b>Canberra-Sydney</b>								
Qantas	1,980	1,965	1,717	87.4	1,669	84.9	15	0.8
QantasLink	4,237	4,099	3,391	82.7	3,212	78.4	138	3.3
Virgin Blue	2,621	2,566	2,267	88.3	2,227	86.8	55	2.1
All Airlines	8,838	8,630	7,375	85.5	7,108	82.4	208	2.4
<b>Coffs Harbour-Sydney</b>								
QantasLink	1,688	1,686	1,257	74.6	1,278	75.8	2	0.1
Virgin Blue	727	720	625	86.8	584	81.1	7	1.0
All Airlines	2,415	2,406	1,882	78.2	1,862	77.4	9	0.4
<b>Darwin-Brisbane</b>								
Qantas	364	362	224	61.9	250	69.1	2	0.5
Virgin Blue	365	362	305	84.3	311	85.9	3	0.8
All Airlines	729	724	529	73.1	561	77.5	5	0.7
<b>Darwin-Melbourne</b>								
Jetstar	138	137	96	70.1	98	71.5	1	0.7
Tiger Airways	163	161	63	39.1	82	50.9	2	1.2
Virgin Blue	350	347	316	91.1	281	81.0	3	0.9
All Airlines	651	645	475	73.6	461	71.5	6	0.9
<b>Darwin-Perth</b>								
Qantas	365	365	323	88.5	323	88.5	0	0.0
Virgin Blue	312	309	274	88.7	271	87.7	3	1.0
All Airlines	677	674	597	88.6	594	88.1	3	0.4
<b>Dubbo-Sydney</b>								
QantasLink	1,212	1,211	996	82.2	926	76.5	1	0.1
Regional Express	2,046	2,045	1,690	82.6	1,628	79.6	1	0.0
All Airlines	3,258	3,256	2,686	82.5	2,554	78.4	2	0.1
<b>Gold Coast-Adelaide</b>								
Jetstar	360	360	313	86.9	326	90.6	0	0.0
Tiger Airways	299	294	223	75.9	223	75.9	5	1.7
Virgin Blue	362	359	330	91.9	334	93.0	3	0.8
All Airlines	1,021	1,013	866	85.5	883	87.2	8	0.8
<b>Gold Coast-Melbourne</b>								
Jetstar	2,387	2,345	1,899	81.0	1,954	83.3	42	1.8
Tiger Airways	1,039	1,023	690	67.4	687	67.2	16	1.5
Virgin Blue	2,327	2,296	1,855	80.8	1,925	83.8	31	1.3
All Airlines	5,753	5,664	4,444	78.5	4,566	80.6	89	1.5

	<i>Sectors</i>		<i>Departures On Time</i>		<i>Arrivals On Time</i>		<i>Cancellations</i>	
	<i>Sched.</i>	<i>Flown</i>	<i>No.</i>	<i>%</i>	<i>No.</i>	<i>%</i>	<i>No.</i>	<i>%</i>
<b>Gold Coast-Newcastle</b>								
Jetstar	490	488	398	81.6	402	82.4	2	0.4
Virgin Blue	156	154	128	83.1	130	84.4	2	1.3
All Airlines	646	642	526	81.9	532	82.9	4	0.6
<b>Gold Coast-Sydney</b>								
Jetstar	3,302	3,245	2,547	78.5	2,604	80.2	57	1.7
Tiger Airways	556	550	429	78.0	425	77.3	6	1.1
Virgin Blue	4,463	4,336	3,567	82.3	3,551	81.9	127	2.8
All Airlines	8,321	8,131	6,543	80.5	6,580	80.9	190	2.3
<b>Hamilton Island-Brisbane</b>								
Jetstar	345	341	251	73.6	258	75.7	4	1.2
Virgin Blue	365	361	304	84.2	308	85.3	4	1.1
All Airlines	710	702	555	79.1	566	80.6	8	1.1
<b>Hamilton Island-Sydney</b>								
Jetstar	363	359	283	78.8	282	78.6	4	1.1
Virgin Blue	364	359	266	74.1	288	80.2	5	1.4
All Airlines	727	718	549	76.5	570	79.4	9	1.2
<b>Hobart-Melbourne</b>								
Jetstar	1,457	1,447	1,045	72.2	1,091	75.4	10	0.7
Qantas	736	736	700	95.1	685	93.1	0	0.0
Tiger Airways	589	589	449	76.2	453	76.9	0	0.0
Virgin Blue	1,546	1,539	1,272	82.7	1,279	83.1	7	0.5
All Airlines	4,328	4,311	3,466	80.4	3,508	81.4	17	0.4
<b>Hobart-Sydney</b>								
Jetstar	705	702	555	79.1	570	81.2	3	0.4
Qantas	370	370	299	80.8	307	83.0	0	0.0
Virgin Blue	1,009	999	817	81.8	809	81.0	10	1.0
All Airlines	2,084	2,071	1,671	80.7	1,686	81.4	13	0.6
<b>Kalgoorlie-Perth</b>								
Qantas	470	462	381	82.5	387	83.8	8	1.7
QantasLink	520	518	446	86.1	446	86.1	2	0.4
Skywest	244	238	207	87.0	157	66.0	6	2.5
All Airlines	1,234	1,218	1,034	84.9	990	81.3	16	1.3
<b>Karratha-Perth</b>								
Qantas	1,763	1,749	1,555	88.9	1,505	86.0	14	0.8
QantasLink	584	572	529	92.5	522	91.3	12	2.1
Skywest	390	384	309	80.5	303	78.9	6	1.5
Virgin Blue	638	616	512	83.1	509	82.6	22	3.4
All Airlines	3,375	3,321	2,905	87.5	2,839	85.5	54	1.6

	<i>Sectors</i>		<i>Departures On Time</i>		<i>Arrivals On Time</i>		<i>Cancellations</i>	
	<i>Sched.</i>	<i>Flown</i>	<i>No.</i>	<i>%</i>	<i>No.</i>	<i>%</i>	<i>No.</i>	<i>%</i>
<b>Launceston-Melbourne</b>								
Jetstar	1,048	1,044	774	74.1	700	67.0	4	0.4
QantasLink	944	932	679	72.9	600	64.4	12	1.3
Tiger Airways	213	213	147	69.0	150	70.4	0	0.0
Virgin Blue	1,547	1,540	1,374	89.2	1,352	87.8	7	0.5
All Airlines	3,752	3,729	2,974	79.8	2,802	75.1	23	0.6
<b>Launceston-Sydney</b>								
Jetstar	391	391	309	79.0	320	81.8	0	0.0
Virgin Blue	365	365	307	84.1	306	83.8	0	0.0
All Airlines	756	756	616	81.5	626	82.8	0	0.0
<b>Mackay-Brisbane</b>								
Jetstar	1,181	1,160	900	77.6	894	77.1	21	1.8
QantasLink	1,110	1,106	878	79.4	832	75.2	4	0.4
Virgin Blue	1,750	1,734	1,533	88.4	1,492	86.0	16	0.9
All Airlines	4,041	4,000	3,311	82.8	3,218	80.5	41	1.0
<b>Melbourne-Adelaide</b>								
Jetstar	598	598	554	92.6	558	93.3	0	0.0
Qantas	3,493	3,489	3,077	88.2	3,064	87.8	4	0.1
QantasLink	150	149	112	75.2	99	66.4	1	0.7
Tiger Airways	1,200	1,187	911	76.7	907	76.4	13	1.1
Virgin Blue	3,140	3,123	2,678	85.8	2,699	86.4	17	0.5
All Airlines	8,581	8,546	7,332	85.8	7,327	85.7	35	0.4
<b>Melbourne-Alice Springs</b> (To October 2010 only)								
Qantas	304	304	260	85.5	265	87.2	0	0.0
Tiger Airways	140	140	112	80.0	102	72.9	0	0.0
All Airlines	444	444	372	83.8	367	82.7	0	0.0
<b>Melbourne-Brisbane</b>								
Jetstar	203	203	162	79.8	149	73.4	0	0.0
Qantas	5,053	5,038	4,437	88.1	4,401	87.4	15	0.3
Tiger Airways	755	754	524	69.5	559	74.1	1	0.1
Virgin Blue	4,083	4,016	3,314	82.5	3,293	82.0	67	1.6
All Airlines	10,094	10,011	8,437	84.3	8,402	83.9	83	0.8
<b>Melbourne-Cairns</b>								
Jetstar	545	543	461	84.9	477	87.8	2	0.4
Qantas	365	365	329	90.1	322	88.2	0	0.0
Tiger Airways	106	106	59	55.7	64	60.4	0	0.0
Virgin Blue	404	401	335	83.5	316	78.8	3	0.7
All Airlines	1,420	1,415	1,184	83.7	1,179	83.3	5	0.4
<b>Melbourne-Canberra</b>								
Qantas	3,013	2,992	2,673	89.3	2,686	89.8	21	0.7
QantasLink	432	402	353	87.8	324	80.6	30	6.9
Tiger Airways	361	361	227	62.9	235	65.1	0	0.0
Virgin Blue	1,830	1,806	1,546	85.6	1,544	85.5	24	1.3
All Airlines	5,636	5,561	4,799	86.3	4,789	86.1	75	1.3

	<i>Sectors</i>		<i>Departures On Time</i>		<i>Arrivals On Time</i>		<i>Cancellations</i>	
	<i>Sched.</i>	<i>Flown</i>	<i>No.</i>	<i>%</i>	<i>No.</i>	<i>%</i>	<i>No.</i>	<i>%</i>
<b>Melbourne-Darwin</b>								
Jetstar	141	141	121	85.8	114	80.9	0	0.0
Tiger Airways	163	162	95	58.6	84	51.9	1	0.6
Virgin Blue	350	348	310	89.1	298	85.6	2	0.6
All Airlines	654	651	526	80.8	496	76.2	3	0.5
<b>Melbourne-Gold Coast</b>								
Jetstar	2,379	2,351	1,933	82.2	1,879	79.9	28	1.2
Tiger Airways	1,038	1,029	751	73.0	741	72.0	9	0.9
Virgin Blue	2,327	2,306	1,963	85.1	1,928	83.6	21	0.9
All Airlines	5,744	5,686	4,647	81.7	4,548	80.0	58	1.0
<b>Melbourne-Hobart</b>								
Jetstar	1,455	1,446	1,088	75.2	1,121	77.5	9	0.6
Qantas	736	736	574	78.0	570	77.4	0	0.0
Tiger Airways	589	589	452	76.7	458	77.8	0	0.0
Virgin Blue	1,548	1,541	1,277	82.9	1,278	82.9	7	0.5
All Airlines	4,328	4,312	3,391	78.6	3,427	79.5	16	0.4
<b>Melbourne-Launceston</b>								
Jetstar	1,046	1,041	806	77.4	813	78.1	5	0.5
QantasLink	945	933	681	73.0	578	62.0	12	1.3
Tiger Airways	213	213	148	69.5	151	70.9	0	0.0
Virgin Blue	1,548	1,543	1,286	83.3	1,286	83.3	5	0.3
All Airlines	3,752	3,730	2,921	78.3	2,828	75.8	22	0.6
<b>Melbourne-Mildura</b>								
QantasLink	1,021	1,019	812	79.7	711	69.8	2	0.2
Regional Express	1,048	1,047	978	93.4	958	91.5	1	0.1
Virgin Blue	365	363	291	80.2	292	80.4	2	0.5
All Airlines	2,434	2,429	2,081	85.7	1,961	80.7	5	0.2
<b>Melbourne-Newcastle</b>								
Jetstar	970	962	770	80.0	753	78.3	8	0.8
Virgin Blue	365	364	320	87.9	311	85.4	1	0.3
All Airlines	1,335	1,326	1,090	82.2	1,064	80.2	9	0.7
<b>Melbourne-Perth</b>								
Jetstar	714	706	566	80.2	575	81.4	8	1.1
Qantas	2,394	2,393	1,878	78.5	1,990	83.2	1	0.0
Tiger Airways	395	393	272	69.2	274	69.7	2	0.5
Virgin Blue	1,475	1,470	1,298	88.3	1,290	87.8	5	0.3
All Airlines	4,978	4,962	4,014	80.9	4,129	83.2	16	0.3
<b>Melbourne-Sunshine Coast</b>								
Jetstar	724	721	597	82.8	557	77.3	3	0.4
Tiger Airways	341	341	256	75.1	254	74.5	0	0.0
Virgin Blue	428	419	325	77.6	331	79.0	9	2.1
All Airlines	1,493	1,481	1,178	79.5	1,142	77.1	12	0.8

	<i>Sectors</i>		<i>Departures On Time</i>		<i>Arrivals On Time</i>		<i>Cancellations</i>	
	<i>Sched.</i>	<i>Flown</i>	<i>No.</i>	<i>%</i>	<i>No.</i>	<i>%</i>	<i>No.</i>	<i>%</i>
<b>Melbourne-Sydney</b>								
Jetstar	1,859	1,806	1,229	68.1	1,305	72.3	53	2.9
Qantas	10,966	10,644	8,919	83.8	8,723	82.0	322	2.9
Tiger Airways	2,097	2,064	1,506	73.0	1,513	73.3	33	1.6
Virgin Blue	9,069	8,797	6,922	78.7	6,895	78.4	272	3.0
All Airlines	23,991	23,311	18,576	79.7	18,436	79.1	680	2.8
<b>Mildura-Melbourne</b>								
QantasLink	1,020	1,018	878	86.2	783	76.9	2	0.2
Regional Express	1,046	1,046	971	92.8	956	91.4	0	0.0
Virgin Blue	365	362	298	82.3	295	81.5	3	0.8
All Airlines	2,431	2,426	2,147	88.5	2,034	83.8	5	0.2
<b>Newcastle-Brisbane</b>								
Jetstar	1,345	1,341	1,121	83.6	1,116	83.2	4	0.3
QantasLink	777	766	576	75.2	582	76.0	11	1.4
Virgin Blue	693	683	551	80.7	546	79.9	10	1.4
All Airlines	2,815	2,790	2,248	80.6	2,244	80.4	25	0.9
<b>Newcastle-Gold Coast</b>								
Jetstar	488	488	375	76.8	381	78.1	0	0.0
Virgin Blue	156	156	134	85.9	131	84.0	0	0.0
All Airlines	644	644	509	79.0	512	79.5	0	0.0
<b>Newcastle-Melbourne</b>								
Jetstar	969	965	808	83.7	799	82.8	4	0.4
Virgin Blue	365	362	301	83.1	309	85.4	3	0.8
All Airlines	1,334	1,327	1,109	83.6	1,108	83.5	7	0.5
<b>Newman-Perth</b>								
QantasLink	1,077	1,068	980	91.8	962	90.1	9	0.8
Virgin Blue	436	432	379	87.7	380	88.0	4	0.9
All Airlines	1,513	1,500	1,359	90.6	1,342	89.5	13	0.9
<b>Perth-Adelaide</b>								
Jetstar	361	361	298	82.5	303	83.9	0	0.0
Qantas	1,362	1,358	1,199	88.3	1,153	84.9	4	0.3
Virgin Blue	752	745	675	90.6	663	89.0	7	0.9
All Airlines	2,475	2,464	2,172	88.1	2,119	86.0	11	0.4
<b>Perth-Brisbane</b>								
Qantas	1,457	1,455	1,173	80.6	1,142	78.5	2	0.1
Virgin Blue	728	725	660	91.0	644	88.8	3	0.4
All Airlines	2,185	2,180	1,833	84.1	1,786	81.9	5	0.2
<b>Perth-Broome</b>								
Qantas	377	371	305	82.2	316	85.2	6	1.6
QantasLink	607	601	527	87.7	516	85.9	6	1.0
Skywest	284	283	232	82.0	224	79.2	1	0.4
Virgin Blue	570	566	499	88.2	496	87.6	4	0.7
All Airlines	1,838	1,821	1,563	85.8	1,552	85.2	17	0.9

	<i>Sectors</i>		<i>Departures On Time</i>		<i>Arrivals On Time</i>		<i>Cancellations</i>	
	<i>Sched.</i>	<i>Flown</i>	<i>No.</i>	<i>%</i>	<i>No.</i>	<i>%</i>	<i>No.</i>	<i>%</i>
<b>Perth-Darwin</b>								
Qantas	365	365	327	89.6	330	90.4	0	0.0
Virgin Blue	312	310	283	91.3	280	90.3	2	0.6
All Airlines	677	675	610	90.4	610	90.4	2	0.3
<b>Perth-Kalgoorlie</b>								
Qantas	469	461	401	87.0	398	86.3	8	1.7
QantasLink	517	516	472	91.5	465	90.1	1	0.2
Skywest	244	238	209	87.8	202	84.9	6	2.5
All Airlines	1,230	1,215	1,082	89.1	1,065	87.7	15	1.2
<b>Perth-Karratha</b>								
Qantas	1,765	1,750	1,562	89.3	1,572	89.8	15	0.8
QantasLink	573	562	531	94.5	527	93.8	11	1.9
Skywest	387	381	342	89.8	315	82.7	6	1.6
Virgin Blue	631	619	542	87.6	544	87.9	12	1.9
All Airlines	3,356	3,312	2,977	89.9	2,958	89.3	44	1.3
<b>Perth-Melbourne</b>								
Jetstar	720	708	533	75.3	520	73.4	12	1.7
Qantas	2,392	2,389	1,944	81.4	1,891	79.2	3	0.1
Tiger Airways	395	393	231	58.8	241	61.3	2	0.5
Virgin Blue	1,477	1,472	1,350	91.7	1,321	89.7	5	0.3
All Airlines	4,984	4,962	4,058	81.8	3,973	80.1	22	0.4
<b>Perth-Newman</b>								
QantasLink	1,069	1,062	970	91.3	956	90.0	7	0.7
Virgin Blue	439	430	387	90.0	381	88.6	9	2.1
All Airlines	1,508	1,492	1,357	91.0	1,337	89.6	16	1.1
<b>Perth-Port Hedland</b>								
Qantas	588	588	528	89.8	532	90.5	0	0.0
QantasLink	685	680	636	93.5	641	94.3	5	0.7
Virgin Blue	631	615	573	93.2	573	93.2	16	2.5
All Airlines	1,904	1,883	1,737	92.2	1,746	92.7	21	1.1
<b>Perth-Sydney</b>								
Jetstar	390	387	254	65.6	296	76.5	3	0.8
Qantas	2,583	2,565	2,107	82.1	2,084	81.2	18	0.7
Virgin Blue	1,779	1,772	1,647	92.9	1,601	90.3	7	0.4
All Airlines	4,752	4,724	4,008	84.8	3,981	84.3	28	0.6
<b>Port Hedland-Perth</b>								
Qantas	589	589	506	85.9	512	86.9	0	0.0
QantasLink	688	682	632	92.7	630	92.4	6	0.9
Virgin Blue	630	616	543	88.1	527	85.6	14	2.2
All Airlines	1,907	1,887	1,681	89.1	1,669	88.4	20	1.0
<b>Port Lincoln-Adelaide</b>								
			(From May 2010 only)					
QantasLink	788	775	668	86.2	654	84.4	13	1.6
Regional Express	1,813	1,809	1,704	94.2	1,627	89.9	4	0.2
All Airlines	2,601	2,584	2,372	91.8	2,281	88.3	17	0.7

	<i>Sectors</i>		<i>Departures On Time</i>		<i>Arrivals On Time</i>		<i>Cancellations</i>	
	<i>Sched.</i>	<i>Flown</i>	<i>No.</i>	<i>%</i>	<i>No.</i>	<i>%</i>	<i>No.</i>	<i>%</i>
<b>Port Macquarie-Sydney</b>								
QantasLink	1,519	1,508	1,160	76.9	1,138	75.5	11	0.7
Virgin Blue	728	713	567	79.5	530	74.3	15	2.1
All Airlines	2,247	2,221	1,727	77.8	1,668	75.1	26	1.2
<b>Proserpine-Brisbane</b>								
Jetstar	359	354	252	71.2	239	67.5	5	1.4
Virgin Blue	365	362	265	73.2	282	77.9	3	0.8
All Airlines	724	716	517	72.2	521	72.8	8	1.1
<b>Rockhampton-Brisbane</b>								
Jetstar	125	124	101	81.5	104	83.9	1	0.8
QantasLink	2,048	2,029	1,591	78.4	1,584	78.1	19	0.9
Tiger Airways	271	269	205	76.2	196	72.9	2	0.7
Virgin Blue	1,764	1,740	1,504	86.4	1,512	86.9	24	1.4
All Airlines	4,208	4,162	3,401	81.7	3,396	81.6	46	1.1
<b>Sunshine Coast-Melbourne</b>								
Jetstar	728	720	458	63.6	526	73.1	8	1.1
Tiger Airways	341	340	238	70.0	232	68.2	1	0.3
Virgin Blue	427	414	309	74.6	332	80.2	13	3.0
All Airlines	1,496	1,474	1,005	68.2	1,090	73.9	22	1.5
<b>Sunshine Coast-Sydney</b>								
Jetstar	1,204	1,183	943	79.7	970	82.0	21	1.7
Virgin Blue	626	610	474	77.7	500	82.0	16	2.6
All Airlines	1,830	1,793	1,417	79.0	1,470	82.0	37	2.0
<b>Sydney-Adelaide</b>								
Jetstar	682	678	635	93.7	632	93.2	4	0.6
Qantas	3,281	3,279	2,861	87.3	2,897	88.4	2	0.1
Tiger Airways	636	626	448	71.6	459	73.3	10	1.6
Virgin Blue	1,793	1,788	1,436	80.3	1,471	82.3	5	0.3
All Airlines	6,392	6,371	5,380	84.4	5,459	85.7	21	0.3
<b>Sydney-Albury</b>								
QantasLink	1,287	1,281	919	71.7	879	68.6	6	0.5
Regional Express	1,326	1,321	1,093	82.7	1,009	76.4	5	0.4
Virgin Blue	727	720	608	84.4	612	85.0	7	1.0
All Airlines	3,340	3,322	2,620	78.9	2,500	75.3	18	0.5
<b>Sydney-Ayers Rock</b>								
			(From October 2010 only)					
Qantas	95	95	82	86.3	83	87.4	0	0.0
Virgin Blue	92	92	78	84.8	80	87.0	0	0.0
All Airlines	187	187	160	85.6	163	87.2	0	0.0
<b>Sydney-Ballina</b>								
Jetstar	435	435	368	84.6	374	86.0	0	0.0
Regional Express	988	988	856	86.6	781	79.0	0	0.0
Virgin Blue	418	418	337	80.6	324	77.5	0	0.0
All Airlines	1,841	1,841	1,561	84.8	1,479	80.3	0	0.0



	<i>Sectors</i>		<i>Departures On Time</i>		<i>Arrivals On Time</i>		<i>Cancellations</i>	
	<i>Sched.</i>	<i>Flown</i>	<i>No.</i>	<i>%</i>	<i>No.</i>	<i>%</i>	<i>No.</i>	<i>%</i>
<b>Sydney-Brisbane</b>								
Jetstar	978	956	792	82.8	796	83.3	22	2.2
Qantas	7,378	7,262	6,087	83.8	6,074	83.6	116	1.6
Virgin Blue	6,488	6,297	4,559	72.4	4,686	74.4	191	2.9
All Airlines	14,844	14,515	11,438	78.8	11,556	79.6	329	2.2
<b>Sydney-Cairns</b>								
Jetstar	575	574	487	84.8	511	89.0	1	0.2
Qantas	1,312	1,311	1,086	82.8	1,119	85.4	1	0.1
Virgin Blue	1,011	1,007	681	67.6	713	70.8	4	0.4
All Airlines	2,898	2,892	2,254	77.9	2,343	81.0	6	0.2
<b>Sydney-Canberra</b>								
Qantas	2,048	2,038	1,824	89.5	1,792	87.9	10	0.5
QantasLink	4,240	4,106	3,301	80.4	3,153	76.8	134	3.2
Virgin Blue	2,673	2,626	2,143	81.6	2,155	82.1	47	1.8
All Airlines	8,961	8,770	7,268	82.9	7,100	81.0	191	2.1
<b>Sydney-Coffs Harbour</b>								
QantasLink	1,687	1,684	1,305	77.5	1,183	70.2	3	0.2
Virgin Blue	726	721	636	88.2	643	89.2	5	0.7
All Airlines	2,413	2,405	1,941	80.7	1,826	75.9	8	0.3
<b>Sydney-Dubbo</b>								
QantasLink	1,212	1,211	1,001	82.7	997	82.3	1	0.1
Regional Express	2,051	2,049	1,763	86.0	1,667	81.4	2	0.1
All Airlines	3,263	3,260	2,764	84.8	2,664	81.7	3	0.1
<b>Sydney-Gold Coast</b>								
Jetstar	3,290	3,244	2,694	83.0	2,633	81.2	46	1.4
Tiger Airways	556	549	385	70.1	401	73.0	7	1.3
Virgin Blue	4,461	4,349	3,512	80.8	3,508	80.7	112	2.5
All Airlines	8,307	8,142	6,591	81.0	6,542	80.3	165	2.0
<b>Sydney-Hamilton Island</b>								
Jetstar	355	353	314	89.0	306	86.7	2	0.6
Virgin Blue	364	361	287	79.5	262	72.6	3	0.8
All Airlines	719	714	601	84.2	568	79.6	5	0.7
<b>Sydney-Hobart</b>								
Jetstar	699	698	590	84.5	605	86.7	1	0.1
Qantas	370	370	347	93.8	348	94.1	0	0.0
Virgin Blue	1,013	1,004	753	75.0	759	75.6	9	0.9
All Airlines	2,082	2,072	1,690	81.6	1,712	82.6	10	0.5
<b>Sydney-Launceston</b>								
Jetstar	391	391	327	83.6	328	83.9	0	0.0
Virgin Blue	365	365	306	83.8	320	87.7	0	0.0
All Airlines	756	756	633	83.7	648	85.7	0	0.0

	<i>Sectors</i>		<i>Departures On Time</i>		<i>Arrivals On Time</i>		<i>Cancellations</i>	
	<i>Sched.</i>	<i>Flown</i>	<i>No.</i>	<i>%</i>	<i>No.</i>	<i>%</i>	<i>No.</i>	<i>%</i>
<b>Sydney-Melbourne</b>								
Jetstar	1,849	1,796	1,465	81.6	1,363	75.9	53	2.9
Qantas	10,970	10,641	9,000	84.6	8,786	82.6	329	3.0
Tiger Airways	2,101	2,058	1,354	65.8	1,344	65.3	43	2.0
Virgin Blue	9,017	8,748	7,031	80.4	6,733	77.0	269	3.0
All Airlines	23,937	23,243	18,850	81.1	18,226	78.4	694	2.9
<b>Sydney-Perth</b>								
Jetstar	391	390	307	78.7	332	85.1	1	0.3
Qantas	2,584	2,575	2,095	81.4	2,126	82.6	9	0.3
Virgin Blue	1,781	1,775	1,502	84.6	1,506	84.8	6	0.3
All Airlines	4,756	4,740	3,904	82.4	3,964	83.6	16	0.3
<b>Sydney-Port Macquarie</b>								
QantasLink	1,520	1,510	1,196	79.2	1,128	74.7	10	0.7
Virgin Blue	728	721	577	80.0	572	79.3	7	1.0
All Airlines	2,248	2,231	1,773	79.5	1,700	76.2	17	0.8
<b>Sydney-Sunshine Coast</b>								
Jetstar	1,188	1,179	1,017	86.3	1,016	86.2	9	0.8
Virgin Blue	626	617	467	75.7	464	75.2	9	1.4
All Airlines	1,814	1,796	1,484	82.6	1,480	82.4	18	1.0
<b>Sydney-Townsville</b>								
Jetstar	267	267	238	89.1	242	90.6	0	0.0
Virgin Blue	365	363	254	70.0	239	65.8	2	0.5
All Airlines	632	630	492	78.1	481	76.3	2	0.3
<b>Sydney-Wagga Wagga</b>								
QantasLink	1,340	1,334	1,055	79.1	942	70.6	6	0.4
Regional Express	1,568	1,556	1,375	88.4	1,235	79.4	12	0.8
All Airlines	2,908	2,890	2,430	84.1	2,177	75.3	18	0.6
<b>Townsville-Brisbane</b>								
Jetstar	360	359	282	78.6	260	72.4	1	0.3
Qantas	1,865	1,858	1,632	87.8	1,584	85.3	7	0.4
Virgin Blue	1,718	1,708	1,538	90.0	1,530	89.6	10	0.6
All Airlines	3,943	3,925	3,452	87.9	3,374	86.0	18	0.5
<b>Townsville-Cairns</b>								
QantasLink	1,969	1,935	1,510	78.0	1,300	67.2	34	1.7
Virgin Blue	325	323	308	95.4	306	94.7	2	0.6
All Airlines	2,294	2,258	1,818	80.5	1,606	71.1	36	1.6
<b>Townsville-Sydney</b>								
Jetstar	265	265	223	84.2	224	84.5	0	0.0
Virgin Blue	366	364	254	69.8	261	71.7	2	0.5
All Airlines	631	629	477	75.8	485	77.1	2	0.3

	<i>Sectors</i>		<i>Departures On Time</i>		<i>Arrivals On Time</i>		<i>Cancellations</i>	
	<i>Sched.</i>	<i>Flown</i>	<i>No.</i>	<i>%</i>	<i>No.</i>	<i>%</i>	<i>No.</i>	<i>%</i>
	<b>Wagga Wagga-Sydney</b>							
QantasLink	1,340	1,328	1,063	80.0	956	72.0	12	0.9
Regional Express	1,569	1,556	1,337	85.9	1,259	80.9	13	0.8
All Airlines	2,909	2,884	2,400	83.2	2,215	76.8	25	0.9

# Airports

On time performance is reported for all routes where the passenger load averages over 8000 passengers per month, and where two or more airlines operate in competition. The following data reports by airport against flights operated on those routes only.

Airport	Departures			Arrivals		
	Sectors	On Time		Sectors	On Time	
	Flown	No.	%	Flown	No.	%
<b>Adelaide</b>						
Jetstar	2 346	1 954	83.3	2 346	2 084	88.8
Qantas	10 048	8 910	88.7	10 078	8 914	88.5
QantasLink	922	811	88.0	924	753	81.5
Regional Express	1 810	1 722	95.1	1 809	1 627	89.9
Tiger Airways	2 373	1 956	82.4	2 365	1 793	75.8
Virgin Blue	7 450	6 377	85.6	7 462	6 396	85.7
All Airlines	24 949	21 730	87.1	24 984	21 567	86.3

Relates to services to and from Alice Springs, Brisbane, Canberra, Gold Coast, Melbourne, Perth Port Lincoln and Sydney.

## Albury

QantasLink	1 280	930	72.7	1 281	879	68.6
Regional Express	1 321	1 102	83.4	1 321	1 009	76.4
Virgin Blue	713	599	84.0	720	612	85.0
All Airlines	3 314	2 631	79.4	3 322	2 500	75.3

Relates to services to and from Sydney only.

## Alice Springs

Qantas	424	381	89.9	424	380	89.6
Tiger Airways	191	132	69.1	191	144	75.4
All Airlines	615	513	83.4	615	524	85.2

Relates to services to and from Adelaide and Melbourne. January 2010 to October 2010 only.

## Ayers Rock

Qantas	94	83	88.3	95	83	87.4
Virgin Blue	92	82	89.1	92	80	87.0
All Airlines	186	165	88.7	187	163	87.2

Relates to services to and from Sydney only. October 2010 to December 2010 only.

## Ballina

Jetstar	435	345	79.3	435	374	86.0
Regional Express	986	760	77.1	988	781	79.0
Virgin Blue	413	332	80.4	418	324	77.5
All Airlines	1 834	1 437	78.4	1 841	1 479	80.3

Relates to services to and from Sydney only.

<i>Airport</i>	<i>Departures</i>			<i>Arrivals</i>		
	<i>Sectors Flown</i>	<i>On Time</i>		<i>Sectors Flown</i>	<i>On Time</i>	
		<i>No.</i>	<i>%</i>		<i>No.</i>	<i>%</i>
<b>Brisbane</b>						
Jetstar	6 287	5 045	80.2	6 264	5 051	80.6
Qantas	20 367	17 098	83.9	20 356	17 377	85.4
QantasLink	4 305	3 441	79.9	4 035	3 087	76.5
Tiger Airways	1 231	889	72.2	1 230	946	76.9
Virgin Blue	22 277	18 534	83.2	22 204	18 264	82.3
All Airlines	54 467	45 007	82.6	54 089	44 725	82.7
Relates to services to and from Adelaide, Cairns, Canberra, Darwin, Hamilton Island, Mackay, Melbourne, Newcastle, Perth, Proserpine, Rockhampton, Sydney and Townsville.						
<b>Broome</b>						
Qantas	371	274	73.9	371	316	85.2
QantasLink	602	530	88.0	601	516	85.9
Skywest	293	219	74.7	283	224	79.2
Virgin Blue	565	458	81.1	566	496	87.6
All Airlines	1 831	1 481	80.9	1 821	1 552	85.2
Relates to services to and from Perth only.						
<b>Cairns</b>						
Jetstar	2 200	1 896	86.2	2 199	1 886	85.8
Qantas	3 127	2 743	87.7	3 136	2 772	88.4
QantasLink	1 942	1 620	83.4	1 935	1 300	67.2
Tiger Airways	105	41	39.0	106	64	60.4
Virgin Blue	3 417	2 900	84.9	3 428	2 805	81.8
All Airlines	10 791	9 200	85.3	10 804	8 827	81.7
Relates to services to and from Brisbane, Melbourne, Sydney and Townsville.						
<b>Canberra</b>						
Qantas	7 265	6 548	90.1	7 285	6 587	90.4
QantasLink	4 637	3 837	82.7	4 642	3 591	77.4
Tiger Airways	361	231	64.0	363	237	65.3
Virgin Blue	6 232	5 504	88.3	6 243	5 242	84.0
All Airlines	18 495	16 120	87.2	18 533	15 657	84.5
Relates to services to and from Adelaide, Brisbane, Melbourne and Sydney.						
<b>Coffs Harbour</b>						
QantasLink	1 686	1 257	74.6	1 684	1 183	70.2
Virgin Blue	720	625	86.8	721	643	89.2
All Airlines	2 406	1 882	78.2	2 405	1 826	75.9
Relates to services to and from Sydney only.						
<b>Darwin</b>						
Jetstar	137	96	70.1	141	114	80.9
Qantas	727	547	75.2	730	614	84.1
Tiger Airways	161	63	39.1	162	84	51.9
Virgin Blue	1 018	895	87.9	1 022	860	84.1
All Airlines	2 043	1 601	78.4	2 055	1 672	81.4
Relates to services to and from Brisbane, Melbourne and Perth.						

Airport	Departures			Arrivals		
	Sectors	On Time		Sectors	On Time	
	Flown	No.	%	Flown	No.	%
<b>Dubbo</b>						
QantasLink	1 211	996	82.2	1 211	997	82.3
Regional Express	2 045	1 690	82.6	2 049	1 667	81.4
All Airlines	3 256	2 686	82.5	3 260	2 664	81.7
Relates to services to and from Sydney only.						
<b>Gold Coast</b>						
Jetstar	6 438	5 157	80.1	6 441	5 213	80.9
Tiger Airways	1 867	1 342	71.9	1 878	1 381	73.5
Virgin Blue	7 145	5 880	82.3	7 170	5 900	82.3
All Airlines	15 450	12 379	80.1	15 489	12 494	80.7
Relates to services to and from Adelaide, Melbourne, Newcastle and Sydney.						
<b>Hamilton Island</b>						
Jetstar	700	534	76.3	695	571	82.2
Virgin Blue	720	570	79.2	722	566	78.4
All Airlines	1 420	1 104	77.7	1 417	1 137	80.2
Relates to services to and from Brisbane and Sydney.						
<b>Hobart</b>						
Jetstar	2 149	1 600	74.5	2 144	1 726	80.5
Qantas	1 106	999	90.3	1 106	918	83.0
Tiger Airways	589	449	76.2	589	458	77.8
Virgin Blue	2 538	2 089	82.3	2 545	2 037	80.0
All Airlines	6 382	5 137	80.5	6 384	5 139	80.5
Relates to services to and from Melbourne and Sydney.						
<b>Kalgoorlie</b>						
Qantas	462	381	82.5	461	398	86.3
QantasLink	518	446	86.1	516	465	90.1
Skywest	238	207	87.0	238	202	84.9
All Airlines	1 218	1 034	84.9	1 215	1 065	87.7
Relates to services to and from Perth only.						
<b>Karratha</b>						
Qantas	1 749	1 555	88.9	1 750	1 572	89.8
QantasLink	572	529	92.5	562	527	93.8
Skywest	384	309	80.5	381	315	82.7
Virgin Blue	616	512	83.1	619	544	87.9
All Airlines	3 321	2 905	87.5	3 312	2 958	89.3
Relates to services to and from Perth only.						

Airport	Departures			Arrivals		
	Sectors	On Time		Sectors	On Time	
	Flown	No.	%	Flown	No.	%
<b>Launceston</b>						
Jetstar	1 435	1 083	75.5	1 432	1 141	79.7
QantasLink	932	679	72.9	933	578	62.0
Tiger Airways	213	147	69.0	213	151	70.9
Virgin Blue	1 905	1 681	88.2	1 908	1 606	84.2
All Airlines	4 485	3 590	80.0	4 486	3 476	77.5
Relates to services to and from Melbourne and Sydney.						
<b>Mackay</b>						
Jetstar	1 160	900	77.6	1 156	973	84.2
QantasLink	1 106	878	79.4	1 110	833	75.0
Virgin Blue	1 734	1 533	88.4	1 741	1 435	82.4
All Airlines	4 000	3 311	82.8	4 007	3 241	80.9
Relates to services to and from Brisbane only.						
<b>Melbourne</b>						
Jetstar	10 518	8 287	78.8	10 520	8 138	77.4
Qantas	25 961	22 147	85.3	25 943	22 035	84.9
QantasLink	2 503	1 958	78.2	2 501	1 823	72.9
Regional Express	1 047	978	93.4	1 046	956	91.4
Tiger Airways	7 339	5 313	72.4	7 328	5 050	68.9
Virgin Blue	26 497	21 865	82.5	26 492	21 951	82.9
All Airlines	73 865	60 548	82.0	73 830	59 953	81.2
Relates to services to and from Adelaide, Alice Springs, Brisbane, Cairns, Canberra, Darwin, Gold Coast, Hobart, Launceston, Mildura, Newcastle, Perth, Sunshine Coast and Sydney.						
<b>Mildura</b>						
QantasLink	1 018	878	86.2	1 019	711	69.8
Regional Express	1 046	971	92.8	1 047	958	91.5
Virgin Blue	362	298	82.3	363	292	80.4
All Airlines	2 426	2 147	88.5	2 429	1 961	80.7
Relates to services to and from Melbourne only.						
<b>Newcastle</b>						
Jetstar	2 794	2 304	82.5	2 795	2 315	82.8
QantasLink	766	576	75.2	769	517	67.2
Virgin Blue	1 201	986	82.1	1 205	1 001	83.1
All Airlines	4 761	3 866	81.2	4 769	3 833	80.4
Relates to services to and from Brisbane, Gold Coast and Melbourne.						
<b>Newman</b>						
QantasLink	1 068	980	91.8	1 062	956	90.0
Virgin Blue	432	379	87.7	430	381	88.6
All Airlines	1 500	1 359	90.6	1 492	1 337	89.6
Relates to services to and from Perth only.						

Airport	Departures			Arrivals		
	Sectors Flown	On Time No.	On Time %	Sectors Flown	On Time No.	On Time %
<b>Perth</b>						
Jetstar	1 456	1 085	74.5	1 455	1 239	85.2
Qantas	11 302	9 546	84.5	11 319	9 606	84.9
QantasLink	3 421	3 136	91.7	3 442	3 095	89.9
Skywest	902	783	86.8	915	658	71.9
Tiger Airways	393	231	58.8	393	274	69.7
Virgin Blue	7 254	6 616	91.2	7 256	6 203	85.5
All Airlines	24 728	21 397	86.5	24 780	21 075	85.0
Relates to services to and from Adelaide, Brisbane, Broome, Darwin, Kalgoorlie, Karratha, Melbourne, Newman, Port Hedland and Sydney.						
<b>Port Hedland</b>						
Qantas	589	506	85.9	588	532	90.5
QantasLink	682	632	92.7	680	641	94.3
Virgin Blue	616	543	88.1	615	573	93.2
All Airlines	1 887	1 681	89.1	1 883	1 746	92.7
Relates to services to and from Perth only.						
<b>Port Lincoln</b>						
QantasLink	775	668	86.2	775	635	81.9
Regional Express	1 809	1 704	94.2	1 810	1 680	92.8
All Airlines	2 584	2 372	91.8	2 585	2 315	89.6
Relates to services to and from Adelaide only. May 2010 to December 2010 only.						
<b>Port Macquarie</b>						
QantasLink	1 508	1 160	76.9	1 510	1 128	74.7
Virgin Blue	713	567	79.5	721	572	79.3
All Airlines	2 221	1 727	77.8	2 231	1 700	76.2
Relates to services to and from Sydney only.						
<b>Proserpine</b>						
Jetstar	354	252	71.2	353	270	76.5
Virgin Blue	362	265	73.2	362	267	73.8
All Airlines	716	517	72.2	715	537	75.1
Relates to services to and from Brisbane only.						
<b>Rockhampton</b>						
Jetstar	124	101	81.5	123	108	87.8
QantasLink	2 029	1 591	78.4	2 292	1 751	76.4
Tiger Airways	269	205	76.2	269	210	78.1
Virgin Blue	1 740	1 504	86.4	1 744	1 498	85.9
All Airlines	4 162	3 401	81.7	4 428	3 567	80.6
Relates to services to and from Brisbane only.						



Airport	Departures			Arrivals		
	Sectors Flown	On Time		Sectors Flown	On Time	
		No.	%		No.	%
<b>Sunshine Coast</b>						
Jetstar	1 903	1 401	73.6	1 900	1 573	82.8
Tiger Airways	340	238	70.0	341	254	74.5
Virgin Blue	1 024	783	76.5	1 036	795	76.7
All Airlines	3 267	2 422	74.1	3 277	2 622	80.0
Relates to services to and from Melbourne and Sydney.						
<b>Sydney</b>						
Jetstar	10 961	9 234	84.2	11 001	8 534	77.6
Qantas	27 571	23 382	84.8	27 517	22 895	83.2
QantasLink	11 126	8 777	78.9	11 112	8 398	75.6
Regional Express	5 914	5 087	86.0	5 908	4 623	78.2
Tiger Airways	3 233	2 187	67.6	3 237	2 458	75.9
Virgin Blue	31 972	25 167	78.7	31 925	25 388	79.5
All Airlines	90 777	73 834	81.3	90 700	72 296	79.7
Relates to services to and from Adelaide, Albury, Ayers Rock, Ballina, Brisbane, Cairns, Canberra, Coffs Harbour, Dubbo, Gold Coast, Hamilton Island, Hobart, Launceston, Melbourne, Perth, Port Macquarie, Sunshine Coast, Townsville and Wagga Wagga.						
<b>Townsville</b>						
Jetstar	624	505	80.9	621	545	87.8
Qantas	1 858	1 632	87.8	1 862	1 624	87.2
QantasLink	1 935	1 510	78.0	1 942	1 481	76.3
Virgin Blue	2 395	2 100	87.7	2 393	2 029	84.8
All Airlines	6 812	5 747	84.4	6 818	5 679	83.3
Relates to services to and from Brisbane, Cairns and Sydney.						
<b>Wagga Wagga</b>						
QantasLink	1 328	1 063	80.0	1 334	942	70.6
Regional Express	1 556	1 337	85.9	1 556	1 235	79.4
All Airlines	2 884	2 400	83.2	2 890	2 177	75.3
Relates to services to and from Sydney only.						

## Definitions

---

On time departure                      A flight departure is counted as "on time" if it departs the gate within 15 minutes of the scheduled departure time shown in the carriers' schedule.

---

On time arrival                         A flight arrival is counted as "on time" if it arrived at the gate within 15 minutes of the scheduled arrival time shown in the carriers' schedule.  
Neither diverted nor cancelled flights count as on time.

---

Cancellation                            A flight is regarded as a cancellation if it is cancelled or rescheduled less than 7 days prior to its scheduled departure time.

---

On time departure percentage                      The percentage of on time departures is measured against the number of departures *operated* on any particular sector.

---

On time arrival percentage                         The percentage of on time arrivals is measured against the number of arrivals *operated* on any particular sector.

---

Cancellation percentage                            The percentage of cancellations is measured against the number of services *scheduled* on any particular sector.

---