



**Australian Government**

**Department of Infrastructure and Transport**

Bureau of Infrastructure, Transport and Regional Economics

STATISTICAL REPORT



# Aviation

Domestic airline on time performance 2010-11

© Commonwealth of Australia 2011

ISSN 1832-0759

This work is copyright and the data contained in this publication should not be reproduced or used in any form without acknowledgement.

#### Enquiries

Bureau of Infrastructure, Transport and Regional Economics  
GPO Box 501  
Canberra ACT 2601

Telephone: 02 6274 7790

Facsimile: 02 6274 7727

Website: [www.bitre.gov.au](http://www.bitre.gov.au)

Email: [avstats@infrastructure.gov.au](mailto:avstats@infrastructure.gov.au)

This publication, including a spreadsheet of the time-series data, can be downloaded from the BITRE website: <http://www.bitre.gov.au/info.aspx?ResourceId=214&NodeId=104>.

#### Disclaimers

BITRE seeks to publish its work to the highest professional standards. However, it cannot accept responsibility for any consequences arising from the use of information herein. Readers should rely on their own skill and judgment in applying any information or analysis to particular issues or circumstances.

# Foreword

The Bureau of Infrastructure, Transport and Regional Economics (BITRE) monitors the punctuality and reliability of major domestic airlines operating between Australian airports. The purpose of this is to allow for evaluation of overall industry and individual airline performance, so that consumers of air travel can make informed decisions.

The following domestic airlines reported this data monthly to the BITRE during 2010-11: Jetstar, Qantas, QantasLink, Regional Express, Skywest Airlines, Tiger Airways and Virgin Australia. Data has been gathered since November 2003, although some airlines commenced reporting since then, including Jetstar which first reported in May 2004, MacAir in July 2005 and Tiger Airways in April 2008. MacAir ceased operations in February 2009 and data was not received for December 2008 or January 2009.

Information presented in this report is for Australian domestic routes for which the passenger load averaged 8000 or more passengers per month over the previous six months, and where two or more airlines operated in competition on those routes. 52 routes met these criteria for all twelve months in 2010-11 and another 3 routes did so for a shorter period of the year. Over time, routes which meet these criteria change as airline networks and traffic levels vary.

Participating airlines report their overall monthly network performance where this is possible.

Total industry figures encompass all services operated by reporting airlines only. These airlines collectively carried over 95 per cent of total domestic passengers (regular public transport only) in 2010.

The method of capturing on time performance varies between airlines utilising different recording systems. Jetstar and Qantas jet aircraft use Aircraft Communication Addressing and Reporting System (ACARS) to electronically measure on time performance. Regional Express, Skywest, Tiger Airways, Virgin Australia and the Qantas non-jet fleet record on time performance manually using records from pilots, gate agents and/or ground crews.

After initial data is collected, aggregate reports are audited internally by participating airlines prior to publication.

Reports and detailed time series data in Microsoft Excel spreadsheet format are available from the BITRE website at: <http://www.bitre.gov.au/info.aspx?ResourceId=214&NodeId=104>.



# Contents

	Page
Industry performance .....	1
Individual routes .....	8
Airports .....	22
Definitions .....	28



## Industry performance

For the year ended June 2011, on time performance over all routes operated by participating airlines (Jetstar, Qantas, QantasLink, Regional Express, Skywest Airlines, Tiger Airways and Virgin Australia) averaged 80.6 per cent for on time departures, and 78.8 per cent for on time arrivals. Cancellations for 2010-11 represented 1.6 per cent of all scheduled flights. The equivalent figures for 2009-10 were 85.6 per cent for departures, 84.4 per cent for arrivals and 1.0 per cent for cancellations.

The long term average performance for all routes since reporting commenced in November 2003 is 84.4 per cent for on time departures and 83.1 per cent for on time arrivals. Cancellations averaged 1.2 per cent of all scheduled flights.

On time performance tracked around 87 per cent for the period before June 2007. There was then a noticeable decrease to 79 per cent for the period from June 2007 to December 2008. For the period January 2009 to June 2010, on time performance rose back up to 85 per cent but has dropped back down to 80 per cent for the latest year (see Figure 1). On time performance in 2010-11 was affected by adverse weather conditions on the East Coast during December 2010 and January 2011 in particular followed by the extreme weather conditions experienced in February 2011 with cyclones Yasi and Carlos and finally in June 2011 by the volcanic ash cloud from Chile.

Of the major domestic airlines, Qantas achieved the highest level of on time departures for 2010-11 at 83.8 per cent, followed by Virgin Australia at 79.9 per cent, Jetstar at 77.1 per cent and Tiger Airways at 65.9 per cent. The regional airlines were led by Regional Express at 86.2 per cent, Skywest at 85.8 per cent and QantasLink at 78.5 per cent.

Qantas also achieved the highest on time arrivals among the major domestic airlines at 83.1 per cent, followed by Virgin Australia at 78.7 per cent, Jetstar at 77.3 per cent and Tiger Airways at 65.9 per cent. Skywest was the best performing regional airline for on time arrivals at 85.1 per cent, followed by Regional Express at 81.3 per cent, and QantasLink at 74.8 per cent.

Tiger Airways had the highest percentage of cancellations for 2010-11 at 3.0 per cent, while Skywest had the lowest at 0.3 per cent.

Of the 52 routes which met the criteria for on time performance reporting for all twelve months in 2010-11, the Adelaide-Port Lincoln route had the highest percentage of on time departures (92.6 per cent) and the highest percentage of on time arrivals (89.7 per cent). The Sunshine Coast-Melbourne route had the lowest percentage of on time departures (56.2 per cent) and the lowest percentage of on time arrivals (63.9 per cent).

Cancellations were highest on the Rockhampton-Brisbane route at 4.4 per cent, followed by Brisbane-Rockhampton at 4.0 per cent, Canberra-Sydney at 3.5 per cent and Melbourne-Sydney, Sydney-Melbourne and Sydney-Canberra each at 3.2 per cent.

Of the airports with on time performance reporting for all twelve months in 2010-11, Port Lincoln Airport recorded the highest percentage of on time departures (91.8 per cent) and the highest percentage of on time arrivals (89.7 per cent). Sunshine Coast Airport recorded the lowest percentage of on time departures (66.7 per cent) and Albury Airport recorded the lowest percentage of on time arrivals (73.9 per cent). These figures only refer to reported routes and do not cover all flights at these airports.

Table 1 On time performance for the year ended June 2011 — Total Industry

	<i>Sectors</i>		<i>Departures On Time</i>		<i>Arrivals On Time</i>		<i>Cancellations</i>	
	<i>Scheduled</i>	<i>Flown</i>	<i>No.</i>	<i>%</i>	<i>No.</i>	<i>%</i>	<i>No.</i>	<i>%</i>
Jetstar	66 956	65 992	50 855	77.1	50 999	77.3	964	1.4
Qantas	121 412	119 591	100 227	83.8	99 431	83.1	1 821	1.5
QantasLink	101 259	99 309	77 986	78.5	74 311	74.8	1 950	1.9
Regional Express	64 940	64 677	55 750	86.2	52 588	81.3	263	0.4
Skywest	12 121	12 089	10 372	85.8	10 291	85.1	32	0.3
Tiger Airways	20 775	20 153	13 271	65.9	13 280	65.9	622	3.0
Virgin Australia	140 245	137 444	109 806	79.9	108 154	78.7	2 801	2.0
All Airlines	527 708	519 255	418 267	80.6	409 054	78.8	8 453	1.6

1. Total airline network data (including routes not shown in this report).

Table 2 Top ten routes for on time performance for the year ended June 2011 (covers participating airlines only and routes reported for all twelve months)

<i>Departures</i>		<i>Arrivals</i>	
<i>Route</i>	<i>On Time (%)</i>	<i>Route</i>	<i>On Time (%)</i>
Adelaide-Port Lincoln	92.6	Adelaide-Port Lincoln	89.7
Port Lincoln-Adelaide	91.8	Port Lincoln-Adelaide	89.4
Canberra-Brisbane	89.3	Brisbane-Canberra	89.0
Perth-Port Hedland	88.8	Gold Coast-Adelaide	88.6
Perth-Newman	88.5	Adelaide-Gold Coast	88.5
Cairns-Brisbane	88.4	Adelaide-Perth	88.5
Adelaide-Gold Coast	88.4	Adelaide-Canberra	87.4
Perth-Kalgoorlie	88.1	Brisbane-Adelaide	87.4
Perth-Darwin	87.7	Perth-Port Hedland	87.1
Mildura-Melbourne	87.5	Darwin-Perth	86.9

Table 3 Top ten airports for on time performance for the year ended June 2011 (covers participating airlines only and routes reported for all twelve months)

<i>Departures</i>		<i>Arrivals</i>	
<i>Airport</i>	<i>On Time (%)</i>	<i>Airport</i>	<i>On Time (%)</i>
Port Lincoln	91.8	Port Lincoln	89.7
Mildura	87.5	Port Hedland	87.1
Newman	87.0	Newman	86.0
Adelaide	85.9	Kalgoorlie	85.9
Port Hedland	85.6	Karratha	85.5
Canberra	84.9	Adelaide	84.6
Kalgoorlie	83.9	Canberra	82.9
Wagga Wagga	83.5	Perth	81.8
Karratha	83.2	Townsville	81.4
Perth	83.1	Dubbo	80.2



## Total industry on time performance

Figure 1 On time performance (by month from June 2006)—Total Industry

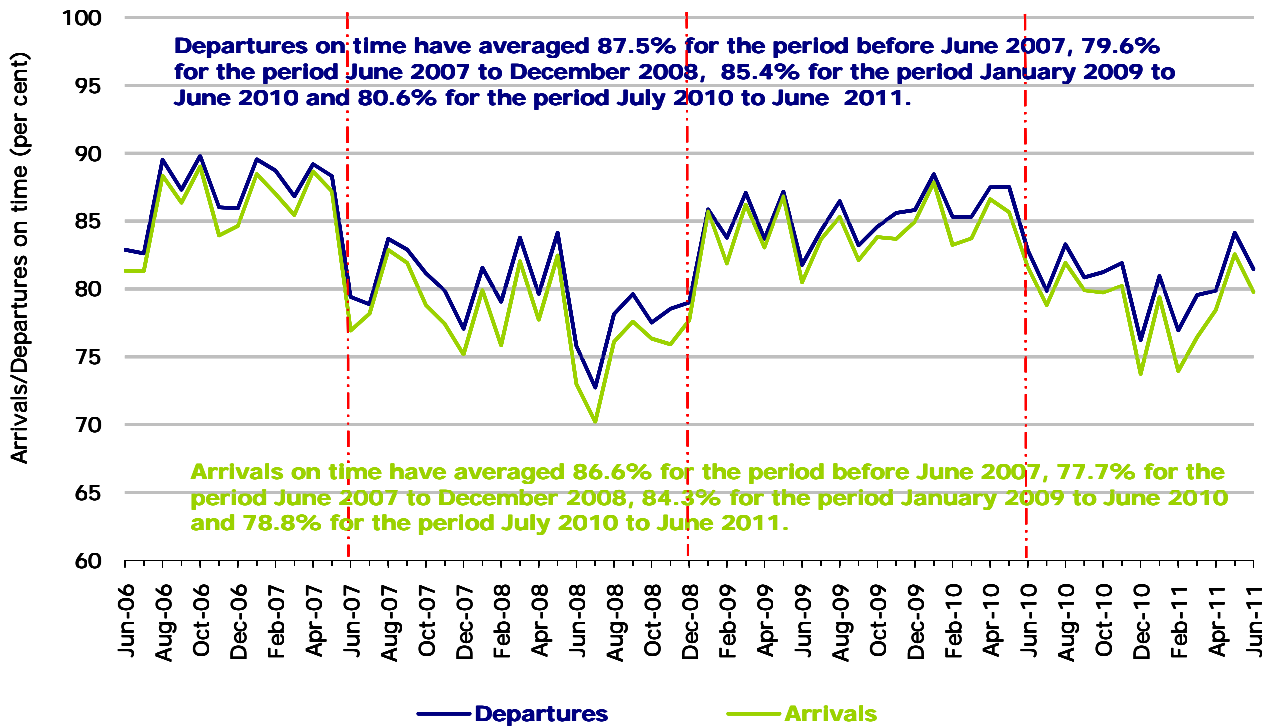
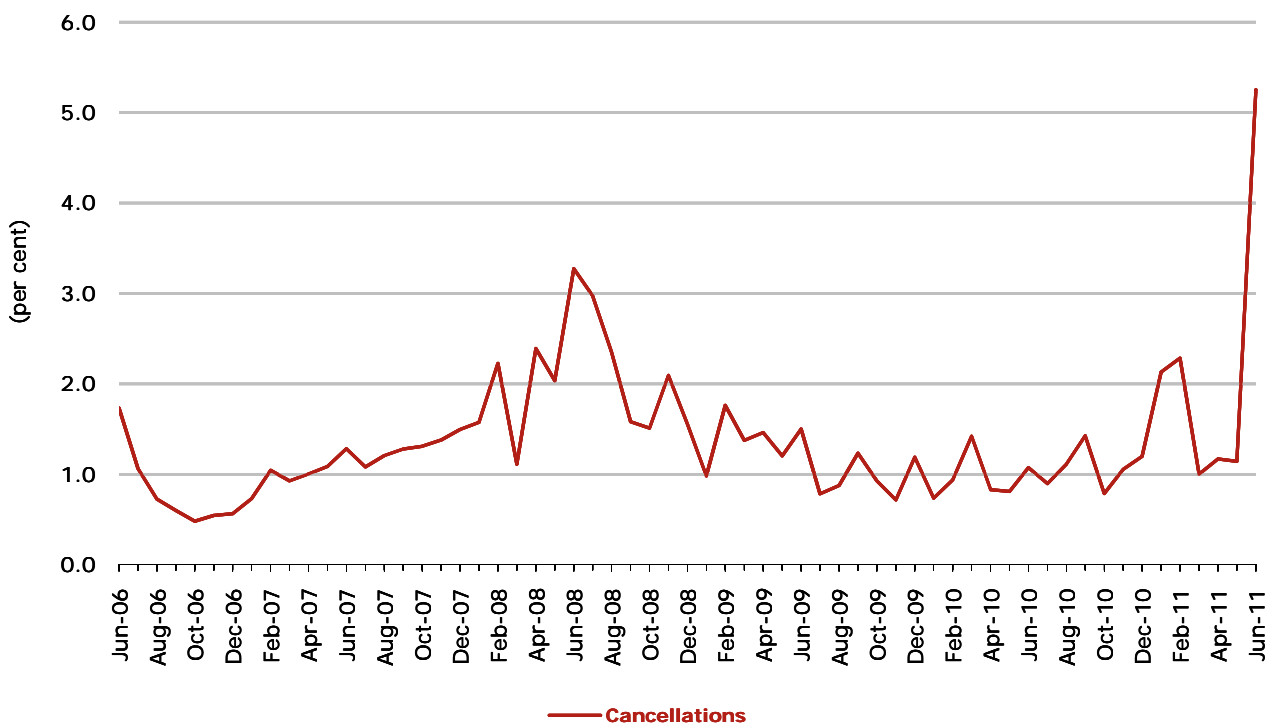


Figure 2 Cancellations (by month from June 2006)—Total Industry



## Major domestic airlines on time performance

Figure 3 On time performance (by month from June 2006)—Jetstar

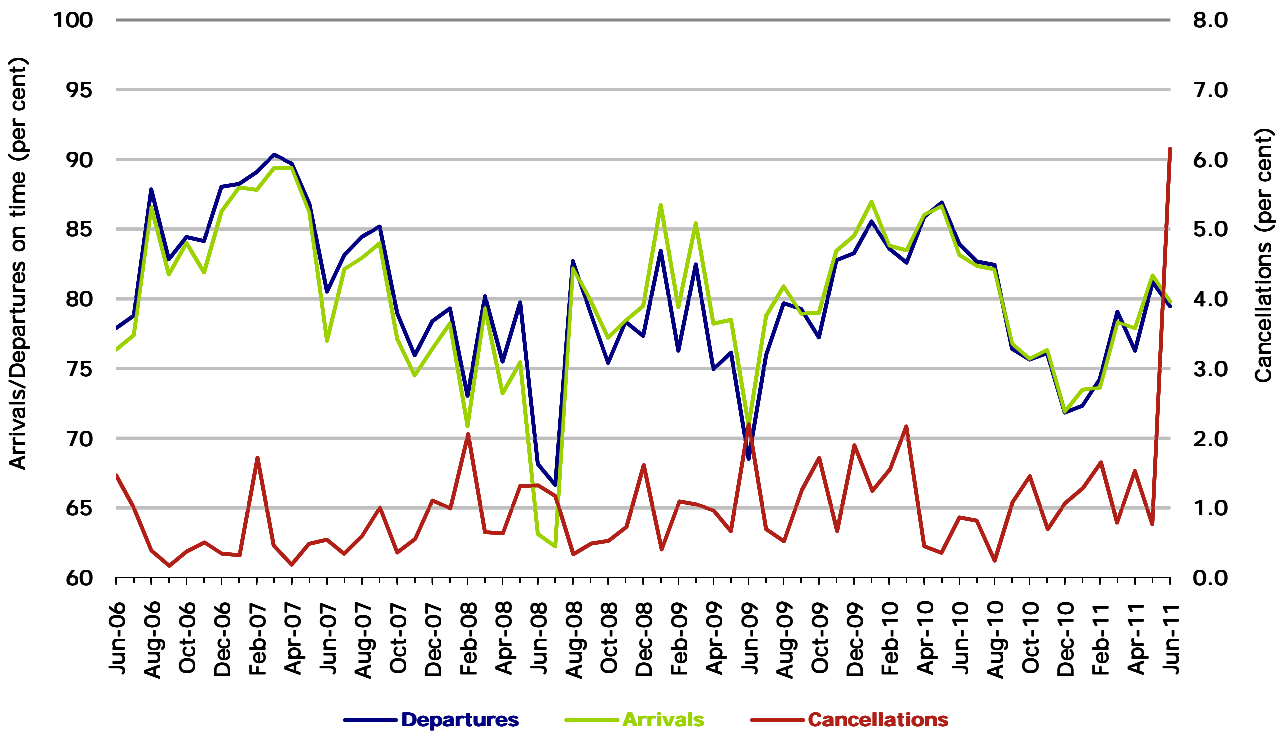


Figure 4 On time performance (by month from June 2006)—Qantas

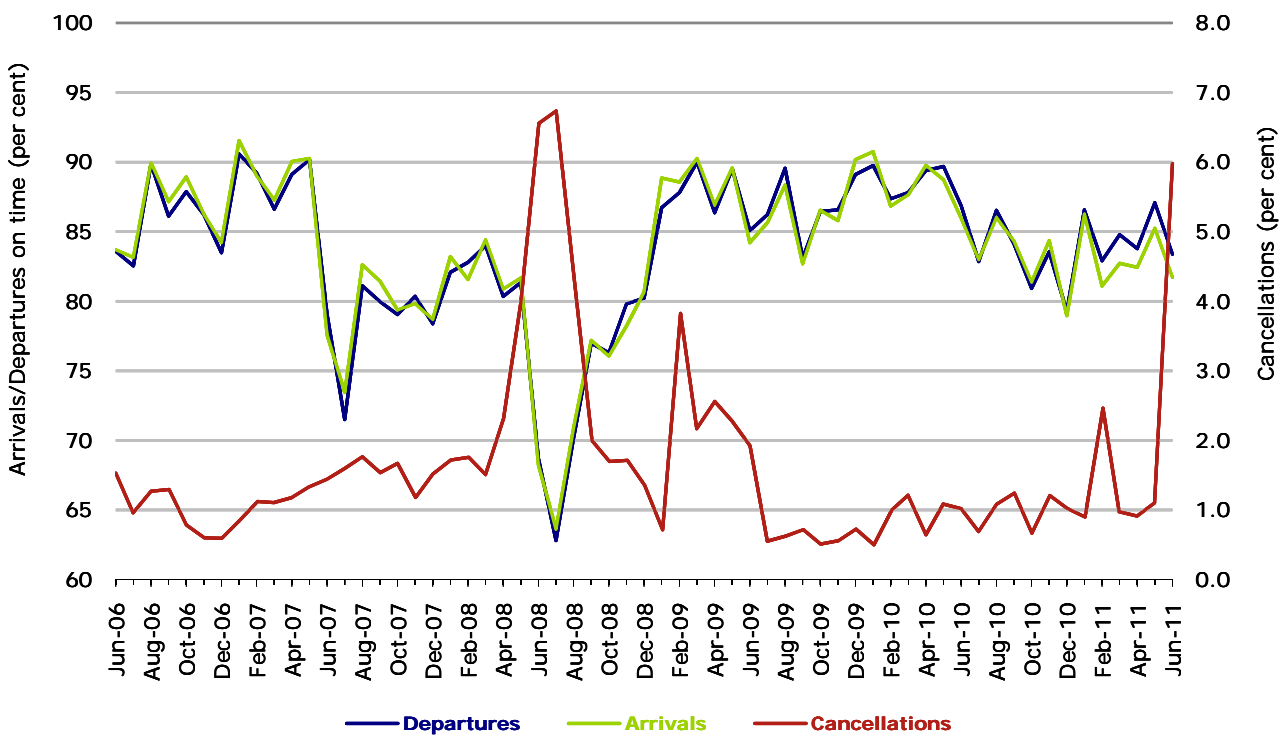
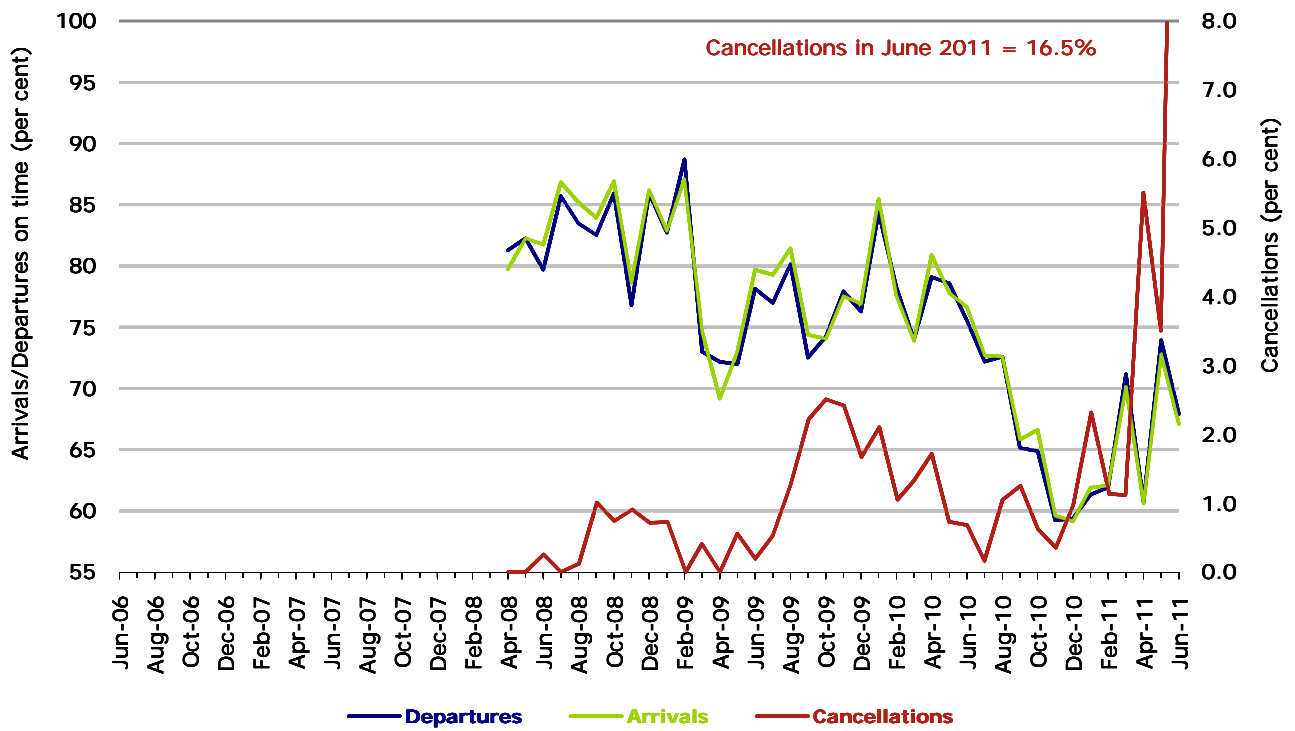
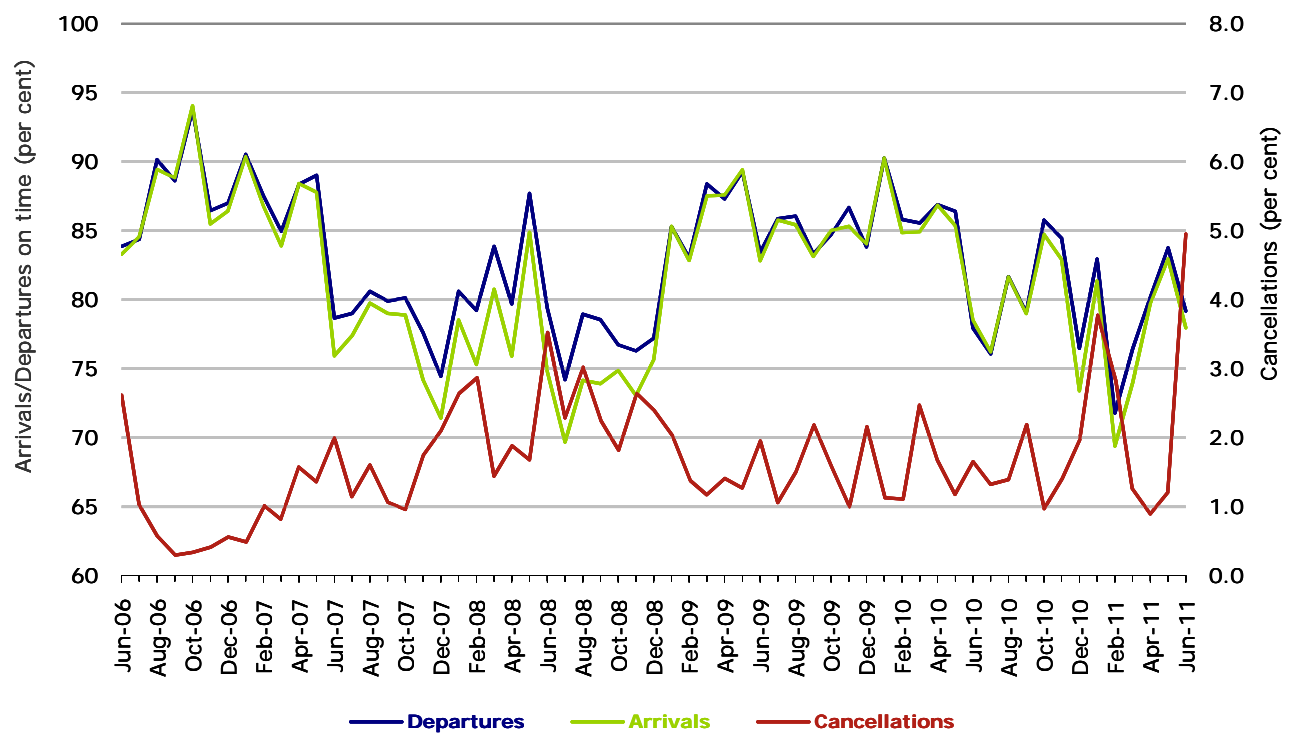


Figure 5 On time performance (by month from June 2006)—Tiger Airways



Tiger Airways commenced reporting in April 2008.

Figure 6 On time performance (by month from June 2006)—Virgin Blue



## Major regional airlines on time performance

Figure 7 On time performance (by month from June 2006)—QantasLink

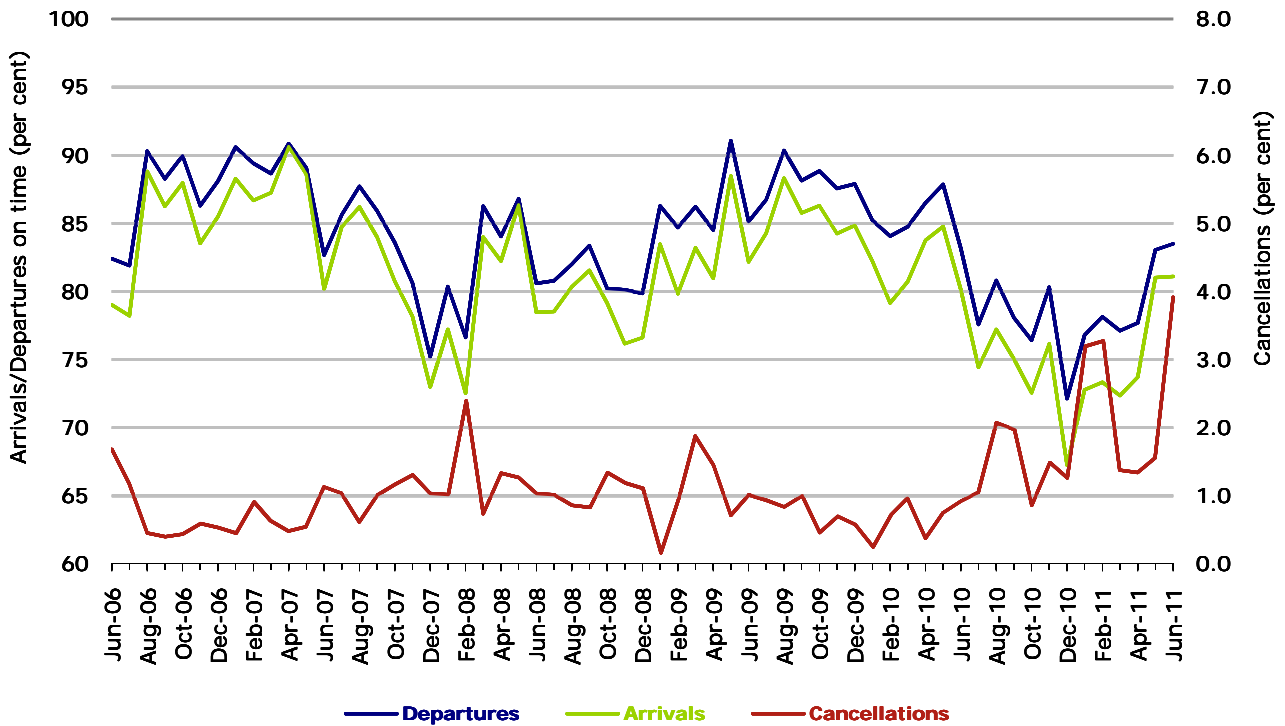


Figure 8 On time performance (by month from June 2006)—Regional Express

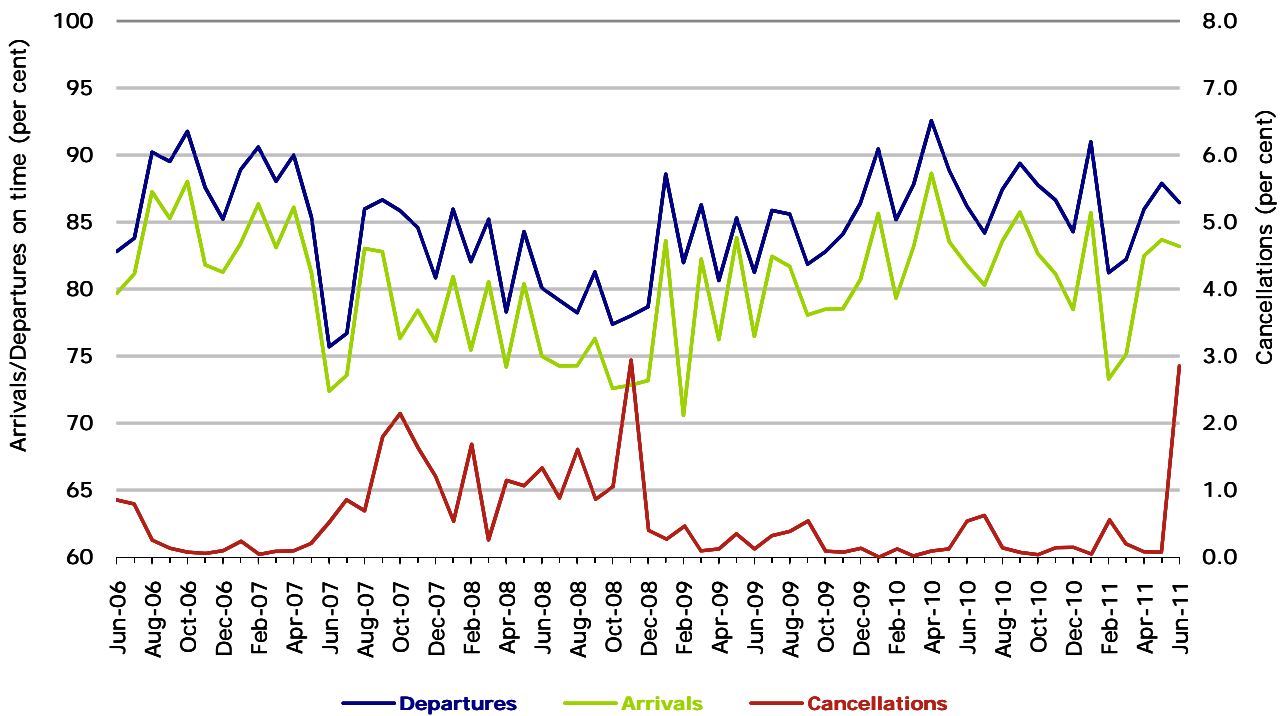
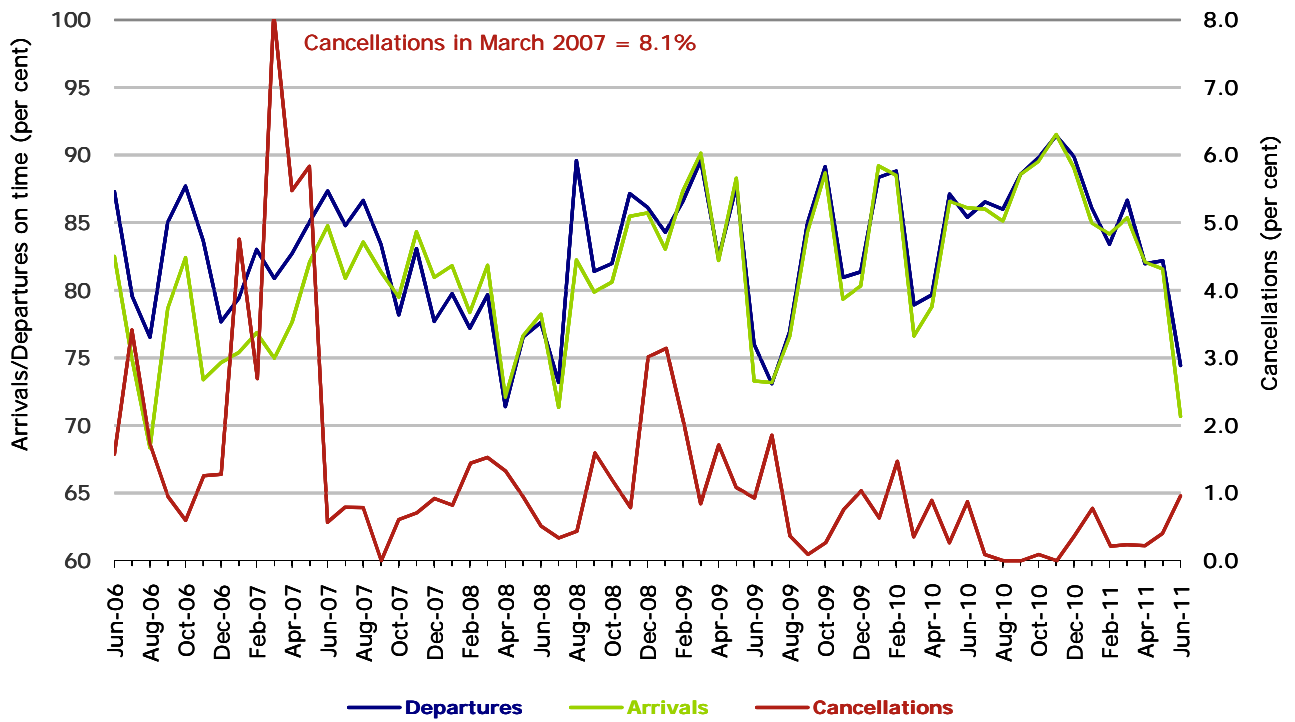


Figure 9 On time performance (by month from June 2006)—Skywest





## Individual routes

On time performance is reported for all routes where the passenger load averages over 8000 passengers per month over the previous six months, and where two or more airlines operate in competition on those routes. There are now 53 routes which meet this definition. Over time, however, routes which meet this definition may change as airline networks and traffic levels vary.

	<i>Sectors</i>		<i>Departures On Time</i>		<i>Arrivals On Time</i>		<i>Cancellations</i>	
	<i>Sched.</i>	<i>Flown</i>	<i>No.</i>	<i>%</i>	<i>No.</i>	<i>%</i>	<i>No.</i>	<i>%</i>
<b>Adelaide-Brisbane</b>								
Jetstar	361	357	277	77.6	284	79.6	4	1.1
Qantas	1,251	1,244	1,136	91.3	1,051	84.5	7	0.6
Tiger Airways	116	116	109	94.0	106	91.4	0	0.0
Virgin Australia	1,084	1,065	905	85.0	891	83.7	19	1.8
All Airlines	2,812	2,782	2,427	87.2	2,332	83.8	30	1.1
<b>Adelaide-Canberra</b>								
Qantas	553	549	495	90.2	493	89.8	4	0.7
Virgin Australia	353	350	278	79.4	293	83.7	3	0.8
All Airlines	906	899	773	86.0	786	87.4	7	0.8
<b>Adelaide-Gold Coast</b>								
Jetstar	360	357	321	89.9	322	90.2	3	0.8
Tiger Airways	120	120	88	73.3	90	75.0	0	0.0
Virgin Australia	364	359	330	91.9	328	91.4	5	1.4
All Airlines	844	836	739	88.4	740	88.5	8	0.9
<b>Adelaide-Melbourne</b>								
Jetstar	816	803	608	75.7	582	72.5	13	1.6
Qantas	3,472	3,436	2,892	84.2	2,900	84.4	36	1.0
QantasLink	205	198	180	90.9	165	83.3	7	3.4
Tiger Airways	1,140	1,123	929	82.7	904	80.5	17	1.5
Virgin Australia	3,126	3,093	2,605	84.2	2,520	81.5	33	1.1
All Airlines	8,759	8,653	7,214	83.4	7,071	81.7	106	1.2
<b>Adelaide-Perth</b>								
Jetstar	363	360	314	87.2	319	88.6	3	0.8
Qantas	1,349	1,337	1,148	85.9	1,201	89.8	12	0.9
Virgin Australia	746	735	615	83.7	632	86.0	11	1.5
All Airlines	2,458	2,432	2,077	85.4	2,152	88.5	26	1.1
<b>Adelaide-Port Lincoln</b>								
QantasLink	1,176	1,152	1,013	87.9	964	83.7	24	2.0
Regional Express	2,508	2,498	2,367	94.8	2,311	92.5	10	0.4
All Airlines	3,684	3,650	3,380	92.6	3,275	89.7	34	0.9
<b>Adelaide-Sydney</b>								
Jetstar	847	835	695	83.2	616	73.8	12	1.4
Qantas	3,305	3,272	2,915	89.1	2,861	87.4	33	1.0
Tiger Airways	470	457	382	83.5	370	81.1	13	2.8
Virgin Australia	1,802	1,782	1,386	77.8	1,415	79.4	20	1.1
All Airlines	6,424	6,346	5,378	84.7	5,262	82.9	78	1.2

	<i>Sectors</i>		<i>Departures On Time</i>		<i>Arrivals On Time</i>		<i>Cancellations</i>	
	<i>Sched.</i>	<i>Flown</i>	<i>No.</i>	<i>%</i>	<i>No.</i>	<i>%</i>	<i>No.</i>	<i>%</i>
<b>Albury-Sydney</b>								
QantasLink	1,350	1,337	955	71.4	938	70.2	13	1.0
Regional Express	1,302	1,291	1,057	81.9	1,008	78.1	11	0.8
Virgin Australia	717	701	580	82.7	557	79.5	16	2.2
All Airlines	3,369	3,329	2,592	77.9	2,503	75.2	40	1.2
<b>Alice Springs-Melbourne</b> (To October 2010 only)								
Qantas	123	123	102	82.9	115	93.5	0	0.0
Tiger Airways	63	63	35	55.6	40	63.5	0	0.0
All Airlines	186	186	137	73.7	155	83.3	0	0.0
<b>Ayers Rock-Sydney</b> (From October 2010 only)								
Qantas	275	273	244	89.4	244	89.4	2	0.7
Virgin Australia	274	272	221	81.3	235	86.4	2	0.7
All Airlines	549	545	465	85.3	479	87.9	4	0.7
<b>Ballina-Sydney</b>								
Jetstar	449	442	333	75.3	342	77.4	7	1.6
Regional Express	947	944	714	75.6	662	70.1	3	0.3
Virgin Australia	417	412	292	70.9	311	75.5	5	1.2
All Airlines	1,813	1,798	1,339	74.5	1,315	73.1	15	0.8
<b>Brisbane-Adelaide</b>								
Jetstar	359	357	293	82.1	295	82.6	2	0.6
Qantas	1,250	1,241	1,066	85.9	1,122	90.4	9	0.7
Tiger Airways	117	115	91	79.1	83	72.2	2	1.7
Virgin Australia	1,083	1,071	900	84.0	932	87.0	12	1.1
All Airlines	2,809	2,784	2,350	84.4	2,432	87.4	25	0.9
<b>Brisbane-Cairns</b>								
Jetstar	1,088	1,076	846	78.6	873	81.1	12	1.1
Qantas	1,430	1,421	1,191	83.8	1,267	89.2	9	0.6
Virgin Australia	1,760	1,745	1,501	86.0	1,507	86.4	15	0.9
All Airlines	4,278	4,242	3,538	83.4	3,647	86.0	36	0.8
<b>Brisbane-Canberra</b>								
Qantas	1,687	1,676	1,506	89.9	1,544	92.1	11	0.7
QantasLink	187	180	143	79.4	144	80.0	7	3.7
Virgin Australia	1,402	1,381	1,172	84.9	1,192	86.3	21	1.5
All Airlines	3,276	3,237	2,821	87.1	2,880	89.0	39	1.2
<b>Brisbane-Darwin</b>								
Qantas	365	363	277	76.3	260	71.6	2	0.5
Virgin Australia	366	363	287	79.1	279	76.9	3	0.8
All Airlines	731	726	564	77.7	539	74.2	5	0.7
<b>Brisbane-Hamilton Island</b>								
Jetstar	320	316	245	77.5	240	75.9	4	1.3
Virgin Australia	366	363	308	84.8	298	82.1	3	0.8
All Airlines	686	679	553	81.4	538	79.2	7	1.0



	<i>Sectors</i>		<i>Departures On Time</i>		<i>Arrivals On Time</i>		<i>Cancellations</i>	
	<i>Sched.</i>	<i>Flown</i>	<i>No.</i>	<i>%</i>	<i>No.</i>	<i>%</i>	<i>No.</i>	<i>%</i>
<b>Brisbane-Mackay</b>								
Jetstar	1,200	1,190	936	78.7	966	81.2	10	0.8
QantasLink	1,220	1,214	895	73.7	825	68.0	6	0.5
Virgin Australia	1,751	1,737	1,413	81.3	1,390	80.0	14	0.8
All Airlines	4,171	4,141	3,244	78.3	3,181	76.8	30	0.7
<b>Brisbane-Melbourne</b>								
Jetstar	687	669	443	66.2	517	77.3	18	2.6
Qantas	4,927	4,886	4,026	82.4	4,132	84.6	41	0.8
Tiger Airways	970	942	590	62.6	602	63.9	28	2.9
Virgin Australia	4,068	3,982	3,180	79.9	3,304	83.0	86	2.1
All Airlines	10,652	10,479	8,239	78.6	8,555	81.6	173	1.6
<b>Brisbane-Newcastle</b>								
Jetstar	1,348	1,341	1,111	82.8	1,123	83.7	7	0.5
QantasLink	774	755	570	75.5	476	63.0	19	2.5
Virgin Australia	722	714	566	79.3	552	77.3	8	1.1
All Airlines	2,844	2,810	2,247	80.0	2,151	76.5	34	1.2
<b>Brisbane-Perth</b>								
Jetstar	136	135	107	79.3	127	94.1	1	0.7
Qantas	1,423	1,419	1,037	73.1	1,138	80.2	4	0.3
Virgin Australia	731	727	599	82.4	611	84.0	4	0.5
All Airlines	2,290	2,281	1,743	76.4	1,876	82.2	9	0.4
<b>Brisbane-Proserpine</b>								
Jetstar	352	345	257	74.5	263	76.2	7	2.0
Virgin Australia	366	361	285	78.9	271	75.1	5	1.4
All Airlines	718	706	542	76.8	534	75.6	12	1.7
<b>Brisbane-Rockhampton</b>								
QantasLink	2,360	2,301	1,680	73.0	1,623	70.5	59	2.5
Tiger Airways	187	178	135	75.8	133	74.7	9	4.8
Virgin Australia	1,745	1,640	1,347	82.1	1,344	82.0	105	6.0
All Airlines	4,292	4,119	3,162	76.8	3,100	75.3	173	4.0
<b>Brisbane-Sydney</b>								
Jetstar	1,120	1,093	736	67.3	678	62.0	27	2.4
Qantas	7,180	7,030	5,422	77.1	5,541	78.8	150	2.1
Tiger Airways	374	344	184	53.4	194	56.4	30	8.0
Virgin Australia	6,493	6,350	5,007	78.9	4,666	73.5	143	2.2
All Airlines	15,167	14,817	11,349	76.6	11,079	74.8	350	2.3
<b>Brisbane-Townsville</b>								
Jetstar	354	350	274	78.3	300	85.7	4	1.1
Qantas	1,808	1,796	1,530	85.2	1,524	84.9	12	0.7
Virgin Australia	1,756	1,742	1,463	84.0	1,480	85.0	14	0.8
All Airlines	3,918	3,888	3,267	84.0	3,304	85.0	30	0.8

	<i>Sectors</i>		<i>Departures On Time</i>		<i>Arrivals On Time</i>		<i>Cancellations</i>	
	<i>Sched.</i>	<i>Flown</i>	<i>No.</i>	<i>%</i>	<i>No.</i>	<i>%</i>	<i>No.</i>	<i>%</i>
<b>Broome-Perth</b>								
Qantas	417	408	290	71.1	319	78.2	9	2.2
QantasLink	536	527	428	81.2	429	81.4	9	1.7
Skywest	266	265	176	66.4	154	58.1	1	0.4
Virgin Australia	579	569	421	74.0	455	80.0	10	1.7
All Airlines	1,798	1,769	1,315	74.3	1,357	76.7	29	1.6
<b>Cairns-Brisbane</b>								
Jetstar	1,081	1,069	952	89.1	920	86.1	12	1.1
Qantas	1,429	1,420	1,264	89.0	1,231	86.7	9	0.6
Virgin Australia	1,761	1,739	1,523	87.6	1,439	82.7	22	1.2
All Airlines	4,271	4,228	3,739	88.4	3,590	84.9	43	1.0
<b>Cairns-Melbourne</b>								
Jetstar	631	623	491	78.8	520	83.5	8	1.3
Qantas	363	358	260	72.6	280	78.2	5	1.4
Tiger Airways	250	242	128	52.8	144	59.3	8	3.2
Virgin Australia	418	411	234	56.9	277	67.4	7	1.7
All Airlines	1,662	1,634	1,113	68.1	1,221	74.7	28	1.7
<b>Cairns-Sydney</b>								
Jetstar	639	629	505	80.3	484	76.9	10	1.6
Qantas	1,248	1,236	1,054	85.3	1,099	88.9	12	1.0
Virgin Australia	1,071	1,058	845	79.9	802	75.8	13	1.2
All Airlines	2,958	2,923	2,404	82.2	2,385	81.6	35	1.2
<b>Cairns-Townsville</b>								
QantasLink	2,038	1,997	1,648	82.5	1,497	75.0	41	2.0
Virgin Australia	325	320	294	91.9	292	91.3	5	1.5
All Airlines	2,363	2,317	1,942	83.8	1,789	77.2	46	1.9
<b>Canberra-Adelaide</b>								
Qantas	605	600	535	89.2	535	89.2	5	0.8
Virgin Australia	353	349	274	78.5	284	81.4	4	1.1
All Airlines	958	949	809	85.2	819	86.3	9	0.9
<b>Canberra-Brisbane</b>								
Qantas	1,689	1,678	1,536	91.5	1,456	86.8	11	0.7
QantasLink	187	181	120	66.3	98	54.1	6	3.2
Virgin Australia	1,402	1,376	1,232	89.5	1,170	85.0	26	1.9
All Airlines	3,278	3,235	2,888	89.3	2,724	84.2	43	1.3
<b>Canberra-Melbourne</b>								
Qantas	2,993	2,956	2,606	88.2	2,513	85.0	37	1.2
QantasLink	434	396	335	84.6	316	79.8	38	8.8
Tiger Airways	354	348	201	57.8	209	60.1	6	1.7
Virgin Australia	1,889	1,864	1,597	85.7	1,578	84.7	25	1.3
All Airlines	5,670	5,564	4,739	85.2	4,616	83.0	106	1.9

	<i>Sectors</i>		<i>Departures On Time</i>		<i>Arrivals On Time</i>		<i>Cancellations</i>	
	<i>Sched.</i>	<i>Flown</i>	<i>No.</i>	<i>%</i>	<i>No.</i>	<i>%</i>	<i>No.</i>	<i>%</i>
<b>Canberra-Sydney</b>								
Qantas	1,971	1,946	1,659	85.3	1,622	83.4	25	1.3
QantasLink	4,246	4,034	3,233	80.1	2,983	73.9	212	5.0
Virgin Australia	2,577	2,509	2,157	86.0	2,095	83.5	68	2.6
All Airlines	8,794	8,489	7,049	83.0	6,700	78.9	305	3.5
<b>Coffs Harbour-Sydney</b>								
QantasLink	1,725	1,711	1,237	72.3	1,277	74.6	14	0.8
Virgin Australia	729	721	600	83.2	569	78.9	8	1.1
All Airlines	2,454	2,432	1,837	75.5	1,846	75.9	22	0.9
<b>Darwin-Brisbane</b>								
Qantas	364	361	213	59.0	223	61.8	3	0.8
Virgin Australia	366	361	292	80.9	282	78.1	5	1.4
All Airlines	730	722	505	69.9	505	69.9	8	1.1
<b>Darwin-Melbourne</b>								
Jetstar	141	139	107	77.0	102	73.4	2	1.4
Qantas	24	22	20	90.9	18	81.8	2	8.3
Tiger Airways	179	175	84	48.0	93	53.1	4	2.2
Virgin Australia	356	350	311	88.9	272	77.7	6	1.7
All Airlines	700	686	522	76.1	485	70.7	14	2.0
<b>Darwin-Perth</b>								
Qantas	365	362	310	85.6	314	86.7	3	0.8
Virgin Australia	287	285	238	83.5	248	87.0	2	0.7
All Airlines	652	647	548	84.7	562	86.9	5	0.8
<b>Dubbo-Sydney</b>								
QantasLink	1,246	1,239	981	79.2	895	72.2	7	0.6
Regional Express	2,073	2,066	1,703	82.4	1,627	78.8	7	0.3
All Airlines	3,319	3,305	2,684	81.2	2,522	76.3	14	0.4
<b>Gold Coast-Adelaide</b>								
Jetstar	361	360	317	88.1	333	92.5	1	0.3
Tiger Airways	119	117	78	66.7	79	67.5	2	1.7
Virgin Australia	362	356	327	91.9	326	91.6	6	1.7
All Airlines	842	833	722	86.7	738	88.6	9	1.1
<b>Gold Coast-Melbourne</b>								
Jetstar	2,512	2,473	1,780	72.0	1,899	76.8	39	1.6
Tiger Airways	819	801	483	60.4	496	62.0	18	2.2
Virgin Australia	2,392	2,348	1,814	77.3	1,906	81.2	44	1.8
All Airlines	5,723	5,622	4,077	72.5	4,301	76.5	101	1.8
<b>Gold Coast-Newcastle</b>								
(To March 2011 only)								
Jetstar	439	437	341	78.0	347	79.4	2	0.5
Virgin Australia	116	115	85	73.9	83	72.2	1	0.9
All Airlines	555	552	426	77.2	430	77.9	3	0.5

	<i>Sectors</i>		<i>Departures On Time</i>		<i>Arrivals On Time</i>		<i>Cancellations</i>	
	<i>Sched.</i>	<i>Flown</i>	<i>No.</i>	<i>%</i>	<i>No.</i>	<i>%</i>	<i>No.</i>	<i>%</i>
<b>Gold Coast-Sydney</b>								
Jetstar	3,573	3,522	2,564	72.8	2,700	76.7	51	1.4
Tiger Airways	406	397	316	79.7	312	78.5	9	2.2
Virgin Australia	4,283	4,168	3,176	76.2	3,202	76.8	115	2.7
All Airlines	8,262	8,087	6,056	74.9	6,214	76.8	175	2.1
<b>Hamilton Island-Brisbane</b>								
Jetstar	322	316	222	70.3	230	72.8	6	1.9
Virgin Australia	368	363	294	81.0	294	81.0	5	1.4
All Airlines	690	679	516	76.0	524	77.2	11	1.6
<b>Hamilton Island-Sydney</b>								
Jetstar	356	350	261	74.6	268	76.6	6	1.7
Virgin Australia	363	356	250	70.2	267	75.0	7	1.9
All Airlines	719	706	511	72.4	535	75.8	13	1.8
<b>Hobart-Melbourne</b>								
Jetstar	1,563	1,539	1,036	67.3	1,054	68.5	24	1.5
Qantas	733	721	668	92.6	647	89.7	12	1.6
Tiger Airways	529	520	315	60.7	319	61.3	9	1.7
Virgin Australia	1,507	1,491	1,093	73.3	1,089	73.0	16	1.1
All Airlines	4,332	4,271	3,112	72.9	3,109	72.8	61	1.4
<b>Hobart-Sydney</b>								
Jetstar	790	776	600	77.3	600	77.3	14	1.8
Qantas	366	359	283	78.8	284	79.1	7	1.9
Virgin Australia	984	970	715	73.7	719	74.1	14	1.4
All Airlines	2,140	2,105	1,598	75.9	1,603	76.2	35	1.6
<b>Kalgoorlie-Perth</b>								
Qantas	651	644	530	82.3	526	81.7	7	1.1
QantasLink	376	372	321	86.3	319	85.8	4	1.1
Skywest	225	223	189	84.8	151	67.7	2	0.9
All Airlines	1,252	1,239	1,040	83.9	996	80.4	13	1.0
<b>Karratha-Perth</b>								
Qantas	1,859	1,820	1,563	85.9	1,519	83.5	39	2.1
QantasLink	603	580	520	89.7	513	88.4	23	3.8
Skywest	337	330	241	73.0	219	66.4	7	2.1
Virgin Australia	639	610	456	74.8	452	74.1	29	4.5
All Airlines	3,438	3,340	2,780	83.2	2,703	80.9	98	2.9
<b>Launceston-Melbourne</b>								
Jetstar	1,157	1,142	789	69.1	770	67.4	15	1.3
QantasLink	976	948	638	67.3	541	57.1	28	2.9
Tiger Airways	32	32	22	68.8	22	68.8	0	0.0
Virgin Australia	1,505	1,485	1,230	82.8	1,217	82.0	20	1.3
All Airlines	3,670	3,607	2,679	74.3	2,550	70.7	63	1.7

	<i>Sectors</i>		<i>Departures On Time</i>		<i>Arrivals On Time</i>		<i>Cancellations</i>	
	<i>Sched.</i>	<i>Flown</i>	<i>No.</i>	<i>%</i>	<i>No.</i>	<i>%</i>	<i>No.</i>	<i>%</i>
<b>Launceston-Sydney</b>								
Jetstar	461	455	356	78.2	358	78.7	6	1.3
Virgin Australia	366	365	251	68.8	251	68.8	1	0.3
All Airlines	827	820	607	74.0	609	74.3	7	0.8
<b>Mackay-Brisbane</b>								
Jetstar	1,204	1,192	891	74.7	846	71.0	12	1.0
QantasLink	1,211	1,204	875	72.7	801	66.5	7	0.6
Virgin Australia	1,751	1,729	1,478	85.5	1,405	81.3	22	1.3
All Airlines	4,166	4,125	3,244	78.6	3,052	74.0	41	1.0
<b>Melbourne-Adelaide</b>								
Jetstar	813	803	712	88.7	719	89.5	10	1.2
Qantas	3,478	3,450	3,018	87.5	2,963	85.9	28	0.8
QantasLink	206	201	148	73.6	131	65.2	5	2.4
Tiger Airways	1,139	1,121	799	71.3	792	70.7	18	1.6
Virgin Australia	3,127	3,101	2,574	83.0	2,576	83.1	26	0.8
All Airlines	8,763	8,676	7,251	83.6	7,181	82.8	87	1.0
<b>Melbourne-Alice Springs</b> (To October 2010 only)								
Qantas	123	123	103	83.7	98	79.7	0	0.0
Tiger Airways	63	63	48	76.2	42	66.7	0	0.0
All Airlines	186	186	151	81.2	140	75.3	0	0.0
<b>Melbourne-Brisbane</b>								
Jetstar	676	666	478	71.8	449	67.4	10	1.5
Qantas	4,924	4,880	4,223	86.5	4,008	82.1	44	0.9
Tiger Airways	963	939	608	64.7	621	66.2	24	2.5
Virgin Australia	4,054	3,962	3,126	78.9	3,052	77.0	92	2.3
All Airlines	10,617	10,447	8,435	80.7	8,130	77.8	170	1.6
<b>Melbourne-Cairns</b>								
Jetstar	629	622	521	83.8	545	87.6	7	1.1
Qantas	365	361	300	83.1	300	83.1	4	1.1
Tiger Airways	252	244	143	58.4	160	65.7	8	3.2
Virgin Australia	417	412	320	77.7	303	73.5	5	1.2
All Airlines	1,663	1,639	1,284	78.3	1,308	79.8	24	1.4
<b>Melbourne-Canberra</b>								
Qantas	2,989	2,953	2,609	88.4	2,599	88.0	36	1.2
QantasLink	432	391	342	87.5	285	72.9	41	9.5
Tiger Airways	353	350	204	58.4	211	60.3	3	0.8
Virgin Australia	1,854	1,824	1,482	81.3	1,498	82.1	30	1.6
All Airlines	5,628	5,518	4,637	84.0	4,593	83.2	110	2.0
<b>Melbourne-Darwin</b>								
Jetstar	144	142	120	84.5	122	85.9	2	1.4
Qantas	24	23	19	82.6	21	91.3	1	4.2
Tiger Airways	179	177	104	58.8	94	53.1	2	1.1
Virgin Australia	355	350	302	86.3	299	85.4	5	1.4
All Airlines	702	692	545	78.8	536	77.5	10	1.4

	<i>Sectors</i>		<i>Departures On Time</i>		<i>Arrivals On Time</i>		<i>Cancellations</i>	
	<i>Sched.</i>	<i>Flown</i>	<i>No.</i>	<i>%</i>	<i>No.</i>	<i>%</i>	<i>No.</i>	<i>%</i>
<b>Melbourne-Gold Coast</b>								
Jetstar	2,501	2,480	1,868	75.3	1,763	71.1	21	0.8
Tiger Airways	819	806	560	69.5	526	65.3	13	1.6
Virgin Australia	2,391	2,361	1,908	80.8	1,845	78.1	30	1.3
All Airlines	5,711	5,647	4,336	76.8	4,134	73.2	64	1.1
<b>Melbourne-Hobart</b>								
Jetstar	1,565	1,542	1,099	71.3	1,139	73.9	23	1.5
Qantas	733	720	566	78.6	546	75.8	13	1.8
Tiger Airways	529	520	341	65.6	353	67.8	9	1.7
Virgin Australia	1,505	1,491	1,151	77.2	1,147	76.9	14	0.9
All Airlines	4,332	4,273	3,157	73.9	3,185	74.5	59	1.4
<b>Melbourne-Launceston</b>								
Jetstar	1,154	1,139	849	74.5	856	75.2	15	1.3
QantasLink	974	947	691	73.0	594	62.7	27	2.8
Tiger Airways	32	32	21	65.6	22	68.8	0	0.0
Virgin Australia	1,505	1,489	1,147	77.0	1,156	77.6	16	1.1
All Airlines	3,665	3,607	2,708	75.1	2,628	72.9	58	1.6
<b>Melbourne-Mildura</b>								
QantasLink	1,036	1,028	778	75.7	685	66.6	8	0.8
Regional Express	1,039	1,035	963	93.0	938	90.6	4	0.4
Virgin Australia	365	362	301	83.1	300	82.9	3	0.8
All Airlines	2,440	2,425	2,042	84.2	1,923	79.3	15	0.6
<b>Melbourne-Newcastle</b>								
Jetstar	1,168	1,151	880	76.5	845	73.4	17	1.5
Virgin Australia	365	364	298	81.9	291	79.9	1	0.3
All Airlines	1,533	1,515	1,178	77.8	1,136	75.0	18	1.2
<b>Melbourne-Perth</b>								
Jetstar	824	809	631	78.0	630	77.9	15	1.8
Qantas	2,402	2,388	1,834	76.8	1,821	76.3	14	0.6
Tiger Airways	510	498	356	71.4	371	74.4	12	2.4
Virgin Australia	1,491	1,479	1,253	84.7	1,197	80.9	12	0.8
All Airlines	5,227	5,174	4,074	78.7	4,019	77.7	53	1.0
<b>Melbourne-Sunshine Coast</b>								
Jetstar	828	826	616	74.6	564	68.3	2	0.2
Tiger Airways	347	335	226	67.4	222	66.2	12	3.5
Virgin Australia	410	400	278	69.5	273	68.3	10	2.4
All Airlines	1,585	1,561	1,120	71.7	1,059	67.8	24	1.5
<b>Melbourne-Sydney</b>								
Jetstar	2,032	1,965	1,284	65.3	1,320	67.2	67	3.3
Qantas	10,757	10,393	8,620	82.9	8,251	79.4	364	3.4
Tiger Airways	2,049	1,989	1,303	65.5	1,301	65.4	60	2.9
Virgin Australia	8,916	8,636	6,605	76.5	6,405	74.2	280	3.1
All Airlines	23,754	22,983	17,812	77.5	17,277	75.2	771	3.2

	<i>Sectors</i>		<i>Departures On Time</i>		<i>Arrivals On Time</i>		<i>Cancellations</i>	
	<i>Sched.</i>	<i>Flown</i>	<i>No.</i>	<i>%</i>	<i>No.</i>	<i>%</i>	<i>No.</i>	<i>%</i>
<b>Mildura-Melbourne</b>								
QantasLink	1,035	1,026	857	83.5	749	73.0	9	0.9
Regional Express	1,040	1,036	957	92.4	939	90.6	4	0.4
Virgin Australia	365	361	306	84.8	303	83.9	4	1.1
All Airlines	2,440	2,423	2,120	87.5	1,991	82.2	17	0.7
<b>Newcastle-Brisbane</b>								
Jetstar	1,345	1,338	1,084	81.0	1,067	79.7	7	0.5
QantasLink	773	753	540	71.7	525	69.7	20	2.6
Virgin Australia	722	711	550	77.4	539	75.8	11	1.5
All Airlines	2,840	2,802	2,174	77.6	2,131	76.1	38	1.3
<b>Newcastle-Gold Coast</b> (To March 2011 only)								
Jetstar	436	436	313	71.8	313	71.8	0	0.0
Virgin Australia	116	116	83	71.6	82	70.7	0	0.0
All Airlines	552	552	396	71.7	395	71.6	0	0.0
<b>Newcastle-Melbourne</b>								
Jetstar	1,164	1,152	917	79.6	905	78.6	12	1.0
Virgin Australia	365	363	269	74.1	287	79.1	2	0.5
All Airlines	1,529	1,515	1,186	78.3	1,192	78.7	14	0.9
<b>Newman-Perth</b>								
Qantas	75	73	38	52.1	26	35.6	2	2.7
QantasLink	1,022	1,010	920	91.1	886	87.7	12	1.2
Virgin Australia	409	405	336	83.0	332	82.0	4	1.0
All Airlines	1,506	1,488	1,294	87.0	1,244	83.6	18	1.2
<b>Perth-Adelaide</b>								
Jetstar	365	360	266	73.9	267	74.2	5	1.4
Qantas	1,347	1,331	1,119	84.1	1,084	81.4	16	1.2
Virgin Australia	745	731	632	86.5	605	82.8	14	1.9
All Airlines	2,457	2,422	2,017	83.3	1,956	80.8	35	1.4
<b>Perth-Brisbane</b>								
Jetstar	134	133	101	75.9	89	66.9	1	0.7
Qantas	1,425	1,420	1,096	77.2	1,050	73.9	5	0.4
Virgin Australia	731	726	646	89.0	617	85.0	5	0.7
All Airlines	2,290	2,279	1,843	80.9	1,756	77.1	11	0.5
<b>Perth-Broome</b>								
Qantas	417	409	329	80.4	341	83.4	8	1.9
QantasLink	540	531	443	83.4	409	77.0	9	1.7
Skywest	244	244	198	81.1	188	77.0	0	0.0
Virgin Australia	580	571	472	82.7	468	82.0	9	1.6
All Airlines	1,781	1,755	1,442	82.2	1,406	80.1	26	1.5
<b>Perth-Darwin</b>								
Qantas	365	363	317	87.3	321	88.4	2	0.5
Virgin Australia	287	286	252	88.1	240	83.9	1	0.3
All Airlines	652	649	569	87.7	561	86.4	3	0.5

	<i>Sectors</i>		<i>Departures On Time</i>		<i>Arrivals On Time</i>		<i>Cancellations</i>	
	<i>Sched.</i>	<i>Flown</i>	<i>No.</i>	<i>%</i>	<i>No.</i>	<i>%</i>	<i>No.</i>	<i>%</i>
<b>Perth-Kalgoorlie</b>								
Qantas	650	643	552	85.8	546	84.9	7	1.1
QantasLink	373	370	333	90.0	329	88.9	3	0.8
Skywest	217	215	197	91.6	180	83.7	2	0.9
All Airlines	1,240	1,228	1,082	88.1	1,055	85.9	12	1.0
<b>Perth-Karratha</b>								
Qantas	1,858	1,826	1,587	86.9	1,585	86.8	32	1.7
QantasLink	596	575	527	91.7	516	89.7	21	3.5
Skywest	336	331	299	90.3	265	80.1	5	1.5
Virgin Australia	633	617	502	81.4	496	80.4	16	2.5
All Airlines	3,423	3,349	2,915	87.0	2,862	85.5	74	2.2
<b>Perth-Melbourne</b>								
Jetstar	827	807	568	70.4	545	67.5	20	2.4
Qantas	2,400	2,382	1,825	76.6	1,791	75.2	18	0.8
Tiger Airways	512	499	299	59.8	293	58.7	13	2.5
Virgin Australia	1,492	1,479	1,264	85.5	1,207	81.6	13	0.9
All Airlines	5,231	5,167	3,956	76.6	3,836	74.2	64	1.2
<b>Perth-Newman</b>								
Qantas	75	73	60	82.2	51	69.9	2	2.7
QantasLink	1,014	1,002	897	89.5	875	87.3	12	1.2
Virgin Australia	412	399	348	87.2	341	85.5	13	3.2
All Airlines	1,501	1,474	1,305	88.5	1,267	86.0	27	1.8
<b>Perth-Port Hedland</b>								
Qantas	679	668	587	87.9	571	85.5	11	1.6
QantasLink	638	623	565	90.7	564	90.5	15	2.4
Virgin Australia	664	639	562	87.9	546	85.4	25	3.8
All Airlines	1,981	1,930	1,714	88.8	1,681	87.1	51	2.6
<b>Perth-Sydney</b>								
Jetstar	453	439	311	70.8	347	79.0	14	3.1
Qantas	2,634	2,603	2,106	80.9	2,064	79.3	31	1.2
Virgin Australia	1,804	1,786	1,590	89.0	1,455	81.5	18	1.0
All Airlines	4,891	4,828	4,007	83.0	3,866	80.1	63	1.3
<b>Port Hedland-Perth</b>								
Qantas	678	665	547	82.3	543	81.7	13	1.9
QantasLink	643	625	569	91.0	560	89.6	18	2.8
Virgin Australia	663	633	530	83.7	522	82.5	30	4.5
All Airlines	1,984	1,923	1,646	85.6	1,625	84.5	61	3.1
<b>Port Lincoln-Adelaide</b>								
QantasLink	1,176	1,152	1,003	87.1	992	86.1	24	2.0
Regional Express	2,514	2,501	2,350	94.0	2,273	90.9	13	0.5
All Airlines	3,690	3,653	3,353	91.8	3,265	89.4	37	1.0



	<i>Sectors</i>		<i>Departures On Time</i>		<i>Arrivals On Time</i>		<i>Cancellations</i>	
	<i>Sched.</i>	<i>Flown</i>	<i>No.</i>	<i>%</i>	<i>No.</i>	<i>%</i>	<i>No.</i>	<i>%</i>
<b>Port Macquarie-Sydney</b>								
QantasLink	1,572	1,551	1,163	75.0	1,123	72.4	21	1.3
Virgin Australia	717	707	552	78.1	523	74.0	10	1.4
All Airlines	2,289	2,258	1,715	76.0	1,646	72.9	31	1.4
<b>Proserpine-Brisbane</b>								
Jetstar	357	348	247	71.0	232	66.7	9	2.5
Virgin Australia	366	361	258	71.5	268	74.2	5	1.4
All Airlines	723	709	505	71.2	500	70.5	14	1.9
<b>Rockhampton-Brisbane</b>								
QantasLink	2,111	2,051	1,480	72.2	1,403	68.4	60	2.8
Tiger Airways	187	178	133	74.7	124	69.7	9	4.8
Virgin Australia	1,748	1,637	1,341	81.9	1,315	80.3	111	6.4
All Airlines	4,046	3,866	2,954	76.4	2,842	73.5	180	4.4
<b>Sunshine Coast-Melbourne</b>								
Jetstar	833	824	437	53.0	522	63.3	9	1.1
Tiger Airways	347	334	194	58.2	191	57.3	13	3.7
Virgin Australia	410	394	241	61.2	278	70.6	16	3.9
All Airlines	1,590	1,552	872	56.2	991	63.9	38	2.4
<b>Sunshine Coast-Sydney</b>								
Jetstar	1,294	1,263	1,001	79.3	1,040	82.3	31	2.4
Tiger Airways	92	79	53	66.6	49	62.5	13	14.1
Virgin Australia	627	609	411	67.5	445	73.1	18	2.9
All Airlines	2,013	1,951	1,465	75.1	1,534	78.6	62	3.1
<b>Sydney-Adelaide</b>								
Jetstar	847	836	741	88.6	749	89.6	11	1.3
Qantas	3,257	3,233	2,791	86.3	2,797	86.5	24	0.7
Tiger Airways	471	457	313	68.5	328	71.8	14	3.0
Virgin Australia	1,804	1,787	1,362	76.2	1,411	79.0	17	0.9
All Airlines	6,379	6,313	5,207	82.5	5,285	83.7	66	1.0
<b>Sydney-Albury</b>								
QantasLink	1,350	1,339	938	70.1	901	67.3	11	0.8
Regional Express	1,301	1,294	1,059	81.8	978	75.6	7	0.5
Virgin Australia	716	709	595	83.9	591	83.4	7	1.0
All Airlines	3,367	3,342	2,592	77.6	2,470	73.9	25	0.7
<b>Sydney-Ayers Rock</b>								
			(From October 2010 only)					
Qantas	276	275	245	89.1	249	90.5	1	0.4
Virgin Australia	273	272	222	81.6	224	82.4	1	0.4
All Airlines	549	547	467	85.4	473	86.5	2	0.4
<b>Sydney-Ballina</b>								
Jetstar	443	442	381	86.2	383	86.7	1	0.2
Regional Express	950	948	823	86.8	753	79.4	2	0.2
Virgin Australia	417	415	319	76.9	306	73.7	2	0.5
All Airlines	1,810	1,805	1,523	84.4	1,442	79.9	5	0.3

	<i>Sectors</i>		<i>Departures On Time</i>		<i>Arrivals On Time</i>		<i>Cancellations</i>	
	<i>Sched.</i>	<i>Flown</i>	<i>No.</i>	<i>%</i>	<i>No.</i>	<i>%</i>	<i>No.</i>	<i>%</i>
<b>Sydney-Brisbane</b>								
Jetstar	1,097	1,072	859	80.1	820	76.5	25	2.3
Qantas	7,155	7,010	5,768	82.3	5,616	80.1	145	2.0
Tiger Airways	376	345	213	61.6	178	51.7	31	8.2
Virgin Australia	6,498	6,351	4,662	73.4	4,538	71.5	147	2.3
All Airlines	15,126	14,778	11,502	77.8	11,152	75.5	348	2.3
<b>Sydney-Cairns</b>								
Jetstar	675	669	529	79.1	577	86.2	6	0.9
Qantas	1,249	1,242	1,023	82.4	1,053	84.8	7	0.6
Virgin Australia	1,070	1,060	723	68.2	739	69.7	10	0.9
All Airlines	2,994	2,971	2,275	76.6	2,369	79.7	23	0.8
<b>Sydney-Canberra</b>								
Qantas	2,038	2,017	1,801	89.3	1,766	87.6	21	1.0
QantasLink	4,251	4,048	3,134	77.4	3,011	74.4	203	4.8
Virgin Australia	2,613	2,553	2,090	81.9	2,106	82.5	60	2.3
All Airlines	8,902	8,618	7,025	81.5	6,883	79.9	284	3.2
<b>Sydney-Coffs Harbour</b>								
QantasLink	1,723	1,709	1,280	74.9	1,187	69.5	14	0.8
Virgin Australia	728	722	626	86.7	631	87.4	6	0.8
All Airlines	2,451	2,431	1,906	78.4	1,818	74.8	20	0.8
<b>Sydney-Dubbo</b>								
QantasLink	1,246	1,240	988	79.7	992	80.0	6	0.5
Regional Express	2,081	2,073	1,751	84.5	1,664	80.3	8	0.4
All Airlines	3,327	3,313	2,739	82.7	2,656	80.2	14	0.4
<b>Sydney-Gold Coast</b>								
Jetstar	3,549	3,516	2,799	79.6	2,716	77.2	33	0.9
Tiger Airways	407	397	277	69.8	301	75.9	10	2.5
Virgin Australia	4,281	4,175	3,246	77.7	3,188	76.4	106	2.5
All Airlines	8,237	8,088	6,322	78.2	6,205	76.7	149	1.8
<b>Sydney-Hamilton Island</b>								
Jetstar	351	348	286	82.2	290	83.3	3	0.9
Virgin Australia	363	360	268	74.4	244	67.8	3	0.8
All Airlines	714	708	554	78.2	534	75.4	6	0.8
<b>Sydney-Hobart</b>								
Jetstar	783	771	629	81.6	660	85.6	12	1.5
Qantas	366	359	334	93.0	335	93.3	7	1.9
Virgin Australia	985	971	685	70.5	713	73.4	14	1.4
All Airlines	2,134	2,101	1,648	78.4	1,708	81.3	33	1.5
<b>Sydney-Launceston</b>								
Jetstar	477	472	414	87.7	413	87.5	5	1.0
Virgin Australia	366	365	293	80.3	287	78.6	1	0.3
All Airlines	843	837	707	84.5	700	83.6	6	0.7

	<i>Sectors</i>		<i>Departures On Time</i>		<i>Arrivals On Time</i>		<i>Cancellations</i>	
	<i>Sched.</i>	<i>Flown</i>	<i>No.</i>	<i>%</i>	<i>No.</i>	<i>%</i>	<i>No.</i>	<i>%</i>
<b>Sydney-Melbourne</b>								
Jetstar	2,019	1,957	1,516	77.5	1,400	71.5	62	3.1
Qantas	10,764	10,401	8,680	83.5	8,658	83.2	363	3.4
Tiger Airways	2,058	1,985	1,090	54.9	1,079	54.4	73	3.5
Virgin Australia	8,868	8,597	6,558	76.3	6,163	71.7	271	3.1
All Airlines	23,709	22,940	17,844	77.8	17,300	75.4	769	3.2
<b>Sydney-Perth</b>								
Jetstar	445	437	341	78.0	384	87.9	8	1.8
Qantas	2,633	2,613	2,091	80.0	2,082	79.7	20	0.8
Virgin Australia	1,801	1,784	1,482	83.1	1,547	86.7	17	0.9
All Airlines	4,879	4,834	3,914	81.0	4,013	83.0	45	0.9
<b>Sydney-Port Macquarie</b>								
QantasLink	1,572	1,554	1,174	75.5	1,140	73.4	18	1.1
Virgin Australia	717	711	547	76.9	552	77.6	6	0.8
All Airlines	2,289	2,265	1,721	76.0	1,692	74.7	24	1.0
<b>Sydney-Sunshine Coast</b>								
Jetstar	1,273	1,261	1,107	87.8	1,103	87.5	12	0.9
Tiger Airways	92	79	52	65.7	49	62.5	13	14.1
Virgin Australia	625	619	422	68.2	417	67.4	6	1.0
All Airlines	1,990	1,959	1,581	80.7	1,569	80.1	31	1.6
<b>Sydney-Townsville</b>								
Jetstar	292	291	244	83.8	264	90.7	1	0.3
Virgin Australia	365	362	247	68.2	227	62.7	3	0.8
All Airlines	657	653	491	75.2	491	75.2	4	0.6
<b>Sydney-Wagga Wagga</b>								
QantasLink	1,310	1,299	997	76.8	896	69.0	11	0.8
Regional Express	1,567	1,554	1,386	89.2	1,262	81.2	13	0.8
All Airlines	2,877	2,853	2,383	83.5	2,158	75.6	24	0.8
<b>Townsville-Brisbane</b>								
Jetstar	354	351	275	78.3	231	65.8	3	0.8
Qantas	1,809	1,797	1,555	86.5	1,501	83.5	12	0.7
Virgin Australia	1,757	1,744	1,531	87.8	1,499	86.0	13	0.7
All Airlines	3,920	3,892	3,361	86.4	3,231	83.0	28	0.7
<b>Townsville-Cairns</b>								
QantasLink	2,036	1,990	1,454	73.1	1,251	62.9	46	2.3
Virgin Australia	325	320	294	91.9	291	90.9	5	1.5
All Airlines	2,361	2,310	1,748	75.7	1,542	66.8	51	2.2
<b>Townsville-Sydney</b>								
Jetstar	294	291	234	80.4	237	81.4	3	1.0
Virgin Australia	365	362	221	61.0	227	62.7	3	0.8
All Airlines	659	653	455	69.7	464	71.1	6	0.9

	<i>Sectors</i>		<i>Departures On Time</i>		<i>Arrivals On Time</i>		<i>Cancellations</i>	
	<i>Sched.</i>	<i>Flown</i>	<i>No.</i>	<i>%</i>	<i>No.</i>	<i>%</i>	<i>No.</i>	<i>%</i>
<b>Wagga Wagga-Sydney</b>								
QantasLink	1,310	1,296	1,029	79.4	924	71.3	14	1.1
Regional Express	1,567	1,555	1,352	86.9	1,284	82.6	12	0.8
All Airlines	2,877	2,851	2,381	83.5	2,208	77.4	26	0.9

# Airports

On time performance is reported for all routes where the passenger load averages over 8000 passengers per month, and where two or more airlines operate in competition. The following data reports by airport against flights operated on those routes only.

Airport	Departures			Arrivals		
	Sectors	On Time		Sectors	On Time	
	Flown	No.	%	Flown	No.	%
<b>Adelaide</b>						
Jetstar	2 712	2 215	81.7	2 716	2 363	87.0
Qantas	9 838	8 586	87.3	9 855	8 501	86.3
QantasLink	1 350	1 193	88.4	1 353	1 123	83.0
Regional Express	2 498	2 367	94.8	2 501	2 273	90.9
Tiger Airways	1 816	1 507	83.0	1 810	1 282	70.8
Virgin Australia	7 384	6 119	82.9	7 395	6 134	82.9
All Airlines	25 598	21 987	85.9	25 630	21 676	84.6

Relates to services to and from Brisbane, Canberra, Gold Coast, Melbourne, Perth Port Lincoln and Sydney.

## Albury

QantasLink	1 337	955	71.4	1 339	901	67.3
Regional Express	1 291	1 057	81.9	1 294	978	75.6
Virgin Australia	701	580	82.7	709	591	83.4
All Airlines	3 329	2 592	77.9	3 342	2 470	73.9

Relates to services to and from Sydney only.

## Alice Springs

Qantas	123	102	82.9	123	98	79.7
Tiger Airways	63	35	55.6	63	42	66.7
All Airlines	186	137	73.7	186	140	75.3

Relates to services to and from Melbourne only. To October 2010 only.

## Ayers Rock

Qantas	273	244	89.4	275	249	90.5
Virgin Australia	272	221	81.3	272	224	82.4
All Airlines	545	465	85.3	547	473	86.5

Relates to services to and from Sydney only. From October 2010 only.

## Ballina

Jetstar	442	333	75.3	442	383	86.7
Regional Express	944	714	75.6	948	753	79.4
Virgin Australia	412	292	70.9	415	306	73.7
All Airlines	1 798	1 339	74.5	1 805	1 442	79.9

Relates to services to and from Sydney only.

Airport	Departures			Arrivals		
	Sectors	On Time		Sectors	On Time	
	Flown	No.	%	Flown	No.	%
<b>Brisbane</b>						
Jetstar	6 872	5 248	76.4	6 842	5 168	75.5
Qantas	19 832	16 055	81.0	19 810	16 136	81.5
QantasLink	4 450	3 288	73.9	4 189	2 827	67.5
Tiger Airways	1 579	999	63.3	1 578	1 030	65.3
Virgin Australia	22 176	18 028	81.3	22 125	17 309	78.2
All Airlines	54 909	43 618	79.4	54 544	42 470	77.9
Relates to services to and from Adelaide, Cairns, Canberra, Darwin, Hamilton Island, Mackay, Melbourne, Newcastle, Perth, Proserpine, Rockhampton, Sydney and Townsville.						
<b>Broome</b>						
Qantas	408	290	71.1	409	341	83.4
QantasLink	527	428	81.2	531	409	77.0
Skywest	265	176	66.4	244	188	77.0
Virgin Australia	569	421	74.0	571	468	82.0
All Airlines	1 769	1 315	74.3	1 755	1 406	80.1
Relates to services to and from Perth only.						
<b>Cairns</b>						
Jetstar	2 321	1 948	83.9	2 367	1 995	84.3
Qantas	3 014	2 578	85.5	3 024	2 620	86.6
QantasLink	1 997	1 648	82.5	1 990	1 251	62.9
Tiger Airways	242	128	52.8	244	160	65.7
Virgin Australia	3 528	2 896	82.1	3 537	2 840	80.3
All Airlines	11 102	9 198	82.8	11 162	8 866	79.4
Relates to services to and from Brisbane, Melbourne, Sydney and Townsville.						
<b>Canberra</b>						
Qantas	7 180	6 336	88.2	7 195	6 402	89.0
QantasLink	4 611	3 688	80.0	4 619	3 440	74.5
Tiger Airways	348	201	57.8	350	211	60.3
Virgin Australia	6 098	5 260	86.3	6 108	5 089	83.3
All Airlines	18 237	15 485	84.9	18 272	15 142	82.9
Relates to services to and from Adelaide, Brisbane, Melbourne and Sydney.						
<b>Coffs Harbour</b>						
QantasLink	1 711	1 237	72.3	1 709	1 187	69.5
Virgin Australia	721	600	83.2	722	631	87.4
All Airlines	2 432	1 837	75.5	2 431	1 818	74.8
Relates to services to and from Sydney only.						
<b>Darwin</b>						
Jetstar	139	107	77.0	142	122	85.9
Qantas	745	543	72.9	749	602	80.4
Tiger Airways	175	84	48.0	177	94	53.1
Virgin Australia	996	841	84.4	999	818	81.9
All Airlines	2 055	1 575	76.6	2 067	1 636	79.1
Relates to services to and from Brisbane, Melbourne and Perth.						

<i>Airport</i>	<i>Departures</i>			<i>Arrivals</i>		
	<i>Sectors Flown</i>	<i>On Time</i>		<i>Sectors Flown</i>	<i>On Time</i>	
		<i>No.</i>	<i>%</i>		<i>No.</i>	<i>%</i>
<b>Dubbo</b>						
QantasLink	1 239	981	79.2	1 240	992	80.0
Regional Express	2 066	1 703	82.4	2 073	1 664	80.3
All Airlines	3 305	2 684	81.2	3 313	2 656	80.2
Relates to services to and from Sydney only.						
<b>Gold Coast</b>						
Jetstar	6 792	5 002	73.6	6 789	5 114	75.3
Tiger Airways	1 315	878	66.7	1 323	917	69.3
Virgin Australia	6 987	5 402	77.3	7 011	5 443	77.6
All Airlines	15 094	11 282	74.7	15 123	11 474	75.9
Relates to services to and from Adelaide, Melbourne, Newcastle and Sydney.						
<b>Hamilton Island</b>						
Jetstar	666	483	72.5	664	530	79.8
Virgin Australia	719	544	75.7	723	542	75.0
All Airlines	1 385	1 027	74.2	1 387	1 072	77.3
Relates to services to and from Brisbane and Sydney.						
<b>Hobart</b>						
Jetstar	2 315	1 636	70.7	2 313	1 799	77.8
Qantas	1 080	951	88.1	1 079	881	81.6
Tiger Airways	520	315	60.7	520	353	67.8
Virgin Australia	2 461	1 808	73.5	2 462	1 860	75.5
All Airlines	6 376	4 710	73.9	6 374	4 893	76.8
Relates to services to and from Melbourne and Sydney.						
<b>Kalgoorlie</b>						
Qantas	644	530	82.3	643	546	84.9
QantasLink	372	321	86.3	370	329	88.9
Skywest	223	189	84.8	215	180	83.7
All Airlines	1 239	1 040	83.9	1 228	1 055	85.9
Relates to services to and from Perth only.						
<b>Karratha</b>						
Qantas	1 820	1 563	85.9	1 826	1 585	86.8
QantasLink	580	520	89.7	575	516	89.7
Skywest	330	241	73.0	331	265	80.1
Virgin Australia	610	456	74.8	617	496	80.4
All Airlines	3 340	2 780	83.2	3 349	2 862	85.5
Relates to services to and from Perth only.						

Airport	Departures			Arrivals		
	Sectors	On Time		Sectors	On Time	
	Flown	No.	%	Flown	No.	%
<b>Launceston</b>						
Jetstar	1 597	1 145	71.7	1 611	1 269	78.8
QantasLink	948	638	67.3	947	594	62.7
Tiger Airways	32	22	68.8	32	22	68.8
Virgin Australia	1 850	1 481	80.1	1 854	1 443	77.8
All Airlines	4 427	3 286	74.2	4 444	3 328	74.9
Relates to services to and from Melbourne and Sydney.						
<b>Mackay</b>						
Jetstar	1 192	891	74.7	1 190	966	81.2
QantasLink	1 204	875	72.7	1 214	825	68.0
Virgin Australia	1 729	1 478	85.5	1 737	1 390	80.0
All Airlines	4 125	3 244	78.6	4 141	3 181	76.8
Relates to services to and from Brisbane only.						
<b>Melbourne</b>						
Jetstar	12 145	9 058	74.6	12 128	8 816	72.7
Qantas	25 291	21 292	84.2	25 285	21 054	83.3
QantasLink	2 567	1 959	76.3	2 568	1 771	69.0
Regional Express	1 035	963	93.0	1 036	939	90.6
Tiger Airways	7 074	4 713	66.6	7 064	4 392	62.2
Virgin Australia	26 231	20 745	79.1	26 218	20 401	77.8
All Airlines	74 343	58 730	79.0	74 299	57 373	77.2
Relates to services to and from Adelaide, Alice Springs, Brisbane, Cairns, Canberra, Darwin, Gold Coast, Hobart, Launceston, Mildura, Newcastle, Perth, Sunshine Coast and Sydney.						
<b>Mildura</b>						
QantasLink	1 026	857	83.5	1 028	685	66.6
Regional Express	1 036	957	92.4	1 035	938	90.6
Virgin Australia	361	306	84.8	362	300	82.9
All Airlines	2 423	2 120	87.5	2 425	1 923	79.3
Relates to services to and from Melbourne only.						
<b>Newcastle</b>						
Jetstar	2 926	2 314	79.1	2 929	2 315	79.0
QantasLink	753	540	71.7	755	476	63.0
Virgin Australia	1 190	902	75.8	1 193	926	77.6
All Airlines	4 869	3 756	77.1	4 877	3 717	76.2
Relates to services to and from Brisbane, Gold Coast and Melbourne.						
<b>Newman</b>						
Qantas	73	38	52.1	73	51	69.9
QantasLink	1 010	920	91.1	1 002	875	87.3
Virgin Australia	405	336	83.0	399	341	85.5
All Airlines	1 488	1 294	87.0	1 474	1 267	86.0
Relates to services to and from Perth only.						



Airport	Departures			Arrivals		
	Sectors Flown	On Time No.	On Time %	Sectors Flown	On Time No.	On Time %
<b>Perth</b>						
Jetstar	1 739	1 246	71.7	1 741	1 460	83.9
Qantas	11 718	9 578	81.7	11 729	9 489	80.9
QantasLink	3 101	2 765	89.2	3 114	2 707	86.9
Skywest	790	694	87.8	818	524	64.1
Tiger Airways	499	299	59.8	498	371	74.4
Virgin Australia	7 234	6 268	86.6	7 227	5 996	83.0
All Airlines	25 081	20 850	83.1	25 127	20 547	81.8
Relates to services to and from Adelaide, Brisbane, Broome, Darwin, Kalgoorlie, Karratha, Melbourne, Newman, Port Hedland and Sydney.						
<b>Port Hedland</b>						
Qantas	665	547	82.3	668	571	85.5
QantasLink	625	569	91.0	623	564	90.5
Virgin Australia	633	530	83.7	639	546	85.4
All Airlines	1 923	1 646	85.6	1 930	1 681	87.1
Relates to services to and from Perth only.						
<b>Port Lincoln</b>						
QantasLink	1 152	1 003	87.1	1 152	964	83.7
Regional Express	2 501	2 350	94.0	2 498	2 311	92.5
All Airlines	3 653	3 353	91.8	3 650	3 275	89.7
Relates to services to and from Adelaide only.						
<b>Port Macquarie</b>						
QantasLink	1 551	1 163	75.0	1 554	1 140	73.4
Virgin Australia	707	552	78.1	711	552	77.6
All Airlines	2 258	1 715	76.0	2 265	1 692	74.7
Relates to services to and from Sydney only.						
<b>Proserpine</b>						
Jetstar	348	247	71.0	345	263	76.2
Virgin Australia	361	258	71.5	361	271	75.1
All Airlines	709	505	71.2	706	534	75.6
Relates to services to and from Brisbane only.						
<b>Rockhampton</b>						
QantasLink	2 051	1 480	72.2	2 301	1 623	70.5
Tiger Airways	178	133	74.7	178	133	74.7
Virgin Australia	1 637	1 341	81.9	1 640	1 344	82.0
All Airlines	3 866	2 954	76.4	4 119	3 100	75.3
Relates to services to and from Brisbane only.						

<i>Airport</i>	<i>Departures</i>			<i>Arrivals</i>		
	<i>Sectors Flown</i>	<i>On Time</i>		<i>Sectors Flown</i>	<i>On Time</i>	
		<i>No.</i>	<i>%</i>		<i>No.</i>	<i>%</i>
<b>Sunshine Coast</b>						
Jetstar	2 087	1 438	68.9	2 087	1 667	79.9
Tiger Airways	413	247	59.8	414	271	65.5
Virgin Australia	1 003	652	65.0	1 019	690	67.7
All Airlines	3 503	2 337	66.7	3 520	2 628	74.7
Relates to services to and from Melbourne and Sydney.						
<b>Sydney</b>						
Jetstar	12 072	9 846	81.6	12 060	8 990	74.5
Qantas	27 150	22 733	83.7	27 112	21 966	81.0
QantasLink	11 189	8 511	76.1	11 168	8 140	72.9
Regional Express	5 869	5 019	85.5	5 856	4 581	78.2
Tiger Airways	3 263	1 945	59.6	3 266	2 226	68.2
Virgin Australia	31 813	24 347	76.5	31 764	24 144	76.0
All Airlines	91 356	72 401	79.3	91 226	70 047	76.8
Relates to services to and from Adelaide, Albury, Ayers Rock, Ballina, Brisbane, Cairns, Canberra, Coffs Harbour, Dubbo, Gold Coast, Hamilton Island, Hobart, Launceston, Melbourne, Perth, Port Macquarie, Sunshine Coast, Townsville and Wagga Wagga.						
<b>Townsville</b>						
Jetstar	642	509	79.3	641	564	88.0
Qantas	1 797	1 555	86.5	1 796	1 524	84.9
QantasLink	1 990	1 454	73.1	1 997	1 497	75.0
Virgin Australia	2 426	2 046	84.3	2 424	1 999	82.5
All Airlines	6 855	5 564	81.2	6 858	5 584	81.4
Relates to services to and from Brisbane, Cairns and Sydney.						
<b>Wagga Wagga</b>						
QantasLink	1 296	1 029	79.4	1 299	896	69.0
Regional Express	1 555	1 352	86.9	1 554	1 262	81.2
All Airlines	2 851	2 381	83.5	2 853	2 158	75.6
Relates to services to and from Sydney only.						

## Definitions

---

On time departure                      A flight departure is counted as "on time" if it departs the gate within 15 minutes of the scheduled departure time shown in the carriers' schedule.

---

On time arrival                         A flight arrival is counted as "on time" if it arrived at the gate within 15 minutes of the scheduled arrival time shown in the carriers' schedule.  
Neither diverted nor cancelled flights count as on time.

---

Cancellation                            A flight removed from service within 7 days of scheduled departure is regarded as a cancellation.

---

On time departure percentage                      The percentage of on time departures is measured against the number of departures *operated* on any particular sector.

---

On time arrival percentage                         The percentage of on time arrivals is measured against the number of arrivals *operated* on any particular sector.

---

Cancellation percentage                         The percentage of cancellations is measured against the number of services *scheduled* on any particular sector.

---