



Australian Government

**Department of Infrastructure, Transport,
Regional Development and Local Government**

Bureau of Infrastructure, Transport and Regional Economics

STATISTICAL REPORT



Aviation

Domestic airline on time performance 2009-10

© Commonwealth of Australia 2010

ISSN 1832-0759

This work is copyright and the data contained in this publication should not be reproduced or used in any form without acknowledgement.

Enquiries

Bureau of Infrastructure, Transport and Regional Economics
GPO Box 501
Canberra ACT 2601

Telephone: 02 6274 7790

Facsimile: 02 6274 7727

Website: www.bitre.gov.au

Email: avstats@infrastructure.gov.au

This publication, including a spreadsheet of the time-series data, can be downloaded from the BITRE website: <http://www.bitre.gov.au/info.aspx?ResourceId=214&NodeId=104>.

Disclaimers

BITRE seeks to publish its work to the highest professional standards. However, it cannot accept responsibility for any consequences arising from the use of information herein. Readers should rely on their own skill and judgment in applying any information or analysis to particular issues or circumstances.

Foreword

The Bureau of Infrastructure, Transport and Regional Economics (BITRE) monitors the punctuality and reliability of major domestic airlines operating between Australian airports. The purpose of this is to allow for evaluation of overall industry and individual airline performance, so that consumers of air travel can make informed decisions.

The following domestic airlines reported this data monthly to the BITRE during 2009-10: Jetstar, Qantas, QantasLink, Regional Express, Skywest Airlines, Tiger Airways and Virgin Blue. Data has been gathered since November 2003, although some airlines commenced reporting since then, including Jetstar which first reported in May 2004, MacAir in July 2005 and Tiger Airways in April 2008. MacAir ceased operations in February 2009 and data was not received for December 2008 or January 2009.

Information presented in this report is for Australian domestic routes for which the passenger load averaged 8000 or more passengers per month over the previous six months, and where two or more airlines operated in competition on those routes. 51 routes met these criteria for all twelve months in 2009-10 and another 5 routes did so for a shorter period of the year. Over time, routes which meet these criteria change as airline networks and traffic levels vary.

Participating airlines report their overall monthly network performance where this is possible.

Total industry figures encompass all services operated by reporting airlines only. These airlines collectively carried over 95 per cent of total domestic passengers (regular public transport only) in 2009.

The method of capturing on time performance varies between airlines utilising different recording systems. Jetstar and Qantas jet aircraft use Aircraft Communication Addressing and Reporting System (ACARS) to electronically measure on time performance. MacAir, Regional Express, Skywest, Tiger Airways, Virgin Blue and the Qantas non-jet fleet record on time performance manually using records from pilots, gate agents and/or ground crews.

After initial data is collected, aggregate reports are audited internally by participating airlines prior to publication.

Reports and detailed time series data in Microsoft Excel spreadsheet format are available from the BITRE website at: <http://www.bitre.gov.au/info.aspx?ResourceId=214&NodeId=104>.

Contents

	Page
Industry performance	1
Individual routes	8
Airports	22
Definitions	28

Industry performance

For the year ended June 2010, on time performance over all routes operated by participating airlines (Jetstar, Qantas, QantasLink, Regional Express, Skywest Airlines, Tiger Airways and Virgin Blue) averaged 85.6 per cent for on time departures, and 84.4 per cent for on time arrivals. Cancellations for 2009-10 represented 1.0 per cent of all scheduled flights. The equivalent figures for 2008-09 were 81.1 per cent for departures, 79.7 per cent for arrivals and 1.7 per cent for cancellations.

The long term average performance for all routes since reporting commenced in November 2003 is 85.0 per cent for on time departures and 83.8 per cent for on time arrivals. Cancellations averaged 1.2 per cent of all scheduled flights.

As shown in Figure 1, there was a noticeable decrease in airline on time performance from June 2007 to December 2008. Whereas on time arrivals and on time departures tracked around 87 per cent before June 2007, they were below 80 per cent for June 2007 to December 2008. For January 2009 to June 2010, they have risen back up to nearly 85 per cent. Similarly, the percentage of cancelled flights rose from 0.9 per cent before June 2007 to 1.8 per cent for June 2007 to December 2008 before dropping back down to 1.1 per cent for January 2009 to June 2010 (Figure 2 refers).

Of the major domestic airlines, Qantas achieved the highest level of on time departures for 2009-10 at 87.7 per cent, followed by Virgin Blue at 85.3 per cent, Jetstar at 82.1 per cent and Tiger Airways at 77.4 per cent. The regional airlines were led by QantasLink at 86.8 per cent, Regional Express at 86.4 per cent and Skywest at 82.8 per cent.

Qantas also achieved the highest on time arrivals among the major domestic airlines at 87.4 per cent, followed by Virgin Blue at 85.0 per cent, Jetstar at 82.9 per cent and Tiger Airways at 78.0 per cent. QantasLink was the best performing regional airline for on time arrivals at 83.7 per cent, followed by Skywest at 82.2 per cent, and Regional Express at 81.8 per cent.

Virgin Blue had the highest percentage of cancellations for 2009-10 at 1.6 per cent, while Regional Express had the lowest at 0.2 per cent.

Of the 51 routes which met the criteria for on time performance reporting for all twelve months in 2009-10, the Darwin-Perth route had the highest percentage of on time departures (94.2 per cent) and the Cairns-Brisbane route had the highest percentage of on time arrivals (93.0 per cent). The Melbourne-Darwin route had the lowest percentage of on time departures (75.8 per cent) and on time arrivals (70.6 per cent).

Cancellations were highest on the Sydney-Melbourne route at 3.0 per cent, followed by Melbourne-Sydney at 2.9 per cent, Canberra-Sydney at 2.1 per cent, Gold Coast-Sydney also at 2.1 per cent and Brisbane-Sydney at 2.0 per cent.

Of the airports with on time performance reporting for all twelve months in 2009-10, Newman Airport recorded the highest percentage of on time departures (91.6 per cent) and on time arrivals (91.7 per cent). Ballina Airport recorded the lowest percentage of on time departures (72.8 per cent) and Wagga Wagga Airport recorded the lowest percentage of on time arrivals (75.4 per cent).

Table 1 On time performance for the year ended June 2010 — Total Industry

	<i>Sectors</i>		<i>Departures On Time</i>		<i>Arrivals On Time</i>		<i>Cancellations</i>	
	<i>Scheduled</i>	<i>Flown</i>	<i>No.</i>	<i>%</i>	<i>No.</i>	<i>%</i>	<i>No.</i>	<i>%</i>
Jetstar	55 867	55 239	45 342	82.1	45 783	82.9	628	1.1
Qantas	119 657	118 744	104 086	87.7	103 787	87.4	913	0.8
QantasLink	93 321	92 655	80 382	86.8	77 562	83.7	666	0.7
Regional Express	64 797	64 666	55 902	86.4	52 909	81.8	131	0.2
Skywest	13 013	12 918	10 694	82.8	10 622	82.2	95	0.7
Tiger Airways	17 534	17 272	13 360	77.4	13 466	78.0	262	1.5
Virgin Blue	137 227	135 084	115 200	85.3	114 773	85.0	2 143	1.6
All Airlines	501 416	496 578	424 966	85.6	418 902	84.4	4 838	1.0

1. Total airline network data (including routes not shown in this report).

Table 2 Top ten routes for on time performance for the year ended June 2010 (covers participating airlines only and routes reported for all twelve months)

<i>Departures</i>		<i>Arrivals</i>	
<i>Route</i>	<i>On Time (%)</i>	<i>Route</i>	<i>On Time (%)</i>
Darwin-Perth	94.2	Cairns-Brisbane	93.0
Perth-Newman	93.2	Perth-Darwin	93.0
Perth-Darwin	92.8	Canberra-Brisbane	92.3
Canberra-Brisbane	92.4	Perth-Newman	91.7
Cairns-Brisbane	91.8	Brisbane-Canberra	91.3
Newman-Perth	91.6	Newcastle-Gold Coast	91.1
Brisbane-Canberra	90.8	Newman-Perth	90.9
Perth-Karratha	90.8	Brisbane-Hamilton Island	90.8
Townsville-Brisbane	90.7	Brisbane-Cairns	90.7
Canberra-Melbourne	90.2	Brisbane-Townsville	90.6

Table 3 Top ten airports for on time performance for the year ended June 2010 (covers participating airlines only and routes reported for all twelve months)

<i>Departures</i>		<i>Arrivals</i>	
<i>Airport</i>	<i>On Time (%)</i>	<i>Airport</i>	<i>On Time (%)</i>
Newman	91.6	Newman	91.7
Canberra	89.9	Karratha	90.2
Townsville	89.7	Hamilton Island	89.1
Cairns	89.1	Rockhampton	89.0
Karratha	88.7	Townsville	88.3
Rockhampton	88.5	Brisbane	88.2
Mildura	88.4	Kalgoorlie	87.8
Mackay	88.3	Cairns	87.5
Adelaide	87.8	Adelaide	87.3
Brisbane	86.9	Canberra	86.9

Total industry on time performance

Figure 1 On time performance (by month from June 2005)—Total Industry

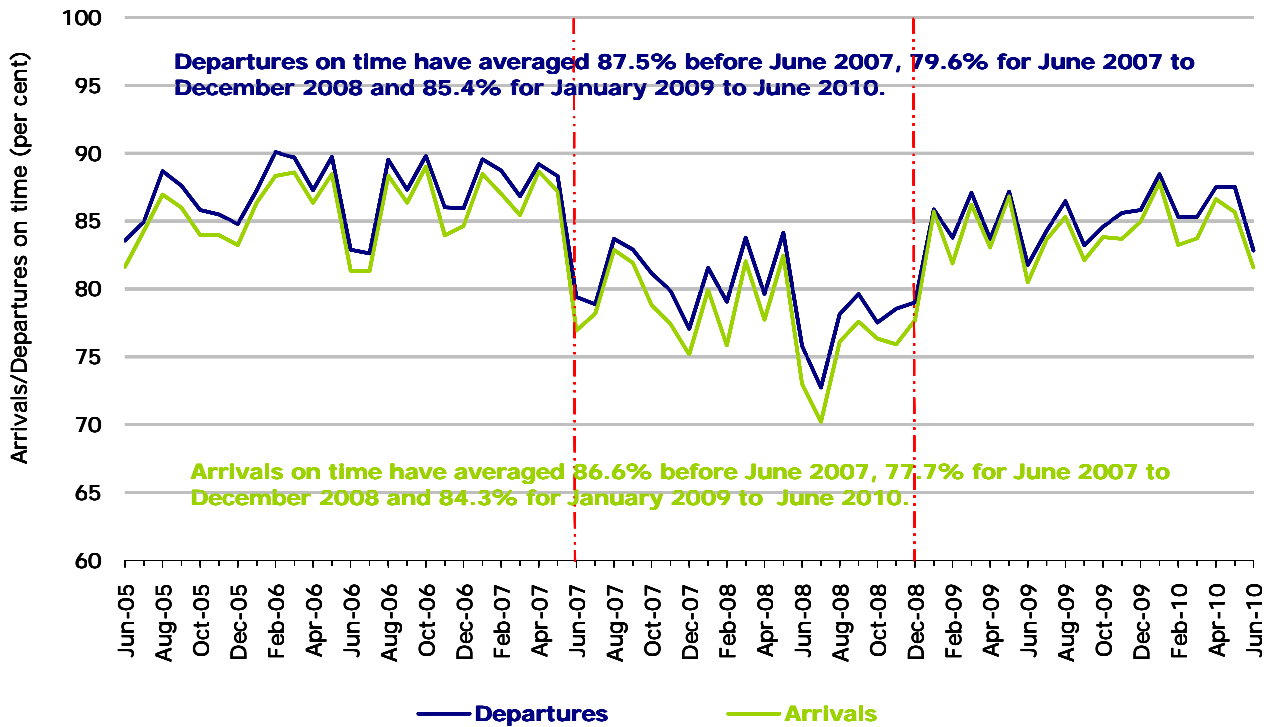
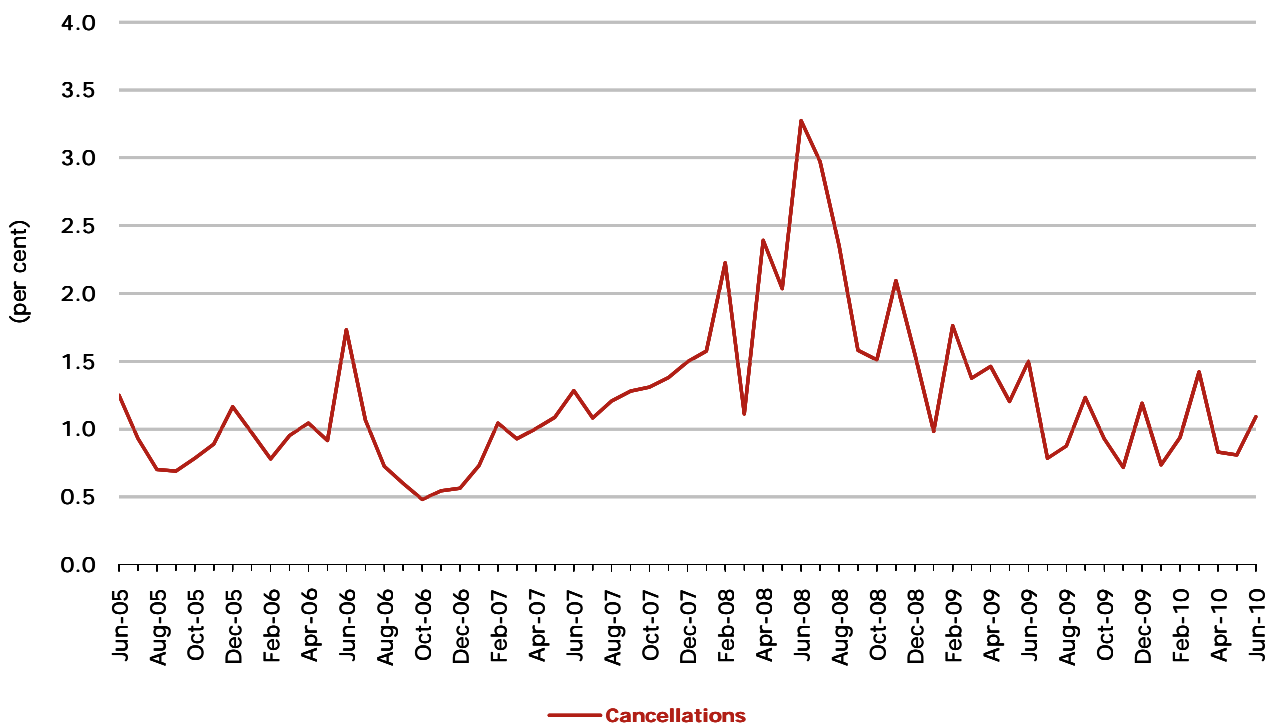
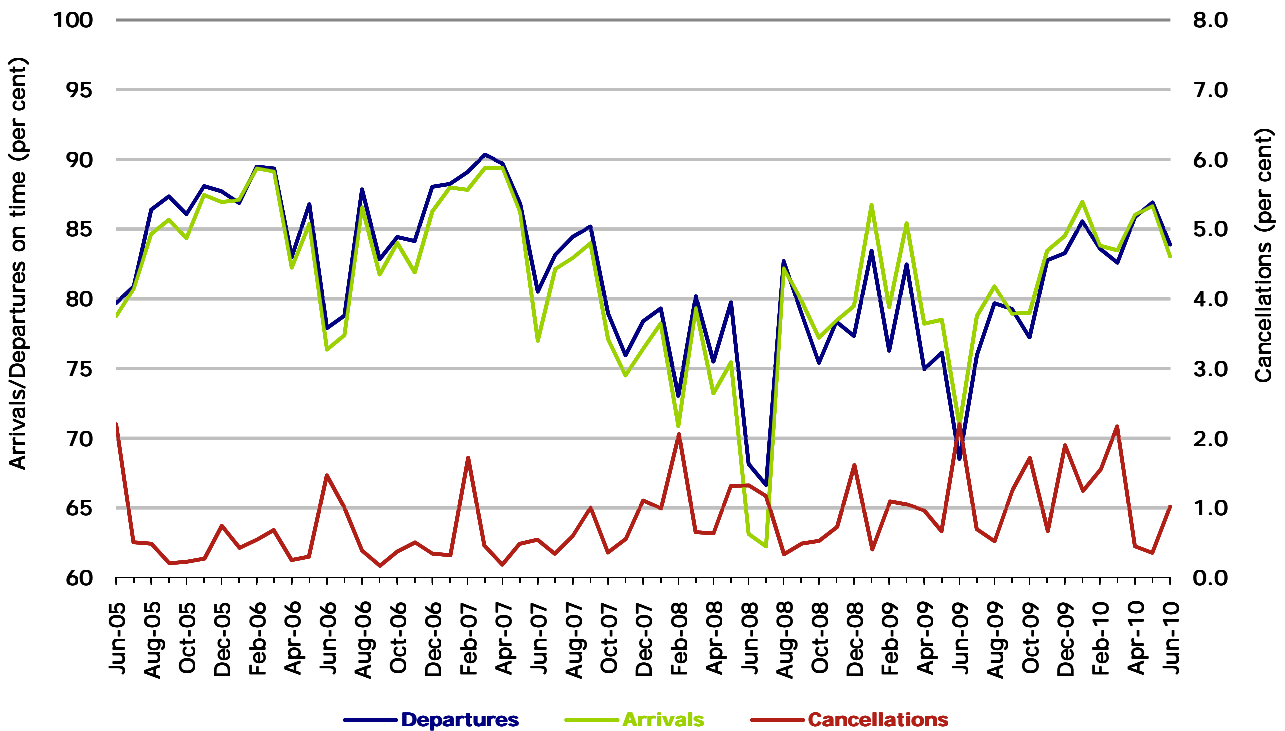


Figure 2 Cancellations (by month from June 2005)—Total Industry



Major domestic airlines on time performance

Figure 3 On time performance (by month from June 2005)—Jetstar



Jetstar commenced reporting in May 2004.

Figure 4 On time performance (by month from June 2005)—Qantas

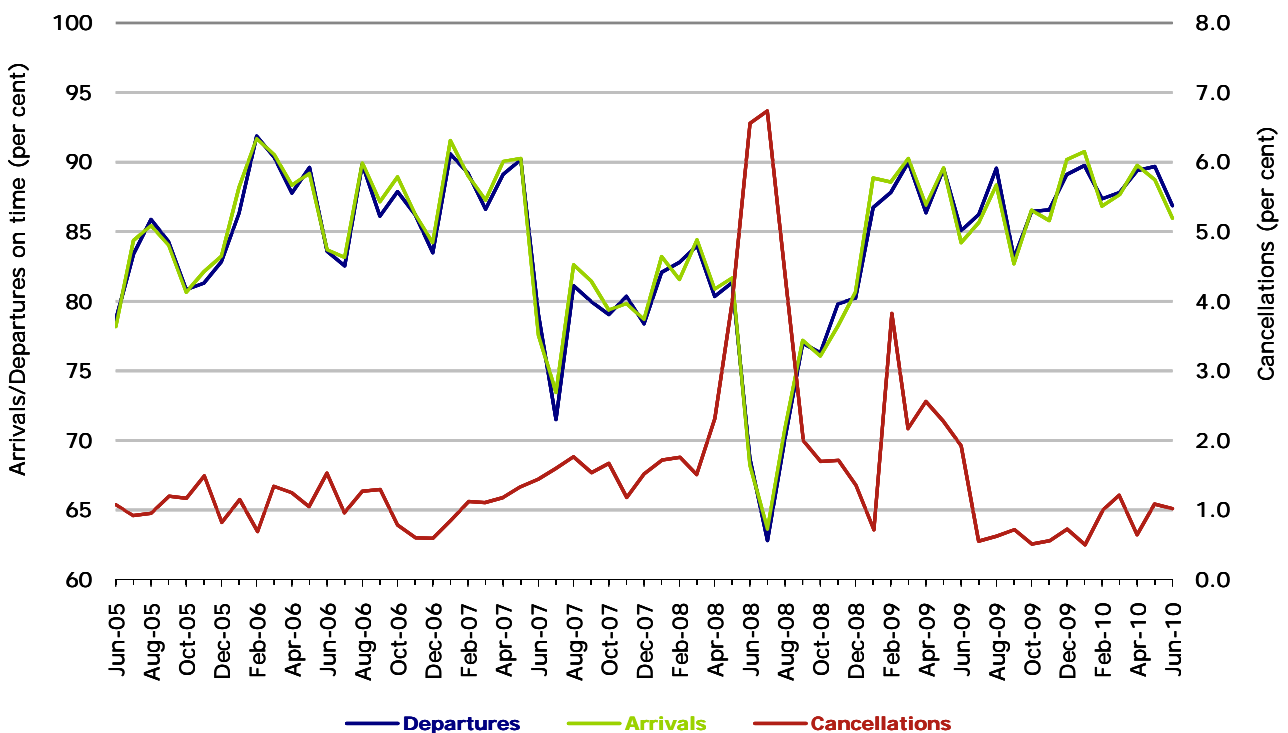
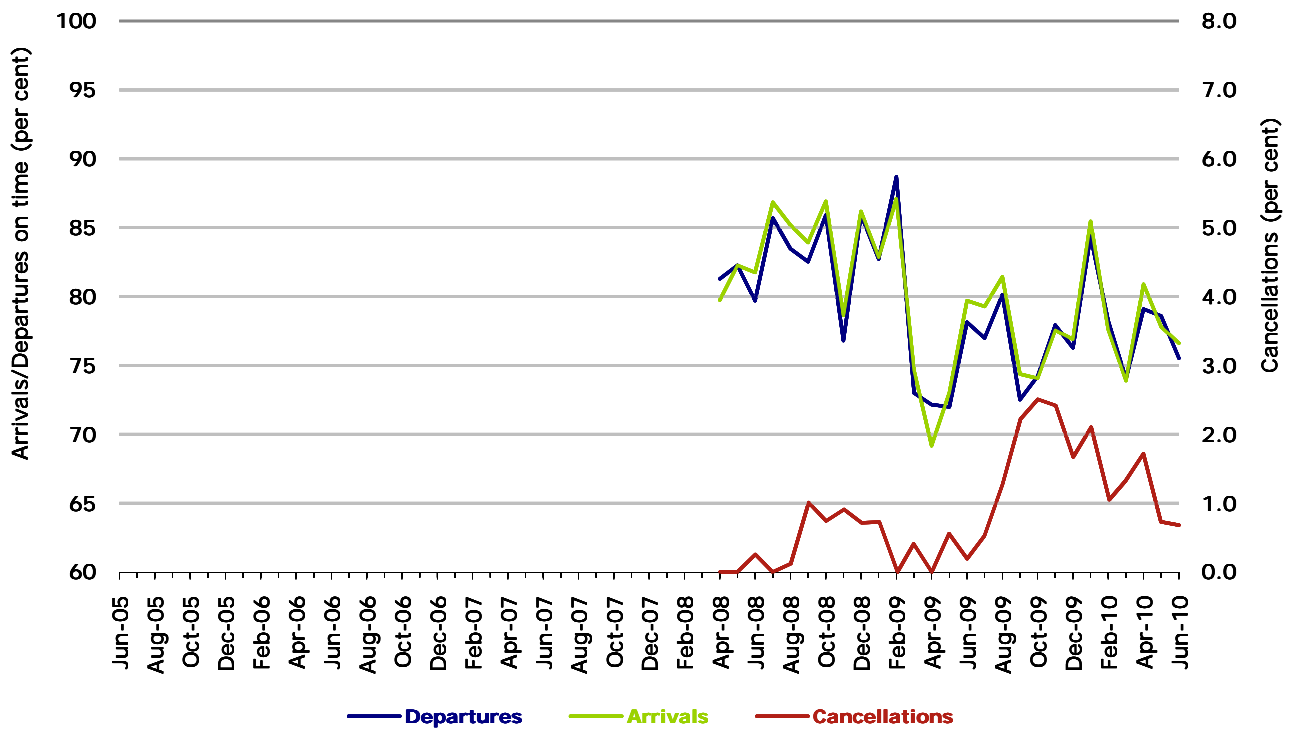
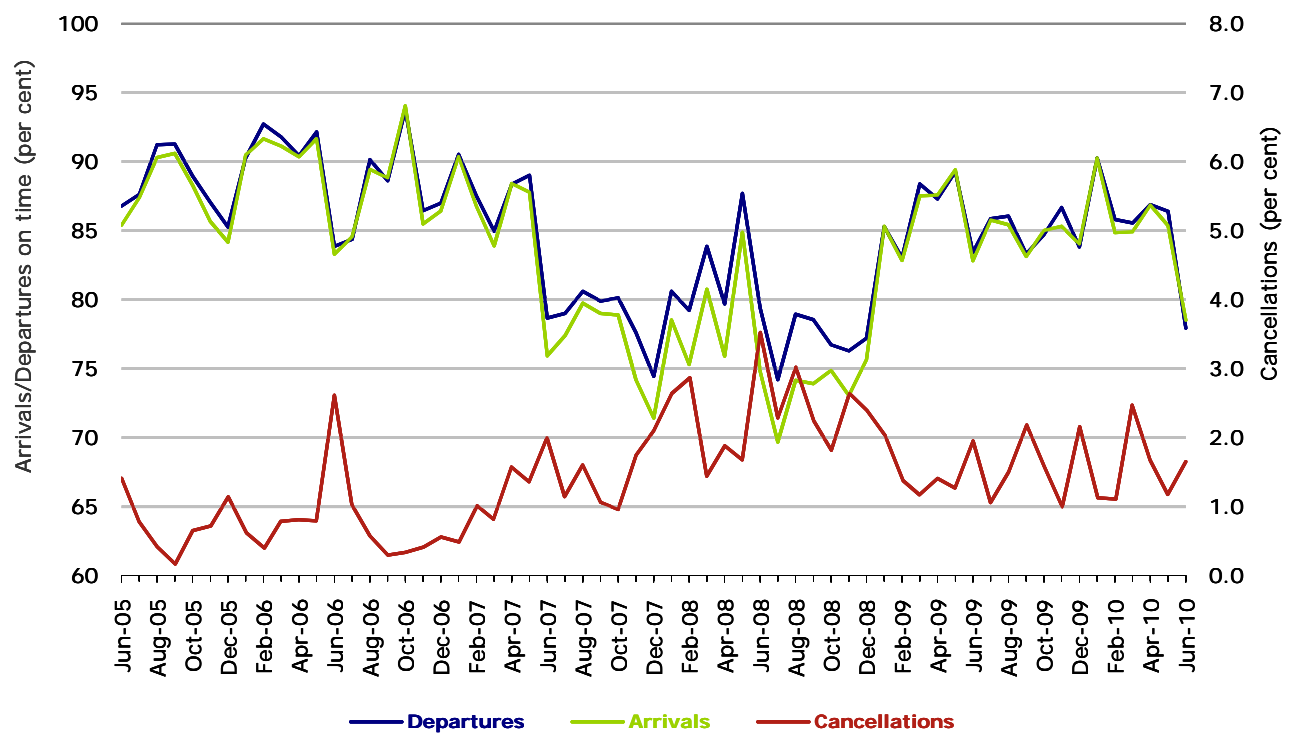


Figure 5 On time performance (by month from June 2005)—Tiger Airways



Tiger Airways commenced reporting in April 2008.

Figure 6 On time performance (by month from June 2005)—Virgin Blue



Major regional airlines on time performance

Figure 7 On time performance (by month from June 2005)—QantasLink

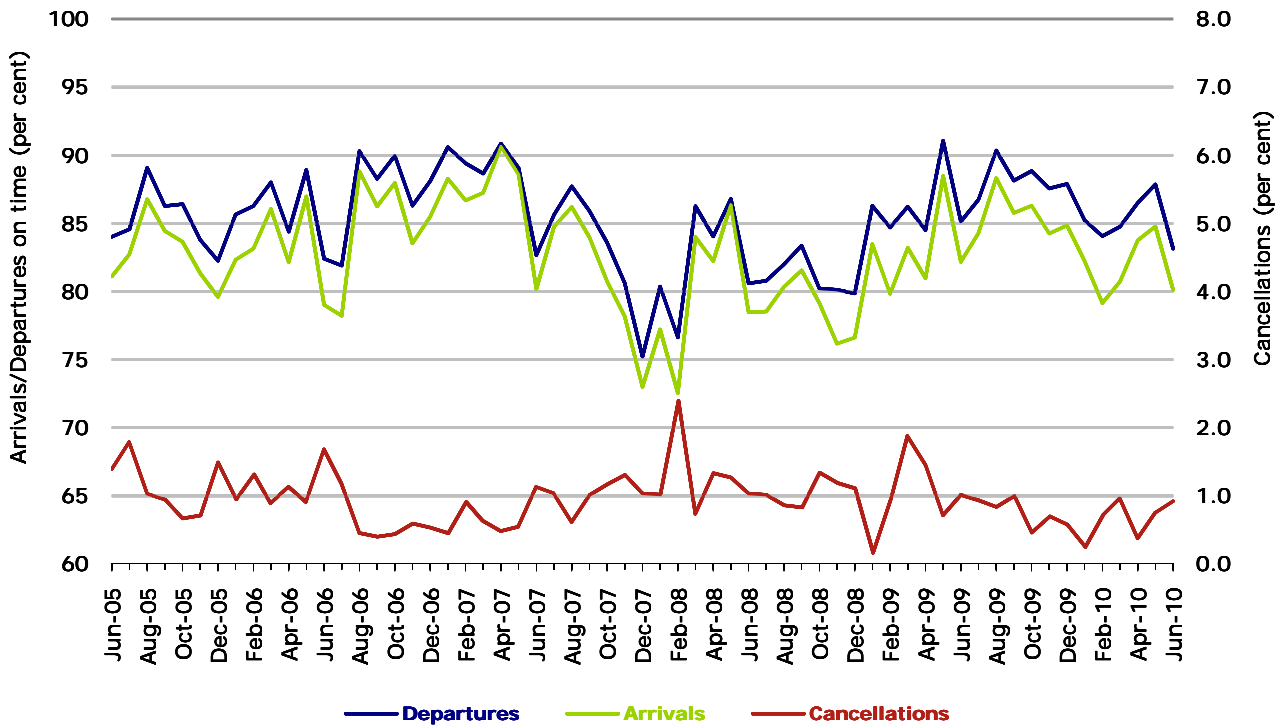


Figure 8 On time performance (by month from June 2005)—Regional Express

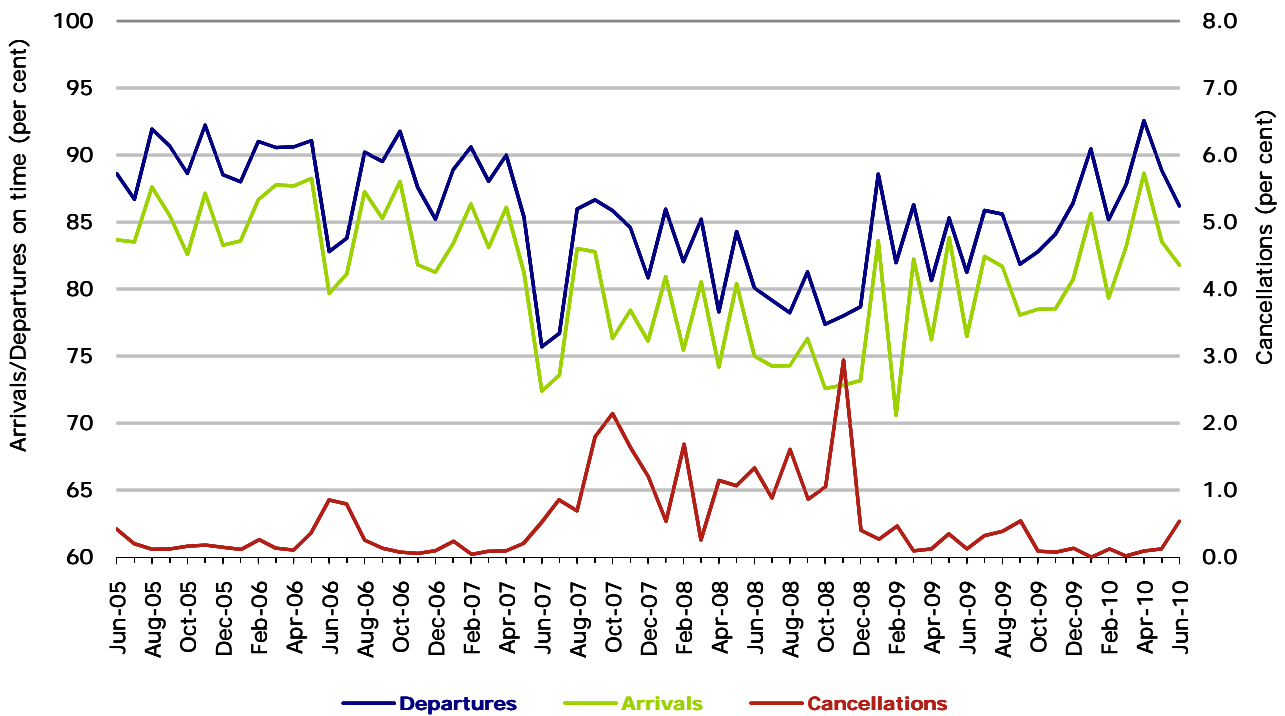
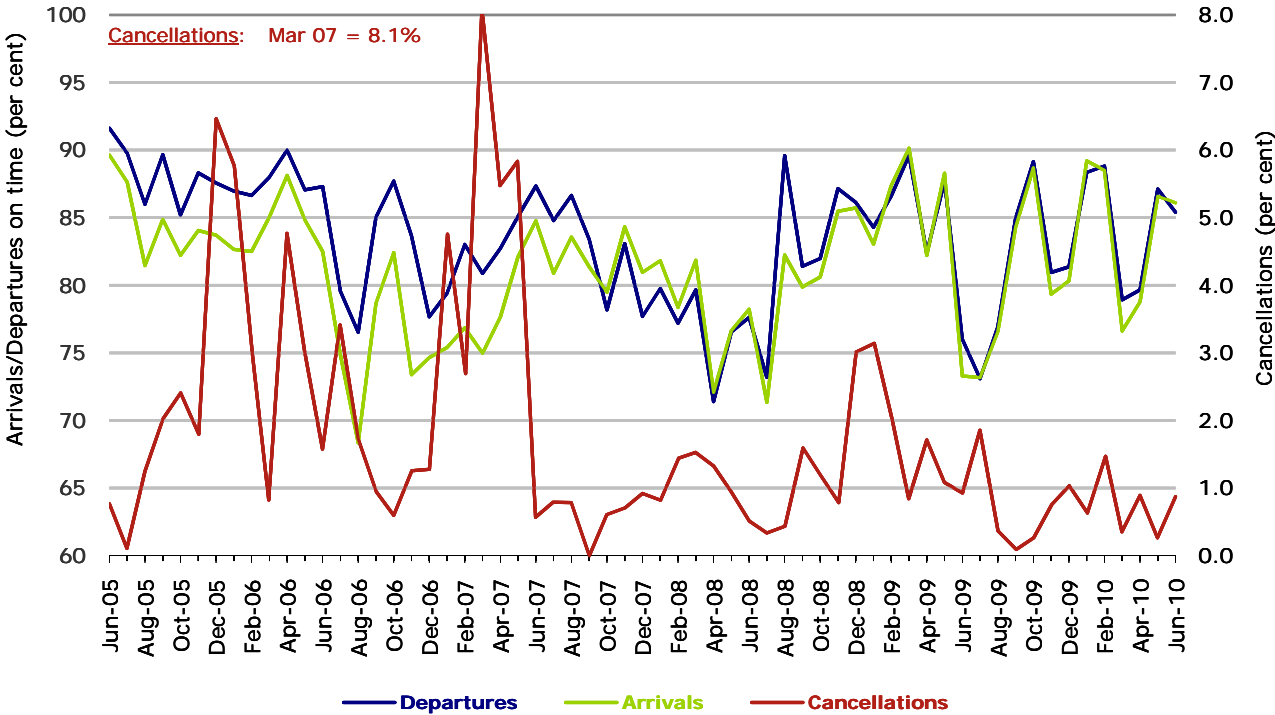


Figure 9 On time performance (by month from June 2005)—Skywest



Individual routes

On time performance is reported for all routes where the passenger load averages over 8000 passengers per month over the previous six months, and where two or more airlines operate in competition on those routes. 51 routes met these criteria for all twelve months in 2009-10 and another 5 routes did so for a shorter period of the year. Over time, however, routes which meet this definition may change as airline networks and traffic levels vary.

	<i>Sectors</i>		<i>Departures On Time</i>		<i>Arrivals On Time</i>		<i>Cancellations</i>	
	<i>Sched.</i>	<i>Flown</i>	<i>No.</i>	<i>%</i>	<i>No.</i>	<i>%</i>	<i>No.</i>	<i>%</i>
Adelaide-Alice Springs			(To April 2010 only)					
Qantas	305	305	281	92.1	280	91.8	0	0.0
Tiger Airways	130	130	99	76.2	97	74.6	0	0.0
All Airlines	435	435	380	87.4	377	86.7	0	0.0
Adelaide-Brisbane								
Jetstar	352	348	244	70.1	273	78.4	4	1.1
Qantas	1,117	1,117	1,027	91.9	1,038	92.9	0	0.0
Tiger Airways	91	91	86	94.5	85	93.4	0	0.0
Virgin Blue	1,101	1,090	946	86.8	967	88.7	11	1.0
All Airlines	2,661	2,646	2,303	87.0	2,363	89.3	15	0.6
Adelaide-Canberra								
Qantas	559	557	500	89.8	507	91.0	2	0.4
Tiger Airways	85	84	54	64.3	63	75.0	1	1.2
Virgin Blue	365	364	315	86.5	321	88.2	1	0.3
All Airlines	1,009	1,005	869	86.5	891	88.7	4	0.4
Adelaide-Gold Coast								
Jetstar	360	358	298	83.2	314	87.7	2	0.6
Tiger Airways	366	365	311	85.2	315	86.3	1	0.3
Virgin Blue	363	359	339	94.4	344	95.8	4	1.1
All Airlines	1,089	1,082	948	87.6	973	89.9	7	0.6
Adelaide-Melbourne								
Jetstar	566	564	395	70.0	403	71.5	2	0.4
Qantas	3,475	3,469	3,061	88.2	3,019	87.0	6	0.2
QantasLink	48	48	43	89.6	40	83.3	0	0.0
Tiger Airways	897	888	705	79.4	697	78.5	9	1.0
Virgin Blue	2,961	2,929	2,653	90.6	2,638	90.1	32	1.1
All Airlines	7,947	7,898	6,857	86.8	6,797	86.1	49	0.6
Adelaide-Perth								
Jetstar	358	358	322	89.9	305	85.2	0	0.0
Qantas	1,367	1,365	1,221	89.5	1,230	90.1	2	0.1
Tiger Airways	75	74	71	95.9	63	85.1	1	1.3
Virgin Blue	768	759	690	90.9	640	84.3	9	1.2
All Airlines	2,568	2,556	2,304	90.1	2,238	87.6	12	0.5
Adelaide-Port Lincoln			(From May 2010 only)					
QantasLink	197	197	179	90.9	170	86.3	0	0.0
Regional Express	505	503	485	96.4	476	94.6	2	0.4
All Airlines	702	700	664	94.9	646	92.3	2	0.3

	<i>Sectors</i>		<i>Departures On Time</i>		<i>Arrivals On Time</i>		<i>Cancellations</i>	
	<i>Sched.</i>	<i>Flown</i>	<i>No.</i>	<i>%</i>	<i>No.</i>	<i>%</i>	<i>No.</i>	<i>%</i>
Adelaide-Sydney								
Jetstar	545	540	475	88.0	423	78.3	5	0.9
Qantas	3,343	3,328	3,031	91.1	2,978	89.5	15	0.4
Tiger Airways	564	556	462	83.1	470	84.5	8	1.4
Virgin Blue	1,745	1,739	1,453	83.6	1,492	85.8	6	0.3
All Airlines	6,197	6,163	5,421	88.0	5,363	87.0	34	0.5
Albury-Sydney								
QantasLink	1,227	1,226	947	77.2	910	74.2	1	0.1
Regional Express	1,335	1,334	1,132	84.9	1,095	82.1	1	0.1
Virgin Blue	729	718	592	82.5	571	79.5	11	1.5
All Airlines	3,291	3,278	2,671	81.5	2,576	78.6	13	0.4
Alice Springs-Adelaide (To April 2010 only)								
Qantas	304	304	270	88.8	282	92.8	0	0.0
Tiger Airways	130	130	96	73.8	99	76.2	0	0.0
All Airlines	434	434	366	84.3	381	87.8	0	0.0
Alice Springs-Melbourne								
Qantas	365	365	299	81.9	322	88.2	0	0.0
Tiger Airways	156	156	116	74.4	119	76.3	0	0.0
All Airlines	521	521	415	79.7	441	84.6	0	0.0
Ballina-Sydney								
Jetstar	410	405	327	80.7	314	77.5	5	1.2
Regional Express	999	998	737	73.8	661	66.2	1	0.1
Virgin Blue	404	398	345	86.7	328	82.4	6	1.5
All Airlines	1,813	1,801	1,409	78.2	1,303	72.3	12	0.7
Brisbane-Adelaide								
Jetstar	349	347	265	76.4	270	77.8	2	0.6
Qantas	1,118	1,118	1,024	91.6	1,054	94.3	0	0.0
Tiger Airways	90	90	71	78.9	78	86.7	0	0.0
Virgin Blue	1,099	1,091	983	90.1	944	86.5	8	0.7
All Airlines	2,656	2,646	2,343	88.5	2,346	88.7	10	0.4
Brisbane-Cairns								
Jetstar	1,104	1,101	956	86.8	986	89.6	3	0.3
Qantas	1,460	1,460	1,317	90.2	1,356	92.9	0	0.0
Virgin Blue	1,587	1,586	1,418	89.4	1,420	89.5	1	0.1
All Airlines	4,151	4,147	3,691	89.0	3,762	90.7	4	0.1
Brisbane-Canberra								
Qantas	1,702	1,697	1,582	93.2	1,603	94.5	5	0.3
QantasLink	104	104	101	97.1	101	97.1	0	0.0
Virgin Blue	1,469	1,459	1,277	87.5	1,273	87.3	10	0.7
All Airlines	3,275	3,260	2,960	90.8	2,977	91.3	15	0.5

	<i>Sectors</i>		<i>Departures On Time</i>		<i>Arrivals On Time</i>		<i>Cancellations</i>	
	<i>Sched.</i>	<i>Flown</i>	<i>No.</i>	<i>%</i>	<i>No.</i>	<i>%</i>	<i>No.</i>	<i>%</i>
Brisbane-Darwin								
Jetstar	142	139	110	79.1	110	79.1	3	2.1
Qantas	365	365	320	87.7	319	87.4	0	0.0
Virgin Blue	365	364	298	81.9	298	81.9	1	0.3
All Airlines	872	868	728	83.9	727	83.8	4	0.5
Brisbane-Hamilton Island								
Jetstar	346	342	285	83.3	302	88.3	4	1.2
Virgin Blue	366	364	337	92.6	339	93.1	2	0.5
All Airlines	712	706	622	88.1	641	90.8	6	0.8
Brisbane-Mackay								
Jetstar	1,042	1,032	876	84.9	876	84.9	10	1.0
QantasLink	965	965	824	85.4	794	82.3	0	0.0
Virgin Blue	1,700	1,690	1,472	87.1	1,481	87.6	10	0.6
All Airlines	3,707	3,687	3,172	86.0	3,151	85.5	20	0.5
Brisbane-Melbourne								
Qantas	5,026	5,016	4,467	89.1	4,492	89.6	10	0.2
Tiger Airways	242	242	186	76.9	191	78.9	0	0.0
Virgin Blue	4,026	3,973	3,534	89.0	3,578	90.1	53	1.3
All Airlines	9,294	9,231	8,187	88.7	8,261	89.5	63	0.7
Brisbane-Newcastle								
Jetstar	1,357	1,347	1,187	88.1	1,208	89.7	10	0.7
QantasLink	793	783	696	88.9	599	76.5	10	1.3
Virgin Blue	615	614	553	90.1	540	87.9	1	0.2
All Airlines	2,765	2,744	2,436	88.8	2,347	85.5	21	0.8
Brisbane-Perth								
Qantas	1,459	1,459	1,203	82.5	1,197	82.0	0	0.0
Virgin Blue	730	730	656	89.9	588	80.5	0	0.0
All Airlines	2,189	2,189	1,859	84.9	1,785	81.5	0	0.0
Brisbane-Proserpine								
Jetstar	356	354	284	80.2	303	85.6	2	0.6
Virgin Blue	365	363	322	88.7	313	86.2	2	0.5
All Airlines	721	717	606	84.5	616	85.9	4	0.6
Brisbane-Rockhampton								
Jetstar	307	306	268	87.6	276	90.2	1	0.3
QantasLink	2,144	2,136	1,886	88.3	1,868	87.5	8	0.4
Tiger Airways	91	91	75	82.4	77	84.6	0	0.0
Virgin Blue	1,768	1,739	1,579	90.8	1,580	90.9	29	1.6
All Airlines	4,310	4,272	3,808	89.1	3,801	89.0	38	0.9
Brisbane-Sydney								
Jetstar	971	939	764	81.4	700	74.5	32	3.3
Qantas	7,276	7,197	6,150	85.5	6,211	86.3	79	1.1
Virgin Blue	6,425	6,238	5,038	80.8	4,704	75.4	187	2.9
All Airlines	14,672	14,374	11,952	83.2	11,615	80.8	298	2.0

	<i>Sectors</i>		<i>Departures On Time</i>		<i>Arrivals On Time</i>		<i>Cancellations</i>	
	<i>Sched.</i>	<i>Flown</i>	<i>No.</i>	<i>%</i>	<i>No.</i>	<i>%</i>	<i>No.</i>	<i>%</i>
Brisbane-Townsville								
Jetstar	387	386	322	83.4	341	88.3	1	0.3
Qantas	1,770	1,768	1,559	88.2	1,601	90.6	2	0.1
Virgin Blue	1,716	1,712	1,537	89.8	1,560	91.1	4	0.2
All Airlines	3,873	3,866	3,418	88.4	3,502	90.6	7	0.2
Broome-Perth								
Qantas	230	227	157	69.2	166	73.1	3	1.3
QantasLink	755	747	654	87.6	673	90.1	8	1.1
Skywest	312	310	201	64.8	181	58.4	2	0.6
Virgin Blue	544	535	429	80.2	451	84.3	9	1.7
All Airlines	1,841	1,819	1,441	79.2	1,471	80.9	22	1.2
Cairns-Brisbane								
Jetstar	1,101	1,100	1,016	92.4	1,035	94.1	1	0.1
Qantas	1,460	1,460	1,342	91.9	1,387	95.0	0	0.0
Virgin Blue	1,586	1,585	1,448	91.4	1,433	90.4	1	0.1
All Airlines	4,147	4,145	3,806	91.8	3,855	93.0	2	0.0
Cairns-Melbourne								
Jetstar	442	439	358	81.5	355	80.9	3	0.7
Qantas	364	364	322	88.5	327	89.8	0	0.0
Virgin Blue	394	393	316	80.4	324	82.4	1	0.3
All Airlines	1,200	1,196	996	83.3	1,006	84.1	4	0.3
Cairns-Sydney								
Jetstar	518	512	431	84.2	444	86.7	6	1.2
Qantas	1,314	1,311	1,152	87.9	1,183	90.2	3	0.2
Virgin Blue	887	884	775	87.7	786	88.9	3	0.3
All Airlines	2,719	2,707	2,358	87.1	2,413	89.1	12	0.4
Cairns-Townsville								
QantasLink	1,897	1,878	1,655	88.1	1,569	83.5	19	1.0
Virgin Blue	351	345	333	96.5	333	96.5	6	1.7
All Airlines	2,248	2,223	1,988	89.4	1,902	85.6	25	1.1
Canberra-Adelaide								
Qantas	611	611	563	92.1	564	92.3	0	0.0
Tiger Airways	85	84	64	76.2	65	77.4	1	1.2
Virgin Blue	365	364	321	88.2	323	88.7	1	0.3
All Airlines	1,061	1,059	948	89.5	952	89.9	2	0.2
Canberra-Brisbane								
Qantas	1,702	1,693	1,584	93.6	1,582	93.4	9	0.5
QantasLink	104	104	95	91.3	95	91.3	0	0.0
Virgin Blue	1,469	1,453	1,325	91.2	1,323	91.1	16	1.1
All Airlines	3,275	3,250	3,004	92.4	3,000	92.3	25	0.8

	<i>Sectors</i>		<i>Departures On Time</i>		<i>Arrivals On Time</i>		<i>Cancellations</i>	
	<i>Sched.</i>	<i>Flown</i>	<i>No.</i>	<i>%</i>	<i>No.</i>	<i>%</i>	<i>No.</i>	<i>%</i>
Canberra-Melbourne								
Qantas	3,021	2,998	2,753	91.8	2,688	89.7	23	0.8
QantasLink	449	424	363	85.6	332	78.3	25	5.6
Tiger Airways	352	348	267	76.7	272	78.2	4	1.1
Virgin Blue	2,038	2,018	1,837	91.0	1,800	89.2	20	1.0
All Airlines	5,860	5,788	5,220	90.2	5,092	88.0	72	1.2
Canberra-Sydney								
Qantas	2,082	2,063	1,853	89.8	1,802	87.3	19	0.9
QantasLink	4,452	4,376	3,826	87.4	3,679	84.1	76	1.7
Virgin Blue	2,685	2,582	2,342	90.7	2,322	89.9	103	3.8
All Airlines	9,219	9,021	8,021	88.9	7,803	86.5	198	2.1
Coffs Harbour-Sydney								
QantasLink	1,566	1,566	1,244	79.4	1,226	78.3	0	0.0
Virgin Blue	728	718	620	86.4	601	83.7	10	1.4
All Airlines	2,294	2,284	1,864	81.6	1,827	80.0	10	0.4
Darwin-Brisbane								
Jetstar	141	140	99	70.7	115	82.1	1	0.7
Qantas	365	364	271	74.5	282	77.5	1	0.3
Virgin Blue	365	363	316	87.1	326	89.8	2	0.5
All Airlines	871	867	686	79.1	723	83.4	4	0.5
Darwin-Melbourne								
Jetstar	271	270	196	72.6	209	77.4	1	0.4
Tiger Airways	10	9	2	22.2	2	22.2	1	10.0
Virgin Blue	323	321	301	93.8	270	84.1	2	0.6
All Airlines	604	600	499	83.2	481	80.2	4	0.7
Darwin-Perth								
Qantas	395	395	370	93.7	370	93.7	0	0.0
Virgin Blue	351	348	330	94.8	293	84.2	3	0.9
All Airlines	746	743	700	94.2	663	89.2	3	0.4
Dubbo-Sydney								
QantasLink	1,184	1,182	1,021	86.4	942	79.7	2	0.2
Regional Express	1,888	1,884	1,498	79.5	1,440	76.4	4	0.2
All Airlines	3,072	3,066	2,519	82.2	2,382	77.7	6	0.2
Gold Coast-Adelaide								
Jetstar	360	358	307	85.8	307	85.8	2	0.6
Tiger Airways	364	360	311	86.4	315	87.5	4	1.1
Virgin Blue	363	359	334	93.0	339	94.4	4	1.1
All Airlines	1,087	1,077	952	88.4	961	89.2	10	0.9
Gold Coast-Melbourne								
Jetstar	2,149	2,109	1,785	84.6	1,739	82.5	40	1.9
Tiger Airways	1,150	1,133	848	74.8	848	74.8	17	1.5
Virgin Blue	2,013	2,002	1,717	85.8	1,710	85.4	11	0.5
All Airlines	5,312	5,244	4,350	83.0	4,297	81.9	68	1.3

	<i>Sectors</i>		<i>Departures On Time</i>		<i>Arrivals On Time</i>		<i>Cancellations</i>	
	<i>Sched.</i>	<i>Flown</i>	<i>No.</i>	<i>%</i>	<i>No.</i>	<i>%</i>	<i>No.</i>	<i>%</i>
Gold Coast-Newcastle								
Jetstar	356	355	308	86.8	312	87.9	1	0.3
Virgin Blue	156	154	139	90.3	141	91.6	2	1.3
All Airlines	512	509	447	87.8	453	89.0	3	0.6
Gold Coast-Sydney								
Jetstar	2,999	2,938	2,420	82.4	2,345	79.8	61	2.0
Tiger Airways	338	335	267	79.7	265	79.1	3	0.9
Virgin Blue	4,366	4,271	3,673	86.0	3,615	84.6	95	2.2
All Airlines	7,703	7,544	6,360	84.3	6,225	82.5	159	2.1
Hamilton Island-Brisbane								
Jetstar	345	343	279	81.3	287	83.7	2	0.6
Virgin Blue	366	364	336	92.3	337	92.6	2	0.5
All Airlines	711	707	615	87.0	624	88.3	4	0.6
Hamilton Island-Sydney (From September 2009 only)								
Jetstar	298	295	241	81.7	244	82.7	3	1.0
Virgin Blue	303	300	249	83.0	265	88.3	3	1.0
All Airlines	601	595	490	82.4	509	85.5	6	1.0
Hervey Bay-Sydney (July 2009 only)								
Jetstar	18	18	15	83.3	13	72.2	0	0.0
Virgin Blue	31	31	29	93.5	30	96.8	0	0.0
All Airlines	49	49	44	89.8	43	87.8	0	0.0
Hobart-Melbourne								
Jetstar	1,484	1,471	1,018	69.2	1,045	71.0	13	0.9
Qantas	736	736	710	96.5	694	94.3	0	0.0
Tiger Airways	492	490	378	77.1	384	78.4	2	0.4
Virgin Blue	1,489	1,486	1,235	83.1	1,214	81.7	3	0.2
All Airlines	4,201	4,183	3,341	79.9	3,337	79.8	18	0.4
Hobart-Sydney								
Jetstar	680	679	536	78.9	569	83.8	1	0.1
Qantas	371	371	303	81.7	319	86.0	0	0.0
Virgin Blue	825	821	681	82.9	705	85.9	4	0.5
All Airlines	1,876	1,871	1,520	81.2	1,593	85.1	5	0.3
Kalgoorlie-Perth								
Qantas	385	378	314	83.1	315	83.3	7	1.8
QantasLink	618	613	530	86.5	524	85.5	5	0.8
Skywest	290	281	237	84.3	187	66.5	9	3.1
All Airlines	1,293	1,272	1,081	85.0	1,026	80.7	21	1.6
Karratha-Perth								
Qantas	1,716	1,708	1,542	90.3	1,501	87.9	8	0.5
QantasLink	496	488	462	94.7	461	94.5	8	1.6
Skywest	384	375	299	79.7	289	77.1	9	2.3
Virgin Blue	630	617	526	85.3	520	84.3	13	2.1
All Airlines	3,226	3,188	2,829	88.7	2,771	86.9	38	1.2

	<i>Sectors</i>		<i>Departures On Time</i>		<i>Arrivals On Time</i>		<i>Cancellations</i>	
	<i>Sched.</i>	<i>Flown</i>	<i>No.</i>	<i>%</i>	<i>No.</i>	<i>%</i>	<i>No.</i>	<i>%</i>
Launceston-Melbourne								
Jetstar	1,049	1,047	798	76.2	674	64.4	2	0.2
QantasLink	841	831	623	75.0	541	65.1	10	1.2
Tiger Airways	363	362	252	69.6	254	70.2	1	0.3
Virgin Blue	1,486	1,478	1,346	91.1	1,315	89.0	8	0.5
All Airlines	3,739	3,718	3,019	81.2	2,784	74.9	21	0.6
Launceston-Sydney								
Jetstar	360	360	282	78.3	301	83.6	0	0.0
Virgin Blue	366	365	292	80.0	300	82.2	1	0.3
All Airlines	726	725	574	79.2	601	82.9	1	0.1
Mackay-Brisbane								
Jetstar	1,045	1,034	868	83.9	886	85.7	11	1.1
QantasLink	964	963	830	86.2	810	84.1	1	0.1
Virgin Blue	1,696	1,690	1,556	92.1	1,540	91.1	6	0.4
All Airlines	3,705	3,687	3,254	88.3	3,236	87.8	18	0.5
Melbourne-Adelaide								
Jetstar	563	562	521	92.7	517	92.0	1	0.2
Qantas	3,472	3,468	3,071	88.6	3,028	87.3	4	0.1
QantasLink	48	48	37	77.1	35	72.9	0	0.0
Tiger Airways	895	882	703	79.7	704	79.8	13	1.5
Virgin Blue	2,962	2,931	2,551	87.0	2,520	86.0	31	1.0
All Airlines	7,940	7,891	6,883	87.2	6,804	86.2	49	0.6
Melbourne-Alice Springs								
Qantas	365	365	312	85.5	319	87.4	0	0.0
Tiger Airways	156	156	128	82.1	122	78.2	0	0.0
All Airlines	521	521	440	84.5	441	84.6	0	0.0
Melbourne-Brisbane								
Qantas	5,013	5,003	4,454	89.0	4,555	91.0	10	0.2
Tiger Airways	242	242	191	78.9	203	83.9	0	0.0
Virgin Blue	4,027	3,971	3,383	85.2	3,490	87.9	56	1.4
All Airlines	9,282	9,216	8,028	87.1	8,248	89.5	66	0.7
Melbourne-Cairns								
Jetstar	440	435	373	85.7	389	89.4	5	1.1
Qantas	365	365	339	92.9	335	91.8	0	0.0
Virgin Blue	394	393	328	83.5	330	84.0	1	0.3
All Airlines	1,199	1,193	1,040	87.2	1,054	88.3	6	0.5
Melbourne-Canberra								
Qantas	3,021	3,005	2,700	89.9	2,716	90.4	16	0.5
QantasLink	449	424	382	90.1	363	85.6	25	5.6
Tiger Airways	352	349	256	73.4	270	77.4	3	0.9
Virgin Blue	1,987	1,966	1,734	88.2	1,752	89.1	21	1.1
All Airlines	5,809	5,744	5,072	88.3	5,101	88.8	65	1.1

	<i>Sectors</i>		<i>Departures On Time</i>		<i>Arrivals On Time</i>		<i>Cancellations</i>	
	<i>Sched.</i>	<i>Flown</i>	<i>No.</i>	<i>%</i>	<i>No.</i>	<i>%</i>	<i>No.</i>	<i>%</i>
Melbourne-Darwin								
Jetstar	275	275	172	62.5	155	56.4	0	0.0
Tiger Airways	11	11	7	63.6	5	45.5	0	0.0
Virgin Blue	323	322	282	87.6	269	83.5	1	0.3
All Airlines	609	608	461	75.8	429	70.6	1	0.2
Melbourne-Gold Coast								
Jetstar	2,147	2,114	1,756	83.1	1,804	85.3	33	1.5
Tiger Airways	1,150	1,137	855	75.2	876	77.0	13	1.1
Virgin Blue	2,012	2,003	1,744	87.1	1,756	87.7	9	0.4
All Airlines	5,309	5,254	4,355	82.9	4,436	84.4	55	1.0
Melbourne-Hobart								
Jetstar	1,481	1,469	1,057	72.0	1,095	74.5	12	0.8
Qantas	736	736	595	80.8	585	79.5	0	0.0
Tiger Airways	492	492	395	80.3	392	79.7	0	0.0
Virgin Blue	1,491	1,486	1,190	80.1	1,184	79.7	5	0.3
All Airlines	4,200	4,183	3,237	77.4	3,256	77.8	17	0.4
Melbourne-Launceston								
Jetstar	1,046	1,044	802	76.8	814	78.0	2	0.2
QantasLink	843	830	605	72.9	520	62.7	13	1.5
Tiger Airways	365	364	258	70.9	261	71.7	1	0.3
Virgin Blue	1,487	1,481	1,307	88.3	1,287	86.9	6	0.4
All Airlines	3,741	3,719	2,972	79.9	2,882	77.5	22	0.6
Melbourne-Mildura								
QantasLink	1,099	1,095	892	81.5	769	70.2	4	0.4
Regional Express	1,055	1,054	990	93.9	969	91.9	1	0.1
Virgin Blue	365	363	315	86.8	298	82.1	2	0.5
All Airlines	2,519	2,512	2,197	87.5	2,036	81.1	7	0.3
Melbourne-Newcastle								
Jetstar	886	881	718	81.5	739	83.9	5	0.6
Virgin Blue	365	365	340	93.2	335	91.8	0	0.0
All Airlines	1,251	1,246	1,058	84.9	1,074	86.2	5	0.4
Melbourne-Perth								
Jetstar	656	647	503	77.7	488	75.4	9	1.4
Qantas	2,366	2,365	1,900	80.3	1,927	81.5	1	0.0
Tiger Airways	417	415	292	70.4	253	61.0	2	0.5
Virgin Blue	1,457	1,449	1,306	90.1	1,197	82.6	8	0.5
All Airlines	4,896	4,876	4,001	82.1	3,865	79.3	20	0.4
Melbourne-Sunshine Coast								
Jetstar	666	661	501	75.8	515	77.9	5	0.8
Tiger Airways	262	262	224	85.5	227	86.6	0	0.0
Virgin Blue	429	425	365	85.9	375	88.2	4	0.9
All Airlines	1,357	1,348	1,090	80.9	1,117	82.9	9	0.7

	<i>Sectors</i>		<i>Departures On Time</i>		<i>Arrivals On Time</i>		<i>Cancellations</i>	
	<i>Sched.</i>	<i>Flown</i>	<i>No.</i>	<i>%</i>	<i>No.</i>	<i>%</i>	<i>No.</i>	<i>%</i>
Melbourne-Sydney								
Jetstar	1,259	1,217	869	71.4	888	73.0	42	3.3
Qantas	11,014	10,745	9,271	86.3	9,080	84.5	269	2.4
Tiger Airways	2,052	1,975	1,578	79.9	1,547	78.3	77	3.8
Virgin Blue	8,806	8,518	6,527	76.6	6,669	78.3	288	3.3
All Airlines	23,131	22,455	18,245	81.3	18,184	81.0	676	2.9
Mildura-Melbourne								
QantasLink	1,100	1,099	939	85.4	881	80.2	1	0.1
Regional Express	1,055	1,054	978	92.8	965	91.6	1	0.1
Virgin Blue	365	362	306	84.5	311	85.9	3	0.8
All Airlines	2,520	2,515	2,223	88.4	2,157	85.8	5	0.2
Newcastle-Brisbane								
Jetstar	1,358	1,349	1,149	85.2	1,168	86.6	9	0.7
QantasLink	793	780	651	83.5	667	85.5	13	1.6
Virgin Blue	614	609	541	88.8	539	88.5	5	0.8
All Airlines	2,765	2,738	2,341	85.5	2,374	86.7	27	1.0
Newcastle-Gold Coast								
Jetstar	355	353	308	87.3	318	90.1	2	0.6
Virgin Blue	156	155	146	94.2	145	93.5	1	0.6
All Airlines	511	508	454	89.4	463	91.1	3	0.6
Newcastle-Melbourne								
Jetstar	889	885	761	86.0	765	86.4	4	0.4
Virgin Blue	365	361	340	94.2	339	93.9	4	1.1
All Airlines	1,254	1,246	1,101	88.4	1,104	88.6	8	0.6
Newman-Perth								
QantasLink	1,068	1,059	977	92.3	968	91.4	9	0.8
Virgin Blue	412	405	364	89.9	363	89.6	7	1.7
All Airlines	1,480	1,464	1,341	91.6	1,331	90.9	16	1.1
Perth-Adelaide								
Jetstar	360	360	260	72.2	250	69.4	0	0.0
Qantas	1,367	1,365	1,249	91.5	1,210	88.6	2	0.1
Tiger Airways	75	74	62	83.8	64	86.5	1	1.3
Virgin Blue	771	759	702	92.5	711	93.7	12	1.6
All Airlines	2,573	2,558	2,273	88.9	2,235	87.4	15	0.6
Perth-Brisbane								
Qantas	1,459	1,458	1,238	84.9	1,256	86.1	1	0.1
Virgin Blue	728	727	661	90.9	638	87.8	1	0.1
All Airlines	2,187	2,185	1,899	86.9	1,894	86.7	2	0.1
Perth-Broome								
Qantas	229	226	184	81.4	188	83.2	3	1.3
QantasLink	750	742	658	88.7	648	87.3	8	1.1
Skywest	311	310	230	74.2	214	69.0	1	0.3
Virgin Blue	543	541	475	87.8	473	87.4	2	0.4
All Airlines	1,833	1,819	1,547	85.0	1,523	83.7	14	0.8

	<i>Sectors</i>		<i>Departures On Time</i>		<i>Arrivals On Time</i>		<i>Cancellations</i>	
	<i>Sched.</i>	<i>Flown</i>	<i>No.</i>	<i>%</i>	<i>No.</i>	<i>%</i>	<i>No.</i>	<i>%</i>
Perth-Darwin								
Qantas	394	394	365	92.6	360	91.4	0	0.0
Virgin Blue	350	347	323	93.1	329	94.8	3	0.9
All Airlines	744	741	688	92.8	689	93.0	3	0.4
Perth-Kalgoorlie								
Qantas	384	377	335	88.9	336	89.1	7	1.8
QantasLink	616	614	552	89.9	554	90.2	2	0.3
Skywest	289	280	226	80.7	226	80.7	9	3.1
All Airlines	1,289	1,271	1,113	87.6	1,116	87.8	18	1.4
Perth-Karratha								
Qantas	1,721	1,711	1,557	91.0	1,570	91.8	10	0.6
QantasLink	493	486	459	94.4	458	94.2	7	1.4
Skywest	381	371	324	87.3	298	80.3	10	2.6
Virgin Blue	627	618	552	89.3	547	88.5	9	1.4
All Airlines	3,222	3,186	2,892	90.8	2,873	90.2	36	1.1
Perth-Melbourne								
Jetstar	661	648	447	69.0	490	75.6	13	2.0
Qantas	2,356	2,352	1,899	80.7	1,927	81.9	4	0.2
Tiger Airways	416	413	229	55.4	260	63.0	3	0.7
Virgin Blue	1,457	1,451	1,336	92.1	1,338	92.2	6	0.4
All Airlines	4,890	4,864	3,911	80.4	4,015	82.5	26	0.5
Perth-Newman								
QantasLink	1,063	1,056	985	93.3	974	92.2	7	0.7
Virgin Blue	413	407	378	92.9	368	90.4	6	1.5
All Airlines	1,476	1,463	1,363	93.2	1,342	91.7	13	0.9
Perth-Port Hedland (From October 2009 only)								
Qantas	440	439	397	90.4	403	91.8	1	0.2
QantasLink	481	478	456	95.4	458	95.8	3	0.6
Virgin Blue	437	426	399	93.7	397	93.2	11	2.5
All Airlines	1,358	1,343	1,252	93.2	1,258	93.7	15	1.1
Perth-Sydney								
Jetstar	207	204	143	70.1	159	77.9	3	1.4
Qantas	2,396	2,387	1,933	81.0	1,943	81.4	9	0.4
Virgin Blue	1,767	1,762	1,640	93.1	1,650	93.6	5	0.3
All Airlines	4,370	4,353	3,716	85.4	3,752	86.2	17	0.4
Port Hedland-Perth (From October 2009 only)								
Qantas	439	438	378	86.3	375	85.6	1	0.2
QantasLink	477	474	440	92.8	436	92.0	3	0.6
Virgin Blue	434	428	376	87.9	375	87.6	6	1.4
All Airlines	1,350	1,340	1,194	89.1	1,186	88.5	10	0.7
Port Lincoln-Adelaide (From May 2010 only)								
QantasLink	197	197	174	88.3	168	85.3	0	0.0
Regional Express	504	502	478	95.2	462	92.0	2	0.4
All Airlines	701	699	652	93.3	630	90.1	2	0.3

	<i>Sectors</i>		<i>Departures On Time</i>		<i>Arrivals On Time</i>		<i>Cancellations</i>	
	<i>Sched.</i>	<i>Flown</i>	<i>No.</i>	<i>%</i>	<i>No.</i>	<i>%</i>	<i>No.</i>	<i>%</i>
Port Macquarie-Sydney								
QantasLink	1,337	1,337	1,128	84.4	1,090	81.5	0	0.0
Virgin Blue	727	711	587	82.6	568	79.9	16	2.2
All Airlines	2,064	2,048	1,715	83.7	1,658	81.0	16	0.8
Proserpine-Brisbane								
Jetstar	359	356	286	80.3	284	79.8	3	0.8
Virgin Blue	365	363	309	85.1	315	86.8	2	0.5
All Airlines	724	719	595	82.8	599	83.3	5	0.7
Rockhampton-Brisbane								
Jetstar	309	308	261	84.7	260	84.4	1	0.3
QantasLink	1,927	1,918	1,665	86.8	1,673	87.2	9	0.5
Tiger Airways	91	91	72	79.1	72	79.1	0	0.0
Virgin Blue	1,767	1,733	1,585	91.5	1,597	92.2	34	1.9
All Airlines	4,094	4,050	3,583	88.5	3,602	88.9	44	1.1
Sunshine Coast-Melbourne								
Jetstar	667	661	458	69.3	479	72.5	6	0.9
Tiger Airways	262	262	226	86.3	228	87.0	0	0.0
Virgin Blue	427	421	356	84.6	352	83.6	6	1.4
All Airlines	1,356	1,344	1,040	77.4	1,059	78.8	12	0.9
Sunshine Coast-Sydney								
Jetstar	1,060	1,045	886	84.8	899	86.0	15	1.4
Virgin Blue	538	526	437	83.1	442	84.0	12	2.2
All Airlines	1,598	1,571	1,323	84.2	1,341	85.4	27	1.7
Sydney-Adelaide								
Jetstar	543	539	503	93.3	506	93.9	4	0.7
Qantas	3,290	3,288	2,924	88.9	2,951	89.8	2	0.1
Tiger Airways	564	559	432	77.3	439	78.5	5	0.9
Virgin Blue	1,746	1,741	1,465	84.1	1,435	82.4	5	0.3
All Airlines	6,143	6,127	5,324	86.9	5,331	87.0	16	0.3
Sydney-Albury								
QantasLink	1,228	1,227	988	80.5	920	75.0	1	0.1
Regional Express	1,332	1,331	1,130	84.9	1,034	77.7	1	0.1
Virgin Blue	728	724	605	83.6	599	82.7	4	0.5
All Airlines	3,288	3,282	2,723	83.0	2,553	77.8	6	0.2
Sydney-Ballina								
Jetstar	406	403	334	82.9	351	87.1	3	0.7
Regional Express	1,000	999	819	82.0	773	77.4	1	0.1
Virgin Blue	404	402	347	86.3	338	84.1	2	0.5
All Airlines	1,810	1,804	1,500	83.1	1,462	81.0	6	0.3
Sydney-Brisbane								
Jetstar	957	925	779	84.2	825	89.2	32	3.3
Qantas	7,289	7,224	6,231	86.3	6,392	88.5	65	0.9
Virgin Blue	6,418	6,219	4,632	74.5	5,011	80.6	199	3.1
All Airlines	14,664	14,368	11,642	81.0	12,228	85.1	296	2.0

	<i>Sectors</i>		<i>Departures On Time</i>		<i>Arrivals On Time</i>		<i>Cancellations</i>	
	<i>Sched.</i>	<i>Flown</i>	<i>No.</i>	<i>%</i>	<i>No.</i>	<i>%</i>	<i>No.</i>	<i>%</i>
Sydney-Cairns								
Jetstar	517	510	456	89.4	454	89.0	7	1.4
Qantas	1,314	1,313	1,086	82.7	1,152	87.7	1	0.1
Virgin Blue	887	885	653	73.8	715	80.8	2	0.2
All Airlines	2,718	2,708	2,195	81.1	2,321	85.7	10	0.4
Sydney-Canberra								
Qantas	2,134	2,121	1,925	90.8	1,900	89.6	13	0.6
QantasLink	4,452	4,388	3,750	85.5	3,575	81.5	64	1.4
Virgin Blue	2,735	2,641	2,210	83.7	2,200	83.3	94	3.4
All Airlines	9,321	9,150	7,885	86.2	7,675	83.9	171	1.8
Sydney-Coffs Harbour								
QantasLink	1,566	1,565	1,273	81.3	1,181	75.5	1	0.1
Virgin Blue	727	721	635	88.1	643	89.2	6	0.8
All Airlines	2,293	2,286	1,908	83.5	1,824	79.8	7	0.3
Sydney-Dubbo								
QantasLink	1,184	1,182	1,025	86.7	1,029	87.1	2	0.2
Regional Express	1,885	1,883	1,573	83.5	1,503	79.8	2	0.1
All Airlines	3,069	3,065	2,598	84.8	2,532	82.6	4	0.1
Sydney-Gold Coast								
Jetstar	2,997	2,941	2,460	83.6	2,529	86.0	56	1.9
Tiger Airways	337	334	244	73.1	251	75.1	3	0.9
Virgin Blue	4,368	4,278	3,526	82.4	3,676	85.9	90	2.1
All Airlines	7,702	7,553	6,230	82.5	6,456	85.5	149	1.9
Sydney-Hamilton Island (From September 2009 only)								
Jetstar	295	293	261	89.1	263	89.8	2	0.7
Virgin Blue	303	300	257	85.7	253	84.3	3	1.0
All Airlines	598	593	518	87.4	516	87.0	5	0.8
Sydney-Hervey Bay (July 2009 only)								
Jetstar	18	18	18	100.0	16	88.9	0	0.0
Virgin Blue	31	31	29	93.5	29	93.5	0	0.0
All Airlines	49	49	47	95.9	45	91.8	0	0.0
Sydney-Hobart								
Jetstar	677	676	595	88.0	588	87.0	1	0.1
Qantas	371	371	350	94.3	354	95.4	0	0.0
Virgin Blue	828	824	657	79.7	645	78.3	4	0.5
All Airlines	1,876	1,871	1,602	85.6	1,587	84.8	5	0.3
Sydney-Launceston								
Jetstar	359	359	299	83.3	305	85.0	0	0.0
Virgin Blue	365	365	288	78.9	297	81.4	0	0.0
All Airlines	724	724	587	81.1	602	83.1	0	0.0

	<i>Sectors</i>		<i>Departures On Time</i>		<i>Arrivals On Time</i>		<i>Cancellations</i>	
	<i>Sched.</i>	<i>Flown</i>	<i>No.</i>	<i>%</i>	<i>No.</i>	<i>%</i>	<i>No.</i>	<i>%</i>
Sydney-Melbourne								
Jetstar	1,250	1,212	984	81.2	941	77.6	38	3.0
Qantas	11,008	10,728	9,441	88.0	8,883	82.8	280	2.5
Tiger Airways	2,052	1,970	1,479	75.1	1,485	75.4	82	4.0
Virgin Blue	8,761	8,471	6,841	80.8	6,502	76.8	290	3.3
All Airlines	23,071	22,381	18,745	83.8	17,811	79.6	690	3.0
Sydney-Perth								
Jetstar	207	206	165	80.1	182	88.3	1	0.5
Qantas	2,384	2,381	1,920	80.6	1,821	76.5	3	0.1
Virgin Blue	1,768	1,764	1,489	84.4	1,321	74.9	4	0.2
All Airlines	4,359	4,351	3,574	82.1	3,324	76.4	8	0.2
Sydney-Port Macquarie								
QantasLink	1,336	1,336	1,150	86.1	1,107	82.9	0	0.0
Virgin Blue	728	719	590	82.1	588	81.8	9	1.2
All Airlines	2,064	2,055	1,740	84.7	1,695	82.5	9	0.4
Sydney-Sunshine Coast								
Jetstar	1,050	1,041	888	85.3	916	88.0	9	0.9
Virgin Blue	538	529	441	83.4	445	84.1	9	1.7
All Airlines	1,588	1,570	1,329	84.6	1,361	86.7	18	1.1
Sydney-Townsville								
Jetstar	255	253	233	92.1	234	92.5	2	0.8
Virgin Blue	369	366	265	72.4	283	77.3	3	0.8
All Airlines	624	619	498	80.5	517	83.5	5	0.8
Sydney-Wagga Wagga								
QantasLink	1,464	1,458	1,245	85.4	1,148	78.7	6	0.4
Regional Express	1,541	1,533	1,261	82.3	1,108	72.3	8	0.5
All Airlines	3,005	2,991	2,506	83.8	2,256	75.4	14	0.5
Townsville-Brisbane								
Jetstar	392	391	321	82.1	324	82.9	1	0.3
Qantas	1,770	1,764	1,594	90.4	1,584	89.8	6	0.3
Virgin Blue	1,718	1,711	1,590	92.9	1,585	92.6	7	0.4
All Airlines	3,880	3,866	3,505	90.7	3,493	90.4	14	0.4
Townsville-Cairns								
QantasLink	1,895	1,874	1,644	87.7	1,514	80.8	21	1.1
Virgin Blue	351	347	337	97.1	337	97.1	4	1.1
All Airlines	2,246	2,221	1,981	89.2	1,851	83.3	25	1.1
Townsville-Sydney								
Jetstar	255	254	222	87.4	226	89.0	1	0.4
Virgin Blue	370	367	307	83.7	305	83.1	3	0.8
All Airlines	625	621	529	85.2	531	85.5	4	0.6

	<i>Sectors</i>		<i>Departures On Time</i>		<i>Arrivals On Time</i>		<i>Cancellations</i>	
	<i>Sched.</i>	<i>Flown</i>	<i>No.</i>	<i>%</i>	<i>No.</i>	<i>%</i>	<i>No.</i>	<i>%</i>
	Wagga Wagga-Sydney							
QantasLink	1,460	1,450	1,213	83.7	1,136	78.3	10	0.7
Regional Express	1,549	1,538	1,235	80.3	1,148	74.6	11	0.7
All Airlines	3,009	2,988	2,448	81.9	2,284	76.4	21	0.7

Airports

On time performance is reported for all routes where the passenger load averages over 8000 passengers per month, and where two or more airlines operate in competition. The following data reports by airport against flights operated on those routes only.

Airport	Departures			Arrivals		
	Sectors	On Time		Sectors	On Time	
	Flown	No.	%	Flown	No.	%
Adelaide						
Jetstar	2 168	1 734	80.0	2 166	1 850	85.4
Qantas	10 141	9 121	89.9	10 154	9 089	89.5
QantasLink	245	222	90.6	245	203	82.9
Regional Express	503	485	96.4	502	462	92.0
Tiger Airways	2 188	1 788	81.7	2 179	1 764	81.0
Virgin Blue	7 240	6 396	88.3	7 245	6 272	86.6
All Airlines	22 485	19 746	87.8	22 491	19 640	87.3

Relates to services to and from Alice Springs, Brisbane, Canberra, Gold Coast, Melbourne, Perth Port Lincoln and Sydney.

Albury

QantasLink	1 226	947	77.2	1 227	920	75.0
Regional Express	1 334	1 132	84.9	1 331	1 034	77.7
Virgin Blue	718	592	82.5	724	599	82.7
All Airlines	3 278	2 671	81.5	3 282	2 553	77.8

Relates to services to and from Sydney only.

Alice Springs

Qantas	669	569	85.1	670	599	89.4
Tiger Airways	286	212	74.1	286	219	76.6
All Airlines	955	781	81.8	956	818	85.6

Relates to services to and from Adelaide and Melbourne.

Ballina

Jetstar	405	327	80.7	403	351	87.1
Regional Express	998	737	73.8	999	773	77.4
Virgin Blue	398	345	86.7	402	338	84.1
All Airlines	1 801	1 409	78.2	1 804	1 462	81.0

Relates to services to and from Sydney only.

Brisbane

Jetstar	6 293	5 317	84.5	6 294	5 457	86.7
Qantas	20 080	17 622	87.8	20 083	18 076	90.0
QantasLink	3 988	3 507	87.9	3 765	3 245	86.2
Tiger Airways	423	332	78.5	424	360	84.9
Virgin Blue	21 923	19 004	86.7	21 878	19 101	87.3
All Airlines	52 707	45 782	86.9	52 444	46 239	88.2

Relates to services to and from Adelaide, Cairns, Canberra, Darwin, Hamilton Island, Mackay, Melbourne, Newcastle, Perth, Proserpine, Rockhampton, Sydney and Townsville.

Airport	Departures			Arrivals		
	Sectors	On Time		Sectors	On Time	
	Flown	No.	%	Flown	No.	%
Broome						
Qantas	227	157	69.2	226	188	83.2
QantasLink	747	654	87.6	742	648	87.3
Skywest	310	201	64.8	310	214	69.0
Virgin Blue	535	429	80.2	541	473	87.4
All Airlines	1 819	1 441	79.2	1 819	1 523	83.7
Relates to services to and from Perth only.						
Cairns						
Jetstar	2 051	1 805	88.0	2 046	1 829	89.4
Qantas	3 135	2 816	89.8	3 138	2 843	90.6
QantasLink	1 878	1 655	88.1	1 874	1 514	80.8
Virgin Blue	3 207	2 872	89.6	3 211	2 802	87.3
All Airlines	10 271	9 148	89.1	10 269	8 988	87.5
Relates to services to and from Brisbane, Melbourne, Sydney and Townsville.						
Canberra						
Qantas	7 365	6 753	91.7	7 380	6 726	91.1
QantasLink	4 904	4 284	87.4	4 916	4 039	82.2
Tiger Airways	432	331	76.6	433	333	76.9
Virgin Blue	6 417	5 825	90.8	6 430	5 546	86.3
All Airlines	19 118	17 193	89.9	19 159	16 644	86.9
Relates to services to and from Adelaide, Brisbane, Melbourne and Sydney.						
Coffs Harbour						
QantasLink	1 566	1 244	79.4	1 565	1 181	75.5
Virgin Blue	718	620	86.4	721	643	89.2
All Airlines	2 284	1 864	81.6	2 286	1 824	79.8
Relates to services to and from Sydney only.						
Darwin						
Jetstar	410	295	72.0	414	265	64.0
Qantas	759	641	84.5	759	679	89.5
Tiger Airways	9	2	22.2	11	5	45.5
Virgin Blue	1 032	947	91.8	1 033	896	86.7
All Airlines	2 210	1 885	85.3	2 217	1 845	83.2
Relates to services to and from Brisbane, Melbourne and Perth.						
Dubbo						
QantasLink	1 182	1 021	86.4	1 182	1 029	87.1
Regional Express	1 884	1 498	79.5	1 883	1 503	79.8
All Airlines	3 066	2 519	82.2	3 065	2 532	82.6
Relates to services to and from Sydney only.						

Airport	Departures			Arrivals		
	Sectors	On Time		Sectors	On Time	
	Flown	No.	%	Flown	No.	%
Gold Coast						
Jetstar	5 760	4 820	83.7	5 766	4 965	86.1
Tiger Airways	1 828	1 426	78.0	1 836	1 442	78.5
Virgin Blue	6 786	5 863	86.4	6 795	5 921	87.1
All Airlines	14 374	12 109	84.2	14 397	12 328	85.6
Relates to services to and from Adelaide, Melbourne, Newcastle and Sydney.						
Hamilton Island						
Jetstar	638	520	81.5	635	565	89.0
Virgin Blue	664	585	88.1	664	592	89.2
All Airlines	1 302	1 105	84.9	1 299	1 157	89.1
Relates to services to and from Brisbane and Sydney.						
Hervey Bay						
Jetstar	18	15	83.3	18	16	88.9
Virgin Blue	31	29	93.5	31	29	93.5
All Airlines	49	44	89.8	49	45	91.8
Relates to services to and from Sydney only.						
Hobart						
Jetstar	2 150	1 554	72.3	2 145	1 683	78.5
Qantas	1 107	1 013	91.5	1 107	939	84.8
Tiger Airways	490	378	77.1	492	392	79.7
Virgin Blue	2 307	1 916	83.1	2 310	1 829	79.2
All Airlines	6 054	4 861	80.3	6 054	4 843	80.0
Relates to services to and from Melbourne and Sydney.						
Kalgoorlie						
Qantas	378	314	83.1	377	336	89.1
QantasLink	613	530	86.5	614	554	90.2
Skywest	281	237	84.3	280	226	80.7
All Airlines	1 272	1 081	85.0	1 271	1 116	87.8
Relates to services to and from Perth only.						
Karratha						
Qantas	1 708	1 542	90.3	1 711	1 570	91.8
QantasLink	488	462	94.7	486	458	94.2
Skywest	375	299	79.7	371	298	80.3
Virgin Blue	617	526	85.3	618	547	88.5
All Airlines	3 188	2 829	88.7	3 186	2 873	90.2
Relates to services to and from Perth only.						

Airport	Departures			Arrivals		
	Sectors	On Time		Sectors	On Time	
	Flown	No.	%	Flown	No.	%
Launceston						
Jetstar	1 407	1 080	76.8	1 403	1 119	79.8
QantasLink	831	623	75.0	830	520	62.7
Tiger Airways	362	252	69.6	364	261	71.7
Virgin Blue	1 843	1 638	88.9	1 846	1 584	85.8
All Airlines	4 443	3 593	80.9	4 443	3 484	78.4
Relates to services to and from Melbourne and Sydney.						
Mackay						
Jetstar	1 034	868	83.9	1 032	876	84.9
QantasLink	963	830	86.2	965	794	82.3
Virgin Blue	1 690	1 556	92.1	1 690	1 481	87.6
All Airlines	3 687	3 254	88.3	3 687	3 151	85.5
Relates to services to and from Brisbane only.						
Melbourne						
Jetstar	9 305	7 272	78.2	9 306	7 100	76.3
Qantas	26 052	22 642	86.9	26 028	22 352	85.9
QantasLink	2 397	1 916	79.9	2 402	1 794	74.7
Regional Express	1 054	990	93.9	1 054	965	91.6
Tiger Airways	6 285	4 887	77.8	6 273	4 740	75.6
Virgin Blue	25 673	21 372	83.2	25 666	21 691	84.5
All Airlines	70 766	59 079	83.5	70 729	58 642	82.9
Relates to services to and from Adelaide, Alice Springs, Brisbane, Cairns, Canberra, Darwin, Gold Coast, Hobart, Launceston, Sunshine Coast, Mildura, Newcastle, Perth and Sydney.						
Mildura						
QantasLink	1 099	939	85.4	1 095	769	70.2
Regional Express	1 054	978	92.8	1 054	969	91.9
Virgin Blue	362	306	84.5	363	298	82.1
All Airlines	2 515	2 223	88.4	2 512	2 036	81.1
Relates to services to and from Melbourne only.						
Newcastle						
Jetstar	2 587	2 218	85.7	2 583	2 259	87.5
QantasLink	780	651	83.5	783	599	76.5
Virgin Blue	1 125	1 027	91.3	1 133	1 016	89.7
All Airlines	4 492	3 896	86.7	4 499	3 874	86.1
Relates to services to and from Brisbane, Gold Coast and Melbourne.						
Newman						
QantasLink	1 059	977	92.3	1 056	974	92.2
Virgin Blue	405	364	89.9	407	368	90.4
All Airlines	1 464	1 341	91.6	1 463	1 342	91.7
Relates to services to and from Perth only.						

Airport	Departures			Arrivals		
	Sectors Flown	On Time No.	On Time %	Sectors Flown	On Time No.	On Time %
Perth						
Jetstar	1 212	850	70.1	1 211	975	80.5
Qantas	10 709	9 157	85.5	10 716	8 902	83.1
QantasLink	3 376	3 110	92.1	3 381	3 062	90.6
Skywest	961	780	81.2	966	657	68.0
Tiger Airways	487	291	59.8	489	316	64.6
Virgin Blue	7 038	6 466	91.9	7 035	5 748	81.7
All Airlines	23 783	20 654	86.8	23 798	19 660	82.6
Relates to services to and from Adelaide, Brisbane, Broome, Darwin, Kalgoorlie, Karratha, Melbourne, Newman, Port Hedland and Sydney.						
Port Hedland						
Qantas	438	378	86.3	439	403	91.8
QantasLink	474	440	92.8	478	458	95.8
Virgin Blue	428	376	87.9	426	397	93.2
All Airlines	1 340	1 194	89.1	1 343	1 258	93.7
Relates to services to and from Perth only.						
Port Lincoln						
QantasLink	197	174	88.3	197	170	86.3
Regional Express	502	478	95.2	503	476	94.6
All Airlines	699	652	93.3	700	646	92.3
Relates to services to and from Adelaide only.						
Port Macquarie						
QantasLink	1 337	1 128	84.4	1 336	1 107	82.9
Virgin Blue	711	587	82.6	719	588	81.8
All Airlines	2 048	1 715	83.7	2 055	1 695	82.5
Relates to services to and from Sydney only.						
Proserpine						
Jetstar	356	286	80.3	354	303	85.6
Virgin Blue	363	309	85.1	363	313	86.2
All Airlines	719	595	82.8	717	616	85.9
Relates to services to and from Brisbane only.						
Rockhampton						
Jetstar	308	261	84.7	306	276	90.2
QantasLink	1 918	1 665	86.8	2 136	1 868	87.5
Tiger Airways	91	72	79.1	91	77	84.6
Virgin Blue	1 733	1 585	91.5	1 739	1 580	90.9
All Airlines	4 050	3 583	88.5	4 272	3 801	89.0
Relates to services to and from Brisbane only.						

Airport	Departures			Arrivals		
	Sectors	On Time		Sectors	On Time	
	Flown	No.	%	Flown	No.	%
Sunshine Coast						
Jetstar	1 706	1 344	78.8	1 702	1 431	84.1
Tiger Airways	262	226	86.3	262	227	86.6
Virgin Blue	947	793	83.7	954	820	86.0
All Airlines	2 915	2 363	81.1	2 918	2 478	84.9
Relates to services to and from Melbourne and Sydney.						
Sydney						
Jetstar	9 376	7 975	85.1	9 406	7 525	80.0
Qantas	27 426	23 877	87.1	27 402	23 516	85.8
QantasLink	11 156	9 431	84.5	11 137	8 983	80.7
Regional Express	5 746	4 783	83.2	5 754	4 344	75.5
Tiger Airways	2 863	2 155	75.3	2 866	2 282	79.6
Virgin Blue	30 980	24 930	80.5	30 949	25 353	81.9
All Airlines	87 547	73 151	83.6	87 514	72 003	82.3
Relates to services to and from Adelaide, Albury, Ballina, Brisbane, Cairns, Canberra, Coffs Harbour, Dubbo, Gold Coast, Hamilton Island, Hervey Bay, Hobart, Launceston, Sunshine Coast, Melbourne, Perth, Port Macquarie, Townsville and Wagga Wagga.						
Townsville						
Jetstar	645	543	84.2	639	575	90.0
Qantas	1 764	1 594	90.4	1 768	1 601	90.6
QantasLink	1 874	1 644	87.7	1 878	1 569	83.5
Virgin Blue	2 425	2 234	92.1	2 423	2 176	89.8
All Airlines	6 708	6 015	89.7	6 708	5 921	88.3
Relates to services to and from Brisbane, Cairns and Sydney.						
Wagga Wagga						
QantasLink	1 450	1 213	83.7	1 458	1 148	78.7
Regional Express	1 538	1 235	80.3	1 533	1 108	72.3
All Airlines	2 988	2 448	81.9	2 991	2 256	75.4
Relates to services to and from Sydney only.						

Definitions

On time departure	A flight departure is counted as "on time" if it departs the gate within 15 minutes of the scheduled departure time shown in the carriers' schedule.
On time arrival	A flight arrival is counted as "on time" if it arrived at the gate within 15 minutes of the scheduled arrival time shown in the carriers' schedule. Neither diverted nor cancelled flights count as on time.
Cancellation	A flight is regarded as a cancellation if it is cancelled or rescheduled less than 7 days prior to its scheduled departure time.
On time departure percentage	The percentage of on time departures is measured against the number of departures <i>operated</i> on any particular sector.
On time arrival percentage	The percentage of on time arrivals is measured against the number of arrivals <i>operated</i> on any particular sector.
Cancellation percentage	The percentage of cancellations is measured against the number of services <i>scheduled</i> on any particular sector.
