



Australian Government

Department of Infrastructure, Transport,  
Regional Development and Local Government  
Bureau of Infrastructure, Transport and Regional Economics



bitre

## AVIATION STATISTICS

### Airline On Time Performance

2008-09—OTP 77

© Commonwealth of Australia 2009

ISSN 1832-0759

This work is copyright and the data contained in this publication should not be reproduced or used in any form without acknowledgement.

#### Enquiries

Bureau of Infrastructure, Transport and Regional Economics  
GPO Box 501  
Canberra ACT 2601

Telephone: 02 6274 7790

Facsimile: 02 6274 7727

Website: [www.bitre.gov.au](http://www.bitre.gov.au)

Email: [avstats@infrastructure.gov.au](mailto:avstats@infrastructure.gov.au)

This publication, including a spreadsheet of the time-series data, can be downloaded from the BITRE website:

<http://www.bitre.gov.au/info.aspx?ResourceId=214&NodeId=104>.

#### Disclaimers

BITRE seeks to publish its work to the highest professional standards. However, it cannot accept responsibility for any consequences arising from the use of information herein. Readers should rely on their own skill and judgment in applying any information or analysis to particular issues or circumstances.

# Foreword

The Bureau of Infrastructure, Transport and Regional Economics (BITRE) monitors the punctuality and reliability of major domestic airlines operating between Australian airports. The purpose of this is to allow for evaluation of overall industry and individual airline performance, so that consumers of air travel can make informed decisions.

The following domestic airlines reported this data monthly to the BITRE during 2008-09: Jetstar, MacAir, Qantas, QantasLink, Regional Express, Skywest Airlines, Tiger Airways, and Virgin Blue. Data has been gathered since November 2003, although some airlines commenced reporting since then, including Jetstar which first reported in May 2004, MacAir in July 2005 and Tiger Airways in April 2008. MacAir ceased operations in February 2009 and data was not received for December 2008 or January 2009.

Information presented in this report is for Australian domestic routes for which the passenger load averaged 8000 or more passengers per month over the previous six months, *and* where two or more airlines operated in competition on those routes. 46 routes met these criteria for all twelve months in 2008, plus another 5 routes did so for a shorter period of the year. Over time, routes which meet these criteria change as airline networks and traffic levels vary.

Participating airlines report their overall monthly network performance where this is possible. An exception was MacAir, which supplied total network data because it did not operate on competitive routes.

Total industry figures encompass all services operated by reporting airlines only. These airlines collectively carried over 95 per cent of total domestic passengers (regular public transport only) in 2008-09.

The method of capturing on time performance varies between airlines utilising different recording systems. Jetstar and Qantas jet aircraft use Aircraft Communication Addressing and Reporting System (ACARS) to electronically measure on time performance. MacAir, Regional Express, Skywest, Tiger Airways, Virgin Blue and the Qantas non-jet fleet record on time performance manually using records from pilots, gate agents and/or ground crews.

After initial data is collected, aggregate reports are audited internally by participating airlines prior to publication.

Reports and detailed time series data in Microsoft Excel spreadsheet format are available from the BITRE website at:  
<http://www.bitre.gov.au/info.aspx?ResourceId=214&NodeId=104>.



# Contents

	Page
Industry performance .....	1
Individual routes .....	9
Airports .....	21
Definitions.....	28



## Industry performance

For the year ended June 2009, on time performance over all routes operated by participating airlines (Jetstar, MacAir, Qantas, QantasLink, Regional Express, Skywest Airlines, Tiger Airways and Virgin Blue) averaged 81.1 per cent for on time departures, and 79.7 per cent for on time arrivals. Cancellations for 2008-09 represented 1.7 per cent of all scheduled flights. The equivalent figures for the year ended June 2008 were 80.6 per cent for departures, 78.8 per cent for arrivals and 1.7 per cent for cancellations.

The long term average performance for all routes since reporting commenced in November 2003 is 84.9 per cent for on time departures and 83.7 per cent for on time arrivals. Cancellations averaged 1.2 per cent of all scheduled flights. As shown in Figure 1, there was a noticeable decrease in airline on time performance from June 2007 to December 2008. Whereas on time arrivals and on time departures tracked around 87 per cent before June 2007, they were below 80 per cent for June 2007 to December 2008. For January 2009 to June 2009, they have risen back up to more than 84 per cent. Similarly, the percentage of cancelled flights rose from 0.9 per cent before June 2007 to 1.8 per cent for June 2007 to December 2008 before dropping back down to 1.4 per cent for January 2009 to June 2009 (Figure 2 refers).

Of the major domestic airlines, Virgin Blue achieved the highest level of on time departures for 2008-09 at 81.5 per cent, followed by Qantas at 80.8 per cent, Tiger Airways at 79.8 per cent and Jetstar at 76.8 per cent. The regional airlines were led by QantasLink at 83.7 per cent, Skywest at 83.6 per cent, Regional Express at 81.3 per cent and MacAir at 79.9 per cent.

Qantas achieved the highest on time arrivals among the major domestic airlines at 81.0 per cent, trailed by Tiger Airways at 80.4 per cent, Virgin Blue at 79.7 per cent and Jetstar at 78.2 per cent. Skywest was the best performing regional airline for on time arrivals at 82.1 per cent, followed by QantasLink at 80.9 per cent, MacAir at 80.6 per cent and Regional Express at 76.3 per cent.

MacAir had the highest percentage of cancellations for 2008-09 at 6.7 per cent, while Tiger Airways had the lowest at 0.4 per cent.

Of the 46 routes which met the criteria for on time performance reporting for all twelve months in 2008-09, the Sydney-Townsville route had the highest percentage of on time departures (90.6 per cent), while the Ballina-Sydney route had the lowest (66.3 per cent). On time arrivals were highest on the Sydney-Townsville route (89.8 per cent) and lowest on the Ballina-Sydney route (60.0 per cent).

Cancellations were highest on the Melbourne-Sydney route at 5.4 per cent, followed by Sydney-Melbourne also at 5.4 per cent, Canberra-Sydney at 4.7 per cent, Sydney-Canberra at 4.4 per cent and Brisbane-Sydney at 4.0 per cent.

Townsville Airport recorded the highest percentage of on time departures (87.9 per cent), while Ballina recorded the lowest (66.3 per cent). Hamilton Island Airport recorded the highest percentage of on time arrivals (87.8 per cent), while Wagga Wagga Airport recorded the lowest (66.2 per cent).

Table 1 On time performance for the year ended June 2009 — Total Industry

	<i>Sectors</i>		<i>Departures On Time</i>		<i>Arrivals On Time</i>		<i>Cancellations</i>	
	<i>Scheduled</i>	<i>Flown</i>	<i>No.</i>	<i>%</i>	<i>No.</i>	<i>%</i>	<i>No.</i>	<i>%</i>
Jetstar	59 538	58 982	45 275	76.8	46 095	78.2	556	0.9
MacAir	5 617	5 241	4 187	79.9	4 222	80.6	376	6.7
Qantas	123 826	120 557	97 369	80.8	97 677	81.0	3 269	2.6
QantasLink	90 588	89 632	74 986	83.7	72 485	80.9	956	1.1
Regional Express	61 865	61 383	49 908	81.3	46 855	76.3	482	0.8
Skywest	12 434	12 265	10 251	83.6	10 067	82.1	169	1.4
Tiger Airways	10 339	10 293	8 217	79.8	8 279	80.4	46	0.4
Virgin Blue	138 084	135 357	110 358	81.5	107 901	79.7	2 727	2.0
All Airlines	502 291	493 710	400 551	81.1	393 581	79.7	8 581	1.7

1. Total airline network data (including routes not shown in this report).
2. No data received from MacAir after November 2008. Operations ceased in February 2009.

Table 2 Top ten routes for on time performance for the year ended June 2009 (covers participating airlines only and routes reported for all twelve months)

<i>Departures</i>		<i>Arrivals</i>	
<i>Route</i>	<i>On Time (%)</i>	<i>Route</i>	<i>On Time (%)</i>
Sydney-Townsville	90.6	Sydney-Townsville	89.8
Townsville-Sydney	89.4	Townsville-Sydney	88.9
Canberra-Adelaide	88.3	Townsville-Brisbane	88.3
Townsville-Brisbane	87.7	Brisbane-Hamilton Island	87.8
Canberra-Melbourne	87.6	Canberra-Adelaide	87.1
Canberra-Brisbane	87.1	Cairns-Brisbane	86.4
Brisbane-Hamilton Island	86.7	Melbourne-Canberra	86.2
Cairns-Brisbane	86.2	Brisbane-Cairns	86.1
Brisbane-Melbourne	85.6	Canberra-Melbourne	86.0
Melbourne-Mildura	85.4	Hamilton Island-Brisbane	85.8

Table 3 Top ten airports for on time performance for the year ended June 2009 (covers participating airlines only and routes reported for all twelve months)

<i>Departures</i>		<i>Arrivals</i>	
<i>Airport</i>	<i>On Time (%)</i>	<i>Airport</i>	<i>On Time (%)</i>
Townsville	87.9	Hamilton Island	87.8
Canberra	86.5	Townsville	86.1
Hamilton Island	85.1	Hervey Bay	85.0
Mildura	84.0	Alice Springs	84.1
Cairns	83.4	Canberra	83.1
Adelaide	82.5	Cairns	82.8
Kalgoorlie	82.5	Kalgoorlie	82.5
Hobart	82.5	Brisbane	82.2
Rockhampton	82.2	Rockhampton	82.2
Mackay	82.1	Gold Coast	81.9



## Total industry on time performance

Figure 1 On time performance (by month from June 2004)—Total Industry

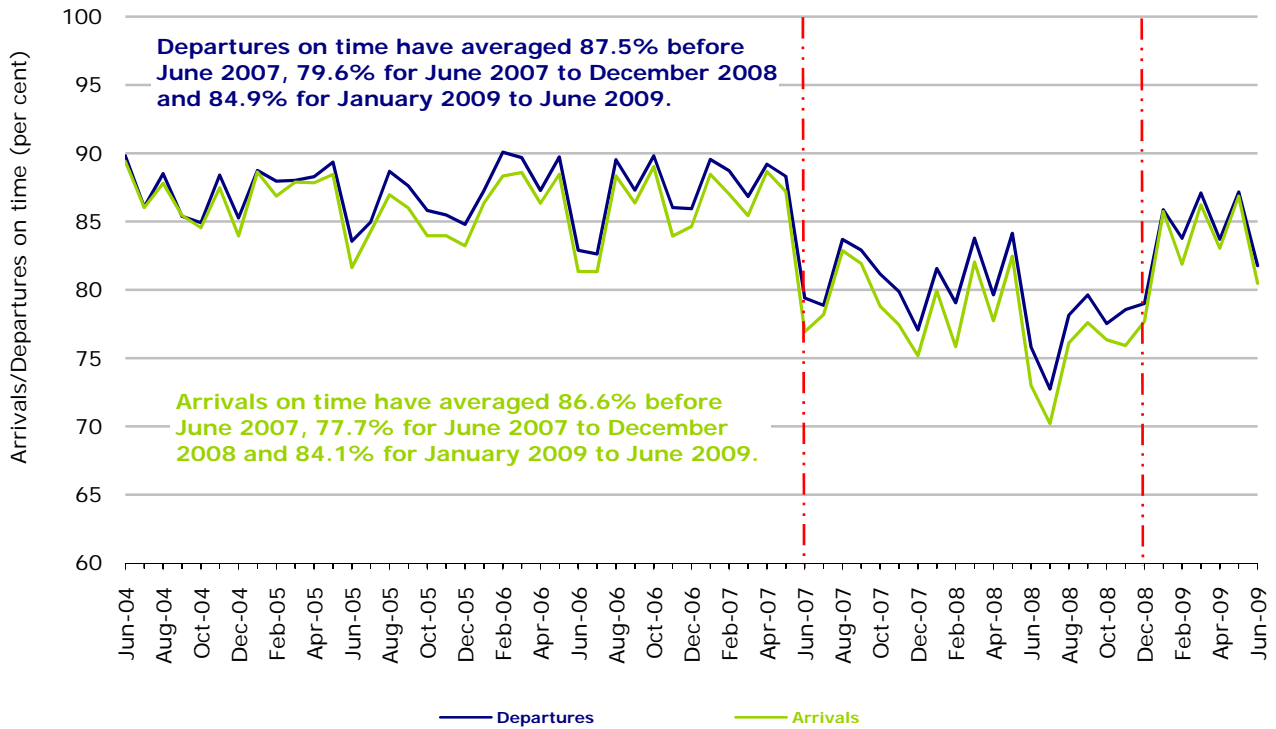
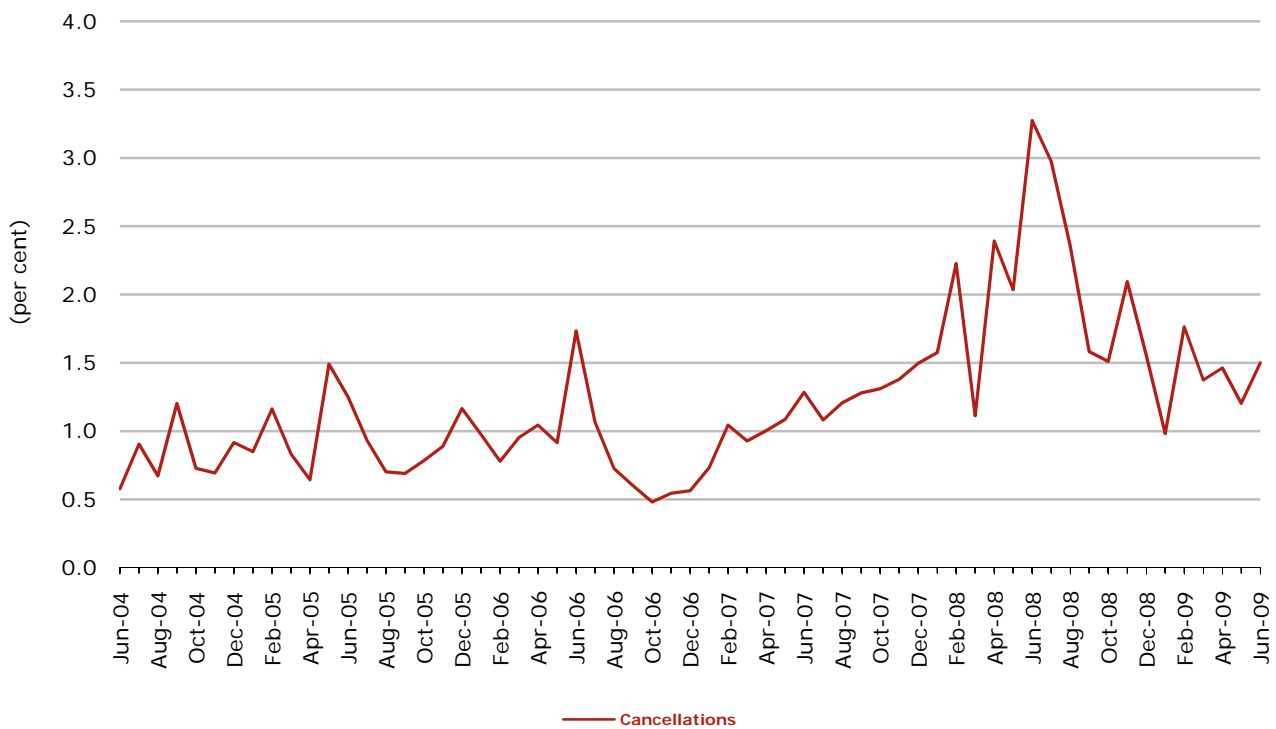
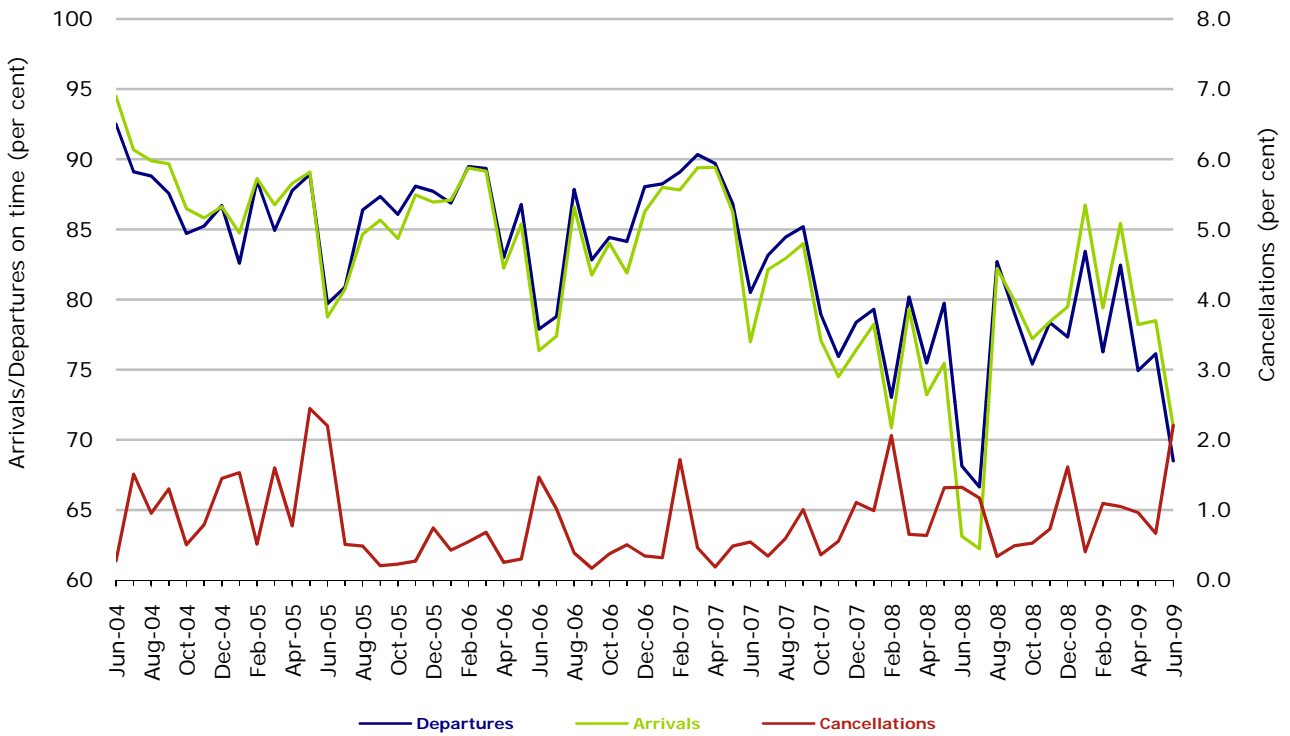


Figure 2 Cancellations (by month from June 2004)—Total Industry



## Major domestic airlines on time performance

Figure 3 On time performance (by month from June 2004)—Jetstar



Jetstar commenced reporting in May 2004.

Figure 4 On time performance (by month from June 2004)—Qantas

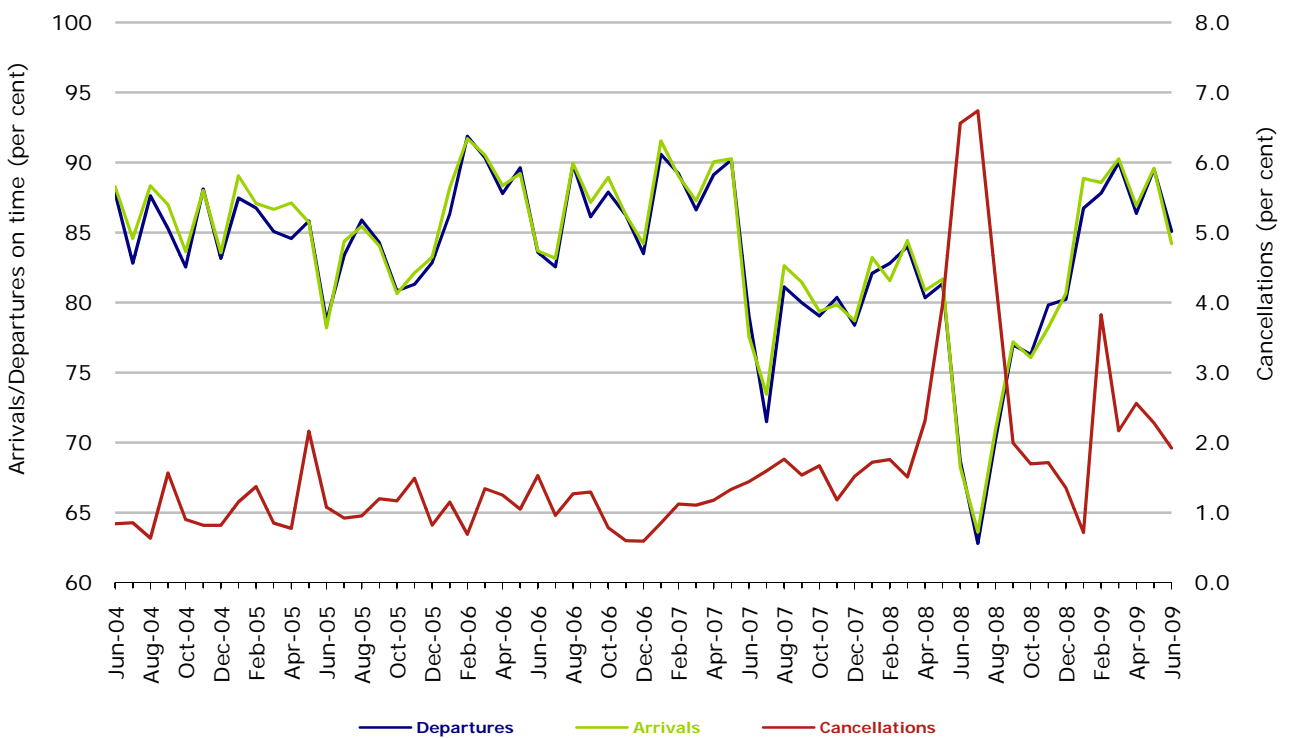
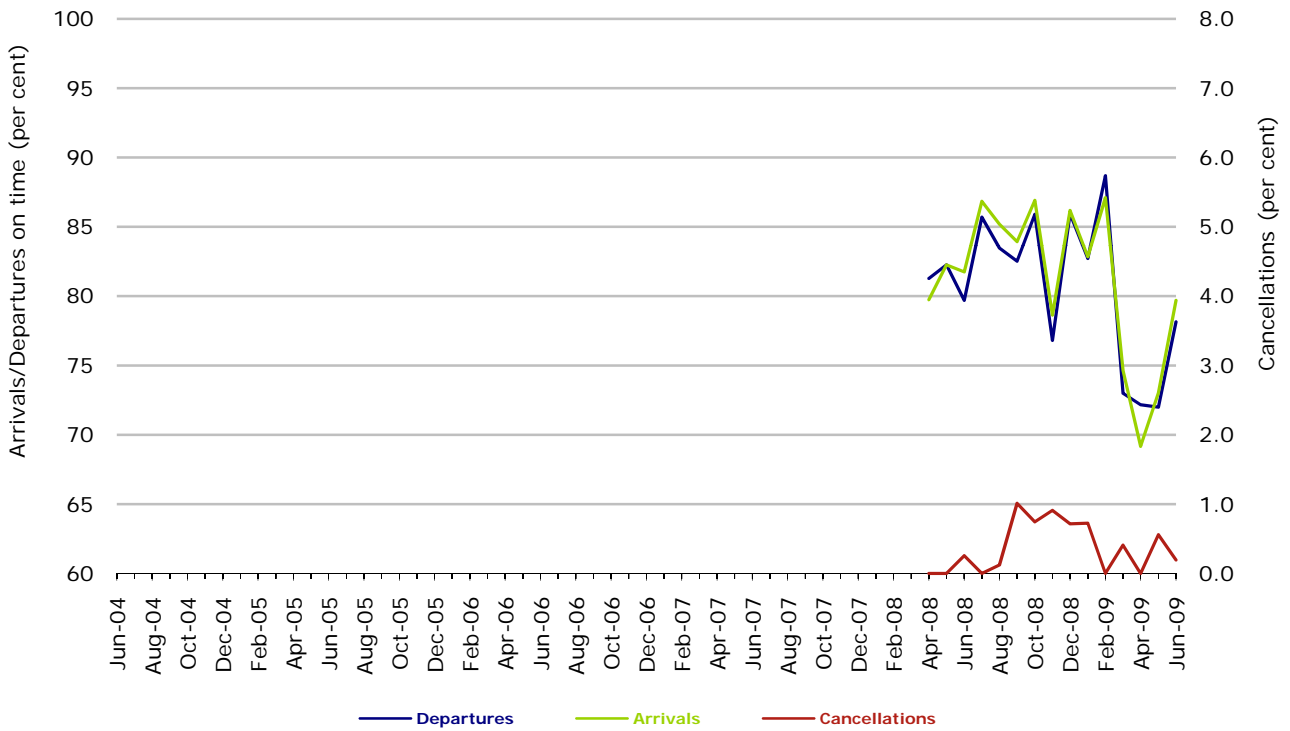
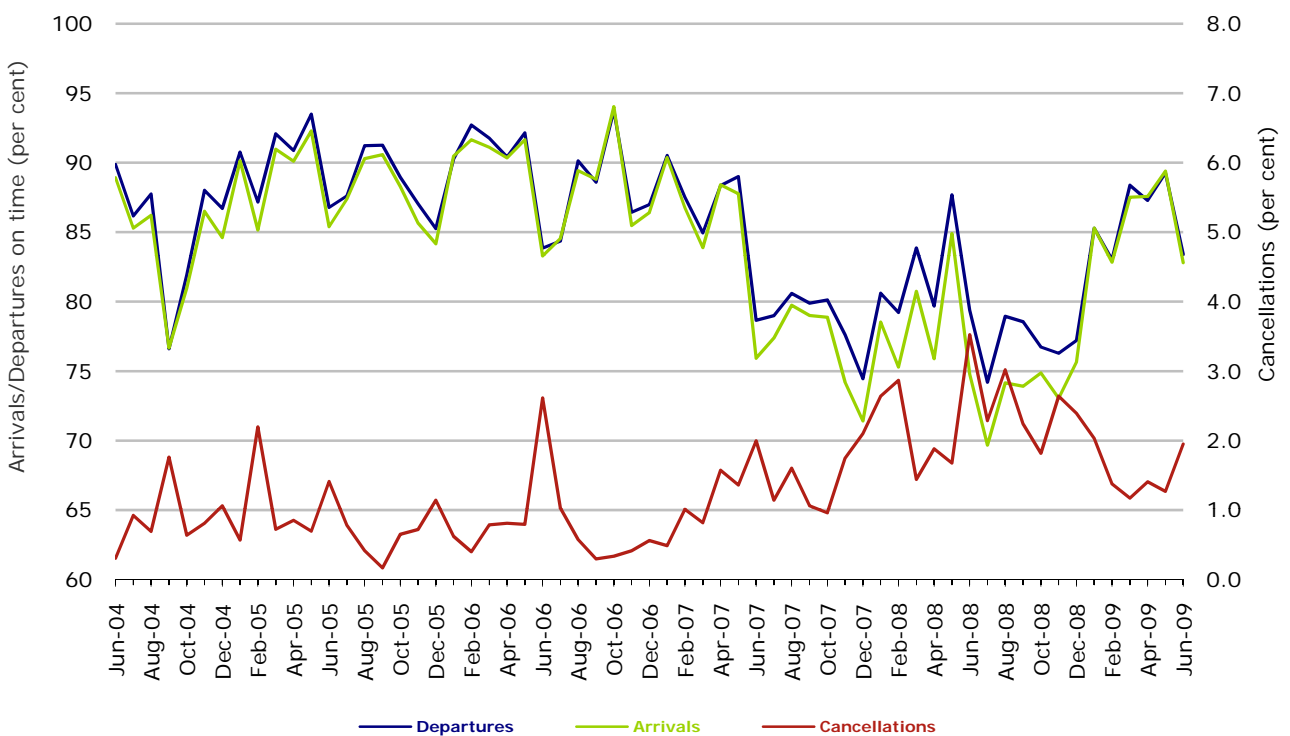


Figure 5 On time performance (by month from June 2004)—Tiger Airways



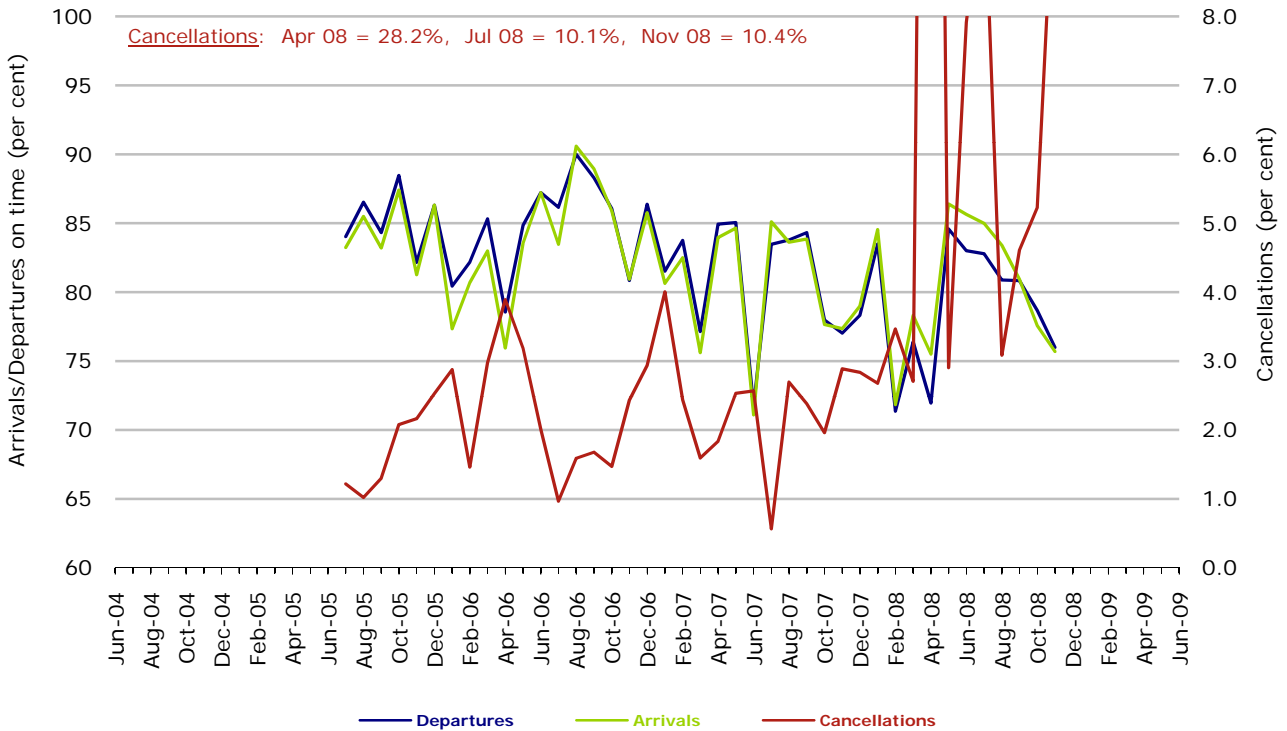
Tiger Airways commenced reporting in April 2008.

Figure 6 On time performance (by month from June 2004)—Virgin Blue



## Major regional airlines on time performance

Figure 7 On time performance (by month from June 2004)—MacAir



MacAir commenced reporting in July 2005. No data received after November 2008. Operations ceased in February 2009.

Figure 8 On time performance (by month from June 2004)—QantasLink

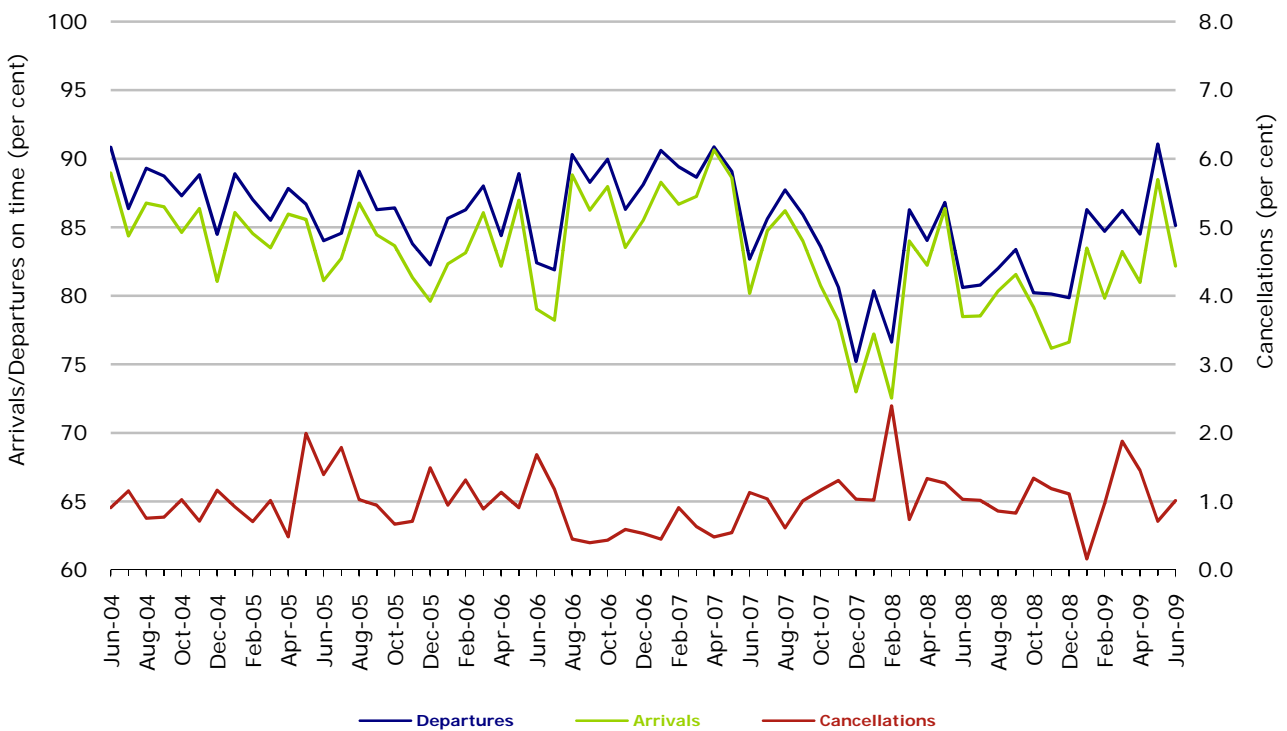


Figure 9 On time performance (by month from June 2004)—Regional Express

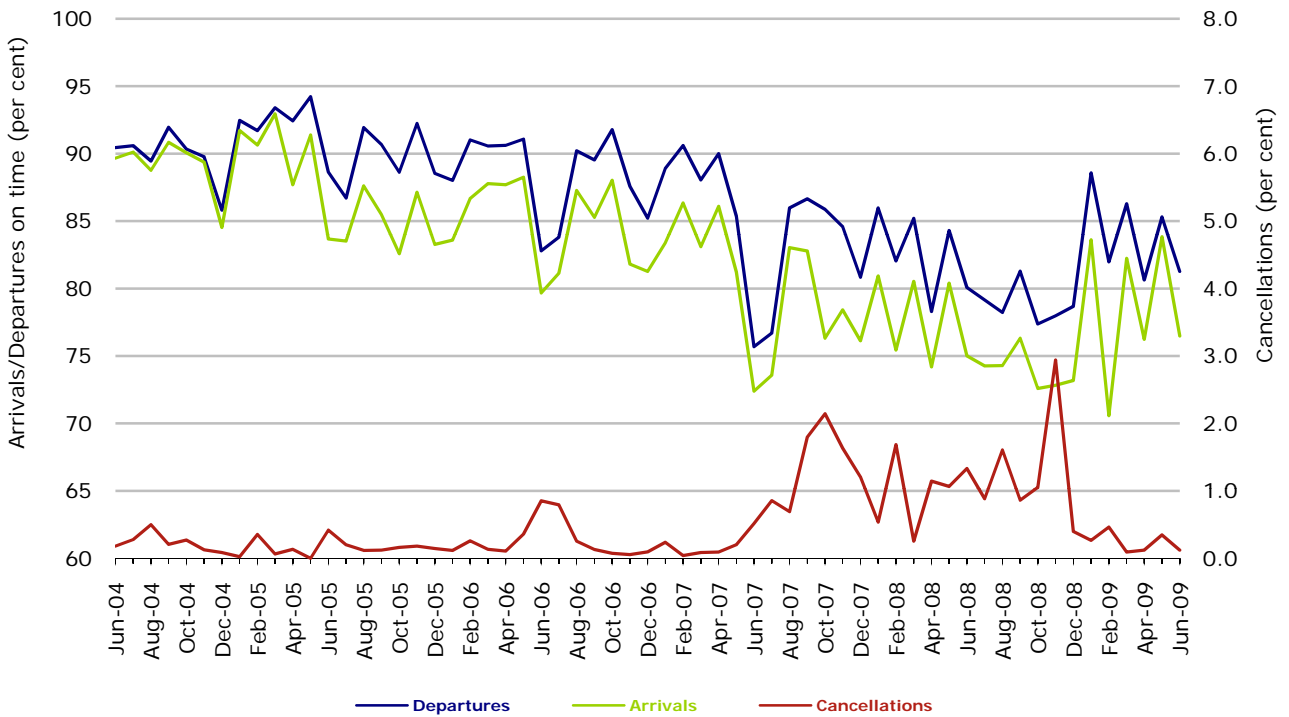
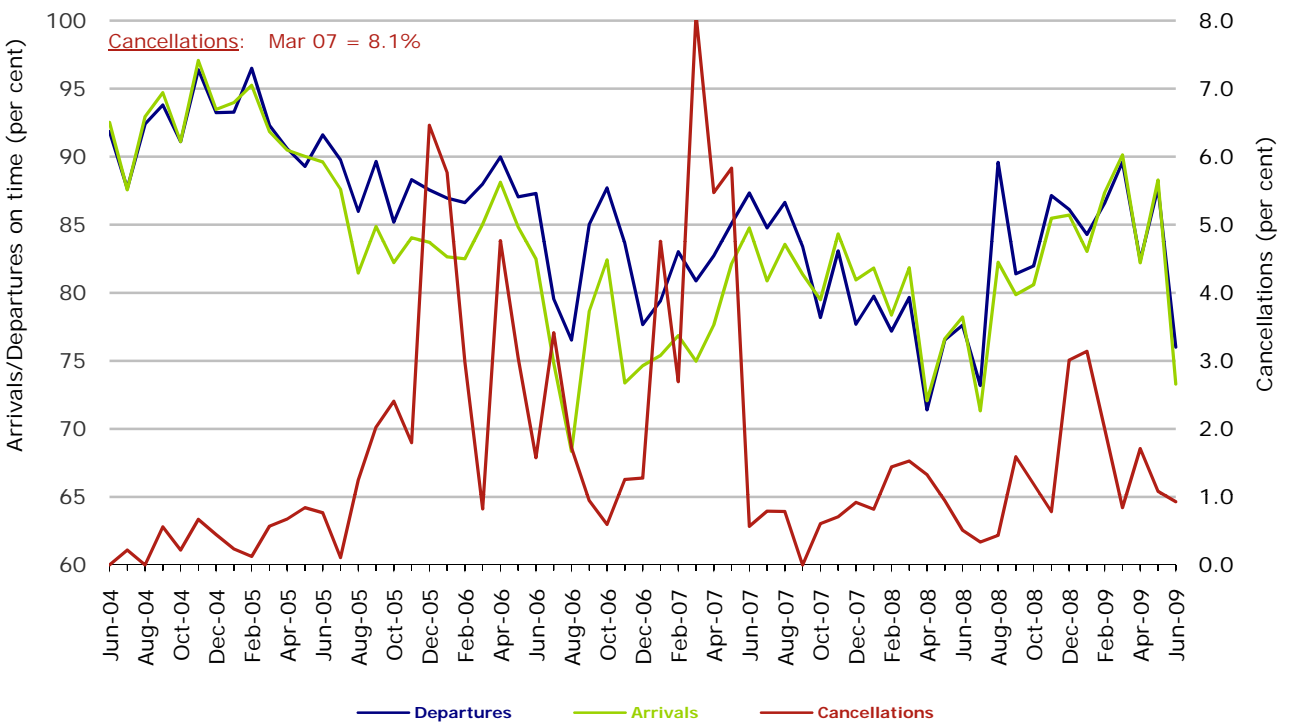


Figure 10 On time performance (by month from June 2004)—Skywest





## Individual routes

On time performance is reported for all routes where the passenger load averages over 8000 passengers per month over the previous six months, and where two or more airlines operate in competition on those routes. 46 routes met these criteria for all twelve months in 2008-09, plus another 5 routes for a shorter period of the year. Over time, however, routes which meet this definition may change as airline networks and traffic levels vary.

	<i>Sectors</i>		<i>Departures On Time</i>		<i>Arrivals On Time</i>		<i>Cancellations</i>	
	<i>Sched.</i>	<i>Flown</i>	<i>No.</i>	<i>%</i>	<i>No.</i>	<i>%</i>	<i>No.</i>	<i>%</i>
<b>Adelaide-Alice Springs</b>			(June 2009 only)					
Qantas	30	30	24	80.0	26	86.7	0	0.0
Tiger Airways	13	13	13	100.0	13	100.0	0	0.0
All Airlines	43	43	37	86.0	39	90.7	0	0.0
<b>Adelaide-Brisbane</b>								
Jetstar	344	343	238	69.4	257	74.9	1	0.3
Qantas	1,045	1,045	935	89.5	935	89.5	0	0.0
Virgin Blue	1,311	1,297	988	76.2	1,022	78.8	14	1.1
All Airlines	2,700	2,685	2,161	80.5	2,214	82.5	15	0.6
<b>Adelaide-Canberra</b>								
Qantas	556	554	455	82.1	464	83.8	2	0.4
Tiger Airways	55	55	37	67.3	40	72.7	0	0.0
Virgin Blue	365	363	266	73.3	272	74.9	2	0.5
All Airlines	976	972	758	78.0	776	79.8	4	0.4
<b>Adelaide-Gold Coast</b>								
Jetstar	363	363	282	77.7	292	80.4	0	0.0
Tiger Airways	122	122	99	81.1	102	83.6	0	0.0
Virgin Blue	366	363	313	86.2	315	86.8	3	0.8
All Airlines	851	848	694	81.8	709	83.6	3	0.4
<b>Adelaide-Melbourne</b>								
Jetstar	285	283	126	44.5	136	48.1	2	0.7
Qantas	4,165	4,087	3,532	86.4	3,536	86.5	78	1.9
Tiger Airways	857	849	636	74.9	639	75.3	8	0.9
Virgin Blue	3,361	3,308	2,758	83.4	2,774	83.9	53	1.6
All Airlines	8,668	8,527	7,052	82.7	7,085	83.1	141	1.6
<b>Adelaide-Perth</b>								
Jetstar	91	91	84	92.3	75	82.4	0	0.0
Qantas	1,647	1,635	1,355	82.9	1,375	84.1	12	0.7
Tiger Airways	121	121	115	95.0	97	80.2	0	0.0
Virgin Blue	773	764	655	85.7	588	77.0	9	1.2
All Airlines	2,632	2,611	2,209	84.6	2,135	81.8	21	0.8
<b>Adelaide-Sydney</b>								
Jetstar	399	393	311	79.1	334	85.0	6	1.5
Qantas	3,633	3,574	3,084	86.3	3,076	86.1	59	1.6
Virgin Blue	1,808	1,796	1,399	77.9	1,474	82.1	12	0.7
All Airlines	5,840	5,763	4,794	83.2	4,884	84.7	77	1.3

	<i>Sectors</i>		<i>Departures On Time</i>		<i>Arrivals On Time</i>		<i>Cancellations</i>	
	<i>Sched.</i>	<i>Flown</i>	<i>No.</i>	<i>%</i>	<i>No.</i>	<i>%</i>	<i>No.</i>	<i>%</i>
<b>Albury-Sydney</b>								
QantasLink	1,304	1,300	981	75.5	965	74.2	4	0.3
Regional Express	1,354	1,342	1,017	75.8	998	74.4	12	0.9
Virgin Blue	692	682	527	77.3	498	73.0	10	1.4
All Airlines	3,350	3,324	2,525	76.0	2,461	74.0	26	0.8
<b>Alice Springs-Adelaide</b> (June 2009 only)								
Qantas	30	30	25	83.3	26	86.7	0	0.0
Tiger Airways	13	13	13	100.0	13	100.0	0	0.0
All Airlines	43	43	38	88.4	39	90.7	0	0.0
<b>Alice Springs-Melbourne</b>								
Qantas	365	365	240	65.8	276	75.6	0	0.0
Tiger Airways	159	159	129	81.1	136	85.5	0	0.0
All Airlines	524	524	369	70.4	412	78.6	0	0.0
<b>Ballina-Sydney</b>								
Jetstar	357	357	263	73.7	256	71.7	0	0.0
Regional Express	988	976	573	58.7	497	50.9	12	1.2
Virgin Blue	388	384	303	78.9	277	72.1	4	1.0
All Airlines	1,733	1,717	1,139	66.3	1,030	60.0	16	0.9
<b>Brisbane-Adelaide</b>								
Jetstar	344	343	270	78.7	267	77.8	1	0.3
Qantas	1,046	1,044	884	84.7	905	86.7	2	0.2
Virgin Blue	1,316	1,304	1,071	82.1	921	70.6	12	0.9
All Airlines	2,706	2,691	2,225	82.7	2,093	77.8	15	0.6
<b>Brisbane-Cairns</b>								
Jetstar	1,159	1,158	908	78.4	947	81.8	1	0.1
Qantas	1,460	1,460	1,202	82.3	1,274	87.3	0	0.0
Virgin Blue	1,500	1,498	1,308	87.3	1,321	88.2	2	0.1
All Airlines	4,119	4,116	3,418	83.0	3,542	86.1	3	0.1
<b>Brisbane-Canberra</b>								
Qantas	1,696	1,690	1,463	86.6	1,511	89.4	6	0.4
QantasLink	104	103	94	91.3	92	89.3	1	1.0
Virgin Blue	1,698	1,665	1,378	82.8	1,303	78.3	33	1.9
All Airlines	3,498	3,458	2,935	84.9	2,906	84.0	40	1.1
<b>Brisbane-Darwin</b>								
Jetstar	442	441	329	74.6	294	66.7	1	0.2
Qantas	366	366	301	82.2	296	80.9	0	0.0
Virgin Blue	367	366	274	74.9	280	76.5	1	0.3
All Airlines	1,175	1,173	904	77.1	870	74.2	2	0.2
<b>Brisbane-Hamilton Island</b>								
Jetstar	365	364	302	83.0	314	86.3	1	0.3
Virgin Blue	368	366	331	90.4	327	89.3	2	0.5
All Airlines	733	730	633	86.7	641	87.8	3	0.4



	<i>Sectors</i>		<i>Departures On Time</i>		<i>Arrivals On Time</i>		<i>Cancellations</i>	
	<i>Sched.</i>	<i>Flown</i>	<i>No.</i>	<i>%</i>	<i>No.</i>	<i>%</i>	<i>No.</i>	<i>%</i>
<b>Brisbane-Mackay</b>								
Jetstar	1,032	1,022	790	77.3	831	81.3	10	1.0
QantasLink	697	694	586	84.4	562	81.0	3	0.4
Virgin Blue	1,739	1,731	1,422	82.1	1,364	78.8	8	0.5
All Airlines	3,468	3,447	2,798	81.2	2,757	80.0	21	0.6
<b>Brisbane-Melbourne</b>								
Jetstar	49	49	46	93.9	47	95.9	0	0.0
Qantas	5,205	5,077	4,219	83.1	4,286	84.4	128	2.5
Virgin Blue	4,310	4,251	3,765	88.6	3,450	81.2	59	1.4
All Airlines	9,564	9,377	8,030	85.6	7,783	83.0	187	2.0
<b>Brisbane-Newcastle</b>								
Jetstar	1,368	1,367	1,054	77.1	1,118	81.8	1	0.1
QantasLink	720	701	576	82.2	481	68.6	19	2.6
Virgin Blue	574	572	501	87.6	488	85.3	2	0.3
All Airlines	2,662	2,640	2,131	80.7	2,087	79.1	22	0.8
<b>Brisbane-Perth</b>								
Qantas	1,459	1,459	1,061	72.7	1,048	71.8	0	0.0
Virgin Blue	730	730	619	84.8	460	63.0	0	0.0
All Airlines	2,189	2,189	1,680	76.7	1,508	68.9	0	0.0
<b>Brisbane-Proserpine</b>								
Jetstar	365	364	254	69.8	280	76.9	1	0.3
Virgin Blue	368	367	301	82.0	302	82.3	1	0.3
All Airlines	733	731	555	75.9	582	79.6	2	0.3
<b>Brisbane-Rockhampton</b>								
Jetstar	365	365	297	81.4	313	85.8	0	0.0
QantasLink	1,946	1,933	1,640	84.8	1,625	84.1	13	0.7
Virgin Blue	1,800	1,780	1,455	81.7	1,415	79.5	20	1.1
All Airlines	4,111	4,078	3,392	83.2	3,353	82.2	33	0.8
<b>Brisbane-Sydney</b>								
Jetstar	387	365	282	77.3	298	81.6	22	5.7
Qantas	7,618	7,289	5,694	78.1	5,320	73.0	329	4.3
Virgin Blue	6,922	6,673	5,346	80.1	4,900	73.4	249	3.6
All Airlines	14,927	14,327	11,322	79.0	10,518	73.4	600	4.0
<b>Brisbane-Townsville</b>								
Jetstar	662	643	507	78.8	546	84.9	19	2.9
Qantas	1,879	1,865	1,543	82.7	1,599	85.7	14	0.7
Virgin Blue	1,712	1,706	1,465	85.9	1,458	85.5	6	0.4
All Airlines	4,253	4,214	3,515	83.4	3,603	85.5	39	0.9
<b>Broome-Perth</b>								
Qantas	294	289	174	60.2	185	64.0	5	1.7
QantasLink	646	641	526	82.1	519	81.0	5	0.8
Skywest	314	305	213	69.8	179	58.7	9	2.9
Virgin Blue	565	543	352	64.8	386	71.1	22	3.9
All Airlines	1,819	1,778	1,265	71.1	1,269	71.4	41	2.3

	<i>Sectors</i>		<i>Departures On Time</i>		<i>Arrivals On Time</i>		<i>Cancellations</i>	
	<i>Sched.</i>	<i>Flown</i>	<i>No.</i>	<i>%</i>	<i>No.</i>	<i>%</i>	<i>No.</i>	<i>%</i>
<b>Cairns-Brisbane</b>								
Jetstar	1,163	1,161	971	83.6	967	83.3	2	0.2
Qantas	1,460	1,460	1,264	86.6	1,295	88.7	0	0.0
Virgin Blue	1,501	1,498	1,314	87.7	1,297	86.6	3	0.2
All Airlines	4,124	4,119	3,549	86.2	3,559	86.4	5	0.1
<b>Cairns-Melbourne</b>								
Jetstar	451	451	366	81.2	333	73.8	0	0.0
Qantas	360	356	239	67.1	274	77.0	4	1.1
Virgin Blue	709	706	538	76.2	509	72.1	3	0.4
All Airlines	1,520	1,513	1,143	75.5	1,116	73.8	7	0.5
<b>Cairns-Sydney</b>								
Jetstar	499	490	380	77.6	403	82.2	9	1.8
Qantas	1,234	1,232	1,023	83.0	1,064	86.4	2	0.2
Virgin Blue	1,154	1,145	997	87.1	989	86.4	9	0.8
All Airlines	2,887	2,867	2,400	83.7	2,456	85.7	20	0.7
<b>Canberra-Adelaide</b>								
Qantas	603	601	548	91.2	554	92.2	2	0.3
Tiger Airways	55	55	39	70.9	38	69.1	0	0.0
Virgin Blue	365	364	314	86.3	296	81.3	1	0.3
All Airlines	1,023	1,020	901	88.3	888	87.1	3	0.3
<b>Canberra-Brisbane</b>								
Qantas	1,695	1,690	1,508	89.2	1,460	86.4	5	0.3
QantasLink	104	103	77	74.8	74	71.8	1	1.0
Virgin Blue	1,702	1,660	1,421	85.6	1,418	85.4	42	2.5
All Airlines	3,501	3,453	3,006	87.1	2,952	85.5	48	1.4
<b>Canberra-Melbourne</b>								
Qantas	3,068	2,995	2,632	87.9	2,596	86.7	73	2.4
QantasLink	468	446	399	89.5	383	85.9	22	4.7
Tiger Airways	624	619	501	80.9	498	80.5	5	0.8
Virgin Blue	2,072	2,020	1,795	88.9	1,750	86.6	52	2.5
All Airlines	6,232	6,080	5,327	87.6	5,227	86.0	152	2.4
<b>Canberra-Sydney</b>								
Qantas	2,281	2,183	1,907	87.4	1,866	85.5	98	4.3
QantasLink	4,958	4,711	3,939	83.6	3,830	81.3	247	5.0
Virgin Blue	2,622	2,501	2,172	86.8	2,185	87.4	121	4.6
All Airlines	9,861	9,395	8,018	85.3	7,881	83.9	466	4.7
<b>Coffs Harbour-Sydney</b>								
QantasLink	1,434	1,431	1,041	72.7	1,007	70.4	3	0.2
Virgin Blue	733	729	623	85.5	592	81.2	4	0.5
All Airlines	2,167	2,160	1,664	77.0	1,599	74.0	7	0.3

	<i>Sectors</i>		<i>Departures On Time</i>		<i>Arrivals On Time</i>		<i>Cancellations</i>	
	<i>Sched.</i>	<i>Flown</i>	<i>No.</i>	<i>%</i>	<i>No.</i>	<i>%</i>	<i>No.</i>	<i>%</i>
<b>Darwin-Brisbane</b>								
Jetstar	442	438	317	72.4	365	83.3	4	0.9
Qantas	366	366	241	65.8	259	70.8	0	0.0
Virgin Blue	366	365	274	75.1	303	83.0	1	0.3
All Airlines	1,174	1,169	832	71.2	927	79.3	5	0.4
<b>Darwin-Melbourne</b> (To October 2008 only)								
Jetstar	246	246	199	80.9	204	82.9	0	0.0
Tiger Airways	94	94	55	58.5	72	76.6	0	0.0
Virgin Blue	12	12	5	41.7	4	33.3	0	0.0
All Airlines	352	352	259	73.6	280	79.5	0	0.0
<b>Dubbo-Sydney</b>								
QantasLink	1,056	1,055	913	86.5	822	77.9	1	0.1
Regional Express	1,816	1,796	1,340	74.6	1,292	71.9	20	1.1
All Airlines	2,872	2,851	2,253	79.0	2,114	74.1	21	0.7
<b>Gold Coast-Adelaide</b>								
Jetstar	364	364	253	69.5	250	68.7	0	0.0
Tiger Airways	122	122	95	77.9	92	75.4	0	0.0
Virgin Blue	365	361	285	78.9	244	67.6	4	1.1
All Airlines	851	847	633	74.7	586	69.2	4	0.5
<b>Gold Coast-Melbourne</b>								
Jetstar	2,204	2,197	1,660	75.6	1,588	72.3	7	0.3
Tiger Airways	1,066	1,063	865	81.4	883	83.1	3	0.3
Virgin Blue	1,926	1,906	1,515	79.5	1,328	69.7	20	1.0
All Airlines	5,196	5,166	4,040	78.2	3,799	73.5	30	0.6
<b>Gold Coast-Newcastle</b> (From November 2008 only)								
Jetstar	239	239	172	72.0	185	77.4	0	0.0
Virgin Blue	104	103	101	98.1	101	98.1	1	1.0
All Airlines	343	342	273	79.8	286	83.6	1	0.3
<b>Gold Coast-Sydney</b>								
Jetstar	3,277	3,251	2,358	72.5	2,188	67.3	26	0.8
Qantas	62	62	53	85.5	52	83.9	0	0.0
Virgin Blue	4,168	4,052	3,356	82.8	3,254	80.3	116	2.8
All Airlines	7,507	7,365	5,767	78.3	5,494	74.6	142	1.9
<b>Hamilton Island-Brisbane</b>								
Jetstar	365	363	295	81.3	303	83.5	2	0.5
Virgin Blue	367	364	324	89.0	321	88.2	3	0.8
All Airlines	732	727	619	85.1	624	85.8	5	0.7
<b>Hervey Bay-Sydney</b>								
Jetstar	208	208	171	82.2	177	85.1	0	0.0
Virgin Blue	366	364	287	78.8	278	76.4	2	0.5
All Airlines	574	572	458	80.1	455	79.5	2	0.3

	<i>Sectors</i>		<i>Departures On Time</i>		<i>Arrivals On Time</i>		<i>Cancellations</i>	
	<i>Sched.</i>	<i>Flown</i>	<i>No.</i>	<i>%</i>	<i>No.</i>	<i>%</i>	<i>No.</i>	<i>%</i>
<b>Hobart-Melbourne</b>								
Jetstar	1,619	1,605	1,279	79.7	1,309	81.6	14	0.9
Qantas	730	729	646	88.6	633	86.8	1	0.1
Tiger Airways	378	378	307	81.2	308	81.5	0	0.0
Virgin Blue	1,700	1,693	1,409	83.2	1,396	82.5	7	0.4
All Airlines	4,427	4,405	3,641	82.7	3,646	82.8	22	0.5
<b>Hobart-Sydney</b>								
Jetstar	653	652	510	78.2	523	80.2	1	0.2
Qantas	370	370	298	80.5	316	85.4	0	0.0
Virgin Blue	730	730	632	86.6	623	85.3	0	0.0
All Airlines	1,753	1,752	1,440	82.2	1,462	83.4	1	0.1
<b>Kalgoorlie-Perth</b>								
Qantas	606	592	475	80.2	493	83.3	14	2.3
QantasLink	503	488	432	88.5	432	88.5	15	3.0
Skywest	375	345	269	78.0	237	68.7	30	8.0
All Airlines	1,484	1,425	1,176	82.5	1,162	81.5	59	4.0
<b>Karratha-Perth</b> (From October 2008 only)								
Qantas	1,214	1,181	1,030	87.2	1,008	85.4	33	2.7
QantasLink	297	278	253	91.0	252	90.6	19	6.4
Skywest	127	126	99	78.6	98	77.8	1	0.8
Virgin Blue	435	421	339	80.5	326	77.4	14	3.2
All Airlines	2,073	2,006	1,721	85.8	1,684	83.9	67	3.2
<b>Launceston-Melbourne</b>								
Jetstar	1,067	1,058	809	76.5	840	79.4	9	0.8
QantasLink	750	739	638	86.3	537	72.7	11	1.5
Tiger Airways	355	353	295	83.6	300	85.0	2	0.6
Virgin Blue	1,477	1,466	1,257	85.7	1,240	84.6	11	0.7
All Airlines	3,649	3,616	2,999	82.9	2,917	80.7	33	0.9
<b>Launceston-Sydney</b>								
Jetstar	365	360	213	59.2	267	74.2	5	1.4
Virgin Blue	365	364	301	82.7	302	83.0	1	0.3
All Airlines	730	724	514	71.0	569	78.6	6	0.8
<b>Mackay-Brisbane</b>								
Jetstar	1,033	1,023	773	75.6	782	76.4	10	1.0
QantasLink	699	697	597	85.7	631	90.5	2	0.3
Virgin Blue	1,741	1,730	1,462	84.5	1,433	82.8	11	0.6
All Airlines	3,473	3,450	2,832	82.1	2,846	82.5	23	0.7
<b>Maroochydore-Melbourne</b>								
Jetstar	738	729	504	69.1	514	70.5	9	1.2
Tiger Airways	212	212	173	81.6	180	84.9	0	0.0
Virgin Blue	494	479	396	82.7	347	72.4	15	3.0
All Airlines	1,444	1,420	1,073	75.6	1,041	73.3	24	1.7

	<i>Sectors</i>		<i>Departures On Time</i>		<i>Arrivals On Time</i>		<i>Cancellations</i>	
	<i>Sched.</i>	<i>Flown</i>	<i>No.</i>	<i>%</i>	<i>No.</i>	<i>%</i>	<i>No.</i>	<i>%</i>
<b>Maroochydore-Sydney</b>								
Jetstar	1,028	1,006	762	75.7	765	76.0	22	2.1
Virgin Blue	712	692	511	73.8	507	73.3	20	2.8
All Airlines	1,740	1,698	1,273	75.0	1,272	74.9	42	2.4
<b>Melbourne-Adelaide</b>								
Jetstar	284	284	260	91.5	251	88.4	0	0.0
Qantas	4,157	4,087	3,474	85.0	3,489	85.4	70	1.7
Tiger Airways	857	850	651	76.6	656	77.2	7	0.8
Virgin Blue	3,354	3,310	2,631	79.5	2,556	77.2	44	1.3
All Airlines	8,652	8,531	7,016	82.2	6,952	81.5	121	1.4
<b>Melbourne-Alice Springs</b>								
Qantas	365	365	287	78.6	300	82.2	0	0.0
Tiger Airways	159	159	139	87.4	138	86.8	0	0.0
All Airlines	524	524	426	81.3	438	83.6	0	0.0
<b>Melbourne-Brisbane</b>								
Jetstar	49	48	46	95.8	47	97.9	1	2.0
Qantas	5,167	5,047	4,241	84.0	4,282	84.8	120	2.3
Virgin Blue	4,305	4,237	3,556	83.9	3,572	84.3	68	1.6
All Airlines	9,521	9,332	7,843	84.0	7,901	84.7	189	2.0
<b>Melbourne-Cairns</b>								
Jetstar	451	451	367	81.4	366	81.2	0	0.0
Qantas	360	356	265	74.4	281	78.9	4	1.1
Virgin Blue	708	708	521	73.6	504	71.2	0	0.0
All Airlines	1,519	1,515	1,153	76.1	1,151	76.0	4	0.3
<b>Melbourne-Canberra</b>								
Qantas	3,067	2,992	2,540	84.9	2,594	86.7	75	2.4
QantasLink	468	445	398	89.4	394	88.5	23	4.9
Tiger Airways	624	619	482	77.9	499	80.6	5	0.8
Virgin Blue	2,058	2,009	1,708	85.0	1,742	86.7	49	2.4
All Airlines	6,217	6,065	5,128	84.6	5,229	86.2	152	2.4
<b>Melbourne-Darwin</b>								
			(To October 2008 only)					
Jetstar	246	246	196	79.7	168	68.3	0	0.0
Tiger Airways	93	93	88	94.6	83	89.2	0	0.0
Virgin Blue	11	11	8	72.7	6	54.5	0	0.0
All Airlines	350	350	292	83.4	257	73.4	0	0.0
<b>Melbourne-Gold Coast</b>								
Jetstar	2,204	2,199	1,747	79.4	1,800	81.9	5	0.2
Tiger Airways	1,066	1,063	871	81.9	875	82.3	3	0.3
Virgin Blue	1,928	1,915	1,531	79.9	1,549	80.9	13	0.7
All Airlines	5,198	5,177	4,149	80.1	4,224	81.6	21	0.4

	<i>Sectors</i>		<i>Departures On Time</i>		<i>Arrivals On Time</i>		<i>Cancellations</i>	
	<i>Sched.</i>	<i>Flown</i>	<i>No.</i>	<i>%</i>	<i>No.</i>	<i>%</i>	<i>No.</i>	<i>%</i>
<b>Melbourne-Hobart</b>								
Jetstar	1,619	1,605	1,249	77.8	1,303	81.2	14	0.9
Qantas	730	729	549	75.3	558	76.5	1	0.1
Tiger Airways	378	378	310	82.0	309	81.7	0	0.0
Virgin Blue	1,698	1,693	1,342	79.3	1,361	80.4	5	0.3
All Airlines	4,425	4,405	3,450	78.3	3,531	80.2	20	0.5
<b>Melbourne-Launceston</b>								
Jetstar	1,066	1,057	820	77.6	835	79.0	9	0.8
QantasLink	752	739	606	82.0	595	80.5	13	1.7
Tiger Airways	355	353	296	83.9	293	83.0	2	0.6
Virgin Blue	1,476	1,471	1,200	81.6	1,200	81.6	5	0.3
All Airlines	3,649	3,620	2,922	80.7	2,923	80.7	29	0.8
<b>Melbourne-Maroochydore</b>								
Jetstar	739	735	569	77.4	580	78.9	4	0.5
Tiger Airways	212	212	187	88.2	182	85.8	0	0.0
Virgin Blue	494	487	411	84.4	431	88.5	7	1.4
All Airlines	1,445	1,434	1,167	81.4	1,193	83.2	11	0.8
<b>Melbourne-Mildura</b>								
QantasLink	1,267	1,266	1,008	79.6	944	74.6	1	0.1
Regional Express	1,135	1,133	1,034	91.3	1,008	89.0	2	0.2
Virgin Blue	262	261	229	87.7	214	82.0	1	0.4
All Airlines	2,664	2,660	2,271	85.4	2,166	81.4	4	0.2
<b>Melbourne-Newcastle</b>								
Jetstar	1,042	1,038	719	69.3	764	73.6	4	0.4
Tiger Airways	41	41	33	80.5	36	87.8	0	0.0
Virgin Blue	365	364	343	94.2	346	95.1	1	0.3
All Airlines	1,448	1,443	1,095	75.9	1,146	79.4	5	0.3
<b>Melbourne-Perth</b>								
Jetstar	339	336	256	76.2	246	73.2	3	0.9
Qantas	2,488	2,452	1,639	66.8	1,686	68.8	36	1.4
Tiger Airways	596	592	477	80.6	472	79.7	4	0.7
Virgin Blue	1,460	1,456	1,271	87.3	1,139	78.2	4	0.3
All Airlines	4,883	4,836	3,643	75.3	3,543	73.3	47	1.0
<b>Melbourne-Sydney</b>								
Jetstar	300	296	228	77.0	231	78.0	4	1.3
Qantas	11,145	10,406	8,178	78.6	8,045	77.3	739	6.6
Virgin Blue	9,813	9,404	7,279	77.4	7,271	77.3	409	4.2
All Airlines	21,258	20,106	15,685	78.0	15,547	77.3	1,152	5.4
<b>Mildura-Melbourne</b>								
QantasLink	1,267	1,263	1,012	80.1	1,022	80.9	4	0.3
Regional Express	1,135	1,133	1,017	89.8	1,011	89.2	2	0.2
Virgin Blue	261	261	203	77.8	218	83.5	0	0.0
All Airlines	2,663	2,657	2,232	84.0	2,251	84.7	6	0.2

	<i>Sectors</i>		<i>Departures On Time</i>		<i>Arrivals On Time</i>		<i>Cancellations</i>	
	<i>Sched.</i>	<i>Flown</i>	<i>No.</i>	<i>%</i>	<i>No.</i>	<i>%</i>	<i>No.</i>	<i>%</i>
<b>Newcastle-Brisbane</b>								
Jetstar	1,369	1,368	1,029	75.2	1,026	75.0	1	0.1
QantasLink	721	700	532	76.0	535	76.4	21	2.9
Virgin Blue	574	572	514	89.9	508	88.8	2	0.3
All Airlines	2,664	2,640	2,075	78.6	2,069	78.4	24	0.9
<b>Newcastle-Gold Coast</b> (From November 2008 only)								
Jetstar	241	241	192	79.7	195	80.9	0	0.0
Virgin Blue	104	104	101	97.1	100	96.2	0	0.0
All Airlines	345	345	293	84.9	295	85.5	0	0.0
<b>Newcastle-Melbourne</b>								
Jetstar	1,036	1,036	750	72.4	794	76.6	0	0.0
Tiger Airways	41	41	38	92.7	38	92.7	0	0.0
Virgin Blue	365	363	325	89.5	318	87.6	2	0.5
All Airlines	1,442	1,440	1,113	77.3	1,150	79.9	2	0.1
<b>Newman-Perth</b> (From November 2008 only)								
QantasLink	701	694	605	87.2	601	86.6	7	1.0
Virgin Blue	257	249	196	78.7	199	79.9	8	3.1
All Airlines	958	943	801	84.9	800	84.8	15	1.6
<b>Perth-Adelaide</b>								
Jetstar	91	90	74	82.2	41	45.6	1	1.1
Qantas	1,648	1,635	1,308	80.0	1,316	80.5	13	0.8
Tiger Airways	121	121	107	88.4	111	91.7	0	0.0
Virgin Blue	768	759	611	80.5	652	85.9	9	1.2
All Airlines	2,628	2,605	2,100	80.6	2,120	81.4	23	0.9
<b>Perth-Brisbane</b>								
Qantas	1,461	1,457	972	66.7	1,080	74.1	4	0.3
Virgin Blue	732	731	603	82.5	611	83.6	1	0.1
All Airlines	2,193	2,188	1,575	72.0	1,691	77.3	5	0.2
<b>Perth-Broome</b>								
Qantas	293	289	205	70.9	215	74.4	4	1.4
QantasLink	641	637	529	83.0	531	83.4	4	0.6
Skywest	309	299	224	74.9	211	70.6	10	3.2
Virgin Blue	563	550	396	72.0	395	71.8	13	2.3
All Airlines	1,806	1,775	1,354	76.3	1,352	76.2	31	1.7
<b>Perth-Kalgoorlie</b>								
Qantas	606	593	497	83.8	493	83.1	13	2.1
QantasLink	503	488	419	85.9	427	87.5	15	3.0
Skywest	374	344	275	79.9	256	74.4	30	8.0
All Airlines	1,483	1,425	1,191	83.6	1,176	82.5	58	3.9

	<i>Sectors</i>		<i>Departures On Time</i>		<i>Arrivals On Time</i>		<i>Cancellations</i>	
	<i>Sched.</i>	<i>Flown</i>	<i>No.</i>	<i>%</i>	<i>No.</i>	<i>%</i>	<i>No.</i>	<i>%</i>
<b>Perth-Karratha</b>	(From October 2008 only)							
Qantas	1,218	1,182	1,043	88.2	1,037	87.7	36	3.0
QantasLink	295	278	254	91.4	250	89.9	17	5.8
Skywest	131	130	105	80.8	86	66.2	1	0.8
Virgin Blue	434	423	371	87.7	361	85.3	11	2.5
All Airlines	2,078	2,013	1,773	88.1	1,734	86.1	65	3.1
<b>Perth-Melbourne</b>								
Jetstar	342	336	203	60.4	244	72.6	6	1.8
Qantas	2,488	2,450	1,676	68.4	1,760	71.8	38	1.5
Tiger Airways	596	592	377	63.7	378	63.9	4	0.7
Virgin Blue	1,461	1,458	1,187	81.4	1,172	80.4	3	0.2
All Airlines	4,887	4,836	3,443	71.2	3,554	73.5	51	1.0
<b>Perth-Newman</b>	(From November 2008 only)							
QantasLink	699	693	629	90.8	620	89.5	6	0.9
Virgin Blue	251	250	238	95.2	236	94.4	1	0.4
All Airlines	950	943	867	91.9	856	90.8	7	0.7
<b>Perth-Sydney</b>								
Qantas	2,318	2,293	1,666	72.7	1,756	76.6	25	1.1
Virgin Blue	1,770	1,754	1,457	83.1	1,524	86.9	16	0.9
All Airlines	4,088	4,047	3,123	77.2	3,280	81.0	41	1.0
<b>Port Macquarie-Sydney</b>								
QantasLink	1,334	1,330	1,048	78.8	1,003	75.4	4	0.3
Virgin Blue	696	685	522	76.2	498	72.7	11	1.6
All Airlines	2,030	2,015	1,570	77.9	1,501	74.5	15	0.7
<b>Proserpine-Brisbane</b>								
Jetstar	365	362	265	73.2	273	75.4	3	0.8
Virgin Blue	369	367	287	78.2	291	79.3	2	0.5
All Airlines	734	729	552	75.7	564	77.4	5	0.7
<b>Rockhampton-Brisbane</b>								
Jetstar	365	365	292	80.0	298	81.6	0	0.0
QantasLink	1,656	1,639	1,408	85.9	1,393	85.0	17	1.0
Virgin Blue	1,801	1,769	1,403	79.3	1,387	78.4	32	1.8
All Airlines	3,822	3,773	3,103	82.2	3,078	81.6	49	1.3
<b>Sydney-Adelaide</b>								
Jetstar	399	395	333	84.3	346	87.6	4	1.0
Qantas	3,594	3,546	2,903	81.9	3,017	85.1	48	1.3
Virgin Blue	1,807	1,797	1,505	83.8	1,353	75.3	10	0.6
All Airlines	5,800	5,738	4,741	82.6	4,716	82.2	62	1.1



	<i>Sectors</i>		<i>Departures On Time</i>		<i>Arrivals On Time</i>		<i>Cancellations</i>	
	<i>Sched.</i>	<i>Flown</i>	<i>No.</i>	<i>%</i>	<i>No.</i>	<i>%</i>	<i>No.</i>	<i>%</i>
<b>Sydney-Albury</b>								
QantasLink	1,305	1,301	1,001	76.9	917	70.5	4	0.3
Regional Express	1,350	1,337	971	72.6	871	65.1	13	1.0
Virgin Blue	691	684	557	81.4	550	80.4	7	1.0
All Airlines	3,346	3,322	2,529	76.1	2,338	70.4	24	0.7
<b>Sydney-Ballina</b>								
Jetstar	364	364	301	82.7	315	86.5	0	0.0
Regional Express	994	985	690	70.1	630	64.0	9	0.9
Virgin Blue	390	388	324	83.5	324	83.5	2	0.5
All Airlines	1,748	1,737	1,315	75.7	1,269	73.1	11	0.6
<b>Sydney-Brisbane</b>								
Jetstar	387	366	296	80.9	328	89.6	21	5.4
Qantas	7,657	7,340	5,795	79.0	5,978	81.4	317	4.1
Virgin Blue	6,919	6,666	4,859	72.9	5,011	75.2	253	3.7
All Airlines	14,963	14,372	10,950	76.2	11,317	78.7	591	3.9
<b>Sydney-Cairns</b>								
Jetstar	500	493	441	89.5	434	88.0	7	1.4
Qantas	1,234	1,233	952	77.2	989	80.2	1	0.1
Virgin Blue	1,151	1,145	940	82.1	923	80.6	6	0.5
All Airlines	2,885	2,871	2,333	81.3	2,346	81.7	14	0.5
<b>Sydney-Canberra</b>								
Qantas	2,328	2,248	1,889	84.0	1,854	82.5	80	3.4
QantasLink	4,960	4,721	3,976	84.2	3,738	79.2	239	4.8
Virgin Blue	2,637	2,518	2,095	83.2	2,100	83.4	119	4.5
All Airlines	9,925	9,487	7,960	83.9	7,692	81.1	438	4.4
<b>Sydney-Coffs Harbour</b>								
QantasLink	1,435	1,432	1,112	77.7	1,011	70.6	3	0.2
Virgin Blue	732	731	628	85.9	636	87.0	1	0.1
All Airlines	2,167	2,163	1,740	80.4	1,647	76.1	4	0.2
<b>Sydney-Dubbo</b>								
QantasLink	1,056	1,055	907	86.0	899	85.2	1	0.1
Regional Express	1,819	1,804	1,330	73.7	1,234	68.4	15	0.8
All Airlines	2,875	2,859	2,237	78.2	2,133	74.6	16	0.6
<b>Sydney-Gold Coast</b>								
Jetstar	3,289	3,265	2,503	76.7	2,598	79.6	24	0.7
Qantas	63	62	43	69.4	38	61.3	1	1.6
Virgin Blue	4,168	4,067	3,349	82.3	3,412	83.9	101	2.4
All Airlines	7,520	7,394	5,895	79.7	6,048	81.8	126	1.7
<b>Sydney-Hervey Bay</b>								
Jetstar	208	208	188	90.4	188	90.4	0	0.0
Virgin Blue	367	366	302	82.5	300	82.0	1	0.3
All Airlines	575	574	490	85.4	488	85.0	1	0.2

	<i>Sectors</i>		<i>Departures On Time</i>		<i>Arrivals On Time</i>		<i>Cancellations</i>	
	<i>Sched.</i>	<i>Flown</i>	<i>No.</i>	<i>%</i>	<i>No.</i>	<i>%</i>	<i>No.</i>	<i>%</i>
<b>Sydney-Hobart</b>								
Jetstar	653	652	543	83.3	567	87.0	1	0.2
Qantas	370	370	324	87.6	321	86.8	0	0.0
Virgin Blue	730	730	512	70.1	493	67.5	0	0.0
All Airlines	1,753	1,752	1,379	78.7	1,381	78.8	1	0.1
<b>Sydney-Launceston</b>								
Jetstar	365	364	255	70.1	264	72.5	1	0.3
Virgin Blue	366	365	309	84.7	315	86.3	1	0.3
All Airlines	731	729	564	77.4	579	79.4	2	0.3
<b>Sydney-Maroochydore</b>								
Jetstar	1,026	1,016	810	79.7	813	80.0	10	1.0
Virgin Blue	712	698	531	76.1	550	78.8	14	2.0
All Airlines	1,738	1,714	1,341	78.2	1,363	79.5	24	1.4
<b>Sydney-Melbourne</b>								
Jetstar	286	282	232	82.3	242	85.8	4	1.4
Qantas	11,099	10,371	8,079	77.9	7,625	73.5	728	6.6
Virgin Blue	9,792	9,388	7,412	79.0	7,077	75.4	404	4.1
All Airlines	21,177	20,041	15,723	78.5	14,944	74.6	1,136	5.4
<b>Sydney-Perth</b>								
Qantas	2,319	2,309	1,648	71.4	1,607	69.6	10	0.4
Virgin Blue	1,762	1,757	1,408	80.1	1,151	65.5	5	0.3
All Airlines	4,081	4,066	3,056	75.2	2,758	67.8	15	0.4
<b>Sydney-Port Macquarie</b>								
QantasLink	1,333	1,330	1,066	80.2	971	73.0	3	0.2
Virgin Blue	696	689	552	80.1	550	79.8	7	1.0
All Airlines	2,029	2,019	1,618	80.1	1,521	75.3	10	0.5
<b>Sydney-Townsville</b>								
Jetstar	260	260	245	94.2	243	93.5	0	0.0
Virgin Blue	365	365	321	87.9	318	87.1	0	0.0
All Airlines	625	625	566	90.6	561	89.8	0	0.0
<b>Sydney-Wagga Wagga</b>								
QantasLink	1,364	1,364	1,080	79.2	963	70.6	0	0.0
Regional Express	1,487	1,480	1,084	73.2	919	62.1	7	0.5
All Airlines	2,851	2,844	2,164	76.1	1,882	66.2	7	0.2
<b>Townsville-Brisbane</b>								
Jetstar	666	643	518	80.6	538	83.7	23	3.5
Qantas	1,878	1,864	1,635	87.7	1,634	87.7	14	0.7
Virgin Blue	1,710	1,702	1,537	90.3	1,545	90.8	8	0.5
All Airlines	4,254	4,209	3,690	87.7	3,717	88.3	45	1.1
<b>Townsville-Sydney</b>								
Jetstar	259	259	232	89.6	240	92.7	0	0.0
Virgin Blue	365	365	326	89.3	315	86.3	0	0.0
All Airlines	624	624	558	89.4	555	88.9	0	0.0

	<i>Sectors</i>		<i>Departures On Time</i>		<i>Arrivals On Time</i>		<i>Cancellations</i>	
	<i>Sched.</i>	<i>Flown</i>	<i>No.</i>	<i>%</i>	<i>No.</i>	<i>%</i>	<i>No.</i>	<i>%</i>
<b>Wagga Wagga-Sydney</b>								
QantasLink	1,364	1,363	1,066	78.2	1,036	76.0	1	0.1
Regional Express	1,487	1,480	1,100	74.3	1,026	69.3	7	0.5
All Airlines	2,851	2,843	2,166	76.2	2,062	72.5	8	0.3

# Airports

On time performance is reported for all routes where the passenger load averages over 8000 passengers per month, and where two or more airlines operate in competition. The following data reports by airport against flights operated on those routes only.

Airport	Departures			Arrivals		
	Sectors	On Time		Sectors	On Time	
	Flown	No.	%	Flown	No.	%
<b>Adelaide</b>						
Jetstar	1 473	1 041	70.7	1 476	1 155	78.3
Qantas	10 925	9 385	85.9	10 943	9 307	85.0
Tiger Airways	1 160	900	77.6	1 161	910	78.4
Virgin Blue	7 891	6 379	80.8	7 895	6 022	76.3
All Airlines	21 449	17 705	82.5	21 475	17 394	81.0
Relates to services to and from Alice Springs, Brisbane, Canberra, Gold Coast, Melbourne, Perth and Sydney.						
<b>Albury</b>						
QantasLink	1 300	981	75.5	1 301	917	70.5
Regional Express	1 342	1 017	75.8	1 337	871	65.1
Virgin Blue	682	527	77.3	684	550	80.4
All Airlines	3 324	2 525	76.0	3 322	2 338	70.4
Relates to services to and from Sydney only.						
<b>Alice Springs</b>						
Qantas	395	265	67.1	395	326	82.5
Tiger Airways	172	142	82.6	172	151	87.8
All Airlines	567	407	71.8	567	477	84.1
Relates to services to and from Adelaide and Melbourne only.						
<b>Ballina</b>						
Jetstar	357	263	73.7	364	315	86.5
Regional Express	976	573	58.7	985	630	64.0
Virgin Blue	384	303	78.9	388	324	83.5
All Airlines	1 717	1 139	66.3	1 737	1 269	73.1
Relates to services to and from Sydney only.						
<b>Brisbane</b>						
Jetstar	6 481	5 039	77.8	6 480	5 184	80.0
Qantas	20 250	16 367	80.8	20 269	16 923	83.5
QantasLink	3 431	2 896	84.4	3 139	2 633	83.9
Virgin Blue	23 009	19 236	83.6	22 958	18 719	81.5
All Airlines	53 171	43 538	81.9	52 846	43 459	82.2
Relates to services to and from Adelaide, Cairns, Canberra, Darwin, Hamilton Island, Mackay, Melbourne, Newcastle, Perth, Proserpine, Rockhampton, Sydney and Townsville.						

Airport	Departures			Arrivals		
	Sectors Flown	On Time No.	On Time %	Sectors Flown	On Time No.	On Time %
<b>Broome</b>						
Qantas	289	174	60.2	289	215	74.4
QantasLink	641	526	82.1	637	531	83.4
Skywest	305	213	69.8	299	211	70.6
Virgin Blue	543	352	64.8	550	395	71.8
All Airlines	1 778	1 265	71.1	1 775	1 352	76.2
Relates to services to and from Perth only.						
<b>Cairns</b>						
Jetstar	2 102	1 717	81.7	2 102	1 747	83.1
Qantas	3 048	2 526	82.9	3 049	2 544	83.4
Virgin Blue	3 349	2 849	85.1	3 351	2 748	82.0
All Airlines	8 499	7 092	83.4	8 502	7 039	82.8
Relates to services to and from Brisbane, Melbourne and Sydney.						
<b>Canberra</b>						
Qantas	7 469	6 595	88.3	7 484	6 423	85.8
QantasLink	5 260	4 415	83.9	5 269	4 224	80.2
Tiger Airways	674	540	80.1	674	539	80.0
Virgin Blue	6 545	5 702	87.1	6 555	5 417	82.6
All Airlines	19 948	17 252	86.5	19 982	16 603	83.1
Relates to services to and from Adelaide, Brisbane, Melbourne and Sydney.						
<b>Coffs Harbour</b>						
QantasLink	1 431	1 041	72.7	1 432	1 011	70.6
Virgin Blue	729	623	85.5	731	636	87.0
All Airlines	2 160	1 664	77.0	2 163	1 647	76.1
Relates to services to and from Sydney only.						
<b>Darwin</b>						
Jetstar	684	516	75.4	687	462	67.2
Qantas	366	241	65.8	366	296	80.9
Tiger Airways	94	55	58.5	93	83	89.2
Virgin Blue	377	279	74.0	377	286	75.9
All Airlines	1 521	1 091	71.7	1 523	1 127	74.0
Relates to services to and from Brisbane and Melbourne.						
<b>Dubbo</b>						
QantasLink	1 055	913	86.5	1 055	899	85.2
Regional Express	1 796	1 340	74.6	1 804	1 234	68.4
All Airlines	2 851	2 253	79.0	2 859	2 133	74.6
Relates to services to and from Sydney only.						

Airport	Departures			Arrivals		
	Sectors Flown	On Time No.	On Time %	Sectors Flown	On Time No.	On Time %
<b>Gold Coast</b>						
Jetstar	6 051	4 443	73.4	6 068	4 885	80.5
Qantas	62	53	85.5	62	38	61.3
Tiger Airways	1 185	960	81.0	1 185	977	82.4
Virgin Blue	6 422	5 257	81.9	6 449	5 376	83.4
All Airlines	13 720	10 713	78.1	13 764	11 276	81.9
Relates to services to and from Adelaide, Melbourne, Newcastle and Sydney.						
<b>Hamilton Island</b>						
Jetstar	363	295	81.3	364	314	86.3
Virgin Blue	364	324	89.0	366	327	89.3
All Airlines	727	619	85.1	730	641	87.8
Relates to services to and from Brisbane only.						
<b>Hervey Bay</b>						
Jetstar	208	171	82.2	208	188	90.4
Virgin Blue	364	287	78.8	366	300	82.0
All Airlines	572	458	80.1	574	488	85.0
Relates to services to and from Sydney only.						
<b>Hobart</b>						
Jetstar	2 257	1 789	79.3	2 257	1 870	82.9
Qantas	1 099	944	85.9	1 099	879	80.0
Tiger Airways	378	307	81.2	378	309	81.7
Virgin Blue	2 423	2 041	84.2	2 423	1 854	76.5
All Airlines	6 157	5 081	82.5	6 157	4 912	79.8
Relates to services to and from Melbourne and Sydney.						
<b>Kalgoorlie</b>						
Qantas	592	475	80.2	593	493	83.1
QantasLink	488	432	88.5	488	427	87.5
Skywest	345	269	78.0	344	256	74.4
All Airlines	1 425	1 176	82.5	1 425	1 176	82.5
Relates to services to and from Perth only.						
<b>Karratha</b>						
Qantas	1 181	1 030	87.2	1 182	1 037	87.7
QantasLink	278	253	91.0	278	250	89.9
Skywest	126	99	78.6	130	86	66.2
Virgin Blue	421	339	80.5	423	361	85.3
All Airlines	2 006	1 721	85.8	2 013	1 734	86.1
Relates to services to and from Perth only.						

Airport	Departures			Arrivals		
	Sectors	On Time		Sectors	On Time	
	Flown	No.	%	Flown	No.	%
<b>Launceston</b>						
Jetstar	1 418	1 022	72.1	1 421	1 099	77.3
QantasLink	739	638	86.3	739	595	80.5
Tiger Airways	353	295	83.6	353	293	83.0
Virgin Blue	1 830	1 558	85.1	1 836	1 515	82.5
All Airlines	4 340	3 513	80.9	4 349	3 502	80.5
Relates to services to and from Melbourne and Sydney.						
<b>Mackay</b>						
Jetstar	1 023	773	75.6	1 022	831	81.3
QantasLink	697	597	85.7	694	562	81.0
Virgin Blue	1 730	1 462	84.5	1 731	1 364	78.8
All Airlines	3 450	2 832	82.1	3 447	2 757	80.0
Relates to services to and from Brisbane only.						
<b>Maroochydore</b>						
Jetstar	1 735	1 266	73.0	1 751	1 393	79.6
Tiger Airways	212	173	81.6	212	182	85.8
Virgin Blue	1 171	907	77.5	1 185	981	82.8
All Airlines	3 118	2 346	75.2	3 148	2 556	81.2
Relates to services to and from Melbourne and Sydney.						
<b>Melbourne</b>						
Jetstar	8 295	6 457	77.8	8 272	6 251	75.6
Qantas	26 434	21 173	80.1	26 430	20 986	79.4
QantasLink	2 450	2 012	82.1	2 448	1 942	79.3
Regional Express	1 133	1 034	91.3	1 133	1 011	89.2
Tiger Airways	4 360	3 534	81.1	4 360	3 432	78.7
Virgin Blue	27 326	22 030	80.6	27 311	21 583	79.0
All Airlines	69 998	56 240	80.3	69 954	55 205	78.9
Relates to services to and from Adelaide, Alice Springs, Brisbane, Cairns, Canberra, Darwin, Gold Coast, Hobart, Launceston, Maroochydore, Mildura, Newcastle, Perth and Sydney.						
<b>Mildura</b>						
QantasLink	1 263	1 012	80.1	1 266	944	74.6
Regional Express	1 133	1 017	89.8	1 133	1 008	89.0
Virgin Blue	261	203	77.8	261	214	82.0
All Airlines	2 657	2 232	84.0	2 660	2 166	81.4
Relates to services to and from Melbourne only.						
<b>Newcastle</b>						
Jetstar	2 645	1 971	74.5	2 644	2 067	78.2
QantasLink	700	532	76.0	701	481	68.6
Virgin Blue	1 039	940	90.5	1 039	935	90.0
Tiger Airways	41	38	92.7	41	36	87.8
All Airlines	4 425	3 481	78.7	4 425	3 519	79.5
Relates to services to and from Brisbane, Gold Coast and Melbourne.						

Airport	Departures			Arrivals		
	Sectors Flown	On Time No.	On Time %	Sectors Flown	On Time No.	On Time %
<b>Newman</b>						
QantasLink	694	605	87.2	693	620	89.5
Virgin Blue	249	196	78.7	250	236	94.4
All Airlines	943	801	84.9	943	856	90.8
Relates to services to and from Perth only.						
<b>Perth</b>						
Jetstar	426	277	65.0	427	321	75.2
Qantas	9 899	7 367	74.4	9 917	7 402	74.6
QantasLink	2 096	1 831	87.4	2 101	1 804	85.9
Skywest	773	604	78.1	776	514	66.2
Tiger Airways	713	484	67.9	713	569	79.8
Virgin Blue	5 925	4 863	82.1	5 920	4 249	71.8
All Airlines	19 832	15 426	77.8	19 854	14 859	74.8
Relates to services to and from Adelaide, Brisbane, Broome, Kalgoorlie, Karratha, Melbourne, Newman and Sydney.						
<b>Port Macquarie</b>						
QantasLink	1 330	1 048	78.8	1 330	971	73.0
Virgin Blue	685	522	76.2	689	550	79.8
All Airlines	2 015	1 570	77.9	2 019	1 521	75.3
Relates to services to and from Sydney only.						
<b>Proserpine</b>						
Jetstar	362	265	73.2	364	280	76.9
Virgin Blue	367	287	78.2	367	302	82.3
All Airlines	729	552	75.7	731	582	79.6
Relates to services to and from Brisbane only.						
<b>Rockhampton</b>						
Jetstar	365	292	80.0	365	313	85.8
QantasLink	1 639	1 408	85.9	1 933	1 625	84.1
Virgin Blue	1 769	1 403	79.3	1 780	1 415	79.5
All Airlines	3 773	3 103	82.2	4 078	3 353	82.2
Relates to services to and from Brisbane only.						
<b>Sydney</b>						
Jetstar	7 665	6 147	80.2	7 637	5 682	74.4
Qantas	27 479	21 633	78.7	27 409	21 495	78.4
QantasLink	11 203	9 142	81.6	11 190	8 663	77.4
Regional Express	5 606	4 075	72.7	5 594	3 813	68.2
Virgin Blue	32 354	25 604	79.1	32 320	25 487	78.9
All Airlines	84 307	66 601	79.0	84 150	65 140	77.4
Relates to services to and from Adelaide, Albury, Ballina, Brisbane, Cairns, Canberra, Coffs Harbour, Dubbo, Gold Coast, Hervey Bay, Hobart, Launceston, Maroochydore, Melbourne, Perth, Port Macquarie, Townsville and Wagga Wagga.						



<i>Airport</i>	<i>Departures</i>			<i>Arrivals</i>		
	<i>Sectors Flown</i>	<i>On Time</i>		<i>Sectors Flown</i>	<i>On Time</i>	
		<i>No.</i>	<i>%</i>		<i>No.</i>	<i>%</i>
<b>Townsville</b>						
Jetstar	902	750	83.1	903	789	87.4
Qantas	1 864	1 635	87.7	1 865	1 599	85.7
Virgin Blue	2 067	1 863	90.1	2 071	1 776	85.8
All Airlines	4 833	4 248	87.9	4 839	4 164	86.1
Relates to services to and from Brisbane and Sydney.						
<b>Wagga Wagga</b>						
QantasLink	1 363	1 066	78.2	1 364	963	70.6
Regional Express	1 480	1 100	74.3	1 480	919	62.1
All Airlines	2 843	2 166	76.2	2 844	1 882	66.2
Relates to services to and from Sydney only.						

## Definitions

---

On time departure                      A flight departure is counted as "on time" if it departs the gate within 15 minutes of the scheduled departure time shown in the carriers' schedule.

---

On time arrival                         A flight arrival is counted as "on time" if it arrived at the gate within 15 minutes of the scheduled arrival time shown in the carriers' schedule.  
Neither diverted nor cancelled flights count as on time.

---

Cancellation                            A flight is regarded as a cancellation if it is cancelled or rescheduled less than 7 days prior to its scheduled departure time.

---

On time departure percentage                      The percentage of on time departures is measured against the number of departures *operated* on any particular sector.

---

On time arrival percentage                         The percentage of on time arrivals is measured against the number of arrivals *operated* on any particular sector.

---

Cancellation percentage                      The percentage of cancellations is measured against the number of services *scheduled* on any particular sector.

---