



Australian Government

Department of Infrastructure, Transport,
Regional Development and Local Government
Bureau of Infrastructure, Transport and Regional Economics



bitre

AVIATION STATISTICS

Airline
On Time Performance

2007 Annual Report—OTP 55

© Commonwealth of Australia 2008

ISSN 1832-0759

This work is copyright and the data contained in this publication should not be reproduced or used in any form without acknowledgement.

Enquiries

Bureau of Infrastructure, Transport and Regional Economics
GPO Box 501
Canberra ACT 2601

Telephone: 02 6274 7720

Facsimile: 02 6274 7727

Web site: www.bitre.gov.au

Email: avstats@infrastructure.gov.au

This publication, including a spreadsheet of the time-series data, can be downloaded from the BITRE web site: <http://www.bitre.gov.au/info.aspx?ResourceId=214&NodeId=104>.

Disclaimers

BITRE seeks to publish its work to the highest professional standards. However, it cannot accept responsibility for any consequences arising from the use of information herein. Readers should rely on their own skill and judgment in applying any information or analysis to particular issues or circumstances.

FOREWORD

The Bureau of Infrastructure, Transport and Regional Economics (BITRE) reports on domestic aviation on time performance of participating Australian domestic airlines: Jetstar, Qantas, QantasLink, Regional Express, Skywest Airlines, and Virgin Blue. Reporting commenced in November 2003. Macair, which commenced reporting in July 2005, only supply total network data as they have no competitive routes.

The purpose of collecting this information is to monitor overall industry and individual airline performance on punctuality and to allow consumers of air travel to make informed decisions when planning air travel.

On time performance is reported for all routes where the passenger load averages over 8 000 passengers per month and where two or more airlines operate in competition. There are currently 46 routes which meet this definition. However, over time, routes which meet this criteria may change as airline networks and traffic levels vary.

Airlines also report overall monthly network performance. Total industry figures refer to all services operated by reporting airlines only. This currently represents over 99 per cent of scheduled domestic aviation services in Australia.

The method of capturing on time performance varies between airlines utilising different recording systems. Jetstar and Qantas jet aircraft use Aircraft Communication Addressing and Reporting System (ACARS) to electronically measure on time performance. Virgin Blue, Macair, Regional Express, Skywest and the Qantas non-jet fleet record on time performance manually using records from pilots, gate agents and/or ground crews.

Reports are published monthly on the BITRE web site. After collection of initial data, aggregate reports are subject to internal audit by participating airlines prior to publication. The target date for publication is within six weeks of the end of the reporting period. This report collates data for the total industry and individual routes and airports for the year ended 31 December 2007.

Information on the total network for the year ending 31 December 2007 is presented on Page 1.

On time performance reporting was provided for 46 different routes covering 28 airports for the year ending 31 December 2007. Detailed information on the performance of these routes is included in the tables beginning on Page 5, while detailed information on performance by airport is included from Page 15. The definitions can be found on Page 19.

Detailed time series data is available in Microsoft Excel spreadsheet format from the BITRE web site at – <http://www.bitre.gov.au/info.aspx?ResourceId=214&NodeId=104>.

CONTENTS

Industry Performance	1
Individual Routes	5
Airports.....	15
Definitions	19

INDUSTRY PERFORMANCE

For the year ended 31 December 2007 airline on time performance over all routes operated by participating airlines (Jetstar, Macair, Qantas, QantasLink, Regional Express, Skywest Airlines and Virgin Blue) averaged 83.7 per cent in terms of on time departures and 82.2 per cent for on time arrivals. Cancellations averaged 1.2 per cent of all scheduled flights. The equivalent figures for the previous calendar year were 87.3 per cent for departures, 86.1 per cent for arrivals and 0.9 per cent for cancellations.

The long term average performance for all routes since reporting commenced in November 2003 is 86.5 per cent for departures and 85.4 per cent for arrivals. Cancellations averaged 0.9 per cent of all scheduled flights.

For the 2007 calendar year the highest level of on time departures was recorded in January at 89.6 per cent, while the highest level of on time arrivals was recorded in April at 88.7 per cent. The lowest percentage of cancellations was 0.7 per cent in January.

The lowest level of on time performance was recorded in December with 77.1 per cent of departures and 75.2 per cent of arrivals being on time. The highest percentage of cancellations was also recorded in December with 1.5 per cent of scheduled flights cancelled.

Of the major domestic airlines, Jetstar achieved the highest level of on time departures for 2007 at 84.1 per cent, while Qantas and Virgin Blue achieved 82.8 and 82.4 per cent respectively. QantasLink was the best performing regional airline with 85.7 per cent departures on time, followed by Regional Express (84.8 per cent), Skywest (82.8 per cent) and Macair (80.8 per cent).

Skywest recorded the highest percentage of cancellations for the year at 2.5 per cent, followed closely by Macair at 2.3 per cent. Jetstar recorded the lowest level of cancellations at 0.6 per cent.

The Canberra–Adelaide route had the highest percentage of on time departures (90.5 per cent) out of the 46 routes which meet the criteria for on time performance reporting. Conversely, the Perth–Brisbane route had the lowest percentage of on time departures (63.9 per cent). On time arrivals were also highest on the Canberra–Adelaide route (90.7 per cent), and were lowest on the Sydney–Albury route (69.6 per cent). Cancellations were highest on the Melbourne–Sydney route (3.5 per cent).

Canberra Airport recorded the highest percentage of on time departures (88.6 per cent), while Broome Airport recorded the lowest percentage (72.2 per cent). On time arrivals were also highest at Canberra Airport (85.9 per cent) and lowest at Albury Airport (69.6 per cent).

On time performance – total industry for the 2007 calendar year

	Sectors		On Time		Cancellations	On Time (%)		Cancellations (%)
	Scheduled	Flown	Departures	Arrivals		Departures	Arrivals	
Jetstar	51 979	51 650	43 461	42 776	329	84.1	82.8	0.6
Macair	14 258	13 923	11 246	11 200	335	80.8	80.4	2.3
Qantas	121 133	119 479	98 921	99 531	1 654	82.8	83.3	1.4
QantasLink	99 568	98 705	84 624	82 864	863	85.7	84.0	0.9
Regional Express	67 587	67 034	56 846	53 686	553	84.8	80.1	0.8
Skywest	12 787	12 461	10 313	10 025	326	82.8	80.5	2.5
Virgin Blue	112 363	110 869	91 396	89 812	1,494	82.4	81.0	1.3
All Airlines	479 675	474 121	396 807	389 894	5 554	83.7	82.2	1.2

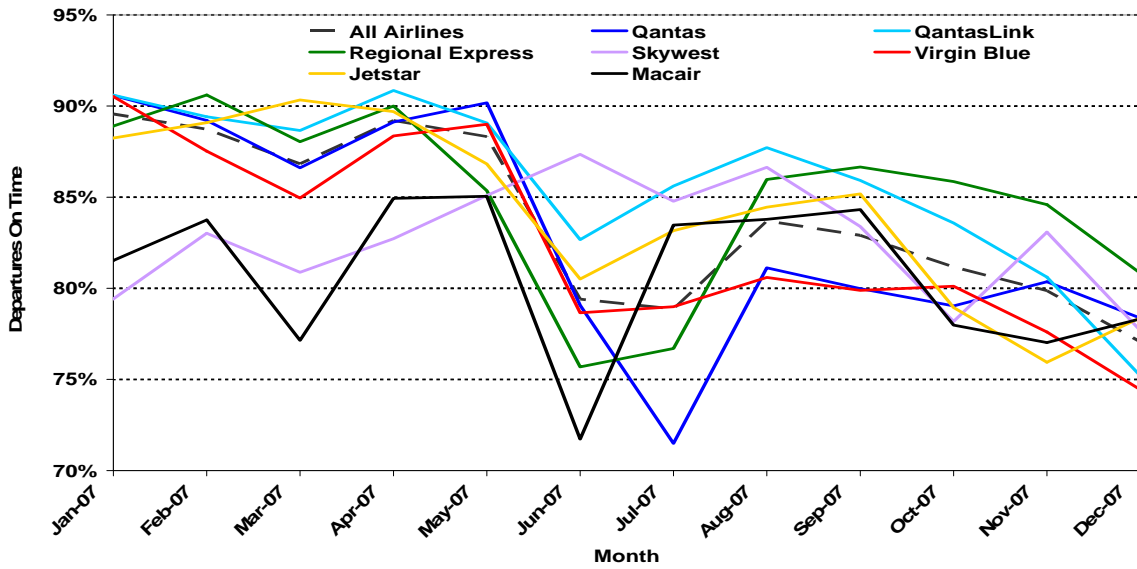
Top ten routes for on time performance for the 2007 calendar year (participating airlines only)

Departures		Arrivals	
Route	On Time (%)	Route	On Time (%)
Canberra-Adelaide	90.5	Canberra-Adelaide	90.7
Sydney-Townsville	89.9	Sydney-Townsville	87.3
Sydney-Maroochydore	89.3	Sydney-Maroochydore	84.9
Cairns-Brisbane	89.2	Cairns-Brisbane	88.8
Canberra-Melbourne	88.4	Canberra-Melbourne	85.8
Canberra-Brisbane	88.3	Canberra-Brisbane	85.8
Adelaide-Melbourne	87.9	Adelaide-Melbourne	87.6
Mackay-Brisbane	87.9	Mackay-Brisbane	86.3
Hobart-Sydney	87.8	Hobart-Sydney	86.9
Adelaide-Sydney	87.3	Adelaide-Sydney	88.1

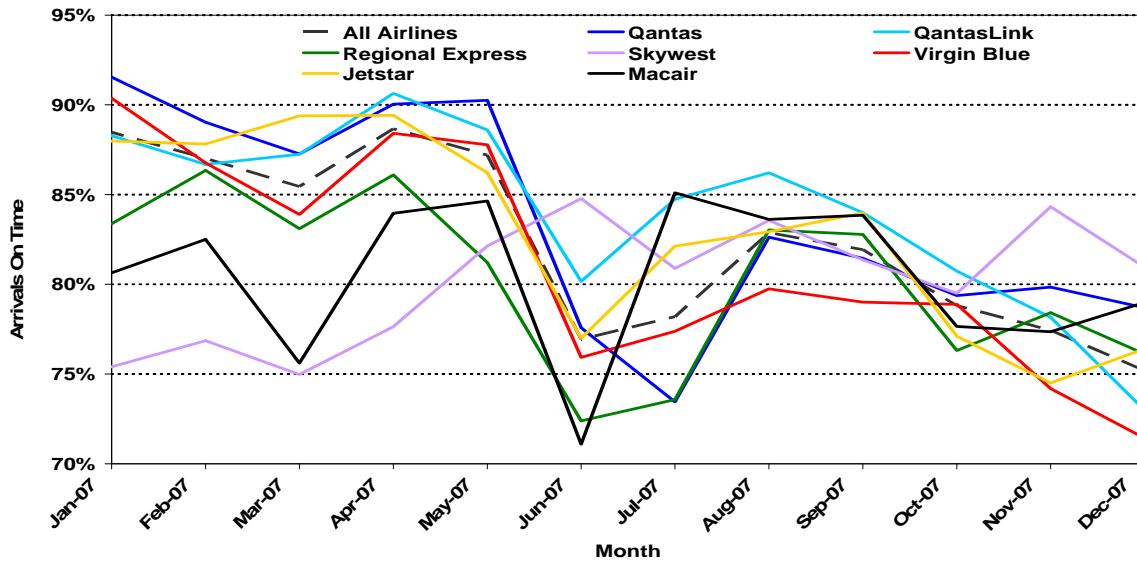
Top ten airports for on time performance for the 2007 calendar year (participating airlines and reported routes only)

Departures		Arrivals	
Airport	On Time (%)	Airport	On Time (%)
Canberra	88.6	Canberra	85.9
Mackay	87.9	Rockhampton	85.1
Adelaide	87.0	Townsville	84.9
Rockhampton	86.6	Adelaide	84.9
Townsville	86.5	Maroochydore	83.9
Mildura	85.7	Kalgoorlie	83.7
Hobart	85.1	Hamilton Island	83.4
Coffs Harbour	85.0	Newcastle	83.3
Cairns	85.0	Brisbane	83.2
Brisbane	84.1	Mackay	82.7

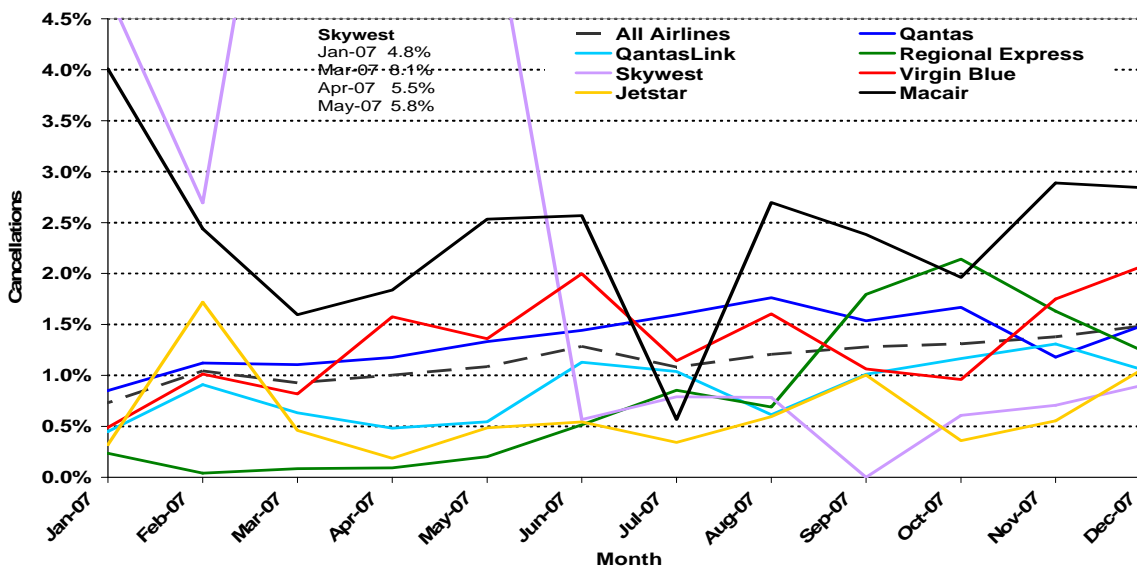
On Time Departures – Total Industry



On Time Arrivals – Total Industry



Cancellations – Total Industry



INDIVIDUAL ROUTES

On time performance is reported for all routes which are flown by two or more airlines where the passenger load averages over 8 000 passengers per month. There are currently 46 routes which meet this definition. However, over time, routes which meet this definition may change as airline networks and traffic levels vary.

	Sectors		On Time Departures		On Time Arrivals		Cancellations	
	Sched.	Flown	No.	%	No.	%	No.	%
Adelaide-Brisbane								
Jetstar	365	361	303	83.9	309	85.6	4	1.1
Qantas	1 048	1 048	927	88.5	929	88.6	0	0.0
Virgin Blue	1 107	1 105	938	84.9	963	87.1	2	0.2
All Airlines	2 520	2 514	2 168	86.2	2 201	87.5	6	0.2
Adelaide-Canberra								
Qantas	543	543	489	90.1	491	90.4	0	0.0
Virgin Blue	358	357	261	73.1	275	77.0	1	0.3
All Airlines	901	900	750	83.3	766	85.1	1	0.1
Adelaide-Gold Coast								
Jetstar	316	316	284	89.9	283	89.6	0	0.0
Virgin Blue	365	364	279	76.6	270	74.2	1	0.3
All Airlines	681	680	563	82.8	553	81.3	1	0.1
Adelaide-Melbourne								
Qantas	4 083	4 033	3 529	87.5	3 551	88.0	50	1.2
Virgin Blue	3 093	3 043	2 694	88.5	2 649	87.1	50	1.6
All Airlines	7 176	7 076	6 223	87.9	6 200	87.6	100	1.4
Adelaide-Perth								
Qantas	1 703	1 699	1 469	86.5	1 481	87.2	4	0.2
Virgin Blue	449	449	390	86.9	384	85.5	0	0.0
All Airlines	2 152	2 148	1 859	86.5	1 865	86.8	4	0.2
Adelaide-Sydney								
Jetstar	524	521	493	94.6	476	91.4	3	0.6
Qantas	3 765	3 725	3 282	88.1	3 278	88.0	40	1.1
Virgin Blue	1 813	1 804	1 504	83.4	1 576	87.4	9	0.5
All Airlines	6 102	6 050	5 279	87.3	5 330	88.1	52	0.9
Albury-Sydney								
QantasLink	1 354	1 354	1 096	80.9	1 098	81.1	0	0.0
Regional Express	1 390	1 374	1 067	77.7	1 012	73.7	16	1.2
All Airlines	2 744	2 728	2 163	79.3	2 110	77.3	16	0.6
Ballina-Sydney								
Jetstar	370	370	315	85.1	305	82.4	0	0.0
Regional Express	1 224	1 206	921	76.4	814	67.5	18	1.5
Virgin Blue	438	427	348	81.5	334	78.2	11	2.5
All Airlines	2 032	2 003	1 584	79.1	1 453	72.5	29	1.4

	Sectors		On Time Departures		On Time Arrivals		Cancellations	
	Sched.	Flown	No.	%	No.	%	No.	%
Brisbane-Adelaide								
Jetstar	365	361	331	91.7	317	87.8	4	1.1
Qantas	1 047	1 047	866	82.7	932	89.0	0	0.0
Virgin Blue	1 109	1 107	934	84.4	931	84.1	2	0.2
All Airlines	2 521	2 515	2 131	84.7	2 180	86.7	6	0.2
Brisbane-Cairns								
Jetstar	1 066	1 062	793	74.7	824	77.6	4	0.4
Qantas	1 463	1 462	1 245	85.2	1 306	89.3	1	0.1
Virgin Blue	1 534	1 530	1 312	85.8	1 296	84.7	4	0.3
All Airlines	4 063	4 054	3 350	82.6	3 426	84.5	9	0.2
Brisbane-Canberra								
Qantas	1 450	1 445	1 220	84.4	1 283	88.8	5	0.3
QantasLink	364	357	324	90.8	327	91.6	7	1.9
Virgin Blue	1 162	1 153	996	86.4	996	86.4	9	0.8
All Airlines	2 976	2 955	2 540	86.0	2 606	88.2	21	0.7
Brisbane-Darwin								
Jetstar	313	313	270	86.3	269	85.9	0	0.0
Qantas	367	367	317	86.4	300	81.7	0	0.0
Virgin Blue	365	365	276	75.6	272	74.5	0	0.0
All Airlines	1 045	1 045	863	82.6	841	80.5	0	0.0
Brisbane-Hamilton Island								
Jetstar	364	360	315	87.5	319	88.6	4	1.1
Virgin Blue	366	365	316	86.6	286	78.4	1	0.3
All Airlines	730	725	631	87.0	605	83.4	5	0.7
Brisbane-Hobart								
Jetstar	156	156	124	79.5	116	74.4	0	0.0
Virgin Blue	417	417	355	85.1	337	80.8	0	0.0
All Airlines	573	573	479	83.6	453	79.1	0	0.0
Brisbane-Mackay								
Jetstar	1 094	1 091	937	85.9	934	85.6	3	0.3
QantasLink	693	689	593	86.1	592	85.9	4	0.6
Virgin Blue	1 122	1 121	907	80.9	874	78.0	1	0.1
All Airlines	2 909	2 901	2 437	84.0	2 400	82.7	8	0.3
Brisbane-Melbourne								
Qantas	5 396	5 355	4 549	84.9	4 720	88.1	41	0.8
Virgin Blue	3 648	3 614	2 983	82.5	2 974	82.3	34	0.9
All Airlines	9 044	8 969	7 532	84.0	7 694	85.8	75	0.8
Brisbane-Newcastle								
Jetstar	1 089	1 088	909	83.5	928	85.3	1	0.1
QantasLink	610	601	512	85.2	483	80.4	9	1.5
Virgin Blue	586	583	484	83.0	477	81.8	3	0.5
All Airlines	2 285	2 272	1 905	83.8	1 888	83.1	13	0.6
Brisbane-Perth								
Qantas	1 347	1 347	1 031	76.5	1 054	78.2	0	0.0
Virgin Blue	365	365	269	73.7	268	73.4	0	0.0
All Airlines	1 712	1 712	1 300	75.9	1 322	77.2	0	0.0

	Sectors		On Time Departures		On Time Arrivals		Cancellations	
	Sched.	Flown	No.	%	No.	%	No.	%
Brisbane-Proserpine								
Jetstar	365	362	279	77.1	275	76.0	3	0.8
Virgin Blue	365	363	307	84.6	292	80.4	2	0.5
All Airlines	730	725	586	80.8	567	78.2	5	0.7
Brisbane-Rockhampton								
Jetstar	365	365	315	86.3	314	86.0	0	0.0
QantasLink	2 564	2 544	2 256	88.7	2 260	88.8	20	0.8
Virgin Blue	1 095	1 094	853	78.0	833	76.1	1	0.1
All Airlines	4 024	4 003	3 424	85.5	3 407	85.1	21	0.5
Brisbane-Sydney								
Qantas	7 927	7 757	6 515	84.0	6 313	81.4	170	2.1
Virgin Blue	6 590	6 394	5 481	85.7	5 225	81.7	196	3.0
All Airlines	14 517	14 151	11 996	84.8	11 538	81.5	366	2.5
Brisbane-Townsville								
Jetstar	365	364	293	80.5	304	83.5	1	0.3
Qantas	1 679	1 676	1 424	85.0	1 440	85.9	3	0.2
Virgin Blue	1 185	1 184	994	84.0	978	82.6	1	0.1
All Airlines	3 229	3 224	2 711	84.1	2 722	84.4	5	0.2
Broome-Perth								
Qantas	385	385	275	71.4	283	73.5	0	0.0
QantasLink	325	322	270	83.9	275	85.4	3	0.9
Skywest	422	411	305	74.2	275	66.9	11	2.6
Virgin Blue	257	256	142	55.5	154	60.2	1	0.4
All Airlines	1 389	1 374	992	72.2	987	71.8	15	1.1
Cairns-Brisbane								
Jetstar	1 071	1 067	921	86.3	876	82.1	4	0.4
Qantas	1 464	1 461	1 358	93.0	1 386	94.9	3	0.2
Virgin Blue	1 533	1 530	1 341	87.6	1 340	87.6	3	0.2
All Airlines	4 068	4 058	3 620	89.2	3 602	88.8	10	0.2
Cairns-Melbourne								
Jetstar	410	405	360	88.9	344	84.9	5	1.2
Qantas	365	365	252	69.0	297	81.4	0	0.0
Virgin Blue	747	743	583	78.5	594	79.9	4	0.5
All Airlines	1 522	1 513	1 195	79.0	1 235	81.6	9	0.6
Cairns-Sydney								
Jetstar	499	495	425	85.9	405	81.8	4	0.8
Qantas	1 305	1 304	1 089	83.5	1 154	88.5	1	0.1
Virgin Blue	1 054	1 052	826	78.5	854	81.2	2	0.2
All Airlines	2 858	2 851	2 340	82.1	2 413	84.6	7	0.2
Canberra-Adelaide								
Qantas	590	590	543	92.0	548	92.9	0	0.0
Virgin Blue	356	356	313	87.9	310	87.1	0	0.0
All Airlines	946	946	856	90.5	858	90.7	0	0.0

	Sectors		On Time Departures		On Time Arrivals		Cancellations	
	Sched.	Flown	No.	%	No.	%	No.	%
Canberra-Brisbane								
Qantas	1 449	1 445	1 300	90.0	1 254	86.8	4	0.3
QantasLink	364	357	298	83.5	290	81.2	7	1.9
Virgin Blue	1 163	1 153	1 011	87.7	992	86.0	10	0.9
All Airlines	2 976	2 955	2 609	88.3	2 536	85.8	21	0.7
Canberra-Melbourne								
Qantas	2 572	2 554	2 249	88.1	2 193	85.9	18	0.7
QantasLink	1 214	1 197	1 058	88.4	1 013	84.6	17	1.4
Virgin Blue	1 520	1 513	1 345	88.9	1 311	86.6	7	0.5
All Airlines	5 306	5 264	4 652	88.4	4 517	85.8	42	0.8
Coffs Harbour-Sydney								
QantasLink	1 736	1 735	1 450	83.6	1 363	78.6	1	0.1
Virgin Blue	728	725	642	88.6	631	87.0	3	0.4
All Airlines	2 464	2 460	2 092	85.0	1 994	81.1	4	0.2
Darwin-Brisbane								
Jetstar	313	312	255	81.7	240	76.9	1	0.3
Qantas	367	367	278	75.7	304	82.8	0	0.0
Virgin Blue	365	365	286	78.4	309	84.7	0	0.0
All Airlines	1 045	1 044	819	78.4	853	81.7	1	0.1
Darwin-Melbourne								
Jetstar	318	317	275	86.8	281	88.6	1	0.3
Virgin Blue	140	138	112	81.2	104	75.4	2	1.4
All Airlines	458	455	387	85.1	385	84.6	3	0.7
Dubbo-Sydney								
QantasLink	1 360	1 357	1 178	86.8	1 117	82.3	3	0.2
Regional Express	1 641	1 624	1 256	77.3	1 257	77.4	17	1.0
All Airlines	3 001	2 981	2 434	81.7	2 374	79.6	20	0.7
Gold Coast-Adelaide								
Jetstar	316	316	275	87.0	280	88.6	0	0.0
Virgin Blue	365	362	216	59.7	273	75.4	3	0.8
All Airlines	681	678	491	72.4	553	81.6	3	0.4
Gold Coast-Melbourne								
Jetstar	2 010	2 009	1 565	77.9	1 561	77.7	1	0.0
Virgin Blue	2 352	2 312	1 820	78.7	1 842	79.7	40	1.7
All Airlines	4 362	4 321	3 385	78.3	3 403	78.8	41	0.9
Gold Coast-Sydney								
Jetstar	2 963	2 955	2 547	86.2	2 476	83.8	8	0.3
Qantas	730	729	626	85.9	640	87.8	1	0.1
Virgin Blue	4 115	4 052	3 210	79.2	3 307	81.6	63	1.5
All Airlines	7 808	7 736	6 383	82.5	6 423	83.0	72	0.9
Hamilton Island-Brisbane								
Jetstar	364	359	299	83.3	291	81.1	5	1.4
Virgin Blue	366	364	291	79.9	306	84.1	2	0.5
All Airlines	730	723	590	81.6	597	82.6	7	1.0

	Sectors		On Time Departures		On Time Arrivals		Cancellations	
	Sched.	Flown	No.	%	No.	%	No.	%
Hervey Bay-Sydney								
Jetstar	209	207	181	87.4	184	88.9	2	1.0
Virgin Blue	366	364	298	81.9	293	80.5	2	0.5
All Airlines	575	571	479	83.9	477	83.5	4	0.7
Hobart-Brisbane								
Jetstar	156	156	105	67.3	110	70.5	0	0.0
Virgin Blue	416	416	301	72.4	310	74.5	0	0.0
All Airlines	572	572	406	71.0	420	73.4	0	0.0
Hobart-Melbourne								
Jetstar	1 462	1 460	1 290	88.4	1 236	84.7	2	0.1
Qantas	732	731	632	86.5	615	84.1	1	0.1
Virgin Blue	1 497	1 494	1 248	83.5	1 207	80.8	3	0.2
All Airlines	3 691	3 685	3 170	86.0	3 058	83.0	6	0.2
Hobart-Sydney								
Jetstar	576	572	511	89.3	500	87.4	4	0.7
Qantas	368	368	285	77.4	296	80.4	0	0.0
Virgin Blue	725	723	664	91.8	649	89.8	2	0.3
All Airlines	1 669	1 663	1 460	87.8	1 445	86.9	6	0.4
Kalgoorlie-Perth								
Qantas	570	566	451	79.7	467	82.5	4	0.7
QantasLink	330	330	270	81.8	288	87.3	0	0.0
Skywest	494	452	371	82.1	354	78.3	42	8.5
All Airlines	1 394	1 348	1 092	81.0	1 109	82.3	46	3.3
Launceston-Melbourne								
Jetstar	1 098	1 095	813	74.2	824	75.3	3	0.3
QantasLink	764	762	700	91.9	598	78.5	2	0.3
Virgin Blue	1 494	1 485	1 250	84.2	1 260	84.8	9	0.6
All Airlines	3 356	3 342	2 763	82.7	2 682	80.3	14	0.4
Launceston-Sydney								
Jetstar	367	364	280	76.9	304	83.5	3	0.8
Virgin Blue	406	406	296	72.9	317	78.1	0	0.0
All Airlines	773	770	576	74.8	621	80.6	3	0.4
Mackay-Brisbane								
Jetstar	1 094	1 090	917	84.1	885	81.2	4	0.4
QantasLink	724	719	665	92.5	647	90.0	5	0.7
Virgin Blue	1 122	1 120	992	88.6	997	89.0	2	0.2
All Airlines	2 940	2 929	2 574	87.9	2 529	86.3	11	0.4
Maroochydore-Melbourne								
Jetstar	681	673	510	75.8	507	75.3	8	1.2
Virgin Blue	732	713	549	77.0	584	81.9	19	2.6
All Airlines	1 413	1 386	1 059	76.4	1 091	78.7	27	1.9
Maroochydore-Sydney								
Jetstar	1 014	999	837	83.8	812	81.3	15	1.5
Virgin Blue	494	488	379	77.7	384	78.7	6	1.2
All Airlines	1 508	1 487	1 216	81.8	1 196	80.4	21	1.4

	Sectors		On Time Departures		On Time Arrivals		Cancellations	
	Sched.	Flown	No.	%	No.	%	No.	%
Melbourne-Adelaide								
Qantas	4 349	4 276	3 628	84.8	3 652	85.4	73	1.7
Virgin Blue	3 091	3 046	2 537	83.3	2 513	82.5	45	1.5
All Airlines	7 440	7 322	6 165	84.2	6 165	84.2	118	1.6
Melbourne-Brisbane								
Qantas	5 354	5 322	4 448	83.6	4 407	82.8	32	0.6
Virgin Blue	3 642	3 607	2 890	80.1	2 893	80.2	35	1.0
All Airlines	8 996	8 929	7 338	82.2	7 300	81.8	67	0.7
Melbourne-Cairns								
Jetstar	411	406	380	93.6	367	90.4	5	1.2
Qantas	365	365	297	81.4	293	80.3	0	0.0
Virgin Blue	747	744	565	75.9	543	73.0	3	0.4
All Airlines	1 523	1 515	1 242	82.0	1 203	79.4	8	0.5
Melbourne-Canberra								
Qantas	2 306	2 290	1 960	85.6	1 970	86.0	16	0.7
QantasLink	1 211	1 193	1 032	86.5	1 012	84.8	18	1.5
Virgin Blue	1 520	1 514	1 286	84.9	1 248	82.4	6	0.4
All Airlines	5 037	4 997	4 278	85.6	4 230	84.7	40	0.8
Melbourne-Darwin								
Jetstar	317	317	252	79.5	254	80.1	0	0.0
Virgin Blue	141	138	111	80.4	117	84.8	3	2.1
All Airlines	458	455	363	79.8	371	81.5	3	0.7
Melbourne-Gold Coast								
Jetstar	2 020	2 019	1 692	83.8	1 665	82.5	1	0.0
Virgin Blue	2 355	2 318	1 924	83.0	1 908	82.3	37	1.6
All Airlines	4 375	4 337	3 616	83.4	3 573	82.4	38	0.9
Melbourne-Hobart								
Jetstar	1 462	1 459	1 272	87.2	1 256	86.1	3	0.2
Qantas	732	731	542	74.1	529	72.4	1	0.1
Virgin Blue	1 496	1 494	1 215	81.3	1 178	78.8	2	0.1
All Airlines	3 690	3 684	3 029	82.2	2 963	80.4	6	0.2
Melbourne-Launceston								
Jetstar	1 100	1 096	847	77.3	818	74.6	4	0.4
QantasLink	764	760	619	81.4	623	82.0	4	0.5
Virgin Blue	1 494	1 487	1 177	79.2	1 152	77.5	7	0.5
All Airlines	3 358	3 343	2 643	79.1	2 593	77.6	15	0.4
Melbourne-Maroochydore								
Jetstar	682	678	593	87.5	564	83.2	4	0.6
Virgin Blue	733	720	577	80.1	594	82.5	13	1.8
All Airlines	1 415	1 398	1 170	83.7	1 158	82.8	17	1.2
Melbourne-Mildura								
QantasLink	1 632	1 626	1 305	80.3	1 298	79.8	6	0.4
Regional Express	1 304	1 298	1 159	89.3	1 092	84.1	6	0.5
All Airlines	2 936	2 924	2 464	84.3	2 390	81.7	12	0.4

	Sectors		On Time Departures		On Time Arrivals		Cancellations	
	Sched.	Flown	No.	%	No.	%	No.	%
Melbourne-Newcastle								
Jetstar	729	729	597	81.9	586	80.4	0	0.0
QantasLink	912	909	794	87.3	769	84.6	3	0.3
Virgin Blue	365	363	324	89.3	317	87.3	2	0.5
All Airlines	2 006	2 001	1 715	85.7	1 672	83.6	5	0.2
Melbourne-Perth								
Qantas	2 478	2 462	1 638	66.5	1 801	73.2	16	0.6
Virgin Blue	1 429	1 427	1 242	87.0	1 148	80.4	2	0.1
All Airlines	3 907	3 889	2 880	74.1	2 949	75.8	18	0.5
Melbourne-Sydney								
Qantas	11 033	10 606	8 722	82.2	8 215	77.5	427	3.9
Virgin Blue	8 867	8 606	7 138	82.9	6 838	79.5	261	2.9
All Airlines	19 900	19 212	15 860	82.6	15 053	78.4	688	3.5
Mildura-Melbourne								
QantasLink	1 633	1 616	1 332	82.4	1 318	81.6	17	1.0
Regional Express	1 305	1 300	1 168	89.8	1 136	87.4	5	0.4
All Airlines	2 938	2 916	2 500	85.7	2 454	84.2	22	0.7
Newcastle-Brisbane								
Jetstar	1 088	1 087	836	76.9	785	72.2	1	0.1
QantasLink	612	605	531	87.8	508	84.0	7	1.1
Virgin Blue	586	580	484	83.4	481	82.9	6	1.0
All Airlines	2 286	2 272	1 851	81.5	1 774	78.1	14	0.6
Newcastle-Melbourne								
Jetstar	728	728	575	79.0	587	80.6	0	0.0
QantasLink	907	903	779	86.3	745	82.5	4	0.4
Virgin Blue	365	363	294	81.0	273	75.2	2	0.5
All Airlines	2 000	1 994	1 648	82.6	1 605	80.5	6	0.3
Perth-Adelaide								
Qantas	1 703	1 692	1 445	85.4	1 469	86.8	11	0.6
Virgin Blue	449	449	382	85.1	390	86.9	0	0.0
All Airlines	2 152	2 141	1 827	85.3	1 859	86.8	11	0.5
Perth-Brisbane								
Qantas	1 345	1 343	855	63.7	975	72.6	2	0.1
Virgin Blue	365	365	236	64.7	243	66.6	0	0.0
All Airlines	1 710	1 708	1 091	63.9	1 218	71.3	2	0.1
Perth-Broome								
Qantas	385	385	292	75.8	313	81.3	0	0.0
QantasLink	323	321	249	77.6	245	76.3	2	0.6
Skywest	421	414	331	80.0	322	77.8	7	1.7
Virgin Blue	257	256	138	53.9	146	57.0	1	0.4
All Airlines	1 386	1 376	1 010	73.4	1 026	74.6	10	0.7
Perth-Kalgoorlie								
Qantas	569	567	494	87.1	483	85.2	2	0.4
QantasLink	330	330	268	81.2	276	83.6	0	0.0
Skywest	495	451	369	81.8	369	81.8	44	8.9
All Airlines	1 394	1 348	1 131	83.9	1 128	83.7	46	3.3

	Sectors		On Time Departures		On Time Arrivals		Cancellations	
	Sched.	Flown	No.	%	No.	%	No.	%
Perth-Melbourne								
Qantas	2 477	2 456	1 743	71.0	1 729	70.4	21	0.8
Virgin Blue	1 429	1 426	1 208	84.7	1 133	79.5	3	0.2
All Airlines	3 906	3 882	2 951	76.0	2 862	73.7	24	0.6
Perth-Port Hedland								
QantasLink	981	977	773	79.1	818	83.7	4	0.4
Skywest	77	77	52	67.5	51	66.2	0	0.0
All Airlines	1 058	1 054	825	78.3	869	82.4	4	0.4
Perth-Sydney								
Qantas	1 951	1 945	1 425	73.3	1 447	74.4	6	0.3
Virgin Blue	1 092	1 090	911	83.6	851	78.1	2	0.2
All Airlines	3 043	3 035	2 336	77.0	2 298	75.7	8	0.3
Port Hedland-Perth								
QantasLink	974	969	790	81.5	783	80.8	5	0.5
Skywest	79	79	42	53.2	39	49.4	0	0.0
All Airlines	1 053	1 048	832	79.4	822	78.4	5	0.5
Proserpine-Brisbane								
Jetstar	365	362	266	73.5	262	72.4	3	0.8
Virgin Blue	365	362	288	79.6	299	82.6	3	0.8
All Airlines	730	724	554	76.5	561	77.5	6	0.8
Rockhampton-Brisbane								
Jetstar	365	365	284	77.8	262	71.8	0	0.0
QantasLink	2 015	1 999	1 784	89.2	1 783	89.2	16	0.8
Virgin Blue	1 094	1 092	924	84.6	922	84.4	2	0.2
All Airlines	3 474	3 456	2 992	86.6	2 967	85.9	18	0.5
Sydney-Adelaide								
Jetstar	393	390	292	74.9	309	79.2	3	0.8
Qantas	3 454	3 435	2 842	82.7	2 986	86.9	19	0.6
Virgin Blue	1 813	1 804	1 455	80.7	1 417	78.5	9	0.5
All Airlines	5 660	5 629	4 589	81.5	4 712	83.7	31	0.5
Sydney-Albury								
QantasLink	1 356	1 356	1 001	73.8	950	70.1	0	0.0
Regional Express	1 389	1 373	1 041	75.8	950	69.2	16	1.2
All Airlines	2 745	2 729	2 042	74.8	1 900	69.6	16	0.6
Sydney-Ballina								
Jetstar	372	372	330	88.7	322	86.6	0	0.0
Regional Express	1 229	1 209	927	76.7	875	72.4	20	1.6
Virgin Blue	437	431	360	83.5	358	83.1	6	1.4
All Airlines	2 038	2 012	1 617	80.4	1 555	77.3	26	1.3
Sydney-Brisbane								
Qantas	7 974	7 808	6 463	82.8	6 677	85.5	166	2.1
Virgin Blue	6 586	6 389	5 161	80.8	4 965	77.7	197	3.0
All Airlines	14 560	14 197	11 624	81.9	11 642	82.0	363	2.5

	Sectors		On Time Departures		On Time Arrivals		Cancellations	
	Sched.	Flown	No.	%	No.	%	No.	%
Sydney-Cairns								
Jetstar	501	498	452	90.8	438	88.0	3	0.6
Qantas	1 305	1 304	1 042	79.9	1 065	81.7	1	0.1
Virgin Blue	1 055	1 053	797	75.7	728	69.1	2	0.2
All Airlines	2 861	2 855	2 291	80.2	2 231	78.1	6	0.2
Sydney-Coffs Harbour								
QantasLink	1 736	1 736	1 384	79.7	1 363	78.5	0	0.0
Virgin Blue	728	728	635	87.2	635	87.2	0	0.0
All Airlines	2 464	2 464	2 019	81.9	1 998	81.1	0	0.0
Sydney-Dubbo								
QantasLink	1 360	1 357	1 106	81.5	1 137	83.8	3	0.2
Regional Express	1 642	1 628	1 159	71.2	1 098	67.4	14	0.9
All Airlines	3 002	2 985	2 265	75.9	2 235	74.9	17	0.6
Sydney-Gold Coast								
Jetstar	2 970	2 954	2 559	86.6	2 567	86.9	16	0.5
Qantas	730	730	610	83.6	618	84.7	0	0.0
Virgin Blue	4 113	4 053	3 205	79.1	3 194	78.8	60	1.5
All Airlines	7 813	7 737	6 374	82.4	6 379	82.4	76	1.0
Sydney-Hervey Bay								
Jetstar	209	209	185	88.5	187	89.5	0	0.0
Virgin Blue	366	365	282	77.3	287	78.6	1	0.3
All Airlines	575	574	467	81.4	474	82.6	1	0.2
Sydney-Hobart								
Jetstar	576	575	502	87.3	513	89.2	1	0.2
Qantas	368	368	303	82.3	303	82.3	0	0.0
Virgin Blue	725	724	543	75.0	499	68.9	1	0.1
All Airlines	1 669	1 667	1 348	80.9	1 315	78.9	2	0.1
Sydney-Launceston								
Jetstar	365	363	302	83.2	288	79.3	2	0.5
Virgin Blue	406	406	315	77.6	315	77.6	0	0.0
All Airlines	771	769	617	80.2	603	78.4	2	0.3
Sydney-Maroochydore								
Jetstar	1 016	1 009	902	89.4	866	85.8	7	0.7
Virgin Blue	494	490	437	89.2	406	82.9	4	0.8
All Airlines	1 510	1 499	1 339	89.3	1 272	84.9	11	0.7
Sydney-Melbourne								
Qantas	10 978	10 570	8 303	78.6	8 122	76.8	408	3.7
Virgin Blue	8 872	8 611	7 244	84.1	6 998	81.3	261	2.9
All Airlines	19 850	19 181	15 547	81.1	15 120	78.8	669	3.4
Sydney-Perth								
Qantas	1 952	1 951	1 398	71.7	1 516	77.7	1	0.1
Virgin Blue	1 092	1 092	813	74.5	705	64.6	0	0.0
All Airlines	3 044	3 043	2 211	72.7	2 221	73.0	1	0.0

	Sectors		On Time Departures		On Time Arrivals		Cancellations	
	Sched.	Flown	No.	%	No.	%	No.	%
Sydney-Townsville								
Jetstar	260	260	254	97.7	250	96.2	0	0.0
Virgin Blue	365	364	307	84.3	295	81.0	1	0.3
All Airlines	625	624	561	89.9	545	87.3	1	0.2
Sydney-Wagga Wagga								
QantasLink	1 361	1 361	1 018	74.8	982	72.2	0	0.0
Regional Express	1 798	1 773	1 429	80.6	1 273	71.8	25	1.4
All Airlines	3 159	3 134	2 447	78.1	2 255	72.0	25	0.8
Townsville-Brisbane								
Jetstar	365	364	284	78.0	286	78.6	1	0.3
Qantas	1 679	1 674	1 481	88.5	1 493	89.2	5	0.3
Virgin Blue	1 185	1 182	1 037	87.7	1 059	89.6	3	0.3
All Airlines	3 229	3 220	2 802	87.0	2 838	88.1	9	0.3
Townsville-Sydney								
Jetstar	261	261	241	92.3	238	91.2	0	0.0
Virgin Blue	365	364	283	77.7	299	82.1	1	0.3
All Airlines	626	625	524	83.8	537	85.9	1	0.2
Wagga Wagga-Sydney								
QantasLink	1 359	1 358	1 067	78.6	966	71.1	1	0.1
Regional Express	1 803	1 777	1 425	80.2	1 370	77.1	26	1.4
All Airlines	3 162	3 135	2 492	79.5	2 336	74.5	27	0.9

AIRPORTS

On time performance is reported for all routes where the passenger load averages over 8 000 passengers per month and where two or more airlines operate in competition. The following data reports by airport against flights operated on those routes only.

	Departures			Arrivals		
	Sectors Flown	On Time No.	On Time %	Sectors Flown	On Time No.	On Time %
Adelaide Airport						
Jetstar	1198	1080	90.2	1067	906	84.9
Qantas	11 048	9 696	87.8	11 040	9 587	86.8
Virgin Blue	7 122	6 066	85.2	7 124	5 834	81.9
All Airlines	19 368	16 842	87.0	19 231	16 327	84.9
Relates to services to and from Brisbane, Canberra, Gold Coast, Melbourne, Perth and Sydney.						
Albury Airport						
QantasLink	1 354	1 096	80.9	1 356	950	70.1
Regional Express	1 374	1 067	77.7	1 373	950	69.2
All Airlines	2 728	2 163	79.3	2 729	1 900	69.6
Relates to services to and from Sydney only.						
Ballina Airport						
Jetstar	370	315	85.1	372	322	86.6
Regional Express	1206	921	76.4	1209	875	72.4
Virgin Blue	427	348	81.5	431	358	83.1
All Airlines	2 003	1 584	79.1	2 012	1 555	77.3
Relates to services to and from Sydney only.						
Brisbane Airport						
Jetstar	5 522	4 566	82.7	5 523	4 306	78.0
Qantas	20 456	17 167	83.9	20 468	17 425	85.1
QantasLink	4 191	3 685	87.9	3 680	3 228	87.7
Virgin Blue	19 655	16 467	83.8	19 630	16 079	81.9
All Airlines	49 824	41 885	84.1	49 301	41 038	83.2
Relates to services to and from Adelaide, Cairns, Canberra, Darwin, Hamilton Island, Hobart, Mackay, Melbourne, Newcastle, Perth, Proserpine, Rockhampton, Sydney and Townsville.						
Broome Airport						
Qantas	385	275	71.4	385	313	81.3
QantasLink	322	270	83.9	321	245	76.3
Skywest	411	305	74.2	414	322	77.8
Virgin Blue	256	142	55.5	256	146	57.0
All Airlines	1 374	992	72.2	1 376	1 026	74.6
Relates to services to and from Perth only.						
Cairns Airport						
Jetstar	1 967	1 706	86.7	1 966	1 629	82.9
Qantas	3 130	2 699	86.2	3 131	2 664	85.1
Virgin Blue	3 325	2 750	82.7	3 327	2 567	77.2
All Airlines	8 422	7 155	85.0	8 424	6 860	81.4
Relates to services to and from Brisbane, Melbourne and Sydney.						

	Departures			Arrivals		
	Sectors Flown	On Time No.	%	Sectors Flown	On Time No.	%
Canberra Airport						
Qantas	4 589	4 092	89.2	4 278	3 744	87.5
QantasLink	1 554	1 356	87.3	1 550	1 339	86.4
Virgin Blue	3 022	2 669	88.3	3 024	2 519	83.3
All Airlines	9 165	8 117	88.6	8 852	7 602	85.9
Relates to services to and from Adelaide, Brisbane and Melbourne.						
Coffs Harbour Airport						
QantasLink	1 735	1 450	83.6	1 736	1 363	78.5
Virgin Blue	725	642	88.6	728	635	87.2
All Airlines	2 460	2 092	85.0	2 464	1 998	81.1
Relates to services to and from Sydney only.						
Darwin Airport						
Jetstar	629	530	84.3	630	523	83.0
Qantas	367	278	75.7	367	300	81.7
Virgin Blue	503	398	79.1	503	389	77.3
All Airlines	1 499	1 206	80.5	1 500	1 212	80.8
Relates to services to and from Brisbane and Melbourne.						
Dubbo Airport						
QantasLink	1 357	1 178	86.8	1 357	1 137	83.8
Regional Express	1 624	1 256	77.3	1 628	1 098	67.4
All Airlines	2 981	2 434	81.7	2 985	2 235	74.9
Relates to services to and from Sydney only.						
Gold Coast Airport						
Jetstar	5 280	4 387	83.1	5 289	4 515	85.4
Qantas	729	626	85.9	730	618	84.7
Virgin Blue	6 726	5 246	78.0	6 735	5 372	79.8
All Airlines	12 735	10 259	80.6	12 754	10 505	82.4
Relates to services to and from Adelaide, Melbourne and Sydney.						
Hamilton Island Airport						
Jetstar	359	299	83.3	360	319	88.6
Virgin Blue	364	291	79.9	365	286	78.4
All Airlines	723	590	81.6	725	605	83.4
Relates to services to and from Brisbane only.						
Hervey Bay Airport						
Jetstar	207	181	87.4	209	187	89.5
Virgin Blue	364	298	81.9	365	287	78.6
All Airlines	571	479	83.9	574	474	82.6
Relates to services to and from Sydney only.						
Hobart Airport						
Jetstar	2 188	1 906	87.1	2 190	1 885	86.1
Qantas	1 099	917	83.4	1 099	832	75.7
Virgin Blue	2 633	2 213	84.0	2 635	2 014	76.4
All Airlines	5 920	5 036	85.1	5 924	4 731	79.9
Relates to services to and from Brisbane, Melbourne and Sydney.						

	Departures			Arrivals		
	Sectors Flown	On Time No.	On Time %	Sectors Flown	On Time No.	On Time %
Kalgoorlie Airport						
Qantas	566	451	79.7	567	483	85.2
QantasLink	330	270	81.8	330	276	83.6
Skywest	452	371	82.1	451	369	81.8
All Airlines	1 348	1 092	81.0	1 348	1 128	83.7
Relates to services to and from Perth only.						
Launceston Airport						
Jetstar	1 459	1 093	74.9	1 459	1 106	75.8
QantasLink	762	700	91.9	760	623	82.0
Virgin Blue	1 891	1 546	81.8	1 893	1 467	77.5
All Airlines	4 112	3 339	81.2	4 112	3 196	77.7
Relates to services to and from Melbourne and Sydney.						
Mackay Airport						
Jetstar	1 090	917	84.1	1 091	934	85.6
QantasLink	719	665	92.5	689	592	85.9
Virgin Blue	1 120	992	88.6	1 121	874	78.0
All Airlines	2 929	2 574	87.9	2 901	2 400	82.7
Relates to services to and from Brisbane only.						
Maroochydore Airport						
Jetstar	1 672	1 347	80.6	1 687	1 430	84.8
Virgin Blue	1 201	928	77.3	1 210	1 000	82.6
All Airlines	2 873	2 275	79.2	2 897	2 430	83.9
Relates to services to and from Melbourne and Sydney.						
Melbourne Airport						
Jetstar	6 704	5 633	84.0	6 687	5 340	79.9
Qantas	26 052	21 235	81.5	26 064	21 227	81.4
QantasLink	4 488	3 750	83.6	4 478	3 674	82.0
Regional Express	1 298	1 159	89.3	1 300	1 136	87.4
Virgin Blue	25 464	20 986	82.4	25 455	20 929	82.2
All Airlines	64 006	52 763	82.4	63 984	52 306	81.7
Relates to services to and from Adelaide, Brisbane, Cairns, Canberra, Darwin, Gold Coast, Hobart, Launceston, Maroochydore, Mildura, Newcastle, Perth and Sydney.						
Mildura Airport						
QantasLink	1 616	1 332	82.4	1 626	1 298	79.8
Regional Express	1 300	1 168	89.8	1 298	1 092	84.1
All Airlines	2 916	2 500	85.7	2 924	2 390	81.7
Relates to services to and from Melbourne only.						
Newcastle Airport						
Jetstar	1 815	1 411	77.7	1 817	1 514	83.3
QantasLink	1 508	1 310	86.9	1 510	1 252	82.9
Virgin Blue	943	778	82.5	946	794	83.9
All Airlines	4 266	3 499	82.0	4 273	3 560	83.3
Relates to services to and from Brisbane and Melbourne.						

	Departures			Arrivals		
	Sectors Flown	On Time No.	On Time %	Sectors Flown	On Time No.	On Time %
Perth Airport						
Qantas	8 388	6 254	74.6	8 410	6 602	78.5
QantasLink	1 628	1 290	79.2	1 621	1 346	83.0
Skywest	942	752	79.8	942	668	70.9
Virgin Blue	3 586	2 875	80.2	3 589	2 659	74.1
All Airlines	14 544	11 171	76.8	14 562	11 275	77.4
Relates to services to and from Adelaide, Brisbane, Broome, Kalgoorlie, Melbourne, Port Hedland and Sydney.						
Port Hedland Airport						
QantasLink	969	790	81.5	977	818	83.7
Skywest	79	42	53.2	77	51	66.2
All Airlines	1 048	832	79.4	1 054	869	82.4
Relates to services to and from Perth only.						
Proserpine Airport						
Jetstar	362	266	73.5	362	275	76.0
Virgin Blue	362	288	79.6	363	292	80.4
All Airlines	724	554	76.5	725	567	78.2
Relates to services to and from Brisbane only.						
Rockhampton Airport						
Jetstar	365	284	77.8	365	314	86.0
QantasLink	1 999	1 784	89.2	2 544	2 260	88.8
Virgin Blue	1 092	924	84.6	1 094	833	76.1
All Airlines	3 456	2 992	86.6	4 003	3 407	85.1
Relates to services to and from Brisbane only.						
Sydney Airport						
Jetstar	6 630	5 778	87.1	6 744	5 700	84.5
Qantas	26 166	20 961	80.1	26 434	21 343	80.7
QantasLink	5 810	4 509	77.6	5 804	4 544	78.3
Regional Express	5 983	4 556	76.1	5 981	4 453	74.5
Virgin Blue	26 510	21 554	81.3	26 495	21 558	81.4
All Airlines	71 099	57 358	80.7	71 458	57 598	80.6
Relates to services to and from Adelaide, Albury, Ballina, Brisbane, Cairns, Coffs Harbour, Dubbo, Gold Coast, Hervey Bay, Hobart, Launceston, Maroochydore, Melbourne, Perth, Townsville and Wagga Wagga.						
Townsville Airport						
Jetstar	625	525	84.0	624	554	88.8
Qantas	1 674	1 481	88.5	1 676	1 440	85.9
Virgin Blue	1 546	1 320	85.4	1 548	1 273	82.2
All Airlines	3 845	3 326	86.5	3 848	3 267	84.9
Relates to services to and from Brisbane and Sydney.						
Wagga Wagga Airport						
QantasLink	1 358	1 067	78.6	1 361	982	72.2
Regional Express	1 777	1 425	80.2	1 773	1 273	71.8
All Airlines	3 135	2 492	79.5	3 134	2 255	72.0
Relates to services to and from Sydney only.						

DEFINITIONS

On time departure	A flight departure is counted as "on time" if it departs the gate within 15 minutes of the scheduled departure time shown in the carriers' schedule.
On time arrival	A flight arrival is counted as "on time" if it arrived at the gate within 15 minutes of the scheduled arrival time shown in the carriers' schedule. Neither diverted nor cancelled flights count as on time.
Cancellation	A flight is regarded as a cancellation if it is cancelled or rescheduled less than 7 days prior to its scheduled departure time.
On time departure percentage	The percentage of on time departures is measured against the number of departures <i>operated</i> on any particular sector.
On time arrival percentage	The percentage of on time arrivals is measured against the number of arrivals <i>operated</i> on any particular sector.
Cancellation percentage	The percentage of cancellations is measured against the number of services <i>scheduled</i> on any particular sector.
