



Australian Government

Department of Transport and Regional Services  
Bureau of Transport and Regional Economics



btre

AVIATION STATISTICS

Airline  
On Time Performance

FY 2006-07 — OTP 48

© Commonwealth of Australia 2007

ISSN 1832-0759

This work is copyright and the data contained in this publication should not be reproduced or used in any form without acknowledgement.

#### Enquiries

Bureau of Transport and Regional Economics

GPO Box 501  
Canberra ACT 2601

Telephone: 02 6274 7720

Facsimile: 02 6274 7727

Website: [www.btre.gov.au](http://www.btre.gov.au)

Email: [avstats@dotars.gov.au](mailto:avstats@dotars.gov.au)

This publication, including a spreadsheet of the time-series data, can be downloaded from the BTRE website:

<http://www.btre.gov.au/Info.aspx?NodeId=104>

#### Disclaimers

The BTRE seeks to publish its work to the highest professional standards. However, it cannot accept responsibility for any consequences arising from the use of information herein. Readers should rely on their own skill and judgment in applying any information or analysis to particular issues or circumstances.

## FOREWORD

In late 2003, the Bureau of Transport and Regional Economics (BTRE) established an agreement with major Australian airlines to report domestic aviation on time performance statistics. Qantas, QantasLink, Regional Express, Skywest Airlines and Virgin Blue agreed to report monthly on time performance statistics to BTRE from November 2003. Jetstar, which commenced operations on 25 May 2004, is also now participating. Macair, who commenced reporting in July 2005, only supply total network data as they have no competitive routes. Ozjet reported airline on time performance during the period January–March 2006 only.

The purpose of collecting and publishing this information is to monitor overall industry and individual airline performance on punctuality and to allow consumers of air travel to make informed decisions when planning air travel.

On time performance is reported for all routes which are flown by two or more airlines where the passenger load averages over 8,000 passengers per month. In 2006-07 there were 45 routes which met this definition, however, over time routes which meet this definition may change as airline networks and traffic levels vary.

Airlines also report overall monthly network performance. Total industry figures refer to all services operated by reporting airlines only. This currently represents over 95 per cent of scheduled aviation services in Australia.

The method of capturing on time performance varies between airlines utilising different recording systems. Jetstar and Qantas jet aircraft use Aircraft Communication Addressing and Reporting System (ACARS) to electronically measure on time performance. Virgin Blue, Regional Express, Skywest, Macair and the Qantas non-jet fleet record on time performance manually using records from pilots, gate agents and/or ground crews.

Reports are published monthly on the BTRE web site. After collection of initial data, aggregate reports are subject to internal audit by participating airlines prior to publication. This report collates data for the total industry and individual routes and airports for the year ended 30 June 2007.

Definitions relating to on time performance are provided at the end of this report.

Detailed time series data is available in Microsoft Excel spreadsheet format from the BTRE web site at <http://www.btre.gov.au/info.aspx?ResourceId=217&NodeId=104>

# CONTENTS

<b>Industry performance .....</b>	<b>1</b>
<b>Individual routes .....</b>	<b>3</b>
<b>Airports.....</b>	<b>12</b>
<b>Definitions .....</b>	<b>16</b>

# INDUSTRY PERFORMANCE

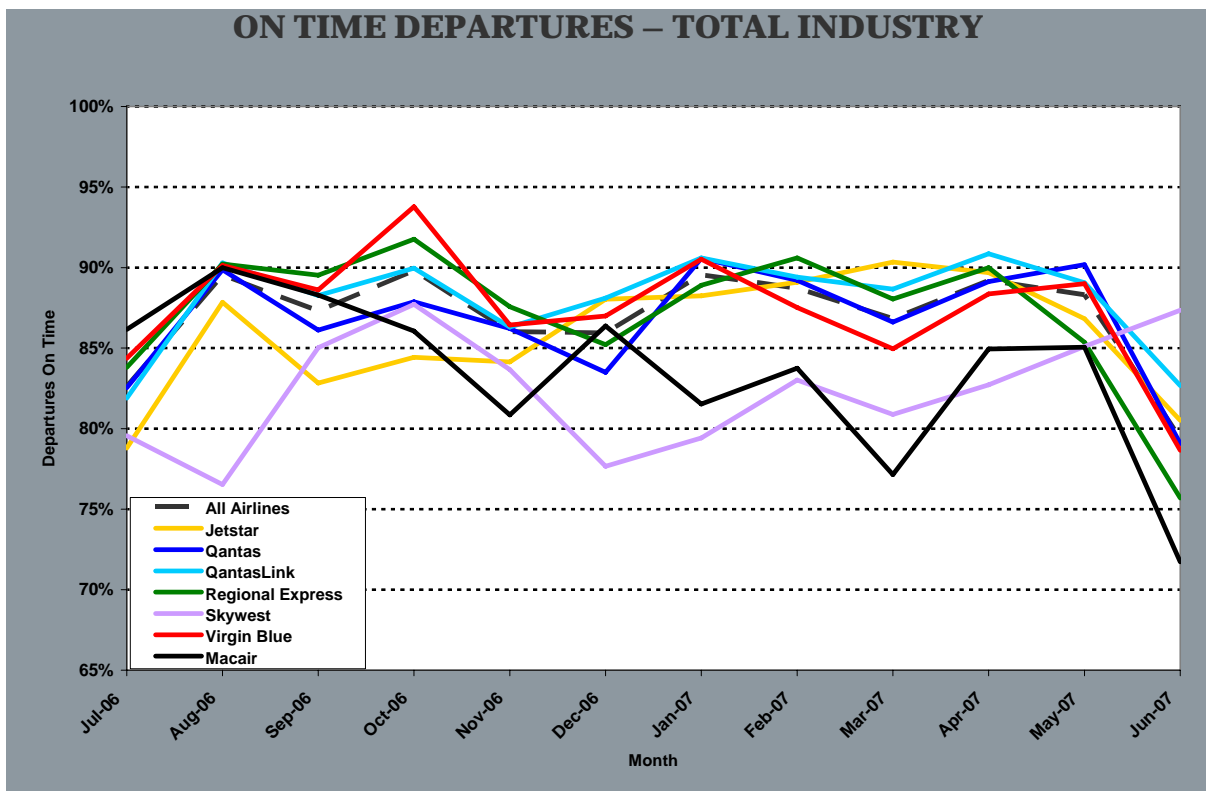
Airline on time performance over all routes operated by airlines participating in on time performance reporting (i.e. Jetstar, Macair, Qantas, QantasLink, Regional Express, Skywest Airlines and Virgin Blue), averaged 86.9 per cent in terms of on time departures and 85.6 per cent for on time arrivals for the year ended 30 June 2007. Cancellations averaged 0.8 per cent of all scheduled flights.

The highest level of on time performance was recorded in October, with 89.8 per cent in terms of departures on time and 89.0 per cent in terms of arrivals on time. The lowest percentage of cancellations was recorded in October, with 0.5 per cent of scheduled flights cancelled.

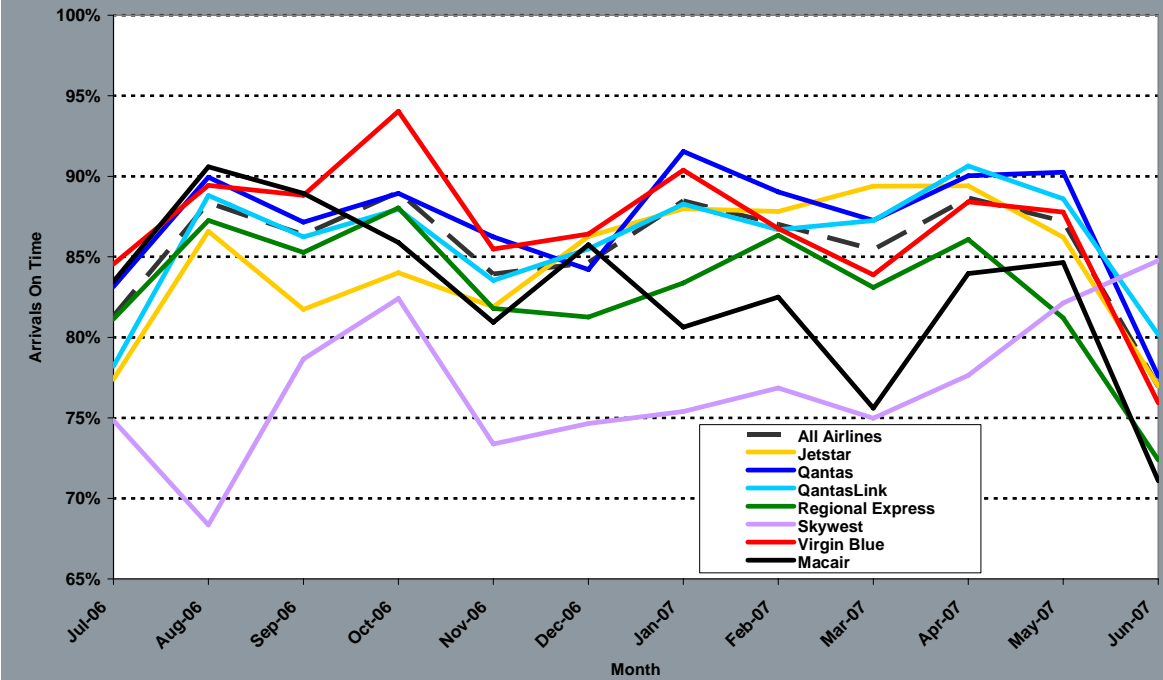
The lowest level of on time performance was recorded in June with 79.4 per cent of departures and 76.4 per cent of arrivals being on time. The highest percentage of cancellations was also recorded in June, with 1.3 per cent of scheduled flights cancelled.

## On time performance – total industry for the year ending 30 June 2007

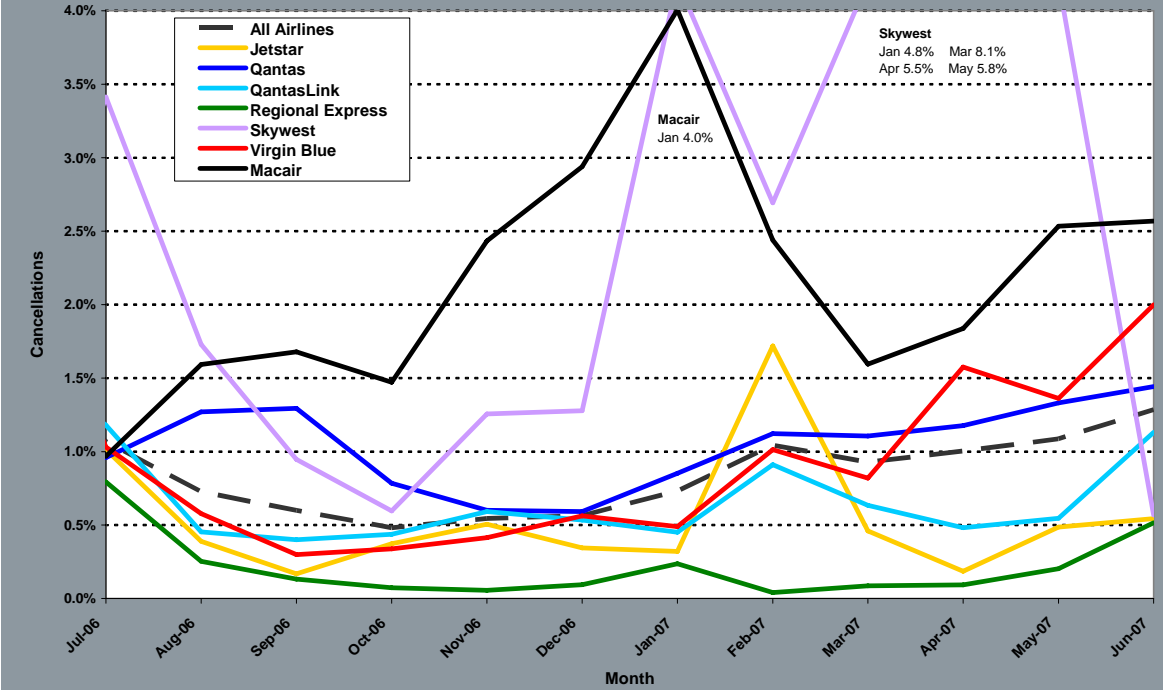
	Sectors Scheduled	Sectors Flown	On Time Departures	On Time Arrivals	Cancellations	On Time Departures (%)	On Time Arrivals (%)	Cancellations (%)
Jetstar	50 893	50 621	43 480	42 848	272	85.9	84.6	0.5
Macair	14 637	14 322	11 977	11 886	315	83.6	83.0	2.2
Qantas	119 439	118 192	102 491	102 936	1 247	86.7	87.1	1.0
QantasLink	97 315	96 686	85 069	83 129	629	88.0	86.0	0.6
Regional Express	64 695	64 556	56 264	53 614	139	87.2	83.1	0.2
Skywest	11 850	11 478	9 471	8 859	372	82.5	77.2	3.1
Virgin Blue	109 980	109 026	95 383	94 715	954	87.5	86.9	0.9
<b>All Airlines</b>	<b>468 809</b>	<b>464 881</b>	<b>404 135</b>	<b>397 987</b>	<b>3 928</b>	<b>86.9</b>	<b>85.6</b>	<b>0.8</b>



### ON TIME ARRIVALS – TOTAL INDUSTRY



### CANCELLATIONS – TOTAL INDUSTRY



## INDIVIDUAL ROUTES

On time performance is reported for all routes which are flown by two or more airlines where the passenger load averages over 8,000 passengers per month. There are currently 45 routes which meet this definition. However, over time routes which meet this definition may change as airline networks and traffic levels vary.

	Sectors		On time departures		On time arrivals		Cancellations	
	sched.	flown	no.	%	no.	%	no.	%
<b>Adelaide-Brisbane</b>								
Jetstar	365	363	324	89.3	320	88.2	2	0.5
Qantas	1 045	1 045	965	92.3	964	92.2	0	0.0
Virgin Blue	1 089	1 088	966	88.8	988	90.8	1	0.1
All Airlines	2 499	2 496	2 255	90.3	2 272	91.0	3	0.1
<b>Adelaide-Canberra</b>								
Qantas	542	542	480	88.6	483	89.1	0	0.0
Virgin Blue	362	362	294	81.2	311	85.9	0	0.0
All Airlines	904	904	774	85.6	794	87.8	0	0.0
<b>Adelaide-Gold Coast</b>								
Jetstar	246	246	229	93.1	229	93.1	0	0.0
Virgin Blue	434	433	384	88.7	370	85.5	1	0.2
All Airlines	680	679	613	90.3	599	88.2	1	0.1
<b>Adelaide-Melbourne</b>								
Qantas	4 051	4 008	3 642	90.9	3 673	91.6	43	1.1
Virgin Blue	3 064	3 026	2 776	91.7	2 789	92.2	38	1.2
All Airlines	7 115	7 034	6 418	91.2	6 462	91.9	81	1.1
<b>Adelaide-Perth</b>								
Qantas	1 585	1 579	1 406	89.0	1 416	89.7	6	0.4
Virgin Blue	449	449	399	88.9	393	87.5	0	0.0
All Airlines	2 034	2 028	1 805	89.0	1 809	89.2	6	0.3
<b>Adelaide-Sydney</b>								
Jetstar	364	363	337	92.8	327	90.1	1	0.3
Qantas	3 792	3 769	3 480	92.3	3 446	91.4	23	0.6
Virgin Blue	1 822	1 820	1 616	88.8	1 636	89.9	2	0.1
All Airlines	5 978	5 952	5 433	91.3	5 409	90.9	26	0.4
<b>Albury-Sydney</b>								
QantasLink	1 359	1 359	1 114	82.0	1 096	80.6	0	0.0
Regional Express	1 338	1 336	1 106	82.8	1 066	79.8	2	0.1
All Airlines	2 697	2 695	2 220	82.4	2 162	80.2	2	0.1
<b>Ballina-Sydney</b>								
Jetstar	421	416	367	88.2	358	86.1	5	1.2
Regional Express	1 223	1 221	1 031	84.4	922	75.5	2	0.2
Virgin Blue	439	435	365	83.9	359	82.5	4	0.9
All Airlines	2 083	2 072	1 763	85.1	1 639	79.1	11	0.5

	Sectors		On time departures		On time arrivals		Cancellations	
	sched.	flown	no.	%	no.	%	no.	%
<b>Brisbane-Adelaide</b>								
Jetstar	365	363	340	93.7	333	91.7	2	0.5
Qantas	1 044	1 044	924	88.5	965	92.4	0	0.0
Virgin Blue	1 091	1 089	979	89.9	967	88.8	2	0.2
All Airlines	2 500	2 496	2 243	89.9	2 265	90.7	4	0.2
<b>Brisbane-Cairns</b>								
Jetstar	992	989	826	83.5	819	82.8	3	0.3
Qantas	1 459	1 458	1 301	89.2	1 345	92.2	1	0.1
Virgin Blue	1 529	1 529	1 381	90.3	1 325	86.7	0	0.0
All Airlines	3 980	3 976	3 508	88.2	3 489	87.8	4	0.1
<b>Brisbane-Canberra</b>								
Qantas	1 357	1 354	1 231	90.9	1 262	93.2	3	0.2
QantasLink	366	364	333	91.5	347	95.3	2	0.5
Virgin Blue	1 091	1 091	980	89.8	990	90.7	0	0.0
All Airlines	2 814	2 809	2 544	90.6	2 599	92.5	5	0.2
<b>Brisbane-Darwin</b>								
Jetstar	312	312	271	86.9	270	86.5	0	0.0
Qantas	365	365	317	86.8	295	80.8	0	0.0
Virgin Blue	365	365	283	77.5	276	75.6	0	0.0
All Airlines	1 042	1 042	871	83.6	841	80.7	0	0.0
<b>Brisbane-Hamilton Island</b>								
Jetstar	364	360	331	91.9	323	89.7	4	1.1
Virgin Blue	367	366	332	90.7	315	86.1	1	0.3
All Airlines	731	726	663	91.3	638	87.9	5	0.7
<b>Brisbane-Hobart</b>								
Jetstar	158	157	137	87.3	137	87.3	1	0.6
Virgin Blue	373	372	352	94.6	341	91.7	1	0.3
All Airlines	531	529	489	92.4	478	90.4	2	0.4
<b>Brisbane-Mackay</b>								
Jetstar	1 050	1 048	927	88.5	926	88.4	2	0.2
QantasLink	722	722	636	88.1	649	89.9	0	0.0
Virgin Blue	1 075	1 074	933	86.9	911	84.8	1	0.1
All Airlines	2 847	2 844	2 496	87.8	2 486	87.4	3	0.1
<b>Brisbane-Melbourne</b>								
Qantas	5 351	5 281	4 764	90.2	4 897	92.7	70	1.3
Virgin Blue	3 587	3 566	3 110	87.2	3 158	88.6	21	0.6
All Airlines	8 938	8 847	7 874	89.0	8 055	91.0	91	1.0
<b>Brisbane-Newcastle</b>								
Jetstar	1 084	1 083	927	85.6	918	84.8	1	0.1
QantasLink	606	596	534	89.6	507	85.1	10	1.7
Virgin Blue	592	589	513	87.1	516	87.6	3	0.5
All Airlines	2 282	2 268	1 974	87.0	1 941	85.6	14	0.6
<b>Brisbane-Perth</b>								
Qantas	1 264	1 264	1 051	83.1	1 051	83.1	0	0.0
Virgin Blue	365	365	290	79.5	302	82.7	0	0.0
All Airlines	1 629	1 629	1 341	82.3	1 353	83.1	0	0.0
<b>Brisbane-Proserpine</b>								
Jetstar	365	362	298	82.3	276	76.2	3	0.8
Virgin Blue	365	363	320	88.2	311	85.7	2	0.5
All Airlines	730	725	618	85.2	587	81.0	5	0.7



	Sectors		On time departures		On time arrivals		Cancellations	
	sched.	flown	no.	%	no.	%	no.	%
<b>Brisbane-Rockhampton</b>								
Jetstar	365	365	325	89.0	324	88.8	0	0.0
QantasLink	2 558	2 548	2 342	91.9	2 346	92.1	10	0.4
Virgin Blue	1 074	1 073	894	83.3	881	82.1	1	0.1
All Airlines	3 997	3 986	3 561	89.3	3 551	89.1	11	0.3
<b>Brisbane-Sydney</b>								
Qantas	7 688	7 563	6 672	88.2	6 484	85.7	125	1.6
Virgin Blue	6 394	6 248	5 623	90.0	5 496	88.0	146	2.3
All Airlines	14 082	13 811	12 295	89.0	11 980	86.7	271	1.9
<b>Brisbane-Townsville</b>								
Jetstar	365	365	289	79.2	297	81.4	0	0.0
Qantas	1 666	1 664	1 494	89.8	1 519	91.3	2	0.1
Virgin Blue	1 118	1 118	996	89.1	972	86.9	0	0.0
All Airlines	3 149	3 147	2 779	88.3	2 788	88.6	2	0.1
<b>Broome-Perth</b>								
Qantas	412	412	318	77.2	335	81.3	0	0.0
QantasLink	232	231	203	87.9	207	89.6	1	0.4
Skywest	371	361	254	70.4	234	64.8	10	2.7
Virgin Blue	256	256	167	65.2	195	76.2	0	0.0
All Airlines	1 241	1 230	921	74.9	949	77.2	11	0.9
<b>Cairns-Brisbane</b>								
Jetstar	994	991	881	88.9	851	85.9	3	0.3
Qantas	1 458	1 455	1 369	94.1	1 403	96.4	3	0.2
Virgin Blue	1 529	1 528	1 377	90.1	1 388	90.8	1	0.1
All Airlines	3 981	3 974	3 627	91.3	3 642	91.6	7	0.2
<b>Cairns-Melbourne</b>								
Jetstar	525	525	431	82.1	441	84.0	0	0.0
Qantas	367	366	277	75.7	323	88.3	1	0.3
Virgin Blue	730	726	588	81.0	607	83.6	4	0.5
All Airlines	1 622	1 617	1 296	80.1	1 371	84.8	5	0.3
<b>Cairns-Sydney</b>								
Jetstar	460	460	386	83.9	385	83.7	0	0.0
Qantas	1 262	1 261	1 082	85.8	1 153	91.4	1	0.1
Virgin Blue	1 041	1 040	863	83.0	913	87.8	1	0.1
All Airlines	2 763	2 761	2 331	84.4	2 451	88.8	2	0.1
<b>Canberra-Adelaide</b>								
Qantas	589	589	548	93.0	559	94.9	0	0.0
Virgin Blue	360	360	313	86.9	317	88.1	0	0.0
All Airlines	949	949	861	90.7	876	92.3	0	0.0
<b>Canberra-Brisbane</b>								
Qantas	1 356	1 353	1 269	93.8	1 238	91.5	3	0.2
QantasLink	365	360	297	82.5	303	84.2	5	1.4
Virgin Blue	1 093	1 092	1 009	92.4	994	91.0	1	0.1
All Airlines	2 814	2 805	2 575	91.8	2 535	90.4	9	0.3
<b>Canberra-Melbourne</b>								
Qantas	2 582	2 566	2 295	89.4	2 256	87.9	16	0.6
QantasLink	1 212	1 206	1 072	88.9	1 051	87.1	6	0.5
Virgin Blue	1 522	1 514	1 404	92.7	1 388	91.7	8	0.5
All Airlines	5 316	5 286	4 771	90.3	4 695	88.8	30	0.6

	Sectors		On time departures		On time arrivals		Cancellations	
	sched.	flown	no.	%	no.	%	no.	%
<b>Coffs Harbour-Sydney</b>								
QantasLink	1 737	1 737	1 468	84.5	1 389	80.0	0	0.0
Virgin Blue	728	728	655	90.0	652	89.6	0	0.0
All Airlines	2 465	2 465	2 123	86.1	2 041	82.8	0	0.0
<b>Darwin-Brisbane</b>								
Jetstar	313	313	240	76.7	245	78.3	0	0.0
Qantas	365	365	254	69.6	284	77.8	0	0.0
Virgin Blue	365	365	280	76.7	307	84.1	0	0.0
All Airlines	1 043	1 043	774	74.2	836	80.2	0	0.0
<b>Darwin-Melbourne</b>								
Jetstar	281	280	231	82.5	240	85.7	1	0.4
Qantas	1	1	1	100.0	0	0.0	0	0.0
Virgin Blue	139	137	117	85.4	119	86.9	2	1.4
All Airlines	421	418	349	83.5	359	85.9	3	0.7
<b>Dubbo-Sydney</b>								
QantasLink	1 366	1 364	1 203	88.2	1 140	83.6	2	0.1
Regional Express	1 546	1 545	1 291	83.6	1 292	83.6	1	0.1
All Airlines	2 912	2 909	2 494	85.7	2 432	83.6	3	0.1
<b>Gold Coast-Adelaide</b>								
Jetstar	246	246	229	93.1	232	94.3	0	0.0
Virgin Blue	434	432	345	79.9	370	85.6	2	0.5
All Airlines	680	678	574	84.7	602	88.8	2	0.3
<b>Gold Coast-Melbourne</b>								
Jetstar	2 030	2 020	1 618	80.1	1 669	82.6	10	0.5
Virgin Blue	2 220	2 192	1 863	85.0	1 939	88.5	28	1.3
All Airlines	4 250	4 212	3 481	82.6	3 608	85.7	38	0.9
<b>Gold Coast-Sydney</b>								
Jetstar	2 949	2 913	2 500	85.8	2 426	83.3	36	1.2
Qantas	731	730	624	85.5	640	87.7	1	0.1
Virgin Blue	3 939	3 899	3 299	84.6	3 392	87.0	40	1.0
All Airlines	7 619	7 542	6 423	85.2	6 458	85.6	77	1.0
<b>Hamilton Island-Brisbane</b>								
Jetstar	364	358	303	84.6	301	84.1	6	1.6
Virgin Blue	368	364	326	89.6	336	92.3	4	1.1
All Airlines	732	722	629	87.1	637	88.2	10	1.4
<b>Hervey Bay-Sydney</b>								
Jetstar	209	207	178	86.0	183	88.4	2	1.0
Virgin Blue	365	364	314	86.3	317	87.1	1	0.3
All Airlines	574	571	492	86.2	500	87.6	3	0.5
<b>Hobart-Brisbane</b>								
Jetstar	159	157	134	85.4	140	89.2	2	1.3
Virgin Blue	373	372	303	81.5	329	88.4	1	0.3
All Airlines	532	529	437	82.6	469	88.7	3	0.6
<b>Hobart-Melbourne</b>								
Jetstar	1 462	1 461	1 295	88.6	1 270	86.9	1	0.1
Qantas	731	731	633	86.6	630	86.2	0	0.0
Virgin Blue	1 477	1 474	1 319	89.5	1 287	87.3	3	0.2
All Airlines	3 670	3 666	3 247	88.6	3 187	86.9	4	0.1

	Sectors		On time departures		On time arrivals		Cancellations	
	sched.	flown	no.	%	no.	%	no.	%
<b>Hobart-Sydney</b>								
Jetstar	586	585	516	88.2	506	86.5	1	0.2
Qantas	367	367	307	83.7	319	86.9	0	0.0
Virgin Blue	729	728	656	90.1	638	87.6	1	0.1
All Airlines	1 682	1 680	1 479	88.0	1 463	87.1	2	0.1
<b>Kalgoorlie-Perth</b>								
Qantas	575	571	479	83.9	491	86.0	4	0.7
QantasLink	341	339	287	84.7	298	87.9	2	0.6
Skywest	494	439	394	89.7	374	85.2	55	11.1
All Airlines	1 410	1 349	1 160	86.0	1 163	86.2	61	4.3
<b>Launceston-Melbourne</b>								
Jetstar	1 097	1 091	850	77.9	853	78.2	6	0.5
Qantas	37	37	35	94.6	35	94.6	0	0.0
QantasLink	702	699	641	91.7	523	74.8	3	0.4
Virgin Blue	1 465	1 457	1 303	89.4	1 330	91.3	8	0.5
All Airlines	3 301	3 284	2 829	86.1	2 741	83.5	17	0.5
<b>Launceston-Sydney</b>								
Jetstar	364	362	281	77.6	307	84.8	2	0.5
Virgin Blue	407	406	323	79.6	336	82.8	1	0.2
All Airlines	771	768	604	78.6	643	83.7	3	0.4
<b>Mackay-Brisbane</b>								
Jetstar	1 050	1 047	904	86.3	891	85.1	3	0.3
QantasLink	752	749	699	93.3	692	92.4	3	0.4
Virgin Blue	1 074	1 073	974	90.8	982	91.5	1	0.1
All Airlines	2 876	2 869	2 577	89.8	2 565	89.4	7	0.2
<b>Maroochydore-Melbourne</b>								
Jetstar	715	712	575	80.8	567	79.6	3	0.4
Virgin Blue	730	727	603	82.9	629	86.5	3	0.4
All Airlines	1 445	1 439	1 178	81.9	1 196	83.1	6	0.4
<b>Maroochydore-Sydney</b>								
Jetstar	1 049	1 045	885	84.7	852	81.5	4	0.4
Virgin Blue	494	493	383	77.7	404	81.9	1	0.2
All Airlines	1 543	1 538	1 268	82.4	1 256	81.7	5	0.3
<b>Melbourne-Adelaide</b>								
Qantas	4 313	4 265	3 834	89.9	3 888	91.2	48	1.1
Virgin Blue	3 064	3 035	2 698	88.9	2 719	89.6	29	0.9
All Airlines	7 377	7 300	6 532	89.5	6 607	90.5	77	1.0
<b>Melbourne-Brisbane</b>								
Qantas	5 332	5 272	4 738	89.9	4 678	88.7	60	1.1
Virgin Blue	3 586	3 569	3 089	86.6	3 033	85.0	17	0.5
All Airlines	8 918	8 841	7 827	88.5	7 711	87.2	77	0.9
<b>Melbourne-Cairns</b>								
Jetstar	525	525	478	91.0	466	88.8	0	0.0
Qantas	367	367	299	81.5	309	84.2	0	0.0
Virgin Blue	730	726	618	85.1	608	83.7	4	0.5
All Airlines	1 622	1 618	1 395	86.2	1 383	85.5	4	0.2
<b>Melbourne-Canberra</b>								
Qantas	2 320	2 304	2 027	88.0	2 046	88.8	16	0.7
QantasLink	1 211	1 205	1 056	87.6	1 039	86.2	6	0.5
Virgin Blue	1 521	1 513	1 371	90.6	1 358	89.8	8	0.5
All Airlines	5 052	5 022	4 454	88.7	4 443	88.5	30	0.6

	Sectors		On time departures		On time arrivals		Cancellations	
	sched.	flown	no.	%	no.	%	no.	%
<b>Melbourne-Darwin</b>								
Jetstar	281	280	240	85.7	236	84.3	1	0.4
Qantas	1	1	1	100.0	1	100.0	0	0.0
Virgin Blue	141	138	123	89.1	125	90.6	3	2.1
All Airlines	423	419	364	86.9	362	86.4	4	0.9
<b>Melbourne-Gold Coast</b>								
Jetstar	2 036	2 029	1 770	87.2	1 721	84.8	7	0.3
Virgin Blue	2 221	2 195	1 979	90.2	1 945	88.6	26	1.2
All Airlines	4 257	4 224	3 749	88.8	3 666	86.8	33	0.8
<b>Melbourne-Hobart</b>								
Jetstar	1 463	1 460	1 300	89.0	1 284	87.9	3	0.2
Qantas	731	731	569	77.8	579	79.2	0	0.0
Virgin Blue	1 477	1 474	1 301	88.3	1 291	87.6	3	0.2
All Airlines	3 671	3 665	3 170	86.5	3 154	86.1	6	0.2
<b>Melbourne-Launceston</b>								
Jetstar	1 096	1 091	902	82.7	868	79.6	5	0.5
Qantas	36	36	24	66.7	27	75.0	0	0.0
QantasLink	703	702	618	88.0	608	86.6	1	0.1
Virgin Blue	1 465	1 459	1 246	85.4	1 243	85.2	6	0.4
All Airlines	3 300	3 288	2 790	84.9	2 746	83.5	12	0.4
<b>Melbourne-Maroochydore</b>								
Jetstar	715	713	635	89.1	622	87.2	2	0.3
Virgin Blue	730	728	636	87.4	637	87.5	2	0.3
All Airlines	1 445	1 441	1 271	88.2	1 259	87.4	4	0.3
<b>Melbourne-Mildura</b>								
QantasLink	1 633	1 629	1 374	84.3	1 363	83.7	4	0.2
Regional Express	1 299	1 298	1 154	88.9	1 117	86.1	1	0.1
All Airlines	2 932	2 927	2 528	86.4	2 480	84.7	5	0.2
<b>Melbourne-Newcastle</b>								
Jetstar	730	730	605	82.9	595	81.5	0	0.0
QantasLink	902	898	794	88.4	775	86.3	4	0.4
Virgin Blue	365	363	323	89.0	325	89.5	2	0.5
All Airlines	1 997	1 991	1 722	86.5	1 695	85.1	6	0.3
<b>Melbourne-Perth</b>								
Qantas	2 498	2 484	1 881	75.7	1 973	79.4	14	0.6
Virgin Blue	1 433	1 431	1 295	90.5	1 240	86.7	2	0.1
All Airlines	3 931	3 915	3 176	81.1	3 213	82.1	16	0.4
<b>Melbourne-Sydney</b>								
Qantas	10 610	10 321	8 989	87.1	8 578	83.1	289	2.7
Virgin Blue	8 580	8 431	7 439	88.2	7 197	85.4	149	1.7
All Airlines	19 190	18 752	16 428	87.6	15 775	84.1	438	2.3
<b>Mildura-Melbourne</b>								
QantasLink	1 633	1 624	1 411	86.9	1 395	85.9	9	0.6
Regional Express	1 299	1 299	1 194	91.9	1 175	90.5	0	0.0
All Airlines	2 932	2 923	2 605	89.1	2 570	87.9	9	0.3
<b>Newcastle-Brisbane</b>								
Jetstar	1 083	1 082	874	80.8	832	76.9	1	0.1
QantasLink	608	600	545	90.8	503	83.8	8	1.3
Virgin Blue	592	586	518	88.4	516	88.1	6	1.0
All Airlines	2 283	2 268	1 937	85.4	1 851	81.6	15	0.7

	Sectors		On time departures		On time arrivals		Cancellations	
	sched.	flown	no.	%	no.	%	no.	%
<b>Newcastle-Melbourne</b>								
Jetstar	729	729	605	83.0	601	82.4	0	0.0
QantasLink	897	892	810	90.8	771	86.4	5	0.6
Virgin Blue	365	364	316	86.8	311	85.4	1	0.3
All Airlines	1 991	1 985	1 731	87.2	1 683	84.8	6	0.3
<b>Perth-Adelaide</b>								
Qantas	1 584	1 573	1 392	88.5	1 356	86.2	11	0.7
Virgin Blue	449	449	410	91.3	416	92.7	0	0.0
All Airlines	2 033	2 022	1 802	89.1	1 772	87.6	11	0.5
<b>Perth-Brisbane</b>								
Qantas	1 267	1 263	904	71.6	977	77.4	4	0.3
Virgin Blue	365	365	286	78.4	281	77.0	0	0.0
All Airlines	1 632	1 628	1 190	73.1	1 258	77.3	4	0.2
<b>Perth-Broome</b>								
Qantas	413	413	339	82.1	354	85.7	0	0.0
QantasLink	275	273	209	76.6	208	76.2	2	0.7
Skywest	369	362	286	79.0	272	75.1	7	1.9
Virgin Blue	256	256	185	72.3	191	74.6	0	0.0
All Airlines	1 283	1 274	999	78.4	1 007	79.0	9	0.7
<b>Perth-Kalgoorlie</b>								
Qantas	573	572	516	90.2	506	88.5	1	0.2
QantasLink	341	339	273	80.5	292	86.1	2	0.6
Skywest	494	440	378	85.9	370	84.1	54	10.9
All Airlines	1 408	1 351	1 167	86.4	1 168	86.5	57	4.0
<b>Perth-Melbourne</b>								
Qantas	2 512	2 493	1 890	75.8	1 851	74.2	19	0.8
Virgin Blue	1 433	1 430	1 277	89.3	1 238	86.6	3	0.2
All Airlines	3 945	3 923	3 167	80.7	3 089	78.7	22	0.6
<b>Perth-Sydney</b>								
Qantas	1 985	1 975	1 526	77.3	1 451	73.5	10	0.5
Virgin Blue	1 094	1 093	994	90.9	911	83.3	1	0.1
All Airlines	3 079	3 068	2 520	82.1	2 362	77.0	11	0.4
<b>Proserpine-Brisbane</b>								
Jetstar	366	362	258	71.3	250	69.1	4	1.1
Virgin Blue	365	362	312	86.2	318	87.8	3	0.8
All Airlines	731	724	570	78.7	568	78.5	7	1.0
<b>Rockhampton-Brisbane</b>								
Jetstar	365	365	310	84.9	302	82.7	0	0.0
QantasLink	2 080	2 069	1 902	91.9	1 910	92.3	11	0.5
Virgin Blue	1 074	1 073	951	88.6	946	88.2	1	0.1
All Airlines	3 519	3 507	3 163	90.2	3 158	90.0	12	0.3
<b>Sydney-Adelaide</b>								
Jetstar	365	364	309	84.9	313	86.0	1	0.3
Qantas	3 486	3 476	2 996	86.2	3 199	92.0	10	0.3
Virgin Blue	1 822	1 818	1 567	86.2	1 544	84.9	4	0.2
All Airlines	5 673	5 658	4 872	86.1	5 056	89.4	15	0.3
<b>Sydney-Albury</b>								
QantasLink	1 361	1 361	1 073	78.8	1 000	73.5	0	0.0
Regional Express	1 337	1 334	1 070	80.2	1 003	75.2	3	0.2
All Airlines	2 698	2 695	2 143	79.5	2 003	74.3	3	0.1

	Sectors		On time departures		On time arrivals		Cancellations	
	sched.	flown	no.	%	no.	%	no.	%
<b>Sydney-Ballina</b>								
Jetstar	421	418	386	92.3	375	89.7	3	0.7
Regional Express	1 224	1 222	1 047	85.7	985	80.6	2	0.2
Virgin Blue	439	438	384	87.7	379	86.5	1	0.2
All Airlines	2 084	2 078	1 817	87.4	1 739	83.7	6	0.3
<b>Sydney-Brisbane</b>								
Qantas	7 709	7 593	6 616	87.1	6 780	89.3	116	1.5
Virgin Blue	6 392	6 244	5 368	86.0	5 264	84.3	148	2.3
All Airlines	14 101	13 837	11 984	86.6	12 044	87.0	264	1.9
<b>Sydney-Cairns</b>								
Jetstar	460	460	422	91.7	406	88.3	0	0.0
Qantas	1 261	1 260	1 046	83.0	1 063	84.4	1	0.1
Virgin Blue	1 040	1 039	839	80.8	798	76.8	1	0.1
All Airlines	2 761	2 759	2 307	83.6	2 267	82.2	2	0.1
<b>Sydney-Coffs Harbour</b>								
QantasLink	1 738	1 738	1 437	82.7	1 376	79.2	0	0.0
Virgin Blue	728	728	644	88.5	644	88.5	0	0.0
All Airlines	2 466	2 466	2 081	84.4	2 020	81.9	0	0.0
<b>Sydney-Dubbo</b>								
QantasLink	1 365	1 364	1 166	85.5	1 165	85.4	1	0.1
Regional Express	1 547	1 545	1 233	79.8	1 193	77.2	2	0.1
All Airlines	2 912	2 909	2 399	82.5	2 358	81.1	3	0.1
<b>Sydney-Gold Coast</b>								
Jetstar	2 952	2 910	2 527	86.8	2 540	87.3	42	1.4
Qantas	730	730	591	81.0	607	83.2	0	0.0
Virgin Blue	3 936	3 899	3 301	84.7	3 289	84.4	37	0.9
All Airlines	7 618	7 539	6 419	85.1	6 436	85.4	79	1.0
<b>Sydney-Hervey Bay</b>								
Jetstar	208	208	193	92.8	188	90.4	0	0.0
Virgin Blue	365	365	303	83.0	309	84.7	0	0.0
All Airlines	573	573	496	86.6	497	86.7	0	0.0
<b>Sydney-Hobart</b>								
Jetstar	575	575	485	84.3	500	87.0	0	0.0
Qantas	367	367	297	80.9	301	82.0	0	0.0
Virgin Blue	729	729	571	78.3	540	74.1	0	0.0
All Airlines	1 671	1 671	1 353	81.0	1 341	80.3	0	0.0
<b>Sydney-Launceston</b>								
Jetstar	365	364	317	87.1	295	81.0	1	0.3
Virgin Blue	407	407	329	80.8	331	81.3	0	0.0
All Airlines	772	771	646	83.8	626	81.2	1	0.1
<b>Sydney-Maroochydore</b>								
Jetstar	1 052	1 049	938	89.4	903	86.1	3	0.3
Virgin Blue	494	494	427	86.4	403	81.6	0	0.0
All Airlines	1 546	1 543	1 365	88.5	1 306	84.6	3	0.2
<b>Sydney-Melbourne</b>								
Qantas	10 547	10 300	8 526	82.8	8 436	81.9	247	2.3
Virgin Blue	8 586	8 431	7 506	89.0	7 420	88.0	155	1.8
All Airlines	19 133	18 731	16 032	85.6	15 856	84.7	402	2.1

	Sectors		On time departures		On time arrivals		Cancellations	
	sched.	flown	no.	%	no.	%	no.	%
<b>Sydney-Perth</b>								
Qantas	2 000	1 998	1 443	72.2	1 583	79.2	2	0.1
Virgin Blue	1 093	1 093	877	80.2	857	78.4	0	0.0
All Airlines	3 093	3 091	2 320	75.1	2 440	78.9	2	0.1
<b>Sydney-Townsville</b>								
Jetstar	226	226	218	96.5	214	94.7	0	0.0
Qantas	51	51	44	86.3	46	90.2	0	0.0
Virgin Blue	365	364	322	88.5	316	86.8	1	0.3
All Airlines	642	641	584	91.1	576	89.9	1	0.2
<b>Sydney-Wagga Wagga</b>								
QantasLink	1 363	1 362	1 080	79.3	1 007	73.9	1	0.1
Regional Express	1 873	1 860	1 540	82.8	1 401	75.3	13	0.7
All Airlines	3 236	3 222	2 620	81.3	2 408	74.7	14	0.4
<b>Townsville-Brisbane</b>								
Jetstar	365	365	280	76.7	279	76.4	0	0.0
Qantas	1 666	1 664	1 512	90.9	1 526	91.7	2	0.1
Virgin Blue	1 118	1 116	1 026	91.9	1 030	92.3	2	0.2
All Airlines	3 149	3 145	2 818	89.6	2 835	90.1	4	0.1
<b>Townsville-Sydney</b>								
Jetstar	227	227	205	90.3	200	88.1	0	0.0
Qantas	51	51	44	86.3	44	86.3	0	0.0
Virgin Blue	365	364	308	84.6	322	88.5	1	0.3
All Airlines	643	642	557	86.8	566	88.2	1	0.2
<b>Wagga Wagga-Sydney</b>								
QantasLink	1 362	1 360	1 107	81.4	996	73.2	2	0.1
Regional Express	1 884	1 871	1 555	83.1	1 521	81.3	13	0.7
All Airlines	3 246	3 231	2 662	82.4	2 517	77.9	15	0.5

## AIRPORTS

On time performance is reported for all routes which are flown by two or more airlines where the passenger load averages over 8,000 passengers per month. The following data reports by airport against flights operated on those routes only.

	Departures			Arrivals		
	Sectors Flown	No. on Time	% on Time	Sectors Flown	No. on Time	% on Time

### Adelaide Airport

Jetstar	972	890	91.6	973	878	90.2
Qantas	10 943	9 973	91.1	10 947	9 967	91.0
Virgin Blue	7 178	6 435	89.6	7 183	6 333	88.2
All Airlines	19 093	17 298	90.6	19 103	17 178	89.9

Relates to services to and from Brisbane, Canberra, Gold Coast, Melbourne, Perth and Sydney.

### Albury Airport

QantasLink	1 359	1 114	82.0	1 361	1 000	73.5
Regional Express	1 336	1 106	82.8	1 334	1 003	75.2
All Airlines	2 695	2 220	82.4	2 695	2 003	74.3

Relates to services to and from Sydney only.

### Ballina Airport

Jetstar	416	367	88.2	418	375	89.7
Regional Express	1221	1031	84.4	1222	985	80.6
Virgin Blue	435	365	83.9	438	379	86.5
All Airlines	2 072	1 763	85.1	2 078	1 739	83.7

Relates to services to and from Sydney only.

### Brisbane Airport

Jetstar	5 404	4 671	86.4	5 403	4 411	81.6
Qantas	19 993	17 754	88.8	20 010	17 850	89.2
QantasLink	4 230	3 845	90.9	3 778	3 408	90.2
Virgin Blue	19 208	16 986	88.4	19 197	16 712	87.1
All Airlines	48 835	43 256	88.6	48 388	42 381	87.6

Relates to services to and from Adelaide, Cairns, Canberra, Darwin, Hamilton Island, Hobart, Mackay, Melbourne, Newcastle, Proserpine, Rockhampton, Sydney and Townsville.

### Broome Airport

Qantas	412	318	77.2	413	354	85.7
QantasLink	231	203	87.9	273	208	76.2
Skywest	361	254	70.4	362	272	75.1
Virgin Blue	256	167	65.2	256	191	74.6
All Airlines	1 230	921	74.9	1 274	1 007	79.0

Relates to services to and from Perth only.

### Cairns Airport

Jetstar	1 976	1 698	85.9	1 974	1 691	85.7
Qantas	3 082	2 728	88.5	3 085	2 717	88.1
Virgin Blue	3 294	2 828	85.9	3 294	2 731	82.9
All Airlines	8 352	7 254	86.9	8 353	7 139	85.5

Relates to services to and from Brisbane, Melbourne and Sydney.



	Departures			Arrivals		
	Sectors Flown	No. on Time	% on Time	Sectors Flown	No. on Time	% on Time
<b>Canberra Airport</b>						
Qantas	4 508	4 112	91.2	4 200	3 791	90.3
QantasLink	1 566	1 369	87.4	1 569	1 386	88.3
Virgin Blue	2 966	2 726	91.9	2 966	2 659	89.6
All Airlines	9 040	8 207	90.8	8 735	7 836	89.7
Relates to services to and from Adelaide, Brisbane and Melbourne.						
<b>Coffs Harbour Airport</b>						
QantasLink	1 737	1 468	84.5	1 738	1 376	79.2
Virgin Blue	728	655	90.0	728	644	88.5
All Airlines	2 465	2 123	86.1	2 466	2 020	81.9
Relates to services to and from Sydney only.						
<b>Darwin Airport</b>						
Jetstar	593	471	79.4	592	506	85.5
Qantas	366	255	69.7	366	296	80.9
Virgin Blue	502	397	79.1	503	401	79.7
All Airlines	1 461	1 123	76.9	1 461	1 203	82.3
Relates to services to and from Brisbane, Melbourne and Sydney.						
<b>Dubbo Airport</b>						
QantasLink	1 364	1 203	88.2	1 364	1 165	85.4
Regional Express	1 545	1 291	83.6	1 545	1 193	77.2
All Airlines	2 909	2 494	85.7	2 909	2 358	81.1
Relates to services to and from Sydney only.						
<b>Gold Coast Airport</b>						
Jetstar	5 179	4 347	83.9	5 185	4 490	86.6
Qantas	730	624	85.5	730	607	83.2
Virgin Blue	6 523	5 507	84.4	6 527	5 604	85.9
All Airlines	12 432	10 478	84.3	12 442	10 701	86.0
Relates to services to and from Adelaide, Melbourne and Sydney.						
<b>Hamilton Island Airport</b>						
Jetstar	358	303	84.6	360	323	89.7
Virgin Blue	364	326	89.6	366	315	86.1
All Airlines	722	629	87.1	726	638	87.9
Relates to services to and from Brisbane only.						
<b>Hervey Bay Airport</b>						
Jetstar	207	178	86.0	208	188	90.4
Virgin Blue	364	314	86.3	365	309	84.7
All Airlines	571	492	86.2	573	497	86.7
Relates to services to and from Sydney only.						
<b>Hobart Airport</b>						
Jetstar	2 203	1 945	88.3	2 192	1 921	87.6
Qantas	1 098	940	85.6	1 098	880	80.1
Virgin Blue	2 574	2 278	88.5	2 575	2 172	84.3
All Airlines	5 875	5 163	87.9	5 865	4 973	84.8
Relates to services to and from Brisbane, Melbourne and Sydney.						

	Departures			Arrivals		
	Sectors Flown	No. on Time	% on Time	Sectors Flown	No. on Time	% on Time
<b>Kalgoorlie Airport</b>						
Qantas	571	479	83.9	572	506	88.5
QantasLink	339	287	84.7	339	292	86.1
Skywest	439	394	89.7	440	370	84.1
All Airlines	1 349	1 160	86.0	1 351	1 168	86.5
Relates to services to and from Perth only.						
<b>Launceston Airport</b>						
Jetstar	1 453	1 131	77.8	1 455	1 163	79.9
QantasLink	699	641	91.7	702	608	86.6
Virgin Blue	1 863	1 626	87.3	1 866	1 574	84.4
All Airlines	4 052	3 433	84.7	4 059	3 372	83.1
Relates to services to and from Melbourne and Sydney.						
<b>Mackay Airport</b>						
Jetstar	1 047	904	86.3	1 048	926	88.4
QantasLink	749	699	93.3	722	649	89.9
Virgin Blue	1 073	974	90.8	1 074	911	84.8
All Airlines	2 869	2 577	89.8	2 844	2 486	87.4
Relates to services to and from Brisbane only.						
<b>Maroochydore Airport</b>						
Jetstar	1 757	1 460	83.1	1 762	1 525	86.5
Virgin Blue	1 220	986	80.8	1 222	1 040	85.1
All Airlines	2 977	2 446	82.2	2 984	2 565	86.0
Relates to services to and from Melbourne and Sydney.						
<b>Melbourne Airport</b>						
Jetstar	6 828	5 930	86.8	6 818	5 641	82.7
Qantas	25 781	22 362	86.7	25 783	22 101	85.7
QantasLink	4 434	3 842	86.6	4 421	3 740	84.6
Regional Express	1 298	1 154	88.9	1 299	1 175	90.5
Virgin Blue	25 062	22 118	88.3	25 044	22 215	88.7
All Airlines	63 403	55 406	87.4	63 365	54 872	86.6
Relates to services to and from Adelaide, Brisbane, Burnie, Cairns, Canberra, Darwin, Gold Coast, Hobart, Launceston, Maroochydore, Mildura, Newcastle, Perth and Sydney.						
<b>Mildura Airport</b>						
QantasLink	1 624	1 411	86.9	1 629	1 363	83.7
Regional Express	1 299	1 194	91.9	1 298	1 117	86.1
All Airlines	2 923	2 605	89.1	2 927	2 480	84.7
Relates to services to and from Melbourne only.						
<b>Newcastle Airport</b>						
Jetstar	1 811	1 479	81.7	1 813	1 513	83.5
QantasLink	1 492	1 355	90.8	1 494	1 282	85.8
Virgin Blue	950	834	87.8	952	841	88.3
All Airlines	4 253	3 668	86.2	4 259	3 636	85.4
Relates to services to and from Brisbane and Melbourne.						

	Departures			Arrivals		
	Sectors Flown	No. on Time	% on Time	Sectors Flown	No. on Time	% on Time

### Perth Airport

Qantas	8 432	6 700	79.5	8 450	6 985	82.7
QantasLink	1 716	1 404	81.8	1 693	1 451	85.7
Skywest	876	727	83.0	871	668	76.7
Virgin Blue	3 593	3 152	87.7	3 594	2 987	83.1
All Airlines	14 587	11 963	82.0	14 578	12 069	82.8

Relates to services to and from Adelaide, Brisbane, Broome, Kalgoorlie, Melbourne, Port Hedland and Sydney.

### Proserpine Airport

Jetstar	362	258	71.3	362	276	76.2
Virgin Blue	362	312	86.2	363	311	85.7
All Airlines	724	570	78.7	725	587	81.0

Relates to services to and from Brisbane only.

### Rockhampton Airport

Jetstar	365	310	84.9	365	324	88.8
QantasLink	2 069	1 902	91.9	2 548	2 346	92.1
Virgin Blue	1 073	951	88.6	1 073	881	82.1
All Airlines	3 507	3 163	90.2	3 986	3 551	89.1

Relates to services to and from Brisbane only.

### Sydney Airport

Jetstar	6 574	5 795	88.2	6 578	5 544	84.3
Qantas	25 775	21 559	83.6	26 037	22 115	84.9
QantasLink	5 825	4 756	81.6	5 820	4 621	79.4
Regional Express	5 961	4 890	82.0	5 973	4 801	80.4
Virgin Blue	26 049	22 438	86.1	26 049	22 573	86.7
All Airlines	70 184	59 438	84.7	70 457	59 654	84.7

Relates to services to and from Adelaide, Albury, Ballina, Brisbane, Cairns, Canberra, Coffs Harbour, Darwin, Dubbo, Hervey Bay, Gold Coast, Maroochydore, Melbourne, Perth, Townsville and Wagga Wagga.

### Townsville Airport

Jetstar	592	485	81.9	591	511	86.5
Qantas	1 715	1 556	90.7	1 715	1 565	91.3
Virgin Blue	1 480	1 334	90.1	1 482	1 288	86.9
All Airlines	3 787	3 375	89.1	3 788	3 364	88.8

Relates to services to and from Brisbane and Sydney.

### Wagga Wagga Airport

QantasLink	1 360	1 107	81.4	1 362	1 007	73.9
Regional Express	1 871	1 555	83.1	1 860	1 401	75.3
All Airlines	3 231	2 662	82.4	3 222	2 408	74.7

Relates to services to and from Sydney only.

## DEFINITIONS

---

On time departure	A flight departure is counted as "on time" if it departs the gate within 15 minutes of the scheduled departure time shown in the carriers' schedule.
On time arrival	A flight arrival is counted as "on time" if it arrived at the gate within 15 minutes of the scheduled arrival time shown in the carriers' schedule. Neither diverted nor cancelled flights count as on time.
Cancellation	A flight is regarded as a cancellation if it is cancelled or rescheduled less than 7 days prior to its scheduled departure time.
On time departure percentage	The percentage of on time departures is measured against the number of departures <i>operated</i> on any particular sector.
On time arrival percentage	The percentage of on time arrivals is measured against the number of arrivals <i>operated</i> on any particular sector.
Cancellation percentage	The percentage of cancellations is measured against the number of services <i>scheduled</i> on any particular sector.

---