



Australian Government

Department of Transport and Regional Services
Bureau of Transport and Regional Economics



btre

AVIATION STATISTICS

Airline
On Time Performance

2005-06—OTP 34

© Commonwealth of Australia 2006

ISSN 1832-0759

This work is copyright and the data contained in this publication should not be reproduced or used in any form without acknowledgement.

Enquiries

Bureau of Transport and Regional Economics

GPO Box 501
Canberra ACT 2601

Telephone: 02 6274 7720

Facsimile: 02 6274 7727

Website: www.btre.gov.au

Email: avstats@dotars.gov.au

This publication can be downloaded from the BTRE website. A spreadsheet of the time-series data is also available at

<http://www.btre.gov.au/statistics/aviation/otphome.aspx>

Disclaimers

The BTRE seeks to publish its work to the highest professional standards. However, it cannot accept responsibility for any consequences arising from the use of information herein. Readers should rely on their own skill and judgment in applying any information or analysis to particular issues or circumstances.

FOREWORD

In late 2003, the Bureau of Transport and Regional Economics (BTRE) established an agreement with major Australian airlines to report domestic aviation on time performance statistics. Qantas, QantasLink, Regional Express, Skywest Airlines and Virgin Blue agreed to report monthly on time performance statistics to BTRE from November 2003. Jetstar, which commenced operations on 25 May 2004, is also now participating. Macair, who commenced reporting in July 2005, only supply total network data as they have no competitive routes. Ozjet reported airline on time performance during the period January – March 2006 only. The purpose of collecting and publishing this information is to monitor overall industry and individual airline performance on punctuality and to allow consumers of air travel to make informed decisions when planning air travel.

On time performance is reported for all routes which are flown by two or more airlines where the passenger load averages over 8,000 passengers per month. In 2005-06 there were 52 routes which met this definition, however, over time routes which meet this definition may change as airline networks and traffic levels vary.

Airlines also report overall monthly network performance. Total industry figures refer to all services operated by reporting airlines only. This currently represents over 95 per cent of scheduled aviation services in Australia.

The method of capturing on time performance varies between airlines utilising different recording systems. Jetstar and Qantas jet aircraft use Aircraft Communication Addressing and Reporting System (ACARS) to electronically measure on time performance. Virgin Blue, Regional Express, Skywest, Macair and the Qantas non-jet fleet record on time performance manually using records from pilots, gate agents and/or ground crews.

Reports are published monthly on the BTRE web site. After collection of initial data, aggregate reports are subject to internal audit by participating airlines prior to publication. This report collates data for the total industry and individual routes and airports for the year ended 30 June 2006.

Definitions relating to on time performance are provided at the end of this report.

Detailed time series data is available in Microsoft Excel spreadsheet format from the BTRE web site at http://www.btre.gov.au/statistics/aviation/otp_downloads.aspx

Bureau of Transport and Regional Economics

GPO Box 501

Canberra ACT 2601

Telephone: 02 6274 7720

Facsimile: 02 6274 7727

Website: <http://www.btre.gov.au/statistics/statsindex.aspx>

Email: avstats@dotars.gov.au

CONTENTS

Industry performance	1
Individual routes	3
Airports	15
Definitions	21

This page is left intentionally blank

INDUSTRY PERFORMANCE

Airline on time performance over all routes operated by airlines participating in on time performance reporting (i.e. Jetstar, Macair, Ozjet, Qantas, QantasLink, Regional Express, Skywest Airlines and Virgin Blue), averaged 87.0 per cent in terms of on time departures and 85.7 per cent for on time arrivals for the year ended 30 June 2006. Cancellations averaged 1.0 per cent of all scheduled flights.

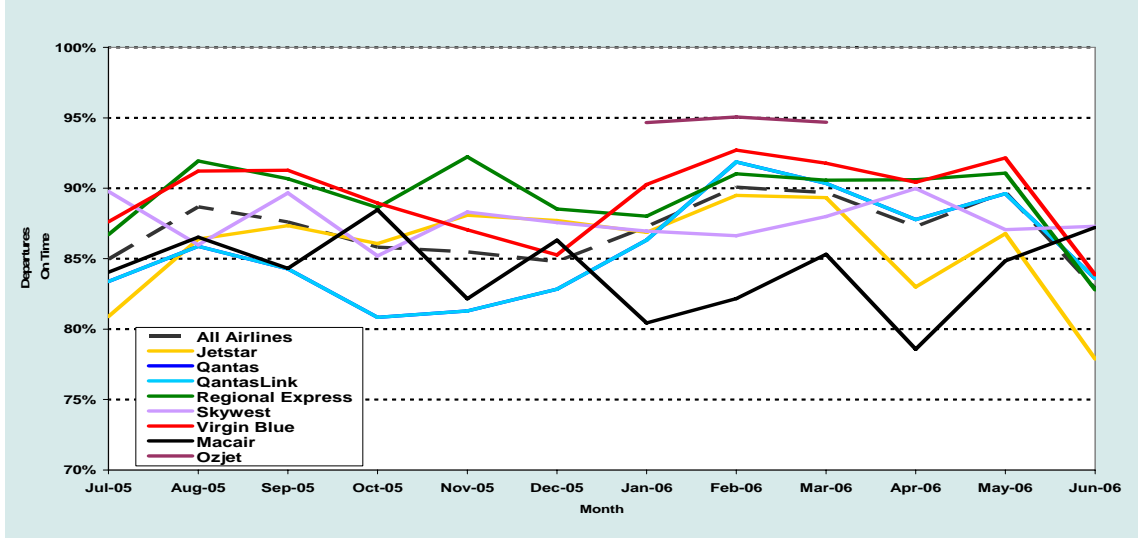
The highest level of on time performance was recorded in February, with 90.1 per cent in terms of departures on time and March, with 88.6 per cent in terms of arrivals on time. The lowest percentage of cancellations was recorded in August and September, with 0.7 per cent of scheduled flights cancelled.

The lowest level of on time performance was recorded in June with 82.9 per cent of departures and 81.4 per cent of arrivals being on time. The highest percentage of cancellations was also recorded in June, with 1.7 per cent of scheduled flights cancelled.

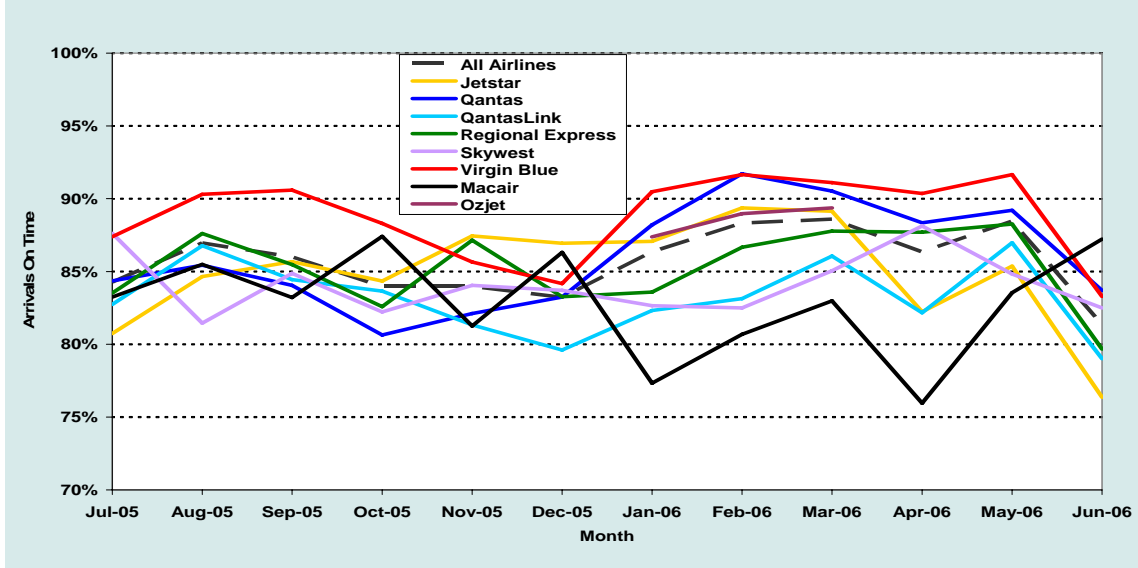
On time performance – total industry for the year ending 30 June 2006

	Jetstar	Macair	Ozjet	Qantas	Qantas Link	Regional Express	Skywest	Virgin Blue	All Airlines
Sectors Scheduled	46 505	16 607	567	119 305	97 292	59 396	11 907	106 416	457 817
Sectors Flown	46 266	16 241	563	117 955	96 199	59 258	11 575	105 533	453 406
On Time Departures	39 672	13 692	534	100 990	82 461	52 979	10 148	94 320	394 559
On Time Arrivals	39 264	13 482	498	101 323	80 084	50 545	9 734	93 654	388 348
Cancellations	239	366	4	1 350	1 093	138	332	883	4 411
OnTime Departures (%)	85.7%	84.3%	94.8%	85.6%	85.7%	89.4%	87.7%	89.4%	87.0%
OnTime Arrivals (%)	84.9%	83.0%	88.5%	85.9%	83.2%	85.3%	84.1%	88.7%	85.7%
Cancellations (%)	0.5%	2.2%	0.7%	1.1%	1.1%	0.2%	2.8%	0.8%	1.0%

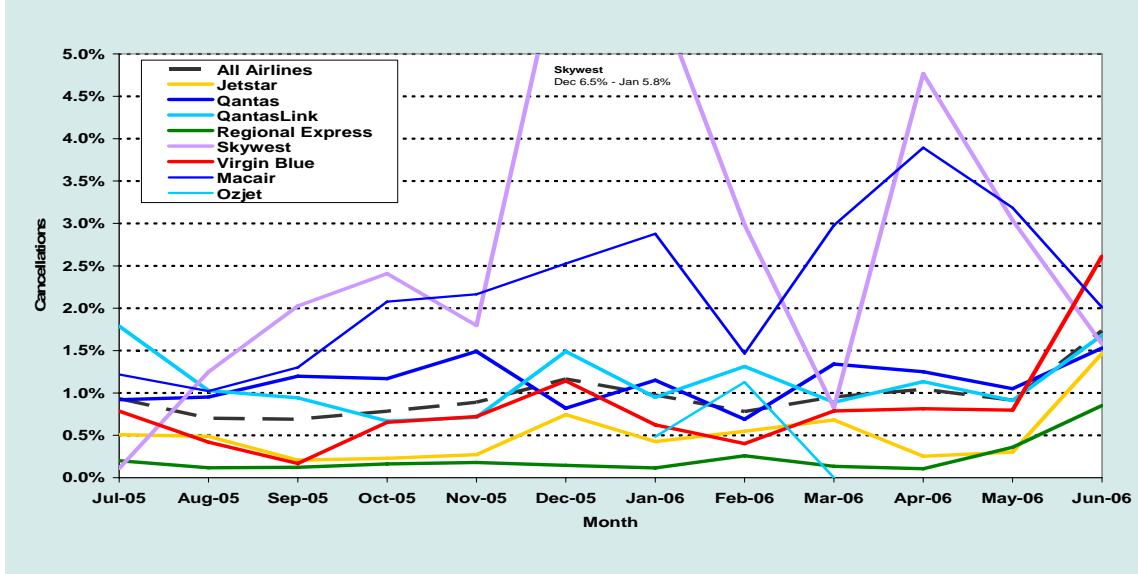
ON TIME DEPARTURES – TOTAL INDUSTRY



ON TIME ARRIVALS – TOTAL INDUSTRY



CANCELLATIONS – TOTAL INDUSTRY



INDIVIDUAL ROUTES

On time performance is reported for all routes which are flown by two or more airlines where the passenger load averages over 8,000 passengers per month. In 2005-06 there were 52 routes which met this definition, however, over time routes which meet this definition may change as airline networks and traffic levels vary.

	Sectors		On time departures		On time arrivals		Cancellations	
	sched.	flown	no.	%	no.	%	no.	%
Adelaide-Alice Springs								
Qantas	92	92	80	87.0%	77	83.7%	0	0.0%
Virgin Blue	38	38	30	78.9%	22	57.9%	0	0.0%
All Airlines	130	130	110	84.6%	99	76.2%	0	0.0%
Adelaide-Brisbane								
Jetstar	180	179	168	93.9%	166	92.7%	1	0.6%
Qantas	1 261	1 261	1 147	91.0%	1 147	91.0%	0	0.0%
Virgin Blue	1 063	1 061	914	86.1%	921	86.8%	2	0.2%
All Airlines	2 504	2 501	2 229	89.1%	2 234	89.3%	3	0.1%
Adelaide-Canberra								
Qantas	545	545	465	85.3%	467	85.7%	0	0.0%
Virgin Blue	361	361	313	86.7%	320	88.6%	0	0.0%
All Airlines	906	906	778	85.9%	787	86.9%	0	0.0%
Adelaide-Gold Coast								
Jetstar	347	344	287	83.4%	297	86.3%	3	0.9%
Virgin Blue	447	443	400	90.3%	401	90.5%	4	0.9%
All Airlines	794	787	687	87.3%	698	88.7%	7	0.9%
Adelaide-Melbourne								
Qantas	4 108	4 069	3 631	89.2%	3 659	89.9%	39	0.9%
Virgin Blue	3 073	3 042	2 804	92.2%	2 816	92.6%	31	1.0%
All Airlines	7 181	7 111	6 435	90.5%	6 475	91.1%	70	1.0%
Adelaide-Perth								
Qantas	1 452	1 444	1 211	83.9%	1 177	81.5%	8	0.6%
Virgin Blue	453	453	420	92.7%	402	88.7%	0	0.0%
All Airlines	1 905	1 897	1 631	86.0%	1 579	83.2%	8	0.4%
Adelaide-Port Lincoln								
QantasLink	500	496	472	95.2%	463	93.3%	4	0.8%
Regional Express	830	829	768	92.6%	756	91.2%	1	0.1%
All Airlines	1 330	1 325	1 240	93.6%	1 219	92.0%	5	0.4%
Adelaide-Sydney								
Jetstar	150	150	110	73.3%	124	82.7%	0	0.0%
Qantas	3 736	3 711	3 308	89.1%	3 320	89.5%	25	0.7%
Virgin Blue	1 823	1 814	1 609	88.7%	1 618	89.2%	9	0.5%
All Airlines	5 709	5 675	5 027	88.6%	5 062	89.2%	34	0.6%

	Sectors		On time departures		On time arrivals		Cancellations	
	sched.	flown	no.	%	no.	%	no.	%
Albury-Sydney								
QantasLink	1 379	1 368	1 056	77.2%	1 069	78.1%	11	0.8%
Regional Express	1 264	1 262	1 092	86.5%	1 057	83.8%	2	0.2%
All Airlines	2 643	2 630	2 148	81.7%	2 126	80.8%	13	0.5%
Alice Springs-Adelaide								
Qantas	92	92	71	77.2%	70	76.1%	0	0.0%
Virgin Blue	38	38	23	60.5%	21	55.3%	0	0.0%
All Airlines	130	130	94	72.3%	91	70.0%	0	0.0%
Ballina-Sydney								
Jetstar	340	337	293	86.9%	303	89.9%	3	0.9%
QantasLink	61	60	35	58.3%	42	70.0%	1	1.6%
Regional Express	1 223	1 223	1 086	88.8%	1 000	81.8%	0	0.0%
Virgin Blue	402	397	322	81.1%	324	81.6%	5	1.2%
All Airlines	2 026	2 017	1 736	86.1%	1 669	82.7%	9	0.4%
Brisbane-Adelaide								
Jetstar	150	150	145	96.7%	148	98.7%	0	0.0%
Qantas	1 261	1 260	1 127	89.4%	1 155	91.7%	1	0.1%
Virgin Blue	1 063	1 063	996	93.7%	983	92.5%	0	0.0%
All Airlines	2 474	2 473	2 268	91.7%	2 286	92.4%	1	0.0%
Brisbane-Cairns								
Jetstar	734	731	652	89.2%	618	84.5%	3	0.4%
Qantas	1 420	1 417	1 182	83.4%	1 211	85.5%	3	0.2%
Virgin Blue	1 457	1 455	1 353	93.0%	1 327	91.2%	2	0.1%
All Airlines	3 611	3 603	3 187	88.5%	3 156	87.6%	8	0.2%
Brisbane-Canberra								
Qantas	1 394	1 391	1 231	88.5%	1 265	90.9%	3	0.2%
QantasLink	87	83	69	83.1%	77	92.8%	4	4.6%
Virgin Blue	1 094	1 094	1 034	94.5%	1 042	95.2%	0	0.0%
All Airlines	2 575	2 568	2 334	90.9%	2 384	92.8%	7	0.3%
Brisbane-Darwin								
Jetstar	53	53	38	71.7%	28	52.8%	0	0.0%
Qantas	567	565	461	81.6%	476	84.2%	2	0.4%
Virgin Blue	366	364	314	86.3%	309	84.9%	2	0.5%
All Airlines	986	982	813	82.8%	813	82.8%	4	0.4%
Brisbane-Hamilton Island								
Jetstar	272	272	241	88.6%	243	89.3%	0	0.0%
Qantas	27	27	23	85.2%	22	81.5%	0	0.0%
Virgin Blue	299	298	275	92.3%	279	93.6%	1	0.3%
All Airlines	598	597	539	90.3%	544	91.1%	1	0.2%
Brisbane-Hobart								
Jetstar	209	209	171	81.8%	169	80.9%	0	0.0%
Virgin Blue	365	365	343	94.0%	339	92.9%	0	0.0%
All Airlines	574	574	514	89.5%	508	88.5%	0	0.0%
Brisbane-Mackay								
Jetstar	1 051	1 046	916	87.6%	914	87.4%	5	0.5%
Qantas	244	244	221	90.6%	223	91.4%	0	0.0%
QantasLink	183	183	151	82.5%	153	83.6%	0	0.0%
Virgin Blue	1 069	1 068	948	88.8%	930	87.1%	1	0.1%
All Airlines	2 547	2 541	2 236	88.0%	2 220	87.4%	6	0.2%

	Sectors		On time departures		On time arrivals		Cancellations	
	sched.	flown	no.	%	no.	%	no.	%
Brisbane-Melbourne								
Qantas	5 298	5 232	4 564	87.2%	4 582	87.6%	66	1.2%
Virgin Blue	3 561	3 528	3 159	89.5%	3 163	89.7%	33	0.9%
All Airlines	8 859	8 760	7 723	88.2%	7 745	88.4%	99	1.1%
Brisbane-Newcastle								
Jetstar	1 075	1 075	943	87.7%	938	87.3%	0	0.0%
QantasLink	550	546	452	82.8%	431	78.9%	4	0.7%
Virgin Blue	417	416	366	88.0%	370	88.9%	1	0.2%
All Airlines	2 042	2 037	1 761	86.5%	1 739	85.4%	5	0.2%
Brisbane-Perth								
Qantas	1 043	1 043	867	83.1%	810	77.7%	0	0.0%
Virgin Blue	365	364	316	86.8%	293	80.5%	1	0.3%
All Airlines	1 408	1 407	1 183	84.1%	1 103	78.4%	1	0.1%
Brisbane-Proserpine								
Jetstar	364	363	335	92.3%	321	88.4%	1	0.3%
Virgin Blue	365	365	342	93.7%	335	91.8%	0	0.0%
All Airlines	729	728	677	93.0%	656	90.1%	1	0.1%
Brisbane-Rockhampton								
Jetstar	364	364	331	90.9%	325	89.3%	0	0.0%
QantasLink	2 953	2 930	2 663	90.9%	2 645	90.3%	23	0.8%
Virgin Blue	1 069	1 069	917	85.8%	924	86.4%	0	0.0%
All Airlines	4 386	4 363	3 911	89.6%	3 894	89.3%	23	0.5%
Brisbane-Sydney								
Qantas	7 147	7 034	6 101	86.7%	5 895	83.8%	113	1.6%
Virgin Blue	6 002	5 902	5 334	90.4%	5 170	87.6%	100	1.7%
All Airlines	13 149	12 936	11 435	88.4%	11 065	85.5%	213	1.6%
Brisbane-Townsville								
Jetstar	241	239	206	86.2%	208	87.0%	2	0.8%
Qantas	1 689	1 677	1 419	84.6%	1 434	85.5%	12	0.7%
Virgin Blue	1 179	1 175	1 072	91.2%	1 094	93.1%	4	0.3%
All Airlines	3 109	3 091	2 697	87.3%	2 736	88.5%	18	0.6%
Broome-Perth								
Qantas	443	439	337	76.8%	371	84.5%	4	0.9%
QantasLink	323	321	275	85.7%	275	85.7%	2	0.6%
Skywest	262	258	210	81.4%	203	78.7%	4	1.5%
Virgin Blue	276	276	222	80.4%	221	80.1%	0	0.0%
All Airlines	1 304	1 294	1 044	80.7%	1 070	82.7%	10	0.8%
Burnie-Melbourne								
QantasLink	721	706	630	89.2%	554	78.5%	15	2.1%
Regional Express	618	615	588	95.6%	555	90.2%	3	0.5%
All Airlines	1 339	1 321	1 218	92.2%	1 109	84.0%	18	1.3%
Cairns-Brisbane								
Jetstar	762	759	648	85.4%	627	82.6%	3	0.4%
Qantas	1 429	1 422	1 293	90.9%	1 296	91.1%	7	0.5%
Virgin Blue	1 459	1 456	1 378	94.6%	1 376	94.5%	3	0.2%
All Airlines	3 650	3 637	3 319	91.3%	3 299	90.7%	13	0.4%

	Sectors		On time departures		On time arrivals		Cancellations	
	sched.	flown	no.	%	no.	%	no.	%
Cairns-Melbourne								
Jetstar	545	543	452	83.2%	472	86.9%	2	0.4%
Qantas	365	364	293	80.5%	329	90.4%	1	0.3%
Virgin Blue	692	691	576	83.4%	599	86.7%	1	0.1%
All Airlines	1 602	1 598	1 321	82.7%	1 400	87.6%	4	0.2%
Cairns-Sydney								
Jetstar	429	427	372	87.1%	379	88.8%	2	0.5%
Qantas	1 219	1 210	1 070	88.4%	1 106	91.4%	9	0.7%
Virgin Blue	1 041	1 033	891	86.3%	883	85.5%	8	0.8%
All Airlines	2 689	2 670	2 333	87.4%	2 368	88.7%	19	0.7%
Canberra-Adelaide								
Qantas	657	657	598	91.0%	597	90.9%	0	0.0%
Virgin Blue	361	361	340	94.2%	337	93.4%	0	0.0%
All Airlines	1 018	1 018	938	92.1%	934	91.7%	0	0.0%
Canberra-Brisbane								
Qantas	1 385	1 379	1 235	89.6%	1 226	88.9%	6	0.4%
QantasLink	87	82	66	80.5%	69	84.1%	5	5.7%
Virgin Blue	1 095	1 093	1 013	92.7%	1 017	93.0%	2	0.2%
All Airlines	2 567	2 554	2 314	90.6%	2 312	90.5%	13	0.5%
Canberra-Melbourne								
Qantas	2 629	2 617	2 230	85.2%	2 223	84.9%	12	0.5%
QantasLink	1 202	1 176	981	83.4%	941	80.0%	26	2.2%
Virgin Blue	1 289	1 275	1 178	92.4%	1 166	91.5%	14	1.1%
All Airlines	5 120	5 068	4 389	86.6%	4 330	85.4%	52	1.0%
Coffs Harbour-Sydney								
QantasLink	1 939	1 927	1 593	82.7%	1 537	79.8%	12	0.6%
Virgin Blue	727	721	651	90.3%	649	90.0%	6	0.8%
All Airlines	2 666	2 648	2 244	84.7%	2 186	82.6%	18	0.7%
Darwin-Brisbane								
Jetstar	52	52	20	38.5%	35	67.3%	0	0.0%
Qantas	569	567	421	74.3%	452	79.7%	2	0.4%
Virgin Blue	366	364	286	78.6%	303	83.2%	2	0.5%
All Airlines	987	983	727	74.0%	790	80.4%	4	0.4%
Darwin-Melbourne								
Jetstar	52	52	26	50.0%	42	80.8%	0	0.0%
Qantas	200	200	167	83.5%	175	87.5%	0	0.0%
Virgin Blue	155	155	118	76.1%	119	76.8%	0	0.0%
All Airlines	407	407	311	76.4%	336	82.6%	0	0.0%
Darwin-Sydney								
Qantas	92	92	76	82.6%	84	91.3%	0	0.0%
Virgin Blue	66	66	50	75.8%	38	57.6%	0	0.0%
All Airlines	158	158	126	79.7%	122	77.2%	0	0.0%
Devonport-Melbourne								
QantasLink	477	467	417	89.3%	392	83.9%	10	2.1%
Regional Express	78	78	75	96.2%	73	93.6%	0	0.0%
All Airlines	555	545	492	90.3%	465	85.3%	10	1.8%

	Sectors		On time departures		On time arrivals		Cancellations	
	sched.	flown	no.	%	no.	%	no.	%
Dubbo-Sydney								
QantasLink	1 511	1 483	1 255	84.6%	1 182	79.7%	28	1.9%
Regional Express	1 281	1 277	1 031	80.7%	1 052	82.4%	4	0.3%
All Airlines	2 792	2 760	2 286	82.8%	2 234	80.9%	32	1.1%
Gold Coast-Adelaide								
Jetstar	347	346	312	90.2%	314	90.8%	1	0.3%
Virgin Blue	447	443	396	89.4%	402	90.7%	4	0.9%
All Airlines	794	789	708	89.7%	716	90.7%	5	0.6%
Gold Coast-Melbourne								
Jetstar	1 976	1 964	1 511	76.9%	1 569	79.9%	12	0.6%
Virgin Blue	2 279	2 264	1 958	86.5%	2 011	88.8%	15	0.7%
All Airlines	4 255	4 228	3 469	82.0%	3 580	84.7%	27	0.6%
Gold Coast-Sydney								
Jetstar	2 698	2 675	2 373	88.7%	2 326	87.0%	23	0.9%
Qantas	730	729	649	89.0%	652	89.4%	1	0.1%
Virgin Blue	3 497	3 478	3 089	88.8%	3 133	90.1%	19	0.5%
All Airlines	6 925	6 882	6 111	88.8%	6 111	88.8%	43	0.6%
Hamilton Island-Brisbane								
Jetstar	274	274	235	85.8%	229	83.6%	0	0.0%
Qantas	27	27	24	88.9%	25	92.6%	0	0.0%
Virgin Blue	299	297	283	95.3%	286	96.3%	2	0.7%
All Airlines	600	598	542	90.6%	540	90.3%	2	0.3%
Hervey Bay-Sydney								
Jetstar	86	86	77	89.5%	74	86.0%	0	0.0%
Virgin Blue	133	133	110	82.7%	111	83.5%	0	0.0%
All Airlines	219	219	187	85.4%	185	84.5%	0	0.0%
Hobart-Brisbane								
Jetstar	210	210	179	85.2%	175	83.3%	0	0.0%
Virgin Blue	365	365	319	87.4%	332	91.0%	0	0.0%
All Airlines	575	575	498	86.6%	507	88.2%	0	0.0%
Hobart-Melbourne								
Jetstar	1 528	1 524	1 161	76.2%	1 115	73.2%	4	0.3%
Qantas	730	730	647	88.6%	628	86.0%	0	0.0%
Virgin Blue	1 504	1 501	1 355	90.3%	1 323	88.1%	3	0.2%
All Airlines	3 762	3 755	3 163	84.2%	3 066	81.7%	7	0.2%
Hobart-Sydney								
Jetstar	716	714	660	92.4%	647	90.6%	2	0.3%
Qantas	427	427	365	85.5%	382	89.5%	0	0.0%
Virgin Blue	728	725	642	88.6%	641	88.4%	3	0.4%
All Airlines	1 871	1 866	1 667	89.3%	1 670	89.5%	5	0.3%
Kalgoorlie-Perth								
Qantas	586	583	476	81.6%	477	81.8%	3	0.5%
QantasLink	394	391	342	87.5%	350	89.5%	3	0.8%
Skywest	612	559	538	96.2%	524	93.7%	53	8.7%
All Airlines	1 592	1 533	1 356	88.5%	1 351	88.1%	59	3.7%

	Sectors		On time departures		On time arrivals		Cancellations	
	sched.	flown	no.	%	no.	%	no.	%
Karratha-Perth								
Qantas	592	582	539	92.6%	542	93.1%	10	1.7%
QantasLink	700	681	567	83.3%	588	86.3%	19	2.7%
Skywest	244	213	187	87.8%	190	89.2%	31	12.7%
All Airlines	1 536	1 476	1 293	87.6%	1 320	89.4%	60	3.9%
Launceston-Melbourne								
Jetstar	1 322	1 309	1 130	86.3%	1 092	83.4%	13	1.0%
Qantas	375	375	358	95.5%	355	94.7%	0	0.0%
Virgin Blue	1 429	1 426	1 343	94.2%	1 346	94.4%	3	0.2%
All Airlines	3 126	3 110	2 831	91.0%	2 793	89.8%	16	0.5%
Launceston-Sydney								
Jetstar	365	365	333	91.2%	334	91.5%	0	0.0%
Virgin Blue	389	389	341	87.7%	351	90.2%	0	0.0%
All Airlines	754	754	674	89.4%	685	90.8%	0	0.0%
Mackay-Brisbane								
Jetstar	1 052	1 046	876	83.7%	879	84.0%	6	0.6%
Qantas	244	244	188	77.0%	207	84.8%	0	0.0%
QantasLink	185	185	159	85.9%	160	86.5%	0	0.0%
Virgin Blue	1 069	1 068	1 004	94.0%	1 005	94.1%	1	0.1%
All Airlines	2 550	2 543	2 227	87.6%	2 251	88.5%	7	0.3%
Maroochydore-Melbourne								
Jetstar	679	677	512	75.6%	490	72.4%	2	0.3%
Virgin Blue	764	756	672	88.9%	690	91.3%	8	1.0%
All Airlines	1 443	1 433	1 184	82.6%	1 180	82.3%	10	0.7%
Maroochydore-Sydney								
Jetstar	1 009	1 000	801	80.1%	805	80.5%	9	0.9%
Virgin Blue	496	492	411	83.5%	422	85.8%	4	0.8%
All Airlines	1 505	1 492	1 212	81.2%	1 227	82.2%	13	0.9%
Melbourne-Adelaide								
Qantas	4 330	4 285	3 703	86.4%	3 794	88.5%	45	1.0%
Virgin Blue	3 073	3 042	2 689	88.4%	2 684	88.2%	31	1.0%
All Airlines	7 403	7 327	6 392	87.2%	6 478	88.4%	76	1.0%
Melbourne-Brisbane								
Qantas	5 318	5 249	4 581	87.3%	4 604	87.7%	69	1.3%
Virgin Blue	3 558	3 531	3 175	89.9%	3 101	87.8%	27	0.8%
All Airlines	8 876	8 780	7 756	88.3%	7 705	87.8%	96	1.1%
Melbourne-Burnie								
QantasLink	731	723	603	83.4%	599	82.8%	8	1.1%
Regional Express	616	613	577	94.1%	566	92.3%	3	0.5%
All Airlines	1 347	1 336	1 180	88.3%	1 165	87.2%	11	0.8%
Melbourne-Cairns								
Jetstar	542	540	482	89.3%	485	89.8%	2	0.4%
Qantas	365	364	308	84.6%	324	89.0%	1	0.3%
Virgin Blue	692	690	604	87.5%	602	87.2%	2	0.3%
All Airlines	1 599	1 594	1 394	87.5%	1 411	88.5%	5	0.3%

	Sectors		On time departures		On time arrivals		Cancellations	
	sched.	flown	no.	%	no.	%	no.	%
Melbourne-Canberra								
Qantas	2 362	2 353	2 017	85.7%	1 984	84.3%	9	0.4%
QantasLink	1 195	1 158	962	83.1%	969	83.7%	37	3.1%
Virgin Blue	1 288	1 277	1 168	91.5%	1 166	91.3%	11	0.9%
All Airlines	4 845	4 788	4 147	86.6%	4 119	86.0%	57	1.2%
Melbourne-Darwin								
Jetstar	53	53	43	81.1%	33	62.3%	0	0.0%
Qantas	197	197	159	80.7%	136	69.0%	0	0.0%
Virgin Blue	155	155	141	91.0%	135	87.1%	0	0.0%
All Airlines	405	405	343	84.7%	304	75.1%	0	0.0%
Melbourne-Devonport								
QantasLink	478	469	376	80.2%	392	83.6%	9	1.9%
Regional Express	77	77	71	92.2%	73	94.8%	0	0.0%
All Airlines	555	546	447	81.9%	465	85.2%	9	1.6%
Melbourne-Gold Coast								
Jetstar	1 974	1 963	1 697	86.4%	1 641	83.6%	11	0.6%
Virgin Blue	2 282	2 270	2 033	89.6%	1 976	87.0%	12	0.5%
All Airlines	4 256	4 233	3 730	88.1%	3 617	85.4%	23	0.5%
Melbourne-Hobart								
Jetstar	1 528	1 522	1 199	78.8%	1 201	78.9%	6	0.4%
Qantas	760	760	600	78.9%	621	81.7%	0	0.0%
Virgin Blue	1 505	1 503	1 357	90.3%	1 344	89.4%	2	0.1%
All Airlines	3 793	3 785	3 156	83.4%	3 166	83.6%	8	0.2%
Melbourne-Launceston								
Jetstar	1 320	1 307	1 141	87.3%	1 141	87.3%	13	1.0%
Qantas	379	379	255	67.3%	272	71.8%	0	0.0%
Virgin Blue	1 427	1 426	1 276	89.5%	1 283	90.0%	1	0.1%
All Airlines	3 126	3 112	2 672	85.9%	2 696	86.6%	14	0.4%
Melbourne-Maroochydore								
Jetstar	680	679	585	86.2%	571	84.1%	1	0.1%
Virgin Blue	764	757	708	93.5%	702	92.7%	7	0.9%
All Airlines	1 444	1 436	1 293	90.0%	1 273	88.6%	8	0.6%
Melbourne-Mildura								
Qantas	1	1	1	100.0%	0	0.0%	0	0.0%
QantasLink	1 603	1 583	1 285	81.2%	1 249	78.9%	20	1.2%
Regional Express	1 183	1 181	1 097	92.9%	1 040	88.1%	2	0.2%
All Airlines	2 787	2 765	2 383	86.2%	2 289	82.8%	22	0.8%
Melbourne-Newcastle								
Jetstar	863	863	766	88.8%	751	87.0%	0	0.0%
QantasLink	845	833	680	81.6%	663	79.6%	12	1.4%
Virgin Blue	365	364	339	93.1%	331	90.9%	1	0.3%
All Airlines	2 073	2 060	1 785	86.7%	1 745	84.7%	13	0.6%
Melbourne-Perth								
Qantas	2 371	2 370	1 836	77.5%	1 625	68.6%	1	0.0%
Virgin Blue	1 469	1 465	1 367	93.3%	1 281	87.4%	4	0.3%
All Airlines	3 840	3 835	3 203	83.5%	2 906	75.8%	5	0.1%

	Sectors		On time departures		On time arrivals		Cancellations	
	sched.	flown	no.	%	no.	%	no.	%
Melbourne-Sydney								
Ozjet	284	283	272	96.1%	257	90.8%	1	0.4%
Qantas	10 051	9 723	8 498	87.4%	8 252	84.9%	328	3.3%
Virgin Blue	8 092	7 935	7 028	88.6%	6 934	87.4%	157	1.9%
All Airlines	18 427	17 941	15 798	88.1%	15 443	86.1%	486	2.6%
Mildura-Melbourne								
Qantas	1	1	1	100.0%	1	100.0%	0	0.0%
QantasLink	1 600	1 574	1 345	85.5%	1 322	84.0%	26	1.6%
Regional Express	1 182	1 180	1 104	93.6%	1 059	89.7%	2	0.2%
All Airlines	2 783	2 755	2 450	88.9%	2 382	86.5%	28	1.0%
Newcastle-Brisbane								
Jetstar	1 075	1 075	934	86.9%	921	85.7%	0	0.0%
QantasLink	550	545	473	86.8%	451	82.8%	5	0.9%
Virgin Blue	417	414	374	90.3%	349	84.3%	3	0.7%
All Airlines	2 042	2 034	1 781	87.6%	1 721	84.6%	8	0.4%
Newcastle-Melbourne								
Jetstar	885	884	774	87.6%	768	86.9%	1	0.1%
QantasLink	846	837	707	84.5%	664	79.3%	9	1.1%
Virgin Blue	365	364	325	89.3%	324	89.0%	1	0.3%
All Airlines	2 096	2 085	1 806	86.6%	1 756	84.2%	11	0.5%
Perth-Adelaide								
Qantas	1 406	1 404	1 174	83.6%	1 212	86.3%	2	0.1%
Virgin Blue	453	452	397	87.8%	423	93.6%	1	0.2%
All Airlines	1 859	1 856	1 571	84.6%	1 635	88.1%	3	0.2%
Perth-Brisbane								
Qantas	1 044	1 043	724	69.4%	833	79.9%	1	0.1%
Virgin Blue	365	365	301	82.5%	299	81.9%	0	0.0%
All Airlines	1 409	1 408	1 025	72.8%	1 132	80.4%	1	0.1%
Perth-Broome								
Qantas	444	443	381	86.0%	393	88.7%	1	0.2%
QantasLink	254	251	210	83.7%	219	87.3%	3	1.2%
Skywest	271	265	205	77.4%	194	73.2%	6	2.2%
Virgin Blue	276	276	234	84.8%	233	84.4%	0	0.0%
All Airlines	1 245	1 235	1 030	83.4%	1 039	84.1%	10	0.8%
Perth-Kalgoorlie								
Qantas	586	585	498	85.1%	502	85.8%	1	0.2%
QantasLink	394	391	346	88.5%	347	88.7%	3	0.8%
Skywest	612	558	525	94.1%	525	94.1%	54	8.8%
All Airlines	1 592	1 534	1 369	89.2%	1 374	89.6%	58	3.6%
Perth-Karratha								
Qantas	592	582	540	92.8%	537	92.3%	10	1.7%
QantasLink	769	751	622	82.8%	650	86.6%	18	2.3%
Skywest	210	203	174	85.7%	168	82.8%	7	3.3%
All Airlines	1 571	1 536	1 336	87.0%	1 355	88.2%	35	2.2%
Perth-Melbourne								
Qantas	2 420	2 411	1 735	72.0%	1 861	77.2%	9	0.4%
Virgin Blue	1 469	1 464	1 291	88.2%	1 328	90.7%	5	0.3%
All Airlines	3 889	3 875	3 026	78.1%	3 189	82.3%	14	0.4%

	Sectors		On time departures		On time arrivals		Cancellations	
	sched.	flown	no.	%	no.	%	no.	%
Perth-Port Hedland								
QantasLink	295	293	250	85.3%	255	87.0%	2	0.7%
Skywest	48	36	32	88.9%	29	80.6%	12	25.0%
All Airlines	343	329	282	85.7%	284	86.3%	14	4.1%
Perth-Sydney								
Qantas	1 915	1 910	1 435	75.1%	1 544	80.8%	5	0.3%
Virgin Blue	1 111	1 109	953	85.9%	994	89.6%	2	0.2%
All Airlines	3 026	3 019	2 388	79.1%	2 538	84.1%	7	0.2%
Port Hedland-Perth								
QantasLink	294	291	223	76.6%	252	86.6%	3	1.0%
Skywest	39	37	32	86.5%	30	81.1%	2	5.1%
All Airlines	333	328	255	77.7%	282	86.0%	5	1.5%
Port Lincoln-Adelaide								
QantasLink	498	493	463	93.9%	432	87.6%	5	1.0%
Regional Express	830	829	766	92.4%	740	89.3%	1	0.1%
All Airlines	1 328	1 322	1 229	93.0%	1 172	88.7%	6	0.5%
Proserpine-Brisbane								
Jetstar	365	364	315	86.5%	304	83.5%	1	0.3%
Virgin Blue	366	365	342	93.7%	339	92.9%	1	0.3%
All Airlines	731	729	657	90.1%	643	88.2%	2	0.3%
Rockhampton-Brisbane								
Jetstar	365	365	285	78.1%	277	75.9%	0	0.0%
QantasLink	2 605	2 582	2 352	91.1%	2 363	91.5%	23	0.9%
Virgin Blue	1 069	1 069	983	92.0%	984	92.0%	0	0.0%
All Airlines	4 039	4 016	3 620	90.1%	3 624	90.2%	23	0.6%
Sydney-Adelaide								
Jetstar	150	150	124	82.7%	120	80.0%	0	0.0%
Qantas	3 473	3 457	2 901	83.9%	3 081	89.1%	16	0.5%
Virgin Blue	1 823	1 815	1 637	90.2%	1 586	87.4%	8	0.4%
All Airlines	5 446	5 422	4 662	86.0%	4 787	88.3%	24	0.4%
Sydney-Albury								
QantasLink	1 382	1 374	1 131	82.3%	1 005	73.1%	8	0.6%
Regional Express	1 275	1 273	1 072	84.2%	994	78.1%	2	0.2%
All Airlines	2 657	2 647	2 203	83.2%	1 999	75.5%	10	0.4%
Sydney-Ballina								
Jetstar	341	341	316	92.7%	305	89.4%	0	0.0%
QantasLink	60	60	45	75.0%	50	83.3%	0	0.0%
Regional Express	1 225	1 225	1 100	89.8%	1 056	86.2%	0	0.0%
Virgin Blue	401	399	332	83.2%	327	82.0%	2	0.5%
All Airlines	2 027	2 025	1 793	88.5%	1 738	85.8%	2	0.1%
Sydney-Brisbane								
Qantas	7 139	7 033	6 299	89.6%	6 305	89.6%	106	1.5%
Virgin Blue	6 002	5 885	5 082	86.4%	5 021	85.3%	117	1.9%
All Airlines	13 141	12 918	11 381	88.1%	11 326	87.7%	223	1.7%

	Sectors		On time departures		On time arrivals		Cancellations	
	sched.	flown	no.	%	no.	%	no.	%
Sydney-Cairns								
Jetstar	427	426	385	90.4%	366	85.9%	1	0.2%
Qantas	1 161	1 156	1 003	86.8%	1 003	86.8%	5	0.4%
Virgin Blue	1 041	1 037	827	79.7%	837	80.7%	4	0.4%
All Airlines	2 629	2 619	2 215	84.6%	2 206	84.2%	10	0.4%
Sydney-Coffs Harbour								
QantasLink	1 945	1 939	1 634	84.3%	1 505	77.6%	6	0.3%
Virgin Blue	725	723	667	92.3%	651	90.0%	2	0.3%
All Airlines	2 670	2 662	2 301	86.4%	2 156	81.0%	8	0.3%
Sydney-Darwin								
Qantas	92	92	70	76.1%	52	56.5%	0	0.0%
Virgin Blue	65	65	54	83.1%	46	70.8%	0	0.0%
All Airlines	157	157	124	79.0%	98	62.4%	0	0.0%
Sydney-Dubbo								
QantasLink	1 510	1 483	1 207	81.4%	1 180	79.6%	27	1.8%
Regional Express	1 283	1 281	1 095	85.5%	1 062	82.9%	2	0.2%
All Airlines	2 793	2 764	2 302	83.3%	2 242	81.1%	29	1.0%
Sydney-Gold Coast								
Jetstar	2 700	2 675	2 355	88.0%	2 352	87.9%	25	0.9%
Qantas	834	834	720	86.3%	724	86.8%	0	0.0%
Virgin Blue	3 498	3 485	3 095	88.8%	3 091	88.7%	13	0.4%
All Airlines	7 032	6 994	6 170	88.2%	6 167	88.2%	38	0.5%
Sydney-Hervey Bay								
Jetstar	87	87	84	96.6%	79	90.8%	0	0.0%
Virgin Blue	133	133	113	85.0%	113	85.0%	0	0.0%
All Airlines	220	220	197	89.5%	192	87.3%	0	0.0%
Sydney-Hobart								
Jetstar	715	712	641	90.0%	602	84.6%	3	0.4%
Qantas	334	334	282	84.4%	291	87.1%	0	0.0%
Virgin Blue	728	726	619	85.3%	609	83.9%	2	0.3%
All Airlines	1 777	1 772	1 542	87.0%	1 502	84.8%	5	0.3%
Sydney-Launceston								
Jetstar	365	365	350	95.9%	344	94.2%	0	0.0%
Virgin Blue	389	389	353	90.7%	361	92.8%	0	0.0%
All Airlines	754	754	703	93.2%	705	93.5%	0	0.0%
Sydney-Maroochydore								
Jetstar	1 010	1 004	873	87.0%	850	84.7%	6	0.6%
Virgin Blue	496	494	426	86.2%	416	84.2%	2	0.4%
All Airlines	1 506	1 498	1 299	86.7%	1 266	84.5%	8	0.5%
Sydney-Melbourne								
Ozjet	283	280	262	93.6%	241	86.1%	3	1.1%
Qantas	9 985	9 662	8 200	84.9%	8 103	83.9%	323	3.2%
Virgin Blue	8 094	7 941	7 161	90.2%	7 040	88.7%	153	1.9%
All Airlines	18 362	17 883	15 623	87.4%	15 384	86.0%	479	2.6%

	Sectors		On time departures		On time arrivals		Cancellations	
	sched.	flown	no.	%	no.	%	no.	%
Sydney-Perth								
Qantas	1 986	1 983	1 591	80.2%	1 352	68.2%	3	0.2%
Virgin Blue	1 111	1 109	981	88.5%	904	81.5%	2	0.2%
All Airlines	3 097	3 092	2 572	83.2%	2 256	73.0%	5	0.2%
Sydney-Townsville								
Jetstar	124	123	116	94.3%	116	94.3%	1	0.8%
Qantas	211	210	192	91.4%	187	89.0%	1	0.5%
Virgin Blue	365	363	322	88.7%	325	89.5%	2	0.5%
All Airlines	700	696	630	90.5%	628	90.2%	4	0.6%
Sydney-Wagga Wagga								
QantasLink	1 504	1 490	1 213	81.4%	1 068	71.7%	14	0.9%
Regional Express	1 358	1 356	1 126	83.0%	982	72.4%	2	0.1%
All Airlines	2 862	2 846	2 339	82.2%	2 050	72.0%	16	0.6%
Townsville-Brisbane								
Jetstar	241	239	201	84.1%	197	82.4%	2	0.8%
Qantas	1 688	1 676	1 482	88.4%	1 480	88.3%	12	0.7%
Virgin Blue	1 180	1 175	1 132	96.3%	1 117	95.1%	5	0.4%
All Airlines	3 109	3 090	2 815	91.1%	2 794	90.4%	19	0.6%
Townsville-Sydney								
Jetstar	122	121	111	91.7%	110	90.9%	1	0.8%
Qantas	215	214	188	87.9%	194	90.7%	1	0.5%
Virgin Blue	365	363	330	90.9%	328	90.4%	2	0.5%
All Airlines	702	698	629	90.1%	632	90.5%	4	0.6%
Wagga Wagga-Sydney								
QantasLink	1 503	1 485	1 186	79.9%	1 014	68.3%	18	1.2%
Regional Express	1 358	1 356	1 160	85.5%	1 142	84.2%	2	0.1%
All Airlines	2 861	2 841	2 346	82.6%	2 156	75.9%	20	0.7%

This page left intentionally blank

AIRPORTS

On time performance is reported for all routes which are flown by two or more airlines where the passenger load averages over 8,000 passengers per month. The following data reports by airport against flights operated on those routes only.

	Departures			Arrivals		
	Sectors Flown	No. on Time	% on Time	Sectors Flown	No. on Time	% on Time
Adelaide Airport						
Jetstar	673	565	84.0	646	582	90.1
Regional Express	829	768	92.6	829	740	89.3
Qantas	11 122	9 842	88.5	11 155	9 909	88.8
QantasLink	496	472	95.2	493	432	87.6
Virgin Blue	7 212	6 490	90.0	7 214	6 436	89.2
All Airlines	20 332	18 137	89.2	20 337	18 099	89.0
Relates to services to and from Alice Springs, Brisbane, Canberra, Gold Coast, Melbourne, Perth, Port Lincoln and Sydney.						
Albury Airport						
QantasLink	1 368	1 056	77.2	1 374	1 005	73.1
Regional Express	1 262	1 092	86.5	1 273	994	78.1
All Airlines	2 630	2 148	81.7	2 647	1 999	75.5
Relates to services to and from Sydney Only.						
Alice Springs Airport						
Qantas	92	71	77.2	92	77	83.7
Virgin Blue	38	23	60.5	38	22	57.9
All Airlines	130	94	72.3	130	99	76.2
Relates to services to and from Adelaide Only.						
Ballina Airport						
Jetstar	337	293	86.9	341	305	89.4
Regional Express	1 223	1 086	88.8	1 225	1 056	86.2
QantasLink	60	35	58.3	60	50	83.3
Virgin Blue	397	322	81.1	399	327	82.0
All Airlines	2 017	1 736	86.1	2 025	1 738	85.8
Relates to services to and from Sydney Only.						
Brisbane Airport						
Jetstar	4 502	3 978	88.4	4 563	3 810	83.5
Qantas	19 890	17 196	86.5	19 901	17 575	88.3
QantasLink	3 742	3 335	89.1	3 394	3 043	89.7
Virgin Blue	18 526	16 769	90.5	18 508	16 450	88.9
All Airlines	46 660	41 278	88.5	46 366	40 878	88.2
Relates to services to and from Adelaide, Cairns, Canberra, Darwin, Hamilton Island, Hobart, Mackay, Melbourne, Newcastle Perth, Proserpine, Rockhampton, Sydney and Townsville.						
Broome Airport						
Qantas	439	337	76.8	443	393	88.7
QantasLink	321	275	85.7	251	219	87.3
Skywest	258	210	81.4	265	194	73.2
Virgin Blue	276	222	80.4	276	233	84.4
All Airlines	1 294	1 044	80.7	1 235	1 039	84.1
Relates to services to and from Perth Only.						

	Departures			Arrivals		
	Sectors Flown	No. on Time	% on Time	Sectors Flown	No. on Time	% on Time
Burnie Airport						
QantasLink	706	630	89.2	723	599	82.8
Regional Express	615	588	95.6	613	566	92.3
All Airlines	1 321	1 218	92.2	1 336	1 165	87.2
Relates to services to and from Melbourne Only.						
Cairns Airport						
Jetstar	1 729	1 472	85.1	1 697	1 469	86.6
Qantas	2 996	2 656	88.7	2 937	2 538	86.4
Virgin Blue	3 180	2 845	89.5	3 182	2 766	86.9
All Airlines	7 905	6 973	88.2	7 816	6 773	86.7
Relates to services to and from Brisbane, Melbourne and Sydney.						
Canberra Airport						
Qantas	4 653	4 063	87.3	4 289	3 716	86.6
QantasLink	1 258	1 047	83.2	1 241	1 046	84.3
Virgin Blue	2 729	2 531	92.7	2 732	2 528	92.5
All Airlines	8 640	7 641	88.4	8 262	7 290	88.2
Relates to services to and from Adelaide, Brisbane and Melbourne.						
Coffs Harbour Airport						
QantasLink	1 927	1 593	82.7	1 939	1 505	77.6
Virgin Blue	721	651	90.3	723	651	90.0
All Airlines	2 648	2 244	84.7	2 662	2 156	81.0
Relates to services to and from Sydney Only.						
Darwin Airport						
Jetstar	104	46	44.2	106	61	57.5
Qantas	859	664	77.3	854	664	77.8
Virgin Blue	585	454	77.6	584	490	83.9
All Airlines	1 548	1 164	75.2	1 544	1 215	78.7
Relates to services to and from Brisbane, Melbourne and Sydney.						
Devonport Airport						
QantasLink	467	417	89.3	469	392	83.6
Regional Express	78	75	96.2	77	73	94.8
All Airlines	545	492	90.3	546	465	85.2
Relates to services to and from Melbourne Only.						
Dubbo Airport						
QantasLink	1 483	1 255	84.6	1 483	1 180	79.6
Regional Express	1 277	1 031	80.7	1 281	1 062	82.9
All Airlines	2 760	2 286	82.8	2 764	2 242	81.1
Relates to services to and from Sydney Only.						
Gold Coast Airport						
Jetstar	4 985	4 196	84.2	4 982	4 290	86.1
Qantas	729	649	89.0	834	724	86.8
Virgin Blue	6 185	5 443	88.0	6 198	5 468	88.2
All Airlines	11 899	10 288	86.5	12 014	10 482	87.2
Relates to services to and from Adelaide, Melbourne and Sydney.						
Hamilton Island Airport						
Jetstar	274	235	85.8	272	243	89.3
Qantas	27	24	88.9	27	22	81.5
Virgin Blue	297	283	95.3	298	279	93.6
All Airlines	598	542	90.6	597	544	91.1
Relates to services to and from Brisbane Only.						

	Departures			Arrivals		
	Sectors Flown	No. on Time	% on Time	Sectors Flown	No. on Time	% on Time
Hervey Bay Airport						
Jetstar	86	77	89.5	87	79	90.8
Virgin Blue	133	110	82.7	133	113	85.0
All Airlines	219	187	85.4	220	192	87.3
Relates to services to and from Sydney Only.						
Hobart Airport						
Jetstar	2 448	2 000	81.7	2 443	1 972	80.7
Qantas	1 157	1 012	87.5	1 094	912	83.4
Virgin Blue	2 591	2 316	89.4	2 594	2 292	88.4
All Airlines	6 196	5 328	86.0	6 131	5 176	84.4
Relates to services to and from Brisbane, Melbourne and Sydney.						
Kalgoorlie Airport						
Qantas	583	476	81.6	585	502	85.8
QantasLink	391	342	87.5	391	347	88.7
Skywest	559	538	96.2	558	525	94.1
All Airlines	1 533	1 356	88.5	1 534	1 374	89.6
Relates to services to and from Perth Only.						
Karratha Airport						
Qantas	582	539	92.6	582	537	92.3
QantasLink	681	567	83.3	751	650	86.6
Skywest	213	187	87.8	203	168	82.8
All Airlines	1 476	1 293	87.6	1 536	1 355	88.2
Relates to services to and from Perth only.						
Launceston Airport						
Jetstar	1 674	1 463	87.4	1 672	1 485	88.8
Qantas	375	358	95.5	379	272	71.8
Virgin Blue	1 815	1 684	92.8	1 815	1 644	90.6
All Airlines	3 864	3 505	90.7	3 866	3 401	88.0
Relates to services to and from Melbourne and Sydney.						
Mackay Airport						
Jetstar	1 046	876	83.7	1 046	914	87.4
Qantas	244	188	77.0	244	223	91.4
QantasLink	185	159	85.9	183	153	83.6
Virgin Blue	1 068	1 004	94.0	1 068	930	87.1
All Airlines	2 543	2 227	87.6	2 541	2 220	87.4
Relates to services to and from Brisbane Only.						
Maroochydore Airport						
Jetstar	1 677	1 313	78.3	1 683	1 421	84.4
Virgin Blue	1 248	1 083	86.8	1 251	1 118	89.4
All Airlines	2 925	2 396	81.9	2 934	2 539	86.5
Relates to services to and from Melbourne and Sydney.						
Melbourne Airport						
Jetstar	6 927	5 913	85.4	6 953	5 548	79.8
Ozjet	283	272	96.1	280	241	86.1
Qantas	25 681	21 958	85.5	25 661	21 916	85.4
QantasLink	4 766	3 906	82.0	4 760	3 873	81.4
Regional Express	1 871	1 745	93.3	1 873	1 687	90.1
Virgin Blue	24 415	21 885	89.6	24 407	21 925	89.8
All Airlines	63 943	55 679	87.1	63 934	55 190	86.3
Relates to services to and from Adelaide, Brisbane, Burnie, Cairns, Canberra, Darwin, Devonport, Gold Coast, Hobart, Launceston, Maroochydore, Mildura, Newcastle, Perth and Sydney.						

	Departures			Arrivals		
	Sectors Flown	No. on Time	% on Time	Sectors Flown	No. on Time	% on Time
Mildura Airport						
Qantas	1	1	100.0	1	0	0.0
QantasLink	1 574	1 345	85.5	1 583	1 249	78.9
Regional Express	1 180	1 104	93.6	1 181	1 040	88.1
All Airlines	2 755	2 450	88.9	2 765	2 289	82.8
Relates to services to and from Melbourne Only.						
Newcastle Airport						
Jetstar	1 959	1 708	87.2	1 938	1 689	87.2
QantasLink	1 382	1 180	85.4	1 379	1 094	79.3
Virgin Blue	778	699	89.8	780	701	89.9
All Airlines	4 119	3 587	87.1	4 047	3 449	85.2
Relates to services to and from Brisbane and Melbourne.						
Perth Airport						
Qantas	8 378	6 487	77.4	8 444	6 354	75.2
QantasLink	1 686	1 428	84.7	1 684	1 465	87.0
Skywest	1 062	936	88.1	1 067	947	88.8
Virgin Blue	3 666	3 176	86.6	3 667	3 101	84.6
All Airlines	14 792	12 027	81.3	14 862	11 867	79.8
Relates to services to and from Adelaide, Brisbane, Broome, Kalgoorlie, Karratha, Melbourne, Port Hedland and Sydney.						
Port Hedland Airport						
QantasLink	291	223	76.6	293	255	87.0
Skywest	37	32	86.5	36	29	80.6
All Airlines	328	255	77.7	329	284	86.3
Relates to services to and from Perth Only.						
Port Lincoln Airport						
QantasLink	493	463	93.9	496	463	93.3
Regional Express	829	766	92.4	829	756	91.2
All Airlines	1 322	1 229	93.0	1 325	1 219	92.0
Relates to services to and from Adelaide Only.						
Proserpine Airport						
Jetstar	364	315	86.5	363	321	88.4
Virgin Blue	365	342	93.7	365	335	91.8
All Airlines	729	657	90.1	728	656	90.1
Relates to services to and from Brisbane Only.						
Rockhampton Airport						
Jetstar	365	285	78.1	364	325	89.3
QantasLink	2 582	2 352	91.1	2 930	2 645	90.3
Virgin Blue	1 069	983	92.0	1 069	924	86.4
All Airlines	4 016	3 620	90.1	4 363	3 894	89.3
Relates to services to and from Brisbane Only.						
Sydney Airport						
Jetstar	5 883	5 244	89.1	5 875	5 102	86.8
Ozjet	280	262	93.6	283	257	90.8
Qantas	24 761	21 258	85.9	25 050	21 429	85.5
QantasLink	6 346	5 230	82.4	6 323	4 844	76.6
Regional Express	5 135	4 393	85.6	5 118	4 251	83.1
Virgin Blue	24 564	21 669	88.2	24 557	21 596	87.9
All Airlines	66 969	58 056	86.7	67 206	57 479	85.5
Relates to services to and from Adelaide, Albury, Ballina, Brisbane, Cairns, Coffs Harbour, Darwin, Dubbo, Gold Coast, Hervey Bay, Hobart, Launceston, Maroochydore, Melbourne, Perth, Townsville and Wagga Wagga.						

	Departures			Arrivals		
	Sectors Flown	No. on Time	% on Time	Sectors Flown	No. on Time	% on Time
Townsville Airport						
Jetstar	360	312	86.7	362	324	89.5
Qantas	1 890	1 670	88.4	1 887	1 621	85.9
Virgin Blue	1 538	1 462	95.1	1 538	1 419	92.3
All Airlines	3 788	3 444	90.9	3 787	3 364	88.8
Relates to services to and from Brisbane and Sydney.						
Wagga Wagga Airport						
QantasLink	1 485	1 186	79.9	1 490	1 068	71.7
Regional Express	1 356	1 160	85.5	1 356	982	72.4
All Airlines	2 841	2 346	82.6	2 846	2 050	72.0
Relates to services to and from Sydney Only.						

This page intentionally left blank

DEFINITIONS

On time departure	A flight departure is counted as "on time" if it departs the gate within 15 minutes of the scheduled departure time shown in the carriers' schedule.
On time arrival	A flight arrival is counted as "on time" if it arrived at the gate within 15 minutes of the scheduled arrival time shown in the carriers' schedule. Neither diverted nor cancelled flights count as on time.
Cancellation	A flight is regarded as a cancellation if it is cancelled or rescheduled less than 7 days prior to its scheduled departure time.
On time departure percentage	The percentage of on time departures is measured against the number of departures <i>operated</i> on any particular sector.
On time arrival percentage	The percentage of on time arrivals is measured against the number of arrivals <i>operated</i> on any particular sector.
Cancellation percentage	The percentage of cancellations is measured against the number of services <i>scheduled</i> on any particular sector.
