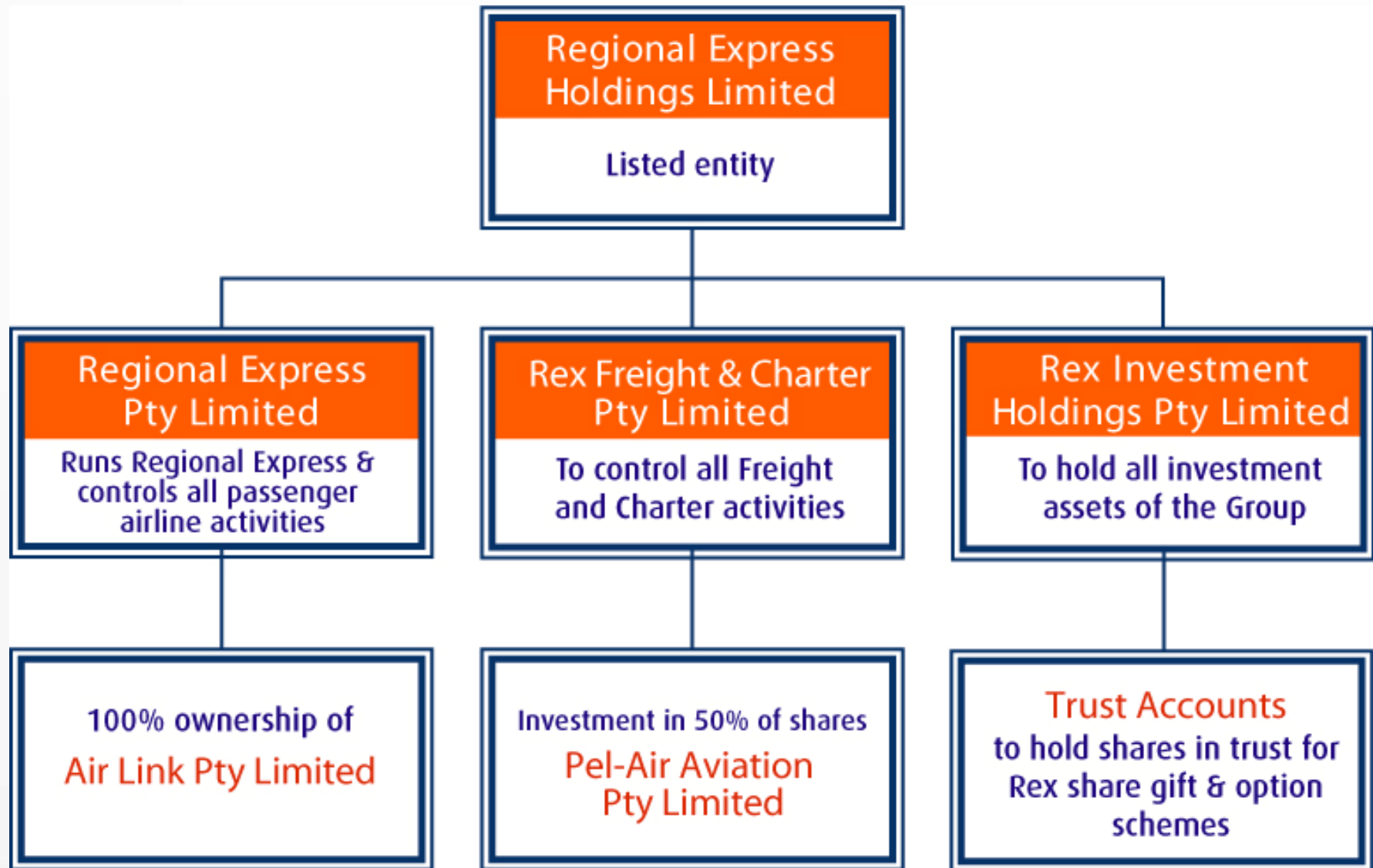


3rd Quarter Results

Company Briefing 24 May 06



GROUP STRUCTURE





OVERVIEW

- 50% profit attributable to Rex
- Saab being introduced - Charter
- Consistent performance
- Expect to achieve annual budget

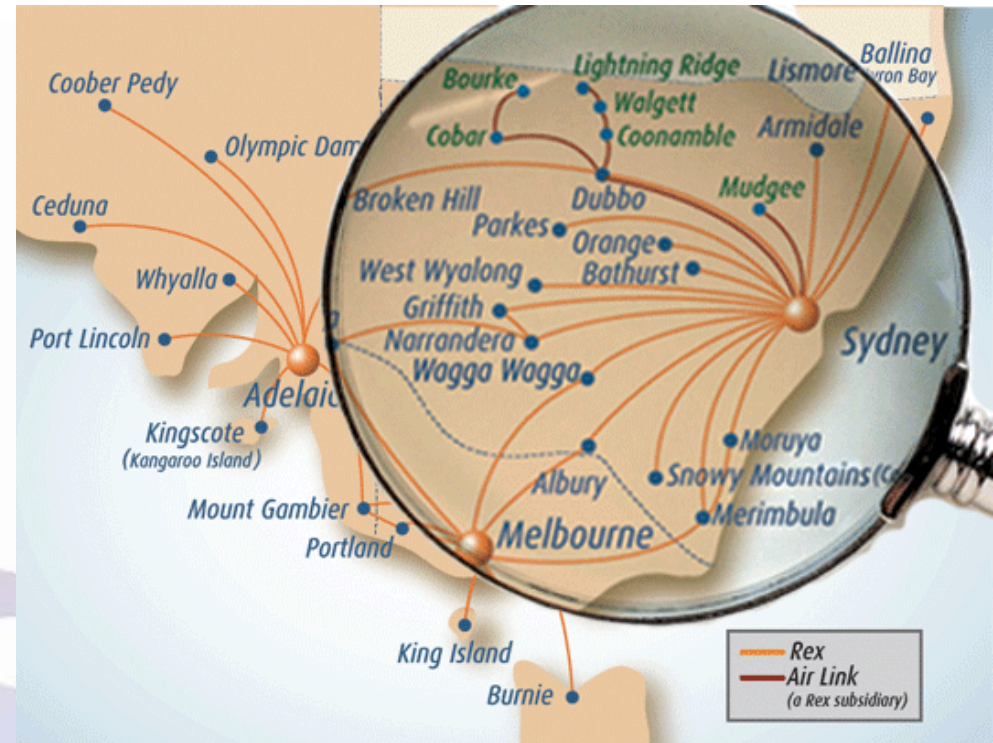


9 months to 31 Mar 06	YTD06	YTD05	Change
Sales Revenue (\$'000)	23,473	22,857	+3%
Profit Before Tax (\$'000)	3,986	3,812	+5%
Aircraft Hours	11,667	11,804	-1%



OVERVIEW

- ➔ Air Link-Rex market share in Dubbo surpassed QantasLink in Mar 06
- ➔ Better distribution leading to improved load factor & passenger numbers
- ➔ Increasing charter activities



9 months to 31 Mar 06	YTD06	YTD05	Change
Sales Revenue (\$'000)	5,777	4,538	+27%
Profit Before Tax (\$'000)	560	467	+20%
Passengers	30,702	22,764	+35%
ASKs ('000)	1,160	1,017	+14%
Load Factor (%)	70.3	59.3	+11% pts
Average Fare (\$)	133	140	-5%



rex OVERVIEW

9 months to 31 Mar 06	YTD06	YTD05	Change	FY06 Budget	Achieved
Passengers	864,000	771,000	+12%	1,135,000	76%
ASKs (M)	501	449	+11%	666	75%
Average Fare (\$) (Excl. fuel levy)	120 (101)	115 (107)	+4% (-6%)	121 (102)	N/A
Average Fleet Size	29	27	+7%	29	100%
Load Factor (%)	66.2	65.8	+0.4% pts	65.7	N/A
Revenue/ASK (c)	22.1	21.2	+4%	22.1	N/A
Total cost/ASK (c)	19.3	19.8	-2%	19.1	N/A
Fuel % Total Exp	19.6%	15.3%	+4% pts	18.9%	N/A







GROUP FINANCIAL
HIGHLIGHTS



9 months to 31 Mar 06	YTD06 \$M	YTD05 \$M	Change	FY06 Budget \$M	Achieved
Passenger Revenue	108.8	92.3	+18%	142.4	76%
Total Revenue	110.2	93.6	+18%	144.7	76%
Total Revenue & Other Income	115.9	96.1	+21%	147.3	79%
EBITDAR	24.7	14.8	+68%	33.1	75%
PBT	17.0	7.0	+143%	21.5	79%
NPAT	12.0	6.2	+93%	15.1	79%
Earnings Per Share	12.0c	11.0c	+13%	N/A	N/A

AIRLINES

ESTIMATED COMPARATIVE PERFORMANCE

	 9 months to 31 Mar 06 (A\$M)	 Full year ended 31 Mar 06 (S\$M)	 Quarter ended Mar 06 (US\$M)	 Half year ended 31 Dec 05 (A\$M)	 Half year ended 31 Mar 06 (A\$M)	 Half year ended 31 Dec 05 (A\$M)
Revenue	116	13,341	2,019	6,847	936	38
PBT	17	1,662	96	483	99	1
Debt/Equity*	0.07	0.13	0.2	0.86	1.12	N/A
Revenue Margin (PBT/Revenue)	14.6%	12.5%	4.7%	7.1%	10.6%	2.6%
Revenue Growth	+21%	+11%	+21%	+9%	+6%	+15%
PBT Growth	+143%	-7.2%	+7.9%	-3.4%	-4.7%	+20%

*Borrowing is based on interest bearing long term debt only.

FUTURE OUTLOOK

- Further fleet additions/rationalisation
- Network Capacity Increase
- Increase emphasis on Charter & Freight
- Extract synergies from recent acquisitions
- On target to meet prospectus forecast

Question & Answer Session